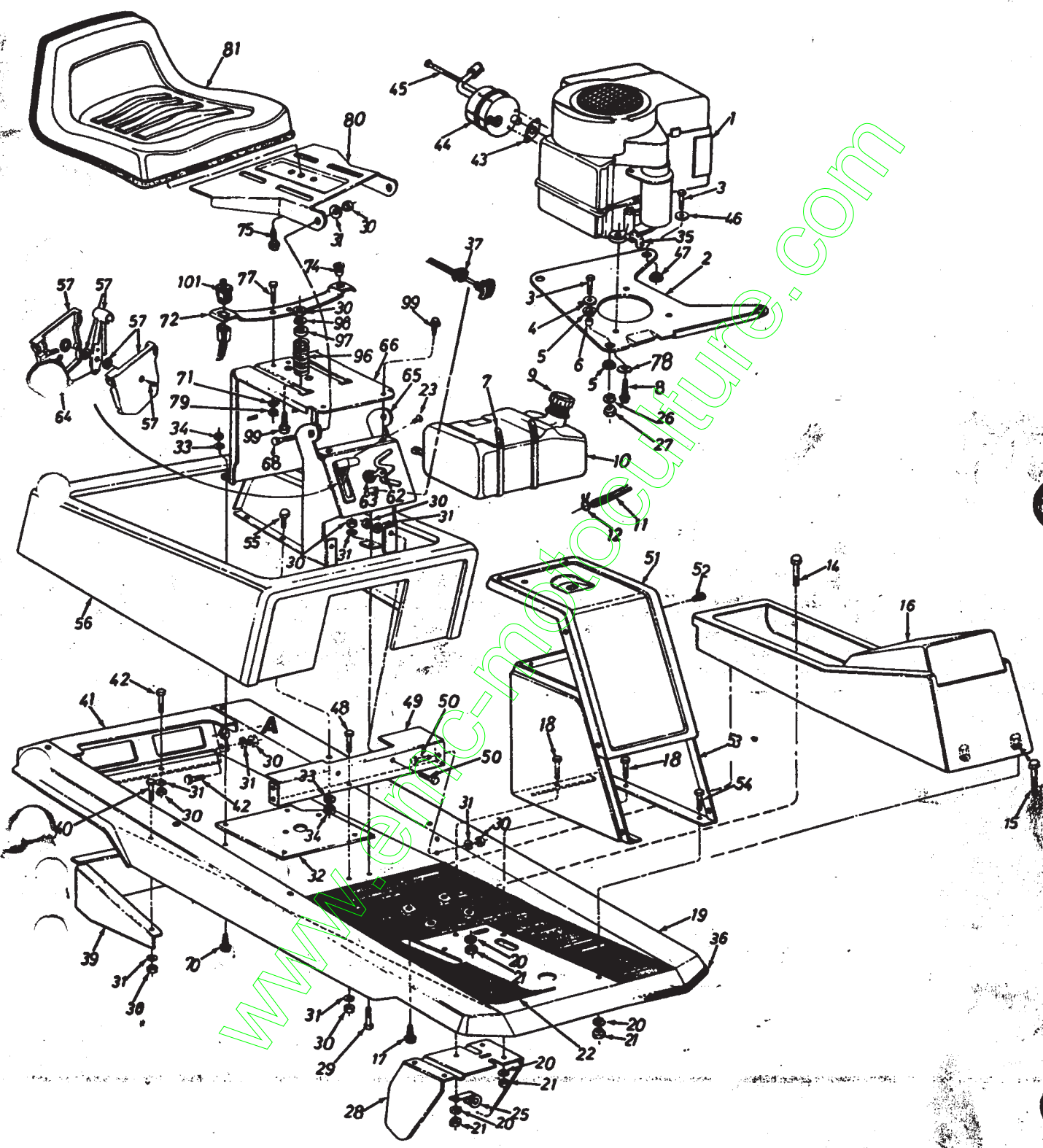


10/76

Models 560 and 561

10/76



Models 560 and 561

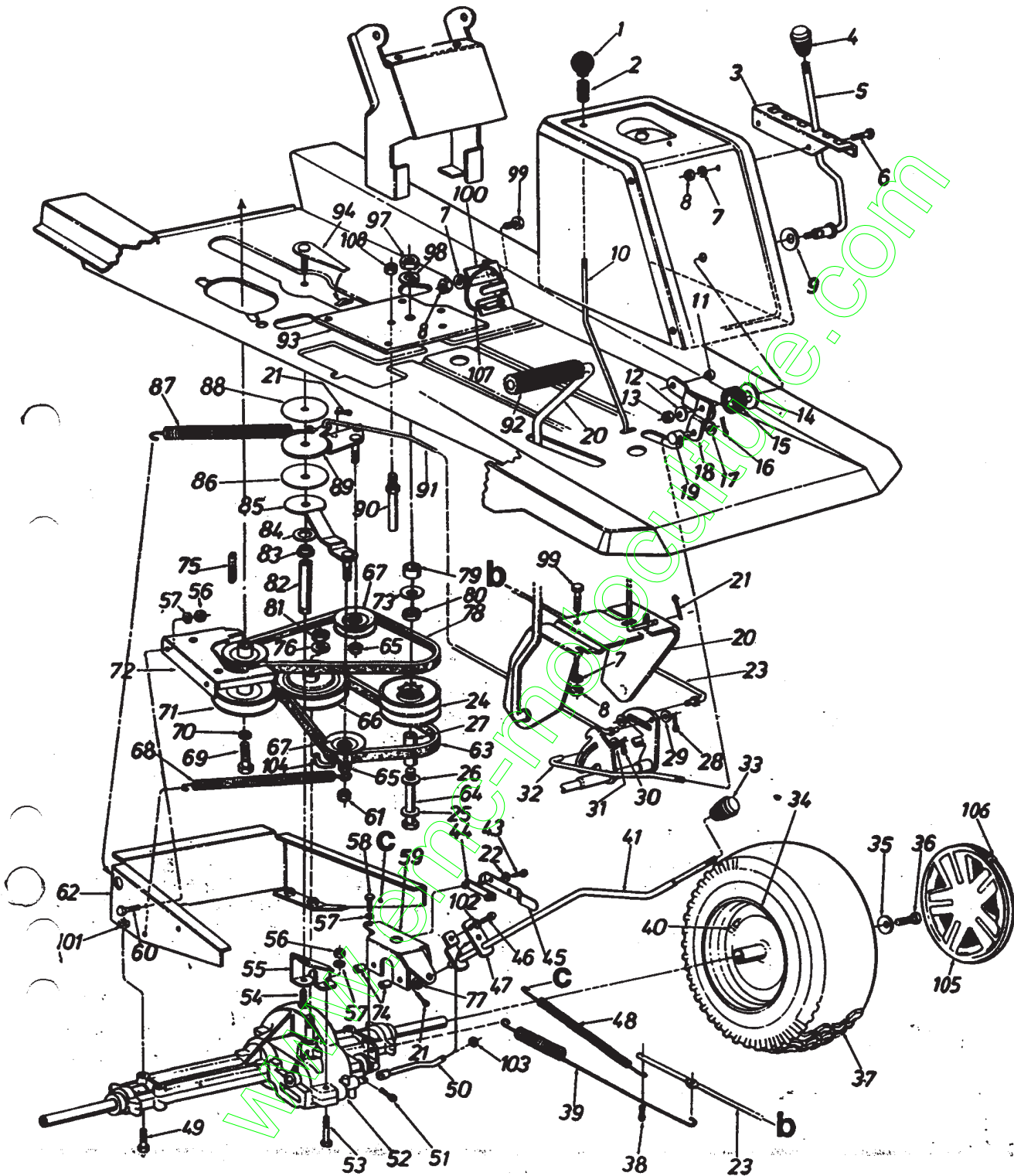
PARTS LIST FOR MODELS 560 AND 561 RIDING MOWERS

REF. NO.	PART NO.	CODE	DESCRIPTION	REF. NO.	PART NO.	CODE	DESCRIPTION
1	—		Engine	44	751-0412		Muffler Ass'y. (8 H.P. B&S)
2	15572A		Engine Mounting Plate		751-0425		Spark Arrester For 8 H.P. Muffler (B&S—Optional)
3	710-0158		Hex Bolt 5/16-24 x 1.25" Lg.*				Muffler Ass'y. (10, 11 & 12 H.P. B&S)
4	736-0231		Fl-Wash. .330" I.D. x 1.125" O.D.		751-0413		Spark Arrester For 10, 11 & 12 H.P. Muffler (B&S Optional)
5	722-0153		Engine Mounting Grommet		751-0426		Muffler Ass'y. (8 H.P. Tecumseh)
6	750-0539		Spacer .315" I.D. x .50" O.D. x .520" Lg.		751-0604		Spark Arrester (8 H.P. Tecumseh—Optional)
7	726-0209		Cable Tie 30.6 Lg.		751-0605		Shld. Bolt (8 H.P. B&S)
8	710-0502A		Hex Wash. Hd. Self-Tap Scr. 3/8-16 x 1.25" Lg.	45	738-0635		Shld. Bolt (10, 11 & 12 H.P. B&S)
9	751-3071		Gas Cap		738-0636		Shld. Bolt (8 H.P. Tecumseh)
10	751-0368A		Fuel Tank		738-0905		Fl-Wash. .330" I.D. x 1.25" O.D.
11	751-0535-26		Fuel Line—26" Lg.	46	736-0343		Flange Wash. .320" I.D. x .750" O.D.
12	726-0205		Hose Clamp—1/2" O.D. Tube	47	736-0392		Seat Support & Frame Brkt.
14	710-0380		Hex Bolt 5/16-18 x 1.75" Lg.*††				Hex Bolt 5/16-18 x .75" Lg.*
15	710-0116		Hex Bolt 5/16-18 x 2" Lg.*††	49	15604		Steering Housing Cover†
16	731-0712A		Front Console††	50	710-0118		Truss Mach. B-Tap Scr. #10 x .5" Lg.†
17	710-0906		Plastite Scr. 5/16 x 1.25" Lg.††	51	15554		Steering Shaft Housing†
18	710-0118		Hex Bolt 5/16-18 x .75" Lg.*††	52	710-0351		Hex Bolt 5/16-18 x 1" Lg. (Gr. 5)†
19	17672A		Main Frame				Hex Bolt 1/4-20 x .50" Lg.*
20	736-0119		L-Wash. 5/16" I.D.*	53	16403		Engine Cover Ass'y.
21	712-0267		Hex Nut 5/16-18 Thd.*	54	710-0376		Throttle Control Box Ass'y.
22	735-0220A		Floor Mat				Ignition Key
23	710-0779A		Truss Mach. AB-Tap Scr. #10 x .50" Lg.	55	710-0289		Ignition Switch
24	726-0175		Clamp	56	683-0044	N	Throttle Control Wire 35" Lg.
26	736-0119		L-Wash. 5/16" I.D.*	57	831-0823A		Throttle Control Wire 30.5" Lg.
27	712-0123		Hex Nut 5/16-24 Thd.*	62	725-0201		Front Seat Bracket
28	17677		Clutch-Brake Pedal Ass'y.	63	725-0267		Rear Seat Bracket
29	710-0118		Hex Bolt 5/16-18 x .75" Lg.*	64	746-0503		Shld. Bolt .437" Dia. x .268" Lg.
30	712-0267		Hex Nut 5/16-18 Thd.*		746-0891		Hex Tap Scr. 1/4-20 x 1.0" Lg.
31	736-0119		L-Wash. 5/16" I.D.*	65	16483A		L-Wash. 5/16" I.D.*
32	783-0005		Variable Speed Mounting Plate	66	15606A		Seat Spring
33	736-0329		L-Wash. 1/4" I.D.*	68	738-0296		Grommet
34	712-0287		Hex Nut 1/4-20 Thd.*	70	710-0855		Hex Wash. Hd. Tap Scr. 3/8-16 x 3/4" Lg.
35	737-0125		90° Elbow Male To Female	71	736-0119		Hex Bolt 5/16-18 x .75" Lg.*
36	731-0511-57		Trim Strip (39" Req'd.)	72	732-0632		Bell-Wash. .345" I.D. x .88" O.D.
37	746-0614A		Choke Control	74	731-0555A		Hex Cent. L-Nut 5/16-18 Thd.
39	15552		Transaxle Support Ass'y.	75	710-0623		Seat Pivot Bracket
40	710-0118		Hex Bolt 5/16-18 x .75" Lg.*				Seat Ass'y. Comp.
41	15571		Rear Frame Panel	77	710-0118		Compression Spring 2.7" Lg.
42	710-0621		Hex Bolt 5/16-18 x .50" Lg.*	78	736-0242		Bushing
43	721-0207		Exhaust Gasket (8 H.P. B&S)	79	712-0158		Fl-Wash. .344" I.D. x .875"
	721-0208		Exhaust Gasket (10, 11 & 12 H.P. B&S)	80	15607D		Hex Bolt 5/16-18 x 1" Lg. (Gr. 5)
				81	757-0345		Seat Switch
				96	732-0633		
				97	722-0160		
				98	736-0159		
				99	710-0376		
				101	725-1441		

† Model 560
†† Model 561

*For faster service obtain standard nuts, bolts and washers locally.
If these items cannot be obtained locally, order by part number and size as shown on parts list.

Models 560 thru 561



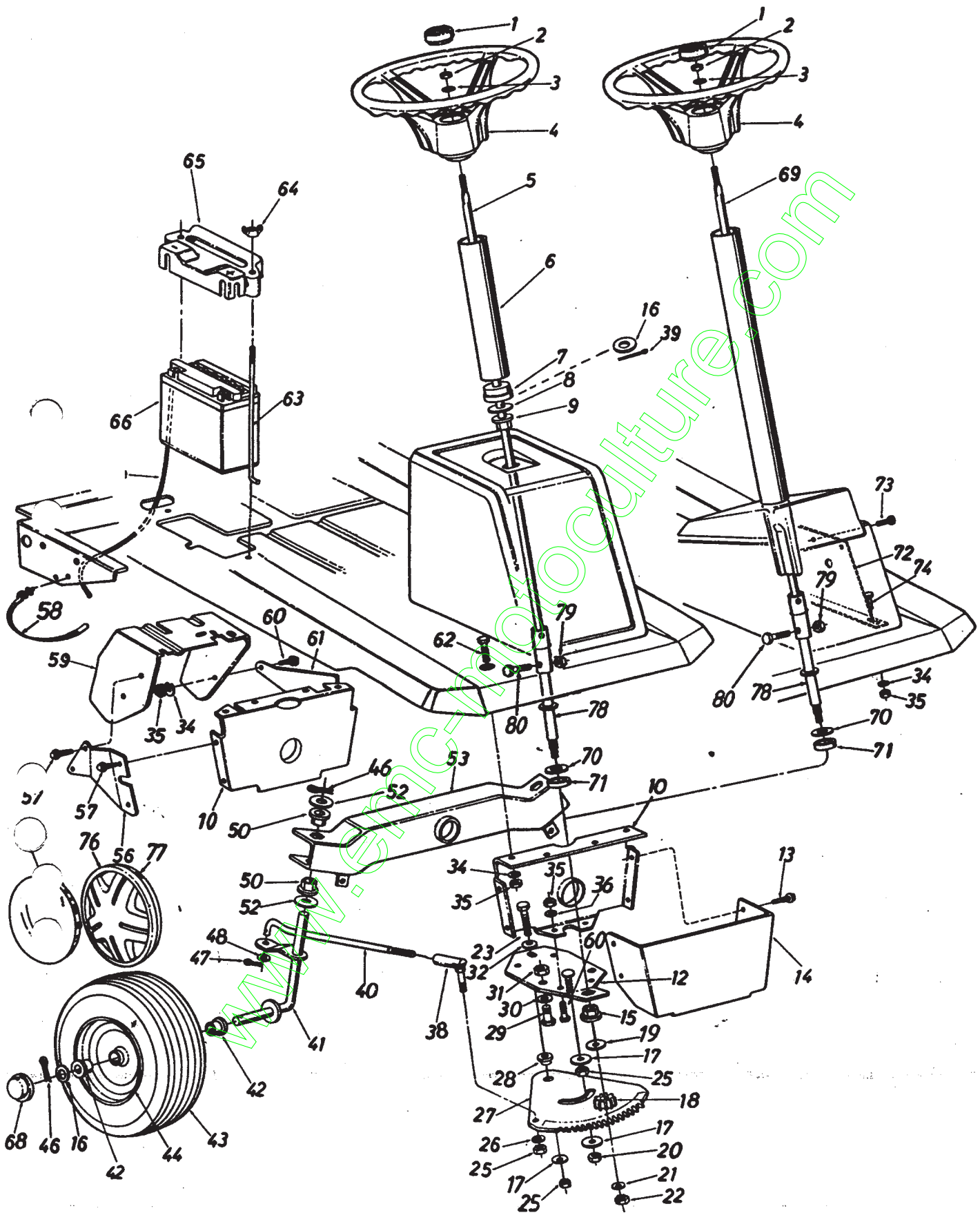
NOTE: If brand of tire is important, order by part number and description (description is printed on the sidewall of tire) [i.e. Armstrong Super Turf, Goodyear Softrac, Carlisle Turf Saver, etc.].

Models 560 and 561

PARTS LIST FOR MODELS 560 AND 561 RIDING MOWERS

REF. NO.	PART NO.	CODE	DESCRIPTION	REF. NO.	PART NO.	CODE	DESCRIPTION
1	720-0187		Ball Knob 1/4-20 Thd. 1.25"	54	710-0180		Hex Bolt 3/8-24 x .75" Lg.*
2	732-0437		Compression Spring	55	15564A		Torque Rod Bracket
3	16389		Speed Index Bracket	56	712-0287		Hex Nut 1/4-20 Thd.*
4	720-0232		Shift Knob	57	736-0329		L-Wash. 1/4" I.D.*
5	747-0652		Speed Control Lever	58	710-0965		Self-Tap Mach. Scr. Type "C"
6	710-0323		Truss Mach. Scr. 5/16-18 x .75" Lg.*	59	17515A		1/4-20 x 1.37" Lg.
7	736-0119		L-Wash. 5/16" I.D.*	60	710-0597		Shift Lever Support Brkt.
8	712-0267		Hex Nut 5/16-18 Thd.*	61	712-0262		Hex Bolt 1/4-20 x 1.00" Lg.*
9	736-0253		Bell-Wash. .345" I.D. x .88"	62	15552		Hex L-Nut 3/8-24 Thd.
10	747-0427		Brake Locking Rod (560)	63	754-0240		Transaxle Support Ass'y.
	747-0450		Brake Locking Rod (561)	64	710-0693		V-Belt
11	731-0493		Cap	65	712-0116		Hex Bolt 3/8-16 x 4.5" Lg.
12	736-0242		Bell-Wash. .345" I.D. x .08"	66	656-0002		Hex Ins. L-Nut 3/8-24 Thd.
13	712-0158		Hex Cent. L-Nut 5/16-18 Thd.	67	756-0116		V-Pulley
14	736-0100		FI-Wash. .531" I.D. x 1.25" O.D.	68	732-0308		V-Belt Idler .38" I.D. x 3.06"
15	735-0219		Rubber Washer (560)	69	710-0314		Ext. Spring .50" O.D. x 6.37"
	735-0129		Rubber Washer (561)	70	736-0171		Hex Bolt 7/16-20 x 1.00" Lg.
	714-0145		Intern. Cotter Pin 1/2" Dia.	71	756-0391		L-Wash. 7/16" I.D.
17	736-0275		FI-Wash. .34" I.D. x .68" O.D.	72	15623		Engine Pulley
18	16396		Speed Control Lever Brkt. Ass'y.	73	736-0219		Upper Eng. Belt Guard
19	711-0677		Ferrule—Engagement	74	750-0686		Bell-Wash. .4" I.D. x 1.12" O.D.
20	17677		Clutch/Brake Pedal Ass'y.	75	714-0114		Spacer .256" I.D. x .50" O.D.
	714-0507		Cotter Pin 3/32" Dia. x .75**	76	736-0427		Sq.-Key 1/4" x 2.00" Lg.
	736-0426		Plastic Washer	77	736-0226		Bell-Wash. .567" I.D. x 1.125"
23	747-0431		Brake Rod	78	754-0241A		FI-Wash. .469" I.D. x .88" O.D.
24	717-0884		Variable Speed Pulley Ass'y.	79	750-0706		V-Belt
25	736-0247		FI-Wash. .4" I.D. x 1.25" O.D.	80	741-0405		Spacer 1.00" x .380" O.D.
26	741-0405		Thrust Brg. 1.25" O.D. x .56" I.D.				Thrust Wash. .56" I.D. x 1.25" O.D.
27	750-0705		Spacer Sleeve 2.71"	81	712-3035		Hex Jam Nut 9/16-18 Thd.
28	714-0115		Cotter Pin 1/8" Dia. x 1.25**	82	711-0676		Torque Rod
29	736-0275		FI-Wash. .34" I.D. x .60" O.D.	83	748-0294		Flange Bearing .378
30	714-0104		Intern. Cot-Pin 5/16" Dia.	84	736-0187		FI-Wash. .640" I.D. x 1.24"
31	736-0275		FI-Wash. .34" I.D. x .60" O.D.	85	15569A		Idler Bracket Ass'y.
32	747-0394A		Speed Control Link	86	736-0283		Thrust Wash. .635" I.D.
33	720-0232		Shift Knob	87	732-0556		Extension Spring 7.58" Lg.
34	734-0594		Rear Wheel Rim Only	88	736-0284		Thrust Wash. .385" I.D.
35	736-0242		Bell-Wash. .345" I.D. x .88"	89	15585		Idler Bracket Ass'y. For Clutch
36	710-0627		Hex L-Bolt 5/16-24 x .75" Lg.	90	711-0640		Belt Guard Pin 3/8-16 x 2.75" Lg.
37	734-0591		Rear Wheel Ass'y.—Comp.	91	747-0560		Clutch Rod
	734-0275		Tire Only	92	735-0196		Foot Pad
38	714-0470		Cotter Pin 1/8" Dia. x 1.25**	93	783-0005		Variable Speed Mtg. Plate
	732-0389		Extension Spring 17.0" Lg.	94	15642		Weld Bolt Brkt. Ass'y. —
	734-0255		Air Valve	97	712-0798		Hex Nut 3/8-16
41	16475		Shift Lever Ass'y.	98	736-0217		L-Wash. 3/8 Heavy Duty
	710-0227		Hex Wash. Hd. Scr. #8 x .5" Lg.	99	710-0118		Hex Bolt 5/16-18 x .75" Lg.*
	726-0222		Insulator Nut	100	17839		Speed Control Rod Brkt.
45	732-0615		Spring Switch	101	712-0265		Hex Sems Nut 5/16-18 Thd.
46	710-0289		Hex Bolt 1/4-20 x .50" Lg.*	102	736-0270		Bell-Wash. .265" I.D. x .75" O.D.
47	16476		Shift Lever Adjusting Link	103	726-0231		Push on Retaining Ring
48	732-0487		Ext. Spring 81/4" Lg.	104	747-0758		Belt Guard
49	710-0378		Hex Bolt 5/16-18 x 2.5" Lg.	105	734-1614		Hub Cap—Beige (Optional)
50	747-0668		Shift Rod		734-1504		Hub Cap—Grey (Optional)
51	714-0149B		Intern. Cotter Pin	106	727-0425		Spring Clip (Used w/Ref. #105)
52	—		Transaxle (See Breakdown)	107	732-0525		Comp. Spring Clip
53	710-0136		Hex Bolt 1/4-20 x 1.75" Lg.*	108	712-0181		Hex Top L-Jam Nut 3/8-16 Thd.

Models 560 thru 561



Models 560 and 561

PARTS LIST FOR MODELS 560 AND 561 RIDING MOWERS

REF. NO.	PART NO.	CODE	DESCRIPTION	REF. NO.	PART NO.	CODE	DESCRIPTION
1	731-0220		Steering Wheel Cap	40	747-0417		Steering Tie Rod
2	712-0237		Hex L-Nut 5/16-24 Thd.	41	683-0012	N	Front Axle Ass'y.—R.H.
3	736-0242		Bell-Wash. .345" I.D. x .88" O.D.		683-0011	N	Front Axle Ass'y.—L.H. (Not Shown)
4	731-0805		Steering Wheel Ass'y. (3 Spoke)	42	Δ		Flange Bearing
	731-0806A		Steering Wheel Ass'y. (4 Spoke)	43	Δ		Front Wheel Ass'y. Comp.
5	683-0035	N	Steering Shaft Ass'y.†	44	Δ		Front Wheel Rim Only
6	750-0568		Steering Tube Spacert	46	714-0470		Cotter Pin 1/8" Dia. x 1.25**
7	731-0651		Steering Tube Spacert	47	714-0115		Cotter Pin 1/8" Dia. x 1.00**
8	736-0187		FI-Wash. .635" I.D. x 1.24" O.D.†	48	736-0300		FI-Wash. .385" I.D. x .87"
9	741-0225		Hex Flange Bearing†	50	741-0225		Hex Flange Bearing
10	15613A		Pivot Bar Bracket	52	736-0156		FI-Wash. .635" I.D. x 1.12"
12	683-0045	N	Steering Gear Support Brkt.	53	15610A		Pivot Bar Ass'y.
13	710-0776A		Hex Wash. Hd. AB-Tap Scr. 1/4 x .62" Lg.	56	15694A		Bracket Reinforcement—R.H.
14	15608		Steering Gear Cover	57	710-0776A		Hex Wash. Hd. AB-Tap Scr. 1/4 x .62" Lg.
15	741-0225		Hex Flange Bearing	58	726-0154		Cable Tie**
16	736-0285		FI-Wash. .640" I.D. x 1.5" O.D.	59	17677		Clutch-Brake Pedal Ass'y.
17	736-0320		FI-Washer 3/8" I.D. x 1.37" O.D.	60	710-0118		Hex Bolt 5/16-18 x .75" Lg.*
	748-0290		Steering Pinion Gear	61	15699A		Bracket Reinforcement—L.H.
19	736-0272		FI-Wash. .510" I.D. x 1" O.D.	62	710-0118		Hex Bolt 5/16-18 x .75" Lg.*
20	712-0116		Hex L-Nut 3/8-24	63	711-0222		Battery Hold Down Rod
21	736-0275		FI-Wash. .34" I.D. x .68" O.D.	64	712-0113		Wing Nut Solid 1/4-20 Thd.
22	712-0123		Hex Nut 5/16-24 Thd.	65	731-0708		Battery Hold Down Cover
	710-0459		Hex Bolt 3/8-24 x 1.5" Lg. (Grade 5)	66	725-1633		12V Battery
25	712-0241		Hex Nut 3/8-24 Thd.*	67	734-1219		Chrome Hub Cap (Optional)
26	736-0169		L-Wash. 3/8" I.D.*	68	731-0484A		Plastic Hub Cap (Optional)
27	717-0472A		Steering Gear Segment	69	683-0034	N	Steering Shaft Ass'y.††
28	738-0541		Shoulder Spacer .622" Dia. x .218	70	736-0187		FI-Wash. .635" I.D. x 1.24" O.D.
29	710-0689		Hex Bolt (Nylon) 1/2-13 x .75"	71	750-0532		Spacer (Plastic)
30	736-0160		FI-Wash. .530" I.D. x .930"	72	16069		Rainf. Brkt. Ass'y.††
31	712-0206		Hex Nut 1/2-13 Thd.*	73	710-0323		Truss Mach. Scr. 5/16-18††
32	736-0105		Bell-Wash. .385" I.D. x .88"	74	710-0116		Hex Bolt 5/16-18 x 2.00" Lg.††
34	736-0119		L-Wash. 5/16" I.D.*	76	734-1610		Hub Cap—Beige (Optional)
35	712-0267		Hex Nut 5/16-18 Thd.*		734-1502		Hub Cap—Grey (Optional)
36	736-0271		Spr. Wash. .32" I.D. x .62" O.D.	77	727-0425A		Spring Clip (Used w/Ref. 76)
	723-0156		Ball Joint Ass'y. 3/8-24 Thd.	78	738-3089	N	Steering End Adapter
39	714-0115		Cotter Pin 1/8" Dia. x 1.00" Lg.†	79	712-0324		Hex Nylon L-Nut 1/4-20 Thd.
				80	710-0958		Hex Bolt 1/4-20 x 1.31" Lg.

† Model 560
† Model 561

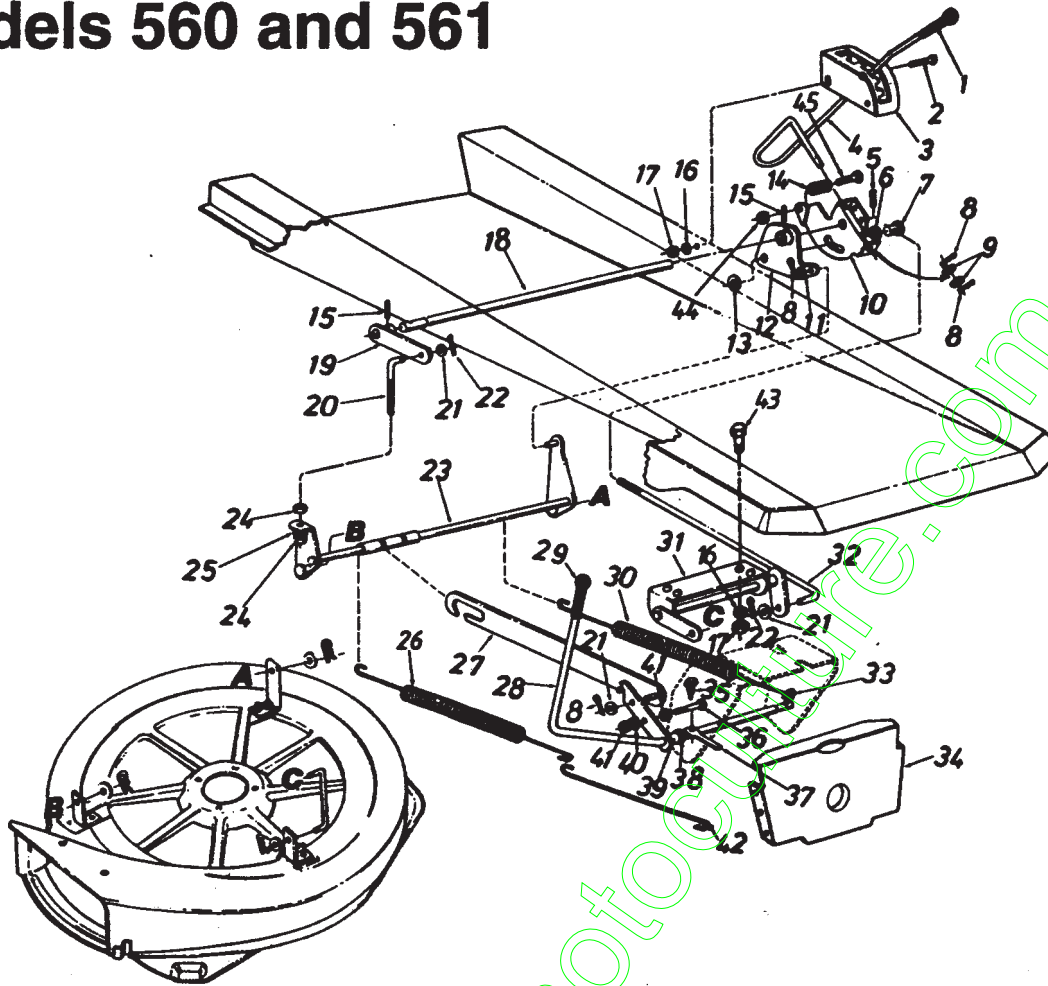
*For faster service obtain standard nuts, bolts and washers locally. If these items cannot be obtained locally, order by part number and size as shown on parts list.

Δ FRONT WHEEL CHART

Description	11 X 4.0 Nylon Brg.	11 X 4.0 Ball Brg.
Wheel Assembly Comp.	734-1454A	734-1686
Tire Only	734-1382	734-1382
Rim Only	734-1455	734-1683
Bearing	741-0487	741-0569
Air Valve	734-0255	734-0255
Grease Fitting	737-0280	—

NOTE: If brand of tire is important, order by part number and description (description is printed on the sidewall of tire) [i.e. Armstrong Super Turf, Goodyear Softrac, Carlisle Turf Saver, etc.].

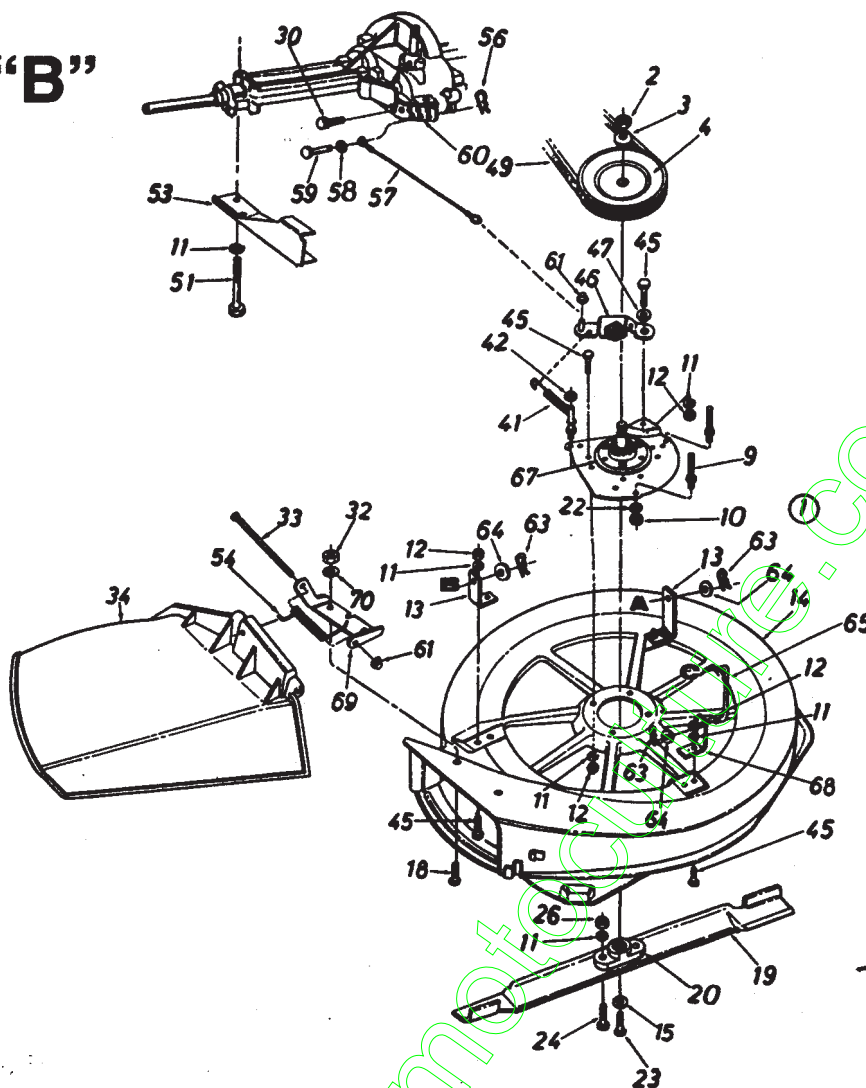
Models 560 and 561



PARTS LIST FOR MODELS 560 AND 561 RIDING MOWERS WITH 30" DECK

REF. NO.	PART NO.	CODE	DESCRIPTION	REF. NO.	PART NO.	CODE	DESCRIPTION
1	720-0223		Grip	23	15600A		Deck Link Ass'y.—Rear
2	710-0323		Truss Mach. Scr. 5/16-18 x .75" Lg.*	24	712-0798		Hex Nut 3/8-16 Thd.*
3	16397		Deck Index Bracket	25	736-0169		L-Wash. 3/8" I.D.*
4	747-0651		Deck Lift Handle	26	732-0530		Extension Spring 13.25" Lg.
	715-0134		Spring Pin Spir. 3/16" Dia. x 1.50" Lg.	27	15644A		Deck Drive Control Bracket
6	736-0187		Fl-Wash. .385" I.D. x .87" O.D.	28	15568A		Blade Engagement Lever Ass'y.
7	11-0749		Adj. Ferrule Deck Lift Handle	29	720-0223		Grip
8	714-0115		Cotter Pin 1/8" Dia. x 1.0"	30	732-0530		Extension Spring 13.25" Lg.
9	736-0160		Fl-Wash. .531" I.D. x .930" O.D.	31	15573A		Deck Lift Ass'y.—Front
10	16401A		Deck Lift Handle Retainer	32	747-0426		Deck Lift Connecting Rod
11	736-0300		Fl-Wash. .385" I.D. x .87" O.D.	33	711-0753		Clevis Pin Special .250" Dia.
12	15578		Deck Lift Brkt. Ass'y.—L.H.	34	15613A		Pivot Bar Bracket
13	736-0162		Fl-Wash. .635" I.D. x 1.04" O.D.	35	710-3243		Hex TT-Tap Scr. #12-24 x .5" Lg.
14	732-0711		Compression Spring .5" Dia. x .9" Lg.	36	710-0805		Hex Bolt 5/16-18 x 1.50" Lg. (Grade 5)
15	715-0114		Spring Pin Spir. 1/4" Dia. x 1.50" Lg.	37	732-0435		Switch Actuator
16	736-0119		L-Wash. 5/16" I.D.*	38	736-0160		Fl-Wash. .531" I.D. x .930" O.D.
17	712-0267		Hex Nut 5/16-18 Thd.*	39	750-0760		Spacer .511" I.D. x .70" O.D. x .38" Lg.
18	738-0550		Rear Hgt. Adj. Shaft	40	736-0119		L-Wash. 5/16" I.D.*
19	15609A		Deck Lift Brkt. Ass'y.—R.H.	41	712-0267		Hex Nut 5/16-18 Thd.*
20	710-0866		Deck Adj. Scr. 3/8-16 Thd.	42	732-0451B		Spring Hook
21	736-0300		Fl-Wash. .385" I.D. x .87" O.D.	43	710-0118		Hex Bolt 5/16-18 x .75" Lg.
22	714-0145		Intern. Cotter Pin 1/2" Dia.	44	712-0291		Hex Cent. L-Nut 1/4-20 Thd.
				45	710-0106		Hex Bolt 1/4-20 x 1.25" Lg.*

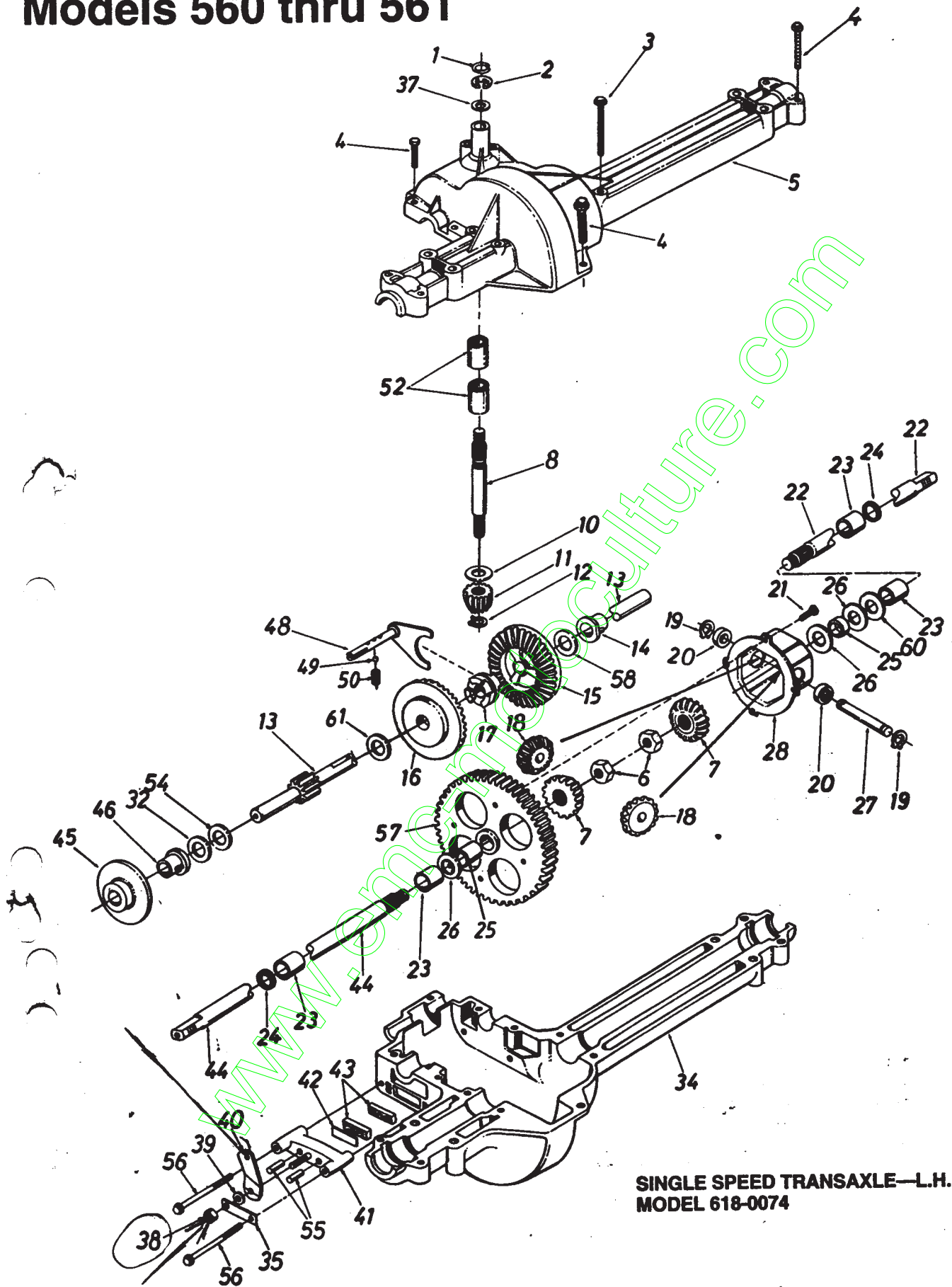
Deck "B"



PARTS LIST FOR 30" SIDE DISCHARGE MOWING DECK

REF. NO.	PART NO.	CODE	DESCRIPTION	REF. NO.	PART NO.	CODE	DESCRIPTION
1	17611		30" S.D. Deck Assy. Comp. (Service Only)	41	732-0482		Extension Spring .5" O.D. x 3.2" Lg.
2	712-0318		Hex Jam Nut 5/8-18 Thd.	42	726-0201		Push Speed Nut
3	736-0317		Bell-Wash. .630" I.D. x 1.25"	45	710-0118		Hex Bolt 5/16-18 x .75"
4	756-0430		5/8 V-Pulley .75" I.D. x 7"	46	16053		Blade Brake Brkt. Ass'y.
10	712-0342		Stud 3/8-16 x 2.75" Lg.	47	748-0234		Shoulder Spacer .500" Dia.
11	736-0119		Hex Jam Nut 3/8-16 Thd.	49	754-0264		"V"-Belt
13	16706		L-Wash. 5/16" I.D.*	51	710-0176		Hex Bolt 5/16-18 x 2.75"
14	17610		Hex Nut 5/16-18 Thd.*	53	15625B		Lower Outside Belt Guard
15	736-0217		Hanger Brkt. 3.25"	54	732-0602		Torsion Spring
18	710-0255		30" S.D. Deck Ass'y.	56	714-0104		Int. Cot. Pin 5/16" Dia.
19	742-0256A		L-Wash. 3/8" I.D. Hd.	57	727-0296		Brake Cable 9.75" Lg.
20	748-0300		Truss Scr. 1/4-20 x .75" Lg.*	58	736-0142		FI-Wash. .281" I.D. x .50"
22	736-0169		30" High Lift Blade	59	711-0701		Clevis Pin 1/4" Dia.
23	710-0152		Blade Adapter	60	15626B		Lower Inside Belt Guard
24	710-0888		L-Wash. 3/8" I.D.*	61	726-0106		Cap Speed Nut 1/4" Rod
26	712-0123		Hex Bolt 3/8-24 x 1.0"	63	714-0145		Int. Cotter Pin 1/2" Dia.
30	710-0289		Hex Bolt 5/16-24 x 1.0" Lg.	64	736-0160		FI-Wash. .531" I.D. x .930"
32	712-0287		Hex Nut 5/16-24 Thd.*	65	747-0428		Deck Link 3.9" Lg.
33	711-0792		Hex Bolt 1/4-20 x .50" Lg.*	67	717-0916		Blade Spindle Ass'y. Comp.
34	731-1032		Hex Nut 1/4-20 Thd.*	68	15621A		Weird Bracket
			Hinge Pin	69	703-1693		Hinge Mtg. Brkt.
			Chute Ass'y. Comp. (Incl. Ref. 33, 34, 54, 61, 69)	70	736-0270		Bell-Wash. 1/4" I.D.

Models 560 thru 561



SINGLE SPEED TRANSAXLE—L.H.
MODEL 618-0074

N°38

à Ressorer. 4 tour.

Models 560 and 561

annex 95-

PARTS LIST FOR
SINGLE SPEED TRANSAXLE LEFT HAND 618-0074

REF. NO.	PART NO.	CODE	DESCRIPTION	REF. NO.	PART NO.	CODE	DESCRIPTION
1	732-0614		Wire Ring	32	**		Washer (See Below)
2	716-0231		*E*-Ring	34	719-0313		Lower Housing
3	710-0854		Hex Bolt 1/4-20 x 1.75" Lg.*	35	718-0150		Anti-Rotation Brkt.
4	710-0809		Hex Tap Scr. 1/4-20 x 1.25" Lg.	37	**		Washer (See Below)
5	719-0314		Upper Housing	38	712-0273		Hex Nut 5/16-24 Thd.
6	712-0200A		Hex Jam Nut 1/2-20 Thd.	39	736-0371		FI-Wash. .344" I.D. x .875" O.D.
7	717-1019		Miter Gear	40	717-0772A		Actuating Arm
8	711-0861		Input Shaft	41	761-0198		Brake Yoke
10	736-0335		Thrust Washer 5/8" I.D. x 1.25" O.D.	42	717-0682		Puck Plate
				43	717-0678		Brake Puck
11	717-0633		Pinion Input 14T	44	717-0770A		Axle L.H.
12	716-0171		Retaining Ring	45	761-0202		Brake Disc
13	711-1016	N	Drive Shaft—L.H. Brake	46	741-0337		Flange Bearing 5/8" I.D. x 15/16" Lg.
14	741-0336		Flange Brg. 5/8" I.D. x 3/4" Lg.*	48	611-0011		Shift Fork Ass'y.
15	717-1362		Bevel Gear 42T—Small I.D.	49	741-0862		Ball Detent .250" Dia.
16	717-1363		Bevel Gear 42T—Large I.D.	50	732-0863		Spring Detent
17	718-0228		Clutch Collar	52	741-0335		Needle Brg. 5/8" I.D. x 1/2" Lg.
	717-1020		Miter Gear 15T (H.D.)	54	736-0349		FI-Wash. 5/8" I.D. x 1" O.D. x .020 Thk.
	716-0184		Snap Ring				Actuating Pin 5/16" Dia.
20	741-0589		Thrust Bearing	55	741-0343		Hex Wash Hd. Self-Tap Scr. 1/4-20 Thd.
21	710-0862A		Pan Head Scr. 1/4-20 x .50" Lg. w/Patch	56	710-1206		Differential Gear 58T
	717-0771A	N	Axle R.H.	57	717-1364		FI-Wash. 5/8" I.D. x 1" O.D. x .020 Thk.
	741-0340		Sleeve Bearing 3/4" I.D. x 1.0" Lg.	58	736-0349		Thrust Wash. 5/8" I.D. x 1" O.D. x .025" Thk.
24	721-0179		Oil Seal 3/4" I.D.		736-0495		Washer (See Below)
25	750-0767		Axle Spacer				Thrust Washer
26	736-0445		FI-Wash. .760" I.D. x 1.5" O.D.	60	**		Grease—Shell (15 oz.)
27	711-0918		Cross Shaft	61	736-0519		
28	717-1252		Differential Can Ass'y.		737-0148		

**Ref. No. 32 736-0495 Thrust Wash. 5/8" I.D. x 1" O.D. x .025" Thk.
736-0336 FI-Wash. 5/8" I.D. x 1" O.D. x .030" Thk.
736-0494 Thrust Wash. 5/8" I.D. x 1" O.D. x .035" Thk.
736-0337 FI-Wash. 5/8" I.D. x 1" O.D. x .040" Thk.

Ref. No. 37 736-0349 FI-Wash. 5/8" I.D. x 1" O.D. x .020" Thk.
736-0336 FI-Wash. 5/8" I.D. x 1" O.D. x .030" Thk.
736-0337 FI-Wash. 5/8" I.D. x 1" O.D. x .040" Thk.

Ref. No. 60 736-0492 FI-Wash. .76" I.D. x 1.5" O.D. x .010" Thk.
736-0493 FI-Wash. .76" I.D. x 1.5" O.D. x .020" Thk.
736-0351 FI-Wash. .76" I.D. x 1.5" O.D. x .030" Thk.
736-0445 FI-Wash. .76" I.D. x 1.5" O.D. x .060" Thk.