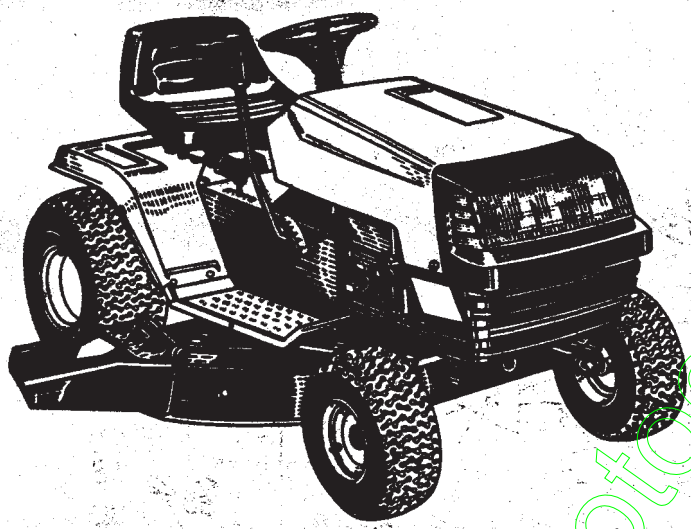


1276 = 1376

\$1.00

OWNER'S GUIDE

- ILLUSTRATED PARTS
- PARTS LIST



TRANSMATIC FRONT ENGINE LAWN TRACTORS

Model Series
620 thru 669
Lawn Tractors

IMPORTANT!

Record the Model No. and Mfg. Code which appear on your unit in the space below. You must have these numbers, along with the date of purchase, in order to receive warranty or service.

MEETS ANSI SAFETY STANDARDS

MODEL NO. MFG. CODE

Important:
Read Safety Rules
and Instructions Carefully



WARNING: This unit is equipped with an internal combustion engine and should not be used on or near any unimproved forest-covered, brush-covered or grass-covered land unless the engine's exhaust system is equipped with a spark arrester meeting applicable local or state laws (if any). If a spark arrester is used, it should be maintained in effective working order by the operator.

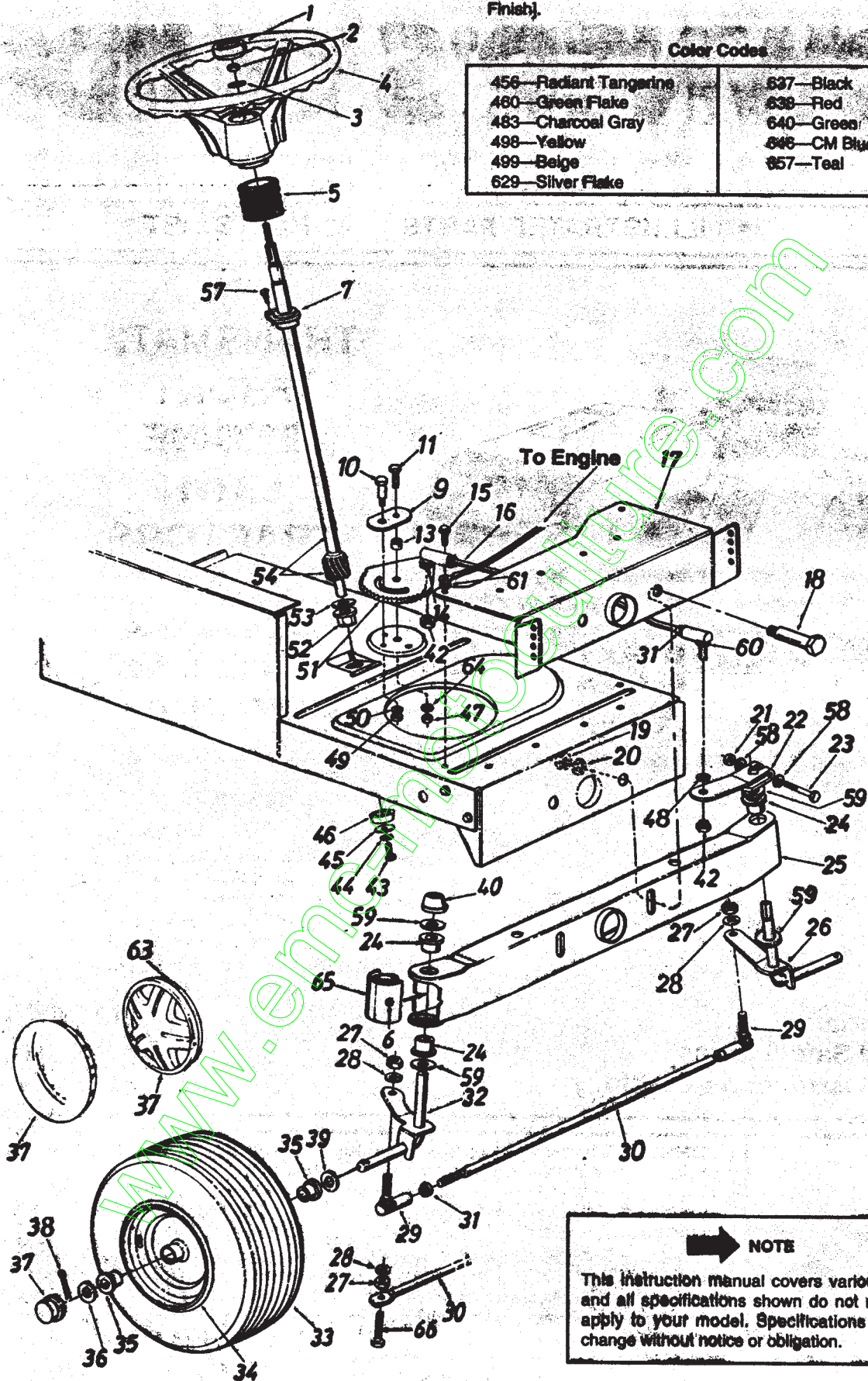
In the State of California the above is required by law (Section 4442 of the California Public Resources Code). Other states may have similar laws. Federal laws apply on federal lands. A spark arrester for the muffler is available through your nearest engine authorized service dealer or contact the service department, P.O. Box 360900, Cleveland, Ohio 44136.

Models 620 thru 669

CODE: N notes a new part (not previously existing). A three digit number is the color code. Specify color code as shown below if color or finish is important when ordering parts. [i.e., 638 for Red Finish].

Color Codes

456—Radiant Tangerine	627—Black
480—Green Flake	638—Red
483—Charcoal Gray	640—Green
498—Yellow	648—CM Blue
499—Beige	657—Teal
629—Silver Flake	



NOTE

This instruction manual covers various models, and all specifications shown do not necessarily apply to your model. Specifications subject to change without notice or obligation.

Model 620 thru 669

900 with OSA elabo

PARTS LIST FOR FRONT ENGINE LAWN TRACTORS

REF. NO.	PART NO.	CODE	DESCRIPTION	REF. NO.	PART NO.	CODE	DESCRIPTION
1	731-0220		Steering Wheel Cap	35	**		Bearing
2	712-0237		Hex L-Nut 5/16-24 Thd.	36	736-0285		FI-Wash. .635 I.D. x 1.59" O.D.
3	736-0242		Belleville Wash. .345" I.D.				
4	731-0805		Steering Wheel (3 Spoke)	37	731-0484A		Front Wheel Hub Cap
	731-0806A		Steering Wheel (4 Spoke)		734-0541		Front Wheel Hub Cap (Chrome—Optional)
5	731-0559		Steering Bellow—4.5" (Style 2, 3, 5, 7, 8)		734-1503		Spoked Hub Cap (Gray—Optional)
	731-0954		Steering Bellow—9" (Style 0, 4, 6, 9)		734-1612		Spoked Hub Cap (Beige—Optional)
6	737-0280		Grease Fitting (Optional)				
7	741-0356		Flange Bearing .890 I.D. x 1.36 O.D. (Style 2, 3, 5, 7, 8)	38	714-0470		Cotter Pin 1/8" Dia. x 1.25"
9	17198A	N	Retainer Plate	39	736-0187		FI-Wash. .640" I.D. x 1.24" O.D.
10	738-0141		Shoulder Bolt .437" Dia. x .35 Lg. 5/16-18 Thd.	40	726-0214		Push Cap 5/8" Dia. Rod
11	710-0152		Hex Bolt 3/8-24 x 1.0" Lg. (Grade 5)	42	712-0446		Hex Jam Nut 3/8-24 Thd.
				43	710-0538		Hex L-Bolt 5/16-18 x .62"
13	750-0535		Spacer .380" I.D. x .625" O.D. x .227	44	736-0119		L-Wash. 5/16" I.D.*
14	736-0169		L-Wash. 3/8" I.D.*	45	736-0343		FI-Wash. .33" I.D. x 1.25" O.D.
15	710-0726		Hex Wash. Hd. Self-Tap Scr.	46	750-0532		Spacer (Plastic)
16	711-0788		Steering Drag Link	47	712-0214		Hex Cent. L-Nut 3/8-24 Thd.
17	17621		Front Pivot Brkt.	48	736-0169		L-Wash. 3/8" I.D.*
18	738-0527		Shoulder Bolt .498" Dia. x 2.04 Lg. 3/8-16 Thd.	49	712-0158		Hex Cent. L-Nut 5/16-18 Thd.
19	712-0798		Hex Nut 3/8-16 Thd.*	50	736-0119		L-Wash. 5/16" I.D.*
20	736-0169		L-Wash. 3/8" I.D.*	51	717-0622A		Steering Gear Segment
21	712-0237		Hex Cent. L-Nut 5/16-24 Thd.	52	741-0225		Hex Fig. Brg. .634 I.D.
22	16481A		Steering Arm Front Axle	53	736-0187		FI-Wash. (Hardened)
23	710-0772		Hex Bolt 5/16-24 x 2.00" Lg. (Grade 5)	54	738-0743		Steering Shaft
24	741-0487A	N	Hex Fig. Brg. .632 I.D.	55	710-0837		Oval Hd. Cr.—Sunk Scr. #10 x 5/8" Lg. (Style 2, 3, 5, 7, 8)
25	683-0002	N	Pivot Bar Ass'y.	58	736-0271		Wave-Wash. .32" I.D. x .62" O.D.
26	**		Front Axle Ass'y.—L.H.	59	736-0187		FI-Wash. (Hardened)
27	712-0241		Hex Nut 3/8-24 Thd.*	60	723-3018		Drag Link Ball Joint 3/8-24 Thd.
28	736-0169		L-Wash. 3/8" I.D.*	61	736-0607		Ext. L-Wash. 5/16" I.D.
29	723-3018		Ball Joint 3/8-24 Thd.	63	727-0425A		Spring Clip (Used w/Spoked Hub Cap)
30	747-0753		Tie Rod (Adjustable)	64	736-0356		Bell-Wash. .39" I.D. x 1.38" O.D.
	747-0861	N	Tie Rod (Non-Adjustable)	65	731-1291	N	Pivot Bar End Cap (Optional)
31	712-0711		Hex Jam Nut 3/8-24 Thd.*	66	710-0459		Hex Bolt 3/8-24 x 1.5" Lg. (Gr. 5)
32	**		Front Axle Ass'y.—R.H.				
33	**		Wheel Ass'y. Comp.				
34	**		Front Wheel Rim Only				

*For faster service obtain standard nuts, bolts and washers locally. If these items cannot be obtained locally, order by part number and size as shown on parts list.

**FRONT WHEEL CHART

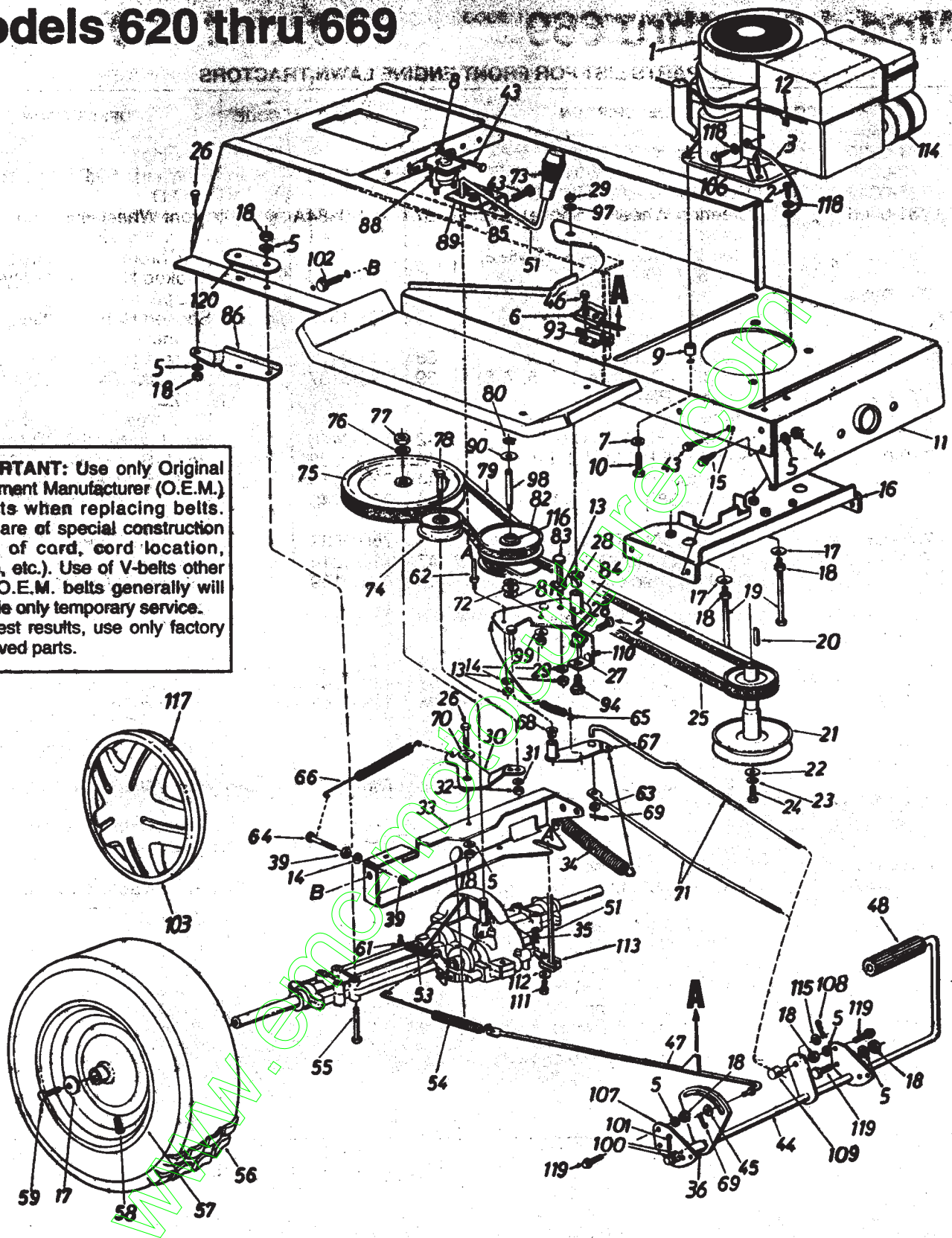
Description	15" x 6" w/Plastic Bearing	15" x 6" w/Plastic Bearing	13" x 5" w/Plastic Bearing	15" x 6" w/Ball Bearing	13" x 6" w/Ball Bearing
Wheel Ass'y. Comp.	734-0863A	634-0022	734-1229A	734-1684A	734-1672A
Tire Only	734-0864	734-0864	734-0298	734-0864	734-1421
Rim Only	734-0997B	734-0997B	734-1227A	734-1685A	734-1685A
Bearing	741-0487A	741-0487A	741-0487A	741-0569	741-0569
Air Valve	734-0255	734-0255	734-0255	734-0255	734-0255
Grease Fitting	737-0280	—	737-0280	737-0280	737-0280
Front Axle Ass'y.—L.H.	17585	17585	16480	17753	16480
Front Axle Ass'y.—R.H.	17584	17584	15840	17754	15840

Note: If brand of tire is important, order by part number and description (description is printed on the sidewall of tire) [i.e. Armstrong Super Turf, Goodyear Softrac, Carlisle Turf Saver, etc.].

Models 620 thru 669

REAR WHEEL CHART

IMPORTANT: Use only Original Equipment Manufacturer (O.E.M.) V-belts when replacing belts. They are of special construction (type of cord, cord location, length, etc.). Use of V-belts other than O.E.M. belts generally will provide only temporary service. For best results, use only factory approved parts.



****REAR WHEEL CHART**

Description	18" x 9.50"	18" x 8.50"	18" x 6.50"	20" x 8.0"	20" x 10.0"
Wheel Ass'y. Comp.	734-0817	734-0601	734-0592	734-1675	734-1064
Tire Only	734-0448	734-0516	734-0294	734-1596	734-1066
Rim Only	734-0603A	734-0603A	734-0594	734-0603A	734-0603A

Note: If brand of tire is important, order by part number and description (description is printed on the sidewall of tire) [i.e. Armstrong Super Turf, Goodyear Softrac, Carlisle Turf Saver, etc.].

Models 620 thru 669

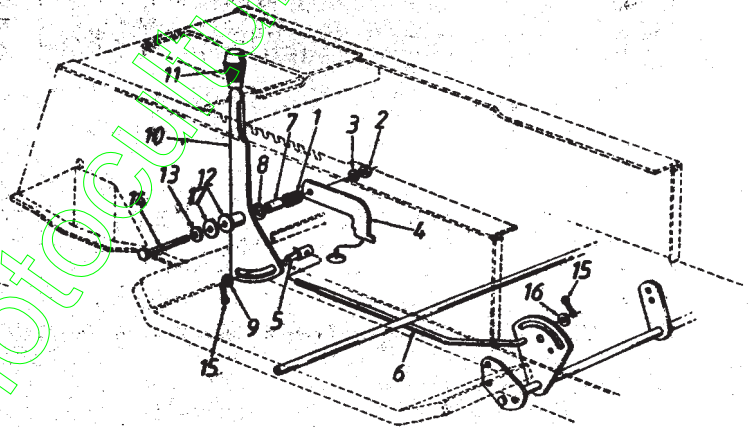
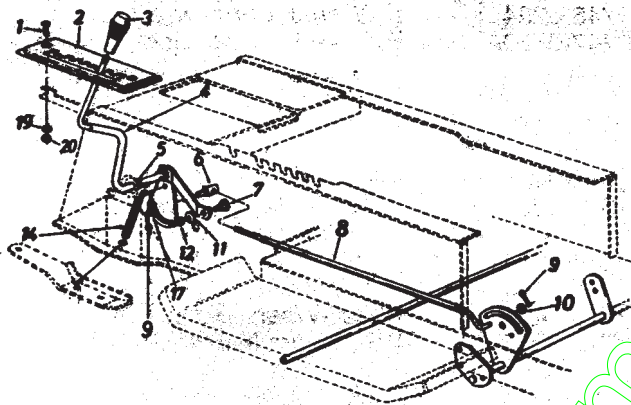
PARTS LIST FOR FRONT ENGINE LAWN TRACTORS

REF. NO.	PART NO.	CODE	DESCRIPTION	REF. NO.	PART NO.	CODE	DESCRIPTION
1	—		Engine	65	710-1068		Hex Bolt 5/16-18 x 3.5" Lg. (Used w/18" Wheels)
2	710-0726		Hex Wash. AB-Tap Scr. 5/16" x .75"		710-0176		Hex Bolt 5/16-18 x 2.75" (Used w/20" Wheels)
3	725-0980		Electric Ground Wire				Wheel Ass'y. Comp.
4	712-0123		Hex Nut 5/16-24 Thd.*	56	**		Wheel Rim Only
5	736-0119		L-Wash. 5/16" I.D.*	57	**		Air Valve (Service Only)
6	17962		Switch Plate	58	734-0255		Hex Bolt 5/16-24 x .75" Lg.*
7	736-0247		FI-Wash. .406" I.D. x 1.25"	59	710-0627		Brake Return Spring Anchor
9	750-0777		Spacer	61	732-0454		Belt Guard Pin 1/4-20 Thd.
8	736-0222		Ext. L-Wash. 1/4" I.D.	62	711-0768		FI-Wash. .34" I.D. x .66" O.D.
10	710-1007		Hex L-Wash. Tap Scr. 3/8-16 x 1.5" Lg. (B&S)	63	736-0275		Hex Bolt 1/4-28 x 1.25" Lg.*
	710-0650		Hex Wash. Hd. TT-Tap Scr. 5/16-18 x 7/8" Lg. (Tec.)	64	710-0428		Ext. Spring
				65	732-0568		Ext. Spring .62" O.D. x 6.12"
11	17620C	N	Lower Frame Ass'y.	66	732-0384		Variable Speed Torque Brkt. Ass'y.
12	726-0235		Speed Clip	67	16554A		Variable Speed Torque Brkt. Ass'y. (30" Deck Only)
13	712-0287		Hex Nut 1/4-20 Thd.*		16352A		Flanged Bearing
14	736-0329		L-Wash. 1/4" I.D.*				Cotter Pin 3/32" Dia.*
15	710-1012		Rib Neck Bolt 5/16-24 x .84" Lg.	68	741-0419		Shoulder Spacer .27" Lg.
16	17893		Belt Guard Brkt. Ass'y.	69	714-0111		Speed Control Link
17	736-0242		Bell-Wash. .345" I.D. x .88"	70	748-0234		Speed Control Link (30" Deck Only)
18	712-0267		Hex Nut 5/16-18 Thd.*	71	747-0530A		Truss Bearing .56 Dia. x 1.25"
19	710-0190		Hex Bolt 5/16-18 x 4.0**		747-0512		Shift Knob
20	714-0114		Sq. Key 1/4" x 1/4" x 2.00"				FI-Idler Pulley 3.25" x .75"
21	756-0488		Engine Pulley	72	741-0405		"V"-Pulley (Used w/18" Wheels)
22	736-0322		FI-Wash. 7/16" I.D. x 1.25"	73	720-0232		"V"-Pulley (Used w/20" Wheels)
23	736-0171		L-Wash. 7/16" I.D.*	74	756-0437		Variable Speed Pulley Ass'y. 5" O.D.
24	710-0757		Hex Bolt 7/16-20 x 1.50" Lg.	75	656-0005		Hex Bolt 1/4-20 x 3.5" Lg.
25	754-0280		Variable-Speed Belt				Variable Speed Brkt. Ass'y.
26	710-0118		Hex Bolt 5/16-18 x .75" Lg.		656-0004		Comp. Spring—Clip
27	17963		Bearing Shaft Bracket Ass'y.				Axle Support Brkt.—R.H.
28	741-0591	N	Flanged Nylon Brg. .63" I.D. x .6" Lg.	76	736-0427		Axle Support Brkt.—L.H. (Not Shown)
29	712-0241		Hex Nut 3/8-24 Thd.*	77	712-3035		Solenoid
30	17643		Idler Bracket (Used w/20" Wheels)	78	710-0539		Shift Lever Bracket
	17694		Idler Bracket (Used w/18" Wheels)	79	754-0370		Teflon Washer .565" I.D.
31	736-0169		L-Wash. 3/8" I.D.*	80	716-0114		Safety Switch (Clutch)
32	712-0241		Hex Nut 3/8-24 Thd.*	81	736-0355		Shld. Bolt 3/8-24 x 3.12" Lg.
33	17629A	N	Transaxle Support Brkt.	82	717-0800A	N	Transaxle Spacer (Used w/18" Wheels)
34	732-0556		Ext. Spring .94" O.D. x 7.58"	83	710-1223		Bell-Wash. .38" I.D. x .88"
35	714-0149B		Inter. Cott-Pin	84	16354B		Shaft .56" Dia. x 3.875" Lg.
36	750-0802		Spacer .63" I.D.	85	732-0525		Bell-Wash. .39" I.D. x 1.12"
39	712-0138		Hex Nut 1/4-28 Thd.	86	17668		FI-Wash. .64" I.D. x .94"
43	710-0599		Hex Wash. Hd. S-Tap Scr. 1/4-20 x .50" Lg.		17669		Cotter Pin 1/8" Dia. x 1.25"
44	17715A		Clutch/Brake Pedal Ass'y.	88	725-1426		Hex Wash. Hd. Scr. 5/16-18 x .62" Lg.
45	736-0117		FI-Wash.	89	17630		
46	710-0351		Truss Mach. Scr. B-Tap Scr. #10 x .5" Lg.	90	736-0414		
47	17686A	N	Brake Rod Ass'y.	93	725-3169A		
48	735-0196		Foot Pad	94	738-0755		
51	17705		Shift Lever Ass'y.	96	748-0334		
53	732-0264		Ext. Spring .38" O.D. x 2.5"	97	736-0105		
54	732-0413		Ext. Spring 7.08" (Used w/20" Wheels)	98	738-0569		
	732-0642		Ext. Spring 7.33" (Used w/18" Wheels)	99	736-0331		
				100	738-0256		
				101	714-0470		
				102	710-0604		

PARTS LIST FOR FRONT ENGINE LAWN TRACTORS (CONTINUED)

REF. NO.	PART NO.	CODE	DESCRIPTION	REF. NO.	PART NO.	CODE	DESCRIPTION
103	734-1504		Hub Cap (Gray—Optional)	112	736-0270		Bell-Wash. .265" I.D. x .75"
	734-1614		Hub Cap (Beige—Optional)	113	17707		Shift Lever Link Ass'y.
106	710-0323		Pan Hd. Mach. Scr. 5/16-18 x .75" Lg.	114	—		Muffler (Refer to Style Sheet)
107	17860		Pedal Bracket	115	736-0140		FI-Wash. .385" I.D. x .62"
108	714-0470		Cotter Pin 1/8" Dia. x 1.25"	116	741-0404		Needle Brgs. (2 Req'd.)
109	711-0198		Ferrule	117	727-0425A		Spring Clip (Used w/Ref. #103)
110	710-0376		Hex Bolt 5/16-18 x 1.0" Lg.—(Gr. 5)	118	736-0607		External L-Wash. 5/16" I.D. x .75"
111	710-0195		Hex Bolt 1/4-28 x .50" Lg.	119	710-0650		Hex Wash. TT-Tap Scr. 5/16-18 x .75"
				120	17840		Transaxle Mtg. Brkt.

Models 620 thru 669



PARTS LIST FOR FRONT ENGINE LAWN TRACTORS

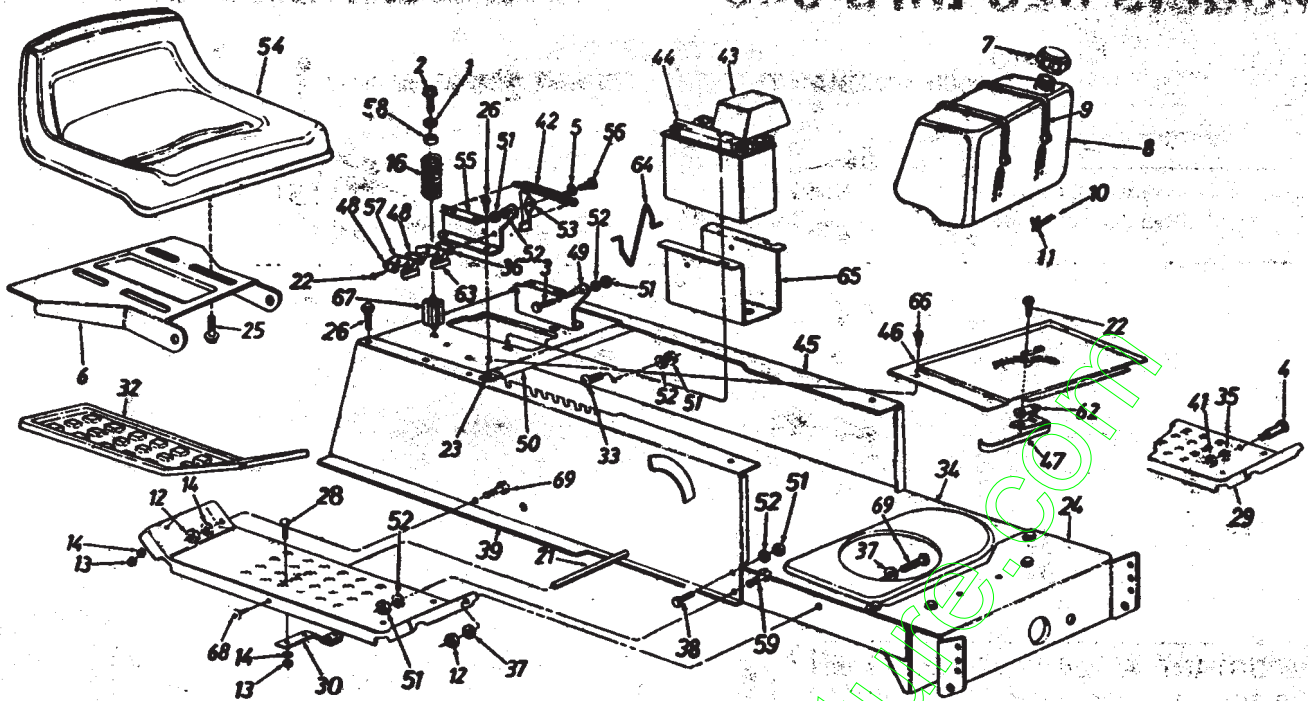
REF. NO.	PART NO.	CODE	DESCRIPTION
1	710-0924		Truss Mach. Scr. 1/4-20 x .75" Lg.
2	16195		5-Speed Selector Plate
	16236		6-Speed Selector Plate
	16194		7-Speed Selector Plate
3	720-0218		Shift Knob
4	16192A		Speed Selector Lever Ass'y.
5	736-0192		Flat Washer .53" I.D. x .93"
6	711-0198		Ferrule 3/8-24 x .37" Dia.
7	738-0155		Shoulder Bolt
8	747-0503A		Speed Control Link
9	714-0111		Cotter Pin 3/32" Dia. x 1.0"
10	736-0226		FI-Wash. .469" I.D. x .88"
11	736-0119		L-Wash. 5/16" I.D.*
12	712-0267		Hex Nut 5/16-18 Thd.*
14	732-0303		Spring .38" O.D. x 3.18" Lg.
17	736-0140		FI-Wash. .385" I.D. x .62"
19	736-0329		L-Wash. 1/4" I.D.*
20	712-0287		Hex Nut 1/4-20 Thd.*

PARTS LIST FOR FRONT ENGINE LAWN TRACTORS

REF. NO.	PART NO.	CODE	DESCRIPTION
1	732-0645		Compression Spring
2	712-0267		Hex Nut 5/16-18 Thd.*
3	736-0119		L-Wash. 5/16" I.D.*
4	17956		Shift Lever Support
5	711-0198		Ferrule 3/8-24 Thd.
6	747-0787		Speed Control Rod
7	750-0662		Spacer 1.56" Lg.
8	736-0253		Bell-Wash. .505" I.D. x 1" O.D.
9	736-0300		FI-Wash. .385" I.D. x .87" O.D.
10	17888A	N	Speed Selector Lever
11	720-0232		Shift Knob
12	750-0913	N	Spacer 1.46" Lg.
13	736-0242		Bell-Wash. .345" I.D. x .88" O.D.
14	710-3056		Hex Bolt 5/16-18 x 3.25" Lg.
15	714-0111		Cotter Pin 3/32" Dia. x 1" Lg.
16	736-0226		FI-Wash. .469" I.D. x .88"
17	736-0418A		FI-Wash. .34" I.D. x 2.25"

Models 620 thru 669

620 thru 669 models



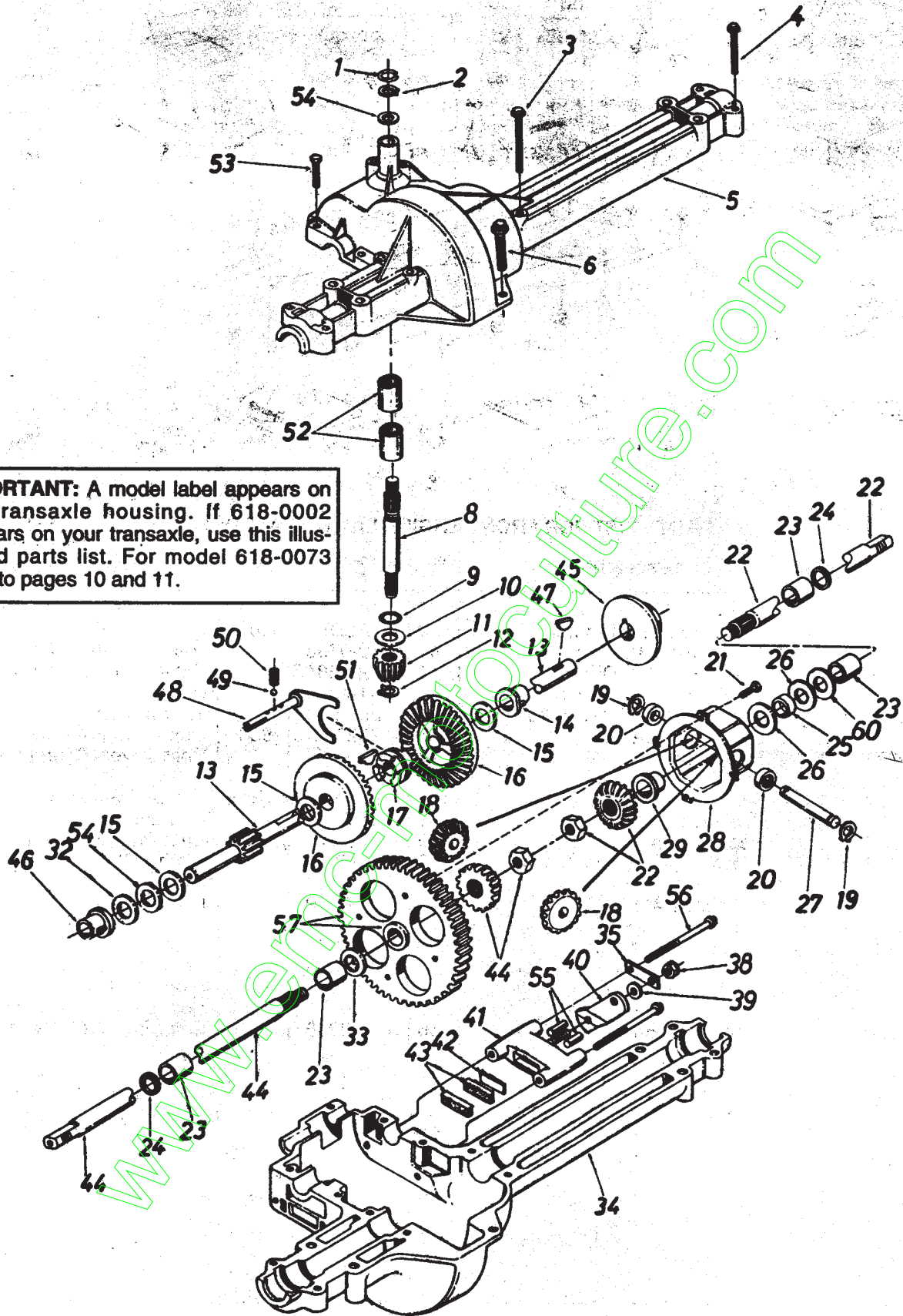
PARTS LIST FOR FRONT ENGINE LAWN TRACTORS

REF. NO.	PART NO.	CODE	DESCRIPTION	REF. NO.	PART NO.	CODE	DESCRIPTION
1	736-0159		FI-Wash. .344" I.D. x .875"	38	710-0118		Hex Bolt 5/16-18 x .75" Lg.*
2	710-1208	N	Hex Wash. Hd. Tap Scr. 5/16-18 x 3.25" Lg.	39	17622B	638/N	Upper Frame—R.H.
3	738-0155		Shld. Bolt .437" Dia. x .162"	41	712-0798		Hex Nut 3/8-16 Thd.*
4	738-0145		Shld. Bolt .50" Dia. x .84"	42	732-0581B		Extension Spring 5.31" Lg.
5	736-0141		Spr-Wash. .445" I.D. x .75	43	731-1200		Battery Cover
6	15607D		Seat Pivot Bracket	44	725-0514A		12-V Battery
7	751-3071		Fuel Cap	45	17623	638	Upper Frame—L.H.
8	751-0553		Fuel Tank	46	—		Shift Cover (Refer to Style Sheet)
9	726-0209		Tie Strap	47	725-1643	N	Reverse Safety Switch
10	751-0535-15		Fuel Line	48	726-0279		Insulator Plate
11	726-0205		Hose Clamp	49	17951		Seat Pivot Brkt. Support—L.H.
12	712-0138		Hose Nut 1/4-28 Thd.	50	17953		Hitch Plate
13	712-0287		Hex Nut 1/4-20 Thd.*	51	712-0267		Hex Nut 5/16-18 Thd.*
14	736-0329		L-Wash. 1/4" I.D.	52	736-0119		L-Wash. 5/16" I.D.*
16	732-0672		Compression Spring	53	17239A		Seat Lift Brkt.
21	738-0526		Running Board Rod	54	757-0345		Seat 8-7/8" High
22	710-0227		Hex Wash. Hd. AB-Tap Scr. #8 x .50" Lg.		757-0338		Seat 10-5/8" High
23	726-0139		Speed Nut #10Z		757-0350		Seat 14 1/4" High
24	17621		Front Pivot Brkt.	55	17950		Seat Pivot Brkt. Support—R.H.
25	710-0623		Hex Tap Scr. 3/8-16 x .75"	56	738-0296		Shld. Bolt .437" Dia. x .268"
26	710-0726		Hex Wash. Hd. AB-Tap Scr. 5/16 x .75" Lg.	57	725-1303		Spring Switch
28	710-0134		Carriage Bolt 1/4-20 x .62**	58	722-0160		Bushing
29	17770		Running Board (R.H. & L.H.)	59	710-0650		Hex Wash. TT-Tap Scr. 5/16-18 x 7/8" Lg.
30	761-0168A		Blade Brake Ass'y.	62	726-0320		Insulator Nut Plate
32	731-0909		Rubber Foot Pad—L.H.**	63	725-1439		Safety Switch (Seat)
	731-0910		Rubber Foot Pad—R.H.**	64	732-0674		Battery Tray Clip
	723-0422		Abrasive Foot Pad**	65	17952	N	Battery Tray
33	710-0323		Truss Mach. Scr. 5/16-18 x .75" Lg.	66	710-0351		Truss Mach. B-Tap Scr. #10 x .5" Lg.
34	17620C	N	Lower Frame	67	748-0347	N	Spring Spacer
35	736-0169		L-Wash. 3/8" I.D.*	68	710-1221	N	Pan Hd. Cutting Scr. 5/16-18 x .75" Lg.
36	726-0278		Insulator Boss Plate	69	710-0412		Hex Bolt 1/4-28 x .75" Lg.
37	736-0463		FI-Wash. .25" I.D. x .625" O.D.				

**Optional Parts

Models 620 thru 669

618-0002-022 216000



IMPORTANT: A model label appears on the transaxle housing. If 618-0002 appears on your transaxle, use this illustrated parts list. For model 618-0073 refer to pages 10 and 11.

**SINGLE SPEED TRANSAXLE—R.H.
MODEL 618-0002**

Models 620 thru 669

888 UNIT 053 elabom

PARTS LIST FOR SINGLE SPEED TRANSAXLE RIGHT HAND 618-0002

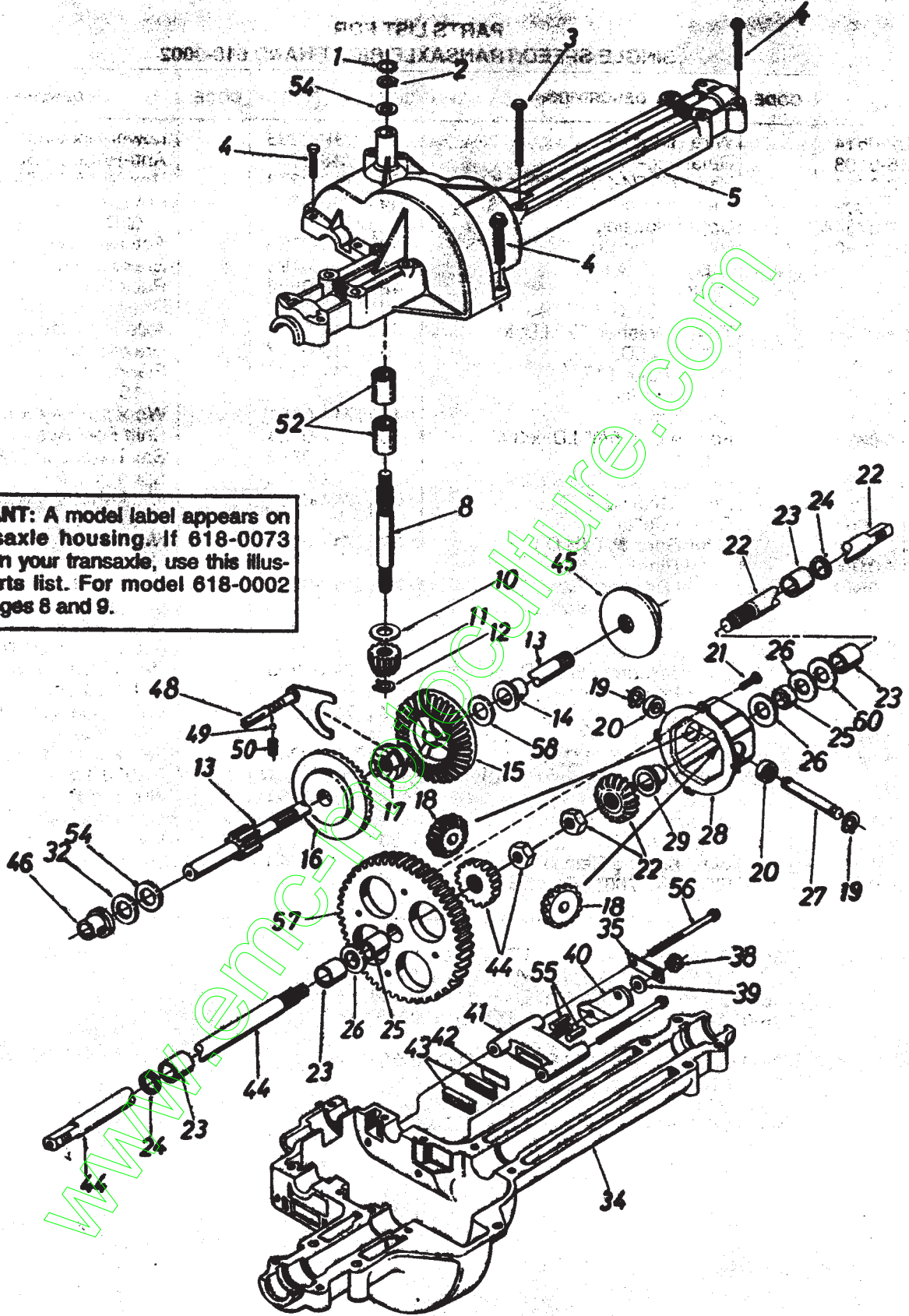
REF. NO.	PART NO.	CODE	DESCRIPTION	REF. NO.	PART NO.	CODE	DESCRIPTION
1	732-0614		Wire Ring	34	719-0303		Lower Housing
2	718-0108		Retaining—Ring	35	718-0150		Anti-Rotation Brkt.
3	710-0854		Hex Bolt 1/4-20 x 1.75" Lg.	38	712-0273		Hex Nut 5/16-24 Thd.
4	710-0809		Hex Tap Scr. 1/4-20 x 1.25" Lg.	39	736-0371		Fl-Wash. .344" I.D. x .875" O.D.
5	717-0764A		Upper Housing	40	717-0700		Actuating Arm
6	710-0642		Hex TT-Tap Scr. 1/4-20 x .75" Lg.	41	761-0198		Brake Yoke
8	711-0861		Input Shaft	42	717-0682		Puck Plate
9	721-0178		Square Seal 5/8" I.D.	43	717-0678		Brake Puck
10	736-0335		Thrust Washer 5/8" I.D. x 1.25" O.D.	44	717-0538		Axle L.H. Ass'y.
11	717-0639		Pinion Input 14T	45	717-0677		Brake Disc
12	716-0171		Retaining Ring	46	741-0337		Flange Bearing 5/8" I.D. x 15/16" Lg.
13	717-0758		Drive Shaft	47	714-0161		Woodruff Key 3/16 x 5/8 HT
14	741-0336		Flange Brg. 5/8" I.D. x 3/4" Lg.	48	717-0754		Shift Fork Ass'y.
15	736-0335		Fl-Wash. 5/8" I.D. x 1.25"	49	741-0862		Ball Detent .250" Dia.
16	717-0757		Bevel Gear 42T	50	732-0863		Spring Detent
17	717-0667		Clutch Collar	51	714-0169		#9 Hi-Pro Key 3/16" x 3/4" Dia. HT
18	717-1020		Miter Gear 15T (H.D.)	52	741-0335		Needle Brg. 5/8" I.D. x 1/2" Lg.
19	716-0184		Snap Ring	53	710-0855		Hex Bolt 1/4-20 x 1.00" Lg.
20	741-0589		Thrust Bearing	54	736-0349		Fl-Wash. 5/8" I.D. x 1" O.D. x .020 Thk.
21	710-0862A		Pan Head Scr. 1/4-20 x .50" Lg. w/Patch	55	741-0343		Actuating Pin 5/16" Dia.
22	717-0539		Axle R.H. Ass'y.	56	710-1208		Hex Wash Hd. Self-Tap Scr. 1/4-20 Thd.
23	741-0340		Sleeve Bearing 3/4" I.D. x 1.0" Lg.	57	717-0767		Differential Gear 72T Ass'y. w/Bearing
24	721-0179		Oil Seal 3/4" I.D.	58	736-0349		Fl-Wash. 5/8" I.D. x 1" O.D. x .020 Thk.
25	750-0827		Axle Spacer				Thrust Wash. 5/8" I.D. x 1" O.D. x .025" Thk.
26	736-0445		Fl-Wash. .760" I.D. x 1.5" O.D.				Washer (See Below)
27	711-0918		Cross Shaft				Grease—Shell (15 oz.)
28	717-1252		Differential Can Ass'y.	60	**		
29	—		Part of Ref. 28	—	737-0148		
32	**		Washer (See Below)				
33	736-0445		Fl-Wash. .760" I.D. x 1.5" O.D.				

**Ref. No. 32 736-0495 Thrust Wash. 5/8" I.D. x 1" O.D. x .025" Thk.
736-0336 Fl-Wash. 5/8" I.D. x 1" O.D. x .030" Thk.
736-0494 Thrust Wash. 5/8" I.D. x 1" O.D. x .035" Thk.
736-0337 Fl-Wash. 5/8" I.D. x 1" O.D. x .040" Thk.

**Ref. No. 60 736-0492 Fl-Wash. .76" I.D. x 1.5" O.D. x .010" Thk.
736-0493 Fl-Wash. .76" I.D. x 1.5" O.D. x .020" Thk.
736-0351 Fl-Wash. .76" I.D. x 1.5" O.D. x .030" Thk.
736-0445 Fl-Wash. .76" I.D. x 1.5" O.D. x .060" Thk.

Models 620 thru 669

618 thru 652



IMPORTANT: A model label appears on the transaxle housing. If 618-0073 appears on your transaxle, use this illustrated parts list. For model 618-0002 refer to pages 8 and 9.

**SINGLE SPEED TRANSAXLE—R.H.
MODEL 618-0073**

Models 620 thru 669

Models 620 thru 669

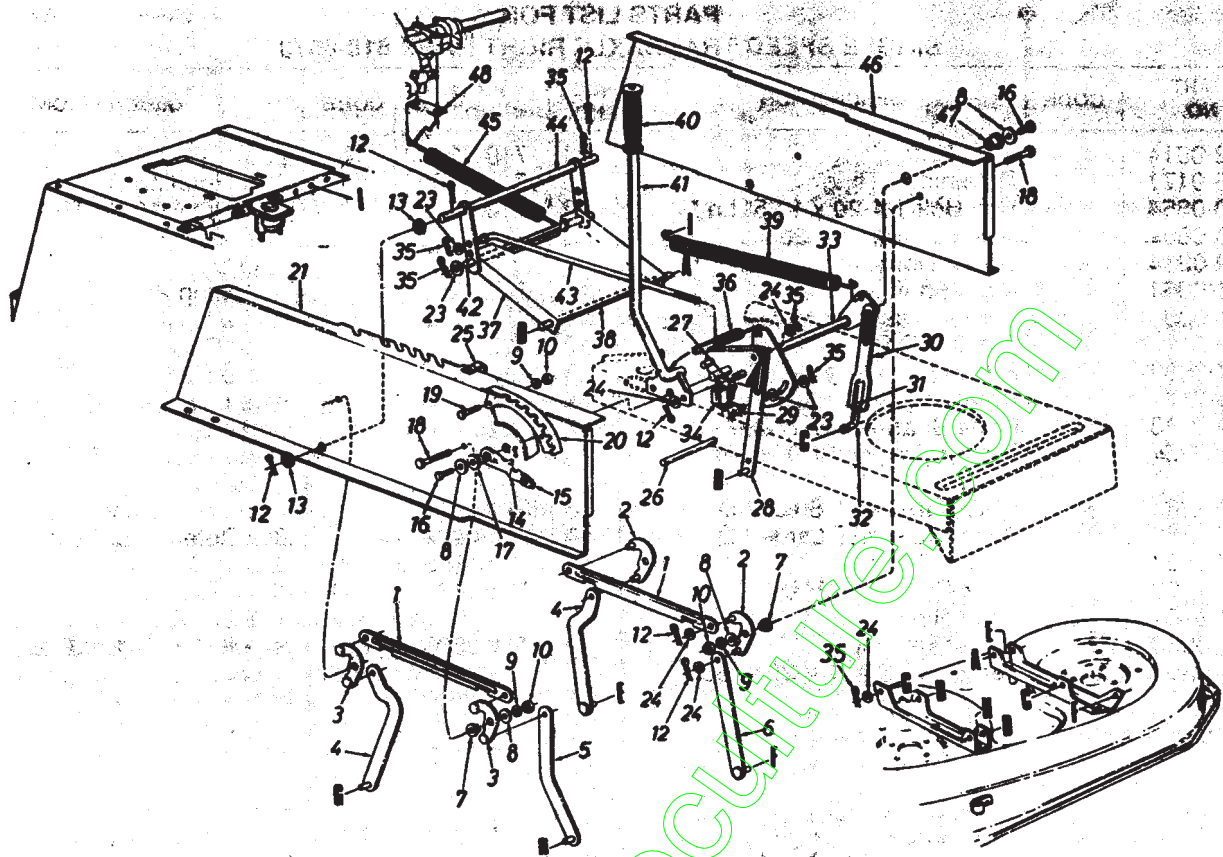
PARTS LIST FOR SINGLE SPEED TRANSAXLE RIGHT HAND 618-0073

REF. NO.	PART NO.	CODE	DESCRIPTION	REF. NO.	PART NO.	CODE	DESCRIPTION
1	732-0614		Wire Ring	34	719-0313	N	Lower Housing
2	716-0171		Retaining—Ring	35	718-0150		Anti-Rotation Brkt.
3	710-0854		Hex Bolt 1/4-20 x 1.75" Lg.*	38	712-0273		Hex Nut 5/16-24 Thd.
4	710-0809		Hex Tap Scr. 1/4-20 x 1.25" Lg.	39	736-0371		FI-Wash. .344" I.D. x .875" O.D.
5	719-0314	N	Upper Housing				
8	711-0861		Input Shaft	40	717-0700		Actuating Arm
10	736-0335		Thrust Washer 5/8" I.D. x 1.25" O.D.	41	761-0198		Brake Yoke
11	717-0633		Pinion Input 14T	42	717-0682		Puck Plate
12	716-0171		Retaining Ring	43	717-0678		Brake Puck
13	711-0943	N	Drive Shaft—R.H. Brake	44	717-0538		Axle L.H. Ass'y.
14	741-0336		Flange Brg. 5/8" I.D. x 3/4" Lg.*	45	761-0202	N	Brake Disc
15	717-1362	N	Bevel Gear 42T Small I.D.	46	741-0337		Flange Bearing 5/8" I.D. x 15/16" Lg.
16	717-1363	N	Bevel Gear 42T Large I.D.	48	611-0011		Shift Fork Ass'y.
17	717-0667		Clutch Collar	49	741-0862		Ball Detent .250" Dia.
18	717-1020		Miter Gear 15T (H.D.)	50	732-0863		Spring Detent
19	716-0184		Snap Ring	51	714-0169		#9 Hi-Pro Key 3/16" x 3/4" Dia. HT
20	741-0589		Thrust Bearing	52	741-0335		Needle Brg. 5/8" I.D. x 1/2" Lg.
21	710-0862A		Pan Head Scr. 1/4-20 x .50" Lg. w/Patch	54	736-0349		FI-Wash. 5/8" I.D. x 1" O.D. x .020 Thk.
22	717-0539		Axle R.H. Ass'y.	55	741-0343		Actuating Pin 5/16" Dia.
23	741-0340		Sleeve Bearing 3/4" I.D. x 1.0" Lg.	56	710-1206		Hex Wash Hd. Self-Tap Scr. 1/4-20 Thd.
24	721-0179		Oil Seal 3/4" I.D.	57	717-1364	N	Differential Gear 58T
25	750-0767	N	Axle Spacer	58	736-0349		FI-Wash. 5/8" I.D. x 1" O.D. x .020 Thk.
26	736-0445		FI-Wash. .760" I.D. x 1.5" O.D.				Thrust Wash. 5/8" I.D. x 1" O.D. x .025" Thk.
27	711-0918		Cross Shaft		736-0495		Washer (See Below)
28	717-1252		Differential Can Ass'y.				Grease—Shell (15 oz.)
29	—		Part of Ref. 28	60	**		
32	**		Washer (See Below)	—	737-0148		
33	736-0445		FI-Wash. .760" I.D. x 1.5" O.D.				

**Ref. No. 32 736-0495 Thrust Wash. 5/8" I.D. x 1" O.D. x .025" Thk.
736-0336 FI-Wash. 5/8" I.D. x 1" O.D. x .030" Thk.
736-0494 Thrust Wash. 5/8" I.D. x 1" O.D. x .035" Thk.
736-0337 FI-Wash. 5/8" I.D. x 1" O.D. x .040" Thk.

**Ref. No. 60 736-0492 FI-Wash. .76" I.D. x 1.5" O.D. x .010" Thk.
736-0493 FI-Wash. .76" I.D. x 1.5" O.D. x .020" Thk.
736-0351 FI-Wash. .76" I.D. x 1.5" O.D. x .030" Thk.
736-0445 FI-Wash. .76" I.D. x 1.5" O.D. x .060" Thk.

Models 620 thru 669



PARTS LIST FOR FRONT ENGINE LAWN TRACTORS

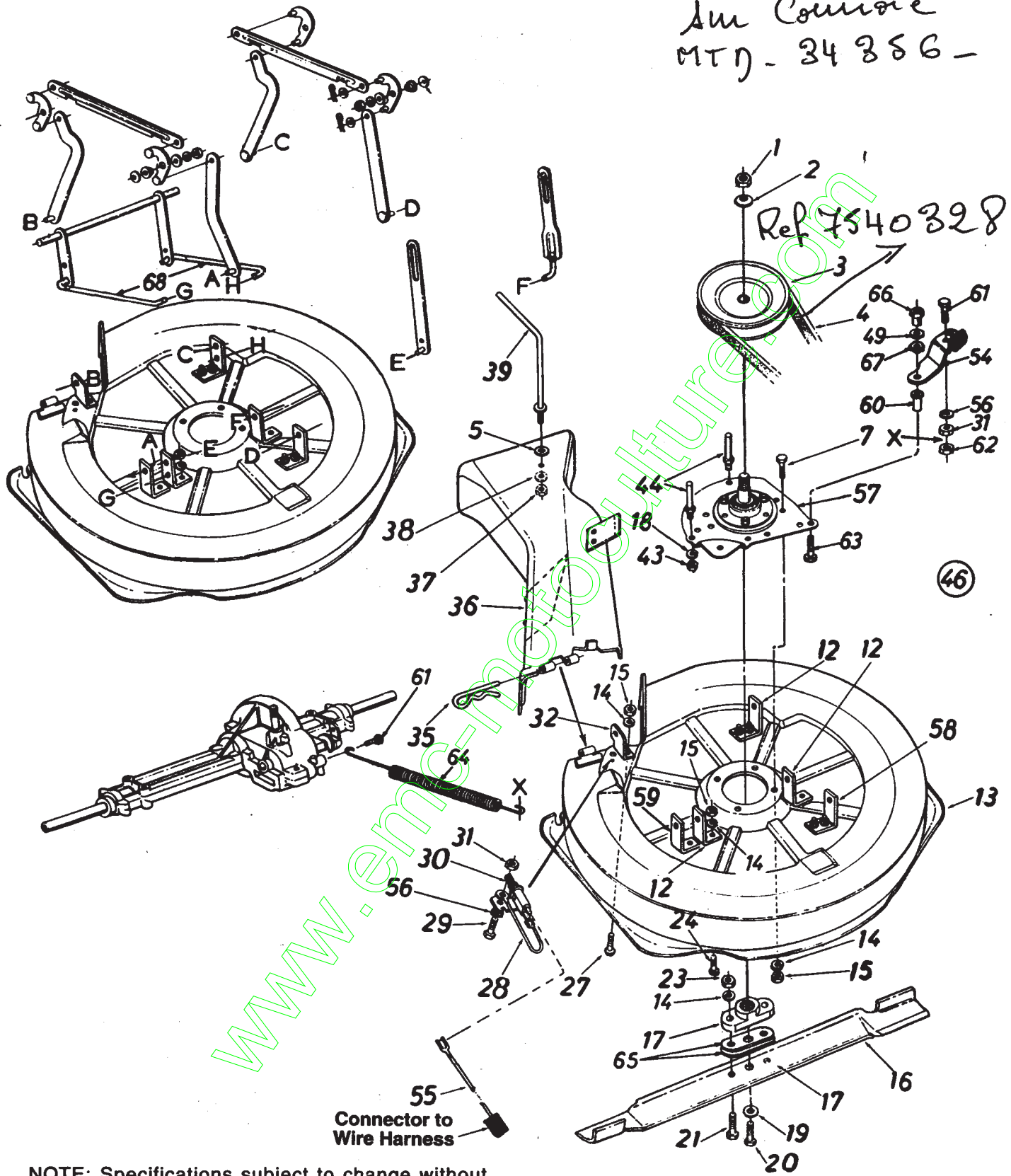
REF. NO.	PART NO.	CODE	DESCRIPTION	REF. NO.	PART NO.	CODE	DESCRIPTION
1	09735A		Connecting Rod	25	726-0272		Clamp
2	17640		Pivot Link Ass'y.—L.H.	26	738-0526		Running Board Rod
3	17641		Pivot Link Ass'y.—R.H.	27	710-3007		Hex Wash. Hd. Tap Scr.
4	17710		Deck Hanger Link Ass'y.	28	14802A		Link Deck Lift Ass'y.
5	14800A		Deck Hanger Link Ass'y.	29	711-0723A		Adj. Ferrule 3/8-24-Thd.
6	14804A		Deck Hanger Link Ass'y.	30	17712		Adj. Deck Lift Link
7	748-0331		Shld. Spacer .318" I.D.	31	712-3066		Hex Nut 1/2-20 Thd. (Gr. 5)
8	736-0264		FI-Wash. .344" I.D. x .62" O.D.	32	711-0841		Lift Link Adjuster
9	736-0119		L-Wash. 5/16" I.D.*	33	17637A	N	Lift Shaft Ass'y.
10	712-0267		Hex Nut 5/16-18 Thd.*	34	725-0803C		Safety Switch (Deck)
12	714-0470		Cotter Pin 1/8" Dia.	35	714-0145		Inter. Cotter Pin 3/8" Dia.
13	736-0256		FI-Wash. .635" I.D. x 1.0" O.D.	36	732-0637		Extension Spring
14	732-0412A		Deck Lift—Down Stop (Incl. Ref. 15)†	37	17636A		Stabilizer Bracket
15	08540		Knob†	38	738-0670		Shaft 1/2" Dia. x 10.28" Lg.
16	710-0604		Hex Wash. TT-Tap Scr. 5/16-18 x .75" Lg.	39	732-0638		Extension Spring
17	748-0176		Flange Brg. .63" I.D.†	40	720-0233		Grip (Lift Handle)
18	710-1238	N	Hex Wash. Hd. Scr. 5/16-18 x .875" Lg.	41	17675		Deck Lift Handle Ass'y.
19	710-0118		Hex Bolt 5/16-18 x .75" Lg.	42	738-0669		Shaft 3/8" Dia. x 9.34" Lg.
20	17730		Index Brkt.	43	747-0598		Disengagement Rod
21	17622B	N	Upper Frame—R.H.	44	17624		Stabilizer Shaft Ass'y.
23	736-0267		FI-Wash. .385" I.D. x .87" O.D.	45	732-0556		Extension Spring 7.58" Lg.
24	736-0160		FI-Wash. .531" I.D. x .93" O.D.	46	17623		Upper Frame—L.H.
				47	741-0313		Flange Brg. .632" I.D.
				48	17128		Spring Retainer Brkt.

†Optional

Deck "C"

30" Rear Discharge Mowing Deck Model 600 Series Front Engine Lawn Tractors

An Course
MTD - 34856 -



ASSEMBLY INSTRUCTIONS



WARNING: Do not operate your unit unless the chute deflector has been properly installed.

ATTACHING THE CHUTE DEFLECTOR

Secure the chute deflector to the deck by placing the large hairpin clip in the chute deflector bracket, ← located on the rear of the deck. See figure 1.

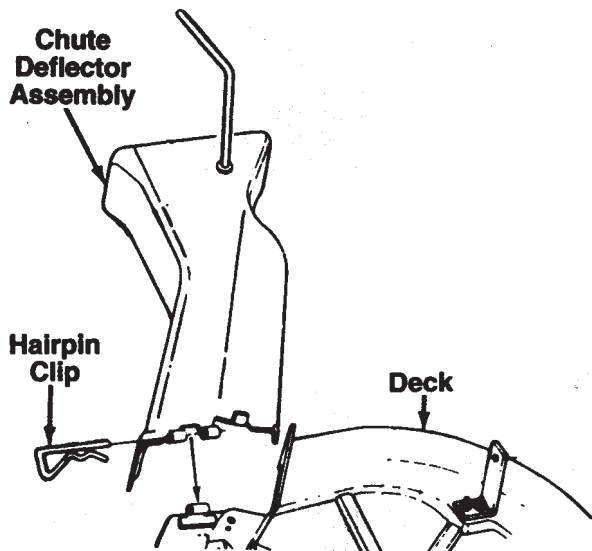


FIGURE 1.

PARTS LIST FOR 30" REAR DISCHARGE MOWING DECK

REF. NO.	PART NO.	CODE	DESCRIPTION	REF. NO.	PART NO.	CODE	DESCRIPTION
1	712-0318		Hex Jam Nut 5/8-18 Thd.	32	16708		Angle Hanger Brkt.
2	736-0158		L-Wash. 5/8" I.D.	35	714-0174		Internal Cotter Pin
3	756-0444		5/8" V-Pulley .75" I.D. x 7"	36	731-0715		R.D. Chute Deflector
4	754-0328		"V"-Belt	37	712-0158		Hex L-Nut 5/16-18 Thd.
5	736-0231		Fl-Wash. .344" I.D. x 1.12" O.D.	38	736-0271		L-Wash. .32" I.D. x .62" O.D.
7	710-0118		Hex Bolt 5/16-18 x .75" Lg.*	39	747-0474		90° Rod 5/16-18 Thd.
12	16707A		Hanger Bracket	43	712-0342		Hex Jam Nut 3/8-16 Thd.
13	15906		30" R.D. Deck Ass'y.	44	711-0780		Stud 3/8-16 x 3.0" Lg.
14	736-0119		L-Wash. 5/16" I.D.*	46	16710		30" R.D. Deck Ass'y. Comp. (Service)
15	712-0267		Hex Nut 5/16-18 Thd.*	49	736-0160		Fl-Wash. .53" I.D. x .93" O.D.†
16	742-0256A		30" High Lift Blade—R.H.	54	17869		Blade Brake Ass'y.†
17	748-0300		Blade Adapter	55	725-1558		Wire Lead
18	736-0169		L-Wash. 3/8" I.D.*	57	717-0916		Blade Spindle Ass'y. Comp.
19	736-0217		L-Wash. 3/8" I.D. H.D.	58	17409		Hanger Brkt.—L.H.
20	710-0151		Hex Bolt 3/8-24 x 2" Lg.	59	17408		Hanger Brkt.—R.H.
21	710-0624		Hex Bolt 5/16-24 x 1.5" Lg. (Special)	60	750-0702		Spacer .312" I.D. x 1.46" Lg.
23	712-0123		Hex Nut 5/16-24 Thd.*	61	710-0597		Hex Bolt 1/4-20 x 1" Lg.
24	710-0259		Hex Sems Bolt 5/16-18 x .62" Lg.*	62	712-0107		Hex L-Nut 1/4-20 Thd.
27	710-0323		Truss Mach. Scr. 5/16-18 x .75" Lg.*	63	710-0116		Hex Bolt 5/16-18 x 2" Lg.
28	725-0765		Electrical Wire	64	732-0657		Ext. Spring 22.36" Lg.
29	710-0289		Hex Bolt 1/4-20 x .50" Lg.*	65	12626		Blade Spacer (2 Req'd.)
30	725-0269		Safety Switch	66	711-0404		Shoulder Nut
31	712-0287		Hex Nut 1/4-20 Thd.*	67	736-0232		Wave Wash. .53" I.D. x .78" O.D.
				68	747-0783		Deck Stabilizer Rod†

*For faster service obtain standard nuts, bolts and washers locally. If these items cannot be obtained locally, order by part number and size as shown on parts list.

† Not part of deck assembly complete.



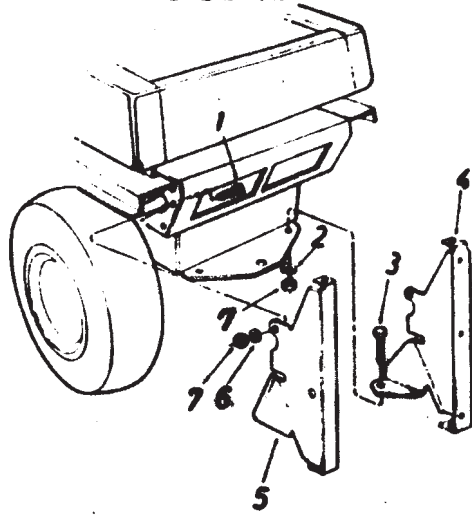
NOTE

Specifications subject to change without notice or obligation.

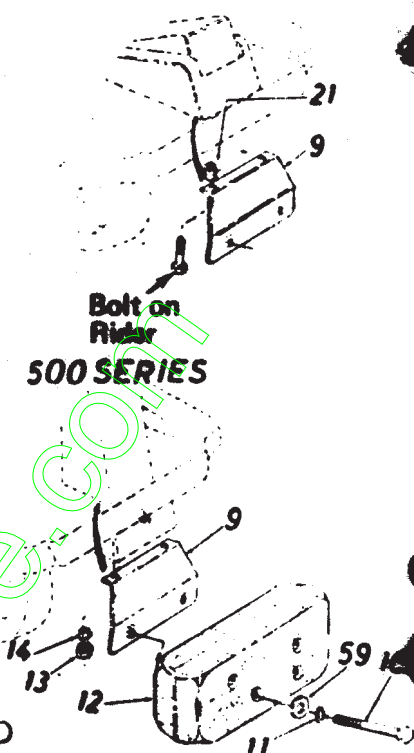
Model 038

19038

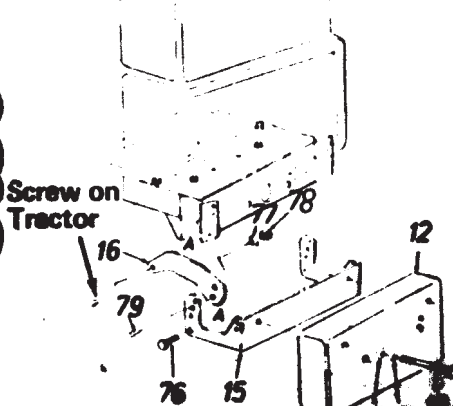
500 SERIES



Bolt on Rider
500 SERIES

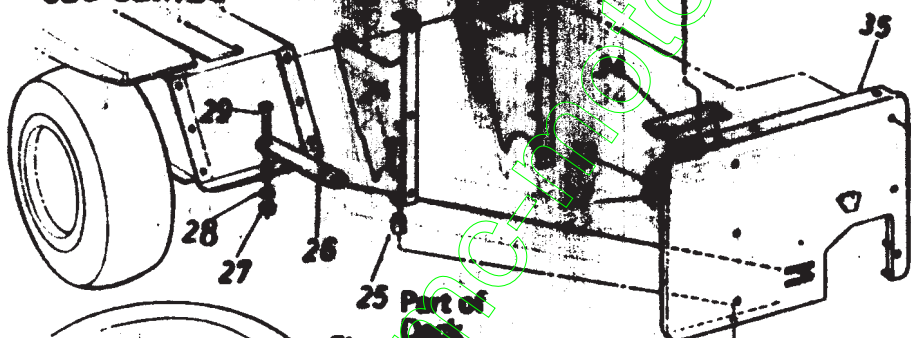


600 SERIES

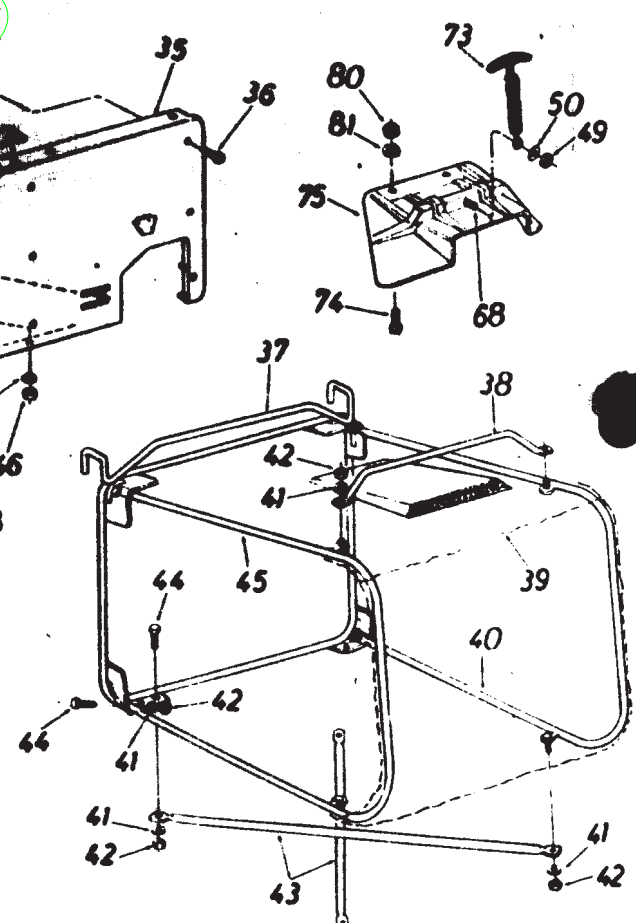
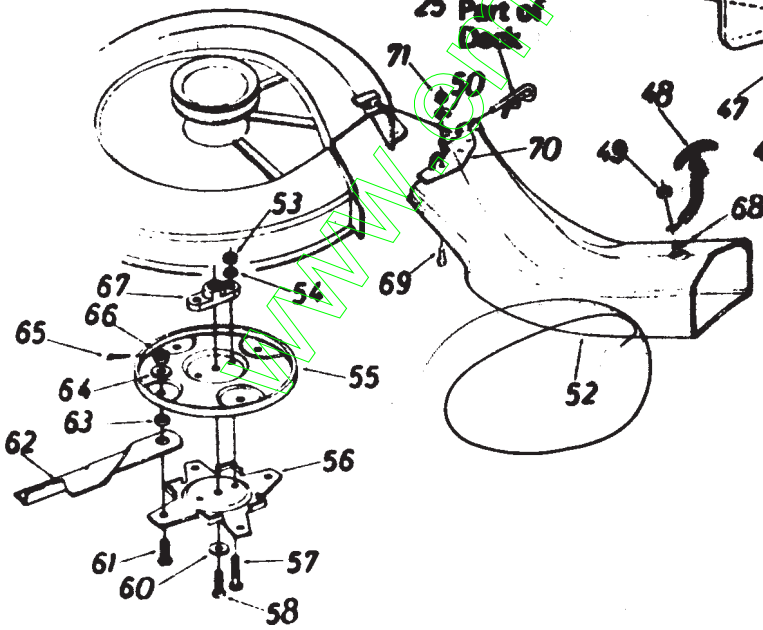


Screw on Tractor

600 SERIES



Part of Deck



CHUTE DEFLECTOR ASSEMBLY

A chute deflector assembly is provided to allow you to mow without bagging the grass.



Although the area of operation should be completely cleared of foreign objects, a small object may have been overlooked and could be accidentally thrown by the mower in any direction, causing personal injury. Therefore, the original straight chute with the chute deflector assembly attached must be on at all times when the grass catcher bag is not in use.

To mow without the grass catcher, you must attach the chute deflector provided to the original straight chute which was on your mower. It is not necessary to remove the rear discharge panel from the unit.

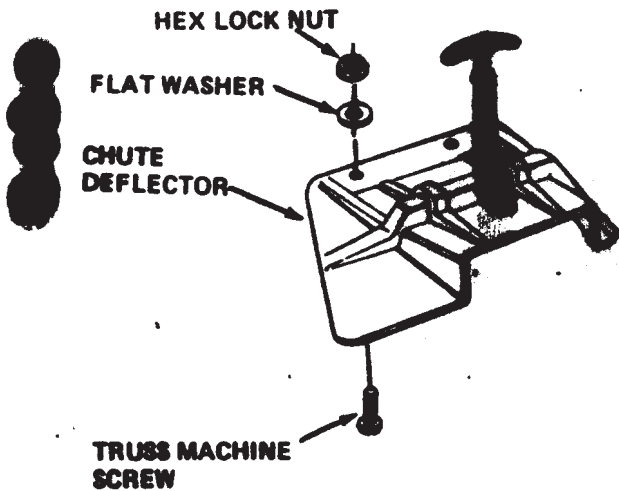


FIGURE 16

1. Attach the chute deflector to the original straight chute with two truss machine screws $1/4-20 \times 1/2$ " long, $1/4$ " flat washers and hex lock nuts as shown in figure 16.
2. Remove the grass bag, remove the curved chute and attach the straight chute with the chute deflector. Secure in place using the hook latch spring, and internal cotter pin at deck.

Model 038

PARTS LIST FOR GRASS CATCHER KIT MODEL 038 FOR 30" REAR DISCHARGE DECKS

REF. NO.	PART NO.	DESCRIPTION	NEW PART	REF. NO.	PART NO.	DESCRIPTION	NEW PART
1	710-0376	Hex Bolt 5/16-18 x 1.0" Lg.* †		44	710-0258	Hex Bolt 1/4-20 x .62" Lg.*	
2	736-0119	L-Wash. 5/16" I.D.* †		45	15993	Catcher Side Frame Ass'y. - L.H.	
3	710-0376	Hex Bolt 5/16-18 x 1.0" Lg.* †		46	712-0267	Hex Nut 5/16-18 Thd.*	
4	15970	Catcher Support Brkt - R.H. †		47	736-0119	L-Wash. 5/16" I.D.	
5	15971	Catcher Support Brkt - L.H. †		48	723-0296	Hook Latch Ass'y.	
6	736-0119	L-Wash. 5/16" I.D.* †		49	712-0107	Hex L-Nut 1/4-20 Thd.	
7	712-0267	Hex Nut 5/16-18 Thd.* †		50	736-0142	Fl-Wash. 1/4" I.D.*	
9	15539	Counterweight Support Brkt. Ass'y.		52	18920	R.D. Bungee Chute Ass'y.	
10	710-0693	Hex Bolt 3/8-16 x 4.5" Lg.*		53	712-0123	Hex Nut 5/16-24 Thd.*	
11	736-0105	Belleville Wash. .40" I.D. x .88" O.D.		54	736-0119	L-Wash. 5/16" I.D.*	
12	723-0367	Counterweight 36 lbs.		55	742-0296	Upper Blade Disc	
13	712-0267	Hex Nut 5/16-18 Thd.* †		56	742-0278	Lower Blade Disc	
14	736-0119	L-Wash. 5/16" I.D.* †		57	710-0693	Hex Bolt 5/16-24 x 1.0" Lg. (Grade 5)*	
15	15873	Counterweight Support Brkt. Ass'y.		58	710-0152	Hex Bolt 3/8-24 x 1.0" Lg.	
16	16024	Tie Strap ††		59	736-0280	Fl-Wash. .39" I.D. x 1.12" O.D.	
19	15363	Catcher Support Brkt. - L.H. ††		60	736-0355	Bell-Wash. 38" I.D. x 1.38"	
21	711-0242	Spacer .389" I.D. x 1.0" O.D. x .32" Lg. †		61	736-0567	Shld. Bolt. .50" Dia. x .360" Spc.	
23	15364	Catcher Support Brkt. - R.H. ††		62	712-0267	30" Blade Tip (4-Req'd.)	
24	710-0442	Hex Bolt 5/16-18 x 1.50" Lg.*		63	736-0664	Spacer .805" I.D. x .75" O.D. x 1.25" Lg.	
25	750-0434	Spacer .389" I.D. x .47" O.D. x 1.0" Lg.		64	736-0179	Fl-Wash. .50" I.D. x 1.25" O.D.	
26	05400	Linkage Bracket		65	736-0111	Cutter Pin 3/32" Dia. x 1.0" Lg.*	
27	712-0922	Hex Jam Nut 1/2-20 Thd.		66	710-0114	Hex Slotted Nut 1/2-20 Thd.	
28	736-0821	L-Wash. 1/2" I.D.*		67	736-0308	Blade Adaptor	
29	710-0483	Hex Bolt 1/2-20 x 1.0" Lg.*		68	710-0280	Hex Bolt 1/4-20 x .50" Lg.*	
30	710-0405	Curved Carriage Bolt 5/16-18 x 1.78" Lg.		69	710-0280	Trans Mech. Scr. 1/4-20 x .50" Lg.*	
31	749-0659	Grass Catcher Support Tube		70	18921	Chute Mounting Brkt.	
32	712-0267	Hex Nut 5/16-18 Thd.		71	710-0257	Hex Nut 1/4-20 Thd.*	
33	736-0119	L-Wash. 5/16" I.D.*		72	710-0778	Hex A/B Tap Scr. 1/4 x .62" Lg.	
34	15885	Grass Catcher Support Plate		73	736-0278	Hook Latch Ass'y. 7" Lg.	
35	15923	Rear Discharge Panel		74	710-0280	Trans Mech. Scr. 1/4-20 x 50" Lg.*	
36	710-0599	Hex Wash. High Self Tap. Scr. 1/4-20 x .89" Lg.		75	736-0721	R D Chute Extension	
37	15991	Grass Catcher Frame Ass'y.		76	710-0314	Hex Bolt 7/16-20 x 1.0" Lg.* ††	
38	749-0653	Grass Catcher Handle		77	736-0171	L-Wash. 7/16" I.D.* ††	
39	764-0210	Grass Catcher Box		78	712-0240	Hex Nut 7/16-20 Thd.* ††	
40	15992	Catcher Side Frame Ass'y. - R.H.		79	710-0915	Self-Tap. Scr. 5/16-18 x 1.0" Lg. ††	
41	736-0175	Spring-Wash. .270" I.D. x .57" O.D. x .025		80	712-0107	Hex L-Nut 1/4-20 Thd.	
42	712-0107	Hex L-Nut 1/2-20 Thd		81	736-0142	Fl-Wash. .281" I.D. x .50" O.D. x .063	
43	749-0651	Bottom Cross Brace					

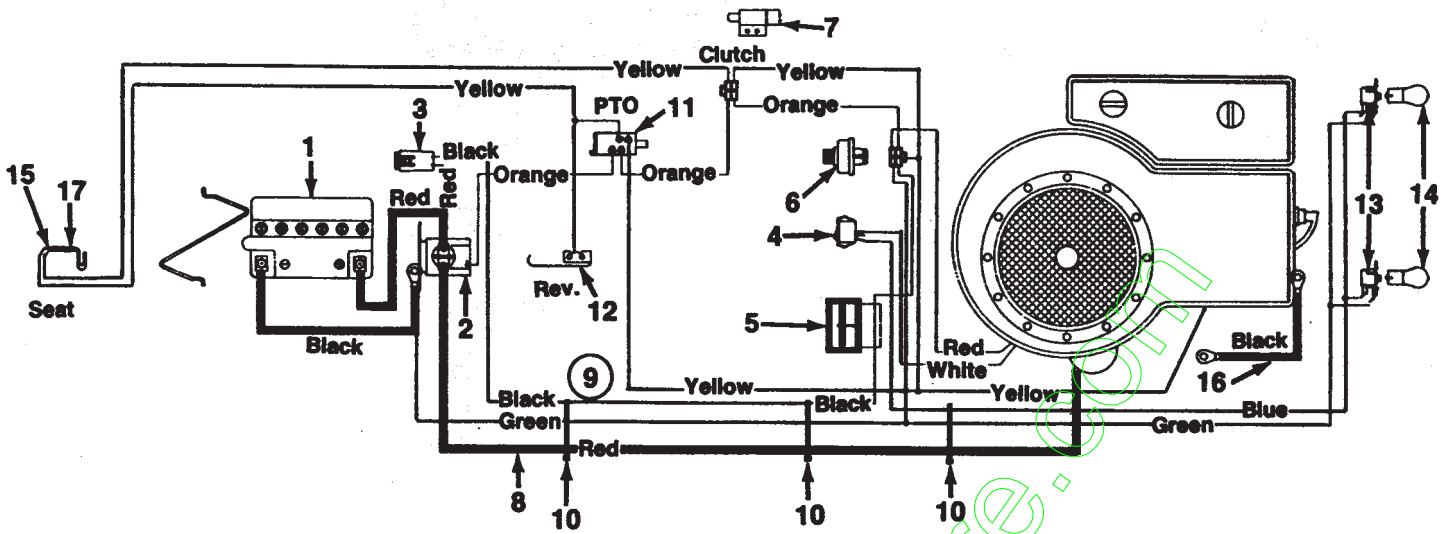
*Common Hardware may be purchased locally.

†Used on 500 Series riders only.

††Used on 600 Series lawn tractors only.

1276
1376

Models 620 thru 669

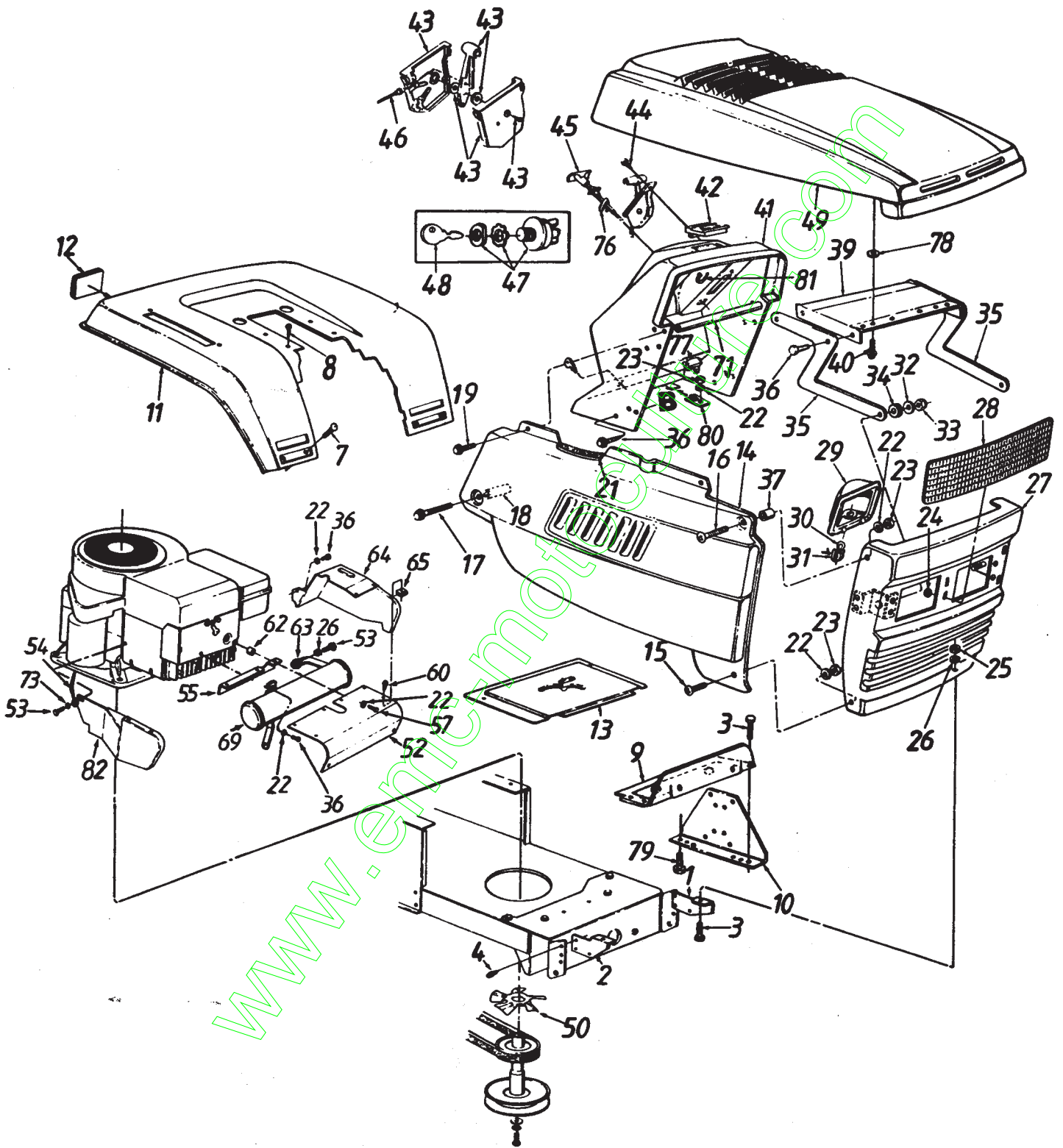


PARTS LIST FOR MODEL 600 SERIES LAWN TRACTORS

REF. NO.	PART NO.	CODE	DESCRIPTION
1	725-0514A		Battery
2	725-1426		Solenoid
3	725-1625		Fuse 7.5 Amps
4	725-0634		Light Switch (Optional)
5	725-0925		Ammeter (Optional)
6	725-0267		Ignition Switch
7	725-3169A		Safety Switch (Clutch)
8	725-1081		Electric Wire 30" Lg. (B&S)
	725-1082		Electric Wire 36" Lg. (Tec.)
9	629-0066	N	Wire Harness w/o Ammeter (B&S)
	629-0073	N	Wire Harness w/o Ammeter (Tec.)
	629-0076	N	Wire Harness w/Ammeter (B&S)
	629-0078	N	Wire Harness w/Ammeter (Tec.)
10	726-0197		Cable Tie
11	725-0803C		Safety Switch (Deck)
12	725-0759		Safety Switch (Reverse)
13	725-1649	N	Socket (Used on Styles 0, 1, 6, 7)
	725-1650	N	Socket (Used on Styles 2, 3, 4, 5, 8, 9)
14	725-0963		Bulb (Headlight)
15	725-1303		Safety Switch (Seat)
16	725-0980		Ground Wire 7.5" Lg.
17	725-1439		Safety Switch (Seat)

Keep this sheet with your owner's guide for ordering replacement parts.

Style 9



Style 9

PARTS LIST FOR MODEL 600 SERIES LAWN TRACTORS

REF. NO.	PART NO.	CODE	DESCRIPTION	REF. NO.	PART NO.	CODE	DESCRIPTION
1	15821		Grille Mtg. Brkt.—L.H.	37	750-0218		Spacer .262" I.D. x .31"
2	15822		Grille Mtg. Brkt.—R.H.	39	16903A	N	Hood Plate
3	710-0118		Hex Bolt 5/16-18 x .75" Lg.	40	710-1005		Hex Wash. Hd. Tap Scr. 1/4-20 x .5" Lg.
4	710-0607		Hex Wash. Hd. Tap Scr. 5/16-18 x .5" Lg.	41	731-1048A	N	Dash
7	710-0167		Carriage Bolt 1/4-20 x .5" Lg.	42	725-0925		Ammeter
8	710-0726		Hex Wash. Hd. Tap Scr. 5/16 x .75" Lg.	43	831-0823A		Throttle Control Box Ass'y.
9	17633A		Support Bracket	44	710-0919		Mach. Scr. #10 x .44" Lg.
10	17300D		Dash Support Bracket	45	746-0616A		Choke Control 23" Lg.†
11	17324A	N	Rear Fender	46	746-0614A		Choke Control 38" Lg.††
12	730-3000		Reflector (Optional)	46	746-0501		Throttle Control Wire 18.5" Lg.†
13	17286		Transmission Cover	47	746-0634		Throttle Control Wire 35" Lg.††
14	17308		Side Panel—R.H.†	47	725-0267		Ignition Switch
	17309		Side Panel—L.H. (Not Shown)†	48	725-0201		Ignition Key
	17458		Side Panel w/Foam—R.H.††	49	731-1054A	N	Hood
	17459		Side Panel Ass'y. w/Foam—L.H. (Not Shown)††	50	17199		Cooling Fan†
15	710-0286		Truss Mach. Scr. 1/4-20 x .5" Lg.	52	16812		Muffler Heat Shield—Front
16	710-0166		Truss Mach. Scr. 1/4-20 x 1.0" Lg.	53	710-0323		Truss Mach. Scr. 5/16-18 x .75" Lg.†
17	710-1026		Hex Wash. TT-Tap Scr. 1/4-20 x 1.75" Lg.	54	725-0980		Ground Wire†
18	750-0768		Spacer .26" I.D. x 1.32"	55	16813		Heat Shield Bracket†
19	710-0642		Hex Rolling Tap Scr. 1/4-20 x .75" Lg.	56	736-0175		Spr. Wash. 1/4" I.D.†
21	731-0511-12		Trim Strip—12" Lg.	57	710-0788		Hex Wash. Hd. Tap Scr. 1/4-20 x 1" Lg.†
22	736-0329		L-Wash. 1/4" I.D.*	58	710-0294		Hex Bolt 1/4-20 x 3/8" Lg.*†
23	712-0287		Hex Nut 1/4-20 Thd.*	60	710-0224		Hex Wash. Hd. AB-Tap Scr. #10 x .5" Lg.
24	726-0201		Speed Nut 5/16" Thd.	62	750-0709		Spacer .28" I.D. x .5" O.D.†
25	712-0267		Hex Nut 5/16-18 Thd.*	63	721-0208		Exhaust Gasket†
26	736-0119		L-Wash. 5/16" I.D.*	64	16801A	N	Muffler Heat Shield—L.H.†
27	17410		Grille Ass'y.	65	712-0147		Speed Nut #10-24 Thd.†
28	731-1044		Headlight Lens	69	751-0464		Muffler†
29	731-0705		Headlamp Housing	71	749-0814		Grille Support Tube
30	725-0963		Headlamp	73	736-0607		External L-Wash. 5/16" I.D.
31	725-1650	N	Twist Lock Lamp Socket	76	17782		Choke Retainer
32	736-0242		Bell-Wash. .345" I.D. x .88"	77	725-0634		Light Switch
33	712-0429		Hex L-Nut 5/16-18 Thd.	78	736-3010		FI-Wash. .406" I.D. x .812" O.D.
34	735-0126		Rubber Washer	79	710-0258		Hex Bolt 1/4-20 x .62" Lg.
35	17273		Hood Hinge	80	783-0013	N	Dash Fastening Tab
36	710-0599		Hex Wash. Hd. B-Tap Scr. 1/4-20 x .5" Lg.	81	725-0157		Cable Tie
				82	16811		Muffler Heat Shield—R.H.†

† Used with Single Cylinder Engine Only.

†† Used with Twin Cylinder Engine Only.

NOTE: Mufflers for twin cylinder engines refer to owner's guide.

SUPPLEMENT SHEET

CODE: R-320

DATE: November 22, 1991

SUBJECT: Replacement Parts -
600 Series Lawn Tractors

Use this supplement sheet instead of your owner's guide when ordering a replacement front wheel assembly or related parts listed below.

" FRONT WHEEL CHART

Description	15" x 6" w/Plastic Bearing	13" x 5" w/Plastic Bearing	15" x 6" w/Ball Bearing	13" x 6" w/Ball Bearing
Wheel Assy. Comp.	634-0050	634-0067	634-0060	634-0060
Tire Only	734-0864	734-0298	734-0864	734-1421
Rim Only	634-0024	634-0060	634-0061	634-0061
Bearing	741-0487A	741-0487A	741-0560	741-0560
Air Valve	734-0255	734-0255	734-0255	734-0255
Grease Fitting (Optional)	737-0211	737-0211	737-0260	737-0260
Grease Plug	737-0212	737-0212	—	—
Front Axle Assy.--L.H.	17585	16480	17585	16480
Front Axle Assy.--R.H.	17584	15840	17584	15840

NOTE: # brand of tire is important, order by part number and description (description is printed on the sidewall of tire) [i.e. Armstrong Super Turf, Goodyear Softrac, Cariso Turf Saver, etc.].

FORM NO. 770-6038G

YOUR UNIT HAS BEEN EQUIPPED WITH PARTS OTHER THAN THOSE
SHOWN IN YOUR OWNERS MANUAL. WHEN ORDERING REPLACEMENT
PARTS USE THESE PART NUMBERS:

MUFFLER - 751-0464

ENGINE PULLEY - 756-0522

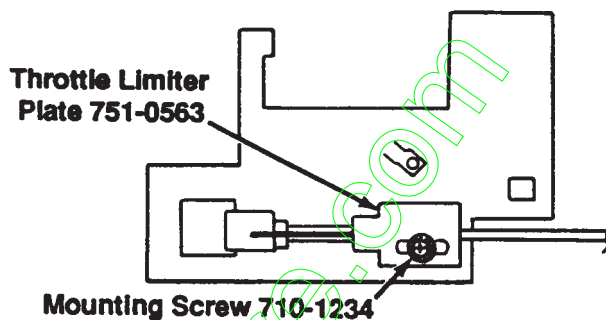
www.emc-motoculture.com

EEC

CODE: R-235
DATE: OCTOBER 14, 1991
SUBJECT: THROTTLE LIMITER FOR
EEC COUNTRIES

This tractor has been modified to comply with EEC Directive 538. It comes with the following special parts which are different than those shown in the Owner's Guide:

Description	Part Number
Throttle Limiter:	
Plate	751-0563
Screw #10-32 x .62" Lg.	710-1234
Lock Washer	736-0722
Flat Washer .218" I.D. x .6" O.D	736-0931
Muffler:	
11 H.P. and 12 H.P.	751-0464



After an initial run-in period, the engine speed may need to be adjusted to compensate for alterations that take place during the run-in period. To comply with EEC Directive 538, the maximum allowable engine speed is 2800 rpm.

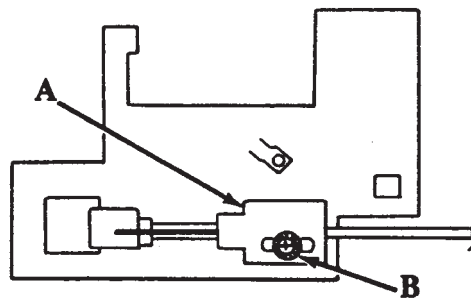
Engine speed may be adjusted as follows (see illustration below):

1. Locate throttle limiter on engine end of throttle cable.
2. Loosen mounting screw.
3. Slide plate forward to decrease engine speed or backward to increase engine speed.
4. Tighten screw.

Should you take up residence outside EEC, you may increase the throttle setting of your tractor as shown above to restore full design performance.

Ce tracteur a été modifié pour être conforme à la directive 538 de la CEE. Les pièces suivantes sont différentes de celles mentionnées dans le manuel:

Description	Référence
limiteur de gaz:	
plaque	751-0563
vis	710-1234
rondelle	736-0722
rondelle	736-0931
pot d'échappement:	751-0464



Après une courte période de rodage il faudra peut-être régler de nouveau le régime moteur pour compenser les modifications se produisant pendant le rodage. Pour se conformer à la directive No. 538 de la CEE le régime moteur maximal admissible est 2800 rpm (t/m).

Vous pouvez régler la vitesse comme suite:

1. Localisez le limiteur de gaz du côté moteur du câble de gaz (re.fA).
2. Dévissez la vis de fixation (ref B).
3. Faites glisser le support vers l'avant pour diminuer la vitesse, vers l'arrière pour l'augmenter.
4. Réservez la vis (ref B).

Si vous déménagez pour habiter hors de la CEE, vous pouvez augmenter le réglage de gaz de votre autoportée en agissant sur la vis de réglage d'accélération et ainsi redonner à votre autoportée toute la puissance avec laquelle elle a été conçue.

FORM NO. 770-6572G

SUPPLEMENT SHEET

THE PART NUMBERS LISTED BELOW MUST BE USED WHEN ORDERING PARTS FOR YOUR MOWER. THOSE IN YOUR MANUAL ARE DIFFERENT THAN THOSE USED ON YOUR UNIT. SEE PAGES 2 & 3 . THE FOLLOWING REFERENCES ARE USED ON YOUR UNIT.

REF. NO. 25 - ORDER PART NO. 14608

REF. NO. 24 - ORDER PART NO. 741-0225

REF. NO. 65 - ORDER PART NO. 731-1134

