

OWNER'S GUIDE

OUTDOOR POWER EQUIPMENT
for all seasons



VARIABLE SPEED RIDING MOWERS

Model Numbers

- 135-502-000
- 135-504-000
- 135-506-000
- 135-512-000
- 135-514-000
- 135-516-000
- 135-518-000

Important:
Read Safety Rules and
Instructions Carefully

Thank you for purchasing
an American-built product.

INDEX

Safe Operation Practices	3	Off-Season Storage	20
Assembly Instructions	4	Trouble Shooting Charts	21-23
Controls	11	Illustrated Parts for Rider	24, 25, 26, 28, 30
Operation	13	Parts List for Rider	25, 27, 29, 31
Adjustments	15	Illustrated Parts for Transaxle	32, 33
Lubrication	16	Electrical Diagram	34, 35
Maintenance	17	Parts Information	Back Cover



Instructions given with this symbol are for personal safety. Be sure to follow them.

LIMITED WARRANTY

For one year from the date of original retail purchase, MTD PRODUCTS, INC. will either repair or replace, at its option, free of charge, F.O.B. factory or authorized service firm, any part or parts found to be defective in material or workmanship. Transportation charges for the movement of any power equipment unit or attachment are the responsibility of the purchaser. Transportation charges for any parts submitted for replacement under this warranty must be paid by the purchaser unless such return is requested by MTD PRODUCTS, INC.

This warranty will not apply to any part which has become inoperative due to abuse or excessive use, accident, neglect, improper maintenance or alterations. This warranty does not apply to the engine, motor, battery, battery charger, or optional parts thereof. Please refer to the applicable manufacturer's warranty on these items.

This warranty will not apply where the unit has been used commercially.

Warranty service is available through your local authorized service dealer or distributor. If you do not know the dealer or distributor in your area, please write to the Customer Service Department of MTD.

The return of a complete unit will not be accepted by the factory unless prior written permission has been extended by MTD.

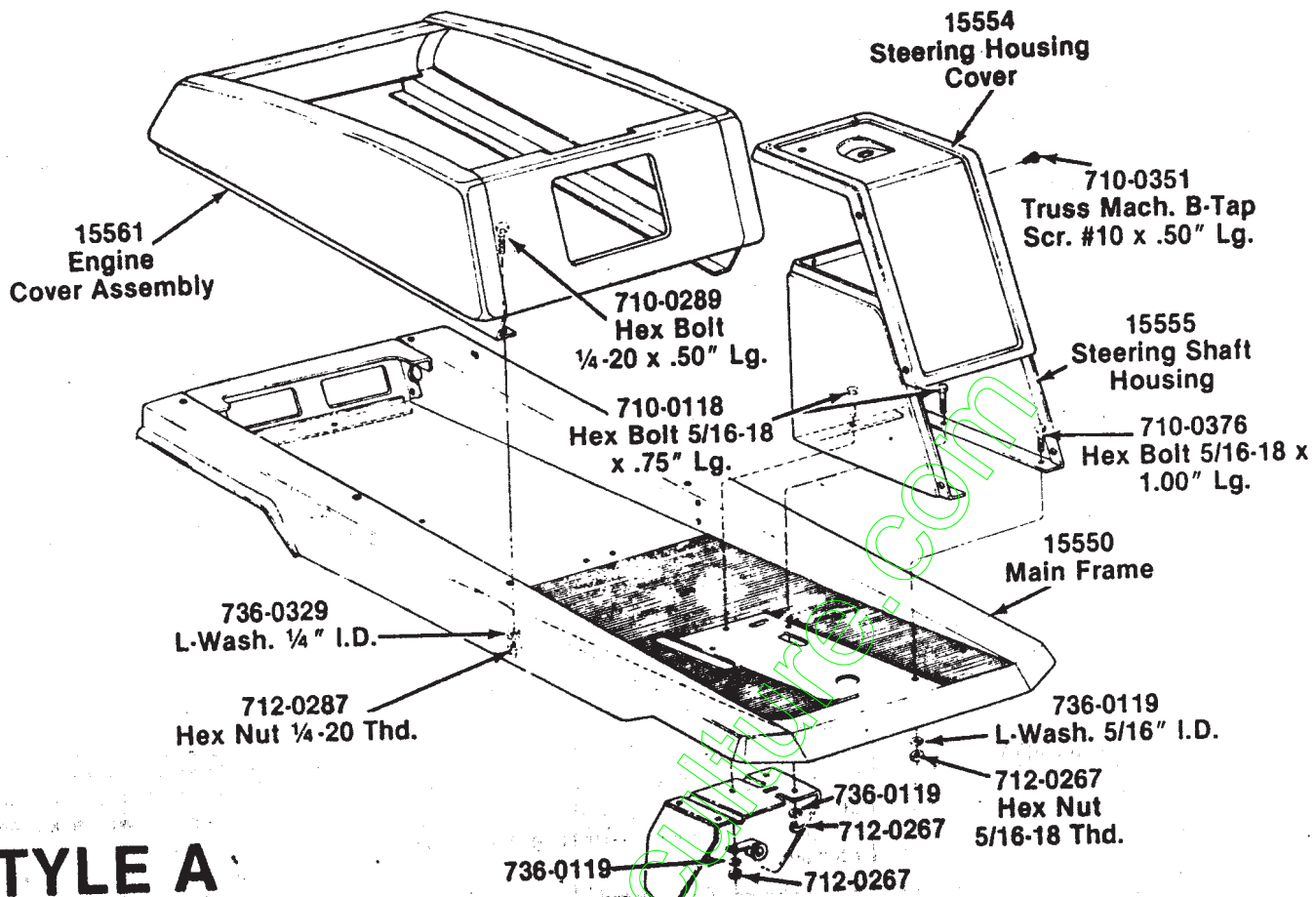
This warranty gives you specific legal rights. You may also have other rights which vary from state to state.



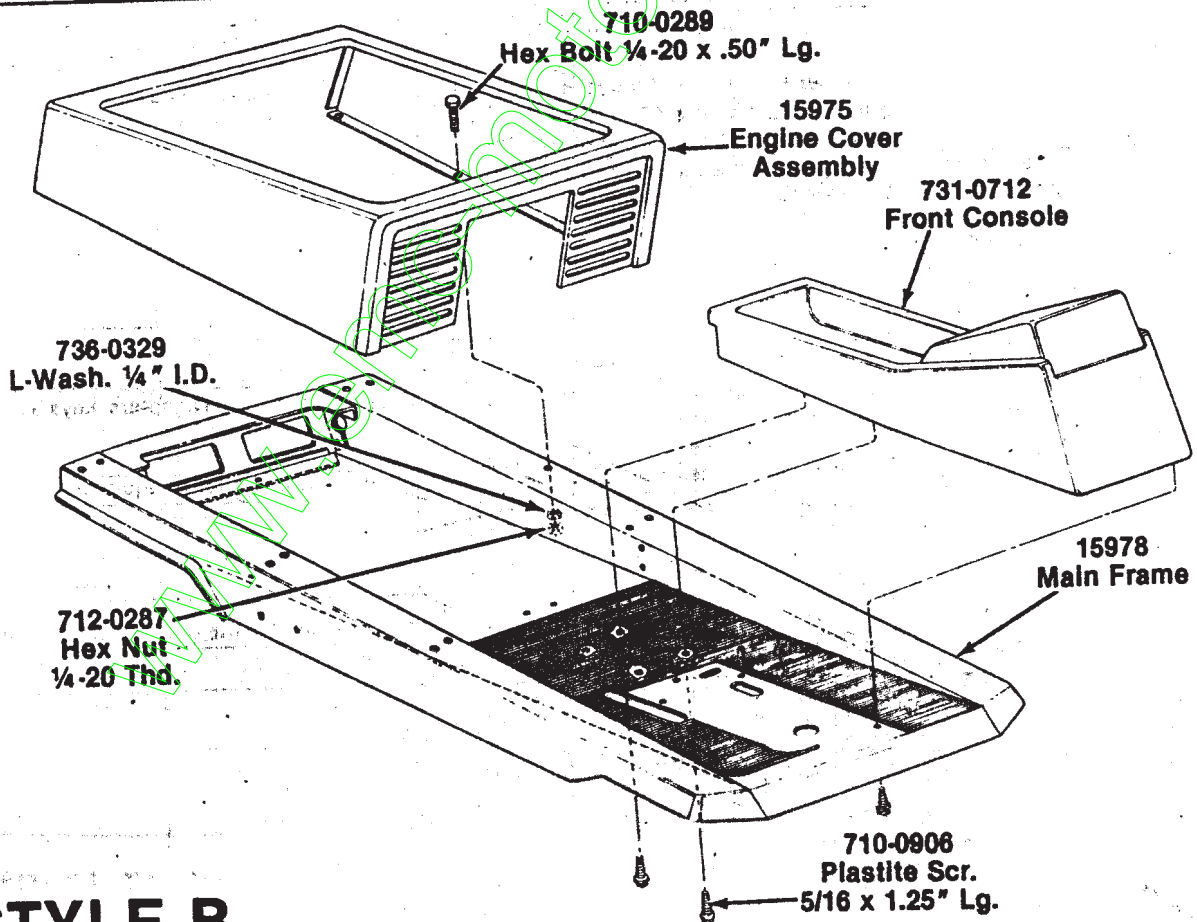
WARNING

This unit is equipped with an internal combustion engine and should not be used on or near any unimproved forest-covered, brush-covered, or grass-covered land unless the engine's exhaust system is equipped with a spark arrester meeting applicable local or state laws (if any). If a spark arrester is used, it should be maintained in effective working order by the operator.

In the State of California the above is required by law (Section 4442 of the California Public Resources Code). Other states may have similar laws. Federal laws apply on federal lands. A spark arrester muffler is available at your nearest engine authorized service center.

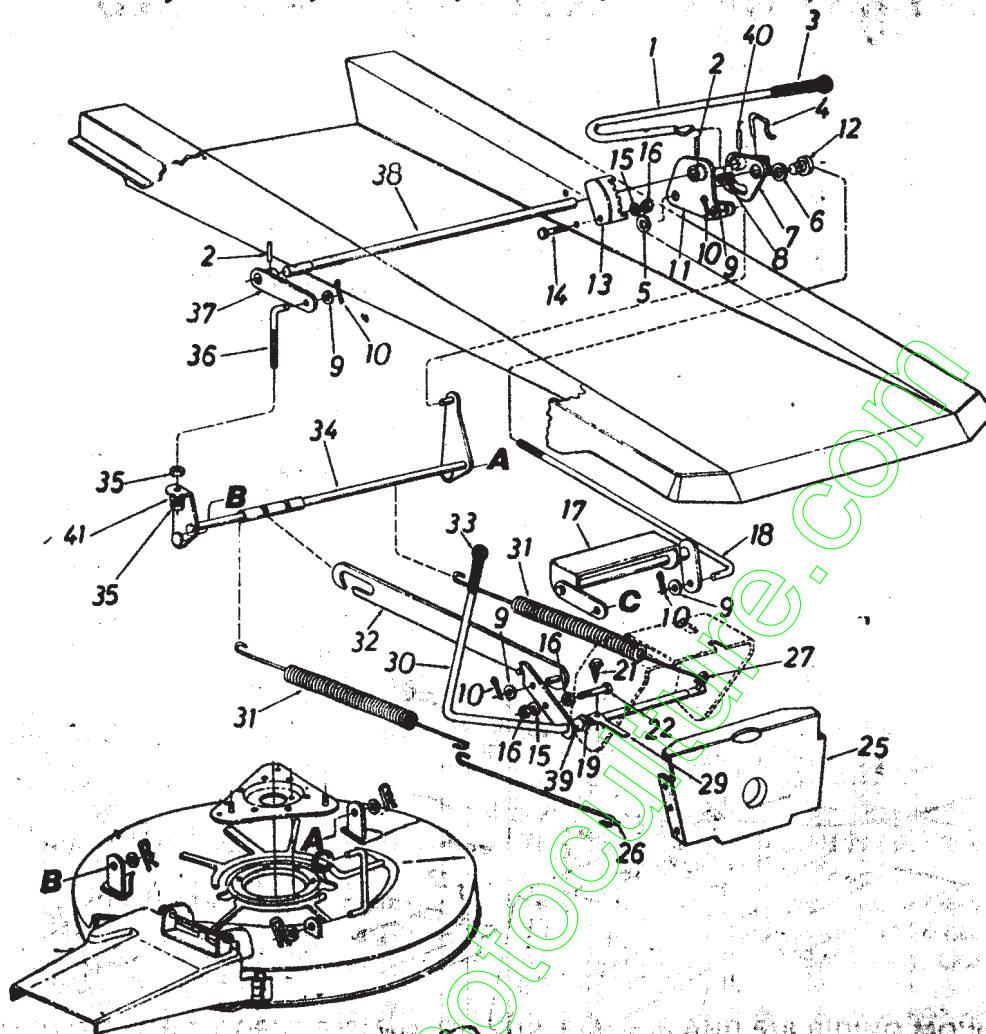


STYLE A



STYLE B

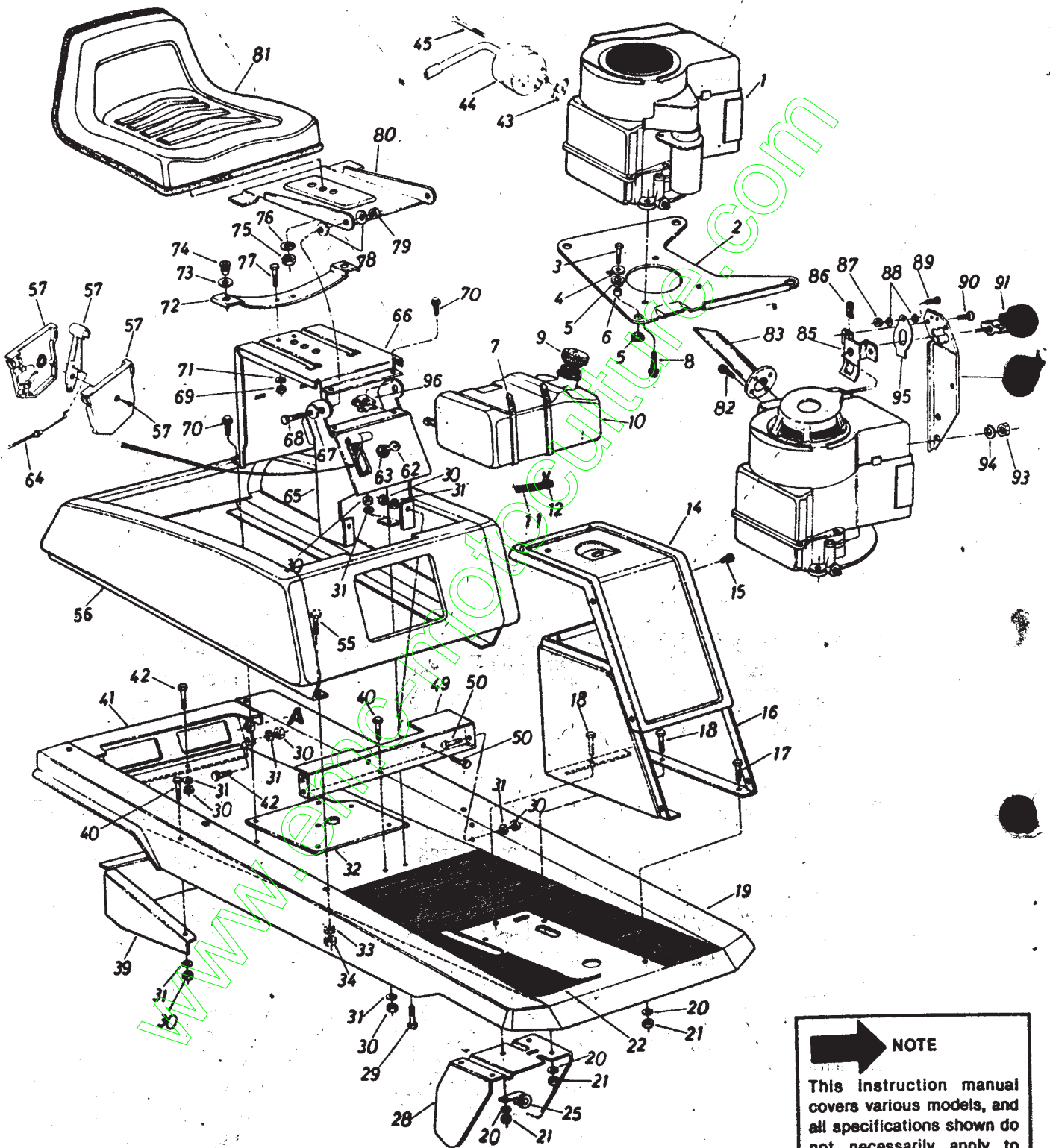
Models 502, 504, 506, 512, 514, 516 and 518



PARTS LIST FOR MODELS 502, 504, 506, 512, 514, 516 AND 518 RIDING MOWER

REF. NO.	PART NO.	COLOR CODE	DESCRIPTION	NEW PART	REF. NO.	PART NO.	COLOR CODE	DESCRIPTION	NEW PART
1	747-0418		Deck Lift Handle		21	710-0599		Hex Wash. Hd. Self-Tap Scr.	
2	715-0114		Spring Pin Spir. 1/4" Dia. x 1.50" Lg.		21	710-0805		Hex Bolt 5/16-18 x 1.50" Lg.*	
3	720-0143		Grip		25	1561305		Pivot Bar Bracket	
4	714-0166		Cotter Pin (Special)		26	732-0451		Spring Hook	
5	736-0162		FI-Wash. 5/8" I.D. x 1.0" O.D. x .12		27	711-0753		Spec. Clevis Pin .250" Dia.	
6	736-0187		FI-Wash. 5/8" I.D. x 1.25" O.D. x .60		29	732-0435		Switch Actuator	
7	15576		Deck Lift Handle Brkt. Ass'y.		30	15568		Blade Engagement Lever	
8	732-0430		Compression Spring .50" O.D. x 1.04		31	732-0440		Blade Ass'y.	
9	736-0300		FI-Wash. .385" I.D. x .87" O.D. x .06		31	732-0440		Extension Spring .99" O.D. x 14.25" Lg.	
10	714-0115		Cotter Pin 1/8" Dia. x 1.00"		32	15644		Deck Drive Control Brkt. Ass'y.	
11	15578		Deck Lift Brkt. Ass'y.—L.H.		33	720-0143		Grip	
12	711-0749		Adj. Ferrule—Deck Lift Handle		34	15600		Deck Link Ass'y.—Rear	
13	15581		Index Bracket		35	712-0798		Hex Nut 3/8-16 Thd.*	
14	710-0118		Hex Bolt 5/16-18 x .75" Lg.*		36	710-0866		Deck Adj. Scr. 3/8-16 Thd.	
15	736-0119		L-Wash. 5/16" I.D.*		37	15609		Deck Lift Brkt. Ass'y.—R.H.	
16	712-0267		Hex Nut 5/16-18 Thd.*		38	738-0550		Rear Height Adj. Shaft	
17	15573		Deck Lift Ass'y. Front		39	750-0515		Sleeve .511" I.D. x .70" O.D. x .37" Lg.	
18	747-0426		Deck Lift Connecting Rod		40	715-0134		Spring Pin Spir. 3/16" Dia. x 1.50" Lg.	
19	736-0160		FI-Wash. .531" I.D. x .930"		41	736-0169		L-Wash. 3/8" I.D.*	

Models 502, 504, 506, 512, 514, 516 and 518



NOTE

This instruction manual covers various models, and all specifications shown do not necessarily apply to your model. Specifications subject to change without notice or obligation.

Models 502, 504, 506, 512, 514, 516 and 518

PARTS LIST FOR MODELS 502, 504, 506, 512, 514, 516 AND 518 RIDING MOWER

REF. NO.	PART NO.	COLOR CODE	DESCRIPTION	NEW PART NO.	REF. NO.	PART NO.	COLOR CODE	DESCRIPTION	NEW PART NO.
1	—		Engine		56	—		Refer to Page 24	
2	15572		Engine Mounting Plate		57	831-0692		Throttle Control Box Ass'y.	
3	710-0158		Hex Bolt 5/16-24 x 1.25" Lg.*		62	725-0201		Ignition Key	
4	736-0231		Fl-Wash. .330" I.D. x 1.125" O.D.		63	725-0267		Ignition Switch (Electric Start)	
5	722-0153		Engine Mounting Grommet			725-0464		Ignition Switch†	
6	750-0539		Spacer 315" I.D. x .50" O.D. x .520" Lg.		64	746-0503		Throttle Control Wire	
7	726-0153		Cable Tie		65	15897		Front Seat Bracket	N
8	710-0502		Hex Wash. Hd. Self-Tap Scr. 3/8-16 x 1.25" Lg.		66	15606		Rear Seat Bracket	
9	723-0155		Gas Gauge		67	736-0242		Bell-Wash. .345" I.D. x .88" O.D.	
10	751-0368		Fuel Tank		68	710-0118		Hex Bolt 5/16-18 x .75" Lg.*	
11	751-0173		Gas Line		69	712-0287		Hex Nut 1/4-20 Thd.*	
12	726-0207		Hose Clamp—.406" Dia.		70	710-0601		Hex Self-Tap Scr. 5/16-18 x .75" Lg.	
14	—		Refer to Page 24		71	736-0329		L-Wash. 1/4" I.D.*	
15	—		Refer to Page 24		72	732-0431		Seat Spring	
16	—		Refer to Page 24		73	736-0160		Fl-Wash. .531" I.D. x .930" O.D.	
17	—		Refer to Page 24					Grommet	
18	—		Refer to Page 24		74	731-0555		Hex Nut 1/2-13 Thd.*	
19	—		Refer to Page 24		75	712-0206		L-Wash. 1/2" I.D.*	
20	—		Refer to Page 24		76	736-0921		Hex Bolt 1/4-20 x .62" Lg.*	
21	—		Refer to Page 24		77	710-0258		Bell-Wash. .345" I.D. x .88" O.D.	
22	735-0220		Floor Mat		78	736-0242		Hex Cent. L-Nut 5/16-18 Thd.	
25	726-0175		Clamp					Seat Pivot Bracket	
28	15562		Clutch-Brake Pedal Ass'y.		79	712-0158		Seat Ass'y. Comp.	
29	710-0759		Hex Bolt 5/16-18 x .62" Lg.*		80	15607		Hex Wash. Hd. TT-Tap Scr. 8-32 x .50" Lg. (5 H.P.)	
30	712-0267		Hex Nut 5/16-18 Thd.*		81	757-0264		Exhaust Pipe Ass'y. (5 H.P.)	
31	736-0119		L-Wash. 5/16" I.D.*		82	710-0894		Switch Brkt. Ass'y.†	
32	15588		Mounting Brkt. Variable Speed Pulley		83	751-0339		Speed Nut #10-24 U-Type†	
33	736-0329		L-Wash. 1/4" I.D.*		85	11053		Hex Nut #10-24 Thd.*†	
34	712-0287		Hex Nut 1/4-20 Thd.*		86	712-0147		Fiber Washer†	
39	15552		Transaxle Support Ass'y.		87	712-0121		Truss Mach. Scr. #10-24 x .62" Lg.*†	
40	710-0118		Hex Bolt 5/16-18 x .75" Lg.*		88	736-0338		Truss Mach. Scr. #10 x .50" Lg.*†	
41	15571		Rear Frame Panel		89	710-0425		Plastic Handle (Starter Rope)†	
42	710-0621		Hex Bolt 5/16-18 x .50" Lg.*					Rope Handle Bracket†	
43	721-0207		Exhaust Gasket (8 H.P.)		90	710-0351		Hex Nut 5/16-18 Thd.*†	
	721-0208		Exhaust Gasket (10 & 11 H.P.)					L-Wash. 5/16" I.D.*†	
44	751-0412		Muffler Ass'y. (8 H.P.)		91	11263		Switch Spring†	
	751-0413		Muffler Ass'y. (10 & 11 H.P.)					Palnut Lug 5/16-18	
45	738-0635		Shld. Bolt (8 H.P.)		92	15655			
	738-0636		Shld. Bolt (10 & 11 H.P.)		93	712-0267			
49	15604		Seat Support & Frame Brkt.		94	736-0119			
50	710-0621		Hex Bolt 5/16-18 x .50" Lg.*		95	732-0257			
55	710-0289		Hex Bolt 1/4-20 x .50" Lg.*		96	726-0211			

(462—Red Flake)

*For faster service obtain standard nuts, bolts and washers locally. If these items cannot be obtained locally, order by part number and size as shown on parts list.

When ordering parts, if color or finish is important use the appropriate color code shown above. (e.g. Red Flake Finish—11836 (462).)

†Recoil Start Models Only.

Models 502, 504, 506, 512, 514, 516 and 518

PARTS LIST FOR MODELS 502, 504, 506, 512, 514, 516 AND 518 RIDING MOWER

REF. NO.	PART NO.	COLOR CODE	DESCRIPTION	NEW PART	REF. NO.	PART NO.	COLOR CODE	DESCRIPTION	NEW PART
1	—		Engine		56	—		Refer to Page 24	
2	15572		Engine Mounting Plate		57	831-0692		Throttle Control Box Ass'y.	
3	710-0158		Hex Bolt 5/16-24 x 1.25" Lg.*		62	725-0201		Ignition Key	
4	736-0231		FI-Wash. .330" I.D. x 1.125" O.D.		63	725-0267		Ignition Switch (Electric Start)	
5	722-0153		Engine Mounting Grommet			725-0464		Ignition Switch†	
6	750-0539		Spacer .315" I.D. x .50" O.D. x .520" Lg.		64	746-0503		Throttle Control Wire	
7	726-0153		Cable Tie		65	15897		Front Seat Bracket	N
8	710-0502		Hex Wash. Hd. Self-Tap Scr. 3/8-16 x 1.25" Lg.		66	15606		Rear Seat Bracket	
9	723-0155		Gas Gauge		67	736-0242		Bell-Wash. .345" I.D. x .88" O.D.	
10	751-0368		Fuel Tank		68	710-0118		Hex Bolt 5/16-18 x .75" Lg.*	
11	751-0173		Gas Line		69	712-0287		Hex Nut 1/4-20 Thd.*	
12	726-0207		Hose Clamp—.406" Dia.		70	710-0601		Hex Self-Tap Scr. 5/16-18 x .75" Lg.	
14	—		Refer to Page 24		71	736-0329		L-Wash. 1/4" I.D.*	
15	—		Refer to Page 24		72	732-0431		Seat Spring	
16	—		Refer to Page 24		73	736-0160		FI-Wash. .531" I.D. x .930" O.D.	
17	—		Refer to Page 24					Grommet	
18	—		Refer to Page 24		74	731-0555		Hex Nut 1/2-13 Thd.*	
19	—		Refer to Page 24		75	712-0206		L-Wash. 1/2" I.D.*	
20	—		Refer to Page 24		76	736-0921		Hex Bolt 1/4-20 x .62" Lg.*	
21	—		Refer to Page 24		77	710-0258		Hex Bolt 1/4-20 x .62" Lg.*	
22	735-0220		Floor Mat		78	736-0242		Bell-Wash. .345" I.D. x .88" O.D.	
25	726-0175		Clamp					Hex Cent. L-Nut 5/16-18 Thd.	
28	15562		Clutch-Brake Pedal Ass'y.		79	712-0158		Seat Pivot Bracket	
29	710-0759		Hex Bolt 5/16-18 x .62" Lg.*		80	15607		Seat Ass'y. Comp.	
30	712-0267		Hex Nut 5/16-18 Thd.*		81	757-0264		Hex Wash. Hd. TT-Tap Scr. 8-32 x .50" Lg. (5 H.P.)	
31	736-0119		L-Wash. 5/16" I.D.*		82	710-0894		Exhaust Pipe Ass'y. (5 H.P.)	
32	15588		Mounting Brkt. Variable Speed Pulley		83	751-0339		Switch Brkt. Ass'y.†	
33	736-0329		L-Wash. 1/4" I.D.*		85	11053		Speed Nut #10-24 U-Type†	
34	712-0287		Hex Nut 1/4-20 Thd.*		86	712-0147		Hex Nut #10-24 Thd.*†	
39	15552		Transaxle Support Ass'y.		87	712-0121		Fiber Washert	
40	710-0118		Hex Bolt 5/16-18 x .75" Lg.*		88	736-0338		Truss Mach. Scr. #10-24 x .82" Lg.*†	
41	15571		Rear Frame Panel		89	710-0425		Truss Mach. Scr. #10 x .50" Lg.*†	
42	710-0621		Hex Bolt 5/16-18 x .50" Lg.*					Plastic Handle (Starter Rope)†	
43	721-0207		Exhaust Gasket (8 H.P.)		90	710-0351		Rope Handle Bracket†	
44	721-0208		Exhaust Gasket (10 & 11 H.P.)					Hex Nut 5/16-18 Thd.*†	
44	751-0412		Muffler Ass'y. (8 H.P.)		91	11263		L-Wash. 5/16" I.D.*†	
45	751-0413		Muffler Ass'y. (10 & 11 H.P.)					Switch Spring†	
45	738-0635		Shld. Bolt (8 H.P.)		92	15655		Palnut Lug 5/16-18	
46	738-0636		Shld. Bolt (10 & 11 H.P.)		93	712-0267			
49	15604		Seat Support & Frame Brkt.		94	736-0119			
50	710-0621		Hex Bolt 5/16-18 x .50" Lg.*		95	732-0257			
55	710-0289		Hex Bolt 1/4-20 x .50" Lg.*		96	726-0211			

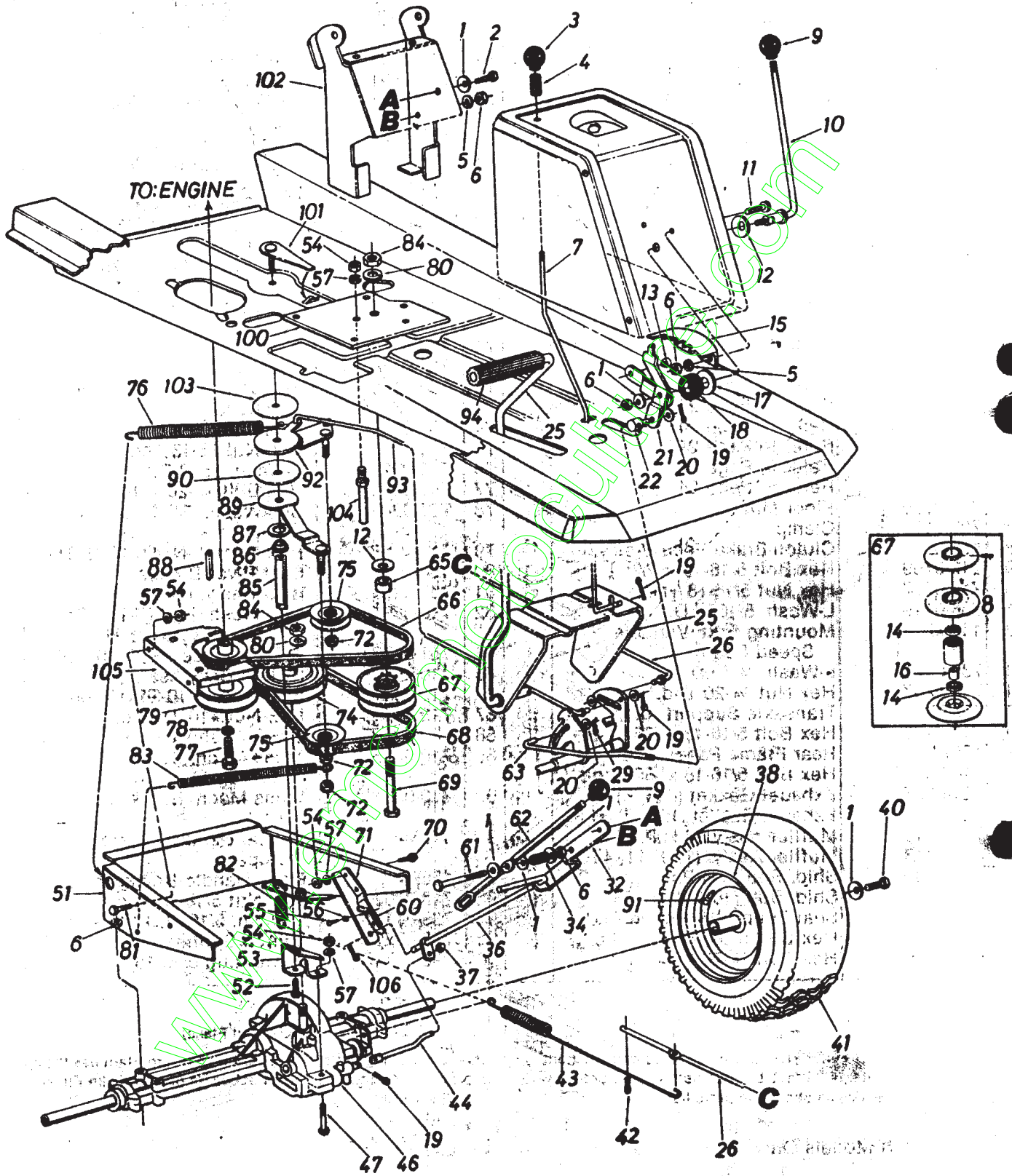
(462—Red Flake)

*For faster service obtain standard nuts, bolts and washers locally. If these items cannot be obtained locally, order by part number and size as shown on parts list.

When ordering parts, if color or finish is important use the appropriate color code shown above. (e.g. Red Flake Finish—11836 (462).)

†Recoil Start Models Only.

Models 502, 504, 506, 512, 514, 516 and 518



Models 502, 504, 506, 512, 514, 516 and 518

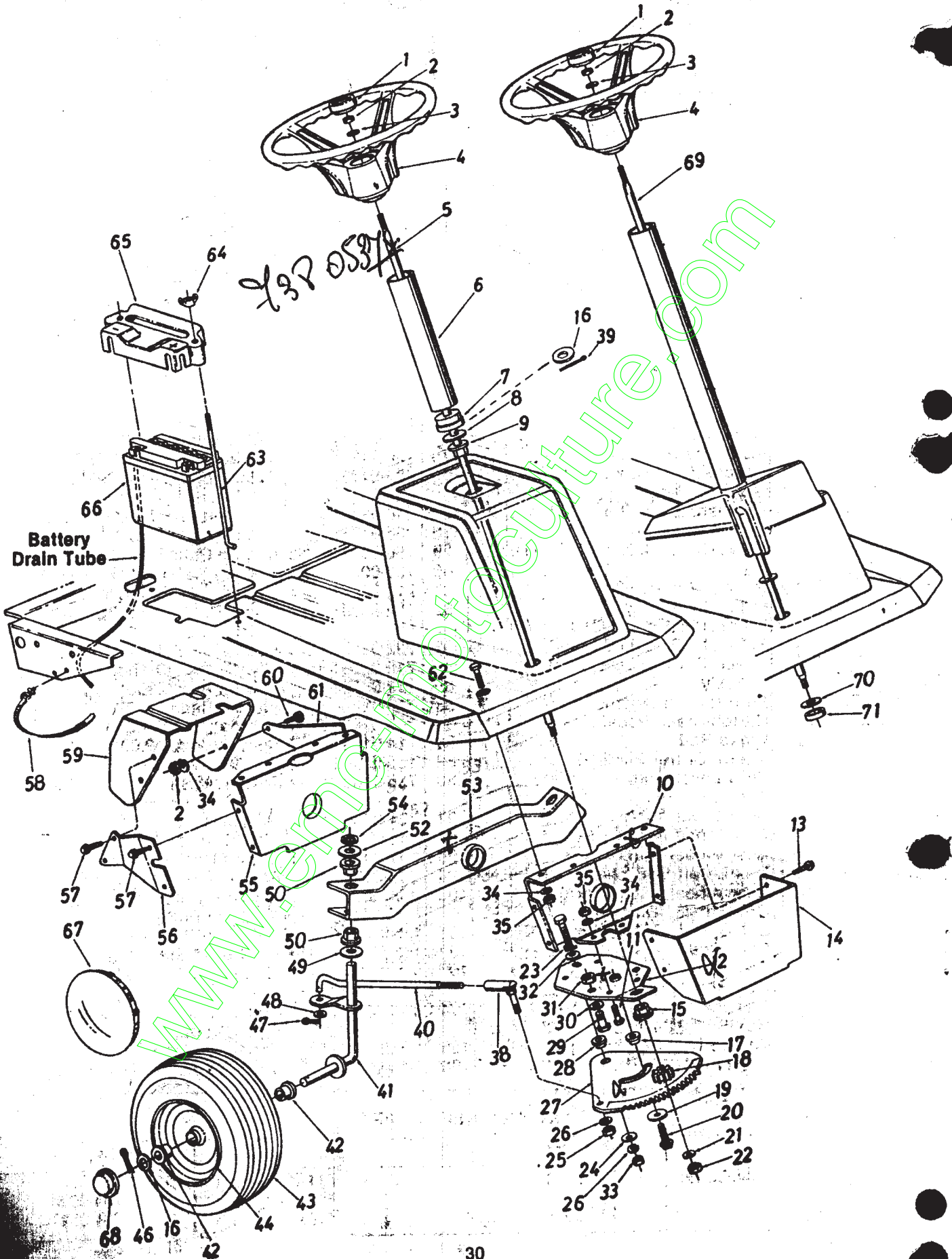
PARTS LIST FOR MODELS 502, 504, 506, 512, 514, 516 AND 518 RIDING MOWER

QTY. NO.	PART NO.	COLOR CODE	DESCRIPTION	NEW PART	REF. NO.	PART NO.	COLOR CODE	DESCRIPTION	NEW PART
1	736-0242		Bell-Wash. .345" I.D. x .88" O.D.		55	710-0789		C-Sink AB S-Tap Scr. #8 x .50"	
2	710-0776		Hex Wash. Hd. AB-Tap Scr. 1/4 x .62" Lg.		56	726-0206		Push-In Nut #10	
3	720-0187		Ball Knob		57	736-0329		L-Wash. 1/4" I.D.*	
4	732-0437		Compression Spring		60	732-0420		Spring Switch	
5	736-0119		L-Wash. 5/16" I.D.*		61	710-0395		Hex Bolt 5/16-18 x 2.25" Lg.*	
6	712-0267		Hex Nut 5/16-18 Thd.*		62	747-0430		Upper Shift Lever	
7	747-0427		Brake Locking Rod (Style A)		63	747-0394		Speed Control Rod (Style A)	
	747-0450		Brake Locking Rod (Style B)			747-0451		Speed Control Rod (Style B)	
8	715-0124		Spring Pin Spir. 5/32" Dia. x .62" Lg.		65	750-0333		Spacer .501" I.D. x .750" O.D. x .775	
9	720-0165		Gear Shift Knob		66	754-0241		"V"-Belt 5/8" L x 35" Lg.	
10	747-0424		Speed Control Lever		67	717-0473		Variable Speed Pulley Ass'y.	
11	710-0323		Truss Mach. Scr. 5/16-18 x .75" Lg.*		68	754-0240		"V"-Belt 5/8" L x 38" Lg.	
12	736-0253		Bell-Wash. .505" I.D. x 1.00"		69	710-0786		Hex Bolt 1/2-13 x 4.0" Lg.*	
13	731-0493		Cap		70	710-0258		Hex Bolt 1/4-20 x .62" Lg.*	
14	741-0139		Ball Brg. .50" I.D. x 1.38"		71	15624		Shift Lever Support	
15	15581		Index Bracket		72	712-0116		Hex Ins. L-Nut 3/8-24 Thd.	
16	750-0516		Spacer .50" I.D. x .69" O.D. x 1.38" Lg.		74	756-0390		5/8" V-Pulley 6.0" O.D.	
17	736-0100		FI-Wash. .50" I.D. x 1.25" O.D. (Style A)		75	756-0116		"V"-Belt Idler 3.06" O.D.	
	736-0154		FI-Wash. 1/2" I.D. x 1.50" O.D. (Style B)		76	732-0436		Extension Spring .99" O.D. x 8.0" Lg.	
18	735-0219		Rubber Wash. .50" I.D. x 1.25" O.D.		77	710-0314		Hex Bolt 7/16-20 x 1.0" Lg.*	
19	714-0115		Cotter Pin 1/8 x 1.00" Lg.*		78	736-0171		L-Wash. 7/16" I.D.*	
20	736-0275		FI-Wash. .344" I.D. x .688"		79	756-0391		Engine Pulley	
21	15582		Speed Control Lever Brkt. Ass'y.		80	738-0921		L-Wash. 1/2" I.D.*	
22	711-0677		Ferrule—Engagement		81	710-0352		Hex Bolt 1/4-20 x .75" Lg.*	
25	15562		Clutch-Brake Pedal Ass'y.		82	732-0303		Brake Return Ext. Spring 3.18" Lg.	
26	747-0431		Brake Rod		83	732-0308		Extension Spring	
29	714-0104		Intern. Cotter Pin 5/16" Dia.		84	712-0206		Hex Nut 1/2-13 Thd.*	
32	15659		Shift Lever Brkt.		85	711-0676		Torque Rod 3.835" Lg.	
34	732-0369		Spring		86	748-0294		Flange Bearing .378	
36	15637		Shift Lever Ass'y.		87	736-0187		FI-Wash. .640" I.D. x 1.24"	
37	726-0106		Cap Speed Nut 1/4" Rod		88	714-0114		Sq. Key 1/4 x 2.00" Lg.*	
40	710-0627		Rear Wheel Rim Only		89	15569		Idler Bracket Ass'y.	
41	**		Hex L-Bolt 5/16-24 x .75" Lg.		90	736-0283		Thrust Wash. .635" I.D. x 3.50" O.D.	
42	714-0470		Rear Wheel Ass'y. Comp.		91	734-0255		Air Valve	
43	732-0389		Cot-Pin 1/8" Dia. x 1.25"		92	15585		Idler Bracket Ass'y.	
44	747-0421		Ext. Spring .75" O.D. x 17.0"		93	747-0422		Clutch Rod	
46	717-0775		Shift Rod		94	735-0196		Foot Pad Bracket	
47	710-0136		Transaxle Comp.		100	15588		Mounting Bracket Variable	
51	15552		Hex Bolt 1/4-20 x 1.75" Lg.*		101	15642		Speed Pulley	
52	710-0180		Transaxle Support Ass'y.		102	15897		Weld Scr. Brkt. Ass'y.	
53	15564		Hex Bolt 3/8-24 x .75" Lg.*		103	736-0284		Front Seat Bracket	N
54	712-0287		Torque Rod Bracket		104	711-0747		Thrust Wash. .385" I.D. x 3.50" O.D.	
			Hex Nut 1/4-20 Thd.*		105	15623		Belt Guard Pin 1/4" Dia. x 1.68" Lg.	
					106	714-0111		Upper Engine Belt Guard	
								Cotter Pin 3/32" Dia. x .75" Lg.	

**REAR WHEEL CHART

Description	16 x 6.50	15 x 6.0	13 x 5.0
Wheel Assembly Comp.	734-0591	734-0524	734-0523
Tire Only	734-0275	734-0427	734-0298
Rim Only	734-0594	734-0521	734-0517

Models 502, 504, 506, 512, 514, 516 and 518



Models 502, 504, 506, 512, 514, 516 and 518

PARTS LIST FOR MODELS 502, 504, 506, 512, 514,
516 AND 518 RIDING MOWER

REF. NO.	PART NO.	COLOR CODE	DESCRIPTION	NEW PART	REF. NO.	PART NO.	COLOR CODE	DESCRIPTION	NEW PART
1	731-0220		Steering Wheel Cap		33	712-0241		Hex Nut 3/8-24 Thd.*	
2	712-0267		Hex Nut 5/16-18 Thd.*		34	736-0119		L-Wash. 5/16" I.D.*	
3	736-0242		Bell-Wash. .345" I.D. x .88" O.D.		35	712-0267		Hex Nut 5/16-18 Thd.*	
4	731-0219		Steering Wheel Ass'y.		38	723-0156		Ball Joint Ass'y. 3/8-24 Thd.	
5	738-0537		Steering Shaft†		39	714-0115		Cotter Pin 1/8" Dia. x 1.00" Lg.*†	
6	750-0568		Steering Tube Spacer (Chrome)†		40	747-0417		Steering Tie Rod	
7	731-0651		Steering Tube Spacer†		41	15616		Front Axle Ass'y.—R.H.	
8	736-0187		Fl-Wash. .640" I.D. x 1.25" O.D.†		41	15617		Front Axle Ass'y.—L.H. (Not Shown)	
9	741-0225		Hex Flange Bearing†		42	741-0313		Flange Bearing .632" I.D.	
10	15613		Pivot Bar Bracket		43	◀		Front Wheel Ass'y. Comp.	
11	710-0118		Hex Bolt 5/16-18 x .75" Lg.*		44	◀		Front Wheel Rim Only	
12	15614		Steering Gear Support Brkt.		46	714-0470		Cotter Pin 1/8" Dia. x 1.25" Lg.*	
13	710-0776		Hex Wash. Hd. AB-Tap Scr. 1/4 x .62" Lg.		47	714-0115		Cotter Pin 1/8" Dia. x 1.00" Lg.*	
14	15608		Steering Gear Cover		48	736-0300		Fl-Wash. .385" I.D. x .87" O.D.	
15	741-0225		Hex Flange Bearing		49	736-0156		Fl-Wash. .635" I.D. x 1.12" O.D.	
16	736-0285		Fl-Wash. .640" I.D. x 1.62" O.D.†		50	741-0225		Hex Flange Bearing	
17	738-0541		Shoulder Spacer .622 Dia. x .218		52	736-0156		Fl-Wash. .635" I.D. x 1.12" O.D.	
18	748-0290		Steering Pinion Gear		53	15610		Pivot Bar Ass'y.	
19	736-0320		Fl-Wash. .385" I.D. x 1.38" O.D.		54	726-0159		Speed Nut 5/8" I.D.	
20	710-0502		Hex Wash. Hd. Self-Tap Scr. 3/8-16 x 1.25" Lg.		55	15613		Pivot Bar Bracket	
21	736-0275		Fl-Wash. .34" I.D. x .68" O.D.		56	15694		Bracket Reinforcement—R.H.	
22	712-0123		Hex Nut 5/16-24 Thd.*		57	710-0776		Hex Wash. Hd. AB-Tap Scr. 1/4 x .62" Lg.	
23	710-0191		Hex Bolt 3/8-24 x 1.25" Lg. (Grade 5)		58	726-0154		Cable Tie**	
24	736-0320		Fl-Wash. .385" I.D. x 1.38" O.D.		59	15562		Clutch-Brake Pedal Ass'y.	
25	712-0241		Hex Nut 3/8-24 Thd.*		60	710-0118		Hex Bolt 5/16-18 x .75" Lg.*	
26	736-0169		L-Wash. 3/8" I.D.*		61	15699		Bracket Reinforcement—L.H.	
27	717-0472		Steering Gear Segment		62	710-0118		Hex Bolt 5/16-18 x .75" Lg.*	
28	738-0541		Shoulder Spacer .622" Dia. x .218		63	711-0222		Battery Hold Down Rod**	
29	710-0689		Hex Bolt (Nylon) 1/2-13 x .75" Lg.		64	712-0113		Wing Nut Solid 1/4-20 Thd.**	
30	736-0160		Fl-Wash. .530" I.D. x .930" O.D.		65	731-0708		Battery Hold Down Cover**	
31	712-0206		Hex Nut 1/2-13 Thd.*		66	725-0514		12V Battery**	
32	736-0105		Bell-Wash. .385" I.D. x .88" O.D.		67	734-1002		Chrome Hub Cap (Optional)	
					68	731-0484		Plastic Hub Cap (Optional)	
					69	16042		Steering Shaft Ass'y.††	
					70	736-0187		Fl-Wash. .62" I.D. x 1.50" O.D.††	
					71	750-0532		Spacer (Plastic)††	

(462—Red Flake)

†Models 502, 504 & 506 only.

††Models 512, 514, 516 & 518 only.

**Electric Start Models only.

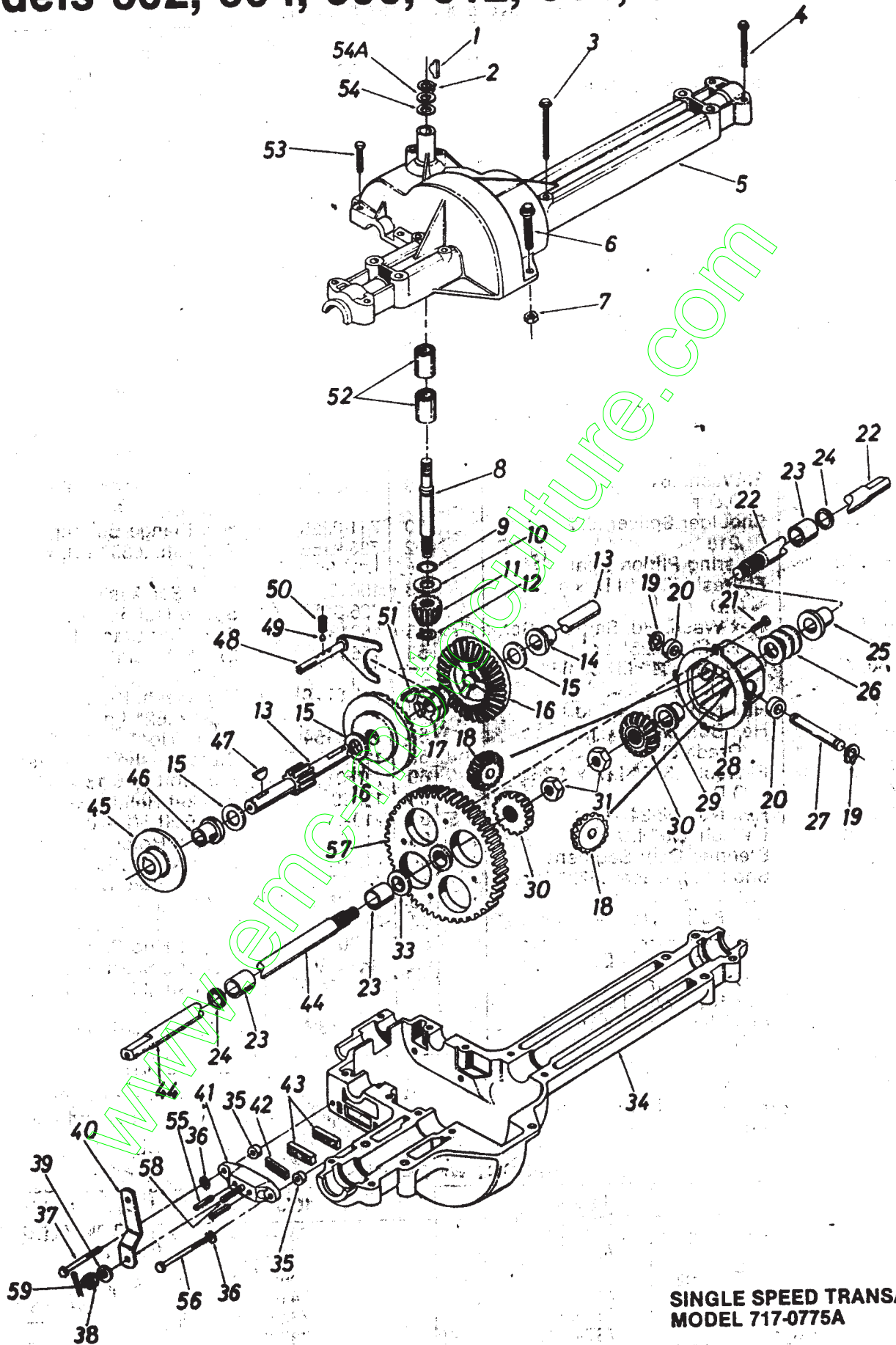
When ordering parts, if color or finish is important use the appropriate color code shown above. (e.g. Red Flake Finish—11836 (462).)

Row 4 V.

◀ FRONT WHEEL CHART

Description	11 x 4.0 / 14	10.5 x 4.0	10.5 x 3.5
Wheel Assembly Comp.	734-1044	734-1184	734-1000
Tire Only	734-0770	734-1185	—
Rim Only	734-1042	734-1183	—
Bearing	741-0313	741-0313	741-0313
Air Valve	734-0255	734-0255	—
Grease Fitting	737-0146	737-0146	—

Models 502, 504, 506, 512, 514, 516 and 518



SINGLE SPEED TRANSAXLE
MODEL 717-0775A

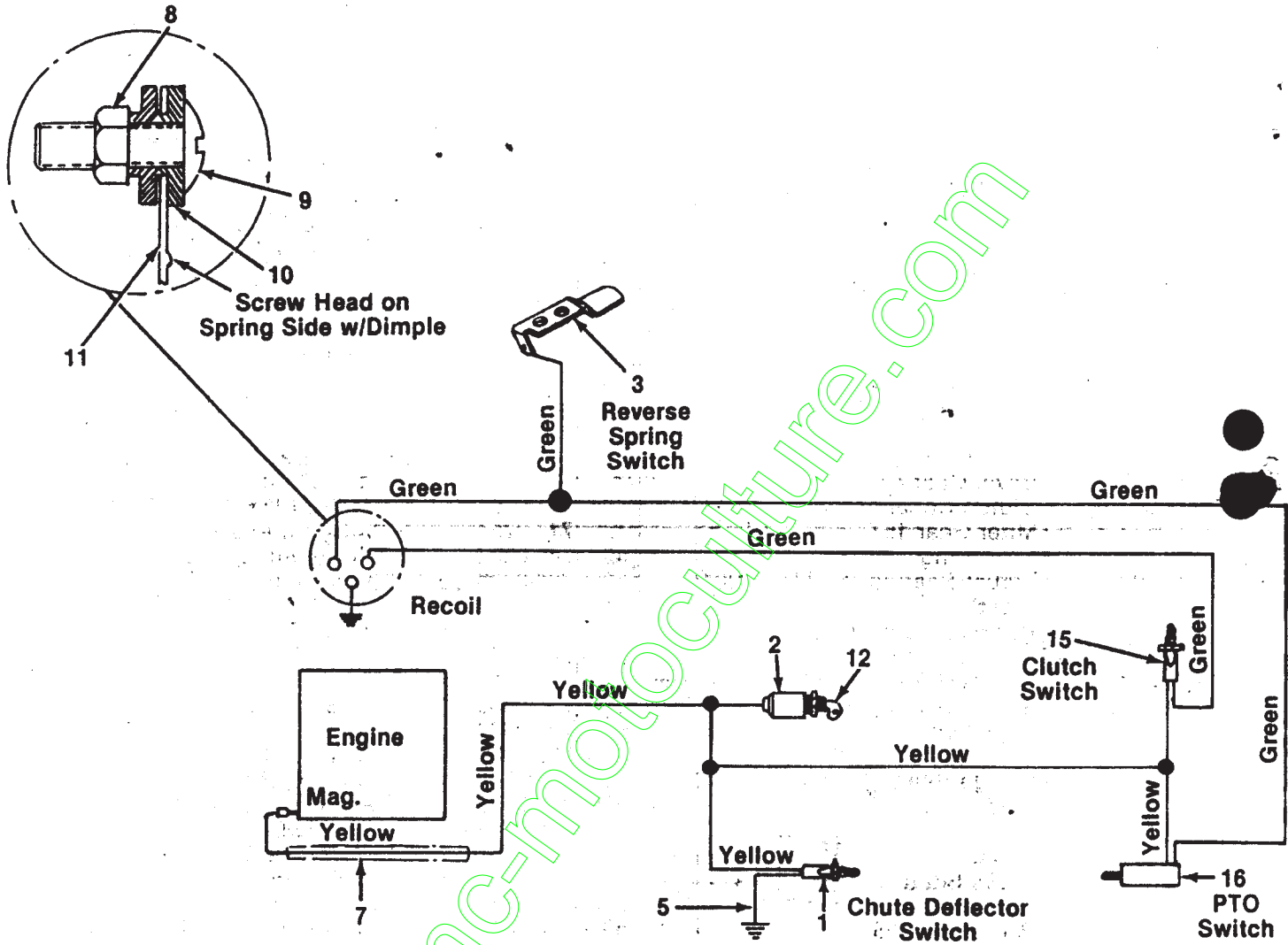
Models 502, 504, 506, 512, 514, 516 and 518

PARTS LIST FOR SINGLE SPEED TRANSAXLE 717-0775A

REF. NO.	PART NO.	COLOR CODE	DESCRIPTION	NEW PART	REF. NO.	PART NO.	COLOR CODE	DESCRIPTION	NEW PART
1	714-0129		#4 Hi-Pro Key 3/32 x 5/8" Dia.		33	736-0188		Fl-Wash. .760" I.D. x 1.49" O.D.	
2	716-0115		Snap Ring .625" Shaft					Lower Housing	
3	710-0854		Hex Bolt 1/4-20 x 1.75" Lg.*		34	717-0761		Spacer .53" O.D. x 3/8" Lg.	
4	710-0809		Hex Bolt 1/4-20 x 1.25" Lg.*		35	750-0555		L-Wash. 1/4" I.D.*	
5	717-0764		Upper Housing		36	736-0329		Hex Bolt 1/4-20 x 1.50" Lg. (Grade 5)	
6	710-0889		Hex Fl-Bolt 1/4-20 x .88" Lg.*		37	710-0886		Castle Nut 5/16-24 Thd.	
7	712-0287		Hex Nut 1/4-20 Thd.*					Fl-Wash. .344" I.D. x .875" O.D.	
8	717-0634		Input Shaft		38	712-0335		Actuating Arm	
9	721-0178		Square Seal 5/8" I.D.		39	736-0159		Brake Yoke	
10	736-0335		Thrust Washer 5/8" I.D. x 1.25" O.D.		40	717-0772		Puck Plate	
11	717-0633		Pinion Input 14T		41	717-0679		Brake Puck	
12	716-0108		Retaining Ring 7/16" Ext.		42	717-0682		Axle L.H. Kit	N
13	717-0768		Drive Shaft		43	717-0678		Brake Disc	
14	741-0336		Flange Brg. 5/8" I.D. x 3/4" Lg.*		44	753-0395		Flange Bearing 5/8" I.D. x 15/16" Lg.	
15	**		Fl-Wash. (See Below)		45	717-0677		Woodruff Key 3/16 x 5/8 HT	
16	717-0757		Bevel Gear 42T		46	741-0337		Shift Fork Ass'y.	
17	717-0667		Clutch Collar		47	714-0161		Ball Detent .250" Dia.	
18	717-0674		Miter Gear 15T		48	717-0754		Spring-Detent	
19	716-0142		Snap Ring		49	741-0862		#9 Hi-Pro Key 3/16" x 3/4" Dia. HT	
20	717-0690		Thrust Bearing 1/2" I.D. x 1.0" O.D.		50	732-0863		Needle Brg. 5/8" I.D. x 1/2" Lg.	
21	710-0862		Pan Head Scr. 1/4-20 x .50" Lg. w/Patch		51	714-0169		Hex Bolt 1/4-20 x 1.00" Lg.	
22	753-0394		Axle R.H. Kit	N	52	741-0335		Fl-Wash. 5/8" I.D. x .030" Thk.	
23	741-0340		Sleeve Bearing 3/4" I.D. x 1.0" Lg.		53	710-0855		Fl-Wash. 5/8" I.D. x .040" Thk.	
24	721-0179		Oil Seal 3/4" I.D.		54	736-0336		Actuating Pin 5/16" Dia.	
25	741-0339		Flange Bearing 3/4" I.D. x 15/16" Lg.		54A	736-0337		Hex Bolt 1/4-20 x 1.50" Lg. (Grade 5)	
26	736-0188		Fl-Wash. .760" I.D. x 1.49" O.D.		55	741-0343		Differential Gear 72T Ass'y. w/Bearing	N
27	717-0673		Cross Shaft		56	710-0886		Sq. Hd. Bolt 5/16-24 Thd.	
28	717-0777		Differential Housing Ass'y.		57	717-0767		Cotter Pin 3/32" Dia. x .50" Lg.	
29	—		Part of Ref. 28		58	717-0681		Grease—Shell (10 oz.)	
30	717-0687		Miter Gear		59	1544-013			
31	716-0144		Retaining Ring		—	737-0148			

**Ref. No. 15 736-0349 Fl-Wash. 5/8" I.D. x 1.0" O.D. x .020" Thk.
 736-0336 Fl-Wash. 5/8" I.D. x 1.0" O.D. x .030" Thk.
 736-0337 Fl-Wash. 5/8" I.D. x 1.0" O.D. x .040" Thk.

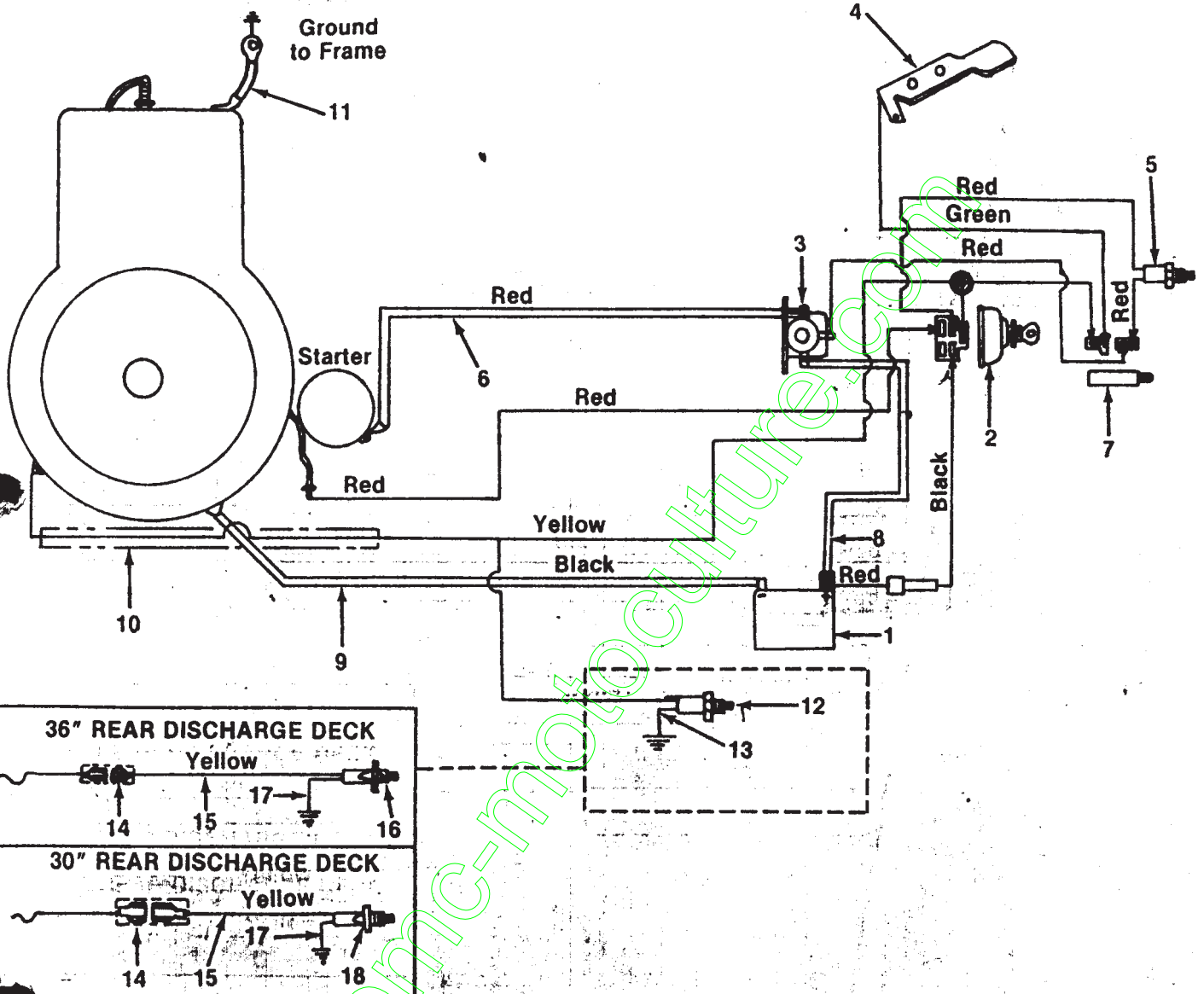
Models 502 and 512 (Recoil Start)



PARTS LIST FOR ELECTRICAL SYSTEM RIDING MOWER MODELS 502 AND 512

REF. NO.	PART NO.	COLOR CODE	DESCRIPTION	NEW PART
1	725-0269		Safety Switch	
2	725-0484		Key Switch	
3	732-0420		Spring Switch	
5	725-0765		Wire Lead	
7	731-0652		Convuluted Conduit 24" Lg.	
8	712-0121		Hex Nut #10-24	
9	710-0425		Truss Mach. Scr. #10-24 x .62	
10	736-0338		Fiber Washer	
11	732-0257		Spring Switch	
12	725-0201		Ignition Key	
15	725-0268		Safety Switch	
16	725-0819		Safety Switch	
—	725-0863		Wire Harness	

Models 504, 506, 514, 516 and 518 (Electric Start)



PARTS LIST FOR ELECTRICAL SYSTEM
PARTS LIST FOR ELECTRICAL SYSTEM
MODELS 504, 506, 514, 516 AND 518
TRIMBLE RIDING MOWERS

REF. NO.	PART NO.	COLOR CODE	DESCRIPTION	NEW PART NO.	REF. NO.	PART NO.	COLOR CODE	DESCRIPTION	NEW PART
1	725-0514		Battery	11	725-0977			Ground Wire	
2	725-0267		Key Switch	12	725-0269			Safety Switch (Deck)	
3	725-0771		Solenoid	13	725-0765			Ground Wire	
4	732-0420		Spring Switch (Reverse)	14	725-0717			Tab Receptacle	
5	725-0268		Safety Switch	15	725-1037			Wire Lead—12" Lg.	
6	725-0424		Electric Wire	16	725-1001			Safety Switch	
7	725-0819		Safety Switch	17	725-0765			Ground Wire	
8	725-0927		Electric Wire—13.5" Lg.	18	725-0269			Safety Switch	
9	725-0975		Ground Wire		725-0861			Wire Harness	
10	731-0652		Convuluted Conduit—24" Lg.						

PARTS INFORMATION

POWER EQUIPMENT PARTS AND SERVICE

Parts and service are available through the authorized service firms listed below. All orders should specify the model number of each unit, part numbers, description of parts and the quantity of each part required.

NOTE: If any parts are found to be missing or defective upon assembly of this unit, write to advise the factory so that immediate replacement can be made.

ALABAMA Auto Electric & Carburetor Co.	BIRMINGHAM 2625 4th Ave. S.	35233	OHIO Stebe's Mid-State Mower Supply	CARROLL Box 366, 71 High St.	43112
KANSAS Sutton's Lawn Mower Shop	NORTH LITTLE ROCK 5301 Roundtop Drive Box 368, Rt. 4	72117	Bleckrie, Inc.	CLEVELAND 7900 Lorain Ave.	44102
CALIFORNIA Billious	PORTERVILLE 75 North D Street	93257	National Central	WADSWORTH 687 Seville Rd.	44281
COLORADO Spitzer Industrial Products Co.	DENVER 6601 N. Washington St.	80229	Burton Supply Co.	YOUNGSTOWN 1301 Logan Ave. Box 929	44501
FLORIDA Radco Distributors	JACKSONVILLE 4909 Victor St. Box 5459	32207	OKLAHOMA Victory Motors, Inc.	MUSKOGEE 605 S. Cherokee	74401
Small Eng. Dist.	HIALEAH 7995 W. 26th Court	33016	OREGON Kenton Supply Co.	PORTLAND 8216 N. Denver Ave.	97217
GEORGIA East Point Cycle & Key Inc.	EAST POINT 2834 Church St.	30344	PENNSYLVANIA EECO Inc.	HARRISBURG 4021 N. 6th St.	17110
ILLINOIS Keen Edge Co.	LYONS 8615 Ogden Ave.	60534	Thompson Rubber Co.	PHILADELPHIA 5222-24 N. Fifth St.	19120
INDIANA Parts & Sales Inc.	ELKHART 2101 Industrial Pkwy.	46516	Bluemont Co.	PITTSBURGH 11125 Frankstown Rd.	
IOWA Power Lawn & Garden Equip.	DUBUQUE 2551 J.F. Kennedy	52001	Frank Roberts & Sons	PUNXSUTAWNEY R.D. 2	15767
LOUISIANA Suhren Engine Co.	NEW ORLEANS 8330 Earhart Blvd.	70118	Scranton Auto Ignition Co.	SCRANTON 1133-35 Wyoming Ave.	18509
MARYLAND Center Supply Co.	TAKOMA PARK 6867 New Hampshire Ave.	20912	TENNESSEE Master Repair Service	KNOXVILLE 2000 Western Ave.	37921
MASSACHUSETTS Morton B. Collins Co.	SPRINGFIELD 300 Birnie Ave.	01107	American Sales & Service, Inc.	MEMPHIS 3035-43 Bellbrook	38116
MICHIGAN Lorenz Service Co.	LANSING 2500 S. Pennsylvania	48910	TEXAS Marr Brothers, Inc.	DALLAS 423 E. Jefferson	75203
Power Equipment Dist.	MOUNT CLEMENS 1340 Hubbard	48043	Woodson Sales Corp.	FORT WORTH 6733 Baker Blvd. Hwy. 10	76118
MINNESOTA Hance Distributing Inc.	HOPKINS 420 Excelsior Ave. W.	55343	Bullard Supply Co.	HOUSTON 2409 Commerce St.	77003
MISSISSIPPI Biloxi Sales & Service, Inc.	BILOXI 506 Caillavet St.	39533	Engine House Inc.	SAN ANTONIO 8610 Botts Lane P.O. Box 17867	78217
MISSOURI Automotive Equip. Service	KANSAS CITY 3117 Holmes St.	64109	UTAH Powered Products	BOUNTIFUL 485 N 500 W.	84010
Ross-Frazier Supply Co.	ST. JOSEPH 8th and Monterey	64503	VIRGINIA RBI Corp.	ASHLAND 101 Cedar Ridge Dr.	23005
Henzler, Inc.	ST. LOUIS 2015 Lemay Ferry Rd.	63125	WASHINGTON Equip. Northwest	SEATTLE 1410 14th Ave.	98122
NEW JERSEY Lawnmower Parts Inc.	BELLMAWR 717 Creek Rd.	08030	WISCONSIN Hors Dist. Inc.	CHILTON 444 N. Madison St.	
NEW MEXICO Spitzer Eng. & Parts Co.	ALBUQUERQUE 1023 Third Ave. N.W.	87103	NORTH CAROLINA Smith Hardware Co.	GOLDSBORO 515 N. George St.	27530
NEW YORK Gamble Dist., Inc.	CARTHAGE West End Ave.	13619	Dixie Sales Company	GREENSBORO 335 N. Green	27402

WARRANTY PARTS AND SERVICE POLICY

The purpose of warranty is to protect the customer from defects in workmanship and materials, defects which are NOT detected at the time of manufacture. It does not provide for the unlimited and unrestricted replacement of parts. Use and maintenance are the responsibility of the customer. The manufacturer cannot assume responsibility for conditions over which it has no control. Simply put, if it's the manufacturer's fault, it's the manufacturer's responsibility. If it's the customer's fault, it's the customer's responsibility.

CLAIMS AGAINST THE MANUFACTURER'S WARRANTY INCLUDES:

1. Replacement of Missing Parts on new equipment.
2. Replacement of Defective Parts within the warranty period.
3. Repair of Defects within the warranty period.

All claims MUST be substantiated with the following information:

1. Model Number of unit involved.
2. Date unit was purchased or first put into service.
3. Date of failure.
4. Nature of failure.

MTD PRODUCTS INC • P.O. BOX 36900 • CLEVELAND, OHIO 44136