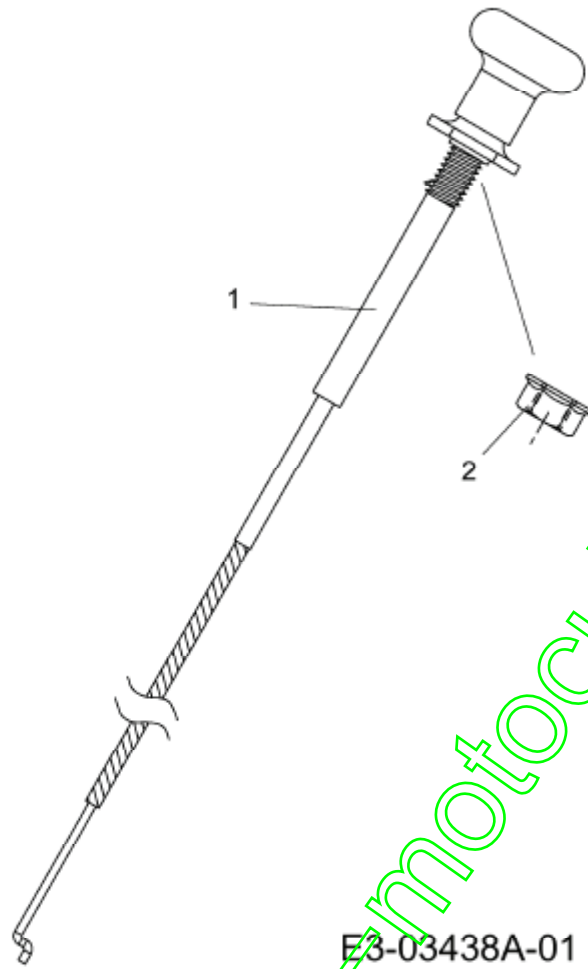
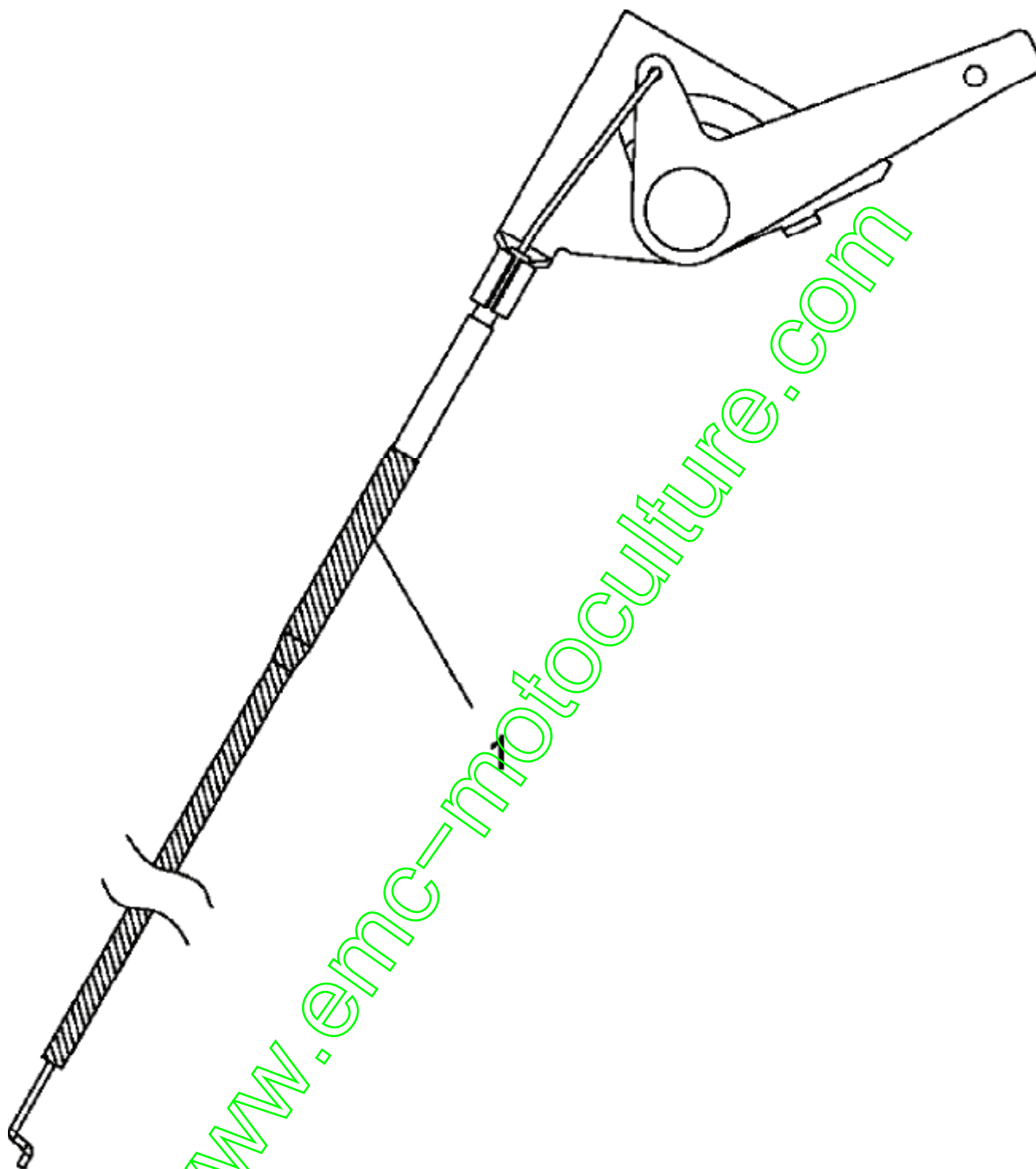


Commande de choke



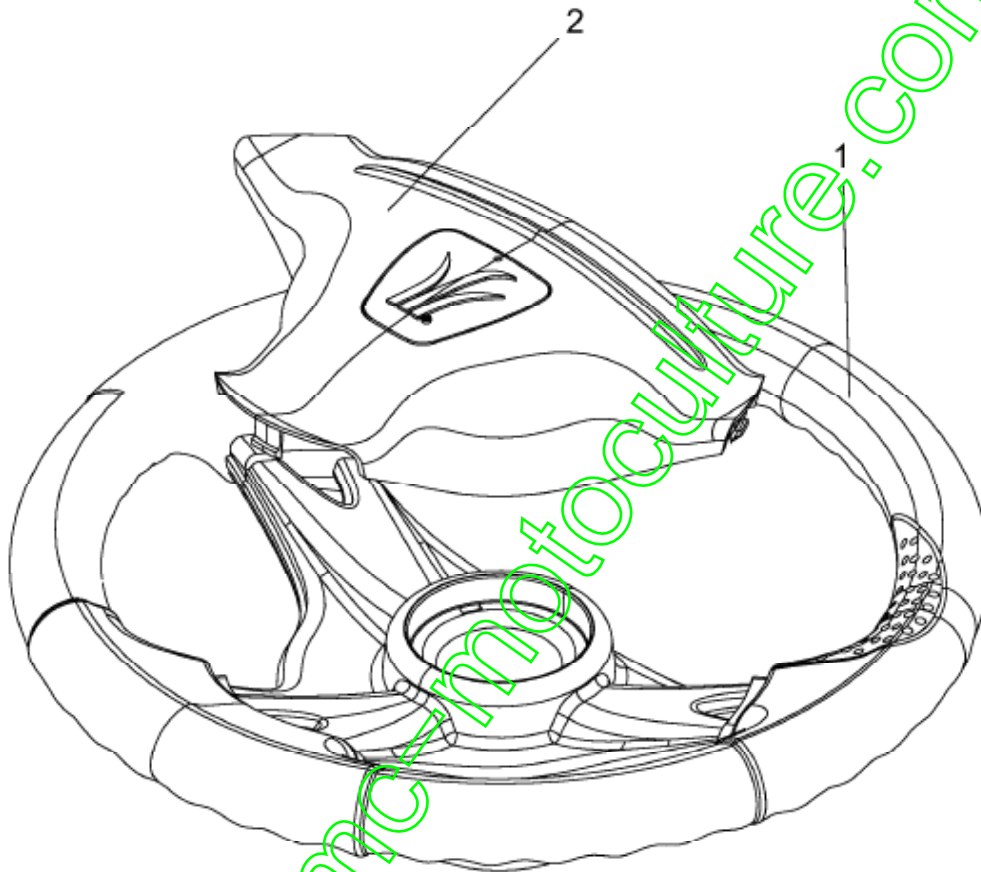
Position	Numéro de pièce	Quantité	Designation	DIN	Additional
1	746-1085A	1	CABLE STARTER	37.5" LG x 2.0 EXT	
2	712-3005	1	ŪCROU AVEC FLANC:3/8-16:GR5	FINISH:701-01000 912-3005	

## Cable de gaz

**E3-03437A-01**

Position	Numéro de pièce	Quantité	Designation	DIN	Additional
1	746-1100	1	CABLE GAZ	MIT HEBEL	

## Volant

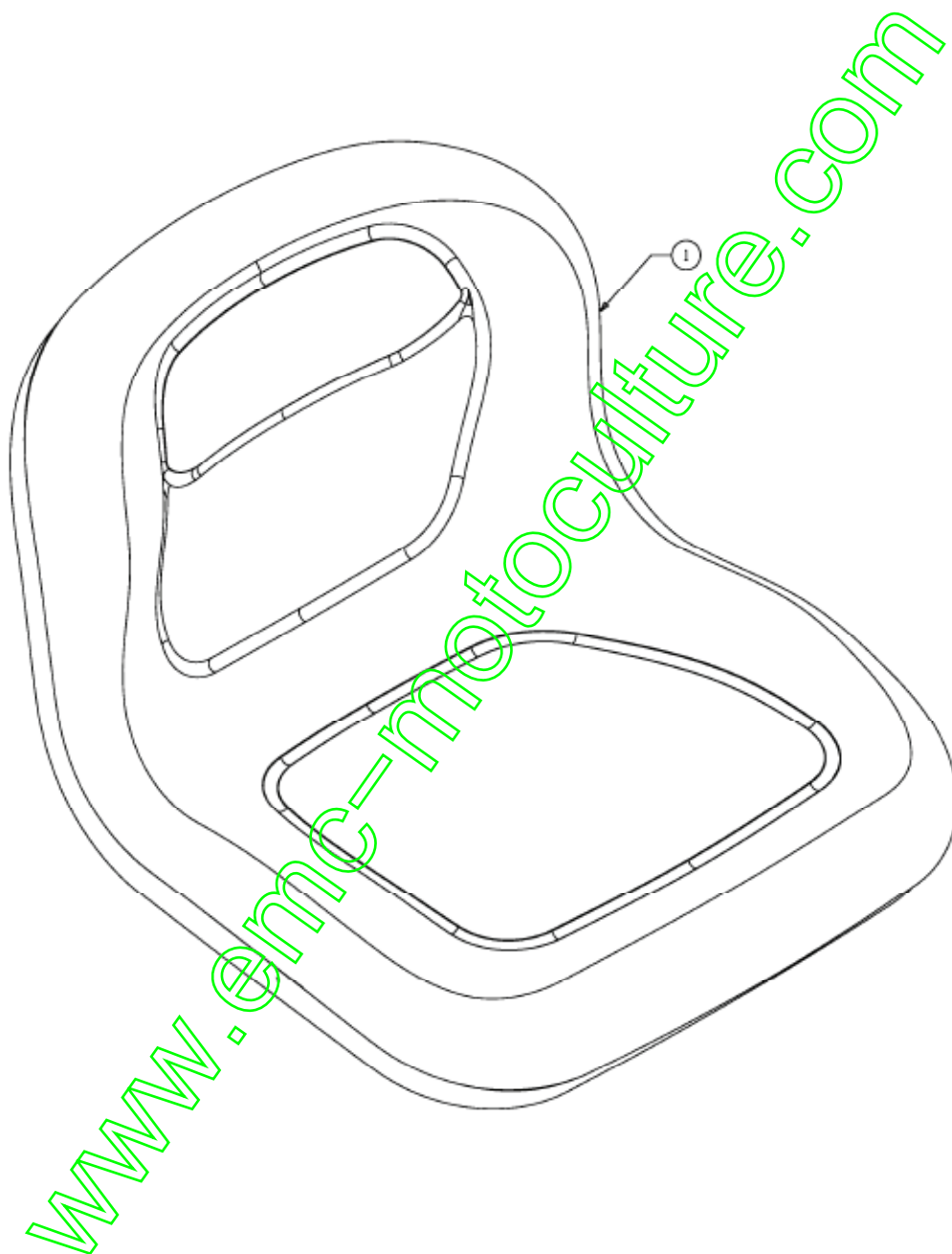


E3-02016A-01

Position	Numéro de pièce	Quantité	Designation	DIN	Additional
1	631-04008A	1	VOLANT CPL.:3 RAYONS:12"	SOFTGRIP	
2	731-04065A	1	COUVERCLE DE VOLANT		

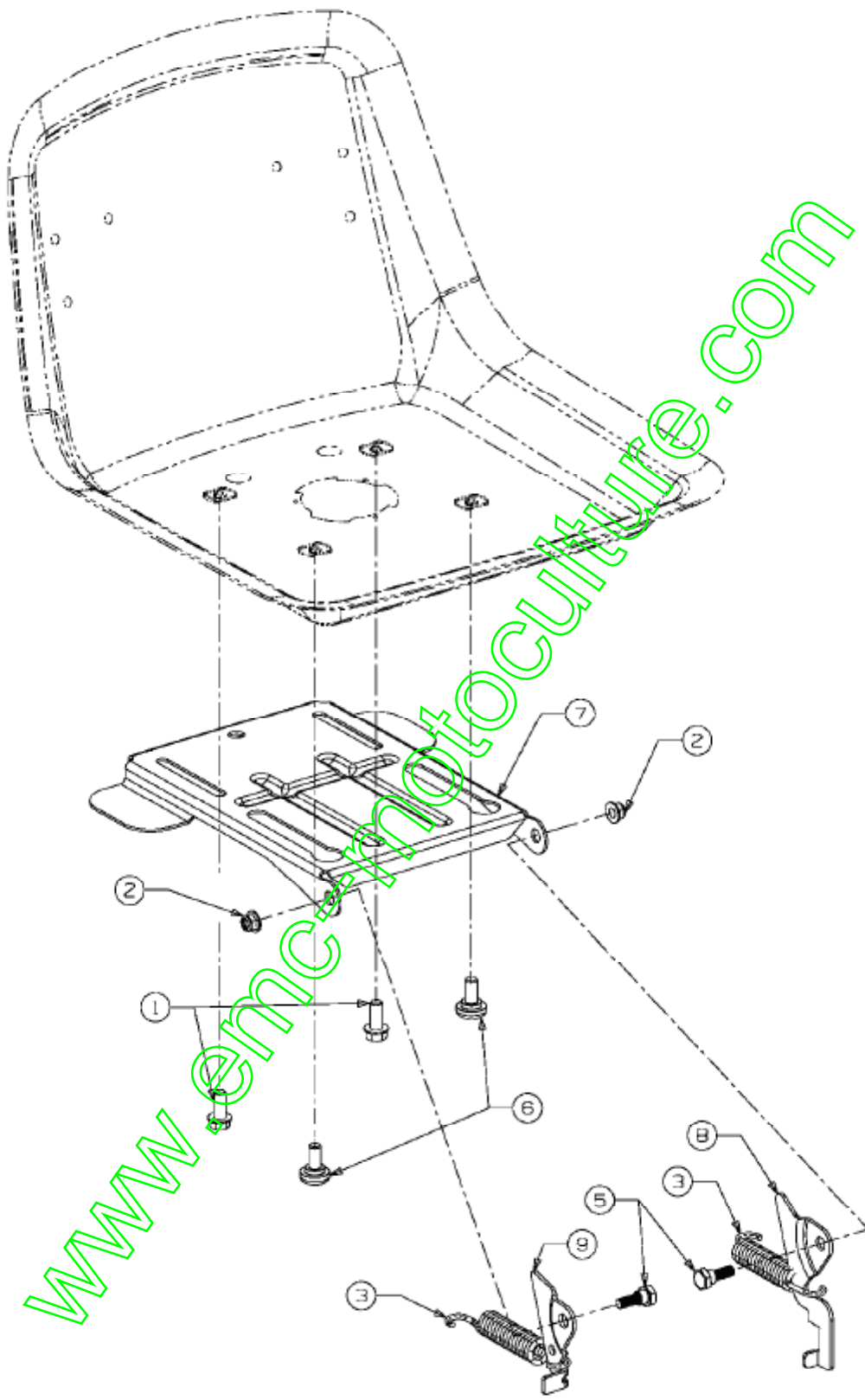
## Siège

E3-04902A-01

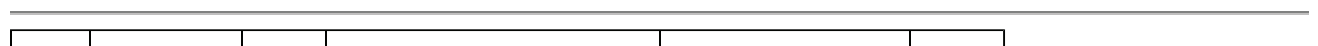


Position	Numéro de pièce	Quantité	Designation	DIN	Additional
1	757-04109	1	SIEGE	FINISH: SCHWARZ	

Support de siège



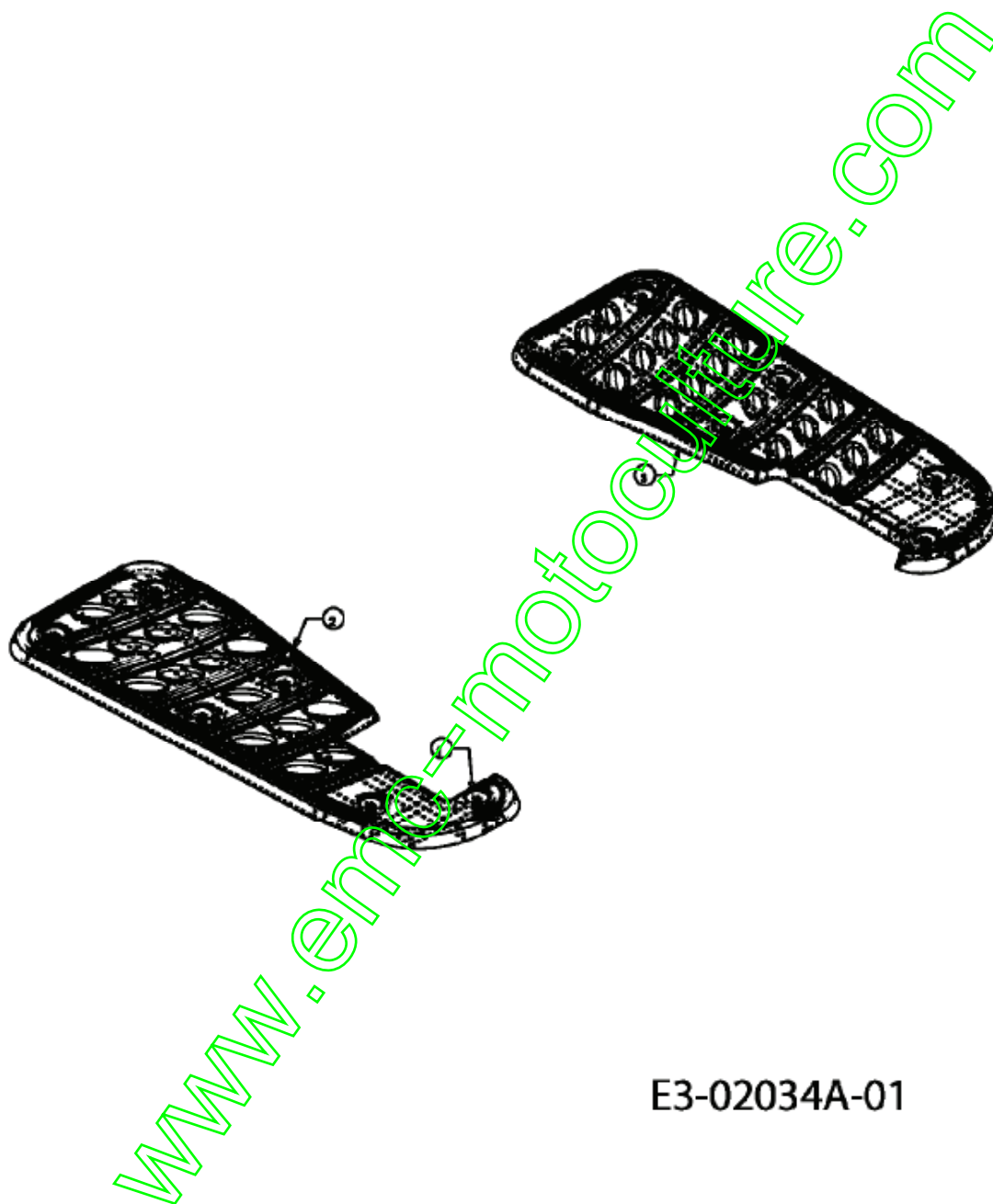
E3-02012B-01



Position	Numéro de pièce	Quantité	Designation	DIN	Additional
1	710-04482	2	VIS:3/8-16:.875:GR5:STD	FINISH:701-01000	
2	712-04063	2	ŪCROU HEX. AVEC FLANC	FINISH:701-01000	
3	732-04309	1	RESSORT	FINISH:MTD STD 701-01006	
5	738-0296	2	AXE EPAULE	FINISH:701-01000	
6	738-04012A	2	VIS EPAULEE	FINISH:SIEHE ZG.	
7	783-04081B-S	1	PLAQUE DE SIÈGE: NOIR	783-04081B637 / SCHWARZ	
8	783-1366B	1	PLAQUE DE CONT.:COMM. DE SIÈGE	GLANZVERZINKT	
9	17239D	1	LEVIER: AJUSTAGE DE SIÈGE	FINISH:701-01002	

[www.emc-motoculture.com](http://www.emc-motoculture.com)

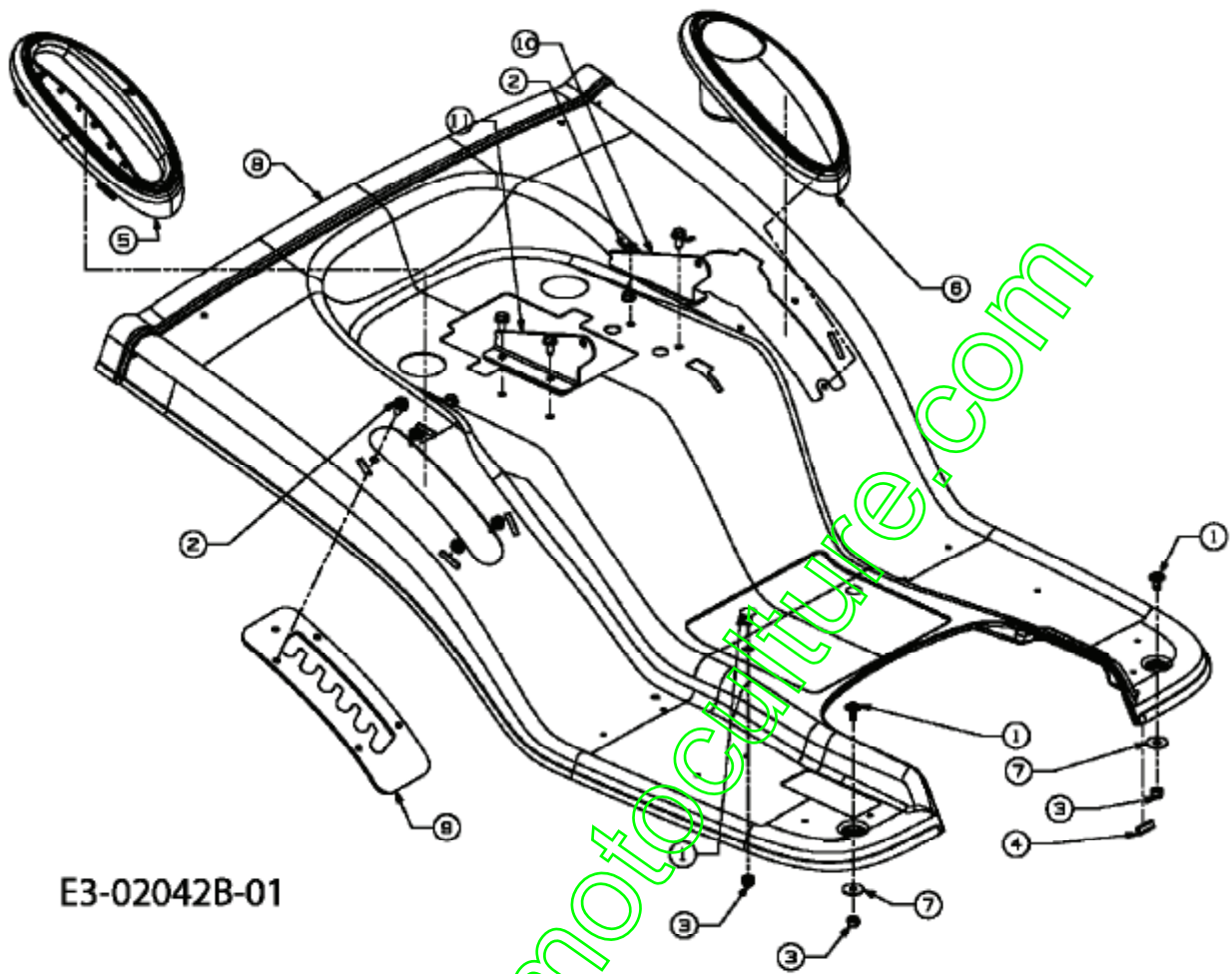
Marche pied anti-dérappand



E3-02034A-01

Position	Numéro de pièce	Quantité	Designation	DIN	Additional
1	726-3046	12	CLIP DE FIXATION: .250 DIA	FINISH:KUNSTSTOFF SCHWARZ	
2	735-0656	1	MARCHE PIED DROITE	FINISH:KUNSTSTOFF SCHWARZ	
3	735-0693	1	MARCHE PIED GAUCHE	735-0693-0637	

## Jupe

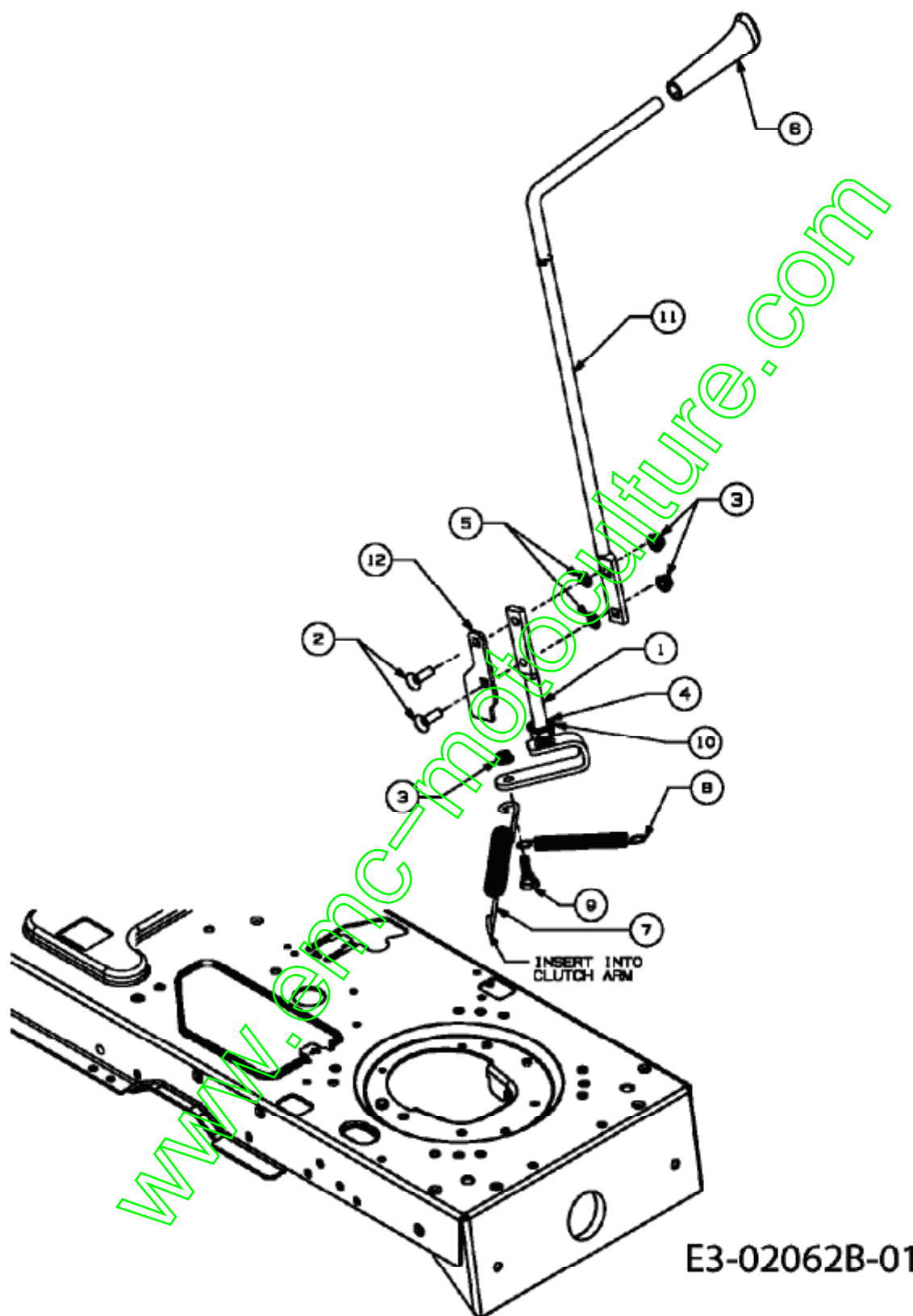


E3-02042B-01

Position	Numéro de pièce	Quantité	Designation	DIN	Additional
1	710-0260A	4	VIS à Tête PL. 5/16-18.62 GR5	FINISH:701-01000	
2	710-0726	10	VIS 5/16-12:0.750:HXINDWS	FINISH:MTD STD 701-01002	
3	712-0429	4	ÛCROU	FINISH:701-01000	
4	731-0511	1	BORDURE DE PROTECTION	FINISH:SCHWARZ, SIEHE ZG.	
5	731-2546A	1	COUVERCLE DROITE	FINISH:KUNSTSTOFF SCHWARZ	
6	731-2549	1	CACHE	FINISH:SCHWARZ 731-2549*	
7	736-3078	2	RONDELLE .344 x 1.00 x .063:HT	FINISH:701-01001	
8	783-04616	1	JUPE ARRIERE	FINISH:PAINT F564.019.00	
9	783-1404A	1	PLAQUE SELECTEUR HAUTEUR DE	450/500:FINISH:GLANZVERZINKT	
10	783-1496	1	SUPPORT DE SIEGE GAUCHE	FINISH:LACKIERT	
11	783-1500	1	SUPPORT DE SIEGE DROIT	FINISH:LACKIERT	



## Enclenchement plateau de coupe

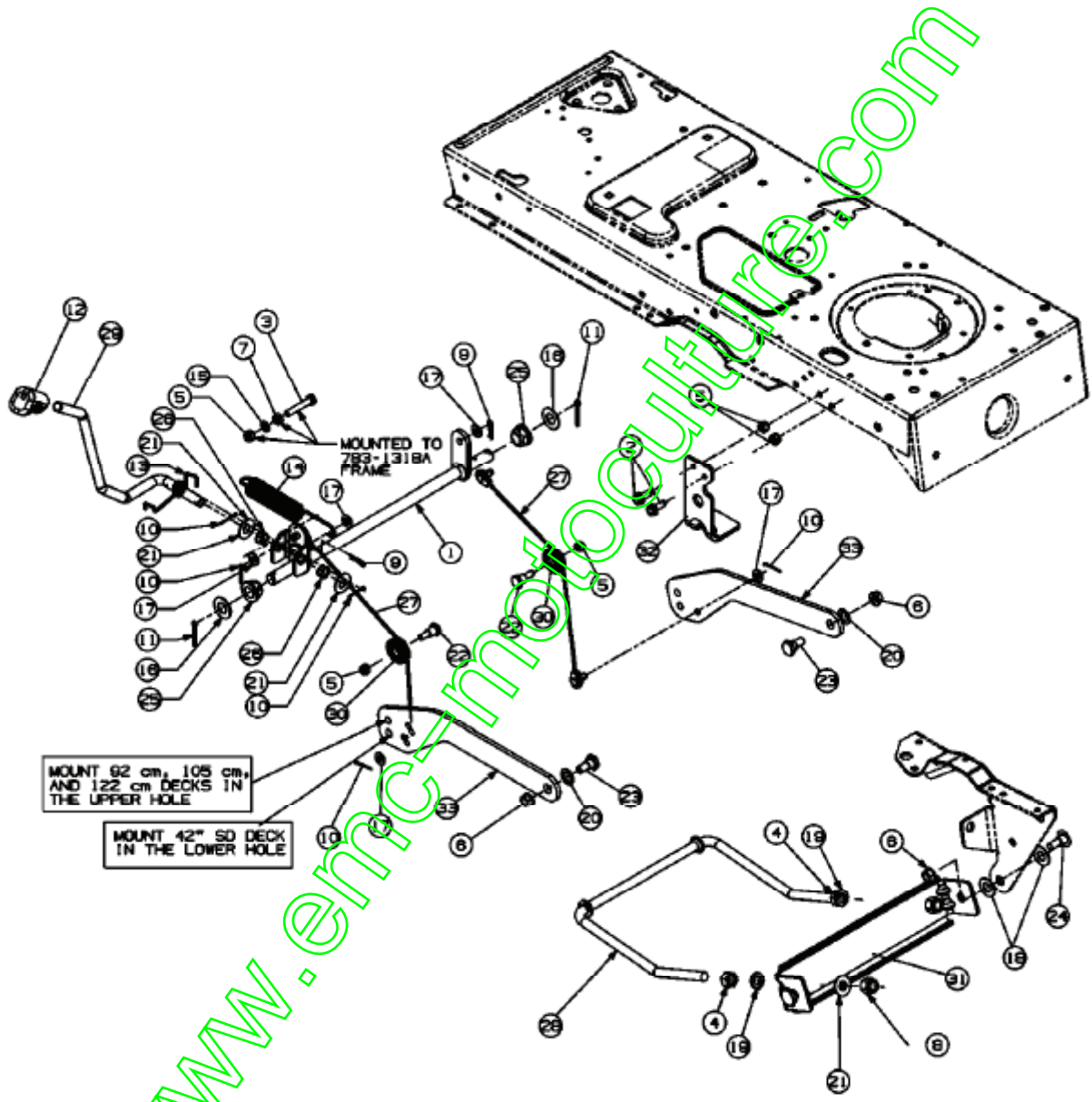


Position	Numéro de pièce	Quantité	Designation	DIN	Additional
1	647-04045637	1	LEVIER PTO MANUELLE	SCHWEIßTEIL / SCHWARZ LACKIERT	
2	710-0276	2	VIS à TÊTE PLATE: 5/16-18:1.00	FINISH:701-01000	
3	712-3004A	2	ÛCROU HEX.: 5/16-18:GR5:SD:LK	FINISH:701-01000	
4	716-0104	1	CIRCLIPS.:500 DIA ARBRE	FINISH:ÖL BENETZT	

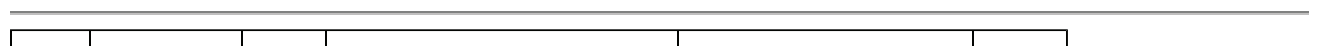
5	726-0201	2	RONDELLE .3125 ID	FINISH:SPEC-101617	
6	631-04247	1	POIGNÛE CPL:PTO:500	MIT AUFKLEBERINFO EIN/AUS	
7	732-04000B	1	RESS. DE TRACT.:.755ODx10.6 LG	FINISH:SIEHE ZG.	
8	732-04174	1	RESSORT.50 OD x 5.0 LG	FINISH:SIEHE ZG.	
9	738-0138A	1	VIS EPAULEE	FINISH:MTD STD 701-01006	
10	741-0708	1	BAGUE	GESCHLITZT	
11	747-1112D	1	LEVIER PLATEAU PTO MANUEL.	FINISH:SIEHE ZG.	
12	783-1497-Z	1	BARREAU DE JONCTION	VERZINKT	

[www.emc-motoculture.com](http://www.emc-motoculture.com)

Relevage plateau de coupe

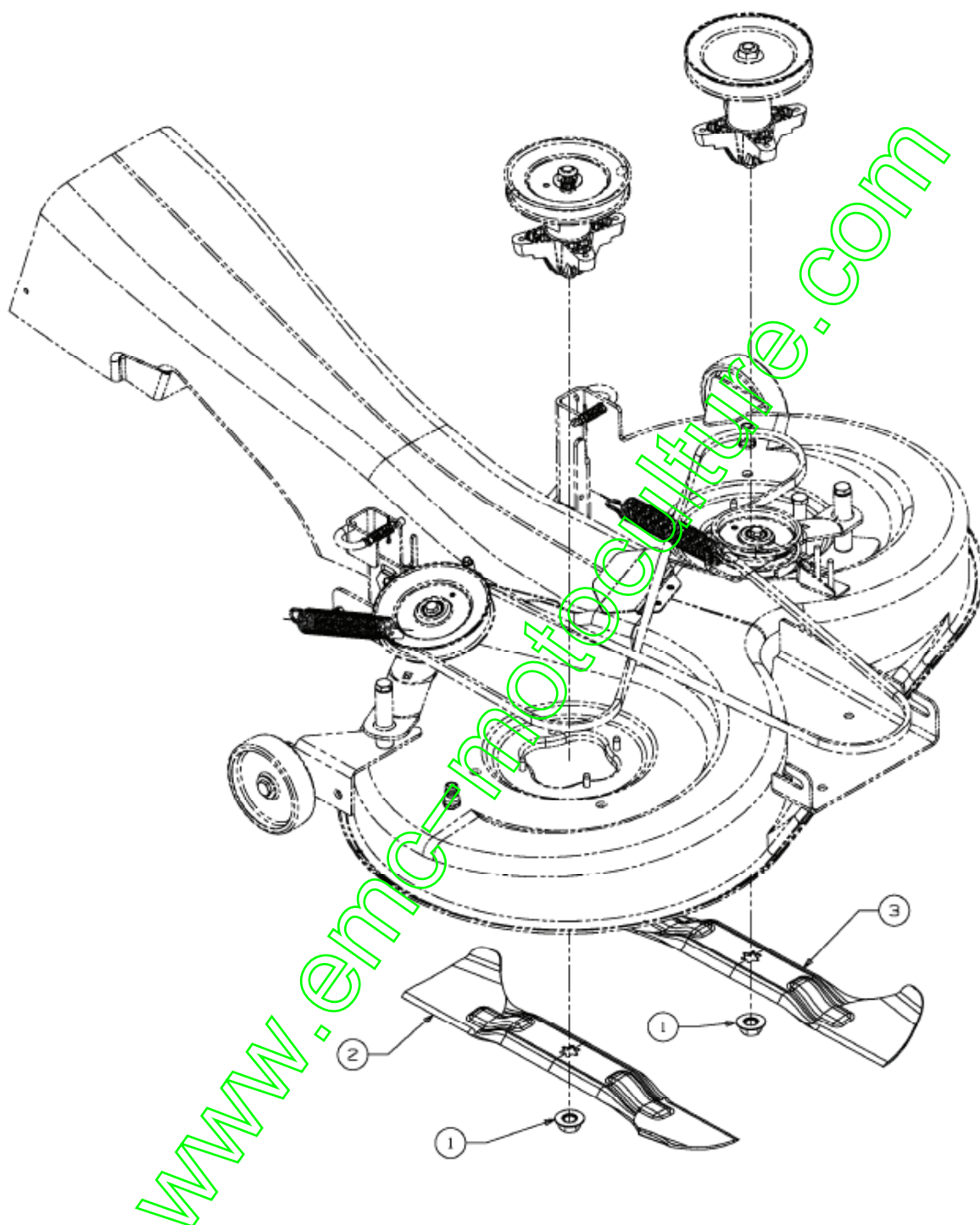


E3-02075A-01



Position	Numéro de pièce	Quantité	Designation	DIN	Additional
1	683-0587637	1	ARBRE DE RELEVAGE	683-0587	
2	710-0604A	2	VIS 5/16-18:0.625	FINISH:MTD SPEC-701-01002	
3	710-3180	1	VIS HEX. 5/16-18:1.75:GR5:STD	FINISH:701-01000	
4	712-0206	2	ÛCROU HEX. 1/2-13:GR.5	FINISH:MTD STD 701-01000	
5	712-0429	5	ÛCROU	FINISH:701-01000	
6	712-0431	4	ÛCROU STOP 3/8-16:GRF	FINISH:MTD SPEC-100015	
7	712-3010	1	ÛCROU HEX. 5/16-18:GR5	FINISH:701-01000	
8	712-3083	2	ÛCROU HEX. 1/2-13:GRB:NYLON	FINISH:701-01000	
9	714-0104	2	GOUPILLE	FINISH:PHOS AND OIL	
10	714-0111	5	GOUPILLE FENDUE 3/32:1.0"	FINISH:MTD SPEC-100015	
11	714-0162	2	GOUPILLE FENDUE 5/32:1.25	FINISH:MTD SPEC-100015	
12	720-0311	1	POIGNÛE: 1/2	FARBE:SCHWARZ VINYL	
13	732-04004	1	RESSORT LEVIER DÛCLENCH. BASS.	500er RIDER	
14	732-0971	1	RESSORT	FINISH:SIEHE ZG.	
15	736-0119	1	RONDELLE GROWER	FINISH:MTD STD 701-01001	
16	736-0187	2	RONDELLE .64X1.24X.06	FINISH:701-01001	
17	736-0275	5	RONDELLE	FINISH:MTD STD 701-01000	
18	736-0414	4	RONDELLE TÛFLON	FINISH:WEISS: 936-0414	
19	736-0921	2	RONDELLE GROWER	FINISH:MTD STD 701-01001	
20	736-3068	2	RONDELLE .531 x.875 x.060	FINISH:MTD STD 701-01000	
21	736-3084	4	RONDELLE	FINISH:MTD STD 701-01001	
22	738-0138A	2	VIS EPAULEE	FINISH:MTD STD 701-01006	
23	738-0143	2	VIS EPAULEE	FINISH:MTD SPEC 100015 (EU)	
24	738-0507B	2	VIS	FINISH:PHOS & OIL	
25	741-0225	2	BAGUE HEXAGONALE TEFLON 6 PANS	FINISH:KUNSTSTOFF SCHWARZ	
26	741-0715	2	BAGUE	741-0715	
27	746-1139	2	CABLE DE RELEVAGE 14.06 LG	FINISH:SIEHE ZG.	
28	747-1130B	1	ETRIER-RELEVAGE AVANT	5" DIA MTD SPEC 701-01006	
29	747-1280	1	LEVIER DE RELEVAGE	FINISH:GLANZVERZINKT	
30	756-1154	2	POULIE	FINISH:SCHWARZ	
31	783-0720C637	1	SUPPORT DE RELEVAGE	SCHWARZ	
32	783-05540	1	SUPPORT	FINISH:LACKIERT	
33	783-1328A637	2	BRAS DE RELEVAGE - PLATEAU	SCHWARZ LACKIERT	

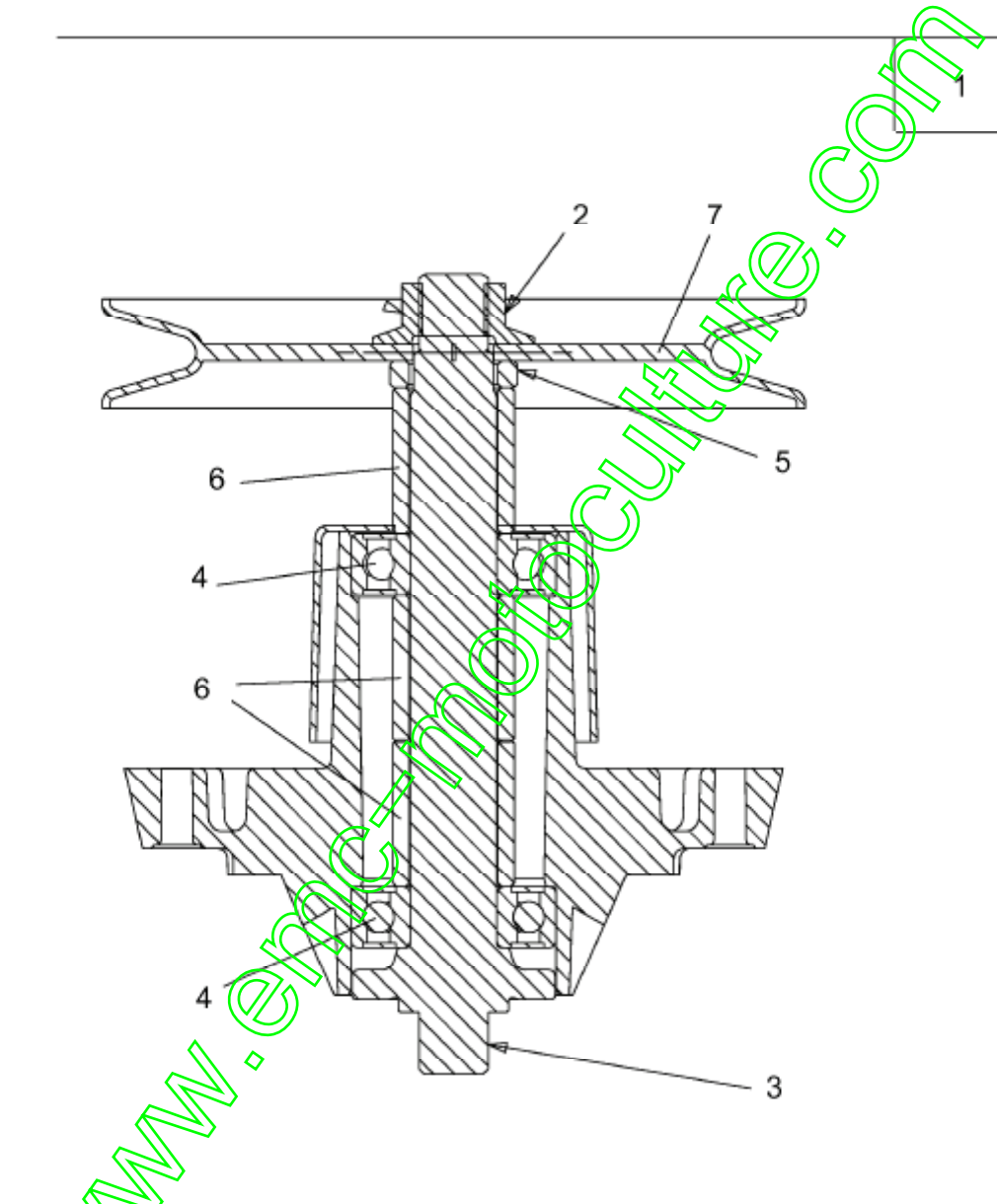
Lame



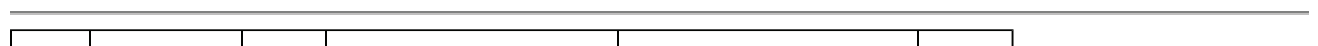
E3-03431A-01

Position	Numéro de pièce	Quantité	Designation	DIN	Additional
1	712-0417A	2	ÛCROU HEX. AV. FLANC: 5/8-18	FINISH:701-01000	
2	742-04080	1	LAME DROITE	STAR BAG:FINISH SIEHE ZG.	
3	742-04081	1	LAME GAUCHE	STAR BAG:FINISH SIEHE ZG.	

Palier 618-0609B



E3-01670B-01

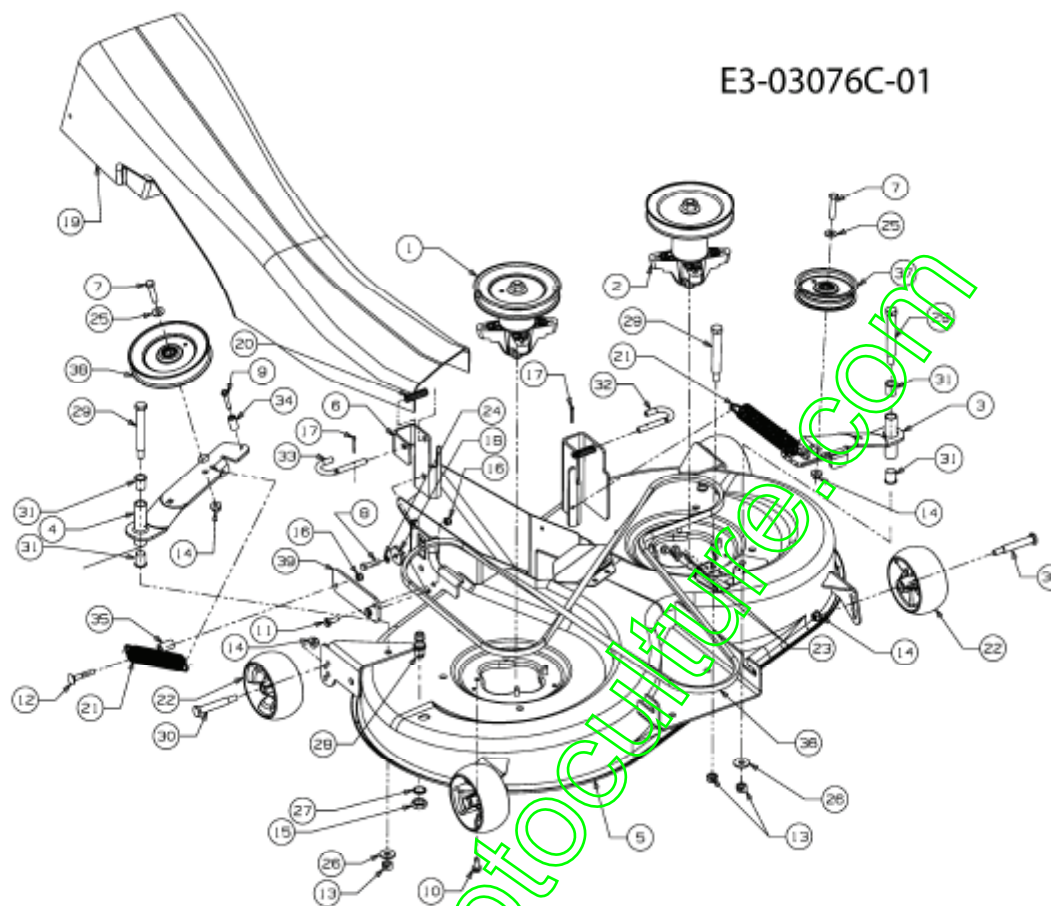


Position	Numéro de pièce	Quantité	Designation	DIN	Additional
1	618-0609B	1	918-0666A	6.482 DIA X .5625	
2	712-0417A	1	ÛCROU HEX. AV. FLANC: 5/8-18	FINISH:701-01000	
3	738-1128	1	AXE DE PALIER DE LAMES:6.58"	FINISH:GEÖLT	
4	741-0919	2	ROULEMENT ; BILLES	FINISH:SIEHE SPEC.	
5	750-04309	1	DOUILLE .805 X 1.15 X .230LG	FINISH:GEÖLT	
6	750-1000	3	ENTRETOISE:.80x1.10x1.330	FINISH:GEÖLT	
7	756-1218	1	POULIE DE PALIER DE LAME	Ô6.482xÔ.5625:FINISH SIEHE ZG.	

[www.emc-motoculture.com](http://www.emc-motoculture.com)



Plateau de coupe N (41"/105cm)



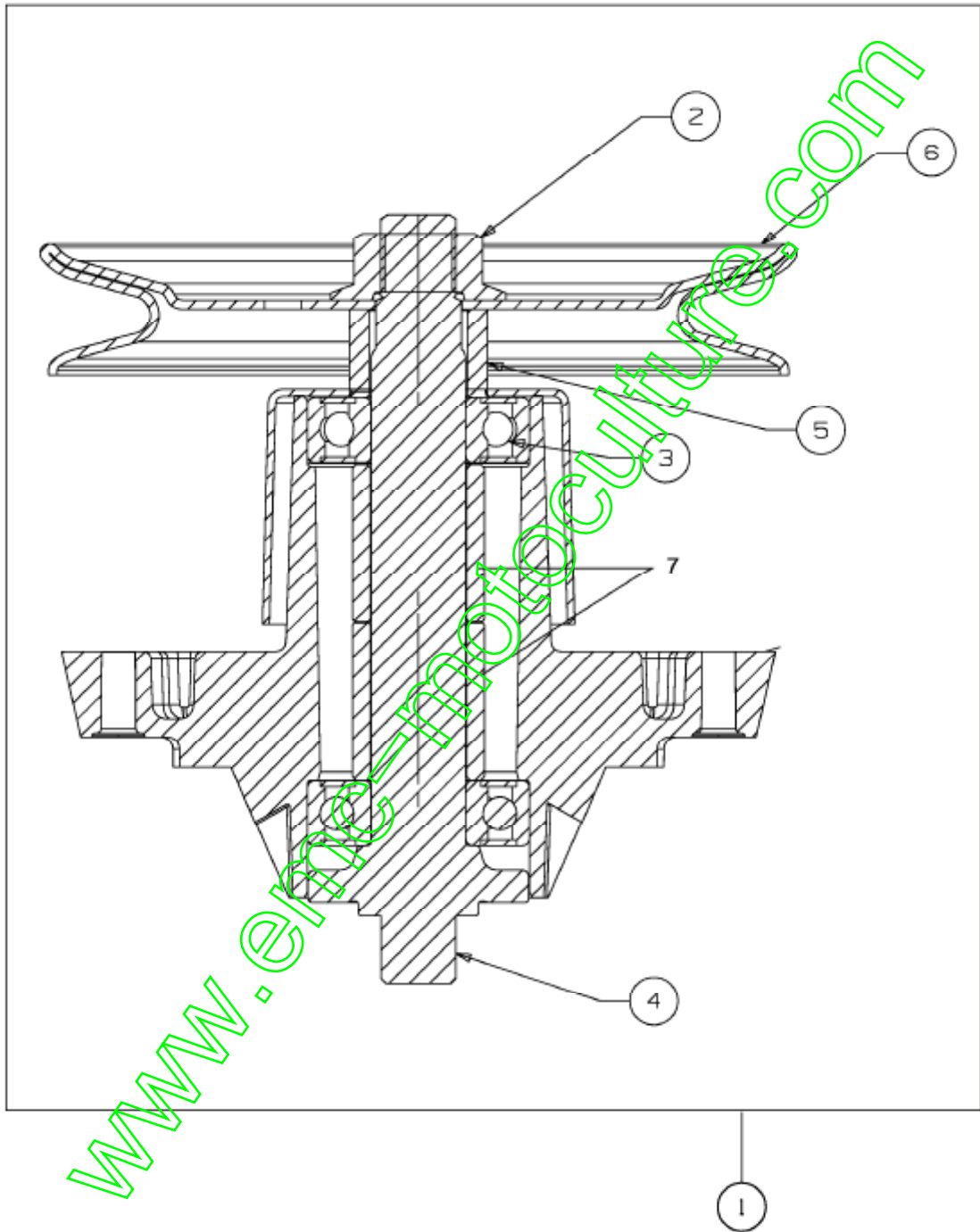
Position	Numéro de pièce	Quantité	Designation	DIN	Additional
1	618-04657	1	RIEMENSCHIEBE:6.482 DIA X.5625	KEILRIEMENSCHIEBE 6.3 DIA	
2	618-0609B	1	918-0666A	6.482 DIA X .5625	
3	683-04058A	1	SUPPORT CPLT	N-DECK 500 SCHWEIßEN-HAND	
4	683-04061	1	SUPPORT	DECK 500 S SCHWEIßTEIL	
5	683-04330A	1	GUTBROD ROUGE	SCHWEISSTEIL:LACKIERT MTD QUAL	
6	683-0596	1	SUPPORT	683-0596-0637	
7	710-0347	2	VIS HEX. 3/8-16-1.75:GR5:STD	FINISH:701-01000	
8	710-0528	1	VIS HEX. 5/16-18-1.25:GR5:STD	FINISH:701-01000 910-0528	
9	710-0778	1	VIS HEX. 1/4-20-1.500	FINISH:MTD SPEC-701-01002	
10	710-1260A	8	VIS TT:5/16-18:.750 HXINDWSH	LAGERGEH.MESSERWELLE:701-01002	
11	710-1681	2	VIS SIX PANS CREUX	MTD SPEC-100015 21.1441.70	
12	710-1719	1	VIS T=TE PLATE M8X50 DIN 603	MTD-SPEC-100015 22.3419.32	
13	712-0290	3	ÛCROU 7/16-14	FINISH:701-01000	
14	712-04065	6	ÛCROU HEXAGONAL	FINISH:SPEC-101616 912-04065	
15	712-0641	2	ÛCROU HEX. M16-1.5 DIN 936	FINISH:701-01000 24.1424.31	
16	712-0692	3	ÛCROU HEXAGONAL 24.1426.18	FINISH:SPEC-100015 24.1426.18	
17	714-0115	2	GOUPILLE FENDUE 1/8 x 1.0	FINISH:MTD SPEC-100015	
18	717-04074	1	PIGNON HAUTEUR PLATEAU	FINISH:SIEHE ZG. 917-04074	
19	731-2539B	1	GOULOTTE EJECTION	FINISH:SCHWARZ	
20	732-0306A	2	RESSORT DE PRESSION	FINISH:MTD SPEC 701-01000	
21	732-04099	2	RESSORT	FINISH:SIEHE ZG.	
22	734-04155	4	ROUE DE PLATEAU	FINISH:SIEHE ZG	
23	735-0271A	2	SILENT BLOC	FINISH:SCHWARZ	
24	736-0119	1	RONDELLE GROWER	FINISH:MTD STD 701-01001	
25	736-0300	2	RONDELLE	FINISH:MTD SPEC-100015	
26	736-04097A	2	RONDELLE:PLATE:11.65x28.75x3mm	FINISH:701-01000	



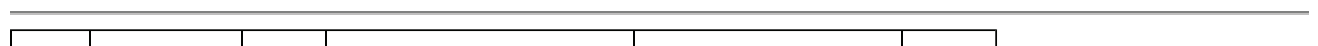
27	736-0760	2	RONDELLE 17X23.8X1.95	FINISH:701-01001	
28	737-04003D	2	BUSE NETTOYAGE PLATEAU	FINISH:MTD SPEC-100015	
29	738-0476	3	VIS i ÜPAULE .625x3.50:7/16-14	PHOS & OIL ODER SPEC 101616	
30	738-3056	4	AXE DE ROUE DE PLATEAU	MTD STD 701-01000 938-3056	
31	741-0591	4	BAGUE	FINISH:SCHWARZ 941-0591	
32	747-04116A	1	TRINGLE .375 DIA	.375 DIA:FINISH:GLANZVERZINKT	
33	747-1116	1	GOUPILLE	FINISH:PHOS & OIL	
34	750-04182	1	ENTRETOISE	FINISH:SIEHE ZG.	
35	750-04195	1	DOUILLE DE DIST. Ø16xØ8x27LG	DIN 2391:ST35:FINISH 701-01000	
36	754-04069	1	COURROIE	FINISH:	
37	756-04049	1	POULIE DE COURROIE TRAPÜZ.	KUGELGELAGERT: SCHWARZ LACKIERT	
38	756-04050	1	POULIE DE COURR. TR. Ø 6.0" DIA	KUGELGELAGERT: SCHWARZ LACKIERT	
39	783-04255	1	COMMANDE D'ARRET	FINISH:LACKIERT	

www.emc-motoculture.com

Palier 618-04657



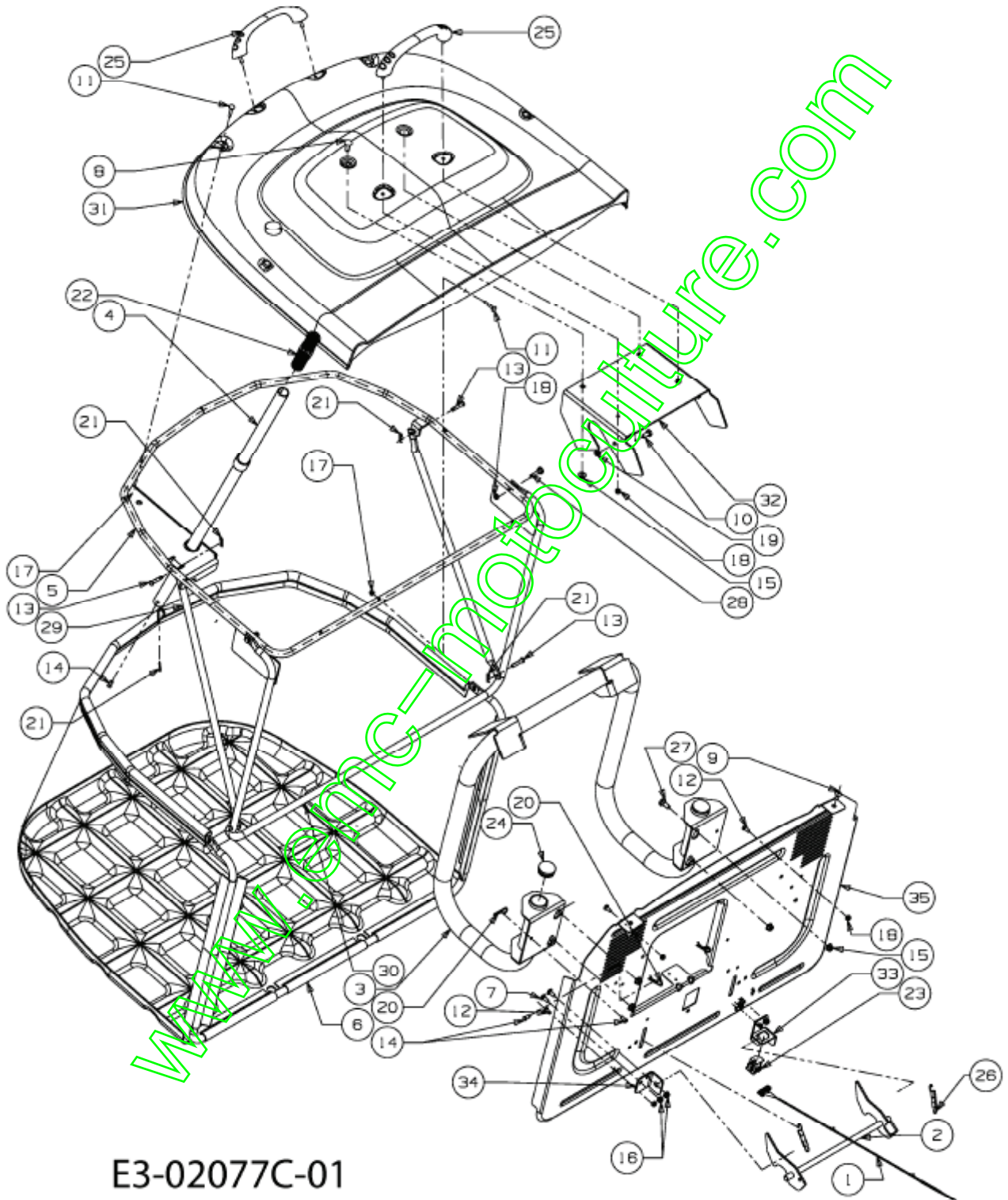
E3-03996A-01



Position	Numéro de pièce	Quantité	Designation	DIN	Additional
1	618-04657	1	RIEMENSCHLEIBE:6.482 DIA x.5625	KEILRIEMENSCHLEIBE 6.3 DIA	
2	712-0417A	1	ÛCROU HEX. AV. FLANC: 5/8-18	FINISH:701-01000	
3	741-0919	2	ROULEMENT j BILLES	FINISH:SIEHE SPEC.	
4	738-1010A	1	AXE DE PALIER 5.75 LG	FINISH:GEÖLT / 618-0324A	
5	748-0433	1	DOUILLE .820 x 1.150 x .730 LG	FINISH:GEÖLT	
6	756-1227	1	POULIE DE PALIER DE LAME	FINISH:SIEHE ZG.	
7	750-1000	2	ENTRETOISE: .80x1.10x1.330	FINISH:GEÖLT	

[www.emc-motoculture.com](http://www.emc-motoculture.com)

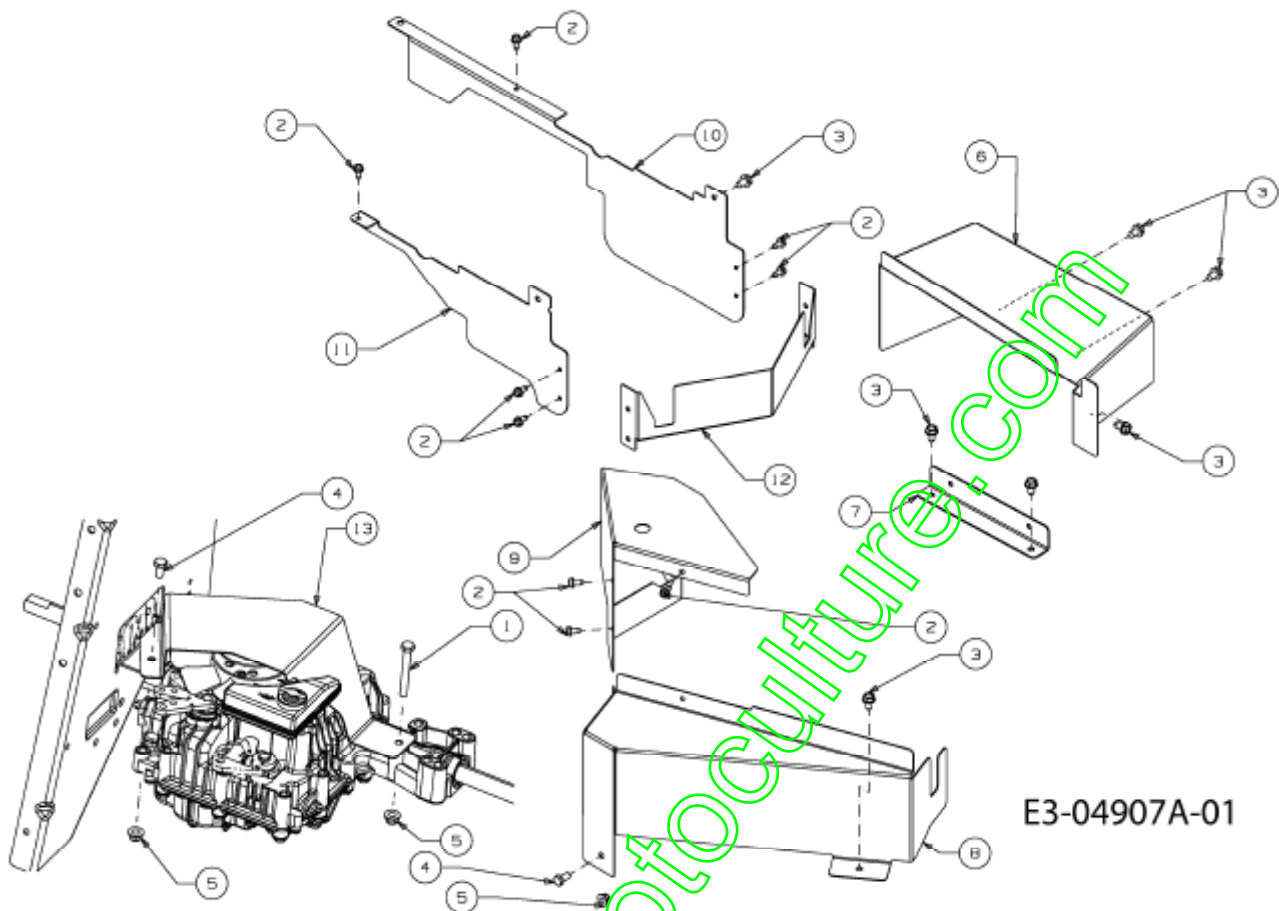
Bac recuperateur



E3-02077C-01

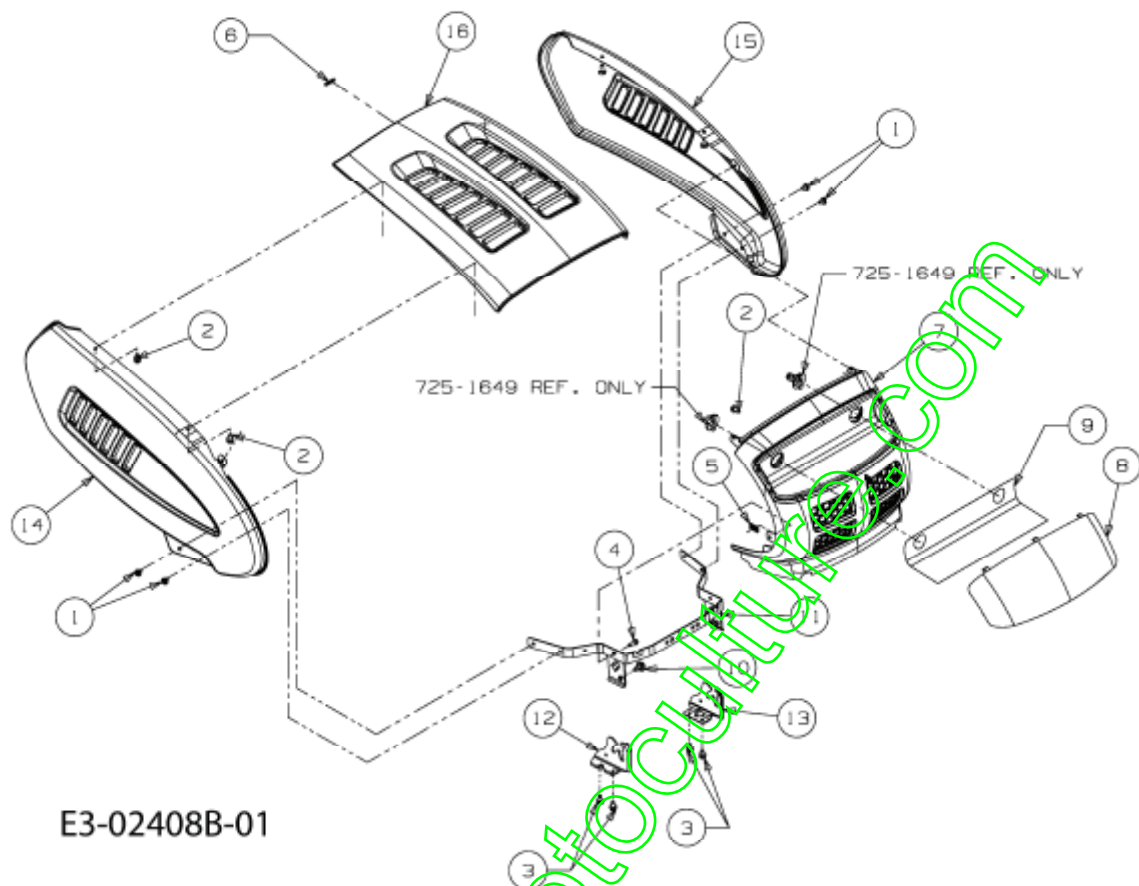
Position	Numéro de pièce	Quantité	Designation	DIN	Additional
1	629-1101B	1	CÂBLE À TISSER:500:BAG	PRESENT	
2	647-0063B	1	FERMETURE CPL. BAC	250L/300L:SCHWEISSTEIL:LACKIER	
3	649-0132	1	TRINGLE DE BAC	SCHWEISSTEIL:FINISH LACKIERT	
4	649-0138A	1	TUBE DE RELEVAGE BAC 250/300L	250L/300L:SCHWEISSTEIL:LACKIER	
5	649-04008	1	TRINGLE DE BAC:HAUT 300L	SCHWEISSTEIL:FINISH LACKIERT	
6	664-0110A	1	TISSU BAC DE RAMASSAGE	300 L 500S:FINISH:SCHWARZ	
7	710-0134	4	VIS i T=TE PLATE	FINISH:701-01000	
8	710-3105	2	VIS i T=TE PL.5/16-18.:875:GR1	FINISH:701-01000	
9	710-1017	2	VIS	FINISH:MTD SPEC-100016	
10	710-1376	2	VIS i SIX PANS CREUX	FINISH:701-01000 21.1441.68	
11	710-1612	5	VIS i T=TE PLATE:M5x30 DIN 603	FINISH:Zn5gIcB 22.3419.03	
12	710-1691	3	VIS i SIX PANS CREUX	FINISH:Zn5gIcB 21.1441.45	
13	711-04138	4	GOUJON i ÜPINGLER .25DIAX1.25L	FINISH:GELBVERZINKT SIEHE ZG.	
14	711-0701	5	GOUJON	FINISH:SIEHE ZG.	
15	712-04063	6	ÛCROU HEX. AVEC FLANC	FINISH:701-01000	
16	712-04064	4	ÛCROU HEXAGONAL	FINISH:701-01000 912-04064	
17	712-0642	5	ÛCROU DE SÛCURITÛ:M5-0.8	DIN 6926	
18	712-0691	9	ÛCROU HEXAGONAL	MTD SPEC-100015 24.1426.14	
19	712-0692	2	ÛCROU HEXAGONAL 24.1426.18	FINISH:SPEC-100015 24.1426.18	
20	714-0145	4	GOUPILLE	FINISH:PHOS & OIL	
21	714-04033	5	GOUPILLE FENDUE .072 x.92 LG	FINISH:PHOS & OIL	
22	720-0204	1	POIGNEE:1.0 ID x 4.7 LG	FINISH:SCHWARZ	
23	725-3167	1	COMMUTATEUR	FINISH:SCHWARZ 925-3167	
24	731-04048	2	CAPUCHON DE PROTECTION	300L/250L BAG:KUNSTST.SCHWARZ	
25	731-04578	2	POIGNEE AVEC VIS	FINISH:SCHWARZ	
26	732-0264	2	RESSORT	FINISH:SPEC-701-01006 932-0264	
27	738-0140	4	VIS i ÜP...:435 x.178-5/16 x.56	FINISH:VERZINKT	
28	738-1183	2	VIS i ÜPAULE:9,5mmx5mm:M6-1x24	FINISH:VERZINKT SIEHE ZG.	
29	749-04010	2	SUPPORT:BAC DE RAMASSAGE 250/ /300L		
30	749-1412	1	ETRIER AVANT BAC 250/300L		
31	783-04179B	1	CAPOT DE BAC 300 LITRES	FINISH:LACKIERT F564.011.01	
32	783-04180	1	CONSOLE D'ACCROCHAGE:BAC 300L	FINISH:LACKIERT 783-04180*	
33	783-04622	1	EQUERRE GAUCHE:BAC 450/500	SCHALTER:GRSBG 450/500:LACKIER	
34	783-04623	1	EQUERRE:DROITE:BAC 450/500	GRASFANGSACK 450/500:LACKIERT	
35	783-04834A	1	PLAQUE ARRIERE NOIR	FINISH:LACKIERT	

## Couvercles de protection boîte de vitesse



Position	Numéro de pièce	Quantité	Designation	DIN	Additional
1	710-0378	1	VIS HEX.:5/16-18:2.50:GR5 STD	FINISH:701-01000	
2	710-0599	9	VIS $\bar{i}$ SIX PANS CREUX	MTD SPEC-701-01002 or 101617	
3	710-0604A	7	VIS 5/16-18:0.625	FINISH:MTD SPEC-701-01002	
4	710-3025	2	VIS	FINISH:701-01000	
5	712-04063	3	ÛCROU HEX. AVEC FLANC	FINISH:701-01000	
6	783-06203	1	ABDECKUNG:500:N:LINKE-SEITE	FINISH:LACKIERT MTD QUALITÄT	
7	783-06204	1	HALTEWINKEL:ABDECK:500 N-DECK	FINISH:LACKIERT MTD QUALITÄT	
8	783-06206	1	ABDECKUNG:500:N:RECHTE SEITE	FINISH:LACKIERT MTD QUALITÄT	
9	783-06207	1	ABDECKUNG:500:N:RECHTE SEITE	FINISH:LACKIERT MTD QUALITÄT	
10	783-06208	1	ABDECKUNG:500:N:PTO:LINKS	FINISH:LACKIERT MTD QUALITÄT	
11	783-06209	1	ABDECKUNG:500:N:PTO:RECHTS	FINISH:LACKIERT MTD QUALITÄT	
12	783-06210	1	PROTECTION AVANT	FINISH:LACKIERT MTD QUALITÄT	
13	783-06371	1	ABDECKUNG:500:E/N:GETRIEBE	FINISH:LACKIERT MTD QUALITÄT	

Capot de moteur 3-Style



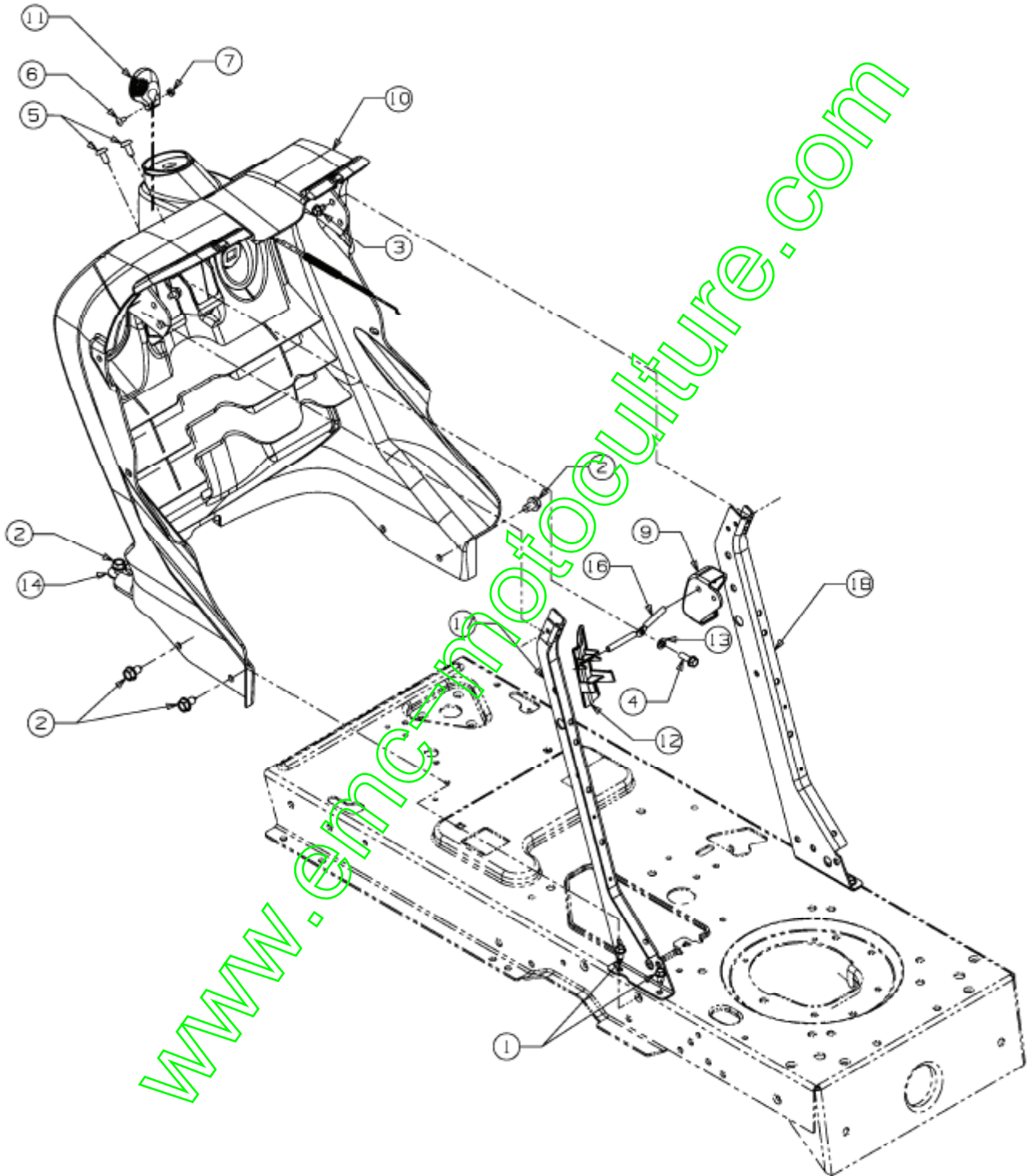
E3-02408B-01

Position	Numéro de pièce	Quantité	Designation	DIN	Additional
1	710-04593	4	VIS 5/16-18:0.375:PANTRX	FINISH:MTD SPEC-701-01002	
2	710-0604A	6	VIS 5/16-18:0.625	FINISH:MTD SPEC-701-01002	
3	710-0607	4	VIS HEX.TT5/16-18:.500XINDWSh	FINISH:MTD SPEC-701-01002	
4	710-0642	2	VIS1/4-20:0.750	MTD SPEC-701-01002 910-0642	
5	712-0292	2	ÛCROU ; CAGE T14-20	FINISH:PHOS & OIL	
6	731-0511	1	BORDURE DE PROTECTION	FINISH:SCHWARZ, SIEHE ZG.	
7	731-05442	1	CALANDRE 3-STYLE:500	FINISH: SCHWARZ	
8	731-2118A	1	OPTIQUE DE PHARE	NEUTRAL	
9	731-2430	1	FILM DE RÛFLECTEUR 9 STYLE	400/700	
10	738-04091A	2	VIS À ÉPAULE	FINISH:701-01002	
11	783-04606C	1	GRAPHIT GRIS	FINISH:LACKIERT	
12	783-04840	1	HAUBENHALTER:RECHTS:3-Style	FINISH:LACKIERT	
13	783-04841	1	HAUBENHALTER:LINKS:3-Style	FINISH:LACKIERT	
14	783-04921	1	PIÈCE LATÉRALE ; DROIT 3 STY	FINISH:LACKIERT	
15	783-04924	1	PIÈCE LATÉRALE ; GAUCHE 3 STY	FINISH:LACKIERT	
16	783-0783	1	CAPOT 3/9 STYLE	FINISH:LACKIERT	



Tableau de bord

E3-04913A-01

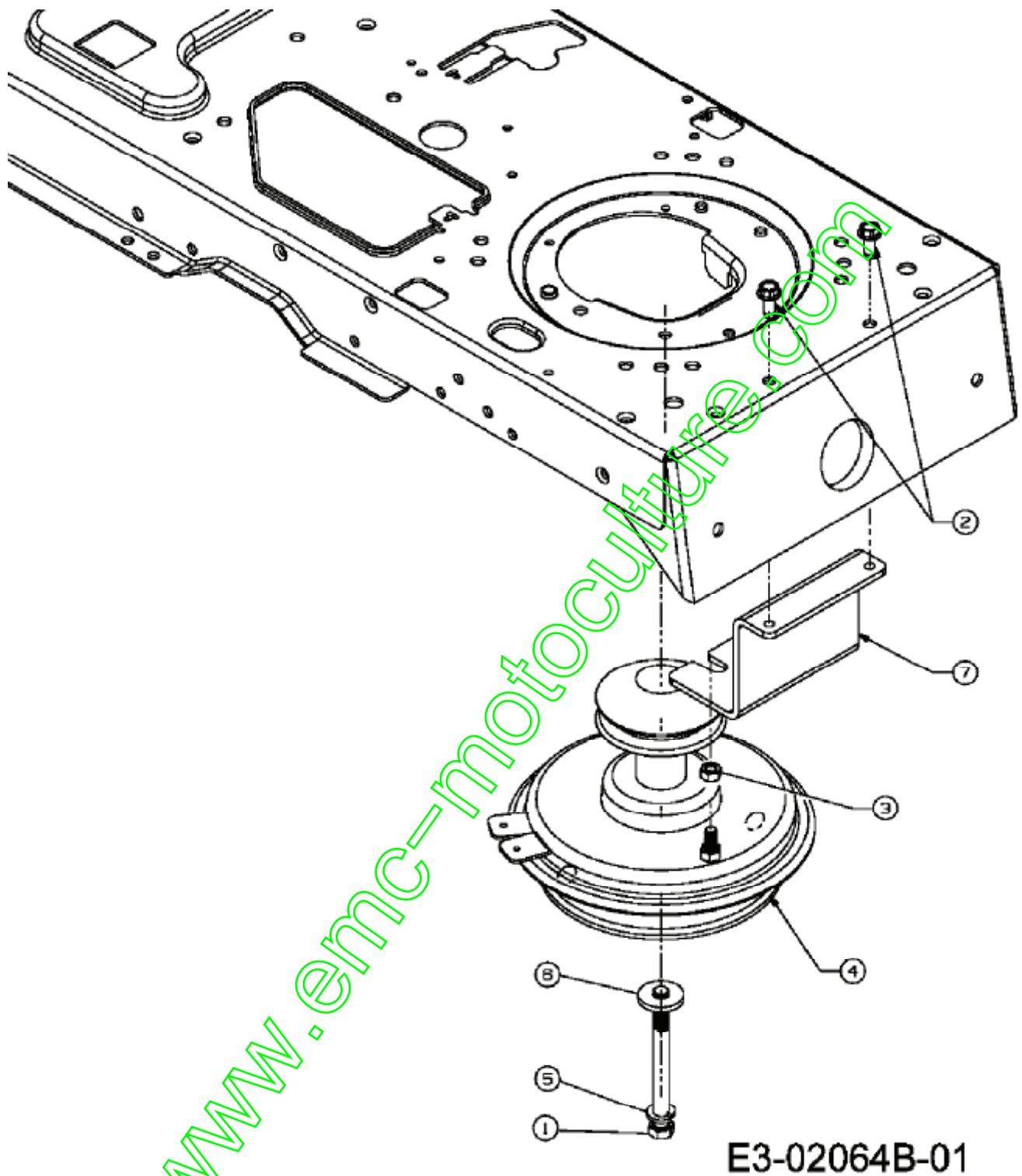




Position	Numéro de pièce	Quantité	Designation	DIN	Additional
1	710-0599	4	VIS j SIX PANS CREUX	MTD SPEC-701-01002 or 101617	
2	710-0604A	5	VIS 5/16-18:0.625	FINISH:MTD SPEC-701-01002	
3	710-0653	2	VIS j SIX PANS CREUX	FINISH:MTD SPEC-100016	
4	710-0895	1	VIS j SIX PANS CREUX	FINISH:MTD STD 701-01002	
5	710-1017	2	VIS	FINISH:MTD SPEC-100016	
6	710-3217	1	VIS	FINISH:701-01000 TRUSPHI	
7	712-0142	1	ÜCROU HEX.:#8-32:GRA	FINISH:MTD STD 701-01000	
9	731-04217	1	CONSOLE DE LEVIER DE FREIN	W/O CRUISE	
10	731-05001B	1	TABEAU DE BORD	w/MAN PTO	
11	731-1857	1	POIGNÛE	FINISH:KUNSTSTOFF SCHWARZ	
12	731-2228	1	COUVERCLE DE PROT. 8/9 STYLE	FARBE SCHWARZ	
13	736-0142	1	RONDELLE PLATE 1/4X.500X . 063	FINISH:701-01000	
14	736-0701	2	RONDELLE	MTD SPEC-100015 24.6486.18	
15	746-0616A	1	CABLE STARTER 58.4CM	746-0616A	
16	747-1196	1	TIGE SUPPORT	CRUISE/BREMSE:FINISH:SIEHE ZG.	
17	783-04285F	1	HALTEKONSOLE:ARMATURENBRETT:RE	RECHTE SEITE:FINISH PLAIN	
18	783-04323F	1	HALTEKONSOLE:ARMATURENBRETT:LI	LINKE SEITE:FINISH PLAIN	
19	783-04374	1	RAHMEN:500 SERIE		

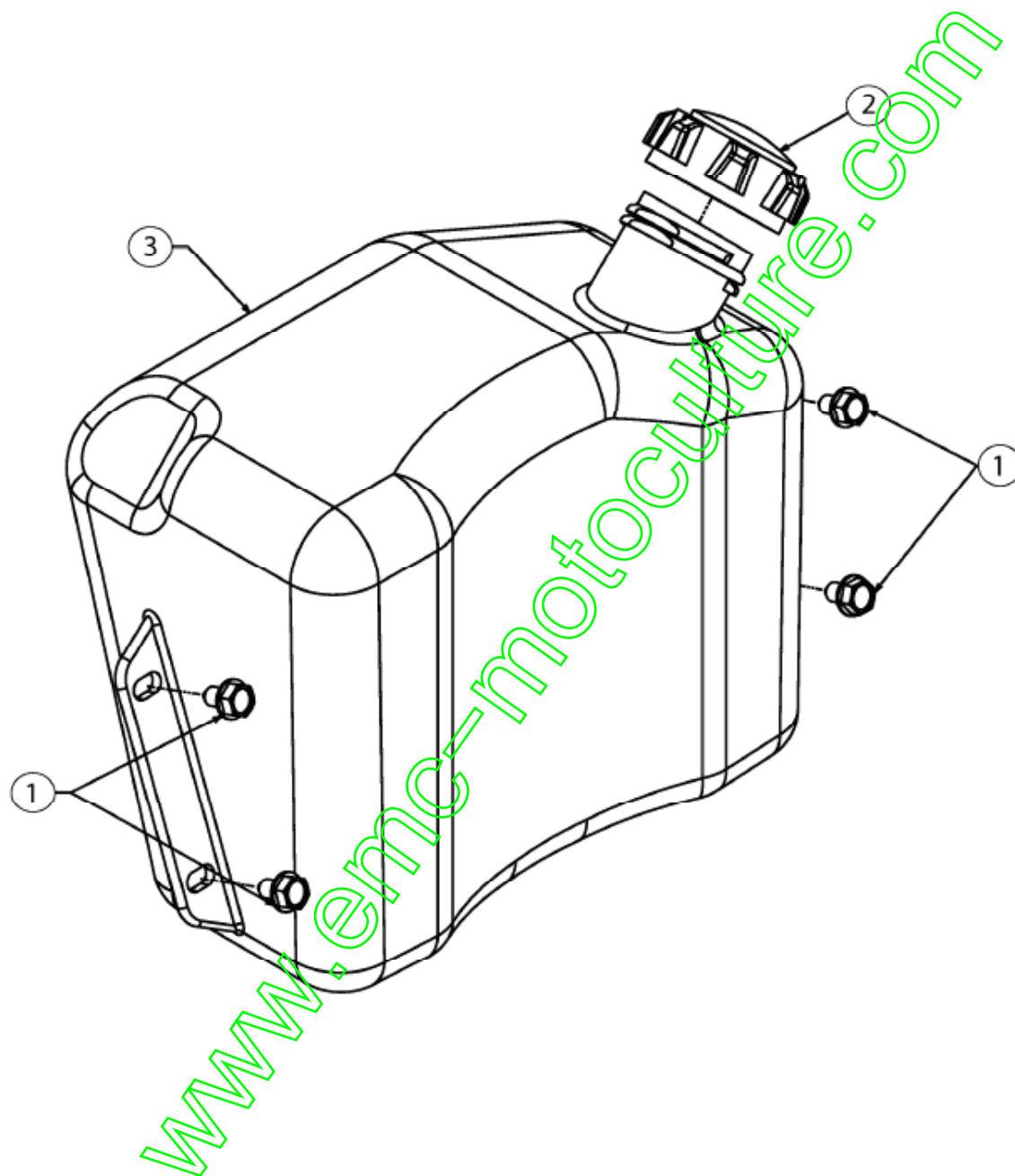
www.emc-motoculture.com

Poulie moteur



Position	Numéro de pièce	Quantité	Designation	DIN	Additional
1	710-04002	1	VIS HEX. 7/16-20:4.50:GR5:STD	FINISH:MTD STD 701-01000	
2	710-1260A	2	VIS TT:5/16-18:.750 HXINDWSH	LAGERGEH.MESSERWELLE:701-01002	
3	712-3010	1	ÛCROU HEX. 5/16-18:GR5	FINISH:701-01000	
4	717-1788A	1	EMBAYAGE MANUEL HYDRO	500er RIDER / GELBVERZINKT	
5	736-0171	1	RONDELLE GROWER	FINISH:MTD STD 701-01001	
6	736-0322	1	RONDELLE .450 X 1.250 X .164	FINISH:701-01001 936-0322	
7	783-05026-NA	1	SUPPORT PTO	NACHARBEIT AUS 783-05026	

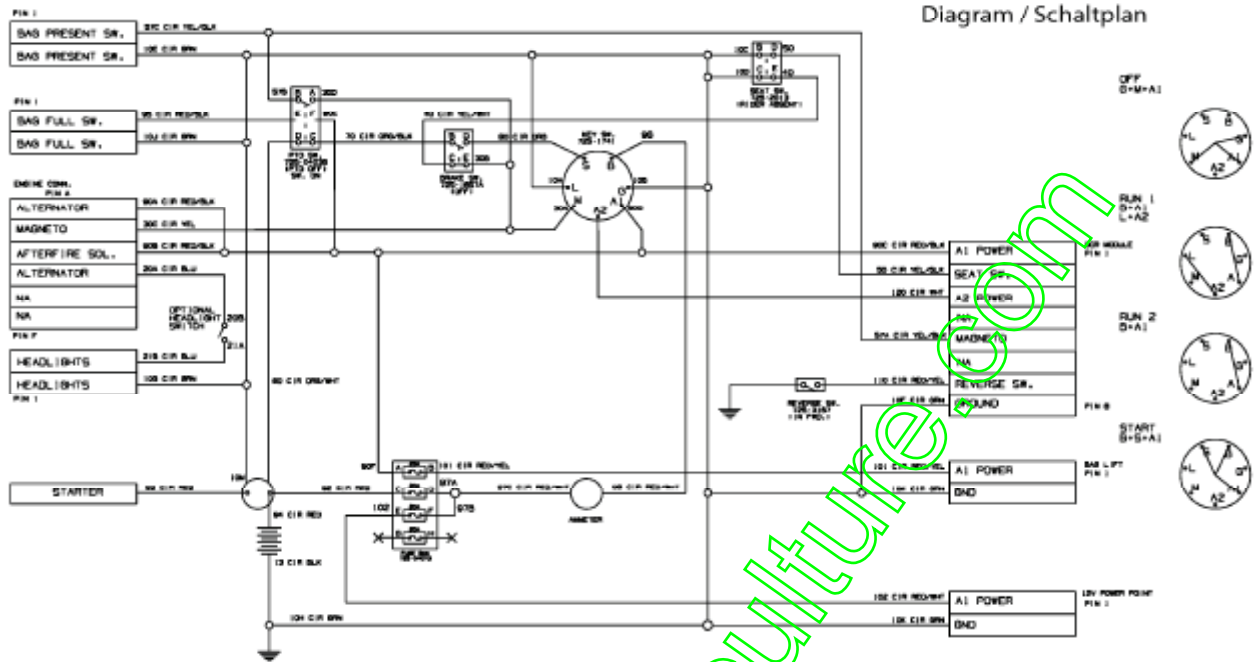
Réservoir



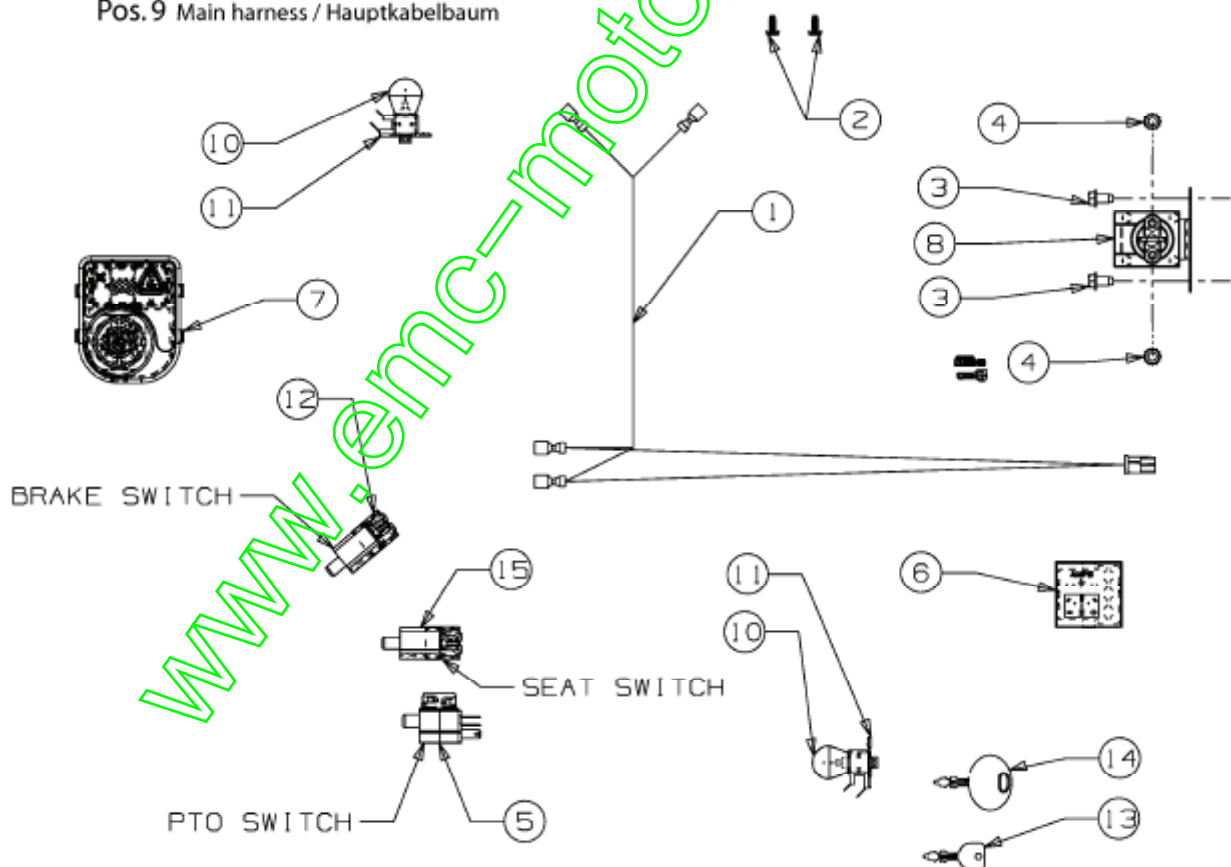
E3-02020A-01

Position	Numéro de pièce	Quantité	Designation	DIN	Additional
1	710-0604A	4	VIS 5/16-18:0.625	FINISH:MTD SPEC-701-01002	
2	751-0603	1	BOUCHON RESERVOIR ESSENCE	FINISH:SCHWARZ	
3	751-0818D	1	RESERVOIR ESSENCE: 2.0 GAL	FINISH:NATUR SIEHE ZG.	

### Assortiment électrique, Plan électrique



not shown / nicht abgebildet:  
Pos. 9 Main harness / Hauptkabelbaum

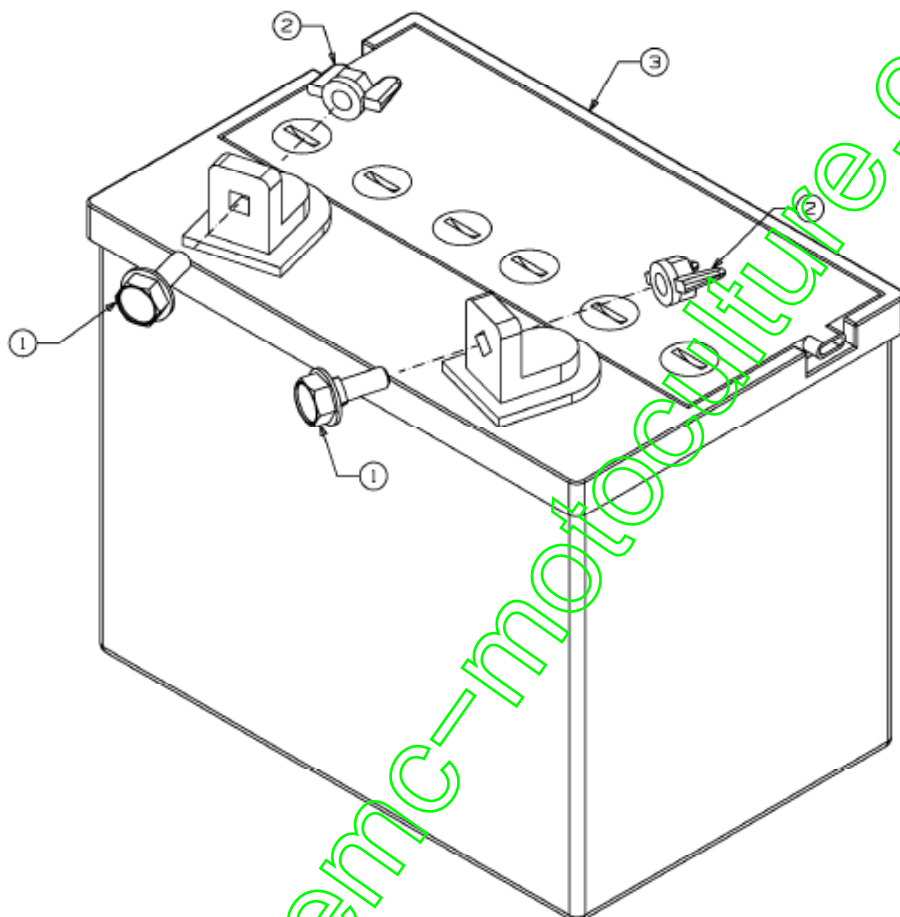


E3-04786A-01

Position	Numéro de pièce	Quantité	Designation	DIN	Additional
1	629-04133B	1	FAISCEAU DE PHARE	629-04133B	
2	710-0351	2	VIS	MTD SPEC-100016	
3	710-0599	2	VIS à SIX PANS CREUX	MTD SPEC-701-01002 or 101617	
4	712-0271	2	ECROU 1/4-20"+ DISQUE DENTÜ	FINISH:MTD STD 701-010015	
5	725-04038	1	COMMUTATEUR DELTA	NO/NC/NC:KLICKMONTAGE	
6	725-04156	1	INDIC. AMPÈREMÈTRE S. LUMIÈRE	925-04156	
7	725-04227B	1	CONTACTEUR A CLÜ	925-04227B	
8	725-04439	1	COMMUTATEUR MAGNÛTIQUE	12V:100 AMP	
9	725-04629A	1	FAISCEAU COMPLET	FSBX	
10	725-0963	2	AMPOULE ÛLECTRIQUE	12V 21W	
11	725-1649	2	DOUILLE DE LAMPE: 1/4 ROTATION	GRAU KUNSTSTOFF	
12	725-1657A	1	SECURITE D'EMBAYAGE	Sich.Mähwerk+Kuppl. GRAU	
13	725-1744A	1	CLÜ DE CONTACT	FINISH:	
14	725-1745A	1	CLE UNIVERSEL	725-1745A	
15	725-2013	1	SECURITE DE SIEGE	FINISH GRAU	

www.emc-motoculture.com

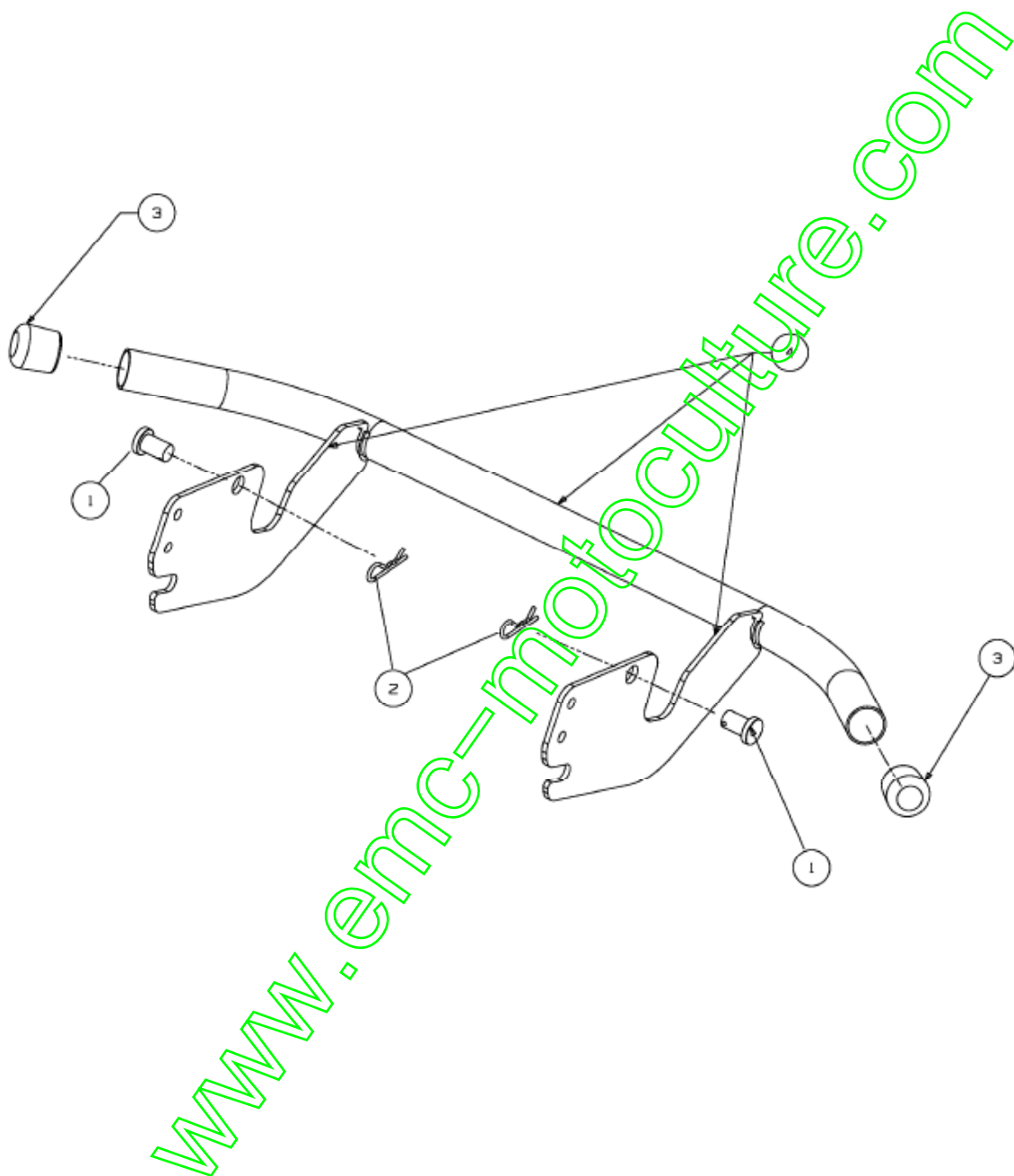
## Batterie



E3-02023C-01

Position	Numéro de pièce	Quantité	Designation	DIN	Additional
1	712-3087	2	ÛCROU PAPILLON	FINISH:KUNSTSTOFF SCHWARZ	
2	725-1751	1	BATTERIE SÈCHE 220CCA	12V 16Ah	
3	725-2064A	2	BIDON D ACIDE 1.05 LITRE	SONDERABFÜLLUNG (35.5 oz)	
4	738-1132	2	AXE	FINISH:PHOS & OIL SIEHE CODE	

Pare-chocs

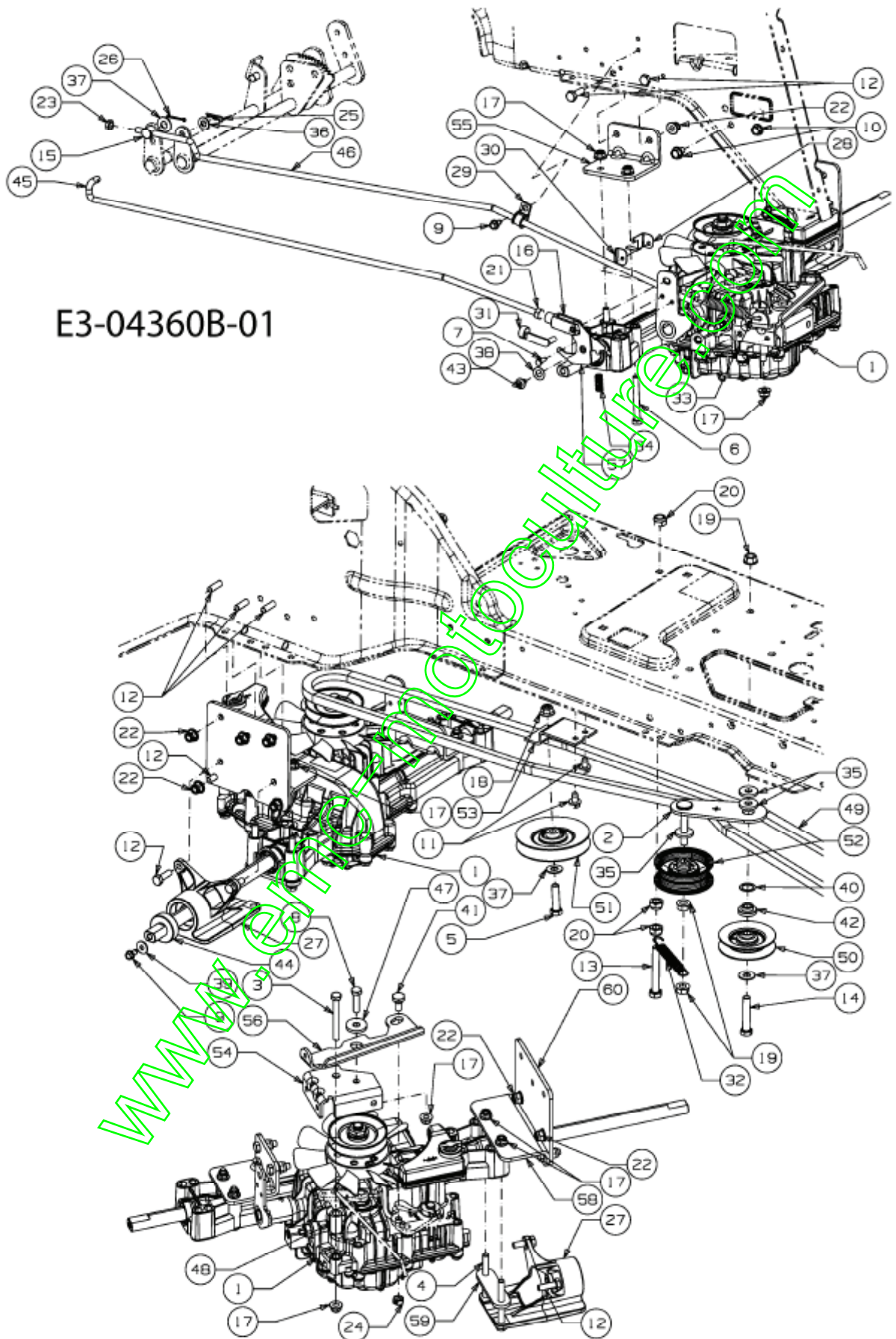


E3-02339B-01

Position	Numéro de pièce	Quantité	Designation	DIN	Additional
1	711-0332	2	GOUJON ; ÜPINGLER .50X.78 LG	FINISH:701-01000	
2	714-0145	2	GOUPILLE	FINISH:PHOS & OIL	
3	731-04500	2	BOUCHON	K 28 S 500 SCHWARZ	
4	683-04236637	1	PARE-CHOC DE FR. SÛRIE 500	SCHWARZ LACKIERT	



Entraînement de roulement



E3-04360B-01

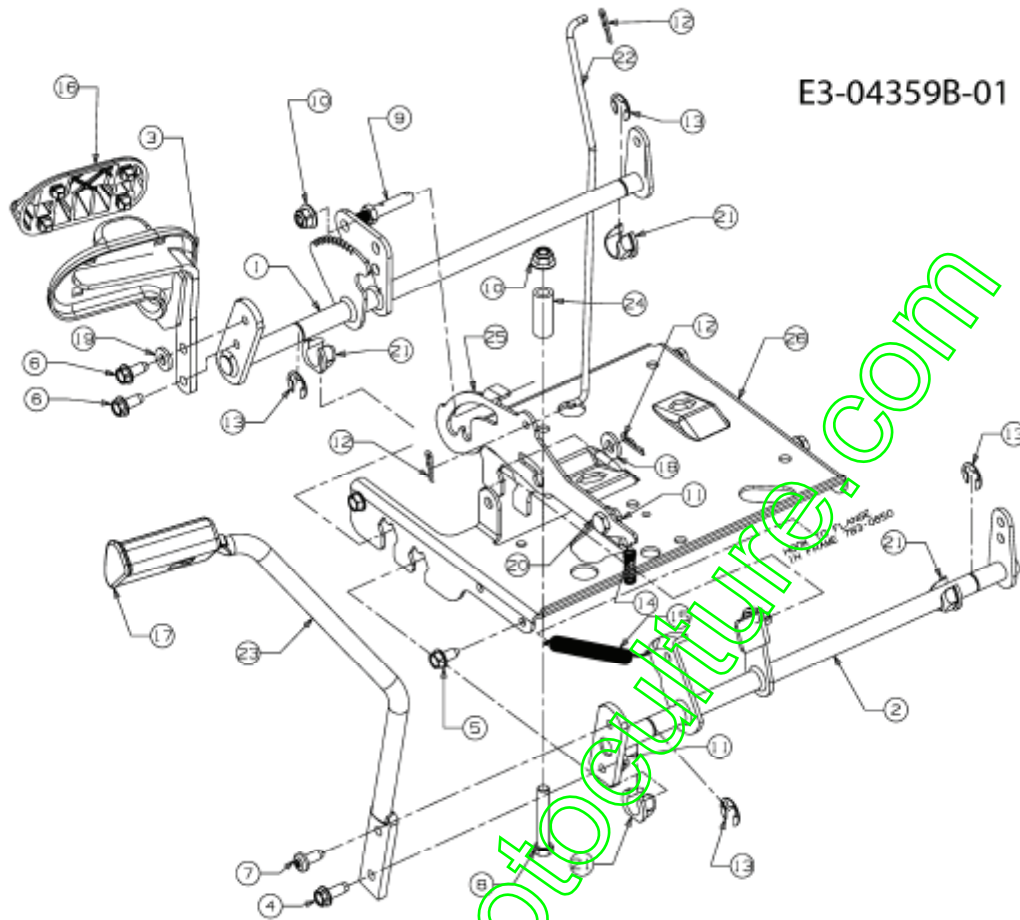


Position	Numéro de pièce	Quantité	Designation	DIN	Additional
1	618-04751	1	PONT HYDRO CONTACTER MTD	TUFF TORQ	
2	683-0604A	1	CADRE SUPP. CPL..GAL. TEND. DB	SCHWEISSTEIL:683-0604A-Z	
3	710-0176	1	VIS HEX.:5/16-18:2.75:GR5:STD	(21.1441.82) FINISH:701-01000	
4	710-0189	2	VIS HEX.:5/16-18x3.00:GR5:STD	701-01000 or 101616 910-0189	
5	710-0344	1	VIS HEX.:3/8-16:1.50:GR5:SPEC	FINISH:701-01000	
6	710-0378	2	VIS HEX.:5/16-18:2.50:GR5:STD	FINISH:701-01000	
7	710-0436	1	VIS	FINISH:MTD STANDARD 701-01002	
8	710-0528	1	VIS HEX. 5/16-18:1.25:GR5:STD	FINISH:701-01000 910-0528	
9	710-0599	2	VIS $\dot{\bar{I}}$ SIX PANS CREUX	MTD SPEC-701-01002 or 101617	
10	710-0604A	2	VIS 5/16-18:0.625	FINISH:MTD SPEC-701-01002	
11	710-0607	2	VIS HEX.TT5/16-18:..500HXINDWsh	FINISH:MTD SPEC-701-01002	
12	710-1682	9	VIS	FINISH:SPEC-100015 21.1441.72	
13	710-1771	1	VIS HEX.:M10x70 DIN933-8.8	FINISH:MTD 701-01000	
14	710-3144	1	VIS HEX.: 3/8-16:2.00:GR5:STD	FINISH:STD 701-01000 910-3144	
15	711-0677	1	FUSEAU D'ÜCROU - EX 711-0611	FINISH:GELBVERZINKT SIEHE ZG.	
16	711-1407	1	T=TE DE FOURCHE ZN5GL CB DIN71	Zn5glcB 9S20K 28.6218.17	
17	712-04063	6	ÜCROU HEX. AVEC FLANC	FINISH:701-01000	
18	712-04065	1	ÜCROU HEXAGONAL	FINISH:SPEC-101616 912-04065	
19	712-0431	3	ÜCROU STOP 3/8-16:GRF	FINISH:MTD SPEC-100015	
20	712-0637	3	ÜCROU	MTD SPEC 701-101616 24.1426.22	
21	712-0690	1	ÜCROU HEXAGONAL	FINISH:MTD 701-01000 24.1421.18	
22	712-0714	9	ÜCROU HEX. AV. CEINT. M8-1.25	FINISH:MTD SPEC-100015	
23	712-3007	1	ÜCROU HEX. 5/16-18 GR5	FINISH:MTD STD 701-01000	
24	712-3009	1	ÜCROU HEX. PROT. 5/16-18:GRB	FINISH:STD 701-01000 912-3009	
25	714-0104	1	GOUPILLE	FINISH:PHOS AND OIL	
26	714-0111	1	GOUPILLE FENDUE 3/32:1.0"	FINISH:MTD SPEC-100015	
27	719-0534	1	BLOC EMBASE	FINISH:PLAIN	
28	725-04834	1	PATTE DE SECURITE	FINISH:SPEC-100015	
29	726-0272	1	COLLIER	FINISH:VERZINKT	
30	726-04089	1	PLAQUE ISOLANTE	FINISH:NATUR ODER SCHWARZ	
31	726-0457	1	BOULON: M8-32 DIN 71752	9S20K 25.9425.12	
32	732-0429A	1	RESSORT	FINISH:PHOSPHATE AND OIL	
33	732-0716D	1	RESSORT	FINISH:MTD STD 701-01006	
34	732-0891A	1	RESSORT à PRES. CONT. D. FREIN	RDF 2020 ROSTFREI	
35	736-0258	3	RONDELLE PLATE 385x110x.135	FINISH:MTD 701-01000 936-0258	
36	736-0275	1	RONDELLE	FINISH:MTD STD 701-01000	
37	736-0300	3	RONDELLE	FINISH:MTD SPEC-100015	
38	736-0314	1	RONDELLE	FINISH:MTD STD 701-01001	
39	736-0685	1	RONDELLE	MTD SPEC 100015 24.6486.16	
40	736-0773	1	RONDELLE	24.6273.68	
41	738-0140	1	VIS $\dot{\bar{I}}$ ÜP.:.435 x.178-5/16 x.56	FINISH:VERZINKT	
42	738-0372B	1	RONDELLE EPAULEE	FINISH:GEÖLT	
43	738-04375	1	VIS	FINISH:SIEHE ZG.	
44	741-0998	1	ROULEM. $\dot{\bar{I}}$ BIL. .75IDX40ODX12	400er HYDRO GETRIEBE	
45	747-05032	1	TRINGLE	FINISH:SPEC-100015	
46	747-05033	1	TRINGLE DE FREIN	FINISH:SPEC-100015	
47	748-0331	1	ENTRETOISE	FINISH:GEÖLT	
48	750-05141	1	ENTRETOISE	FINISH:MTD STD SPEC-101616	
49	754-04222	1	COURROIE TRANSMISSION HYDRO	754-04222	
50	756-0236	1	GALET TENDEUR	SCHWARZ LACKIERT ODER VERZINKT	
51	756-0487	1	GALET TENDEUR	FINISH:FARBE SCHWARZ	
52	756-3054A	1	POULIE TENDEUR	FINISH:SIEHE ZG	
53	783-05340	1	HALTER:RIEMENSCHIBE:500 HYDRO	FINISH:LACKIERT	
54	783-06177	1	SUPPORT	FINISH:LACKIERT MTD QUALITÄT	
55	783-06179	1	SUPPORT DE PONT HYDRO	FINISH:LACKIERT MTD QUALITÄT	
56	783-06218	1	SUPPORT DE PONT HYDRO	FINISH:MTD STD SPEC-101616	

	783-06228	1	SUPPORT DE SECURITE	FINISH:SPEC-100015	
58	783-06317	1	SUPPORT	HYDRO TT:FINISH LACKIERT	
59	783-06318	1	SUPPORT PONT HYDRO	FINISH:LACKIERT	
60	783-06404	1	NOIR	FINISH:LACKIERT	

[www.emc-motoculture.com](http://www.emc-motoculture.com)

## Pedales



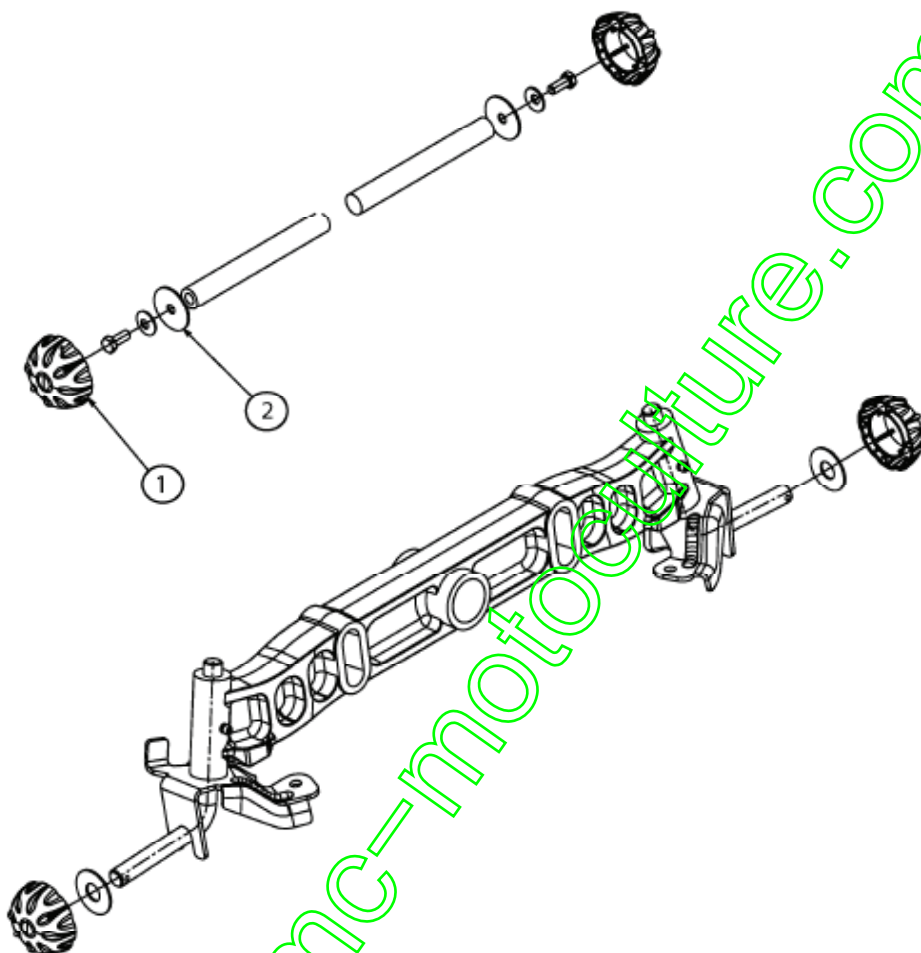
Position	Numéro de pièce	Quantité	Designation	DIN	Additional
1	647-04159	1	LEVIER D AVANCEMENT	SCHWEISSTEIL:LACKIERT	
2	647-04160	1	BREMSPEDALWELLE VST HYDRO TT	SCHWEISSTEIL:LACKIERT	
3	683-0267C	1	PEDAL CPLT:HYDRO	SCHWEISSTEIL:FINISH LACKIERT	
4	710-0650	1	VIS HEX.:TT:5/16-18:0.875	FINISH:MTD SPEC-701-01002	
5	710-0726	4	VIS 5/16-12:0.750:HXINDWS	FINISH:MTD STD 701-01002	
6	710-1260A	2	VIS TT:5/16-18:0.750:HXINDWSH	LAGERGEH.MESSERWELLE:701-01002	
7	710-1611B	1	VIS:TT:5/16-18:0.750:PANTRXI	FINISH:MTD SPEC-100015	
8	710-3011	1	VIS HEX.:3/8-16:2.25:GR5:STD	FINISH:701-01000	
9	711-1363	1	GOUJON FILETÚ:3/8-16:3/8x2.43	FINISH:PHOS & OIL	
10	712-04065	2	ÚCROU HEXAGONAL	FINISH:SPEC-101616 912-04065	
11	712-3004A	2	ÚCROU HEX.: 5/16-18:GR5:SD:LK	FINISH:701-01000	
12	714-0104	3	GOU PILLE	FINISH:PHOS AND OIL	
13	716-0106A	4	CIRCLIPS:E-TYPE:.625 DIA ARBRE	FINISH:701-01001	
14	732-0335	4	RESSORT	.405 DIA X 1.17 LG	
15	732-0963	4	RESSORT	SPEC 701-01006 OR 701-01000	
16	735-0662	1	GARNITURE DE PEDALE	FINISH:KUNSTSTOFF SCHWARZ	
17	735-3049A	1	GARNITURE DE PEDALE DE FREIN	FINISH: SCHWARZ	
18	736-3004	1	RONDELLE	FINISH:MTD STD 701-01000	
19	736-3008	1	RONDELLE	FINISH:701-01000	
20	738-0155	1	VIS EPAULEE	MTD STD 701-01000 938-0155	
21	741-3065B	4	BAGUE EXAGONALE RAINURÉE	GESCHLITZT:FINISH SCHWARZ	
22	747-04093A	1	TIGE DE FREIN	FINISH:701-01006 OR 701-01007	
23	747-04641A	1	FINISH:PLAIN	FINISH:PLAIN	
24	748-0415B	1	ENTRETOISE	.385 ID x .635 OD x 1.54	
25	783-0663E	1	CONSOLE: FREIN D'ARR=TT: HYDRO	FINISH:SIEHE ZG.	
26	783-1335C	1	STÜTZKONSOLE:LENKUNG:500	FINISH:PAINT	



Position	Numéro de pièce	Quantité	Designation	DIN	Additional
1	17962	1	PLAQUE DE SUPP. P. COMMUTATEUR	FINISH:WIE GESTANZT	
2	683-04115D	1	RAHMEN VOLLST:UNTEN	SCHWEISSTEIL:FINISH LACKIERT	
3	710-0134	2	VIS $\dot{\bar{I}}$ T=TE PLATE	FINISH:701-01000	
4	710-0224	2	VIS PARK:#10-16:0.500:HXINDWSH	FINISH:MTD STD 701-01002	
5	710-0599	1	VIS $\dot{\bar{I}}$ SIX PANS CREUX	MTD SPEC-701-01002 or 101617	
6	710-0604A	2	VIS 5/16-18:0.625	FINISH:MTD SPEC-701-01002	
7	710-0726	2	VIS 5/16-12:0.750:HXINDWS	FINISH:MTD STD 701-01002	
8	710-1260A	4	VIS TT:5/16-18:.750 HXINDWSH	LAGERGEH.MESSERWELLE:701-01002	
9	710-1681	7	VIS $\dot{\bar{I}}$ SIX PANS CREUX	MTD SPEC-100015 21.1441.70	
10	711-0679A	1	GOUJON $\dot{\bar{I}}$ ÜPINGLER	FINISH:SIEHE ZG.	
11	712-0324	2	ÜCROU HEX.:1/4-20:GR8:NYLON	FINISH:701-01000	
12	712-0692	6	ÜCROU HEXAGONAL 24.1426.18	FINISH:SPEC-100015 24.1426.18	
13	712-0714	1	ÜCROU HEX. AV. CEINT. M8-1.25	FINISH:MTD SPEC-100015	
14	714-0147	1	GOUPILLE $\dot{\bar{I}}$ RESSORT:.125 X 1.75	FINISH:SIEHE ZG.	
15	723-0444	1	CEINTURE DE SÛCURITÛ BATTERIE	FINISH:SCHWARZ	
16	726-0354	2	SUPPORT FUSEAU	FINISH:GLANZVERZINKT	
17	732-04035	2	RESSORT DE SIEGE	FINISH:701-01000	
18	736-0222	1	RONDELLE	FINISH:701-01001	
19	736-0700	1	RONDELLE A8.4 DIN 125	MTD SPEC-100015 24.6481.18	
21	747-05022	1	TIGE DE PONT	FINISH:MTD SPEC-100015	
22	749-04013A	1	4KT-ROHR:ANHÄNGEKUPPLUNG	30x30mmx170.39mm LG.ST37:LACK	
23	783-0349	1	BOÏTIER DE BATTERIE	FINISH:LACKIERT SCHWARZ	
24	783-06180	1	SUPPORT TUBE D ATTELAGE	FINISH:LACKIERT	
25	783-06273	1			
26	783-1318A	1	CHASSIS ARRIERE		
27	783-1387A	1	CADRE SUPP. COMM. DE SIËGE	VERZINKT	
28	783-1410	1	SUPPORT DE SIEGE	FE564.021.00	

www.emc-motoculture.com

## Enjoliveurs



E3-02001A-01

Position	Numéro de pièce	Quantité	Designation	DIN	Additional
1	731-2290A	4	CAPUCHON DE ROUE	FINISH:KUNSTSTOFF SCHWARZ	
2	736-0430	2	RONDELLE .350X.1.59X.062	FINISH:701-01000	



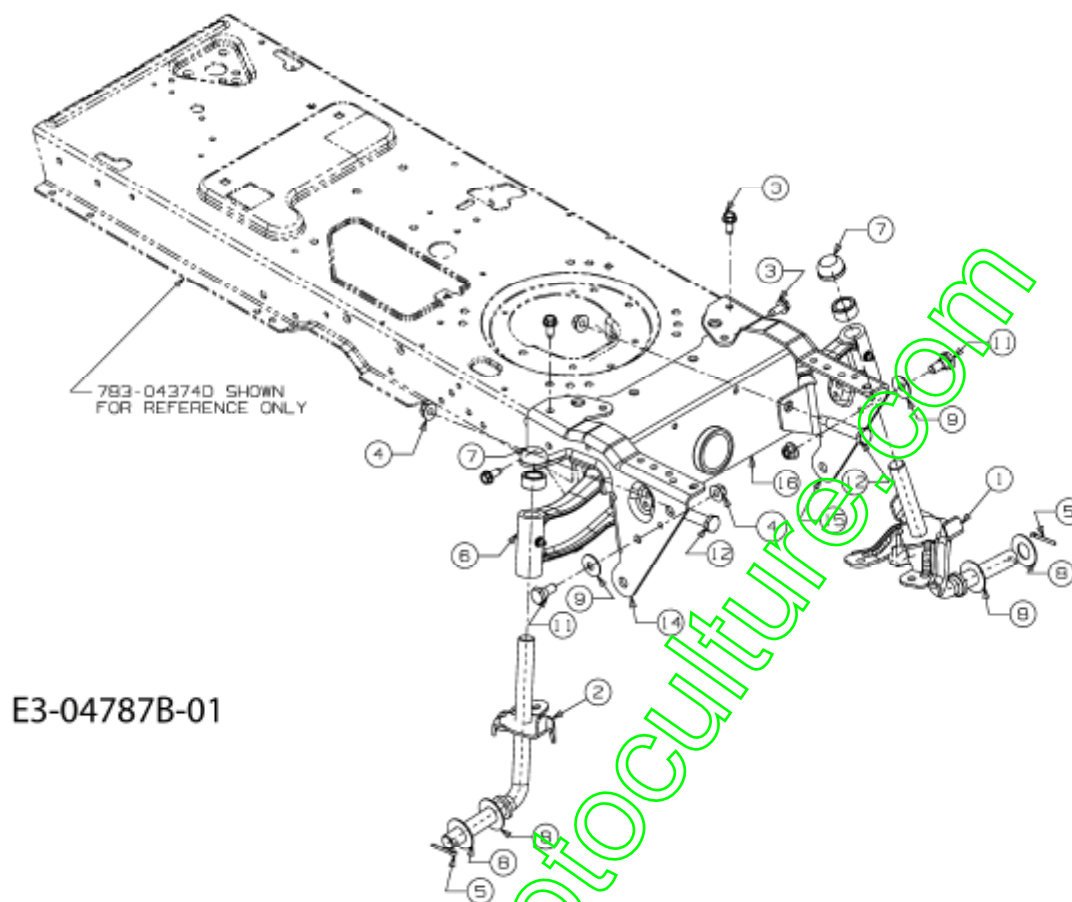


Position	Numéro de pièce	Quantité	Designation	DIN	Additional
1	710-0514	2	VIS HEX.:3/8-16:1.00:GR5:STD	FINISH:MTD STD 701-01000	
2	710-0643	1	VIS HEX.: 5/16-18:1.00:GR5	LOCTITE MICROVERKAPSELT	
3	711-1775B	1	TRINGLE REGL. VOIE/GAUCHE	FINISH:SIEHE ZG.	
4	711-1776B	1	TRINGLE REGL. VOIE/DROITE	FINISH:SIEHE ZG.	
5	712-0240	2	ÛCROU HEX.: 7/16-20:GR2	FINISH:MTD STD 701-01000	
6	712-0241	2	ÛCROU HEX.: 3/8-24:GR5	FINISH:MTD STD 701-01000	
7	712-04065	2	ÛCROU HEXAGONAL	FINISH:SPEC-101616 912-04065	
8	712-0459	1	ÛCROU HEX.: 7/16-20:GRB	FINISH:MTD SPEC-101616	
9	712-3004A	2	ÛCROU HEX.: 5/16-18:GR5:SD:LK	FINISH:701-01000	
10	717-1550F	1	SEGMENT DE DIRECTION	FINISH:WIE ZUSAMMENGEBAUT	
11	717-1554	1	PIGNON DE DIRECTION	FINISH:GEÖLT	
12	723-0448A	2	ROTULE DE DIRECTION 7/16-20	FINISH:GELB VERZINKT	
13	736-0169	2	BAGUE ÛLASTIQUE	FINISH:MTD SPEC-100016	
14	736-0174	1	RONDELLE:.66X.88X.016	FINISH:STD 701-01001 FSt	
15	736-0231	1	RONDELLE 344IDX1.125 OD .12	FINISH:MTD STD 701-01000	
16	736-0242	1	RONDELLE CONIQUE.340X.872X.060	FINISH:MTD STD 701-01001	
17	736-0369	1	RONDELLE	FINISH:SIEHE ZG. 936-0369	
18	736-3084	1	RONDELLE	FINISH:MTD STD 701-01001	
20	738-0372B	2	RONDELLE EPAULEE	FINISH:GEÖLT	
21	738-04263	1	COLONNE DE DIRECTION	FINISH:701-01000	
22	741-0475	2	DOUILLE PLASTIQUE:.385 ID	NATUR ODER SCHWARZ 941-0475	
23	741-04237B	1	BAGUE	FINISH:PLAIN	

www.emc-motoculture.com

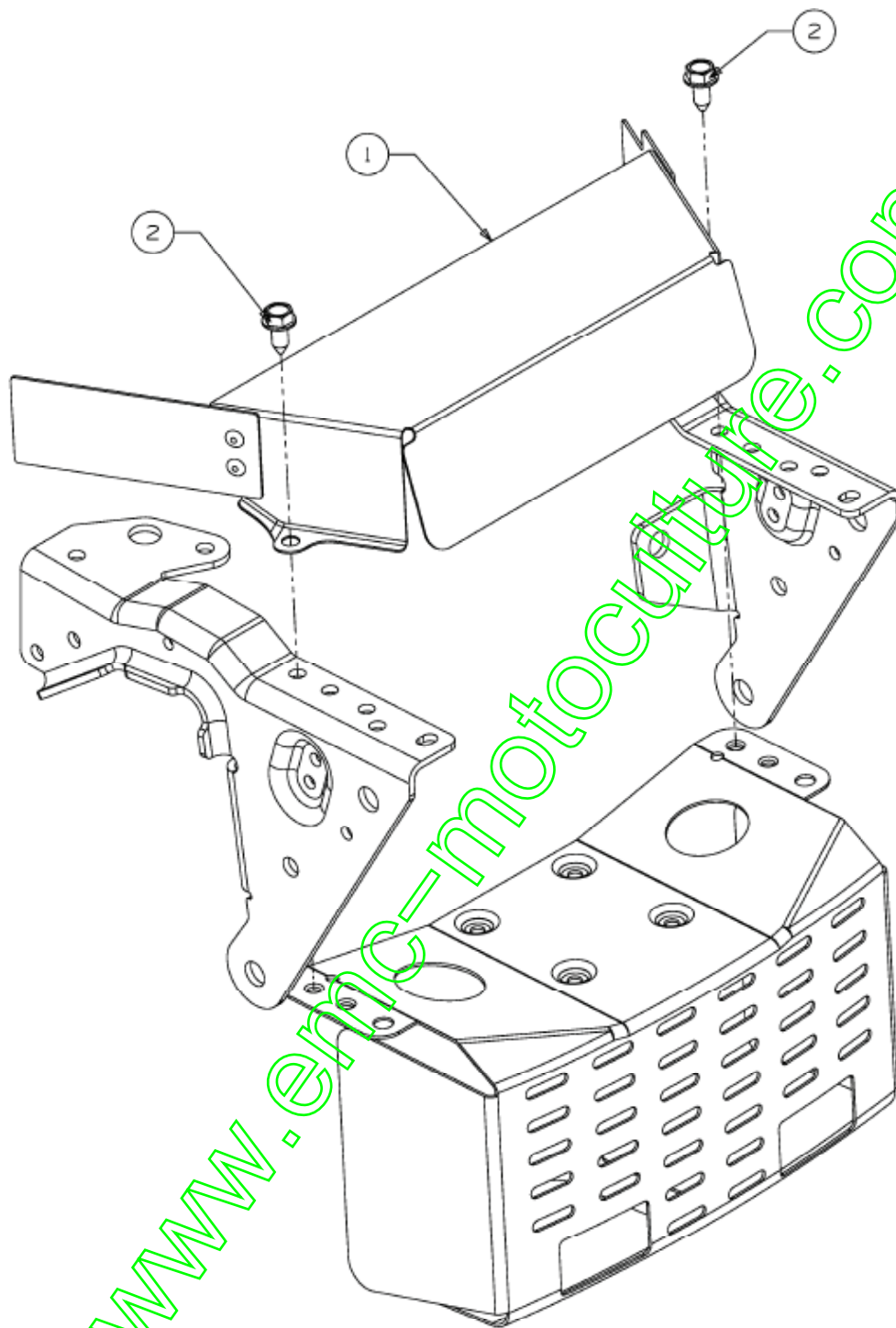


## Axe avant



Position	Numéro de pièce	Quantité	Designation	DIN	Additional
1	611-04050	1	FUSEE GAUCHE	SCHWEIBTEIL FINISH:LACKIERT	
2	611-04049	1	FUSEE DROITE	SCHWEIBTEIL FINISH:LACKIERT	
3	710-1260A	4	VIS TT:5/16-18:.750 HXNDWSH	LAGERGEH.MESSERWELLE:701-01002	
4	712-04065	4	ÛCROU HEXAGONAL	FINISH:SPEC-101616 912-04065	
5	714-0162	2	GOUPILLE FENDUE 5/32.1.25	FINISH:MTD SPEC-100015	
6	719-04177A	1	ESSIEU FONTE	FINISH:SCHWARZ LACKIERT	
7	726-0341	2	CAPUCHON GLIPS	FINISH:SCHWARZ	
8	736-0316	4	RONDELLE 4.78XA1.59"	FINISH:MTD STD 701-01000	
9	736-0331	2	RONDELLE CONIQUE	FINISH:MTD SPEC-100016	
11	738-0143	2	VIS EPANLEE	FINISH:MTD SPEC 100015 (EU)	
12	738-1011A	2	AXE	FINISH:MTD STD 701-01000	
13	748-04068	2	DOUVILLE .71IDX.125 ODX.56 LG	FINISH:701-01010	
14	783-0726E	1	FINISH:LACKIERT	FINISH:LACKIERT	
15	783-0727D	1	FINISH:LACKIERT	FINISH:LACKIERT	
16	783-0728B	1	VORDERACHSTRÄGER	FINISH:LACKIERT	

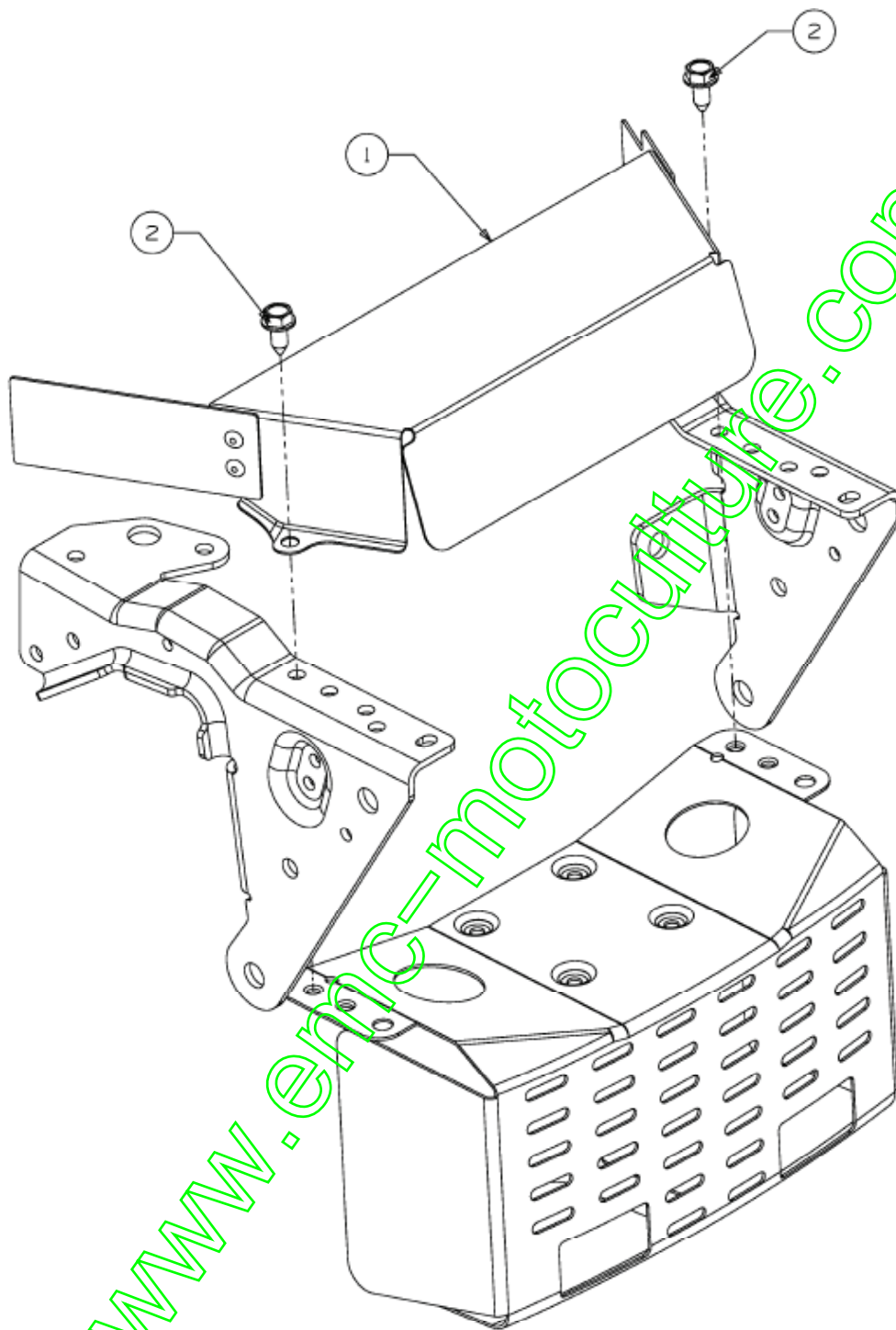
Protection thermique



E3-04933A-01

Position	Numéro de pièce	Quantité	Designation	DIN	Additional
1	618-04424	1	HITZESCHILD VOLLST:TEC TWIN	NIETTEIL	
2	710-0726	2	VIS 5/16-12:0.750:HXINDWS	FINISH:MTD STD 701-01002	

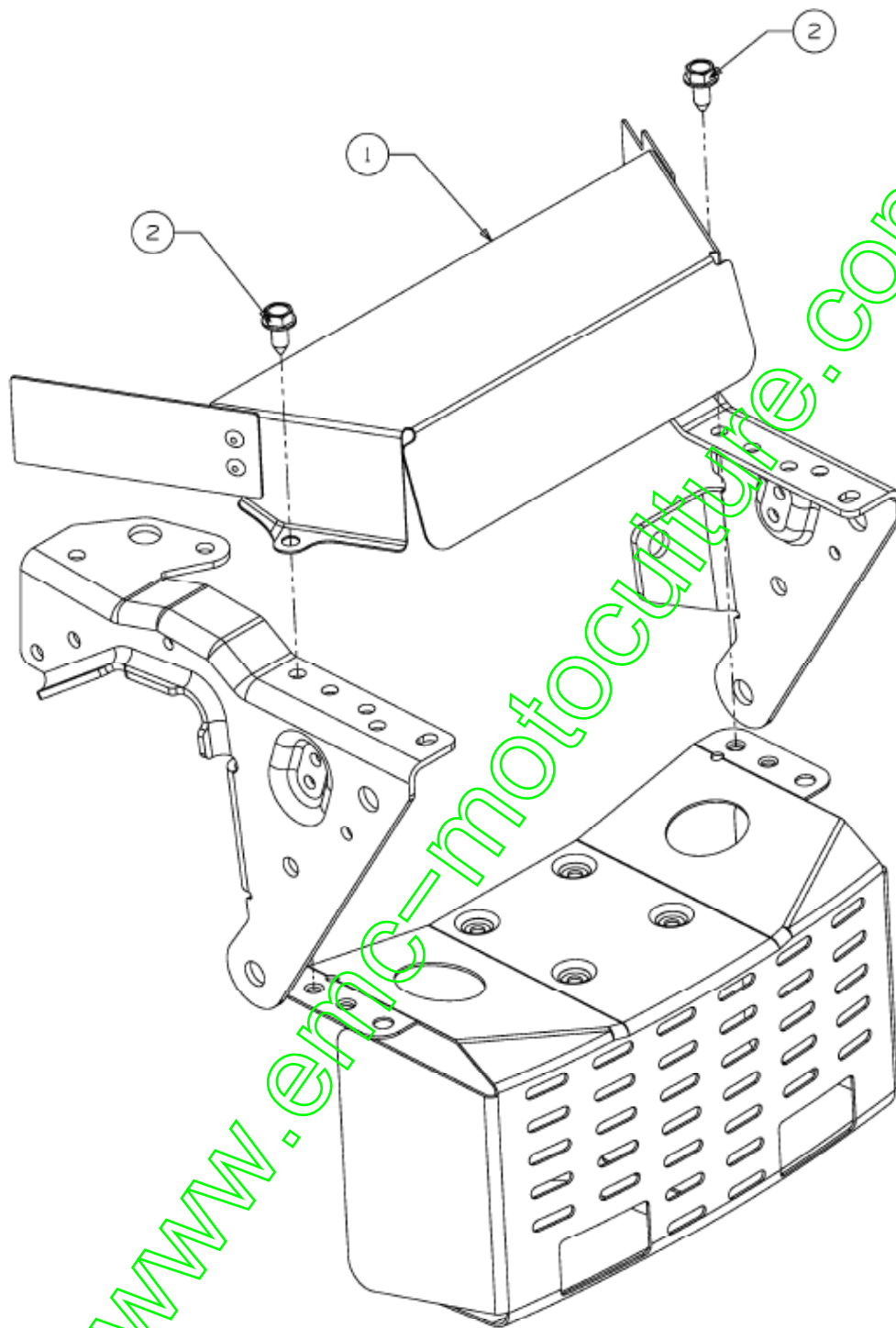
Protection thermique



E3-04933A-01

Position	Numéro de pièce	Quantité	Designation	DIN	Additional
1	618-04424	1	HITZESCHILD VOLLST:TEC TWIN	NIETTEIL	
2	710-0726	2	VIS 5/16-12:0.750:HXINDWS	FINISH:MTD STD 701-01002	

Protection thermique

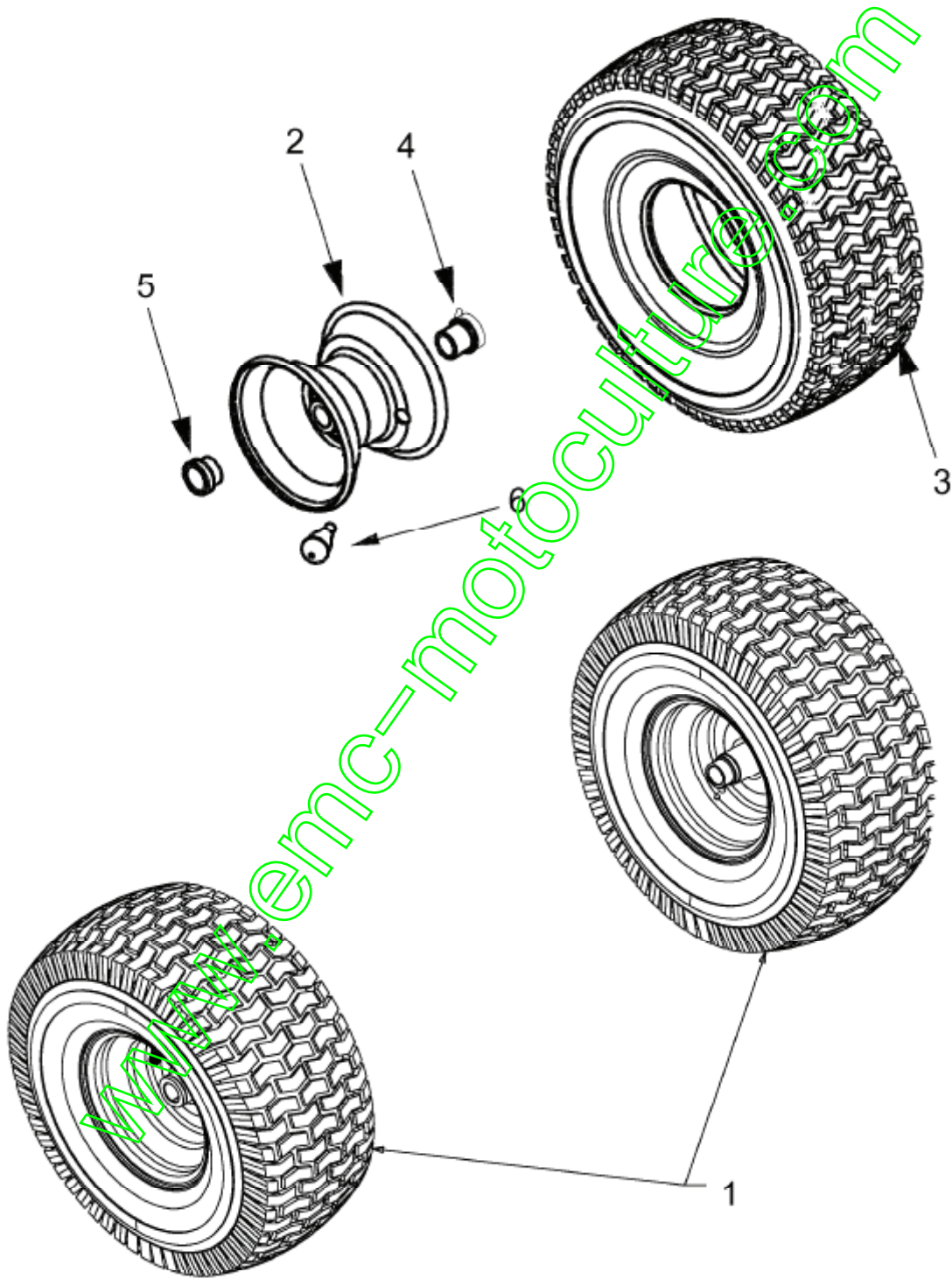


E3-04933A-01

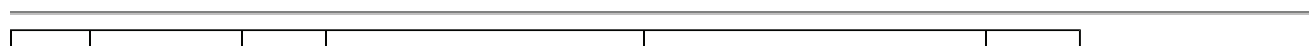
Position	Numéro de pièce	Quantité	Designation	DIN	Additional
1	618-04424	1	HITZESCHILD VOLLST:TEC TWIN	NIETTEIL	
2	710-0726	2	VIS 5/16-12:0.750:HXINDWS	FINISH:MTD STD 701-01002	

Roues avant 15x6 jusqu'au 02.03.2012

bis 03.02.2013  
to 03.02.2013  
jusqu'au 03.02.2013



E3-02085B-01



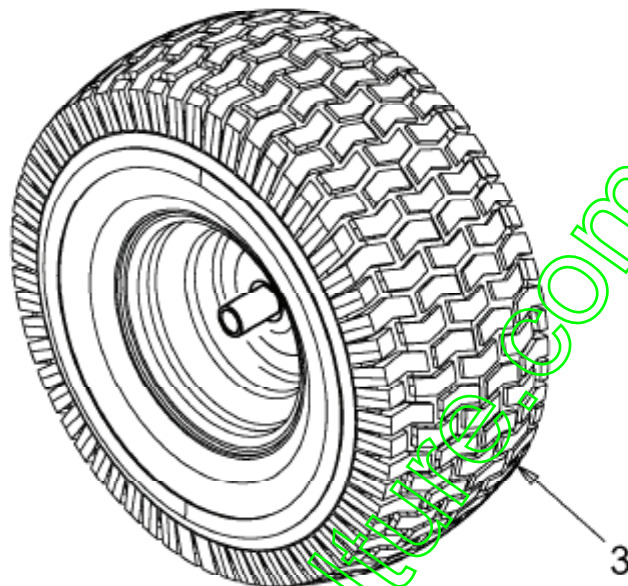
Position	Numéro de pièce	Quantité	Designation	DIN	Additional
1	634-04086	2	ROUE CPLT	SHL	
2	634-04081	1	JANTE CPLT	GLEITLAGER SCHWEIßTEIL	
3	734-1731	1	PNEU 15X600X6 DICO MULTI-TRAC	FINISH:	
4	741-0990B	1	PALIER DE BRIDE	m.SCHMIERNIPPEL:FINISH SCHWARZ	
5	741-0516B	1	BAGUE DE ROUE .760x1.00x1.20	FINISH: SCHWARZ	
6	734-0255	1	VALVE:PNEU	TR 412-P / 32.6mm / 934-0255	

[www.emc-motoculture.com](http://www.emc-motoculture.com)



Roues arrière 18x9.5 jusqu'au 30.06.2013

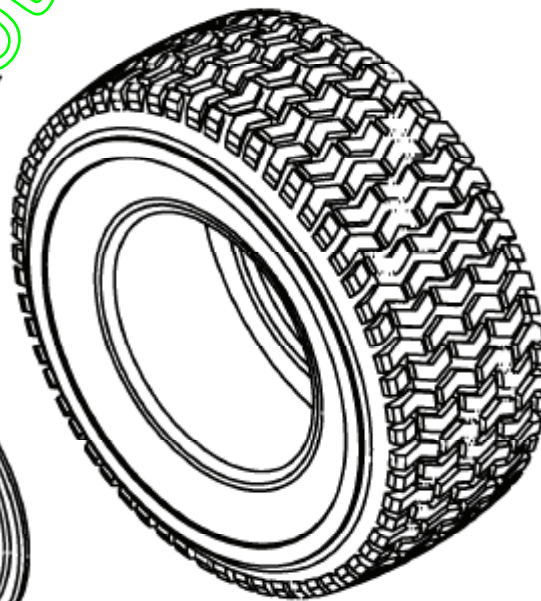
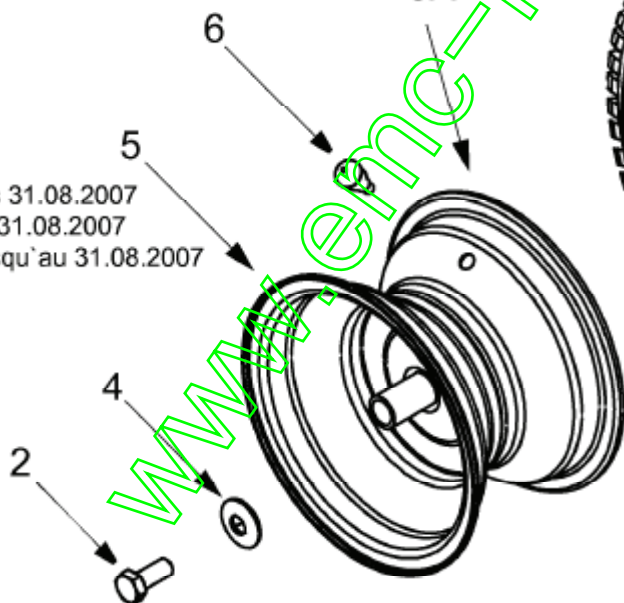
bis 30.06.2013  
to 30.06.2013  
jusqu'au 30.06.2013



ab 01.09.2007  
from 01.09.2007  
à partir du 01.09.2007

5A

bis 31.08.2007  
to 31.08.2007  
jusqu'au 31.08.2007



E3-02084B-01



Position	Numéro de pièce	Quantité	Designation	DIN	Additional
2	710-0627	2	VIS HEX. 5/16-24:.750 GR5:LOCK	FINISH:701-01000	
3	734-0817	2	ROUE COMPL 18X9.50-8 ST ELEC	734-0817662/-674/-WY/-CB	
4	736-0242	2	RONDELLE CONIQUE.340X.872X.060	FINISH:MTD STD 701-01001	
5	634-0070	2	JANTE	FINISH:788-0499/674/0662	
5A	634-04369	2	JANTE 8.0x7.0x .750 ID	FINISH:LACKIERT	
6	734-0255	2	VALVE:PNEU	TR 412-P / 32.6mm / 934-0255	
7	734-0448	2	PNEU 18*950*8	734-0448-0901	

[www.emc-motoculture.com](http://www.emc-motoculture.com)