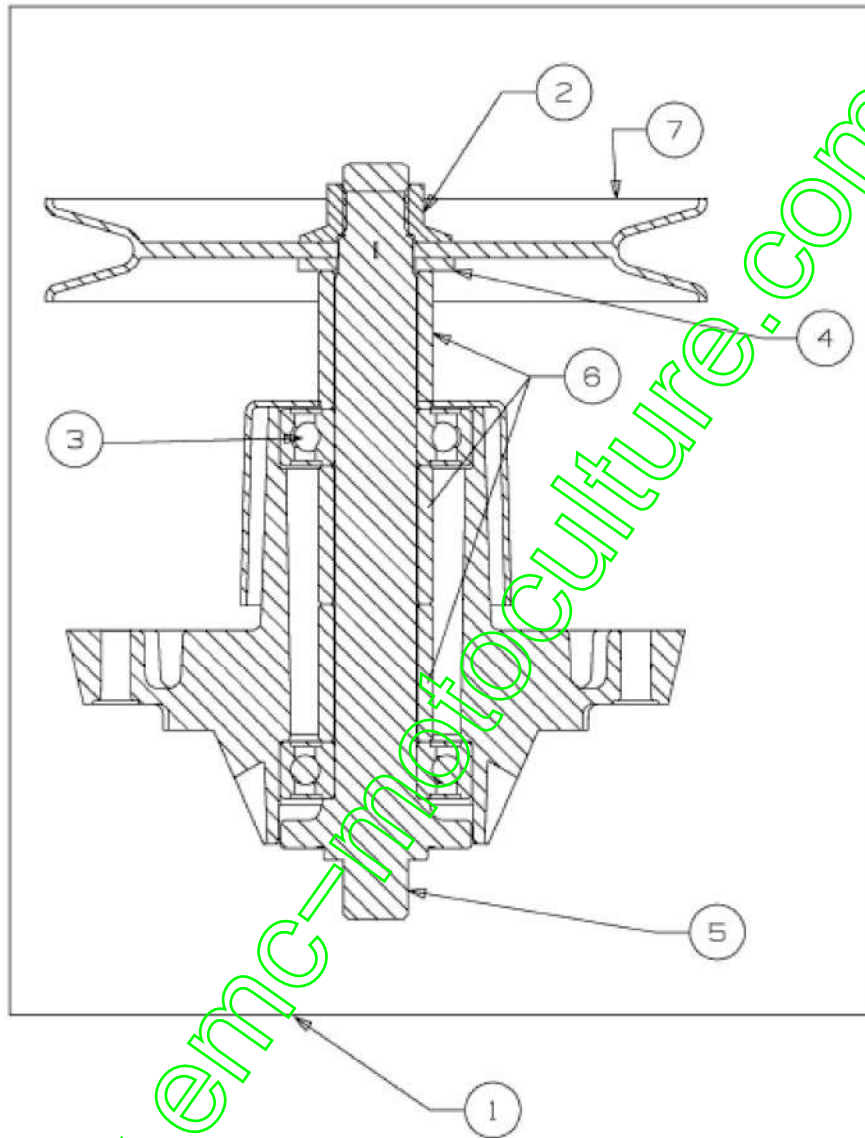


13HT76KN615 (2015) > PALIER 618-0609D

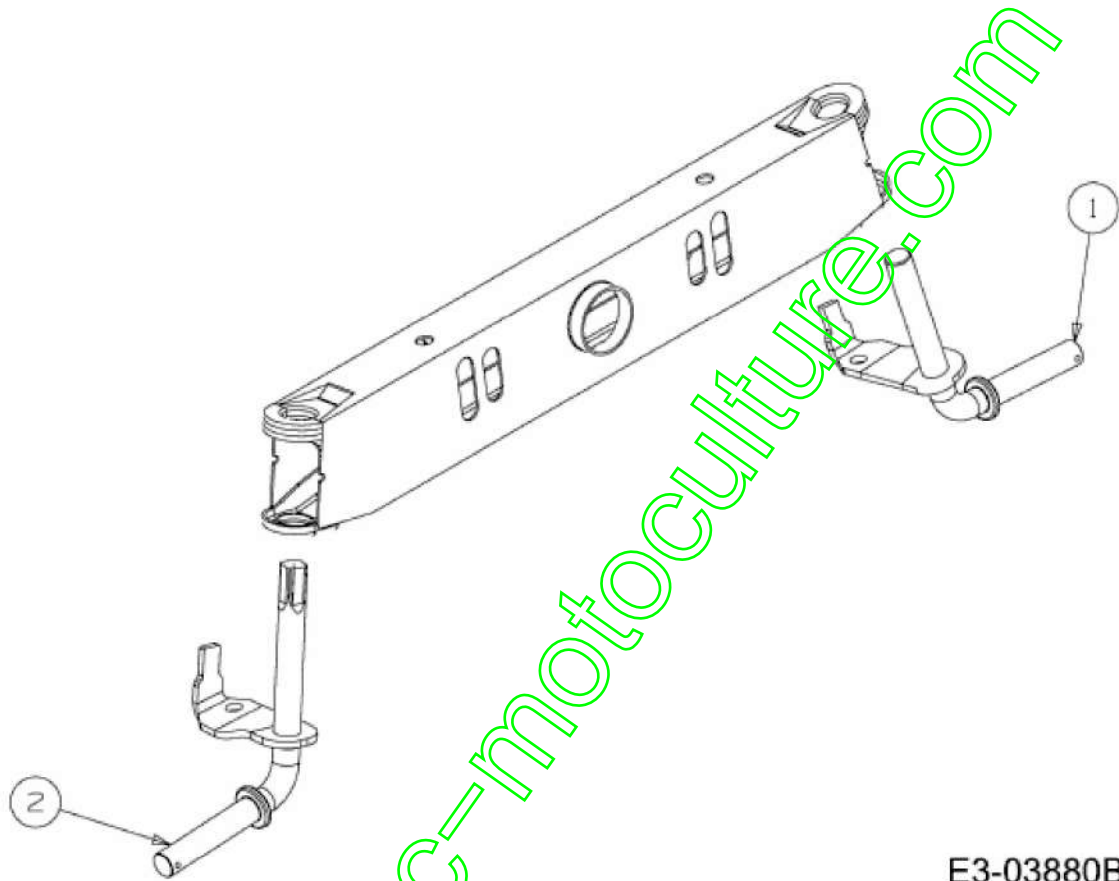


E3-01670D-01

| Position | Numéro de pièce | Quantité | Désignation                      | Dimension                          |
|----------|-----------------|----------|----------------------------------|------------------------------------|
| 1        | 618-0609D       | 1        |                                  |                                    |
| 2        | 712-0417A       | 1        | ÛCROU HEX. AV. FLAN<br>C: 5/8-18 | FINISH:MTD STD 701-01<br>000       |
| 3        | 741-0919A       | 2        | ROULEMENT A BILLES               | FINISH:                            |
| 4        | 736-0315        | 1        | RONDELLE FL                      | FINISH:STD 701-01000               |
| 5        | 738-1128        | 1        | AXE DE PALIER DE LA<br>MES:6.58" | FINISH:GEÖLT                       |
| 6        | 750-1000        | 3        | ENTRETOISE:.80x1.10x<br>1.330    | FINISH:GEÖLT                       |
| 7        | 756-1218        | 1        | POULIE DE PALIER DE<br>LAME      | O6.482xO.5625:FINISH S<br>IEHE ZG. |

www.emc-motoculture.com

13HT76KN615 (2015) > AXES

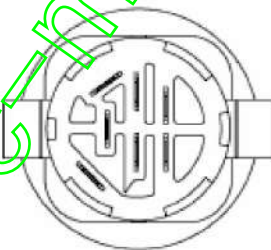
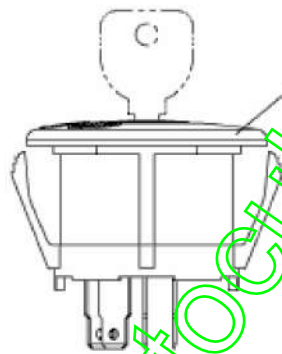
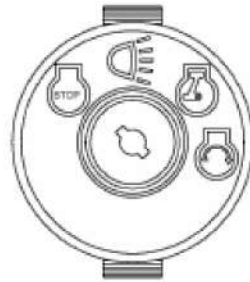


E3-03880B-01

| Position | Numéro de pièce | Quantité | Désignation                       | Dimension                 |
|----------|-----------------|----------|-----------------------------------|---------------------------|
| 1        | 638-04014A      | 1        | FUSEE GAUCHE                      | SCHWEISSTEIL:LAC<br>KIERT |
| 2        | 638-04013       | 1        | ACHSSCHENKEL:RE:LT5:<br>46" PKT:1 | SCHWEISSTEIL:LAC<br>KIERT |

[www.emc-motoculture.com](http://www.emc-motoculture.com)

13HT76KN615 (2015) > CONTACTEUR



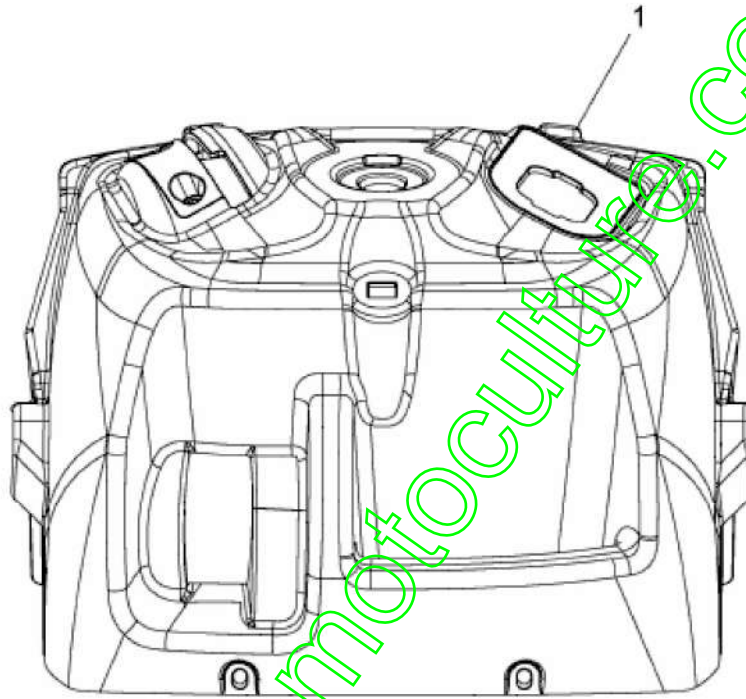
E3-04007A-01

[www.emcmotoculture.com](http://www.emcmotoculture.com)

| Position | Numéro de pièce | Quantité | Désignation      | Dimension        |
|----------|-----------------|----------|------------------|------------------|
| 1        | 725-1741        | 1        | CONTACTEUR A CLE | FINISH: 925-1741 |

[www.emc-motoculture.com](http://www.emc-motoculture.com)

13HT76KN615 (2015) > TABLEAU DE BORD



E3-07425B-01

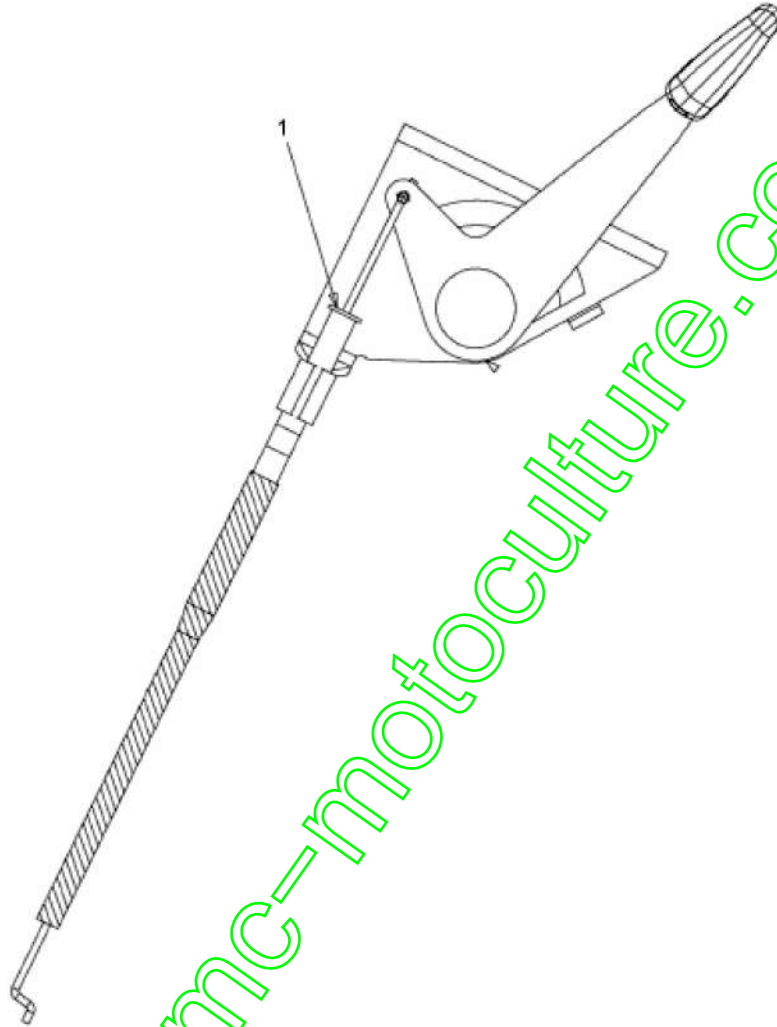
| Position | Numéro de pièce | Quantité | Désignation     | Dimension                 |
|----------|-----------------|----------|-----------------|---------------------------|
| 1        | 731-08054A      | 1        | TABLEAU DE BORD | FINISH:KUNSTSTOFF SCHWARZ |

[www.emc-motoculture.com](http://www.emc-motoculture.com)



13HT76KN615 (2015) > CABLE DE GAZ À PARTIR DU 11.01.2013

ab 11.01.2013  
from 11.01.2013  
à partir du 11.01.2013



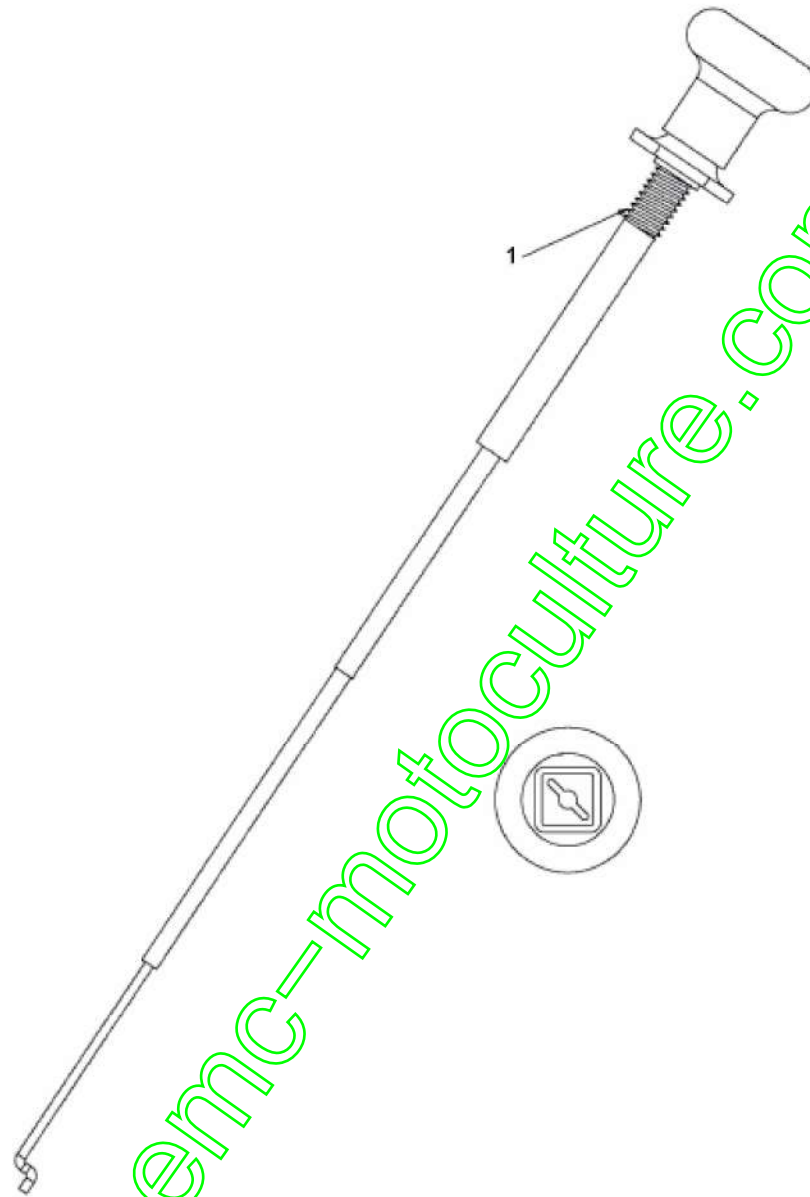
[www.emc-motoculture.com](http://www.emc-motoculture.com)

E3-08093A-01

| Position | Numéro de pièce | Quantité | Désignation | Dimension           |
|----------|-----------------|----------|-------------|---------------------|
| 1        | 746-04591       | 1        | CABLE GAZ   | MIT BEDIENUNGSHEBEL |

[www.emc-motoculture.com](http://www.emc-motoculture.com)

13HT76KN615 (2015) > COMMANDE DE CHOKE



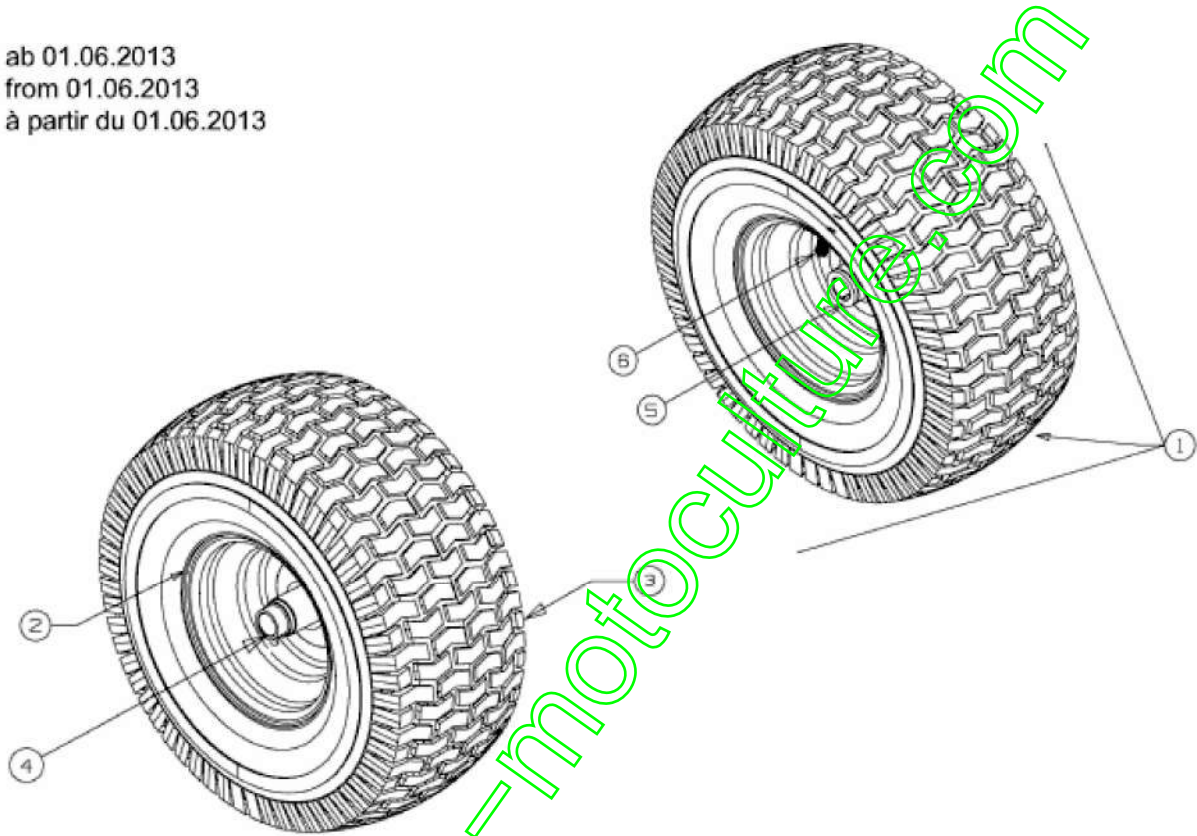
E3-08094A-01

| Position | Numéro de pièce | Quantité | Désignation   | Dimension               |
|----------|-----------------|----------|---------------|-------------------------|
| 1        | 746-04847       | 1        | CABLE STARTER | FINISH:ZUGKNOPF SCHWARZ |

[www.emc-motoculture.com](http://www.emc-motoculture.com)

13HT76KN615 (2015) > ROUES AVANT 15X6 À PARTIR DU 01.06.2013

ab 01.06.2013  
from 01.06.2013  
à partir du 01.06.2013

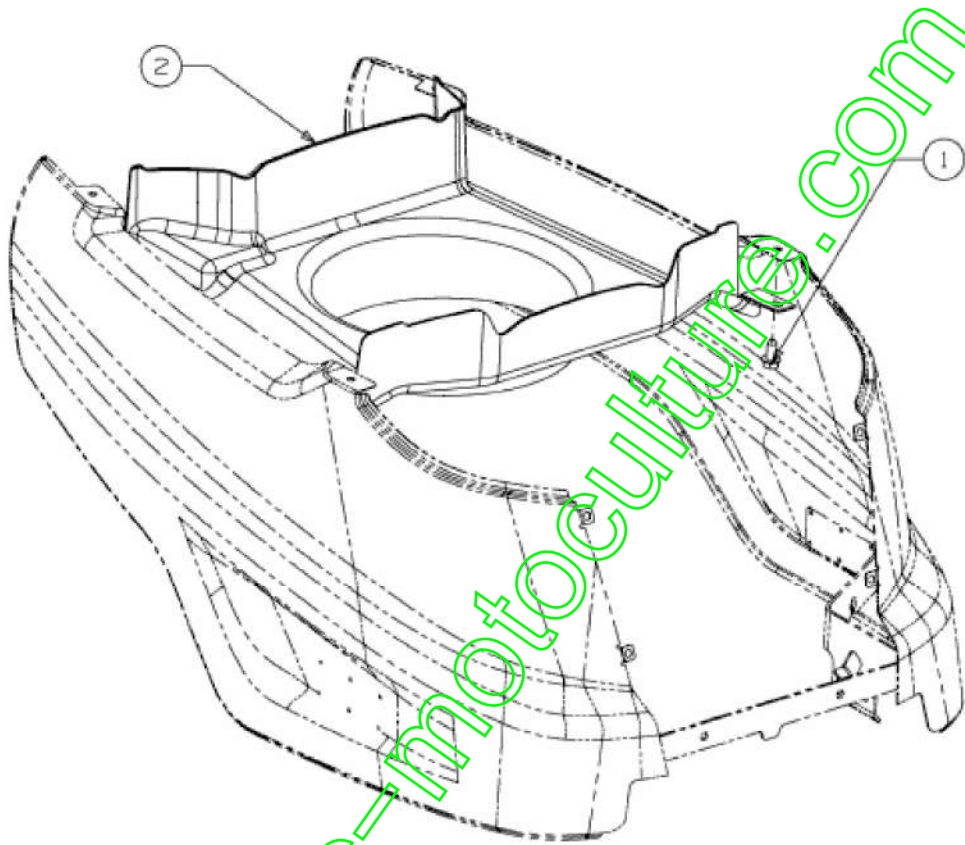


E3-02085C-01

| Position | Numéro de pièce | Quantité | Désignation                    | Dimension                       |
|----------|-----------------|----------|--------------------------------|---------------------------------|
| 1        | 634-04086       | 2        | ROUE CPLT                      | SHL                             |
| 2        | 634-04081       | 2        | JANTE CPLT                     | GLEITLAGER SCHWEIßT EIL         |
| 3        | 734-1731        | 2        | PNEU 15X600X6 DICO M ULTI-TRAC | FINISH:                         |
| 4        | 741-0990B       | 2        | BAGUE DE ROUE AVEC GRAISSEUR   | m.SCHMIERNIPPEL:FINIS H SCHWARZ |
| 5        | 741-0516B       | 2        | BAGUE DE ROUE .760x 1.00x1.20  | FINISH: SCHWARZ                 |
| 6        | 734-0255        | 2        | VALVE:PNEU                     | TR 412-P / 32.6mm / 934-0 255   |

www.emc-motoculture.com

13HT76KN615 (2015) > CONDUIT AIR



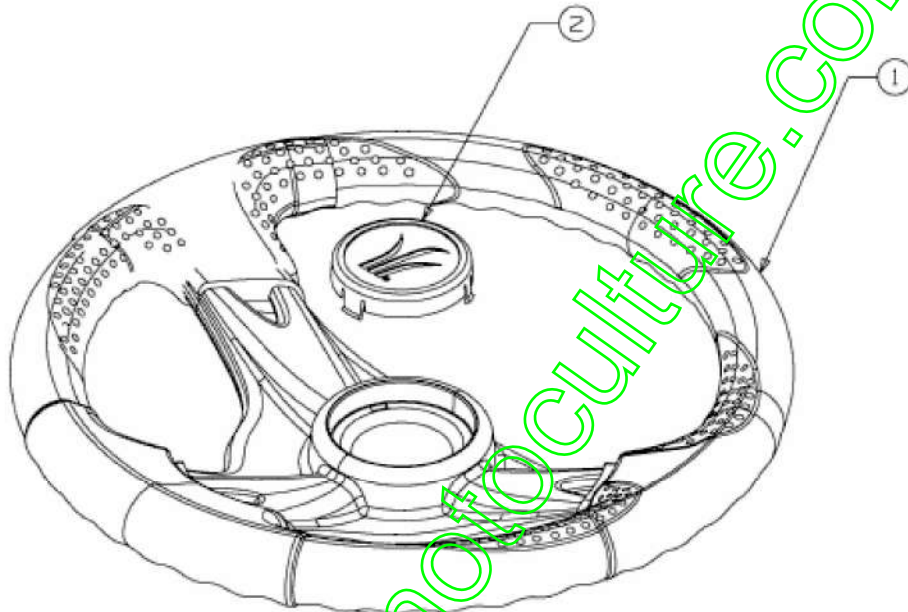
E3-09060A-01

| Position | Numéro de pièce | Quantité | Désignation                        | Dimension                     |
|----------|-----------------|----------|------------------------------------|-------------------------------|
| 1        | 710-04484       | 2        | VIS HEX. TT:5/16-18:.75<br>0:HXIND | FINISH:MTD SPEC-70<br>1-01002 |
| 2        | 631-05275       | 1        | KAWA.726,KOHLER TWI<br>N           | KAWA.726,KOHLER T<br>WIN      |

[www.emc-motoculture.com](http://www.emc-motoculture.com)



13HT76KN615 (2015) > VOLANT

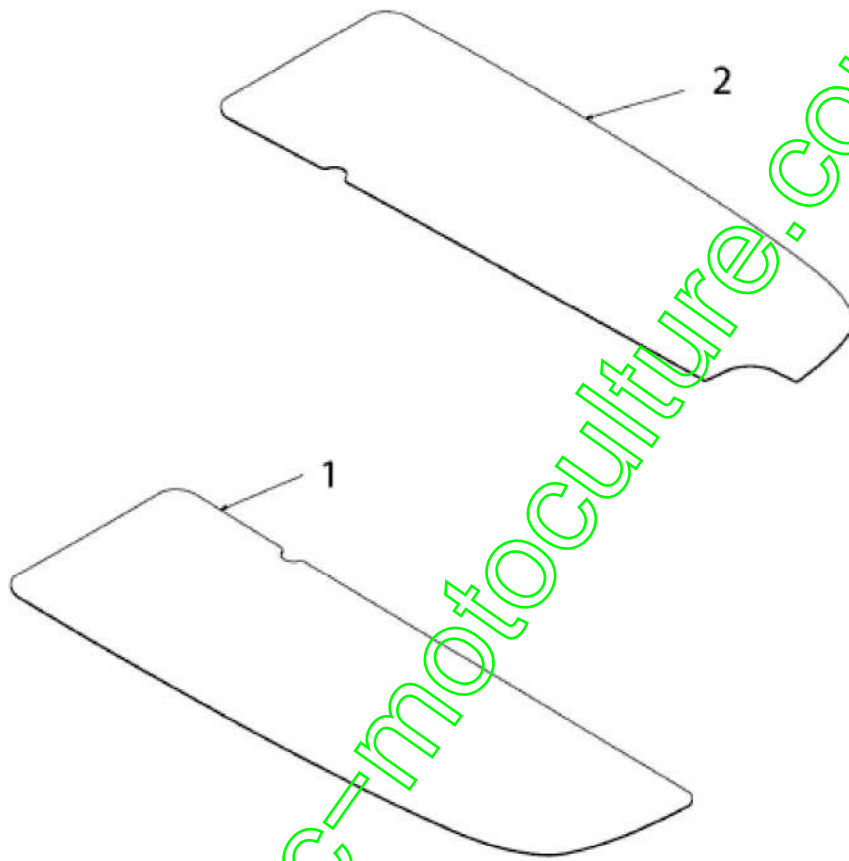


E3-02712B-01

| Position | Numéro de pièce | Quantité | Désignation              | Dimension                 |
|----------|-----------------|----------|--------------------------|---------------------------|
| 1        | 631-04008B      | 1        | VOLANT CPL.:3 RAYONS:12" | SOFTGRIP                  |
| 2        | 731-04040       | 1        | COUVERCLE DE VOLANT      | Ø 60mm:KUNSTSTOFF SCHWARZ |

[www.emc-motoculture.com](http://www.emc-motoculture.com)

13HT76KN615 (2015) > MARCHEPIED GARNITURE

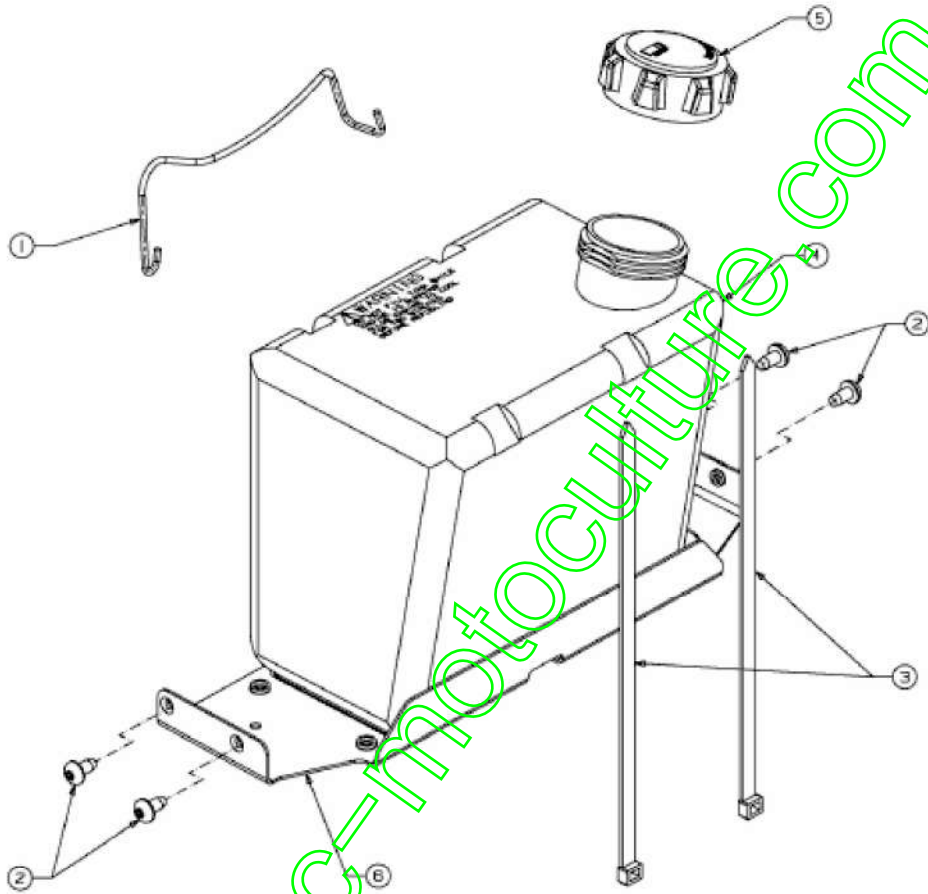


E3-02721A-01

| Position | Numéro de pièce | Quantité | Désignation             | Dimension      |
|----------|-----------------|----------|-------------------------|----------------|
| 1        | 723-04025       | 1        | MARCHE PIED DROIT<br>E  | FARBE: SCHWARZ |
| 2        | 723-04026       | 1        | MARCHE PIED GAUCHE<br>E | FARBE: SCHWARZ |

[www.emc-motoculture.com](http://www.emc-motoculture.com)

13HT76KN615 (2015) > RÉSERVOIR

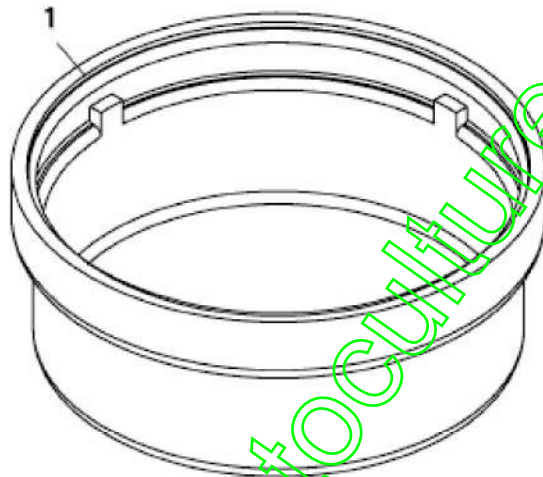


E3-07426A-01

| Position | Numéro de pièce | Quantité | Désignation              | Dimension                     |
|----------|-----------------|----------|--------------------------|-------------------------------|
| 1        | 683-04448       | 1        | TRINGLE SUPPORT BATTERIE | FINISH:LACKIERT MTD QUALITÄT  |
| 2        | 710-05070       | 4        | VIS                      | FINISH:SCHWARZ SPEC 701-01010 |
| 3        | 726-0230        | 2        | COLLIER                  | FINISH:SCHWARZ                |
| 4        | 751-0553        | 1        | RESERVOIR 5 L ENV.       | FINISH:NATUR SIEHE ZG.        |
| 5        | 751-0603A       | 1        | BOUCHON ESSENCE          | FINISH:KUNSTSTOFF SCHWARZ     |
| 6        | 783-07083       | 1        |                          |                               |

[www.emc-motoculture.com](http://www.emc-motoculture.com)

13HT76KN615 (2015) > ENJOLIVEURS



[www.emc-motoculture.com](http://www.emc-motoculture.com)

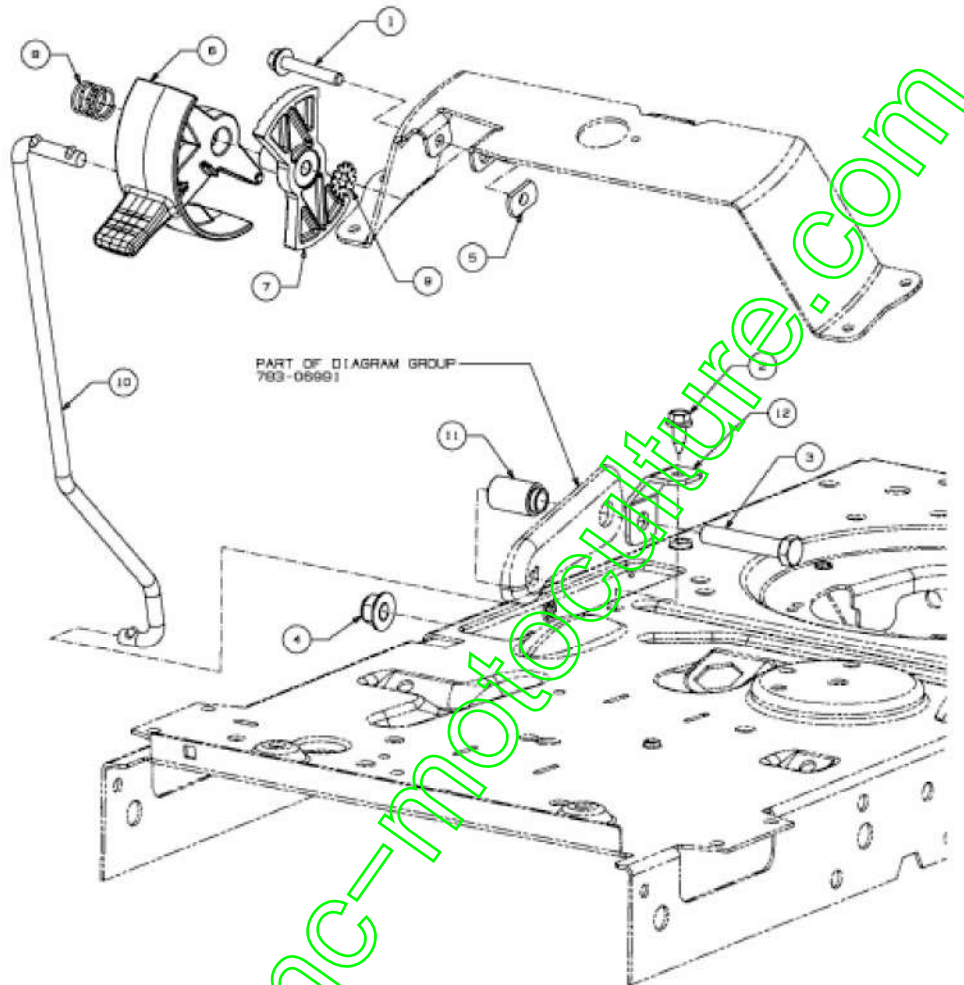
E3-02002B-01

| Position | Numéro de pièce | Quantité | Désignation           | Dimension                     |
|----------|-----------------|----------|-----------------------|-------------------------------|
| 1        | 731-0484A       | 2        | ENJOLIVEUR DEV<br>ANT | FINISH: SCHWARZ 931-0<br>484A |

[www.emc-motoculture.com](http://www.emc-motoculture.com)



13HT76KN615 (2015) > CONTROLE DE VITESSE

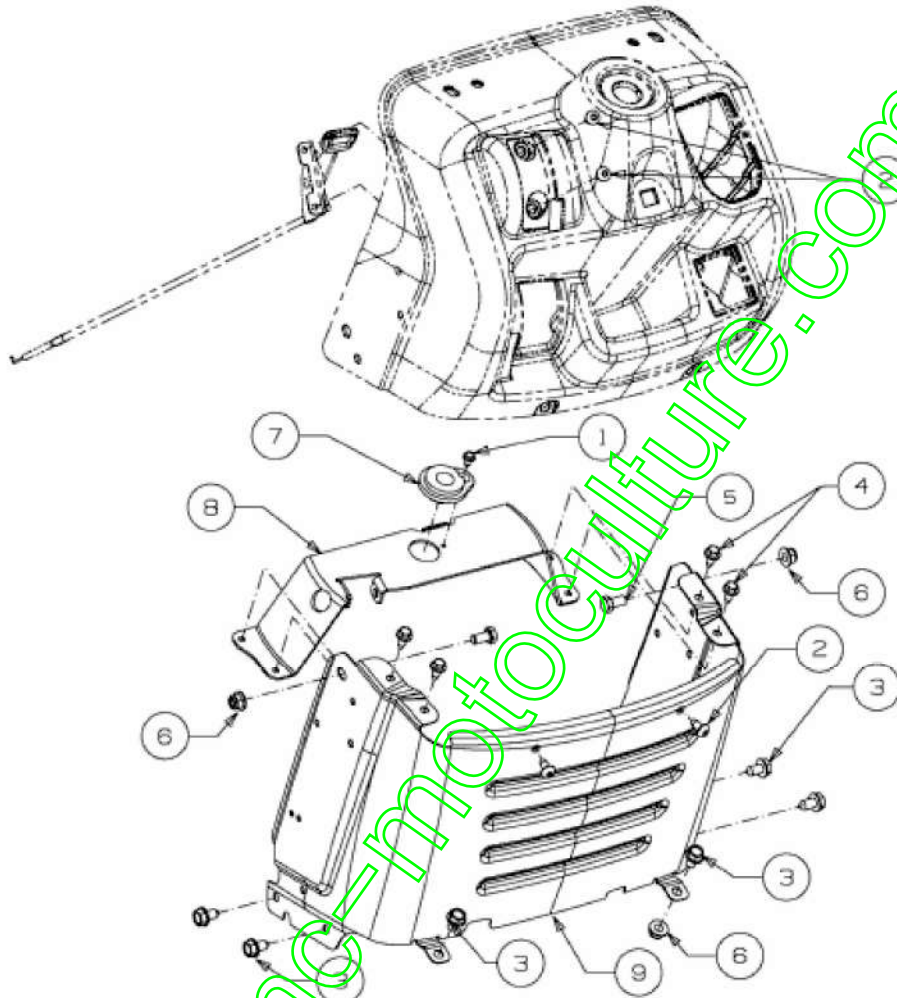


E3-07438B-01

| Position | Numéro de pièce | Quantité | Désignation                    | Dimension                     |
|----------|-----------------|----------|--------------------------------|-------------------------------|
| 1        | 710-05237       | 1        | VIS                            | FINISH:MTD STD 701-01000      |
| 2        | 710-1652        | 1        | VIS HEX. TT:1/4-20:.625:HXINDW | FINISH:MTD-SPEC-701-01002     |
| 3        | 710-3144        | 1        | VIS HEX.: 3/8-16:2.00:GR5:STD  | FINISH:STD 701-01000 910-3144 |
| 4        | 712-04065       | 1        | ÜCROU HEXAGONAL                | FINISH:SPEC-101616 912-04065  |
| 5        | 712-0414        | 1        | ÜCROU 1/4-20                   | FINISH:PLAIN                  |
| 6        | 731-07885B      | 1        | POIGNEE DE VITESSE             | FINISH:KUNSTSTOFF GELB        |
| 7        | 731-07965A      | 1        | 731-07965A                     | FINISH:PLAIN (SCHWARZ)        |
| 8        | 732-04877       | 1        | RESSORT                        | FINISH:GELBVERZ:MTD 701-01000 |
| 9        | 736-3006        | 1        | RONDELLE (1/4) X -75           | FINISH:GELBVERZ:MTD 701-01001 |
| 10       | 747-05398       | 1        | TRINGLE DE VITESSE             | FINISH:701-01000 OR 701-01007 |
| 11       | 750-04465C      | 1        | ENTRETOISE                     | FINISH:GEÖLT                  |
| 12       | 783-06823       | 1        | SUPPORT                        | KONTROLLHEBEL:VERZ. SIEHE ZG. |

www.emc-motoculture.com

13HT76KN615 (2015) > TABLEAU DE BORD PIÈCE INFÉRIEURE



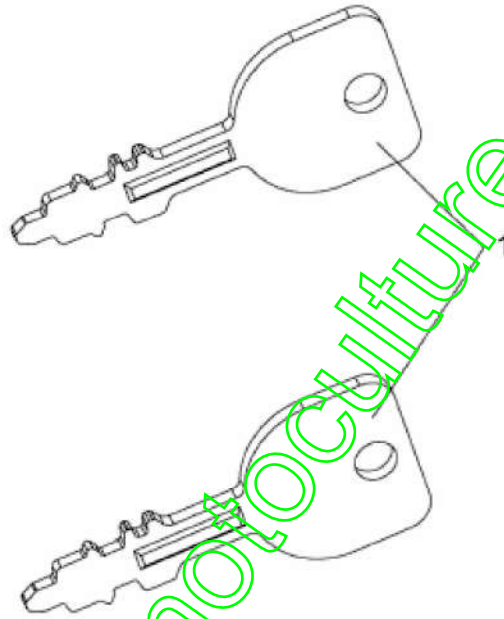
E3-07428C-01

| Position | Numéro de pièce | Quantité | Désignation                        | Dimension                        |
|----------|-----------------|----------|------------------------------------|----------------------------------|
| 1        | 710-0224        | 1        | VIS PARK:#10-16:0.500:<br>HXINDWSH | FINISH:MTD STD 701-01<br>002     |
| 2        | 710-05070       | 4        | VIS                                | FINISH:SCHWARZ SPEC<br>701-01010 |
| 3        | 710-0604A       | 6        | VIS 5/16-18:0.625                  | FINISH:MTD SPEC-701-0<br>1002    |
| 4        | 710-1652        | 4        | VIS HEX. TT:1/4-20:.625:<br>HXINDW | FINISH:MTD SPEC-701-<br>01002    |
| 5        | 710-3025        | 2        | VIS                                | FINISH:701-01000                 |
| 6        | 712-04063       | 3        | ÜCROU HEX. AVEC FLA<br>NC          | FINISH:MTD STD SPEC-<br>101616   |
| 7        | 741-0587        | 1        | SUPPORT                            | FINISH:NATUR                     |
| 8        | 783-06785<br>C  | 1        |                                    |                                  |
| 9        | 783-06811<br>D  | 1        |                                    |                                  |

www.emc-motoculture.com

---

13HT76KN615 (2015) > CLÉ DE CONTACT



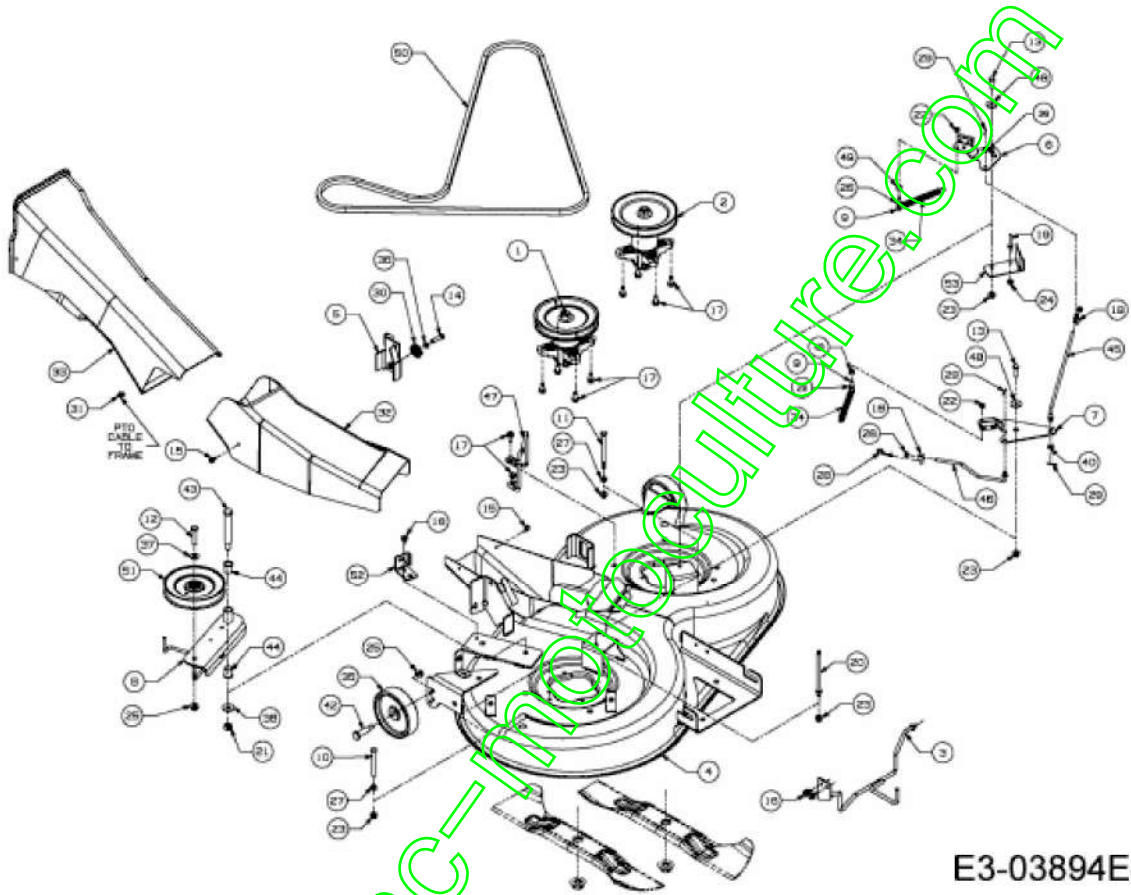
[www.emc-motoculture.com](http://www.emc-motoculture.com)

E3-08235A-01

| Position | Numéro de pièce | Quantité | Désignation    | Dimension |
|----------|-----------------|----------|----------------|-----------|
| 1        | 725-1744A       | 2        | CLÜ DE CONTACT | FINISH:   |

[www.emc-motoculture.com](http://www.emc-motoculture.com)

13HT76KN615 (2015) > PLATEAU DE COUPE N (41"/105CM)



E3-03894E-01

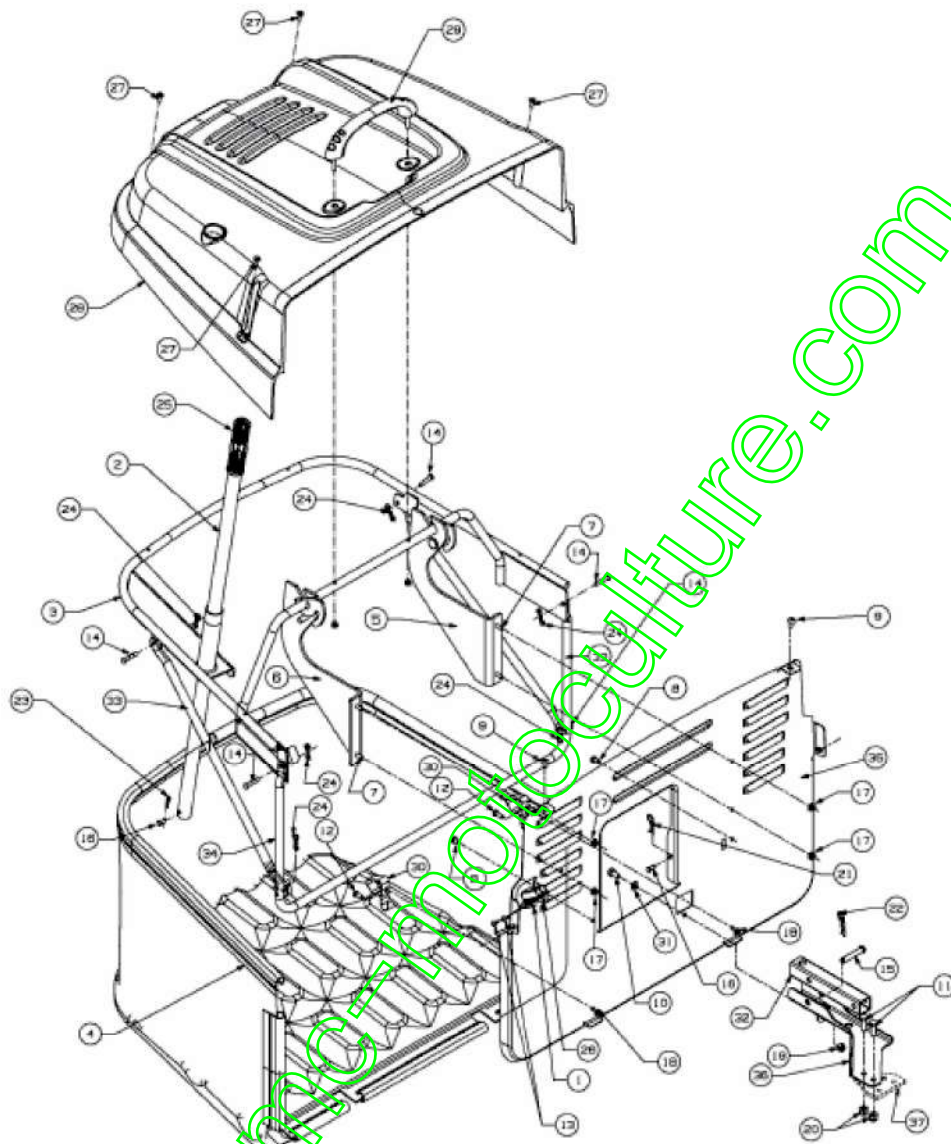
| Position | Numéro de pièce | Quantité | Désignation                        | Dimension                          |
|----------|-----------------|----------|------------------------------------|------------------------------------|
| 1        | 618-04657<br>A  | 1        |                                    |                                    |
| 2        | 618-0609<br>D   | 1        |                                    |                                    |
| 3        | 647-04143       | 1        | TRINGLE DE PLATEAU                 | SCHWEISSTEIL:647-041<br>43-Z       |
| 4        | 683-04390<br>B  | 1        |                                    |                                    |
| 5        | 683-04396       | 1        | SUPPORT PLATEAU                    | SCHWEISSTEIL:LACKIE<br>RT LT-5     |
| 6        | 683-04409       | 1        | BREMSE VOLLST:DECK:<br>A/C/N-DECK  | LT5: NIETTEIL                      |
| 7        | 683-04417       | 1        | FREIN DE LAME                      | LT5: NIETTEIL                      |
| 8        | 683-04420       | 1        | SPANNROLLENTRAGER<br>VOLLST.       | SCHWEISSTEIL:FINISH:L<br>ACKIERT   |
| 9        | 710-0106        | 2        | VIS HEX. 1/4-20:1.25:GR5:<br>SPEC  | FINISH:MTD STD 701-01<br>000       |
| 10       | 710-0189        | 1        | VIS HEX. 5/16-18x3.00:GR<br>5:STD  | 701-01000 or 101616 910-<br>0189   |
| 11       | 710-0190        | 1        | VIS                                | FINISH:MTD STD 701-01<br>000       |
| 12       | 710-0347        | 1        | VIS HEX. 3/8-16:1.75:GR5:<br>STD   | FINISH:MTD STD 701-01<br>000       |
| 13       | 710-0376        | 2        | VIS HEX.:5/16-18:1.00:GR<br>5:STD  | FINISH:MTD STD 701-01<br>000       |
| 14       | 710-0528        | 1        | VIS HEX. 5/16-18:1.25:GR<br>5:STD  | FINISH:STD 701-01000 9<br>10-0528  |
| 15       | 710-0599        | 2        | VIS   SIX PANS CREUX               | MTD SPEC-701-01002 or<br>101617    |
| 16       | 710-0607        | 4        | VIS HEX.TT5/16-18:.500HX<br>INDWSh | FINISH:MTD SPEC-701-0<br>1002      |
| 17       | 710-1260<br>A   | 10       | VIS TT:5/16-18:.750 HXIND<br>WSH   | LAGERGEH.MESSERWE<br>LLE:701-01002 |
| 18       | 711-0736        | 2        | AXE                                | FINISH:MTD SPEC 701-0<br>1000      |
| 19       | 711-0993        | 1        | GUIDE COURROIE                     |                                    |



| Position | Numéro de pièce | Quantité | Désignation                 | Dimension                      |
|----------|-----------------|----------|-----------------------------|--------------------------------|
|          |                 |          |                             | FINISH:701-01006 911-0993      |
| 20       | 711-1044 A      | 1        | GUIDE COURROIE              | LG FINISH:701-01006            |
| 21       | 712-0290        | 1        | ÜCROU 7/16-14               | FINISH:MTD STD 701-01000       |
| 22       | 712-0291        | 2        | ÜCROU EX AF-43013           | FINISH:MTD STD SPEC-100015     |
| 23       | 712-04063       | 5        | ÜCROU HEX. AVEC FLANC       | FINISH:MTD STD SPEC-101616     |
| 24       | 712-04064       | 1        | ÜCROU HEXAGONAL             | GRF:FINISH:701-01000 912-04064 |
| 25       | 712-04065       | 3        | ÜCROU HEXAGONAL             | FINISH:SPEC-101616 912-04065   |
| 26       | 712-3006        | 4        | ÜCROU HEXAGONAL             | FINISH:PHOS AND OIL            |
| 27       | 712-3010        | 2        | ÜCROU HEX. 5/16-18:GR5      | FINISH:MTD SPEC 701-01000      |
| 28       | 714-0145        | 1        | GOUPILLE                    | FINISH:PHOS & OIL              |
| 29       | 714-0507        | 3        | GOUPILLE PENDUE 3/32 X .750 | FINISH:MTD SPEC-100015         |
| 30       | 717-04074       | 1        | PIGNON HAUTEUR PLAT ÉAU     | FINISH:SIEHE ZG. 917-04074     |
| 31       | 729-04033       | 1        | CLIPS SERRE CABLE           | 729-04033                      |
| 32       | 731-06251       | 1        | CANAL D'ÜJECTION INFÜRIEUR  | FINISH:SCHWARZ                 |
| 33       | 731-06252       | 1        | CANAL D'ÜJECTION SUPÜRIEUR  | FINISH:SCHWARZ                 |
| 34       | 732-0604 A      | 2        | RESSORT                     | FINISH:PHOS AND OIL            |
| 35       | 734-0973        | 4        | ROULETTE DE PLATEAU         | FINISH:KUNSTSTOFF SCHWARZ      |
| 36       | 736-0119        | 2        | RONDELLE                    | FINISH:MTD STD 701-01001       |
| 37       | 736-0300        | 1        | RONDELLE                    | FINISH:MTD SPEC-100015         |
|          |                 |          |                             |                                |

| Position | Numéro de pièce | Quantité | Désignation                        | Dimension                          |
|----------|-----------------|----------|------------------------------------|------------------------------------|
| 38       | 736-04097<br>A  | 1        | RONDELLE:PLATE:11.65x<br>28.75x3mm | FINISH:MTD SPEC 701-0<br>1000      |
| 39       | 736-0700        | 1        | RONDELLE A8.4 DIN 125              | MTD SPEC-100015 24.64<br>81.18     |
| 40       | 736-3020        | 1        | RONDELLE                           | FINISH:MTD STD 701-01<br>000       |
| 42       | 738-0373        | 2        | VIS à ÉPAULE .496x1.525:<br>3/8-16 | FINISH:MTD STD 701-01<br>000       |
| 43       | 738-0476        | 1        | VIS à ÉPAULE .625x3.50:7/<br>16-14 | PHOS & OIL ODER SPEC<br>101616     |
| 44       | 741-0591        | 2        | BAGUE                              | FINISH:NATUR 941-0591              |
| 45       | 747-04775       | 1        | TIGE DE FREIN                      | FINISH:SPEC-100015                 |
| 46       | 747-04776       | 1        | TIGE DE FREIN                      | FINISH:SPEC-100015                 |
| 47       | 747-04840<br>A  | 1        | 747-04840A                         | FINISH:747-04840A-Z                |
| 48       | 748-0234        | 2        | RONDELLE EPAULEE                   | FINISH:ROSTPREVENTI<br>ON          |
| 49       | 750-05381       | 2        | ENTRETOISE                         | FINISH:IN ÖL SAE 30 GE<br>DIPPT    |
| 50       | 754-04174       | 1        | COURROIE DE COUPE                  | 754-04174                          |
| 51       | 756-04050       | 1        | POULIE DE COURR. TR.<br>Ø 6.0"DIA  | KUGELGELAGERT:SCH<br>WARZ LACKIERT |
| 52       | 783-04740       | 1        | FÜHRUNGSBL:BOWDENZ<br>UG:DECKBETÄT | FINISH:LACKIERT                    |
| 53       | 783-05868       | 1        | CARTER COURROIE                    | FINISH:LACKIERT MTD S<br>TD        |

13HT76KN615 (2015) > DISPOSITIF DE RÉCEPTION DE L'HERBE

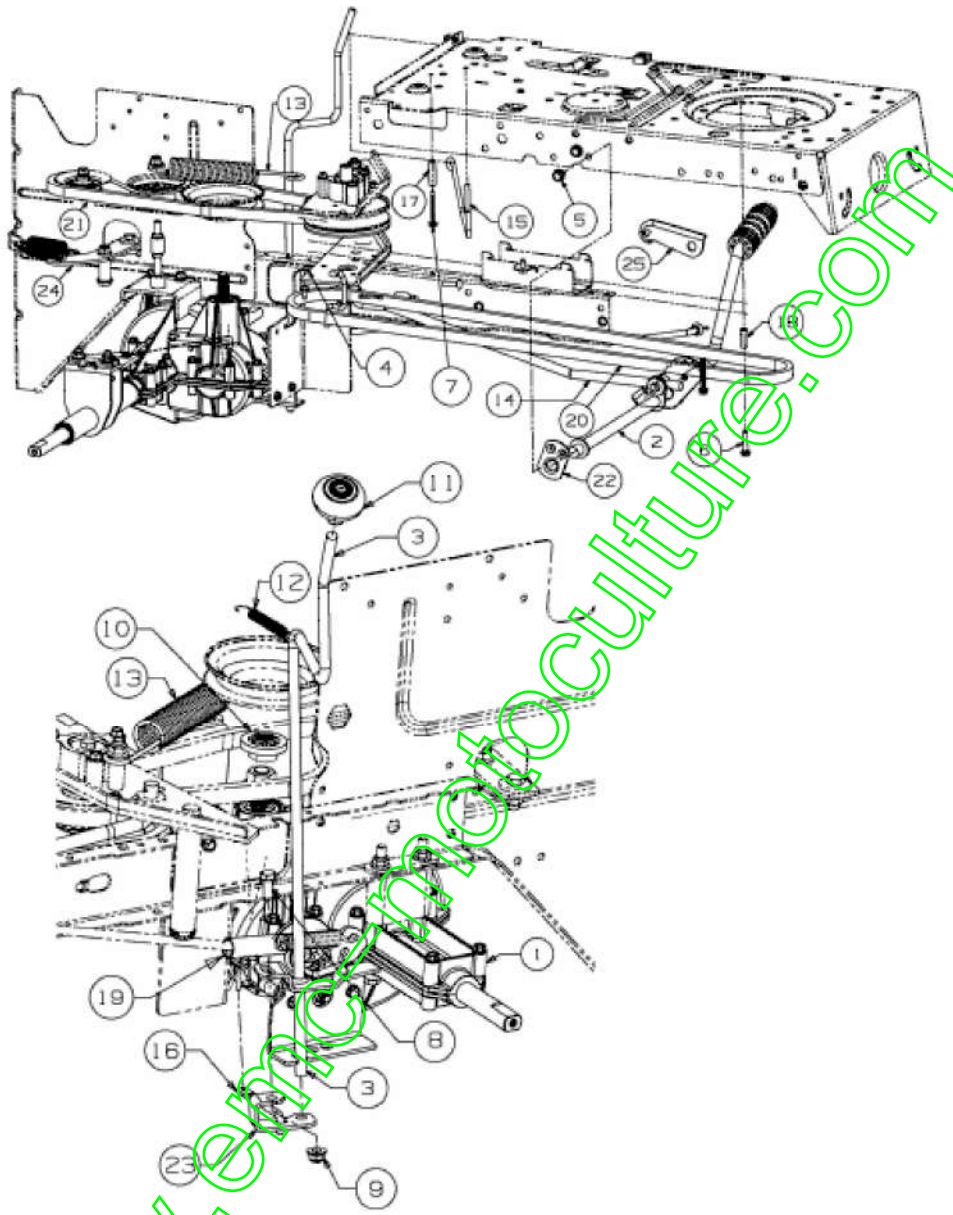


E3-03879C-01

| Position | Numéro de pièce | Quantité | Désignation                     | Dimension                      |
|----------|-----------------|----------|---------------------------------|--------------------------------|
| 1        | 17962           | 1        | PLAQUE DE SUPP. P. COMMUTATEUR  | FINISH:WIE GESTANZT            |
| 2        | 649-04052       | 1        | STAHLROHR VST:HEBEL:GRSBG:500   | SCHWEISSTEIL:FINISH:LACKIERT   |
| 3        | 649-04076A-S    | 1        | ARMATURE DE BAC                 | SCHWEISSTEIL:FINISH:LACKIERT   |
| 4        | 664-04085       | 1        | TISSU BAC DE RAMASSAGE          | 700:FINISH SCHWARZ             |
| 5        | 683-04421       | 1        | EINHÄNGEKONSOLE VOL LST:LINKS   | SCHWEISSTEIL:FINISH:LACKIERT   |
| 6        | 683-04422       | 1        | EINHÄNGEKONSOLE VOL LST:RECHTS  | SCHWEISSTEIL:FINISH:LACKIERT   |
| 7        | 710-04666       | 4        | VIS HEXAGONALE                  | FINISH:701-010015              |
| 8        | 710-0599        | 2        | VIS i SIX PANS CREUX            | MTD SPEC-701-01002 o r 101617  |
| 9        | 710-1017        | 2        | VIS                             | FINISH:MTD SPEC-100016         |
| 10       | 710-1376        | 1        | VIS i SIX PANS CREUX            | FINISH:701-01000 21.1441.68    |
| 11       | 710-1682        | 2        | VIS                             | FINISH:SPEC-100015 21.1441.72  |
| 12       | 710-1690        | 2        | VIS                             | MTD SPEC-100015 21.1441.46     |
| 13       | 710-1760        | 2        | VIS                             | PHOS & OIL (ähnlich 710-0779A) |
| 14       | 711-04138       | 6        | GOUJON i ÜPINGLER .25 DIAX1.25L | FINISH:SIEHE ZG.               |
| 15       | 711-0679A       | 1        | GOUJON i ÜPINGLER               | FINISH:SIEHE ZG.               |
| 16       | 711-0791        | 3        | GOUJON                          | FINISH:SIEHE ZG.               |
| 17       | 712-04064       | 4        | ÜCROU HEXAGONAL                 | GRF:FINISH:701-01000 912-04064 |
| 18       | 712-0691        | 4        | ÜCROU HEXAGONAL                 | MTD SPEC-100015 24.1426.14     |
| 19       | 712-0692        | 1        | ÜCROU HEXAGONAL 24.1426.18      | FINISH:SPEC-100015 24.1426.18  |

| Position | Numéro de pièce | Quantité | Désignation                     | Dimension                      |
|----------|-----------------|----------|---------------------------------|--------------------------------|
| 20       | 712-0714        | 2        | ÜCROU                           | FINISH:MTD SPEC-100 015        |
| 21       | 714-0145        | 2        | GOUPILLE                        | FINISH:PHOS & OIL              |
| 22       | 714-0147        | 1        | GOUPILLE ; RESSORT:.12 5 X 1.75 | FINISH:SIEHE ZG.               |
| 23       | 714-04033       | 1        | GOUPILLE FENDUE .072 x.92 LG    | FINISH:PHOS & OIL              |
| 24       | 714-04040       | 6        | GOUPILLE                        | FINISH:VERZINKT                |
| 25       | 720-0204        | 1        | POIGNEE:1.0 ID x 4.7 LG         | FINISH:SCHWARZ                 |
| 26       | 725-04039       | 1        | SECURITE                        | FINISH:GRAY/BLACK 9 25-04039   |
| 27       | 728-04044       | 4        | RIVET                           | WÜRTH #093614816               |
| 28       | 731-06106       | 1        | COUVERCLE DE BAC                | FINISH:KUNSTSTOFF S CHWARZ     |
| 29       | 731-06163       | 1        | POIGNEE                         | FINISH:SCHWARZ                 |
| 30       | 732-0838A       | 2        | RESSORT CLIPS DE BAC            | VERSCHLUSS                     |
| 31       | 736-0700        | 1        | RONDELLE A8.4 DIN 125           | MTD SPEC-100015 24.6 481.18    |
| 32       | 749-04013 A     | 1        | 4KT-ROHR:ANHÄNGEKUPLUNG         | 30x30mmx179.39mm L G ST37:LACK |
| 33       | 749-04108       | 2        | KREUZ-VERBINDUNGSR OHR:BAG 250L | FINISH:LACKIERT 500 MR         |
| 34       | 749-04418       | 1        | ROHRRAHMEN:VORN:200 L           | FINISH:LACKIERT                |
| 35       | 783-05731       | 1        | HECKPLATTE:E/N-DECK:LT5         | FINISH:LACKIERT MTD QUALITÄT   |
| 36       | 783-05801 A     | 1        | SUPPORT                         | FINISH:LACKIERT MTD QUALITÄT   |
| 37       | 783-1363        | 1        | 783-1363                        | FINISH:BLAU CHROMA TIEREN *    |

13HT76KN615 (2015) > ENTRAÎNEMENT DE ROULEMENT, PEDALE, LEVIER DE COMMANDE



E3-03859F-01

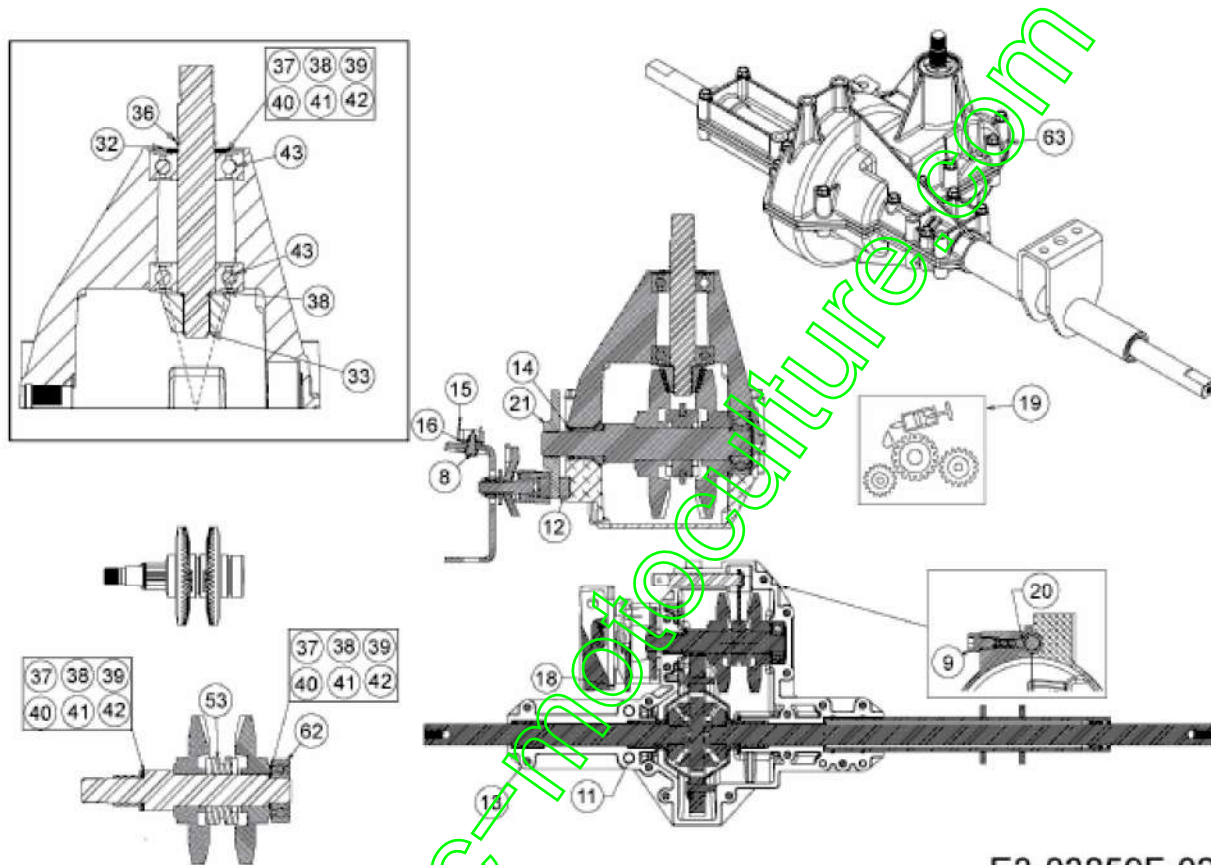
| Position | Numéro de pièce | Quantité | Désignation                        | Dimension                       |
|----------|-----------------|----------|------------------------------------|---------------------------------|
| 1        | 618-04575<br>A  | 1        | BOITE                              | FINISH:                         |
| 2        | 647-04132<br>A  | 1        | PEDAL VOLLST:TRANS:R<br>R DIS LT-5 | SCHWEISSTEIL:LACKI<br>ERT       |
| 3        | 647-04140<br>A  | 1        | LEVIER INVERSEUR                   | FINISH:BLAU CHROMA<br>TIEREN *  |
| 4        | 683-04429       | 1        | SPANNROLLENTÄGER<br>VST:VARI:LT5   | HECKAUSWURF:FINIS<br>H LACKIERT |
| 5        | 710-0604A       | 2        | VIS 5/16-18:0.625                  | FINISH:MTD SPEC-701-<br>01002   |
| 6        | 710-0809        | 1        | VIS HEX. TT:1/4-20:1.250<br>HXIND  | FINISH:MTD STD 701-0<br>1002    |
| 7        | 710-1026        | 1        | VIS HEX:TT:1/4-20:1.750            | FINISH:MTD-SPEC-100<br>016      |
| 8        | 710-3008        | 1        | VIS 5/16-18:75:GR5 STD             | FINISH:MTD STD 701-0<br>1000    |
| 9        | 712-04063       | 1        | ÜCROU HEX. AVEC FLAN<br>C          | FINISH:MTD STD SPEC<br>-101616  |
| 10       | 718-04407       | 1        | MOYEU: POULIE:5/8 DEN<br>TELURE    | VERZÄHNUNG                      |
| 11       | 720-04028       | 1        | POIGNEE INVERSEUR                  | FINISH:SCHWARZ                  |
| 12       | 732-04488       | 1        | RESSORT DE TRACTION                | FINISH:701-01006                |
| 13       | 732-04517       | 1        | RESSORT                            | FINISH:PHOS AND OIL             |
| 14       | 747-04780       | 1        | TRINGLE                            | LT-5 FINISH:MTD STD<br>100015   |
| 15       | 747-04803       | 1        | TIGE                               | FINISH:LACKIERT                 |
| 16       | 747-04850       | 1        | TIGE                               | LT-5 HECKAUSWURF:7<br>01-01000  |
| 17       | 750-04456       | 1        | ENTRETOISE                         | FINISH:VERZINKT SIEH<br>E ZG.   |
| 18       | 750-0566A       | 1        | ENTRETOISE                         | FINISH:VERZINKT SIEH<br>E ZG.   |
| 19       | 750-0802        | 1        | ENTRETOISE / .640IDX.76<br>0DX2.63 | FINISH:KUNSTSTOFF<br>SCHWARZ    |
| 20       | 754-04211       | 1        |                                    | POLY                            |

| Position | Numéro de pièce | Quantité | Désignation                 | Dimension                    |
|----------|-----------------|----------|-----------------------------|------------------------------|
|          |                 |          | COURROIE MOTEUR VARIABLEUR  |                              |
| 21       | 754-04268       | 1        | COURROIE VARIATEUR PONT LT5 | POLY                         |
| 22       | 783-04536<br>B  | 1        | STÜTZBLECH:PEDAL:LT-5       | FINISH:LACKIERT MTD QUALITÄT |
| 23       | 783-05853<br>C  | 1        | PATTE                       | FINISH:MTD STD SPEC -100015  |
| 24       | 783-06623       | 1        | SUPPORT                     | FINISH:783-06623-Z           |
| 25       | 783-06991       | 1        | SUPPORT                     | SD-TR./HYDRO:VERZINKT        |

www.emc-motoculture.com



13HT76KN615 (2015) > BOÎTE DE VITESSE 618-04575A



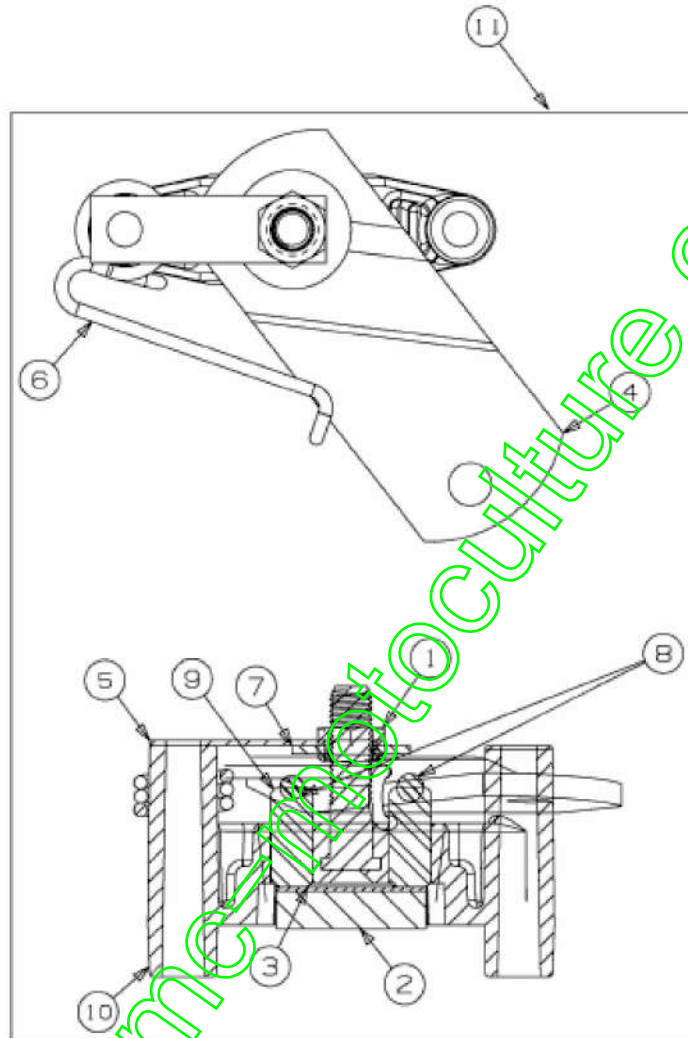
E3-03859F-02

| Position | Numéro de pièce | Quantité | Désignation                    | Dimension                  |
|----------|-----------------|----------|--------------------------------|----------------------------|
| 8        | 710-0227        | 2        | VIS                            | FINISH:MTD STD 701-01002   |
| 9        | 710-04731       | 1        | SCHRAUBE TT 5/16-18 .375lg     | 710-04731                  |
| 11       | 710-1325        | 17       | VIS HEXAGONALE                 | FINISH:MTD SPEC-701-01002  |
| 12       | 717-0678        | 1        | PLAQUETTE DE FREIN             | FINISH:                    |
| 13       | 719-04358       | 1        | 719-04358                      | 719-04358                  |
| 14       | 721-0213        | 1        | JOINT SPI .625x.812x.094       | FINISH:                    |
| 15       | 725-1644        | 1        | INTERRUPTEUR DE SUCURITÜ       | FINISH:VERZINKT SIEHE ZG.  |
| 16       | 726-0320        | 1        | PLAQUE D'ISOLATION             | FINISH:NATUR ODER SCHWARZ  |
| 18       | 736-0342        | 1        | RONDELLE PLATE .283 x.75 x.030 | FINISH:MTD STD 701-01000   |
| 19       | 6021-U1-1073    | X        | GRAISSE (400G)                 | +Li12 HYDROXYSTEARAT       |
| 20       | 741-1134        | 1        | BIJLE                          | FINISH:SIEHE ZG.           |
| 21       | 761-0202        | 1        | DISQUE DE FREIN                | FINISH:ÖL UND FETTFREI     |
| 32       | 716-0231        | 1        | CIRCLIPS                       | FINISH:PHOS & OIL/916-0231 |
| 33       | 716-0385        | 1        | CIRCLIPS                       | FINISH:SCHWARZ PHOS & OIL  |
| 36       | 732-0614        | 1        | CIRCLIPS                       | FINISH:ZINC PHOSPHATE      |
| 37       | 736-0336        | 1        | RONDELLE 5/8X1.00X.030         | ZINC SIEHE ZG.             |
| 38       | 736-0337        | 2        | RONDELLE 5/8 IDX1.0 ODX.040    | MTD STD 701-01001 936-0337 |
| 39       | 736-0349        | 1        | RONDELLE 5/8 IDX10 ODX .020    | FINISH:SIEHE ZG.           |
| 40       | 736-04337       | 1        | RONDELLE                       | FINISH:GEÖLT               |
| 41       | 736-0494        | 1        | RONDELLE                       |                            |

| Position | Numéro de pièce | Quantité | Désignation     | Dimension                 |
|----------|-----------------|----------|-----------------|---------------------------|
|          |                 |          |                 | FINISH:ZINC SIEHE ZG.     |
| 42       | 736-0495        | 1        | RONDELLE        | FINISH:SIEHE ZG. 936-0495 |
| 43       | 741-0524A       | 2        | ROULEMENT       | FINISH: *                 |
| 53       | 718-04045       | 1        | PIGNON BALADEUR | FINISH:SIEHE ZG.          |
| 62       | 741-0524A       | 1        | ROULEMENT       | FINISH: *                 |
| 63       | 618-04575A      | 1        | BOITE           | FINISH:                   |

[www.emc-motoculture.com](http://www.emc-motoculture.com)

13HT76KN615 (2015) > FREIN

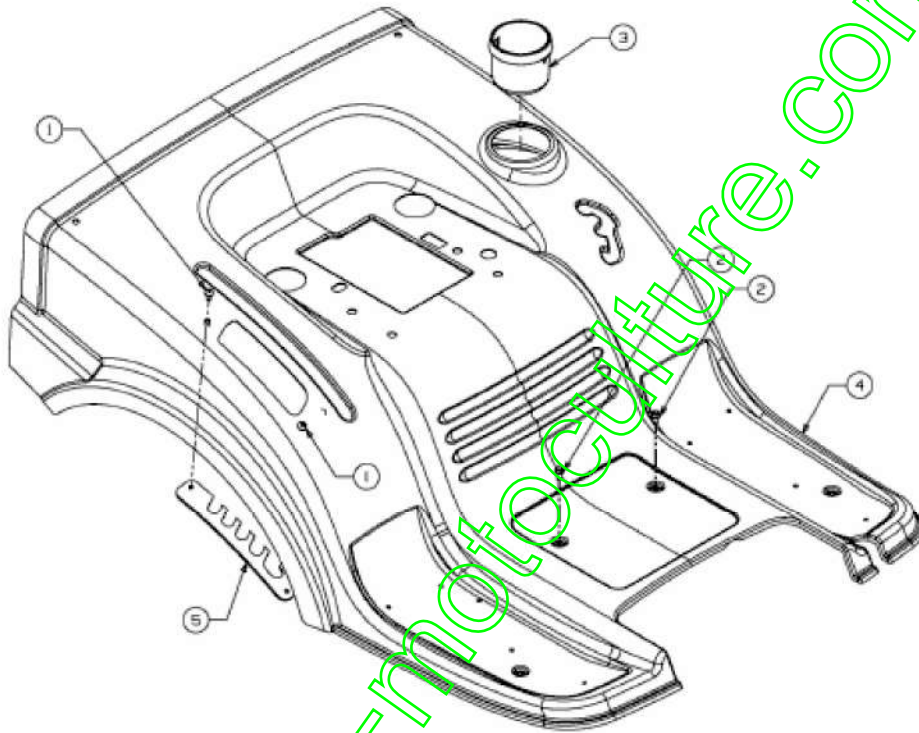


E3-03859F-03

| Position | Numéro de pièce | Quantité | Désignation                   | Dimension                 |
|----------|-----------------|----------|-------------------------------|---------------------------|
| 1        | 712-0273        | 1        | ÜCROU HEXAGONAL 5/16-24"      | FINISH:MTD STD 701-01000  |
| 2        | 717-0678        | 1        | PLAQUETTE DE FREIN            | FINISH:                   |
| 3        | 717-0682        | 1        | INSERT DE FREIN               | FINISH:NONE 917-0682      |
| 4        | 717-0700        | 1        | LEVIER DE FREIN, i DROITE     | 717-0700                  |
| 5        | 718-0150        | 1        | LANG. DE SUPP.: ANTI ROTATION | FINISH:GELB VERZINKT      |
| 6        | 732-0742        | 1        | RESSORT                       | 732-0742/932-0742         |
| 7        | 736-0371        | 1        | RONDELLE 1.344XA .875"        | FINISH:701-01001          |
| 9        | 741-0343        | 2        | GOUJON DE PRESSION 5/16"      | FINISH:SIEHE ZG. 941-0343 |
| 10       | 761-0198A       | 1        | APPUI DE FREIN                | FINISH:NONE 961-0198A     |
| 11       | 661-0006        | 1        | SUPPORT PLAQUETTE FREIN       | FINISH:                   |

www.emc-motoculture.com

13HT76KN615 (2015) > JUPE

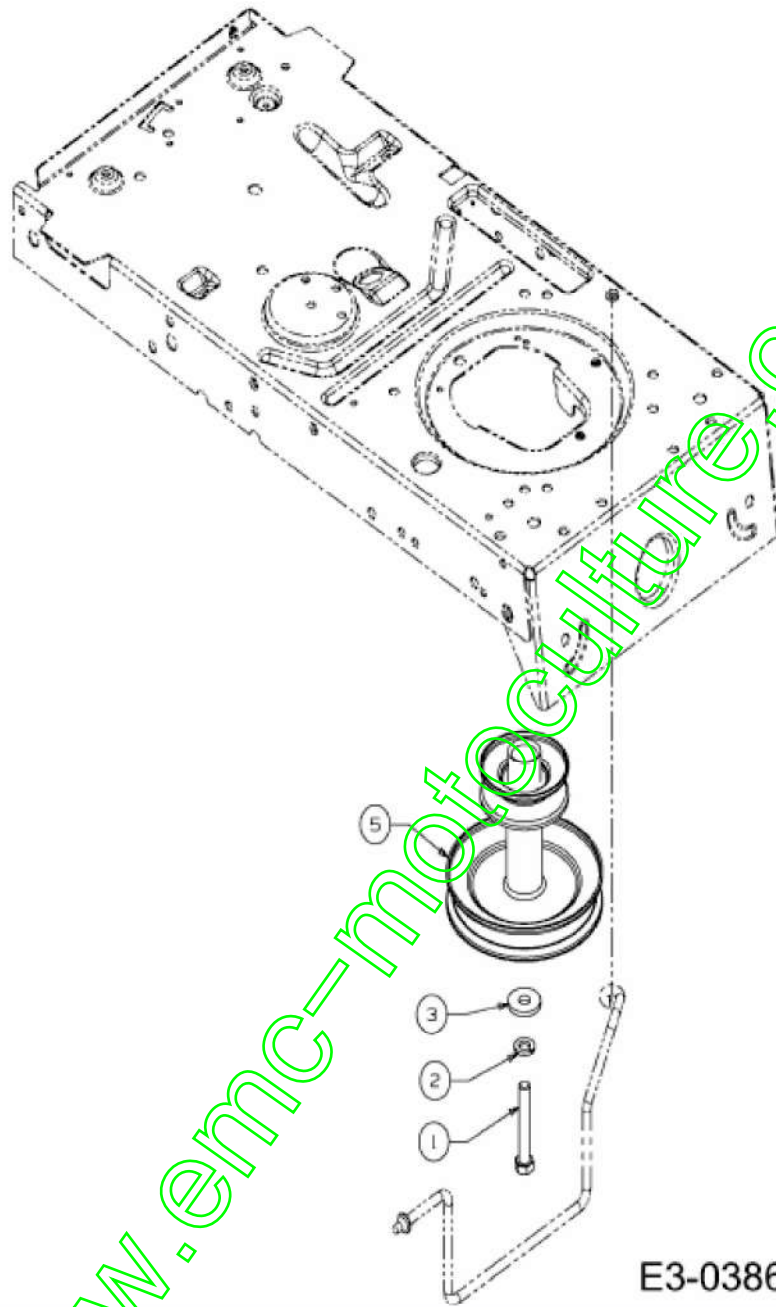


E3-03884C-01

| Position | Numéro de pièce | Quantité | Désignation                | Dimension                      |
|----------|-----------------|----------|----------------------------|--------------------------------|
| 1        | 710-05070       | 2        | VIS                        | FINISH: SCHWARZ SPEC 701-01010 |
| 2        | 710-0599        | 2        | VIS ; SIX PANS CREUX       | MTD SPEC-701-01002 or 101617   |
| 3        | 731-04591 A     | 1        | PORTE GOBELET              | FINISH: KUNSTSTOFF SCHWARZ     |
| 4        | 783-05744       | 1        | JUPE                       | FINISH: LACKIERT               |
| 5        | 783-05875 A     | 1        | SELECTEUR HAUTEUR DE COUPE | FINISH: 783-05875A-Z 5 POS     |

[www.emc-motoculture.com](http://www.emc-motoculture.com)

13HT76KN615 (2015) > POULIE MOTEUR



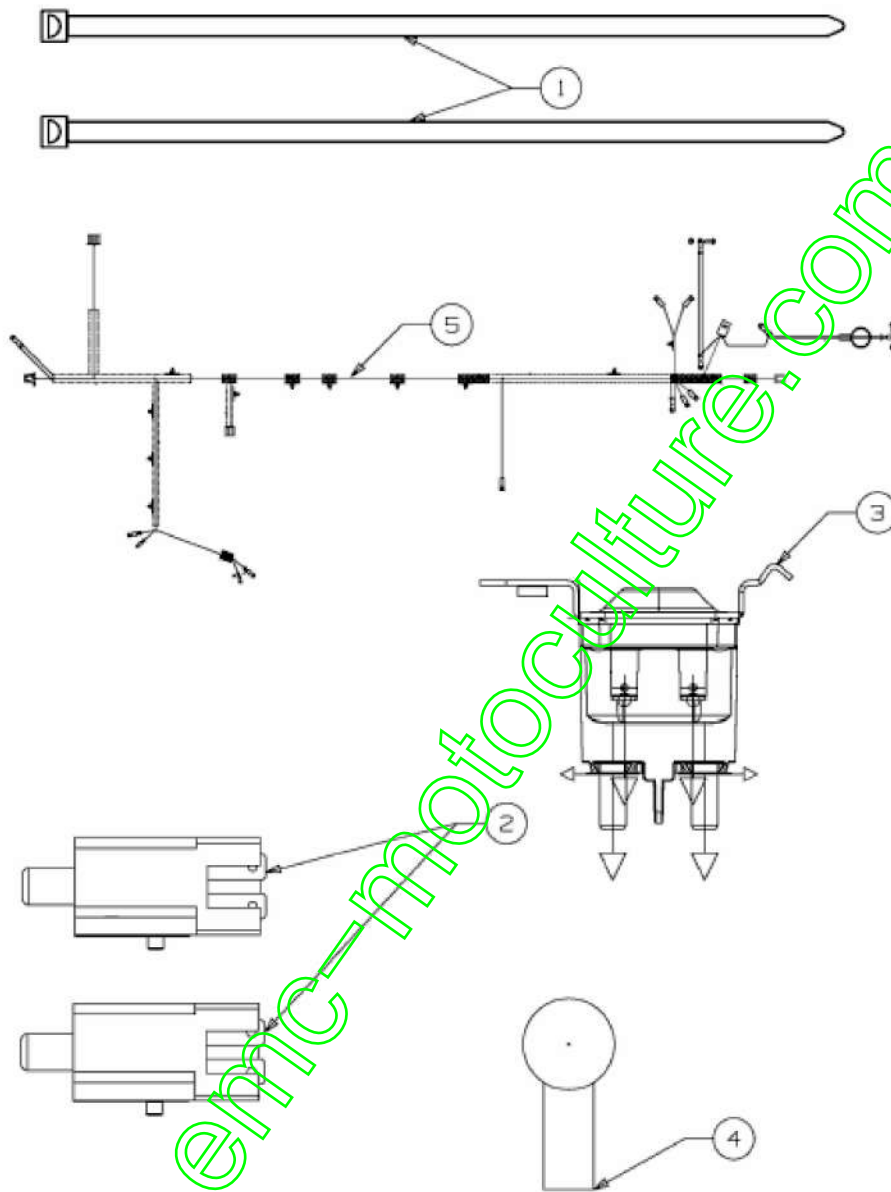
E3-03869A-01



| Position | Numéro de pièce | Quantité | Désignation                      | Dimension                       |
|----------|-----------------|----------|----------------------------------|---------------------------------|
| 1        | 710-04607       | 1        | VIS POULIE MOTEUR                | FINISH:MTD SPEC-1000<br>15      |
| 2        | 736-0171        | 1        | RONDELLE GROWER                  | FINISH:MTD STD 701-01<br>001    |
| 3        | 736-0322        | 1        | RONDELLE .450 X 1.25<br>0 X .164 | FINISH:701-01001 936-0<br>322   |
| 5        | 756-04310       | 1        | POULIE MOTEUR                    | GETRIEBE.FINISH:SPE<br>C-100015 |

[www.emc-motoculture.com](http://www.emc-motoculture.com)

13HT76KN615 (2015) > ASSORTIMENT ÉLECTRIQUE

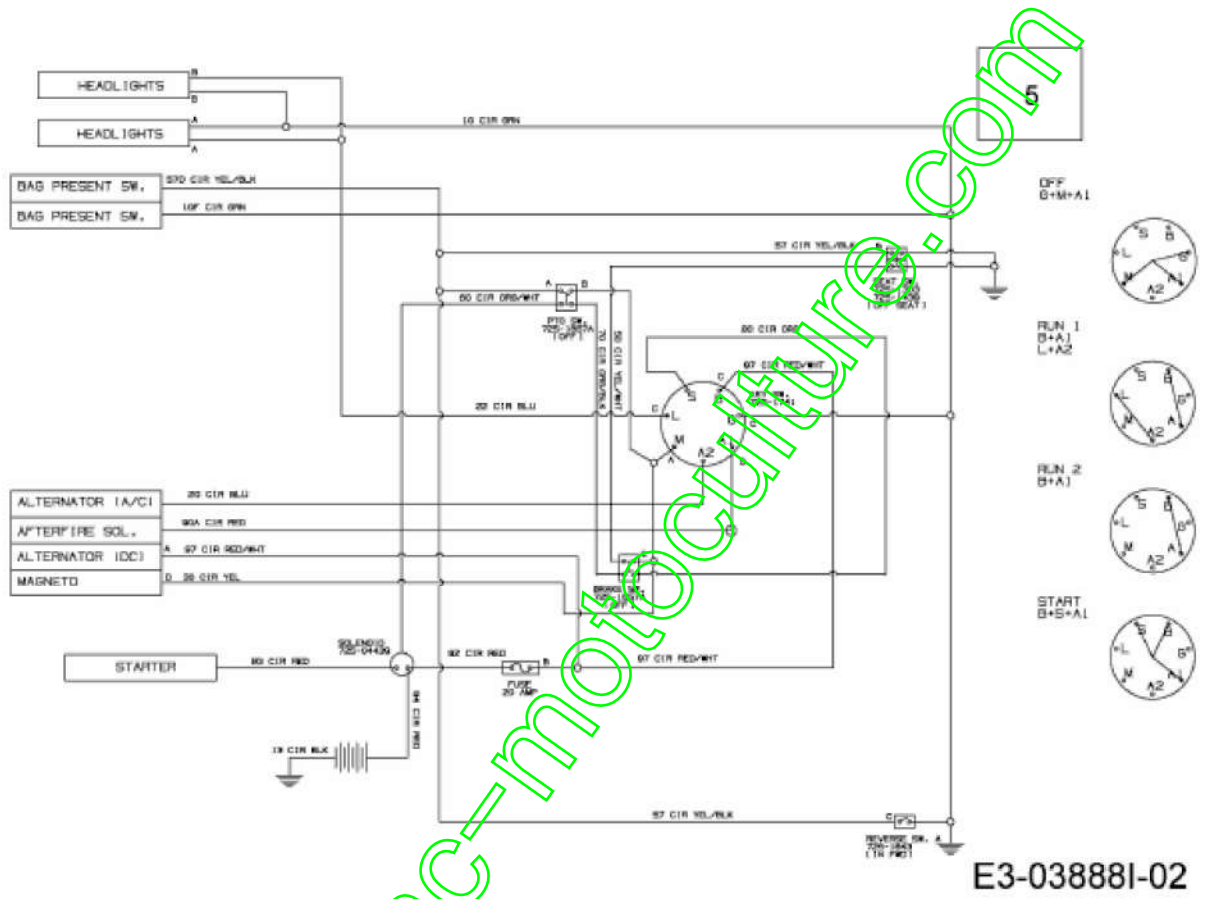


E3-03888I-01

| Position | Numéro de pièce | Quantité | Désignation                        | Dimension                  |
|----------|-----------------|----------|------------------------------------|----------------------------|
| 1        | 725-0157        | 2        | COLLIER DE SERRAGE3/<br>16X0.5X7.4 | MATERIAL:NYLON-S<br>CHWARZ |
| 2        | 725-04363       | 2        | SECURITE                           | FINISH:SIEHE ZG.           |
| 3        | 725-06153       | 1        | SOLENOIDE                          | FINISH:                    |
| 4        | 725-3237        | 1        | COUVERCLE POLE / ROU<br>GE         | BATTERIE FINISH:RO<br>T    |
| 5        | 725-05502A      | 1        | 725-05502A                         | ACDC:RR BAG                |

[www.emc-motoculture.com](http://www.emc-motoculture.com)

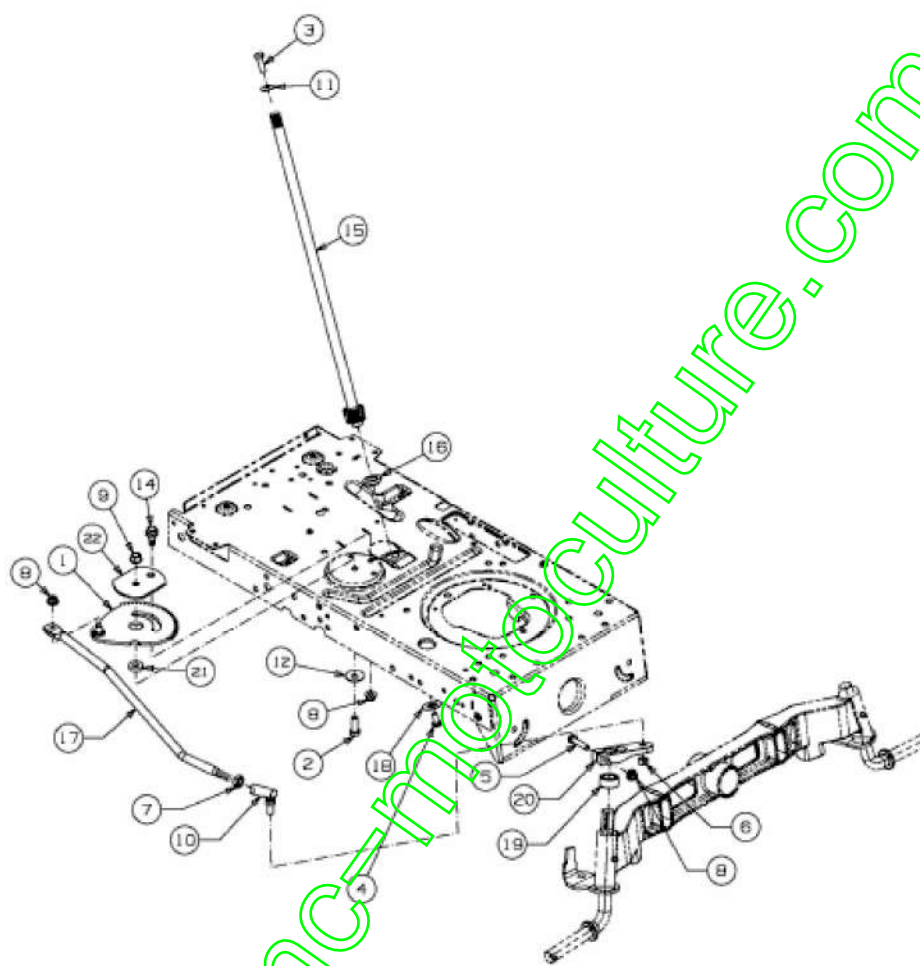
13HT76KN615 (2015) > PLAN ÉLECTRIQUE



| Position | Numéro de pièce | Quantité | Désignation | Dimension   |
|----------|-----------------|----------|-------------|-------------|
| 5        | 725-05502A      | 1        | 725-05502A  | ACDC:RR BAG |

[www.emc-motoculture.com](http://www.emc-motoculture.com)

13HT76KN615 (2015) > SYSTÈME DIRECTION



E3-03840F-01

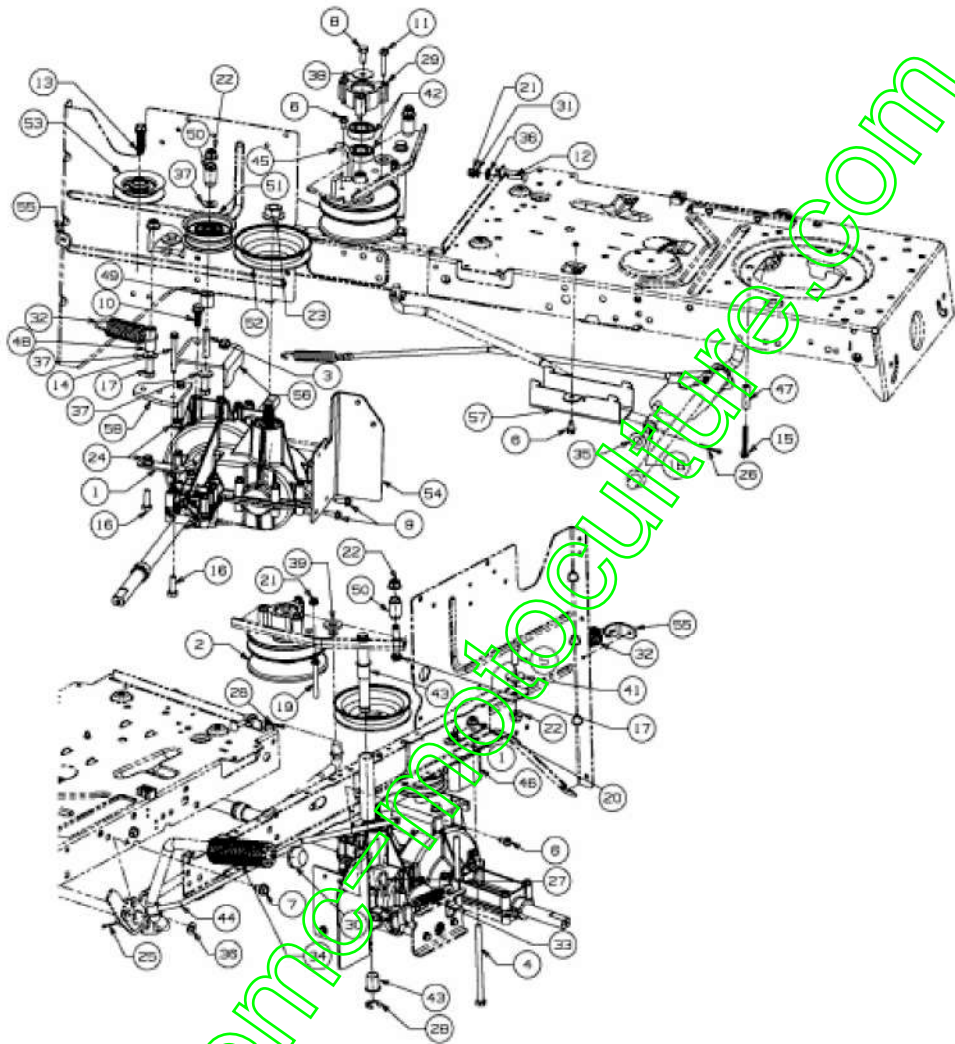
| Position | Numéro de pièce | Quantité | Désignation                    | Dimension                     |
|----------|-----------------|----------|--------------------------------|-------------------------------|
| 1        | 617-04094       | 1        | SEGMENT DE DIRECTION           | SCHWEISSTEIL:PHOS & OIL       |
| 2        | 710-0514        | 1        | VIS HEX.:3/8-16:1.00:GR5:STD   | FINISH:MTD STD 701-01000      |
| 3        | 710-0643        | 1        | VIS HEX.: 5/16-18:1.00:GR5     | FINISH: MTD STD 701-01000     |
| 4        | 710-1309        | 1        | VIS                            | FINISH:MTD STD 701-01000      |
| 5        | 710-3180        | 1        | VIS HEX. 5/16-18:1.75:GR5:STD  | SPEC-701-01000 or SPEC 101616 |
| 6        | 712-0214        | 1        | ECROU                          | FINISH:701-01000              |
| 7        | 712-0240        | 1        | ÛCROU HEX.: 7/16-20:GR2        | FINISH:MTD STD 701-01000      |
| 8        | 712-04063       | 3        | ÛCROU HEX. AVEC FLANC          | FINISH:MTD STD SPEC-101616    |
| 9        | 712-0431        | 1        | ÛCROU STOP 3/8-16:GRF          | FINISH:MTD SPEC-100015        |
| 10       | 723-0448A       | 1        | ROTULE DE DIRECTION 7/16-20    | FINISH:GELB VERZINKT          |
| 11       | 736-0242        | 1        | RONDELLE CONIQUE.340X.872X.060 | FINISH:MTD STD 701-01001      |
| 12       | 736-0331        | 1        | RONDELLE CONIQUE               | FINISH:MTD SPEC-100016        |
| 14       | 738-04141       | 1        | AXE                            | FINISH:701-01000              |
| 15       | 738-05078       | 1        | ARBRE DE DIRECTION             | FINISH:PHOS & OIL             |
| 16       | 741-04124       | 1        | PALIER DE BRIDE                | FINISH:PLAIN                  |
| 17       | 747-05464       | 1        | TRINGLE DE DIRECTION           | FINISH:MTD SPEC-100015        |
| 18       | 748-0389        | 1        | BAGUE                          | FINISH:GEÖLT                  |
| 19       | 748-04068       | 1        | DOUILLE .71IDX.125 ODX.56 LG   | FINISH:SPEC 701-01010         |
| 20       | 748-04278       | 1        |                                |                               |
| 21       | 750-06192A      | 1        | 750-06192A                     | FINISH:DAMPFBEHANDLT          |
|          |                 |          |                                |                               |

| Position | Numéro de pièce | Quantité | Désignation | Dimension         |
|----------|-----------------|----------|-------------|-------------------|
| 22       | 783-08577       | 1        | 783-08577   | FINISH:PHOS & OIL |

[www.emc-motoculture.com](http://www.emc-motoculture.com)



13HT76KN615 (2015) > ENTRAÎNEMENT DE ROULEMENT, VARIATEUR



E3-03858I-01

| Position | Numéro de pièce | Quantité | Désignation                         | Dimension                          |
|----------|-----------------|----------|-------------------------------------|------------------------------------|
| 1        | 17840           | 2        | SUPPORT                             | FINISH:17840-0637                  |
| 2        | 656-04015<br>A  | 1        | POULIE VARIATEUR                    | FINISH:                            |
| 3        | 710-0411        | 1        | VIS HHCS:3/8-16:4.00:GR<br>5:STD    | FINISH:701-01000                   |
| 4        | 710-04469       | 2        | VIS HEX. 5/16-18X5.00:G<br>R5:STD   | 710-04469                          |
| 5        | 710-0514        | 1        | VIS HEX.:3/8-16:1.00:GR<br>5:STD    | FINISH:MTD STD 701-01<br>000       |
| 6        | 710-0599        | 4        | VIS   SIX PANS CREUX                | MTD SPEC-701-01002 or<br>101617    |
| 7        | 710-0604A       | 2        | VIS 5/16-18:0.625                   | FINISH:MTD SPEC-701-<br>01002      |
| 8        | 710-0627        | 1        | VIS HEX. 5/16-24:1.750 GR<br>5:LOCK | FINISH:MTD STD 701-01<br>000       |
| 9        | 710-0642        | 2        | VIS 1/4-20:0.750                    | MTD SPEC-701-01002 9<br>10-0642    |
| 10       | 710-0654A       | 2        | VIS   SIX PANS CREUX                | FINISH:MTD SPEC-701-<br>01002      |
| 11       | 710-0778        | 3        | VIS HEX. TT:1/4-20:1.500            | FINISH:MTD SPEC-701-<br>01002      |
| 12       | 710-0932A       | 1        | VIS                                 | FINISH:MTD STD 701-01<br>000       |
| 13       | 710-1007        | 1        | VIS HEX.TTSEMS3/8-16:<br>1,500      | FINISH:STD 701-01002 o<br>r 101616 |
| 14       | 710-1206        | 1        | VIS HEX. TT:1/4-20:2.375            | FINISH:MTD SPEC-701-<br>01002      |
| 15       | 710-1026        | 2        | VIS HEX:TT:1/4-20:1.750             | FINISH:MTD-SPEC-1000<br>16         |
| 16       | 710-1082        | 2        | VIS                                 | FINISH:SPEC-100015 2<br>1.1441.72  |
| 17       | 710-3144        | 2        | VIS HEX.: 3/8-16:2.00:GR<br>5:STD   | FINISH:STD 701-01000 9<br>10-3144  |
| 18       | 711-04036       | 1        | AXE                                 | FINISH:GLANZVERZINK<br>T 911-04036 |
| 19       | 711-04826       | 1        | GUIDE COURROIE                      |                                    |

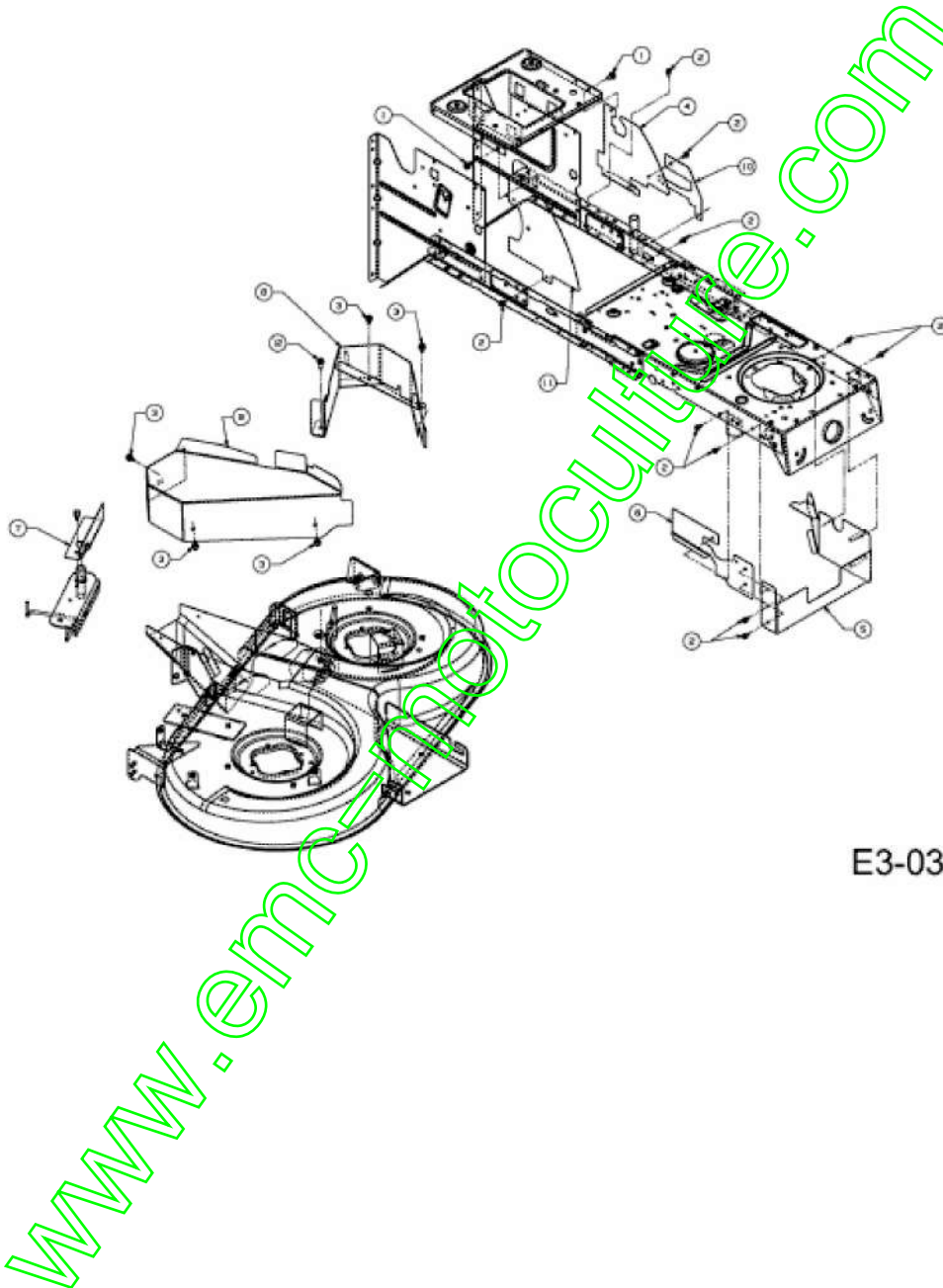
| Position | Numéro de pièce | Quantité | Désignation                  | Dimension                      |
|----------|-----------------|----------|------------------------------|--------------------------------|
|          |                 |          |                              | BLACK OXIDE ODER PHOS & OIL    |
| 20       | 712-04063       | 2        | ÜCROU HEX. AVEC FLANC        | FINISH:MTD STD SPEC-101616     |
| 21       | 712-04064       | 2        | ÜCROU HEXAGONAL              | GRF:FINISH:701-01000 912-04064 |
| 22       | 712-04065       | 4        | ÜCROU HEXAGONAL              | FINISH:SPEC-101616 912-04065   |
| 23       | 712-0700        | 1        | ÜCROU HEXAGONAL              | FINISH:701-01000 912-0700      |
| 24       | 712-0714        | 2        | ÜCROU                        | FINISH:MTD SPEC-1000 15        |
| 25       | 714-0111        | 1        | GOUPILLE FENDUE 3/32 1.0"    | FINISH:MTD SPEC-1000 15        |
| 26       | 714-0115        | 2        | GOUPILLE FENDUE 1/8 x 1.0    | FINISH:MTD SPEC-1000 15        |
| 27       | 714-0209        | 1        | GOUPILLE FENDUE              | FINISH:GELBVERZINKT 914-0209   |
| 28       | 716-0106A       | 1        | CIRCLIPS                     | FINISH:MTD SPEC 701-01001      |
| 29       | 718-04261       | 1        | CAGE DE ROULEMENT            | FINISH:ROSTSCHUTZ SIEHE ZG.    |
| 30       | 726-0214        | 1        | BOUCHON                      | FINISH:SCHWARZ                 |
| 31       | 726-0233        | 1        | RONDELLE                     | FINISH:PHOS AND OIL            |
| 32       | 732-04505       | 1        | RESSORT 1.00 DIA X 3.9 25 LG | FINISH:PHOS AND OIL            |
| 33       | 732-07160       | 1        | RESSORT                      | FINISH:MTD STD 701-01006       |
| 34       | 735-0239        | 1        | CAOUTCHOUC/PEDALE 4          | FINISH:SCHWARZ                 |
| 35       | 736-0272        | 1        | RONDELLE .510x1.00X.060      | FINISH:MTD-SPEC 101616         |
| 36       | 736-0275        | 2        | RONDELLE                     | FINISH:MTD STD 701-01000       |
| 37       | 736-0300        | 3        | RONDELLE                     | FINISH:MTD SPEC-1000 15        |

| Position | Numéro de pièce | Quantité | Désignation                    | Dimension                       |
|----------|-----------------|----------|--------------------------------|---------------------------------|
| 38       | 736-0362        | 1        | RONDELLE .320ID X 1.25 ODX .0  | FINISH:701-01001                |
| 39       | 736-3019        | 1        | RONDELLE .531x1.062x.134:HT    | FINISH:736-3019-Z               |
| 41       | 738-0347        | 1        | RONDELLE ; EMB. .625ID x.169   | FINISH:                         |
| 42       | 741-0124A       | 2        | ROULEMENT A BILLE              | FINISH:                         |
| 43       | 741-0591        | 2        | BAGUE                          | FINISH:NATUR 941-0591           |
| 44       | 747-04815 C     | 1        | 747-04815C                     | FINISH:SPEC-100015              |
| 45       | 747-04897 D     | 1        | 747-04897D                     | FINISH:MTD SPEC-100015          |
| 46       | 748-04175       | 1        | SUPPORT ENTRETOISE             | FINISH:GEÖLT                    |
| 47       | 750-04456       | 1        | ENTRETOISE                     | FINISH:VERZINKT SIEHE ZG.       |
| 48       | 750-04584       | 1        | DOUILLE .375IDx.625ODx 1.34 LG | FINISH:SPEC-101616:GELB VERZIN  |
| 49       | 750-04988       | 1        | ENTRETOISE                     | FINISH:ÖL GEDIPPT               |
| 50       | 750-05521 A     | 2        | 750-05521A                     | FINISH:GEÖLT                    |
| 51       | 756-04224       | 1        | POULIE TENDEUR                 | FINISH:SIEHE ZG.                |
| 52       | 756-04298       | 1        | POULIE DE PONT                 | PINS:FINISH:SIEHE ZG. 656-04044 |
| 53       | 756-04324       | 1        | POULIE TENDEUR                 | FINISH:SCHWARZ LACKIERT         |
| 54       | 783-05795       | 1        | SUPPORT DE TRANSMISSION        | FINISH:LACKIERT                 |
| 55       | 783-05844       | 1        | SUPPORT                        | FINISH:783-05844-Z 783-05844*   |
| 56       | 783-05855       | 1        | STÜTZBLECH GETRIEBE            | FINISH:LACKIERT                 |
| 57       | 783-05882       | 1        | FÜHRUNGSBLECH:FWD:RR DIS LT-5  | FINISH:LACKIERT 783-05882*      |
| 58       | 783-1363        | 1        | 783-1363                       |                                 |

| Position | Numéro de pièce | Quantité | Désignation | Dimension                  |
|----------|-----------------|----------|-------------|----------------------------|
|          |                 |          |             | FINISH:BLAU CHROMATIEREN * |

[www.emc-motoculture.com](http://www.emc-motoculture.com)

13HT76KN615 (2015) > COUVERCLES DE PROTECTION PLATEAU DE COUPE N (41"/105CM)

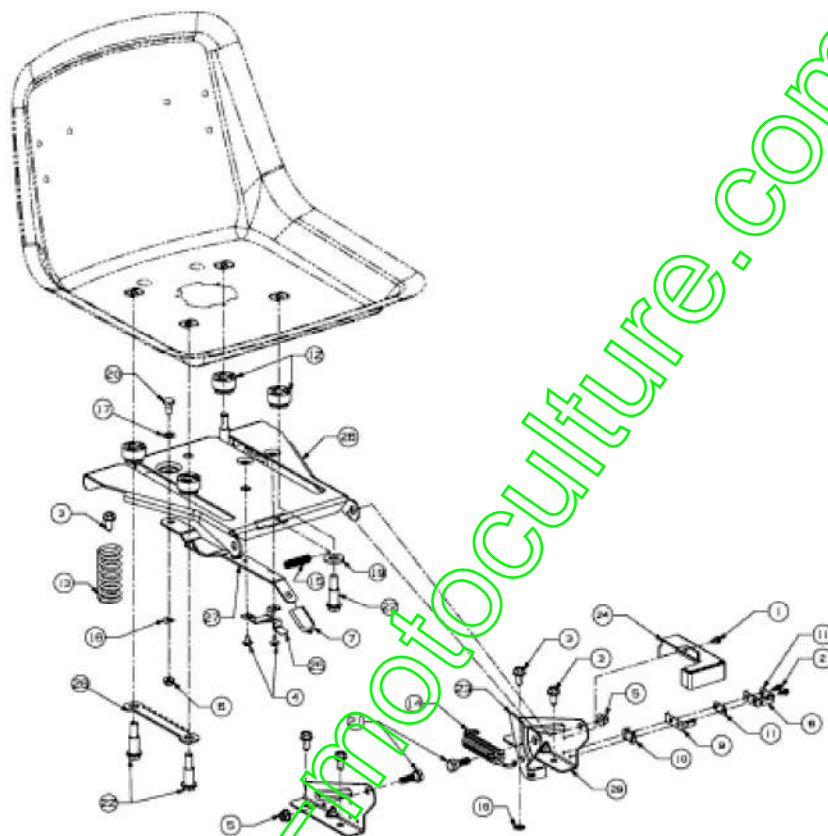


E3-03857D-01

| Position | Numéro de pièce | Quantité | Désignation                        | Dimension                      |
|----------|-----------------|----------|------------------------------------|--------------------------------|
| 1        | 710-04484       | 2        | VIS HEX. TT:5/16-18.:750:HXIND     | FINISH:MTD SPEC-701-01002      |
| 2        | 710-0599        | 10       | VIS $\dot{\bar{I}}$ SIX PANS CREUX | MTD SPEC-701-01002 or 101617   |
| 3        | 710-0607        | 5        | VIS HEX.TT5/16-18.:500HXINDWSh     | FINISH:MTD SPEC-701-01002      |
| 4        | 783-05994       | 1        | ABDECKUNG RE.HINTE N:LT-5          | FINISH:LACKIERT MTD QUALITÄT   |
| 5        | 783-06002       | 1        | PROTECTION DE POULIE PTO           | FINISH:LACKIERT MTD QUALITÄT   |
| 6        | 783-06003       | 1        | PROTECTION DE POULIE DROITE        | FINISH:LACKIERT MTD QUALITÄT   |
| 7        | 783-06004       | 1        | PROTECTION DE POULIE DROITE        | FINISH:LACKIERT MTD QUALITÄT   |
| 8        | 783-06005       | 1        | ABDECKUNG4 FRANCE:LT-5:N-DECK      | FINISH:LACKIERT MTD QUALITÄT   |
| 9        | 783-06006 A-S   | 1        | COUVERCLE DE PROT.:LT-5:N-DECK     | FINISH: SCHWARZ GEPULVERT      |
| 10       | 783-06084       | 1        | ABDECKUNG2:GETRIEBE:AUTO.LINKS     | FINISH:LACKIERT MTD QUALITÄT   |
| 11       | 783-06676       | 1        | PROTECTION DROITE                  | FINISH:LACKIERT MTD QUALITÄT   |
| 12       | 710-1260A       | 1        | VIS TT:5/16-18.:750 HXINDWSH       | LAGERGEH.MESSERWELLE:701-01002 |

www.encyclo-motoculture.com

13HT76KN615 (2015) > SUPPORT DE SIÈGE



E3-04367B-01

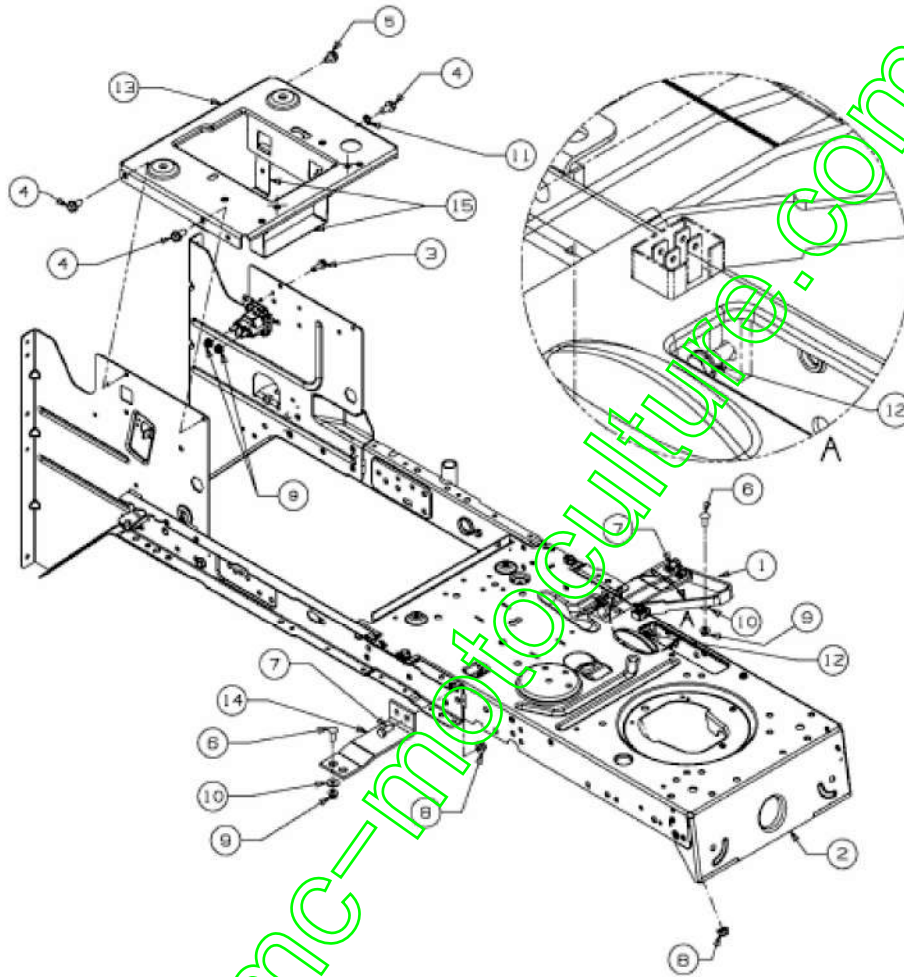


| Position | Numéro de pièce | Quantité | Désignation                        | Dimension                          |
|----------|-----------------|----------|------------------------------------|------------------------------------|
| 1        | 710-0224        | 1        | VIS PARK:#10-16:0.500:H<br>XINDWSH | FINISH:MTD STD 701-01<br>002       |
| 2        | 710-0227        | 2        | VIS                                | FINISH:MTD STD 701-01<br>002       |
| 3        | 710-04484       | 6        | VIS HEX. TT:5/16-18:.75<br>0:HXIND | FINISH:MTD SPEC-701-0<br>1002      |
| 4        | 710-1268        | 2        | VIS HEX.:B#10-16:0.375             | HXINDWSH:SP FINISH:7<br>01-01002   |
| 5        | 712-04063       | 2        | ÜCROU HEX. AVEC FLA<br>NC          | FINISH:MTD STD SPEC-<br>701616     |
| 6        | 712-04064       | 1        | ÜCROU HEXAGONAL                    | GRF:FINISH:701-01000 9<br>12-04064 |
| 7        | 720-0309A       | 1        | POIGNÉE PLASTIQUE                  | FINISH:SCHWARZ                     |
| 8        | 725-1303        | 1        | RESSORT DE SÖRETÜ<br>SIEGE         | SI.-SCHALTER SITZ:GEL<br>BVERZINKT |
| 9        | 725-1439        | 1        | RESSORT SÖRETÜ DE<br>SIEGE         | SI.-SCHALTER SITZ:GEL<br>BVERZINKT |
| 10       | 726-0278        | 1        | PLAQUE D'ISOLATION                 | FINISH:NATUR ODER S<br>CHWARZ      |
| 11       | 726-0279        | 2        | PLAQUE D'ISOLATION                 | FINISH:NATUR ODER S<br>CHWARZ      |
| 12       | 731-04074       | 4        | ENTRETOISE PLASTIQU<br>E DE SIEGE  | FINISH:SCHWARZ                     |
| 13       | 732-04035       | 2        | RESSORT DE SIEGE                   | FINISH:701-01000                   |
| 14       | 732-04309       | 1        | RESSORT                            | FINISH:MTD STD 701-01<br>006       |
| 15       | 732-0499        | 1        | RESSORT                            | FINISH:701-01000                   |
| 16       | 736-0175        | 1        | RONDELLE GROWER:.2<br>65x.562x.025 | FINISH:701-01001                   |
| 17       | 736-0204        | 1        | RONDELLE .344 X 62 X.0<br>3        | FINISH:MTD STD 701-01<br>000       |
| 18       | 736-0607        | 1        | RONDELLE                           | FINISH:MTD STD 701-01<br>001       |
| 19       | 736-3019        | 2        | RONDELLE .531x1.062x.<br>134:HT    | FINISH:736-3019-Z                  |

| Position | Numéro de pièce | Quantité | Désignation                      | Dimension                 |
|----------|-----------------|----------|----------------------------------|---------------------------|
| 20       | 738-0137A       | 1        | VIS ÉPAULE .340 X .28<br>5:1/4-2 | 738-0137A                 |
| 21       | 738-0296        | 2        | AXE EPAULE                       | FINISH:701-01000          |
| 22       | 738-0966A       | 4        | VIS EPAULEE                      | FINISH:MTD SPEC 701-01006 |
| 23       | 783-0209D       | 1        | SUPP. SIÈGE                      | FINISH:VERZINKT SIEHE ZG. |
| 24       | 783-04877<br>A  | 1        | 783-06279                        | FINISH:LACKIERT           |
| 25       | 783-0611        | 1        | ARRÊT: AJUSTAGE DE SIÈGE         | FINISH:PHOS & OIL         |
| 26       | 783-0738D       | 1        | SUPPORT DE SIÈGE 450/500 RIDER   | FINISH:LACKIERT           |
| 27       | 783-0739A       | 1        | LEVIER DE RÉGLAGE                | FINISH:LACKIERT           |
| 28       | 783-0753        | 1        | CREMAILLÈRE RÉGLAGE SIÈGE        | FINISH:SPEC 701-01000     |
| 29       | 783-1489D       | 2        | 783-1489B-4015 / FEUER ROTQ      |                           |

www.emc-motoculture.com

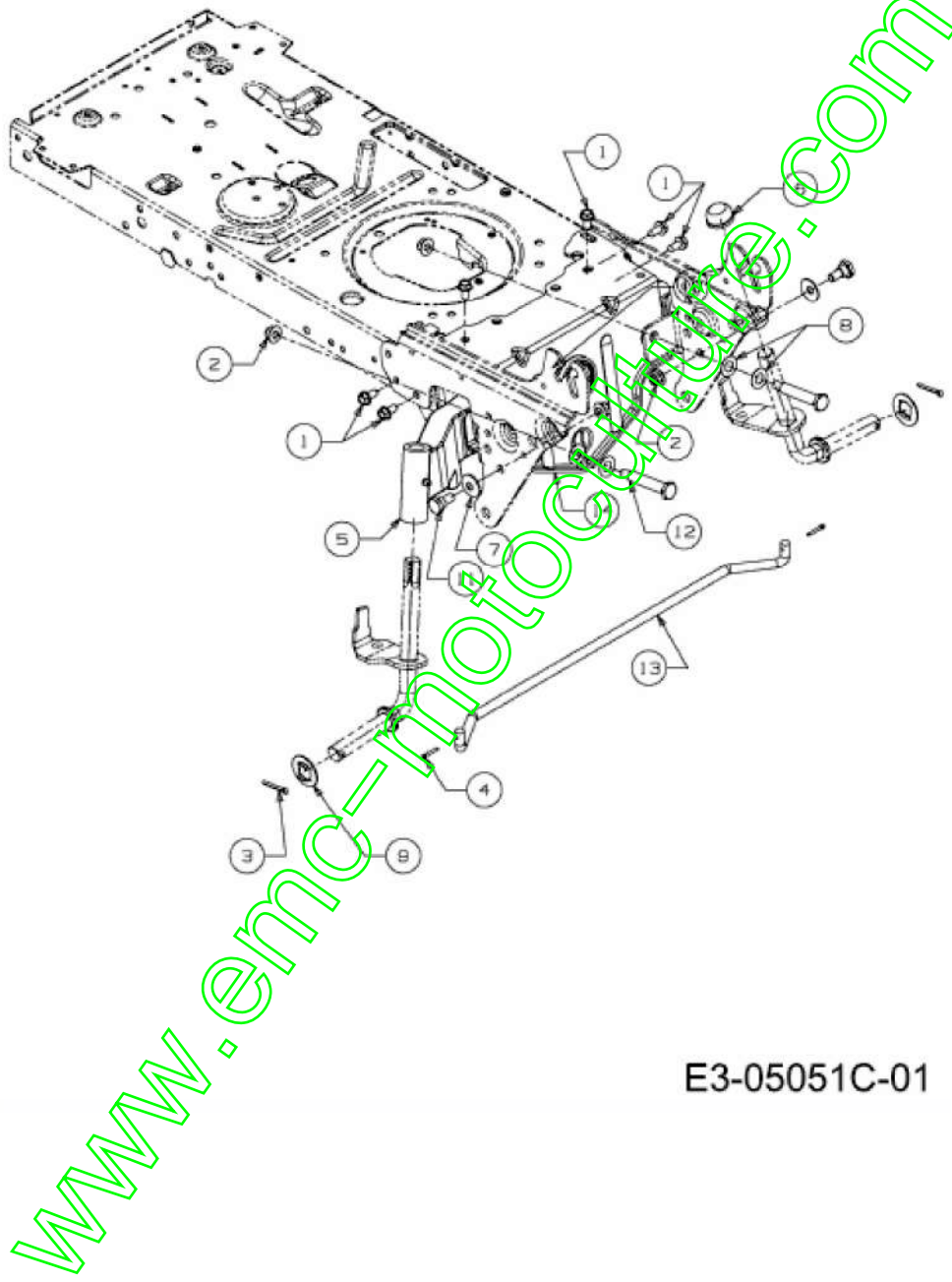
13HT76KN615 (2015) > CHÂSSIS



E3-04369E-01

| Position | Numéro de pièce | Quantité | Désignation                        | Dimension                         |
|----------|-----------------|----------|------------------------------------|-----------------------------------|
| 1        | 683-04195       | 1        | STÜTZKONSOLE-LI.SITZ<br>WANNE LT5  | SCHWEISSTEIL                      |
| 2        | 683-04682<br>B  | 1        |                                    |                                   |
| 3        | 710-04461       | 1        | 710-04461                          | FINISH:SIEHE ZG.                  |
| 4        | 710-04484       | 3        | VIS HEX. TT:5/16-18:.750:<br>HXIND | FINISH:MTD SPEC-701-<br>01002     |
| 5        | 710-0607        | 1        | VIS HEX.TT5/16-18:.500H<br>XINDWSh | FINISH:MTD SPEC-701-<br>01002     |
| 6        | 710-0703        | 2        | VIS                                | FINISH:MTD STD 701-0<br>1000      |
| 7        | 710-3008        | 2        | VIS 5/16-18:.75:GR5 STD            | FINISH:MTD STD 701-0<br>1000      |
| 8        | 712-04063       | 3        | ÜCROU HEX. AVEC FLAN<br>C          | FINISH:MTD STD SPEC<br>-101616    |
| 9        | 712-04064       | 4        | ÜCROU HEXAGONAL                    | GRF:FINISH:701-01000<br>912-04064 |
| 10       | 736-0173        | 2        | RONDELLE 281DX 74OD<br>X.063       | FINISH:MTD STD 701-0<br>1000      |
| 11       | 736-0607        | 1        | RONDELLE                           | FINISH:MTD STD 701-0<br>1001      |
| 12       | 738-04237<br>A  | 1        | AXE EPAULE                         | FINISH:MTD STD 701-0<br>1002      |
| 13       | 783-04548<br>D  | 1        |                                    |                                   |
| 14       | 783-04637       | 1        | STÜTZKONSOLE SITZWA<br>NNE LT5     | FINISH:NONE                       |
| 15       | 783-04869<br>A  | 2        | HALTEBLECH:BATTERIE:<br>LT-5       | FINISH:LACKIERT                   |

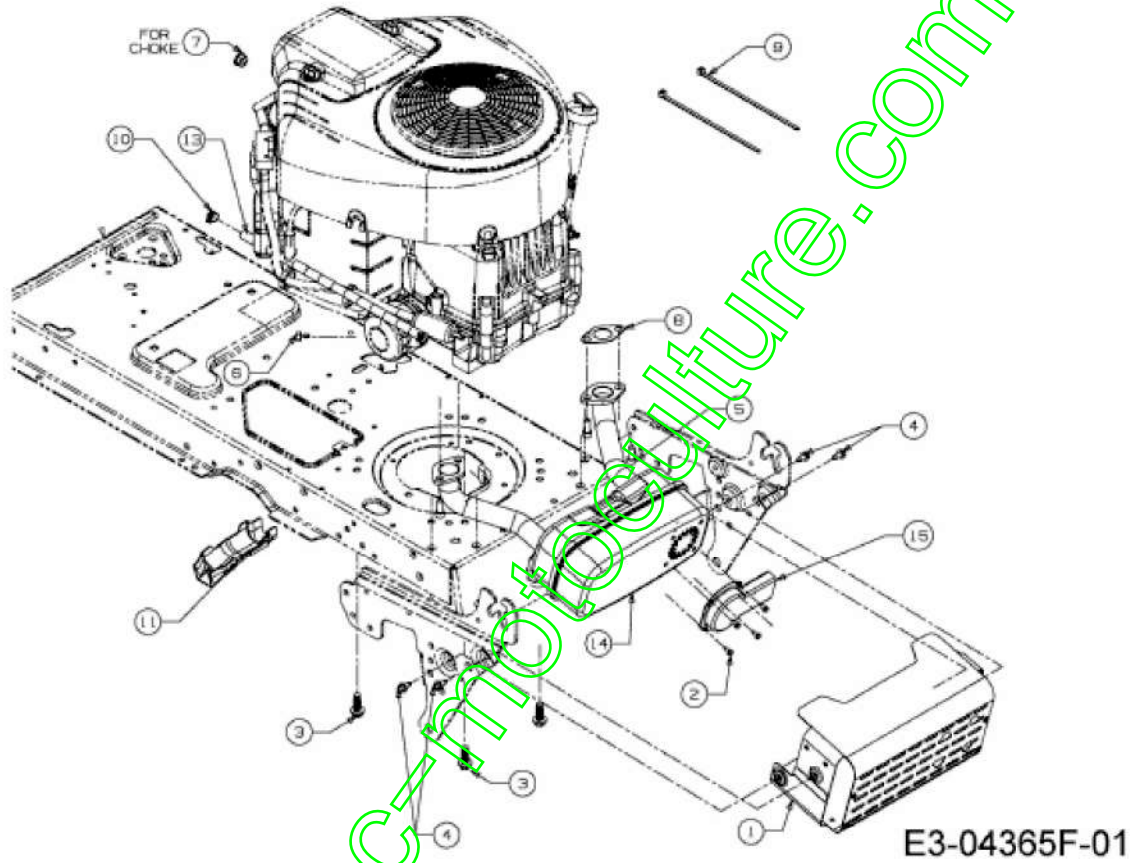
13HT76KN615 (2015) > AXE AVANT



E3-05051C-01

| Position | Numéro de pièce | Quantité | Désignation                    | Dimension                    |
|----------|-----------------|----------|--------------------------------|------------------------------|
| 1        | 710-04484       | 6        | VIS HEX. TT:5/16-18.:750:HXIND | FINISH:MTD SPEC-701-01002    |
| 2        | 712-04065       | 4        | ÛCROU HEXAGONAL                | FINISH:SPEC-101616 912-04065 |
| 3        | 714-0162        | 2        | GOUPILLE FENDUE 5/32:1.25      | FINISH:MTD SPEC-100015       |
| 4        | 714-0474        | 2        | GOUPILLE                       | FINISH:MTD SPEC-100015       |
| 5        | 719-04350       | 1        | ESSIEU FONTE                   | FINISH:SCHWARZ LACKIERT      |
| 6        | 726-0341        | 1        | CAPUCHON CLIPS                 | FINISH:SCHWARZ               |
| 7        | 736-0331        | 2        | RONDELLE CONIQUE               | FINISH:MTD SPEC-100016       |
| 8        | 736-0369        | 4        | RONDELLE                       | FINISH:SIEHE ZG. 936-0369    |
| 9        | 736-04228A      | 2        | RONDELLE                       | FINISH:MTD SPEC 701-01000    |
| 11       | 738-0143        | 2        | VIS EPAULEE                    | FINISH:MTD SPEC 100015 (EU)  |
| 12       | 738-04128       | 2        | VIS ÛPAULE .500x2.38:3/8-16    | FINISH:MTD STD 701-01006     |
| 13       | 747-04772       | 1        | TRINGLE DE ROUE:LT5            | FINISH:SPEC-100015           |
| 14       | 783-05326B      | 1        | 783-05326B-S                   | FINISH:LACKIERT MTD QUALITÄT |

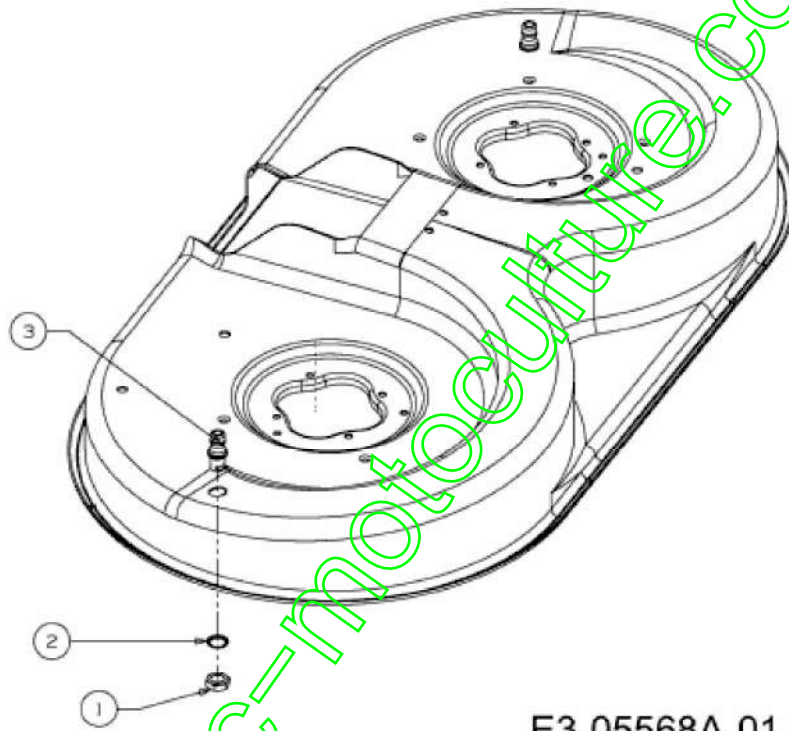
13HT76KN615 (2015) > ACCESSOIRES MOTEUR



| Position | Numéro de pièce | Quantité | Désignation                     | Dimension                     |
|----------|-----------------|----------|---------------------------------|-------------------------------|
| 1        | 683-04549<br>A  | 1        |                                 |                               |
| 2        | 710-0227        | 4        | VIS                             | FINISH:MTD STD 701-01002      |
| 3        | 710-04683<br>C  | 4        | VIS                             | FINISH:SIEHE ZG.              |
| 4        | 710-0599        | 4        | VIS ; SIX PANS CREUX            | MTD SPEC-701-01002 or 101617  |
| 5        | 710-1314A       | 4        | VIS HEX. INT. 5/16-18:75:GR8    | FINISH:PHOS & OIL             |
| 6        | 712-0271        | 1        | ECROU 1/4-20"+ DISQUE DENTÜ     | FINISH:MTD STD 701-010015     |
| 7        | 712-3005        | 1        | ÜCROU AVEC FLANC 3/8-16:GR5     | FINISH:701-01000 912-3005     |
| 8        | 721-0460        | 2        | JOINT D'ÜCHAPPEMT. INTEK TWIN   | B&S P273485                   |
| 9        | 725-0157        | 2        | COLLIER DE SERRAGE 3/16X0.5X7.4 | MATERIAL:NYLON-SCHWARZ        |
| 10       | 726-0205        | 2        | COLLIER DE SERRAGE DE BOYAU     | FINISH:PHOSPHATIERT (GELB)    |
| 11       | 731-05628       | 1        | GOUTIERE VIDANGE D'HUILE        | FINISH:SCHWARZ                |
| 13       | 751-0535        | 1        | TUYAU ESSENCE NOIR              | Ø12,7+/-5.84 / Ø6,35+/-0,41   |
| 14       | 751-10542       | 1        | DOPPELROHRAUSPUFF: B&S INTEK    | FINISH:NONE                   |
| 15       | 751-11053<br>A  | 1        | DEFLECTEUR D'ÉCHAPPEMENT        | LANGER ABGASKANAL: ALUMINIZED |



13HT76KN615 (2015) > TUYÈRE NETTOYAGE



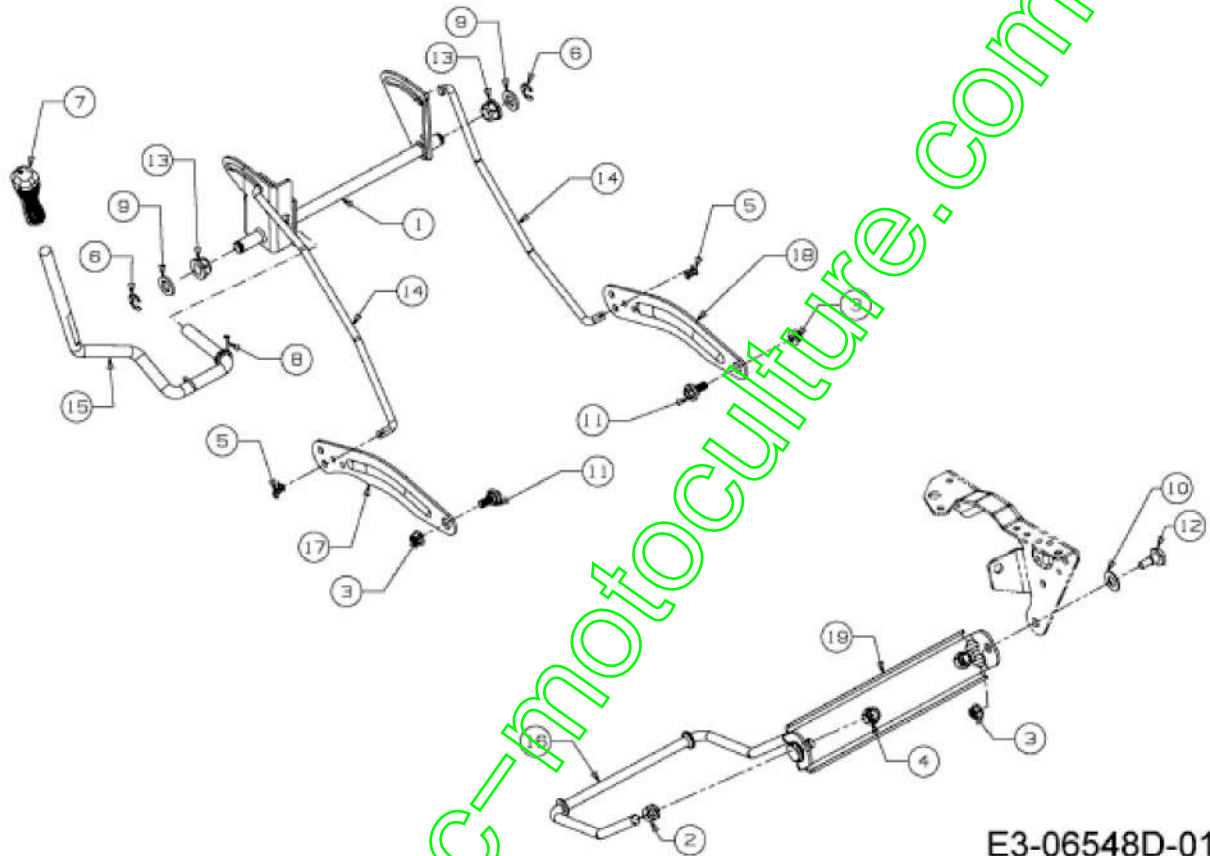
E3-05568A-01

[www.emc-motoculture.com](http://www.emc-motoculture.com)

| Position | Numéro de pièce | Quantité | Désignation                    | Dimension                       |
|----------|-----------------|----------|--------------------------------|---------------------------------|
| 1        | 712-0641        | 2        | ECROU HEX. M16-1.5 D<br>IN 936 | FINISH:701-01000 24.1<br>424.31 |
| 2        | 736-0760        | 2        | RONDELLE 17X23.8X1.<br>95      | FINISH:MTD STD 701-<br>01001    |
| 3        | 737-04003D      | 2        | BUSE NETTOYAGE PL<br>ATEAU     | FINISH:MTD SPEC-100<br>015      |

[www.emc-motoculture.com](http://www.emc-motoculture.com)

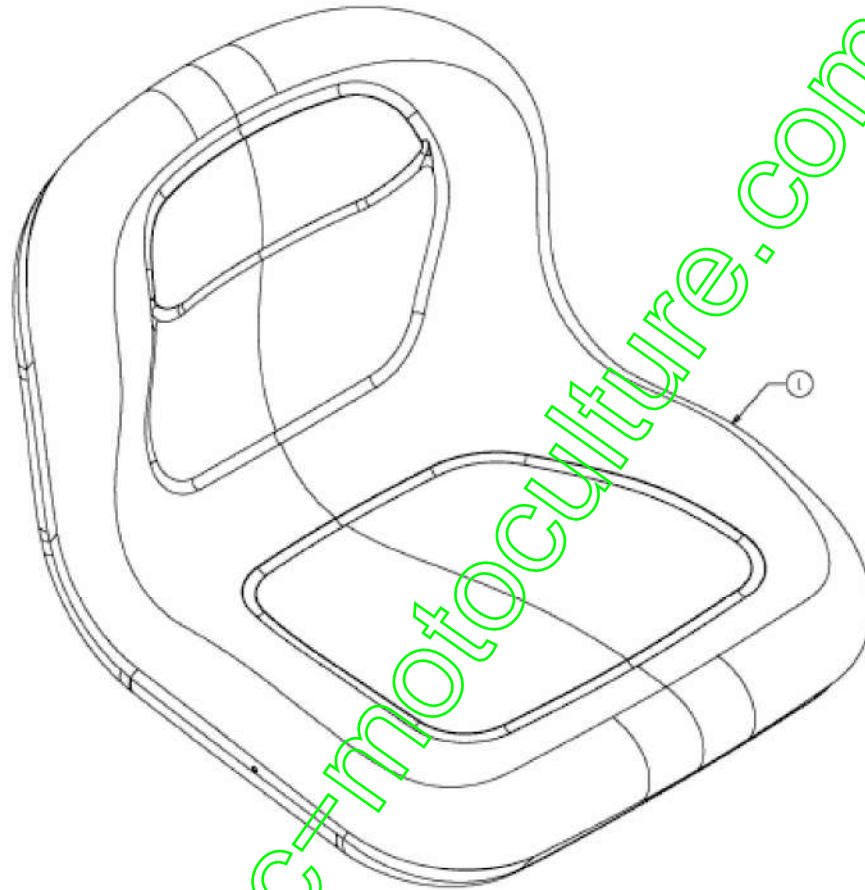
13HT76KN615 (2015) > RELEVAGE PLATEAU DE COUPE



E3-06548D-01

| Position | Numéro de pièce | Quantité | Désignation                   | Dimension                    |
|----------|-----------------|----------|-------------------------------|------------------------------|
| 1        | 683-04679       | 1        |                               |                              |
| 2        | 712-0206        | 2        | ÜCROU HEX. 1/2-13:GR.5        | FINISH:MTD STD 701-01000     |
| 3        | 712-04065       | 4        | ÜCROU HEXAGONAL               | FINISH:SPEC-101616 912-04065 |
| 4        | 712-3083        | 2        | ÜCROU HEX. 1/2-13:GRB:NYLON   | FINISH:MTD STD 701-01000     |
| 5        | 714-04040       | 2        | GOUPILLE                      | FINISH:VERZINKT              |
| 6        | 716-0106A       | 2        | CIRCLIPS                      | FINISH:MTD SPEC 701-01001    |
| 7        | 720-0298        | 1        | POIGNEE                       |                              |
| 8        | 732-04438       | 1        | RESSORT                       | FINISH:701-01006             |
| 9        | 736-0366        | 2        | RONDELLE 5/8 ID X 1.0 OD      | FINISH:MTD STD 701-01000     |
| 10       | 736-0414        | 2        | RONDELLE TUFロン                | FINISH:WEISS: 936-0414       |
| 11       | 738-04130A      | 2        | VIS EPAULEE                   | FINISH:SPEC-701-01010        |
| 12       | 738-0507B       | 2        | VIS                           | FINISH:PHOS & OIL            |
| 13       | 741-0225        | 2        | BAGUE HEXAGONALE TEFロン 6 PANS | FINISH:KUNSTSTOFF SCHWARZ    |
| 14       | 747-04282       | 1        | LEVIER DE RELEVAGE :LT-5      | FINISH:701-01000             |
| 15       | 747-05292       | 2        | BRAS DE RELEVAGE              | FINISH:SCHWARZ E-COAT        |
| 16       | 747-1324        | 1        | TRINGLE                       | 5" DIA FINISH:701-01000      |
| 17       | 783-04494C      | 1        | NOIR                          | FINISH:LACKIERT MTD QUALITÄT |
| 18       | 783-04711C      | 1        | NOIR                          | FINISH:LACKIERT MTD QUALITÄT |
| 19       | 783-0720C       | 1        | SUPPORT DE RELEVAGE           | FINISH:LACKIERT              |

13HT76KN615 (2015) > SIÈGE

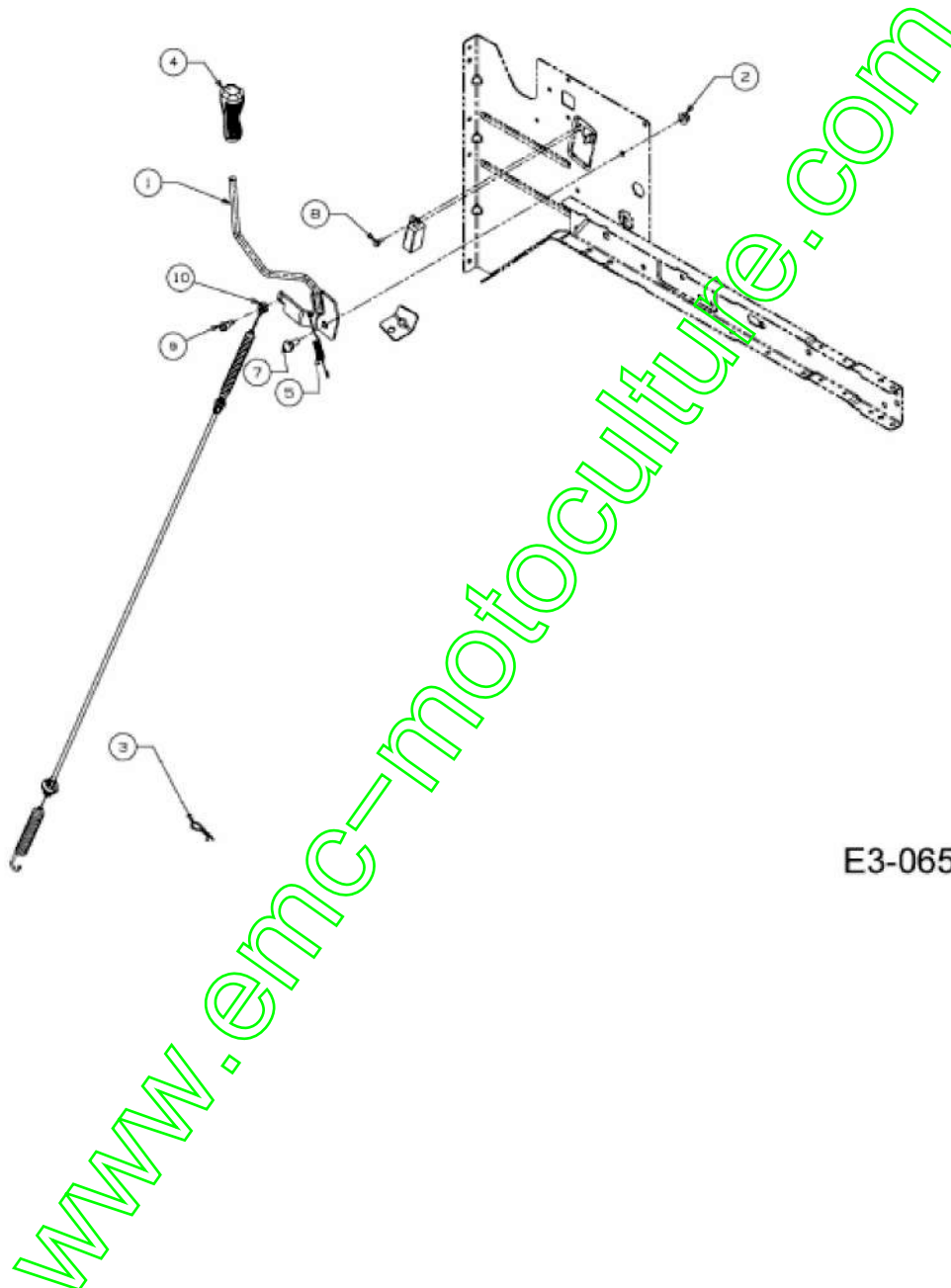


E3-06638B-01

| Position | Numéro de pièce | Quantité | Désignation      | Dimension |
|----------|-----------------|----------|------------------|-----------|
| 1        | 757-04161       | 1        | SIEGE HAUT JAUNE | 757-04161 |

[www.emc-motoculture.com](http://www.emc-motoculture.com)

13HT76KN615 (2015) > ENCLENCHEMENT PLATEAU DE COUPE



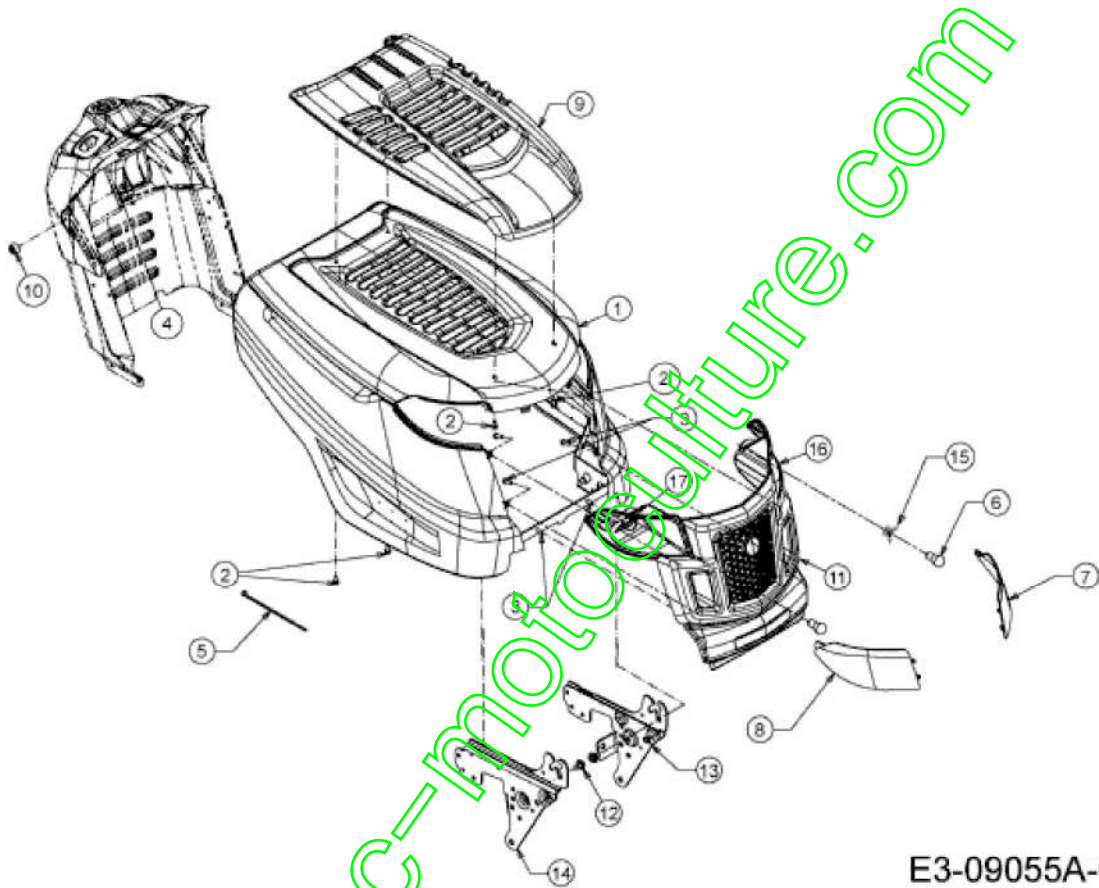
E3-06551D-01

| Position | Numéro de pièce | Quantité | Désignation                    | Dimension                      |
|----------|-----------------|----------|--------------------------------|--------------------------------|
| 1        | 647-04239       | 1        | LEVIER ENCLENCHEMENT           | SCHWEISSTEIL:647-04239 SCHWARZ |
| 2        | 712-04063       | 1        | ÜCROU HEX. AVEC F LANC         | FINISH:MTD STD SPEC-10 1616    |
| 3        | 714-0145        | 1        | GOUPILLE                       | FINISH:PHOS & OIL              |
| 4        | 720-04049 A     | 1        | POIGNEE PLASTIQUE              | FINISH: SCHWARZ                |
| 5        | 732-04276 A     | 1        | RESSORT                        | FINISH:701-01006               |
| 7        | 738-0140        | 1        | VIS j ÜP.:.435 x.178-5/16 x.56 | FINISH:VERZINKT                |
| 8        | 738-04237 A     | 1        | AXE EPAULE                     | FINISH:MTD STD 701-01002       |
| 9        | 738-04425       | 1        | AXE EPAULE                     | FINISH:MTD 701-01000           |
| 10       | 746-05140       | 1        | CABLE EMBRAYAGE LAME LT5       | ABGEDICHTET LT-5               |

www.emc-motoculture.com



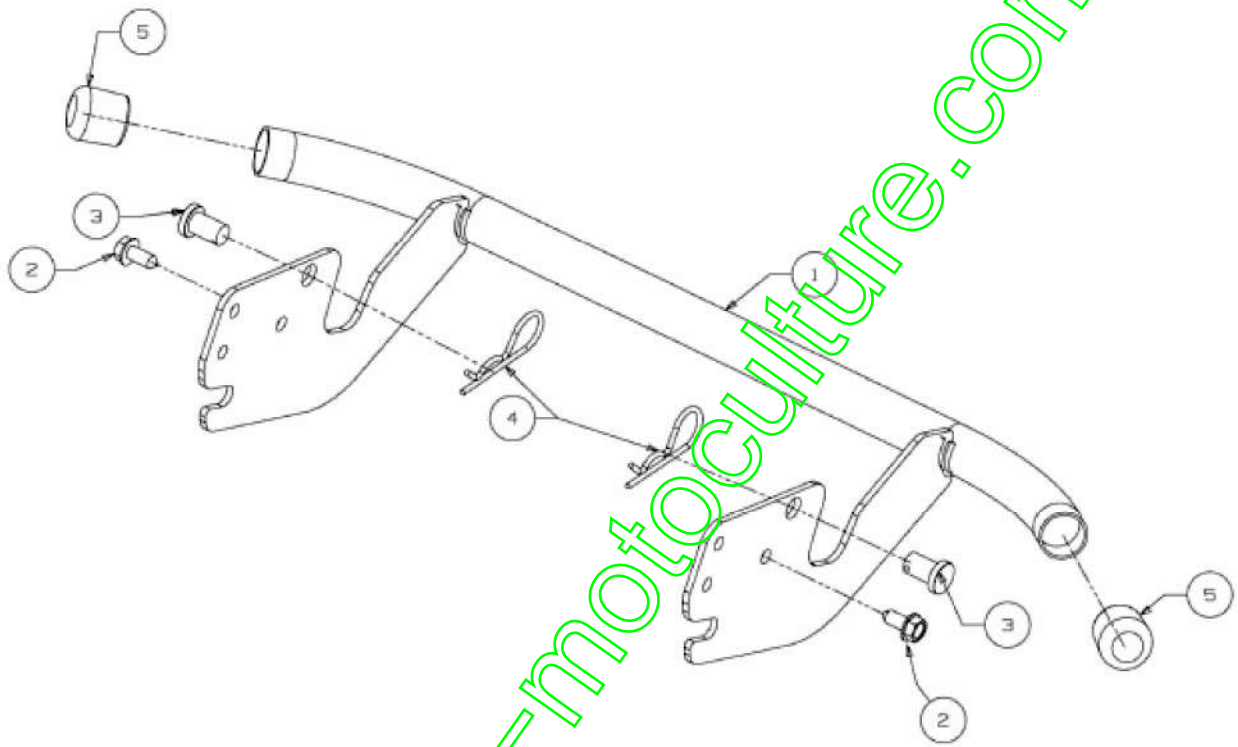
13HT76KN615 (2015) > CAPOT DE MOTEUR K-STYLE



E3-09055A-01

| Position | Numéro de pièce | Quantité | Désignation                        | Dimension                      |
|----------|-----------------|----------|------------------------------------|--------------------------------|
| 1        | 683-04774       | 1        | SCHWEISSTEIL:FINISH LA<br>CKIERT   |                                |
| 2        | 710-04187       | 4        | VIS HEX.:1/4-15:0.50:HXIN<br>DWSH  | FINISH:701-01002 910-<br>04187 |
| 3        | 710-05108       | 6        | VIS                                | FINISH:Schwarz                 |
| 4        | 710-05281       | 2        | 710-05281                          | FINISH:MTD STD 701-<br>01002   |
| 5        | 725-0157        | 1        | COLLIER DE SERRAGE3/1<br>6X0.5X7.4 | MATERIAL:NYLON-SC<br>Hwarz     |
| 6        | 725-0963        | 2        | AMPOULE ÜLECTRIQUE                 | 12V 21W                        |
| 7        | 731-06095       | 1        | OPTIQUE GAUCHE                     | TROY-BILT:FINISH:KL<br>AR      |
| 8        | 731-06096       | 1        | OPTIQUE DROITE                     | TROY-BILT:FINISH:KL<br>AR      |
| 9        | 731-06194<br>B  | 1        | CAPOT MOTEUR SUPERI<br>EUR STYLE K | FINISH:KUNSTSTOFF<br>Schwarz   |
| 10       | 731-06404       | 2        | SILENBLOCK:CAPOT STY<br>LE-K       | ARMATURENBRETT:K<br>-STYLE     |
| 11       | 731-06796       | 1        | CALANDRE STYLE K                   | KUNSTSTOFF SCHWA<br>RZ         |
| 12       | 738-04091<br>A  | 2        | VIS À ÉPAULE                       | FINISH:701-01002               |
| 13       | 783-05417       | 1        | ÜTRIER DE CHARN.:j DR.<br>CAPOT    | FINISH:LACKIERT                |
| 14       | 783-05418       | 1        | ÜTRIER DE CHARN.:j DR.<br>CAPOT    | FINISH:LACKIERT                |
| 15       | 725-1649        | 2        | DOUILLE DE LAMPE: 1/4 R<br>OTATION | GRAU KUNSTSTOFF                |
| 16       | 777X43038       | 1        | REFLECTEUR GAUCHE                  | FINISH:                        |
| 17       | 777X43039       | 1        | REFLECTEUR DROITE                  | FINISH:                        |

13HT76KN615 (2015) > PARE-CHOCS

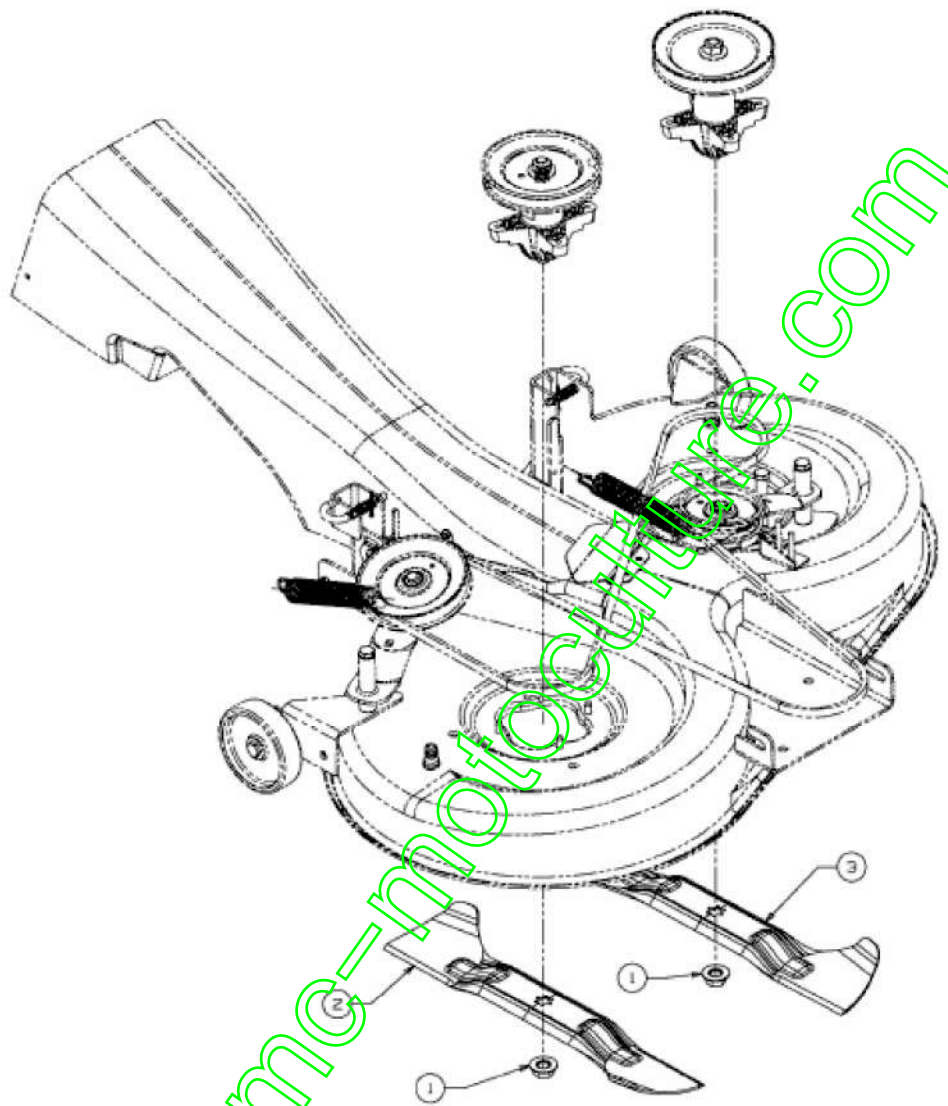


E3-02339E-01

| Position | Numéro de pièce | Quantité | Désignation                        | Dimension                     |
|----------|-----------------|----------|------------------------------------|-------------------------------|
| 1        | 683-04236B      | 1        |                                    |                               |
| 2        | 710-04484       | 2        | VIS HEX. TT:5/16-18:.75<br>0:HXIND | FINISH:MTD SPEC-701<br>-01002 |
| 3        | 711-0332        | 2        | GOUJON ; ÜPINGLER .5<br>0X.78 LG   | FINISH:701-01000              |
| 4        | 714-04075       | 2        | EPINGLE                            | FINISH:ZINC SPEC-10<br>0015   |
| 5        | 731-04500       | 2        | BOUCHON                            | 500 SERIES:K 28 S:SC<br>HWARZ |

[www.emc-motoculture.com](http://www.emc-motoculture.com)

13HT76KN615 (2015) > LAME

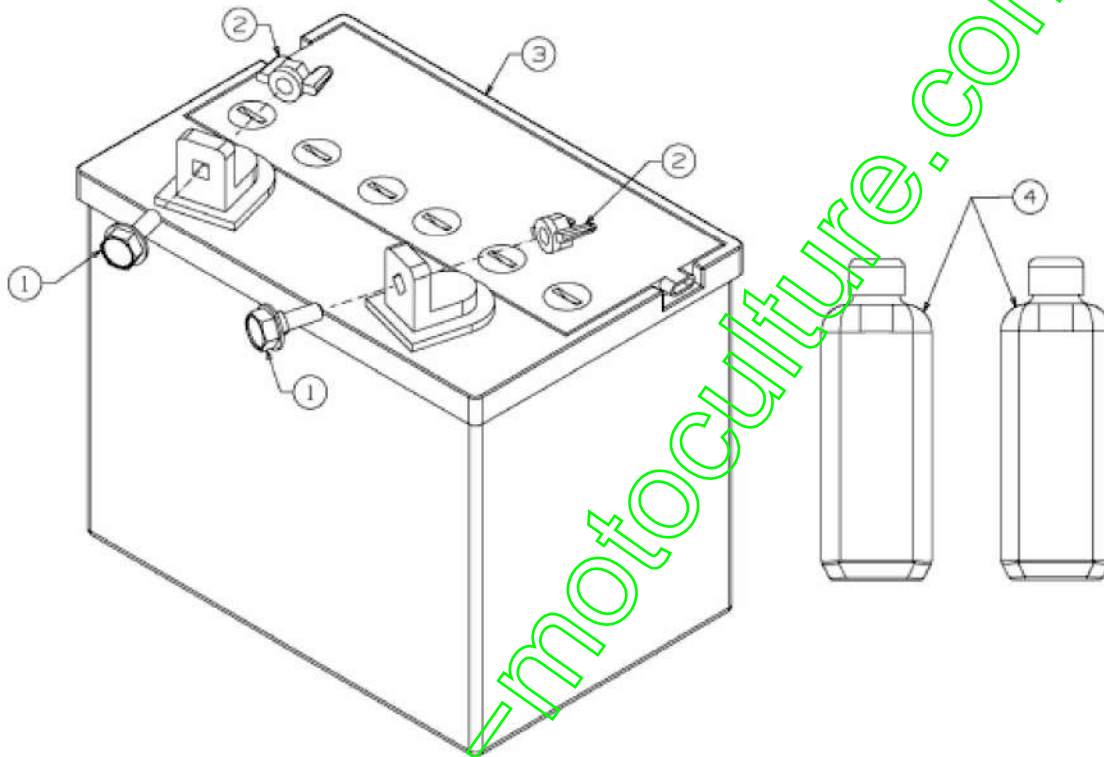


E3-03431A-01

| Position | Numéro de pièce | Quantité | Désignation                      | Dimension                     |
|----------|-----------------|----------|----------------------------------|-------------------------------|
| 1        | 712-0417A       | 2        | ÛCROU HEX. AV. FLAN<br>C: 5/8-18 | FINISH:MTD STD 701-<br>01000  |
| 2        | 742-04080       | 1        | LAME DROITE                      | STAR BAG:FINISH SIE<br>HE ZG. |
| 3        | 742-04081       | 1        | LAME GAUCHE                      | STAR BAG:FINISH SIE<br>HE ZG. |

[www.emc-motoculture.com](http://www.emc-motoculture.com)

13HT76KN615 (2015) > BATTERIE



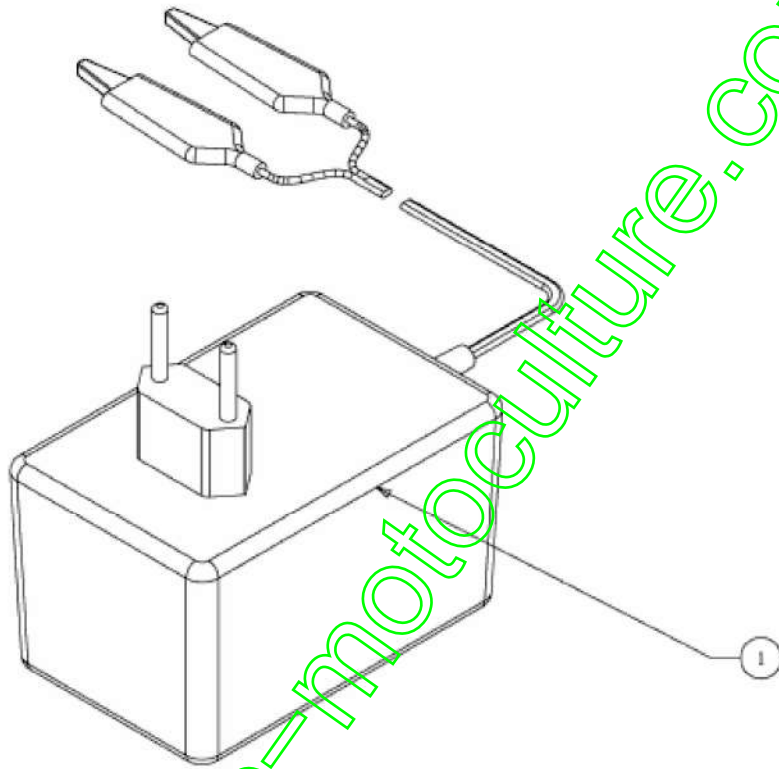
E3-02023D-01

| Position | Numéro de pièce | Quantité | Désignation              | Dimension                    |
|----------|-----------------|----------|--------------------------|------------------------------|
| 1        | 738-1132        | 2        | AXE                      | FINISH:PHOS & OIL SIEHE CODE |
| 2        | 712-3087        | 2        | ÜCROU PAPILLON           | FINISH:KUNSTSTOFF SCHWARZ    |
| 3        | 725-1751        | 1        | BATTERIE SÈCHE 220CCA    | 12V 16Ah                     |
| 4        | 725-2064A       | 2        | BIDON D ACIDE 1.05 LITRE | SONDERABFÜLLUNG (35.5 oz)    |

[www.emc-motoculture.com](http://www.emc-motoculture.com)



13HT76KN615 (2015) > CHARGEUR D'ACCUMULATEURS



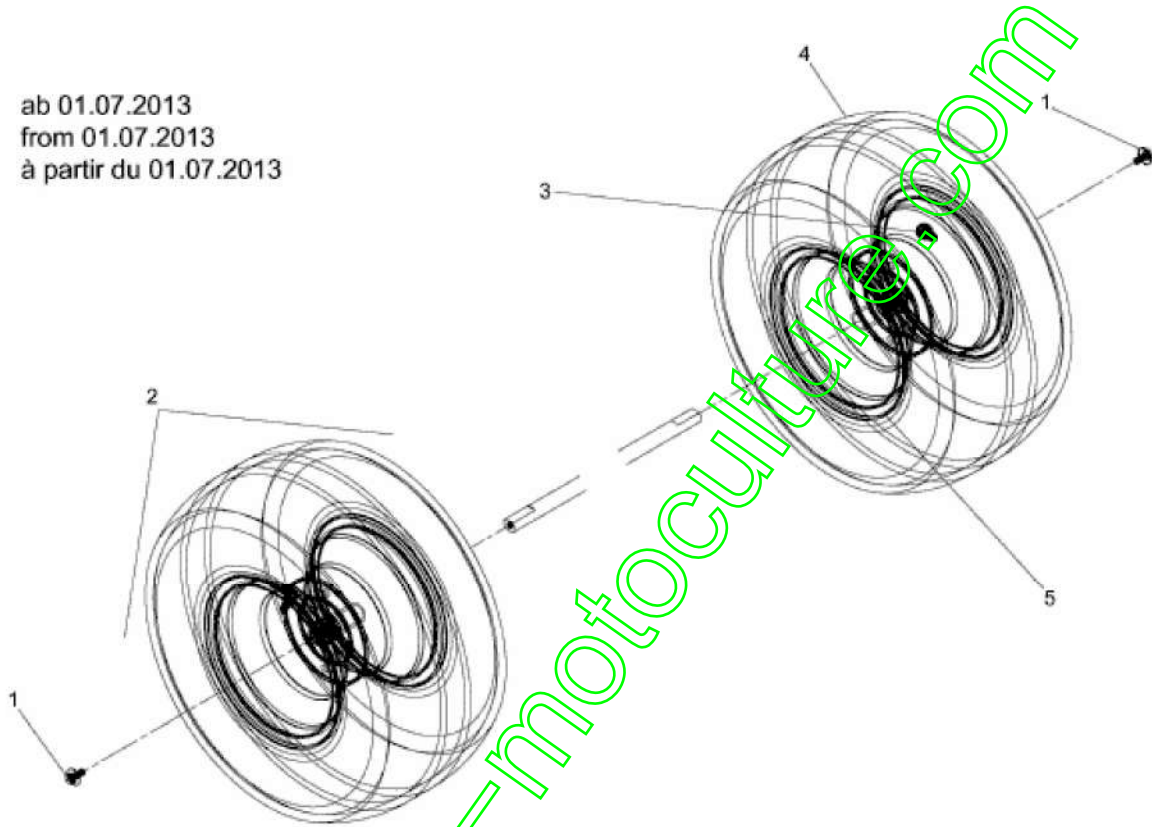
E3-08095A-01

| Position | Numéro de pièce | Quantité | Désignation          | Dimension |
|----------|-----------------|----------|----------------------|-----------|
| 1        | 725-04098       | 1        | CHARGEUR DE BATTERIE | *CE*      |

[www.emc-motoculture.com](http://www.emc-motoculture.com)

13HT76KN615 (2015) > ROUES ARRIÈRE 18X9.5 À PARTIR DU 01.07.2013

ab 01.07.2013  
from 01.07.2013  
à partir du 01.07.2013



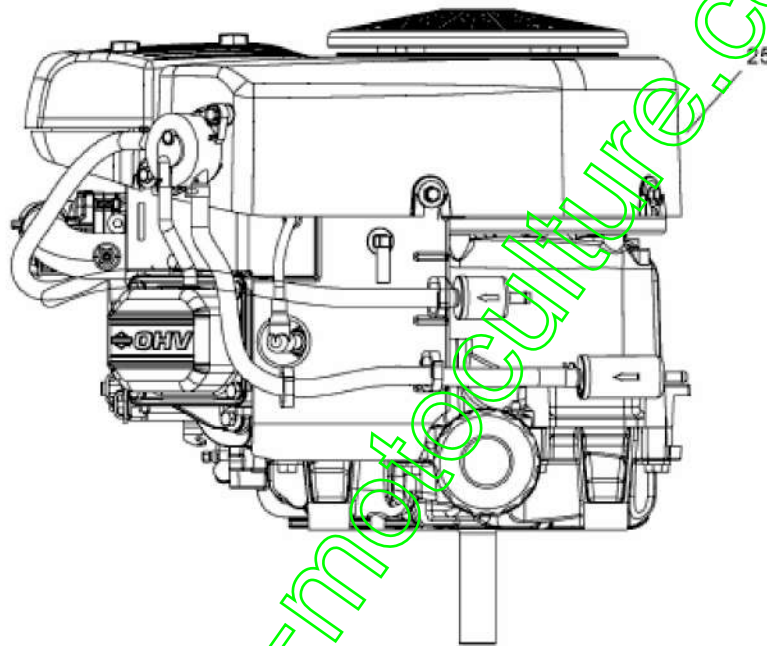
E3-02084C-01

| Position | Numéro de pièce | Quantité | Désignation                     | Dimension                        |
|----------|-----------------|----------|---------------------------------|----------------------------------|
| 1        | 710-05339       | 2        | VIS                             | GR5 E-TEIL-SET                   |
| 2        | 734-0817        | 2        | ROUE COMPL 18X9,50-8<br>ST ELEC | 734-0817662/-674/-W<br>Y/-CB     |
| 3        | 734-0255        | 2        | VALVE:PNEU                      | TR 412-P / 32.6mm / 9<br>34-0255 |
| 4        | 734-0448        | 2        | PNEU 18*950*8                   | 734-0448-0901                    |
| 5        | 634-04369       | 2        | JANTE 8.0x7.0x .750 ID          | FINISH:LACKIERT                  |

[www.emc-motoculture.com](http://www.emc-motoculture.com)

13HT76KN615 (2015) > MOTEUR BRIGGS & STRATTON JUSQU'AU 12.01.2015

bis 12.01.2015  
to 12.01.2015  
jusqu'au 12.01.2015



Briggs & Stratton  
Model: 40R777  
Type: 0015B1

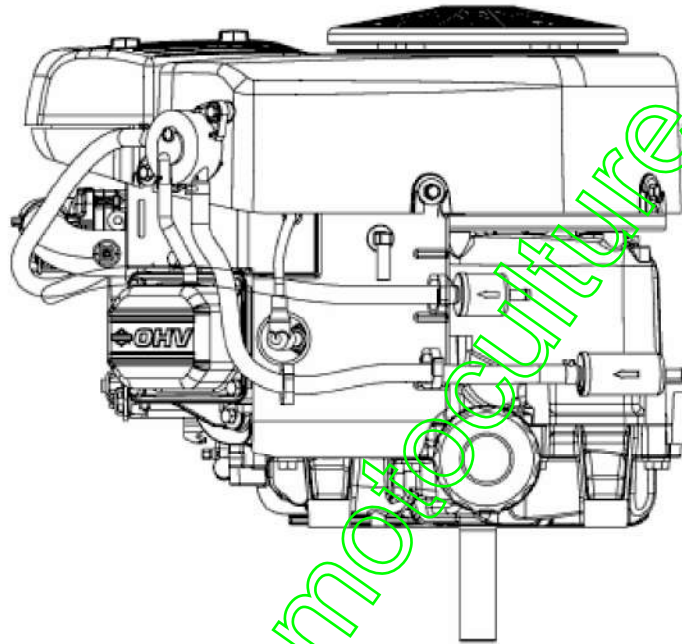
E3-09061A-01

| Position | Numéro de pièce | Quantité | Désignation                    | Dimension      |
|----------|-----------------|----------|--------------------------------|----------------|
| 1        | 752B400015B1    | 1        | B-MOTOR: B&S INTEK 7200 SERIES | 40R777-0015-B1 |

[www.emc-motoculture.com](http://www.emc-motoculture.com)

13HT76KN615 (2015) > MOTEUR BRIGGS & STRATTON À PARTIR DU 13.01.2015

ab 13.01.2015  
from 13.01.2015  
à partir du 13.01.2015



Briggs & Stratton  
Model: 40R77  
Type: 0019B1

E3-09062A-01

| Position | Numéro de pièce | Quantité | Désignation                    | Dimension      |
|----------|-----------------|----------|--------------------------------|----------------|
| 1        | 752B400019B1    | 1        | B-MOTOR: B&S INTEK 7200 SERIES | 40R777-0019-B1 |

[www.emc-motoculture.com](http://www.emc-motoculture.com)