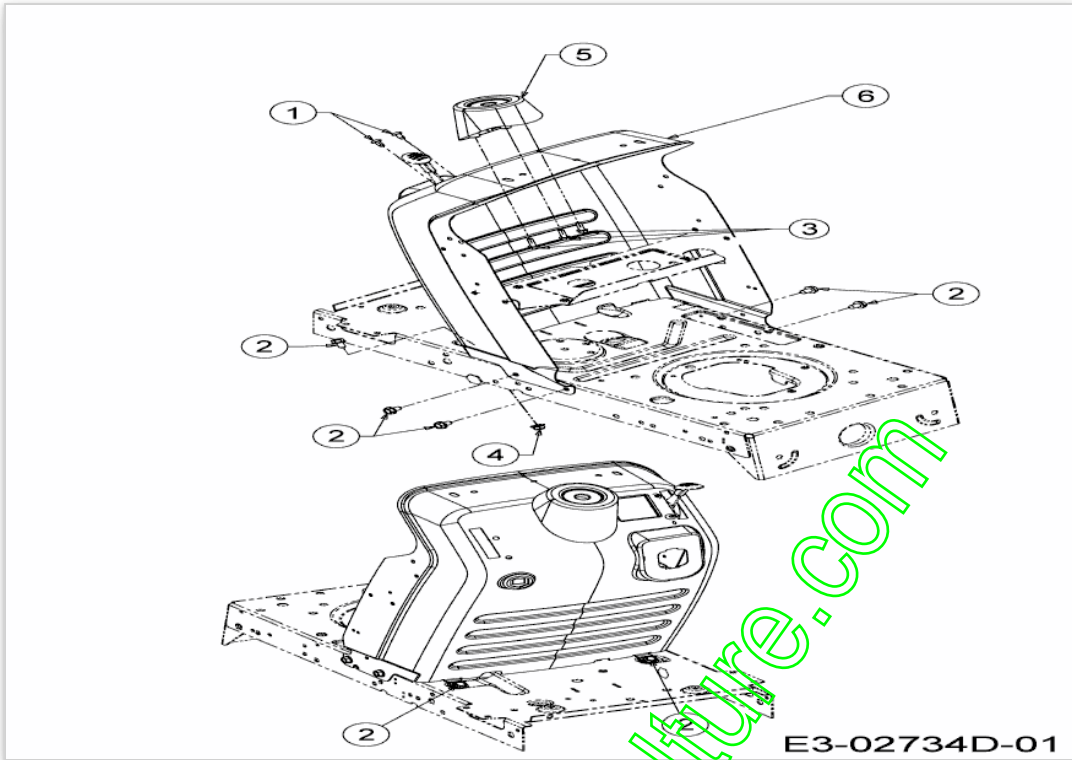


Position	Numéro de pièce	#	Appellation I	Appellation II
1	710-04593	6	VIS 5/16-18:0.375:PANTRXI	FINISH:MTD SPEC-701-01002
2	710-0726	2	VIS 5/16-12:0.750:HXINDWS	FINISH:MTD STD 701-01002
3	710-0751	6	VIS HEX.: 1/4-20:.620:GR5:STD	FINISH:SPEC-100015
4	712-04064	6	ÜCROU HEXAGONAL	GRN5:SPEC-100015 912-04064
5	725-0157	1	COLLIER DE SERRAGE3/16X0.5X7.4	MATERIAL:NYLON-SCHWARZ
6	731-05078C	1	CACHE TABLEAU DE BORD	FINISH:SCHWARZ LT-5
7	731-06757	1	OPTIQUE DE PHARE NOIR	FINISH:SCHWARZ
8	738-04091A	2	VIS EPAULEE	FINISH:SPEC-100016
9	783-05417	1	ÜTRIER DE CHARN.:j DR. CAPOT	FINISH:LACKIERT
10	783-05418	1	ÜTRIER DE CHARN.:j DR. CAPOT	FINISH:LACKIERT
11	783-05454	1	MTD NOIR	FINISH:LACKIERT MTD QUALITÄT
12	783-05684	1	PERLEISS	FINISH:LACKIERT MTD QUALITÄT
13	783-05685	1	CALANDRE VERTE VERTS LOISIRS	FINISH:LACKIERT MTD QUALITÄT

www.emc-motoculture.com

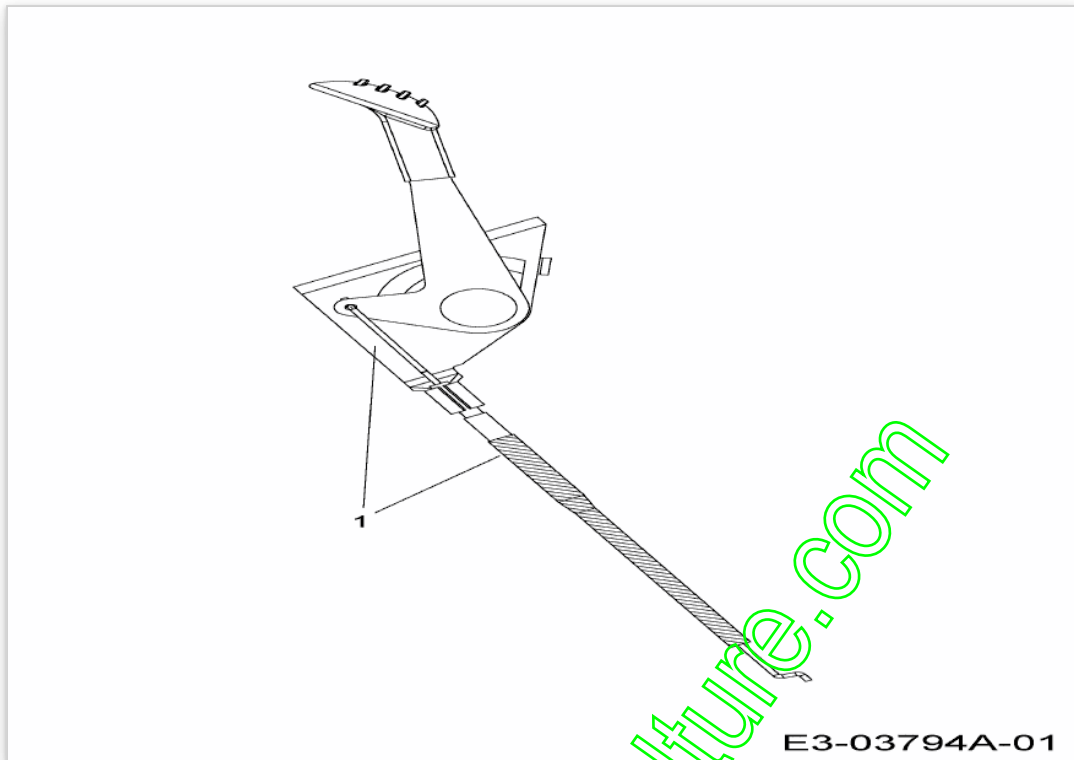


E3-02734D-01

www.emc-motoculture.com

Position	Numéro de lapièce	#	Appellation I	Appellation II
1	710-04483	2	VIS:TT:1/4- 20.:500:TRUSTRXI	FINISH:GELB SPEC-701-01002
2	710-0604A	6	VIS 5/16-18:0.625	FINISH:MTD SPEC-100016 TYPE 1
3	710-0895	3	VIS A SIX PANS CREUX	FINISH:MTD SPEC-100016 TYPE 1
4	712-04063	1	ÜCROU HEX. AVEC FLANC	FINISH:MTD STD SPEC-101616
5	731-04945	1	SUPPORT VOLANT	FINISH:SIEHE ZG.
6	783-04873B	1	ANTRAZITE GRIS	FINISH:LACKIERT

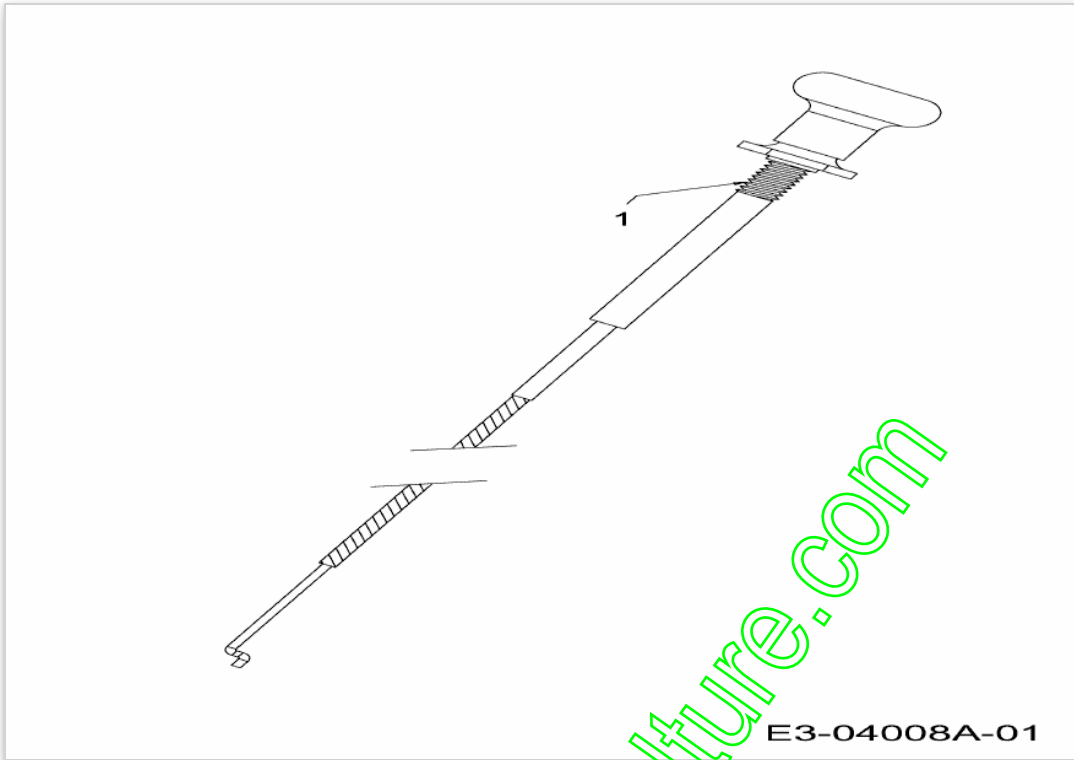
www.emc-motoculture.com



www.emc-motoculture.com

Position	Numéro de lapièce	#	Appellation I	Appellation II
1	746-04406	1	CABLE ACCELERATEUR	FINISH:

www.emc-motoculture.com

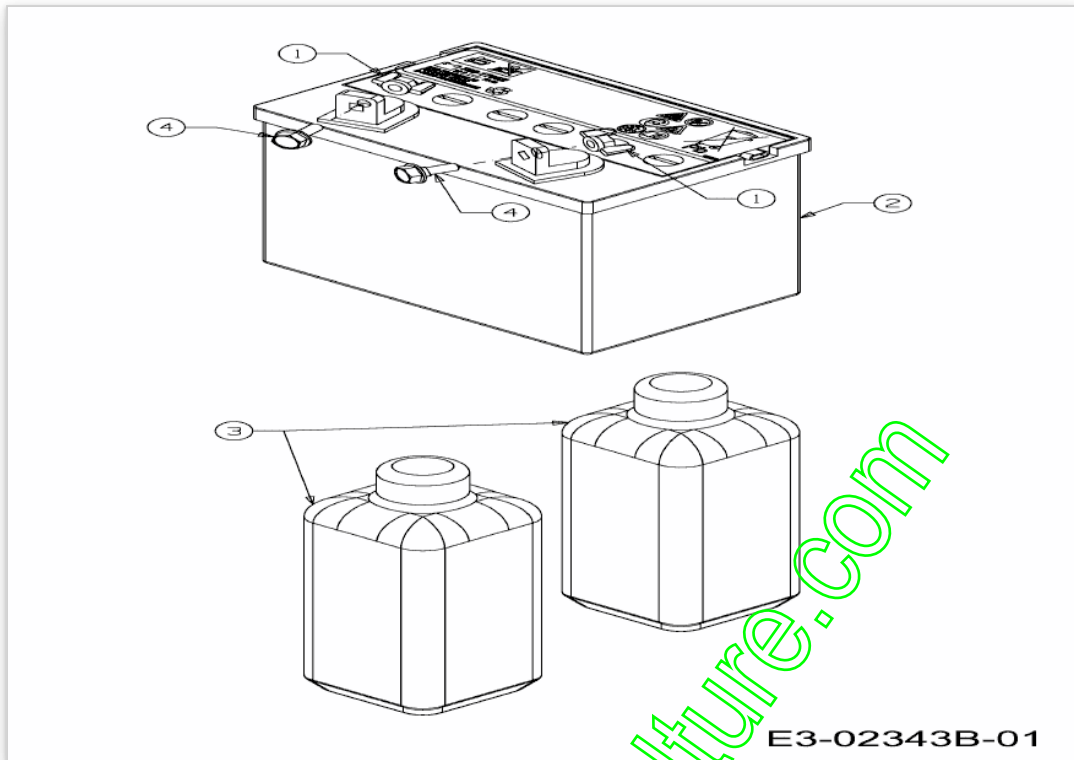


E3-04008A-01

www.emc-motoculture.com

Position	Numéro de lapièce	#	Appellation I	Appellation II
1	746-1089	1	CABLE STARTER	29.0" LG x 1.50 EXT

www.emc-motoculture.com

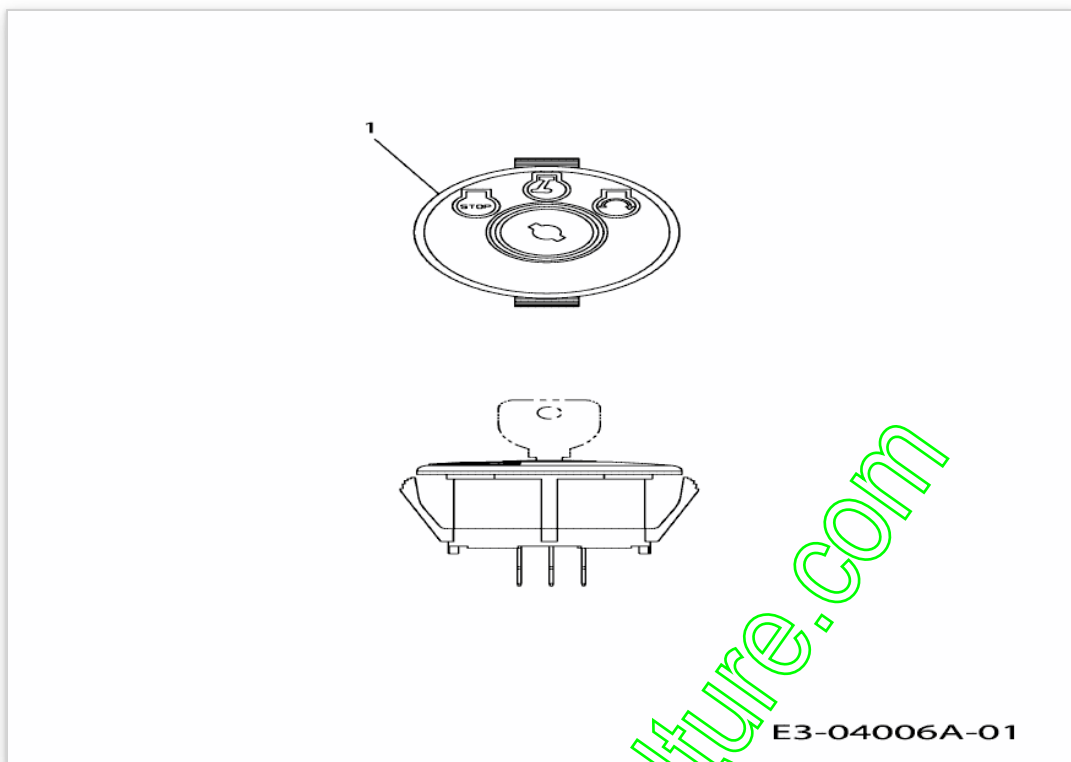


E3-02343B-01

www.emc-motoculture.com

Position	Numéro de lapièce	#	Appellation I	Appellation II
1	712-3087	2	ÜCROU PAPILLON	FINISH:KUNSTSTOFF SCHWARZ
2	725-1705E	1	BATTERIE:U1:150 CCA TROCKEN	BELÜFTUNG OBEN
3	725-2064	2	BIDON ACIDE 1 LITRE	725-2064
4	738-1132	2	AXE	FINISH:PHOS & OIL SIEHE CODE

www.emc-motoculture.com

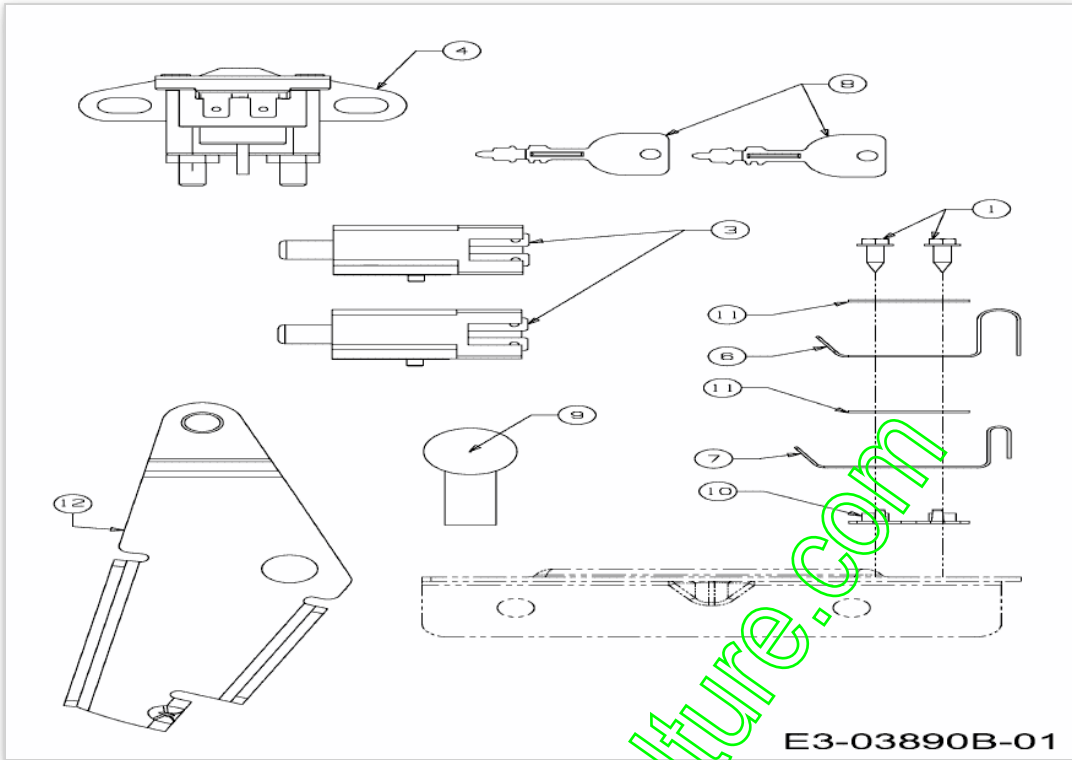


E3-04006A-01

www.emc-motoculture.com

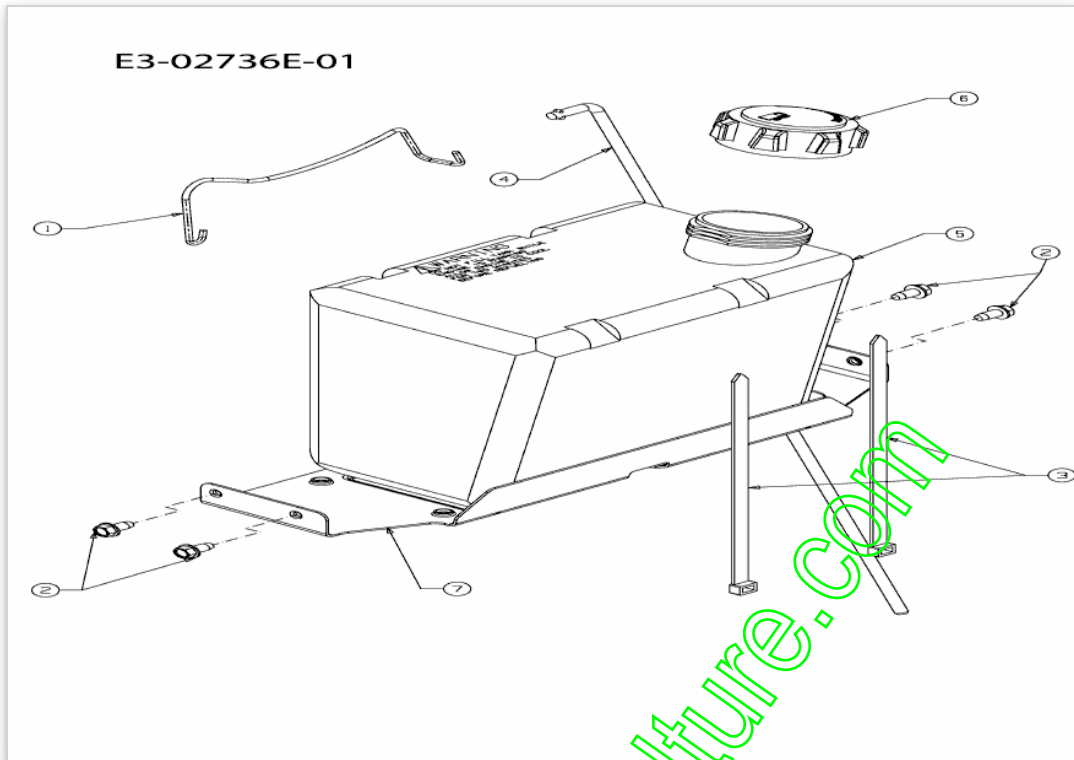
Position	Numéro de pièce	#	Appellation I	Appellation II
1	725-04659	1	CONTACTEUR A CLEF	FINISH:

www.emc-motoculture.com



Position	Numéro de pièce	#	Appellation I	Appellation II
1	710-0227	2	VIS	FINISH:MTD SPEC-100016 TYPE 1
3	725-04363	2	SECURITE EMBRAYAGE	FINISH:SIEHE ZG.
4	725-04439	1	COMMUTATEUR MAGNÛTIQUE	12V:100 AMP
6	725-1303	1	RESSORT DE SURETE SIËGE	SI.-SCHALTER SITZ:GELBVERZINKT
7	725-1439	1	RESSORT SURETE DE SIEGE	SI.-SCHALTER SITZ:GELBVERZINKT
8	725-1744A	2	CLE DE CONTACT	FINISH:
9	725-3237	1	COUVERCLE POLE / ROUGE	BATTERIE FINISH:ROT
10	726-0278	1	PLAQUE D'ISOLATION	FINISH:NATUR ODER SCHWARZ
11	726-0279	2	PLAQUE D'ISOLATION	FINISH:NATUR ODER SCHWARZ
12	783-04903	1	HALTEBLECH:SPEED:NO RMC	

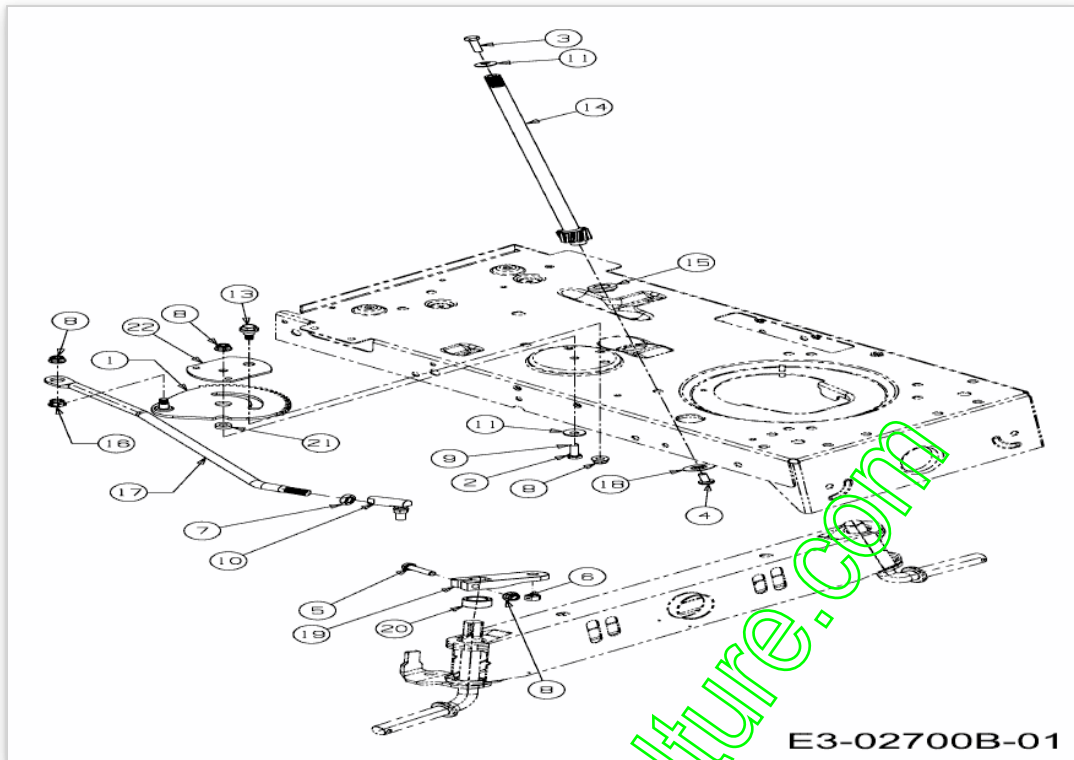
www.emc-motoculture.com



www.emc-motoculture.com

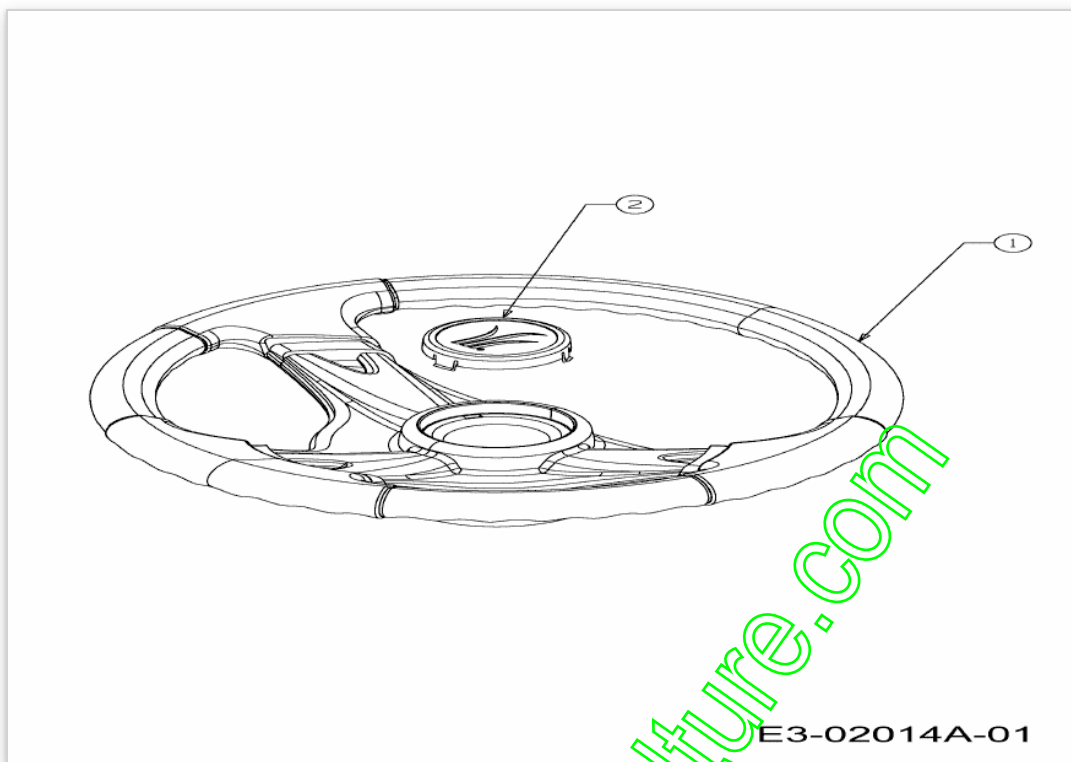
Position	Numéro de lapièce	#	Appellation I	Appellation II
1	683-04448	1	TRINGLE SUPPORT BATTERIE	FINISH:LACKIERT MTD QUALITÄT
2	710-0599	4	VIS A SIX PANS CREUX	FINISH:SPEC-100016 TYPE 1
3	726-0209	2	COLLIER	FINISH:SCHWARZ
4	747-04430	1	TRINGLE	FINISH:701-01000 OR 701-010007
5	751-0553	1	RESERVOIR 5 L ENV.	FINISH:NATUR SIEHE ZG.
6	751-0603A	1	BOUCHON ESSENCE	FINISH:KUNSTSTOFF SCHWARZ
7	783-04584A	1	HALTEBLECH:BENZINTANK	FINISH:LACKIEREN MTD QUALITÄT

www.emc-motoculture.com



www.emc-motoculture.com

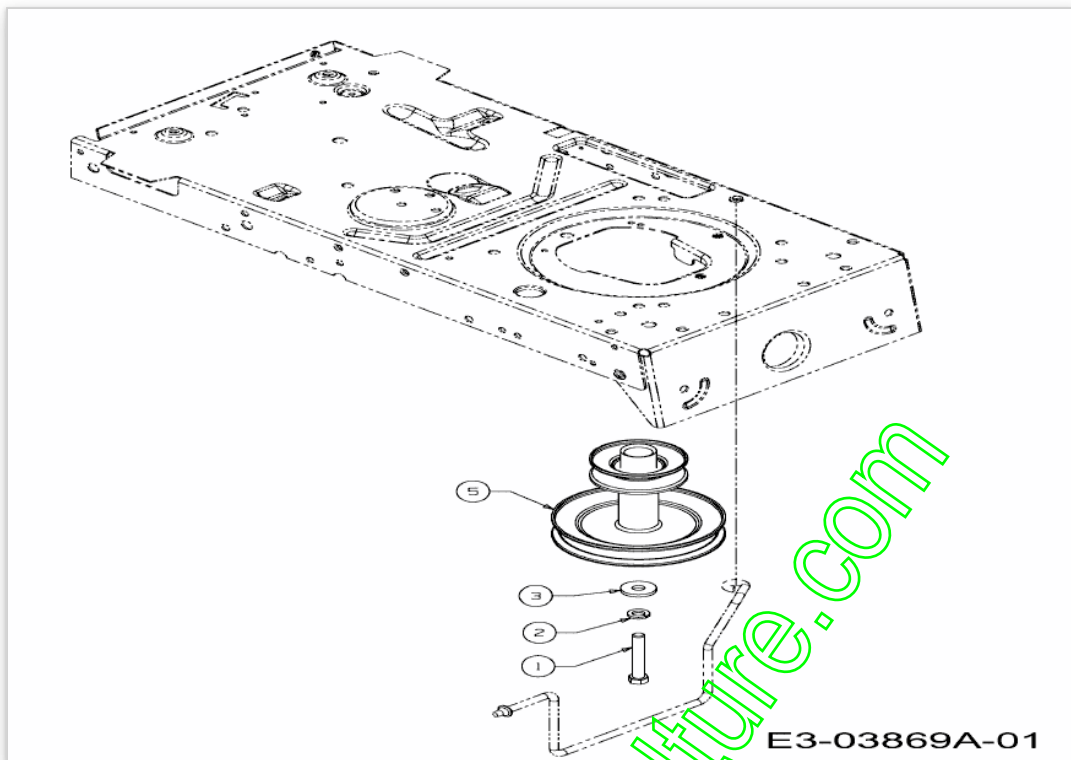
Position	Numéro de pièce	#	Appellation I	Appellation II
1	617-04024	1	SEGMENT DE DIRECTION CPL	FINISH:PHOS & OIL
2	710-0376	1	VIS HEX.:5/16- 18:1.00:GR5:STD	FINISH:MTD SPEC-100015
3	710-0643	1	VIS HEX.: 5/16-18:1.00:GR5	FINISH:MTD SPEC-100015
4	710-1309	1	VIS	FINISH:MTD SPEC-100015
5	710-3180	1	VIS HEX. 5/16- 18:1.75:GR5:STD	SPEC-701-01000 or SPEC 101616
6	712-0214	1	ECROU	FINISH:701-01000
7	712-0240	1	ÜCROU HEX.: 7/16-20:GR2	FINISH:MTD STD 701-01000
8	712-04063	4	ÜCROU HEX. AVEC FLANC	FINISH:MTD STD SPEC-101616
10	723-0448A	1	ROTULE DE DIRECTION 7/16-20	FINISH:GELB VERZINKT
11	736-0242	2	RONDELLE CONIQUE.340X.872X.060	FINISH:MTD STD 701-01001
13	738-04141	1	AXE	FINISH:701-01000
14	738-0919A	1	COLONNE DE DIRECTION	FINISH:PHOS & OIL
15	741-04124	1	PALIER DE BRIDE	FINISH:PLAIN
16	741-0475	1	DOUILLE PLASTIQUE:385 ID	NATUR ODER SCHWARZ 941-0475
17	747-04298	1	TRINGLE DE DIRECTION	FINISH:701-01007
18	748-0389	1	BAGUE	FINISH:GEÖLT
19	748-04065-Z	1	BIELETTE DE DIRECTION	FINISH:VERZINKT
20	748-04068	1	DOUILLE 71IDX.125 ODX.56 LG	FINISH:SPEC-100015
21	750-04418	1	DOUILLE .322ID.625ODX.21LG	FINISH:GEÖLT
22	783-04644	1	PLAQUE	FINISH:PHOS & OIL OR 701-01000



www.emc-motoculture.com

Position	Numéro de lapièce	#	Appellation I	Appellation II
1	631-04028	1	VOLANT	STD GRIP:FINISH SCHWARZ
2	731-04040	1	COUVERCLE DE VOLANT	Ò 60mm:KUNSTSTOFF SCHWARZ

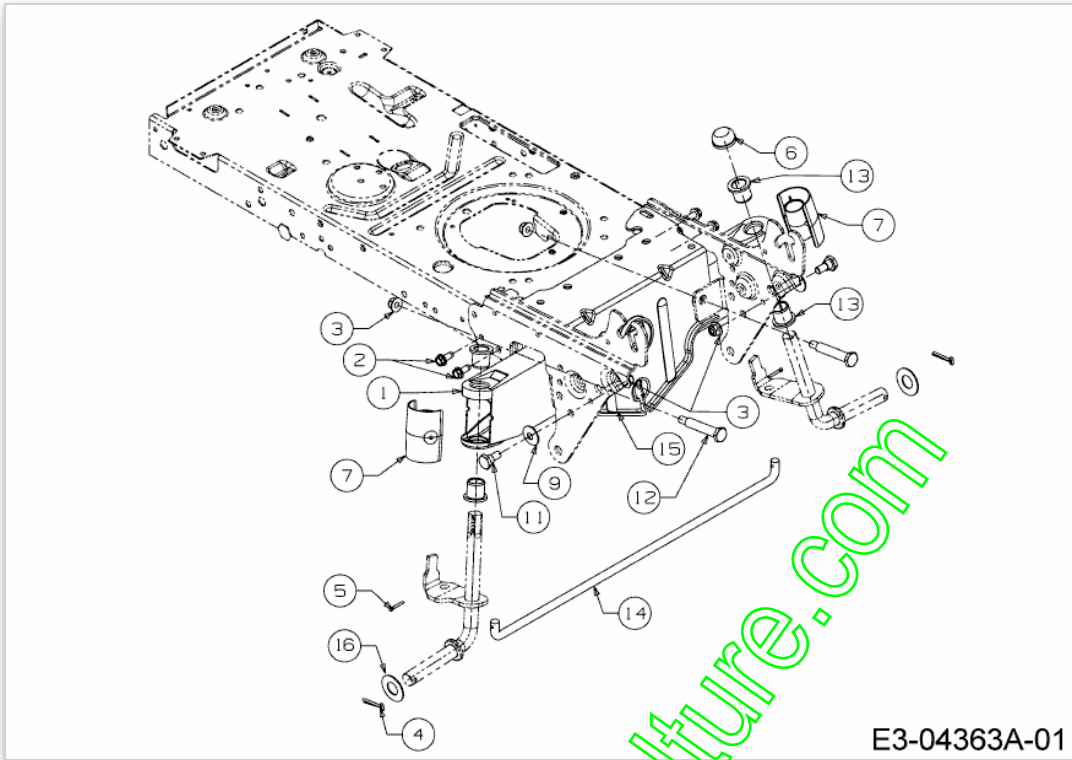
www.emc-motoculture.com



www.emc-motoculture.com

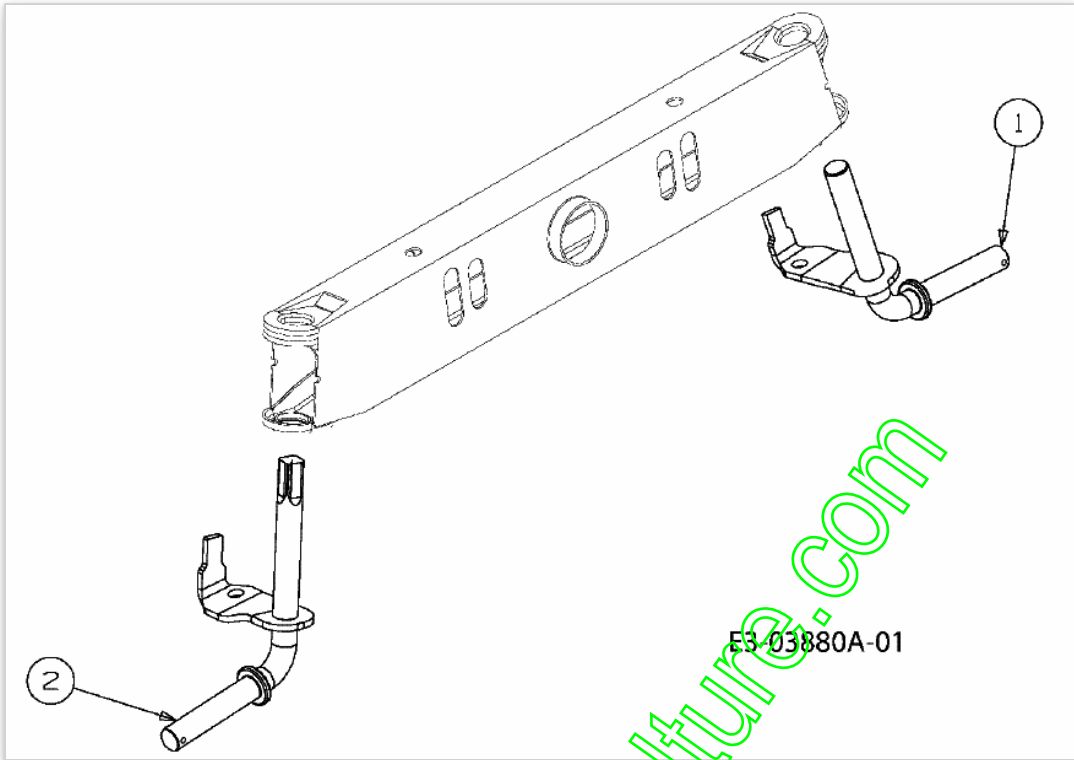
Position	Numéro de lapièce	#	Appellation I	Appellation II
1	710-04607	1	VIS POULIE MOTEUR	FINISH:MTD SPEC-100015
2	736-0171	1	RONDELLE GROWER	FINISH:MTD STD 701-01001
3	736-0322	1	RONDELLE .450 X 1.250 X .164	FINISH:701-01001 936-0322
5	756-04310	1	POULIE MOTEUR	GETRIEBE:FINISH:SPEC-100015

www.emc-motoculture.com



Position	Numéro de pièce	#	Appellation I	Appellation II
1	683-0128B637	1	ESSIEU AVANT	SCHWARZ GEPULVERT
2	710-1260A	4	VIS TT:5/16-18:.750	FINISH:SPEC-100016 TYPE 1
3	712-04065	4	ÜCROU HEXAGONAL	FINISH:SPEC-100015 912-04065
4	714-04039	2	EPINGLE	FINISH:PHOS & OIL
5	714-0474	2	GOUPILLE	FINISH:MTD SPEC-100015
6	726-0341	1	CAPUCHON CLIPS	FINISH:SCHWARZ
7	731-1291A	2	CARTER PLASTIQUE	MATERIAL:PP SCHWARZ:LT5
8	736-0316	2	RONDELLE 1.78XA1.59"	FINISH:MTD STD 701-01000
9	736-0331	2	RONDELLE CONIQUE	FINISH:MTD SPEC-100016
11	738-0143	2	VIS EPAULEE	FINISH:MTD SPEC 100015 (EU)
12	738-04128	2	VIS ÜPAULE .500x2.38:3/8-16	FINISH:MTD STD 701-01006
13	741-0660A	4	BAGUE ESSIEU DE ROUE	FINISH:KUNSTSTOFF SCHWARZ
14	747-04299A	1	TRINGLE DE DIRECTION	FINISH:SPEC-100015 or E-Coat
15	783-05326637	1	PLAQUE SUPPORT AVANT	783-05326-0637
16	736-0316	2	RONDELLE 1.78XA1.59"	FINISH:MTD STD 701-01000

www.emc-motoculture.com

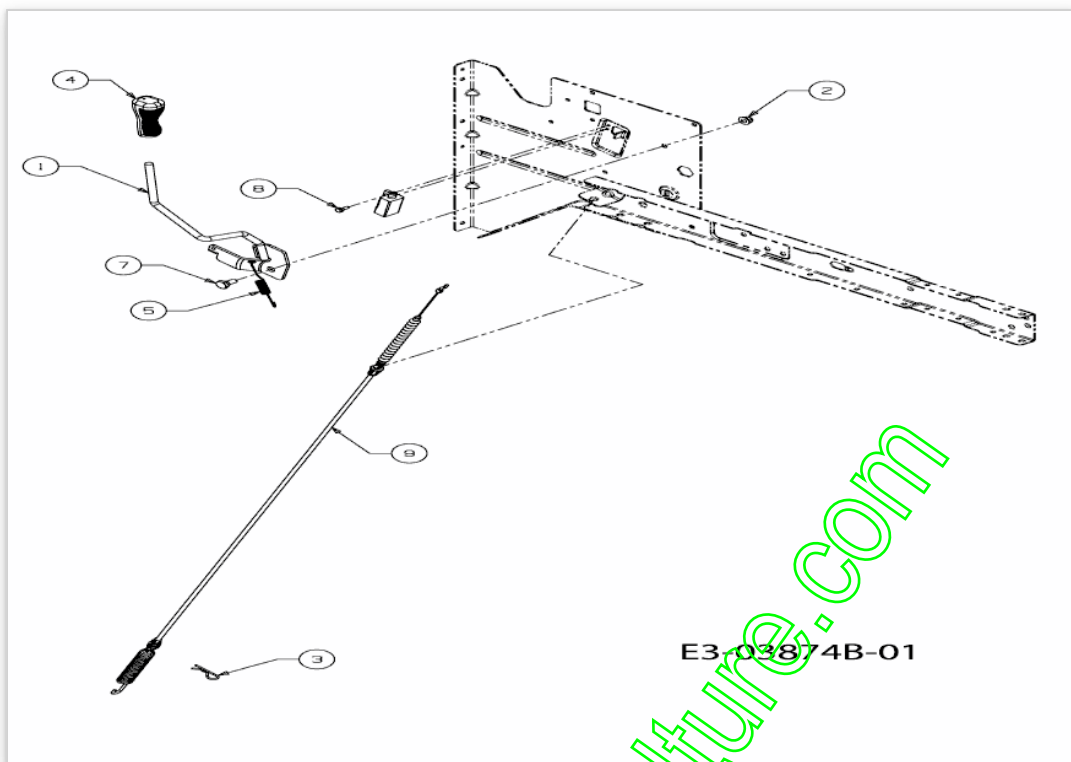


E3-03880A-01

www.emc-motoculture.com

Position	Numéro de lapièce	#	Appellation I	Appellation II
1	638-04014637	1	FUSEE GAUCHE	SCHWEISSTEIL:LACKIERT
2	638-04013637	1	FUSEE DROITE	SCHWEISSTEIL:LACKIERT

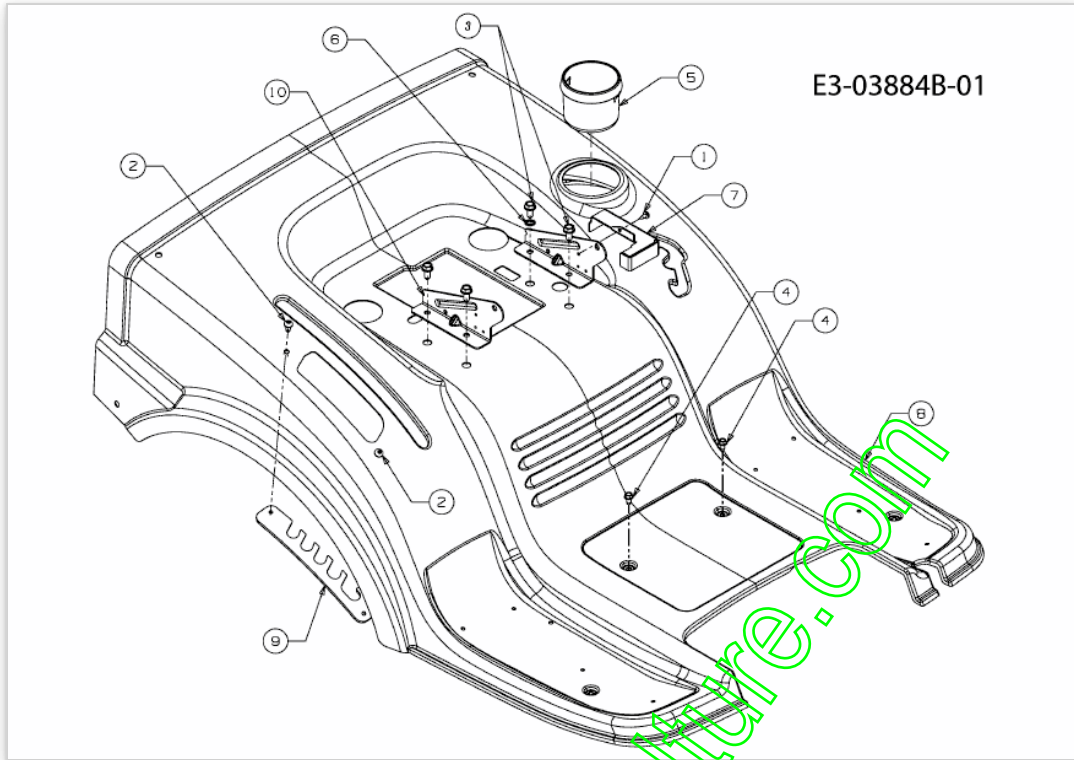
www.emc-motoculture.com



www.emc-motoculture.com

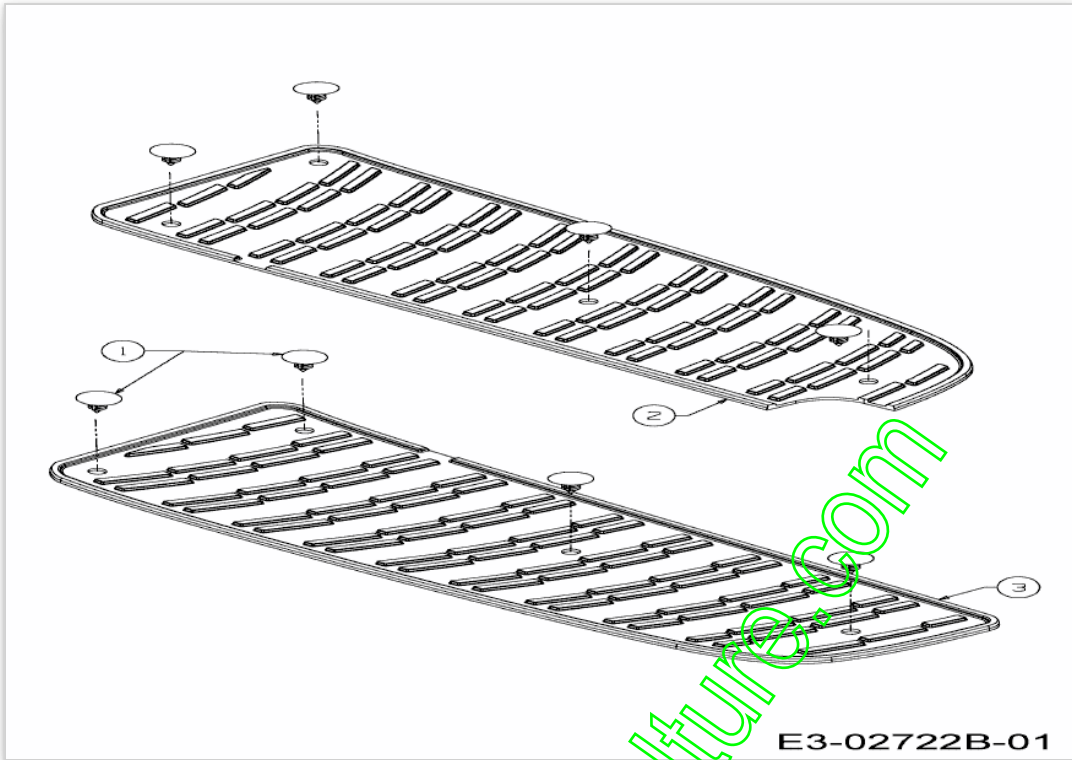
Position	Numéro de lapièce	#	Appellation I	Appellation II
1	647-04137	1	LEVIER D EMBRAYAGE	SCHWEISSTEIL:FINISH LACKIERT
2	712-04063	1	ÜCROU HEX. AVEC FLANC	FINISH:MTD STD SPEC-101616
3	714-0145	1	GOUPILLE	FINISH:PHOS & OIL
4	720-04049A	1	POIGNEE PLASTIQUE	FINISH:SCHWARZ
5	732-04276A	1	RESSORT	FINISH:701-01006
7	738-0140	1	VIS j ÜP.:.435 x.178-5/16 x.56	FINISH:VERZINKT
8	738-04237A	1	AXE EPAULE	FINISH:MTD STD 701-01002
9	746-04488	1	CABLE ENCLENCHEMENT LAME LT-5	MIT DICHTRING

www.emc-motoculture.com



Position	Numéro de pièce	#	Appellation I	Appellation II
1	710-0224	1	VIS PARK:#10-16:0.500:HXINDWSH	FINISH:MTD SPEC-100016 TYPE 1
2	710-04483	2	VIS:TT:1/4-20:.500:TRUSTRXI	FINISH:GELB SPEC-701-01002
3	710-04484	4	VIS HEX. TT:5/16-18:.750:HXIND	FINISH:MTD SPEC-100016 TYPE 1
4	710-0599	2	VIS A SIX PANS CREUX	FINISH:SPEC-100016 TYPE 1
5	731-04591A	1	PORTE GOBELET	FINISH:KUNSTSTOFF SCHWARZ
6	736-0607	1	RONDELLE	FINISH:MTD STD 701-01001
7	783-04877A	1	783-06279	FINISH:LACKIERT
8	783-05744	1	JUPE	FINISH:LACKIERT
9	783-05875	1	SELECTEUR HAUTEUR DE COUPE	FINISH:LACKIERT
10	783-1489C	2	HALTER:MONTAGE:SITZ	FINISH:LACKIERT

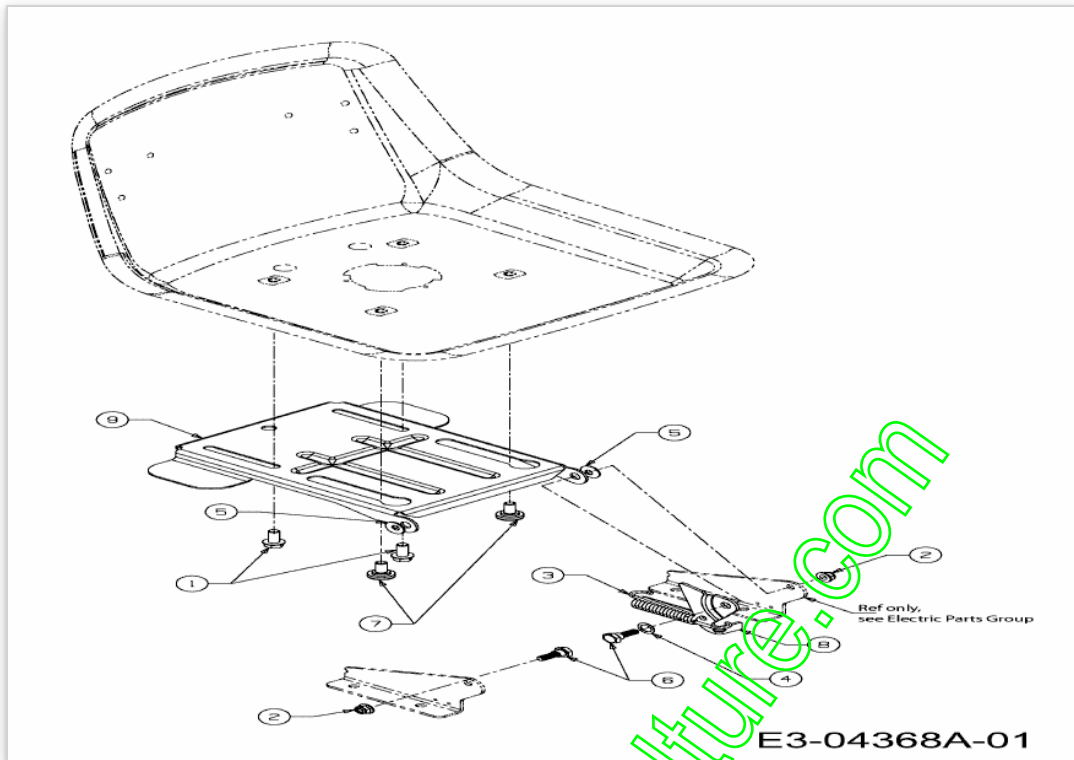
www.emc-motoculture.com



www.emc-motoculture.com

Position	Numéro de lapièce	#	Appellation I	Appellation II
1	726-3046	8	CLIP DE FIXATION:.250 DIA	FINISH:KUNSTSTOFF SCHWARZ
2	735-04047	1	MARCHE PIED GAUCHE	FINISH:SCHWARZ
3	735-04048	1	MARCHE PIED DROITE	FINISH:SCHWARZ

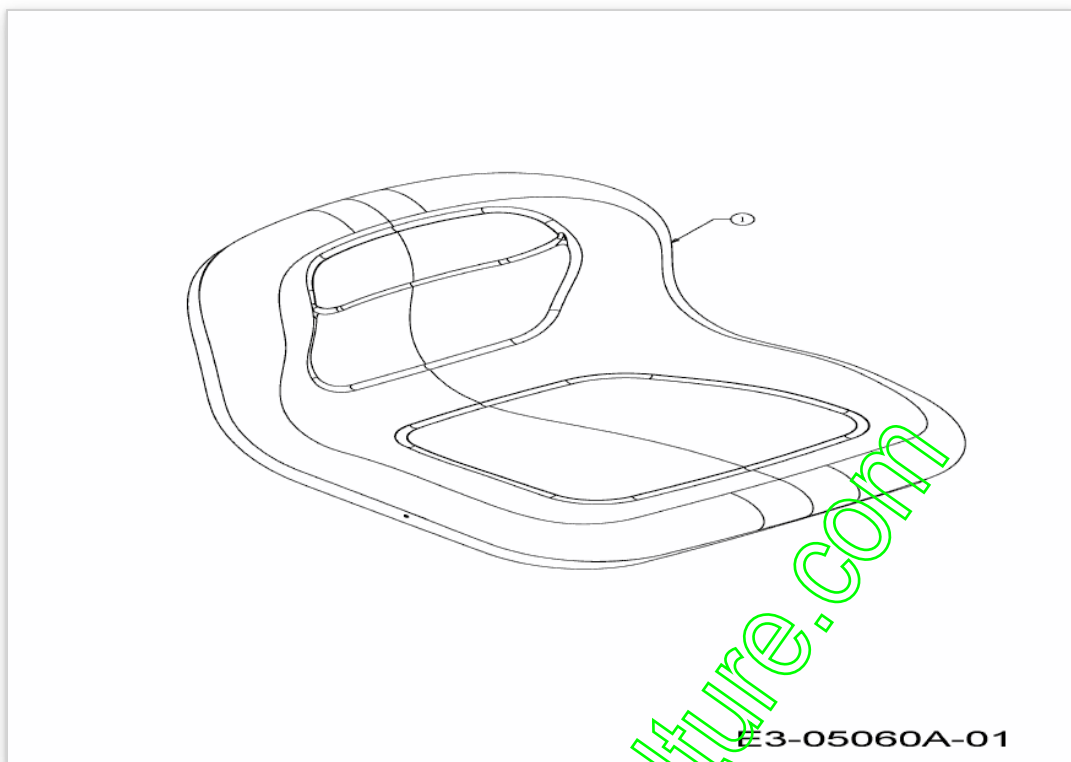
www.emc-motoculture.com



www.emc-motoculture.com

Position	Numéro de pièce	#	Appellation I	Appellation II
1	710-04482	2	VIS:3/8-16:.875:GR5:STD	FINISH:MTD SPEC-100015
2	712-04063	2	ÜCROU HEX. AVEC FLANC	FINISH:MTD STD SPEC-101616
3	732-1184	1	RESSORT	500er:FINISH:MTD STD 701-01000
4	736-0108	1	RONDELLE	FINISH:701-01000
5	736-0242	2	RONDELLE CONIQUE.340X.872X.060	FINISH:MTD STD 701-01001
6	738-0296	2	AXE EPAULE	FINISH:701-01000
7	738-04012A	2	VIS EPAULEE	FINISH:SIEHE ZG.
8	783-0209D	1	SUPP. SIËGE	FINISH:SPEC-100016
9	783-04081B	1	PLAQUE DE SIËGE: NOIR	FINISH:LACKIERT

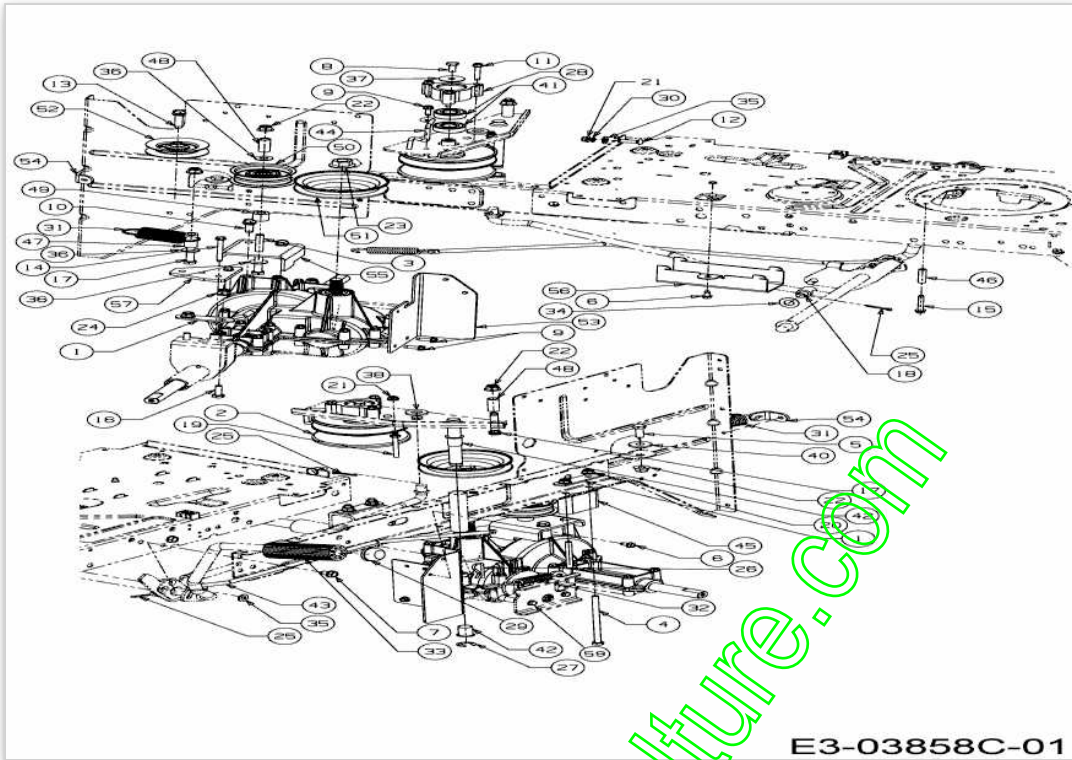
www.emc-motoculture.com



www.emc-motoculture.com

Position	Numéro de lapièce	#	Appellation I	Appellation II
1	757-04109	1	SIEGE NOIR HAUT	FINISH:SCHWARZ

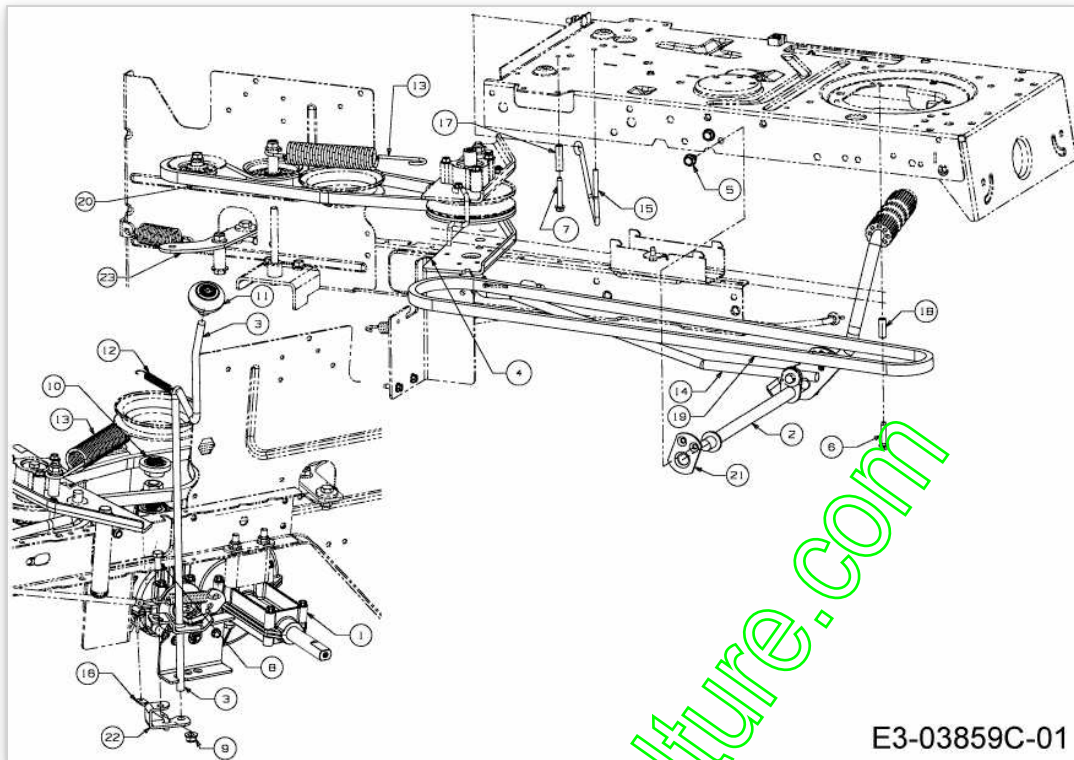
www.emc-motoculture.com



www.emc-motoculture.com

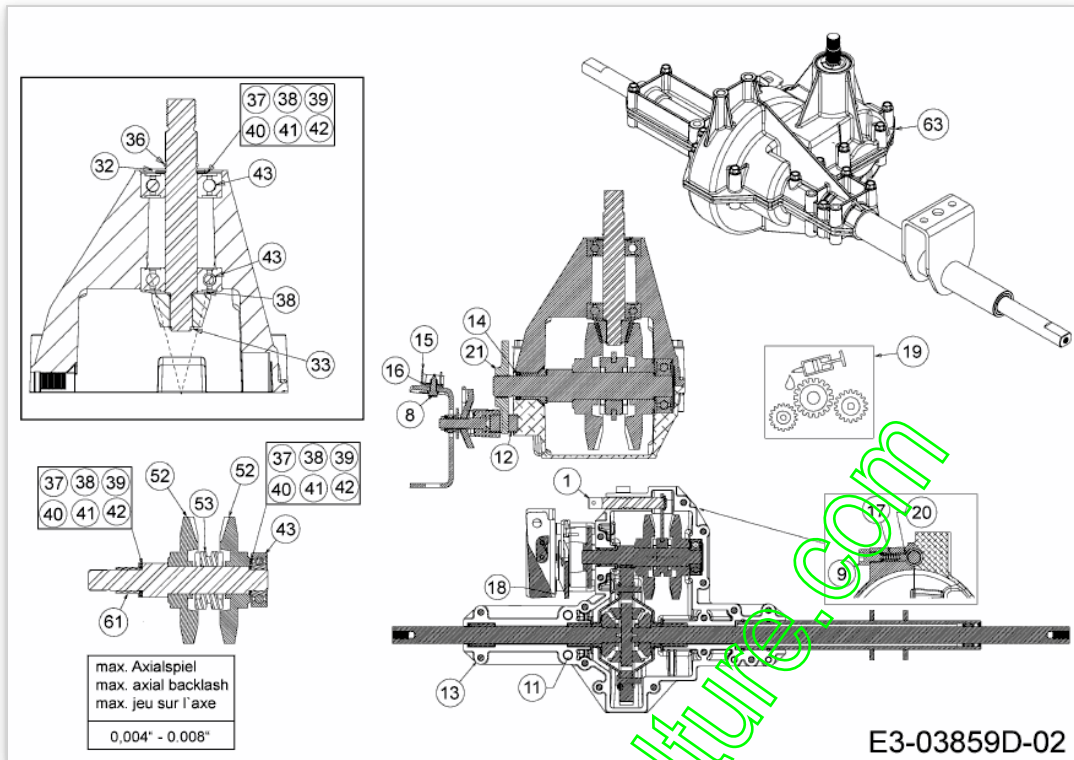
Position	Numéro de pièce	#	Appellation I	Appellation II
1	17840-Z	2	SUPPORT	
2	656-04015A	1	POULIE VARIATEUR	FINISH:
3	710-0411	1	VIS HHCS:3/8-16:4.00:GR5:STD	FINISH:SPEC-100015
4	710-04469	2	VIS HEX. 5/16-18X5.00:GR5:STD	FINISH:MTD SPEC-100015
5	710-0514	1	VIS HEX.:3/8-16:1.00:GR5:STD	FINISH:MTD SPEC-100015
6	710-0599	3	VIS A SIX PANS CREUX	FINISH:SPEC-100016 TYPE 1
7	710-0604A	2	VIS 5/16-18:0.625	FINISH:MTD SPEC-100016 TYPE 1
8	710-0627	1	VIS HEX. 5/16-24:750 GR5:LOCK	FINISH:MTD SPEC-100015
9	710-0642	3	VIS1/4-20:0.750	SPEC-100016 TYPE 1 910-0642
10	710-0654A	2	VIS j SIX PANS CREUX	FINISH:MTD SPEC-701-01002
11	710-0778	3	VIS HEX. TT:1/4-20:1.500	FINISH:MTD SPEC-100016 TYPE 1
12	710-0932	1	VIS	FINISH:701-01000
13	710-1007	1	VIS HEX.TTSEMS3/8-16:1,500	FINISH:STD SPEC-100016
14	710-1206	2	VIS HEX. TT:1/4-20:2.375	FINISH:MTD SPEC-100016 TYPE 1
15	710-1325	1	VIS HEXAGONALE	FINISH:MTD SPEC-701-01002
16	710-1682	2	VIS	FINISH:SPEC-100015 21.1441.72
17	710-3144	2	VIS HEX.: 3/8-16:2.00:GR5:STD	FINISH:STD 701-01000 910-3144
18	711-04036	1	AXE	FINISH:GLANZVERZINKT 911-04036
19	711-04826	1	GUIDE COURROIE	BLACK OXIDE ODER PHOS & OIL
20	712-04063	2	ÜCROU HEX. AVEC FLANC	FINISH:MTD STD SPEC-101616
21	712-04064	2	ÜCROU HEXAGONAL	GRN5:SPEC-100015 912-04064
22	712-04065	4	ÜCROU HEXAGONAL	FINISH:SPEC-100015 912-04065
23	712-0700	1	ÜCROU HEXAGONAL	FINISH:701-01000 912-0700
24	712-0714	2	ECROU	FINISH:MTD SPEC-100015
25	714-0111	3	GOUPILLE FENDUE 3/32:1.0"	FINISH:MTD SPEC-100015
26	714-0209	1	GOUPILLE FENDUE	FINISH:SPEC-701-01006 914-0209
27	716-0106A	1	CIRCLIPS	FINISH:MTD SPEC 701-01001
28	718-04261	1	CAGE DE ROULEMENT	FINISH:ROTSCHUTZ SIEHE ZG.
29	726-0214	1	BOUCHON	FINISH:SCHWARZ
30	726-0233	1	RONDELLE	FINISH:PHOS AND OIL

Position	Numéro de lapièce	#	Appellation I	Appellation II
31	732-04505	1	RESSORT 1.00 DIA X 3.925 LG	FINISH:PHOS AND OIL
32	732-0716D	1	RESSORT	FINISH:MTD STD 701-01006
33	735-0239	1	CAOUTCHOUC/PEDALE 4;0 LG	FINISH:SCHWARZ
34	736-0272	1	RONDELLE .510x1.00X.060	FINISH:MTD-SPEC 101616
35	736-0275	2	RONDELLE	FINISH:MTD STD 701-01000
36	736-0300	3	RONDELLE	FINISH:MTD SPEC-100015
37	736-0362	1	RONDELLE .320ID X 1.25 ODX .0	FINISH:701-01001
38	736-3019	1	RONDELLE .531x1.062x.134:HT	FINISH:736-3019-Z
40	738-0347	1	RONDELLE ; EMB. .625IDx.169	FINISH:
41	741-0124	2	PALIER ; BILLES	FINISH
42	741-0591	2	BAGUE	FINISH:NATUR 941-0591
43	747-04815B	1	TRINGLE DE FREIN	FINISH:SPEC-100015
44	747-04897B	1	747-04897D-S	FINISH:747-04897B-Z
45	748-04175	1	SUPPORT ENTRETOISE	FINISH:GEÖLT
46	750-04456	1	ENTRETOISE	FINISH:VERZINKT SIEHE ZG.
47	750-04584	1	DOUILLE .375IDx.625ODx 1.34 LG	FINISH:SPEC-100015
48	750-04962	2	ENTRETOISE	FINISH:GEÖLT
49	750-04988	1	ENTRETOISE	FINISH:ÖL GEDIPPT
50	756-04224	1	POULIE TENDEUR	BLK ECOAT,PAINT OR SPEC-100015
51	756-04298	1	POULIE DE PONT	PINS:FINISH:SIEHE ZG.656-04044
52	756-04324	1	POULIE TENDEUR	FINISH:SCHWARZ LACKIERT
53	783-05705637	1	SUPPORT DE PONT	FINISH:LACKIERT
54	783-05844-Z	1	EQUERE	783-05844-Z
55	783-05855637	1	SUPPORT	SCHWARZ
56	783-05882637	1	SUPPORT	FINISH:LACKIERT
57	783-1363	1	MONTAGEPLATTE- GETRIEBE	FINISH:BLAU CHROMATIEREN *
59	710-1206	2	VIS HEX. TT:1/4-20:2.375	FINISH:MTD SPEC-100016 TYPE 1



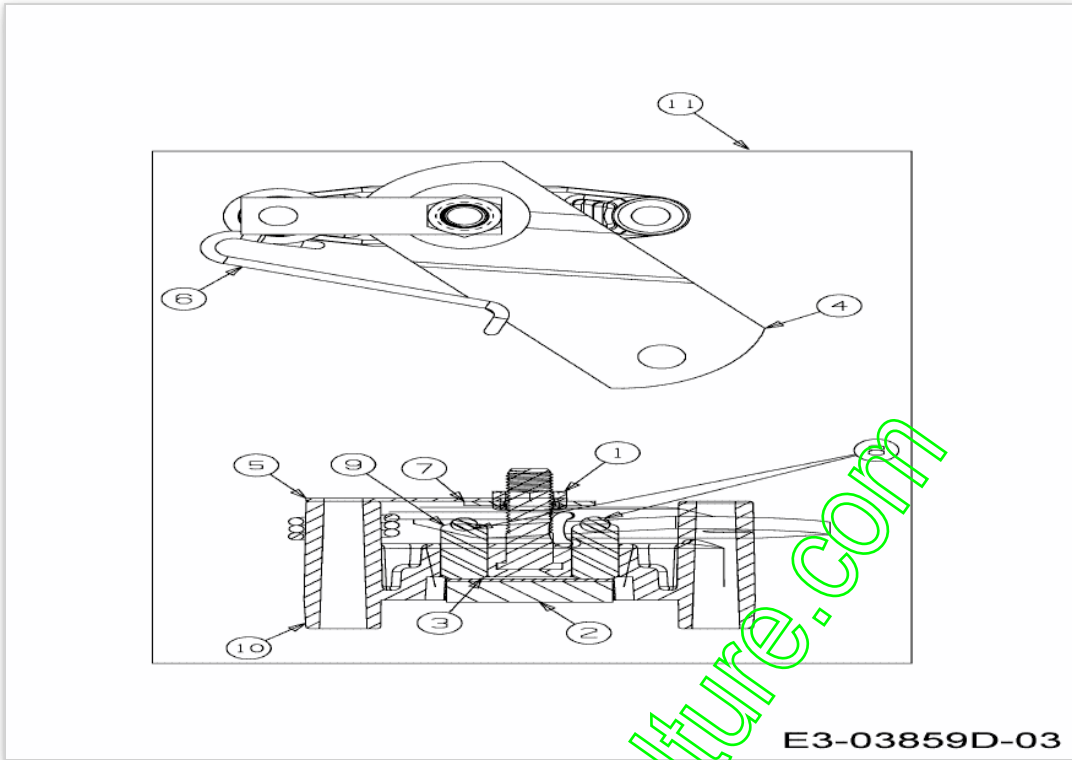
www.emc-motoculture.com

Position	Numéro de pièce	#	Appellation I	Appellation II
1	092.60.138	1	SERVICE KIT LT-5 BOÎTE	E-TEIL-SET
2	647-04132A	1	PEDAL VOLLST:TRANS:RR DIS LT-5	SCHWEISSTEIL:LACKIERT
3	647-04140-Z	1	LEVIER INVERSEUR	FINISH:VERZINKT MTD 701-01000
4	683-04429	1	SPANNROLLENTRÄGER VST:VARI:LT5	HECKAUSWURF:FINISH LACKIERT
5	710-0604A	2	VIS 5/16-18:0.625	FINISH:MTD SPEC-100016 TYPE 1
6	710-0809	1	VIS HEX. TT:1/4-20:1.250:HXIND	FINISH:MTD SPEC-100016 TYPE 1
7	710-1325	1	VIS HEXAGONALE	FINISH:MTD SPEC-701-01002
8	710-3008	1	VIS 5/16-18:.75:GR5:STD	FINISH:MTD STD 701-01000
9	712-04063	1	ÜCROU HEX. AVEC FLANC	FINISH:MTD STD SPEC-101616
10	718-04407	1	MOYEU: POULIE:5/8 DENTELURE	VERZÄHNUNG
11	720-04028	1	POIGNEE INVERSEUR	FINISH:SCHWARZ
12	732-04488	1	RESSORT DE TRACTION	FINISH:701-01006
13	732-04517	1	RESSORT	FINISH:PHOS AND OIL
14	747-04780	1	TRINGLE	LT-5 FINISH:MTD STD 100015
15	747-04803	1	TIGE	FINISH:LACKIERT
16	747-04850	1	TIGE	LT-5 HECKAUSWURF:701-01000
17	750-04456	1	ENTRETOISE	FINISH:VERZINKT SIEHE ZG.
18	750-0566A	1	ENTRETOISE	FINISH:MTD SPEC-100015
19	754-04211	1	COURROIE MOTEUR VARIATEUR	POLY
20	754-04268	1	COURROIE VARIATEUR PONT LT5	POLY
21	783-04536B	1	STÜTZBLECH:PEDAL:LT-5	FINISH:LACKIERT MTD QUALITÄT
22	783-05853A	1	SUPPORT	FINISH:MTD STD SPEC-100015
23	783-06623	1	SUPPORT	FINISH:MTD SPEC-100015



www.emc-motoculture.com

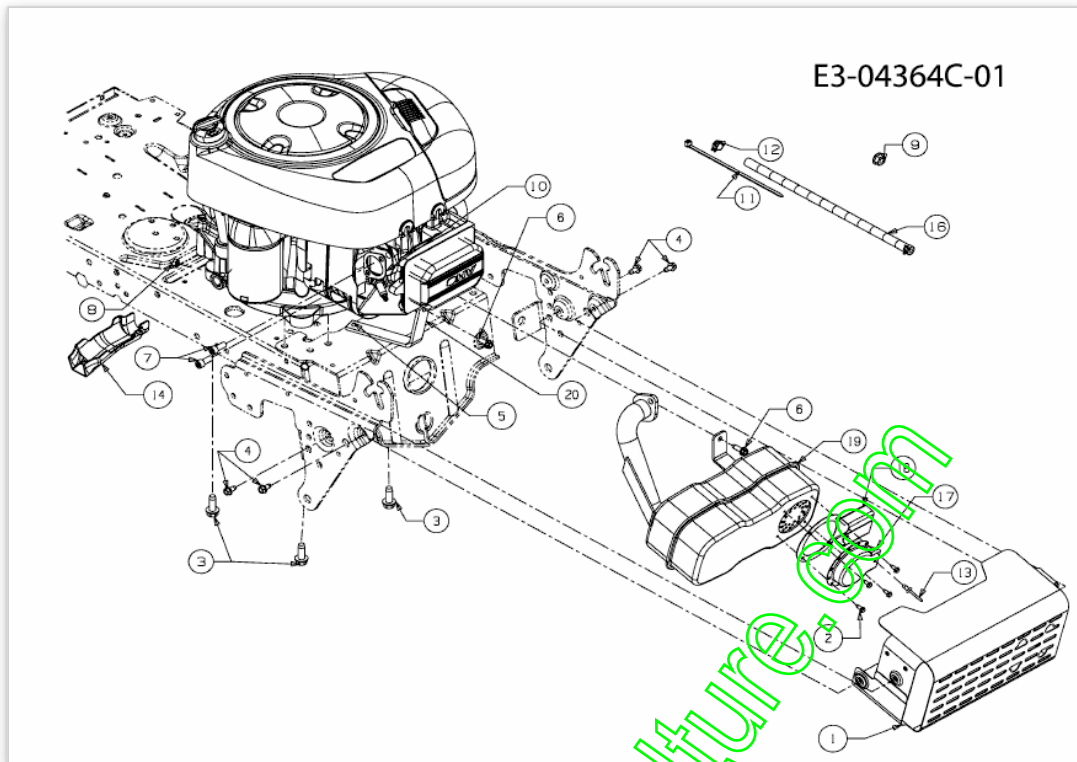
Position	Numéro de pièce	#	Appellation I	Appellation II
1	611-04096	1	FOURCHETTE	PRESSTEIL:FINISH:
8	710-0227	2	VIS	FINISH:MTD SPEC-100016 TYPE 1
9	710-04731	1	VIS	FINISH: MTD STD 701-01002
11	710-1325	17	VIS HEXAGONALE	FINISH:MTD SPEC-701-01002
12	717-0678	1	PLAQUETTE DE FREIN	FINISH:
13	719-04358	1	CARTER INFERIEUR	FINISH:WIE GEGOSSEN
14	721-0213	1	JOINT SPI .625x.812x.094	FINISH:
15	725-1644	1	INTERRUPTEUR DE SÛCURITÛ	FINISH:MTD SPEC-100015
16	726-0320	1	PLAQUE D'ISOLATION	FINISH:NATUR ODER SCHWARZ
17	732-04485A	1	RESSORT	FINISH:PHOS AND OIL SIEHE ZG.
18	736-0342	1	RONDELLE PLATE .283 x.75 x.030	FINISH:MTD STD 701-01000
19	6021-U1-1073	X	GRAISSE (400G)	+L12 HYDROXYSTEARAT
20	741-1134	1	BILLE	FINISH:SIEHE ZG.
21	761-0202	1	DISQUE DE FREIN	FINISH:ÖL UND FETTFREI
32	716-0231	1	CIRCLIPS	FINISH:PHOS & OIL/916-0231
33	716-0385	1	CIRCLIPS	FINISH:SCHWARZ PHOS & OIL
36	732-0614	1	CIRCLIPS	FINISH:ZINC PHOSPHATE
37	736-0336	1	RONDELLE 5/8X1.00X.030	ZINC SIEHE ZG.
38	736-0337	2	RONDELLE 5/8 IDX1.0 ODX.040	MTD STD 701-01001 936-0337
39	736-0349	1	RONDELLE 5/8 IDX10 OD X.020	FINISH:SIEHE ZG.
40	736-04337	1	RONDELLE	FINISH:GEÖLT
41	736-0494	1	RONDELLE	FINISH:ZINC SIEHE ZG.
42	736-0495	1	RONDELLE	FINISH:SIEHE ZG. 936-0495
43	741-0524A	3	ROULEMENT	FINISH:SIEHE CHART *
52	717-04537	2	PIGNON 55 DENTS	FINISH:ÖL GEDIPPT
53	718-04045	1	PIGNON BALADEUR	FINISH:SIEHE ZG.
61	741-04458	1	BAGUE	FINISH:ÖL-IMPRÄGNIERT
63	092.60.138	1	SERVICE KIT LT-5 BOÏTE	E-TEIL-SET



www.emc-motoculture.com

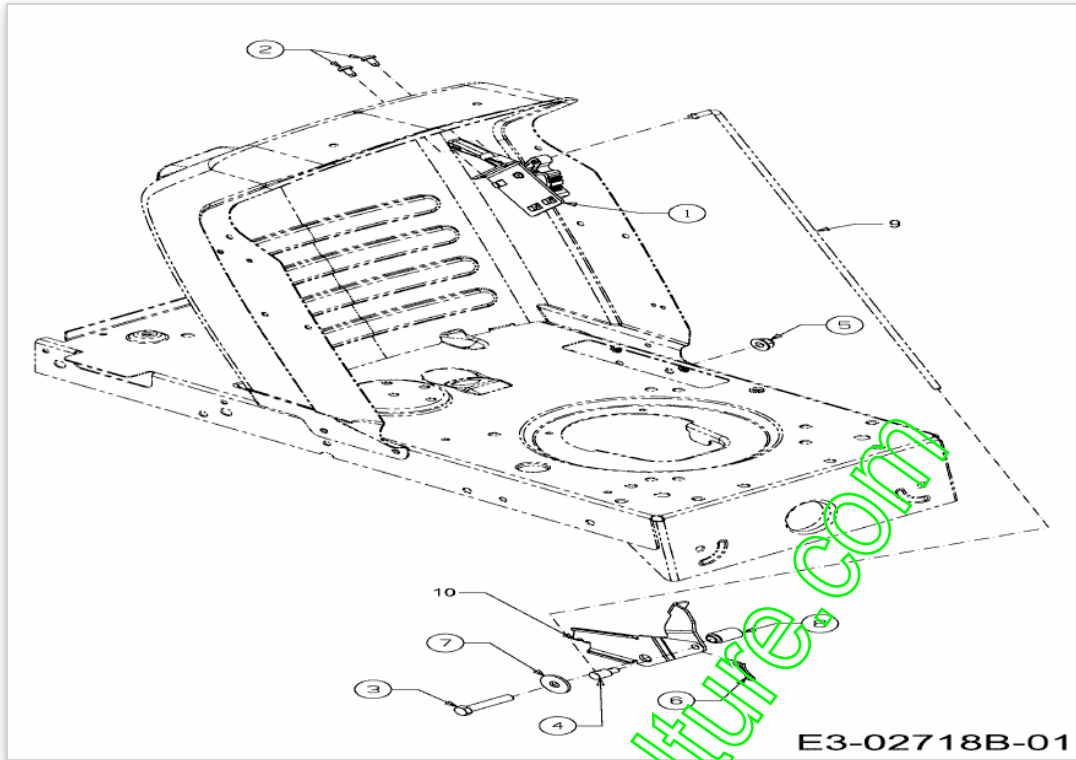
Position	Numéro de pièce	#	Appellation I	Appellation II
1	712-0273	1	ÜCROU HEXAGONAL 5/16-24"	FINISH:MTD SPEC-100015
2	717-0678	1	PLAQUETTE DE FREIN	FINISH:
3	717-0682	1	INSERT DE FREIN	FINISH:NONE 917-0682
4	717-0700	1	LEVIER DE FREIN, j DROITE	FINISH:PHOSPHATE & OIL
5	718-0150	1	LANG. DE SUPP.: ANTI ROTATION	FINISH:SPEC-100015
6	732-0743	1	RESSORT	FINISH:ZINC PHOS&OIL 932-0743
7	736-0371	1	RONDELLE 1.344XA .875"	FINISH:701-04001
9	741-0343	2	GOIJON DE PRESSION 5/16"	FINISH:SIHE ZG. 941-0343
10	761-0198A	1	APPUI DE FREIN	FINISH:NONE 961-0198A
11	661-0006	1	SUPPORT PLAQUETTE FREIN	FINISH:

www.emc-motoculture.com



Position	Numéro de pièce	#	Appellation I	Appellation II
1	683-04549	1	PROTECTION D ECHAPPEMENT	SCHWEISSTEIL:FINISH LACKIERT
2	710-0227	4	VIS	FINISH:MTD SPEC-100016 TYPE 1
3	710-04683	4	VIS HEX.:3/8-16:1.000	FINISH:MTD SPEC-701-01002
4	710-0599	4	VIS A SIX PANS CREUX	FINISH:SPEC-100016 TYPE 1
5	710-0604A	1	VIS 5/16-18:0.625	FINISH:MTD SPEC-100016 TYPE 1
6	710-0642	2	VIS1/4-20:0.750	SPEC-100016 TYPE 1 910-0642
7	710-1314A	2	VIS HEX. INT. 5/16-18:.75:GR8	FINISH:PHOS & OIL
8	712-0271	1	ECROU 1/4-20"+ DISQUE DENTE	FINISH:MTD SPEC-100016 GR5
9	712-3005	1	ÜCROU AVEC FLANC:3/8-16:GR5	FINISH SPEC-100015 912-3005
10	721-0208	1	JOINT ECHAP B/S MONO CYLINDRE	FINISH:B&S #272293
11	725-0157	1	COLLIER DE SERRAGE3/16X0.5X7.4	MATERIAL:NYLON-SCHWARZ
12	726-0205	2	COLLIER DE SERRAGE DE BOYAU	FINISH:PHOS UND GELB LACKIERT
13	728-04000	1	RIVET POP	FINISH:SIEHE ZG.
14	731-05628	1	GOUTIERE VIDANGE D HUILE	FINISH:SCHWARZ
16	751-0535	1	TUYAU ESSENCE NOIR	Ø12,7+/-5.84 / Ø6,35+/-0,41
17	751-0564B	1	DEFLECTEUR:ÜCHAPPEMENT	MATERIAL:ALUMINIERTER STAHL
18	751-10353	1	RALLONGE DÜFLECTEUR	FINISH:ALUMINISIERT
19	751-10536A	1	SILENCIEUX	FINISH:SIEHE ZG.
20	783-06509	1	SUPPORT MOTEUR	MODELL 21:FINISH LACKIERT *

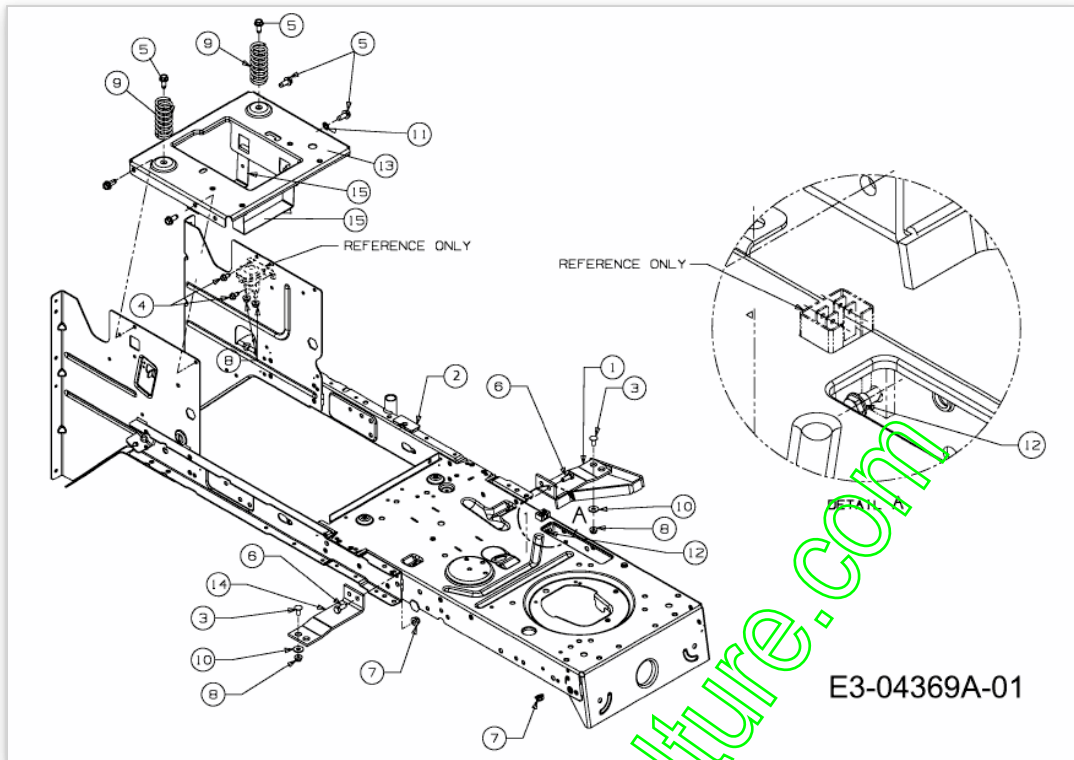
www.eric-motoculture.com



www.emc-motoculture.com

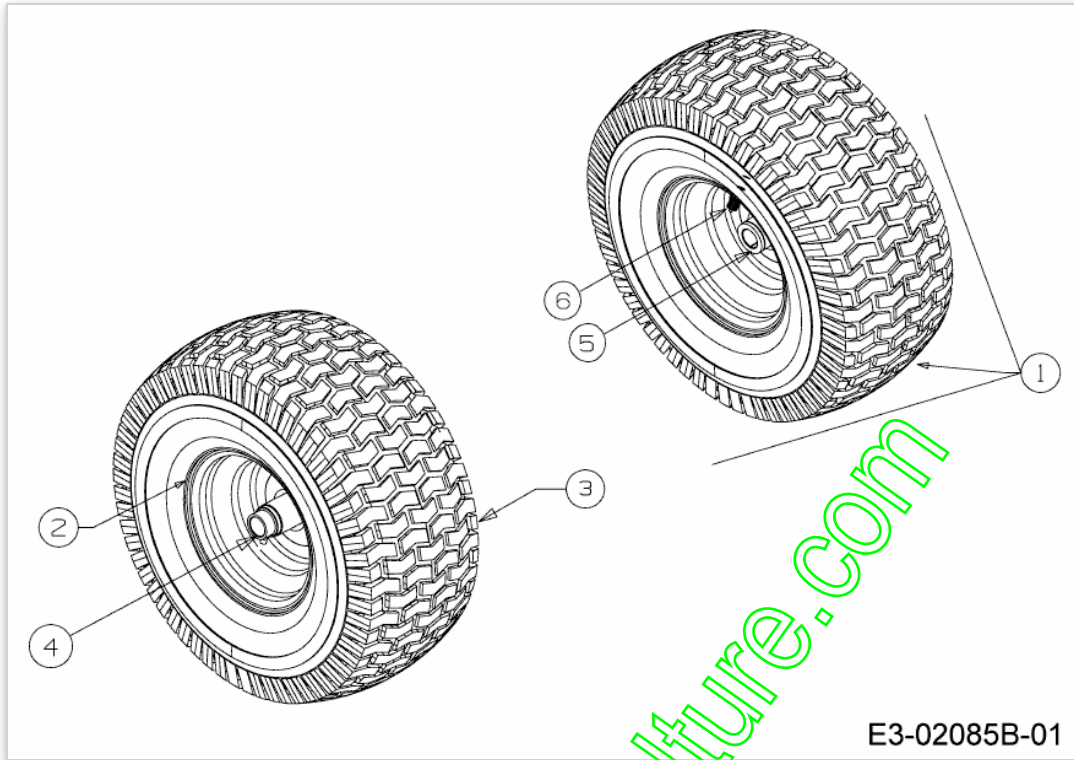
Position	Numéro de lapièce	#	Appellation I	Appellation II
1	683-04225	1	SCHALTHEBEL VOLLST:6- SPEED:LT5	
2	710-04483	2	VIS:TT:1/4-20:.500:TRUSTRXI	FINISH:GELB SPEC-701-01002
3	710-3144	1	VIS HEX.: 3/8- 16:2.00:GR5:STD	FINISH:STD 701-01000 910-3144
4	711-0736	1	AXE	FINISH:MTD SPEC 701-01000
5	712-04065	1	ÜCROU HEXAGONAL	FINISH:SPEC-100015 912-04065
6	714-04040	1	GOUPILLE	FINISH:VERZINKT
7	736-0133	1	RONDELLE .411X1.25X1.00	FINISH:MTD STD 701-01000
8	750-04465	1	ENTRETOISE	
9	747-04430	1	TRINGLE	FINISH:701-01000 OR 701-010007
10	783-04903	1	HALTEBLECH:SPEED:NO RMC	

www.emc-motoculture.com



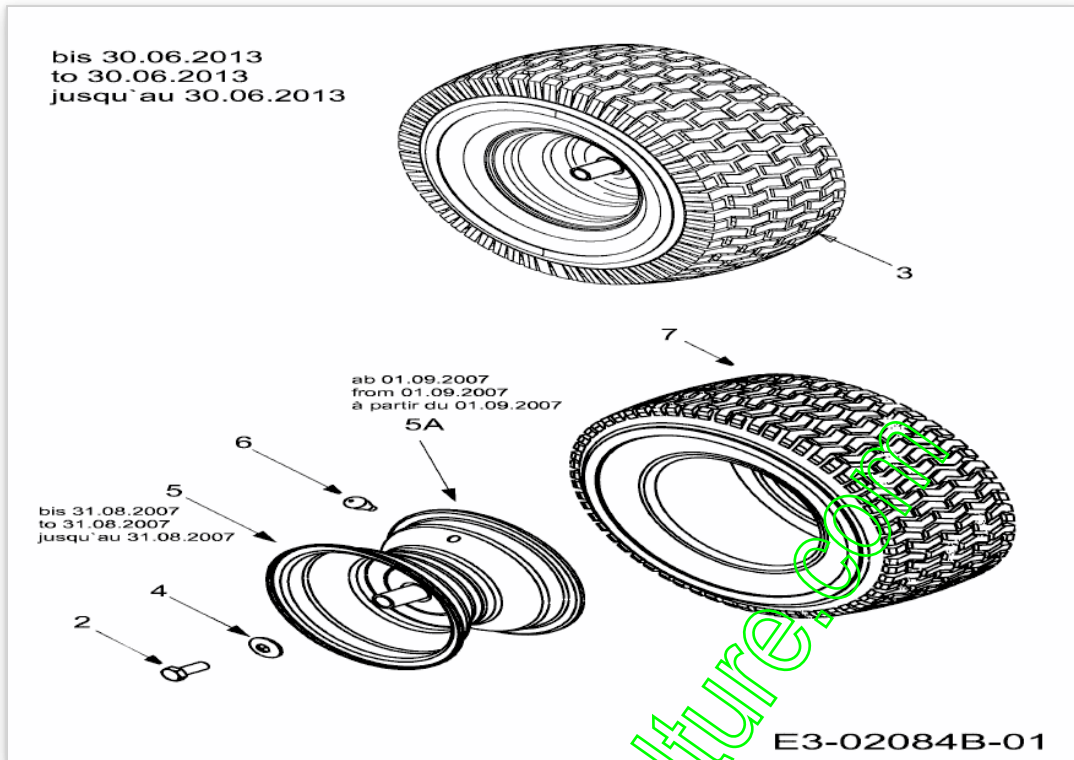
Position	Numéro de pièce	#	Appellation I	Appellation II
1	683-04195637	1	SUPPORT	SCHWEIßTEIL / SCHWARZ LACKIERT
2	683-04408	1	CHASSIS	SCHWEISSTEIL:FINISH:LACKIERT
3	710-0134	2	VIS ; T α TE PLATE	FINISH:MTD SPEC-100015
4	710-0599	2	VIS A SIX PANS CREUX	FINISH:SPEC-100016 TYPE 1
5	710-04484	6	VIS HEX. TT:5/16- 18:.750:HXIND	FINISH:MTD SPEC-100016 TYPE 1
6	710-3008	2	VIS 5/16- 18:.75:GR5:STD	FINISH:MTD STD 701-01000
7	712-04063	3	ÜCROU HEX. AVEC FLANC	FINISH:MTD STD SPEC-101616
8	712-04064	4	ÜCROU HEXAGONAL	GRN5:SPEC-100015 912-04064
9	732-04035	2	RESSORT DE SIEGE	FINISH:701-01000
10	736-0173	2	RONDELLE 281DX 74ODX.063	FINISH:MTD STD 701-01000
11	736-0607	1	RONDELLE	FINISH:MTD STD 701-01001
12	738-04237A	1	AXE EPAULE	FINISH:MTD STD 701-01002
13	783-04548C-S	1	SUPPORT DE SIEGE	SCHWARZ
14	783-04637637	1	SUPPORT	SCHWARZ LACKIERT
15	783-04869A-S	2	SUPPORT BATTERIE	SCHWARZ

www.emc-motoculture.com



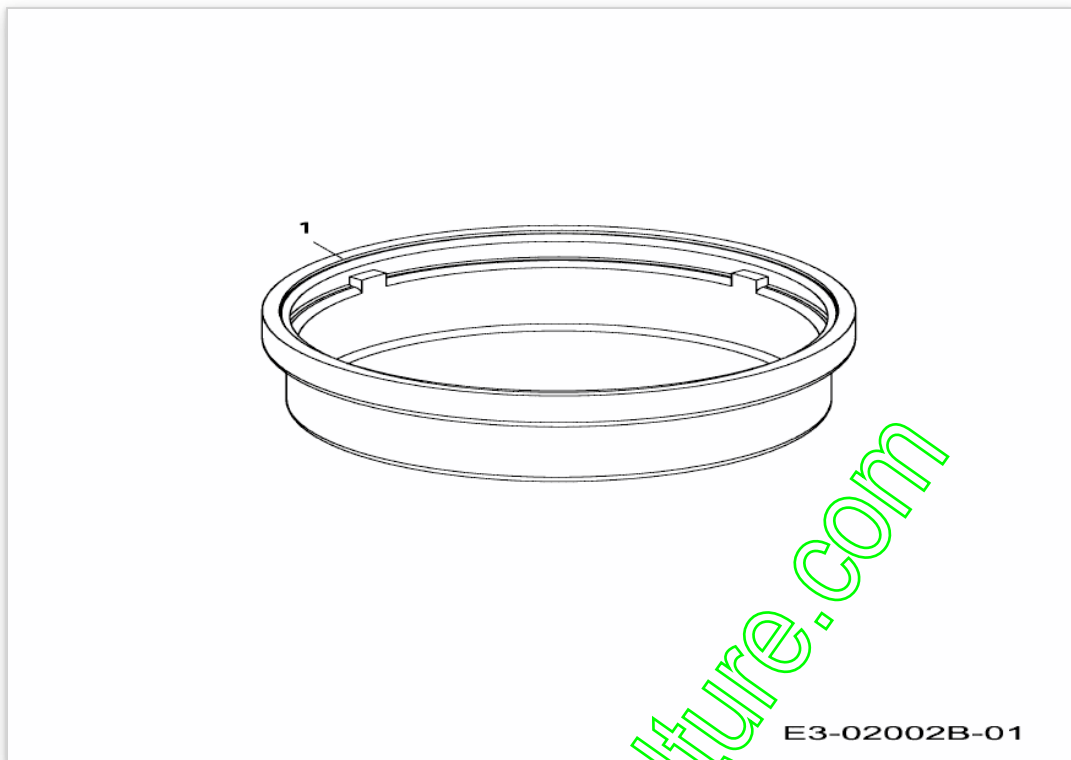
Position	Numéro de pièce	#	Appellation I	Appellation II
1	634-04086	2	ROUE CPLT	SHL
2	634-04081	1	JANTE CPLT	GLEITLAGER SCHWEIßTEIL
3	734-1731	1	PNEU 15X600X6 DICO MULTI-TRAC	FINISH:
4	741-0990B	1	BAGUE DE ROUE AVEC GRAISSEUR	m.SCHMIERNIPPEL:FINISH SCHWARZ
5	741-0516B	1	BAGUE DE ROUE .760x1.00x1.20	FINISH:SCHWARZ
6	734-0255	1	VALVE:PNEU	TR 412-P / 32.6mm / 934-0255

www.emc-motoculture.com



Position	Numéro de pièce	#	Appellation I	Appellation II
2	710-0627	2	VIS HEX. 5/16-24:.750 GR5:LOCK	FINISH:MTD SPEC-100015
3	734-0817	2	ROUE COMPL 18X9,50-8 ST ELEC	SIEHE FARBVARIANTEN
4	736-0242	2	RONDELLE CONIQUE.340X.872X.060	FINISH:MTD STD 701-01001
5	634-0070	2	JANTE	FINISH:788-0499/674/0662
5A	634-04369	2	JANTE 8.0x7.0x .750 ID	FINISH:LACKIERT
6	734-0255	2	VALVE:PNEU	TR 412-P / 32.6mm / 934-0255
7	734-0448	2	PNEU 18*950*8	734-0448-0901

www.emc-motoculture.com

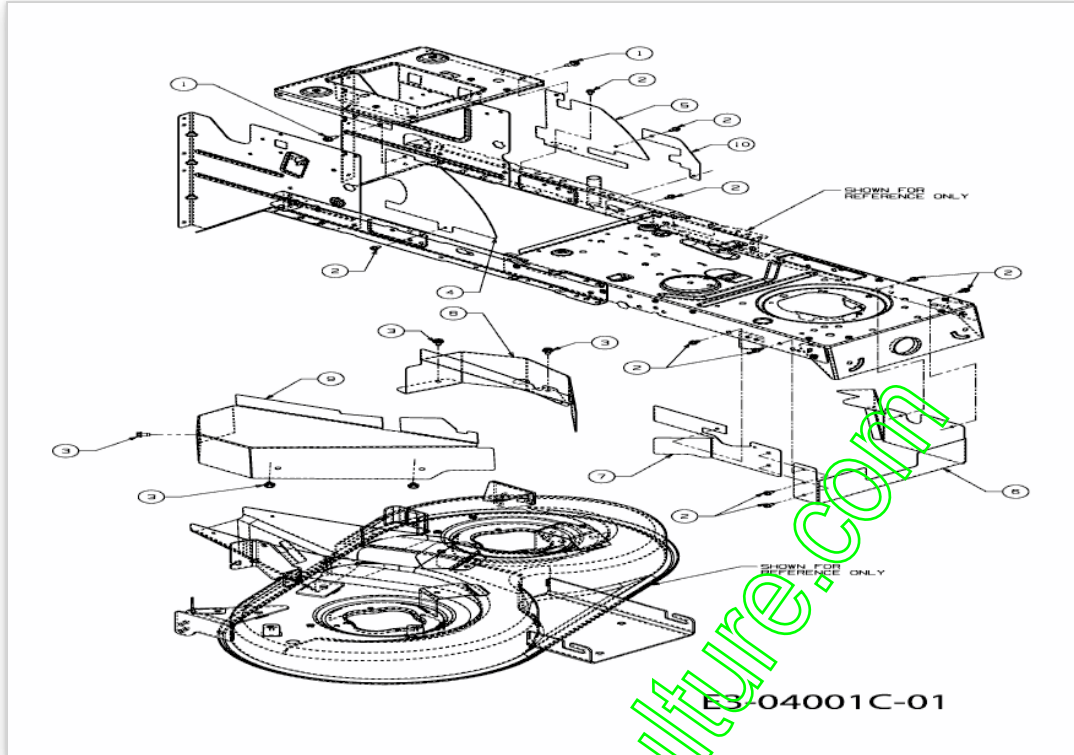


E3-02002B-01

www.emc-motoculture.com

Position	Numéro de lapièce	#	Appellation I	Appellation II
1	731-0484A	2	ENJOLIVEUR DEVANT	KUNSTSTOFF SCHWARZ 931-0484A

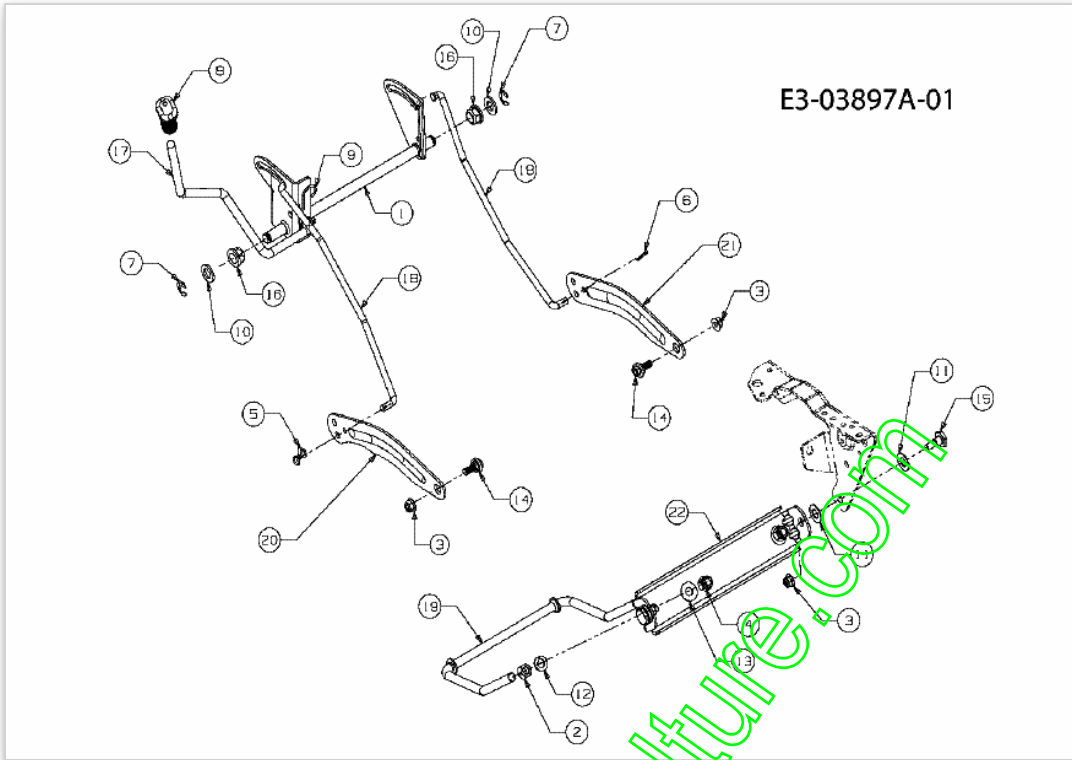
www.emc-motoculture.com



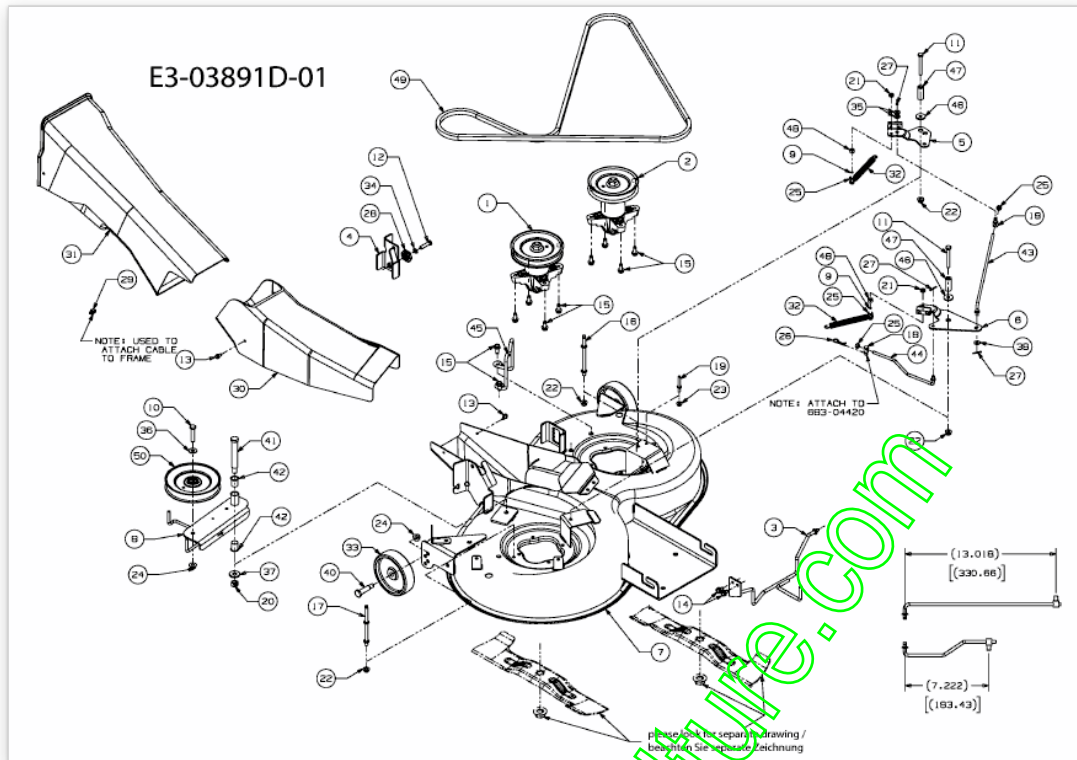
www.emc-motoculture.com

Position	Numéro de lapièce	#	Appellation I	Appellation II
1	710-04484	2	VIS HEX. TT:5/16- 18.:750:HXIND	FINISH:MTD SPEC-100016 TYPE 1
2	710-0599	10	VIS A SIX PANS CREUX	FINISH:SPEC-100016 TYPE 1
3	710-0607	4	VIS HEX.TT5/16- 18.:500HXINDWSh	FINISH:MTD SPEC-100016 TYPE 1
4	783-05992637	1	PROTECTION ARRIERE DROITE	SCHWARZ
5	783-05994	1	ABDECKUNG RE.HINTEN:LT-5	FINISH:LACKIERT MTD QUALITÄT
6	783-05998637	1	PROTECTION AVANT	SCHWARZ
7	783-05999637	1	PROTECTION AVANT DROITE	SCHWARZ
8	783-06000637	1	PROTECTION GAUCHE	SCHWARZ
9	783-06001637	1	PROTECTION DROITE	SCHWARZ
10	783-06084637	1	PROTECTION	SCHWARZ

www.emc-motoculture.com



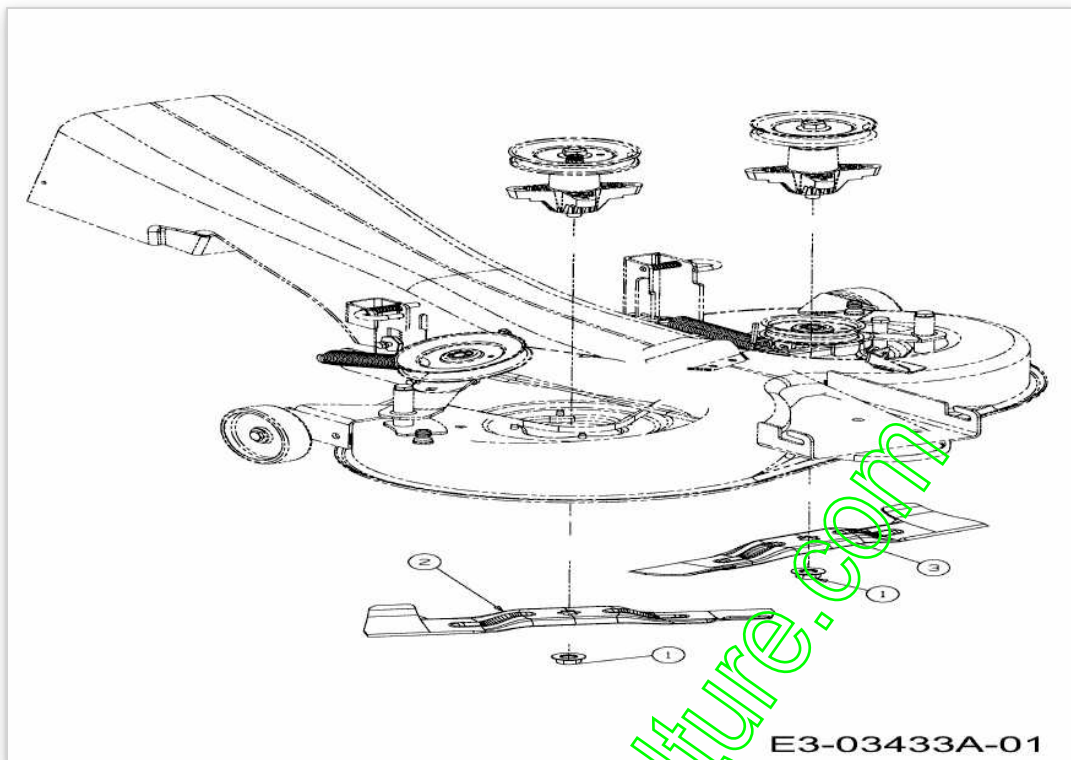
Position	Numéro de pièce	#	Appellation I	Appellation II
1	683-04466	1	LEVIER COMPLET	SCHWEISSTEIL:FINISH LACKIERT
2	712-0206	2	ÜCROU HEX. 1/2-13:GR.5	FINISH:MTD STD 701-01000
3	712-04065	4	ÜCROU HEXAGONAL	FINISH:SPEC-100015 912-04065
4	712-3083	2	ÜCROU HEX. 1/2-13:GRB:NYLON	FINISH:MTD STD 701-01000
5	714-04043	1	GOUPILLE	FINISH:VERZINKT
6	714-0470	1	EPINGLE EX AF-43010	FINISH:SPEC-100015 470 32 32
7	716-0106A	2	CIRCLIPS	FINISH:MTD SPEC 701-01001
8	720-0311	1	POIGNÛE LEVIER COUPE : 1/2	FARBE: SCHWARZ VINYL
9	732-04225	1	RESSORT	FINISH:MTD STD 701-01006
10	736-0366	2	RONDELLE 5/8 ID X 1.0 OD	FINISH:MTD SPEC-100015
11	736-0414	4	RONDELLE TÜFLON	FINISH:WEISS: 936-0414
12	736-0921	2	RONDELLE GROWER	FINISH:MTD STD 701-01001
13	736-3084	2	RONDELLE	FINISH:MTD STD 701-01001
14	738-04130	2	VIS .625X.175:3/8-16	FINISH:701-01002
15	738-0507B	2	VIS	FINISH:PHOS & OIL
16	741-0225	2	BAGUE HEXAGONALE TEFLON 6 PANS	FINISH:KUNSTSTOFF SCHWARZ
17	747-04282	1	LEVIER DE RELEVAGE :LT-5	FINISH:SPEC-100015
18	747-04842	2	TRINGLE DE RELEVAGE	A/C/E/N-Deck
19	747-1324	1	TRINGLE	FINISH:SPEC-100015
20	783-04494B	1	AUSHEBEARM:DECK 42" RECHTS LT5	FINISH:LACKIERT MTD QUALITÄT
21	783-04711B	1	AUSHEBEARM:DECK 42" LINKS LT5	FINISH:LACKIERT MTD QUALITÄT
22	783-0720C	1	SUPPORT DE RELEVAGE	FINISH:LACKIERT



Position	Numéro de lapièce	#	Appellation I	Appellation II
1	618-0324C	1	RIEMENSCHLEIBE:6.482 DIA x.5625	RIEMENSCHLEIBE 5.75 DIA
2	618-0409B	1	RIEMENSCHLEIBE:6.482 DIA x.5625	RIEMENSCHLEIBE 5.39 DIA
3	647-04144	1	TRINGLE GUIDE COURROIE	SCHWEISSTEIL:BLANK *
4	683-04396	1	SUPPORT PLATEAU	SCHWEISSTEIL:LACKIERT LT-5
5	683-04409	1	BREMSE VOLLST:DECK:A/C/N- DECK	LT5: NIETTEIL
6	683-04417	1	FREIN DE LAME	LT5: NIETTEIL
7	683-04418	1	CARTER DE COUPE 92 CM	SCHWEISSTEIL:FINISH:LACKIERT
8	683-04420	1	SPANNROLLENTÄGER VOLLST.	SCHWEISSTEIL:FINISH:LACKIERT
9	710-0106	2	VIS HEX. 1/4-20:1.25:GR5:SPEC	FINISH:MTD SPEC-100015
10	710-0347	1	VIS HEX. 3/8-16:1.75:GR5:STD	FINISH:MTD SPEC-100015
11	710-0378	2	VIS HEX.:5/16-18:2.50:GR5:STD	FINISH:MTD SPEC-100015
12	710-0528	1	VIS HEX. 5/16-18:1.25:GR5:STD	FINISH:SPEC-100015 910-0528
13	710-0599	2	VIS A SIX PANS CREUX	FINISH:SPEC-100016 TYPE 1
14	710-0607	2	VIS HEX.TT5/16-18:.500HXINDWSh	FINISH:MTD SPEC-100016 TYPE 1
15	710-1260A	10	VIS TT:5/16-18:.750	FINISH:SPEC-100016 TYPE 1
16	711-05319	1	GUIDE COURROIE	SCHWEISSTEIL:FINISH:PHOS & OIL
17	711-05320	1	GUIDE COURROIE	SCHWEISSTEIL:FINISH:PHOS & OIL
18	711-0736	2	AXE	FINISH:MTD SPEC 701-01000
19	711-0993	1	GUIDE COURROIE	FINISH:701-01006 911-0993
20	712-0290	1	ÜCROU 7/16-14	FINISH:MTD STD 701-01000
21	712-0291	2	ÜCROU EX AF-43013	FINISH:MTD STD SPEC-100015
22	712-04063	4	ÜCROU HEX. AVEC FLANC	FINISH:MTD STD SPEC-101616
23	712-04064	1	ÜCROU HEXAGONAL	GRN5:SPEC-100015 912-04064
24	712-04065	3	ÜCROU HEXAGONAL	FINISH:SPEC-100015 912-04065
25	712-3006	4	ÜCROU HEXAGONAL	FINISH:PHOS AND OIL
26	714-0145	1	GOUPILLE	FINISH:PHOS & OIL
27	714-0507	3	GOUPILLE FENDUE 3/32 X .750	FINISH:MTD SPEC-100015
28	717-04074	1	PIGNON HAUTEUR PLATEAU	FINISH:SIEHE ZG. 917-04074
29	729-04033	1	CLIPS SERRE CABLE	729-04033
30	731-06251	1	CANAL D'ÜJECTION INFÜRIEUR	FINISH:SCHWARZ
31	731-06252	1	CANAL D'ÜJECTION SUPÜRIEUR	FINISH:SCHWARZ
32	732-0604A	2	RESSORT	FINISH:PHOS AND OIL
33	734-0973	2	ROULETTE DE PLATEAU	FINISH:KUNSTSTOFF SCHWARZ
34	736-0119	1	RONDELLE	FINISH:MTD STD 701-01001
35	736-0264	2	RONDELLE: .330 x.630 x.0635	FINISH:701-01000 936-0264
36	736-0300	1	RONDELLE	FINISH:MTD SPEC-100015
37	736-04097A	1	RONDELLE:PLATE:11.65x28.75x3mm	FINISH:MTD SPEC 701-01000
38	736-3020	1	RONDELLE	FINISH:MTD STD 701-01000
40	738-0373	2	VIS i ÜPAULE .496x1.525:3/8-16	FINISH:MTD STD 701-01000
41	738-0476	1	VIS i ÜPAULE .625x3.50:7/16-14	PHOS & OIL ODER SPEC 101616

Position	Numéro de lapièce	#	Appellation I	Appellation II
42	741-0591	2	BAGUE	FINISH:NATUR 941-0591
43	747-04781	1	TIGE DE FREIN	FINISH:SPEC-100015
44	747-04782	1	TIGE DE FREIN	FINISH:SPEC-100015
45	747-04840	1	GUIDE COURROIE	FINISH:SPEC-100015
46	748-0234	2	RONDELLE EPAULEE	FINISH:ROSTPREVENTION
47	750-04993	2	ENTRETOISE	FINISH:SPEC-100015
48	750-05381	2	ENTRETOISE	FINISH:IN ÖL SAE 30 GEDIPPT
49	754-04175	1	COURROIE DE COUPE 92 CM	FINISH:
50	756-04050	1	POULIE DE COURR. TR. Ø 6.0"DIA	KUGELGELAGERT: SCHWARZ LACKIERT

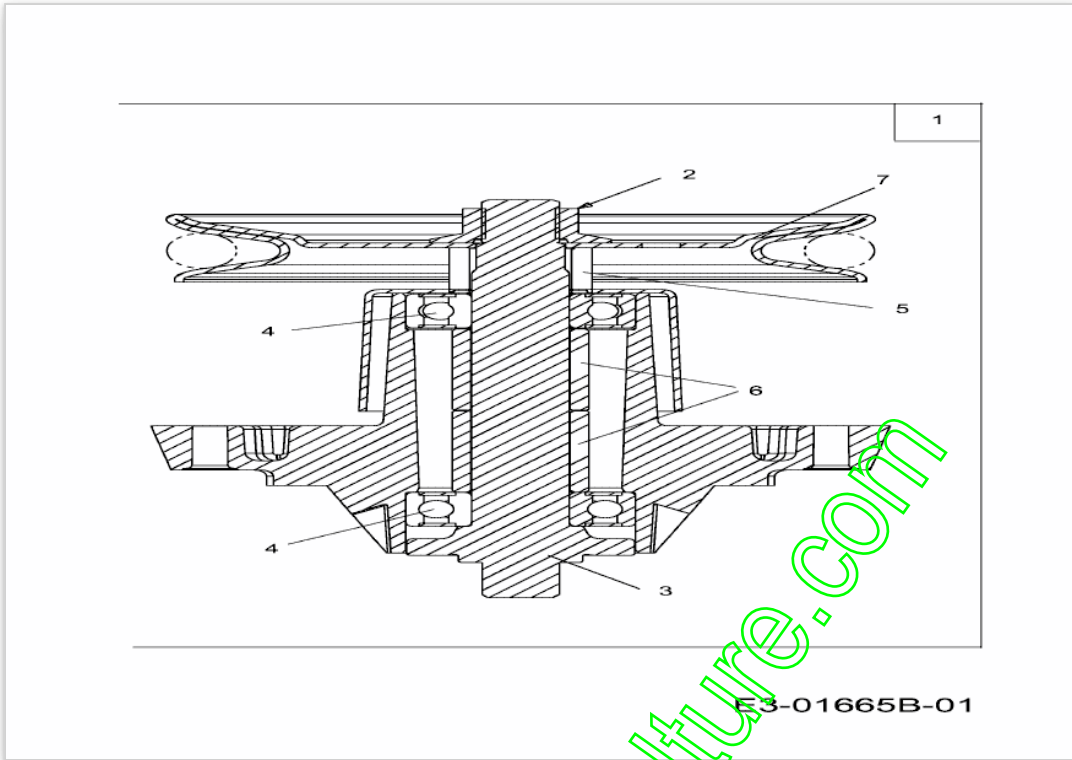
www.emc-motoculture.com



www.emc-motoculture.com

Position	Numéro de lapièce	#	Appellation I	Appellation II
1	712-0417A	2	ÜCROU HEX. AV. FLANC: 5/8- 18	FINISH:MTD STD 701-01000
2	742-04020A	1	LAME j DROITE 18.40 LG	STAR BAG
3	742-04021A	1	LAME j GAUCHE 18.40 LG	STAR BAG

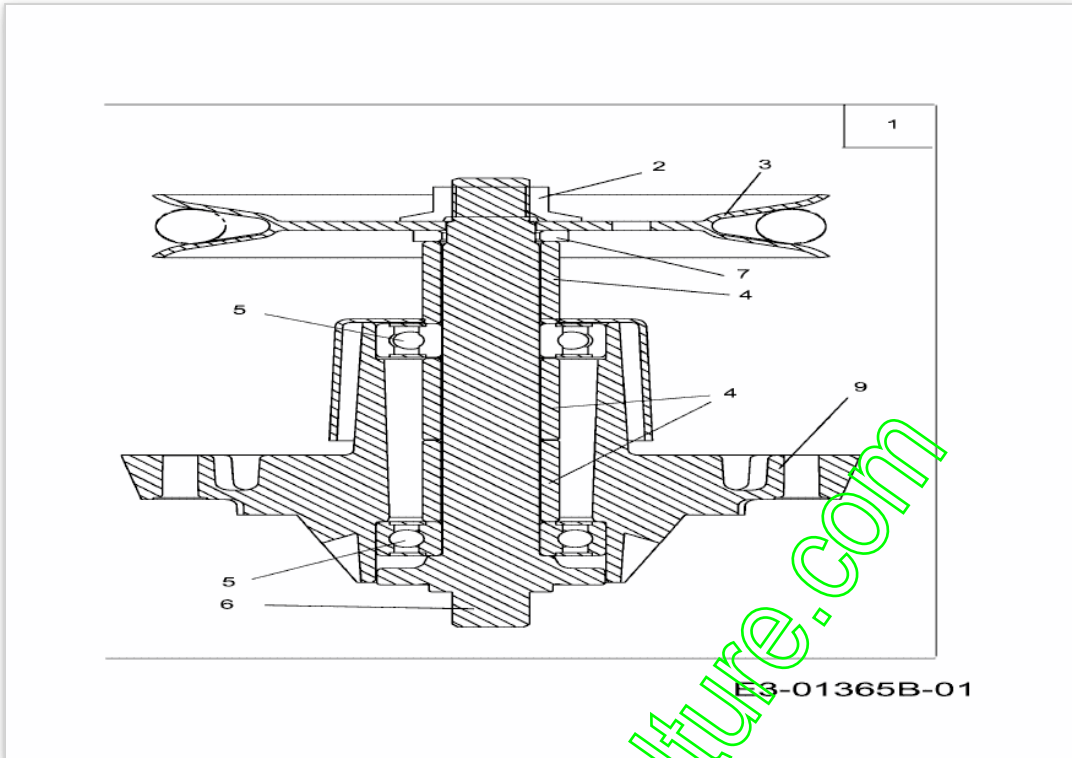
www.emc-motoculture.com



www.emc-motoculture.com

Position	Numéro de pièce	#	Appellation I	Appellation II
1	618-0324C	1	RIEMENSCHIEBE:6.482 DIA x.5625	RIEMENSCHIEBE 5.75 DIA
2	712-0417A	1	ÜCROU HEX. AV. FLANC: 5/8-18	FINISH:MTD STD 701-01000
3	738-1010A	1	AXE DE PALIER 5.75 LG	FINISH:GEÖLT 618-0324A
4	741-0919	2	ROULEMENT j BILLES	FINISH:SIEHE SPEC.
5	748-0433	1	DOUILLE .820 x 1.150 x .730 LG	FINISH:GEÖLT
6	750-1000	2	ENTRETOISE:.80x1.10x1.330	FINISH:GEÖLT
7	756-1188	1	POULIE DE COURROIE TRAPEZ.	SPEC-100015 or AUTOPHORETIC C.

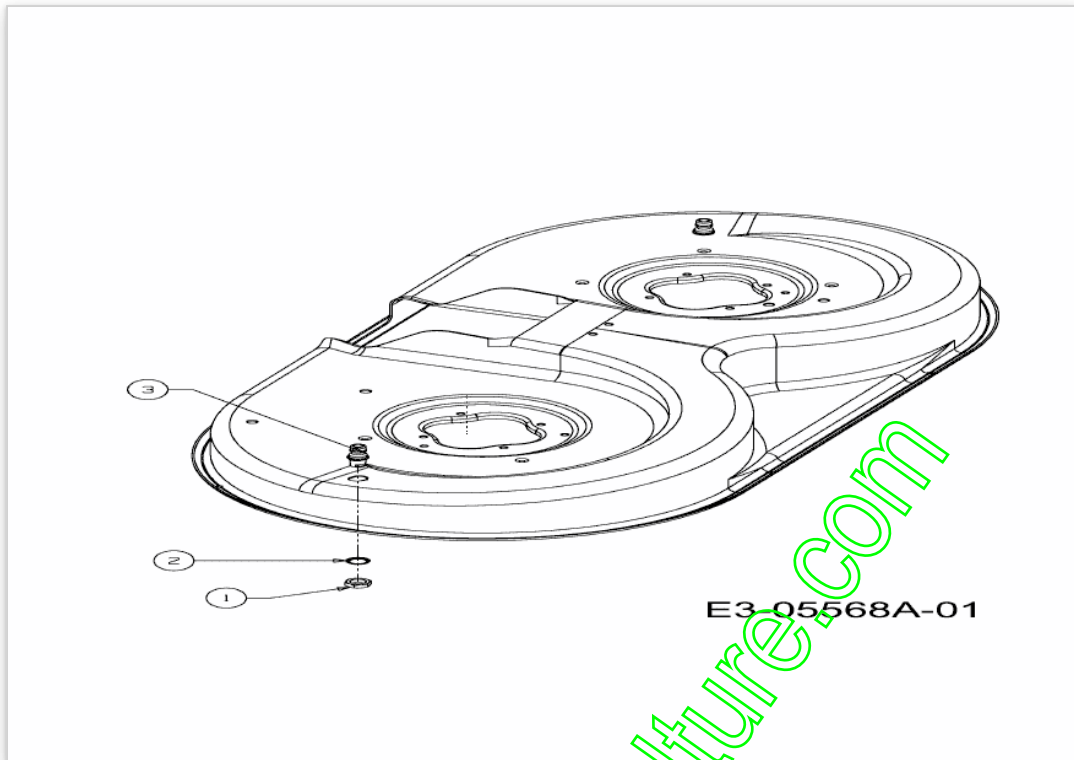
www.emc-motoculture.com



www.emc-motoculture.com

Position	Numéro de pièce	#	Appellation I	Appellation II
1	918-0409B	1	PALIER DE LAME CPL.:	RIEMENSCHIEBE 5.39 DIA
2	712-0417A	1	ÜCROU HEX. AV. FLANC: 5/8-18	FINISH:MTD STD 701-01000
3	756-04216	1	POULIE DE PALIER DE LAME G	FINISH:SPEC-100015
4	750-1000	3	ENTRETOISE:.80x1.10x1.330	FINISH:GEÖLT
5	741-0919	2	ROULEMENT ; BILLES	FINISH:SIEHE SPEC.
6	738-1128	1	AXE DE PALIER DE LAMES:6.58"	FINISH:GEÖLT
7	748-0160A	1	RONDELLE	FINISH:PLAIN
9	619-0019C	1	CORPS DE PALIER DE LAME	FINISH:WIE GEGOSSEN

www.emc-motoculture.com

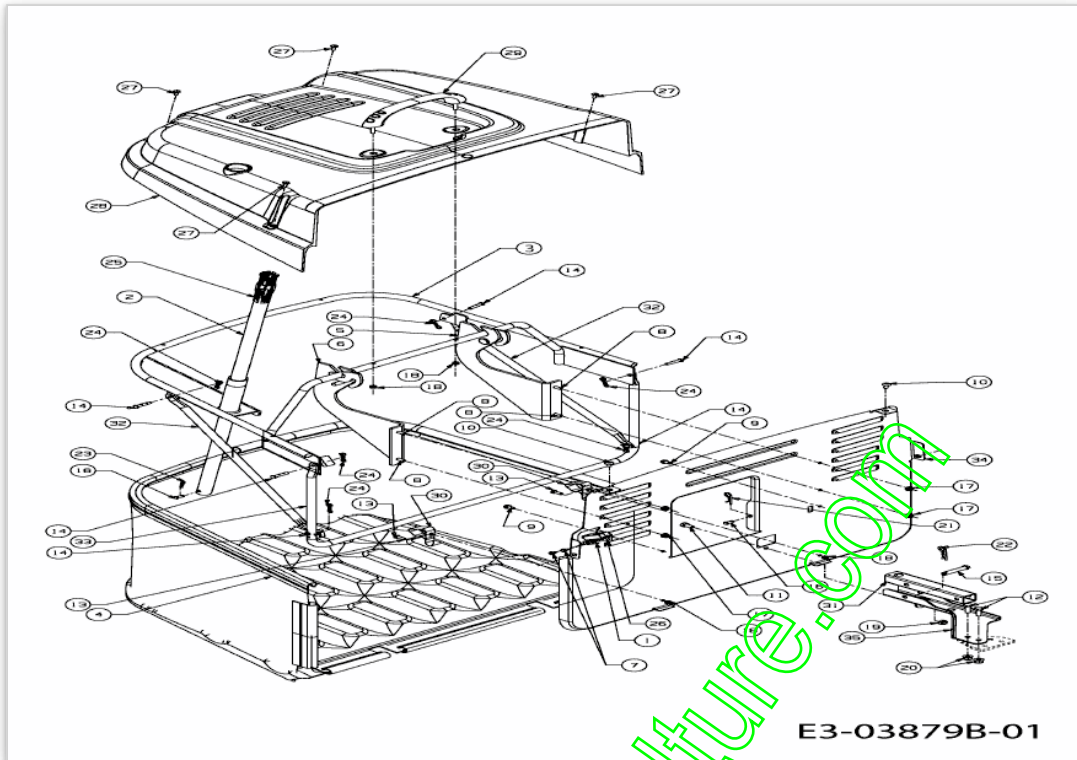


E3-05568A-01

www.emc-motoculture.com

Position	Numéro de lapièce	#	Appellation I	Appellation II
1	712-0641	2	ECROU HEX. M16-1.5 DIN 936	FINISH:701-01000 24.1424.31
2	736-0760	2	RONDELLE 17X23.8X1.95	FINISH:MTD STD 701-01001
3	737-04003D	2	BUSE NETTOYAGE PLATEAU	FINISH:MTD SPEC-100015

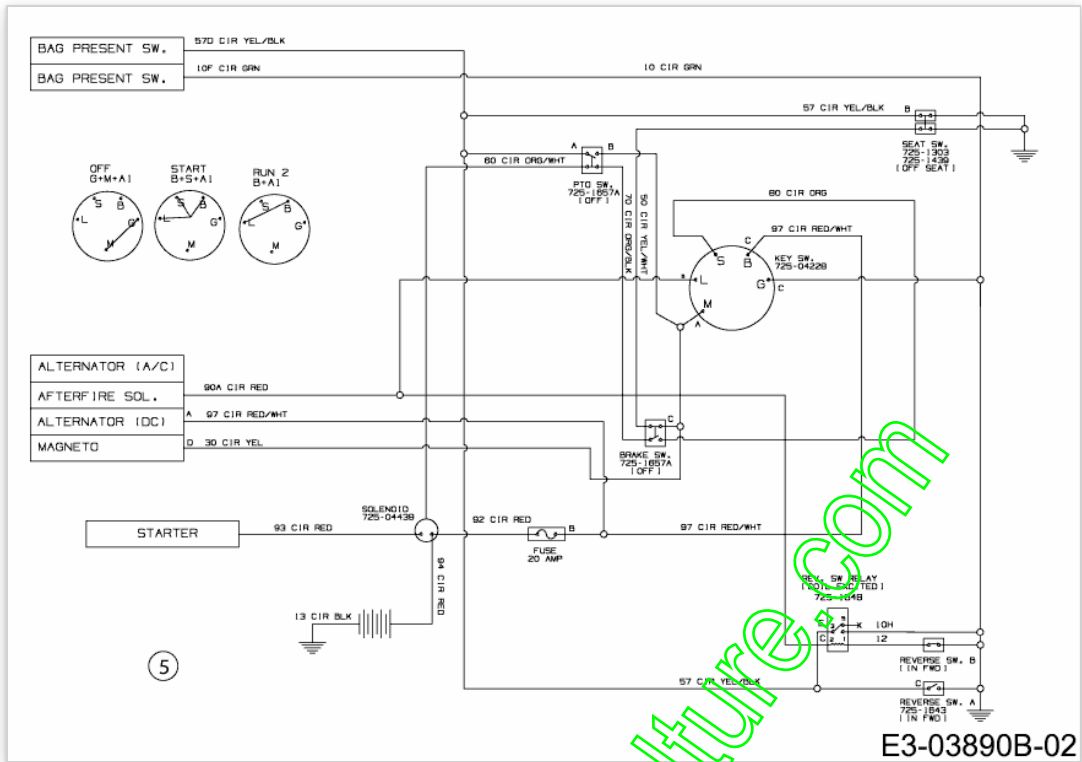
www.emc-motoculture.com



Position	Numéro de pièce	#	Appellation I	Appellation II
1	17962	1	PLAQUE DE SUPP. P. COMMUTATEUR	FINISH:WIE GESTANZT
2	649-04052	1	STAHLROHR VST:HEBEL:GRSBG:500	SCHWEISSTEIL:FINISH:LACKIERT
3	649-04076637	1	ARMATURE DE BAC	SCHWARZ
4	664-04085	1	TISSU BAC DE RAMASSAGE	700:FINISH SCHWARZ
5	683-04421	1	EINHÄNGEKONSOLE VOLLST:LINKS	SCHWEISSTEIL:FINISH:LACKIERT
6	683-04422	1	EINHÄNGEKONSOLE VOLLST:RECHTS	SCHWEISSTEIL:FINISH:LACKIERT
7	710-0224	2	VIS PARK:#10- 16:0.500:HXINDWSH	FINISH:MTD SPEC-100016 TYPE 1
8	710-04666	4	VIS HEXAGONALE	FINISH:MTD SPEC-701-010015
9	710-0599	2	VIS A SIX PANS CREUX	FINISH:SPEC-100016 TYPE 1
10	710-1017	2	VIS	FINISH:MTD SPEC-100016
11	710-1376	1	VIS A SIX PANS CREUX	FINISH:SPEC-100015 21.1441.68
12	710-1682	2	VIS	FINISH:SPEC-100015 21.1441.72
13	710-1690	2	VIS	MTD SPEC-100015 21.1441.46
14	711-04138	6	GOUJON ; ÜPINGLER .25DIAX1.25L	FINISH:SIEHE ZG.
15	711-0679A	1	GOUJON ; ÜPINGLER	FINISH:SIEHE ZG.
16	711-0701	3	GOUJON	FINISH:SIEHE ZG.
17	712-04064	4	ÜCROU HEXAGONAL	GRN5:SPEC-100015 912-04064
18	712-0691	4	ÜCROU HEXAGONAL	MTD SPEC-100015 24.1426.14
19	712-0692	1	ÜCROU HEXAGONAL 24.1426.18	FINISH:SPEC-100015 24.1426.18
20	712-0714	2	ECROU	FINISH:MTD SPEC-100015
21	714-0145	2	GOUPILLE	FINISH:PHOS & OIL
22	714-0147	1	GOUPILLE ; RESSORT:.125 X 1.75	FINISH:SIEHE ZG.
23	714-04033	1	GOUPILLE FENDUE .072 x.92 LG	FINISH:PHOS & OIL
24	714-04040	6	GOUPILLE	FINISH:VERZINKT
25	720-0204	1	POIGNEE:1.0 ID x 4.7 LG	FINISH:SCHWARZ
26	725-04039	1	SECURITE	FINISH:GRAY/BLACK 925-04039
27	728-04044	4	RIVET	WÜRTH #093614816
28	731-06106	1	COUVERCLE DE BAC	FINISH:KUNSTSTOFF SCHWARZ
29	731-06163	1	POIGNEE	FINISH:SCHWARZ
30	732-0838A	2	RESSORT CLIPS DE BAC	VERSCHLUSS
31	749-04013A	1	4KT- ROHR:ANHÄNGEKUPPLUNG	30x30mmx179.39mm LG ST37:LACK

Position	Numéro de lapièce	#	Appellation I	Appellation II
32	749-04108	2	KREUZ- VERBINDUNGSROHR:BAG 250L	FINISH:LACKIERT 500 MR
33	749-04418	1	ROHRRAHMEN:VORN:200L	FINISH:LACKIERT
34	783-05731	1	HECKPLATTE:E/N-DECK:LT5	FINISH:LACKIERT MTD QUALITÄT
35	783-05801A	1	SUPPORT	FINISH:LACKIERT MTD QUALITÄT

www.emc-motoculture.com



www.emc-motoculture.com

Position	Numéro de pièce	#	Appellation I	Appellation II
5	725-05067	1	FAISCEAU COMPLET	BAG

www.emc-motoculture.com

www.emc-motoculture.com