



72
72 hydro

www.emc-motoculture.com

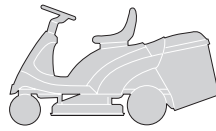


CATALOGO DELLE PARTI DI RICAMBIO
SPARE PARTS CATALOGUE
CATALOGUES DES PIECES DE RECHANGE
ERSATZTEILKATALOG

EXR **2001**

F72

F72 hydro



CATALOGO PARTI DI RICAMBIO SPARE PARTS CATALOGUE CATALOGUE DE PIECES ERSATZTEILKATALOG

2001

000.0

1 / 7

COME USARE IL CATALOGO

1. Generalità

Questo catalogo contiene tutte le informazioni necessarie per ordinare correttamente i pezzi di ricambio.

2. Struttura del catalogo

In ogni pagina del catalogo sono riportate le seguenti indicazioni:

HOW TO USE THE CATALOGUE

1. General information

This catalogue contains all the information necessary for correctly ordering spare parts.

2. Structure of the catalogue

Each page of the catalogue has these indications:

COMMENT UTILISER LE CATALOGUE

1. Généralités

Ce catalogue contient toutes les indications nécessaires pour commander correctement les pièces détachées.

2. Structure du catalogue

Les indications suivantes sont reportées sur chaque page du catalogue:

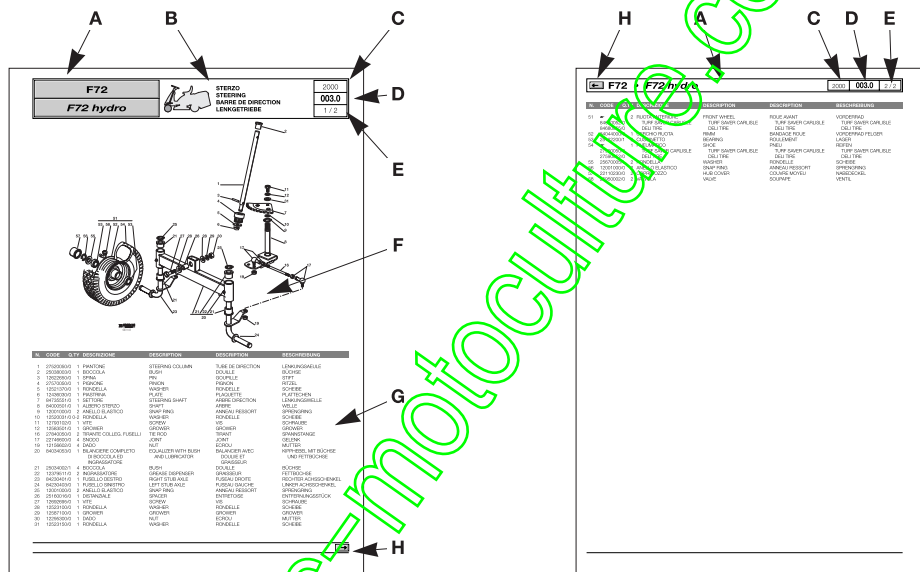
WIE IST DER KATALOG ZU BENUTZEN

1. Allgemeines

Dieser Katalog enthält alle Informationen, die für die korrekte Bestellung von Ersatzteilen erforderlich sind.

2. Aufbau des Katalogs

Auf jeder Seite des Katalogs sind die folgenden Angaben wiedergeben:



A. Macchina o serie di macchine per le quali la pagina è valida.

B. Indicazione del gruppo con la raffigurazione in miniatura della sua collocazione sulla macchina.

C. Anno di produzione della macchina a cui si riferisce.

D. Numerazione progressiva della tavola, secondo il seguente criterio:
- le prime due cifre indicano il numero progressivo;
- le eventuali lettere che seguono indicano le diverse versioni alternative di quel gruppo;
- la cifra dopo il punto indica un eventuale aggiornamento nel corso della annualità indicata al punto 3.

A. Machine or machine series to which the page applies.

B. Indication of the unit with a miniature drawing showing its position on the machine.

C. Year of production of the machine concerned.

D. Progressive numbering of the table, arranged as follows:
- the first two numbers are the progressive number;
- any letters that follow will indicate the various alternative versions of that unit;
- the number after the dot is for any updates during the year given at point 3.

A. La machine ou la série de machines auxquelles se réfère la page.

B. L'indication du groupe avec la représentation en miniature de sa position sur la machine.

C. L'année de fabrication de la machine concernée.

D. La numérotation progressive du tableau, selon le critère suivant:
- les deux premiers chiffres indiquent le numéro progressif;
- les éventuelles lettres qui suivent indiquent les différentes versions alternatives de ce groupe;
- le chiffre après le point indique l'éventuelle mise à jour effectuée au cours de l'année indiquée au point 3.

A. Maschine oder Serie der Maschine, für welche die Seite gültig ist.

B. Bezeichnung der Gruppe mit einer Miniaturdarstellung ihrer Anbringung auf der Maschine.

C. Herstellungsjahr der betreffenden Maschine.

D. Progressive Numerierung der Tafel nach folgendem Kriterium:
- die ersten zwei Ziffern bezeichnen die progressive Nummer;
- die eventuellen Buchstaben, die folgen, bezeichnen die verschiedenen alternativen Versionen dieser Gruppe;
- die Ziffer nach dem Punkt bezeichnet einen eventuellen neueren Stand im Laufe des Jahrgangs, der in Punkt 3 angegeben ist.

Esempio:

005a.0 =

005 Gruppo Motore
a 10 HP TECUMSEH
.0 Prima stesura

Example:

005a.0 =

005 Engine unit
a 10 HP TECUMSEH
.0 First copy

Exemple

005a.0 =

005 Groupe Moteur
a 10 HP TECUMSEH
.0 Première rédaction

Beispiel:

005a.0 =

005 Motorgruppe
a 10 HP TECUMSEH
.0 Erste Ausgabe



E. Numero della pagina e numero totale delle pagine necessarie per la descrizione del gruppo.

E. Page number and total number of pages necessary for the description of the unit.

E. Numéro de la page et nombre total des pages nécessaires pour la description du groupe.

E. Seitenzahl und Gesamtzahl der Seiten, die für die Beschreibung der Gruppe erforderlich sind.

F. Vista esplosa del gruppo.

F. Exploded view of the unit.

F. Vue éclatée du groupe.

F. Explosionszeichnung der Gruppe.

G. Descrizione completa dei singoli particolari, con codice e quantità di pezzi.

G. Full description of each part, with code number and number of pieces.

G. Description complète de chaque élément, avec code et quantité des pièces.

G. Vollständige Beschreibung der Einzelteile, mit Kodenummer und Menge der Teile.

H. Indicazione della presenza di altre pagine di seguito.

H. Indication of additional pages.

H. Indication de la présence d'autres pages successives.

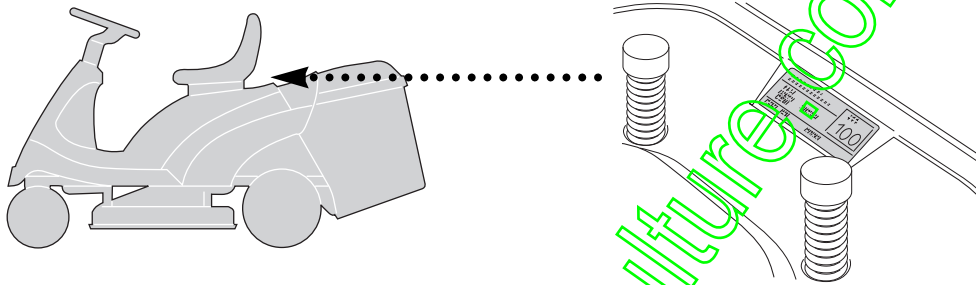
H. Angabe über die Präsenz weiterer folgender Seiten.

Nelle pagine di seguito, sono riportate nuovamente le indicazioni relative ai punti A - C - D - E - G e H.

The additional pages repeat the indications as at points A - C - D - E - G and H.

Les pages qui suivent reportent, elles aussi, les indications concernant les points A - C - D - E - G et H.

Auf den nachfolgenden Seiten sind die Bezeichnungen, die sich auf die Punkte A - C - D - E - G und H beziehen, erneut wiedergegeben.



3. Ordine di ricambi

3. Spare parts order

3. Commande pièces détachées

3. Ersatzteilbestellungen

Prima di formulare un ordine di ricambi, accertare che il catalogo corrisponda all'anno di costruzione della macchina, e riportato sulla targhetta di identificazione.

Before putting in an order for spare parts, make sure that the catalogue is the one applying to the machine's year of manufacture, as shown on the identification plate attached to the machine.

Avant de passer une commande pour des pièces détachées, s'assurer que le catalogue est celui correspondant à l'année de fabrication de la machine reportée sur la plaquette d'identification.

Ehe eine Ersatzteilbestellung geschrieben wird, muß man sich vergewissern, daß der Katalog mit dem Herstellungsjahr der Maschine übereinstimmt, oder mit dem auf dem Kennzeichenschild wiedergegeben.

Ogni ordine di ricambi deve necessariamente contenere:

Each spare parts order must include:

Chaque commande de pièces détachées doit obligatoirement contenir:

Jede Ersatzteilbestellung muß enthalten:

- modello della macchina;
- quantità di pezzi richiesta;
- descrizione (eventuale);
- numero di codice del pezzo;
- destinatario
- mezzo di spedizione.

- the model of the machine;
- the number of parts required;
- description (if incidental);
- the code number for the item;
- the destination;
- the method of shipping.

- modèle de la machine;
- quantité de pièces demandée;
- description (éventuelle);
- numéro de code de la pièce;
- le destinataire;
- le moyen de transport.

- Modell der Maschine;
- Menge der angeforderten Teile;
- Bezeichnung (eventuell);
- Artikelnummer des Teils;
- Empfänger;
- Versandart.

Esempio di ordinazione:

An example of an order:

Exemple de commande:

Beispiel einer Bestellung:

Su una macchina F72 del 2001, con motore TECUMSEH da 10 HP si deve sostituire la protezione del silenziatore. Tale particolare è raffigurato nella tavola **005a.0** alla posizione **22**, a cui corrisponde il codice **82598061/0**.

The muffler protection on a F72 machine, produced in 2001 with an TECUMSEH 10 HP engine, must be replaced. This part is shown in table **005a.0** in position **22**, and has the code number **82598061/0**.

Sur une machine F72 du 2001, avec moteur TECUMSEH de 10 CH, il faut remplacer la protection silencieux. Cette pièce est représentée sur le tableau **005a.0** à la position **22**, correspondant au code **82598061/0**.

Auf einer Maschine F72 von 2001, mit Motor TECUMSEH mit 10 PS muß der Auspuffschutz ersetzt werden. Dieses Einzelteil ist auf der Tafel **005a.0** unter der Position **22** dargestellt, der dem Code **82598061/0** entspricht.

L'ordinazione sarà quindi:

The order will therefore be:

La commande sera donc formulée de la façon suivante:

Die Bestellung lautet demnach:

per F72:
n. 1 protezione cod. 82598061/0 da inviare a
a mezzo

for F72:
1 protection - code 82598061/0 to be sent to
method of shipping

pour F72:
1 protection - code 82598061/0 à envoyer à
par

Für F72:
1 Schutz - Kode 82598061/0 zu versenden an
mit

Nota

Note

Remarque

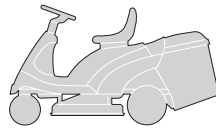
Anmerkung

Per le parti non codificate del motore e della trasmissione contrassegnate con (*), occorre rivolgersi al Costruttore.

For parts of the engine and the transmission without code numbers, marked by (*), it's necessary to contact the manufacturer.

Pour les pièces non codées du moteur et de la transmission, indiquées avec (*), il faut s'adresser au Fabricant.

Für die nicht codierten Teile des Motors und des Antriebs, die mit (*) gekennzeichnet sind, muß man sich an den Hersteller wenden.

F72**F72 hydro**
INDICE DELLE TAVOLE
INDEX OF TABLES
SOMMAIRE DES TABLEAUX
INHALT DER TAFELN

2001

000.0

3 / 7

| GRUPPO / UNIT / GROUPE / GRUPPE | | F72 | F72 hydro |
|---|--|-------------|-------------|
|  | TELAIO CHASSIS CHASSIS RAHMENSATZ | 001 | 001 |
|  | CORROZZERIA BODY CARROSSERIE KARROSSERIE | 002 | 002 |
|  | STERZO STEERING BARRE DE DIRECTION LENKGETRIEBE | 003 | 003 |
|  | COMANDO FRENO E COMANDO CAMBIO BRAKE AND GEARBOX CONTROLS COMMANDE FREIN ET BOITE DE VITESSE BREMSE UND WECHSEL ANTRIEB | 004M | - |
|  | COMANDO TRASMISSIONE E FRENO DRIVE AND BRAKE CONTROLS COMMANDE TRANSMISSION ET FREIN GETRIEBE UND BREMSE ANTRIEB | - | 004Y |
|  | MOTORE ENGINE MOTEUR MOTOR 10 - 10,5 - 11 - 11,5 - 12 - 12,5 HP B&S | 005 005a | 005 005a |
|  | TRASMISSIONE TRANSMISSION TRANSMISSION GETRIEBE | 006M | 006Y |
|  | SOLLEVAMENTO PIATTO DI TAGLIO CUTTING PLATE LIFTING SOULEVEMENT PATEAU DE COUPE SCHNEIDWERKZEUG AUFHEBESATZ | 007 | 007 |
|  | PIATTO DI TAGLIO (1) CUTTING PLATE (1) PATEAU DE COUPE (1) SCHNEIDWERKZEUG (1) | 008 | 008 |



GRUPPO / UNIT / GROUPE / GRUPPE

F72

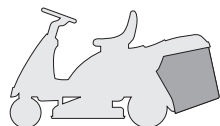
F72 hydro



PIATTO DI TAGLIO (2)
CUTTING PLATE (2)
PLATEAU DE COUPE (2)
SCHNEIDWERKZEUG (2)

009

009



SACCO
GRASSCATCHER
BAC
AUFFANGSACK

010

010



PARTI ELETTRICHE
ELECTRICAL PARTS
PARTIES ELECTRIQUES
ELETRISCHETEILE

011

011



ACCESSORI A RICHIESTA
OPTIONALS ON REQUEST
ACCESSOIRES SUR DEMANDE
ZUBEHOERE NACH ANFRAGE

012

012

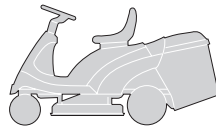


ETICHETTE
LABELS
ETIQUETTES
KLEBZETTEL

013

013

www.emc-motoculture.com

F72**F72 hydro**
ELENCO NUMERICO
NUMERICAL LIST
LISTE NUMERIQUE
NUMERISCHE AUFSTELLUNG

2001

000.0

5 / 7

| CODE | TABLE | N. | Q.TY | CODE | TABLE | N. | Q.TY | CODE | TABLE | N. | Q.TY |
|------------|-------|----|------|------------|-------|----|------|------------|-------|----|------|
| 12001000/0 | 003 | 9 | 2 | 12293200/0 | 004M | 51 | 1 | 12523070/0 | 002 | 21 | 2 |
| 12001000/0 | 003 | 25 | 2 | 12293200/0 | 004Y | 14 | 1 | 12523070/0 | 008 | 45 | 1 |
| 12001000/0 | 003 | 56 | 2 | 12293200/0 | 004Y | 25 | 2 | 12523080/0 | 009 | 22 | 1 |
| 12001010/0 | 006M | 56 | 2 | 12293200/0 | 004Y | 73 | 2 | 12523080/0 | 009 | 34 | 2 |
| 12001010/0 | 006Y | 66 | 2 | 12293200/0 | 004Y | 87 | 2 | 12523100/0 | 003 | 28 | 2 |
| 12139100/0 | 009 | 19 | 1 | 12293200/0 | 005 | 5 | 1 | 12540040/0 | 004M | 53 | 1 |
| 12139430/0 | 006M | 22 | 1 | 12293200/0 | 005a | 5 | 1 | 12540040/0 | 010 | 16 | 1 |
| 12139480/0 | 009 | 25 | 1 | 12293200/0 | 006M | 17 | 2 | 12540260/0 | 005 | 6 | 2 |
| 12154210/0 | 006M | 27 | 4 | 12293200/0 | 007 | 21 | 1 | 12540260/0 | 005 | 10 | 1 |
| 12154210/0 | 006Y | 24 | 4 | 12293200/0 | 008 | 15 | 2 | 12540260/0 | 005a | 6 | 2 |
| 12154210/0 | 009 | 17 | 4 | 12293200/0 | 008 | 20 | 1 | 12540260/0 | 006M | 8 | 1 |
| 12154250/0 | 009 | 35 | 1 | 12293200/0 | 008 | 57 | 1 | 12540260/0 | 006Y | 8 | 1 |
| 12154320/0 | 012 | 13 | 4 | 12293201/0 | 001 | 10 | 4 | 12543000/0 | 006M | 3 | 1 |
| 12154510/0 | 002 | 17 | 2 | 12293201/0 | 001 | 13 | 4 | 12543000/0 | 006Y | 3 | 1 |
| 12154510/0 | 002 | 86 | 2 | 12293201/0 | 001 | 17 | 4 | 12581200/0 | 002 | 43 | 2 |
| 12154510/0 | 004M | 21 | 1 | 12293201/0 | 001 | 36 | 4 | 12582100/0 | 006Y | 34 | 1 |
| 12154510/0 | 004Y | 21 | 1 | 12293201/0 | 002 | 84 | 6 | 12582101/0 | 010 | 10 | 4 |
| 12154510/0 | 005a | 20 | 1 | 12293201/0 | 004M | 33 | 1 | 12583500/0 | 002 | 55 | 4 |
| 12154510/0 | 006Y | 45 | 2 | 12293201/0 | 004Y | 61 | 1 | 12583500/0 | 003 | 12 | 1 |
| 12154510/0 | 007 | 30 | 1 | 12293201/0 | 005 | 4 | 3 | 12583500/0 | 004M | 50 | 1 |
| 12154510/0 | 008 | 12 | 2 | 12293201/0 | 005a | 4 | 3 | 12583500/0 | 005a | 15 | 2 |
| 12154510/0 | 009 | 8 | 6 | 12293201/0 | 006M | 33 | 1 | 12583500/0 | 008 | 19 | 1 |
| 12154510/0 | 009 | 32 | 4 | 12293201/0 | 008 | 50 | 1 | 12583500/0 | 009 | 28 | 1 |
| 12154510/0 | 010 | 14 | 2 | 12295200/0 | 007 | 5 | 1 | 12587100/0 | 003 | 29 | 1 |
| 12154510/0 | 012 | 6 | 2 | 12295200/0 | 009 | 57 | 1 | 12608600/0 | 004M | 36 | 1 |
| 12154510/0 | 012 | 9 | 1 | 12295300/0 | 003 | 30 | 1 | 12608950/0 | 006M | 23 | 1 |
| 12155000/0 | 001 | 24 | 1 | 12360352/0 | 011 | 11 | 2 | 12609260/0 | 009 | 14 | 1 |
| 12155000/0 | 002 | 22 | 2 | 12361005/0 | 011 | 23 | 1 | 12620299/0 | 002 | 62 | 1 |
| 12155000/0 | 004M | 5 | 2 | 12379511/0 | 001 | 36 | 1 | 12622650/0 | 003 | 3 | 1 |
| 12155000/0 | 004M | 26 | 1 | 12379511/0 | 003 | 22 | 2 | 12674550/0 | 006Y | 44 | 2 |
| 12155000/0 | 004M | 41 | 1 | 12379511/0 | 004Y | 53 | 1 | 12674700/0 | 007 | 29 | 1 |
| 12155000/0 | 004M | 48 | 1 | 12400030/0 | 010 | 34 | 1 | 12674701/0 | 010 | 12 | 2 |
| 12155000/0 | 004Y | 5 | 2 | 12436030/0 | 003 | 6 | 1 | 12674701/0 | 012 | 5 | 2 |
| 12155000/0 | 004Y | 27 | 1 | 12436050/0 | 007 | 23 | 1 | 12691100/0 | 005 | 3 | 1 |
| 12155000/0 | 004Y | 58 | 1 | 12437502/0 | 002 | 75 | 2 | 12691100/0 | 005a | 3 | 1 |
| 12155000/0 | 006M | 14 | 1 | 12437503/0 | 002 | 13 | 2 | 12691200/0 | 002 | 20 | 2 |
| 12155000/0 | 006M | 18 | 1 | 12500030/0 | 009 | 4 | 1 | 12691800/0 | 006M | 25 | 4 |
| 12155000/0 | 006M | 20 | 1 | 12500090/0 | 001 | 25 | 1 | 12691800/0 | 006Y | 22 | 4 |
| 12155000/0 | 006M | 35 | 1 | 12520010/0 | 006M | 57 | 2-4 | 12691900/0 | 008 | 48 | 1 |
| 12155000/0 | 006Y | 14 | 1 | 12520040/0 | 006Y | 67 | 0-4 | 12692050/0 | 004M | 40 | 1 |
| 12155000/0 | 006Y | 29 | 1 | 12520031/0 | 003 | 10 | 0-2 | 12692050/0 | 004Y | 57 | 1 |
| 12155000/0 | 007 | 22 | 1 | 12521320/0 | 002 | 74 | 2 | 12692050/0 | 008 | 5 | 1 |
| 12155000/0 | 007 | 26 | 1 | 12521330/0 | 004Y | 54 | 1 | 12692080/0 | 008 | 43 | 1 |
| 12155000/0 | 008 | 6 | 1 | 12521330/0 | 004Y | 83 | 2 | 12692695/0 | 003 | 27 | 1 |
| 12155000/0 | 008 | 18 | 1 | 12521331/0 | 001 | 19 | 2 | 12726388/0 | 002 | 45 | 1 |
| 12155000/0 | 008 | 21 | 1 | 12521331/0 | 002 | 28 | 4 | 12726388/0 | 006Y | 41 | 1 |
| 12155000/0 | 008 | 46 | 1 | 12521331/0 | 010 | 13 | 2 | 12727810/0 | 011 | 3 | 2 |
| 12155000/0 | 008 | 54 | 1 | 12521350/0 | 001 | 35 | 2 | 12728460/0 | 002 | 73 | 2 |
| 12155000/0 | 008 | 58 | 1 | 12521350/0 | 003 | 31 | 1 | 12728510/0 | 010 | 35 | 3 |
| 12155000/0 | 011 | 21 | 1 | 12521350/0 | 004M | 17 | 2 | 12728510/0 | 010 | 38 | 4 |
| 12155000/0 | 012 | 24 | 3 | 12521350/0 | 004Y | 17 | 2 | 12729601/0 | 002 | 27 | 4 |
| 12155010/0 | 001 | 32 | 2 | 12521350/0 | 006M | 34 | 1 | 12729601/0 | 010 | 8 | 4 |
| 12155010/0 | 004Y | 40 | 1 | 12521350/0 | 006Y | 28 | 1 | 12731350/0 | 004M | 7 | 4 |
| 12155010/0 | 004Y | 75 | 1 | 12521350/0 | 008 | 44 | 1 | 12731350/0 | 004Y | 7 | 4 |
| 12155010/0 | 004Y | 89 | 1 | 12521370/0 | 003 | 5 | 1 | 12731350/0 | 007 | 3 | 4 |
| 12155010/0 | 006M | 11 | 1 | 12521370/0 | 004M | 35 | 2 | 12731350/0 | 007 | 10 | 4 |
| 12155010/0 | 006Y | 11 | 1 | 12521370/0 | 006Y | 31 | 1 | 12731601/0 | 004M | 10 | 4 |
| 12155010/0 | 008 | 35 | 1 | 12521410/0 | 006M | 54 | 2 | 12731601/0 | 004Y | 10 | 4 |
| 12155020/0 | 004Y | 43 | 1 | 12521410/0 | 006Y | 64 | 2 | 12731601/0 | 005a | 23 | 1 |
| 12155020/0 | 004Y | 52 | 1 | 12523020/0 | 006Y | 48 | 1 | 12731601/0 | 006Y | 47 | 1 |
| 12156602/0 | 003 | 19 | 4 | 12523020/0 | 012 | 12 | 4 | 12731601/0 | 008 | 8 | 4 |
| 12156602/0 | 007 | 6 | 1 | 12523040/0 | 001 | 43 | 1 | 12734995/0 | 001 | 18 | 2 |
| 12156602/0 | 007 | 13 | 1 | 12523040/0 | 002 | 11 | 2 | 12735104/0 | 005 | 11 | 1 |
| 12156602/0 | 007 | 16 | 1 | 12523040/0 | 002 | 16 | 4 | 12735106/0 | 001 | 48 | 2 |
| 12156602/0 | 009 | 38 | 1 | 12523040/0 | 009 | 7 | 6 | 12735106/0 | 005a | 17 | 4 |
| 12290800/0 | 002 | 46 | 1 | 12523040/0 | 009 | 31 | 4 | 12735110/0 | 001 | 40 | 1 |
| 12290800/0 | 006Y | 42 | 1 | 12523050/0 | 004M | 20 | 1 | 12735110/0 | 001 | 46 | 2 |
| 12292100/0 | 010 | 11 | 4 | 12523050/0 | 004Y | 20 | 1 | 12735110/0 | 004Y | 48 | 2 |
| 12292102/0 | 001 | 7 | 8 | 12523050/0 | 006Y | 32 | 1 | 12735110/0 | 005 | 20 | 2 |
| 12292102/0 | 004Y | 84 | 2 | 12523060/0 | 001 | 23 | 1 | 12735110/0 | 005a | 27 | 2 |
| 12292102/0 | 005a | 25 | 1 | 12523060/0 | 002 | 56 | 4 | 12735110/0 | 011 | 10 | 2 |
| 12292102/0 | 010 | 17 | 1 | 12523060/0 | 006M | 13 | 1 | 12735120/0 | 001 | 42 | 1 |
| 12293200/0 | 001 | 22 | 2 | 12523060/0 | 006M | 32 | 1 | 12735150/0 | 006M | 29 | 2 |
| 12293200/0 | 004M | 14 | 1 | 12523060/0 | 006Y | 13 | 1 | 12735150/0 | 006Y | 26 | 1 |
| 12293200/0 | 004M | 25 | 2 | 12523060/0 | 008 | 49 | 1 | 12735402/0 | 002 | 9 | 10 |

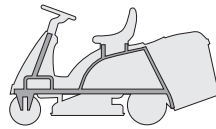


| CODE | TABLE | N. | Q.TY | CODE | TABLE | N. | Q.TY | CODE | TABLE | N. | Q.TY |
|------------|-------|----|------|------------|-------|----|------|------------|-------|----|------|
| 12735402/0 | 002 | 24 | 4 | 19410607/0 | 011 | 16 | 1 | 25547053/0 | 012 | 7 | 1 |
| 12735402/0 | 002 | 26 | 2 | 19410611/0 | 011 | 12 | 1 | 25600020/0 | 002 | 71 | 1 |
| 12735402/0 | 009 | 53 | 8 | 22041980/0 | 008 | 32 | 1 | 25600021/1 | 002 | 72 | 1 |
| 12735410/0 | 002 | 10 | 8 | 22110230/0 | 003 | 57 | 2 | 25600041/0 | 010 | 31 | 1 |
| 12735510/0 | 005 | 9 | 1 | 22110230/0 | 006M | 58 | 2 | 25600042/0 | 010 | 32 | 1 |
| 12735520/0 | 004M | 52 | 1 | 22110230/0 | 006Y | 68 | 2 | 25600047/0 | 010 | 36 | 1 |
| 12735520/0 | 006Y | 33 | 1 | 22160400/0 | 009 | 21 | 1 | 25600048/0 | 010 | 37 | 1 |
| 12735598/0 | 002 | 12 | 2 | 22171001/0 | 004M | 18 | 1 | 25601554/0 | 006M | 12 | 1 |
| 12735694/0 | 009 | 23 | 1 | 22171001/0 | 004Y | 18 | 1 | 25601554/0 | 006Y | 12 | 1 |
| 12737310/0 | 006M | 2 | 1 | 22399801/0 | 006Y | 40 | 1 | 25670005/1 | 003 | 55 | 2 |
| 12737310/0 | 006Y | 2 | 1 | 22446402/0 | 006Y | 15 | 1 | 25670005/1 | 006M | 55 | 2 |
| 12737450/0 | 005a | 14 | 2 | 22523060/0 | 004Y | 39 | 1 | 25670005/1 | 006Y | 65 | 2 |
| 12760520/0 | 012 | 23 | 3 | 22524970/1 | 001 | 31 | 2 | 25670007/0 | 009 | 27 | 1 |
| 12788512/0 | 002 | 42 | 2 | 22672151/0 | 004Y | 35 | 2 | 25670008/0 | 004Y | 51 | 1 |
| 12788910/0 | 012 | 11 | 4 | 22672151/0 | 006M | 9 | 1 | 25670008/0 | 007 | 5 | 2 |
| 12790780/0 | 005a | 24 | 1 | 22672151/0 | 006Y | 9 | 1 | 25670008/0 | 007 | 7 | 2 |
| 12790780/0 | 010 | 15 | 1 | 22672152/0 | 004Y | 38 | 1 | 25670008/0 | 007 | 12 | 2 |
| 12791200/0 | 001 | 6 | 8 | 22672152/0 | 008 | 33 | 1 | 25670008/0 | 007 | 17 | 2 |
| 12791200/0 | 002 | 15 | 2 | 22672152/0 | 008 | 41 | 2 | 25670011/0 | 004M | 47 | 2 |
| 12791200/0 | 008 | 11 | 2 | 22680009/0 | 004M | 54 | 1 | 25670011/0 | 004Y | 74 | 2 |
| 12791400/0 | 004Y | 82 | 2 | 22746600/0 | 003 | 17 | 4 | 25670011/0 | 004Y | 88 | 2 |
| 12791500/0 | 012 | 8 | 1 | 22746601/0 | 004M | 44 | 1 | 25670011/0 | 006M | 10 | 1 |
| 12792099/0 | 010 | 9 | 2 | 22746601/0 | 008 | 14 | 1 | 25670011/0 | 006M | 19 | 2 |
| 12792611/0 | 001 | 9 | 4 | 22943005/0 | 004M | 24 | 1 | 25670011/0 | 006Y | 10 | 1 |
| 12792611/0 | 001 | 12 | 4 | 22943005/0 | 004Y | 24 | 1 | 25670011/0 | 007 | 24 | 1 |
| 12792611/0 | 001 | 16 | 4 | 24487997/0 | 004M | 22 | 1 | 25670011/0 | 007 | 25 | 2 |
| 12793101/0 | 002 | 54 | 4 | 24487997/0 | 004M | 49 | 1 | 25670011/0 | 008 | 17 | 2 |
| 12793102/0 | 003 | 11 | 1 | 24487997/0 | 004Y | 22 | 1 | 25670011/0 | 008 | 53 | 2 |
| 12793102/0 | 004M | 32 | 1 | 24487997/0 | 004Y | 77 | 1 | 25722415/0 | 011 | 2 | 1 |
| 12793102/0 | 006M | 30 | 1 | 24487997/0 | 004Y | 91 | 1 | 25722453/1 | 002 | 51 | 1 |
| 12793102/0 | 008 | 34 | 1 | 24487997/0 | 007 | 4 | 1 | 25774275/0 | 004M | 19 | 1 |
| 12793102/0 | 009 | 26 | 1 | 24487997/0 | 007 | 18 | 1 | 25774275/0 | 004Y | 19 | 1 |
| 12793301/0 | 004M | 4 | 2 | 24487997/0 | 008 | 56 | 1 | 25785114/0 | 002 | 52 | 1 |
| 12793301/0 | 004Y | 4 | 2 | 24487997/0 | 009 | 55 | 2 | 25795000/0 | 002 | 82 | 1 |
| 12793301/0 | 004Y | 60 | 1 | 24487998/0 | 012 | 15 | 2 | 25840003/0 | 007 | 14 | 1 |
| 12793301/0 | 006M | 31 | 1 | 25033060/0 | 009 | 2 | 1 | 25869004/0 | 005 | 15 | 1 |
| 12793301/0 | 006Y | 27 | 1 | 25034002/1 | 001 | 2 | 2 | 25869004/0 | 005a | 10 | 1 |
| 12793701/0 | 001 | 21 | 2 | 25034002/1 | 003 | 21 | 4 | 25943001/0 | 001 | 34 | 2 |
| 12793701/0 | 005 | 2 | 3 | 25038003/0 | 003 | 2 | 1 | 25950000/0 | 006M | 59 | 2 |
| 12793701/0 | 005a | 2 | 3 | 25065014/1 | 011 | 17 | 1 | 25950000/0 | 006Y | 69 | 2 |
| 12794900/0 | 004Y | 42 | 1 | 25065020/0 | 011 | 15 | 1 | 25950002/0 | 003 | 58 | 2 |
| 12794970/0 | 009 | 33 | 1 | 25110267/0 | 004Y | 2 | 1 | 25961201/0 | 002 | 61 | 1 |
| 12815200/0 | 009 | 30 | 4 | 25110269/0 | 004M | 2 | 1 | 27010205/0 | 010 | 4 | 1 |
| 12815210/0 | 009 | 6 | 6 | 25122000/1 | 001 | 37 | 2 | 27010207/0 | 010 | 5 | 1 |
| 12815240/0 | 005a | 19 | 1 | 25122200/1 | 003 | 53 | 4 | 27023000/0 | 009 | 10 | 1 |
| 12818700/0 | 009 | 15 | 4 | 25160012/0 | 006Y | 43 | 2 | 27034051/0 | 008 | 55 | 1 |
| 14356699/0 | 013 | 10 | 2 | 25160016/0 | 003 | 26 | 1 | 27034052/0 | 004M | 43 | 1 |
| 14357423/1 | 013 | 9 | 1 | 25160501/0 | 009 | 13 | 1 | 27034054/0 | 006M | 15 | 1 |
| 14357425/0 | 013 | 3 | 1 | 25318424/0 | 010 | 33 | 1 | 27034056/0 | 002 | 85 | 1 |
| 14357426/0 | 013 | 7 | 1 | 25394501/0 | 002 | 44 | 1 | 27034058/0 | 004Y | 85 | 1 |
| 14357427/0 | 013 | 6 | 1 | 25394510/0 | 007 | 28 | 1 | 27034059/0 | 004M | 13 | 1 |
| 14357428/0 | 013 | 1 | 1 | 25394510/0 | 008 | 2 | 1 | 27034060/0 | 004Y | 13 | 1 |
| 14357431/0 | 013 | 4 | 1 | 25430205/0 | 001 | 33 | 2 | 27034061/0 | 008 | 13 | 1 |
| 14357519/1 | 013 | 2 | 1 | 25430210/0 | 008 | 51 | 1 | 27034062/0 | 004Y | 71 | 1 |
| 14357526/0 | 013 | 5 | 1 | 25430220/0 | 004M | 23 | 1 | 27037000/1 | 001 | 4 | 1 |
| 14357702/0 | 013 | 8 | 1 | 25430220/0 | 004Y | 23 | 1 | 27045000/0 | 009 | 5 | 1 |
| 18120002/1 | 011 | 19 | 1 | 25430220/0 | 008 | 9 | 1 | 27045080/0 | 004Y | 33 | 2 |
| 18210016/0 | 011 | 8 | 1 | 25430226/0 | 004M | 39 | 1 | 27047000/0 | 008 | 38 | 1 |
| 18375051/1 | 005 | 18 | 3 | 25430226/0 | 004Y | 56 | 1 | 27047002/0 | 004M | 34 | 2 |
| 18375051/1 | 005a | 12 | 3 | 25430226/0 | 008 | 4 | 1 | 27047003/0 | 002 | 18 | 2 |
| 18375053/0 | 005 | 17 | 1 | 25430236/0 | 004M | 16 | 1 | 27063020/0 | 004Y | 47 | 2 |
| 18375053/0 | 005a | 11 | 1 | 25430236/0 | 004Y | 16 | 1 | 27065050/0 | 011 | 18 | 1 |
| 18400861/0 | 011 | 6 | 1 | 25463200/0 | 009 | 18 | 1 | 27107501/0 | 009 | 51 | 1 |
| 18400915/2 | 006M | 24 | 1 | 25510007/1 | 007 | 11 | 1 | 27109501/0 | 002 | 7 | 1 |
| 18400935/0 | 006Y | 21 | 1 | 25510007/1 | 009 | 36 | 1 | 27109505/0 | 002 | 7 | 1 |
| 18401001/0 | 005 | 14 | 2 | 25510022/0 | 012 | 14 | 2 | 27109506/0 | 002 | 7 | 1 |
| 18401001/0 | 005a | 9 | 2 | 25510040/1 | 004M | 46 | 1 | 27109507/0 | 002 | 7 | 1 |
| 18450065/1 | 011 | 5 | 1 | 25510040/1 | 004Y | 72 | 1 | 27110302/1 | 002 | 4 | 1 |
| 18564861/1 | 011 | 22 | 1 | 25510040/1 | 004Y | 86 | 1 | 27110303/0 | 002 | 5 | 1 |
| 18565351/0 | 011 | 7 | 1 | 25510040/1 | 006M | 16 | 1 | 27110304/0 | 002 | 29 | 1 |
| 18566113/0 | 012 | 4 | 2 | 25510040/1 | 007 | 20 | 1 | 27110305/0 | 002 | 30 | 1 |
| 18736110/0 | 011 | 9 | 1 | 25510040/1 | 008 | 16 | 1 | 27110306/0 | 002 | 6 | 1 |
| 18737849/0 | 005 | 13 | 1 | 25510040/1 | 008 | 52 | 1 | 27110317/1 | 002 | 4 | 1 |
| 18737849/0 | 005a | 8 | 1 | 25519997/0 | 012 | 22 | 1 | 27110318/1 | 002 | 4 | 1 |
| 18738216/0 | 005a | 16 | 1 | 25547012/1 | 001 | 5 | 2 | 27110319/1 | 002 | 4 | 1 |
| 18738218/0 | 005a | 13 | 1 | 25547033/0 | 002 | 53 | 1 | 27110321/0 | 002 | 5 | 1 |
| 19035000/0 | 009 | 3 | 1 | 25547049/0 | 004M | 9 | 2 | 27110322/0 | 002 | 5 | 1 |
| 19216032/0 | 009 | 12 | 2 | 25547049/0 | 004Y | 9 | 2 | 27110323/0 | 002 | 5 | 1 |
| 19410605/1 | 011 | 14 | 1 | 25547049/0 | 008 | 7 | 2 | 27140051/1 | 009 | 52 | 1 |
| 19410606/0 | 011 | 13 | 3 | 25547049/0 | 012 | 10 | 2 | 27158000/0 | 004Y | 44 | 2 |

www.mtc-motoculture.com

| CODE | TABLE | N. | Q.TY | CODE | TABLE | N. | Q.TY | CODE | TABLE | N. | Q.TY |
|------------|-------|----|------|------------|-------|----|------|------|-------|----|------|
| 27160051/1 | 008 | 39 | 1 | 84000501/0 | 003 | 8 | 1 | | | | |
| 27208402/0 | 009 | 11 | 1 | 84001003/0 | 007 | 1 | 1 | | | | |
| 27275000/0 | 004Y | 26 | 1 | 84001005/1 | 007 | 8 | 1 | | | | |
| 27294001/0 | 001 | 41 | 1 | 84001007/0 | 008 | 3 | 1 | | | | |
| 27294002/0 | 001 | 45 | 1 | 84001011/2 | 004M | 8 | 1 | | | | |
| 27315059/0 | 008 | 36 | 1 | 84001011/2 | 004Y | 8 | 1 | | | | |
| 27315077/0 | 004M | 45 | 1 | 84001015/1 | 004M | 3 | 1 | | | | |
| 27315089/0 | 006Y | 30 | 1 | 84001015/1 | 004Y | 3 | 1 | | | | |
| 27395050/1 | 004M | 12 | 1 | 84002051/0 | 007 | 19 | 1 | | | | |
| 27395050/1 | 004Y | 12 | 1 | 84034057/0 | 003 | 20 | 1 | | | | |
| 27430551/1 | 002 | 19 | 2 | 84040111/0 | 011 | 1 | 1 | | | | |
| 27430552/0 | 004M | 11 | 1 | 84040300/0 | 001 | 20 | 1 | | | | |
| 27430552/0 | 004Y | 11 | 1 | 84044000/0 | 003 | 52 | 2 | | | | |
| 27430554/0 | 001 | 39 | 1 | 84044001/0 | 006M | 52 | 1 | | | | |
| 27430555/0 | 007 | 31 | 1 | 84044001/0 | 006Y | 62 | 1 | | | | |
| 27430560/0 | 004Y | 50 | 1 | 84106050/0 | 010 | 3 | 1 | | | | |
| 27430562/0 | 005 | 21 | 1 | 84108051/0 | 009 | 56 | 1 | | | | |
| 27487000/0 | 008 | 10 | 1 | 84109500/0 | 009 | 20 | 1 | | | | |
| 27488000/0 | 009 | 29 | 1 | 84110100/1 | 002 | 8 | 1 | | | | |
| 27510096/0 | 006M | 7 | 1 | 84110102/1 | 002 | 8 | 1 | | | | |
| 27510096/0 | 006Y | 7 | 1 | 84110103/1 | 002 | 8 | 1 | | | | |
| 27510097/1 | 009 | 54 | 1 | 84110104/1 | 002 | 8 | 1 | | | | |
| 27510103/0 | 004M | 15 | 1 | 84110107/1 | 002 | 8 | 1 | | | | |
| 27510103/0 | 004Y | 15 | 1 | 84110109/1 | 002 | 8 | 1 | | | | |
| 27520050/0 | 003 | 1 | 1 | 84110110/1 | 002 | 8 | 1 | | | | |
| 27546001/0 | 002 | 23 | 2 | 84110111/1 | 002 | 8 | 1 | | | | |
| 27546003/0 | 002 | 25 | 2 | 84110117/1 | 002 | 3 | 1 | | | | |
| 27546009/0 | 005a | 21 | 1 | 84110118/1 | 002 | 3 | 1 | | | | |
| 27546015/0 | 004M | 6 | 2 | 84110119/1 | 002 | 3 | 1 | | | | |
| 27546015/0 | 004Y | 6 | 2 | 84110120/1 | 002 | 3 | 1 | | | | |
| 27546015/0 | 007 | 2 | 2 | 84207101/0 | 004Y | 80 | 1 | | | | |
| 27546015/0 | 007 | 9 | 2 | 84207250/0 | 009 | 9 | 1 | | | | |
| 27546023/0 | 006Y | 46 | 1 | 84220501/0 | 008 | 31 | 1 | | | | |
| 27570050/0 | 003 | 4 | 1 | 84230401/0 | 003 | 23 | 1 | | | | |
| 27590050/0 | 003 | 54 | 2 | 84230403/0 | 003 | 24 | 1 | | | | |
| 27590051/0 | 006M | 53 | 1 | 84317051/1 | 004Y | 55 | 1 | | | | |
| 27590051/0 | 006Y | 63 | 1 | 84317051/2 | 004M | 37 | 1 | | | | |
| 27590052/0 | 003 | 54 | 2 | 84317055/0 | 006M | 6 | 1 | | | | |
| 27590053/0 | 006M | 53 | 1 | 84317061/0 | 008 | 37 | 1 | | | | |
| 27590053/0 | 006Y | 63 | 1 | 84317065/1 | 007 | 27 | 1 | | | | |
| 27598060/0 | 005 | 12 | 1 | 84317067/0 | 006Y | 6 | 1 | | | | |
| 27598060/0 | 005a | 7 | 1 | 84317069/0 | 008 | 1 | 1 | | | | |
| 27600059/1 | 005 | 19 | 1 | 84503001/0 | 004M | 1 | 1 | | | | |
| 27600059/1 | 005a | 26 | 1 | 84503001/0 | 004Y | 1 | 1 | | | | |
| 27600091/0 | 002 | 2 | 1 | 84545057/0 | 001 | 3 | 1 | | | | |
| 27600092/0 | 002 | 2 | 1 | 84564090/1 | 009 | — | 1 | | | | |
| 27600093/0 | 002 | 2 | 1 | 84564092/0 | 009 | 1 | 1 | | | | |
| 27600094/0 | 002 | 2 | 1 | 84598061/0 | 005a | 22 | 1 | | | | |
| 27604000/0 | 009 | 24 | 1 | 84598062/0 | 012 | 2 | 1 | | | | |
| 27604002/0 | 008 | 47 | 1 | 84598064/0 | 002 | 1 | 1 | | | | |
| 27604003/1 | 006M | 1 | 1 | 84598065/0 | 002 | 1 | 1 | | | | |
| 27604003/1 | 006Y | 1 | 1 | 84598066/0 | 002 | 1 | 1 | | | | |
| 27670053/0 | 004Y | 45 | 2 | 84598067/0 | 002 | 1 | 1 | | | | |
| 27733000/2 | 002 | 81 | 1 | 84640550/0 | 005 | 7 | 1 | | | | |
| 27734055/0 | 004Y | 41 | 1 | 84650100/0 | 010 | 7 | 1 | | | | |
| 27772067/0 | 006M | 28 | 2 | 84680050/0 | 006M | 51 | 2 | | | | |
| 27772095/0 | 001 | 47 | 1 | 84680050/0 | 006Y | 61 | 2 | | | | |
| 27772099/0 | 011 | 20 | 1 | 84680052/0 | 003 | 51 | 2 | | | | |
| 27772101/0 | 004Y | 36 | 1 | 84680053/0 | 006M | 51 | 2 | | | | |
| 27772103/0 | 004Y | 37 | 1 | 84680053/0 | 006Y | 61 | 2 | | | | |
| 27772105/0 | 004Y | 81 | 1 | 84680055/0 | 003 | 51 | 2 | | | | |
| 27772115/0 | 006Y | 25 | 1 | 84735551/0 | 003 | 7 | 1 | | | | |
| 27787025/0 | 001 | 15 | 2 | 84773551/0 | 004M | 31 | 1 | | | | |
| 27840050/0 | 003 | 16 | 2 | 84773553/0 | 004M | 38 | 1 | | | | |
| 27869053/0 | 012 | 3 | 1 | 84773557/0 | 005a | 18 | 1 | | | | |
| 33320504/0 | 011 | 25 | 1 | 84773561/0 | 004Y | 34 | 1 | | | | |
| 33320506/0 | 011 | 24 | 3 | 84773563/0 | 004Y | 49 | 1 | | | | |
| 33340033/0 | 011 | 4 | 1 | 84773565/0 | 004Y | 46 | 1 | | | | |
| 35061400/0 | 006M | 5 | 1 | 84773568/0 | 004Y | 32 | 1 | | | | |
| 35061403/0 | 006Y | 5 | 1 | 84783005/1 | 002 | 83 | 1 | | | | |
| 35061424/0 | 008 | 59 | 1 | 84783009/0 | 001 | 11 | 1 | | | | |
| 81000772/2 | 008 | 42 | 1 | 84801103/0 | 010 | 1 | 1 | | | | |
| 81007092/0 | 006Y | 39 | 1 | 84801105/0 | 010 | 2 | 1 | | | | |
| 82180050/0 | 012 | 31 | 1 | 84801107/1 | 001 | 14 | 1 | | | | |
| 82180055/0 | 012 | 32 | 1 | 84801111/1 | 001 | 8 | 1 | | | | |
| 82394508/0 | 004M | 42 | 1 | 84801113/1 | 001 | 1 | 1 | | | | |
| 82394508/0 | 004Y | 59 | 1 | 84869051/0 | 010 | 6 | 1 | | | | |
| 82598001/0 | 005 | 8 | 1 | 99900030/5 | 012 | 21 | 1 | | | | |
| 82601503/0 | 006M | 21 | 1 | 99900090/0 | 012 | 1 | 1 | | | | |
| 84000250/0 | 002 | 41 | 1 | | | | | | | | |

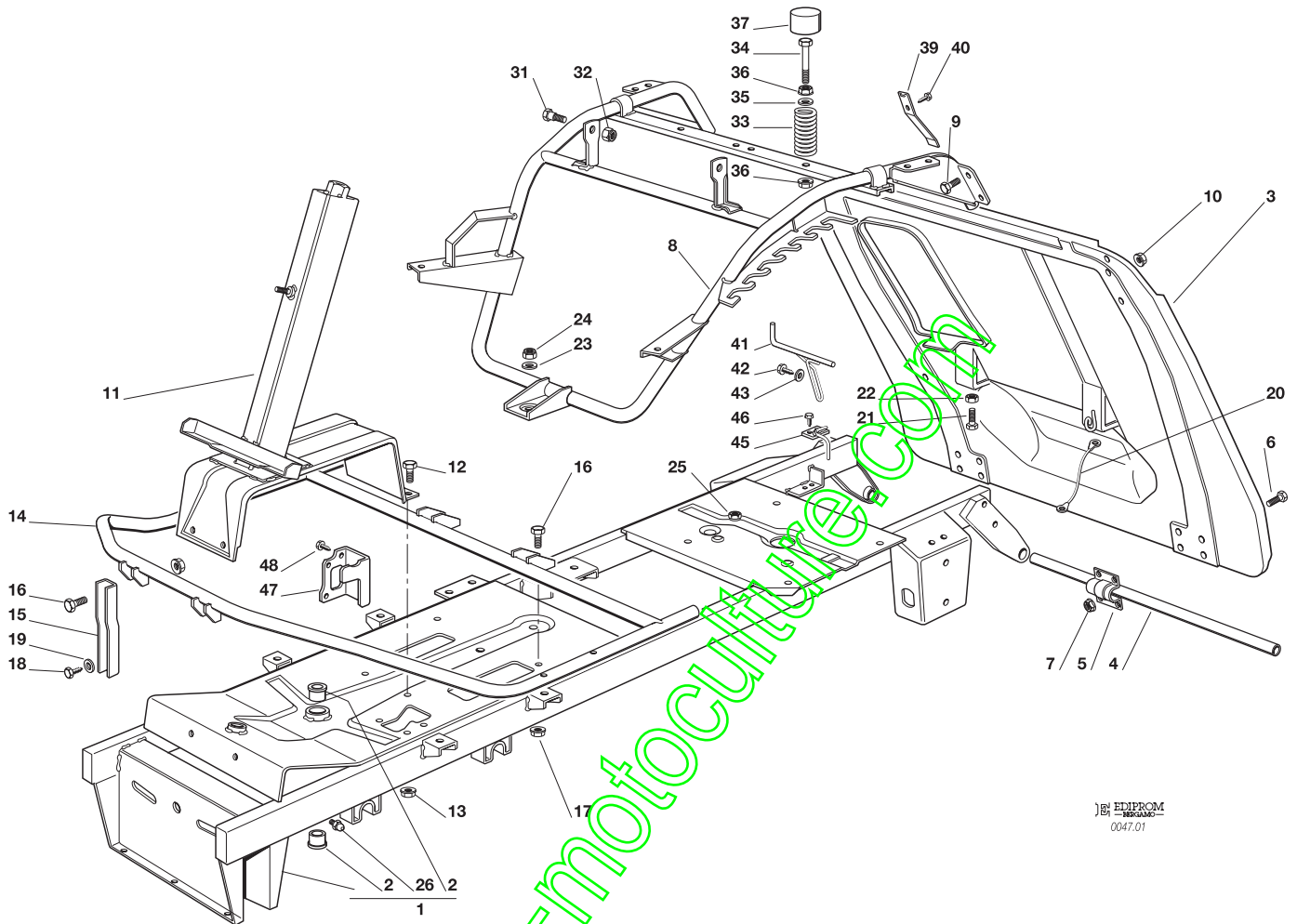
www.monoculture.com

F72**F72 hydro**
TELAIO
CHASSIS
CHASSIS
RAHMENSATZ

2001

001.0

1 / 2

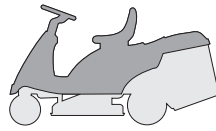

 EDIPROM
 0047.01

| N. | CODE | Q.TY | DESCRIZIONE | DESCRIPTION | DESCRIPTION | BESCHREIBUNG |
|----|------------|------|-------------------|-------------------|--------------------|-----------------|
| 1 | 84801113/1 | 1 | TELAIO | CHASSIS | CHASSIS | RAHMENSATZ |
| 2 | 25034002/1 | 2 | BOCCOLA | BUSH | DOUILLE | BÜCHSE |
| 3 | 84545057/0 | 1 | PIASTRA | PLATE | PLAQUE | PLATTE |
| 4 | 27037000/1 | 1 | PERNO | PIN | PIVOT | BOLZEN |
| 5 | 25547012/1 | 2 | PIASTRA | PLATE | PLAQUE | PLATTE |
| 6 | 12791200/0 | 8 | VITE | SCREW | VIS | SCHRAUBE |
| 7 | 12292102/0 | 8 | DADO | NUT | ECROU | MUTTER |
| 8 | 84801111/1 | 1 | TELAIO SEDILE | CHASSIS | CHASSIS | RAHMENSATZ |
| 9 | 12792611/0 | 4 | VITE | SCREW | VIS | SCHRAUBE |
| 10 | 12293201/0 | 4 | DADO | NUT | ECROU | MUTTER |
| 11 | 84783009/0 | 1 | SUPPORTO PIANTONE | SUPPORT | SUPPORT | HALTER |
| 12 | 12792611/0 | 4 | VITE | SCREW | VIS | SCHRAUBE |
| 13 | 12293201/0 | 4 | DADO | NUT | ECROU | MUTTER |
| 14 | 84801107/1 | 1 | SUPPORTO PEDANE | FOTTBOARD SUPPORT | SUPPORT MARCHEPIED | FUSSBRETTHALTER |
| 15 | 27787025/0 | 2 | SUPPORTO | SUPPORT | SUPPORT | HALTER |
| 16 | 12792611/0 | 4 | VITE | SCREW | VIS | SCHRAUBE |
| 17 | 12293201/0 | 4 | DADO | NUT | ECROU | MUTTER |
| 18 | 12734995/0 | 2 | VITE | SCREW | VIS | SCHRAUBE |
| 19 | 12521331/0 | 2 | RONDELLA | WASHER | RONDELLE | SCHEIBE |
| 20 | 84040300/0 | 1 | CAVO AGGANCI | CORD | CORDE | SEIL |
| 21 | 12793701/0 | 2 | VITE | SCREW | VIS | SCHRAUBE |
| 22 | 12293200/0 | 2 | DADO | NUT | ECROU | MUTTER |
| 23 | 12523060/0 | 1 | RONDELLA | WASHER | RONDELLE | SCHEIBE |
| 24 | 12155000/0 | 1 | DADO | NUT | ECROU | MUTTER |
| 25 | 12500090/0 | 1 | DADO | NUT | ECROU | MUTTER |
| 26 | 12379511/0 | 1 | INGRASSATORE | GREASE DISPENSER | GRAISSEUR | FETTBUCHSE |
| 31 | 22524970/1 | 2 | PERNO | PIN | PIVOT | BOLZEN |
| 32 | 12155010/0 | 2 | DADO | NUT | ECROU | MUTTER |
| 33 | 25430205/0 | 2 | MOLLA | SPRING | RESSORT | FEDER |
| 34 | 25943001/0 | 2 | VITE | SCREW | VIS | SCHRAUBE |
| 35 | 12521350/0 | 2 | RONDELLA | WASHER | RONDELLE | SCHEIBE |



| N. | CODE | Q.TY | DESCRIZIONE | DESCRIPTION | DESCRIPTION | BESCHREIBUNG |
|----|------------|------|----------------------|--------------------|--------------------------|-----------------------|
| 36 | 12293201/0 | 4 | DADO | NUT | ECROU | MUTTER |
| 37 | 25122000/1 | 2 | CUFFIA | HOOD | PROTECTEUR | SCHUTZKASTEN |
| 39 | 27430554/0 | 1 | MOLLA | SPRING | RESSORT | FEDER |
| 40 | 12735110/0 | 1 | VITE | SCREW | VIS | SCHRAUBE |
| 41 | 27294001/0 | 1 | GUIDA | GUIDE | GUIDE | FÜHRUNG |
| 42 | 12735120/0 | 1 | VITE | SCREW | VIS | SCHRAUBE |
| 43 | 12523040/0 | 1 | RONDELLA | WASHER | RONDELLE | SCHEIBE |
| 45 | 27294002/0 | 1 | GUIDACINGHIA (mecc.) | BELT GUIDE (mech.) | GUIDE DE CURROIRE (mec.) | RIEMENFÜHRUNG (mech.) |
| 46 | 12735110/0 | 2 | VITE (mecc.) | SCREW (mech.) | VIS (mec.) | SCHRAUBE (mech.) |
| 47 | 27772095/0 | 1 | STAFFA | CLAMP | ETRIER | BRIDE |
| 48 | 12735106/0 | 2 | VITE | SCREW | VIS | SCHRAUBE |

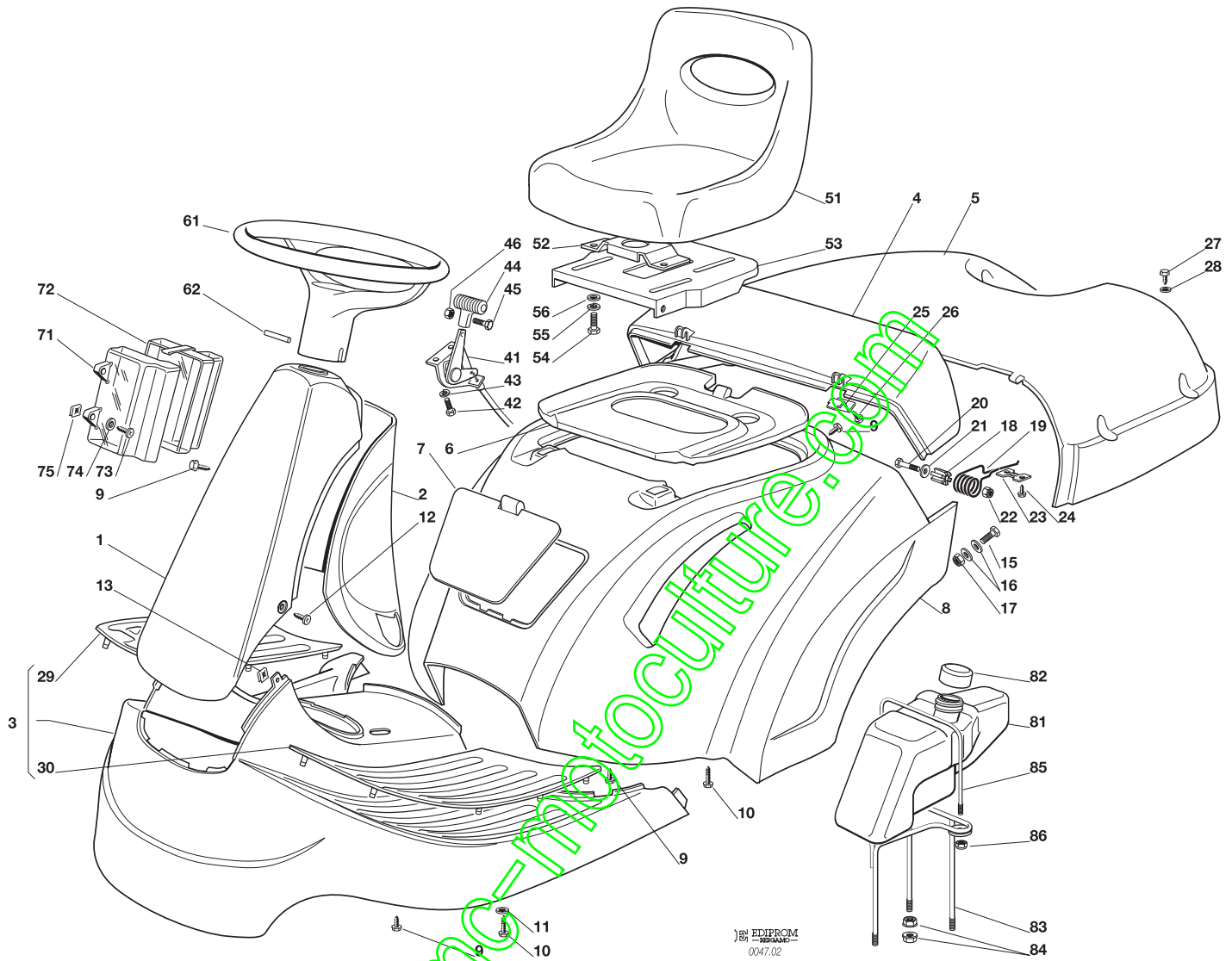
www.emc-motoculture.com

F72**F72 hydro**
CARROZZERIA
BODY
CARROSSERIE
KARROSSERIE

2001

002.0

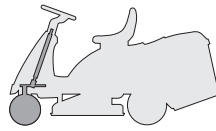
1 / 2


 EDIPROM
 0047.02

| N. | CODE | Q.TY | DESCRIZIONE | DESCRIPTION | DESCRIPTION | BESCHREIBUNG |
|----|------------|------|------------------------------------|---------------------------------------|-------------------------------|------------------------------|
| 1 | 84598064/0 | 1 | PROTEZIONE ANTERIORE ROSSO | FRONT COVER RED | COUVERCLE AVANT ROUGE | VORDERDECKEL ROT |
| | 84598065/0 | | VERDE | GREEN | VERT | GRÜN |
| | 84598066/0 | | GIALLO | YELLOW | JAUNE | GELB |
| | 84598067/0 | | BLU | BLUE | BLEU | BLAU |
| 2 | 27600091/0 | 1 | PROTEZIONE POSTERIORE ROSSO | REAR COVER RED | COUVERCLE ARRIER ROUGE | HINTERDECKEL ROT |
| | 27600092/0 | | VERDE | GREEN | VERT | GRÜN |
| | 27600093/0 | | GIALLO | YELLOW | JAUNE | GELB |
| | 27600094/0 | | BLU | BLUE | BLEU | BLAU |
| 3 | 84110117/1 | 1 | COPERTURA PEDANA ROSSO | FOOTBOARD COVER RED | COUVRE MARCHEPIED ROUGE | FUSSBRETTDECKEL ROT |
| | 84110118/1 | | VERDE | GREEN | VERT | GRÜN |
| | 84110119/1 | | GIALLO | YELLOW | JAUNE | GELB |
| | 84110120/1 | | BLU | BLUE | BLEU | BLAU |
| 4 | 27110302/1 | 1 | COPERTURA SACCO FISSA ROSSO | GRASS-CATCHER COVER, FIXED RED | COUVRE-BAC FIXE ROUGE | FESTER SACKKAPPE ROT |
| | 27110317/1 | | VERDE | GREEN | VERT | GRÜN |
| | 27110318/1 | | GIALLO | YELLOW | JAUNE | GELB |
| | 27110319/1 | | BLU | BLUE | BLEU | BLAU |
| 5 | 27110303/0 | 1 | COPERTURA SACCO MOBILE ROSSO | GRASS-CATCHER COVER, MOBILE RED | COUVRE-BAC MOBILE ROUGE | BEWEGLICHER SACKKAPPE ROT |
| | 27110321/0 | | VERDE | GREEN | VERT | GRÜN |
| | 27110322/0 | | GIALLO | YELLOW | JAUNE | GELB |
| | 27110323/0 | | BLU | BLUE | BLEU | BLAU |
| 6 | 27110306/0 | 1 | COPERTURA MOTORE | ENGINE COVER | COUVRE MOTEUR | MOTORKAPPE |



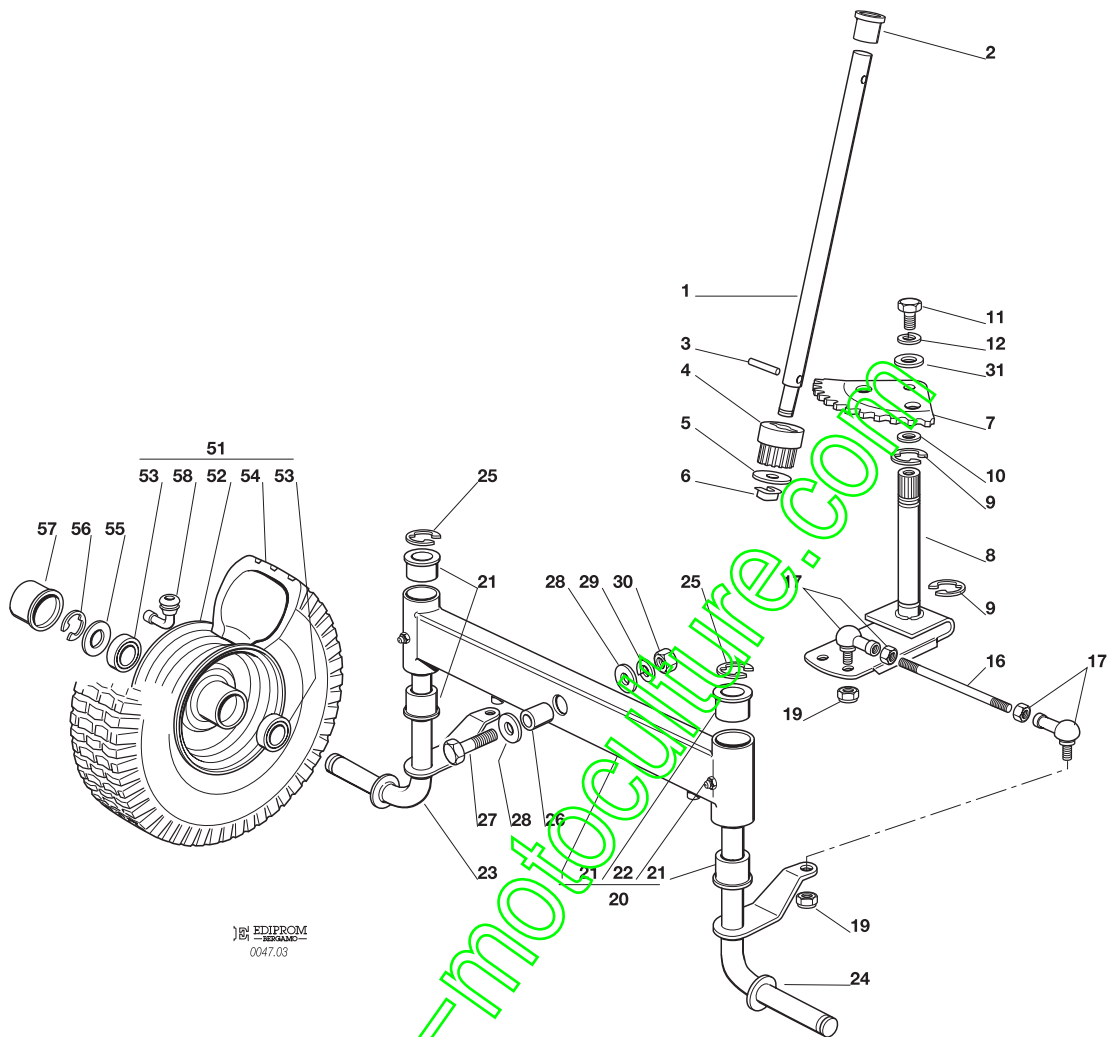
| N. | CODE | Q.TY | DESCRIZIONE | DESCRIPTION | DESCRIPTION | BESCHREIBUNG |
|----|------------|------|-------------------------|-----------------------|------------------------|-----------------------|
| 7 | ☛ | 1 | COPERCHIO ANTERIORE | FRONT COVER | COUVERCLE AVANT | DECKEL |
| | 27109501/0 | | ROSSO | RED | ROUGE | ROT |
| | 27109505/0 | | VERDE | GREEN | VERT | GRÜN |
| | 27109506/0 | | GIALLO | YELLOW | JAUNE | GELB |
| | 27109507/0 | | BLU | BLUE | BLEU | BLAU |
| 8 | ☛ | 1 | COPERTURA RUOTE | WHEELS COVER | COUVRE ROUES | RADENKAPPE |
| | 84110100/1 | | ROSSO | RED | ROUGE | ROT |
| | 84110102/1 | | VERDE | GREEN | VERT | GRÜN |
| | 84110103/1 | | GIALLO | YELLOW | JAUNE | GELB |
| | 84110104/1 | | BLU | BLUE | BLEU | BLAU |
| 8 | ☛ | 1 | COPERTURA RUOTE (hydro) | WHEELS COVER (hydro) | COUVRE ROUES (hydro) | RADENKAPPE (hydro) |
| | 84110107/1 | | ROSSO | RED | ROUGE | ROT |
| | 84110109/1 | | VERDE | GREEN | VERT | GRÜN |
| | 84110110/1 | | GIALLO | YELLOW | JAUNE | GELB |
| | 84110111/1 | | BLU | BLUE | BLEU | BLAU |
| 9 | | 10 | VITE | SCREW | VIS | SCHRAUBE |
| 10 | | 8 | VITE | SCREW | VIS | SCHRAUBE |
| 11 | | 2 | RONDELLA | WASHER | RONDELLE | SCHEIBE |
| 12 | | 2 | VITE | SCREW | VIS | SCHRAUBE |
| 13 | | 2 | PIASTRINA | PLATE | PLAQUE | PLATTE |
| 15 | | 2 | VITE | SCREW | VIS | SCHRAUBE |
| 16 | | 4 | RONDELLA | WASHER | RONDELLE | SCHEIBE |
| 17 | | 2 | DADO | NUT | ECROU | MUTTER |
| 18 | | 2 | BUSSOLA | BUSH | DOUILLE | BUCHSE |
| 19 | | 2 | MOLLA | SPRING | RESSORT | FEDER |
| 20 | | 2 | VITE | SCREW | VIS | SCHRAUBE |
| 21 | | 2 | RONDELLA | WASHER | RONDELLE | SCHEIBE |
| 22 | | 2 | DADO | NUT | ECROU | MUTTER |
| 23 | | 2 | PIASTRINA | PLATE | PLAQUE | PLATTE |
| 24 | | 4 | VITE | SCREW | VIS | SCHRAUBE |
| 25 | | 2 | PIASTRINA | PLATE | PLAQUE | PLATTE |
| 26 | | 2 | VITE | SCREW | VIS | SCHRAUBE |
| 27 | | 4 | VITE | SCREW | VIS | SCHRAUBE |
| 28 | | 4 | RONDELLA | WASHER | RONDELLE | SCHEIBE |
| 29 | | 1 | COPRIPEDANA DESTRA | RIGHT FOOTBOARD COVER | COUVRE MARCHEPIED DRO. | RECHTE FUSSBRETDECKEL |
| 30 | | 1 | COPRIPEDANA SINISTRA | LEFT FOOTBOARD COVER | COUVRE MARCHEPIED GAU. | LINKE FUSSBRETDECKEL |
| 41 | | 1 | ACCELERATORE | ACCELERATOR | ACCELERATEUR | GAS ZUG |
| 42 | | 2 | VITE | SCREW | VIS | SCHRAUBE |
| 43 | | 2 | GROWER | GROWER | GROWER | GROWER |
| 44 | | 1 | MANOPOLINA | HANDLE | POIGNE | GRIF |
| 45 | | 1 | VITE | SCREW | VIS | SCHRAUBE |
| 46 | | 1 | DADO | NUT | ECROU | MUTTER |
| 51 | | 1 | SEDILE | SEAT | SIEGE | SITZ |
| 52 | | 1 | SUPPORTO | SUPPORT | SUPPORT | HALTER |
| 53 | | 1 | PIASTRA | PLATE | PLAQUE | PLATTE |
| 54 | | 4 | VITE | SCREW | VIS | SCHRAUBE |
| 55 | | 4 | GROWER | GROWER | GROWER | GROWER |
| 56 | | 4 | RONDELLA | WASHER | RONDELLE | SCHEIBE |
| 61 | | 1 | VOLANTE | STEERING WHEEL | VOLANT | LENKRAD |
| 62 | | 1 | SPINA | PIN | GOUPILLE | STIFT |
| 71 | | 1 | PROTEZIONE SUPERIORE | UPPER GUARD | PROTECTION SUPERIEUR | OBERSCHUTZ |
| 72 | | 1 | PROTEZIONE INFERIORE | LOWER GUARD | PROTECTION INFERIEUR | UNTERSCHUTZ |
| 73 | | 2 | VITE | SCREW | VIS | SCHRAUBE |
| 74 | | 2 | ROSETTA | WASHER | RONDELLE | SCHEIBE |
| 75 | | 2 | PIASTRINA | PLATE | PLAQUE | PLÄTTE |
| 81 | | 1 | SERBATOIO | TANK | RESERVOIR | TANK |
| 82 | | 1 | TAPPO | CAP | BOUCHON | TANKVERSCHLUSS |
| 83 | | 1 | SUPPORTO | SUPPORT | SUPPORT | HALTER |
| 84 | | 6 | DADO | NUT | ECROU | MUTTER |
| 85 | | 1 | ASTA | ROD | TIGE | STAB |
| 86 | | 2 | DADO | NUT | ECROU | MUTTER |

F72**F72 hydro**
STERZO
STEERING
BARRE DE DIRECTION
LENKGETRIEBE

2001

003.0

1 / 2

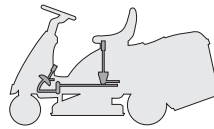

 EDIPROM
 0047.03

| N. | CODE | Q.TY | DESCRIZIONE | DESCRIPTION | DESCRIPTION | BESCHREIBUNG |
|----|------------|------|--|---------------------------------------|--|--|
| 1 | 27520050/0 | 1 | PIANTONE | STEERING COLUMN | TUBE DE DIRECTION | LENKUNGSAEULE |
| 2 | 25038003/0 | 1 | BOCCOLA | BUSH | DOUILLE | BÜCHSE |
| 3 | 12622650/0 | 1 | SPINA | PIN | GOUPILLE | STIFT |
| 4 | 27570050/0 | 1 | PIGNONE | PINION | PIGNON | RITZEL |
| 5 | 12521370/0 | 1 | RONDELLA | WASHER | RONDELLE | SCHEIBE |
| 6 | 12436030/0 | 1 | PIASTRINA | PLATE | PLAQUETTE | PLATTECHEN |
| 7 | 84735551/0 | 1 | SETTORE | STEERING SHAFT | ARBRE DIRECTION | LENKUNGSWELLE |
| 8 | 84000501/0 | 1 | ALBERO STERZO | SHAFT | ARBRE | WELLE |
| 9 | 12001000/0 | 2 | ANELLO ELASTICO | SNAP RING | ANNEAU RESSORT | SPRENGRING |
| 10 | 12520031/0 | 0-2 | RONDELLA | WASHER | RONDELLE | SCHEIBE |
| 11 | 12793102/0 | 1 | VITE | SCREW | VIS | SCHRAUBE |
| 12 | 12583500/0 | 1 | GROWER | GROWER | GROWER | GROWER |
| 16 | 27840050/0 | 2 | TIRANTE COLLEG. FUSELLI | TIE ROD | TIRANT | SPANNSTANGE |
| 17 | 22746600/0 | 4 | SNODO | JOINT | JOINT | GELENK |
| 19 | 12156602/0 | 4 | DADO | NUT | ECROU | MUTTER |
| 20 | 84034057/0 | 1 | BILANCIERE COMPLETO DI BOCCOLA ED INGRASSATORE | EQUALIZER WITH BUSH AND LUBRICATOR | BALANCIER AVEC DOULIE ET GRAISSEUR | KIPPHEBEL MIT BÜCHSE UND FETTBUCHSE |
| 21 | 25034002/1 | 4 | BOCCOLA | BUSH | DOUILLE | BÜCHSE |
| 22 | 12379511/0 | 2 | INGRASSATORE | GREASE DISPENSER | GRAISSEUR | FETTBUCHSE |
| 23 | 84230401/0 | 1 | FUSELLO DESTRO | RIGHT STUB AXLE | FUSEAU DROITE | RECHTER ACHSSCHENKEL |
| 24 | 84230403/0 | 1 | FUSELLO SINISTRO | LEFT STUB AXLE | FUSEAU GAUCHE | LINKER ACHSSCHENKEL |
| 25 | 12001000/0 | 2 | ANELLO ELASTICO | SNAP RING | ANNEAU RESSORT | SPRENGRING |
| 26 | 25160016/0 | 1 | DISTANZIALE | SPACER | ENTRETOISE | ENTFERNUNGSSTÜCK |
| 27 | 12692695/0 | 1 | VITE | SCREW | VIS | SCHRAUBE |
| 28 | 12523100/0 | 2 | RONDELLA | WASHER | RONDELLE | SCHEIBE |
| 29 | 12587100/0 | 1 | GROWER | GROWER | GROWER | GROWER |
| 30 | 12295300/0 | 1 | DADO | NUT | ECROU | MUTTER |
| 31 | 12521350/0 | 1 | RONDELLA | WASHER | RONDELLE | SCHEIBE |



| N. | CODE | Q.TY | DESCRIZIONE | DESCRIPTION | DESCRIPTION | BESCHREIBUNG |
|----|-------------------------------|------|---|---|--|---|
| 51 | ☛ 84680052/0 84680055/0 | 2 | RUOTA ANTERIORE TURF SAVER CARLISLE DELI TIRE | FRONT WHEEL TURF SAVER CARLISLE DELI TIRE | ROUE AVANT TURF SAVER CARLISLE DELI TIRE | VORDERRAD TURF SAVER CARLISLE DELI TIRE |
| 52 | 84044000/0 | 2 | CERCHIO RUOTA | RIMM | BANDAGE ROUE | VORDERRAD FELGER |
| 53 | 25122200/1 | 4 | CUSCINETTO | BEARING | ROULEMENT | LAGER |
| 54 | ☛ 27590050/0 27590052/0 | 2 | PNEUMATICO TURF SAVER CARLISLE DELI TIRE | SHOE TURF SAVER CARLISLE DELI TIRE | PNEU TURF SAVER CARLISLE DELI TIRE | REIFEN TURF SAVER CARLISLE DELI TIRE |
| 55 | 25670005/1 | 2 | RONDELLA | WASHER | RONDELLE | SCHEIBE |
| 56 | 12001000/0 | 2 | ANELLO ELASTICO | SNAP RING | ANNEAU RESSORT | SPRENGRING |
| 57 | 22110230/0 | 2 | COPRIMOZZO | HUB COVER | COUVRE MOYEU | NABEDECKEL |
| 58 | 25950002/0 | 2 | VALVOLA | VALVE | SOUPAPE | VENTIL |

www.emc-motoculture.com

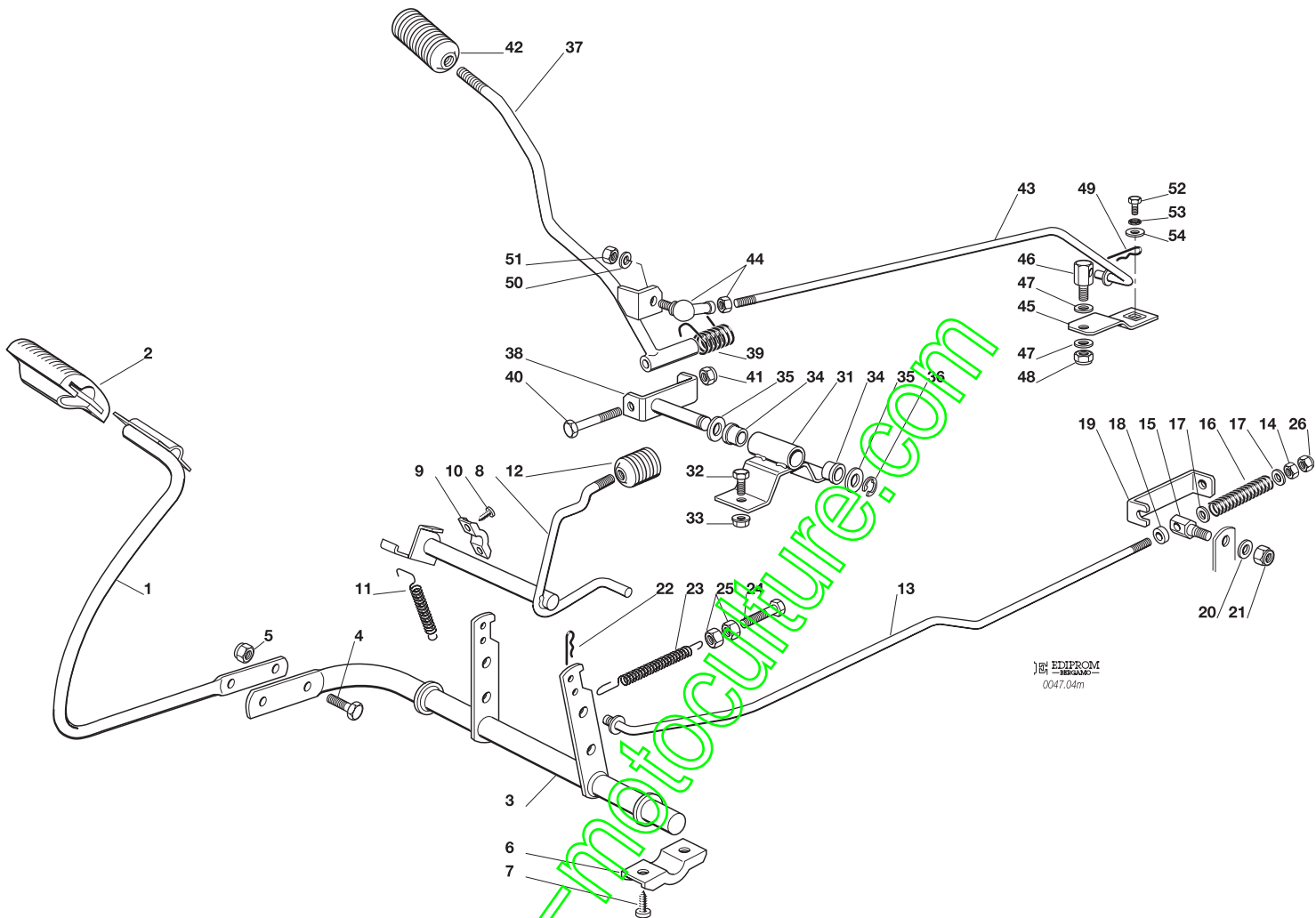
F72*F72 hydro*

COMANDO FRENO E COMANDO CAMBIO
BRAKE AND GEARBOX CONTROLS
COMMANDE FREIN ET BOITE DE VITESSE
BREMSE UND WECHSEL ANTRIEB

2001

004M.0

1 / 2



| N. | CODE | Q.TY | DESCRIZIONE | DESCRIPTION | DESCRIPTION | BESCHREIBUNG |
|----|------------|------|----------------------|-------------|---------------|------------------|
| 1 | 84503001/0 | 1 | PEDALE | PEDAL | PEDAL | PEDAL |
| 2 | 25110269/0 | 1 | COPRISTAFFA | CLAMP COVER | COUVRE ETRIER | BRIDEDECKEL |
| 3 | 84001015/1 | 1 | ASSE FRENO | AXLE | AXE | ACHSE |
| 4 | 12793301/0 | 2 | VITE | SCREW | VIS | SCHRAUBE |
| 5 | 12155000/0 | 2 | DADO | NUT | ECROU | MUTTER |
| 6 | 27546015/0 | 2 | PIASTRINA | PLATE | PLAQUE | PLATTE |
| 7 | 12731350/0 | 4 | VITE | SCREW | VIS | SCHRAUBE |
| 8 | 84001011/2 | 1 | ASSE FRENO STAZIONAM | AXLE | AXE | ACHSE |
| 9 | 25547049/0 | 2 | PIASTRINA | PLATE | PLAQUE | PLATTE |
| 10 | 12731601/0 | 4 | VITE | SCREW | VIS | SCHRAUBE |
| 11 | 27430552/0 | 1 | MOLLA | SPRING | RESSORT | FEDER |
| 12 | 27395050/1 | 1 | MANOPOLA | KNOB | POIGNEE | KNOPF |
| 13 | 27034059/0 | 1 | ASTA | ROD | BARRE | STANGE |
| 14 | 12293200/0 | 1 | DADO | NUT | ECROU | MUTTER |
| 15 | 27510103/0 | 1 | PERNO | PIN | PIVOT | BOLZEN |
| 16 | 25430236/0 | 1 | MOLLA | SPRING | RESSORT | FEDER |
| 17 | 12521350/0 | 2 | ROSETTA | WASHER | RONDELLE | SCHEIBE |
| 18 | 22171001/0 | 1 | DISTANZIALE | SPACER | ENTRETOISE | ENTFERNUNGSSTÜCK |
| 19 | 25774275/0 | 1 | STAFFA | CLAMP | ETRIER | BRIDE |
| 20 | 12523050/0 | 1 | ROSETTA | WASHER | RONDELLE | SCHEIBE |
| 21 | 12154510/0 | 1 | DADO | NUT | ECROU | MUTTER |
| 22 | 24487997/0 | 1 | COPPIGLIA | COTTER PIN | GOUPILLE | SPLIT |
| 23 | 25430220/0 | 1 | MOLLA | SPRING | RESSORT | FEDER |
| 24 | 22943005/0 | 1 | VITE | SCREW | VIS | SCHRAUBE |
| 25 | 12293200/0 | 2 | DADO | NUT | ECROU | MUTTER |
| 26 | 12155000/0 | 1 | DADO | NUT | ECROU | MUTTER |
| 31 | 84773551/0 | 1 | STAFFA | CLAMP | ETRIER | BRIDE |
| 32 | 12793102/0 | 1 | VITE | SCREW | VIS | SCHRAUBE |
| 33 | 12293201/0 | 1 | DADO | NUT | ECROU | MUTTER |

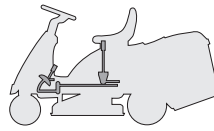


| N. | CODE | Q.TY | DESCRIZIONE | DESCRIPTION | DESCRIPTION | BESCHREIBUNG |
|----|------------|------|-------------|-------------|-------------|--------------|
| 34 | 27047002/0 | 2 | BUSSOLA | BUSHING | DOUILLE | LAGER |
| 35 | 12521370/0 | 2 | RONDELLA | WASHER | RONDELLE | SCHEIBE |
| 36 | 12608600/0 | 1 | SEEGER | SEEGER | SEEGER | SEEGER |
| 37 | 84317051/2 | 1 | LEVA | GEARSHIFT | LEVIER | HEBEL |
| 38 | 84773553/0 | 1 | STAFFA | CLAMP | ETRIER | BRIDE |
| 39 | 25430226/0 | 1 | MOLLA | SPRING | RESSORT | FEDER |
| 40 | 12692050/0 | 1 | VITE | SCREW | VIS | SCHRAUBE |
| 41 | 12155000/0 | 1 | DADO | NUT | ECROU | MUTTER |
| 42 | 82394508/0 | 1 | MANOPOLA | KNOB | POIGNEE | WECHSEL |
| 43 | 27034052/0 | 1 | ASTA | ROD | BARRE | STANGE |
| 44 | 22746601/0 | 1 | SNODO | JOINT | JOINT | GELENK |
| 45 | 27315077/0 | 1 | LEVA | GEARSHIFT | LEVIER | HEBEL |
| 46 | 25510040/1 | 1 | PERNO | PIN | PIVOT | BOLZEN |
| 47 | 25670011/0 | 2 | RONDELLA | WASHER | RONDELLE | SCHEIBE |
| 48 | 12155000/0 | 1 | DADO | NUT | ECROU | MUTTER |
| 49 | 24487997/0 | 1 | COPPIGLIA | COTTER PIN | GOUPILLE | SPLIT |
| 50 | 12583500/0 | 1 | GROWER | GROWER | GROWER | GROWER |
| 51 | 12293200/0 | 1 | DADO | NUT | ECROU | MUTTER |
| 52 | 12735520/0 | 1 | VITE | SCREW | VIS | SCHRAUBE |
| 53 | 12540040/0 | 1 | RONDELLA | WASHER | RONDELLE | SCHEIBE |
| 54 | 22680009/0 | 1 | RONDELLA | WASHER | RONDELLE | SCHEIBE |

www.emc-motoculture.com

F72

F72 hydro

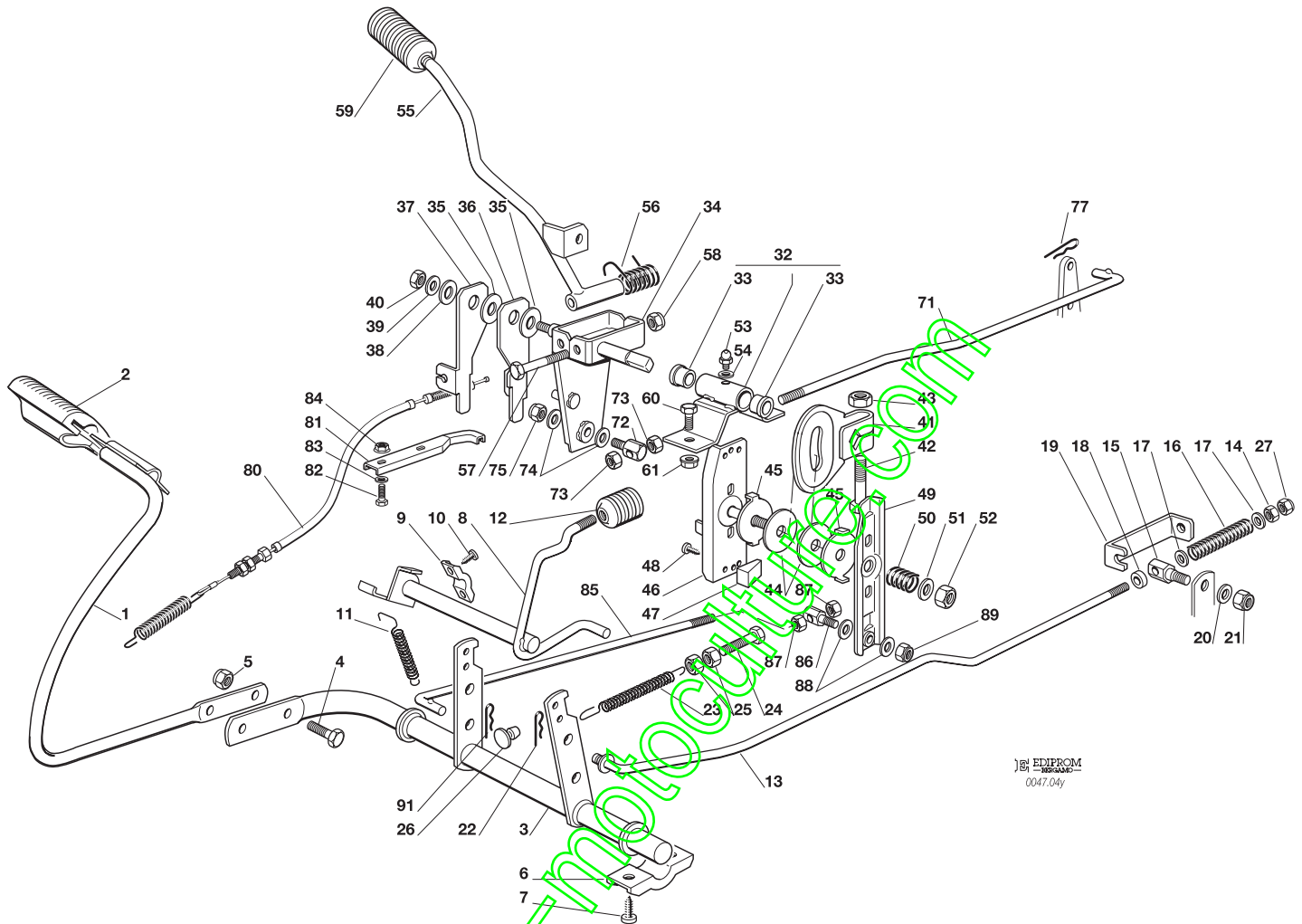


**COMANDO TRASMISSIONE E FRENO
DRIVE AND BRAKE CONTROLS
COMMANDE TRANSMISSION ET FREIN
GETRIEBE UND BREMSE ANTRIEB**

2001

004Y.0

1 / 2



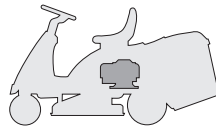
EDIPROM
0047.04y

| N. | CODE | Q.TY | DESCRIZIONE | DESCRIPTION | DESCRIPTION | BESCHREIBUNG |
|----|------------|------|-----------------------|--------------------|--------------------------|------------------|
| 1 | 84503001/0 | 1 | PEDALE | PEDAL | PEDAL | PEDAL |
| 2 | 25110267/0 | 1 | COPRISTAFFA | CLAMP COVER | COUVRE ETRIER | BRIDEDECKEL |
| 3 | 84001015/1 | 1 | ASSE FRENO | AXLE | AXE | ACHSE |
| 4 | 12793301/0 | 2 | VITE | SCREW | VIS | SCHRAUBE |
| 5 | 12155000/0 | 2 | DADO | NUT | ECROU | MUTTER |
| 6 | 27546015/0 | 2 | PIASTRINA | PLATE | PLAQUE | PLATTE |
| 7 | 12731350/0 | 4 | VITE | SCREW | VIS | SCHRAUBE |
| 8 | 84001011/2 | 1 | ASSE FRENO STAZIONAM. | AXLE | AXE | ACHSE |
| 9 | 25547049/0 | 2 | PIASTRINA | PLATE | PLAQUE | PLATTE |
| 10 | 12731601/0 | 4 | VITE | SCREW | VIS | SCHRAUBE |
| 11 | 27430552/0 | 1 | MOLLA | SPRING | RESSORT | FEDER |
| 12 | 27395050/1 | 1 | MANOPOLA | KNOB | POIGNEE | KNOPF |
| 13 | 27034060/0 | 1 | ASTA | ROD | BARRE | STANGE |
| 14 | 12293200/0 | 1 | DADO | NUT | ECROU | MUTTER |
| 15 | 27510103/0 | 1 | PERNO | PIN | PIVOT | BOLZEN |
| 16 | 25430236/0 | 1 | MOLLA | SPRING | RESSORT | FEDER |
| 17 | 12521350/0 | 2 | ROSETTA | WASHER | RONDELLE | SCHIBE |
| 18 | 22171001/0 | 1 | DISTANZIALE | SPACER | ENTRETOISE | ENTFERNUNGSSTÜCK |
| 19 | 25774275/0 | 1 | STAFFA | CLAMP | ETRIER | BRIDE |
| 20 | 12523050/0 | 1 | ROSETTA | WASHER | RONDELLE | SCHIBE |
| 21 | 12154510/0 | 1 | DADO | NUT | ECROU | MUTTER |
| 22 | 24487997/0 | 1 | COPPIGLIA | COTTER PIN | GOUPILLE | SPLIT |
| 23 | 25430220/0 | 1 | MOLLA | SPRING | RESSORT | FEDER |
| 24 | 22943005/0 | 1 | VITE | SCREW | VIS | SCHRAUBE |
| 25 | 12293200/0 | 2 | DADO | NUT | ECROU | MUTTER |
| 26 | 27275000/0 | 1 | GOMMINO | GROMMET | CAOUTCHOUC | GUMMI |
| 27 | 12155000/0 | 1 | DADO | NUT | ECROU | MUTTER |
| 32 | 84773568/0 | 1 | STAFFA CON BUSSOLE | BRACKET WITH BUSSH | INGSETRIER AVEC DOUILLES | BRIDE MIT LAGERN |
| 33 | 27045080/0 | 2 | BUSSOLA | BUSHING | DOUILLE | LAGER |



| N. | CODE | Q.TY | DESCRIZIONE | DESCRIPTION | DESCRIPTION | BESCHREIBUNG |
|----|------------|------|--------------|------------------|-------------|--------------|
| 34 | 84773561/0 | 1 | LEVA | LEVER | LEVIER | HEBEL |
| 35 | 22672151/0 | 2 | RONDELLA | WASHER | RONDELLE | SCHEIBE |
| 36 | 27772101/0 | 1 | STAFFA | CLAMP | ETRIER | BRIDE |
| 37 | 27772103/0 | 1 | STAFFA | CLAMP | ETRIER | BRIDE |
| 38 | 22672152/0 | 1 | RONDELLA | WASHER | RONDELLE | SCHEIBE |
| 39 | 22523060/0 | 1 | RONDELLA | WASHER | RONDELLE | SCHEIBE |
| 40 | 12155010/0 | 1 | DADO | NUT | ECROU | MUTTER |
| 41 | 27734055/0 | 1 | SETTORE | SECTOR | SECTEUR | SEKTOR |
| 42 | 12794900/0 | 1 | VITE | SCREW | VIS | SCHRAUBE |
| 43 | 12155020/0 | 1 | DADO | NUT | ECROU | MUTTER |
| 44 | 27158000/0 | 2 | DISCO | PLATE | DISQUE | SCHEIBE |
| 45 | 27670053/0 | 2 | RONDELLA | WASHER | RONDELLE | SCHEIBE |
| 46 | 84773565/0 | 1 | STAFFA | CLAMP | ETRIER | BRIDE |
| 47 | 27063020/0 | 2 | CAMMA | CAM | CAME | NOCKEN |
| 48 | 12735110/0 | 2 | VITE | SCREW | VIS | SCHRAUBE |
| 49 | 84773563/0 | 1 | LEVA | LEVER | LEVIER | HEBEL |
| 50 | 27430560/0 | 1 | MOLLA | SPRING | RESSORT | FEDER |
| 51 | 25670008/0 | 1 | RONDELLA | WASHER | RONDELLE | SCHEIBE |
| 52 | 12155020/0 | 1 | DADO | NUT | ECROU | MUTTER |
| 53 | 12379511/0 | 1 | INGRASSATORE | GREASE DISPENSER | GRAISSEUR | FETTBÜCHSE |
| 54 | 12521330/0 | 1 | RONDELLA | WASHER | RONDELLE | SCHEIBE |
| 55 | 84317051/1 | 1 | LEVA | GEARSHIFT | LEVIER | HEBEL |
| 56 | 25430226/0 | 1 | MOLLA | SPRING | RESSORT | FEDER |
| 57 | 12692050/0 | 1 | VITE | SCREW | VIS | SCHRAUBE |
| 58 | 12155000/0 | 1 | DADO | NUT | ECROU | MUTTER |
| 59 | 82394508/0 | 1 | MANOPOLA | KNOB | POIGNEE | WECHSEL |
| 60 | 12793301/0 | 1 | VITE | SCREW | VIS | SCHRAUBE |
| 61 | 12293201/0 | 1 | DADO | NUT | ECROU | MUTTER |
| 71 | 27034062/0 | 1 | ASTA | ROD | BARRE | STANGE |
| 72 | 25510040/1 | 1 | PERNO | PIN | PIVOT | BOLZEN |
| 73 | 12293200/0 | 2 | DADO | NUT | ECROU | MUTTER |
| 74 | 25670011/0 | 2 | RONDELLA | WASHER | RONDELLE | SCHEIBE |
| 75 | 12155010/0 | 1 | DADO | NUT | ECROU | MUTTER |
| 77 | 24487997/0 | 1 | COPPIGLIA | COTTER PIN | GOUPILLE | SPLIT |
| 80 | 84207101/0 | 1 | FILO | WIRE | FIL | KABEL |
| 81 | 27772105/0 | 1 | STAFFA | CLAMP | ETRIER | BRIDE |
| 82 | 12791400/0 | 2 | VITE | SCREW | VIS | SCHRAUBE |
| 83 | 12521330/0 | 2 | RONDELLA | WASHER | RONDELLE | SCHEIBE |
| 84 | 12292102/0 | 2 | DADO | NUT | ECROU | MUTTER |
| 85 | 27034058/0 | 1 | ASTA | ROD | BARRE | STANGE |
| 86 | 25510040/1 | 1 | PERNO | PIN | PIVOT | BOLZEN |
| 87 | 12293200/0 | 2 | DADO | NUT | ECROU | MUTTER |
| 88 | 25670011/0 | 2 | RONDELLA | WASHER | RONDELLE | SCHEIBE |
| 89 | 12155010/0 | 1 | DADO | NUT | ECROU | MUTTER |
| 91 | 24487997/0 | 1 | COPPIGLIA | COTTER PIN | GOUPILLE | SPLIT |

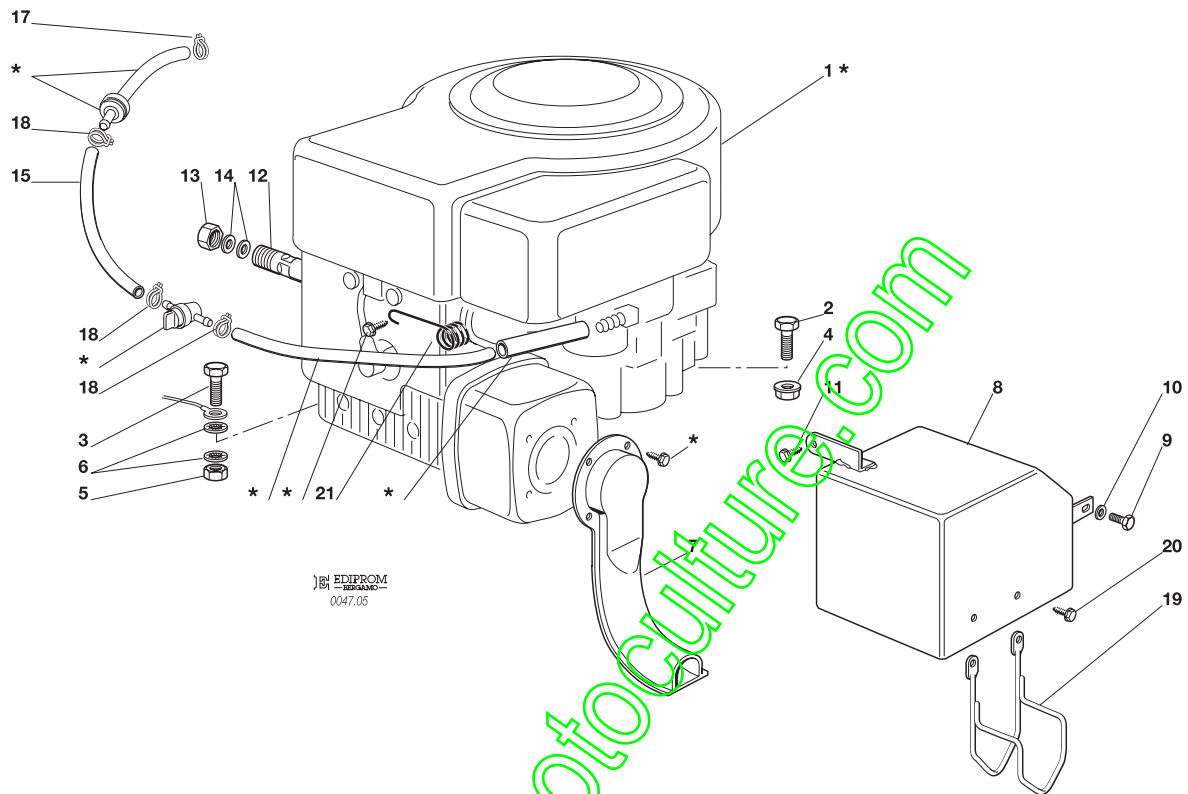
www.enc-motoculture.com

F72**F72 hydro**
MOTORE
ENGINE
MOTEUR
MOTOR
10-10,5-11-11,5-12-12,5 HP B&S

2001

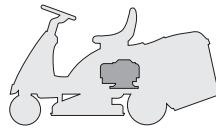
005.0

1 / 1


 EDIFROM
 0047.05

| N. | CODE | Q.TY | DESCRIZIONE | DESCRIPTION | DESCRIPTION | BESCHREIBUNG |
|----|------------|------|-------------------------|-------------------------|--------------------------------------|---------------------------------|
| 1* | - | 1 | MOTORE | ENGINE | MOTEUR | MOTOR |
| 2 | 12793701/0 | 3 | VITE | SCREW | VIS | SCHRAUBE |
| 3 | 12691100/0 | 1 | VITE | SCREW | VIS | SCHRAUBE |
| 4 | 12293201/0 | 3 | DADO | NUT | ECROU | MUTTER |
| 5 | 12293200/0 | 1 | DADO | NUT | ECROU | MUTTER |
| 6 | 12540260/0 | 2 | RONDELLA | WASHER | RONDELLE | SCHIBE |
| 7 | 84640550/0 | 1 | RACCORDO SCARICO | EXHAUST CONNECTION | CONNEXION ECHAPPEMENT | AUSPUFFANSCHLUSS |
| 8 | 82598001/0 | 1 | PROTEZIONE SILENZIATORE | MUFFLER PROTECTION | PROTECTION SILENCIEUX | AUSPUFFSCHUTZ |
| 9 | 12735510/0 | 1 | VITE | SCREW | VIS | SCHRAUBE |
| 10 | 12540260/0 | 1 | RONDELLA | WASHER | RONDELLE | SCHIBE |
| 11 | 12735104/0 | 1 | VITE | SCREW | VIS | SCHRAUBE |
| 12 | 27598060/0 | 1 | PROLUNGA SCARICO OLIO | OIL DISCHARGE EXTENSION | EXTENSION RALLONGE DE DECH. HUILE | ÖL ENTLEERUNGSVERLÄN- GERUNG |
| 13 | 18737849/0 | 1 | TAPPO PER PROLUNGA | OIL CAP | BOUCHON HUILE | OELVERSCHLUSS |
| 14 | 18401001/0 | 2 | GUARNIZIONE | OIL SEAL | GARNITURE | DICHTUNG |
| 15 | 25869004/0 | 1 | TUBO FILTRO | TUBE | TUBE | ROHR |
| 17 | 18375053/0 | 1 | FASCETTA | FAIR LED | FIXATION DE CABLE | KABELBEFESTIGUNG |
| 18 | 18375051/1 | 3 | FASCETTA | FAIR LED | FIXATION DE CABLE | KABELBEFESTIGUNG |
| 19 | 27600059/1 | 1 | PROTEZIONE SCARICO | EXHAUST PROTECTION | PROTECTION ECHAPPEMENT | AUSPUFFSCHUTZ |
| 20 | 12735110/0 | 2 | VITE | SCREW | VIS | SCHRAUBE |
| 21 | 27430562/0 | 1 | MOLLA | SPRING | RESSORT | FEDER |

PER LA SOSTITUZIONE DELLE PARTI CONTRASSEGNAE CON «*» RIVOLGERSI AL SERVIZIO ASSISTENZA DEL COSTRUTTORE DEL MOTORE.
 TO REPLACE THE PARTS MARKED «*» SEEK ASSISTANCE FROM THE ENGINE MANUFACTURER'S AFTER SALES SERVICE.
 POUR LE REMPLACEMENT DES PIÈCES MARQUÉES AVEC «*» S'ADRESSER AU SERVICE APRÈS VENTES DU CONSTRUCTEUR DU MOTOREUR.
 ZUM AUSTAUSCH DER MIT «*» GEKENNZEICHNETEN TEILE, WENDEN SIE SICH AN DEN KUNDENDIENST DES HERSTELLERS DES MOTOR.

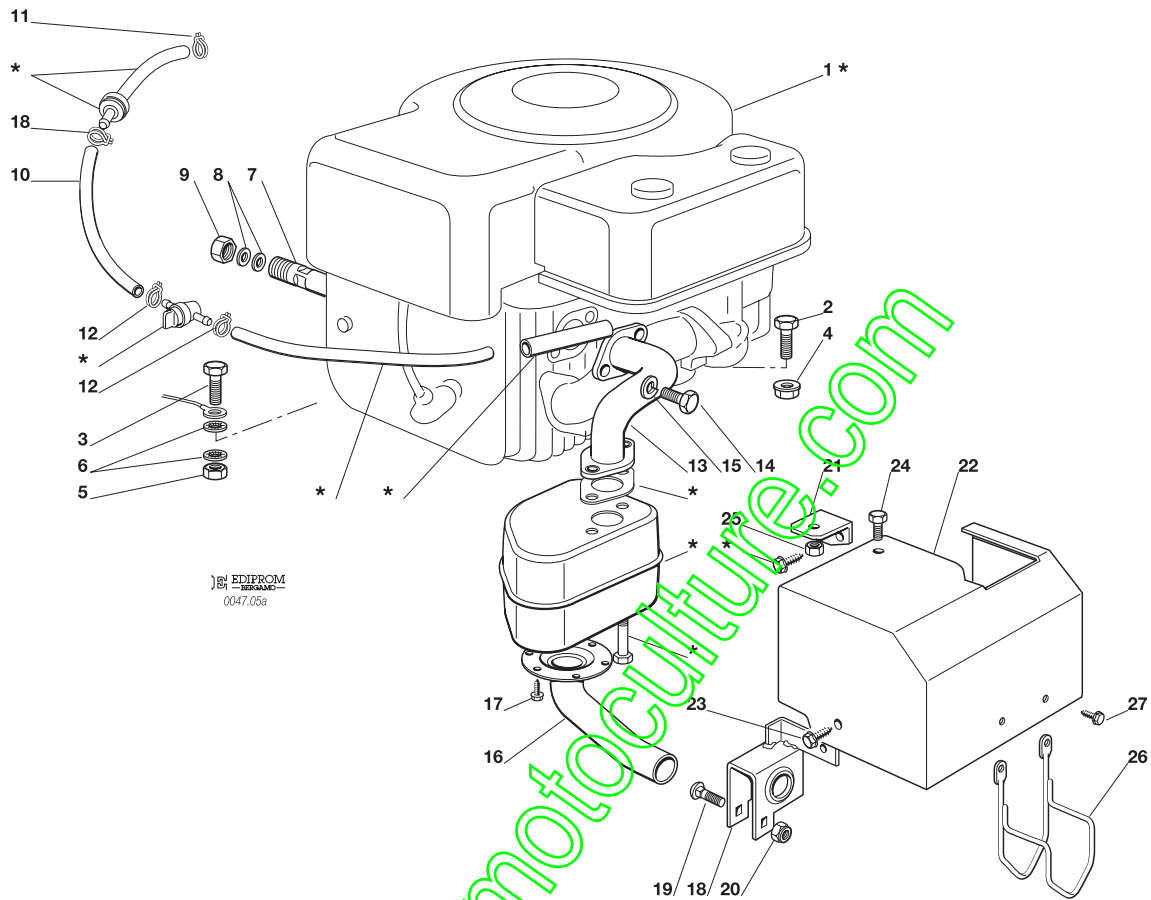
F72**F72 hydro**

MOTORE
ENGINE
MOTEUR
MOTOR
10 HP TECUMSEH

2001

005a.0

1 / 2



EDIPROM
 0047.05a

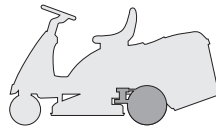
| N. | CODE | Q.TY | DESCRIZIONE | DESCRIPTION | DESCRIPTION | BESCHREIBUNG |
|----|------------|------|--------------------------|----------------------------|---------------------------------------|----------------------------------|
| 1* | - | 1 | MOTORE | ENGINE | MOTEUR | MOTOR |
| 2 | 12793701/0 | 3 | VITE | SCREW | VIS | SCHRAUBE |
| 3 | 12691100/0 | 1 | VITE | SCREW | VIS | SCHRAUBE |
| 4 | 12293201/0 | 3 | DADO | NUT | ECROU | MUTTER |
| 5 | 12293200/0 | 1 | DADO | NUT | ECROU | MUTTER |
| 6 | 12540260/0 | 2 | RONDELLA | WASHER | RONDELLE | SCHEIBE |
| 7 | 27598060/0 | 1 | PROLUNGA SCARICO OLIO | OIL DISCHARGE EXTENSION | EXTENSION RALLONGE DE DECH. HUILE | ÖL ENTLEERUNGSVERLÄEN- GERUNG |
| 8 | 18737849/0 | 1 | TAPPO PER PROLUNGA | OIL CAP | BOUCHON HUILE | OELVERSCHLUSS |
| 9 | 18401001/0 | 2 | GUARNIZIONE | OIL SEAL | GARNITURE | DICHTUNG |
| 10 | 25869004/0 | 1 | TUBO FILTRO | TUBE | TUBE | ROHR |
| 11 | 18375053/0 | 1 | FASCETTA | FAIR LED | FIXATION DE CABLE | KABELBEFESTIGUNG |
| 12 | 18375051/1 | 3 | FASCETTA | FAIR LED | FIXATION DE CABLE | KABELBEFESTIGUNG |
| 13 | 18738218/0 | 1 | TUBI RACCORDO SCARICO | EXHAUST CONNECTING TUBE | TUBE DE CONNEXION POUR ECHAPPEMENT | VERBINDUNGSRÖHR FÜR ABGASUNG |
| 14 | 12737450/0 | 2 | VITE | SCREW | VIS | SCHRAUBE |
| 15 | 12583500/0 | 2 | GROWER | GROWER | GROWER | GROWER |
| 16 | 18738216/0 | 1 | TUBI RACCORDO SCARICO | EXHAUST CONNECTING TUBE | TUBE DE CONNEXION POUR ECHAPPEMENT | VERBINDUNGSRÖHR FÜR ABGASUNG |
| 17 | 12735106/0 | 4 | VITE | SCREW | VIS | SCHRAUBE |
| 18 | 84773557/0 | 1 | STAFFA | BRACKET | ETRIER | BRIDE |
| 19 | 12815240/0 | 1 | VITE | SCREW | VIS | SCHRAUBE |
| 20 | 12154510/0 | 1 | DADO | NUT | ECROU | MUTTER |
| 21 | 27546009/0 | 1 | PIASTRINA | PLATE | PLAQUETTE | PLATTE |
| 22 | 84598061/0 | 1 | PROTEZIONE SILENZIATORE | MUFFLER PROTECTION | PROTECTION SILENCIEUX | AUSPUFFSCHUTZ |
| 23 | 12731601/0 | 1 | VITE | SCREW | VIS | SCHRAUBE |
| 24 | 12790780/0 | 1 | VITE | SCREW | VIS | SCHRAUBE |
| 25 | 12292102/0 | 1 | DADO | NUT | ECROU | MUTTER |
| 26 | 27600059/1 | 1 | PROTEZIONE SCARICO | EXHAUST PROTECTION | PROTECTION ECHAPPEMENT | AUSPUFFSCHUTZ |
| 27 | 12735110/0 | 2 | VITE | SCREW | VIS | SCHRAUBE |



| N. | CODE | Q.TY | DESCRIZIONE | DESCRIPTION | DESCRIPTION | BESCHREIBUNG |
|----|------|------|-------------|-------------|-------------|--------------|
|----|------|------|-------------|-------------|-------------|--------------|

PER LA SOSTITUZIONE DELLE PARTI CONTRASSEGNAE CON «★» RIVOLGERSI AL SERVIZIO ASSISTENZA DEL COSTRUTTORE DEL MOTORE.
TO REPLACE THE PARTS MARKED «★» SEEK ASSISTANCE FROM THE ENGINE MANUFACTURER'S AFTER SALES SERVICE.
POUR LE REMPLACEMENT DES PIÈCES MARQUÉES AVEC «★» S'ADRESSER AU SERVICE APRÈS VENTES DU CONSTRUCTEUR DU MOTEUR.
ZUM AUSTAUSCH DER MIT «★» GEKENNZEICHNETEN TEILE, WENDEN SIE SICH AN DEN KUNDENDIENST DES HERSTELLERS DES MOTOR.

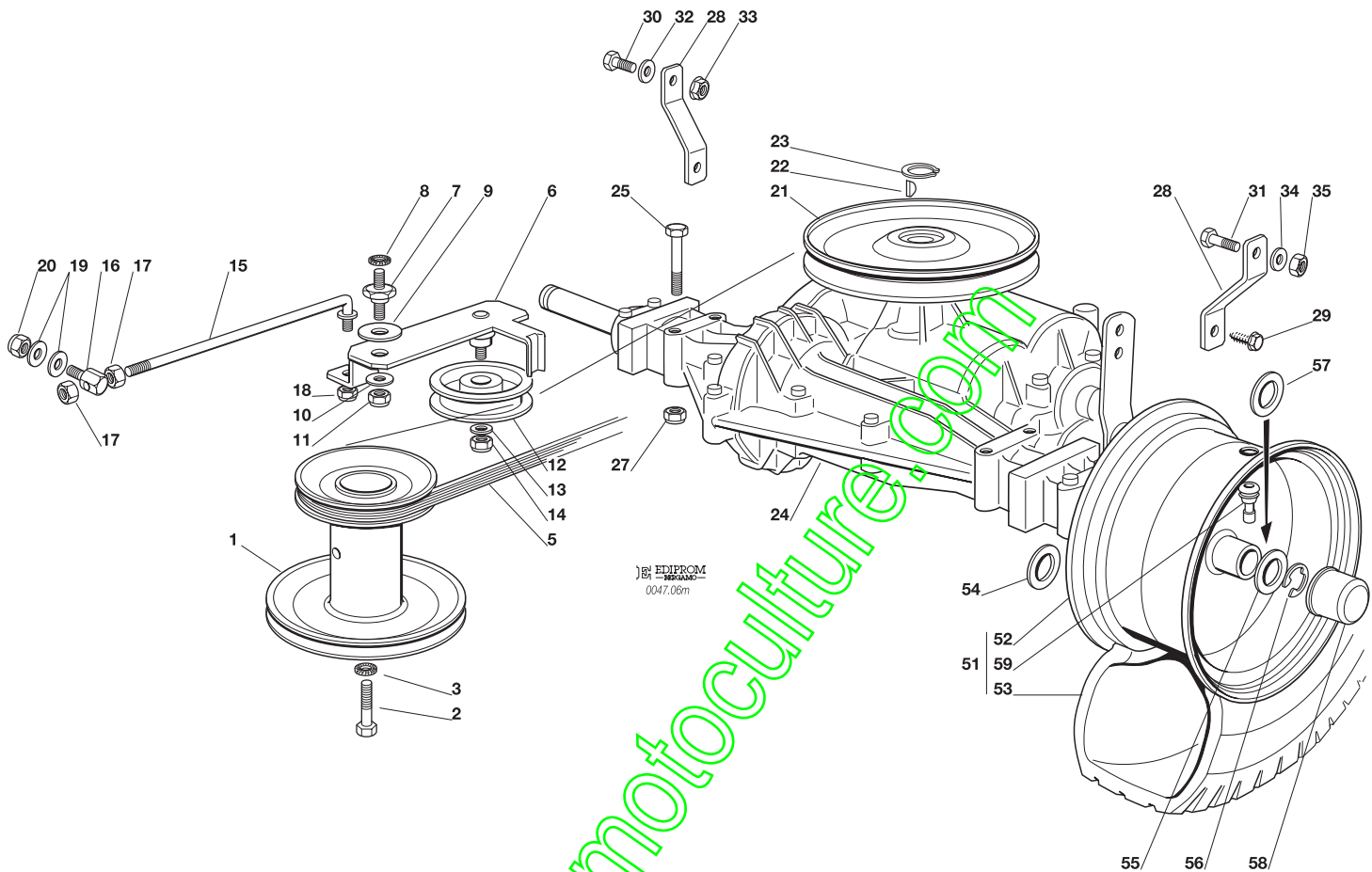
www.emc-motoculture.com

F72*F72 hydro*
TRASMISSIONE
TRANSMISSION
TRANSMISSION
GETRIEBE

2001

006M.0

1 / 2



| N. | CODE | Q.TY | DESCRIZIONE | DESCRIPTION | DESCRIPTION | BESCHREIBUNG |
|-----|------------|------|-----------------|-------------|----------------|----------------|
| 1 | 27604003/1 | 1 | PULEGGIA | PULLEY | POULIE | RIEMENSCHLEIBE |
| 2 | 12737310/0 | 1 | VITE | SCREW | VIS | SCHRAUBE |
| 3 | 12543000/0 | 1 | ROSETTA | WASHER | RONDELLE | SCHLEIBE |
| 5 | 35061400/0 | 1 | CINGHIA | BELT | COURROIE | RIEMEN |
| 6 | 84317055/0 | 1 | LEVA | LEVER | LEVIER | HEBEL |
| 7 | 27510096/0 | 1 | PERNO | PIN | PIVOT | BOLZEN |
| 8 | 12540260/0 | 1 | RONDELLA | WASHER | RONDELLE | SCHLEIBE |
| 9 | 22672151/0 | 1 | RONDELLA | WASHER | RONDELLE | SCHLEIBE |
| 10 | 25670011/0 | 1 | RONDELLA | WASHER | RONDELLE | SCHLEIBE |
| 11 | 12155010/0 | 1 | DADO | NUT | ECROU | MUTTER |
| 12 | 25601554/0 | 1 | PULEGGIA | PULLEY | POULIE | RIEMENSCHLEIBE |
| 13 | 12523060/0 | 1 | RONDELLA | WASHER | RONDELLE | SCHLEIBE |
| 14 | 12155000/0 | 1 | DADO | NUT | ECROU | MUTTER |
| 15 | 27034054/0 | 1 | TIRANTE | TIE ROD | TIRANT | SPANNSTANGE |
| 16 | 25510040/1 | 1 | PERNO | PIN | PIVOT | BOLZEN |
| 17 | 12293200/0 | 2 | DADO | NUT | ECROU | MUTTER |
| 18 | 12155000/0 | 1 | DADO | NUT | ECROU | MUTTER |
| 19 | 25670011/0 | 2 | RONDELLA | WASHER | RONDELLE | SCHLEIBE |
| 20 | 12155000/0 | 1 | DADO | NUT | ECROU | MUTTER |
| 21 | 82601503/0 | 1 | PULEGGIA | PULLEY | POULIE | RIEMENSCHLEIBE |
| 22 | 12139430/0 | 1 | LINGUETTA | KEY | CLAVETTE | KEIL |
| 23 | 12608950/0 | 1 | ANELLO ELASTICO | SNAP RING | ANNEAU RESSORT | SPRENGRING |
| 24★ | 18400915/2 | 1 | ASSE POSTERIORE | REAR AXLE | AXE ARRIERE | HINTERACHSE |
| 25 | 12691800/0 | 4 | VITE | SCREW | VIS | SCHRAUBE |
| 27 | 12154210/0 | 4 | DADO | NUT | ECROU | MUTTER |
| 28 | 27772067/0 | 2 | STAFFA | CLAMP | ETRIER | BRIDE |
| 29 | 12735150/0 | 2 | VITE | SCREW | VIS | SCHRAUBE |
| 30 | 12793102/0 | 1 | VITE | SCREW | VIS | SCHRAUBE |
| 31 | 12793301/0 | 1 | VITE | SCREW | VIS | SCHRAUBE |
| 32 | 12523060/0 | 1 | RONDELLA | WASHER | RONDELLE | SCHLEIBE |
| 33 | 12293201/0 | 1 | DADO | NUT | ECROU | MUTTER |



| N. | CODE | Q.TY | DESCRIZIONE | DESCRIPTION | DESCRIPTION | BESCHREIBUNG |
|----|------------|------|---------------------|---------------------|---------------------|---------------------|
| 34 | 12521350/0 | 1 | RONDELLA | WASHER | RONDELLE | SCHEIBE |
| 35 | 12155000/0 | 1 | DADO | NUT | ECROU | MUTTER |
| 51 | ☛ | 2 | RUOTA POSTERIORE | REAR WHEEL | ROUE ARRIERE | HINTERRAD |
| | 84680050/0 | | TURF SAVER CARLISLE | TURF SAVER CARLISLE | TURF SAVER CARLISLE | TURF SAVER CARLISLE |
| | 84680053/0 | | DELI TIRE | DELI TIRE | DELI TIRE | DELI TIRE |
| 52 | 84044001/0 | 1 | CERCHIO RUOTA | RIMM | BANDAGE ROUE | HINTRERRAD FELGER |
| 53 | ☛ | 1 | PNEUMATICO | SHOE | PNEU | REIFEN |
| | 27590051/0 | | TURF SAVER CARLISLE | TURF SAVER CARLISLE | TURF SAVER CARLISLE | TURF SAVER CARLISLE |
| | 27590053/0 | | DELI TIRE | DELI TIRE | DELI TIRE | DELI TIRE |
| 54 | 12521410/0 | 2 | RONDELLA | WASHER | RONDELLE | SCHEIBE |
| 55 | 25670005/1 | 2 | RONDELLA | WASHER | RONDELLE | SCHEIBE |
| 56 | 12001010/0 | 2 | ANELLO ELASTICO | SNAP RING | ANNEAU RESSORT | SPRENGRING |
| 57 | 12520010/0 | 2-4 | ROSETTA | WASHER | RONDELLE | SCHEIBE |
| 58 | 22110230/0 | 2 | COPRIMOZZO | HUB COVER | COUVRE MOYEU | NABEDECKEL |
| 59 | 25950000/0 | 2 | VALVOLA | VALVE | SOUPAPE | VENTIL |

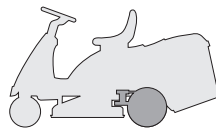
PER LA SOSTITUZIONE IN GARANZIA DELLE PARTI CONTRASSEGNALE CON «*» RIVOLGERSI AL SERVIZIO ASSISTENZA DEL COSTRUTTORE (TECUMSEH).

TO REPLACE UNDER GUARANTEE THE PARTS MARKED «*» SEEK ASSISTANCE FROM MANUFACTURER'S AFTER SALES SERVICE (TECUMSEH).
 POUR LE REMPLACEMENT, SOUS GARANTIE DES PIÈCES MARQUÉES AVEC «*» S'ADRESSER AU SERVICE APRÈS VENTES DU CONSTRUCTEUR (TECUMSEH).

ZUM AUSTAUSCH DER MIT «*» GEKENNZEICHNETEN TEILE IM RAHMEN DER GARANTIE WENDEN SIE SICH AN DEN KUNDENDIENST DES HERSTELLERS (TECUMSEH).

www.emc-motoculture.com

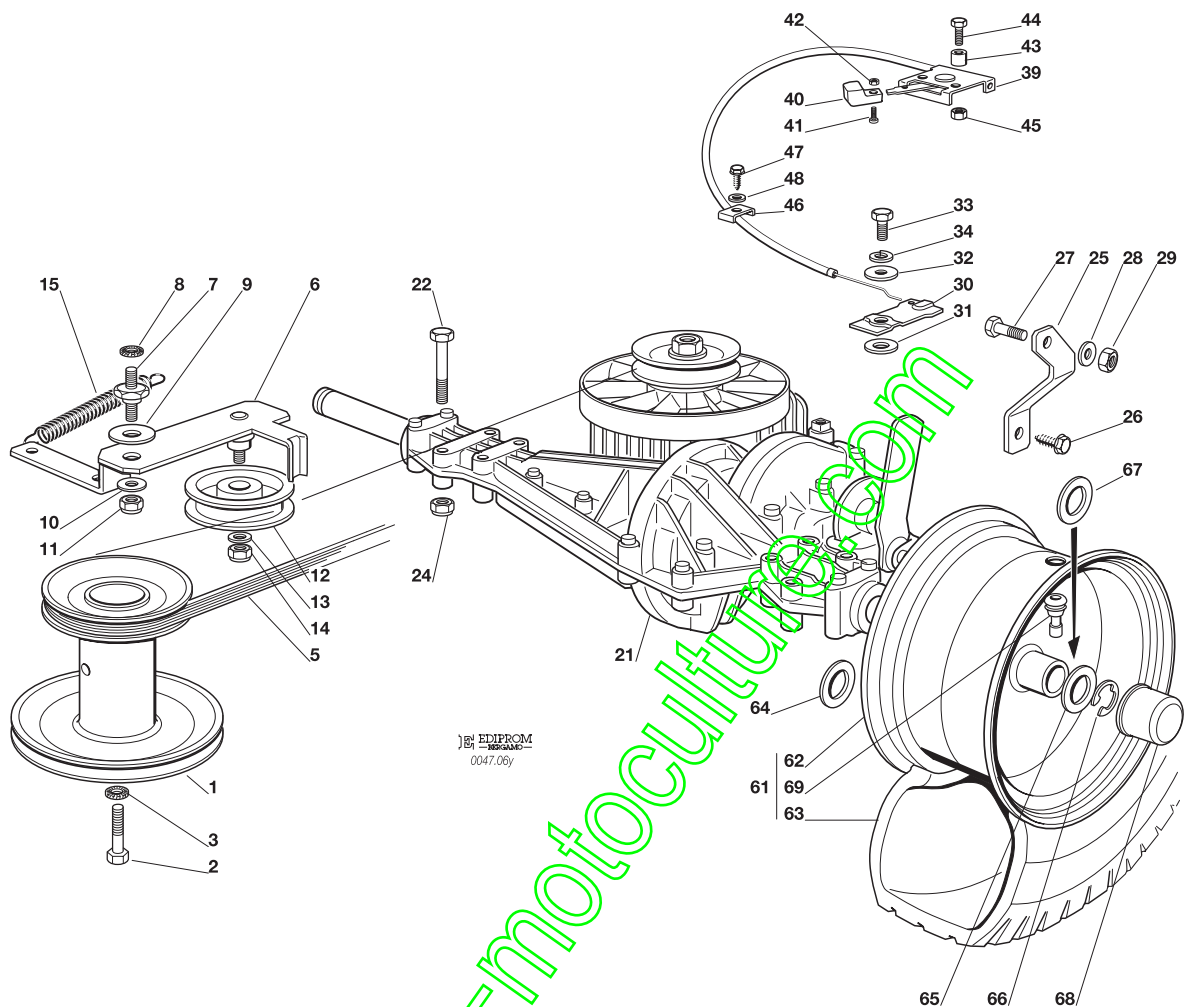
F72

F72 hydro
TRASMISSIONE
TRANSMISSION
TRANSMISSION
GETRIEBE

2001

006Y.0

1 / 2



| N. | CODE | Q.TY | DESCRIZIONE | DESCRIPTION | DESCRIPTION | BESCHREIBUNG |
|-----|------------|------|-----------------|-------------------|--------------------|------------------|
| 1 | 27604003/1 | 1 | PULEGGIA | PULLEY | POULIE | RIEMENSCHLEIBE |
| 2 | 12737310/0 | 1 | VITE | SCREW | VIS | SCHRAUBE |
| 3 | 12543000/0 | 1 | ROSETTA | WASHER | RONDELLE | SCHLEIBE |
| 5 | 35061403/0 | 1 | CINGHIA | BELT | COURROIE | RIEMEN |
| 6 | 84317067/0 | 1 | LEVA | LEVER | LEVIER | HEBEL |
| 7 | 27510096/0 | 1 | PERNO | PIN | PIVOT | BOLZEN |
| 8 | 12540260/0 | 1 | RONDELLA | WASHER | RONDELLE | SCHLEIBE |
| 9 | 22672151/0 | 1 | RONDELLA | WASHER | RONDELLE | SCHLEIBE |
| 10 | 25670011/0 | 1 | RONDELLA | WASHER | RONDELLE | SCHLEIBE |
| 11 | 12155010/0 | 1 | DADO | NUT | ECROU | MUTTER |
| 12 | 25601554/0 | 1 | PULEGGIA | PULLEY | POULIE | RIEMENSCHLEIBE |
| 13 | 12523060/0 | 1 | RONDELLA | WASHER | RONDELLE | SCHLEIBE |
| 14 | 12155000/0 | 1 | DADO | NUT | ECROU | MUTTER |
| 15 | 22446402/0 | 1 | MOLLA | SPRING | RESSORT | FEDER |
| 21★ | 18400935/0 | 1 | ASSE POSTERIORE | REAR AXLE | AXE ARRIERE | HINTERACHSE |
| 22 | 12691800/0 | 4 | VITE | SCREW | VIS | SCHRAUBE |
| 24 | 12154210/0 | 4 | DADO | NUT | ECROU | MUTTER |
| 25 | 27772115/0 | 1 | STAFFA | CLAMP | ETRIER | BRIDE |
| 26 | 12735150/0 | 1 | VITE | SCREW | VIS | SCHRAUBE |
| 27 | 12793301/0 | 1 | VITE | SCREW | VIS | SCHRAUBE |
| 28 | 12521350/0 | 1 | RONDELLA | WASHER | RONDELLE | SCHLEIBE |
| 29 | 12155000/0 | 1 | DADO | NUT | ECROU | MUTTER |
| 30 | 27315089/0 | 1 | LEVA | LEVER | LEVIER | HEBEL |
| 31 | 12521370/0 | 1 | RONDELLA | WASHER | RONDELLE | SCHLEIBE |
| 32 | 12523050/0 | 1 | RONDELLA | WASHER | RONDELLE | SCHLEIBE |
| 33 | 12735520/0 | 1 | VITE | SCREW | VIS | SCHRAUBE |
| 34 | 12582100/0 | 1 | GROWER | GROWER | GROWER | GROWER |
| 39 | 81007092/0 | 1 | COMANDO SBLOCCO | DISENGAGE CONTROL | COMMANDE DEBLOCAGE | ENTSPERREN HEBEL |
| 40 | 22399801/0 | 1 | MANOPOLINA | HANDLE | POIGNEE | GRIFF |



| N. | CODE | Q.TY | DESCRIZIONE | DESCRIPTION | DESCRIPTION | BESCHREIBUNG |
|----|----------------|------|---------------------|---------------------|---------------------|---------------------|
| 41 | 12726388/0 | 1 | VITE | SCREW | VIS | SCHRAUBE |
| 42 | 12290800/0 | 1 | DADO | NUT | ECROU | MUTTER |
| 43 | 25160012/0 | 2 | DISTANZIALE | SPACER | ENTRETOISE | ENTFERNUNGSSTÜCK |
| 44 | 12674550/0 | 2 | VITE | SCREW | VIS | SCHRAUBE |
| 45 | 12154510/0 | 2 | DADO | NUT | ECROU | MUTTER |
| 46 | 27546023/0 | 1 | PIASTRINA | PLATE | PLAQUETTE | PLATTE |
| 47 | 12731601/0 | 1 | VITE | SCREW | VIS | SCHRAUBE |
| 48 | 12523020/0 | 1 | RONDELLA | WASHER | RONDELLE | SCHEIBE |
| 61 | ☛ | 2 | RUOTA POSTERIORE | REAR WHEEL | ROUE ARRIERE | HINTERRAD |
| | 84680050/0 | | TURF SAVER CARLISLE | TURF SAVER CARLISLE | TURF SAVER CARLISLE | TURF SAVER CARLISLE |
| | 84680053/0 | | DELI TIRE | DELI TIRE | DELI TIRE | DELI TIRE |
| 62 | 84044001/0 | 1 | CERCHIO RUOTA | RIMM | BANDAGE ROUE | HINTRERRAD FELGER |
| 63 | ☛ | 1 | PNEUMATICO | SHOE | PNEU | REIFEN |
| | 27590051/0 | | TURF SAVER CARLISLE | TURF SAVER CARLISLE | TURF SAVER CARLISLE | TURF SAVER CARLISLE |
| | 27590053/0 | | DELI TIRE | DELI TIRE | DELI TIRE | DELI TIRE |
| 64 | 12521410/0 | 2 | RONDELLA | WASHER | RONDELLE | SCHEIBE |
| 65 | 25670005/1 | 2 | RONDELLA | WASHER | RONDELLE | SCHEIBE |
| 66 | 12001010/0 | 2 | ANELLO ELASTICO | SNAP RING | ANNEAU RESSORT | SPRENGRING |
| 67 | 12520010/0 0-4 | | ROSETTA | WASHER | RONDELLE | SCHEIBE |
| 68 | 22110230/0 | 2 | COPRIMOZZO | HUB COVER | COUVRE MOYEU | NABEDECKEL |
| 69 | 25950000/0 | 2 | VALVOLA | VALVE | SOUPAPE | VENTIL |

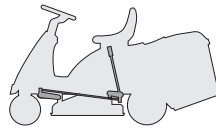
PER LA SOSTITUZIONE IN GARANZIA DELLE PARTI CONTRASSEGNAE CON «☛» RIVOLGERSI AL SERVIZIO ASSISTENZA DEL COSTRUTTORE (TECUMSEH).

TO REPLACE UNDER GUARANTEE THE PARTS MARKED «☛» SEEK ASSISTANCE FROM MANUFACTURER'S AFTER SALES SERVICE (TECUMSEH).

POUR LE REMPLACEMENT, SOUS GARANTIE DES PIÈCES MARQUÉES AVEC «☛» S'ADRESSER AU SERVICE APRÈS VENTES DU CONSTRUCTEUR (TECUMSEH).

ZUM AUSTAUSCH DER MIT «☛» GEKENNZEICHNETEN TEILE IM RAHMEN DER GARANTIE, WENDEN SIE SICH AN DEN KUNDENDIENST DES HERSTELLERS (TECUMSEH).

www.emc-motoculture.com

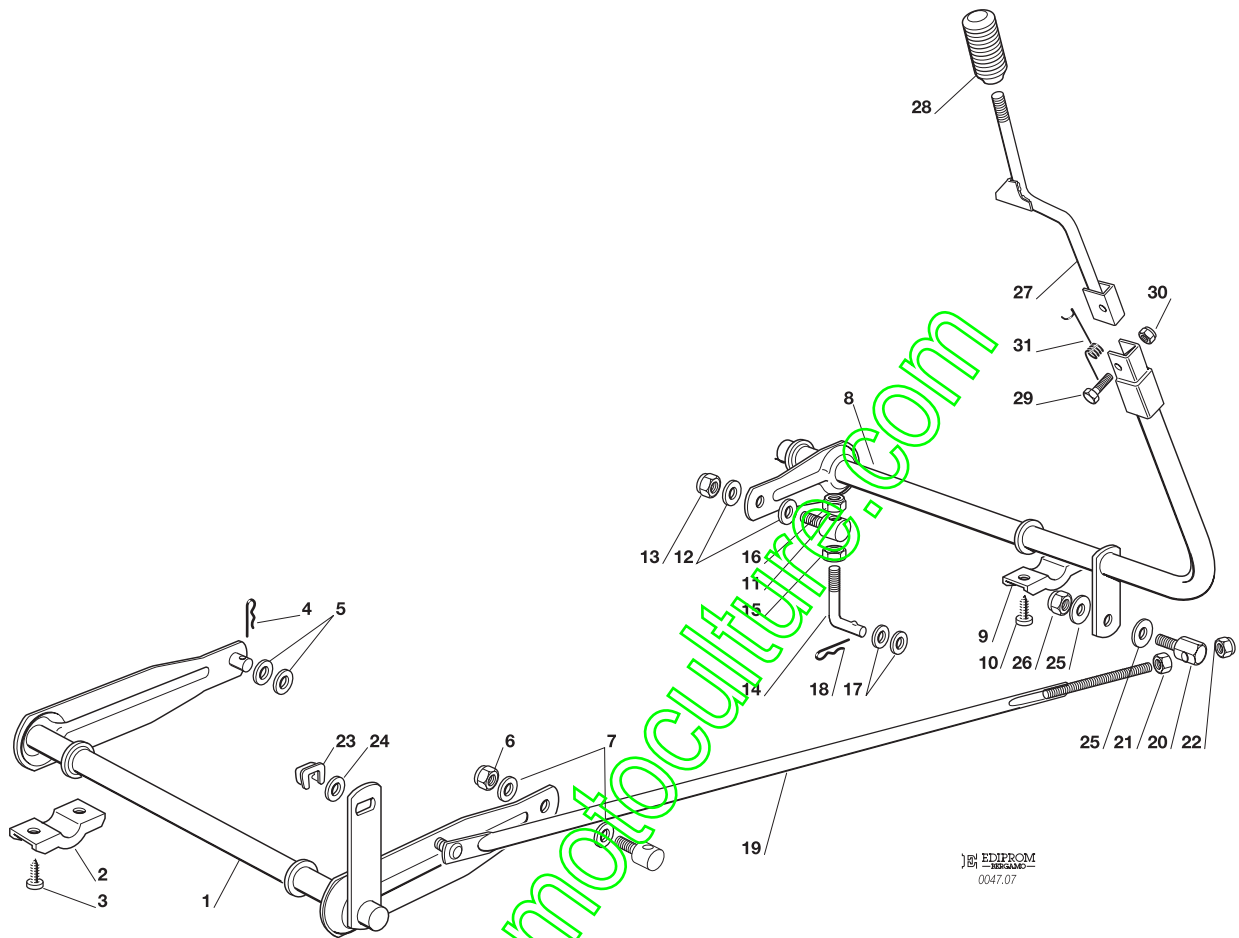
F72**F72 hydro**

SOLLEVAMENTO PIATTO DI TAGLIO
CUTTING PLATE LIFTING
SOULEVEMENT PLATEAU DE COUPE
SCHNEIDWERKZEUG AUFHEBESATZ

2001

007.0

1 / 1

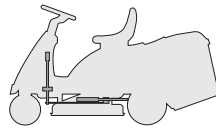


EDIPROM
 0047.07

| N. | CODE | Q.TY | DESCRIZIONE | DESCRIPTION | DESCRIPTION | BESCHREIBUNG |
|----|------------|------|--------------------|-------------|-------------|--------------|
| 1 | 84001003/0 | 1 | ASSE FULCRO PIATTO | AXLE | AXE | ACHSE |
| 2 | 27546015/0 | 2 | PIASTRINA | PLATE | PLAQUE | PLATTE |
| 3 | 12731350/0 | 4 | VITE | SCREW | VIS | SCHRAUBE |
| 4 | 24487997/0 | 1 | COPPIGLIA | COTTER PIN | GOUPILLE | SPLIT |
| 5 | 25670008/0 | 2 | RONDELLA | WASHER | RONDELLE | SCHEIBE |
| 6 | 12156602/0 | 1 | DADO | NUT | ECROU | MUTTER |
| 7 | 25670008/0 | 2 | RONDELLA | WASHER | RONDELLE | SCHEIBE |
| 8 | 84001005/1 | 1 | ASSE FULCRO PIATTO | AXLE | AXE | ACHSE |
| 9 | 27546015/0 | 2 | PIASTRINA | PLATE | PLAQUE | PLATTE |
| 10 | 12731350/0 | 4 | VITE | SCREW | VIS | SCHRAUBE |
| 11 | 25510007/1 | 1 | PERNO | PIN | PIVOT | BOLZEN |
| 12 | 25670008/0 | 2 | RONDELLA | WASHER | RONDELLE | SCHEIBE |
| 13 | 12156602/0 | 1 | DADO | NUT | ECROU | MUTTER |
| 14 | 25840003/0 | 1 | TIRANTE | TIE ROD | TIRANT | SPANNSTANGE |
| 15 | 12295200/0 | 1 | DADO | NUT | ECROU | MUTTER |
| 16 | 12156602/0 | 1 | DADO | NUT | ECROU | MUTTER |
| 17 | 25670008/0 | 2 | RONDELLA | WASHER | RONDELLE | SCHEIBE |
| 18 | 24487997/0 | 1 | COPPIGLIA | COTTER PIN | GOUPILLE | SPLIT |
| 19 | 84002051/0 | 1 | ASTA COLLEGAMENTO | ROD | TIGE | STAB |
| 20 | 25510040/1 | 1 | PERNO | PIN | PIVOT | BOLZEN |
| 21 | 12293200/0 | 1 | DADO | NUT | ECROU | MUTTER |
| 22 | 12155000/0 | 1 | DADO | NUT | ECROU | MUTTER |
| 23 | 12436050/0 | 1 | PIASTRINA | PLATE | PLAQUE | PLATTE |
| 24 | 25670011/0 | 1 | RONDELLA | WASHER | RONDELLE | SCHEIBE |
| 25 | 25670011/0 | 2 | RONDELLA | WASHER | RONDELLE | SCHEIBE |
| 26 | 12155000/0 | 1 | DADO | NUT | ECROU | MUTTER |
| 27 | 84317065/1 | 1 | LEVA SOLLEVAMENTO | LEVER | LEVIER | HEBEL |
| 28 | 25394510/0 | 1 | MANOPOLA | KNOB | POIGNEE | GRIF |
| 29 | 12674700/0 | 1 | VITE | SCREW | VIS | SCHRAUBE |
| 30 | 12154510/0 | 1 | DADO | NUT | ECROU | MUTTER |
| 31 | 27430555/0 | 1 | MOLLA | SPRING | RESSORT | FEDER |

F72

F72 hydro

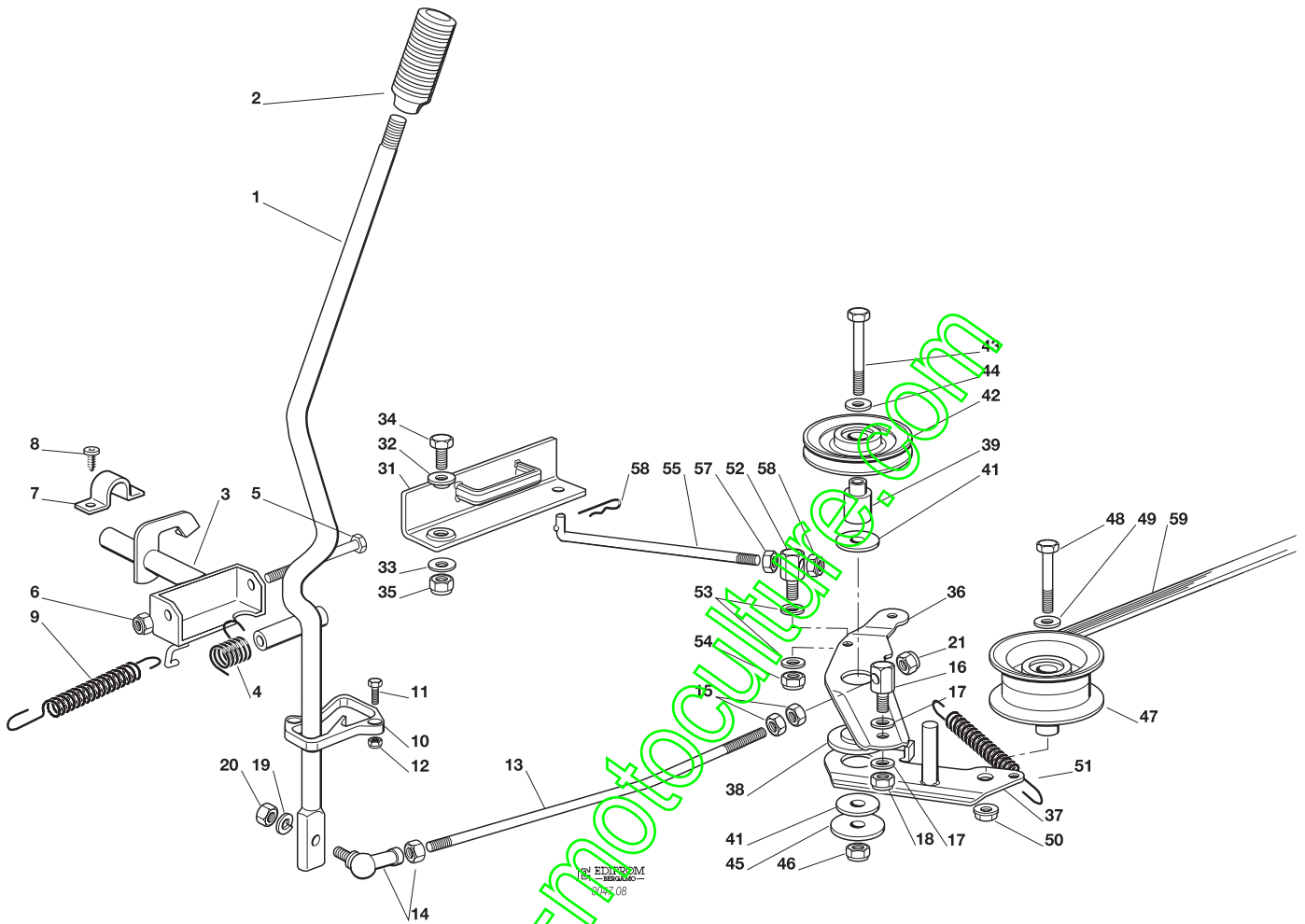


**PIATTO DI TAGLIO (1)
CUTTING PLATE (1)
PLATEAU DE COUPE (1)
SCHNEIDWERKZEUG (1)**

2001

008.0

1 / 2

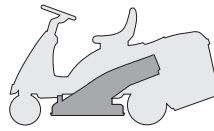


| N. | CODE | Q.TY | DESCRIZIONE | DESCRIPTION | DESCRIPTION | BESCHREIBUNG |
|----|------------|------|-------------------|-------------|--------------------|--------------|
| 1 | 84317069/0 | 1 | LEVA | LEVER | LEVIER | HEBEL |
| 2 | 25394510/0 | 1 | MANOPOLA | KNOB | POIGNEE | GRIF |
| 3 | 84001007/0 | 1 | ASSE INNESTO LAMA | AXLE | AXE | ACHSE |
| 4 | 25430226/0 | 1 | MOLLA | SPRING | RESSORT | FEDER |
| 5 | 12692050/0 | 1 | VITE | SCREW | VIS | SCHRAUBE |
| 6 | 12155000/0 | 1 | DADO | NUT | ECROU | MUTTER |
| 7 | 25547049/0 | 2 | PIASTRINA | PLATE | PLAQUE | PLATTE |
| 8 | 12731601/0 | 4 | VITE | SCREW | VIS | SCHRAUBE |
| 9 | 25430220/0 | 1 | MOLLA | SPRING | RESSORT | FEDER |
| 10 | 27487000/0 | 1 | PATTINO | SHOE | BLOC DE GLISSEMENT | GLEITBLOCK |
| 11 | 12791200/0 | 2 | VITE | SCREW | VIS | SCHRAUBE |
| 12 | 12154510/0 | 2 | DADO | NUT | ECROU | MUTTER |
| 13 | 27034061/0 | 1 | ASTA | ROD | TIGE | STAB |
| 14 | 22746601/0 | 1 | SNODO | JOINT | JOINT | GELENK |
| 15 | 12293200/0 | 2 | DADO | NUT | ECROU | MUTTER |
| 16 | 25510040/1 | 1 | PERNO | PIN | PIVOT | BOLZEN |
| 17 | 25670011/0 | 2 | RONDELLA | WASHER | RONDELLE | SCHEIBE |
| 18 | 12155000/0 | 1 | DADO | NUT | ECROU | MUTTER |
| 19 | 12583500/0 | 1 | GROWER | GROWER | GROWER | GROWER |
| 20 | 12293200/0 | 1 | DADO | NUT | ECROU | MUTTER |
| 21 | 12155000/0 | 1 | DADO | NUT | ECROU | MUTTER |
| 31 | 84220501/0 | 1 | FRENO LAMA | BRAKE | FREIN | BREMSE |
| 32 | 22041980/0 | 1 | BUSSOLA | BUSH | DOUILLE | BÜCHSE |
| 33 | 22672152/0 | 1 | RONDELLA | WASHER | RONDELLE | SCHEIBE |
| 34 | 12793102/0 | 1 | VITE | SCREW | VIS | SCHRAUBE |
| 35 | 12155010/0 | 1 | DADO | NUT | ECROU | MUTTER |
| 36 | 27315059/0 | 1 | LEVA | LEVER | LEVIER | HEBEL |
| 37 | 84317061/0 | 1 | LEVA | LEVER | LEVIER | HEBEL |
| 38 | 27047000/0 | 1 | BUSSOLA | BUSH | DOUILLE | BÜCHSE |



| N. | CODE | Q.TY | DESCRIZIONE | DESCRIPTION | DESCRIPTION | BESCHREIBUNG |
|----|------------|------|-------------|-------------|-------------|------------------|
| 39 | 27160051/1 | 1 | DISTANZIALE | SPACER | ENTRETOISE | ENTFERNUNGSSTÜCK |
| 41 | 22672152/0 | 2 | RONDELLA | WASHER | RONDELLE | SCHEIBE |
| 42 | 81000772/2 | 1 | PULEGGIA | PULLEY | POULIE | RIEMENSCHLEIBE |
| 43 | 12692080/0 | 1 | VITE | SCREW | VIS | SCHRAUBE |
| 44 | 12521350/0 | 1 | ROSETTA | WASHER | RONDELLE | SCHEIBE |
| 45 | 12523070/0 | 1 | RONDELLA | WASHER | RONDELLE | SCHEIBE |
| 46 | 12155000/0 | 1 | DADO | NUT | ECROU | MUTTER |
| 47 | 27604002/0 | 1 | PULEGGIA | PULLEY | POULIE | RIEMENSCHLEIBE |
| 48 | 12691900/0 | 1 | VITE | SCREW | VIS | SCHRAUBE |
| 49 | 12523060/0 | 1 | ROSETTA | WASHER | RONDELLE | SCHEIBE |
| 50 | 12293201/0 | 1 | DADO | NUT | ECROU | MUTTER |
| 51 | 25430210/0 | 1 | MOLLA | SPRING | RESSORT | FEDER |
| 52 | 25510040/1 | 1 | PERNO | PIN | PIVOT | BOLZEN |
| 53 | 25670011/0 | 2 | RONDELLA | WASHER | RONDELLE | SCHEIBE |
| 54 | 12155000/0 | 1 | DADO | NUT | ECROU | MUTTER |
| 55 | 27034051/0 | 1 | ASTA | ROD | TIGE | STAB |
| 56 | 24487997/0 | 1 | COPPIGLIA | COTTER PIN | GOUPILLE | SPLIT |
| 57 | 12293200/0 | 1 | DADO | NUT | ECROU | MUTTER |
| 58 | 12155000/0 | 1 | DADO | NUT | ECROU | MUTTER |
| 59 | 35061424/0 | 1 | CINGHIA | BELT | COURROIE | RIEMEN |

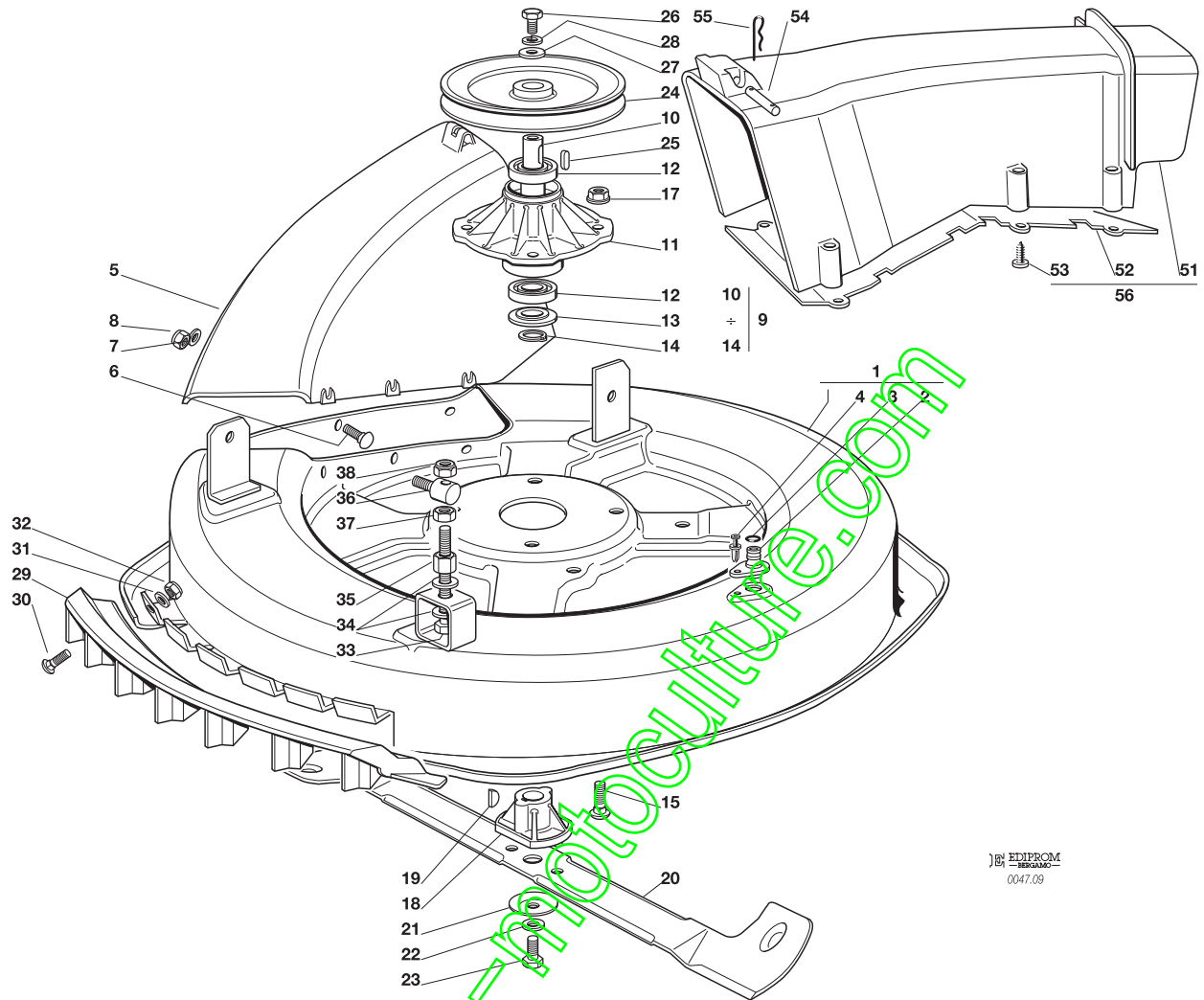
www.emc-motoculture.com

F72**F72 hydro**
PIATTO DI TAGLIO (2)
CUTTING PLATE (2)
PLATEAU DE COUPE (2)
SCHNEIDWERKZEUG (2)

2001

009.0

1 / 2

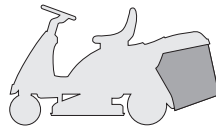

 EDIPROM
 0047.09

| N. | CODE | Q.TY | DESCRIZIONE | DESCRIPTION | DESCRIPTION | BESCHREIBUNG |
|----|------------|------|-------------------------|-------------------------|-----------------------|---------------------------|
| 1 | 84564092/0 | 1 | PIATTO | PLATE | PLATEAU | SCHNEID |
| 2 | 25033060/0 | 1 | ATTACCO | WATER HOSE CONNECTION | RACCORD TUYAU D'EAU | WASSERANSCHLUSS |
| 3 | 19035000/0 | 1 | ANELLO OR | O RING | RACCORD TUYAU D'EAU | O RING |
| 4 | 12500030/0 | 1 | RIVETTO | RIVET | RIVET | NIET |
| 5 | 27045000/0 | 1 | BOCCA CONVOGLIATORE | CONVEYOR INLET | BOUCHE CONVOYEUR | BLECHSATZEINGANG |
| 6 | 12815210/0 | 6 | VITE | SCREW | VIS | SCHRAUBE |
| 7 | 12523040/0 | 6 | ROSETTA | WASHER | RONDELLE | SCHEIBE |
| 8 | 12154510/0 | 6 | DADO | NUT | ECROU | MUTTER |
| 9 | 84207250/0 | 1 | ASS. FLANGIA (10÷14) | FLANGE ASS.Y (10÷14) | ENS. BRIDE (10÷14) | NABE, KOMPLETT (10÷14) |
| 10 | 27023000/0 | 1 | ALBERO | SHAFT | ARBRE | WELLE |
| 11 | 27208402/0 | 1 | FLANGIA | FLANGE | BRIDE | FLANSCH |
| 12 | 19216032/0 | 2 | CUSCINETTO | BEARING | ROULEMENT | KUEGELLAGER |
| 13 | 25160501/0 | 1 | DISCO PARAPOLVERE | DUST COVER | PROTEGE-POUSSIÈRE | STAUBSCHUTTSCHIEBE |
| 14 | 12609260/0 | 1 | SEEGER | SEEGER | SEEGER | SEEGER |
| 15 | 12818700/0 | 4 | VITE | SCREW | VIS | SCHRAUBE |
| 17 | 12154210/0 | 4 | DADO | NUT | ECROU | MUTTER |
| 18 | 25463200/0 | 1 | MOZZO COLTELLO | BLADE HUB | MOYEU LAME | MESSERHALTER |
| 19 | 12139100/0 | 1 | LINGUETTA | KEY | CLAVETTE | KEIL |
| 20 | 84109500/0 | 1 | COLTELLO | BLADE | LAME | MESSER |
| 21 | 22160400/0 | 1 | DISCO ELASTICO | ELASTIC WASHER | RONDELLE ELASTIQUE | FEDERSCHIEBE |
| 22 | 12523080/0 | 1 | RONDELLA | WASHER | RONDELLE | SCHEIBE |
| 23 | 12735694/0 | 1 | VITE | SCREW | VIS | SCHRAUBE |
| 24 | 27604000/0 | 1 | PULEGGIA | PULLEY | POULIE | RIEMENSCHIEBE |
| 25 | 12139480/0 | 1 | CHIAVETTA | KEY | CLAVETTE | KEIL |
| 26 | 12793102/0 | 1 | VITE | SCREW | VIS | SCHRAUBE |
| 27 | 25670007/0 | 1 | RONDELLA | WASHER | RONDELLE | SCHEIBE |
| 28 | 12583500/0 | 1 | GROWER | GROWER | GROWER | GROWER |
| 29 | 27488000/0 | 1 | GRIGLIA ASPIRAZIONE | AIR INTAKE GRILL | GRILLE D'ASPIRATION | ANSAUGGITTER |
| 30 | 12815200/0 | 4 | VITE | SCREW | VIS | SCHRAUBE |
| 31 | 12523040/0 | 4 | ROSETTA | WASHER | RONDELLE | SCHEIBE |



| N. | CODE | Q.TY | DESCRIZIONE | DESCRIPTION | DESCRIPTION | BESCHREIBUNG |
|----|------------|------|--|---|--|---|
| 32 | 12154510/0 | 4 | DADO | NUT | ECROU | MUTTER |
| 33 | 12794970/0 | 1 | VITE | SCREW | VIS | SCHRAUBE |
| 34 | 12523080/0 | 2 | ROSETTA | WASHER | RONDELLE | SCHEIBE |
| 35 | 12154250/0 | 1 | DADO | NUT | ECROU | MUTTER |
| 36 | 25510007/1 | 1 | PERNO | PIN | PIVOT | BOLZEN |
| 37 | 12295200/0 | 1 | DADO | NUT | ECROU | MUTTER |
| 38 | 12156602/0 | 1 | DADO | NUT | ECROU | MUTTER |
| — | 84564090/1 | | PIATTO DI TAGLIO ASSEMBLATO (008, 32÷62 + 009, 1÷38) | CUTTING PLATE, ASSEMBLED (008, 32÷62 + 009, 1÷38) | PLATEAU DE COUPE,S COMPLETE (008, 32÷62 + 009, 1÷38) | CHNEIDWERKZEUG, KOMPLETT (008, 32÷62 + 009, 1÷38) |
| 51 | 27107501/0 | 1 | CONVOGLIATORE | CONVEYOR | CONVOYEUR | BLECHSATZ |
| 52 | 27140051/1 | 1 | DEFLETTORE | DEFLECTOR | DEFLECTEUR | ABWEISER |
| 53 | 12735402/0 | 8 | VITE | SCREW | VIS | SCHRAUBE |
| 54 | 27510097/1 | 1 | PERNO | PIN | PIVOT | BOLZEN |
| 55 | 24487997/0 | 2 | COPPIGLIA | COTTER PIN | GOUPILLE | SPLIT |
| 56 | 84108051/0 | 1 | ASS. CONVOGLIATORE (51, 52, 53) | CONVEYOR ASS.Y (51, 52, 53) | ENS. CONVOYEUR (51, 52, 53) | BLECHSATZ, KOMPLETT (51, 52, 53) |

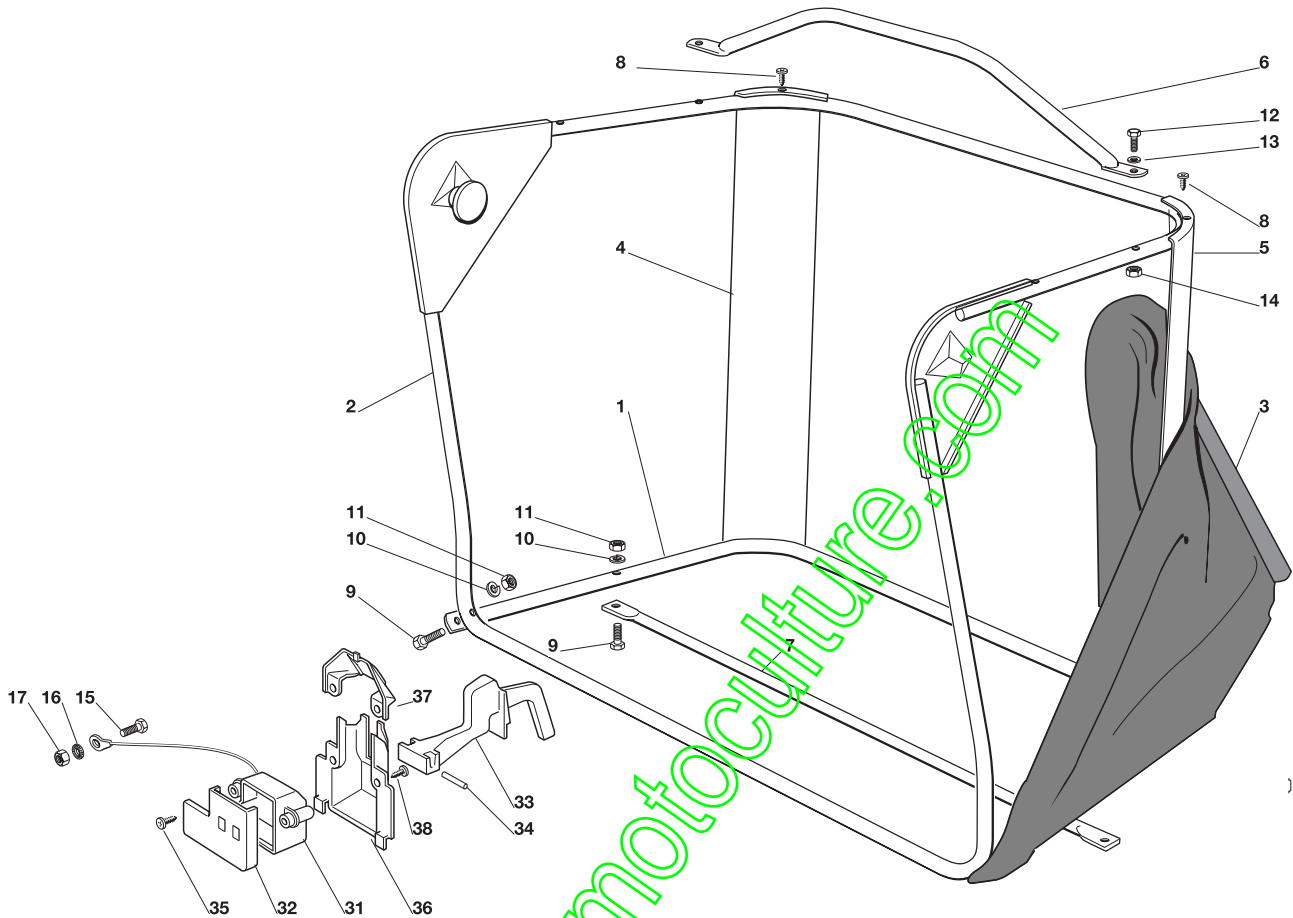
www.emc-motoculture.com

F72**F72 hydro**
**SACCO
GRASSCATCHER
BAC
AUFFANGSACK**

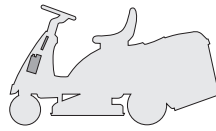
2001

010.0

1 / 1


 EDIPROM
 0047.10

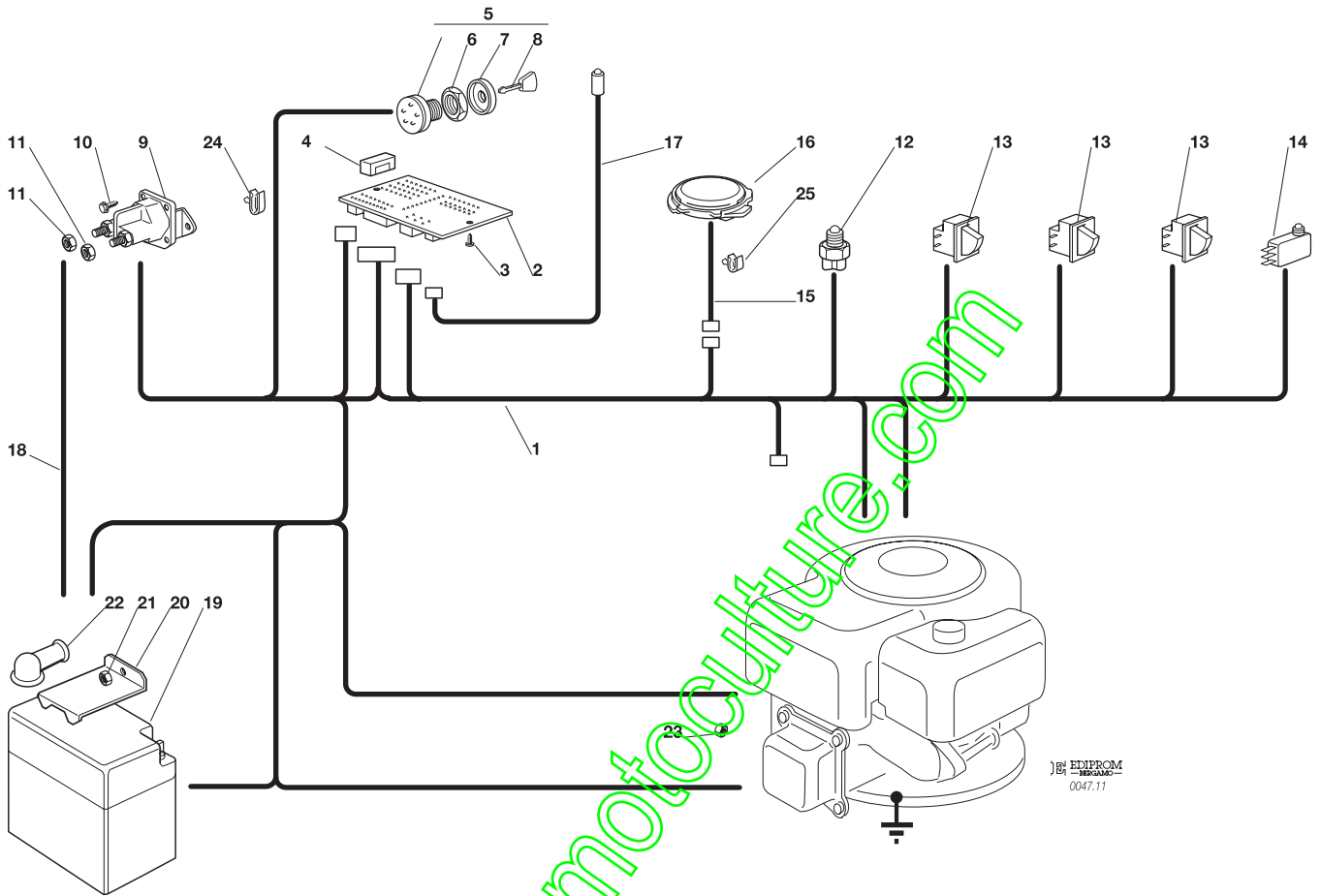
| N. | CODE | Q.TY | DESCRIZIONE | DESCRIPTION | DESCRIPTION | BESCHREIBUNG |
|----|------------|------|----------------------|-----------------------|----------------------|----------------|
| 1 | 84801103/0 | 1 | TELAIO INFERIORE | LOWER FRAME | CHASSIS INFÉRIEUR | UNTERERRAHMEN |
| 2 | 84801105/0 | 1 | TELAIO SUPERIORE | UPPER FRAME | CHASSIS SUPÉRIEUR | OBERERRAHMEN |
| 3 | 84106050/0 | 1 | CONFEZIONE SACCO | GRASSCATCHER | BAC | SACK |
| 4 | 27010205/0 | 1 | ANGOLARE DESTRO | RIGHT ANGULAR SUPPORT | SUPPORT ANGULAIRE | RECHTER HALTER |
| | | | | DROITE | | |
| 5 | 27010207/0 | 1 | ANGOLARE SINISTRO | LEFT ANGULAR SUPPORT | SUPPORT ANGULAIRE | LINKER HALTER |
| 6 | 84869051/0 | 1 | TUBO | ROD | TIGE | STANGE |
| 7 | 84650100/0 | 1 | RINFORZO | STIFFENING | REINFORCEMENT | VERSTAERKUNG |
| 8 | 12729601/0 | 4 | VITE | SCREW | VIS | SCHRAUBE |
| 9 | 12792099/0 | 2 | VITE | SCREW | VIS | SCHRAUBE |
| 10 | 12582101/0 | 4 | GROWER | GROWER | GROWER | GROWER |
| 11 | 12292100/0 | 4 | DADO | NUT | ECROU | MUTTER |
| 12 | 12674701/0 | 2 | VITE | SCREW | VIS | SCHRAUBE |
| 13 | 12521331/0 | 2 | RONDELLA | WASHER | RONDELLE | SCHEIBE |
| 14 | 12154510/0 | 2 | DADO | NUT | ECROU | MUTTER |
| 15 | 12790780/0 | 1 | VITE | SCREW | VIS | SCHRAUBE |
| 16 | 12540040/0 | 1 | RONDELLA | WASHER | RONDELLE | SCHEIBE |
| 17 | 12292102/0 | 1 | DADO | NUT | ECROU | MUTTER |
| 31 | 25600041/0 | 1 | PROTEZIONE MICRO | MICRO PROTECTION | PROTECTION MICRO | SCHUTZ |
| 32 | 25600042/0 | 1 | COPERCHIO PROTEZIONE | PROTECTION COVER | COUVERCLE PROTECTION | SCHUTZDEKEL |
| 33 | 25318124/0 | 1 | LEVA | LEVER | LEVIER | HEBEL |
| 34 | 12400030/0 | 1 | PERNO | PIN | PIVOT | BOLZEN |
| 35 | 12728510/0 | 3 | VITE | SCREW | VIS | SCHRAUBE |
| 36 | 25600047/0 | 1 | DEFLETTORE | DEFLECTOR | DEFLECTEUR | ABWEISER |
| 37 | 25600048/0 | 1 | CHIUSURA DEFLETTORE | DEFLECTOR COVER | COUVERCLE DEFLECTEUR | ABWEISERDEKEL |
| 38 | 12728510/0 | 4 | VITE | SCREW | VIS | SCHRAUBE |

F72**F72 hydro**
PARTI ELETTRICHE
ELECTRICAL PARTS
PARTIES ELECTRIQUES
ELETRISCHE TEILE

2001

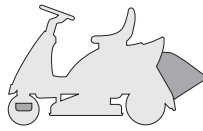
011.0

1 / 1


 EDIPROM
 0047.11

| N. | CODE | Q.TY | DESCRIZIONE | DESCRIPTION | DESCRIPTION | BESCHREIBUNG |
|----|------------|------|-------------------------|-------------------------|------------------------|----------------------|
| 1 | 84040111/0 | 1 | CABLAGGIO | CABLES | CABLAGES | KABELSATZ |
| 2 | 25722415/0 | 1 | SCHEDA ELETTRONICA | ELECTRONIC CARD | CARTE ELECTRONIQUE | ELEKTRONISCHE KARTE |
| 3 | 12727810/0 | 2 | VITE | SCREW | VIS | SCHRAUBE |
| 4 | 33340033/0 | 1 | FUSIBILE | FUSE | FUSIBLE | SICHERUNG |
| 5 | 18450065/1 | 1 | INTERRUTTORE AVVIAMENTO | STARTING SWITCH | INTERRUPTEUR DEMARRAGE | SCHALTER |
| 6 | 18400861/0 | 1 | GHIERA | SCREWED RING | EMBOUT | NUTMUTTER |
| 7 | 18565351/0 | 1 | PROTEZIONE GHIERA | SCREWED RING PROTECTION | PROTECTION EMBOUT | NUTMUTTER SCHUTZ |
| 8 | 18210016/0 | 1 | CHIAVE AVVIAMENTO | STARTING KEY | CLEF A DEMARRAGE | SCHLÜSSEL FÜR START |
| 9 | 18736110/0 | 1 | RELÉ AVVIAMENTO | STARTER RELAY | RELAIS D'ALLUMAGE | ANLASSRELAIS |
| 10 | 12735110/0 | 2 | VITE | SCREW | VIS | SCHRAUBE |
| 11 | 12360352/0 | 2 | DADO | NUT | ECROU | MUTTER |
| 12 | 19410611/0 | 1 | INTERRUTTORE CAMBIO | GEARBOX SWITCH | INT. BOÎTE DE VITESSE | ANTRIEB SCHALTER |
| 13 | 19410606/0 | 3 | MICRO INTERRUTTORE | MICROSWITCH | MICROINTERRUPTEUR | MIKROSCHALTER |
| 14 | 19410605/1 | 1 | MICRO SACCO PIENO | FULL GRASSCATC. MICRO | MICRO BAC PLEIN | VOLLKORB VORRICHTUNG |
| 15 | 25065020/0 | 1 | CAVO MICRO SEDILE | CABLE | CABLES | KABEL |
| 16 | 19410607/0 | 1 | MICRO SEDILE | MICROSWITCH | MICROINTERRUPTEUR | MIKROSCHALTER |
| 17 | 25065014/1 | 1 | CAVO LED SEGNAZIONE | CABLE | CABLES | KABEL |
| 18 | 27065050/0 | 1 | CAVO BATTERIA SOLENOIDE | CABLE | CABLES | KABEL |
| 19 | 18120002/1 | 1 | BATTERIA | BATTERY | BATTERIE | BATTERIE |
| 20 | 27772099/0 | 1 | STAFFA | CLAMP | ETRIER | BRIDE |
| 21 | 12155000/0 | 1 | DADO | NUT | ECROU | MUTTER |
| 22 | 18564861/1 | 1 | CAPPUCCIO | PROTECTION | CAPUCHON | STECKER |
| 23 | 12361005/0 | 1 | DADO | NUT | ECROU | MUTTER |
| 24 | 33320506/0 | 3 | FERMACAVO | FAIRLEAD | FIXATION CABLE | KABELBEFESTIGUNG |
| 25 | 33320504/0 | 1 | FERMACAVO | FAIRLEAD | FIXATION CABLE | KABELBEFESTIGUNG |



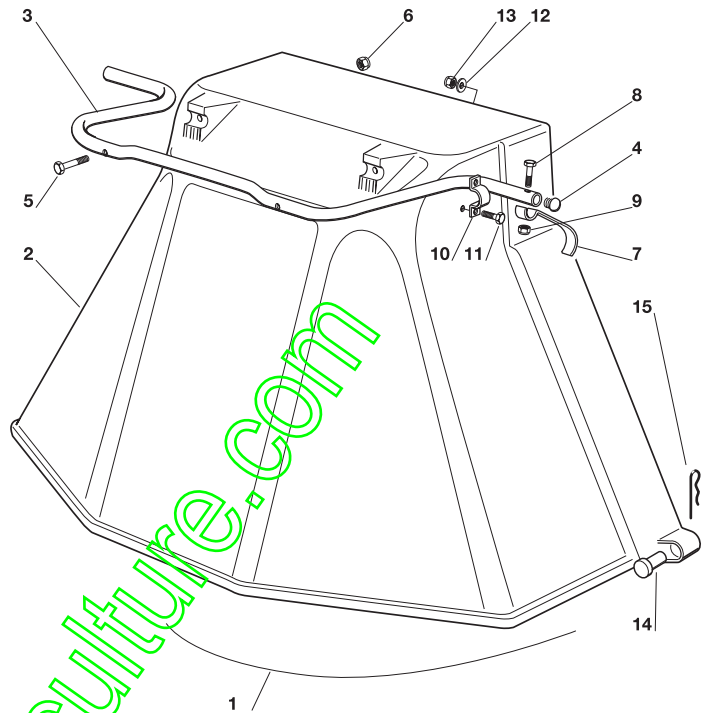
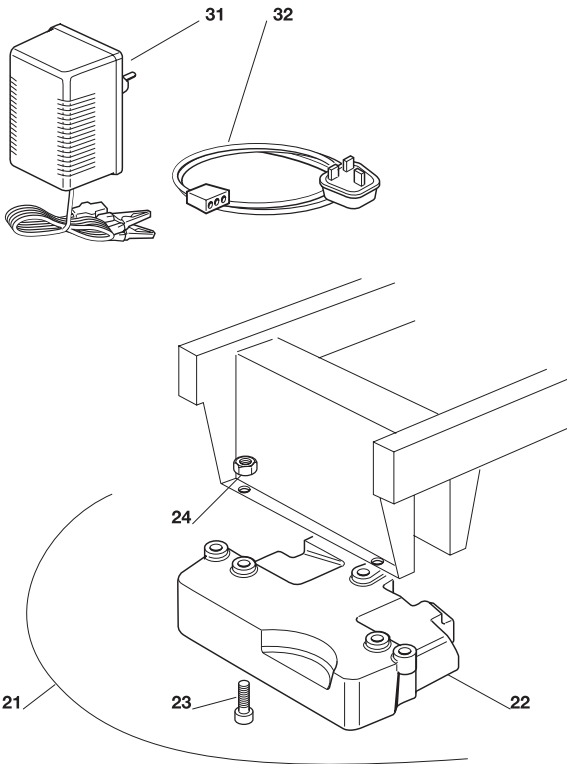
F72**F72 hydro**

**ACCESSORI A RICHIESTA
OPTIONALS ON REQUEST
ACCESSOIRES SUR DEMANDE
ZUBEHOERE NACH ANFRAGE**

2001

012.0

1 / 1

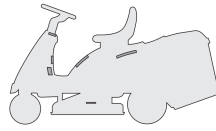


EDIPROM
0047.12

| N. | CODE | Q.TY | DESCRIZIONE | DESCRIPTION | DESCRIPTION | BESCHREIBUNG |
|----|------------|------|----------------------------|----------------------|-------------------------|-------------------------------|
| 1 | 99900090/0 | 1 | ASS. KIT PROTEZIONE USCITA | EJECTION-GUARD ASS.Y | KIT PROTECTION SORTIE | VORRICHTUNG FÜR AUSWURFSCHUTZ |
| 2 | 84598062/0 | 1 | PROTEZIONE USCITA | EJECTION GUARD | PROTECTION SORTIE | AUSWURFSCHUTZ |
| 3 | 27869053/0 | 1 | TUBO DI AGGANCIO | SUPPORT | SOPPORT | HALTER |
| 4 | 18566113/0 | 2 | PUNTALE | CAP | BOUCHON | PFROPFEN |
| 5 | 12674701/0 | 2 | VITE | SCREW | VIS | SCHRAUBE |
| 6 | 12154510/0 | 2 | DADO | NUT | ECROU | MUTTER |
| 7 | 25547053/0 | 1 | PIASTRINA | PLATE | PLAQUETTE | PLÄTTCHEN |
| 8 | 12791500/0 | 1 | VITE | SCREW | VIS | SCHRAUBE |
| 9 | 12154510/0 | 1 | DADO | NUT | ECROU | MUTTER |
| 10 | 25547049/0 | 2 | PIASTRINA | PLATE | PLAQUETTE | PLÄTTCHEN |
| 11 | 12788910/0 | 4 | VITE | SCREW | VIS | SCHRAUBE |
| 12 | 12523020/0 | 4 | ROSETTA | WASHER | RONDELLE | SCHEIBE |
| 13 | 12154320/0 | 4 | DADO | NUT | ECROU | MUTTER |
| 14 | 25510022/0 | 2 | PERNO | PIN | PIVOT | BOLZEN |
| 15 | 24487998/0 | 2 | COPPIGLIA | COTTER PIN | GOUPILLE | SPLIT |
| 21 | 99900030/5 | 1 | ASS. KIT PESO ANT. | FRONT WEIGHT KIT | KIT POIDS ANTERIEUR | VORDERGEWICHT |
| 22 | 25519997/0 | 1 | PESO | WEIGHT | POIDS | VORRICHTUNG |
| 23 | 12760520/0 | 3 | VITE | SCREW | VIS | GEWICHT |
| 24 | 12155000/0 | 3 | DADO | NUT | ECROU | SCHRAUBE |
| 31 | 82180050/0 | 1 | CARICA BATTERIE | BATTERY CHARGER | CHARGEUR DE BATTERIES | BATTERIELADEGERÄT |
| 32 | 82180055/0 | 1 | CAVO (solo per U.K.) | CABLE (U.K. only) | CABLES (seulement U.K.) | KABEL (nur für U.K.) |

F72

F72 hydro

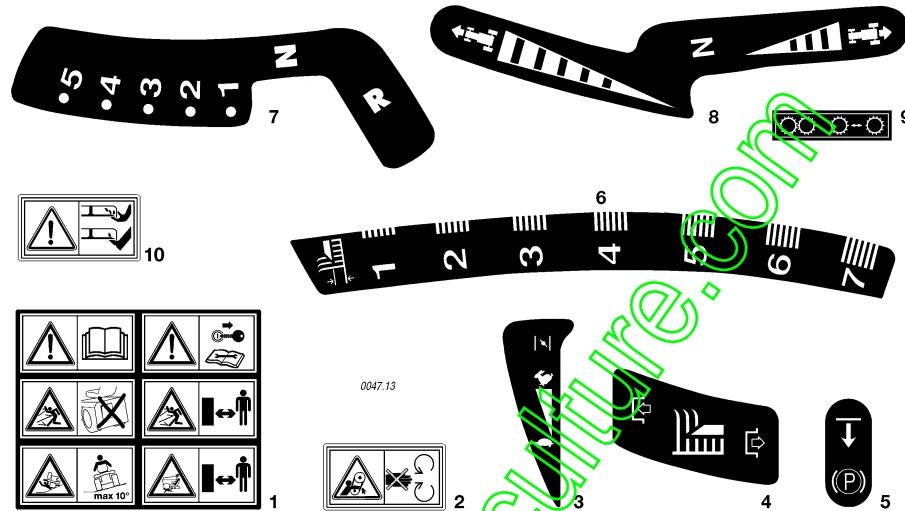


ETICHETTE
LABELS
ETIQUETTES
KLEBZETTEL

2001

013.0

1 / 1



| N. | CODE | Q.TY | DESCRIZIONE | DESCRIPTION | DESCRIPTION | BESCHREIBUNG |
|----|------------|------|-------------------|---------------|-------------------|--------------------|
| 1 | 14357428/0 | 1 | ETICHETTA | LABEL | ETIQUETTE | KLEBZETTEL |
| 2 | 14357519/1 | 1 | ETICHETTA | LABEL | ETIQUETTE | KLEBZETTEL |
| 3 | 14357425/0 | 1 | ETICHETTA | LABEL | ETIQUETTE | KLEBZETTEL |
| 4 | 14357431/0 | 1 | ETICHETTA | LABEL | ETIQUETTE | KLEBZETTEL |
| 5 | 14357526/0 | 1 | ETICHETTA | LABEL | ETIQUETTE | KLEBZETTEL |
| 6 | 14357427/0 | 1 | ETICHETTA | LABEL | ETIQUETTE | KLEBZETTEL |
| 7 | 14357426/0 | 1 | ETICHETTA (mecc.) | LABEL (mech.) | ETIQUETTE (mec.) | KLEBZETTEL (mech.) |
| 8 | 14357702/0 | 1 | ETICHETTA (hydro) | LABEL (hydro) | ETIQUETTE (hydro) | KLEBZETTEL (hydro) |
| 9 | 14357423/1 | 1 | ETICHETTA (hydro) | LABEL (hydro) | ETIQUETTE (hydro) | KLEBZETTEL (hydro) |
| 10 | 14356699/0 | 2 | ETICHETTA | LABEL | ETIQUETTE | KLEBZETTEL |

www.emc-motoculture.com