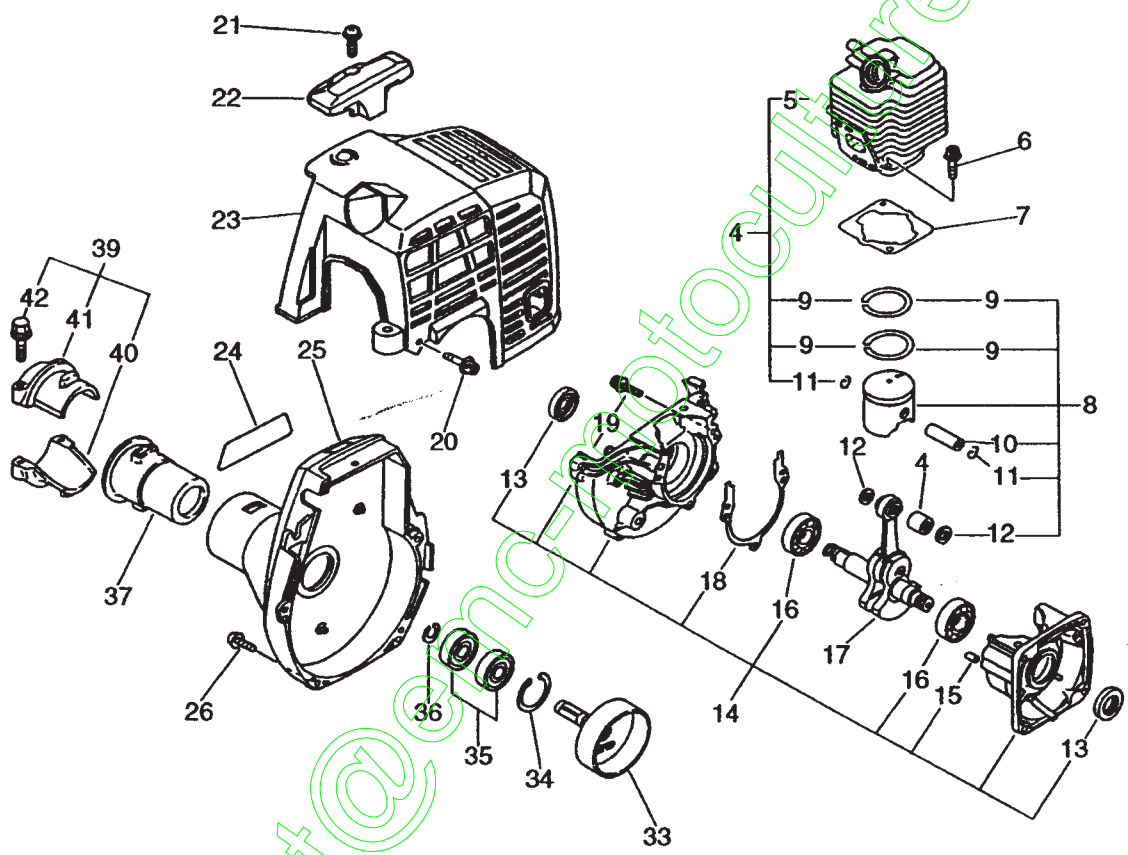


HCA 2400

contact@emc-motoculture.com

No.1



Hedge Trimmers

HCA-2400

Cylinder
Crankcase

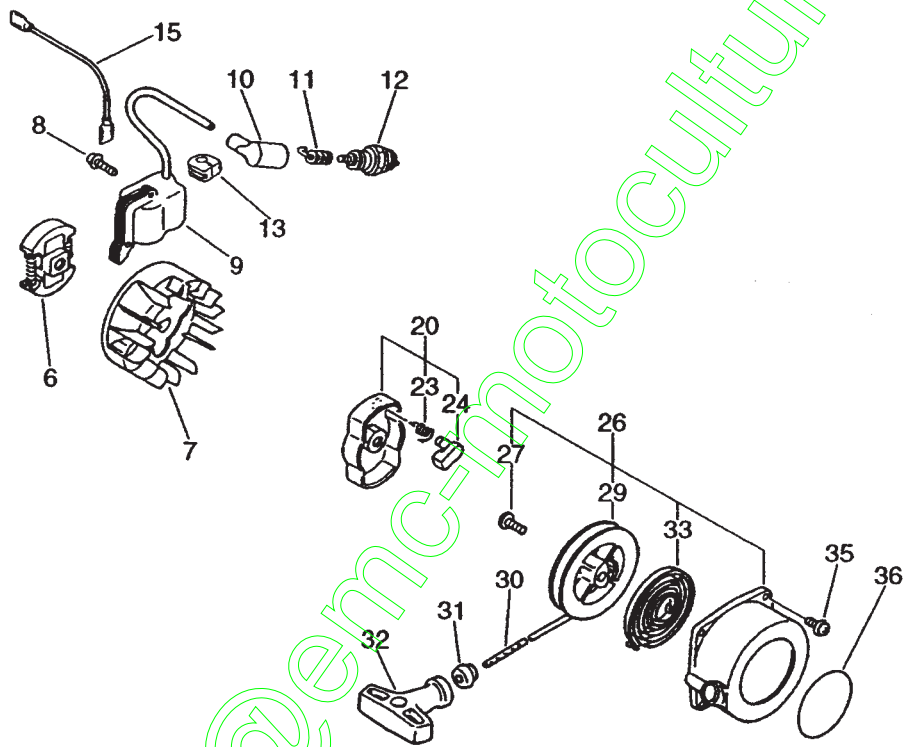
SEC525

Key	Qty	Part Number	Qty	Description	Remarks
5		101011-09560	1	CYLINDER	Sr/Nr 005909 and before
5		101011-08960	1	CYLINDER (CR)	Sus. by 101003-08960
4		101003-08960	1	CYLINDER PISTON KIT	
5	+	101011-08961	1	CYLINDER (CR)	Sr/Nr 005910 and after
9	+	100011-09560	1	RING, PISTON	
11	+	100015-04630	1	CIRCLIP, PISTON PIN	
6		900162-05022	2	BOLT, H.S. 5*22	
		101010-44332	1	GASKET, CYL. BASE	
8		100000-09561	1	PISTON KIT	Sus. by 100000-09563
8		100000-09562	1	PISTON KIT	Sus. by 100000-09563
8		100000-09563	1	PISTON KIT	
9	+	100011-09560	2	RING, PISTON	
10	+	100013-11520	1	PIN, PISTON	
11	+	100015-04630	2	CIRCLIP, PISTON PIN	
12	+	100014-11520	2	SPACER, PISTON PIN	
14		100204-52130	1	CRANKCASE KIT	
13	+	100212-42030	2	OILSEAL	
15	+	100215-03930	2	PIN, DOWEL	
16	+	900810-36201	2	BEARING, BALL 6201	Sus. by 94035-36201
16	+	94035-36201	2	BEARING BALL	
18	+	100242-42030	1	GASKET, CRANKCASE	
19	+	900162-05028	3	BOLT, H.S. 5*28	
		100100-52131	1	CRANKSHAFT ASSY	Sr/Nr 005909 and before
17		100100-44732	1	CRANKSHAFT ASSY	Sus. by A011-000100
		A011-000100	1	CRANKSHAFT ASSY	Sr/Nr 005910 and after
	+	100012-51230	1	BEARING, NEEDLE	Sus. by V553-000010
4	+	V553-000010	1	BEARING, NEEDLE	
20		900162-04016	2	BOLT, H.S. 4*16	Sus. by 900163-04016
20		900163-04016	2	BOLT HSH	
21		900238-05016	1	SCREW 5*16	
22		159912-54130	1	GUARD, TOP	
23		101514-48930	1	COVER, CYLINDER	
24		890115-12360	1	LABEL, MODEL	
25		101503-52131	1	COVER ASSY, FAN	
26		900162-04016	4	BOLT, H.S. 4*16	Sus. by 900163-04016
26		900163-04016	4	BOLT HSH	
33		175005-48930	1	DRUM, CLUTCH	Sus. by 175005-48931
33		175005-48931	1	DRUM, CLUTCH	
34		900702-00028	1	CIRCLIP 28	
35		900807-06001	2	BEARING, BALL 6001	Sus. by 900807-96001
35		900807-96001	2	BEARING, BALL 6000	
36		900701-00012	1	CIRCLIP 12	

37		610910-55230	1	CUSHION	
39		610903-55230	1	HOLDER KIT	
40	+	610923-55230	1	HOLDER	
41	+	610922-27432	1	HOLDER	
42	+	900142-05025	2	BOLT 5*25 (W/W,SW)	

contact@emc-motoculture.com

No.2



Hedge Trimmers

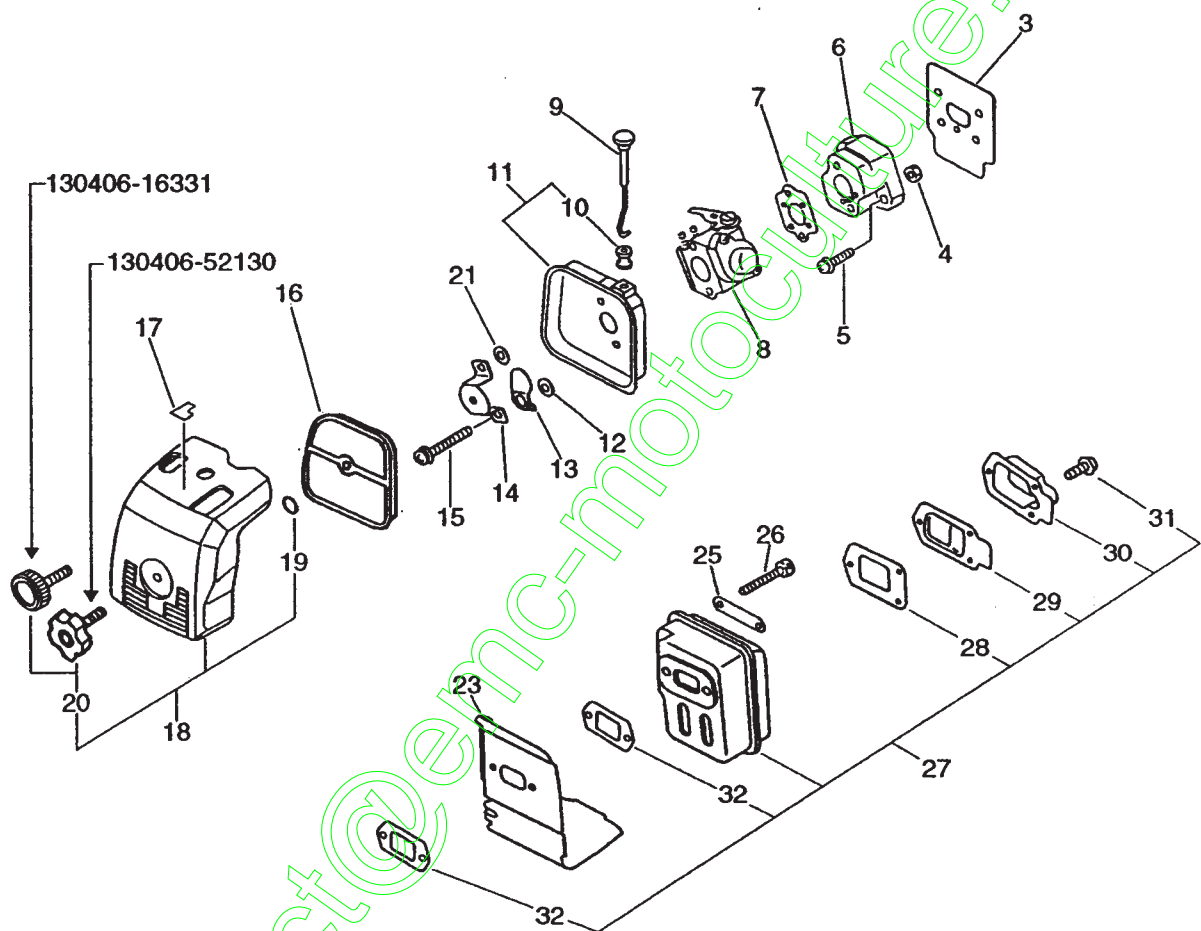
HCA-2400

Starter
Magneto

SEC526

No.	Part Number	Qty	Description	Remarks
6	175000-42031	1	CLUTCH ASSY	Sus. by 175000-56830
6	175000-49030	1	CLUTCH ASSY	Sus. by 175000-56830
6	175000-56830	1	CLUTCH ASSY	
7	156801-44731	1	FLYWHEEL	Sus. by 156801-44731
7	156801-12360	1	FLYWHEEL	Sus. by 156801-44731
7	156801-44731	1	FLYWHEEL	
8	900162-04022	2	BOLT, H.S. 4*22	
9	156601-06961	1	C.D. IGNITION MODULE	Sr/Nr 005909 and before
9	156626-52630	1	COIL, IGNITION	Sr/Nr 005910 and after
10	159012-03433	1	CAP, SPARK PLUG	
11	159011-03432	1	COIL, SPARK PLUG CAP	
12	159010-10230	1	PLUG, SPARK (BPMR-7A	
13	156112-40630	1	GROMMET	
15	162021-52130	1	LEAD	Sus. by 162010-52830
15	162010-52830	1	LEAD	Sr/Nr 005910 and after
20	177202-44330	1	PAWL ASSY, STARTER	
23	+ 177234-42030	1	SPRING, RETURN	
24	+ 177218-44330	1	PAWL, STARTER	
26	177200-42033	1	STARTER ASSY	
27	+ 177236-44330	1	SCREW	
29	+ 177215-44430	1	DRUM, STARTER	
30	+ 177226-10120	1	ROPE, STARTER	
31	+ 177227-42030	1	GUIDE, ROPE	
32	+ 177228-06530	1	GRIP, STARTER	
33	+ 177220-42030	1	SPRING, REWIND	
35	900162-04016	2	BOLT, H.S. 4*16	Sus. by 900163-04016
35	900163-04016	2	BOLT, HSH 4*16	
36	890118-49130	1	LABEL, ECHO	

No.3



Hedge Trimmers

HCA-2400

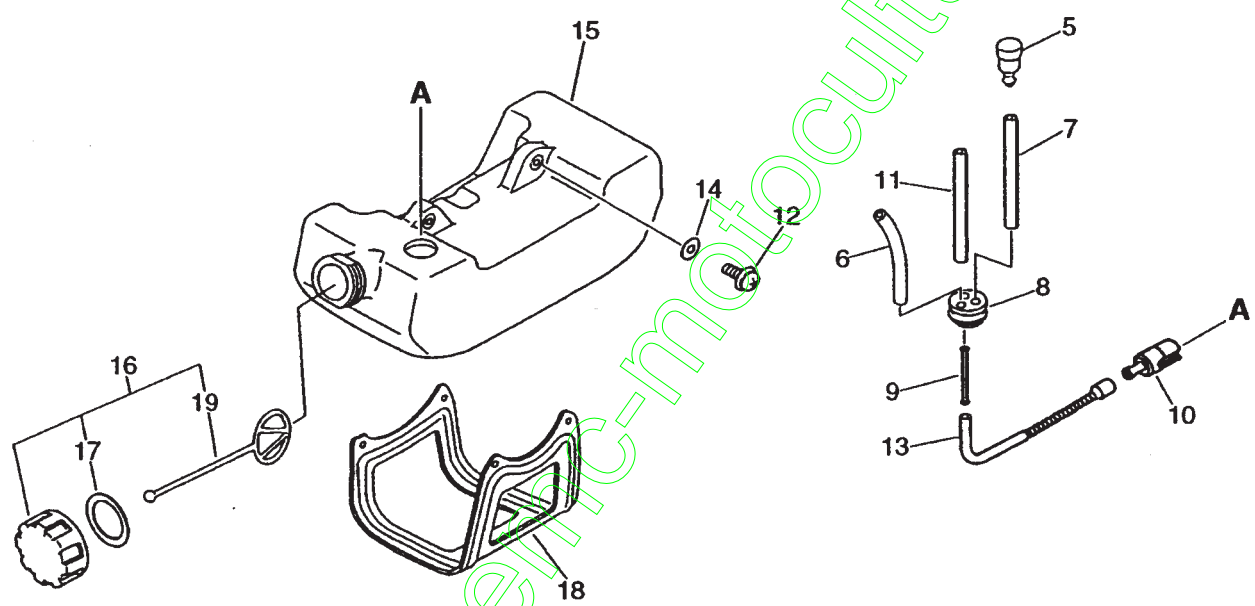
Cleaner

Muffler

SEC527

3		130010-42032	1	GASKET,INTAKE	
4		900500-00005	2	NUT 5	
5		900238-05020	2	SCREW 5*20	
6		130017-42031	1	INSULATOR, INTAKE	
7		130016-42031	1	GASKET, INTAKE	Sr/Nr 005909 and before
7		130010-05960	1	GASKET, INTAKE	Sr/Nr 005910 and after
8		125200-52131	1	CARBURETOR ASSY	Sr/Nr 005909 and before
8		123000-52130	1	CARBURETOR ASSY	Sus. by 123000-52133
8		123000-52131	1	CARBURETOR ASSY	Sus. by 123000-52133
8		123000-52132	1	CARBURETOR ASSY	Sus. by 123000-52133
8		123000-52133	1	CARBURETOR WT-424C	Sr/Nr 005910 and after
9		178510-51730	1	ROD, CHOKE	
11		130314-51730	1	CASE, CLEANER	Sus. by 130301-51730
11		130301-51730	1	CASE, AIR CLEANER	
10	+	178810-05230	1	GROMMET	
12		178516-00830	1	SPACER	
13		178515-05060	1	SHUTTER, CHOKE	
14		129011-52130	1	PLATE	
15		900242-05057	2	SCREW 5*57	
16		130310-51830	1	FILTER, AIR	
17		890121-47530	1	LABEL, CHOKE	
18		130302-51731	1	COVER ASSY, AIR CLN.	Sus. by 130302-52130
18		130302-52130	1	COVER ASSY, AIR CLN.	
19	+	900720-00003	1	O-RING 3	Can be used on the 130302-51731 only.
20	+	130406-16331	1	NUT, THUMB	Can be used on the 130302-51731 only.
20	+	130406-52130	1	KNOB, FASTENER	Can be used on the 130302-52130 only.
21		900600-00005	1	WASHER 5	
23		145631-42030	1	COVER, MUFFLER	
25		145642-04930	1	WASHER	
26		900105-05055	2	BOLT, H.S. 5*55	
27		145802-21560	1	MUFFLER ASSY	
28	+	145866-42031	1	GASKET, MUFFLER LID	
29	+	145863-42030	1	HOLDER, SCREEN	Sus. by 145818-52130
29	+	145818-52130	1	GUIDE, EXHAUST	
30	+	145876-42030	1	LID, MUFFLER (B)	
31	+	900242-04010	3	SCREW 4*10	
32	+	145510-42031	2	GASKET, MUFFLER	Sus. by V104-000160
32	+	145510-42032	2	GASKET, MUFFLER	Sus. by V104-000160
32	+	V104-000160	2	GASKET,EXHAUST	

No.4



Hedge Trimmers

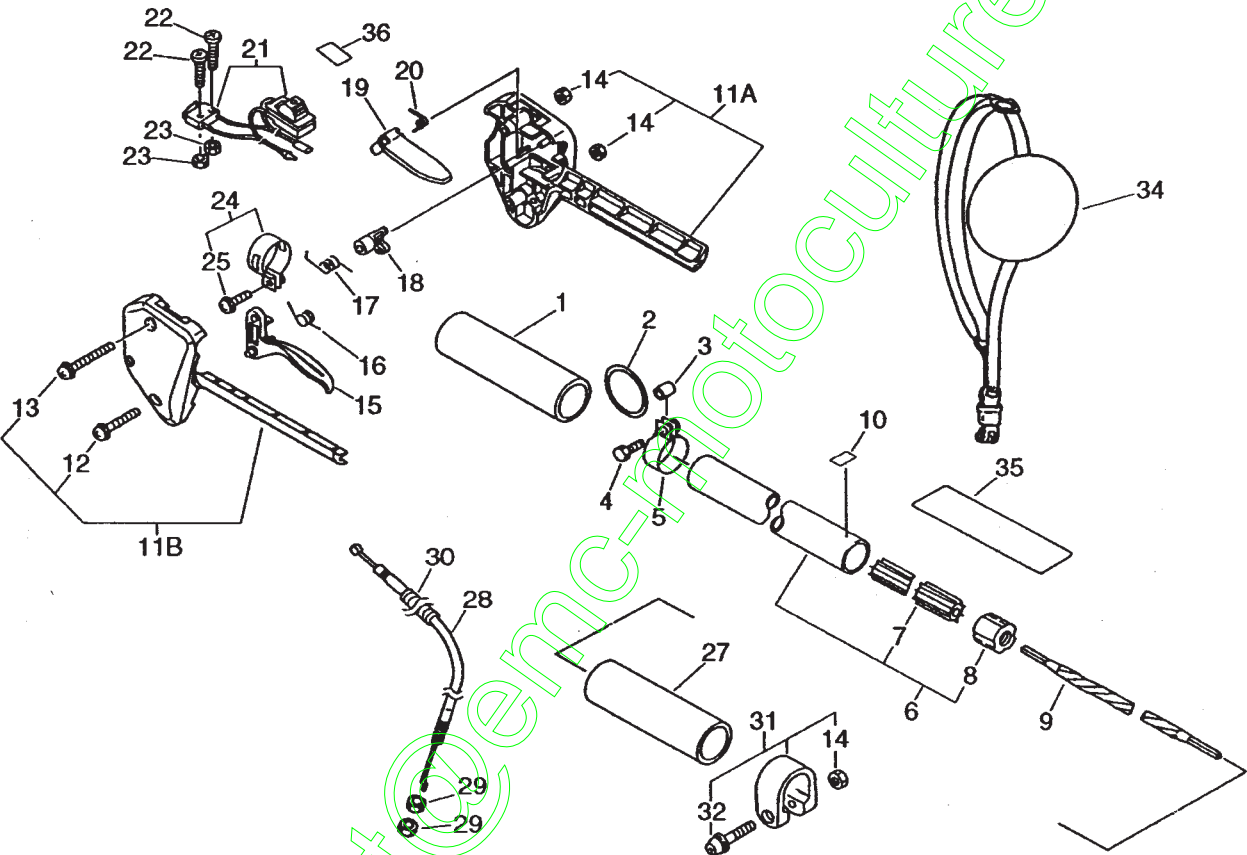
HCA-2400

Fuel Tank

SEC528

5		131300-40630	1	VALVE, CHECK	Sus. by 131300-56430
5		131300-56430	1	VALVE, CHECK	
6		132012-51030	1	PIPE 3*5*90	Sus. by 132010-56330
6		132010-56330	1	PIPE 3*6*90	
7		131312-44330	1	PIPE, 3*5*70L	Sus. by 131312-39130
7		131312-39130	1	PIPE	
8		132115-46730	1	GROMMET, FUEL	
9		132011-03360	1	CONNECTOR, FUEL PIPE	
10		131205-50430	1	STRAINER, FUEL	Sus. by 131205-07320
10		131205-07320	1	STRAINER, FUEL	
11		132010-13930	1	PIPE, FUEL	Sus. by 131312-39130
11		131312-44330	1	PIPE, 3*5*70L	Sus. by 131312-39130
11		131312-39130	1	PIPE	
12		900238-05016	2	SCREW 5*16	
13		132012-12360	1	PIPE, FUEL	
14		900603-00005	2	WASHER 5	
15		131005-44330	1	TANK, FUEL	Sus. by 131005-46830
15		131005-44331	1	TANK, FUEL	Sus. by 131005-46830
15		131005-46830	1	TANK, FUEL	
16		131004-55730	1	CAP ASSY, FUEL TANK	Sus. by 131004-08960
16		131004-06560	1	CAP ASSY, FUEL TANK	Sus. by 131004-08960
16		131004-08960	1	CAP ASSY, FUEL	
17	+	131016-40930	1	GASKET, FUEL CAP	Can be used on the 131004-55730 and 131004-
17	+	131016-55830	1	GASKET, FUEL CAP	Can be used on the 131004-08960 only
19	+	131051-52430	1	CONNECTOR, CAP	Can be used on the 131004-06560 and 131004-
18		305110-42030	1	STAND (BL)	

No.5



Hedge Trimmers

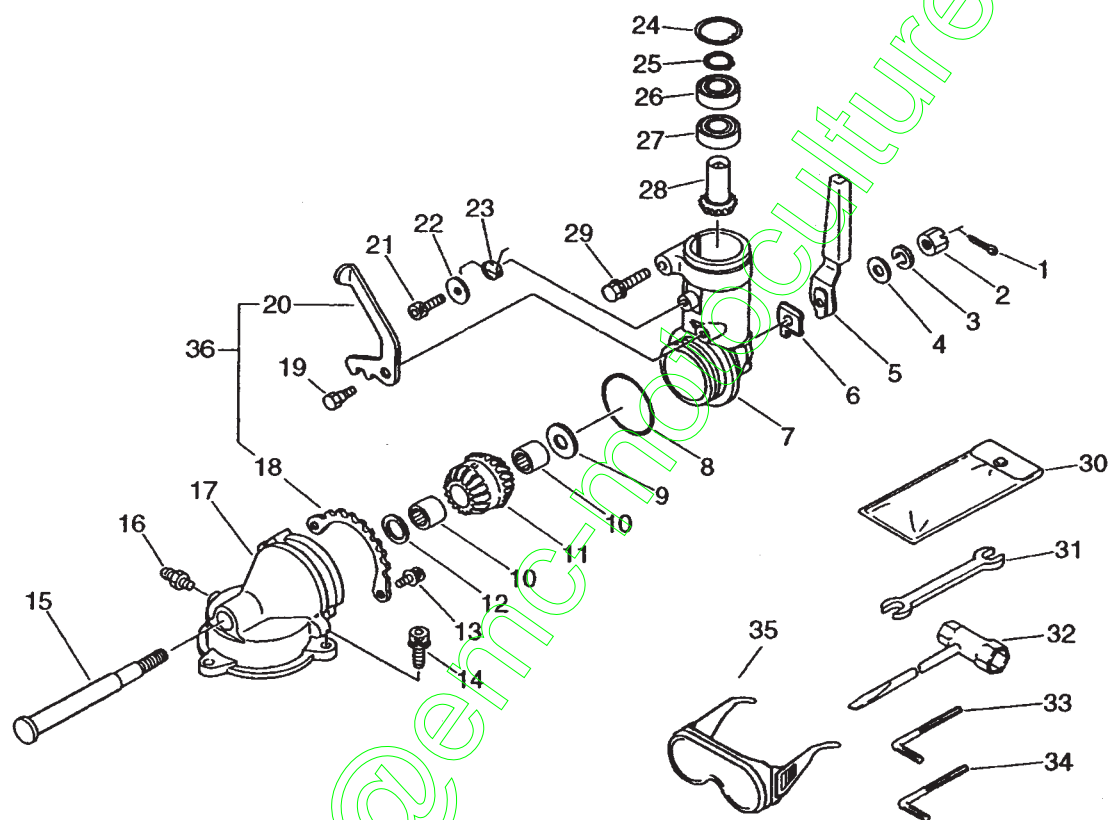
HCA-2400

Handle
Throttle

SEC529

QTY	Part Number	Description	Notes
1	351213-52130	1 GRIP, FRONT HANDLE	
2	301016-52730	1 RING, HARNESS	
3	699012-03330	1 SPACER	
4	900100-05018	1 BOLT 5*18	
5	301207-08930	1 HOOK	
6	610206-12360	1 HOUSING ASY, D. SHFT	
7	+ 610217-12360	1 LINER, FLEXIBLE	
8	+ 610246-44730	2 STOPPER	
9	610013-12360	1 SHAFT, FLEXIBLE	
10	890152-04930	1 LABEL, CAUTION	
11	178003-12360	1 BRACKET SET, THROTTLE	
12	+ 900242-05025	1 SCREW 5*25	
13	+ 900242-05035	1 SCREW 5*35	
14	+ 900500-00005	2 NUT 5	
15	178010-52130	1 CONTROL, THROTTLE	
16	178043-42230	1 SPRING, THR. RETURN	
17	178043-12360	1 SPRING, THR. RETURN	
18	178012-12360	1 LOCKOUT, THROTTLE	
19	178090-52630	1 LOCKOUT, T. CONTROL	
20	178013-52630	1 SPRING, THR. LOCK	
21	163404-12360	1 SWITCH, IGNITION ASY	
22	900210-02010	2 SCREW, 2*10	
23	900500-00002	2 NUT 2	
24	301200-29430	1 BAND ASSY	
25	+ 900242-05012	1 SCREW 5*12	Sus. by 900242-05014 (This model only)
25	+ 900242-05014	1 SCREW 5*14	
27	351012-54330	1 GRIP, REAR HANDLE	
28	178001-44430	1 WIRE, THROTTLE	Sus. by 178001-56730
28	178001-56730	1 CABLE, THROTTLE	
29	900502-00006	2 NUT 6 (3N)	
30	178127-50330	1 TUBE	
31	610272-52130	1 BAND	
14	+ 900500-00005	1 NUT 5	
32	+ 900242-05028	1 SCREW 5*28	
34	301000-52731	1 HARNESS, SHOULDER	
35	890617-12360	1 LABEL, CAUTION	Sus. by 890617-12361
35	890617-12361	1 LABEL, CAUTION	
36	890157-39130	1 LABEL, SWITCH	

No.6



Hedge Trimmers

HCA-2400

Gear Case

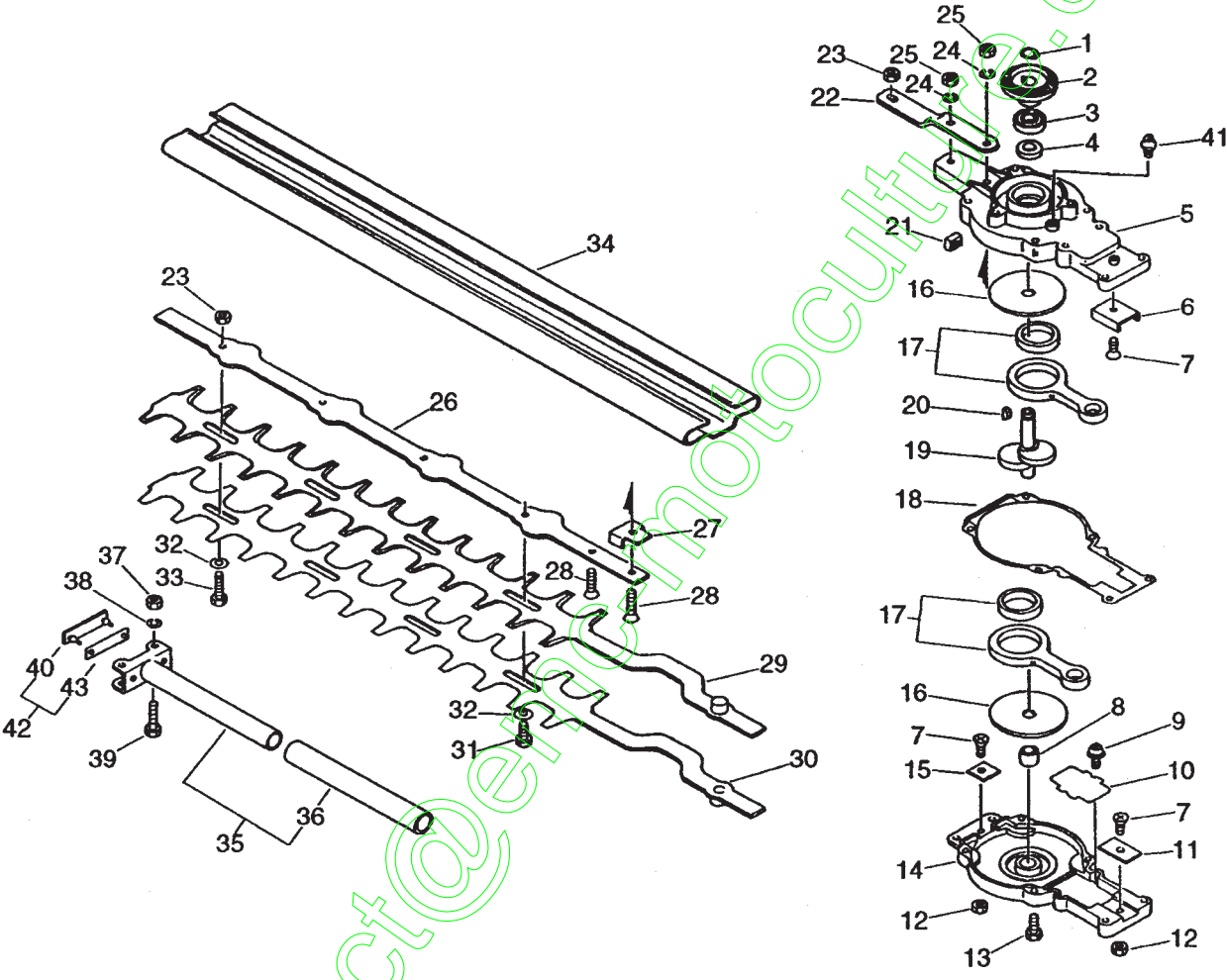
SEC530

Part Number		QTY	Description	Remarks
1	900300-16016	1	PIN, SPLIT 1.6*16	
2	900529-00006	1	NUT 6	
3	900605-00006	1	WASHER, SPRING 6	
4	403720-07350	1	WASHER, SLUST	
5	190511-12360	1	PIECE, LEVER	Sus. by 190511-12362
5	190511-12361	1	PIECE, LEVER	Sus. by 190511-12362
5	190511-12362	1	PIECE, LEVER	
6	610478-12360	1	PLATE, ANGLE	Sus. by 610478-12361
6	610478-12361	1	PLATE, ANGLE	
7	610410-12360	1	CASE, GEAR	Sus. by 610410-12361
7	610410-12361	1	CASE, GEAR	
8	900724-00032	1	O-RING	
9	100132-06720	1	WASHER 8.5*18*2	Sr/Nr 017687 and before
9	610350-12360	1	WASHER	Sr/Nr 017688 and after
10	100113-11520	2	BEARING, NEEDLE	
11	610361-12360	1	GEAR, BEVEL	
12	610317-12360	1	WASHER, ADJUSTMENT	Sus. by 610317-12460
12	610317-12460	1	WASHER, CIRCULAR 10	
13	900162-04010	2	BOLT, H.S. 4*10	
14	900162-05018	3	BOLT, H.S. 5*18	
15	610310-12360	1	SHAFT, P.T.O.	
16	880110-10860	2	NIPPLE, GREASE	
17	610431-12360	1	LID, GEAR CASE	
18	610470-12360	1	RESETTER, LATCH	Sus. by P021-000850
36	P021-000850	1	LATCH RESETTER SET	
18	+ 610470-12361	1	RESETTER, LATCH	Sr/Nr 017688 and after
20	+ 610472-12361	1	PAWL	Sr/Nr 017688 and after
19	610474-12360	1	BOLT 5	
20	610472-12360	1	PAWL	Sus. by P021-000850
21	900162-05014	1	BOLT, H.S. 5*14	
22	900603-00005	1	WASHER 5	
23	178013-12360	1	SPRING, THR. LOCK	
24	900702-00022	1	CIRCLIP 22	
25	900706-00010	1	CIRCLIP 10	
26	900858-06900	1	BEARING, BALL 6900Z	
27	900855-06900	1	BEARING, BALL 6900	
28	610311-12360	1	GEAR, DRIVE	
29	900142-05035	1	BOLT 5*35 (W/W, SW)	
30	898510-39130	1	BAG, TOOL	
31	895112-00330	1	SPANNER 8*10	
32	895410-08030	1	WRENCH, W/S. DRIVER	
33	895612-03430	1	L-WRENCH (3MM)	
34	895610-00130	1	L-WRENCH (4MM)	

35-	899580-40930	1	GOGGLE	Remarks
35	899580-68730	1	SAFETY GLASSES	Sus. by 899580-68730

contact@emc-motoculture.com

No.7



Hedge Trimmers

HCA-2400

Cutter

Gear Case

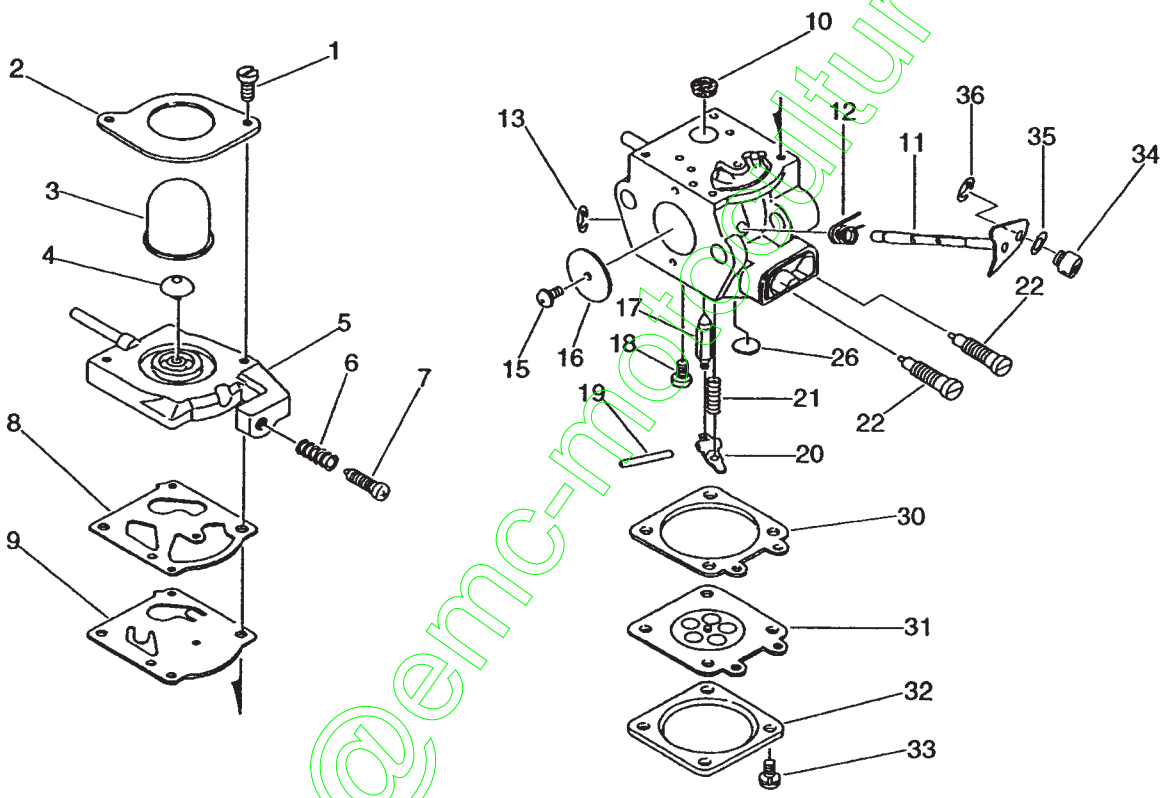
SEC531

Key	Part Number	Qty	Description	Notes
1	900701-00010	1	CIRCLIP 10	
2	610312-12360	1	GEAR, SPUR	
3	900800-06000	1	BEARING, BALL 6000	
4	100213-05930	1	OILSEAL	
5	610420-12360	1	CASE, GEAR	Sus. by 610420-12361
5	610420-12361	1	CASE, GEAR	
6	610441-54030	1	GUIDE	
9	900212-04008	3	SCREW 4*8	
9	900242-03006	4	SCREW 3*6	
10	610424-54030	2	PLATE, SIDE	
11	610447-54030	1	PLATE, EYE	
12	900500-00004	2	NUT 4	
13	900142-05020	4	BOLT 5*20 (W/W,SW)	
14	610409-54030	1	COVER ASSY	Sus. by 610409-54031
14	610409-54031	1	CASE, CAM	
8 +	160616-05410	1	COLLAR.	
15	610450-54030	1	PLATE, GUIDE	
16	610462-54030	2	PLATE, SIDE	
17	610805-54030	2	BAR, OPERATION	
18	V110-000000	1	GASKET, GEAR CASE	
19	610344-12360	1	CAM	
20	610325-02730	1	KEY, WOODRUFF	
21	610426-54030	2	SEAL	
22	699110-12360	1	SUPPORT, CUTTER	Sus. by X425-000080
22	X425-000080	1	SUPPORT, CUTTER	
23	433022-06460	4	NUT	
24	900605-00005	2	WASHER, SPRING 5	
25	900500-00005	2	NUT 5	
26	699117-12360	1	SUPPORT, CUTTER	Sus. by X425-000070
26	X425-000070	1	SUPPORT, CUTTER	
27	610440-54030	1	PLATE, ANGLE	
28	900212-05020	2	SCREW 5*20	
29	697005-12360	1	CUTTER	Sus. by X411-000120
29	697005-12361	1	CUTTER	Sus. by X411-000120
29	X411-000120	1	CUTTER	
30	697006-12360	1	CUTTER	Sus. by X411-000130
30	697006-12361	1	CUTTER	Sus. by X411-000130
30	X411-000130	1	CUTTER	
31	699115-07760	1	BOLT, CUTTER	
32	699118-04560	4	WASHER	
33	699115-04560	3	BOLT, CUTTER	
34	898523-12360	1	SCABBARD, BLADE	

Key	+	Part Number	Qty	Description	Remarks
35		351305-12360	1	HANDLE	
36	+	351315-12360	1	GRIP, HANDLE	
37		900500-00005	2	NUT 5	
38		900605-00005	2	WASHER, SPRING 5	
39		900142-05025	2	BOLT 5*25 (W/W,SW)	
40		610426-12360	1	SEAL	Sus. by V150-000311
42		V150-000310	1	PLATE,EYE	Sus. by V150-000311
42		V150-000311	1	PLATE,EYE	
40	+	610426-12361	1	SEAL	Sus. by 610426-12362
40	+	610426-12362	1	SEAL	Sr/Nr 022386 and after
43	+	V150-000300	1	PLATE,EYE	Sr/Nr 022386 and after

contact@emc-motoculture.com

No.9



Hedge Trimmers

HCA-2400

Carburetor
(Sr/Nr 005910 and after)

SEC533

Part Number		Description		Remarks	
	123000-52130	1	CARBURETOR ASSY	Sus. by 123000-52133	
	123000-52131	1	CARBURETOR ASSY	Sus. by 123000-52133	
	123000-52132	1	CARBURETOR ASSY	Sus. by 123000-52133	
	123000-52133	1	CARBURETOR WT-424C	Sr/Nr 005910 and after	
1	+	123110-43130	2	SCREW	
2	+	123142-09560	1	COVER, PRIMER PUMP	
3	+	123181-09560	1	PUMP, PRIMER	
4	+	123171-35630	1	VALVE, CHECK	
5	+	123124-43230	1	COVER, FUEL PUMP	
6	+	123133-04260	1	SPRING, IDLE ADJUST	
7	+	123134-04260	1	SCREW, IDLE ADJUST	
8	+	123125-09560	1	GASKET, FUEL PUMP	
9	+	123112-09560	1	DIAPHRAGM, FUEL PUMP	
10	+	123126-10631	1	SCREEN, INLET	
11	+	123117-52130	1	SHAFT, THROTTLE	
12	+	123113-52130	1	SPRING, THE.RTN	
13	+	123127-15030	1	RING	
15	+	123114-03930	1	SCREW	Used on 123000-52130 only.
15	+	123114-38830	1	SCREW	Used on 123000-52131 `52133
16	+	123116-52130	1	VALVE, THROTTLE	Used on 123000-52130 only.
16	+	123116-53130	1	VALVE, THROTTLE	Used on 123000-52131 `52133
17	+	123137-19830	1	VALVE, INLET NEEDLE	
18	+	123139-03930	1	SCREW, M. LEVER PIN	
19	+	123138-03930	1	PIN, METERING LEVER	
20	+	123123-03930	1	LEVER, METERING	
21	+	123122-39330	1	SPRING, METER. LEVER	
22	+	123120-52130	2	NEEDLE, HIGH SPEED	Used on 123000-52130,123000-52131
22	+	123120-52131	2	NEEDLE, HIGH SPEED	Used on 123000-52132,123000-52133
26	+	123146-10631	1	PLUG, WELCH	
30	+	123140-03930	1	GASKET, M. DIAPHRAGM	
31	+	123141-03930	1	DIAPHRAGM, METERING	
32	+	123142-03930	1	COVER, M. DIAPHRAGM	
33	+	123130-02960	4	SCREW	
34	+	123172-26030	1	SWIVEL	
35	+	123149-26030	1	WASHER	
36	+	123173-07930	1	CLIP	