

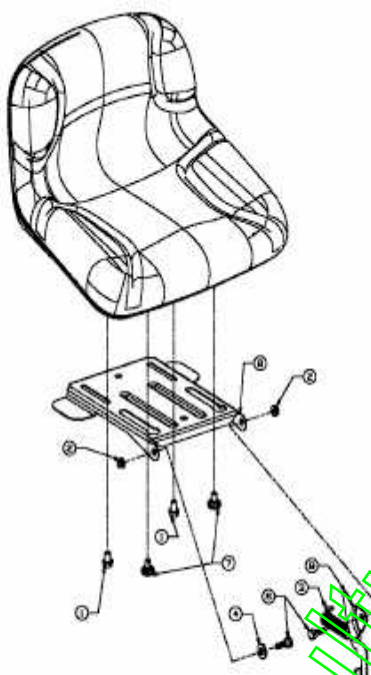
E3-02002A-01

www.emc-motoculture.com

Position	Numéro de lapièce	#	Appellation I	Appellation II
1	731-0484A	2	ENJOLIVEUR DEVANT	KUNSTSTOFF SCHWARZ 931- 0484A

www.emc-motoculture.com

Position	Numéro de pièce	#	Appellation I	Appellation II
1	710-0227	4	VIS	FINISH:MTD STD 701-01002
2	710-0456	1	VIS	FINISH:701-01002
3	710-0599	4	VIS ; SIX PANS CREUX	MTD SPEC-701-01002 or 101617
4	710-0726	4	VIS 5/16-12:0.750:HXINDWS	FINISH:MTD STD 701-01002
5	710-1237	2	VIS HEX.:T:#10-32:0.625:	FINISH:MTD STD 701-01002
6	710-1314A	2	VIS HEX. INT. 5/16-18:.75:GR8	FINISH:PHOS & OIL
7	710-1315	4	VIS HEX.TT:3/8-16:1.25:HXIN:S	FINISH:MTD SPEC-701-01002
8	712-0271	1	ECROU 1/4-20"+ DISQUE DENTÜ	FINISH:MTD STD 701-010015
9	712-3017	1	ÜCROU HEXAGONAL	FINISH:701-01000
10	721-0208	1	JOINT ECHAP B/S MONO CYLINDRE	FINISH:B&S #272293
12	725-0157	1	COLLIER DE SERRAGE3/16X0.5X7.4	MATERIAL:NYLON-SCHWARZ
13	726-0205	2	COLLIER DE SERRAGE DE BOYAU	FINISH:PHOSPHATIERT (GELB)
14	732-0966	1	RESSORT DE CABLE	732-0966
15	736-0119	2	RONDELLE	FINISH:MTD STD 701-01001
16	736-0300	1	RONDELLE	FINISH:MTD SPEC-100015
17	736-0400	1	RONDELLE PLATE .194x.62x.063	FINISH:MTD STD 701-01000
19	751B213146	1	SERRE-CABLE DE FIXATION	FINISH:VERZINKT
20	751-0535	1	TUYAU ESSENCE NOIR	Ø12,7+/-5.84 / Ø6,35+/-0,41
21	751-0564A	1	DÜFLECTEUR:ÜCHAPPEMENT	
22	751-0617A	1	POT D'ÜCHAPPEMENT	
23	751-0619A	1	TUYAU D'ÜCHAPPEMENT	FINISH:PLAINE/BARE
24	751-3140	1	EMBOUT DE VIDANGE	FINISH:SIEHE ZG. 951-3140
25	751-3141	1	TUYAU VIDANGE	13 X 3:FINISH KLAR METERWARE
26	751-3142	1	BOUCHON VIDANGE	FINISH:GELB 951-3142
27	783-0615B	1	HITZESCHUTZ F.AUSPUFF	SCHWARZ GEPULVERT

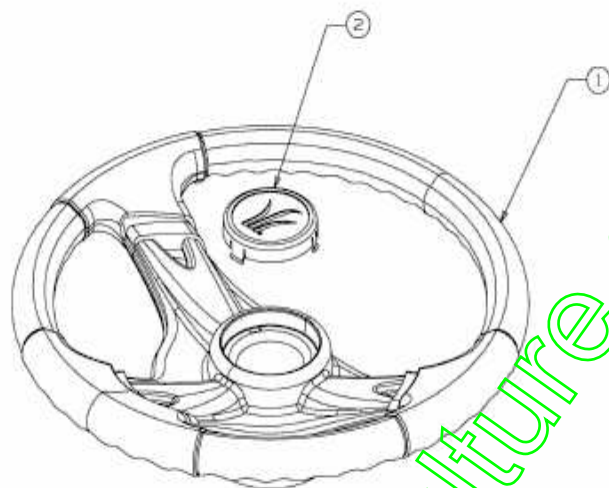


E3-02012A-01

www.emc-motoculture.com

Position	Numéro de lapièce	#	Appellation I	Appellation II
1	710-0870	2	VIS	710-0870 / 910-0870
2	712-0429	2	ÜCROU	FINISH:701-01000
3	732-1184	1	RESSORT	500er:FINISH:MTD STD 701-01000
4	736-0696	1	RONDELLE DIN 1440	AD25 x ID12 X 3 (24.6484.25)
6	738-0296	2	AXE EPAULE	FINISH:701-01000
7	738-04012	2	VIS DE SIEGE	3/8-16
8	783-04081A	1	PLAQUE SUPPORT DE SIEGE	(MANUELLE VERSTELLUNG)
9	783-1366	1	PATTE CONTACTEUR	VERZINKT

www.emc-motoculture.com



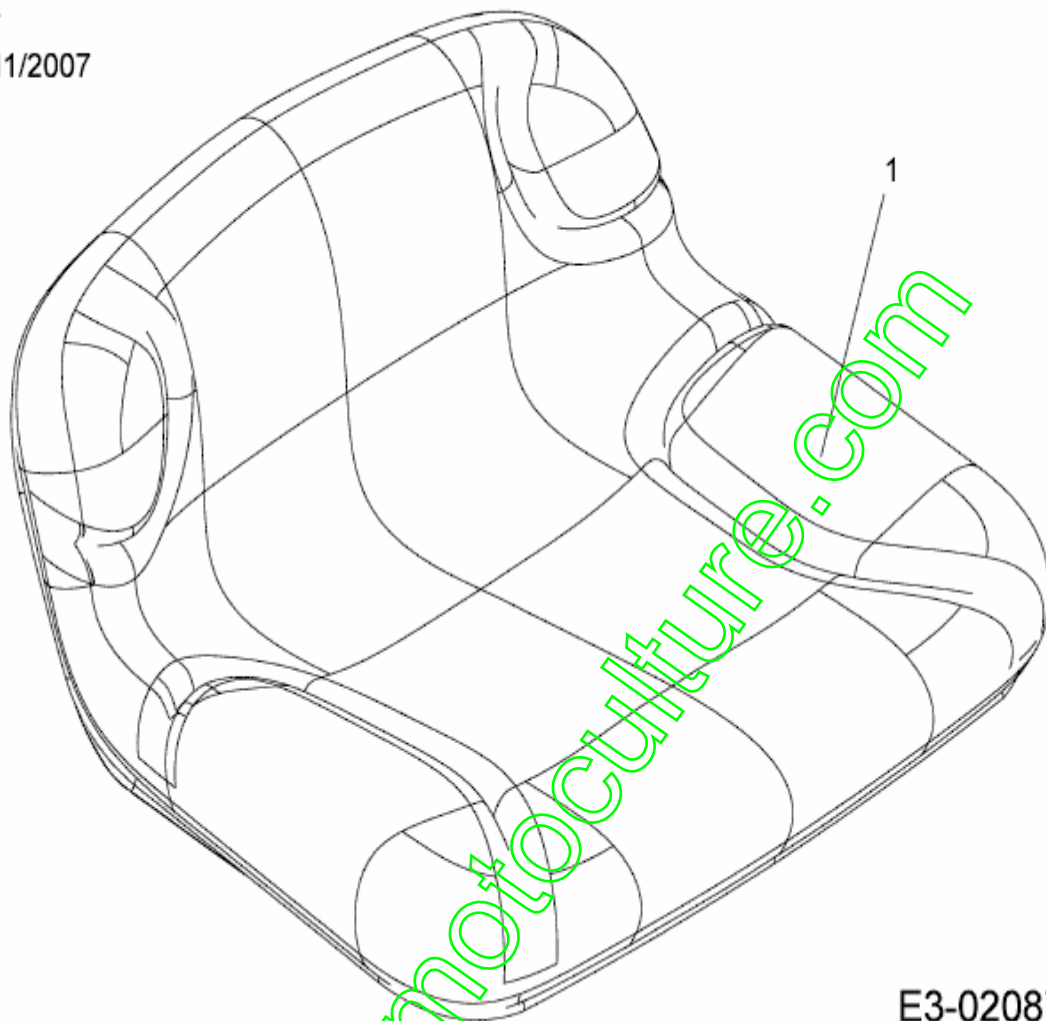
E3-02014A-01

www.emc-motoculture.com

Position	Numéro de lapièce	#	Appellation I	Appellation II
1	631-04028	1	VOLANT	STD GRIP:FINISH SCHWARZ
2	731-04040	1	COUVERCLE DE VOLANT	Ø 60mm:KUNSTSTOFF SCHWARZ

www.emc-motoculture.com

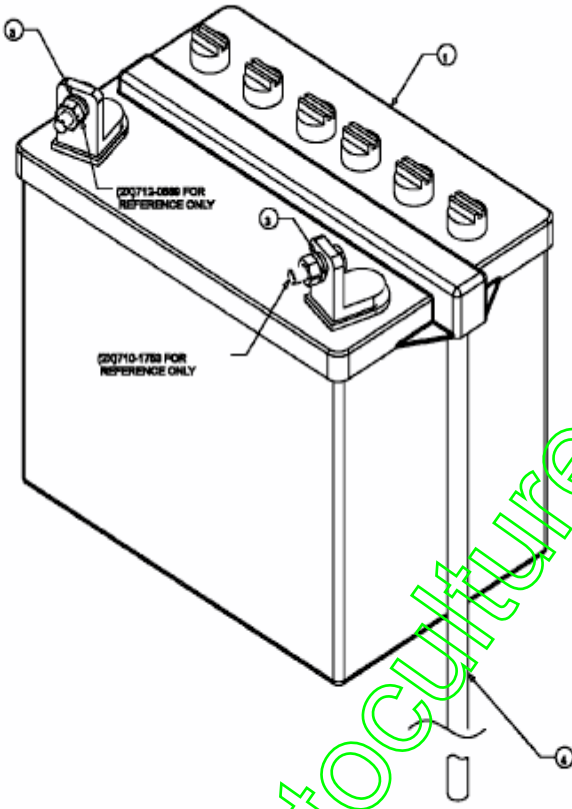
bis 05/11/2007
til 11/05/2007
jusqu'au 05/11/2007



E3-02087A-01

Position	Numéro de lapièce	#	Appellation I
1	757-04002A	1	SIEGE

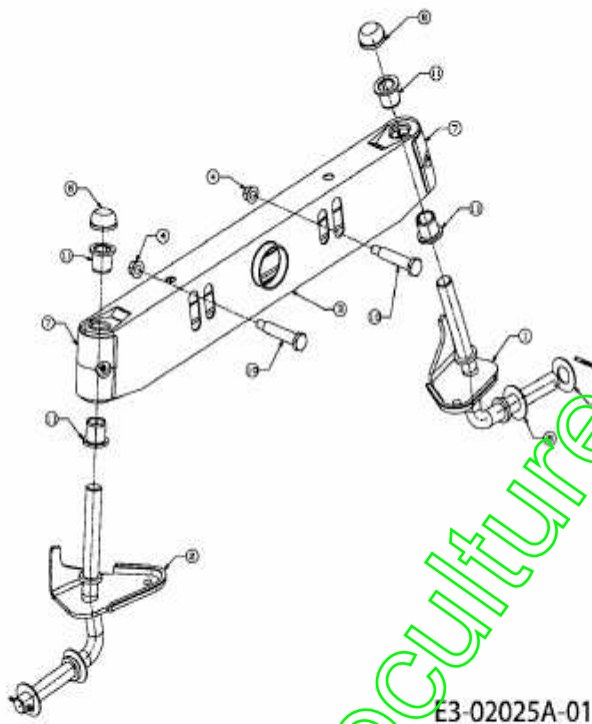
www.emc-motoculture.com



www.emc-motoculture.com

Position	Numéro de lapièce	#	Appellation I	Appellation II
1	725-2057	1	BATTERIE	U1-9 (725-1707D)
3	736-0648	2	RONDELLE GROWER	FINISH:SPEC-100016 24.8195.14
4	750-04016	1	TUYAU D'AÜRATION BATTERIE	6-0.5x1x700 PVC glasklar

www.emc-motoculture.com

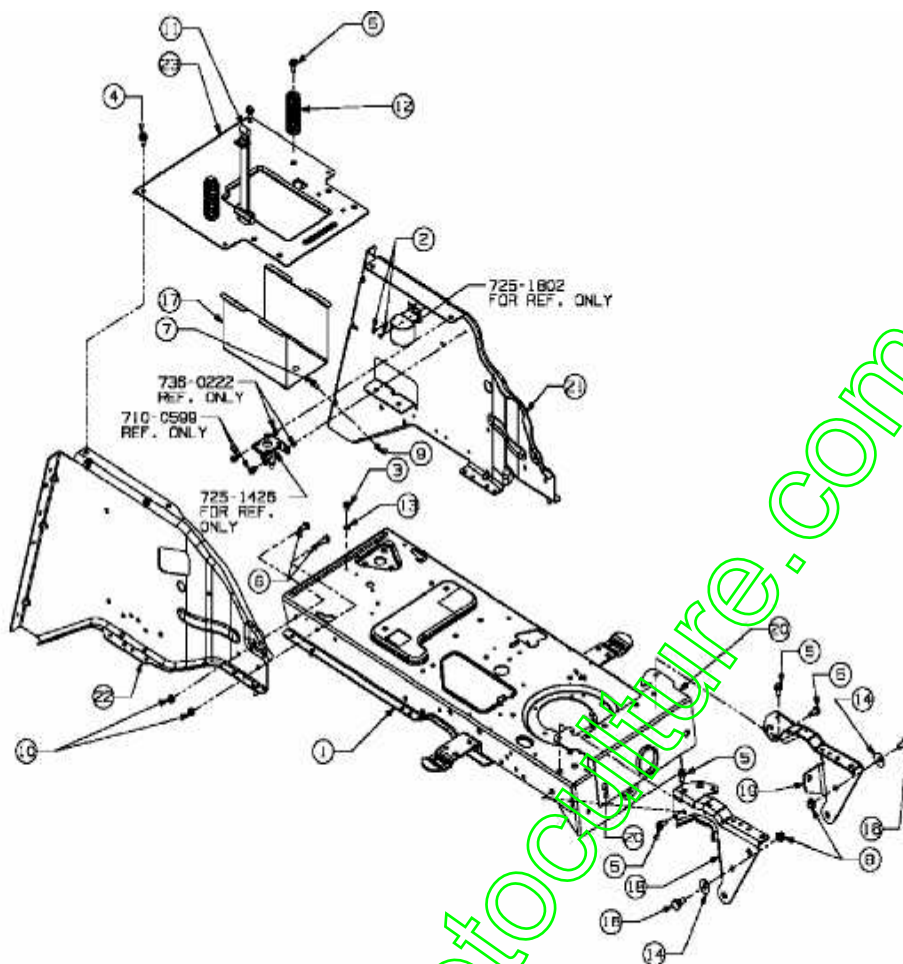


E3-02025A-01

www.emc-motoculture.com

Position	Numéro de pièce	#	Appellation I	Appellation II
1	611-04038	1	AXE COMPLET GAUCHE .750 DIA	SCHWEIßTEIL
2	611-04039	1	AXE COMPLET DROIT .750 DIA	SCHWEIßTEIL
3	683-0128B637	1	ESSIEU AVANT	SCHWARZ GEPULVERT
4	712-04065	2	ÜCROU HEXAGONAL	FINISH:SPEC-101616 912- 04065
5	714-0162	2	GOUPILLE FENDUE 5/32:1.25	FINISH:MTD SPEC-100015
6	726-0341	2	CAPUCHON CLIPS	FINISH: SCHWARZ
7	731-1291A	2	CARTER PLASTIQUE	MATERIAL:PP SCHWARZ:LT5
8	736-0316	4	RONDELLE 1.78XA1.59"	FINISH:MTD STD 701- 01000
10	738-1011A	2	AXE	FINISH:MTD STD 701- 01000
11	741-0660A	4	BAGUE	FINISH:KUNSTSTOFF SCHWARZ

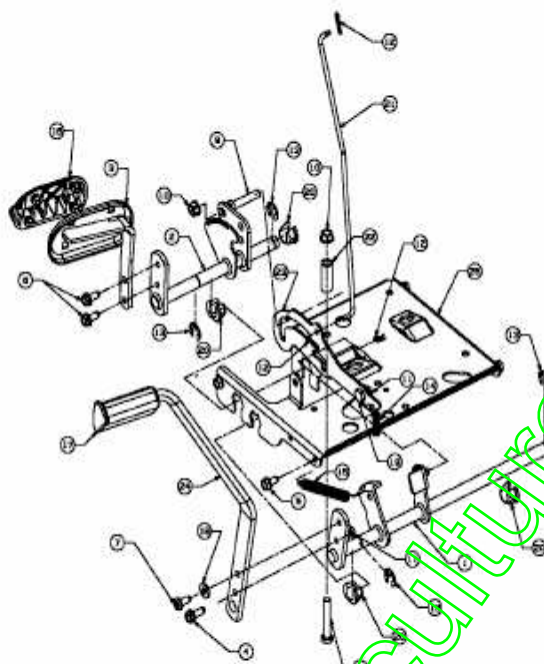
www.emc-motoculture.com



E3-02026A-01

Position	Numéro de pièce	#	Appellation I	Appellation II
1	683-04115A	1	RAHMEN VOLLST:UNTEN	SCHWEIßTEIL FINISH:PAINT
2	710-0148	2	VIS	FINISH:701-01002 910-0148
3	710-0599	1	VIS ; SIX PANS CREUX	MTD SPEC-701-01002 or 101617
4	710-0726	2	VIS 5/16-12:0.750:HXINDWS	FINISH:MTD STD 701-01002
5	710-1260A	8	VIS TT:5/16-18:.750 HXINDWSH	LAGERGEH.MESSERWELLE:701-01002
6	710-1681	6	VIS ; SIX PANS CREUX	MTD SPEC-100015 21.1441.70
7	710-1691	1	VIS ; SIX PANS CREUX	FINISH:Zn5glcB 21.1441.45
8	712-0431	2	ÜCROU STOP 3/8-16:GRF	FINISH:MTD SPEC-100015
9	712-0691	1	ÜCROU HEXAGONAL	MTD SPEC-100015 24.1426.14
10	712-0692	6	ÜCROU HEXAGONAL 24.1426.18	FINISH:SPEC-100015 24.1426.18
11	723-0444	1	CEINTURE DE SÜCURITÜ BATTERIE	FINISH:SCHWARZ
12	732-04035	2	RESSORT DE SIEGE	FINISH:701-01000
13	736-0222	1	RONDELLE	FINISH:MTD STD 701-01001
14	736-0331	2	RONDELLE CONIQUE	FINISH:MTD SPEC-100016
16	738-0143	2	VIS EPAULEE	FINISH:MTD SPEC 100015 (EU)
17	783-0349	1	BOÏTIER DE BATTERIE	FINISH:LACKIERT SCHWARZ *
18	783-0726C	1	SUPPORT D'ESSIEU DROIT	FINISH:LACKIERT
19	783-0727B	1	SUPPORT D'ESSIEU GAUCHE	PAINT
20	783-0728	1	SUPPORT AVANT	783-0728
21	783-1317B	1	RAHMEN:HINTEN:LINKS SINGLE	SPEED 500 PAINT
22	783-1318A	1	CHASSIS ARRIERE	
23	783-1410	1	SUPPORT DE SIEGE	F564.021.00

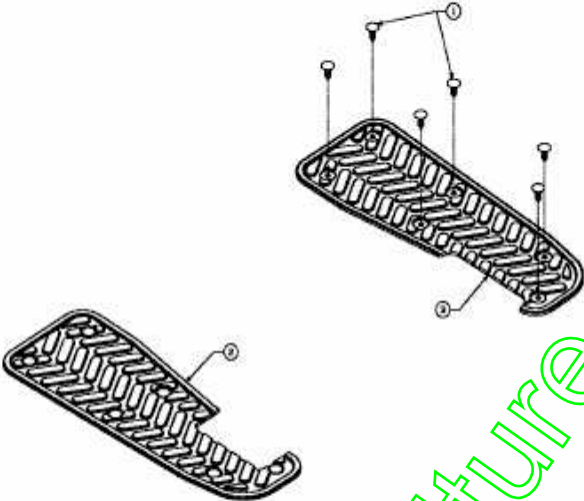
www.emc-motoculture.com



E3-02031A-01

www.emc-motoculture.com

Position	Numéro de lapièce	#	Appellation I	Appellation II
1	647- 0057B637	1	ARBRE DE PÜDALE DE FREIN 500	SCHWEIßTEIL SCHWARZ LACKIERT
2	647- 04027A-S	1	LEVIER CPL	PEDAL SCHWEIßTEIL
3	683-0266	1	PEDALE AUTODRIVE	SCHWEISSTEIL:FINISH LACKIERT
4	710-0650	1	VIS HEX.:TT:5/16- 18:0.875	FINISH:MTD SPEC-701-01002
5	710-0726	4	VIS 5/16- 12:0.750:HXINDWS	FINISH:MTD STD 701-01002
6	710-1260A	2	VIS TT:5/16-18:750 HXINDWSH	LAGERGEH.MESSERWELLE:701- 01002
7	710-1611B	1	VIS:TT:5/16- 18:0.750:PANTRXI	FINISH:MTD SPEC-100015
8	710-3011	1	VIS HEX.:3/8- 16:2.25:GR5:STD	FINISH:MTD STD 701-01000
9	711-04159	1	TIGE FILETÜE	3/8-16:3/8 x 2.68 LG
10	712-0431	2	ÜCROU STOP 3/8- 16:GRF	FINISH:MTD SPEC-100015
11	712-0429	2	ÜCROU	FINISH:701-01000
12	714-0104	3	GOUPILLE	FINISH:PHOS AND OIL
13	716-0106A	4	CIRCLIPS	FINISH:MTD SPEC 701-01001
14	732-0335	1	RESSORT	.405 DIA X 1.17 LG
15	732-0963	1	RESSORT	SPEC 701-01006 OR 701-01000
16	735-0662	1	GARNITURE DE PEDALE	FINISH:KUNSTSTOFF SCHWARZ
17	735-3049	1	GARNITURE DE FREIN i PIED	735-3049
18	736-3008	1	RONDELLE	FINISH:MTD SPEC-701-01000
19	738-0155	1	VIS EPAULEE	MTD STD 701-01000 938-0155
20	741-3065B	4	BAGUE EXAGONALE RAINURÜE	GESCHLITZT:FINISH SCHWARZ
21	747-04093	1	TIGE DE FREIN	
22	748-0415B	1	ENTRETOISE	.385 ID x .635 OD x1.54
23	783-0732	1	SUPPORT	FINISH:SIEHE ZG:
24	783-0773A	1	PEDALE DE FREIN	783-0773
25	783-1335B	1	CONSOLE DE DIRECTION	FINISH:PAINT

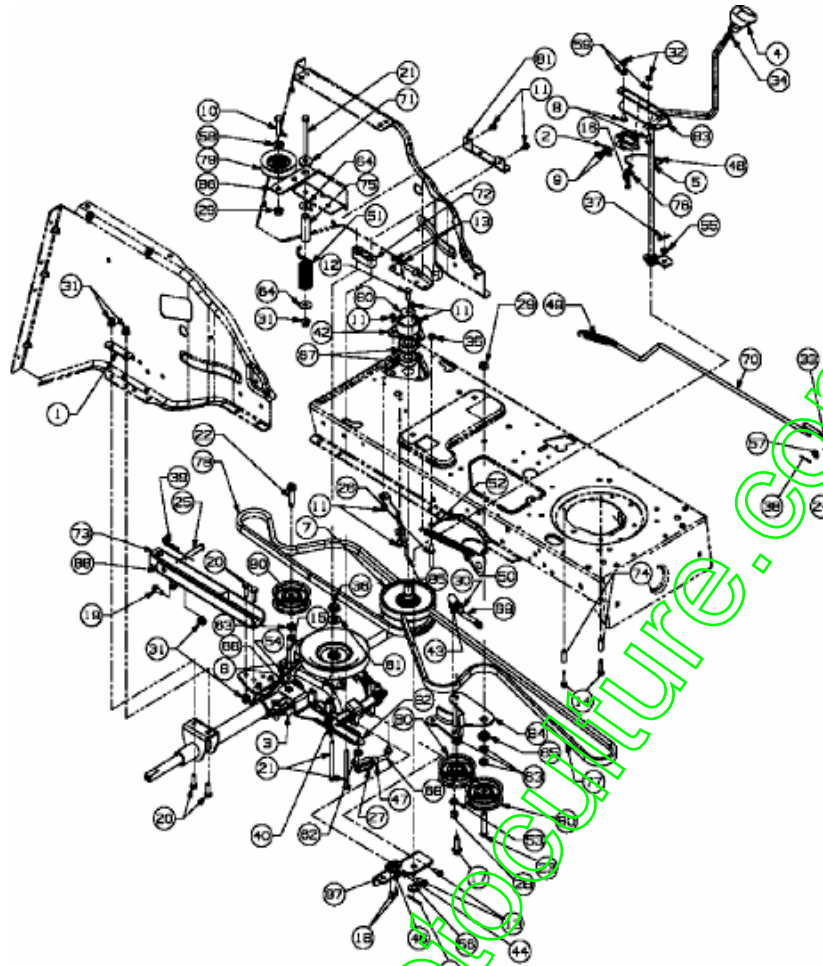


E3-02035A-01

www.emc-motoculture.com

Position	Numéro de lapièce	#	Appellation I	Appellation II
1	726-3046	12	CLIP DE FIXATION:.250 DIA	FINISH:KUNSTSTOFF SCHWARZ
2	735-04015	1	REVÊTEMENT DE MARCHEPIED	FINISH:KUNSTSTOFF SCHWARZ
3	735-04016	1	REVTEMENT DE MARCHEPIED	FINISH:KUNSTSTOFF SCHWARZ

www.emc-motoculture.com



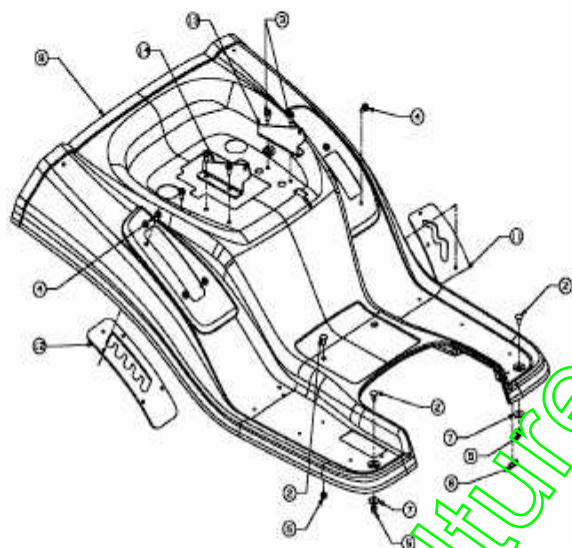
E3-02037A-01

Position	Numéro de pièce	#	Appellation I	Appellation II
1	17840	1	SUPPORT	FINISH:17840-0637
2	17962	1	PLAQUE DE SUPP. P. COMMUTATEUR	FINISH:WIE GESTANZT
3	618-04065A	1	TRANSMISSION AUTODRIVE VISION	E-TEIL-SET / s. XETT
4	631-0009A	1	POIGNEE	FARBE:KUNSTSTOFF SCHWARZ
5	647-04013	1	LEVIER INVERSEUR DECK N-G	647-04013
6	656-0002	1	POULIE DE PONT	INNENVERZAHNUNG:VERZINKT
7	656-0059A	1	POULIE VARIATEUR	VARIO-FAHRANTRIEB 956-0059A
8	710-0134	2	VIS ; TATE PLATE	FINISH:MTD STD 701-01000
9	710-0224	2	VIS PARK:#10-16:0.500:HXINDWSH	FINISH:MTD STD 701-01002
10	710-0344	1	VIS HEX.:3/8-16:1.50:GR5:SPEC	FINISH:701-01000
11	710-0599	7	VIS ; SIX PANS CREUX	MTD SPEC-701-01002 or 101617
12	710-0627	1	VIS HEX. 5/16-24:750 GR5:LOCK	FINISH:MTD STD 701-01000
13	710-0642	4	VIS1/4-20:0.750	MTD SPEC-701-01002 910-0642
14	710-0809	2	VIS HEX. TT:1/4-20:1.250:HXIND	FINISH:MTD STD 701-01002
15	710-1206	1	VIS HEX. TT:1/4-20:2.375	FINISH:MTD SPEC-701-01002
16	710-1237	1	VIS HEX.:T:#10-32:0.625:	FINISH:MTD STD 701-01002
17	710-1315A	1	TAPTITE-SCHRAUBE 3/8-16x1.25LG	
18	710-1388	2	VIS TIN BZ 4,8x13 D1 7981	MTD SPEC-100015 22.6417.44
19	710-1681	1	VIS ; SIX PANS CREUX	MTD SPEC-100015 21.1441.70
20	710-1682	4	VIS	FINISH:SPEC-100015 21.1441.72
21	710-1686	3	VIS	FINISH:ZN 5 GL 21.1443.85
22	710-1858A	1	VIS	FINISH:MTD SPEC 701-01002
23	710-3144	1	VIS HEX.: 3/8-16:2.00:GR5:STD	FINISH:STD 701-01000 910-3144
24	711-0677	1	FUSEAU D'UCROU - EX 711-0611	FINISH:GELBVERZINKT SIEHE ZG.
25	711-0679A	1	GOUJON ; ÜPINGLER	FINISH:SIEHE ZG.
26	711-0747	1	GUIDE COURROIE	FINISH:SIEHE ZG.
27	711-1407	1	TATE DE FOURCHE ZN5GL CB DIN71	Zn5glcB 9S20K 28.6218.17
28	712-0241	1	ÜCROU HEX.: 3/8-24:GR5	FINISH:MTD STD 701-01000
29	712-0431	2	ÜCROU STOP 3/8-16:GRF	FINISH:MTD SPEC-100015
30	712-0711	1	ÜCROU HEXAGONAL	MTD SPEC-100015 912-0711
31	712-0714	8	ÜCROU	FINISH:MTD SPEC-100015
32	712-3006	2	ÜCROU HEXAGONAL	FINISH:PHOS AND OIL
33	712-3007	1	ÜCROU HEX. 5/16-18 GR5	FINISH:MTD STD 701-01000
34	712-3008	1	ÜCROU HEXAGONAL	FINISH:MTD STD 701-01000
35	712-3027	1	ÜCROU HEXAGONALE 1/4-20:GRF	FINISH:MTD STD 701-01000
36	712-3035	1	ÜCROU HEXAGONAL	FINISH:STD 701-01000 912-3035
37	714-0104	1	GOUPILLE	FINISH:PHOS AND OIL
38	714-0111	1	GOUPILLE FENDUE 3/32:1.0"	FINISH:MTD SPEC-100015
39	714-0147	1	GOUPILLE ; RESSORT:125 X 1.75	FINISH:SIEHE ZG.
40	714-0209	1	GOUPILLE FENDUE	FINISH:GELBVERZINKT 914-0209

Position	Numéro de pièce	#	Appellation I	Appellation II
41	714-0470	1	EPINGLE EX AF-43010	FINISH:SPEC-100015 470 32 32
42	718-04012	1	CAGE DE PALIER	FINISH:ROSTSCHUTZ
43	723-3018	1	ROTULE DE DIRECTION 3/8-24	FINISH:N/A
44	725-1773	1	AGRAFE DE SECURITE	FINISH:SIEHE ZG.
46	726-0320	1	PLAQUE D'ISOLATION	FINISH:NATUR ODER SCHWARZ
47	726-0457	1	BOULON: M8-32 DIN 71752	9S20K 25.9425.12
48	732-0525	1	RESSORT DE RAPPEL LEVIER	FINISH:PRE-GALVANIZED
49	732-0716	1	RESSORT &&&	732-0716
50	732-0963	1	RESSORT	SPEC 701-01006 OR 701-01000
51	732-1030	1	RESSORT	20MM ID X 71MM LG
52	736-0142	1	RONDELLE PLATE 1/4X.500X .063	FINISH:701-01000
53	736-0169	1	BAGUE ÜLASTIQUE	FINISH:MTD SPEC-100016
54	736-0176	1	RONDELLE PLATE .25x.93X.125"	FINISH:MTD SPEC-100015
55	736-0204	1	RONDELLE .344 X 62 X.03	FINISH:MTD STD 701-01000
56	736-0272	1	RONDELLE .510x1.00X.060	FINISH:MTD-SPEC 101616
57	736-0275	1	RONDELLE	FINISH:MTD STD 701-01000
58	736-0300	1	RONDELLE	FINISH:MTD SPEC-100015
59	736-0329	2	RONDELLE GROWER	FINISH:701-01001 24.8195.16
60	736-0362	1	RONDELLE .320ID X 1.25 OD X .0	FINISH:701-01001
61	736-0427	1	RONDELLE	FINISH:MTD STD 701-01001
62	736-3008	1	RONDELLE	FINISH:MTD SPEC-701-01000
63	736-3010	4	RONDELLE	FINISH:MTD STD 701-01001
64	736-3078	2	RONDELLE .344 x 1.00 x .063:HT	FINISH:701-01001
65	738-0372B	1	RONDELLE EPAULEE	FINISH:GEÖLT
66	738-04029	1	RONDELLE EPAULEE	FINISH:GEÖLT
67	741-0600	2	ROULEMENT , BILLES	741-0600/941-0600
68	747-04167	1	TIGE COUDEE	
69	747-1127	1	TIGE D AJUSTEMENT	747-1127
70	747-1298B	1	TIGE DE FREIN DECK N-G	FINISH:GELBVERZINKT,SIEHE ZG
71	748-0331	1	ENTRETOISE	FINISH:GEÖLT
72	748-0334	1	ENTRETOISE	FINISH:GEÖLT
73	749-04013	1	TUYAU DISPOSITIF D'ATTELAGE	30mm x 30mm x 216 LG:LACKIERT
74	750-0566A	2	ENTRETOISE	FINISH:VERZINKT SIEHE ZG.
75	750-1311	1	ENTRETOISE	FINISH: SIEHE ZG.
76	751B221535	1	FIXATION CABLE BOWDEN	751B221535
77	754-0626	1	COURROIE MOTEUR/VARIATEUR	POLY
78	754-0629	1	COURROIE VARIATEUR/BOITE	POLY
79	756-0236	1	GALET TENDEUR	SCHWARZ LACKIERT ODER VERZINKT
80	756-3054A	3	POULIE TENDEUR	FINISH:VERZINKT SPEC-100015
81	783-04051	1	783-04051-RG	500er TRANSMATIC
82	783-04161	1	SUPPORT	FINISH:GLANZVERZINKT,SIEHE ZG.
83	783-04162A	1	SUPPORT	GELBVERZINKT

Position	Numéro de lapièce	#	Appellation I	Appellation II
84	783-04442	1	SPANNROLLENHALTER:CENTER DBL	FINISH:783-04442-Z
85	783-04483	1	SUPPORT	PAINT
86	783-1323	1	DRIVE PULLEY HOLDER	
87	783-1362A	1	SUPPORT	
88	783-1369	1	GLISSIÈRE	FINISH:LACKIERT *

www.emc-motoculture.com



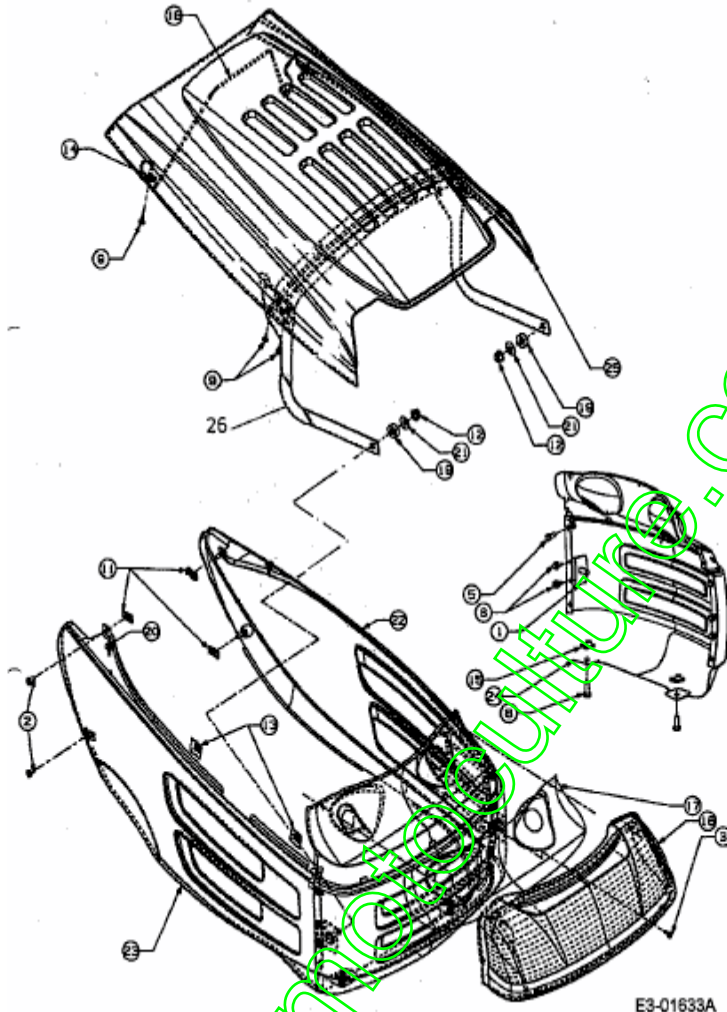
E3-02052A-01

www.emc-motoculture.com

Position	Numéro de pièce	#	Appellation I	Appellation II
2	710-0260A	4	VIS j T ^{TE} PL. 5/16-18:.62 GR5	FINISH:701-01000
3	710-0726	6	VIS 5/16-12:0.750:HXINDWS	FINISH:MTD STD 701-01002
4	710-1611B	7	VIS:TT:5/16-18:0.750:PANTRXI	FINISH:MTD SPEC-100015
5	712-0429	4	ÜCROU	FINISH:701-01000
6	731-0511	1	BORDURE DE PROTECTION	FINISH:SCHWARZ, SIEHE ZG.
7	736-3078	2	RONDELLE .344 x 1.00 x .063:HT	FINISH:701-01001
9	783-04152	1	JUPE YM-JAUNE	FINISH:PAINT F564.035.00
11	783-04397	1	SCHALKULISSE:500 MR	FINISH:BLAU CHROMATIERT *
12	783-04473	1	450 VERZINKT	450:VERZINKT
13	783-1496	1	SUPPORT DE SIEGE GAUCHE	FINISH:LACKIERT
14	783-1500	1	SUPPORT DE SIEGE DROIT	FINISH:LACKIERT

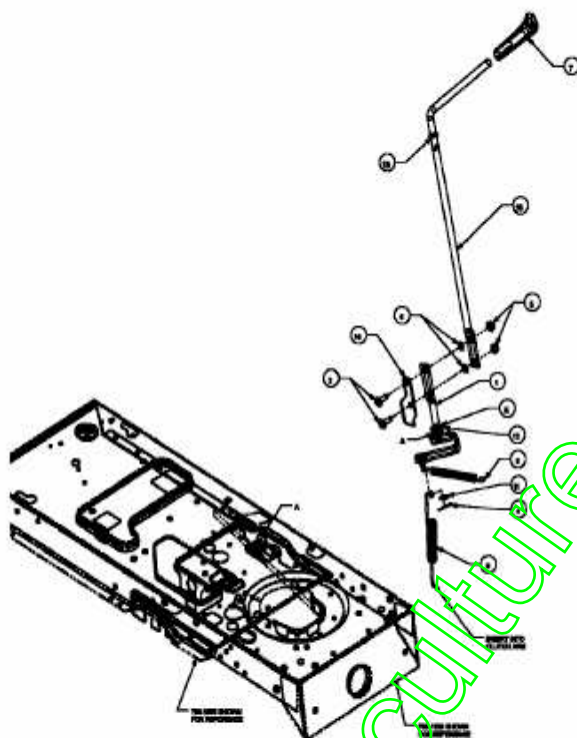
www.emc-motoculture.com

500er Serie Hood, Grill 8-Style w/Latch



E3-01633A

Position	Numéro de lapièce	#	Appellation I	Appellation II
1	683-0195	2	SUPPORT CALANDRE STL 8	SCHWEISSTEIL:FINISH:683- 0195-Z
2	710-0286	2	VIS	FINISH:701-01000
3	710-0456	1	VIS	FINISH:701-01002
5	710-0751	2	VIS HEX.: 1/4- 20:.620:GR5:STD	FINISH:701-01000
6	710-0896	4	VIS HEX.:1/4-14:0,625	FINISH:MTD STD 701-01002
7	710-0924	2	VIS EN T ^{te} PLATE 1/4- 20X;75"	FINISH:MTD STD 701-01000
8	710-1681	2	VIS ; SIX PANS CREUX	MTD SPEC-100015 21.1441.70
9	710-1760	6	VIS	PHOS & OIL (ähnlich 710- 0779A)
10	712-0271	2	ECROU 1/4-20"+ DISQUE DENTÜ	FINISH:MTD STD 701-010015
11	712-0292	4	ÜCROU ; CAGE 1/4-20	FINISH:PHOS & OIL
12	712-0431	2	ÜCROU STOP 3/8-16:GRF	FINISH:MTD SPEC-100015
13	726-0359	2	PLAQUE ISOLANT	A4M (PB-NR.) 000.70.264
14	726-0362	2	ECROU	000.06.044
15	726-0365	2	ÜCROU ; CAGE	BESTELL-Nr.BM 53313 000.02.520
16	731-1854A	1	BANDEAU DE PHARE 8 STYLE	FINISH:KLAR (DÖ)
17	731-2140	1	REFLECTEUR LUMIÈRE	FINISH:
18	732-0886	1	SUPPORT ETRIER CAPOT STL 8	GESCHWÄRZT ODER PHOSPHATIERT
19	735-0126	2	RONDELLE CAOUTCHOUC	33X87X.32
20	735-0199A	2	BOUCHON EN CAOUTCH.:.62ODx.22	FINISH:SCHWARZ 935- 0199A
21	736-0105	2	RONDELLE CONIQUE	FINISH:MTD SPEC-100016
22	783-0475A	1	TOLE LATERALE GAUCHE	
23	783-0476B	1	TOLE LATERALE DROITE	
24	783-0477A	1	GRILLE 8 STYLE	FINISH:LACKIERT
25	783-0478A	1	CAPOT STYLE 8	783-0478A-0638
26	683-0220A	1	SCHWEISSTEIL:FINISH LACKIERT	SCHWEISSTEIL:FINISH LACKIERT

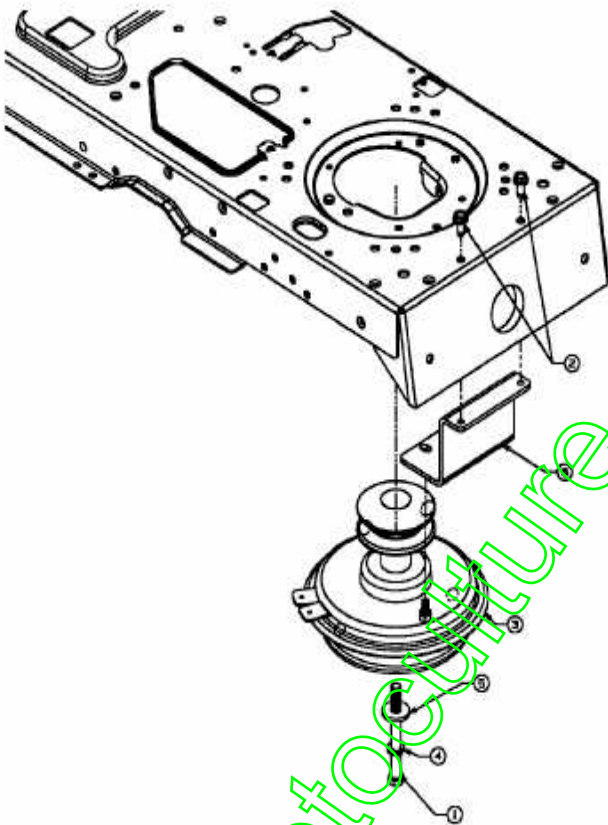


E3-02062A-01

www.emc-motoculture.com

Position	Numéro de pièce	#	Appellation I	Appellation II
1	647-0066	1	LEVIER PTO MAN. 500	500er RIDER
2	710-0276	2	VIS à TÊTE PLATE: 5/16-18:1.00	FINISH:701-01000
3	712-3004A	2	ÛCROU HEX.: 5/16-18:GR5:SD:LK	FINISH:701-01000
4	714-0111	1	GOUPILLE FENDUE 3/32:1.0"	FINISH:MTD SPEC-100015
5	716-0104	1	CIRCLIPS:.500 DIA ARBRE	FINISH:ÖL BENETZT
6	726-0201	2	RONDELLE .3125 ID	FINISH:SPEC-101617
7	731-2111A	1	POIGNEE PTO	SCHWARZ Aufkl. 777120544
8	732-04000	1	ZUGFEDER .75 OD X 10.6 LG	
9	732-1165	1	FINISH:PHOS & OIL	FINISH:PHOS & OIL
10	736-0108	1	RONDELLE	FINISH:701-01000
11	736-0314	1	RONDELLE	FINISH:MTD STD 701-01001
12	741-0708	1	BAGUE	GESCHLITZT
13	747-1112D	1	LEVIER PLATEAU PTO MANUEL.	FINISH:SIEHE ZG.
14	783-1497	1	PATTE DE RACCORDEMENT	EINRÜCKEN/STOP

www.emc-motoculture.com

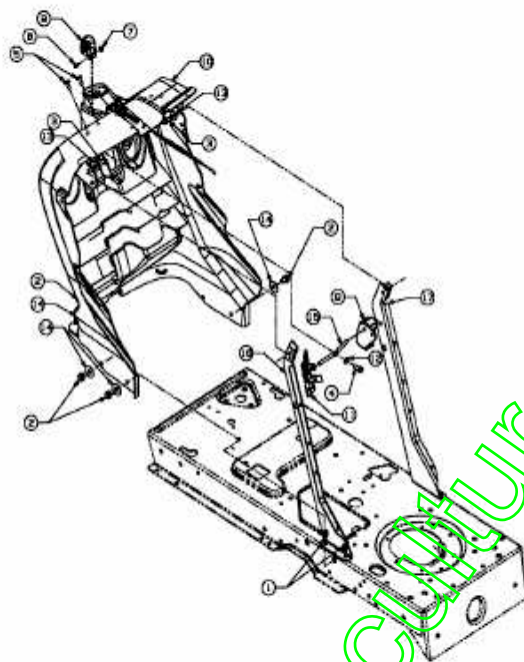


E3-02063A-01

www.emc-motoculture.com

Position	Numéro de pièce	#	Appellation I	Appellation II
1	710-04002	1	VIS HEX. 7/16-20:4.50:GR5:STD	FINISH:MTD STD 701-01000
2	710-1260A	2	VIS TT:5/16-18:.750 HXINDWSH	LAGERGEH.MESSERWELLE:701-01002
3	717-1787A	1	P.T.O	KUGELLAGER 26.1026.05
4	736-0171	1	RONDELLE GROWER	FINISH:MTD STD 701-01001
5	736-0322	1	RONDELLE .450 X 1.250 X .164	FINISH:701-01001 936-0322
6	783-04000A	1	SUPPORT:STOP:EMBAYAGE	SCHWARZ LACKIERT

www.emc-motoculture.com

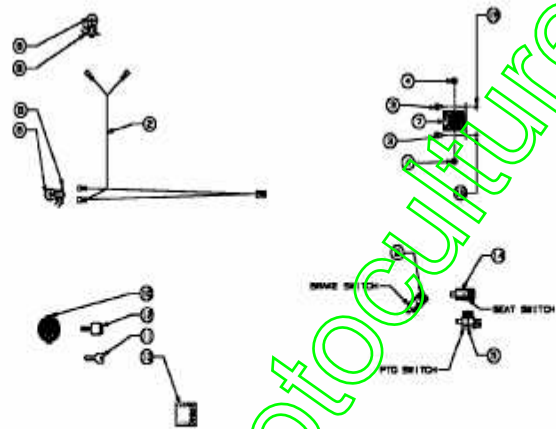
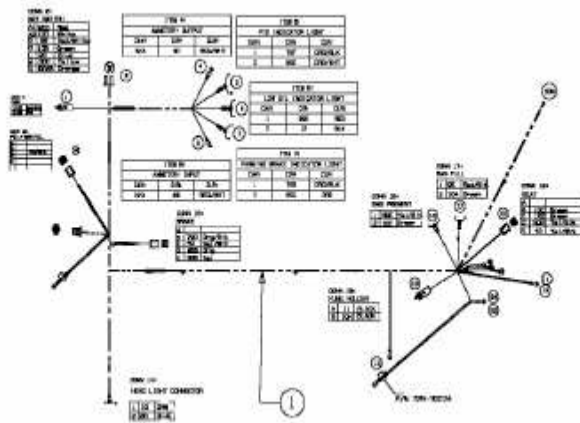


E3-02021A-01

www.emc-motoculture.com

Position	Numéro de pièce	#	Appellation I	Appellation II
1	710-0599	4	VIS ; SIX PANS CREUX	MTD SPEC-701-01002 or 101617
2	710-0604A	5	VIS 5/16-18:0.625	FINISH:MTD SPEC-701-01002
3	710-0642	2	VIS1/4-20:0.750	MTD SPEC-701-01002 910-0642
4	710-0895	1	VIS ; SIX PANS CREUX	FINISH:MTD STD 701-01002
5	710-1017	2	VIS	FINISH:MTD SPEC-100016
6	710-3217	1	VIS	FINISH:701-01000 TRUSPHI
7	712-0142	1	ÜCROU HEX.:#8-32:GRA	FINISH:MTD STD 701-01000
8	731-04217	1	CONSOLE DE LEVIER DE FREIN	W/O CRUISE
9	731-1857	1	POIGNÜE	FINISH:KUNSTSTOFF SCHWARZ
10	731-2122C	1	TABEAU DE BORD	500er MIT MAN-PTO / E-TEIL- SET
11	731-2228	1	COUVERCLE DE PROT. 8/9 STYLE	FARBE SCHWARZ
12	736-0142	1	RONDELLE PLATE 1/4X.500X .063	FINISH:701-01000
13	736-0270	2	RONDELLE GROWER	FINISH:MTD SPEC 701-01001
14	736-3078	5	RONDELLE .344 x 1.00 x .063:HT	FINISH:701-01001
15	747-1196	1	TIGE SUPPORT	CRUISE/BREMSE:FINISH:SIEHE ZG.
16	783-04285	1	ARMATURES DE SOUTIENT DROIT	BRETT: 500 PAINT
17	783-04323	1	ARMATURES DE SOUTIENT GAUCHE	BRETT: 500 PAINT

www.emc-motoculture.com

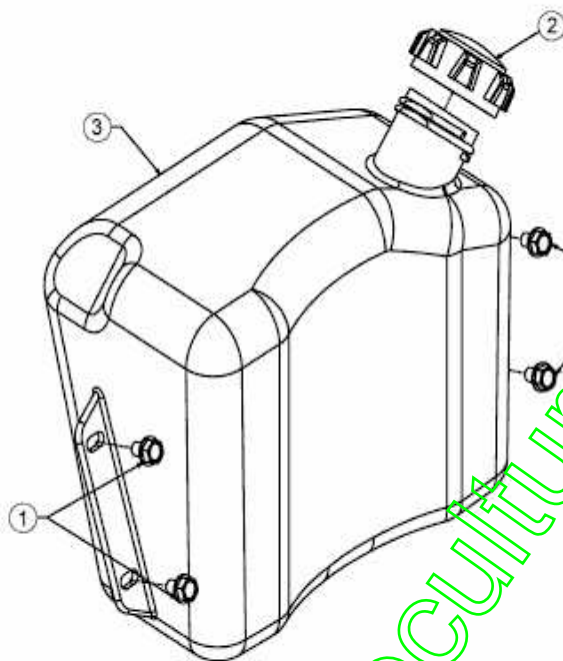


E3-02019A-01

www.emc-motoculture.com

Position	Numéro de pièce	#	Appellation I	Appellation II
1	629-04021	1	FAISCEAU COMPLET	W/MON
2	629-0469B	1	FAISCEAU DE PHARE	
3	710-0599	2	VIS ; SIX PANS CREUX	MTD SPEC-701-01002 or 101617
4	712-0271	2	ECROU 1/4-20"+ DISQUE DENTÜ	FINISH:MTD STD 701-010015
5	725-04038	1	SECURITE D EMBRAYAGE	NO/NC/NC:KLICKMONTAGE
6	725-0963	2	AMPOULE ÜLECTRIQUE	#1156
7	725-1426	1	RELAIS DE DEMARRAGE SOLENOID	725-1426 Mutter 712-0271
8	725-1649	2	DOUILLE DE LAMPE: 1/4 ROTATION	GRAU KUNSTSTOFF
9	725-1657A	1	SECURITE D'EMBRAYAGE	Sich.Möhwerk+Kuppl. GRAU
10	725-1741	1	CONTACTEUR A CLE	FINISH: 925-1741
11	725-1744	1	CLÜ DE CONTACT:DELTA	725-1744
12	725-1745	1	CLÜ DE CONTACT	DELTA MIT PLASTIK
13	725-1758	1	INDICATEUR AVEC AMPÈREMÈTRE	MIT AMMETER
14	725-2013	1	SECURITE DE SIEGE	FINISH GRAU
15	736-0222	2	RONDELLE	FINISH:MTD STD 701-01001

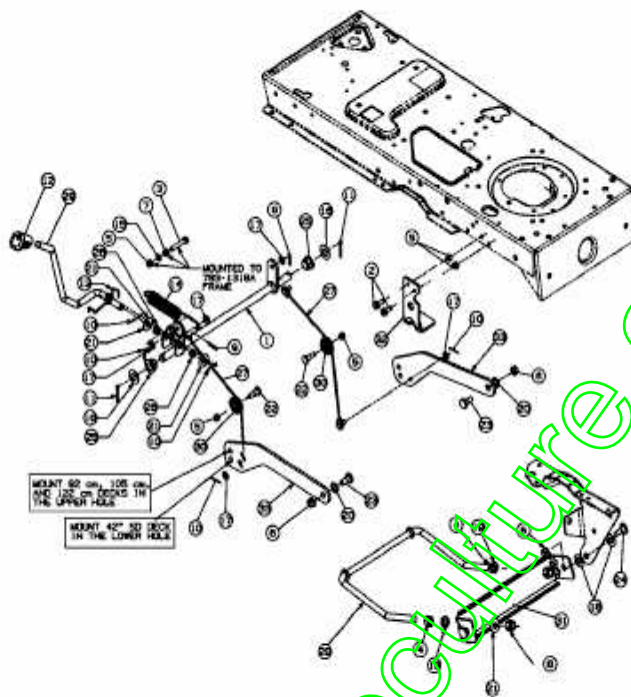
www.emc-motoculture.com



E3-02020A-01

Position	Numéro de lapièce	#	Appellation I	Appellation II
1	710-0604A	4	VIS 5/16-18:0.625	FINISH:MTD SPEC-701-01002
2	751-0603	1	BOUCHON RESERVOIR ESSENCE	FINISH:SCHWARZ
3	751-0818D	1	RESERVOIR ESSENCE: 2.0 GAL	FINISH:NATUR SIEHE ZG.

www.emc-motoculture.com



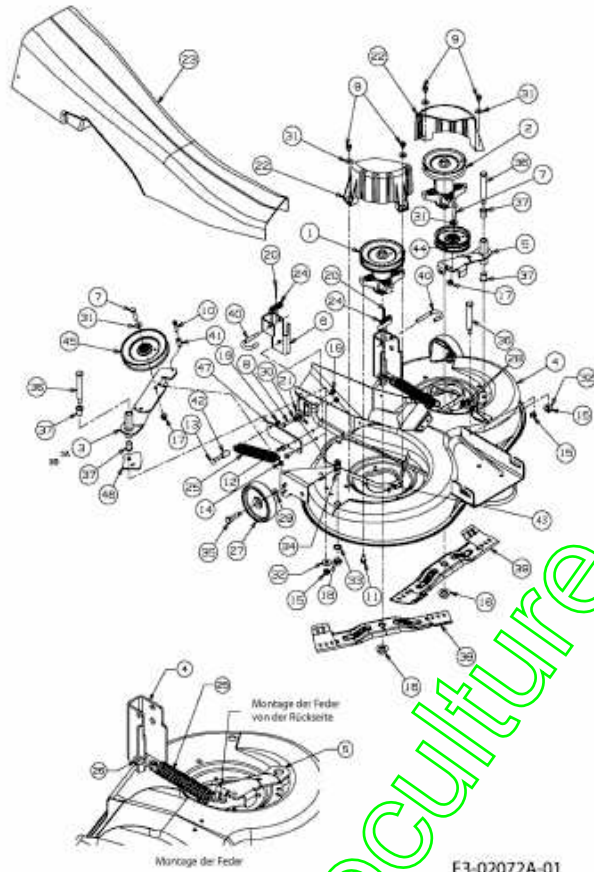
E3-02075A-01

www.emc-motoculture.com

Position	Numéro de lapièce	#	Appellation I	Appellation II
1	683-0587637	1	ARBRE DE RELEVAGE	683-0587
2	710-0604A	2	VIS 5/16-18:0.625	FINISH:MTD SPEC-701-01002
3	710-3180	1	VIS HEX. 5/16-18:1.75:GR5:STD	SPEC-701-01000 or SPEC 101616
4	712-0206	2	ÜCROU HEX. 1/2-13:GR.5	FINISH:MTD STD 701-01000
5	712-0429	5	ÜCROU	FINISH:701-01000
6	712-0431	4	ÜCROU STOP 3/8-16:GRF	FINISH:MTD SPEC-100015
7	712-3010	1	ÜCROU HEX. 5/16-18:GR5	FINISH:MTD SPEC 701-01000
8	712-3083	2	ÜCROU HEX. 1/2-13:GRB:NYLON	FINISH:MTD STD 701-01000
9	714-0104	2	GOUPILLE	FINISH:PHOS AND OIL
10	714-0111	5	GOUPILLE FENDUE 3/32:1.0"	FINISH:MTD SPEC-100015
11	714-0162	2	GOUPILLE FENDUE 5/32:1.25	FINISH:MTD SPEC-100015
12	720-0311	1	POIGNÜE: 1/2	FARBE:SCHWARZ VINYL
13	732-04004	1	RESSORT LEVIER DÜCLENCH. BASS.	500er RIDER
14	732-0971	1	RESSORT	FINISH:OIL & PHOSPHATE
15	736-0119	1	RONDELLE	FINISH:MTD STD 701-01001
16	736-0187	2	RONDELLE .64X1.24X.06	FINISH:MTD SPEC 701-01001
17	736-0275	5	RONDELLE	FINISH:MTD STD 701-01000
18	736-0414	4	RONDELLE TÜFLON	FINISH:WEISS: 936-0414
19	736-0921	2	RONDELLE GROWER	FINISH:MTD STD 701-01001
20	736-3068	2	RONDELLE .531 x.875 x.060	FINISH:MTD STD 701-01000
21	736-3084	4	RONDELLE	FINISH:MTD STD 701-01001
22	738-0138A	2	VIS EPAULEE	FINISH:MTD STD 701-01006
23	738-0143	2	VIS EPAULEE	FINISH:MTD SPEC 100015 (EU)
24	738-0507B	2	VIS	FINISH:PHOS & OIL
25	741-0225	2	BAGUE HEXAGONALE TEFLON 6 PANS	FINISH:KUNSTSTOFF SCHWARZ
26	741-0715	2	BAGUE	741-0715
27	746-1139	2	CABLE DE RELEVAGE 14.06 LG	FINISH:SIEHE ZG.
28	747-1130B	1	ETRIER-RELEVAGE AVANT	5" DIA MTD SPEC 701-01006

Position	Numéro de lapièce	#	Appellation I	Appellation II
29	747-1280	1	LEVIER DE RELEVAGE	FINISH:GLANZVERZINKT
30	756-1154	2	POULIE	FINISH:SCHWARZ
31	783- 0720C637	1	SUPPORT DE RELEVAGE	SCHWARZ
32	783-05540	1	SUPPORT	FINISH:LACKIERT
33	783- 1328A637	2	BRAS DE RELEVAGE - PLATEAU	SCHWARZ LACKIERT

www.emc-motoculture.com



www.emc-motoculture.com

Position	Numéro de pièce	#	Appellation I	Appellation II
1	618-0324A	1	PALIER DE LAME COMPLET	m. RIEMENSCHLEIBE RECHTS
2	618-0409	1	PALIER DE LAME COMPLET	618-0409/918-0409
3	683-04061637	1	PORT. DE GALET TEND. DR. E/N B	DECK 500 S / SCHWEIßTEIL
3A	683-04061650	1	PORT. DE GALET TEND. DR. E/N B	DECK 500 S / SCHWEIßTEIL
3B	683-04061665	1	PORT. DE GALET TEND. DR. E/N B	DECK 500 S / SCHWEIßTEIL
4	683-04062A	1	CARTER 92CM	SCHWEIßTEIL SCHWARZ LACKIERT
5	683-04072	1	SPANNROLLENTRÄGER VST:E-DECK	SCHWEIßTEIL:FINISH LACKIERT
6	683-0596	1	SUPPORT	683-0596-0637
7	710-0347	2	VIS HEX. 3/8-16:1.75:GR5:STD	FINISH:MTD STD 701-01000
8	710-0528	1	VIS HEX. 5/16-18:1.25:GR5:STD	FINISH:STD 701-01000 910-0528
9	710-0607	4	VIS HEX.TT5/16-18:.500HXINDWSh	FINISH:MTD SPEC-701-01002
10	710-0778	1	VIS HEX. TT:1/4-20:1.500	FINISH:MTD SPEC-701-01002
11	710-1260A	8	VIS TT:5/16-18:.750 HXINDWSH	LAGERGEH.MESSERWELLE:701-01002
12	710-1681	2	VIS j SIX PANS CREUX	MTD SPEC-100015 21.1441.70
13	710-1719	1	VIS j TæTE PLATE M8X50 DIN 603	MTD-SPEC-100015 22.3419.32
14	712-0181	2	ÜCROU	FINISH:MTD SPEC-100015
15	712-0290	3	ÜCROU 7/16-14	FINISH:MTD STD 701-01000
16	712-0417A	2	ÜCROU HEX. AV. FLANC 5/8-18	FINISH:MTD STD 701-01000
17	712-0431	2	ÜCROU STOP 3/8-16:GRF	FINISH:MTD SPEC-100015
18	712-0641	2	ECROU HEX. M16-1.5 DIN 936	FINISH:701-01000 24.1424.31
19	712-0692	3	ÜCROU HEXAGONAL 24.1426.18	FINISH:SPEC-100015 24.1426.18
20	714-0470	2	EPINGLE EX AF-43010	FINISH:SPEC-100015 470 32 32
21	717-1553B	1	ROUE:HAUTEUR DE COUPE.PLATEAU	
22	731-2538	2	PROTECTION COURROIE DE LAME	92CM/105CM FINISH:SCHWARZ (ZW)
23	731-2543A	1	CANAL D'ÜJECTION	SCHWARZ
24	732-0306	2	RESSORT DE PRESSION	732-0306
25	732-04099	2	RESSORT	FINISH:SIEHE ZG.
26	732-04112	1	CROCHET	FINISH:LACKIERT / 732-04112-Z
27	734-0973	2	ROULETTE DE PLATEAU	FINISH:KUNSTSTOFF SCHWARZ
28	735-0271	2	PROTEGE CAOUTCHOUC	FINISH:SCHWARZ
29	736-0105	2	RONDELLE CONIQUE	FINISH:MTD SPEC-100016
30	736-0119	1	RONDELLE	FINISH:MTD STD 701-01001
31	736-0300	6	RONDELLE	FINISH:MTD SPEC-100015
32	736-04097A	2	RONDELLE:PLATE:11.65x28.75x3mm	FINISH:MTD SPEC 701-01000
33	736-0760	2	RONDELLE 17X23.8X1.95	FINISH:MTD STD 701-01001
34	737-04003B	2	BUSE DE LAVAGE	
35	738-0373	2	VIS j ÜPAULE .496x1.525:3/8-16	FINISH:MTD STD 701-01000

Position	Numéro de pièce	#	Appellation I	Appellation II
36	738-0476	3	VIS ; ÜPAULE .625x3.50:7/16-14	PHOS & OIL ODER SPEC 101616
37	741-0591	4	BAGUE	FINISH:NATUR 941-0591
38	742-04020	1	LAME DROITE	STAR BAG
39	742-04021	1	LAME GAUCHE	STAR BAG
40	747-04116	2	TRINGLE	.375 DIA
41	750-04182	1	ENTRETOISE	FINISH:SIEHE ZG.
42	750-04195	1	DOUILLE DE DIST. Ø16xØ8x27LG	DIN 23911:ST35:FINISH 701-01000
43	754-0632	1	COURROIE VOIR 754-04075	KEVL
44	756-04049	1	POULIE DE COURROIE TRAPÜZ.	KUGELGELAGERT: SCHWARZ LACKIERT
45	756-04050	1	POULIE DE COURR. TR. Ø 6.0"DIA	KUGELGELAGERT: SCHWARZ LACKIERT
46	783-04240	1	METALLIC-ROT GEPULVERT	
47	783-04255	1	COMMANDE D'ARRET	FINISH:LACKIERT

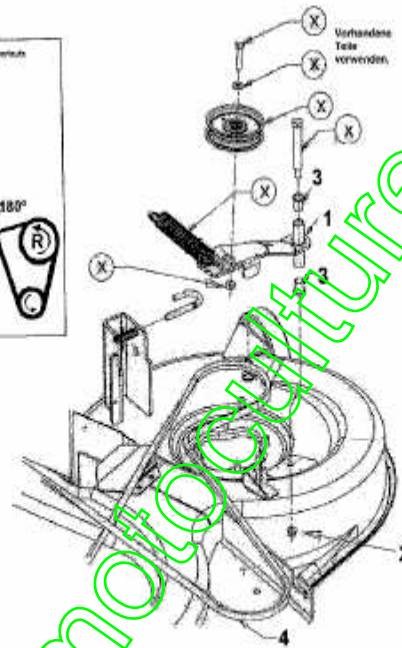
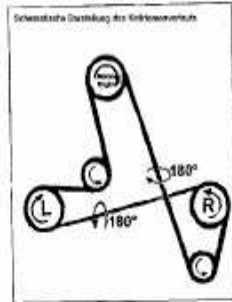
www.emc-motoculture.com

VISION Baureihe mit 92cm/36" Heckauswurf-Mähwerk

Stärkerer Keilriemen und neuer Spannarm;

Kit 753-04933

nur für Decke mit 2 Spannrollen
für Decke mit 3 Spannrollen
verwenden sonst Decke über 2 Rollen einbauen

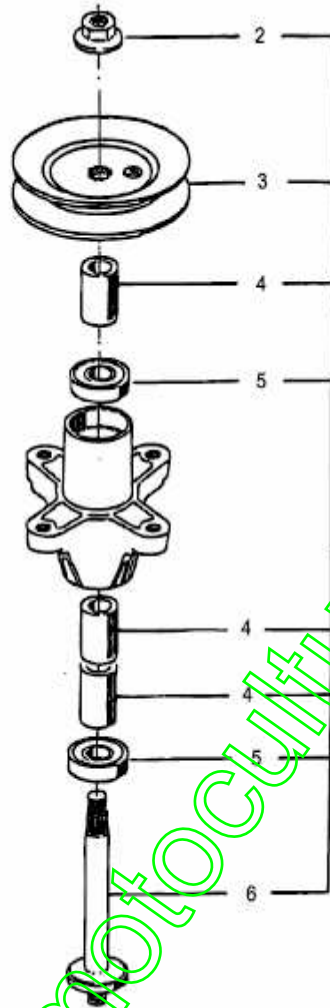


E3-02072A-02

www.emc-motoculture.com

Position	Numéro de lapièce	#	Appellation I	Appellation II	Remarque
1	683- 04072A	1	SPANNROLLENTRÄGER- LINKS E-DECK	92cm SCHWEIßTEIL PAINT	
2	712-0290	1	ÜCROU 7/16-14	FINISH:MTD STD 701-01000	
3	741-0591	2	BAGUE	FINISH:NATUR 941-0591	
4	754-04075	1	COURROIE COUPE 92CMM	754-04075	fsg

www.emc-motoculture.com

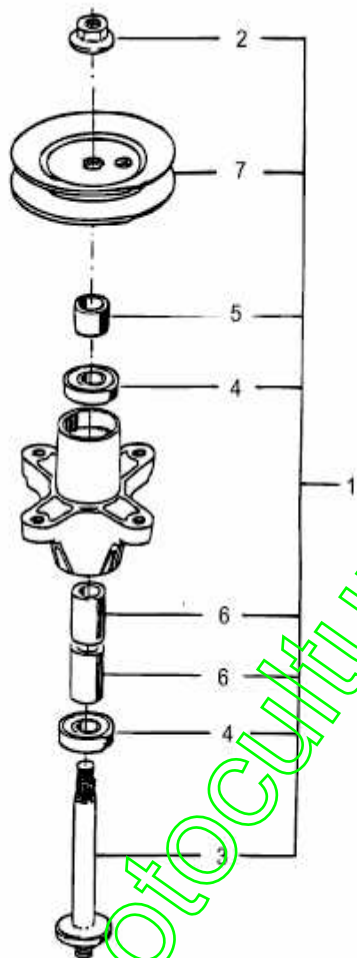


E3-01365A-01

www.emc-motoculture.com

Position	Numéro de lapièce	#	Appellation I	Appellation II
1	618-0409	1	PALIER DE LAME COMPLET	618-0409/918-0409
2	712-0417A	1	ÜCROU HEX. AV. FLANC: 5/8-18	FINISH:MTD STD 701- 01000
3	756-1171	1	POULIE DE PALIER	E-TEIL-SET
4	750-1000	3	ENTRETOISE: .80x1.10x1.330	FINISH:GEÖLT
5	741-0919	2	ROULEMENT ; BILLES	FINISH:SIEHE SPEC.
6	738-1128	1	AXE DE PALIER DE LAMES:6.58"	FINISH:GEÖLT

www.emc-motoculture.com

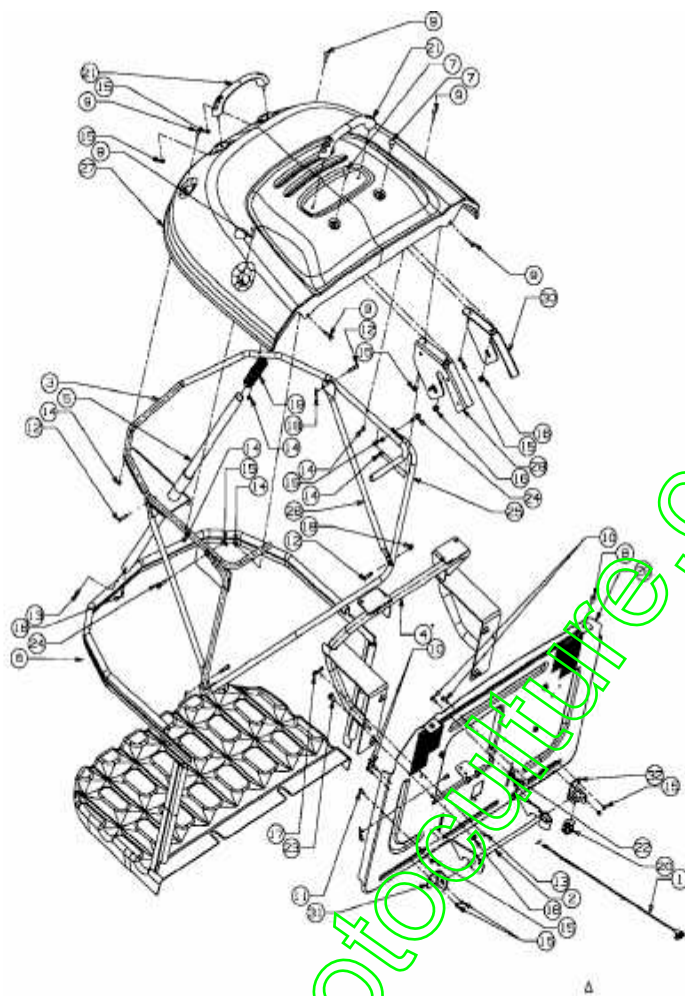


E3-01665A-01

www.emc-motoculture.com

Position	Numéro de lapièce	#	Appellation I	Appellation II
1	618-0324A	1	PALIER DE LAME COMPLET	m. RIEMENSCHIEBE RECHTS
2	712-0417A	1	ÜCROU HEX. AV. FLANC: 5/8-18	FINISH:MTD STD 701- 01000
3	738-1010	1	AXE DE PALIER DE LAME	FINISH:GEÖLT
4	741-0919	2	ROULEMENT i BILLES	FINISH:SIEHE SPEC.
5	748-0433	1	DOUILLE .820 x 1.150 x .730 LG	FINISH:GEÖLT
6	750-1000	2	ENTRETOISE:.80x1.10x1.330	FINISH:GEÖLT
7	756-1188	1	POULIE DE COURROIE TRAPÜZ.	FINISH:SIEHE ZG.

www.emc-motoculture.com



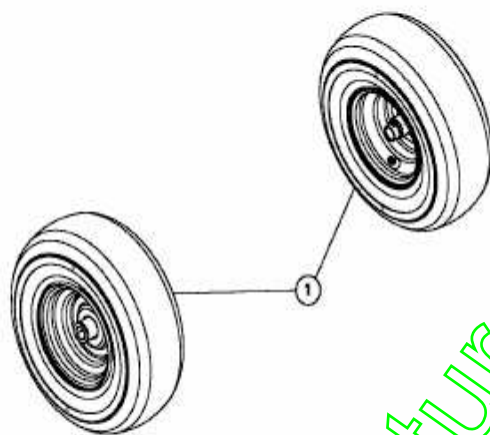
E3-02080A-01

www.emc-motoculture.com

Position	Numéro de lapièce	#	Appellation I	Appellation II
1	629-1101A	1	FAISCEAU	PRESENT
2	647-0063	1	FERMETURE AVEC LEVIER	BAG 250L/300L
3	649- 04009637	1	GRSBG 250L 500 MR SCHWEIßTEIL	GRSBG 250L 500 MR SCHWEIßTEIL
4	649- 04011637	1	GRASFANGS:250L500MR E- TEIL-SET	GRASFANGS:250L500MR E-TEIL-SET
5	649-04015	1	ROHR VOLLST:HEBEL GRSBG 500 MR	SCHWEIßTEIL
6	664-04026	1	SAC DE RÜC. D. L'HERBE CPL.	FINISH: SCHWARZ
7	710-0260A	2	VIS ; TATE PL. 5/16-18:62 GR5	FINISH:701-01000
8	710-1017	2	VIS	FINISH:MTD SPEC- 100016
9	710-1612	6	VIS ; TATE PLATE:M5x30 DIN 603	FINISH:Zn5glcB 22.3419.03
10	710-1690	4	VIS	MTD SPEC-100015 21.1441.46
11	710-1691	1	VIS ; SIX PANS CREUX	FINISH:Zn5glcB 21.1441.45
12	711-04138	4	GOUJON ; ÜPINGLER .25DIAX1.25L	FINISH:SIEHE ZG.
13	711-0701	5	GOUJON	FINISH:SIEHE ZG.
14	712-0642	6	ÜCROU DE SÜCURITÜ:M5- 0.8	FINISH:DIN 6926
15	712-0691	11	ÜCROU HEXAGONAL	MTD SPEC-100015 24.1426.14
16	712-3004A	6	ÜCROU HEX.: 5/16- 18:GR5:SD:LK	FINISH:701-01000
17	714-0145	4	GOUPILLE	FINISH:PHOS & OIL
18	714-04033	5	GOUPILLE FENDUE .072 x.92 LG	FINISH:PHOS & OIL
19	720-0204	1	POIGNEE:1.0 ID x 4.7 LG	FINISH: SCHWARZ
20	725-3167	1	COMMUTATEUR	FINISH: SCHWARZ 925- 3167
21	731-04578	2	POIGNEE AVEC VIS	FINISH: SCHWARZ
22	732-0264	1	RESSORT	FINISH: SPEC-701-01006 932-0264
23	738-0140	4	VIS ; ÜP.:.435 x.178-5/16 x.56	FINISH: VERZINKT
24	738-1183	2	VIS ; ÜPAULE:9,5mmx5mm:M6- 1x24	FINISH: VERZINKT SIEHE ZG.
25	749- 04101637	1	TUYAU:CHØSSIS:FRONT:BAG 250L	500 MR / SCHWARZ GEPULVERT
26	749-04108	2	KREUZ- VERBINDUNGSROHR:BAG 250L	FINISH:LACKIERT 500 MR
27	783-04153	1	CAPOT DE BAC	FINISH:LACKIERT

Position	Numéro de lapièce	#	Appellation I	Appellation II
28	783-04349	1	SUPPORT D'ACCROCHAGE DROIT	250L 500 MR
29	783-04378	1	TABLIER ARRIERE CHASSIS 450	500 MR SCHWARZ LACKIERT
30	783-04427	1	CONSOLE D'ACCROCHAGE GAUCHE	MR
31	783-1391	1	SCHARNIERWINKEL-RE. SPERRKLINKE	GRASFANGSACK 250L/300L
32	783-1392	1	SCHALTER BAG 250L/300L	SCHALTER BAG 250L/300L

www.emc-motoculture.com

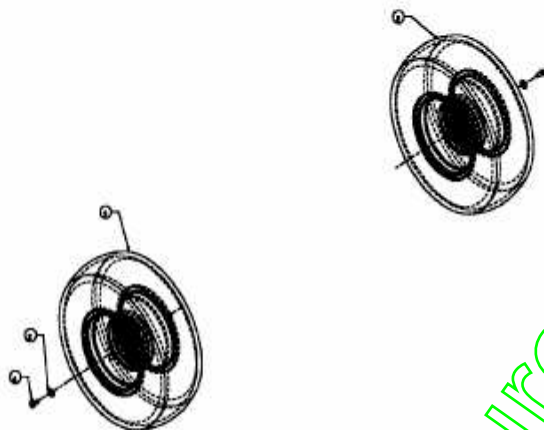


E3-02082A-01

www.emc-motoculture.com

Position	Numéro de pièce	#	Appellation I	Appellation II
1	634-04101	2	ROUE AV COMPLETE	GLEITLAGER

www.emc-motoculture.com

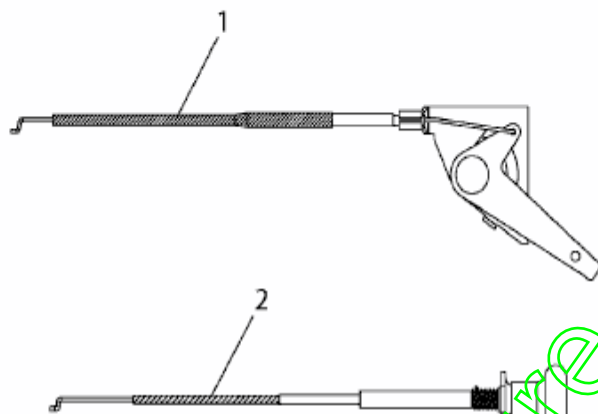


E3-02083A-018

www.emc-motoculture.com

Position	Numéro de lapièce	#	Appellation I	Appellation II
2	736-0242	2	RONDELLE CONIQUE.340X.872X.060	FINISH:MTD STD 701- 01001
3	734-0592	2	ROUE COMPL 18X6.50-8 ST	734-0592662/-G/-674/-Y/- CB/-WY
4	710-0627	2	VIS HEX. 5/16-24:..750 GR5:LOCK	FINISH:MTD STD 701- 01000

www.emc-motoculture.com

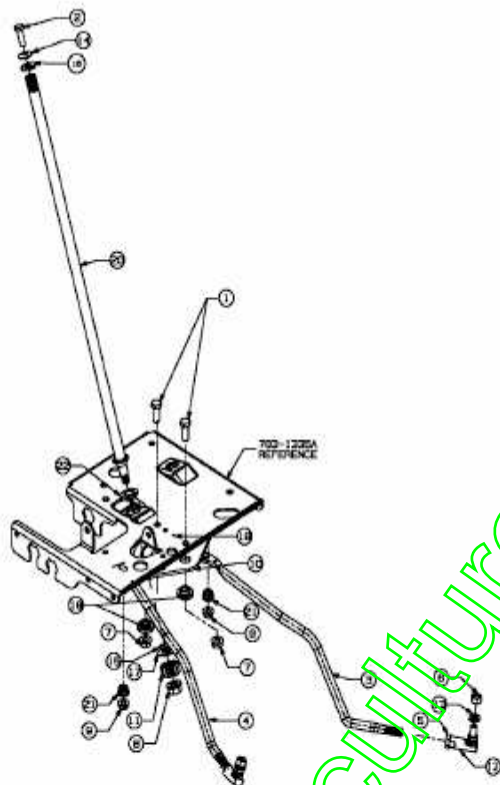


E3-02228A-01

www.emc-motoculture.com

Position	Numéro de lapièce	#	Appellation I	Appellation II
1	746-1087	1	CØBLE GAZ + SUPPORT	FINISH:
2	746-1088	1	CØBLE STARTER 23.0"LGX1.50E	EXT:MIT ZUGKNOPF

www.emc-motoculture.com



E3-02000A-01

www.emc-motoculture.com

Position	Numéro de pièce	#	Appellation I	Appellation II
1	710-0514	2	VIS HEX.:3/8-16:1.00:GR5:STD	FINISH:MTD STD 701-01000
2	710-0643	1	VIS HEX.: 5/16-18:1.00:GR5	FINISH: MTD STD 701-01000
3	711-1775A	1	TRINGLE DE REGLAGE GAUCHE	FINISH:SIEHE ZG.
4	711-1776A	1	TRINGLE DE REGLAGE DROITE	FINISH:SIEHE ZG.
5	712-0240	2	ÜCROU HEX.: 7/16-20:GR2	FINISH:MTD STD 701-01000
6	712-0241	2	ÜCROU HEX.: 3/8-24:GR5	FINISH:MTD STD 701-01000
7	712-0431	2	ÜCROU STOP 3/8-16:GRF	FINISH:MTD SPEC-100015
8	712-0459	1	ÜCROU HEX.: 7/16-20:GRB	FINISH:MTD SPEC-101616
9	712-3004A	2	ÜCROU HEX.: 5/16-18:GR5:SD:LK	FINISH:701-01000
10	717-1550E	1	SEGMENT DE DIRECTION	11/90 RATIO
11	717-1554	1	PIGNON DE DIRECTION	FINISH:GEÖLT
12	723-0448A	2	ROTULE DE DIRECTION 7/16-20	FINISH:GELB VERZINKT
13	736-0169	2	BAGUE ÜLASTIQUE	FINISH:MTD SPEC-100016
14	736-0242	1	RONDELLE CONIQUE.340X.872X.060	FINISH:MTD STD 701-01001
15	736-0770	1	RONDELLE D'AJUSTAGE DIN 988	13X19X0.3 ST
16	736-0231	1	RONDELLE 344IDX1.125 OD .12	FINISH:MTD STD 701-01000
17	736-3084	1	RONDELLE	FINISH:MTD STD 701-01001
19	738-0372B	2	RONDELLE EPAULEE	FINISH:GEÖLT
20	738-1001A	1	ARBRE DE DIRECTION	FINISH:701-01006 SIEHE ZG.
21	741-0475	2	DOUILLE PLASTIQUE: .385 ID	NATUR ODER SCHWARZ 941-0475
22	741-0656	1	BAGUE	