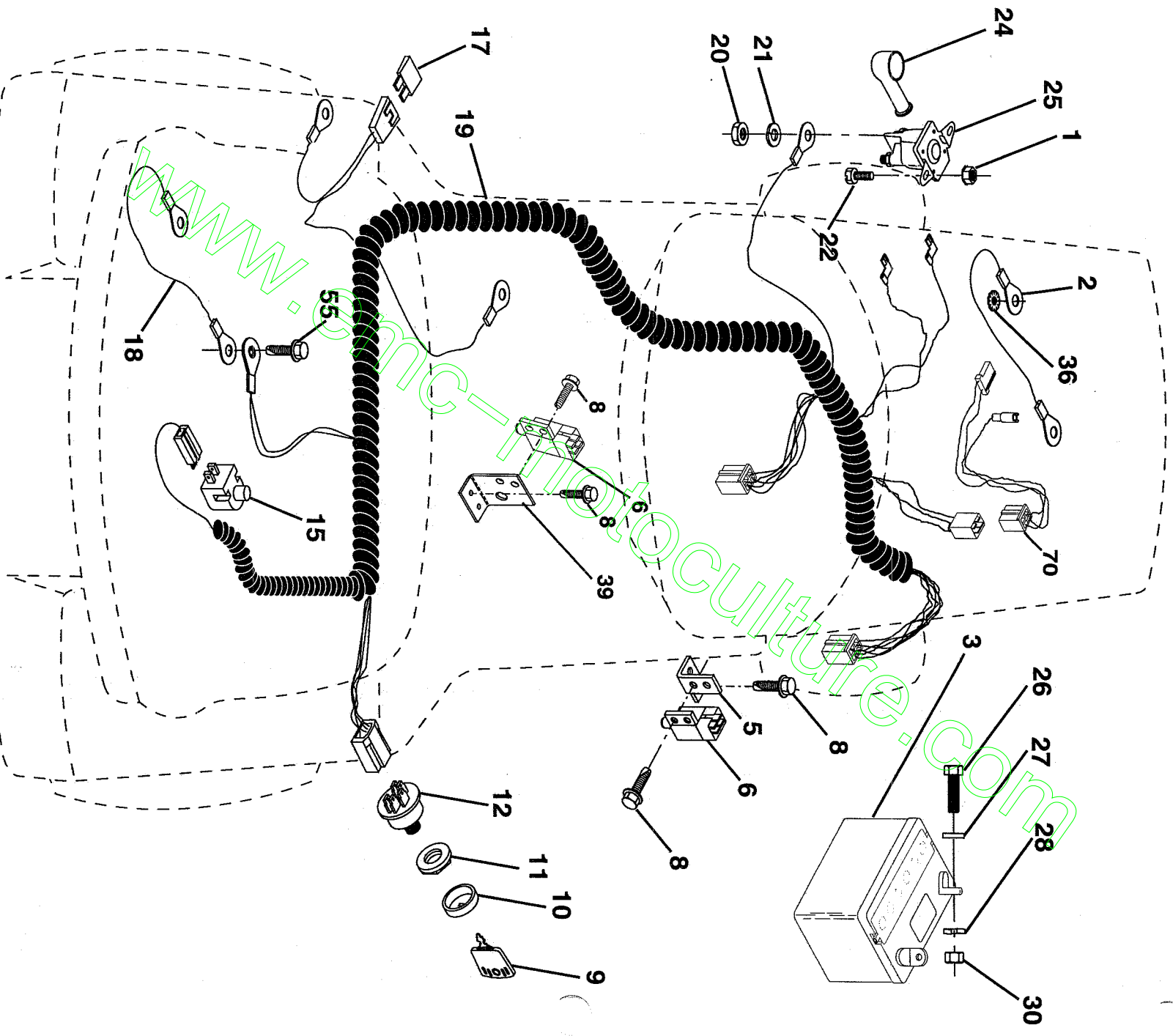


REPAIR PARTS

TRACTOR -- MODEL NUMBER LM1236D

ELECTRICAL



REPAIR PARTS

TRACTOR - - MODEL NUMBER LM1236D

ELECTRICAL

KEY NO.	PART NO.	DESCRIPTION
1	73640400	Nut, Hex, Keps 1/4-20
2	108423X	Assembly, Cable
3	144924	Battery
5	108236X	Bracket, Switch
6	109553X	Switch, Interlock, 4 Terminal
8	17021008	Screw, Hex Head, Self-Tapping #10-24 x 1/2
9	140402	Key, Molded
10	141226	Cover, Ignition Key
11	140400	Nut, Ignition
12	144921	Switch, Ignition
15	121305X	Switch, Plunger
16	73510500	Nut, Hex, Keps 5/16-18
17	108824X	Fuse
18	128353	Assembly, Cable
19	146063	Harness, Ignition
20	73350400	Nut, Hex, Jam 1/4-20
21	10090400	Washer, Lock 1/4
22	71110408	Bolt, Hex, Fin 1/4-20 UNC x 1/2 Grade 5
24	131563	Cover, Terminal
25	145673	Solenoid
26	74760412	Bolt, Hex Head 1/4-20 UNC x 3/4
27	19091016	Washer 9/32 x 5/8 x 16 Gauge
28	10040400	Washer, Lock 1/4
30	73220400	Nut, Hex, Fin. 1/4-20 UNC
36	11150400	Washer, Lock, Internal Tooth 1/4
39	141735	Bracket Switch Clutch
55	17490508	Screw, Thdrol
70	140413	Harness Engine

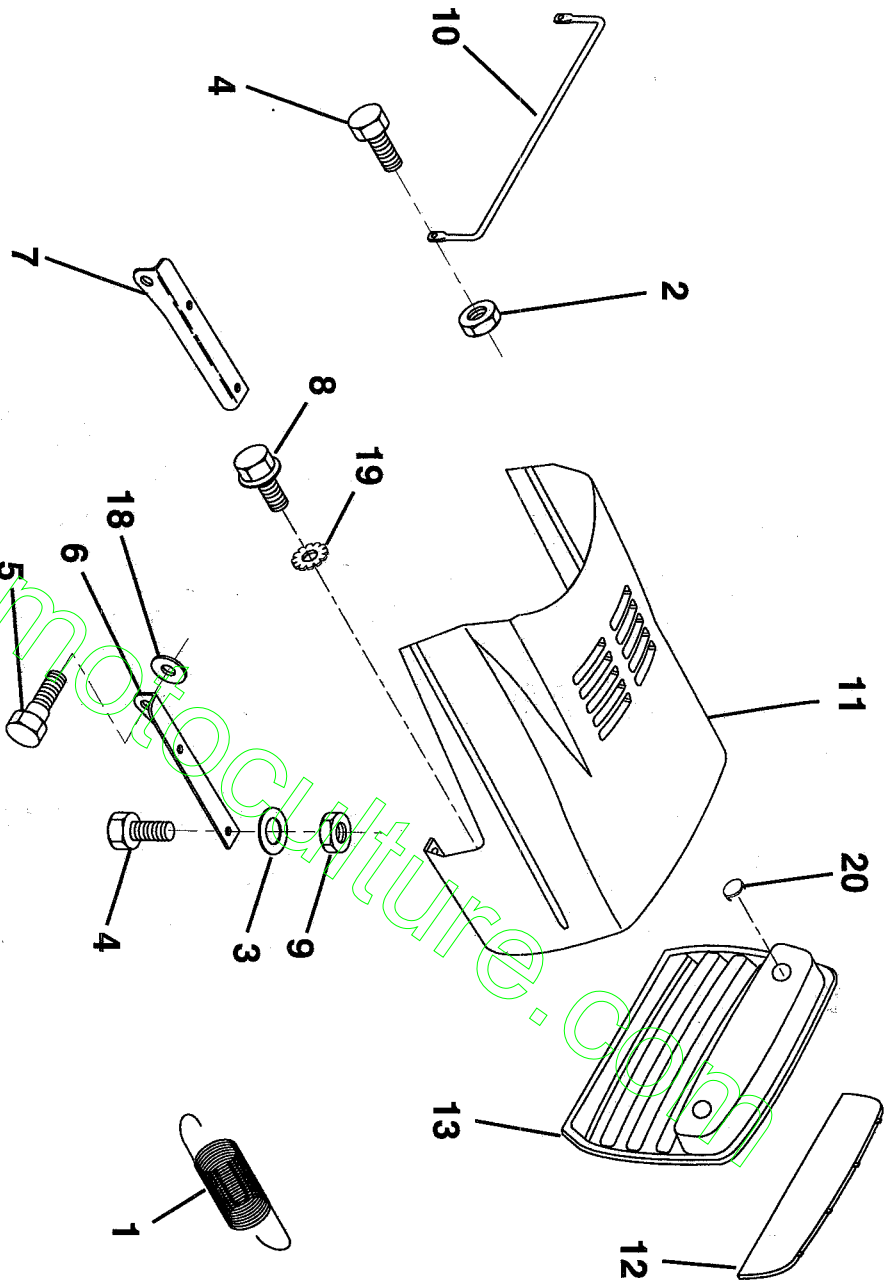
NOTE: All component dimensions given in U.S. inches
1 inch = 25.4 mm

HARDWARE SHOWN LARGER FOR EASIER IDENTIFICATION

REPAIR PARTS

TRACTOR -- MODEL NUMBER LM1236D

HOOD



KEY NO.	PART NO.	DESCRIPTION
1	124657X	Spring, Extension
2	73510400	Nut, Hex, Keys 1/4-20 UNC
3	19091416	Washer, 9/32 x 7/8 x 16 Ga.
4	74780412	Bolt, Hex, Fin 1/4-20 x 3/4 Grade 5
5	139888	Bolt, Shoulder
6	122549X	Bracket, Hood, R.H.
7	122548X	Bracket, Hood, L.H.
8	17521310	Screw, Std, Hex Hd, W/Pl, Washer
9	73800400	Nut, Lock W/Insert 1/4-20

KEY NO.	PART NO.	DESCRIPTION
10	123693X	Brace, Hood
11	132918X505	Hood
12	122035X	Lens
13	127029X	Grill
18	19111116	Washer 11/32 x 11/16 x 16 Ga.
19	11030400	Washer, Lock Ext/Int Tooth 1/4
20	131319	Plug socket

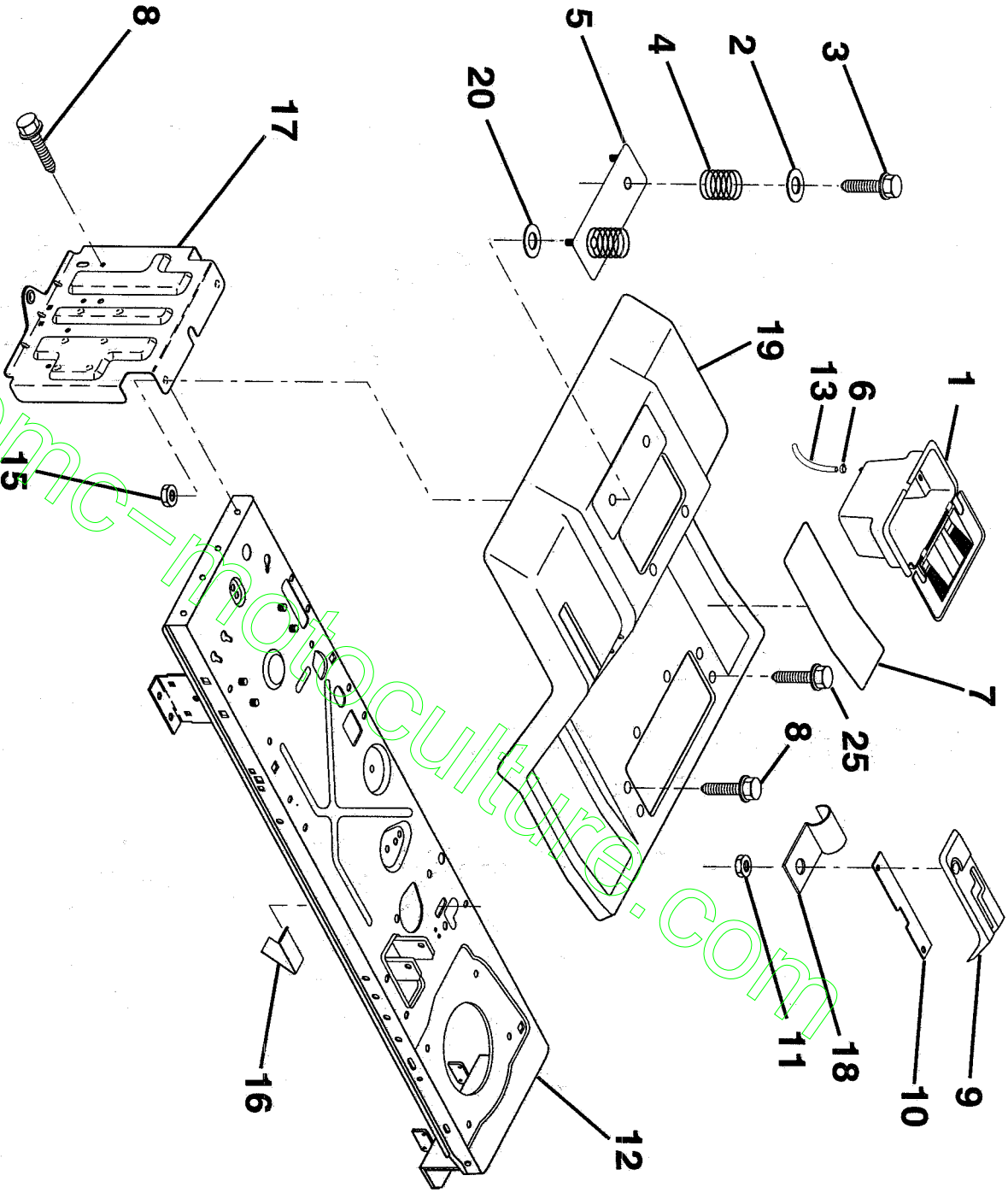
NOTE: All component dimensions given in U.S. inches.
1 inch = 25.4 mm.

HARDWARE SHOWN LARGER FOR EASIER IDENTIFICATION

REPAIR PARTS

TRACTOR -- MODEL NUMBER LM1236D

FENDER / CHASSIS



KEY NO.	PART NO.	DESCRIPTION
1	129965	Case, Battery
2	19132012	Washer, 13/32 x 1-1/4 x 12 Gauge
3	17490612	Screw, Hex Washer Head, Thd. Roll, 3/8-16 x 3/4
4	124181X	Spring, Compression, Seat
5	127115X505	Plate, Battery
6	109596X	Clamp, Hose
7	124144X	Pad, Footrest
8	17490512	Screw, Hex Washer Head, Thd. Roll, 5/16-18 x 3/4
9	126994X	Console, Shift Control
10	139783	Bar, Shift Lock

KEY NO.	PART NO.	DESCRIPTION
11	124346X	Nut, Self-Threading 3/16
12	145190	Chassis Assembly, Weldment
13	109238X	Tube, Battery Drain
15	73640400	Nut, Hex, Keps 1/4-20
16	141736	Switch, Actuator
17	140782	Drawbar
18	126470X	Clip, Insulated
19	140955X505	Fender/Footrest
20	19091413	Washer 9/32 x 7/8 x 13 Gauge
25	17190516	Scr.-Hx Wsh Thd Roll 5/16 - 18 x 1T

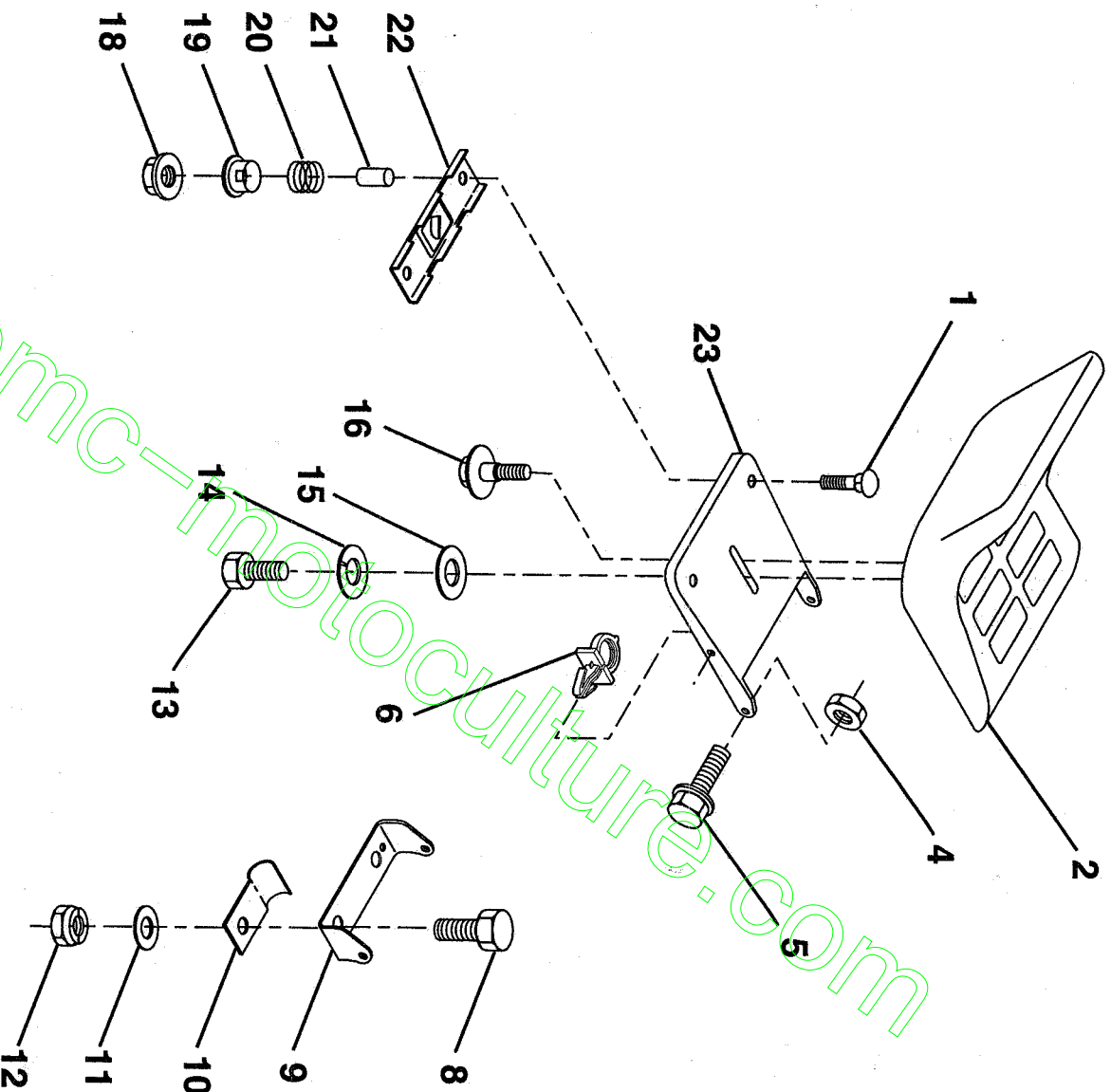
NOTE: All component dimensions given in U.S. inches.
1 inch = 25.4 mm.

HARDWARE SHOWN LARGER FOR EASIER IDENTIFICATION

REPAIR PARTS

TRACTOR - - MODEL NUMBER LM1236D

SEAT



KEY NO.	PART NO.	DESCRIPTION
1	72050411	Bolt, Carriage 1/4-20 x 1-3/8
2	134647	Seat
4	73800500	Nut, Lock Hex W/Ins. 5/16-18
5	139888	Bolt, Shld. 5/16-18
6	145006	Clip, Push-In
8	74760616	Bolt, Hex, Fin 3/8-16 UNC x 3/4
9	140551	Bolt, Hex, Pivot, Seat
10	126471X	Washer 13/32 x 2 x 10 Gauge
11	19133210	Washer 13/32 x 2 x 10 Gauge
12	73800600	Nut, Lock Hex W/Wsh 3/8-16

KEY NO.	PART NO.	DESCRIPTION
13	74780814	Bolt, Fin Hex 1/2 - 13 x 7/8 Gr. 5
14	10040800	Washer Lock Hvy HLCL Spr. 1/2
15	19171912	Washer 17/32 x 13/16 x 12 Gauge
16	127018X	Bolt, Shoulder
18	123976X	Locknut, Hex, Large, Flange
19	121248X	Bushing, Snap
20	121250X	Spring, Compression
21	134300	Spacer, Split, Large .28 Id. x .96
22	121246X	Bracket, Switch, Mounting
23	140552	Pan, Seat

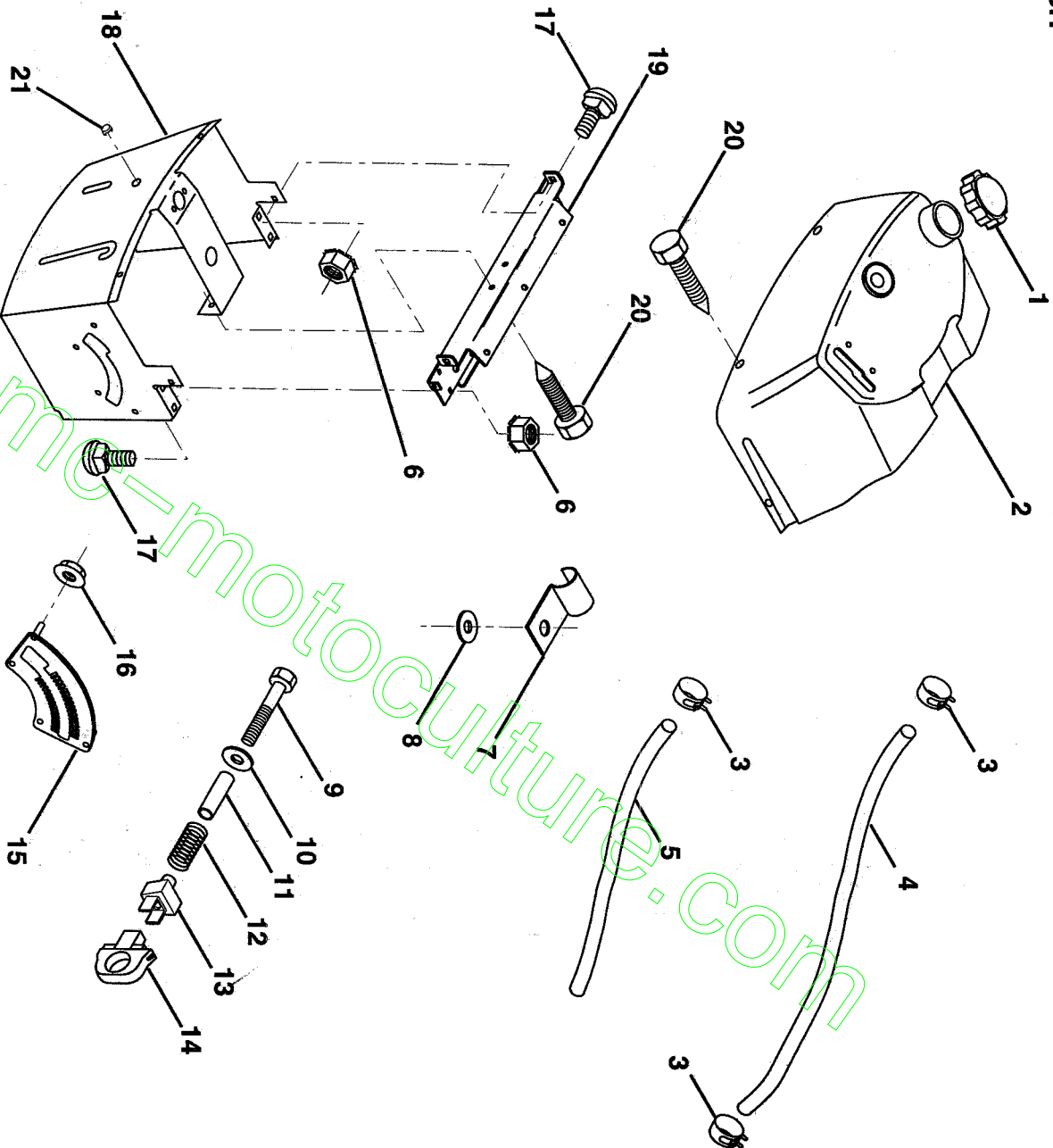
NOTE: All component dimensions given in U.S. inches.
1 inch = 25.4 mm.

HARDWARE SHOWN LARGER FOR EASIER IDENTIFICATION

REPAIR PARTS

TRACTOR -- MODEL NUMBER LM1236D

DASH



KEY NO.	PART NO.	DESCRIPTION
1	141523	Cap, Fuel
2	138393	Assembly, Dash & Fuel Tank
3	123487X	Clamp, Hose
4	8544R	Line, Fuel
5	8548R	Line, Fuel
6	73400400	Nut, Hex, Keps 1/4-20
7	2751R	Clip, Fuel Line
8	19091216	Washer 9/32 x 3/4 x 16 Gauge
9	74760428	Bolt, Hex, Fin. 1/4-20 x 1-3/4
10	19091413	Washer 11/32 x 11/16 x 16 Gauge
11	121249X	Spacer, Split

KEY NO.	PART NO.	DESCRIPTION
12	3720R	Spring
13	126450X	Clip, Height Adjustment
14	126115X	Knob, Height Stop
15	122023X	Adjustment, Quadrant Height
16	124346X	Nut, Self-Threading 3/16-18
17	72110404	Bolt, Carriage 1/4-20 x 1/2 Grade 5
18	130745	Support Assembly, Dash
19	134744	Brace, Cross
20	17060408	Screw, Tap 1/4-20 x 1/2
21	134014	Plug, Dome

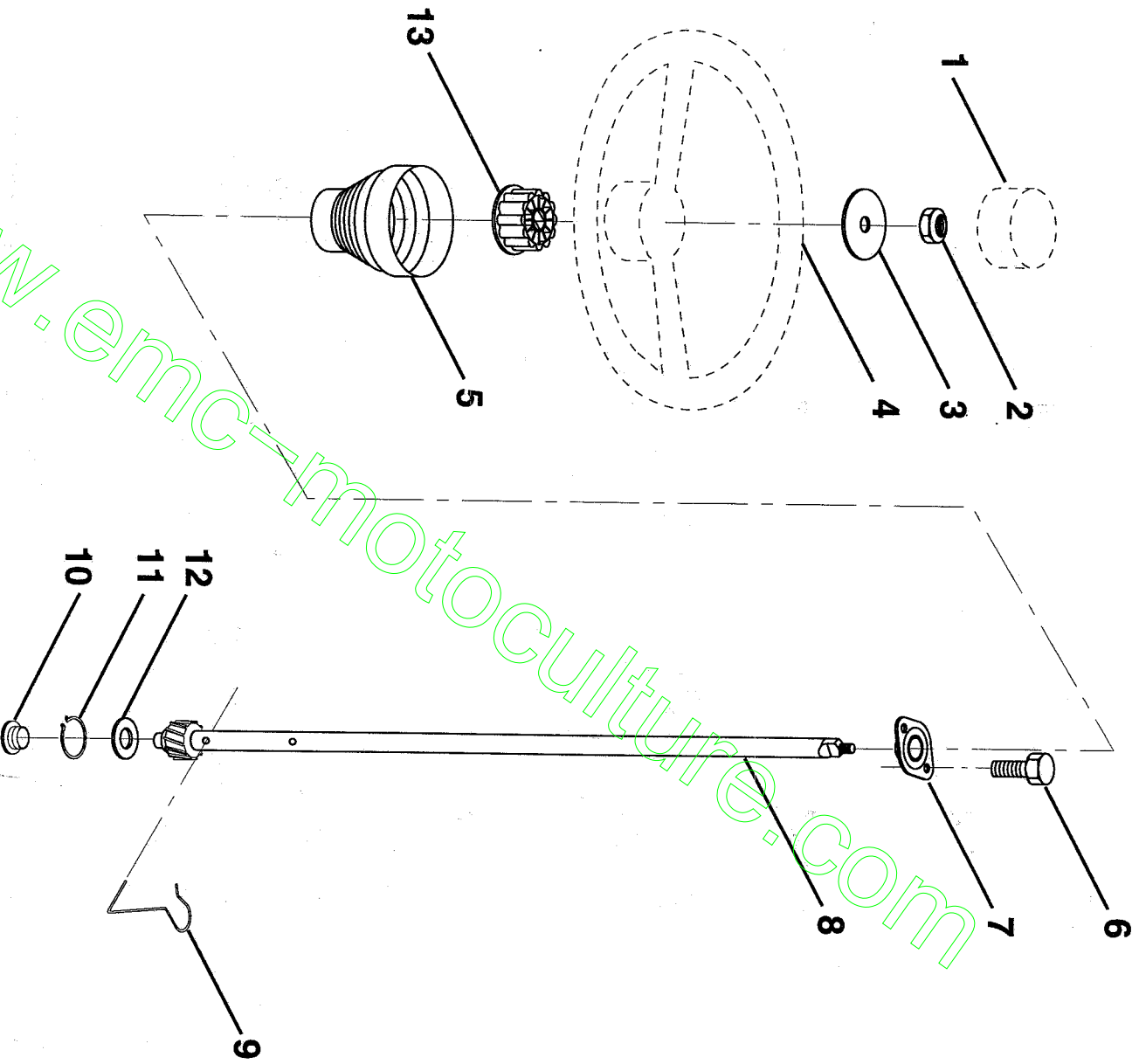
NOTE: All component dimensions given in U.S. inches.
1 inch = 25.4 mm.

HARDWARE SHOWN LARGER FOR EASIER IDENTIFICATION

REPAIR PARTS

TRACTOR - - MODEL NUMBER LM1236D

STEERING WHEEL



KEY NO.	PART NO.	DESCRIPTION
1	133742	Insert, Steering Wheel
2	7810H	Locknut 3/8-24 UNF
3	19133808	Washer 13/32 x 2-3/8 x 8 Ga.
4	133741	Wheel, Steering
5	121897X	Sleeve, Steering
6	17431008	Screw, Hex Self-Tapping #10-16 x 1/2
7	102803X	Bushing, Steering

KEY NO.	PART NO.	DESCRIPTION
8	123651X	Shaft, Steering
9	124210X	Clip, Steering
10	123438X	Bushing, Lower, Steering
11	12000045	Ring, Retaining
12	19211616	Washer 21/32 x 1 x 16 Ga.
13	104820X	Adaptor, Steering Wheel

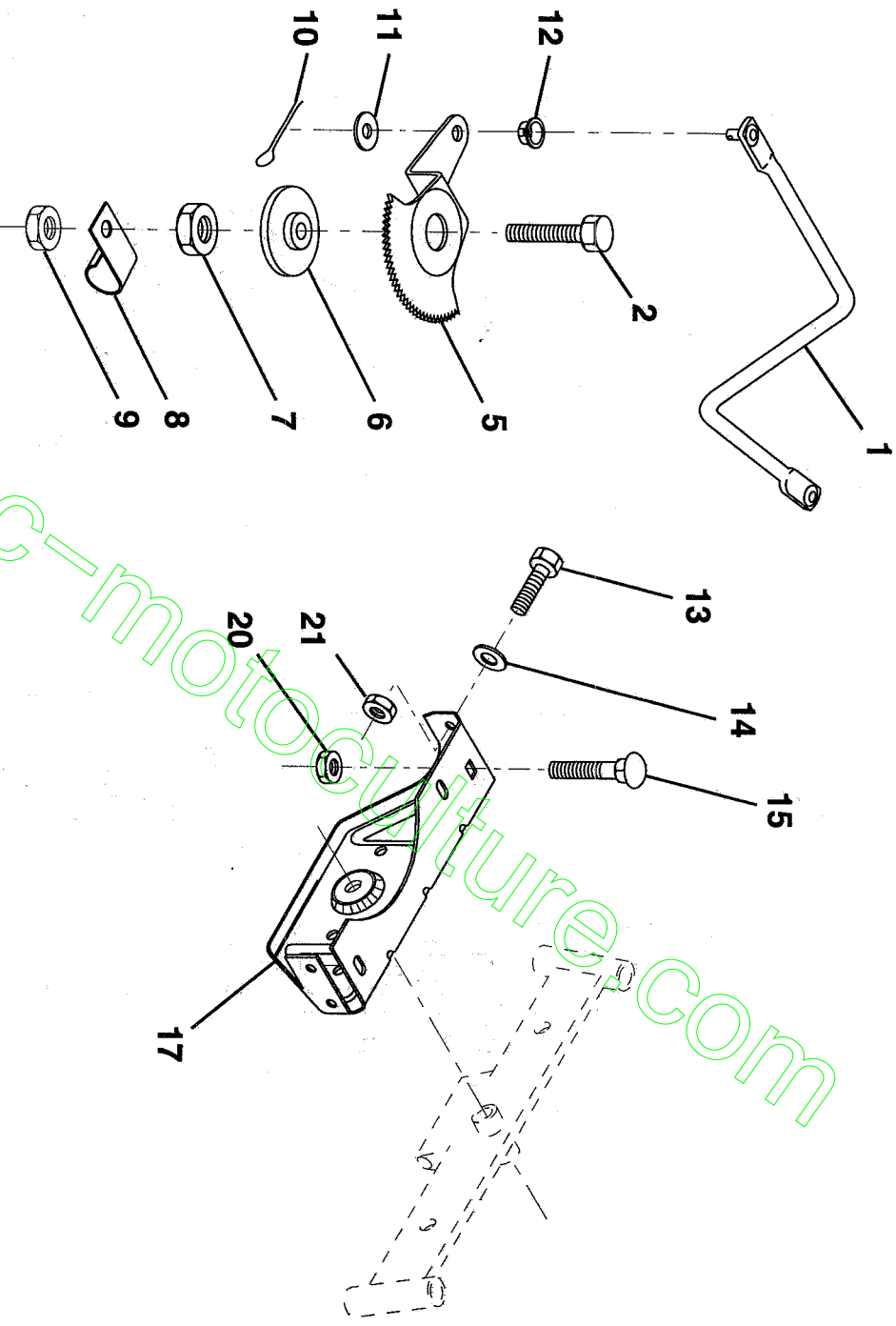
NOTE: All component dimensions given in U.S. inches.
1 inch = 25.4 mm.

HARDWARE SHOWN LARGER FOR EASIER IDENTIFICATION

REPAIR PARTS

TRACTOR - - MODEL NUMBER LM1236D

SECTOR GEAR / AXLE SUPPORT



KEY NO.	PART NO.	DESCRIPTION
1	132566	Link, Drag
2	74780828	Bolt, Hex, Fin 1/2-13 x 1-3/4
5	121926X	Gear, Sector
6	121927X	Bushing
7	73030800	Nut, Heavy, Hex, Top Lock 1/2-13 UNC
8	126472X	Clip, Wire
9	73680800	Nut, Crownlock 1/2-13
10	76020412	Pin, Cotter 1/8 x 3/4
11	19131316	Washer 13/32 x 13/16 x 16 Ga.

KEY NO.	PART NO.	DESCRIPTION
12	126847X	Bushing
13	74760512	Bolt, Hex 5/16-18 x 3/4
14	19111416	Washer 1 1/32 x 7/8 x 16 Ga.
15	72110606	Bolt, Carriage 3/8-16 UNC x 3/4
17	137096	Support, Front Axle
20	73680600	Nut, Crownlock 3/8-16 UNC
21	73680500	Nut, Crownlock 5/16-18

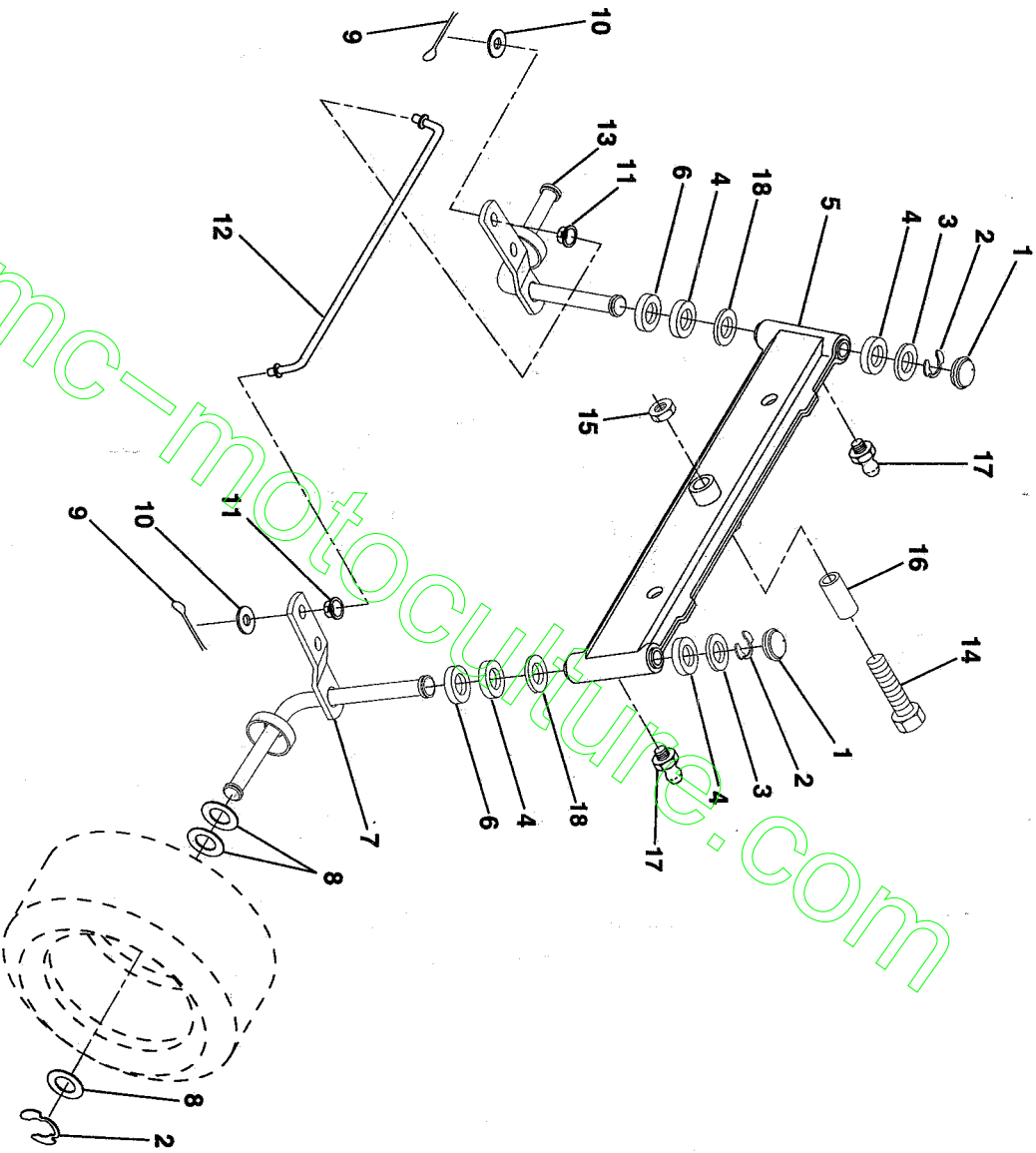
NOTE: All component dimensions given in U.S. inches.
1 inch = 25.4 mm.

HARDWARE SHOWN LARGER FOR EASIER IDENTIFICATION

REPAIR PARTS

TRACTOR - - MODEL NUMBER LM1236D

FRONT AXLE



KEY NO.	PART NO.
1	121232X
2	12000029
3	121748X
4	3366R
5	142033
6	6266H
7	137062
8	121749X
9	76020412
10	19131316

DESCRIPTION
Cap, Spindle
Ring, Klip
Washer 25/32 x 1-5/8 x 16 Gauge
Bearing
Axle, Front
Bearing, Thrust
Spindle Assembly, R.H.
Washer 25/32 x 1-1/4 x 16 Gauge
Pin, Cotter 1/8 x 3/4
Washer 13/32 x 13/16 x 16 Gauge

KEY NO.	PART NO.
11	126847X
12	130465
13	137061
14	74011056
15	73901000
16	110438X
17	6855M
18	19272016

DESCRIPTION
Bushing
Rod, Tie
Spindle Assembly, L.H.
Bolt, Hex 5/8-11 x 3-1/2
Nut, Lock Flange 5/8-11
Spacer
Fitting, Grease
Washer 27/32 x 1-1/4 x 16 Ga.

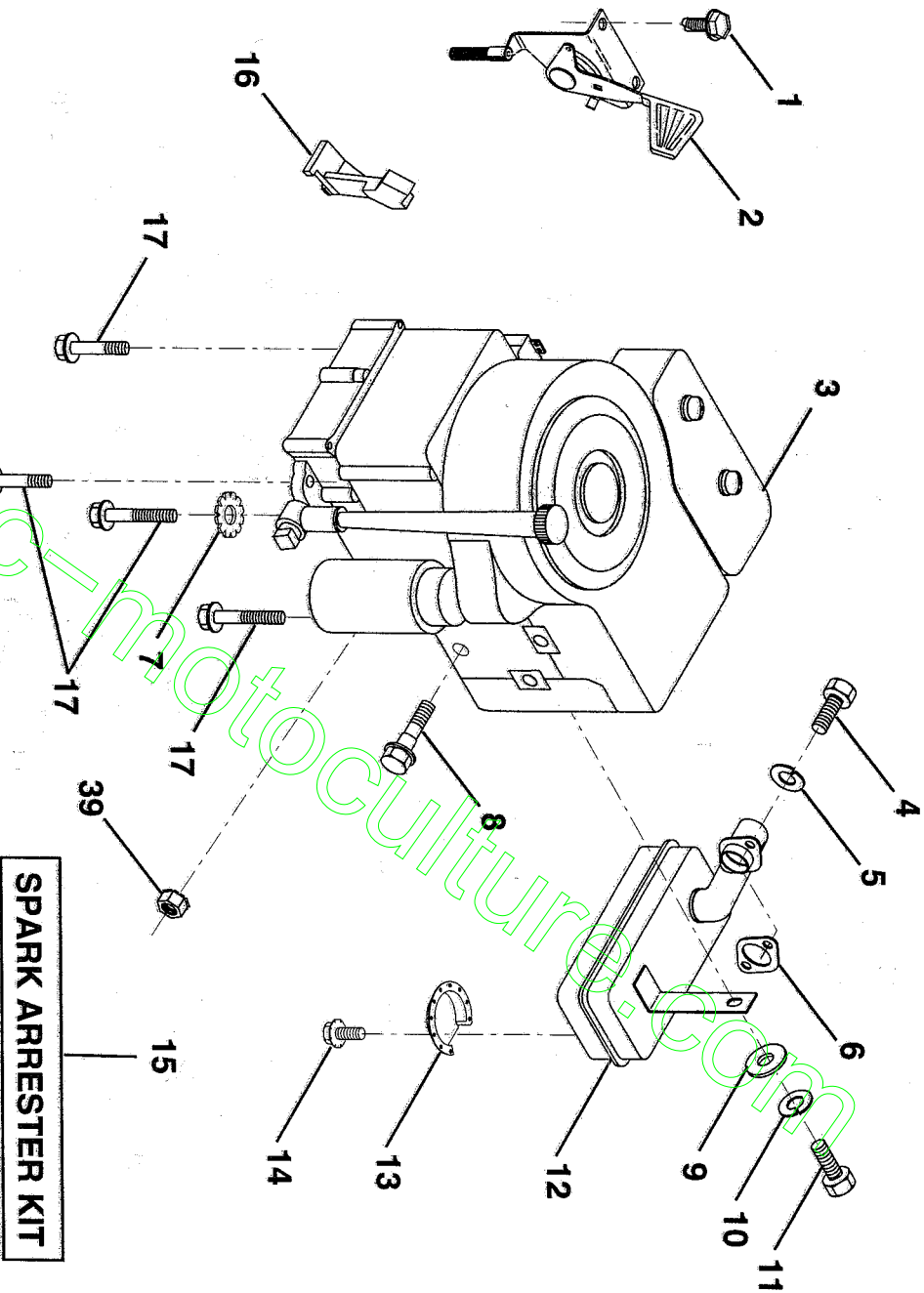
NOTE: All component dimensions given in U.S. inches.
1 inch = 25.4 mm.

HARDWARE SHOWN LARGER FOR EASIER IDENTIFICATION

REPAIR PARTS

TRACTOR - - MODEL NUMBER LM1236D

ENGINE / THROTTLE



KEY NO.	PART NO.	DESCRIPTION
1	17060408	Screw, Hex, Thread Cutting 1/4-20 x 1/2
2	133025	Control, Throttle
3	145296	Engine, B&S, 12 HP, model #282707
4	71070512	Screw, Hex Hd
5	10040500	Washer, Lock, Heavy Helical Spring
6	125593X	Gasket, Exhaust
7	11050600	Washer lock ext tooth
8	121094X	Bolt, Shoulder 5/16 UNC
9	19101216	Washer 5/16 x 3/4 x 16 Gauge

KEY NO.	PART NO.	DESCRIPTION
10	10040400	Washer, Lock, Heavy Helical Spring 1/4
11	74760412	Bolt, Hex, Fin 1/4-20 x 3/4
12	137437	Muffer
13	101326L	Deflector Muffer
14	17030808	Screw Spiderlock
15	137180	Kit, Spark Arrester (Optional)
16	127951	Stop, Choke
17	17490624	Screw, Hex Washer Head, Thd. Roll, 3/8-16 x 1-1/2
39	73510400	Nut, Keps, Hex, 1/4-20

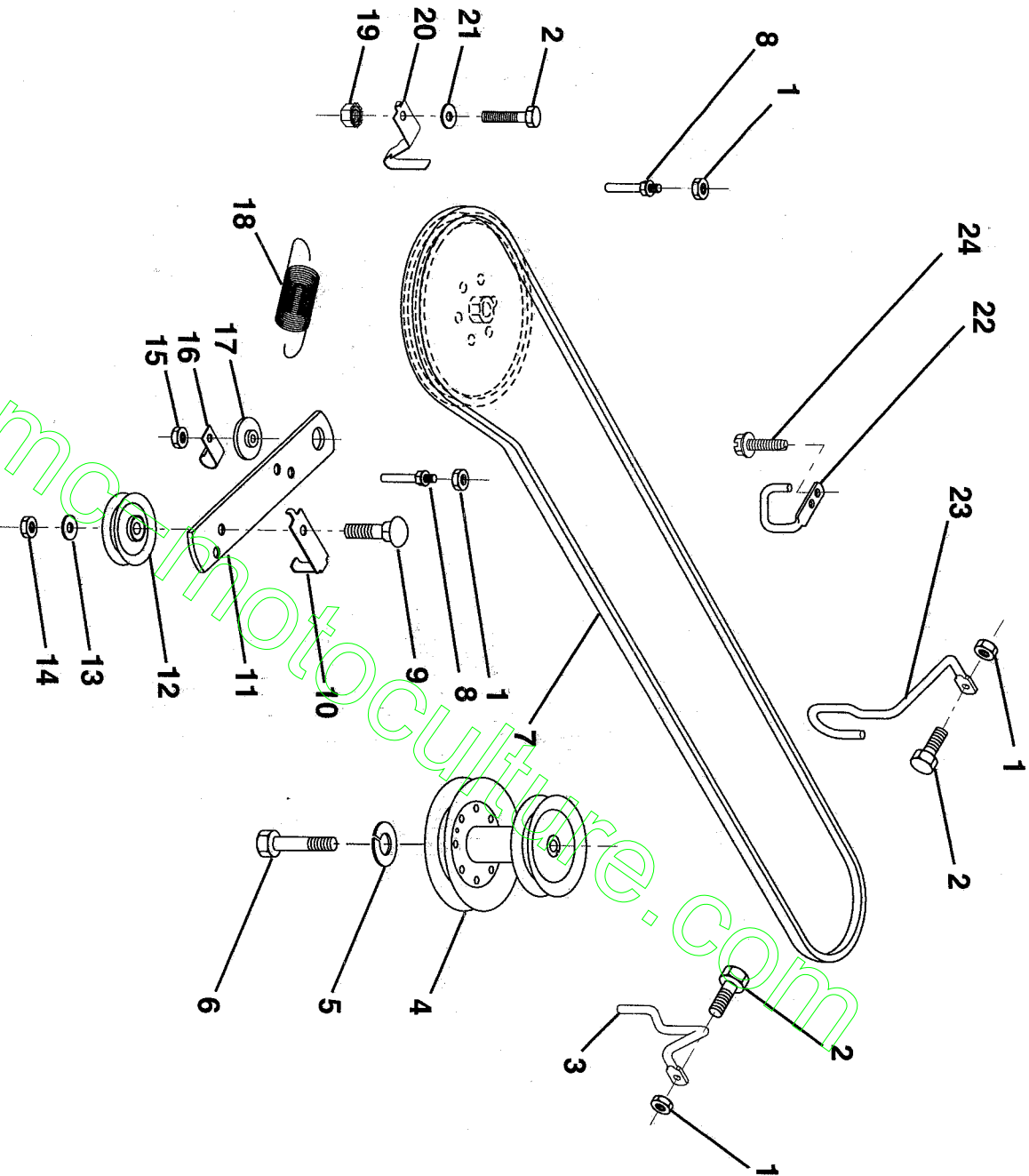
NOTE: All component dimensions given in U.S. inches.
1 inch = 25.4 mm

HARDWARE SHOWN LARGER FOR EASIER IDENTIFICATION

REPAIR PARTS

TRACTOR -- MODEL NUMBER LM1236D

GROUND DRIVE



KEY NO.	PART NO.
1	73680500
2	74760512
3	141342
4	138029
5	10040700
6	71170744
7	124525X
8	123405X
9	72140612
10	123396X
11	140911
12	123674X

DESCRIPTION
Nut, Lock Hex w/Ins 5/16-18
Bolt, Hex 5/16-18 UNC x 3/4
Keeper, Mower Drive Belt, Engine, R.H.
Pulley, Engine
Washer, Lock, Heavy Helical Spring 7/16
Bolt, Hex, 7/16-20 x 2-3/4 Grade 5
Traction, V-Belt Drive
Keeper, T/A Ground Drive Belt
Bolt, Carriage 3/8-16 UNC x 1-1/2
Keeper, Ground Drive Belt, Idler Arm, Ground Drive Clutch
Idler, Flat

KEY NO.	PART NO.	DESCRIPTION
13	19131316	Washer 13/32 x 13/16 x 16 Gauge
14	73930600	Nut, Centerlock 3/8-16 UNC
15	73680600	Crownlock, Nut 3/8-16
16	126471X	Clip, Insulated
17	122052X	Spacer, Retainer
18	131459	Spring, Extension
19	73510500	Nut, Keps 5/16-18 UNC
20	139919	Keeper, T/A Ground Drive Belt
21	19111016	Washer 11/32 x 5/8 x 16 Gauge
22	123404X	Keeper, Ground Drive Belt, Frame
23	140916	Keeper, Mower Drive Belt, L.H.
24	17720408	Screw, Thd, Cut, 1/4-20 X 1/2.

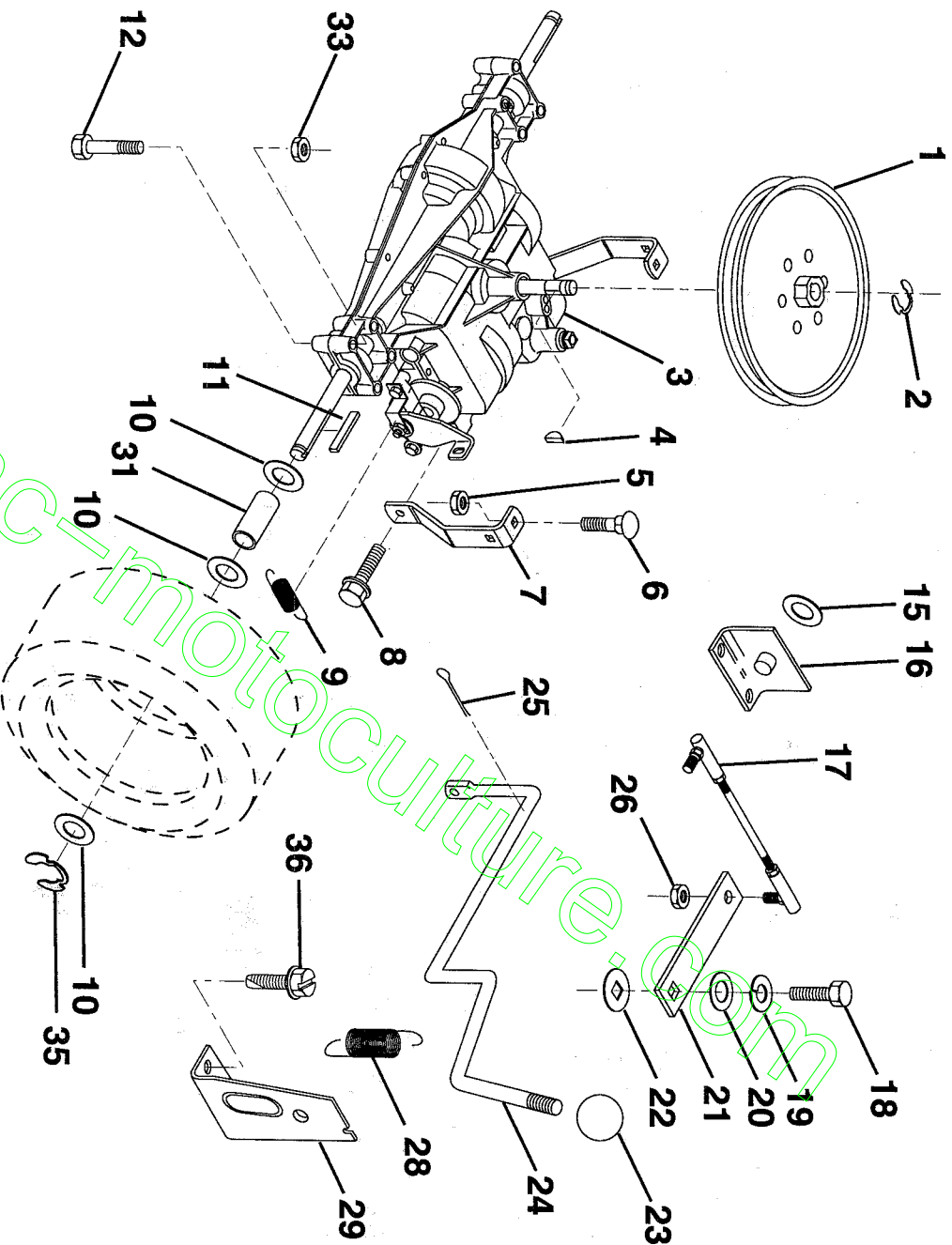
NOTE: All component dimensions given in U.S. inches.
1 inch = 25.4 mm

HARDWARE SHOWN LARGER FOR EASIER IDENTIFICATION

REPAIR PARTS

TRACTOR - - MODEL NUMBER LM1236D

TRANSAXLE



KEY NO.	PART NO.	DESCRIPTION
1	123385X	Pulley
2	12000028	Ring, Retainer
3	142602	Transaxle Model Number 4360-78 Key, Woodruff #9
4	2228M	Nut, Lock Hex 5/16-18
5	73680500	Bolt, Carriage 5/16-18 UNC x 3/4
6	72140506	Strap, Torque
7	123378X	Screw 5/16-18 x 3/4
8	17490512	Spring, Brake
9	146682	Washer 25/32 x 1-1/4 x 16 Gauge
10	121749X	Key, Square
11	123583X	Bolt Fin Hex 5/16-18 x 2-1/2
12	74760644	Washer 17/32 x 16 Ga.
15	19171616	Support, Handle Shift
16	124600X	Link, Shift
17	123632X	Bolt, Hex, Fin. 1/4-28 UNF x 3/4
18	74550412	Grade 8

KEY NO.	PART NO.	DESCRIPTION
19	10040400	Washer, Lock 1/4
20	19091210	Washer 9/32 x 3/4 x 10 Gauge
21	123484X	Arm, Shift
22	105701X	Washer, Shift Plate
23	106933X	Knob, Deluxe
24	128215	Rod, Shift
25	76020416	Pin, Cotter 1/8 x 1
26	73810500	Nut, Hex, Nylon 5/16-24 UNF
28	128085	Spring, Extension
29	128084	Support, Handle, Shift, R.H.
31	109502X	Spacer, Split
33	73680600	Nut, Crownlock 3/8-16
35	12000001	E-Ring
36	17720408	Screw, Thd. Cut. 1/4-20 X 1/2

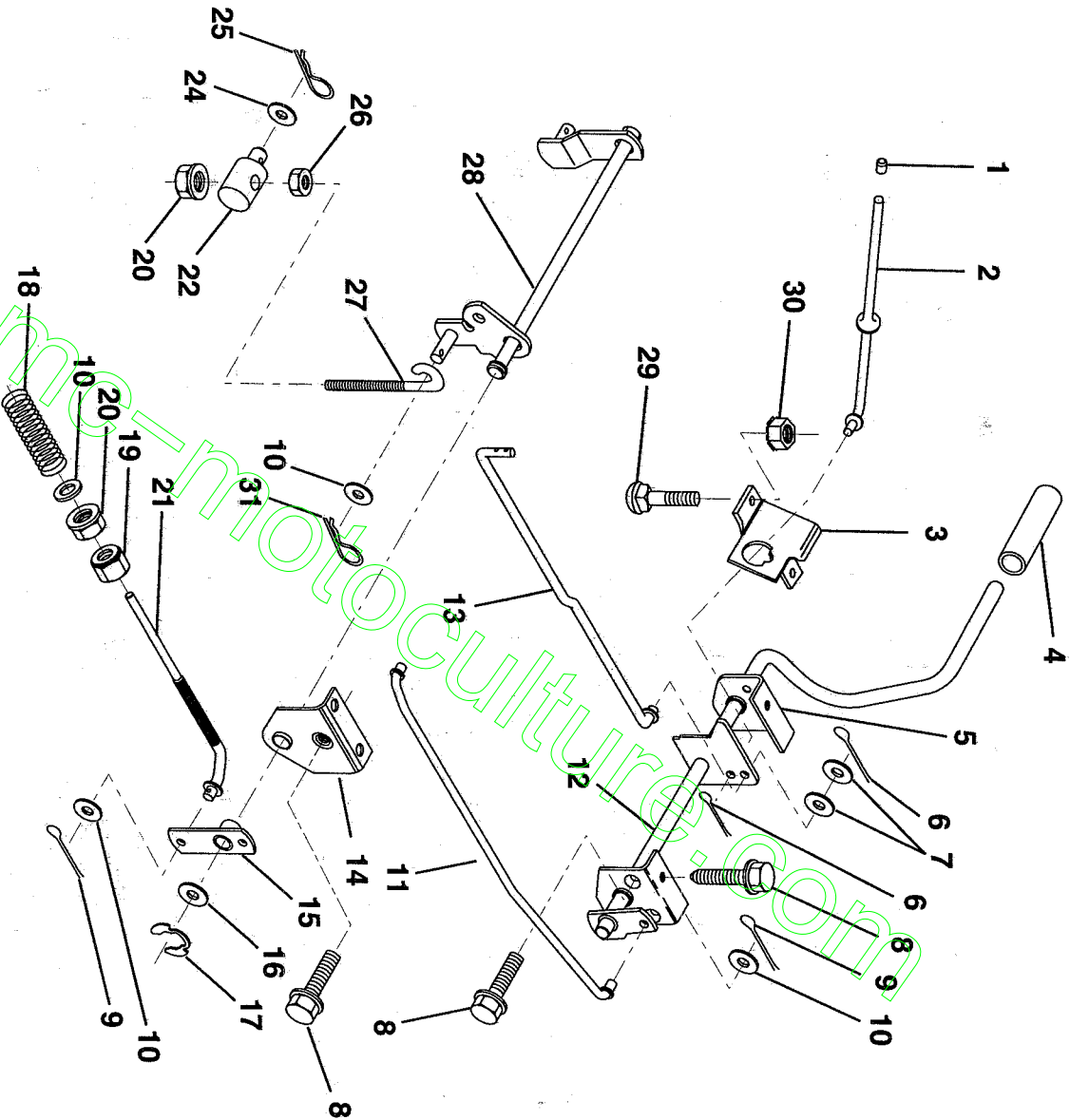
NOTE: All component dimensions given in U.S. inches.
1 inch = 25.4 mm.

HARDWARE SHOWN LARGER FOR EASIER IDENTIFICATION

REPAIR PARTS

TRACTOR - - MODEL NUMBER LM1236D

BRAKE/REAR MOWER LIFT ASSEMBLY



KEY NO.	PART NO.	DESCRIPTION
1	71673	Cap, Parking Brake
2	123436X	Rod, Parking Brake
3	123437X	Bracket, Parking Brake
4	8156H	Cover, Pedal
5	122504X	Bracket, Pedal, Clutch LH
6	76020312	Pin, Cotter 3/32 x 3/4
7	19131016	Washer 13/32 x 5/8 x 16 Gauge
8	17490508	Screw, Hex, Thd. Roll. 5/16-18 x 1/2
9	76020412	Pin, Cotter 1/8 x 3/4
10	19131316	Washer 13/32 x 13/16 x 16 Gauge
11	123543X	Rod, Front Brake
12	139933	Assembly, Clutch/Brake Pedal
13	123394X	Rod, Clutch
14	121978X	Bracket, Lift, Shaft
15	133332	Assembly, Brake, Pivot, Arm

KEY NO.	PART NO.	DESCRIPTION
16	19251816	Washer 25/32 x 1-1/8 x 16 Gauge
17	12000034	Ring, Klip
18	106888X	Spring, Brake Rod
19	73350600	Nut, Hex, Jam 3/8-16 UNC
20	73680600	Crownlock, Nut 3/8-16
21	131460	Rod, Rear Brake
22	144585	Trunnion, Lift
24	19132012	Washer 13/32 x 1-1/4 x 12 Gauge
25	4921H	Spring, Retainer
26	73930600	Nut, Centerlock 3/8-16 UNC
27	127369	Link, Threaded
28	140776	Assembly, Rear Mower Lift
29	72110506	Bolt, Carriage 5/16-18 UNC x 3/4
30	73510500	Nut, Keps 5/16-18 UNC
31	3146R	Retainer spring

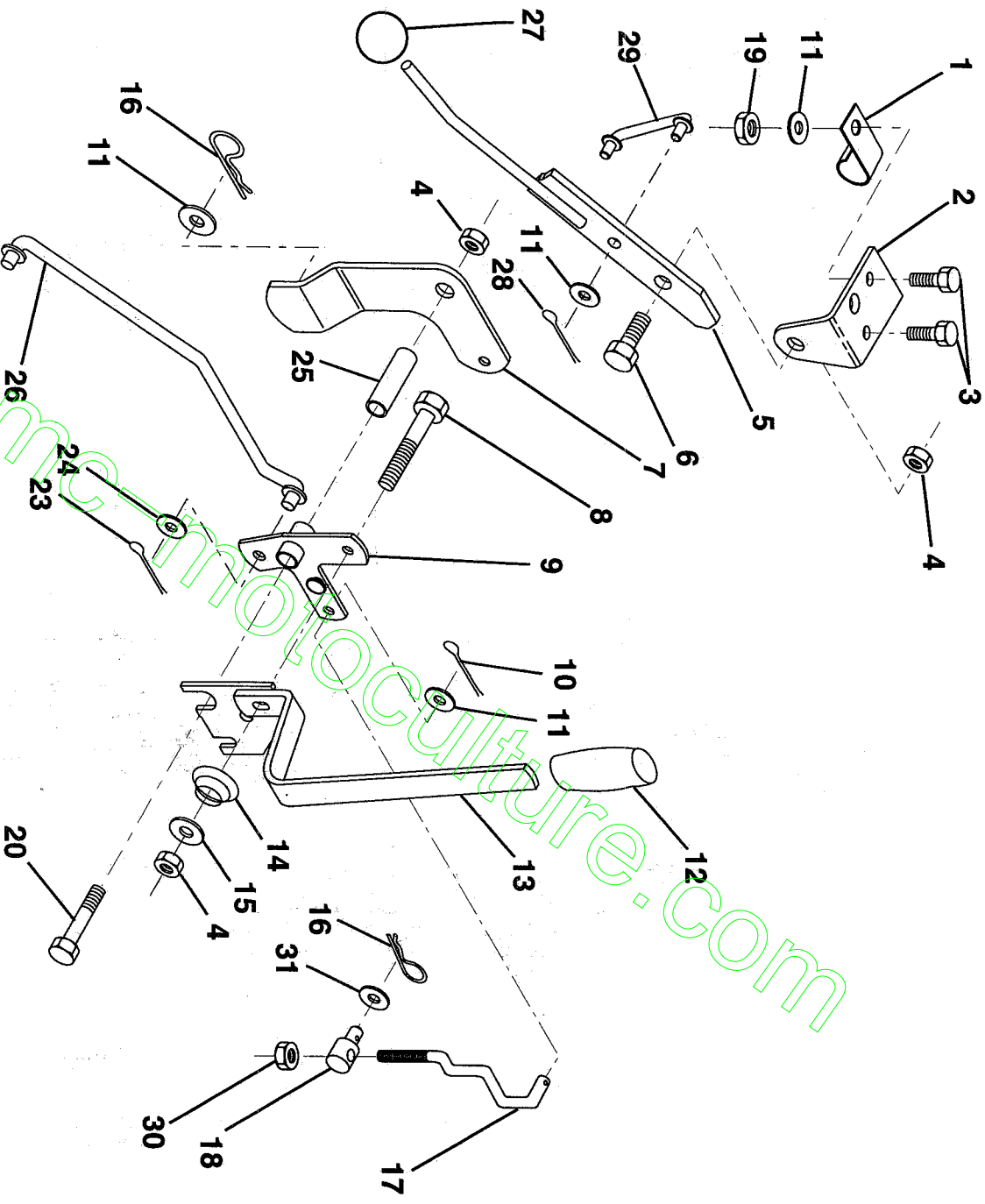
NOTE: All component dimensions given in U.S. inches.
1 inch = 25.4 mm.

HARDWARE SHOWN LARGER FOR EASIER IDENTIFICATION

REPAIR PARTS

TRACTOR - - MODEL NUMBER LM1236D

MOWER LIFT LEVER



KEY NO.	PART NO.	DESCRIPTION
1	126470X	Clip, Insulated
2	122018X	Bracket, Mower Clutch
3	711110408	Bolt, Hex, Fin 1/4-20 UNC x 1/2
4	73680600	Grade 5 Nut, Lock Hex W/Wsh 3/8-16
5	145187	Assembly, Clutch Lever
6	106451X	Bolt, Shoulder
7	135371	Assembly, Mower Clutch Arm
8	74760636	Bolt, Hex 3/8-16 UNC x 2-1/4
9	121930X	Assembly, Bellcrank, Lift
10	76020412	Pin, Cotter 1/8 x 3/4
11	19131316	Washer 13/32 x 13/16 x 16 Gauge
12	131861	Sleeve, Handle
13	139352	Assembly, Lift Handle
14	123496X	Spring, Compression
15	19131212	Washer 13/32 x 3/4 x 12 Gauge

KEY NO.	PART NO.	DESCRIPTION
16	4921H	Retainer, Spring
17	127359	Link, Front Lift
18	142028	Trunnion, Threaded 3/8-16
19	73680400	Nut, Crownlock 1/4-20
20	74760644	Bolt, Hex, Fin. 3/8-16 UNC x 2-3/4
23	76020416	Pin, Cotter 1/8 x 1
24	19171616	Washer 17/32 x 1 x 16 Gauge
25	121933X	Tube, Spacer
26	141470	Rod, Mower Lift
27	106932X	Knob, Rd
28	76020312	Pin, Cotter 3/32 x 3/4
29	131655	Link, Mower Clutch
30	73350600	Nut, Hex Jam 3/8-16
31	19132012	Washer 13/32 x 1-1/4 x 12 Ga.

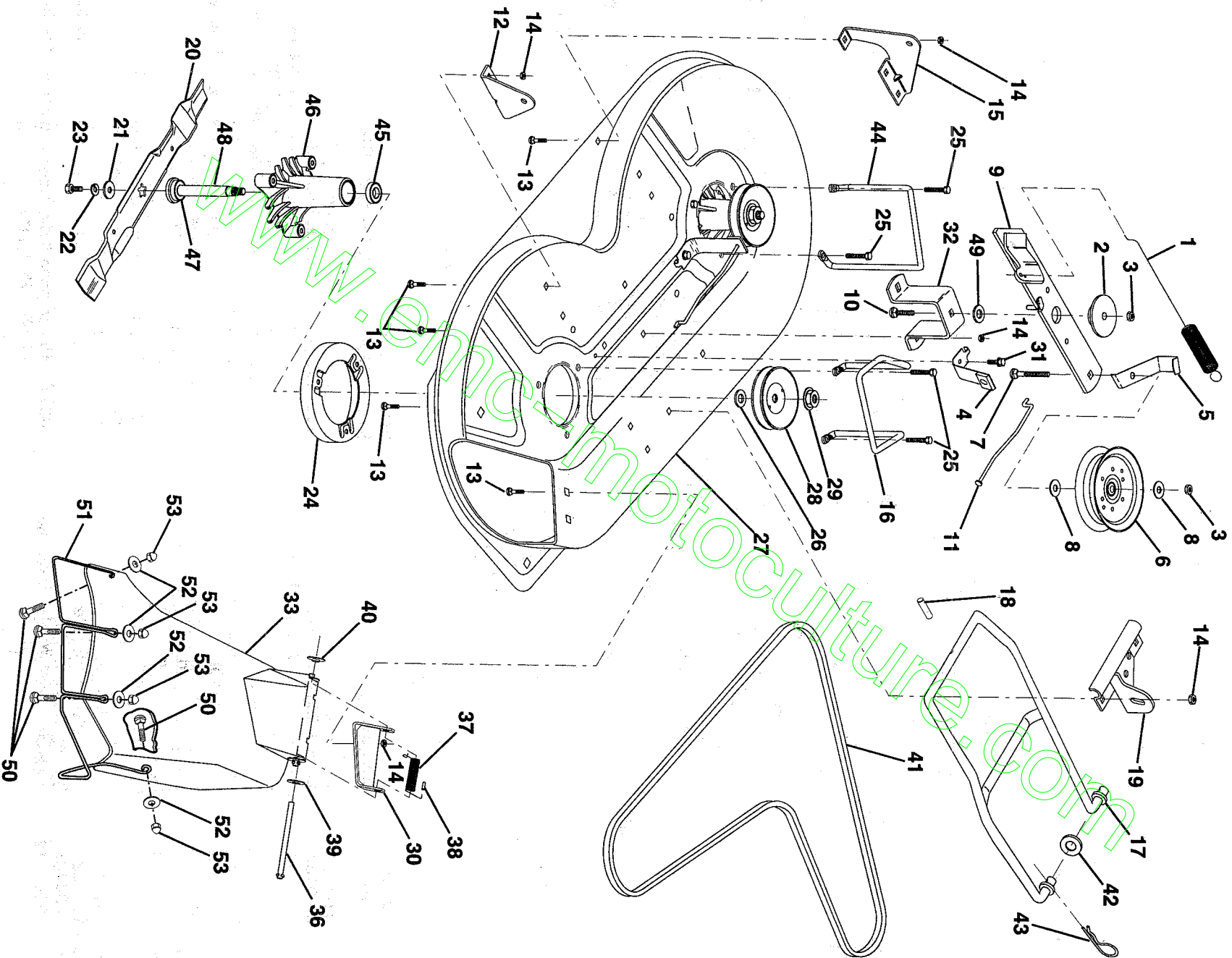
NOTE: All component dimensions given in U.S. inches.
1 inch = 25.4 mm.

HARDWARE SHOWN LARGER FOR EASIER IDENTIFICATION

REPAIR PARTS

TRACTOR -- MODEL NUMBER LM1236D

MOWER DECK



REPAIR PARTS

TRACTOR - - MODEL NUMBER LM1236D

MOWER DECK

KEY NO.	PART NO.	DESCRIPTION	KEY NO.	PART NO.	DESCRIPTION
1	140064	Spring, Mower Clutch	30	136631	Bracket, Deflector
2	122052X	Spacer, Retainer	31	17490508	Screw, Hex Washer Head, Thd. Roll, 5/16-18 x 1/2
3	73680600	Nut, Lock Hex W/Wsh 3/8-16	32	122051X	Arm, Support Idler, Mower
4	130840	Assembly, Brake	33	139083	Shield, Deflector
5	131251	Guide, Belt Idler	36	121980X	Rod, Hinge
6	121316X	Idler, Flat	37	123713X	Spring, Torsion Deflector
7	72110616	Bolt, Carriage 3/8-16 x 2 Grade 5	38	105304X	Cap, Sleeve
8	19131410	Washer 13/32 x 7/8 x 10 Gauge	39	19111016	Washer 11/32 x 5/8 x 16 Gauge
9	127744	Assembly, Mower Idler Arm	40	110452X	Nut, Push
10	72140610	Bolt, Carriage 3/8-16 x 1-1/4	41	131264	V-Belt
11	130841	Rod, Brake	42	19171616	Washer 11/32 x 5/8 x 16 Gauge
12	127356	Bracket, Rear Lift, R.H.	43	3146R	Clip, Hairpin
13	72140506	Bolt, Carriage 5/16-18 UNC x 5/8	44	140608	Keeper, L.H.
14	73680500	Nut, Lock Hex W/lms 5/16-18	45	110485X	Bearing
15	127357	Bracket, Rear Lift, L.H.	46	128774	Housing, Mandrel, Vented
16	140093	Keeper, R.H.	47	129895	Bearing
17	128508	Stabilizer, Mower Link	48	137645	Shaft, Mandrel (Includes Key Number 47)
18	128511	Pin, Drive	49	133943	Washer, Hardened
19	127380	Bracket, Stabilizer Link	50	M720305016	Bolt, Rd, Hd, SQ, NK, M5X0.8 X 16
20	138496	Washer, Mwr. 36" High Lift	51	136383	Guard, DFTTR, MWR, 36" TUV
21	140296	Washer, Hard Blade Mower Vented	52	19070718	Washer
22	10030600	Washer, Lock, Heavy 3/8	53	M730705000	Nut, Acorn M5 X 0.8
23	850857	Bolt 3/8-24 x 1-1/4 Grade 8	--	144973	Mandrel Assembly (Includes Key Numbers 21-23, 26, 29 and 45-48)
24	140329	Stripper	--		Deck 36 HP. LR
25	138776	Screw, Thdrol, Hex Hd.			
26	129963	Washer .150 Thick			
27	129983	Housing, Mower			
28	129207	Pulley, Mandrel			
29	137266	Nut, Flangelock 9/16			

NOTE: All component dimensions given in U.S. inches.
1 inch = 25.4 mm.

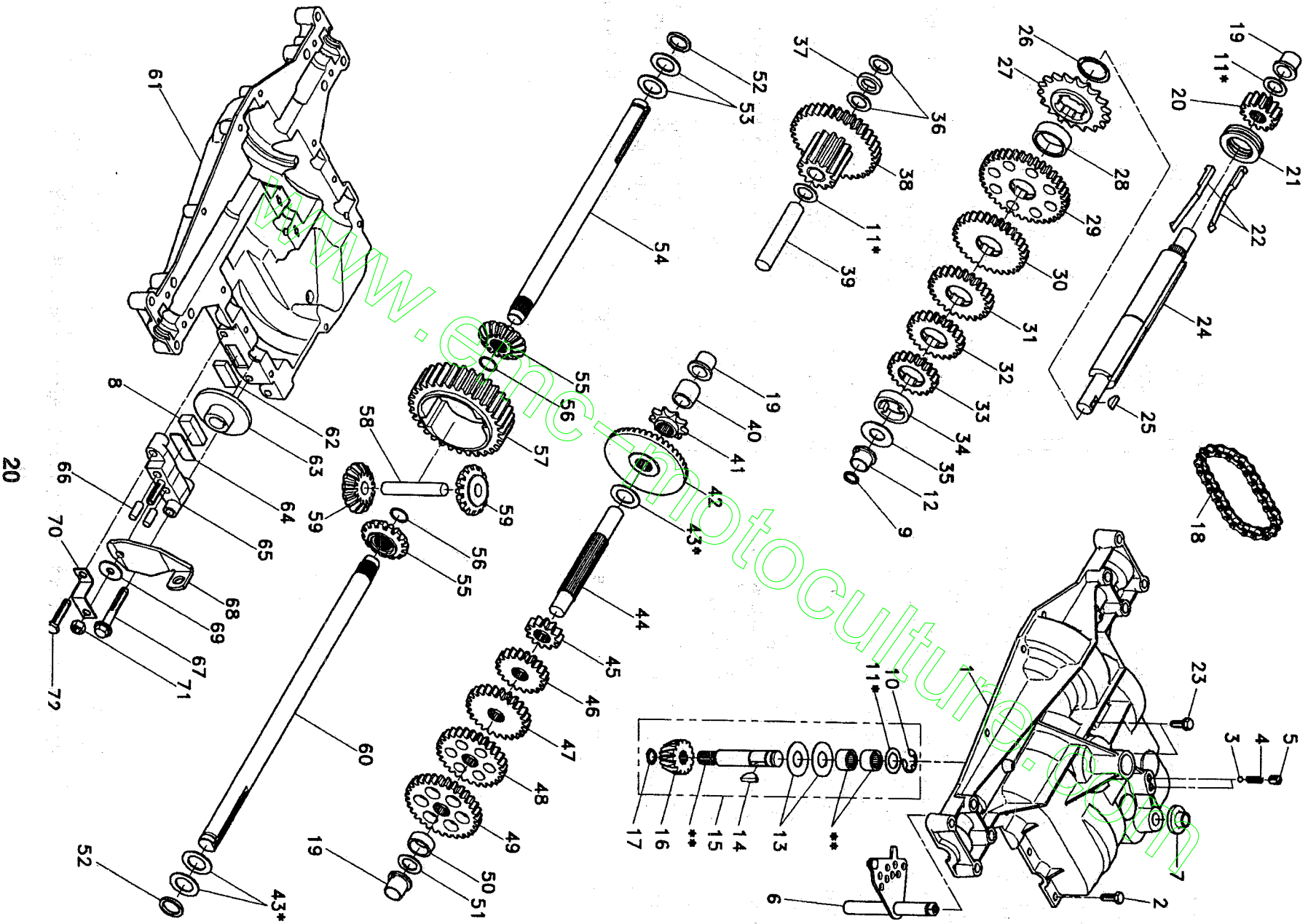
www.emc-mot.com

HARDWARE SHOWN LARGER FOR EASIER IDENTIFICATION

REPAIR PARTS

TRACTOR - - MODEL NUMBER LM1236D

DANA TRANSAXLE - MODEL NUMBER 4360-78



REPAIR PARTS

TRACTOR - - MODEL NUMBER LM1236D

DANA TRANSAXLE - MODEL NUMBER 4360-78

NO. DE REF. PIÈCE	NO. DE REF. PIÈCE	DESCRIPTION	NO. DE REF. PIÈCE	DESCRIPTION
1	142671	Boîtier supérieur	40	Entretoise 0,635 x 0,875 x 0,755
2	2274J	Vis taraudée 1/4-20 x 0,734	41	Pignon à 9 dents
3	134400	Bille de détente	42	Engrenage en biseau à 42 dents
4	105904X	Ressort de détente	43	* Ensemble du jeu d'arbre de cale 0,750
5	105905X	Vis de pression	44	Arbre d'entraînement
6	138235	Jeu de l'ensemble de changement de vitesse	45	Entretoise 0,781 x 1,00 x 0,375
7	134399	Manchon de changement de vitesse	46	Engrenage droit à 12 dents
8	120951X	Palet de friction	47	Engrenage droit à 20 dents
9	143045	Bague d'étranchéité	48	Engrenage droit à 25 dents
10	142672	Bague de fermeture	49	Engrenage droit à 28 dents
11	134793	* Ensemble du jeu d'arbre de cale 0,625	50	Engrenage droit à 31 dents
12	143051	Palier à bride	51	Entretoise 0,781 x 1,00 x 0,375
13	120415X	Rondelle plate 0,632 x 1,38 x 0,046	52	Rondelle plate 0,632 x 1,00 x 0,060
14	142674	Clavette-disque no. 9	53	Rondelle de Neoprene
15	138234	Ensemble du jeu d'arbre d'entrée	54	Rondelle plate 0,758 x 1,25 x 0,031
16	110078X	Pignon en biseau à 14 dents	55	Essieu C.G.
17	105909X	Bague de fermeture	56	Engrenage à ongllet à 15 dents
18	105910X	Chaîne de pas de 24	57	Bague de fermeture
19	105911X	Palier à bride	58	Engrenage droit à 32 dents
20	142675	Engrenage droit à 14 dents	59	Arbre transversal
21	138246	Collet d'embrayage	60	Engrenage à ongllet à 15 dents
22	138236	Ensemble du jeu des clés d'embrayage	61	Essieu C.D.
23	134791	Vis taraudée avec le matériau d'étranchéité	62	Boîtier inférieur
24	142676	Arbre intermédiaire	63	Palet de friction
25	2244J	Clavette-disque no. 61	64	Disque à frein
26	105916X	Bague de fermeture	65	Entretoise
27	120470X	Pignon à 18 dents	66	Méchoire de frein
28	110070X	Entretoise	67	Cheville
29	142677	Engrenage droit à 37 dents	68	Vis taraudée 5/16-18 x 2,25
30	120405X	Engrenage droit à 30 dents	69	Levier de commande
31	108980X	Engrenage droit à 25 dents	70	Rondelle plate 0,321 x 1,00 x 0,055
32	120406X	Engrenage droit à 22 dents	71	Support d'antirotaion
33	134796	Engrenage droit à 19 dents	72	Écrou frein 5/16-24
34	134797	Entretoise 1,133 x 1,50 x 0,375	73	Vis taraudée 5/16-18 x 1,44
35	105925X	Rondelle plate 0,640 x 1,37 x 0,061		Graisse
36	2232J	Rondelle plate 0,632 x 1,00 x 0,026		
37	108978X	Entretoise 0,630 x 1,00 x 0,169		
38	110079X	Ensemble d'engrenage.		
39	124639X	Combinaison des 12 dents et 35 dents Arbre du galet-tendeur		

** Commander le no. de réf. 15.

* Utiliser dans les différentes combinaisons pour maintenir des écartsments appropriés.

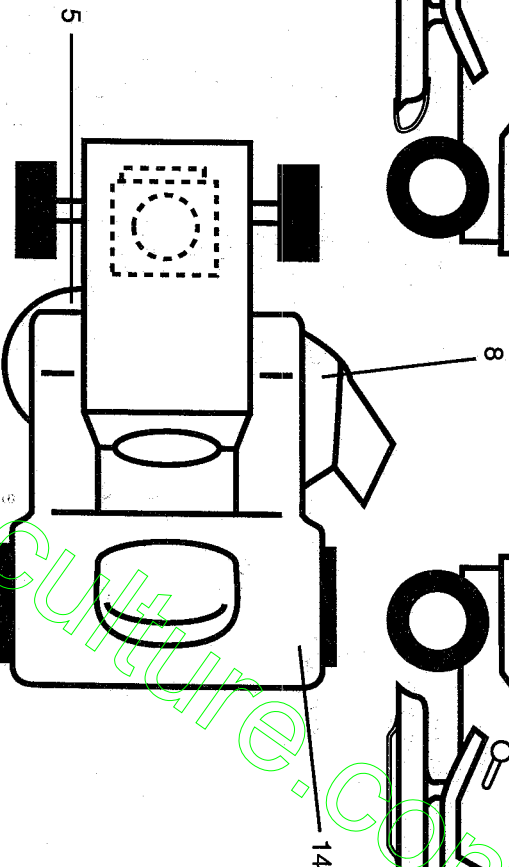
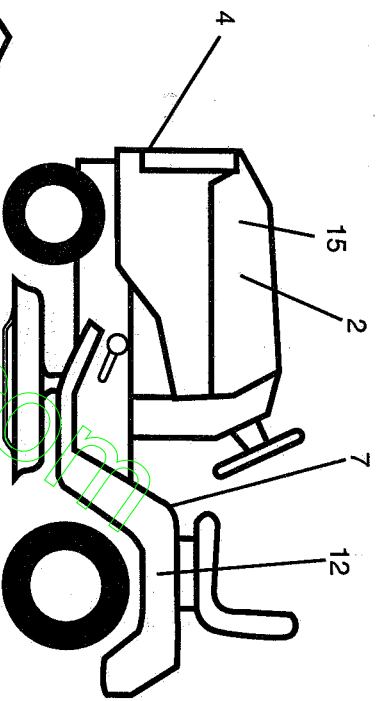
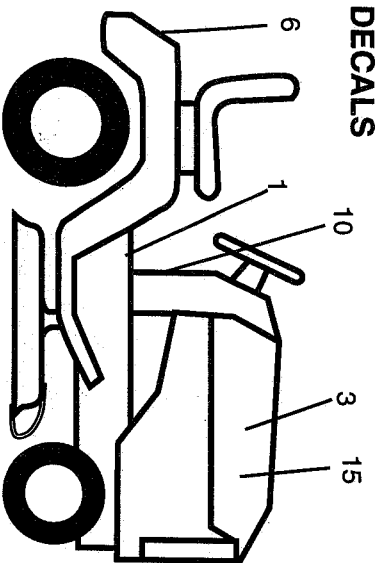
REMARQUE: Toutes les dimensions de composant sont données en pouces E.-U. 1 pouce = 25,4 mm.

www.motocycleparts.com

REPAIR PARTS

TRACTOR - - MODEL NUMBER LM1236D

DECALS



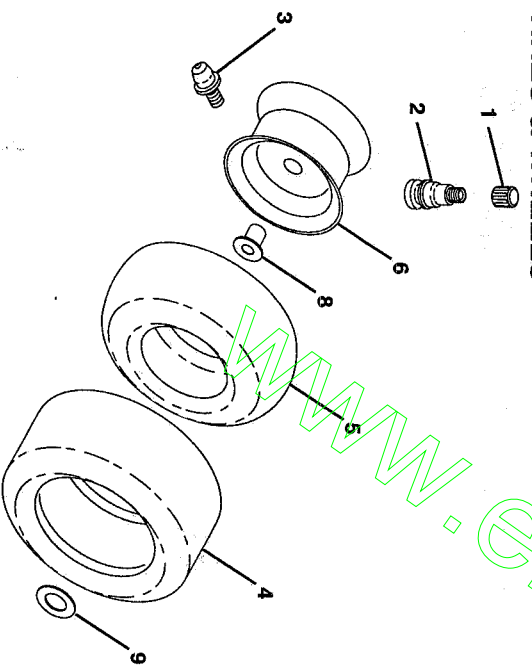
KEY NO.	PART NO.
1	1445545
2	1417444
3	1417443
4	132627
5	136830
6	132628
7	145498
8	145494

DESCRIPTION
Decal, Inst. Oper. Symbols E/F
Decal, Stripe, Hood, L,H.
Decal, Stripe, Hood, R,H.
Decal, Grill
Decal, V-Belt Sch.
Decal, Fender
Decal, Read Owner's Manual Symbol
Decal, Mower Cut Finger Symbol

KEY NO.	PART NO.
10	145437
12	145005
14	125690X
15	136082
--	147061
--	146974
--	147485
--	CE36
--	MP36

DESCRIPTION
Deca. Europe, Stand. CE
Decal, Battery, Dan
Decal 100 DbA
Decal, Hood Insert
Manual, Operator's (English)
Manual, Operator's (French)
Manual, Repair Parts (Eng/Fr)
Available accessories are not included with your tractor:
Rear Bagger
Mulcher Kit

TIRES & WHEELS



KEY NO.	PART NO.
1	59192
2	65139
3	278H
4	124142X
5	124243X
--	8134H
6	122394X427
8	140325X427
9	9040H
--	121748X
--	144334

DESCRIPTION
Cap, Valve
Stem, Valve
Fitting, Grease (Front Only)
Tire, Front
Tire, Rear
Tube, Tire, Front
(Optional, Service Item Only)
Tube, Tire, Rear
(Optional, Service Item Only)
Rim Assembly, Front
Rim Assembly, Rear
Bearing, Flange (Front Only)
Washer, Axle Cap
Sealant, Tire (10 oz. Tube)