

Repère	Référence	Désignation	Quantité
1	MZ80	LAME POUR 80 CM	1,000
2	28489	KIT AILETTE DE LAME	1,000
3	36489	VIS RL XM6-12	1,000
4	71201	ECROU H FR.EMB. M6	1,000
5	71110	VIS HM 10X30	1,000
6	71052	RDLE FREIN A10	1,000
7	28238	ROND.FIXATION LAME	1,000
8	9071	VIS J M 8X20 DIN603	1,000
9	28288	POIGN.TRAPPE VISITE	1,000
10	5347	VIS J M 8X25 DIN603	1,000
12	28420	ACCOUPLLEMENT LAME	1,000
13	71205	ECROU H FR.EMB. M8	1,000
14	26157	JEU BOUL. CIS.8PCES	1,000
15	20602	CLAVETTE 5X5X25	1,000
16	28062	AXE DE LAME	1,000
17	21553	RLT A BILL.6305-2RS	1,000
18	28171	PALIER DE LAME	1,000
19	28020	ENTRET.PALIER LAME	1,000
20	28133	POULIE D.175/D.190	1,000
21	7341	RDLE PL. 10,3X49X5	1,000
22	28411	CHAPE TENDEUR	1,000
23	28070	COUSSINET 15/17/20	1,000
24	9166	RDLE PL.15X24X2	1,000
25	71047	CIRCL.EXT. 15X1	1,000
26	25019	-> 28762 + 39084	1,000
27	28076	RESSORT TEND.TR.LAM	1,000
28	71036	CIRCL.EXT.14X1	1,000
29	71034	RDLE PL. M14 U	1,000
30	25126	AXE BRAS TENDEUR	1,000
31	50870	BRAS TENDEUR	1,000
32	25509	POULIE TENDEUR DIAM	1,000
33	25112	RLT A BILLES 6202	1,000
34	71039	CIRCL.INT.35X1,5	1,000
35	22029	RDLE PL.B 6,5DIN69	1,000
36	71049	RDLE GROWER A6	1,000
37	28284	GUIDE COURROIE TEND	1,000
38	28316	AXE ROULEAU AR.96	1,000
39	28123	ROULEAU	1,000
40	6169	VIS HM 8X16 DIN 93	1,000
41	28405	CARCASSE NUE	1,000
42	39469	CANAL D'EJECTION	1,000

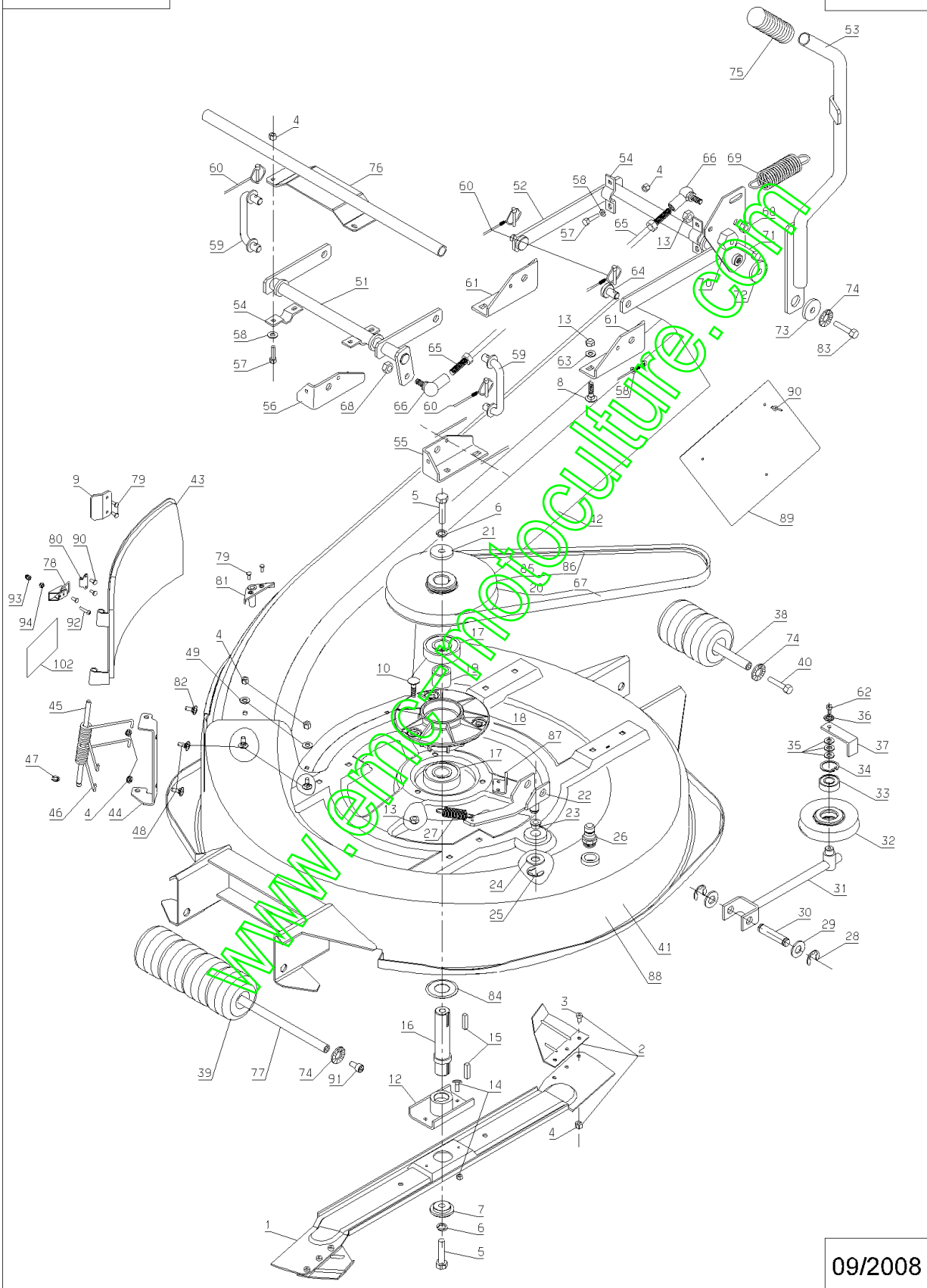
Repère	Référence	Désignation	Quantité
43	28230	TRAPPE DE VISITE	1,000
44	28233	TOLE CHARNIERE	1,000
45	28231	AXE TRAPPE	1,000
46	28245	RESSORT DE TORSION	1,000
47	5602	ANNEAU TRUARC	1,000
48	21608	VIS JAPY M6X16	1,000
51	28419	BRAS AVANT HDC	1,000
52	37618	BRAS ARRIERE HDC	1,000
53	28429	LEVIER HDC	1,000
54	25711	CAVALIER	1,000
55	28038	SUP. HDC AV. GAUCHE	1,000
56	28127	SUP.HDC AV.DROIT	1,000
57	71239	VIS HM 6-45 ZBL	1,000
58	2235	RDLE PL.A 6,4DIN12	1,000
59	28113	TIGE INTER.HDC	1,000
60	28075	GOUPIL.CLIPS CHAINE	1,000
61	28045	SUP. HDC ARRIERE	1,000
62	20507	VIS HM 6 X 20	1,000
63	7035	RDLE PL.B 8,4DIN90	1,000
64	28208	AXE FIX.CARCASSE ZG	1,000
65	28119	TIGE DE COMMANDE	1,000
66	28047	ROTULE DE DIRECTION	1,000
67	28729	COURROIE 1207 MM	1,000
68	9017	ECR.AUTOFR.HM10 DIN	1,000
69	25425	RESSORT DE COMPENSA	1,000
70	28040	BUTEE HDC	1,000
71	9061	VIS HM 8X30	1,000
72	7330	RONDELLE BELLEVILLE	1,000
73	20021	RONDELLE 8,5X40X4	1,000
74	71343	RDLE GROWER A8	1,000
75	28148	POIGNEE LEV.HDC.VID	1,000
76	28427	TUBE SUPPORT CAPOT	1,000
77	28315	AXE ROULEAU AV.96	1,000
78	37074	GRENOUILLERE	1,000
79	71114	RIVET CLOUS DIAM.4X	1,000
80	37085	CROCHET GRENOUILLER	1,000
81	28386	GUIDAGE FIX.DEFLECT	1,000
82	5496	VIS TRCC 6X20	1,000
83	71413	VIS HM 8-20	1,000
84	28530	RDLE DE PROTECTION	1,000
85	28391	POULIE D.190/D.206	1,000

Repère	Référence	Désignation	Quantité
86	28446	COURROIE 1232 MM	1,000
87	28448	BUTEE	1,000
88	28872	CARCASSE 80 CPLTE	1,000
89	28504	TOLE DE PROTECTION	1,000
90	71113	RIVET CLOUS DIAM.4X	1,000
91	71372	VIS CHC M8-16,8.8	1,000
92	37072	VIS B HC M4-20 10.9	1,000
93	37073	ECROU H FR BORGNE	1,000
94	21525	ECR.AUTOFR.HM4 DIN	1,000
102	13089	ETIQ.TRAPPE FR.	1,000

www.emc-motoculture.com

MBHE - MHHE - MKHE

105.01

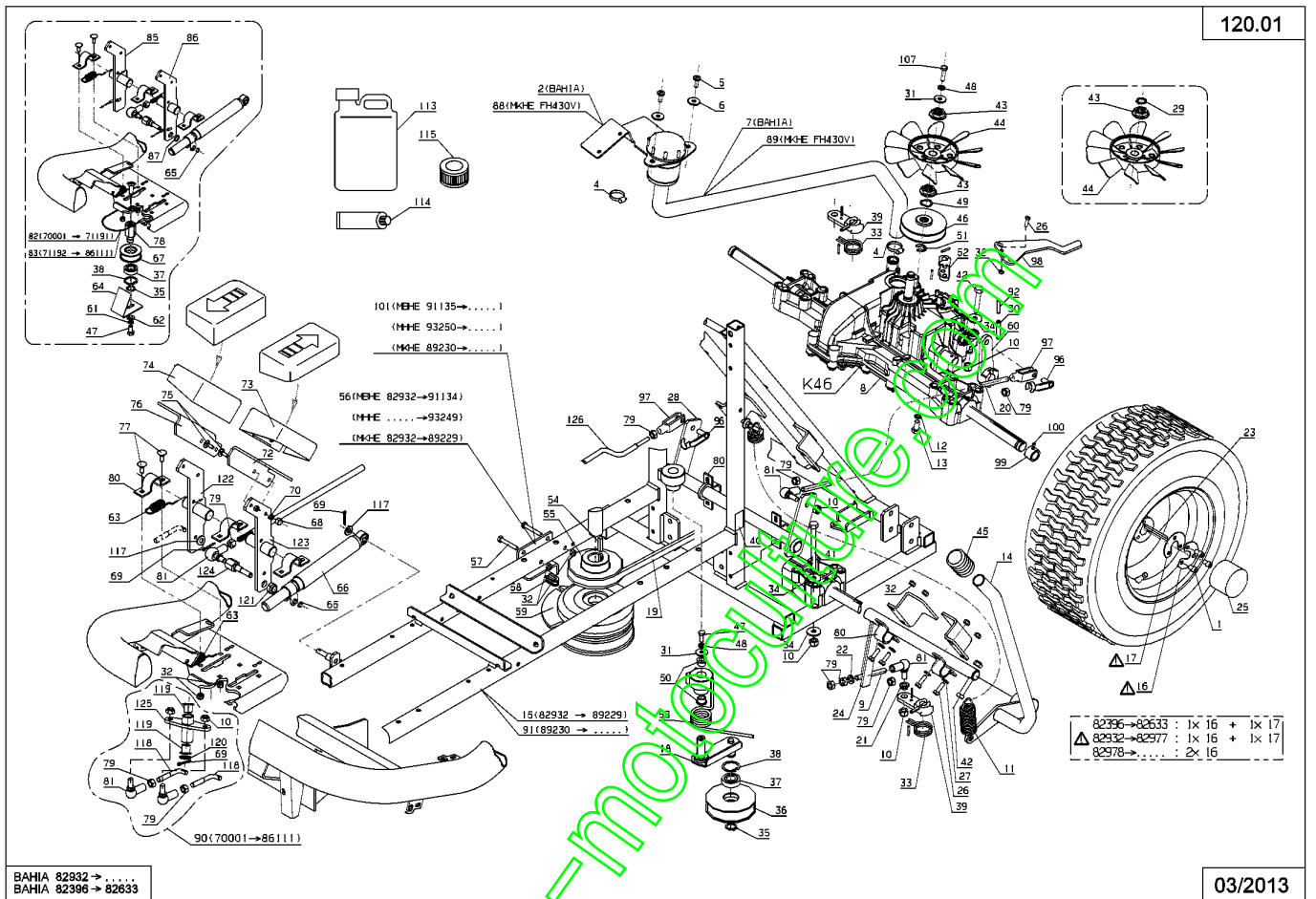


Repère	Référence	Désignation	Quantité
1	71072	VIS CHC M6X10	1,000
2	28535	SUPPORT	1,000
4	28534	COLLIER 16-27	1,000
5	37997	VIS HM6-16 8.8 EMB	1,000
6	5604	RONDELLE PLATE LL6N	1,000
7	28532	DURITE PREFORMEE	1,000
8	28529	BOITE HYDRO K46	1,000
9	28508	TRINGLE FREIN PARK	1,000
10	71205	ECROU H FR.EMB. M8	1,000
11	28076	RESSORT TEND.TR.LAM	1,000
12	28256	JOINT VIS VIDANGE	1,000
13	28249	VIS DE VIDANGE	1,000
14	28512	LEVIER FREIN A MAIN	1,000
15	28500	CHASSIS TUBE 25	1,000
16	52175	SEGMENT ARRET ROUE	1,000
17	52174	SEGMENT ARRET ROUE	1,000
18	51189	TENDEUR COURROIE AV	1,000
19	28525	COURROIE 955 MM	1,000
20	28516	TRINGLE MARCHE AV	1,000
21	28507	ENTRETOISE	1,000
22	7335	RDLE PL.A 8,4DIN12	1,000
23	71418	CLAV A 4 76X4 76X75	1,000
24	28509	TUBE FREIN PARKING	1,000
25	25176	CAPUCHON JANTE AV.	1,000
26	20507	VIS HM 6 X 20	1,000
27	2235	RDLE PL.A 6,4DIN12	1,000
28	28558	AXE MARCHE AVANT	1,000
29	71439	CIRCLIPS K46	1,000
30	28629	GOUPILLE	1,000
31	22029	RDLE PL.B 6,5DIN69	1,000
32	71201	ECROU H FR.EMB. M6	1,000
33	28538	RESSORT TORSION K46	1,000
34	7035	RDLE PL.B 8,4DIN90	1,000
35	71047	CIRCL.EXT. 15X1	1,000
36	35141	GALET TENDEUR	1,000
37	9022	ROULEMENT A BILLES	1,000
38	21256	CIRCLIPS INT.32X1,2	1,000
39	28539	BIELLETTE FREIN K46	1,000
40	13016	ETIQ.RESERV.HUILE H	1,000
41	71199	VIS HM 8X90	1,000
42	5340	VIS H M 8X45 DIN933	1,000

Repère	Référence	Désignation	Quantité
43	28540	ENTRET.CANNELE K46	1,000
44	28541	VENTILATEUR K46	1,000
45	28100	POIGNEE LEVIER FR.	1,000
46	28488	KIT AXE BOITE K46	1,000
48	71049	RDLE GROWER A6	1,000
49	28543	RDLE ONDUFLEX K46	1,000
50	37059	BAGUE JFM 141822-20	1,000
51	28544	CIRCLIPS BAS K46	1,000
52	28545	BIELLET.BYPASS K46	1,000
53	25511	RESSORT DE TORSION	1,000
54	71007	CLAV.6,35X6,35X28	1,000
55	28011	POULIE SORTIE MOT.	1,000
56	28072	BUTEE EMBRAYAGE	1,000
57	22456	VIS H M 6X40	1,000
58	28078	GUIDE BUTEE EMBRAY	1,000
59	28135	EMBRAYAGE ELECTROM.	1,000
60	28546	BIELLET.AVANCE K46	1,000
62	21270	RDLE PL.B 6,4	1,000
63	24717	RESSORT FREIN	1,000
64	28274	TOLE GALET TENDEUR	1,000
65	5602	ANNEAU TRUARC	1,000
66	28143	AMORTISS.TRANSM.AV.	1,000
67	23632	POULIE FIXE VARIA.	1,000
68	25900	CHAPEAU PROTECTION	1,000
69	71018	COUPILLE FENDUE V3,	1,000
70	37561	ECROU H FR M5,10	1,000
72	28139	PEDALE MARCHE ARR.	1,000
73	28188	REJET.PEDAL.MAR.AR.	1,000
74	28167	REJET.PEDAL.MAR.AV.	1,000
75	71231	VIS JM5-16,12.9	1,000
76	28131	PEDALE MARCHE AVANT	1,000
77	21608	VIS JAPY M6X16	1,000
78	28286	AXE GALET TEND.CABL	1,000
79	2020	ECROU H.M8 DIN934	1,000
80	25711	CAVALIER	1,000
81	28234	ROTULE M8	1,000
82	28227	CABLE PEDALES	1,000
83	28312	CABLE PEDALE GALET	1,000
85	28431	BIEL.PED.MARC.AV.96	1,000
86	28432	BIEL.PED.MAR.ARR.96	1,000
87	24684	ANNEAU TRUARC 8 DI	1,000

Repère	Référence	Désignation	Quantité
88	28584	SUPPORT	1,000
89	28576	DURIT PREFORME.03	1,000
90	28492	KIT CABLE PEDALE	1,000
91	37715	CHASSIS CPL TUBE 25	1,000
92	71014	GOUPIL.ELAST.3,5X30	1,000
96	71169	GOUJ.A CLAPET 8X32	1,000
97	71077	CHAPE 8X32 B	1,000
98	28603	LEVIER BY-PASS	1,000
99	25728	RDLE BUTEE FREIN	1,000
100	71355	VIS HM6-10,8.8	1,000
101	28583	BUTEE EMBRAYAGE	1,000
107	20693	VIS H M 6X25 DIN933	1,000
113	26785	BIDON HUI. 2L20W20	1,000
114	28462	TUBE SILICONE JS545	1,000
115	28336	FILTR.HUILE K55 K46	1,000
118	28556	TRINGLE PEDALE	1,000
119	28555	COUSSINET 12/14/15	1,000
120	71336	RDLE 13X20X2	1,000
121	9017	ECR.AUTOFR.HM10 DIN	1,000
122	28566	BIEL.PEDALE MAR.AV	1,000
123	28564	BIEL.PEADLE MAR.ARR	1,000
124	28560	AXE ACCROC.TRINGLE	1,000
125	28563	PLATINE	1,000
126	28605	TRINGLE TRANSM.AV	1,000

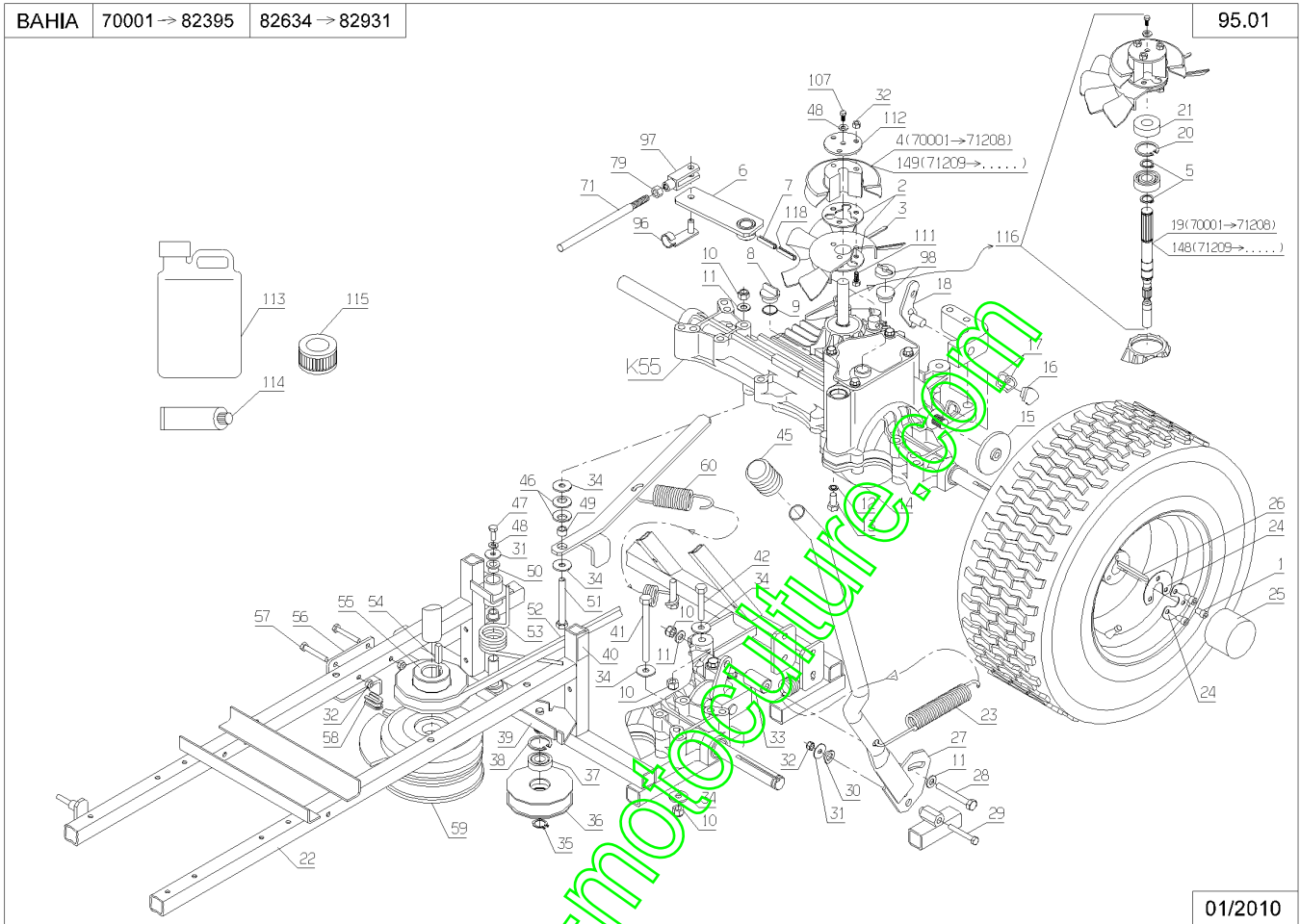
www.emc-motoculture.com



www.emc-motors.com

Repère	Référence	Désignation	Quantité
1	71072	VIS CHC M6X10	1,000
2	28385	RDLE VENTILATEUR	1,000
3	28142	VENTILATEUR BOITE	1,000
4	28248	KIT AXE BOITE K55	1,000
5	71202	CIRCL.K55 13,8X1,27	1,000
6	28423	BIELLETTE CDE BOITE	1,000
7	71013	GOUPIL. ELAST. 6X30	1,000
8	28183	BOUCHON RESERV.HUIL	1,000
9	28196	JOINT BOUCH.RES.HUI	1,000
10	71205	ECROU H FR.EMB. M8	1,000
11	7335	RDLE PL.A 8,4DIN12	1,000
12	28256	JOINT VIS VIDANGE	1,000
13	28249	VIS DE VIDANGE	1,000
14	28003	BOITE HYDRO KANSAKI	1,000
15	28213	DISQUE FREIN PARKIN	1,000
16	28221	GARNITURE DE FREIN	1,000
17	28257	CALE DE REGLAGE	1,000
18	28222	LEVIER FREIN PARKIN	1,000
20	71039	CIRCL.INT.35X1,5	1,000
21	28235	JOINT AXE ENT. BOITE	1,000
22	28406	CHASSIS TUBE 25	1,000
23	28184	RESSORT TRACT.FREIN	1,000
24	52174	SEGMENT ARRET ROUE	1,000
25	25176	CAPUCHON JANTE AV.	1,000
26	71226	CLAV.4,76X4,76X55	1,000
27	28416	LEVIER FREIN A MAIN	1,000
28	20513	VIS H M 8X60 DIN933	1,000
29	71239	VIS HM 6-45 ZBL	1,000
30	20561	RDLE OND. A 10	1,000
31	22029	RDLE PL.B 6,5DIN69	1,000
32	71201	ECROU H FR.EMB. M6	1,000
33	28166	ENTRETOISE	1,000
34	7035	RDLE PL.B 8,4DIN90	1,000
35	71047	CIRCL.EXT. 15X1	1,000
36	35141	GALET TENDEUR	1,000
37	9022	ROULEMENT A BILLES	1,000
38	21256	CIRCLIPS INT.32X1,2	1,000
39	28407	TENDEUR COURROIE	1,000
40	13016	ETIQ.RESERV.HUILE H	1,000
41	71199	VIS HM 8X90	1,000
42	5340	VIS H M 8X45 DIN933	1,000

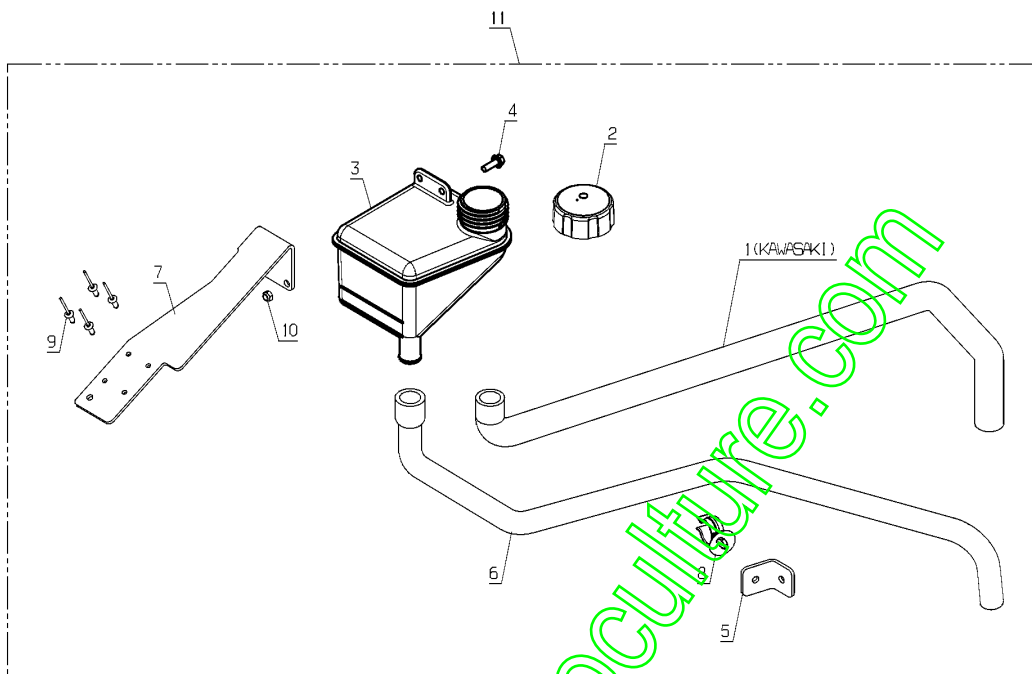
Repère	Référence	Désignation	Quantité
45	28100	POIGNEE LEVIER FR.	1,000
46	28198	RDLE RESSORT BY-PAS	1,000
47	37997	VIS HM6-16 8.8 EMB	1,000
48	71049	RDLE GROWER A6	1,000
49	28193	ENTRETOISE BY-PASS	1,000
50	5455	BAGUE C14/18X18 BP	1,000
51	71068	VIS H M 8X70	1,000
52	28012	COURROIE 1007 MM	1,000
53	25511	RESSORT DE TORSION	1,000
54	71007	CLAV.6,35X6,35X28	1,000
55	28011	POULIE SORTIE MOT.	1,000
56	28072	BUTEE EMBRAYAGE	1,000
57	22456	VIS H M 6X40	1,000
58	28078	GUIDE BUTEE EMBRAY	1,000
59	28135	EMBRAYAGE ELECTROM	1,000
60	28185	RESSORT TRAC.BY-PAS	1,000
71	28048	TRINGLE TRANS.AVANC	1,000
79	2020	ECROU H.M8 DIN934	1,000
96	71169	GOUJ.A CLAPET 8X32	1,000
97	71077	CHAPE 8X32 B	1,000
98	28258	RENIFLARD	1,000
107	20693	VIS H M 6X25 DIN933	1,000
111	71288	VIS H M6-60,8.8	1,000
112	28378	ACCOUPL.POULIE BTE	1,000
113	26785	BIDON HUI. 2L20W20	1,000
114	28462	TUBE SILICONE JS545	1,000
115	28336	FILTR.HUILE K55 K46	1,000
118	71014	GOUPIL.ELAST.3,5X30	1,000
148	28379	AXE ENTREE BTE 97	1,000
149	28380	POULIE ENTRE.BTE 97	1,000



Repère	Référence	Désignation	Quantité
1	28532	DURITE PREFORMEE	1,000
2	36382	BOUCHON CONTOUR 175	1,000
3	36569	VASE EXPANSION	1,000
4	37996	VIS HM5-16 8.8 EMB	1,000
5	38062	TOLE SUPPORT AGRAFE	1,000
6	38355	DURITE PREFORMEE	1,000
7	38390	TOLE SUP.VASE EXPA.	1,000
8	38413	AGRAFE DURIT	1,000
9	71114	RIVET CLOUS DIAM.4X	1,000
10	37561	ECROU H FR M5,10	1,000
11	38388	KIT RESERVOIR COMP.	1,000

www.emc-motoculture.com

PL01843



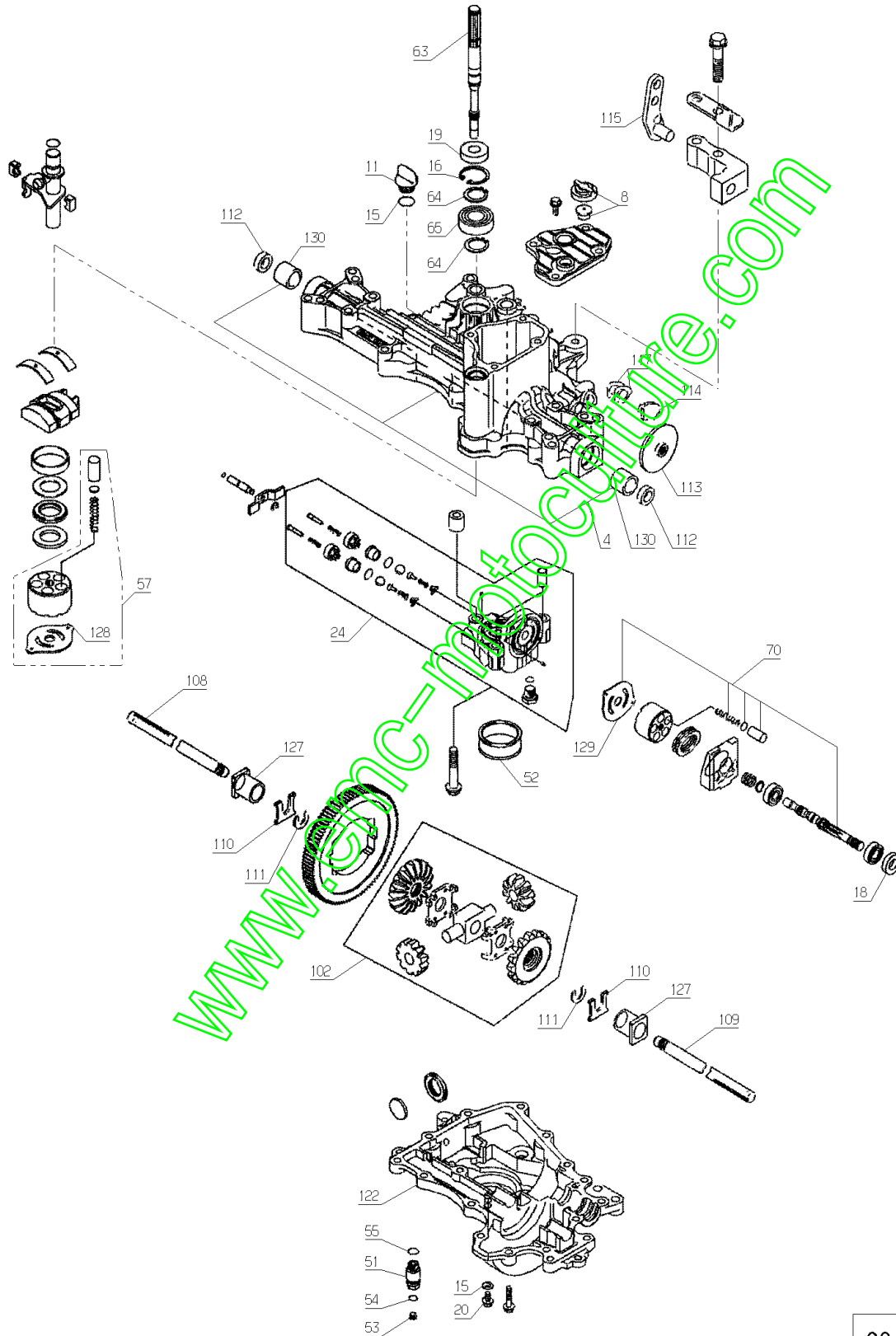
03/2013

www.emc-motoculture.com

Repère	Référence	Désignation	Quantité
4	28376	KIT CARTER SUP. K55	1,000
8	28258	RENIFLARD	1,000
11	28183	BOUCHON RESERV.HUIL	1,000
15	28256	JOINT VIS VIDANGE	1,000
16	71039	CIRCL.INT.35X1,5	1,000
18	28458	JOINT AXE FREIN K55	1,000
19	28235	JOINT AXE ENT.BOITE	1,000
20	28249	VIS DE VIDANGE	1,000
24	28618	CARTER POMPE	1,000
51	28621	CONNECTEUR	1,000
52	28336	FILTR.HUILE K55 K46	1,000
53	28622	BOUCHON	1,000
54	28624	JOINT O-RING	1,000
55	28623	JOINT O-RING	1,000
57	28616	KIT POMPE	1,000
63	28379	AXE ENTREE BTE 97	1,000
64	71202	CIRCL.K55 13,8X1,27	1,000
65	40465	RLT 6202 HUILE	1,000
70	28617	KIT MOTEUR POMPE	1,000
102	28457	KIT PIGNON DIFF.K55	1,000
108	28570	AXE DE SORTIE D.K55	1,000
109	28571	AXE DE SORTIE G.K55	1,000
110	34565	RONDELLE MAINTIEN	1,000
111	34566	ANNEAU K55	1,000
112	28569	JOINT AXE SORTIE	1,000
113	28213	DISQUE FREIN PARKIN	1,000
114	28221	GARNITURE DE FREIN	1,000
115	28222	LEVIER FREIN PARKIN	1,000
117	28257	CALE DE REGLAGE	1,000
122	28375	CARTER INF. K55	1,000
127	28374	BAGUE K55	1,000
128	28615	GLACE DISTR. POMPE	1,000
129	28614	GLACE DISTR.MOTEUR	1,000
130	28377	BAGUE BTE K46/K55	1,000

BAHIA K55

89.01

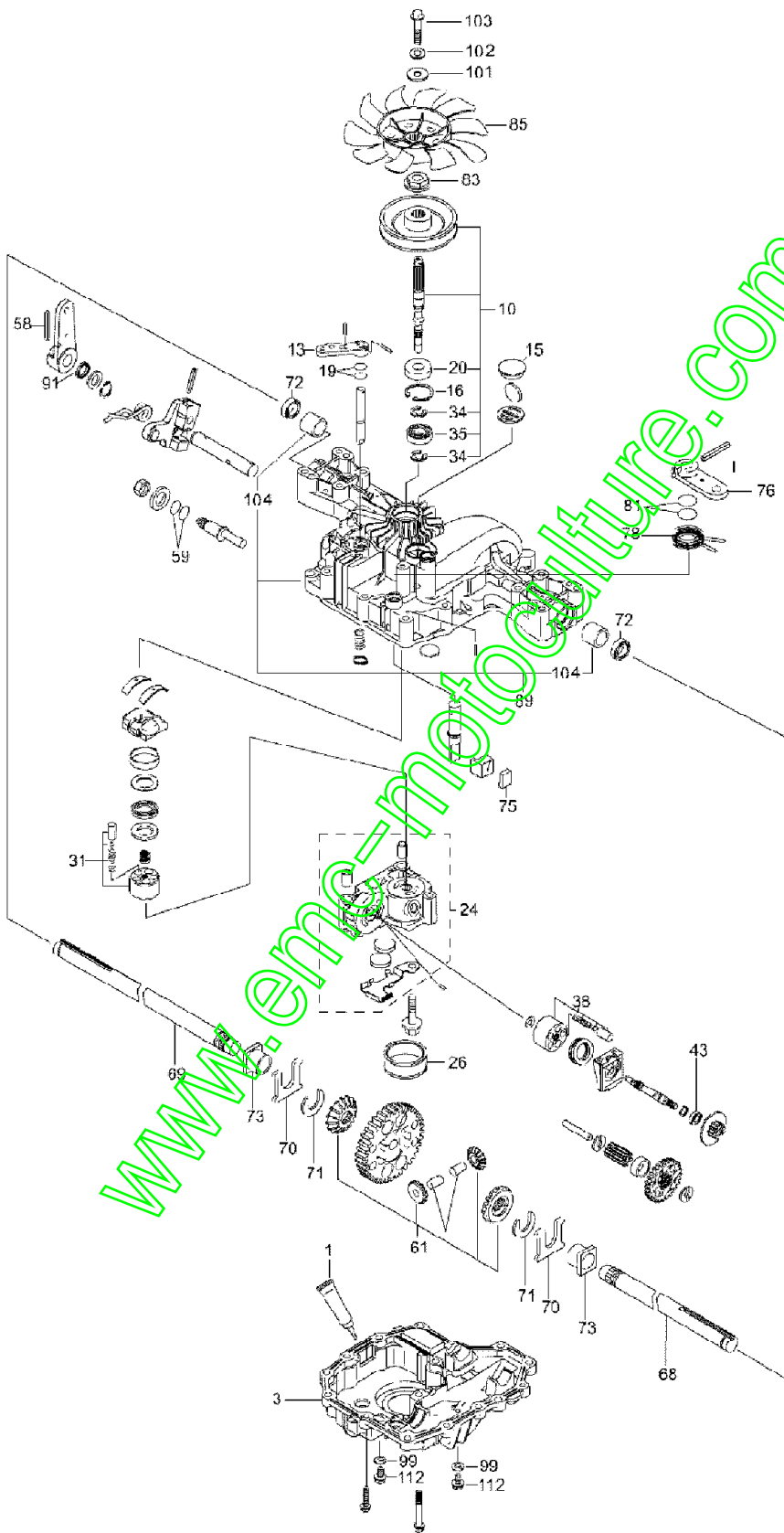


03/2009

Repère	Référence	Désignation	Quantité
1	28462	TUBE SILICONE JS545	1,000
3	28372	CARTER INF. K46	1,000
10	28488	KIT AXE BOITE K46	1,000
13	28545	BIELLET.BYPASS K46	1,000
15	30581	BOUCHON	1,000
16	71039	CIRCL.INT.35X1,5	1,000
19	28625	JOINT	1,000
20	28235	JOINT AXE ENT.BOITE	1,000
24	28626	CARTER CENTR.POMPE	1,000
26	28336	FILTR.HUILE K55 K46	1,000
31	28627	KIT POMPE	1,000
34	28544	CIRCLIPS BAS K46	1,000
35	40465	RLT 6202 HUILE	1,000
38	28628	KIT MOTEUR POMPE	1,000
43	25112	RLT A BILLES 6202	1,000
58	28629	GOUPILLE	1,000
59	28623	JOINT O-RING	1,000
61	28630	KIT PIGNONS K46	1,000
68	28631	AXE SORTIE DROIT	1,000
69	28632	AXE SORTIE GAUCHE	1,000
70	34565	RONDELLE MAINTIEN	1,000
71	34567	ANNEAU K46	1,000
72	28569	JOINT AXE SORTIE	1,000
73	28371	BAGUE K46	1,000
75	28633	GARNITURE DE FREIN	1,000
76	28539	BIELLETTE FREIN K46	1,000
78	28538	RESSORT TORSION K46	1,000
81	28634	JOINT O-RING	1,000
83	28540	ENTRET.CANNELE K46	1,000
85	28541	VENTILATEUR K46	1,000
89	28373	KIT CARTER SUP. K46	1,000
91	28635	JOINT	1,000
99	28256	JOINT VIS VIDANGE	1,000
101	38886	RDLE PLATE BTE K46	1,000
102	38885	RDLE GROWER BTE K46	1,000
103	38884	VIS EMB.CRAN.BOITE	1,000
104	28377	BAGUE BTE K46/K55	1,000
112	28249	VIS DE VIDANGE	1,000

K46

89.02

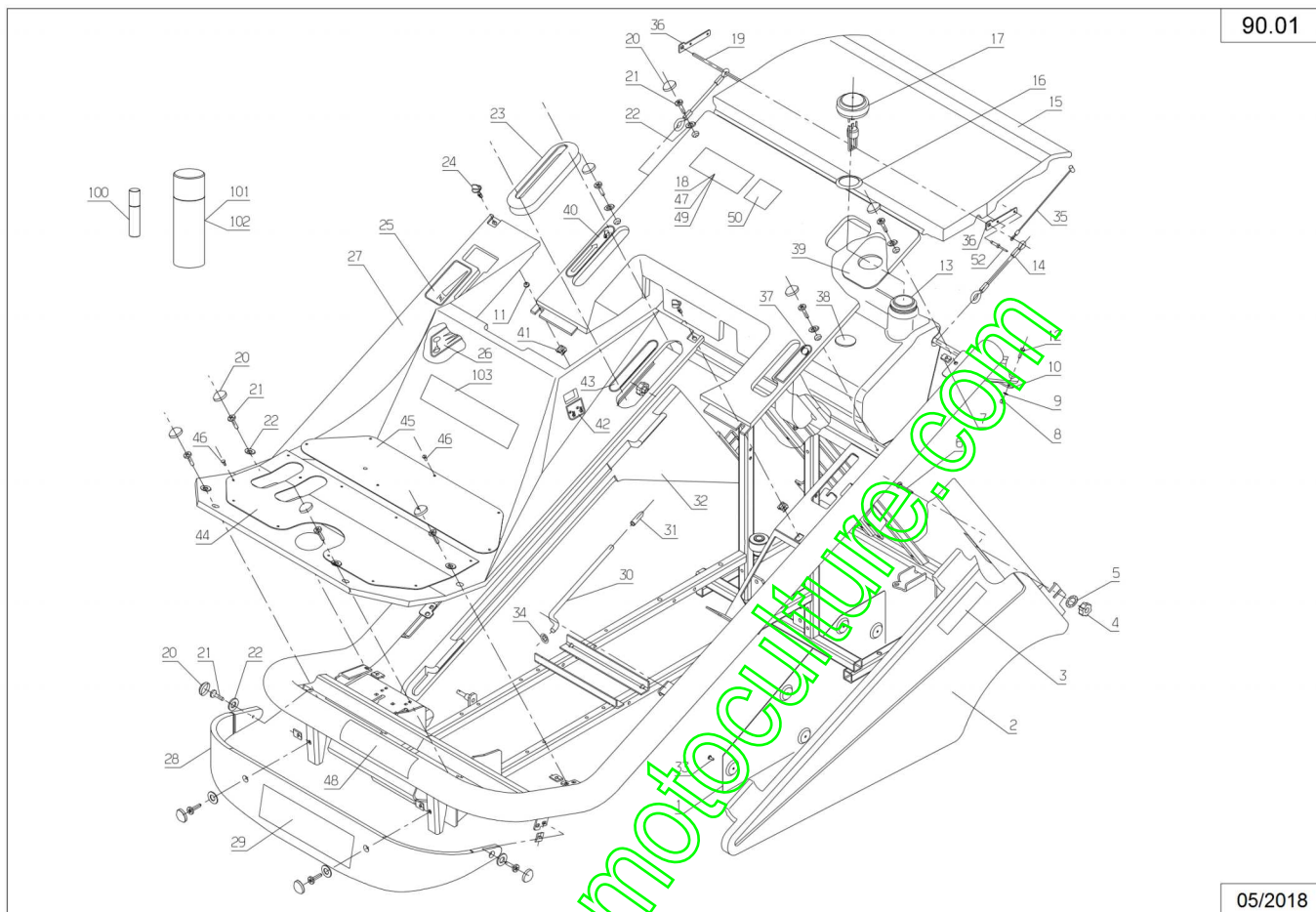


03/2010

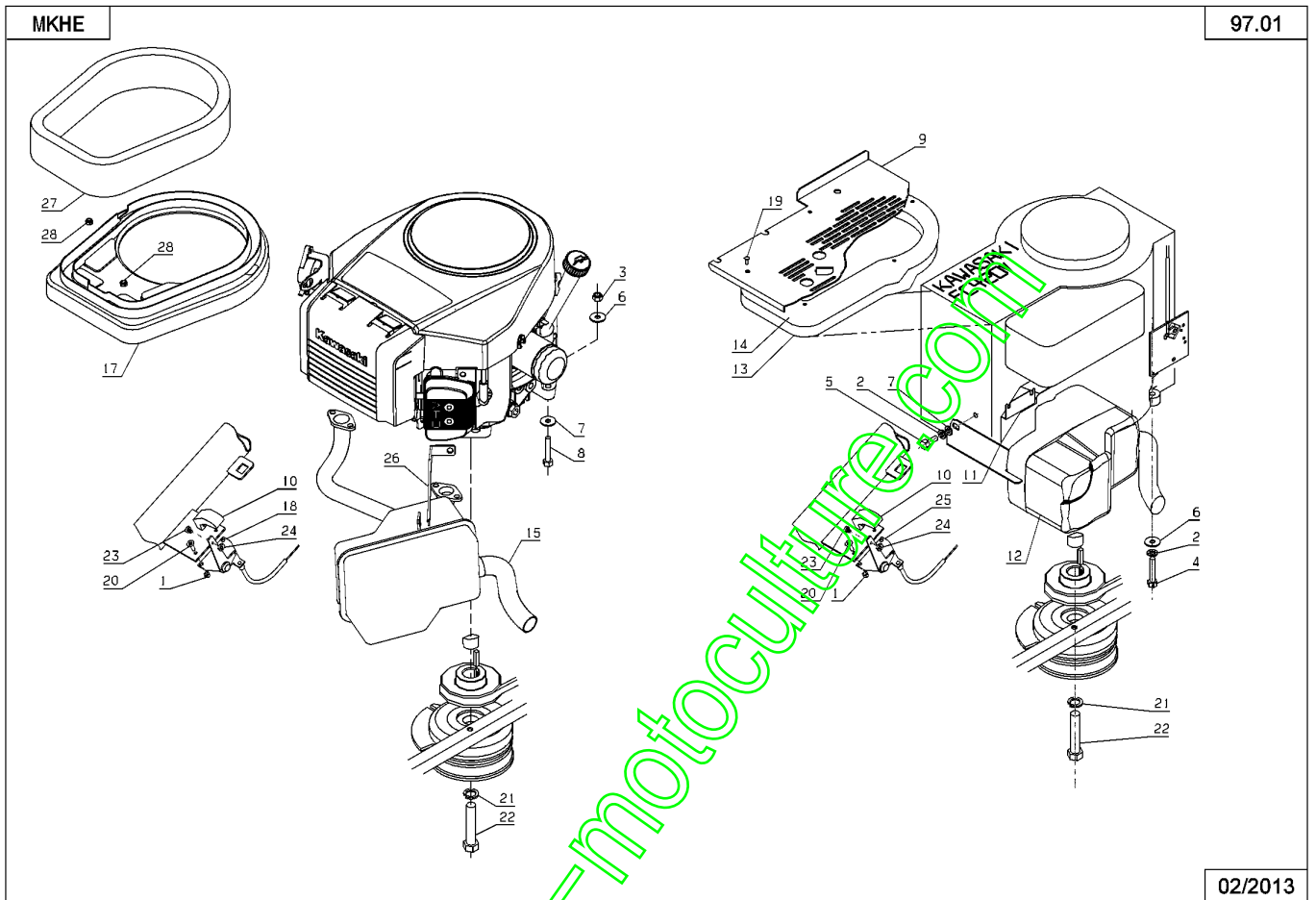
Repère	Référence	Désignation	Quantité
1	28319	TOLE PROTEC.CAPOT	1,000
2	28305	CACHE LAT.G.BLANC	1,000
3	13086	ETIQ.ETE.CACH.LAT.	1,000
4	28160	BOUTON DE MANOEUVRE	1,000
5	71049	RDLE GROWER A6	1,000
6	21608	VIS JAPY M6X16	1,000
7	21436	ECROU NUL 530	1,000
8	37561	ECROU H FR M5,10	1,000
9	20564	RONDELLE PLATE 5,5	1,000
10	28052	TRAVER.MAINT.RESERV	1,000
11	28317	PASSE FIL DIA.5	1,000
12	2009	VIS M5 X 16	1,000
13	28050	RESERVOIR	1,000
14	28239	SANGLE ELASTIQUE	1,000
15	28307	CAPOT ARRIERE BLANC	1,000
16	28250	JOINT BOUCHON JALGE	1,000
17	28055	BOUCHON RESERVOIR	1,000
18	13084	ETIQ. MBHE	1,000
19	28240	TRINGLE SUP.SANGLE	1,000
20	28102	COIFFE VIS TOLE	1,000
21	71111	VIS TOLE B4,8X16	1,000
22	28094	RDLE COIF.VIS TOLE	1,000
23	28242	CACHE HDC	1,000
24	28228	VIS 1/4 DE TOUR	1,000
25	13075	ETIQ. MANNETTE GAZ	1,000
26	13072	ETI.MIS.ROUT.MOTEUR	1,000
27	28306	CAPOT AVANT BLANC	1,000
28	28150	CACHE DIRECTION	1,000
29	13085	ETIQ.ETE.CACH.DIREC	1,000
30	28164	TRING.BRID.BATTERIE	1,000
31	28148	EMBOUT DE PROTECT.	1,000
32	28304	CACHE LAT.DR.BLANC	1,000
33	71114	RIVET CLOUS DIAM.4X	1,000
34	6185	ANNEAU SELF LOCK AX	1,000
35	28643	CABLE CAPOT PANIER	1,000
36	28644	GUIDE	1,000
37	13074	ETIQ.FREIN PARKING	1,000
38	25879	RDLE AUTOCOLLANTE	1,000
39	28311	MOUSSE ETANC.RESERV	1,000
40	13073	ETIQ.VIDANGE PANIER	1,000
41	28229	CLIP 1/4 DE TOUR	1,000

Repère	Référence	Désignation	Quantité
42	13071	ETIQ.MIS.ROUTE LAME	1,000
43	13070	ETIQ. HDC	1,000
44	28280	TOLE MARCHE PIED AV	1,000
45	28281	TOLE MARCHE PIED AR	1,000
46	71245	RIVET CL.9X1,5X5,5	1,000
47	13102	ETIQUETTE MKHE	1,000
48	13021	ETIQ.AVERTISSEMENT	1,000
49	13208	ETIQ. MHHE	1,000
50	13142	ETIQ.POWERED BY B/S	1,000
51	28341	ENTONNOIR+FLOTTEUR	1,000
52	71327	RIVET ALU 4X21	1,000
100	25480	STICK RECHANGE VERT	1,000
101	25965	BOMBE VERTE 400ML	1,000
102	25966	BOMBE BLANCHE 400ML	1,000
103	13079	ETIQ.BAHIA	1,000

www.emc-motoculture.com



Repère	Référence	Désignation	Quantité
1	37561	ECROU H FR M5,10	1,000
2	71343	RDLE GROWER A8	1,000
3	71205	ECROU H FR.EMB. M8	1,000
4	5340	VIS H M 8X45 DIN933	1,000
5	6169	VIS HM 8X16 DIN 93	1,000
6	7035	RDLE PL.B 8,4DIN90	1,000
7	7335	RDLE PL.A 8,4DIN12	1,000
8	20513	VIS H M 8X60 DIN933	1,000
9	28022	TOLE SUPPORT CONTAC	1,000
10	28177	POIGNEE LEVIER GAZ	1,000
11	28345	TOLE CARBURAT. KAWA	1,000
12	28347	POT ECHAP.MOT.KAWA	1,000
13	28348	MOUSS.CENTR.AIR KAW	1,000
14	28389	SUPPORT MOUSSE KAWA	1,000
15	28577	POT ECHAPPEMENT	1,000
17	28581	SUPP.MOUSSE KAWA	1,000
18	37821	COMMANDE GAZ KIT	1,000
19	71114	RIVET CLOUS DIAM 4X	1,000
20	71128	VIS TF CR M5X16	1,000
21	71159	RDLE FREIN 7/16"	1,000
22	71208	VIS H 7/16" 20 UNF	1,000
23	71224	VIS POIG.GAZ 8-32'	1,000
24	71225	ECROU POIG.GAZ 8-32	1,000
25	37820	COMMANDE GAZ	1,000
26	28590	PATTE FIXATION POT	1,000
27	28591	MOUSSE ASPI.KAWA	1,000
28	71201	ECROU H FR.EMB. M6	1,000



97.01

02/2013

Repère	Référence	Désignation	Quantité
1	71288	VIS H M6-60,8.8	1,000
2	28608	ENTRET.COURRONNE	1,000
3	28609	COURONNE DIRECTION	1,000
4	28598	SUPPORT.ARR.SIEGE D	1,000
5	1513	ANN.E.RE DIA.15	1,000
6	28024	ENTRETOISE FUSEE	1,000
7	28401	FUSEE DROITE	1,000
8	28402	FUSEE GAUCHE	1,000
9	28201	KIT COURONNE DIR.	1,000
10	28047	ROTULE DE DIRECTION	1,000
11	28536	BIELLE DIRECTION	1,000
12	28114	ENTRETOISE COURONNE	1,000
13	28403	ESSIEU SOUDE	1,000
14	28025	ENTRETOISE ESSIEU	1,000
15	28028	SUP.COURONNE DENTEE	1,000
16	28111	COUVERC.CONS.DIRECT	1,000
17	28300	TUBE CONSOLE VERT	1,000
18	28430	COLONNE DIRECTION	1,000
19	25728	RDLE BUTEE FREIN	1,000
20	37997	VIS HM6-16 8.8 EMB	1,000
21	28110	SOUFFLET DIRECTION	1,000
22	28033	-> 29900 + 29978	1,000
23	28155	CAPUCHON DE VOLANT	1,000
24	25330	BADGE VOLANT ETESIA	1,000
25	28251	POMMEAU VOLANT	1,000
26	38057	SIEGE	1,000
27	28573	CHASSIS VERT	1,000
28	28599	SUPP.ARR.SIEGE G.	1,000
29	25711	CAVALIER	1,000
30	28205	LOQUET BLOCAGE SIEG	1,000
31	28137	VIS EPAUL.LOQUET ZG	1,000
32	28414	SUPPORT SIEGE	1,000
33	28206	RESSORT BLOCAGE SIE	1,000
34	28586	SUPPORT SIEGE	1,000
35	28022	TOLE SUPPORT CONTAC	1,000
36	28140	-> 38744 + 38746	1,000
37	28017	-> 38745 + 38747	1,000
38	28049	SUP.ARR.SIEGE DROIT	1,000
39	28203	SUPPORT ARR.SIEGE G	1,000
40	28112	RESSORT SIEGE	1,000
41	28056	BOUCHON TUBE DIA.60	1,000

Repère	Référence	Désignation	Quantité
42	9017	ECR.AUTOFR.HM10 DIN	1,000
43	71201	ECROU H FR.EMB. M6	1,000
44	22456	VIS H M 6X40	1,000
45	71238	RDLE PL. A 10,2	1,000
46	21036	RDLE PL.A 10,5 DIN1	1,000
47	71205	ECROU H FR.EMB. M8	1,000
48	21270	RDLE PL.B 6,4	1,000
49	7038	VIS H M 8X35 DIN933	1,000
50	71198	VIS HM 10X45	1,000
51	71434	VIS C HC M10-20 8.8	1,000
52	9056	VIS H M 8X25 DIN933	1,000
53	2235	RDLE PL.A 6,4DIN12	1,000
54	7335	RDLE PL.A 8,4DIN12	1,000
55	20606	CLAVETTE 5X5X20	1,000
56	1557	ECROU H.M6 DIN934	1,000
57	28645	BUTEE SIEGE	1,000
58	25176	CAPUCHON JANTE AV	1,000
59	28308	LOGO SIEGE ETESIA	1,000
60	6169	VIS HM 8X16 DIN 933	1,000
61	28296	ENTRETOISE	1,000
62	25301	GRAISSEUR "HYDRAULI	1,000
63	28294	CAPUCHON POMMEAU	1,000
65	28381	BLOCAG. POSIT.1 HDC	1,000
66	2009	VIS M5 X 16	1,000
67	37561	ECROU H FR M5,10	1,000
68	29923	POMMEAU VOLANT	1,000
69	71114	RIVET CLOUS DIAM.4X	1,000
70	71110	VIS HM 10X30	1,000
71	9009	RDLE PL.11X32X4	1,000
72	28585	TOLE SUPP.CONTACT.	1,000
73	29978	CAPUCHON VOLANT	1,000
74	29900	VOLANT DE DIRECTION	1,000

Repère	Référence	Désignation	Quantité
1	28479	ROUE AR. VERTE TREL	1,000
2	28186	ROUE AR. VERTE S/N	1,000
3	28445	PNEU ARRIERE TREL	1,000
4	28351	PNEU SO/NAT	1,000
5	28483	JANTE AR. VERTE TR	1,000
6	28355	JANTE AR. VERTE S	1,000
7	28353	CHAMBRE A AIR ARR.	1,000
9	28478	ROUE AV. VERTE 6"	1,000
10	28452	ROUE AV. VERTE 5"	1,000
11	28187	ROUE AV. VERTE 4"	1,000
12	28444	PNEU AV. 6"	1,000
13	28455	PNEU AV. 5"	1,000
14	28350	PNEU AV. 4"	1,000
15	28482	JANTE AV. VERTE 6"	1,000
16	28454	JANTE AV. VERTE 5"	1,000
18	28484	CHAMBRE A AIR 6"	1,000
19	28456	CHAMBRE A AIR 5"	1,000
20	28352	CHAMBRE A AIR 4"	1,000
21	25616	RLT A BILLES 6204 2	1,000
22	28461	LIQUIDE ANTI-CREV.	1,000

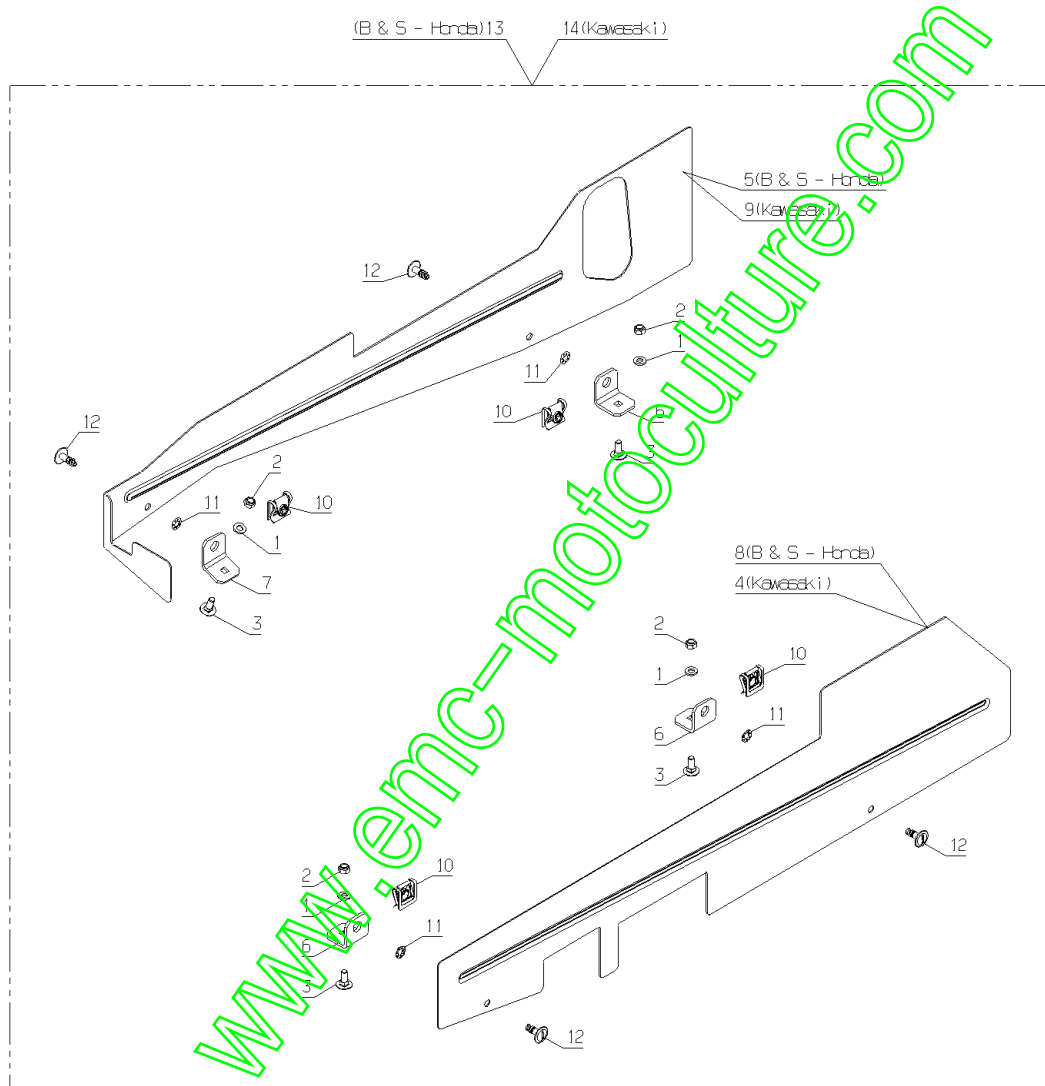
www.emc-motoculture.com

BAHIA 102.01	TRELLEBORG	KENDA-NATIER SONAMIA	KENDA-NATIER SONAMIA
	16x6,5-8 1	16x6,5-8 2	
	16x6,5-8 3	16x6,5-8 4	
	5	6	
	7	8	
	10x6,5-6 9	4, 1x3,5-5 10	11x4-4 11
	10x6,5-6 12	4, 1x3,5-5 13	11x4-4 14
	6 pouces/zoll / inch 15	5 pouces/zoll / inch 16	4 pouces/zoll / inch 17
	18	19	20
		21	
		22	

Repère	Référence	Désignation	Quantité
1	2235	RDLE PL.A 6,4DIN12	1,000
2	71201	ECROU H FR.EMB. M6	1,000
3	21608	VIS JAPY M6X16	1,000
4	37307	PROTECTEUR G.KAWA	1,000
5	37308	PROTECTEUR DROIT	1,000
6	37310	TOLE FIXAT.PROTEC.G	1,000
7	37311	TOLE FIX.PROT.AV.DR	1,000
8	37486	PROTECTEUR GAUCHE	1,000
9	37487	PROTECTEUR DR.KAWA	1,000
10	37499	RECEPTACLE 1/4 TOUR	1,000
11	37500	RONDELLE 1/4 TOUR	1,000
12	37501	VERROU 1/4 TOUR	1,000
13	37550	KIT CONFOR.ELTS MOB	1,000
14	37551	KIT CONFOR.ELTS.MOB	1,000

www.emc-motoculture.com

PL01551



04/2010

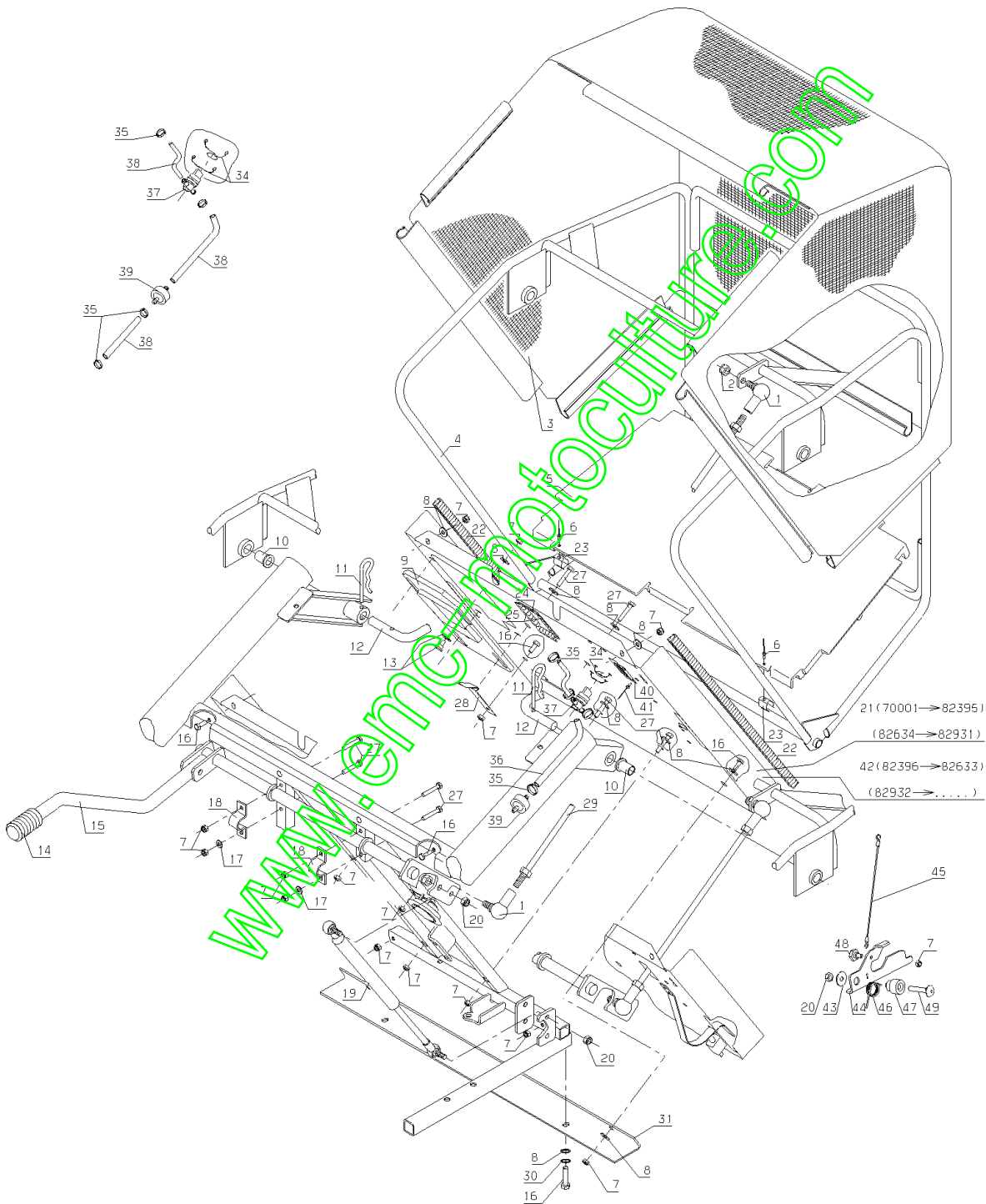
Repère	Référence	Désignation	Quantité
1	28047	ROTULE DE DIRECTION	1,000
2	9017	ECR.AUTOFR.HM10 DIN	1,000
3	28087	TOILE PANIER	1,000
4	28408	PANIER SOUDE	1,000
5	28095	FOND DE PANIER	1,000
6	71241	RIVET 4,8X10,5	1,000
7	71201	ECROU H FR.EMB. M6	1,000
8	21270	RDLE PL.B 6,4	1,000
9	28568	GUIDE CANAL	1,000
10	28070	COUSSINET 15/17/20	1,000
11	71228	GOUP. BETA DIAM.4	1,000
12	28082	AXE D'ARTIC.PANIER	1,000
13	28137	VIS EPAUL.LOQUET ZG	1,000
14	28118	POIGNEE LEV.HDC.VID	1,000
15	28409	LEVIER SOUDE	1,000
16	37997	VIS HM6-16 8.8 EMB	1,000
17	2235	RDLE PL.A 6,4DIN12	1,000
18	25711	CAVALIER	1,000
19	51458	VERIN PANIER	1,000
20	71205	ECROU H FR.EMB. M8	1,000
21	28295	PLAQUE ARRIERE	1,000
22	28254	GAINÉ PROTECT.690MM	1,000
23	25886	AGRAFE 17/20	1,000
24	28252	GAINÉ PROTECT.55 MM	1,000
25	28253	GAINÉ PROTECT.115MM	1,000
27	22456	VIS H M 6X40	1,000
28	40016	VERROU CACHE ARR.	1,000
29	28168	TRINGLE DE RENVOI	1,000
30	71049	RDLE GROWER A6	1,000
31	28362	RENF.PLAQ.AR.PAN.96	1,000
34	5202	COLLIER RILSAN	1,000
35	28323	COLLIER DURIT	1,000
36	30281	DURIT ESS.1400 MM	1,000
37	28324	ROBINET D'ESSENCE	1,000
39	25266	FILTRE A ESSENCE	1,000
40	28068	BROSSE PANIER	1,000
41	71114	RIVET CLOUS DIAM.4X	1,000
42	28522	PLAQUE ARRIERE	1,000
43	7035	RDLE PL.B 8,4DIN90	1,000
44	28547	VERROU PANIER	1,000
45	28549	CABLE CAPOT PANIER	1,000

Repère	Référence	Désignation	Quantité
46	40063	RESSORT DE RAPPEL	1,000
47	28548	PIVOT VERROU	1,000
49	20520	VIS JAPY M8 X 45	1,000

www.emc-motoculture.com

MBHE-MHHE-MKHE

110.01

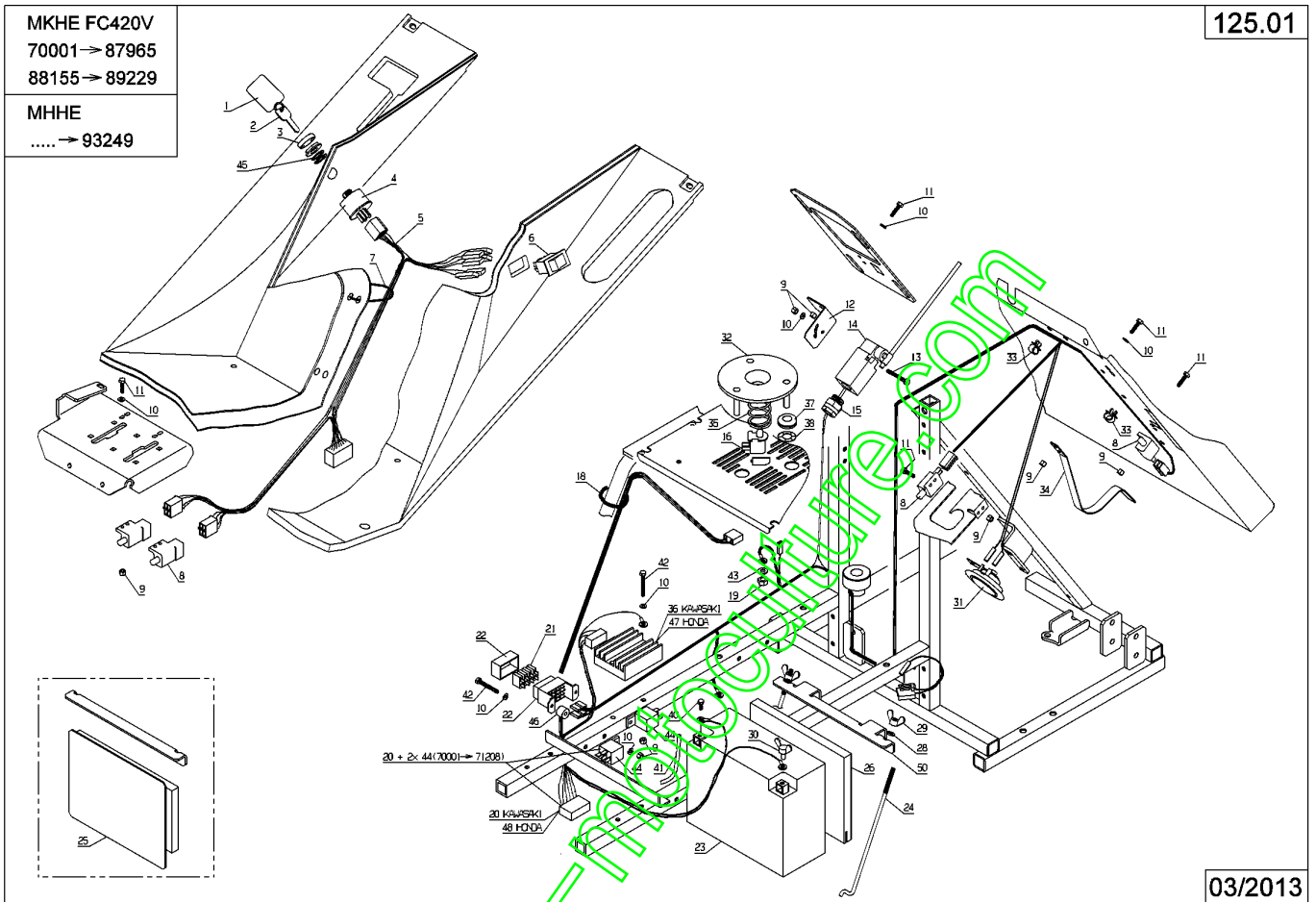


11/2007

Repère	Référence	Désignation	Quantité
1	28310	PORTE CLEFS ETESIA	1,000
2	28388	JEU DE 2 CLES	1,000
3	28382	ENJOLIVEUR DE CLEF	1,000
4	28384	CONTACTEUR A CLEF	1,000
5	28291	FAIS.ELE.CIRC.AV.96	1,000
6	52494	INTERRUPT.3 CONTACT	1,000
7	5202	COLLIER RILSAN	1,000
8	28159	INTERRUPTEUR	1,000
9	37561	ECROU H FR M5,10	1,000
10	20564	RONDELLE PLATE 5,5	1,000
11	2009	VIS M5 X 16	1,000
12	28211	SUP.TEMOIN REMPLIS.	1,000
13	5399	VIS M5X40 DIN 912	1,000
14	28210	TEMOIN REMPLISSAGE	1,000
15	29789	PRESSE ETOUPE	1,000
16	28106	INTERRUPTEUR SIEGE	1,000
17	28081	AGRAFE 12,8 MM	1,000
18	21119	COLLIER 260 MM	1,000
19	15849	ECROU HEXAG.	1,000
20	28449	FAISC. ARR. KAWA 97	1,000
21	25824	FUSIBLE 20A,12V	1,000
22	25803	PORTE FUSIBLE	1,000
23	52101	BATTERIE	1,000
24	28164	TRING.BRID.BATTERIE	1,000
25	28244	PROTECTION BATTERIE	1,000
26	28015	PROTECT.THERMIQUE	1,000
28	21270	RDLE PL.B 6,4	1,000
29	1504	ECROU HM6	1,000
30	71236	VIS PAPILLON M6X12	1,000
31	28209	AVERTISSEUR SONORE	1,000
32	28279	DISQUE SENSITIF	1,000
34	28073	LAME INTERRU.PANIER	1,000
35	28293	RESSO.DISQ.SENSITIF	1,000
36	15729	REGUL. DE TENSION	1,000
37	28292	PASSE FIL DIA.14	1,000
38	7377	GRIFFAXE RENF. 8	1,000
40	71168	VIS PLOMB 6-12	1,000
41	28329	RENIFL.BATTER.850MM	1,000
42	71167	VIS CHC M5-50,8.8	1,000
43	15848	RDLE GROWER	1,000
44	28392	RELAIS INV.ETANCHE	1,000

Repère	Référence	Désignation	Quantité
45	71016	RDLE 16X22X1 DIN988	1,000
46	28393	ENTRET.16X5,2X12	1,000
47	18796	REGULATEUR	1,000
48	28474	FAISC.EL.AR.HONDA	1,000
50	35675	EQUERRE BRIDAGE	1,000

www.emc-motoculture.com



Repère	Référence	Désignation	Quantité
1	28310	PORTE CLEFS ETESIA	1,000
2	28388	JEU DE 2 CLES	1,000
3	28382	ENJOLIVEUR DE CLEF	1,000
4	28384	CONTACTEUR A CLEF	1,000
5	28592	FAISC.ELECT.CPLT	1,000
6	52494	INTERRUPT.3 CONTACT	1,000
7	5202	COLLIER RILSAN	1,000
8	28159	INTERRUPTEUR	1,000
9	37561	ECROU H FR M5,10	1,000
10	20564	RONDELLE PLATE 5,5	1,000
11	2009	VIS M5 X 16	1,000
12	28211	SUP.TEMOIN REMPLIS.	1,000
13	5399	VIS M5X40 DIN 912	1,000
14	28210	TEMOIN REMPLISSAGE	1,000
15	29789	PRESSE ETOUPE	1,000
16	28106	INTERRUPTEUR SIEGE	1,000
17	28081	AGRAFE 12,8 MM	1,000
18	21119	COLLIER 260 MM	1,000
19	15849	ECROU HEXAG.	1,000
20	28582	PORTE-FUSIBLE	1,000
21	25824	FUSIBLE 20A,12V	1,000
22	16604	KIT RELAIS DEMARR.	1,000
23	52101	BATTERIE	1,000
24	28164	TRING.BRID.BATTERIE	1,000
25	28244	PROTECTION BATTERIE	1,000
26	28015	PROTECT.THERMIQUE	1,000
27	28207	SUP.BATTERIE NOIR	1,000
28	21270	RDLE PL.B 6,4	1,000
29	1504	ECROU HM6	1,000
30	71236	VIS PAPILLON M6X12	1,000
31	28209	AVERTISSEUR SONORE	1,000
32	28279	DISQUE SENSITIF	1,000
34	28073	LAME INTERRU.PANIER	1,000
35	28293	RESSO.DISQ.SENSITIF	1,000
36	20563	VIS TF M5 X 12	1,000
37	28292	PASSE FIL DIA.14	1,000
38	7377	GRIFFAXE RENF. 8	1,000
39	28383	-> 28015 + 35675	1,000
40	71168	VIS PLOMB 6-12	1,000
41	28329	RENIFL.BATTER.850MM	1,000
42	28537	ECROU HU BSF 5/163	1,000

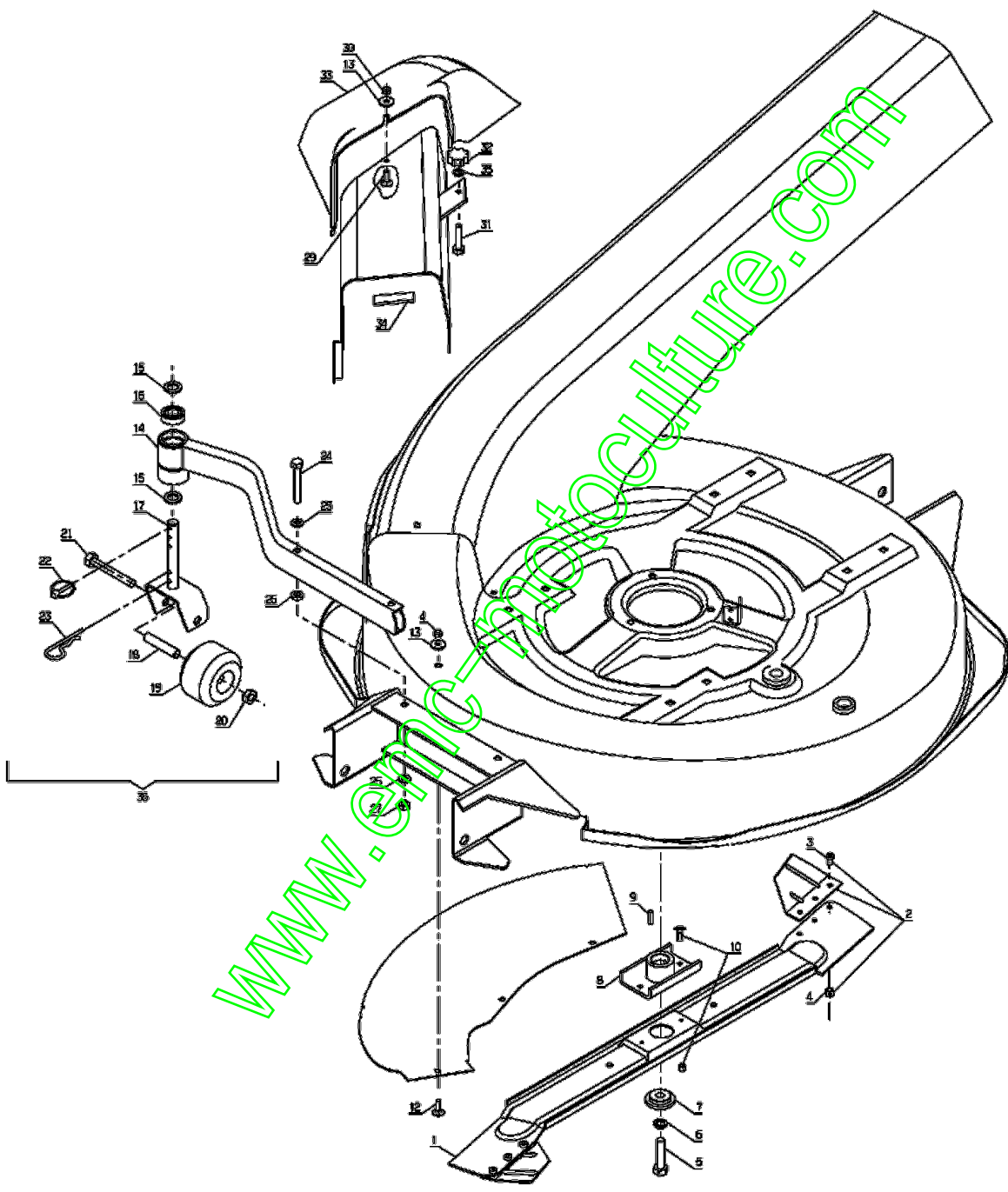
Repère	Référence	Désignation	Quantité
43	15848	RDLE GROWER	1,000
44	28392	RELAIS INV.ETANCHE	1,000
45	71016	RDLE 16X22X1 DIN988	1,000
46	28594	BRIDE DE FIXATTION	1,000
47	35675	EQUERRE BRIDAGE	1,000

www.emc-motoculture.com

Repère	Référence	Désignation	Quantité
1	MZ80M	LAME POUR MU80	1,000
2	28486	KIT AIL.MULCHING	1,000
3	36489	VIS RL XM6-12	1,000
4	71201	ECROU H FR.EMB. M6	1,000
5	71110	VIS HM 10X30	1,000
6	71052	RDLE FREIN A10	1,000
7	28238	ROND.FIXATION LAME	1,000
8	28420	ACCOUPLLEMENT LAME	1,000
9	20602	CLAVETTE 5X5X25	1,000
10	26157	JEU BOUL. CIS.8PCES	1,000
12	5496	VIS TRCC 6X20	1,000
13	22029	RDLE PL.B 6,5DIN69	1,000
14	28440	TUBE SUPP. ROULEAU	1,000
15	9166	RDLE PL.15X24X2	1,000
16	9022	ROULEMENT A BILLES	1,000
17	28437	CHAPE ROULEAU	1,000
18	28333	ENTRETOISE ROULEAU	1,000
19	28123	ROULEAU	1,000
20	9017	ECR.AUTOFR.HM10 DIN	1,000
21	71032	VIS H M 10X75	1,000
22	71005	GOUP. A CLIPS 5X32	1,000
23	71228	GOUP. BETA DIAM.4	1,000
24	20513	VIS H M 8X60 DIN933	1,000
25	7335	RDLE PL.A 8,4DIN12	1,000
26	71126	RDLE PL. 8,4 DIN 73	1,000
27	71205	ECROU H FR.EMB. M8	1,000
29	71231	VIS JM5-16,12.9	1,000
30	37561	ECROU H FR M5,10	1,000
31	71023	VIS H M 6X50	1,000
32	28160	BOUTON DE MANOEUVRE	1,000
33	28149	DEFLECT.PARTIE ARR.	1,000
34	28285	GAINÉ PROTECT. 65MM	1,000
35	71049	RDLE GROWER A6	1,000
36	MAS80	KIT ANTI SCALP	1,000

MBHE-MHHE-MKHE

130.01



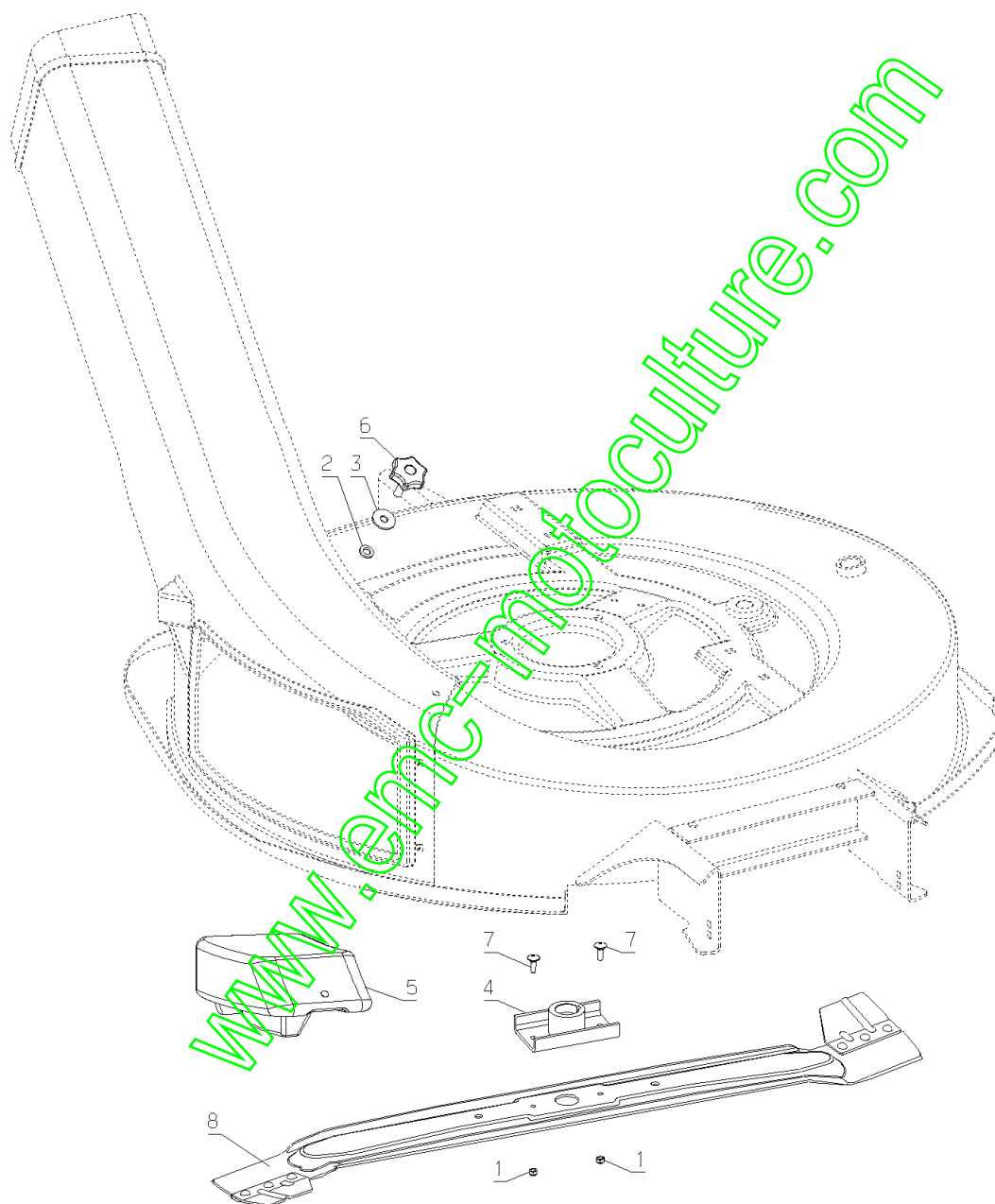
01/2014

Repère	Référence	Désignation	Quantité
1	37561	ECROU H FR M5,10	1,000
2	71343	RDLE GROWER A8	1,000
3	7035	RDLE PL.B 8,4DIN90	1,000
4	28420	ACCOUPLMENT LAME	1,000
5	35936	INSERT MULCHING	1,000
6	36152	BOUTON DE MANOEUVRE	1,000
7	71231	VIS JM5-16,12.9	1,000
8	MZ80M	LAME POUR MU80	1,000

www.emc-motoculture.com

MU80N

PL01316



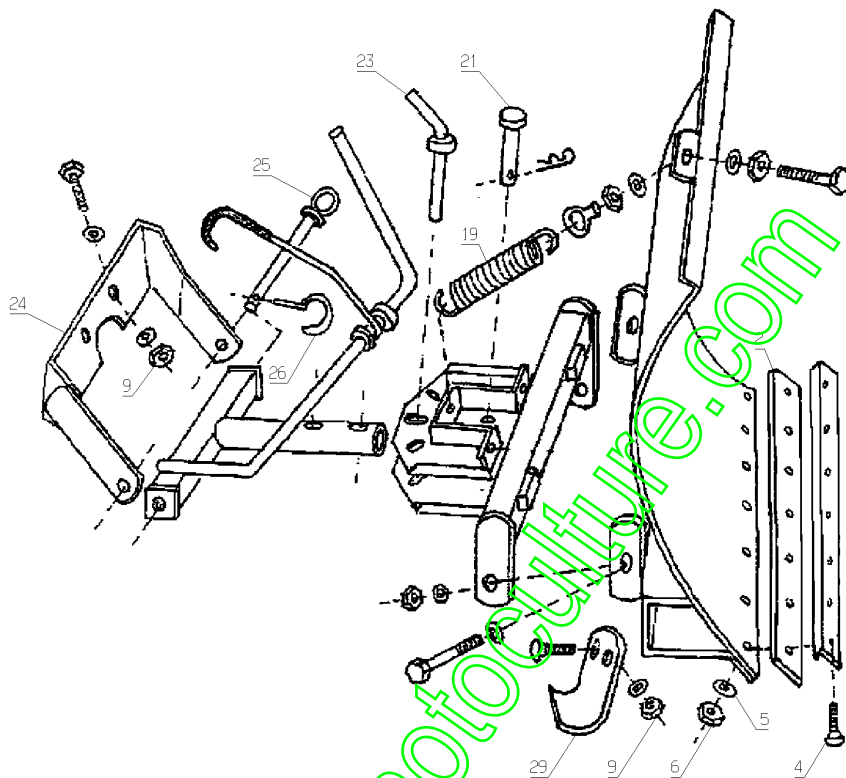
10/2007

Repère	Référence	Désignation	Quantité
2	30553	BANDE CAOUTCHOUC 1M	1,000
4	71251	VIS TRCC M10X35	1,000
5	9009	RDLE PL.11X32X4	1,000
6	9017	ECR.AUTOFR.HM10 DIN	1,000
9	30633	ECROU	1,000
19	30565	RESSORT	1,000
21	25469	AXE AVANT	1,000
23	25470	AXE ARRIERE	1,000
24	28344	CHASSIS MV80	1,000
25	28360	AXE ACCROCHAGE	1,000
26	28361	GOUPILLE A CLIPS	1,000
29	30557	PATIN	1,000

www.emc-motoculture.com

MV80

131.01



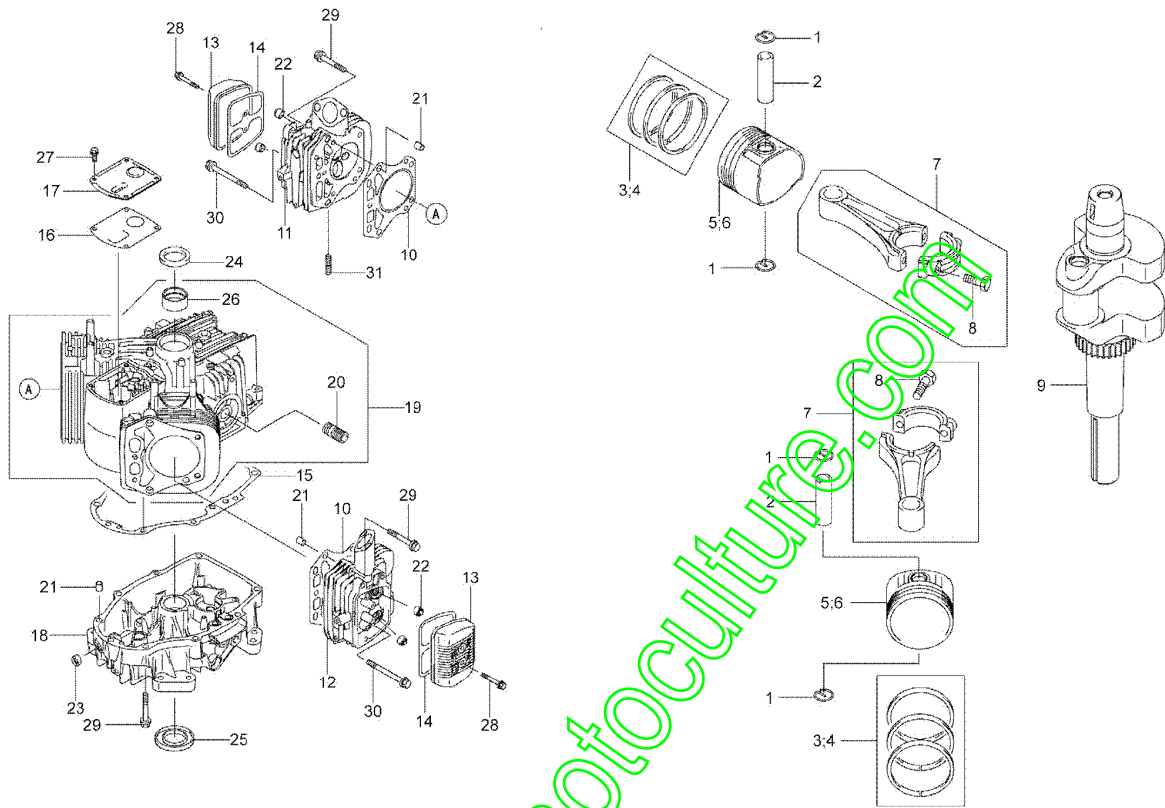
11/2006

www.emc-motoculture.com

Repère	Référence	Désignation	Quantité
1	18225	JONC D'AXE	1,000
2	18140	AXE DE PISTON	1,000
3	17743	JEU DE SEGMENTS	1,000
4	18141	JEU SEGMENTS 0,5	1,000
5	18139	PISTON	1,000
6	18142	PISTON 0,5	1,000
7	18156	BIELLE COMPLETE	1,000
8	17978	VIS EPAULEE	1,000
9	18143	VILEBREQUIN	1,000
10	18117	JOINT DE CULASSE	1,000
11	18118	CULASSE 1	1,000
12	18119	CULASSE 2	1,000
13	18123	COUVRE CULASSE	1,000
14	18125	JOINT COUV.CULASSE	1,000
15	18128	JOINT CARTER	1,000
16	18129	JOINT	1,000
17	18165	COUVERCLE	1,000
18	18198	CARTER INFERIEUR	1,000
19	18207	CARTER MOTEUR	1,000
20	18214	JOINT	1,000
21	18226	GOUPILLE	1,000
22	18228	JOINT 6x11x10,2	1,000
23	15429	JOINT 8x14x5	1,000
24	18230	JOINT 35X48X8	1,000
25	18231	JOINT 35X62X8	1,000
26	18238	BAGUE	1,000
27	17726	VIS EPAULEE	1,000
28	18147	VIS	1,000
29	18149	VIS	1,000
30	18150	VIS	1,000
31	18180	GOUJON	1,000

MKHE - H80

471.01



KAWASAKI
FH430V

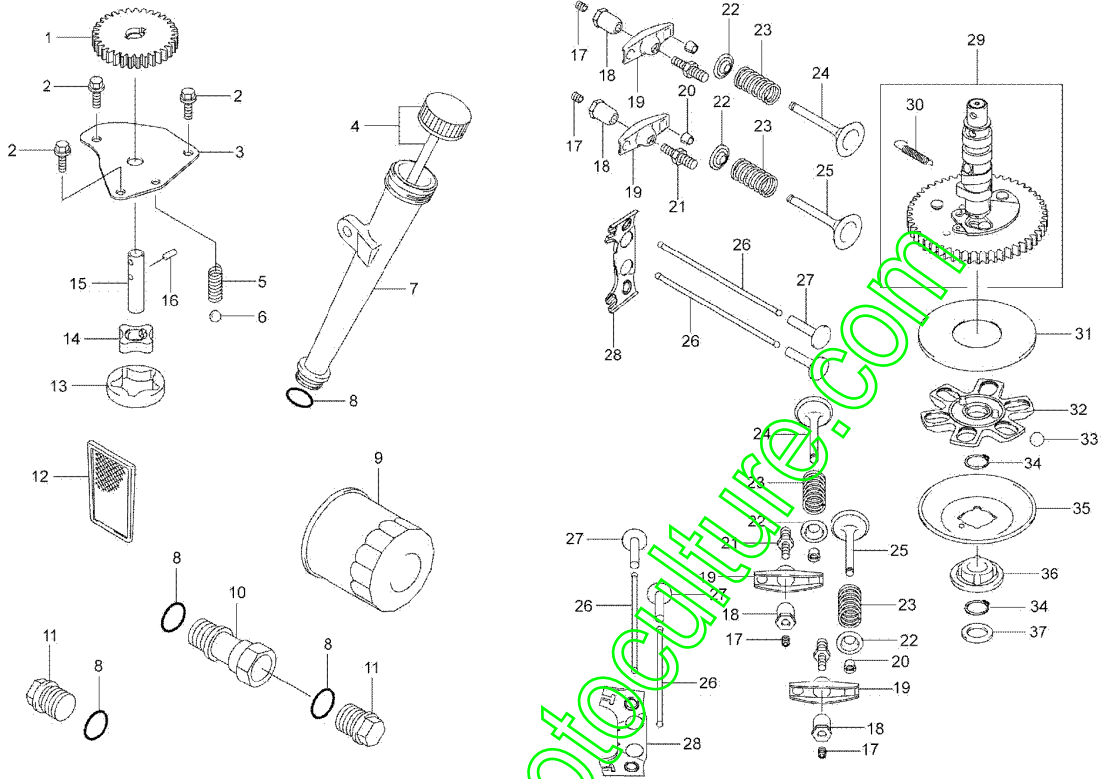
10-2004

www.emc-motoculture.com

Repère	Référence	Désignation	Quantité
1	18212	PIGNON	1,000
2	17726	VIS EPAULEE	1,000
3	18160	COUVERCLE POMPE	1,000
4	18164	JAUGE A HUILE	1,000
5	18242	RESSORT	1,000
6	18240	BILLE	1,000
7	18217	TUBE REMPLISSAGE	1,000
8	15686	JOINT TORIQUE	1,000
9	18088	FILTRE A HUILE	1,000
10	18215	RALLONGE VIDANGE	1,000
11	18236	BOUCHON DE VIDANGE	1,000
12	18201	GRILLE FILTRATION	1,000
13	18176	CORPS DE POMPE	1,000
14	18175	POMPE	1,000
15	18152	AXE DE POMPE	1,000
16	18227	GOUPILLE	1,000
17	17941	VIS	1,000
18	17765	ECROU GUIDE	1,000
19	18137	CULBUTEUR	1,000
20	18136	PASTILLE	1,000
21	18252	GOUJON	1,000
22	18135	RONDELLE D'APPUI	1,000
23	17762	RESSORT SOUPE	1,000
24	18133	SOUPE ADMISSION	1,000
25	18134	SOUPE D'ECHAP.	1,000
26	18155	TIGE POUSSOIR	1,000
27	18138	POUSSOIR	1,000
28	18144	GUIDE	1,000
29	18206	ARBRE CAMES CPLT	1,000
30	18241	RESSORT	1,000
31	18159	PLATINE	1,000
32	18145	GUIDE	1,000
33	18239	BILLE	1,000
34	18224	CIRCLIPS	1,000
35	18162	PLATINE	1,000
36	18197	COUSSINET	1,000
37	18259	RONDELLE	1,000

MKHE - H80

473.01



KAWASAKI
FH430V

10-2004

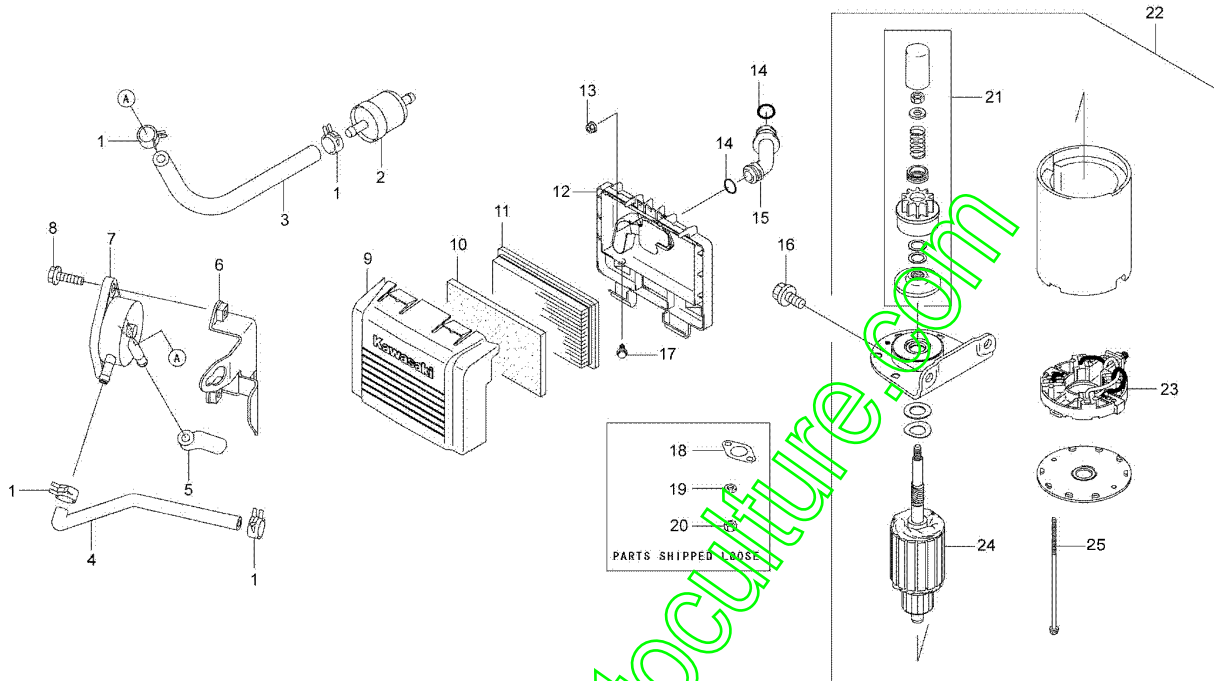
www.emc-motoculture.com

Repère	Référence	Désignation	Quantité
1	18253	COLLIER	1,000
2	18199	FILTRE A ESSENCE	1,000
3	18257	DURIT	1,000
4	18258	DURIT	1,000
5	18256	DURIT	1,000
6	18190	SUPPORT POMPE	1,000
7	18200	POMPE CARBURANT	1,000
8	15276	VIS EMBASE 6x20	1,000
9	18120	COUVERC.FILTRE AIR	1,000
10	18121	PRE-FILTRE	1,000
11	18122	FILTRE	1,000
12	18124	CORPS DE FILTRE	1,000
13	18222	ECROU	1,000
14	18218	JOINT TORIQUE	1,000
15	18194	CONDUITE	1,000
16	18148	VIS	1,000
17	18249	VIS	1,000
18	18126	JOINT D'ECHAPPEMENT	1,000
19	15848	RDLE GROWER	1,000
20	15849	ECROU HEXAG.	1,000
21	18151	ENS.ENGRENAGE	1,000
22	18184	DEMARREUR	1,000
23	18181	CHARBON BALAI	1,000
24	18183	ROTOR	1,000
25	18360	VIS DEMARREUR	1,000

www.emc-motoculture.com

KAWASAKI
FH430V

475.01



09/2008

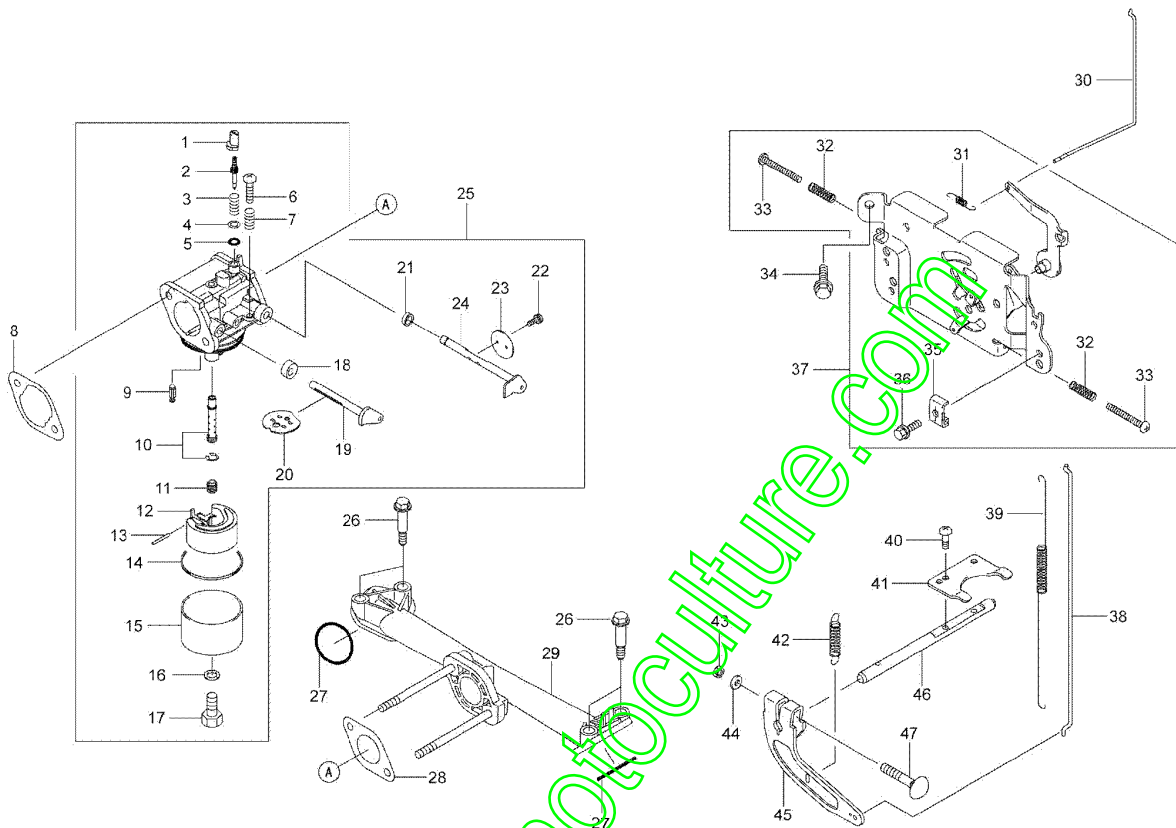
Repère	Référence	Désignation	Quantité
1	18195	BAGUE	1,000
2	18168	VIS DE RICHESSE	1,000
3	18246	RESSORT	1,000
4	18261	RONDELLE	1,000
5	18232	JOINT TORIQUE	1,000
6	18220	VIS	1,000
7	18006	RESSORT	1,000
8	18132	JOINT	1,000
9	18171	POINTEAU	1,000
10	18208	DIFFUSEUR	1,000
11	18234	GICLEUR PPAL 88	1,000
12	18172	FLOTTEUR	1,000
13	18154	AXE DE FLOTTEUR	1,000
14	18130	JOINT	1,000
15	18169	CUVE	1,000
16	18131	JOINT	1,000
17	18255	VIS	1,000
18	18237	JOINT	1,000
19	18173	AXE PAPILL. STARTER	1,000
20	18179	PAPILLON STARTER	1,000
21	18001	JOINT D'ETANCHEITE	1,000
22	18219	VIS	1,000
23	18170	PAPILLON GAZ	1,000
24	18174	AXE PAPILLON GAZ	1,000
25	18167	CARBURATEUR CPLT	1,000
26	18251	VIS	1,000
27	18233	JOINT TORIQUE	1,000
28	18127	JOINT	1,000
29	18216	COLLECTEUR D'ADM.	1,000
30	18177	TIGE STARTER	1,000
31	18244	RESSORT	1,000
32	18245	RESSORT	1,000
33	18221	VIS	1,000
34	17726	VIS EPAULEE	1,000
35	18254	PONTET	1,000
36	15753	VIS	1,000
37	18205	PLAQ.CTRL CPLTE	1,000
38	18178	TIGE REGULATEUR	1,000
39	18243	RESSORT	1,000
40	18188	VIS	1,000
41	18285	PLAQUE	1,000

Repère	Référence	Désignation	Quantité
42	18196	RESSORT	1,000
43	18193	ECROU	1,000
44	15340	RONDELLE	1,000
45	18204	LEVIER	1,000
46	18153	AXE	1,000
47	18248	VIS	1,000

www.emc-motoculture.com

MKHE - H80

477.01



KAWASAKI
FH430V

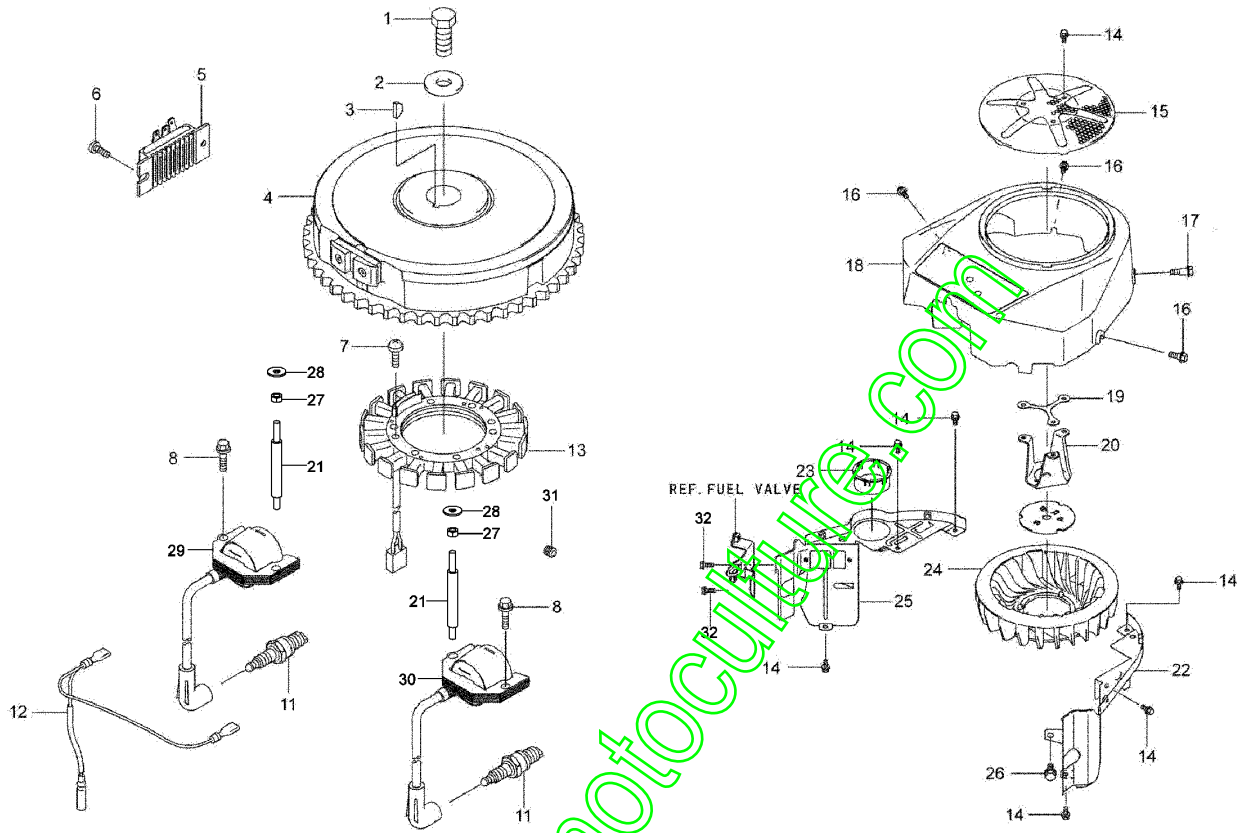
10-2004

Repère	Référence	Désignation	Quantité
1	18247	VIS	1,000
2	18260	RONDELLE	1,000
3	18209	CLAVETTE	1,000
4	18187	VOLANT MAGNET.	1,000
5	18182	REGULATEUR TENSION	1,000
6	15604	VIS	1,000
7	18189	VIS	1,000
8	15276	VIS EMBASE 6x20	1,000
9	18264	BOBINE	1,000
10	18265	BOBINE	1,000
11	18116	BOUGIE CHAMPION	1,000
12	18192	FAISCEAU	1,000
13	18210	ALTERNATEUR	1,000
14	17726	VIS EPAULEE	1,000
15	18163	GRILLE PROTECTION	1,000
16	18249	VIS	1,000
17	18250	VIS	1,000
18	18213	CAPOT MOTEUR	1,000
19	18223	ENTRETOISE	1,000
20	18191	SUPPORT	1,000
21	18263	GOUJON MOTEUR	1,000
22	18202	CAPOTAGE LAT.2	1,000
23	18166	CACHE	1,000
24	18211	VENTILATEUR	1,000
25	18203	CAPOTAGE LAT.1	1,000
26	18148	VIS	1,000
27	1557	ECROU H.M6 DIN934	1,000
28	21270	RDLE PL.B 6,4	1,000
31	15471	BOUCHON	1,000
32	15840	VIS	1,000

www.emc-motoculture.com

KAWASAKI
FH430V

479.01



11/2011

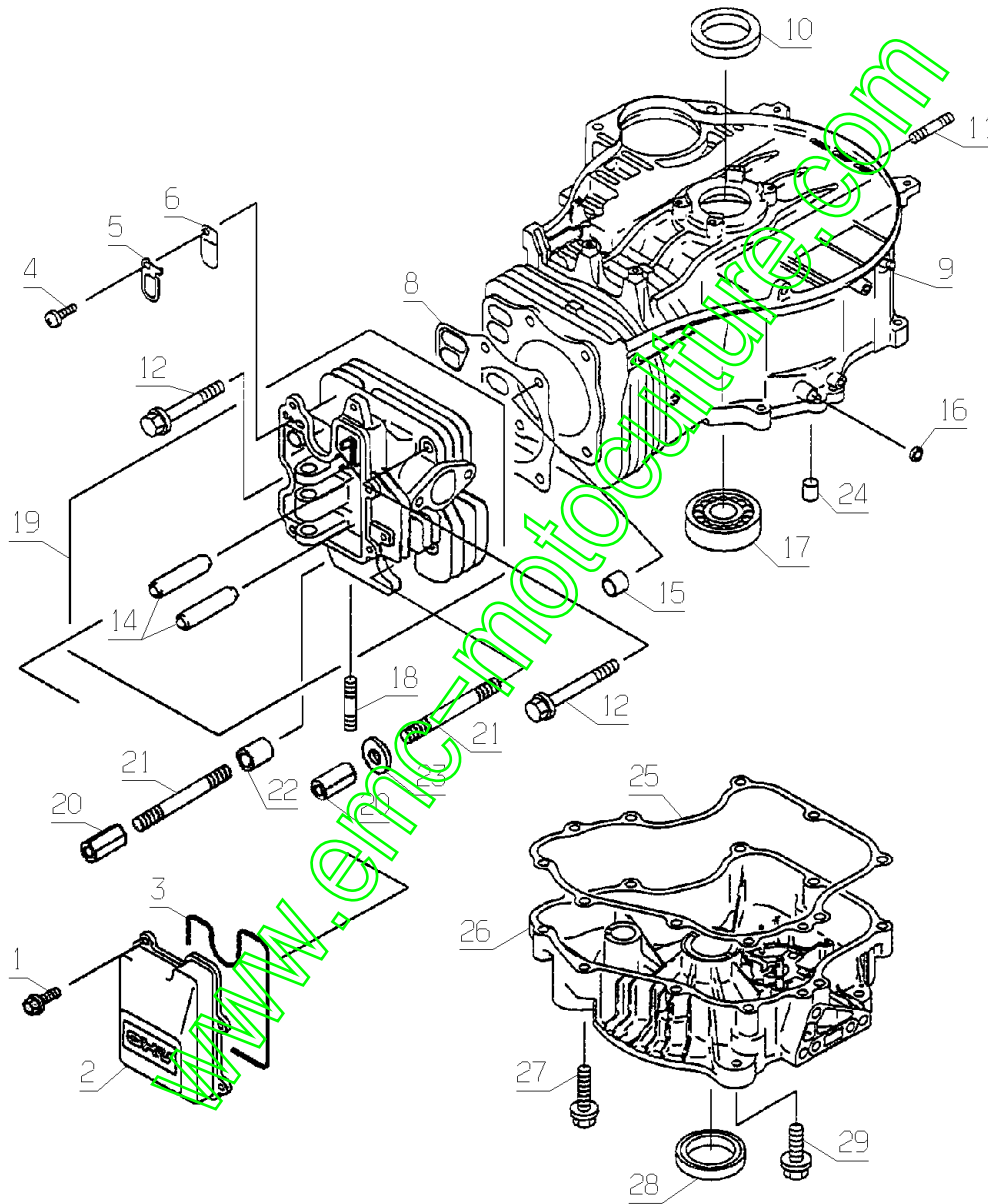
www.emc-motoculture.com

Repère	Référence	Désignation	Quantité
1	15601	VIS	1,000
2	15602	COUVRE CULASSE	1,000
3	15603	JOINT	1,000
4	15604	VIS	1,000
5	15605	PLAQUETTE	1,000
6	15606	LAME SOUPE	1,000
8	15608	JOINT CULASSE	1,000
9	15609	CARTER MOTEUR	1,000
10	15610	JOINT ETANCHEITE	1,000
11	15611	GOUJON	1,000
12	15612	VIS	1,000
14	15950	GUIDE SOUPE	1,000
15	15615	PLOT CENTRAGE	1,000
16	15616	JOINT	1,000
17	15617	ROULEMENT A BILLES	1,000
18	15888	GOUJON	1,000
19	15951	CULASSE COMPLETE	1,000
20	15620	ECROU	1,000
21	15618	GOUJON	1,000
22	15621	ENTRETOISE	1,000
23	15622	RONDELLE	1,000
24	15623	PLOT DE CENTRAGE	1,000
25	15624	JOINT CARTER	1,000
26	15625	CARTER INFERIEUR	1,000
27	15626	VIS	1,000
28	15889	JOINT	1,000
29	15628	VIS	1,000

www.emc-motoculture.com

KAWASAKI
FC420V

470.01



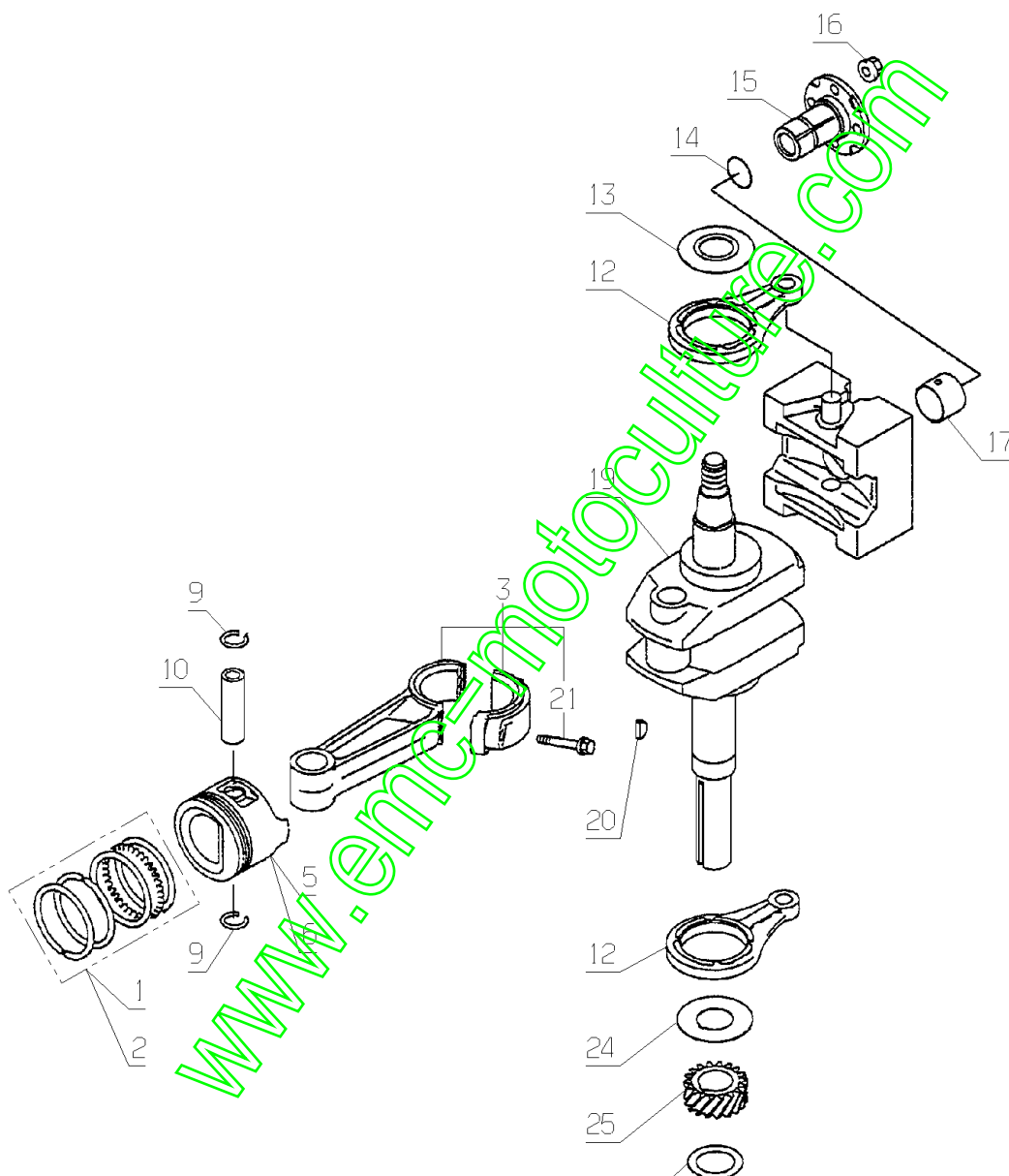
MKHE - AK85

02-2005

Repère	Référence	Désignation	Quantité
1	15890	JEU DE SEGMENTS	1,000
2	15891	JEU DE SEGMENTS 0,5	1,000
3	15892	BIELLE COMPLETE	1,000
5	15894	PISTON	1,000
6	15895	PISTON 0,5	1,000
9	17545	JONC D'AXE	1,000
10	15898	AXE DE PISTON	1,000
12	15886	BIELLETTTE	1,000
13	15643	ENTRETOISE	1,000
14	15687	JOINT TORIQUE	1,000
15	17536	GUIDE CONTRE POIDS	1,000
16	15646	ECROU	1,000
17	15896	COUSSINET	1,000
19	15899	VILEBREQUIN	1,000
20	15650	CLAVETTE	1,000
21	15651	VIS	1,000
24	15654	ENTRETOISE	1,000
25	15655	PIGNON HELICOIDAL	1,000
28	15656	RDLE CALAGE 1,18	1,000
29	15866	RDLE CALAGE 1,215	1,000
30	15867	RDLE CALAGE 1,25	1,000
31	15868	RDLE CALAGE 1,285	1,000
32	15869	RDLE CALAGE 1,32	1,000
33	15870	RDLE CALAGE 1,355	1,000
34	15871	RDLE CALAGE 1,39	1,000
35	15872	RDLE CALAGE 1,425	1,000
36	15873	RDLE CALAGE 1,46	1,000
37	15874	RDLE CALAGE 1,495	1,000
38	15875	RDLE CALAGE 1,53	1,000
39	15876	RDLE CALAGE 1,565	1,000
40	15877	RDLE CALAGE 1,6	1,000
41	15878	RDLE CALAGE 1,635	1,000
42	15879	RDLE CALAGE 1,67	1,000
43	15880	RDLE CALAGE 1,705	1,000
44	15881	RDLE CALAGE 1,74	1,000
45	15882	RDLE CALAGE 1,775	1,000
46	15657	RDLE CALAGE 1,81	1,000

KAWASAKI
FC420V

472.01



28, 29, 30, 31, 32, 33, 34, 35, 36,
37, 38, 39, 40, 41, 42, 43, 44, 45, 46

MKHE - AK85

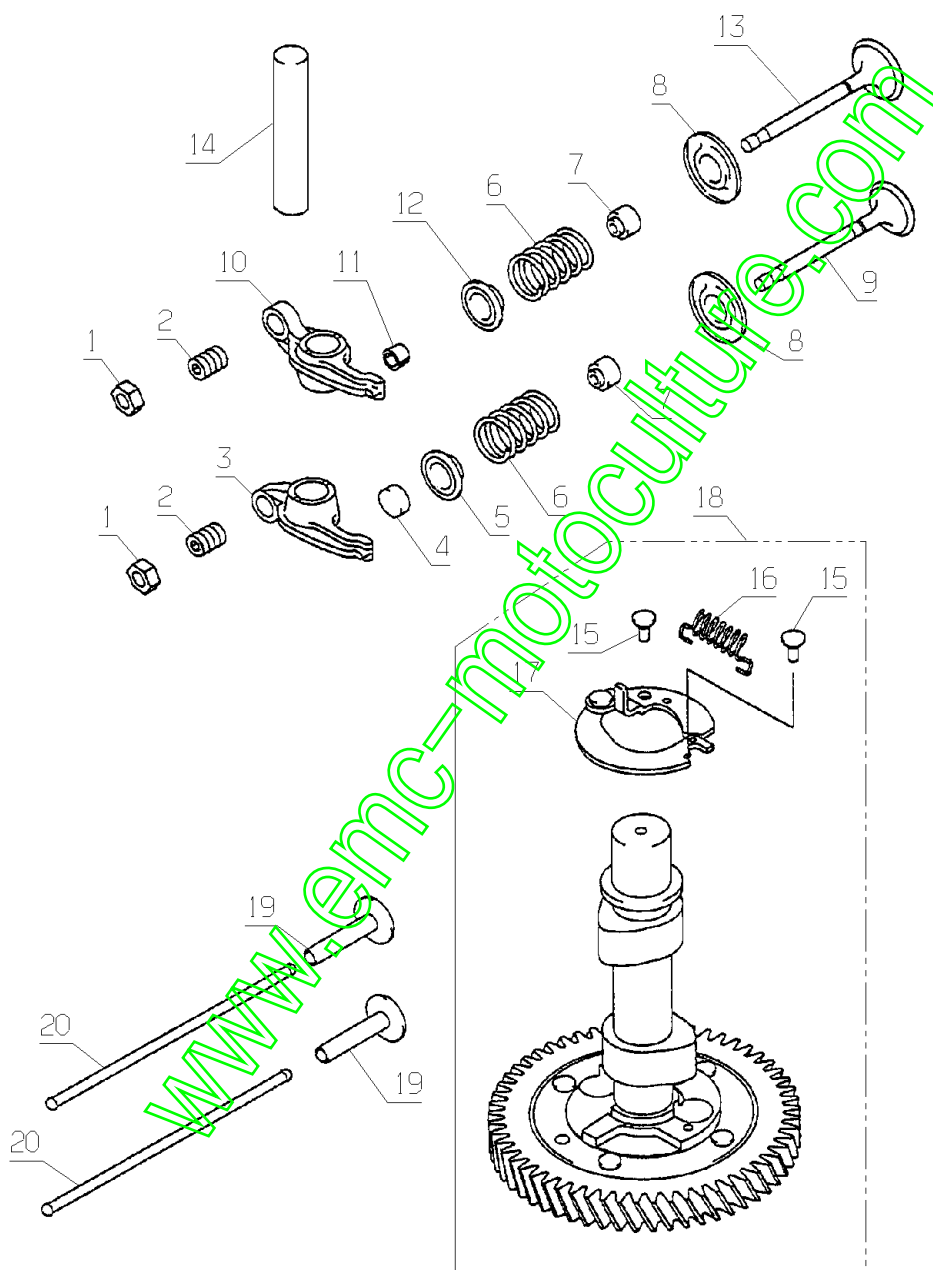
02-2005

Repère	Référence	Désignation	Quantité
1	15661	ECROU	1,000
2	15662	VIS	1,000
3	15663	CULBUTEUR	1,000
4	15664	PASTILLE	1,000
5	15665	COUPELLE D'ARRET	1,000
6	15901	RESSORT DE SOUPAPE	1,000
7	15904	JOINT	1,000
8	15668	RONDELLE D'APPUI	1,000
9	15906	SOUPAPE ECHAPPEMENT	1,000
10	15670	CULBUTEUR	1,000
11	15671	COLLET	1,000
12	15672	COUPELLE D'ARRET	1,000
13	15673	SOUPAPE ADMISSION	1,000
14	15674	AXE CULBUTEUR	1,000
15	15675	AXE	1,000
16	15676	RESSORT	1,000
17	15903	DECOMPRESSEUR	1,000
18	15949	ARBRE A CAME CPLT	1,000
19	15679	POUSSOIR	1,000
20	15680	TIGE POUSSOIR	1,000

www.emc-motoculture.com

KAWASAKI
FC420V

474.01



MKHE - AK85

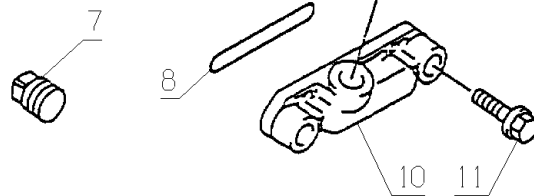
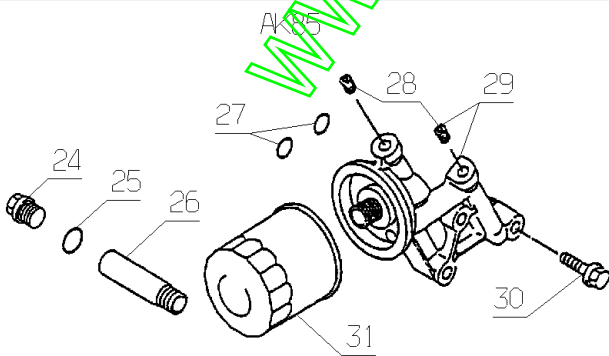
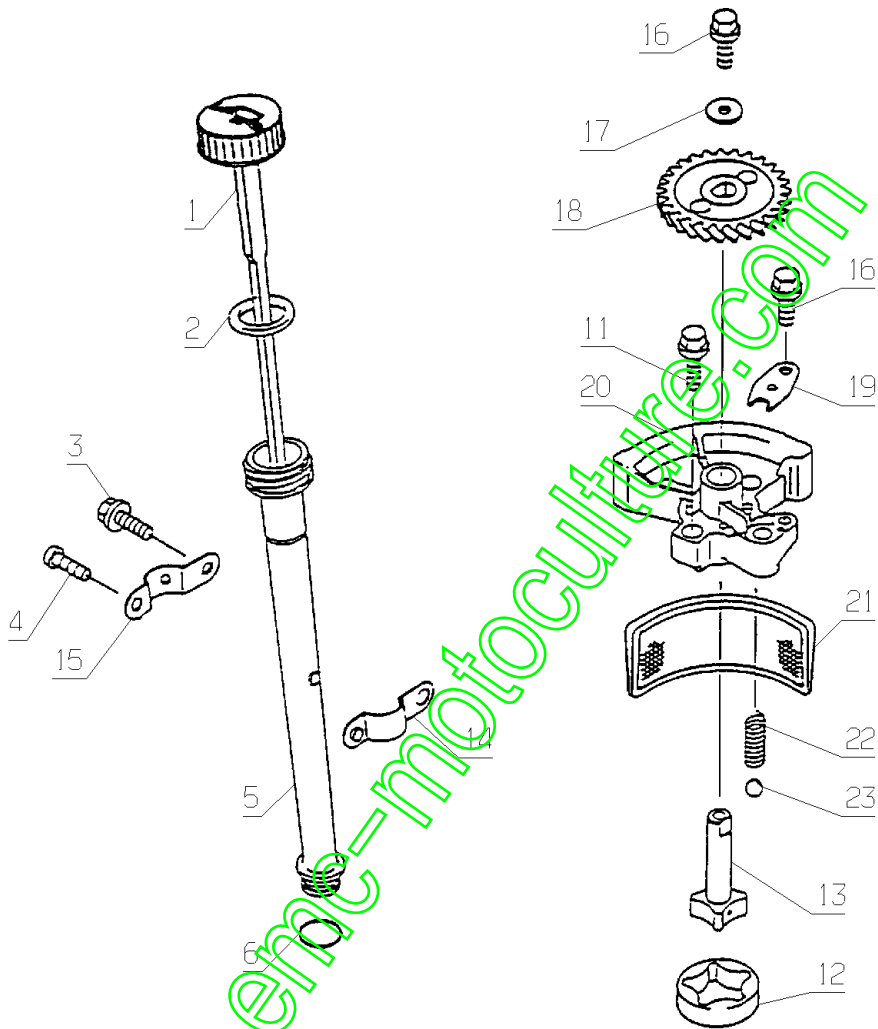
02-2005

Repère	Référence	Désignation	Quantité
1	15908	JAUGE A HUILE	1,000
2	15682	JOINT	1,000
3	15601	VIS	1,000
4	15684	VIS	1,000
5	15685	TUBE REMPLISSAGE	1,000
6	15686	JOINT TORIQUE	1,000
7	17562	BOUCHON	1,000
8	15688	JOINT TORIQUE	1,000
9	15909	VIS BOUCHON	1,000
10	15690	FLASQUE	1,000
11	15691	VIS	1,000
12	15692	CORPS DE POMPE	1,000
13	15693	AXE DE POMPE	1,000
14	15694	ATTACHE	1,000
15	15695	ATTACHE	1,000
16	15696	VIS	1,000
17	15437	RONDELLE	1,000
18	15698	PIGNON HELICOIDAL	1,000
19	15699	PLAQUETTE D'ARRET	1,000
20	15700	COUVERCLE DE POMPE	1,000
21	15910	GRILLE FILTRATION	1,000
22	15702	RESSORT	1,000
23	15703	BILLE ACIER	1,000
24	18082	BOUCHON	1,000
25	18083	JOINT	1,000
26	18084	MANCHON	1,000
27	18085	JOINT	1,000
29	18086	SUPPORT DE FILTRE	1,000
30	18087	VIS	1,000
31	18088	FILTRE A HUILE	1,000

www.emc-motoculture.com

KAWASAKI
FC420V

476.01



MKHE - AK85

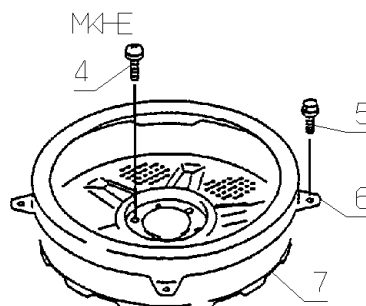
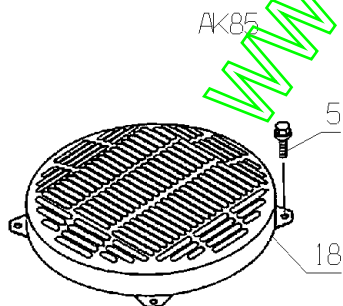
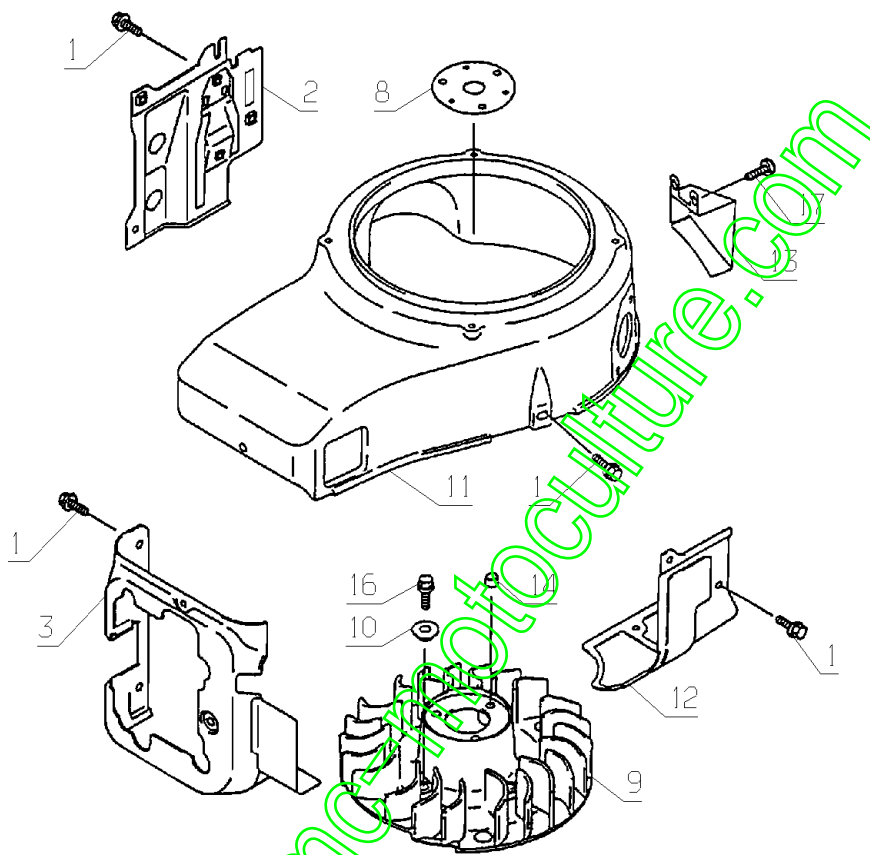
02-2005

Repère	Référence	Désignation	Quantité
1	17726	VIS EPAULEE	1,000
2	15707	CAPOTAGE LATERAL	1,000
3	15708	CAPOTAGE FRONTAL	1,000
4	15709	VIS	1,000
5	15696	VIS	1,000
6	15711	CADRE	1,000
7	15712	GRILLE	1,000
8	15713	DISQUE	1,000
9	15914	VENTILATEUR	1,000
10	15917	COLLIER	1,000
11	15912	ENVELOPPE REFOULEM.	1,000
12	15717	CAPOTAGE LATERAL G.	1,000
13	15913	CACHE	1,000
14	15915	COLLIER 6,2X7,8X5	1,000
16	15601	VIS	1,000
17	15725	VIS	1,000
18	18089	GRILLE PROTECTION	1,000

www.emc-motoculture.com

KAWASAKI
FC420V

478.01



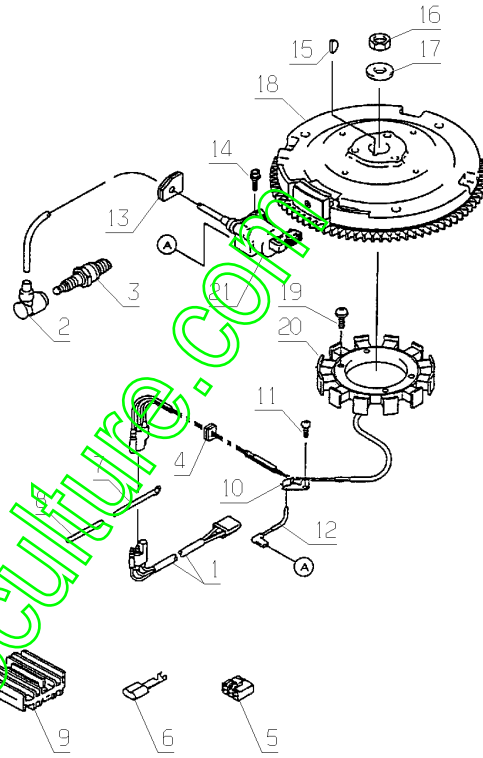
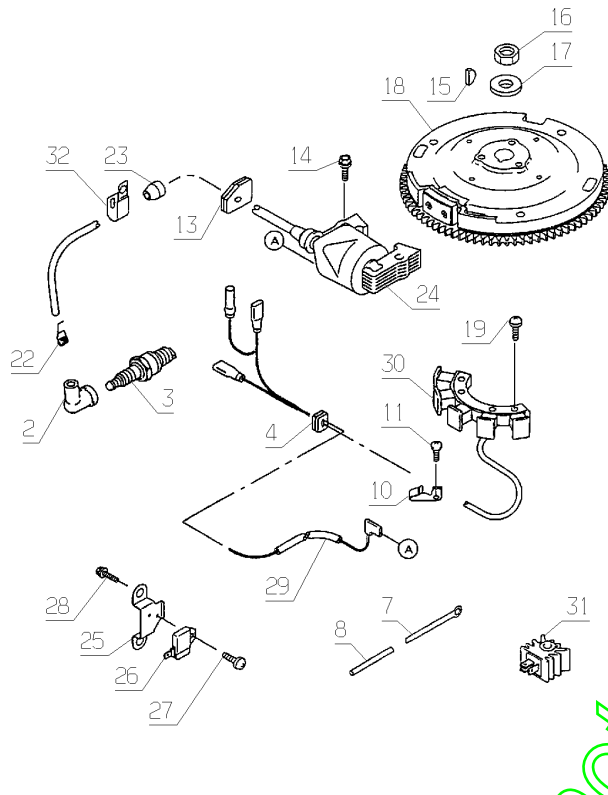
MKHE - AK85

02-2005

Repère	Référence	Désignation	Quantité
1	15721	FAISCEAU	1,000
2	15722	CAPUCHON BOUGIE	1,000
3	3861	BOUGIE DIA.14X19(R)	1,000
4	15724	PASSE-FIL	1,000
5	15924	CONNECTEUR	1,000
6	15923	COSSE	1,000
7	15727	LANGUETTE	1,000
8	15728	TUBE	1,000
9	15729	REGUL. DE TENSION	1,000
10	15730	ATTACHE	1,000
11	15604	VIS	1,000
12	18042	CABLE PRIMAIRE	1,000
13	15733	PASSE-FIL	1,000
14	15919	VIS	1,000
15	15650	CLAVETTE	1,000
16	15736	ECROU	1,000
17	15737	RONDELLE	1,000
18	15918	VOLANT MAGNETIQUE	1,000
19	15739	VIS	1,000
20	15740	ALTERNATEUR	1,000
21	15920	BOBINE	1,000
22	18090	AGRAFE	1,000
23	18091	PASSE-FIL	1,000
24	18092	BOBINE	1,000
25	18093	SUPPORT	1,000
26	17573	MODULE D'ALLUMAGE	1,000
27	15725	VIS	1,000
28	18094	VIS	1,000
29	15732	FIL DE CHARGE	1,000
30	18095	ALTERNATEUR	1,000
31	18096	REGULATEUR	1,000
32	18046	ATTACHE CABLE	1,000

KAWASAKI
FC420V

480.01



AK85 - MKHE

AK85

MK-E

02-2005

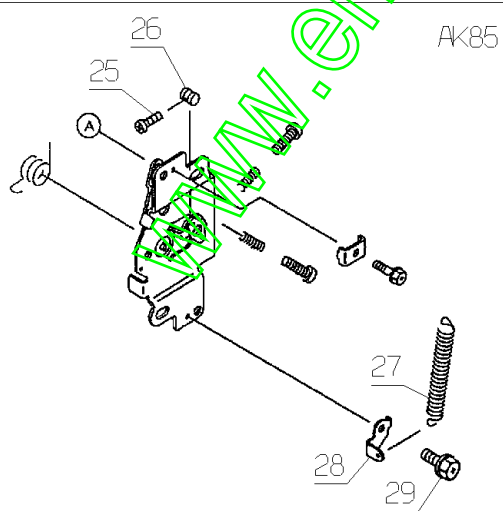
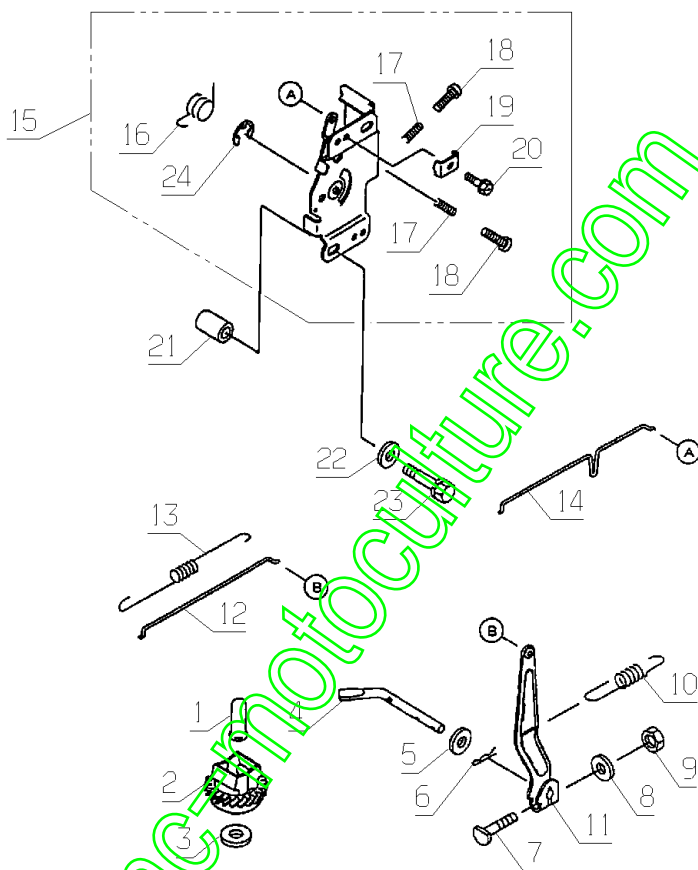
www.emc-motoculture.com

Repère	Référence	Désignation	Quantité
1	15741	TETON	1,000
2	15742	ENSEMBLE REGULATEUR	1,000
3	15360	RONDELLE	1,000
4	15743	PALETTE	1,000
5	15359	RONDELLE	1,000
6	15358	GOUPILLE FENDUE	1,000
7	15744	VIS	1,000
8	15340	RONDELLE	1,000
9	15339	ECROU M6	1,000
10	15745	RESSORT REGULATEUR	1,000
11	15746	LEVIER REGULATEUR	1,000
12	15747	TIGE REGULATEUR	1,000
13	15748	RESSORT	1,000
14	15749	TIGE STARTER	1,000
15	15927	PLAQUETTE CONTROLE	1,000
16	15751	RESSORT	1,000
17	15928	RESSORT	1,000
18	15347	VIS	1,000
19	15752	PONTET	1,000
20	15753	VIS	1,000
21	15754	ENTRETOISE	1,000
22	15755	RONDELLE	1,000
23	15756	VIS	1,000
24	15930	ANNEAU TRUARC	1,000
25	17619	VIS BUTEE RALENTI	1,000
26	18097	ARRET	1,000
27	18098	RESSORT	1,000
28	18099	SUPPORT	1,000
29	18100	VIS	1,000

www.emc-motoculture.com

KAWASAKI
FC420V

482.01



MKHE - AK85

02-2005

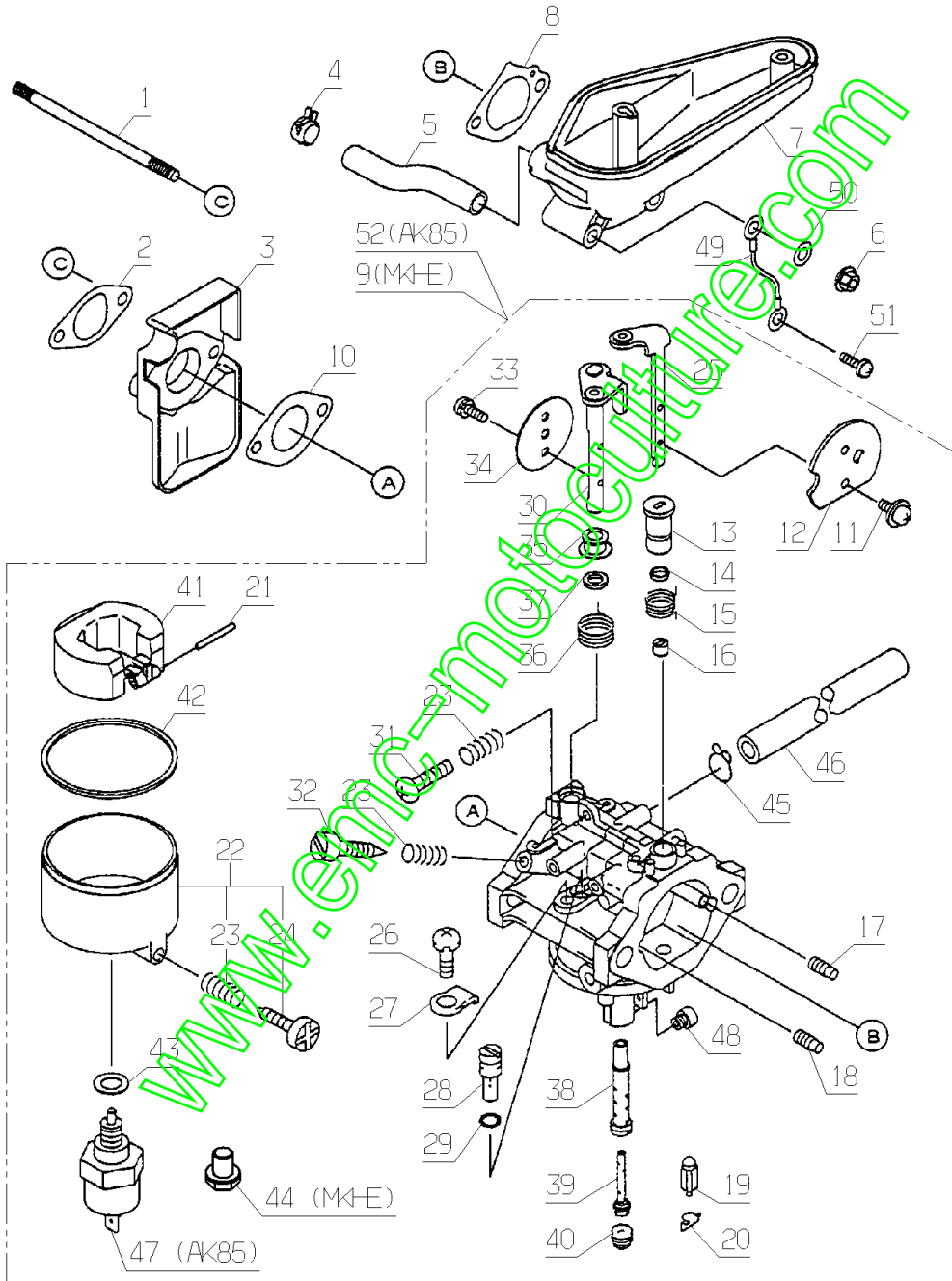
Repère	Référence	Désignation	Quantité
1	15761	GOUJON	1,000
2	15762	JOINT	1,000
3	15763	ISOLATEUR	1,000
4	15764	COLLIER	1,000
5	15765	DURITE	1,000
6	15646	ECROU	1,000
7	15767	CARTER - FILTRE	1,000
8	15768	JOINT	1,000
9	15931	CARBURATEUR	1,000
10	15770	JOINT	1,000
11	15771	VIS	1,000
12	15772	PAPILLON STARTER	1,000
13	15773	BAGUE	1,000
14	15775	RDLE ETANCHEITE	1,000
15	15774	RESSORT	1,000
16	15776	BAGUE	1,000
17	15777	GICLEUR 1,0	1,000
18	15932	GICLEUR D'AIR 1,8	1,000
19	15933	POINTEAU	1,000
20	15780	CLIPS	1,000
21	15781	AXE FLOTTEUR	1,000
22	15782	CUVE	1,000
23	15783	RESSORT	1,000
24	15784	VIS DE PURGE	1,000
25	15785	AXE PAPIL. STARTER	1,000
26	15786	VIS	1,000
27	15787	PLAQUETTE D'ARRET	1,000
28	15938	GICLEUR DE RALENTI	1,000
29	15789	JOINT	1,000
30	15790	AXE PAPILLON GAZ	1,000
31	15791	VIS	1,000
32	15792	VIS DE RICHESSE	1,000
33	15793	VIS	1,000
34	15794	PAPILLON GAZ	1,000
35	15795	BAGUE	1,000
36	15796	RESSORT	1,000
37	15797	RONDELLE ETANCHEITE	1,000
38	15935	DIFFUSEUR	1,000
39	15936	PORTE GICLEUR	1,000
40	15937	GIGLEUR PRINCIPAL	1,000
41	18262	CARBURAT.AK85 FC420	1,000

Repère	Référence	Désignation	Quantité
42	15802	JOINT	1,000
43	15803	RONDELLE	1,000
44	15939	VIS DE CUVE	1,000
45	15940	COLLIER	1,000
46	15941	DURITE 4,5X6,5X100	1,000
47	18101	ELECTRO VANNE	1,000
48	18102	VIS	1,000
49	18103	CABLE DE MASSE	1,000
50	15359	RONDELLE	1,000
51	18105	VIS	1,000

www.emc-motoculture.com

KAWASAKI
FC420V

484.01



MKHE - AK85

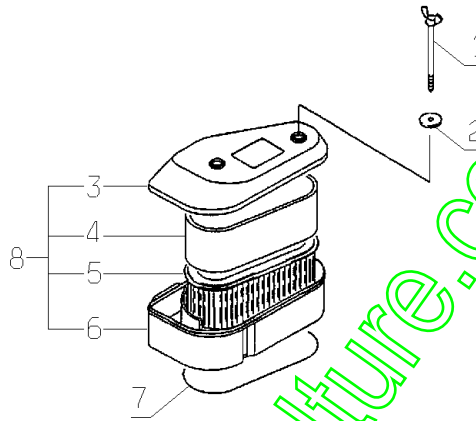
02-2005

Repère	Référence	Désignation	Quantité
1	15811	VIS	1,000
2	15812	RONDELLE	1,000
3	15813	COUV.FILTRE A AIR	1,000
4	15814	PRE-FILTRE	1,000
5	15815	CARTOUCHE	1,000
6	15816	CORPS DE FILTRE	1,000
7	15817	JOINT	1,000
8	15818	FILTRE COMPLET	1,000
9	15823	JOINT	1,000
10	15848	RDLE GROWER	1,000
11	15849	ECROU HEXAG.	1,000
12	28347	POT ECHAP.MOT.KAWA	1,000
13	18104	PARE FLAMME	1,000
14	15821	PARE-ETINCELLES	1,000
16	18105	VIS	1,000
18	18106	SUPPORT ECHAPPEMENT	1,000
19	18107	PARE CHALEUR	1,000
20	17637	RONDELLE PLATE	1,000
21	15819	VIS	1,000
22	18109	POT ECHAP.CPLT	1,000

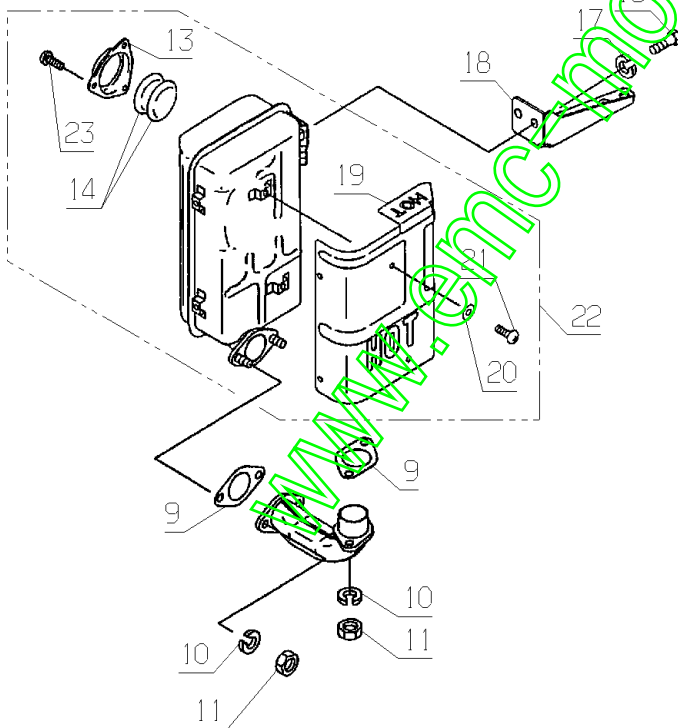
www.emc-motoculture.com

KAWASAKI
FC420V

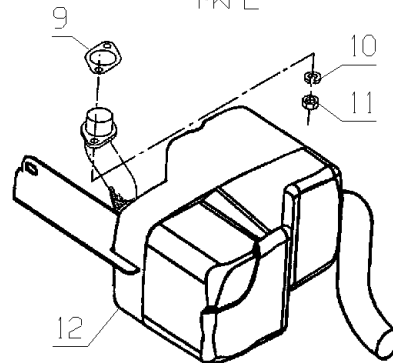
486.01



AK85



MK-E



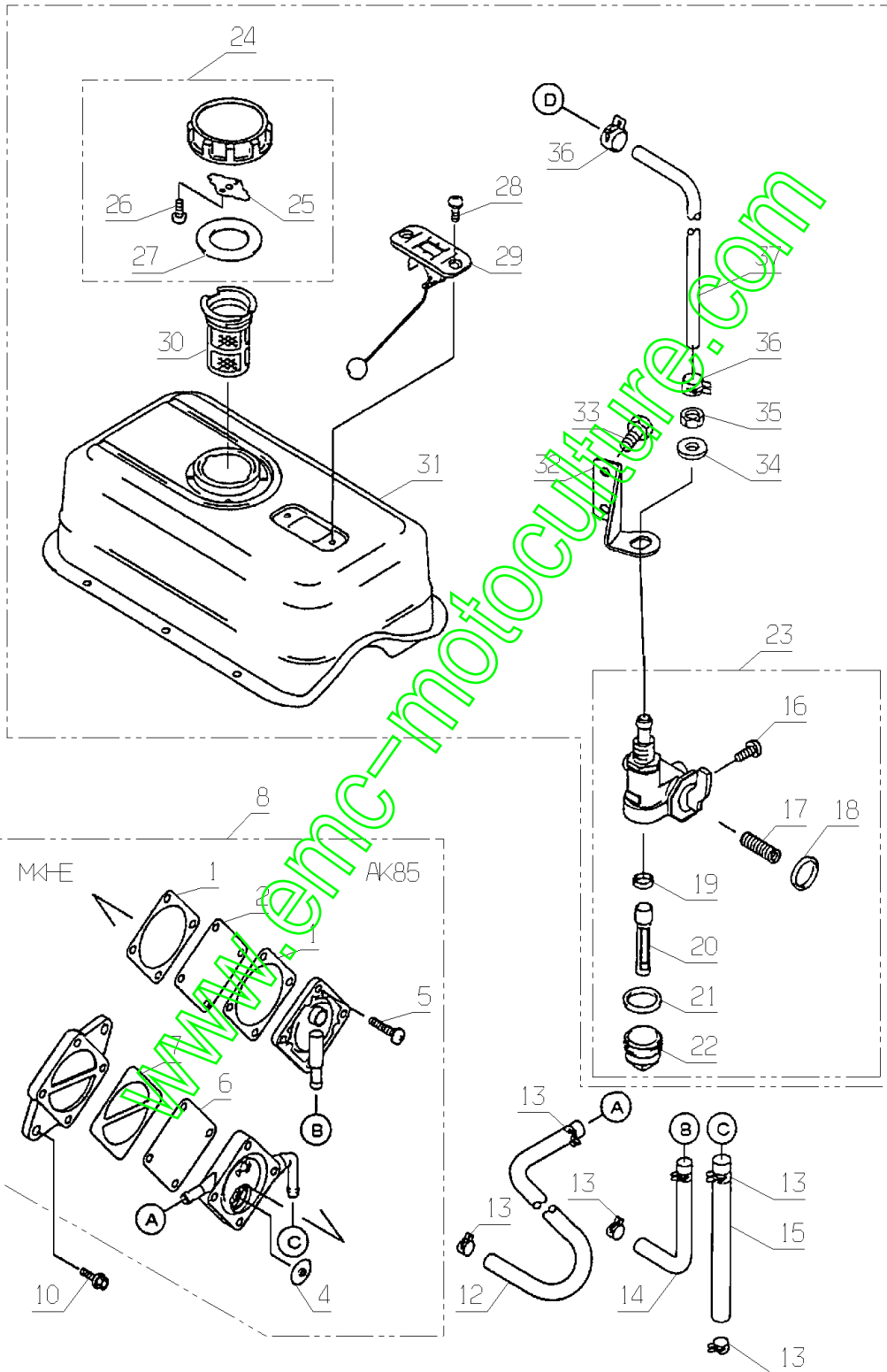
MKHE - AK85

02-2005

Repère	Référence	Désignation	Quantité
1	15833	JOINT	1,000
2	15832	MEMBRANE	1,000
4	15834	SOUPAPE	1,000
5	15835	VIS	1,000
6	15836	MEMBRANE	1,000
7	15837	JOINT	1,000
8	15838	POMPE A ESSENCE	1,000
10	15601	VIS	1,000
12	15842	DURITE	1,000
13	15843	COLLIER	1,000
14	15844	DURITE	1,000
16	17654	VIS	1,000
17	17664	RESSORT	1,000
18	17656	JOINT TORIQUE	1,000
19	17657	JOINT TORIQUE	1,000
20	17642	CREPINE	1,000
21	17639	JOINT	1,000
22	17651	COUPELLE	1,000
23	17650	ROBINET	1,000
24	15948	ENS. BOUCHON COMPLET	1,000
25	15946	RESSORT	1,000
26	15427	VIS	1,000
27	15947	JOINT	1,000
28	15945	VIS	1,000
29	15944	JAUGE DE CARBURANT	1,000
30	15943	CREPINE	1,000
31	15942	RESERVOIR	1,000
32	18110	SUPPORT	1,000
33	18100	VIS	1,000
34	17667	RONDELLE PLATE	1,000
35	18111	ECROU	1,000
36	18112	COLLIER	1,000
37	18113	DURITE	1,000

KAWASAKI
FC420V

488.01



MKHE - AK85

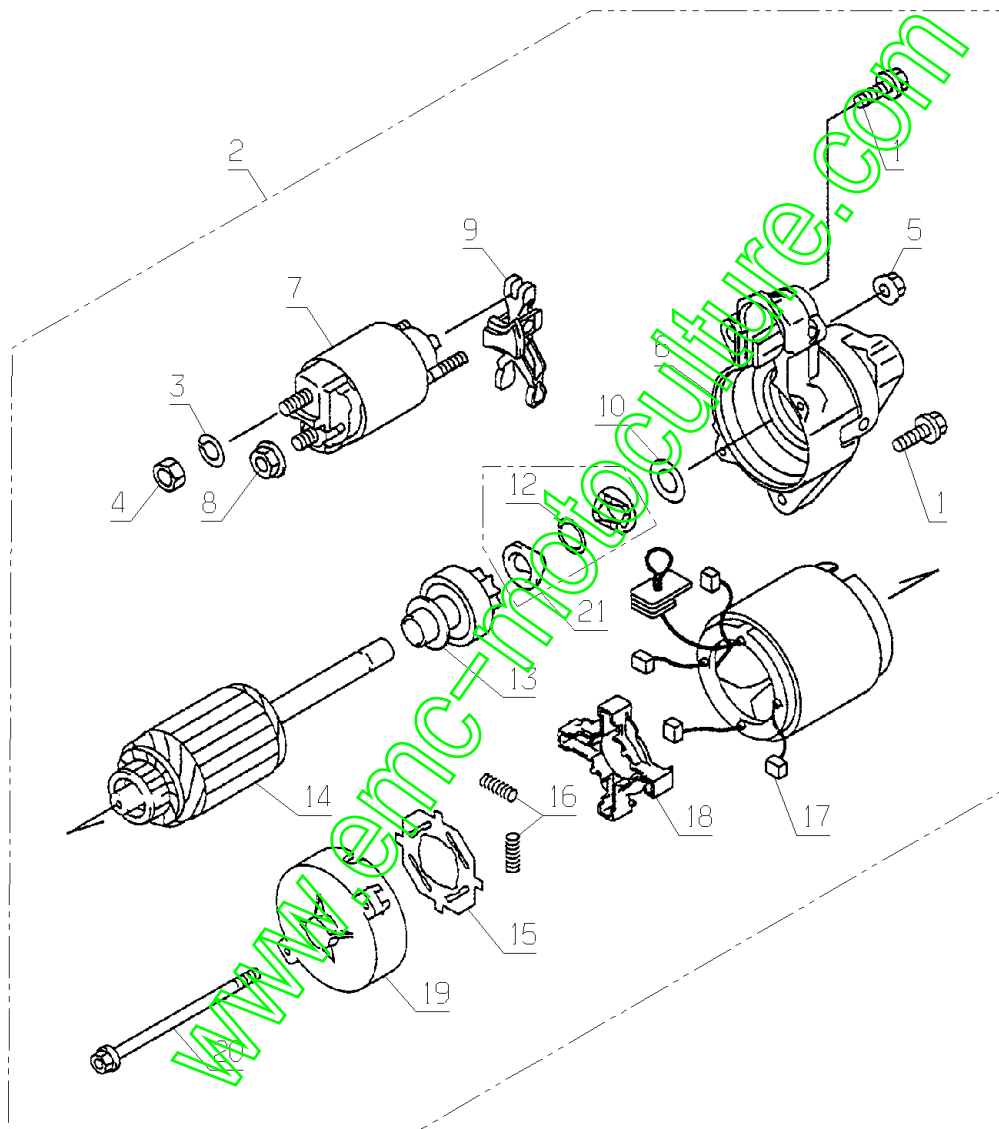
02-2005

Repère	Référence	Désignation	Quantité
1	15846	VIS	1,000
2	15847	DEMARREUR ELECTR.	1,000
3	15848	RDLE GROWER	1,000
4	2020	ECROU H.M8 DIN934	1,000
5	15850	ECROU	1,000
6	15851	FLASQUE SUPERIEUR	1,000
7	15852	SOLENOIDE	1,000
8	15853	ECROU	1,000
9	15854	ETRIER DE COMMANDE	1,000
10	15855	RONDELLE	1,000
12	15857	CIRCLIPS	1,000
13	15858	PIGNON D'ENTR.	1,000
14	15859	ROTOR	1,000
15	15860	ISOLATEUR	1,000
16	15861	RESSORT	1,000
17	15862	CHARBON BALAI	1,000
18	15863	PORTE BALAI	1,000
19	15864	FLASQUE INFERIEUR	1,000
20	15865	VIS	1,000
21	15856	ENS. BAGUES	1,000

www.emc-motoculture.com

KAWASAKI
FC420V

490.01



MKHE - AK85

02-2005

www.emc-motoculture.com