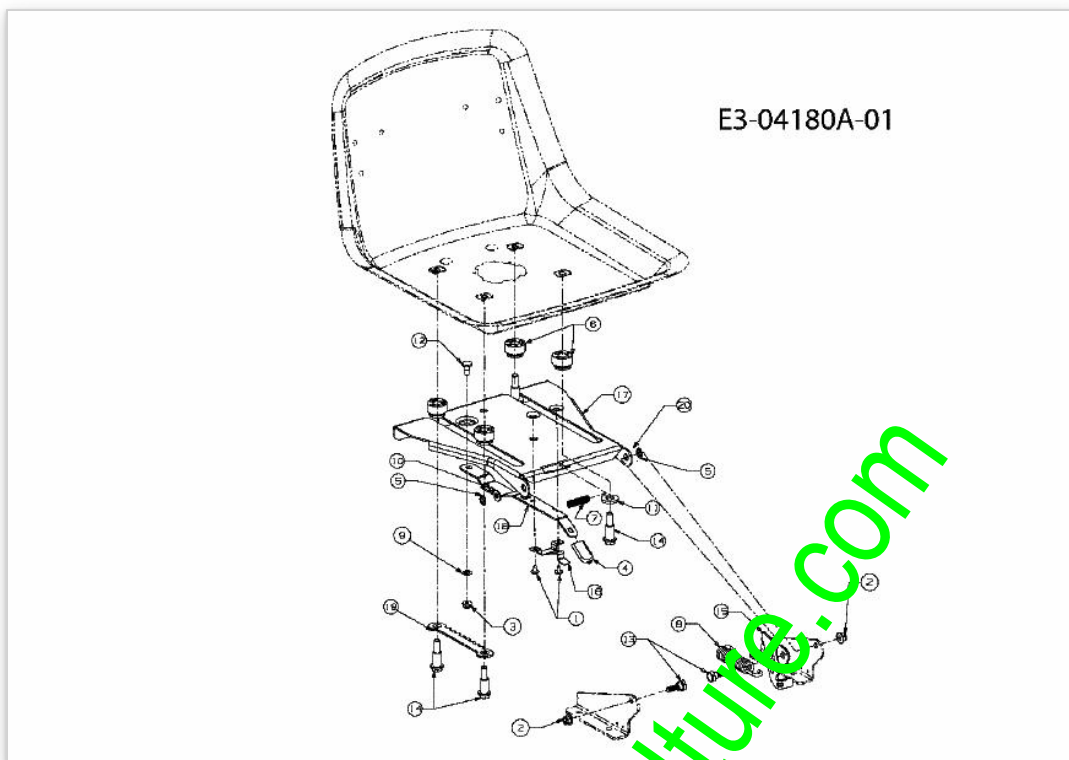


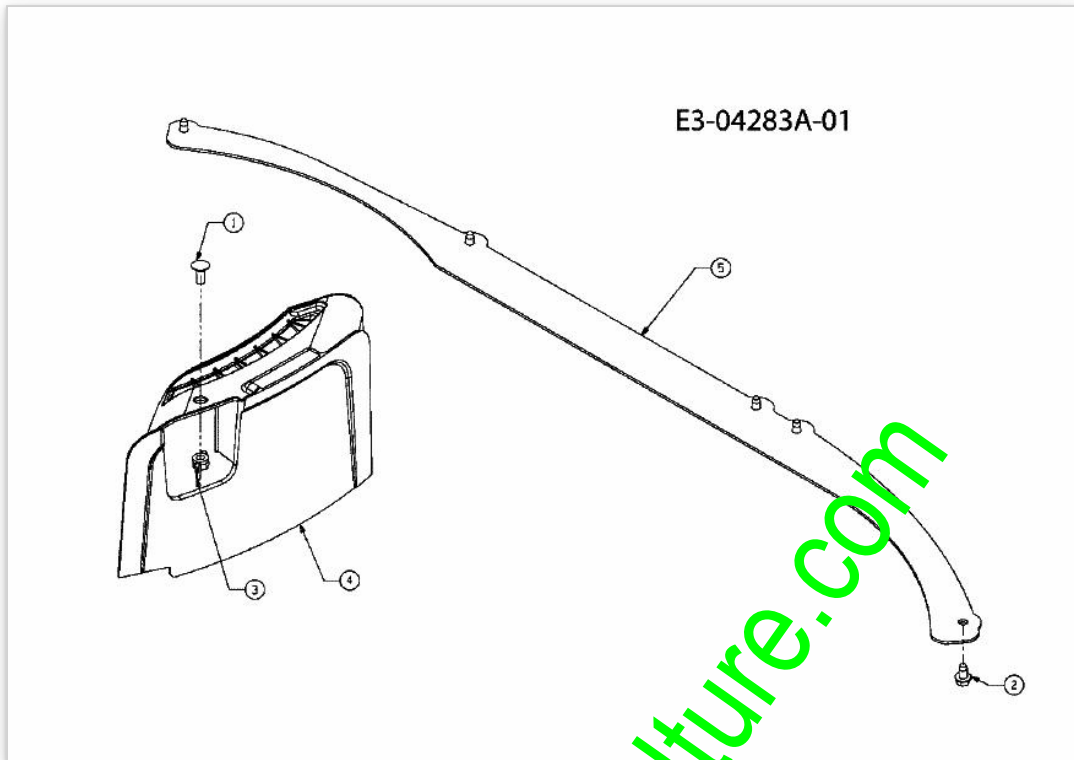
www.emc-motoculture.com

Position	Numéro de lapièce	#	Appellation I	Appellation II
1	618-0624	1	PALIER DE LAME CPL. 6.3 DIA.	RIEMENSCHIEBE
2	712-0417A	1	ÜCROU HEX. AV. FLANC: 5/8- 18	FINISH:MTD STD 701-01000
3	738-1010	1	AXE DE PALIER DE LAME	FINISH:GEÖLT
4	741-0919	2	ROULEMENT j BILLES	FINISH:SIEHE SPEC.
5	748-0433	1	DOUILLE .820 x 1.150 x .730 LG	FINISH:GEÖLT
6	750-1000	2	ENTRETOISE:.80x1.10x1.330	FINISH:GEÖLT
7	756-1227	1	POULIE DE PALIER DE LAME	FINISH:SIEHE ZG.

www.emc-motoculture.com

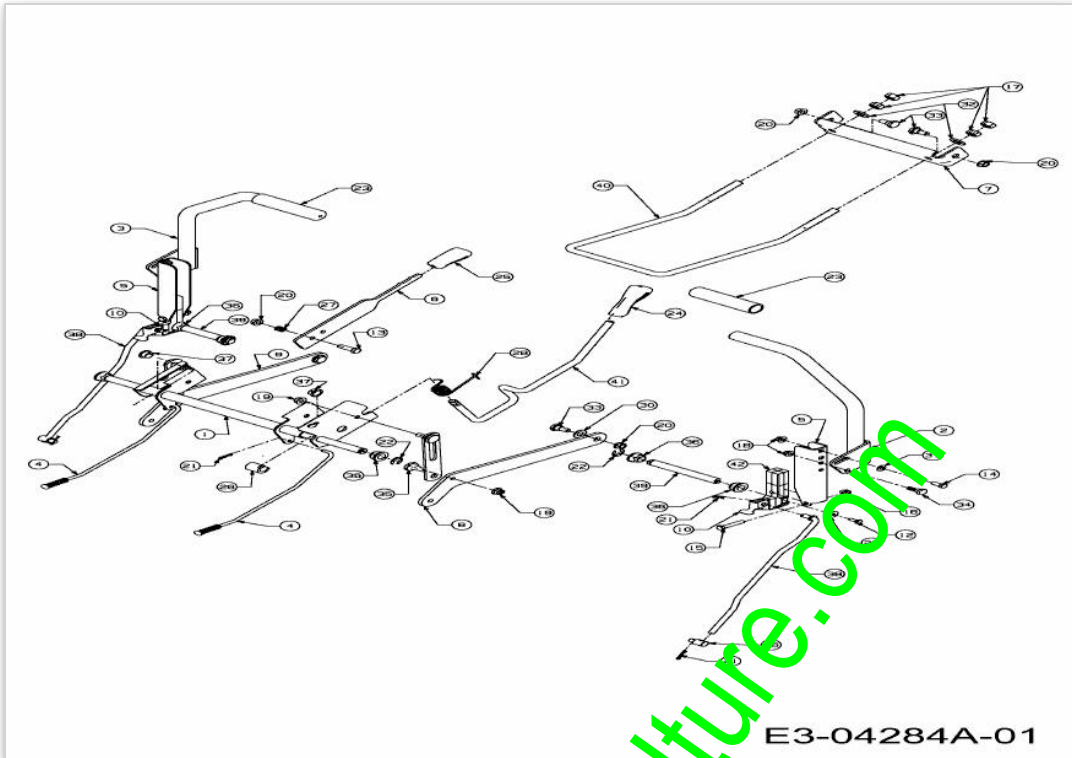


Position	Numéro de lapièce	#	Appellation I	Appellation II
1	710-1268	2	VIS HEX.:B#10-16:0.375	HXINDWSH:SP FINISH:701-01002
2	712-04063	2	ECROU HEX. AVEC FLANC	FINISH:MTD SPEC-100015
3	712-04064	1	ECROU HEXAGONAL	FINISH:SPEC-100015 912-04064
4	720-0309A	1	POIGNÉE PLASTIQUE	FINISH:SCHWARZ
5	726-0201	2	RONDELLE .3125 ID	MECHANISCH VERZINKT:SIEHE ZG.
6	731-04074	4	ENTRETOISE PLASTIQUE DE SIEGE	FINISH:SCHWARZ
7	732-0499	1	RESSORT	FINISH:SPEC-100015
8	732-1184	1	RESSORT	500er:FINISH:MTD STD 701-01000
9	736-0204	1	RONDELLE .344 X 62 X.03	FINISH:MTD SPEC-100015
10	736-0275	1	RONDELLE	FINISH:MTD SPEC-100015
11	736-3019	2	RONDELLE .531x1.062x.134:HT	FINISH:MTD SPEC-100016
12	738-0137A	1	VIS A EPAULE .340 X .285:1/4-2	FINISH:GM4435M CODE A
13	738-0296	2	AXE EPAULE	FINISH:SPEC-100015
14	738-0966A	4	VIS EPAULEE	FINISH:MTD SPEC 701-01006
15	783-0209D	1	SUPP. SIÈGE	FINISH:SPEC-100016
16	783-0611	1	ARRET AJUSTAGE DE SIEGE	FINISH:PHOS & OIL
17	783-0738D	1	SUPPORT DE SIÈGE	FINISH:LACKIERT
18	783-0739A	1	LEVIER DE RÜGLAGE	FINISH:LACKIERT
19	783-0753	1	CREMALLIERE REGLAGE SIEGE	FINISH:SPEC-100015
20	736-0242	1	RONDELLE CONIQUE.340X.872X.060	FINISH:MTD SPEC-100016



Position	Numéro de lapièce	#	Appellation I	Appellation II
1	710-0134	1	VIS j TATE PLATE	FINISH:MTD SPEC-100015
2	710-0599	5	VIS A SIX PANS CREUX	FINISH:MTD SPEC-101617
3	712-3087	1	ECROU PAPILLON	FINISH:KUNSTSTOFF SCHWARZ
4	731-2363	1	BOUCHON MULCHING	FINISH:KUNSTSTOFF SCHWARZ
5	783-1146A	1	LITEAU KIT-MULCHING :DECK G	FINISH:LACKIERT

www.emc-motoculture.com



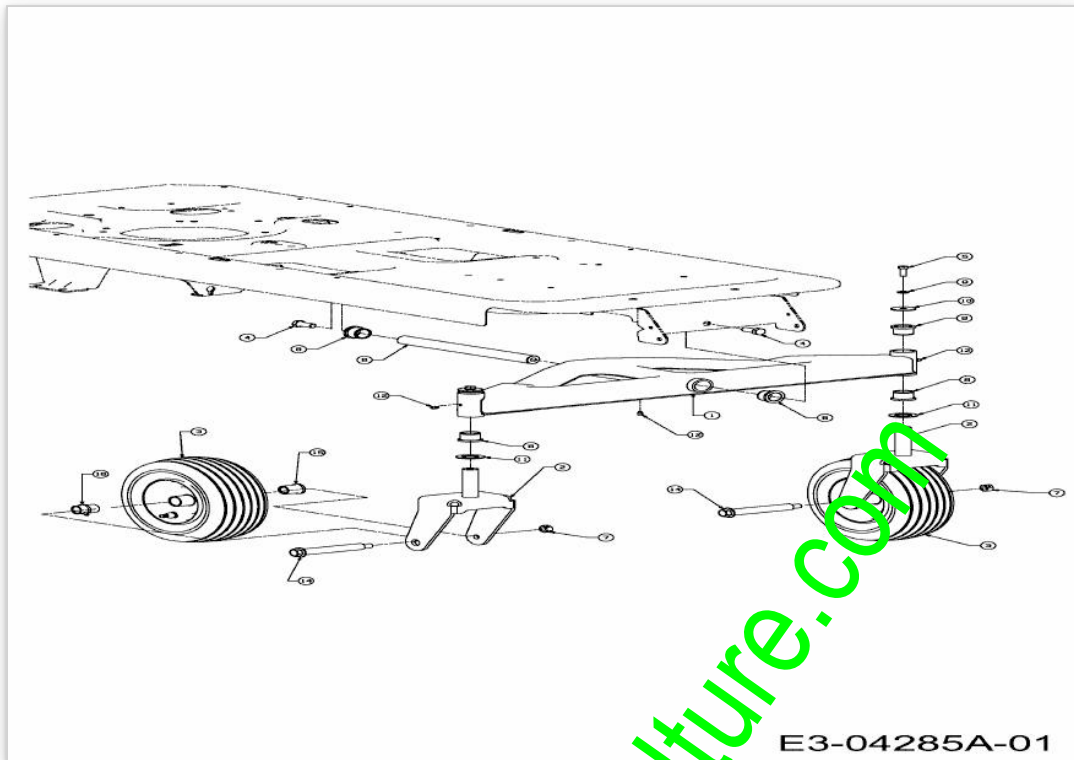
www.emc-motoculture.com

E3-04284A-01

Position	Numéro de pièce	#	Appellation I	Appellation II
1	603-04160B	1	ARBRE COMPLET	603-04160B FINISH:LACKIERT
2	603-04322	1	LEVIER DROIT	603-04322-0637
3	603-04324	1	LEVIER GAUCHE	603-04324-0637
4	647-04065	2	TIGE DE FREIN	947-04065
5	703-05387B	2	SUPPORT ARBRE DE DIRECTION	703-05387B
6	703-05396A	1	LEVIER DE FREIN	703-05396A-0637
7	703-05414A	1	TRAVERSE:DECK VORNE	FINISH:LACKIERT
8	703-05793A	2	LEVIER BRAS COMPLET	
9	703-06096	2	BRAS	703-06096
10	703-06169	2	CHANDELLE	703-06169-0637
11	710-0347	2	VIS HEX. 3/8-16:1.75:GR5:STD	FINISH:MTD SPEC-100015
12	710-0433	2	VIS	FINISH:MTD STD 701-01000
13	710-3005	1	VIS HEX.HHCS:3/8-16:1.25GR5STD	FINISH:MTD SPEC-100015
14	710-3008	2	VIS 5/16-18:.75:GR5:STD	SPEC-701-01006 or.SPEC-100015
15	710-3180	2	VIS HEX. 5/16-18:1.75:GR5:STD	FINISH:SPEC-100015
16	711-0832	2	ECROU	FINISH:701-01006 911-0832
17	712-0206	4	ECROU HEX. 1/2-13:GR.5	FINISH:MTD SPEC-100015
18	712-04063	6	ECROU HEX. AVEC FLANC	FINISH:MTD SPEC-100015
19	712-04065	4	ECROU HEXAGONAL	FINISH:SPEC-100015 912-04065
20	712-0431	5	ECROU STOP 3/8-16:GRF	FINISH:MTD SPEC-100015
21	714-0104	6	GOUDILLE	FINISH:PHOS AND OIL
22	716-0106	4	SPRINGS	FINISH:ÖL BENETZT
23	720-0274	2	POIGNÜE:1.0 ID x 5.0 LG	FINISH:SCHWARZ
24	720-0311	1	POIGNÜE LEVIER COUPE : 1/2	FARBE:SCHWARZ VINYL
25	731-04735	1	POIGNEE	FINISH:SCHWARZ
26	731-05732	1	ENTRETOISE	731-05732
27	732-0334	1	RESSORT DE PRESSION	732-0334 / 932-0334
28	732-0874	1	RESSORT	SPEC 701-01006 OR 701-01000
29	736-0270	2	RONDELLE GROWER	FINISH:MTD SPEC-100016
30	736-0272	2	RONDELLE .510x1.00X.060	SPEC 100015 oder SPEC-101616
31	736-0275	2	RONDELLE	FINISH:MTD SPEC-100015
32	736-3019	2	RONDELLE .531x1.062x.134:HT	FINISH:MTD SPEC-100016

Position	Numéro de lapièce	#	Appellation I	Appellation II
33	738-0143	4	VIS EPAULEE	FINISH:MTD SPEC 100015 (EU)
34	738-0296	2	AXE EPAULE	FINISH:SPEC-100015
35	738-0507B	4	VIS	FINISH:MTD SPEC-701-01006
36	741-0225	6	BAGUE HEXAGONALE TEFLON 6 PANS	FINISH:KUNSTSTOFF SCHWARZ
37	741-3074	2	BAGUE	NYLON:FINISH
38	747-04225A	2	TRINGLE DE RELEVAGE	747-04225A
39	747-04226	2	WELLE	747-04226
40	747-04401A	1	ARCEAU DE RELEVAGE	747-04401A
41	747-04637	1	LEVIER DE RELEVAGE	FINISH:MTD STANDARD 701-01007
42	748-04169	2	SUPPORT ADAPTATEUR	748-04169

www.emc-motoculture.com

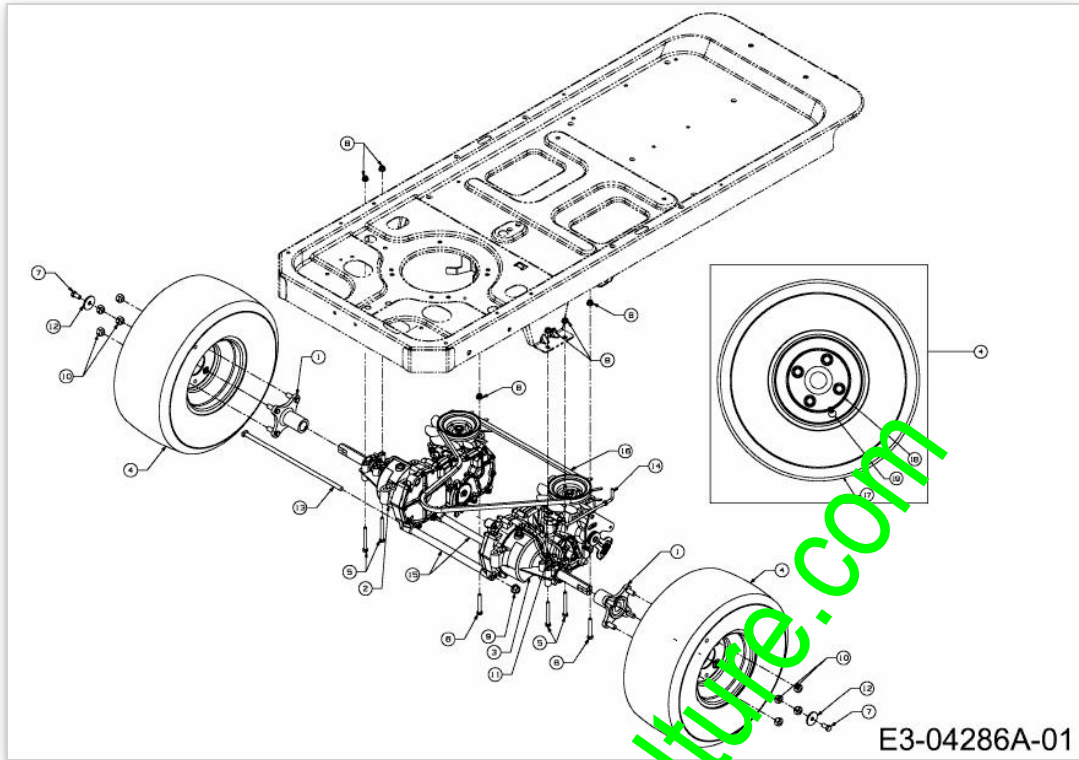


E3-04285A-01

www.emc-motoculture.com

Position	Numéro de pièce	#	Appellation I	Appellation II
1	603-04148C	1	AVANT TRAIN	
2	603-04308	2	RADHALTER VOLLST:	SCHWEISSTEIL:LACKIERT
3	634-04237A	2	ROUE 11.0 X 4.0 X 5.0	634-04237A
4	710-04186	2	VIS	FINISH:MTD SPEC-100015
5	710-0514	2	VIS HEX.:3/8-16:1.00:GR5:STD	FINISH:MTD SPEC-100015
6	711-04228	1	ARBRE	911-04228
7	712-3022	2	ECROU HEXAGONAL	FINISH:MTD STD 701-01000
8	731-05500	6	PALIER DE BRIDE	FINISH: *
9	736-0169	2	BAGUE ÜLASTIQUE	FINISH:MTD SPEC-100016
10	736-0227	2	RONDELLE 3/8X1.00"	FINISH:SPEC-100015 936-0227
11	736-0250	2	RONDELLE 1.06X1.75X.1"	FINISH:MTD STD 701-01000
12	737-3000	3	GRAISSEUR	GLEITMITTEL
14	738-04182A	2	AXE DE ROUE	FINISH:MTD STD 701-01000
15	741-0516B	2	BAGUE DE ROUE .760x1.00x1.20	FINISH:SCHWARZ
16	741-0990B	2	BAGUE DE ROUE AVEC GRAISSEUR	m.SCHMIERNIPPEL:FINISH SCHWARZ

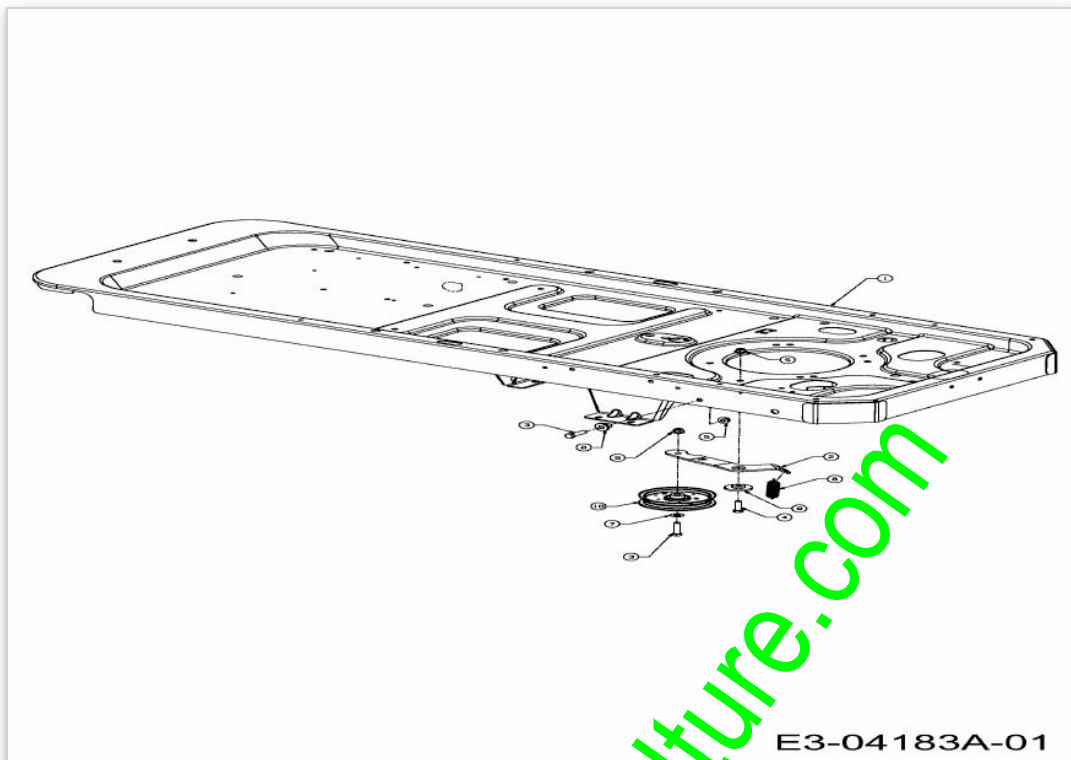
www.emc-motoculture.com



www.emc-motoculture.com

Position	Numéro de pièce	#	Appellation I	Appellation II
1	618-04317	2	MOYEURS DE ROUE	FINISH:NONE 918-04317
2	618-04431A	1	TRANSMISSION HYDRO GAUCHE	918-04431A
3	618-04432A	1	PONT HYDRO CONTACTER MTD	918-04432A
4	634-04294	2	ROUE COMPLETE 18X8.5-8	634-04294
5	710-0176	4	VIS HEX.:5/16-18:2.75:GR5:STD	(21.1441.82)FINISH:SPEC-100015
6	710-0395	2	VIS HHCS:5/16-18:2.25:GR2:STD	FINISH:MTD SPEC-100015
7	710-3119	2	VIS 3/8-16 X .75 GR	FINISH:MTD SPEC-100015
8	712-04063	6	ECROU HEX. AVEC FLANC	FINISH:MTD SPEC-100015
9	712-0459	2	ECROU HEX.: 7/16-20:GRB	FINISH:MTD SPEC-100015
10	712-3050	8	ECROU	FINISH:SPEC-100015 912-3050
11	714-0507	2	GOUPILLE FENDUE 3/32 X .750	FINISH:MTD SPEC-100015
12	736-0227	2	RONDELLE 3/8X1.00	FINISH:SPEC-100015 936-0227
13	738-04192	2	TIGE DE SUPPORT	738-04192
14	747-04217C	2	TIGE	747-04217C-0637
15	750-04561	2	RACCORD TUYAU	750-04561
16	754-04043A	1	COURROIF DE TRANSMISSION	954-04043A A SEC X 58 RZT
17	734-04246	2	PNEU 18X8.5-8	2PLY:TS:TURF SAVER
18	603-04173	2	JANTE ARRIERE	FINISH:LACKIERT -499
19	734-0255	2	VALVE:PNEU	TR 412-P / 32.6mm / 934-0255

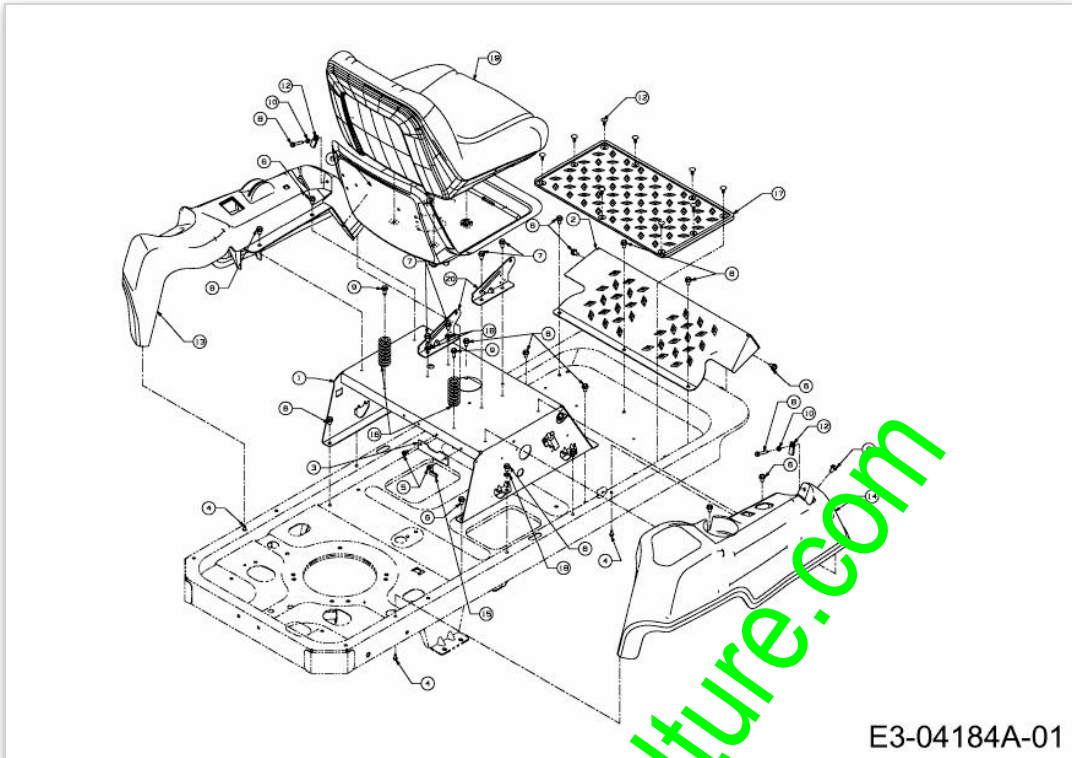
www.emc-motoculture.com



www.emc-motoculture.com

Position	Numéro de lapièce	#	Appellation I	Appellation II
1	603-04303E	1	***	
2	703-05829	1	BRAS DE TENSION	703-05829-0637
3	710-0520	3	VIS HEX.:3/8- 16:1.50:GR5:STD	FINISH:SPEC-100015
4	710-3005	1	VIS HEX.HHCS:3/8- 16:1.25GR5STD	FINISH:MTD SPEC-100015
5	712-04065	4	ECROU HEXAGONAL	FINISH:SPEC-100015 912-04065
6	732-0626	1	RESSORT	732-0626
7	736-0300	1	RONDELLE	FINISH:MTD SPEC-100015
8	738-04058	2	DOUILLE	0.380x0.624x0.495:SPEC-100015
9	738-04162A	1	ENTRETOISE .8840 x .190	FINISH:IN ÖL GETAUCHT
10	756-04129	1	POULIE TENDEUR	FINISH:

www.emc-motoculture.com

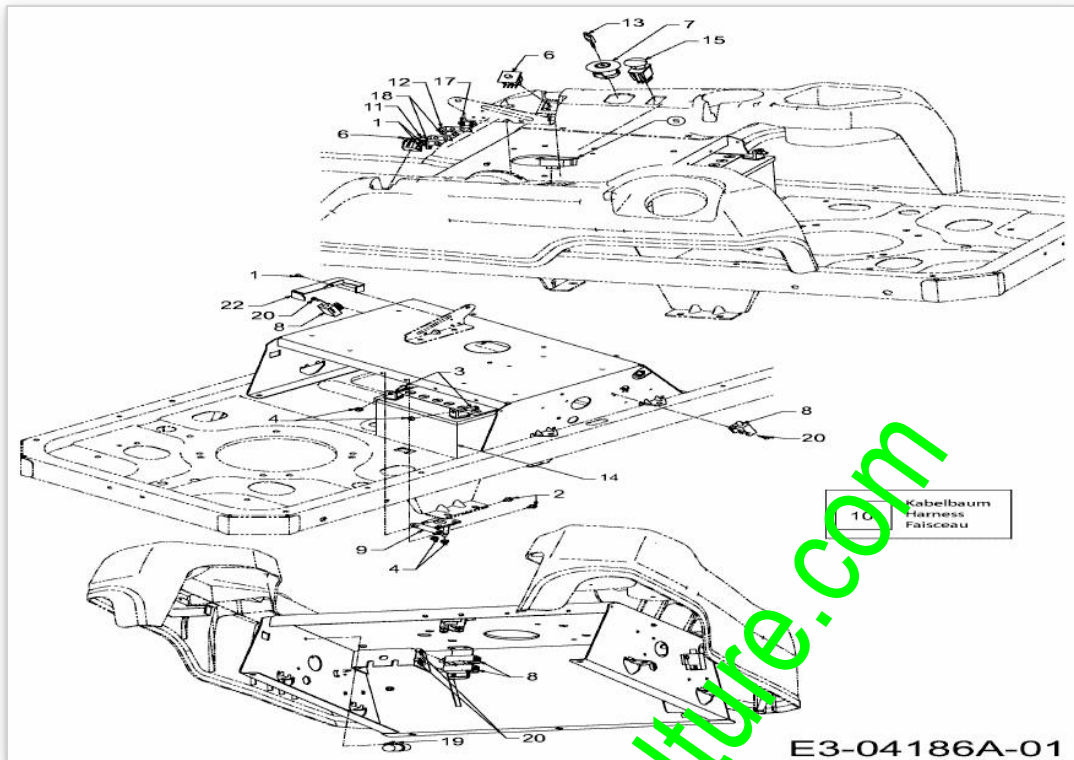


E3-04184A-01

www.emc-motoculture.com

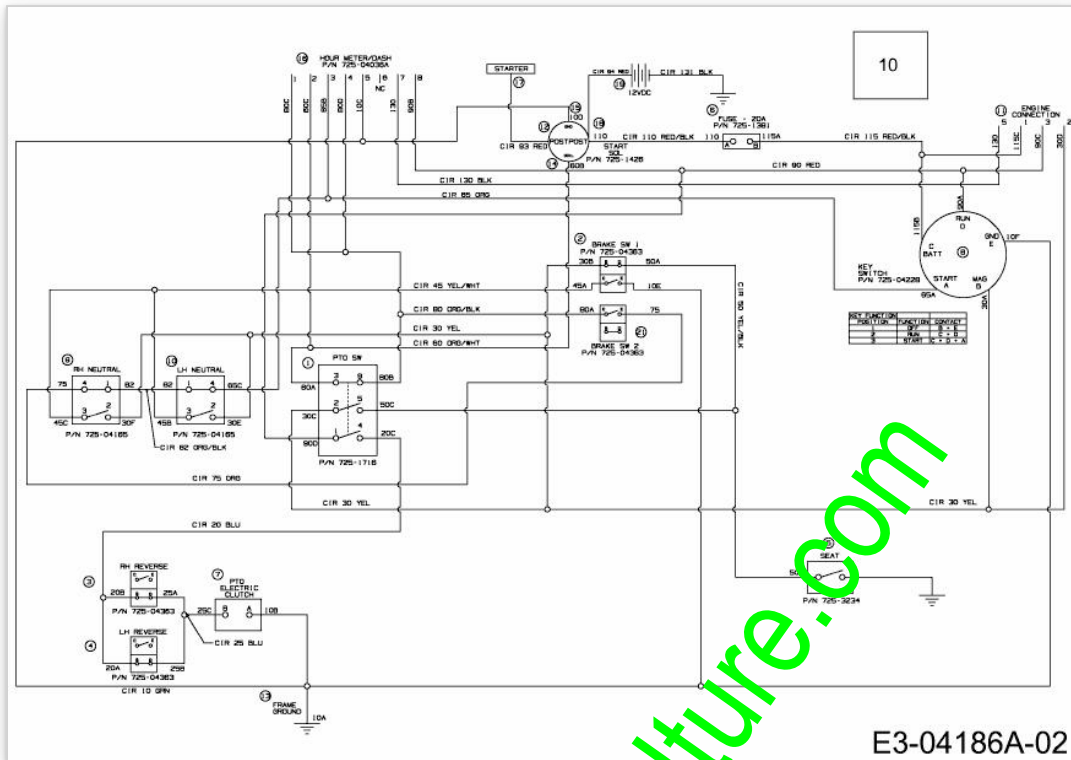
Position	Numéro de pièce	#	Appellation I	Appellation II
1	603-04447A	1	***	
2	703-05373B	1	MARCHE-PIED	
3	703-05894	1	TOLE DE FIXATION	703-05894-0637
4	710-04261	4	VIS	FINISH:MTD SPEC-100016 TYPE 1
5	710-0599	2	VIS A SIX PANS CREUX	FINISH:MTD SPEC-101617
6	710-0604A	20	VIS 5/16-18:0.625	FINISH:MTD SPEC-100016 TYPE 1
7	710-0726	4	VIS 5/16-12:0.750:HXINDWS	FINISH:MTD STD 701-01002
8	710-0778	2	VIS HEX. TT:1/4-20:1.500	FINISH:MTD SPEC-100016 TYPE 1
9	710-1260A	2	VIS TT:5/16-18:.750	FINISH:SPEC-100016 TYPE 1
10	712-0298	2	ECROU HEXAGONAL AF-43015	FINISH:MTD SPEC-100015
11	712-04092	2	ECROU	712-04092
12	726-3046	9	CLIP DE FIXATION:.250 DIA	FINISH:KUNSTSTOFF SCHWARZ
13	731-04662D	1	PROTECTION GAUCHE	731-04662D
14	731-04663C	1	CONSOLE DROITE	731-04663C
15	731-0511	5	BORDURE DE PROTECTION	FINISH:SCHWARZ, SIEHE ZG.
16	732-04035	2	RESSORT DE SIEGE	FINISH:SPEC-100015
17	735-04082	1	MARCHE PIEDS ANTIDER.	735-04082
18	736-0148	3	RONDELLE	FINISH:MTD SPEC-100016
19	757-04041	1	SIEGE	757-04041
20	783-1489C	2	SUPPORT:SIEGE	FINISH:LACKIERT

www.emc-motoculture.com



www.emc-motoculture.com

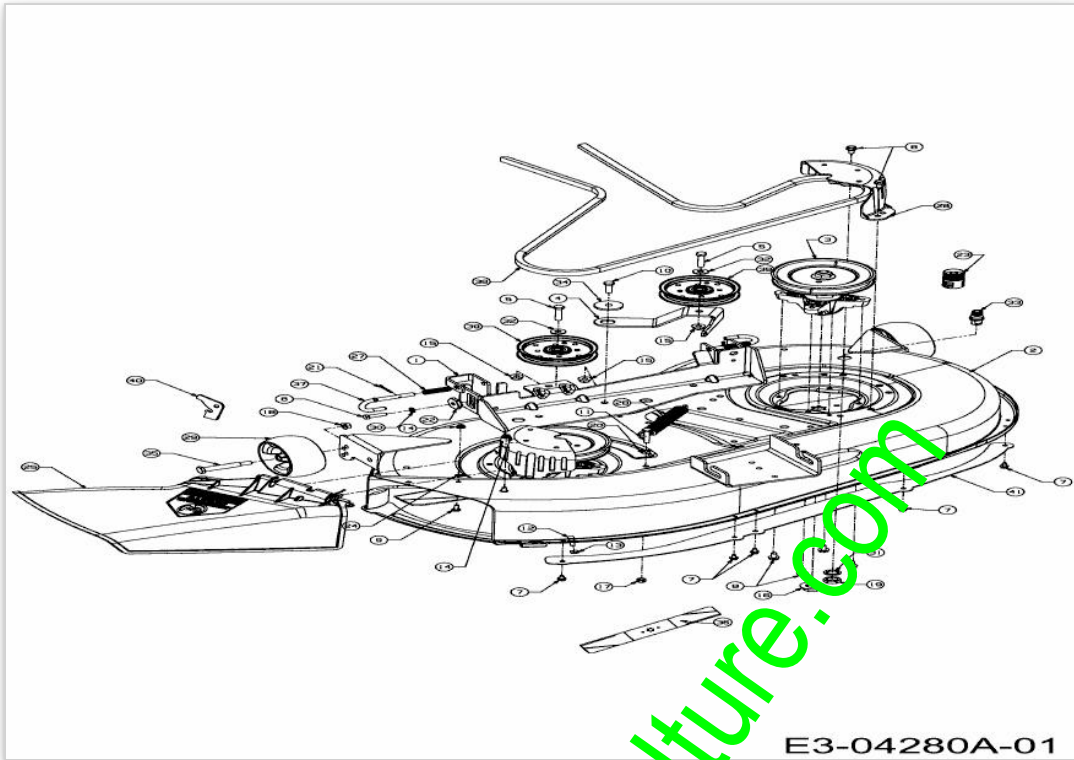
Position	Numéro de pièce	#	Appellation I	Appellation II
1	710-0227	3	VIS	FINISH:MTD SPEC-100016 TYPE 1
2	710-0653	2	VIS A SIX PANS CREUX	FINISH:MTD SPEC-100016
3	710-3015	2	VIS:1/4-20:.75:GR5:STD	FINISH:MTD SPEC-100015
4	712-0271	4	ECROU 1/4-20"+ DISQUE DENTE	FINISH:MTD SPEC-100016 GR5
5	725-04022B	1	COMPTEUR HORAIRE	925-04022B / 777I22893-LABEL
6	725-04165	2	CONTACTEUR	DOPPEL-POL 925-04165
7	725-04228	1	CONTACTEUR 3 POSITION	
8	725-04363	4	SECURITE EMBRAYAGE	FINISH:SEHE ZG.
9	725-04439	1	COMMUTATEUR MAGNÛTIQUE	12V:100 AMP
10	725-04621A	1	FAISCEAU	725-04621A
11	725-1303	1	RESSORT DE SURETE SIEGE	SI.-SCHALTER SITZ:SPEC-100015
12	725-1439	1	RESSORT SURETE DE SIEGE	SI.-SCHALTER SITZ:SPEC-100015
13	725-1745	1	CLÛ DE CONTACT	DELTA MIT PLASTIK
14	725-1750A	1	BATTERIE:U1:230 CCA:NASS	
15	725-1752	1	BOUTON PTO	FINISH:
16	725-1754	1	PACK ACIDE	
17	726-0278	1	PLAQUE D'ISOLATION	FINISH:NATUR ODER SCHWARZ
18	726-0279	2	PLAQUE D'ISOLATION	FINISH:NATUR ODER SCHWARZ
19	726-0470	2	COLLIER	FINISH:SCHWARZ:UV-BESTÄNDIG
20	738-04237A	4	AXE EPAULE	FINISH:MTD SPEC-100016
21	770-8569L	4	BATTERIE-BEIBLATT	
22	783-04877A	4	783-06279	FINISH:LACKIERT



www.emc-motoculture.com

Position	Numéro de pièce	#	Appellation I	Appellation II
10	725-04621A	1	FAISCEAU	725-04621A

www.emc-motoculture.com



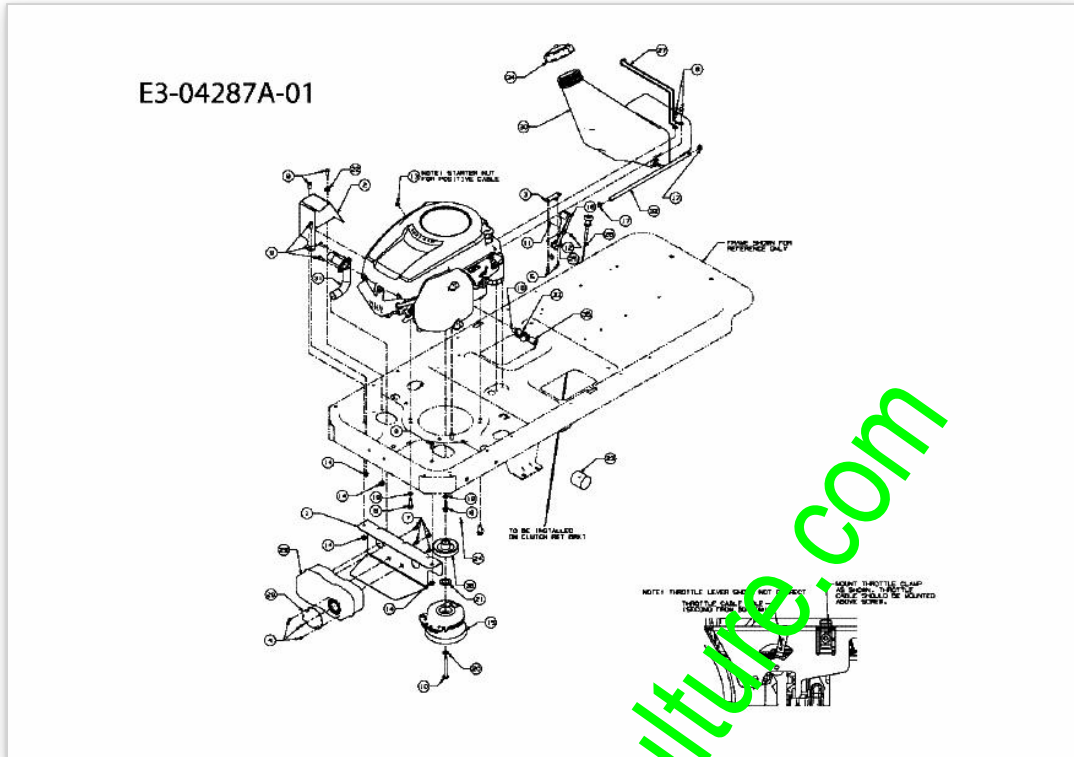
www.emc-motoculture.com

E3-04280A-01

Position	Numéro de pièce	#	Appellation I	Appellation II
1	603-04156	1	603-04156	603-04156
2	603-04335C	1	DECK	
3	618-0624	2	PALIER DE LAME CPL. 6.3 DIA.	RIEMENSCHIEBE
4	703-05824B	1	703-05824A-0716	
5	710-0347	2	VIS HEX. 3/8-16:1.75:GR5:STD	FINISH:MTD SPEC-100015
6	710-0528	1	VIS HEX. 5/16-18:1.25:GR5:STD	FINISH:SPEC-100015 910-0528
7	710-0599	5	VIS A SIX PANS CREUX	FINISH:MTD SPEC-101617
8	710-04484	12	VIS HEX. TT:5/16-18:.750:HXIND	FINISH:MTD SPEC-100016 TYPE 1
9	710-0751	2	VIS HEX.: 1/4-20:.620:GR5:STD	FINISH:SPEC-100015
10	710-3005	1	VIS HEX.HHCS:3/8-16:1.25GR5STD	FINISH:MTD SPEC-100015
11	710-3180	1	VIS HEX. 5/16-18:1.75:GR5:STD	FINISH:SPEC-100015
12	711-04069	1	GOUPILLE 1/4-20	1/4-20:SPC 701-01006 911-04069
13	712-0324	1	ECROU HEX.:1/4-20:GR8:NYLON	FINISH:701-01000
14	712-04064	2	ECROU HEXAGONAL	FINISH:SPEC-100015 912-04064
15	712-04065	3	ECROU HEXAGONAL	FINISH:SPEC-100015 912-04065
16	712-0417A	2	ECROU HEX. AV. FLANC: 5/8-18	FINISH:MTD STD 701-01000
17	712-0429	1	ECROU	FINISH:SPEC-100015
18	712-0431	2	ECROU STOP 3/8-16:GRF	FINISH:MTD SPEC-100015
19	712-0641	1	ECROU HEX. M16-1.5 DIN 936	FINISH:SPEC-100015 24.1424.31
20	712-3010	1	ECROU HEX. 5/16-18:GR5	FINISH:MTD SPEC-100015
21	714-0470	2	EPINGLE EX AF-43010	FINISH:SPEC-100015 470 32 32
22	717-04074	1	PIGNON HAUTEUR PLATEAU	PHOS & SPEC-100015 917-04074
23	721-04041	1	ADAPTATEUR BUSE DE LAVAGE	FINISH: 921-04041
24	726-0233	2	RONDELLE	MECHANISCH KLAR VERZINKT
25	731-1032B	1	CLAPET D'ÜJECTION	SEITENAUSWURF 931-1032B
26	731-2231B	2	PROTECTION COURROIE DROITE	731-2231B
27	732-0306	2	RESSORT DE PRESSION	732-0306
28	732-0459C	1	RESSORT	FINISH:MTD SPEC-100015

Position	Numéro de pièce	#	Appellation I	Appellation II
29	734-04155	2	ROUE DE PLATEAU	FINISH:KUNSTSTOFF SCHWARZ
30	736-0119	1	RONDELLE	FINISH:MTD SPEC-100016
31	736-0225	1	RONDELLE	FINISH:MTD SPEC-100016
32	736-3072	2	RONDELLE .38 x.93 x.110:HT	FINISH:701-01001
33	737-04003C	1	GICLEUR	FINISH:FINIDIP 140 -VERZINKT-
34	738-04162A	1	ENTRETOISE .8840 x .190	FINISH:IN ÖL GETAUCHT
35	738-3056	2	AXE DE ROUE DE PLATEAU	FINISH:SPEC-100015 938-3056
36	742-04083	2	LAME 21.20"LG:STAR LOW	742-04083
37	747-1116	2	GOUPILLE	FINISH:PHOS & OIL COATING
38	754-04137	1	COURROIE DE LAME	954-04137
39	756-04129	2	POULIE TENDEUR	FINISH:
40	783-1025	1	PLAQUE ACCROCHE DEFLECTEUR	FINISH:VERZINKT
41	783-1146A	1	LITEAU KIT-MULCHING :DECK G	FINISH:LACKIERT

www.emc-motoculture.com



Position	Numéro de pièce	#	Appellation I	Appellation II
1	703-05441A	1	SUPPORT D'ECHAPPEMENT	703-05441A
2	703-05870	1	PROTECTION D ECHAPPEMENT	703-05870
3	703-05892	1	SUPPORT CABLE	703-05892
4	710-0227	3	VIS	FINISH:MTD SPEC-100016 TYPE 1
5	710-04261	2	VIS	FINISH:MTD SPEC-100016 TYPE 1
6	710-04484	2	VIS HEX. TT:5/16-18:.750:HXIND	FINISH:MTD SPEC-100016 TYPE 1
7	710-0599	4	VIS A SIX PANS CREUX	FINISH:MTD SPEC-101617
8	710-1315	4	VIS HEX.TT:3/8-16:1.25:HXIN:S	FINISH:SPEC-100016 TYPE 1
9	710-3008	6	VIS 5/16-18:.75:GR5:STD	SPEC-701-01006 or.SPEC-100015
10	710-3157A	1	VIS HEX HHCS:7/16-20:3.25GR5	LOCK FINISH:701-01000
11	710-3217	1	VIS	FINISH:701-01000 TRUSPHI
12	712-0142	1	ECROU HEX.:#8-32:GRA	FINISH:MTD SPEC-100015
13	712-0271	1	ECROU 1/4-20"+ DISQUE DENTE	FINISH:MTD SPEC-100016 GR5
14	712-04063	4	ECROU HEX. AVEC FLANC	FINISH:MTD SPEC-100015
15	717-04376A	1	P T O	917-04376A
16	721-0331		PRODUIT D'ETANC. LOCTITE 582	DOSE À 50 mL
17	726-0205	2	COLLER DE SERRAGE DE BOYAU	FINISH:PHOS UND GELB LACKIERT
18	731-04914	1	MANETTE GAZ	FINISH:SCHWARZ
19	736-0148	2	RONDELLE	FINISH:MTD SPEC-100016
20	736-0171	1	RONDELLE GROWER	FINISH:MTD SPEC-100016
21	736-0277	1	RONDELLE	FINISH:MTD SPEC-701-01000
22	736-3008	1	RONDELLE	FINISH:MTD SPEC-100015
23	737-0169		HUILE MOTEUR 20W/30	oder HD SAE20W/30 API:SF/CC
24	737-0288		GRAISSE ANTI GRIP LOCTITE	Dose 500 G
25	746-04161	1	CABLE GAZ	FINISH:
26	746-04235	1	CABLE DE STARTER	746-04235
27	747-04228A	1	ÜTRIER RÜSERVOIR	747-04228A
28	751-0564B	1	DEFLECTEUR ECHAPPEMENT	MATERIAL:ALUMINIERTER STAHL
29	751-0617A	1	POT D'ÜCHAPPEMENT	

Position	Numéro de pièce	#	Appellation I	Appellation II
30	751-10057D	1	RÛSERVOIR ; ESSENCE	751-10057D
31	751-10251	1	PIPE D ECHAPPEMENT	751-10251
32	751-10349	16	TUYAU ESSENCE	MIN:1/4:FINISH SCHWARZ
33	751-10517	1	RACCORD DE VID. D'HUIL. AV. C.	951-10517
34	751-3124D	1	BOUCHON ESSENCE	751-3124D
35	751-3141	9	TUYAU VIDANGE	13 X 3:FINISH KLAR METERWARE
36	756-0978B	1	POULIE:MOTEUR:ELEC PTO	MTD SPEC 101642 OR 701-01000

www.emc-motoculture.com

www.emc-motoculture.com