

MCCULLOCH®

PARTNER

ILLUSTRATED PARTS LIST

PROMAC 54/DEKO

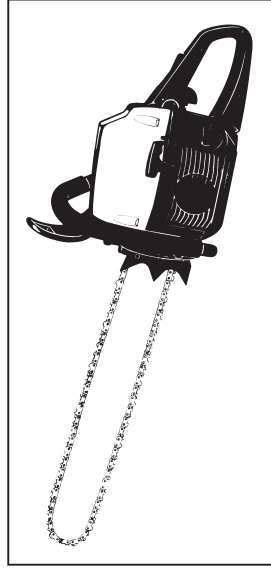
PROMAC 61/DEKO

PARTNER P610/DEKO

PARTNER P541/DEKO

SERIAL NUMBER PREFIX 02

CE



January 2002

	54 cc	<table border="0"> <tr> <td>PN McC</td> <td>PN ELX</td> </tr> <tr> <td>C 1</td> <td>248765 538248765 1</td> </tr> <tr> <td>B 2</td> <td>• 227393 538227393 1</td> </tr> <tr> <td>C 3</td> <td>• 227510 538227510 1</td> </tr> <tr> <td>4</td> <td>•• 229544 538229544 2</td> </tr> <tr> <td>B 5</td> <td>•• 227543 538227543 1</td> </tr> <tr> <td>6</td> <td>•• 227344 538227344 1</td> </tr> </table>	PN McC	PN ELX	C 1	248765 538248765 1	B 2	• 227393 538227393 1	C 3	• 227510 538227510 1	4	•• 229544 538229544 2	B 5	•• 227543 538227543 1	6	•• 227344 538227344 1
	PN McC	PN ELX														
C 1	248765 538248765 1															
B 2	• 227393 538227393 1															
C 3	• 227510 538227510 1															
4	•• 229544 538229544 2															
B 5	•• 227543 538227543 1															
6	•• 227344 538227344 1															
59 cc	<table border="0"> <tr> <td>PN McC</td> <td>PN ELX</td> </tr> <tr> <td>C 1</td> <td>248766 538248766 1</td> </tr> <tr> <td>B 2</td> <td>• 227393 538227393 1</td> </tr> <tr> <td>C 3</td> <td>• 227511 538227511 1</td> </tr> <tr> <td>4</td> <td>•• 229544 538229544 2</td> </tr> <tr> <td>B 5</td> <td>•• 227544 538227544 1</td> </tr> <tr> <td>6</td> <td>•• 227344 538227344 1</td> </tr> </table>	PN McC	PN ELX	C 1	248766 538248766 1	B 2	• 227393 538227393 1	C 3	• 227511 538227511 1	4	•• 229544 538229544 2	B 5	•• 227544 538227544 1	6	•• 227344 538227344 1	
PN McC	PN ELX															
C 1	248766 538248766 1															
B 2	• 227393 538227393 1															
C 3	• 227511 538227511 1															
4	•• 229544 538229544 2															
B 5	•• 227544 538227544 1															
6	•• 227344 538227344 1															

FIGURE 2

WALBRO WJ 82		<table border="0"> <tr> <td>PN McC</td> <td>PN ELX</td> </tr> <tr> <td>C -</td> <td>241311 538241311 1</td> </tr> <tr> <td>B 1</td> <td>• 229925 538229925 1</td> </tr> <tr> <td>A 2</td> <td>•• 237211 538237211 1</td> </tr> <tr> <td>3</td> <td>• 229927 538229927 2</td> </tr> <tr> <td>5</td> <td>• 237202 538237202 L 1</td> </tr> <tr> <td>6</td> <td>• 229930 538229930 H 1</td> </tr> <tr> <td>C 7</td> <td>• 237203 538237203 1</td> </tr> <tr> <td>9</td> <td>• 240219 538240219 1</td> </tr> <tr> <td>10</td> <td>• 240218 538240218 1</td> </tr> </table>	PN McC	PN ELX	C -	241311 538241311 1	B 1	• 229925 538229925 1	A 2	•• 237211 538237211 1	3	• 229927 538229927 2	5	• 237202 538237202 L 1	6	• 229930 538229930 H 1	C 7	• 237203 538237203 1	9	• 240219 538240219 1	10	• 240218 538240218 1
PN McC	PN ELX																					
C -	241311 538241311 1																					
B 1	• 229925 538229925 1																					
A 2	•• 237211 538237211 1																					
3	• 229927 538229927 2																					
5	• 237202 538237202 L 1																					
6	• 229930 538229930 H 1																					
C 7	• 237203 538237203 1																					
9	• 240219 538240219 1																					
10	• 240218 538240218 1																					

FIGURE 3

A = high moving - alta rotazione - haute demande - große Nachfrage
 B = medium moving - media rotazione - moyenne demande - mittelmäßige Nachfrage
 C = slow moving - bassa rotazione - basse demande - wenige Nachfrage

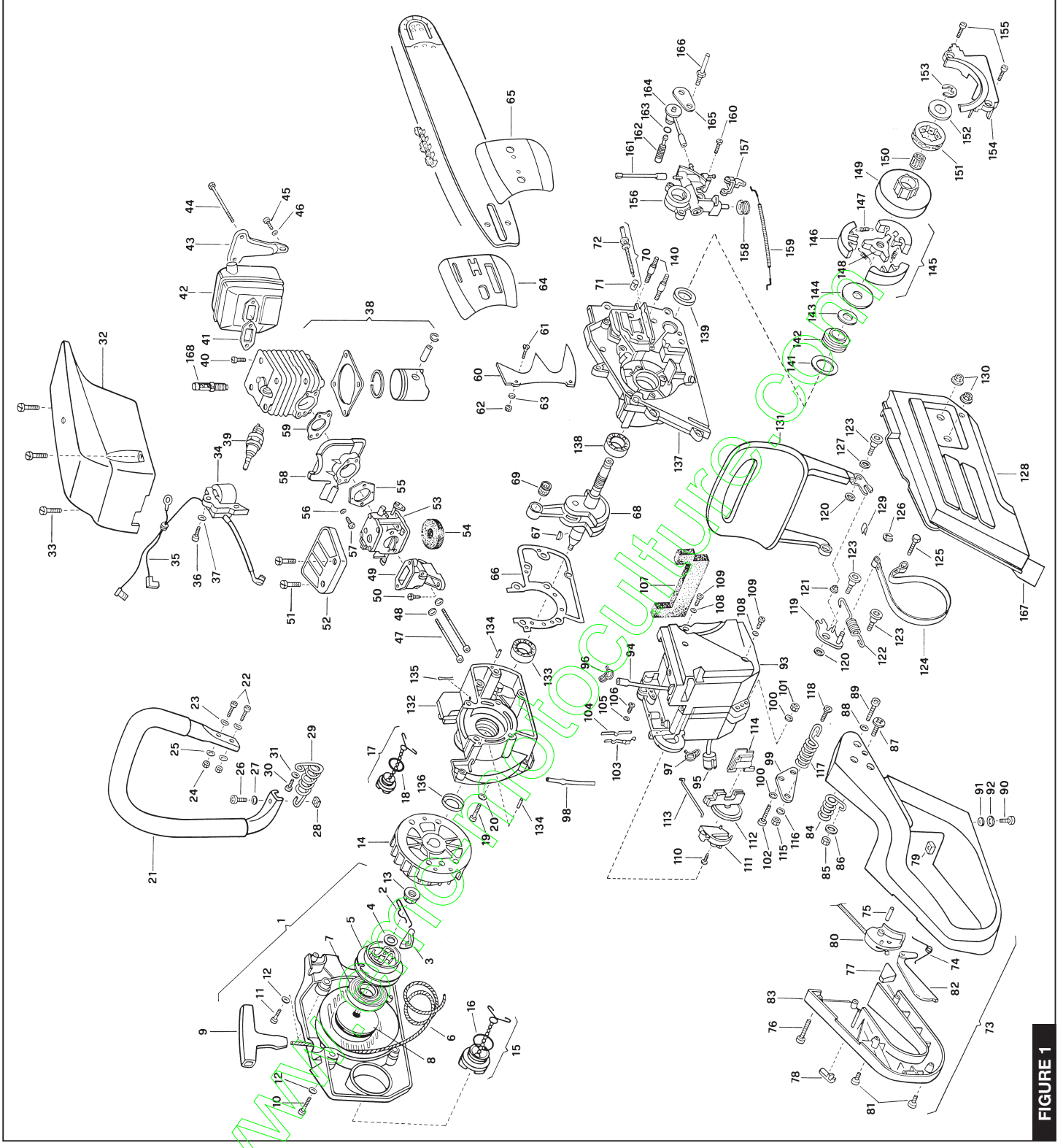


FIGURE 1

PN Mcc	PN ELX	PN Mcc	PN ELX
1	240861	538240861	Motillon
2	241929	538241929	Parer
3	240485	538240485	
4	240484	538240484	
5	227470	538227470	
6	227468	538227468	
7	227300	538227300	
8	227467	538227467	
9	240884	538240884	
10	255530	538255530	M5x55
11	255803	538255803	M5x25
12	227826	538227826	
13	227827	538227827	
14	241312	538241312	
15	227508	538227508	
16	227420	538227420	
17	227307	538227307	
18	227459	538227459	M5x20
19	255806	538255806	M5x20
20	227828	538227828	
21	241382	538241382	
22	255806	538255806	M5x20
23	227829	538227829	
24	255642	538255642	
25	227620	538227620	
26	227653	538227653	M5x16
27	255808	538255808	
28	228524	538228524	
29	241368	538241368	
30	227653	538227653	M5x16
31	227659	538227659	
32	242269	538242269	yellow/pink
33	242270	538242270	yellow
34	227468	538227468	M5x21
35	241301	538241301	
36	255806	538255806	M5x20
37	227829	538227829	
38	240012	538240012	
39	227361	538227361	
40	227362	538227362	
41	227363	538227363	
42	240054	538240054	
43	227481	538227481	
44	227367	538227367	M5x70
45	255881	538255881	M5x70
46	227826	538227826	
47	227826	538227826	
48	227829	538227829	
49	227316	538227316	
50	255802	538255802	M5x14
51	227458	538227458	M5x21
52	227361	538227361	
53	240012	538240012	
54	227424	538227424	
55	227427	538227427	
56	227829	538227829	
57	255803	538255803	M5x25
58	240114	538240114	
59	227385	538227385	
60	227371	538227371	
61	227616	538227616	M5x16
62	255642	538255642	
63	227826	538227826	
64	227888	538227888	
65	227889	538227889	
66	227831	538227831	
67	227831	538227831	
68	227335	538227335	
69	227335	538227335	
70	227516	538227516	
71	227886	538227886	
72	227885	538227885	
73	241384	538241384	
74	227443	538227443	
75	227445	538227445	
76	227801	538227801	M5x75
77	227804	538227804	
78	240083	538240083	
79	229524	538229524	
80	240119	538240119	
81	240882	538240882	
82	241471	538241471	
83	241473	538241473	
84	241357	538241357	
85	235642	5382235642	
86	227259	538227259	
87	241147	538241147	M5x16
88	238386	538238386	
89	240845	538240845	M5x16
90	241474	538241474	
91	227259	538227259	
92	241308	538241308	
93	227406	538227406	
94	241205	538241205	
95	227406	538227406	
96	227409	538227409	
97	227411	538227411	
98	227676	538227676	
99	227626	538227626	
100	238942	538238942	
101	238942	538238942	
102	238330	538238330	M5x55
103	241468	538241468	
104	241467	538241467	
105	241469	538241469	
106	240863	538240863	
107	241572	538241572	
108	227826	538227826	
109	238302	538238302	M5x14
110	240863	538240863	
111	241464	538241464	
112	241465	538241465	
113	241466	538241466	
114	241479	538241479	
115	235642	5382235642	
116	227826	538227826	
117	227881	538227881	
118	238303	538238303	M5x5
119	241487	538241487	
120	241495	538241495	
121	241484	538241484	
122	241485	538241485	
123	228510	5382228510	
124	241319	538241319	
125	240314	538240314	M5x16
126	227304	538227304	
127	238225	5382238225	
128	241350	538241350	
129	228514	5382228514	
130	227762	538227762	
131	241317	538241317	
132	240166	538240166	
133	229450	5382229450	
134	227487	538227487	
135	238728	538238728	
136	227489	538227489	
137	248167	538248167	
138	229450	5382229450	
139	241307	538241307	
140	227370	538227370	
141	241339	538241339	
142	241344	538241344	
143	241345	538241345	
144	241346	538241346	
145	241347	538241347	
146	227859	538227859	
147	227880	538227880	
148	241348	538241348	
149	227546	538227546	
150	227229	538227229	
151	227229	538227229	
152	228519	5382228519	
153	241349	538241349	
154	241343	538241343	
155	228808	5382228808	M5x14
156	241320	538241320	
157	241332	538241332	
158	227383	538227383	
159	241342	538241342	
160	228808	5382228808	M5x14
161	241340	538241340	
162	227464	538227464	
163	227327	538227327	
164	241341	538241341	
165	240309	538240309	
166	240303	538240303	
167	227943	538227943	
168	94273	538094273	

A = high moving - alta rotazione - haute demande - große Nachfrage
 B = medium moving - media rotazione - moyenne demande - mittelmäßige Nachfrage
 C = slow moving - bassa rotazione - basse demande - wenige Nachfrage