

REPAIR PARTS MANUAL
MODEL NO. PS14B97 (96011027000)
LAWN TRACTOR

Colombia

HOW TO USE THIS MANUAL

This manual is designed to provide the customer with a means to identify the parts on his/her tractor when ordering repair parts. The illustrations may or may not represent the actual assemblies; therefore, it is not recommended to use this manual as a guide to assemble or disassemble the tractor. Some hardware and parts are drawn larger in order to more readily identify them.

Each tractor has its own model number.

The model number for your tractor can be found on the fender under the seat.

When ordering parts, always give the following information:

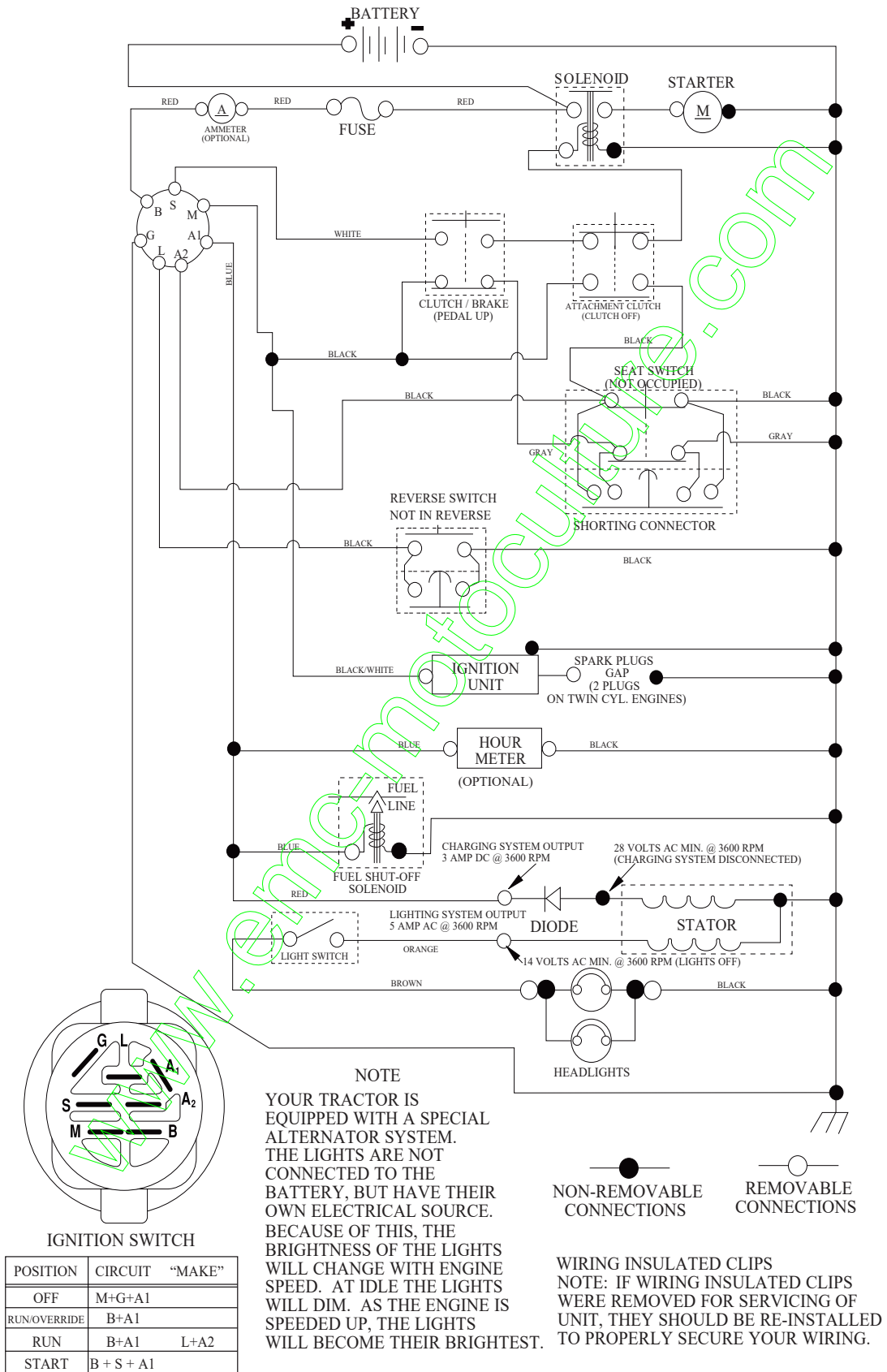
- Product - "Tractor"
- MODEL NUMBER - "PS14B97 (96011027000)"
- Part Number
- Part Description

TABLE OF CONTENTS

SCHEMATIC	3
ELECTRICAL	4-5
CHASSIS	6-7
DRIVE	8-9
STEERING	10-11
ENGINE	12-13
MOWER DECK	14-15
MOWER LIFT	16
DECALS	17
SEAT	18

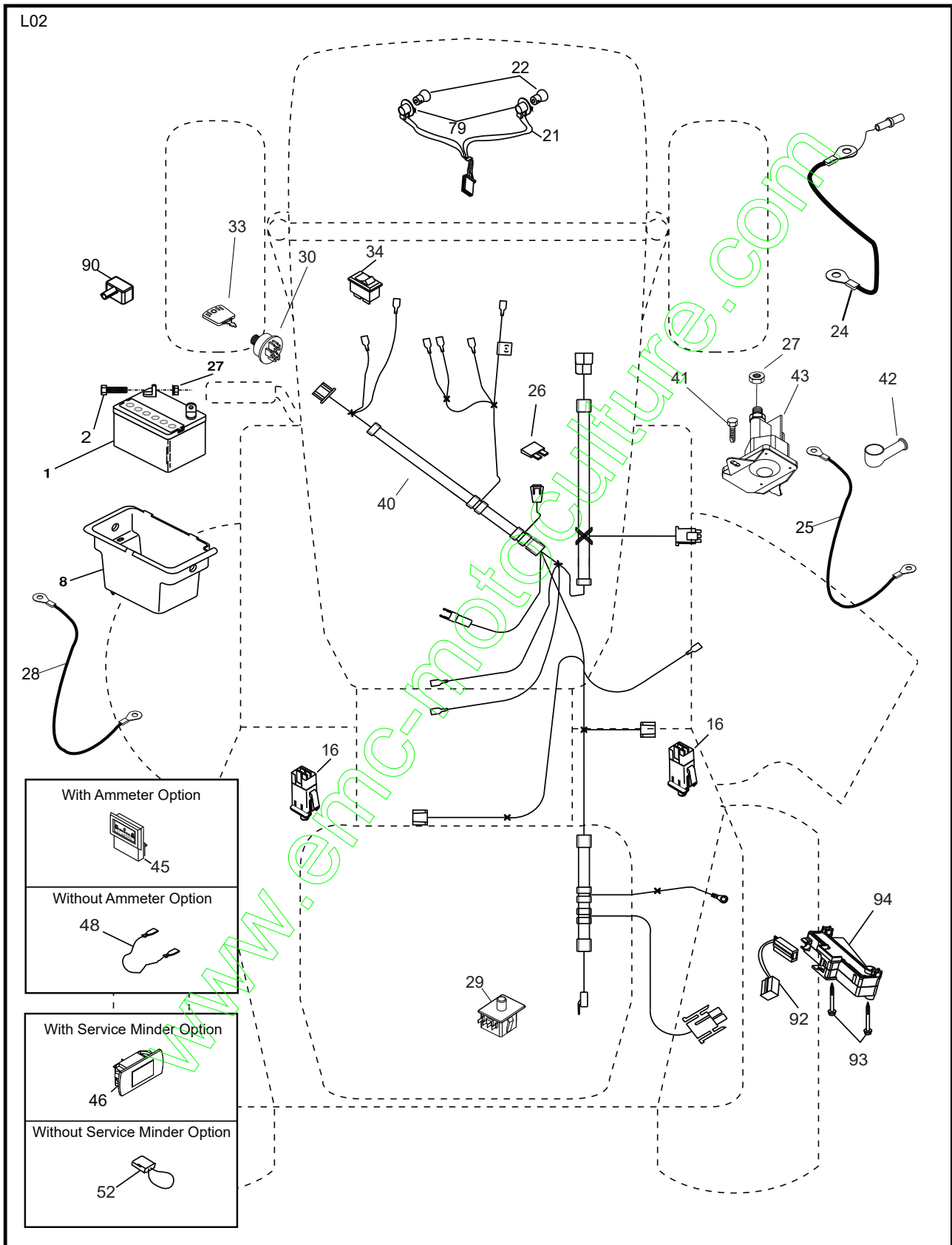
TRACTOR- -MODEL NO. PS14B97 (96011027000) PRODUCT NO. 960 11 02-70 SCHEMATIC

SCH03



TRACTOR- -MODEL NO. PS14B97 (96011027000) PRODUCT NO. 960 11 02-70

ELECTRICAL

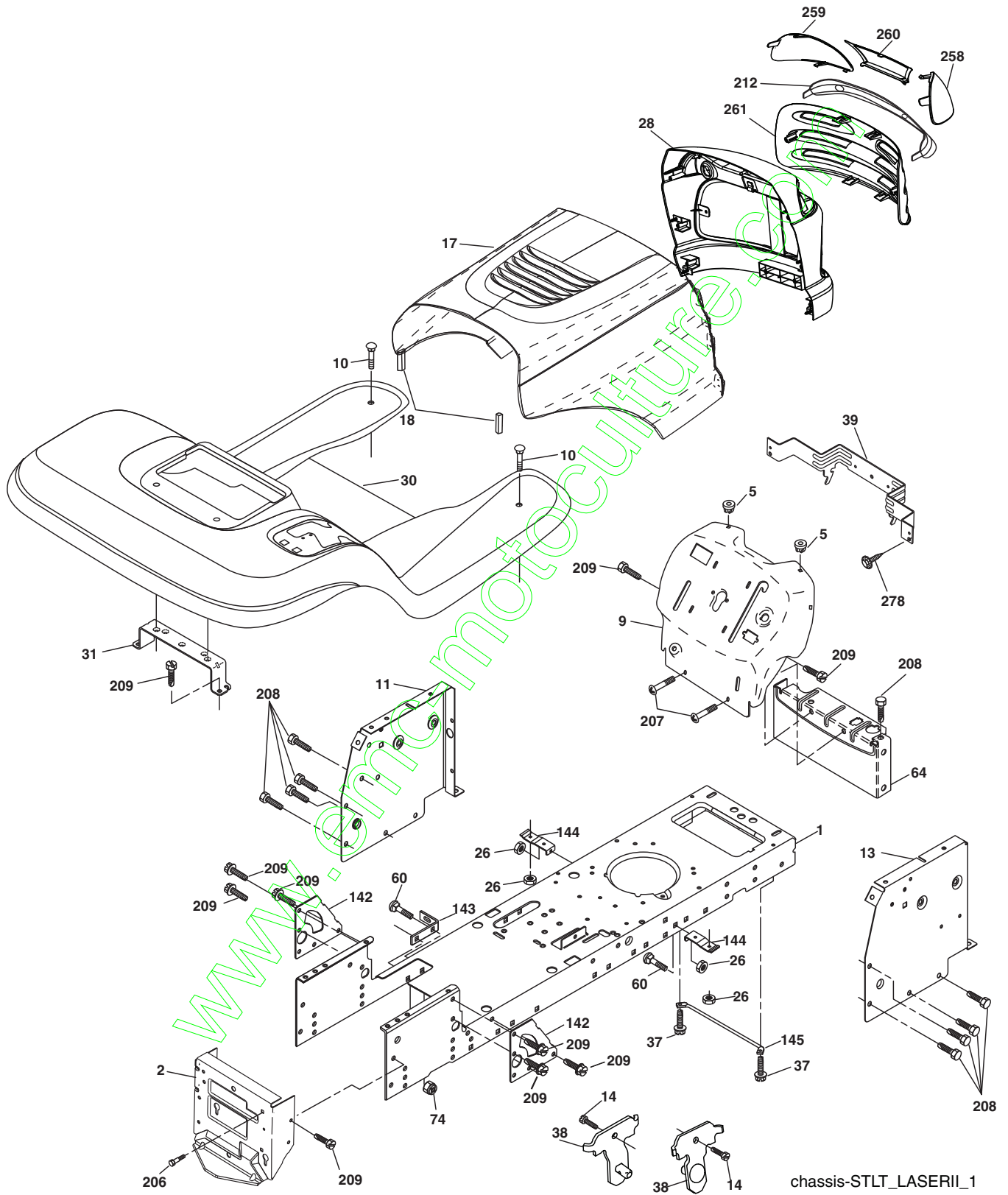


**TRACTOR- -MODEL NO. PS14B97 (96011027000) PRODUCT NO. 960 11 02-70
ELECTRICAL**

KEY NO.	PART NO.	DESCRIPTION
1	532 16 34-65	Battery
2	874 76 04-12	Bolt Hex Hd 1/4-20 unc x 3/4
8	532 17 66-89	Box Battery Fender
16	532 17 61-38	Switch Interlock
21	532 18 37-59	Harness Headlight
22	532 00 41-52	Bulb
24	532 12 47-80	Cable Battery 6 Ga. 11" Red
25	532 14 61-47	Cable Battery 6 Ga. Red w/16 Wir
26	532 17 51-58	Fuse
27	873 51 04-00	Nut Keps Hex 1/4-20 unc
28	532 12 47-73	Cable Ground 6 Ga. 12" Black
29	532 19 27-49	Switch Seat
30	532 19 33-50	Switch Ignition
33	532 41 19-35	Key/Chain
34	532 11 07-12	Switch Light/Reset
40	532 19 74-28	Harness Ignition
41	871 11 04-08	Bolt Blk Fin Hex 1/4 - 20 x 1/2
42	532 13 15-63	Cover Terminal Red
43	532 19 25-07	Solenoid
48	532 12 14-33	Adapter Ammeter Rectangular
52	532 14 19-40	Protection Wire Loop
79	532 17 52-42	Socket Asm. Bulb Twistlock
90	532 18 04-49	Cover Terminal Battery
92	532 19 66-15	Harness Pigtail Console ROS
93	532 19 25-40	Screw Plastite 10-14 x 2.0
94	532 19 18-34	Module Reverse ROS

NOTE: All component dimensions given in U.S. inches.
1 inch = 25.4 mm.

TRACTOR- -MODEL NO. PS14B97 (96011027000) PRODUCT NO. 960 11 02-70
CHASSIS

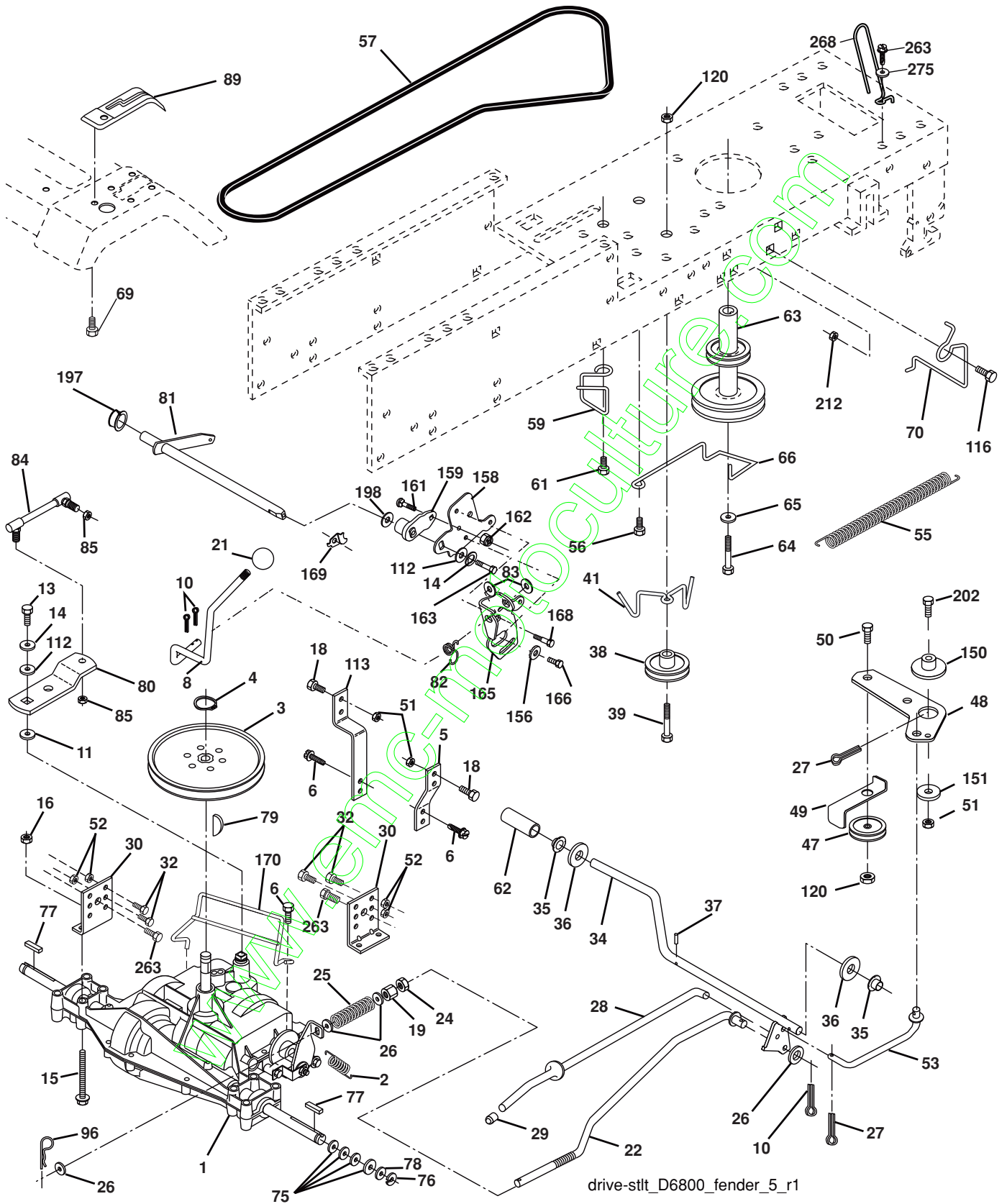


**TRACTOR- -MODEL NO. PS14B97 (96011027000) PRODUCT NO. 960 11 02-70
CHASSIS**

KEY NO.	PART NO.	DESCRIPTION
1	532 17 46-19	Chassis Stamping
2	532 17 65-54	Drawbar
5	532 15 52-72	Bumper Hood/Dash
9	532 19 68-36	Dash P/L
10	872 14 06-08	Bolt, Carriage 3/8-16 x 1
11	532 17 49-96	Panel Dash LH
13	532 18 17-19	Panel Dash RH
14	817 49 06-08	Screw Thdrol 3/8-16 x 1/2
17	532 40 38-31	Hood
18	532 18 49-21	Bumper Hood
26	873 80 06-00	Nut Lock Hex w/Ins. 3/8-16 unc
28	532 40 83-00	Grille (Includes key Nos. 29, 212)
30	532 40 38-32	Fender Footrest
31	532 13 99-76	Bracket Support Fender
37	817 49 05-08	Screw Thdrol 6/16-18 x 1/2 TYT
38	532 17 57-10	Bracket Asm. Pivot, Mower Rear
39	532 40 78-07	Bracket Pivot
60	872 14 06-06	bolt RDHD SQNK 3/8-16 unc x 3/4
64	532 15 47-98	Dash Lower
74	873 68 06-00	Nut Crownlock 3/8-16 unc
142	532 17 57-02	Plate Reinforcement
143	532 18 66-89	Bracket Swaybar Chassis Notch
144	532 17 55-82	Bracket Footrest
145	532 40 91-67	Rod Pivot Chassis/Hood
206	532 17 01-65	Bolt Shoulder 5/16-18 TT
207	817 67 05-08	Screw Thdrol 5/16-18 x 1/2
208	817 67 06-08	Screw Thdrol 3/8-16 x 1/2
209	817 00 06-12	Screw Hexwsh Thdr 3/8-16 x 3/4
212	532 18 42-48	Insert Lens
258	532 19 05-07	Lens RH Clear
259	532 19 05-08	Lens LH Clear
260	532 40 83-82	Cover Lens
261	532 40 83-95	Insert Grille
278	532 41 63-58	Screw #10 x 0.750 BOS Thread
-	532 00 54-79	Plug Btn

NOTE: All component dimensions given in U.S. inches.
1 inch = 25.4 mm.

TRACTOR- -MODEL NO. PS14B97 (96011027000) PRODUCT NO. 960 11 02-70
DRIVE



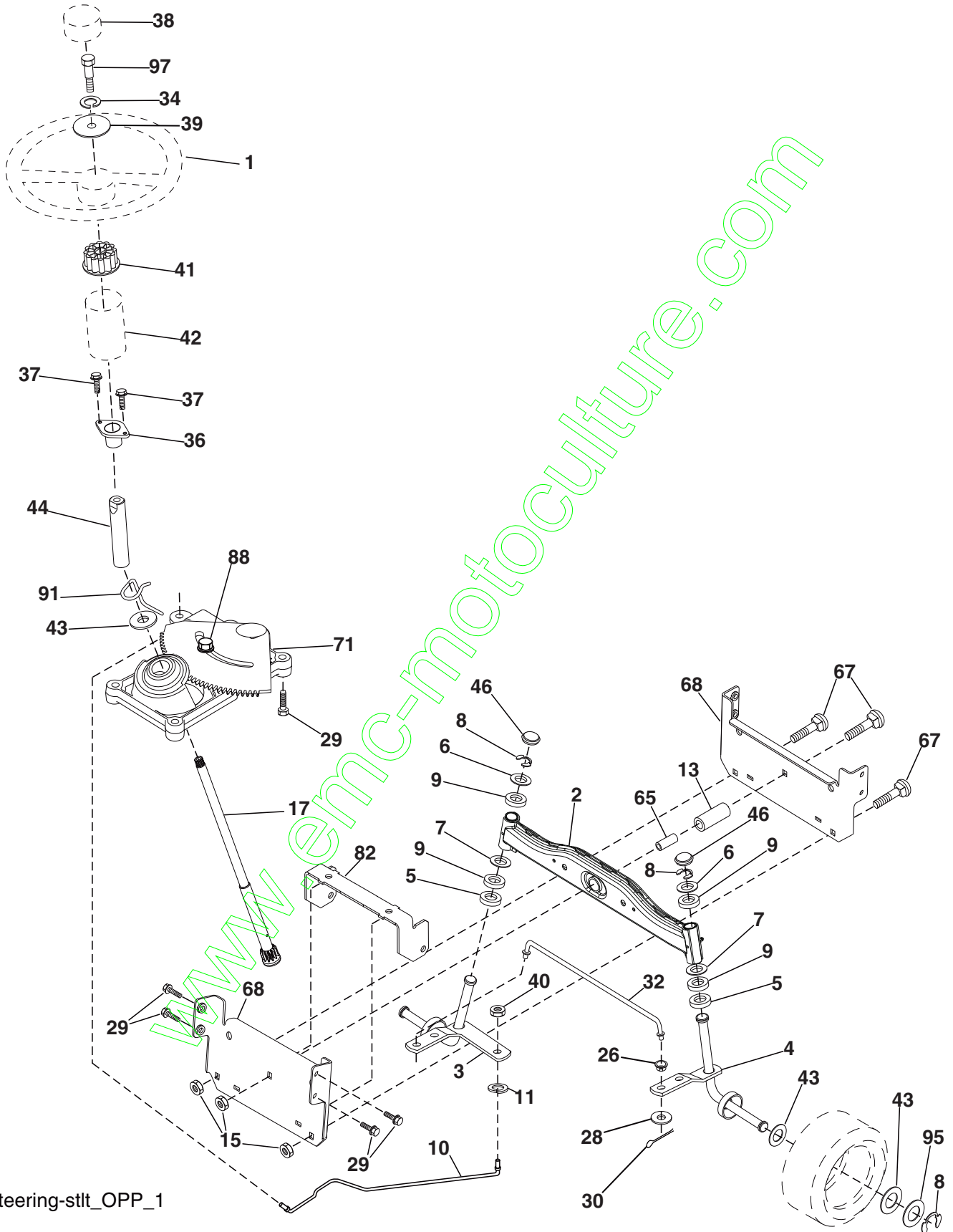
drive-stlt_D6800_fender_5_r1

**TRACTOR- -MODEL NO. PS14B97 (96011027000) PRODUCT NO. 960 11 02-70
DRIVE**

KEY NO.	PART NO.	DESCRIPTION	KEY NO.	PART NO.	DESCRIPTION
1	-----	Transaxle Dana, Model D6800-5 (Order parts from transaxle manufacturer)	63	532 17 54-10	Pulley, Engine
2	532 14 66-82	Spring, Brake Return	64	532 17 39-37	Bolt, Hex 7/16-20 x 4 Gr. 5
3	532 12 36-66	Pulley, Transaxle	65	810 04 07-00	Washer, Lock Hvy Hlcl Spr 7/16
4	812 00 00-28	Ring, Retainer	66	532 15 47-78	Keeper, Belt Engine F-Proof
5	532 12 72-85	Strap, Torque	69	532 14 24-32	Screw Hex Wsh Hi-Lo
6	817 06 05-12	Screw, 5/16-18 x 3/4 smgml	70	532 13 46-83	Guide Belt Mower Drive RH
8	532 19 25-02	Rod, Shifter	75	532 12 17-49	Washer 25/32 x 1-1/4 x 16 Ga.
10	876 02 04-16	Pin, Cotter 1/8 x 1	76	812 00 00-01	E-Ring
11	532 10 57-01	Washer, Shift Plate	77	532 12 35-83	Key Square
13	874 55 04-12	Bolt 1/4-28 unc Gr. 8 w/Patch	78	532 12 17-48	Washer 25/32 x 1-5/8 x 16 Ga.
14	810 04 04-00	Washer Lock	79	532 12 50-96	Key Woodruff #9 3/16 x 3/4
15	874 49 05-44	Bolt, Hex Flghd 5/16-18 Gr. 5	80	532 13 14-88	Arm Shift
16	873 80 05-00	Nut Lock 5/16-18 unc	81	532 16 55-94	Shaft Asm. Cross Taper
18	874 78 06-16	Bolt, Fin Hex 3/8-16 unc x 1 Gr. 5	82	532 16 57-11	Spring Torsion Shift
19	873 80 06-00	Locknut 3/8-16	83	819 17 12-16	Washer 17/32 x 3/4 x 16 Ga.
21	532 10 69-33	Knob	84	532 16 62-29	Link Trans.
22	532 13 08-04	Rod, Brake	85	532 15 03-60	Nut Lock Center 1/4-28
24	873 35 06-00	Nut, Hex Jam 3/8-16	89	532 40 32-08	Console Shift
25	532 10 68-88	Spring, Rod, Brake	96	532 12 47-88	Retainer Spring 1" Zinc/Cad
26	819 13 13-16	Washer 13/32 x 13/16 x 16 Ga.	112	819 09 12-10	Washer 9/32 x 3/4 x 10 Ga.
27	876 02 04-12	Pin, Cotter 1/8 x 3/4	113	532 12 15-20	Strap Torque L.H. Lt
28	532 17 57-65	Rod, Brake, Park	116	872 14 06-08	Bolt RDHD SQNK 3/8-16 unc x 1
29	532 07 16-73	Cap, Brake Park	120	873 90 06-00	Nut Lock Flg. 3/8-16 unc
30	532 17 49-73	Bracket, Transaxle, L.H.	150	532 17 54-56	Spacer Retainer
32	874 76 05-12	Bolt Hex Hd 5/16-18 unc x 3/4	151	819 13 32-10	Washer 13/32 x 2 x 10 Ga.
34	532 17 55-78	Shaft, Foot Pedal	156	532 16 60-02	Washer 5/16 ID x 10 x .125
35	532 12 01-83	Bearing Nylon	158	532 16 55-89	Bracket Shift Mound
36	819 21 16-16	Washer 21/32 x 1 x 16 Ga.	159	532 18 39-00	Hub Shift
37	532 12 49-63	Pin, Roll 3/16 x 1	161	872 14 04-06	Bolt Rdhd Sqnk 1/4-20 x 3/4 Gr. 5
38	532 17 91-14	Pulley Idler	162	873 68 04-00	Nut Crownlock 1/4-20 unc
39	872 11 06-22	Bolt 3/8-16 unc x 2-3/4 Gr. 5	163	874 78 04-16	Bolt Hex Fin 1/4-20 unc x 1 Gr. 5
41	532 17 55-56	Keeper, Belt	165	532 16 56-23	Bracket Pivot Lever
47	532 12 77-83	Pulley, Idler	166	817 49 05-10	Screw 5/16-18 x 5/8
48	532 15 44-07	Bellcrank Asm Clutch	168	532 16 54-92	Bolt Shoulder 5/16-18 x .561
49	532 12 32-05	Retainer, Belt	169	532 16 55-80	Plate Fastening
50	872 11 06-12	Bolt, Carr. Sh 3/8-16 x 1-1/2 Gr. 5	170	532 18 74-14	Keeper, Belt, Transaxle
51	873 68 06-00	Nut, Crownlock 3/8-16	197	532 16 96-13	Nyliner Snap-In 5/8 ID
52	873 68 05-00	Nut, Crownlock 5/16-18	198	532 16 95-93	Washer Nylon
53	532 19 96-52	Link, Clutch	202	872 11 06-14	Bolt Carr Sh 3/8-16 x 1-3/4 Gr. 5
55	532 10 57-09	Spring, Return, Clutch	212	532 14 52-12	Nut Hex Flange Lock
56	817 06 06-20	Screw 3/8-16 x 1-1/4	263	817 00 06-12	Screw, 3/8-16 x 3/4 smgml
57	532 40 16-03	V-Belt, Drive	268	532 18 24-02	Guard Muffler
59	532 16 96-91	Keeper Belt Center Span	275	819 13 16-14	Washer 13/32 x 1 x 14 Ga.
61	817 12 06-14	Screw 3/8-16 x .875			
62	532 12 48-72	Cover, Foot Pedal			

NOTE: All component dimensions given in U.S. inches
1 inch = 25.4 mm

TRACTOR- -MODEL NO. PS14B97 (96011027000) PRODUCT NO. 960 11 02-70
STEERING ASSEMBLY



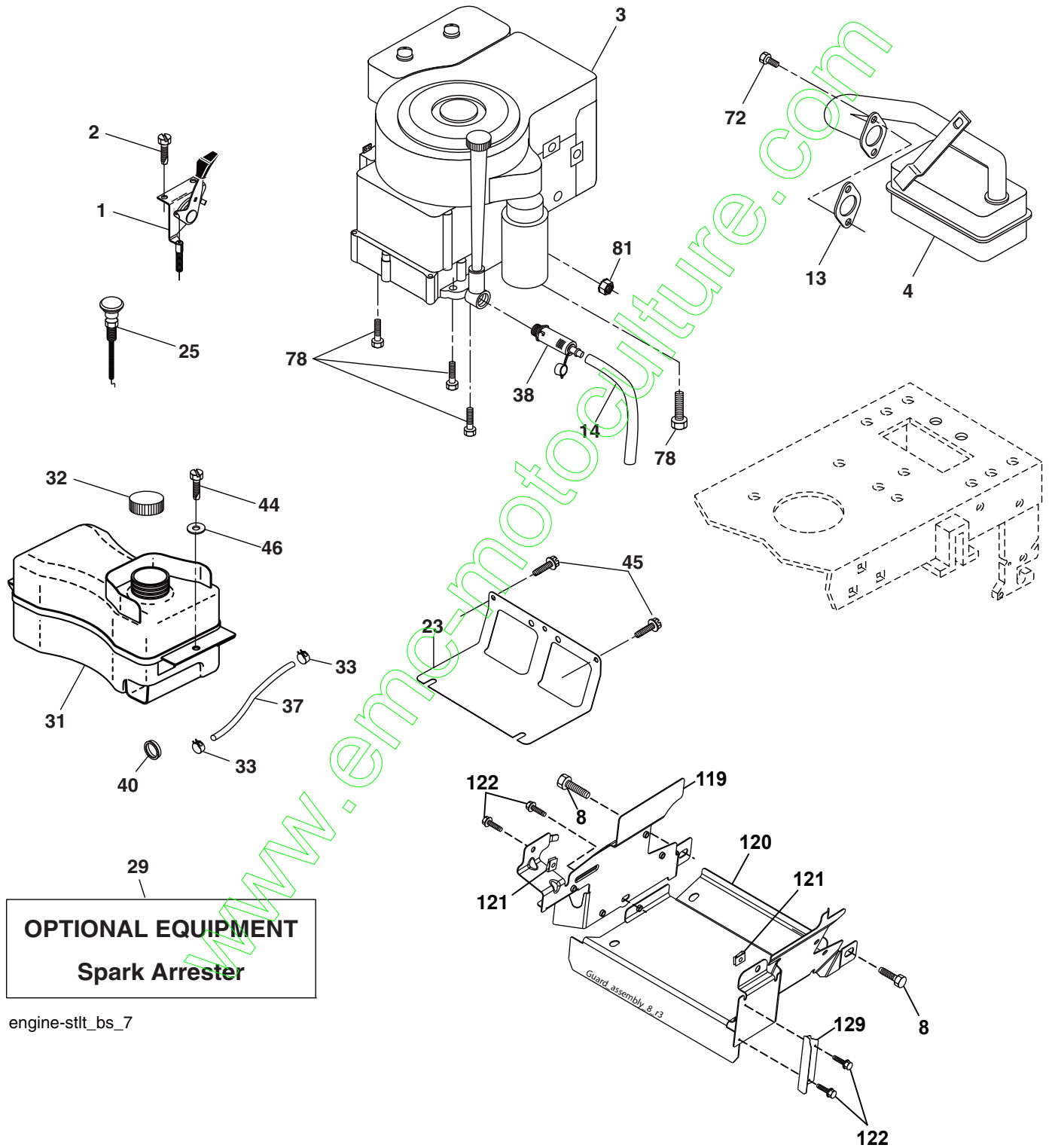
Steering-stltt_OPP_1

**TRACTOR- -MODEL NO. PS14B97 (96011027000) PRODUCT NO. 960 11 02-70
STEERING ASSEMBLY**

KEY NO.	PART NO.	DESCRIPTION
1	532 18 67-80	Wheel Steering Opp. Sears Blk
2	532 19 56-73	Axle Asm
3	532 16 98-40	Spindle Asm LH
4	532 16 98-39	Spindle Asm RH
5	532 12 49-31	Bearing Race Thrust Harden
6	532 12 17-48	Washer 25/32 x 1-5/8 x 16 Ga.
7	819 27 20-16	Washer 27/32 x 1-1/4 x 16 Ga.
8	812 00 00-29	Ring Clip #t5304-75
9	532 12 49-37	Bearing Col Strg Blk
10	532 17 51-21	Link Drag
11	810 04 06-00	Washer Lock Hvy Hlcl Spr 3/8
13	532 13 65-18	Spacer Brace Axle
15	532 14 52-12	Nut Hexflange Lock
17	532 19 07-53	Shaft Asm Strg
26	532 12 68-47	Bushing Link Drag Blk LR
28	819 13 14-16	Washer 13/32 x 7/8 x 16 Ga.
29	817 00 06-12	Screw 3/8-16 x .75
30	876 02 04-12	Pin Cotter 1/8 x 3/4 Cad
32	532 19 27-57	Rod Tie Wire Form 19 75 Mech
34	810 04 05-00	Washer Lock Hvy Hlcl Spr. 5/16
36	532 15 50-99	Bushing Strg Nat .623/.618ld
37	532 15 29-27	Screw TT #10-32 x 5 x 3/8 Flange
38	532 19 29-16	Cap Wheel Steer P/L
39	819 11 38-12	Washer 11/32 x 2-3/8
40	873 54 06-00	Nut Crownlock 3/8-24
41	532 18 67-37	Adapter Wheel Strg
42	532 16 96-33	Boot Shaft Steering
43	532 12 17-49	Washer 25/32 x 1 1/4 x 16 Ga.
44	532 19 07-52	Extension Steering
46	532 12 12-32	Cap Spindle Fr Top Blk
65	532 41 47-36	Spacer Brace Axle
67	872 11 06-18	Bolt RDHD SQ 3/8-16 unc x 2-1/4
68	532 16 98-27	Brace Axle
71	532 17 51-46	Steering Asm
82	532 19 99-78	Bracket Susp. Chassis Front
88	532 17 51-18	Bolt Shoulder 7/16-20
91	532 17 55-53	Cup Steering
95	532 18 89-67	Washer Hardened
97	874 78 05-64	Bolt 5/16-18 unc x 4" L Gr. 5

NOTE: All component dimensions given in U.S. inches.
1 inch = 25.4 mm.

**TRACTOR- -MODEL NO. PS14B97 (96011027000) PRODUCT NO. 960 11 02-70
ENGINE**



engine-stlt_bs_7

**TRACTOR- -MODEL NO. PS14B97 (96011027000) PRODUCT NO. 960 11 02-70
ENGINE**

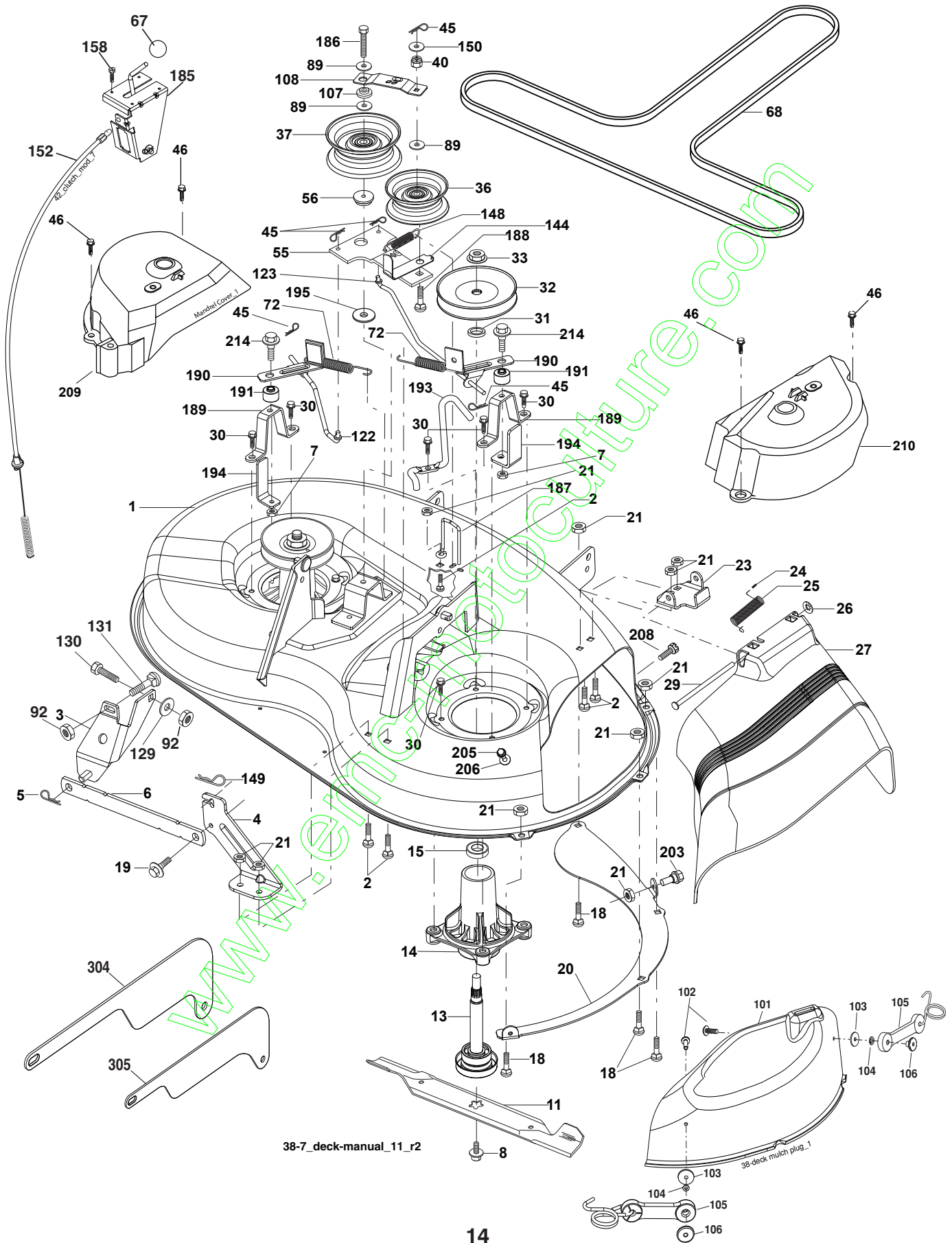
KEY NO.	PART NO.	DESCRIPTION
1	532 17 05-51	Control Th/ch Flag
2	817 72 04-08	Screw Hex Thd Cut 1/4-20 x 1/2
3	-----	Engine B&S Model No. 219B807 (Order parts from engine manufacturer)
4	532 17 97-58	Muffler
8	532 17 18-77	Bolt
13	532 16 52-91	Gasket Eng
14	532 14 84-56	Tube Drain Oil Easy
23	532 16 98-37	Shield Brn/Dbr Guard
25	532 19 06-95	Control Choke
29	532 13 71-80	Kit Spark Arrester
31	532 40 75-16	Tank Fuel Front 1.25
32	532 19 77-25	Cap Asm Fuel Top
33	532 12 34-87	Clamp Hose Blk
37	532 13 70-40	Line Fuel 20"
38	532 18 16-54	Plug Oil Drain Easy
40	532 12 40-28	Bushing Snap Nyl Blk Fuel Line
44	817 67 04-12	Screw Hexwsh Thdrol 1/4-20 x 3/4
45	817 00 06-12	Screw Hexwsh Thdrol 3/8-16 x 3/4
46	819 09 14-16	Washer 9/32 x 7/8 x 16 Ga.
72	532 19 23-34	Screw Socket HD 5/16-18 x .75
78	817 06 06-20	Screw 3/8-16 x 1-1/4
81	873 51 04-00	Nut Keps Hex 1/4-20 unc
119	532 19 79-49	Guard Asm. Engine. LH. CRD
120	532 19 79-48	Guard Asm. Engine. RH. CRD
121	532 19 66-88	Clips, Threaded
122	532 13 77-29	Screw. THD. ROL. 1/4-20 x 5/8
129	532 40 03-28	Guard. Pulley. ENG. Adapter

NOTE: All component dimensions given in U.S. inches
1 inch = 25.4 mm

Engine Power Rating Information

The gross power rating for individual gas engine models is labeled in accordance with SAE (Society of Automotive Engineers) code J11940 (Small Engine Power & Torque Rating Procedure), and rating performance has been obtained and corrected in accordance with SAE J1995 (Revision 2002-5). Actual gross engine power will be lower and is affected by, among other things, ambient operating conditions and engine-to-engine variability. Given both the wide array of products on which engines are placed and the variety of environmental issues applicable to operating the equipment, the gas engine will not develop the rated gross power when used in a given piece of power equipment (actual "on-site" or net horsepower). This difference is due to a variety of factors including, but not limited to, accessories (air cleaner, exhaust, charging, cooling, carburetor, fuel pump, etc.), application limitations, ambient operating conditions (temperature, humidity, altitude), and engine-to-engine variability. Due to manufacturing and capacity limitations, Briggs & Stratton may substitute an engine of higher rated power for this Series engine.

**TRACTOR- -MODEL NO. PS14B97 (96011027000) PRODUCT NO. 960 11 02-70
MOWER**

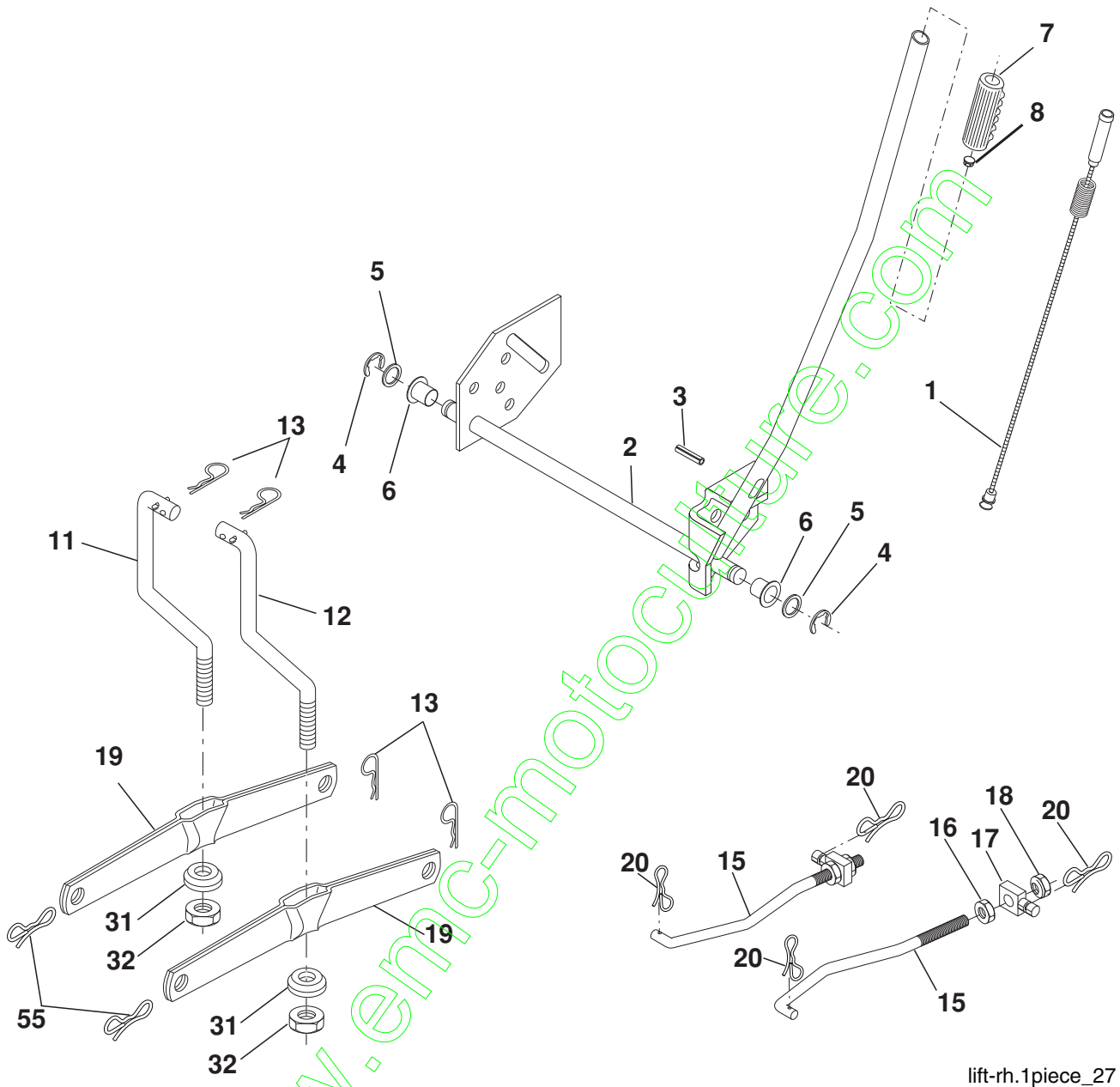


**TRACTOR- -MODEL NO. PS14B97 (96011027000) PRODUCT NO. 960 11 02-70
MOWER**

KEY NO.	PART NO.	DESCRIPTION	KEY NO.	PART NO.	DESCRIPTION
1	532 19 25-56	Mower Housing Assembly	105	532 16 07-93	Latch Asm.
2	872 14 05-06	Bolt Carriage 5/16-18 x 3/4	106	532 12 50-04	Nut Weld .327/.304 #10-24
3	532 13 80-17	Bracket Asm Fr. Sway Bar	107	532 13 35-02	Spacer Retainer
4	532 19 25-68	Bracket Deck Sway Bar 38"/42"	108	532 13 35-03	Stiffener, Idler Arm
5	532 12 46-70	Retainer Spring	122	532 41 01-89	Rod, Brake LH
6	532 17 80-24	Bar Sway Deck	123	532 41 01-90	Rod, Brake RH
7	873 80 05-00	Nut Lock Hx w/Ins. 5/16-18 unc	129	819 13 13-12	Washer 13/32 x 13/16 x 12Ga.
8	532 19 30-03	Bolt 3/8-24 x 1.25 Gr. 8	130	874 78 06-16	Bolt Fin Hex 3/8-16 unc x 1 Gr. 5
11	532 19 39-57	Blade Mower	131	872 14 06-08	Bolt RDHD SQNK 3/8-16 unc x 1
13	532 19 28-72	Shaft Assembly, Mandrel, Vented	144	532 19 34-14	Keeper Belt Idler Tension
14	532 18 72-81	Housing, Mandrel, Vented	148	532 16 90-22	Spring Return Idler
15	532 11 04-85	Bearing, Ball, Mandrel	149	532 16 58-98	Retainer Spring Yellow
18	872 14 05-05	Bolt Rdhd Sqnk 5/16-18 x 5/8	150	819 09 12-10	Washer 9/32 x 3/4 x 10 Ga.
19	532 13 28-27	Bolt, Shoulder	152	532 19 32-35	Clutch Cable 38"/46"
20	532 40 00-95	Baffle Vortex Front	158	817 72 04-08	Screw Hex Thd Cut 1/4-20 x 1/2
21	873 68 05-00	Nut	185	532 18 82-34	Head Asm Cable Clutch
23	532 19 25-57	Bracket, Mower Deflector	186	817 49 06-44	Screw Hex Wsh Thdrol 3/8-16 x 2-3/4
24	532 10 53-04	Cap, Sleeve	187	532 19 34-12	Keeper Belt
25	532 19 70-26	Spring, Torsion, Deflector	188	532 16 58-91	Bolt Carriage Idler
26	532 11 04-52	Nut, Push	189	532 19 25-59	Stand, Brake
27	532 40 16-18	Shield, Deflector	190	532 19 25-60	Arm, Brake
29	532 13 14-91	Rod, Hinge	191	532 19 25-61	Spacer, Brake
30	532 17 39-84	Screw Thdrol.	193	532 19 34-13	Keeper Belt RH Mandrel
31	532 18 76-90	Washer, Spacer	194	532 19 41-05	Guard Brake
32	532 15 35-32	Pulley, Mandrel	195	819 13 32-10	Washer
33	532 40 02-34	Nut, Toplock	205	817 49 04-16	Screw THD Roll 1/4-20 x 1.00
36	532 13 14-94	Pulley, Idler, Flat	206	819 09 14-16	Washer 9/32 x 7/8 x 16 Ga.
37	532 19 31-98	Pulley, Idler Flat	208	817 67 06-08	Screw THD Roll 1/4-20 x 5/8
40	873 68 06-00	Nut, Crownlock 3/8-16 unc	209	532 40 92-56	Cover Mandrel LH 38"
45	532 12 47-88	Retainer	210	532 40 92-57	Cover Mandrel RH 38"
46	532 13 77-29	Screw THD Roll 3/8-16 x 1/2	214	532 19 37-82	Bolt/Washer Asm 5/16-18
55	532 13 38-40	Idler Arm Assembly	304	532 41 05-20	Shield Side LH
56	532 16 57-23	Spacer, Retainer	305	532 41 05-21	Shield Side RH
67	532 10 69-32	Knob	--	532 19 25-58	Brake Assembly (Includes Stand, Arm and Guard Components)
68	532 19 32-14	V-Belt	--	532 19 28-70	Mandrel Assembly (Includes housing, shaft assembly, and bearing only - pulley/nut/washer and blade bolt/washers not included)
72	532 19 32-16	Spring Brake Return	--	532 19 36-46	Replacement Mower, Complete
89	819 13 13-11	Washer 13/32 x 13/16 x 11 Ga.			
92	873 80 06-00	Nut. Lock. Hex w/Ins. 3/8-16 unc			
101	532 19 25-73	Cover Mulching			
102	871 08 10-10	Screw Pan Hd Phillip 10-24 x 5/8			
103	819 06 12-16	Washer #10			
104	810 07 10-00	Washer Lock #10			

NOTE: All component dimensions given in U.S. inches
1 inch = 25.4 mm

**TRACTOR- -MODEL NO. PS14B97 (96011027000) PRODUCT NO. 960 11 02-70
MOWER LIFT**



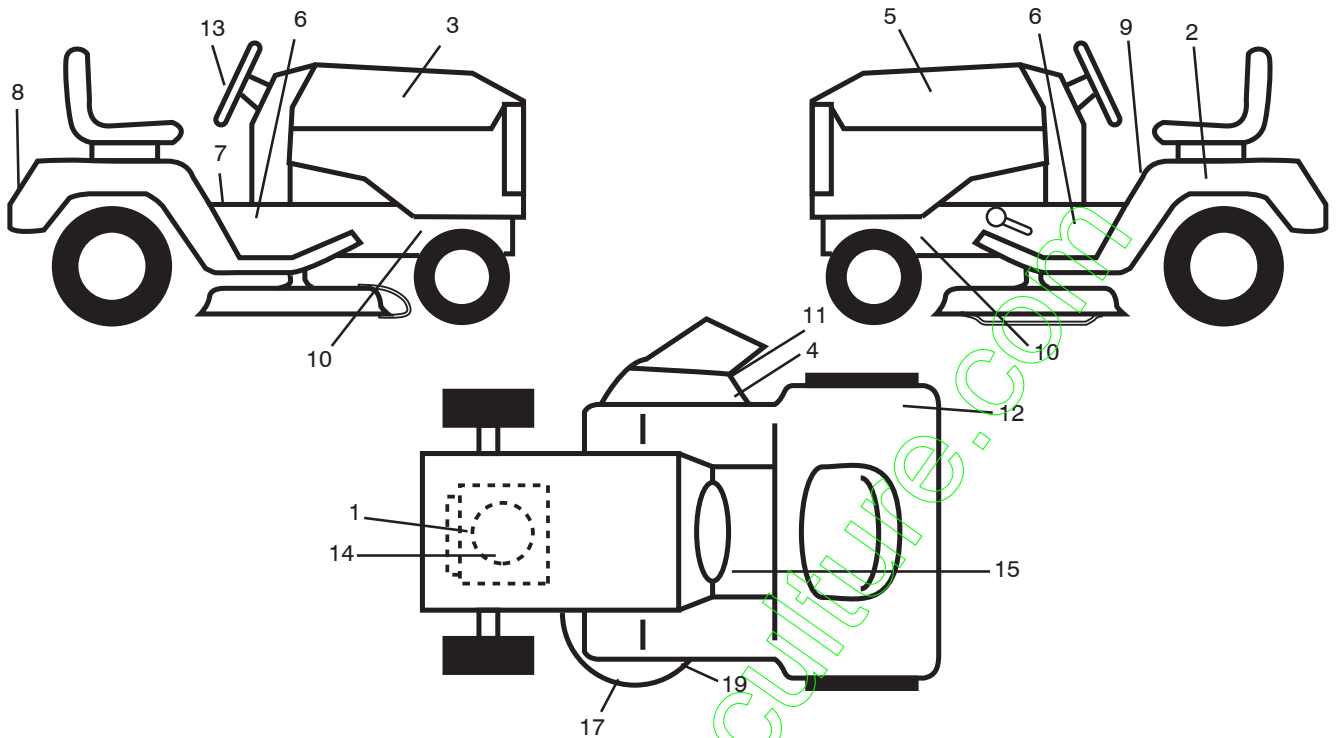
lift-rh.1piece_27

KEY NO.	PART NO.	DESCRIPTION
1	532 15 94-60	Wire Asm Inner w/Plunger
2	532 15 94-71	Shaft Asm Lift
3	532 10 57-67	Pin Groove
4	812 00 00-02	E Ring #5133-62
5	819 21 16-21	Washer PLTD 21/32 x 1 x 21Ga.
6	532 12 01-83	Bearing Nylon Blk 629 Id
7	532 10 94-13	Grip Handle Bicycle Matte Blk
8	532 12 45-26	Button Plunger Black
11	532 13 98-65	Link Lift LH
12	532 13 98-66	Link Lift RH
13	532 12 46-70	Retainer Spring

KEY NO.	PART NO.	DESCRIPTION
15	532 17 32-88	Link Front
16	873 35 08-00	Nut Jam Hex 1/2-13 unc
17	532 17 56-89	Trunnion
18	873 80 08-00	Nut Lock w/Wsh 1/2-13 unc
19	532 13 98-68	Arm Suspension Rear
20	532 19 42-09	Pin Cotter 7/16 Bow Tie Lock
31	532 16 98-65	Bearing Pvt Lift
32	873 54 06-00	Nut Crownlock 3/8-24
55	532 19 42-08	Pin Cotter 5/16 Bow Tie Lock

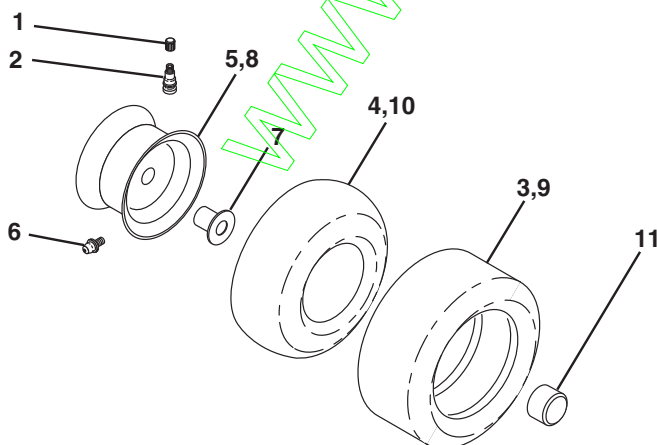
NOTE: All component dimensions given in U.S. inches
1 inch = 25.4 mm

**TRACTOR- -MODEL NO. PS14B97 (96011027000) PRODUCT NO. 960 11 02-70
DECALS**



KEY NO.	PART NO.	DESCRIPTION	KEY NO.	PART NO.	DESCRIPTION
1	532 19 68-41	Decal, Warning Engine Symbols	13	532 41 18-96	Decal, Strg Wheel Cap
2	532 14 50-05	Decal, Bat Dan/Poi P/L Symbols	14	532 40 88-15	Decal, Eng HP
3	532 41 81-00	Decal, Hood RH	15	532 15 97-37	Decal, Brake/Clutch
4	532 19 63-57	Decal, Deflector Warning Symbols	17	532 13 49-99	Decal, Mower Enviro
5	532 41 81-01	Decal, Hood LH	19	532 19 43-02	Decal, V-Belt Sch
6	532 18 56-51	Decal, Chas. Turbo Collection	--	532 16 25-98	Decal, Drawbar Load Limit
7	532 14 08-37	Decal, Saddle Brake Parking	--	532 13 83-11	Decal, Lift Handle (Lift Handle)
8	532 41 18-97	Decal, Fender Logo	--	532 41 69-03	Manual Operator's Euro
9	532 40 03-89	Decal, Warning Sym. CE	--	532 41 69-04	Manual, Parts
10	532 15 97-36	Decal, Chassis Hot Muffler	--	532 18 82-52	Pad Foot Rest LH
11	532 18 21-66	Decal, Mower Cut finger Symbol	--	532 18 82-53	Pad Foot Rest RH
12	532 18 04-32	Decal, 100 Dba			

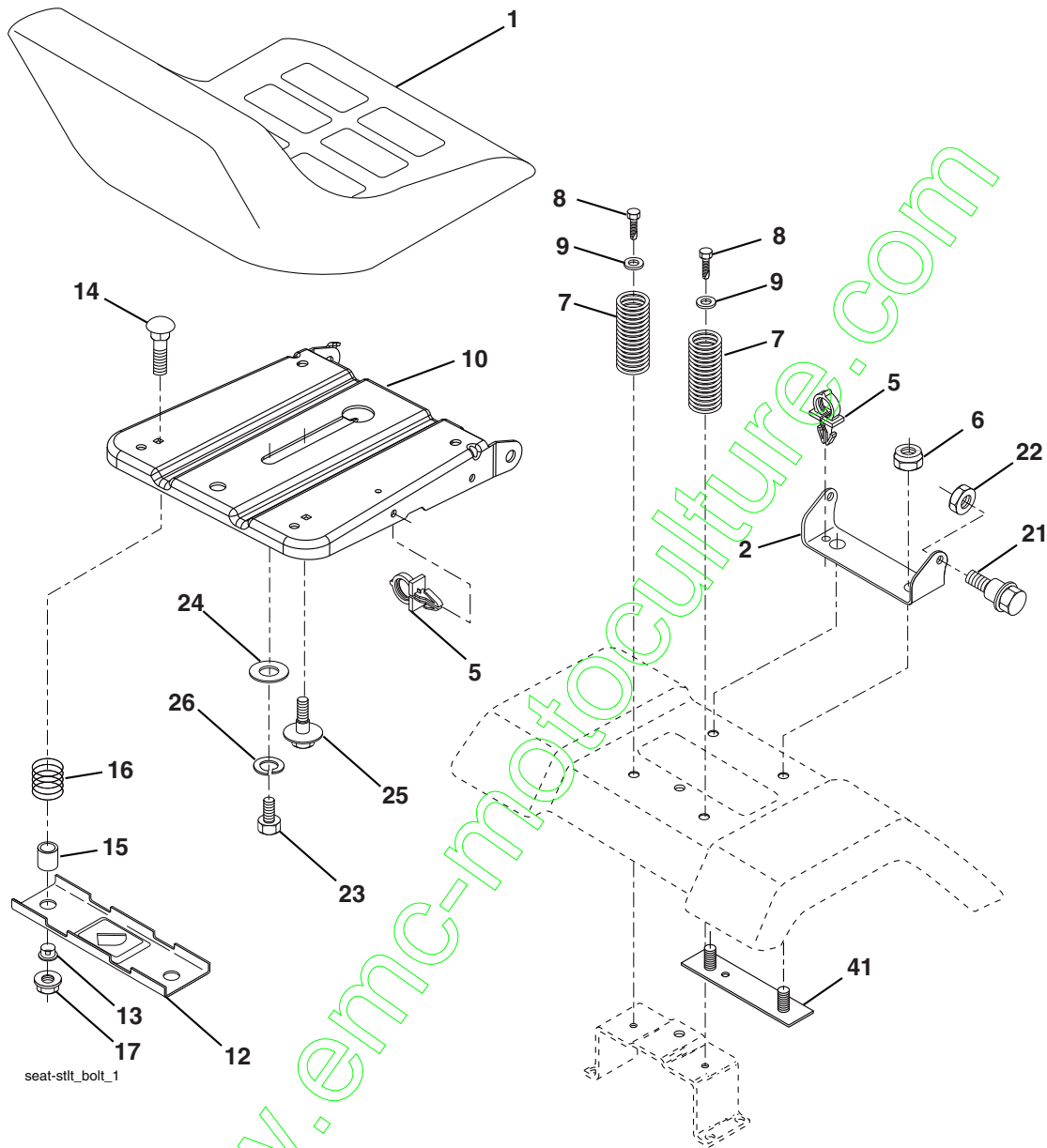
WHEELS & TIRES



KEY NO.	PART NO.	DESCRIPTION
1	532 05 91-92	Cap Valve Tire
2	532 06 51-39	Stem Valve
3	532 10 62-22x	Tire F Ts 15 x 6 - 6 Service
4	532 05 99-04	Tube Front (Service Item Only)
5	532 13 83-36	Rim Asm 6" Front Service
6	532 12 49-57	Fitting Grease (Front Wheel Only)
7	532 12 49-59	Bearing Flange (Front Wheel Only)
8	532 13 83-37	Rim Asm 8" Rear Service
9	532 12 46-35x	Tire R Ts 18 x 8.5-8 C. Service
10	532 12 49-26	Tube Rear (Service Item Only)
11	532 17 50-39	Cap Axle Blk 1 50 x 1 00

NOTE: All component dimensions given in U.S. inches
1 inch = 25.4 mm

**TRACTOR- -MODEL NO. PS14B97 (96011027000) PRODUCT NO. 960 11 02-70
SEAT ASSEMBLY**



KEY NO.	PART NO.	DESCRIPTION
1	532 19 78-95	Seat
2	532 14 05-51	Bracket Pivot Seat 8 720
5	532 14 50-06	Clip Push-In
6	873 80 06-00	Nut Lock Hex w/Wsh 3/8-16 unc
7	532 12 41-81	Spring Seat Cprsn 2 250 Blk Zi
8	817 00 06-16	Screw 3/8-16 x 1.5
9	819 13 16-14	Washer 13/32 x 1 x 14 Ga.
10	532 19 55-30	Pan Seat
12	532 17 46-48	Bracket Mounting Switch
13	532 12 12-48	Bushing Snap Blk Nyl 50 Id
14	872 05 04-12	Bolt Rdhd Sht Nk 1/4-20 x 1-1/2
15	532 13 43-00	Spacer Split 28 x 96 Yel Zinc

KEY NO.	PART NO.	DESCRIPTION
16	532 12 12-50	Spring Cprsn 1 27 Blk Pnt
17	532 12 39-76	Nut Lock 1/4 Lge Flg Gr. 5 Zinc
21	532 17 18-52	Bolt Shoulder 5/16-18 unc -2A
22	873 80 05-00	Nut Lock Hex w/Insert 5/16-18 unc
23	871 11 08-14	Bolt Hex
24	819 17 19-12	Washer 17/32 x 1-3/16 x 12 Ga.
25	532 12 70-18	Bolt Shoulder 5/16-18 x 62
26	810 04 08-00	Washer Lock Hvy HLCLSPR 1/2
41	532 14 06-75	Strap Asm Fender

NOTE: All component dimensions given in U.S. inches.
1 inch = 25.4 mm

SERVICE NOTES

www.emc-motoculture.com

www.emc-motoculture.com

Colombia