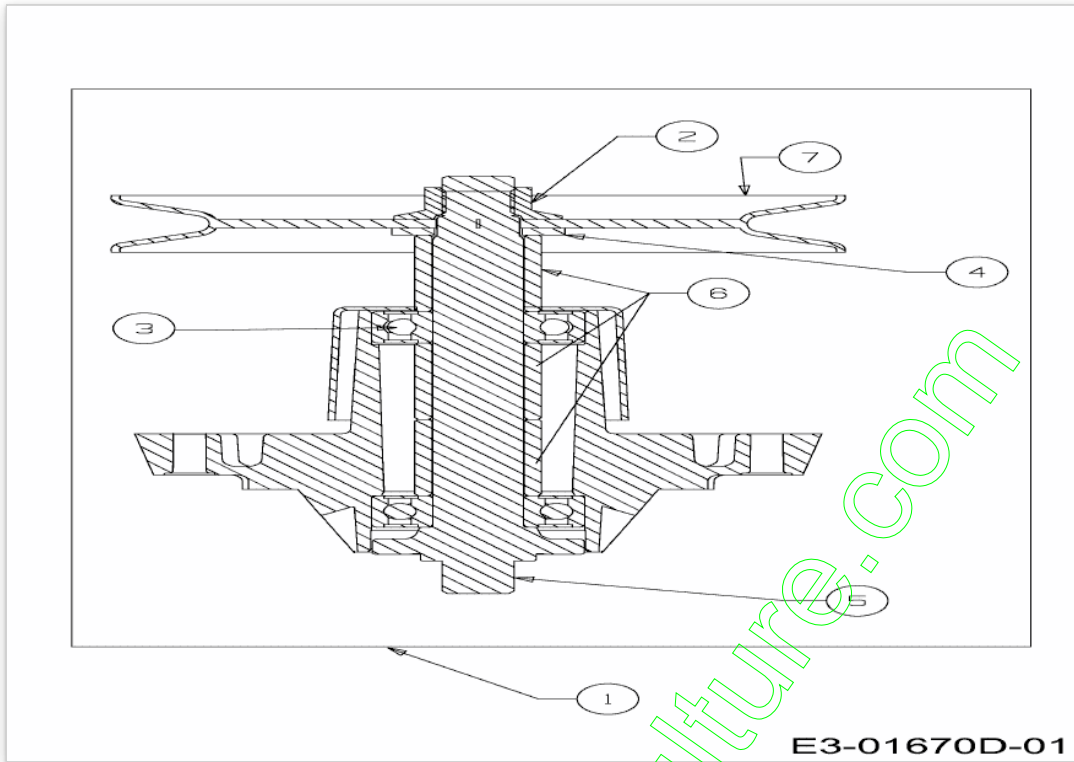


www.emc-motoculture.com

Position	Numéro de lapièce	#	Appellation I	Appellation II
1	918-04657A	1	PALIER DE LAME COMPLET	KEILRIEMENSCHIEBE 6.3 DIA
2	712-0417A	1	ÜCROU HEX. AV. FLANC: 5/8-18	FINISH:MTD STD 701-01000
3	741-0919A	2	ROULEMENT A BILLES	FINISH:
4	738-1010A	1	AXE DE PALIER 5.75 LG	FINISH:GEÖLT 618-0324A
5	748-04302	1	ENTRETOISE	FINISH:GEÖLT
6	756-1227	1	POULIE DE PALIER DE LAME	FINISH:SIEHE ZG.
7	750-1000	2	ENTRETOISE:.80x1.10x1.330	FINISH:GEÖLT

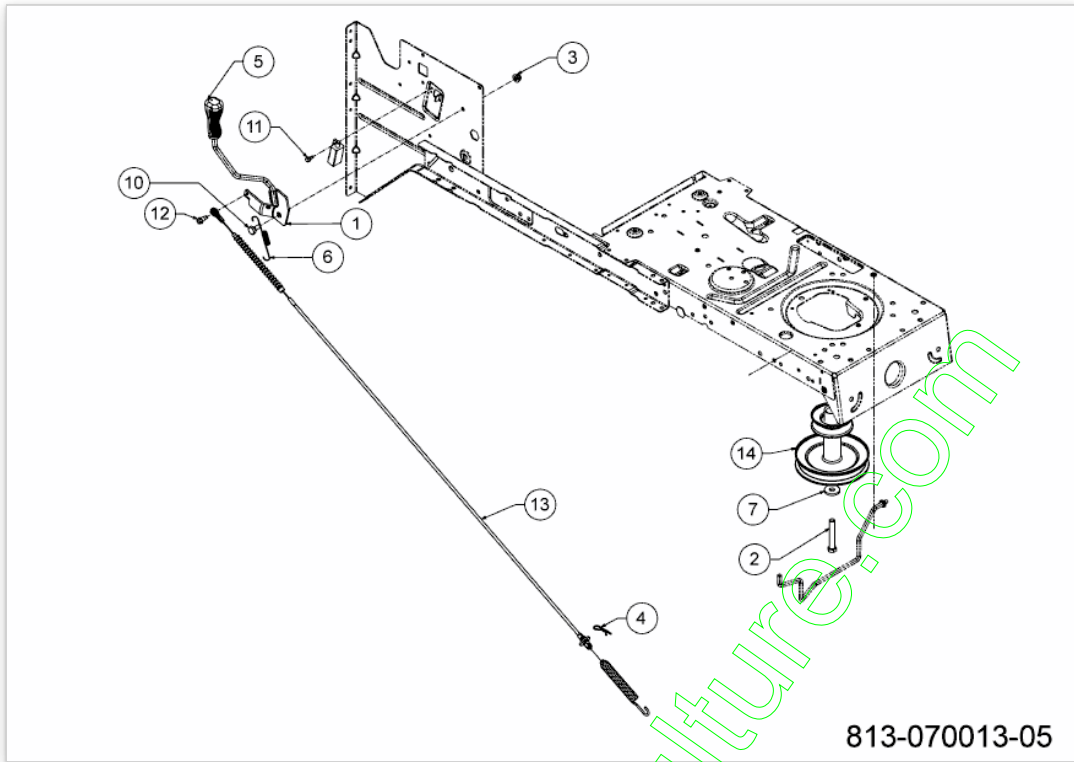
www.emc-motoculture.com



www.emc-motoculture.com

Position	Numéro de lapièce	#	Appellation I	Appellation II
1	918-0609D	1	PALIER DE LAME COMPLET	RIEMENSCHIEBE
2	712-0417A	1	ÜCROU HEX. AV. FLANC: 5/8-18	FINISH:MTD STD 701-01000
3	741-0919A	2	ROULEMENT A BILLES	FINISH:
4	736-0315	1	RONDELLE FL	FINISH:STD SPEC-100015
5	738-1128	1	AXE DE PALIER DE LAMES:6.58"	FINISH:GEÖLT
6	750-1000	3	ENTRETOISE:.80x1.10x1.330	FINISH:GEÖLT
7	756-1218	1	POULIE DE PALIER DE LAME	Ø6.482xØ.5625:FINISH SIEHE ZG.

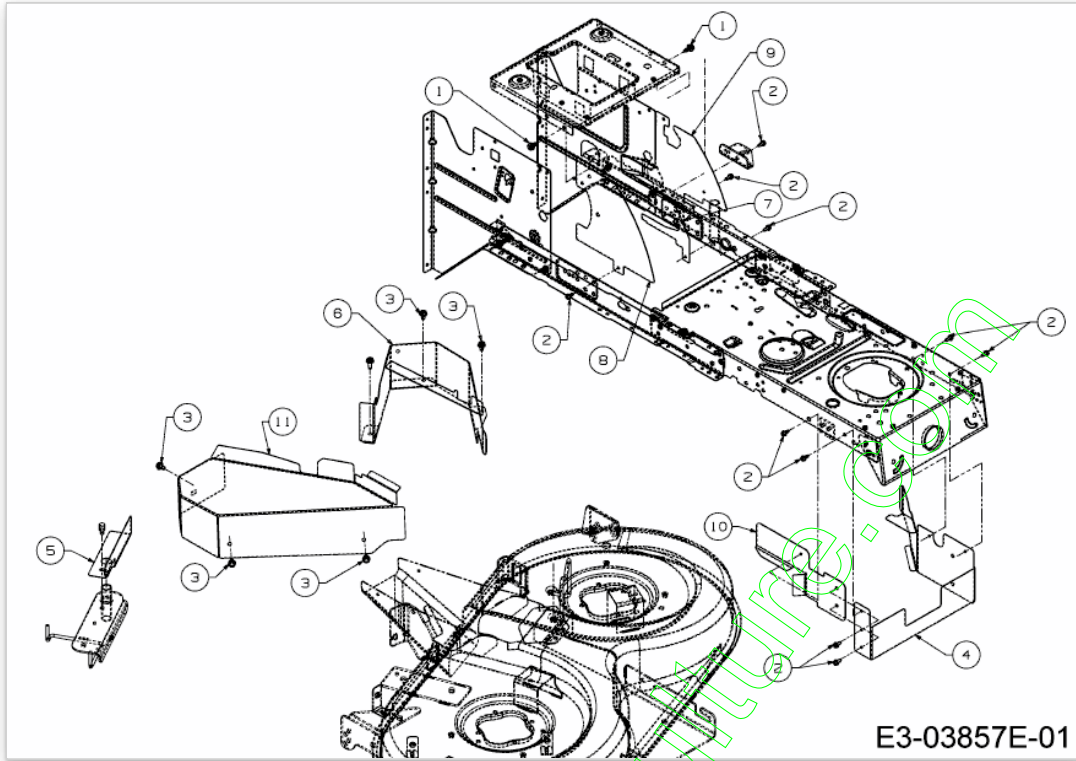
www.emc-motoculture.com



www.emc-motoculture.com

Position	Numéro de lapièce	#	Appellation I	Appellation II
1	647-04239B	1		
2	710-04377	1	VIS A SIX PANS CREUX	FINISH:MTD SPEC-100015
3	712-04063	1	ECROU HEX. AVEC FLANC	FINISH:MTD SPEC-100015
4	714-0145	1	GOUPILLE	FINISH:SPEC-701-01006
5	720-04049A	1	POIGNEE PLASTIQUE	FINISH:SCHWARZ
6	732-05376	1	RESSORT LEVIER PTO	FINISH:MTD SPEC-701-01006
7	736-0322	1	RONDELLE .450 X 1.250 X .164	FINISH:SPEC-100016 936-0322
10	738-0140	1	VIS A EP.:.435 x.178-5/16 x.56	FINISH:MTD SPEC-100015
11	738-04237A	1	AXE EPAULE	FINISH:MTD SPEC-100016
12	738-04425	1	AXE EPAULE	FINISH:MTD SPEC-100016
13	746-05436	1	CABLE D EMBRAYAGE	VERKAPSELT
14	756-04310	1	POULIE MOTEUR	GETRIEBE:FINISH:SPEC-100015

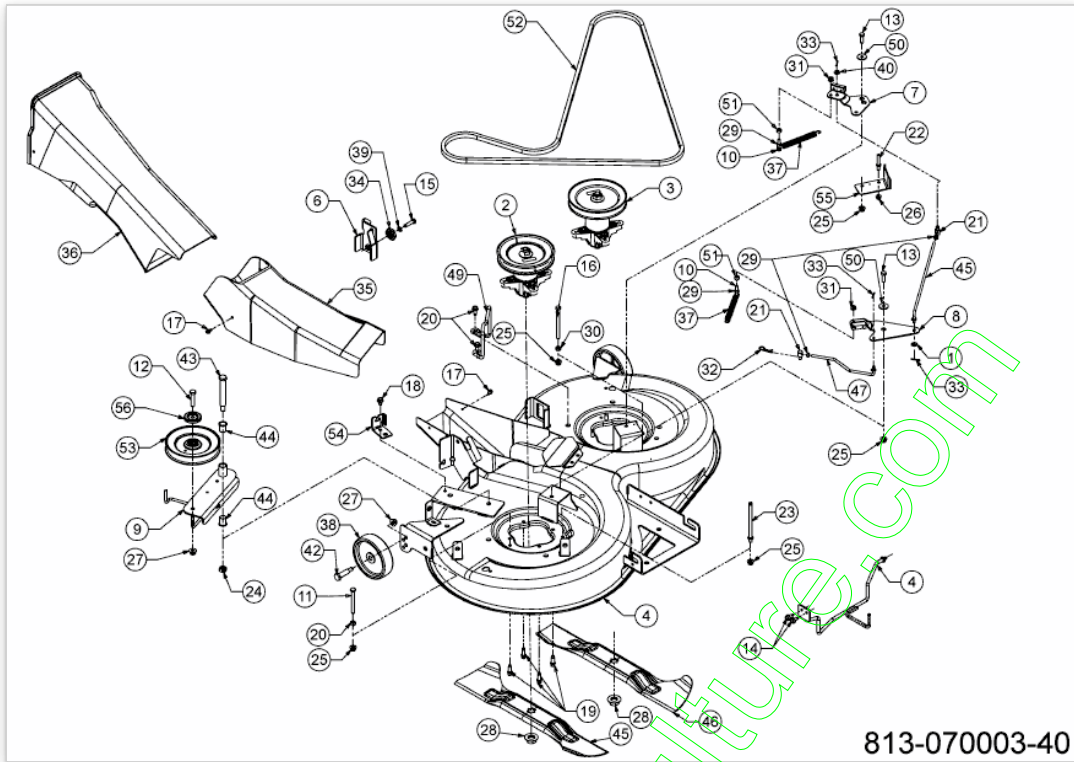
www.emc-motoculture.com



www.emc-motoculture.com

Position	Numéro de lapièce	#	Appellation I	Appellation II
1	710-04484	2	VIS HEX. TT:5/16-18:.750:HXIND	FINISH:MTD SPEC-100016 TYPE 1
2	710-0599	10	VIS A SIX PANS CREUX	FINISH:MTD SPEC-101617
3	710-0607	5	VIS HEX.TT5/16- 18:.500HXINDWSh	FINISH:MTD SPEC-100016 TYPE 1
4	783-06002A	1	PROTECTION DE POULIE PTO	SCHWARZ
5	783-06004637	1	PROTECTION DE POULIE DROITE	FINISH:SCHWARZ
6	783-06005A	1	COUVERCLE DE PROT.:LT-5:N- DECK	FINISH: SCHWARZ GEPULVERT
7	783-06084637	1	PROTECTION	SCHWARZ
8	783-06676	1	PROTECTION DROITE	FINISH:LACKIERT MTD QUALITÄT
9	783-09678637	1	PROTECTION ARRIERE GAUCHE	FINISH:LACKIERT MTD QUALITÄT
10	783-10469	1		
11	783-10472	1		

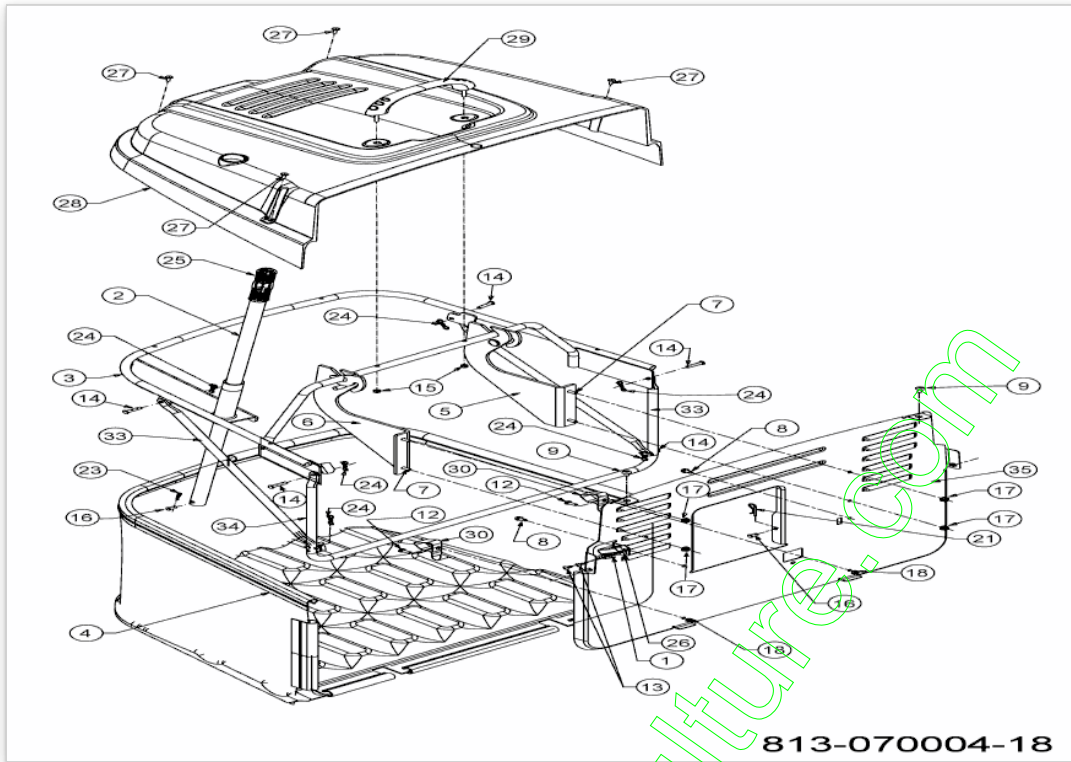
www.emc-motoculture.com



Position	Numéro de pièce	#	Appellation I	Appellation II
1	1751	1	RONDELLTE	1751
2	918-04657A	1	PALIER DE LAME COMPLET	KEILRIEMENSCHLEIBE 6.3 DIA
3	918-0609D	1	PALIER DE LAME COMPLET	RIEMENSCHLEIBE
4	647-04143A	1	RIEMENFÜHRUNG VST:RAHMEN:105cm	SCHWEISST:VERZINKEN+VERSIEGEL*
5	683-04390G-S	1	CARTER DE COUPE LT 5 105CM	SCHWARZ LACKIERT
6	683-04396637	1	SUPPORT	SCHWARZ
7	683-04409	1	BREMSE VOLLST:DECK:A/C/N-DECK	LT5: NIETTEIL
8	683-04417	1	FREIN DE LAME	LT5: NIETTEIL
9	683-04420637	1	SUPPORT POULIE TENDEUR	SCHWARZ LACKIERT
10	710-0106	2	VIS HEX. 1/4- 20:1.25:GR5:SPEC	FINISH:MTD SPEC-100015
11	710-0189	1	VIS HEX.:5/16- 18x3.00:GR5:STD	FINISH:SPEC-100015 910-0189
12	710-0347	1	VIS HEX. 3/8- 16:1.75:GR5:STD	FINISH:MTD SPEC-100015
13	710-0376	2	VIS HEX.:5/16- 18:1.00:GR5:STD	FINISH:MTD SPEC 701-01006
14	710-04484	2	VIS HEX. TT:5/16- 18:.750:HXIND	FINISH:MTD SPEC-100016 TYPE 1
15	710-0528	1	VIS HEX. 5/16- 18:1.25:GR5:STD	FINISH:SPEC-100015 910-0528
16	710-05410	1	VIS	710-05410
17	710-0599	2	VIS A SIX PANS CREUX	FINISH:MTD SPEC-101617
18	710-0607	1	VIS HEX.TT5/16- 18:.500HXINDWSh	FINISH:MTD SPEC-100016 TYPE 1
19	710-06322	8	VIS	FINISH:SPEC-100016 TYPE 1
20	710-1260A	2	VIS TT:5/16-18:.750	FINISH:SPEC-100016 TYPE 1
21	711-0736	2	AXE	FINISH:MTD SPEC-100015
22	711-0993	1	GUIDE COURROIE	FINISH:701-01006 911-0993
23	711-1044A	1	GUIDE COURROIE	FINISH:PHOS AND OIL
24	712-0290	1	ECROU 7/16-14	FINISH:MTD SPEC-100015
25	712-04063	5	ECROU HEX. AVEC FLANC	FINISH:MTD SPEC-100015
26	712-04064	1	ECROU HEXAGONAL	FINISH:SPEC-100015 912-04064
27	712-04065	3	ECROU HEXAGONAL	FINISH:SPEC-100015 912-04065
28	712-05134	2	ECROU	FINISH:MTD SPEC-100015+WAX
29	712-3006	4	ECROU HEXAGONAL	FINISH:SPEC-100015
30	712-3010	2	ECROU HEX. 5/16-18:GR5	FINISH:MTD SPEC-100015
31	712-3027	2	ECROU HEXAGONAL 1/4- 20:GRF	FINISH:MTD SPEC-100015
32	714-0145	1	GOUPILLE	FINISH:SPEC-701-01006
33	714-0507	3	GOUPILLE FENDUE 3/32 X .750	FINISH:MTD SPEC-100015

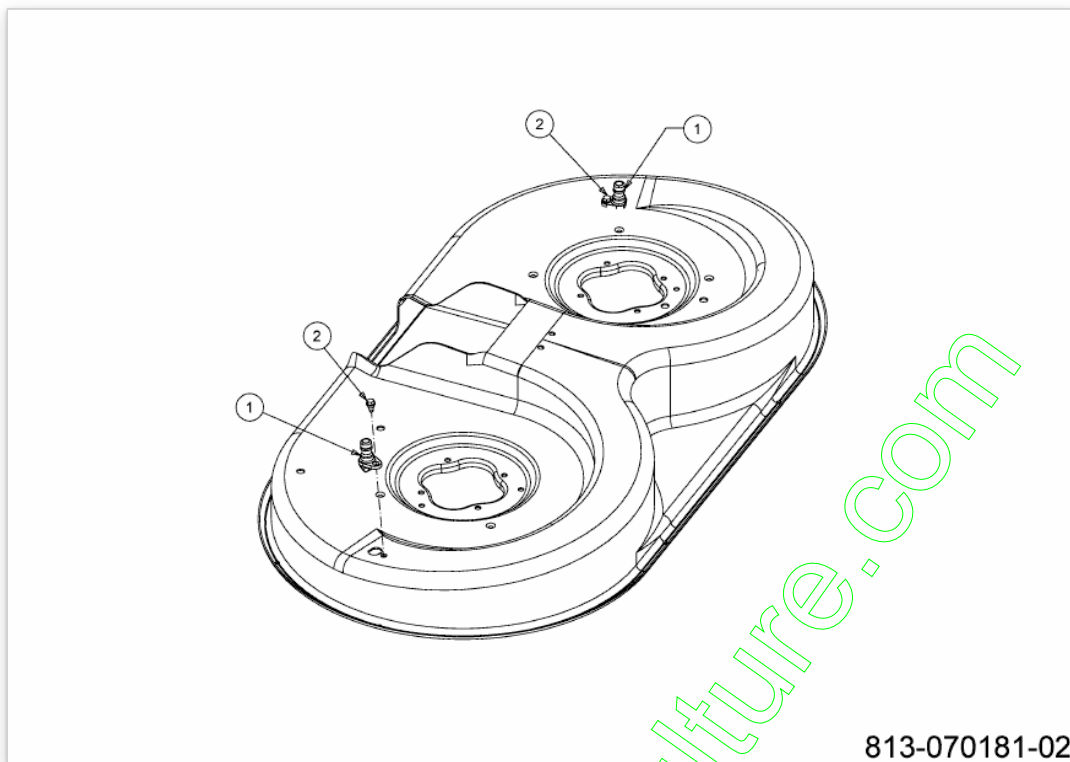
Position	Numéro de lapièce	#	Appellation I	Appellation II
34	717-04074	1	PIGNON HAUTEUR PLATEAU	PHOS & SPEC-100015 917-04074
35	731-06251	1	CANAL D'EJECTION INFERIEUR	FINISH:SCHWARZ
36	731-06252	1	CANAL D'EJECTION SUPERIEUR	FINISH:SCHWARZ
37	732-0604A	2	RESSORT	FINISH:PHOS AND OIL
38	734-06265	2	ROULETTE DE PLATEAU	FINISH:KUNSTSTOFF SCHWARZ
39	736-0119	2	RONDELLE	FINISH:MTD SPEC-100016
40	736-0264	1	RONDELLE: .330 x.630 x.0635	FINISH:SPEC-100015 936-0264
42	738-0373	2	VIS A EPAULE .496x1.525:3/8- 16	FINISH:MTD SPEC-100015
43	738-0476	1	VIS A EPAULE .625x3.50:7/16- 14	FINISH:SPEC-100015
44	741-0591	2	BAGUE	FINISH:NATUR 941-0591
45	742-04080	1	LAME DROITE	STAR BAG:WÄRMEBEHANDELT
46	742-04081	1	LAME GAUCHE	STAR BAG:WÄRMEBEHANDELT
47	747-04776	1	TIGE DE FREIN	FINISH:MTD SPEC-100015
48	747-04781A	1	TIGE DE FREIN	MTD SPEC-101616 (YELLOW ZINC)
49	747-04840A	1	GUIDE COURROIE	FINISH:747-04840A-Z
50	748-0234	2	RONDELLE EPAULEE	FINISH:ROSTPREVENTION
51	750-05381	2	ENTRETOISE	FINISH:IN ÖL SAE 30 GEDIPPT
52	754-04174	1	COURROIE DE COUPE	FINISH:
53	756-04050	1	POULIE DE COURR. TR. Ø 6.0"DIA	KUGELGELAGERT: SCHWARZ LACKIERT
54	783-04740637	1	SUPPORT	SCHWARZ LACKIERT
55	783-05868A-S	1	SUPPORT GUIDE COURROIE	FINISH:LACKIERT SCHWARZ
56	783-08389	1	PROTECTION DE POULIE	FINISH:PLAIN

www.emo-motoculture.com



www.emc-motoculture.com

Position	Numéro de pièce	#	Appellation I	Appellation II
1	17962	1	PLAQUE DE SUPP. P. COMMUTATEUR	FINISH:WIE GESTANZT
2	649-04052637	1	BRAS DE RELEVAGE BAC	SCHWARZ LACKIERT
3	649-04076B-S	1	ARMATURE DE BAC	SCHWEISSTEIL:FINISH LACKIERT
4	664-04085A	1	TOILE BAC 200 L	LT-5:FINISH SCHWARZ
5	683-04421637	1	SUPPORT DE BAC GAUCHE	SCHWARZ
6	683-04422637	1	SUPPORT DE BAC DROITE	SCHWARZ
7	710-04666	4	VIS HEXAGONALE	FINISH:MTD SPEC-100015
8	710-0599	2	VIS A SIX PANS CREUX	FINISH:MTD SPEC-101617
9	710-1017	2	VIS	FINISH:MTD SPEC-100016
12	710-0751	2	VIS HEX.: 1/4-20:.620:GR5:STD	FINISH:SPEC-100015
13	710-1760	2	VIS	PHOS & OIL (ähnlich 710-0779A)
14	711-04138	6	GOUJON ; ÜPINGLER .25DIAX1.25L	FINISH:MTD SPEC-100015
15	712-0691	2	ECROU HEXAGONAL	MTD SPEC-100015 24.1426.14
16	711-0701	3	GOUJON	FINISH:MTD SPEC-100015
17	712-04064	4	ECROU HEXAGONAL	FINISH:SPEC-100015 912-04064
18	712-0324	2	ECROU HEX.:1/4-20:GR8:NYLON	FINISH:701-01000
21	714-0145	2	GOUPILLE	FINISH:SPEC-701-01006
23	714-04033	1	GOUPILLE FENDUE .072 x.92 LG	FINISH: MTD SPEC-100016
24	714-04040	6	GOUPILLE	FINISH:ASTM F1941 FE/ZN 3AN
25	720-0204	1	POIGNEE:1.0 ID x 4.7 LG	FINISH:SCHWARZ
26	725-04039	1	SECURITE	FINISH:GRAY/BLACK 925-04039
27	728-04044	4	RIVET	WÜRTH #093614816
28	731-06106	1	COUVERCLE DE BAC	FINISH:KUNSTSTOFF SCHWARZ
29	731-06163	1	POIGNEE	FINISH:SCHWARZ
30	732-0838A	2	RESSORT CLIPS DE BAC	VERSCHLUSS:FINISH SPEC-100015
33	749-04108637	2	BARRE LAT BAC 250 LITRE	500 MR SCHWARZ LACKIERT
34	749-04418637	1	ARMATURE DE BAC	SCHWARZ
35	783-05731637	1	PLAQUE ARRIERE	SCHWARZ LACKIERT

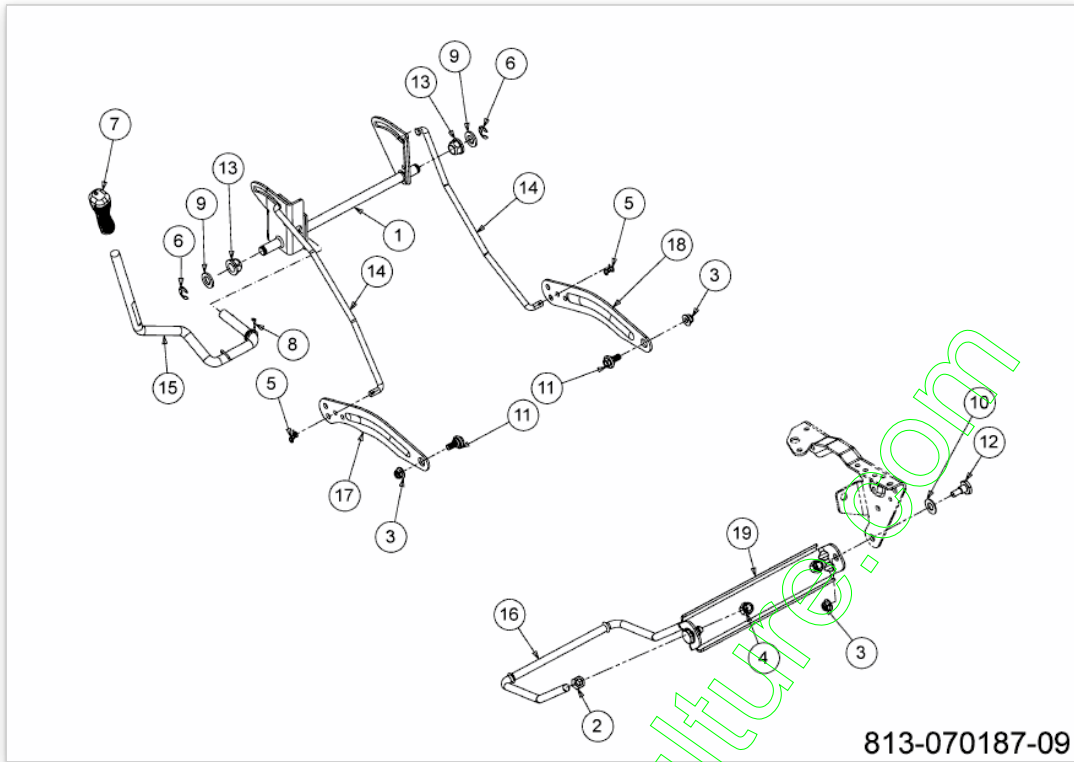


813-070181-02

www.emc-motoculture.com

Position	Numéro de pièce	#	Appellation I	Appellation II
1	731-07487	2	BUSE DE NETTOYAGE PLATEAU	FINISH: SCHWARZ 788-0637
2	738-04502	2	VIS	FINISH: SPEC-101625

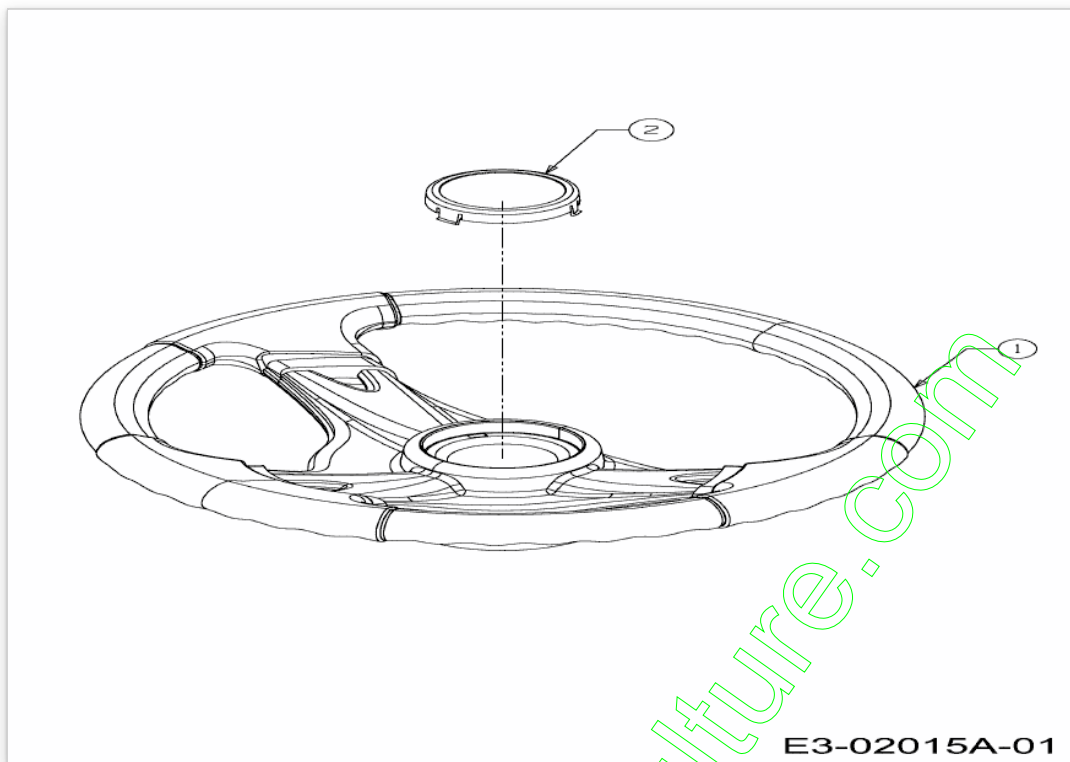
www.emc-motoculture.com



813-070187-09

Position	Numéro de lapièce	#	Appellation I	Appellation II
1	683-04679637	1	LEVIER DE RELEVAGE	SCHWEISSTEIL:FINISH LACKIERT
2	712-0206	2	ECROU HEX. 1/2-13:GR.5	FINISH:MTD SPEC-100015
3	712-04065	4	ECROU HEXAGONAL	FINISH:SPEC-100015 912-04065
4	712-3083	2	ECROU HEX. 1/2-13:GRB:NYLON	FINISH:MTD SPEC-100015
5	714-04040	2	GOUPILLE	FINISH:ASTM F1941 FE/ZN 3AN
6	716-0106A	2	CIRCLIPS	FINISH:PHOSPHATIERT
7	720-0298	1	POIGNEE	FARBE:KUNSTSTOFF SCHWARZ
8	732-04438	1	RESSORT	FINISH:701-01006
9	736-0366	2	RONDELLE 5/8 ID X 1.0 OD	FINISH:MTD SPEC-100015
10	736-0414	2	RONDELLE TÜFLON	FINISH:WEISS: 936-0414
11	738-04130A	2	VIS EPAULEE	FINISH:SPEC-100016 TYPE 1
12	738-0507B	2	VIS	FINISH:MTD SPEC-701-01006
13	741-0225	2	BAGUE HEXAGONALE TEFLON 6 PANS	FINISH:KUNSTSTOFF SCHWARZ
14	747-04842	2	TRINGLE DE RELEVAGE	A/C/E/N-Deck:747-04842-Z
15	747-05292	1	BRAS DE RELEVAGE	FINISH:SCHWARZ E-COAT
16	747-1324	1	TRINGLE	FINISH:SPEC-100015
17	783-04494C-S	1	LEVIER DE RELEVAGE DROITE	SCHWARZ
18	783-04711C-S	1	BRAS DE RELEVAGE GAUCHE	SCHWARZ
19	783-0720C637	1	SUPPORT DE RELEVAGE	SCHWARZ

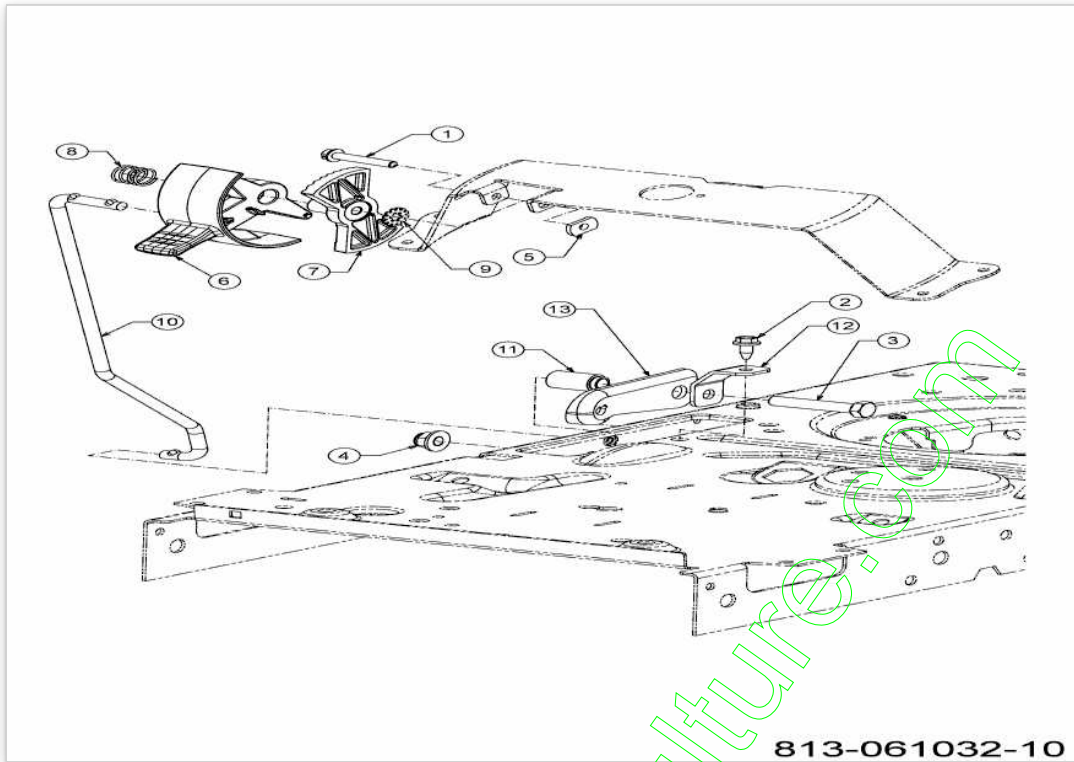
www.emc-motoculture.com



www.emc-motoculture.com

Position	Numéro de lapièce	#	Appellation I	Appellation II
1	631-04028	1	VOLANT	FINISH SCHWARZ
2	731-04039	1	CAPUCHON DE VOLANT SANS LOGO	FINISH:KUNSTSTOFF SCHWARZ

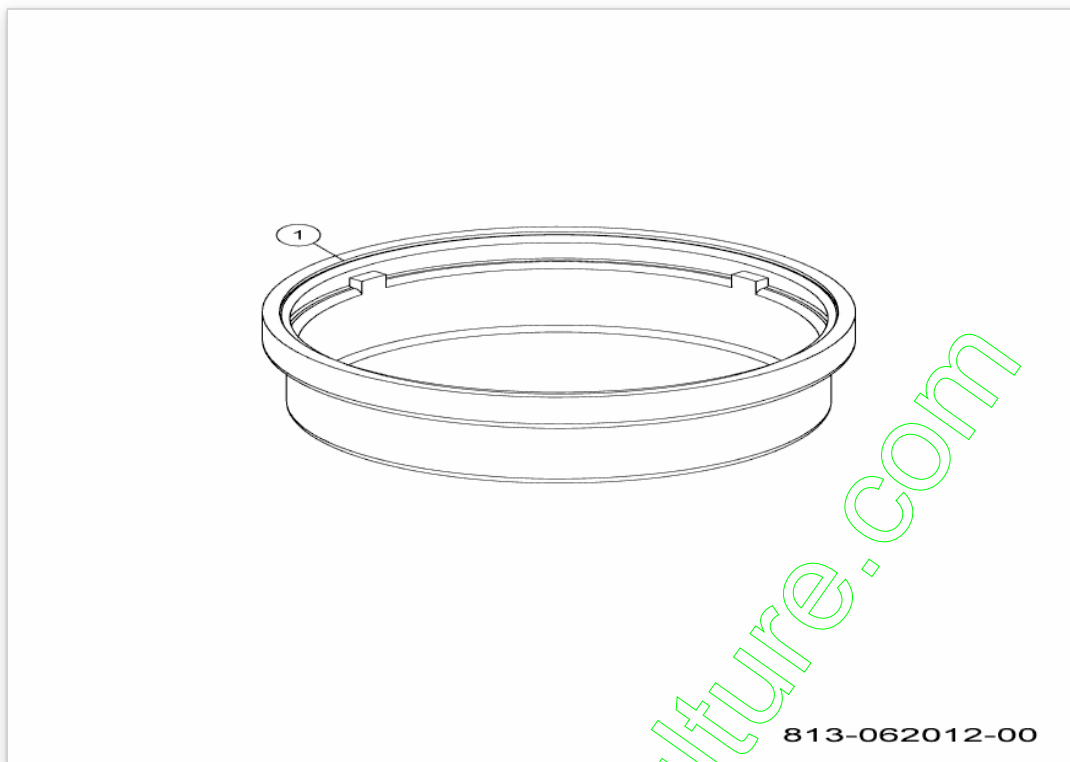
www.emc-motoculture.com



813-061032-10

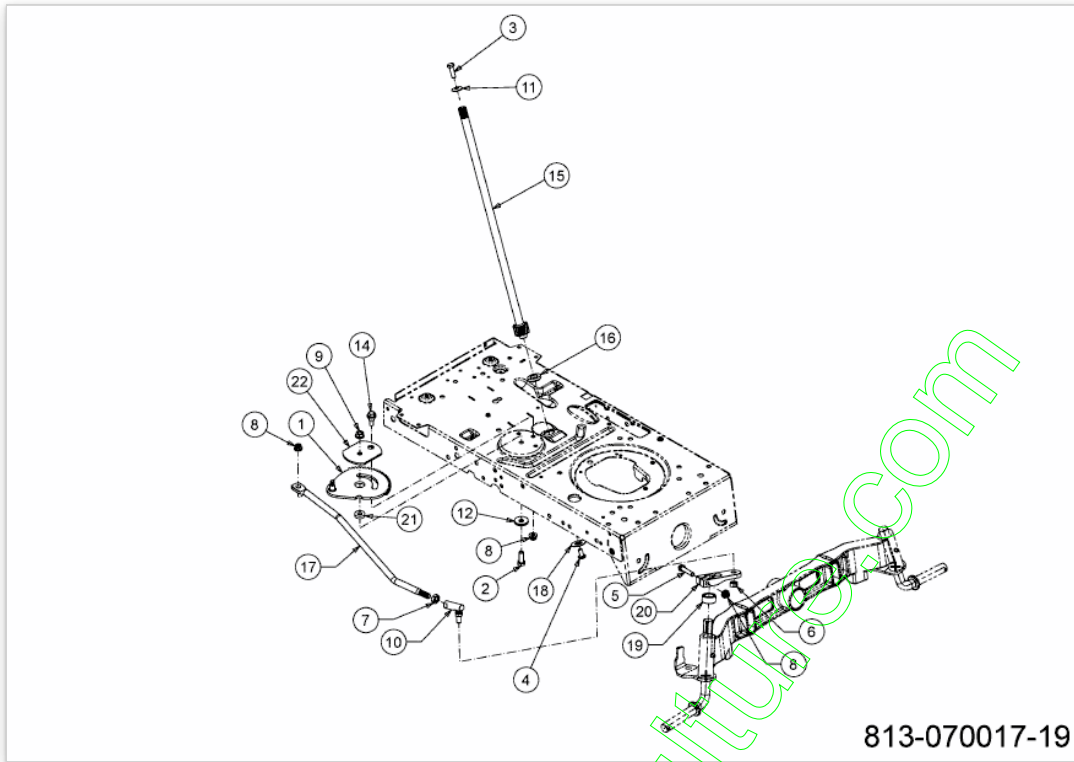
Position	Numéro de pièce	#	Appellation I	Appellation II
1	710-04860C	1	6KT-SCHRAUBE 1/4-20 X 1.5	710-04860C
2	710-1652	1	VIS HEX. TT:1/4-20:.625:HXINDW	FINISH:MTD-SPEC-100016 TYPE 1
3	710-3184A	1	VIS	710-3184A
4	712-04065	1	ECROU HEXAGONAL	FINISH:SPEC-100015 912-04065
5	712-0414	1	ECROU 1/4-20	FINISH:PLAIN
6	731-07885B	1	POIGNEE DE VITESSE	FINISH:KUNSTSTOFF GELB
7	731-07895A	1	INDICATION DE VITESSE	FINISH:PLAIN (SCHWARZ)
8	732-04877	1	RESSORT	FINISH:MTD SPEC-100015
9	736-3006	1	RONDELLE 1/4 X -75	FINISH:SPEC-100016
10	747-05398	1	TRINGLE DE VITESSE	FINISH:SPEC-100015
11	750-04465C	1	ENTRETOISE	FINISH:GEÖLT
12	783-06823	1	SUPPORT	KONTROLLHEBEL:VERZ.SIEHE ZG.
13	783-06991	1	SUPPORT	SD-TR./HYDRO:783-06991-Z

www.emc-motoculture.com



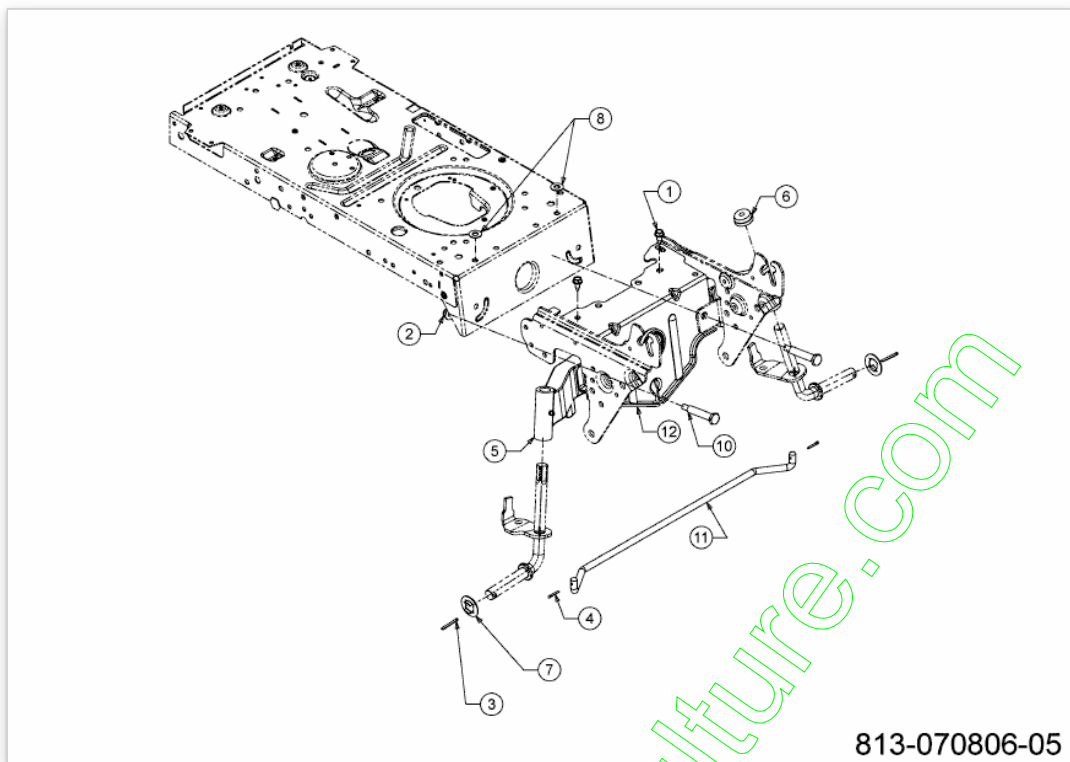
Position	Numéro de pièce	#	Appellation I	Appellation II
1	731-0484A	2	ENJOLIVEUR DEVANT	KUNSTSTOFF SCHWARZ 931-0484A

www.emc-motoculture.com



Position	Numéro de lapièce	#	Appellation I	Appellation II
1	617-04094	1	SEGMENT DE DIRECTION	SCHWEISSTEIL:PHOS & OIL
2	710-0514	1	VIS HEX.:3/8-16:1.00:GR5:STD	FINISH:MTD SPEC-100015
3	710-0643	1	VIS HEX.: 5/16-18:1.00:GR5	FINISH:MTD SPEC-100015
4	710-1309	1	VIS	FINISH:MTD SPEC-100015
5	710-3180	1	VIS HEX. 5/16-18:1.75:GR5:STD	FINISH:SPEC-100015
6	712-0214	1	ECROU	FINISH:SPEC-100015
7	712-0240	1	ECROU HEX.: 7/16-20:GR2	FINISH:MTD SPEC-100015
8	712-04063	3	ECROU HEX. AVEC FLANC	FINISH:MTD SPEC-100015
9	712-0431	1	ECROU STOP 3/8-16:GRF	FINISH:MTD SPEC-100015
10	723-0448A	1	ROTULE DE DIRECTION 7/16-20	FINISH:MTD SPEC-100015
11	736-0242	1	RONDELLE CONIQUE.340X.872X.060	FINISH:MTD SPEC-100016
12	736-0331	1	RONDELLE CONIQUE	FINISH:MTD SPEC-100016
14	738-04141	1	AXE	FINISH:SPEC-100015
15	738-07154	1	LENKWELLE 5/8 KURZ	738-07154
16	741-04124	1	PALIER DE BRIDE	FINISH:PLAIN
17	747-05464	1	TRINGLE DE DIRECTION	FINISH:MTD SPEC-100015
18	748-0389	1	BAGUE	FINISH:GEÖLT
19	748-04068	1	DOUILLE .71IDX.125 ODX.56 LG	FINISH:SPEC-100015
20	748-04278-Z	1	BIELETTE DE DIRECTION	FINISH:MTD-SPEC-100015
20	748-04278ZW	1	BIELETTE DE DIRRECTION	FINISH:BLAU CHROMATIEREN
21	750-06192A	1	ENTRETOISE	FINISH:DAMPFBEHANDELT
22	783-08577A	1	PLAQUE DE SEGMENT	FINISH:PHOS&OIL or SPEC-100015

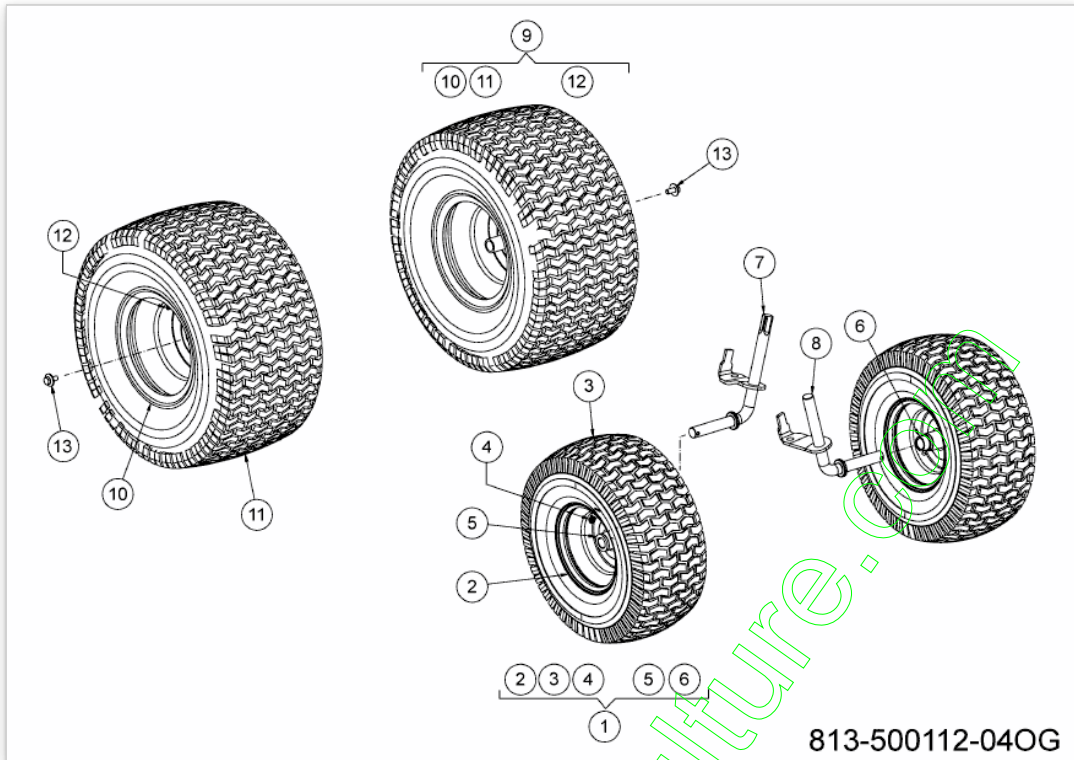
www.emc-motoculture.com



813-070806-05

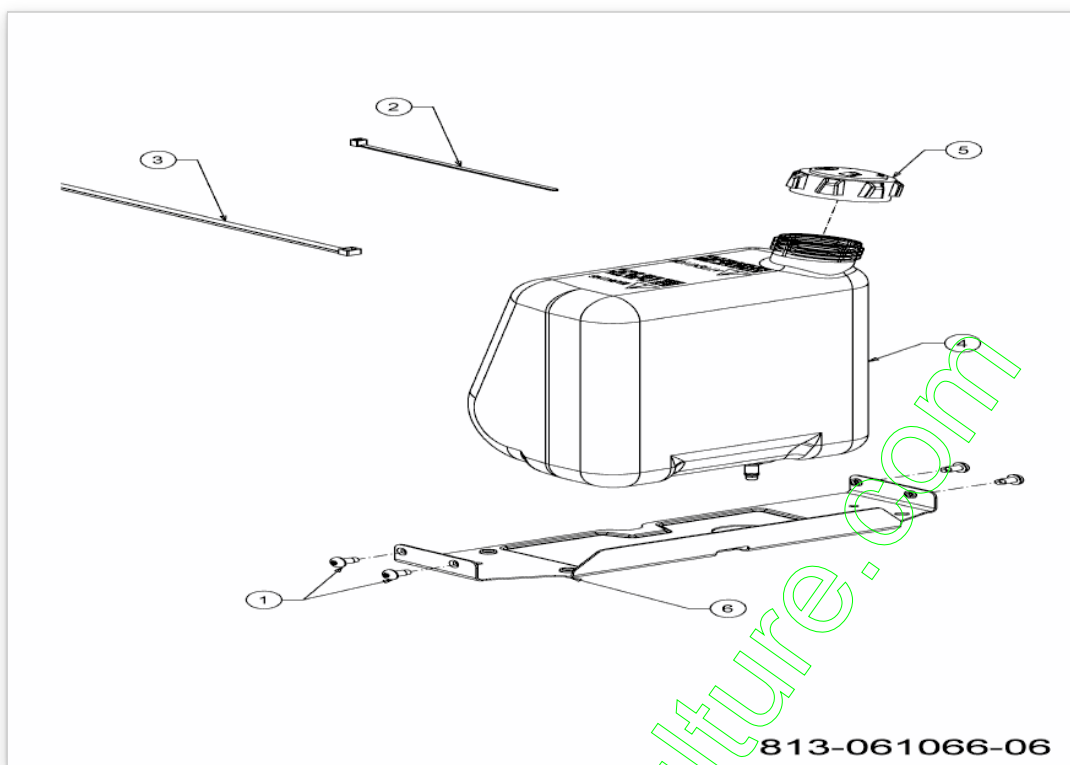
Position	Numéro de pièce	#	Appellation I	Appellation II
1	710-04484	2	VIS HEX. TT:5/16-18:.750:HXIND	FINISH:MTD SPEC-100016 TYPE 1
2	712-04065	2	ECROU HEXAGONAL	FINISH:SPEC-100015 912-04065
3	714-0162	2	GOUPILLE FENDUE 5/32:1.25	FINISH:MTD SPEC-100015
4	714-0474	2	GOUPILLE	FINISH:MTD SPEC-100015
5	719-04350	1	ESSIEU FONTE	FINISH:SCHWARZ LACKIERT
6	726-0341	1	CAPUCHON CLIPS	FINISH:SCHWARZ
7	736-04228B	2	RONDELLE	SPECIAL:FINISH SPEC-701-100015
8	736-05080	2	RONDELLE	736-05080
10	738-04128	2	VIS A EPAULE .500x2.38:3/8-16	FINISH:MTD SPEC-100015
11	747-04772	1	TRINGLE DE ROUE:LT5	FINISH:SPEC-100015
12	783-05326D-S	1	SUPPORT AVANT	783-05326D-S

www.emc-motoculture.com



Position	Numéro de pièce	#	Appellation I	Appellation II
1	634-04406-G	2	ROUE COMPLETE 15X6.0X6 GRISE	FELGE:OYSTER GRAY 788-0662
2	634-04405662	2	JANTE AVANT GRISE	FINISH:OYSTER GRAY 788-0662
3	734-1731	2	PNEU 15X600X6 DICO MULTI- TRAC	SQ SHOULDER:TURF SAVER
4	734-0255	2	VALVE:PNEU	TR 412-P / 32.6mm / 934-0255
5	741-0990B	2	BAGUE DE ROUE AVEC GRAISSEUR	m.SCHMIERNIPPEL:FINISH SCHWARZ
6	741-0516B	2	BAGUE DE ROUE .760x1.00x1.20	FINISH:SCHWARZ
7	638-04013637	1	FUSEE DROITE	SCHWEISSTEIL:LACKIERT
8	638-04014A-S	1	FUSEE GAUCHE	SCHWARZ
9	634-04641-OG		HINTERRAD KPL. 18x9.5-8	GLEITLAGER
10	634-04369-G	2	634-04369-WY	FINISH:OYSTER GRAY GEPULVERT
11	734-1729	2	PNEU 18 X 9,50 - 8	CHARLISLE
12	734-0255	2	VALVE:PNEU	TR 412-P / 32.6mm / 934-0255
13	710-05339A	2	VIS	FINISH:MTD STD SPEC-101617

www.emc-motoculture.com

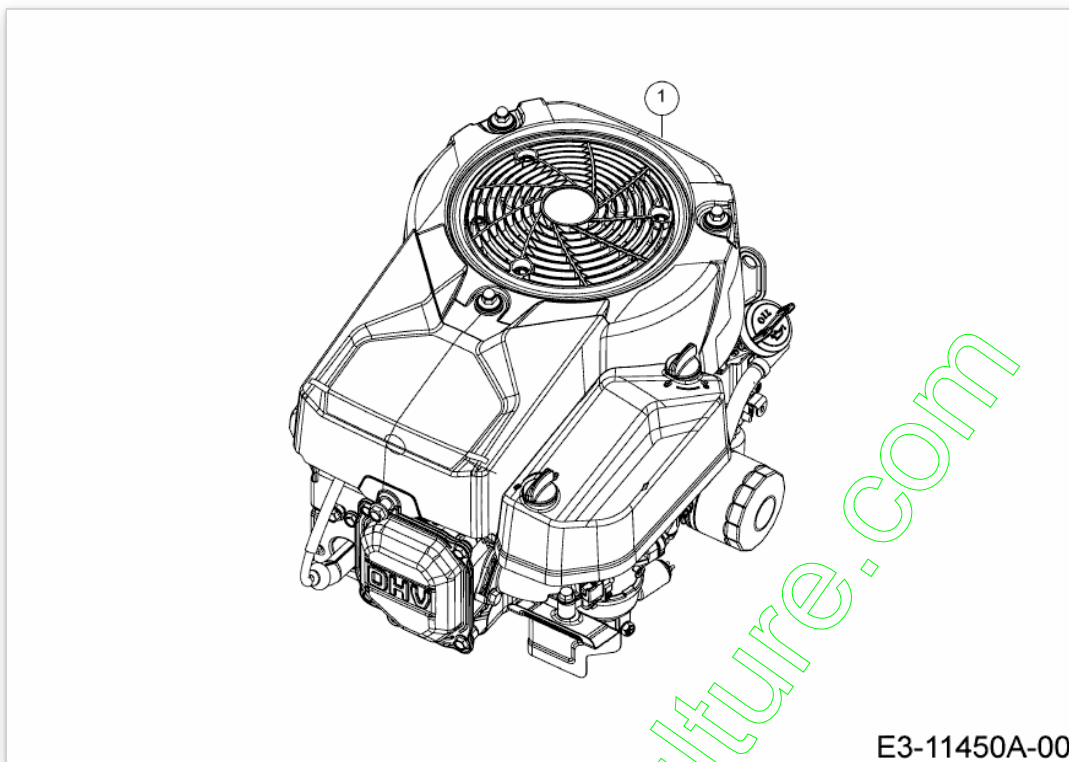


813-061066-06

www.emc-motoculture.com

Position	Numéro de lapièce	#	Appellation I	Appellation II
1	710-05070A	4	VIS	FINISH: SCHWARZ SPEC-000087
2	725-0157	1	COLLIER DE SERRAGE3/16X0.5X7.4	MATERIAL: NYLON-SCHWARZ
3	726-0230	1	COLLIER	FINISH: SCHWARZ
4	751-0555B	1	RESERVOIR D'ESSENCE: 5.7L	FINISH: NATUR
5	751-0603B	1	BOUCHON ESSENCE	FINISH: KUNSTSTOFF SCHWARZ
6	783-07083A-S	1	SUPPORT DE RESERVOIR ESSENCE	FINISH: LACKIERT MTD QUALITÄT

www.emc-motoculture.com

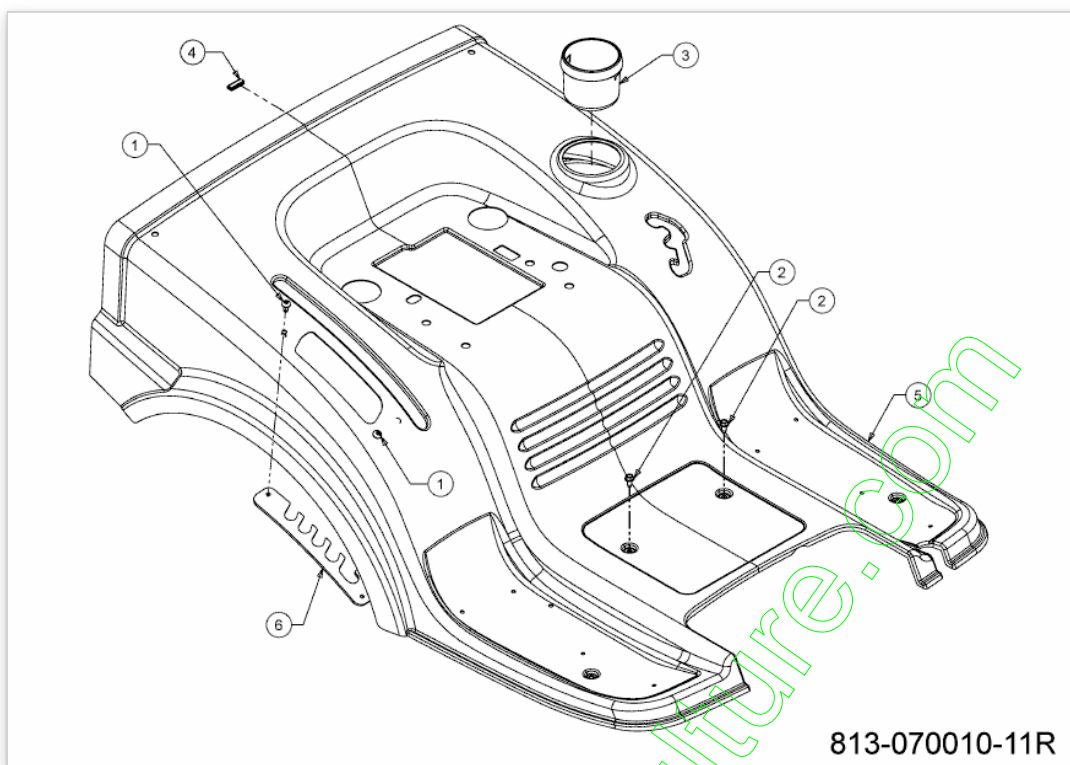


E3-11450A-00

www.emc-motoculture.com

Position	Numéro de lapièce	#	Appellation I	Appellation II
1	752Z4X90HW	1	B-MOTOR:ZS:547cc:SNGL:OHV	MODELL#:4X90HW V-STAGE

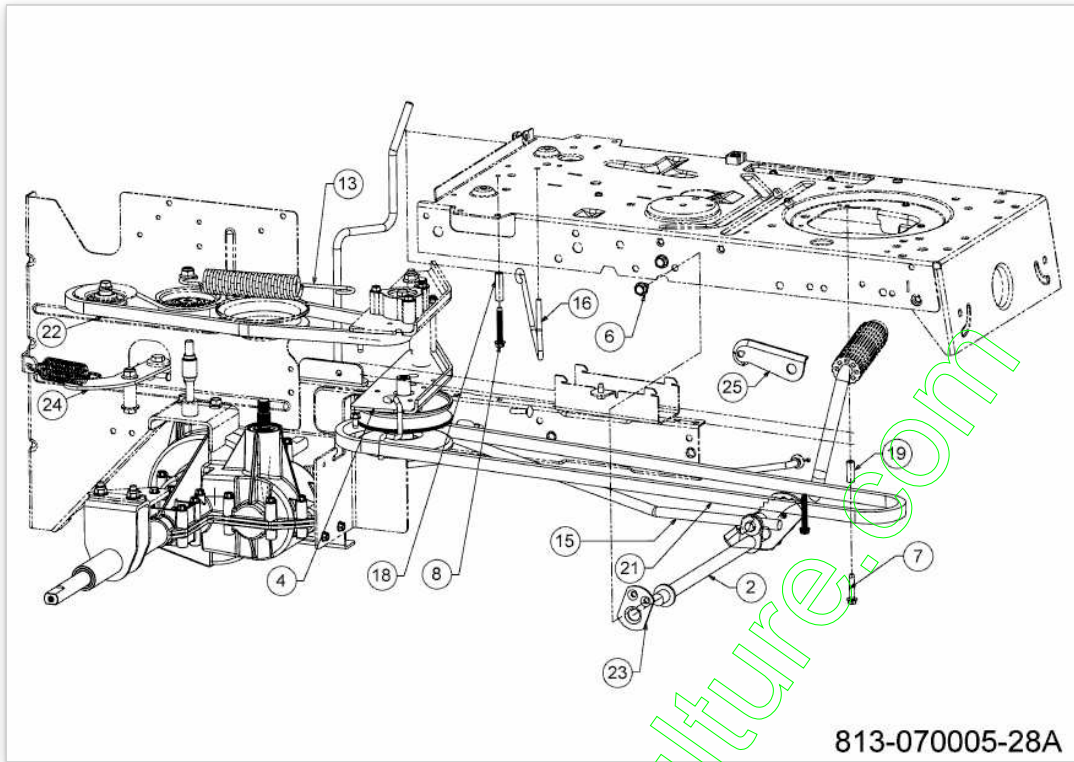
www.emc-motoculture.com



www.emc-motoculture.com

Position	Numéro de pièce	#	Appellation I	Appellation II
1	710-05070A	2	VIS	FINISH: SCHWARZ SPEC-000087
2	710-0599	2	VIS A SIX PANS CREUX	FINISH: MTD SPEC-101617
3	731-04591A	1	PORTE GOBELET	FINISH: KUNSTSTOFF SCHWARZ
4	731-0511	1	BORDURE DE PROTECTION	FINISH: SCHWARZ, SIEHE ZG.
5	783-05744638	1	JUPE ARRIERE ROUGE MTD	MTD ROT
6	783-05875A	1	SELECTEUR HAUTEUR DE COUPE	FINISH: 783-05875A-Z 5 POS

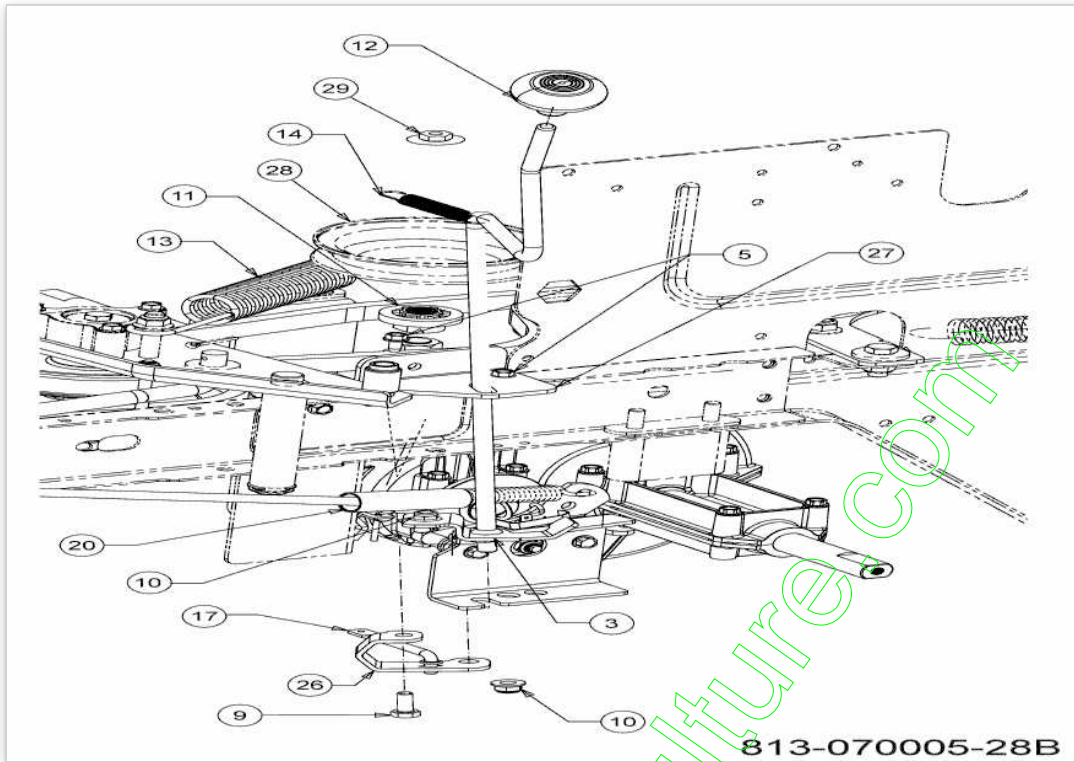
www.emc-motoculture.com



www.emc-motoculture.com

Position	Numéro de lapièce	#	Appellation I	Appellation II
2	647-04132A	1	PEDAL VOLLST:TRANS:RR DIS LT-5	SCHWEISSTEIL:LACKIERT
4	683-04429A-S	1	SUPPORT VARIATEUR	HECKAUSWURF: SCHWARZ LACKIERT
6	710-0604A	2	VIS 5/16-18:0.625	FINISH:MTD SPEC-100016 TYPE 1
7	710-0809	1	VIS HEX. TT:1/4- 20:1.250:HXIND	FINISH:MTD SPEC-100016 TYPE 1
8	710-1026	1	VIS HEX:TT:1/4-20:1.750	FINISH:MTD-SPEC-100016
15	747-04780	1	TRINGLE	LT-5 FINISH:MTD STD 100015
16	747-04803	1	TIGE	FINISH:LACKIERT
18	750-04456	1	ENTRETOISE	FINISH:MTD SPEC-100015
19	750-0566A	1	ENTRETOISE	FINISH:MTD SPEC-100015
21	754-04211	1	COURROIE MOTEUR VARIATEUR	POLY
22	754-04268	1	COURROIE VARIATEUR PONT LT5	POLY
23	783-04536B	1	STÜTZBLECH:PEDAL:LT-5	FINISH:LACKIERT MTD QUALITÄT
24	783-06623	1	SUPPORT	FINISH:MTD SPEC-100015
25	783-06991	1	SUPPORT	SD-TR./HYDRO:783-06991-Z

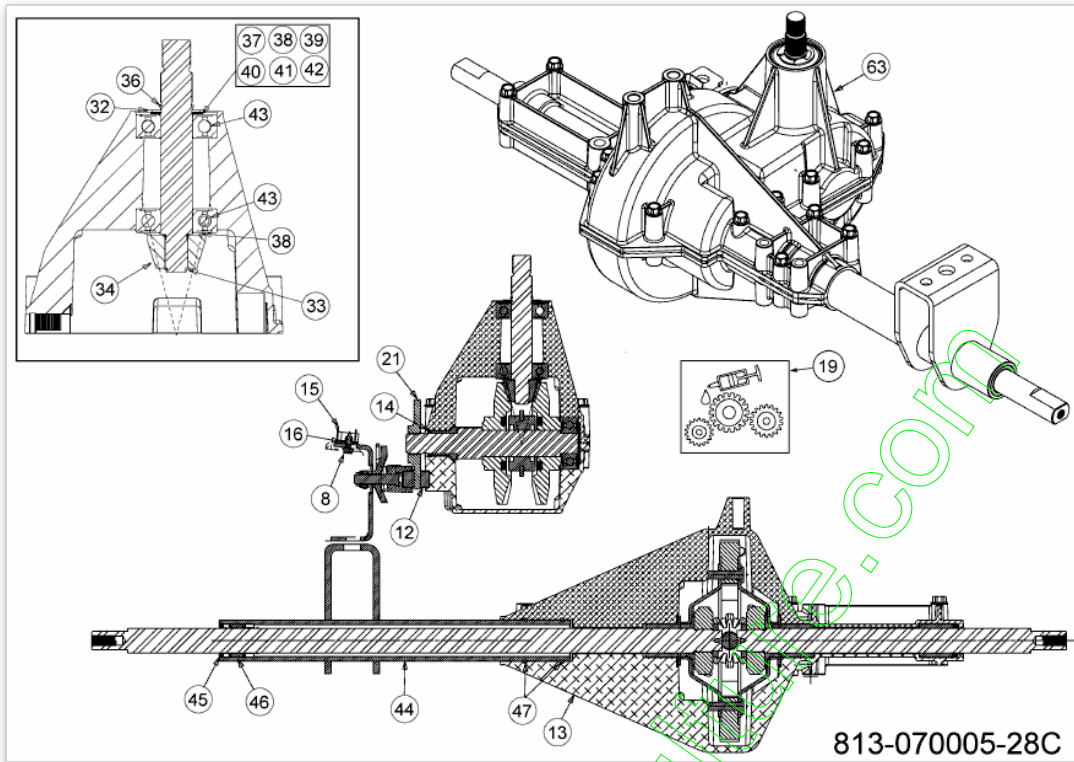
www.emc-motoculture.com



www.emc-motoculture.com

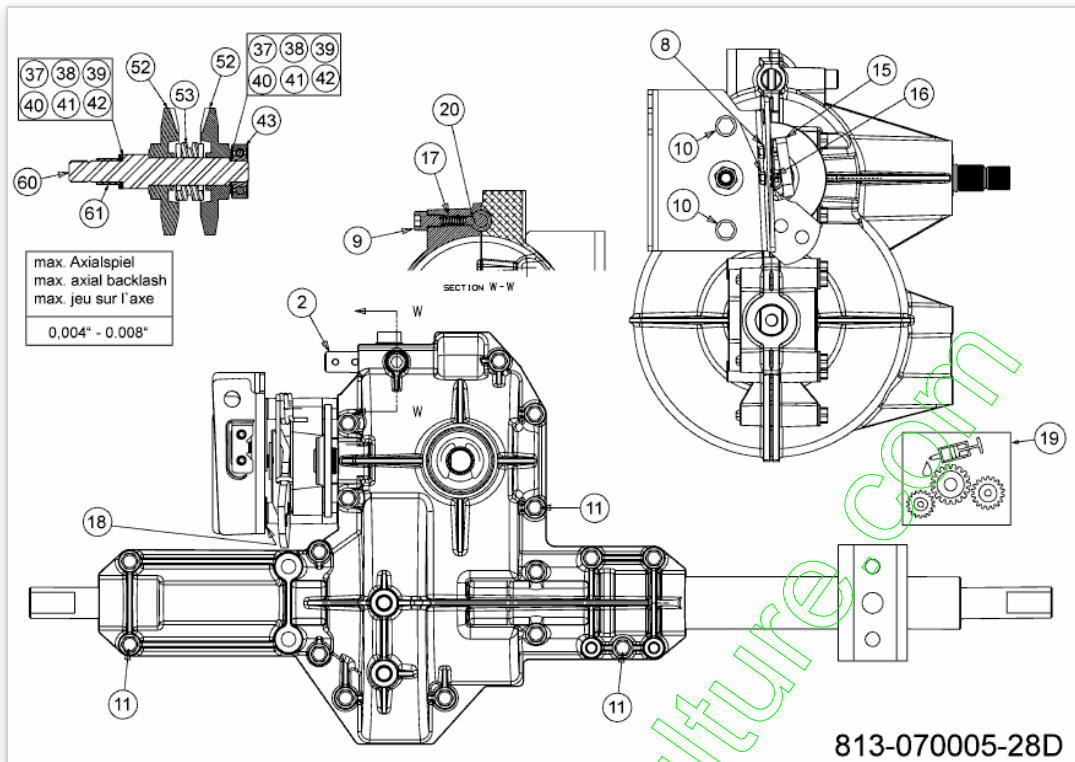
Position	Numéro de lapièce	#	Appellation I	Appellation II
3	647-05112A	1	LEVIER INVERSEUR	SCHWEISSTEIL:BLAU CHROMATIERT*
5	710-0599	2	VIS A SIX PANS CREUX	FINISH:MTD SPEC-101617
9	710-3025	1	VIS	FINISH:MTD SPEC-100015
10	712-04063	1	ECROU HEX. AVEC FLANC	FINISH:MTD SPEC-100015
11	718-04407	1	MOYEU: POULIE:5/8 DENTELURE	VERZAHNUNG
12	720-04028	1	POIGNEE INVERSEUR	FINISH:SCHWARZ
13	732-04517	1	RESSORT	FINISH:PHOS AND OIL
14	732-05609	1	ZUGFEDER:.45 OD X 3.32 LG	FINISH:MTD SPEC 701-01006
17	747-06967	1	TIGE	LT5-RD:FINISH:MTD SPEC-100015
20	750-0802	1	ENTRETOISE / .640IDX.760DX2.63	FINISH:KUNSTSTOFF SCHWARZ
26	783-09625	1	SUPPORT	FINISH:BLAU CHROMATIERT *
27	783-09677	1	SUPPORT	FINISH:BLAU CHROMATIERT *
28	756-04298	1	POULIE DE PONT	PINS:FINISH:SIEHE ZG.656-04044
29	712-0700	1	ECROU HEXAGONAL	SPEC-100015+WAX 912-0700

www.emc-motoculture.com



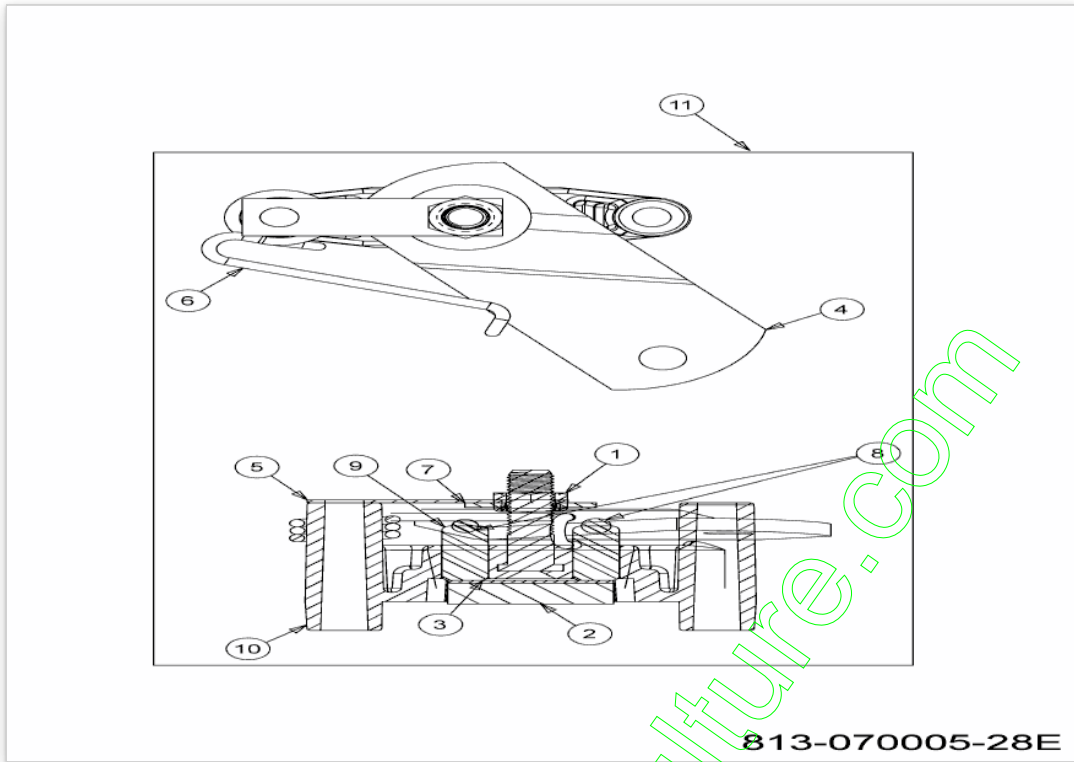
Position	Numéro de pièce	#	Appellation I	Appellation II
8	710-0227	2	VIS	FINISH:MTD SPEC-100016 TYPE 1
12	717-0678	1	PLAQUETTE DE FREIN	FINISH:
13	719-04358	1	CARTER INFERIEUR	FINISH:WIE GEGOSSEN
14	721-0213	1	JOINT SPI .625x.812x.094	FINISH:
15	725-1644	1	INTERRUPTEUR DE SÜCURITÜ	FINISH:MTD SPEC-100015
16	726-0320	1	PLAQUE D'ISOLATION	FINISH:NATUR ODER SCHWARZ
17	732-05586	1	DRUCKFEDER:.205 OD X .65LG	FINISH:PHOS AND OIL
19	6021-U1-1073	X	GRAISSE (400G)	+Li12 HYDROXYSTEARAT
21	761-0202	1	DISQUE DE FREIN	FINISH:ÖL UND FETTFREI
32	716-0231	1	CIRCLIPS	FINISH:SPEC-100016
33	716-0385	1	CIRCLIPS	SHR-39:FINISH PHOS & OIL
34	717-1760	1	PIGNON CONIQUE 14 T	FINISH:SIEHE ZG.
36	732-0614	1	CIRCLIPS	FINISH:ZINC PHOSPHATE
37	736-0336	1	RONDELLE 5/8X1.00X.030	FINISH:MTD SPEC-100016
38	736-0337	2	RONDELLE 5/8 IDX1.0 ODX.040	MTD STD 701-01001 936-0337
39	736-0349	1	RONDELLE 5/8 IDX10 OD X .020	FINISH:SIEHE ZG.
40	736-04337	1	RONDELLE	FINISH:GEÖLT
41	736-0494	1	RONDELLE	FINISH:MTD SPEC-100016
42	736-0495	1	RONDELLE	FINISH:SIEHE ZG. 936-0495
43	741-0524A	2	ROULEMENT	FINISH:SIEHE CHART *
44	618-04538	1	ACHSROHR VOLLST:RECHTS	SCHWEISSTEIL:FINISH:PHOS & OIL
45	721-0338	1	JOINT	.75 x 1.00 x .125:FINISH STD
46	741-04288	1	CAGE AIGUILLE	741-04288
47	721-0521	2	JOINT 1.174 ID X 103 THK	FINISH:NONE
63	618-07408B	1	TRANSMISSION ENS.	618-07408B

www.enrc-motoculture.com



Position	Numéro de lapièce	#	Appellation I	Appellation II
2	611-05186	1	FOURCHETTE	FINISH:
8	710-0227	2	VIS	FINISH:MTD SPEC-100016 TYPE 1
9	710-04731	1	VIS	FINISH:MTD SPEC-100016
10	710-1206	2	VIS HEX. TT:1/4-20:2.375	FINISH:MTD SPEC-100016 TYPE 1
11	710-1325	17	VIS HEXAGONALE	FINISH:SPEC-100016 TYPE 1
15	725-1644	1	INTERRUPTEUR DE SÜCURITÜ	FINISH:MTD SPEC-100015
16	726-0320	1	PLAQUE D'ISOLATION	FINISH:NATUR ODER SCHWARZ
17	732-05586	1	DRUCKFEDER:.205 OD X .65LG	FINISH:PHOS AND OIL
18	736-0342	1	RONDELLE PLATE .283 x.75 x.030	FINISH:MTD STD 701-01000
19	6021-U1-1073	X	GRAISSE (400G)	+Li12 HYDROXYSTEARAT
20	741-1134	1	BILLE	FINISH:SIEHE ZG.
37	736-0336	1	RONDELLE 5/8X1.00X.030	FINISH:MTD SPEC-100016
38	736-0337	1	RONDELLE 5/8 IDX1.0 ODX.040	MTD STD 701-01001 936-0337
39	736-0349	1	RONDELLE 5/8 IDX10 OD X .020	FINISH:SIEHE ZG.
40	736-04337	1	RONDELLE	FINISH:GEÖLT
41	736-0494	1	RONDELLE	FINISH:MTD SPEC-100016
42	736-0495	1	RONDELLE	FINISH:SIEHE ZG. 936-0495
43	741-0524A	1	ROULEMENT	FINISH:SIEHE CHART *
52	717-05425	2	PIGNON 55 DENTS	FINISH:OIL DIPPED
53	718-04381	1	CRABOT	718-04381P
60	711-04823	1	ARBRE DE TRANSMISSION	711-04823
61	741-04458	1	BAGUE	FINISH:ÖL-IMPRÄGNIERT

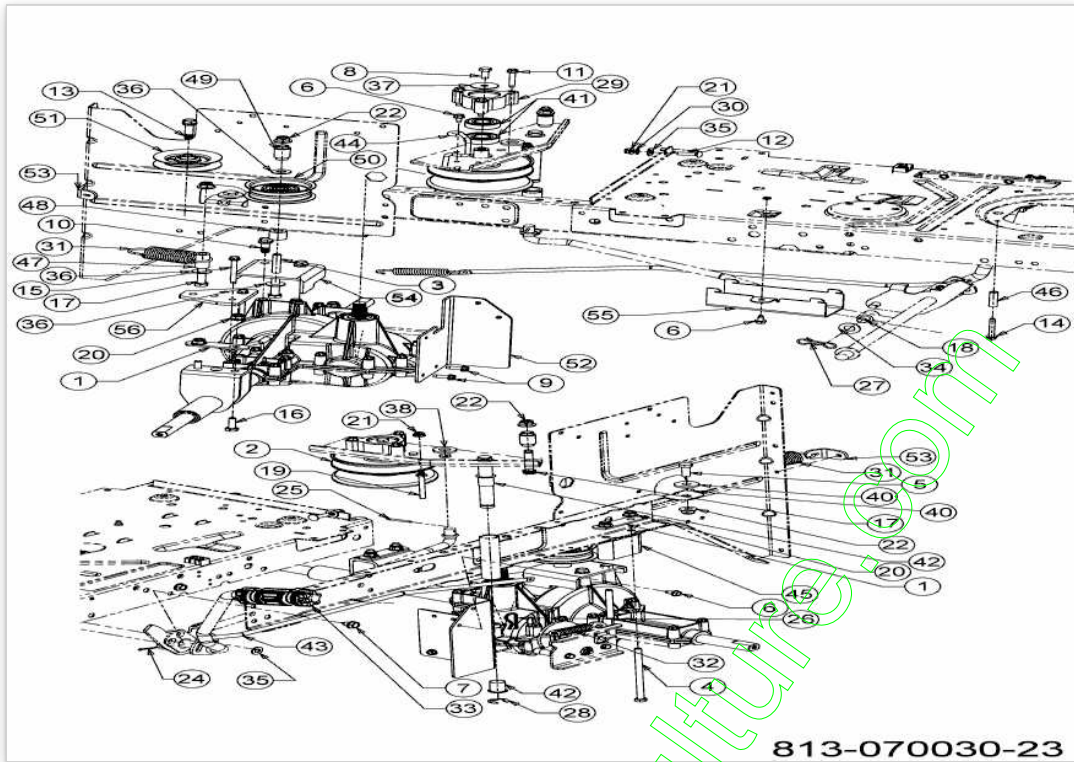
www.emc-motoculture.com



www.emc-motoculture.com

Position	Numéro de pièce	#	Appellation I	Appellation II
1	712-0273	1	ECROU HEXAGONAL 5/16-24"	FINISH:MTD SPEC-100015
2	717-0678	1	PLAQUETTE DE FREIN	FINISH:
3	717-0682	1	INSERT DE FREIN	FINISH:NONE 917-0682
4	717-0772B	1	LEVIER DE FREIN	FINISH:PHOSPHATE & OIL
5	718-0150	1	LANG. DE SUPP.: ANTI ROTATION	FINISH:SPEC-100015
6	732-0743	1	RESSORT	FINISH:ZINC PHOS&OIL 932-0743
7	736-0371	1	RONDELLE 1.344XA .875"	FINISH:MTD SPEC-100016
9	741-0343	2	GOUJON DE PRESSION 5/16"	FINISH:SIEHE ZG. 941-0343
10	761-0198B	1	APPUI DE FREIN	FINISH:NONE 961-0198B
11	661-0006	1	SUPPORT PLAQUETTE FREIN	FINISH:

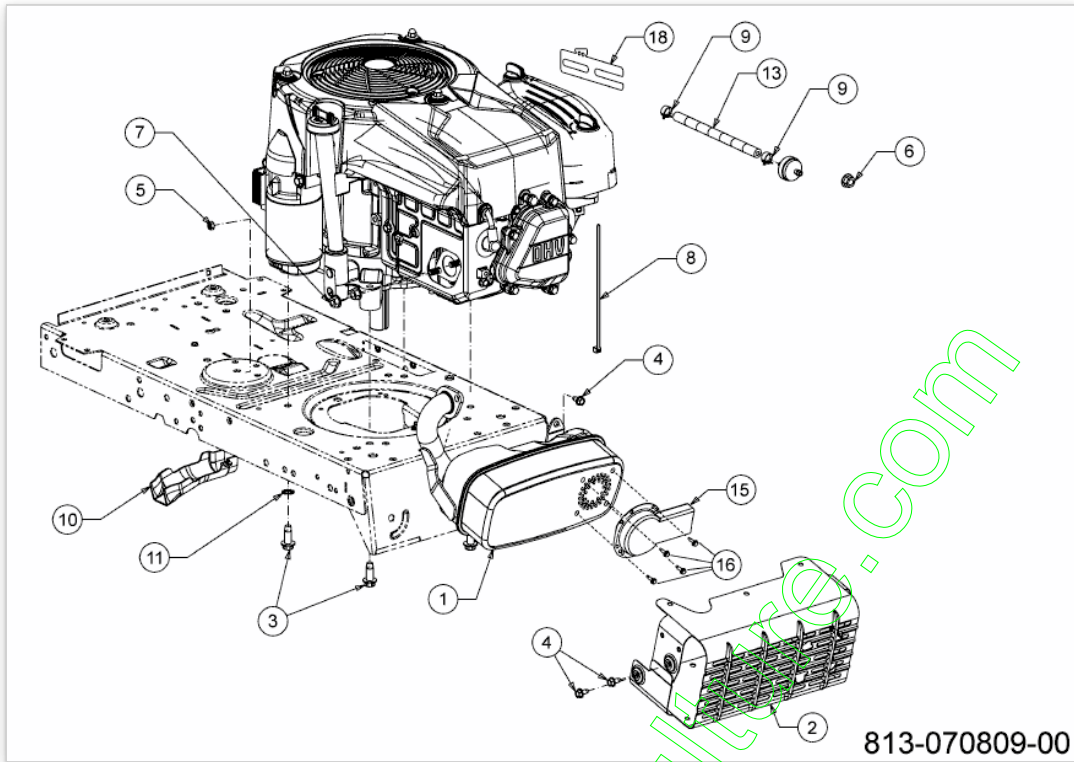
www.emc-motoculture.com



Position	Numéro de lapièce	#	Appellation I	Appellation II
1	17840	2	SUPPORT	FINISH: 17840-Z
2	656-05011	1	POULIE VARIATEUR	FINISH:SEE DRW
3	710-0411	1	VIS HHCS:3/8-16:4.00:GR5:STD	FINISH:SPEC-100015
4	710-04469	2	VIS HEX. 5/16-18X5.00:GR5:STD	FINISH:MTD SPEC-100015
5	710-0514	1	VIS HEX.:3/8-16:1.00:GR5:STD	FINISH:MTD SPEC-100015
6	710-0599	4	VIS A SIX PANS CREUX	FINISH:MTD SPEC-101617
7	710-0604A	2	VIS 5/16-18:0.625	FINISH:MTD SPEC-100016 TYPE 1
8	710-0627	1	VIS HEX. 5/16-24:.750 GR5:LOCK	FINISH:MTD SPEC-100015
9	710-0642	2	VIS1/4-20:0.750	SPEC-100016 TYPE 1 910-0642
10	710-0654A	2	VIS A SIX PANS CREUX	FINISH:GEOMET XL
11	710-0778	3	VIS HEX. TT:1/4-20:1.500	FINISH:MTD SPEC-100016 TYPE 1
12	710-0932A	1	VIS	FINISH:MTD SPEC-100015
13	710-1007	1	VIS HEX.TTSEMS3/8-16:1,500	FINISH:STD SPEC-100016
14	710-1026	1	VIS HEX.TT:1/4-20:1.750	FINISH:MTD-SPEC-100016
15	710-1206	2	VIS HEX. TT:1/4-20:2.375	FINISH:MTD SPEC-100016 TYPE 1
16	710-0376	2	VIS HEX.:5/16-18:1.00:GR5:STD	FINISH:MTD SPEC 701-01006
17	710-3144	2	VIS HEX.: 3/8-16:2.00:GR5:STD	FINISH:SPEC-100015 910-3144
18	711-04036	1	AXE	FINISH:SPEC-100015 911-04036
19	711-04826	1	GUIDE COURROIE	BLACK OXIDE ODER PHOS & OIL
20	712-04063	4	ECROU HEX. AVEC FLANC	FINISH:MTD SPEC-100015
21	712-04064	2	ECROU HEXAGONAL	FINISH:SPEC-100015 912-04064
22	712-04065	4	ECROU HEXAGONAL	FINISH:SPEC-100015 912-04065
24	714-0111	1	GOUPILLE FENDUE 3/32:1.0"	FINISH:MTD SPEC-100015
25	714-0115	1	GOUPILLE FENDUE 1/8 x 1.0	FINISH:MTD SPEC-100015
26	714-0209	1	GOUPILLE FENDUE	FINISH:SPEC 701-01006 914-0209
27	714-05005	1	GOUPILLE	FINISH:ASTM F1941 FE/ZN 3AN
28	716-0106A	1	CIRCLIPS	FINISH:PHOSPHATIERT
29	718-04261	1	CAGE DE ROULEMENT	FINISH:ROTSCHUTZ SIEHE ZG.
30	726-0233	1	RONDELLE	MECHANISCH KLAR VERZINKT
31	732-04505	1	RESSORT 1.00 DIA X 3.925 LG	FINISH:PHOS AND OIL
32	732-0716D	1	RESSORT	FINISH:MTD STD 701-01006
33	735-05051	1	CAOUTCHOUC DE PEDALE DE FREIN	FINISH:SCHWARZ SIEHE ZG.
34	736-0272	1	RONDELLE .510x1.00X.060	SPEC 100015 oder SPEC-101616
35	736-0275	2	RONDELLE	FINISH:MTD SPEC-100015
36	736-0300	3	RONDELLE	FINISH:MTD SPEC-100015
37	736-0362	1	RONDELLE .320ID X 1.25 ODX .0	FINISH:SPEC-100016
38	736-3019	1	RONDELLE .531x1.062x.134:HT	FINISH:MTD SPEC-100016
40	738-0347	1	RONDELLE j EMB. .625IDx.169	FINISH:
41	741-0124A	2	ROULEMENT A BILLE	FINISH:

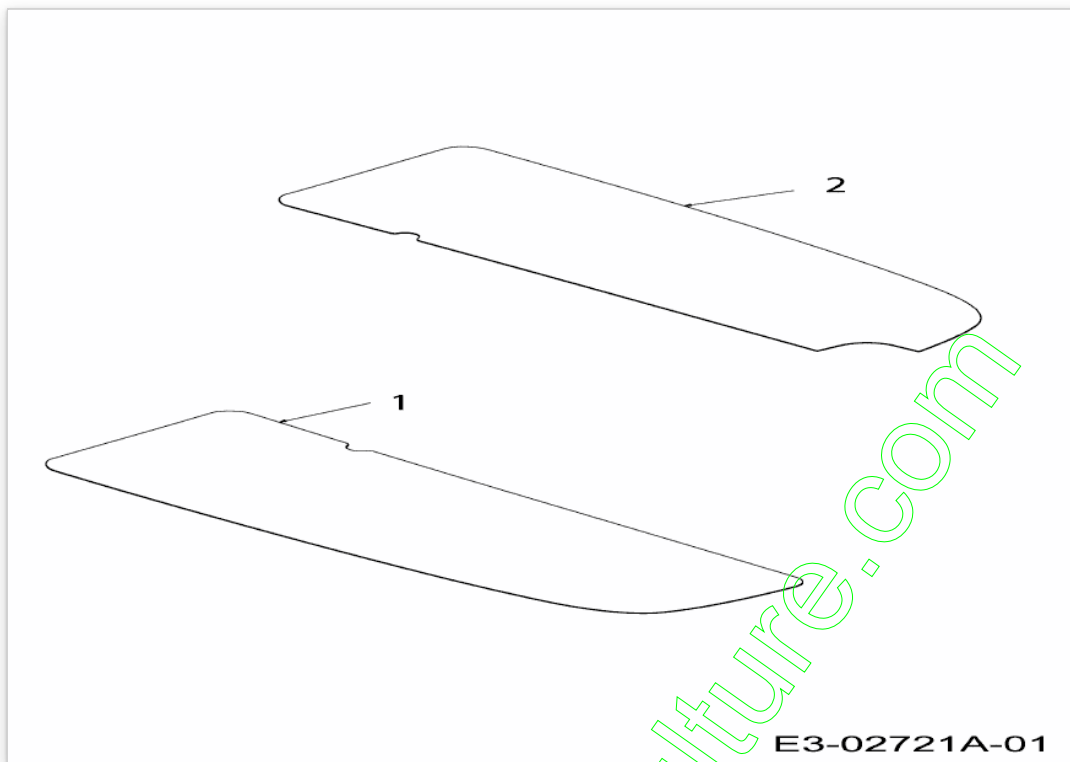
Position	Numéro de lapièce	#	Appellation I	Appellation II
42	741-0591	2	BAGUE	FINISH:NATUR 941-0591
43	747-04815C	1	TIGE DE FREIN	FINISH:SPEC-100015
44	747-04897D-S	1	RIEMENFÜHRUNG:FWD:RR DIS LT-5	FINISH:LACKIERT
45	748-04175	1	SUPPORT ENTRETOISE	FINISH:GEÖLT
46	750-04456	1	ENTRETOISE	FINISH:MTD SPEC-100015
47	750-04584	1	DOUILLE .375IDx.625ODx 1.34 LG	FINISH:SPEC-100015
48	750-04988	1	ENTRETOISE	FINISH:ÖL GEDIPPT
49	750-05521A	2	LAGBERBUCHSE:18mm ODx9.8mm ID	FINISH:GEÖLT
50	756-04224	1	POULIE TENDEUR	BLK ECOAT,PAINT OR SPEC-100015
51	756-04324	1	POULIE TENDEUR	FINISH:SCHWARZ LACKIERT
52	783-05705	1	SUPPORT DE TRANSMISSION	FINISH:LACKIERT
53	783-05844	1	SUPPORT	FINISH:783-05844-Z 783-05844*
54	783-05855	1	STÜTZBLECH GETRIEBE	FINISH:LACKIERT
55	783-05882	1	FÜHRUNGSBLECH:FWD:RR DIS LT-5	FINISH:LACKIERT 783-05882*
56	783-1363	1	PLAQUE SUPPORT	FINISH:BLAU CHROMATIEREN *

www.emc-motoculture.com



Position	Numéro de lapièce	#	Appellation I	Appellation II
1	751-14585C	1		
2	683-05460A-S	1	PROTECTION D ECHAPPEMENT NOIR	SCHWARZ
3	710-04683C	4	VIS	FINISH:SIEHE ZG.
4	710-0599	5	VIS A SIX PANS CREUX	FINISH:MTD SPEC-101617
5	712-0691	1	ECROU HEXAGONAL	MTD SPEC-100015 24.1426.14
6	712-3005	1	ECROU AVEC FLANC:3/8-16:GR5	FINISH:SPEC-100015 912-3005
7	712-3086	2	ECROU/FLANC: M8-1.25	FINISH:MTD SPEC-100015
8	725-0157	1	COLLIER DE SERRAGE3/16X0.5X7.4	MATERIAL:NYLON-SCHWARZ
9	726-0205	2	COLLIER DE SERRAGE DE BOYAU	FINISH:PHOS UND GELB LACKIERT
10	731-05628	1	GOUTIERE VIDANGE D HUILE	FINISH:SCHWARZ
11	736-0148	1	RONDELLE	FINISH:MTD SPEC-100016
13	751-10349-54	1	TUYAU ESSENCE 54"	751-10349-54
14	751-3013	1	FILTRE ESSENCE	COLOR:RED 951-3013
15	751-11053B	1	DEFLEKTOR:AUSPUFF	LANGER ABGASKANAL:ALUMINIZED
16	710-06625	4	VIS 8-32X0.47:HXWSH	FINISH:ASTM F1137 GRADE D
18	783-06232-Z	1	SUPPORT	FINISH:VERZINKT

www.emc-motocult.fr

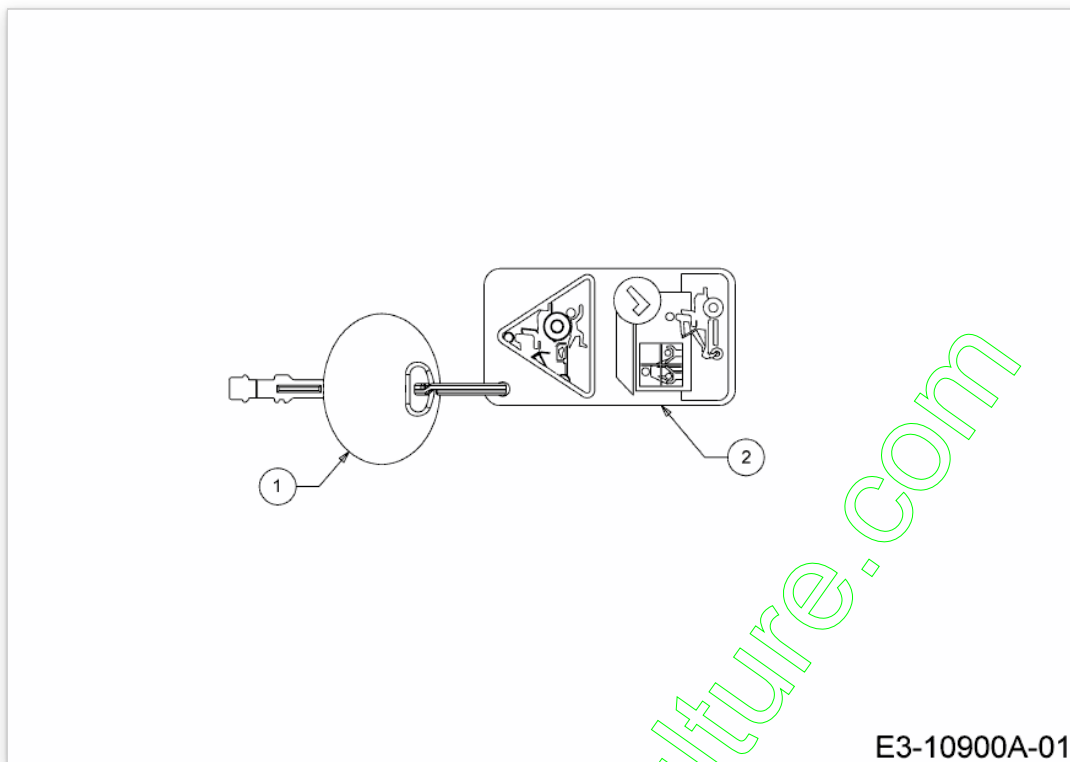


www.emc-motoculture.com

E3-02721A-01

Position	Numéro de lapièce	#	Appellation I	Appellation II
1	723-04025	1	MARCHE PIED DROITE	FARBE: SCHWARZ
2	723-04026	1	MARCHE PIED GAUCHE	FARBE: SCHWARZ

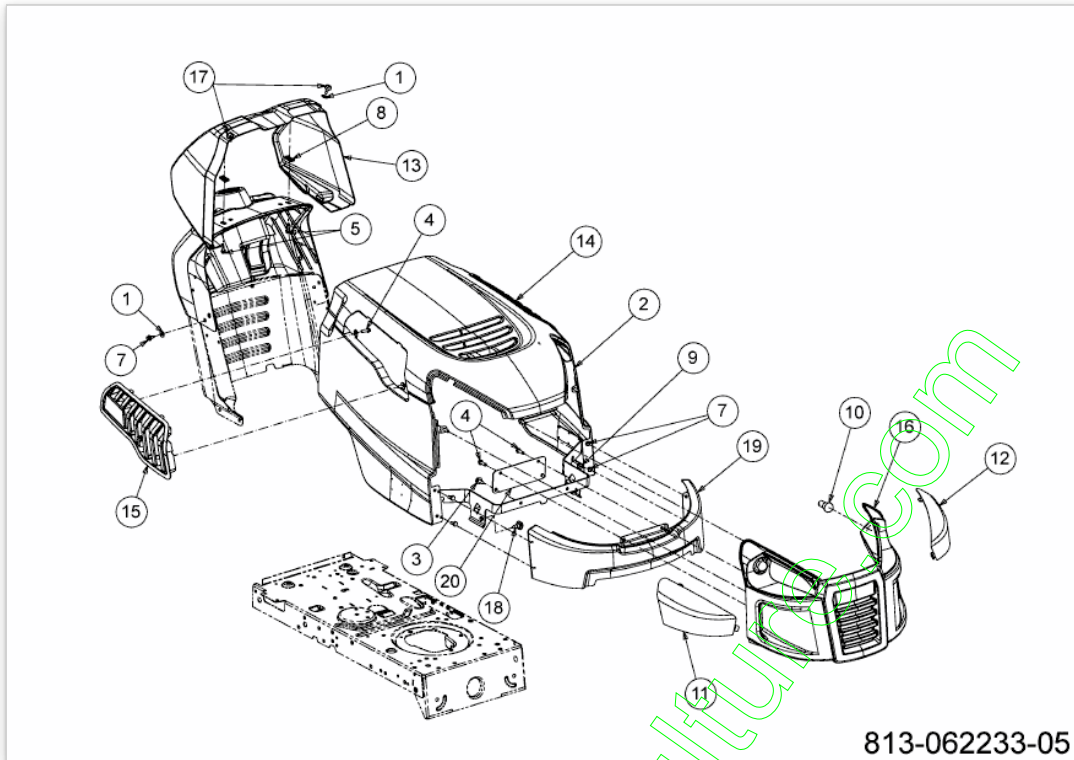
www.emc-motoculture.com



E3-10900A-01

Position	Numéro de lapièce	#	Appellation I	Appellation II
1	725-1745A	1	CLE UNIVERSEL	FINISH:
2	731-19013	1		

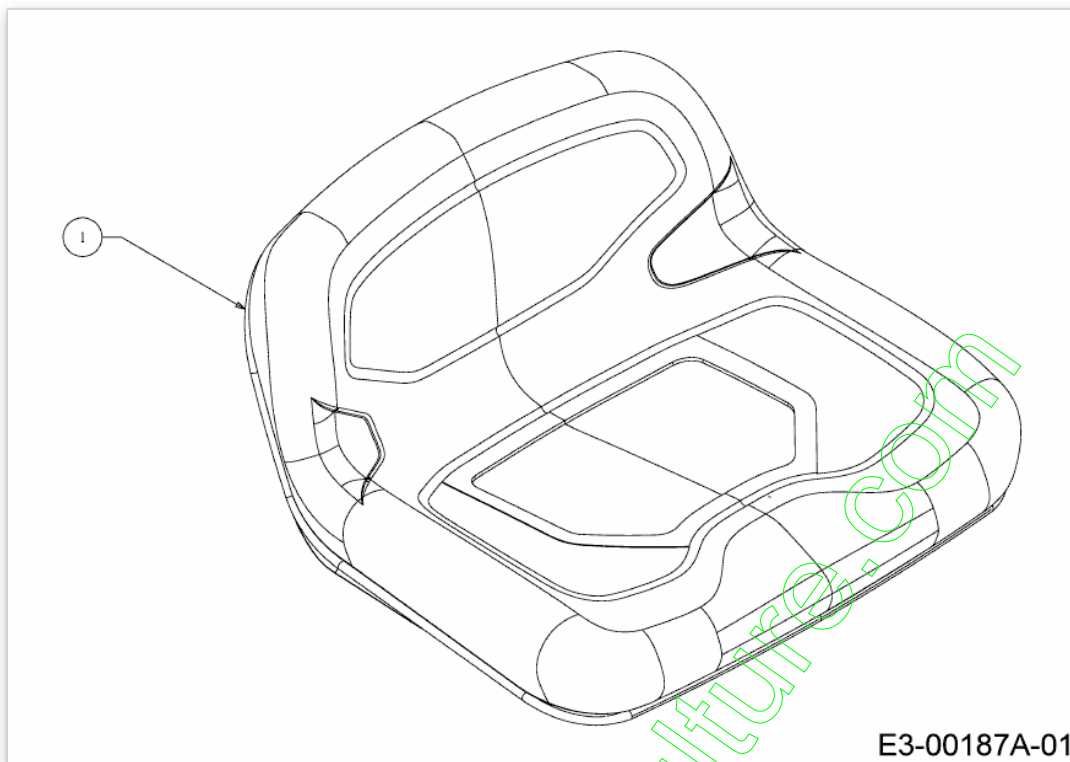
www.emc-motoculture.com



813-062233-05

Position	Numéro de pièce	#	Appellation I	Appellation II
1	1751	4	RONDELLTE	1751
2	683-04619A	1	HAUBE VOLLST	
3	710-04484	2	VIS HEX. TT:5/16-18:..750:HXIND	FINISH:MTD SPEC-100016 TYPE 1
4	710-05108	10	VIS	FINISH:SPEC-701-01006
5	710-0642	2	VIS1/4-20:0.750	SPEC-100016 TYPE 1 910-0642
6	710-0751	4	VIS HEX.: 1/4-20:..620:GR5:STD	FINISH:SPEC-100015
7	710-1652	2	VIS HEX. TT:1/4-20:..625:HXINDW	FINISH:MTD-SPEC-100016 TYPE 1
8	712-0292	2	ECROU A CAGE 1/4-20	FINISH:PHOSPHATIERT & GEÖLT
9	712-04064	4	ECROU HEXAGONAL	FINISH:SPEC-100015 912-04064
10	725-0963	2	AMPOULE ELECTRIQUE	FINISH:
11	731-07458	1	OPTIQUE DROITE	CRAFTSMAN:FINISH CLEAR
12	731-07459	1	OPTIQUE GAUCHE	CRAFTSMAN:FINISH CLEAR
13	731-07460A	1	CONSOLE DE TABLEAU DE BORD	FINISH:KUNSTSTOFF SCHWARZ
14	731-07711A	1	GRILLE DE CAPOT GAUCHE	731-07711A
15	731-07712A	1	GRILLE DE CAPOT DROITE	FINISH:KUNSTSTOFF SCHWARZ
16	731-10940	1	CALANDRE	FINISH:SIEHE ZG.
17	735-0271A	2	SILENT BLOC	FINISH:SCHWARZ
18	738-04091A	2	VIS EPAULEE	FINISH:SPEC-100016
19	783-06598	1	GRIL AVANT	
20	783-06610637	1	SUPPORT DE CALANDRE	FINISH:LACKIERT

www.emc-motoculture.com

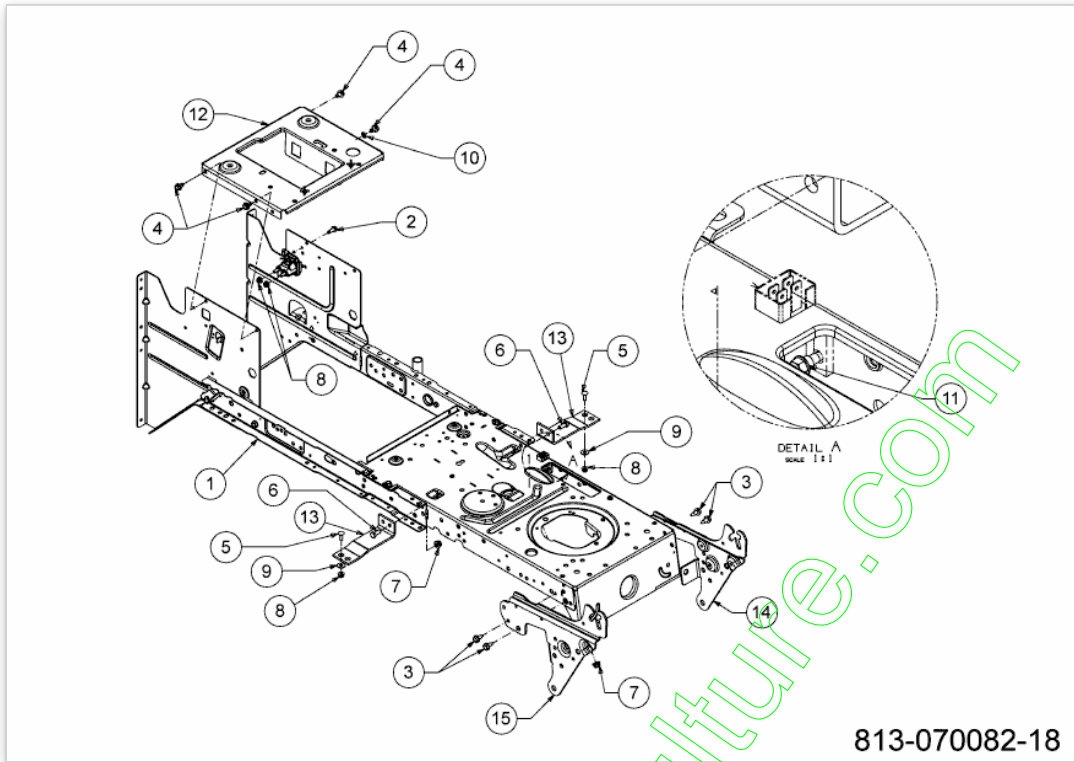


E3-00187A-01

www.emc-motoculture.com

Position	Numéro de pièce	#	Appellation I	Appellation II
1	757-05230	1	SITZ NIEDRIGE RÜCKENLEHNE	SCHWARZ

www.emc-motoculture.com

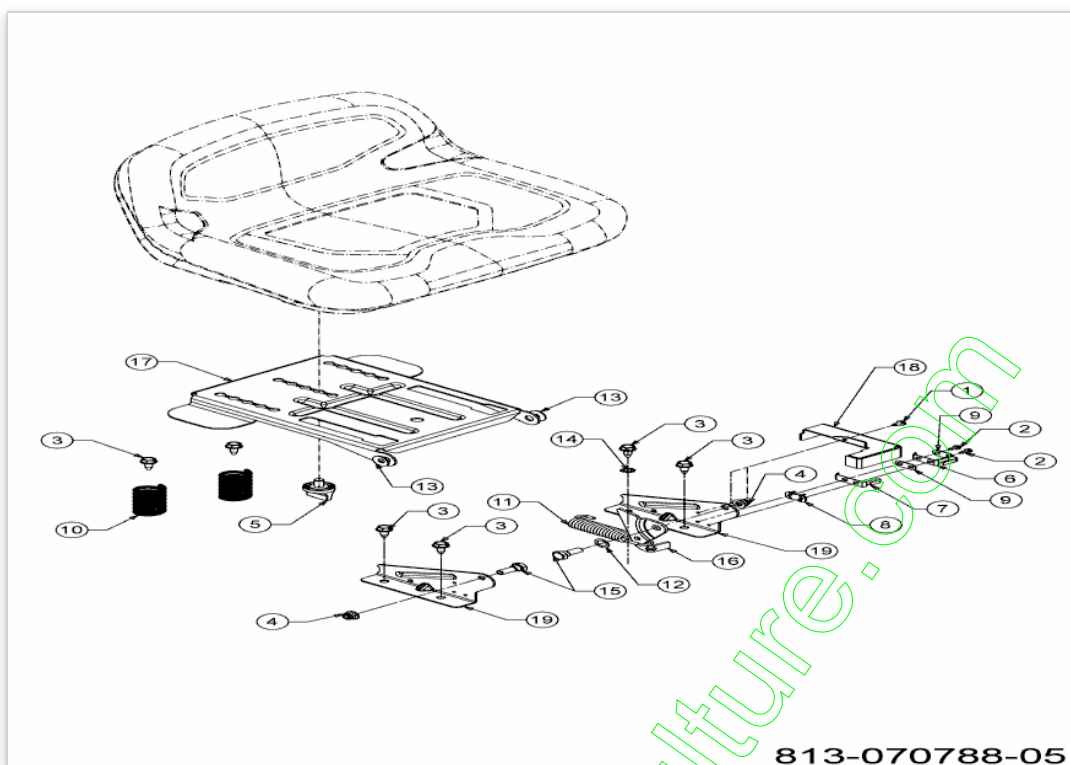


813-070082-18

www.emc-motoculture.com

Position	Numéro de lapièce	#	Appellation I	Appellation II
1	683-04682G-S	1	CHASSIS	SCHWARZ LACKIERT
2	710-04461	1	VIS	FINISH:SIEHE ZG.
3	710-04484	4	VIS HEX. TT:5/16-18:.750:HXIND	FINISH:MTD SPEC-100016 TYPE 1
4	710-0607	4	VIS HEX.TT5/16- 18:.500HXINDWSh	FINISH:MTD SPEC-100016 TYPE 1
5	710-0703	2	VIS	FINISH:MTD SPEC-100015
6	710-3008	2	VIS 5/16-18:.75:GR5:STD	SPEC-701-01006 or.SPEC-100015
7	712-04063	3	ECROU HEX. AVEC FLANC	FINISH:MTD SPEC-100015
8	712-04064	4	ECROU HEXAGONAL	FINISH:SPEC-100015 912-04064
9	736-0173	2	RONDELLE 281DX 74ODX.063	FINISH:MTD SPEC-100015
10	736-0607	1	RONDELLE	FINISH:MTD SPEC-100016
11	738-04237A	1	AXE EPAULE	FINISH:MTD SPEC-100016
12	783-04548D-S	1	SUPPORT DE SIEGE	SCHWARZ
13	783-04637637	2	SUPPORT	SCHWARZ LACKIERT
14	783-05417B-S	1	ÉTRIER DE CHARN.:À GA. CAPOT	783-05417B-S
15	783-05418D-S	1	ÉTRIER DE CHARN.:À DR. CAPOT	783-05418D-S

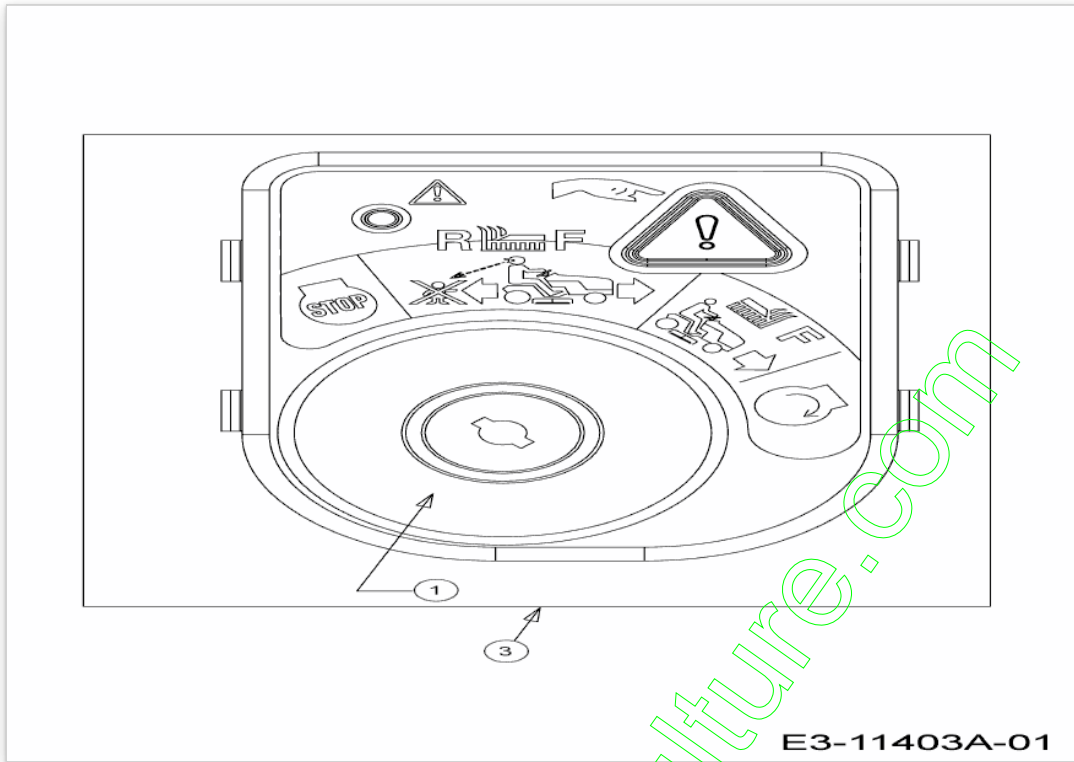
www.emc-motoculture.com



www.emc-motoculture.com

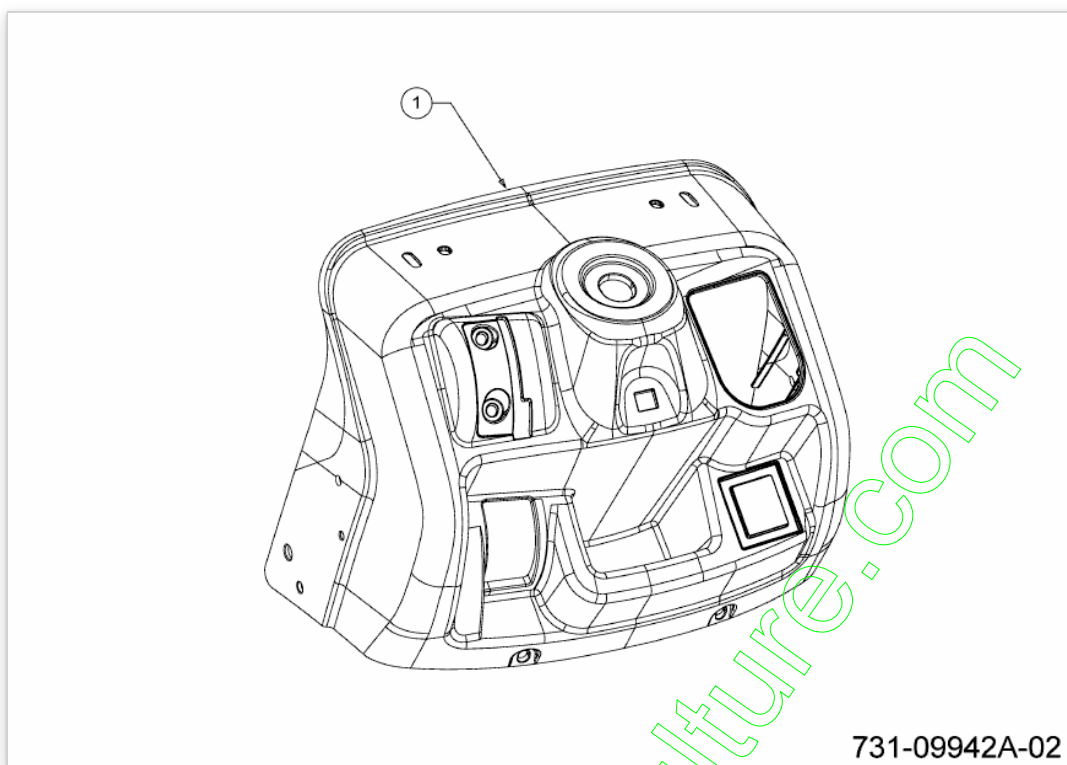
Position	Numéro de lapièce	#	Appellation I	Appellation II
1	710-0224	1	VIS PARK:#10-16:0.500:HXINDWSH	FINISH:MTD SPEC-100016 TYPE 1
2	710-0227	2	VIS	FINISH:MTD SPEC-100016 TYPE 1
3	710-04484	6	VIS HEX. TT:5/16-18:.750:HXIND	FINISH:MTD SPEC-100016 TYPE 1
4	712-04063	2	ECROU HEX. AVEC FLANC	FINISH:MTD SPEC-100015
5	720-05164	1	EINSTELLKNOPF:3/8-16:.625	FINISH:SCHWARZ
6	725-1303	1	RESSORT DE SURETE SIËGE	SI.-SCHALTER SITZ:SPEC-100015
7	725-1439	1	RESSORT SURETE DE SIEGE	SI.-SCHALTER SITZ:SPEC-100015
8	726-0278	1	PLAQUE D'ISOLATION	FINISH:NATUR ODER SCHWARZ
9	726-0279	2	PLAQUE D'ISOLATION	FINISH:NATUR ODER SCHWARZ
10	732-0735A	2	RESSORT DE SIEGE	FINISH:MTD SPEC 101616
11	732-08282	1	RESSORT	732-08282
12	736-0108	1	RONDELLE	FINISH:MTD SPEC-100015
13	736-0242	2	RONDELLE CONIQUE.340X.872X.060	FINISH:MTD SPEC-100016
14	736-0607	1	RONDELLE	FINISH:MTD SPEC-100016
15	738-0296	2	AXE EPAULE	FINISH:SPEC-100015
16	783-0209D	1	SUPP. SIËGE	FINISH:SPEC-100016
17	783-04081D-S	1	PLAQUE DE SIEGE NOIRE	SCHWARZ
18	783-04877A-S	1	PROTECTION DE SECURITES DE	SCHWARZ / 788-0637
19	783-1489D637	2	SUPPORT DE SIEGE NOIR	SCHWARZ

www.emc-motoculture.com



Position	Numéro de lapièce	#	Appellation I	Appellation II
1	725-1741	1	CONTACTEUR A CLE	FINISH: 925-1741
3	725-06119C	1	ZÜNDSCHLOSS:RMC:MPTO:SCHWARZ	FINISH:

www.emc-motoculture.com

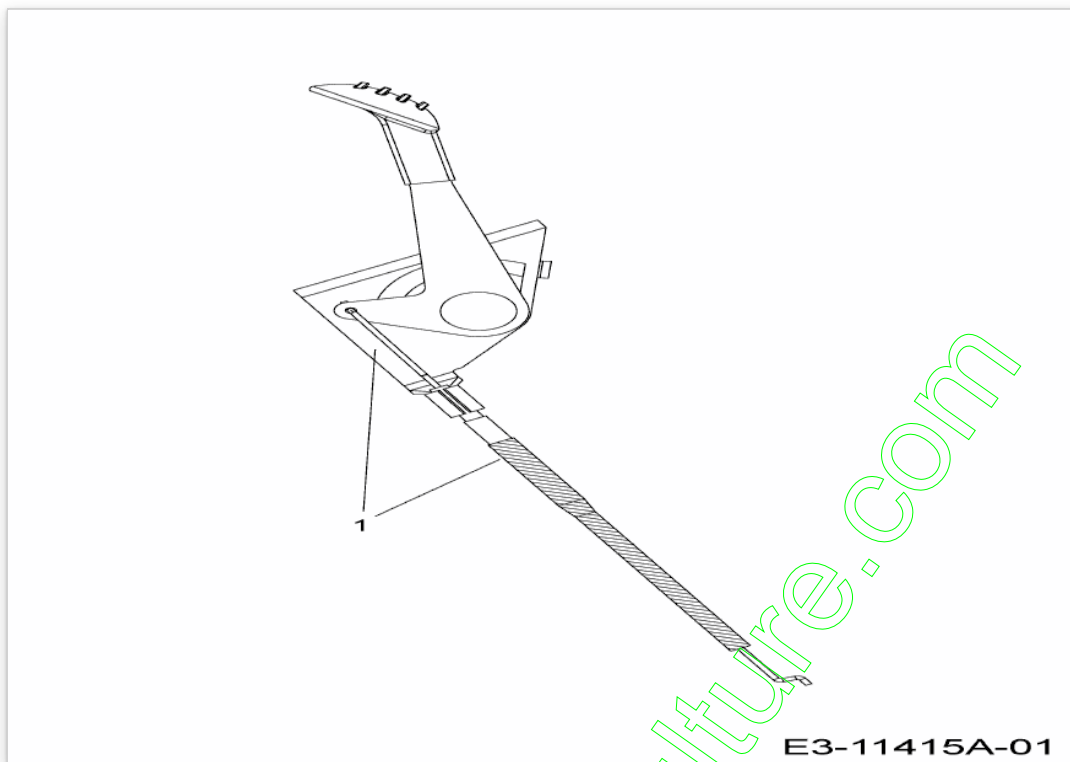


731-09942A-02

www.emc-motoculture.com

Position	Numéro de pièce	#	Appellation I	Appellation II
1	731-09942A	1	TABLEAU DE BORD	KUNSTSTOFF SCHWARZ

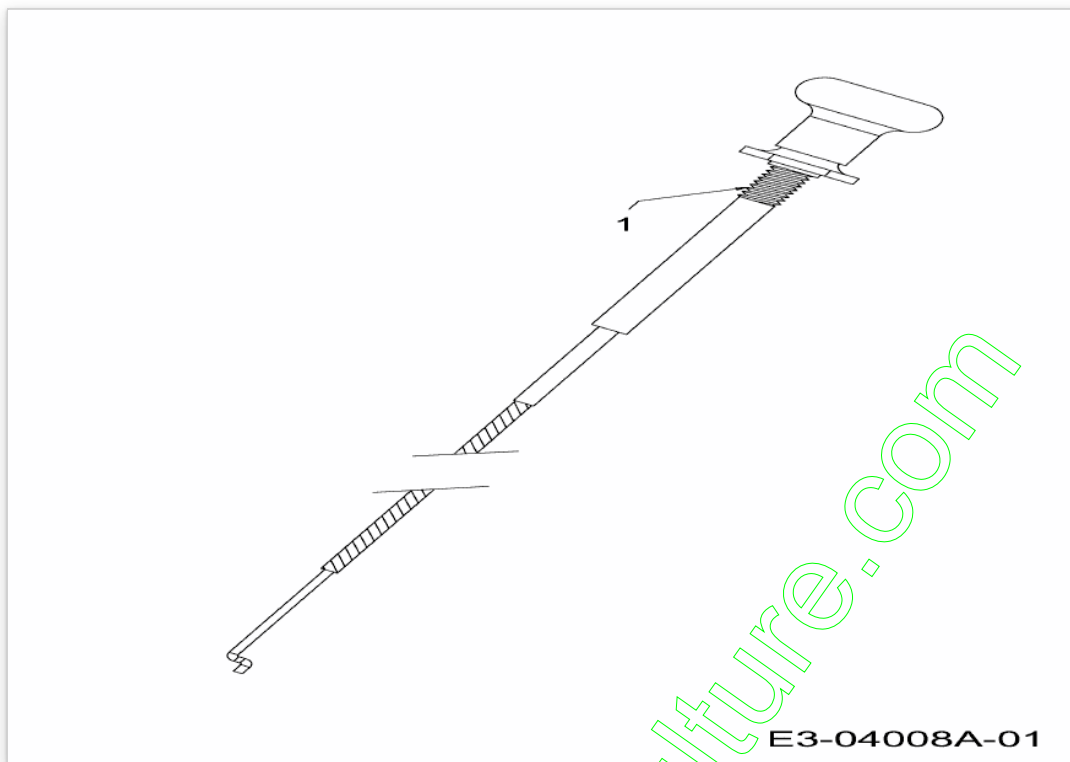
www.emc-motoculture.com



www.emc-motoculture.com

Position	Numéro de pièce	#	Appellation I	Appellation II
1	746-04406A	1	GASZUG:27.4"x.62:M.BEDIENHEBEL	746-04406A

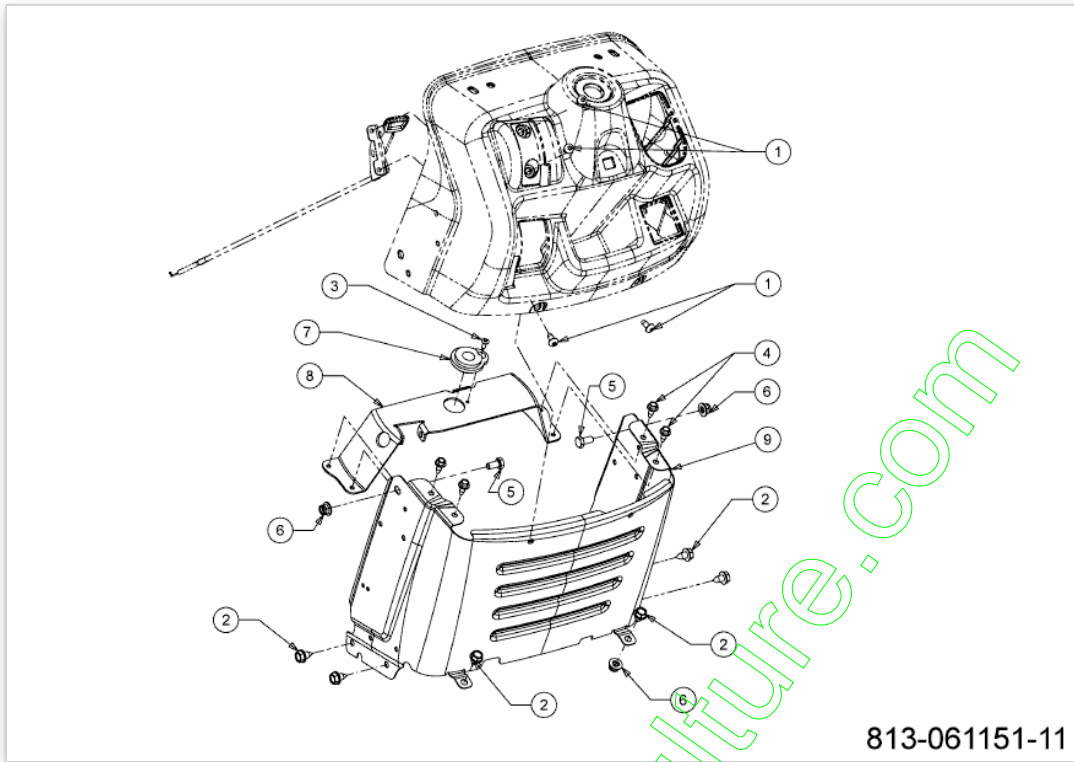
www.emc-motoculture.com



www.emc-motoculture.com

Position	Numéro de pièce	#	Appellation I	Appellation II
1	746-1089	1	CABLE STARTER	29.0" LG x 1.50 EXT

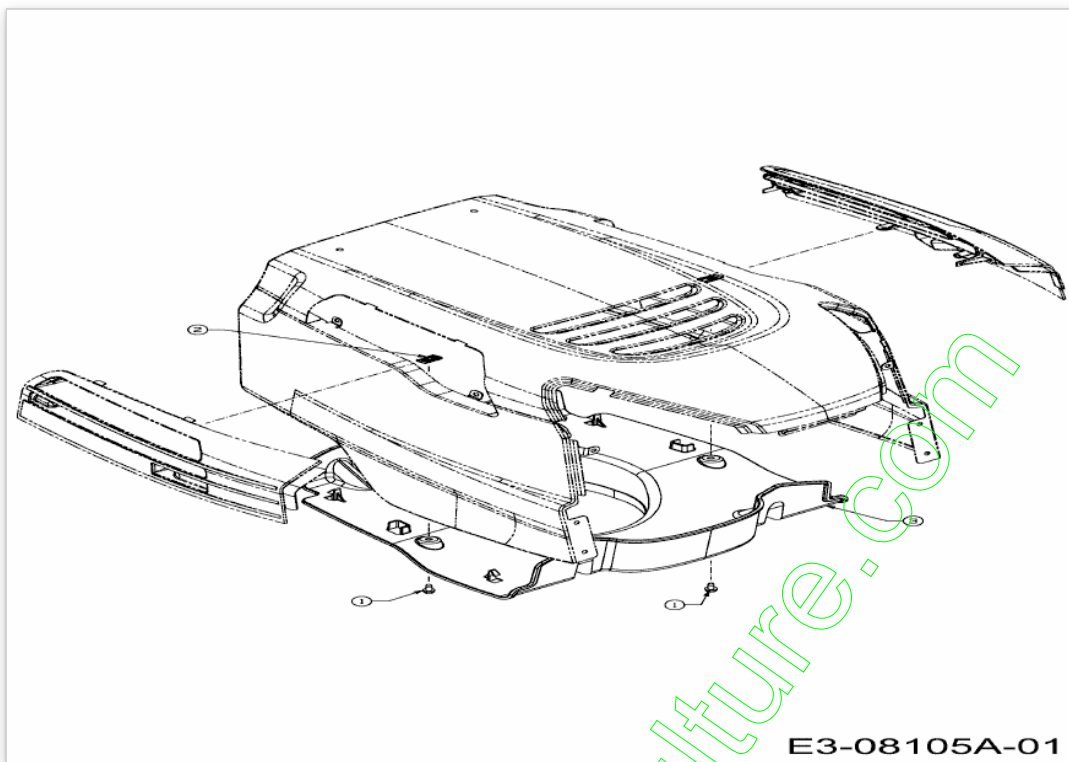
www.emc-motoculture.com



www.emc-motoculture.com

Position	Numéro de lapièce	#	Appellation I	Appellation II
1	710-05070A	4	VIS	FINISH:SCHWARZ SPEC-000087
2	710-0604A	6	VIS 5/16-18:0.625	FINISH:MTD SPEC-100016 TYPE 1
3	710-0837	1	VIS	FINISH:MTD SPEC-100016 TYPE 1
4	710-1652	4	VIS HEX. TT:1/4-20:.625:HXINDW	FINISH:MTD-SPEC-100016 TYPE 1
5	710-3025	2	VIS	FINISH:MTD SPEC-100015
6	712-04063	4	ECROU HEX. AVEC FLANC	FINISH:MTD SPEC-100015
7	741-0587	1	SUPPORT	FINISH:NATUR
8	783-06785C-S	1	SUPPORT TABLEAU DE BORD	SCHWARZ
9	783-06811F-S	1	TABLEAU DE BORD INFERIEUR	

www.emc-motoculture.com

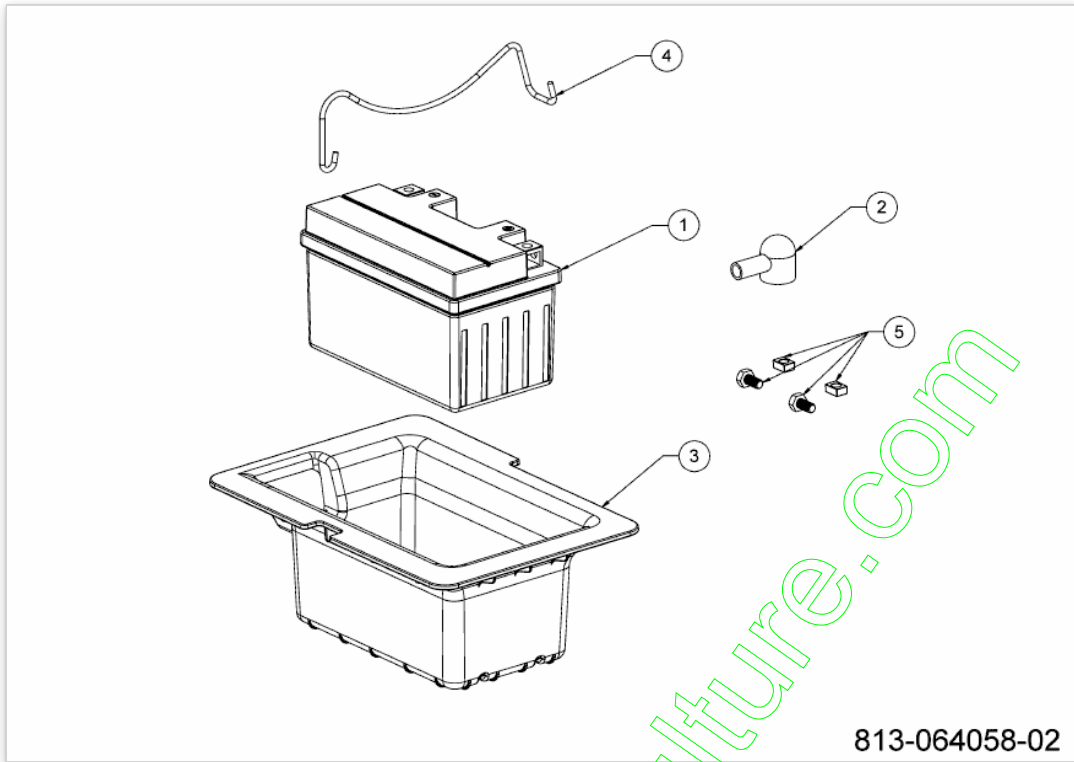


E3-08105A-01

www.emc-motoculture.com

Position	Numéro de pièce	#	Appellation I	Appellation II
1	710-0599	2	VIS A SIX PANS CREUX	FINISH:MTD SPEC-101617
2	712-0292	2	ECROU A CAGE 1/4-20	FINISH:PHOSPATIERT & GEÖLT
3	731-08440A	1	LUFTFÜHRUNG:S-STYLE:5.125	FINISH:KUNSTSTOFF SCHWARZ

www.emc-motoculture.com

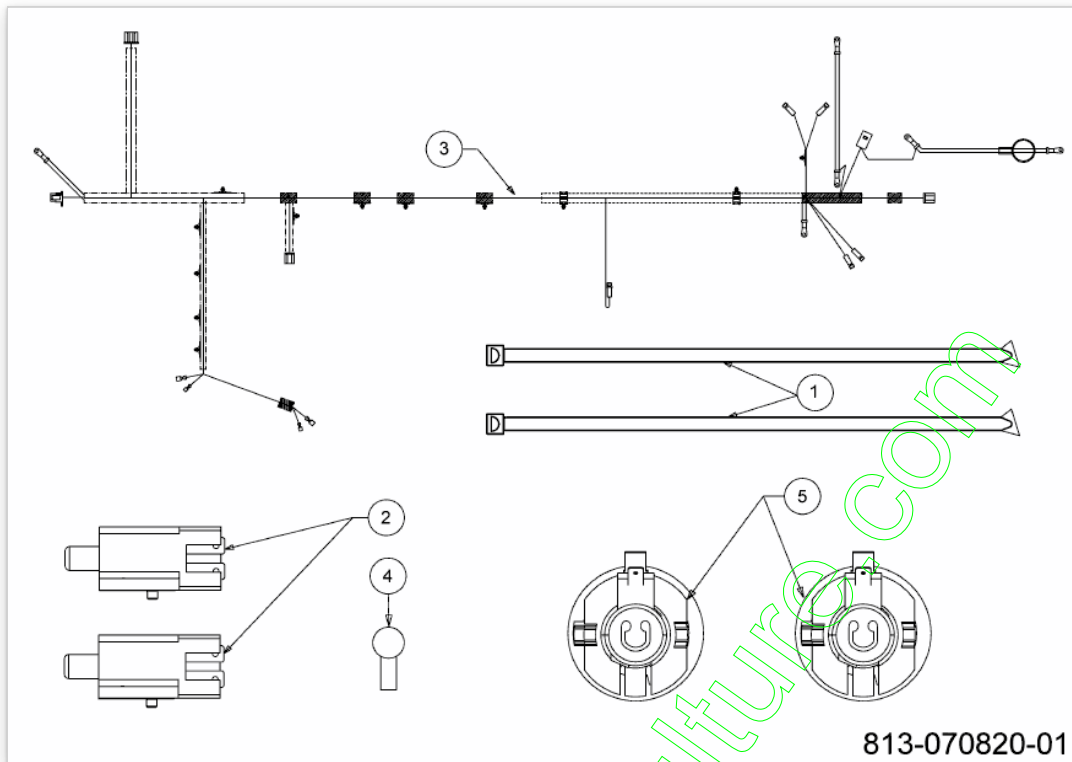


813-064058-02

www.emc-motoculture.com

Position	Numéro de pièce	#	Appellation I	Appellation II
1	725-17136	1	BATTERIE AGM 7AH	725-17136
2	725-3237	1	COUVERCLE POLE / ROUGE	BATTERIE FINISH:ROT
3	731-27025	1	BOÎTE BATTERIE	
4	747-11690	1		
5	753-11253	1	KIT SCHRAUBEN	

www.emc-motoculture.com



813-070820-01

Position	Numéro de pièce	#	Appellation I	Appellation II
1	725-0157	4	COLLIER DE SERRAGE3/16X0.5X7.4	MATERIAL:NYLON-SCHWARZ
2	725-04363	2	SECURITE EMBRAYAGE	FINISH:SIEHE ZG.
3	725-18173A	1	KABELBAUM:LT5:ACDC:HDLT:RMC:	BAG
3A	629-04133B	2	FAISCEAU DE PHARE	FINISH:
4	725-3237	1	COUVERCLE POLE / ROUGE	BATTERIE FINISH:ROT
5	725-1649A	2	LAMPEN-FASSUNG: 1/4 DREHUNG	KUNSTSTOFF GRAU

www.emc-motoculture.com