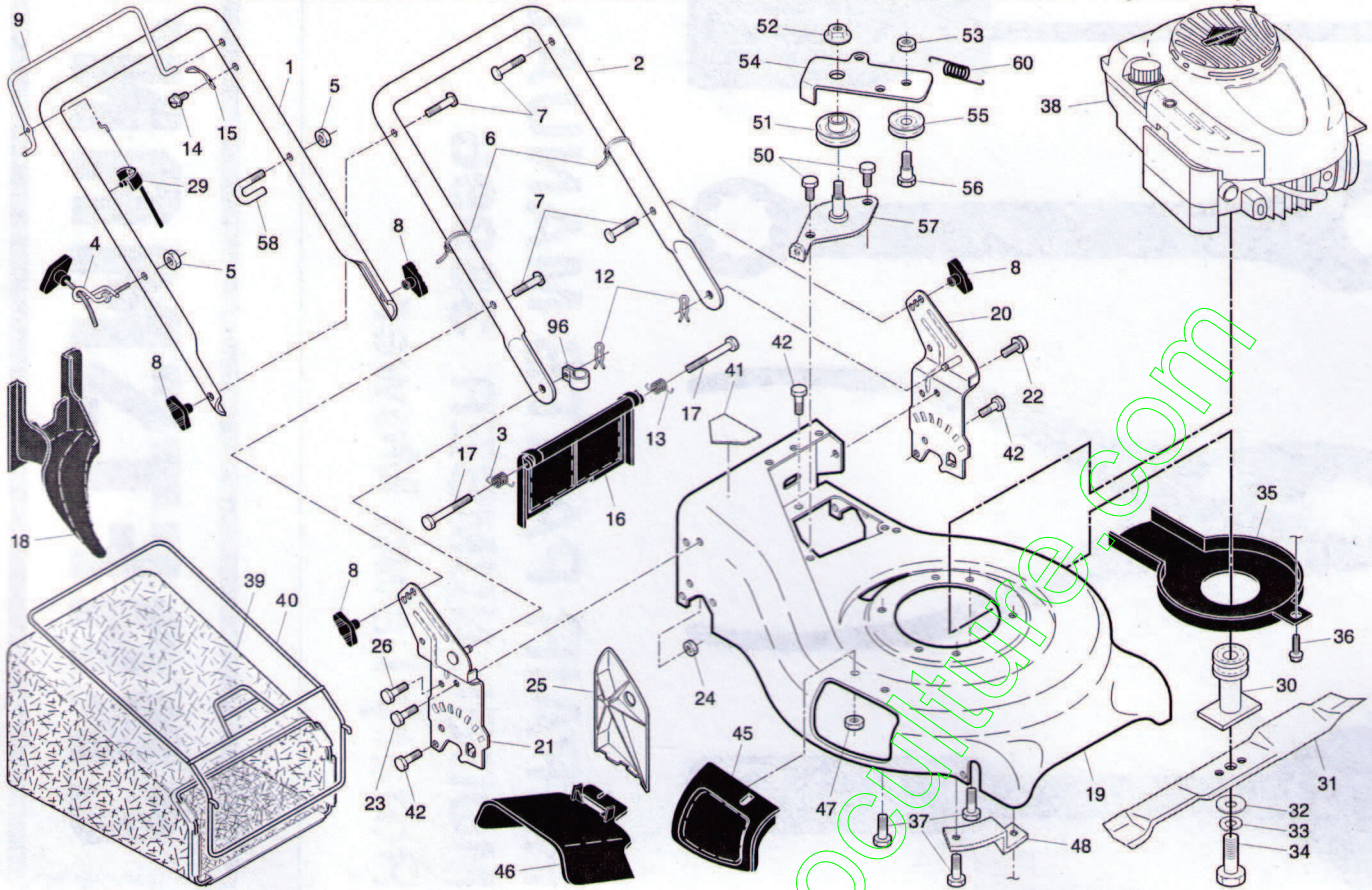


## CRAFTSMAN ROTARY LAWN MOWER - - MODEL NUMBER 38996 (389962)



## CRAFTSMAN ROTARY LAWN MOWER - - MODEL NUMBER 38996 (389962)

KEY NO.	PART NO.	DESCRIPTION	KEY NO.	PART NO.	DESCRIPTION
1	194579X479	Handle, Upper	34	851084	Bolt, Hex Head
2	193664X479	Handle, Lower	35	188786	Debris Shield
3	405416	Spring, Rear Door, RH	36	192325	Bolt
4	194788	Rope Guide	37	150406	Bolt, Engine
5	132004	Nut, Hex, with Lockwasher Insert 1/4-20	38	---	Engine, Briggs & Stratton, Model Number 124K02-0438-EA (order parts from Engine manufacturer)
6	66426	Wire, Tie	39	410679	Grassbag
7	191574	Bolt, Handle 5/16-18 x 2-5/8	40	407453	Frame, Grassbag
8	189713X428	Knob, Handle	41	182166	Danger Decal
9	194580X428	Control Bar	42	54583	Screw
12	51793	Cotter, Hairpin	45	183058X428	Mulcher Door Assembly
13	405415	Spring, Rear Door, LH	46	169699X428	Discharge Deflector
14	750634	Screw	47	88349	Nut, Hex
15	850733X004	Bracket, Upstop	48	188839X004	Mounting Bracket, Debris Shield
16	401815X428	Kit, Rear Door (Includes Springs)	50	57808	Screw
17	184193	Bolt, Rear Door	51	193791	Pulley, Idler
18	198170	Plug, Mulcher	52	145212	Flanged Nut
19	410132	Kit, Housing	53	155552	Locknut
20	192980X479	Handle Bracket Assembly, LH	54	193792X004	Idle Arm
21	192979X479	Handle Bracket Assembly, RH	55	166043	Idle Pulley
22	150078	Screw, Hex Washer Head	56	160829	Shoulder Bolt
23	163183	Bolt, Hex Head 5/16-18 x 5/8	57	193315X004	Bracket Assembly
24	73800500	Nut, Hex, with Lockwasher Insert 5/16-18	58	182003	Clip, Packaging
25	161333	Baffle, Side	60	182226	Spring, Return
26	163409	Screw #12 x 5/8	96	197991	Clip, Cable
29	191221	Cable, Operator Presence	--	410436	Operator's Manual, European
30	189179	Blade Adapter / Pulley	--	410435	Operator's Manual, Scandinavian
31	199377	Blade, 21"	--	410437	Repair Parts Manual, English
32	851074	Washer			
33	850263	Washer, Lock			

NOTE: All component dimensions given in U.S. inches. 1 inch = 25.4 mm.

**IMPORTANT:** Use only Original Equipment Manufacturer (O.E.M.) replacement parts. Failure to do so could be hazardous, damage your lawn mower and void your warranty.