

REPAIR PARTS MANUAL
MODEL NO. 253120
Lawn Tractor

CRAFTSMAN[®]

HOW TO USE THIS MANUAL

This manual is designed to provide the customer with a means to identify the parts on his/her tractor when ordering repair parts. The illustrations may or may not represent the actual assemblies; therefore, it is not recommended to use this manual as a guide to assemble or disassemble the tractor. Some hardware and parts are drawn larger in order to more readily identify them.

Each tractor has its own model number.

The model number for your tractor can be found on the fender under the seat.

When ordering parts, always give the following information:

- Product - "Tractor"
- Model Number - "253120"
- Part Number
- Part Description

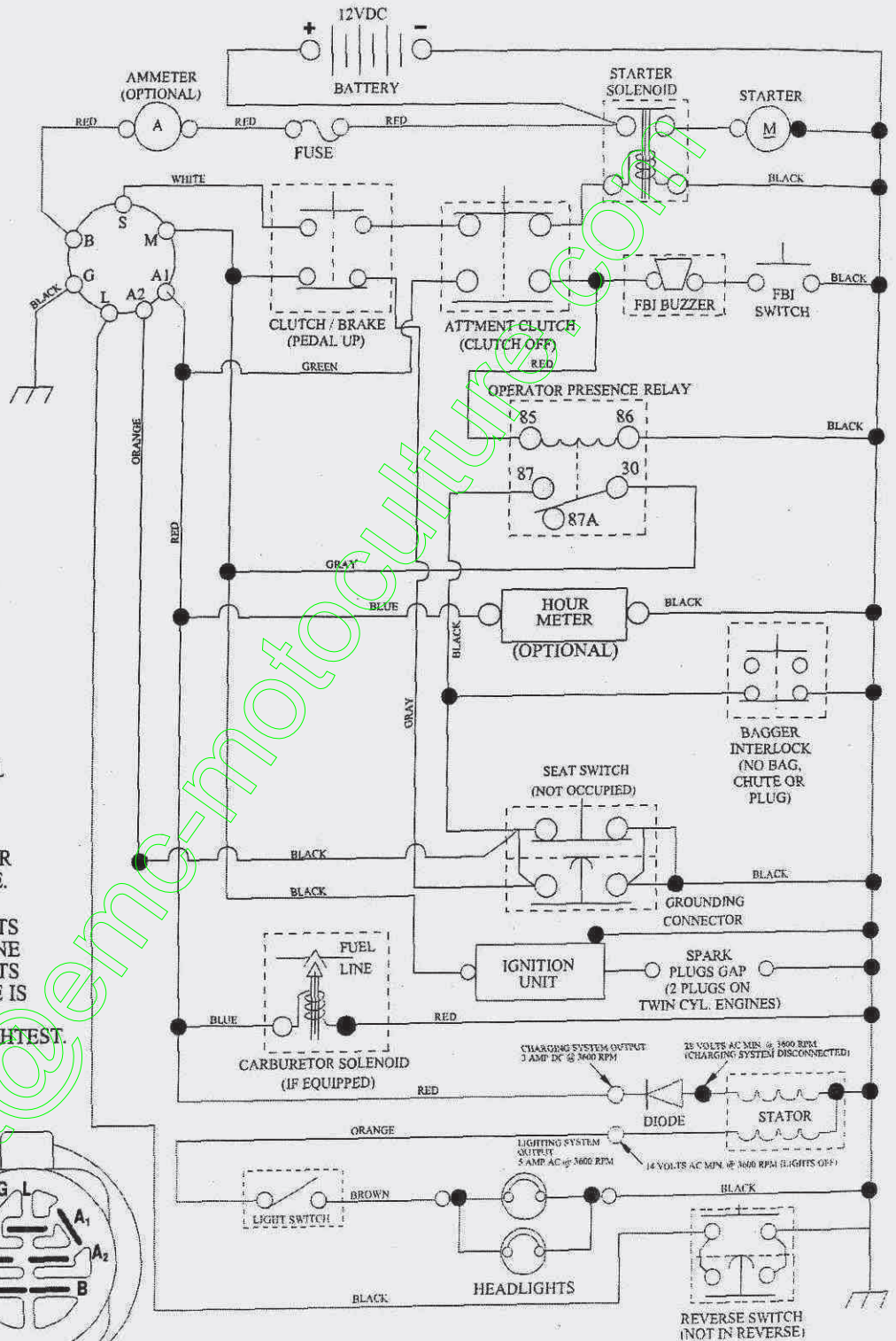
TABLE OF CONTENTS

SCHEMATIC	3
ELECTRICAL.....	4-5
CHASSIS AND ENCLOSURES.....	6-7
DRIVE.....	8-9
STEERING ASSEMBLY.....	10-11
SEAT ASSEMBLY.....	12
DECALS.....	13
ENGINE.....	14-15
MOWER LIFT.....	16-17
MOWER	18-19
BAGGER.....	20-21
TRANSAXLE.....	22-23
ENGINE BREAKDOWN.....	24-30
WARRANTY.....	BACK COVER

TRACTOR- -MODEL NO. 917.253120

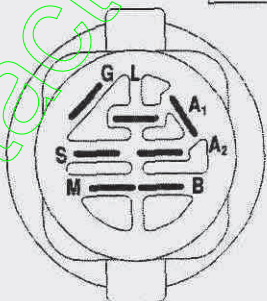
SCHEMATIC

SCH08



NOTE

YOUR TRACTOR IS EQUIPPED WITH A SPECIAL ALTERNATOR SYSTEM. THE LIGHTS ARE NOT CONNECTED TO THE BATTERY, BUT HAVE THEIR OWN ELECTRICAL SOURCE. BECAUSE OF THIS, THE BRIGHTNESS OF THE LIGHTS WILL CHANGE WITH ENGINE SPEED. AT IDLE THE LIGHTS WILL DIM. AS THE ENGINE IS SPEEDED UP, THE LIGHTS WILL BECOME THEIR BRIGHTEST.



IGNITION SWITCH

POSITION	CIRCUIT	"MAKE"
OFF	M+G+A1	
RUN/OVERRIDE	B+A1	
RUN	B+A1	L+A2
START	B+S+A1	

WIRING INSULATED CLIPS

NOTE: IF WIRING INSULATED CLIPS WERE REMOVED FOR SERVICING OF UNIT, THEY SHOULD BE RE-INSTALLED TO PROPERLY SECURE YOUR WIRING.

REMOVABLE CONNECTIONS

NON-REMOVABLE CONNECTIONS

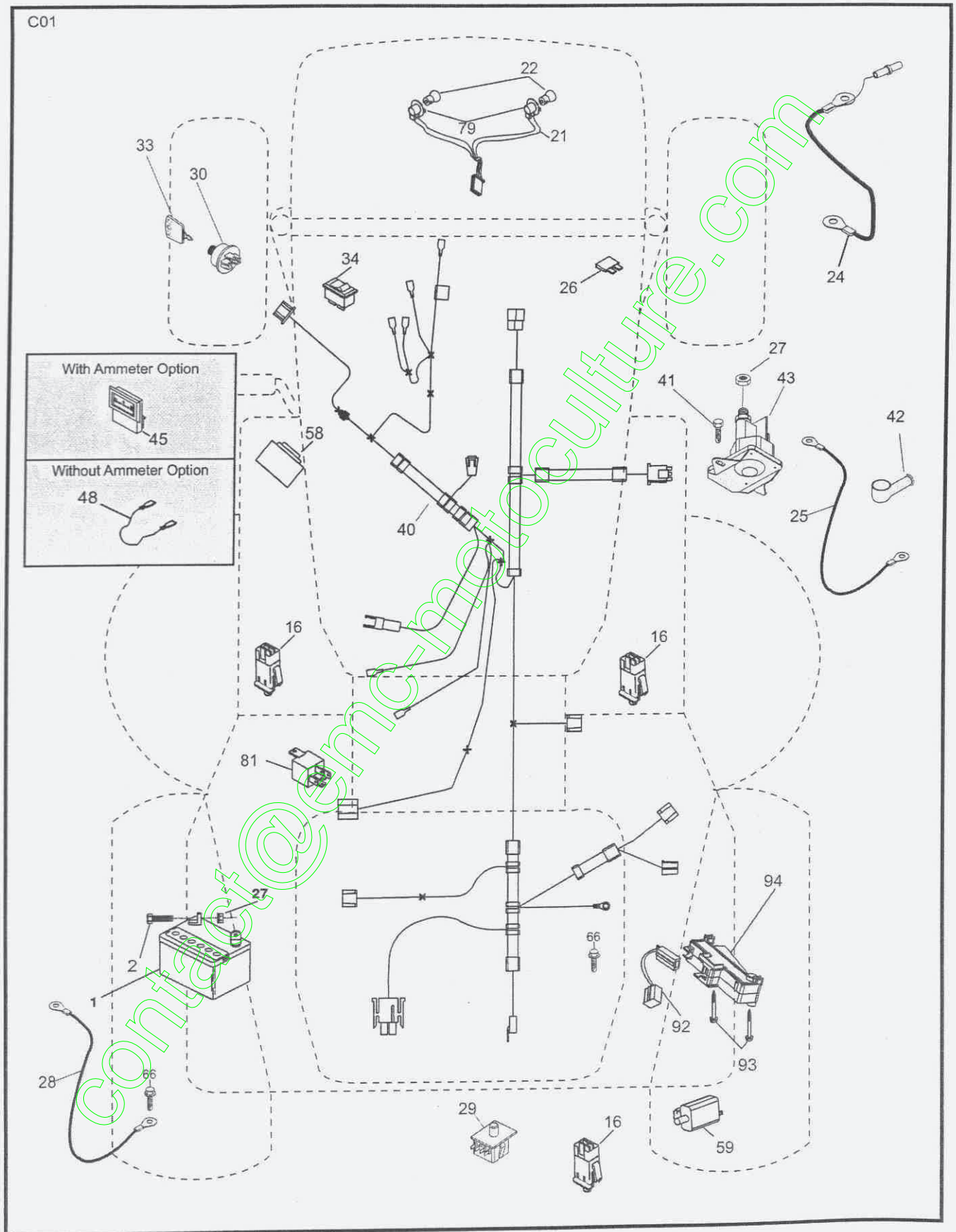


RELAY

REPAIR PARTS

TRACTOR- -MODEL NO. 917.253120

ELECTRICAL



REPAIR PARTS

TRACTOR- -MODEL NO. 917.253120

ELECTRICAL

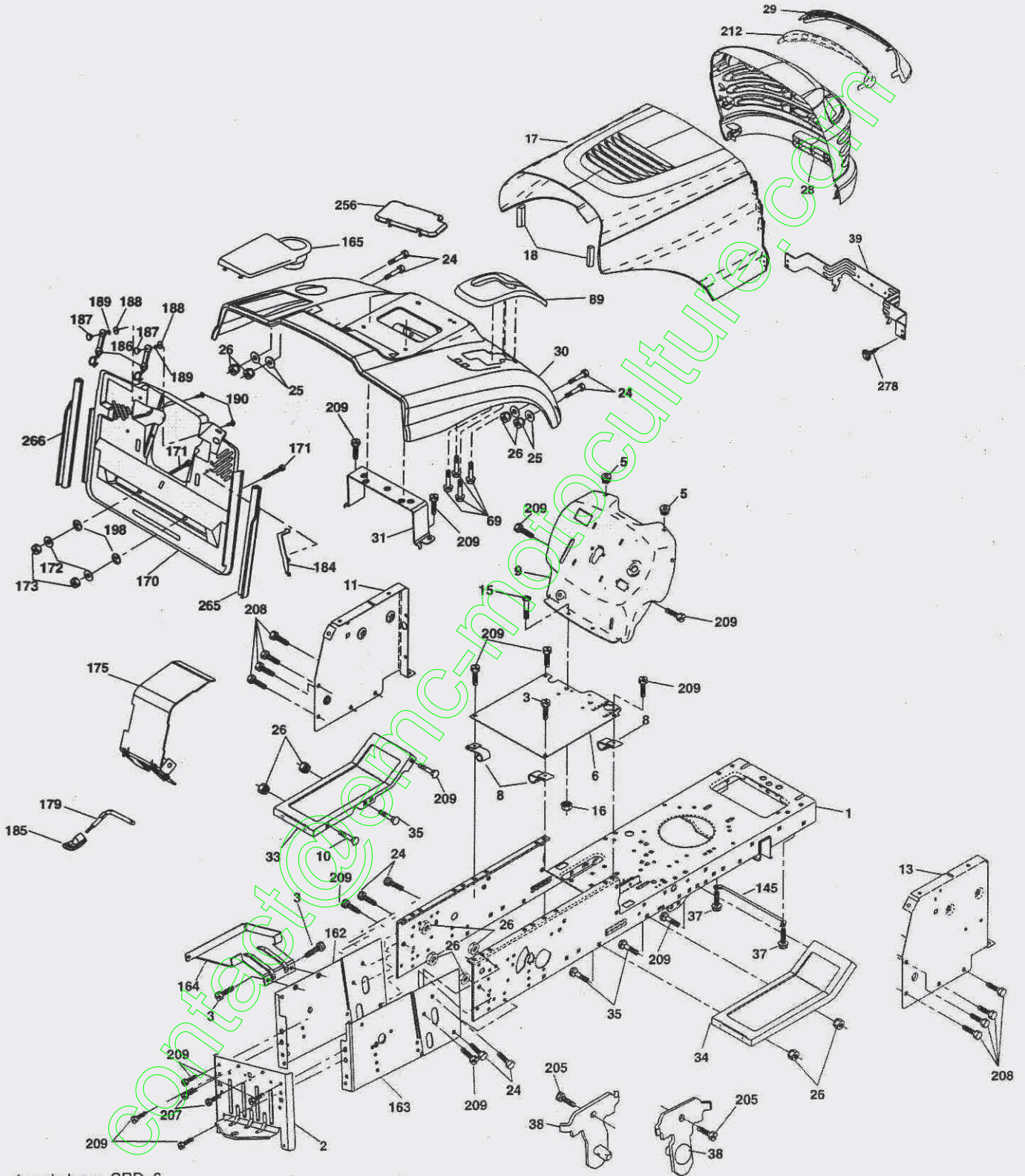
KEY NO.	PART NO.	DESCRIPTION
1	163465	Battery
2	74760412	Bolt Hex Hd 1/4-20 unc x 3/4
16	176138	Switch Interlock Push-In
21	183759	Harness Asm Light w/4152J
22	4152J	Bulb Light #1156
24	4799J	Cable Starter 6 Ga. 11" Red
25	165987	Cable Battery CRD 56" Red
26	175158	Fuse
27	STD541425	Nut Keps Hex 1/4-20 unc
28	127725X	Cable Ground 6 Ga. 18" Black
29	192749	Switch Seat
30	193350	Switch Ignition
33	411934	Key/Chain
34	110712X	Switch Light
40	197436	Harness Ign
41	71110408	Bolt Flk Fin Hex 1/4-20 unc x 1/2
42	131563	Cover Terminal Red
43	192507	Solenoid
48	140844	Adapter Ammeter
58	169419	Buzzer Crd
59	180379	Switch FBI CRD
66	17490608	Screw Thdrol 3/8-16 x 1/2 Ty-Tt
79	175242	Socket Asm Bulb Twistlock
81	109748X	Relay Asm
92	196615	Harness Pigtail
93	192540	Screw 10-14 x 2.0
94	191834	Module Reverse

NOTE: All component dimensions given in U.S. inches.
1 inch = 25.4 mm.

REPAIR PARTS

TRACTOR- -MODEL NO. 917.253120

CHASSIS AND ENCLOSURES



chassis-laser_CRD_6

REPAIR PARTS

TRACTOR- -MODEL NO. 917.253120

CHASSIS AND ENCLOSURES

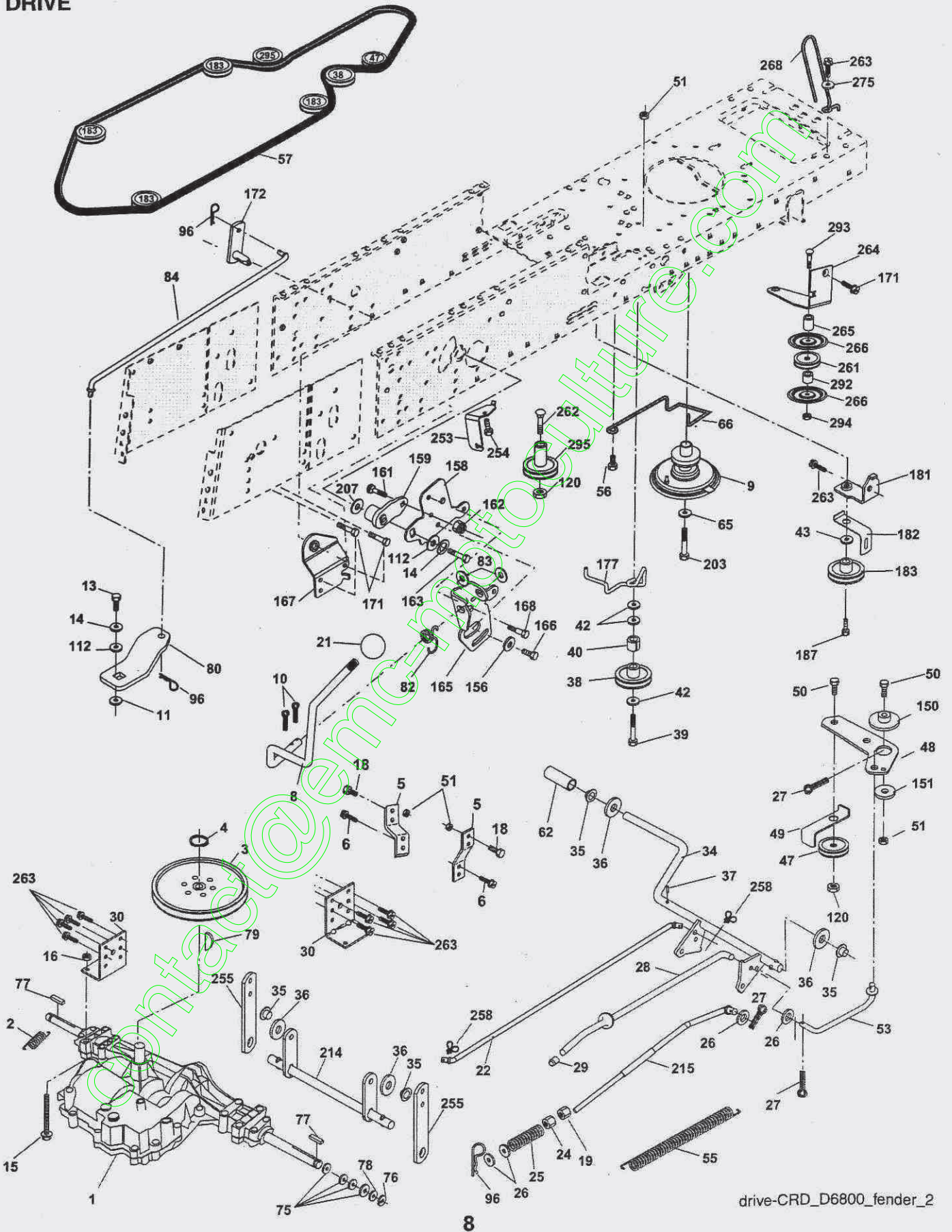
KEY NO.	PART NO.	DESCRIPTION	KEY NO.	PART NO.	DESCRIPTION
1	174620	Chassis Assembly	162	180382	Bracket Exten Chassis LH CRD
2	180384	Drawbar	163	180383	Bracket Exten Chassis RH CRD
3	17060612	Screw 3/8-16 x .75	164	165605	Support Battery CRD
5	155272	Bumper Hood/Dash	165	179020X428	Cover Battery CRD Lt
6	184419	Saddle	170	199488	Backplate Asm CRD
8	126471X	Clip Insulator 13/32 Mtg. Hole	171	72140620	Bolt Rdhd Sqnk 3/8-16 x 2-1/2
9	193518X012	Dash Silkscr	172	19132016	Washer 13/32 x 1-1/4 x 16 Ga.
10	STD533710	Bolt, Carriage 3/8-16 x 1	173	STD541437	Nut, Keps Hex 3/8-16 unc
11	174996	Panel, Dash, LH	175	188203	Door Trap
13	172105X010	Panel, Asm. Dash RH	179	188202	Rod Pivot FBI CRD
15	74180512	Screw, Machine, Truss Head 5/16-18 unc x 3/4	184	174662	Bracket Actuator Bagger CRD
16	STD541431	Nut Keps 5/16-18 unc	185	179608X505	Knob Rod Brake Parking
17	185682X613	Hood Assembly	186	160793	Latch Asm Mulch/Bagger
18	184921	Bumper Hood	187	2029J	Nut Weld .327/.304 #10-24
24	STD523710	Bolt Fin Hex 3/8-16 unc x 1. Gr. 5	188	19061216	Washer #10
25	19131312	Washer 13/32 x 13/16 x 12 Ga.	189	STD5511110	Washer Lock #10
26	STD541437	Nut Lock Hex w/lns 3/8-16 unc	190	71081010	Screw Pan Hd Phillips 10-24
28	193258	Grille/Lens Asm (Includes key #s 29 and 212)	198	168937	Nut, Push
29	174332X599	Lens, Grille	205	17490608	Screw Thdrol 5/8-16 x 1/2
30	192533X613	Fender	207	17670508	Screw Thdrol 5/16-18 x 1/2
31	165156	Bracket, Fender Support	208	17670608	Screw Thdrol 3/8-16 x 1/2 TYT
33	179716X613	Footrest, LH	209	17000612	Screw Hex Wsh Thdrol 3/8-16
34	179717X613	Footrest, RH	212	175143	Insert Lens Reflective
35	STD533107	Bolt RDHD SHT SQNK 3/8-16 x 3/4	256	180810X428	Cover Fender Rack
37	17490508	Screw Thdrol 5/16-18 x 1/2 TYT	265	185704	Seal Side RH
38	181748	Pivot Bracket Assembly	266	185703	Seal Side LH
39	407807	Bracket Pivot	278	416358	Screw #10 x 0.750 BOS Thread
69	142432	Screw Hex 1/4-1/2 unc	--	5479J	Plug, Button
89	192392X428	Console			
145	409167	Rod Pivot Hood			

NOTE: All component dimensions given in U.S. inches
1 inch = 25.4 mm.

REPAIR PARTS

TRACTOR- -MODEL NO. 917.253120

DRIVE



REPAIR PARTS

TRACTOR- -MODEL NO. 917.253120

DRIVE

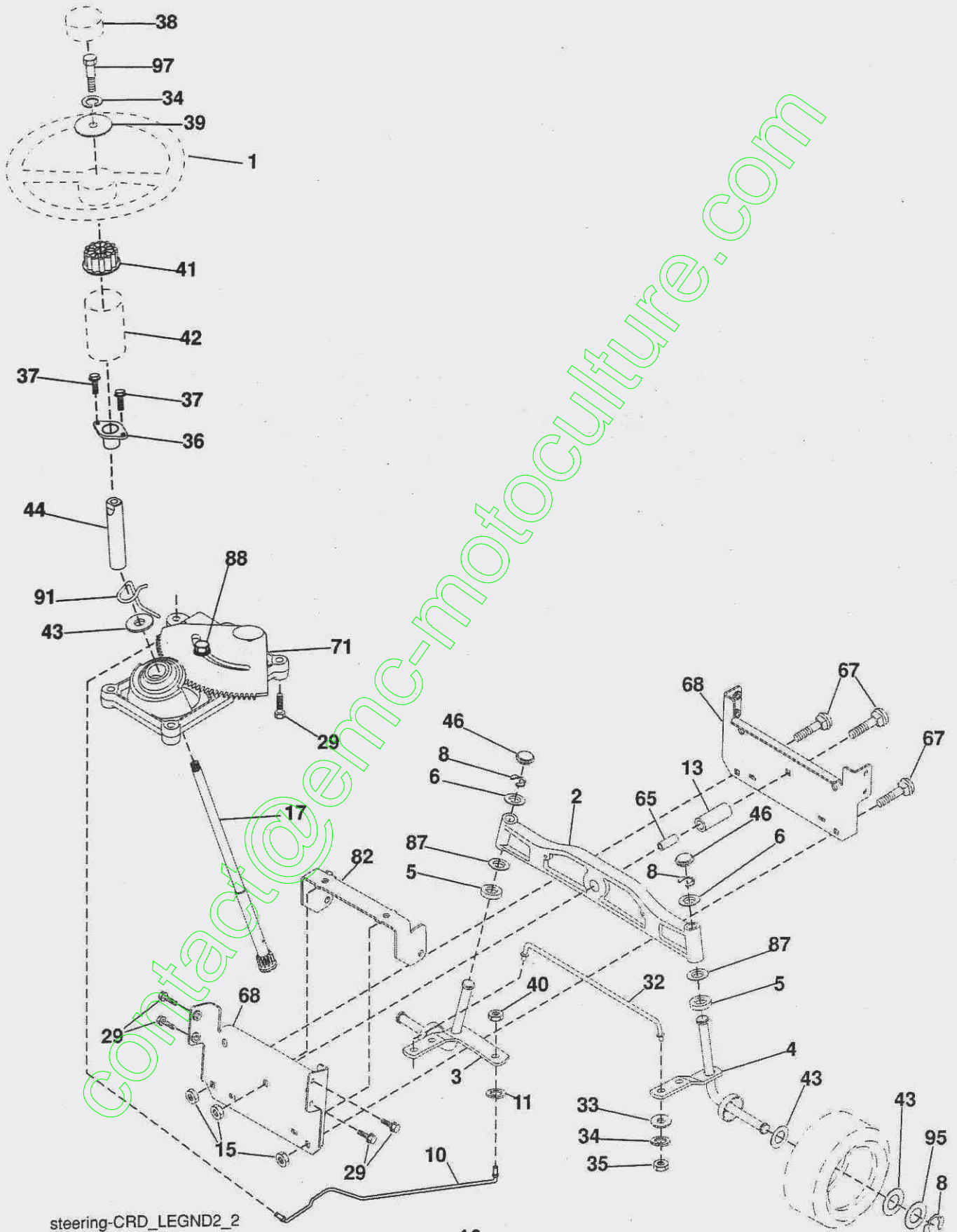
KEY NO.	PART NO.	DESCRIPTION	KEY NO.	PART NO.	DESCRIPTION
1	-----	Transaxle DANA 6800-3 (See Breakdown)	80	145090	Arm Shift
2	146682	Spring Brake Return	82	165711	Spring, Torsion
3	165999	Pulley Transaxle	83	19171216	Washer 17/32 x 3/4 x 16 Ga.
4	12000028	Ring Retainer #5100-62	84	407603	Link, Transaxle
5	121520X	Strap Torque 30 Degrees	96	4497H	Spring, Retainer 1"
6	17060512	Screw 5/16-18 x 3/4	112	19091210	Washer 9/32 x 3/4 x 10 Ga.
8	192706	Rod, Shift	120	73900600	Nut Lock Fig. 3/8-16 unc
9	408579	Clutch	150	165850	Bushing, Bellcrank Grnd Dr.
10	76020416	Pin, Cotter 1/8 x 1	151	19133210	Washer 13/32 x 2 x 10 Ga.
11	105701X	Washer Plate Shf .3888 Sq. Hole	156	166002	Washer Srrted 5/16ID x 1.125
13	74550412	Bolt 1/4-28 unf Gr. 8 w/Patch	158	165589	Bracket Shift Mount
14	10040400	Washer, Lock Hvy Helical	159	183900	Hub Shift
15	74490544	Bolt Hex FGHD 5/16-18 x Gr. 5	161	72140406	Bolt Rdhd Sqnc 1/4-20 x 3/4 Gr.
16	73800500	Nut, Lock Hex w/Ins 5/16-18 unc	162	73680400	Nut Crownlock 1/4-20 unc
18	74780616	Bolt Hex 3/8-16 unc x 1 Gr. 5	163	74780416	Bolt Hex Fin 1/4-20 unc x 1 Gr. 5
19	73800600	Nut, Lock Hex w/Ins. 3/8-16	165	165623	Bracket Pivot Lever
21	106933X	Knob	166	17490510	Screw 5/16-18 x 5/8
22	175607	Rod, Brake	167	165588	Bracket Support Shift CRD
24	73350600	Nut	168	165492	Bolt Shoulder 5/16-18 x .561
25	106888X	Spring, Rod, Brake	171	17490608	Screw Thdrol 3/8-16 x 1/2 Ty-Tt
26	19131316	Washer 13/32 x 13/16 x 16 Ga.	172	407605	Shaft Asm Shifter Frt CRD
27	76020412	Pin, Cotter 1/8 x 3/4	177	165932	Keeper Flat Idler 3.06" CRD
28	175765	Rod, Parking Brake	181	180211	Bracket Idler Ground Drive CRD
29	71673	Cap, Parking Brake	182	182682	Keeper Belt 2.5" Od V-Idler CRD
30	169592	Bracket, Mfg. Transaxle	183	199532	Pulley V-Idler
34	175578	Shaft, Asm Pedal Foot CRD	187	17580520	Screw Thdrol 5/16-18 x 1.25
35	120183X	Bearing, Nylon	203	71170780	Bolt Hex 7/16-20 x 5
36	19211616	Washer 21/32 x 1 x 16 Ga.	207	169845	Washer Nylon Rear
37	1572H	Pin, Roll 3/16 x 1"	214	175609	Shaft Asm. Brake
38	165936	Pulley Flat Composite 3.06"	215	410142	Rod Brake Hydro
39	74760644	Bolt Fin Hex 3/8-16 unc x 2-3/4	253	175028	Bracket, Cable
40	4470J	Spacer, Split 395 x 59 Bzp	254	17000616	Screw 3/8-16 x 1
42	19131312	Washer 13/32 x 13/16 x 12 Ga.	255	175608	Brace Shaft Brake Mtg.
43	19111012	Washer 11/32 x 5/8 x 12 Ga.	258	178062	Clip Retainer
47	127783	Pulley, Idler, V Groove Plastic	261	131494	Pulley Idler Flat
48	154407	Bellcrank Clutch Grnd Drv	262	72110622	Bolt Rdhd 3/8-16 unc x 2-3/4 Gr. 5
49	123205X	Retainer, Belt Style Spring	263	17000612	Screw 3/8-16 x 3/4
50	72110612	Bolt, Carr. 3/8-16 x 1/2 x Gr. 5	264	197608	Bracket Idler
51	73680600	Nut, Crownlock 3/8-16 unc	265	404607	Spacer, Idler
53	199652	Link, Clutch 7.66	266	182061	Shield, Idler
55	105709X	Spring, Return, Clutch	268	182402	Guard Muffler
56	17060620	Screw 3/8-16 x 1-1/4	275	19131614	Washer 13/32 x 1 x 14 Ga.
57	405075	V-Belt Kev CRD	292	400271	Spacer
62	8883R	Cover, Pedal	293	72140628	Bolt 3/8-16 x 3-1/2
65	10040700	Washer	294	197033	Nut Jam 3/8-16
66	154778	Keeper, Belt Engine F-Proof	295	179114	Pulley Idler Composite
75	121749X	Washer 25/32 x 1-1/4 x 16 Ga.			
76	12000001	Ring, E			
77	123583X	Key, Square			
78	121748X	Washer 25/32 x 1-5/8 x 16 Ga.			
79	2228M	Key Woodruff			

NOTE: All component dimensions given in U.S. inches
1 inch = 25.4 mm

REPAIR PARTS

TRACTOR- -MODEL NO. 917.253120

STEERING ASSEMBLY



steering-CRD_LEGND2_2

REPAIR PARTS

TRACTOR- -MODEL NO. 917.253120

STEERING ASSEMBLY

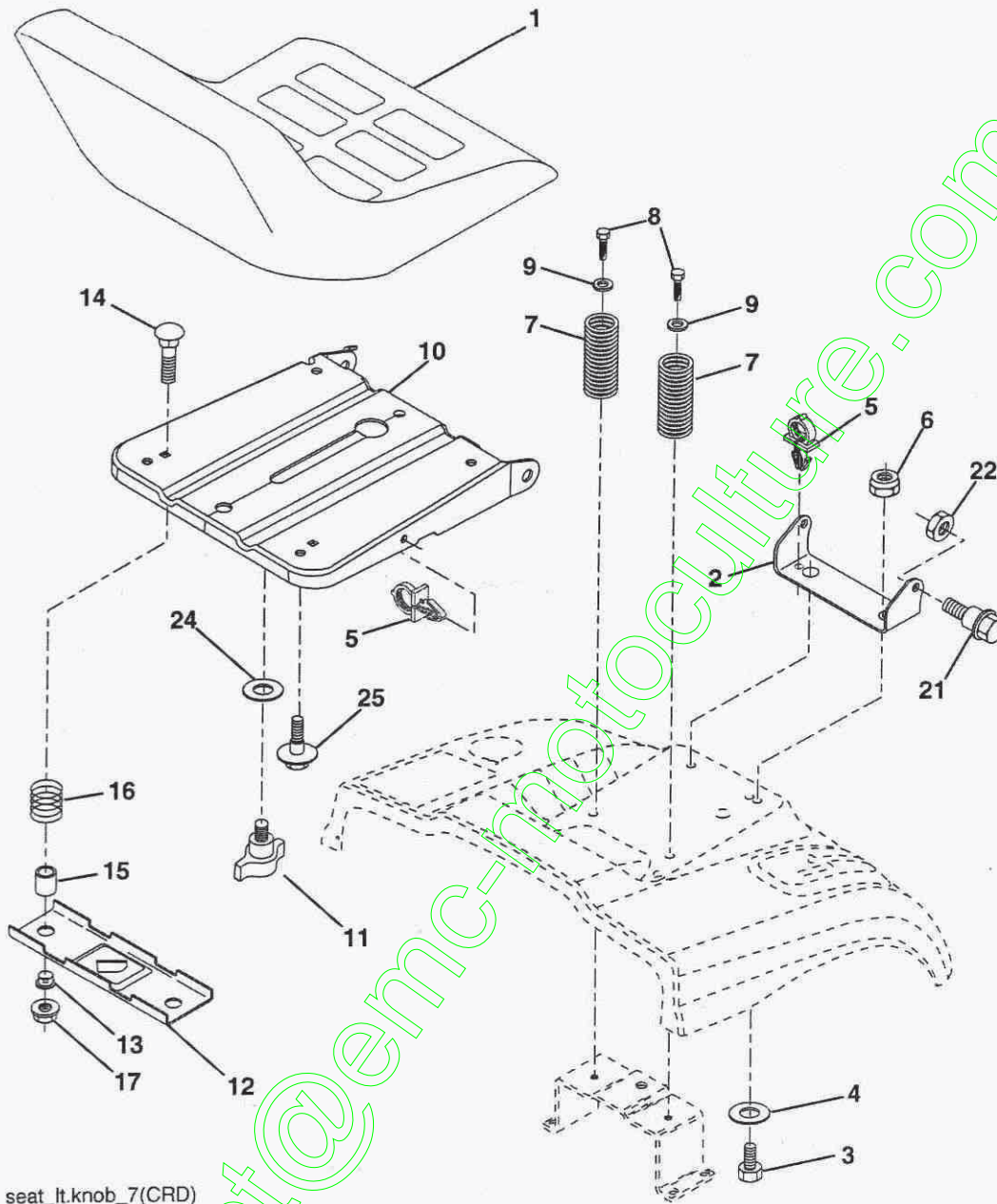
KEY NO.	PART NO.	DESCRIPTION
1	186093X428	Steering Wheel
2	184706	Front Axle Assembly
3	169840	Spindle Assembly, LH
4	169839	Spindle Assembly, RH
5	6266H	Bearing, Race, Thrust, Hardened
6	121748X	Washer 25/32 x 1-5/8 x 16 Ga.
8	12000029	Ring, Clip
10	175121	Link, Drag
11	STD551137	Washer, Lock
13	136518	Spacer Axle
15	145212	Nut, Hexflange Lock
17	190753	Shaft Assembly, Steering
29	17000612	Screw, 3/8-16 x 3/4 SMGML Tap/R
32	170162	Rod, Tie
33	19111216	Washer 11/32 x 3/4 x 16 Ga.
34	STD551131	Washer Lock Hvy Hlcl Spr 5/16
35	73540500	Nut Crownlock 5/16-24 unf
36	155099	Bushing, Steering
37	152927	Screw TT #10-32 x 5 x 3/8 Flange
38	186095X428	Cap Wheel Steering
39	19113812	Washer 11/32 ID x 2-3/8 OD x 12 Ga.
40	73540600	Nut Crownlock 3/8-24
41	186737	Adaptor, Steering Wheel
42	145054X428	Boot, Steering Dash
43	121749X	Washer 25/32 x 1-1/4 x 16 Ga.
44	190752	Extension Steering Non-Adjust
46	184946X505	Cap, Spindle
65	414736	Spacer Brace Axle
67	72110618	Bolt RDHD SQ 3/8-16 x 2-1/4
68	169827	Brace Axle
71	175146	Steering Asm.
82	199978	Bracket Susp Chassis Front
87	173966	Washer Flat .781 x 1-1/2 x .14
88	175118	Bolt Shoulder
91	175553	Clip Steering
95	188967	Washer Harden .739 x 1.637 x 060
97	74780564	Bolt 5/16-18 unc x 4" L Gr. 5

NOTE: All component dimensions given in U.S. inches.
1 inch = 25.4 mm.

REPAIR PARTS

TRACTOR- -MODEL NO. 917.253120

SEAT ASSEMBLY



seat_lt.knob_7(CRD)

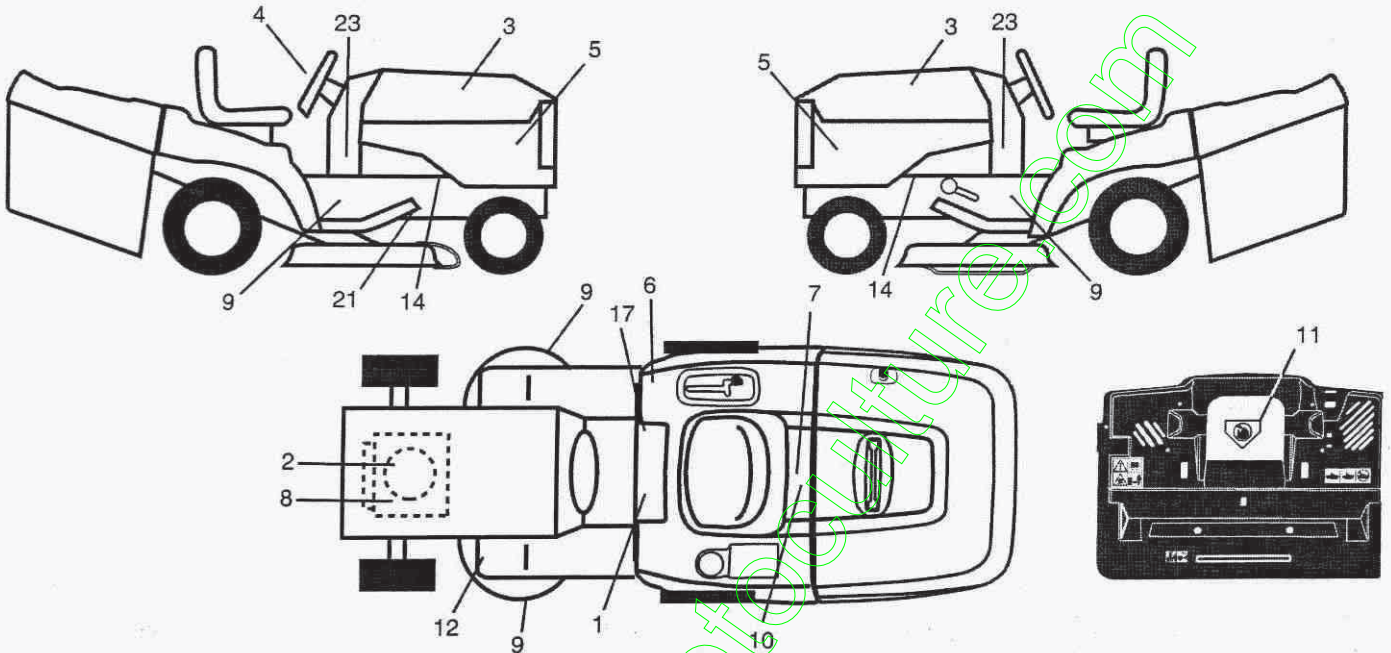
KEY NO.	PART NO.	DESCRIPTION	KEY NO.	PART NO.	DESCRIPTION
1	188939	Seat	13	121248X	Bushing Snap Blk Nyl 50 Id
2	140551	Bracket Pnt Pivot Seat (blk)	14	72050412	Bolt Rdhd Sht Nk 1/4-20 x 1-1/2
3	71110616	Bolt Fin Hex 3/8-16 unc x 1	15	134300	Spacer Split .28 x .96 Zinc
4	19131610	Washer Flat 13/32 x 1 x 10 Ga.	16	121250X	Spring Cprsn
5	145006	Clip Push In Hinged	17	123976X	Nut Lock 1/4 Lge Flg Gr. 5 Zinc
6	STD541437	Nut Lock Hex 3/8-16 unc	21	171852	Bolt Shoulder 5/16-18 unc-2A
7	124181X	Spring Seat Cprsn 2 250 Blk Zi	22	STD541431	Nut Hex Lock w/lns 5/16-18
8	17000616	Screw 3/8-16 x 1	24	19171912	Washer 17/32 x 1-3/16 x 12 Ga.
9	19131614	Washer 13/32 x 1 x 14 Ga.	25	127018X	Bolt Shoulder 5/16-18 x .62
10	195530	Pan Pnt Seat			
11	166369	Knob Seat Adj Wingnut			
12	174648	Bracket Pnt Mounting Switch			

NOTE: All component dimensions given in U.S. inches.
1 inch = 25.4 mm

REPAIR PARTS

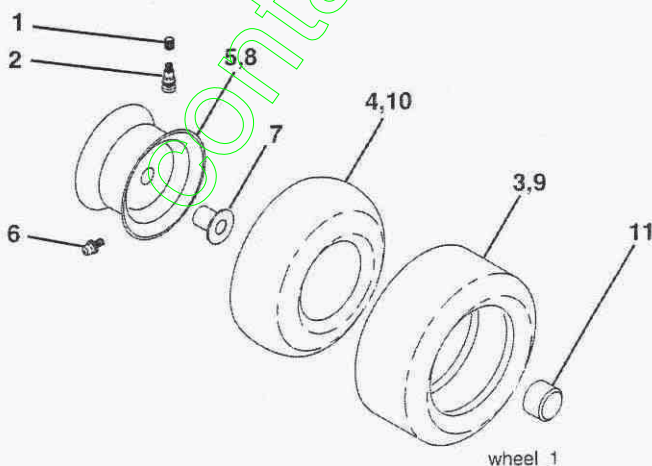
TRACTOR- -MODEL NO. 917.253120

DECALS



KEY NO.	PART NO.	DESCRIPTION	KEY NO.	PART NO.	DESCRIPTION
1	400389	Decal Read Owner's Manual Sym	12	159737	Decal Brake/Clutch Symbol Lt
2	416729	Decal Hp Engine	14	159736	Decal Chassis Hot Muffler
3	411697	Decal Hood	17	140837	Decal Saddle Brake Parking
4	164065	Decal Steering Wheel	21	166286	Decal Deck Sch 92 CRD
5	413054	Decal Hood Side	23	181685	Decal Panel Dash
6	180432	Decal 100 DB/CE	--	138311	Decal Lift Handle
7	166960	Decal Bypass Fender	--	179768X428	Pad Footrest LH
8	196841	Decal Engine Warning Sym	--	179769X428	Footrest Pad RH
9	169842	Decal Cutoffinger Sym	--	418726	Manual Operator's (Euro)
10	145005	Decal Bat Dan/Poi P/L Sym Wpn	--	418727	Manual Parts
11	182166	Decal Mower Cut Finger Symbol			

WHEELS & TIRES



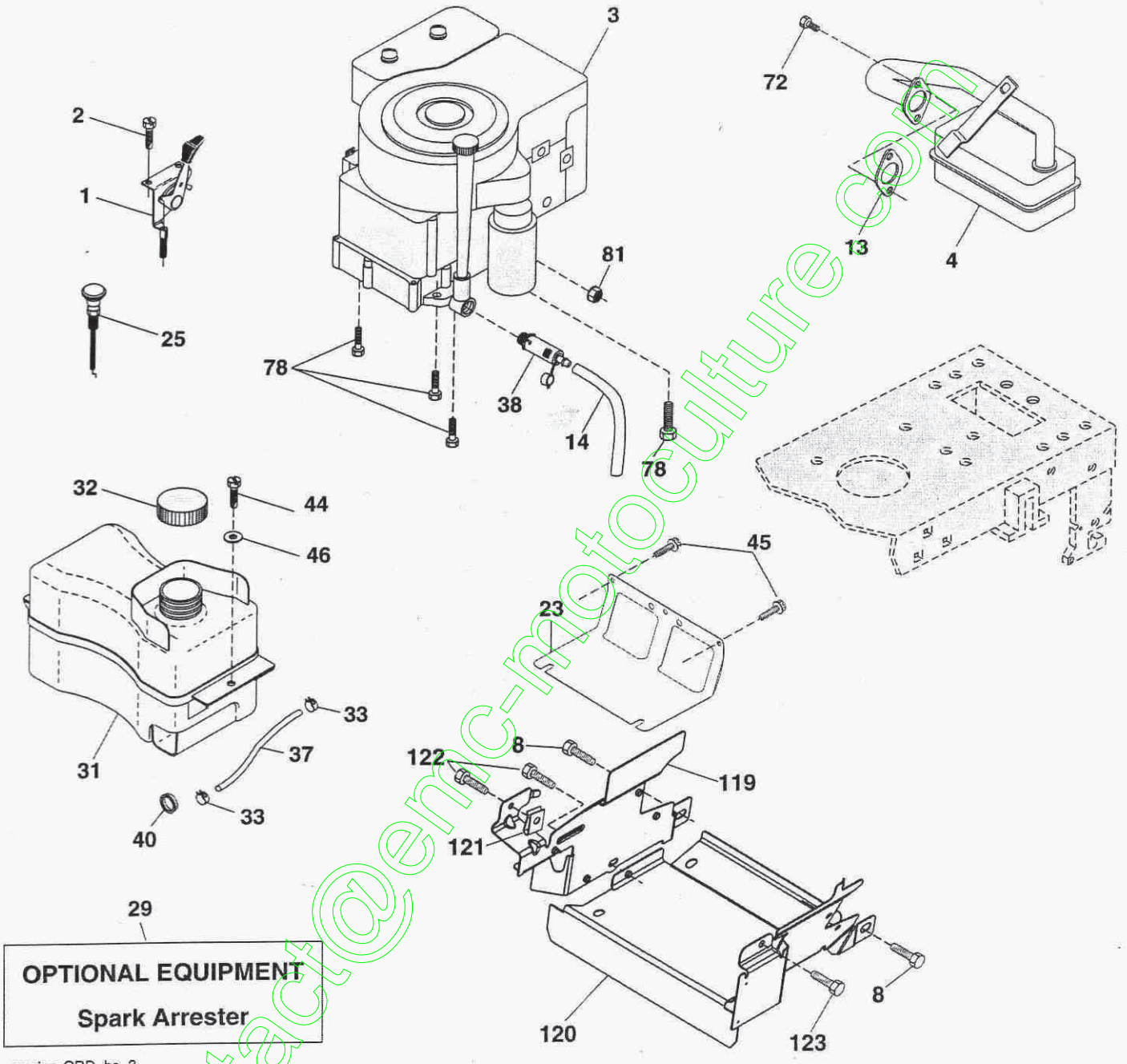
KEY NO.	PART NO.	DESCRIPTION
1	59192	Cap Valve Tire
2	65139	Stem Valve
3	106222X	Tire F Ts 15 x 6.0 - 6 Service
4	59904	Tube Inner Front #35060
5	106732X645	Rim Asm 6" Front Service
6	278H	Fitting Grease
7	9040H	Bearing Flange
8	106108X645	Rim Asm 8" Rear Service
9	138468	Tire R Ts 20 x 8-8 Service
10	7152J	Tube Rear 9.5 x 8 Service
11	104757X645	Cap Axle Blk 1 50 x 1 00
--	144334	Sealant, Tire (10 oz. tube)

NOTE: All component dimensions given in U.S. inches
1 inch = 25.4 mm

REPAIR PARTS

TRACTOR- -MODEL NO. 917.253120

ENGINE



REPAIR PARTS

TRACTOR- -MODEL NO. 917.253120

ENGINE

KEY NO.	PART NO.	DESCRIPTION
1	170545	Control Throttle
2	17720408	Screw Hex Thd Cut 1/4-20 x 1/2
3	-----	Engine Briggs Model 31A607-0740-B1
4	137352	Muffler Exhaust B&S Lt
8	171877	Bolt 5/16-18 unc x 3/4 w/Sems
13	165291	Gasket 1 313 Id Tin Plated
14	148456	Tube Drain Oil Easy
23	169837	Shield Browning/Debris Guard
25	187770X428	Control Choke
29	137180	Arrestor Spark
31	407516	Tank Fuel 1.25 Fr
32	197725	Cap Asm Fuel
33	123487X	Clamp Hose Blk
37	137040	Line Fuel 20"
38	181654	Plug Oil Drain Easy
40	124028X	Bushing Snap
44	17670412	Screw Hexwsh Thdrol 1/4-20 x 3/4
45	17000612	Screw Hexwsh Thdr 3/8-16 x 3/4
46	19091416	Washer 9/32 x 7/8 x 16 Ga.
72	192334	Screw Socket 5/16-18 x 3/4
78	17060620	Screw 3/8-16 x 1-1/4
81	STD541425	Nut Keps 1/4-20 unc
119	199768	Guard Engine LH
120	199767	Guard Engine RH
121	196688	Clips Threaded
122	137729	Screw THD Roll 1/4-20 x 5/8
123	17670508	Screw THDROL 5/16-18 x 1/2

NOTE: All component dimensions given in U.S. inches
1 inch = 25.4 mm

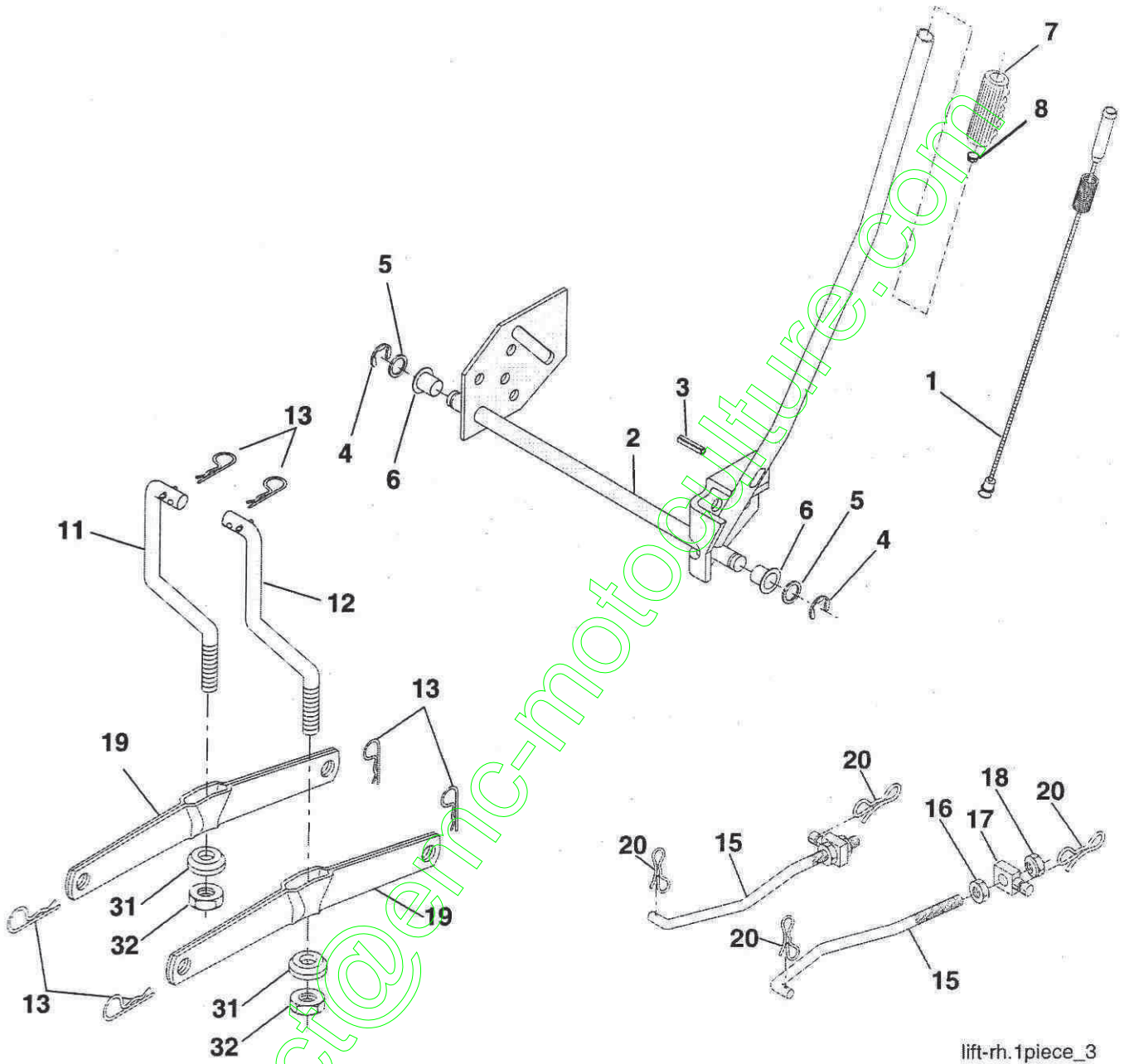
Engine Power Rating Information

The gross power rating for individual gas engine models is labeled in accordance with SAE (Society of Automotive Engineers) code J11940 (Small Engine Power & Torque Rating Procedure), and rating performance has been obtained and corrected in accordance with SAE J1995 (Revision 2002-5). Actual gross engine power will be lower and is affected by, among other things, ambient operating conditions and engine-to-engine variability. Given both the wide array of products on which engines are placed and the variety of environmental issues applicable to operating the equipment, the gas engine will not develop the rated gross power when used in a given piece of power equipment (actual "on-site" or net horsepower). This difference is due to a variety of factors including, but not limited to, accessories (air cleaner, exhaust, charging, cooling, carburetor, fuel pump, etc.), application limitations, ambient operating conditions (temperature, humidity, altitude), and engine-to-engine variability. Due to manufacturing and capacity limitations, Briggs & Stratton may substitute an engine of higher rated power for this Series engine.

REPAIR PARTS

TRACTOR- -MODEL NO. 917.253120

MOWER LIFT



lift-rh. 1piece_3

REPAIR PARTS

TRACTOR- -MODEL NO. 917.253120

MOWER LIFT

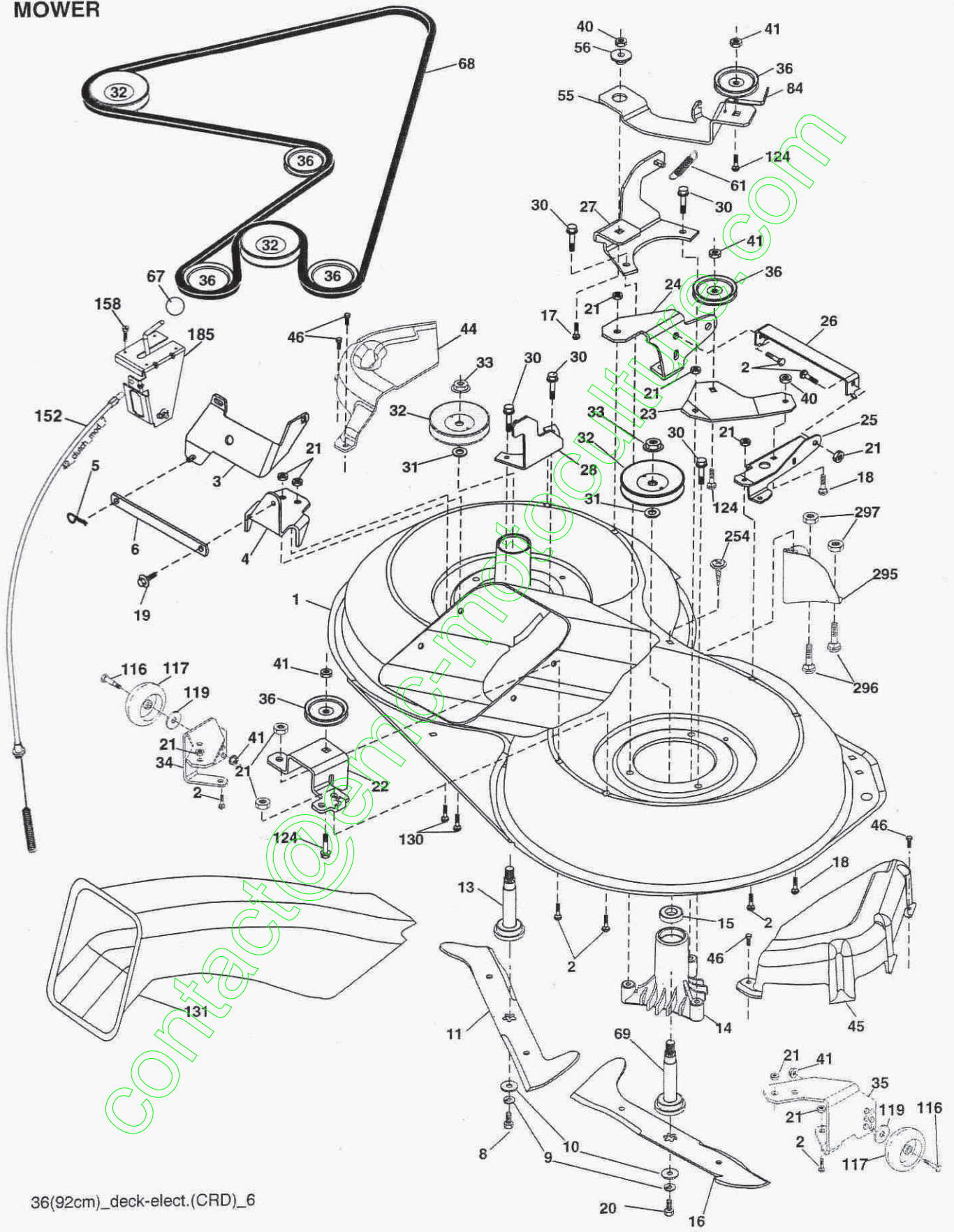
KEY NO.	PART NO.	DESCRIPTION
1	159460	Wire Asm Inner Spring w/Plunger
2	159471	Shaft Asm. Lift
3	105767X	Pin Groove
4	12000002	E Ring #5133-62
5	19211621	Washer 21/32 x 1 x 21 Ga.
6	120183X	Bearing Nylon
7	125631X	Grip Handle
8	124526X	Button Plunger Black
11	165829	Link Asm Lift LH
12	165831	Link Asm Lift RH
13	4939M	Retainer Spring
15	173288	Link Front
16	73350800	Nut Jam Hex 1/2-13 unc
17	175689	Trunnion Blk Zinc
18	73800800	Nut Lock w/Wsh 1/2-13 unc
19	139868	Arm Suspension Mower
20	194209	Pin Cotter Bow Tie Lock
31	169865	Bearing Pvt. Lift.
32	73540600	Nut Crownlock 3/8-24

NOTE: All component dimensions given in U.S. inches
1 inch = 25.4 mm

REPAIR PARTS

TRACTOR- -MODEL NO. 917.253120

MOWER



36(92cm)_deck-elect.(CRD)_6

REPAIR PARTS

TRACTOR- -MODEL NO. 917.253120

MOWER

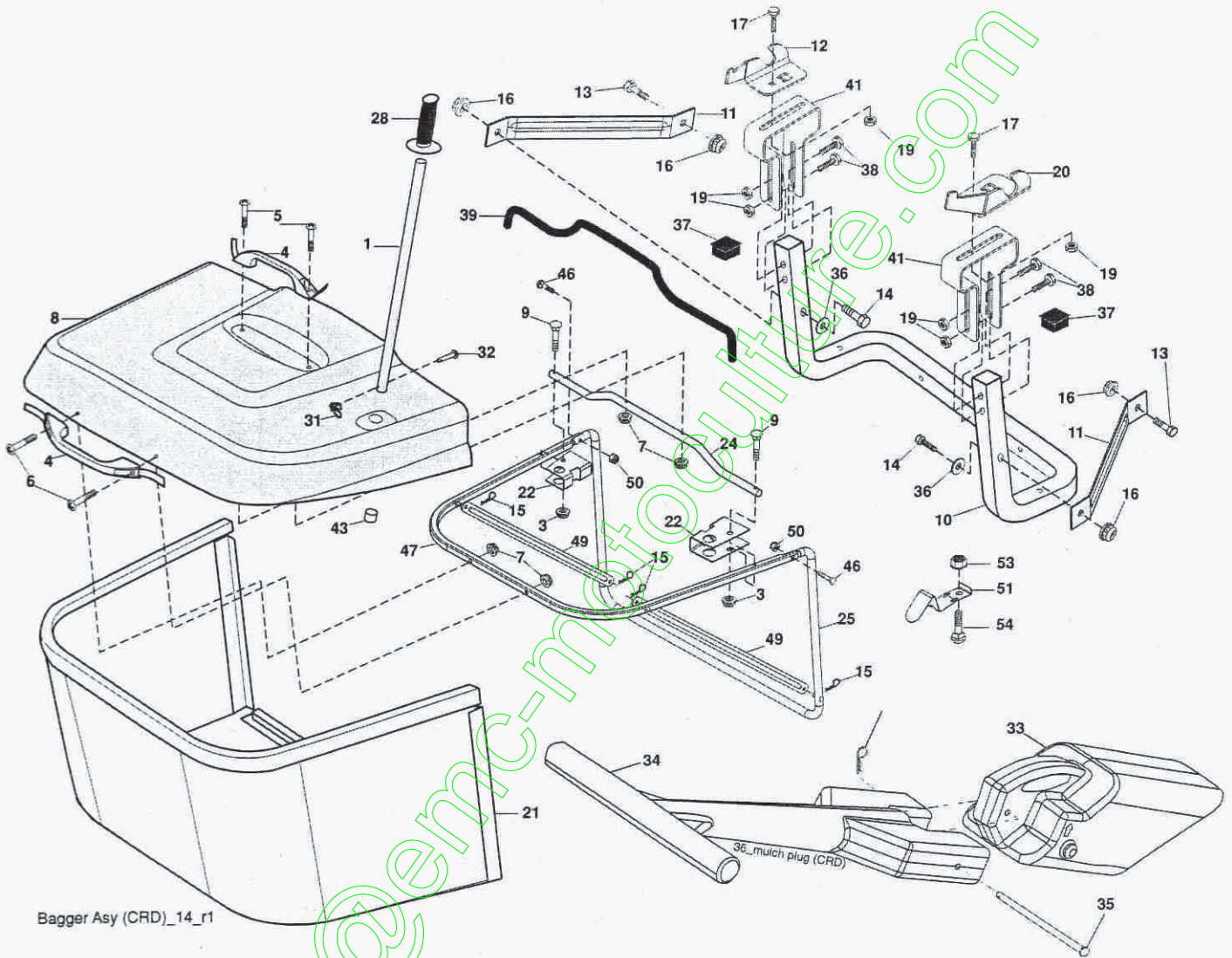
KEY NO.	PART NO.	DESCRIPTION	KEY NO.	PART NO.	DESCRIPTION
1	400108	Housing Asm. Mower 92 CRD	44	175538	Cover Mandrel LH 92 CRD
2	STD533107	Bolt Rdhd Sqnk 5/16-18 unc x 3/4	45	175539	Cover Mandrel RH 92 CRD
3	165569	Bracket Asm. S-Bar Chass 92 CRD	46	137729	Screw Thd Roll 1/4-20 x 5/8
4	165558	Bracket Bar Sway Deck 92 CRD	55	199498	Arm Idler 92 CRD
5	4939M	Retainer Spring	56	165723	Spacer Retainer Mower
6	165557	Bar Sway 92 CRD	61	199486	Spring Tension Belt
8	181712	Bolt 3/8-24 x 1.25 Gr. 8 Patched	67	106932X	Knob Rd 3/8-16 Plstdc Thds Blk
9	STD551137	Washer Lock Hvy 3/8 Unplated	68	402008	Hex-Belt 92 Mower
10	140296	Washer.Hard	69	165482	Shaft Asm w/Lwr Brg RH Thd CRD
11	186385	Blade 92 CRD	84	156085	Keeper Belt Idler
13	137645	Shaft Asm. w/Lower Bearing	116	193406	Bolt Shoulder
14	128774	Housing Mandrel Vented (Machd)	117	174873	Wheel Gauge
15	110485X	Bearing Ball Mandrel	119	19132012	Washer 13/32 x 1-1/4 x 12 Ga.
16	186386	Blade 3-1 RH 92 CRD	124	72110612	Bolt Carr Sh 3/8-16 x 1-1/2 Gr. 5
17	STD533712	Bolt Carriage 3/8-16 x 1-1/4	130	STD533107	Bolt Rdhdsqnk 5/16-18 unc x 3/4
18	STD533707	Bolt Rdhd Sqnk 3/8-16 x 3/4	131	165661	Chute Bagger CRD 92 cm
19	132827	Bolt Shoulder 5/16-18 Thd Form	152	176074	Cable Clutch CRD Service
20	181713	Bolt 3/8-24 x 1.25 Gr. 8 Ptch Lhthd	158	17720408	Screw Thd Cut 1/4-20 x 1/2
21	STD541431	Nut Crown Lock 5/16-18	185	188234	Head Asm Cable Clutch
22	199590	Bracket Idler Sprt RR 92 CRD	254	17000616	Screw 3/8-16 x 1
23	165446	Bracket Idler Sprt RF 92 CRD	295	412171	Baffle Front
24	165242	Bracket Suspension LF 92 CRD	296	72140406	Bolt RDHD SQNK 1/4-20 x 3/4 Gr. 5
25	165244	Bracket Suspension RF 92 CRD	297	73930400	Nut Centerlock 1/4-20 unc
26	400110	Brace Support Susp Frt CRD	--	181857	Mandrel Asm Service (Includes Housing, Shaft and Shaft Hardware Only - Pulley Not Included)
27	165568	Bracket Asm. Susp RR 92 CRD	--	181858	Mandrel Asm CRD LH Threads SVC
28	165567	Bracket Asm. Susp LR 92 CRD	--	413711	Replacement Mower Complete (Order separately gauge wheel components key nos. 116-119)
30	173984	Screw Thd Rolling Washer Head			
31	187690	Washer Spacer			
32	153532	Mandrel Pulleys 38			
33	400234	Nut Flg Top Lock			
34	400107	Bracket Gauge Wheel LF 92 CRD			
35	400106	Bracket Gauge Wheel RF 92 CRD			
36	146763	Pulley Idler V-Groove Dim 4.25			
40	STD541437	Nut Crownlock 3/8-16 unc			
41	73900600	Nutlock Flg 3/8-16 unc			

NOTE: All component dimensions given in U.S. inches
1 inch = 25.4 mm

REPAIR PARTS

TRACTOR- -MODEL NO. 917.253120

BAGGER



REPAIR PARTS

TRACTOR- -MODEL NO. 917.253120

BAGGER

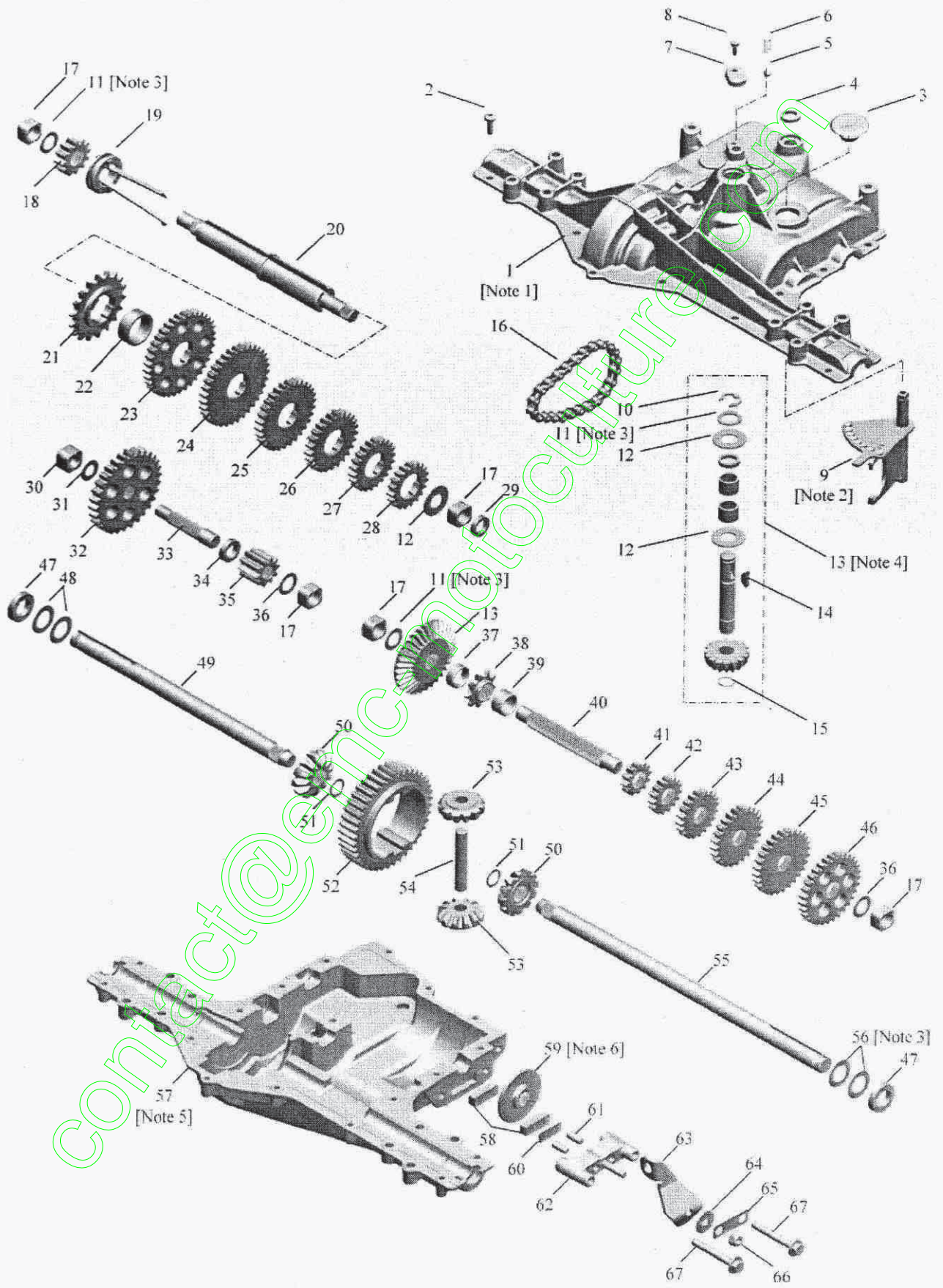
KEY NO.	PART NO.	DESCRIPTION
1	165249	Tube Handle Bagger CRD
3	123976X	Nut Lock 1/4 Lge Flg Gr. 5 Zinc
4	169916	Handle Bagger
5	74981024	Screw Pan Head #10-24 x 1.50 Blk
6	74981032	Screw Pan Hd
7	73401000	Nut Wiz Lock Hex Serr/Hd 10-24
8	169963X613	Cover Bagger Steel CRD
9	72140418	Bolt Carriage 1/4-20 x 2.25d x Gr. 5
10	181282	Tube Support Bagger CRD
11	165719	Bracket Support Upper Bag CRD
12	188848	Bracket Pivot Bagger LH CRD
13	874760612	Bolt Fin Hex 3/8-16 unc x 3/4
14	74520636	Bolt Fin Hex 3/8-16 x 2-1/4 Gr.5
15	4939M	Retainer Spring
16	73900600	Nut Lock Flg 3/8-16 unc
17	STD533107	Bolt Rdhd Sht Sqnk 5/16 -18 unc x 3/4
19	73900500	Nut Lock Hex Flange 5/16-18
20	188847	Bracket Bagger RH CRD
21	406180	Bag Asm CRD
22	165781	Bracket Side Bagger CRD
24	165783	Tube Pivot Bagger CRD
25	193705	Tube Front Bagger CRD
28	165787	Grip Handle Black
31	169484	Retainer Clip
32	126875X	Rivet Rd Hd Drilled 3/8 Dia
33	165571	Plug Mulcher
34	165570	Handle Mulcher
35	165572	Pin Mulcher
36	19132012	Washer 13/32 x 1-1/4 x 12 Ga.
37	175401	Plug Support Bagger CRD
38	72010520	Bolt 5/16-18 x 5.20
39	416257	Seal Bagger
41	169683	Bracket Vert Adj Bagger CRD
43	174083	Plug Tubing End
46	72110510	Bolt Carr 5/16-18 x 1-1/4 Gr.5
47	193704	Tube Upper
49	193305	Bar Spreader
50	73800500	Nut Lock Hx W/Ins 5/16-18 unc
51	199903	Latch Spring
52	72140406	Bolt RDHD SQNK 1/4-20 x 3/4 Gr.5
53	73510400	Nut Keps Hex 1/4-20 unc

NOTE: All component dimensions given in U.S. inches
1 inch = 25.4 mm

REPAIR PARTS

TRACTOR- -MODEL NO. 917.253120

DANA TRANSAXLE - MODEL NUMBER D6800-3



REPAIR PARTS

TRACTOR- -MODEL NO. 917.253120

DANA TRANSAXLE - MODEL NUMBER D6800-3

KEY NO.	PART NO.	DESCRIPTION	KEY NO.	PART NO.	DESCRIPTION
1	407112	1 [1] Assy, Kit, Housing, Upper	47	407129	2 Seal, Oil
2	2274J	18 Screw, Tapping, 1/4-20 X .734	48	2264J	2 Washer, Plain, .758 X 1.25 X .031
3	407113	1 Plug, Rubber	49	407130	1 Axle, LH
4	407114	1 Seal, Oil	50	190987	2 Gear, Miter, 12T, Splined
5	190973	1 Ball, Detent	51	160948	2 Ring, Retaining
6	190974	1 Spring, Detent	52	134419	1 Gear, Spur, 41T
7	407115	1 Cover, Detent	53	170991	2 Gear, Miter, 12T, Idler
8	190975	1 Screw, Tapping, No. 10-24 X .482	54	120952X	1 Shaft, Cross
9	407116	1 [2] Assy, Shifter	55	407131	1 Axle, RH
10	2225J	1 Ring, Retaining	56	134394	1 [3] Assy, Kit, Shim, .750 Shaft
11	134793	2 [3] Assy, Kit, Shim, .625 Shaft	57	407132	1 [5] Housing, Lower
12	120415X	3 Washer, Plain, .632 X 1.38 X .046	58	407133	1 Assy, Kit, Friction Puck
13	407117	1 [4] Assy, Kit, Input Shaft & Bevel & Pinion	59	407134	1 [6] Disc, Brake
14	142674	1 Key, Woodruff, No. 606	60	108989X	1 Spacer, Brake Puck
15	134383	1 Ring, Retaining	61	120954X	2 Pin, Dowel
16	105910X	1 Chain, 24 Pitches	62	160952	1 Jaw, Brake
17	407118	5 Bushing, .626 X .874 Sq X .560	63	407159	1 Lever, Actuating
18	407119	1 Gear, Spur, 12T	64	108996X	1 Washer, Plain, .321 X 1.00 X .055
19	407120	1 Assy, Collar, Shift	65	160954	1 Bracket, Anti-Rotation
20	407121	1 Shaft, Intermediate, RH Brake	66	73810500	1 Nut, Lock, 5/16-24
21	120470X	1 Sprocket, 18T	67	160953	2 Screw, Tapping, 5/16-18 X 2.35
22	407122	1 Spacer, 1.131 X 1.45 X .580			
23	142677	1 Gear, Spur, 37T			
24	142681	1 Gear, Spur, 35T			
25	124644X	1 Gear, Spur, 30T			
26	108980X	1 Gear, Spur, 25T			
27	120406X	1 Gear, Spur, 22T			
28	134796	1 Gear, Spur, 19T			
29	407123	1 Seal, Oil			
30	407124	1 Bushing, .501 X .874 Sq X .650			
31	120467X	1 Washer, Plain, .505 X .942 X .040			
32	407125	1 Gear, Spur, 30T			
33	407126	1 Shaft, Idler			
34	407127	1 Spacer, .633 X 1.00 X .260			
35	134418	1 Gear, Spur, 10T			
36	2228J	2 Washer, Plain, .632 X 1.00 X .046			
37	105936X	1 Spacer, .781 X 1.00 X .375			
38	105928X	1 Sprocket, 9T			
39	407157	1 Spacer, .781 X 1.00 X .576			
40	407128	1 Shaft, Drive			
41	142678	1 Gear, Spur, 12T			
42	143697	1 Gear, Spur, 15T			
43	124641X	1 Gear, Spur, 20T			
44	106589X	1 Gear, Spur, 25T			
45	120408X	1 Gear, Spur, 28T			
46	105937X	1 Gear, Spur, 31T			

Notes:

[1] Includes 7072, 5272, 7101, 840052, 7057, 7089.

[2] Anti-Seize lubricant to be applied to top surface of 6670 Shifter Assembly (use Bostik Never-Seez or equivalent).

[3] Use in various combinations to maintain proper clearances.

[4] Includes 1106, 1746, 3876, 3956, 4689, 5272, 7073, 7074, 7057.

[5] Silicone Sealant to be applied between Upper and Lower Housings (use Loctite Ultra Gray Silicone 5699 or equivalent).

[6] Anti-Seize lubricant to be applied to id of 7103 Brake Disc (use Bostik Never-Seez or equivalent).

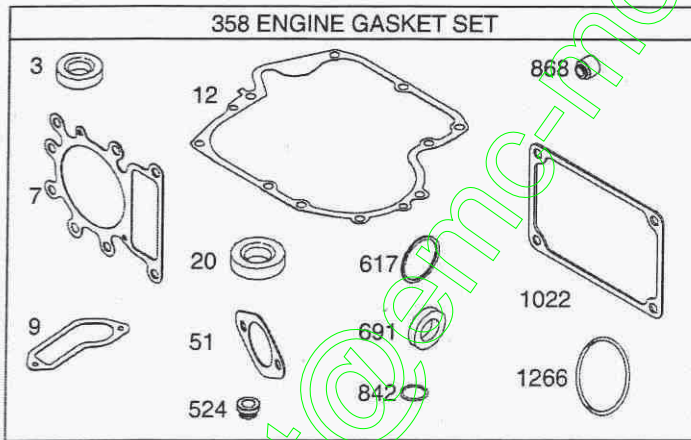
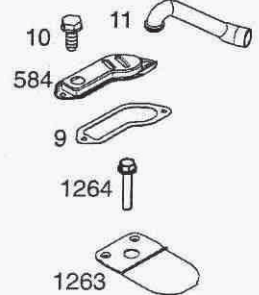
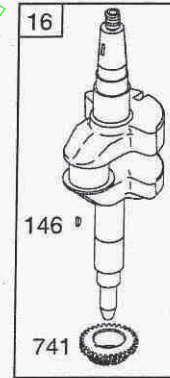
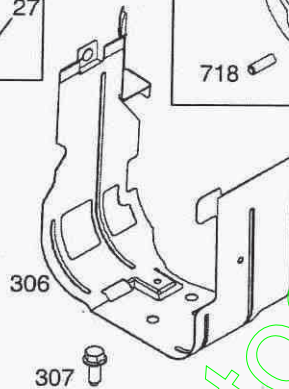
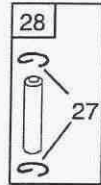
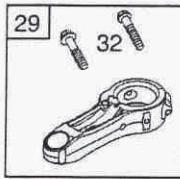
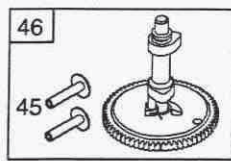
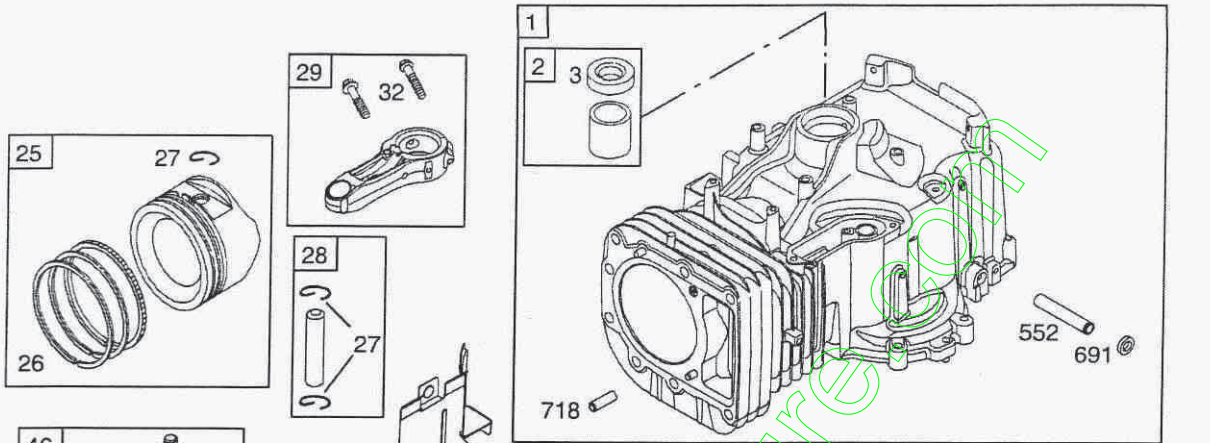
[7] Refill Transaxle with (10) ounces 80W90 gear lube.

NOTE: All component dimensions given in U.S. inches
1 inch = 25.4 mm

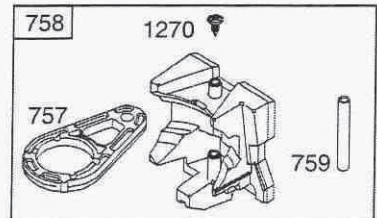
REPAIR PARTS

TRACTOR- -MODEL NO. 917.253120

BRIGGS & STRATTON ENGINE - - MODEL NUMBER 31A607, TYPE NUMBER 0740-B1



24



48 SHORT BLOCK

1058 OPERATOR'S MANUAL

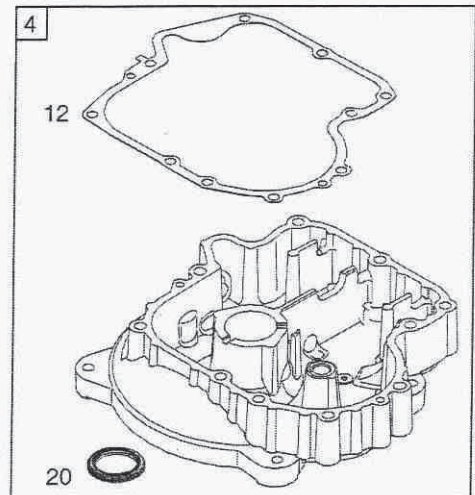
1036 EMISSIONS LABEL

1329 REPLACEMENT ENGINE

1330 REPAIR MANUAL

15

22

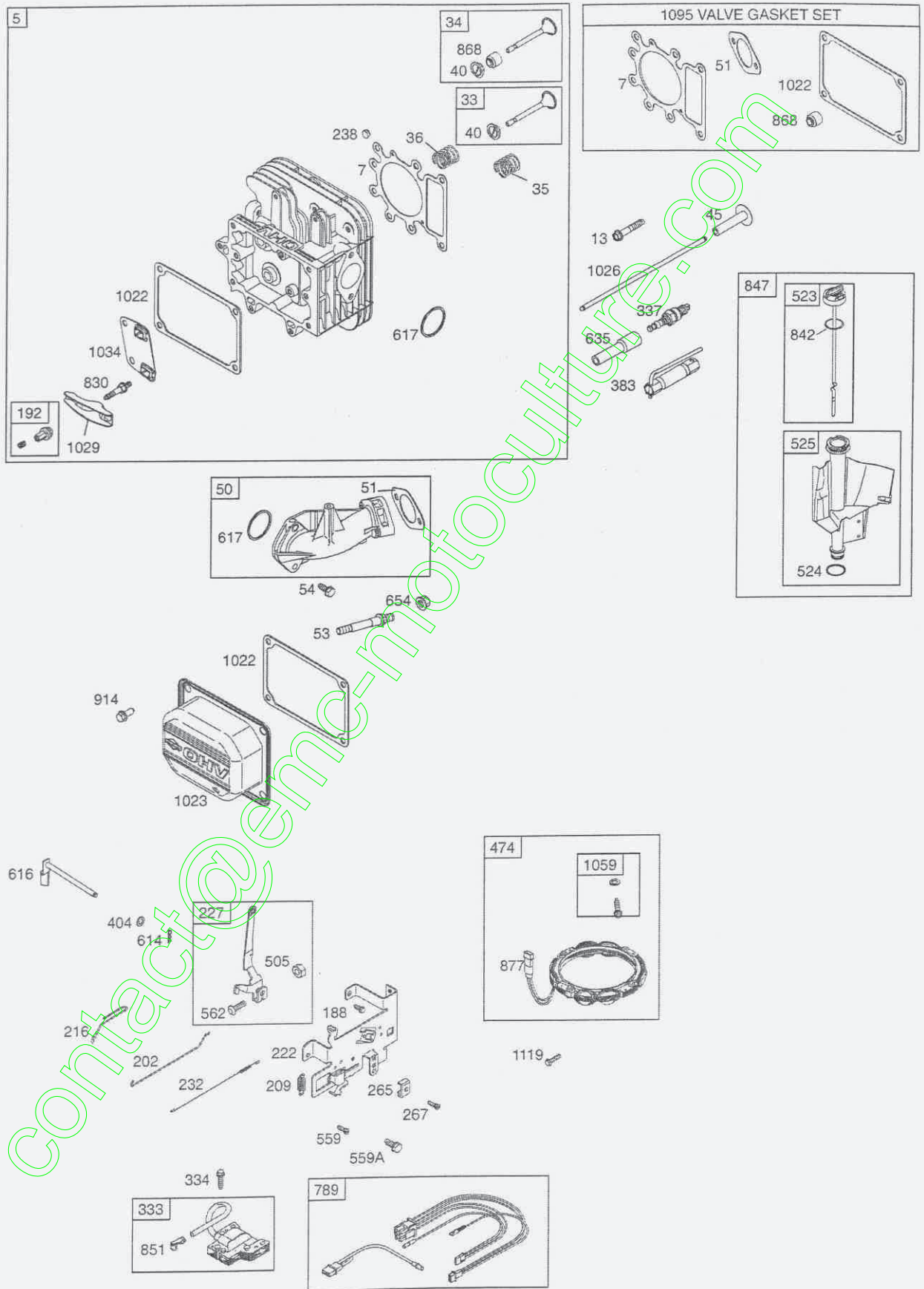


24

REPAIR PARTS

TRACTOR- -MODEL NO. 917.253120

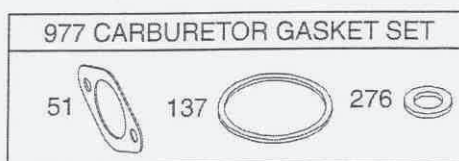
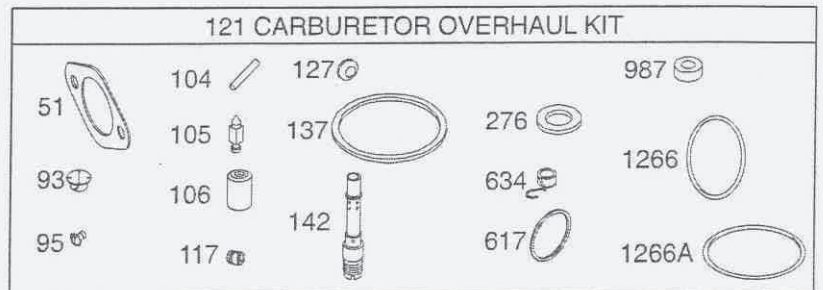
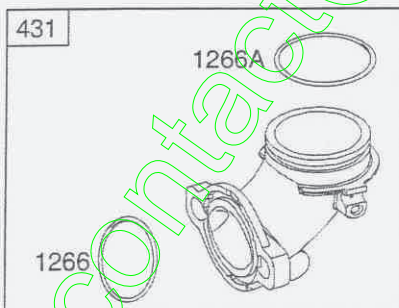
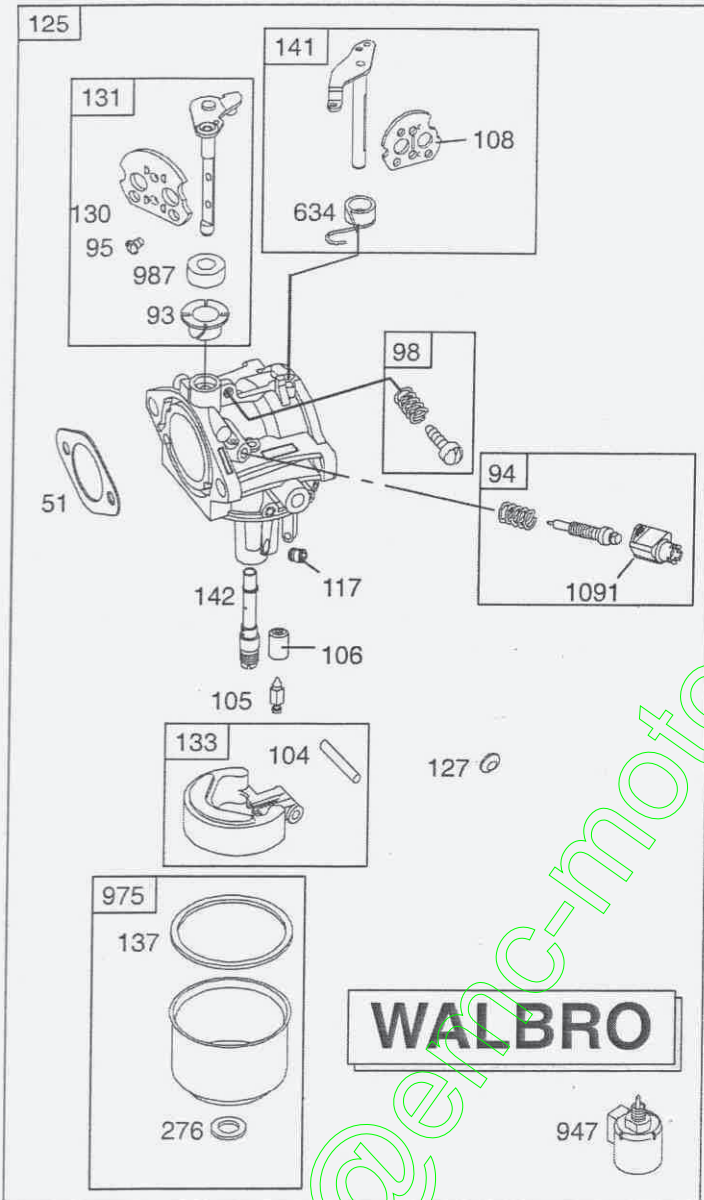
BRIGGS & STRATTON ENGINE - - MODEL NUMBER 31A607, TYPE NUMBER 0740-B*



REPAIR PARTS

TRACTOR- -MODEL NO. 917.253120

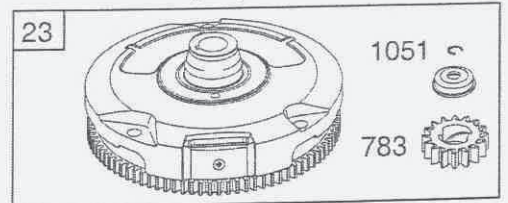
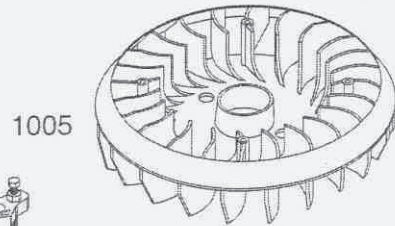
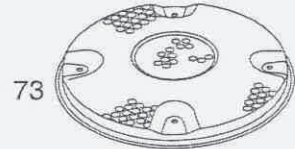
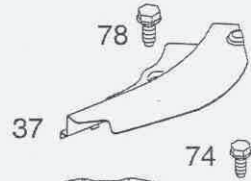
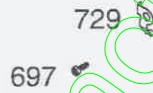
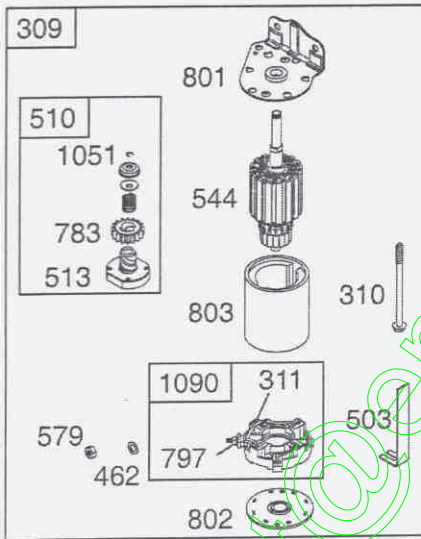
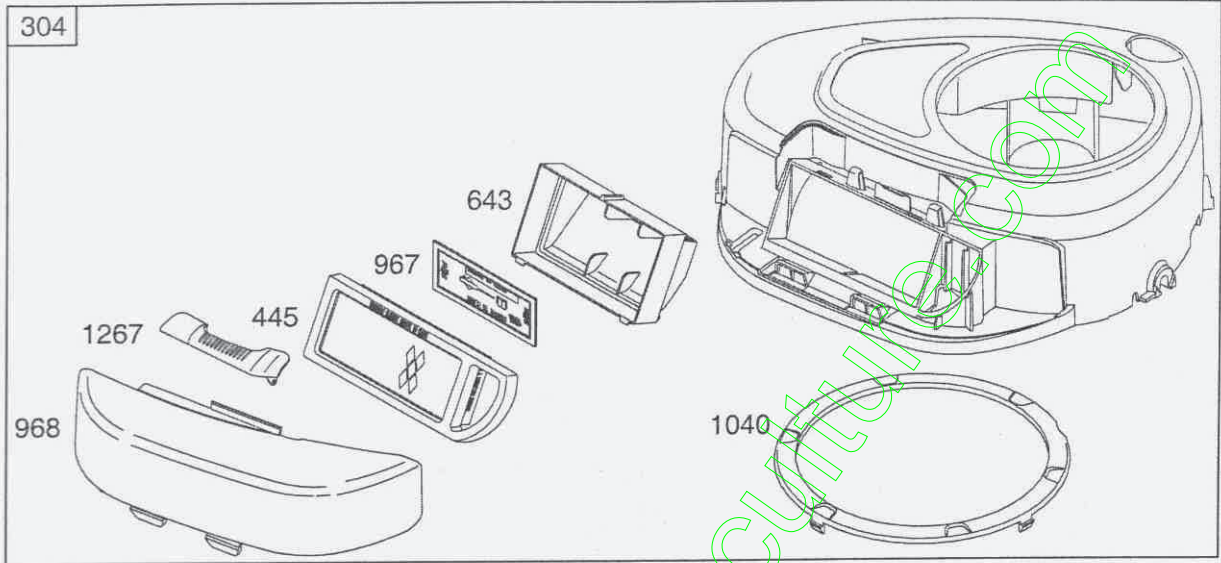
BRIGGS & STRATTON ENGINE - - MODEL NUMBER 31A607, TYPE NUMBER 0740-B1



REPAIR PARTS

TRACTOR- -MODEL NO. 917.253120

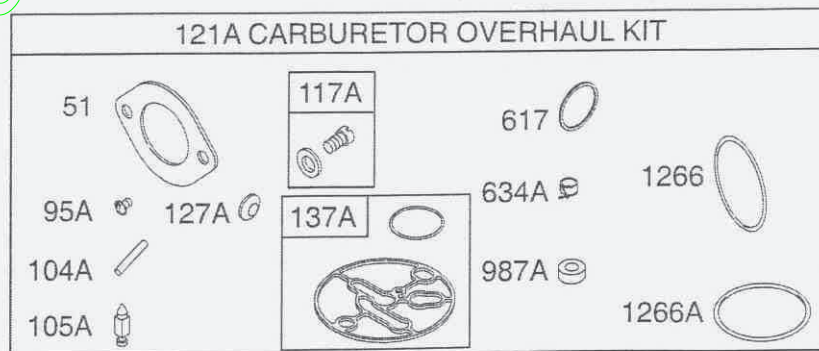
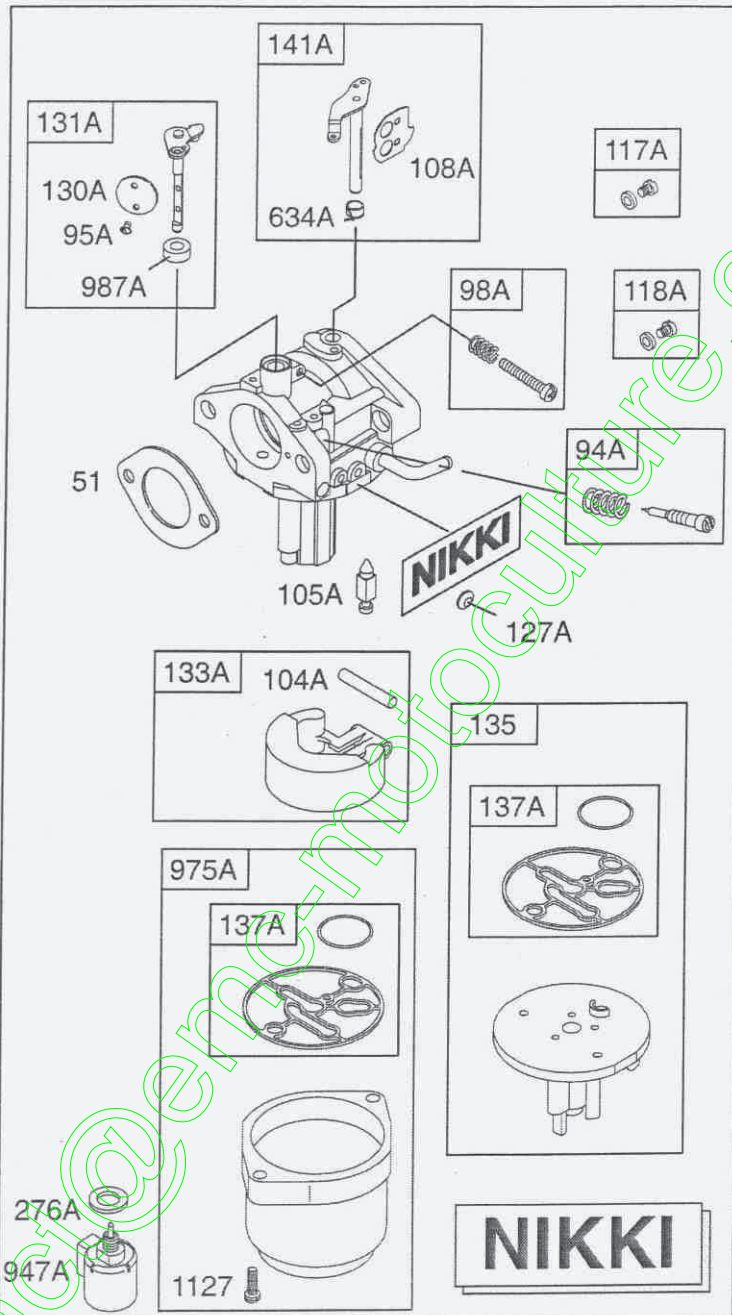
BRIGGS & STRATTON ENGINE - - MODEL NUMBER 31A607, TYPE NUMBER 0740-B1



REPAIR PARTS

TRACTOR- -MODEL NO. 917.253120

BRIGGS & STRATTON ENGINE - - MODEL NUMBER 31A607, TYPE NUMBER 0740-B1



REPAIR PARTS

TRACTOR- -MODEL NO. 917.253120

BRIGGS & STRATTON ENGINE - - MODEL NUMBER 31A607, TYPE NUMBER 0740-B

KEY NO.	PART NO.	DESCRIPTION	KEY NO.	PART NO.	DESCRIPTION
1	793987	Cylinder Assembly	117A	699457	Ø Jet-Main (Standard) (Nikki)
2	399265	Kit-Bushing/Seal (Magneto Side)	118	697228	Jet-Main (High Altitude) (Walbro)
3	391086s	• Seal-Oil (Magneto Side)	118A	699458	Jet-Main (High Altitude) (Nikki)
4	697106	Sump-Engine	121	697241	Kit-Carburetor Overhaul (Walbro)
5	793989	Head-Cylinder	121A	699521	Kit-Carburetor Overhaul (Nikki)
7	699168	+ Gasket-Cylinder Head	125	791888	Carburetor (Walbro)
9	697109	• Gasket-Breather	127	695005	Plug-Welch (Walbro)
10	697157	Screw (Breather Assembly)	127A	690727	Ø Plug-Welch (Nikki)
11	697113	Tube-Breather	130	691750	Valve-Throttle (Walbro)
12	697110	• Gasket-Crankcase	130A	699500	Valve-Throttle (Nikki)
13	793988	Screw (Cylinder Head)	131	494379	Kit-Throttle Shaft (Walbro)
15	690946	Plug-Oil Drain	131A	699501	Kit-Throttle Shaft (Nikki)
16	697127	Crankshaft	133	494381	Float-Carburetor (Walbro)
20	791892	• Seal-Oil (PTO Side)	133A	694914	Float-Carburetor (Nikki)
22	692125	Screw (Crankcase Cover/Sump)	135	698780	Tube-Fuel Transfer (Nikki)
23	693557	Flywheel	137	281165s	Ø± Gasket-Float Bowl (Walbro)
24	222698s	Key-Flywheel	137A	698781	Ø Gasket-Float Bowl (Nikki)
25	792507	Piston Assembly (Standard)	141	495931	Kit-Choke Shaft (Walbro)
	792648	Piston Assembly (.020" Oversize)	141A	695420	Kit-Choke Shaft (Nikki)
26	791936	Ring Set (Standard)	142	697140	Ø Nozzle-Carburetor (Walbro)
	791947	Ring Set (.020" Oversize)	146	691639	Key-Timing
27	698469	Lock-Piston Pin	187	791805	Line-Fuel (Molded)
28	697099	Pin-Piston			(Cut to Required Length)
29	791631	Rod-Connecting (Standard)	188	691693	Screw (Control Bracket)
32	791118	Screw (Connecting Rod)	192	691986	Adjuster-Rocker Arm
33	791934	Valve-Exhaust	202	691841	Link-Mechanical Governor
34	791935	Valve-Intake	209	692208	Spring-Governor
35	691279	Spring-Valve (Intake)	216	691840	Link-Choke
36	691279	Spring-Valve (Exhaust)	222	694042	Bracket-Control
37	697352	Guard-Flywheel	227	691374	Lever-Governor Control
42	499586	Keeper-Valve	232	691842	Spring-Governor
43	691968	Slinger-Governor/Oil	238	691843	Cap-Valve
45	690564	Tappet-Valve	240	394358s	Filter-Fuel
46	793583	Camshaft	265	691024	Clamp-Casing
48	697761	Short Block	267	792629	Screw (Casing Clamp)
50	690193	Manifold-Intake	276	692255	Ø± Washer-Sealing (Walbro)
51	692137	•Ø± Gasket-Intake	276A	695410	Washer-Sealing (Nikki)
53	690227	Stud (Carburetor)	304	698402	Housing-Blower
54	691148	Screw (Intake Manifold)	305	697102	Screw (Blower Housing)
73	697133	Screen-Rotating	305A	793376	Screw (Blower Housing)
74	697897	Screw (Rotating Screen)	306	697107	Shield-Cylinder
78	691003	Screw (Flywheel Guard)	307	691003	Screw (Cylinder Shield)
93	690602	Ø Bushing-Throttle Shaft (Walbro)	309	693551	Motor-Starter
94	498030	Kit-Idle Mixture (Walbro)	310	690323	Bolt (Starter Motor)
94A	695425	Kit-Idle Mixture (Nikki)	311	497608	Brush Set
95	691636	Ø Screw (Throttle Valve) (Walbro)	333	492341	Armature-Magneto
95A	690718	Ø Screw (Throttle Valve) (Nikki)	334	691061	Screw (Magneto Armature)
98	495800	Kit-Idle Speed (Walbro)	337	691043	Plug-Spark
98A	695408	Kit-Idle Speed (Nikki)	358	697191	Gasket Set-Engine
104	690525	Ø Pin-Float Hinge (Walbro)	363	19203	Flywheel Puller
104A	694918	Ø Pin-Float Hinge (Nikki)	383	89838s	Wrench-Spark Plug
105	231855s	Ø Valve-Float Needle (Walbro)	404	691691	Washer (Governor Crank)
105A	696136	Ø Valve-Float Needle (Nikki)	431	697122	Elbow-Intake
106	690577	Ø Seat-Inlet (Walbro)	445	698083	Filter-Air Cleaner Cartridge
108	692344	Valve-Choke (Walbro)	462	691261	Washer (Starter Cable)
108A	695419	Valve-Choke (Nikki)	474	696459	Alternator
117	694352	Ø Jet-Main (Standard) (Walbro)	503	691532	Strap-Starter

REPAIR PARTS

TRACTOR- -MODEL NO. 917.253120

BRIGGS & STRATTON ENGINE - - MODEL NUMBER 31A607, TYPE NUMBER 0740-B1

KEY NO.	PART NO.	DESCRIPTION	KEY NO.	PART NO.	DESCRIPTION
505	691251	Nut (Governor Control Lever)	1005	699043	Fan-Flywheel
510	693699	Drive-Starter	1022	272475s •+	Gasket-Rocker Cover
513	692024	Clutch-Drive	1023	791079	Cover-Rocker Arm
523	699908	Dipstick	1026	692003	Rod-Push (Intake)
524	691032	• Seal-Dipstick Tube		692011	Rod-Push (Exhaust)
525	697184	Tube-Dipstick	1029	691751	Arm-Rocker
544		Starter-Armature (For service see Starter Motor 693551)	1034	690822	Guide-Push Rod
			1036		Label-Emissions (Available from a Briggs & Stratton authorized Service Dealer)
552	697144	Bushing-Governor Crank	1040	698368	Plate-Trim
559	697561	Screw (Remote Choke)	1044	698139	Screw (Flywheel)
559A	693675	Screw (Remote Choke)	1051	691265	Ring-Retaining
562	691119	Bolt (Governor Control Lever)	1058	MS3787	Operator's Manual
579	691029	Nut (Starter Cable)	1059	698516	Kit-Screw/Washer
584	697112	Cover-Breather Passage	1070	690372	Screw (Flywheel Fan)
601	791850	Clamp-Hose	1090	691293	Retainer-Brush
614	691620	Pin-Cotter	1091	691333	Cap-Limiter
616	692012	Crank-Governor	1095	690190	Gasket Set-Valve
617	692138	Ø • Seal-O Ring (Intake Manifold)	1119	691183	Screw (Alternator)
634	690802	Ø Spring/Seal Assembly (Walbro)	1127	695407	Screw (Float Bowl) (Nikki)
634A	698779	Ø Spring/Seal Assembly (Nikki)	1263	697124	Reed-Breather
635	691909	Boot-Spark Plug	1264	697104	Screw (Breather Reed)
643	698401	Retainer-Air Filter	1266	691917	•Ø Seal-O Ring (Intake Elbow)
654	690958	Nut (Carburetor)	1266A	697123	Ø Seal-O Ring (Intake Elbow)
691	692407	• Seal-Governor Shaft	1267	697419	Latch-Blower Housing
697	690372	Screw (Drive Cap)	1270	697156	Plug-AVS Counterweight
718	690959	Pin-Locating	1329	31B707-0026	Replacement Engine (If the original engine is equipped with a six pin wiring harness transfer to the replacement engine. Transfer Muffler and/or Spark Arrester Assembly from the original engine if suitable for additional service or add new parts as required. Remove 691840 add 790544. Transfer the speed limiter control assembly to the replacement engine. Transfer governor spring to the replacement engine.)
729	691224	Clip-Wire			Repair Manual
741	697128	Gear-Timing			
757	693242	Link-Counterweight			
758	697134	Counterweight			
759	697392	Pin-Counterweight			
783	693713	Gear-Pinion			
789	698329	Harness-Wiring			
797	693167	Nut (Brush Retainer)			
801	691283	Cap-Drive			
802	691286	Cap-End			
803		Housing-Starter (For service see Starter Motor 693551)			
830	691095	Stud (Rocker Arm)			
842	691031	• Seal-O Ring (Dipstick Tube)			
847	790442	Dipstick/Tube Assembly	1330	272147	
851	692424	Terminal-Spark Plug			
868	690968	•+ Seal-Valve			
877	393456	Wire-Connector/Alternator			
914	691108	Screw (Rocker Cover)			
947	694393	Solenoid-Fuel (Walbro)			
947A	699915	Solenoid-Fuel (Nikki)			
967	697015	Filter-Pre Cleaner			
968	698403	Cover-Air Cleaner			
975	495933	Bowl-Float (Walbro)			
975A	699502	Bowl-Float (Nikki)			
977	690192	Gasket Set-Carburetor			
987	691326	Ø Seal-Throttle Shaft (Walbro)			
987A	698777	Ø Seal-Throttle Shaft (Nikki)			

- Included in Engine Gasket Set, Key. No. 358
- Ø Included in Carburetor Overhaul Kit, Key. No. 121 Or 121A
- ‡ Included in Carburetor Gasket Set, Key. No. 977
- + Included in Valve Gasket Set, Key. No. 1095

NOTE: All component dimensions given in U.S. inches
1 inch = 25.4 mm