



**REPAIR PARTS MANUAL**  
**MODEL NO. 253160**  
**Lawn Tractor**

---



# HOW TO USE THIS MANUAL

This manual is designed to provide the customer with a means to identify the parts on his/her tractor when ordering repair parts. The illustrations may or may not represent the actual assemblies; therefore, it is not recommended to use this manual as a guide to assemble or disassemble the tractor. Some hardware and parts are drawn larger in order to more readily identify them.

Each tractor has its own model number.

The model number for your tractor can be found on the fender under the seat.

When ordering parts, always give the following information:

- Product - "Tractor"
- Model Number - "253160"
- Part Number
- Part Description

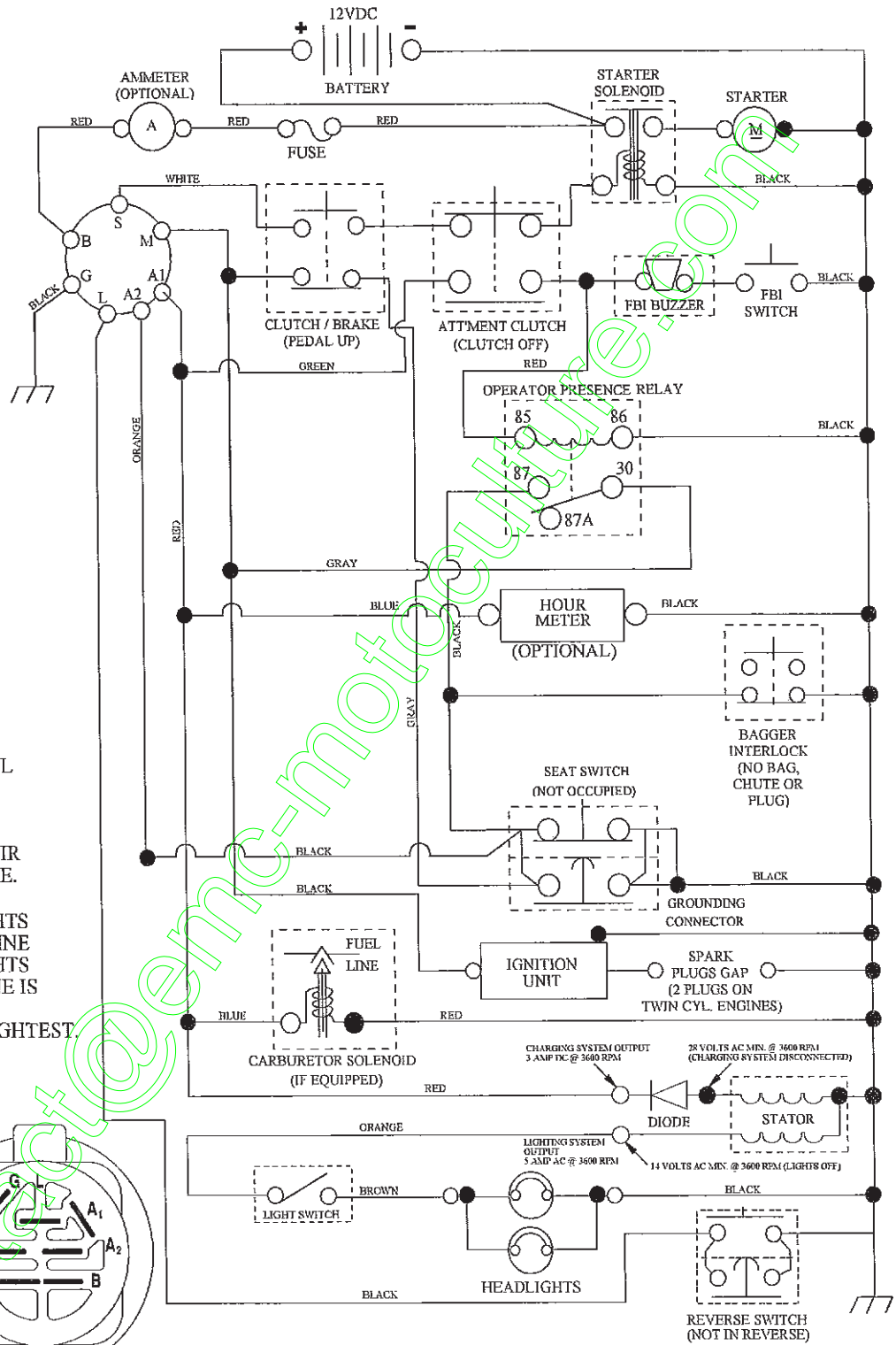
## TABLE OF CONTENTS

SCHEMATIC .....	3
ELECTRICAL.....	4-5
CHASSIS .....	6-7
DRIVE.....	8-9
ENGINE.....	10-11
STEERING .....	12-13
DECALS.....	14
SEAT .....	15
MOWER DECK.....	16-17
MOWER LIFT.....	18
BAGGER.....	19
TRANSAXLE BREAKDOWN .....	20-21
ENGINE BREAKDOWN.....	22-27
WARRANTY.....	BACK COVER

# TRACTOR- -MODEL NO. 917.253160

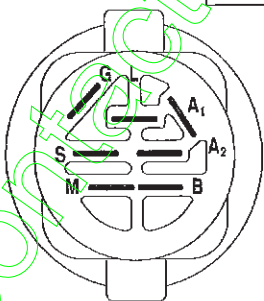
## SCHEMATIC

SCH08



### NOTE

YOUR TRACTOR IS EQUIPPED WITH A SPECIAL ALTERNATOR SYSTEM. THE LIGHTS ARE NOT CONNECTED TO THE BATTERY, BUT HAVE THEIR OWN ELECTRICAL SOURCE. BECAUSE OF THIS, THE BRIGHTNESS OF THE LIGHTS WILL CHANGE WITH ENGINE SPEED. AT IDLE THE LIGHTS WILL DIM. AS THE ENGINE IS SPEEDED UP, THE LIGHTS WILL BECOME THEIR BRIGHTEST.



IGNITION SWITCH

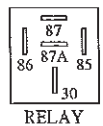
POSITION	CIRCUIT "MAKE"
OFF	M+G+A1
RUN/OVERRIDE	B+A1
RUN	B+A1 L+A2
START	B + S + A1

### WIRING INSULATED CLIPS

NOTE: IF WIRING INSULATED CLIPS WERE REMOVED FOR SERVICING OF UNIT, THEY SHOULD BE RE-INSTALLED TO PROPERLY SECURE YOUR WIRING.

REMOVABLE CONNECTIONS

NON-REMOVABLE CONNECTIONS

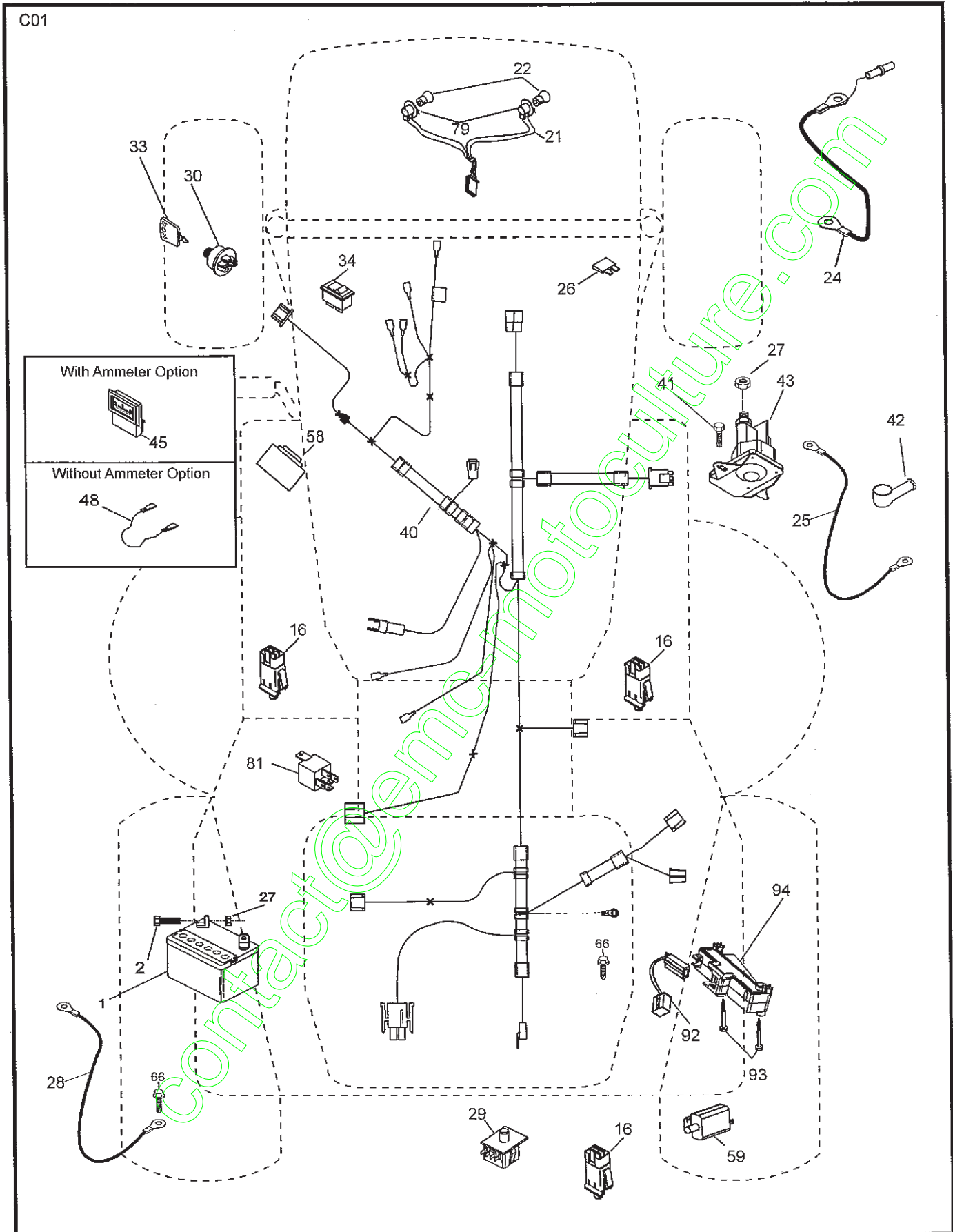


RELAY

# TRACTOR- -MODEL NO. 917.253160

## ELECTRICAL

C01



# TRACTOR- -MODEL NO. 917.253160

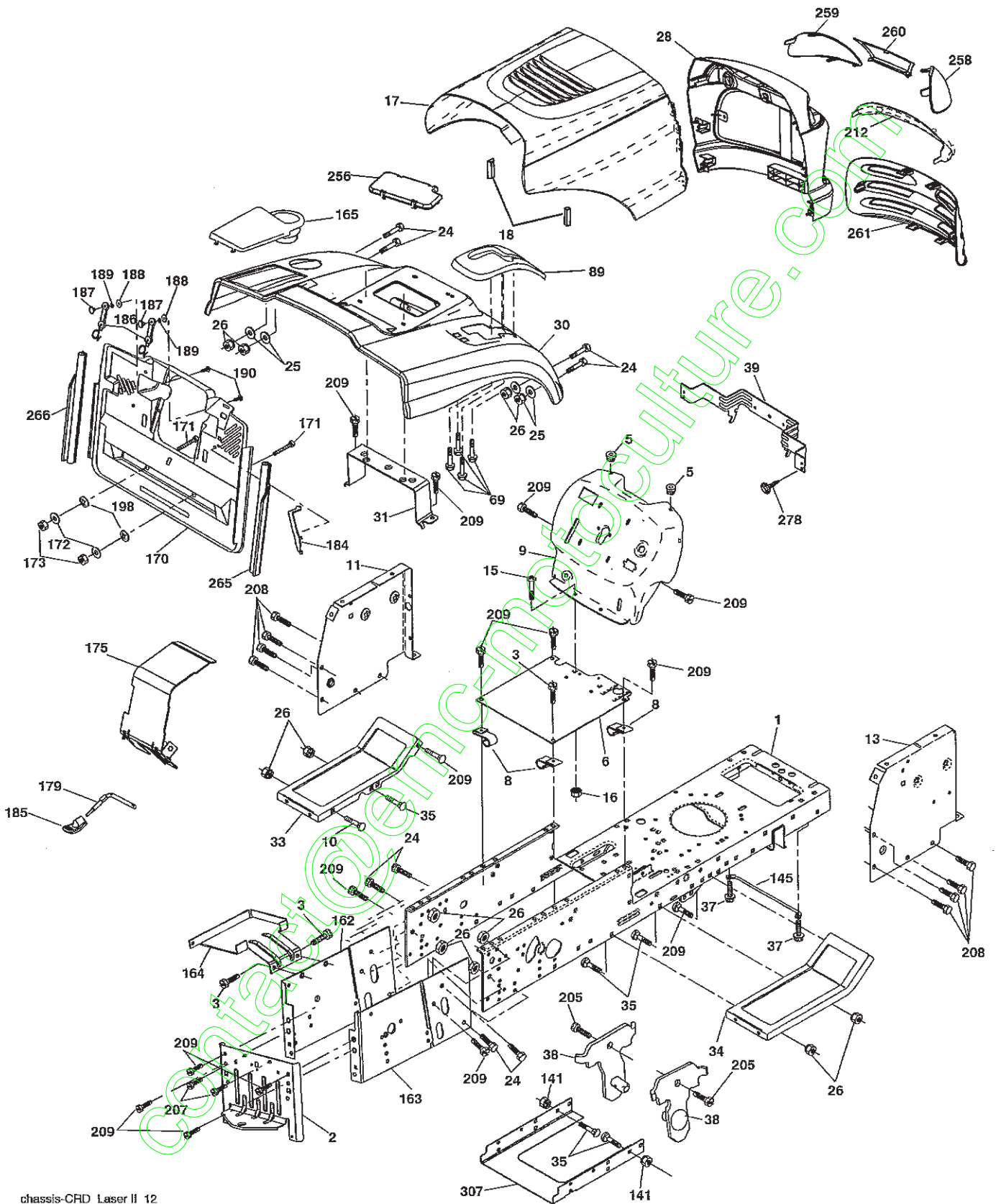
## ELECTRICAL

KEY NO.	PART NO.	DESCRIPTION
1	163465	Battery
2	74760412	Bolt Hex Hd 1/4-20 unc x 3/4
16	176138	Switch Interlock
21	183759	Harness Asm Light w/4152J
22	4152J	Bulb Light #1156
24	421299	Cable Starter 6 Ga. 11" Red
25	165987	Cable Battery Crd 56" Red
26	175158	Fuse
27	73510400	Nut Keps Hex 1/4-20 unc
28	127725X	Cable Ground 6 Ga. 18" Black
29	192749	Switch Seat
30	193350	Switch Ignition
33	411934	Key/Chain
34	110712X	Switch Light
40	197436	Harness Ign
41	71110408	Bolt Flk Fin Hex 1/4-20 unc x 1/2
42	131563	Cover Terminal Red
43	192507	Solenoid
48	140844	Adapter Ammeter
58	169419	Buzzer Crd
59	180379	Switch FBI CRD
66	17490608	Screw Thdrol 3/8-16 x 1/2 Ty-Tt
79	175242	Socket Asm Bulb Twistlock
81	109748X	Relay Asm
92	196615	Harness Pigtail consle ROS
93	192540	Screw Plastite 10-14 x 2.0
94	191834	Module Reverse ROS

**NOTE:** All component dimensions given in U.S. inches.  
1 inch = 25.4 mm.

# TRACTOR- -MODEL NO. 917.253160

## CHASSIS AND ENCLOSURES



chassis-CRD\_Laser II\_12

## TRACTOR- -MODEL NO. 917.253160

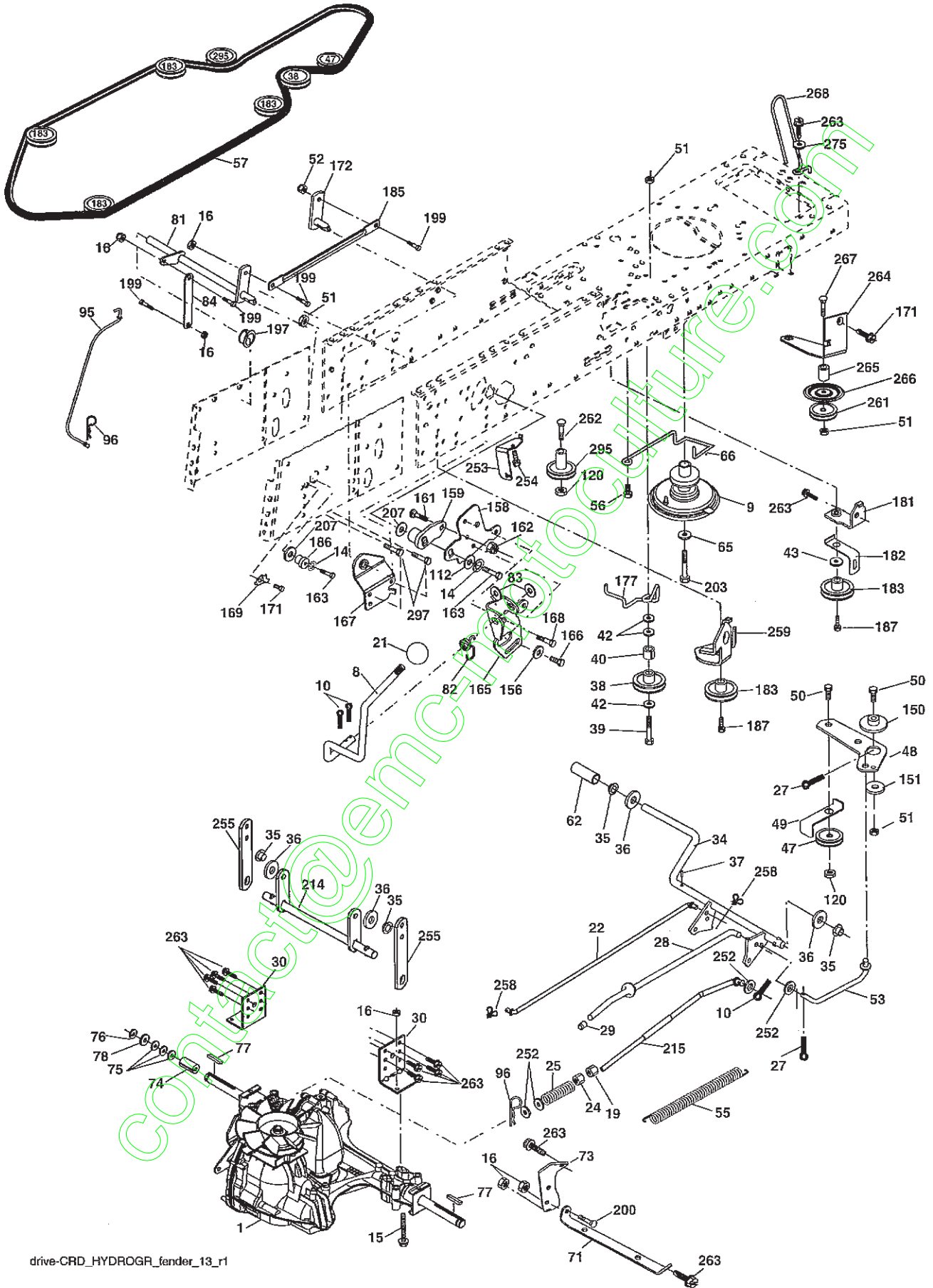
### CHASSIS AND ENCLOSURES

KEY NO.	PART NO.	DESCRIPTION	KEY NO.	PART NO.	DESCRIPTION
1	174620	Chassis	165	179020X428	Cover Battery CRD
2	180384	Drawbar	170	199488	Backplate CRD
3	17060612	Screw 3/8-16 x .75	171	72140620	Bolt Rdhd Sank 3/8-16 x 2-1/2 G5
5	155272	Bumper Hood/Dash	172	19132016	Washer 13/32 x 1-1/4 x 16 Ga.
6	184419	Saddle	173	73510600	Nut Keps Hex 3/8-16 unc
8	126471X	Clip Insulator 13/32 Mtg. Hole	175	188203	Trap Door CRD
9	193518X010	Dash	179	188202	Rod Pivot FBI CRD
10	72140608	Bolt, Carriage 3/8-16 x 3/4	184	174662	Bracket Actuator Bagger CRD
11	174996	Panel, Dash, L.H.	185	179608X505	Knob Rod
13	172105X010	Panel, Asm. Dash R.H.	186	160793	Latch Asm Multch Bagger
15	74180512	Screw, Machine, Truss Head 5/16-18 unc x 3/4	187	2029J	Nut Weld .327/.304 #10-24
16	73510500	Nut	188	19061216	Washer #10
17	185682X613	Hood Assembly	189	10071000	Washer Lock #10
18	184921	Bumper Hood	190	71081010	Screw Pan Hd Phillips 10-24 x 5/8
24	74780616	Bolt	198	168937	Nut Push
25	19131312	Washer 13/32 x 13/16 x 12 Ga.	205	17490608	Screw 3/8-16 x 1/2
26	73800600	Nut	207	17670508	Screw 5/16-18 x 1/2
28	184244X613	Grille	208	17670608	Screw Thdrol 3/8-16 x 1/2
30	192533X613	Fender	209	17000612	Screw Hex Wsh Thdrol 3/8-16 x 3/4
31	165156	Bracket, Fender Support	212	184248	Insert Lens Reflective
33	179716X613	Footrest, L.H.	256	180810X428	Cover Fender Rack CRD
34	179717X613	Footrest, R.H.	258	184245X599	Lens RH
35	72110606	Bolt	259	184246X599	Lens LH
37	17490508	Screw Thdrol 5/16-18 x 1/2 TYT	260	184250X428	Cover Lens
38	181748	Bracket Asm Pivot Mower Rear	261	184258X428	Insert Grille
39	407807	Bracket Pivot	265	185704	Seal, Side RH
69	142432	Screw Hex 1/4-1/2	266	185703	Seal, Side LH
89	192391X428	Console	278	416358	Screw #10 x 0.750 BOS Thread
141	73900600	Nut	307	425125	Shield Chassis Front
145	409167	Rod Pivot Chassis/Hood	--	5479J	Plug Button
162	180382	Bracket Exten Chassis Lh CRD			
163	180383	Bracket Exten Chassis Rh CRD			
164	165605	Support Battery CRD			

**NOTE:** All component dimensions given in U.S. inches.  
1 inch = 25.4 mm.

# TRACTOR- -MODEL NO. 917.253160

## DRIVE



drive-CRD\_HYDROGR\_fender\_13\_r1



# TRACTOR- -MODEL NO. 917.253160

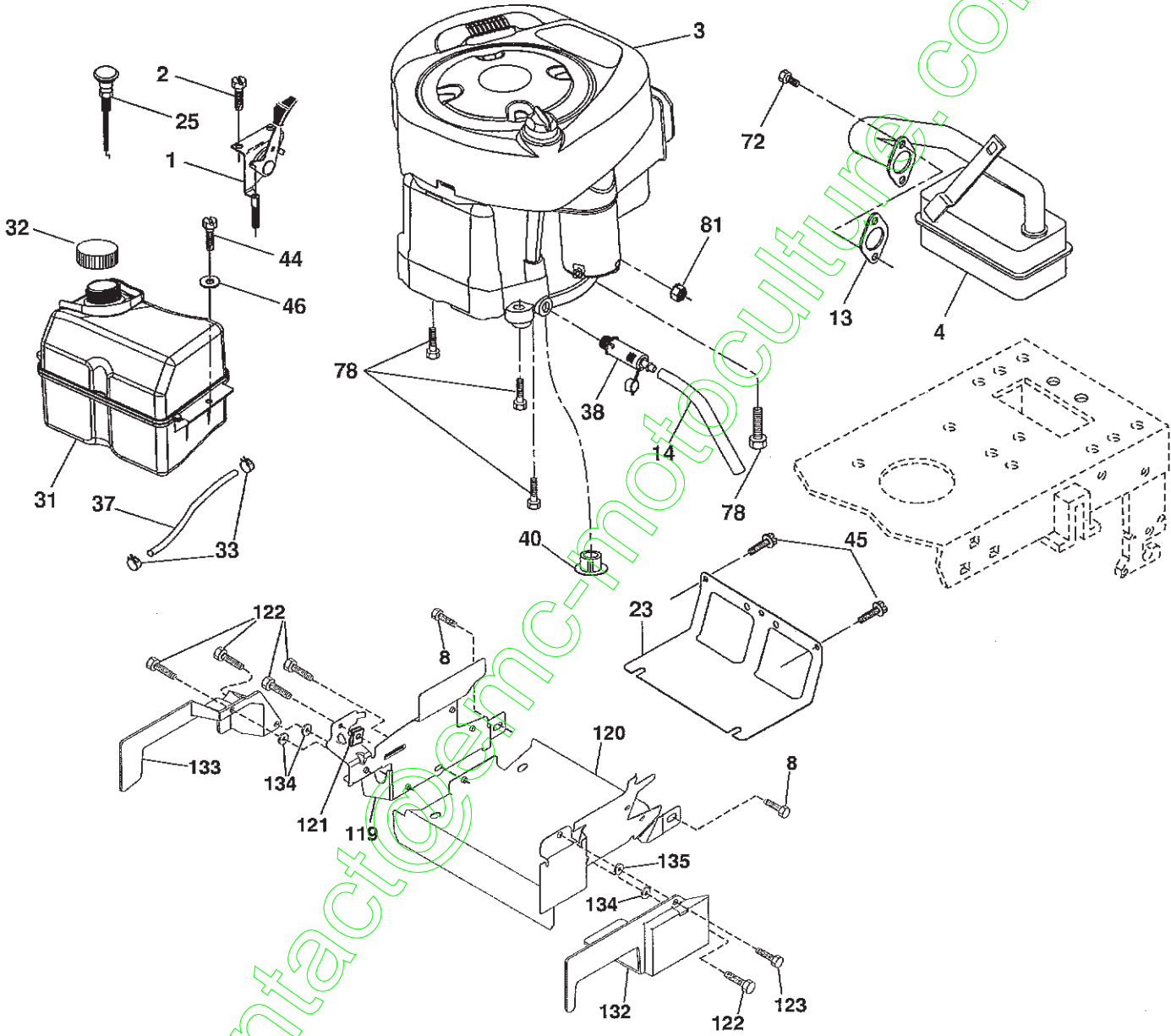
## DRIVE

KEY NO.	PART NO.	DESCRIPTION	KEY NO.	PART NO.	DESCRIPTION
1	-----	Transaxle Hydro Gear 321-0510 (See Breakdown)	112	19091210	Washer 9/32 x 3/4 x 10 Ga.
8	192706	Rod, Shift Fender Adjust Lt	120	73900600	Nut Lock Flg 3/8-16 unc
9	408579	Clutch	150	165850	Bushing, Bellcrank Ground Drive
10	76020416	Pin, Cotter 1/8 x 1	151	19133210	Washer 13/32 x 2 x 10 Ga.
14	10040400	Washer, Lock Hvy Helical	156	166002	Washer Srrted 5/16 ID x 1.125
15	74490544	Bolt Hex FGHD 5/16-18 x Gr. 5	158	165589	Bracket Shift Mount
16	73800500	Nut, Lock Hex w/lns 5/16-18 unc	159	183900	Hub Shift
17	126197X	Washer 1-1/2 OD x 15/32 ID x .250	161	72140406	Bolt Rdhd Sqnk 1/4-20 x 3/4 Gr. 5
19	73800600	Nut, Lock Hex w/lns. 3/8-16	162	73680400	Nut Crownlock 1/4-20 unc
21	106933X	Knob	163	74780416	Bolt Hex Fin 1/4-20 unc x 1 Gr. 5
22	175607	Rod, Brake	165	165623	Bracket Pivot Lever
24	73350600	Nut	166	17490510	Screw 5/16-18 x 5/8
25	192036	Spring, Rod, Brake	167	165588	Bracket Support Shift CRD
27	76020412	Pin, Cotter 1/8 x 3/4	168	165492	Bolt Shoulder 5/16-18 x .561
28	175765	Rod, Parking Brake	169	165580	Plate Fastening Lt
29	71673	Cap, Parking Brake	171	17490608	Screw Thdrol 3/8-16 x 1/2 Ty-Tt
30	169592	Bracket, Mfg. Transaxle	172	170271	Shaft Asm Shifter Frt CRD
34	175578	Shaft, Asm Pedal Foot CRD	177	165932	Keeper Flat Idler 3.06" CRD
35	120183X	Bearing, Nylon	181	180211	Bracket Idler Ground Drive CRD
36	19211616	Washer 21/32 x 1 x 16 Ga.	182	182682	Keeper Belt 2.5" Od V-Idler CRD
37	1572H	Pin, Roll 3/16 x 1"	183	199532	Pulley V-Idler 2.50" Od CRD
38	165936	Pulley Flat Composite 3.06"	185	170008	Link Shift
39	74760644	Bolt Fin Hex 3/8-16 unc x 2-3/4	186	165614	Hub Tapered Round CRD
40	4470J	Spacer, Split 395 x 59 Bzp	187	17580520	Screw Thdrol 5/16-18 x 1.25
42	19131312	Washer 13/32 x 13/16 x 12 Ga.	197	169613	Nyliner Snap-In 5/8
43	19111012	Washer 11/32 x 5/8 x 12 Ga.	199	169612	Bolt Shoulder 5/16-18 unc
47	127783	Pulley, Idler, V Groove Plastic	200	72140508	Bolt RDHD SQNK 5/16-18 x 1
48	154407	Bellcrank Clutch Grnd Drv	203	71170780	Bolt Hex 7/16-20 x 5
49	123205X	Retainer, Belt Style Spring	207	169845	Washer Nylon Rear
50	72110612	Bolt, Carr. 3/8-16 x 1/2 x Gr. 5	214	175609	Shaft Asm. Brake
51	73680600	Nut, Crownlock 3/8-16 unc	215	175652	Rod Brake Hydro
52	73680500	Nut Crownlock 5/16-18	243	190736	Bracket Anti-Rotation
53	199652	Link, Clutch 7.66	252	19131616	Washer 13/32 x 1 x 16 Ga.
55	105709X	Spring, Return, Clutch	253	175028	Bracket Cable Chassis
56	17060620	Screw 3/8-16 x 1-1/4	254	17000616	Screw 3/8-16 x 1
57	170140	V-Belt Kev 112" 0650 CRD	255	175608	Brace Shaft Brake Mtg.
62	8883R	Cover, Pedal	258	178062	Clip Retainer
65	10040700	Washer	259	180212	Bracket Pulley
66	154778	Keeper, Belt Engine F-Proof	261	131494	Pulley Idler Flat
71	169183	Strap, Torque, LH	262	72110622	Bolt RDHD 3/8-16 unc x 2-3/4 Gr. 5
73	169182	Strap, Torque, RH	263	17000612	Screw Hex wsh
74	137057	Spacer, Split	264	197608	Bracket Idler Chassis
75	121749X	Washer 25/32 x 1-1/4 x 16 Ga.	265	404607	Spacer NORAM
76	12000001	Ring, E	266	182061	Shield, Idler
77	123583X	Key, Square	267	72140626	Bolt 3/8-16 x 3-1/4
78	121748X	Washer 25/32 x 1-5/8 x 16 Ga.	268	182402	guard Muffler
81	170006	Asm, Shaft	275	19131614	Washer 13/32 x 1
82	165711	Spring, Torsion	279	72110616	Bolt RDHD SQNK 3/8-16 unc x 2
83	19171216	Washer 17/32 x 3/4 x 16 Ga.	295	179114	Pulley Idler Composite
84	170007	Link, Transaxle	297	17490610	Screw Hx wsh THDR 3/8-16 x 5/8
95	170015	Control Asm Bypass Hydro			
96	4497H	Spring, Retainer 1"			

**NOTE:** All component dimensions given in U.S. inches  
1 inch = 25.4 mm

TRACTOR- -MODEL NO. 917.253160

ENGINE



29  
**OPTIONAL EQUIPMENT**  
**Spark Arrester**

engine-CRD\_bs\_9

## TRACTOR- -MODEL NO. 917.253160

### ENGINE

KEY NO.	PART NO.	DESCRIPTION
1	170545	Control Throt/Ch
2	720408	Screw 1/4-20 x 1/2
3	----	Engine B&S Model 31A607-0740-B1 (Order Parts from Engine Manufacturer)
4	137352	Muffler Exhaust B&S LT
8	171877	Bolt 5/16-18 unc x 3/4
13	165291	Gasket Muffler
14	148456	Tube Drain Oil Easy
23	169837	Shield Browning/Debris Guard
25	187770X428	Control Choke
29	137180	Arrester Spark
31	407516	Tank Fuel
32	197725	Cap Asm Fuel Top
33	123487	Clamp Hose Blk
37	137040	Line Fuel 20"
38	181654	Plug Drain Oil Easy
40	124028	Bushing Snap
44	17670412	Screw Hexwsh Thdrol 3/8-16 x 1
45	17000612	Screw 3/8-16 x 3/4
46	19091416	Washer 9/32 x 7/8 x 16 Ga.
72	192334	Screw Socket Head 5/16-18 x .75
78	17060620	Screw 3/8-16 x 1-1/4
81	73510400	Nut Keps Hex 1/4-20 unc
119	199768	Guard Asm. Eng. LH
120	199767	Guard Asm. Eng. RH
121	196688	Clips Threaded
122	137729	Screw Thd Roll 1/4-20 x 5/8
123	17670508	Screw Thdrol 5/16-18 x 1/2
132	420757	Shield Side RH
133	420756	Shield Side LH
134	423062	1/4" Palnut
135	423063	5/16" Palnut

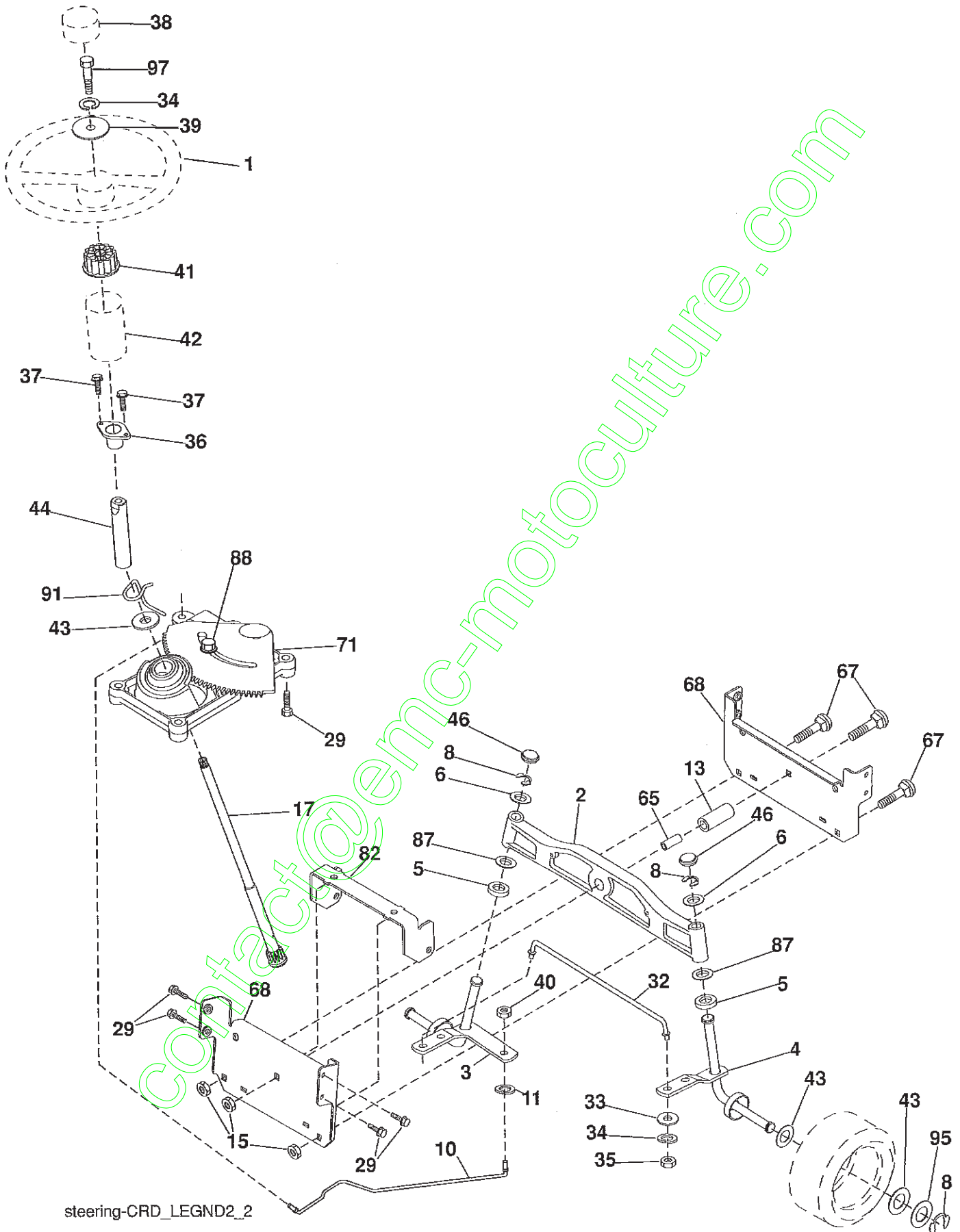
**NOTE:** All component dimensions given in U.S. inches  
1 inch = 25.4 mm

### Engine Power Rating Information

The gross power rating for individual gas engine models is labeled in accordance with SAE (Society of Automotive Engineers) code J11940 (Small Engine Power & Torque Rating Procedure), and rating performance has been obtained and corrected in accordance with SAE J1995 (Revision 2002-5). Actual gross engine power will be lower and is affected by, among other things, ambient operating conditions and engine-to-engine variability. Given both the wide array of products on which engines are placed and the variety of environmental issues applicable to operating the equipment, the gas engine will not develop the rated gross power when used in a given piece of power equipment (actual "on-site" or net horsepower). This difference is due to a variety of factors including, but not limited to, accessories (air cleaner, exhaust, charging, cooling, carburetor, fuel pump, etc.), application limitations, ambient operating conditions (temperature, humidity, altitude), and engine-to-engine variability. Due to manufacturing and capacity limitations, Briggs & Stratton may substitute an engine of higher rated power for this Series engine.

TRACTOR- -MODEL NO. 917.253160

STEERING ASSEMBLY



# TRACTOR- -MODEL NO. 917.253160

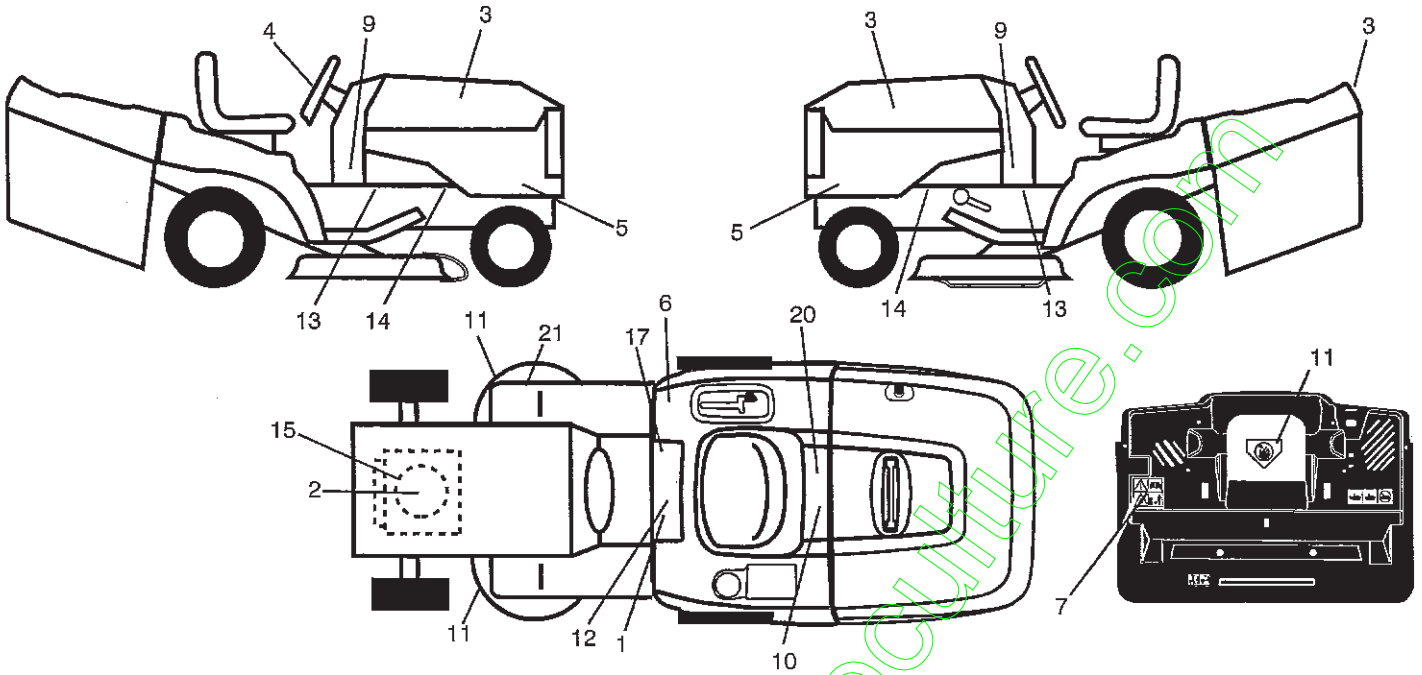
## STEERING ASSEMBLY

KEY NO.	PART NO.	DESCRIPTION
1	414851X428	Steering Wheel
2	184706	Axle Assembly
3	169840	Spindle Assembly, L.H.
4	169839	Spindle Assembly, R.H.
5	6266H	Bearing, Race, Thrust, Hardened
6	121748X	Washer 25/32 x 1-5/8 x 16 Ga.
8	12000029	Ring, Klip
10	175121	Link, Drag
11	10040600	Washer, Lock
13	136518	Spacer Brg Axle Front
15	145212	Nut, Hexflange Lock
17	190753	Shaft, Steering
29	17000612	Screw, 3/8-16 x 3/4
32	170162	Rod, Tie
33	19111216	Washer 11/32 x 3/4 x 16 Ga.
34	10040500	Washer Lock Hvy Hlcl Spr 5/16
35	73540500	Nut Crownlock 5/16-24 unf
36	155099	Bushing, Steering
37	152927	Screw TT #10-32 x 5 x 3/8 Flange
38	414852X428	Cap Wheel Steer
39	19113812	Washer 11/32 x 2 3/8 x 12 Ga.
40	73540600	Nut 3/8-24 unf
41	186737	Adaptor, Steering Wheel
42	145054X428	Boot, Steering Dash P/L Mtl
43	121749X	Washer 25/32 x 1-1/4 x 16 Ga.
44	190752	Extension Steering
46	184946X505	Cap, Spindle
65	414736	Spacer Brace Axle
67	72110618	Bolt Rdhd Sq 3/8-16 unc x 2-1/4
71	175146	Steering Asm.
68	169827	Brace Axle
82	199978	Bracket Susp Chassis Front
87	173966	Washer Flat .781 x 1-1/2 x .14
88	175118	Bolt Shoulder 7/16-20 unc
91	175553	Clip Steering
95	188967	Washer Hardened
97	74780564	Bolt 5/16-18 unc x 4"L Gr. 5

**NOTE:** All component dimensions given in U.S. inches.  
1 inch = 25.4 mm.

# TRACTOR- -MODEL NO. 917.253160

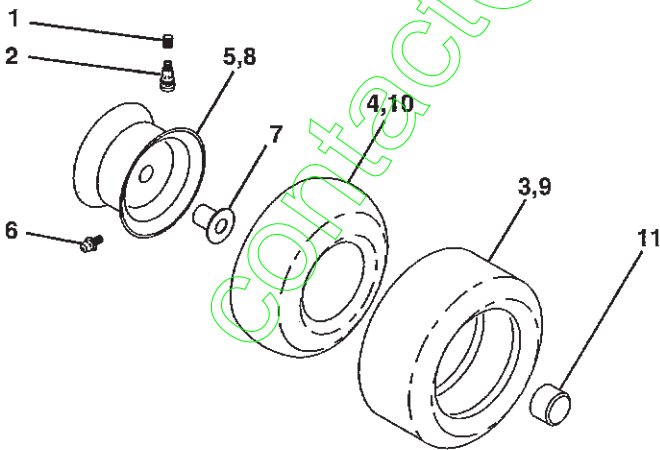
## DECALS



KEY NO.	PART NO.	DESCRIPTION
1	400389	Decal, Warning Syms. CE
2	416729	Decal, Hp Engine
3	411697	Decal, Hood RH/LH
4	420121	Decal, Steering Wheel
5	413054	Decal, Hood Side PNL
6	180432	Decal, 100 DBA/CE
7	180435	Decal, Backplate
9	181685	Decal, Lower Dash
10	145005	Decal, Bat Dan/Poi P/L Sym Wpn
11	182166	Decal, Mower Cut Finger Symbol
12	159737	Decal, Brake/Clutch Symbol Lt

KEY NO.	PART NO.	DESCRIPTION
13	401146	Decal, Warning Service/Fire
14	159736	Decal, Chassis Hot Muffler
15	196841	Decal, Warning Eng. Symbols
17	140837	Decal, Saddle Brake Parking
20	166960	Decal, Bypass Fender CRD
21	166286	Decal, Hex Belt Sch
--	138311	Decal, Lift Handle
--	179769X428	Pad Footrest RH
--	179768X428	Pad Footrest LH
--	420647	Manual, Operator's (Euro)
--	420651	Manual Parts

## WHEELS & TIRES

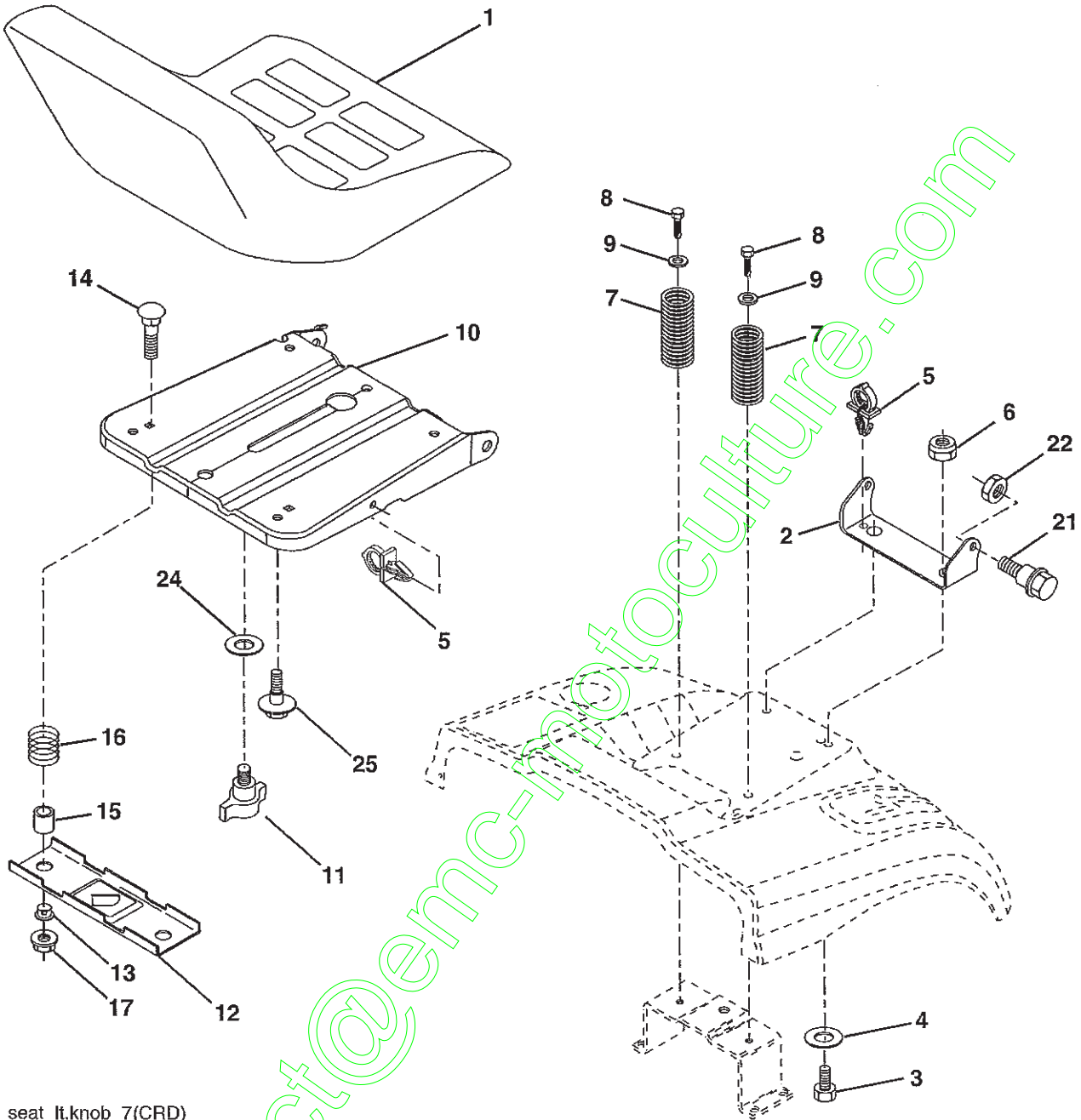


KEY NO.	PART NO.	DESCRIPTION
1	59192	Cap Valve Tire
2	65139	Stem Valve
3	106222X	Tire F Ts 15 x 6 0 - 6 Service
4	59904	Tube Inner Front #35060
5	106732X645	Rim Asm 6" Front Service
6	278H	Fitting Grease
7	9040H	Bearing Flange
8	106108X645	Rim Asm 8" Rear Service
9	138468	Tire R Ts 20 x 8-8 Service
10	7152J	Tube Rear 9 5 x 8 Service
11	104757X645	Cap Axle Blk 1 50 x 1 00
--	144334	Sealant, Tire (10 oz. tube)

**NOTE:** All component dimensions given in U.S. inches  
1 inch = 25.4 mm

# TRACTOR- -MODEL NO. 917.253160

## SEAT ASSEMBLY



seat\_lt.knob\_7(CRD)

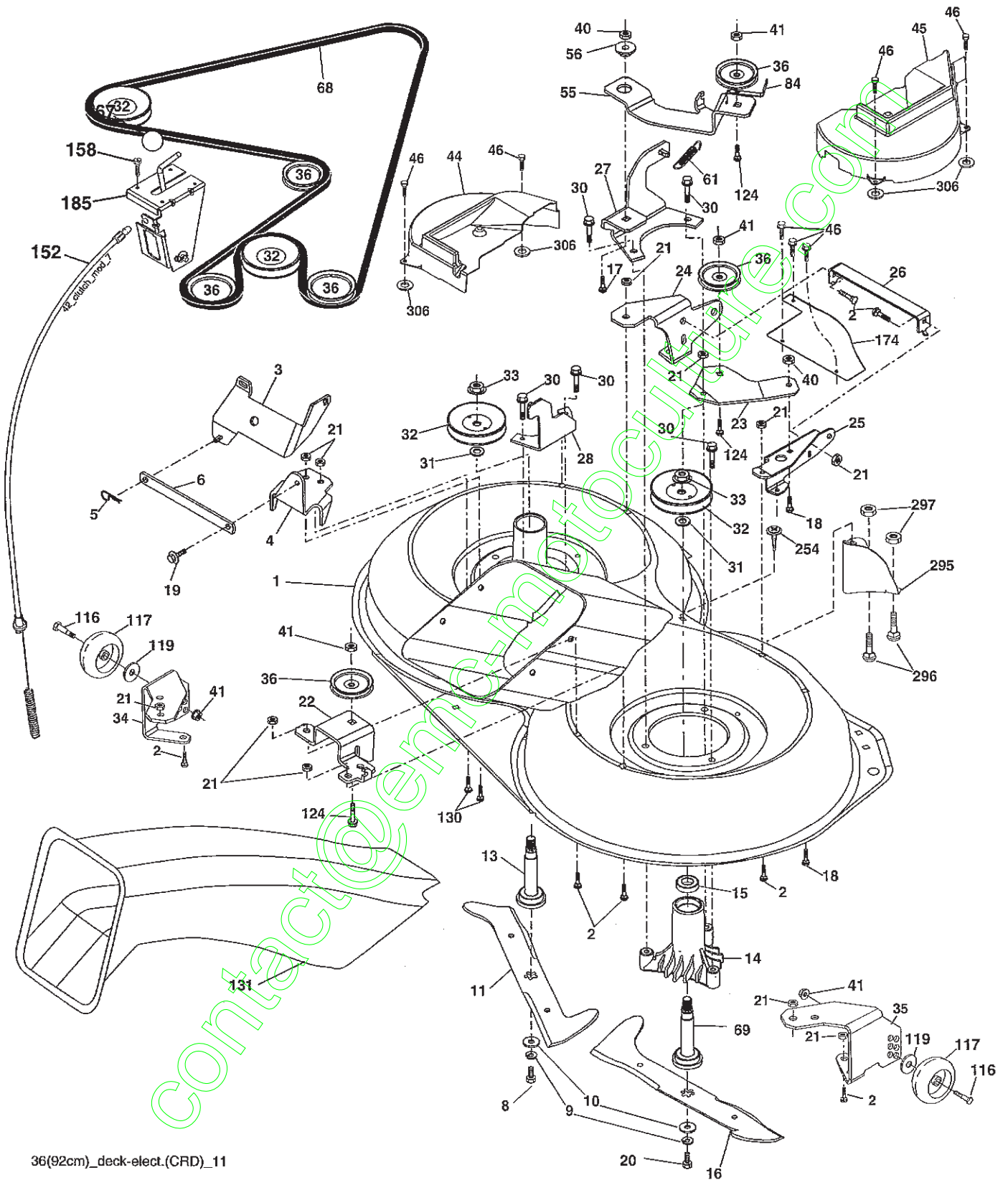
KEY NO.	PART NO.	DESCRIPTION
1	188939	Seat
2	140551	Bracket Pnt Pivot Seat (blk)
3	71110616	Bolt Fin Hex 3/8-16 unc x 1
4	19131610	Washer Flat 13/32 x 1 x 10 Ga.
5	145006	Clip Push In Hinged
6	73800600	Nut Lock Hex 3/8-16 unc
7	124181X	Spring Seat Cprsn 2 250 Blk Zi
8	17000616	Screw 3/8-16 x 1-1/2
9	19131614	Washer 13/32 x 1 x 14 Ga.
10	195530	Pan Pnt Seat (blk)
11	166369	Knob Seat Adj Wingnut
12	174648	Bracket Pnt Mounting Switch

KEY NO.	PART NO.	DESCRIPTION
13	121248X	Bushing Snap Blk Nyl 50 Id
14	72050412	Bolt Rdhd Sht Nk 1/4-20 x 1-1/2
15	134300	Spacer Split
16	121250X	Spring Cprsn
17	123976X	Nut Lock 1/4 Lge Flg Gr. 5 Zinc
21	171852	Bolt Shoulder 5/16-18 unc-2A
22	73800500	Nut Hex Lock w/Ins 5/16-18
24	19171912	Washer 17/32 x 1-3/16 x 12 Ga.
25	127018X	Bolt Shoulder 5/16-18 x .62

**NOTE:** All component dimensions given in U.S. inches.  
1 inch = 25.4 mm

# TRACTOR- -MODEL NO. 917.253160

## MOWER





## TRACTOR- -MODEL NO. 917.253160

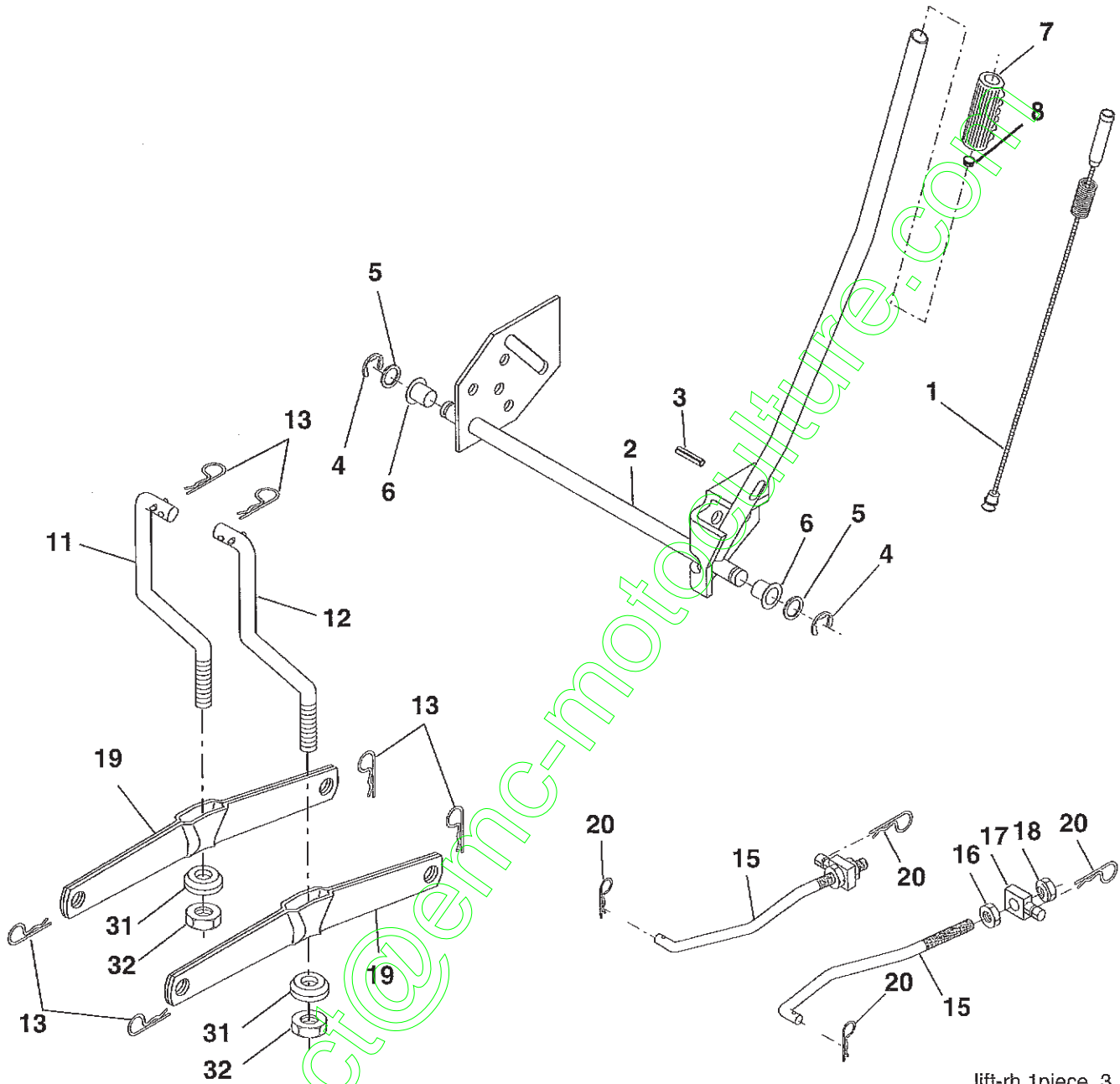
### MOWER

KEY NO.	PART NO.	DESCRIPTION	KEY NO.	PART NO.	DESCRIPTION
1	400108	Housing Asm. Mower 92 CRD	45	420753	Cover Mandrel RH 92 CRD
2	72140506	Bolt Rdhd Sqnk 5/16-18 unc x 3/4	46	137729	Screw Thd Roll 1/4-20 x 5/8
3	165569	Bracket Asm. S-Bar Chass 92 CRD	55	199498	Arm Idler 92 CRD
4	165558	Bracket Bar Sway Deck 92 CRD	56	165723	Spacer Retainer Mower
5	124670	Retainer Spring	61	199486	Spring Tension Belt
6	165557	Bar Sway 92 CRD	67	106932	Knob Rd 3/8-16 Plstc Thds Blk
8	181712	Bolt 3/8-24 x 1.25 Gr. 8 Patched	68	402008	Hex-Belt 92 Mower
9	10030600	Washer Lock Hvy 3/8 Unplated	69	165482	Shaft Asm w/Lwr Brg RH Thd CRD
10	140296	Washer Hard	84	156085	Keeper Belt Idler
11	186385	Blade 3-1 LH 92 CRD	116	193406	Bolt Shoulder
13	137645	Shaft Asm. w/Lower Bearing	117	174873	Wheel Gauge
14	128774	Housing Mandrel Vented (Machd)	119	19132012	Washer 13 x 32 x 1-1/4 x 12
15	110485X	Bearing Ball Mandrel	124	72110612	Bolt Carr Sh 3/8-16 x 1-1/2 Gr. 5
16	186386	Blade 3-1 RH 92 CRD	130	72110506	Bolt Rdhdsqnk 5/16-18 unc x 3/4
17	72140610	Bolt Carriage 3/8-16 x 1-1/4	131	165661	Chute Bagger CRD 92cm
18	72110606	Bolt Rdhd Sqnk 3/8-16 x 3/4	152	176074	Cable Clutch CRD
19	132827	Bolt Shoulder 5/16-18 Thd Form	158	17720408	Screw Hex Thd Cut 1/4-20 x 1/2
20	181713	Bolt 3/8-24 x 1.25 Gr. 8 Ptch Lhthd	174	400241	Guard Front Susp.
21	73680500	Nut Crown Lock 5/16-18	185	188234	Head Asm. Cable Clutch
22	199590	Bracket Idler Sprt 92 CRD	254	17000616	Screw 3/8-16 x1
23	165446	Bracket Idler Sprt	295	412171	Baffle Front
24	165242	Bracket Suspension LF 92 CRD	296	72140406	Bolt RDHD SQNK 1/4-20 x 3/4 Gr. 5
25	165244	Bracket Suspension RF 92 CRD	297	73930400	Nut Centerlock 1/4-20 unc
26	400110	Brace Susp Frt CRD	306	423062	Palnut 1/4"
27	165568	Bracket Asm. Susp RR 92 CRD	---	181857	Mandrel Assembly (Includes housing, shaft assembly, and bearing only - pulley/nut/washer and blade bolt/washers not included).
28	165567	Bracket Asm. Susp LR 92 CRD	---	181858	Mandrel Asm CRD LH Threads SVC
30	173984	Screw Thd Rolling	---	422785	Replacement Mower, Complete (Std. Deck - Order separately gauge wheel components key nos. 116 - 119).
31	187690	Washer Spacer Mower Vented			
32	153532	Mandrel Pulleys			
33	400234	Nut Flg Top Lock			
34	400107	Bracket Gauge Wheel LF 92 CRD			
35	400106	Bracket Gauge Wheel RF 92 CRD			
36	146763	Pulley Idler V-Groove Dim 4.25			
40	73680600	Nut Crownlock 3/8-16 unc			
41	73900600	Nut Lock Flg. 3/8-16 unc			
44	420752	Cover Mandrel LH 92 CRD			

**NOTE:** All component dimensions given in U.S. inches  
1 inch = 25.4 mm

# TRACTOR- -MODEL NO. 917.253160

## MOWER LIFT



lift-rh.1piece\_3

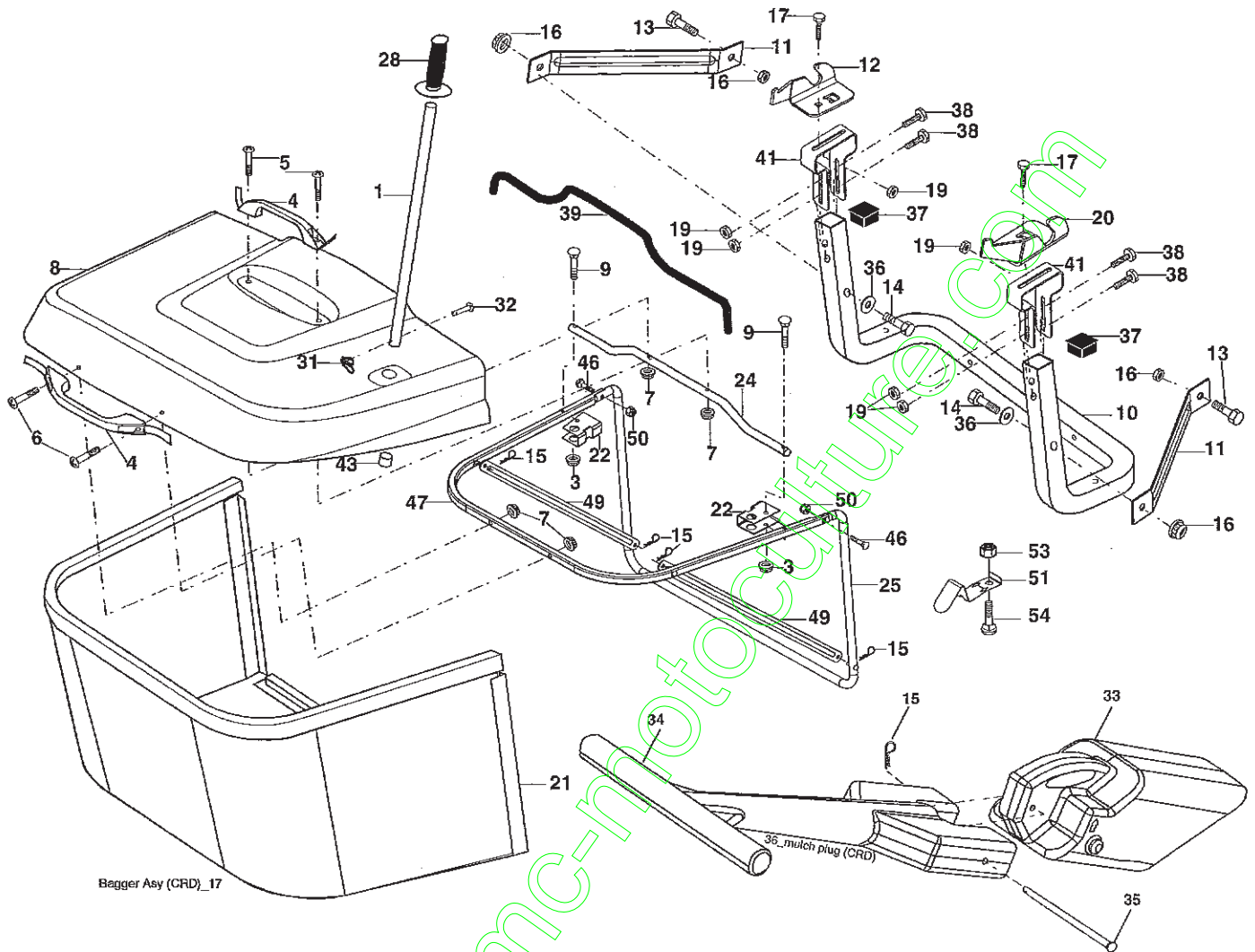
KEY NO.	PART NO.	DESCRIPTION
1	404981	Plunger Asm Lift Lever
2	159471	Shaft Asm. Lift
3	105767X	Pin Groove
4	12000002	E-Ring #5133-62
5	19211621	Washer 21/32 x 1 x 21 Ga.
6	120183X	Bearing Nylon
7	125631X	Grip Handle Fluted
8	125631X	Button Plunger Blk
11	165829	Link Asm Lift L.H.
12	165831	Link Asm Lift R.H.
13	4939M	Retainer Spring

KEY NO.	PART NO.	DESCRIPTION
15	173288	Link Front
16	73350800	Nut Jam Hex 1/2-13 unc
17	175689	Trunnion Blk Zinc
18	73800800	Nut Lock w/wsh 1/2-13 unc
19	139868	Arm Suspension Mower
20	194209	Pin Cotter 7/16 Bowtie Lock
31	169865	Bearing, Pvt. Lift.
32	73540600	Nut Crownlock 3/8-24

**NOTE:** All component dimensions given in U.S. inches  
1 inch = 25.4 mm

# TRACTOR- -MODEL NO. 917.253160

## BAGGER

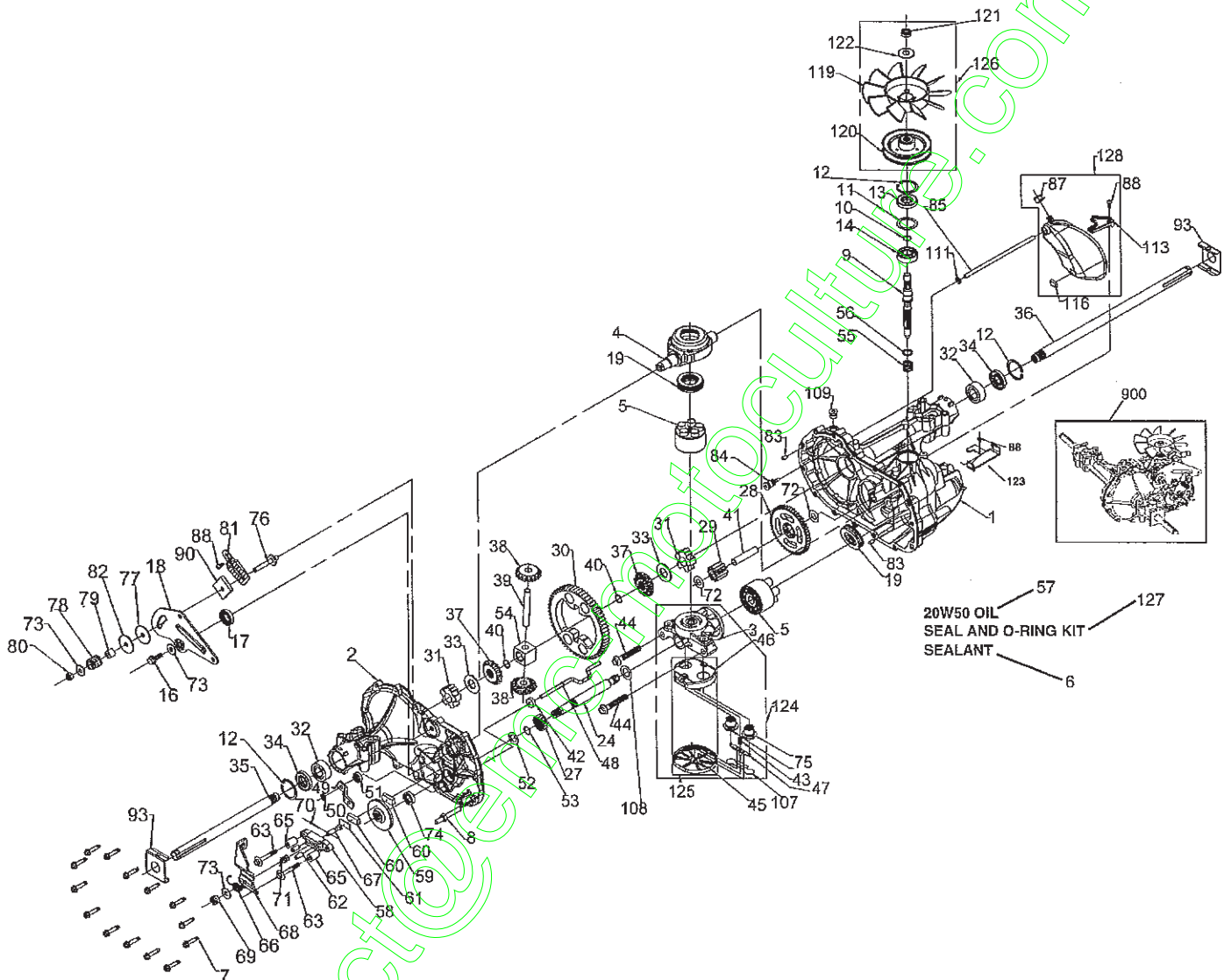


Bagger Assy (CRD)\_17

KEY NO.	PART NO.	DESCRIPTION	KEY NO.	PART NO.	DESCRIPTION
1	165249	Tube Handle Bagger CRD	28	165787	Grip Handle Black
3	123976X	Nut Lock 1/4 Lge Flg Gr 5 Zinc	31	169484	Retainer Clip
4	169916	Handle Bagger w/Lvrs Gr. 5 Zinc	32	126875X	Rivet Rd Hd Drilled 3/8 Dia
5	74981024	Screw Pan Head #10-24 x 1.50 Blk	33	165571	Plug Mulch
6	74981032	Screw Pan Hd	34	165570	Handle Mulcher
7	73401000	Nut Wiz Lock Hex Serr/Hd #10-24	35	165572	Pin Mulcher
8	169963X613	Cover Bagger	36	19132012	Washer 13/32 x 1-1/4 x 12 Ga.
9	72140418	Bolt Carriage 1/4-20 x 2.25d x Gr.5	37	175401	Plug Support Bagger CRD
10	181282	Tube Support Bagger CRD	38	72010520	Bolt 5/16-18 x 2-1/2
11	165719	Bracket Support Upper Bag CRD	39	416257	Seal
12	188848	Bracket Pivot LH	41	169683	Bracket Vert Adj Bagger CRD
13	74760612	Bolt Fin Hex 3/8-16 unc	43	174083	Plug Tubing End
14	74520636	Bolt Fin Hex 3/8-16 x 2-1/4 Gr. 5	46	72110510	Bolt Carr. 5/16-18 x 1-1/4 Gr. 5
15	4939M	Retainer Spring	47	193704	Tube Upper
16	73900600	Nut Lock Flg 3/8-16 unc	49	193305	Bar Spreader
17	72140506	Bolt Rdhd Sht Sqnk 5/16-18 unc x 3/4	50	73800500	Nut Lock Hex W/Ins. 5/16-18 unc
19	73900500	Nut Lock Hex Flange 5/16-18	51	199903	Latch Spring Bagger
20	188847	Bracket Pivot RH	53	73510400	Nut Keps Hex 1/4-20 unc
21	406180	Bag Asm CRD	54	72140406	Bolt Rdhd Sqnk 1/4-20 unc
22	165781	Bracket Side Bagger CRD			
24	165783	Tube Pivot Bagger CRD			
25	193705	Tube Front Bagger CRD			

**NOTE:** All component dimensions given in U.S. inches  
1 inch = 25.4 mm

**TRACTOR- -MODEL NO. 917.253160**  
**TRANSAXLE HYDRO GEAR - - MODEL NUMBER 321-0510**

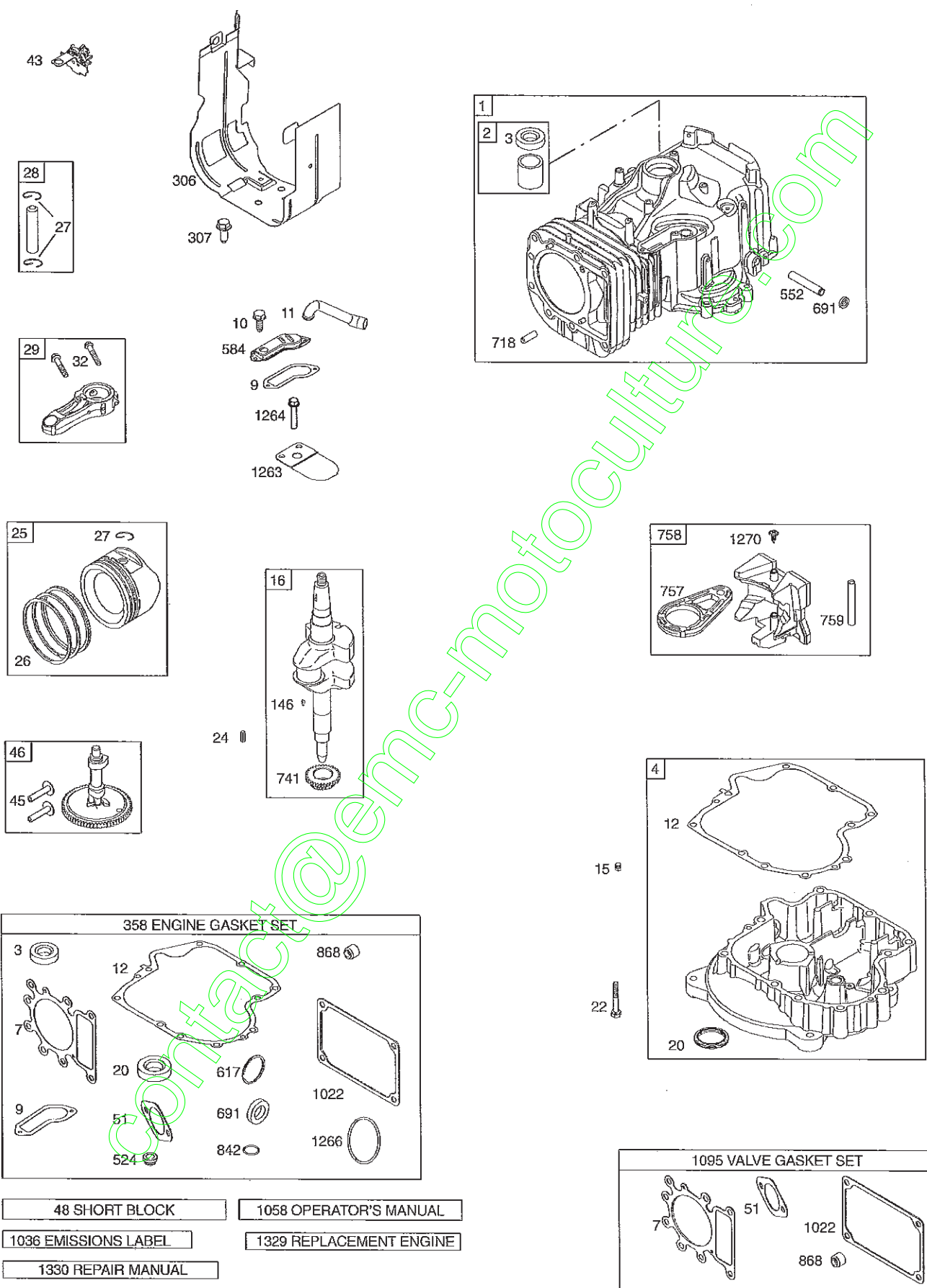


**TRACTOR- -MODEL NO. 917.253160**  
**TRANSAXLE HYDRO GEAR - - MODEL NUMBER 321-0510**

KEY NO.	PART NO.	DESCRIPTION	KEY NO.	PART NO.	DESCRIPTION
1	170351	Main Housing, Assembly	60	142883	Brake Puck
2	170352	Side Housing, Assembly	61	142882	Puck Plate
3	170353	Center Section, Assembly	62	142887	Brake Actuating Pin
4	170354	Swashplate, Trunion Machined	63	170410	HFHCS 1/4-20X2W/Patch, Special Flange
5	169898	Block - Assembly	64	142892	Bolt, 1/4-20 X 1 W/Patch
6	170355	Sealant	65	170411	Spacer
7	170356	Hex Flange Screw 1/4-20 X 1.25	66	170412	Spring, Brake Arm Bias
8	170357	Stud, 5/16-24 Hex Double End	67	170413	SQ. HD. BOLT 5/16-24-Ribbed
9	170358	Shaft, Input	68	178157	Arm, Brake
10	170359	Ring - Retaining	69	170415	Slotted Hex Nut 5/16-24
11	170360	Spacer	70	170416	Cotter Pin 3/32 X 3/4
12	169870	Ring - Retaining	71	170417	Compression Spring Brake Anti-Drag
13	170361	Seal, Lip .67 X 1.58 X .276	72	170418	Washer, HT .5 I.D. X 1 O.D. X .032
14	173158	Ball Brg 17MM ID X 40MM OD X 12MM	73	142884	Flat - Washer 11/32 I.D. X 7/8 O.D.
16	170362	Hex Flange Head Screw 5/16-24 X 0.75	74	170419	Oil Seal .625 X 1.0 X .25
17	170363	Lip Seal 18 X 32 X 7	75	170420	Check Plug Assembly, .027, Washer
18	170364	Arm, Control	76	170421	Stud, 5/16-24 Friction Pack
19	173159	Bearing, 30X52X13 Thrust	77	170422	Puck, .330 X 1.50 X .0975
23	170365	Check Plug Assembly, Washer	78	142969	Spring, Helical Comp
24	170366	Shaft, Motor1	79	142980	Spacer
27	170367	Gear - Pinion, 13T	80	150778	Hex Lock Nut 5/16-24 UNJF(Nylon Insert)
28	170368	10T/48T GEAR	81	170423	Wedge, Friction Pack
29	170369	Gear, 10T Jackshaft	82	170424	Clip, Washer .316X1.50X.1046 (Plated)
30	170370	60T Bull Gear	83	161168	Pin, Standard Headless
31	170371	Sleeve Bearing .75 X 1.575 X .625	84	170425	Fitting, 5/16 Sae 5/32 Tube
32	170389	Sleeve Bearing(Outboard).75X1.750X.625	85	170426	Hose, Expansion Tank
33	142991	Washer, 3/4 ID X 1-1/2 OD X .13 THK	87	173160	Cap, Vent
34	170390	Lip Seal Axle Seal	88	170429	Bolt, Self Tapping 10-32 X 1/2
35	170391	Shaft, Axle .75 X 11.39 (Key, R.H.)	90	170430	Puck, Inner Wedge
36	170392	Shaft, Axle .75 X 16.99 (Key, L.H.)	93	170431	Spring Clip - Housing Thrust
37	150792	Miter Gear (SPLINED)	107	170432	Deflector
38	150793	Miter Gear 15T (0.5 ID)	108	170433	Washer, Motorshaft .71ID X 1.15OD X .030THK
39	150809	Shaft	109	170434	Plug, Sae #6
40	170393	Ring, Spiral Retaining	111	170435	O-ring .07 x .301 I.D.
41	170394	Pin, Jackshaft	113	170437	Bracket, Support Expansion Tank
42	170395	Magnet, Rling	116	170438	Silicon Sponge
43	170396	Spring, Bypass	119	170439	Fan
44	150797	Hydro mtg Screw 3/8-24 X 2.5 Long	120	178159	Pulley
45	170397	Filter	121	170441	Hex Lock Nut 1/2-20
46	170398	Base, Filter	122	170442	Washer Belleville
47	170399	Actuator, Bypass	123	178160	Bracket Belt Keeper
48	170400	Rod, Bypass Actuator	124	170444	Center Section-Filter-Bypass Assembly
49	178156	Arm, Bypass	125	170445	Filter Assembly
50	170402	Retaining Ring .250 External	126	178417	Fan - Pulley Service Assembly
51	170403	Seal, Lip .741 X .250 X .250 TC	127	170447	Seal - O-ring Kit
52	170404	Flat Washer, 5/8 ID X 1.0 OD X .05 THK	128	173165	Kit, Expansion Tank
53	170405	Retaining Ring	900	170061	Transaxle, complete
54	170406	Bearing, Center Block			
55	142977	Spring - Helical Compression			
56	142978	Washer			
57	-----	20W-50 OIL 72.8 oz			
58	170407	Brake Yoke			
59	170408	Rotor, Brake			

**NOTE:** All component dimensions given in U.S. inches  
1 inch = 25.4 mm

**TRACTOR- -MODEL NO. 917.253160**  
**BRIGGS & STRATON ENGINE - - MODEL NUMBER 31A607, TYPE NUMBER 0740-B1**



48 SHORT BLOCK

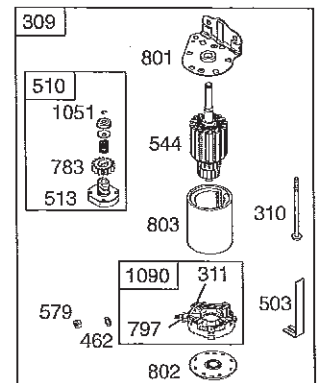
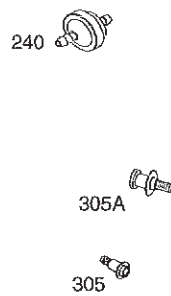
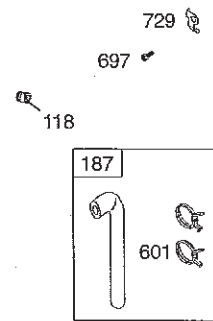
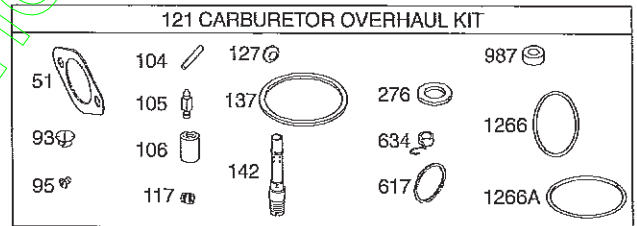
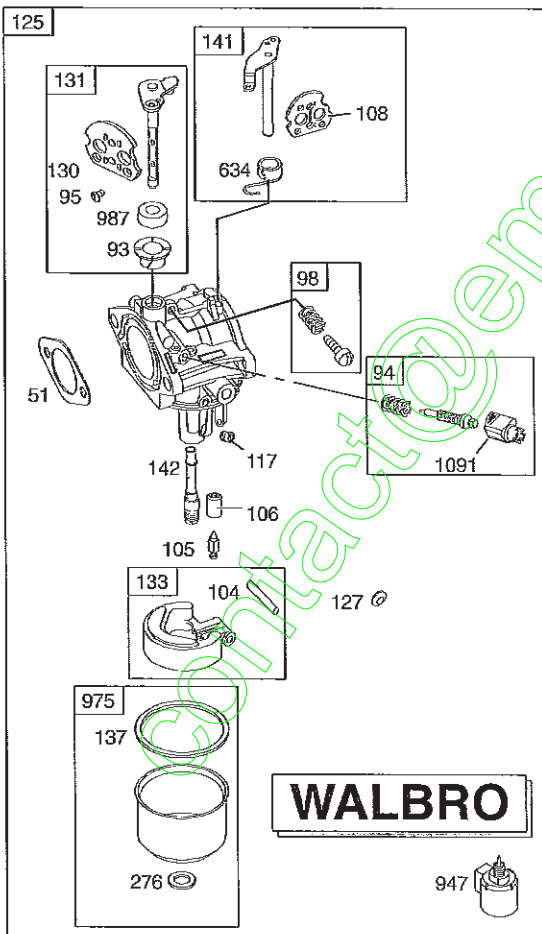
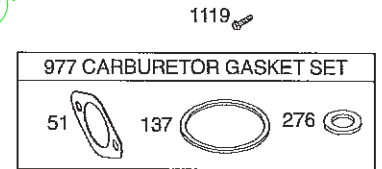
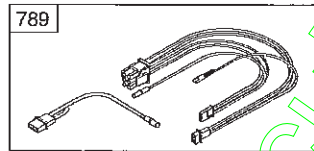
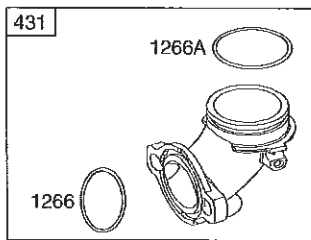
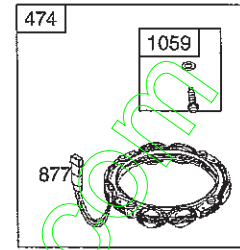
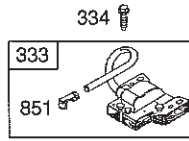
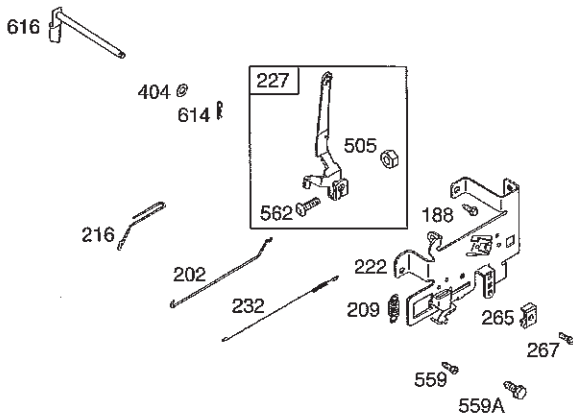
1058 OPERATOR'S MANUAL

1036 EMISSIONS LABEL

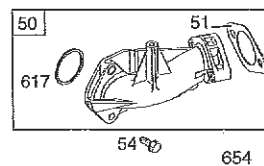
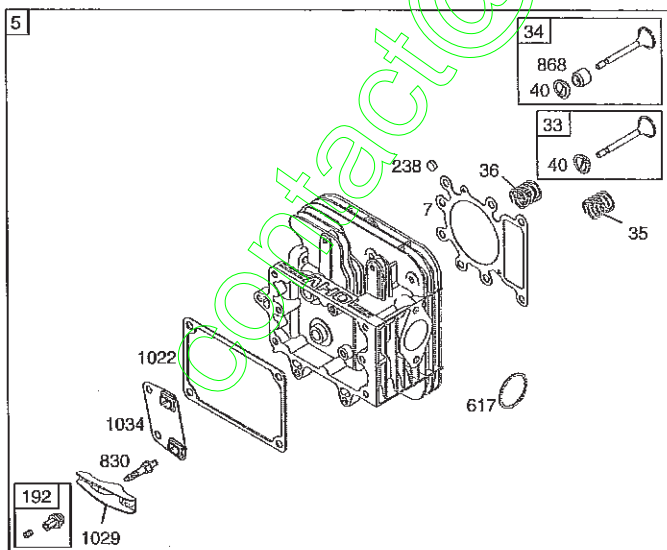
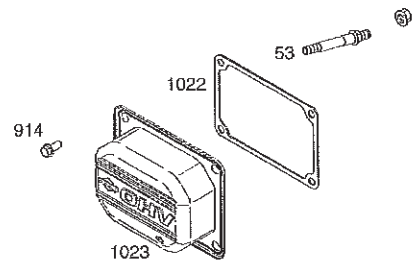
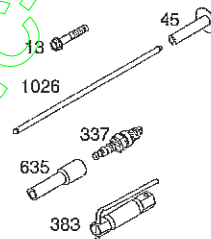
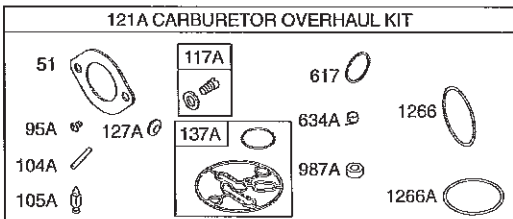
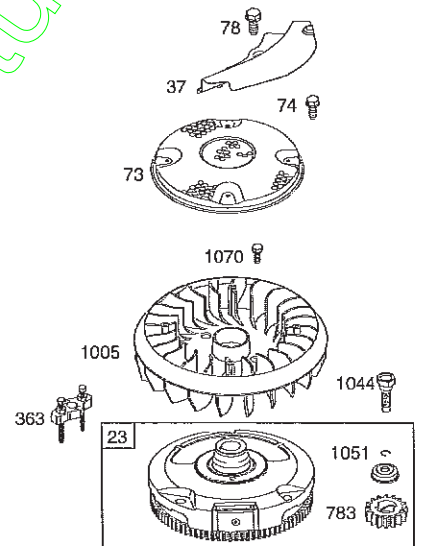
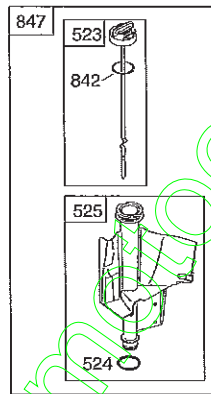
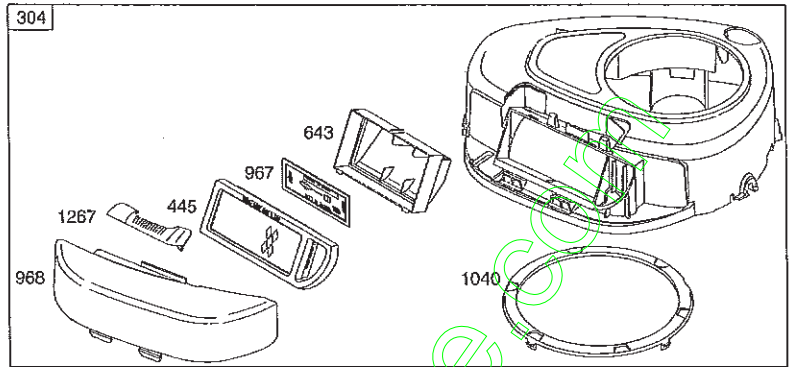
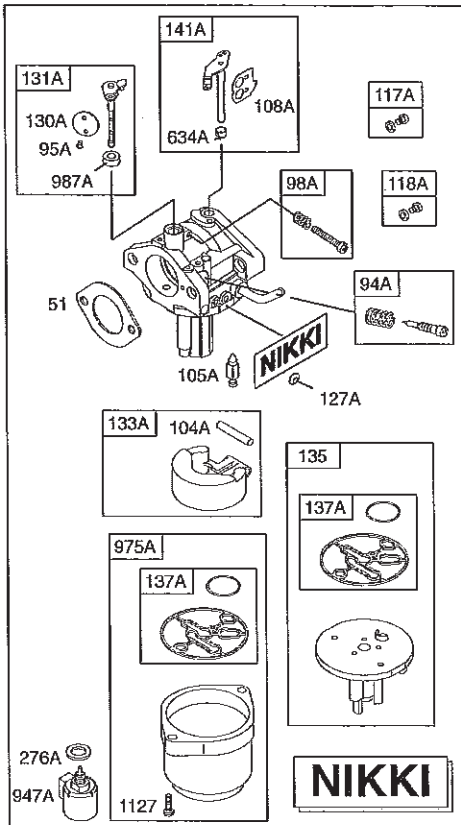
1329 REPLACEMENT ENGINE

1330 REPAIR MANUAL

**TRACTOR- -MODEL NO. 917.253160**  
**BRIGGS & STRATON ENGINE - - MODEL NUMBER 31A607, TYPE NUMBER 0740-B1**



**TRACTOR- -MODEL NO. 917.253160**  
**BRIGGS & STRATON ENGINE - - MODEL NUMBER 31A607, TYPE NUMBER 0740-B1**





## TRACTOR- -MODEL NO. 917.253160

**BRIGGS & STRATON ENGINE - - MODEL NUMBER 31A607, TYPE NUMBER 0740-B1**

KEY NO.	PART NO.	DESCRIPTION	KEY NO.	PART NO.	DESCRIPTION
1	793987	Cylinder Assembly	106	690577	Ø Seat-Inlet (Walbro)
2	399265	Kit-Bushing/Seal (Magneto Side)	108	692344	Valve-Choke (Walbro)
3	391086s	• Seal-Oil (Magneto Side)	108A	695419	Valve-Choke (Nikki)
4	697106	Sump-Engine	117	694352	Ø Jet-Main (Standard) (Walbro)
5	793989	Head-Cylinder	117A	699457	Ø Jet-Main (Standard) (Nikki)
7	699168	•+ Gasket-Cylinder Head	118	697228	Jet-Main (High Altitude) (Walbro)
9	697109	• Gasket-Breather	118A	699458	Jet-Main (High Altitude) (Nikki)
10	697157	Screw (Breather Assembly)	121	697241	Kit-Carburetor Overhaul (Walbro)
11	697113	Tube-Breather	121A	699521	Kit-Carburetor Overhaul (Nikki)
12	697110	• Gasket-Crankcase	125	791888	Carburetor (Walbro)
13	793988	Screw (Cylinder Head)	127	695005	Plug-Welch (Walbro)
15	690946	Plug-Oil Drain	127A	690727	Ø Plug-Welch (Nikki)
16	697127	Crankshaft	130	691750	Valve-Throttle (Walbro)
20	791892	• Seal-Oil (PTO Side)	130A	699500	Valve-Throttle (Nikki)
22	692125	Screw (Crankcase Cover/Sump)	131	494379	Kit-Throttle Shaft (Walbro)
23	693557	Flywheel	131A	699501	Kit-Throttle Shaft (Nikki)
24	222698s	Key-Flywheel	133	494381	Float-Carburetor (Walbro)
25	792507	Piston Assembly (Standard)	133A	694914	Float-Carburetor (Nikki)
	792648	Piston Assembly (.020" Oversize)	135	698780	Tube-Fuel Transfer (Nikki)
26	791936	Ring Set (Standard)	137	281165s	Ø± Gasket-Float Bowl (Walbro)
	791947	Ring Set (.020" Oversize)	137A	698781	Ø Gasket-Float Bowl (Nikki)
27	698469	Lock-Piston Pin	141	495931	Kit-Choke Shaft (Walbro)
28	697099	Pin-Piston	141A	695420	Kit-Choke Shaft (Nikki)
29	791631	Rod-Connecting (Standard)	142	697140	Ø Nozzle-Carburetor (Walbro)
32	791118	Screw (Connecting Rod)	146	691639	Key-Timing
33	791934	Valve-Exhaust	187	791805	Line-Fuel (Molded) (Cut to Required Length)
34	791935	Valve-Intake	188	691693	Screw (Control Bracket)
35	691279	Spring-Valve (Intake)	192	691986	Adjuster-Rocker Arm
36	691279	Spring-Valve (Exhaust)	202	691841	Link-Mechanical Governor
37	697352	Guard-Flywheel	209	692208	Spring-Governor
42	499586	Keeper-Valve	216	691840	Link-Choke
43	691968	Slinger-Governor/Oil	222	694042	Bracket-Control
45	690564	Tappet-Valve	227	691374	Lever-Governor Control
46	793583	Camshaft	232	691842	Spring-Governor
48	697761	Short Block	238	691843	Cap-Valve
50	690193	Manifold-Intake	240	394358s	Filter-Fuel
51	692137	•Ø± Gasket-Intake	265	691024	Clamp-Casing
53	690227	Stud (Carburetor)	267	792629	Screw (Casing Clamp)
54	691148	Screw (Intake Manifold)	276	692255	Ø± Washer-Sealing (Walbro)
73	697133	Screen-Rotating	276A	695410	Ø± Washer-Sealing (Nikki)
74	697897	Screw (Rotating Screen)	304	698402	Housing-Blower
78	691003	Screw (Flywheel Guard)	305	697102	Screw (Blower Housing)
93	690602	Ø Bushing-Throttle Shaft (Walbro)	305A	793376	Screw (Blower Housing)
94	498030	Kit-Idle Mixture (Walbro)	306	697107	Shield-Cylinder
94A	695425	Kit-Idle Mixture (Nikki)	307	691003	Screw (Cylinder Shield)
95	691636	Ø Screw (Throttle Valve) (Walbro)	309	693551	Motor-Starter
95A	690718	Ø Screw (Throttle Valve) (Nikki)	310	690323	Bolt (Starter Motor)
98	495800	Kit-Idle Speed (Walbro)	311	497608	Brush Set
98A	695408	Kit-Idle Speed (Nikki)	333	492341	Armature-Magneto
104	690525	Ø Pin-Float Hinge (Walbro)	334	691061	Screw (Magneto Armature)
104A	694918	Ø Pin-Float Hinge (Nikki)	337	691043	Plug-Spark
105	231855s	Ø Valve-Float Needle (Walbro)	358	697191	Gasket Set-Engine
105A	696136	Ø Valve-Float Needle (Nikki)	363	19203	Flywheel Puller
			383	89838s	Wrench-Spark Plug
			404	691691	Washer (Governor Crank)

## TRACTOR- -MODEL NO. 917.253160

### BRIGGS & STRATON ENGINE - - MODEL NUMBER 31A607, TYPE NUMBER 0740-B1

KEY NO.	PART NO.	DESCRIPTION	KEY NO.	PART NO.	DESCRIPTION
431	697122	Elbow-Intake	1005	699043	Fan-Flywheel
445	698083	Filter-Air Cleaner Cartridge	1022	272475s ++	Gasket-Rocker Cover
462	691261	Washer (Starter Cable)	1023	791079	Cover-Rocker Arm
474	696459	Alternator	1026	692003	Rod-Push (Intake)
503	691532	Strap-Starter		692011	Rod-Push (Exhaust)
505	691251	Nut (Governor Control Lever)	1029	691751	Arm-Rocker
510	693699	Drive-Starter	1034	690822	Guide-Push Rod
513	692024	Clutch-Drive	1036		Label-Emissions (Available from a Briggs & Stratton authorized Service Dealer)
523	699908	Dipstick			
524	691032	Seal-Dipstick Tube			
525	697184	Tube-Dipstick	1040	698368	Plate-Trim
544		Starter-Armature (For service see Starter Motor 693551)	1044	698139	Screw (Flywheel)
552	697144	Bushing-Governor Crank	1051	691265	Ring-Retaining
559	697561	Screw (Remote Choke)	1058	MS3787	Operator's Manual
559A	693675	Screw (Remote Choke)	1059	698516	Kit-Screw/Washer
562	691119	Bolt (Governor Control Lever)	1070	690372	Screw (Flywheel Fan)
579	691029	Nut (Starter Cable)	1090	691293	Retainer-Brush
584	697112	Cover-Breather Passage	1091	691333	Cap-Limiter
601	791850	Clamp-Hose	1095	690190	Gasket Set-Valve
614	691620	Pin-Cotter	1119	691183	Screw (Alternator)
616	692012	Crank-Governor	1127	695407	Screw (Float Bowl) (Nikki)
617	692138	Ø • Seal-O Ring (Intake Manifold)	1263	697124	Reed-Breather
634	690802	Ø Spring/Seal Assembly (Walbro)	1264	697104	Screw (Breather Reed)
634A	698779	Ø Spring/Seal Assembly (Nikki)	1266	691917	•Ø Seal-O Ring (Intake Elbow)
635	691909	Boot-Spark Plug	1266A	697123	Ø Seal-O Ring (Intake Elbow)
643	698401	Retainer-Air Filter	1267	697419	Latch-Blower Housing
654	690958	Nut (Carburetor)	1270	697156	Plug-AVS Counterweight
691	692407	• Seal-Governor Shaft	1329	31B707-0026	Replacement Engine (If the original engine is equipped with a six pin wiring harness transfer to the replacement engine. Transfer Muffler and/or Spark Arrester Assembly from the original engine if suitable for additional service or add new parts as required. Remove 691840 add 790544. Transfer the speed limiter control assembly to the replacement engine. Transfer governor spring to the replacement engine.)
697	690372	Screw (Drive Cap)			Repair Manual
718	690959	Pin-Locating	1330	272147	
729	691224	Clip-Wire			
741	697128	Gear-Timing			
757	693242	Link-Counterweight			
758	697134	Counterweight			
759	697392	Pin-Counterweight			
783	693713	Gear-Pinion			
789	698329	Harness-Wiring			
797	693167	Nut (Brush Retainer)			
801	691283	Cap-Drive			
802	691286	Cap-End			
803		Housing-Starter (For service see Starter Motor 693551)			
830	691095	Stud (Rocker Arm)			
842	691031	• Seal-O Ring (Dipstick Tube)			
847	790442	Dipstick/Tube Assembly			
851	692424	Terminal-Spark Plug			
868	690968	++ Seal-Valve			
877	393456	Wire-Connector/Alternator			
914	691108	Screw (Rocker Cover)			
947	694393	Solenoid-Fuel (Walbro)			
947A	699915	Solenoid-Fuel (Nikki)			
967	697015	Filter-Pre Cleaner			
968	698403	Cover-Air Cleaner			
975	495933	Bowl-Float (Walbro)			
975A	699502	Bowl-Float (Nikki)			
977	690192	Gasket Set-Carburetor			
987	691326	Ø Seal-Throttle Shaft (Walbro)			
987A	698777	Ø Seal-Throttle Shaft (Nikki)			

- Included in Engine Gasket Set, Key. No. 358
- Ø Included in Carburetor Overhaul Kit, Key. No. 121 Or 121A
- ‡ Included in Carburetor Gasket Set, Key. No. 977
- + Included in Valve Gasket Set, Key. No. 1095

**NOTE:** All component dimensions given in U.S. inches  
1 inch = 25.4 mm

---

# SERVICE NOTES

---

[contact@enc-motoculture.com](mailto:contact@enc-motoculture.com)

### LIMITED WARRANTY ON CRAFTSMAN RIDING EQUIPMENT

For two (2) years from the date of purchase, if this Craftsman Riding Equipment is maintained, lubricated and tuned up according to the instructions in the owner's manual, Sears will repair or replace free of charge any parts that are found to be defective in material or workmanship according to the guidelines of coverage listed below. Sears will also provide free labor for these applicable warranted parts for the two full years. During the first 30 days of purchase, there will be no charges to service the product at your home for issues covered by this warranty. (See exclusions below). For your convenience, IN HOME warranty service will still be available after the first 30 days of purchase, but a trip charge will apply. This charge will be waived if the Craftsman product is dropped off at an authorized Sears location. For the nearest authorized Sears location, please call 1-800-4-MY-HOME®. This warranty applies only while this product is within the United States.

This Warranty does not cover:

- Expendable items which become worn during normal use, including but not limited to blades, spark plugs, air cleaners, belts, and oil filters.
- Standard Maintenance Servicing, oil changes, or tune-ups
- Tire replacement or repair caused by punctures from outside objects, such as nails, thorns, stumps, or glass.
- Repairs necessary because of operator abuse, including but not limited to, damage caused by towing objects beyond the capability of the riding equipment, impacting objects that bend the frame or crankshaft, or over-speeding the engine.
- Repairs necessary because of operator negligence, including but not limited to, electrical and mechanical damage caused by improper storage, failure to use the proper grade and amount of engine oil, failure to keep the deck clear of flammable debris, or failure to maintain the equipment according to the instructions contained in the owner's manual.
- Engine (fuel system) cleaning or repairs caused by fuel determined to be contaminated or oxidized (stale). In general, fuel should be used within 30 days of its purchase date.
- Normal deterioration and wear of the exterior finishes, or product label replacement.
- Riding equipment used for commercial or rental purposes.

### LIMITED WARRANTY ON BATTERY

For ninety (90) days from date of purchase, if any battery included with this riding equipment proves defective in material or workmanship and our testing determines the battery will not hold a charge, Sears will replace the battery at no charge. During the first 30 days of purchase, there will be no charges to replace the battery at your HOME. After the first 30 days, for your convenience, IN-HOME warranty service will still be available but a trip charge will apply. This charge will be waived if the Craftsman product is dropped off at an authorized Sears location. For the nearest authorized Sears location, please call 1-800-4-MY-HOME®.

This battery warranty applies only while this product is within the United States.

This warranty gives you specific legal rights, and you may also have other rights, which vary, from state to state.

Sears, Roebuck and Co., Dept. 817WA, Hoffman Estates, IL 60179

**CRAFTSMAN®**