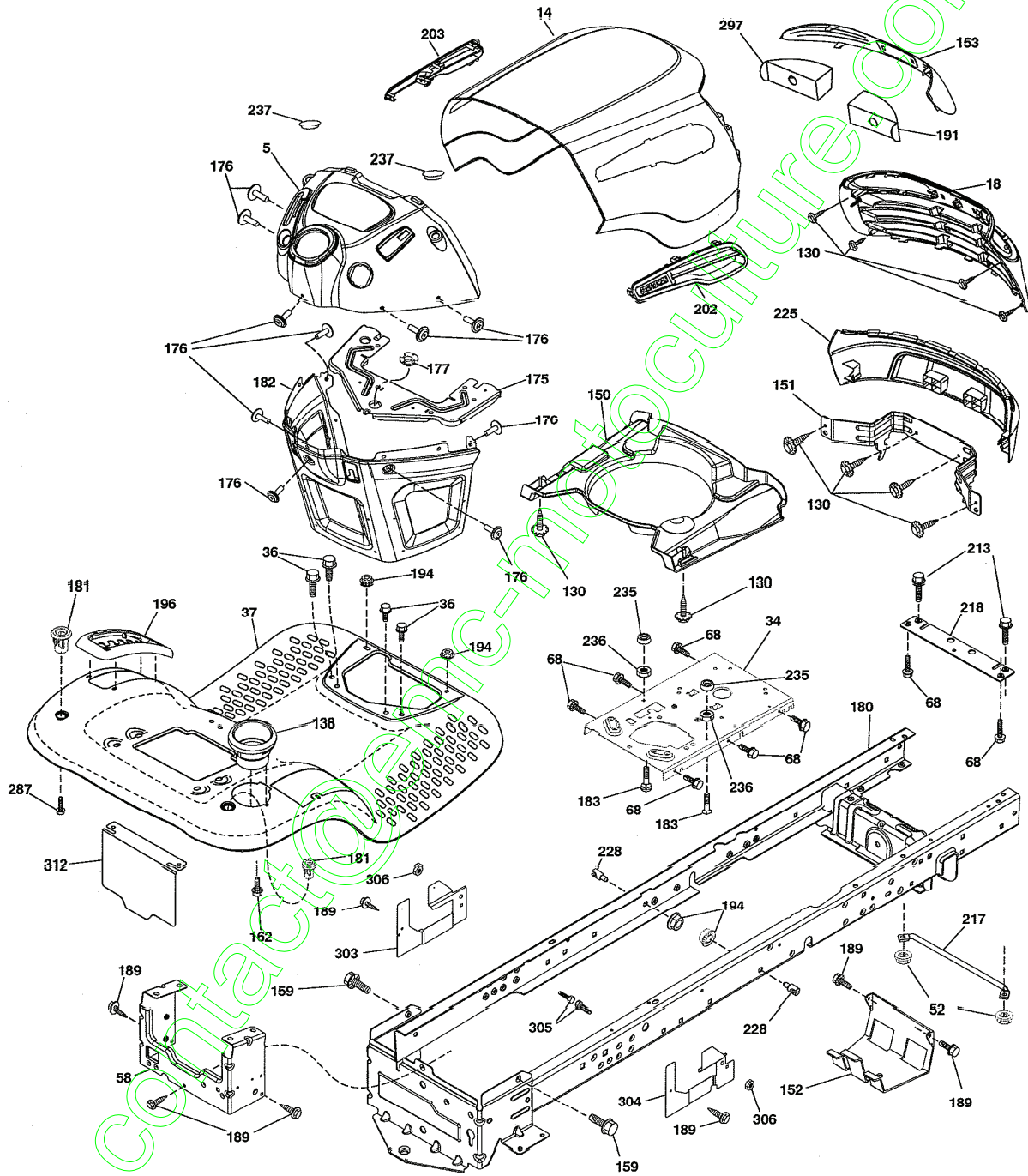
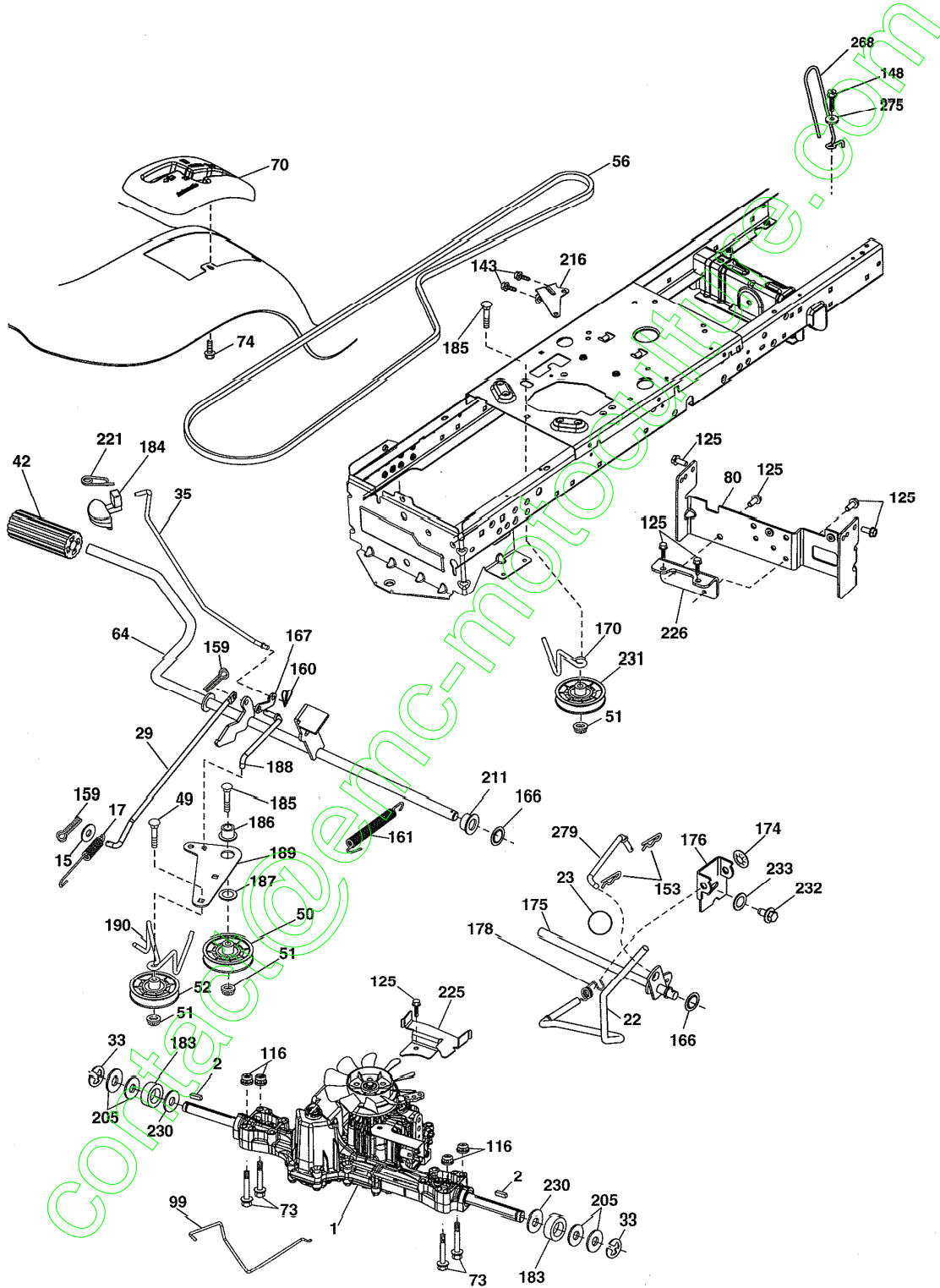


Repère	Part Number	Description
1	163465	BATTERY
2	74750412	BOLT HEX HD 1/4-20 UNC X 3/4
8	193228	BOX BATTERY
16	176138	SWITCH INTERLOCK PUSH-IN
21	400252	HARNESS SOCKET LIGHT W/4152J
22	4152J	BULB LIGHT
25	412894	CABLE STARTER
26	175158	FUSE
27	73510400	NUT KEPS HEX 1/4-20 UNC
28	198885	CABLE, GROUND
29	401545	SWITCH, SEAT
30	193350	SWITCH, IGN
33	411934	KEY/CHAIN
34	110712X	SWITCH LIGHT/RESET
40	401098	HARNESS IGN. DASH
41	17720408	SCREW THD CUT 1/4-20 X 1/2
42	131563	COVER, TERMINAL
43	192507	SOLENOID
55	17060512	SCREW THDROL 5/16-18 X 3/4 TYTT
71	400449	HARNESS IGN. CHASSIS
79	175242	BULBHOLDER ASM. INCAN DESCENT
87	197802	SWITCH INTERLOCK CLUTCH CABLE
90	435395	COVER TERMINAL BATTERY
92	196615	HARNESS PIGTAIL REVERSE SWITCH
93	192540	SCREW PLASTITE 10-14 X 200
94	191834	MODULE REVERSE ROS



Repère	Part Number	Description
5	408874X428	DASH
14	198416X613	HOOD
18	423156	GRILLE
34	196125	PLATE ENGINE
36	17060512	SCREW 5/16-18 X 3/4
37	414872X613	FENDER
52	73680500	NUT LOCK 5/16-18
58	412280	DRAWBAR UPPER
68	17490508	SCREW THDROL 5/16-18 X 1/2
130	416358	SCREW #10 X 0.750
138	193224X428	CUPHOLDER
150	400267	DUCT HEAT HOOD
151	187568	BRACKET PIVOT
152	199535	SHIELD BROWNING/DEBRIS
153	400550X599	LENS
159	17000612	SCREW HEXWSH THDROL 3/8-16 X 3/4
162	142432	SCREW
175	199472	CROSSMEMBER
176	400776	SCREW 10-24 X 5/8 WSHD QDRX
177	195228	BUSHING STEERING
180	415063	CHASSIS
181	193102X428	BUSHING MTG. FENDER CRGO.
182	407176	DASH LOWER
183	74520520	BOLT 5/16-18 X 1-1/4
189	17000512	SCREW 5/16-18 X 3/4
191	416502	INSERT REFLECTIVE RH
194	73900500	NUT LOCK HEX FLANGE 5/16-18
196	414579	CONSOLE ASSEMBLY DECK LIFT
202	423173	VENT HOOD SIDE PANEL RH
203	423172	VENT HOOD SIDE PANEL LH
213	74760512	BOLT HEX 5/16-18 X 3/4
217	409167	ROD PIVOT HOOD
218	196395	HOOD STOP
225	400549X613	BUMPER
228	195161	STUD FASTENER
235	406129	SPACER FENDER
236	73930500	NUT CENTER LOCK 5/16-18
237	403704	PLUG MOUNT CARGO
287	17600406	SCREW 1/4-20 X 3/8

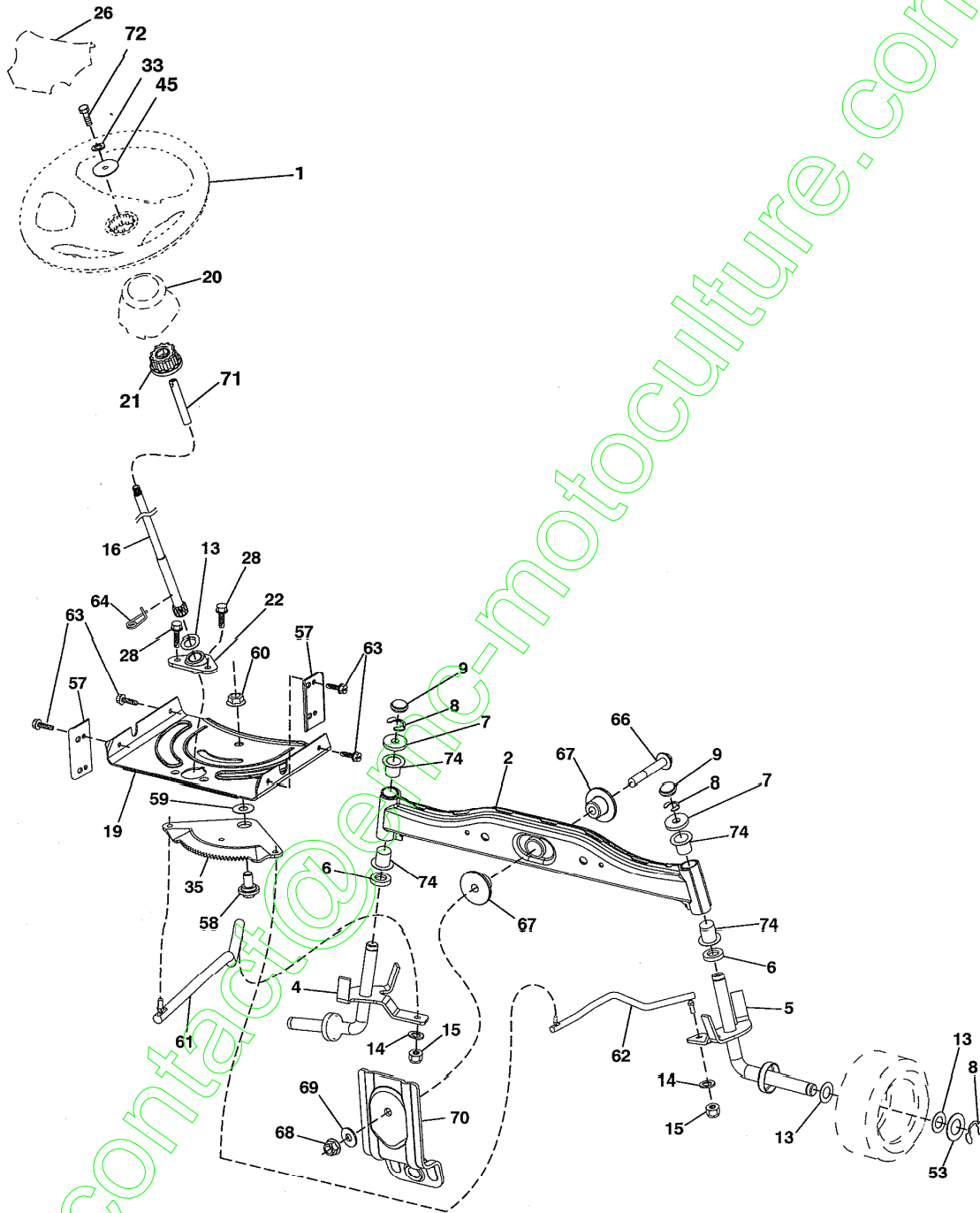
297	401827	INSERT REFLECTIVE LH
303	420959	SHIELD CHASSIS FRENCH LH
304	421509	SHIELD CHASSIS FRENCH RH
305	72110606	BOLT 3/8-16 X 3/4
306	73900600	NUT LOCK FLG 3/8-16 UNC
312	425926	SHIELD DRAWBAR FRENCH



Repère	Part Number	Description
1	408214	TRANSAXLE, TUFFTORQ K46BA (INTERNAL PARTS NOT AVAILABLE)
2	123583X	KEY SQUARE
15	19131316	WASHER 13/32 X 13/16 X 16 GA.
17	413678	SPRING, BRAKE
22	197660	ROD SHIFT
23	106933X	KNOB
29	403806	ROD, BRAKE
33	12000001	RING E
35	401031	ROD, BRAKE, PARK
42	8883R	COVER, FOOT PEDAL
49	72110614	BOLT
50	194327	PULLEY IDLER FLAT
51	73900600	LOCK NUT 3/8-16
52	194326	IDLER V-GROOVE 910" OFFSET
56	130969	V-BELT, DRIVE
64	196200	SHAFT ASSEMBLY PEDAL BRAKE CONTROL
70	193220X428	CONSOLE
73	74490544	BOLT HEX 5/16-18 GR. 5
74	142432	SCREW 1/4 X 1/2
80	440619	STRAP TORQUE
99	415742	ROD SPRINGS BYPASS
116	73900500	NUT LOCK HEX FLANGE 5/16-18
125	17000512	SCREW 5/16-18 X 3/4
143	17490508	SCREW THDROL 5/16-18
148	17000612	SCREW 3/8-16 X 3/4
153	4497H	RETAINER SPRING 1"
159	76020412	PIN COTTER 1/8 X 3/4
160	169484	RETAINER CLIP
161	105709X	SPRING, RETURN, CLUTCH
166	429164	NUT PUSH .625
167	405257	LATCH BRAKE PARKING
170	413430	KEEPER BELT CENTERSPAN
174	197289	NUT PUSH
175	408539	SHAFT ASSEMBLY SHIFT
176	196214	ARM CLEVIS ROD SHIFT
178	197456	SPACER SHIFT
183	137057	SPACER AXLE

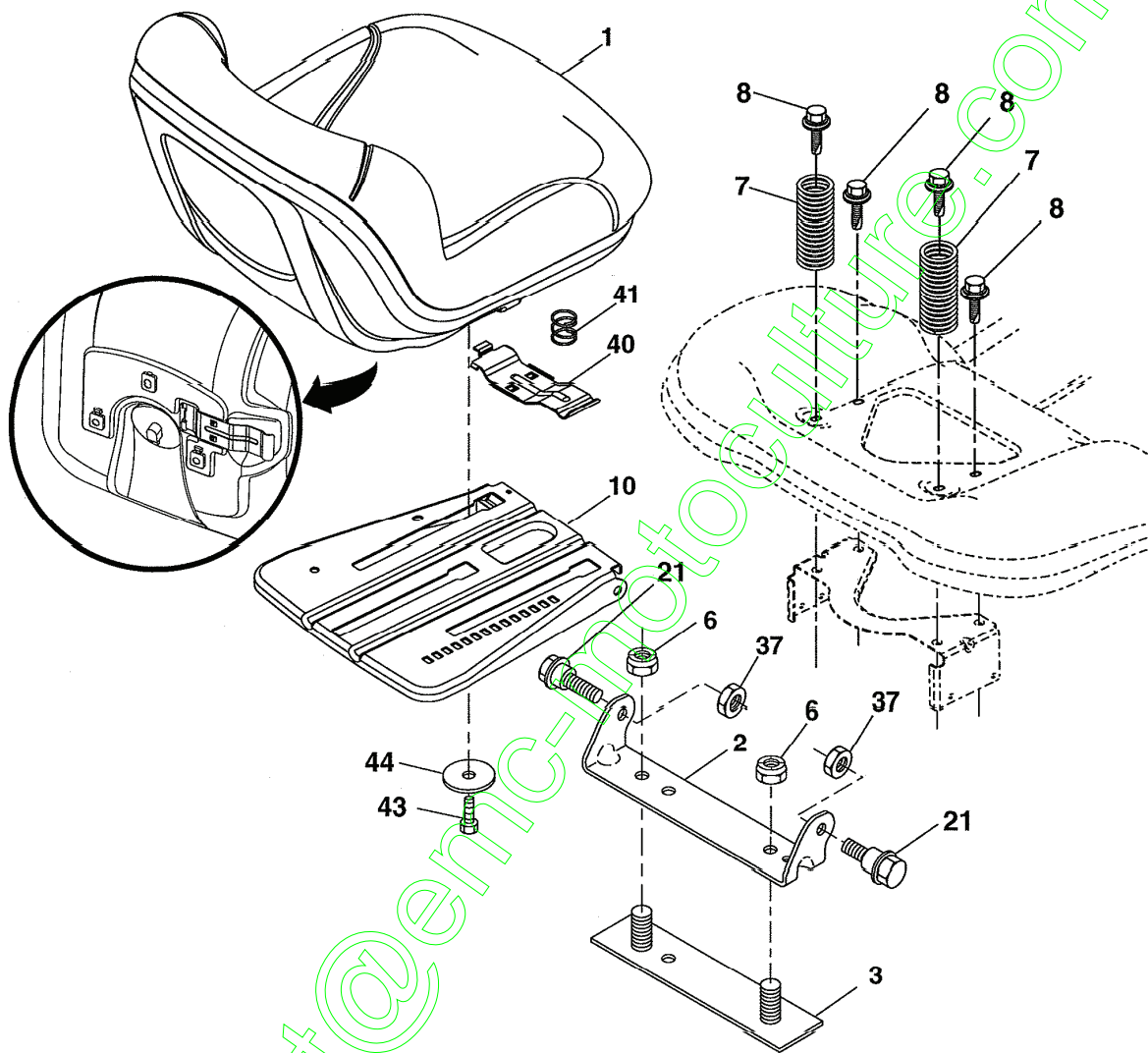
184	199996X667	HANDLE PARKING BRAKE
185	72110622	BOLT
186	194321	SPACER RETAINER
187	19133210	WASHER
188	194323	LINK CLUTCH GROUND DRIVE
189	194317	BELLCRANK GROUND DRIVE
190	194318	KEEPER BELLCRANK GROUND DRIVE
205	121748X	WASHER 25/32 X 1-5/8 X 16 GA.
211	196212	BUSHING SHAFT
216	196131	BRACKET PULLEY IDLER
221	403187	RETAINER SPRING CLIP HANDLE
225	403319	KEEPER BELT TRANSAXLE
226	401564	BRACKET MOUNT TORQUE
230	188967	WASHER HARDEN .793 X 1.637 X 060
231	407287	IDLER V-GROOVE 1.688" OFFSET
232	74780716	BOLT 7/16-14 X 1 GR 5
233	405296	WASHER SERRATED
268	182402	GUARD MUFFLER
275	19131614	WASHER 13/32 X 1 X 14 GA.
279	413150	LINK SHIFT



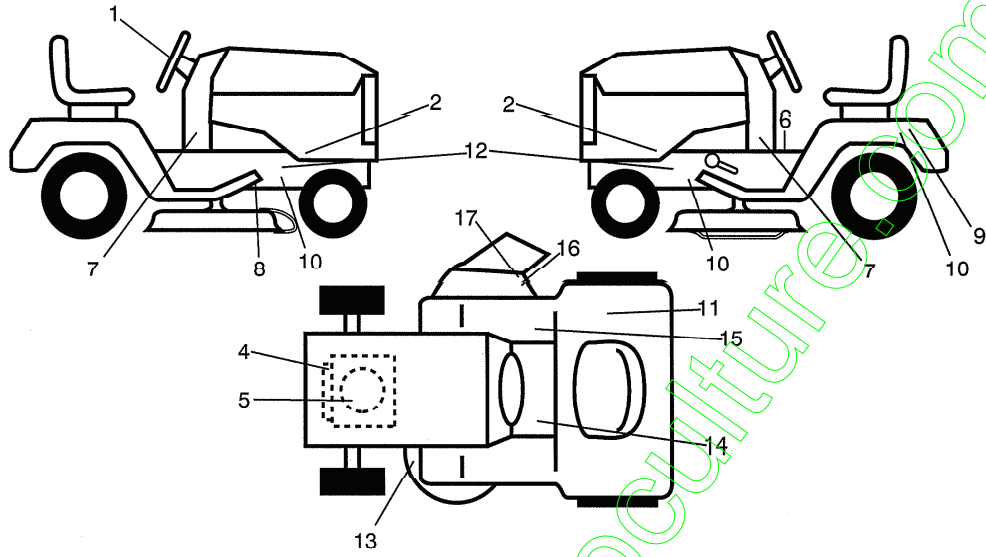


contact@motoculture.com

Repère	Part Number	Description
1	414803X428	WHEEL, STEERING
2	418168	AXLE ASSEMBLY, FRONT
4	403087	SPINDLE ASSEMBLY, LH
5	403088	SPINDLE ASSEMBLY, RH
6	6266H	WASHER THRUST
7	121748X	WASHER 25/32 X 1-5/8 X 16 GA.
8	12000029	RING, KLIP #T5304-75
9	121232X	CAP, SPINDLE
13	121749X	WASHER 25/32 X 1-1/4 X 16 GA.
14	10040600	WASHER, LOCK HVY HLCL SPR 3/8
15	73540600	NUT, CROWN LOCK 3/8-24 UNF
16	429373	SHAFT STEERING
19	194729	PLATE STEERING
20	400803X428	BOOT, STEERING
21	186737	ADAPTER, WHEEL STEERING
22	420537	SUPT. STRG. LOWER
26	414852X428	INSERT, WHEEL STEERING
28	17000612	SCREW 3/8-16 X 3/4
33	10040500	WASHER LOCK HVY HLCL SPR 5/16
35	194732	GEAR, SECTOR PLATE
45	19113812	WASHER 11/32 ID X 2 3/8
53	188967	WASHER HARDENED .793 X 1.637 X .060
57	407465	BRACKET UPSTOP
58	194747	BOLT SHOULDER SECTOR PIVOT CFM
59	194748	WASHER THRUST SECTOR STEERING
60	73971000	NUT FLANGE LOCK 5/8-11
61	194740	DRAGLINK, LH
62	194741	DRAGLINK, RH
63	17000512	SCREW 5/16-18 X 3/4
64	199849	RETAINER CLIP SPRING STEERING
66	71020748	BOLT HEX FGHD 7/16-14 X 3 SERR
67	194737	BUSHING PM FRONT AXLE
68	73900700	NUT LOCK FLANGE 7/16-14 GR. 5
69	199162	WASHER 1.5 X .505 X .118
70	196197	BRACKET DECK SUSP. FRONT
71	190752	SHAFT EXTEN. STRG. SPLINE TEX
72	428982	BOLT FIN HEX 5/16-18 X 4 W/PATCH
74	3366R	BEARING COL STRG BLK

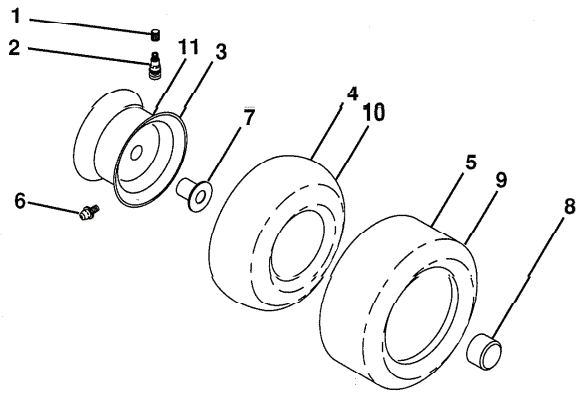


Repère	Part Number	Description
1	423644	SEAT
2	180166	BRACKET PIVOT FENDER
3	140675	STRAP, ASSEMBLY FENDER
6	73800600	NUT, LOCK W/INS. 3/8-16 UNC
7	124181X	SPRING, SEAT CPRSN
8	171877	BOLT 5/16-18 UNC X 3/4 W/SEMS
10	196977	PAN, SEAT
21	171852	BOLT, SHOULDER 5/16-18
37	73800500	NUT, LOCK 5/16-18 UNC
40	197661	HANDLE SLIDE
41	198200	SPRING LATCH
43	74760612	BOLT 3/8-16 UNC X 3/4
44	19133812	WASHER 13/32 X 2 3/8 X 12 GA.



contact@enc-motoculture.com

Repère	Part Number	Description
1	422885	DECAL, STEERING
2	433082	DECAL, PANEL SD RH/LH
4	196841	DECAL, WARNING ENGINE SYM.
5	437417	DECAL, ENGINE HP
6	400389	DECAL, FENDER OPERATOR'S
7	425634	DECAL, LOWER DASH
8	421534	DECAL, V-BELT SCHEMATIC DRIVE
9	145005	DECAL, BATTERY DNGE/POI
10	401146	DECAL, WARNING SERVICE/FIRE
11	180432	DECAL, FENDER 100 DB/CE
12	159736	DECAL, CHASSIS HOT MUFFLER
13	160396	DECAL, MOWER V-BELT SCH.
14	159737	DECAL, BRAKE/CLUTCH SYM.
15	140837	DECAL, SADDLE BRAKE PARKING
16	196357	DECAL, DEFLECTOR WM. CUTFIN. SYM.
17	182166	DECAL, CUTFINGER CE



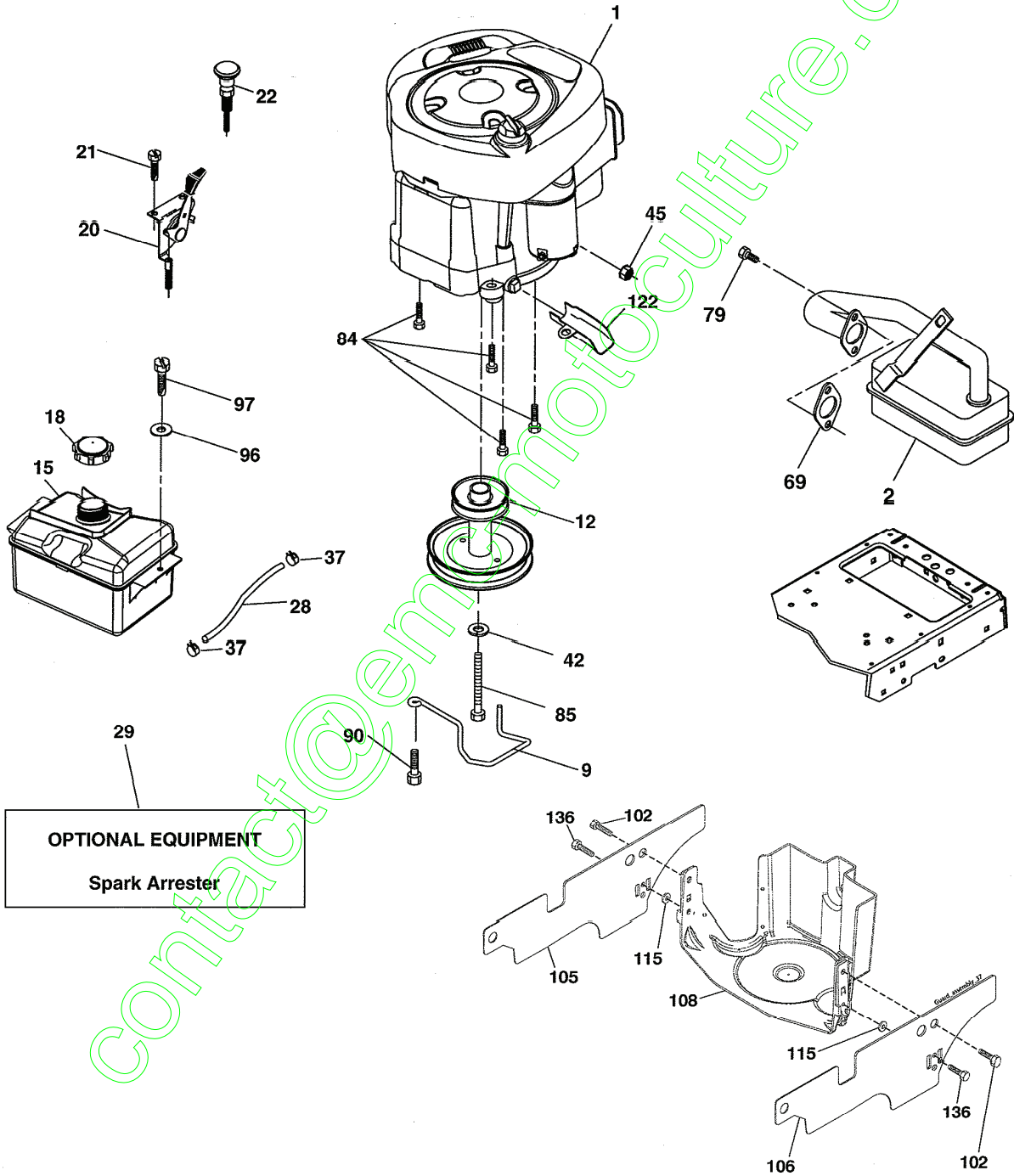
contact@emc-motoculture.com

Repère	Part Number	Description
1	59192	CAP, VALVE, TIRE
2	65139	STEM, VALVE
3	106732X613	RIM ASSEMBLY, FRONT
4	59904	TUBE, FRONT
5	106222X	TIRE, FRONT
6	278H	FITTING, GREASE
7	9040H	BEARING, FLANGE
8	104757X428	CAP, AXLE
9	420531	TIRE, 18 X 9.5-8 TURFSAVER LT
10	7152J	TUBE, REAR
11	106108X613	RIM ASSEMBLY, REAR

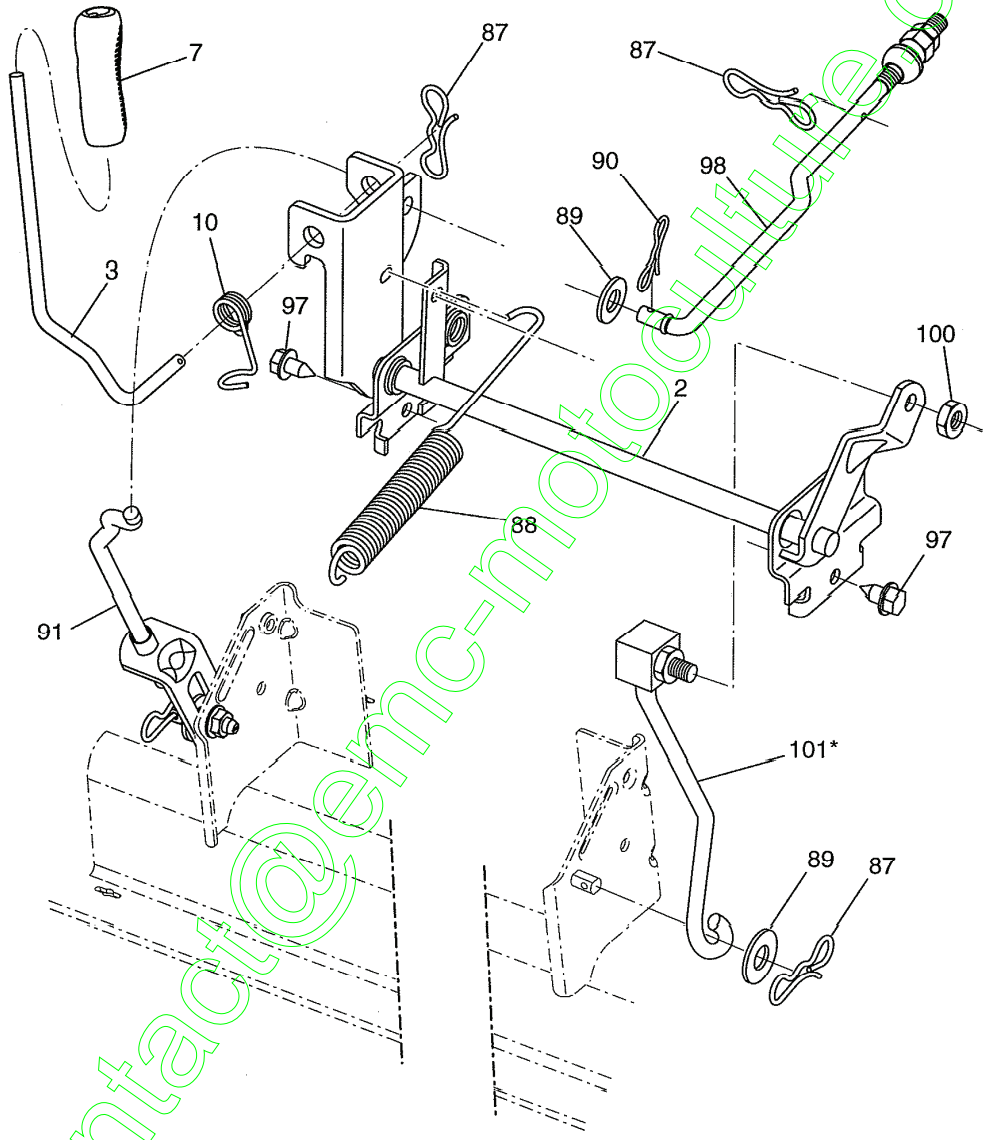


### Engine Power Rating Information

The gross power rating for individual gas engine models is labeled in accordance with SAE (Society of Automotive Engineers) code J1940 (Small Engine Power & Torque Rating Procedure), and rating performance has been obtained and corrected in accordance with SAE J1995 (Revision 2002-05). Torque values are derived at 3060 RPM; horsepower values are derived at 3600 RPM. Actual gross engine power will be lower and is affected by, among other things, ambient operating conditions and engine-to-engine variability. Given both the wide array of products on which engines are placed and the variety of environmental issues applicable to operating the equipment, the gas engine will not develop the rated gross power when used in a given piece of power equipment (actual "on-site" or net power). This difference is due to a variety of factors including, but not limited to, accessories (air cleaner, exhaust, charging, cooling, carburetor, fuel pump, etc.), application limitations, ambient operating conditions (temperature, humidity, altitude), and engine-to-engine variability. Due to manufacturing and capacity limitations, Briggs & Stratton may substitute an engine of higher rated power for this Series engine.

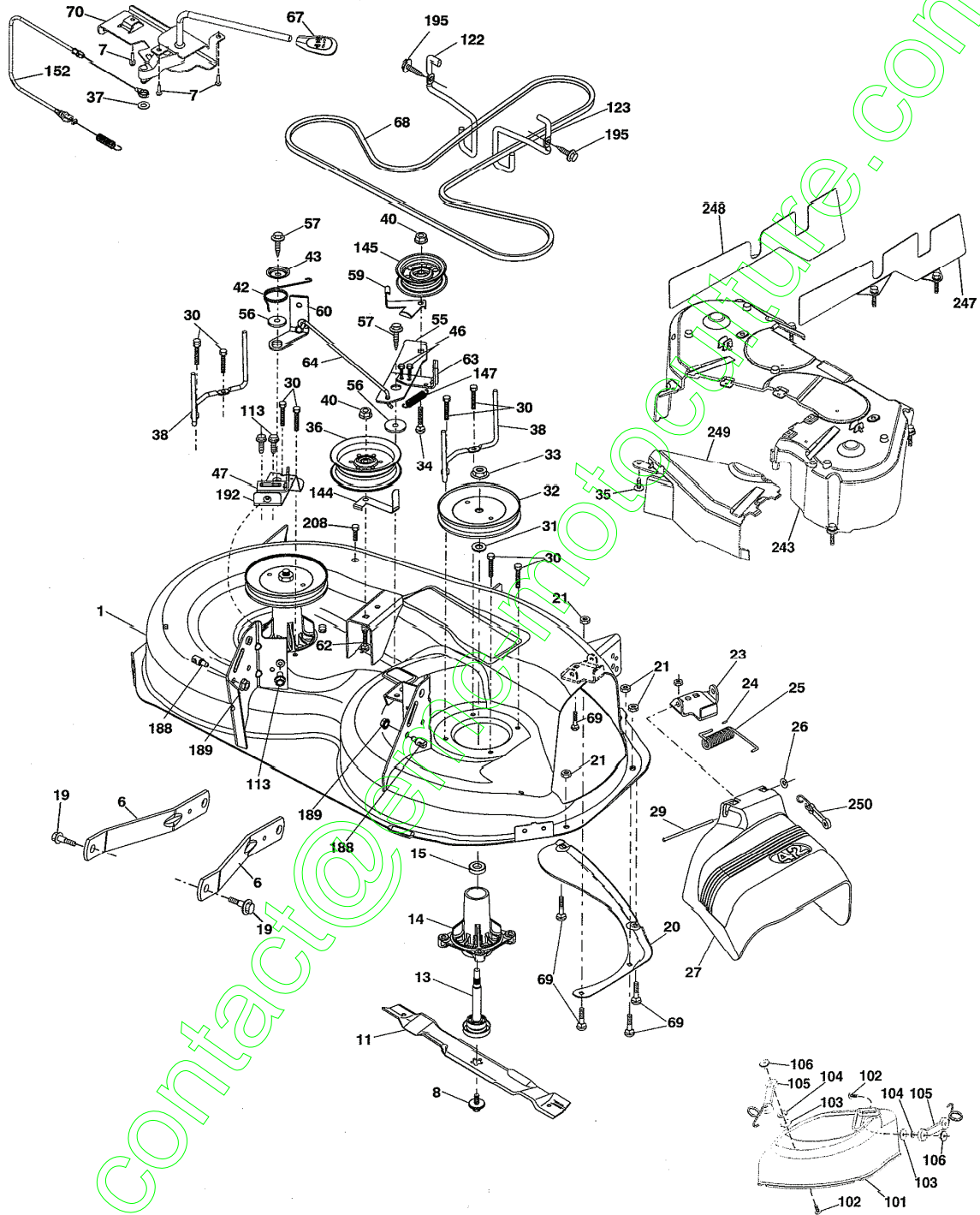


Repère	Part Number	Description
1	438592	ENGINE B&S MODEL NO. 31C707-2429-B1
2	137352	MUFFLER
9	194320	KEEPER BELT ENGINE
12	405471	PULLEY ENGINE
15	407545	TANK FUEL 1.50
18	430220	CAP ASSEMBLY
20	176636X428	CONTROL THROTTLE
21	416358	SCREW #10 X 0.750
22	187771X428	CONTROL CHOKE
28	137040	FUEL LINE
29	137180	SPARK ARRESTER KIT
37	123487X	CLAMP HOSE
42	10040700	WASHER LOCK 7/16
45	73510400	NUT KEPS HEX 1/4-20 UNC
69	165291	GASKET
79	192334	SCREW SOCKET HD 5/16-18 X .75
84	17060620	SCREW 3/8-16 X 1-1/4
85	173937	BOLT HEX 7/16-20 X 4 X GR. 5-1.5
90	17000616	SCREW 3/8-16 X 1.0
96	19091416	WASHER 9/32 X 7/8 X 16 GA.
97	17670412	SCREW 1/4-20 X 3/4
102	17000512	SCREW 5/16-18 X 3/4
105	410528	SHIELD SIDE LH
106	410529	SHIELD SIDE RH
108	421794	COVER ASSEMBLY ENGINE
115	423062	PALNUT
122	421922	OIL EXTENSION DRAIN
136	137729	SCREW 1/4-20 X 5/8



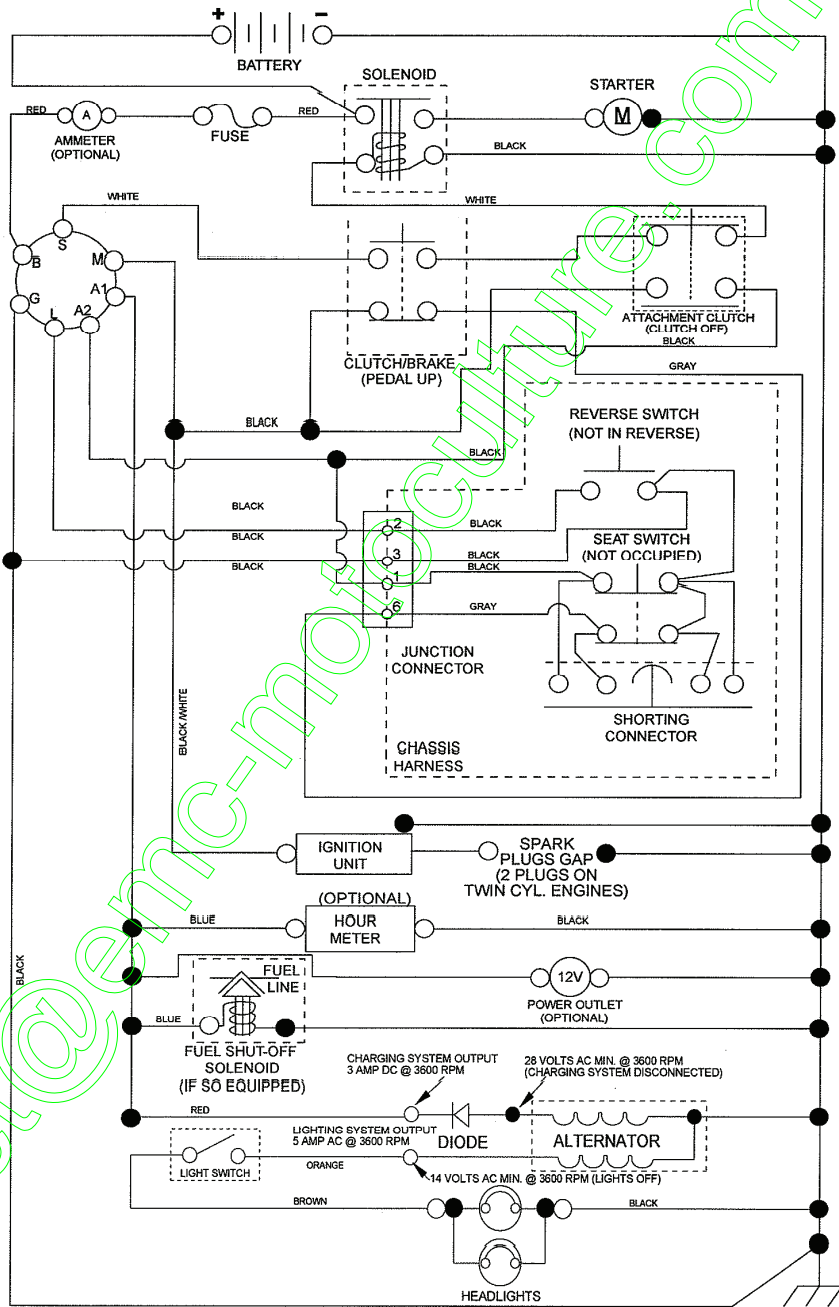
\*KEY 91 MAY BE SUBSTITUTED FOR KEY 101

Repère	Part Number	Description
2	422027	SHAFT ASSEMBLY, LIFT
3	195231	LEVER ASSEMBLY, LIFT RH
7	196492X428	GRIP, LEVER
10	196314	SPRING TORSION
87	194209	PIN COTTER 7/16 BOW TIE LOCK
88	410710	SPRING LIFT ASSIST
89	19191912	WASHER CLEAR ZINC
90	194208	PIN COTTER 5/16 BOW TIE LOCK
91	195181	LINK LIFT SUSP MOWER REAR
97	17000612	SCREW 3/8-16 X .75
98	195270	LINK LIFT SUSP. FRONT MOWER
100	73930600	NUT CENTERLOCK 3/8-16 UNC
101	407003	LINK ASSEMBLY, LIFT FXD

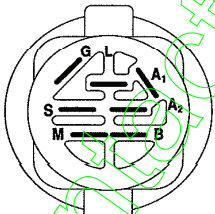


Repère	Part Number	Description
1	199911	MOWER HOUSING
6	195186	ARM SUSPENSION
7	416358	SCREW 10 X .750 BOS THREAD
8	193003	BOLT/WASHER ASSEMBLY 7/16-20 UNF
11	138971	BLADE, HI-LIFT
13	192872	SHAFT ASSEMBLY, MANDREL
14	187281	HOUSING, MANDREL
15	110485X	BEARING, BALL, MANDREL
19	196539	BOLT, SHOULDER
20	159770	BAFFLE VORTEX
21	73680500	NUT, CROWNLOCK 5/16-18 UNC
23	192557	BRACKET, DEFLECTOR
24	105304X	CAP, SLEEVE
25	197026	SPRING, TORSION, DEFLECTOR
26	110452X	NUT, PUSH
27	406520X428	SHIELD, DEFLECTOR
29	131491	ROD, HINGE
30	173984	SCREW THDROL ROLLING WSH HD
31	187690	WASHER, SPACER
32	197473	PULLEY, MANDREL
33	400234	NUT, TOPLOCK, FLANGED
34	72110612	BOLT CARR SH. 3/8-16 X 1-1/2 GR. 5
35	133835	FASTENER
36	197379	PULLEY IDLER
37	19131316	WASHER 13/32 X 13/16 X 16 GA.
38	432520	KEEPER BELT LH MANDREL
40	73900600	NUT, LOCK FLG. 3/8-16 UNC
42	198410	SPRING TORSION BRAKE
43	197256	SPRING TORSION RETAINER
46	137729	SCREW THD ROLL 1/4-20 X 5/8
47	197250	BRACKET CLUTCH CABLE
55	437110	ARM, IDLER
56	199092	SPACER, RETAINER
57	17000616	SCREW HEXWSH THD 3/8-16 X 1
59	141043	GUARD, TUV IDLER (94)
60	197261	ARM BRAKE MOWER
62	72110616	BOLT RDHD SQNK 3/8-16 UNC X 2
63	199477	ARM BRAKE MOWER
64	199790	LINKAGE BRAKE

67	198398X428	HANDLE, CLUTCH CABLE
68	429636	BELT DRIVE
69	72140505	BOLT RDHD SQNK 5/16-18 X 5/8
70	401246	CLUTCH ASSEMBLY MANUAL
101	193107	COVER MULCHING
102	71081010	SCREW PAN HD. PHILLIP 10-24 X 5/8
103	19061216	WASHER #10
104	10071000	WASHER LOCK #10
105	160793	LATCH ASSEMBLY
106	2029J	NUT WELD 327/304 #10-24
113	17000510	SCREW 5/16-18
122	197258	KEEPER BELT ENG. LH
123	197259	KEEPER BELT ENG. RH
144	199204	KEEPER BELT
145	193197	PULLEY, IDLER, FLAT
147	401971	SPRING RETURN
152	435111	CABLE CLUTCH MANUAL W/SPR.
188	195161	STUD FASTENER
189	73900500	NUT LOCK HEX FLANGE
192	197260	BRACKET BRAKE STAND LH
195	17000612	SCREW HEXWSH THDR 3/8-16 X 3/4
208	17670608	SCREW 3/8-16 X 1/2
243	432394	COVER DECK ASSEMBLY
247	432393	SHIELD DECK RH ASSEMBLY
248	432392	SHIELD DECK LH ASSEMBLY
249	406514	COVER CABLE CLUTCH
250	436087	KIT BUNGEE (INCLUDES PHILLIPS HEAD SCREW, WELD NUT, SCREW, BUNGEE LATCH, AND BUNGEE STRAP)
	192870	MANDREL ASSEMBLY (MANDREL ASSEMBLY (INCLUDES HOUSING, SHAFT ASSEMBLY, AND BEARING ONLY - PULLEY/NUT/WASHER AND BLADE BOLT/WASHERS NOT INCLUDED)
	427957	REPLACEMENT MOWER, COMPLETE

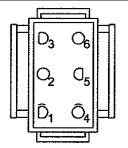


**NOTE**  
 YOUR TRACTOR IS EQUIPPED WITH A SPECIAL ALTERNATOR SYSTEM. THE LIGHTS ARE NOT CONNECTED TO THE BATTERY, BUT HAVE THEIR OWN ELECTRICAL SOURCE. BECAUSE OF THIS, THE BRIGHTNESS OF THE LIGHTS WILL CHANGE WITH ENGINE SPEED. AT IDLE THE LIGHTS WILL DIM. AS THE ENGINE IS SPEEDED UP, THE LIGHTS WILL BECOME THEIR BRIGHTEST.

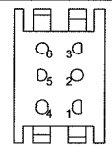


**IGNITION SWITCH**

POSITION	CIRCUIT	"MAKE"
OFF	M+G+A1	
RUN/OVERRIDE	B+A1	
RUN	B+A1	L+A2
START	B + S + A1	



CHASSIS HARNESS CONNECTOR (MATING SIDE)



DASH HARNESS CONNECTOR (MATING SIDE)

WIRING INSULATED CLIPS  
 NOTE: IF WIRING INSULATED CLIPS WERE REMOVED FOR SERVICING OF UNIT, THEY SHOULD BE RE-INSTALLED TO PROPERLY SECURE YOUR WIRING.



NON-REMOVABLE CONNECTIONS



REMOVABLE CONNECTIONS