

REPAIR PARTS MANUAL
MODEL NO. 254061
Lawn Tractor



HOW TO USE THIS MANUAL

This manual is designed to provide the customer with a means to identify the parts on his/her tractor when ordering repair parts. The illustrations may or may not represent the actual assemblies; therefore, it is not recommended to use this manual as a guide to assemble or disassemble the tractor. Some hardware and parts are drawn larger in order to more readily identify them.

Each tractor has its own model number.

The model number for your tractor can be found on the fender under the seat.

When ordering parts, always give the following information:

- Product - "Tractor"
- Model Number - "254061"
- Part Number
- Part Description

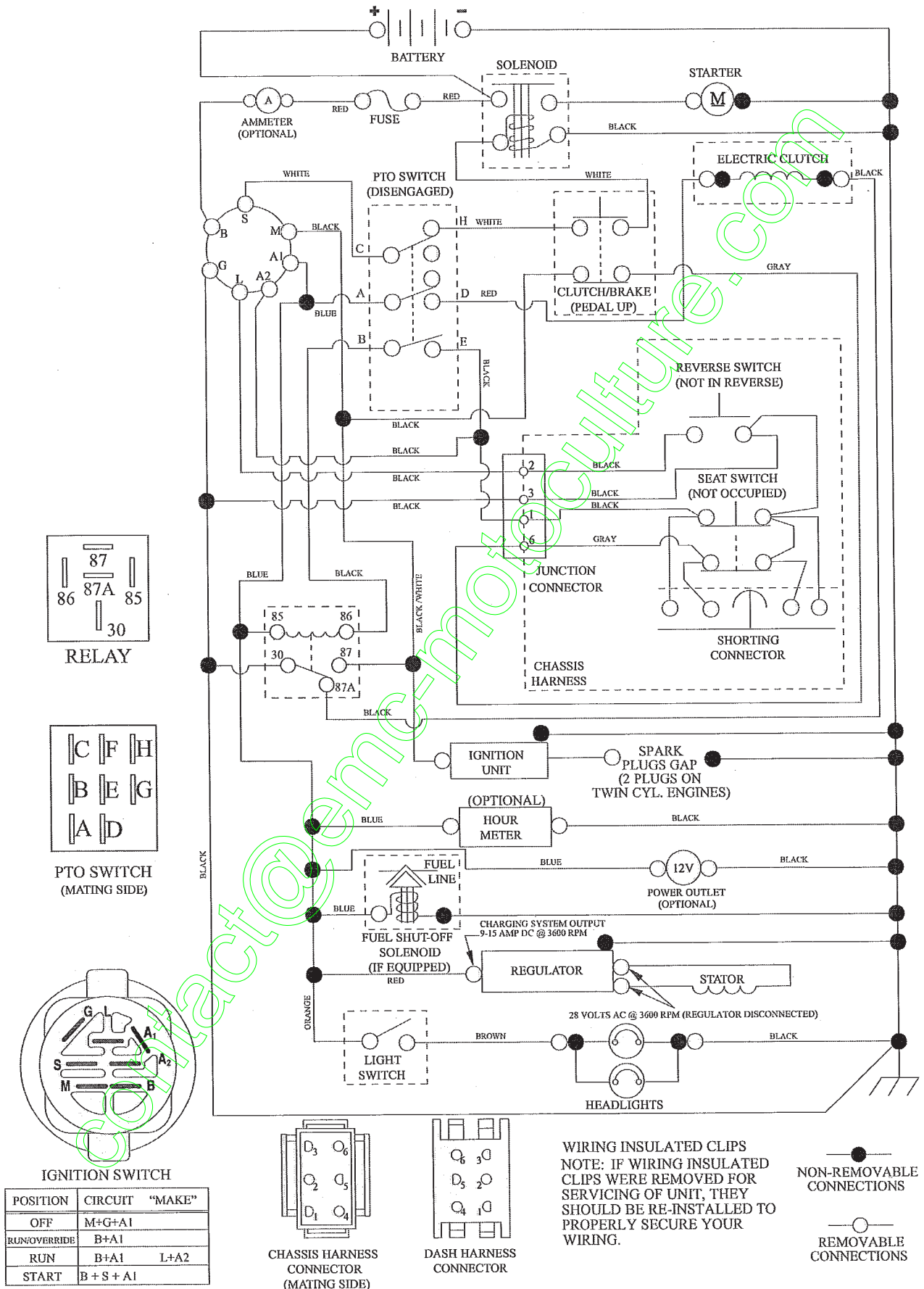
TABLE OF CONTENTS

SCHEMATIC	3
ELECTRICAL.....	4-5
CHASSIS	6-7
DRIVE.....	8-9
STEERING	10-11
SEAT	12
DECALS.....	13
ENGINE.....	14-15
MOWER LIFT.....	16-17
MOWER DECK	18-19
TRANSAXLE BREAKDOWN	20-21
ENGINE BREAKDOWN.....	22-27
WARRANTY.....	BACK COVER

TRACTOR- -MODEL NO. 917.254061

SCHEMATIC

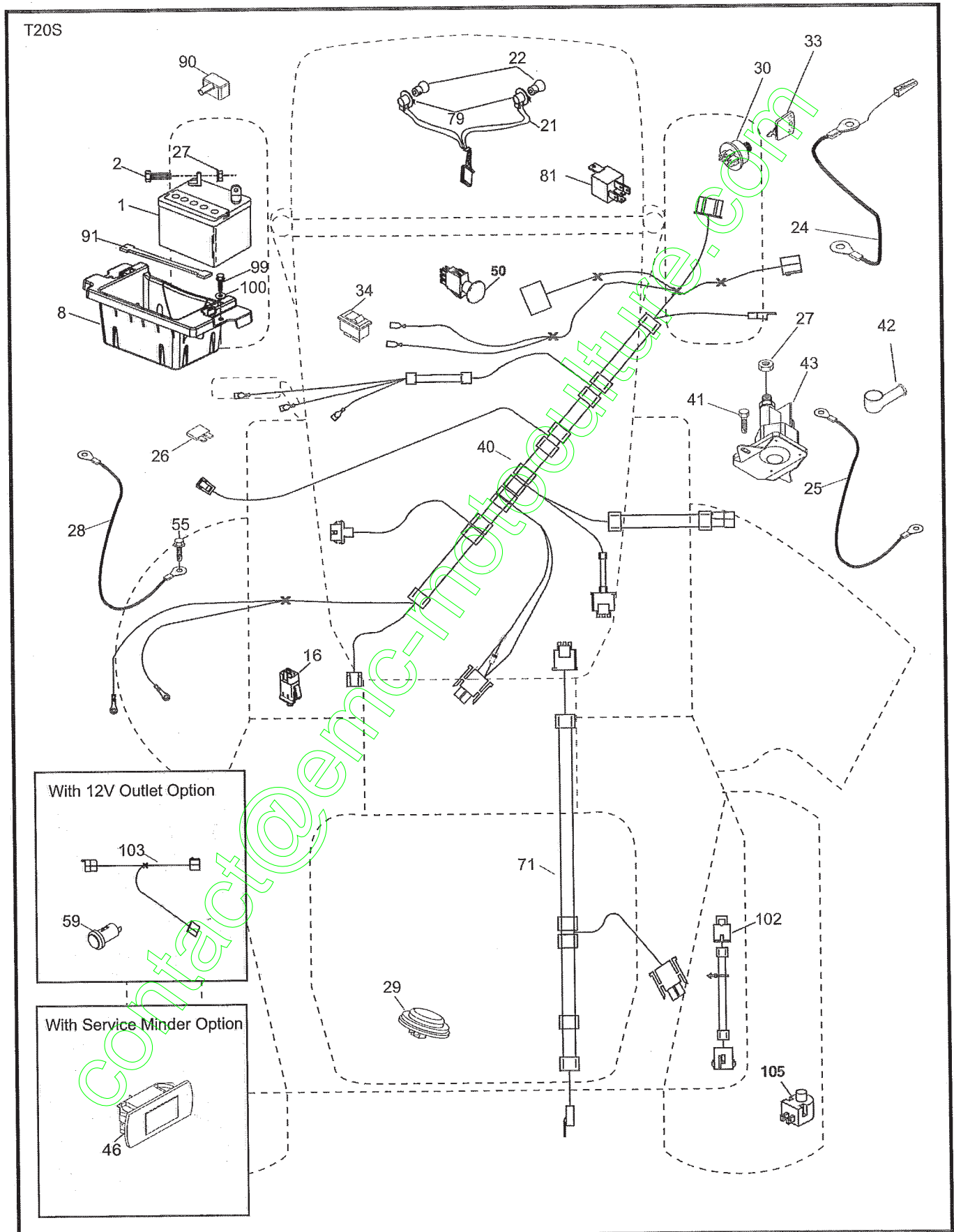
SCH13



REPAIR PARTS

TRACTOR- -MODEL NO. 917.254061

ELECTRICAL



REPAIR PARTS

TRACTOR- -MODEL NO. 917.254061

ELECTRICAL

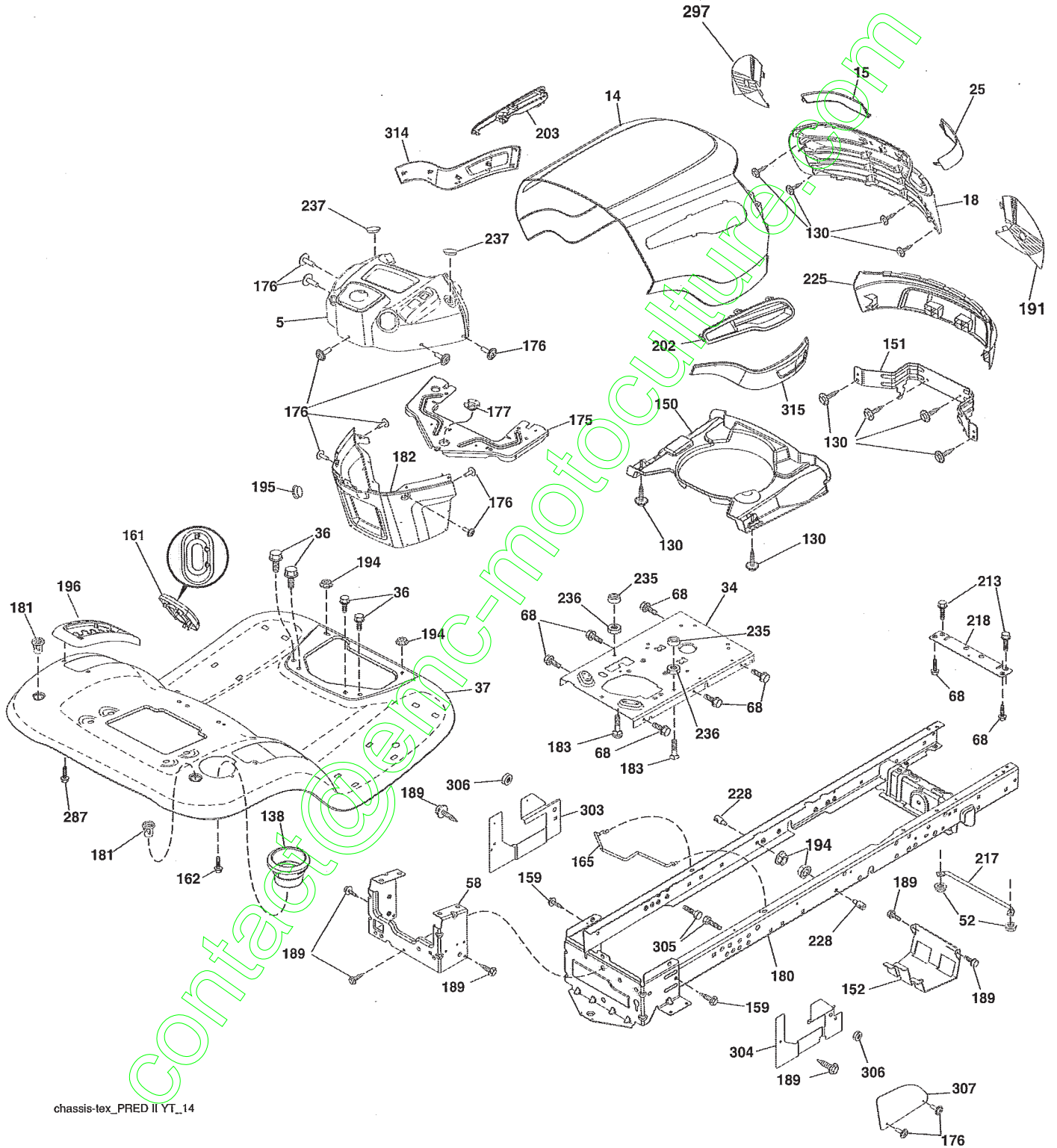
KEY NO.	PART NO.	DESCRIPTION
1	163465	Battery
2	74760412	Bolt Hex Hd 1/4-20 unc x 3/4
8	186491	Box Battery
16	176138	Switch Interlock Push-In
21	400252	Harness Socket Light w/4152J
22	4152J	Bulb Light
24	400253	Cable Btry.
25	412895	Cable Starter
26	175158	Fuse
27	73510400	Nut Keps Hex 1/4-20 unc
28	145491	Cable, Ground
29	401545	Switch, Seat
30	193350	Switch, Ign
33	411934	Key/Chain
34	110712X	Switch Light / Reset
40	409614	Harness Ign. Dash
41	17720408	Screw Thd Cut 1/4-20 x 1/2
42	131563	Cover, Terminal
43	192507	Solenoid
46	401763	Gauge SRVCMNDR HRMTR
50	174652	Switch PTO
55	17060512	Screw Thdrol 5/16-18 x 3/4 TYTT
71	194276	Harness Ign. Chassis
79	175242	Bulbholder Asm. Incan Descent
81	409615	Relay Harness
90	400724	Cover Terminal Battery
91	190270	Strap Btry.
99	17670412	Screw Hexwsh Thdrol 1/4-20 x 3/4
100	19091416	Washer 9/32 x 7/8 16 Ga.
102	404454	Harness Pigtail K46
105	407568	Switch Reverse

NOTE: All component dimensions given in U.S. inches.
1 inch = 25.4 mm.

REPAIR PARTS

TRACTOR- -MODEL NO. 917.254061

CHASSIS AND ENCLOSURES



chassis-tex_PRED II YT_14

REPAIR PARTS

TRACTOR- -MODEL NO. 917.254061

CHASSIS AND ENCLOSURES

KEY NO.	PART NO.	DESCRIPTION	KEY NO.	PART NO.	DESCRIPTION
5	421811X428	Dash	189	17000512	Screw 5/16 - 18 x 3/4
14	421154X615	Hood	191	425407	Insert Reflective RH
15	421493X599	Lens LH	194	73900500	Nut Lock Hex Flange 5/16-18
18	423157	Grille	195	401556X428	Plug Hole Dash 12V Adapter
25	421494X599	Lens RH	196	414579	Console Asm. Deck Lift
34	196125	Plate Engine	202	423175	Vent Side Hood RH
36	17060512	Screw 5/16-18 x 3/4	203	423174	Vent Side Hood LH
37	414878X615	Fender	213	74760512	Bolt hex HD 5/16-18 unc x 3/4
52	73680500	Nut Crown Lock 5/16-18	217	409167	Rod Pivot Chassis
58	412280	Drawbar Upper	218	196395	X piece hood stop
68	17490508	Screw Thdrol 5/16-18 x 1/2	225	421255X615	Bumper
130	416358	Screw # 10 x .750 BOS Thread	228	195161	Stud Fastener
138	193224X428	Cupholder	235	406129	Spacer Fender
150	199411	Duct Heat Hood	236	73930500	Nut Center Lock 5/16-18
151	196332	Bracket Pivot	237	403704	Plug Mount Cargo
152	199535	Shield Browning/Debris	287	17600406	Screw Hex Washhead 1/4-20 x 3/8
159	17000612	Screw Hexwsh Thdrol 3/8-16 x 3/4	297	425406	Insert Reflective LH
161	193229X428	Window Fuel	303	420959	Shield Chassis LH
162	142432	Screw Hex Wsh Hi-Lo 1/4 x 1/2	304	421509	Shield Chassis RH
165	196826	Support Tank Rear	305	72110606	Bolt RDHD SHT SQNK 3/8-16 x 3/4
175	196304	Crossmember	306	73900600	Nut Lock Flg 3/8-16 unc
176	400776	Screw 10-24 x 5/8 Wshd Qdrx	307	424570	Shield Upper Pedal
177	195227	Bushing Steering	314	423145	Trim SD LH
180	415063	Chassis	315	423146	Trim SD RH
181	193102X428	Bushing Mtg. Fender Crgo.			
182	406859	Dash Lower			
183	74780520	Bolt Fin Hex 5/16-18 x 1-1/4			

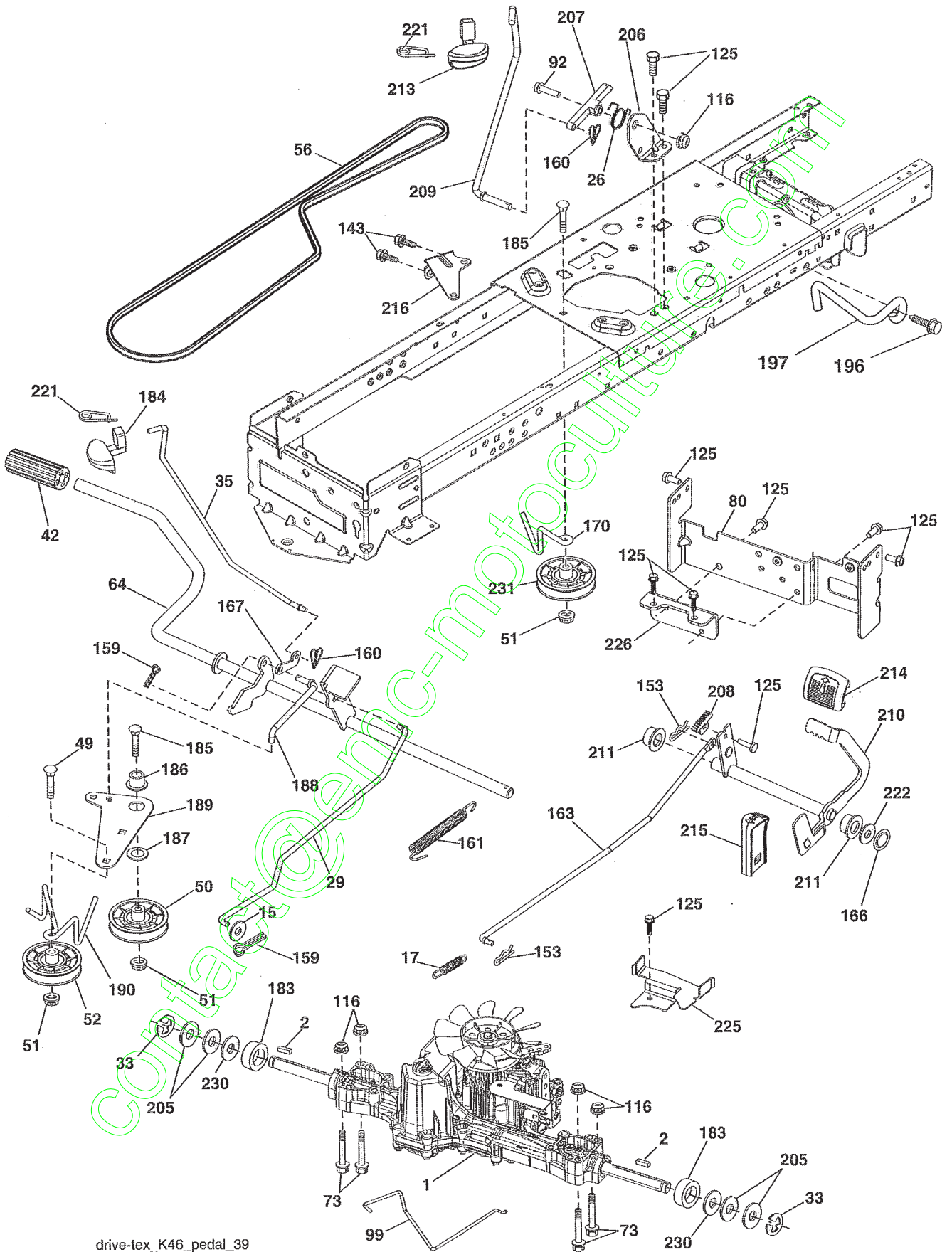
NOTE: All component dimensions given in U.S. inches.
1 inch = 25.4 mm.

contact@emc-motors.com

REPAIR PARTS

TRACTOR- -MODEL NO. 917.254061

DRIVE



drive-tex_K46_pedal_39

REPAIR PARTS

TRACTOR- -MODEL NO. 917.254061

DRIVE

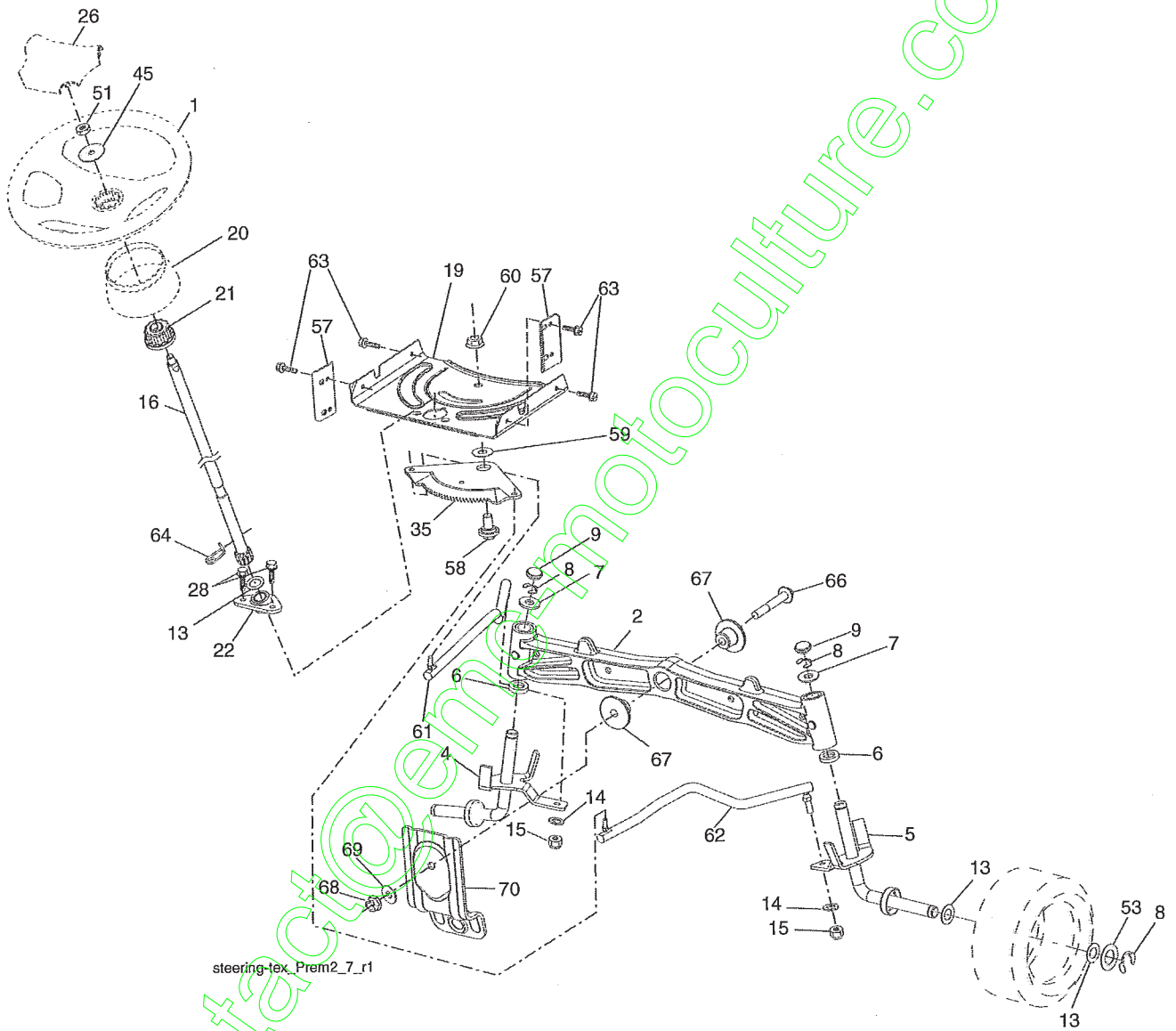
KEY NO.	PART NO.	DESCRIPTION	KEY NO.	PART NO.	DESCRIPTION
1	--	Transaxle, Tufftorq K46BT	183	137057	Spacer Axle
2	123583X	Key	184	196439X505	Handle Parking Brake
15	19131316	Washer 13/32 x 13/16 x 16 Ga.	185	72110622	Bolt
17	413678	Spring, Brake	186	194321	Spacer Retainer
26	199679	Spring Return Cruise	187	19133210	Washer
29	403806	Rod, Brake	188	194323	Link Clutch Ground Drive
33	12000001	Ring E	189	194317	Bellcrank Ground Drive
35	199591	Rod, Brake, Park	190	194318	Keeper Bellcrank Ground Drive
42	8883R	Cover, Foot Pedal	196	17000616	Screw 3/8-16 x 1
49	72110614	Bolt	197	195804	Link Clutch Anti-Rotation
50	194327	Pulley Idler Flat	205	121748X	Washer
51	73900600	Lock Nut 3/8-16	206	197867	Bracket Mount Latch Cruise
52	194326	Idler V-Groove 910" Offset	207	197868	Latch Control Cruise
56	130969	V-Belt, Drive	208	197869	Bolt Sector Control Cruise
64	197865	Shaft Asm. Pedal Brake Control	209	199592	Rod Control Cruise
73	74490544	Bolt Hex Flghd. 5/16-18 Gr. 5	210	400980	Rocker Asm. Pedal Control
80	410024	Strap Torque	211	120183X	Bearing, Nylon
92	74760520	Bolt Fin. Hex 5/16-18 unc x 1.25	213	196441X428	Knob Control Cruise
99	415742	Rod Asm. Bypass	214	421263	Pad Pedal Forward
116	73900500	Nut Lock Hex Flange 5/16-18	215	197301X428	Pad Pedal Reverse
125	17000512	Screw 5/16-18 x 3/4	216	196131	Bracket Pulley Idler
143	17490508	Screw 5/16-18 x 1/2	221	403187	Retainer Spring Clip Handle
153	4497H	Retainer Spring	222	79212010	Washer
159	76020412	Pin Cotter 1/8 x 3/4	225	403319	Keeper Belt Transaxle
160	169484	Retainer Clip	226	401564	Bracket Mount Torque
161	105709x	Spring, Return, Clutch	230	188967	Washer Harden
163	401034	Rod Pedal Control	231	407287	Idler V-Groove 1.688" OFFSET
166	428305	Nut, Push			
167	405257	Latch Brake Parking			
170	413430	Keeper Belt Centerspan			

NOTE: All component dimensions given in U.S. inches
1 inch = 25.4 mm

REPAIR PARTS

TRACTOR- -MODEL NO. 917.254061

STEERING ASSEMBLY



REPAIR PARTS

TRACTOR- -MODEL NO. 917.254061

STEERING ASSEMBLY

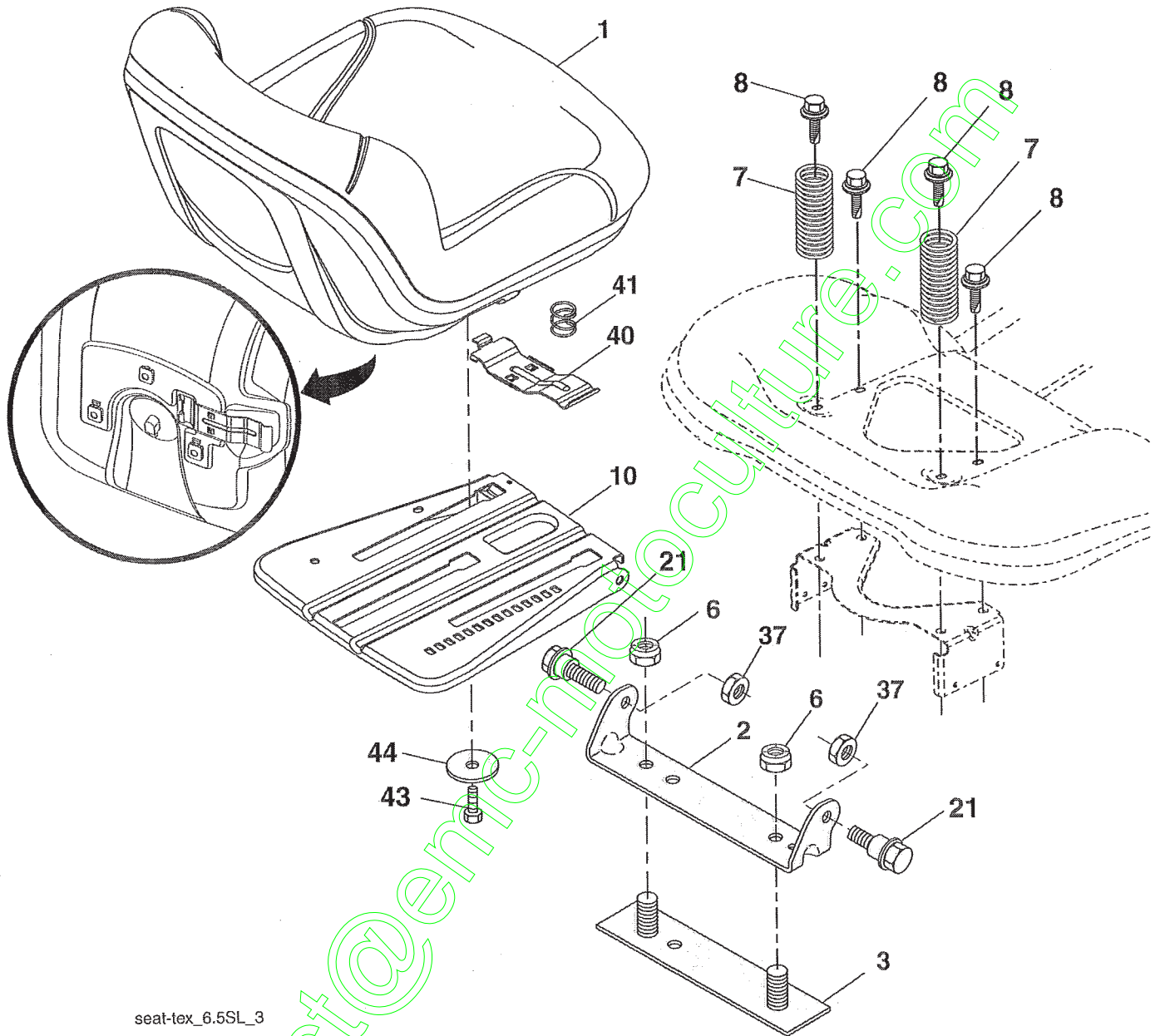
KEY NO.	PART NO.	DESCRIPTION
1	414803X428	Wheel, Steering
2	195968	Axle Asm., Front
4	403087	Spindle Asm., LH
5	403088	Spindle Asm., RH
6	6266H	Bearing, Race Thrust Harden
7	121748X	Washer 25/32 x 1-5/8 x 16 Ga.
8	12000029	Ring, Klip #T5304-75
9	184946X505	Cap, Spindle
13	121749X	Washer 25/32 x 1-1/4 x 16 Ga.
14	STD551137	Washer, Lock Hvy Hlcl Spr 3/8
15	73540600	Nut, Crown Lock 3/8-24 unf
16	194746	Shaft Steering
19	194729	Plate Steering
20	199676X428	Boot, Steering
21	186737	Adapter, Wheel Steering
22	420537	Supt., Strg. Lower
26	414852X428	Insert, Wheel Steering
28	17000612	Screw 3/8-16 x 3/4
35	194732	Gear, Sector Plate
45	19183812	Washer 9/16 x 2-3/8 x 12 Ga.
51	73940800	Nut Hex 1/2-20 unf
53	188967	Washer Hardened .793 x 1.637 x .060
57	407465	Bracket Upstop
58	194747	Bolt Shoulder Sector Pivot CFM
59	194748	Washer Thrust Sector Steering
60	73971000	Nut Flange Lock 5/8-11
61	194740	Draglink LH
62	194741	Draglink, RH
63	17000512	Screw 5/16-18 x 3/4
64	199849	Retainer Clip Spring Steering
66	71020748	Bolt Hex Fghd 7/16-14 x 3 Serr
67	194737	Bushing PM Front Axle
68	73900700	Nut Lock Flange 7/16-14 Gr. 5
69	199162	Washer 1.5 x .505 x .118
70	196197	Bracket Deck Susp. Front

NOTE: All component dimensions given in U.S. inches.
1 inch = 25.4 mm.

REPAIR PARTS

TRACTOR- -MODEL NO. 917.254061

SEAT ASSEMBLY



seat-tex_6.5SL_3

KEY NO.	PART NO.	DESCRIPTION
1	423645	Seat
2	180166	Bracket Pivot Fender
3	140675	Strap, Asm Fender
6	STD541437	Nut, Lock W/Ins. 3/8-16 unc
7	124181X	Spring, Seat Cprsn
8	171877	Bolt 5/16-18 unc x 3/4 w/Sems
10	196977	Pan, Seat
21	171852	Bolt, Shoulder 5/16-18

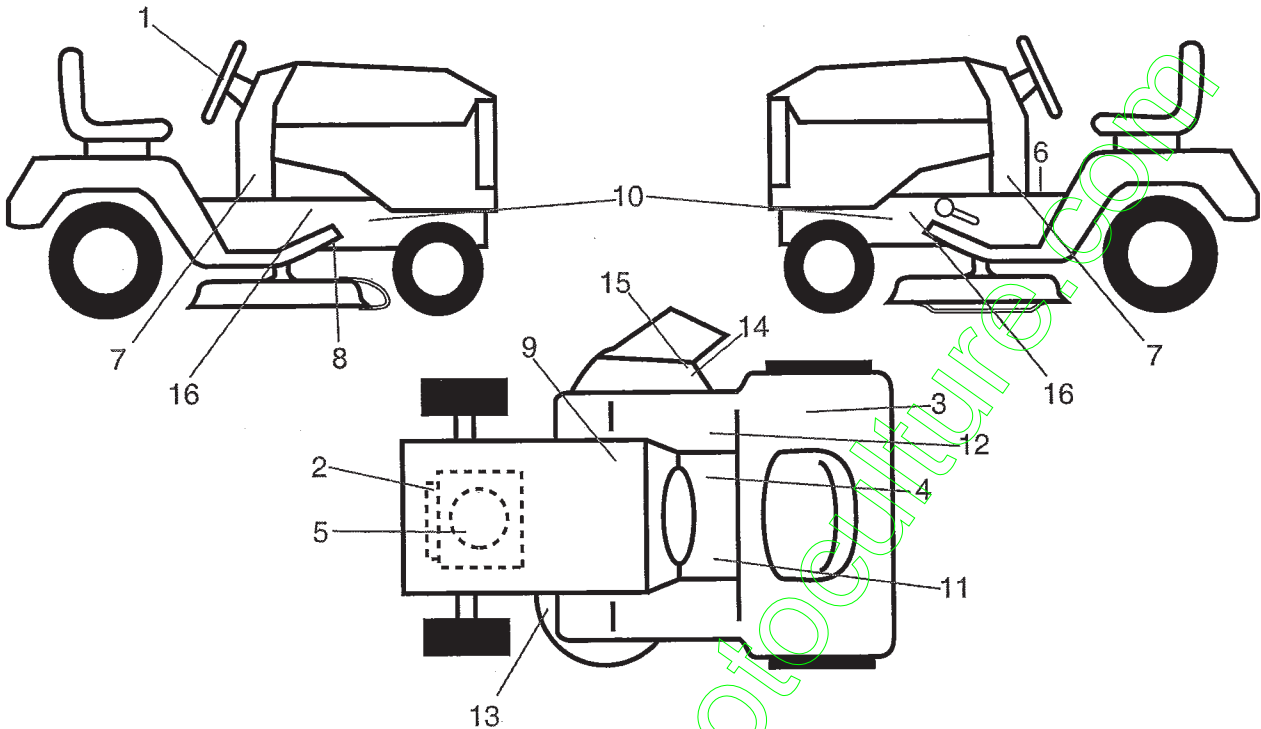
KEY NO.	PART NO.	DESCRIPTION
37	STD541431	Nut, Lock 5/16-18 unc
40	197661	Handle Slide Seat
41	198200	Spring Latch Seat
43	74760612	Bolt 3/8-16 x 3/4
44	19133812	Washer 13/32 x 2-3/8 x 12 Ga.

NOTE: All component dimensions given in U.S. inches.
1 inch = 25.4 mm

REPAIR PARTS

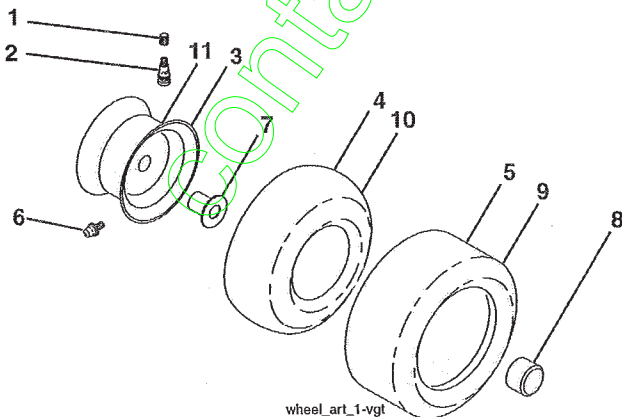
TRACTOR- -MODEL NO. 917.254061

DECALS



KEY NO.	PART NO.	DESCRIPTION	KEY NO.	PART NO.	DESCRIPTION
1	422885	Decal, Steering	14	196357	Decal, Deflector Wrn. Cutfinger Sym.
2	196841	Decal, Warning Engine Sym.	15	182166	Decal, Cutfinger CE
3	180432	Decal, Fender 100 DB/CE	16	401146	Decal, Warning Service/Fire
4	178302	Decal, Operator Cruise Sym.	--	193226X428	Pad, Footrest LH
5	420133	Decal, Engine HP	--	400981X428	Pad, Footrest
6	400389	Decal, Fender Operator's	--	166960	Decal, Bypass
7	425787	Decal, Lower Dash	--	162598	Decal, Drawbar Load Limit
8	421534	Decal, V-Belt Schematic Drive	--	432852	Manual, Operator's (Euro)
9	145005	Decal, Battery Dnge/Poi	--	432853	Manual, Operator's (Scand)
10	159736	Decal, Chassis Hot Muffler	--	432854	Manual, Operator's (E-Bloc)
11	159737	Decal, Brake/Clutch Sym.	--	432855	Manual, Operator's (Baltic)
12	140837	Decal, Saddle Brake Parking	--	432856	Manual, Parts
13	160396	Decal, Mower V-Belt SCH.			

WHEELS & TIRES



wheel_art_1-vgt

KEY NO.	PART NO.	DESCRIPTION
1	59192	Cap, Valve, Tire
2	65139	Stem, Valve
3	106732X613	Rim Assembly, Front
4	59904	Tube, Front
5	106222X	Tire, Front
6	278H	Fitting, Grease
7	9040H	Bearing, Flange
8	104757X428	Cap, Axle (Front Wheel Only)
9	420531	Tire, 18 x 9.5-8 TurfSaver LT
10	7152J	Tube, Rear
11	106108X613	Rim Assembly, Rear
--	144334	Sealant, Tire (10 oz. Tube)

NOTE: All component dimensions given in U.S. inches
1 inch = 25.4 mm

REPAIR PARTS

TRACTOR- -MODEL NO. 917.254061

ENGINE

KEY NO.	PART NO.	DESCRIPTION
1	-----	Engine B&S Model No. 445677-1262-B1 (See Engine Breakdown)
2	149723	Muffler
9	194320	Keeper Belt Engine
11	400008	Clutch Electric
12	405097	Pulley Engine
15	400021	Tank Fuel
18	430218	Cap Asm
20	175437X428	Control Throttle
21	416358	Screw 10 x .750 BOS Thread
22	187767X428	Control Choke
28	8543R	Fuel Line
29	137180	Spark Arrester Kit
37	123487X	Clamp Hose
41	126197X	Washer 1-1/2 OD x 15/32 ID x 250
42	10040700	Washer Lock 7/16
45	73510400	Nut Keps Hex 1/4-20 unc
62	146629	Shield Heat Muffler
69	165391	Gasket
70	159955	Exhaust Tube LH
71	160589	Exhaust Tube RH
79	183906	Screw 5/16-18 x .75
81	148456	Tube Drain Oil Easy
82	428287	Valve Drain Oil
84	17060620	Screw 3/8-16 x 1-1/4
85	173937	Bolt Hex 7/16-20 x 4 x Gr. 5-1.5
87	171877	Bolt 5/16-18 unc x 3/4 w/Sems
90	17000616	Screw 3/8-16 x 1.0
105	415606	Shield Side LH
106	415611	Shield Side RH
107	137729	Screw Thd Roll 1/4-20 x 5/8
108	426803	Cover Asm. Pulley Engine
115	423062	Palnut 1/4"
118	17670508	Screw Thdrol 5/16-18 x 1/2

NOTE: All component dimensions given in U.S. inches
1 inch = 25.4 mm

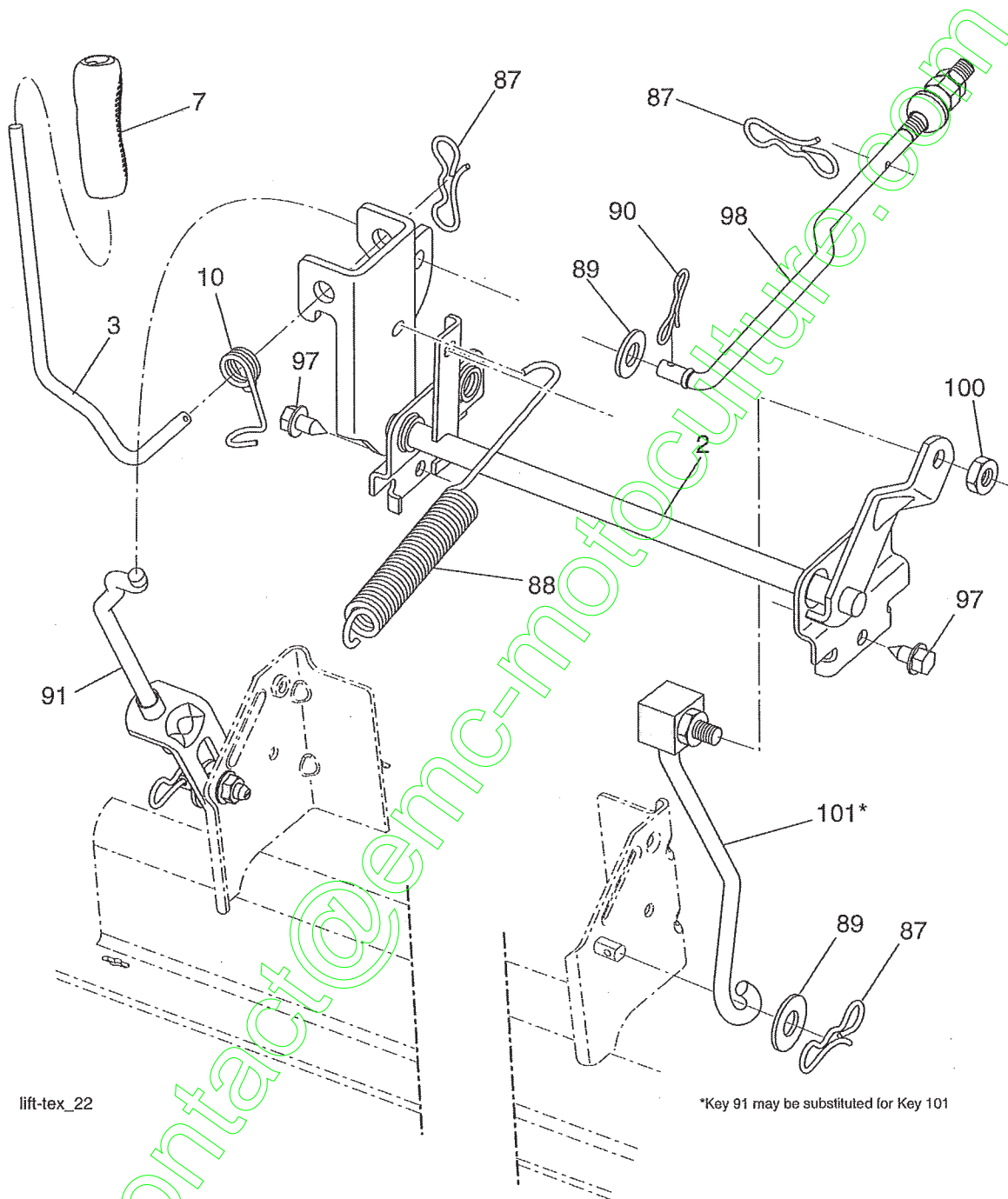
Engine Power Rating Information

The gross power rating for individual gas engine models is labeled in accordance with SAE (Society of Automotive Engineers) code J1940 (Small Engine Power & Torque Rating Procedure), and rating performance has been obtained and corrected in accordance with SAE J1995 (Revision 2002-05). Torque values are derived at 3060 RPM; horsepower values are derived at 3600 RPM. Actual gross engine power will be lower and is affected by, among other things, ambient operating conditions and engine-to-engine variability. Given both the wide array of products on which engines are placed and the variety of environmental issues applicable to operating the equipment, the gas engine will not develop the rated gross power when used in a given piece of power equipment (actual "on-site" or net power). This difference is due to a variety of factors including, but not limited to, accessories (air cleaner, exhaust, charging, cooling, carburetor, fuel pump, etc.), application limitations, ambient operating conditions (temperature, humidity, altitude), and engine-to-engine variability. Due to manufacturing and capacity limitations, Briggs & Stratton may substitute an engine of higher rated power for this Series engine.

REPAIR PARTS

TRACTOR- -MODEL NO. 917.254061

MOWER LIFT



lift-tex_22

*Key 91 may be substituted for Key 101

REPAIR PARTS

TRACTOR- -MODEL NO. 917.254061

MOWER LIFT

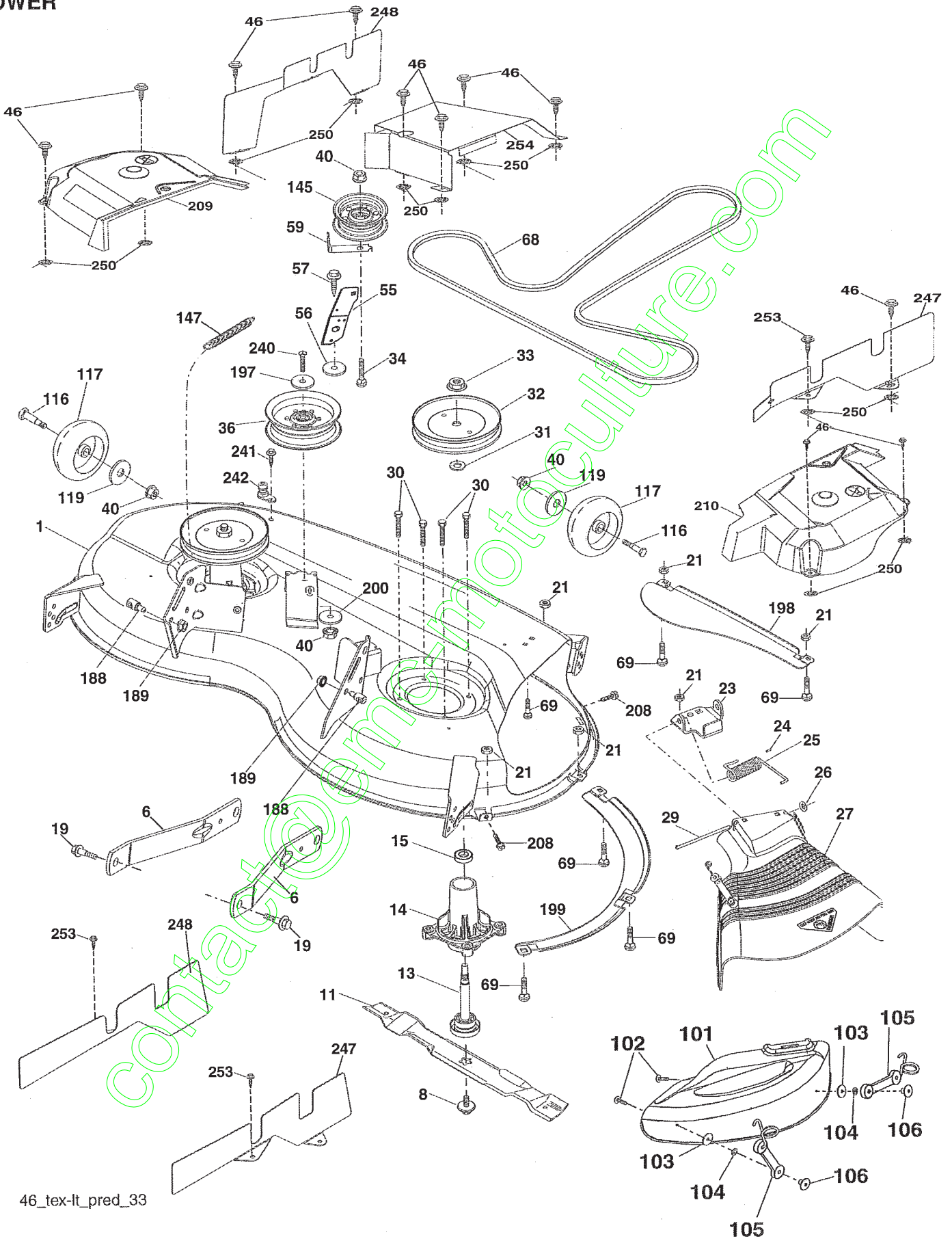
KEY NO.	PART NO.	DESCRIPTION
2	422027	Shaft Asm., Lift
3	195231	Lever Asm., Lift RH
7	196492X428	Grip, Lever
10	196314	Spring Torsion
87	194209	Pin Cotter 7/16 Bow Tie Lock
88	410710	Spring Lift Assist
89	19191912	Washer Clear Zinc
90	194208	Pin Cotter 5/16 Bow Tie Lock
91	195181	Link Lift Susp Mower Rear
97	17000612	Screw 3/8-16 x .75
98	195270	Link Lift Susp. Front Mower
100	73930600	Nut Centerlock 3/8-16 unc
101	407003	Link Asm. Lift FXD

NOTE: All component dimensions given in U.S. inches
1 inch = 25.4 mm

REPAIR PARTS

TRACTOR- -MODEL NO. 917.254061

MOWER



46_tex-It_pred_33

REPAIR PARTS

TRACTOR- -MODEL NO. 917.254061

MOWER

KEY NO.	PART NO.	DESCRIPTION	KEY NO.	PART NO.	DESCRIPTION
1	405049X615	Mower Housing	116	193406	Bolt, Shoulder
6	195186	Arm Suspension	117	174873	Wheel, Gauge
8	193003	Bolt/Washer Asm. 7/16-20 unf	119	19132012	Washer 13/32 x 1-1/4 x 12 Ga.
11	403107	Blade Mulching	145	193197	Pulley Idler
13	192872	Shaft Assembly, Mandrel	147	197251	Spring Mower Drive
14	187281	Housing, Mandrel	188	195161	Stud Fastener
15	110485X	Bearing, Ball, Mandrel	189	73900500	Nut Lock Hex Flange
19	196539	Bolt, Shoulder	197	19131312	Washer 13/32 x 13/16 x 12 Ga.
21	73680500	Nut	198	403149	Baffle Center Front
23	192557	Bracket, Deflector	199	403150	Baffle Front RH
24	105304X	Cap, Sleeve	200	413524	Washer 13/32 x 1 x 1/2 x 11 Ga.
25	197026	Spring, Torsion, Deflector	208	17670608	Screw Thdrol 3/8-16 x 1/2
26	110452X	Nut, Push	209	424986	Guard Cover Mandrel LH
27	415369	Shield, Deflector	210	431087	Guard Cover Mandrel RH
29	131491	Rod, Hinge	240	74520636	Bolt Fin. Hex 3/8-16 x 2-1/4 Gr. 5
30	173984	Screw Thdrol. Rolling Wsh. Hd.	241	152927	Screw
31	187690	Washer, Spacer	242	415598	Port Washout
32	197473	Pulley, Mandrel	247	430263	Shield Deck RH
33	400234	Nut, Toplock, Flanged	248	430262	Shield Deck LH
34	72110612	Bolt Carr. Sh. 3/8-16 x 1-1/2 Gr. 5	250	423062	Palnut 1/4"
36	197379	Pulley, Idler, Flat	253	427350	Rivet Tufflok
40	73900600	Nut, Lock Flg. 3/8-16 unc	254	430264	Shield Deck Rear
46	137729	Screw		192870	Mandrel Assembly (Includes housing, shaft assembly, and bearing only - pulley/nut/washer and blade bolt/washers not included)
55	197249	Arm, Idler			
56	199092	Spacer, Retainer			
57	17000616	Screw Hex Wsh. Thd. 3/8-16 x 1			
59	141043	Guard, Tuv. Idler (94)	--	432859	Replacement Mower, Complete
68	405143	V-Belt Drive			
69	72140505	Bolt			
101	405454	Cover Mulch 46"			
102	71081010	Screw Pan HD Phillip 10-24 x 5/8			
103	10071000	Washer Lock #10			
104	19061216	Washer #10			
105	160793	Latch Asm.			
106	2029J	Nut Weld .327/.304 #10-24			

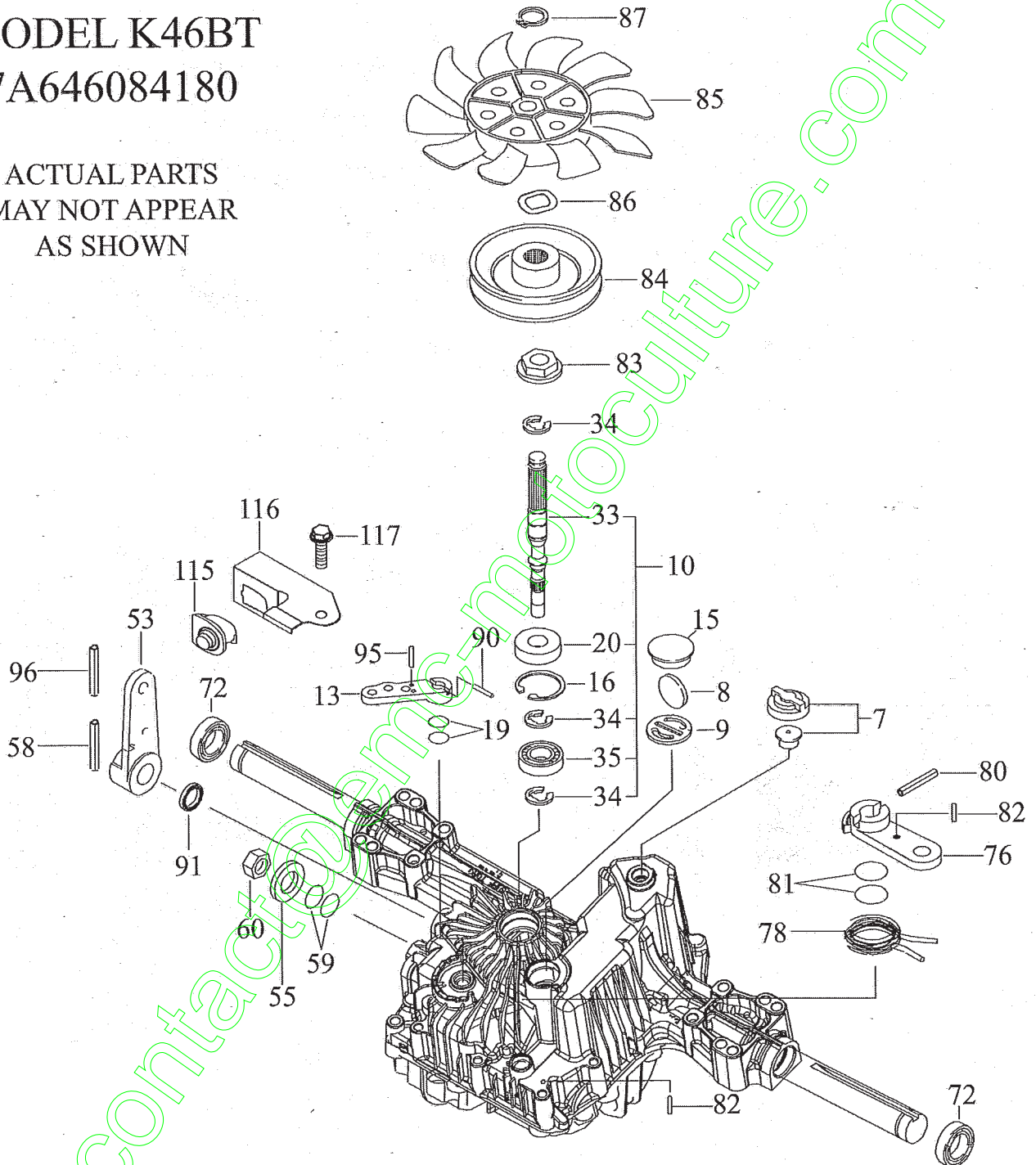
NOTE: All component dimensions given in U.S. inches
1 inch = 25.4 mm

TRACTOR - - MODEL NUMBER 917.254061

HYDRO GEAR TRANSAXLE - MODEL NUMBER T2

MODEL K46BT
7A646084180

ACTUAL PARTS
MAY NOT APPEAR
AS SHOWN



TRACTOR - - MODEL NUMBER 917.254061

TUFF TORQ TRANSAXLE - MODEL NUMBER K46BT

KEY NO.	PART NO.	DESCRIPTION
7	414395	Vent Valve 15
8	414396	Magnet
9	414397	Magnet Holder
10	415923	Pump Shaft/bearing Kit
13	414398	Bypass Lever
15	414399	Sealing Cap 30
16	414400	Snap Ring C 35
19	414401	O-ring 1a P10a
20	414402	Seal Tc 153507
33	414403	Pump Shaft (Standard)
34	414404	E-ring 15
35	414405	Bearing 6202c3
53	414431	Control Lever F
55	415924	Washer 12
58	415925	Roll Pin 6 * 40
59	415926	O-ring 1a P14
60	415927	Nut 12
72	414407	Seal 19 * 32 * 8
76	414408	Brake Lever
78	414409	Brake Return Spring
80	414410	Spring Pin 5 * 32
81	414411	O-ring 1a P12
82	414412	Spring Pin 4 * 16
83	414413	Spine Collar
84	414414	Pulley L
85	414415	Fan, Black
86	414416	Wave Washer
87	414417	Snap Ring
90	414418	Spring Pin 3.0a * 20
91	414419	Oil Seal 16 * 22 *.03
95	414850	Spring Pin 3.0a*16
96	414420	Roll Pin 3.5 * 40
115	415928	Switch 6440-11 Delta
116	415929	Switch Bracket
117	415930	Tapping Screw 8 * 20

NOTE: All component dimensions given in U.S. inches
1 inch = 25.4 mm

REPAIR PARTS

TRACTOR- -MODEL NO. 917.254061

BRIGGS & STRATTON ENGINE - - MODEL NUMBER 445677, TYPE NUMBER 1262-B1

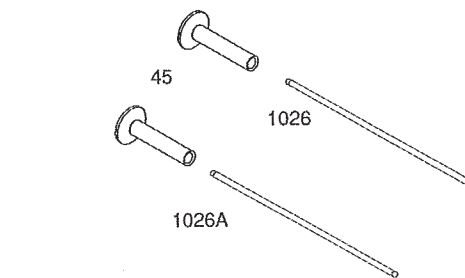
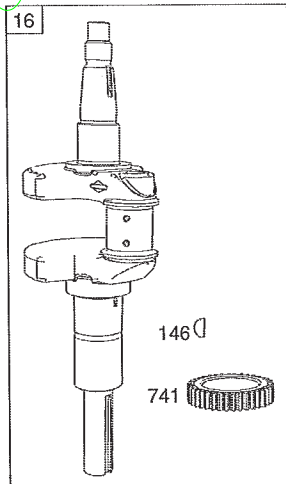
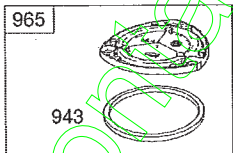
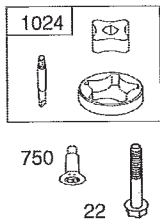
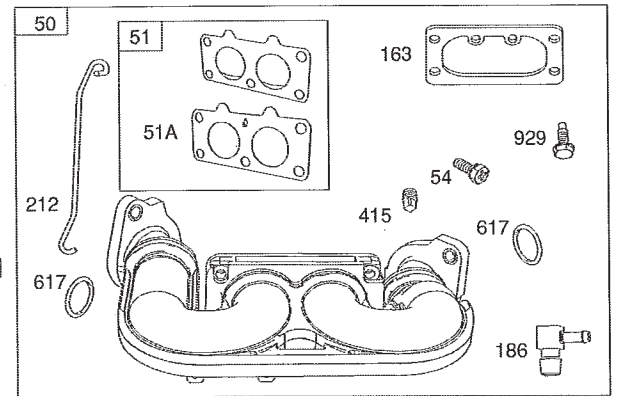
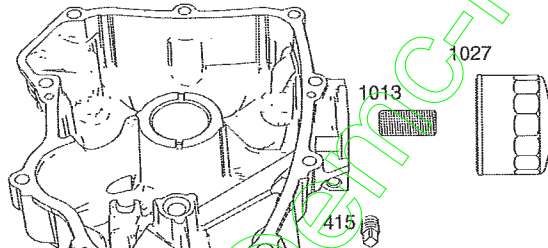
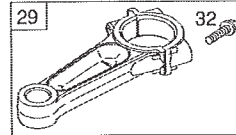
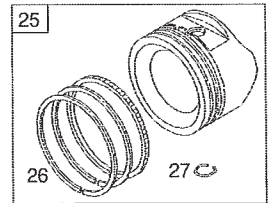
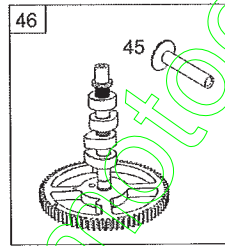
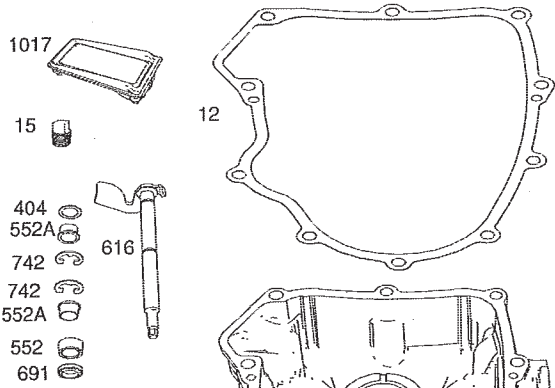
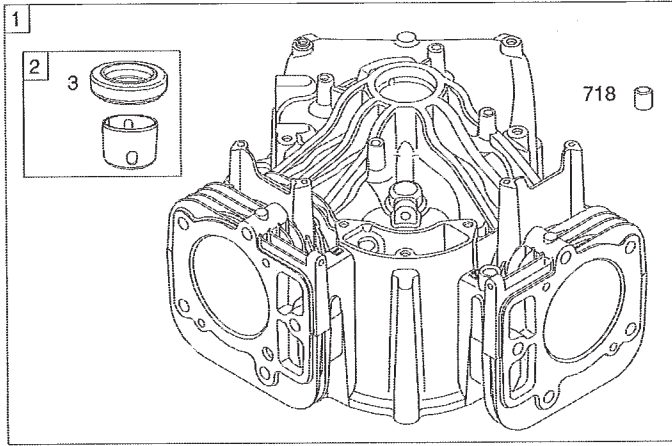
48 SHORT BLOCK

1058 OPERATOR'S MANUAL

1329 REPLACEMENT ENGINE

1330 REPAIR MANUAL

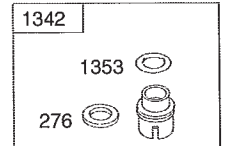
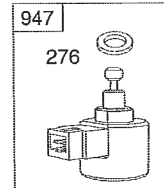
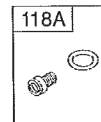
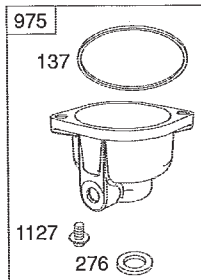
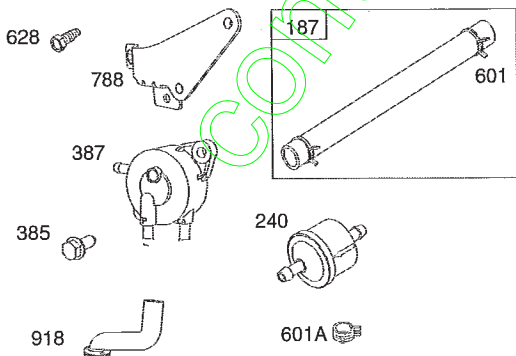
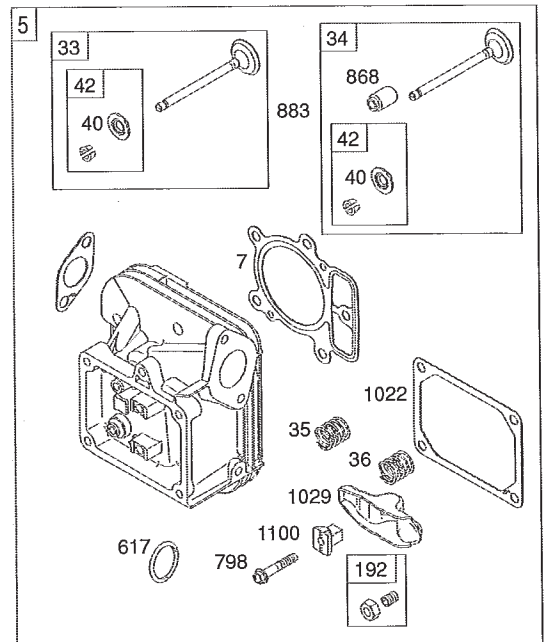
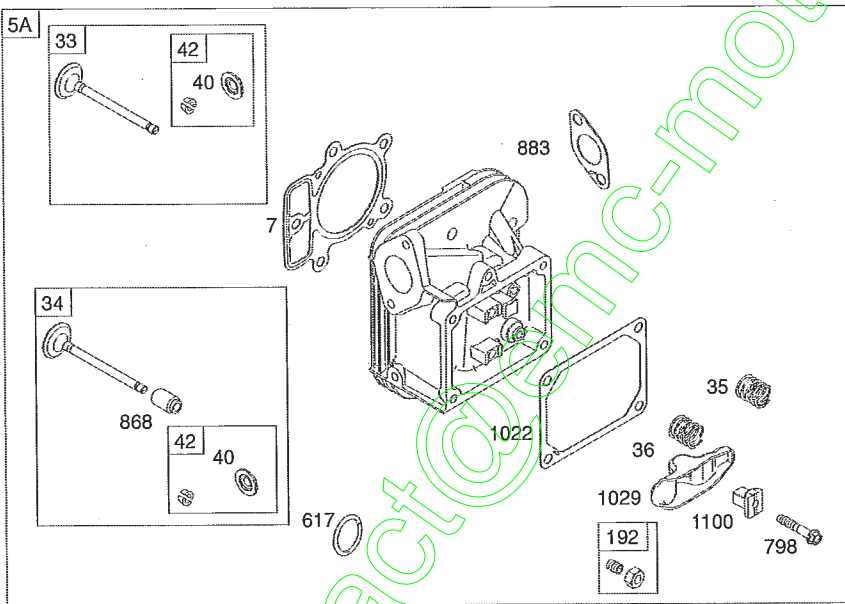
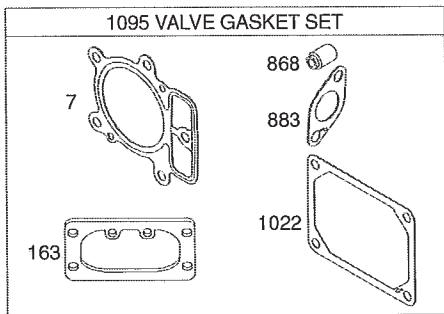
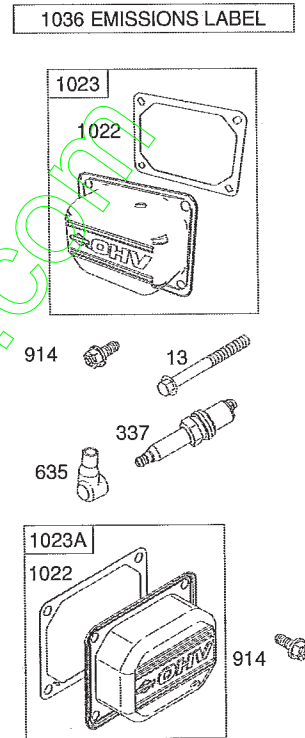
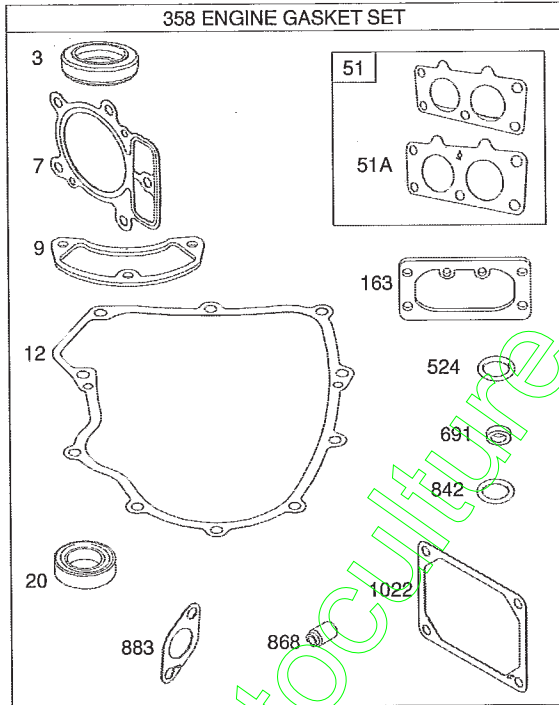
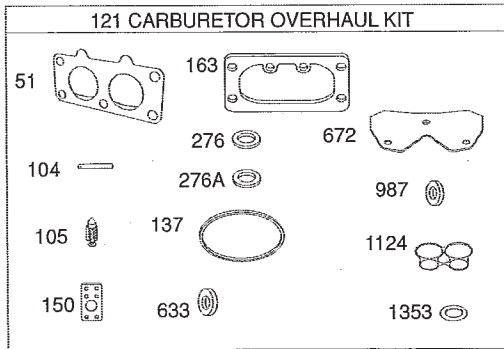
LIQUID GASKET AND THE BREATHER GASKET ARE INTERCHANGEABLE



REPAIR PARTS

TRACTOR- -MODEL NO. 917.254061

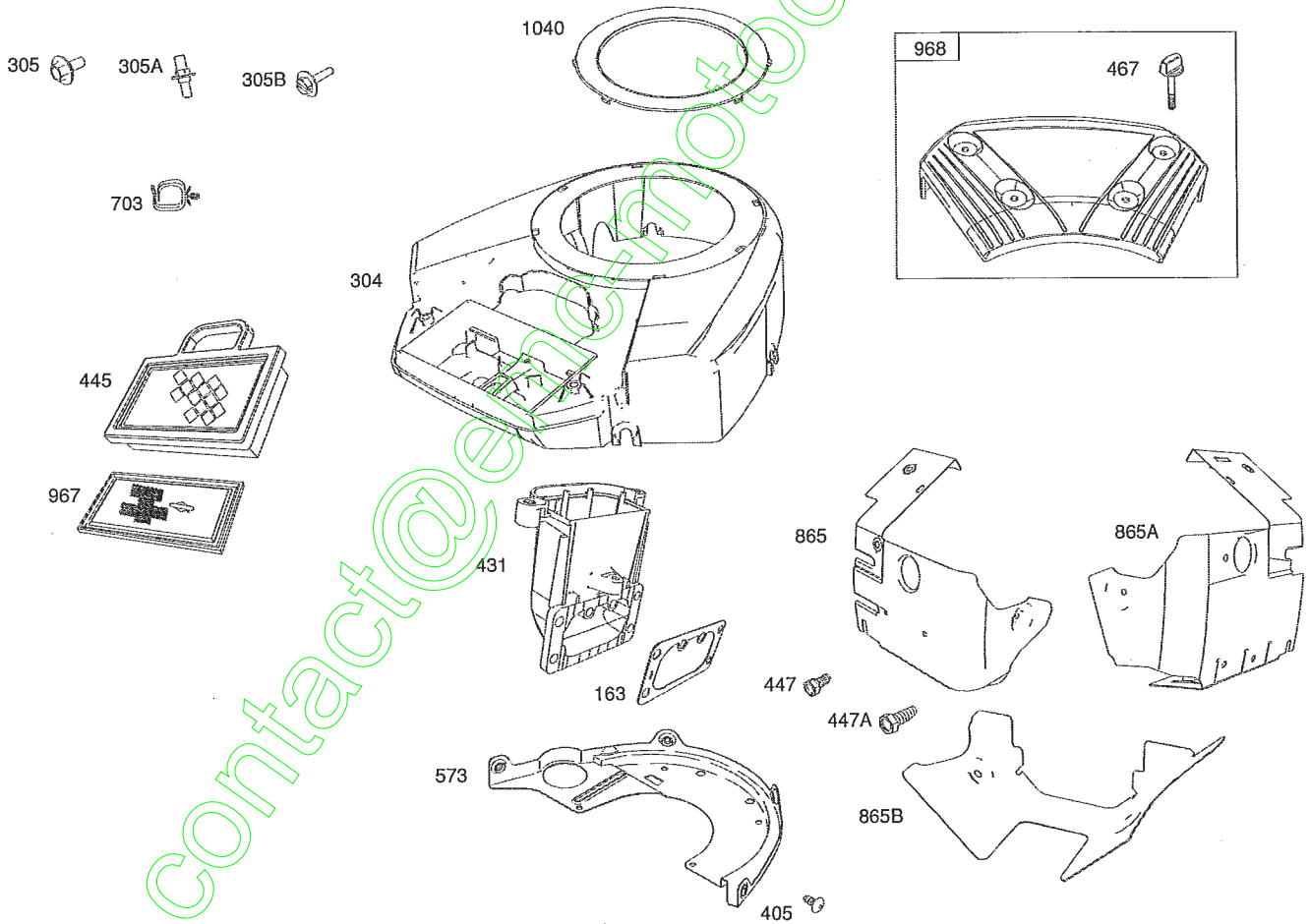
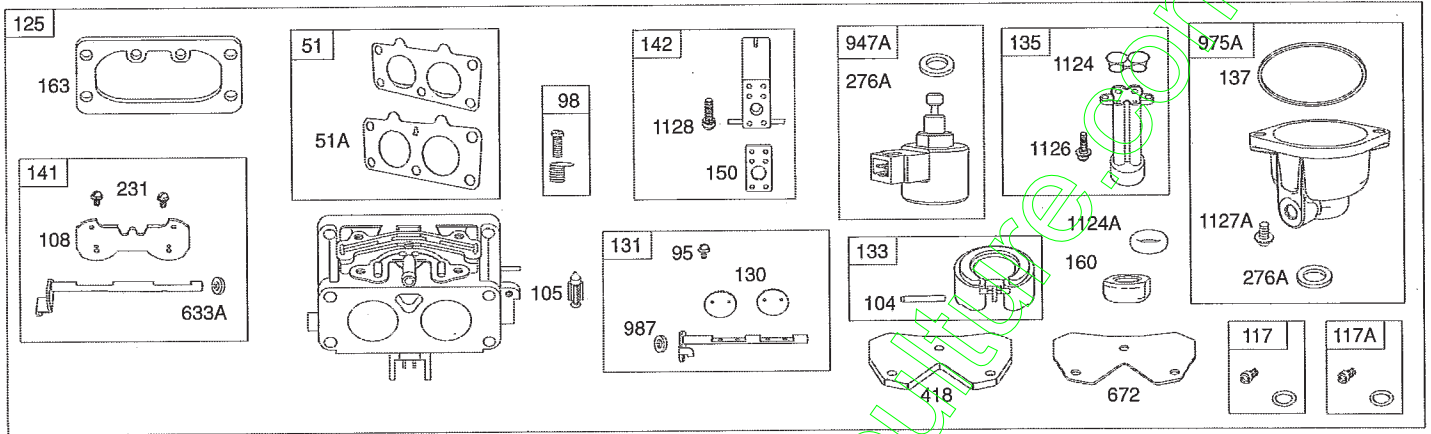
BRIGGS & STRATTON ENGINE - - MODEL NUMBER 445677, TYPE NUMBER 1262-B1



REPAIR PARTS

TRACTOR- -MODEL NO. 917.254061

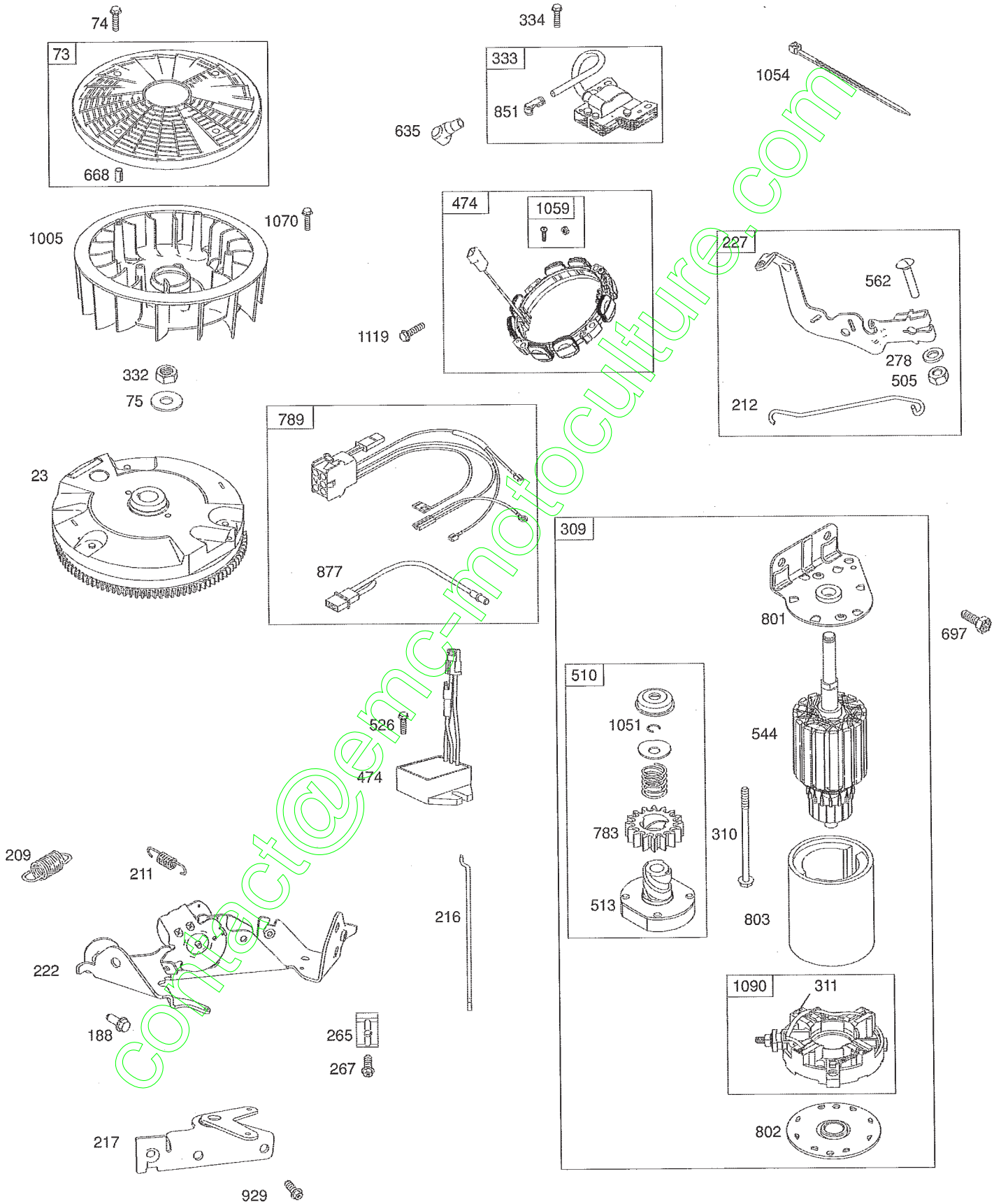
BRIGGS & STRATTON ENGINE - - MODEL NUMBER 445677, TYPE NUMBER 1262-B1



REPAIR PARTS

TRACTOR- -MODEL NO. 917.254061

BRIGGS & STRATTON ENGINE - - MODEL NUMBER 445677, TYPE NUMBER 1262-B1



REPAIR PARTS

TRACTOR- -MODEL NO. 917.254061

BRIGGS & STRATTON ENGINE - - MODEL NUMBER 445677, TYPE NUMBER 1262-B1

KEY NO.	PART NO.	DESCRIPTION	KEY NO.	PART NO.	DESCRIPTION
1	793564	Cylinder Assembly	137	690994	Gasket-Float Bowl
2	499585	Bushing/Seal Kit (Magneto Side)	141	699722	Kit-Choke Shaft
3	391086s	Seal-Oil (Magneto Side)	142	699726	Nozzle-Carburetor
4	796230	Sump-Engine	146	690979	Key-Timing
5	796231	Head-Cylinder (Cylinder #1)	150	690995	Gasket-Nozzle
5A	796232	Head-Cylinder (Cylinder #2)	160	699727	Retainer-Solenoid (Brass)
7	693997	Gasket-Cylinder Head	163	691001	Gasket-Air Cleaner
8	792185	Breather Assembly	177	691031	Seal-O Ring (Dipstick)
9	690937	Gasket-Breather (Liquid Gasket and The Breather Gasket Are Inter-changeable)	187	791766	Line-Fuel (Cut to Required Length)
			188	697551	Screw (Control Bracket)
10	697551	Screw (Breather Assembly)	192	690083	Adjuster-Rocker Arm
11	792184	Tube-Breather	197	697820	Screw (Back Plate)
12	697227	Gasket-Crankcase	209	793339	Spring-Governor (Light Green)
13	793988	Screw (Cylinder Head)	211	796225	Spring-Governed Idle (Orange)
15	690946	Plug-Oil Drain	212	695238	Link-Throttle
16	796540	Crankshaft	213	691021	Bracket-Choke Control
20	795387	Seal-Oil (PTO Side)	216	691022	Link-Choke
22	694966	Screw (Crankcase Cover/Sump)	219	793338	Gear-Governor
23	691053	Flywheel	220	690412	Washer (Governor Gear)
24	222698s	Key-Flywheel	221	841026	Cup-Governor
25	792023	Piston Assembly (Standard)	222	796630	Bracket-Control
	792072	Piston Assembly (.020" Oversize)	227	796223	Lever-Governor Control
26	793561	Ring Set (Standard)	231	690718	Screw (Choke Valve)
	792073	Ring Set (.020" Oversize)	240	691035	Filter-Fuel
27	690975	Lock-Piston Pin	250	690957	Retainer-Breather
28	696581	Pin-Piston	252	794389	Collector-Oil
29	699699	Rod-Connecting	265	691024	Clamp-Casing
32	690976	Screw (Connecting Rod)	267	792629	Screw (Casing Clamp)
33	697576	Valve-Exhaust	276	794271	Washer-Sealing (Aluminum)
34	792200	Valve-Intake	276A	695410	Washer-Sealing (Used On Service Carburetor)
35	694865	Spring-Valve (Intake)	278	792651	Washer (Governor Control Lever)
36	694865	Spring-Valve (Exhaust)	287	697551	Screw (Dipstick Tube)
40	690964	Retainer-Valve	304	796597	Housing-Blower
42	499586	Keeper-Valve	305	691005	Screw (Blower Housing)
45	690977	Tappet-Valve	305A	698336	Screw (Blower Housing)
46	792555	Camshaft	305B	790690	Screw (Blower Housing) (Blower Housing to Intake Elbow)
48	698172	Short Block	309	499521	Motor-Starter
50	695241	Manifold-Intake	310	691263	Screw (Starter Motor)
51	795123	Gasket-Intake	332	691059	Nut (Flywheel)
51A	690950	Gasket-Intake	333	691060	Armature-Magneto
53	690951	Stud (Carburetor)	334	691061	Screw (Magneto Armature)
54	699816	Screw (Intake Manifold)	337	691043	Plug-Spark
73	494439	Screen-Rotating	358	694012	Gasket Set-Engine
74	698425	Screw (Rotating Screen)	385	697551	Screw (Fuel Pump)
75	691056	Washer (Flywheel)	387	808656	Pump-Fuel
95	690718	Screw (Throttle Valve)	404	690442	Washer (Governor Crank)
98	699721	Kit-Idle Speed	415	794903	Plug (Oil Pressure Switch Hole)
104	694918	Pin-Float Hinge	415A	690283	Plug (Intake Manifold)
105	698537	Valve-Float Needle	418	795912	Plate-Carburetor
108	699723	Valve-Choke	431	790816	Elbow-Intake
117	791501	Jet-Main (Standard) (Left)	445	499486s	Filter-Air Cleaner Cartridge
117A	791502	Jet-Main (Standard) (Right)	447	691003	Screw (Air Guide Cover) (Long)
118	695415	Jet-Main (High Altitude) (Left)	447A	697551	Screw (Air Guide Cover) (Short)
118A	843099	Jet-Main (High Altitude) (Right)	462	691261	Washer (Starter Cable)
121	792455	Kit-Carburetor Overhaul	467	691008	Knob-Air Cleaner
125	791230	Carburetor	474	696458	Alternator
130	690993	Valve-Throttle	501	691185	Regulator
131	499805	Kit-Throttle Shaft	505	691029	Nut (Governor Control Lever)
133	699724	Float-Carburetor	510	696541	Drive-Starter
135	699729	Tube-Fuel Transfer			

REPAIR PARTS

TRACTOR- -MODEL NO. 917.254061

BRIGGS & STRATTON ENGINE - - MODEL NUMBER 445677, TYPE NUMBER 1262-B1

KEY NO.	PART NO.	DESCRIPTION	KEY NO.	PART NO.	DESCRIPTION
513	692024	Clutch-Drive	968	791242	Cover-Air Cleaner
523	691036	Dipstick	975	499810	Bowl-Fuel
524 •	691032	Seal-Dipstick Tube	975A	793592	Bowl-Fuel (Used On Service Carburetor)
525	691037	Tube-Dipstick	987 ♣	691000	Seal-Throttle Shaft
526	697551	Screw (Regulator)	1005	791236	Fan-Flywheel
544		Armature-Starter (Service by 499521 Starter Motor Only, Reference 309)	1013	690954	Nipple-Oil Filter
552	690552	Bushing-Governor Crank	1017	796214	Screen-Oil Pump
552A	690553	Bushing-Governor Crank	1022 ♦•	690971	Gasket-Rocker Cover (Liquid Gasket and Rocker Cover Gasket are interchangeable)
562	690311	Screw (Governor Control Lever)	1023	793146	Cover-Rocker (Cylinder #1)
573	790444	Plate-Back	1023A	499600	Cover-Rocker (Cylinder #2)
601	791850	Hose-Clamp (Green)	1024	796220	Pump-Oil
601A	691038	Hose-Clamp (Black)	1026	690981	Rod-Push (Steel)
615	698290	Retainer-Governor Shaft	1026A	690982	Rod-Push (Aluminum)
616	691045	Crank-Governor	1027	492932s	Filter-Oil
617 ♣•	697891	Seal-O Ring (Intake Manifold) (Red)	1029	690972	Arm-Rocker
628	697551	Screw (Fuel Pump Bracket)	1036		Label-Emissions (Available from a Briggs & Stratton Authorized Dealer)
633	699813	Seal-Choke/Throttle Shaft (Choke Shaft)	1040	791237	Plate-Trim
633A	690998	Seal-Choke/Throttle Shaft (Choke Shaft) (Used On Service Carburetor)	1051	691265	Ring-Retaining
635	66538s	Boot-Spark Plug	1054	280275	Tie-Cable
654	690958	Nut (Carburetor)	1058	276245	Operator's Manual
668	691215	Spacer (Rotating Screen)	1059	698516	Kit-Screw/Washer
672	690234	Gasket-Carburetor Plate	1070	791680	Screw (Flywheel Fan)
691 •	790574	Seal-Governor Shaft	1090	691293	Retainer-Brush
697	690372	Screw (Drive Cap)	1095	694013	Gasket Set-Valve
703	691010	Clip	1000	791959	Pivot-Rocker Arm
718	690959	Pin-Locating	1119	691183	Screw (Alternator)
741	690980	Gear-Timing	1124	690988	Seal-O Ring (Fuel Transfer Tube)
742	690328	Retainer-E Ring	1124A	842653	Seal-O Ring (Fuel Transfer Tube) (Used On Service Carburetor)
750	796208	Screw (Oil Pump Cover)	1126	690991	Screw (Fuel Transfer Tube)
783	695708	Gear-Pinion	1127	690992	Screw (Float Bowl)
788	793145	Bracket-Fuel Pump	1127A	695407	Screw (Float Bowl) (Used On Service Carburetor)
789	698330	Harness-Wiring	1128	690990	Screw (Carburetor Nozzle)
798	697890	Screw (Rocker Arm)	1329	44Q777-0037	Replacement Engine
801	691283	Cap-Drive	1330	273521	Repair Manual
802	691286	Cap-End	1342	699731	Extension-Fuel Transfer Tube
803		Housing-Starter (Service by 499521 Starter Motor Only, Reference 309)	1353	699725	Seal-O Ring (Fuel Transfer Tube Extension)
847	499602	Dipstick/Tube Assembly			
850	100106	Sealant-Liquid (Used to Seal Breather Assembly and Rocker Cover)			
851	493880s	Terminal-Spark Plug			
865	691012	Cover-Air Guide (Cylinder #1)			
865A	796541	Cover-Air Guide (Cylinder #2)			
865B	691015	Cover-Air Guide (Cylinder #3)			
868 ♦•	690968	Seal-Valve			
877	790544	Wire/Connector-Alternator			
883 •	690970	Gasket-Exhaust			
914	691127	Screw (Rocker Cover)			
918	793147	Hose-Vacuum			
929	695239	Screw (Choke Control Bracket)			
943 •	796222	Seal-O Ring (Oil Pump Cover)			
947	699728	Solenoid-Fuel			
947A	841546	Solenoid-Fuel (Used On Service Carburetor)			
965	796221	Cover-Oil Pump			
967	273638s	Filter-Pre Cleaner			

- Included in Engine Gasket Set, Key. No. 358
- ♦ Included in Valve Gasket Set, Key No. 1095
- ♣ Included in Carburetor Overhaul Kit, Key, No. 121

NOTE: All component dimensions given in U.S. inches, 1 inch = 25.4 mm

LIMITED WARRANTY ON CRAFTSMAN RIDING EQUIPMENT

For two (2) years from the date of purchase, if this Craftsman Riding Equipment is maintained, lubricated and tuned up according to the instructions in the owner's manual, Sears will repair or replace free of charge any parts that are found to be defective in material or workmanship according to the guidelines of coverage listed below. Sears will also provide free labor for these applicable warranted parts for the two full years. During the first 30 days of purchase, there will be no charges to service the product at your home for issues covered by this warranty. (See exclusions below). For your convenience, IN HOME warranty service will still be available after the first 30 days of purchase, but a trip charge will apply. This charge will be waived if the Craftsman product is dropped off at an authorized Sears location. For the nearest authorized Sears location, please call 1-800-4-MY-HOME®. This warranty applies only while this product is within the United States.

This Warranty does not cover:

- Expendable items which become worn during normal use, including but not limited to blades, spark plugs, air cleaners, belts, and oil filters.
- Standard Maintenance Servicing, oil changes, or tune-ups
- Tire replacement or repair caused by punctures from outside objects, such as nails, thorns, stumps, or glass.
- Repairs necessary because of operator abuse, including but not limited to, damage caused by towing objects beyond the capability of the riding equipment, impacting objects that bend the frame or crankshaft, or over-speeding the engine.
- Repairs necessary because of operator negligence, including but not limited to, electrical and mechanical damage caused by improper storage, failure to use the proper grade and amount of engine oil, failure to keep the deck clear of flammable debris, or failure to maintain the equipment according to the instructions contained in the owner's manual.
- Engine (fuel system) cleaning or repairs caused by fuel determined to be contaminated or oxidized (stale). In general, fuel should be used within 30 days of its purchase date.
- Normal deterioration and wear of the exterior finishes, or product label replacement.
- Riding equipment used for commercial or rental purposes.

LIMITED WARRANTY ON BATTERY

For ninety (90) days from date of purchase, if any battery included with this riding equipment proves defective in material or workmanship and our testing determines the battery will not hold a charge, Sears will replace the battery at no charge. During the first 30 days of purchase, there will be no charges to replace the battery at your HOME. After the first 30 days, for your convenience, IN-HOME warranty service will still be available but a trip charge will apply. This charge will be waived if the Craftsman product is dropped off at an authorized Sears location. For the nearest authorized Sears location, please call 1-800-4-MY-HOME®.

This battery warranty applies only while this product is within the United States.

This warranty gives you specific legal rights, and you may also have other rights, which vary, from state to state.

Sears, Roebuck and Co., Dept. 817WA, Hoffman Estates, IL 60179

