

REPAIR PARTS MANUAL
MODEL NO. 255620
Lawn Tractor



580340826

HOW TO USE THIS MANUAL

This manual is designed to provide the customer with a means to identify the parts on his/her tractor when ordering repair parts. The illustrations may or may not represent the actual assemblies; therefore, it is not recommended to use this manual as a guide to assemble or disassemble the tractor. Some hardware and parts are drawn larger in order to more readily identify them.

Each tractor has its own model number.

The model number for your tractor can be found on the fender under the seat.

When ordering parts, always give the following information:

- Product - "Tractor"
- Model Number - "255620"
- Part Number
- Part Description

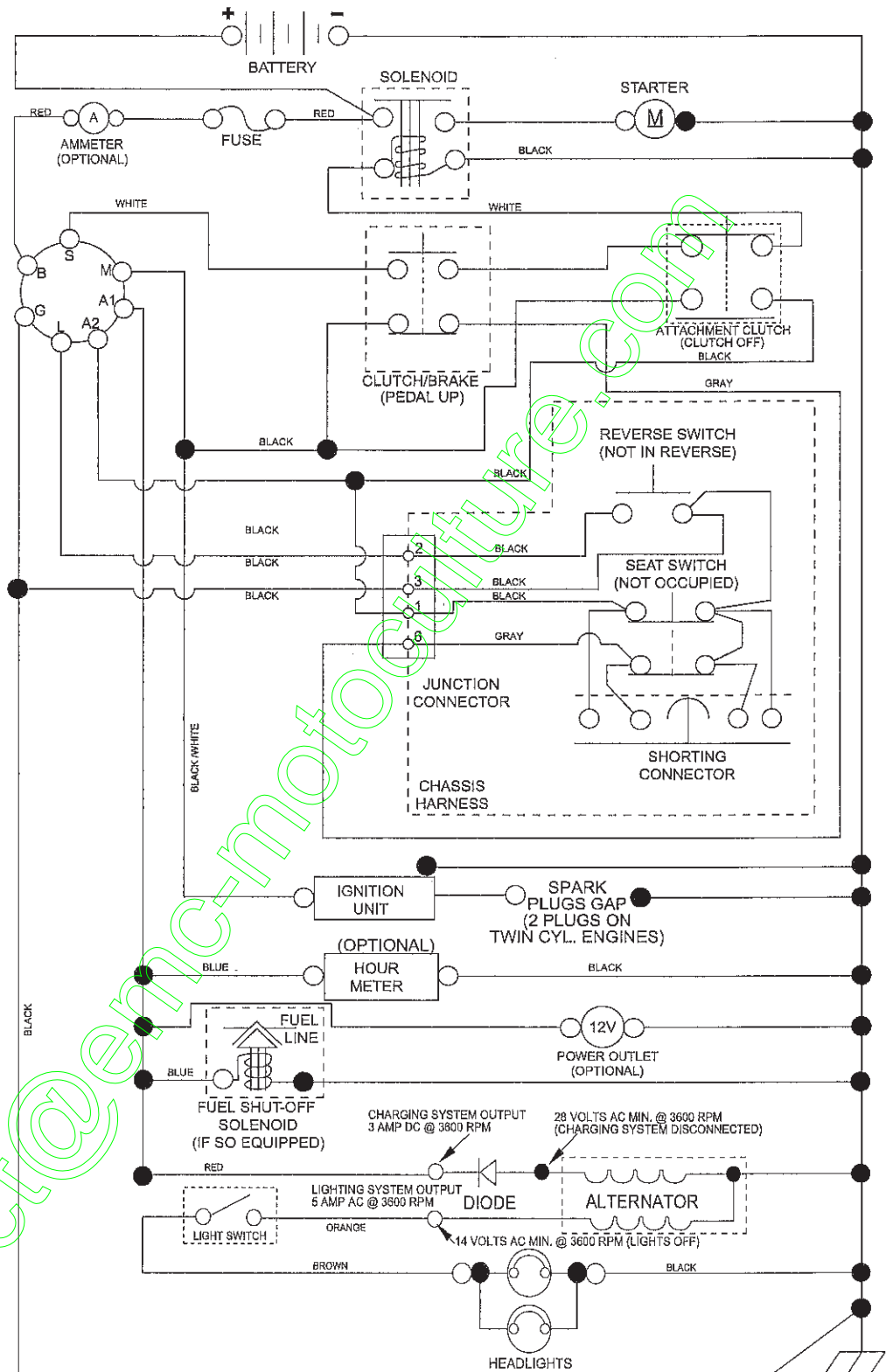
TABLE OF CONTENTS

SCHEMATIC	3
ELECTRICAL	4-5
CHASSIS	6-7
DRIVE	8-9
ENGINE	10-11
STEERING	12-13
MOWER DECK	14-15
MOWER LIFT	16-17
SEAT	18
DECALS	19
TRANSAXLE BREAKDOWN	20-21
ENGINE BREAKDOWN	22-25
WARRANTY	BACK COVER

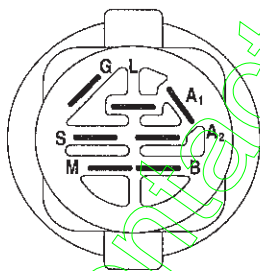
TRACTOR - - MODEL NO. 917.255620

SCHEMATIC

SCH11

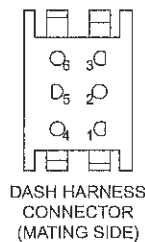
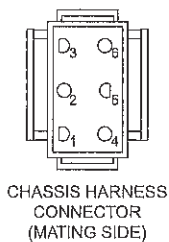


NOTE
YOUR TRACTOR IS EQUIPPED WITH A SPECIAL ALTERNATOR SYSTEM. THE LIGHTS ARE NOT CONNECTED TO THE BATTERY, BUT HAVE THEIR OWN ELECTRICAL SOURCE. BECAUSE OF THIS, THE BRIGHTNESS OF THE LIGHTS WILL CHANGE WITH ENGINE SPEED. AT IDLE THE LIGHTS WILL DIM. AS THE ENGINE IS SPEEDED UP, THE LIGHTS WILL BECOME THEIR BRIGHTEST.

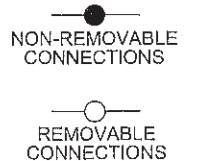


IGNITION SWITCH

POSITION	CIRCUIT	"MAKE"
OFF	M+G+A1	
RUN/OVERRIDE	B+A1	
RUN	B+A1	L+A2
START	B + S + A1	

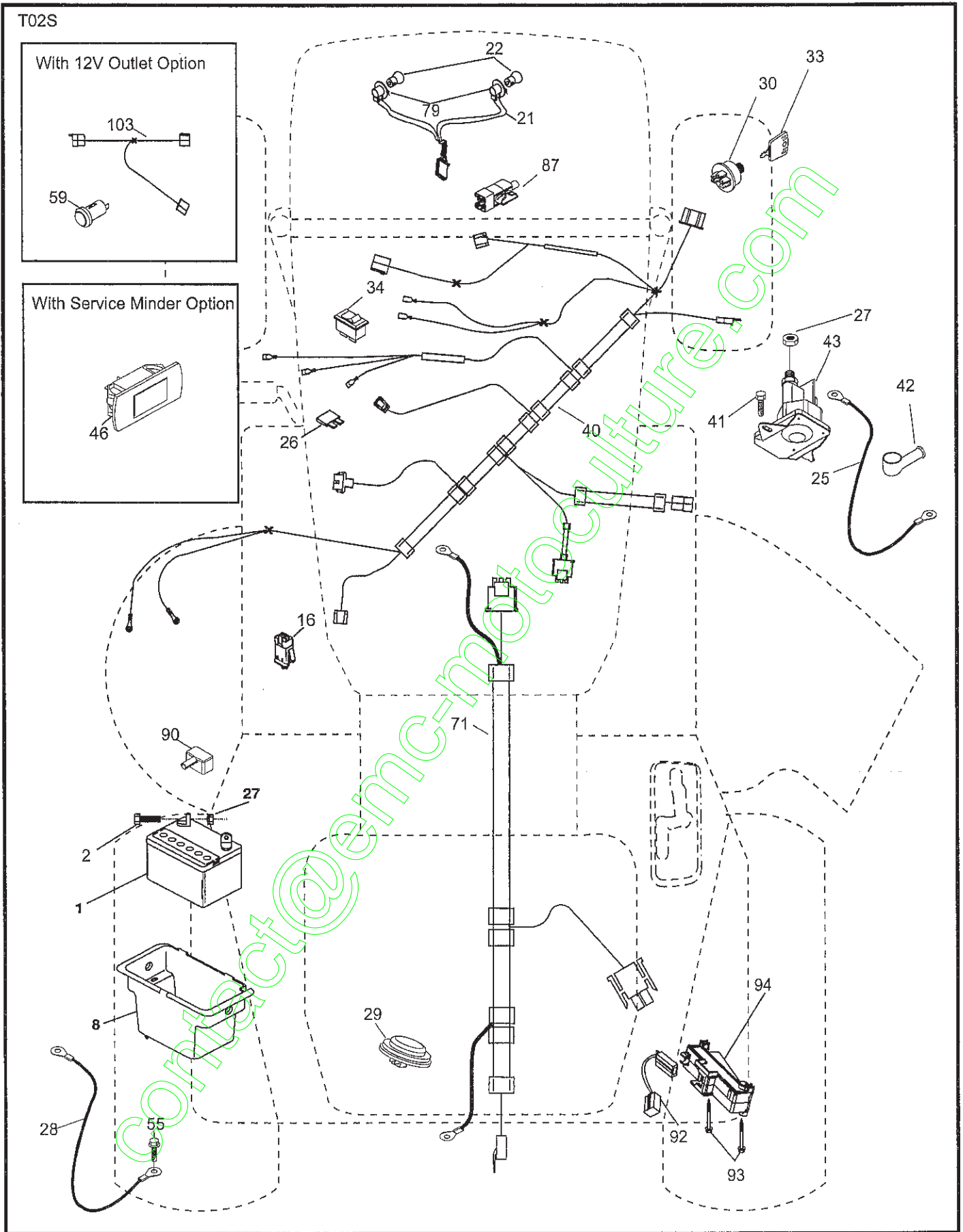


WIRING INSULATED CLIPS
NOTE: IF WIRING INSULATED CLIPS WERE REMOVED FOR SERVICING OF UNIT, THEY SHOULD BE RE-INSTALLED TO PROPERLY SECURE YOUR WIRING.



TRACTOR - - MODEL NO. 917.255620

ELECTRICAL

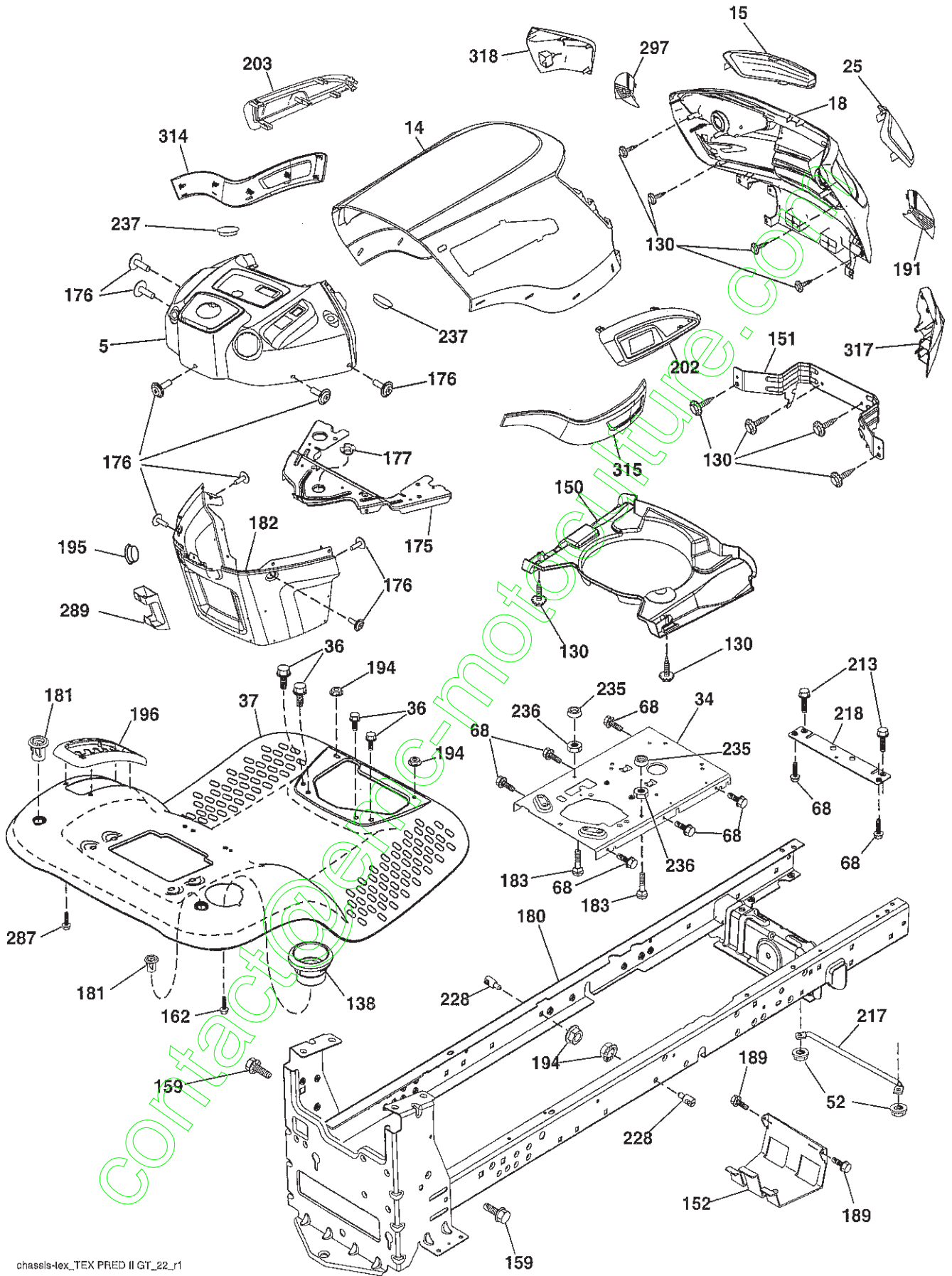


KEY NO.	PART NO.	DESCRIPTION
1	163465	Battery
2	74760412	Bolt Hex Hd 1/4-20 unc x 3/4
8	193228	Box Battery
16	176138	Switch Interlock Push-In
21	400252	Harness Socket Light w/4152J
22	4152J	Bulb Light
25	412895	Cable Starter
26	175158	Fuse
27	73510400	Nut Keps Hex 1/4-20 unc
28	198885	Cable, Ground
29	401545	Switch, Seat
30	193350	Switch, Ign
33	411934	Key/Chain
34	110712X	Switch Light / Reset
40	401098	Harness Ign. Dash
41	17720408	Screw Thd Cut 1/4-20 x 1/2
42	131563	Cover, Terminal
43	192507	Solenoid
55	17060512	Screw Thdrol 5/16-18 x 3/4 TYTT
71	441544	Harness Ign. Chassis
79	175242	Bulbholder Asm. Incan Descent
87	197802	Switch Interlock Clutch Cable
90	435395	Cover Terminal Battery
92	196615	Harness Pigtail Console
93	192540	Screw Plastite
94	191834	Module Reverse

NOTE: All component dimensions given in U.S. inches.
1 inch = 25.4 mm.

TRACTOR - - MODEL NO. 917.255620

CHASSIS AND ENCLOSURES



chassis-lex_TEX PRED II GT_22_r1

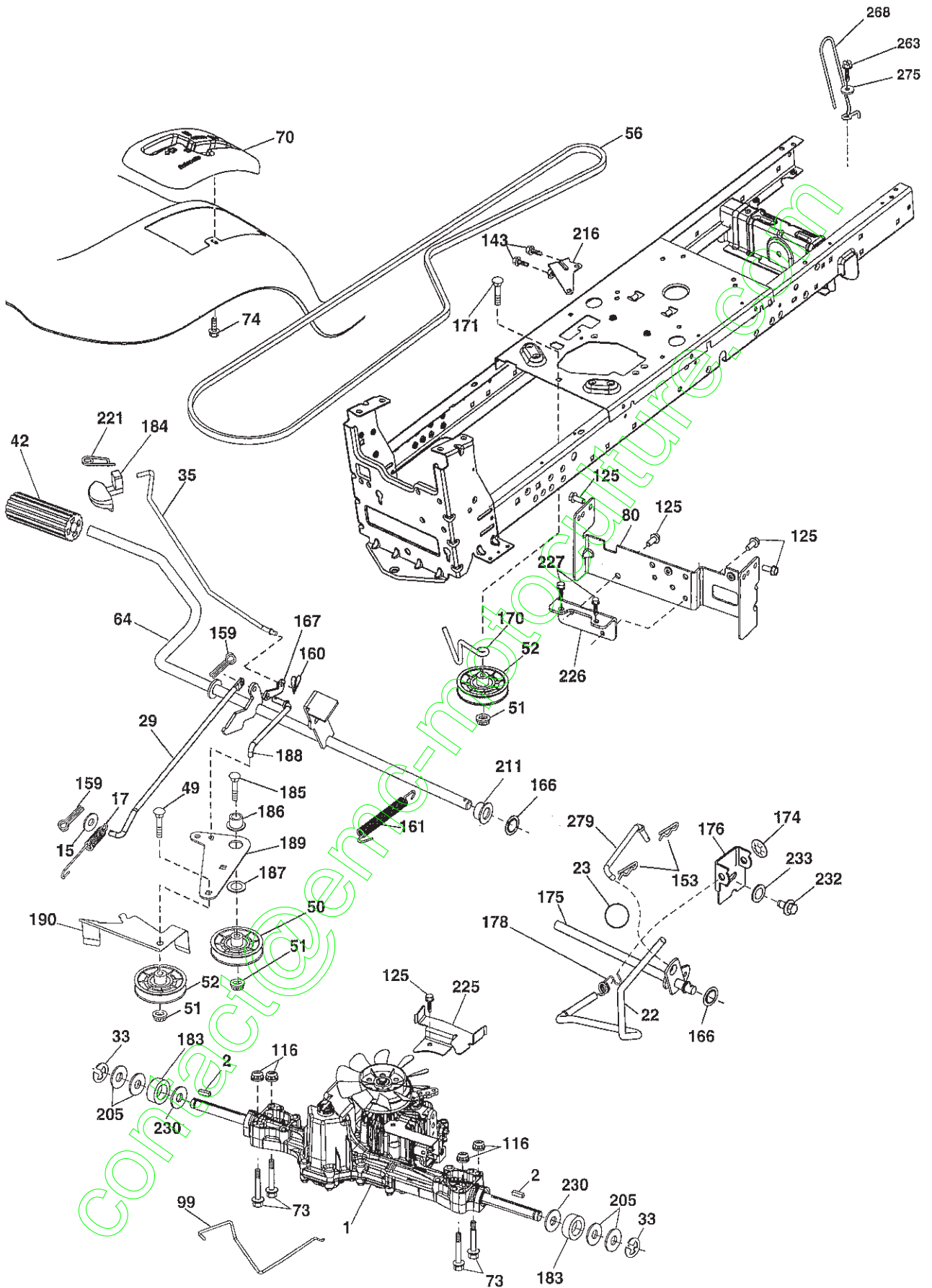
TRACTOR - - MODEL NO. 917.255620
CHASSIS AND ENCLOSURES

KEY NO.	PART NO.	DESCRIPTION
5	421809X428	Dash
14	421154X615	Hood
15	421493X599	Lens LH
18	441721X428	Grille
25	421494X599	Lens RH
34	447253	Plate Engine
36	17060512	Screw 5/16-18 x 3/4
37	414872X615	Fender
52	73680500	Nut Crown Lock 5/16-18
68	17490508	Screw Thdrol 5/16-18 x 1/2
130	416358	Screw # 10 x .750 BOS Thread
138	193224X428	Cupholder
150	199411	Duct Heat Hood
151	445494	Bracket Pivot
152	199535	Shield Browning/Debris
159	17000612	Screw Hexwsh Thdrol 3/8-16 x 3/4
162	142432	Screw Hex Wsh Hi-Lo 1/4 x 1/2
175	196304	Crossmember
176	400776	Screw 10-24 x 5/8 Wshd Qdix
177	195227	Bushing Steering
180	195457	Chassis
181	193102X428	Bushing Mtg. Fender Crgo.
182	406859	Dash Lower
183	74520520	Bolt 5/16-18 x 1-1/4
189	17000512	Screw 5/16 - 18 x 3/4
191	425407	Insert Reflective RH
194	73900500	Nut Lock Hex Flange 5/16-18
195	401556X428	Plug Hole Dash 12V Adapter
196	414579	Console Asm. Deck Lift
202	441722X428	Vent Side Hood RH
203	441723X428	Vent Side Hood LH
213	74760512	Bolt hex HD 5/16-18 unc x 3/4
217	409167	Rod Pivot Chassis
218	196395	X piece hood stop
228	195161	Stud Fastener
235	406129	Spacer Fender
236	73930500	Nut Center Lock 5/16-18
237	403704	Plug Mount Cargo
287	17600406	Screw Hex Washhead 1/4-20 x 3/8
297	425406	Insert Reflective LH
314	580466001	Skirt SD LH
315	580465901	Skirt SD RH
317	421257X615	Cap Corner RH
318	421258X615	Cap Corner LH

NOTE: All component dimensions given in U.S. inches.
 1 inch = 25.4 mm.

TRACTOR - - MODEL NO. 917.255620

DRIVE



drive-tex_K46_fender_35

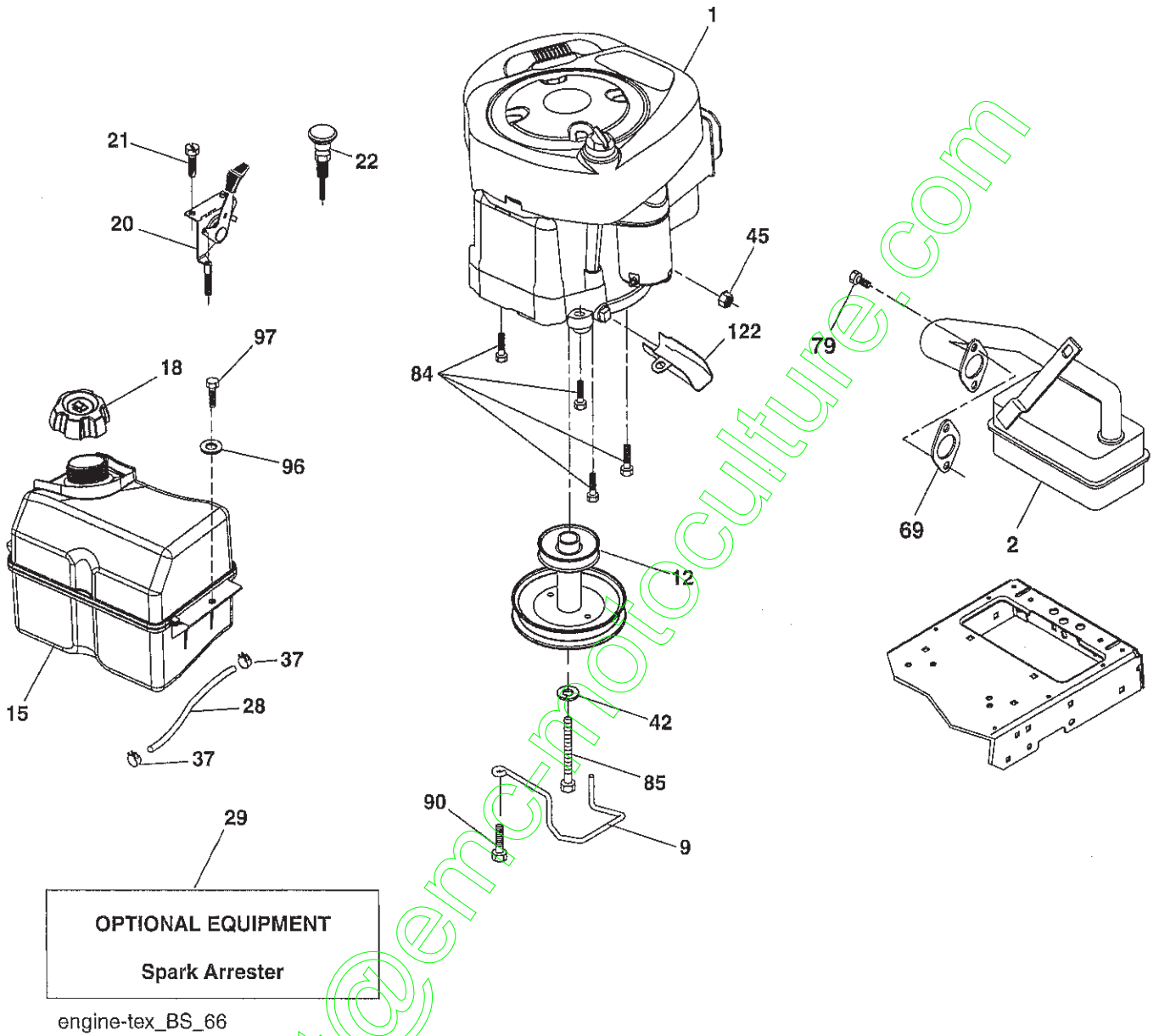
TRACTOR - - MODEL NO. 917.255620

DRIVE

KEY NO.	PART NO.	DESCRIPTION	KEY NO.	PART NO.	DESCRIPTION
1	---	Transaxle, Tufftorq K46 BA (408214)(See Transaxle Break-down.)	170	194322	Keeper V-Idler
2	123583X	Key Square	171	72110616	Bolt 3/8-16 unc x 2
15	19131316	Washer 13/32 x 13/16 x 16 Ga.	174	197289	Nut Push
17	413678	Spring, Brake	175	406208	Shaft Asm Shift
22	197660	Rod Shift	176	196214	Arm Clevis Rod Shift
23	140845	Knob	178	197456	Spring Shift
29	403806	Rod, Brake	183	137057	Spacer Axle
33	12000001	Ring E	184	196439X667	Handle Parking Brake
35	435486	Rod, Brake, Park	185	72110622	Bolt
42	8883R	Cover, Foot Pedal	186	194321	Spacer Retainer
49	72110614	Bolt	187	19133210	Washer
50	194327	Pulley Idler Flat	188	194323	Link Clutch Ground Drive
51	73900600	Lock Nut 3/8-16	189	194317	Bellcrank Ground Drive
52	194326	Idler V-Groove	190	194318	Keeper Bellcrank Ground Drive
56	130969	V-Belt, Drive	205	121748X	Washer 25/32 x 1-5/8 x 16 Ga.
64	196200	Shaft Asm. Pedal Brake Control	211	196212	Bushing Shaft
70	193220X428	Console Shift	216	196131	Bracket Pulley Idler
73	74490540	Bolt Hex 5/16-18 Gr. 5	221	403187	Retainer Spring Clip Handle
74	142432	Screw 1/4 x 1/2	225	403319	Keeper Belt Transaxle
80	440619	Strap Torque	226	401564	Bracket Mount Torque
99	415742	Rod Spring Bypass	227	17490512	Screw 5/16-18 x 3/4
116	73900500	Nut Lock Hex Flange 5/16-18	230	188967	Washer Hardened
125	17000512	Screw 5/16-18 x 3/4	232	74780716	Bolt 7/16-14 x 1 Gr. 5
143	17490508	Screw 5/16-18 x 1/2	233	405296	Washer Serrated
153	4497H	Retainer Spring 1" STD	263	17000612	Screw 3/8-16 x 3/4
159	76020412	Pin Cotter 1/8 x 3/4	268	182402	Guard Muffler
160	169484	Retainer Clip	275	19131614	Washer 13/32 x 1 x 14
161	105709X	Spring, Return, Clutch	279	406207	Link Shift
166	429164	Nut Push .625			
167	405257	Latch Brake Parking			

NOTE: All component dimensions given in U.S. inches
1 inch = 25.4 mm

ENGINE



TRACTOR - - MODEL NO. 917.255620

ENGINE

KEY NO.	PART NO.	DESCRIPTION
1	---	Engine B&S Model No. 31P677-2430-B1 (438594) (See Engine Breakdown.)
2	137352	Muffler
9	194320	Keeper Belt Engine
12	405472	Pulley Engine
15	407489	Tank Fuel
18	430220	Cap Asm
20	175438X428	Control Throttle
21	416358	Screw 10 x .750 BOS Thread
22	187771X428	Control Choke
28	137040	Fuel Line
29	137180	Spark Arrester Kit
37	123487X	Clamp Hose
42	10040700	Washer Lock 7/16
45	73510400	Nut Keps Hex 1/4-20 unc
69	165291	Gasket
79	192334	Screw 5/16-18 x .75
84	17060620	Screw 3/8-16 x 1-1/4
85	173937	Bolt Hex 7/16-20 x 4 x Gr. 5-1.5
90	17000616	Screw 3/8-16 x 1.0
96	19091416	Washer 9/32 x 7/8 x 16
97	17670412	Screw 1/4-20 x 3/4
122	421922	Extension Drain Oil

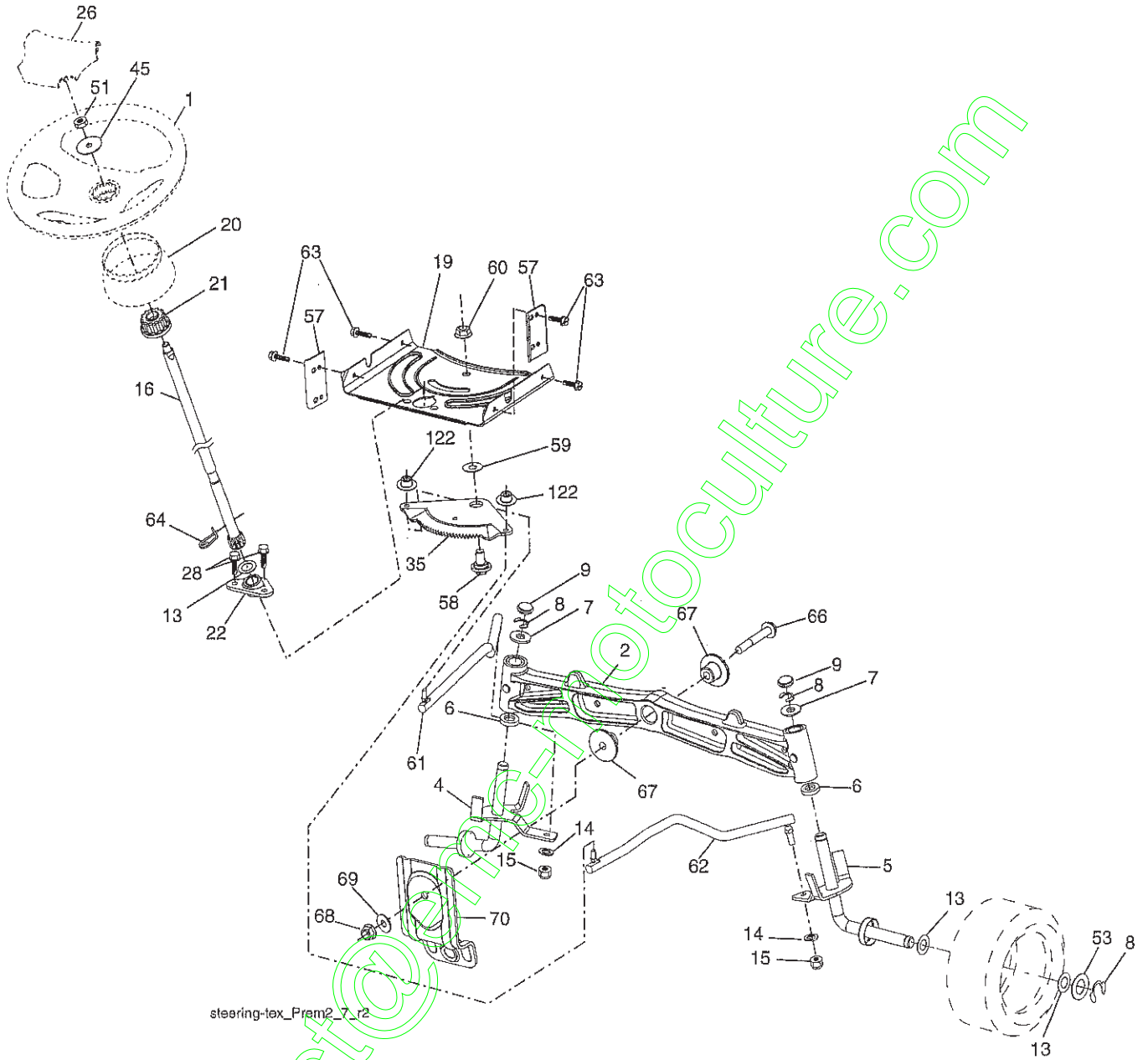
NOTE: All component dimensions given in U.S. inches
1 inch = 25.4 mm

Engine Power Rating Information

The gross power rating for individual gas engine models is labeled in accordance with SAE (Society of Automotive Engineers) code J1940 (Small Engine Power & Torque Rating Procedure), and rating performance has been obtained and corrected in accordance with SAE J1995 (Revision 2002-05). Torque values are derived at 3060 RPM; horsepower values are derived at 3600 RPM. Actual gross engine power will be lower and is affected by, among other things, ambient operating conditions and engine-to-engine variability. Given both the wide array of products on which engines are placed and the variety of environmental issues applicable to operating the equipment, the gas engine will not develop the rated gross power when used in a given piece of power equipment (actual "on-site" or net power). This difference is due to a variety of factors including, but not limited to, accessories (air cleaner, exhaust, charging, cooling, carburetor, fuel pump, etc.), application limitations, ambient operating conditions (temperature, humidity, altitude), and engine-to-engine variability. Due to manufacturing and capacity limitations, Briggs & Stratton may substitute an engine of higher rated power for this Series engine.

TRACTOR -- MODEL NO. 917.255620

STEERING ASSEMBLY



TRACTOR - - MODEL NO. 917.255620

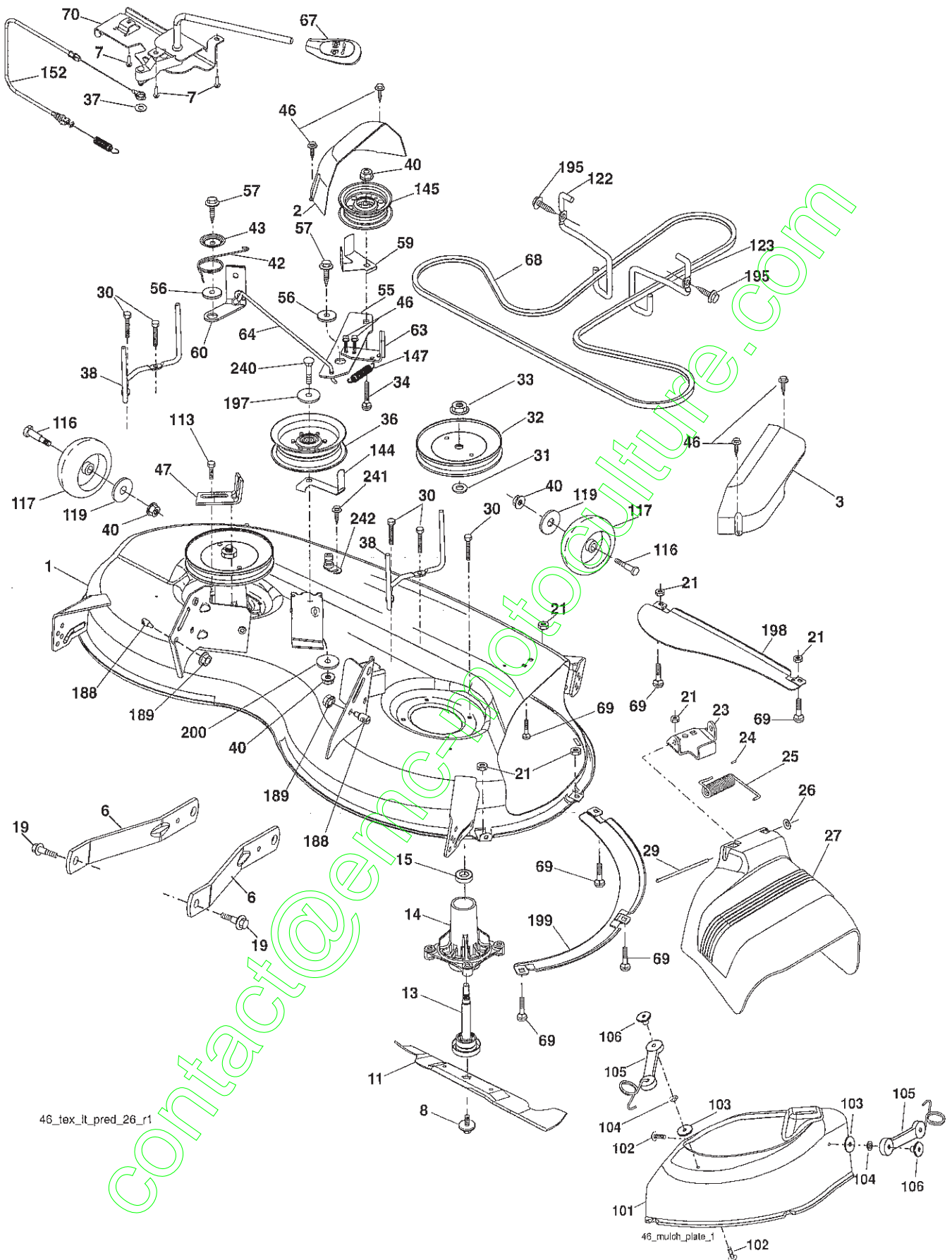
STEERING ASSEMBLY

KEY NO.	PART NO.	DESCRIPTION
1	414851X428	Wheel, Steering
2	195968	Axle Asm., Front
4	403087	Spindle Asm., LH
5	403088	Spindle Asm., RH
6	6266H	Washer Thrust 0.75 x 1.23
7	121748X	Washer 25/32 x 1-5/8 x 16 Ga.
8	12000029	Ring, Clip #T5304-75
9	184946X667	Cap, Spindle
13	121749X	Washer 25/32 x 1-1/4 x 16 Ga.
14	10040600	Washer Lock 3/8
15	73540600	Nut, Crown Lock 3/8-24 unf
16	194746	Shaft Steering
19	194729	Plate Steering
20	199676X428	Boot, Steering
21	186737	Adapter, Wheel Steering
22	420537	Steering Support Lower
26	414852X428	Insert, Wheel Steering
28	17000612	Screw 3/8-16 x 3/4
35	194732	Gear, Sector Plate
45	19183812	Washer 9/16 I.D. x 2-3/8 O.D.
51	73940800	Nut Hex Jam Toplock 1/2-20
53	188967	Washer Hardened .793 x 1.637 x .060
57	407465	Bracket Upstop
58	194747	Bolt Shoulder Sector Pivot CFM
59	194748	Washer Thrust Sector Steering
60	73971000	Nut Flange Lock 5/8-11
61	194740	Draglink, LH
62	194741	Draglink, RH
63	17000512	Screw 5/16-18 x 3/4
64	199849	Retainer Clip Spring Steering
66	71020748	Bolt Hex Fghd 7/16-14 x 3 Serr
67	194737	Bushing PM Front Axle
68	73900700	Nut Lock Flange 7/16-14 Gr. 5
69	199162	Washer 1.5 x .505 x .118
70	196197	Bracket Deck Susp. Front
122	444962	Cap Gear

NOTE: All component dimensions given in U.S. inches.
1 inch = 25.4 mm.

TRACTOR - - MODEL NO. 917.255620

MOWER



TRACTOR -- MODEL NO. 917.255620

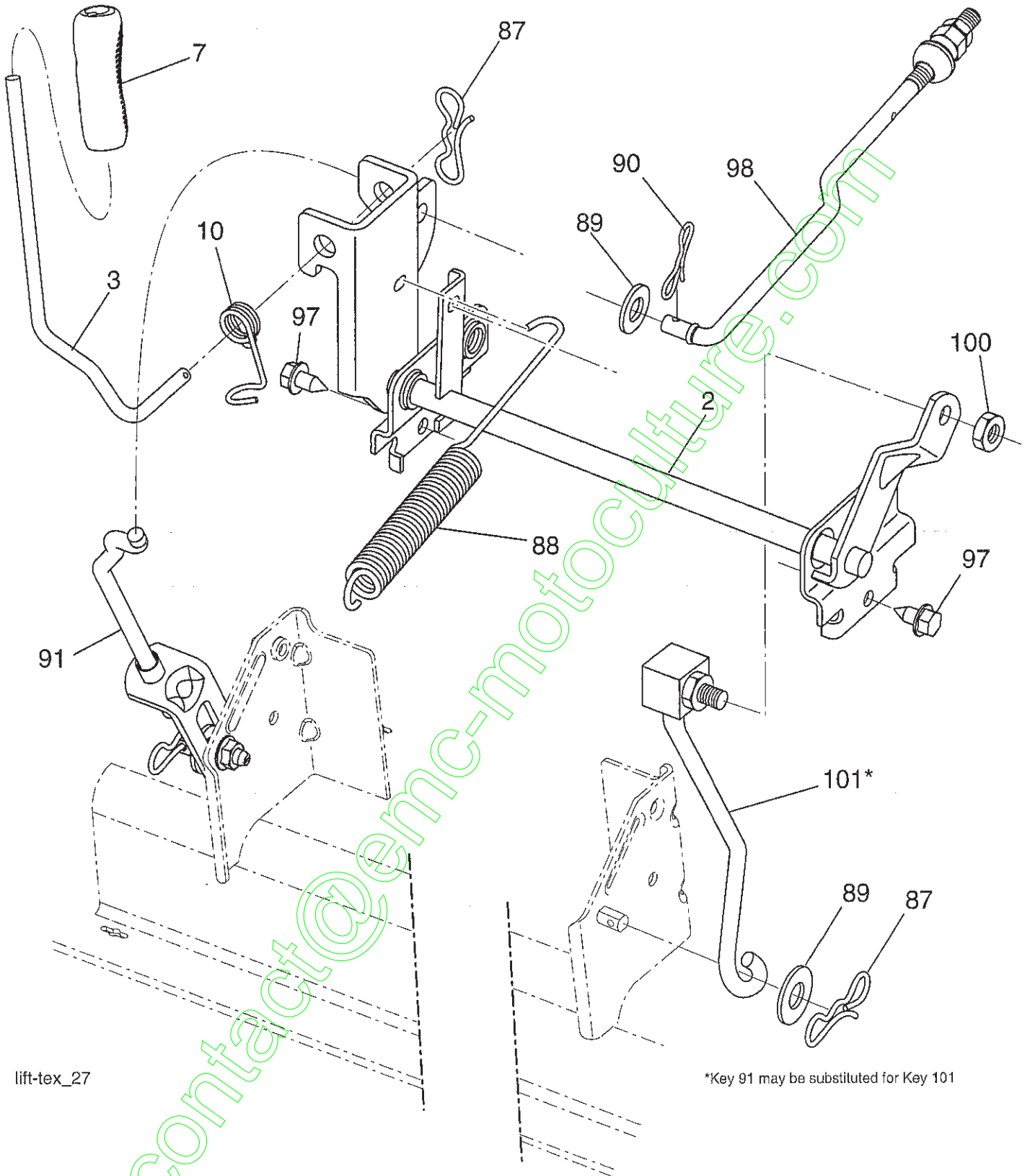
MOWER

KEY NO.	PART NO.	DESCRIPTION	KEY NO.	PART NO.	DESCRIPTION
1	441611X615	Mower Housing	68	405143	V-Belt
2	405507	Cover Mandrel LH	69	72140505	Bolt
3	405506	Cover Mandrel RH	70	199972	Clutch Asm. Manual
6	195186	Arm Suspension	101	405454	Cover Mulch
7	416358	Screw #10 x 0.750 BOS Thread	102	71081010	Screw 10-24 x 5/8
8	193003	Bolt/Washer Asm. 7/16-20 unf	103	10071000	Washer Lock #10
11	403107	Blade	104	19061216	Washer #10
13	192872	Shaft Assembly, Mandrel	105	160793	Latch Asm
14	187281	Housing, Mandrel	106	2029J	Nut
15	110485X	Bearing, Ball, Mandrel	113	17000510	Screw 5/16-18
19	196539	Bolt, Shoulder	116	4898H	Bolt, Shoulder
21	73680500	Nut	117	188606	Wheel, Gauge
23	192557	Bracket, Deflector	119	19121414	Washer 13/32 x 7/8 x 14 Ga.
24	105304X	Cap, Sleeve	122	197258	Keeper Belt Eng. LH
25	197026	Spring, Torsion, Deflector	123	197259	Keeper Belt Eng. RH
26	110452X	Nut, Push	144	199204	Keeper Belt
27	405357	Shield, Deflector	145	193197	Pulley Idler
29	131491	Rod, Hinge	147	401872	Spring Return
30	173984	Screw Thdrol. Rolling Wsh. Hd.	152	435111	Cable Clutch Manual w/Spr.
31	187690	Washer, Spacer	188	195161	Stud Fastener
32	197473	Pulley, Mandrel	189	73900500	Nut Lock Hex Flange
33	400234	Nut, Toplock, Flanged	195	17000612	Screw Hex Wsh. Thdr. 3/8 -16 x 3/4
34	72110612	Bolt Carr. Sh. 3/8-16 x 1-1/2 Gr. 5	197	19131312	Washer 13/32 x 13/16 x 12 Ga.
36	197379	Pulley, Idler, Flat	198	403149	Baffle Center Front
37	19131316	Washer 13/32 x 13/16 x 16 Ga.	199	403150	Baffle Front RH
38	432520	Keeper Belt LH Mandrel	200	413524	Washer 13/32 x 1 x 1/2 x 11 Ga
40	73900600	Nut, Lock Flg. 3/8-16 unc	240	74520636	Bolt Fin. Hex 3/8-16 x 2-1/4 Gr. 5
42	198410	Spring Torsion Brake	241	152927	Screw
43	197256	Spring Torsion Retainer	242	415598	Port Washout
46	137729	Screw	--	192870	Mandrel Assembly (Includes housing, shaft assembly, and bearing only - pulley/nut/washer and blade bolt/washers not included)
47	197250	Bracket Clutch Cable	--	427650	Replacement Mower, Complete
55	197249	Arm, Idler			
56	199092	Spacer, Retainer			
57	17000616	Screw Hex Wsh. Thd. 3/8-16 x 1			
59	141043	Guard, Tuv. Idler (94)			
60	199471	Arm Brake Mower			
63	199477	Arm Brake Mower			
64	405138	Linkage Brake			
67	198398X667	Handle, Clutch Cable			

NOTE: All component dimensions given in U.S. inches
1 inch = 25.4 mm

TRACTOR - - MODEL NO. 917.255620

MOWER LIFT



lift-tex_27

*Key 91 may be substituted for Key 101

TRACTOR - - MODEL NO. 917.255620

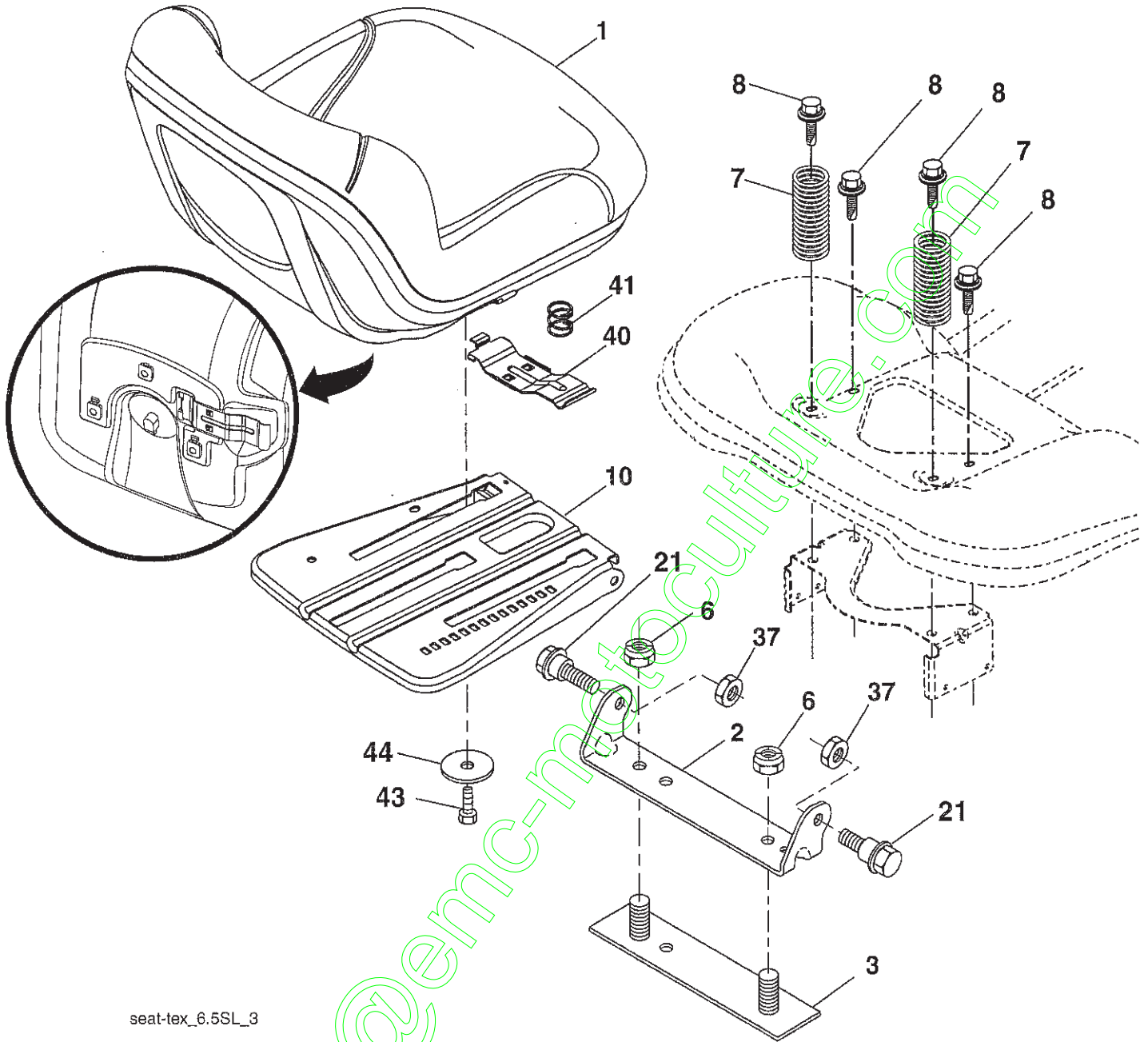
MOWER LIFT

KEY NO.	PART NO.	DESCRIPTION
2	422027	Shaft Asm., Lift
3	195231	Lever Asm., Lift RH
7	196492X428	Grip, Lever
10	196314	Spring Torsion
87	194209	Pin Cotter 7/16 Bow Tie Lock
88	410710	Spring Lift Assist
89	19191912	Washer Clear Zinc
90	194208	Pin Cotter 5/16 Bow Tie Lock
91	195181	Link Lift Susp Mower Rear
97	17000612	Screw 3/8-16 x .75
98	195270	Link Lift Susp Front Mower
100	73930600	Nut Centerlock 3/8-16 unc
101	407003	Link ASm Lift Fxd

NOTE: All component dimensions given in U.S. inches
1 inch = 25.4 mm

TRACTOR - - MODEL NO. 917.255620

SEAT ASSEMBLY



seat-tex_6.5SL_3

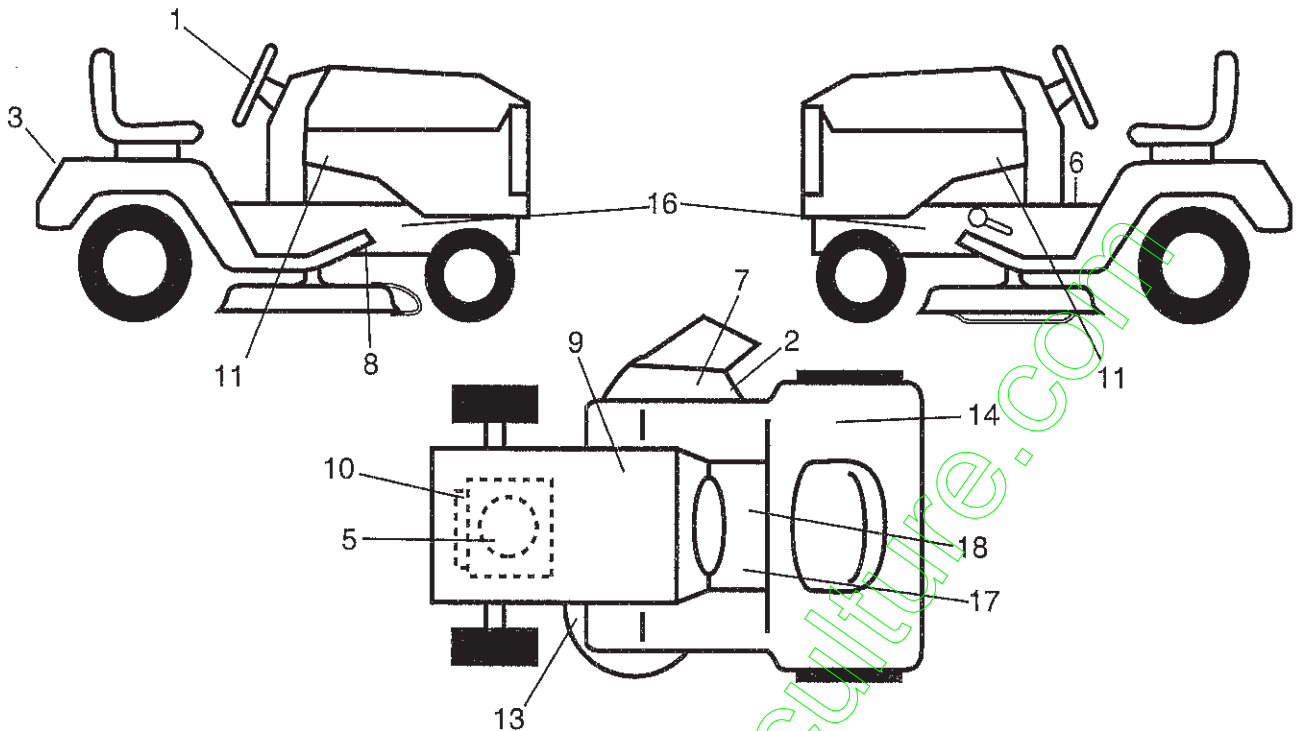
KEY PART NO.	NO.	DESCRIPTION
1	423645	Seat
2	180166	Bracket Pivot Fender
3	140675	Strap, Asm Fender
6	73800500	Nut, Lock 5/16-18 unc PL
7	124181X	Spring, Seat Cprsn
8	171877	Bolt 5/16-18 unc x 3/4 w/Sems
10	196977	Pan, Seat
21	171852	Bolt, Shoulder 5/16-18

KEY PART NO.	NO.	DESCRIPTION
37	73800600	Nut, Lock 5/16-18 unc
40	197661	Handle Slide Seat
41	198200	Spring Latch Seat
43	74760612	Bolt 3/8-16 x 3/4
44	19133812	Washer 13/32 x 2-3/8 x 12 Ga.

NOTE: All component dimensions given in U.S. inches.
1 inch = 25.4 mm

TRACTOR - - MODEL NO. 917.255620

DECALS



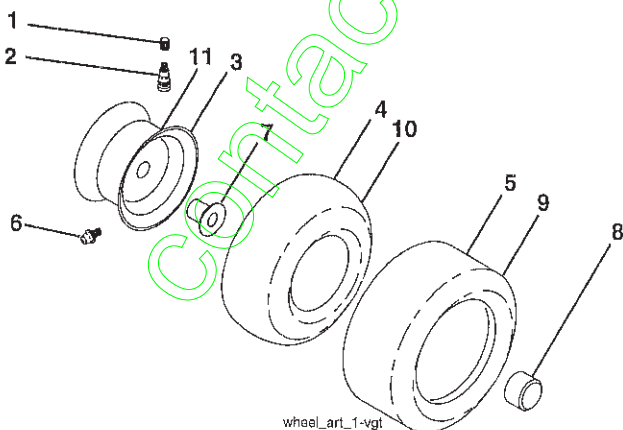
KEY PART NO. NO.

KEY PART NO.	NO.	DESCRIPTION
1	439525	Decal, Steering
2	196357	Decal, Reflector Warning
3	441121	Decal, Fender
5	442546	Decal, Engine HP
6	400389	Decal, Fender Warning
7	182166	Decal, Cut Finger
8	421534	Decal, V-Belt Schematic Drive
9	145005	Decal, Battery Warning
10	196841	Decal, Warning Engine
11	443183	Decal, Hood Side Panel RH/LH
13	160396	Decal, Mower V-Belt SCH.
14	180432	Decal, Fender
16	159736	Decal, Hot Muffler

KEY PART NO. NO.

KEY PART NO.	NO.	DESCRIPTION
17	159737	Decal, Brake/Clutch
18	140837	Decal, Saddle Brake Parking
--	193226X428	Pad, Footrest LH
--	193227X428	Pad, Footrest RH
--	166960	Decal, Bypass
--	162598	Decal, Drawbar Load Limit
--	580340340	Manual, Operator's (Euro)
--	580340650	Manual, Operator's (Scan)
--	580340520	Manual, Operator's (E-Bloc)
--	580340430	Manual, Operator's (Baltic)
--	580340826	Manual, Parts

WHEELS & TIRES



KEY PART NO. NO.

KEY PART NO.	NO.	DESCRIPTION
1	59192	Cap, Valve, Tire
2	65139	Stem, Valve
3	106732X613	Rim Assembly, Front
4	59904	Tube, Front
5	106222X	Tire, Front
6	278H	Fitting, Grease
7	9040H	Bearing, Flange
8	104757X428	Cap, Axle
9	138468	Tire, 18 x 9.5-8 TurfSaver LT
10	7152J	Tube, Rear
11	106108X613	Rim Assembly, Rear
--	144334	Sealant, Tire (10 oz. Tube)

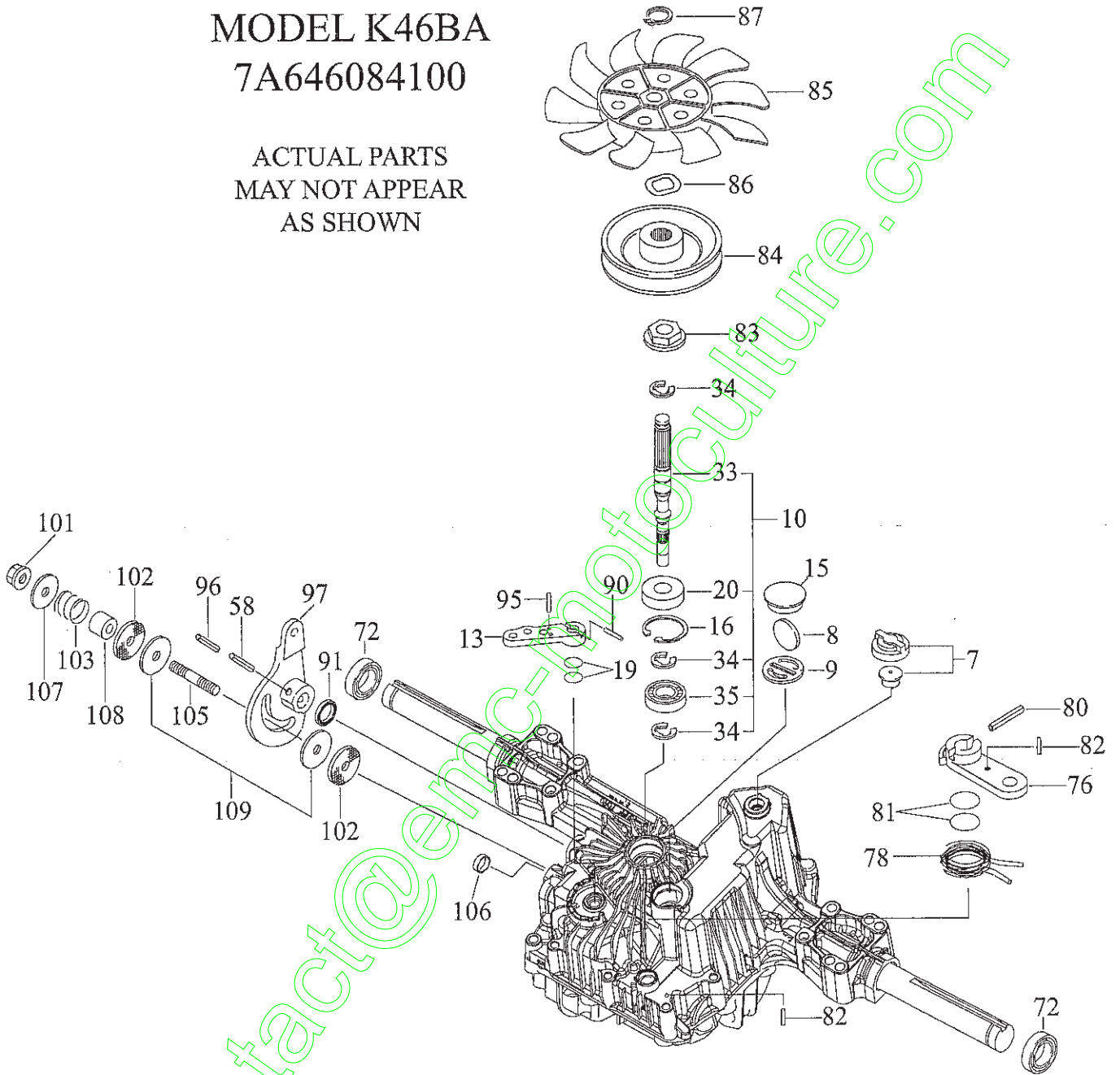
NOTE: All component dimensions given in U.S. inches
1 inch = 25.4 mm

TRACTOR - - MODEL NUMBER 917.255620

TUFF TORQ TRANSAXLE - MODEL NUMBER K46BA

MODEL K46BA
7A646084100

ACTUAL PARTS
MAY NOT APPEAR
AS SHOWN



TRACTOR - - MODEL NUMBER 917.255620

TUFF TORQ TRANSAXLE - MODEL NUMBER K46BA

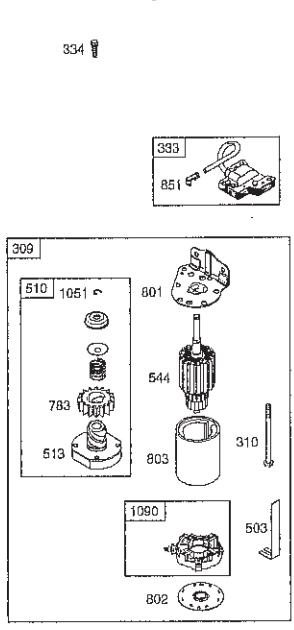
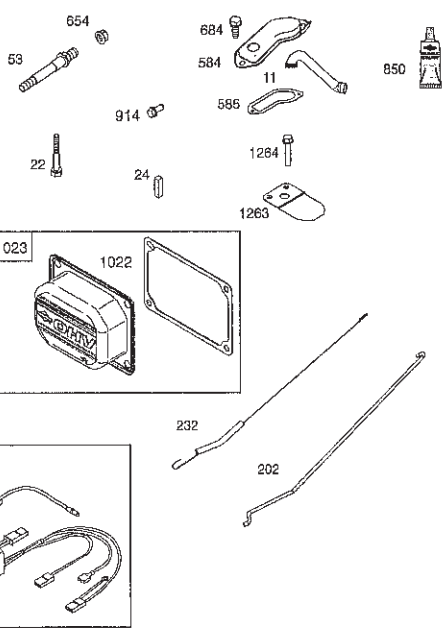
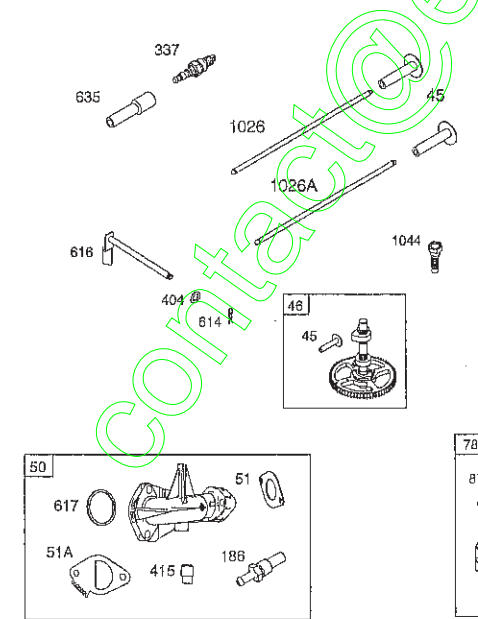
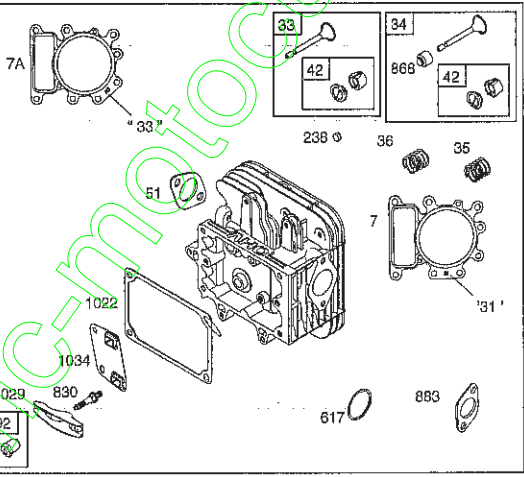
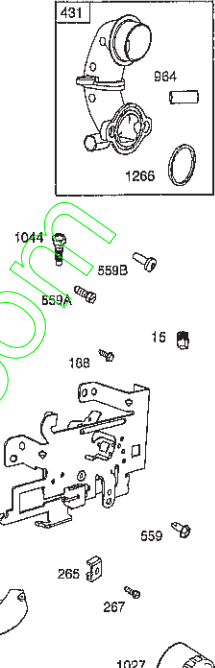
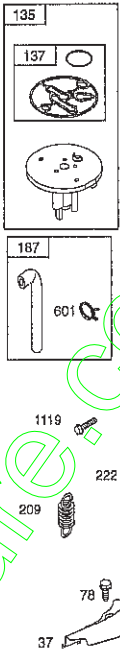
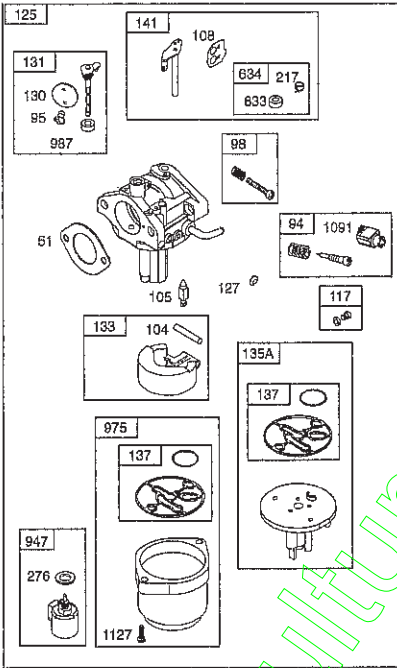
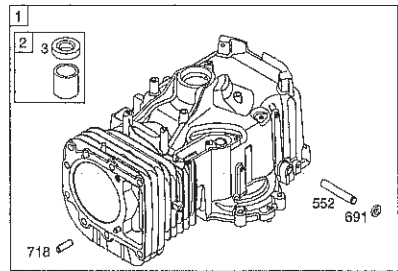
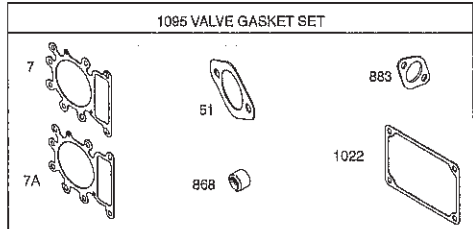
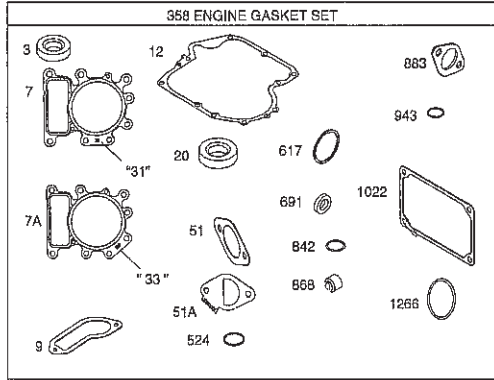
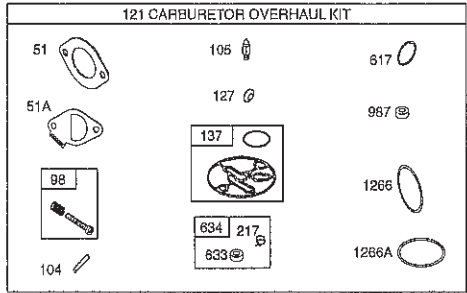
KEY NO.	PART NO.	DESCRIPTION
7	414395	VENT VALVE 15
8	414396	MAGNET
9	414397	MAGNET HOLDER
10	415923	PUMP SHAFT/BEARING KIT
13	414398	BYPASS LEVER
15	414399	SEALING CAP 30
16	414400	SNAP RING C 35
19	414401	O-RING 1A P10A
20	414402	SEAL TC 153507
33	414403	PUMP SHAFT (STANDARD
34	414404	E-RING 15
35	414405	BEARING 6202C3
58	414406	ROLL PIN 6 * 40
72	414407	SEAL 19 * 32 * 8
76	414408	BRAKE LEVER
78	414409	BRAKE RETURN SPRING
80	414410	SPRING PIN 5 * 32
81	414411	O-RING 1A P12
82	414412	SPRING PIN 4 * 16
83	414413	SPINE COLLAR
84	414414	PULLEY L
85	414415	FAN, BLACK
86	414416	WAVE WASHER
87	414417	SNAP RING
90	414418	SPRING PIN 3.0A * 20
91	414419	OIL SEAL 16 * 22 * 03
95	415850	SPRING PIN 3.0A * 16
96	414420	ROLL PIN 3.5 * 40
97	414421	CONTROL LEVER
101	414216	LOCK NUT 10
102	414423	WASHER 10 * 40 * 4
103	414424	SPRING
105	414425	STUD 10 * 60
106	414426	SEALING CAP 18
107	414427	WASHER 10 * 36 * 2.8
108	414428	COLLAR 10 * 20 * 17
109	414429	FRICITION PLATE KIT

NOTE: All component dimensions given in U.S. inches
1 inch = 25.4 mm

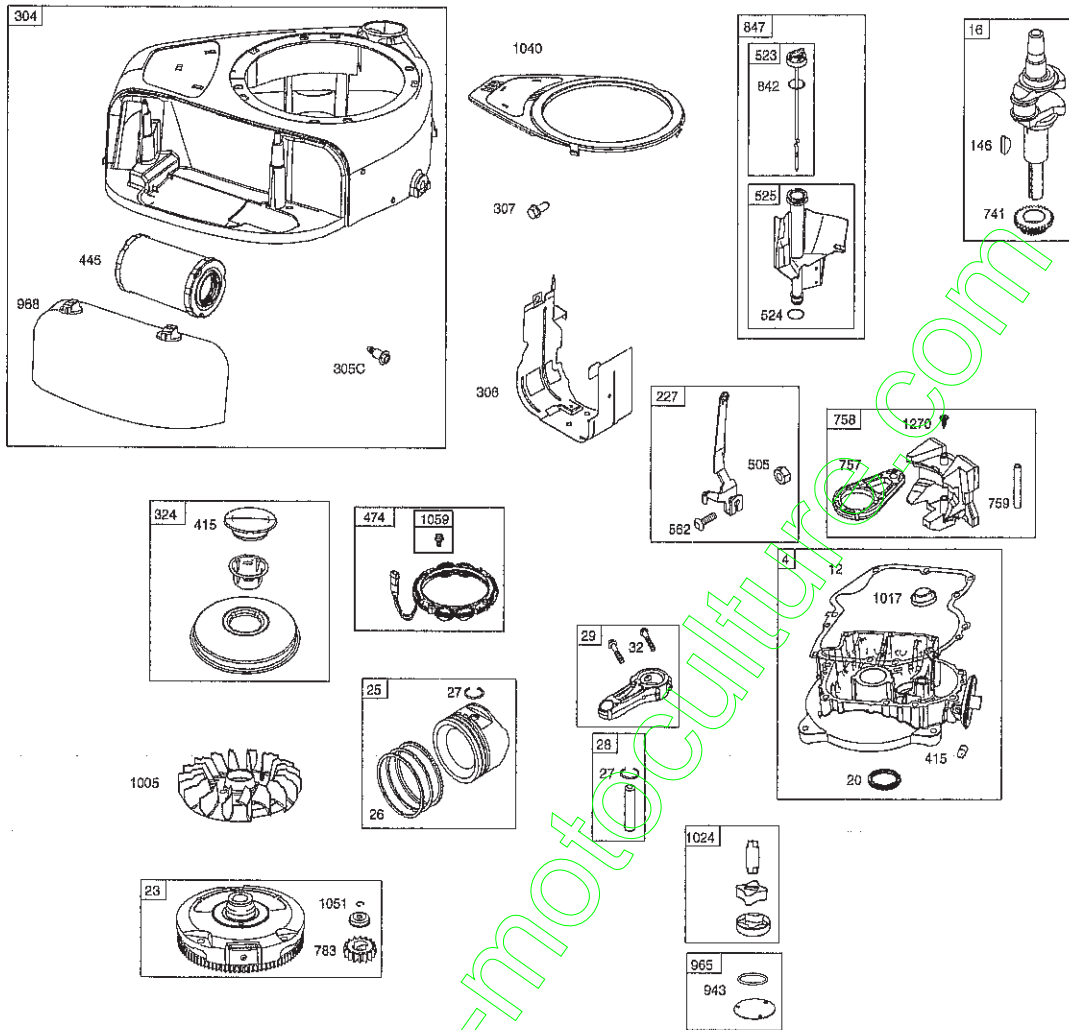
TRACTOR - - MODEL NO. 917.255620

BRIGGS & STRATTON ENGINE - - MODEL NUMBER 31P677, TYPE NUMBER 2430-B1

48 SHORT BLOCK
1036 EMISSIONS LABEL
1058 OPERATOR'S MANUAL
1329 REPLACEMENT ENGINE
1036 EMISSIONS LABEL



TRACTOR - - MODEL NO. 917.255620
BRIGGS & STRATTON ENGINE - - MODEL NUMBER 31P677, TYPE NUMBER 2430-B1



TRACTOR - - MODEL NO. 917.255620
BRIGGS & STRATTON ENGINE - - MODEL NUMBER 31P677, TYPE NUMBER 2430-B1

KEY PART NO.	NO.	DESCRIPTION	KEY PART NO.	NO.	DESCRIPTION
1	796010	Cylinder Assembly	135A	792022	Tube-Fuel Transfer (Service Carburetor)
2	399265	Kit-Bushing/Seal (Magneto Side)	137	698781	Gasket-Float Bowl
3	391086s	Seal-Oil (Magneto Side)	141	792777	Kit-Choke Shaft
4	697188	Sump-Engine	146	691639	Key-Timing
5	796026	Head-Cylinder	186	794873	Connector-Hose (Intake Manifold)
7	796584	Gasket-Cylinder Head	187	791805	Line-Fuel (Formed) (Cut to Required Length)
7A	794114	Gasket-Cylinder Head	188	691693	Screw (Control Bracket)
11	794683	Tube-Breather	192	691986	Adjuster-Rocker Arm
12	697110	Gasket-Crankcase	202	691841	Link-Mechanical Governor
13	793988	Screw (Cylinder Head)	209	692208	Spring-Governor (Green)
15	690946	Plug-Oil Drain	217	695409	Spring-Choke Return
16	796944	Crankshaft	222	694042	Bracket-Control
20	795387	Seal-Oil (PTO Side)	227	691374	Lever-Governor Control
22	692125	Screw (Crankcase Cover/Sump)	232	691842	Spring-Governor Link
23	698281	Flywheel	238	691843	Cap-Valve
24	796335	Key-Flywheel (Steel)	240	394358s	Filter-Fuel
25	796172	Piston Assembly (Standard)	265	691024	Clamp-Casing
	796173	Piston Assembly (.020" Oversize)	267	794904	Screw (Casing Clamp)
26	791936	Ring Set (Standard)	276	695410	Washer-Sealing
	792649	Ring Set (.020" Oversize)	304	797900	Housing-Blower
27	698469	Lock-Piston Pin	305	697102	Screw (Blower Housing) (1/4-20x1.21)
28	796007	Pin-Piston	305A	793376	Screw (Blower Housing) (1/4-20x.82)
29	794571	Rod-Connecting (Standard)	305B	795891	Screw (Blower Housing to Intake Elbow)
32	791118	Screw (Connecting Rod)	305C	799370	Screw (Blower Housing) (1/4-20x.90)
33	792868	Valve-Exhaust	306	796006	Shield-Cylinder
34	791935	Valve-Intake	307	691693	Screw (Cylinder Shield)
35	691279	Spring-Valve (Intake)	309	693551	Motor-Starter
36	691279	Spring-Valve (Exhaust)	310	690323	Bolt (Starter Motor)
37	697352	Guard-Flywheel	324	796308	Screen/Cup Assembly
42	499586	Retainer-Valve	333	795315	Armature-Magneto
43	691968	Slinger-Governor/Oil	334	691061	Screw (Magneto Armature)
45	690564	Tappet-Valve	337	691043	Plug-Spark
46	793880	Camshaft	358	796187	Gasket Set-Engine
48	697762	Short Block	404	691691	Washer (Governor Crank)
50	796180	Manifold-Intake	415	794129	Plug (Cover/Retainer)
51	692137	Gasket-Intake	415A	794903	Plug (Intake Manifold)
51A	796081	Gasket-Intake	431	797901	Elbow-Intake
53	690227	Stud (Carburetor)	445	796031	Filter-Air Cleaner Cartridge
54	691148	Screw (Intake Manifold)	474	696459	Alternator
78	691693	Screw (Flywheel Guard)	503	691532	Strap-Starter
94	793610	Kit-Idle Mixture	505	691251	Nut (Governor Control Lever)
95	690718	Screw (Throttle Valve)	510	693699	Drive-Starter
98	695408	Kit-Idle Speed	513	692024	Clutch-Drive
104	694918	Pin-Float Hinge	523	699908	Dipstick
105	696136	Valve-Float Needle	524	691032	Seal-Dipstick Tube
108	695419	Valve-Choke	525	697184	Tube-Dipstick
117	699773	Jet-Main (Standard)	552	697144	Bushing-Governor Crank
118	843099	Jet-Main (High Altitude)	559	697561	Screw (Remote Choke) (Control Bracket)
121	796184	Kit-Carburetor Overhaul	559A	693675	Screw (Remote Choke) (Control Bracket)
125	796110	Carburetor			
127	690727	Plug-Welch			
130	792747	Valve-Throttle			
131	792765	Kit-Throttle Shaft			
133	694914	Float-Carburetor			
135	698780	Tube-Fuel Transfer (O.E.M. Carburetor)			

TRACTOR - - MODEL NO. 917.255620
BRIGGS & STRATTON ENGINE - - MODEL NUMBER 31P677, TYPE NUMBER 2430-B1

KEY PART NO. NO.	DESCRIPTION	KEY PART NO. NO.	DESCRIPTION
559B 699891	Screw (Speed Limiter) (Control Bracket)	1005 796083	Fan-Flywheel
562 691119	Bolt (Governor Control Lever)	1017 796981	Screen-Oil Pump
584 794682	Cover-Breather Passage	1022 272475s	Gasket-Rocker Cover
585 697109	Gasket-Breather Passage	1023 797421	Cover-Rocker Arm
601 791850	Clamp-Hose (Green)	1024 794644	Pump-Oil
614 691620	Pin-Cotter (Governor Crank)	1026 692003	Rod-Push (Intake)
616 692012	Crank-Governor	1026A692011	Rod-Push (Exhaust)
617 692138	Seal-O Ring (Intake Manifold) (Red)	1027 795890	Filter-Oil
633 699813	Seal-Choke/Throttle (Choke Shaft)	1029 691751	Arm-Rocker
634 698779	Spring/Seal Assembly (Choke Shaft)	1034 690822	Guide-Push Rod
635 691909	Boot-Spark Plug	1036	Label-Emissions (Available from a Briggs & Stratton Authorized Dealer)
654 690958	Nut (Carburetor)	1040 699852	Plate-Trim
684 697157	Screw (Breather Passage Cover)	1044 698139	Screw (Flywheel)
691 692407	Seal-Governor Shaft	1051 691265	Ring-Retaining
697 791680	Screw (Drive Cap)	1054 280275	Tie-Cable
718 690959	Pin-Locating	1058 276344TRI	Owner's Manual
729 691224	Clip-Wire	1059 698516	Kit-Screw/Washer
741 697128	Gear-Timing	1090 691293	Retainer-Brush
750 790832	Screw (Oil Pump Cover)	1091 691333	Cap-Limiter
757 793242	Link-Counterweight	1095 794152	Gasket Set-Valve
758 793763	Counterweight	1119 691183	Screw (Alternator)
759 697392	Pin-Counterweight	1127 695407	Screw (Float Bowl)
783 693713	Gear-Pinion	1263 697124	Reed-Breather
789 698329	Harness-Wiring	1264 697104	Screw (Breather Reed)
801 691283	Cap-Drive	1266 691917	Seal-O Ring (Intake Elbow) (Red)
802 691286	Cap-End	1270 793243	Plug-AVS Counterweight
830 691095	Stud (Rocker Arm)	1329 331877	Replacement Engine
842 691031	Seal-O Ring (Dipstick Tube)	-3036-G5	
847 790442	Dipstick/Tube Assembly	1330 N/A	Repair Manual (Not Available At This Printing)
850 100106	Sealant-Liquid		
851 692424	Terminal-Spark Plug	Engine Gasket Set	Key No. 358
868 690968	Seal-Valve	Carburetor Overhaul Kit	Key No. 121
877 790544	Wire/Connector-Alternator	Valve Gasket Set	Key No. 1095
883 692236	Gasket-Exhaust		
914 697551	Screw (Rocker Cover)		
943 690589	Seal-O Ring (Oil Pump Cover)		
947 699915	Solenoid-Fuel		
964 799159	Cap-Connector (EVAP System)		
965 499613	Cover-Oil Pump		
968 797902	Cover-Air Cleaner		
975 699502	Bowl-Float		
987 698777	Seal-Throttle Shaft		

NOTE: All component dimensions given in U.S. inches.
1 inch = 25.4 mm

contact@mc-motor.com

LIMITED WARRANTY ON CRAFTSMAN RIDING EQUIPMENT

For two (2) years from the date of purchase, if this Craftsman Riding Equipment is maintained, lubricated and tuned up according to the instructions in the owner's manual, Sears will repair or replace free of charge any parts that are found to be defective in material or workmanship according to the guidelines of coverage listed below. Sears will also provide free labor for these applicable warranted parts for the two full years. During the first 30 days of purchase, there will be no charges to service the product at your home for issues covered by this warranty. (See exclusions below). For your convenience, IN HOME warranty service will still be available after the first 30 days of purchase, but a trip charge will apply. This charge will be waived if the Craftsman product is dropped off at an authorized Sears location. For the nearest authorized Sears location, please call 1-800-4-MY-HOME®. This warranty applies only while this product is within the United States.

This Warranty does not cover:

- Expendable items which become worn during normal use, including but not limited to blades, spark plugs, air cleaners, belts, and oil filters.
- Standard Maintenance Servicing, oil changes, or tune-ups
- Tire replacement or repair caused by punctures from outside objects, such as nails, thorns, stumps, or glass.
- Repairs necessary because of operator abuse, including but not limited to, damage caused by towing objects beyond the capability of the riding equipment, impacting objects that bend the frame or crankshaft, or over-speeding the engine.
- Repairs necessary because of operator negligence, including but not limited to, electrical and mechanical damage caused by improper storage, failure to use the proper grade and amount of engine oil, failure to keep the deck clear of flammable debris, or failure to maintain the equipment according to the instructions contained in the owner's manual.
- Engine (fuel system) cleaning or repairs caused by fuel determined to be contaminated or oxidized (stale). In general, fuel should be used within 30 days of its purchase date.
- Normal deterioration and wear of the exterior finishes, or product label replacement.
- Riding equipment used for commercial or rental purposes.

LIMITED WARRANTY ON BATTERY

For ninety (90) days from date of purchase, if any battery included with this riding equipment proves defective in material or workmanship and our testing determines the battery will not hold a charge, Sears will replace the battery at no charge. During the first 30 days of purchase, there will be no charges to replace the battery at your HOME. After the first 30 days, for your convenience, IN-HOME warranty service will still be available but a trip charge will apply. This charge will be waived if the Craftsman product is dropped off at an authorized Sears location. For the nearest authorized Sears location, please call 1-800-4-MY-HOME®.

This battery warranty applies only while this product is within the United States.

This warranty gives you specific legal rights, and you may also have other rights, which vary, from state to state.

Sears, Roebuck and Co., Dept. 817WA, Hoffman Estates, IL 60179

CRAFTSMAN®

Tillykke med Deres nye produkt fra Craftsman Import

Craftsman Import
Sigma 2, Søften
8382 Hinnerup
Tlf. 70 23 24 00

Reklamationsbetingelser

2 års reklamationsret regnet fra leveringsdagen til slutbrugeren.

I reklamationsperioden vil alle dele som har materiale- og/eller fabriktionsfejl blive udbedret. Udbedringen vil bestå i afhjælpning, og udbedringen foretages gratis på nærmeste autoriserede værksted. Maskinen skal indleveres til værkstedet straks fejlen er opdaget, og i rengjort stand. Reklamationsbetingelserne og kvittering med købs og leveringsdatoen skal medbringes. Transportudgifterne til og fra det autoriserede Værksted bæres af slutbrugeren.

Reklamationsbetingelserne dækker ikke følgende - der ikke anses som materiale- og fabriktionsfejl:

1. Slitage.
2. Ukyndig behandling eller påkørsel eller lignende.
3. Brug af forkert smøreolie eller mangelfuld smøring.
4. Brug af snavset eller forkert brændstof.
5. Skade på personer eller gods forvoldt under brug af maskinen.
6. Justering af karburator og fjernkontrol.
7. Maskiner som har været repareret på et ikke autoriseret værksted.
8. Benyttelse af uoriginale reservedele.
9. Hvis motorens hastighedsregulator sættes ud af funktion.
10. Beskadigede knive og knivholdere samt remme.
11. Overbelastning af klipper- eller trækremme.