

REPAIR PARTS MANUAL
MODEL NO. 256940
Lawn Tractor



HOW TO USE THIS MANUAL

This manual is designed to provide the customer with a means to identify the parts on his/her tractor when ordering repair parts. The illustrations may or may not represent the actual assemblies; therefore, it is not recommended to use this manual as a guide to assemble or disassemble the tractor. Some hardware and parts are drawn larger in order to more readily identify them.

Each tractor has its own model number.

The model number for your tractor can be found on the fender under the seat.

When ordering parts, always give the following information:

- Product - "Tractor"
- Model Number - 256940
- Part Number
- Part Description

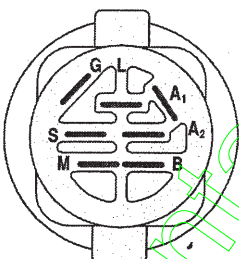
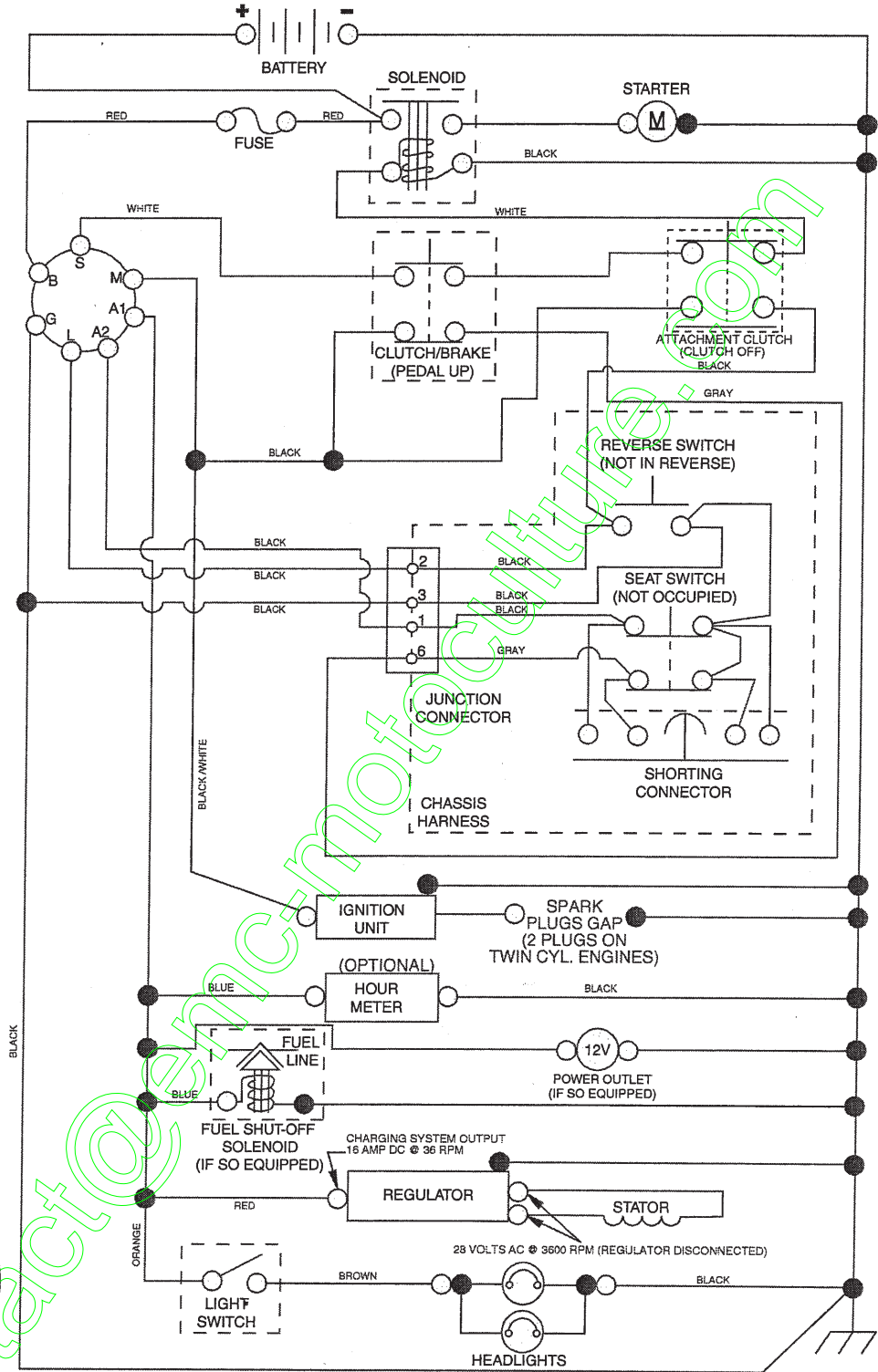
TABLE OF CONTENTS

SCHEMATIC	3
ELECTRICAL	4-5
CHASSIS	6-7
DRIVE	8-9
ENGINE	10-11
STEERING	12
SEAT	13
MOWER DECK	14-15
DECALS	16
MOWER LIFT	17
TRANSAXLE BREAKDOWN	18-19
ENGINE BREAKDOWN	20-24
WARRANTY	BACK COVER

TRACTOR -- MODEL NUMBER 256940

SCHEMATIC

03107-194276-400449_Manual-Text

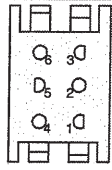


IGNITION SWITCH

POSITION	CIRCUIT	"MAKE"
OFF	M+G+A1	
RUN/OVERRIDE	B+A1	
RUN	B+A1	L+A2
START	B + S + A1	



03107 CHASSIS HARNESS CONNECTOR (MATING SIDE)



DASH HARNESS CONNECTOR (MATING SIDE)

WIRING INSULATED CLIPS
NOTE: IF WIRING INSULATED CLIPS WERE REMOVED FOR SERVICING OF UNIT, THEY SHOULD BE REPLACED TO PROPERLY SECURE YOUR WIRING.



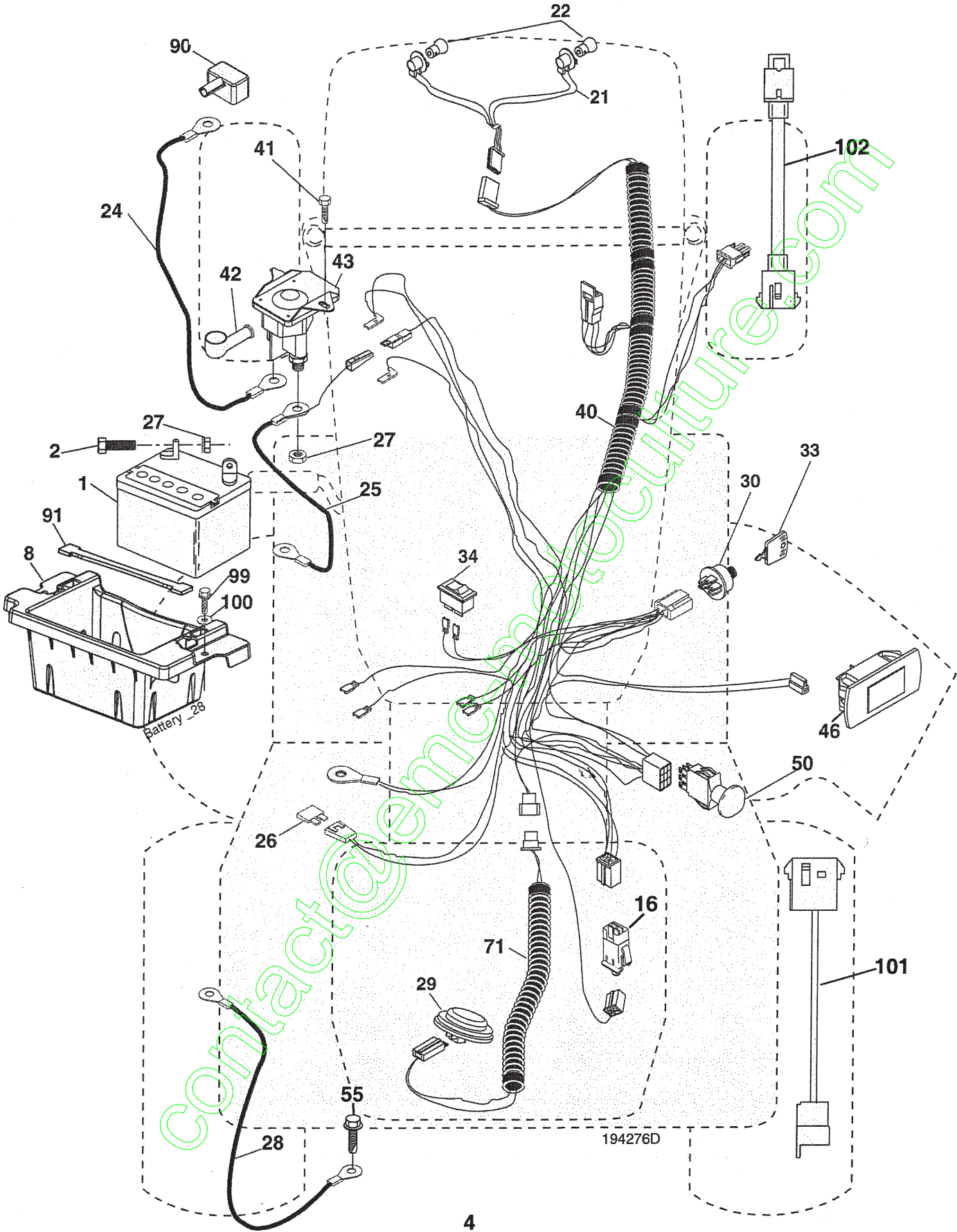
NON-REMOVABLE CONNECTIONS



REMOVABLE CONNECTIONS

TRACTOR -- MODEL NUMBER 256940

ELECTRICAL



TRACTOR - - MODEL NUMBER 256940

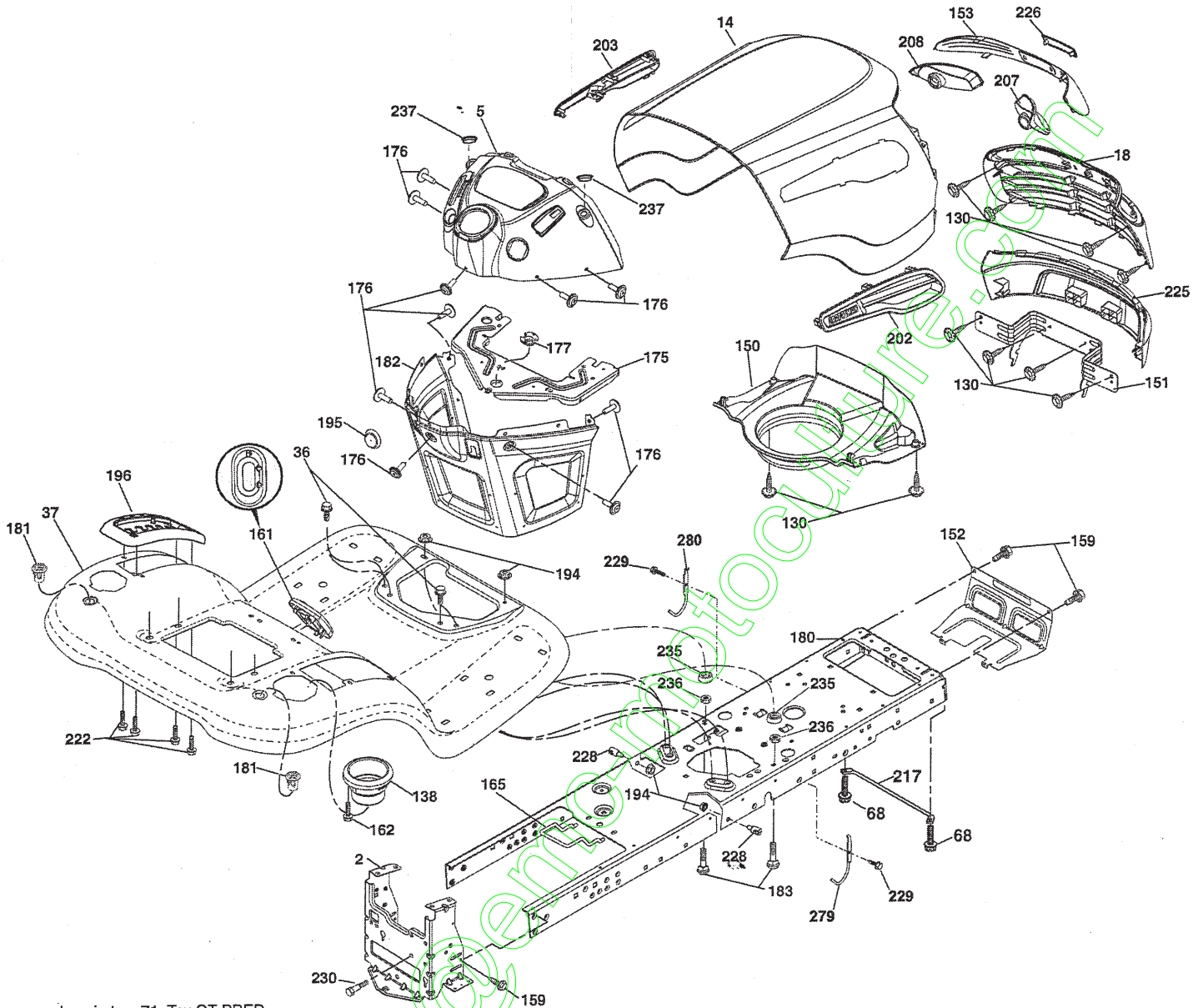
ELECTRICAL

KEY NO.	PART NO.	DESCRIPTION
1	144927	Battery
2	74760412	Bolt Hex Head 1/4-20 x 3/4
8	186491	Box Battery
16	176138	Switch Interlock Push-In
21	400252	Harness Socket Light W/4152J
22	4152J	Bulb
24	400253	Cable Btry
25	198893	Cable Battery
26	175158	Fuse
27	STD541425	Nut Keps Hex 1/4-20 unc
28	145491	Cable, Ground
29	401545	Switch, Seat
30	193350	Switch, Ignition
33	140403	Key, Ignition
34	110712X	Switch Light / Reset
40	401104	Harness Ignition Dash
41	17720408	Screw Thd Cut 1/4-20 x 1/2
42	131563	Cover, Terminal
43	192507	Solenoid
46	401763	Gauge SRVCMNDR
50	174652	Switch PTO
55	17060512	Screw 5/16-18 x 3/4
71	194276	Harness Chassis
90	400724	Cover Terminal Battery
91	190270	Strap Battery Mount Front
99	17670412	Screw 1/4-20 x 3/4
100	19091416	Washer 9/32 x 7/8 x 16 GA
101	198317	Pigtail MATNLK
102	404454	Harness Pigtail

NOTE: All component dimensions give in U.S. inches
1 inch = 25.4 mm

TRACTOR -- MODEL NUMBER 256940

CHASSIS AND ENCLOSURES



chassis-tex_71_Tex GT PRED

TRACTOR - - MODEL NUMBER 256940

CHASSIS AND ENCLOSURES

KEY NO.	PART NO.	DESCRIPTION
2	194263	Drawbar
5	407236X428	Dash
14	404654X428	Hood
18	404625	Grille Asm (Includes Key Nos. 153, 207, 208 and 226)
36	17060512	Screw 5/16-18 x 3/4
37	401120X428	Fender
68	17490508	Screw Thdrol 5/16-18 x 1/2
130	191611	Screw 10 x 3/4 Single Lead-Hex
138	193224X428	Cupholder
150	199411	Duct Heat Hood
151	196332	Bracket Pivot
152	194329	Shield Browning/Debris
153	198965	Lens
159	17000612	Screw Hexwsh Thdrol 3/8-16 x 3/4
161	193229X428	Window Fuel
162	142432	Screw Hex Wsh Hi-Lo 1/4 x 1/2 unc
165	194330	Support Tank Rear
175	196304	Crossmember
176	400776	Screw 10-24 x 5/8 Wshd Qdix
177	195227	Bushing Steering
180	194260	Chassis
181	193102X428	Bushing Mtg. Fender Crgo.
182	194787	Dash Lower

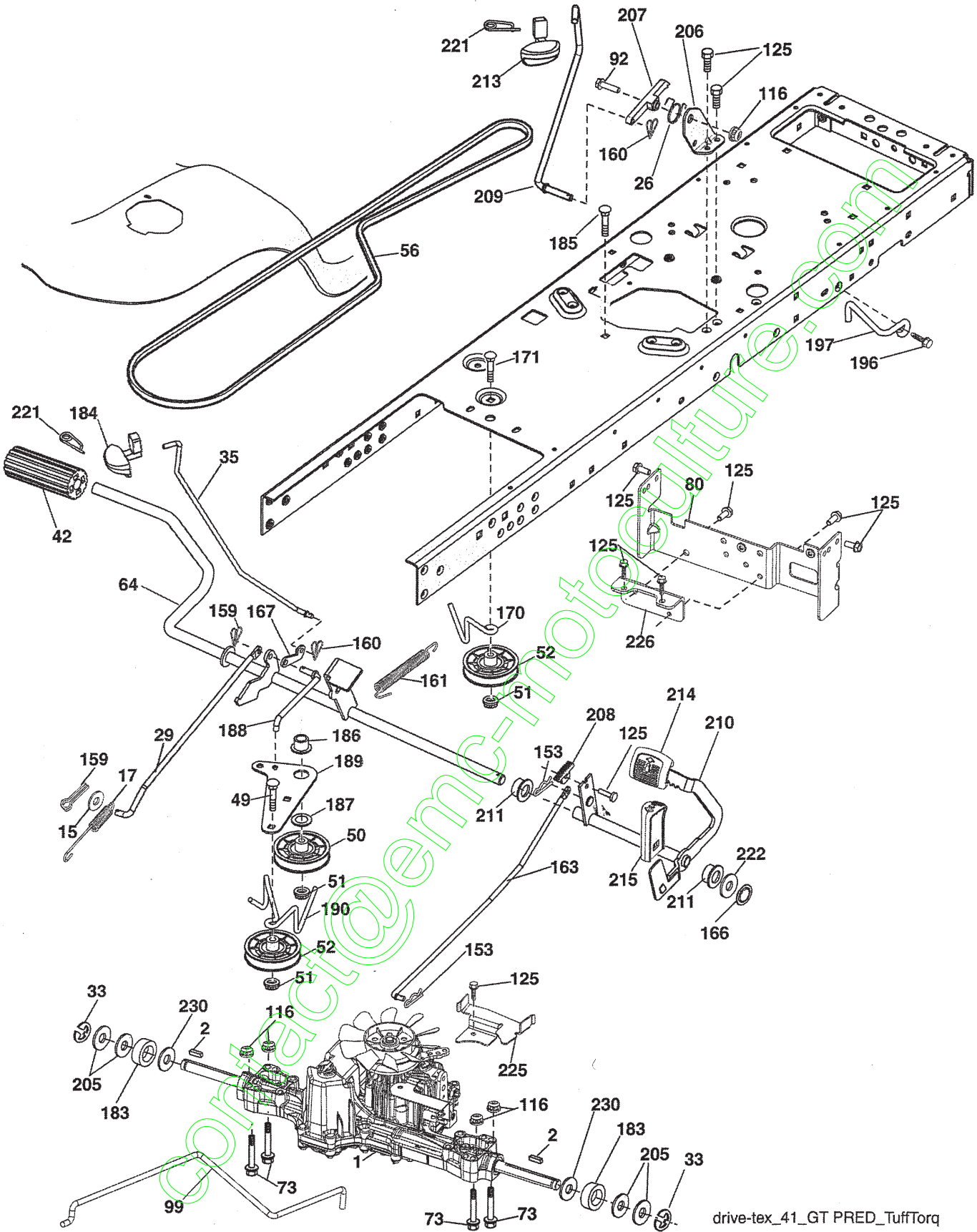
KEY NO.	PART NO.	DESCRIPTION
183	STD523112	Bolt Fin Hex 5/16-18 x 1-1/4
194	73900500	Nut Lock Hex Flange 5/16-18
195	401556X428	Plug Dash
196	196378X428	Console Asm. Deck Lift
202	198968X428	Vent Side Hood RH
203	198969X428	Vent Side Hood LH
207	198963	Bezel RH
208	198964	Bezel LH
217	409167	Rod Pivot Chassis
222	137729	Screw thd Roll 1/4-20 x 5/8
225	198962X615	Bumper
226	198967X428	Logo
228	195161	Stud Fastener
229	17000616	Screw 3/8-16 x 1
230	196539	Bolt Shoulder
235	406129	Spacer Fender
236	73930500	Nut Lock 5/16-18 unc
237	403704	Plug Mount Cargo
279	402682	Rod Upstop 48" LT RH
280	402683	Rod Upstop 48" LT LH

NOTE: All component dimensions given in U.S. inches.
1 inch = 25.4 mm

contact@emc-motors.com

TRACTOR -- MODEL NUMBER 256940

DRIVE



drive-tex_41_GT PRED_TuffTorq

TRACTOR - - MODEL NUMBER 256940

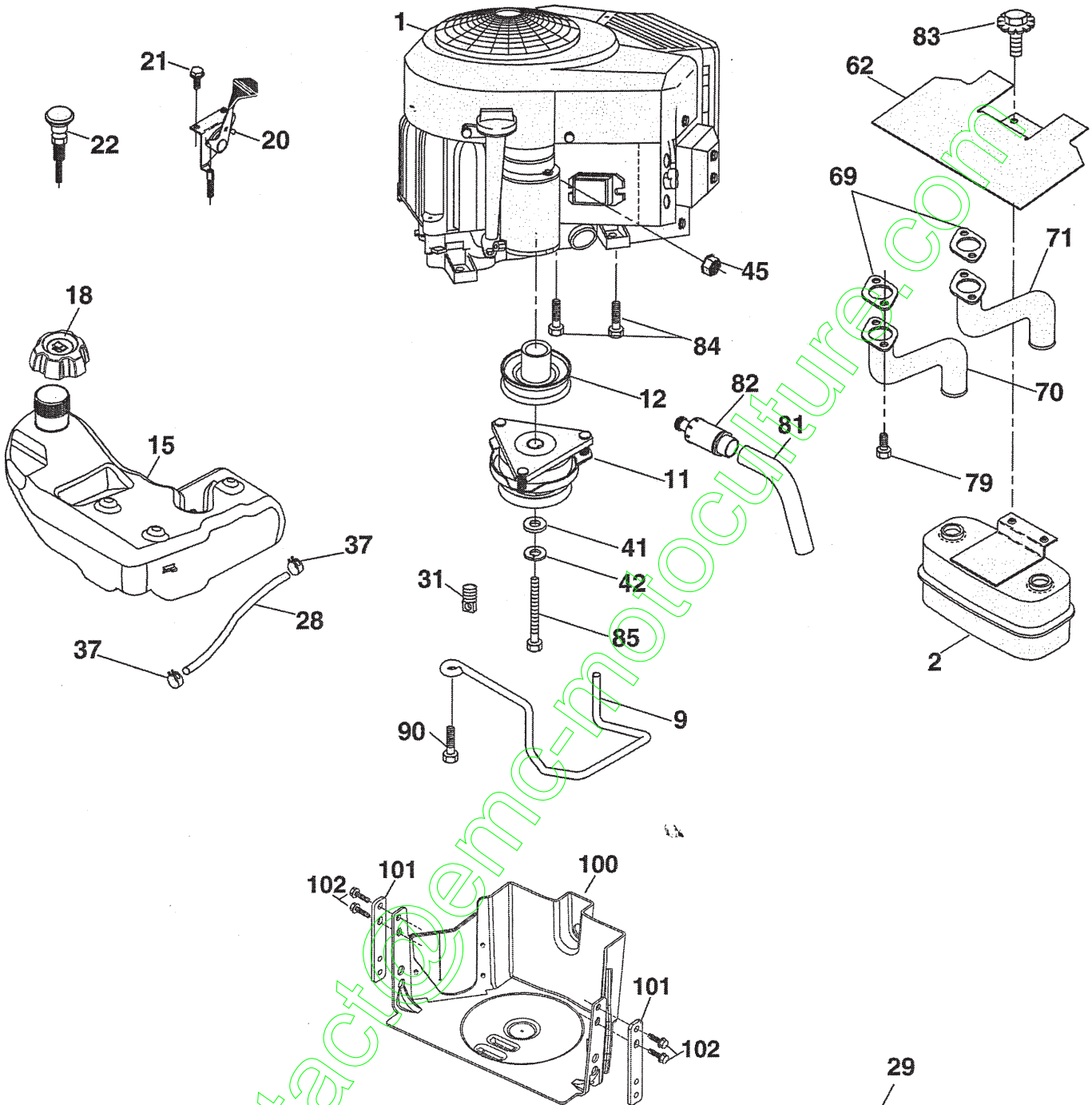
DRIVE

KEY NO.	PART NO.	DESCRIPTION	KEY NO.	PART NO.	DESCRIPTION
1	405384	Transaxle, TUFF TORQ K46BT	183	137057	Spacer Split
2	123583X	Key	184	196439X505	Handle Parking Brake
15	19131316	Washer 13/32 x 13/16 x 16 Ga.	185	72110620	Bolt
17	401072	Spring, Brake	186	194321	Spacer Retainer
26	199679	Spring Return Cruise	187	19133210	Washer
29	403806	Rod, Brake	188	194323	Link Clutch Ground Drive
33	12000001	Ring E	189	194317	Bellcrank Ground Drive
35	199591	Rod, Brake, Park	190	194318	Keeper Bellcrank Ground Drive
42	8883R	Cover, Foot Pedal	196	17000616	Screw 3/8-16 x 1
49	72110614	Bolt	197	195804	Link Clutch Anti-Rotation
50	194327	Pulley Idler Flat	205	121748X	Washer
51	73900600	Lock Nut 3/8-16	206	197867	Bracket Mount Latch Cruise
52	194326	Idler V-Groove 910" Offset	207	197868	Latch Control Cruise
56	130969	V-Belt, Drive	208	197869	Bolt Sector Control Cruise
64	197865	Shaft Asm. Pedal Brake Control	209	199592	Rod Control Cruise
73	74490544	Bolt Hex Flghd 5/16-18 Gr. 5	210	400980	Rocker Asm. Pedal Control
80	410024	Strap Torque	211	120183X	Bearing, Nylon
92	74760520	Bolt Fin Hex 5/16-18 unc x 1.25	213	196441X428	Knob Control Cruise
99	405903	Rod Bypass	214	197302X428	Pad Pedal Forward
116	73900500	Nut Lock Hex Flange 5/16-18	215	197301X428	Pad Pedal Reverse
125	17000512	Screw 5/16-18 x 3/4	221	403187	Retainer Spring Clip Handle
153	4497H	Retainer Spring	222	79212010	Washer
159	76020412	Pin Cotter 1/8 x 3/4	225	403319	Keeper Belt Trans.
160	169484	Retainer Clip	226	401564	Bracket Mount Torque
161	195403	Spring, Return, Clutch	230	188967	Washer Hardened
163	401034	Rod Pedal Control			
166	197290	Nut, Push			
167	405257	Latch Brake Parking			
170	194322	Keeper Belt Centerspan			
171	72110616	Bolt			

NOTE: All component dimensions given in U.S. inches.
1 inch = 25.4 mm

TRACTOR -- MODEL NUMBER 256940

ENGINE



engine-tex_29

SPARK ARRESTER KIT

TRACTOR - - MODEL NUMBER 256940

ENGINE

KEY NO.	PART NO.	DESCRIPTION
1	-----	Engine Briggs Model No. 445677-0758-E1
2	149723	Muffler
9	194320	Keeper Belt Engine
11	400008	Clutch Electric
12	405097	Pulley Engine
15	400021	Tank Fuel
18	195951	Cap Asm
20	175437X428	Control Throttle
21	191611	Screw 10 x 3/4 Single Lead-Hex
25	187767X428	Control Choke
28	8543R	Fuel Line
29	137180	Spark Arrester Kit
31	145006	Clip Push-in Hinged
37	123487X	Clamp Hose
41	126197X	Washer 1-1/2 OD x 15/32 ID x .250
42	STD551143	Washer Lock 7/16
45	STD541425	Nut Keps Hex 1/4-20 unc
62	146629	Shield Heat
69	165391	Gasket
70	159955	Exhaust Tube LH
71	160589	Exhaust Tube RH
79	183906	Screw Socket Head 5/16-18 x 1
81	148456	Tube Drain Oil Easy
82	181654	Plug Drain Oil
83	171877	Bolt 5/16-18 unc x 3/4 w/Sems
84	17060620	Screw 3/8-16 x 1-1/4
85	173937	Bolt 7/16-20 x 4 x Gr. 5-1.5
90	17000616	Screw 3/8-16 x 1
100	400285	Guard Asm
101	402441	Bracket Upper Cloth Wire Form
102	17000512	Screw 5/16-18 x 3/4

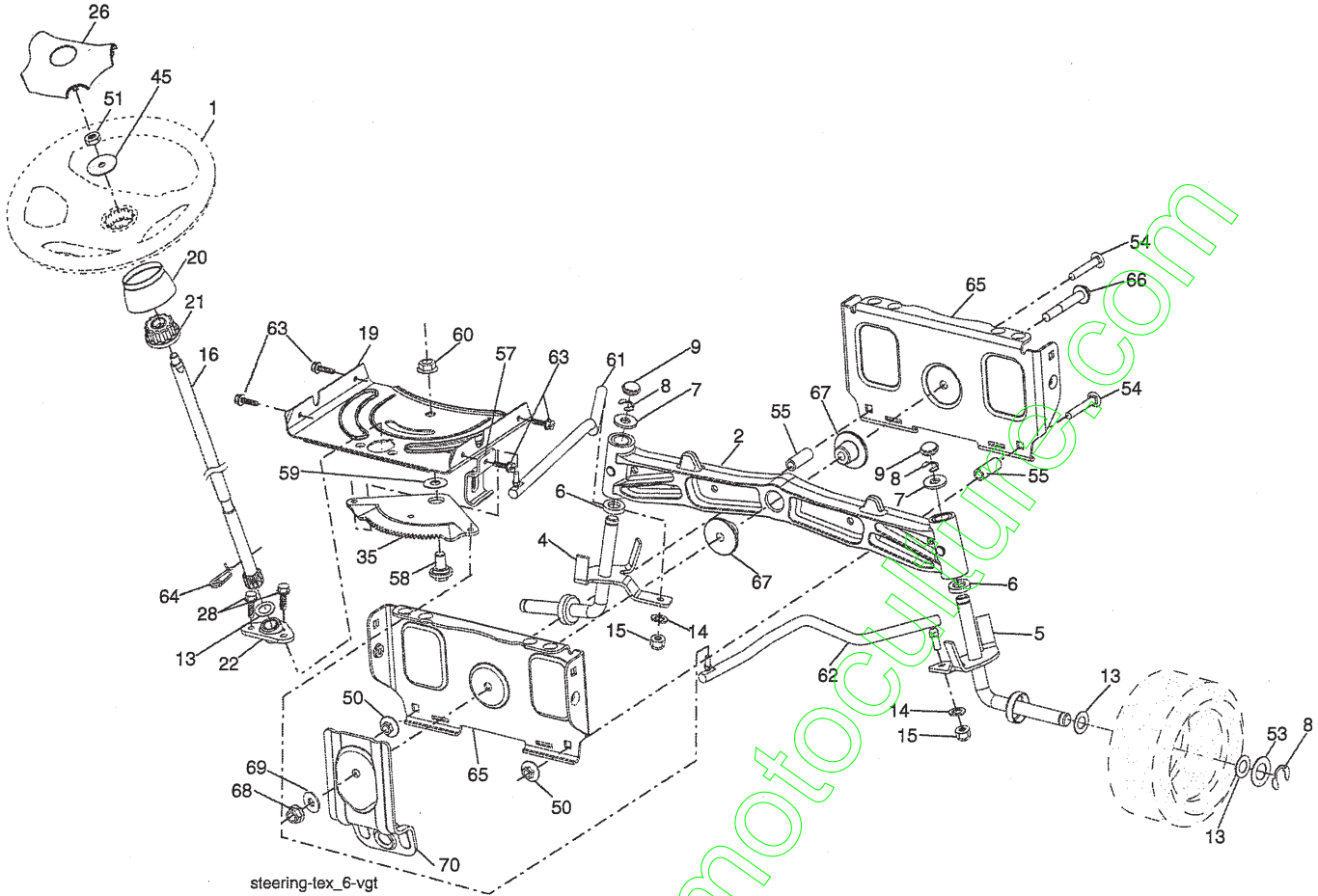
NOTE: All component dimensions given in U.S. inches.
1 inch = 25.4 mm

Engine Power Rating Information

The gross power rating for individual gas engine models is labeled in accordance with SAE (Society of Automotive Engineers) code J11940 (Small Engine Power & Torque Rating Procedure), and rating performance has been obtained and corrected in accordance with SAE J1995 (Revision 2002-5). Actual gross engine power will be lower and is affected by, among other things, ambient operating conditions and engine-to-engine variability. Given both the wide array of products on which engines are placed and the variety of environmental issues applicable to operating the equipment, the gas engine will not develop the rated gross power when used in a given piece of power equipment (actual "on-site" or net horsepower). This difference is due to a variety of factors including, but not limited to, accessories (air cleaner, exhaust, charging, cooling, carburetor, fuel pump, etc.), application limitations, ambient operating conditions (temperature, humidity, altitude), and engine-to-engine variability. Due to manufacturing and capacity limitations, Briggs & Stratton may substitute an engine of higher rated power for this Series engine.

TRACTOR -- MODEL NUMBER 256940

STEERING ASSEMBLY

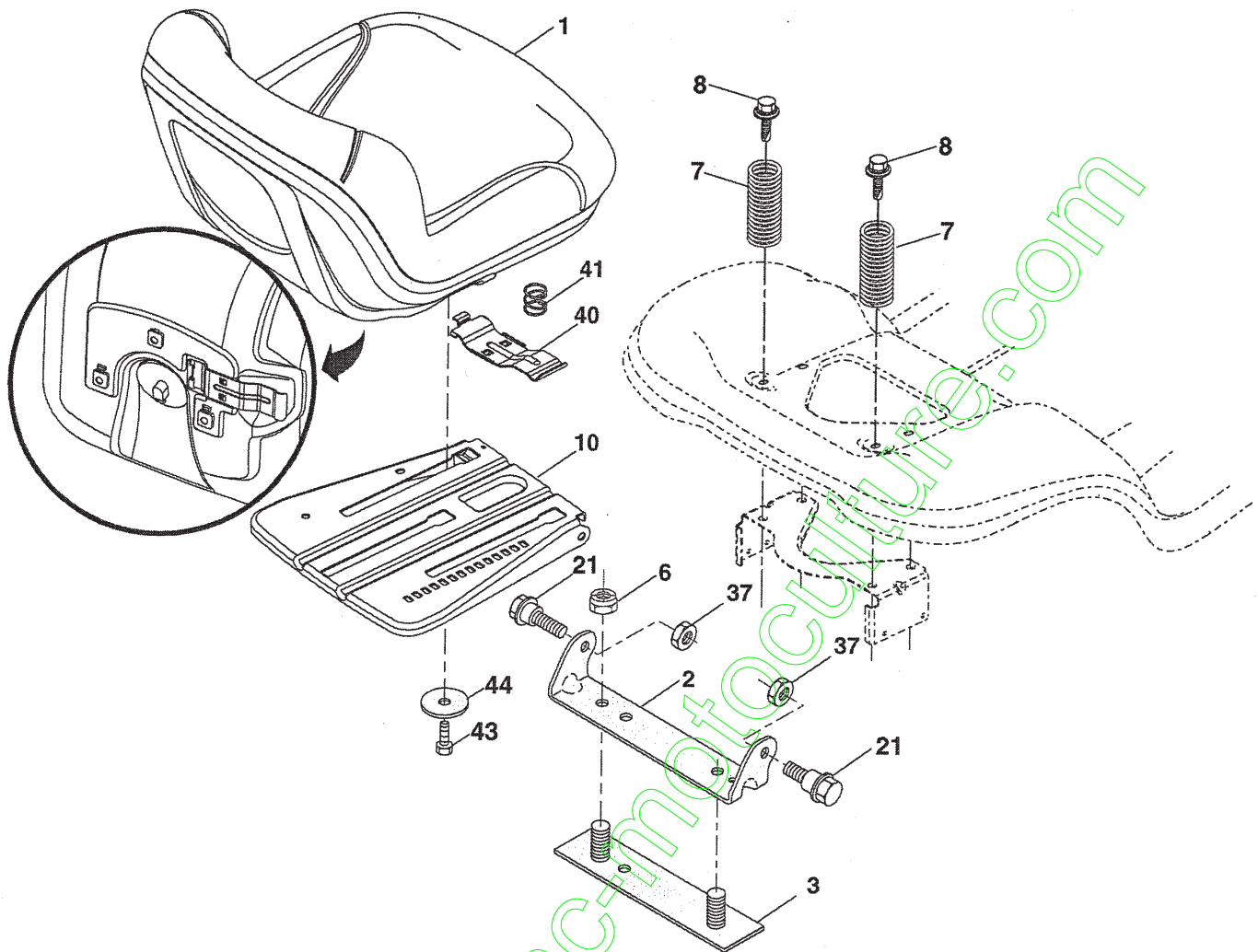


KEY NO.	PART NO.	DESCRIPTION	KEY NO.	PART NO.	DESCRIPTION
1	186093X428	Wheel, Steering	53	188967	Washer Hardened .793x 1.637x .060
2	184706	Axle Asm., Front	54	STD523722	Bolt Hex 3/8-16 UNC x 2-1/4
4	403087	Spindle Asm., LH	55	197636	Spacer Brace Axle
5	403088	Spindle Asm., RH	57	197246	Bracket Upstop
6	6266H	Bearing, Race Thrust Harden	58	194747	Bolt Shoulder Sector Pivot CFM
7	121748X	Washer 25/32 x 1-5/8 x 16 Ga.	59	194748	Washer Thrust Sector Steering
8	12000029	Ring, Klip #T5304-75	60	73971000	Nut Flange Lock 5/8-11
9	184946X505	Cap, Spindle	61	194740	Draglink LH
13	121749X	Washer 25/32 x 1-1/4 x 16 Ga.	62	194741	Draglink, RH
14	STD551137	Washer, Lock Hvy Hicl Spr 3/8	63	17000512	Screw 5/16-18 x 3/4
15	73540600	Nut, Crown Lock 3/8-24 unf	64	199849	Retainer Clip Spring Steering
16	194746	Shaft Steering	65	194734	Brace Axle Front
19	194729	Plate Steering	66	71020748	Bolt Hex Fghd 7/16-14 x 3 Serr
20	199676X428	Boot, Steering	67	194737	Bushing PM Front Axle
21	186737	Adapter, Wheel Steering	68	73900700	Nut Lock Flange 7/16-14 Gr. 5
22	194845	Bushing, Strg. Blk	69	199162	Washer 1.5 x .505 x .118
26	186095X428	Insert, Wheel Steering	70	196197	Bracket Deck Susp. Front
28	17000612	Screw 3/8-16 x 3/4			
35	194732	Gear, Sector Plate			
45	19183812	Washer 9/16 x 2-3/8 x 12 Ga.			
50	73900600	Nut Lock 3/8-16 UNC			
51	STD541350	Nut Hex Jam Toplock 1/2-20 unf			

NOTE: All component dimensions given in U.S. inches.
1 inch = 25.4 mm

TRACTOR - - MODEL NUMBER 256940

SEAT ASSEMBLY



seat-tex_7-vgt

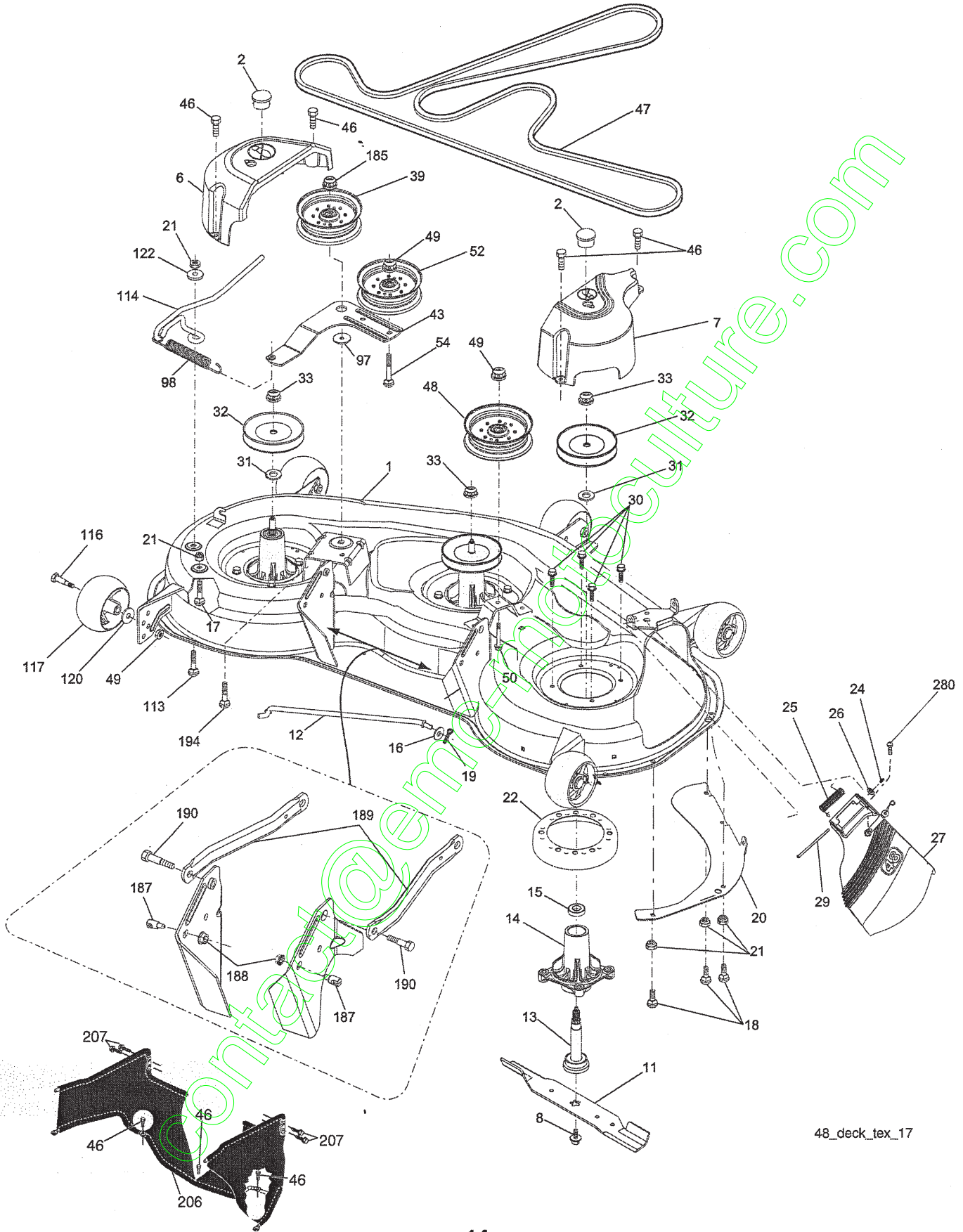
KEY NO.	PART NO.	DESCRIPTION
1	406622	Seat
2	180166	Bracket Pivot Fender
3	140675	Strap, Asm Fender
6	STD541437	Nut, Lock W/Ins. 3/8-16 unc
7	124181X	Spring, Seat Cprsn
8	171877	Bolt 5/16-18 uncx 3/4 w/Sems
10	196977	Pan, Seat
21	171852	Bolt, Shoulder 5/16-18

KEY NO.	PART NO.	DESCRIPTION
37	STD541437	Nut, Lock 5/16-18 unc
40	197661	Handle Slide Seat
41	198200	Spring Latch Seat
43	STD523707	Bolt Fin Hex 3/8-16 unc x 3/4
44	19133812	Washer 13/32 x 2-3/8 x 12 Ga.

NOTE: All component dimensions given in U.S. inches.
1 inch = 25.4 mm

TRACTOR -- MODEL NUMBER 256940

MOWER



TRACTOR - - MODEL NUMBER 256940

MOWER

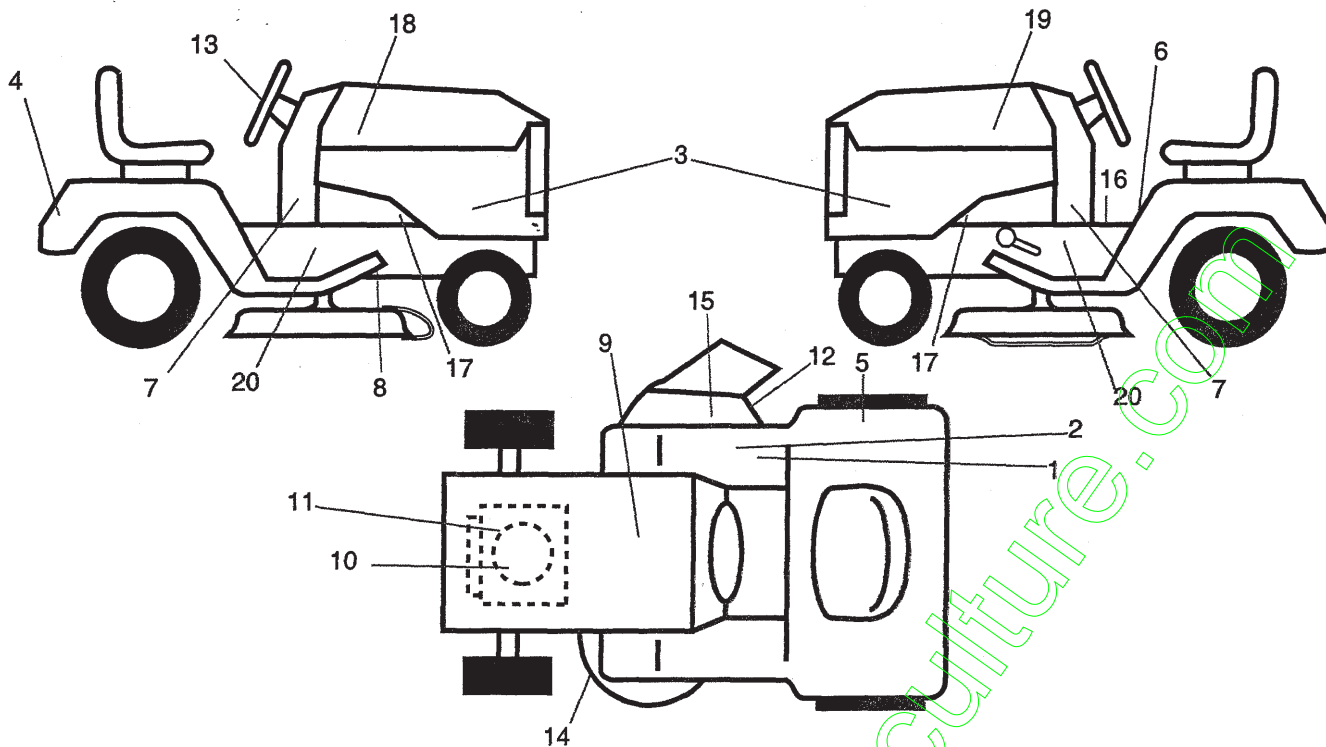
KEY NO.	PART NO.	DESCRIPTION	KEY NO.	PART NO.	DESCRIPTION
1	404265X613	Deck Weldment Mower	48	196106	Pulley Idler Primary
2	178345	Plug Hole Mandrel	49	73900600	Nut, Lock Flg. 3/8-16 unc
6	199405	Cover Mandrel LH	50	17490636	Screw 3/8-16 x 2-1/4
7	199406	Cover Mandrel RH	52	177968	Pulley Idler Clutching
8	174365	Bolt 7/16 Asm. Blade	54	72110612	Bolt Carr SH 3/8-16 x 1-1/2 Gr.5
11	180054	Blade High Lift	97	178515	Washer Hardened
12	404851	Rod Anti-Sway	98	196105	Spring Drive
13	187291	Shaft Asm. w/Lower Bearing	113	72110508	Bolt Rdhd Sqnk 5/16-18 x 3/4
14	187281	Housing, Mandrel	114	197451	Rod Tension Relief
15	110485X	Bearing, Ball, Mandrel	116	193406	Bolt, Shoulder
16	19131312	Washer 13/32 x 13/16 x 12 Ga.	117	174873	Gauge Wheel
17	72110505	Bolt 5/16-18 x 5/8	120	19132012	Washer 13/32 x 1-1/4 x 12 Ga.
18	72140505	Bolt RdHd 5/16-18 unc x 5/8	122	187557	Bushing Tension Relief
19	194208	Pin Cotter 5/16 Bow Tie Lock	185	73900700	Nut Lock Flange 7/16-14 Gr. 5
20	174378	Baffle Vortex	187	195161	Stud Fastener w/"D" Anti-Rotation
21	73680500	Nut, Crownlock 5/16-18 unc	188	73900500	Nut Lock Hex Flange 5/16-18
22	174493	Mandrel Deck Stripper	189	195185	Arm Susp. Mower Rear
24	105304X	Cap Sleeve	190	196539	Bolt Shoulder
25	178102	Spring, Torsion	194	72140716	Bolt Carr Sqnk 7/16-24 x 2
26	110452X	Nut, Push	206	400284	Guard Asm Fabric
27	403604X428	Deflector Shield	207	17000512	Screw 5/16-18 x 3/4
29	131491	Rod, Hinge	280	17670608	Screw 3/8-16 x 1/2
30	173984	Screw, Thdroll Washer Head		187292	Mandrel Asm. Service (Includes Key Nos. 13-15 and 33)
31	187690	Washer, Spacer Mower Vented	--	403406	Replacement Mower, Complete
32	173435	Pulley, Mandrel			
33	400234	Nut, Flg. Top Lock			
39	196104	Pulley, Idler			
43	196065	Arm, Idler			
46	137729	Screw, Thdroll. 1/4-20 x 5/8			
47	197242	Belt Deck Drive			

NOTE: All component dimensions given in U.S. inches.
1 inch = 25.4 mm

contact@emc-motors.com

TRACTOR -- MODEL NUMBER 256940

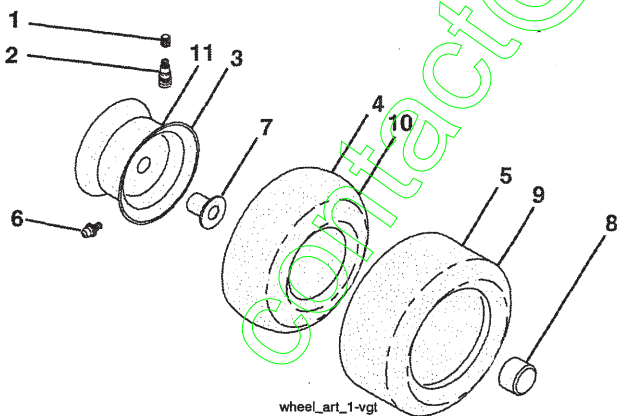
DECALS



KEY NO.	PART NO.	DESCRIPTION
1	178302	Decal, Oper. Cruise
2	140837	Decal, Saddle
3	410336	Decal, Side Panel
4	411697	Decal, Fender
5	180433	Decal, Fender 105 DB/CE
6	400389	Decal, Warning
7	403412	Decal, PNL. SD.
8	199135	Decal, V-Belt Schematic
9	145005	Decal, Battery Dnge/Poi
10	409712	Decal, Engine HP
11	196841	Decal, Warning Eng.
12	196357	Decal, Deflect
13	164065	Decal, Steering Wheel

KEY NO.	PART NO.	DESCRIPTION
14	198785	Decal, Mower Schematic
15	182166	Decal, Cutfingher
16	159737	Decal, Brake/Clutch
17	159736	Decal, Chassis Hot Muffler
18	403695	Decal, Hood RH
19	403696	Decal, Hood LH
20	196842	Decal, SDL SHF/CRD Sym
--	193226X428	Cutfingher
--	400981X428	Pad, Footrest
--	166960	Pad, Footrest, Control
--	162598	Decal, Bypass
--	413028	Decal, Drawbar
--	413029	Manual, Operator's (Euro)
--	413029	Manual, Parts

WHEELS & TIRES

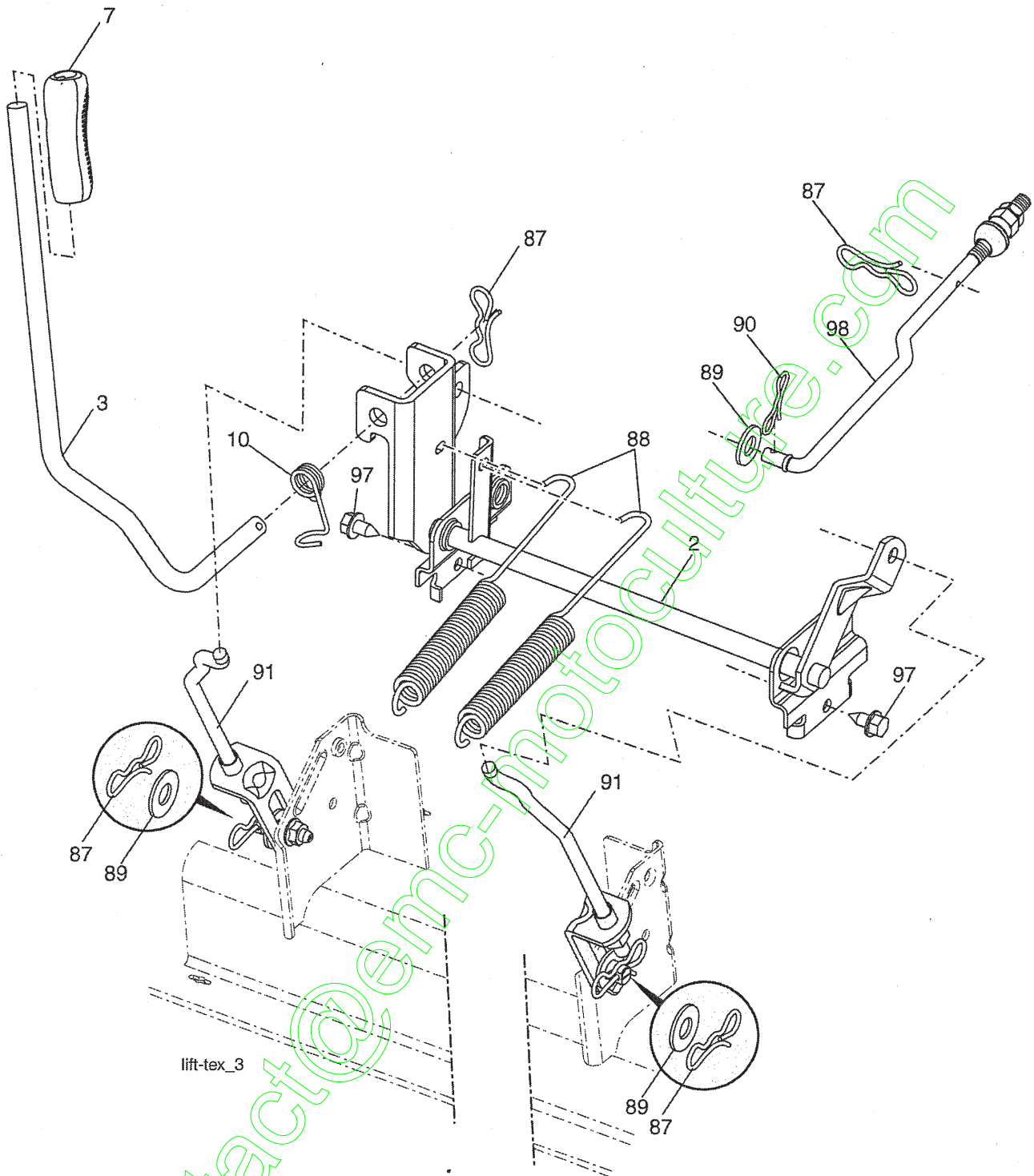


KEY NO.	PART NO.	DESCRIPTION
1	59192	Cap, Valve, Tire
2	65139	Stem, Valve
3	106732X645	Rim Assembly, Front
4	59904	Tube, Front
5	106222X	Tire, Front
6	278H	Fitting, Grease
7	9040H	Bearing, Flange
8	104757X645	Cap, Axle (Front Wheel Only)
9	122082X	Tire, Rear
10	7152J	Tube, Rear
11	106108X645	Rim Assembly, Rear
--	144334	Sealant, Tire (10 oz. Tube)

NOTE: All component dimensions given in U.S. inches.
1 inch = 25.4 mm

TRACTOR - - MODEL NUMBER 256940

MOWER LIFT



KEY NO.	PART NO.	DESCRIPTION
2	195223	Shaft Asm., Lift
3	195231	Lever Asm., Lift Rh
7	196492X428	Grip, Lever
10	196314	Spring Torsion
87	194209	Pin Cotter 7/16 Bow Tie Lock
88	195303	Spring Lift Assist
89	19191912	Washer Clear Zinc

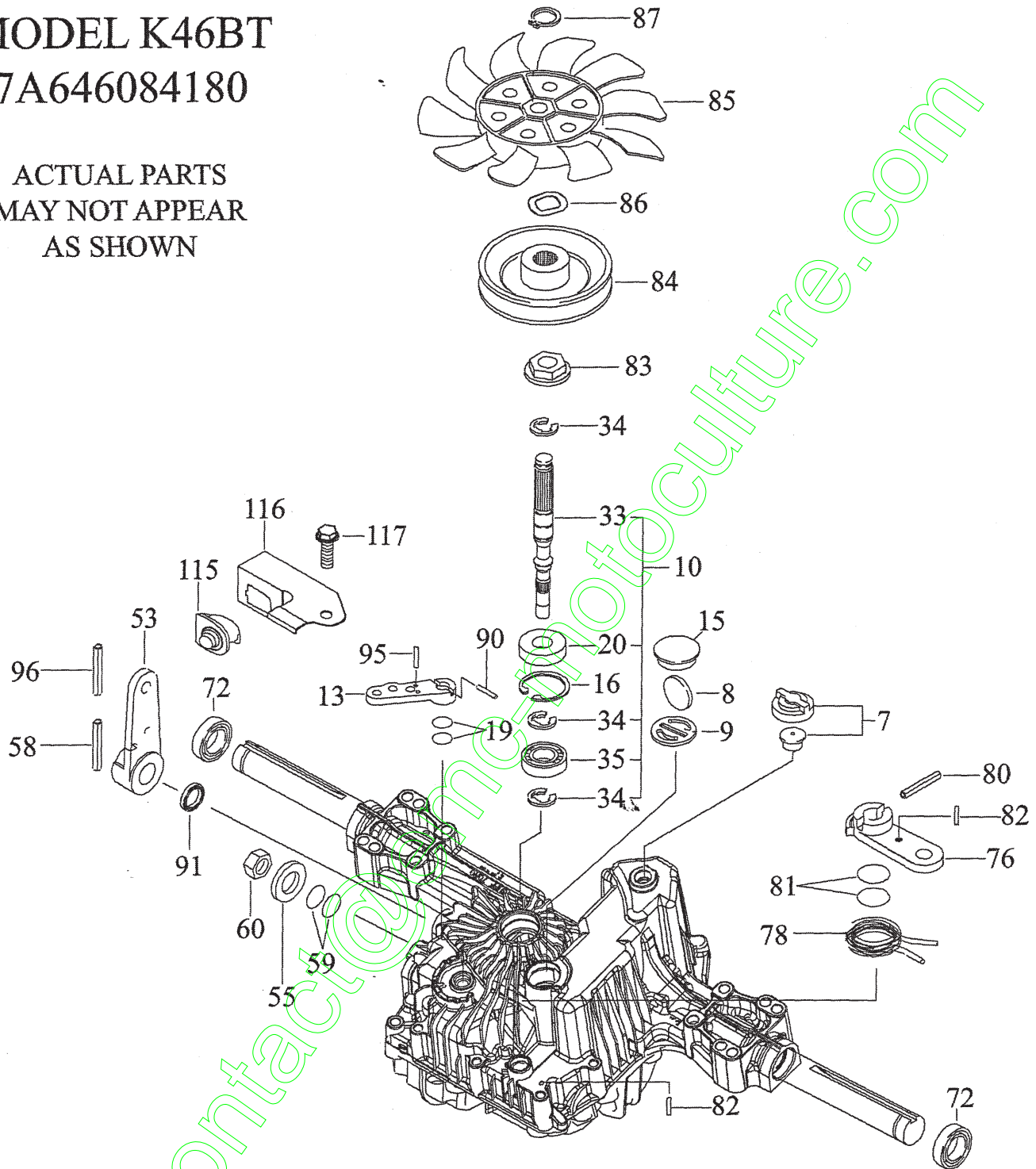
KEY NO.	PART NO.	DESCRIPTION
90	194208	Pin Cotter 5/16 Bow Tie Lock
91	195181	Link Asm. Lift Rear
97	17000612	Screw 3/8-16 x .75
98	195264	Link Lift Susp. Front Mower

NOTE: All component dimensions given in U.S. inches.
1 inch = 25.4 mm

TRACTOR - - MODEL NUMBER 256940
TUFFTORQ TRANSAXLE MODEL NUMBER K46BT

MODEL K46BT
7A646084180

ACTUAL PARTS
MAY NOT APPEAR
AS SHOWN



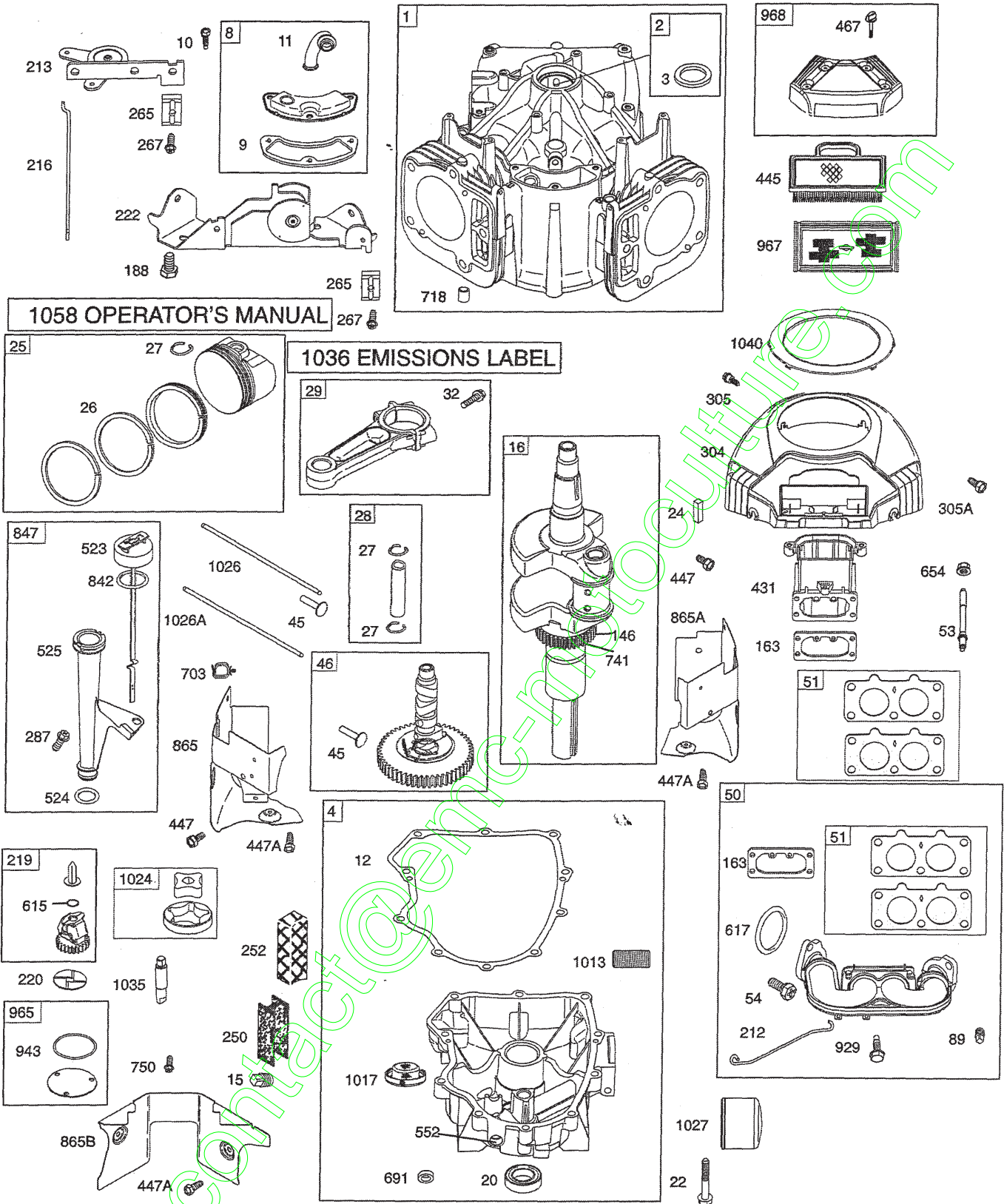
**TRACTOR - - MODEL NUMBER 256940
TUFFTORQ TRANSAXLE MODEL NUMBER K46BT**

KEY NO.	PART NO.	DESCRIPTION
7	414395	VENT VALVE 15
8	414396	MAGNET
9	414397	MAGNET HOLDER
10	415923	PUMP SHAFT/BEARING KIT
13	414398	BYPASS LEVER
15	414399	SEALING CAP 30
16	414400	SNAP RING C 35
19	414401	O-RING 1A P10A
20	414402	SEAL TC 153507
33	414403	PUMP SHAFT (STANDARD)
34	414404	E-RING 15
35	414405	BEARING 6202C3
53	414431	CONTROL LEVER F
55	415924	WASHER 12
58	415925	ROLL PIN 6 * 40
59	415926	O-RING 1A P14
60	415927	NUT 12
72	414407	SEAL 19 * 32 * 8
76	414408	BRAKE LEVER
78	414409	BRAKE RETURN SPRING
80	414410	SPRING PIN 5 * 32
81	414411	O-RING 1A P12
82	414412	SPRING PIN 4 * 16
83	414413	SPINE COLLAR
84	414414	PULLEY L
85	414415	FAN BLACK
86	414416	WAVE WASHER
87	414417	SNAP RING
90	414418	SPRING PIN 3.0A * 20
91	414419	OIL SEAL 16 * 22 *.03
95	414850	SPRING PIN 3.0A*16
96	414420	ROLL PIN 3.5 * 40
115	415928	SWITCH 6440-11 DELTA
116	415929	SWITCH BRACKET
117	415930	TAPPING SCREW 8 * 20

NOTE: All component dimensions given in U.S. inches.
1 inch = 25.4 mm

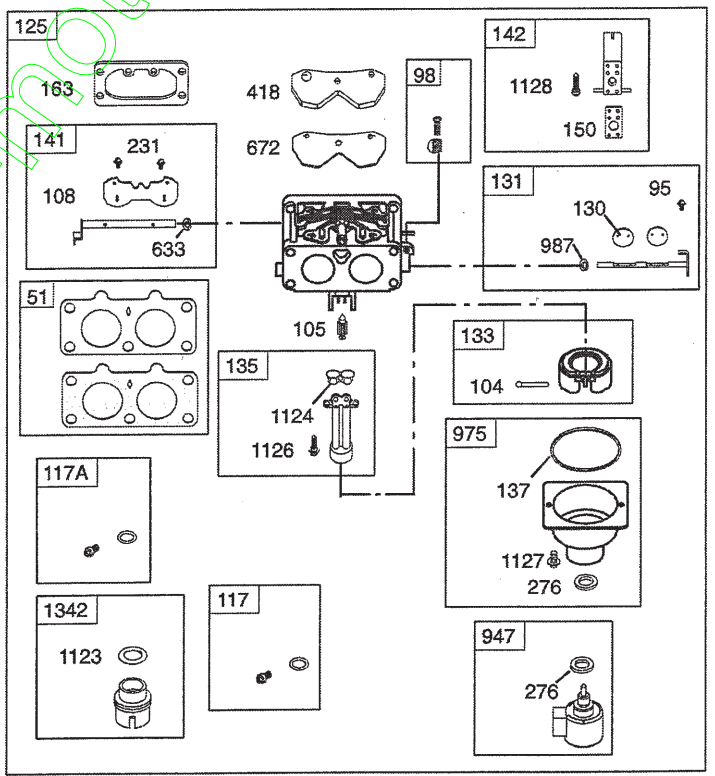
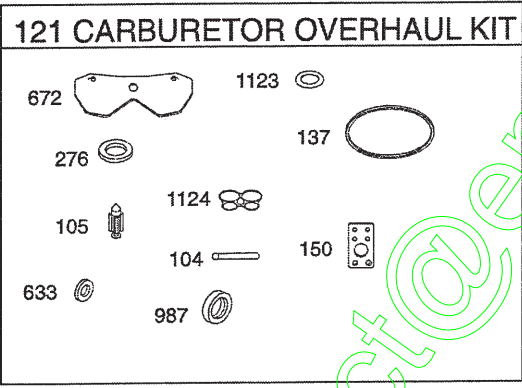
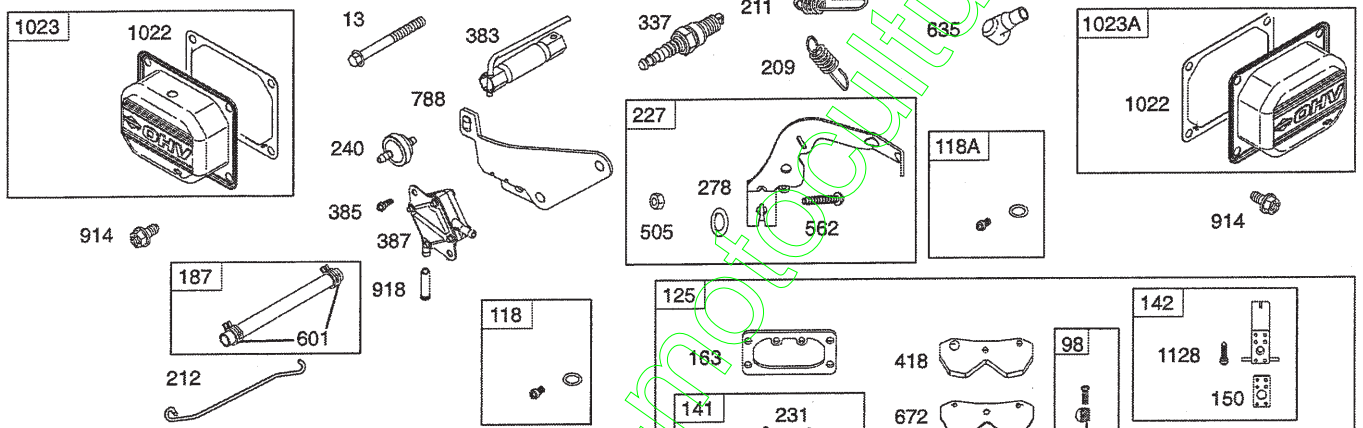
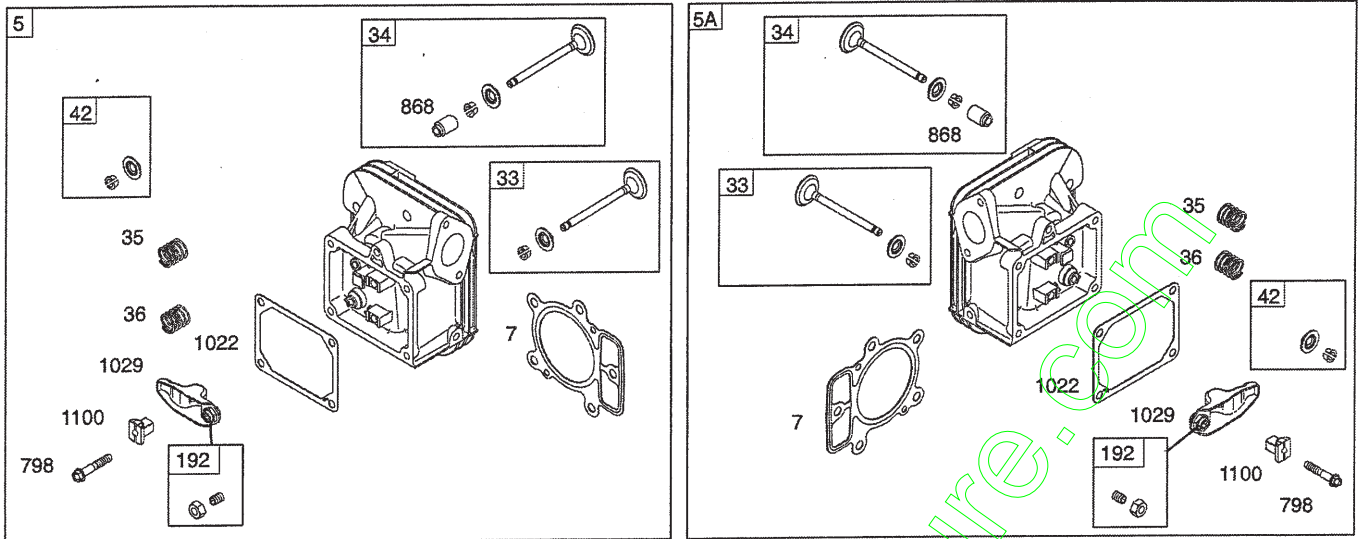
TRACTOR -- MODEL NUMBER 256940

BRIGGS ENGINE-MODEL NUMBER 445677, TYPE NUMBER 0758-E1

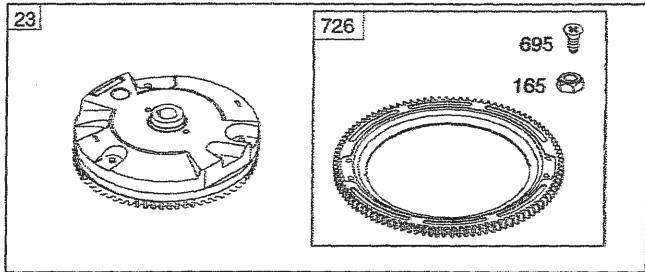
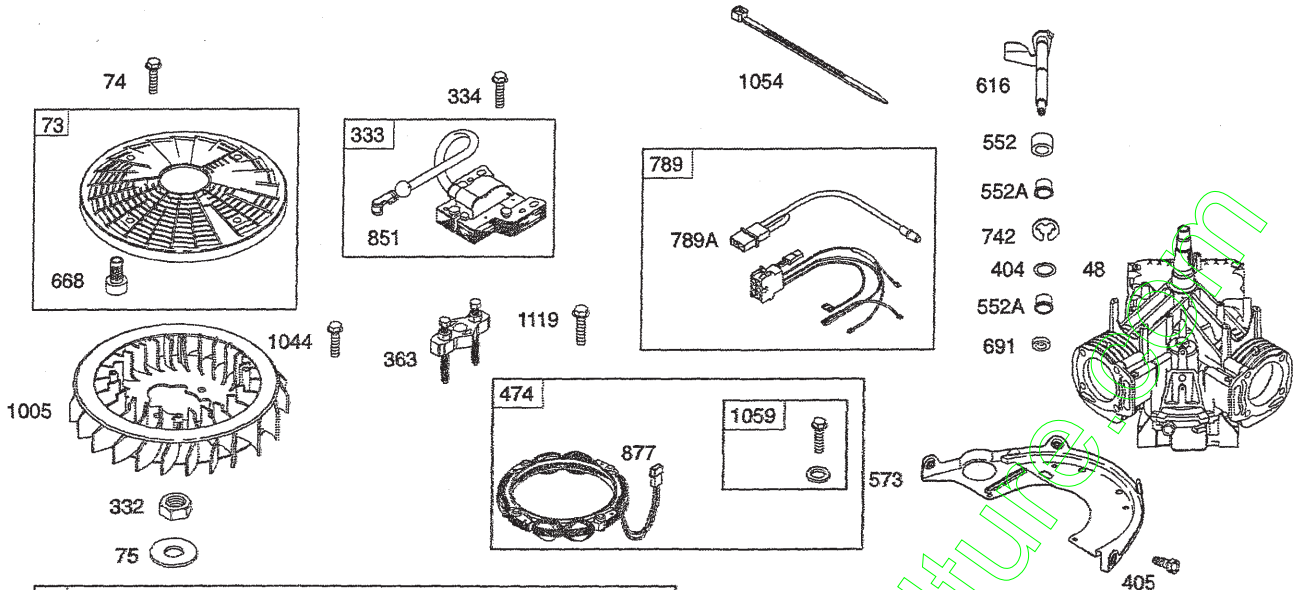


TRACTOR - - MODEL NUMBER 256940

BRIGGS ENGINE-MODEL NUMBER 445677, TYPE NUMBER 0758-E1

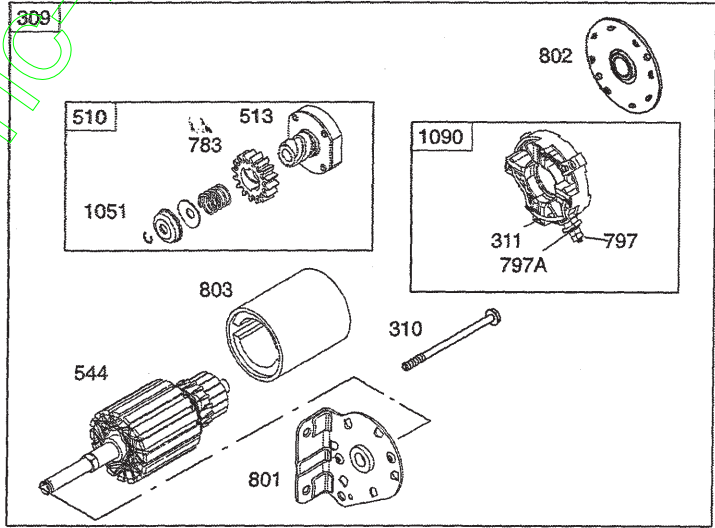
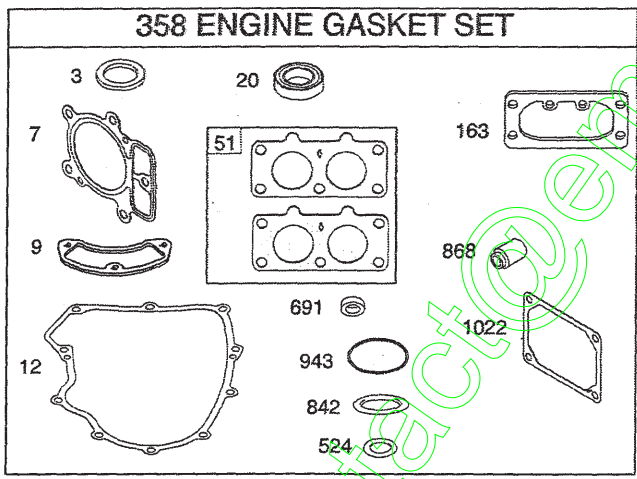
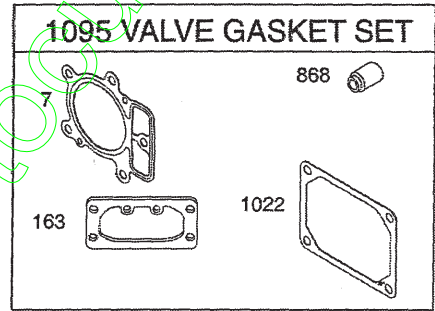


TRACTOR - - MODEL NUMBER 256940
BRIGGS ENGINE-MODEL NUMBER 445677, TYPE NUMBER 0758-E1



1329 REPLACEMENT ENGINE

1330 REPAIR MANUAL



contact@emotors.com

TRACTOR - - MODEL NUMBER 256940

BRIGGS ENGINE-MODEL NUMBER 445677, TYPE NUMBER 0758-E1

KEY NO.	PART NO.	DESCRIPTION	KEY NO.	PART NO.	DESCRIPTION
1	699753	Cylinder Assembly	135	699729	Tube-Fuel Transfer
2	499585	Kit-Bushing/Seal (Magneto Side)	137	690994	Ø Gasket-Float Bowl
3	391086s	• Seal-Oil (Magneto Side)	141	699722	Kit-Choke Shaft
4	699747	Sump-Engine	142	699726	Nozzle-Carburetor
5	792299	Head-Cylinder (Cylinder 1)	146	690979	Key-Timing
5A	792300	Head-Cylinder (Cylinder 2)	150	690995	Ø Gasket-Nozzle
7	693997	•+ Gasket-Cylinder Head	163	691001	•+ Gasket-Air Cleaner
8	792185	Breather Assembly	165	693148	Nut (Ring Gear)
9	690937	• Gasket-Breather	187	791766	Line-Fuel (Cut to Required Length)
10	691108	Screw (Breather Assembly)	188	691108	Screw (Control Bracket)
11	792184	Tube-Breather	192	690083	Adjuster-Rocker Arm
12	697227	• Gasket-Crankcase	209	793340	Spring-Governor
13	791130	Screw (Cylinder Head)	211	691019	Spring-Governed Idle
15	690946	Plug-Oil Drain	212	695238	Link-Governor
16	699700	Crankshaft	213	691021	Bracket-Choke Control
20	791892	• Seal-Oil (PTO Side)	216	691022	Link-Choke
22	694966	Screw (Crankcase Cover)	219	793338	Gear-Governor
23	691053	Flywheel	220	690412	Washer (Governor Gear)
24	222698s	Key-Flywheel	222	698757	Bracket-Control
25	792117	Piston Assembly (Standard)	227	792492	Lever-Governor Control
	792144	Piston Assembly (.020" Oversize)	231	690718	Screw (Choke Valve)
26	792026	Ring Set (Standard)	240	691035	Filter-Fuel
	792073	Ring Set (.020" Oversize)	250	690957	Retainer-Breather
27	690975	Lock-Piston Pin	252	690956	Collector-Oil
28	690229	Pin-Piston (Standard)	265	691024	Clamp-Casing
29	699699	Rod-Connecting (Standard)	267	695134	Screw (Casing Clamp)
32	690976	Screw (Connecting Rod)	276	695410	•Ø Washer-Sealing
33	499596	Valve-Exhaust	278	792651	Washer-Sealing (Governor Control Lever)
34	792200	Valve-Intake	287	691108	Screw (Dipstick/Tube Assembly)
35	694865	Spring-Valve (Intake)	304	791243	Housing-Blower
36	694865	Spring-Valve (Exhaust)	305	691005	Screw (Blower Housing)
42	499586	Keeper-Valve	305A	790690	Screw (Blower Housing)
45	690977	Tappet-Valve	309	499521	Motor-Starter
46	790562	Camshaft	310	691263	Screw (Starter Motor)
48	698173	Short Block	311	497608	Brush Set
50	695241	Manifold-Intake	332	691059	Nut (Flywheel)
51	791677	• Gasket-Intake	333	691060	Armature-Magneto
53	690951	Stud (Carburetor)	334	691061	Screw (Magneto Armature)
54	699816	Screw (Intake Manifold)	337	691043	Plug-Spark
73	494439	Screen-Rotating	358	694012	Gasket Set-Engine
74	698425	Screw (Rotating Screen)	363	19203	Puller-Flywheel
75	691056	Washer (Flywheel)	383	89838s	Wrench-Spark Plug
89	690283	Plug-Oil	385	691108	Screw (Fuel Pump)
95	690718	Screw (Throttle Valve)	387	808656	Pump-Fuel
98	699721	Kit-Idle Speed	404	690442	Washer (Governor Crank)
104	694918	Ø Pin-Float Hinge	405	697820	Screw (Back Plate)
105	698537	Ø Valve-Float Needle	418	690999	Plate-Carburetor
108	699723	Valve-Choke	431	790816	Elbow-Intake
117	791501	Jet-Main (Standard)(Left)	445	499486s	Filter-Air Cleaner Cartridge
117A	791502	Jet-Main (Standard)(Right)	447	691003	Screw (Air Guide Cover)
118	695415	Jet-Main (High Altitude)(Left)	447A	691108	Screw (Air Guide Cover)
118A	843099	Jet-Main (High Altitude)(Right)	467	691008	Knob-Air Cleaner
121	792455	Kit-Carburetor Overhaul	474	696458	Alternator
125	791230	Carburetor	501	691185	Regulator
130	690993	Valve-Throttle	505	691029	Nut (Governor Control Lever)
131	499805	Kit-Throttle Shaft			
133	699724	Float-Carburetor			

TRACTOR - - MODEL NUMBER 256940

BRIGGS ENGINE-MODEL NUMBER 445677, TYPE NUMBER 0758-E1

KEY NO.	PART NO.	DESCRIPTION	KEY NO.	PART NO.	DESCRIPTION
510	696541	Drive-Starter	965	499613	Cover-Oil Pump
513	692024	Clutch-Drive	967	273638s	Filter-Pre Cleaner
523	691036	Dipstick	968	791242	Cover-Air Cleaner
524	691032	• Seal-O Ring (Dipstick Tube)	975	791232	Bowl-Float
525	691037	Tube-Dipstick	987	691000	∅ Seal-Throttle Shaft
526	691108	Screw (Regulator)	1005	791236	Fan-Flywheel
544		Armature-Starter (Serviced by 499521 Starter Motor Only)	1013	690954	Nipple-Oil Filter
552	690552	Bushing-Governor Crank	1017	690770	Screen-Oil Pump
552A	690553	Bushing-Governor Crank	1022	690971	*+ Gasket-Rocker Cover
562	690311	Bolt (Governor Control Lever)	1023	793146	Cover-Rocker Arm (Cylinder 1)
573	790444	Plate-Back	1023A	499600	Cover-Rocker Arm (Cylinder 2)
601	691038	Clamp-Hose	1024	499054	Pump-Oil
615	698290	Retainer-Governor Shaft	1026	690981	Rod-Push (Steel)
616	691045	Crank-Governor	1026A	690982	Rod-Push (Aluminum)
617	697891	Seal-O Ring (Intake Manifold)	1027	492932s	Filter-Oil
633	690998	∅ Seal-Choke/Throttle Shaft	1029	690972	Arm-Rocker
635	66538s	Boot-Spark Plug	1035	691042	Shaft-Pump
654	690958	Nut (Carburetor)	1036		Label-Emissions (Available from an authorized Briggs & Stratton Service Dealer)
668	691215	Spacer	1040	791237	Plate-Trim
672	690234	∅ Gasket-Carburetor Plate	1051	691265	Ring-Retaining
691	790574	• Seal-Governor Shaft	1054	280275	Cable-Tie
695	693149	Screw (Ring Gear)	1058	MS3372	Operator's Manual
697	690372	Screw (Drive Cap)	1059	698516	Kit-Screw/Washer
703	691010	Clip	1070	690372	Screw (Flywheel Fan)
718	690959	Pin-Locating	1090	691293	Retainer-Brush
726	499612	Gear-Ring	1095	694013	Set-Valve Gasket
741	690980	Gear-Timing	1100	690973	Pivot-Rocker Arm
742	690328	Retainer-E Ring	1119	691183	Screw (Alternator)
750	696999	Screw (Oil Pump Cover)	1123	841653	∅ Seal-O Ring (Solenoid Retainer)
783	695708	Gear-Pinion	1124	690988	∅ Seal-O Ring (Fuel Transfer Tube)
788	793145	Bracket-Fuel Pump	1126	690991	Screw (Fuel Transfer Tube)
789	698330	Harness-Wiring	1127	695407	Screw (Float Bowl)
789A	790544	Harness-Wiring	1128	690990	Screw (Carburetor Nozzle)
797	691029	Nut (Brush Retainer)	1329	446877-0027	Replacement Engine (Transfer the speed limiter control assembly to the replacement engine. Transfer Governor Spring to the replacement engine.)
797A	693167	Nut (Brush Retainer)	1330	273521	Repair Manual
798	697890	Screw (Rocker Arm)	1342	699731	Extension Fuel Transfer Tube
801	691283	Cap-Drive			
802	691286	Cap-End			
803		Housing-Starter (Serviced by 499521 Starter Motor Only)			
842	691031	• Seal-O Ring (Dipstick)			
847	499602	Assembly-Dipstick/Tube			
851	493880s	Terminal-Spark Plug			
865	691012	Cover-Air Guide (Cylinder 1)			
865A	793205	Cover-Air Guide (Cylinder 2)			
865B	691015	Cover-Air Guide			
868	690968	*+ Seal-Valve			
877	399916	Wire/Connector-Alternator			
914	691127	Screw (Rocker Arm Cover)			
918	793147	Hose-Vacuum			
929	695239	Screw (Choke Control Bracket)			
943	690589	• Seal-O Ring (Oil Pump Cover)			
947	841546	Solenoid-Fuel			

NOTE: All component dimensions given in U.S. inches
1 inch = 25.4 mm