

CRAFTSMAN

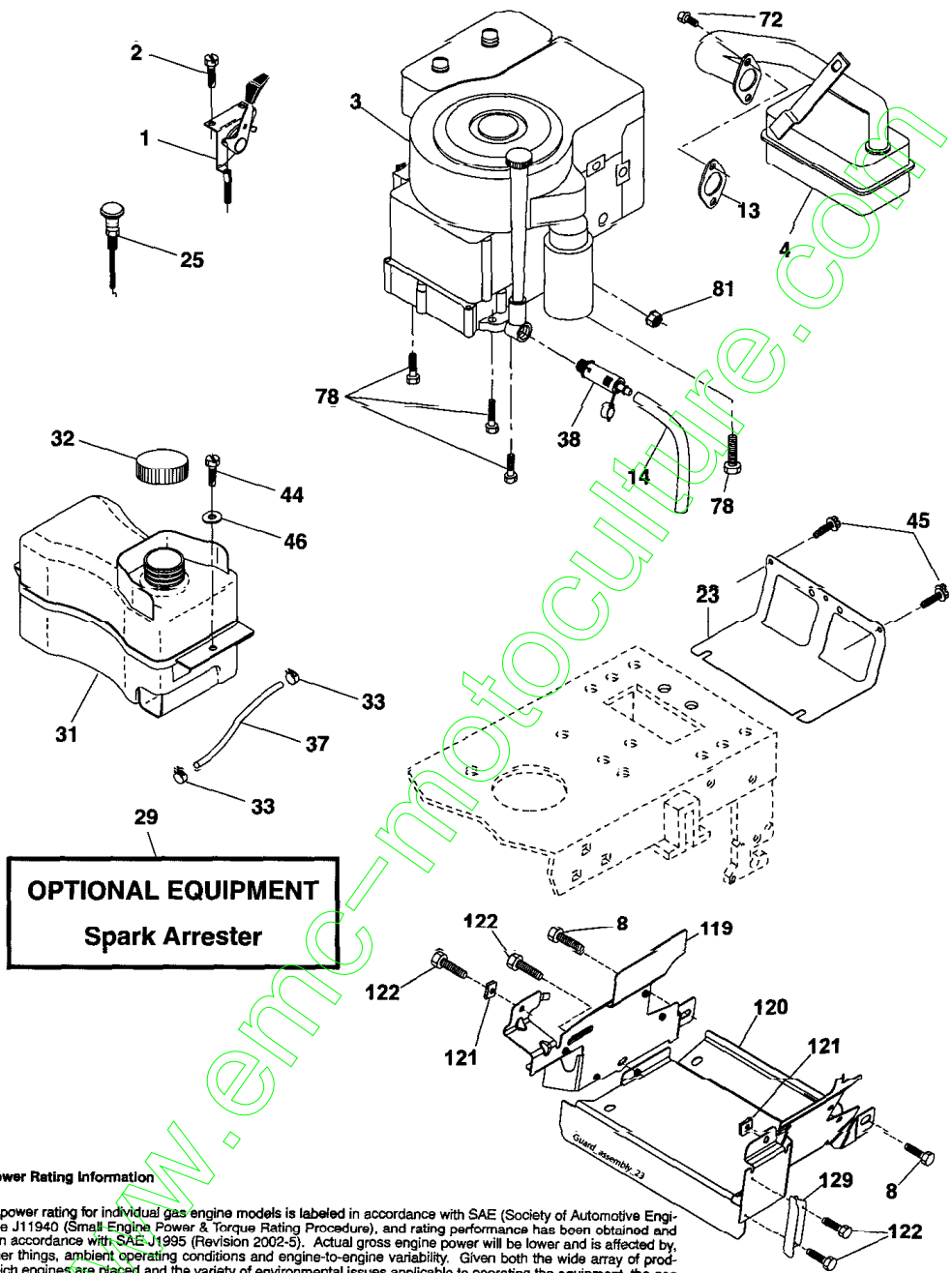
MC 175F

MODELE

257410

www.9mc-motoculture.com

REP	REF	DESIGNATION
1	174619	CHASSIS STAMPING
2	176554	DRAWBAR
5	155272	BUMPER HOOD/DASH
9	193510X013	DASH
10	STD533710	BOLT, CARRIAGE 3/8-16 X 1
11	174996	PANEL, DASH, L.H.
13	172105X010	PANEL, DASH, R.H.
14	17490608	SCREW THDROL 3/8-16 X 1/2
17	187559X613	HOOD ASSEMBLY
18	184921	BUMPER HOOD LARGE 1.75
24	STD523710	BOLT FIN HEX 3/8-16 UNC X 1 GR. 5
25	19131312	WASHER 13/32 X 13/16 X 12 GA.
26	STD541437	NUT
28	187598	GRILLE LENS ASSEMBLY (INCLUDES 29, 212)
29	187567X599	LENS, LASER
30	192528X613	FEND/FTREST PNT STL
31	136619	BRACKET, FENDER SUPPORT
33	179716X613	FOOTREST LH
34	179717X613	FOOTREST RH
35	STD533707	BOLT RDHD SHT SQNK 3/8-16 X 3/4
37	17490508	SCREW THDROL 5/16-18 X 1/2 TYT
38	175710	BRACKET ASSEMBLY PIVOT MOWER REAR
39	187568	BRACKET PIVOT LASER
64	154798	DASH LOWER STL
142	175702	PLATE REINFORCEMENT STL
145	409167	ROD PIVOT/HOOD
159	169473X428	CUPHOLDER
206	170165	BOLT SHOULDER 5/16-18 TT
207	17670508	SCREW THDROL 5/16-18 X 1/2 TYTT
208	17670608	SCREW THDROL 3/8-16 X 1/2
209	17000612	SCREW HEX WSH THDR 3/8-16 X 3/4
212	187569	INSERT LENS REFLECTIVE
278	416358	SCREW #10 X 0.750
NI01	5479J	PLUG, BUTTON
NI02	187801	PLUG DOME PLASTIC
NI03	162598	DECAL, DRAWBAR LOAD LIMIT
NI04	138311	DECAL, LIFT HANDLE
NI05	179768X428	PAD, FOOTREST LH
NI06	179769X428	PAD, FOOTREST RH
NI07	412943	MANUL, OPERATOR'S EURO
NI08	418504	MANUAL, PARTS
NI09	144334	SEALANT, TIRE 10 OZ.
NI10	192870	MANDREL ASSEMBLY (INCLUDES HOUSING, SHAFT ASSEMBLY, AND BEARING ONLY-PULLEY/NUT/WASHER AND BLADE BOLT/WASHERS NOT INCLUDED)
NI11	402918	REPLACEMENT MOWER, COMPLETE

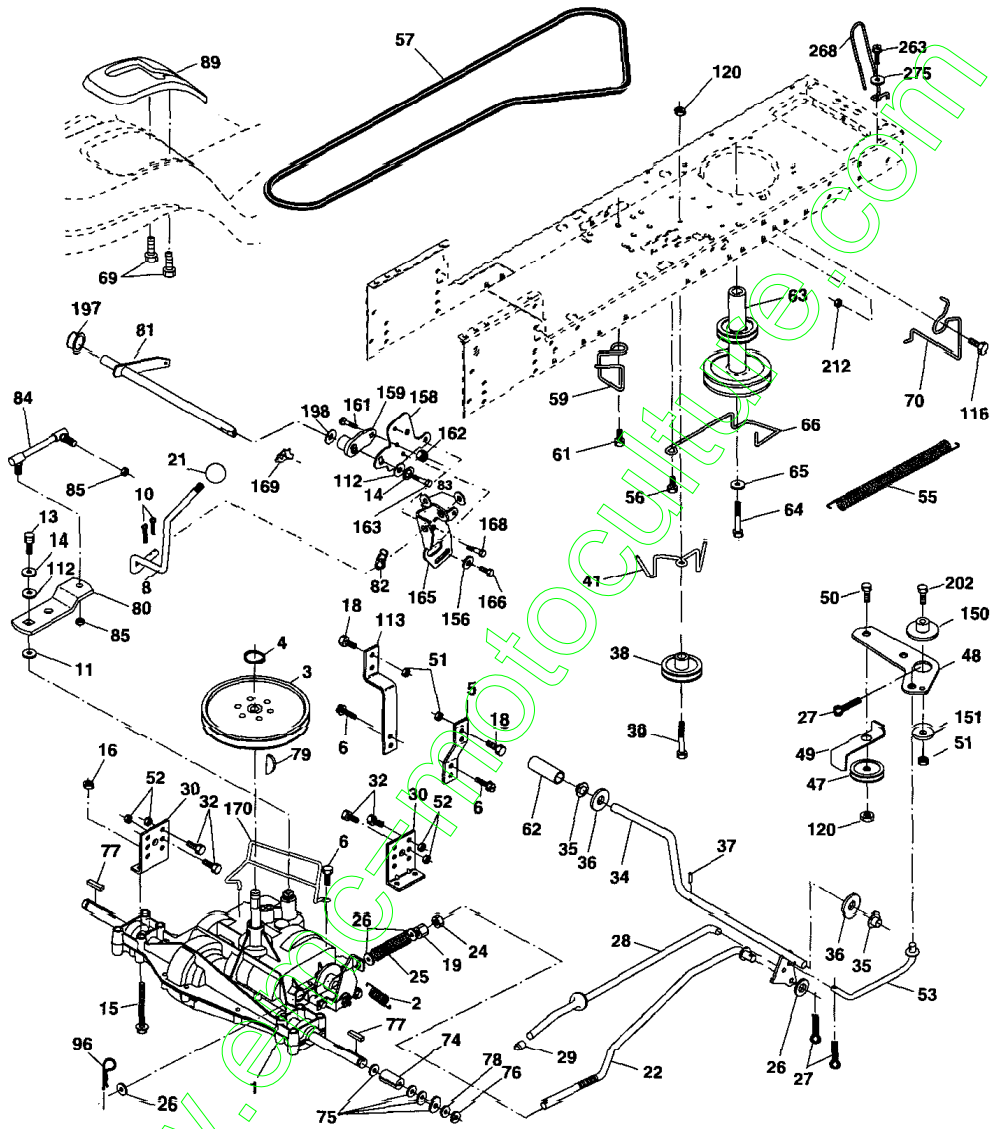


Engine Power Rating Information

The gross power rating for individual gas engine models is labeled in accordance with SAE (Society of Automotive Engineers) code J11940 (Small Engine Power & Torque Rating Procedure), and rating performance has been obtained and corrected in accordance with SAE J1995 (Revision 2002-5). Actual gross engine power will be lower and is affected by, among other things, ambient operating conditions and engine-to-engine variability. Given both the wide array of products on which engines are placed and the variety of environmental issues applicable to operating the equipment, the gas engine will not develop the rated gross power when used in a given piece of power equipment (actual "on-site" or net horsepower). This difference is due to a variety of factors including, but not limited to, accessories (air cleaner, exhaust, charging, cooling, carburetor, fuel pump, etc.), application limitations, ambient operating conditions (temperature, humidity, altitude), and engine-to-engine variability. Due to manufacturing and capacity limitations, Briggs & Stratton may substitute an engine of higher rated power for this Series engine.

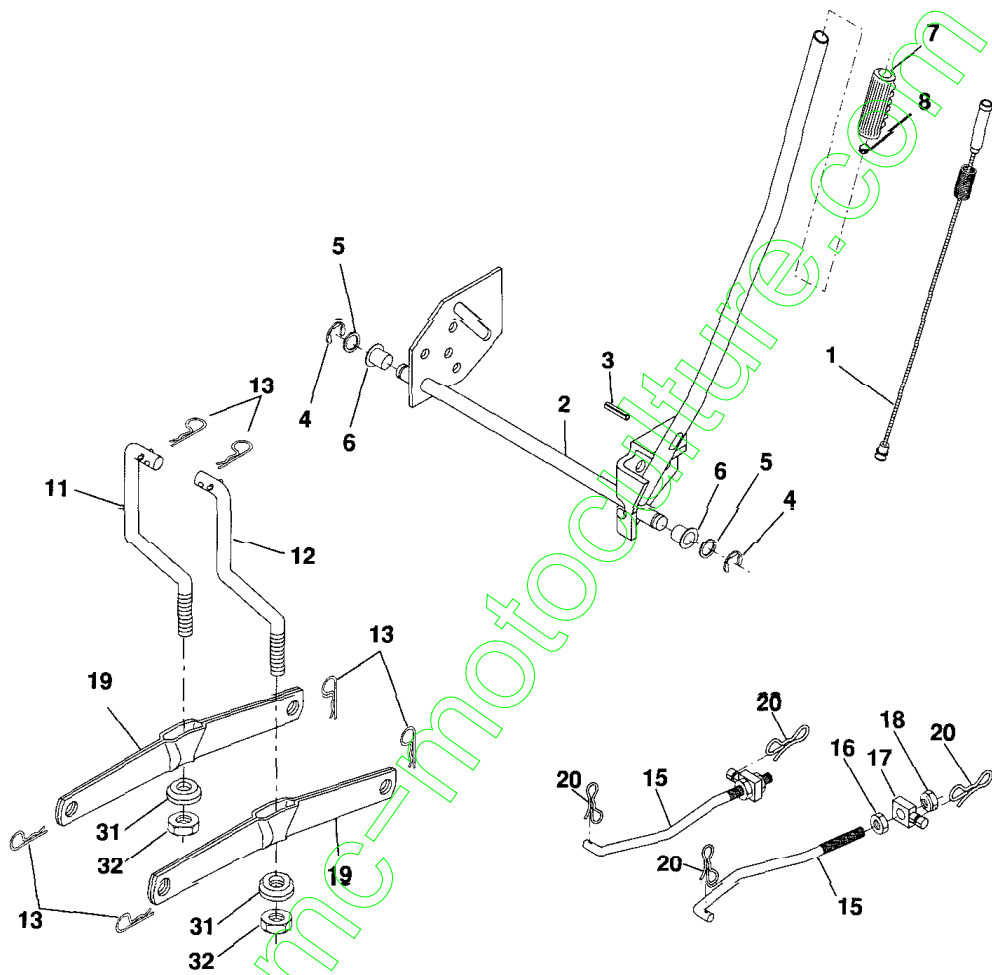
REPERE	REF	DESIGNATION
1	170545	CONTROL, THROTTLE/CHOKE
2	17720408	SCREW, HEX HEAD, THREAD CUTTING 1/4-20 X 1/2
3	N/P	BREAKDOWN)
4	137352	MUFFLER
8	171877	BOLT
13	165291	GASKET
14	148456	TUBE DRAIN OIL EASY
23	169837	SHIELD BRN/DBR GUARD
25	187770X428	CHOKE
29	137180	ARRESTER, SPARK
31	407516	TANK, FUEL
32	197725	CAP ASSEMBLY, FUEL
33	123487X	CLAMP, HOSE
37	137040	LINE, FUEL
38	181654	PLUG, DRAIN OIL EASY
40	124028X	BUSHING SNAP
44	17670412	SCREW, HEX WASHER HEAD, THD., ROLL. 1/4-20 X 3/4
45	17000612	SCREW HEX WSH THDR 3/8-16 X 3/4
46	19091416	WASHER 9/32 X 7/8 X 16 GA.
72	192334	SCREW SOCKET HEAD CAP 5/16-18 X 3/4
78	17060620	SCREW 3/8-16 X 1-1/4
81	73510400	NUT KEPS HEX 1/4-20 UNC
119	197949	GUARD ASSEMBLY ENG SD LH
120	197948	GUARD ASSEMBLY ENG SD RH
121	196688	CLIPS THREADED
122	137729	SCREW THDROL 1/4-20 X 5/8
123	17670508	SCREW THDROL 5/16-18 X 1/2
129	400328	GUARD PULLEY ENG ADAPTER

www.emc-www.emc-culture.com



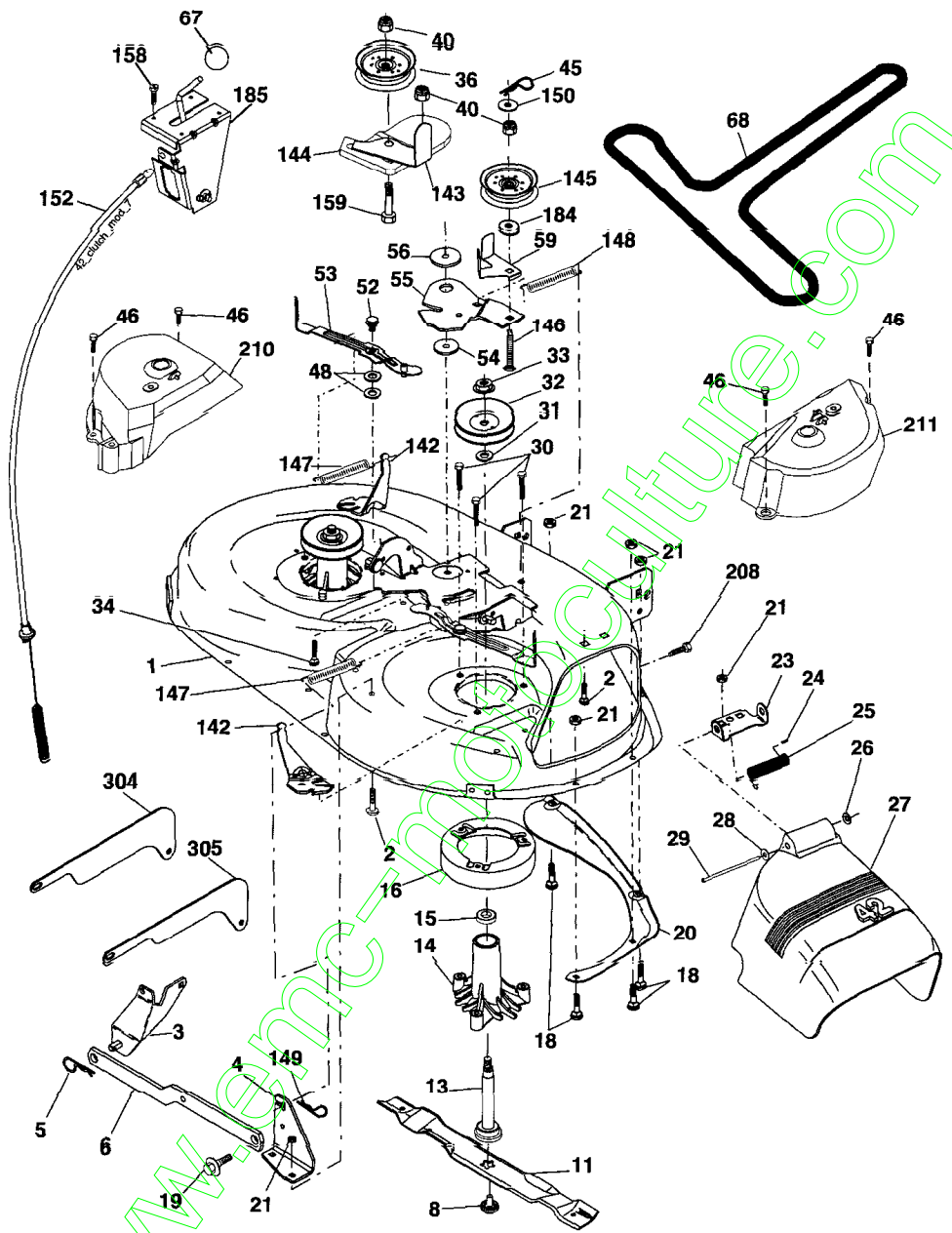
REPERE	REF	DESIGNATION
1	N/P	TRANSAXLE PEERLESS 206-545C (SEE TRANSAXLE BREAKDOWN)
2	146682	SPRING BRAKE RETURN
3	123666X	PULLEY TRANSAXLE
4	12000028	RING RETAINER
5	121520X	STRAP TORQUE 30 DEGREES
6	17060512	SCREW 5/16-18 X 3/4
8	192706	ROD SHIFT FENDER ADJUST
10	STD561210	PIN COTTER 1/8 X 1 CAD
11	105701X	WASHER PLATE SHIFT
13	74550412	BOLT 1/4-28 UNF GR. 8 W/PATCH
14	STD551125	WASHER LOCK HVY HELICAL
15	74490544	BOLT HEX FLGHD 5/16-18 GR. 5
16	STD541431	NUT LOCK HEX W/INS. 5/16-18 UNC
18	STD523710	BOLT FIN HEX 3/8-16 X 1 GR. 5
19	STD541437	NUT LOCK HEX W/WSH 3/8-16 UNC
21	106933X	KNOB
22	130804	ROD, BRAKE
24	73350600	NUT, HEX JAM 3/8-16 UNC
25	106888X	SPRING, BRAKE ROD
26	STD551037	WASHER 13/32 X 13/16 X 16 GA.
27	STD561210	PIN COTTER 1/8 X 3/4 CAD.
28	175765	ROD, PARKING BRAKE
29	71673	CAP, PARKING BRAKE
30	174973	BRACKET, TRANSAXLE
32	STD523107	BOLT HEX HD 5/16-18 UNC X 3/4
34	175578	SHAFT, FOOT PEDAL
35	120183X	BEARING, NYLON
36	19211616	WASHER
37	1572H	PIN, ROLL
38	179114	PULLEY, COMPOSITE, FLAT
39	STD533727	BOLT RDHD 3/8-16 UNC X 2-3/4 GR. 5
41	175556	KEEPER, BELT IDLER
47	127783	PULLEY, IDLER, V-GROOVE
48	154407	BELLCRANK, CLUTCH
49	123205X	RETAINER, BELT
50	72110612	BOLT HEX HD 3/8-16 X 1-1/2
51	STD541437	NUT CROWNLOCK 3/8-16 UNC
52	STD541431	NUT, CROWNLOCK 5/16-18 UNC
53	199652	LINK, CLUTCH
55	105709X	SPRING, RETURN, CLUTCH
56	17060620	SCREW 3/8-16 X 1.04
57	138255	V-BELT
59	169691	KEEPER, CENTER SPAN
61	17120614	SCREW 3/8-16 X .875
62	8883R	COVER, PEDAL
63	180219	PULLEY, ENGINE
64	173937	BOLT HEX 7/16-20 X 4 GR. 5-1.5
65	STD551143	WASHER
66	154778	KEEPER BELT ENGINE HYDRO

REPERE	REF	DESIGNATION
69	142432	SCREW HEX WSH HI-LO 1/4 X 1/2 UNC
70	180218	KEEPER BELT ENGINE
74	137057	SPACER AXLE
75	121749X	WASHER 25/32 X 1-1/4 X 16 GA.
76	STD581075	E-RING
77	123583X	KEY, SQUARE
78	121748X	WASHER 25/32 X 1-5/8 X 16 GA.
79	2228M	KEY WOODRUFF
80	131486	ARM SHIFT
81	165594	SHAFT ASSEMBLY CROSS TAPERED
82	165711	SPRING TORSION
83	19171216	WASHER 17/32 X 3/4 X 16 GA.
84	166228	LINK TRANSAXLE
85	150360	NUT LOCK CENTER 1/4-20
89	192053X428	CONSOLE, SHIFT
96	STD624003	RETAINER SPRING 1" ZINC/CAD
112	19091210	WASHER 9/32 X 3/4 X 10 GA.
113	127285X	STRAP TORQUE 90 DEGREES
116	72140608	BOLT RDHD SQNECK 3/8-16 X 1.25
120	73900600	NUT LOCK FLG 3/8-16
150	175456	SPACER RETAINER
151	19133210	WASHER 13/32 X 2 X 10 GA.
156	166002	WASHER SRRTED 5/16 ID X 1.125
158	165589	BRACKET SHIFT MOUNT
159	183900	HUB TAPERED FLANGE SHIFT LT
161	72140406	BOLT RDHD SQNK 1/4-20 X 3/4 GR. 5
162	73680400	NUT CROWNLOCK 1/4-20 UNC
163	74780416	BOLT HEX FIN 1/4-20 UNC X 1 GR. 5
165	165623	BRACKET PIVOT LEVER
166	17490510	SCREW 5/16-18 X 5/8
168	165492	BOLT SHOULDER 5/16-18 X .561
169	165580	PLATE FASTENING
170	187414	KEEPER BELT T/A
197	169613	NYLINER SNAP-IN 5/8" ID
198	169593	WASHER NYL 7/8 ID X .105" HYD
202	72110614	BOLT CARR SH 3/8-16 X 1-3/4 GR. 5
212	145212	NUT HEX FLG. LOCK
263	17000612	SCREW 3/8-16 X 3/4
268	182402	GUARD MUFFLER
275	19131614	WASHER 13/32 X 1 X 14 GA.



REPERE	REF	DESIGNATION
1	159460	LIFT LEVER INNER WIRE ASSEMBLY
2	159471	SHAFT ASSEMBLY, LIFT
3	105767X	PIN, GROOVE
4	12000002	E-RING
5	19211621	WASHER 21/32 X 1 X 21 GA.
6	120183X	BEARING, NYLON
7	125631X	GRIP, HANDLE, FLUTED
8	122365X	BUTTON, PLUNGER, RED
11	139865	LINK, LIFT, L.H.
12	139866	LINK, LIFT, R.H.
13	STD624008	RETAINER SPRING
15	173288	LINK, FRONT
16	73350800	NUT, HEX, JAM 1/2-13 UNC
17	175689	TRUNNION
18	73800800	LOCKNUT W/WASHER INSERT 1/2-13 UNC
19	139868	ARM, SUSPENSION, REAR
20	194209	PIN COTTER 7/16 BOW TIE LOCK
31	169865	BEARING, PVT, LIFT
32	73540600	NUT, CROWNLOCK 3/8-24

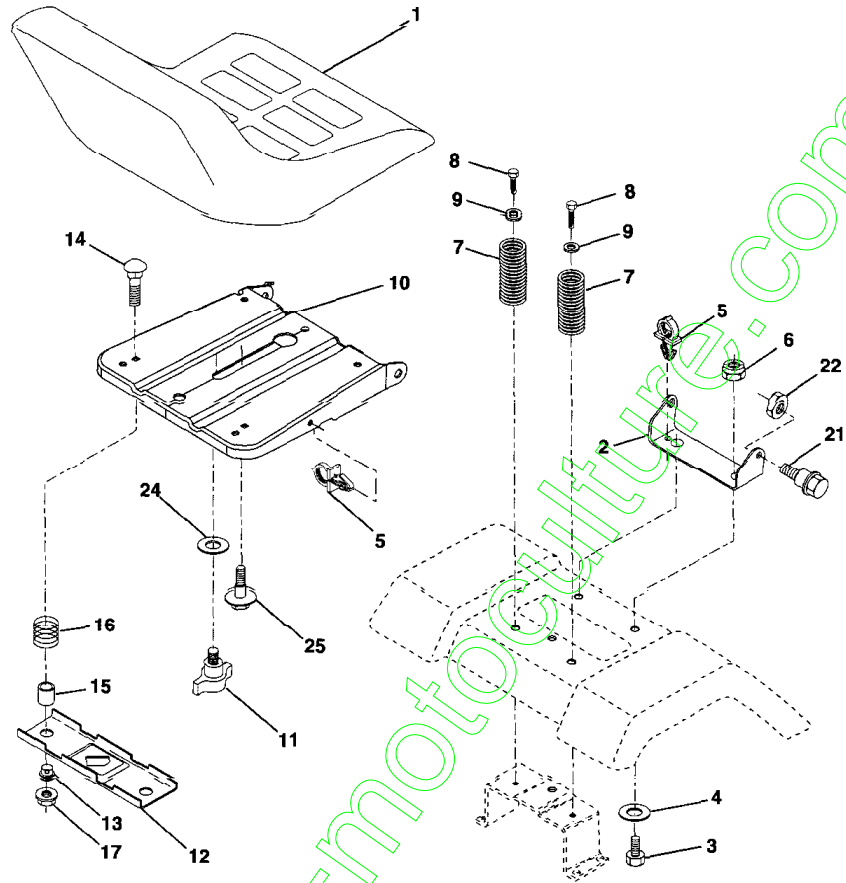
www.emc-motoculture.com



REPERE	REF	DESIGNATION
1	165892	MOWER DECK ASSEMBLY, 42"
2	STD533107	BOLT
3	138017	BRACKET ASSEMBLY, SWAY BAR, FRONT
4	165460	BRACKET SWAY BAR 38/42" DECK
5	STD624008	RETAINER SPRING
6	178024	BAR SWAY DECK
8	193003	BOLT/WASHER
11	134149	BLADE, MULCHING STD. (FOR MULCHING MOWERS ONLY)
13	192872	SHAFT ASSEMBLY MANDREL
14	187281	HOUSING MANDREL
15	110485X	BEARING, BALL, MANDREL
16	174493	STRIPPER, MOWER DECK
18	72140505	BOLT, CARRIAGE 5/16-18 X 5/8
19	132827	BOLT, SHOULDER
20	159770	BAFFLE, VORTEX
21	STD541431	NUT CROWNLOCK 5/16-18 UNC
23	177563	BRACKET, DEFLECTOR
24	105304X	CAP, SLEEVE
25	123713X	SPRING, TORSION, DEFLECTOR
26	110452X	NUT, PUSH
27	400603X428	SHIELD, DEFLECTOR
28	19111016	WASHER 11/32 X 5/8 X 16 GA.
29	131491	ROD, HINGE
30	173984	SCREW THDROL DOD PT HEX
31	187690	WASHER, SPACER
32	153535	PULLEY, MANDREL
33	400234	NUT, TOPLOCK, FLANGED
34	72110612	BOLT CARR. SH. 3/8-16 X 1-1/2 GR. 5
36	131494	PULLEY, IDLER, FLAT
40	73900600	NUT LOCK FLG. 3/8-16 UNC
45	STD624003	RETAINER
46	137729	SCREW, THD. ROLL 1/4-20 X 5/8
48	133944	WASHER, HARDENED
52	139888	BOLT, SHOULDER 5/16-18 UNC
53	184907	ARM ASSEMBLY, PAD, BRAKE
54	178515	WASHER, HARDENED
55	155046	ARM, IDLER
56	165723	SPACER, RETAINER
59	141043	GUARD, TUV IDLER
67	149846	KNOB CUSTOM OVAL
68	180215	V-BELT
142	195784	ARM SPRING BRAKE MOWER
143	157109	BRACKET ARM IDLER 42"
144	158634	KEEPER BELT 42" CLUTCH CABLE
145	165888	PULLEY IDLER FLAT
146	171977	BOLT CARRIAGE IDLER
147	179748	SPRING EXTENSION
148	169022	SPRING RETURN IDLER
149	165898	RETAINER SPRING YELLOW ZINC

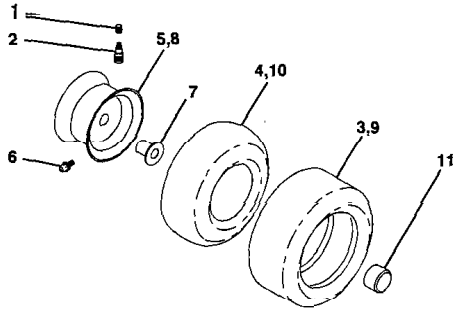
REPERE	REF	DESIGNATION
150	19091210	WASHER 9/32 X 3/4 X 10 GA.
152	181555	CABLE CLUTCH 42 IN
158	17720408	SCREW HEX THD CUT 1/4-20 X 1/2
159	72140614	BOLT RDHD SQN 3/8-16 UNC X 1-3/4
184	19131410	WASHER 13/32 X 7/8 X 10 GA.
185	188234	HEAD ASSEMBLY CABLE CLUTCH
208	17670608	SCREW THDROL 3/8-16 X 1/2
210	409259	COVER MANDREL LH
211	409258	COVER MANDREL RH
304	410522	SHIELD SIDE LH
305	410523	SHIELD SIDE RH

www.emc-motoculture.com



REPERE	REF	DESIGNATION
1	188709	SEAT
2	140551	BRACKET, PIVOT, SEAT
3	71110616	BOLT
4	19131610	WASHER 13/32 X 1 X 10 GA.
5	145006	CLIP, PUSH-IN HINGED
6	STD541437	NUT
7	124181X	SPRING, SEAT
8	17000616	SCREW 3/8-16 X 1-1/2
9	19131614	WASHER 13/32 X 1 X 14 GA.
10	195530	PAN, SEAT
11	166369	KNOB SEAT
12	174648	BRACKET, SWITCH MOUNTING
13	121248X	BUSHING, SNAP
14	72050412	BOLT, CARRIAGE 1/4-20 X 1-1/2
15	134300	SPACER, SPLIT .28 X .88
16	121250X	SPRING
17	123976X	LOCKNUT, FLANGE 1/4 GR. 5
21	171852	BOLT, SHOULDER 5/16-18 UNC
22	STD541431	NUT
24	19171912	WASHER 17/32 X 1-3/16 X 12 GA.
25	127018	BOLT SHOULDER 5/16-18 X .62

www.emc-motoculture.com

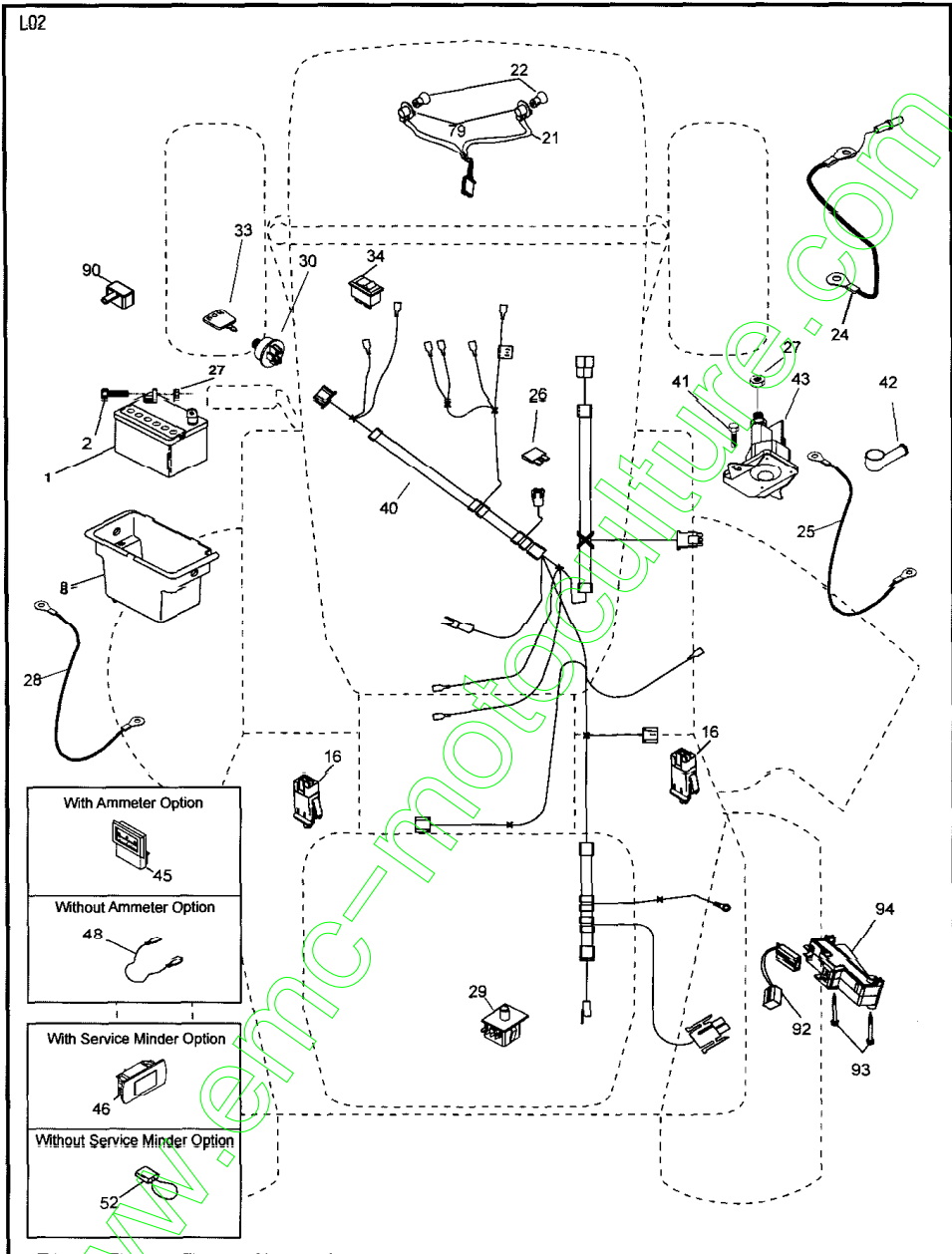


www.emc-motoculture.com

REPERE	REF	DESIGNATION
1	59192	VALVE CAP, TIRE
2	65139	STEM, VALVE
3	106222X	TIRE, FRONT
4	59904	TUBE, FRONT TIRE (NOT PROVIDED, SERVICE ITEM ONLY)
5	106732X624	RIM, FRONT
6	278H	FITTING, GREASE (FRONT WHEEL ONLY)
7	9040H	BEARING, FLANGE (FRONT WHEEL ONLY)
8	106108X624	RIM, REAR
9	106268X	TIRE, REAR
10	7152J	TUBE, REAR TIRE (NOT PROVIDED, SERVICE ITEM ONLY)
11	104757X428	CAP, AXLE

www.emc-motoculture.com

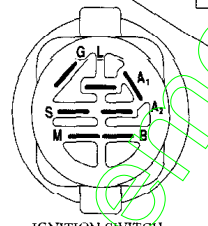
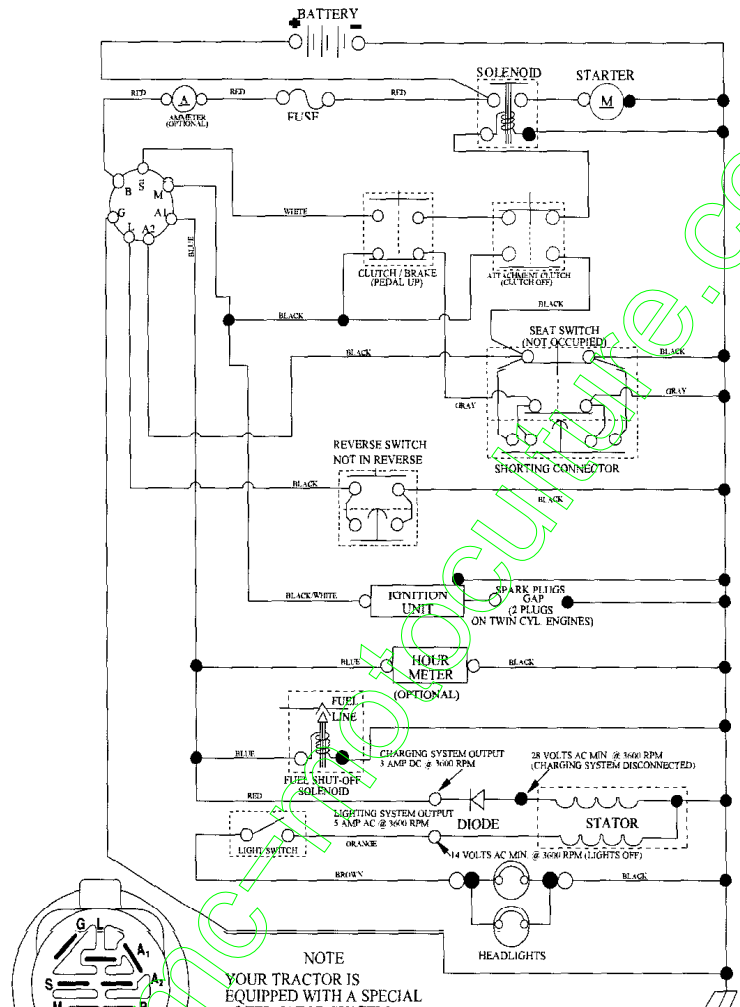
L02



12/07

REPERE	REF	DESIGNATION
1	163465	BATTERY
2	74760412	BOLT HEX HD 1/4-20 UNC X 3/4
8	176689	BOX BATTERY FENDER
16	176138	SWITCH, INTERLOCK
21	175688	HARNESS ASSEMBLY LIGHT W/4152J
22	4152J	BULB LIGHT #1156
24	4799J	CABLE BATTERY 6 GA. 11" RED
25	146147	CABLE BATTERY 6 GA. W/16 WIRE RED
26	175158	FUSE 20 AMP
27	73510400	NUT, KEPS HEX 1/4-20 UNC
28	4207J	CABLE GROUND 6 GA. 12" BLACK
29	192749	SWITCH SEAT
30	193350	SWITCH IGNITION
33	411934	KEY/CHAIN
34	110712X	SWITCH LIGHT
40	197428	HARNESS IGNITION
41	71110408	BOLT BLK. FIN HEX 1/4-20 UNC X 1/2
42	131563	COVER TERMINAL RED
43	192507	SOLENOID
48	140844	ADAPTER AMMETER
52	141940	PROTECTION WIRE LOOP
79	175242	SOCKET ASSEMBLY BULB
90	180449	COVER BATTERY TERMINAL
92	196615	HARNESS PIGTAIL REVERSE SWITCH
93	192540	SCREW PLASTIC 10-14 X 2.0
94	191834	MODULE REVERSE ROS

www.emc-mechatronics.com



IGNITION SWITCH

POSITION	CIRCUIT	"MAKE"
OFF	M+G+A1	
RUN/OVERRIDE	B+A1	
RUN	B+A1	L+A2
START	B+S+A1	

NOTE
 YOUR TRACTOR IS EQUIPPED WITH A SPECIAL ALTERNATOR SYSTEM. THE LIGHTS ARE NOT CONNECTED TO THE BATTERY, BUT HAVE THEIR OWN ELECTRICAL SOURCE. BECAUSE OF THIS, THE BRIGHTNESS OF THE LIGHTS WILL CHANGE WITH ENGINE SPEED. AT IDLE THE LIGHTS WILL DIM. AS THE ENGINE IS SPEEDED UP, THE LIGHTS WILL BECOME THEIR BRIGHTEST.

● NON-REMOVABLE CONNECTIONS
 ○ REMOVABLE CONNECTIONS

WIRING INSULATED CLIPS
 NOTE: IF WIRING INSULATED CLIPS WERE REMOVED FOR SERVICING OF UNIT, THEY SHOULD BE RE-INSTALLED TO PROPERLY SECURE YOUR WIRING.

