

REPAIR PARTS MANUAL
MODEL NO. 257450
Lawn Tractor

CRAFTSMAN®

413064 02.21.07 TH
PRINTED IN U.S.A.

HOW TO USE THIS MANUAL

This manual is designed to provide the customer with a means to identify the parts on his/her tractor when ordering repair parts. The illustrations may or may not represent the actual assemblies; therefore, it is not recommended to use this manual as a guide to assemble or disassemble the tractor. Some hardware and parts are drawn larger in order to more readily identify them.

Each tractor has its own model number.

The model number for your tractor can be found on the fender under the seat.

When ordering parts, always give the following information:

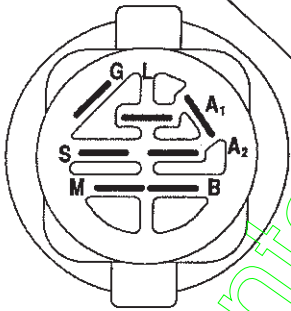
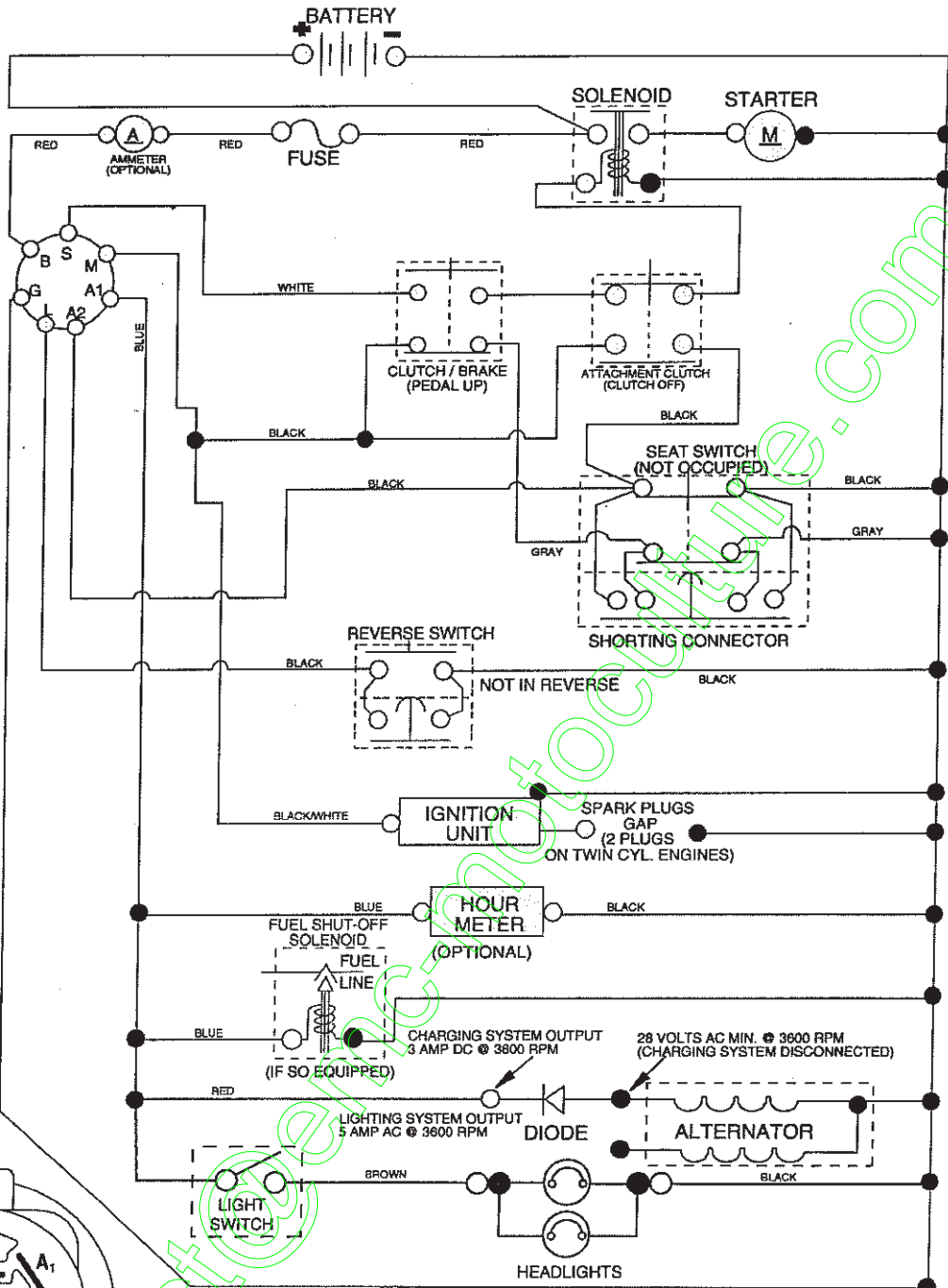
- Product - "Tractor"
- Model Number - "257450"
- Part Number
- Part Description

TABLE OF CONTENTS

SCHEMATIC	3
ELECTRICAL.....	4-5
CHASSIS	6-7
DRIVE.....	8-9
STEERING	10-11
ENGINE.....	12-13
MOWER DECK	14-15
DECALS.....	16
SEAT	17
LIFT	18-19
TRANSAXLE BREAKDOWN	20-21
ENGINE BREAKDOWN.....	22-27
WARRANTY.....	BACK COVER

TRACTOR -- MODEL NUMBER 917.257450

SCHEMATIC
03059_197428



IGNITION SWITCH

POSITION	CIRCUIT "MAKE"
OFF	M+G+A1
RUN/OVERRIDE	B+A1
RUN	B+A1 L+A2
START	B + S + A1

03059

NOTE

YOUR TRACTOR IS EQUIPPED WITH A SPECIAL ALTERNATOR SYSTEM. THE LIGHTS ARE NOT CONNECTED TO THE BATTERY, BUT HAVE THEIR OWN ELECTRICAL SOURCE. BECAUSE OF THIS, THE BRIGHTNESS OF THE LIGHTS WILL CHANGE WITH ENGINE SPEED. AT IDLE THE LIGHTS WILL DIM. AS THE ENGINE IS SPEEDED UP, THE LIGHTS WILL BECOME THEIR BRIGHTEST.

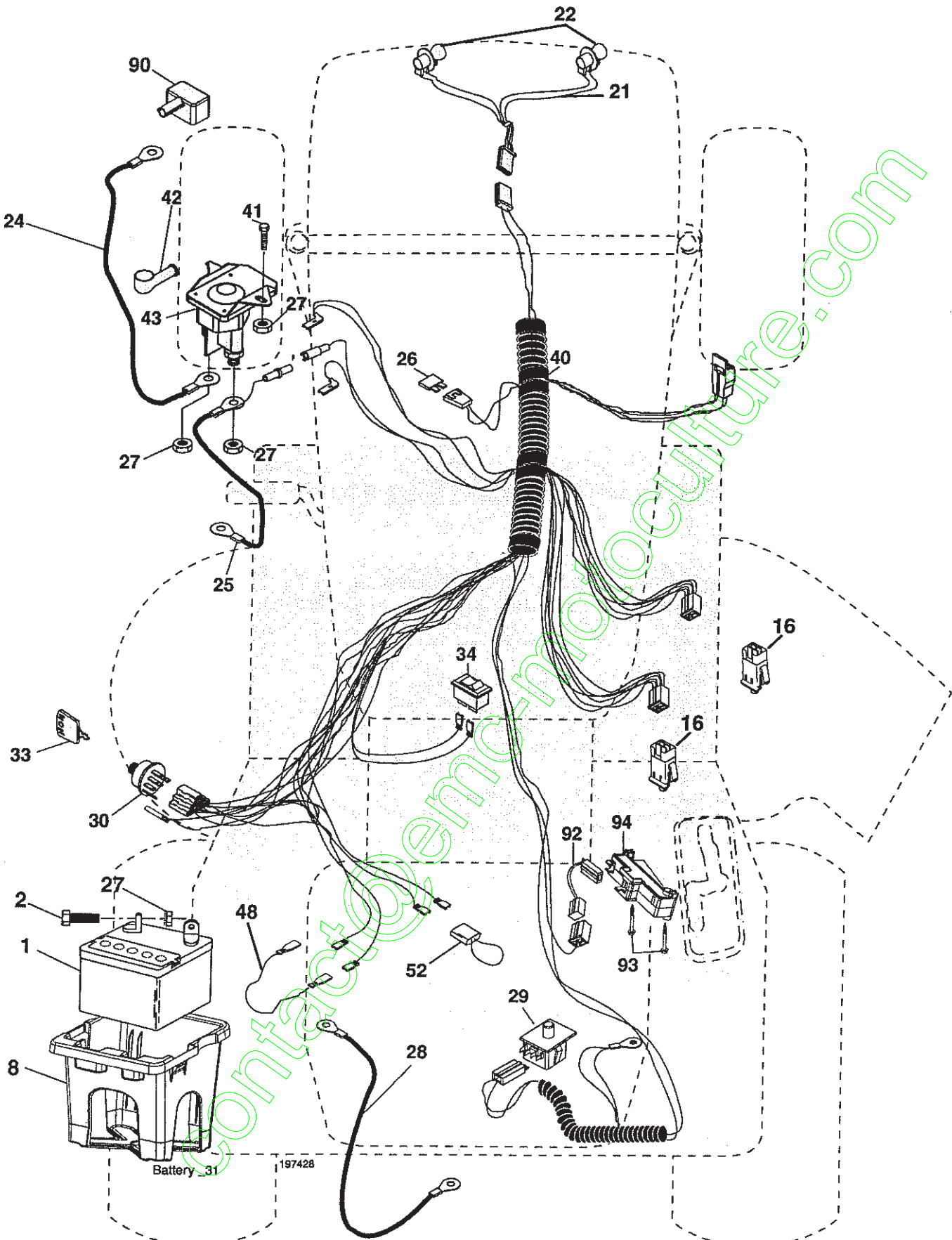


WIRING INSULATED CLIPS

NOTE: IF WIRING INSULATED CLIPS WERE REMOVED FOR SERVICING OF UNIT, THEY SHOULD BE REPLACED TO PROPERLY SECURE YOUR WIRING.

TRACTOR -- MODEL NUMBER 917.257450

ELECTRICAL



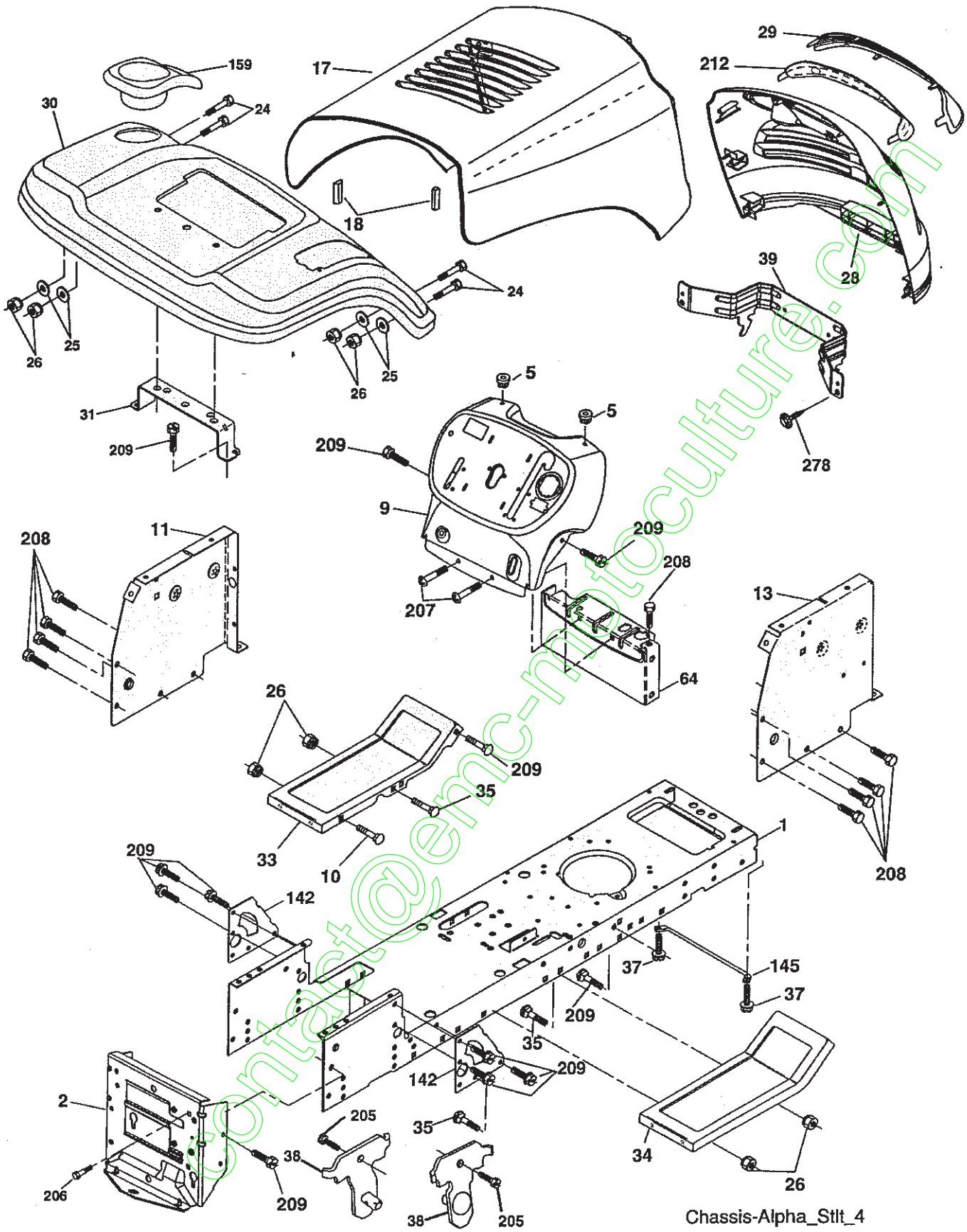
ELECTRICAL**TRACTOR -- MODEL NUMBER 917.257450**

KEY NO.	PART NO.	DESCRIPTION
1	163465	Battery
2	74760412	Bolt Hex Hd 1/4-20 unc x 3/4
8	176689	Box Battery
16	176138	Switch Interlock
21	175688	Harness Asm Light W/4152j
22	4152J	Bulb Light #1156
24	4799J	Cable Battery 6 Ga. 11"red
25	146147	Cable Battery
26	175158	Fuse 20 AMP
27	73510400	Nut Keps Hex 1/4-20 unc
28	4207J	Cable Ground 6 Ga. 12"black
29	192749	Switch
30	193350	Switch Ign
33	140403	Key Ign
34	110712X	Switch Light/Reset
40	197428	Harness Ign
41	71110408	Bolt Blk Fin Hex 1/4-20
42	131563	Cover Terminal Red
43	192507	Solenoid
48	140844	Adapter Ammeter
52	141940	Protection Wire Loop
90	180449	Cover Terminal Battery
92	196615	Harness Pigtail
93	192540	Screw Plastite 10-14 x 2.0
94	191834	Module Reverse

NOTE: All component dimensions given in U. S. inches 1 inch = 25.4 mm.

TRACTOR -- MODEL NUMBER 917.257450

CHASSIS



Chassis-Alpha_Stlt_4

TRACTOR -- MODEL NUMBER 917.257450

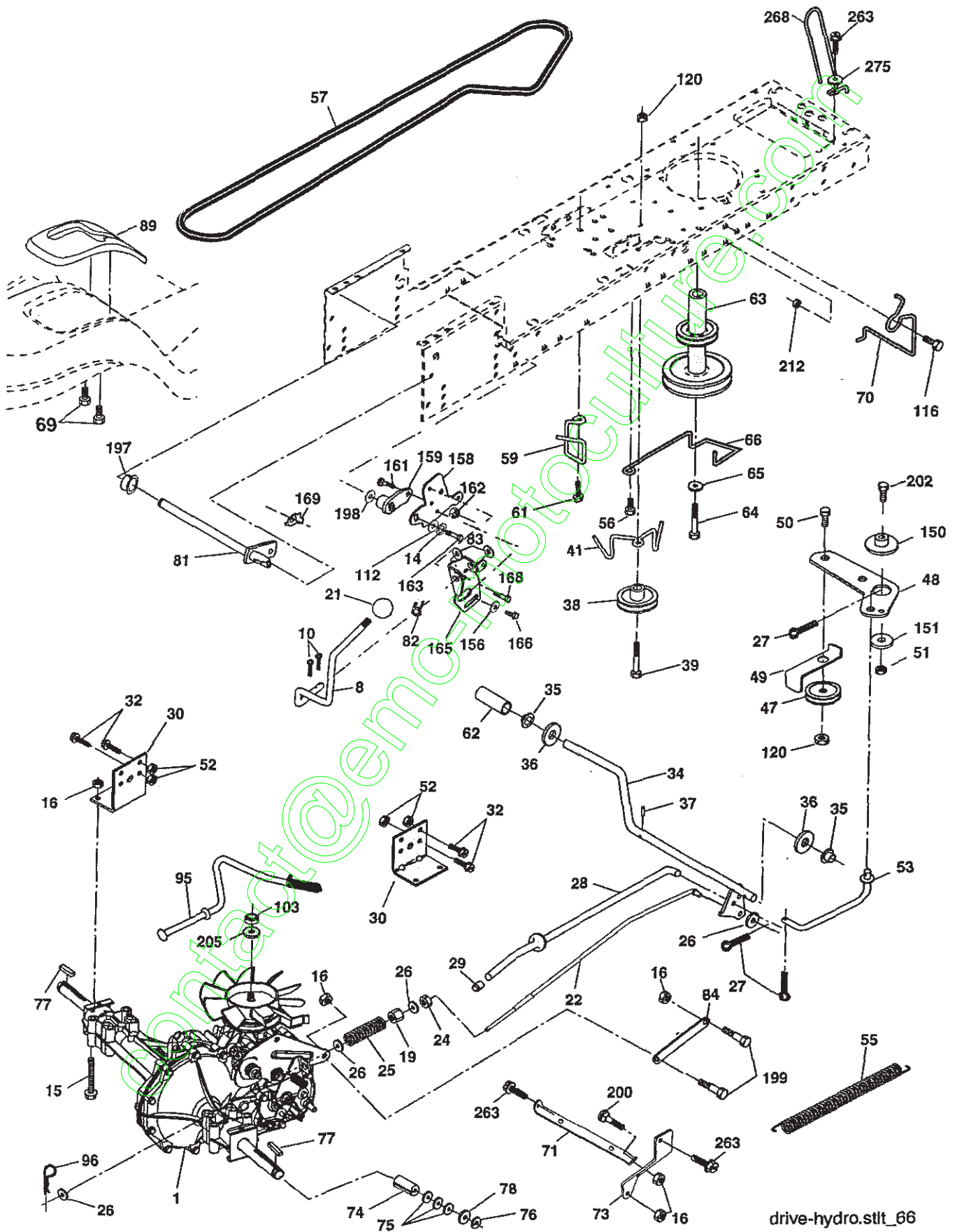
CHASSIS

KEY NO.	PART NO.	DESCRIPTION
1	174619	Chassis
2	176554	Drawbar, Stretch
5	155272	Bumper, Hood/Dash
9	193510X013	Dash
10	72140608	Bolt, Carriage 3/8-16 x 1
11	174996	Panel Dash LH
13	172105X010	Panel Silkscr Dash RH
17	187559X613	Hood
18	184921	Bumper Hood
24	74780616	Bolt Fin Hex 3/8-16 unc x 1 Gr. 5
25	19131312	Washer 13/32 x 13/16 x 12 Ga.
26	73800600	Nut Lock Hex w/Ins 3/8-16 unc
28	187598	Grille/Lens Asm (Include Key nos. 29 and 212)
29	187567X599	Lens Grille Basic Bar
30	192528X613	Fender
31	136619	Bracket Fender Repl 109873X
33	179716X613	Footrest Pnt LH
34	179717X613	Footrest Pnt RH
35	72110606	Bolt Rdhd Sht Sqnk 3/8-16 x 3/4
37	17490508	Screw Thdrol 5/16-18 x 1/2 TYT
38	175710	Bracket Asm. Pivot Mower
39	187568	Bracket Pivot
64	154798	Dash Lower
142	175702	Plate Reinforcement
145	409167	Rod Pivot Chassis/Hood
159	169473x428	Cupholder
205	17490608	Screw Thdrol 3/8-16 x 1/2
206	170165	Bolt Shoulder 5/16-18
207	17670508	Screw Thdrol 5/16-18 x 1/2
208	17670608	Screw Thdrol 3/8-16 x 1/2
209	17000612	Screw Hex Wsh Thdrol 3/8-16
212	187569	Insert Lens Reflect
278	191611	Screw 10 x 3/4 Single Lead-Hex
--	5479J	Plug Button Blk 359 Dia Choke

NOTE: All component dimensions given in U.S. inches
1 inch = 25.4 mm.

TRACTOR -- MODEL NUMBER 917.257450

DRIVE



drive-hydro.stlt_66

TRACTOR -- MODEL NUMBER 917.257450

DRIVE

KEY NO.	PART NO.	DESCRIPTION	KEY NO.	PART NO.	DESCRIPTION
1	-----	Transaxle, 322-0510 (See Transaxle Breakdown)	71	169183	Strap Torque LH
8	192706	Rod Shift Fender Adjust STLT	73	169182	Strap Torque RH
10	76020416	Pin Cotter 1/8 x 1 Cad	74	137057	Spacer Axle
14	10040400	Washer Lock Hvy Helical 1/4	75	121749X	Washer 25/32 x 1 1/4 x 16 Ga.
15	74490544	Bolt 5/16-18 Gr. 5	76	12000001	E-ring #5133-75
16	73800500	Nut Lock Hx W/Ins 5/16-18 unc Pl	77	123583X	Key Square 2.0 x 1845/ 1865
19	73800600	Nut Lock 3/8-16 unc	78	121748X	Washer 25/32 x 1-5/8 x 16 Ga.
21	140845	Knob	81	165596	Shaft Asm Cross Tapered 18"
22	169498	Rod Brake Blk Zinc 26 840	82	16 57-11	Spring Torsion T/a
24	73350600	Nut Hex Jam 3/8-16 unc	83	19171216	Washer 17/32 x 3/4 x 16 Ga.
25	106888X	Spring Rod Brake 2 00 Zinc	84	169843	Transaxle Link
26	19131316	Washer 13/32 x 13/16 x 16 Ga	89	192056x428	Console Shift STLT
27	76020412	Pin Cotter 1/8 x 3/4 Cad	95	170201	Control Asm Bypass
28	175765	Rod Brake Parking LT/YT	96	4497H	Retainer Spring 1"
29	71673	Cap Brake Parking Black	103	73940800	Nut Hex Jam Toplock 1/2-20 UNF
30	174973	Bracket Mtg Transaxle	112	19091210	Washer 9/32 x 3/4 x 10 Ga.
32	74760512	Bolt Hex Hd 5/16-18 unc x 3/4	116	72140608	Bolt Rdhd Sq Neck 3/8-16 x 1
34	175578	Shaft Asm Pedal Foot	120	73900600	Nut Lock Flg. 3/8-16
35	120183X	Bearing Nylon Blk 629 Id	150	175456	Spacer Retainer
36	19211616	Washer 21/32 x 1 x 16 Ga	151	19133210	Washer 13/32 x 2 x 10 Ga.
37	1572H	Pin Roll 3/16 x 1"	156	166002	Washer Srrted 5/16 ID x 1.125
38	179114	Pulley Composite	158	165589	Bracket Shift Mount
39	72110622	Bolt Rdhd 3/8-16 x 2-3/4 Gr. 5	159	183900	Hub Shift
41	175556	Keeper Belt Idler Flat	161	72140406	Bolt Rdhd Sqnk 1/4-20 x 3/4 Gr. 5
47	127783	Pulley Idler V Groove Plastic	162	73680400	Nut Crownlock 1/4-20 unc
48	154407	Bellcrank Clutch Grnd Drv Stl	163	74780416	Bolt Hex Fin 1/4-20 unc x 1 Gr. 5
49	123205X	Retainer Belt Style Spring	165	165623	Bracket Pivot Lever
50	72110612	Bolt Carr. sh 3/8-16 x 1-1/2 Gr. 5	166	17490510	Screw 5/16-18 x 5/8
51	73680600	Nut Crownlock 3/8-16 unc	168	165492	Bolt Shoulder 5/16-18 x .561
52	73680500	Nut Crownlock 5/16-18 unc	169	165580	Plate Fastening STLT/CRD
53	199652	Link Clutch	197	169613	Nyliner Snap-In 5/8" ID
55	105709X	Spring Return Clutch 6 75	198	169593	Washer Nyl 7/8 Id x .105" Hyd
56	17060620	Screw 3/8-16 x 1-1/4	199	169612	Bolt Shoulder 5/16-18 UNC
57	140294	V-Belt	200	72140508	Bolt Rdhd Sqnk 5/16 - 18 unc x 1
59	169691	Keeper Belt Span Ctr	202	72110614	Bolt 3/8-16 x 1-3/4 Gr. 5
61	17120614	Screw 3/8-16 x .875	205	19171616	Washer 17/32 x 1 x 16 Ga.
62	8883R	Cover Pedal	212	145212	Nut Hex Flg Lock
63	180219	Engine Pulley	263	17000612	Screw 3/8-16 x 3/4
64	173937	Bolt Hex	268	182402	Guard Muffler
65	10040700	Washer Lock Hvy Hcl Spr 7/16	275	19131614	Washer 13/32 x 1 x 14
66	154778	Keeper Belt Engine Foolproof			
69	142432	Screw Hex Wsh Hi-Lo 1/4-1/2 unc			
70	180218	Guide Belt Mower Drive RH			

NOTE: All component dimensions given in U.S. inches
1 inch = 25.4 mm

TRACTOR -- MODEL NUMBER 917.257450

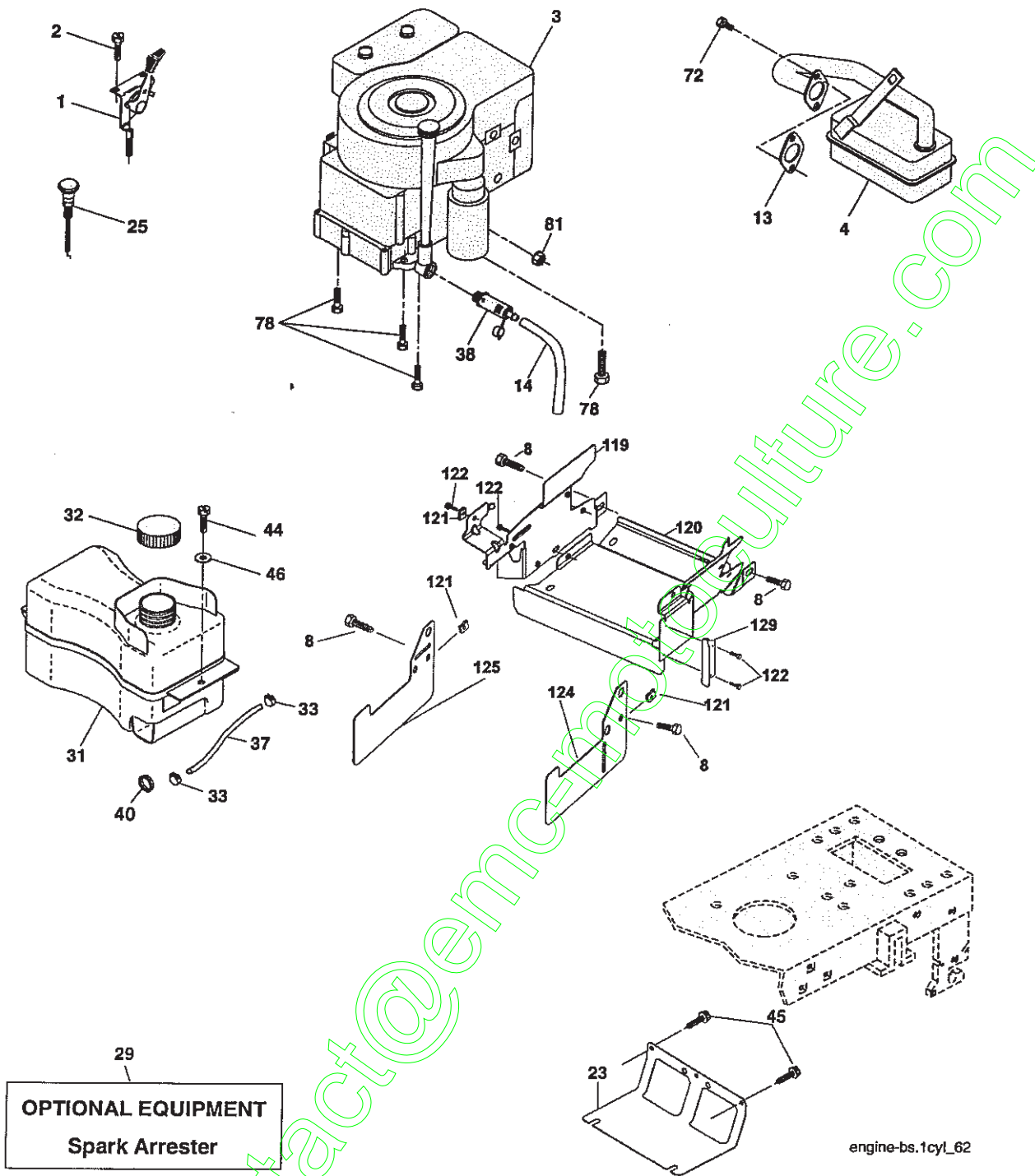
STEERING

KEY NO.	PART NO.	DESCRIPTION
1	186780	Wheel Steering
2	195673	Axle Asm
3	169840	Spindle Asm LH
4	169839	Spindle Asm RH
5	6266H	Bearing Race Thrust Harden
6	121748X	Washer 25/32 x 1-5/8 x 16 Ga.
7	19272016	Washer 27/32 x 1-1/4 x 16 Ga.
8	12000029	Ring Klip #t5304-75
9	3366R	Bearing Col Strg Blk
10	175121	Link Drag
11	10040600	Washer Lock Hvy Hlcl Spr 3/8
13	136518	Spacer earing Axle Front
15	145212	Hexflange Lock
17	190753	Shaft Asm Strg
26	126847X	Bushing Link Drag Blk LR
28	19131416	Washer 13/32 x 7/8 x 16 Ga.
29	17000612	Screw 3/8-16 x 3/4
30	76020412	Pin Cotter 1/8 x 3/4 Cad
32	192757	Rod Tie Wire Form 19 75 Mech
34	10040500	Washer Lock Hvy Hlcl Spr 5/16
36	155099	Bushing Strg 5/8 Id Dash
37	152927	Screw
38	186781	Cap Wheel Steer
39	19113812	Washer 11/32 ID x 2-3/8 OD x 12 Ga.
40	73540600	Nut Crownlock 3/8-24
41	186737	Adaptor Wheel Strg
42	145054X428	Boot Dash Mtl Steering Blk
43	121749X	Washer 25/32 x 1 1/4 x 16 Ga.
44	190752	Extension Steering
46	121232X	Cap Spindle Fr Top Blk
65	160367	Spacer Brace Axle
67	72110618	Bolt RDHD SQNK 3/8-16 x 2-1/4
68	169827	Brace Axle
71	175146	Steering Asm.
82	199978	Bracket Susp Chassis Front
88	175118	Bolt Shoulder 7/16-20
91	175553	Clip Steering
95	188967	Washer Harden .793 x 1.637 x 060
97	74780564	Bolt 5/16-18 unc x 4"L Hlcl Spr. 5/16

NOTE: All component dimensions given in U.S. inches
1 inch = 25.4 mm.

TRACTOR -- MODEL NUMBER 917.257450

ENGINE



engine-bs.1cyL_62

TRACTOR -- MODEL NUMBER 917.257450

ENGINE

KEY NO.	PART NO.	DESCRIPTION	KEY NO.	PART NO.	DESCRIPTION
1	170545	Control Th/ch Flag	45	17000612	Screw Hex Wsh Thdrol 3/8-16
2	17720408	Screw Hex Thd Cut 1/4-20 x 1/2	46	19091416	Washer 9/32 x 7/8 x 16 Ga.
3	-----	Engine, B&S 31C707-0240-B1 (See Engine Breakdown)	72	192334	Screw Socket Hd 5/16-18 x .75
4	137352	Muffler Exhaust B&S	78	17060620	Screw 3/8-16 x 1-1/4
8	171877	Bolt 5/16-18 UNC x 3/4	81	73510400	Nut Keps Hex 1/4-20 unc
13	165291	Gasket Eng 1 313 Id Tin Plated	119	197949	Guard Pulley LH
14	148456	Tube Drain Oil Easy	120	197948	Guard Pulley RH
23	169837	Shield BRN/DBR Guard	121	196688	Clips Threaded
25	187770X428	Control Choke	122	137729	Screw Thdrol 1/4-20 x 5/8
29	137180	Kit Spark Arrestor (Flat Scrn)	124	410522	Shield Side LH
31	407516	Tank Fuel Front	125	410523	Shield Side RH
32	197725	Cap Asm Fuel	129	400328	Guard Pulley Adapter
33	123487X	Clamp Hose			
37	137040	Line Fuel			
38	181654	Plug Drain Oil			
40	124028X	Bushing Snap Nyl Blk Fuel Line			
44	17670412	Screw Thdrol 1/4-20 x 3/4			

NOTE: All component dimensions given in U.S. inches
1 inch = 25.4 mm

For engine service and replacement parts, call the toll free number for your engine manufacturer listed below:

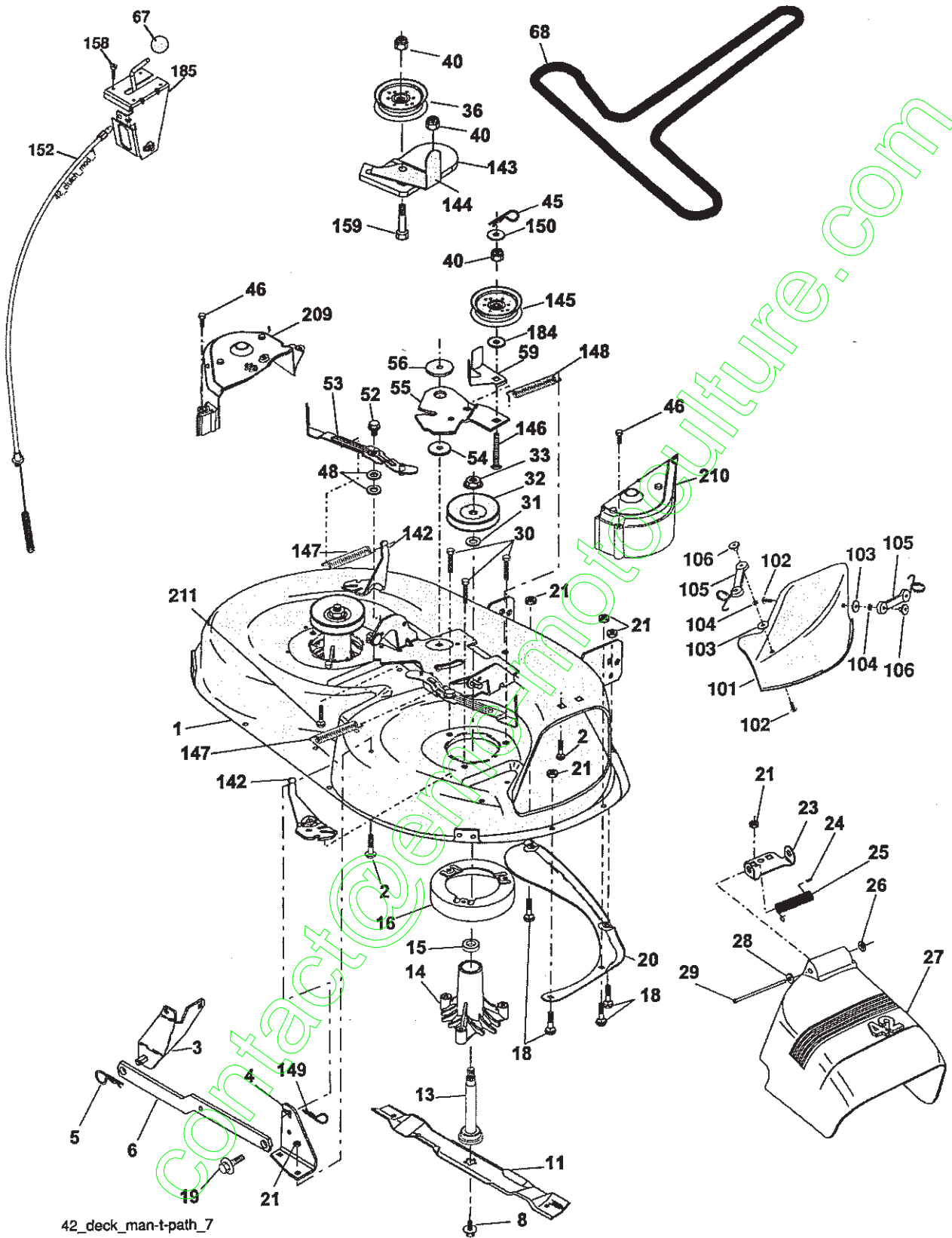
Briggs & Stratton 1-800-233-3723

Engine Power Rating Information

The gross power rating for individual gas engine models is labeled in accordance with SAE (Society of Automotive Engineers) code J11940 (Small Engine Power & Torque Rating Procedure), and rating performance has been obtained and corrected in accordance with SAE J1995 (Revision 2002-5). Actual gross engine power will be lower and is affected by, among other things, ambient operating conditions and engine-to-engine variability. Given both the wide array of products on which engines are placed and the variety of environmental issues applicable to operating the equipment, the gas engine will not develop the rated gross power when used in a given piece of power equipment (actual "on-site" or net horsepower). This difference is due to a variety of factors including, but not limited to, accessories (air cleaner, exhaust, charging, cooling, carburetor, fuel pump, etc.), application limitations, ambient operating conditions (temperature, humidity, altitude), and engine-to-engine variability. Due to manufacturing and capacity limitations, Briggs & Stratton may substitute an engine of higher rated power for this Series engine.

TRACTOR -- MODEL NUMBER 917.257450

MOWER



42_deck_man-t-path_7

TRACTOR - - MODEL NUMBER 917.257450

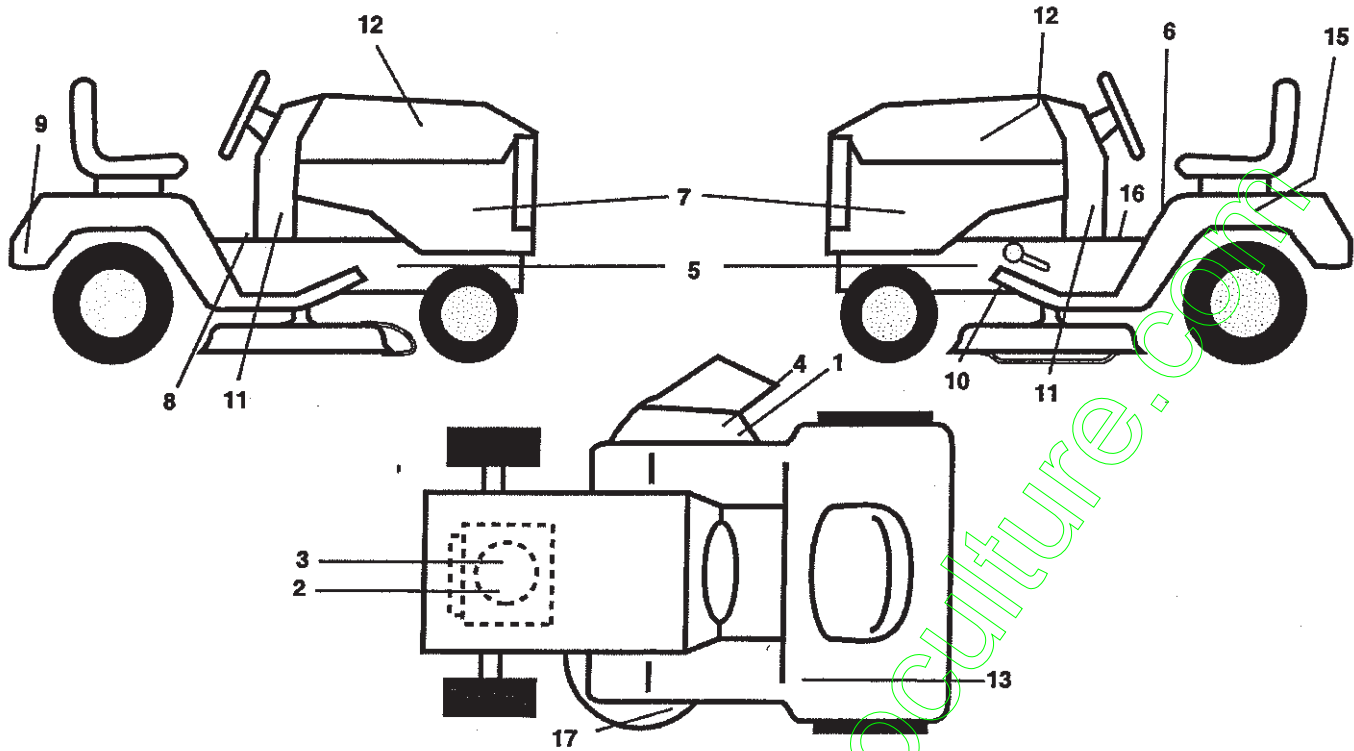
MOWER

KEY NO.	PART NO.	DESCRIPTION	KEY NO.	PART NO.	DESCRIPTION
1	165892	Mower Deck Assembly, 42"	48	133944	Washer, Hardened
2	72140506	Bolt	52	139888	Bolt, Shoulder 5/16-18 unc
3	138017	Bracket Asm Fr. Sway Bar 3/42	53	184907	Arm Assembly, Pad, Brake
4	165460	Bracket Asm Deck 42" Sway Bar	54	178515	Washer, Hardened
5	4939M	Retainer Spring	55	155046	Arm, Idler
6	178024	Bar Sway Deck	56	165723	Spacer, Retainer
8	193003	Bolt Washer Asm 7/16-20 (The following Blades are available)	59	141043	Guard TUV Idler
11	134149	Blade, Mulching 42" Std (for mulching mowers only)	67	149846	Knob
--	138971	Blade Mower 42" Hi-Lift (for bagging and discharging)	68	180215	V-Belt, 42" Mower
--	139775	Blade Mulching 42" Premium (For better wear when mulching)	101	193107	Cover Mulching 42"
13	192872	Shaft Assembly, Mandrel, Vented	102	71081010	Screw Pan HD Phillip 10-24 x 5/8
14	187281	Housing, Mandrel, Vented	103	19061216	Washer
15	110485X	Bearing, Ball, Mandrel	104	10071000	Washer Lock
16	174493	Stripper, Mandrel Deck	105	160793	Latch Asm. Mulch/Bagger
18	72140505	Bolt, Carriage 5/16-18 x 5/8	106	2029J	Nut Weld .328/.304 #10-24
19	132827	Bolt, Shoulder	142	195784	Arm Spring Brake Mower
20	159770	Baffle, Vortex	143	157109	Bracket Arm Idler 42"
21	73680500	Nut	144	158634	Keeper Belt 42" Clutch Cable
23	177563	Bracket, Deflector Mower 42"	145	165888	Pulley Idler Flat
24	105304X	Cap, Sleeve 80 x 112 Blk Mower	146	171977	Bolt Carriage Idler
25	123713X	Spring, Torsion, Deflector 2 52	147	179748	Spring Extension
26	110452X	Nut, Push Phos & Oil	148	169022	Spring Return Idler
27	400603X428	Shield, Deflector 42" Blk	149	165898	Retainer Spring Yellow
28	19111016	Washer 11/32 x 5/8 x 16 Ga.	150	19091210	Washer 9/32 x 3/4 x 10 Ga.
29	131491	Rod, Hinge 42" 6 75 W/G	152	181555	Clutch Cable 42"
30	173984	Screw Thdrol	158	17720408	Screw Hex Thd Cut 1/4-20 x 1/2
31	187690	Washer, Spacer Mower Vented	159	72140614	Bolt Rdhd Sqn 3/8-16 unc x 1-3/4
32	153535	Pulley, Mandrel	184	19131410	Washer 13/32 x 7/8 x 10 Ga.
33	400234	Nut, Toplock	185	188234	Head Asm Cable Clutch
34	72110612	Bolt Carr SH 3/8-16 x 1-1/2 Gr.5	209	409259	Guard, Mandrel, LH 42" Tex French
36	131494	Pulley, Idler, Flat	210	409258	Cover Mandrel RH 42" Tex French
40	73900600	Nut Lock 3/8-16	--	182970	Mandrel Assembly (Includes Housing Shaft and Shaft Hardware Only - Pulley Not Included)
45	4497H	Retainer	--	402918	Replacement Mower, Complete
46	137729	Screw, Thdrol 1/4-20 x 5/8 T			

NOTE: All component dimensions given in U.S. inches
1 inch = 25.4 mm

TRACTOR -- MODEL NUMBER 917.257450

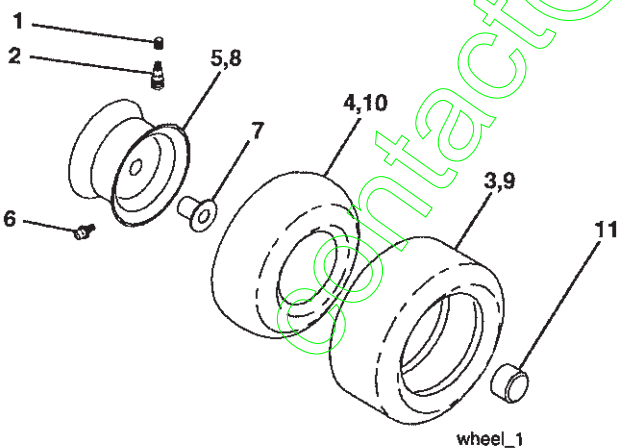
DECALS



KEY NO.	PART NO.	DESCRIPTION
1	182166	Decal, Cutfinger
2	196841	Decal, Warning Eng
3	412646	Decal, Engine HP
4	196357	Decal, Deck Warning
5	159736	Decal, Chassis Hot Muff
6	180432	Decal, Fender Danger
7	404492	Decal, Panel Side
8	140837	Decal, Saddle Brake
9	411697	Decal, Fender
10	197490	Decal, V-Belt Drive
11	186787	Decal, Lower Dash
12	411697	Decal, Hood RH/LH

KEY NO.	PART NO.	DESCRIPTION
13	159737	Decal, Brake Clutch
14	196842	Decal, Sdl SHF
15	145005	Decal, Caution, Battery
16	400389	Decal, Oper Warning
17	160396	Decal, V-Belt Sch.
--	138311	Decal, Handle Lft Height Adj.
--	179769X428	Pad Footrest RH
--	179768X428	Pad Footrest LH
--	166960	Decal, Bypass
--	162598	Decal, Drawbar
--	413062	Manual, Operator's Euro
--	413064	Manual, Parts

WHEELS & TIRES

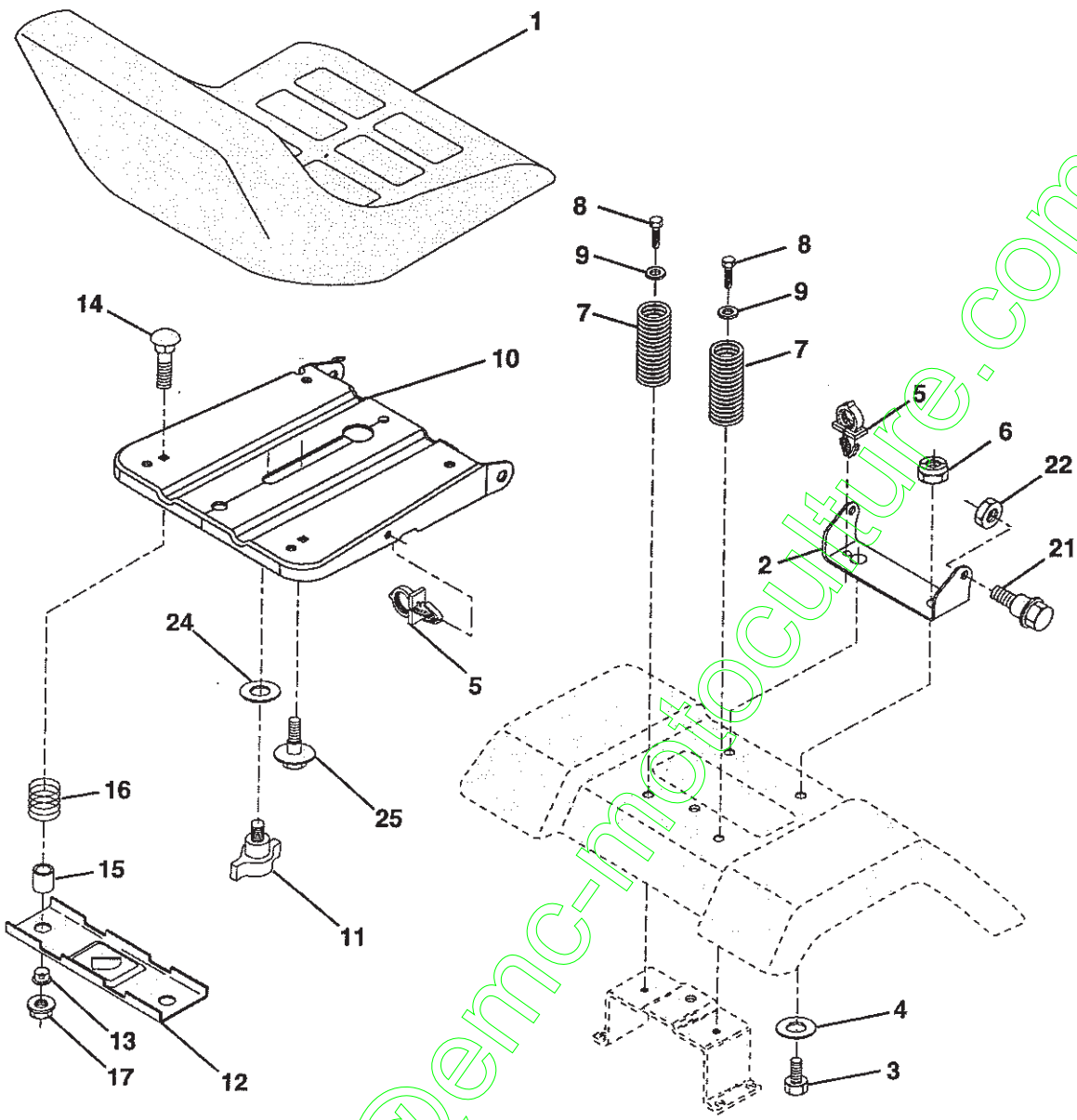


KEY NO.	PART NO.	DESCRIPTION
1	59192	Cap, Tire valve
2	65139	Stem, Valve
3	106222X	Tire, Front
4	59904	Tube, Front (Service item only)
5	106732X624	Rim assembly, 6" front
6	278H	Fitting, Grease (Front wheel only)
7	9040H	Bearing, Flange (Front wheel only)
8	106108X624	Rim assembly, 8" rear
9	106268X	Tire, Rear
10	7152J	Tube, Rear (Service item only)
11	104757X428	Cap, Hub Axle
--	144334	Sealant, Tire (10 oz. Tube)

NOTE: All component dimensions given in U.S. inches
1 inch = 25.4 mm

TRACTOR -- MODEL NUMBER 917.257450

SEAT



seat_ft.knob_13

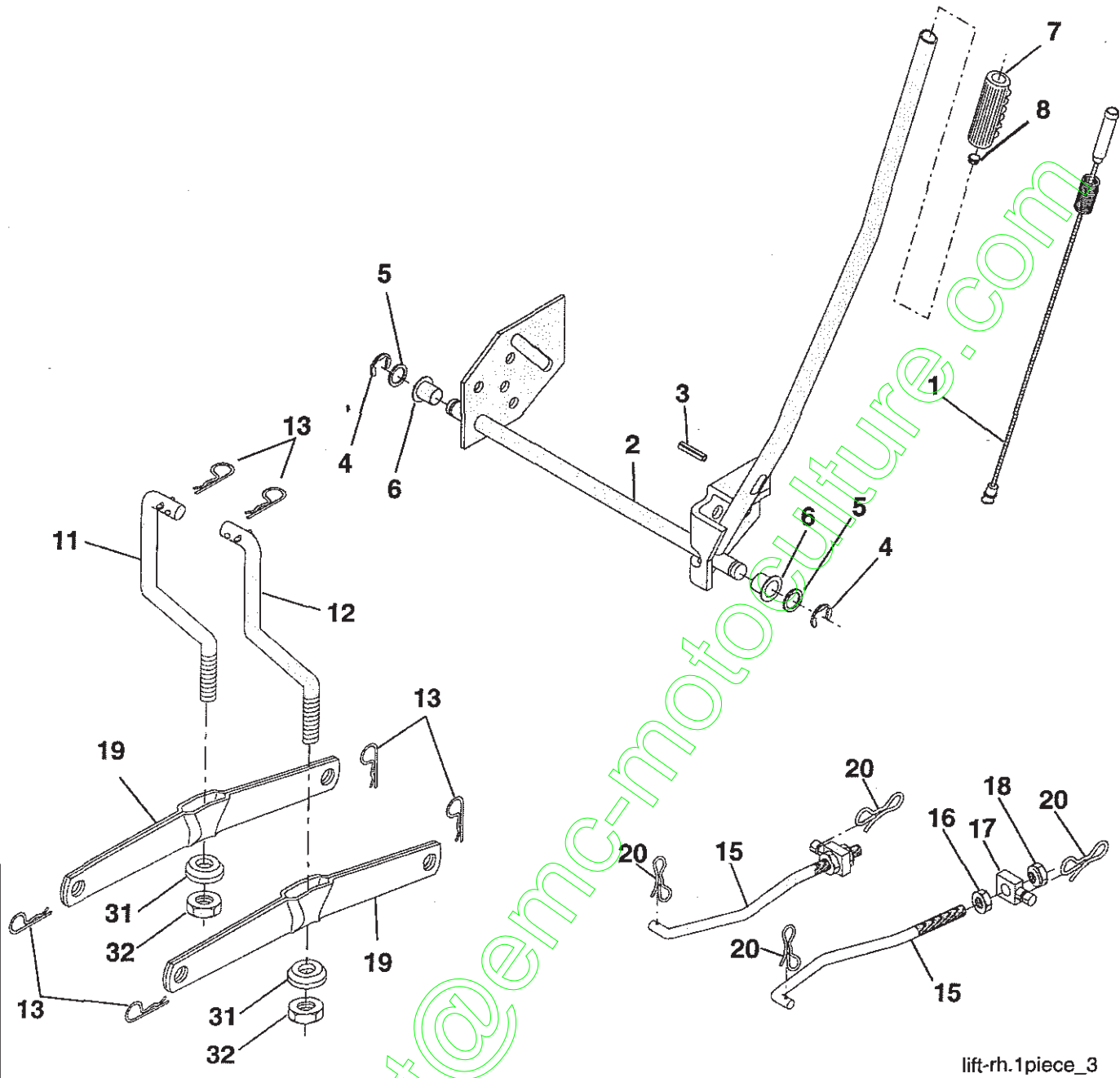
KEY NO.	PART NO.	DESCRIPTION
1	188709	Seat
2	140551	Bracket Seat Pivot
3	71110616	Bolt Hex 3/8 - 16 x 1
4	19131610	Washer 13/32 x 1 x 10 Ga.
5	145006	Clip Push-In Hinged
6	73800600	Nut Lock Hex w/Ins 3/8 - 16
7	124181X	Spring Seat Cprsn 2 250 Blk Zi
8	17000616	Screw 3/8-16 x 1.5
9	19131614	Washer 13/32 x 1 x 14 Ga.
10	195530	Pan Asm. Seat
11	166369	Knob Seat
12	174648	Bracket Pnt Mounting Switch

KEY NO.	PART NO.	DESCRIPTION
13	121248X	Bushing Snap Blk Nyl
14	72050412	Bolt Rdhd Sht Nk 1/4 - 20 x 1 -1/2
15	134300	Spacer Split .28 x .96
16	121250X	Spring Cprsn
17	123976X	Nut Lock 1/4 Lge Flg
21	171852	Bolt Shoulder 5/16-18 unc-2A
22	73800500	Nut Lock Hex w/Ins 5/16 - 18
24	19171912	Washer 17/32 x 1-3/16 x 12 Ga.
25	127018X	Bolt Shoulder 5/16-18 x .62

NOTE: All component dimensions given in U.S. inches
1 inch = 25.4 mm.

TRACTOR -- MODEL NUMBER 917.257450

LIFT



lift-rh.1piece_3

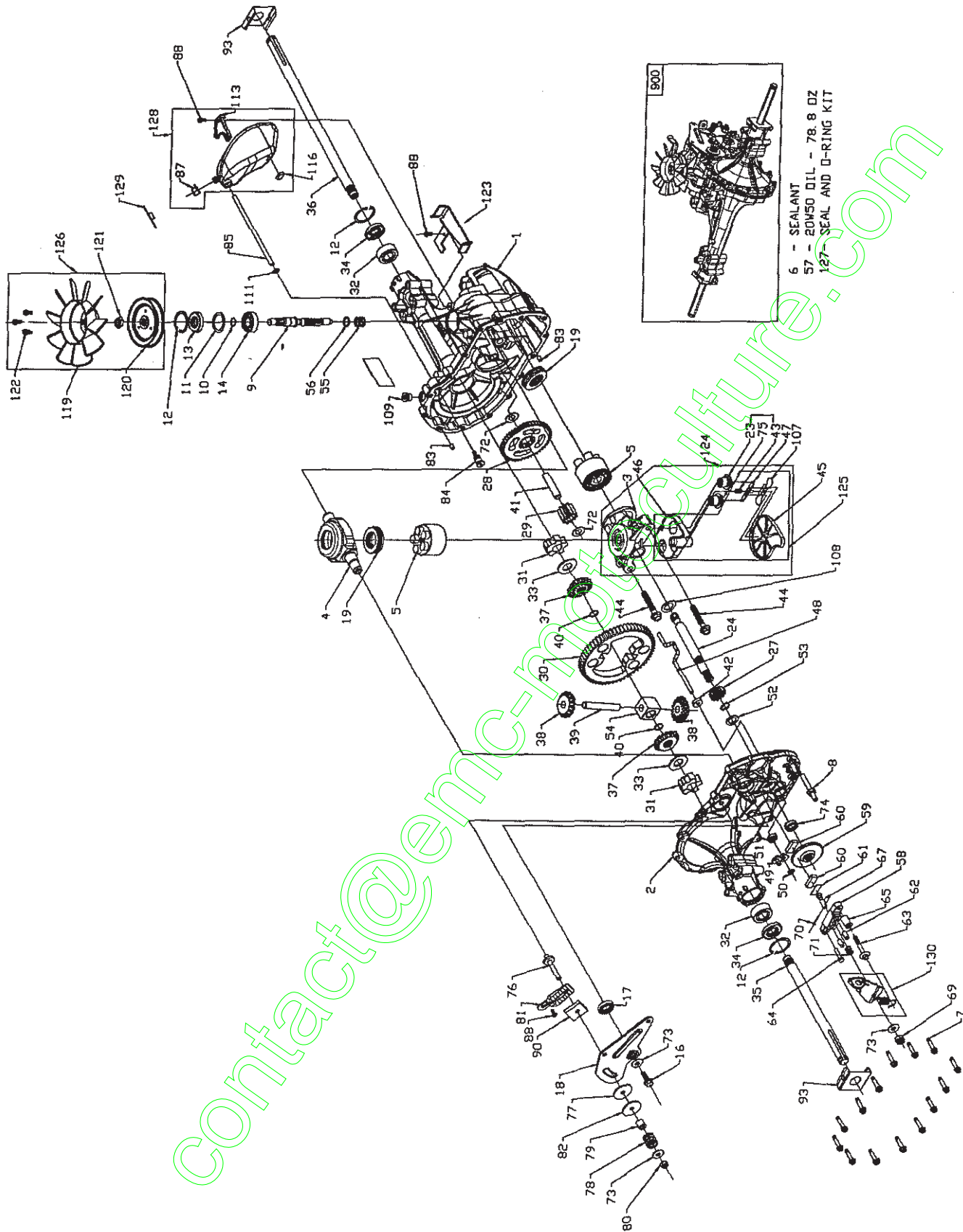
TRACTOR -- MODEL NUMBER 917.257450

LIFT

KEY NO.	PART NO.	DESCRIPTION
1	159460	Wire Asm Inner/Sprg w/plunger
2	159471	Shaft Asm Lift RH
3	105767X	Pin Groove 1 500 Zinc
4	12000002	E Ring #5133-62
5	19211621	Washer 21/32 x 1 x 21 Ga.
6	120183X	Bearing Nylon Blk 629 Id
7	125631X	Grip Handle
8	122365X	Button Plunger
11	139865	Link Lift LH Fixed Length
12	139866	Link Lift RH Fixed Length
13	4939M	Retainer Spring
15	173288	Link Front
16	73350800	Nut Jam Hex 1/2-13 unc
17	175689	Trunnion
18	73800800	Nut Lockw/Wsh 1/2-13 unc
19	139868	Arm Suspension Rear
20	194209	Pin Cotter 7/16 Bow Tie Lock
31	169865	Bearing Pvt Lift
32	73540600	Nut Crownlock 3/8-24

NOTE: All component dimensions given in U.S. inches
1 inch = 25.4 mm.

TRACTOR -- MODEL NUMBER 917.257450
HYDRO TRANSAXLE - MODEL NUMBER 322-0510



TRACTOR - - MODEL NUMBER 917.257450

HYDRO TRANSAXLE - MODEL NUMBER 322-0510

KEY NO.	PART NO.	DESCRIPTION	KEY NO.	PART NO.	DESCRIPTION
1	170351	Kit, Main Housing Main Housing, Machined Bushing .865 X .985 X .790	67	170413	Bolt, Square Head - Brake
2	170352	Kit, Side Housing Side Housing, Machined Bushing .865 X .985 X .790 Bushing .624 X .719 X .562	69	170415	Nut, Castle 5/16-24
3	170353	Kit, Center Section Center Section, Machined Bushing .707 X .788 X .591	70	170416	Pin, Cotter 3/32x3/4
4	170354	Swashplate, Trunnion Machined	71	170417	Brake Spring
5	169898	Kit, Cylinder Block (10cc) Block - Cylinder Piston Spring, Compression Washer - Thrust	72	170418	Washer (310-0750)
6	178322	Sealant Tube	73	142884	Washer, Flat
7	170356	Hexflange Screw 1/4-20 X 1.25	74	170419	Seal, Oil
8	170357	Stud, 5/16-24 Hex Double End	75	170420	Ass'y Check Plug
9	170358	Shaft, Input	76	170421	Bolt, Stud 5/16-24
10	170359	Retaining Ring	77	170422	Puck, Friction
11	170360	Spacer	78	142969	Spring
12	169870	Retaining Ring	79	142980	Spacer
13	170361	Seal, Lip .67 X 1.58 X .276	80	150778	Nut, Nylon Insert Hex Lock 5/16-24
14	173158	Bearing, Ball 6203 (BDR)	81	170423	Wedge, Friction
16	170362	Hex Flange Head Screw 1/4-20 X 1.25	82	170424	Clip, Washer
17	170363	Seal, Lip 18 X 32 X 7	83	161168	Pin
18	170364	Arm, Control	84	170425	Fitting, 5/16 X Sae 5/32 Tube
19	173159	Bearing, Thrust (10cc)	85	170426	Hose, Expansion Tank
23	170365	Check Plug Assembly	87	173160	Cap, Vent
24	170366	Shaft Motor	88	178334	Bolt, Self Tapping (BDR)
27	170367	Gear, Pinion, 13t	90	170430	Puck, Inner Wedge
28	170368	10t / 48t Gear	93	170431	Spring Clip, Housing
29	170369	Gear, 10t Jackshaft	107	170432	Deflector
30	170370	60t Bullgear	108	170433	Washer, Motor Shaft .71ID X 1.15OD X .03 Thick
31	170371	Sleeve Bearing .75 X 1.75 X .625	109	170434	Plug, Straight Thread 9/16-18
32	170389	Sleeve Bearing (Outboard) .75 X 1.575 X .625	111	170435	O-ring .7 X .301 ID
33	142991	Washer	113	170437	Bracket, Support Expansion Tank
34	170390	Lip Seal, Axle Shaft	119	173161	Fan (310-3000)
35	170391	Shaft, Axle (Keyed, R.h.)	120	170440	Pulley
36	170392	Shaft, Axle (Keyed, L.h.)	121	170441	Hex Nut Locking
37	150792	Gear, Splined Diff. (210-1000 & 310-0750)	122	173162	Screw, #12-24 Hx Hd Self Tapping (310-3000)
38	150793	Gear, Miter Diff. (210-1000 & 310-0750)	123	173163	Bracket, Belt Keeper
39	150809	Differential Shaft (310-0750)	124	170444	Kit, Center Section Filter Bypass Center Section Machining Base Filter W/ Poppet Check Plug Assembly, 027 Washer Check Plug Assembly, Washer Spring, Bypass Actuator, Bypass Deflector Bottom, Filter Bushing .707 X .788 X .591
40	170393	Retaining Ring	125	170445	Kit, Filter Bottom, Filter Spring, Bypass Actuator, Bypass Deflector Base, Filter W/ Poppet Kit, Fan / Pulley #12 T.f. Screw - Indented Hex Washer Head Fan Pulley 4.315 X .801
41	170394	Pin, Jackshaft	126	173164	Kit, Seal Lip Seal .67 X 1.58 X .276 Lip Seal 18 X 32 X 7 Lip Seal .706 X 1.584 X .25 Lip Seal .741 X .250 X .250 TC Oil Seal 625 X 1.0 X .25 O-ring .07 X .301 ID
42	170395	Magnet, Ring	127	170447	Kit, Expansion Tank Tank, Expansion Cap, Vent Bolt, Self Tapping 10-32 X 1/2 Bracket, Support Expansion Tank Silicon Sponge 1/2 X 1/2 X 3/16 Cap, Expansion Tank Shipping
43	170396	Spring, Bypass	128	173165	Kit, Brake Arm And Spring Arm, Brake Spring, Brake Arm Bias Instruction Sheet Transaxle Assembly - Complete
44	150797	Bolt 3/8-24 X 2-1/2			
45	170397	Filter			
46	170398	Base, Filter			
47	170399	Actuator, Bypass			
48	170400	Rod, Bypass Actuator			
49	170401	Arm, Bypass			
50	170402	Retaining Ring .25 External			
51	170403	Seal, Lip .741 X .25 X .25			
52	170404	Washer, Flat 0.050" (210-1000)			
53	170405	Retaining Ring			
54	170406	Bearing, Center Block			
55	142977	Spring, Helical Compression			
56	142978	Washer, Block Thrust			
57	---	20w-50 Oil 78.8 Oz			
58	142929	Kit, Brake Yoke			
59	170408	Rotor, Brake			
60	142883	Brake Puck			
61	142882	Brake Puck Plate			
62	170409	Pin, Brake Actuating	129	191032	
63	170410	HFHCS 1/4-20 X 2 W/patch, Special Flange	130	186352	
64	142892	Bolt, Nylok			
65	170411	Spacer, Brake Torsion Spring			
			900	171613	

NOTE: All Component Dimensions Given In U.s. Inches 1 Inch = 25.4 MM