

REPAIR PARTS MANUAL
MODEL NO. 258280
Lawn Tractor

CRAFTSMAN®

HOW TO USE THIS MANUAL

This manual is designed to provide the customer with a means to identify the parts on his/her tractor when ordering repair parts. The illustrations may or may not represent the actual assemblies; therefore, it is not recommended to use this manual as a guide to assemble or disassemble the tractor. Some hardware and parts are drawn larger in order to more readily identify them.

Each tractor has its own model number.

The model number for your tractor can be found on the fender under the seat.

When ordering parts, always give the following information:

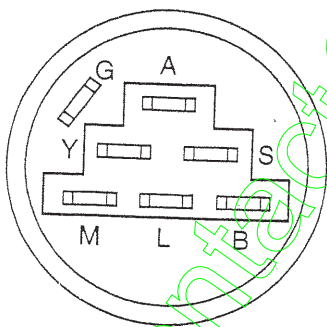
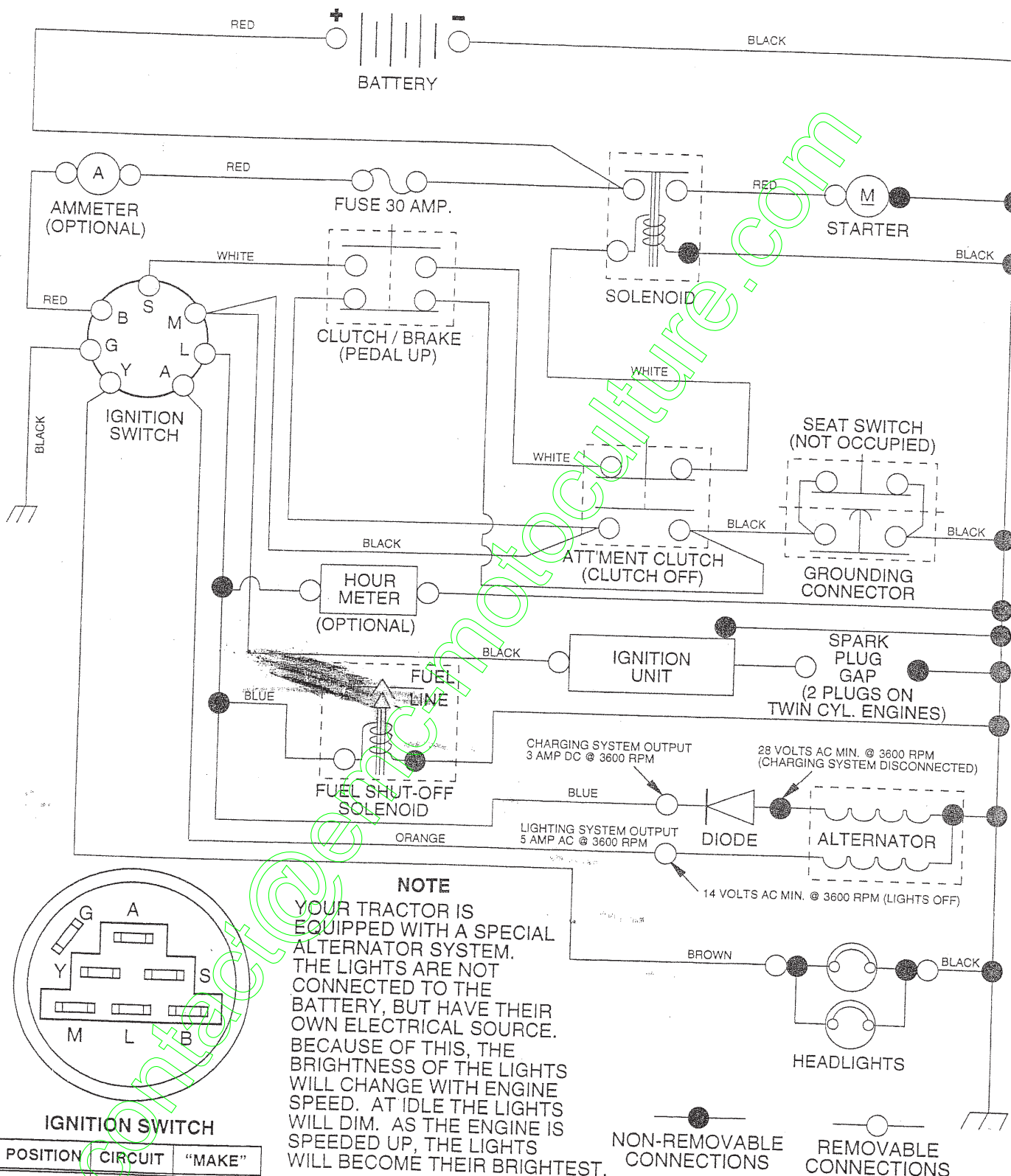
- Product - "Tractor"
- Model Number - "258280"
- Part Number
- Part Description

TABLE OF CONTENTS

SCHEMATIC	3
ELECTRICAL	4-5
CHASSIS	6-7
DRIVE	8-9
STEERING WHEEL	10-11
SEAT	12
DECALS	13
ENGINE	14
MOWER LIFT LEVER	15
MOWER DECK	16-17
TRANSAXLE	18-19

TRACTOR - - MODEL NUMBER 917.258280

SCHEMATIC

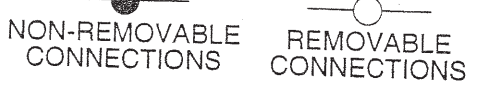


IGNITION SWITCH

POSITION	CIRCUIT	"MAKE"
OFF	G + M + L	NONE
RUN/LIGHT	B + L	A + Y
RUN	B + L	NONE
START	B + L + S	NONE

NOTE
 YOUR TRACTOR IS EQUIPPED WITH A SPECIAL ALTERNATOR SYSTEM. THE LIGHTS ARE NOT CONNECTED TO THE BATTERY, BUT HAVE THEIR OWN ELECTRICAL SOURCE. BECAUSE OF THIS, THE BRIGHTNESS OF THE LIGHTS WILL CHANGE WITH ENGINE SPEED. AT IDLE THE LIGHTS WILL DIM. AS THE ENGINE IS SPEEDED UP, THE LIGHTS WILL BECOME THEIR BRIGHTEST.

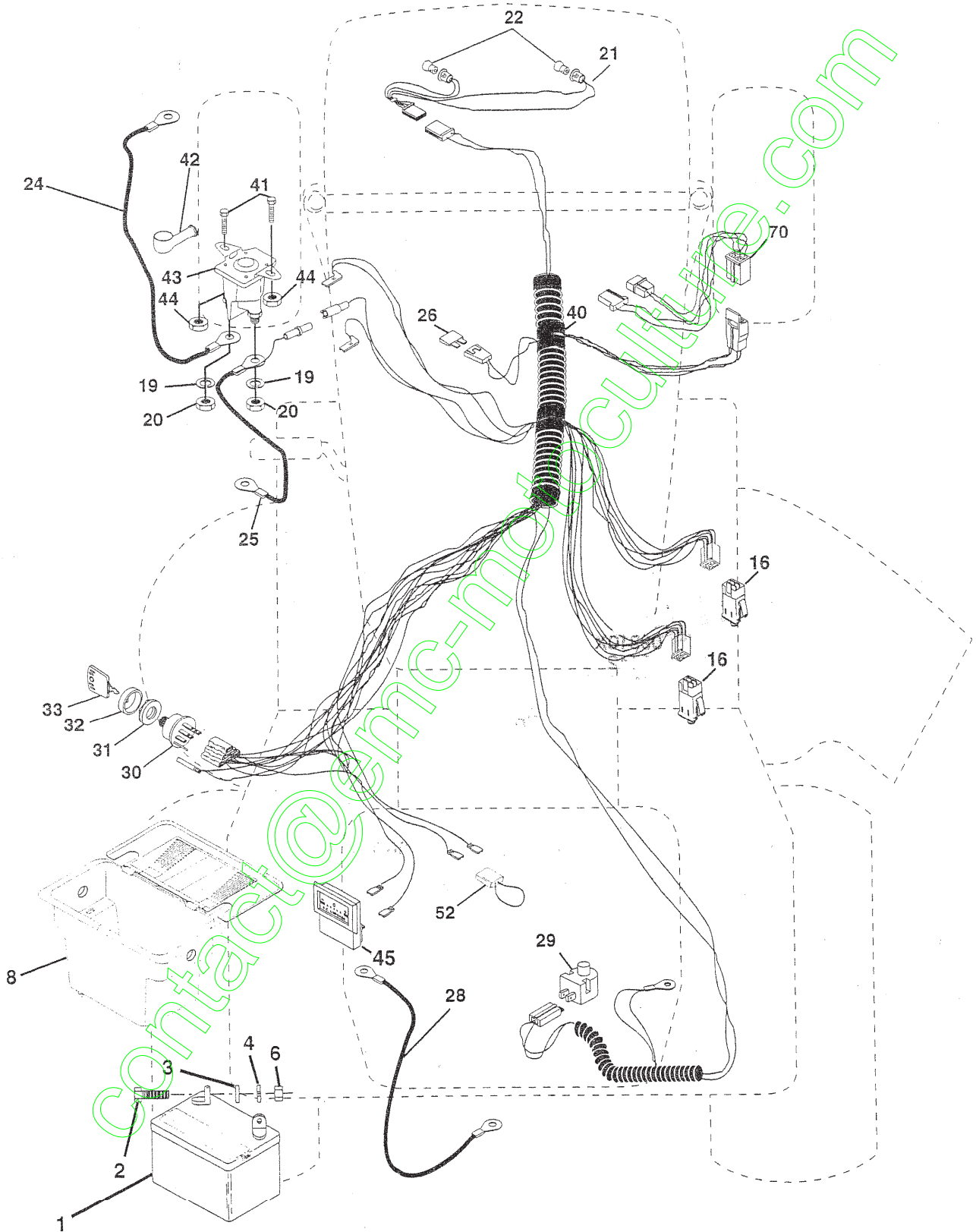
WIRING INSULATED CLIPS
NOTE: IF WIRING INSULATED CLIPS WERE REMOVED FOR SERVICING OF UNIT, THEY SHOULD BE REPLACED TO PROPERLY SECURE YOUR WIRING.



REPAIR PARTS

TRACTOR - - MODEL NUMBER 917.258280

ELECTRICAL



REPAIR PARTS

TRACTOR - - MODEL NUMBER 917.258280

ELECTRICAL

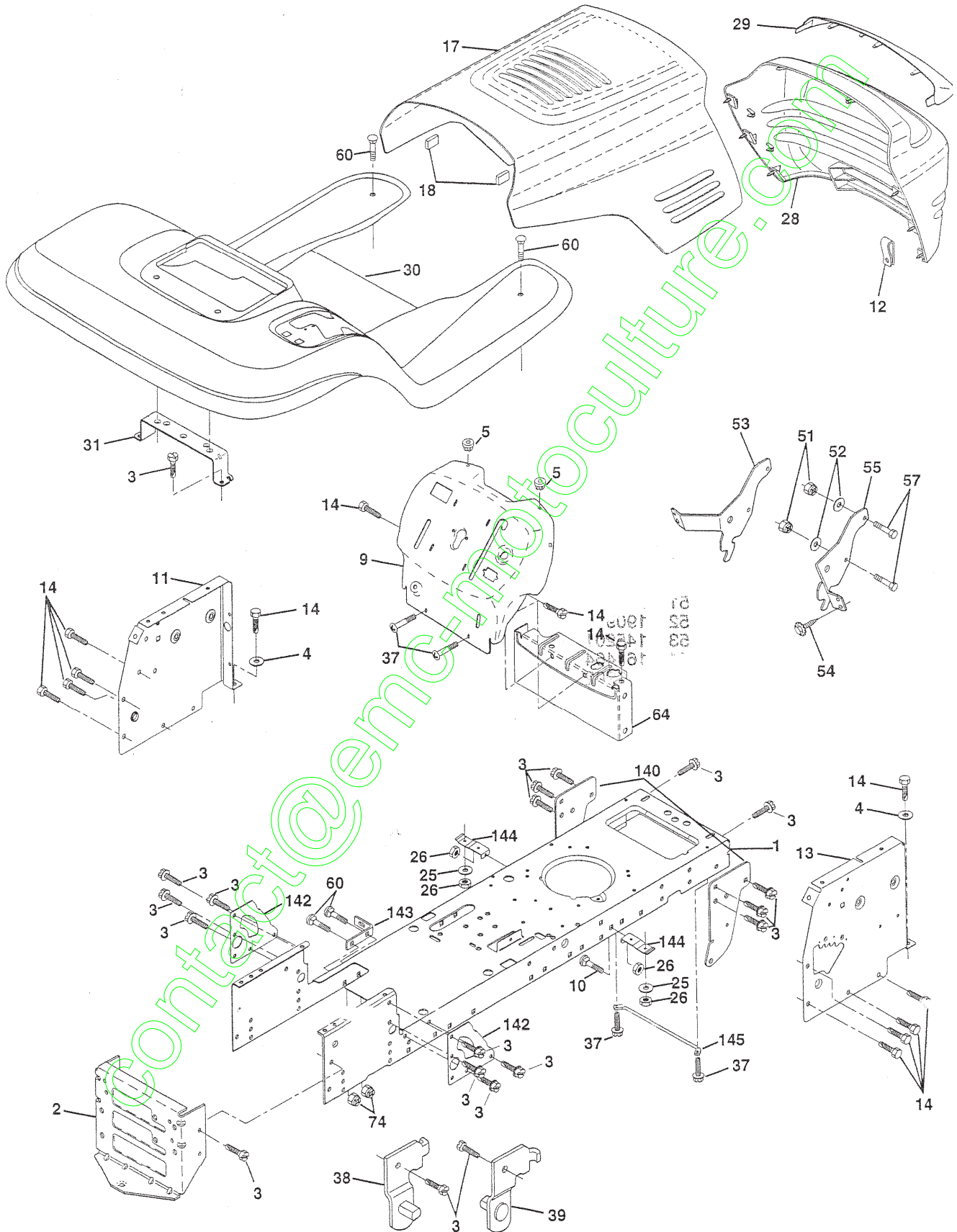
KEY NO.	PART NO.	DESCRIPTION
1	144925	Battery 12 Volt 25 Amp
2	74760412	Bolt, Hex Head 1/4-20 unc x 3/4
3	STD551025	Washer
4	STD551125	Washer
6	STD541025	Nut
8	156417	Case, Battery Mech Hinge
16	153664	Switch, Interlock Push-In
19	STD551125	Washer, Lock
20	73350400	Nut, Hex, Jam 1/4-20 UNC
21	147430	Harness, Light Socket (Includes 4152J)
22	4152J	Bulb, Light
24	4799J	Cable, Battery, 6 Gauge, Red, 11"
25	146147	Cable, Battery, 6 Gauge, Red, W/16 Wire
26	108824X	Fuse, 30 Amp
28	4207J	Cable, Ground, 6 Gauge, Black, 12"
29	121305X	Switch, Plunger
30	140301	Switch, Ignition
31	124211X	Nut, Ignition
32	141226	Cover, Key Switch
33	109310X	Key, Ignition
40	156442	Harness, Ignition
41	71110408	Bolt, Hex Head, Fin. 1/4-20 x 1/2
42	131563	Cover, Terminal, Red
43	145673	Solenoid
44	73640400	Nut Keps Blk Hex 1/4-20 UNC
45	121433X	Ammeter Rectangular 6 Amp
52	141940	Protection Wire Loop
70	140422	Harness Engine B&S

NOTE: All component dimensions given in U.S. inches
1 inch = 25.4 mm

REPAIR PARTS

TRACTOR - - MODEL NUMBER 917.258280

CHASSIS AND ENCLOSURES



REPAIR PARTS

TRACTOR - - MODEL NUMBER 917.258280

CHASSIS AND ENCLOSURES

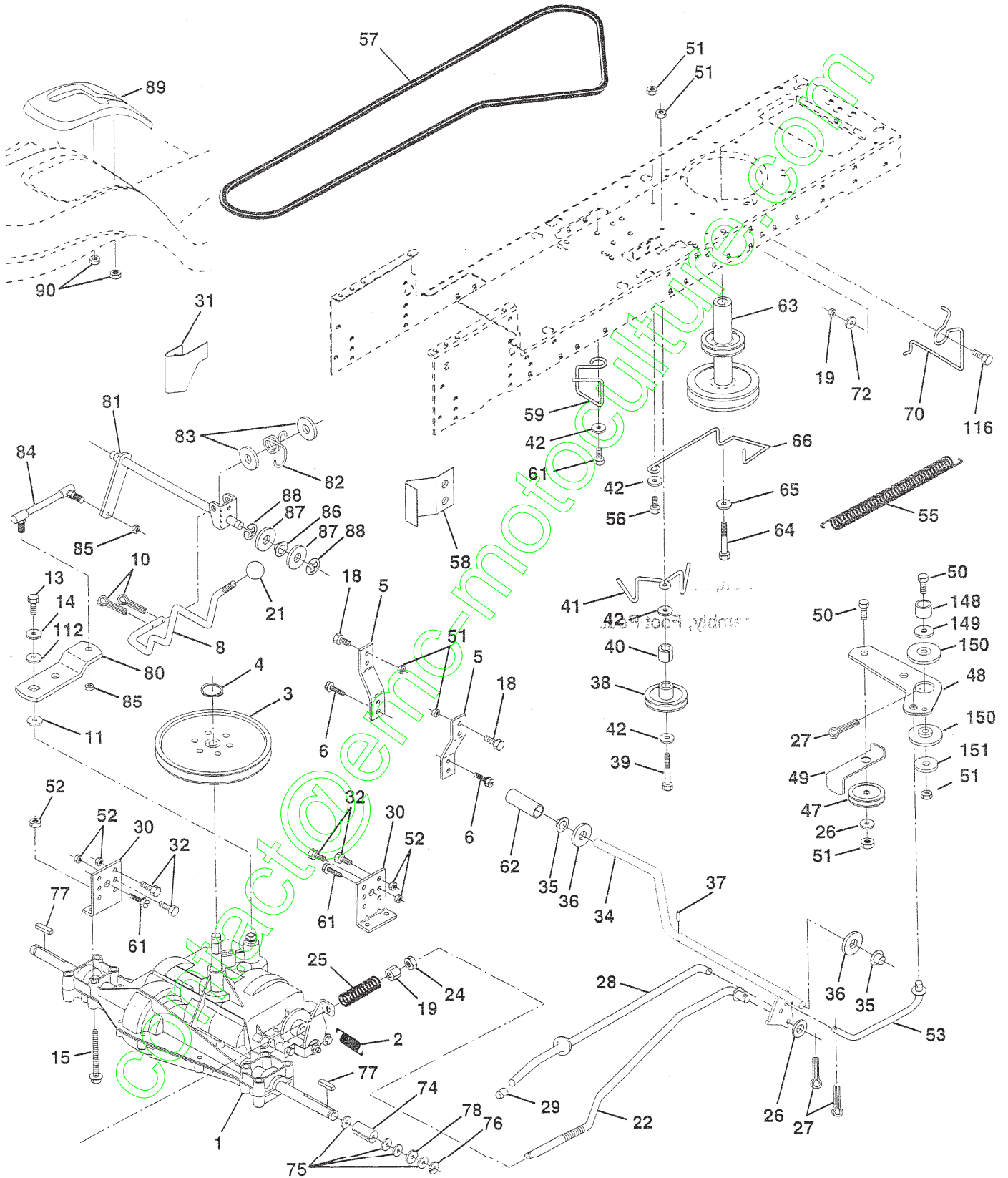
KEY NO.	PART NO.	DESCRIPTION
1	160392	Chassis
2	140356	Drawbar
3	17490612	Screw, Thd. Roll. 3/8-16 x 3/4
4	STD551025	Washer 13/32 x 3/4 x 16 Gauge
5	155272	Bumper Hood/Dash
9	161917X012	Dash
10	STD533710	Bolt, Carriage 3/8-16 x 3/4
11	155927	Panel, Dash, L.H.
12	145660	Clip Tinnerman Grille P/L
13	15534X010	Panel, Dash, R.H.
14	17490608	Screw Thdrol 3/8-16 x 1/2
17	144983X558	Hood Assembly
18	126938X	Bumper Hood
25	19131312	Washer 13/32 x 13/16 x 12 Gauge
26	STD541437	Nut Lock Hex w/Ins. 3/8-16 Unc
28	145198X558	Grille w/Clips MS-558
29	155217	Lens Grille
30	151287X558	Fend/Ftrest Pnt STLT N HLD 558
31	139976	Bracket, Fender Support
37	17490508	Screw, Thd. 5/16-18 x 1/2
38	139886	Pivot Bracket Assembly, L.H.
39	139887	Pivot Bracket Assembly, R.H.
51	73800400	Nut Lock w/Insert 1/4-20 UNC
52	19091416	Washer 9/32 x 7/8 x 16 Ga.
53	145201	Bracket Grille Pickoff LH
54	161464	Screw Hex Wshd #8-7/8 x 7/8
55	145202	Bracket Grille Pickoff RH
57	STD522507	Bolt, Fin Hex 1/4-20 UNC x .75
60	STD533707	Bolt Rdhd Sqnk 3/8-16 UNC x 3/4
64	154798	Dash Lower STLT
74	STD541437	Nut Crownlock 3/8-16 UNC
140	158418	Bracket Suspension Front
142	156095	Plate Reinforcement STLT
143	154966	Bracket Swaybar Chassis
144	154207	Bracket Pnt Footrest STLT
145	156524	Rod Pivot Chassis/Hood
-	5479J	Plug, Button

NOTE: All component dimensions given in U.S. inches
1 inch = 25.4 mm

REPAIR PARTS

TRACTOR - - MODEL NUMBER 917.258280

DRIVE



REPAIR PARTS

TRACTOR - - MODEL NUMBER 917.258280

DRIVE

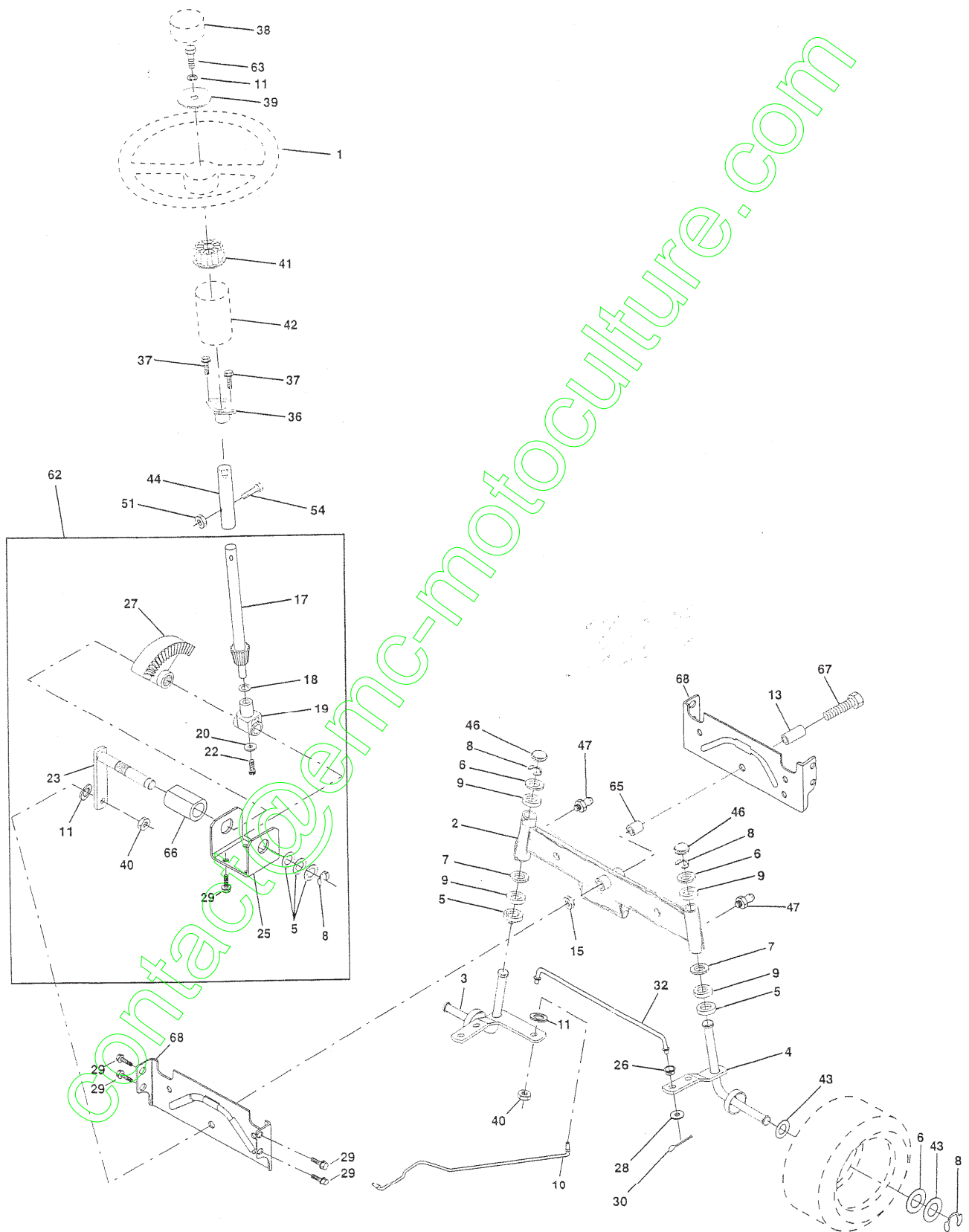
KEY NO.	PART NO.	DESCRIPTION	KEY NO.	PART NO.	DESCRIPTION
1	-----	Transaxle (See Breakdown) Dana 4360-113	52	STD541431	Nut Crown Lock 5/16-18 UNC
2	146682	Spring, Return, Brake	53	105710X	Link, Clutch
3	123666X	Pulley, Transaxle	55	105709X	Spring, Clutch Return
4	12000028	Ring, Retainer	56	STD523712	Bolt Fin Hex 3/8-16 x 1-1/4
5	121520X	Strap, Torque	57	130801	V-Belt, Ground Drive
6	17490512	Screw, Thd., Roll. 5/16-18 x 3/4	58	127274X	Keeper, Belt, R.H.
8	154792	Rod Shifter Fender STLT	59	140312	Keeper, Belt, Center Span
10	STD561210	Pin, Cotter	61	17490612	Screw, Thd., Roll. 3/8-16 x 3/4
11	105701X	Washer, Shift Plate	62	8883R	Cover, Pedal
13	74550412	Bolt 1/4-28 UNF W/Patch Grade 8	63	140186	Pulley, Engine
14	STD551125	Washer	64	71170764	Bolt, Hex Head, Fin. 7/16-20 x 4 Grade 5
15	74490544	Bolt, Hex Flghd 5/16-18 Grade 5	65	STD551143	Washer
18	STD523710	Bolt Fin Hex 3/8-16 UNC x 1. Gr 5	66	154778	Keeper, Belt, Engine, Fool-Proof
19	STD541437	Nut	70	134683	Guide, Mower Drive Belt, R.H.
21	106933X	Knob	72	19132012	Washer 13/32 x 1-1/4 x 12 Gaug
22	130804	Rod, Brake	74	109502X	Spacer, Axle
24	STD541237	Nut	75	121749X	Washer 25/32 x 1-1/4 x 16 Gaug
25	106888X	Spring, Brake Rod	76	STD581075	E-Ring
26	STD551037	Washer	77	123583X	Key, Square 2.0 x .1845/.1865
27	STD561210	Pin	78	121748X	Washer 25/32 x 1-5/8 x 16 Gaug
28	145204	Rod, Parking Brake	80	131488	Arm, Shift
29	124236X	Cap, Parking Brake, Red	81	161076	Shaft Assembly Cross
30	130807	Bracket, Transaxle	82	123782X	Spring, Torsion
31	127275X	Keeper, Belt, L.H.	83	19171216	Washer 17/32 x 3/4 x 16 Gauge
32	STD523107	Bolt	84	145643	Tie Rod
34	155071	Shaft Assembly, Foot Pedal	85	132182	Nut, Nylock
35	120183X	Bearing, Nylon	86	154780	Bushing
36	STD551062	Washer	87	19212016	Washer
37	STD571810	Roll Pin	88	12000008	E-Ring
38	123674X	Pulley, Idler, Flat	89	158391	Console, Shift, STLT
39	STD523727	Bolt	90	124346X	Nut, Self-Threading, Washer Hd 1.
40	4470J	Spacer, Split .395 x .59	112	19091210	Washer 9/32 x 3/4 x 10 Gauge
41	154777	Keeper, Belt, Idler Fool-Proof	116	72110610	Bolt Rdhd Sqneck 3/8-16 x 1.25
42	19131312	Washer 13/32 x 13/16 x 12 Gauge	148	159103	Spacer
47	127783	Pulley, Idler, V-Groove, Plastic	149	122052X	Spacer Retainer PM Mower
48	154407	Bellcrank Clutch Grnd Drv STL	150	150935	Bushing Nylon Collered
49	123205X	Retainer, Belt	151	19133210	Washer 13/32 x 2 x 10 Ga.
50	STD523715	Bolt			
51	STD541437	Nut Crown Lock 3/8-16 UNC			

NOTE: All component dimensions given in U.S. inches
1 inch = 25.4 mm

REPAIR PARTS

TRACTOR - - MODEL NUMBER 917.258280

STEERING ASSEMBLY



REPAIR PARTS

TRACTOR - - MODEL NUMBER 917.258280

STEERING ASSEMBLY

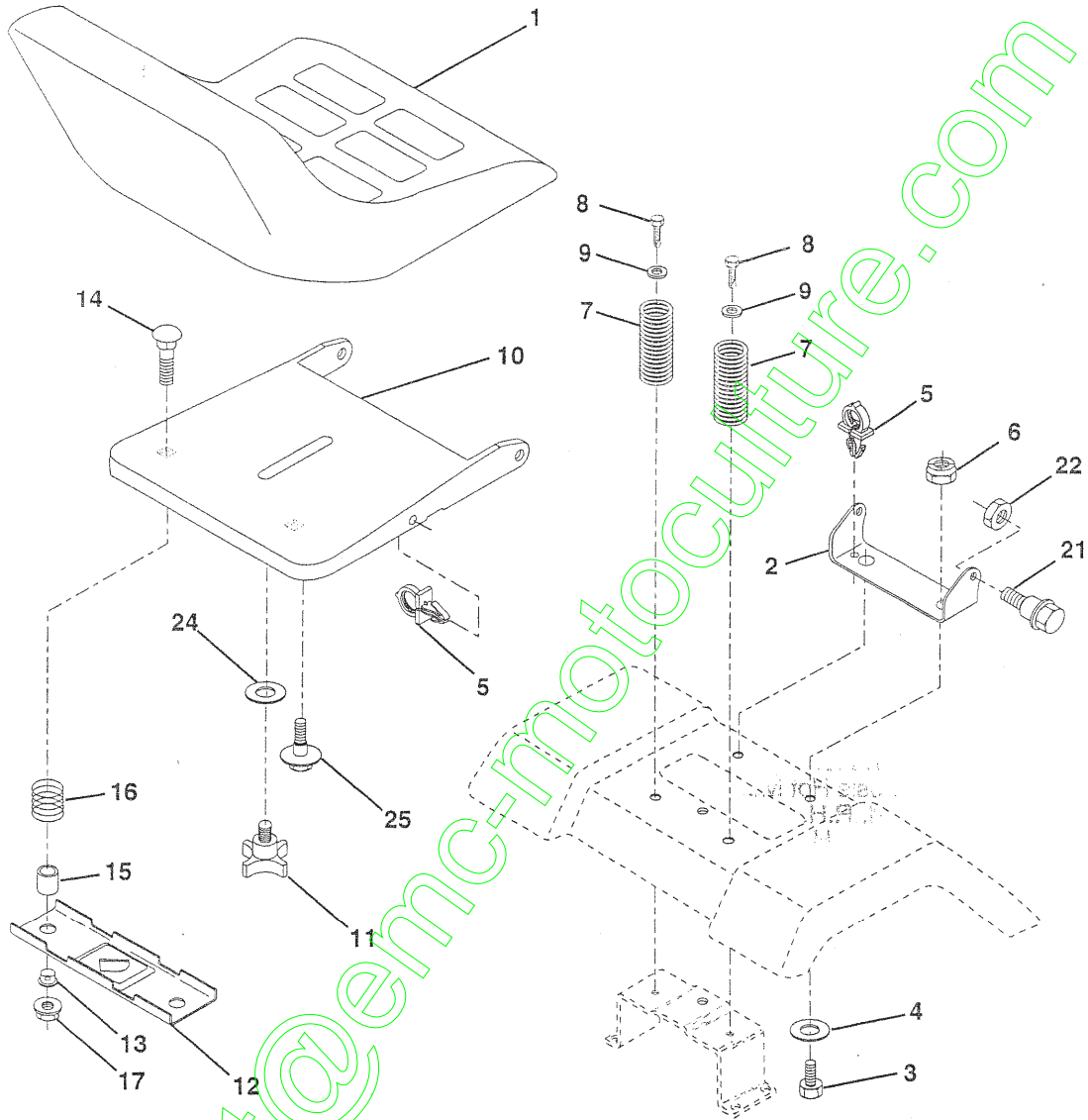
KEY NO.	PART NO.	DESCRIPTION
1	139768	Steering Wheel
2	154427	Axle Assembly STMP Dropped STL
3	156483	Spindle Assembly, L.H.
4	157473	Spindle Assembly, R.H.
5	6266H	Bearing, Race, Thrust, Hardened
6	121748X	Washer 25/32 x 1-5/8 x 16 Gauge
7	19272016	Washer 27/32 x 1-1/4 x 16 Gauge
8	12000029	Ring, Klip
9	3366R	Bearing, Steering Column
10	156438	Draglink Extended Stamped
11	STD551137	Washer, Lock
13	154779	Bearing Axle STL/TGT
15	73901000	Nut, Lock, Flange 5/8-11 UNC
17	156546	Shaft Assembly, Steering
18	57079	Washer, Thrust 5/15 x .750 x .033
19	124035X	Support, Shaft
20	126684X	Washer, Shim 1/4 x 5/8 x .062
22	71200410	Screw Hex Socket 1/4-20 x 5/8
23	127501	Pittman Shaft Assembly
25	154406	Bracket, Steering
26	126847X	Bushing, Link, Drag
27	136874	Gear, Sector
28	19131416	Washer 13/32 x 7/8 x 16 Gauge
29	17490612	Screw, Thd., Roll. 3/8-16 x 3/4
30	STD561210	Pin
32	130465	Rod, Tie
36	155099	Bushing, Steering
37	152927	Screw
38	139769	Insert, Steering Wheel
39	19133808	Washer 13/32 x 2-3/8 x 8 Gauge
40	STD541537	Gripco Nut
41	100711L	Adaptor, Steering Wheel
42	145054	Boot, Steering Shaft
43	121749X	Washer 25/32 x 1-1/4 x 16 Gauge
44	153720	Extension Shaft Steering LR.LT
46	121232X	Cap, Spindle
47	6855M	Fitting, Grease
51	STD541431	Nut Lock Hex w/Ins. 5/16-18 UNC
54	74780520	Bolt Fin Hex 5/16-18 UNC x 1-1/4
62	156594	Kit Steering Asm Service
63	STD523710	Bolt, Fin Hex 3/8-16 UNC x 1 Gr 5
65	154780	Spacer Axle
66	154404	Bearing Arm Pittman
67	74781044	Bolt, Fin Hex 5/8-11 UNC x 2-3/4
68	154429	Axle, Brace

NOTE: All component dimensions given in U.S. inches
1 inch = 25.4 mm

REPAIR PARTS

TRACTOR - - MODEL NUMBER 917.258280

SEAT ASSEMBLY



KEY NO.	PART NO.	DESCRIPTION
1	140122	Seat
2	140551	Bracket, Pivot, Seat
3	STD523710	Bolt
4	19131610	Washer 13/32 x 1 x 10 Gauge
5	145006	Clip, Push-In Hinged
6	STD541437	Nut
7	124181X	Spring, Seat
8	17490616	Screw, Thd., Roll, 3/8-16 x 1
9	19131614	Washer 13/32 x 1 x 14 Gauge
10	155925	Pan, Seat Emboss QCK Conn.
11	120068X	Knob, Seat 1/2-13 Unc
12	121246X	Bracket, Switch Mounting

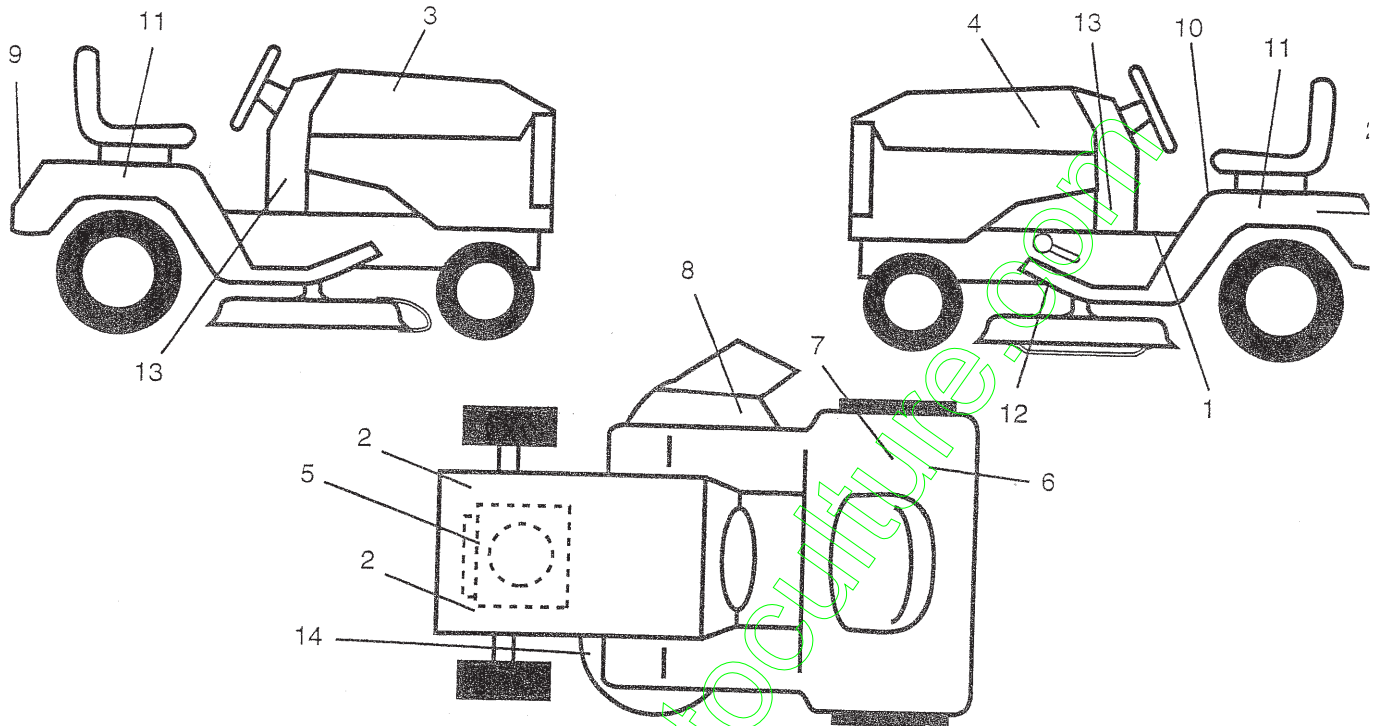
KEY NO.	PART NO.	DESCRIPTION
13	121248X	Bushing, Snap
14	72050412	Bolt, Carriage 1/4-20 x 1-1/2
15	134300	Spacer, Split .28 x .88
16	121250X	Spring
17	123976X	Locknut, Flange 1/4 Grade 5
21	153236	Bolt, Shoulder 5/16-18 UNC
22	STD541431	Nut
24	19171912	Washer 17/32 x 1-3/16 x 12 Gauge
25	127018X	Bolt, Shoulder 5/16-18 x .62

NOTE: All component dimensions given in U.S. inches
1 inch = 25.4 mm

REPAIR PARTS

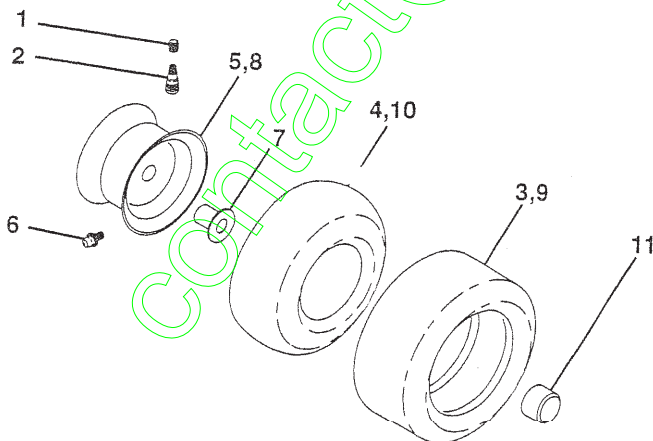
TRACTOR -- MODEL NUMBER 917.258280

DECALS



KEY NO.	PART NO.	DESCRIPTION	KEY NO.	PART NO.	DESCRIPTION
1	140837	Decal, Oper. Instr.	12	146046	Decal, V-Belt Drive Schematic
2	159736	Decal, Chassis Hot Muffler	13	163252	Decal, Dash
3	163200	Decal, Hood, R.H.	14	160396	Decal, V-Belt Schematic
4	163202	Decal, Hood, L.H.	15	159737	Decal, Brake/Clutch Sym
5	273832	Decal, Engine	20	149516	Decal Battery Dngr/Psn Eng
6	126187X	Decal, 100DBA Cer	--	162598	Decal, Drawbar Load Limit
7	145437	Decal, Europe Stand CE	--	138311	Decal, Lift Handle
8	163203	Decal, Deck Mower EZ Mulch	--	154515	Pad Footrest LH STLT
9	163204	Decal, Fender, Craftsman	--	154516	Pad Footrest RH STLT
10	156439	Decal, Fender Danger	--	164255	Oper. Manual, Euro
11	163207	Decal, Fender	--	164256	Oper. Manual, Scan

WHEELS & TIRES



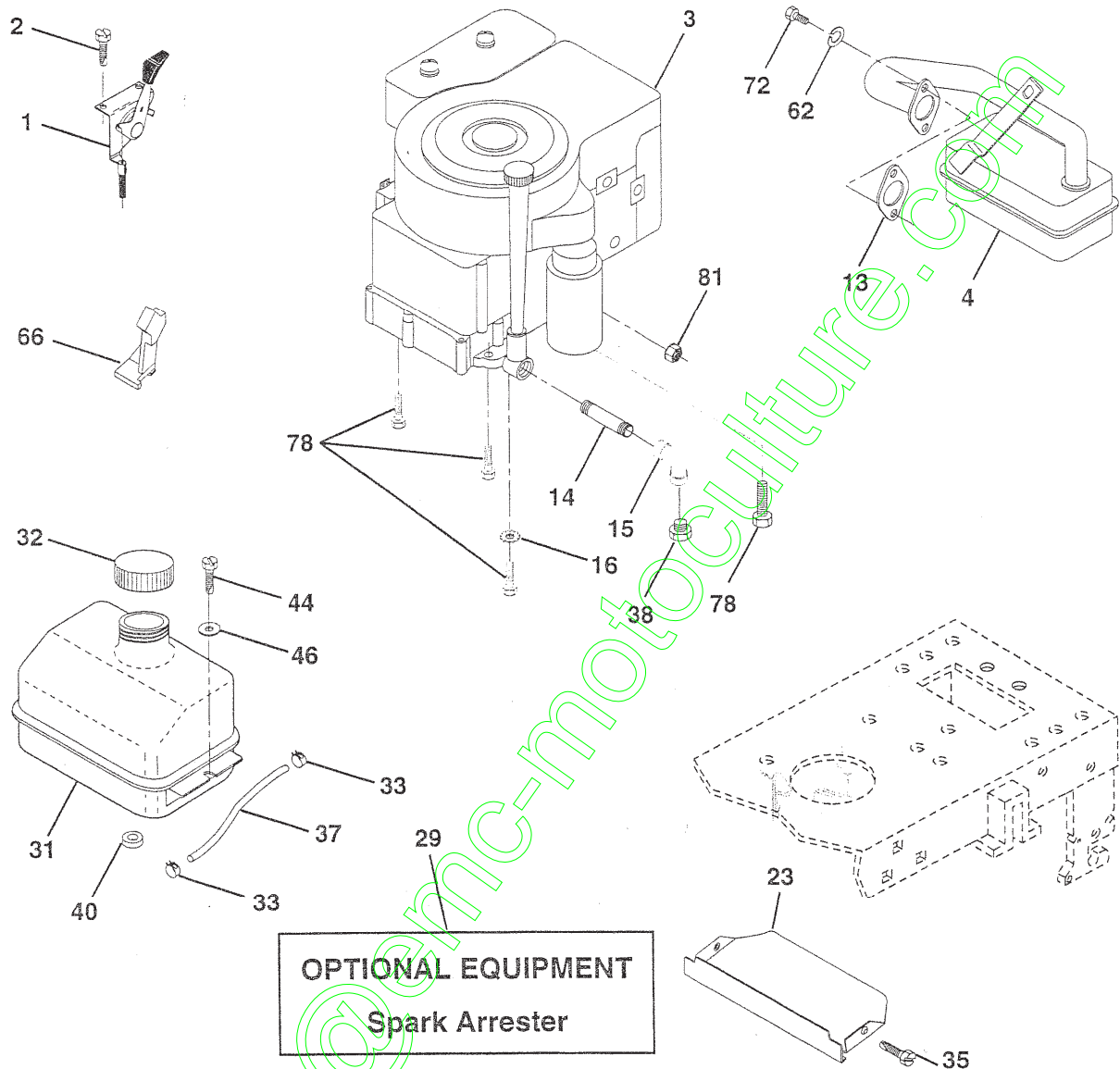
KEY NO.	PART NO.	DESCRIPTION
1	59192	Valve Cap, Tire
2	65139	Stem, Valve
3	106222X	Tire, Front
4	59904	Tube, Front Tire (Not Provided, Service Item Only)
5	106732X427	Rim, Front
6	278H	Fitting, Grease (Front Wheel Only)
7	9040H	Bearing, Flange (Front Wheel Only)
8	106108X427	Rim, Rear
9	106268X	Tire, Rear
10	7152J	Tube, Rear Tire (Not Provided, Service Item Only)
11	104757X	Cap, Axle
--	144334	Sealant, Tire 10 oz.

NOTE: All component dimensions given in U.S. inches
1 inch = 25.4 mm

REPAIR PARTS

TRACTOR - - MODEL NUMBER 917.258280

ENGINE



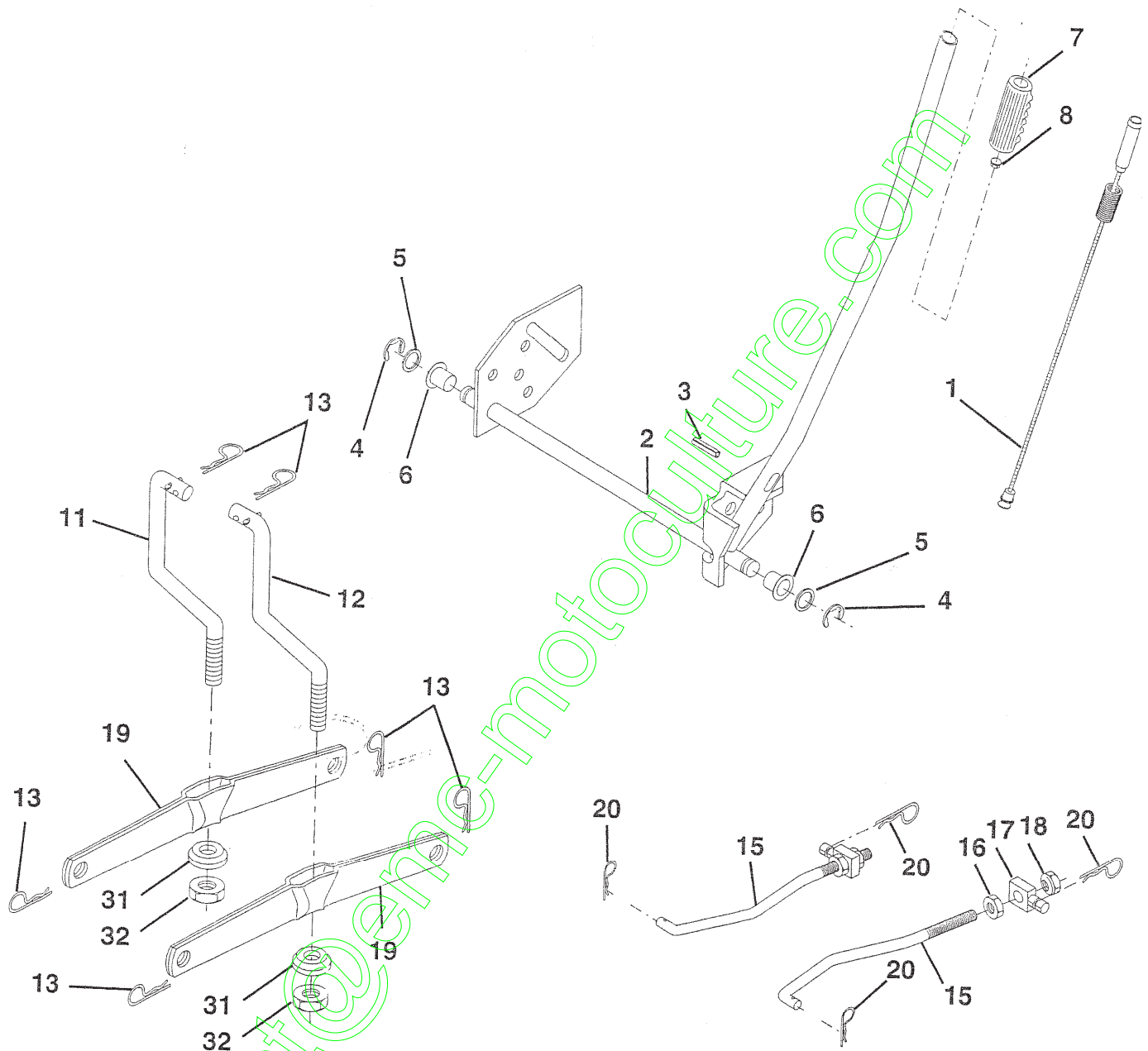
KEY NO.	PART NO.	DESCRIPTION	KEY NO.	PART NO.	DESCRIPTION
1	162158	Control, Throttle/Choke	37	137040	Line, Fuel
2	17720410	Screw, Hex Head, Thread Cutting 1/4-20 x 5/8	38	-----	Plug, Oil Drain (Order From Engine Manufacturer)
3	-----	Engine, B&S, (See Breakdown) No. 28U707, Type ... 174-E1	40	124028X	Bushing, Snap, Fuel Line
4	137352	Muffler	44	17490412	Screw, Hex Washer Head, Thd., Roll. 1/4-20 x 3/4
13	272293	Gasket, Exhaust	46	19091416	Washer 9/32 x 7/8 x 16 Gauge
14	13280324	Nipple, Pipe 3/8 NPT x 3	62	STD551131	Washer, Lock
15	13200300	Elbow, Standard 90°, 3/8-18 NPT	66	127951	Stop Throttle 3000RPM
16	STD551237	Washer	72	71070512	Screw, Hex Cap Head 5/16-18 x 3/4
23	159880	Shield, Bowning/Debris Guard	78	17490620	Screw, Thd., Roll. 3/8-16 x 1-1/4
29	137180	Arrestor, Spark	81	128861	Nut Flange 1/4-20 Starter Nut
31	109202X	Tank, Fuel			
32	158990	Cap Assembly, Fuel Tank, Vented			
33	123487X	Clamp, Hose			
35	17490512	Screw Thdrol 5/16-18 x 3-4 Tyt			

NOTE: All component dimensions given in U.S. inches
1 inch = 25.4 mm

REPAIR PARTS

TRACTOR -- MODEL NUMBER 917.258280

MOWER LIFT



KEY NO.	PART NO.	DESCRIPTION
1	159460	Wire Asm Inner/Sprg W/Plngr LT
2	159471	Shaft Assembly, Lift
3	105767X	Pin, Groove
4	12000002	E-Ring
5	19211621	Washer 21/32 x 1 x 21 Gauge
6	120183X	Bearing, Nylon
7	125631X	Grip, Handle, Fluted
8	122365X	Button, Plunger, Red
11	139865	Link, Lift, L.H.
12	139866	Link, Lift, R.H.
13	STD624008	Retainer Spring

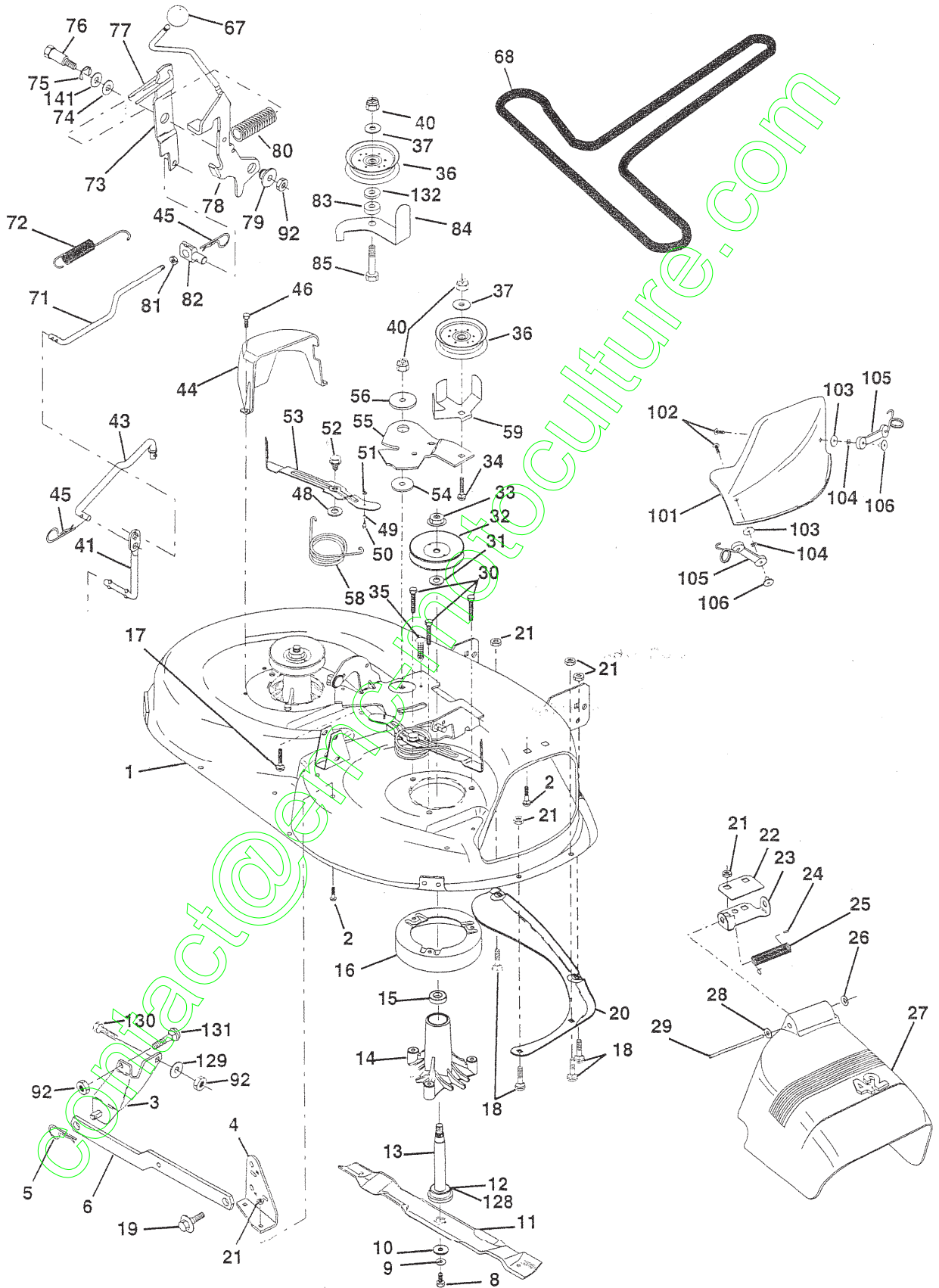
KEY NO.	PART NO.	DESCRIPTION
15	127218	Link, Front
16	73350800	Nut, Hex, Jam 1/2-13 UNC
17	130171	Trunnion
18	73800800	Locknut, Hex, with Washer Insert 1/2-13 UNC
19	139868	Arm, Suspension, Rear
20	163552	Retainer Spring
31	140302	Bearing, Pvt, Lift Spherical
32	73540600	Nut, Crownlock 3/8-24

NOTE: All component dimensions given in U.S. inches
1 inch = 25.4 mm

REPAIR PARTS

TRACTOR -- MODEL NUMBER 917.258280

MOWER DECK



REPAIR PARTS

TRACTOR - - MODEL NUMBER 917.258280

MOWER DECK

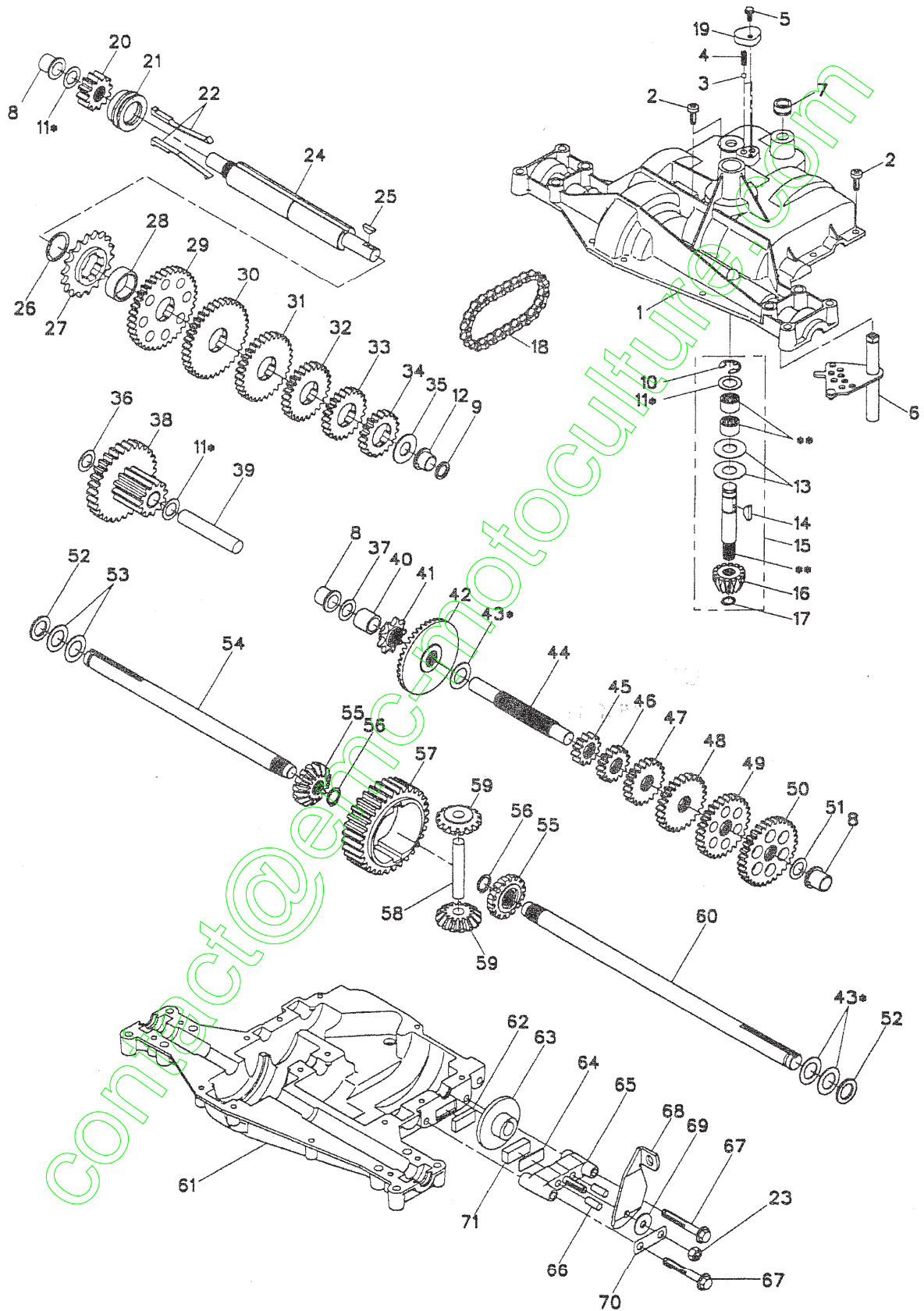
KEY NO.	PART NO.	DESCRIPTION	KEY NO.	PART NO.	DESCRIPTION
1	144393	Mower Housing	52	139888	Bolt, Shoulder 5/16-18 UNC
2	STD533107	Bolt	53	131845	Arm Assembly, Pad, Brake
3	138017	Bracket Assembly, Sway Bar, Front	54	133943	Washer, Hardened
4	138440	Bracket Assembly, Sway Bar	55	155046	Arm, Idler
5	STD624008	Retainer Spring	56	122052X	Spacer, Retainer
6	130832	Arm, Suspension, Rear	58	140086	Spring, Torsion Brakes
8	850857	Bolt, Hex 3/8-24 x 1.25 Grade 8	59	141043	Guard, TUV Idler
9	STD551137	Washer, Lock	67	162113	Knob Custom Oval
10	140296	Washer, Hardened	68	144200	V-Belt
11	134149	Blade, Mulching	71	142427	Rod, Clutch, Primary, with Nibs
12	129895	Bearing, Ball	72	131870	Spring, Return
13	137645	Shaft Assembly, Mandrel, Vented (Includes Key Number 6)	73	127847	Arm, Clutch, Secondary
14	128774	Housing, Mandrel, Vented	74	121748X	Washer 25/32 x 1-5/8 x 16 Gauge
15	110485X	Bearing, Ball, Mandrel	75	12000029	Ring, Klip
16	140329	Stripper, Vented Mower Deck	76	128903	Bolt, Shoulder 3/8-16 UNC x 1.44
17	72110610	Bolt, Carriage 3/8-16 x 1-1/4	77	127845	Keeper, Spring
18	STD533106	Bolt, Carriage 5/16-18 x 5/8	78	160570	Lever Asm. Clutch Pri Plm STLT
19	132827	Bolt, Shoulder	79	127498	Bushing, Large, Brass
20	159770	Baffle, Vortex	80	153701	Spring, Mower Clutch
21	STD541431	Nut Crownlock 5/16-18 UNC	81	73350600	Nut, Hex Jam 3/8-16 Unc
22	134753	Stiffener Bracket	82	142028	Trunnion, Adj.
23	131267	Bracket, Deflector	83	120958X	Washer Sintered
24	105304X	Cap, Sleeve	84	156084	Keeper Belt Idler
25	123713X	Spring, Torsion, Deflector	85	72140618	Bolt Carriage 3/8-16 x 2-1/4
26	110452X	Nut, Push	92	STD541437	Nut
27	130968	Shield, Deflector	101	136420	Mulcher Cover
28	19111016	Washer 11/32 x 5/8 x 16 Gauge	102	71161010	Screw
29	131491	Rod, Hinge	103	19061216	Washer #10
30	157722	Screw Thdrol Rolling Washer Head	104	STD551110	Washer, Lock
31	129963	Washer, Spacer	105	160793	Latch Assembly, Bagger
32	153535	Pulley, Mandrel	106	2029J	Nut, Weld
33	137266	Nut, Toplock, Flanged	128	153390	Washer Felt
34	STD533717	Bolt	129	19131312	Washer 13/32 x 13/16 x 12 Ga.
35	133835	Fastner, Christmas Tree	130	STD523710	Bolt, Fin Hex 3/8-16 UNC x 1 Gr. 5
36	131494	Pulley, Idler, Flat	131	STD533710	Bolt, RDHD SQNK 3/8-16 UNC x 1
37	STD551037	Washer 13/32 x 13/16 x 16 Gauge	132	19132203	Spacer Washer 13/32 I.D. x 1-3/8 O.D. x 1/4
40	STD541437	Nut Crownlock 3/8-16 UNC	141	6266H	Washer Thrust .75 x 1.230
41	133551	Rod, Pivot, with Nibs	--	130794	Mandrel Assembly (Includes Key Numbers 8-10, 12-15, 31 and 32)
43	140083	Rod, Clutch, Secondary, with Nibs	--	145411	Mower Deck, Complete (Standard Deck, Order Separately Mulcher Plate and Gauge Wheel Components, Key Nos. 101-106 and 111-121)
44	140088	Guard, Mandrel, L.H.			
45	STD624003	Retainer			
46	137729	Screw, Thd. Roll 1/4-20 x 5/8			
48	133944	Washer, Hardened			
49	155066	Roller Assembly, Cam Follower			
50	131340	Bolt, Shoulder #10-24 Grade 5			
51	STD541410	Locknut			

NOTE: All component dimensions given in U.S. inches
1 inch = 25.4 mm

REPAIR PARTS

TRACTOR - - MODEL NUMBER 917.258280

DANA TRANSAXLE - MODEL NUMBER 4360-113



REPAIR PARTS

TRACTOR - - MODEL NUMBER 917.258280

DANA TRANSAXLE - MODEL NUMBER 4360-113

KEY PART NO. NO.	DESCRIPTION	KEY PART NO. NO.	DESCRIPTION
1	160939 Housing, Upper	40	120472X Spacer, .633 X .87 X .755
2	2274J Screw, Tapping, 1/4-20 X .734	41	105928X Sprocket 9T
3	134400 Ball, Detent	42	110084X Gear, Bevel, 42T
4	105904X Spring, Detent	43	134394 * Assy, Kit, Shim, .750 Shaft
5	160940 Screw, Tapping, No. 10-24 X .482	44	120473X Shaft, Drive
6	138235 Assy, Shifter	45	142678 Gear, Spur, 12T
7	108727X V-Ring	46	143697 Gear, Spur, 15T
8	148266 Bearing, Flange	47	124641X Gear, Spur, 20T
9	148269 Seal, Oil	48	106589X Gear, Spur, 25T
10	2225J Ring, Retaining	49	120408X Gear, Spur, 28T
11	134793 * Assy, Kit, Shim, .625 Shaft	50	105937X Gear, Spur, 31T
12	148268 Bearing, Flange	51	2226J Washer, Plain, .632 X 1.00 X .060
13	120415X Washer, Plain, .632 X 1.38 X .046	52	134401 Washer, Neoprene
14	142674 Key, Woodruff, No. 9	53	2264J Washer, Plain, .758X 1.25X .031
15	138234 Assy, Kit, Input Shaft	54	160946 Axle, LH
16	110078X Pinion, Bevel, 14T	55	110081X Gear, Miter, 15T
17	105909X Ring, Retaining	56	160948 Ring, Retaining
18	105910X Chain, 24 Pitches	57	110071X Gear, Spur, 32T
19	160942 Cover, Detent	58	120952X Shaft, Cross
20	160943 Gear, Spur, 12T	59	110082X Gear, Miter, 15T
21	148267 Collar, Clutch	60	160950 Axle, RH
22	138236 Assy, Kit, Clutch Keys	61	142680 Housing, Lower
23	73810500 Nut, Lock, 5/16-24	62	120961X Puck, Friction
24	142676 Shaft, Intermediate	63	7294J Disc, Brake
25	2244J Key, Woodruff, No. 61	64	108989X Spacer, Brake Puck
26	105916X Ring, Retaining	65	160952 Jaw, Brake
27	120470X Sprocket, 18T	66	120954X Pin, Dowel
28	110070X Spacer, 1.131 X 1.45 X .494	67	160953 Screw, Tapping, 5/16-18 X 2.35
29	142677 Gear, Spur, 37T	68	138244 Lever, Actuating
30	142681 Gear, Spur, 35T	69	108996X Washer, Plain, .321 X 1.00 X .055
31	124644X Gear, Spur, 30T	70	160954 Bracket, Anti-Rotation
32	108980X Gear, Spur, 25T	71	120951X Puck, Friction
33	120406X Gear, Spur, 22T	72	120416X Grease
34	134796 Gear, Spur 19T		
35	105925X Washer, Plain, .640 X 1.37 X .061		
36	2228J Washer, Plain, .632 X 1.00 X .046		
37	2231J Washer, Plain, .632 X 1.00 X .031		
38	160944 Assy, Gear, Comb., 12T & 30T		
39	124639X Shaft, Idler		

NOTE: All component dimensions given in U.S. inches
1 inch = 25.4 mm