



REPAIR PARTS MANUAL

MODEL NO. 259060

Lawn Tractor

CRAFTSMAN®

HOW TO USE THIS MANUAL

This manual is designed to provide the customer with a means to identify the parts on his/her tractor when ordering repair parts. The illustrations may or may not represent the actual assemblies; therefore, it is not recommended to use this manual as a guide to assemble or disassemble the tractor. Some hardware and parts are drawn larger in order to more readily identify them.

Each tractor has its own model number.

The model number for your tractor can be found on the fender under the seat.

When ordering parts, always give the following information:

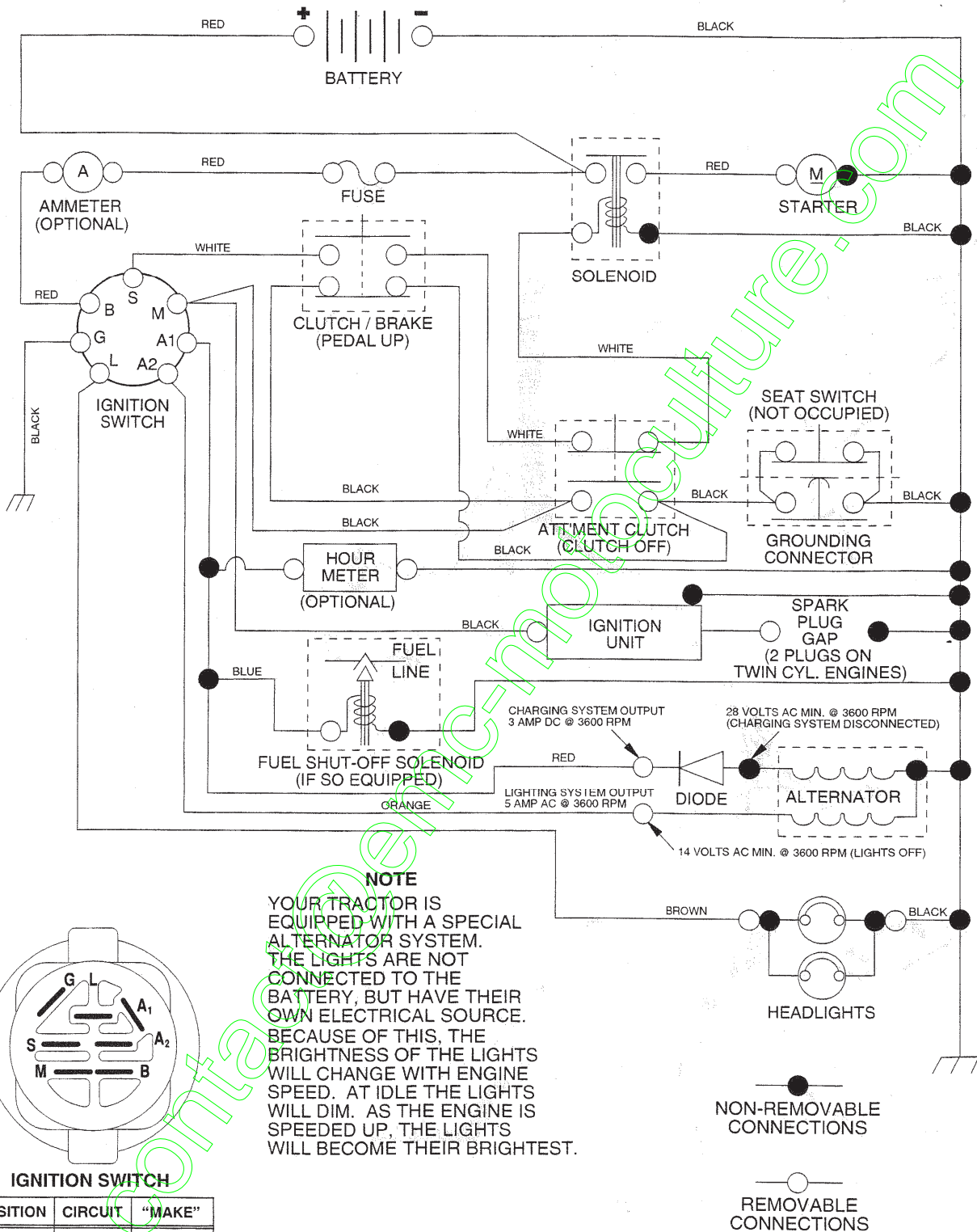
- Product - "Tractor"
- Model Number - "259060"
- Part Number
- Part Description

TABLE OF CONTENTS

SCHEMATIC.....	3
ELECTRICAL.....	4-5
CHASSIS.....	6-7
DRIVE.....	8-9
STEERING.....	10-11
SEAT.....	12
DECALS.....	13
ENGINE.....	14-15
MOWER LIFT.....	16-17
MOWER DECK.....	18-19
TRANSAXLE.....	20-21
ENGINE BREAKDOWN.....	22-27

TRACTOR- -MODEL NO. 917. 259060

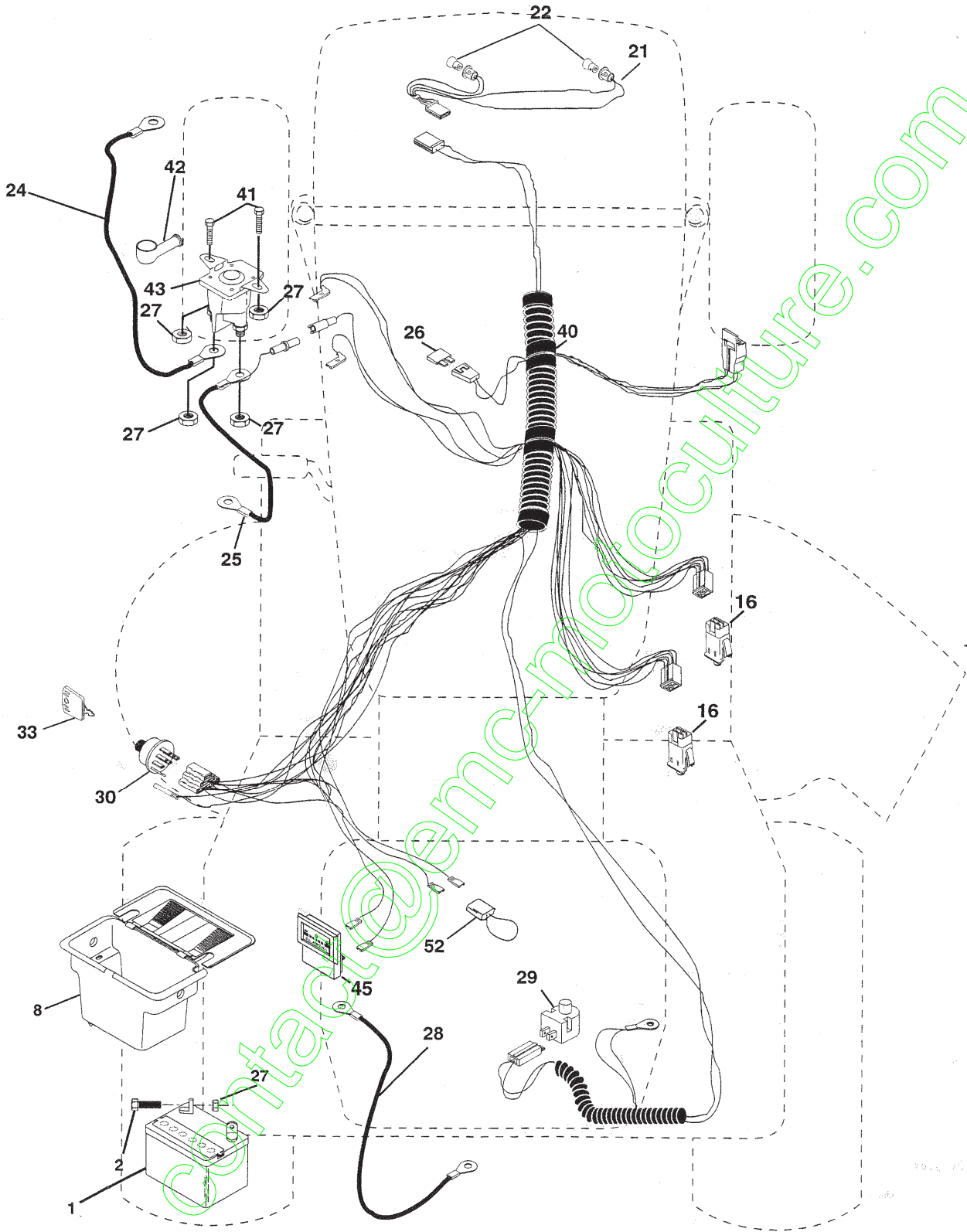
SCHEMATIC



REPAIR PARTS

TRACTOR- -MODEL NO. 917. 259060

ELECTRICAL



REPAIR PARTS

TRACTOR- -MODEL NO. 917. 259060

ELECTRICAL

KEY NO.	PART NO.	DESCRIPTION
1	144925	Battery
2	74760412	Bolt, Hex Head 1/4-20 unc x 3/4
8	156417	Case, Battery Mech Hinge
16	153664	Switch, Interlock Push-In
21	166182	Harness, Light Socket (Includes 4152J)
22	4152J	Bulb, Light
24	4799J	Cable, Battery, 6 Gauge, Red, 11"
25	146147	Cable, Battery, 6 Gauge, Red, W/16 Wire
26	166180	Fuse, 15 Amp
27	73510400	Nut Keps Hex1/4-20 Unc
28	4207J	Cable, Ground, 6 Gauge, Black, 12"
29	121305X	Switch, Plunger
30	163968	Switch, Ignition
33	140403	Key, Ignition
40	170217	Harness, Ignition
41	71110408	Bolt, Hex Head, Fin. 1/4-20 x 1/2
42	131563	Cover, Terminal, Red
43	145673	Solenoid
45	121433X	Ammeter Rectangular
52	141940	Protection Wire Loop

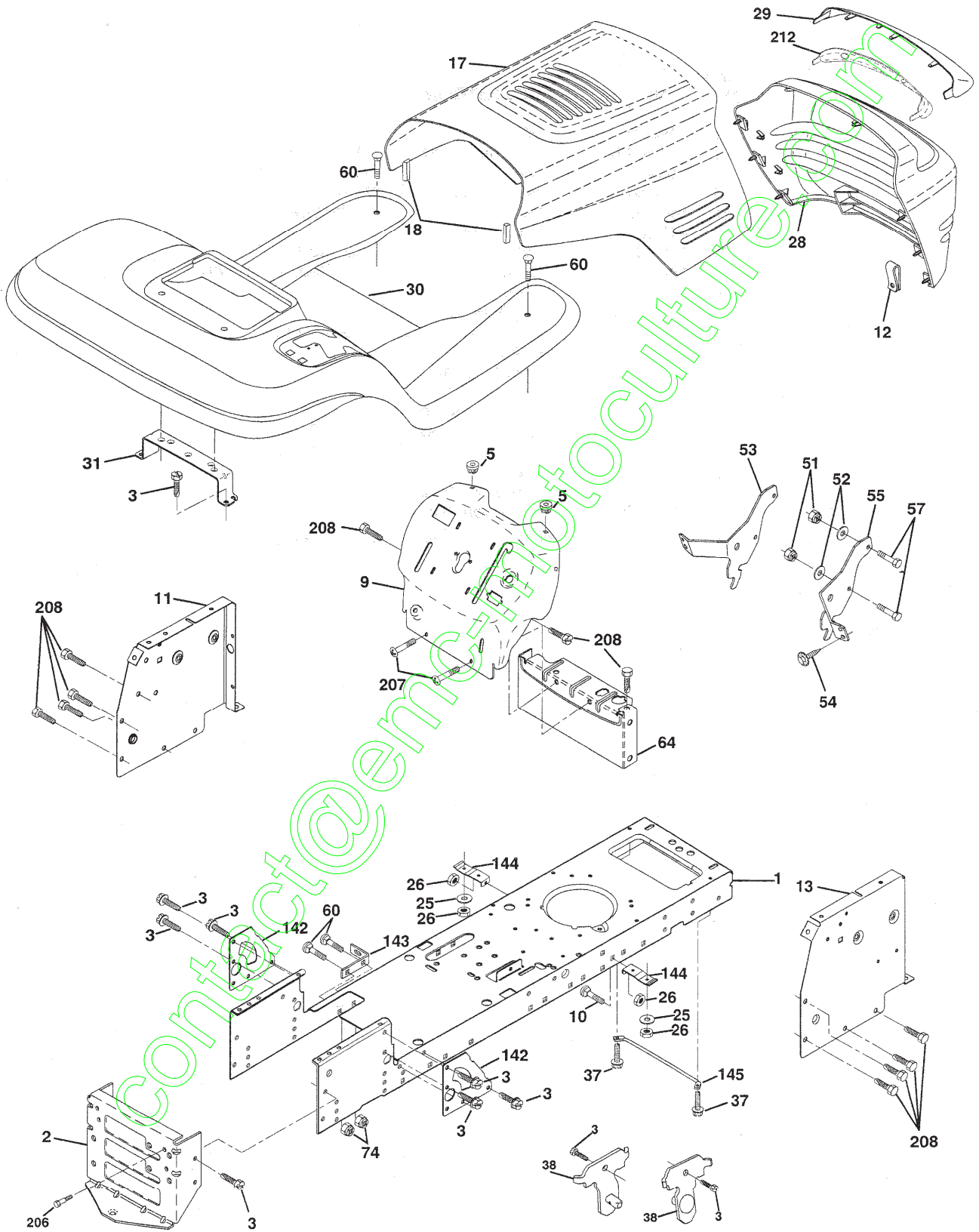
NOTE: ALL COMPONENT DIMENSIONS GIVEN IN U.S. INCHES

1 inch = 25.4 mm

REPAIR PARTS

TRACTOR- -MODEL NO. 917.259060

CHASSIS AND ENCLOSURES



REPAIR PARTS

TRACTOR- -MODEL NO. 917.259060

CHASSIS AND ENCLOSURES

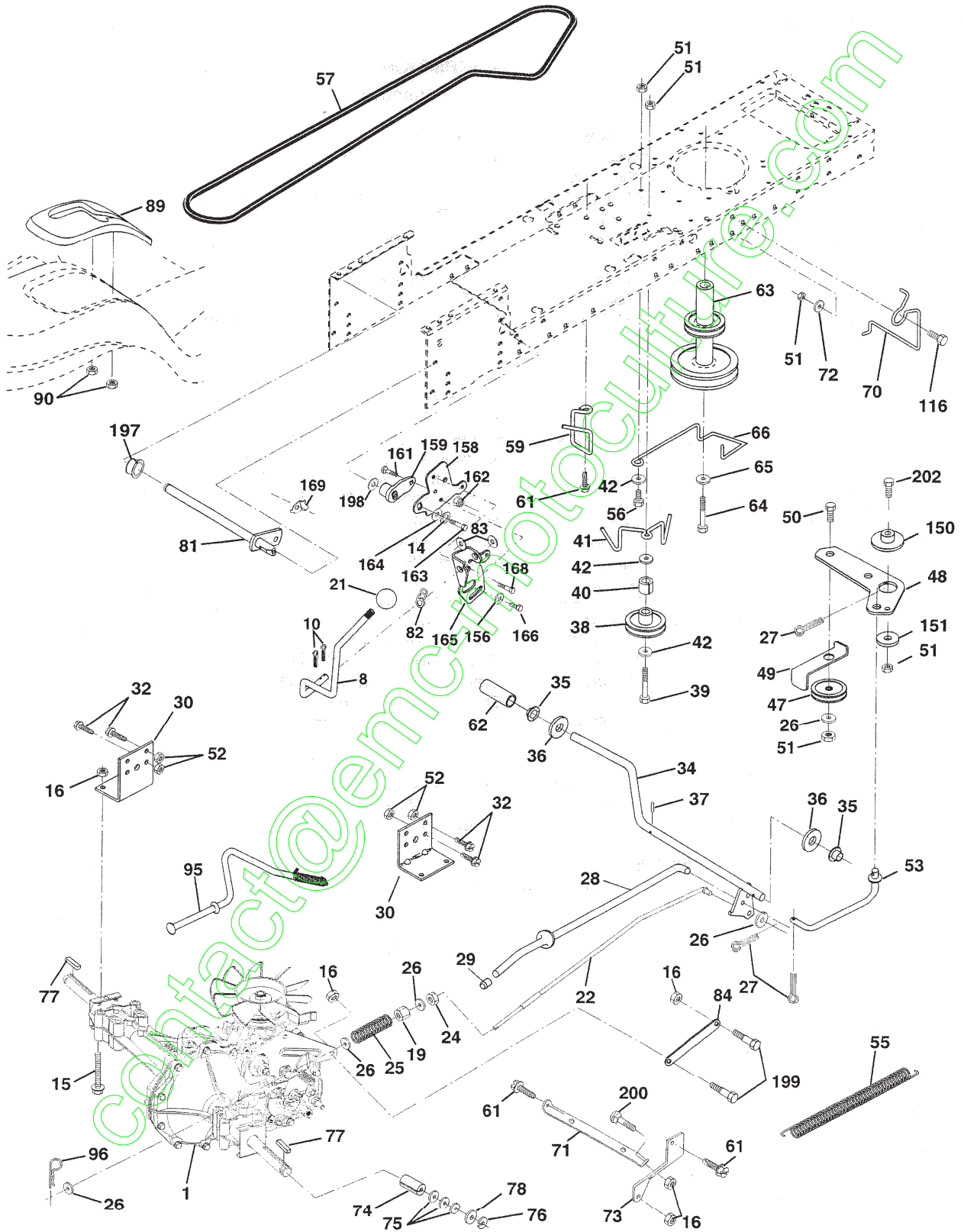
KEY NO.	PART NO.	DESCRIPTION
1	169830	Chassis Stamping
2	169061	Drawbar
3	17060612	Screw 3/8-16 x 3/4
5	155272	Bumper Hood/Dash
9	168337X012	Dash
10	STD533710	Bolt, Carriage 3/8-16 x 1
11	155927	Panel, Dash, L.H.
12	145660	Clip Tinnerman Grille P/L
13	172107X010	Panel, Dash, R.H.
17	144983X558	Hood Assembly
18	126938X	Bumper Hood
25	19131312	Washer 13/32 x 13/16 x 12 Gauge
26	STD541437	Nut
28	156725X558	Grille w/Clips
29	155217X599	Lens, Grille
30	164918X558	Fend/Ftrest Pnt STLT
31	139976	Bracket, Fender Support
37	17490508	Screw Thdrol 5/16-18 x 1/2 Tyt
38	169834	Bracket Asm. Pivot Mower Rear
51	73800400	Nut Lock w/Insert 1/4-20 UNC
52	19091416	Washer 9/32 x 7/8 x 16 Ga.
53	145201	Bracket Grille Pickoff LH
54	161464	Screw Hex Wshd 8-18 x 7/8
55	145202	Bracket Grille Pickoff RH
57	STD522507	Bolt, Fin Hex 1/4-20 UNC x .75
60	72140606	Bolt Rdhd Sqnk 3/8-16 UNC x 3/4
64	154798	Dash Lower STLT
74	73680600	Nut Crownlock 3/8-16 UNC
142	165867	Plate Reinforcement STLT
143	154966	Bracket Swaybar Chassis
144	154207	Bracket Pnt Footrest STLT
145	156524	RJod Pivot Chassis/Hood
206	170165	Bolt Shoulder 5/16 -18 TT
207	17670508	Screw Thdrol 5/16-18 x 1/2 TYTT
208	17670608	Screw Thdrol 3/8-16 x 1/2
212	165919	Insert Lens Reflective
--	5479J	Plug, Button

NOTE: All component dimensions given in U.S. inches
1 inch = 25.4 mm

REPAIR PARTS

TRACTOR- -MODEL NO. 917.259060

DRIVE



REPAIR PARTS

TRACTOR- -MODEL NO. 917.259060

DRIVE

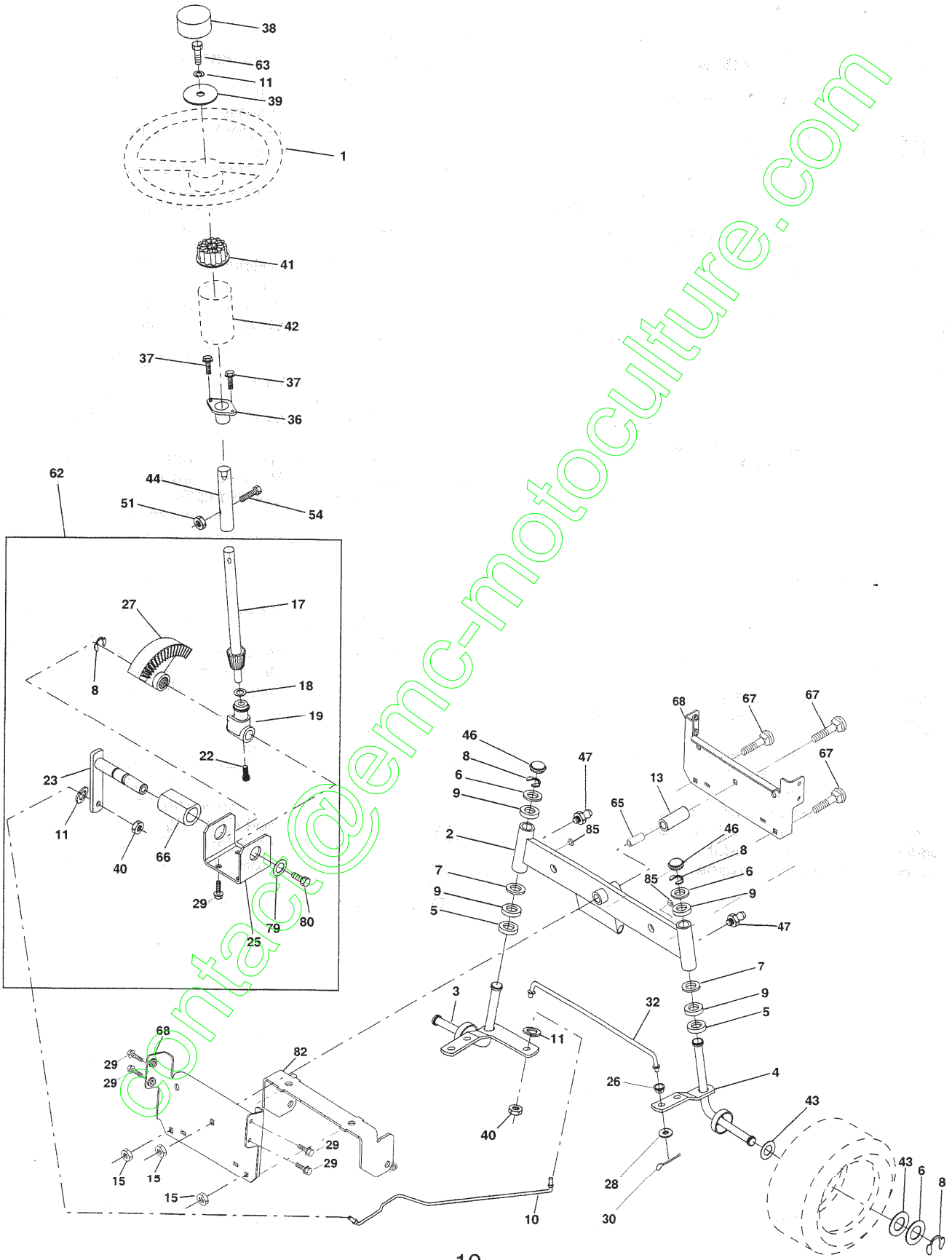
KEY NO.	PART NO.	DESCRIPTION	KEY NO.	PART NO.	DESCRIPTION
1	-----	Transaxle (See Breakdown) Hydro Gr 322-0510	64	71170764	Bolt Hex 7/16-20 x 4 Gr. 5
8	165866	Rod Shift Fender Adjust	65	STD551143	Washer
10	STD561210	Pin Cotter 1/8 x 1 CAD	66	154778	Keeper Belt Engine Hydro
14	10040400	Washer Lock Hvy Helical	70	134683	Keeper Belt Engine
15	74490544	Bolt Hex FLGHD 5/16-18 x Gr 5	71	169183	Strap Torque Lh Hydro
16	STD541431	Nut Lock Hex W/Ins. 5/16-18 Unc	72	19132012	Washer 13/32 x 1-1/4 x 12 Gauge
19	STD541437	Nut Lock Hex W/Wsh 3/8-16 Unc	73	169182	Strap Torque Rh Hydro
21	130564	Knob, Round1/2-13	74	169496	Spacer, Split
22	169498	Rod, Brake Hydro	75	121749X	Washer 25/32 x 1-1/4 x 16 Gauge
24	73350600	Nut, Hex Jam 3/8-16 Unc	76	STD581075	E-Ring
25	106888X	Spring, Brake Rod	77	123583X	Key, Square
26	STD551037	Washer	78	121748X	Washer 25/32 x 1-5/8 x 16 Gauge
27	STD561210	Pin Cotter 1/8 x 3/4 CAD.	81	165596	Shaft Asm Cross Tapered
28	145204	Rod, Parking Brake	82	165711	Spring Torsion
29	71673	Cap, Parking Brake	83	19171216	Washer 17/32 x 3/4 x 16 Ga.
30	130807	Bracket, Transaxle	84	169843	Link Transaxle
32	74760512	Bolt Hex Hd 5/16-18 Unc x 3/4	89	164890X428	Console, Shift
34	155071	Shaft, Foot Pedal	90	124346X	Nut Self-Thd Wsh-hd 1/4 Zinc
35	120183X	Bearing, Nylon	95	170201	Control Bypass Hydro 20" Tires
36	19211616	Washer	96	4497H	Retainer Spring 1" Zinc/Cad
37	1572H	Pin, Roll	103	73940800	Nut Hex Jam Toplock 1/2-20unf
38	131494	Pulley, Idler, Flat	116	72110610	Bolt Rdhd Sqneck 3/8-16 x 1.25
39	74760644	Bolt	150	165850	Bushing Bellcrank Grd Drive
40	4470J	Spacer, Split	151	19133210	Washer 13/32 x 2 x 10 Ga.
41	165838	Keeper, Belt Idler	156	166002	Washer Srrted 5/16ID x 1.125
42	19131312	Washer 13/32 x 13/16 x 12 Gauge	158	165589	Bracket Shift Mount
47	127783	Pulley, Idler, V-Groove	159	165494	Hub Tapered Flange Shift Lt
48	154407	Bellcrank, Clutch	161	72140406	Bolt Rdhd Sqnk 1/4-20 x 3/4 Gr 5
49	123205X	Retainer, Belt	162	73680400	Nut Crownlock 1/4-20 Unc
50	STD523715	Bolt	163	74780416	Bolt Hex Fin 1/4-20 Unc x 1 Gr 5
51	STD541437	Nut Crownlock 3/8-16 UNC	164	19091010	Washer 5/8 x .281 x 10 Ga
52	STD541431	Nut, Crownlock 5/16-18 Unc	165	165623	Bracket Pivot Lever
53	105710X	Link, Clutch	166	166880	Screw 5/16-18 x 5/8
55	105709X	Spring, Return, Clutch	168	165492	Bolt Shoulder 5/16-18 x .561
56	STD523712	Bolt Hex 3/8-16 x 1-1/4	169	165580	Plate Fastening
57	140294	V-Belt	197	169613	Nyliner Snap-In 5/8"ID
59	169691	Keeper, Center Span	198	169593	Washer Nyl 7/8 ID x .105" Hyd
61	17060612	Screw . 3/8-16 x 3/4	199	169612	Bolt Shoulder 5/16-18UNC
62	8883R	Cover, Pedal	200	72140508	Bolt Rdhd Sgnk 5/16-18UNC x 1
63	140186	Pulley, Engine	202	72110612	Bolt Carr Sh 3/8-16 x 1-1/2 Gr.5
			205	19171616	Washer 17/32 x 1 x 16 Ga.

NOTE: All component dimensions given in U.S. inches
1 inch = 25.4 mm

REPAIR PARTS

TRACTOR- -MODEL NO. 917.259060

STEERING ASSEMBLY



REPAIR PARTS

TRACTOR- -MODEL NO. 917.259060

STEERING ASSEMBLY

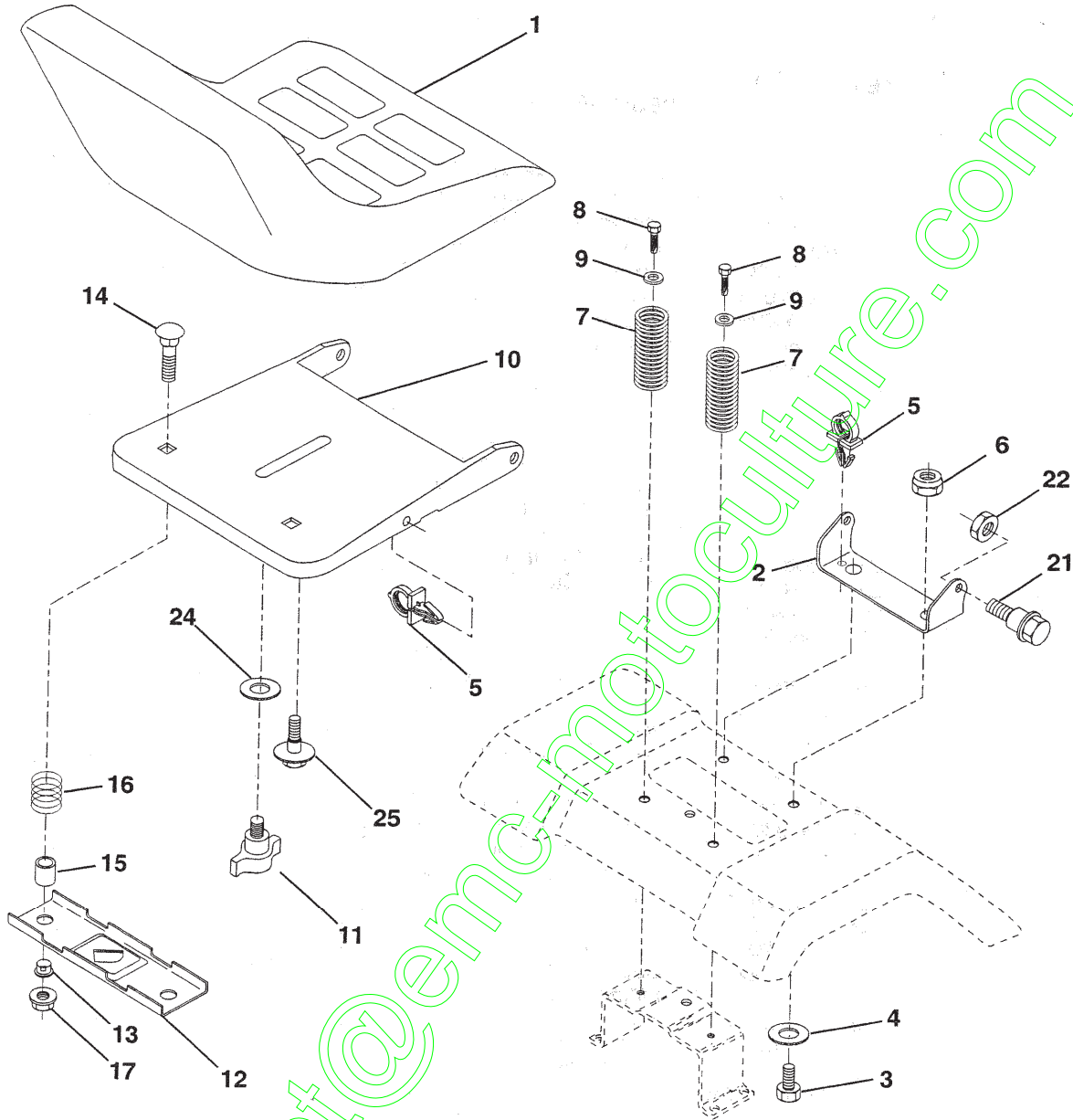
KEY NO.	PART NO.	DESCRIPTION
1	139768	Steering Wheel
2	154427	Axle Assembly STMP Dropped STL
3	156483	Spindle Assembly, L.H.
4	157473	Spindle Assembly, R.H.
5	6266H	Bearing, Race, Thrust, Hardened
6	121748X	Washer 25/32 x 1-5/8 x 16 Gauge
7	19272016	Washer 27/32 x 1-1/4 x 16 Gauge
8	12000029	Ring, Klip
9	3366R	Bearing, Steering Column
10	169832	Draglink
11	STD551137	Washer, Lock
13	136518	Spacer Brg Axle Front
15	145212	Nut, Hexflange Lock
17	156546	Shaft Assembly, Steering
18	57079	Washer, Thrust .515 x .750 x .033
19	160395	Support, Shaft
22	165857	Screw Hex Wshhd Torx
23	165851	Pittman Shaft Assembly
25	154406	Bracket, Steering
26	126847X	Bushing, Link, Drag
27	136874	Gear, Sector
28	19131416	Washer 13/32 x 7/8 x 16 Gauge
29	17060612	Screw 3/8-16 x 3/4
30	STD561210	Pin
32	130465	Rod, Tie
36	155099	Bushing, Steering
37	152927	Screw
38	139769	Insert, Steering Wheel
39	19133812	Washer 13/32 x 2-3/8 x 12 Gauge
40	STD541537	Nut Lock Center 3/8-24 UNF
41	100711L	Adaptor, Steering Wheel
42	145054x428	Boot, Steering Shaft
43	121749X	Washer 25/32 x 1-1/4 x 16 Gauge
44	153720	Extension Shaft Steering LR.LT
46	121232X	Cap, Spindle
47	6855M	Fitting, Grease
51	STD541431	Nut Lock Hex w/Ins. 5/16-18 UNC
54	74780520	Bolt Fin Hex 5/16-18 UNC x 1-1/4
62	167902	Kit Steering Asm Service
63	STD523710	Bolt, Fin Hex 3/8-16 UNC x 1 Gr 5
65	160367	Spacer Brace Axle
66	154404	Bearing Arm Pittman
67	72140618	Bolt Rdhd Sq 3/8-16 x 2-1/4
68	169827	Axle, Brace
79	19132012	Washer 13/32 x 1-1/4 x 12 Ga
80	74950612	Bolt Hex Nylon 3/8-16 x 3/4
82	169835	Bracket Susp Chassis Front
85	133835	Fastner Christmas Tree

NOTE: All component dimensions given in U.S. inches
1 inch = 25.4 mm

REPAIR PARTS

TRACTOR- -MODEL NO. 917.259060

SEAT ASSEMBLY



KEY NO.	PART NO.	DESCRIPTION
1	140122	Seat
2	140551	Bracket, Pivot, Seat
3	71110616	Bolt
4	19131610	Washer 13/32 x 1 x 10 Gauge
5	145006	Clip, Push-In Hinged
6	STD541437	Nut
7	124181X	Spring, Seat
8	17000616	Screw 3/8-16 x 1-1/2
9	19131614	Washer 13/32 x 1 x 14 Gauge
10	155925	Pan, Seat Emboss QCK Conn.
11	166369	Knob Seat

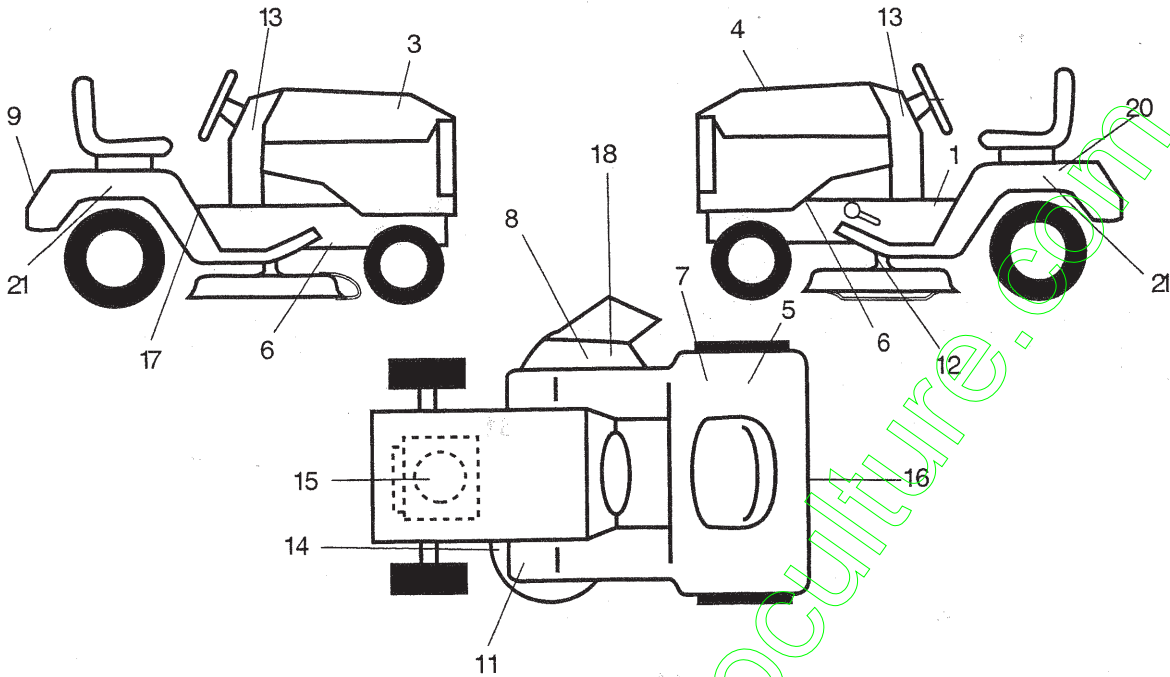
KEY NO.	PART NO.	DESCRIPTION
12	121246X	Bracket, Switch Mounting
13	121248X	Bushing, Snap
14	72050412	Bolt, Carriage 1/4-20 x 1-1/2
15	134300	Spacer, Split .28 x .88
16	121250X	Spring
17	123976X	Locknut, Flange 1/4 Grade 5
21	171852	Bolt, Shoulder 5/16-18 UNC
22	STD541431	Nut
24	19171912	Washer 17/32 x 1-3/16 x 12 Ga.
25	127018X	Bolt, Shoulder 5/16-18 x .62

NOTE: All component dimensions given in U.S. inches
1 inch = 25.4 mm

REPAIR PARTS

TRACTOR- -MODEL NO. 917.259060

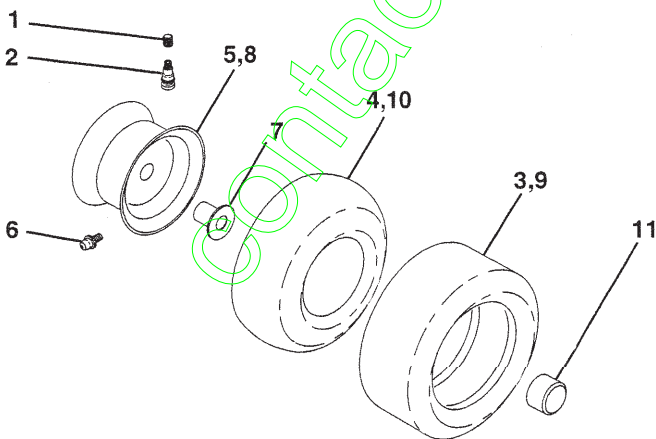
DECALS



KEY NO.	PART NO.	DESCRIPTION
1	140837	Decal, Saddle Brake Parking
3	171696	Decal, Hood, R.H.
4	171697	Decal, Hood, L.H.
5	126187X	Decal, DBA
6	159736	Decal, Chassis Hot Muffler
7	145437	Decal Europe Stand CE
8	166887	Decal, Deck Mower EZ
9	163204	Decal, Fender, Craftsman
11	159737	Decal, Brake/Clutch
12	146046	Decal, V-Belt Drive Schematic
13	163252	Decal, Dash Panel

KEY NO.	PART NO.	DESCRIPTION
14	160396	Decal, V-Belt Schematic
15	165404	Decal, Engine
16	169210	Decal, By Pass Lt Hydro
17	145498	Decal, Read Owners Manual
18	145494	Decal, Mower Cutting Symbol
20	145005	Decal, Battery Dngr/Psn Eng
21	163205	Decal, Fender Sd. Wht
--	138311	Decal, Lift Handle
--	165800X428	Pad Footrest LH STLTL
--	165799X428	Pad Footrest RH STLTL
--	162598	Decal, Drawbar Load Limit
--	173707	Manual Parts
--	173705	Manual Oper Euro
--	173706	Manual Oper Scan

WHEELS & TIRES



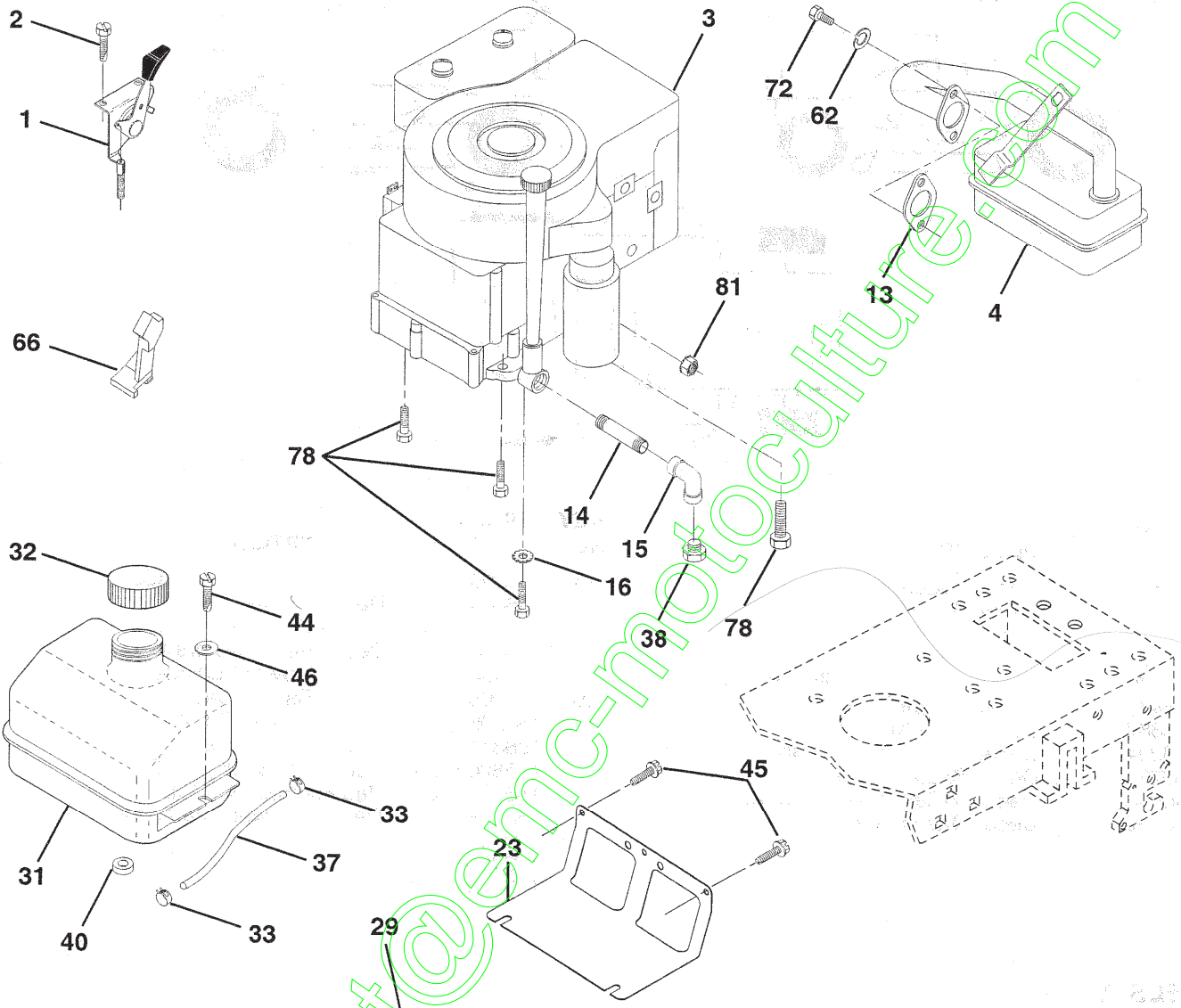
KEY NO.	PART NO.	DESCRIPTION
1	59192	Cap Value Tire
2	65139	Stem Value
3	106222X	Tire F Ts 15 X 6 0 - 6 Service
4	59904	Tube Inner Front #35060
5	106732X427	Rim Asm 6"front White Service
6	278H	Fitting Grease
7	9040H	Bearing Flange
8	106108X427	Rim Asm 8"rear White Service
9	106268X	Tire R Ts 18x9 5-8 Service
10	7152J	Tube Rear 9 5 X 8 Service
11	104757X	Cap Axle Blk 1 50 X 1 00
--	144334	Sealant, Tire (10 oz. tube)

NOTE: All component dimensions given in U.S. inches
1 inch = 25.4 mm

REPAIR PARTS

TRACTOR- -MODEL NO. 917.259060

ENGINE



OPTIONAL EQUIPMENT
Spark Arrester

REPAIR PARTS

TRACTOR- -MODEL NO. 917.259060

ENGINE

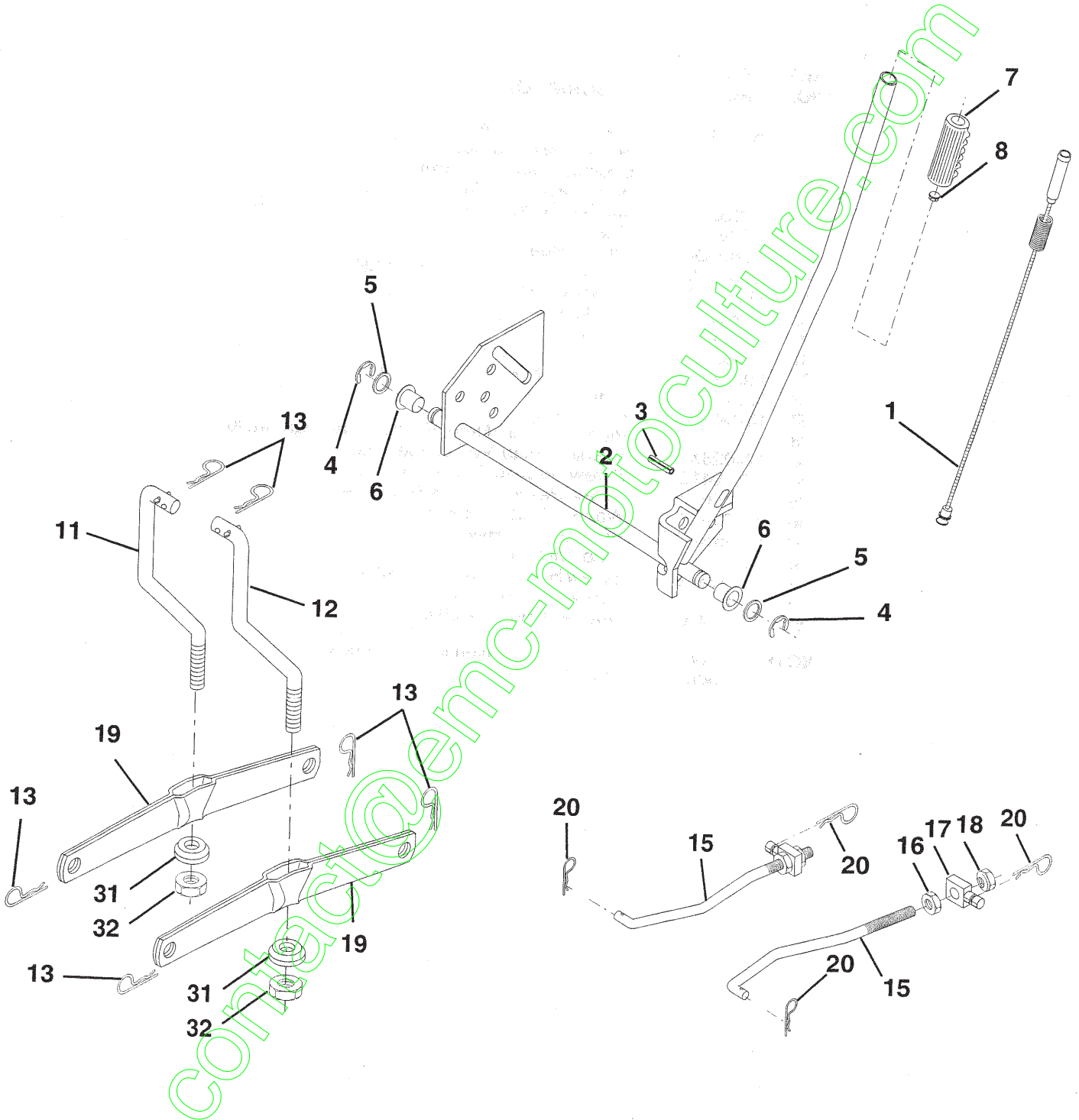
KEY NO.	PART NO.	DESCRIPTION
1	162158	Control, Throt/ Ch Lh
2	17720410	Screw, Hex Thd Cut 1/4-20 x 5/8 T
3	-----	Engine, (See Breakdown) Briggs Model 310707-0136-E1
4	137352	Muffler Exhaust B&S Lt
13	165291	Gasket 1 313 Id Tin Plated
14	13280324	Nipple Pipe 3/8 Npt X 3"
15	13200300	Elbow Std 90 Degree 3/8-18 NPT
16	STD551237	Washer Lock Ext Tooth 3/8
23	169837	Shield Browning/Debris Guard
29	137180	Arrestor Spark
31	109202X	Tank Fuel 1 25 Fr
32	158990	Cap Asm Fuel Sears Vented
33	123487X	Clamp Hose Blk
37	137040	Line Fuel 20"
38	-----	Plug, Oil Drain (Order From Engine Manufacturer)
40	124028X	Bushing Snap Nyl Blk Fuel Line
44	17670412	Screw Hexwsh Thdrol 1/4-20 x 3/4
45	17000612	Screw Hexwsh Thdr 3/8-16 x 3/4
46	19091416	Washer 9/32 x 7/8 x 16ga.
62	STD551131	Washer Lock Hvy Hlcl Spr 5/16
66	127951	Stop Throttle
72	71070512	Screw Hexhd Cap 5/16-18x3/4
78	17060620	Screw 3/8-16x1-1/4
81	73510400	Nut Keps Hex 1/4-20 Unc

NOTE: All component dimensions given in U.S. inches
1 inch = 25.4 mm

REPAIR PARTS

TRACTOR- -MODEL NO. 917.259060

MOWER LIFT



TRACTOR- -MODEL NO. 917.259060

KEY NO.	PART NO.	DESCRIPTION
1	159460	Lift Lever Inner Wire Assembly
2	159471	Shaft Assembly, Lift
3	105767X	Pin, Groove
4	12000002	E-Ring
5	19211621	Washer 21/32 x 1 x 21 Gauge
6	120183X	Bearing, Nylon
7	125631X	Grip, Handle, Fluted
8	122365X	Button, Plunger, Red
11	139865	Link, Lift, L.H.
12	139866	Link, Lift, R.H.
13	STD624008	Retainer Spring
15	173288	Link, Front
16	73350800	Nut, Hex, Jam 1/2-13 UNC
17	130171	Trunnion
18	73800800	Locknut, Hex, with Washer Insert 1/2-13 UNC
19	139868	Arm, Suspension, Rear
20	163552	Retainer Spring
31	140302	Bearing, Pvt, Lift Spherical
32	73540600	Nut, Crownlock 3/8-24

NOTE: All component dimensions given in U.S. inches
1 inch = 25.4 mm

REPAIR PARTS

TRACTOR- -MODEL NO. 917.259060

MOWER

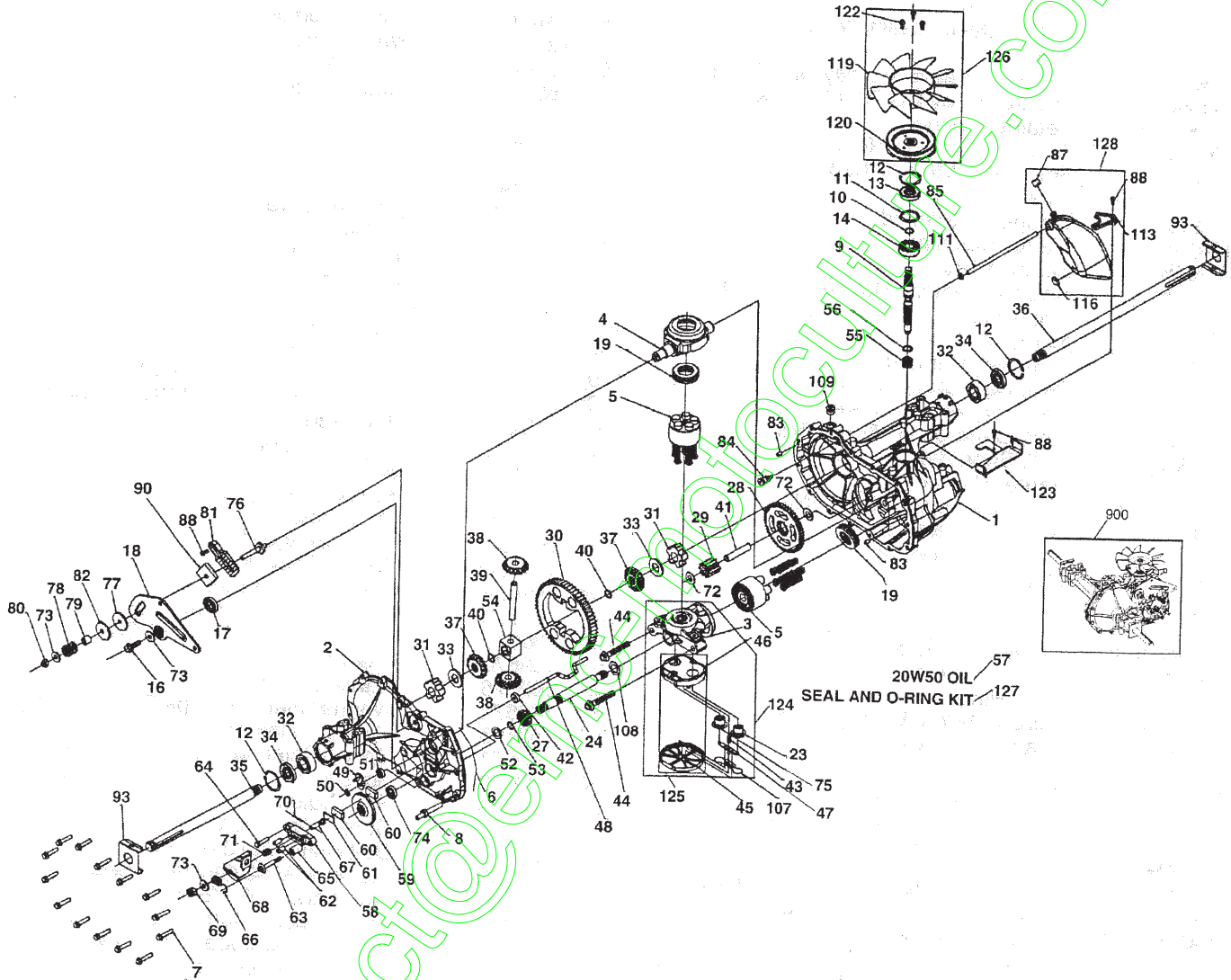
KEY NO.	PART NO.	DESCRIPTION	KEY NO.	PART NO.	DESCRIPTION
1	165892	Mower Deck Assembly, 42"	53	131845	Arm Assembly, Pad, Brake
2	STD533107	Bolt	54	133943	Washer, Hardened
3	138017	Bracket Assembly, Sway Bar, Front	55	155046	Arm, Idler
4	165460	Bracket Sway Bar 38/42" Deck	56	165723	Spacer, Retainer
5	STD624008	Retainer Spring	59	141043	Guard, TUV Idler
6	130832	Arm, Suspension, Rear	67	149846	Knob Custom Oval
8	850857	Bolt, Hex 3/8-24 x 1.25 Gr. 8	68	144959	V-Belt
9	STD551137	Washer, Lock	92	STD541437	Nut
10	140296	Washer, Hardened	101	136420	Mulcher Cover
11	134149	Blade, Mulching	102	71161010	Screw
12	129895	Bearing, Ball	103	19061216	Washer #10
13	137645	Shaft Assembly, Mandrel, Vented (Includes Key Number 12)	104	STD551110	Washer, Lock
14	128774	Housing, Mandrel, Vented	105	160793	Latch Assembly, Bagger
15	110485X	Bearing, Ball, Mandrel	106	2029J	Nut, Weld
16	140329	Stripper, Vented Mower Deck	128	153390	Washer Felt
18	72140505	Bolt, Carriage 5/16-18 x 5/8	129	19131312	Washer 13/32 x 13/16 x 12 Ga.
19	132827	Bolt, Shoulder	130	STD523710	Bolt, Fin Hex 3/8-16 UNC x 1 Gr. 5
20	159770	Baffle, Vortex	131	STD533710	Bolt, Rdhd Sqnk 3/8-16UNC x 1
21	STD541431	Nut Crownlock 5/16-18 UNC	142	165890	Arm Spring Brake Mower
22	134753	Stiffener Bracket	143	157109	Bracket Arm Idler 42"
23	131267	Bracket, Deflector	144	158634	Keeper Belt 42" Clutch Cable
24	105304X	Cap, Sleeve	145	165888	Pulley Idler Flat
25	123713X	Spring, Torsion, Deflector	146	165891	Bolt Carriage Idler
26	110452X	Nut, Push	147	131335	Spring Extension
27	130968X428	Shield, Deflector	148	169022	Spring Return Idler
28	19111016	Washer 11/32 x 5/8 x 16 Ga.	149	165898	Retainer Spring Yellow Zinc
29	131491	Rod, Hinge	150	19091216	Washer 9/32 x 3/4 x 16 Ga.
30	157722	Screw Thdrol Washer Head	151	169670	Bracket Clutch
31	129963	Washer, Spacer	152	169676	Cable Clutch 42 In
32	153535	Pulley, Mandrel	153	169674	Washer Flat 3/8" Type B
33	137266	Nut, Toplock, Flanged	154	169675	Spring Retainer
34	STD533717	Bolt	155	169671	Spring Retention Lever
35	133835	Fastner, Christmas Tree	156	169672	Spacer
36	131494	Pulley, Idler, Flat	157	169669	Rod Clutch
37	STD551037	Washer 13/32 x 13/16 x 16 Gauge	158	17720410	Screw Hex Thd Cut 1/4-20 x 5/8
40	STD541437	Nut Crownlock 3/8-16 UNC	159	72140614	Bolt Rdhd Sqn 3/8-16 UNC x 1-3/4
44	140088	Guard, Mandrel, L.H.	--	130794	Mandrel Assembly (Includes Key Numbers 8-10, 12-15, 31 and 32)
45	STD624003	Retainer	--	169583	Mower Deck, Complete (Standard Deck, Order Separately Mulcher Plate Components, Key Nos. 101- 106)
46	137729	Screw, Thd, Roll 1/4-20 x 5/8			
48	133944	Washer, Hardened			
49	155066	Roller Assembly, Cam Follower			
50	131340	Bolt, Shoulder #10-24 Grade 5			
51	STD541410	Locknut			
52	139888	Bolt, Shoulder 5/16-18 UNC			

NOTE: All component dimensions given in U.S. inches
1 inch = 25.4 mm

REPAIR PARTS

TRACTOR - - MODEL NUMBER 917.259060

HYDRO GEAR TRANSAXLE - MODEL NUMBER 322-0510



REPAIR PARTS

TRACTOR - - MODEL NUMBER 917.259060

HYDRO GEAR TRANSAXLE - MODEL NUMBER 322-0510

KEY PART NO. NO.

DESCRIPTION

1	170351	Main Housing, Assembly
2	170352	Side Housing, Assembly
3	170353	Center Section, Assembly
4	170354	Swashplate, Trunion Machined
5	169898	Block - Assembly
6	170355	Sealant
7	170356	Hex Flange Screw 1/4-20 X 1.25
8	170357	Stud, 5/16-24 Hex Double End
9	170358	Shaft, Input
10	170359	Ring - Retaining
11	170360	Spacer
12	169870	Ring - Retaining
13	170361	Seal, Lip .67 X 1.58 X .276
14	173158	Ball Brg 17MM ID X 40MM OD X 12MM
16	170362	Hex FLange Head Screw 5/16-24 X 0.75
17	170363	Lip Seal 18 X 32 X 7
18	170364	Arm, Control
19	173159	Bearing, 30X52X13 Thrust
23	170365	Check Plug Assembly, Washer
24	170366	Shaft, Motor1
27	170367	Gear - Pinion, 13T
28	170368	10T/48T GEAR
29	170369	Gear, 10T Jackshaft
30	170370	60T Bull Gear
31	170371	Sleeve Bearing .75 X 1.575 X .625
32	170389	Sleeve Bearing (Outboard).75X1.75X.625
33	142991	Washer, 3/4 ID X 1-1/2 OD X .13 THK
34	170390	Lip Seal Axle Seal
35	170391	Shaft, Axle .75 X 11.39 (Key, R.H.)
36	170392	Shaft, Axle .75 X 16.99 (Key, L.H.)
37	150792	Miter Gear (SPLINED)
38	150793	Miter Gear 15T (0.5 ID)
39	150809	Shaft
40	170393	Ring, Spiral Retaining
41	170394	Pin, Jackshaft
42	170395	Magnet, Rling
43	170396	Spring, Bypass
44	150797	Hydro mtg Screw 3/8-24 X 2.5 Long
45	170397	Filter
46	170398	Base, Filter
47	170399	Actuator, Bypass
48	170400	Rod, Bypass Actuator
49	170401	Arm, Bypass
50	170402	Retaining Ring .250 External
51	170403	Seal, Lip .741 X .250 X .250 TC
52	170404	Flat Washer, 5/8 ID X 1.0 OD X .05 THK
53	170405	Retaining Ring
54	170406	Bearing, Center Block
55	142977	Spring - Helical Compression
56	142978	Washer
57	150798	20W-50 OIL72.8 oz
58	170407	Brake Yoke
59	170408	Rotor, Brake

KEY PART NO. NO.

DESCRIPTION

60	142883	Brake Puck
61	142882	Puck Plate
62	170409	Brake Actuating Pin
63	170410	HFHCS 1/4-20X2 W/Patch, Special Flange
64	142892	Bolt, 1/4-20 X 1 W/Patch
65	170411	Spacer
66	170412	Spring, Brake Arm Bias
67	170413	SQ. HD. BOLT 5/16-24-Ribbed
68	170414	Arm, Brake
69	170415	Slotted Hex Nut 5/16-24
70	170416	Cotter Pin 3/32 X 3/4
71	170417	Compression Spring Brake Anti-Drage
72	170418	Washer, HT .5 I.D. X 1 O.D. X .032
73	142884	Flat - Washer 11/32 I.D. X 7/8 O.D.
74	170419	Oil Seal .625 X 1.0 X .25
75	170420	Check Plug Assembly, .027, Washer
76	170421	Stud, 5/16-24 Friction Pack
77	170422	Puck, .330 X 1.50 X .0975
78	142969	Spring, Helical Comp
79	142980	Spacer
80	150778	Hex Lock Nut 5/16-24 UNJF(Nylon Insert)
81	170423	Wedge, Friction Pack
82	170424	Clip, Washer .316X1.50X.1046 (Plated)
83	161168	Pin, Standard Headless
84	170425	Fitting, 5/16 Sae 5/32 Tube
85	170426	Hose, Expansion Tank
87	173160	Cap, Vent
88	170428	Bolt, Self Tapping 10-32 X 1/2
90	170430	Puck, Inner Wedge
93	170431	Spring Clip - Housing Thrust
107	170432	Deflector
108	170433	Washer, Motorshaft .711DX1.15ODX.030THK
109	170434	Plug, Sae #6
111	170435	O-ring .07 x .301 I.D.
113	170437	Bracket, Support Expansion Tank
116	170438	Silicon Sponge
119	173161	Fan
120	17044	Pulley
122	173162	#12 T.F. Screw-lindented Hex Washer Head
123	173163	Bracket Belt Keeper
124	170444	Center Section-Filter-Bypass Assembly
125	170445	Filter Assembly
126	173164	Fan - Pulley Service Aassembly
127	170447	Seal - O-ring Kit
128	173165	Kit, Expansion Tank
900	171613	Transaxle, complete

NOTE: All component dimensions given in U.S. inches
1inch = 25.4 mm