

**REPAIR PARTS MANUAL**  
**MODEL NO. 917.259110**  
**Lawn Tractor**

---

**CRAFTSMAN®**

# HOW TO USE THIS MANUAL

This manual is designed to provide the customer with a means to identify the parts on his/her tractor when ordering repair parts. The illustrations may or may not represent the actual assemblies; therefore, it is not recommended to use this manual as a guide to assemble or disassemble the tractor. Some hardware and parts are drawn larger in order to more readily identify them.

Each tractor has its own model number.

The model number for your tractor can be found on the fender under the seat.

When ordering parts, always give the following information:

- Product - "Tractor"
- Model Number - "917.259110"
- Part Number
- Part Description

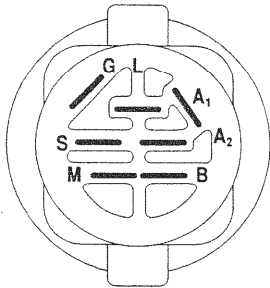
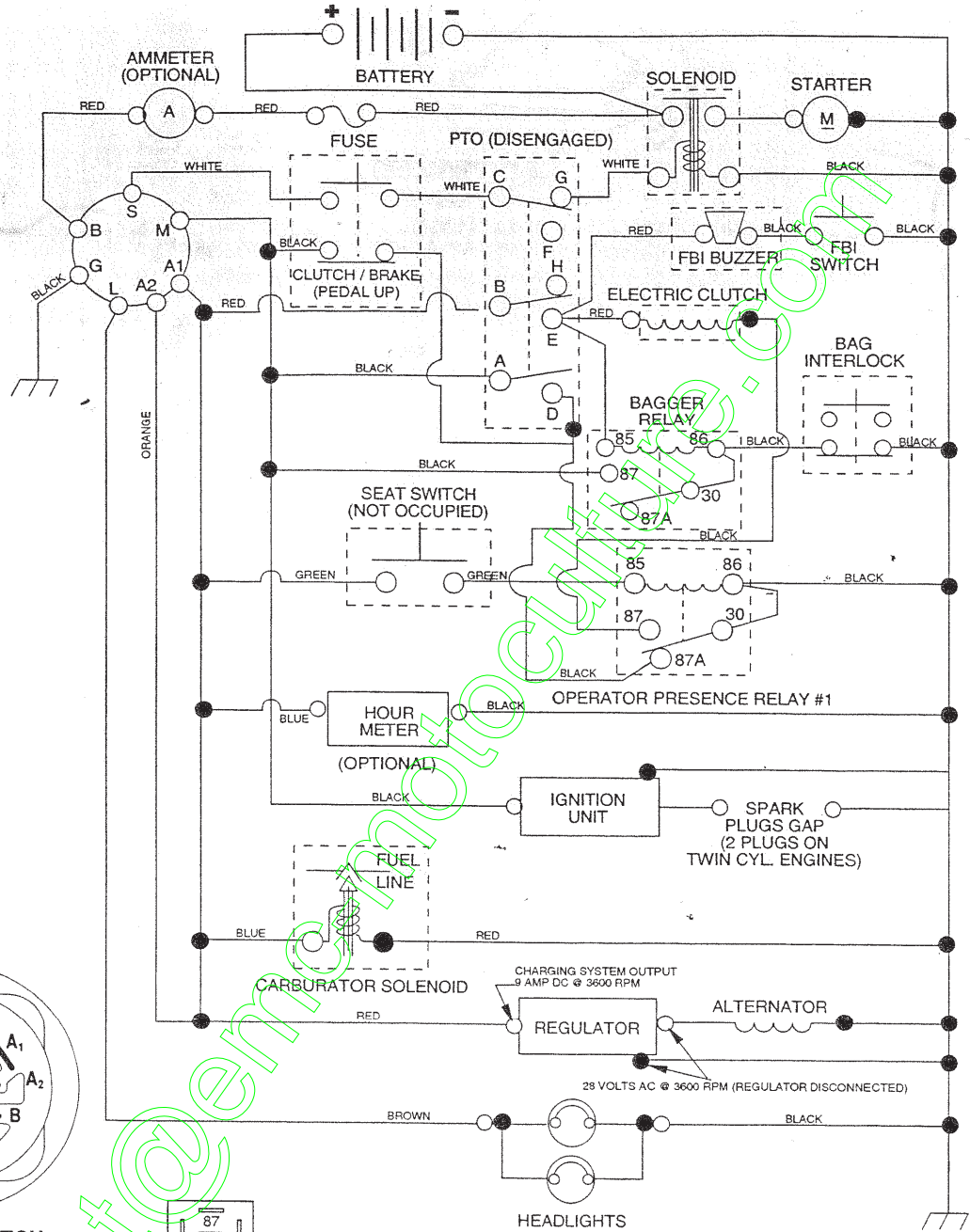
## TABLE OF CONTENTS

SCHEMATIC .....	3
ELECTRICAL .....	4-5
CHASSIS .....	6-7
DRIVE .....	8-9
STEERING .....	10-11
SEAT .....	12
DECALS .....	13
ENGINE .....	14-15
LOWER LIFT .....	16-17
LOWER DECK .....	18-19
BAGGER .....	20-21
TRANSAXLE .....	22-23
ENGINE BREAKDOWN .....	24-28

# REPAIR PARTS

TRACTOR- -MODEL NO. 917.259110

## SCHEMATIC



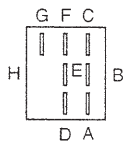
IGNITION SWITCH

POSITION	CIRCUIT	"MAKE"
OFF	M+G+A1	NONE
RUN/LIGHT	B+A1	A2+L
RUN	B+A1	NONE
START	B+S+A1	NONE

WIRING INSULATED CLIPS  
NOTE: IF WIRING INSULATED CLIPS WERE REMOVED FOR SERVICING OF UNIT, THEY SHOULD BE REPLACED TO PROPERLY SECURE YOUR WIRING.



RELAY



PTO SWITCH

POSITION	CIRCUIT
OFF	C+G, B+H
ON	C+F, B+E, A+D

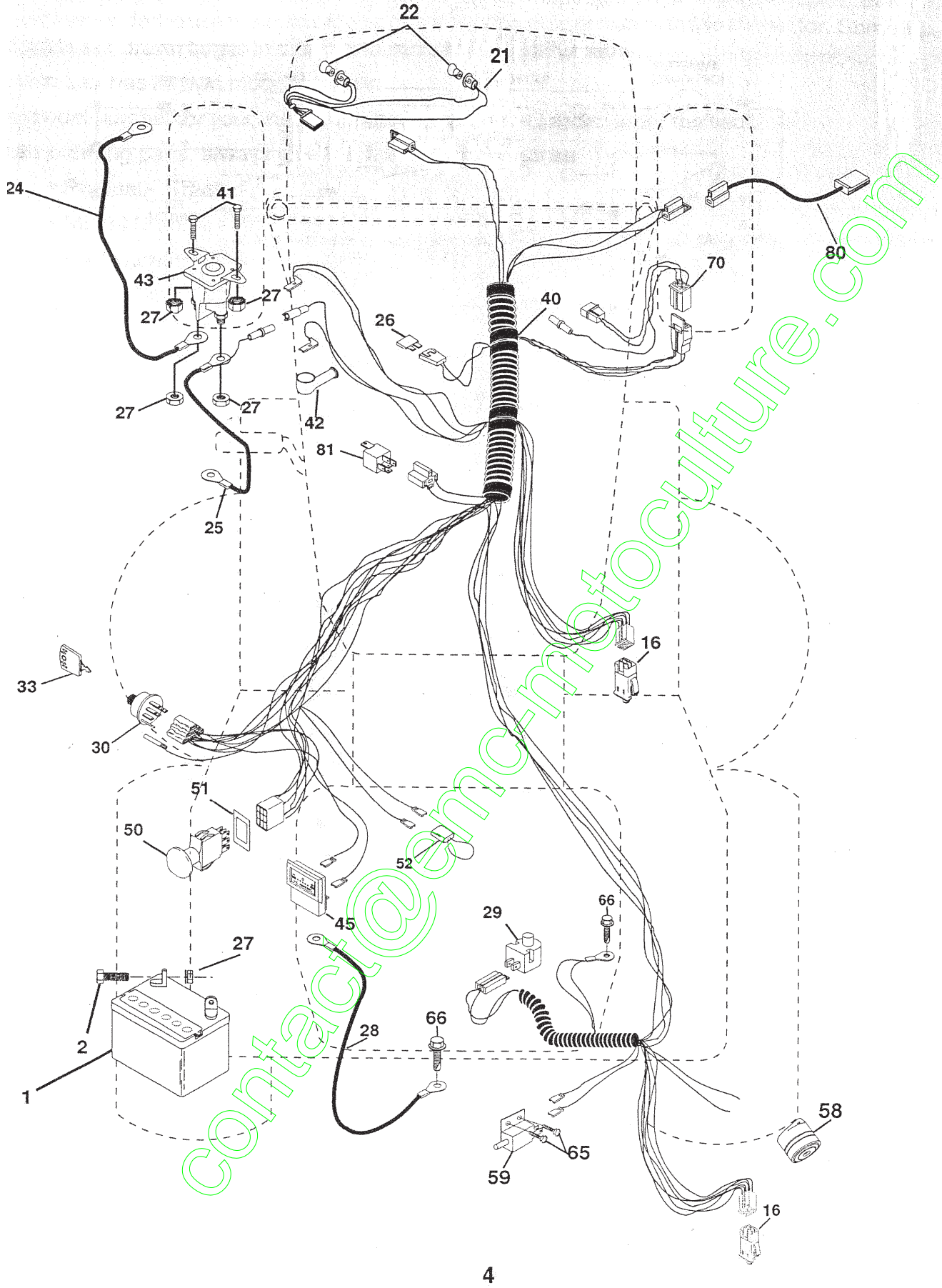
NON-REMOVABLE CONNECTIONS

REMOVABLE CONNECTIONS

# EPAIR PARTS

TRACTOR- -MODEL NO. 917.259110

ELECTRICAL



# REPAIR PARTS

TRACTOR- -MODEL NO. 917.259110

## ELECTRICAL

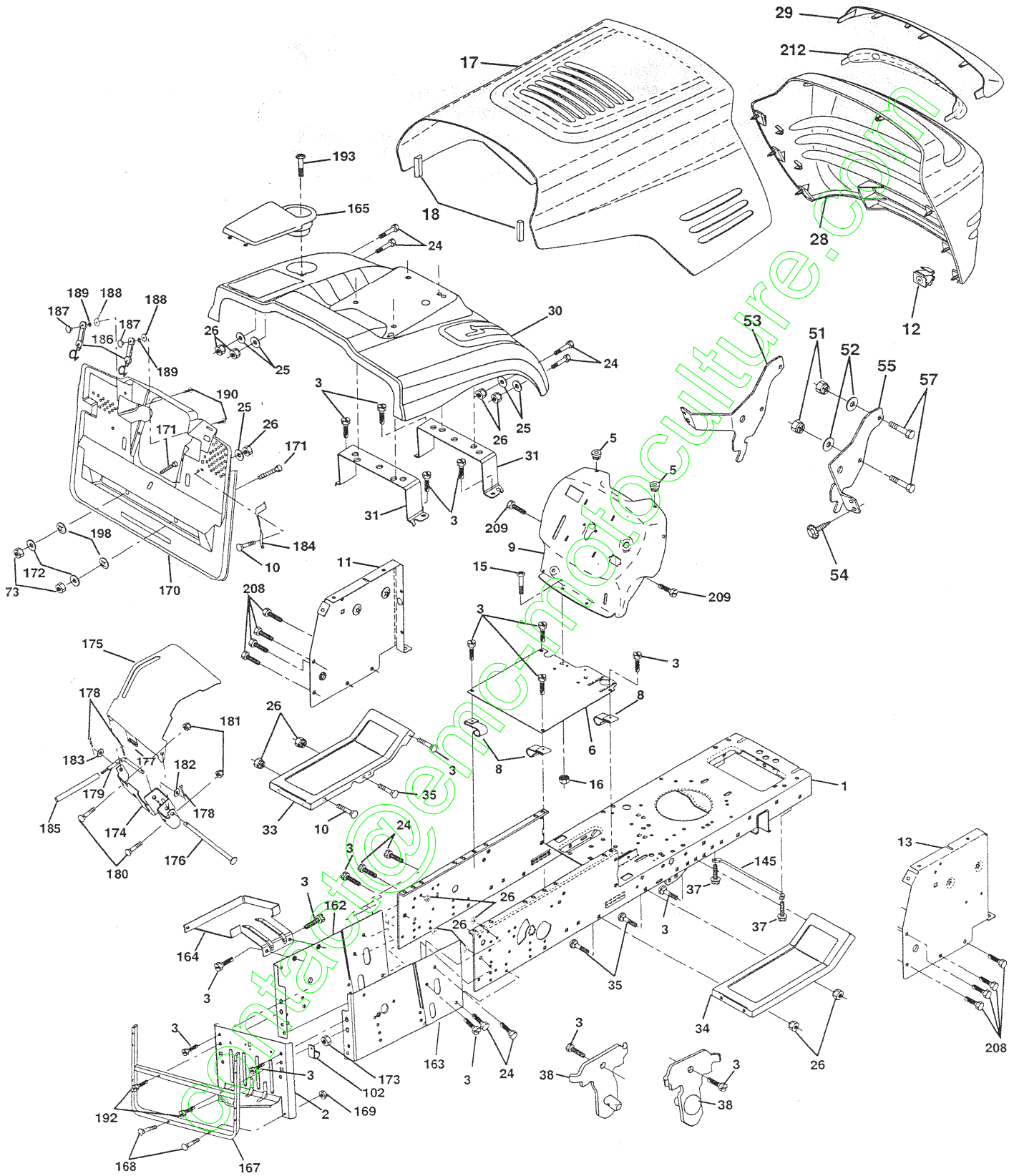
KEY NO.	PART NO.	DESCRIPTION
1	144925	Battery
2	74760412	Bolt Hex Hd 1/4-20 Unc X 3/4
16	153664	Switch Interlock Push-In
21	166182	Harness Asm Light W/4152J
22	4152J	Bulb Light #1156
24	4799J	Cable Starter 6Ga 11" Red
25	165987	Cable Battery Crd 56" Red
26	166180	Fuse 15 Amp
27	STD541425	Nut Keps Hex 1/4-20 Unc
28	127725X	Cable Ground 6Ga 18" Black
29	160784	Switch Plunger Normal Op.Olive
30	163968	Switch Ignition
33	140403	Key Ign Molded
40	170214	Harness Ign Crd Elect
41	71110408	Bolt Flk Fin Hex 1/4-20 Unc X 1/2
42	131563	Cover Terminal Red
43	145673	Solenoid
45	122822X	Ammeter Rectangular 15 amp
50	169416	Switch PTO
51	140405	Ring Retainer PTO
52	141940	Protection Wire Loop
58	169419	Buzzer Crd
59	166299	Switch FBI CRD
65	STD611005	Screw Slftp #10-16 x 1/2 Ty-Ab
66	17490608	Screw Thdrol 3/8-16 x 1/2 Ty-Tt
70	170247	Harness Engine
80	146685	Harness Clutch EVX
81	109748X	Relay Asm

**NOTE:** All component dimensions given in U.S. inches.  
1 inch = 25.4 mm.

# EPAIR PARTS

TRACTOR- -MODEL NO. 917.259110

## CHASSIS AND ENCLOSURES



# REPAIR PARTS

TRACTOR- -MODEL NO. 917.259110

## CHASSIS AND ENCLOSURES

KEY NO.	PART NO.	DESCRIPTION	KEY NO.	PART NO.	DESCRIPTION
1	169831	Chassis Assembly	163	165673	Bracket Exten Chassis Rh CRD
2	165606	Drawbar	164	165605	Support Battery CRD
3	17060612	Screw 3/8-16 x .75	165	165742X428	Cover Battery CRD Lt
5	155272	BumperHood/Dash	167	165779	Support Asm. Backplate WLDMNT
6	155923	Saddle	168	72050412	Bolt, RDHD SHT NK 1/4-20 x 1-1/2
8	126471X	Clip Insulator 13/32 Mtg. Hole	169	123976X	Nut, Lock 1/4 LGE FLG Gr. 5 Zinc
9	168352X010	Dash Slkscr	170	165607	Cover, Backplate Plastic Black
10	STD533710	Bolt, Carriage 3/8-16 x 1	171	74520640	Bolt, Fin Hex 3/8-16 x 2-1/2 Gr. 5
11	155927	Panel, Dash, L.H.	172	19132016	Washer 13/32 x 1-1/4 x 16 Ga.
12	145660	Clip, Tinnerman Grille P/L	173	STD541437	Nut, Keps Hex 3/8-16 UNC
13	172107X010	Panel, Asm. Dash R.H.	174	165939	Bracket Switch FBI CRD
15	74180512	Screw, Machine, Truss Head 5/16-18 UNC x 3/4	175	166212	Guard Door Rear CRD
16	STD541431	Nut Keps 5/16-18 UNC	176	128600	Pin Hinge Pivot
17	144983X558	Hood Assembly	177	132796	Spring Bagger Top LH Black
18	126938X	BumperHood	178	STD560907	Pin Cotter 3/32 x 3/4 Cad Zinc
24	STD523710	Bolt Fin Hex 3/8-16 UNC x 1. Gr 5	179	165942	Rod Pivot FBI CRD
25	19131312	Washer 13/32 x 13/16 x 12 Gauge	180	74760516	Bolt Hex-HD 5/16-18 UNC x 1
26	STD541437	Nut Lock Hex w/Ins 3/8-16 UNC	181	STD541431	Nut Crownlock 5/16-18
28	156725X558	Grille PL	182	138200	Washer .385 x .625 x 11 Ga.
29	155217X599	Lens, Grille	183	STD551037	Washer 13/32 x 13/16 x 16 Ga.
30	165714X558	Fender	184	166139	Bracket Actuator Bagger CRD
31	165156	Bracket, Fender Support	185	165940	Tube Lever Switch FBI CRD
33	145244X558	Footrest, L.H.	186	160793	Latch Asm Mulch/Bagger
34	145243X558	Footrest, R.H.	187	2029J	Nut Weld .327/.304 #10-24
35	STD533107	Bolt RDHD SHT SQNK 3/8-16 x 3/4	188	19061216	Washer #10
37	17490508	Screw Thdrol 5/16-18 x 1/2 TYT	189	STD551110	Washer Lock #10
38	169834	Pivot Bracket Assembly	190	71161010	Screw Truss Hd Phil 10-24 x 5/8
51	73800400	Nut Lock w/Insert 1/4-20 UNC	192	17490624	Screw Thdrol 3/8-16 x 1-1/2
52	19091416	Washer 9/32 x 7/8 x 16 Ga.	193	17070412	Screw Truss 1/4-20 x 3/4 Tap/R
53	145201	Bracket, Grille LH	198	168937	Nut, Push
54	161464	Screw Hex WSHD 8-18 x 7/8	208	17670608	Screw Thdrol 3/8-16 x 1/2 TYT
55	145202	Bracket, Grille RH	209	17000612	Screw Hex Wsh Thdrol 3/8-16
57	STD522507	Bolt, Fin Hex 1/4-20 UNC x .75	212	165919	Insert Lens Reflective
102	2751R	Clip line Fule 13/32 Mtg Hole	--	5479J	Plug, Button
145	156524	Rod Pivot Chassis/Hood			
162	165672	Bracket Exten Chassis Lh CRD			

**NOTE:** All component dimensions given in U.S. inches.  
1 inch = 25.4 mm.





# REPAIR PARTS

## TRACTOR- -MODEL NO. 917.259110

### DRIVE

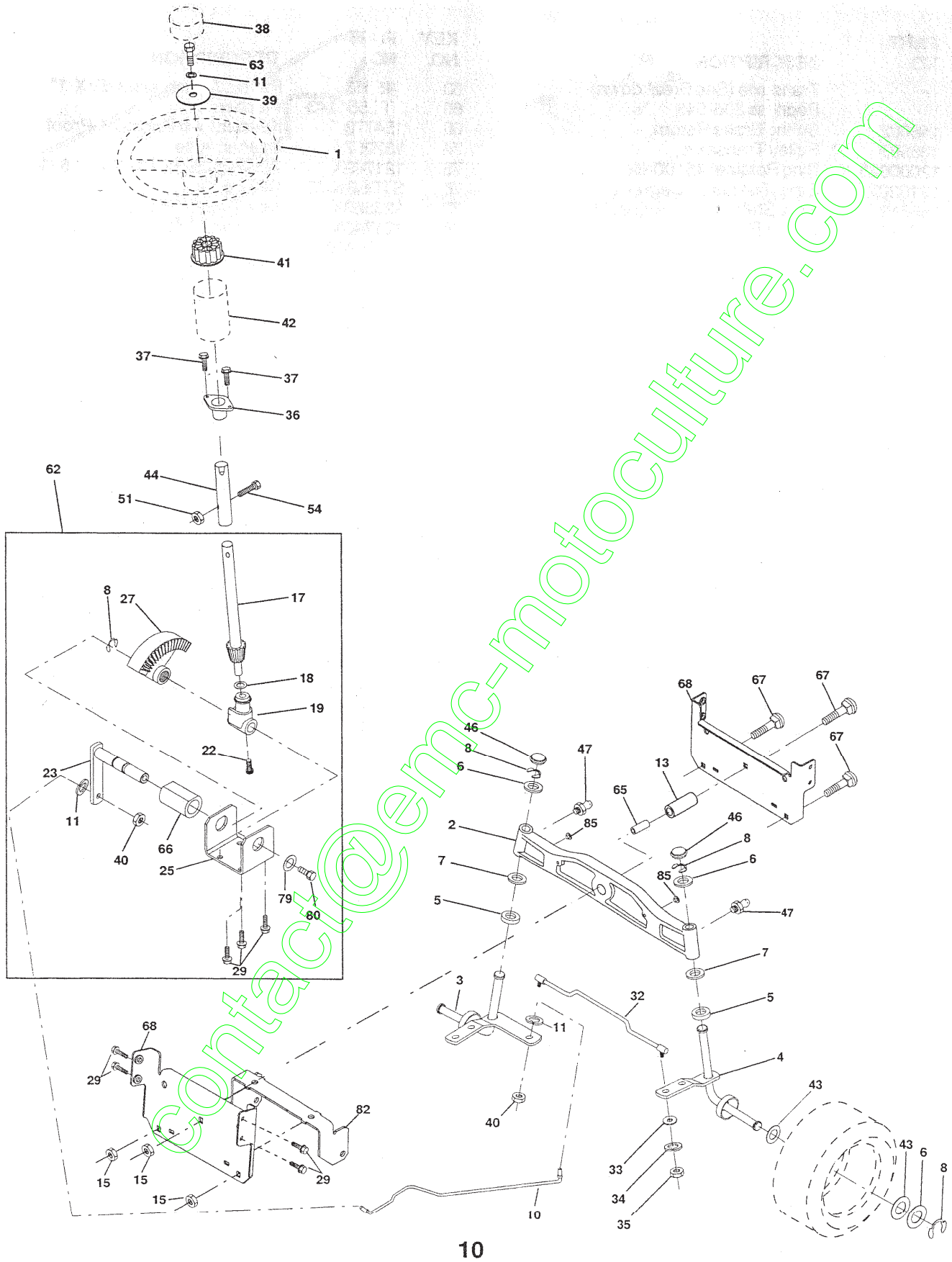
KEY NO.	PART NO.	DESCRIPTION	KEY NO.	PART NO.	DESCRIPTION
1	-----	Transaxle (See Breakdown) Peerless 206-546	63	145868	Pulley, Clutch elect EVX 1"
2	146682	Spring Brake Return	65	STD551143	Washer
3	165999	Pulley Transaxle	66	154778	Keeper, Belt Engine F-Proof
4	12000028	Ring Retainer #5100-62	74	137057	Spacer, Axle
5	121520X	Strap Torque 30 Degrees	75	121749X	Washer 25/32 x 1-1/4 x 16 Ga.
8	165619	Rod, Shift Fender Adjust Lt	76	STD581075	Ring, E
9	169992	Clutch Ele	77	123583X	Key, Square
10	STD561210	Pin, Cotter 1/8 x 1	78	121748X	Washer 25/32 x 1-5/8 x 16 Ga.
11	105701X	Wash Plate Sht .388 Square Hole	79	STD580025	Key Woodruff #9 3/16 x 3/4
13	74550412	Bolt 1/4-28 Unf Gr 8 w/Patch	80	145090	Arm, Shift Pmst 20" Tires
14	STD551125	Washer, Lock Hvy Helical	82	123782X	Spring, Torsion
16	STD541431	Nut Lock Hex W/Wsh 5/16-18 Unc	83	19171216	Washer 17/32 x 3/4 x 16 Ga.
18	STD523710	Bolt Hex 3/8-16 UNC x 1 Gr.5	84	165621	Link, Shift
19	STD541437	Nut Lock Hex W/Wsh 3/8-16 Unc	96	STD624003	Spring, Retainer 1"
20	150280	Bolt, Hex 7/16-20 x 4-1/4 5 Ga 1.38	112	19091210	Washer 9/32 x 3/4 x 10 Ga
21	106933X	Knob Rd 1/2-13 Plstc Thds Blk	144	19111016	Washer 11/32 x 3/4 x 16 Ga.
22	165811	Rod, Brake CRD Pmst	145	74490540	Bolt Hex FGHD 5/16-18 x Gr 5
23	170171	Bracket asm Clutch	150	165850	Bushing, Bellcrank Grnd Dr
24	STD541237	Nut Hex Jam 3/8-16 UNC	151	19133210	Washer 13/32 x 2 x 10 Ga.
25	106888X	Spring, Rod, Brake	153	74760516	Bolt Hex Hd 5/16-18 Unc x 1
26	STD551037	Washer 13/32 x 13/16 x 16 Ga.	156	166002	Washer Srrted 5/16ID x 1.125
27	STD561210	Pin, Cotter 1/8 x 3/4	158	165589	Bracket Shift Mount
28	145204	Rod, Parking Brake	159	165494	Hub Tapered Flange Shift Lt
29	71673	Cap, Parking Brake	161	72140406	Bolt Rdhd Sqnk 1/4-20 x 3/4 Gr 5
30	130807	Bracket, Mfg. Transaxle	162	73680400	Nut Crownlock 1/4-20 Unc
32	STD523107	Bolt Hex 5/16-18 UNC x 3/4	163	74780416	Bolt Hex Fin 1/4-20 Unc x 1 Gr 5
33	STD533107	Bolt Rdhd Sqnk 5/16-18 Unc x 3/4	164	19091010	Washer 5/8 x .281 x 10 Ga.
34	165496	Shaft, Asm Pedal Foot CRD	165	165623	Bracket Pivot Lever
35	120183X	Bearing, Nylon	166	166880	Screw 5/16-18 x 5/8
36	STD551062	Washer 21/32 x 1 x 16 Ga.	167	165588	Bracket Support Shift CRD
37	STD571810	Pin, Roll 3/16 x 1"	168	165492	Bolt Shoulder 5/16-18 x .561
38	165936	Pulley Flat Composite 3.06"	171	17490608	Screw Thdrol 3/8-16 x 1/2 Ty-Tt
39	74760644	Bolt RDHD 3/8-16 x 2-3/4 Gr. 5	172	165635	Shaft Shift Front CRD
40	4470J	Spacer, Split 395 x 59 Bzp	177	165932	Keeper Flat Idler 3.06" CRD
42	19131312	Washer 13/32 x 13/16 x 12 Ga.	178	165933	Keeper Belt Idler 1.88" CRD
47	127783	Pulley, Idler, V Groove Plstc	179	120958X	Washer Sintered
48	154407	Bellcrank Clutch Grnd Drv	180	165630	Pulley Flat Idler 1.88"
49	123205X	Retainer, Belt Style Spring	181	165797	Bracket Idler Ground Drive CRD
50	STD523715	Bolt Hex Hd 3/8-16 UNC x 1-1/2	182	165634	Keeper Belt 2.5" Od V-Idler CRD
51	STD541437	Nut, Crownlock 3/8-16 UNC	183	165626	Pulley V-Idler 2.50" Od CRD
52	STD541431	Nut Crownlock 5/16-18	184	17490644	Screw Hexwsh Thdrol 3/8-16 x 2-3/4
53	105710X	Link, Clutch 7.66	187	17490620	Screw Thdrol 3/8-16 x 1-1/4 TT
55	105709X	Spring, Return, Clutch	188	110436X	Bushing Snap Split
56	STD523712	Bolt, Hex 3/8-16 UNC x 1-1/4	198	169593	Washer Nyl 7/8 ID x 105" Hyd CRD
57	165631	V-Belt Key 111" Pmst CRD			
61	17060612	Screw 3/8-16 x .75 SMGML Tap/R			
62	8883R	Cover, Pedal			

NOTE: All component dimensions given in U.S. inches  
1 inch = 25.4 mm

# EPAIR PARTS

TRACTOR- -MODEL NO. 917.259110

## BEARING ASSEMBLY



# REPAIR PARTS

TRACTOR- -MODEL NO. 917.259110

## STEERING ASSEMBLY

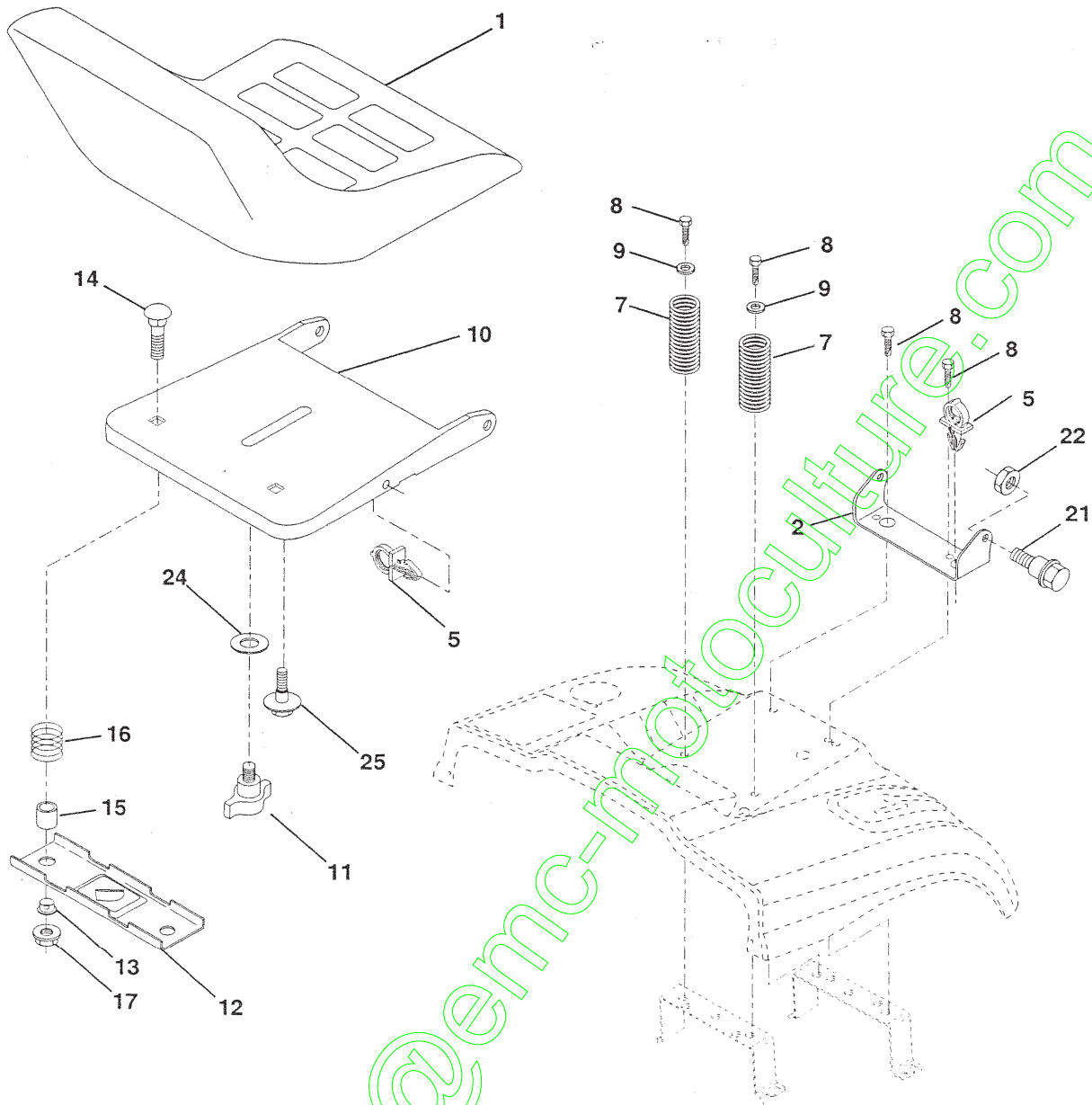
KEY NO.	PART NO.	DESCRIPTION
1	139768	Steering Wheel
2	165854	Front Axle Assembly
3	169840	Spindle Assembly, L.H.
4	169839	Spindle Assembly, R.H.
5	6266H	Bearing, Race, Thrust, Hardened
6	121748X	Washer 25/32 x 1-5/8 x 16 Gauge
7	19272016	Washer 27/32 x 1-1/4 x 16 Gauge
8	12000029	Ring, Klip
10	169832	Link, Drag
11	STD551137	Washer, Lock
13	136518	Spacer Axle
15	145212	Nut, Hexflange Lock
17	156546	Shaft Assembly, Steering
18	57079	Washer, Thrust .515 x .750 x .033
19	160395	Support, Shaft
22	165857	Screw Hex Wshhd Torx
23	165851	Pittman Shaft Assembly
25	154406	Bracket, Steering
27	136874	Gear, Sector
29	17060612	Screw, 3/8-16 x 3/4 SMGML Tap/R
32	170162	Rod, Tie
33	19111216	Washer 11/32 x 3/4 x 16
34	10040500	Washer Lock Hvy Hlcl Spr 5/16
35	73810500	Locknut 5/16-24
36	155099	Bushing, Steering
37	152927	Screw TT #10-32 x 5 x 3/8 Flange
38	139769	Cap Wheel Steering
39	19133812	Washer 13/32 x 2-3/8 x 12 Gauge
40	STD541537	Nut Lock Center 3/8-24 Unf
41	100711L	Adaptor, Steering Wheel
42	145054X428	Boot, Steering Dash
43	121749X	Washer 25/32 x 1-1/4 x 16 Gauge
44	153720	Extension Steering Non-Adjust
46	121232X	Cap, Spindle
47	6855M	Fitting, Grease
51	STD541431	Nut Lock Hx W/Ins 5/16-18 UNC
54	STD523112	Bolt Fin Hex 5/16-18 UNC x 1-1/4
62	167902	Kit, Steering Assembly, Service
63	STD523710	Bolt Fin Hex 3/8-16 unc. x 1 Gr. 5
65	160367	Spacer Brace Axle
66	154404	Bearing Arm Pittman
67	72140618	Bolt RDHD SQNK 3/8-16 x 2-1/4
68	169827	Brace Axle
79	19132012	Washer 13/32 x 1-1/4 x 12 Ga
80	74950612	Bolt Hex Nylon 3/8-16 x 3/4
82	169835	Bracket Susp Chassis Front
85	133835	Fastener Christmas Tree

NOTE: All component dimensions given in U.S. inches.  
1 inch = 25.4 mm.

# EPAIR PARTS

TRACTOR- -MODEL NO. 917.259110

SEAT ASSEMBLY



PART NO.	DESCRIPTION
140122	Seat
140551	Bracket Pnt Pivot Seat (blk )
145006	Clip Push In Hinged
124181X	Spring Seat Cprsn 2 250 Blk Zi
17000616	Screw 3/8-16 X 1.5
19131614	Washer 13/32 X 1 X 14 Ga
155925	Pan Pnt Seat (blk )
166369	Knob Seat Adj Wingnut
121246X	Bracket Pnt Mounting Switch
121248X	Bushing Snap Blk Nyl 50 Id

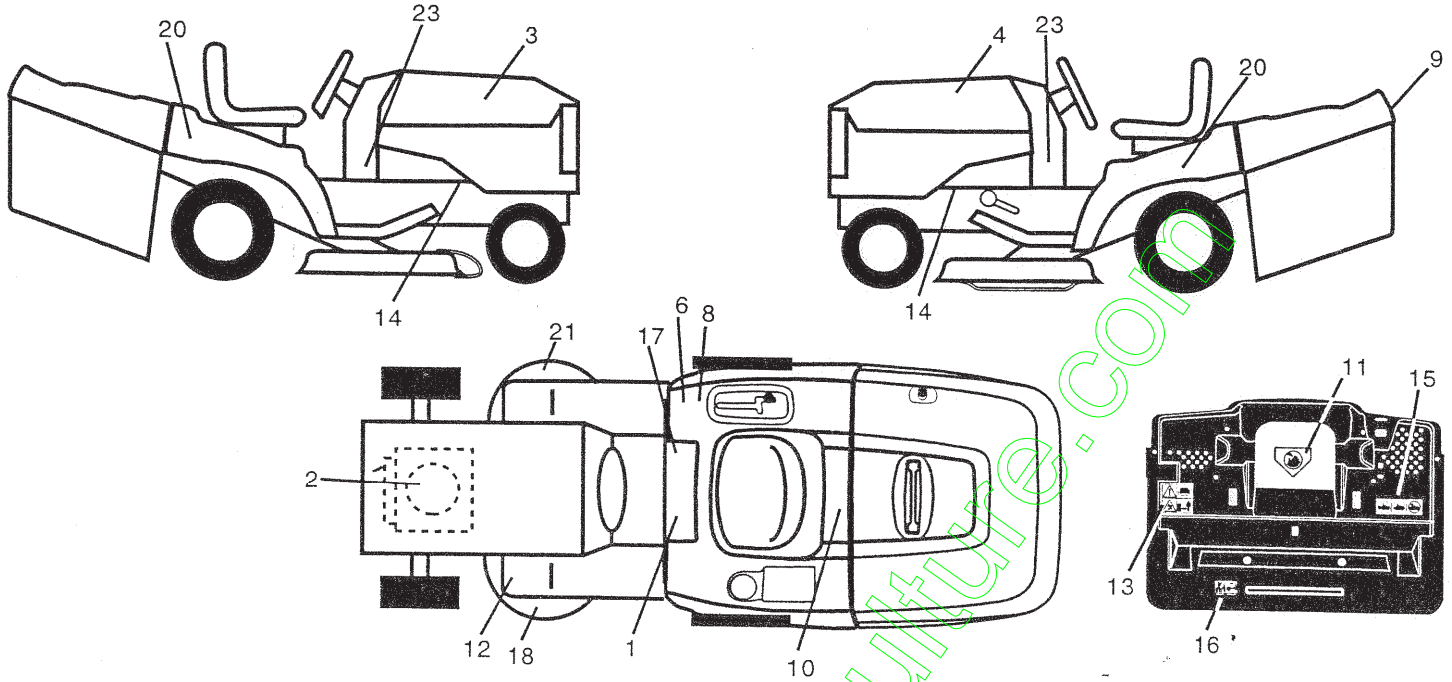
KEY NO.	PART NO.	DESCRIPTION
14	72050412	Bolt Rdhd Sht Nk 1/4-20x1-1/2
15	134300	Spacer Split .28 X .96 Zinc
16	121250X	Spring Cprsn
17	123976X	Nut Lock 1/4 Lge Flg Gr 5 Zinc
21	171852	Bolt Shoulter 5/16-18 Unc-2A
22	73800500	Nut Hex Lock w/Ins 5/16-18
24	19171912	Washer 17/32 X 1-3/16 X 12 Ga.
25	127018X	Bolt Shoulter 5/16-18 X 62

**NOTE:** All component dimensions given in U.S. inches.  
1 inch = 25.4 mm

# REPAIR PARTS

## TRACTOR- -MODEL NO. 917.259110

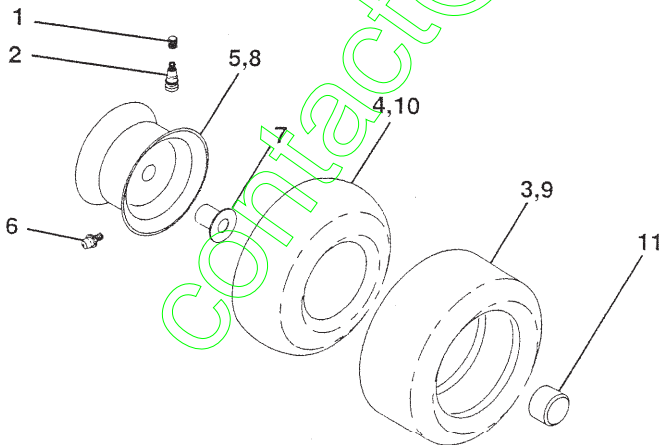
### DECALS



KEY NO.	PART NO.	DESCRIPTION
1	145498	Decal Read Owner's Manual Sym
2	165393	Decal Hp Engine
3	171696	Decal Hood Rh
4	171697	Decal Hood Lh
6	126187X	Decal 100 DBA
8	145437	Decal Europe Stand Ce
9	163204	Decal Fender Logo
10	145005	Decal Bat Dan/Poi P/L Sym Wpn
11	145494	Decal Mower Cut Finger Symbol
12	159737	Decal Brake/Clutch Symbol Lt
13	166959	Decal Warn Back Plate CRD
14	159736	Decal Chassis Hot Muffler
15	166961	Decal Oper Bag Presence CRD

KEY NO.	PART NO.	DESCRIPTION
16	162598	Decal Drawbar Load Limit
17	140837	Decal Saddle Brake Parking
18	133179	Decal Mower QC System
20	163209	Decal Fender
21	166286	Decal Deck Sch 92 CRD
23	163249	Decal Panel Dash
—	138311	Decal Lift Handle
—	157199X428	Pad Footrest
—	173710	Manual Operator's (Euro)
—	173711	Manual Operator's (Scand)
—	173712	Manual Parts

### WHEELS & TIRES



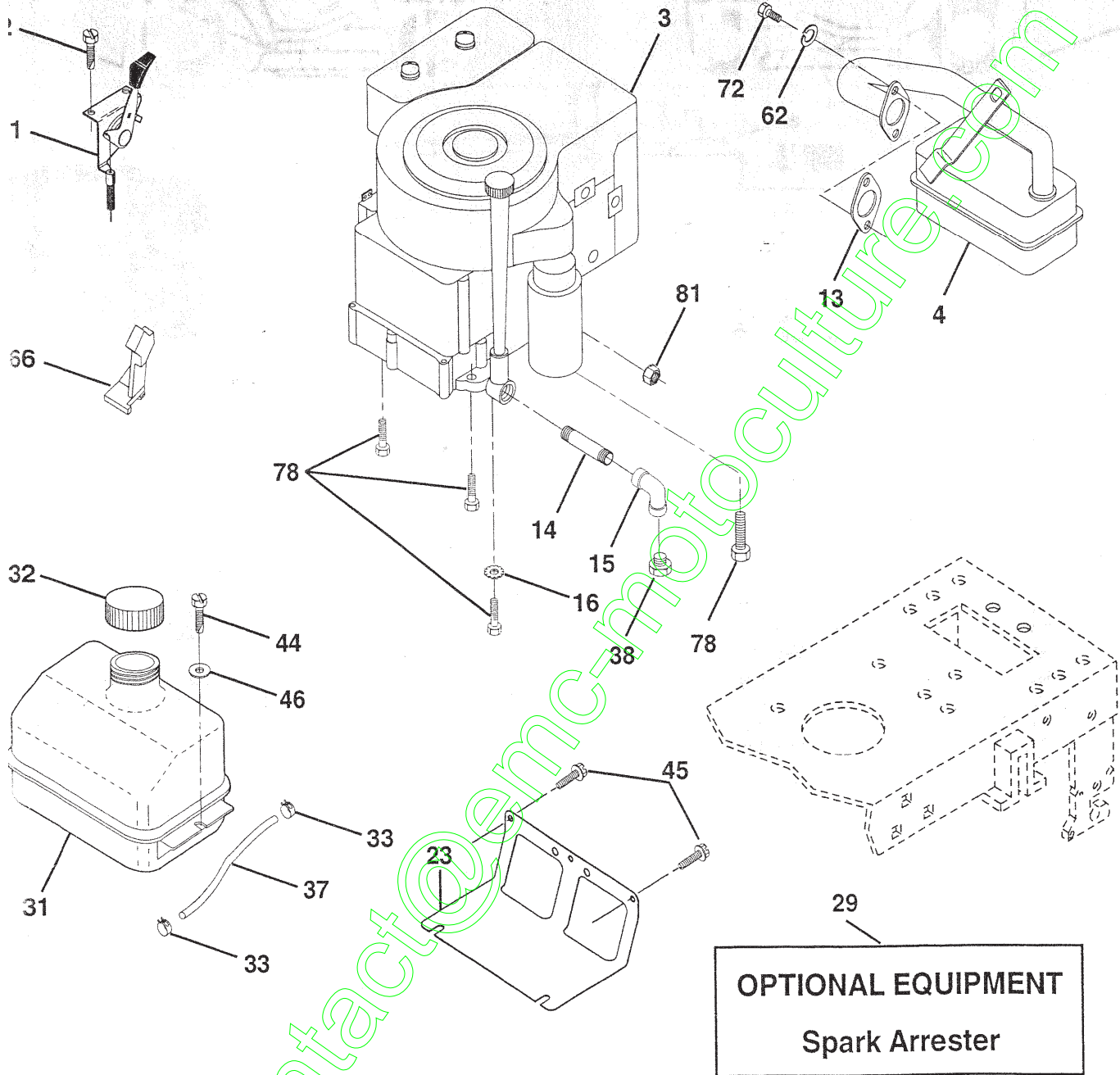
KEY NO.	PART NO.	DESCRIPTION
1	59192	Cap Value Tire
2	65139	Stem Value
3	106222X	Tire F Ts 15 X 6 0 - 6 Service
4	59904	Tube Inner Front #35060
5	106732X427	Rim Asm 6"front White Service
6	278H	Fitting Grease
7	9040H	Bearing Flange
8	106108X427	Rim Asm 8" rear White Service
9	106268X	Tire R Ts 18 x 9.5-8 Service
10	7152J	Tube Rear 9 5 X 8 Service
11	104757X	Cap Axle Blk 1 50 X 1 00
--	144334	Sealant, Tire (10 oz. tube)

**NOTE:** All component dimensions given in U.S. inches  
1 inch = 25.4 mm

# PAIR PARTS

TRACTOR- -MODEL NO. 917.259110

LINE



# REPAIR PARTS

TRACTOR- -MODEL NO. 917.259110

ENGINE

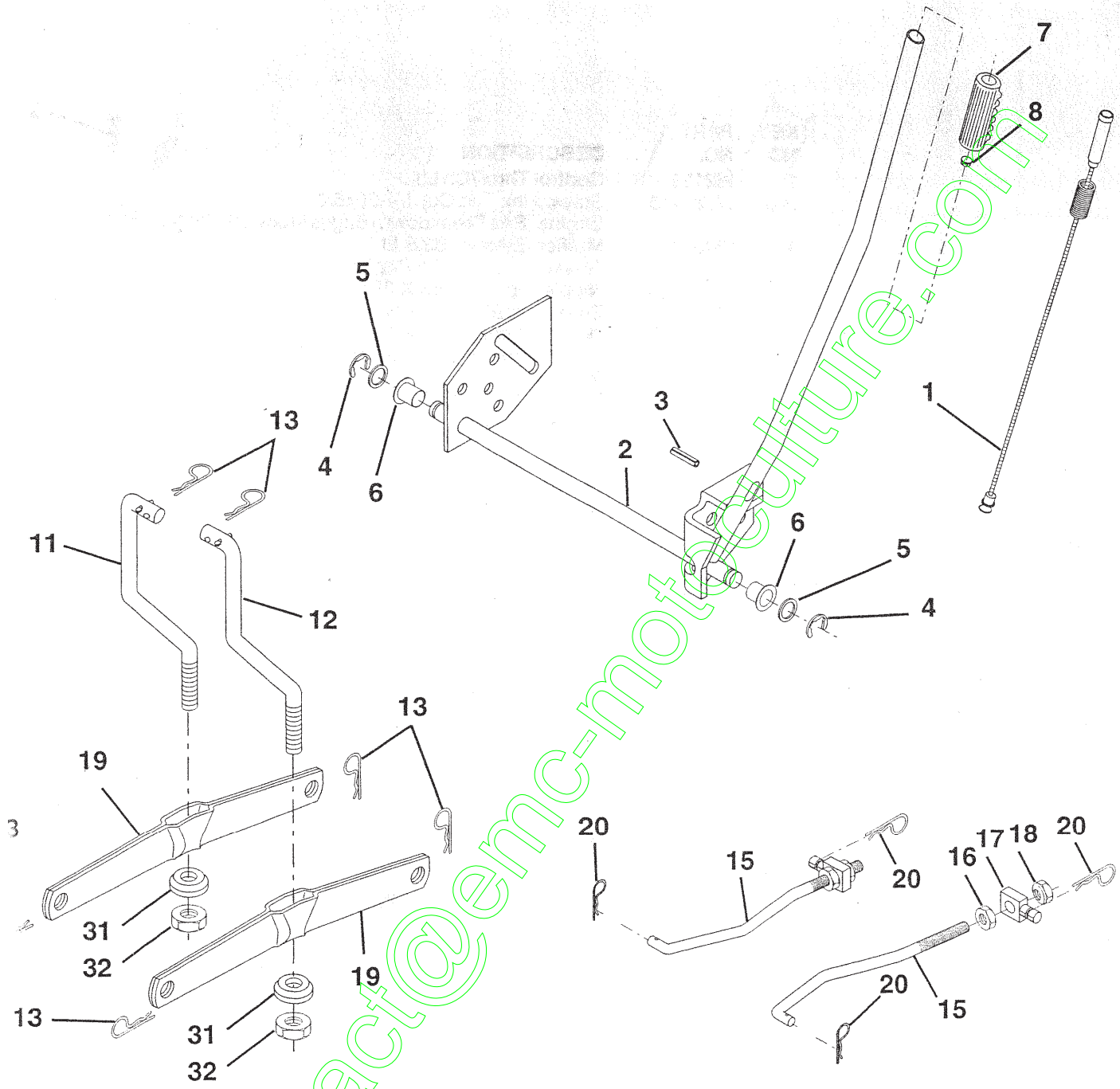
KEY NO.	PART NO.	DESCRIPTION
1	162158	Control Throt/Ch Lh
2	17720410	Screw Hex Thd Cut 1/4-20x5/8 T
3	-----	Engine (See Breakdown) Briggs Model 287707-1277-E1
4	137352	Muffler Exhaust B&S Lt
13	165291	Gasket 1 313 Id Tin Plated
14	13280324	Nipple Pipe 3/8 Npt X 3"
15	13200300	Elbow Std 90 Degree 3/8-18 Npt
16	STD551237	Washer Lock Ext Tooth 3/8
23	169837	Shield Browning/Debris Guard
29	137180	Arrestor Spark
31	109202X	Tank Fuel 1.25 Fr
32	158990	Cap Asm Fuel
33	123487X	Clamp Hose Blk
37	137040	Line Fuel 20"
38	-----	Plug Oil Drain (See Engine Breakdown)
44	17670412	Screw Hexwsh Thdrol 1/4-20x3/4
45	17000612	Screw 3/8-16 x .75 SMGML Tap/R
46	19091416	Washer 9/32 X 7/8 X 16ga
62	STD551131	Washer Lock Hvy Hlcl Spr 5/16
66	127951	Stop Throttle 3000 Rpm
72	71070512	Screw Hexhd Cap 5/16-18x3/4
78	17060620	Screw Thdrol 3/8-16x1-1/4 Tytt
81	73510400	Nut Keps 1/4-20 Starter Nut

**NOTE:** All component dimensions given in U.S. inches  
1 inch = 25.4 mm

# EPAIR PARTS

TRACTOR- -MODEL NO. 917.259110

## OWER LIFT





# REPAIR PARTS

TRACTOR- -MODEL NO. 917.259110

## MOWER LIFT

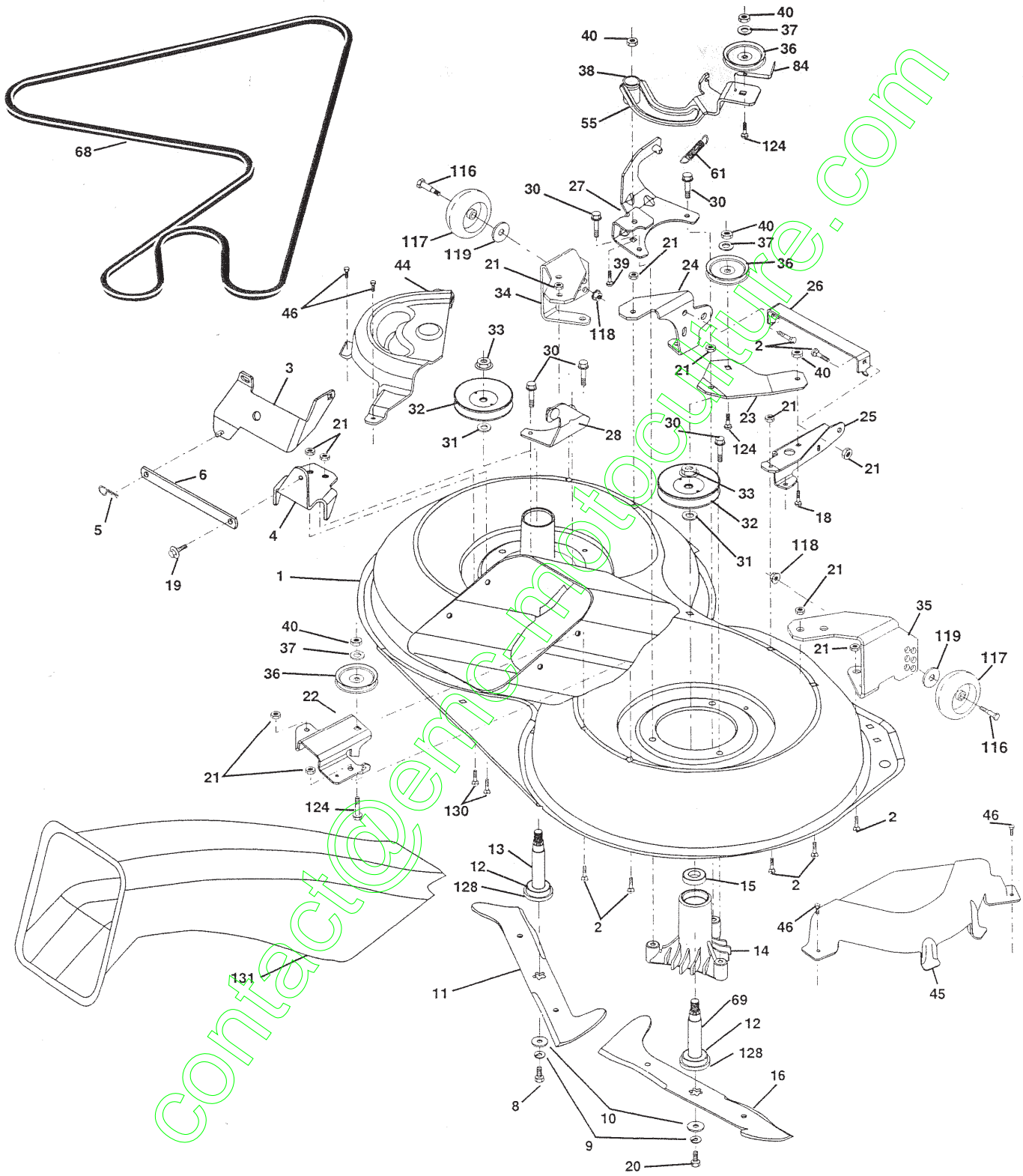
KEY NO.	PART NO.	DESCRIPTION
1	159460	Washer Asm Inner Spring W/Plunger
2	159471	Shaft Asm. Lift
3	105767X	Pin Groove
4	STD581062	E Ring #5133-62
5	19211621	Washer 21/32 x 1 x 21 Ga.
6	120183X	Bearing Nylon
7	125631X	Grip Handle
8	122365X	Button Plunger Red
11	165829	Link Asm Lift L.H.
12	165831	Link Asm Lift R.H.
13	STD624008	Retainer Spring
15	173288	Link Front
16	73350800	Nut Jam Hex 1/2-13 Unc
17	130171	Trunnion Blk Zinc
18	73680800	Nut Crownlock 1/2-13 Unc
19	139868	Arm Suspension Mower
20	163552	Retainer Spring
31	140302	Bearing, Pvt. Lift. Spherical
32	73540600	Nut Crownlock 3/8-24

**NOTE:** All component dimensions given in U.S. inches  
1 inch = 25.4 mm

# REPAIR PARTS

TRACTOR- -MODEL NO. 917.259110

MOWER



# REPAIR PARTS

TRACTOR- -MODEL NO. 917.259110

## MOWER

KEY NO.	PART NO.	DESCRIPTION	KEY NO.	PART NO.	DESCRIPTION
1	169160	Housing Asm. Mower 107 CRD	34	169174	Bracket Gauge Wheel Lf 107 CRD
2	72140506	Bolt Rdhd Sqnk 5/16-18 Unc x 3/4	35	169175	Bracket Gauge Wheel Rf 107 CRD
3	165569	Bracket Asm S-Bar Chass 107 CRD	36	146763	Pulley Idler V-Groove Dim 4.25
4	169167	Bracket Bar Sway Deck 107 CRD	37	19131316	Washer 11/32 x 13/16 x 16 Ga
5	4939M	Retainer Spring	38	169851	Spacer Hub Arm Idler 107
6	165557	Bar Sway 107 CRD	39	72110622	Bolt Rdhd 3/8-16 x 2-3/4
8	850857	Bolt 3/8-24 x 1.25 Gr8 Patched	40	73680600	Nut Crownlock 3/8-16 Unc
9	10030600	Washer Lock Hvy 3/8 Unplated	44	169180	Cover Mandrel Lh 107 CRD
10	140296	Washer Hard Blade Mower vented	45	169179	Cover Mandrel Rh 107 CRD
11	168720	Blade 3-1 Lh 107 CRD	46	137729	Screw Thd Roll 1/4-20 x 5/8
12	129895	Bearing Ball #6204 (Mandrel)	55	169849	Arm Idler 107 CRD
13	137645	Shaft Asm. W/Lower Bearing	61	165945	Spring Tension Belt
14	128774	Housing Mandrel Vented (Machd)	68	169178	Hex-Belt 107 Mower
15	110485X	Bearing Ball Mandrel	69	165482	Shaft Asm W/Lwr Brg Rh Thd CRD
16	168721	Blade 3-1 Rh 107 CRD	84	156085	Keeper Belt Idler
18	72110608	Bolt Rdhd Sqnk 3/8-16 x 1 Gr5	116	137644	Bolt Shoulder
19	132827	Bolt Shoulder 5/16-18 Thd Form	117	133957	Wheel Gage Donut Wide
20	165484	Bolt 3/8-24 x 1.25 Gr8 Ptch Lhthd	118	73930600	Nut Centerlock 3/8-16 Unc
21	73680500	Nut Crown Lock 5/16-18	119	19121414	Washer 3/8 x 7/8 x 14 Ga.
22	169165	Bracket Idler Sprt RR 107 CRD	124	72110612	Bolt Carr Sh 3/8-16 x 1-1/2 Gr5
23	169166	Bracket Idler Sprt RF 107 CRD	128	153390	Washer Felt
24	169170	Bracket Suspension LF 107 CRD	130	72110506	Bolt Rdhdsqnk 5/16-18 Unc x 3/4
25	169171	Bracket Suspension RF 107 CRD	131	165661	Chute Bagger CRD 92cm
26	165237	Brace Support Susp Frt CRD	-	130794	Mandrel Asm Service
27	169172	Bracket Asm. Susp RR 107 CRD	-	165579	Mandrel Asm CRD Lh Threads SVC
28	169168	Bracket Asm. Susp LR 107 CRD	-	170273	Deck Mower Complete
30	157722	Screw Thd Rolling Washer Head			
31	129963	Washer Spacer Mower Vented			
32	153535	Mandrel Pulleys 36 & 46			
33	137266	Nut Flg Top Lock Cntr B 9/16			

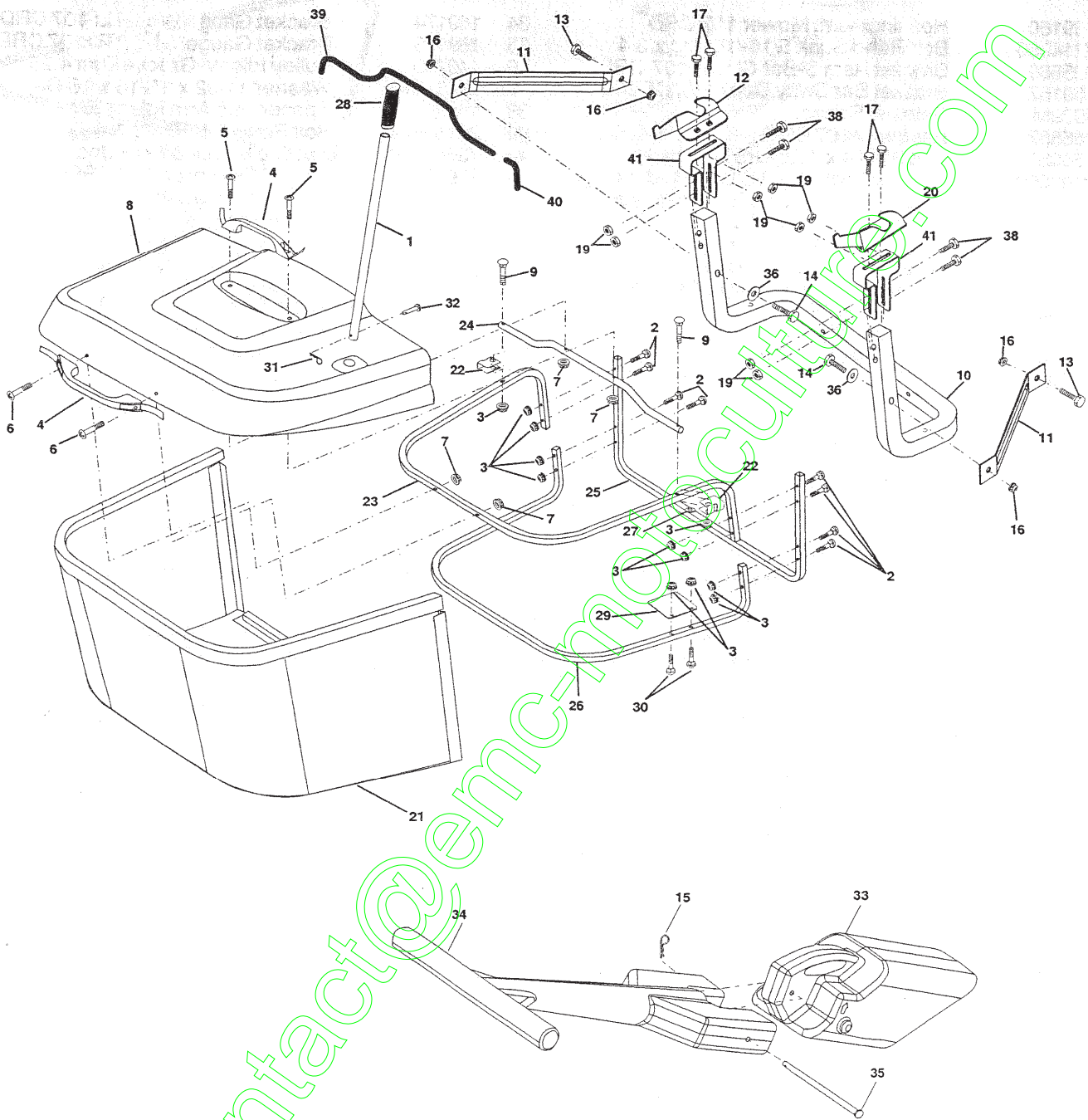
**NOTE:** All component dimensions given in U.S. inches  
1 inch = 25.4 mm

contact@emc-motors.com

# REPAIR PARTS

TRACTOR- -MODEL NO. 917.259110

BAGGER



# REPAIR PARTS

## TRACTOR- -MODEL NO. 917.259110

### BAGGER

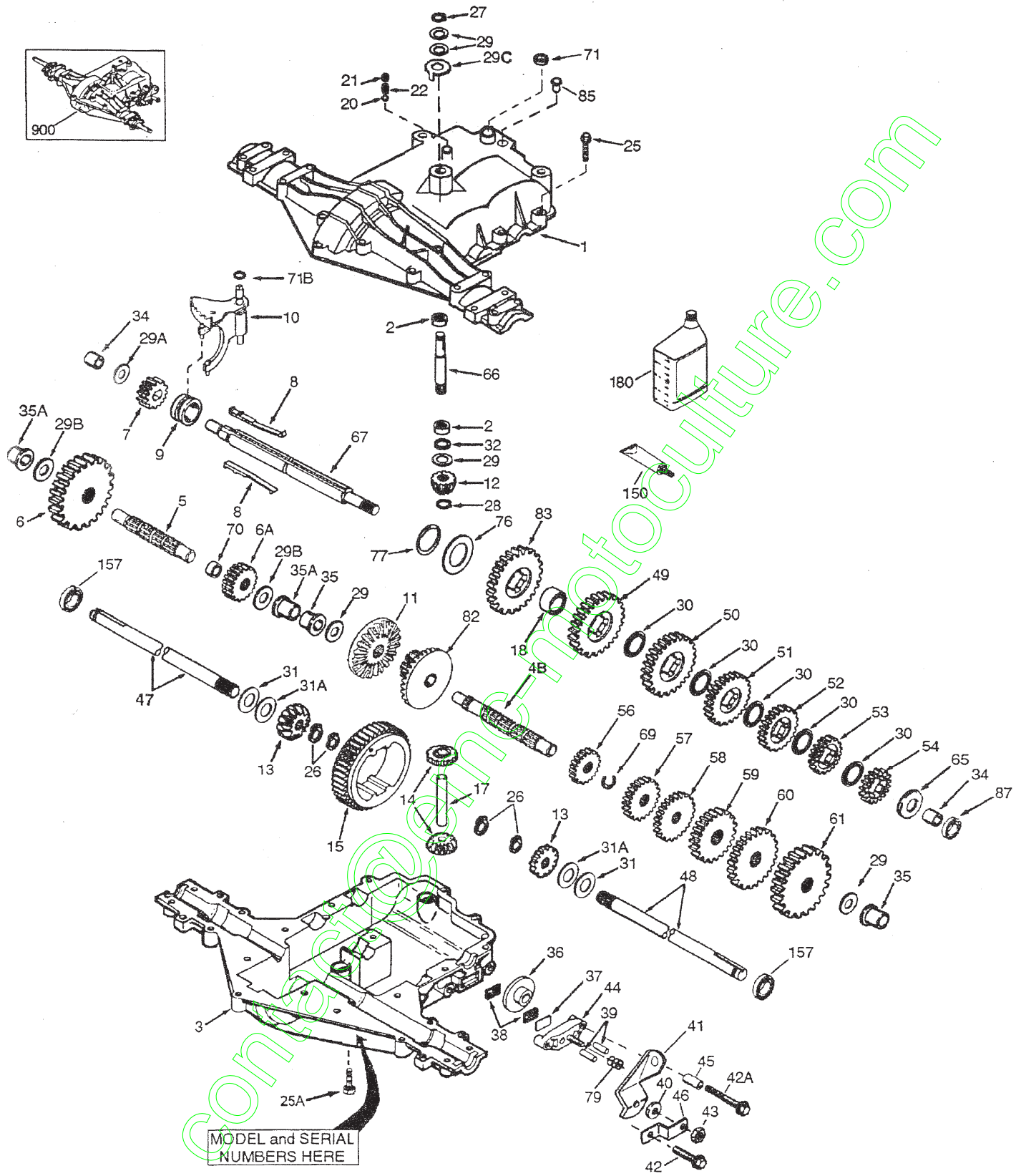
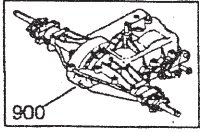
KEY NO.	PART NO.	DESCRIPTION
1	165249	Tube Handle Bagger CRD
2	72140416	Bolt Carriage 1/4-20 x 2.0 Gr.5
3	123976X	Nut Lock 1/4 Lge Flg Gr. 5 Zinc
4	169916	Handle Bagger
5	74981024	Screw Pan Head #10-24 x 1.50 Blk
6	74981032	Screw Pan Hd
7	73401000	Nut Wiz Lock Hex Serr/Hd 10-24
8	165715X558	Cover Bagger Plastic CRD
9	72140418	Bolt Carriage 1/4-20 x 2.25d x Gr.5
10	169688	Tube Support Bagger CRD
11	165719	Bracket Support Upper Bag CRD
12	169685	Bracket Pivot Bagger Lh CRD
13	STD533707	Bolt Rdhd Sht Sqnk 3/8-16 x 3/4
14	74520640	Bolt Hex 3/8-16 x 2-1/2 Gr.5
15	4939M	Retainer Spring
16	73900600	Nut Lock Flg 3/8-16 Unc
17	STD533107	Bolt Rdhd Sht Sqnk 5/16 -18 Unc x 3/4
19	STD541431	Nut Lock Hex W/Ins 5/16-18 Unc Pl
20	169684	Bracket Horiz Adj Bagger RH CRD
21	165780	Bag Asm CRD
22	165781	Bracket Side Bagger CRD
23	165782	Tube Upper Bagger CRD
24	165783	Tube Pivot Bagger CRD
25	165784	Tube Front Bagger CRD
26	165785	Tube Lower Bagger CRD
27	169692	Bushing Snap Bagger CRD
28	165787	Grip Handle Black
29	165839	Plate Stop Bagger handle CRD
30	72140410	Bolt Carriage 1/4-20 x 1 Gr.5
31	STD624003	Retainer Spring 1" Zinc/Cad
32	126875X	Rivet Rd Hd Drilled 3/8 Dia
33	169380	Plug Mulcher
34	165570	Handle Mulcher
35	165572	Pin Mulcher
36	19132016	Washer 13/32 x 1-1/4 x 16 Ga.
38	72010520	Bolt 5/16-18 x 5.20
39	169999	Seal 26" (Long)
40	170000	Seal 7" (Short)
41	169683	Bracket Vert Adj Bagger CRD

**NOTE:** All component dimensions given in U.S. inches  
1 inch = 25.4 mm

# REPAIR PARTS

TRACTOR- -MODEL NO. 917.259110

BEERLESS PMST TRANSAXLE - MODEL NUMBER 206-546



# REPAIR PARTS

## TRACTOR- -MODEL NO. 917.259110

### PEERLESS PMST TRANSAXLE - MODEL NUMBER 206-546

KEY NO.	PART NO.	DESCRIPTION
1	772147	Transaxle Cover
2	780086A	Needle Bearing 5/8"
3	770128	Transaxle Case
4B	776406	Countershaft
5	776409	Output Shaft
6	778364	Spur Gear (38 teeth)
6A	778369	Spur Gear (15 teeth-steel)
7	778330	Spur Gear (11 teeth)
8	792180	Shift Key
9	784352	Shift Collar
10	784378	Shift Rod & Fork
11	778334	Bevel Gear (30 teeth)
12	778309	Input Bevel Pinion (13 teeth)
13	778368	Bevel Gear (13 teeth) (Incl. 14)
14	778368	Bevel Pinion (13 teeth) (Incl.13)
15	778370	Ring Gear (43 teeth)
17	786188	Drive Pin
18	786102	Spacer 1.130 X .695
20	792077A	Ball 5/16" dia
21	792078	Set Screw 3/8-16 x 3/8"
22	792079	Spring .310 ODx .625 L
25	792073A	Screw 1/4-20 x1-1/4" 17
25A	792177	Screw 1/4-20 x1-3/8" 2
26	792125	Retaining Ring (pkg of 2)
27	792035	Retaining Ring
28	788040	Retaining Ring
29	780072	Thrust Washer .627ID x .031W
29A	780160	Thrust Washer .563 ID x .031W
29B	780051	Thrust Washer .762 ID x .031W
29C	780199	Anti-Rotation Washer .632
30	780108	Cup Washer 1.127ID x .032W
31	780001	Flat Washer .750ID x .056W(Use As Needed)
31A	780195	Flat Washer .750ID x .062W
32	788083	Oil Seal 5/8"
34	780194	Bushing .563
35	780193	Flanged Bushing 5/8" ID 2
35A	780197	Flanged Bushing .751 2
36	790075	Brake Disk
37	790007	Brake Pad Plate
38	799021	Brake Pad (pkg of 2)
39	786026	Dowel Pin 5/16 x 3/4
40	792076A	Flat Washer .312 ID x .059W
41	790094	Brake Lever
42	792073A	Screw 1/4-20 x 1-1/4"
42A	792085A	Screw 1/4-20 x 2-1/4"
43	792075	Locknut 5/16-24
44	790025	Brake Pad Holder
45	786066	Spacer .2625 x 1.0
46	786086	Brake Lever Bracket
47	774690	Axle (11-15/16" long)
48	774691	Axle (16-1/2" long)
49	778336	Spur Gear (30 teeth)
50	778338	Spur Gear (27 teeth)
51	778340	Spur Gear (24 teeth)
52	778342	Spur Gear (22 teeth)
53	778352	Spur Gear (19 teeth)
54	778350	Spur Gear (16 teeth)
56	778335	Spur Gear (10 teeth-steel)
57	778337	Spur Gear (13 teeth)
58	778339	Spur Gear (16 teeth)
59	778341	Spur Gear (18 teeth)
60	778351	Spur Gear (21 teeth)
61	778349	Spur Gear (24 teeth)
65	780189	Flat Washer .563 ID x .062W
6	776422	Input Shaft
67	776396	Shifter & Brake Shaft
69	792170	Retaining Ring
70	786187	Spacer .890
71	788069	Square Cut Ring
71B	788092	"O" Ring
76	780090	Flat Washer 1.128 ID x .058W
77	788078A	Inverted Retaining Ring
79	792144	Spring .430 OD x .5000 L
82	778363	Bevel & Spur Gear (30 & 13 teeth)
83	778338	Spur Gear (27 teeth)
85	792154	Oil Fill Plug
87	788089A	Oil Seal 9/16"
150	788093A	Liquid Gasket RTV Silicone
157	788088A	Oil Seal 3/4"
180	730229A	Gear Oil 80W90
900	794715	Replacement 206-546 Transaxle

Parts must be ordered from Tecumseh Products Co.

**NOTE:** All component dimensions given in U.S. inches  
1 inch = 25.4 mm