

# REPAIR PARTS MANUAL

**MODEL NO. 259150**

Lawn Tractor

---

# CRAFTSMAN®

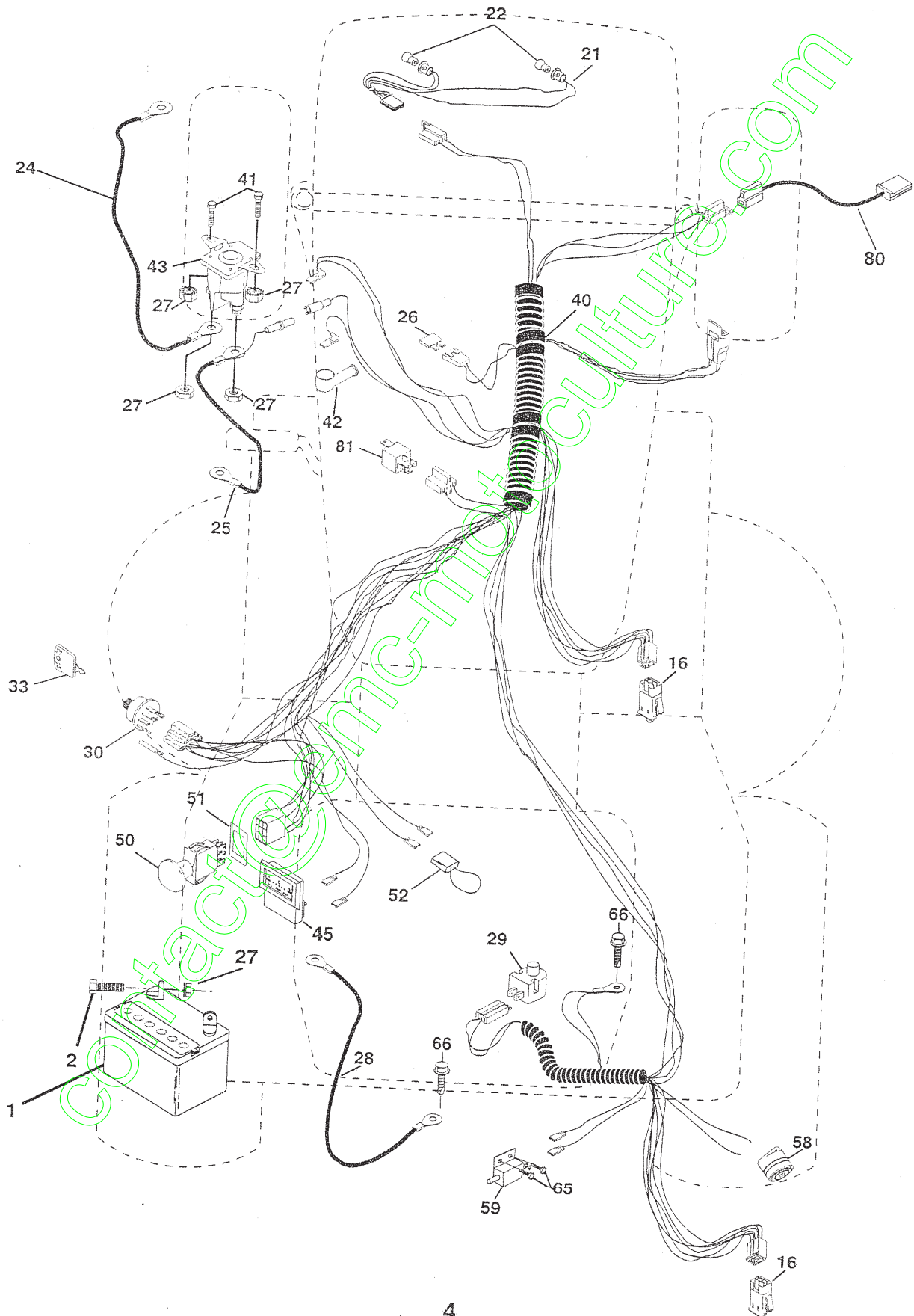
**19 HP HYDRO 107 CM ARR**

PRINTED IN U.S.A.

# REPAIR PARTS

TRACTOR- -MODEL NO. 917. 259150

## ELECTRICAL



# REPAIR PARTS

TRACTOR- -MODEL NO. 917. 259150

## ELECTRICAL

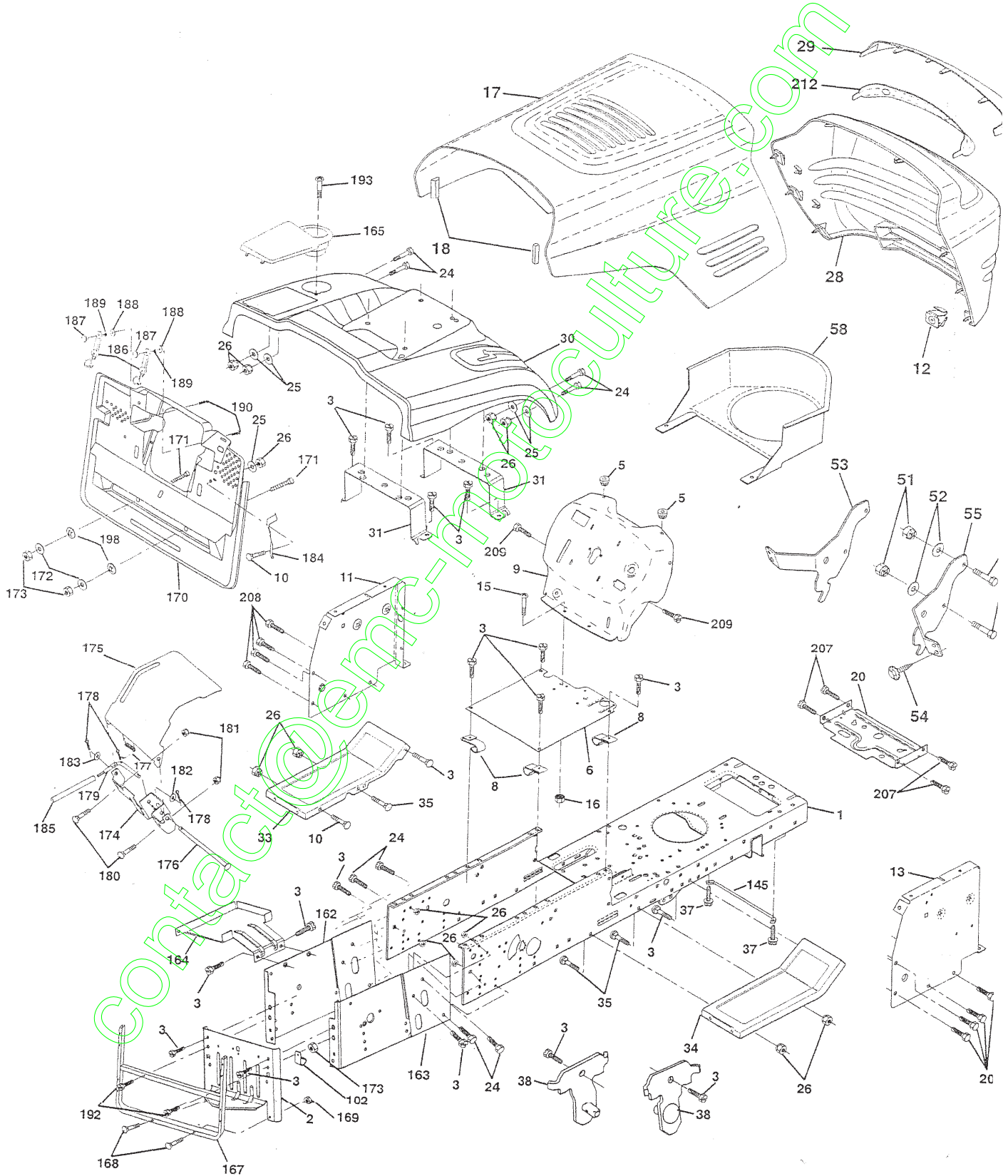
KEY NO.	PART NO.	DESCRIPTION
1	163465	Battery
2	74760412	Bolt Hex Hd 1/4-20 Unc X 3/4
16	153664	Switch Interlock Push-In
21	166182	Harness Asm Light W/4152J
22	4152J	Bulb Light #1156
24	4799J	Cable Starter 6Ga 11" Red
25	165987	Cable Battery Crd 56" Red
26	166180	Fuse 15 Amp
27	73510400	Nut Keps Hex 1/4-20 Unc
28	127725X	Cable Ground 6Ga 18" Black
29	160784	Switch Plunger Normal Op Olive
30	163968	Switch Ignition
33	140403	Key Ign
40	170214	Harness Ign Crd Elect
41	71110408	Bolt Flk Fin Hex 1/4-20 Unc X 1/2
42	131563	Cover Terminal Red
43	145673	Solenoid
45	122822X	Ammeter Rectangular 15Amp
50	169416	Switch PTO
51	140405	Ring Retainer PTO
52	141940	Protection Wire Loop
58	169419	Buzzer Crd
59	166299	Switch FBI CRD
65	17211008	Screw Slftp #10-16 x 1/2 Ty-Ab
66	17490608	Screw Thdrol 3/8-16 x 1/2 Ty-Tt
80	146685	Harness Clutch EVX
81	109748X	Relay Asm

NOTE: All component dimensions given in U.S. inches.  
1 inch = 25.4 mm.

# REPAIR PARTS

TRACTOR- -MODEL NO. 917.259150

## CHASSIS AND ENCLOSURES



# REPAIR PARTS

TRACTOR- -MODEL NO. 917.259150

## CHASSIS AND ENCLOSURES

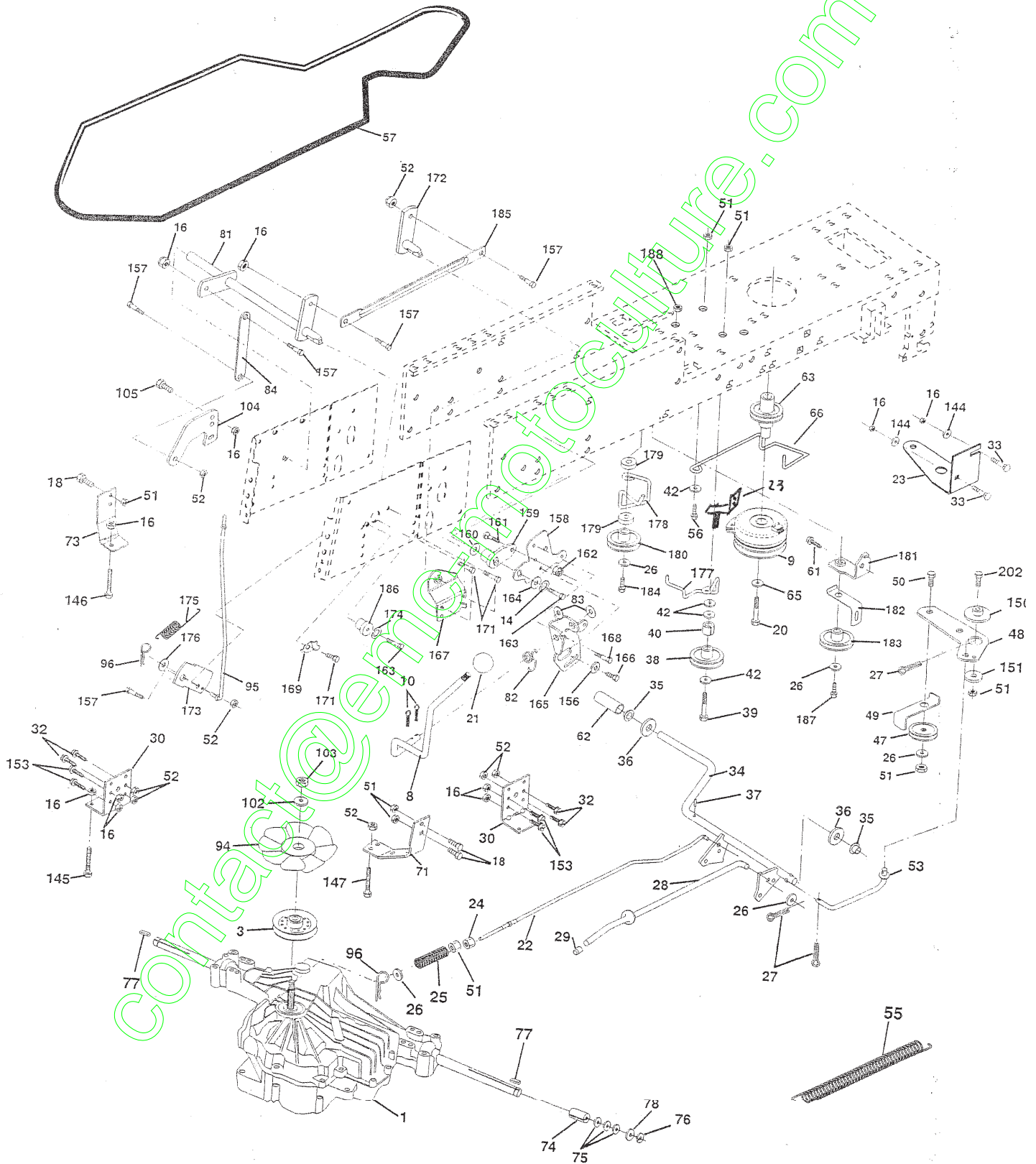
KEY NO.	PART NO.	DESCRIPTION	KEY NO.	PART NO.	DESCRIPTION
1	169831	Chassis Assembly	162	165672	Bracket Exten Chassis Lh CRD
2	165606	Drawbar	163	165673	Bracket Exten Chassis Rh CRD
3	17060612	Screw 3/8-16 x .75	164	165605	Support Battery CRD
5	155272	BumperHood/Dash	165	165742X428	Cover Battery CRD Lt
6	155923	Saddle	167	165779	Support Asm. Backplate WLDMNT
8	126471X	Clip Insulator 13/32 Mtg. Hole	168	72050412	Bolt, RDHD SHT NK 1/4-20 x 1-1/2
9	168352X010	Dash	169	123976X	Nut, Lock 1/4 LGE FLG Gr. 5 Zinc
10	72140608	Bolt, Carriage 3/8-16 x 3/4	170	165607	Cover, Backplate Plastic Black
11	155927	Panel, Dash, L.H.	171	74520640	Bolt Hex 3/8-16 x 2-1/2 Gr. 5
12	145660	Clip, Tinnerman Grille P/L	172	19132016	Washer 13/32 x 1-1/4 x 16 Ga.
13	172108	Panel, Asm. Dash R.H.	173	73510600	Nut, Keps Hex 3/8-16 UNC
15	74180512	Screw, Machine, Truss Head 5/16-18 UNC x 3/4	174	165939	Bracket Switch FBI CRD
16	73510500	Nut	175	166212	Guard Door Rear CRD
17	144983X558	Hood Assembly	176	128600	Pin Hinge Pivot
18	126938X	BumperHood	177	132796	Spring Bagger Top LH Black
20	156437	Plate Mtg. Battery/Fuel Tank	178	76020312	Pin Cotter 3/32 x 3/4 Cad Zinc
24	74780616	Bolt	179	165942	Rod Pivot FBI CRD
25	19131312	Washer 13/32 x 13/16 x 12 Gauge	180	74760516	Bolt Hex HD 5/16-18 UNC x 1
26	73800600	Nut	181	73680500	Nut Crownlock 5/16-18
28	156725X558	Grille	182	138200	Washer .385 x .625 x 11 Ga.
29	155217X599	Lens, Grille	183	19131316	Washer 13/32 x 13/16 x 16 Ga.
30	165713X558	Fender	184	166139	Bracket Actuator Bagger CRD
31	165156	Bracket, Fender Support	185	165940	Tube Lever Switch FBI CRD
33	145244X558	Footrest, L.H.	186	160793	Latch Asm Mulch/Bagger
34	145243X558	Footrest, R.H.	187	2029J	Nut Weld .327/.304 #10-24
35	72110606	Bolt	188	19061216	Washer #10
37	17490508	Screw Thdrol 5/16-18 x 1/2 TYT	189	10071000	Washer Lock #10
38	169834	Pivot Bracket Assembly	190	71161010	Screw Truss Hd Phil 10-24 x 5/8
51	73800400	Nut Lock w/Insert 1/4-20 UNC	192	17490624	Screw Thdrol 3/8-16 x 1-1/2
52	19091416	Washer 9/32 x 7/8 x 16 Ga.	193	17070412	Screw Truss 1/4-20 x 3/4
53	145201	Bracket, Grille LH	198	168937	Nut, Push
54	161464	Screw Hex WSHD 8-18 x 7/8	207	17670508	Screw Thdrol 5/16-18 x 1/2
55	145202	Bracket, Grille RH	208	17670608	Screw Thdrol 3/8-16 x 1/2
57	74780412	Bolt, Fin Hex 1/4-20 UNC x .75	209	17000612	Screw Hex Wsh Thdrol 3/8-16
58	140547	Air Duct	212	165919	Insert Lens
102	2751R	Clip line Fule 13/32 Mtg Hole			
145	156524	Rod Pivot Chassis/Hood			

**NOTE:** All component dimensions given in U.S. inches.  
1 inch = 25.4 mm.

# REPAIR PARTS

DRIVE

TRACTOR- -MODEL NO. 917.259150



# REPAIR PARTS

TRACTOR- MODEL NO. 917.259150

## DRIVE

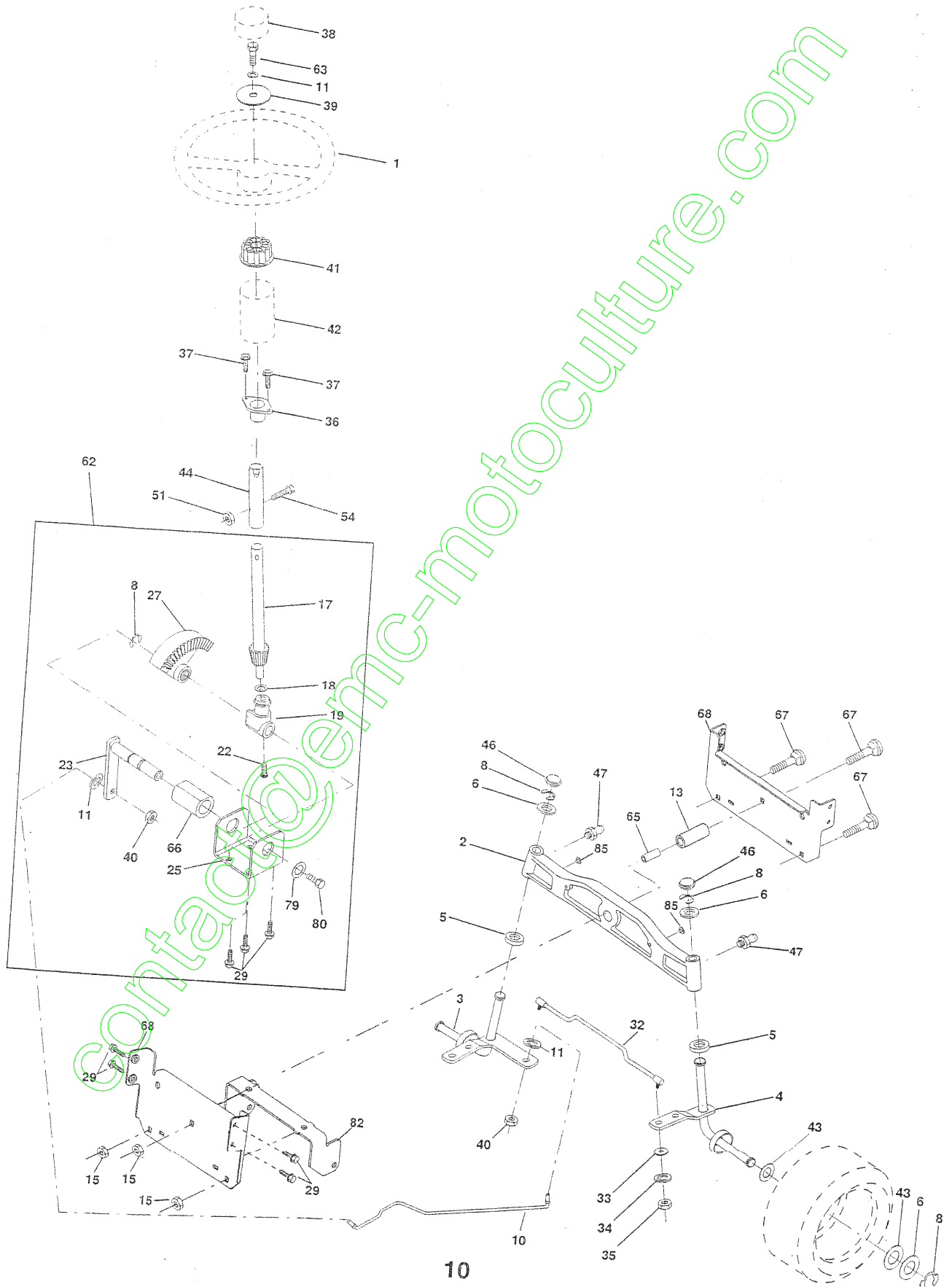
KEY NO.	PART NO.	DESCRIPTION	KEY NO.	PART NO.	DESCRIPTION
1	-----	Transaxle Hydro Gear 331-0650 (See Transaxle Breakdown)	82	123782X	Spring, Torsion
3	143995	Pulley Hydro 0650 Lt/CRD	83	19171216	Washer 17/32 x 3/4 x 16 Ga.
8	165619	Rod, Shift Fender Adjust Lt	84	165629	Link, Transaxle
9	169992	Clutch Ele EVX 80 W/Hard Brake	94	140462	Fan 7"
10	76020416	Pin, Cotter 1/8 x 1	95	165935	Control Asm Bypass Hydro
14	10040400	Washer, Lock Hvy Helical	96	4497H	Spring, Retainer 1"
16	73800500	Nut, Lock Hex w/Ins 5/16-18 UNC	102	141322	Washer, Bellville .50ID x 1.50D
18	74780616	Bolt Hex 3/8-16 UNC x 1 Gr.5	103	73940800	Nut, Hex Jam Toplock 1/2-20 UNF
20	150280	Bolt, Hex 7/16-20 x 4-1/4 5 Ga 1.38	104	140156	Arm, Control Hydro
21	130564	Knob	105	71070516	Screw Cap Hex 5/16 x 18 Unc-1
22	165688	Rod, Brake CRD 0650	144	19111016	Washer 11/32 x 5/8 x 16 Ga.
23	170171	Bracket Asm Clutch Mtg. EVX	145	74490540	Bolt Hex FGHD 5/16-18 x Gr 5
24	73350600	Nut	146	74490536	Bolt Hex FLGHD 5/16-18 x 2-1/4
25	106888X	Spring, Rod, Brake	147	74490524	Bolt Hex FLGHD 5/16-18 x 1-1/2
26	19131316	Washer 13/32 x 13/16 x 16 Ga.	150	165850	Bushing, Bellcrank Grnd Dr
27	76020412	Pin, Cotter 1/8 x 3/4	151	19133210	Washer 13/32 x 2 x 10 Ga.
28	145204	Rod, Parking Brake	153	74760516	Bolt Hex Hd 5/16-18 Unc x 1
29	71673	Cap, Parking Brake	156	166002	Washer Srrted 5/16ID x 1.125
30	169592	Bracket, Mfg. Transaxle	157	153236	Bolt Shoulder 5/16-18 Unc 2A
32	74760512	Bolt Hex 5/16-18 UNC x 3/4	158	165589	Bracket Shift Mount
33	72140506	Bolt Rdhd Sqnk 5/16-18 Unc x 3/4	159	165494	Hub Tapered Flange Shift Lt
34	165496	Shaft, Asm Pedal Foot CRD	160	19292016	Washer 29/32 x 1-1/4 x 16 Ga.
35	120183X	Bearing, Nylon	161	72140406	Bolt Rdhd Sqnk 1/4-20 x 3/4 Gr 5
36	19211616	Washer 21/32 x 1 x 16 Ga.	162	73680400	Nut Crownlock 1/4-20 Unc
37	1572H	Pin, Roll 3/16 x 1"	163	74780416	Bolt Hex Fin 1/4-20 Unc x 1 Gr 5
38	165936	Pulley Flat Composite 3.06"	164	19091010	Washer 5/8 x .281 x 10 Ga.
39	74760644	Bolt Fin Hex	165	165623	Bracket Pivot Lever
40	4470J	Spacer, Split 395 x 59 Bzp	166	166880	Screw 5/16-18 x 5/8
42	19131312	Washer 13/32 x 13/16 x 12 Ga.	167	165588	Bracket Support Shift CRD
47	127783	Pulley, Idler, V Groove Plastic	168	165492	Bolt Shoulder 5/16-18 x .561
48	154407	Bellcrank Clutch Grnd Drv	169	165580	Plate Fastening Lt
49	123205X	Retainer, Belt Style Spring	171	17490608	Screw Thdrol 3/8-16 x 1/2 Ty-Tt
50	74760624	Bolt Hex Hd 3/8-16 UNC x 1-1/2	172	165587	Shaft Asm Shifter Frt CRD 0650
51	73680600	Nut, Crownlock 3/8-16 UNC	173	165934	Bracket Hydro Bypass CRD
52	73680500	Nut Crownlock 5/16-18	174	10090400	Washer Lock 1/4
53	105710X	Link, Clutch 7.66	175	165931	Spring Bypass CRD
55	105709X	Spring, Return, Clutch	176	19070816	Washer 7/32 x 1/2 x 16 Ga.
56	74760620	Bolt, Hex 3/8-16 UNC x 1-1/4	177	165932	Keeper Flat Idler 3.06" CRD
57	165632	V-Belt Key 112" 0650 CRD	178	165933	Keeper Belt Idler 1.88" CRD
61	17060612	Screw 3/8-16 x .75 SMGML Tap/R	179	120958X	Washer Sintered
62	8883R	Cover, Pedal	180	165630	Pulley, Idler, Flat 1.88" CRD
63	145868	Pulley, Clutch elect EVX 1"	181	165797	Bracket Idler Ground Drive CRD
65	10040700	Washer	182	165634	Keeper Belt 2.5" Od V-Idler CRD
66	154778	Keeper, Belt Engine F-Proof	183	165626	Pulley V-Idler 2.50" Od CRD
71	140158	Strap, Torque, Lh	184	17490644	Screw Hexwsh Thdrol 3/8-16 x 2-3/4
73	156347	Strap, Torque, Rh	185	165541	Link Shift CRD Hydro 0650
74	121199X	Spacer, Split	186	165614	Hub Tapered Round CRD
75	121749X	Washer 25/32 x 1-1/4 x 16 Ga.	187	17490620	Screw Thdrol 3/8-16 x 1-1/4 TT
76	12000001	Ring, E	188	110436X	Bushing Snap Split
77	123583X	Key, Square	202	72110612	Bolt Carr SH 3/8-16 x 1-1/2 Gr. 5
78	121748X	Washer 25/32 x 1-5/8 x 16 Ga.			
81	165585	Asm, Shaft			

NOTE: All component dimensions given in U.S. inches  
1 inch = 25.4 mm

# REPAIR PARTS

TRACTOR- -MODEL NO. 917.259150

## STEERING ASSEMBLY





# REPAIR PARTS

TRACTOR- -MODEL NO. 917.259150

## STEERING ASSEMBLY

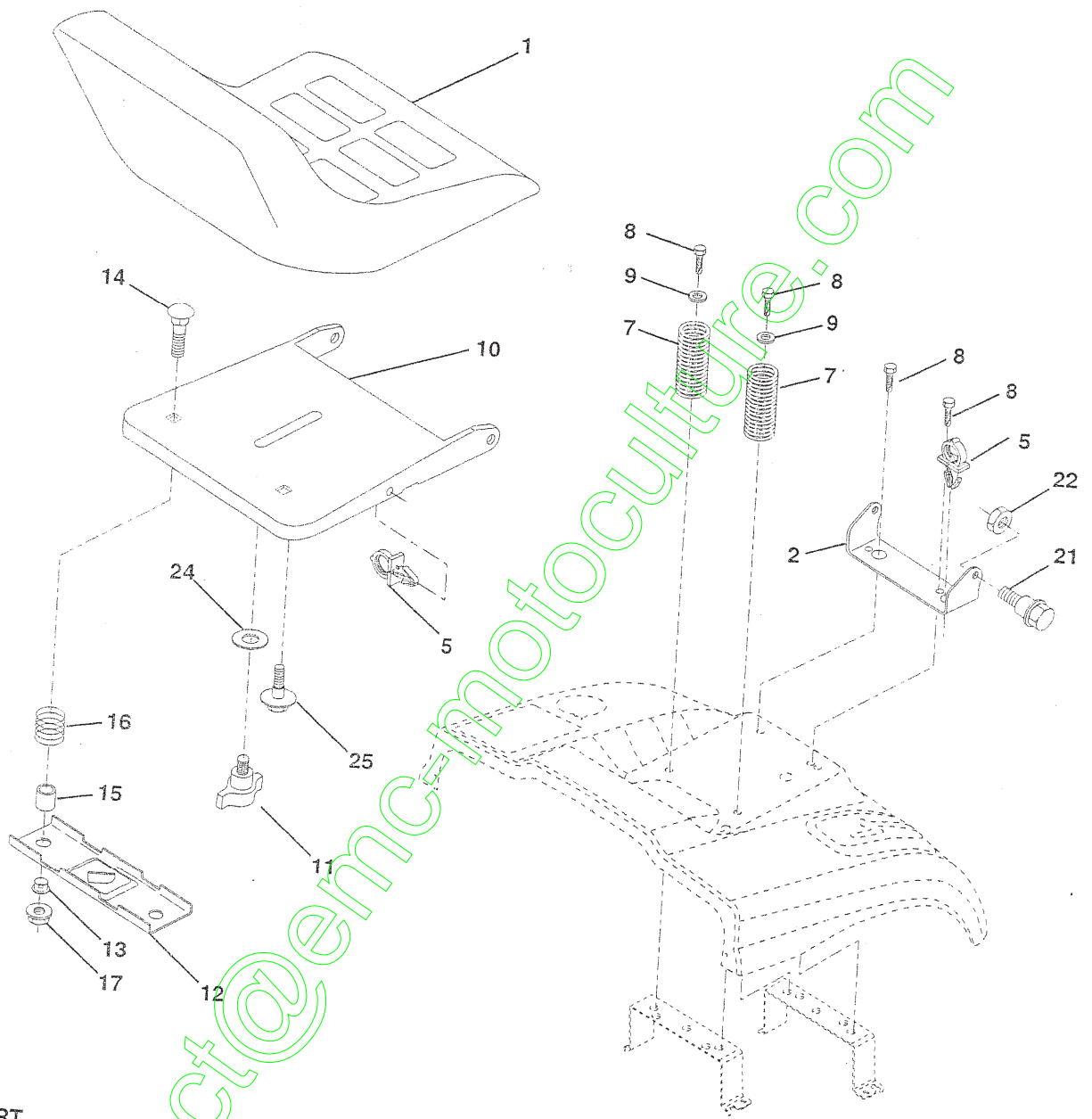
KEY NO.	PART NO.	DESCRIPTION
1	139768	Steering Wheel
2	165854	Front Axle Assembly
3	169840	Spindle Assembly, L.H.
4	169839	Spindle Assembly, R.H.
5	6266H	Bearing, Race, Thrust, Hardened
6	121748X	Washer 25/32 x 1-5/8 x 16 Gauge
8	12000029	Ring, Klip
10	169832	Link, Drag
11	10040600	Washer, Lock
13	136518	Spacer Bearing Axle
15	145212	Nut, Hexflange Lock
17	156546	Shaft Assembly, Steering
18	57079	Washer, Thrust .515 x .750 x .033
19	160395	Support, Shaft
22	165857	Screw Hex Wshhd Torx
23	165851	Pittman Shaft Assembly
25	154406	Bracket, Steering
27	136874	Gear, Sector
29	17060612	Screw, 3/8-16 x 3/4 SMGML
32	170162	Rod, Tie
33	19111216	Washer 11/32 x 3/4 x 16 Ga
34	10040500	Washer Lock 5/16
35	73810500	Nut Lock 5/16-24 Unf
36	155099	Bushing, Steering
37	152927	Screw TT #10-32 x 5 x 3/8 Flange
38	139769	Cap Wheel Steering
39	19133812	Washer 13/32 x 2-3/8 x 12 Gauge
40	7810H	Nut Lock Center 3/8-24 Unf
41	100711L	Adaptor, Steering Wheel
42	145054X428	Boot, Steering Dash
43	121749X	Washer 25/32 x 1-1/4 x 16 Gauge
44	153720	Extension Steering Non-Adjust
46	121232X	Cap, Spindle
47	6855M	Fitting, Grease
51	73800500	Nut Lock Hx W/Ins 5/16-18 UNC
54	74780520	Bolt Fin Hex 5/16-18 UNC x 1-1/4
62	167902	Kit, Steering Assembly, Service
63	74780616	Bolt Fin Hex 3/8-16 unc. x 1 Gr. 5
65	160367	Spacer Brace Axle
66	154404	Bearing Arm Pittman
67	72110618	Bolt RDHD SQNK 3/8-16 x 2-1/4
68	169827	Brace Axle
79	19132012	Washer 13/32 x 1-1/4 x 12 Ga
80	74950612	Bolt Hex Nylon 3/8-16 x 3/4
82	169835	Bracket Susp. Chassis Front
85	133835	Fastner Christmas Tree

NOTE: All component dimensions given in U.S. inches.  
1 inch = 25.4 mm.

# REPAIR PARTS

TRACTOR- -MODEL NO. 917.259150

## SEAT ASSEMBLY



KEY NO.	PART NO.	DESCRIPTION
1	140123	Seat
2	140551	Bracket Pnt Pivot Seat (blk )
5	145006	Clip Push In Hinged
7	124181X	Spring Seat Cprsn 2 250 Blk Zi
8	17000616	Screw 3/8-16 X 1.5 SMGML Tap/R
9	19131614	Washer 13/32 X 1 X 14 Ga
10	155925	Pan Pnt Seat (blk )
11	166369	Knob Seat Adj Wingnut
12	121246X	Bracket Pnt Mounting Switch

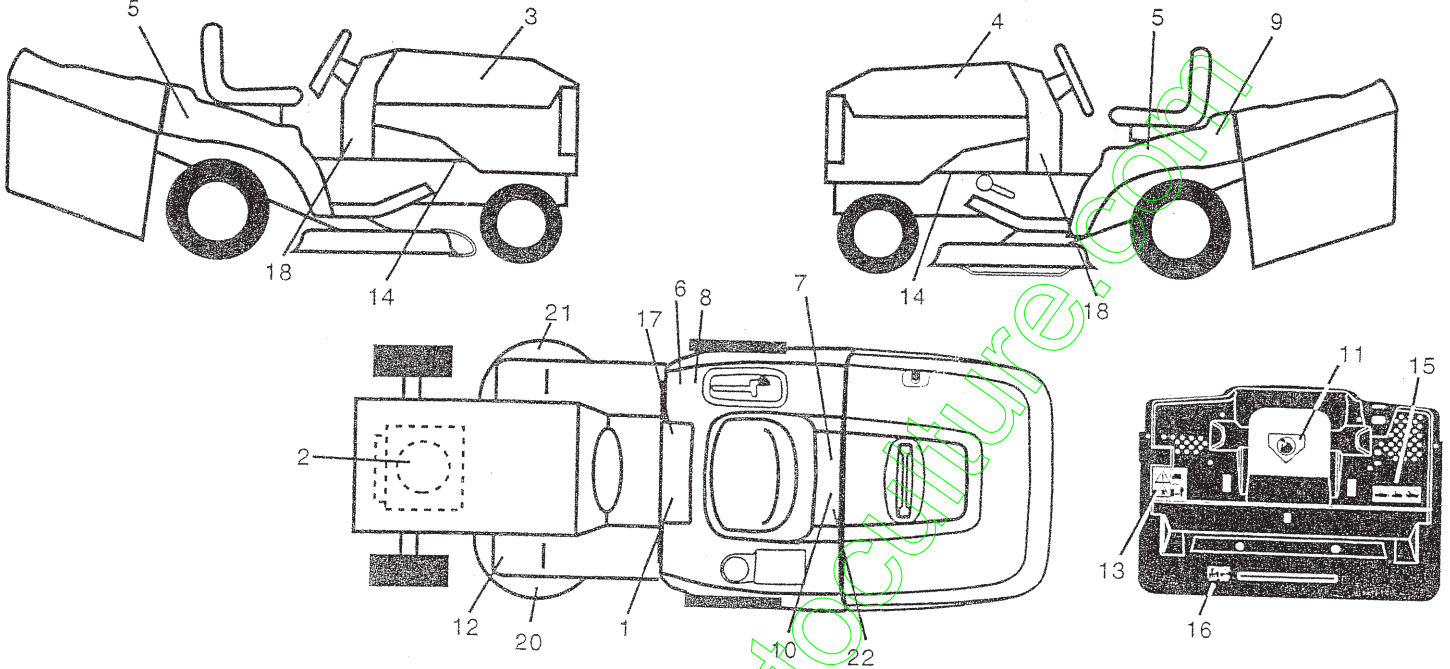
KEY NO.	PART NO.	DESCRIPTION
13	121248X	Bushing Snap Blk Nyl 50 Id
14	72050412	Bolt Rdhd Sht Nk 1/4-20x1-1/2
15	134300	Spacer Split .28 X .96 Zinc
16	121250X	Spring Cprsn
17	123976X	Nut Lock 1/4 Lge Fig Gr 5 Zinc
21	171852	Bolt Shoulder 5/16-18 Unc-2A
22	73800500	Nut Hex Lock w/Ins 5/16-18
24	19171912	Washer 17/32 X 1-3/16 X 12 Ga.
25	127018X	Bolt Shoulder 5/16-18 X 62

**NOTE:** All component dimensions given in U.S. inches  
1 inch = 25.4 mm

# REPAIR PARTS

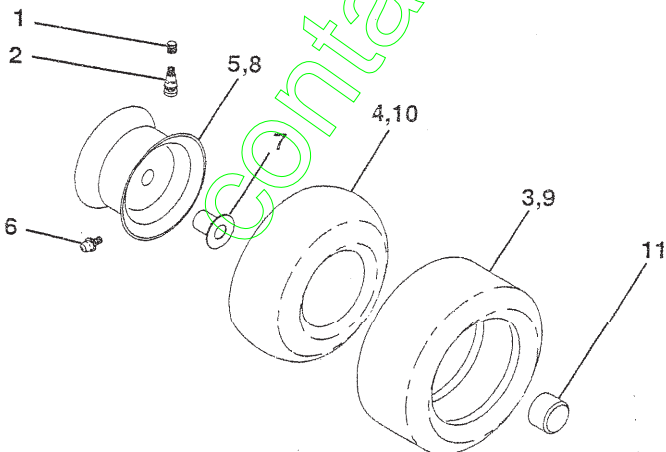
## TRACTOR- -MODEL NO. 917.259150

### DECALS



KEY NO.	PART NO.	DESCRIPTION	KEY NO.	PART NO.	DESCRIPTION
1	145498	Decal Read Owner's Manual Sym	14	159736	Decal Chassis Hot Muffler
2	165389	Decal Hp Engine	15	166961	Decal Oper Bag Presence CRD
3	171696	Decal Hood Rh	16	162598	Decal Drawbar Load Limit
4	171697	Decal Hood Lh	17	140837	Decal Saddle Brake Parking
5	163227	Decal Fender Auto	18	166799	Decal Dash Panel
6	126187X	Decal 100 DBA	20	133179	Decal Mower QC System
7	166960	Decal Bypass Fender	21	166286	Decal Deck Sch 92 CRD
8	145437	Decal Europe Stand Ce	22	138047	Decal Battery
9	163204	Decal Fender Lh	—	138311	Decal Lift Handle
10	145005	Decal Bat Dan/Poi P/L Sym Wpn	—	157199X428	Pad Footrest
11	145494	Decal Mower Cut Finger Symbol	—	173743	Manual Operator's (Euro)
12	159737	Decal Brake/Clutch Symbol Lt	—	173744	Manual Operator's (Scand)
13	166959	Decal Warn Back Plate CRD	—	173745	Manual Parts

### WHEELS & TIRES



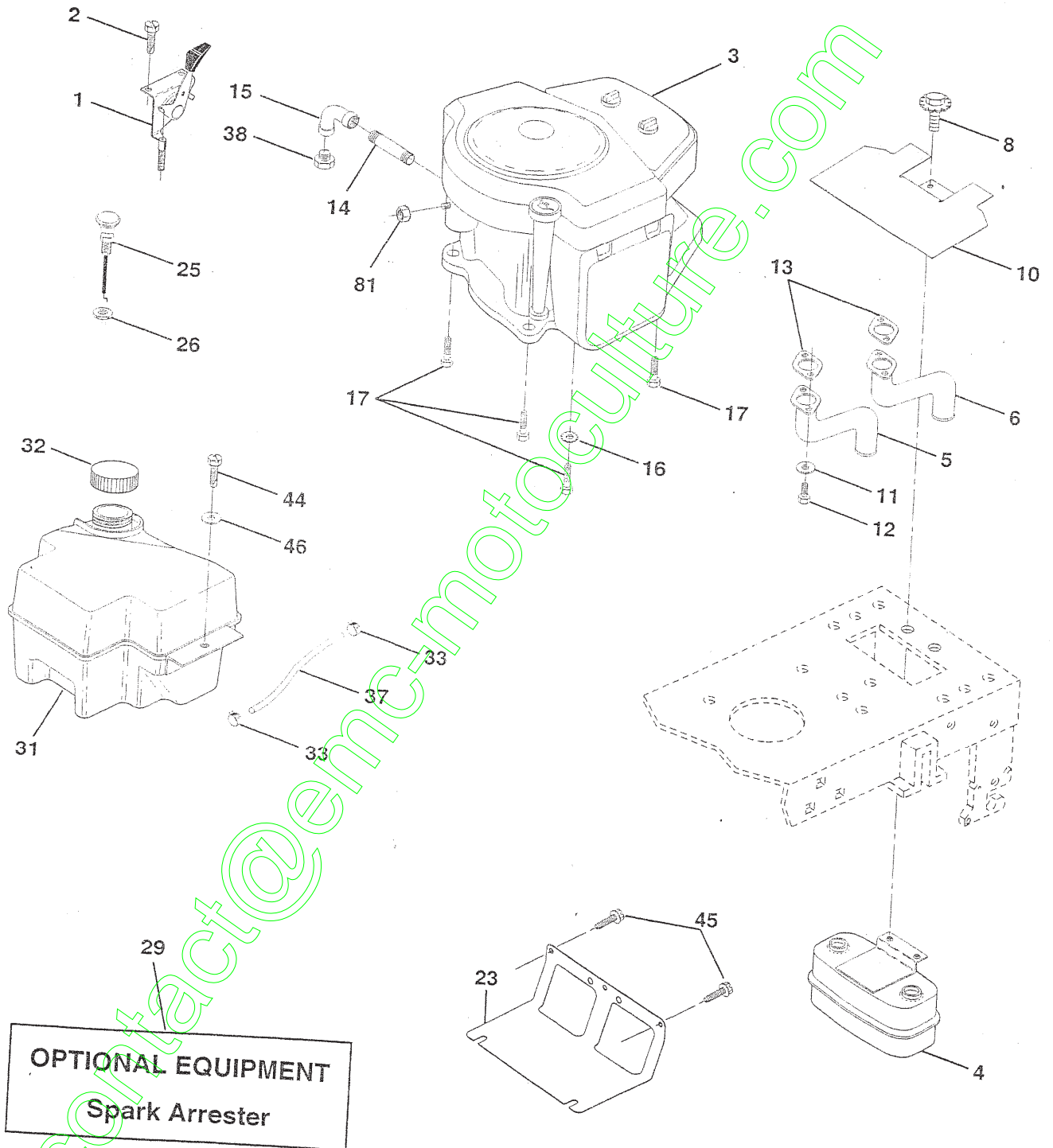
KEY NO.	PART NO.	DESCRIPTION
1	59192	Cap Value Tire
2	65139	Stem Value
3	106222X	Tire F Ts 15 X 6 0 - 6 Service
4	59904	Tube Inner Front #35060
5	106732X427	Rim Asm 6" front White Service
6	278H	Fitting Grease
7	9040H	Bearing Flange
8	106108X427	Rim Asm 8" rear White Service
9	122082X	Tire R Ts 20 x 10-8 Service
10	7152J	Tube Rear 9 5 X 8 Service
11	104757X	Cap Axle Blk 1 50 X 1 00
--	144334	Sealant, Tire (10 oz. tube)

**NOTE:** All component dimensions given in U.S. inches  
1 inch = 25.4 mm

# REPAIR PARTS

TRACTOR- -MODEL NO. 917.259150

## ENGINE



# REPAIR PARTS

TRACTOR- -MODEL NO. 917.259150

## ENGINE

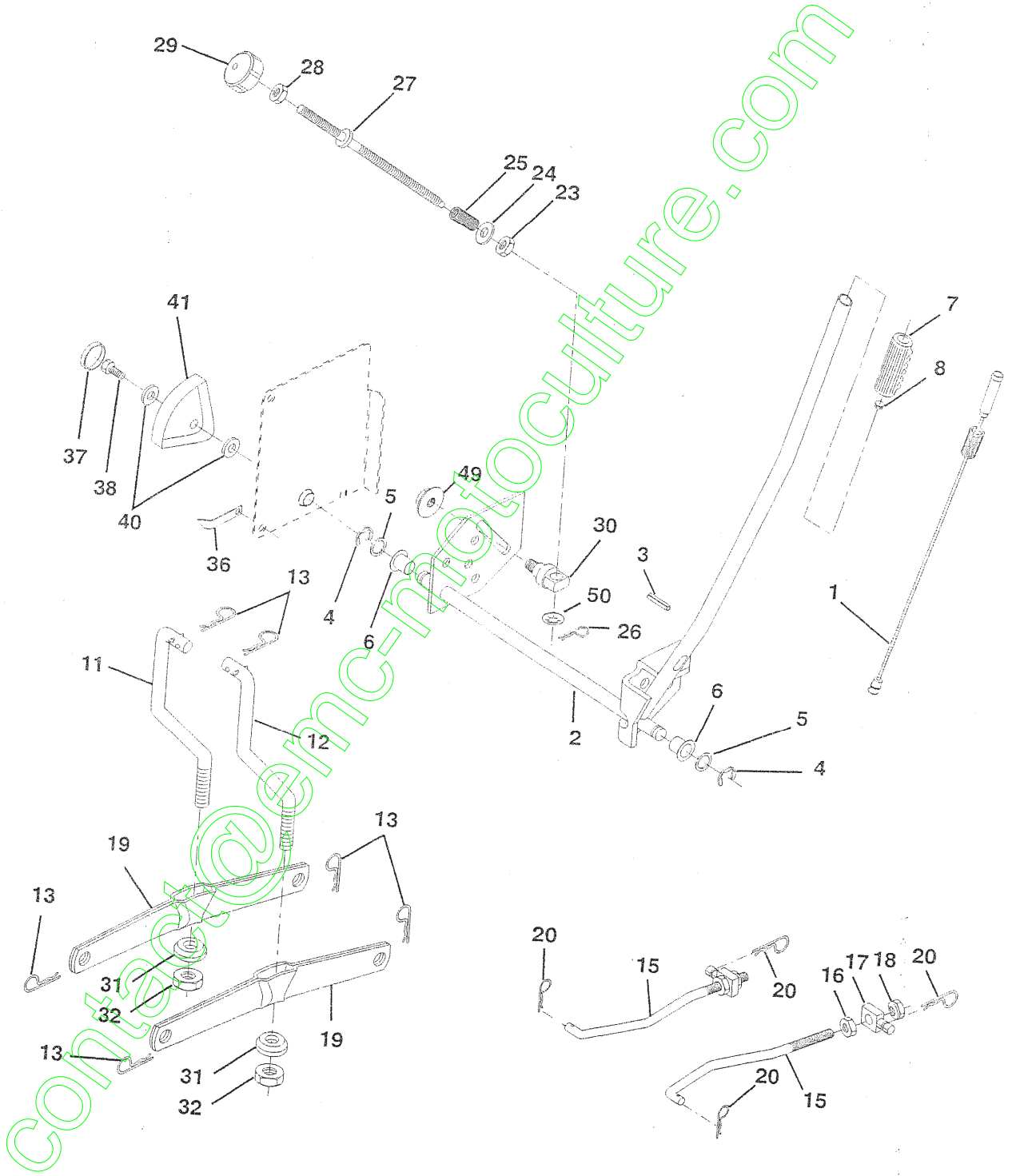
KEY NO.	PART NO.	DESCRIPTION
1	162152	Control, Throt Paddle 32 22
2	17720410	Screw, Hex Thd Cut 1/4-20 x 5/8
3	-----	Engine, (See Breakdown) B & S, No. 460707-2637-E3
4	149723	Muffler Exhaust
5	144069	Exhaust Asm. Left
6	144068	Exhaust Asm. Right
8	150176	Bolt 5/16-18unc x 3/4 W/Sems
10	145552	Heat Shield Lt
11	STD551125	Washer Lock Hvy. Helical 1/4
12	STD522507	Bolt Fin Hex 1/4-20Unc x .75
13	165287	Gasket, Muffler
14	13280336	Nipple, Pipe 4-1/2
15	13200300	Elbow, Standard 90°, 3/8-18 NPT
16	STD551237	Washer Lock Ext Tooth 3/8
17	17490624	Screw Thdrol 3/8-16x1-1/2 Tytt
23	169837	Shield, Brn/Dbr Guard
25	145996	Control Choke
26	73920600	Nut Keps 3/8-24 Unf
29	137180	Arrestor, Spark
31	161911	Tank, Fuel
32	140527	Cap Fuel Guage
33	123487X	Clamp, Hose
37	137040	Line, Fuel
38	-----	Plug, Oil Drain (See Engine Breakdown)
44	17490412	Screw Hexwsh Thdrol 1/4-20 x 3/4
45	17060612	Screw 3/8-16 x .75 SMGML Tap/R
46	19091416	Washer 9/32 x 7/8 x 16 Ga.
81	73510400	Nut Keps 1/4-20 Starter Nut

NOTE: All component dimensions given in U.S. inches  
1 inch = 25.4 mm

# REPAIR PARTS

## MOWER LIFT

TRACTOR- -MODEL NO. 917.259150



# REPAIR PARTS

## MOWER LIFT

TRACTOR- -MODEL NO. 917.259150

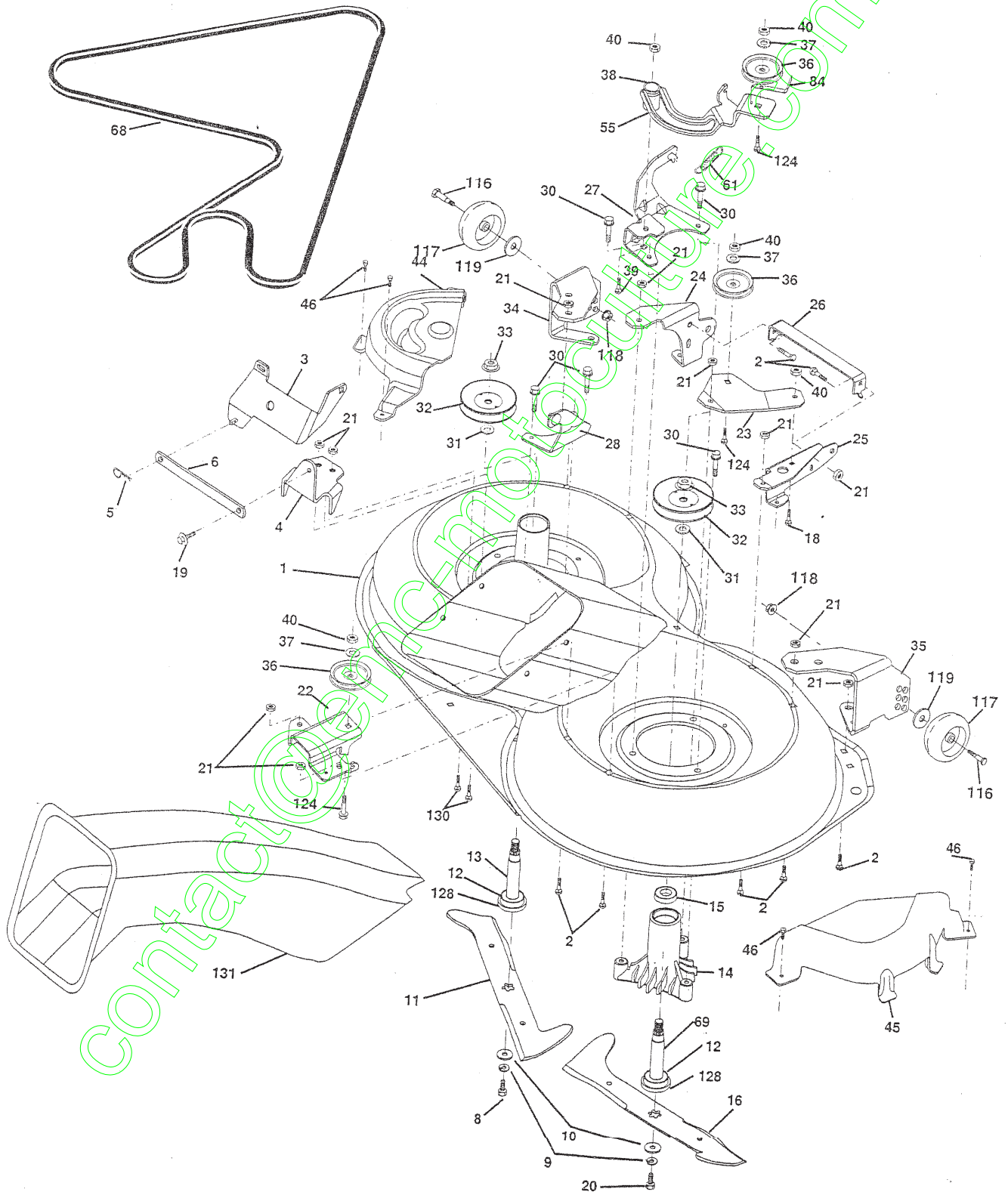
KEY NO.	PART NO.	DESCRIPTION
1	159460	Washer Asm Inner Spring W/Plunger
2	159471	Shaft Asm. Lift
3	105767X	Pin Groove
4	12000002	E Ring #5133-62
5	19211621	Washer 21/32 x 1 x 21 Ga.
6	120183X	Bearing Nylon
7	125631X	Grip Handle Fluted
8	122365X	Button Plunger Black
11	165829	Link Asm Lift L.H.
12	165831	Link Asm Lift R.H.
13	4939M	Retainer Spring
15	173288	Link Front
16	73350800	Nut Jam Hex 1/2-13 Unc
17	130171	Trunnion Blk Zinc
18	73680800	Nut Crownlock 1/2-13 Unc
19	139868	Arm Suspension Mower
20	163552	Retainer Spring
23	110807X	Nut Special
24	19131016	Washer 13/32 x 5/8 x 16 Ga.
25	2876H	Spring 2-1/8"
26	169484	Retainer Clip
27	126971X	Rod Adj Lift Zinc 7.49 Wrk Lg
28	73350600	Nut Hex Jam 3/8-16 Unc
29	138057	Knob Inf 3/8-16 Unc Blk w/sym
30	150233	Trunnion Infin Height
31	140302	Bearing, Pvt. Lift. Spherical
32	73540600	Nut Crownlock 3/8-24
36	155097	Pointer Height Indicator
37	123935X	Plug Hole Blk 1.485/1.515 Dia
38	17060516	Screw 5/16-18 x 3/4 SMGML Tap/R
40	19112410	Washer 11/32 x 1-1/2 x 10 Ga.
41	123934X	Scale Ind Height Blk
49	145212	Nut hex Flange Lock
50	110452X	Nut Push Phos & Oil

**NOTE:** All component dimensions given in U.S. inches  
1 inch = 25.4 mm

# REPAIR PARTS

MOWER

TRACTOR- -MODEL NO. 917.259150





# REPAIR PARTS

TRACTOR- -MODEL NO. 917.259150

## MOWER

KEY NO.	PART NO.	DESCRIPTION	KEY NO.	PART NO.	DESCRIPTION
1	169160	Housing Asm. Mower 107 CRD	34	169174	Bracket Gauge Wheel Lf 107 CRD
2	72140506	Bolt Rdhd Sqnk 5/16-18 Unc x 3/4	35	169175	Bracket Gauge Wheel Rf 107 CRD
3	165569	Bracket Asm S-Bar Chass 107 CRD	36	146763	Pulley Idler V-Groove Dim 4.25
4	169167	Bracket Bar Sway Deck 107 CRD	37	19131316	Washer 11/32 x 13/16 x 16 Ga
5	4939M	Retainer Spring	38	169851	Spacer Hub Arm Idler 107
6	165557	Bar Sway 107 CRD	39	72110622	Bolt Rdhd 3/8-16 x 2-3/4
8	850857	Bolt 3/8-24 x 1.25 Gr8 Patched	40	73680600	Nut Crownlock 3/8-16 Unc
9	10030600	Washer Lock Hvy 3/8 Unplated	44	169180	Cover Mandrel Lh 107 CRD
10	140296	Washer Hard Blade Mower vented	45	169179	Cover Mandrel Rh 107 CRD
11	168720	Blade 3-1 Lh 107 CRD	46	137729	Screw Thd Roll 1/4-20 x 5/8
12	129895	Bearing Ball #6204 (Mandrel)	55	169849	Arm Idler 107 CRD
13	137645	Shaft Asm. W/Lower Bearing	61	165945	Spring Tension Belt
14	128774	Housing Mandrel Vented (Machd)	68	169178	Hex-Belt 107 Mower
15	110485X	Bearing Ball Mandrel	69	165482	Shaft Asm W/Lwr Brg Rh Thd CRD
16	168721	Blade 3-1 Rh 107 CRD	84	156085	Keeper Belt Idler
18	72110608	Bolt Rdhd Sqnk 3/8-16 x 1 Gr5	116	137644	Bolt Shoulder
19	132827	Bolt Shoulder 5/16-18 Thd Form	117	133957	Wheel Gage Donut Wide
20	165484	Bolt 3/8-24 x 1.25 Gr8 Pch Lhthd	118	73930600	Nut Centerlock 3/8-16 Unc
21	73680500	Nut Crown Lock 5/16-18	119	19121414	Washer 3/8 x 7/8 x 14 Ga.
22	169165	Bracket Idler Sprt RR 107 CRD	124	72110612	Bolt Carr Sh 3/8-16 x 1-1/2 Gr5
23	169166	Bracket Idler Sprt RF 107 CRD	128	153390	Washer Felt
24	169170	Bracket Suspension LF 107 CRD	130	72110506	Bolt Rdhdsqnk 5/16-18 Unc x 3/4
25	169171	Bracket Suspension RF 107 CRD	131	165661	Chute Bagger CRD 92cm
26	165237	Brace Support Susp Frt CRD	-	130794	Mandrel Asm Service
27	169172	Bracket Asm. Susp RR 107 CRD	-	165579	Mandrel Asm CRD Lh Threads SVC
28	169168	Bracket Asm. Susp LR 107 CRD	-	170273	Deck Mower Complete
30	157722	Screw Thd Rolling Washer Head			
31	129963	Washer Spacer Mower Vented			
32	153535	Mandrel Pulleys 36 & 46			
33	137266	Nut Flg Top Lock Cntr B 9/16			

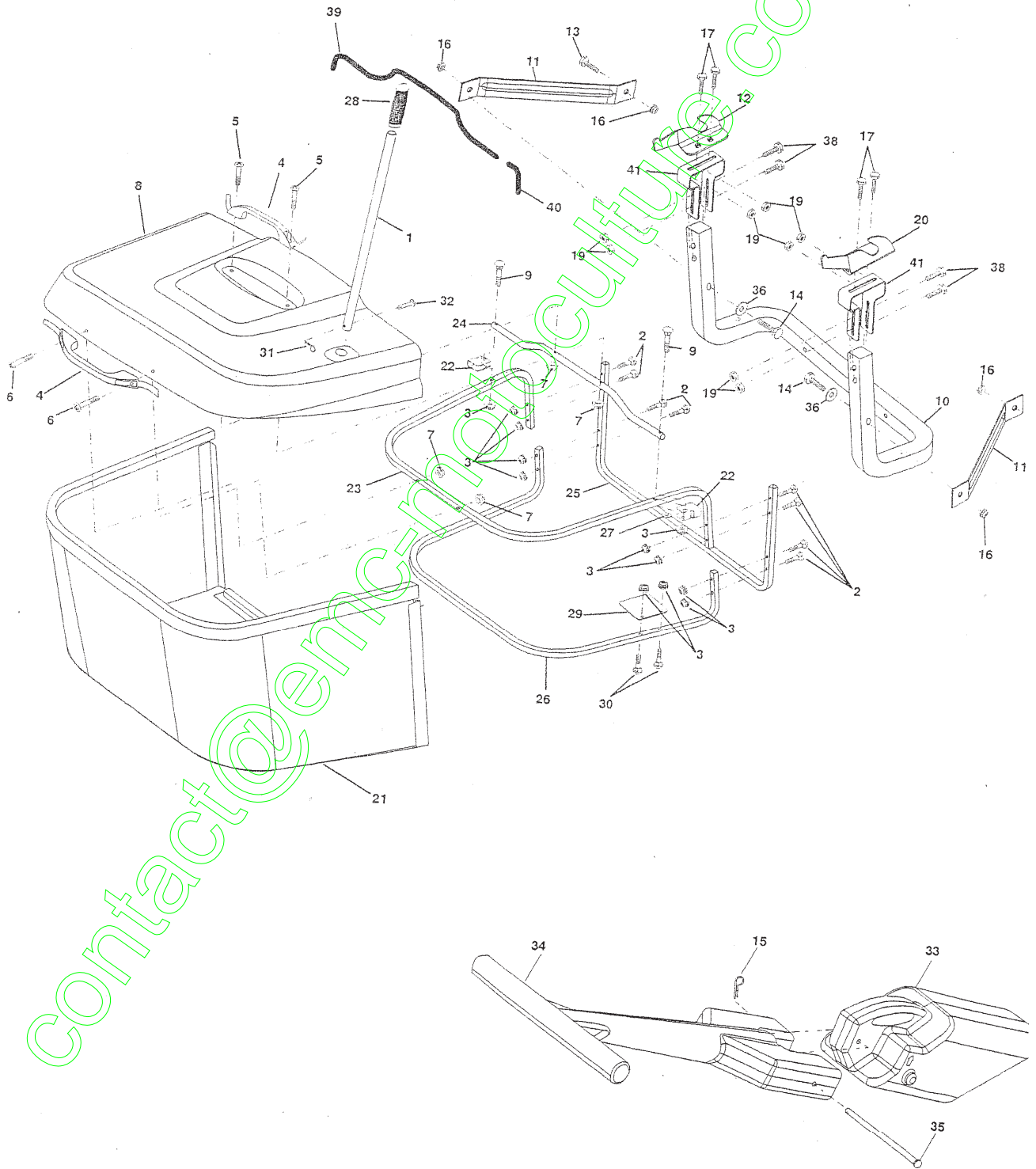
NOTE: All component dimensions given in U.S. inches  
1 inch = 25.4 mm

x 165555 EGAWE MOWT

# REPAIR PARTS

BAGGER

TRACTOR- -MODEL NO. 917.259150



# REPAIR PARTS

## BAGGER

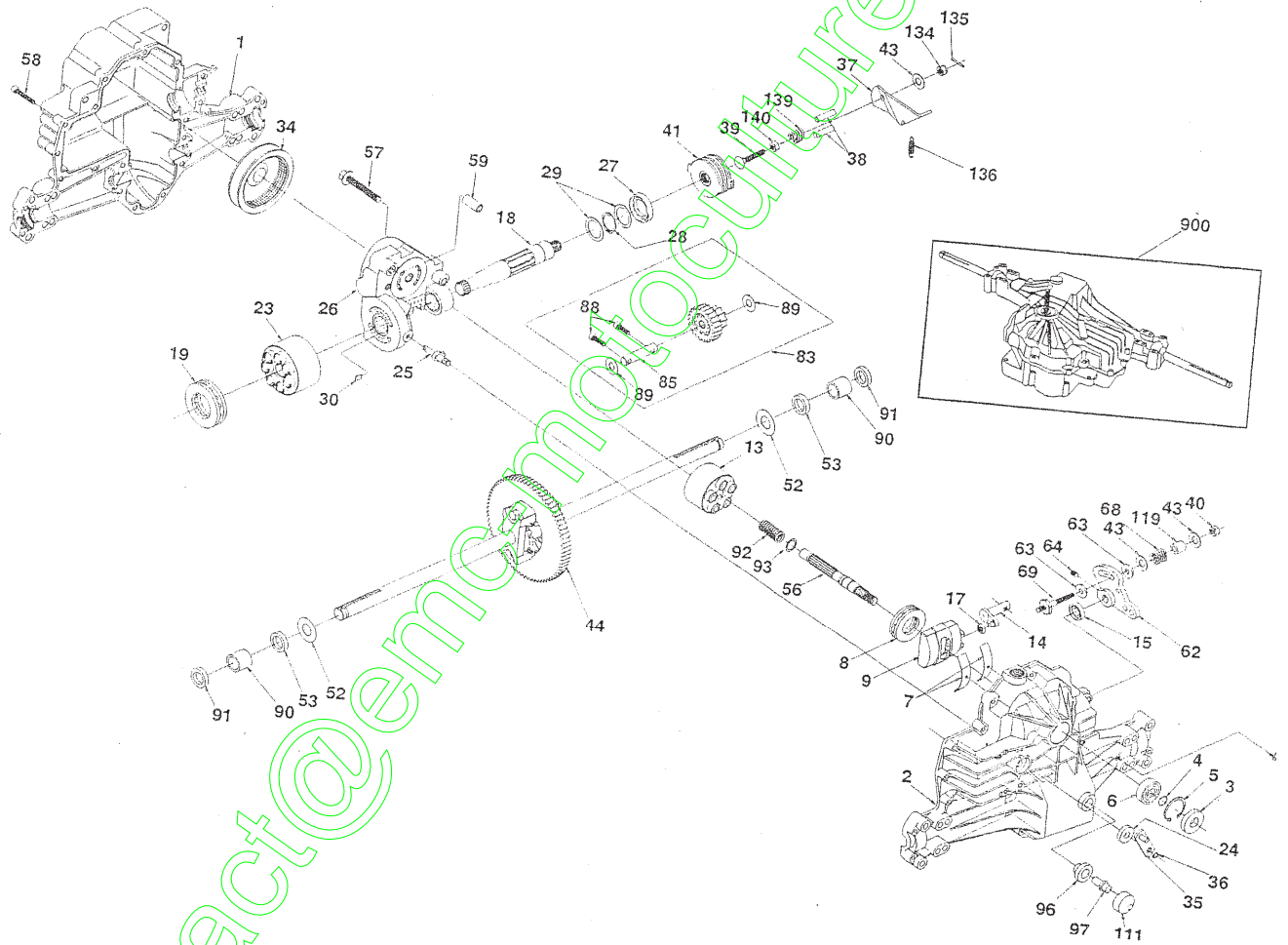
TRACTOR- -MODEL NO. 917.259150

KEY NO.	PART NO.	DESCRIPTION
1	165249	Tube Handle Bagger CRD
2	72140416	Bolt Carriage 1/4-20 x 2.0 Gr.5
3	123976X	Nut Lock 1/4 Lge Fig Gr. 5 Zinc
4	169916	Handle Bagger
5	74981024	Screw Pan Head #10-24 x 1.50 Blk
6	74981032	Screw Pan Hd
7	73401000	Nut Wiz Lock Hex Serr/Hd 10-24
8	165715X558	Cover Bagger Plastic CRD MS558
9	72140418	Bolt Carriage 1/4-20 x 2.25d x Gr.5
10	169688	Tube Support Bagger CRD
11	165719	Bracket Support Upper Bag CRD
12	169685	Bracket Horiz Adj Bagger Lh CRD
13	72110606	Bolt Rdhd Sht Sqnk 3/8-16 x 3/4
14	74520640	Bolt Hex 3/8-16 x 2-1/2 Gr.5
15	4939M	Retainer Spring
16	73900600	Nut Lock Fig 3/8-16 Unc
17	72140506	Bolt Rdhd Sht Sqnk 5/16 -18 Unc x 3/4
19	73900500	Nut Lock Hex Flange 5/16-18 Unc PI
20	169684	Bracket Horiz Adj Bagger RH CRD
21	165780	Bag Asm CRD
22	165781	Bracket Side Bagger CRD
23	165782	Tube Upper Bagger CRD
24	165783	Tube Pivot Bagger CRD
25	165784	Tube Front Bagger CRD
26	165785	Tube Lower Bagger CRD
27	169692	Bushing Snap Bagger CRD
28	165787	Grip Handle Black
29	165839	Plate Stop Bagger handle CRD
30	72140410	Bolt Carriage 1/4-20 x 1 Gr.5
31	4497H	Retainer Spring 1" Zinc/Cad
32	126875X	Rivet Rd Hd Drilled 3/8 Dia
33	169380	Plug Mulcher
34	165570	Handle Mulcher
35	165572	Pin Mulcher
36	19132016	Washer 13/32 x 1-1/4 x 16 Ga.
38	72010520	Bolt 5/16-18 x 5.20
39	169999	Seal 26" (Long)
40	170000	Seal 7" (Short)
41	169683	Bracket Vert Adj Bagger CRD

**NOTE:** All component dimensions given in U.S. inches  
1 inch = 25.4 mm

# REPAIR PARTS

TRACTOR - - MODEL NUMBER 917.259150  
HYDRO GEAR TRANSAXLE - MODEL NUMBER 331-0650



# REPAIR PARTS

TRACTOR - - MODEL NUMBER 917.259150  
 HYDRO GEAR TRANSAXLE - MODEL NUMBER 331-0650

KEY PART NO. NO.	DESCRIPTION	KEY PART NO. NO.	DESCRIPTION
1	142930	43	142884
2	169049	44	150829
3	142932	52	142991
4	142928	53	142961
5	142933	56	142963
6	142934	57	150797
7	142935	58	142964
8	150771	59	142965
9	142937	62	142966
13	169050	63	142967
14	149939	64	142920
15	142940	68	142969
17	142941	69	161134
18	150772	83	169053
19	150773	85	150806
23	142944	88	142973
24	142945	89	142974
25	142946	90	142975
26	169051	91	169054
27	142948	92	142977
28	142949	93	142978
29	142950	96	169055
30	150787	97	169056
34	142951	111	169057
35	142952	119	142980
36	142953	134	142885
37	169052	135	142886
38	142955	136	169058
39	150777	137	161175
40	150778	139	150775
41	142958	140	150776
	RM HOUSING, LOWER ASSEMBLY, UPPER HOUSING SEAL - LIP RING - WIRE RETAINING RING - RETAINING BEARING - SHAFT BALL BEARING - CRADLE BEARING - THRUST 30X52X13 SWASHPLATE - VARIABLE BLOCK - CYLINDER ASS'Y ARM - TRUNNION SEAL - LIP GUIDE - SLOT SHAFT - MOTOR BEARING - THRUST 42X68X16 BLOCK - CYLINDER (MOTOR) SEAL - LIP 10X25X7 ACTUATOR - BYPASS CENTERSECTION ASS'Y SEAL - LIP 26X42X8 RING - RETAINING WASHER - 26X35X1 BYPASS PLATE OIL FILTER ELEMENT ARM - BYPASS RING - RETAINING ARM - BRAKE PIN - ACTUATING BOLT - 5/16-18X1-3/4 NUT - HEX LOCK 5/16-24 UNJC BRAKE ROTOR/STATOR KIT		WASHER - 7/16X7/8X0.060 DIFFERENTIAL ASS'Y WASHER - 3/4X1.5X0.13 SEAL - 0.75X1.25X0.250 SHAFT - INPUT BOLT - 3/8-24X2.5 BOLT - 1/4-20X1.38 PIN - 0.5 ODX 0.43 IDX0.750 ARM - CONTROL PUCK - DAMPENER SET SCREW SPRING 5/16-24 STUD JACK SHAFT/PINION GEAR JACK SHAFT CAPSCREW 6MX20 LG WASHER 7/16X1X0.5 SLEEVE BEARING SEAL - LIP 0.75X1.00X0.158 SPRING - BLOCK WASHER - BLOCK THRUST BUSHING - VENT VENT VENT SPACER CASTLE NUT - 5/16-24 COTTER PIN EXTENSION SPRING SCREW - 10-32X1/2 COMPRESSION SPRING NUT - HEX 5/16-18

NOTE: All component dimensions given in U.S. inches  
 1 inch = 25.4 mm