



REPAIR PARTS MANUAL
MODEL NO. 259220
Lawn Tractor

CRAFTSMAN®

15.5HP MECA 107 CM

HOW TO USE THIS MANUAL

This manual is designed to provide the customer with a means to identify the parts on his/her tractor when ordering repair parts. The illustrations may or may not represent the actual assemblies; therefore, it is not recommended to use this manual as a guide to assemble or disassemble the tractor. Some hardware and parts are drawn larger in order to more readily identify them.

Each tractor has its own model number.

The model number for your tractor can be found on the fender under the seat.

When ordering parts, always give the following information:

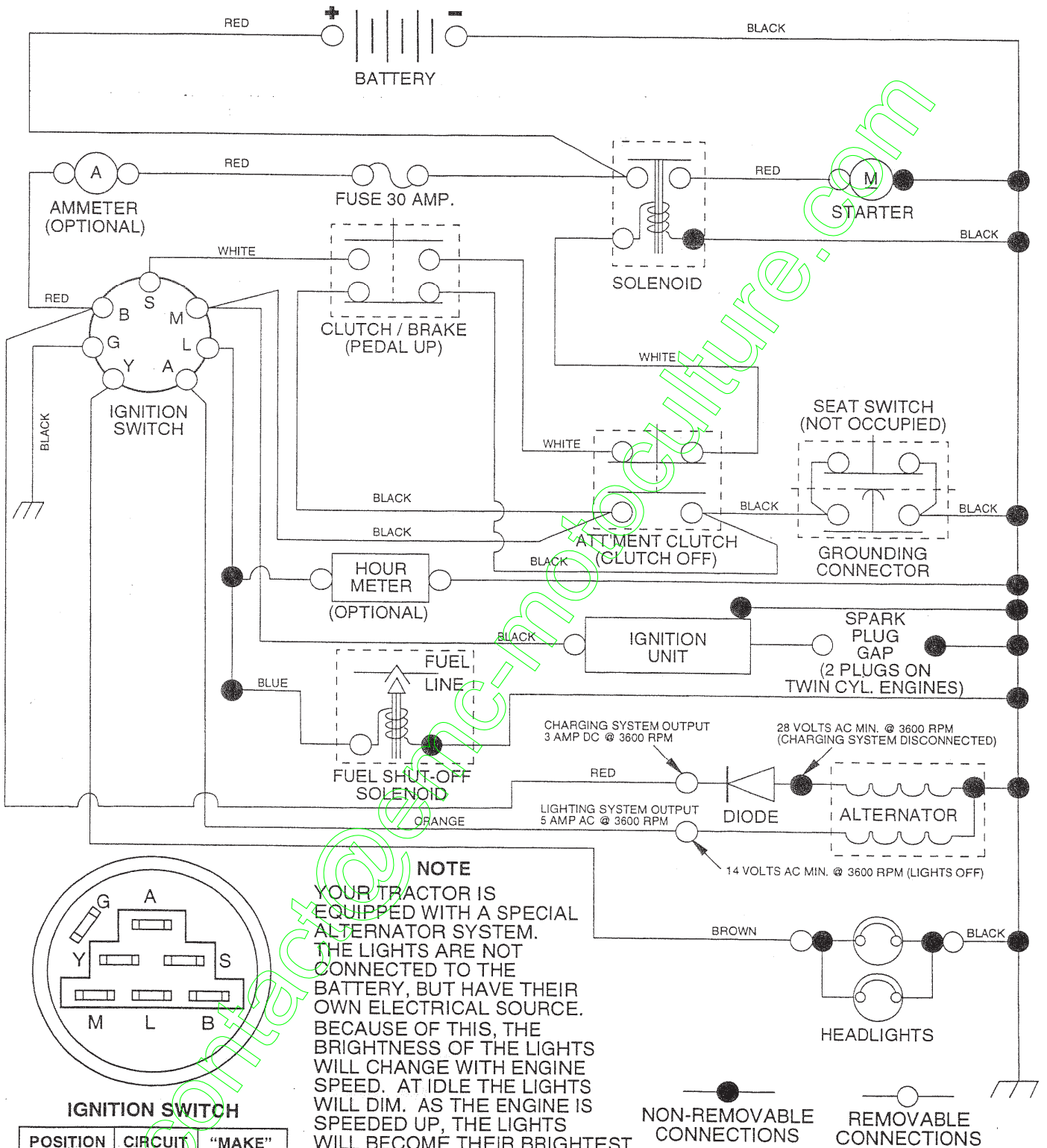
- Product - "Tractor"
- Model Number - "259220"
- Part Number
- Part Description

TABLE OF CONTENTS

SCHEMATIC	3
ELECTRICAL	4-5
CHASSIS	6-7
DRIVE	8-9
STEERING WHEEL	10-11
SEAT	12
DECALS	13
ENGINE	14
MOWER LIFT LEVER	15
MOWER DECK	16-17
TRANSAXLE	18-19

TRACTOR -- MODEL NUMBER 917.259220

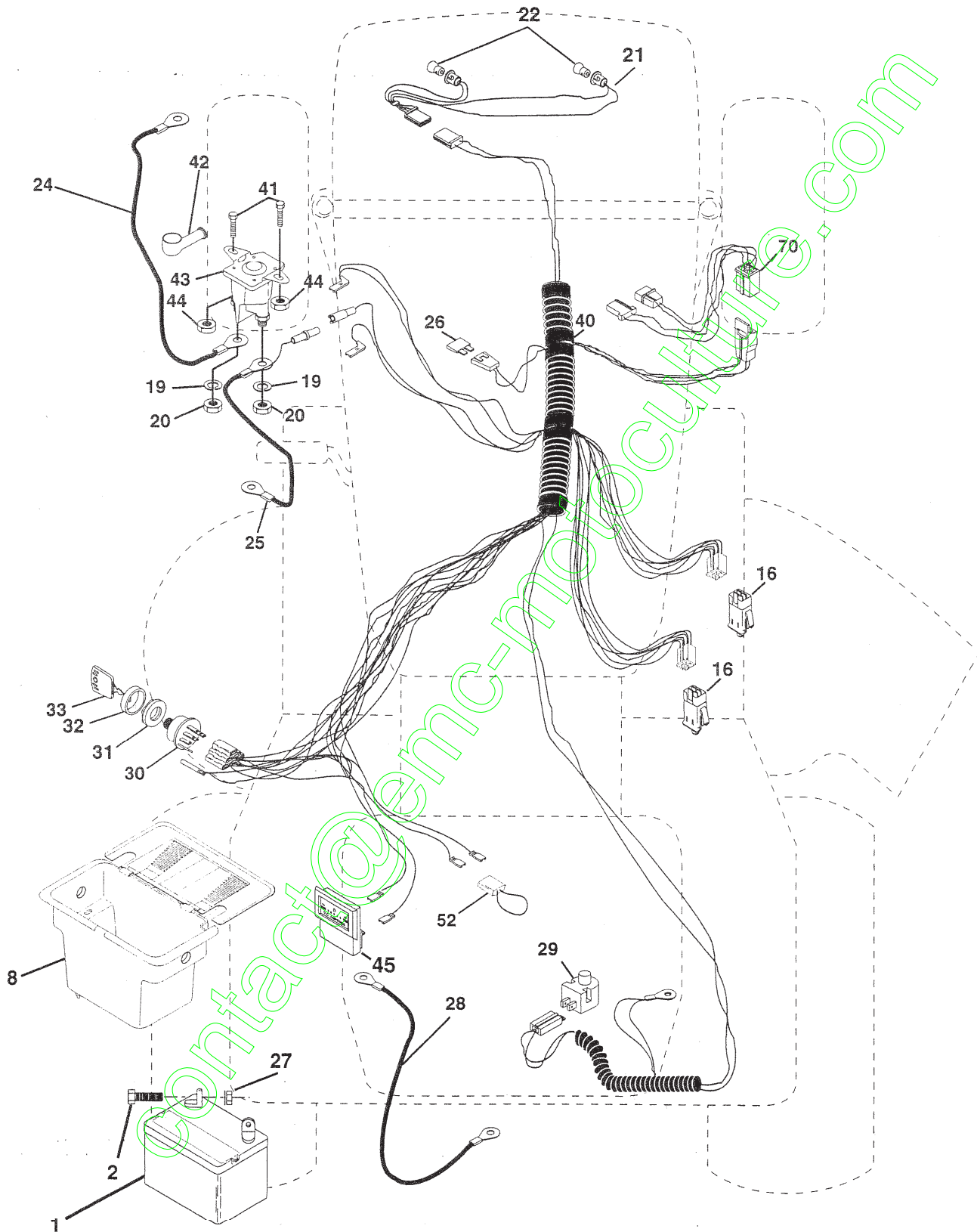
SCHEMATIC



REPAIR PARTS

TRACTOR - - MODEL NUMBER 917.259220

ELECTRICAL



REPAIR PARTS

TRACTOR - - MODEL NUMBER 917.259220

ELECTRICAL

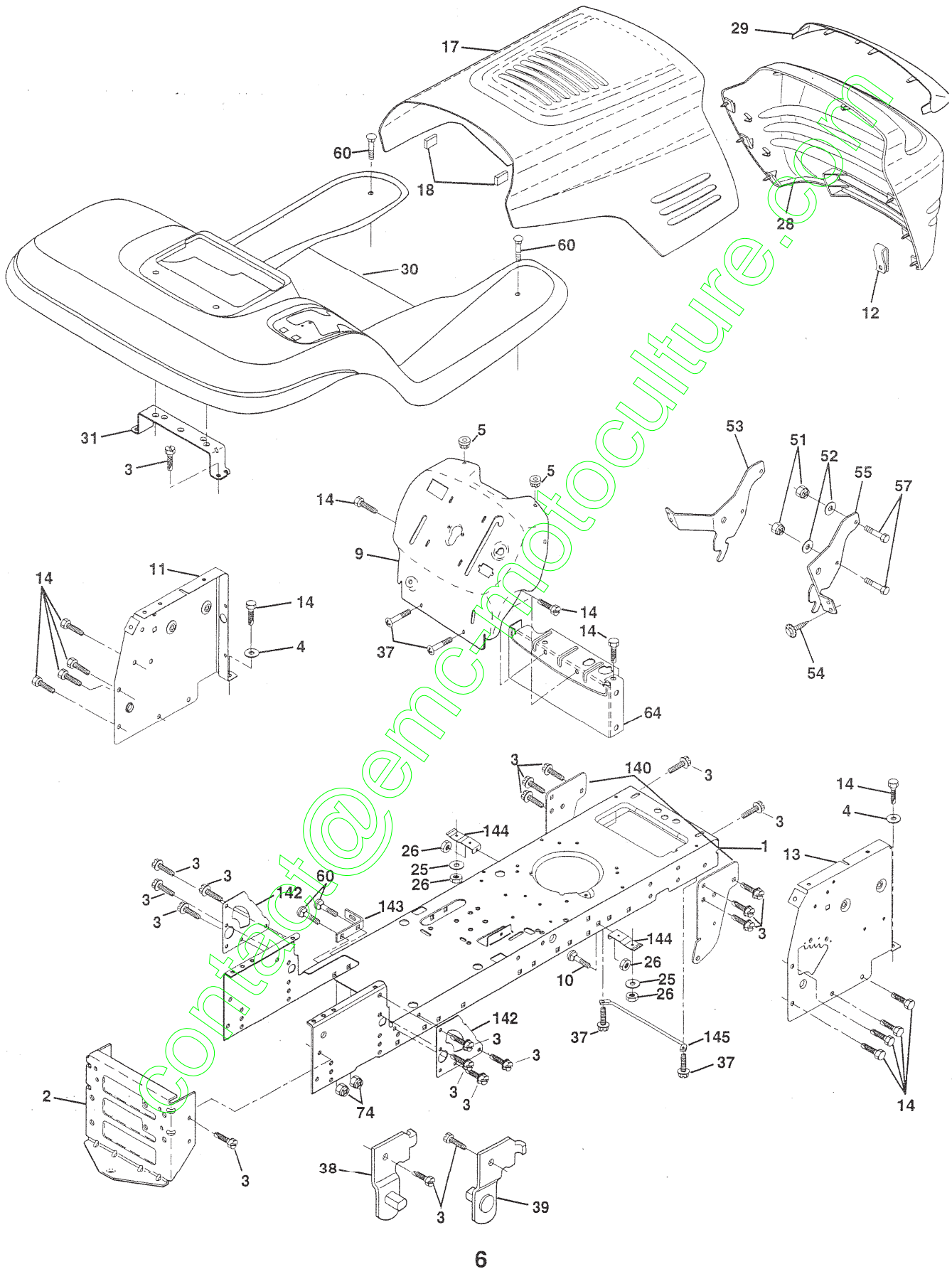
KEY NO.	PART NO.	DESCRIPTION
1	144925	Battery 12 VOLT 25 AMP
2	74760412	Bolt Hex Hd 1/4-20unc x 3/4
8	156417	Case Battery
16	153664	Switch, Interlock Push-In
19	STD551125	Washer Lock 1/4
20	73350400	Nut Jam Hex 1/4-20 Unc
21	166182	Harness Asm Light W/4152j
22	4152J	Bulb Light #1156
24	4799J	Cable Battery 6 Ga 11" red
25	146147	Cable Battery 6 Ga w/16 wire red
26	166180	Fuse 15 AMP
27	73510400	Nut, Keps Hex 1/4-20 UNC
28	4207J	Cable Ground 6 Ga 12" black
29	121305X	Switch Plunger Nc Gray
30	140301	Switch Ign 4 Pos
31	124211X	Nut Ignition
32	141226	Cover Sw Key Blk 1 25 Text SLT
33	109310X	Key Ign Molded Craftsman
40	166145	Harness Ign
41	71110408	Bolt Blk. Fin Hex 1/4-20 Unc x 1/2
42	131563	Cover Terminal Red
43	145673	Solenoid
44	73640400	Nut Keps Blk Hex 1/4-20 Unc
45	121433X	Ammeter Rectangular 6 Amp
52	141940	Protection Wire Loop
70	166659	Harness Engine B&S

NOTE: All component dimensions given in U.S. inches
1 inch = 25.4 mm

REPAIR PARTS

TRACTOR - - MODEL NUMBER 917.259220

CHASSIS AND ENCLOSURES



REPAIR PARTS

TRACTOR - - MODEL NUMBER 917.259220

CHASSIS AND ENCLOSURES

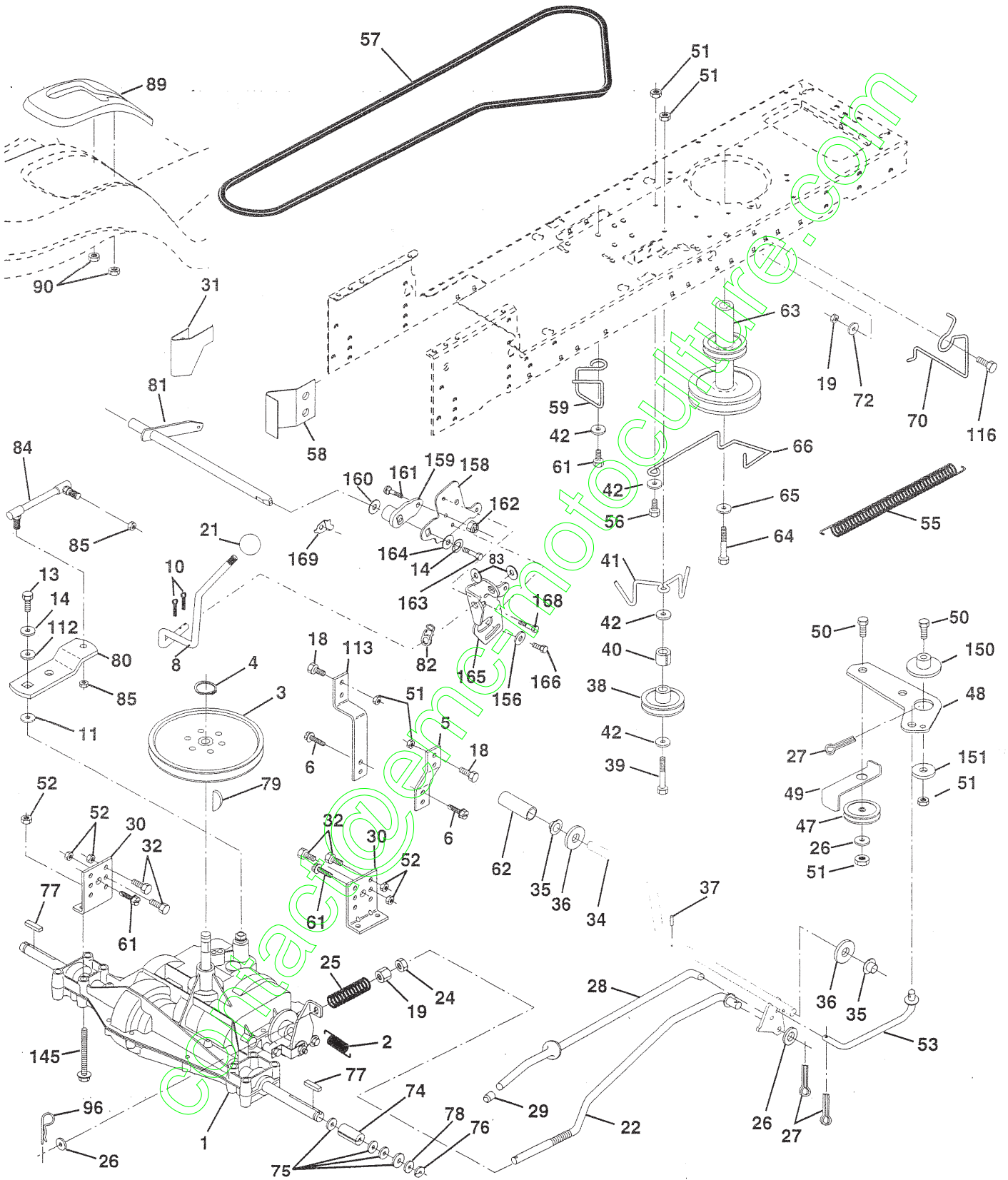
KEY NO.	PART NO.	DESCRIPTION
1	165583	Chassis
2	140356	Drawbar
3	17490612	Screw, Thd. Roll. 3/8-16 x 3/4
4	STD551025	Washer 13/32 x 3/4 x 16 Gauge
5	155272	Bumper Hood/Dash
9	161917X012	Dash.
10	STD533710	Bolt, Carriage 3/8-16 x 3/4
11	155927	Panel, Dash, L.H.
12	145660	Clip Tinnerman Grille P/L
13	155934X010	Panel, Asm. SLKSCR, Dash R.H.
14	17490608	Screw Thdrol 3/8-16 x 1/2
17	144983X558	Hood Assembly
18	126938X	Bumper Hood
25	19131312	Washer 13/32 x 13/16 x 12 Gauge
26	STD541437	Nut, Lock Hex W/Ins. 3/8-16 UNC
28	145198X558	Grille w/Clips MS-558
29	155217X599	Lens, Grille
30	151287X558	Fender
31	139976	Bracket, Fender Support
37	17490508	Screw Thdrol 5/16-18 x 1/2 TYT
38	139886	Pivot Bracket Assembly, L.H.
39	139887	Pivot Bracket Assembly, R.H.
51	73800400	Nut Lock w/Insert 1/4-20 UNC
52	19091416	Washer 9/32 x 7/8 x 16 Ga.
53	145201	Bracket Grille Pickoff LH
54	161464	Screw Hex WSHD 8-18 x 7/8
55	145202	Bracket Grille Pickoff RH
57	STD522507	Bolt, Fin Hex 1/4-20 UNC x .75
60	STD533707	Bolt Rdhd Sqnk 3/8-16 UNC
64	154798	Dash Lower STLT
74	STD541437	Nut, Crownlock 3/8-16 UNC
140	158418	Bracket Front Suspension
142	165867	Plate Reinforcement STLT
143	154966	Bracket Swaybar Chassis
144	154207	Bracket Pnt Footrest STLT
145	156524	Rod Pivot Chassis/Hood
-	5479J	Plug, Button

NOTE: All component dimensions given in U.S. inches
1 inch = 25.4 mm

REPAIR PARTS

TRACTOR - - MODEL NUMBER 917.259220

DRIVE



REPAIR PARTS

TRACTOR - - MODEL NUMBER 917.259220

DRIVE

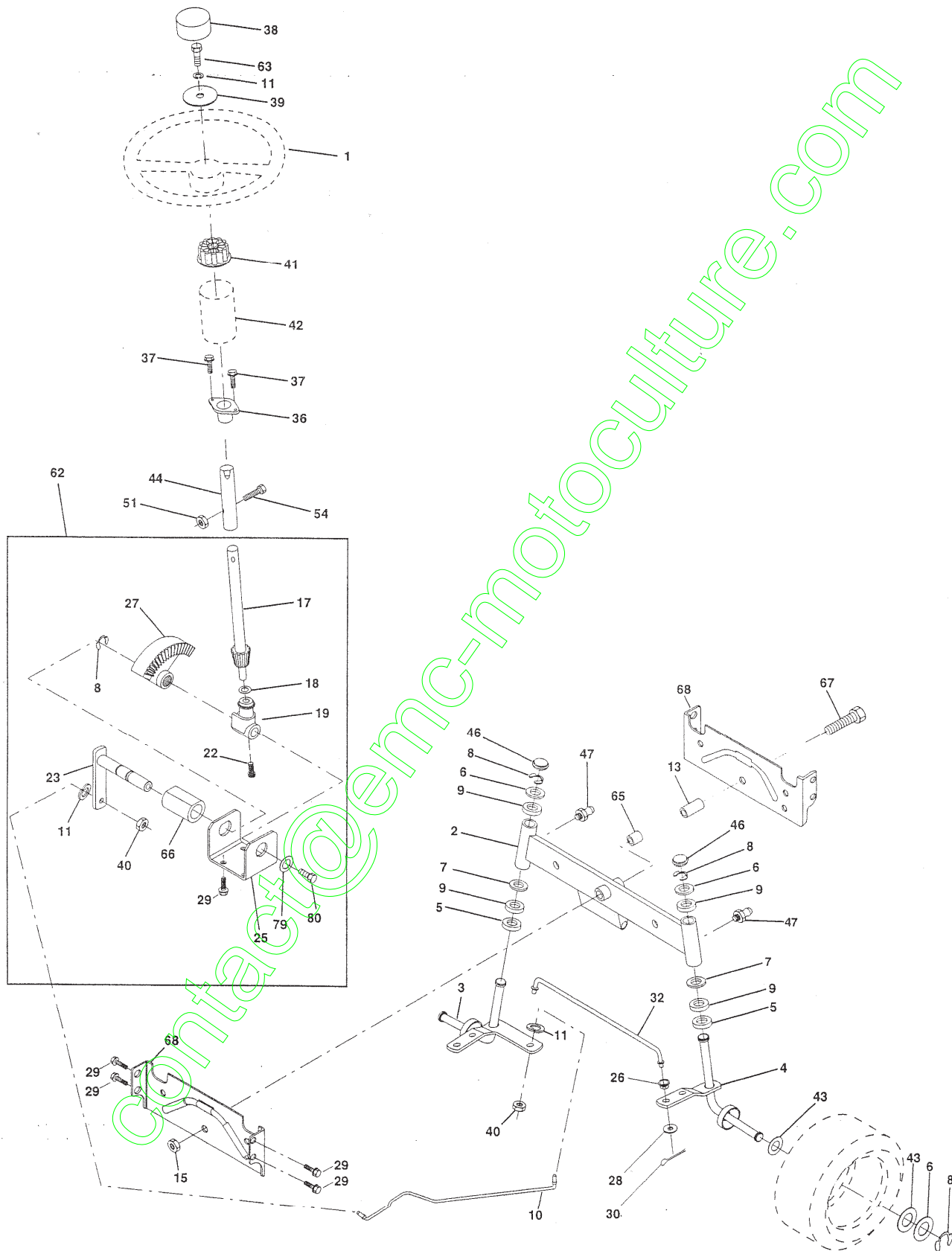
KEY NO.	PART NO.	DESCRIPTION	KEY NO.	PART NO.	DESCRIPTION
1	----	Transaxle (See Breakdown) Peerless Model 206-545C	61	17490612	Screw Thdrol 3/8-16 x 3/4 Ty-tt
2	146682	Spring Return Brake T/a Zinc	62	8883R	Cover Pedal Blk Round
3	123666X	Pulley Transaxle 18/20" tires	63	140186	Pulley Eng Cl Mech 38deg LT/YT
4	12000028	Ring Retainer # 5100-62	64	71170764	Bolt Hex 7/16-20 x 4 Gr 5
5	121520X	Strap Torque 30 Degrees	65	STD551143	Washer Lock Hvy Hlcl Spr 7/16
6	17490512	Screw Thdrol 5/16-18 x 3/4 TYT	66	154778	Keeper Belt Engine
8	165866	Rod Shifter Fender STLT	70	134683	Guide Belt Mower Drive RH
10	STD561210	Pin Cotter 1/8 x 1 Cad	72	19132012	Washer 13/32 x 1-1/4 x 12 Ga
11	105701X	Washer Plate Shf 388 Sq Hole	74	137057	Spacer Axle
13	74550412	Bolt 1/4-28unf Gr8 W/Patch	75	121749X	Washer 25/32 x 1 1/4 x 16 Ga
14	10040400	Washer Lock Hvy Helical 1/4	76	STD581075	E-ring #5133-75
18	STD523710	Bolt Fin Hex 3/8-16unc x 1 Gr.5	77	123583X	Key Square
19	STD541437	Nut Lock Hex W/Ins. 3/8-16 Unc	78	121748X	Washer 25/32 x 1-5/8 x 16ga
21	106933X	Knob Rd 1/2-13 Plstc Thds Blk	79	2228M	Key Woodruff #9 3/16 x 3/4
22	130804	Rod Brake Blk Zinc 26 840	80	131486	Arm, Shift
24	STD541237	Nut Hex Jam 3/8-16 Unc	81	165594	Shaft Assembly
25	106888X	Spring Rod Brake 2 00 Zinc	82	165711	Spring, Torsion
26	STD551037	Washer 13/32 x 13/16 x 16 Ga	83	19171216	Washer 17/32 x 3/4 x 16 Gauge
27	STD561210	Pin Cotter 1/8 x 3/4 Cad	84	166228	Link Transaxle
28	145204	Rod Brake Parking Lt/Yt	85	150360	Nut, Nylock
29	124236X	Cap Brake Parking Red	89	158391X428	Console, Shift, STLT
30	130807	Bracket Mtg Transaxle	90	124346X	Nut, Self-Threading, Washer Hd 1/4
31	127275X	Keeper Belt LH LT 14 Ga	96	4497H	Retainer Spring 1"
32	STD523107	Bolt Hex Hd 5/16-18unc x 3/4	112	19091210	Washer 9/32 x 3/4 x 10 Ga
34	155071	Shaft Asm Pedal Foot	113	127285X	Strap Torque Lh Lt
35	120183X	Bearing Nylon Blk 629 Id	116	72110610	Bolt Rdhd Sq Neck 3/8-16 x 1.25
36	STD551062	Washer 21/32 x 1 x 16 Ga	145	74490540	Bolt Hex FLGHD 5/16-18Gr.5
37	STD571810	Pin Roll 3/16 x 1"	150	165850	Bushing
38	131494	Pulley Idler Flat	151	19133210	Washer 13/32 x 2 x 10 Ga.
39	STD523727	Bolt Fin Hex 3/8-16unc x 2-3/4	156	166002	Washer Srrted 5/16ID x 1 .125
40	4470J	Spacer Split 395 x 59 Bzp	158	165589	Bracket Shift Mount
41	165838	Keeper Belt Idler	159	165494	Hub Tapered Flange Shift Lt
42	19131312	Washer 13/32 x 13/16 x 12 Ga	160	19292016	Washer 29/32 x 1-1/4 x 16 Ga.
47	127783	Pulley Idler	161	72140406	Bolt Rdhd Sqnk 1/4-20 x 3/4 Grade 5
48	154407	Bellcrank Clutch Grnd Drv STL	162	73680400	Nut Crownlock 1/4-20 UNC
49	123205X	Retainer Belt Style Spring	163	74780416	Bolt Hex Fin 1/4-20 UNC x 1 Grade 5
50	STD523715	Bolt Hex Hd 3/8-16unc x 1-1/2	164	19091010	Washer 5/8 x .281 x 10 Ga.
51	STD541437	Nut Crownlock 3/8-16 UNC	165	165623	Bracket Pivot Lever
52	STD541431	Nut Crown Lock 5/16-18	166	166880	Screw 5/16-18 x 5/8
53	105710X	Link Clutch 7 66	168	165492	Bolt shoulder 5/16-18 x .561
55	105709X	Spring Return Clutch 6 75	169	165580	Plate Fastening Lt
56	STD523712	Bolt Fin Hex 3/8-16 unc x 1-1/4			
57	130801	V-Belt Gd Drive 95 00			
58	127274X	Keeper Belt RH LT Pnt/zinc 16g			
59	140312	Keeper Belt Centerspan			

NOTE: All component dimensions given in U.S. inches
1 inch = 25.4 mm

REPAIR PARTS

TRACTOR - - MODEL NUMBER 917.259220

STEERING ASSEMBLY



REPAIR PARTS

TRACTOR - - MODEL NUMBER 917.259220

STEERING ASSEMBLY

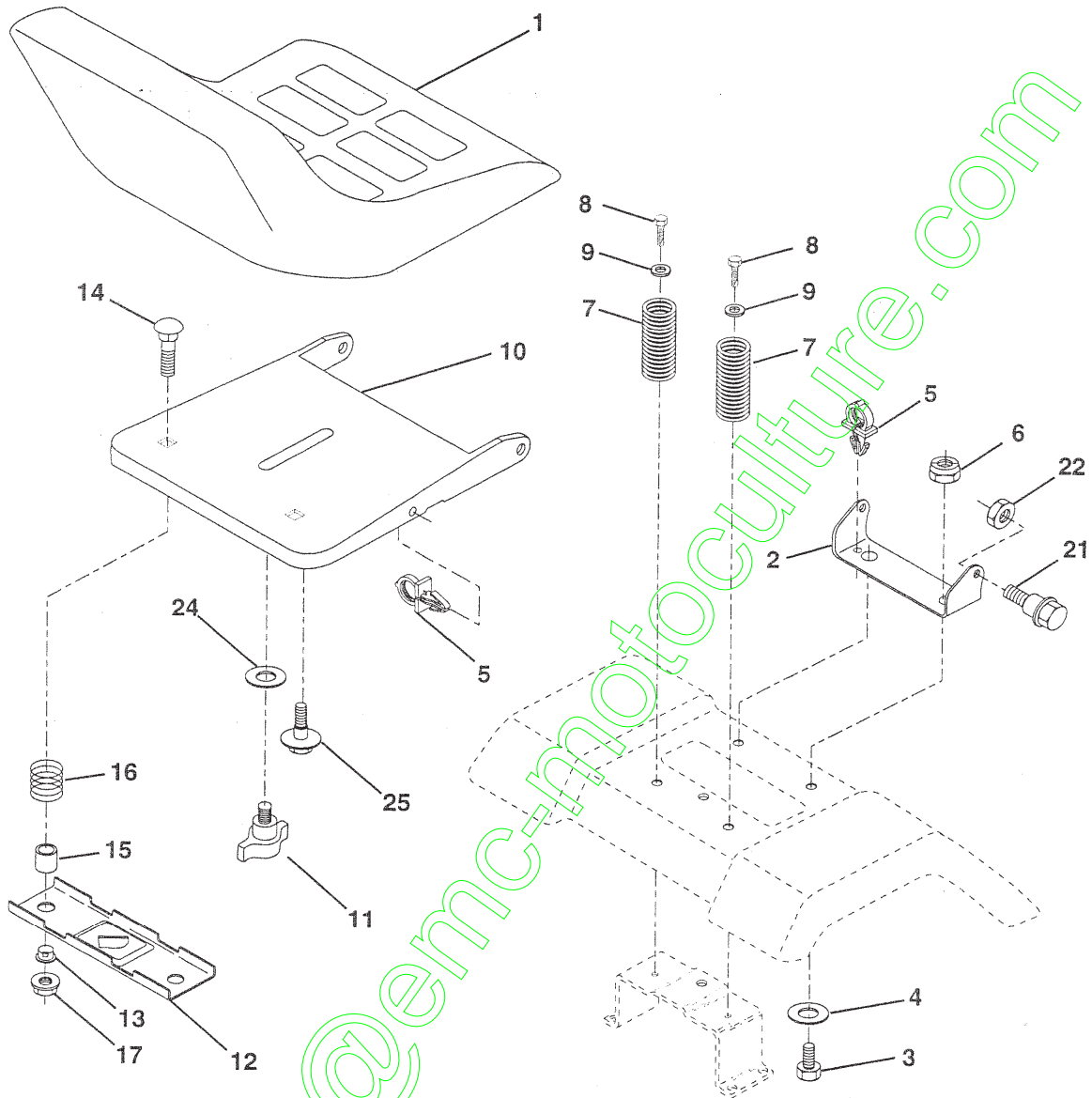
KEY NO.	PART NO.	DESCRIPTION
1	139768	Steering Wheel
2	154427	Front Axle Assembly
3	156483	Spindle Assembly, L.H.
4	157473	Spindle Assembly, R.H.
5	6266H	Bearing, Race, Thrust, Hardened
6	121748X	Washer 25/32 x 1-5/8 x 16 Gauge
7	19272016	Washer 27/32 x 1-1/4 x 16 Gauge
8	12000029	Ring, Klip
9	3366R	Bearing, Steering Column
10	156438	Link, Drag
11	STD551137	Washer, Lock
13	154779	Spacer, Bearing, Front Axle
15	73901000	Nut, Lock, Flange 5/8-11 UNC
17	156546	Shaft Assembly, Steering
18	57079	Washer, Thrust .515 x .750 x .033
19	160395	Support, Shaft
22	165857	Screw Hex WSH HDTorx
23	165851	Pittman Shaft Assembly
25	154406	Bracket, Steering
26	126847X	Bushing, Link, Drag
27	136874	Gear, Sector
28	19131416	Washer 13/32 x 7/8 x 16 Gauge
29	17490612	Screw, Thd., Roll. 3/8-16 x 3/4
30	STD561210	Pin
32	130465	Rod, Tie
36	155099	Bushing, Steering
37	152927	Screw TT #10-32 x 5 x 3/8 Flange
38	139769	Cap Wheel Steer OPP Blk
39	19133808	Washer 13/32 x 2-3/8 x 8 Gauge
40	STD541537	Gripco Nut
41	100711L	Adaptor, Steering Wheel
42	145054	Boot, Steering Dash P/L Mtl Blk
43	121749X	Washer 25/32 x 1-1/4 x 16 Gauge
44	153720	Extension Steering Non-Adjust
46	121232X	Cap, Spindle
47	6855M	Fitting, Grease
51	STD541431	Nut Lock Hx W/Ins 5/16-18 UNC
54	74780520	Bolt Fin Hex 5/16-18 UNC x 1-1/4
62	167902	Kit, Steering Assembly, Service
63	SSTD523710	Bolt Fin Hex 3/8-16 unc. x 1 Gr. 5
65	154780	Spacer Axle
66	154404	Bearing Arm Pittman
67	74781044	Bolt Fin Hex 5/8-11unc x 2-3/4
68	154429	Brace Axle
79	19132012	Washer 13/32 x 1-1/4 x 12 Ga.
80	74950612	Bolt Hex Nylon 3/8-16 x 3/4

NOTE: All component dimensions given in U.S. inches
1 inch = 25.4 mm

REPAIR PARTS

TRACTOR - - MODEL NUMBER 917.259220

SEAT ASSEMBLY



KEY NO.	PART NO.	DESCRIPTION
1	140122	Seat 3350 Blk/blk Craftsman
2	140551	Bracket Pnt Pivot Seat (blk)
3	STD523710	Bolt Fin Hex 3/8-16unc X 1
4	19131610	Washer 13/32 X 3/4 X 10 Ga
5	145006	Clip Push In Hinged
6	STD541437	Nut Hex Lock w/Ins 3/8-16 Unc
7	124181X	Spring Seat Cprsn 2 250 Blk Zi
8	17490616	Screw Thdrol 3/8-16 X 1 Ty-tt
9	19131614	Washer 13/32 X 1 X 14 Ga
10	155925	Pan Pnt Seat (blk)
11	166369	Knob Seat
12	121246X	Bracket Pnt Mounting Switch

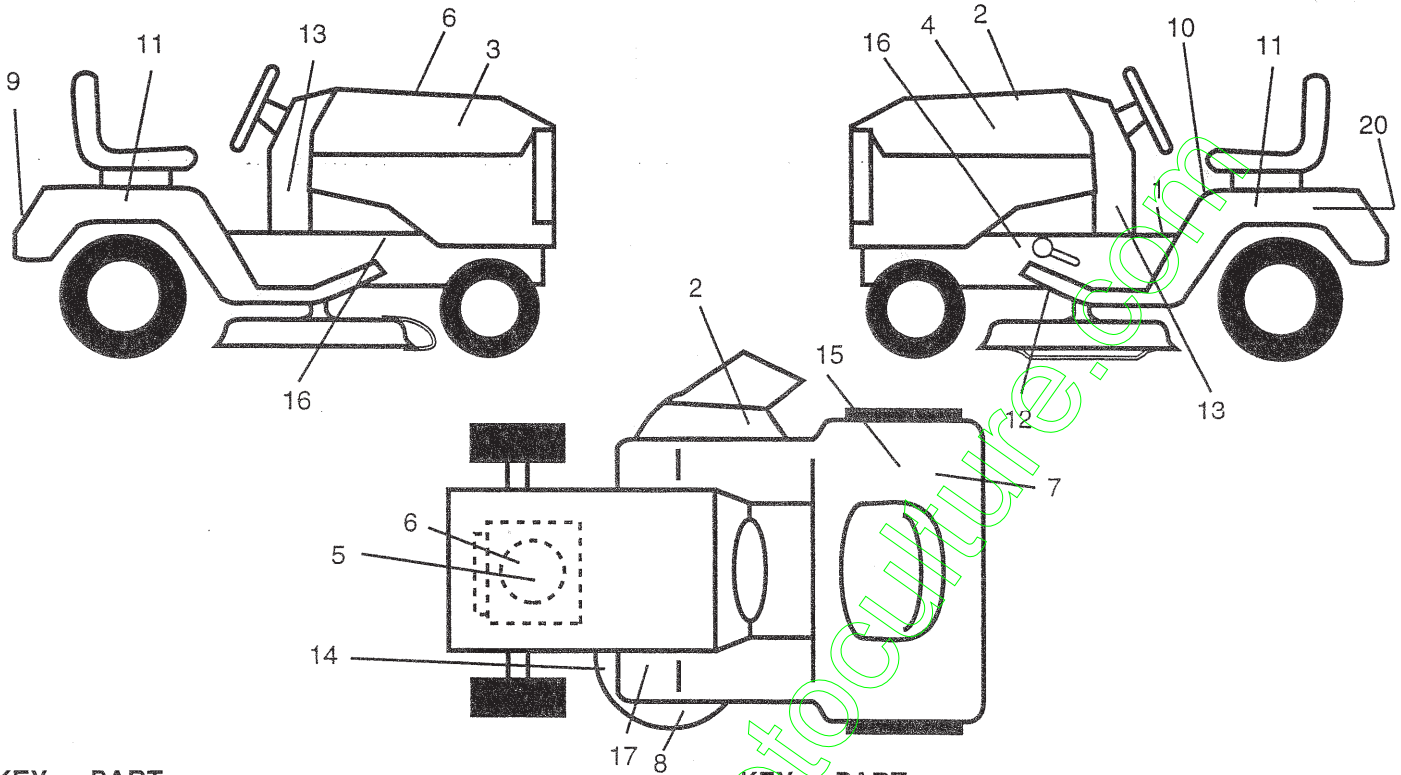
KEY NO.	PART NO.	DESCRIPTION
13	121248X	Bushing Snap Blk Nyl 50 Id
14	72050412	Bolt Rdhd Sht Nk 1/4-20x1-1/2
15	134300	Spacer Split 28 X 96 Zinc
16	121250X	Spring Cprsn 1 27 Blk Pnt
17	123976X	Nut Lock 1/4 Lge Fig Gr 5 Zinc
21	153236	Bolt Shoulder 5/16-18 Unc-2A
22	STD541431	Nut Hex Lock w/Ins 5/16-18
24	19171912	Washer 17/32 X 1-3/16 X 12 Ga
25	127018X	Bolt Shoulder 5/16-18 X 62

NOTE: All component dimensions given in U.S. inches
1 inch = 25.4 mm

REPAIR PARTS

TRACTOR - - MODEL NUMBER 917.259220

DECALS



KEY NO.	PART NO.
1	140837
2	145494
3	163200
4	163202
5	165388
6	145005
7	126187X
8	166887
9	163204
10	145498
11	163207
12	146046
13	163250

DESCRIPTION

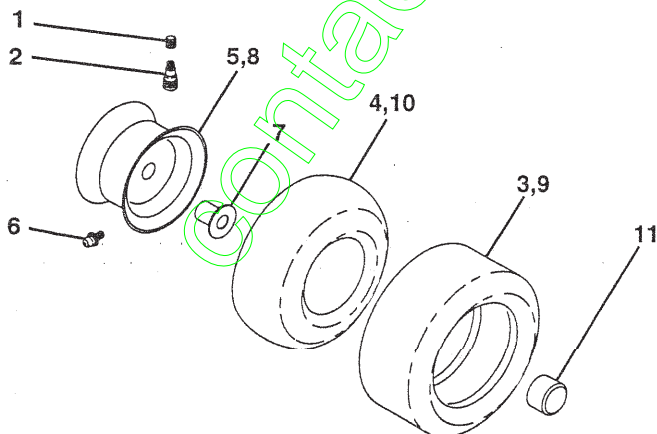
Decal, Saddle Brake Parking
 Decal, Mower Cut Finger Symbol
 Decal, Hood Rh
 Decal, Hood Lh
 Decal, Hp Engine
 Decal, Bat Dan/Poi
 Decal, 100 DBA
 Decal, Deck Mower EZ3
 Decal, Fender Craftsman
 Decal, Read Owners Manual
 Decal, Fender
 Decal, V-belt Dr Sch
 Decal, Dash

KEY NO.	PART NO.
14	160396
15	145437
16	159736
17	159737
20	149516
--	138311
--	154515
--	154516
--	162598
--	168619
--	168620
--	168621

DESCRIPTION

Decal, V-belt Schematic
 Decal, Europe Stand CE
 Decal Chassis Hot Muffler
 Decal Brake/Clutch Symbol
 Decal, Battery Dngr/Psn Eng
 Decal, Lift Handle
 Pad, Footrest LH STLT
 Pad, Footrest RH STLT
 Decal, Drawerbar Load Limit
 Manual Oper Euro
 Manual Oper Scan
 Manual Parts

WHEELS & TIRES



KEY NO.	PART NO.
1	59192
2	65139
3	106222X
4	59904
5	106732X427
6	278H
7	9040H
8	106108X427
9	106268X
10	7152J
11	104757X
--	144334

DESCRIPTION

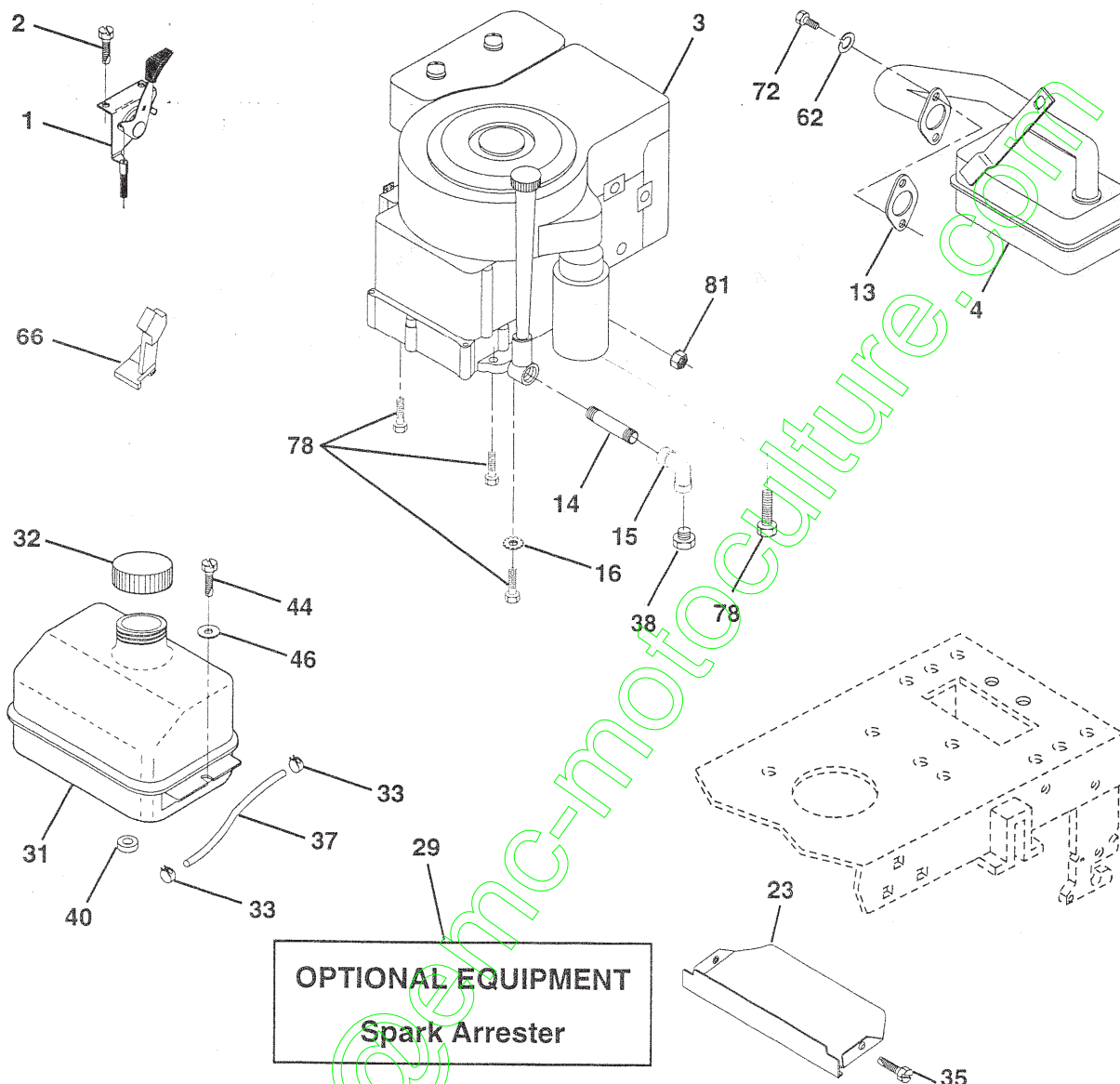
Cap Value Tire
 Stem Value
 Tire F Ts 15 X 6 0 - 6 Service
 Tube Inner Front #35060
 Rim Asm 6"front White Service
 Fitting Grease
 Bearing Flange
 Rim Asm 8"rear White Service
 Tire R Ts 18x9 5-8 Service
 Tube Rear 9 5 X 8 Service
 Cap Axle Blk 1 50 X 1 00
 Sealant, Tire (10 oz. tube)

NOTE: All component dimensions given in U.S. inches
 1 inch = 25.4 mm

REPAIR PARTS

TRACTOR - - MODEL NUMBER 917.259220

ENGINE



KEY NO.	PART NO.	DESCRIPTION
1	162158	Control Throttle/Choke
2	17720410	Screw Hex Thd Cut 1/4-20x5/8 T
3	-----	Engine (See Breakdown) Briggs Model 28U707-1174-E1
4	137352	Muffler Exhaust B&S Lt
13	165291	Gasket 1 313 Id Tin Plated
14	13280324	Nipple Pipe 3/8 Npt X 3"
15	13200300	Elbow Std 90 Degree 3/8-18 Npt
16	STD551237	Washer Lock Ext Tooth 3/8
23	159880	Shield BRN/DBR Guard
29	137180	Arrestor Spark
31	109202X	Tank Fuel 1 25 Fr
32	158990	Cap Asm Fuel W/sym Vented
33	123487X	Clamp Hose Blk

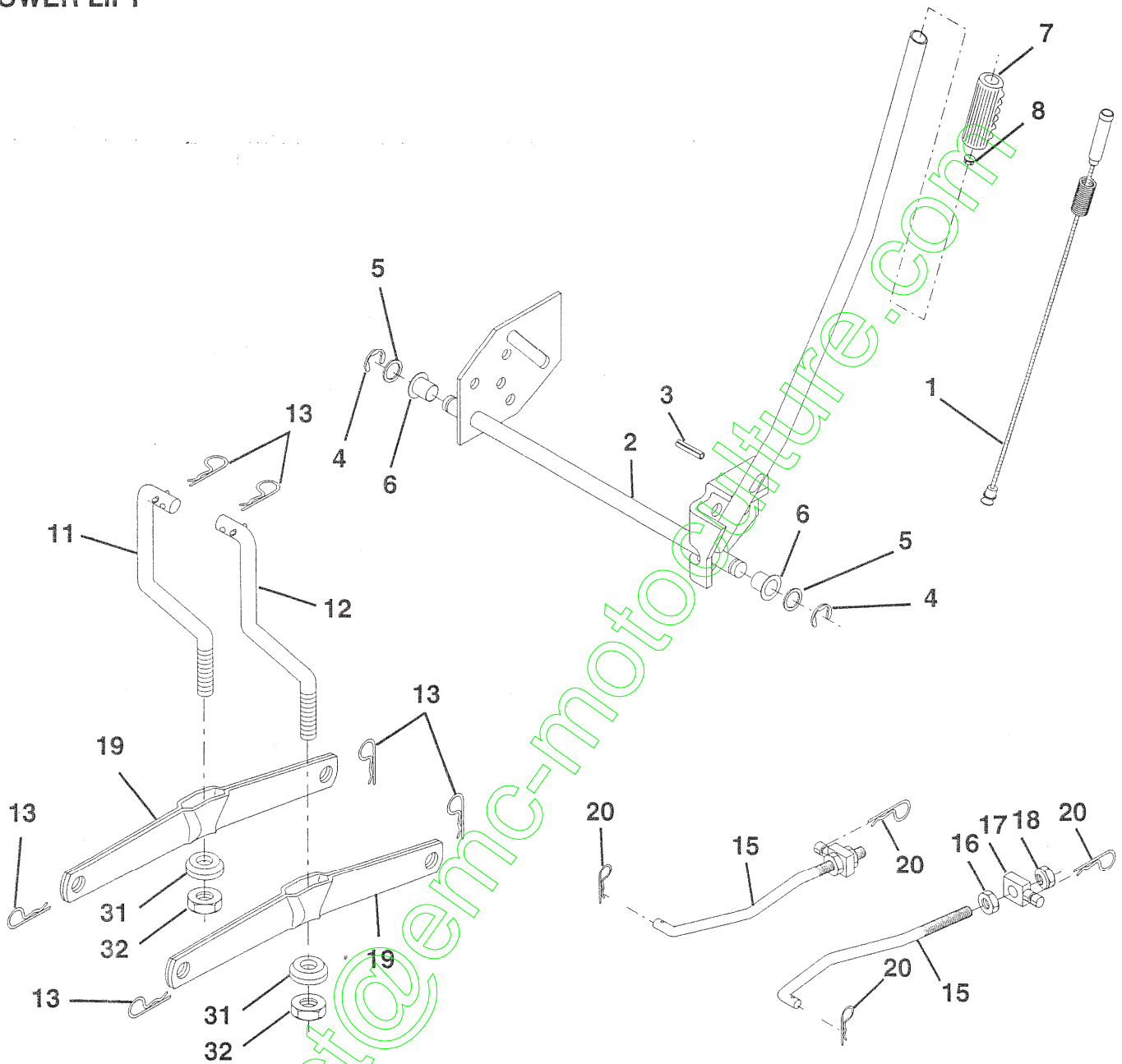
KEY NO.	PART NO.	DESCRIPTION
35	17490512	Screw, Thdrol 5/16-18 x 3/4 Tyt
37	137040	Line Fuel 20"
38	-----	Plug Oil Drain (Order From Engine Manufacturer)
40	124028X	Bushing Snap Nyl Blk Fuel Line
44	17490412	Screw Hexwsh Thdrol 1/4-20x3/4
46	19091416	Washer 9/32 X 7/8 X 16ga
62	STD551131	Washer Lock Hvy Hlcl Spr 5/16
66	127951	Stop Throttle
72	71070512	Screw Hexhd Cap 5/16-18x3/4
78	17490620	Screw Thdrol 3/8-16x1-1/4 Tytt
81	128861	Nut Flange 1/4-20 Starter Nut

NOTE: All component dimensions given in U.S. inches
1 inch = 25.4 mm

REPAIR PARTS

TRACTOR - - MODEL NUMBER 917.259220

MOWER LIFT



KEY NO.	PART NO.	DESCRIPTION
1	159460	Washer Asm Inner Spring W/ Plunger
2	159471	Shaft Asm. Lift RH
3	105767X	Pin Groove
4	12000002	E Ring #5133-62
5	19211621	Washer 21/32 x 1 x 21 Ga.
6	120183X	Bearing Nylon
7	125631X	Grip Handle Fluted
8	122365X	Button Plunger Read
11	139865	Link Asm Lift L.H.
12	139866	Link Asm Lift R.H.

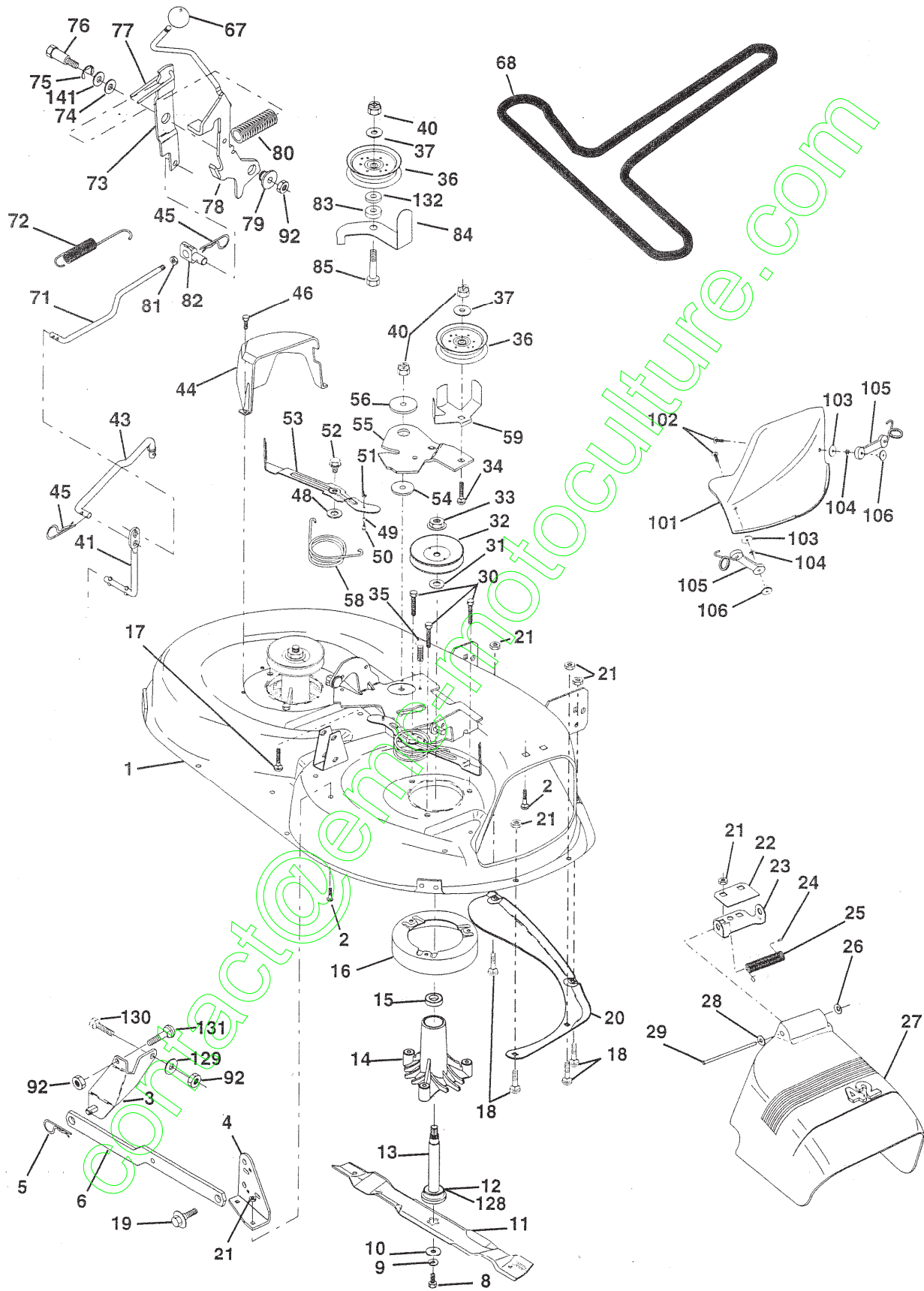
KEY NO.	PART NO.	DESCRIPTION
13	STD624008	Retainer Spring
15	127218	Link Front
16	73350800	Nut Jam Hex 1/2-13 Unc
17	130171	Trunnion Blk Zinc
18	73680800	Nut Crownlock 1/2-13 Unc
19	139868	Arm Suspension Mower
20	163552	Retainer Spring
31	140302	Bearing, Pvt. Lift. Spherical
32	73540600	Nut Crownlock 3/8-24

NOTE: All component dimensions given in U.S. inches
1 inch = 25.4 mm

REPAIR PARTS

TRACTOR - - MODEL NUMBER 917.259220

MOWER DECK



REPAIR PARTS

TRACTOR - - MODEL NUMBER 917.259220

MOWER DECK

KEY NO.	PART NO.	DESCRIPTION	KEY NO.	PART NO.	DESCRIPTION
1	164961	Mower Housing	52	139888	Bolt, Shoulder 5/16-18 UNC
2	STD533107	Bolt	53	131845	Arm Assembly, Pad, Brake
3	138017	Bracket Assembly, Sway Bar, Front	54	133943	Washer, Hardened
4	138440	Bracket Assembly, Sway Bar	55	155046	Arm, Idler
5	STD624008	Retainer Spring	56	122052X	Spacer, Retainer
6	130832	Arm, Suspension, Rear	58	140086	Spring, Torsion Brakes 42"
8	850857	Bolt, Hex 3/8-24 x 1.25 Grade 8	59	141043	Guard, Tuv Idler (94)
9	STD551137	Washer, Lock	67	162113	Knob Custom Oval
10	140296	Washer, Hardened	68	144200	V-Belt
11	134149	Blade, Mulching	71	142427	Rod, Clutch, Primary, with Nibs
12	129895	Bearing, Ball	72	131870	Spring, Return
13	137645	Shaft Assembly, Mandrel, Vented (Includes Key Number 6)	73	127847	Arm, Clutch, Secondary
14	128774	Housing, Mandrel, Vented	74	121748X	Washer 25/32 x 1-5/8 x 16 Gauge
15	110485X	Bearing, Ball, Mandrel	75	12000029	Ring, Klip
16	140329	Stripper, Vented Mower Deck	76	128903	Bolt, Shoulder 3/8-16 UNC x 1.44
17	72110610	Bolt, Carriage 3/8-16 x 2-1/4	77	127845	Keeper, Spring
18	STD533106	Bolt, Carriage 5/16-18 x 5/8	78	160570	Arm, Clutch, Primary
19	132827	Bolt, Shoulder	79	127498	Bushing, Large, Brass
20	159770	Baffle, Vortex	80	153701	Spring, Mower Clutch
21	STD541431	Nut, Crownlock 5/16-18 UNC	81	73350600	Nut, Hex Jam 3/8-16 UNC
22	134753	Stiffener Bracket	82	142028	Trunnion Adj. 94
23	131267	Bracket, Deflector	83	120958X	Washer Sintered
24	105304X	Cap, Sleeve	84	156084	Keeper Belt Idler
25	123713X	Spring, Torsion, Deflector	85	72140620	Bolt Carriage 3/8-16 x 2-1/2
26	110452X	Nut, Push	92	STD541437	Locknut, Hex WWsh 3/8-16 UNC
27	130968	Shield, Deflector	101	136420	Cover Mulching 42" Black
28	19111016	Washer 11/32 x 5/8 x 16 Gauge	102	71161010	Screw Truss Head Phil 10-24 x 5/8
29	131491	Rod, Hinge	103	19061216	Washer #10
30	157722	Screw Thdrol Rolling Washer Head	104	STD551110	Washer Lock #10
31	129963	Washer, Spacer	105	160793	Latch Asm Bagger
32	153535	Pulley, Mandrel	106	2029J	Nut Weld
33	137266	Nut, Toplock, Flanged	128	153390	Washer Felt
34	STD533717	Bolt	129	19131312	Washer 13/32 x 13/16 x 12 Ga.
35	133835	Fastner, Christmas Tree	130	STD523710	Bolt, Fin Hex 3/8-16 UNC x 1 Gr. 5
36	131494	Pulley, Idler, Flat	131	STD533710	Bolt, Rdhd Sqnk 3/8-16 UNC x 1
37	STD551037	Washer 13/32 x 13/16 x 16 Ga.	132	19132203	Washer 13/32 x 1-3/8 x 3 Ga.
40	STD541437	Nut, Crownlock 3/8-16 UNC	141	6266H	Washer Thrust .75 x 1.230
41	133551	Rod, Pivot, with Nibs	--	130794	Mandrel Assembly (Includes Key Numbers 8-10, 12-15, 31 and 32)
43	140083	Rod, Clutch, Secondary, with Nibs	--	164963	Mower Deck, Complete (Std deck - order separately mulcher plate components key nos. 101-106)
44	140088	Guard, Mandrel, L.H.			
45	STD624003	Retainer			
46	137729	Screw, Thd. Roll 1/4-20 x 5/8			
48	133944	Washer, Hardened			
49	155066	Roller Assembly, Cam Follower			
50	131340	Bolt, Shoulder #10-24 Grade 5			
51	STD541410	Locknut			

NOTE: All component dimensions given in U.S. inches
1 inch = 25.4 mm

REPAIR PARTS

TRACTOR - - MODEL NUMBER 917.259220

PEERLESS TRANSAXLE - MODEL NUMBER 206-545C

