

REPAIR PARTS MANUAL
MODEL NO. 277103
Lawn Tractor



HOW TO USE THIS MANUAL

This manual is designed to provide the customer with a means to identify the parts on his/her tractor when ordering repair parts. The illustrations may or may not represent the actual assemblies; therefore, it is not recommended to use this manual as a guide to assemble or disassemble the tractor. Some hardware and parts are drawn larger in order to more readily identify them.

Each tractor has its own model number.

The model number for your tractor can be found on the fender under the seat.

When ordering parts, always give the following information:

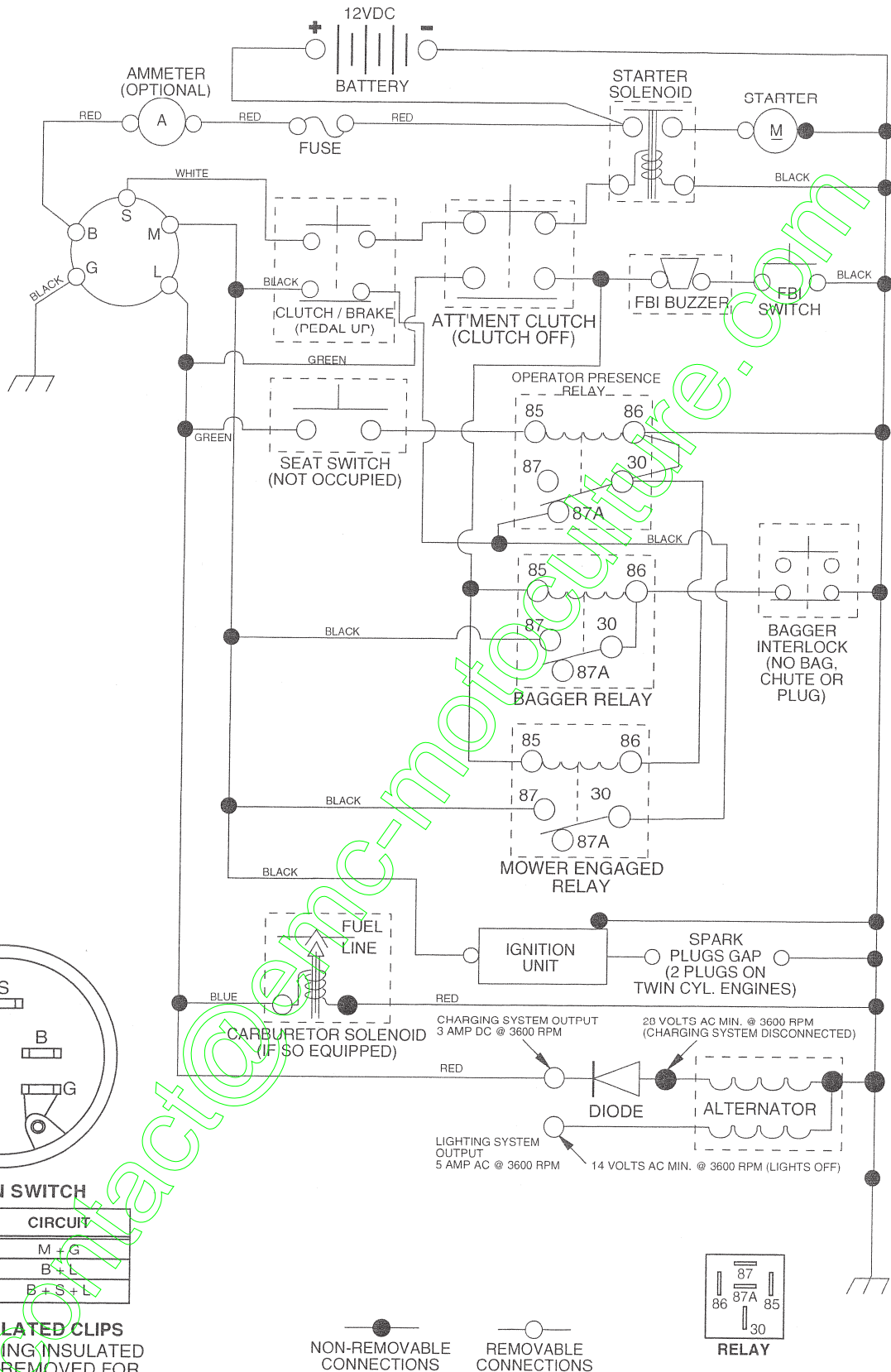
- Product - "Tractor"
- Model Number - "277103"
- Part Number
- Part Description

TABLE OF CONTENTS

| | |
|-----------------------|-------|
| SCHEMATIC | 3 |
| ELECTRICAL..... | 4-5 |
| CHASSIS..... | 6-7 |
| DRIVE..... | 8-9 |
| STEERING | 10-11 |
| SEAT | 12 |
| DECALS..... | 13 |
| ENGINE..... | 14-15 |
| MOWER LIFT | 16-17 |
| MOWER DECK | 18-19 |
| BAGGER | 20-21 |
| TRANSAXLE..... | 22-23 |
| ENGINE BREAKDOWN..... | 24-29 |
| WARRANTY..... | 31 |

TRACTOR- -MODEL NO. 917.277103

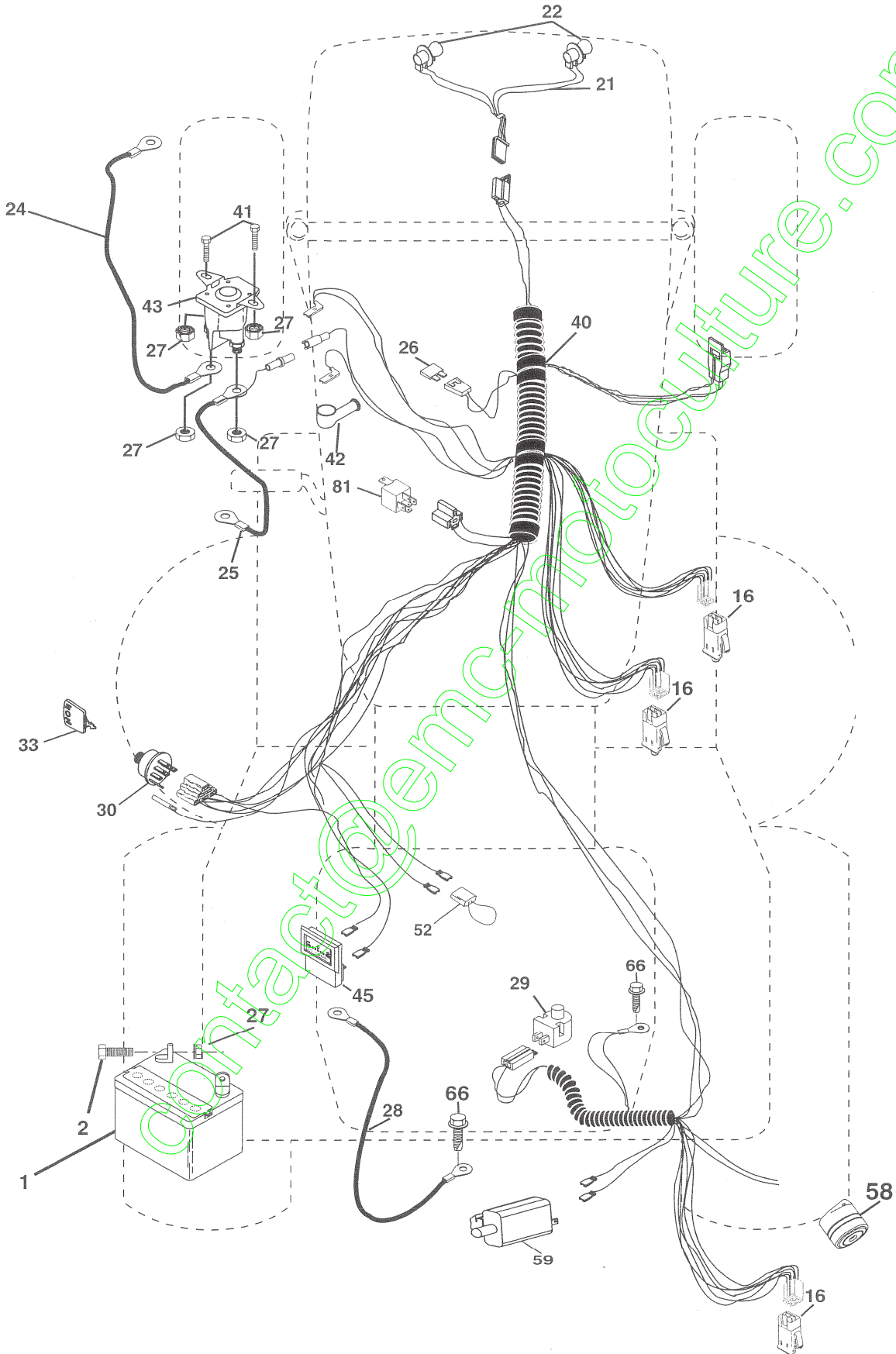
SCHEMATIC



REPAIR PARTS

TRACTOR- -MODEL NO. 917.277103

ELECTRICAL



REPAIR PARTS

TRACTOR- -MODEL NO. 917.277103

ELECTRICAL

| KEY NO. | PART NO. | DESCRIPTION |
|---------|-----------|-----------------------------------|
| 1 | 163465 | Battery |
| 2 | 74760412 | Bolt Hex Hd 1/4-20 unc x 3/4 |
| 16 | 176138 | Switch Interlock Push-In |
| 21 | 175688 | Harness Asm Light W/4152J |
| 22 | 4152J | Bulb Light #1156 |
| 24 | 4799J | Cable Starter 6 Ga. 11" Red |
| 25 | 165987 | Cable Battery Crd 56" Red |
| 26 | 175158 | Fuse |
| 27 | STD541425 | Nut Keps Hex 1/4-20 unc |
| 28 | 127725X | Cable Ground 6 Ga. 18" Black |
| 29 | 121305X | Switch Plunger Normal Op Gray |
| 30 | 175566 | Switch Ignition |
| 33 | 140403 | Key Ign Molded |
| 40 | 188036 | Harness Ign Crd Normal |
| 41 | 71110408 | Bolt Flk Fin Hex 1/4-20 unc x 1/2 |
| 42 | 131563 | Cover Terminal Red |
| 43 | 178861 | Solenoid |
| 45 | 121433X | Ammeter Rectangular |
| 52 | 141940 | Protection Wire Loop |
| 58 | 169419 | Buzzer Crd |
| 59 | 180379 | Switch FBI CRD |
| 66 | 17490608 | Screw Thdrol 3/8-16 x 1/2 Ty-Tt |
| 81 | 109748X | Relay Asm |

NOTE: All component dimensions given in U.S. inches.
1 inch = 25.4 mm.

REPAIR PARTS

TRACTOR- -MODEL NO. 917.277103

CHASSIS AND ENCLOSURES

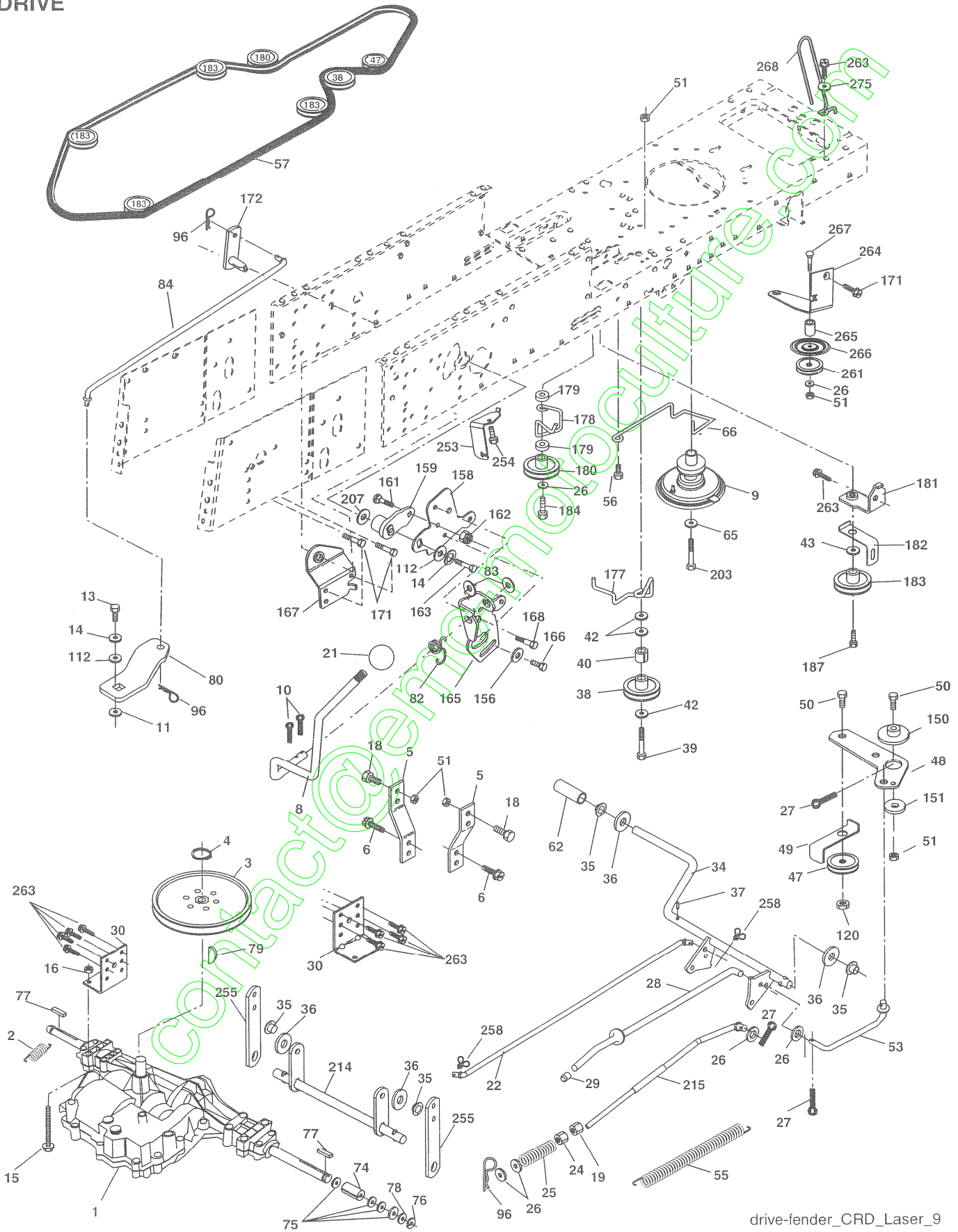
| KEY NO. | PART NO. | DESCRIPTION | KEY NO. | PART NO. | DESCRIPTION |
|---------|------------|--|---------|------------|-------------------------------|
| 1 | 174620 | Chassis Assembly | 69 | 142432 | Screw Hex 1/4-1/2 unc |
| 2 | 180384 | Drawbar | 89 | 177288X428 | Console |
| 3 | 17060612 | Screw 3/8-16 x .75 | 145 | 156524 | Rod Pivot Chassis/Hood |
| 5 | 155272 | Bumper Hood/Dash | 162 | 180382 | Bracket Exten Chassis Lh CRD |
| 6 | 184419 | Saddle | 163 | 180383 | Bracket Exten Chassis Rh CRD |
| 8 | 126471X | Clip Insulator 13/32 Mtg. Hole | 164 | 165605 | Support Battery CRD |
| 9 | 168348X013 | Dash Silscr | 165 | 179020X428 | Cover Battery CRD Lt |
| 10 | STD533710 | Bolt, Carriage 3/8-16 x 1 | 170 | 178862 | Backplate Asm CRD |
| 11 | 174996 | Panel, Dash, L.H. | 171 | 72140620 | Bolt Rdhd Sqnk 3/8-16 x 2-1/2 |
| 12 | 145660 | Clip, Tinnerman Grille P/L | 172 | 19132016 | Washer 13/32 x 1-1/4 x 16 Ga. |
| 13 | 172105X010 | Panel, Asm. Dash R.H. | 173 | STD541437 | Nut, Keps Hex 3/8-16 unc |
| 15 | 74180512 | Screw, Machine, Truss Head 5/16-18 unc x 3/4 | 175 | 188203 | Door Trap |
| 16 | STD541431 | Nut Keps 5/16-18 unc | 179 | 180376 | Rod Pivot FBI CRD |
| 17 | 144983X558 | Hood Assembly | 184 | 174662 | Bracket Actuator Bagger CRD |
| 18 | 184921 | Bumper Hood | 185 | 179608X505 | Knob Rod Brake Parking |
| 24 | STD523710 | Bolt Fin Hex 3/8-16 unc x 1. Gr. 5 | 186 | 160793 | Latch Asm Mulch/Bagger |
| 25 | 19131312 | Washer 13/32 x 13/16 x 12 Ga. | 187 | 2029J | Nut Weld .327/.304 #10-24 |
| 26 | STD541437 | Nut Lock Hex w/Ins 3/8-16 unc | 188 | 19061216 | Washer #10 |
| 28 | 178987X558 | Grille/Lens Asm | 189 | STD551110 | Washer Lock #10 |
| 29 | 155217X599 | Lens, Grille | 190 | 71081010 | Screw Pan Hd Phillips 10-24 |
| 30 | 169962X588 | Fender | 198 | 168937 | Nut, Push |
| 31 | 165156 | Bracket, Fender Support | 205 | 17490608 | Screw Thdrol 5/8-16 x 1/2 |
| 33 | 179716X558 | Footrest, L.H. | 207 | 17670508 | Screw Thdrol 5/16-18 x 1/2 |
| 34 | 179717X558 | Footrest, R.H. | 208 | 17670608 | Screw Thdrol 3/8-16 x 1/2 TYT |
| 35 | STD533107 | Bolt RDHD SHT SQNK 3/8-16 x 3/4 | 209 | 17000612 | Screw Hex Wsh Thdrol 3/8-16 |
| 37 | 17490508 | Screw Thdrol 5/16-18 x 1/2 TYT | 212 | 165919 | Insert Lens Reflective |
| 38 | 181748 | Pivot Bracket Assembly | 214 | 4497H | Retainer Spring 1" |
| 51 | 73800400 | Nut Lock w/Insert 1/4-20 unc | 256 | 180810X428 | Cover Fender Rack |
| 52 | 19091416 | Washer 9/32 x 7/8 x 16 Ga. | 265 | 185704 | Seal Side RH |
| 53 | 145201 | Bracket, Grille LH | 266 | 185703 | Seal Side LH |
| 54 | 161464 | Screw Hex WSHD 8-18 x 7/8 | -- | 5479J | Plug, Button |
| 55 | 145202 | Bracket, Grille RH | | | |
| 57 | STD522507 | Bolt, Fin Hex 1/4-20 unc x .75 | | | |

NOTE: All component dimensions given in U.S. inches.
1 inch = 25.4 mm.

REPAIR PARTS

TRACTOR- -MODEL NO. 917.277103

DRIVE



REPAIR PARTS

TRACTOR- -MODEL NO. 917.277103

DRIVE

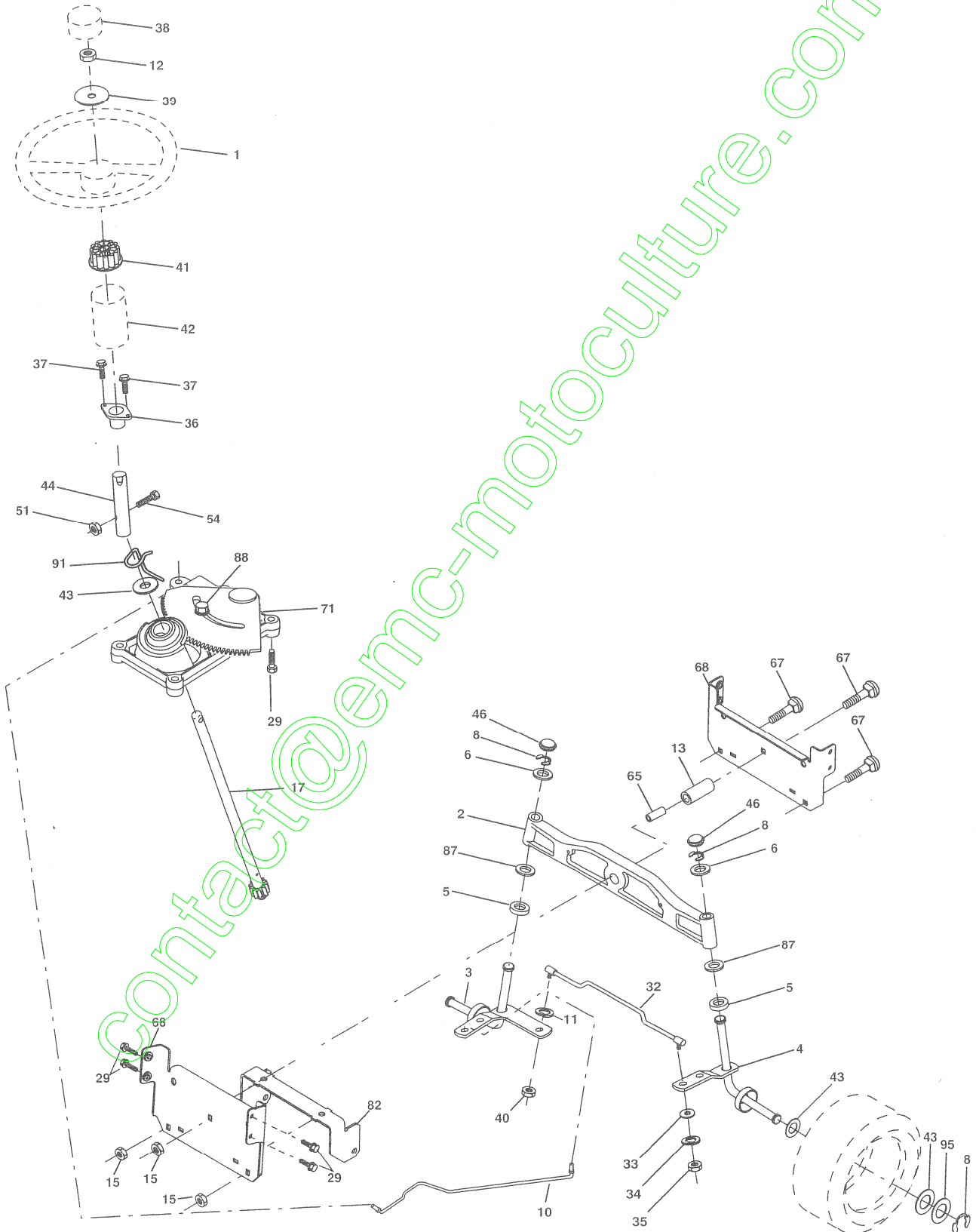
| KEY NO. | PART NO. | DESCRIPTION | KEY NO. | PART NO. | DESCRIPTION |
|---------|-----------|---|---------|-----------|------------------------------------|
| 1 | ----- | Transaxle (See Breakdown) Peerless 206-546 | 78 | 121748X | Washer 25/32 x 1-5/8 x 16 Ga. |
| 2 | 146682 | Spring Brake Return | 79 | STD580025 | Key Woodruff #9 3/16 x 3/4 |
| 3 | 165999 | Pulley Transaxle | 80 | 145090 | Arm Shift Pmst 20" Tires |
| 4 | 12000028 | Ring Retainer #5100-62 | 82 | 165711 | Spring, Torsion |
| 5 | 121520X | Strap Torque 30 Degrees | 83 | 19171216 | Washer 17/32 x 3/4 x 16 Ga. |
| 6 | 17060512 | Screw 5/16-18 x 3/4 | 84 | 165621 | Link, Shift |
| 8 | 165619 | Rod, Shift Fender Adjust Lt | 96 | STD624003 | Spring, Retainer 1" |
| 9 | 180354 | Clutch Noram | 112 | 19091210 | Washer 9/32 x 3/4 x 10 Ga. |
| 10 | STD561210 | Pin, Cotter 1/8 x 1 | 120 | 73900600 | Nut Lock Fig 3/8-16 unc |
| 11 | 105701X | Wash Plate Sht .388 Square Hole | 150 | 165850 | Bushing, Bellcrank Grnd Dr |
| 13 | 74550412 | Bolt 1/4-28 Unf Gr. 8 w/Patch | 151 | 19133210 | Washer 13/32 x 2 x 10 Ga. |
| 14 | STD551125 | Washer, Lock Hvy Helical 1/4 | 156 | 166002 | Washer Srrted 5/16ID x 1.125 |
| 15 | 74490544 | Bolt Hex FGHD 5/16-18 x Gr. 5 | 158 | 165589 | Bracket Shift Mount |
| 16 | STD541431 | Nut Lock Hex W/Wsh 5/16-18 unc | 159 | 183900 | Hub Tapered Flange Shift Lt |
| 18 | STD523710 | Bolt Hex 3/8-16 UNC x 1 Gr. 5 | 161 | 72140406 | Bolt Rdhd Sqnk 1/4-20 x 3/4 Gr. 5 |
| 19 | STD541437 | Nut Lock Hex W/Wsh 3/8-16 unc | 162 | 73680400 | Nut Crownlock 1/4-20 unc |
| 21 | 106933X | Knob Rd 1/2-13 Plstc Thds Blk | 163 | 74780416 | Bolt Hex Fin 1/4-20 unc x 1 Gr. 5 |
| 22 | 175607 | Rod, Brake CRD Pmst | 164 | 19091010 | Washer 5/8 x .281 x 10 Ga. |
| 24 | STD541237 | Nut Hex Jam 3/8-16 unc | 165 | 165623 | Bracket Pivot Lever |
| 25 | 106888X | Spring, Rod, Brake | 166 | 17490510 | Screw 5/16-18 x 5/8 |
| 26 | STD551037 | Washer 13/32 x 13/16 x 16 Ga. | 167 | 165588 | Bracket Support Shift CRD |
| 27 | STD561210 | Pin, Cotter 1/8 x 3/4 | 168 | 165492 | Bolt Shoulder 5/16-18 x .561 |
| 28 | 175765 | Rod, Parking Brake | 171 | 17490608 | Screw Thdrol 3/8-16 x 1/2 Ty-Tt |
| 29 | 71673 | Cap, Parking Brake | 172 | 165635 | Shaft Shift Front CRD |
| 30 | 174973 | Bracket, Mfg. Transaxle | 177 | 165932 | Keeper Flat Idler 3.06" CRD |
| 34 | 175578 | Shaft, Asm Pedal Foot CRD | 178 | 165933 | Keeper Belt Idler 1.88" CRD |
| 35 | 120183X | Bearing, Nylon | 179 | 120958X | Washer Sintered |
| 36 | STD551062 | Washer 21/32 x 1 x 16 Ga. | 180 | 165630 | Pulley Flat Idler 1.88" |
| 37 | STD571810 | Pin, Roll 3/16 x 1" | 181 | 180211 | Bracket Idler Ground Drive CRD |
| 38 | 165936 | Pulley Flat Composite 3.06" | 182 | 182682 | Keeper Belt 2.5" Od V-Idler CRD |
| 39 | 74760644 | Bolt Fin Hex 3/8-16 unc x 2-3/4 | 183 | 186007 | Pulley V-Idler 2.50" Od CRD |
| 40 | 4470J | Spacer, Split 395 x 59 Bzp | 184 | 17490644 | Screw Hexwsh Thdrol 3/8-16 x 2-3/4 |
| 42 | 19131312 | Washer 13/32 x 13/16 x 12 Ga. | 187 | 17580520 | Screw Thdrol 5/16-18 x 1.25 |
| 43 | 19111012 | Washer 11/32 x 5/8 x 12 Ga. | 203 | 71170780 | Bolt Hex 7/16-20 x 5 |
| 47 | 127783 | Pulley, Idler, V Groove Plastic | 207 | 169845 | Washer Nylon |
| 48 | 154407 | Bellcrank Clutch Grnd Dry | 214 | 175609 | Shaft Asm Brake |
| 49 | 123205X | Retainer, Belt Style Spring | 215 | 175651 | Rod Brake |
| 50 | 72110612 | Bolt Carr. Sh 3/8-16 x 1-1/2 Gr. 5 | 253 | 175028 | Bracket Cable Chassis |
| 51 | STD541437 | Nut, Crownlock 3/8-16 unc | 254 | 17000616 | Screw 3/8-16 x 1 |
| 53 | 105710X | Link, Clutch 7.66 | 255 | 175608 | Brace Shaft Brake |
| 55 | 105709X | Spring, Return, Clutch | 258 | 178062 | Clip Retainer |
| 56 | STD523712 | Bolt, Hex 3/8-16 unc x 1-1/4 | 261 | 131494 | Pulley Idler |
| 57 | 165631 | V-Belt Key 1 1/4" Pmst CRD | 263 | 17000612 | Screw Hex Wsh Thdr 3/8-16 x 3/4 |
| 62 | 8883R | Cover, Pedal | 264 | 181995 | Bracket Clutch Mounting |
| 65 | STD551143 | Washer | 265 | 182013 | Spacer Idler Chassis |
| 66 | 154778 | Keeper, Belt Engine F-Proof | 266 | 182061 | Shield Idler |
| 74 | 137057 | Spacer, Axle | 267 | 72140626 | Bolt Rdhd 3/8-16 x 3 1/4 |
| 75 | 121749X | Washer 25/32 x 1-1/4 x 16 Ga. | 268 | 182402 | Guard Muffler RH |
| 76 | STD581075 | Ring, E | 275 | 19131614 | Washer 13/32 x 1 x 14 Ga. |
| 77 | 123583X | Key, Square | | | |

NOTE: All component dimensions given in U.S. inches
1 inch = 25.4 mm

REPAIR PARTS

TRACTOR- -MODEL NO. 917.277103

STEERING ASSEMBLY



REPAIR PARTS

TRACTOR- -MODEL NO. 917.277103

STEERING ASSEMBLY

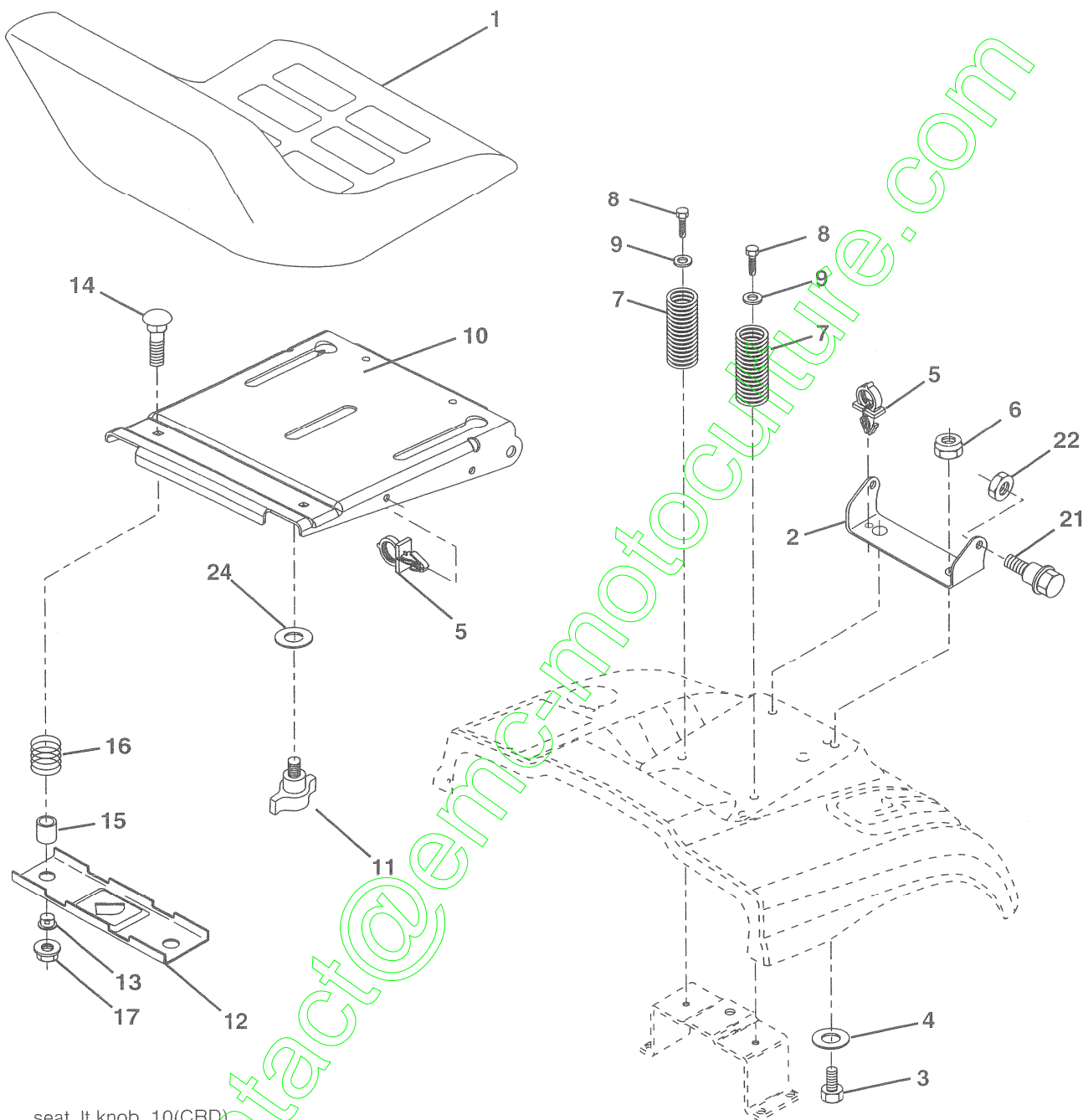
| KEY NO. | PART NO. | DESCRIPTION |
|---------|------------|-----------------------------------|
| 1 | 139768 | Steering Wheel |
| 2 | 184706 | Front Axle Assembly |
| 3 | 169840 | Spindle Assembly, L.H. |
| 4 | 169839 | Spindle Assembly, R.H. |
| 5 | 6266H | Bearing, Race, Thrust, Hardened |
| 6 | 121748X | Washer 25/32 x 1-5/8 x 16 Ga. |
| 8 | 12000029 | Ring, Klip |
| 10 | 175121 | Link, Drag |
| 11 | STD551137 | Washer, Lock |
| 12 | 73940800 | Nut Hex Jam Toplock 1/2-20 unf |
| 13 | 136518 | Spacer Axle |
| 15 | 145212 | Nut, Hexflange Lock |
| 17 | 180641 | Shaft Assembly, Steering |
| 29 | 17000612 | Screw, 3/8-16 x 3/4 SMCML Tap/R |
| 32 | 170162 | Rod, Tie |
| 33 | 19111216 | Washer 11/32 x 3/4 x 16 Ga. |
| 34 | 10040500 | Washer Lock Hvy Hlcl Spr 5/16 |
| 35 | 73540500 | Nut Crownlock 5/16-24 unf |
| 36 | 155099 | Bushing, Steering |
| 37 | 152927 | Screw TT #10-32 x 5 x 3/8 Flange |
| 38 | 139769 | Cap Wheel Steering |
| 39 | 19183812 | Washer 9/16 ID x 2-3/8 OD 12 Ga. |
| 40 | 73540600 | Nut Crownlock 3/8-24 |
| 41 | 186737 | Adaptor, Steering Wheel |
| 42 | 145054X428 | Boot, Steering Dash |
| 43 | 121749X | Washer 25/32 x 1-1/4 x 16 Ga. |
| 44 | 180640 | Extension Steering Non-Adjust |
| 46 | 184946X505 | Cap, Spindle |
| 51 | 73540400 | Nut Crownlock 1/4-28 |
| 54 | 71130420 | Bolt 1/4-28 UNF x 1-1/4 Ga 8 |
| 65 | 160367 | Spacer Brace Axle |
| 67 | 72110618 | Bolt RDHD SQ 3/8-16 x 2-1/4 |
| 68 | 169827 | Brace Axle |
| 71 | 175146 | Steering Asm. |
| 82 | 169835 | Bracket Susp Chassis Front |
| 87 | 173966 | Washer FLat .781 x 1-1/2 x .14 |
| 88 | 175118 | Bolt Shoulder |
| 91 | 175553 | Clip Steering |
| 95 | 188967 | Washer Harden .739 x 1.637 x .060 |

NOTE: All component dimensions given in U.S. inches.
1 inch = 25.4 mm.

REPAIR PARTS

TRACTOR- -MODEL NO. 917.277103

SEAT ASSEMBLY



seat_lt.knob_10(CRD)

| KEY NO. | PART NO. | DESCRIPTION |
|---------|----------|--------------------------------|
| 1 | 188716 | Seat |
| 2 | 180166 | Bracket Pnt Pivot Seat (blk) |
| 3 | 71110616 | Bolt Fin Hex 3/8-16 unc x 1 |
| 4 | 19131610 | Washer Flat 13/32 x 1 x 10 Ga. |
| 5 | 145006 | Clip Push In Hinged |
| 6 | 73800600 | Nut Lock Hex 3/8-16 unc |
| 7 | 124181X | Spring Seat Cprsn 2 250 Blk Zi |
| 8 | 17000616 | Screw 3/8-16 x 1 |
| 9 | 19131614 | Washer 13/32 x 1 x 14 Ga. |
| 10 | 180186 | Pan Pnt Seat |
| 11 | 166369 | Knob Seat Adj Wingnut |
| 12 | 121246X | Bracket Pnt Mounting Switch |

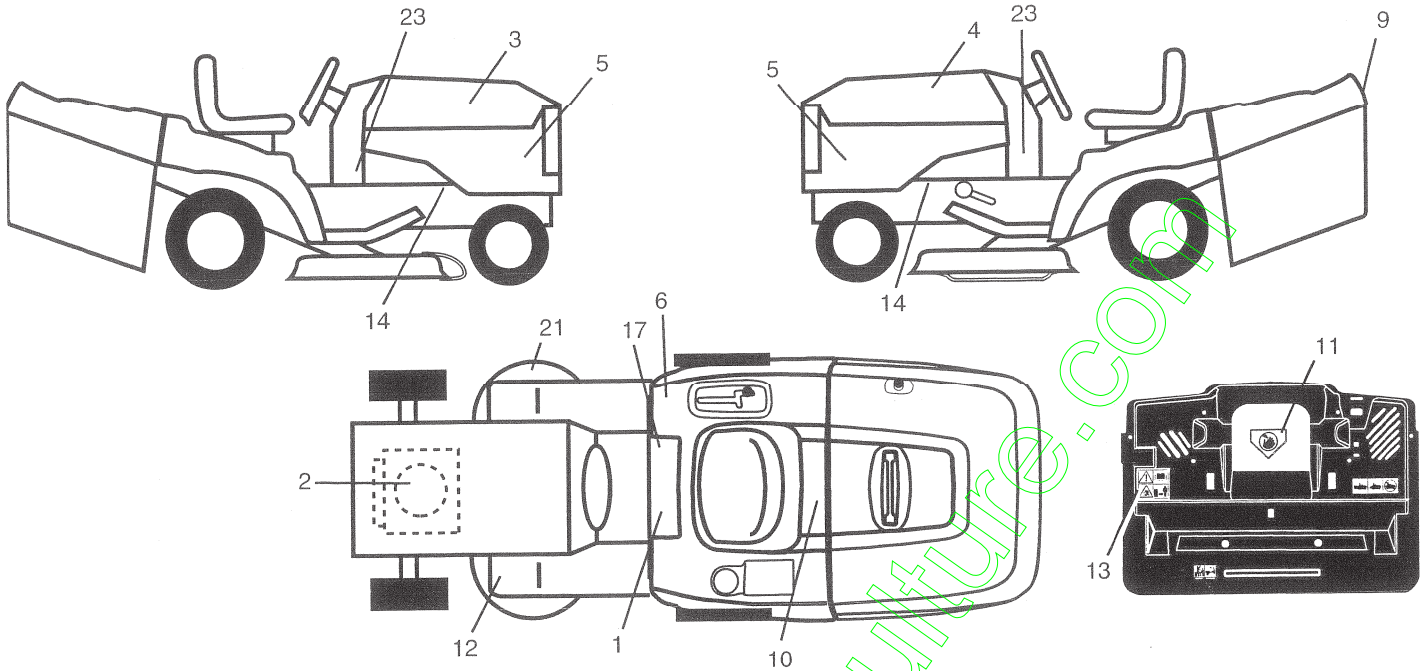
| KEY NO. | PART NO. | DESCRIPTION |
|---------|----------|---------------------------------|
| 13 | 121248X | Bushing Snap Blk Nyl 50 Id |
| 14 | 72050412 | Bolt Rdhd Sht Nk 1/4-20 x 1-1/2 |
| 15 | 134300 | Spacer Split .28 x .96 Zinc |
| 16 | 121250X | Spring Cprsn |
| 17 | 123976X | Nut Lock 1/4 Lge Flg Gr. 5 Zinc |
| 21 | 171852 | Bolt Shoulder 5/16-18 unc-2A |
| 22 | 73800500 | Nut Hex Lock w/Ins 5/16-18 |
| 24 | 19171912 | Washer 17/32 x 1-3/16 x 12 Ga. |
| 25 | 127018X | Bolt Shoulder 5/16-18 x .62 |

NOTE: All component dimensions given in U.S. inches.
1 inch = 25.4 mm

REPAIR PARTS

TRACTOR- -MODEL NO. 917.277103

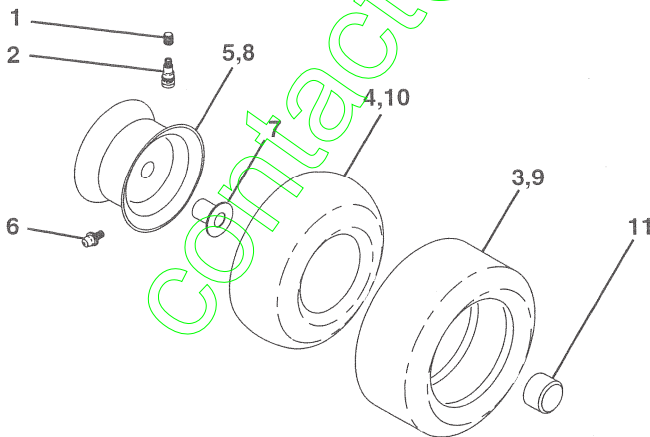
DECALS



| KEY NO. | PART NO. | DESCRIPTION |
|---------|----------|-----------------------------------|
| 1 | 145498 | Decal Read Owner's Manual Sym |
| 2 | 184846 | Decal Hp Engine |
| 3 | 171696 | Decal Hood Rh |
| 4 | 171697 | Decal Hood Lh |
| 5 | 177253 | Decal Hood Side L71000 LT |
| 6 | 180432 | Decal 100 DB/CE |
| 9 | 163204 | Decal Fender Logo |
| 10 | 145005 | Decal Bat Dan/Poi P/L Sym Wpn |
| 11 | 182166 | Decal Mower Cut Finger Symbol |
| 12 | 159737 | Decal Brake/Clutch Symbol L |
| 13 | 180435 | Decal Warn Back Plate CRD Symbols |

| KEY NO. | PART NO. | DESCRIPTION |
|---------|------------|----------------------------|
| 14 | 159736 | Decal Chassis Hot Muffler |
| 17 | 140837 | Decal Saddle Brake Parking |
| 21 | 166286 | Decal Deck Sch 92 CRD |
| 23 | 177097 | Decal Panel Dash |
| — | 138311 | Decal Lift Handle |
| — | 179768X428 | Pad Footrest LH |
| — | 182621 | Decal Bagger Frame Assy |
| — | 179769X428 | Footrest Pad RH |
| — | 191576 | Manual Operator's (Euro) |
| — | 191577 | Manual Operator's (Scand) |
| — | 191561 | Manual Parts |

WHEELS & TIRES



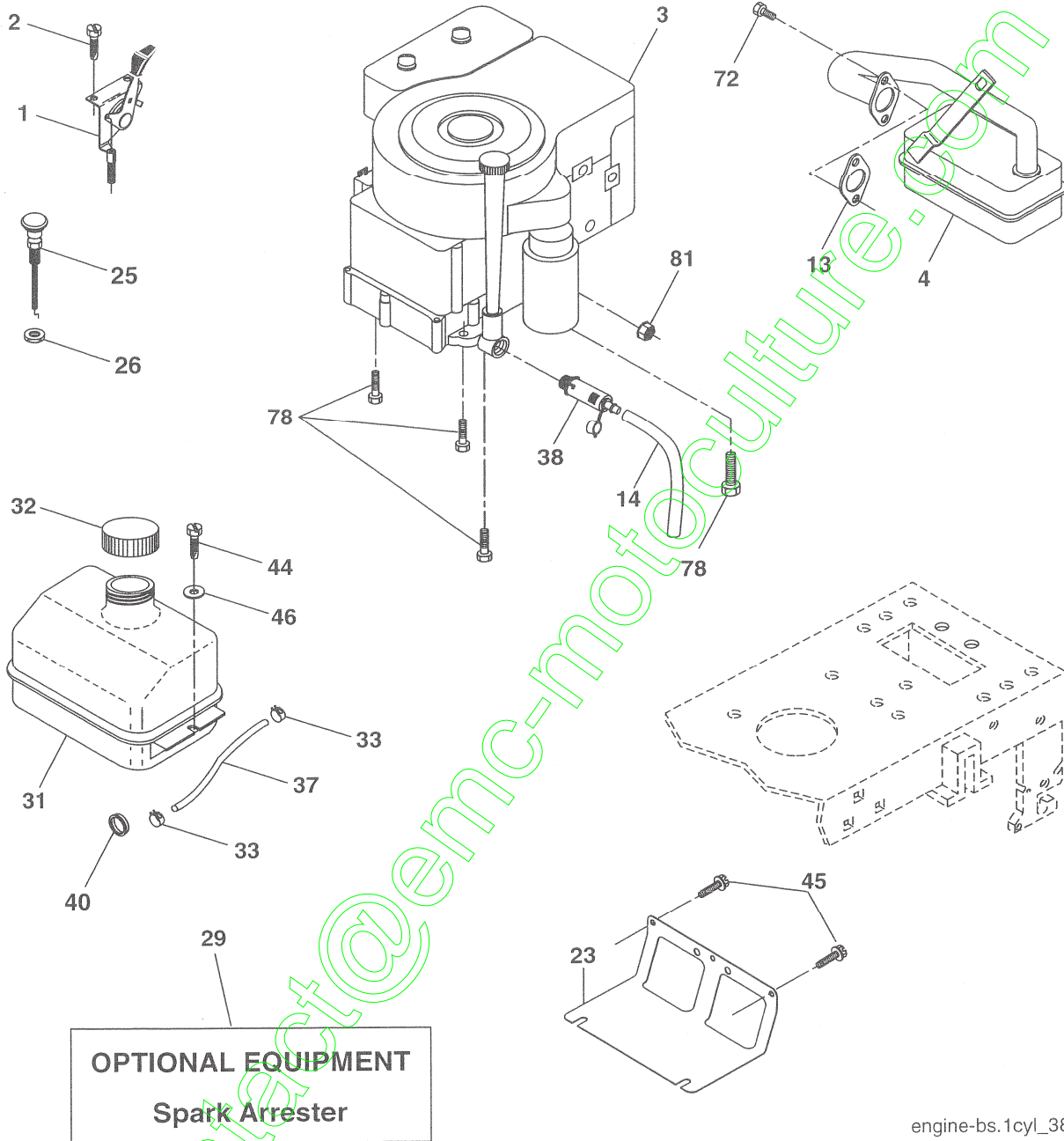
| KEY NO. | PART NO. | DESCRIPTION |
|---------|------------|--------------------------------|
| 1 | 59192 | Cap Valve Tire |
| 2 | 65139 | Stem Valve |
| 3 | 106222X | Tire F Ts 15 X 6 0 - 6 Service |
| 4 | 59904 | Tube Inner Front #35060 |
| 5 | 106732X624 | Rim Asm 6"front White Service |
| 6 | 278H | Fitting Grease |
| 7 | 9040H | Bearing Flange |
| 8 | 106108X624 | Rim Asm 8" rear White Service |
| 9 | 106268X | Tire R Ts 18 x 9.5-8 Service |
| 10 | 7152J | Tube Rear 9 5 X 8 Service |
| 11 | 104757X428 | Cap Axle Blk 1 50 X 1 00 |
| -- | 144334 | Sealant, Tire (10 oz. tube) |

NOTE: All component dimensions given in U.S. inches
1 inch = 25.4 mm

REPAIR PARTS

TRACTOR- -MODEL NO. 917.277103

ENGINE



OPTIONAL EQUIPMENT
Spark Arrester

engine-bs.1cyl_38

| KEY NO. | PART NO. | DESCRIPTION |
|---------|----------|--|
| 1 | 170545 | Control Throttle |
| 2 | 17720408 | Screw Hex Thd Cut 1/4-20 x 1/2 |
| 3 | ----- | Engine (See Breakdown) Briggs Model 282H07-0239-E1 |
| 4 | 137352 | Muffler Exhaust B&S Lt |
| 13 | 165291 | Gasket 1 313 Id Tin Plated |
| 14 | 148456 | Tube Drain Oil Easy |
| 23 | 169837 | Shield Browning/Debris Guard |
| 25 | 180945 | Control Choke |
| 26 | 73920600 | Nut Keys |
| 29 | 137180 | Arrestor Spark |
| 31 | 184900 | Tank Fuel 1.25 Fr |
| 32 | 140527 | Cap Asm Fuel |

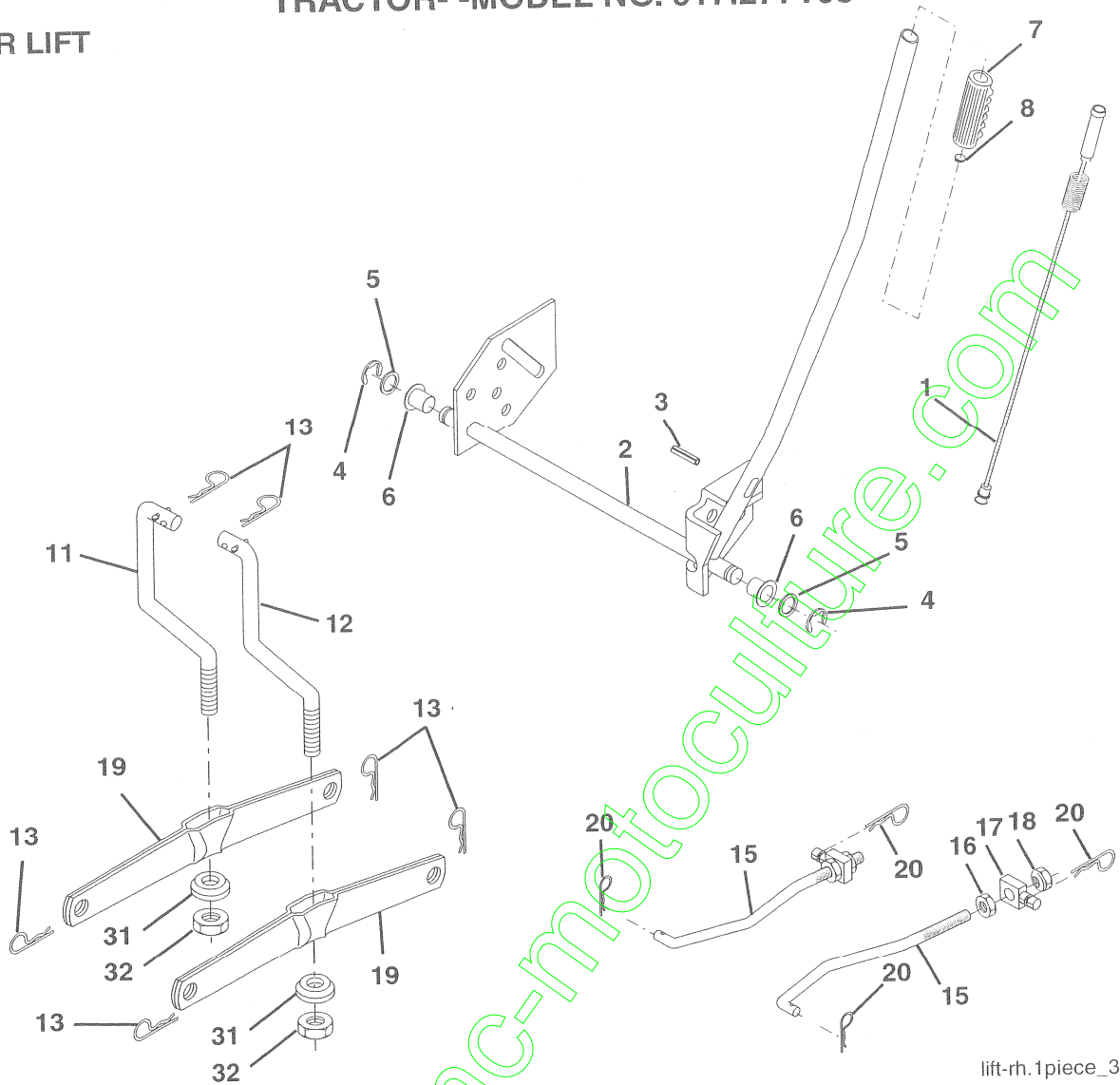
| KEY NO. | PART NO. | DESCRIPTION |
|---------|----------|----------------------------------|
| 33 | 123487X | Clamp Hose Blk |
| 37 | 137040 | Line Fuel 20" |
| 38 | 181654 | Plug Oil Drain Easy |
| 40 | 124028X | Bushing Snap |
| 44 | 17670412 | Screw Hexwsh Thdrol 1/4-20 x 3/4 |
| 45 | 17000612 | Screw Hexwsh Thdr 3/8-16 x 3/4 |
| 46 | 19091416 | Washer 9/32 x 7/8 x 16 Ga. |
| 72 | 183906 | Screw Socket Head 5/16-18 x 1 |
| 78 | 17060620 | Screw 3/8-16x1-1/4 |
| 81 | 73510400 | Nut Keys 1/4-20 unc |

NOTE: All component dimensions given in U.S. inches
1 inch = 25.4 mm

REPAIR PARTS

TRACTOR- -MODEL NO. 917.277103

MOWER LIFT



lift-rh.1piece_3

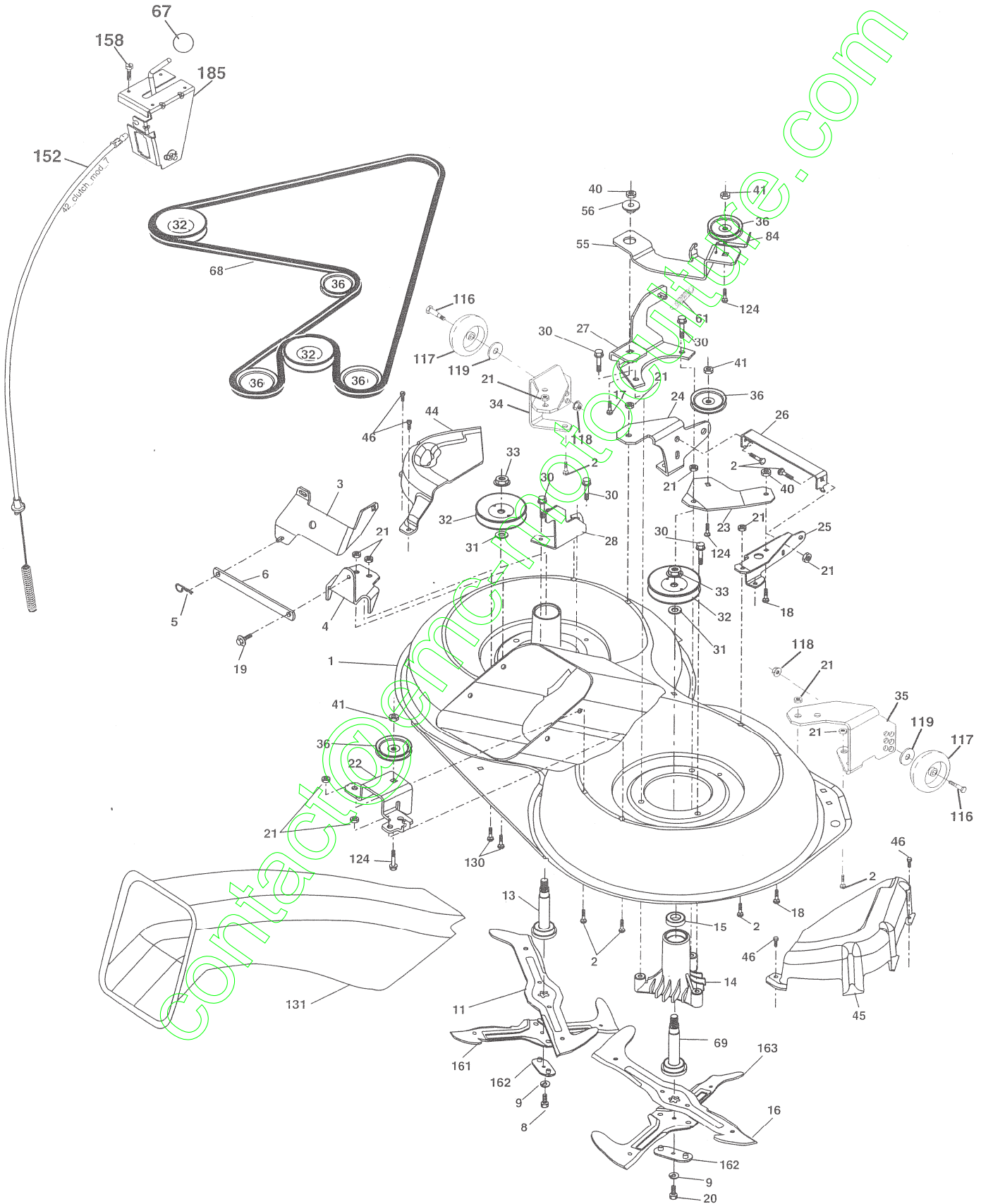
| KEY NO. | PART NO. | DESCRIPTION |
|---------|-----------|-----------------------------------|
| 1 | 159460 | Washer Asm Inner Spring W/Plunger |
| 2 | 159471 | Shaft Asm. Lift |
| 3 | 105767X | Pin Groove |
| 4 | STD581062 | E Ring #5133-62 |
| 5 | 19211621 | Washer 21/32 x 1 x 21 Ga. |
| 6 | 120183X | Bearing Nylon |
| 7 | 125631X | Grip Handle |
| 8 | 124526X | Button Plunger Black |
| 11 | 165829 | Link Asm Lift L.H. |
| 12 | 165831 | Link Asm Lift R.H. |
| 13 | STD624008 | Retainer Spring |
| 15 | 173288 | Link Front |
| 16 | 73350800 | Nut Jam Hex 1/2-13 unc |
| 17 | 175689 | Trunnion Blk Zinc |
| 18 | 73800800 | Nut Lock w/wsh 1/2-13 unc |
| 19 | 139868 | Arm Suspension Mower |
| 20 | 163552 | Retainer Spring |
| 31 | 169865 | Bearing, Pvt. Lift. |
| 32 | 73540600 | Nut Crownlock 3/8-24 |

NOTE: All component dimensions given in U.S. inches
1 inch = 25.4 mm

REPAIR PARTS

TRACTOR- -MODEL NO. 917.277103

MOWER



REPAIR PARTS

TRACTOR- -MODEL NO. 917.277103

MOWER

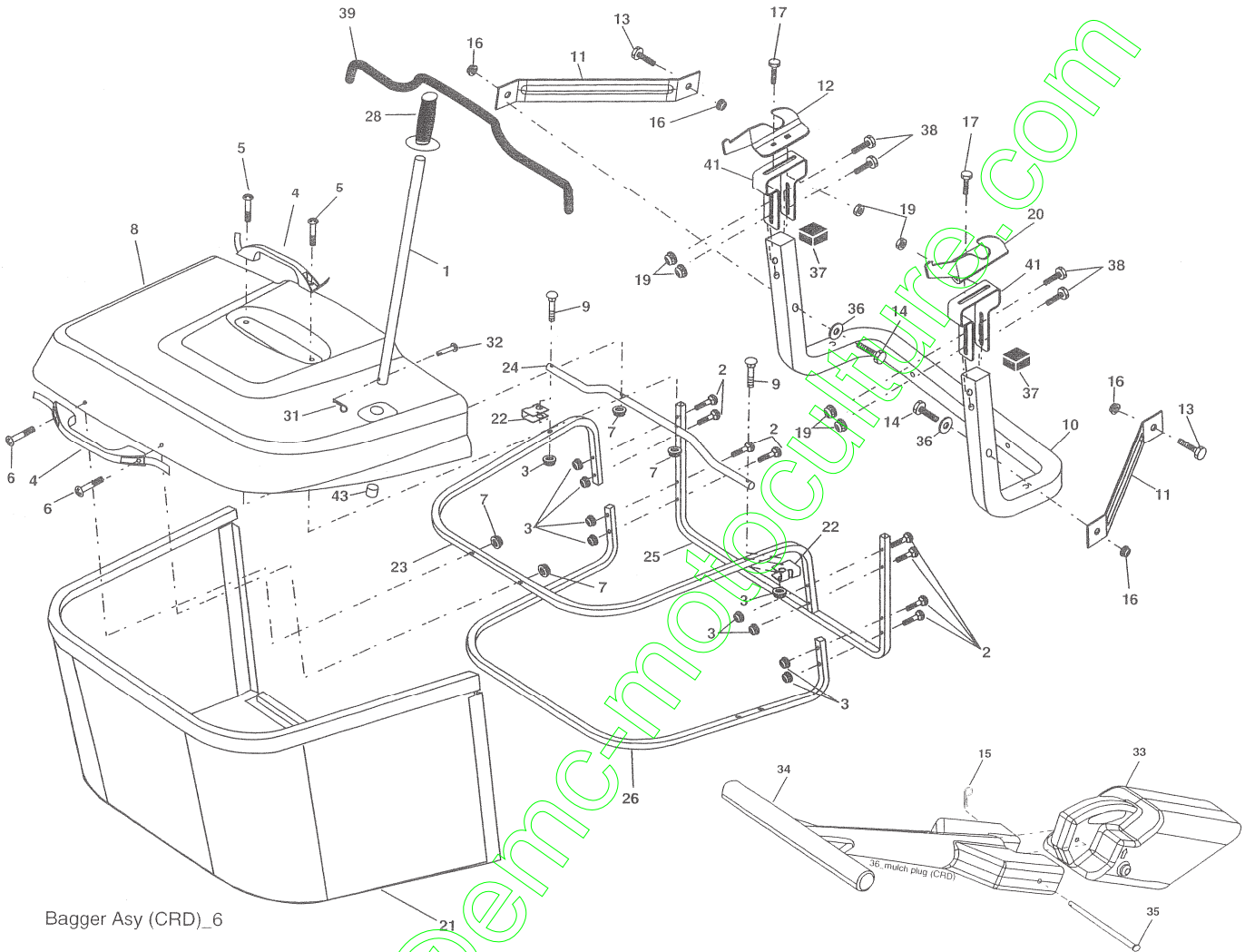
| KEY NO. | PART NO. | DESCRIPTION | KEY NO. | PART NO. | DESCRIPTION |
|---------|----------|-------------------------------------|---------|----------|---|
| 1 | 165552 | Housing Asm. Mower 92 CRD | 45 | 175539 | Cover Mandrel Rh 92 CRD |
| 2 | 72140506 | Bolt Rdhd Sqnk 5/16-18 unc x 3/4 | 46 | 137729 | Screw Thd Roll 1/4-20 x 5/8 |
| 3 | 165569 | Bracket Asm. S-Bar Chass 92 CRD | 55 | 165445 | Arm Idler 92 CRD |
| 4 | 165558 | Bracket Bar Sway Deck 92 CRD | 56 | 165723 | Spacer Retainer Mower |
| 5 | 4939M | Retainer Spring | 61 | 165945 | Spring Tension Belt |
| 6 | 165557 | Bar Sway 92 CRD | 67 | 106932X | Knob Rd 3/8-16 Plstdc Thds Blk |
| 8 | 181712 | Bolt 3/8-24 x 1.25 Gr. 8 Patched | 68 | 180217 | Hex-Belt 92 Mower |
| 9 | 10030600 | Washer Lock Hvy 3/8 Unplated | 69 | 165482 | Shaft Asm W/Lwr Brg Rh Thd CRD |
| 11 | 186385 | Blade 3-1 Lh 92 CRD | 84 | 156085 | Keeper Belt Idler |
| 13 | 137645 | Shaft Asm. W/Lower Bearing | 116 | 184219 | Bolt Shoulder |
| 14 | 128774 | Housing Mandrel Vented (Machd) | 117 | 133957 | Wheel Gage Donut Wide |
| 15 | 110485X | Bearing Ball Mandrel | 118 | 73930600 | Nut Centerlock 3/8-16 unc |
| 16 | 186386 | Blade 3-1 Rh 92 CRD | 119 | 19121414 | Washer 3/8 x 7/8 x 14 Ga. |
| 17 | 72140610 | Bolt Carriage 3/8-16 x 1-1/4 | 124 | 72110612 | Bolt Carr Sh 3/8-16 x 1-1/2 Gr. 5 |
| 18 | 72110606 | Bolt Rdhd Sqnk 3/8-16 x 3/4 | 130 | 72110506 | Bolt Rdhdsqnk 5/16-18 unc x 3/4 |
| 19 | 132827 | Bolt Shoulder 5/16-18 Thd Form | 131 | 165661 | Chute Bagger CRD 92cm |
| 20 | 181713 | Bolt 3/8-24 x 1.25 Gr. 8 Ptch Lhthd | 151 | 169670 | Bracket Clutch Cable |
| 21 | 73680500 | Nut Crown Lock 5/16-18 | 152 | 176074 | Cable Clutch CRD Service |
| 22 | 165243 | Bracket Idler Sprt RR 92 CRD | 153 | 169674 | Washer Flat 3/8" Type B |
| 23 | 165446 | Bracket Idler Sprt RF 92 CRD | 154 | 169675 | Spring Retainer |
| 24 | 165242 | Bracket Suspension LF 92 CRD | 155 | 169671 | Spring Retention Lvr Clutch Cable |
| 25 | 165244 | Bracket Suspension RF 92 CRD | 156 | 169672 | Spacer Clutch Cable |
| 26 | 165237 | Brace Support Susp Frt CRD | 157 | 169669 | Rod Clutch Cable 3/8" |
| 27 | 165568 | Bracket Asm. Susp RR 92 CRD | 158 | 17720408 | Screw Thd Cut 1/4-20 x 1/2 |
| 28 | 165567 | Bracket Asm. Susp LR 92 CRD | 161 | 186387 | Blade Cross LH |
| 30 | 173984 | Screw Thd Rolling Washer Head | 162 | 180878 | Adapter Blade Cross |
| 31 | 187690 | Washer Spacer | 163 | 186388 | Blade Cross RH |
| 32 | 153531 | Mandrel Pulleys 36 & 46 | -- | 181857 | Mandrel Asm Service (Includes Housing, Shaft and Shaft Hardware Only - Pulley Not Included) |
| 33 | 178342 | Nut Flg Top Lock Cntr B 9/16 | -- | 181858 | Mandrel Asm CRD Lh Threads SVC |
| 34 | 165239 | Bracket Gauge Wheel Lf 92 CRD | -- | 188523 | Replacement Mower Complete (Order separately gauge wheel components key nos. 116-119) |
| 35 | 165238 | Bracket Gauge Wheel Rf 92 CRD | | | |
| 36 | 146763 | Pulley Idler V-Groove Dim 4.25 | | | |
| 37 | 19131316 | Washer 11/32 x 13/16 x 16 Ga. | | | |
| 40 | 73680600 | Nut Crownlock 3/8-16 unc | | | |
| 41 | 73900600 | Nutlock Flg 3/8-16 unc | | | |
| 44 | 175538 | Cover Mandrel Lh 92 CRD | | | |

NOTE: All component dimensions given in U.S. inches
1 inch = 25.4 mm

REPAIR PARTS

TRACTOR- -MODEL NO. 917.277103

BAGGER



Bagger Asy (CRD)_6

| KEY NO. | PART NO. | DESCRIPTION |
|---------|------------|---------------------------------------|
| 1 | 165249 | Tube Handle Bagger CRD |
| 2 | 72140416 | Bolt Carriage 1/4-20 x 2.0 Gr. 5 |
| 3 | 123976X | Nut Lock 1/4 Lge Flg Gr. 5 Zinc |
| 4 | 169916 | Handle Bagger |
| 5 | 74981024 | Screw Pan Head #10-24 x 1.50 Blk |
| 6 | 74981032 | Screw Pan Hd |
| 7 | 73401000 | Nut Wiz Lock Hex Serr/Hd 10-24 |
| 8 | 169963X558 | Cover Bagger Steel CRD |
| 9 | 72140418 | Bolt Carriage 1/4-20 x 2.25d x Gr. 5 |
| 10 | 181282 | Tube Support Bagger CRD |
| 11 | 165719 | Bracket Support Upper Bag CRD |
| 12 | 188848 | Bracket Pivot Bagger Lh CRD |
| 13 | STD533707 | Bolt Rdhd Sht Sqnk 3/8-16 x 3/4 |
| 14 | 74520636 | Bolt Hex 3/8-16 x 2-1/4 Gr. 5 |
| 15 | 4939M | Retainer Spring |
| 16 | 73900600 | Nut Lock Flg 3/8-16 unc |
| 17 | STD533107 | Bolt Rdhd Sht Sqnk 5/16 -18 unc x 3/4 |
| 19 | 73900500 | Nut Lock Hex Flange 5/16-18 |
| 20 | 188847 | Bracket Bagger RH CRD |
| 21 | 180880 | Bag Asm CRD |
| 22 | 165781 | Bracket Side Bagger CRD |

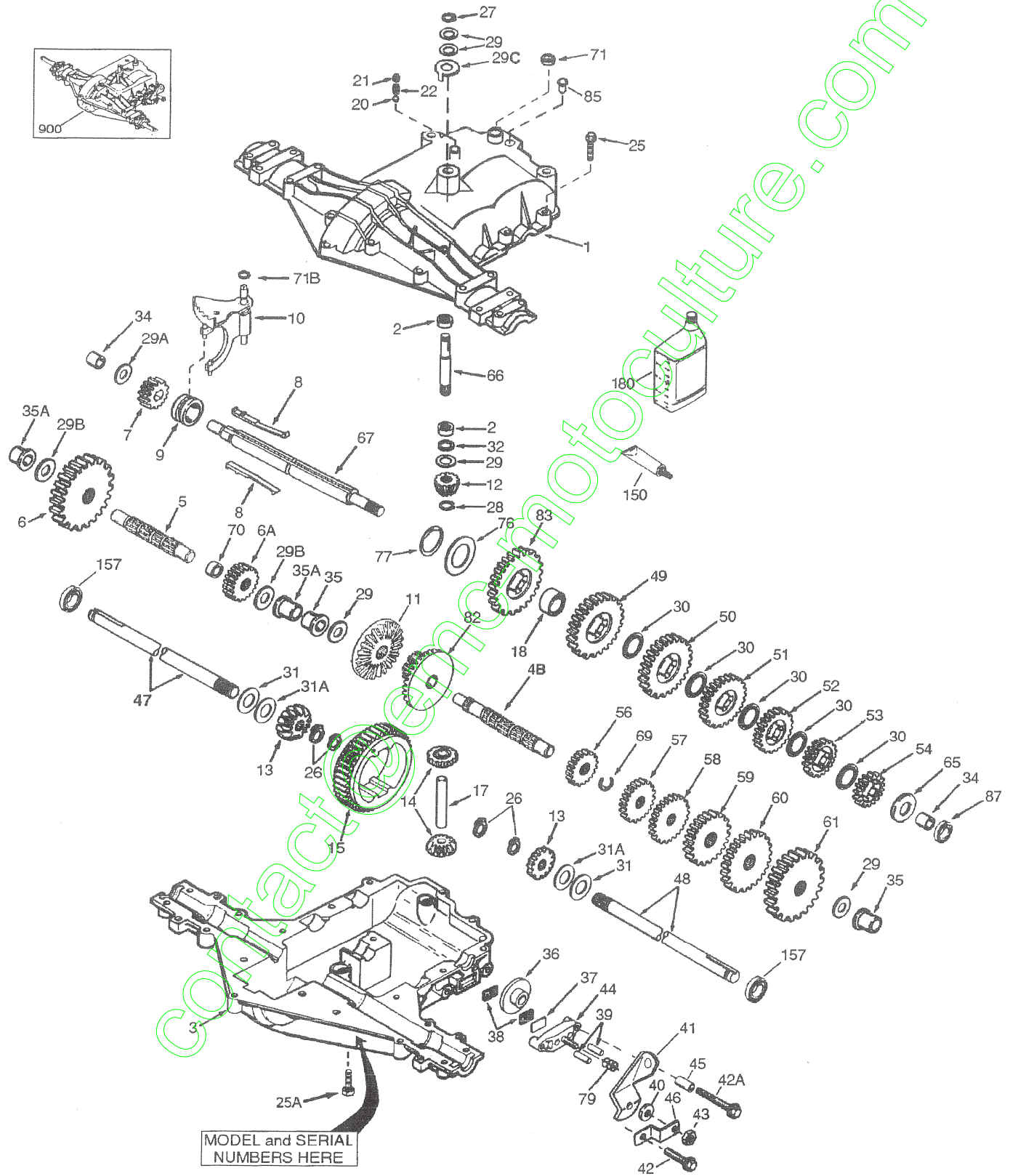
| KEY NO. | PART NO. | DESCRIPTION |
|---------|-----------|-----------------------------------|
| 23 | 165782 | Tube Upper Bagger CRD |
| 24 | 165783 | Tube Pivot Bagger CRD |
| 25 | 180124 | Tube Front Bagger CRD |
| 26 | 165785 | Tube Lower Bagger CRD |
| 28 | 165787 | Grip Handle Black |
| 31 | STD624003 | Retainer Spring 1" Zinc/Cad |
| 32 | 126875X | Rivet Rd Hd Drilled 3/8 Dia |
| 33 | 165571 | Plug Mulcher |
| 34 | 165570 | Handle Mulcher |
| 35 | 165572 | Pin Mulcher |
| 36 | 19132016 | Washer 13/32 x 1-1/4 x 16 Ga. |
| 37 | 175401 | Plug Support Bagger CRD |
| 38 | 72010520 | Bolt 5/16-18 x 5.20 |
| 39 | 180985 | Seal 37" |
| 41 | 169683 | Bracket Vert Adj Bagger CRD |
| 42 | STD541431 | Nut Lock Hex W/Ins 5/16-18 unc Pl |
| 43 | 174083 | Plug Tubing End |

NOTE: All component dimensions given in U.S. inches
1 inch = 25.4 mm

REPAIR PARTS

TRACTOR - MODEL NO. 917.277103

PEERLESS PMST TRANSAXLE - MODEL NUMBER 206-546



REPAIR PARTS

TRACTOR- -MODEL NO. 917.277103

PEERLESS PMST TRANSAXLE - MODEL NUMBER 206-546

| KEY NO. | PART NO. | DESCRIPTION | KEY NO. | PART NO. | DESCRIPTION |
|---------|----------|---|---------|----------|-----------------------------------|
| 1 | 772147 | Transaxle Cover | 42 | 792073A | Screw 1/4-20 x 1-1/4" |
| 2 | 780086A | Needle Bearing 5/8" | 42A | 792085A | Screw 1/4-20 x 2-1/4" |
| 3 | 770128 | Transaxle Case | 43 | 792075 | Locknut 5/16-24 |
| 4B | 776406 | Countershaft | 44 | 790025 | Brake Pad Holder |
| 5 | 776409 | Output Shaft | 45 | 786066 | Spacer .2625 x 1.0 |
| 6 | 778364 | Spur Gear (38 teeth) | 46 | 786086 | Brake Lever Bracket |
| 6A | 778369 | Spur Gear (15 teeth-steel) | 47 | 774690 | Axle (11-15/16" long) |
| 7 | 778330 | Spur Gear (11 teeth) | 48 | 774691 | Axle (16-1/2" long) |
| 8 | 792180 | Shift Key | 49 | 778336 | Spur Gear (30 teeth) |
| 9 | 784352 | Shift Collar | 50 | 778338 | Spur Gear (27 teeth) |
| 10 | 784378 | Shift Rod & Fork | 51 | 778340 | Spur Gear (24 teeth) |
| 11 | 778334 | Bevel Gear (30 teeth) | 52 | 778342 | Spur Gear (22 teeth) |
| 12 | 778309 | Input Bevel Pinion (13 teeth) | 53 | 778352 | Spur Gear (19 teeth) |
| 13 | 778368 | Bevel Gear (13 teeth) (Incl. 14) | 54 | 778350 | Spur Gear (16 teeth) |
| 14 | 778368 | Bevel Pinion (13 teeth) (Incl.13) | 56 | 778335 | Spur Gear (10 teeth-steel) |
| 15 | 778370 | Ring Gear (43 teeth) | 57 | 778337 | Spur Gear (13 teeth) |
| 17 | 786188 | Drive Pin | 58 | 778339 | Spur Gear (16 teeth) |
| 18 | 786102 | Spacer 1.130 X .695 | 59 | 778341 | Spur Gear (18 teeth) |
| 20 | 792077A | Ball 5/16" dia | 60 | 778351 | Spur Gear (21 teeth) |
| 21 | 792078 | Set Screw 3/8-16 x 3/8" | 61 | 778349 | Spur Gear (24 teeth) |
| 22 | 792079 | Spring .310 ODx .625 L | 65 | 780189 | Flat Washer .563 ID x .062W |
| 25 | 792073A | Screw 1/4-20 x1-1/4" 17 | 66 | 776422 | Input Shaft |
| 25A | 792177 | Screw 1/4-20 x1-3/8" 2 | 67 | 776396 | Shifter & Brake Shaft |
| 26 | 792125 | Retaining Ring (pkg of 2) | 69 | 792170 | Retaining Ring |
| 27 | 792035 | Retaining Ring | 70 | 786187 | Spacer .890 |
| 28 | 788040 | Retaining Ring | 71 | 788069 | Square Cut Ring |
| 29 | 780072 | Thrust Washer .627ID x .031W | 71B | 788092 | "O" Ring |
| 29A | 780160 | Thrust Washer .563 ID x .031W | 76 | 780090 | Flat Washer 1.128 ID x .058W |
| 29B | 780051 | Thrust Washer .762 ID x .031W | 77 | 788078A | Inverted Retaining Ring |
| 29C | 780199 | Anti-Rotation Washer .632 | 79 | 792144 | Spring .430 OD x .5000 L |
| 30 | 780108 | Cup Washer 1.127ID x .032W | 82 | 778363 | Bevel & Spur Gear (30 & 13 teeth) |
| 31 | 780001 | Flat Washer .750ID x .056W(Use As Needed) | 83 | 778338 | Spur Gear (27 teeth) |
| 31A | 780195 | Flat Washer .750ID x .062W | 85 | 792154 | Oil Fill Plug |
| 32 | 788083 | Oil Seal 5/8" | 87 | 788089A | Oil Seal 9/16" |
| 34 | 780194 | Bushing .563 | 150 | 788093A | Liquid Gasket RTV Silicone |
| 35 | 780193 | Flanged Bushing 5/8" ID 2 | 157 | 788088A | Oil Seal 3/4" |
| 35A | 780197 | Flanged Bushing .751 2 | 180 | 730229A | Gear Oil 80W90 |
| 36 | 790075 | Brake Disk | 900 | 794715 | Replacement 206-546 Transaxle |
| 37 | 790007 | Brake Pad Plate | | | |
| 38 | 799021 | Brake Pad (pkg of 2) | | | |
| 39 | 786026 | Dowel Pin 5/16 x 3/4 | | | |
| 40 | 792076A | Flat Washer .312 ID x .059W | | | |
| 41 | 790094 | Brake Lever | | | |

Parts must be ordered from Tecumseh Products Co.

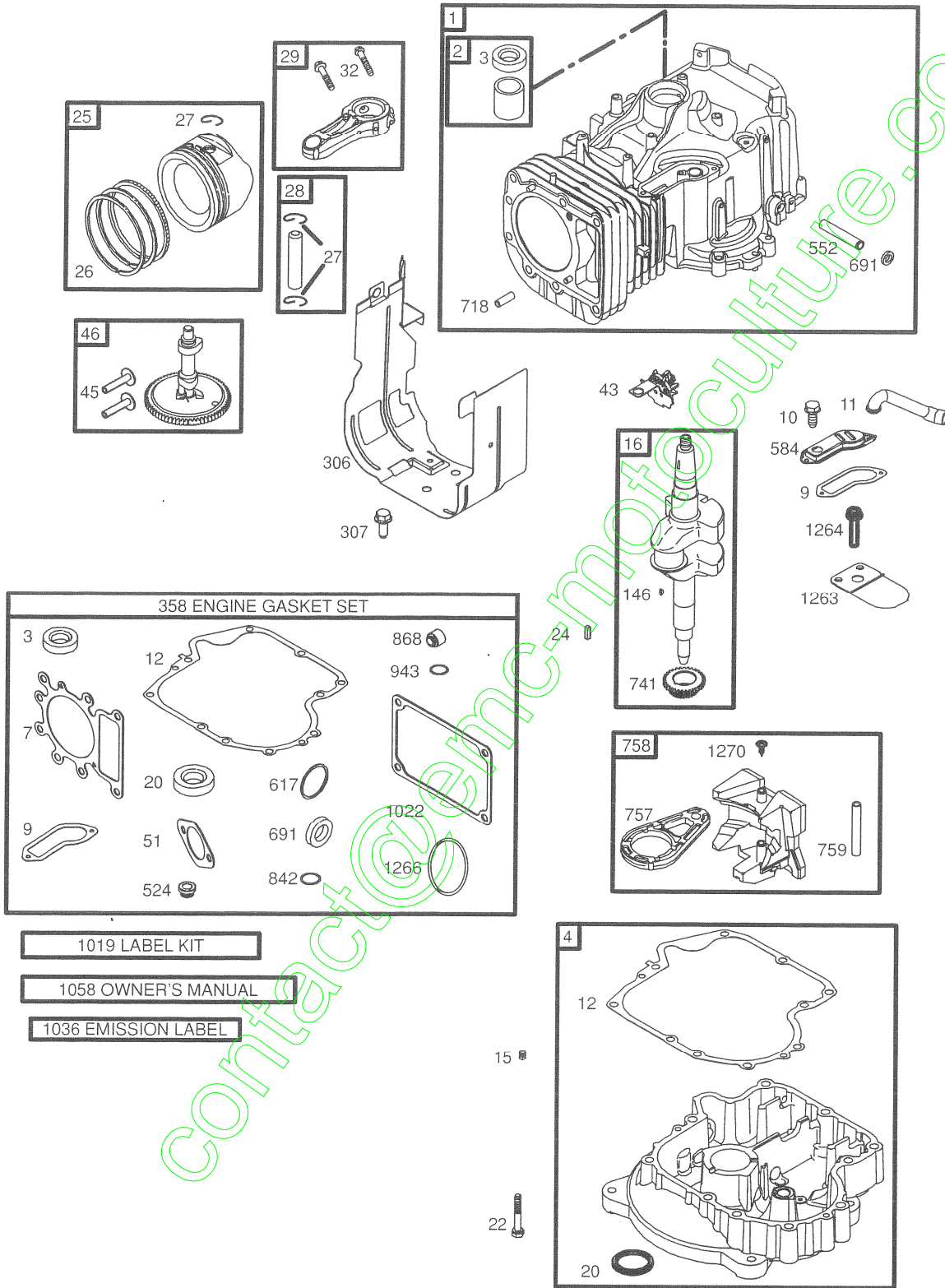
NOTE: All component dimensions given in U.S. inches
1 inch = 25.4 mm

contact@emc-motors.com

REPAIR PARTS

TRACTOR- -MODEL NO. 917.277103

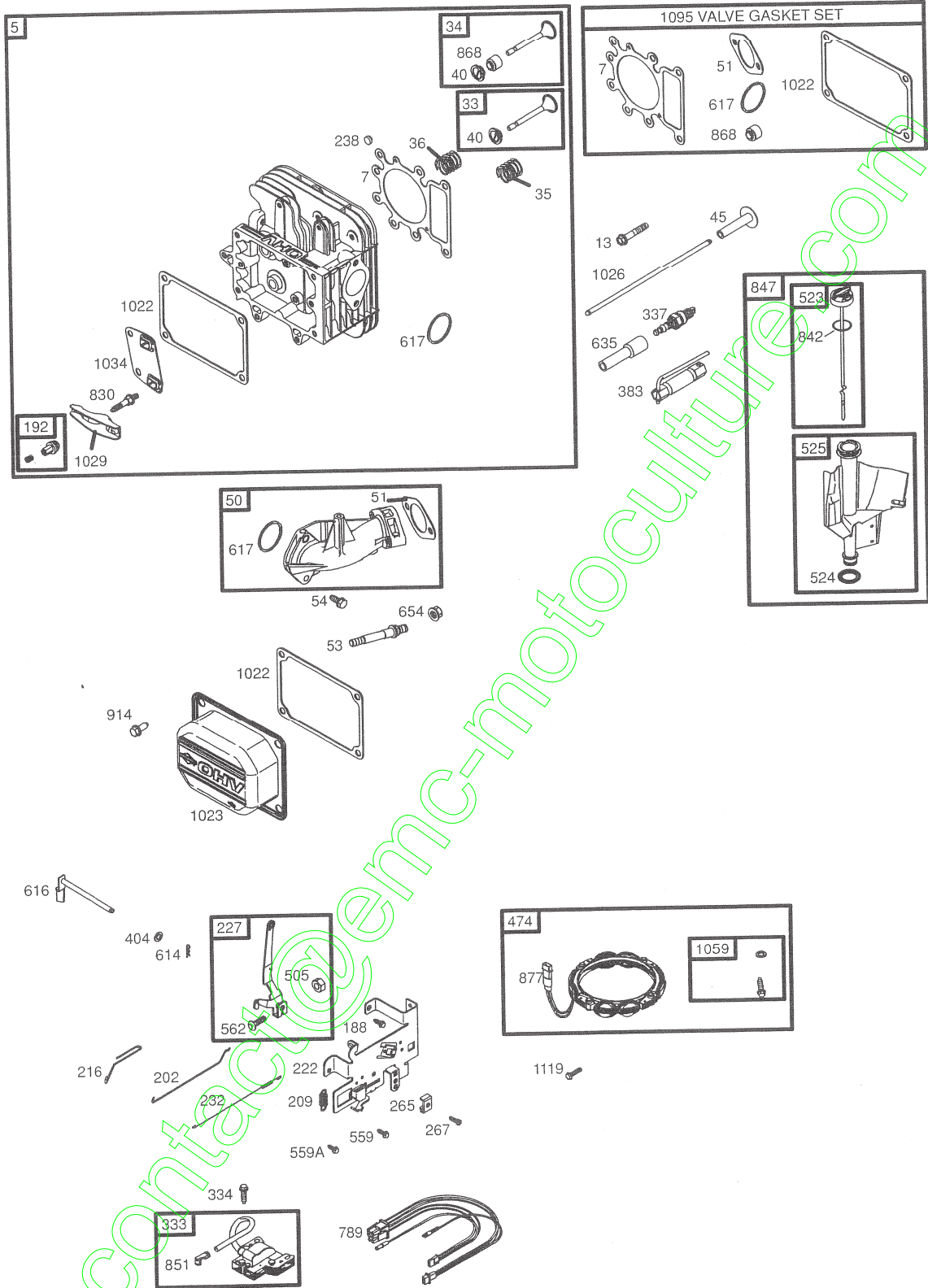
BRIGGS & STRATTON ENGINE - - MODEL NUMBER 282H07, TYPE NUMBER 0239-E1



REPAIR PARTS

TRACTOR- -MODEL NO. 917.277103

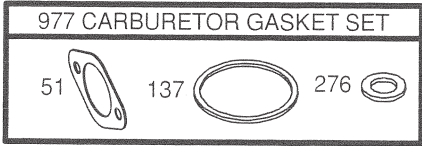
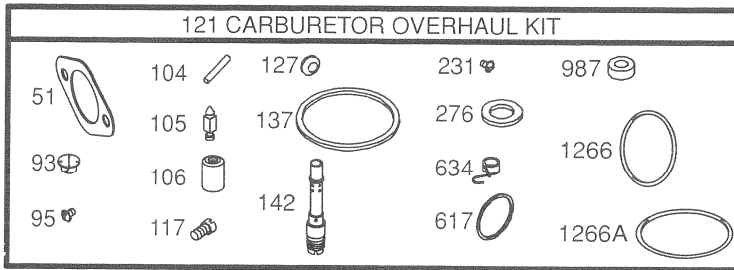
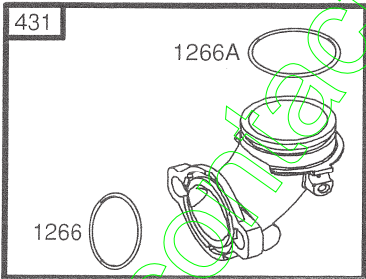
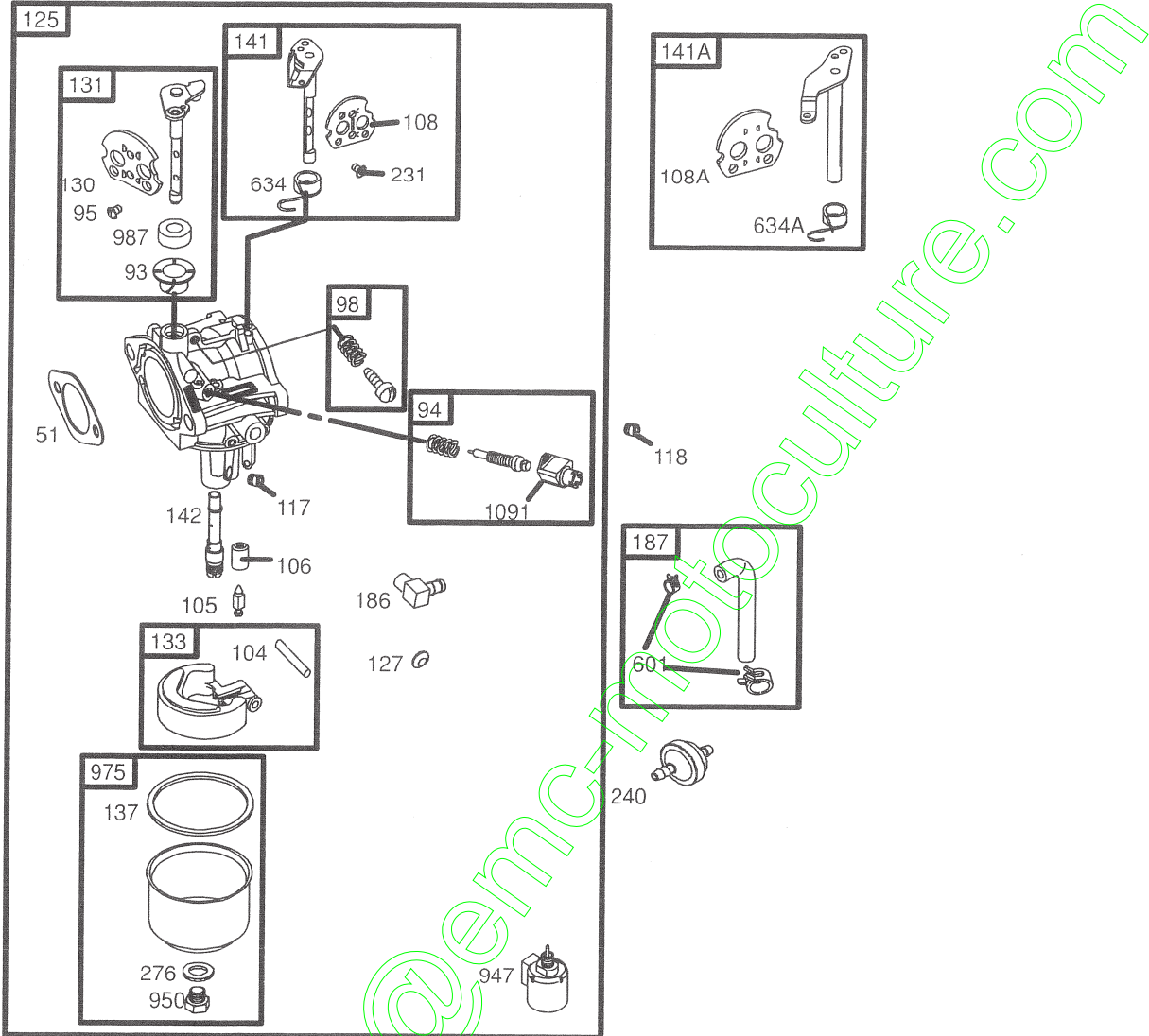
BRIGGS & STRATTON ENGINE - - MODEL NUMBER 282H07, TYPE NUMBER 0239-E1



REPAIR PARTS

TRACTOR- -MODEL NO. 917.277103

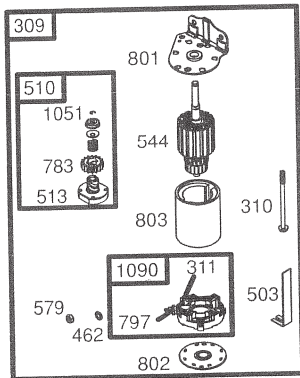
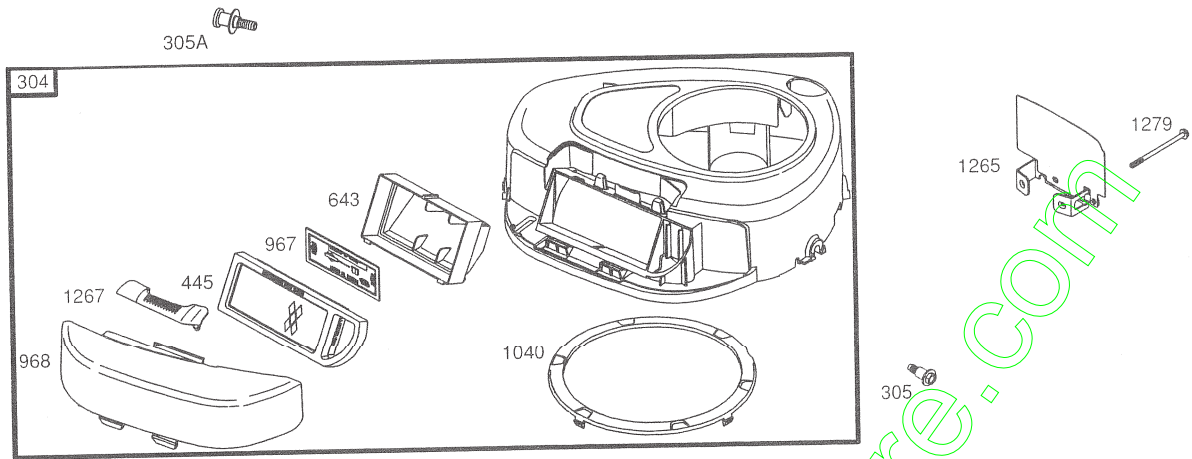
BRIGGS & STRATTON ENGINE - - MODEL NUMBER 282H07, TYPE NUMBER 0239-E1



REPAIR PARTS

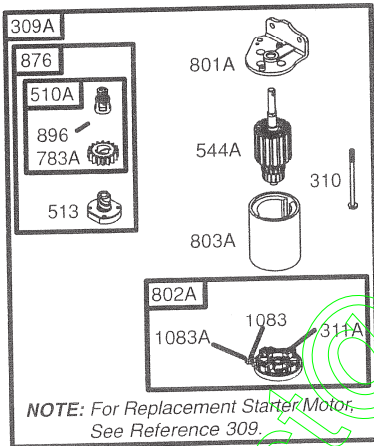
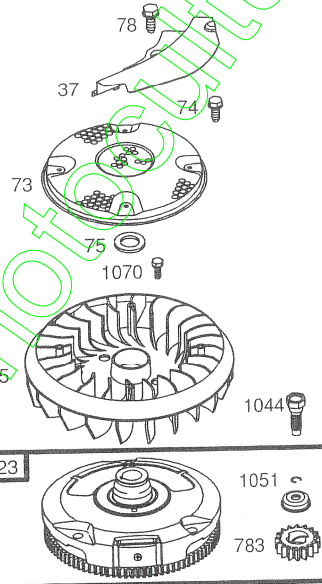
TRACTOR- -MODEL NO. 917.277103

BRIGGS & STRATTON ENGINE - - MODEL NUMBER 282H07, TYPE NUMBER 0239-E1



729

697



contact@emc-motors.com

REPAIR PARTS

TRACTOR- -MODEL NO. 917.277103

BRIGGS & STRATTON ENGINE - - MODEL NUMBER 282H07, TYPE NUMBER 0239-E1

| KEY NO. | PART NO. | DESCRIPTION | KEY NO. | PART NO. | DESCRIPTION |
|---------|----------|--|---------|----------|---|
| 1 | 697132 | Cylinder Assembly | 108 | 690464 | Valve-Choke (Manual Choke) |
| 2 | 399265 | Kit-Bushing/Seal (Magneto Side) | 108A | 692344 | Valve-Choke (Choke A Matic) |
| 3 | 391086 | • Seal-Oil (Magneto Side) | 117 | 694352 | Ø Jet-Main (Standard) |
| 4 | 697106 | Sump-Engine | 118 | 697228 | Jet-Main (High Altitude) |
| 5 | 698148 | Head-Cylinder | 121 | 697241 | Kit-Carburetor Overhaul |
| 7 | 273280 | •+ Gasket-Cylinder Head | 125 | 697190 | Carburetor |
| 9 | 697109 | • Gasket-Breather | 127 | 695005 | Plug-Welch |
| 10 | 697157 | Screw (Breather Assembly) | 130 | 691750 | Valve-Throttle |
| 11 | 697113 | Tube-Breather | 131 | 494379 | Kit-Throttle Shaft |
| 12 | 697110 | • Gasket-Crankcase | 133 | 494381 | Float-Carburetor |
| 13 | 690360 | Screw (Cylinder Head) | 137 | 281165 | Ø‡ Gasket-Float Bowl |
| 15 | 690946 | Plug-Oil Drain | 141 | 495097 | Kit-Choke Shaft (Manual Choke) |
| 16 | 697127 | Crankshaft | 141A | 495931 | Kit-Choke Shaft (Choke A Matic) |
| 20 | 690947 | • Seal-Oil (PTO Side) | 142 | 697140 | Ø Nozzle-Carburetor |
| 22 | 692125 | Screw (Crankcase Cover/Sump) | 146 | 691639 | Key-Timing |
| 23 | 693557 | Flywheel | 186 | 698174 | Connector-Hose |
| 24 | 222698 | Key-Flywheel | 187 | 697098 | Line-Fuel |
| 25 | 697114 | Piston Assembly (Standard) | 188 | 691693 | Screw (Control Bracket) |
| | 697116 | Piston Assembly (.010" Oversize) | 192 | 691986 | Adjuster-Rocker Arm |
| | 697117 | Piston Assembly (.020" Oversize) | 202 | 691841 | Link-Mechanical Governor |
| | 697118 | Piston Assembly (.030" Oversize) | 209 | 692208 | Spring-Governor |
| 26 | 697115 | Ring Set (Standard) | 216 | 691840 | Link-Choke |
| | 697119 | Ring Set (.010" Oversize) | 222 | 694042 | Bracket-Control |
| | 697120 | Ring Set (.020" Oversize) | 227 | 691374 | Lever-Governor Control |
| | 697121 | Ring Set (.030" Oversize) | 231 | 691636 | Screw (Choke Valve) |
| 27 | 698469 | Lock-Piston Pin | 232 | 691842 | Spring-Governor |
| 28 | 697099 | Pin-Piston | 238 | 691843 | Cap-Valve |
| 29 | 697126 | Rod-Connecting (Standard) | 240 | 394358 | Filter-Fuel |
| 32 | 692852 | Screw (Connecting Rod) | 265 | 691024 | Clamp-Casing |
| 33 | 495856 | Valve-Exhaust | 267 | 695134 | Screw (Casing Clamp) |
| 34 | 495857 | Valve-Intake | 276 | 692255 | Ø‡ Washer-Sealing |
| 35 | 691279 | Spring-Valve (Intake) | 304 | 698402 | Housing-Blower |
| 36 | 691279 | Spring-Valve (Exhaust) | 305 | 697102 | Screw (Blower Housing) |
| 37 | 697352 | Guard-Flywheel | 305A | 697103 | Screw (Blower Housing) |
| 40 | 691752 | Retainer-Valve | 306 | 697107 | Shield-Cylinder |
| 43 | 691968 | Slinger-Governor/Oil | 307 | 691003 | Screw (Cylinder Shield) |
| 45 | 690564 | Tappet-Valve | 309 | 693551 | Motor-Starter |
| 46 | 697687 | Camshaft | 309A | --- | Motor-Starter (For Replacement Starter |
| 48 | 697761 | Short Block (31C707-0230-E2 Replace- ment Engine-art not available) | 310 | 690323 | Motor, See Reference 309) |
| 50 | 690193 | Manifold-Intake | 311 | 497608 | Bolt (Starter Motor) |
| 51 | 692137 | •Ø‡+ Gasket-Intake | 311A | 395538 | Brush Set |
| 53 | 690227 | Stud (Carburetor) | 333 | 492341 | Brush Set |
| 54 | 691148 | Screw (Intake Manifold) | 334 | 691061 | Armature-Magneto |
| 73 | 697384 | Screen-Rotating | 337 | 691043 | Screw (Magneto Armature) |
| 74 | 697987 | Screw (Rotating Screen) | 358 | 697151 | Plug-Spark |
| 75 | 690582 | Washer (Flywheel) | 363 | 19203 | Gasket Set-Engine |
| 78 | 691003 | Screw (Flywheel Guard) | 383 | 89838 | Flywheel Puller |
| 93 | 690602 | Ø Bushing-Throttle Shaft | | | Wrench-Spark Plug |
| 94 | 498030 | Kit-Idle Mixture | | | RPM Settings: Low Speed: 1900-2100 |
| 95 | 691636 | Screw (Throttle Valve) | | | High Speed: 3000-3200 |
| 98 | 495800 | Kit-Idle Speed | | | |
| 104 | 690525 | Ø Pin-Float Hinge | • | | Included in Engine Gasket Set, Key. No. 358 |
| 105 | 231855 | Ø Valve-Float Needle | Ø | | Included in Carburetor Overhaul Kit, Key. No. 121 |
| 106 | 690577 | Ø Seat-Inlet | ‡ | | Included in Carburetor Gasket Set, Key. No. 977 |
| | | | + | | Included in Valve Gasket Set, Key. No. 1095 |