



REPAIR PARTS MANUAL
MODEL NO. 277121
Lawn Tractor



HOW TO USE THIS MANUAL

This manual is designed to provide the customer with a means to identify the parts on his/her tractor when ordering repair parts. The illustrations may or may not represent the actual assemblies; therefore, it is not recommended to use this manual as a guide to assemble or disassemble the tractor. Some hardware and parts are drawn larger in order to more readily identify them.

Each tractor has its own model number.

The model number for your tractor can be found on the fender under the seat.

When ordering parts, always give the following information:

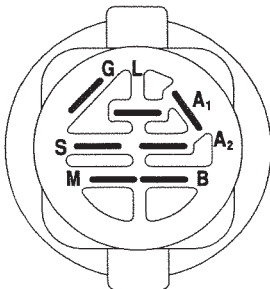
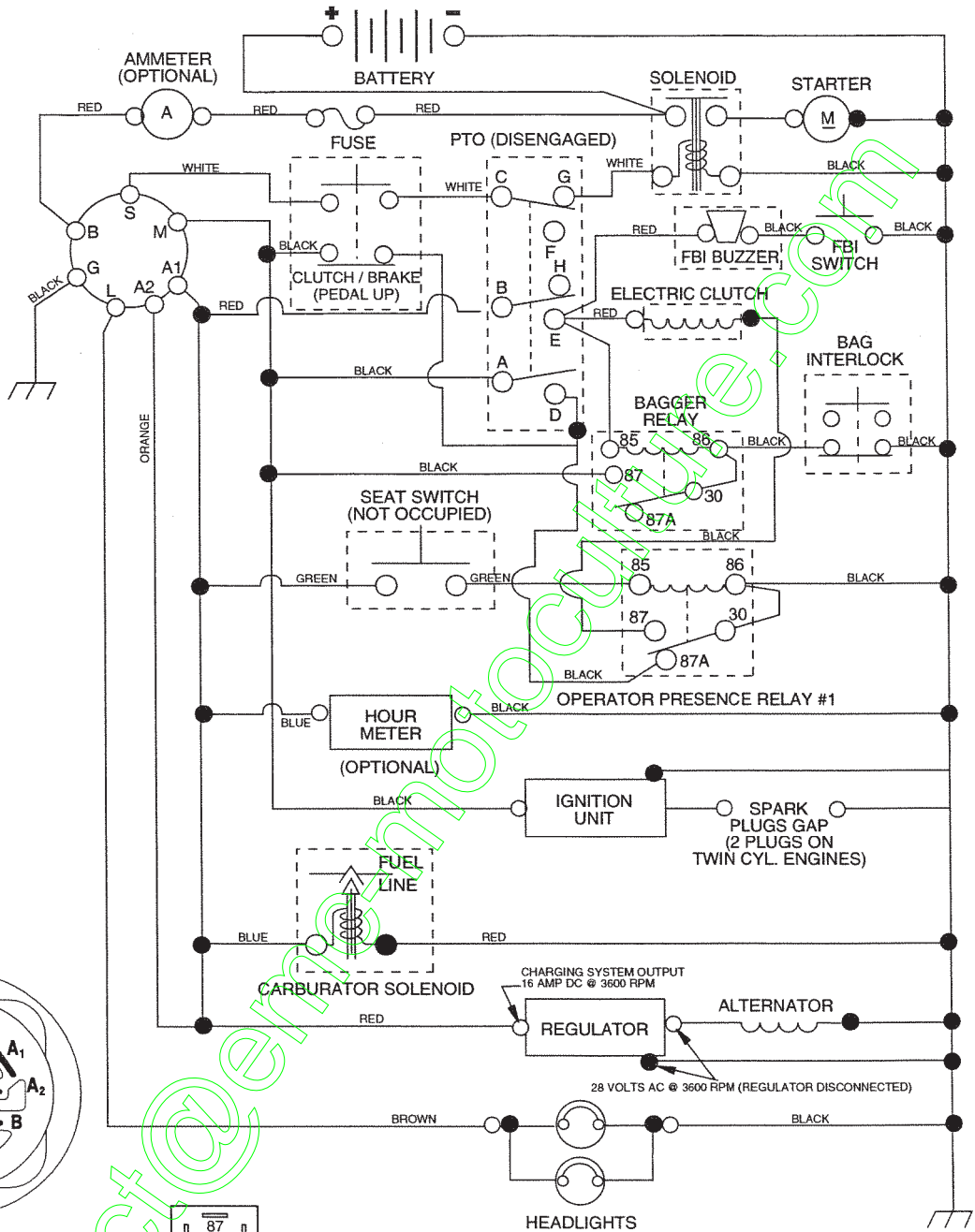
- Product - "Tractor"
- Model Number - 277121
- Part Number
- Part Description

TABLE OF CONTENTS

SCHEMATIC	3
ELECTRICAL.....	4-5
CHASSIS.....	6-7
DRIVE.....	8-9
STEERING	10-11
SEAT	12
DECALS.....	13
ENGINE.....	14
MOWER LIFT.....	15
MOWER DECK	16-17
BAGGER	18-19
TRANSAXLE.....	20-21
ENGINE BREAKDOWN.....	22-26
WARRANTY.....	27

TRACTOR- -MODEL NO. 917.277121

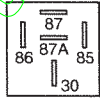
SCHEMATIC



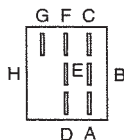
IGNITION SWITCH

POSITION	CIRCUIT	"MAKE"
OFF	M+G+A1	NONE
RUN/LIGHT	B+A1	A2+L
RUN	B+A1	NONE
START	B + S + A1	NONE

WIRING INSULATED CLIPS
NOTE: IF WIRING INSULATED CLIPS WERE REMOVED FOR SERVICING OF UNIT, THEY SHOULD BE REPLACED TO PROPERLY SECURE YOUR WIRING.



RELAY



PTO SWITCH

POSITION	CIRCUIT
OFF	C + G, B + H
ON	C + F, B + E, A + D

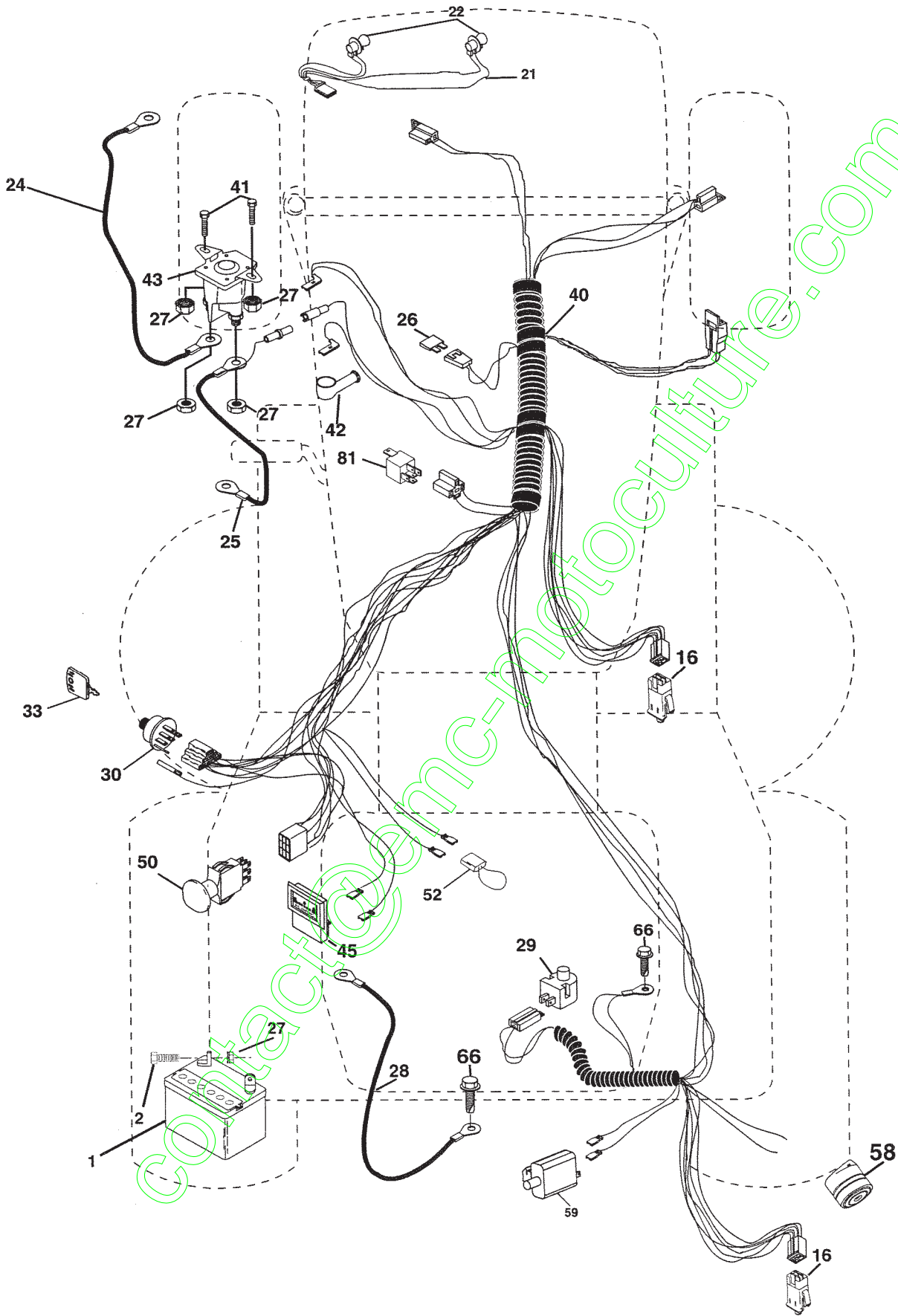
●
NON-REMOVABLE CONNECTIONS

○
REMOVABLE CONNECTIONS

REPAIR PARTS

TRACTOR- -MODEL NO. 917.277121

ELECTRICAL



REPAIR PARTS

TRACTOR- -MODEL NO. 917.277121

ELECTRICAL

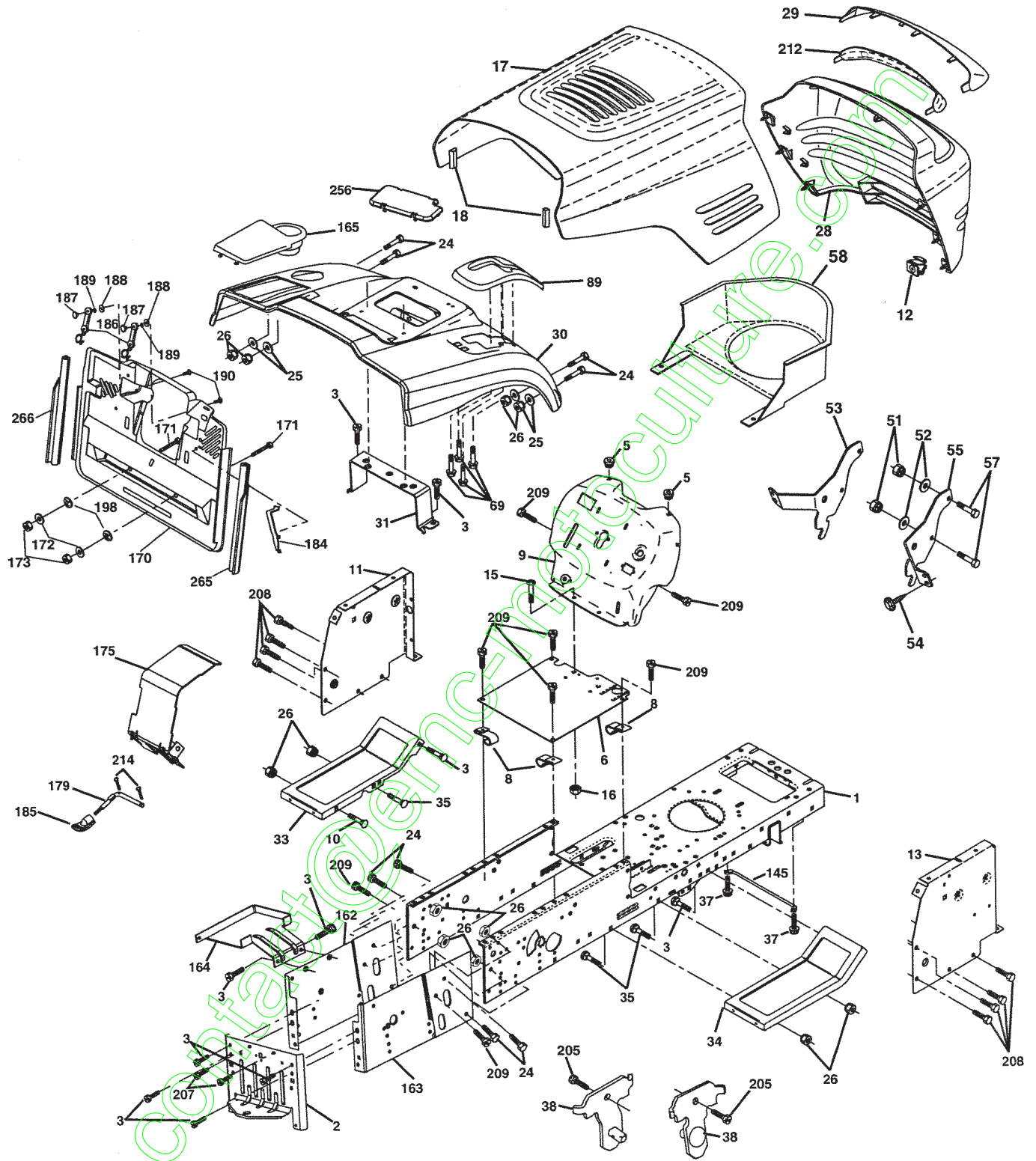
KEY NO.	PART NO.	DESCRIPTION
1	144927	Battery
2	74760412	Bolt Hex Hd 1/4-20 Unc X 3/4
16	176138	Switch Interlock
21	175688	Harness Asm Light W/4152J
22	4152J	Bulb Light #1156
24	4799J	Cable Starter 6Ga 11" Red
25	165987	Cable Battery Crd 56" Red
26	175158	Fuse
27	73510400	Nut Keps Hex 1/4-20 Unc
28	127725X	Cable Ground 6Ga 18" Black
29	160784	Switch Plunger
30	175566	Switch Ignition
33	140403	Key Ign
40	179727	Harness Ign
41	71110408	Bolt Flk Fin Hex 1/4-20 Unc X 1/2
42	131563	Cover Terminal Red
43	178861	Solenoid
45	122822X	Ammeter Rectangular
50	174652	Switch PTO
51	140405	Ring Retainer PTO
52	141940	Protection Wire Loop
58	169419	Buzzer Crd
59	180379	Switch FBI CRD
66	17490608	Screw Thdrol 3/8-16 x 1/2 Ty-Tt
81	109748	Relay Asm

NOTE: All component dimensions given in U.S. inches.
1 inch = 25.4 mm.

REPAIR PARTS

TRACTOR- -MODEL NO. 917.277121

CHASSIS AND ENCLOSURES



REPAIR PARTS

TRACTOR- -MODEL NO. 917.277121

CHASSIS AND ENCLOSURES

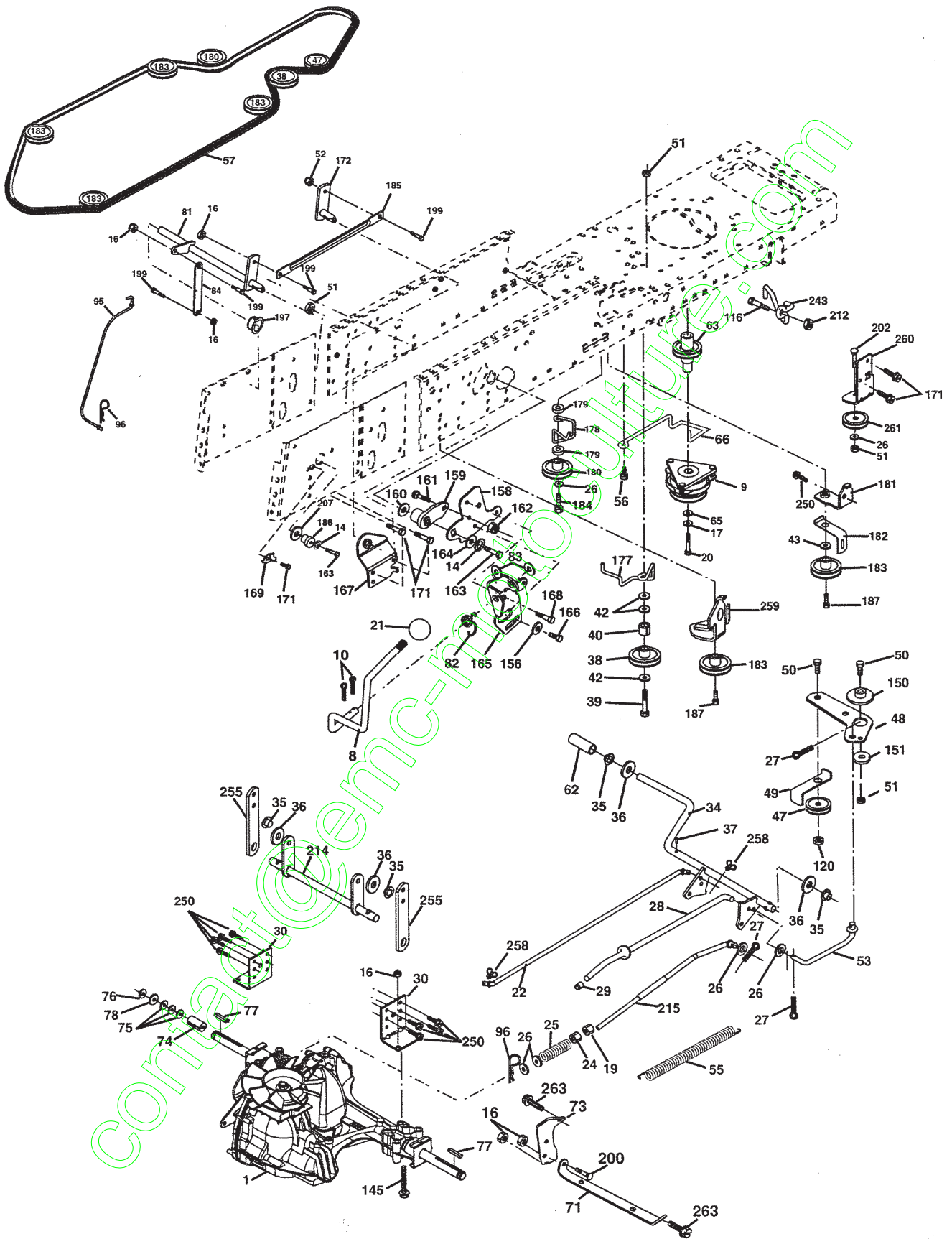
KEY NO.	PART NO.	DESCRIPTION	KEY NO.	PART NO.	DESCRIPTION
1	174620	Chassis	58	174930	Duct Air Engine P/Lt
2	180384	Drawbar	69	142432	Screw Hex 1/4-1/2
3	17060612	Screw 3/8-16 x .75	89	177287X428	Console
5	155272	Bumper Hood/Dash	145	156524	Rod Pivot Chassis/Hood
6	184419	Saddle	162	180382	Bracket Exten Chassis Lh CRD
8	126471X	Clip Insulator 13/32 Mtg. Hole	163	180383	Bracket Exten Chassis Rh CRD
9	168352X012	Dash	164	165605	Support Battery CRD
10	72140608	Bolt, Carriage 3/8-16 x 3/4	165	179020X428	Cover Battery CRD
11	174996	Panel, Dash, L.H.	170	178862	Backplate CRD
12	145660	Clip Tinnerman Grille P/L	171	72140620	Bolt Rdhd Sqnk 3/8-16 x 2-1/2 G5
13	172106	Panel, Asm. Dash R.H.	172	19132016	Washer 13/32 x 1-1/4 x 16 Ga.
15	74180512	Screw, Machine, Truss Head 5/16-18 UNC x 3/4	173	73510600	Nut, Keps Hex 3/8-16 UNC
16	73510500	Nut	175	180310	Trap Door CRD
17	144983X558	Hood Assembly	179	180376	Rod Pivot FBI CRD
18	184921	Bumper Hood	184	174662	Bracket Actuator Bagger CRD
24	74780616	Bolt	185	179608X505	Knob Rod
25	19131312	Washer 13/32 x 13/16 x 12 Gauge	186	160793	Latch Asm Multch Bagger
26	73800600	Nut	187	2029J	Nut Weld .327/.304 #10-24
28	178987X558	Grille Lens Asm	188	19061216	Washer #10
29	155217X599	Lens	189	10071000	Washer Lock #10
30	169962X558	Fender	190	71081010	Screw Pan Hd Phillips 10-24 x 5/8
31	165156	Bracket, Fender Support	198	168937	Nut Push
33	179716X558	Footrest, L.H.	205	17490608	Screw 3/8-16 x 1/2
34	179717X558	Footrest, R.H.	207	17670508	Screw 5/16-18 x 1/2
35	72110606	Bolt	208	17670608	Screw Thdrol 3/8-16 x 1/2
37	17490508	Screw Thdrol 5/16-18 x 1/2 TYT	209	17000612	Screw Hex Wsh Thdrol 3/8-16 x 3/4
38	181748	Bracket Asm Pivot Mower Rear	212	165919	Insert Lens Reflective
51	73800400	Nut Lock w/Insert 1/4-20 UNC	214	4497H	Retainer Spring 1"
52	19091416	Washer 9/32 x 7/8 x 16 Ga.	256	180810X428	Cover Fender Rack CRD
53	145201	Bracket Grille Lh	265	185704	Seal Side RH
54	161464	Screw Hex Wshd 8-18 x 7/8	266	185703	Seal Side LH
55	145202	Bracket Grille Rh			
57	74780412	Bolt, Fin Hex 1/4-20 UNC x .75			

NOTE: All component dimensions given in U.S. inches.
1 inch = 25.4 mm.

REPAIR PARTS

TRACTOR- -MODEL NO. 917.277121

DRIVE



REPAIR PARTS

TRACTOR- -MODEL NO. 917.277121

DRIVE

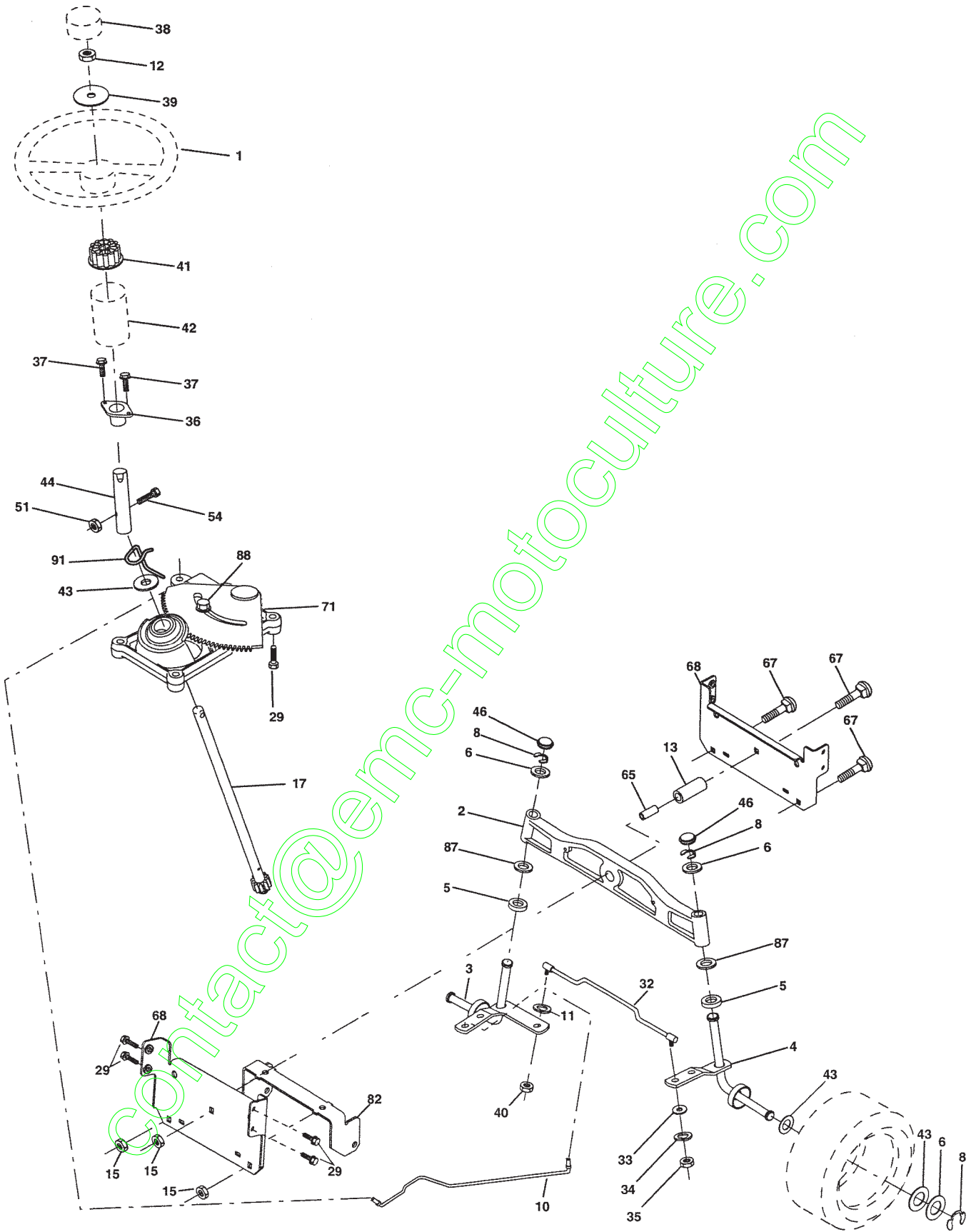
KEY NO.	PART NO.	DESCRIPTION	KEY NO.	PART NO.	DESCRIPTION
1	-----	Transaxle Hydro Gear 321-0510 (See Breakdown))	95	170015	Control Asm Bypass Hydro
8	165619	Rod, Shift Fender Adjust Lt	96	4497H	Spring, Retainer 1"
9	180220	Clutch Elec.	116	72140608	Bolt RDHD Spnk 3/8-16 x 1
10	76020416	Pin, Cotter 1/8 x 1	120	73900600	Nut Lock Flg. 3/8-16 Unc
14	10040400	Washer, Lock Hvy Helical	145	74490544	Bolt Hex FGHD 5/16-18 x Gr 5
16	73800500	Nut, Lock Hex w/Ins 5/16-18 UNC	150	165850	Bushing, Bellcrank Grnd Dr
17	126197X	Washer 1 1/2 x 15/32 x 1/4	151	19133210	Washer 13/32 x 2 x 10 Ga.
19	73800600	Nut Lock Hex w/Ins. 3/8-16 Unc	156	166002	Washer Srrted 5/16ID x 1.125
20	71170764	Bolt Hex 7/16-20 x 4 x Gr. 5	158	165589	Bracket Shift Mount
21	130564	Knob	159	183900	Hub Tapered Flange Shift Lt
22	175607	Rod, Brake	160	19292016	Washer 29/32 x 1-1/4 x 16 Ga.
24	73350600	Nut	161	72140406	Bolt Rdhd Sqnk 1/4-20 x 3/4 Gr 5
25	106888X	Spring, Rod, Brake	162	73680400	Nut Crownlock 1/4-20 Unc
26	19131316	Washer 13/32 x 13/16 x 16 Ga.	163	74780416	Bolt Hex Fin 1/4-20 Unc x 1 Gr 5
27	76020412	Pin, Cotter 1/8 x 3/4	164	19091010	Washer 5/8 x .281 x 10 Ga.
28	175765	Rod, Parking Brake	165	165623	Bracket Pivot Lever
29	071673	Cap, Parking Brake	166	166880	Screw 5/16-18 x 5/8
30	169592	Bracket, Mfg. Transaxle	167	165588	Bracket Support Shift CRD
34	175578	Shaft, Asm Pedal Foot CRD	168	165492	Bolt Shoulder 5/16-18 x .561
35	120183X	Bearing, Nylon	169	165580	Plate Fastening Lt
36	19211616	Washer 21/32 x 1 x 16 Ga.	171	17490608	Screw Thdrol 3/8-16 x 1/2 Ty-Tt
37	1572H	Pin, Roll 3/16 x 1"	172	170271	Shaft Asm Shifter Frt CRD
38	165936	Pulley Flat Composite 3.06"	177	165932	Keeper Flat Idler 3.06" CRD
39	74760644	Bolt Fin Hex 3/8-16 Unc x 2-3/4	178	165933	Keeper Belt Idler 1.88" CRD
40	4470J	Spacer, Split 395 x 59 Bzp	179	120958X	Washer Sintered
42	19131312	Washer 13/32 x 13/16 x 12 Ga.	180	165630	Pulley, Idler, Flat 1.88"CRD
43	19111012	Washer 11/32 x 5/8 x 12 Ga	181	180211	Bracket Idler Ground Drive CRD
47	127783	Pulley, Idler, V Groove Plasic	182	182682	Keeper Belt 2.5" Od V-Idler CRD
48	154407	Bellcrank Clutch Grnd Drv	183	186007	Pulley V-Idler 2.50" Od CRD
49	123205X	Retainer, Belt Style Spring	184	17490644	Screw Hexwsh Thdrol 3/8-16 x 2-3/4
50	72110612	Bolt Carr Sh. 3/8-16 x 1-1/2 Gr. 5	185	170008	Link Shift
51	73680600	Nut, Crownlock 3/8-16 UNC	186	165614	Hub Tapered Round CRD
52	73680500	Nut Crownlock 5/16-18	187	17580520	Screw Thdrol 5/16-18 x 1.25
53	105710X	Link, Clutch 7.66	197	169613	Nyliner Snap-In 5/8
55	105709X	Spring, Return, Clutch	199	169612	Bolt Shoulder 5/16-18 Unc
56	17060620	Screw 3/8-16 x 1-1/4	200	72140508	Bolt RDHD SQNK 5/16-18 x 1
57	170140	V-Belt Kev 112" 0650 CRD	202	72110614	Bolt Carr. Sh. 3/8-16 x 1-3/4 Gr. 5
62	8883R	Cover, Pedal	207	169845	Washer Nylon Rear
63	180397	Pulley Engine	212	145212	Nut Hex Flange Lock
65	10040700	Washer	214	175609	Shaft Asm. Brake
66	154778	Keeper, Belt Engine F-Proof	215	175652	Rod Brake Hydro
71	169183	Strap, Torque, Lh	243	178289	Bracket Anti-Rotate
73	169182	Strap, Torque, Rh	250	17060612	Screw 3/8-16 x .75
74	137057	Spacer, Split	255	175608	Brace Shaft Brake Mtg.
75	121749X	Washer 25/32 x 1-1/4 x 16 Ga.	258	178062	Clip Retainer
76	12000001	Ring, E	259	180212	Bracket Pulley
77	123583X	Key, Square	260	181781	Bracket Idler Chassis
78	121748	Washer 25/32 x 1-5/8 x 16 Ga.	261	131494	Pulley Idler Flat
81	170006	Asm, Shaft	263	17000612	Screw 3/8-16 x 3/4
82	165711	Spring, Torsion			
83	19171216	Washer 17/32 x 3/4 x 16 Ga.			
84	170007	Link, Transaxle			

NOTE: All component dimensions given in U.S. inches
1 inch = 25.4 mm

REPAIR PARTS

TRACTOR- -MODEL NO. 917.277121

STEERING ASSEMBLY



REPAIR PARTS

TRACTOR- -MODEL NO. 917.277121

STEERING ASSEMBLY

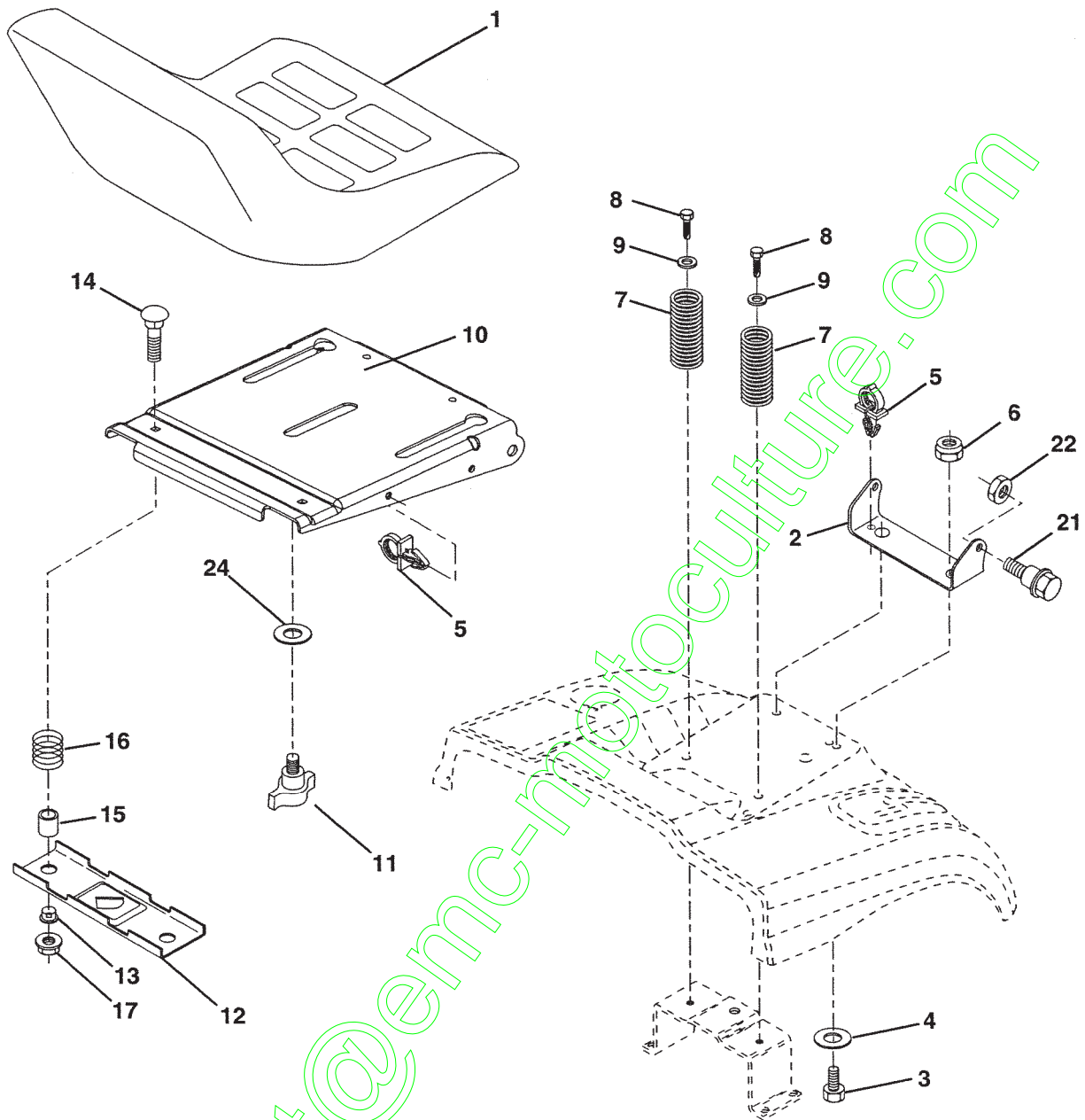
KEY NO.	PART NO.	DESCRIPTION
1	139768	Steering Wheel
2	172393	Cast Iron Axle Assembly
3	169840	Spindle Assembly, L.H.
4	169839	Spindle Assembly, R.H.
5	6266H	Bearing, Race, Thrust, Hardened
6	121748X	Washer 25/32 x 1-5/8 x 16 Gauge
8	12000029	Ring, Klip
10	175121	Link, Drag
11	10040600	Washer, Lock
12	73940800	Nut Hex Jam Toplock 1/2-20 Unf
13	136518	Spacer Brg Axle Front
15	145212	Nut, Hexflange Lock
17	180641	Shaft Assembly, Steering
29	17060612	Screw, 3/8-16 x 3/4
32	171888	Rod, Tie
33	19111216	Washer 11/32 x 3/4 x 16 Ga
34	10040500	Washer Lock Hvy Hlcl Spr 5/16
35	73540500	Nut Crownlock 5/16-24 Unf
36	155099	Bushing, Steering
37	152927	Screw TT #10-32 x 5 x 3/8 Flange
38	139769	Cap Wheel Steer
39	19183812	Washer 9/16 x 2 3/8 x 12 Ga
40	7810H	Nut Lock Center 3/8-24 Unf
41	100711L	Adaptor, Steering Wheel
42	145054X428	Boot, Steering Dash P/L Mtl
43	121749X	Washer 25/32 x 1-1/4 x 16 Gauge
44	180640	Extension Steering
46	184946X505	Cap, Spindle
51	73540400	Nut Crownlock 1/4-28
54	71130420	Bolt Hex 1/4-28 Unf x 1 1/4
65	160367	Spacer Brace Axle
67	72140618	Bolt Rdhd Sq 3/8-16 UNC x 2-1/4
71	175146	Steering Asm.
68	169827	Brace Axle
82	169835	Bracket Susp Chassis Front
87	173966	Washer Flat .781 x 1-1/2 x .14
88	175118	Bolt Shoulder 7/16-20 Unc
91	175553	Clip Steering

NOTE: All component dimensions given in U.S. inches.
1 inch = 25.4 mm.

REPAIR PARTS

TRACTOR- -MODEL NO. 917.277121

SEAT ASSEMBLY



KEY NO.	PART NO.	DESCRIPTION
1	180597	Seat
2	180166	Bracket Pnt Pivot Seat (blk)
3	71110616	Bolt Fin Hex 3/8-16 Unc x 1
4	19131610	Washer Flat 13/32 x 1 x 10 Ga.
5	145006	Clip Push In Hinged
6	73800600	Nut Lock Hex 3/8-16 Unc
7	124181X	Spring Seat Cprsn 2 250 Blk Zi
8	17000616	Screw 3/8-16 X 1-1/2
9	19131614	Washer 13/32 X 1 X 14 Ga
10	180186	Pan Pnt Seat (blk)
11	166369	Knob Seat Adj Wingnut
12	121246X	Bracket Pnt Mounting Switch

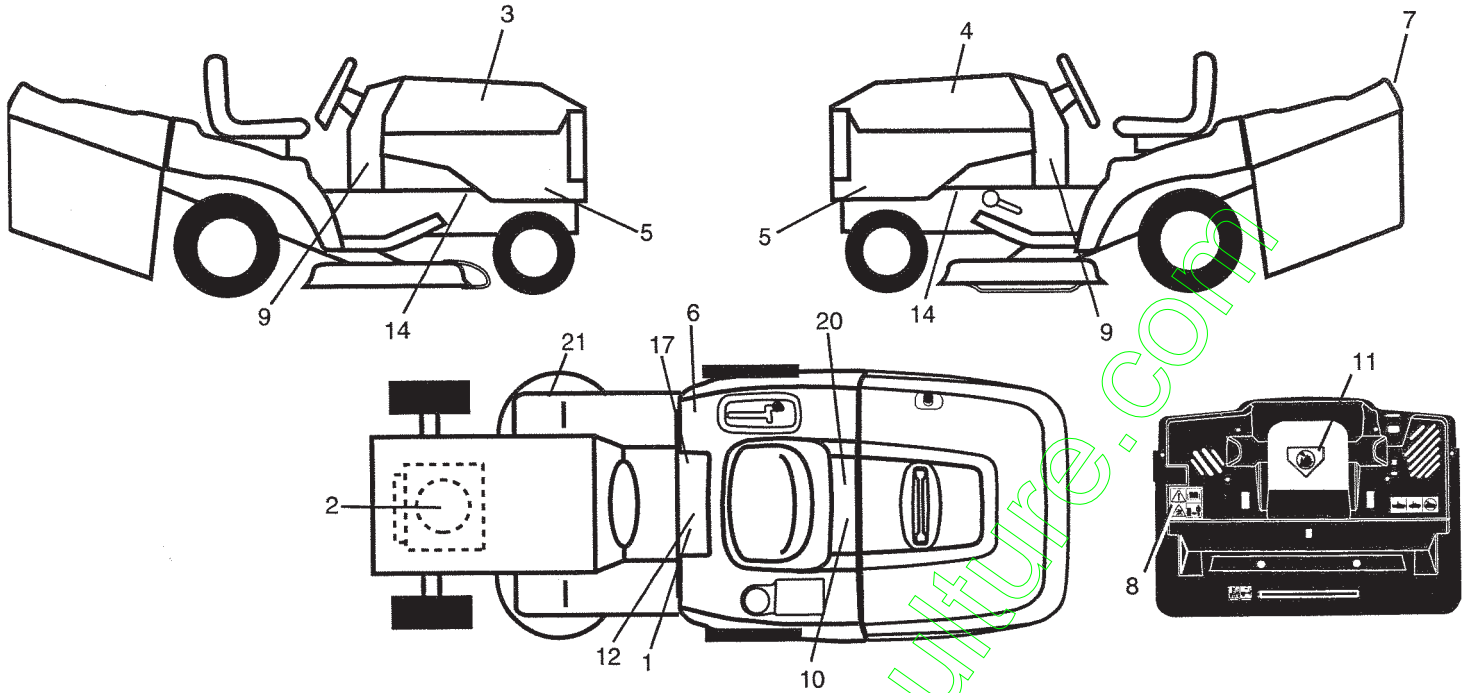
KEY NO.	PART NO.	DESCRIPTION
13	121248X	Bushing Snap Blk Nyl 50 Id
14	72050412	Bolt Rdhd Sht Nk 1/4-20x1-1/2
15	134300	Spacer Split
16	121250X	Spring Cprsn
17	123976X	Nut Lock 1/4 Lge Flg Gr 5 Zinc
21	171852	Bolt Shoulder 5/16-18 Unc-2A
22	73800500	Nut Hex Lock w/Ins 5/16-18
24	19171912	Washer 17/32 X 1-3/16 X 12 Ga.

NOTE: All component dimensions given in U.S. inches.
1 inch = 25.4 mm

REPAIR PARTS

TRACTOR- -MODEL NO. 917.277121

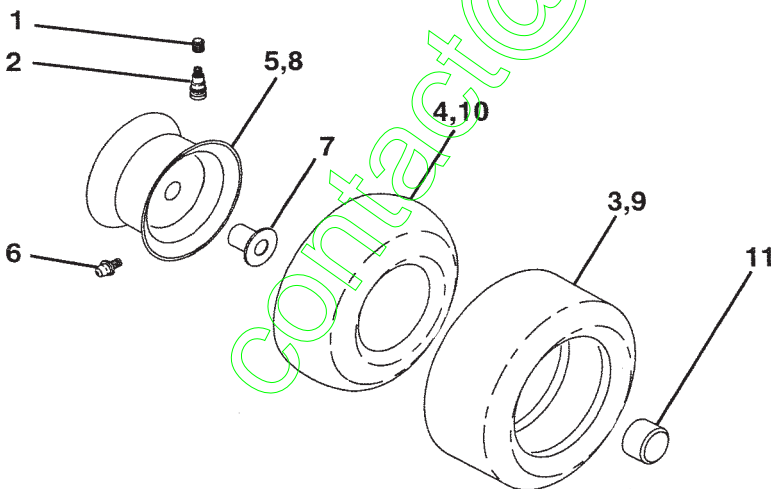
DECALS



KEY NO.	PART NO.	DESCRIPTION
1	145498	Decal Read Owner's Manual Sym
2	181659	Decal Hp Engine
3	171696	Decal Hood RH
4	171697	Decal Hood LH
5	177253	Decal Hood Side
6	180432	Decal 100 DBA/CE
7	163204	Decal Fender
8	180435	Decal Rear Plate
9	181824	Decal Dash Lower
10	145005	Decal Bat Dan/Poi P/L Sym Wpn

KEY NO.	PART NO.	DESCRIPTION
11	182166	Decal Mower Cut Finger Symbol
12	159737	Decal Brake/Clutch Symbol Lt
14	159736	Decal Chassis Hot Muffler
17	140837	Decal Saddle Brake Parking
20	166960	Decal Bypass Fender CRD
21	166286	Decal Hex Belt Sch
—	138311	Decal Lift Handle
—	179769X428	Pad Footrest RH
—	179768X428	Pad Footrest LH
—	182621	Decal Bagger Frame
—	186518	Manual Operator's (Scan)
—	186519	Manual Operator's (Euro)
—	186520	Manual Parts

WHEELS & TIRES



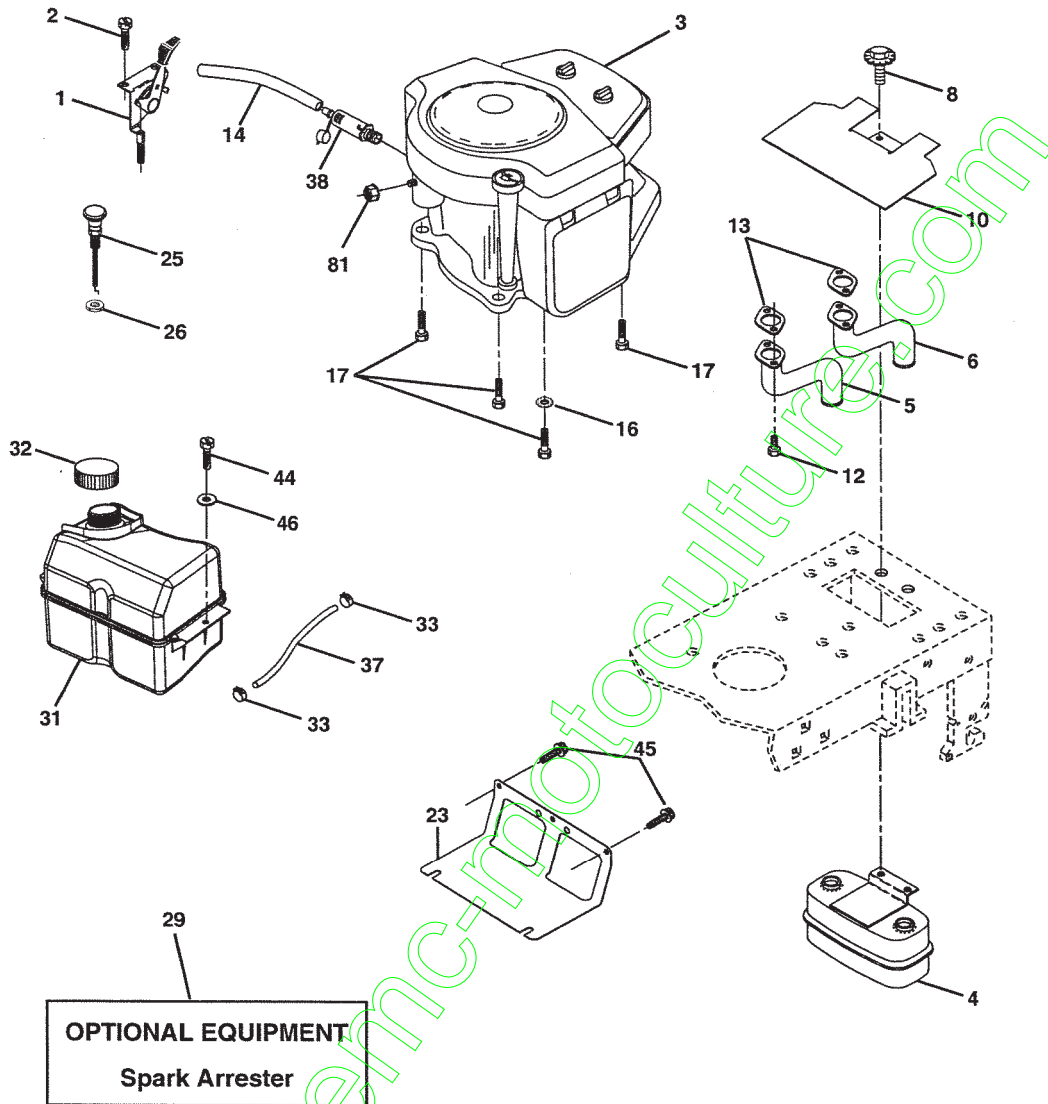
KEY NO.	PART NO.	DESCRIPTION
1	59192	Cap Value Tire
2	65139	Stem Value
3	106222X	Tire F Ts 15 X 6 0 - 6 Service
4	59904	Tube Inner Front #35060
5	106732X624	Rim Asm 6"front Service
6	278H	Fitting Grease
7	9040H	Bearing Flange
8	106108X624	Rim Asm 8"rear Service
9	122082X	Tire R Ts 20 x 8-8 Service
10	7152J	Tube Rear 9 5 X 8 Service
11	104757X428	Cap Axle Blk 1 50 X 1 00
--	144334	Sealant, Tire (10 oz. tube)

NOTE: All component dimensions given in U.S. inches
1 inch = 25.4 mm

REPAIR PARTS

TRACTOR- -MODEL NO. 917.277121

ENGINE



OPTIONAL EQUIPMENT
Spark Arrester

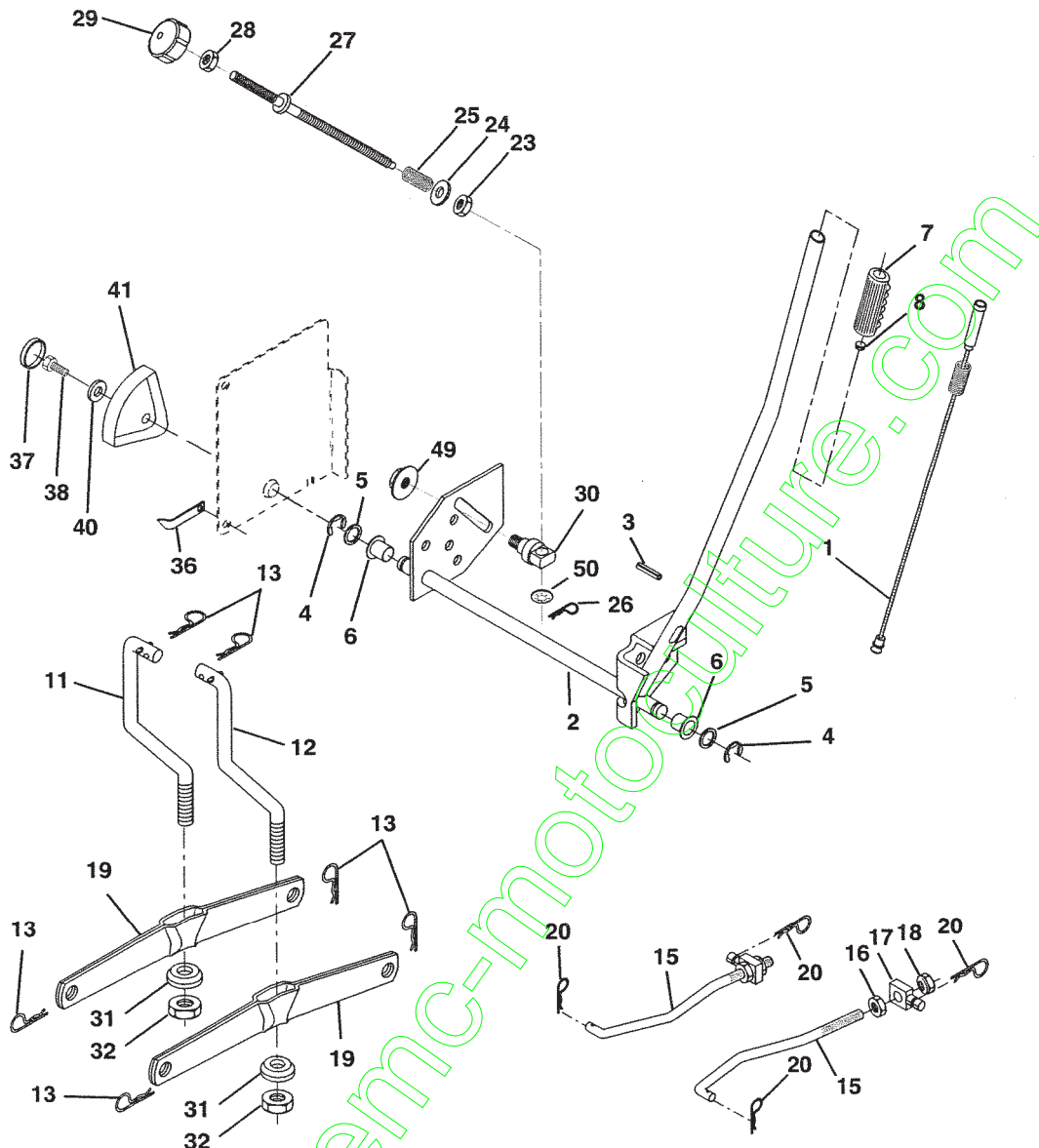
KEY NO.	PART NO.	DESCRIPTION	KEY NO.	PART NO.	DESCRIPTION
1	170546	Control Throt Flag	23	169837	Shield BRN/DBR Guard
2	17720408	Screw Hex Thd Cut 1/4-20x1/2	25	145996	Control Choke
3	-----	Engine B&S Model 407677-0232-E1 (See Engine Breakdown)	26	73920600	Nut Keps 3/8-24 Unf
4	149723	Muffler Exhaust	29	137180	Arrester Spark
5	159955	Exhaust Asm. Left	31	185534	Tank Fuel Front 2.00 Gal.
6	160589	Exhaust Asm. Right	32	140527	Cap Fuel Asm Top Vent
8	171877	Bolt 5/16-18 Unc x 3/4 w/Sems	33	123487X	Clamp Hose Blk
10	162797	Heat Shield Lt	37	137040	Line Fuel
12	183906	Screw Socket Head 5/16-18 x 1	38	181654	Plug Drain Oil Easy
13	165391	Gasket Muffler	44	17670412	Screw Hexwsh Thdrol 1/4-20 x 3/4
14	148456	Tube Drain Oil Easy	45	17000612	Screw 3/8-16 x 3/4
16	11050600	Washer Lock Ext Tooth 3/8	46	19091416	Washer 9/32 X 7/8 X 16ga
17	17060624	Screw 3/8-16 x 1-1/2	81	73510400	Nut Keps 1/4-20 UNC

NOTE: All component dimensions given in U.S. inches
1 inch = 25.4 mm

REPAIR PARTS

TRACTOR- -MODEL NO. 917.277121

MOWER LIFT



KEY NO.	PART NO.	DESCRIPTION
1	159460	Washer Asm Inner Spring W/ Plunger
2	159471	Shaft Asm. Lift
3	105767X	Pin Groove
4	12000002	E Ring #5133-62
5	19211621	Washer 21/32 x 1 x 21 Ga.
6	120183X	Bearing Nylon
7	125631X	Grip Handle Fluted
8	122365X	Button Plunger Red
11	165829	Link Asm Lift L.H.
12	165831	Link Asm Lift R.H.
13	4939M	Retainer Spring
15	173288	Link Front
16	73350800	Nut Jam Hex 1/2-13 Unc
17	175689	Trunnion Blk Zinc
18	73800800	Nut Lock w/wsh 1/2-13 Unc
19	139868	Arm Suspension Mower
20	163552	Retainer Spring
23	110807X	Nut Special

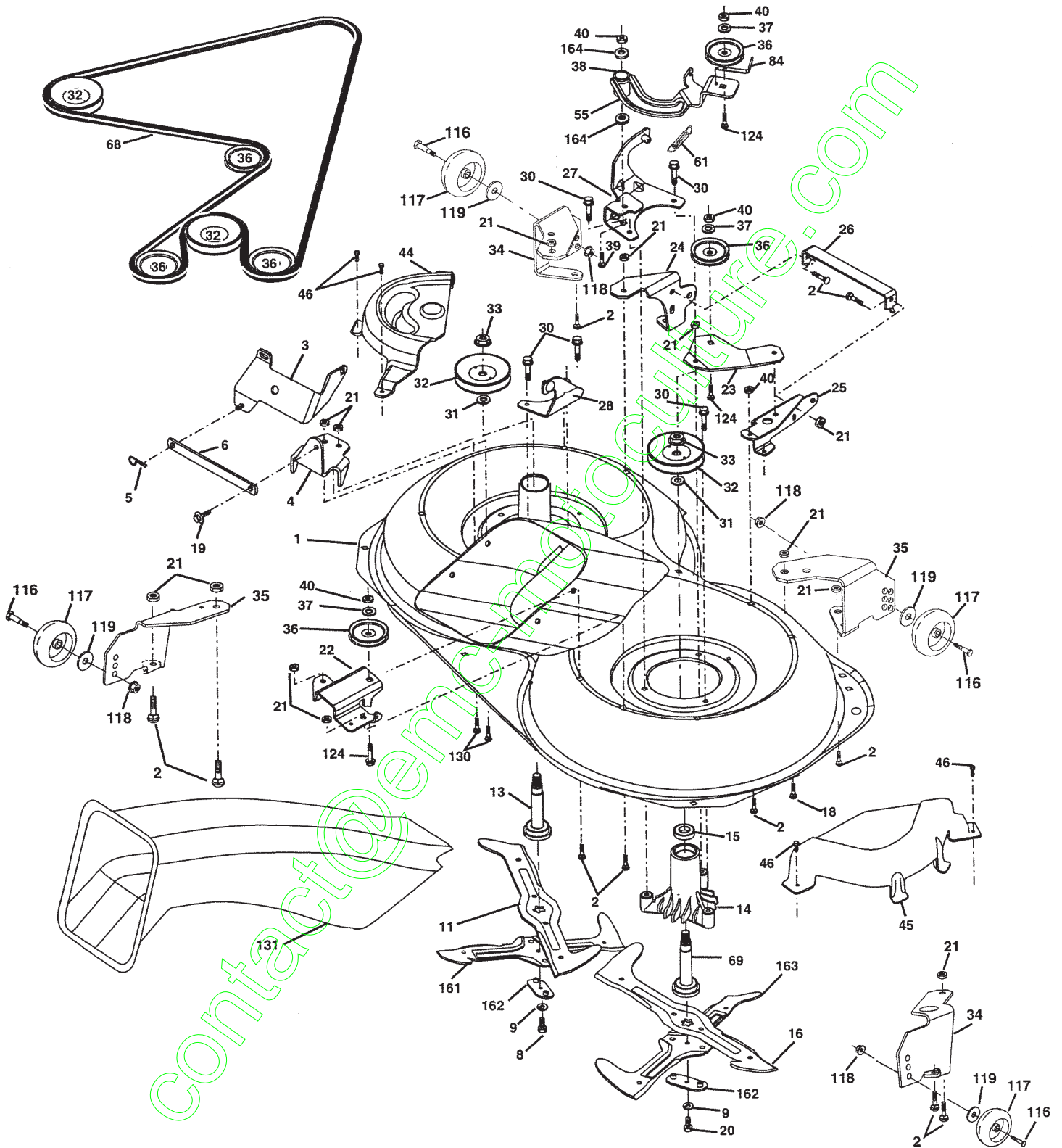
KEY NO.	PART NO.	DESCRIPTION
24	19131016	Washer 13/32 x 5/8 x 16 Ga.
25	2876H	Spring 2-1/8"
26	169484	Retainer Clip
27	126971X	Rod Adj Lift Zinc 7.49 Wrk Lg
28	73350600	Nut Hex Jam 3/8-16 Unc
29	138057	Knob Inf 3/8-16 Unc Blk w/sym
30	150233	Trunnion Infin Height
31	169865	Bearing, Pvt. Lift.
32	73540600	Nut Crownlock 3/8-24
36	155097	Pointer Height Indicator
37	123935X	Plug Hole Blk 1.485/1.515 Dia
38	17060516	Screw 5/16-18 x 1
40	19112410	Washer 11/32 x 1-1/2 x 10 Ga.
41	123934X	Scale Ind Height Blk
49	145212	Nut hex Flange Lock
50	110452X	Nut Push Phos & Oil

NOTE: All component dimensions given in U.S. inches
1 inch = 25.4 mm

REPAIR PARTS

TRACTOR- -MODEL NO. 917.277121

MOWER



REPAIR PARTS

TRACTOR- -MODEL NO. 917.277121

MOWER

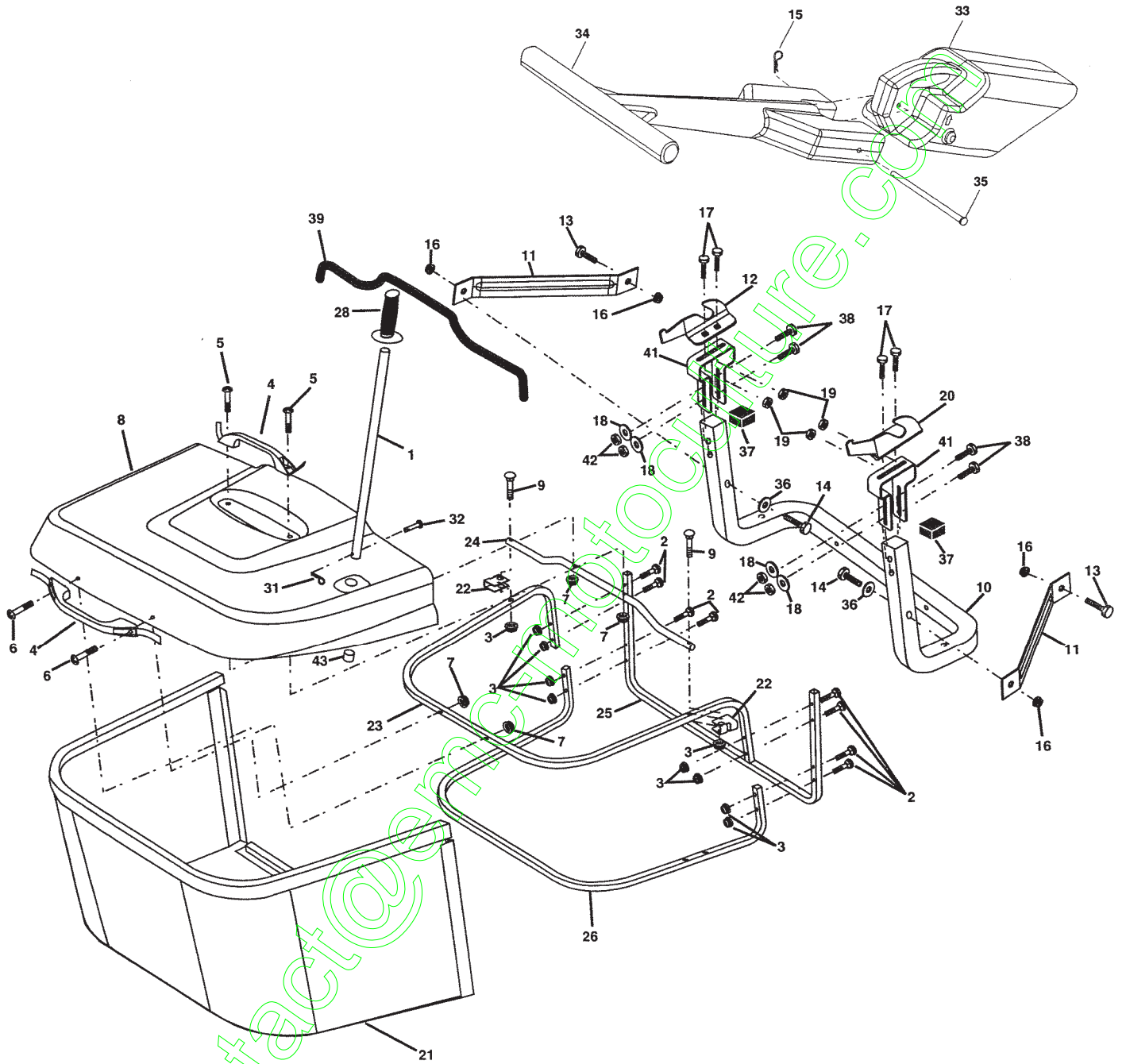
KEY NO.	PART NO.	DESCRIPTION	KEY NO.	PART NO.	DESCRIPTION
1	169160	Housing Asm. Mower	36	146763	Pulley Idler V-Groove Dim 4.25
2	72140506	Bolt Rdhd Sqnk 5/16-18 Unc x 3/4	37	19131316	Washer 11/32 x 13/16 x 16 Ga
3	165569	Bracket Asm. S-Bar Chass	38	169851	Spacer Hub Arm Idler 107 CRD
4	169167	Bracket Bar Sway Deck	39	72110622	Bolt Rdhd 3/8-16 Unc x 2-3/4 Gr. 5
5	4939M	Retainer Spring	40	73680600	Nut Crownlock 3/8-16 Unc
6	165557	Bar Sway	44	175538	Cover Mandrel Lh
8	181712	Bolt 3/8-24 x 1.25 Gr8 Patched	45	175539	Cover Mandrel Rh
9	10030600	Washer Lock Hvy 3/8 Unplated	46	137729	Screw Thd Roll 1/4-20 x 5/8
11	180583	Blade 3-1 Lh	55	169849	Arm Idler 107 CRD
13	137645	Shaft Asm. W/Lower Bearing	61	175159	Spring Tension Belt
14	128774	Housing Mandrel Vented (Machd)	68	169178	Hex-Belt Mower
15	110485X	Bearing Ball Mandrel	69	165482	Shaft Asm W/Lwr Brg Rh Thd CRD
16	180584	Blade 3-1 Rh	84	156085	Keeper Belt Idler
18	72110606	Bolt RdHd Sqnk 5/16-18 Unc x 3/4	116	184219	Bolt Shoulder
19	132827	Bolt Shoulder 5/16-18 Thd Form	117	133957	Wheel Gage Donut Wide
20	181713	Bolt 3/8-24 x 1.25 Gr8 Ptch Lhthd	118	73930600	Nut Centerlock 3/8-16 Unc
21	73680500	Nut Crown Lock 5/16-18	119	19121414	Washer 3/8 x 7/8 x 14 Ga.
22	169165	Bracket Idler RR	124	72110612	Bolt Carr Sh 3/8-16 x 1-1/2 Gr5
23	169166	Bracket Idler RF	130	72110506	Bolt Rdhdsqnk 5/16-18 Unc x 3/4
24	169170	Bracket Suspension LF	131	165661	Chute Bagger CRD 92cm
25	169171	Bracket Suspension RF	161	180424	Blade Cross Lh 107
26	165237	Brace Support Susp Frt CRD	162	180878	Adapter Widmt Blo 107
27	169172	Bracket Asm. Susp RR	163	180425	Blade Cross Rh 107
28	169168	Bracket Asm. Susp LR	164	3366R	Bearing Col. Strge.
30	173984	Screw Thd Rolling	--	181857	Mandrel Asm Service
31	129963	Washer Spacer Mower Vented	--	181858	Mandrel Asm CRD Lh Threads SVC
32	175707	Mandrel Pulleys	--	181770	Deck Mower Complete
33	178342	Nut Flg Top Lock			
34	179509	Bracket Gauge Wheel Lf			
35	176292	Bracket Gauge Wheel Rf			

NOTE: All component dimensions given in U.S. inches
1 inch = 25.4 mm

REPAIR PARTS

TRACTOR- -MODEL NO. 917.277121

BAGGER



REPAIR PARTS

TRACTOR- -MODEL NO. 917.277121

BAGGER

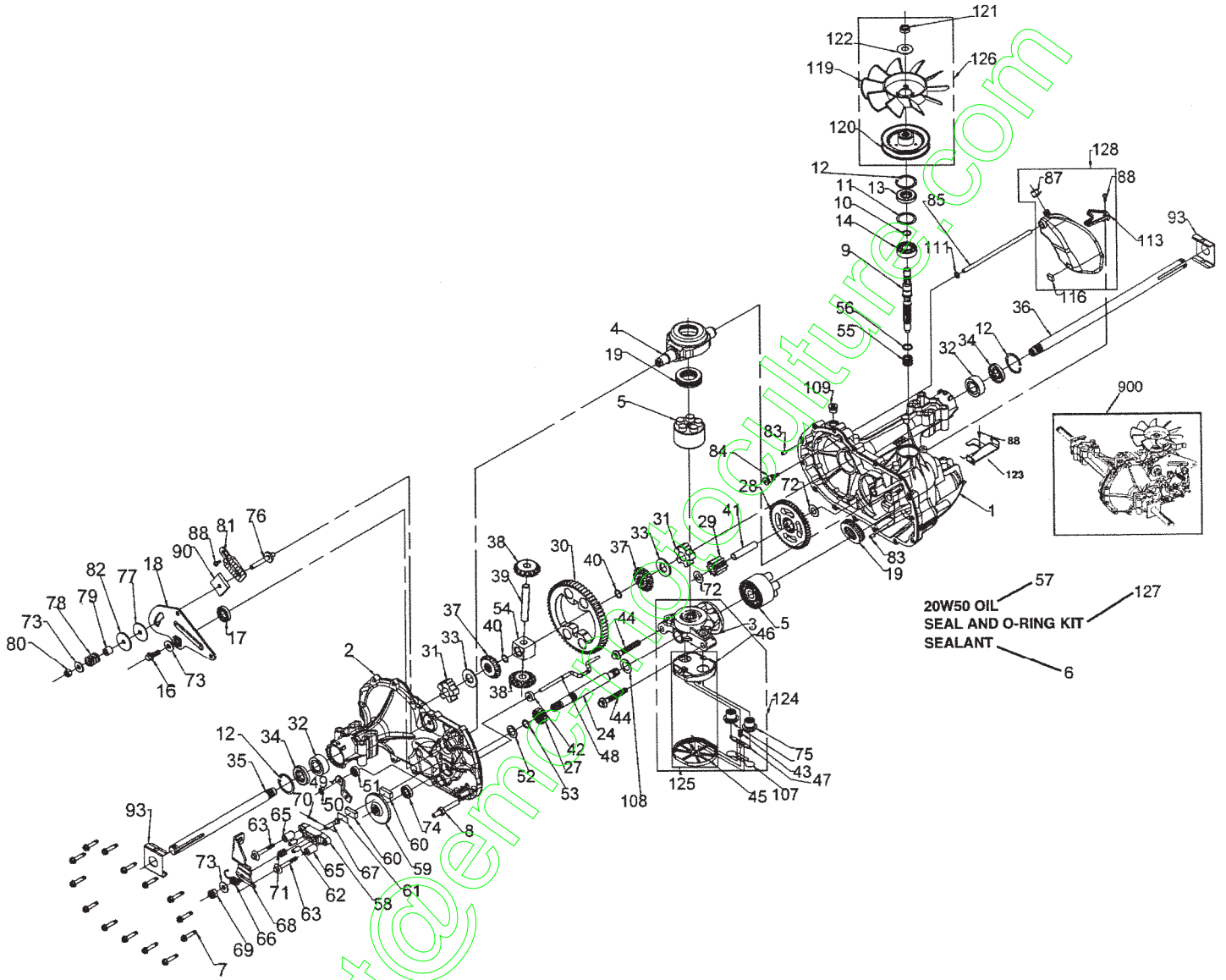
KEY NO.	PART NO.	DESCRIPTION
1	165249	Tube Handle Bagger CRD
2	72140416	Bolt Carriage 1/4-20 X 2.0 Gr.5
3	123976X	Nut Lock 1/4 Lge Flg Gr. 5 Zinc
4	169916	Handle Bagger w/Lvrs Gr. 5 Zinc
5	74981024	Screw Pan Head #10-24 X 1.50 Blk
6	74981032	Screw Pan Hd
7	73401000	Nut Wiz Lock Hex Serr/Hd #10-24
8	169963X558	Cover Bagger
9	72140418	Bolt Carriage 1/4-20 x 2.25d x Gr.5
10	181282	Tube Support Bagger CRD
11	165719	Bracket Support Upper Bag CRD
12	169685	Bracket Horiz. Adj Bagger
13	72110606	Bolt Rdhd Sht Sqnk 3/8-16 X 3/4
14	74520636	Bolt Hex 3/8-16 X 2-1/4 Gr. 5
15	4939M	Retainer Spring
16	73900600	Nut Lock Flg 3/8-16 Unc
17	72140506	Bolt Rdhd Sht Sqnk 5/16-18Unc X 3/4
18	19111216	Washer 11/32 x 3/4 x 16
19	73900500	Nut Lock Hex Flange 5/16-18
20	169684	Bracket Horiz Adj Bagger
21	180880	Bag Asm CRD
22	165781	Bracket Side Bagger CRD
23	165782	Tube Upper Bagger CRD
24	165783	Tube Pivot Bagger CRD
25	180124	Tube Front Bagger CRD
26	165785	Tube Lower Bagger CRD
28	165787	Grip Handle Black
31	169484	Retainer Clip
32	126875X	Rivet Rd Hd Drilled 3/8 Dia
33	169380	Plug Mulch 107
34	165570	Handle Mulch
35	165572	Pin Mulch
36	19132016	Washer 13/32 x 1-1/4 x 16 Ga.
37	175401	Plug Support Bagger CRD
38	72010520	Bolt 5/16-18 x 2-1/2
39	180985	Seal
41	169683	Bracket Vert Adj Bagger CRD
42	73800500	Nut Lock Hex W/Ins 5/16-18 UNC
43	174083	Plug Tubing End

NOTE: All component dimensions given in U.S. inches
1 inch = 25.4 mm

REPAIR PARTS

TRACTOR- -MODEL NO. 917.277121

TRANSAXLE HYDRO GEAR - - MODEL NUMBER 321-0510



REPAIR PARTS

TRACTOR- -MODEL NO. 917.277121

TRANSAXLE HYDRO GEAR - - MODEL NUMBER 321-0510

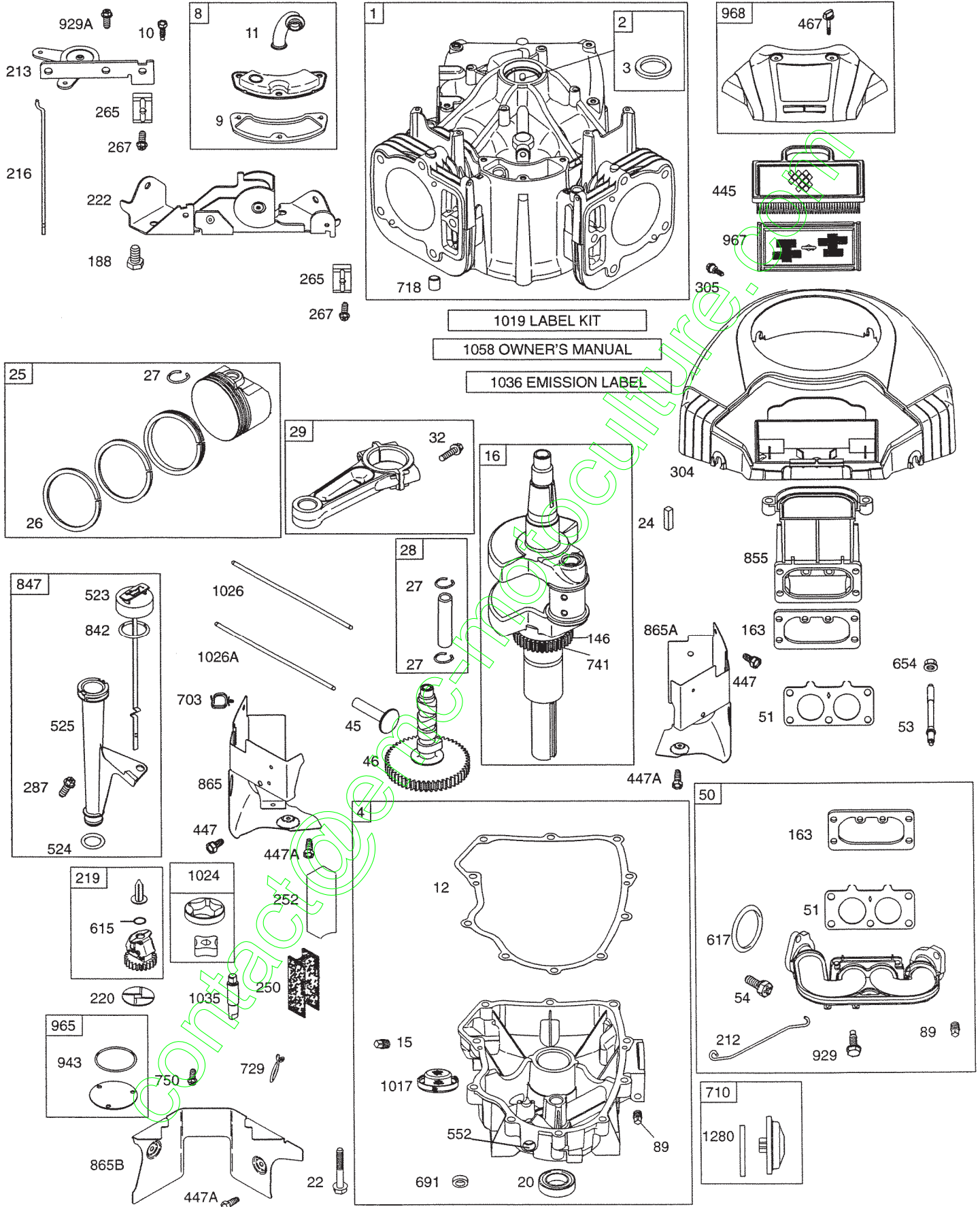
KEY NO.	PART NO.	DESCRIPTION	KEY NO.	PART NO.	DESCRIPTION
1	170351	Main Housing, Assembly	60	142883	Brake Puck
2	170352	Side Housing, Assembly	61	142882	Puck Plate
3	170353	Center Section, Assembly	62	142887	Brake Actuating Pin
4	170354	Swashplate, Trunion Machined	63	170410	HFHCS 1/4-20X2 W/Patch, Special Flange
5	169898	Block - Assembly	64	142892	Bolt, 1/4-20 X 1 W/Patch
6	170355	Sealant	65	170411	Spacer
7	170356	Hex Flange Screw 1/4-20 X 1.25	66	170412	Spring, Brake Arm Bias
8	170357	Stud, 5/16-24 Hex Double End	67	170413	SQ. HD. BOLT 5/16-24-Ribbed
9	170358	Shaft, Input	68	178157	Arm, Brake
10	170359	Ring - Retaining	69	170415	Slotted Hex Nut 5/16-24
11	170360	Spacer	70	170416	Cotter Pin 3/32 X 3/4
12	169870	Ring - Retaining	71	170417	Compression Spring Brake Anti-Drag
13	170361	Seal, Lip .67 X 1.58 X .276	72	170418	Washer, HT .5 I.D. X 1 O.D. X .032
14	173158	Ball Brg 17MM ID X 40MM OD X 12MM	73	142884	Flat Washer 11/32 I.D. X 7/8 O.D.
16	170362	Hex Flange Head Screw 5/16-24 X 0.75	74	170419	Oil Seal .625 X 1.0 X .25
17	170363	Lip Seal 18 X 32 X 7	75	170420	Check Plug Assembly .027, Washer
18	170364	Arm, Control	76	170421	Stud, 5/16-24 Friction Pack
19	173159	Bearing, 30X52X13 Thrust	77	170422	Puck, .330 X 1.50 X .0375
23	170365	Check Plug Assembly, Washer	78	142969	Spring, Helical Comp
24	170366	Shaft, Motor1	79	142980	Spacer
27	170367	Gear - Pinion, 13T	80	150778	Hex Lock Nut 5/16-24 UNJF(Nylon Insert)
28	170368	10T/48T GEAR	81	170423	Wedge, Friction Pack
29	170369	Gear, 10T Jackshaft	82	170424	Clip, Washer .316X1.50X.1046 (Plated)
30	170370	60T Bull Gear	83	161168	Pin, Standard Headless
31	170371	Sleeve Bearing .75 X 1.575 X .625	84	170425	Fitting, 5/16 Sae 5/32 Tube
32	170389	Sleeve Bearing (Outboard).75X1.750X.625	85	170426	Hose, Expansion Tank
33	142991	Washer, 3/4 ID X 1-1/2 OD X .13 THK	87	173160	Cap, Vent
34	170390	Lip Seal Axle Seal	88	170429	Bolt, Self Tapping 10-32 X 1/2
35	170391	Shaft, Axle .75 X 11.39 (Key, R.H.)	90	170430	Puck, Inner Wedge
36	170392	Shaft, Axle .75 X 16.99 (Key, L.H.)	93	170431	Spring Clip - Housing Thrust
37	150792	Miter Gear (SPLINED)	107	170432	Deflector
38	150793	Miter Gear 15T (0.5 ID)	108	170433	Washer, Motorshaft .71ID X 1.15OD X .030THK
39	150809	Shaft	109	170434	Plug, Sae #6
40	170393	Ring, Spiral Retaining	111	170435	O-ring .07 x .301 I.D.
41	170394	Pin, Jackshaft	113	170437	Bracket, Support Expansion Tank
42	170395	Magnet, Rling	116	170438	Silicon Sponge
43	170396	Spring, Bypass	119	170439	Fan
44	150797	Hydro mtg Screw 3/8-24 X 2.5 Long	120	178159	Pulley
45	170397	Filter	121	170441	Hex Lock Nut 1/2-20
46	170398	Base, Filter	122	170442	Washer Belleville
47	170399	Actuator, Bypass	123	178160	Bracket Belt Keeper
48	170400	Rod, Bypass Actuator	124	170444	Center Section-Filter-Bypass Assembly
49	178156	Arm, Bypass	125	170445	Filter Assembly
50	170402	Retaining Ring .250 External	126	178417	Fan - Pulley Service Aassembly
51	170403	Seal, Lip .741 X .250 X .250 TC	127	170447	Seal - O-ring Kit
52	170404	Flat Washer, 5/8 ID X 1.0 OD X .05 THK	128	173165	Kit, Expansion Tank
53	170405	Retaining Ring	900	170061	Transaxle, complete
54	170406	Bearing, Center Block			
55	142977	Spring - Helical Compression			
56	142978	Washer			
57	150798	20W-50 OIL 72.8 oz			
58	170407	Brake Yoke			
59	170408	Rotor, Brake			

NOTE: All component dimensions given in U.S. inches 1 inch = 25.4 mm

REPAIR PARTS

TRACTOR- -MODEL NO. 917.277121

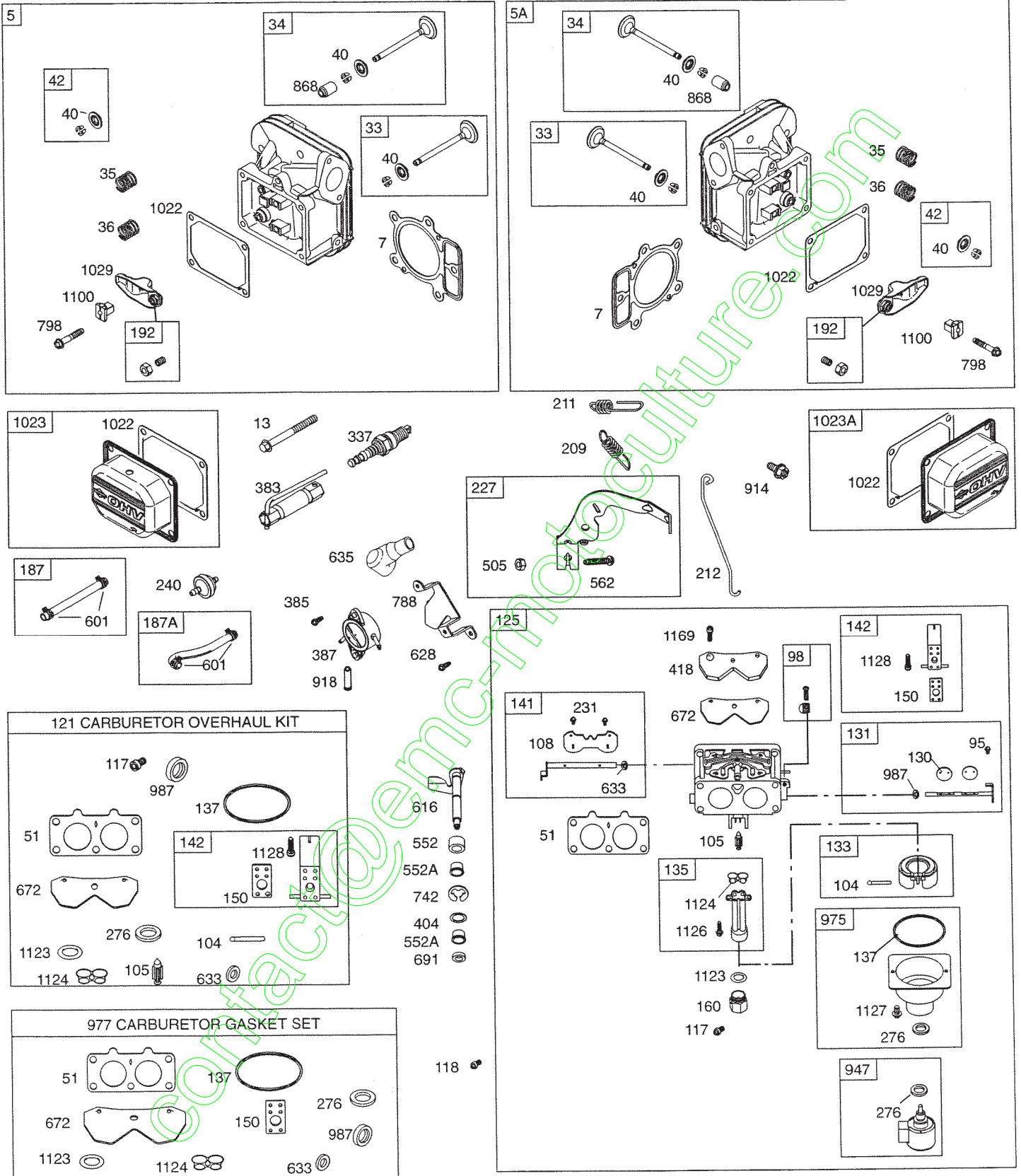
BRIGGS & STRATON ENGINE - - MODEL NUMBER 407677, TYPE NUMBER 0232-E1



REPAIR PARTS

TRACTOR- -MODEL NO. 917.277121

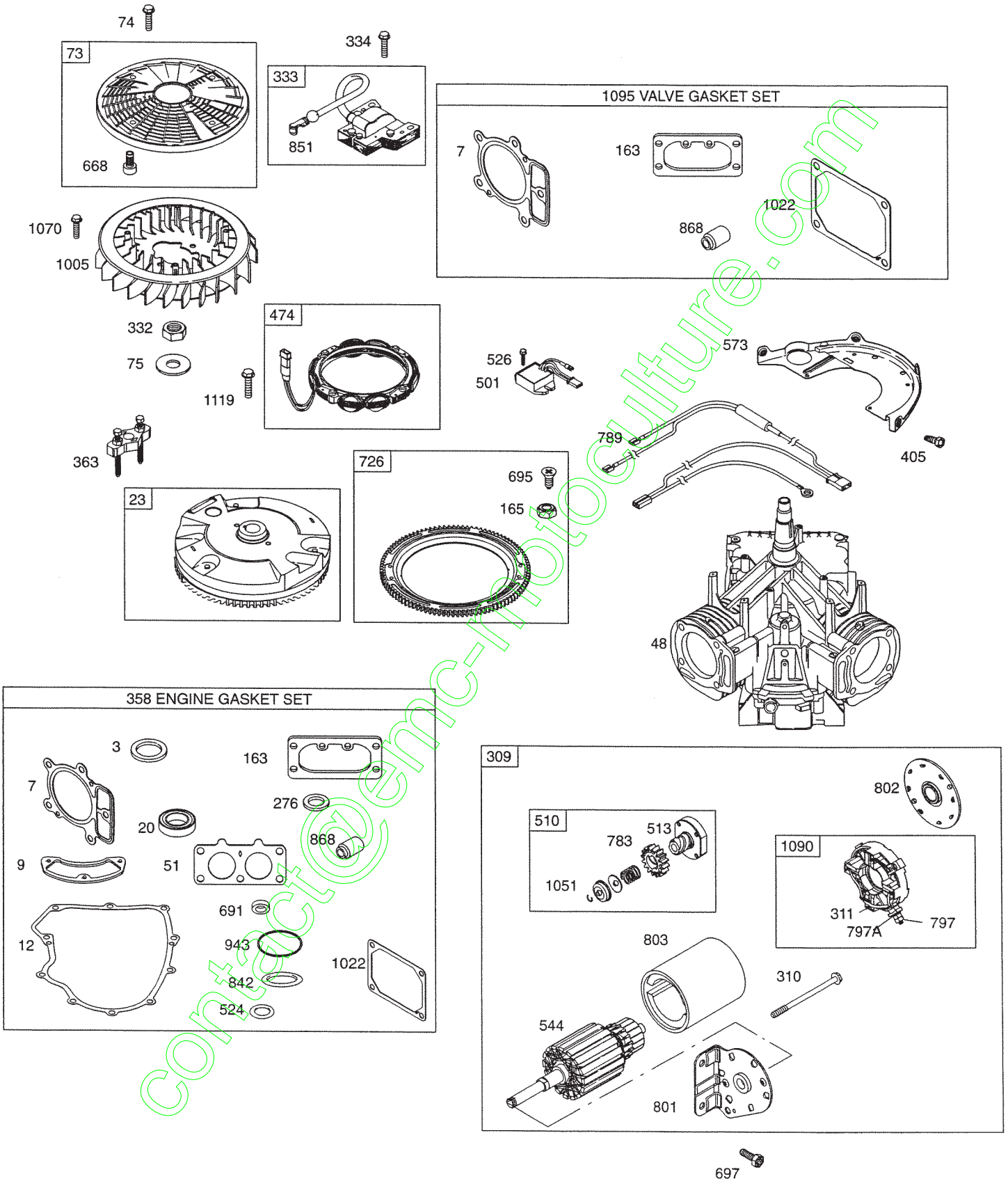
BRIGGS & STRATON ENGINE - - MODEL NUMBER 407677, TYPE NUMBER 0232-E1



REPAIR PARTS

TRACTOR- -MODEL NO. 917.277121

BRIGGS & STRATON ENGINE - - MODEL NUMBER 407677, TYPE NUMBER 0232-E1



REPAIR PARTS

TRACTOR- -MODEL NO. 917.277121

BRIGGS & STRATON ENGINE - - MODEL NUMBER 407677, TYPE NUMBER 0232-E1

KEY NO.	PART NO.	DESCRIPTION	KEY NO.	PART NO.	DESCRIPTION
1	690231	Cylinder Assembly	125	499804	Carburetor
2	499585	Kit-Bushing/Seal (Magneto Side)	130	690993	Valve-Throttle
3	391086	• Seal-Oil (Magneto Side)	131	499805	Kit-Throttle Shaft
4	697473	Sump-Engine	133	499806	Float-Carburetor
5	693998	Head-Cylinder (Cylinder 1)	135	499803	Tube-Fuel Transfer
5A	693999	Head-Cylinder (Cylinder 2)	137	690994	Ø‡ Gasket-Float Bowl
7	690962	•+ Gasket-Cylinder Head	141	499807	Kit-Choke Shaft
8	499601	Breather Assembly	142	499808	Ø Nozzle-Carburetor
9	690937	• Gasket-Breather	146	690979	Key-Timing
10	690960	Screw (Breather Assembly)	150	690995	Ø‡ Gasket-Nozzle
11	690942	Tube-Breather	160	690996	Retainer-Solenoid
12	697227	• Gasket-Crankcase	163	691001	•+ Gasket-Air Cleaner
13	690360	Screw (Cylinder Head)	165	693148	Nut (Ring Gear)
15	690946	Plug-Oil Drain	187	691050	Line-Fuel (Cut to Required Length)
16	691046	Crankshaft	187A	691049	Line-Fuel (Molded)
20	690947	• Seal-Oil (PTO Side)	188	690960	Screw (Control Bracket)
22	694966	Screw (Engine Sump)	192	690083	Adjuster-Rocker Arm
23	691053	Flywheel	209	697674	Spring-Governor
24	222698	Key-Flywheel	211	691019	Spring-Governed Idle
25	499588	Piston Assembly (Standard)	212	695238	Link-Throttle
25	499589	Piston Assembly (.010" Oversize)	213	691021	Bracket-Choke Control
25	499590	Piston Assembly (.020" Oversize)	216	691022	Link-Choke
25	499591	Piston Assembly (.030" Oversize)	219	696376	Gear-Governor
26	499604	Ring Set-Piston (Standard)	220	690412	Washer (Governor Lever)
26	499605	Ring Set-Piston (.010" Oversize)	222	697678	Bracket-Control
26	499606	Ring Set-Piston (.020" Oversize)	227	691048	Lever-Governor Control
26	499607	Ring Set-Piston (.030" Oversize)	231	690718	Screw (Choke Valve)
27	690975	Lock-Piston Pin	240	691035	Filter-Fuel
28	690229	Pin-Piston	250	690957	Retainer-Breather
29	499583	Rod-Connecting	252	690956	Collector-Oil
32	690976	Screw (Connecting Rod)	265	691024	Clamp-Casing
33	499596	Valve-Exhaust	267	695134	Screw (Casing Clamp)
34	499597	Valve-Intake	276	690997	•Ø+ Washer-Sealing
35	690963	Spring-Valve (Intake)	287	690960	Screw (Dipstick Tube)
36	690963	Spring-Valve (Exhaust)	304	695277	Housing-Blower
40	690964	Retainer-Valve	305	691005	Screw (Blower Housing)
42	499586	Keeper-Valve	309	691262	Motor-Starter
45	690977	Tappet-Valve	310	691263	Bolt-Starter Motor
46	690978	Camshaft	311	497608	Brush Set
48	692714	Short Block (446777-0027-E2)	332	691059	Nut (Flywheel)
		Replacement Engine	333	691060	Armature-Magneto
50	695241	Manifold-Intake	334	691061	Screw (Magneto Armature)
51	690950	•Ø‡ Gasket-Intake	337	691043	Plug-Spark
53	690951	Stud (Carburetor)	358	694012	Set-Engine Gasket
54	695240	Screw (Intake Manifold)			RPM Settings:
73	691055	Screen-Rotating			Low Speed: 1900-2100
74	691057	Screw (Rotating Screen)			High Speed: 3000-3200
75	691056	Washer (Flywheel)			
89	690283	Plug-Oil			
95	690718	Screw (Throttle Valve)			
98	499802	Kit-Idle Speed			
104	690984	Ø Pin-Float Hinge			
105	690985	Ø Valve-Float Needle			
108	690986	Valve-Choke			
117	690232	Ø Jet-Main (Standard)			
118	690989	Jet-Main (High Altitude)			
121	499811	Kit-Carburetor Overhaul			

- Included in Engine Gasket Set, Key. No. 358
- Ø Included in Carburetor Overhaul Kit, Key. No. 121
- ‡ Included in Carburetor Gasket Set, Key. No. 977
- + Included in Valve Gasket Set, Key. No. 1095

NOTE: All component dimensions given in U.S. inches 1 inch = 25.4 mm

REPAIR PARTS

TRACTOR- -MODEL NO. 917.277121

BRIGGS & STRATON ENGINE - - MODEL NUMBER 407677, TYPE NUMBER 0232-E1

KEY NO.	PART NO.	DESCRIPTION	KEY NO.	PART NO.	DESCRIPTION
363	19203	Flywheel Puller	802	691286	Cap-End
383	19374	Wrench-Spark Plug	803	— — — —	Housing-Starter (Service with 691262 Starter Motor)
385	690960	Screw (Fuel Pump)	842	691031	• Seal-Dipstick/Tube
387	808656	Pump-Fuel	847	499602	Dipstick/Tube Assembly
404	690442	Washer (Governor Crank)	851	493880	Terminal-Spark Plug
405	690960	Screw (Back Plate)	855	691011	Adapter-Air
418	690999	Plate-Carburetor	865	691012	Cover-Air Guide
445	499486	Filter-Air Cleaner Cartridge	865A	691014	Cover-Air Guide
447	691003	Screw (Air Guide Cover)	865B	691015	Cover-Air Guide
447A	690960	Screw (Air Guide Cover)	868	690968	+ Seal-Valve
467	691008	Knob-Air Cleaner	914	691127	Screw (Rocker Cover)
474	696458	Alternator	918	694000	Hose-Vacuum
501	691185	Regulator	929	695239	Screw (Choke Control Bracket)
505	691029	Nut (Governor Control Lever)	929A	691003	Screw (Choke Control Bracket)
510	497606	Drive-Starter	943	690589	• Seal-O Ring (Oil Pump Cover)
513	692024	Clutch-Drive	947	499809	Solenoid-Fuel
523	691036	Dipstick	965	499613	Cover-Oil Pump
524	691032	• Seal-Dipstick Tube	967	273638	Filter-Pre Cleaner
525	691037	Tube-Dipstick	968	499788	Cover-Air Cleaner
526	690960	Screw (Regulator)	975	499810	Bowl-Float
544	— — — —	Armature-Starter (Service with 691262 Starter Motor)	977	499812	Gasket Set-Carburetor
552	690552	Bushing-Governor Crank	987	691000	∅ ‡ Seal-Throttle Shaft
552A	690553	Bushing-Governor Crank	1005	691243	Fan-Flywheel
562	690311	Bolt (Governor Control Lever)	1017	690770	Screen-Oil Pump
573	691009	Plate-Back	1019	690103	Kit-Label
601	691038	Clamp-Hose	1022	690971	+ Gasket-Rocker Cover
615	690317	Retainer-Governor Shaft	1023	499599	Cover-Rocker (Cylinder 1)
616	691045	Crank-Governor	1023A	499600	Cover-Rocker (Cylinder 2)
617	691917	Seal-O Ring (Intake Manifold)	1024	499054	Pump-Oil
628	690960	Screw (Fuel Pump Bracket)	1026	690981	Rod-Push (Steel)
633	690998	∅ ‡ Seal-Choke/Throttle Shaft	1026A	690982	Rod-Push (Aluminum)
635	66538	Boot-Sparkplug	1029	690972	Arm-Rocker
654	690958	Nut (Carburetor)	1035	691042	Shaft-Pump
668	691215	Spacer	1036	695704	Label-Emission
672	690234	∅ ‡ Gasket-Carburetor Plate	1051	691265	Ring-Retaining
691	690657	• Seal-Governor Shaft	1058	274794	Owner's Manual
695	693149	Screw (Ring Gear)	1070	691058	Screw (Flywheel Fan)
697	690372	Screw (Drive Cap)	1090	691293	Retainer-Brush
703	691010	Clip	1095	694013	Kit-Valve Overhaul
710	697474	Cover-Oil Filter	1100	690973	Pivot-Rocker Arm
718	690959	Pin-Locating	1119	691183	Screw (Alternator)
726	499612	Gear-Ring	1123	690987	∅ ‡ Seal-O Ring (Solenoid Retainer)
729	694123	Clip-Wire	1124	690988	∅ ‡ Seal-O Ring (Fuel Transfer Tube)
741	690980	Gear-Timing	1126	690991	Screw (Fuel Transfer Tube)
742	690328	Retainer-E Ring	1127	690992	Screw (Float Bowl)
750	696999	Screw (Oil Pump Cover)	1128	690990	∅ Screw (Carburetor Nozzle)
783	693058	Gear-Pinion	1169	693140	Screw (Carburetor Cover Plate)
788	691039	Bracket-Fuel Pump	1280	697475	Seal-O Ring (Oil Filter Cover)
789	695050	Harness-Wiring			Low Speed: 1900-2100
797	691029	Nut (Brush Retainer)			High Speed: 3000-3200
797A	693167	Nut (Brush Retainer)			
798	690967	Screw (Rocker Arm)			
801	691283	Cap-Drive			

- Included in Engine Gasket Set, Key. No. 358
- ∅ Included in Carburetor Overhaul Kit, Key. No. 121
- ‡ Included in Carburetor Gasket Set, Key. No. 977
- + Included in Valve Gasket Set, Key. No. 1095

NOTE: All component dimensions given in U.S. inches 1 inch = 25.4 mm