

REPAIR PARTS MANUAL
MODEL NO. 277151
Lawn Tractor

MOPEUR M1e 282 H 07 TYPE 0239-E1



00007

HOW TO USE THIS MANUAL

This manual is designed to provide the customer with a means to identify the parts on his/her tractor when ordering repair parts. The illustrations may or may not represent the actual assemblies; therefore, it is not recommended to use this manual as a guide to assemble or disassemble the tractor. Some hardware and parts are drawn larger in order to more readily identify them.

Each tractor has its own model number.

The model number for your tractor can be found on the fender under the seat.

When ordering parts, always give the following information:

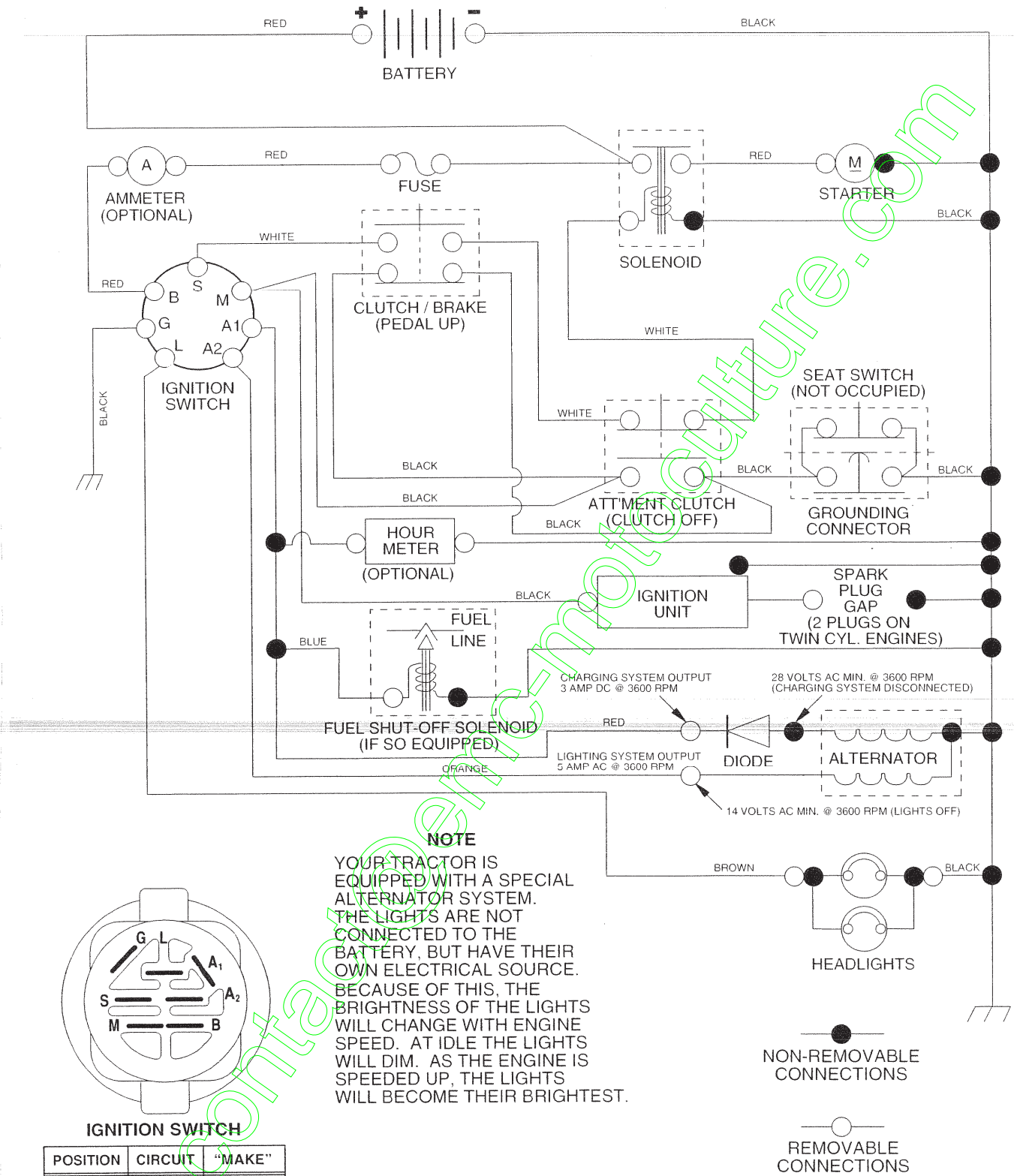
- Product - "Tractor"
- Model Number - "277151"
- Part Number
- Part Description

TABLE OF CONTENTS

| | |
|-----------------------|-------|
| SCHEMATIC | 3 |
| ELECTRICAL..... | 4-5 |
| CHASSIS..... | 6-7 |
| DRIVE..... | 8-9 |
| STEERING | 10-11 |
| SEAT | 12 |
| DECALS..... | 13 |
| ENGINE..... | 14-15 |
| MOWER LIFT..... | 16-17 |
| MOWER DECK | 18-19 |
| TRANSAXLE..... | 20-21 |
| ENGINE BREAKDOWN..... | 22-27 |
| WARRANTY..... | 28 |

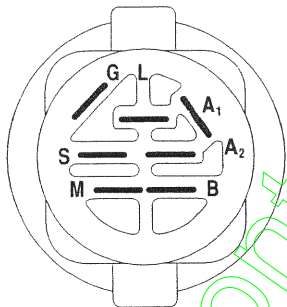
TRACTOR- -MODEL NO. 917. 277151

SCHEMATIC



NOTE

YOUR TRACTOR IS EQUIPPED WITH A SPECIAL ALTERNATOR SYSTEM. THE LIGHTS ARE NOT CONNECTED TO THE BATTERY, BUT HAVE THEIR OWN ELECTRICAL SOURCE. BECAUSE OF THIS, THE BRIGHTNESS OF THE LIGHTS WILL CHANGE WITH ENGINE SPEED. AT IDLE THE LIGHTS WILL DIM. AS THE ENGINE IS SPEEDED UP, THE LIGHTS WILL BECOME THEIR BRIGHTEST.



IGNITION SWITCH

| POSITION | CIRCUIT | "MAKE" |
|-----------|---------|--------|
| OFF | M+G+A1 | NONE |
| RUN/LIGHT | B+A1 | A2+L |
| RUN | B+A1 | NONE |
| START | B+S+A1 | NONE |

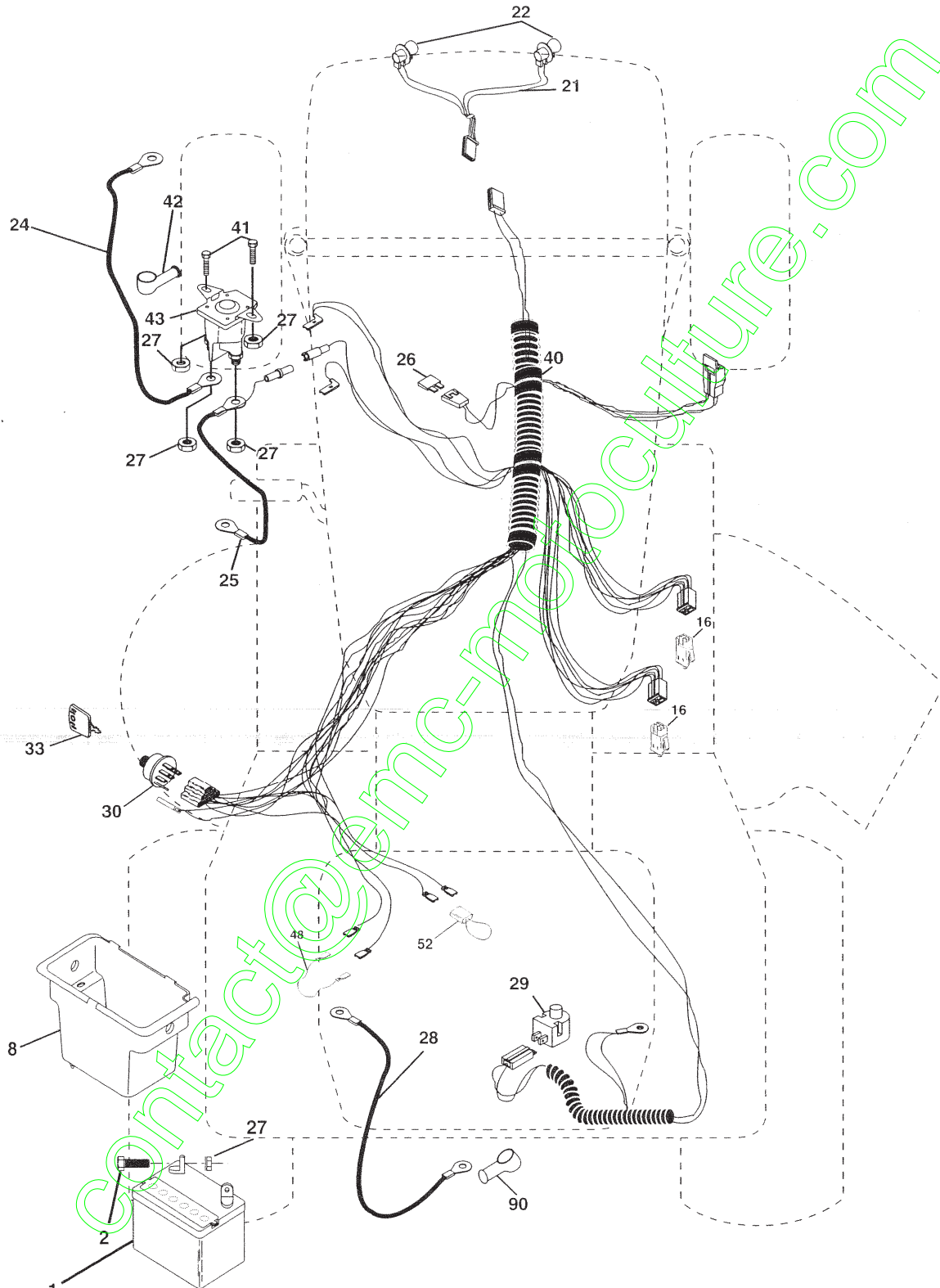
WIRING INSULATED CLIPS

NOTE: IF WIRING INSULATED CLIPS WERE REMOVED FOR SERVICING OF UNIT, THEY SHOULD BE REPLACED TO PROPERLY SECURE YOUR WIRING.

REPAIR PARTS

TRACTOR- -MODEL NO. 917. 277151

ELECTRICAL



REPAIR PARTS

TRACTOR- -MODEL NO. 917. 277151

ELECTRICAL

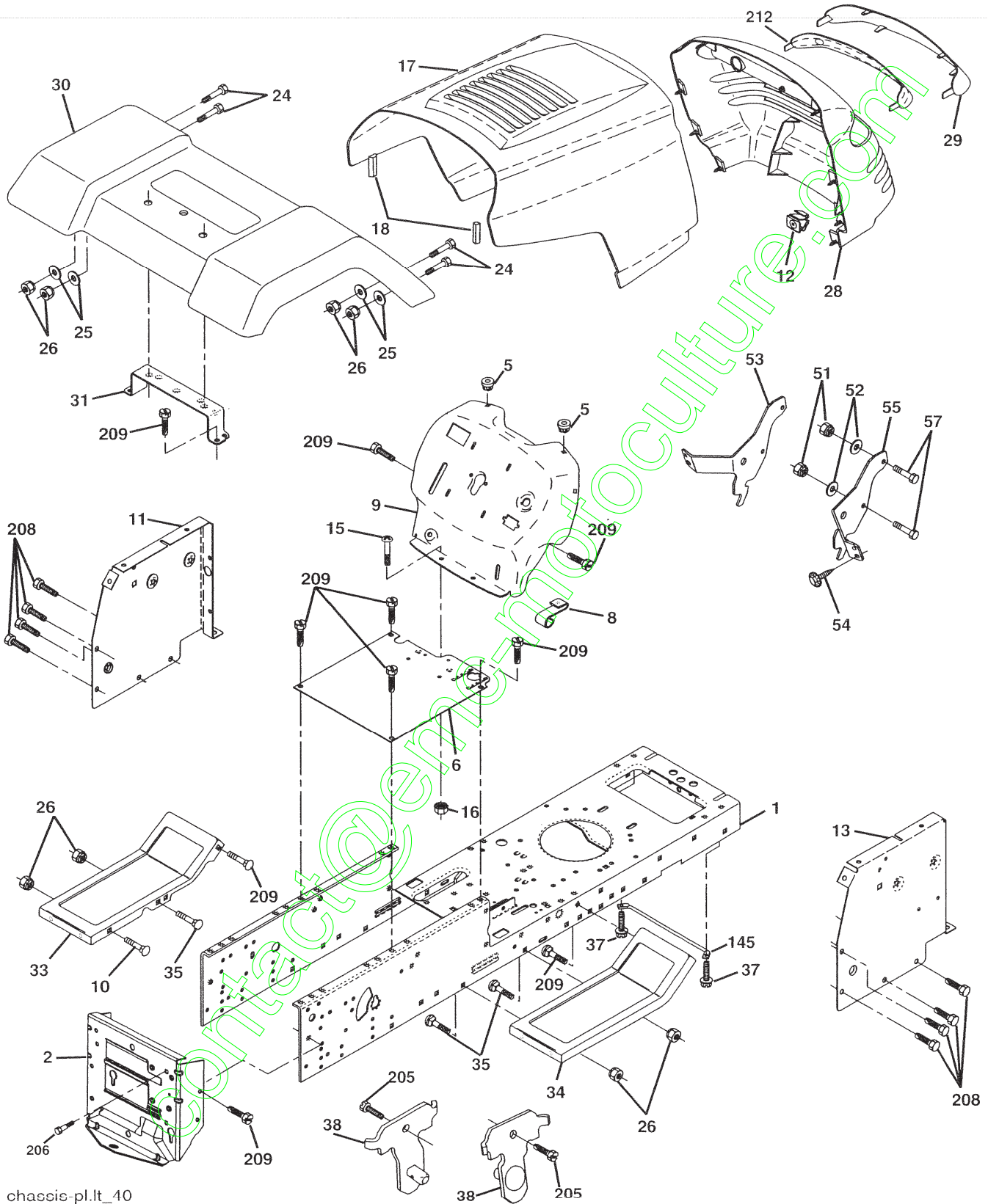
| KEY NO. | PART NO. | DESCRIPTION |
|---------|----------|---|
| 1 | 163465 | Battery |
| 2 | 74760412 | Bolt, Hex Head 1/4-20 unc x 3/4 |
| 8 | 176689 | Box Battery Fender |
| 16 | 176138 | Switch, Interlock |
| 21 | 175685 | Harness, Light Socket (Includes 4152J) |
| 22 | 4152J | Bulb, Light |
| 24 | 4799J | Cable, Battery, 6 Gauge, Red, 11" |
| 25 | 146147 | Cable, Battery, 6 Gauge, Red, W/16 Wire |
| 26 | 175158 | Fuse |
| 27 | 73510400 | Nut Keps Hex 1/4-20 UNC |
| 28 | 4207J | Cable, Ground, 6 Gauge, Black, 12" |
| 29 | 121305X | Switch, Plunger |
| 30 | 175566 | Switch, Ignition |
| 33 | 140403 | Key, Ignition |
| 40 | 179720 | Harness, Ignition |
| 41 | 71110408 | Bolt, Hex Head, Fin. 1/4-20 x 1/2 |
| 42 | 131563 | Cover, Terminal, Red |
| 43 | 178861 | Solenoid |
| 48 | 140844 | Adaptor Ammeter Rectangular |
| 52 | 141940 | Protection Wire Loop |
| 90 | 180449 | Cover Terminal Battery |

NOTE: All component dimensions given in U. S. inches 1 inch = 25.4 mm

REPAIR PARTS

TRACTOR- -MODEL NO. 917. 277151

CHASSIS AND ENCLOSURES



chassis-pl.lt_40

REPAIR PARTS

TRACTOR- -MODEL NO. 917. 277151

CHASSIS AND ENCLOSURES

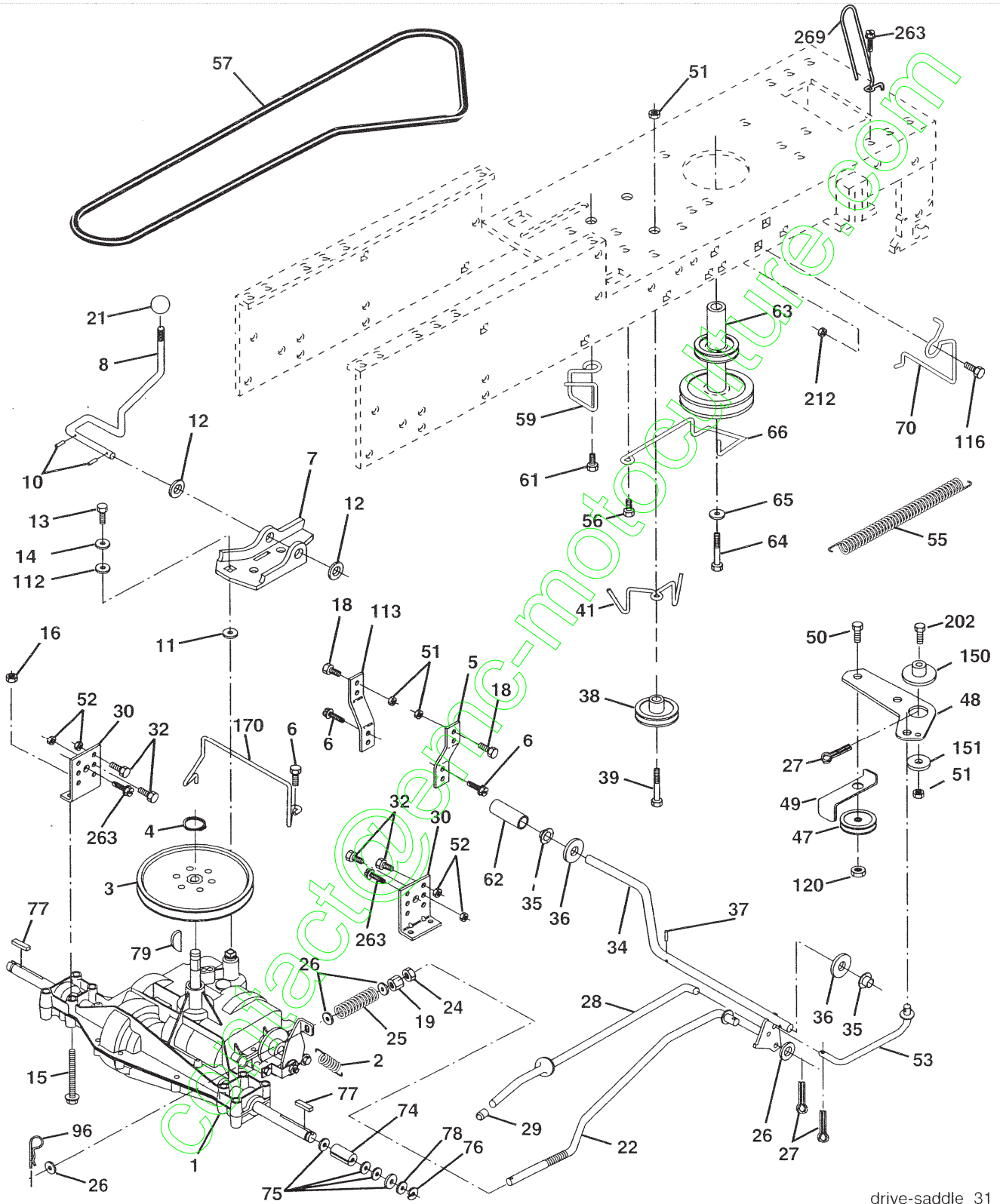
| KEY NO. | PART NO. | DESCRIPTION |
|---------|------------|-----------------------------------|
| 1 | 174620 | Chassis |
| 2 | 176554 | Drawbar |
| 5 | 155272 | Bumper Hood/Dash |
| 6 | 174643X013 | Saddle Slkscr Flt LT |
| 8 | 155138 | Clip Retainer Slide-On |
| 9 | 168347X015 | Dash |
| 10 | 72140608 | Bolt Rdhd Sqnk 3/8-16unc X 1 |
| 11 | 174996 | Panel Dash LH |
| 12 | 145660 | Clip Tinnerman Grille P/L |
| 13 | 172105X010 | Panel Slkscr Dash RH |
| 15 | 74180512 | Screw Mach TRHD 5/16-18 unc x 3/4 |
| 16 | 73510500 | Nut Keps 5/16-18 Unc |
| 17 | 159639X558 | Hood Asm |
| 18 | 184921 | Bumper Hood |
| 24 | 74780616 | Bolt Fin Hex 3/8-16 unc x 1 Gr. 5 |
| 25 | 19131312 | Washer 13/32 X 13/16 x 12 Ga |
| 26 | 73800600 | Nut Hex Lock W/Ins. 3/8-16 Unc |
| 28 | 179777 | Grille/Lens Asm |
| 29 | 150209X599 | Lens Headlight Bar Clear |
| 30 | 169465X558 | Fender |
| 31 | 136619 | Bracket Fender Repl 109873x |
| 33 | 179716X558 | Footrest Pnt Lh |
| 34 | 179717X558 | Footrest Pnt Rh |
| 35 | 72110606 | Bolt Rdhd Sht Sqnk 3/8-16 x 3/4 |
| 37 | 17490508 | Screw Thdrol 5/16-18 x 1/2 |
| 38 | 175710 | Bracket Asm Pivot Mower Rear |
| 51 | 73800400 | Nut Lock Hex w/Ins 1/4-20 |
| 52 | 19091416 | Washer 9/32 x 7/8 x 16 Ga. |
| 53 | 144697 | Bracket, Grille LH |
| 54 | 161464 | Screw |
| 55 | 144696 | Bracket, Grille RH |
| 57 | 74780412 | Bolt Hex 1/4-20 x 3/4 |
| 145 | 156524 | Rod Pivot Chassis/Hood |
| 205 | 17490608 | Screw Thdrol 3/8-16 x 1/2 |
| 206 | 170165 | Bolt Shoulder 5/16-18 |
| 208 | 17670608 | Screw thdrol 3/8-16 x 1/2 |
| 209 | 17000612 | Screw Hex Wsh Thdrol 3/8-16 |
| 212 | 156494 | Insert Lens Reflective |
| - | 5479J | Plug Button Blk 359 Dia Choke |

NOTE: All component dimensions given in U. S.
inches 1 inch = 25.4 mm

REPAIR PARTS

TRACTOR- -MODEL NO. 917. 277151

DRIVE



drive-saddle_31

REPAIR PARTS

TRACTOR- -MODEL NO. 917. 277151

DRIVE

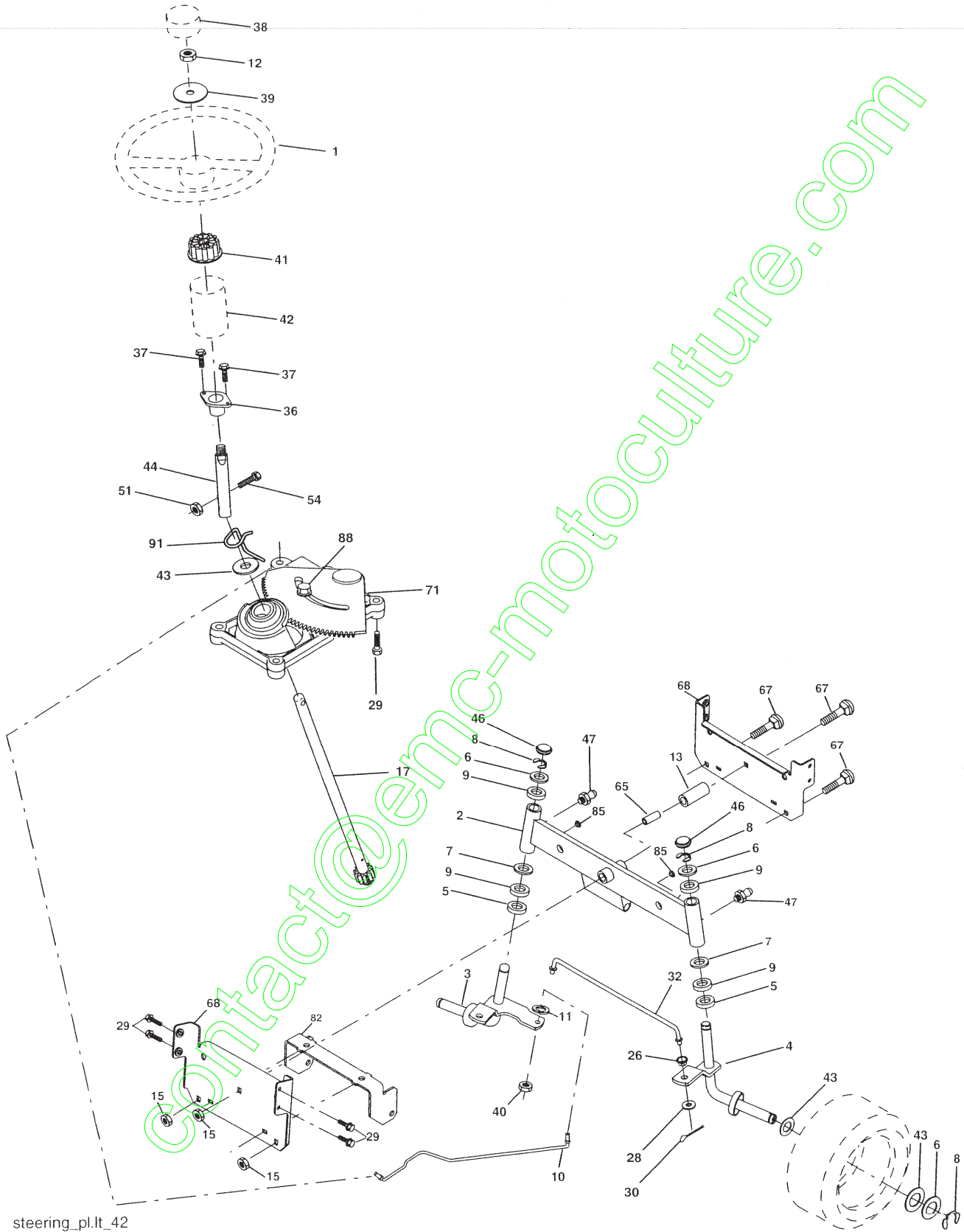
| KEY NO. | PART NO. | DESCRIPTION | KEY NO. | PART NO. | DESCRIPTION |
|---------|-----------------|---|---------|---------------|------------------------------------|
| 1 | ----- | Transaxle Peerless 205-544C (Order parts from transaxle Manufacturer) | 48 | 154407 | Bellcrank Asm. Clutch |
| 2 | 146682 | Spring Return Brake T/a Zinc | 49 | 123205X | Retainer Belt Style Spring |
| 3 | 123666X | Pulley Transaxle 18/20" tires | 50 | 72110612 | Bolt 3/8-16 x 1-1/2 Gr. 5 |
| 4 | 12000028 | Ring Retainer # 5100-62 | 51 | 73680600 | Nut Crownlock 3/8-16 UNC |
| 5 | 121520X | Strap Torque 30 Degrees | 52 | 73680500 | Nut Crown Lock 5/16-18 |
| 6 | 17000512 | Screw 5/16-18 x 3/4 | 53 | 105710X | Link Clutch 7 66 |
| 7 | 162240 | Bracket Saddle Shift T/a | 55 | 105709X | Spring Return Clutch 6 75 |
| 8 | 131679 | Rod Shf Sdl LY/YT Str Blk | 56 | 17060620 | Screw 3/8-16 x 1-1/4 |
| 10 | 76020416 | Pin Cotter 1/8 x 1 Cad | 57 | 130801 | V-Belt Gd Drive |
| 11 | 105701X | Washer Plate 388 Sq Hole | 59 | 169691 | Keeper Belt Centerspan |
| 12 | 19151216 | Washer 15/32 x 3/4 x 16ga | 61 | 17120614 | Screw 3/8-16 x .875 |
| 13 | 74550412 | Bolt 1/4-28urf Gr8 W/Patch | 62 | 8883R | Cover Pedal Blk Round |
| 14 | 10040400 | Washer Lock Hvy Helical 1/4 | 63 | 180219 | Pulley Eng |
| 15 | 74490544 | Bolt Hex Flghd 5/16-18 x Gr. 5 | 64 | 173937 | Bolt Hex 7/16-20 x 4 Gr 5 |
| 16 | 73300500 | Nut Lock Hex w/ins 5/16-18 unc | 65 | 10040700 | Washer Lock Hlcl Spr 7/16 |
| 18 | 74780616 | Bolt Fin Hex 3/8-16 UNC x 1 Gr. 5 | 66 | 154778 | Keeper Belt Engine FP |
| 19 | 73800600 | Nut Lock Hex W/Ins. 3/8-16 Unc | 70 | 180218 | Guide Belt Mower Drive RH |
| 21 | 106933X | Knob Rd 1/2-13 Plstc Thds | 74 | 137057 | Spacer Axle |
| 22 | 130804 | Rod Brake Blk Zinc 26 840 | 75 | 121749X | Washer 25/32 x 1-1/4 x 16 Ga |
| 24 | 73350600 | Nut Hex Jam 3/8-16 Unc | 76 | 12000001 | E-ring #5133-75 |
| 25 | 106888X | Spring Rod Brake 2 00 Zinc | 77 | 123583X | Key Square 2 0 x 1845/ 1865 |
| 26 | 19131316 | Washer 13/32 x 13/16 x 16 Ga. | 78 | 121748X | Washer 25/32 x 1-5/8 x 16 Ga |
| 27 | 76020412 | Pin Cotter 1/8 x 3/4 Cad | 79 | 2228M | Key Woodruff #9 3/16 x 3/4 |
| 28 | 175765 | Rod Brake Parking Lt/Yt | 96 | 4497H | Retainer Spring 1 |
| 29 | 71673 | Cap Brake Parking | 112 | 19091210 | Washer 9/32 x 3/4 x 10 Ga |
| 30 | 174973 | Bracket Mtg Transaxle | 113 | 127285X | Strap Torque LH LT |
| 32 | 74760512 | Bolt Hex Hd 5/16-18unc x 3/4 | 116 | 72140608 | Bolt 3/8-16 x 1 |
| 34 | 175578 | Shaft Asm Pedal Foot Nibbed | 120 | 73900600 | Nut Lock Flg 3/8-16 |
| 35 | 120183X | Bearing Nylon Blk 629 Id | 150 | 175456 | Spacer Retainer |
| 36 | 19211616 | Washer 21/32 x 1 x 16 Ga | 151 | 19133210 | Washer 13/32 x 2 x 10 Ga. |
| 37 | 1572H | Pin Roll 3/16 x 1" | 170 | 178394 | Keeper Belt Transaxle Gear |
| 38 | 179114 | Pulley Composite Flat | 202 | 72110614 | Bolt Carr. Sh 3/8-16 x 1-3/4 Gr. 5 |
| 39 | 74760648 | Bolt Fin Hex 3/8-16 UNC x 3 Gr. 5 | 212 | 145212 | Nut Hex Flange Lock |
| 41 | 175556 | Keeper Belt Idler | 263 | 17000612 | Screw 3/8-16 x 3/4 |
| 47 | 127783 | Pulley Idler V Groove Plastic | 269 | 182402 | Guard Muffler |

NOTE: All component dimensions given in U. S. inches 1 inch = 25.4 mm

REPAIR PARTS

TRACTOR- -MODEL NO. 917. 277151

STEERING ASSEMBLY



steering_pl.lt_42

REPAIR PARTS

TRACTOR- -MODEL NO. 917. 277151

STEERING ASSEMBLY

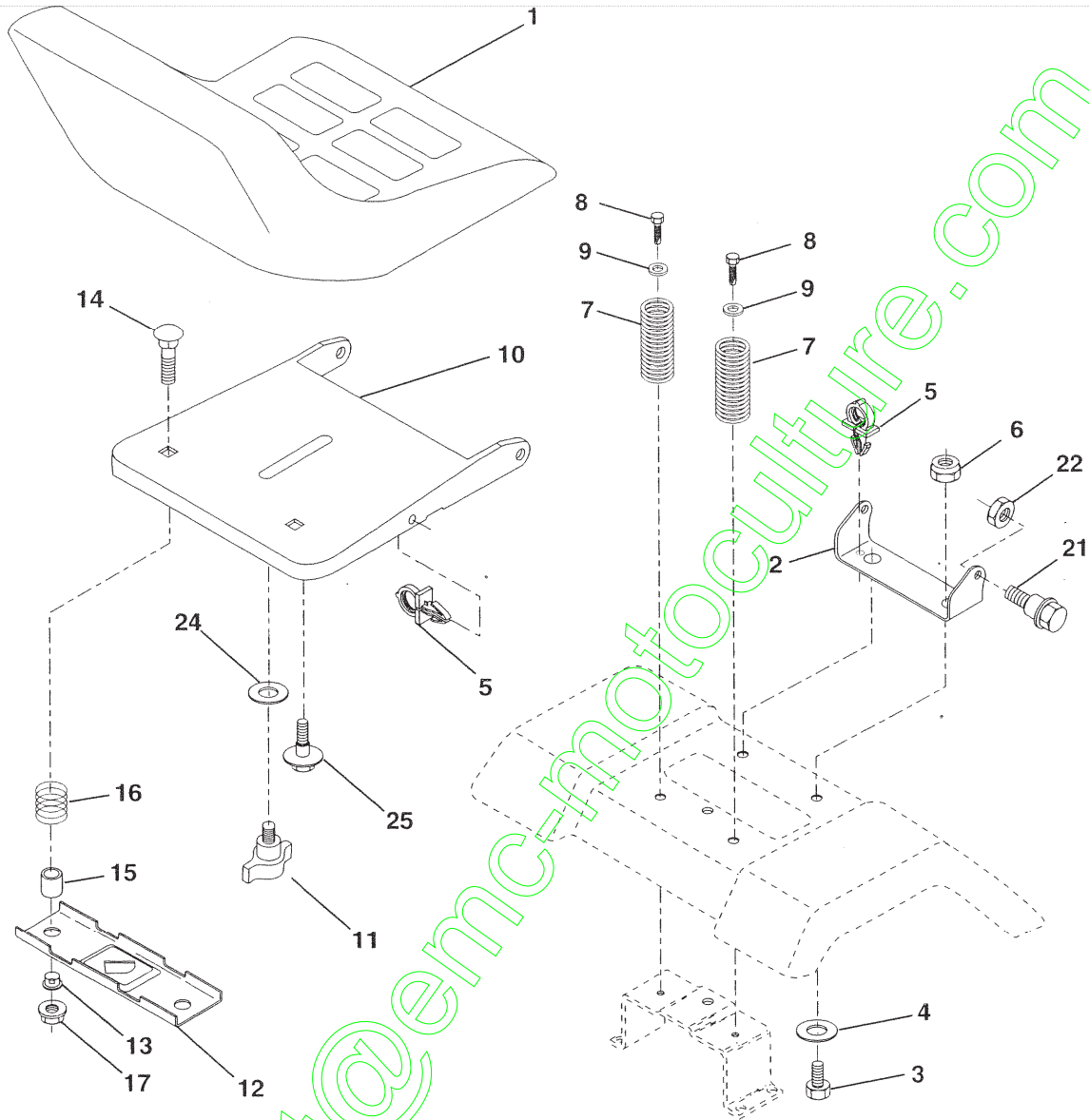
| KEY NO. | PART NO. | DESCRIPTION |
|---------|-----------------|----------------------------------|
| 1 | 140044X428 | Steering Wheel |
| 2 | 175131 | Axle Assembly |
| 3 | 169840 | Spindle Assembly, L.H. |
| 4 | 169839 | Spindle Assembly, R.H. |
| 5 | 6266H | Bearing, Race, Thrust, Hardened |
| 6 | 121748X | Washer 25/32 x 1-5/8 x 16 Gauge |
| 7 | 19272016 | Washer 27/32 x 1-1/4 x 16 Gauge |
| 8 | 12000029 | Ring, Klip |
| 9 | 3366R | Bearing, Steering Column |
| 10 | 175121 | Draglink |
| 11 | 10040600 | Washer, Lock |
| 12 | 73940800 | Nut Hex Jam Toplock 1/2-20 Unf |
| 13 | 136518 | Spacer Bearing Axle Front |
| 15 | 145212 | Hexflange Lock |
| 17 | 180641 | Shaft Assembly, Steering |
| 26 | 126847X | Bushing, Link, Drag |
| 28 | 19131416 | Washer 13/32 x 7/8 x 16 Gauge |
| 29 | 17000612 | Screw 3/8-16 x 3/4 |
| 30 | 76020412 | Pin |
| 32 | 130465 | Rod, Tie |
| 36 | 155099 | Bushing, Steering |
| 37 | 152927 | Screw |
| 38 | 140045X428 | Cap, Steering Wheel |
| 39 | 19183812 | Washer 9/16 x 2-3/8 12 Gauge |
| 40 | 7810H | Gripco Nut |
| 41 | 186737 | Adaptor, Steering Wheel |
| 42 | 145054X428 | Boot, Steering |
| 43 | 121749X | Washer 25/32 x 1-1/4 x 16 Gauge |
| 44 | 180640 | Shaft Extension Steering |
| 46 | 121232X | Cap, Spindle |
| 47 | 183226 | Fitting, Grease |
| 51 | 73540400 | Nut Crownlock 1/4-28 |
| 54 | 71130420 | Bolt Hex 1/4-28unf x 1-1/4 Gr. 8 |
| 65 | 160367 | Spacer Brace Axle |
| 67 | 72110618 | Bolt, Rdhd Sq 3/8-16 UNC x 2-1/4 |
| 68 | 169827 | Axle, Brace |
| 71 | 175146 | Steering Asm |
| 82 | 169835 | Bracket Susp Chassis Front |
| 85 | 133835 | Fastener Christmas Tree |
| 88 | 175118 | Shoulder Bolt |
| 91 | 175553 | Clip Steering |

NOTE: All component dimensions given in U. S. inches
1 inch = 25.4 mm

REPAIR PARTS

TRACTOR- -MODEL NO. 917. 277151

SEAT ASSEMBLY



| KEY NO. | PART NO. | DESCRIPTION |
|---------|----------|-----------------------------|
| 1 | 127427 | Seat |
| 2 | 140551 | Bracket Pnt St |
| 3 | 71110616 | Bolt Fin Hex 3/8-16unc x 1 |
| 4 | 19131610 | Washer Flat 13/32 x1 x10 Ga |
| 5 | 145006 | Clip Push-In Hinged |
| 6 | 73800600 | Locknut Hex W/Wsh 3/8-16 |
| 7 | 124181X | Spring Seat Cprsn 2 250 Blk |
| 8 | 17000616 | Screw 3/8-16 x 1 |
| 9 | 19131614 | Washer 13/32 x 1 x 14 Ga |
| 10 | 182493 | Pan Seat |
| 11 | 166369 | Knob Seat Adj. Wingnut |
| 12 | 121246X | Bracket Mounting Switch |

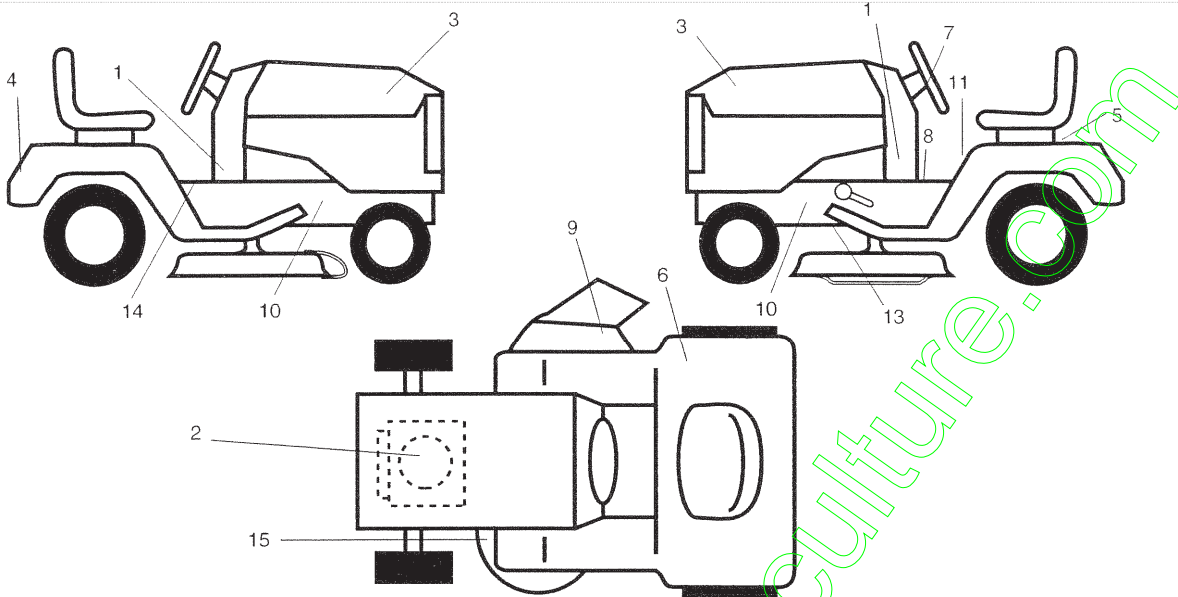
| KEY NO. | PART NO. | DESCRIPTION |
|---------|----------|------------------------------|
| 13 | 121248X | Bushing Snap Blk Nyl 50 Id |
| 14 | 72050412 | Bolt Rdhd Sht 1/4-20x1-1/2 |
| 15 | 134300 | Spacer Split 28x 96 Yel Zinc |
| 16 | 121250X | Spring Cprsn 1 27 Blk Pnt |
| 17 | 123976X | Nut Lock 1/4 Lge Flg Gr 5 |
| 21 | 171852 | Bolt Shld 5/16-18 Unc |
| 22 | 73800500 | Nut Lock Hex W/Ins 5/16-18 |
| 24 | 19171912 | Washer 17/32 x1-3/16x12 Ga |
| 25 | 127018X | Bolt Shoulder 5/16-18 x 62 |

NOTE: All component dimensions given in U. S. inches 1 inch = 25.4 mm

REPAIR PARTS

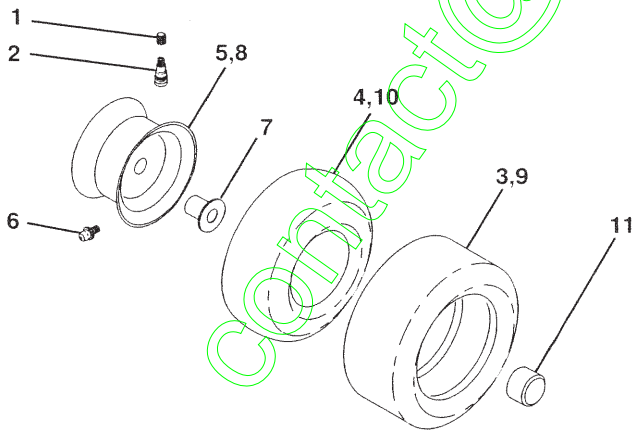
TRACTOR- -MODEL NO. 917. 277151

DECALS



| KEY NO. | PART NO. | DESCRIPTION | KEY NO. | PART NO. | DESCRIPTION |
|---------|----------|----------------------------|---------|----------|-----------------------------|
| 1 | 177109 | Decal Lower Dash | 11 | 145498 | Decal Read Owners Manual |
| 2 | 185845 | Decal Engine | 13 | 146046 | Decal V-Belt Dr Sch tractor |
| 3 | 171704 | Decal Hood | 14 | 159737 | Decal, Brake/Clutch |
| 4 | 163204 | Decal Fender | 15 | 136832 | Decal V-Belt sch |
| 5 | 145005 | Decal Battery Danger | -- | 138311 | Decal Handle Lft Height |
| 6 | 180432 | Decal, Fend 100/CE | -- | 162598 | Decal, Drawbar |
| 7 | 172275 | Decal Steering | -- | 186531 | Manual Oper, Euro |
| 8 | 140837 | Decal, Brake Park | -- | 186532 | Manual Oper, Scan |
| 9 | 182166 | Decal, Cut Finger | -- | 188290 | Manual, Parts |
| 10 | 159736 | Decal, Chassis Hot Muffler | | | |

WHEELS AND TIRES



| KEY NO. | PART NO. | DESCRIPTION |
|---------|------------|-----------------------------------|
| 1 | 59192 | Cap Valve Tire |
| 2 | 65139 | Stem Valve |
| 3 | 106222X | Tire F Ts 15 X 6 0 - 6 Service |
| 4 | 59904 | Tube Front (Service Item Only) |
| 5 | 106732X624 | Rim Asm 6"front Service |
| 6 | 278H | Fitting Grease (Front Wheel Only) |
| 7 | 9040H | Bearing Flange (front Wheel Only) |
| 8 | 106108X624 | Rim Asm 8"rear Service |
| 9 | 124635X | Tire Rear |
| 10 | 7152J | Tube Rear (Service Item Only) |
| 11 | 104757X428 | Cap Axle Blk 1 50 X 1 00 |
| -- | 144334 | Sealant, Tire (10 oz. Tube) |

NOTE: All component dimensions given in U. S. inches 1 inch = 25.4 mm

REPAIR PARTS

TRACTOR- -MODEL NO. 917. 277151

ENGINE

| KEY NO. | PART NO. | DESCRIPTION |
|---------|----------|---|
| 1 | 170551 | Control Throttle/Choke |
| 2 | 17720408 | Screw Hex Thd Cut 1/4-20 x 1/2 |
| 3 | ----- | Engine Briggs Model 282H07-0239-E1 (See Breakdown) |
| 4 | 137352 | Muffler |
| 13 | 165291 | Gasket Eng 1 313 Id Tin Plated |
| 14 | 148456 | Tube Easy Oil Drain |
| 16 | 11050600 | Washer Lock Ext Tooth 3/8 |
| 23 | 169837 | Shield Browning |
| 25 | 180945 | Control Choke 1 Cyl |
| 26 | 73920600 | Nut Keps 3/8-24 Unf |
| 29 | 137180 | Kit Spark Arrestor (Flat Scrn) |
| 31 | 184900 | Tank Fuel Front 1 25 |
| 32 | 140527 | Cap Asm Fuel |
| 33 | 123487X | Clamp Hose (Blk) |
| 37 | 137040 | Line Fuel 20" |
| 38 | 181654 | Plug Oil Drain |
| 40 | 124028X | Bushing Snap Nyl Blk Fuel Line |
| 44 | 17670412 | Screw Hex Wsh Thdrol 1/4-20 x 3/4 |
| 45 | 17000612 | Screw Hex Wsh Thdrol 3/8-16 |
| 46 | 19091416 | Washer 9/32 x 7/8 x 16 ga |
| 72 | 183906 | Screw Socket Head 5/16-18 x 1 |
| 78 | 17060620 | Screw 3/8-16 x 1-1/4 |
| 81 | 73510400 | Nut Keps Hex 1/4-20 UNC |

NOTE: All component dimensions given in U. S.
inches 1 inch = 25.4 mm

REPAIR PARTS

TRACTOR- -MODEL NO. 917. 277151

MOWER LIFT

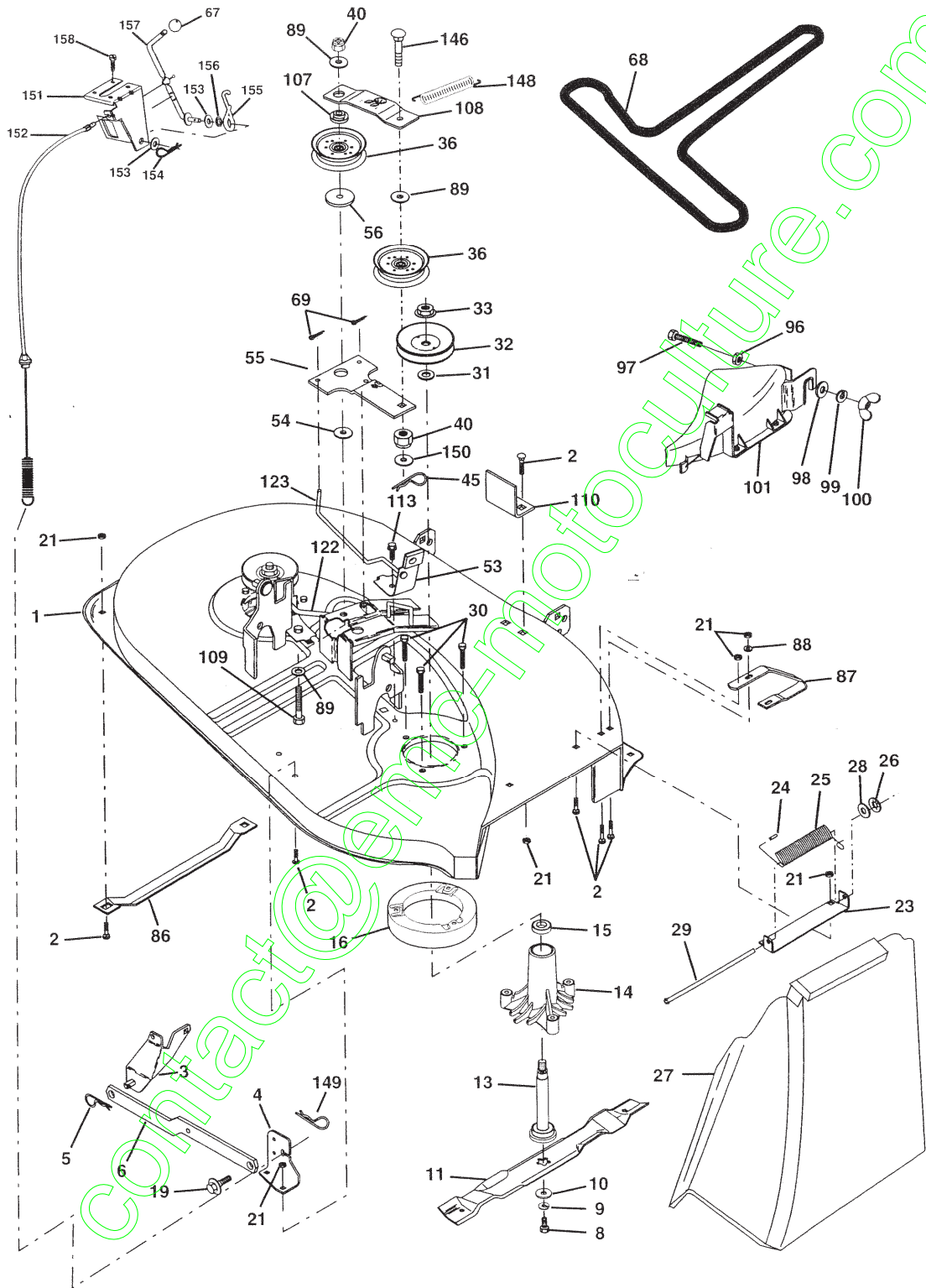
| KEY NO. | PART NO. | DESCRIPTION |
|---------|----------|------------------------------|
| 1 | 159460 | Wire Asm Inner W/plunger |
| 2 | 159471 | Shaft Asm Lift |
| 3 | 105767X | Pin Groove 1 500 Zinc |
| 4 | 12000002 | E Ring #5133-62 |
| 5 | 19211621 | Washer Pltd 21/32 X 1 X 21ga |
| 6 | 120183X | Bearing Nylon Blk 629 Id |
| 7 | 125631X | Grip Handle Fluted Blk |
| 8 | 122365X | Button Plunger Red |
| 11 | 139865 | Link Lift LH |
| 12 | 139866 | Link Lift RH |
| 13 | 4939M | Retainer Spring |
| 15 | 173288 | Link Front |
| 16 | 73350800 | Nut Jam Hex 1/2-13 Unc |
| 17 | 175689 | Trunnion Blk Zinc |
| 18 | 73800800 | Nut Lock w/Wsh 1/2-13 UNC |
| 19 | 139868 | Arm Suspension Rear |
| 20 | 163552 | Retainer Spring Zinc |
| 31 | 169865 | Bearing Pvt Lift |
| 32 | 73540600 | Nut Crownlock 3/8-24 |

NOTE: All component dimensions given in U. S. inches 1 inch = 25.4 mm

REPAIR PARTS

TRACTOR- -MODEL NO. 917. 277151

MOWER



REPAIR PARTS

TRACTOR- -MODEL NO. 917. 277151

MOWER

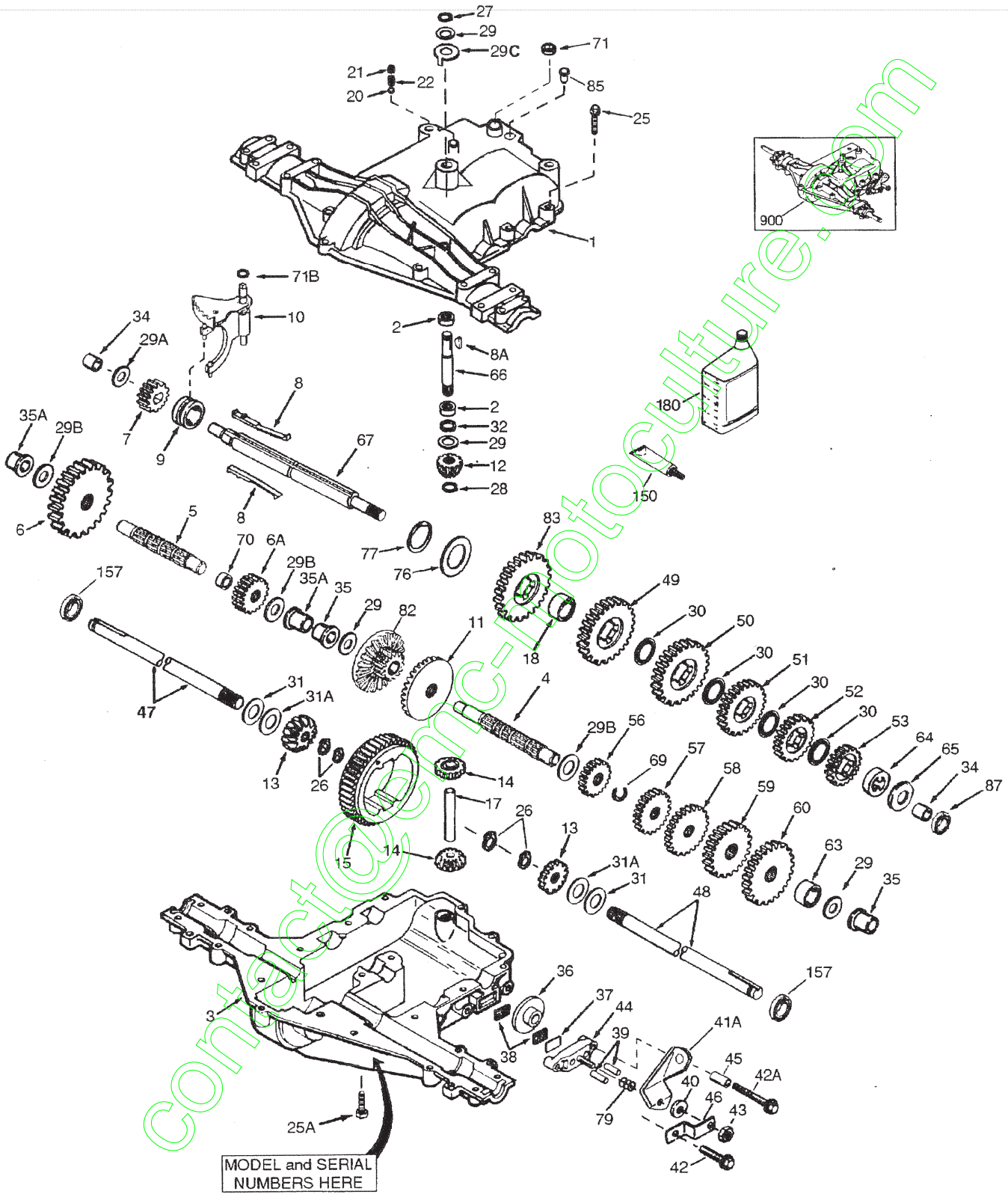
| KEY NO. | PART NO. | DESCRIPTION | KEY NO. | PART NO. | DESCRIPTION |
|---------|------------|---|---------|----------|--|
| 1 | 170280 | Mower Housing Assembly | 86 | 7631J | Runner, LH |
| 2 | 72140506 | Bolt, Carriage 5/16-18 x 3/4 | 87 | 128772 | Runner, RH |
| 3 | 138017 | Bracket Asm. Fram Sway Bar | 88 | 19111216 | Washer 11/32 x 3/4 x 16 Ga |
| 4 | 169970 | Bracket, Asm. Deck Sway Bar | 89 | 19131612 | Washer 13/32 x 1 x 12 Ga |
| 5 | 4939M | Retainer, Spring | 96 | 74930620 | Bolt 3/8-16 x 1-1/4 |
| 6 | 178024 | Bar Sway Deck | 97 | 73930600 | Nut Centerlock 3/8-16 |
| 8 | 850857 | Bolt, Hex 3/8-24 x 1-1/4 Gr 8 | 98 | 19132016 | Washer 13/32 x 1-1/4 x 16 Ga. |
| 9 | 10030600 | Washer, Lock, Hlcl Sprg 3/8 | 99 | 10040600 | Washer Lock Hvy HLCL Spr. 3/8 |
| 10 | 140296 | Washer, Hard Blade Mower Vented | 100 | 135651 | Nut Wing |
| 11 | 134148 | Blade, 38" Mulching Std (For mulching mowers only) | 101 | 132803 | Cover Asm Mulch |
| 13 | 137645 | Shaft and Bearing Assembly (Includes Key Number 15) | 107 | 133502 | Spacer, Retainer |
| 14 | 128774 | Mandrel Housing, Vented | 108 | 133503 | Stiffener, Idler Arm |
| 15 | 110485X | Ball Bearing, Mandrel | 109 | 74760640 | Bolt, Hex Head 3/8-16 x2-1/2 |
| 16 | 174493 | Stripper, Mower, Vented | 110 | 142587 | Upstop Deck Front 38" |
| 19 | 132827 | Bolt, Shoulder | 113 | 17060512 | Screw 5/16-18 x 3/4 |
| 21 | 73680500 | Nut, Crownlock 5/16-18 | 122 | 131289 | Rod, Brake, LH |
| 23 | 137607 | Bracket, Mower Deflector | 123 | 169971 | Rod, Brake, RH |
| 24 | 105304X | Cap, Sleeve | 146 | 165891 | Bolt Carriage Idler |
| 25 | 123713X | Spring, Deflector | 148 | 169022 | Spring Return Idler |
| 26 | 110452X | Nut, Push | 149 | 165898 | Retainer Spring Yellow Zinc |
| 27 | 106736X428 | Shield, Deflector | 150 | 19091216 | Washer 9/32 x 3/4 x 16 Ga. |
| 28 | 19111016 | Washer 11/32 x 3/4 x 16 Ga. | 151 | 169670 | Bracket Clutch |
| 29 | 106735X | Rod, Hinge | 152 | 172758 | Cable Clutch 38 In |
| 30 | 173984 | Screw, Thdro | 153 | 169674 | Washer Flat 3/8" Type B |
| 31 | 129963 | Washer, Spacer | 154 | 169675 | Spring Retainer |
| 32 | 153532 | Pulley, Mandrel | 155 | 169671 | Spring Retention Lever |
| 33 | 178342 | Nut, Flangelock 9/16 | 156 | 169672 | Spacer |
| 36 | 131494 | Pulley, Idler, Flat | 157 | 169669 | Rod Clutch |
| 40 | 73680600 | Nut Crownlock 3/8-16 | 158 | 17720408 | Screw Hex Thd Cut 1/4-20 x 1/2 |
| 45 | 4497H | Retainer, Spring | -- | 130794 | Mandrel Assembly (Includes Housing, Shaft and Shaft Hardware Only-Pulley Not Included) |
| 53 | 130840 | Brake Assembly | -- | 181209 | Replacement Mower, Complete (Std. Deck-Order separately mulcher cover and components Key Nos. 96 - 101.) |
| 54 | 178515 | Washer Hardened | | | |
| 55 | 133840 | Idler Arm Assembly | | | |
| 56 | 165723 | Spacer, Retainer | | | |
| 67 | 149846 | Knob | | | |
| 68 | 180214 | Belt | | | |
| 69 | 76020312 | Pin, Cotter 3/32 x 3/4 | | | |

NOTE: All component dimensions given in U.S. inches
1 inch = 25.4 mm

REPAIR PARTS

TRACTOR- -MODEL NO. 917. 277151

PEERLESS TRANSAXLE - MODEL NUMBER 205-544C



REPAIR PARTS

TRACTOR- -MODEL NO. 917. 277151

PEERLESS TRANSAXLE - MODEL NUMBER 205-544C

| REF PART NO. NO. | DESCRIPTION | REF PART NO. NO. | DESCRIPTION |
|------------------|-------------|------------------|--|
| 1 | 772147 | 39 | 786026 Dowel Pin |
| 2 | 780086A | 40 | 792076A Flat Washer .312 ID x .059W |
| 3 | 770128 | 41A | 790079 Brake Lever |
| 4 | 776395 | 42 | 792073A Screw 1 / 4 - 20 x 1 - 1 / 4" |
| 5 | 776409 | 42A | 792085A Screw 1 / 4 - 20 x 2 - 1 / 4" |
| 6 | 778364 | 43 | 792075 Locknut 5 / 16 - 24 |
| 6A | 778369 | 44 | 790025 Brake Pad Holder |
| 7 | 778330 | 45 | 786066 Spacer .2625 x 1.0 |
| 8 | 792180 | 46 | 786086 Brake Lever Bracket |
| 8A | 792047 | 47 | 774690 Axle (11 - 15 / 16 " long) |
| 9 | 784352 | 48 | 774691 Axle (16 - 1 / 2" long) |
| 10 | 784378 | 49 | 778356 Spur Gear (29 teeth) |
| 11 | 778334 | 50 | 778354 Spur Gear (23 teeth) |
| 12 | 778309 | 51 | 778352 Spur Gear (19 teeth) |
| 13 | 778368 | 52 | 778350 Spur Gear (16 teeth) |
| 14 | 778368 | 53 | 778346 Spur Gear (15 teeth) |
| 15 | 778370 | 53 | 778346 Spur Gear (15 teeth - steel) |
| 17 | 786188 | 56 | 778355 Spur Gear (11 teeth) |
| 18 | 786102 | 57 | 778353 Spur Gear (17 teeth) |
| 20 | 792077A | 58 | 778351 Spur Gear (21 teeth) |
| 21 | 792078 | 59 | 778349 Spur Gear (24 teeth) |
| 22 | 792079 | 60 | 778345 Spur Gear (25 teeth) |
| 25 | 792073A | 63 | 786071 Countershaft Spacer 1 - 1 / 8" x 3 / 8" |
| 25A | 792177 | 64 | 786072 Brake Shaft Spacer 1 - 3 / 8" x 3 / 8" |
| 26 | 792125 | 65 | 780189 Flat Washer .563 ID x .062W |
| 27 | 792035 | 66 | 776422 Input shaft |
| 28 | 788040 | 67 | 776396 Shifter & Brake shaft |
| 29 | 780072 | 69 | 792170 Retaining Ring |
| 29A | 780160 | 70 | 786187 Spacer .890 |
| 29B | 780051 | 71 | 788069 Square Cut Ring |
| 29C | 780199 | 71B | 788092 "O" Ring |
| 30 | 780108 | 76 | 780090 Flat Washer 1.128 ID x .058W |
| 31 | 780001 | 77 | 788078A Inverted Retaining Ring |
| 31A | 780195 | 79 | 792144 Spring .430 OD x .5000 L |
| 32 | 788083 | 82 | 778333 Bevel & Spur Gear (30 & 13 teeth) |
| 34 | 780194 | 83 | 778338 Spur Gear (27 teeth) |
| 35 | 780193 | 85 | 792154 Oil Fill Plug |
| 35A | 780197 | 87 | 788089A Oil Seal 9 / 16" |
| 36 | 790075 | 150 | 788093A Liquid Gasket RTV Silicone |
| 37 | 790007 | 157 | 788088A Oil Seal 3 / 4" |
| 38 | 799021 | 180 | 730229A Gear Oil 80W90 |
| | | 900 | 794711 Replacement MST-205-544C Transaxle |

NOTE: All component dimensions given in U.S. inches
1 inch = 25.4 mm