

REPAIR PARTS MANUAL
MODEL NO. 277340
Lawn Tractor

CRAFTSMAN®

00007

HOW TO USE THIS MANUAL

This manual is designed to provide the customer with a means to identify the parts on his/her tractor when ordering repair parts. The illustrations may or may not represent the actual assemblies; therefore, it is not recommended to use this manual as a guide to assemble or disassemble the tractor. Some hardware and parts are drawn larger in order to more readily identify them.

Each tractor has its own model number.

The model number for your tractor can be found on the fender under the seat.

When ordering parts, always give the following information:

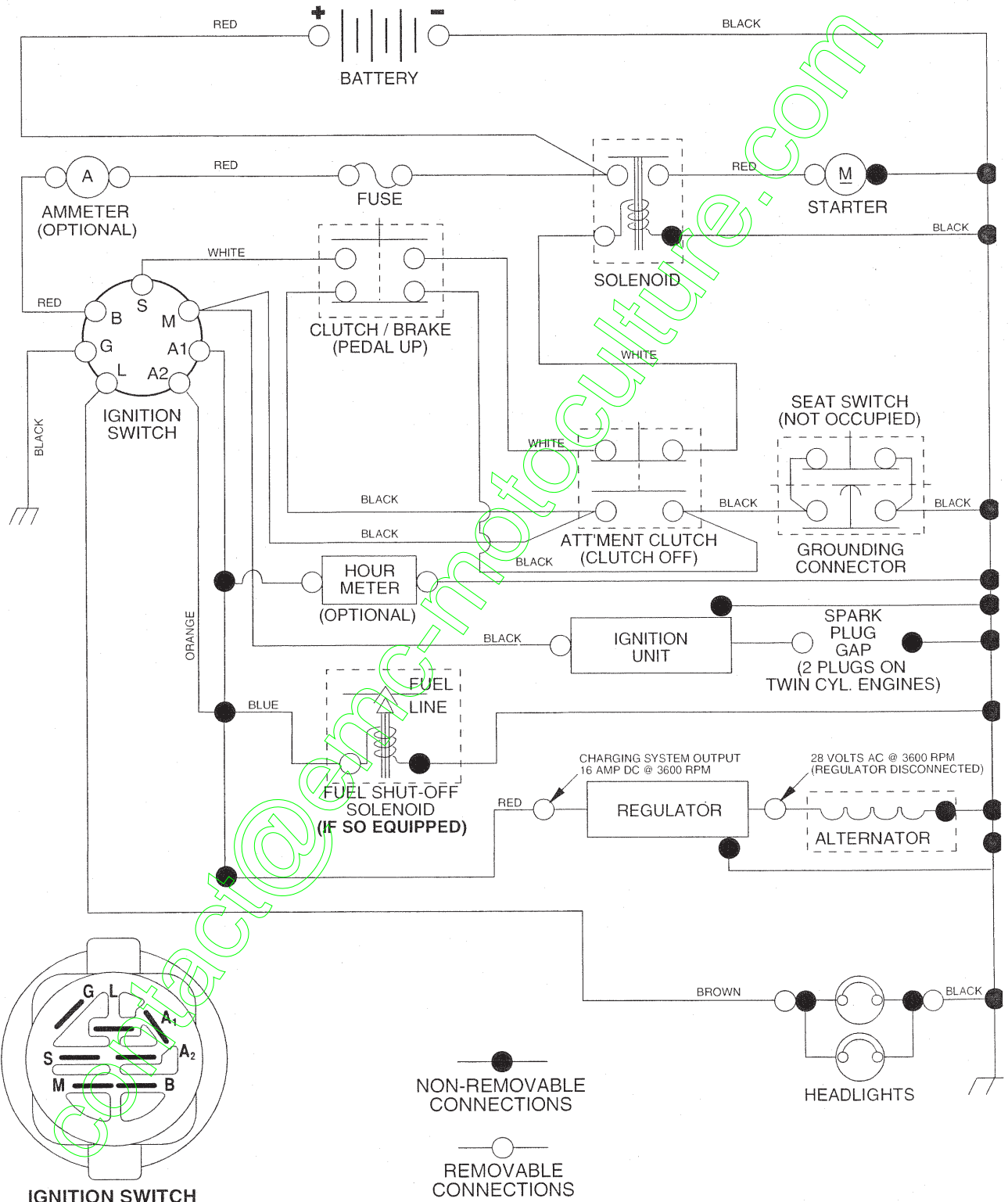
- Product - "Tractor"
- Model Number - "277340"
- Part Number
- Part Description

TABLE OF CONTENTS

SCHEMATIC	3
ELECTRICAL.....	4-5
CHASSIS.....	6-7
DRIVE.....	8-9
STEERING	10-11
SEAT	12
DECALS.....	13
ENGINE.....	14-15
MOWER LIFT	16-17
MOWER DECK	18-19
TRANSAXLE.....	20-21
ENGINE BREAKDOWN.....	22-27
WARRANTY.....	28

TRACTOR- -MODEL NO. 917. 277340

SCHEMATIC



REPAIR PARTS

TRACTOR- -MODEL NO. 917. 277340

ELECTRICAL

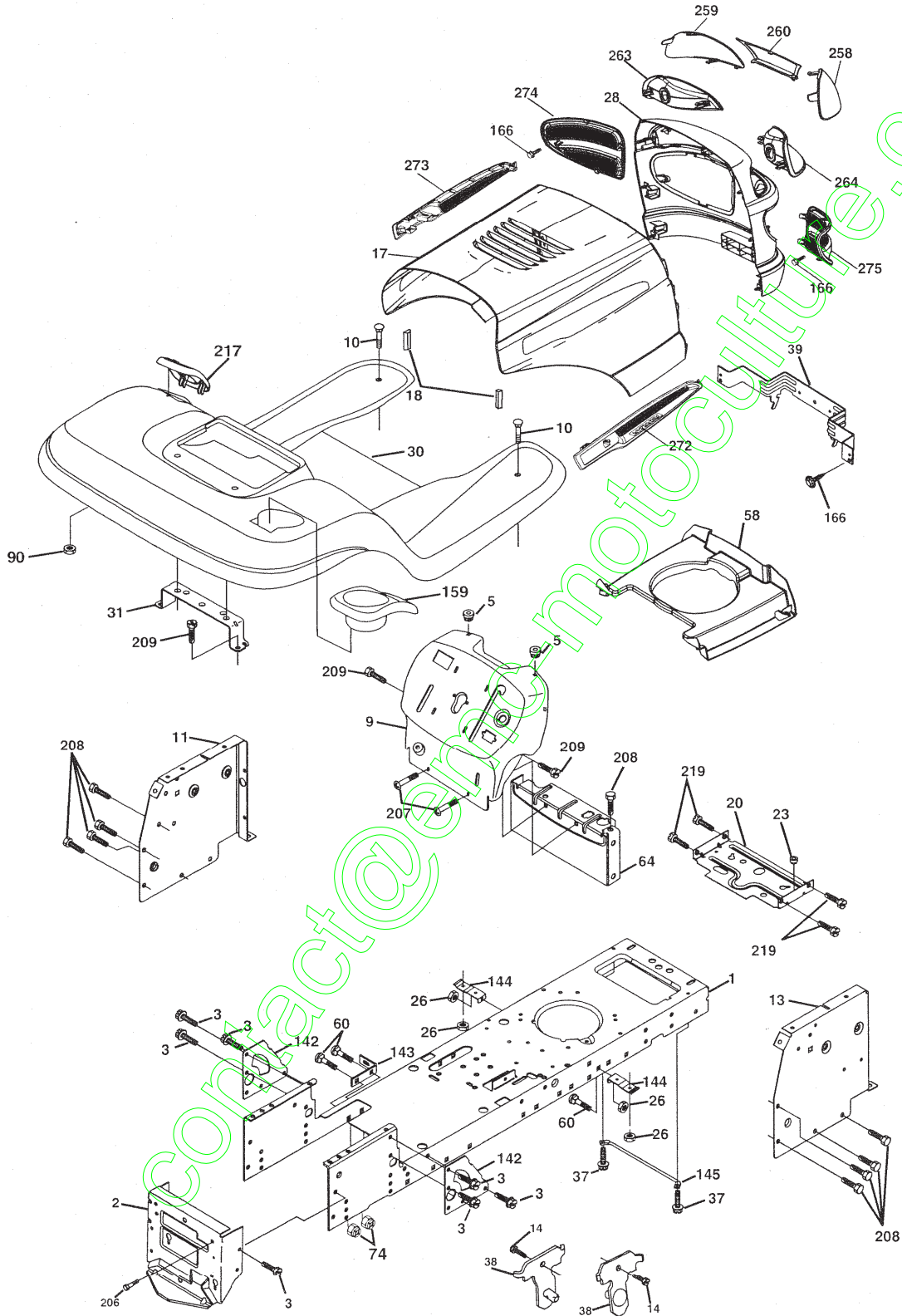
KEY NO.	PART NO.	DESCRIPTION
1	144927	Battery
2	74760412	Bolt, Hex Head 1/4-20 Unc x 3/4
8	7603J	Tray Battery
10	145211	Bolt Battery 1/4-20 x 7.5
11	150109	Holddown Battery Front Mount
12	145769	Nut Push Nylon 1/4"
16	176138	Switch, Interlock
21	183759	Harness, Light Socket (Includes 4152J)
22	4152J	Bulb, Light
25	178909	Cable Battery
26	175158	Fuse, 20 Amp
27	73510400	Nut Keps Hex 1/4-20 Unc
28	145491	Cable, Ground
29	121305X	Switch, Plunger
30	175566	Switch, Ignition
33	140403	Key, Ignition
40	187576	Harness, Ignition
42	154336	Cover Terminal
45	122822X	Ammeter Rectangular
52	141940	Protection Wire Loop
55	17490508	Screw Thdrol 5/16-18 x 1/2

NOTE: All component dimensions given in U. S. inches 1 inch = 25.4 mm

REPAIR PARTS

TRACTOR- -MODEL NO. 917. 277340

CHASSIS AND ENCLOSURES



chassis-Laser -It.stlt_24

REPAIR PARTS

TRACTOR- -MODEL NO. 917. 277340

CHASSIS AND ENCLOSURES

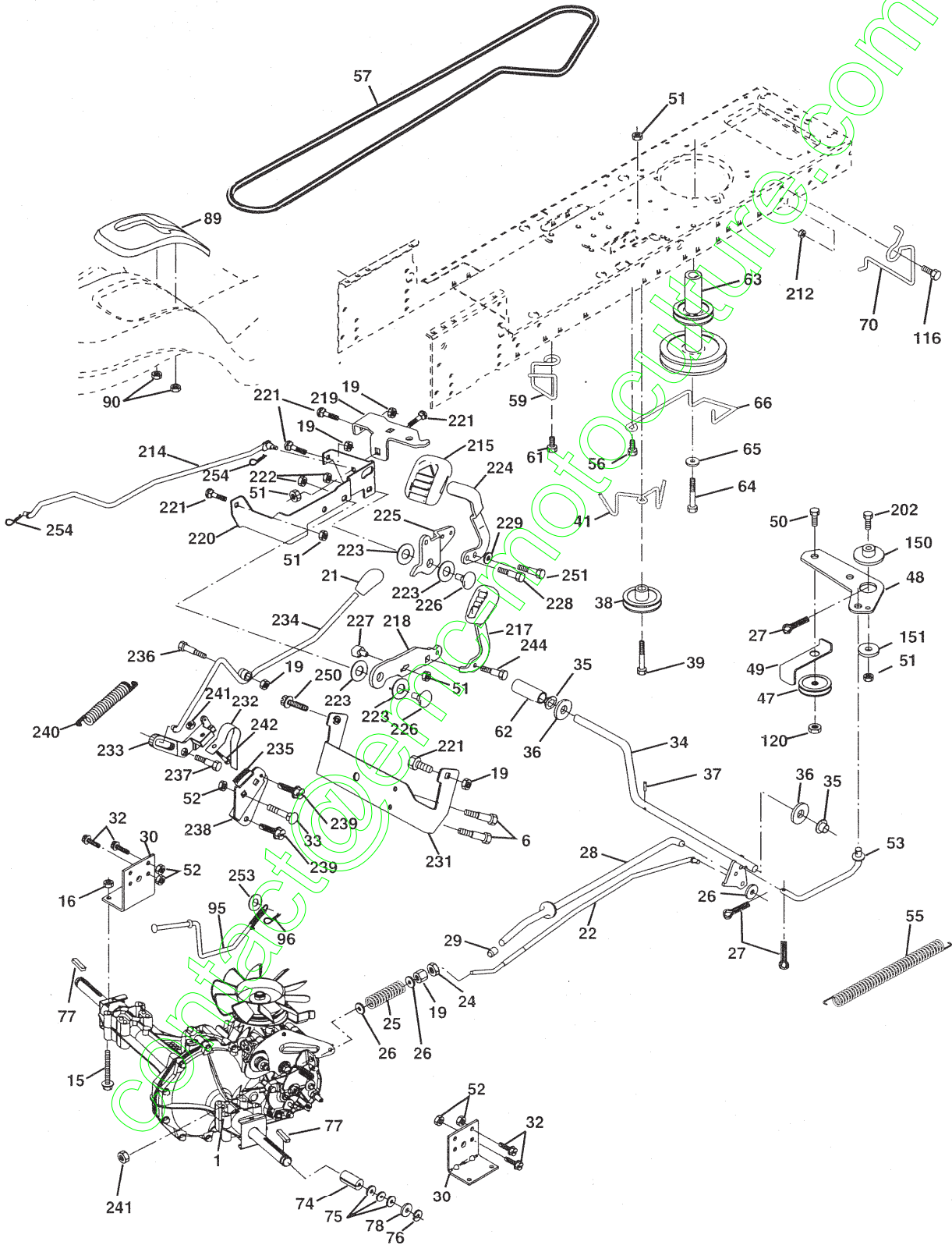
KEY NO.	PART NO.	DESCRIPTION
1	174619	Chassis Stamping
2	176554	Drawbar
3	17060612	Screw 3/8-16 x 3/4
5	155272	Bumper Hood/Dash
9	168337X014	Dash
10	STD533710	Bolt, Carriage 3/8-16 x 1
11	174996	Panel, Dash, L.H.
13	172105X010	Panel, Dash, R.H.
14	17490608	Screw Thdrol 3/8-16 x 1/2
17	184272X615	Hood Assembly
18	184291	Bumper Hood
20	180679	Plate Mtg Battery / Tank Fuel
23	124028X	Bushing
26	STD541437	Nut
28	184259	Grille Lens Asm
30	179131X615	Fend/Ftrest Pnt
31	139976	Bracket, Fender Support
37	17490508	Screw Thdrol 5/16-18 x 1/2 Tyt
38	175710	Bracket Asm. Pivot Mower Rear
39	174714	Bracket Pivot
58	185517	Duct Air Engine
60	72140606	Bolt Rdhd Sqnk 3/8-16 Unc x 3/4
64	154798	Dash Lower STLT
74	73680600	Nut Crownlock 3/8-16 Unc
90	124346X	Nut Self-Thd Wsh-Hd 1/4
142	175702	Plate Reinforcement STLT
143	154966	Bracket Swaybar Chassis
144	175582	Bracket Pnt Footrest STLT
145	156524	Jod Pivot Chassis/Hood
159	179950X428	Cupholder
166	171875	Screw 13-16 x 3/4
206	170165	Bolt Shoulder 5/16 -18 TT
207	17670508	Screw Thdrol 5/16-18 x 1/2 TYTT
208	17670608	Screw Thdrol 3/8-16 x 1/2
209	17000612	Screw 3/8-16 x 3/4
217	179132X428	Console Fuel Window
219	17000512	Screw 5/16-18 x 3/4
258	184264X599	Lens RH
259	184263X599	Lens LH
260	184262X428	Cover Lens
263	184265	Bezel Grille LH
264	184266	Bezel Grille RH
272	185922X428	Vent Hood Laser LH
273	185923X428	Vent Hood Laser RH
274	184260X428	Insert Grille LH
275	184261X428	Insert Grille RH
--	5479J	Plug, Button

NOTE: All component dimensions given in U. S. inches 1 inch = 25.4 mm

REPAIR PARTS

TRACTOR- -MODEL NO. 917. 277340

DRIVE



drive-hydro.stlt_49

REPAIR PARTS

TRACTOR- -MODEL NO. 917. 277340

DRIVE

KEY NO.	PART NO.	DESCRIPTION	KEY NO.	PART NO.	DESCRIPTION
1	-----	Transaxle (See Breakdown)	78	121748X	Washer 25/32 x 1-5/8 x 16 Ga.
		Hydro gear Model 336-0510	89	174901X428	Console Shift
6	17060512	Screw 5/16-18 x 3/4	90	124346X	Nut Self-Thd Wsh-Hd 1/4
15	74490544	Bolt Hex Flghd 5/16-18 Gr. 5	95	180825	Rod Bypass
16	73800500	Nut Lock Hex W/Ins. 5/16-18 Unc	96	4497H	Retainer Spring 1" Zinc/Cad
19	STD541437	Nut Lock Hex w/Ins 3/8-16 Unc	116	72140608	Bolt RDHD SQNK 3/8-16 Unc x 1
21	175036X428	Knob Control Cruise	120	73900600	Nut Lock Flg 3/8-16 Unc
22	175896	Rod, Brake	150	175456	Spacer Retainer
24	73350600	Nut, Hex Jam 3/8-16 Unc	151	19133210	Washer 13/32 x 2 x 10 Ga.
25	106888X	Spring, Brake Rod	202	72110614	Bolt Carr Sh 3/8-16 x 1-3/4 Gr. 5
26	19131316	Washer	212	145212	Nut HexFlange Lock
27	76020412	Pin Cotter 1/8 x 3/4 CAD.	214	174735	Link Transaxle
28	175765	Rod, Parking Brake	215	175646	Cover Pedal Forward
29	71673	Cap Brake Parking	217	179433	Pedal Reverse Asm. w/Pad
30	169592	Bracket, Transaxle	218	174713	Arm Control Pedal Reverse
32	74760512	Bolt Hex Hd 5/16-18 Unc x 3/4	219	174839	Bracket Frest Pdl Ctrl. Hyd
33	72140506	Bolt Rdhd Sqnk 5/16-18 Unc x 3/4	220	174711	Bracket Mtg. Pedal Control
34	175578	Shaft, Foot Pedal	221	72140606	Bolt Rdhd Sqnk 3/8-16 Unc x 3/4
35	120183X	Bearing, Nylon	222	73680700	Nut Crownlock 7/16-14 Unc
36	19211616	Washer	223	174840	Washer Nylon 11/16 ID x .060
37	1572H	Pin, Roll	224	174736	Pedal Forward
38	179114	Pulley, Composite	225	174712	Arm Control Pedal Forward
39	74760648	Bolt Fin Hex 3/8-16 Unc x 3	226	174902	Bolt Pivot Spacer
41	175556	Keeper, Belt Idler Flat	227	174710	Cam Reverse Pedal LT
47	127783	Pulley, Idler, V-Groove	228	179032	Bolt Shoulder 5/16-18
48	154407	Bellcrank Clutch Grnd Drw St	229	176451	Washer Serrated 5/16 x .75
49	123205X	Retainer, Belt	231	174573	Strap Torque
50	72110612	Bolt	232	175570	Actuator Cruise Disengage
51	73680600	Nut Crownlock 3/8-16 Unc	233	174856	Pawl Control Cruise
52	73680500	Nut, Crownlock 5/16-18 Unc	234	174858	Lever Control Cruise
53	105710X	Link, Clutch	235	174857	Sector Control Cruise
55	105709X	Spring, Return, Clutch	236	128903	Bolt Shoulder 3/8-16
56	17060620	Screw 3/8-16 x 1-1/4	237	170165	Bolt Shoulder 5/16-18
57	140294	V-Belt, Ground Drive	238	175807	Arm Mtg. Cruise Sector
59	169691	Keeper, Center Span	239	17490508	Screw Thdrol 5/16 x 1/2
61	17120614	Screw 3/8-16 x .875	240	175610	Spring Return Cruise Control
62	8883R	Cover, Pedal	241	73930400	Nut Centerlock 1/4-20 Unc
63	180219	Pulley, Engine	242	74780412	Bolt Fin Hex 1/4-20 Unc x 3/4
64	173937	Bolt Hex 7/16-20 x 4 Gr.5	244	166880	Screw 5/16-18 x 5/8 Yellow
65	10040700	Washer	250	17060612	Screw 3/8-16 x 3/4
66	154778	Keeper Belt Engine	251	17060516	Screw 5/16-18 x 1
70	180218	Guide Belt Mower Drive RH	253	179422	Washer .3125 x .615 x 16 Ga.
74	137057	Spacer, Axle	254	178062	Clip Retainer
75	121749X	Washer 25/32 x 1-1/4 x 16 Ga.			
76	12000001	E-Ring			
77	123583X	Key, Square			

NOTE: All component dimensions given in U. S. inches 1 inch = 25.4 mm

REPAIR PARTS

TRACTOR- -MODEL NO. 917. 277340

STEERING ASSEMBLY

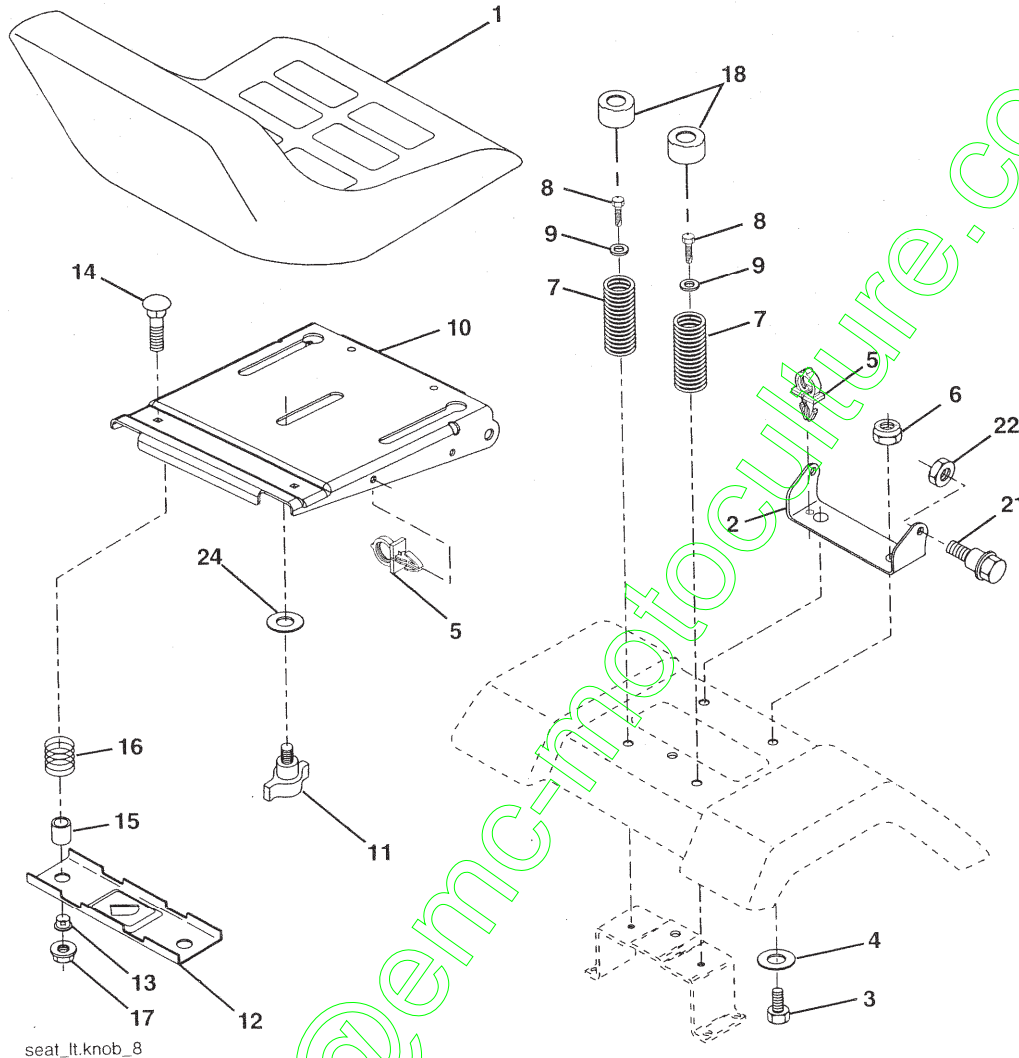
KEY NO.	PART NO.	DESCRIPTION
1	159944X428	Steering Wheel
2	184706	Axle Assembly
3	169840	Spindle Assembly, L.H.
4	169839	Spindle Assembly, R.H.
5	6266H	Bearing, Race, Thrust, Hardened
6	121748X	Washer 25/32 x 1-5/8 x 16 Ga.
8	1200029	Ring, Klip
10	175121	Draglink
11	STD551137	Washer, Lock
12	73940800	Nut Hex Jam Toplock 1/2-20 Unf
13	136518	Spacer Brg Axle Front
15	145212	Nut, Hexflange Lock
17	180641	Shaft Assembly, Steering
29	17060612	Screw 3/8-16 x 3/4
32	171888	Rod, Tie
33	19111216	Washer 11/32 x 3/4 x 16 Ga
34	10040500	Washer Lock 5/16
35	73540500	Crownlock Nut 5/16-24 Unf
36	155099	Bushing, Steering
37	152927	Screw
38	159946X428	Insert, Steering Wheel
39	19182411	Washer 9/16 x 1-1/2 11 Ga.
40	STD541537	Nut Lock Center 3/8-24 Unf
41	159945	Adaptor, Steering Wheel
42	145054x428	Boot, Steering Shaft
43	121749X	Washer 25/32 x 1-1/4 x 16 Ga.
44	180640	Extension Shaft Steering
46	184946X505	Cap, Spindle
51	73540400	Nut Crownlock 1/4-28
54	71130420	Bolt Hex 1/4-28 Unf x 1-1/4
65	160367	Spacer Brace Axle
67	72110618	Bolt Rdhd Sqnk 3/8-16 x 2-1/4
68	169827	Axle, Brace
71	175146	Steering Asm
82	169835	Bracket Susp Chassis Front
87	173966	Washer .781 x 1-1/2 x .14
88	175118	Bolt Shoulder 7/16-20
91	175553	Clip Steering

NOTE: All component dimensions given in U. S. inches
1 inch = 25.4 mm

REPAIR PARTS

TRACTOR- -MODEL NO. 917. 277340

SEAT ASSEMBLY



seat_ft.knob_8

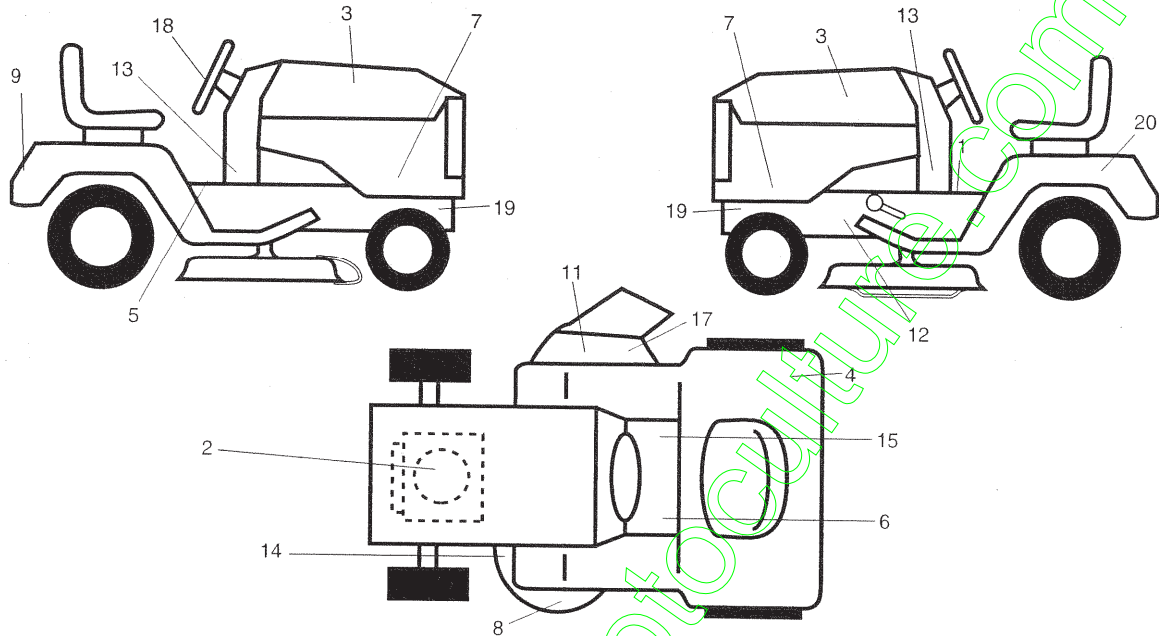
KEY NO.	PART NO.	DESCRIPTION	KEY NO.	PART NO.	DESCRIPTION
1	180597	Seat	13	121248X	Bushing, Snap
2	180166	Bracket, Pivot, Fender	14	72050412	Bolt, Carriage 1/4-20 x 1-1/2
3	71110616	Bolt	15	134300	Spacer, Split .28 x .88
4	19131610	Washer 13/32 x 1 x 10 Ga.	16	121250X	Spring
5	145006	Clip, Push-In Hinged	17	123976X	Locknut, Flange 1/4 Grade 5
6	STD541437	Nut	18	124238X	Cap Spring
7	124181X	Spring, Seat	21	171852	Bolt, Shoulder 5/16-18 Unc
8	17000616	Screw 3/8-16 x 1-1/2	22	STD541431	Nut
9	19131614	Washer 13/32 x 1 x 14 Ga.	24	19171912	Washer 17/32 x 1-3/16 x 12 Ga.
10	180186	Pan, Seat			
11	166369	Knob Seat			
12	121246X	Bracket, Switch Mounting			

NOTE: All component dimensions given in U. S. inches 1 inch = 25.4 mm

REPAIR PARTS

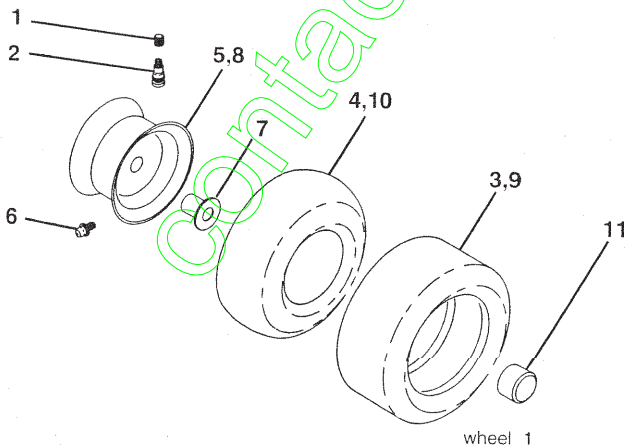
TRACTOR- -MODEL NO. 917. 277340

DECALS



KEY NO.	PART NO.	DESCRIPTION	KEY NO.	PART NO.	DESCRIPTION
1	145498	Decal, Oper. Instr.	15	178302	Decal, Operation Cruise
2	186741	Decal, HP Engine	17	182166	Decal, Cuttinger
3	186366	Decal, Hood	18	164065	Decal, Steering
4	180432	Decal, Fender DB/CE	19	159736	Decal, Hot Muffler
5	159737	Decal, Brake/Clutch	20	145005	Decal, Battery Dngr/Psn Eng
6	140837	Decal, Brake Parking	--	162598	Decal, Drawbar Load Limit
7	186367	Decal, Hood Side	--	138311	Decal, Lift Handle
8	172331	Decal, Deck	--	174998X428	Pad Footrest LH STLT
9	186572	Decal, Fender, Craftsman	--	175542X428	Pad Footrest RH STLT
11	179128	Decal, Deck "B" 42"	--	169210	Decal By Pass LT Hydro
12	146046	Decal, V-Belt Drive Schematic	--	186998	Operator's Manual (Euro)
13	186478	Decal, Lower Dash	--	186999	Operator's Manual (Scan)
14	160396	Decal, V-Belt Schematic	--	187000	Manual, Parts

WHEELS AND TIRES



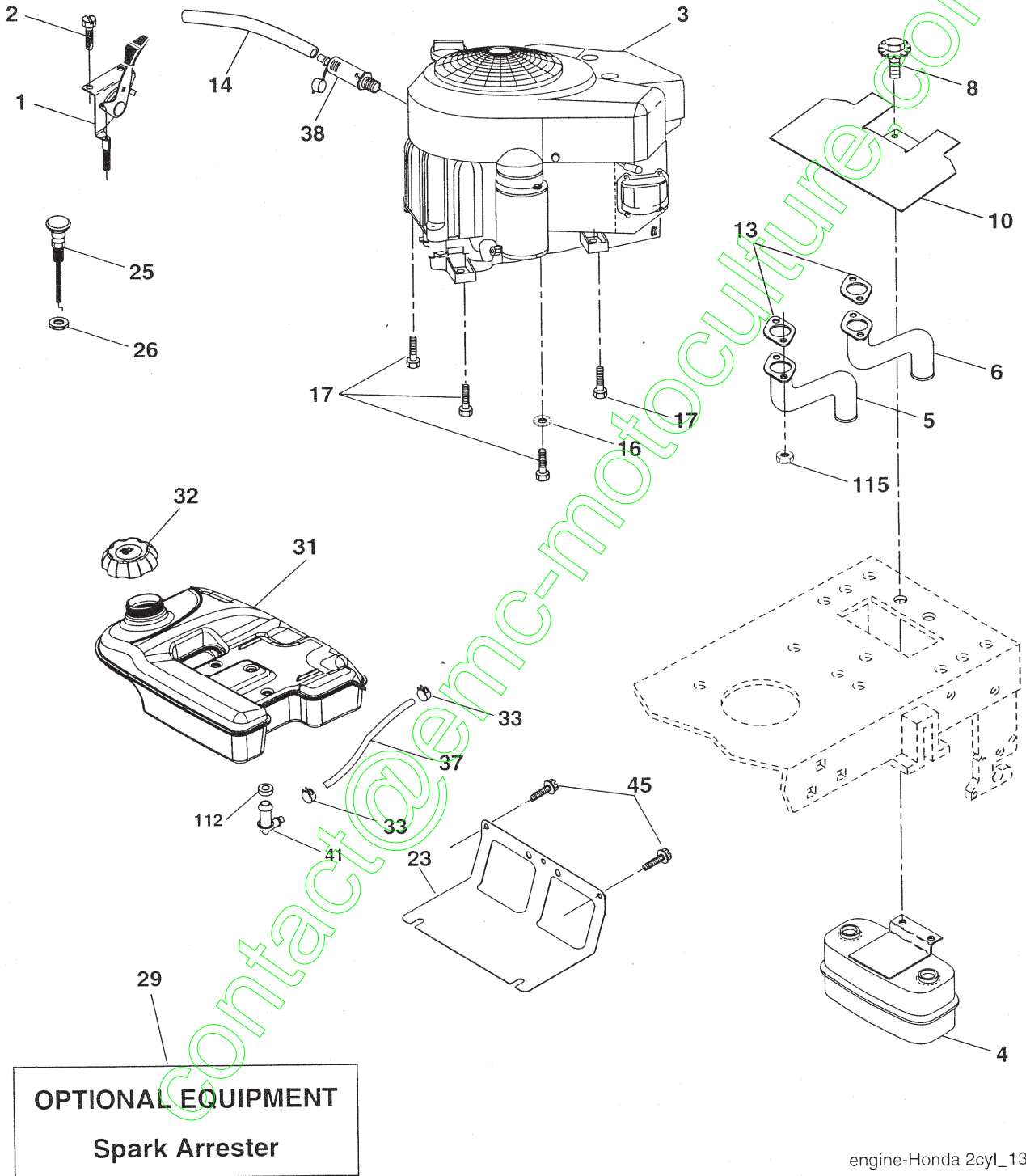
KEY NO.	PART NO.	DESCRIPTION
1	59192	Valve Cap, Tire
2	65139	Stem, Valve
3	177750	Tire, Front
4	59904	Tube, Front Tire (Not Provided, Service Item Only)
5	106732X624	Rim, Front
6	278H	Fitting, Grease (Front Wheel Only)
7	9040H	Bearing, Flange (Front Wheel Only)
8	106108X624	Rim, Rear
9	177751	Tire, Rear
10	7152J	Tube, Rear Tire (Not Provided, Service Item Only)
11	104757X428	Cap, Axle
--	144334	Sealant, Tire 10 oz.

NOTE: All component dimensions given in U. S. inches 1 inch = 25.4 mm

REPAIR PARTS

TRACTOR- -MODEL NO. 917. 277340

ENGINE



REPAIR PARTS

TRACTOR- -MODEL NO. 917. 277340

ENGINE

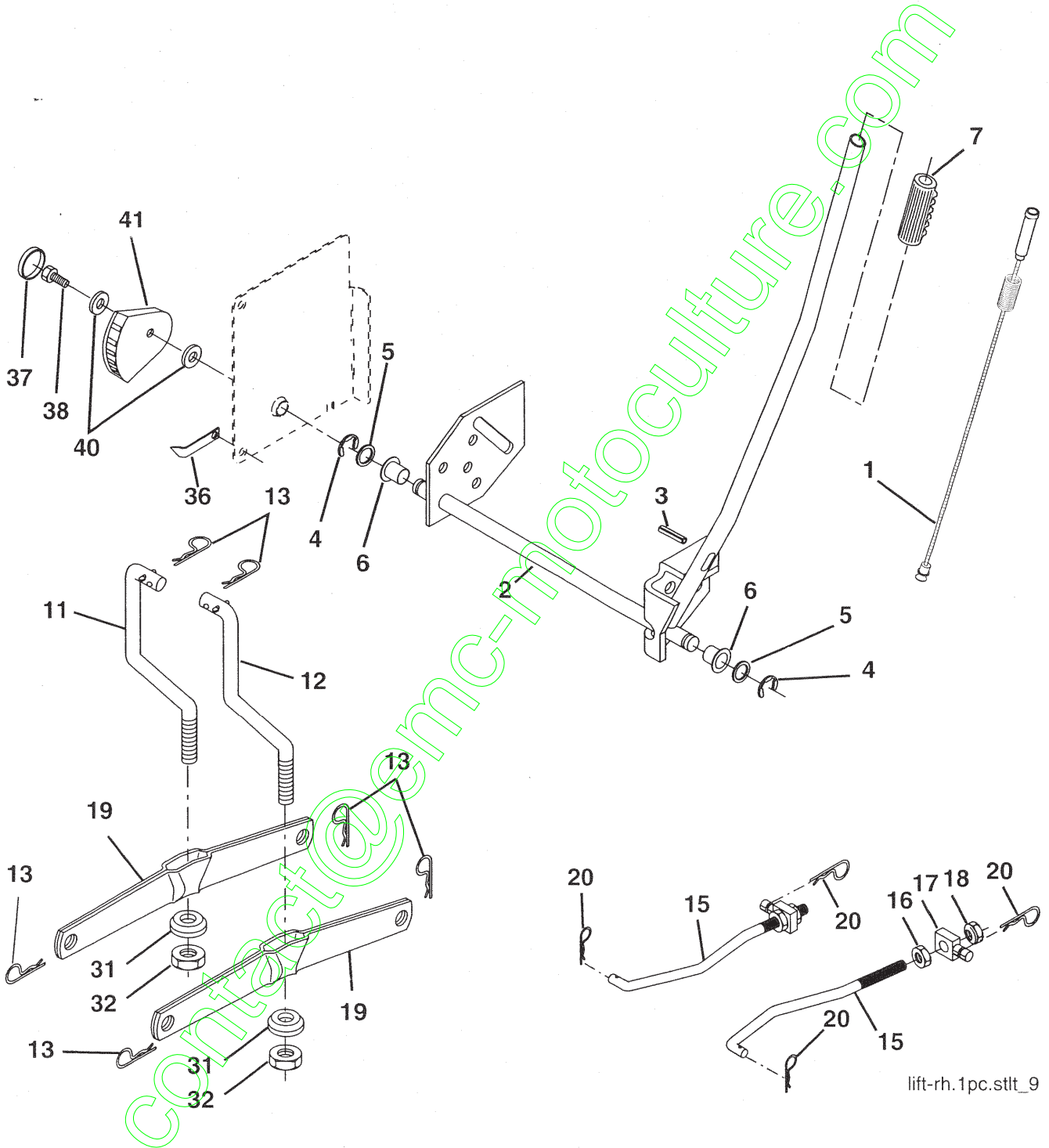
KEY NO.	PART NO.	DESCRIPTION
1	170546	Control, Throttle
2	17720408	Screw, Hex Head, Thread Cutting 1/4-20 x 5/8
3	-----	Engine, (See Breakdown) Honda Model No. GXV 530-EXA1
4	149723	Muffler
5	175484	Tube Exhaust LH
6	175485	Tube Exhaust RH
8	171877	Bolt 5/16-18 Unc x 3/4
10	146629	Shield Heat Muffler
13	-----	Gasket (Order from engine manufacturer)
14	148456	Tube Drain Oil Easy
16	STD551237	Washer
17	17120616	Screw 3/8-16 x 1
23	169837	Shield Brn/Dbr Guard
25	145996	Control Choke
26	73920600	Nut Keps 3/8-24
29	137180	Arrestor, Spark
31	179022	Tank, Fuel
32	179124X428	Cap Fuel
33	123487X	Clamp, Hose
37	8543R	Line, Fuel
38	181654	Plug, Drain Oil Easy
41	139277	Stem Tank Fuel
45	17000612	Screw Hex Wsh Thdr 3/8-16 x 3/4
112	3645J	Bushing
115	-----	Nut Exhaust (Order from engine manufacturer)

NOTE: All component dimensions given in U. S. inches 1 inch = 25.4 mm

REPAIR PARTS

TRACTOR- -MODEL NO. 917. 277340

MOWER LIFT



lift-rh.1pc.stlt_9

REPAIR PARTS

TRACTOR- -MODEL NO. 917. 277340

MOWER LIFT

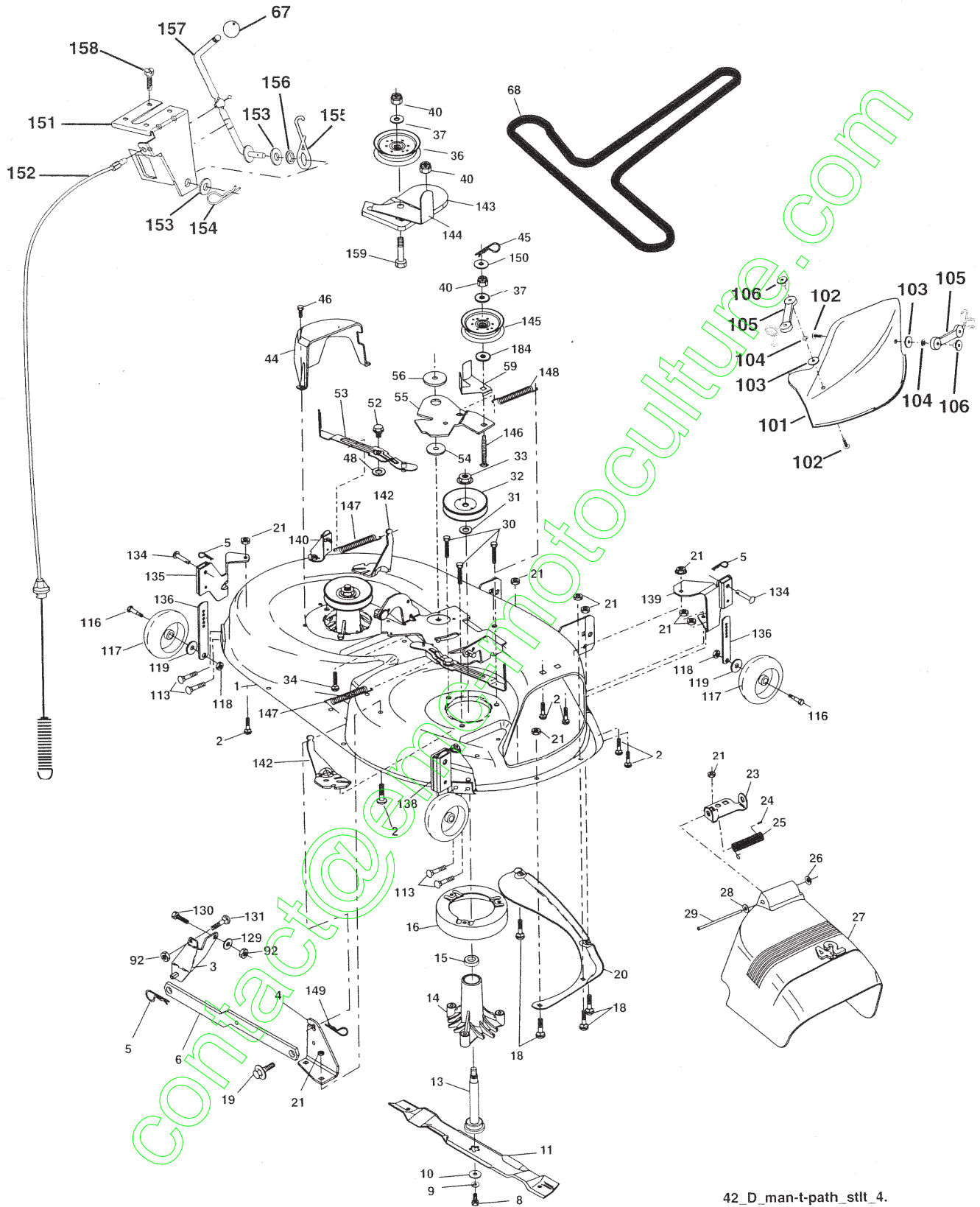
KEY NO.	PART NO.	DESCRIPTION
1	159460	Lift Lever Inner Wire Assembly
2	159471	Shaft Assembly, Lift
3	105767X	Pin, Groove
4	12000002	E-Ring
5	19211621	Washer 21/32 x 1 x 21 Gauge
6	120183X	Bearing, Nylon
7	125631X	Grip, Handle, Fluted
8	122365X	Button, Plunger, Red
11	139865	Link, Lift, L.H.
12	139866	Link, Lift, R.H.
13	STD624008	Retainer Spring
15	173288	Link, Front
16	73350800	Nut, Hex, Jam 1/2-13 Unc
17	175689	Trunnion
18	73800800	Locknut, Hex, with Washer Insert 1/2-13 Unc
19	139868	Arm, Suspension, Rear
20	163552	Retainer Spring
31	169865	Bearing, Pvt. Lift
32	73540600	Nut, Crownlock 3/8-24
36	155097	Pointer Height Indicator
37	123935X	Plug Hole
38	17060516	Screw 5/16-18 x 1
40	19112410	Washer 11/32 x 1-1/2 10 Ga.
41	155098	Indicator Height

NOTE: All component dimensions given in U. S. inches 1 inch = 25.4 mm

REPAIR PARTS

TRACTOR- -MODEL NO. 917. 277340

MOWER



42_D_man-t-path_stlt_4.

REPAIR PARTS

TRACTOR- -MODEL NO. 917. 277340

MOWER

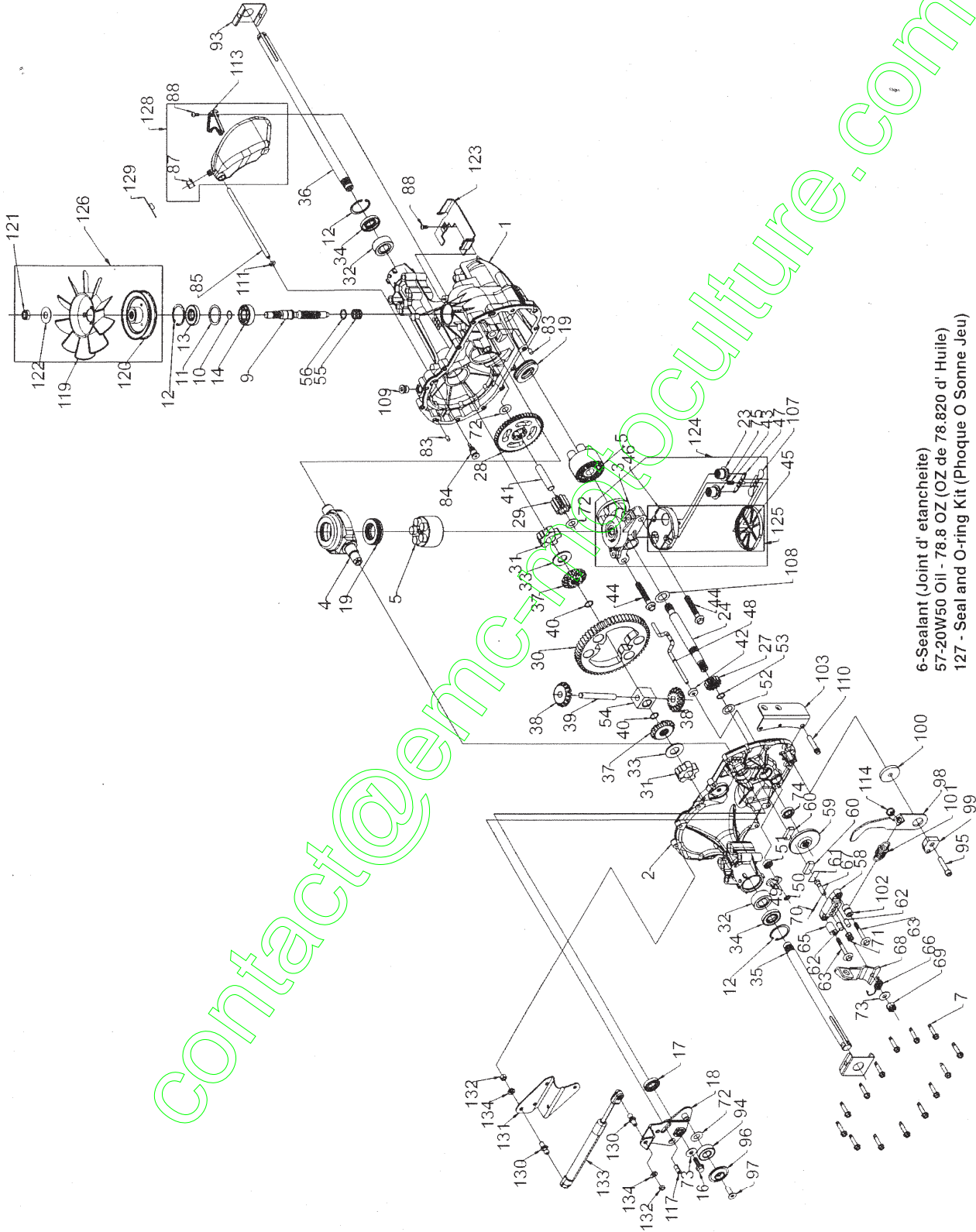
KEY NO.	PART NO.	DESCRIPTION	KEY NO.	PART NO.	DESCRIPTION
1	182032	Deck Asm MWR 42"weldment	67	149846	Knob
2	STD533107	Bolt Rdhd Sqnk 5/16-18 Unc x 3/4	68	180215	V-Belt Mower 42"
3	138017	Bracket Asm Fr Sway Bar 38/42	92	STD541437	Nut Lock 3/8-16
4	165460	Bracket Asm Deck 42"sway Bar	101	136420	Cover Mulching
5	STD624008	Retainer Spring	102	71081010	Washer Lock #10
6	178024	Bar Sway Deck	103	19061216	Washer #10
8	850857	Bolt 3/8 - 24 x 1.25 Gr 8	104	10071000	Screw Pan Head Phillip 10-24 x 5/8
9	STD551137	Washer Lock Hvy 3/8	105	160793	Latch Asm.
10	140296	Washer Hard Blade Mower Vented (The following blades are available)	106	2029J	Nut Weld
11	134149	Blade 42" Mulching Std (For mulching mowers only)	113	17060512	Screw 5/16-18 x 3/4
--	139775	Blade 42" Mulching Premium (For better wear when mulching)	116	184219	Bolt Shoulder 3/8-16 x 3-5/8
--	138971	Blade 42" Hi-Lift (For bagging or discharging)	117	174873	Wheel Gauge
13	137645	Shaft Asm W/lower Bearing	118	73930600	Nut Centerlock 3/8-16
14	128774	Housing Mandrel Vented	119	19121414	Washer 3/8 x 7/8
15	110485X	Bearing Ball Mandrel	129	19131312	Washer 13/32 x 13/16 x 12 Ga.
16	174493	Stripper Mower Vented	130	STD523710	Bolt Fin Hex 3/8-16 x 1 Gr. 5
18	72140505	Bolt Rdhd Sqnk 5/16-18 x 5/8	131	STD533710	Bolt RDHD SQNK 3/8-16 x 1
19	132827	Bolt Shoulder	134	156941	Pin Head Rivet
20	159770	Baffle Vortex 42	135	159765	Bracket Asm Whl Ga. Rear LH
21	STD541431	Nut Crownlock 5/16-18 Unc	136	155986	Bar Adjusting Guage Wheel
23	177563	Bracket Deflector Mower 42"	138	159763	Bracket Asm Whl Ga. Rear RH
24	105304X	Cap Sleeve 80x 112 Blk Mower	139	159767	Bracket Asm Whl Ga. Front RH
25	123713X	Spring Torsion Deflector 2 52	140	159768	Bracket Asm Whl Ga. Front LH
26	110452X	Nut Push Phos & Oil	142	165890	Arm Spring Brake Mower
27	130968X428	Shield Deflector Mower 42" Blk	143	157109	Bracket Arm Idler 42"
28	19111016	Washer 11/32 x 5/8 x 16 Ga.	144	158634	Keeper Belt 42" Clutch Idler
29	131491	Rod Hinge 42"6 75 Wig	145	165888	Pulley Idler Flat
30	173984	Screw Thd Rolling Washer Head	146	171977	Bolt Carriage Idler
31	129963	Washer Spacer Mower Vented	147	179748	Spring Extension
32	153535	Pulley Mandrel 42"	148	169022	Spring Return Idler
33	178342	Nut 9/16 Toplock Fling Oil Dip	149	169898	Retainer Spring Yellow
34	STD533717	Bolt Rdhd 3/8-16 Unc x 1-3/4 Gr5	150	19091216	Washer 9/32 x 3/4 x 16 Ga.
36	131494	Pulley Idler Flat 3 060	151	169670	Bracket Clutch Cable
37	STD551037	Washer 13/32 x 13/16 x 16	152	181555	Clutch Cable 42"
40	STD541437	Nut Crownlock 3/8-16 Unc	153	169674	Washer Flat 3/8" Type B
44	140088	Guard Mandrel LH Black	154	169675	Spring Retainer
45	STD624003	Spring Retainer 1" Zinc/cad	155	169671	Spring Retention Lvr Cltch Cab
46	137729	Screw Hex Thd Cut 1/4-20 x 5/8 T	156	169672	Spacer Clutch Cable
48	133944	Washer Hardened Smaller	157	169669	Rod Clutch Cable 3/8"
52	139888	Bolt Shoulder 5/16-18 Unc Blkz	158	17720408	Screw Hex Thd Cut 1/4-20 x 1/2
53	184907	Arm Asm Pad Brake	159	72140614	Bolt Rdhd Sqn 3/8-16 Unc x 1-3/4
54	178515	Washer Hardened	184	19131410	Washer 13/32 x 7/8 x 10 Ga
55	155046	Arm Idler 42"mower LT/YT	--	130794	Mandrel Asm Service (Includes Housing, Shaft and Shaft Hardware Only-Pulley Not Included)
56	165723	Spacer Retainer Mower	--	186917	Replacement Mower, Complete
59	141043	Guard TUV Idler			

NOTE: All component dimensions given in U.S. inches
1 inch = 25.4 mm

REPAIR PARTS

TRACTOR- -MODEL NO. 917. 277340

HYDRO GEAR TRANSAXLE - MODEL NUMBER 336-0510



REPAIR PARTS

TRACTOR- -MODEL NO. 917. 277340

HYDRO GEAR TRANSAXLE - MODEL NUMBER 336-0510

KEY PART NO. NO.	DESCRIPTION	KEY PART NO. NO.	DESCRIPTION		
1	170351	Main Housing, Assembly	68	178782	Arm, Brake
2	170352	Side Housing, Assembly	69	170415	Slotted Hex Nut 5/16-24
3	170353	Center Section, Assembly	70	170416	Cotter Pin 3/32 X 3/4
4	170354	Swashplate, Trunion Machined	71	170417	Compression Spring Brake Anti-Drag
5	169898	Block - Assembly	72	170418	Washer, Ht .5 I.D. X 1 O.D. X .032
6	170355	Sealant 10.5 Oz	73	142884	Flat - Washer 11/32 I.D. X 7/8 O.D
7	170356	Hex Flange Screw 1/4-20 X 1.25	74	170419	Oil Seal .625 X 1.0 X .25
8	170357	Stud, 5/16-24 Hex Double End	75	170420	Check Plug Assembly, .027, Washer
9	170358	Shaft, Input	76	170421	Stud, 5/16-24 Friction Pack
10	170359	Ring - Retaining	77	170422	Puck, .330 X 1.50 X .0975
11	170360	Spacer	78	142969	Spring, Helical Comp
12	169870	Ring - Retaining	79	142980	Spacer
13	170361	Seal, Lip .67 X 1.58 X .276	80	150778	Hex Lock Nut 5/16-24Unjif(Nylon Insert)
14	169869	Ball Brg 17mm Id X 40mm Od X 12mm	81	170423	Wedge, Friction Pack
16	170362	Hex Flange Head Screw 5/16-24X0.75	82	170424	Clip, Washer .316x1.50x.1046 (Plated)
17	170363	Lip Seal 18 X 32 X 7	83	161168	Pin, Standard Headless
18	178781	Arm, Control	84	170425	Fitting, 5/16 Sae 5/32 Tube
19	150771	Bearing, 30x52x13 Thrust	85	170426	Hose, Expansion Tank
23	170365	Check Plug Assembly, Washer	87	142917	Cap - Poppet Valve
24	170366	Shaft, Motor	88	170429	Bolt, Self Tapping 10-32 X 1/2
27	170367	Gear - Pinion, 13t	90	170430	Puck, Inner Wedge
28	170368	10t/48t Gear	93	170431	Spring Clip - Housing Thrust
29	170369	Gear, 10t Jackshaft	94	178783	Bearing, Ball
30	170370	60t Bull Gear	95	178784	Screw, Socket Head Cap 5/16-24X1-1/2
31	170371	Sleeve Bearing .75 X 1.575 X .625	96	178786	Spacer, Locating
32	170389	SleeveBearing(Outboard) .75x1.750x.625	97	178787	Screw, SFHCS 5/16-18 X 1
33	142991	Washer, 3/4 Id X 1-1/2 Od X .13 Thk	98	178789	Arm Return
34	170390	Lip Seal Axle Seal	99	178792	Puck, Adjusting
35	170391	Shaft, Axle .75 X 11.39 (Key, R.H.)	100	178793	Washer, .24 ID X 1.60 OD X .239
36	170392	Shaft, Axle .75 X 16.99 (Key, L.H.)	101	178794	Spring, Extension
37	150792	Miter Gear (Splined)	102	178795	Spacer .260 ID X .560 OD X .870
38	150793	Miter Gear 15t (0.5 Id)	103	178796	Bracket, Torque
39	150809	Shaft	107	170432	Deflector
40	170393	Ring, Spiral Retaining	108	170433	Washer, Motor Shaft .71idx1.15odx.030thk
41	170394	Pin, Jackshaft	109	170434	Plug, Sae #6
42	170395	Magnet, Ring	111	170435	O-Ring .07 X .301 I.D.
43	170396	Spring, Bypass	113	170437	Bracket, Support Expansion Tank
44	150797	Hydro Mtg Screw 3/8-24 X 2.5 Long	114	178797	Spring
45	170397	Filter	116	170438	Silicon Sponge
46	170398	Base, Filter	117	178799	Pin, Spring
47	170399	Actuator, Bypass	119	170439	Fan, 7 In.
48	170400	Rod, Bypass Actuator	120	170440	Pulley
49	170401	Arm, Bypass	121	170441	Hex Lock Nut 1/2-20 (Nylon Insert)
50	170402	Retaining Ring .250 External	122	170442	Washer, Belleville
51	170403	Seal, Lip .741 X .250 X .250 Tc	123	178800	Belt Keeper
52	170404	Flat Washer, 5/8 Id X 1.0 Od X .05 Thk	124	170444	Center Section-Filter-Bypass Assembly
53	170405	Retaining Ring	125	170445	Filter Assembly
54	170406	Bearing, Center Block	126	170446	Fan - Pulley Service Assembly
55	142977	Spring - Helical Compression	127	170447	Seal - O-Ring Kit
56	142978	Washer	128	173165	Kit, Expansion Tank
57	150798	20w-50 Oil	130	178802	Stud Ball
58	170407	Brake Yoke	131	178803	Bracket, Cruise Damper
59	170408	Rotor, Brake	132	178804	Hex Nut 5/16-18 NC
60	142883	Brake Puck	133	184227	Damper
61	142882	Puck Plate	134	178808	Washer, Helical Spring Lock 5/16
62	142887	Brake Actuating Pin	900	173839	Transaxle Complete
63	170410	Hfhcs 1/4-20x2 W/Patch,SpecialFlange			
64	142892	Bolt, 1/4-20 X 1 W/Patch			
65	170411	Spacer			
66	170412	Spring, Brake Arm Bias			
67	170413	Sq. Hd. Bolt 5/16-24-Ribbed			

NOTE: All component dimensions given in U.S. inches
1 inch = 25.4 mm