

REPAIR PARTS MANUAL
MODEL NO. 992120
Lawn Tractor



HOW TO USE THIS MANUAL

This manual is designed to provide the customer with a means to identify the parts on his/her tractor when ordering repair parts. The illustrations may or may not represent the actual assemblies; therefore, it is not recommended to use this manual as a guide to assemble or disassemble the tractor. Some hardware and parts are drawn larger in order to more readily identify them.

Each tractor has its own model number.

The model number for your tractor can be found on the fender under the seat.

When ordering parts, always give the following information:

- Product - "Tractor"
- Model Number - "992120"
- Part Number
- Part Description

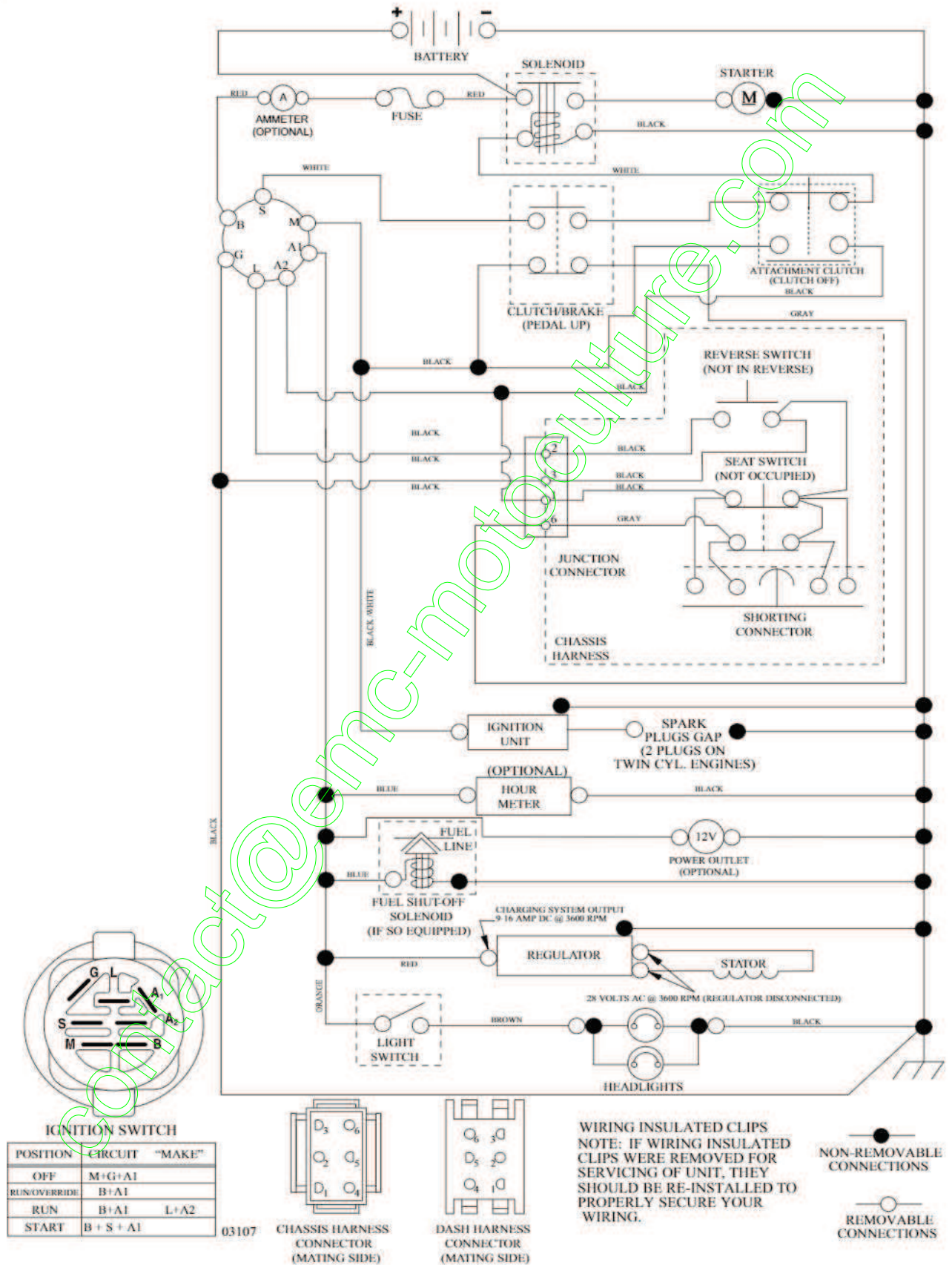
TABLE OF CONTENTS

SCHEMATIC	3
ELECTRICAL.....	4-5
CHASSIS	6-7
DRIVE.....	8-9
ENGINE.....	10-11
STEERING	12-13
MOWER DECK	14-15
MOWER LIFT.....	16
SEAT	17
DECALS.....	18
TRANSAXLE BREAKDOWN	20-21
ENGINE BREAKDOWN.....	22-25
WARRANTY.....	26

TRACTOR- -MODEL NO. 917.992120

SCHEMATIC

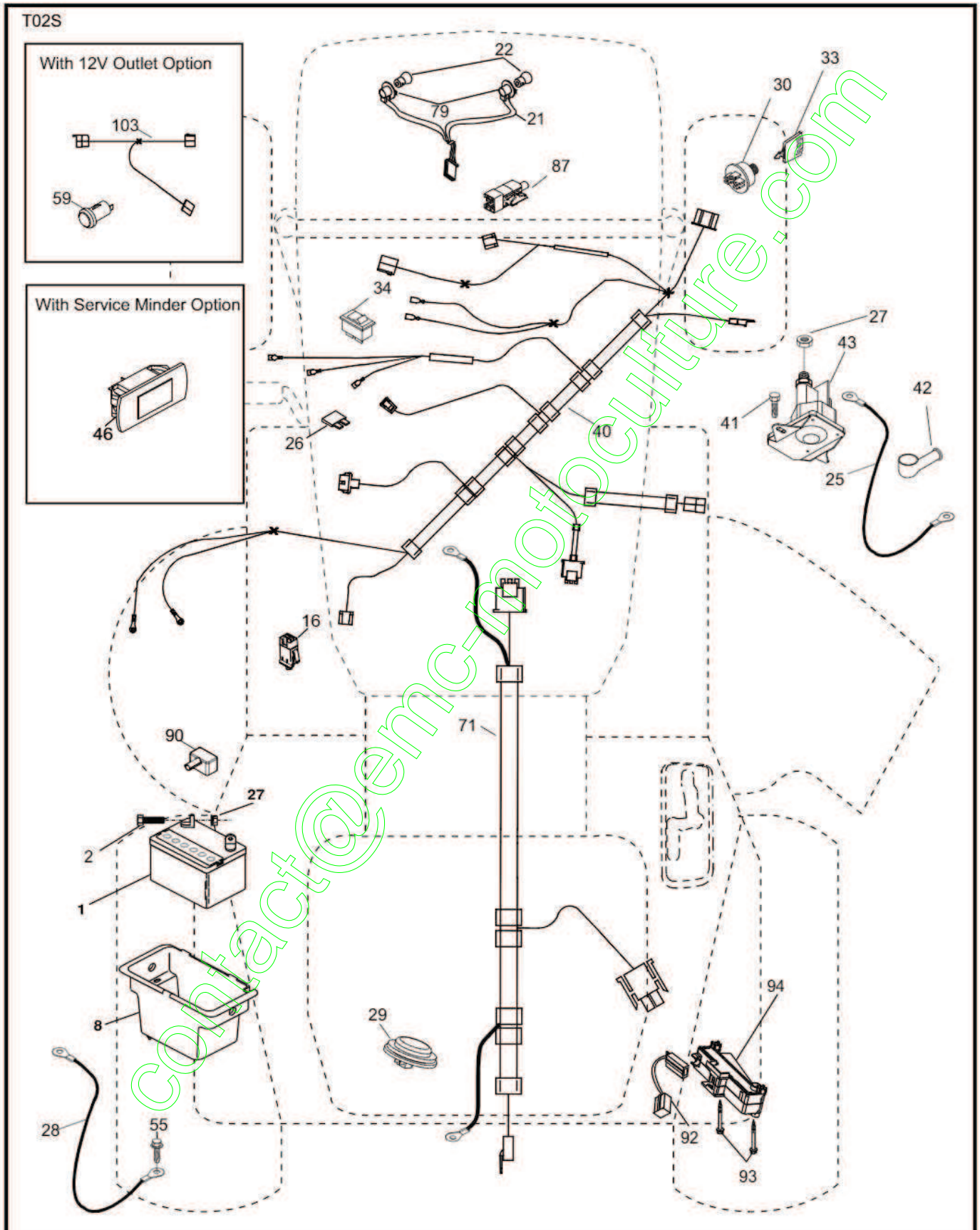
SCH10



REPAIR PARTS

TRACTOR- -MODEL NO. 917.992120

ELECTRICAL



REPAIR PARTS

TRACTOR- -MODEL NO. 917.992120

ELECTRICAL

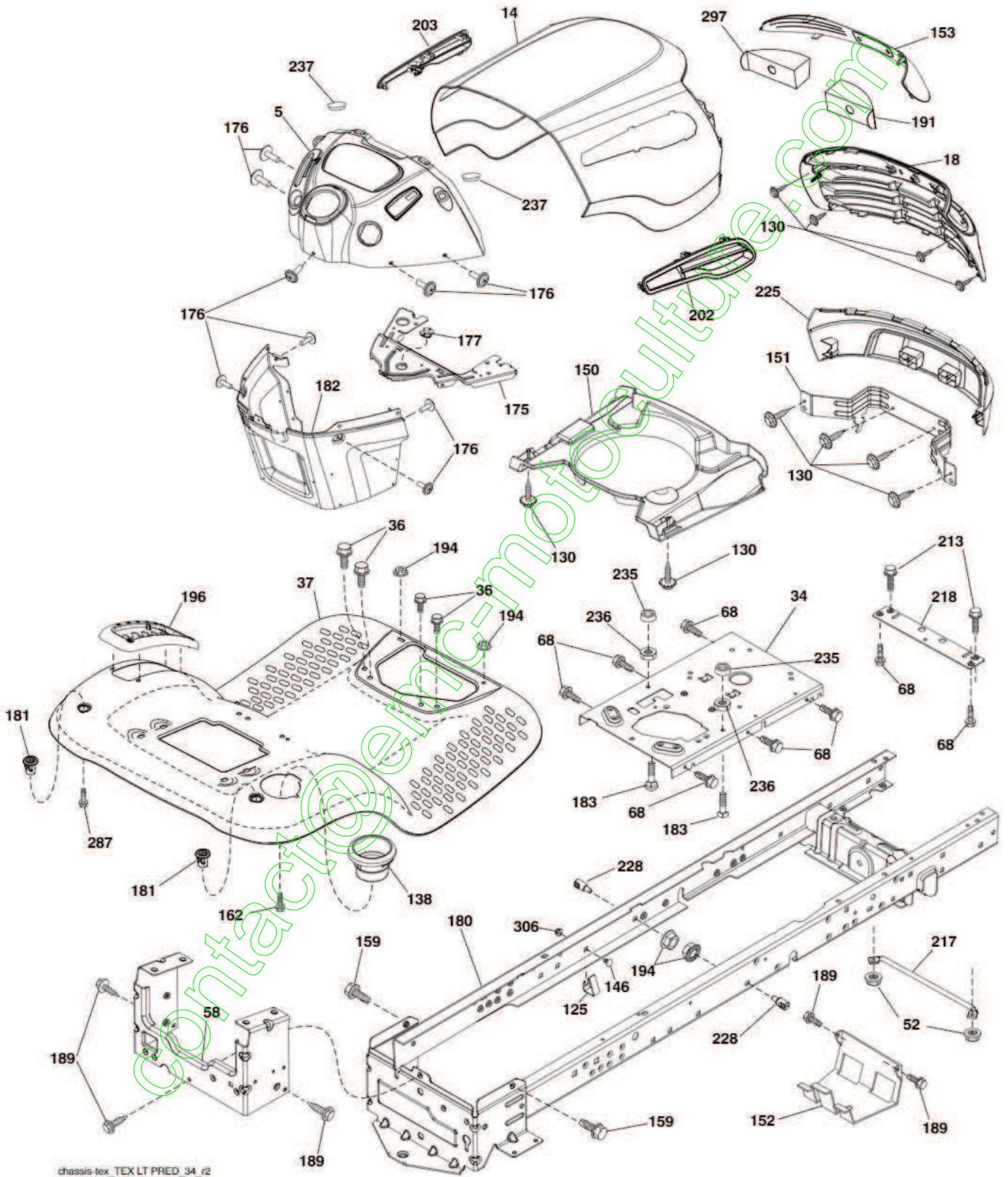
KEY NO.	PART NO.	DESCRIPTION
1	163465	Battery
2	74760412	Bolt Hex Hd 1/4-20 unc x 3/4
8	193228	Box Battery
16	176138	Switch Interlock Push-In
21	400252	Harness Socket Light w/4152J
22	4152J	Bulb Light
25	412894	Cable Starter
26	175158	Fuse
27	73510400	Nut Keps Hex 1/4-20 unc
28	198885	Cable, Ground
29	401545	Switch, Seat
30	193350	Switch, Ign
33	411934	Key/Chain
34	110712X	Switch Light / Reset
40	401098	Harness Ign. Dash/Lift
41	17720408	Screw Thd Cut 1/4-20 x 1/2
42	131563	Cover, Terminal
43	192507	Solenoid
55	17060512	Screw Thdrol 5/16-18 x 3/4 TYTT
71	441544	Harness Ign. Chassis/Lift
79	175242	Bulbholder Asm. Incan Descent
87	197802	Switch Interlock Clutch Cable
90	435395	Cover Terminal Battery
92	196615	Harness Pigtail Reverse Switch
93	192540	Screw Plastite 10 - 14 x 2 00
94	191834	Module Reverse Ros

NOTE: All component dimensions given in U.S. inches.
1 inch = 25.4 mm.

REPAIR PARTS

TRACTOR- -MODEL NO. 917.992120

CHASSIS AND ENCLOSURES



REPAIR PARTS

TRACTOR- -MODEL NO. 917.992120

CHASSIS AND ENCLOSURES

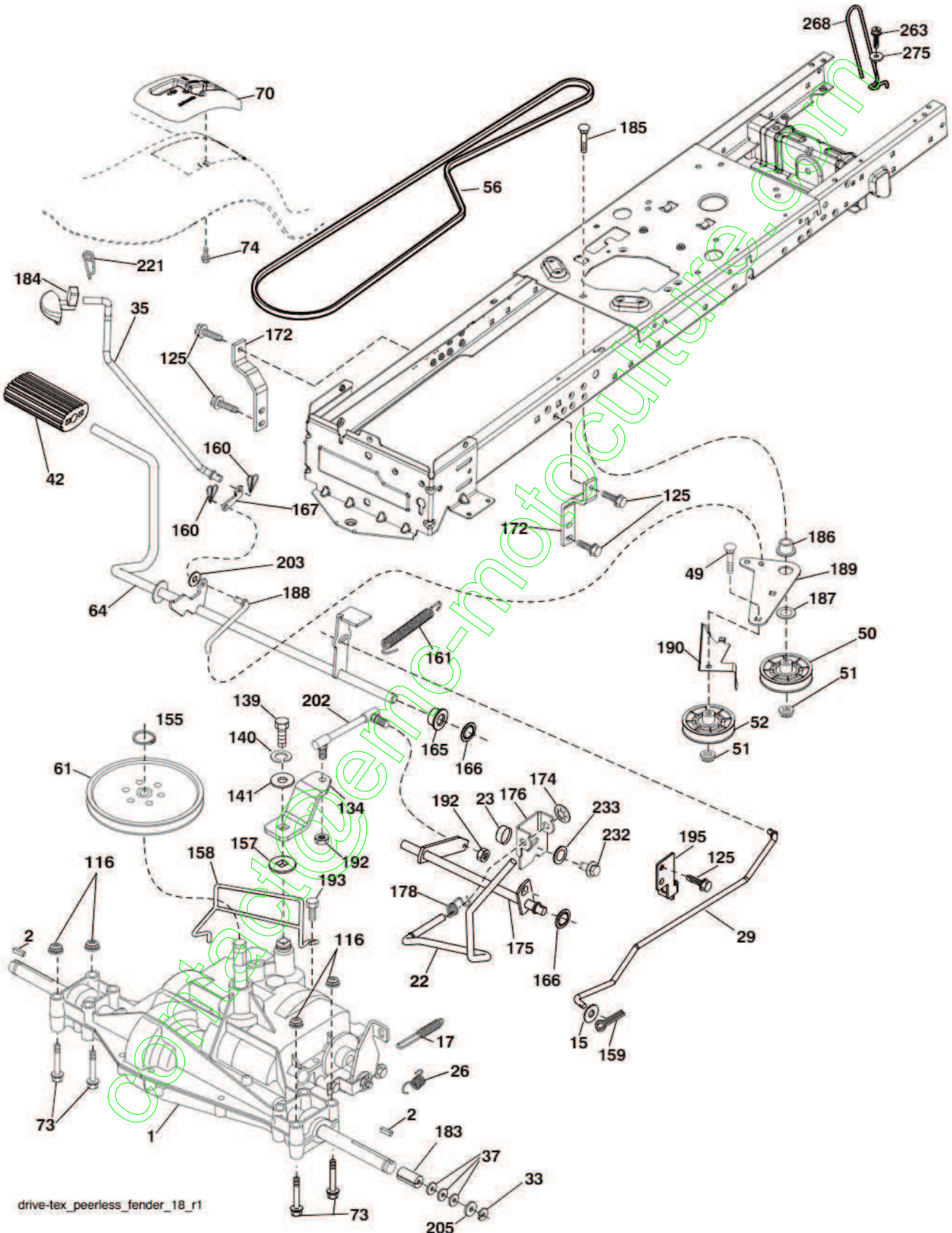
KEY NO.	PART NO.	DESCRIPTION
5	408874X428	Dash
14	198416X615	Hood
18	423156	Grille
34	580910801	Plate Engine
36	17060512	Screw 5/16-18 x 3/4
37	414872X615	Fender
52	73680500	Nut Crown Lock 5/16-18
58	412280	Drawbar Upper
68	17490508	Screw Thdrol 5/16-18 x 1/2
125	581684801	Clip Fuel Line
130	416358	Screw #10 x 0.750
138	193224X428	Cupholder
146	581857901	Bolt
150	400267	Duct Heat Hood
151	187568	Bracket Pivot
152	199535	Shield Browning/Debris
153	400550X599	Lens
159	17000612	Screw Hexwsh Thdrol 3/8-16 x 3/4
162	142432	Screw Hex Wsh Hi-Lo 1/4 x 1/2
175	199472	Crossmember
176	400776	Screw 10-24 x 5/8 Wshd Qdrx
177	195228	Bushing Steering
180	415063	Chassis
181	193102X428	Bushing Mtg. Fender Crgo.
182	407176	Dash Lower
183	74520520	Bolt Full Thd 5/16-18 x 1-1/4
189	17000512	Screw 5/16-18 x 3/4
191	416502	Insert Reflective RH
194	73900500	Nut Lock Hex Flange 5/16-18
196	414579	Console Asm. Deck Lift
202	580427401	Vent Hood Side Panel RH
203	580427501	Vent Hood Side Panel LH
213	74760512	Bolt Hex Hd 5/16-18 x 3/4
217	409167	Rod Pivot Hood
218	196395	X-Piece Hood Stop
225	400549X613	Bumper
228	195161	Stud Fastener
235	406129	Spacer Fender
236	73930500	Nut Center Lock 5/16-18
237	403704	Plug Mount Cargo
287	17600406	Screw 1/4-20 x 3/8
297	401827	Insert Reflective LH
306	73900600	Nut Lock

NOTE: All component dimensions given in U.S. inches.
1 inch = 25.4 mm.

REPAIR PARTS

TRACTOR- -MODEL NO. 917.992120

DRIVE



drive-tex_peerless_fender_18_r1

REPAIR PARTS

TRACTOR- -MODEL NO. 917.992120

DRIVE

KEY NO.	PART NO.	DESCRIPTION	KEY NO.	PART NO.	DESCRIPTION
1	---	Transaxle, Peerless 206-565 (197941) (See Transaxle Break-down.)	160	169484	Retainer Clip
2	123583X	Key Square	161	105709X	Spring, Return, Clutch
15	19131316	Washer 13/32 x 13/16 x 16 Ga.	165	196212	Busing Shaft Brake Hand Control
17	197297	Spring, Brake	166	429164	Nut Push 625
22	197660	Rod Shift	167	405257	Latch Brake Parking
23	106933X	Knob	172	197657	Strap Torque LH
26	197455	Spring Brake RTN	174	197289	Nut Push
29	197267	Rod, Brake	175	197858	Shaft Asm Shift
33	12000001	Ring E	176	196214	Arm Clevis Rod Shift
35	401031	Rod, Brake, Park	178	197456	Spring Shift
37	121749X	Washer 25/32 x 1-1/4 x 16 Ga.	183	137057	Spacer, Axle
42	8883R	Cover, Foot Pedal	184	199996X667	Handle Parking Brake
49	72110614	Bolt	185	72110622	Bolt
50	194327	Pulley Idler Flat	186	194321	Spacer Retainer
51	73900600	Lock Nut 3/8-16	187	19133210	Washer
52	194326	Idler V-Groove	188	194323	Link Clutch Ground Drive
56	194346	V-Belt, Drive	189	194317	Bellcrank Ground Drive
61	123666X	Pulley Transaxle	190	194318	Keeper Bellcrank Ground Drive
64	196200	Shaft Asm. Pedal Brake Control	192	150360	Nut Lock Center 1/4-28
70	193225X428	Console	193	17060512	Screw 5/16-18 x 3/4
73	74490540	Bolt 5/16-18 x 2 1/2 G5	195	197332	Bracket Brake Rod
74	142432	Screw 1/4 x 1/2	202	197859	Link Shift
116	73900500	Nut Lock Hex Flange 5/16-18	203	19111116	Washer 11/32 x 11/16 x 16 Ga.
125	17000512	Screw 5/16-18 x 3/4	205	121748X	Washer 25/32 x 1-5/8 x 16 Ga.
134	197857	Arm Shift	221	403187	Retainer Spring Clip Handle
139	74550412	Bolt 1/4-20 unf Gr. 8 w/Patch	232	74780716	Bolt 7/16-14 x 1 Gr. 5
140	10040400	Washer Lock Hvy Helical 1/4	233	405296	Washer Serrated
141	19091210	Washer 9/32 x 3/4 x 10 Ga.	263	17000612	Screw Hexwsh Thdr 3/8-16 x 3/4
155	12000028	Ring Retainer	268	182402	Guard Muffler
157	105701X	Washer Plate Shf	275	19131614	Washer 13/32 x 1 x 14 Ga.
158	194352	Keeper T/A			
159	76020412	Pin Cotter 1/8 x 3/4			

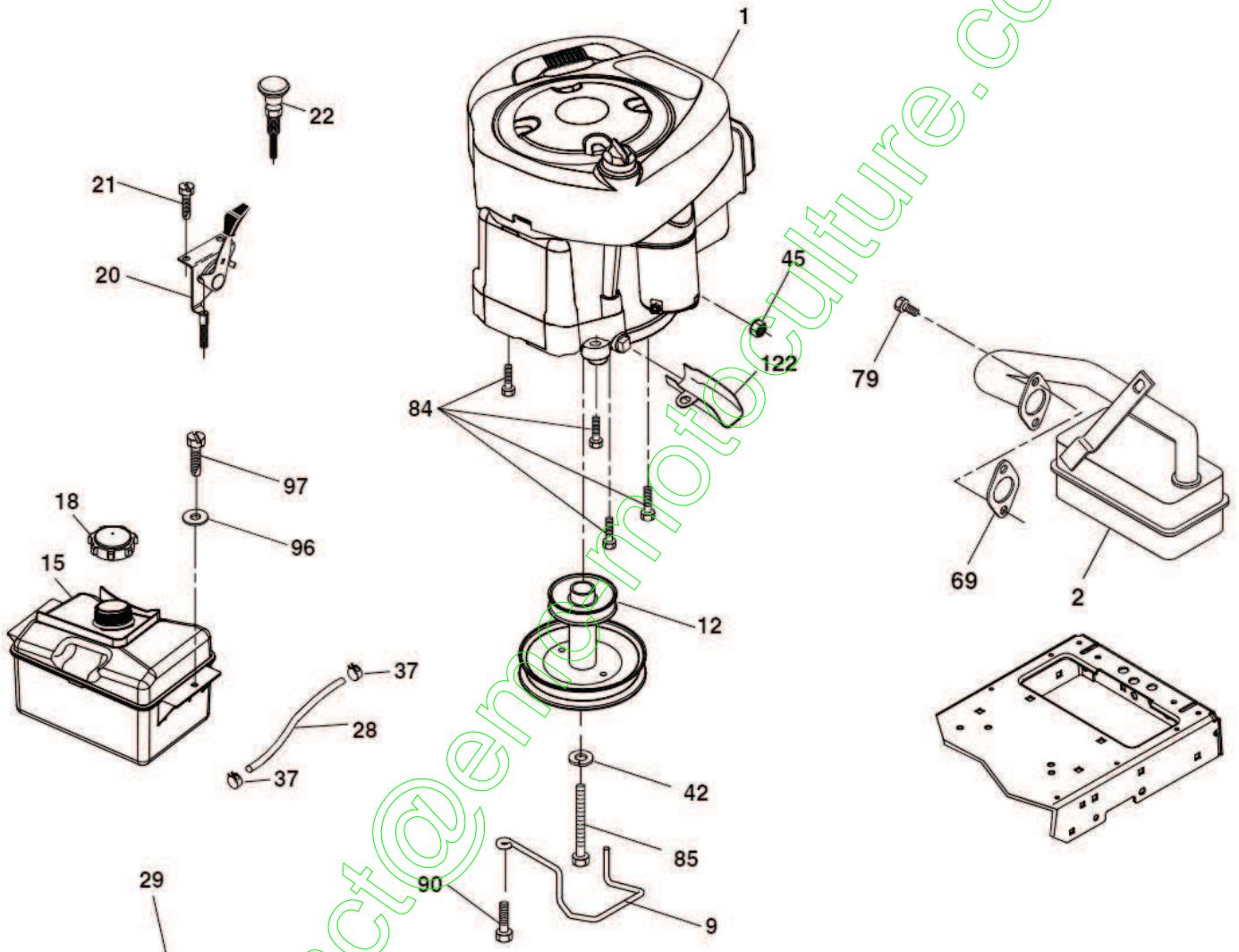
NOTE: All component dimensions given in U.S. inches
1 inch = 25.4 mm

contact@emc-machinery.com

REPAIR PARTS

TRACTOR- -MODEL NO. 917.992120

ENGINE



29

OPTIONAL EQUIPMENT
Spark Arrester

engine-tex_BS_35

REPAIR PARTS

TRACTOR- -MODEL NO. 917.992120

ENGINE

KEY NO.	PART NO.	DESCRIPTION
1	---	Engine B&S Model No. 31L777-0020-B1 (581880801) (See Transaxle Break-down.)
2	137352	Muffler
9	194319	Keeper Belt Engine
12	401985	Pulley Engine
15	581289901	Tank Fuel 1.50
18	430220	Cap Asm
20	176636X428	Control Throttle
21	416358	Screw #10 x 0.750
22	187771X428	Control Choke
28	137040	Fuel Line
29	137180	Spark Arrester Kit
37	123487X	Clamp Hose
42	10040700	Washer Lock 7/16
45	73510400	Nut Keps Hex 1/4-20 unc
69	165291	Gasket
79	192334	Screw Socket Hd 5/16-18 x .75
84	17060620	Screw 3/8-16 x 1-1/4
85	173937	Bolt Hex 7/16-20 x 4 x Gr. 5-1.5
90	17000616	Screw 3/8-16 x 1.0
96	19091416	Washer 9/32 x 7/8 x 16 Ga.
97	17670412	Screw 1/4-20 x 3/4
122	421922	Extension Drain Oil

NOTE: All component dimensions given in U.S. inches
1 inch = 25.4 mm

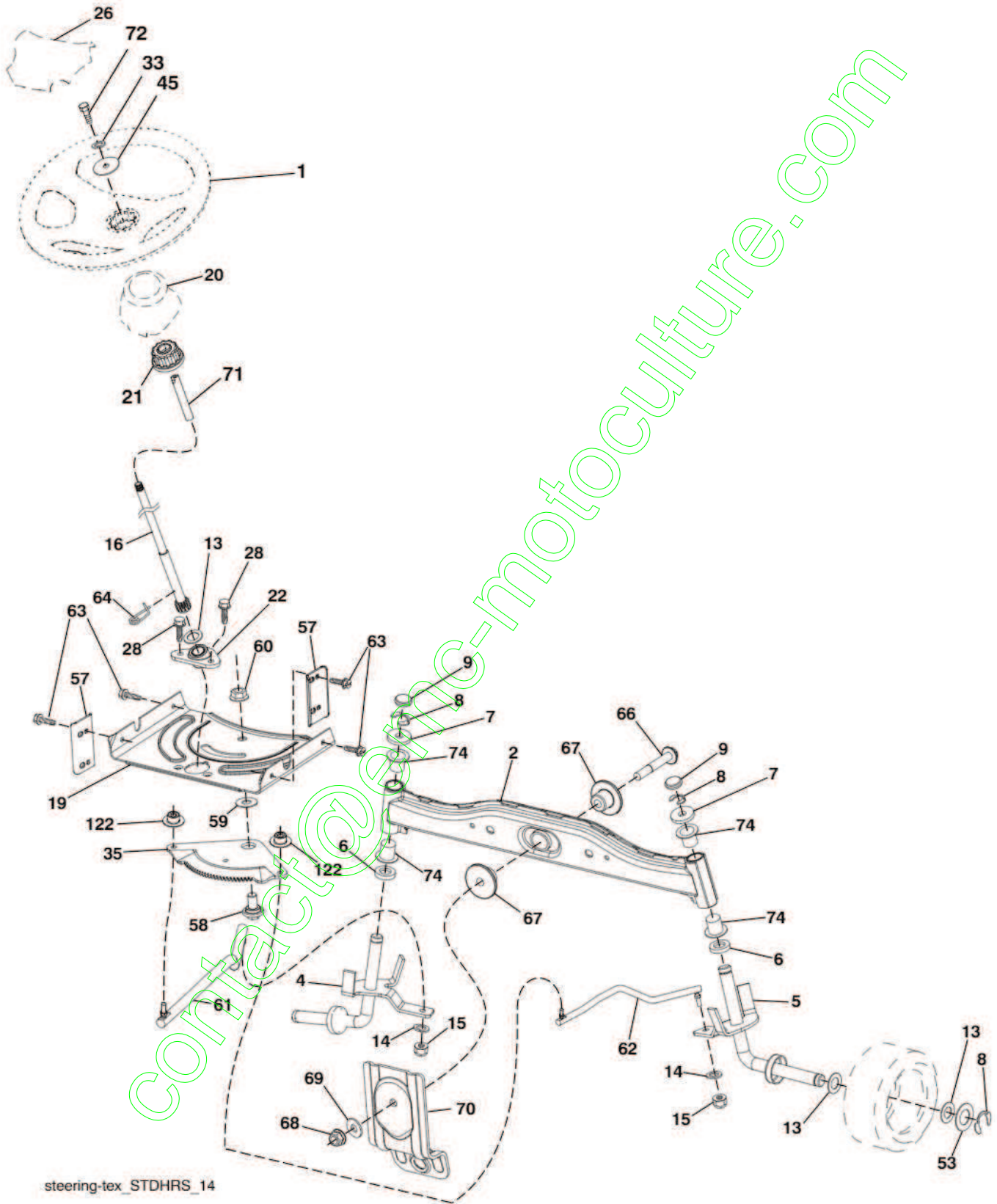
Engine Power Rating Information

The gross power rating for individual gas engine models is labeled in accordance with SAE (Society of Automotive Engineers) code J1940 (Small Engine Power & Torque Rating Procedure), and rating performance has been obtained and corrected in accordance with SAE J1995 (Revision 2002-05). Torque values are derived at 3060 RPM; horsepower values are derived at 3600 RPM. Actual gross engine power will be lower and is affected by, among other things, ambient operating conditions and engine-to-engine variability. Given both the wide array of products on which engines are placed and the variety of environmental issues applicable to operating the equipment, the gas engine will not develop the rated gross power when used in a given piece of power equipment (actual "on-site" or net power). This difference is due to a variety of factors including, but not limited to, accessories (air cleaner, exhaust, charging, cooling, carburetor, fuel pump, etc.), application limitations, ambient operating conditions (temperature, humidity, altitude), and engine-to-engine variability. Due to manufacturing and capacity limitations, Briggs & Stratton may substitute an engine of higher rated power for this Series engine.

REPAIR PARTS

TRACTOR- -MODEL NO. 917.992120

STEERING ASSEMBLY



steering-tex_STDHRS_14

REPAIR PARTS

TRACTOR- -MODEL NO. 917.992120

STEERING ASSEMBLY

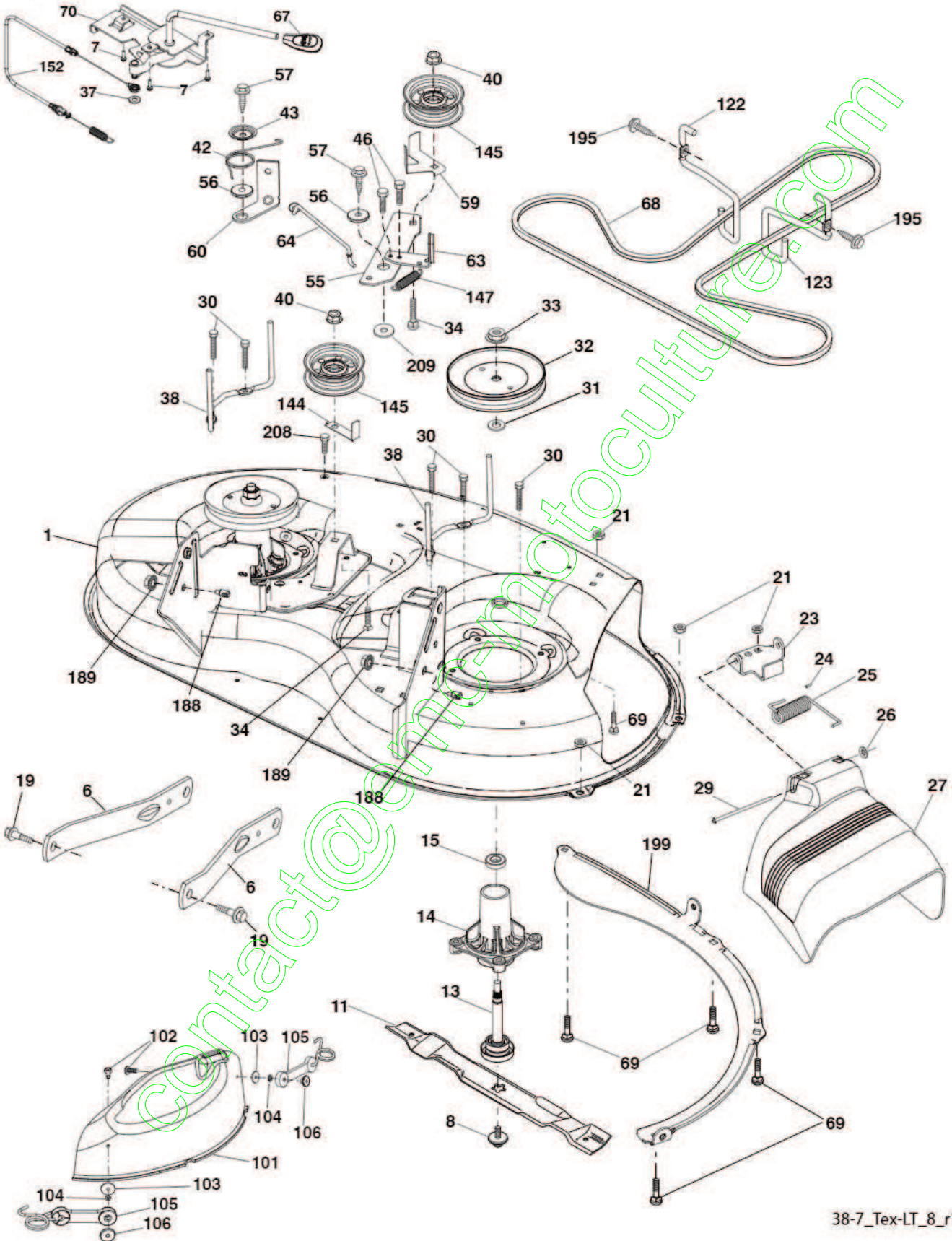
KEY NO.	PART NO.	DESCRIPTION
1	414803X428	Wheel, Steering
2	418168	Axle Asm., Front
4	403087	Spindle Asm., LH
5	403088	Spindle Asm., RH
6	6266H	Washer Thrust 0.75 x 1.23
7	121748X	Washer 25/32 x 1-5/8 x 16 Ga.
8	1200029	Ring, Clip #T5304-75
9	121232X	Cap, Spindle
13	121749X	Washer 25/32 x 1-1/4 x 16 Ga.
14	10040600	Washer Lock 3/8
15	73540600	Nut, Crown Lock 3/8-24 unf
16	429373	Shaft Steering
19	194729	Plate Steering
20	400803X428	Boot, Steering
21	186737	Adapter, Wheel Steering
22	420537	Steering Supt. Lower
26	414852X428	Insert, Wheel Steering
28	17000612	Screw 3/8-16 x 3/4
33	10040500	Washer Lock 5/16
35	194732	Gear, Sector Plate
45	19113812	Washer 11/32 x 2-3/8 x 12 Ga.
53	188967	Washer Hardened .793 x 1.637 x .060
57	407465	Bracket Upstop
58	194747	Bolt Shoulder Sector Pivot CFM
59	194748	Washer Thrust Sector Steering
60	73971000	Nut Flange Lock 5/8-11
61	194740	Draglink, LH
62	194741	Draglink, RH
63	17000512	Screw 5/16-18 x 3/4
64	199849	Retainer Clip Spring Steering
66	71020748	Bolt Hex Fghd 7/16-14 x 3 Serr
67	194737	Bushing PM Front Axle
68	73900700	Nut Lock
69	199162	Washer 1.5 x .505 x .118
70	196197	Bracket Deck Susp. Front
71	190752	Shaft Ext. Steering
72	428982	Bolt Fin Hex 5/16-18 x 4
74	3366R	Bearing
122	444962	Cap Gear Sector

NOTE: All component dimensions given in U.S. inches.
1 inch = 25.4 mm.

REPAIR PARTS

TRACTOR- -MODEL NO. 917.992120

MOWER



38-7_Tex-LT_8_r1

REPAIR PARTS

TRACTOR- -MODEL NO. 917.992120

MOWER

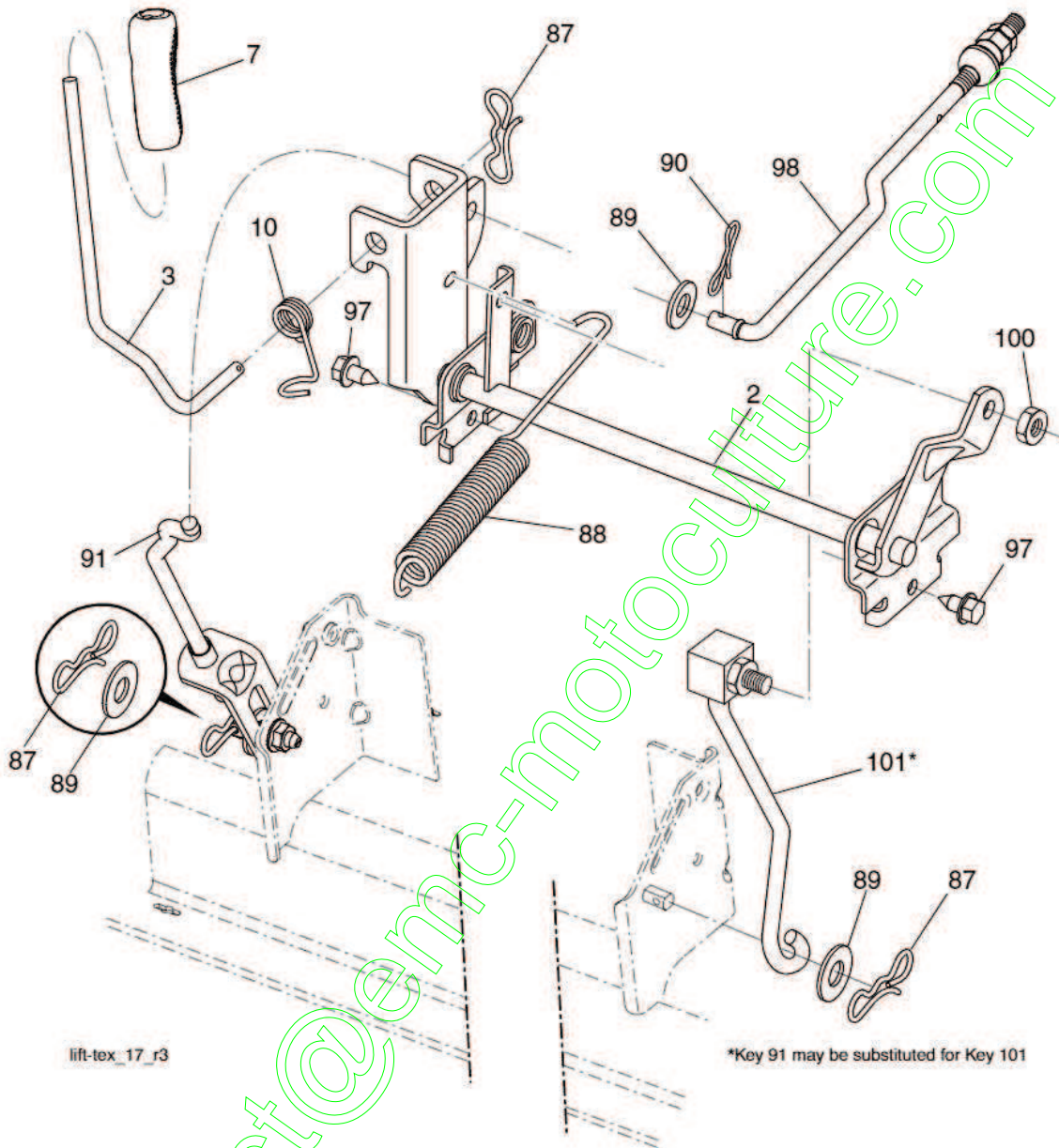
KEY NO.	PART NO.	DESCRIPTION	KEY NO.	PART NO.	DESCRIPTION
1	194251	Mower Housing	67	198398X428	Handle, Clutch Cable
6	195186	Arm Suspension	68	408381	V-Belt
7	416358	Screw 10 x .750 BOS Thread	69	72140505	Bolt Rdhd Sqnk 5/16-18 x 5/8
8	193003	Bolt/Washer Asm 7/16-20 unf	70	401246	Clutch Asm. Manual
11	193957	Blade 3 in 1	101	192573	Cover Asm. Mulching 38"
13	192872	Shaft Assembly, Mandrel	102	71081010	Screw Pan HD Phillips 10-24 x 5/8
14	187281	Housing, Mandrel	103	19061216	Washer #10
15	110485X	Bearing, Ball, Mandrel	104	10071000	Washer Lock #10
19	196539	Bolt, Shoulder	105	160793	Latch Asm.
21	73680500	Nut, Crownlock 5/16-18 unc	106	2029J	Nut Weld .327/304 #10 -24
23	192557	Bracket, Deflector	122	197258	Keeper Belt Eng. LH
24	105304X	Cap, Sleeve	123	197259	Keeper Belt Eng. RH
25	197026	Spring, Torsion, Deflector	144	193414	Keeper Belt
26	110452X	Nut, Push	145	193197	Pulley, Idler, Flat
27	199445X428	Shield, Deflector	147	401872	Spring Return
29	131491	Rod, Hinge	152	435111	Cable Clutch Manual w/Spr.
30	173984	Screw Thdrol Rolling Wsh Hd	188	195161	Stud Fastener
31	187690	Washer, Spacer	189	73900500	Nut Lock Hex Flange
32	199789	Pulley, Mandrel	195	17000612	Screw Hexwsh Thdr 3/8-16 x 3/4
33	400234	Nut, Toplock, Flanged	199	400095	Baffle, Vortex
34	72110612	Bolt Carr Sh. 3/8-16 x 1-1/2 Gr. 5	208	17670608	Screw Thdrol 3/8-16 x 1/2
37	19131316	Washer 13/32 x 13/16 x 16 Ga.	209	19133210	Washer 13/32 x 2 x 10 Ga.
38	199541	Keeper Belt LH Mandrel	-	192870	Mandrel Assembly (Mandrel Assembly (Includes housing, shaft assembly, and bearing only - pulley/ nut/washer and blade bolt/washers not included)
40	73900600	Nut, Lock Flg. 3/8-16 unc	--	400422	Replacement Mower, Complete
42	198410	Spring Torsion Brake			
43	197256	Spring Torsion Retainer			
46	137729	Screw Thd Roll 1/4-20 x 5/8			
55	197249	Arm, Idler			
56	199092	Spacer, Retainer			
57	17000616	Screw Hexwsh Thd 3/8-16 x 1			
59	141043	Guard, Tuv Idler (94)			
60	199471	Arm Brake Mower			
63	199470	Arm Brake Mower			
64	199790	Linkage Brake			

NOTE: All component dimensions given in U.S. inches
1 inch = 25.4 mm

REPAIR PARTS

TRACTOR- -MODEL NO. 917.992120

MOWER LIFT



lift-tex_17_r3

*Key 91 may be substituted for Key 101

KEY NO.	PART NO.	DESCRIPTION
2	422027	Shaft Asm., Lift
3	195231	Lever Asm., Lift RH
7	445060X428	Grip, Lever
10	196314	Spring Torsion
87	194209	Pin Cotter 7/16 Bow Tie Lock
88	410710	Spring Lift Assist
89	19191912	Washer Clear Zinc
90	194208	Pin Cotter 5/16 Bow Tie Lock

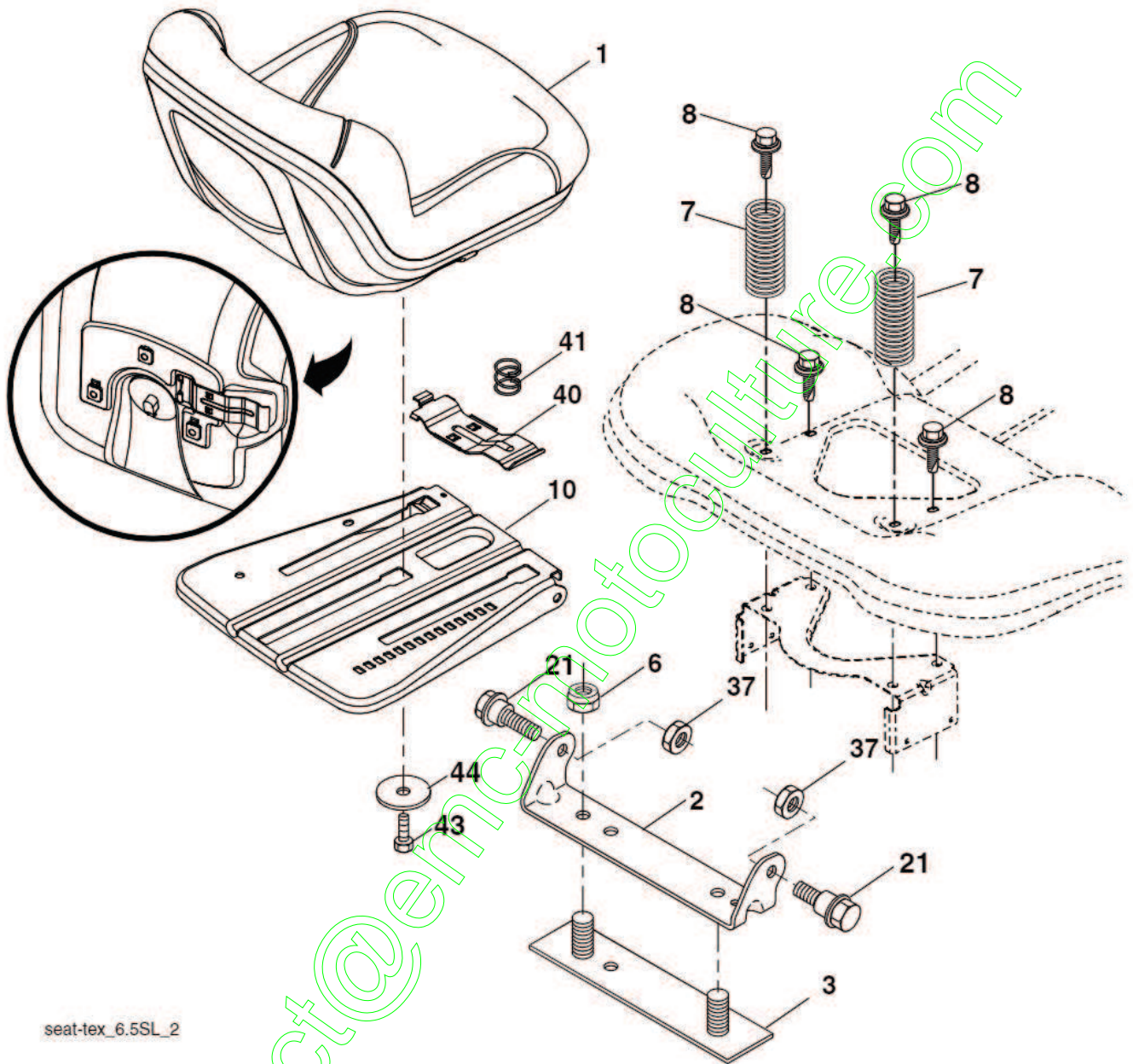
KEY NO.	PART NO.	DESCRIPTION
91	195181	Link Lift Susp Mower Rear
97	17000612	Screw 3/8-16 x .75
98	195270	Link Lift Susp. Front Mower
100	73930600	Nut Centerlock 3/8-16 unc
101	407003	Link Asm. Lift FXD

NOTE: All component dimensions given in U.S. inches
1 inch = 25.4 mm

REPAIR PARTS

TRACTOR- -MODEL NO. 917.992120

SEAT ASSEMBLY



seat-tex_6.5SL_2

KEY NO.	PART NO.	DESCRIPTION
1	423644	Seat
2	180166	Bracket Pivot Fender
3	140675	Strap, Asm Fender
6	73800600	Nut, Lock w/Ins. 3/8-16 unc
7	124181X	Spring, Seat Cprsn
8	171877	Bolt 5/16-18 unc x 3/4 w/Sems
10	196977	Pan, Seat
21	171852	Bolt, Shoulder 5/16-18

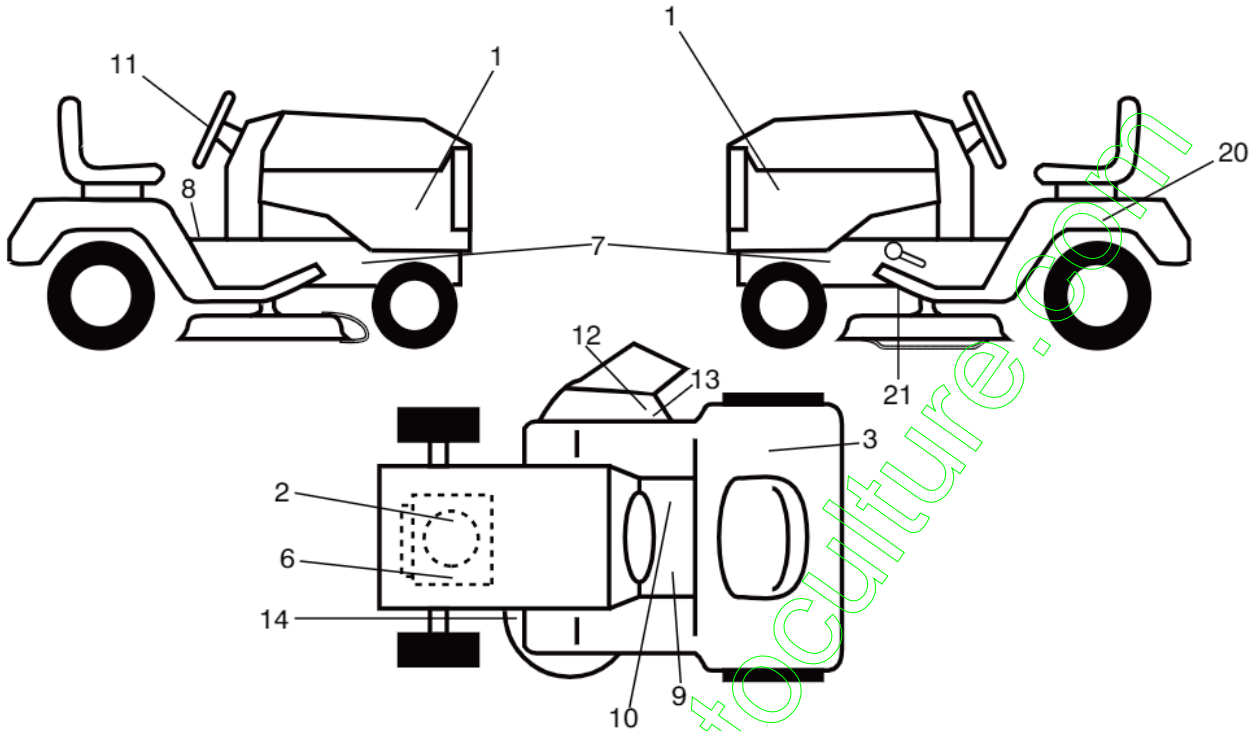
KEY NO.	PART NO.	DESCRIPTION
37	73800500	Nut, Lock 5/16-18 unc
40	197661	Handle Slide
41	198200	Spring Latch
43	74760612	Bolt 3/8-16 unc x 3/4
44	19133812	Washer 13/32 x 2 3/8 x 12 Ga.

NOTE: All component dimensions given in U.S. inches.
1 inch = 25.4 mm

REPAIR PARTS

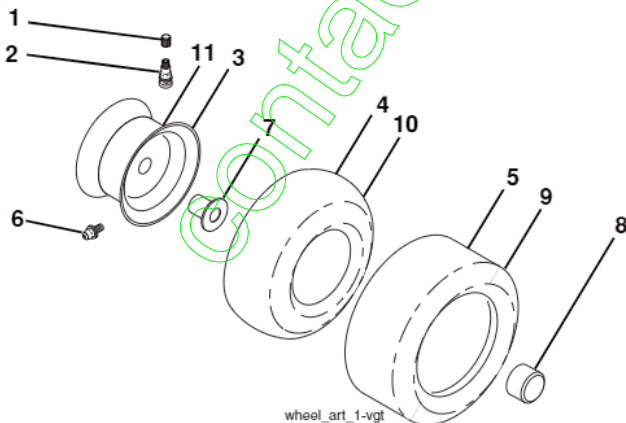
TRACTOR- -MODEL NO. 917.992120

DECALS



KEY NO.	PART NO.	DESCRIPTION	KEY NO.	PART NO.	DESCRIPTION
1	581744402	Decal Side Panal Logo	14	581580003	Decal V-Belt Schematic
2	581886201	Decal Eng. H.P.	20	145005	Decal Bat Dan/Psn
3	581724101	Decal Fender 100 DB/CE	21	421534	Decal V-Belt Sch.
6	581579701	Decal Warning Engine Symbols	--	581724601	Decal Drawbar Load Limit
7	581579601	Decal Chassis Hot Muffler	--	193226X428	Pad Footrest LH
8	581578101	Decal Fender Warn	--	193227X428	Pad Footrest RH
9	581724001	Decal Brake/Clutch Symbols	--	583976340	Manual Operator's (Euro)
10	581578001	Decal Saddle Brake Parking	--	583976350	Manual Operator's (Scand)
11	439525	Decal Ins Strg Whl	--	583976320	Manual Operator's (Ebloc)
12	581579101	Decal Cutfinger CE	--	583976330	Manual Operator's (Baltic)
13	581579201	Decal Deflect. Warn. Cutfng. Sym.	--	583976326	Manual Parts

WHEELS & TIRES



wheel_art_1-vgt

KEY NO.	PART NO.	DESCRIPTION
1	59192	Cap Valve Tire
2	65139	Stem Valve
3	106732X613	Rim Asm 6" Front
4	59904	Tube Front (Service Item Only)
5	106222X	Tire F T 15 x 6 0 - 6
6	278H	Fitting Grease (Front Wheel Only)
7	9040H	Bearing Flange (Front Wheel Only)
8	104757X428	Cap Axle Blk 1 50 x 1 00
9	420531	Tire R T 18 x 9.5-8C
10	7152J	Tube Rear (Service Item Only)
11	106108X613	Rim Asm 8" Rear Service
--	144334	Sealant, Tire (10 oz. Tube)

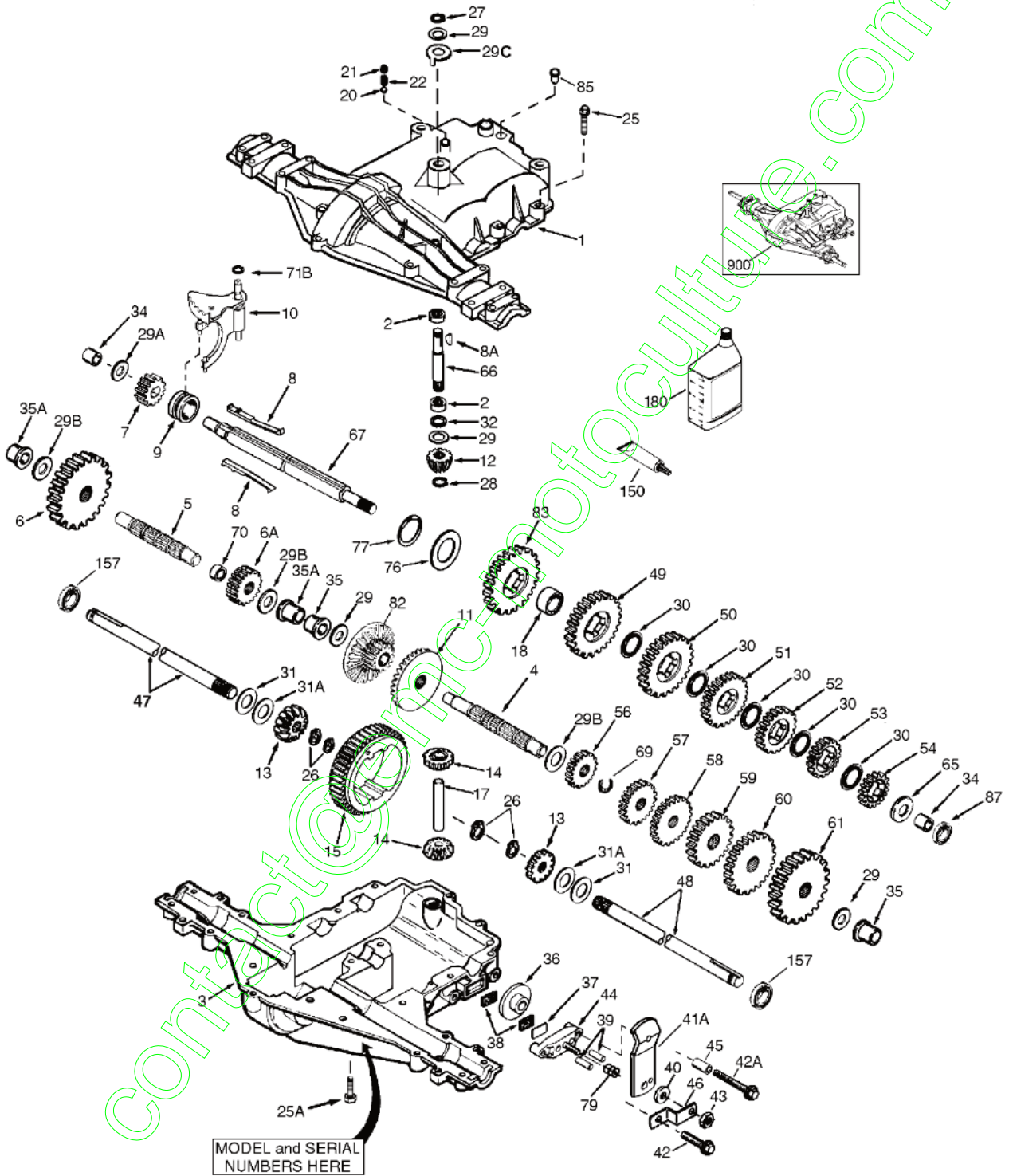
NOTE: All component dimensions given in U.S. inches
1 inch = 25.4 mm

SERVICE NOTES

contact@enc-motoculture.com

TRACTOR - - MODEL NUMBER 917.992120

PEERLESS TRANSAXLE - MODEL NUMBER 206-565



TRACTOR - - MODEL NUMBER 917.992120

PEERLESS TRANSAXLE - MODEL NUMBER 206-565

KEY NO.	PART NO.	DESCRIPTION	KEY NO.	PART NO.	DESCRIPTION
1	772147	Transaxle Cover	42	792073A	Screw 1/4-20 x 1-1/4"
2	780086A	Needle Bearing 5/8"	42A	792085A	Screw 1/4-20 x 2-1/4"
3	770128	Transaxle Case	43	792075	Locknut 5/16-24
4	776395	Countershaft	44	790025	Brake Pad Holder
5	776409	Output Shaft	45	786067	Spacer .2625 x 1.0
6	778364	Spur Gear (38 teeth)	46	786086	Brake Lever Bracket
6A	778369	Spur Gear (15 teeth)	47	774690	Axle (11-15/16" long)
7	778330	Spur Gear (11 teeth)	48	774691	Axle (16-1/2" long)
8	792180	Shift Key	49	778356	Spur Gear (29 teeth)
8A	792047	Woodruff Key #9	50	778338	Spur Gear (27 teeth)
9	784352	Shift Collar	51	778354	Spur Gear (23 teeth)
10	784378	Shift Rod & Fork	52	778313	Spur Gear (19 teeth)
11	778334	Bevel Gear (30 teeth)	53	778350	Spur Gear (16 teeth)
12	778309	Input Bevel Pinion (13 teeth)	54	778346	Spur Gear (15 teeth)
13	778368	Bevel Gear (13 teeth) (Incl. 14)	56	778355	Spur Gear (11 teeth)
14	778368	Bevel Pinion (13 teeth) (Incl. 13)	57	778351	Spur Gear (21 teeth)
15	778370	Ring Gear (43 teeth)	60	778349	Spur Gear (24 teeth)
17	786188	Drive Pin	61	778345	Spur Gear (25 teeth)
18	786102	Spacer 1.130 x .695	65	780189	Flat Washer .563 ID x .062W
20	792077A	Ball 5/16" dia	66	776422	Input Shaft
21	792211	Cap Screw 3/8-16 x 3/8"	67	776396	Shifter & Brake Shaft
22	792079	Spring .310 OD x .625 L	69	792170	Retaining Ring
25	792073A	Screw 1/4-20 x 1-1/4"	70	786187	Spacer .890
25A	792177	Screw 1/4-20 x 1-3/8"	71B	788092	"O" Ring
26	792125	Retaining Ring (pkg of 2)	76	780090	Flat Washer 1.128 ID x .058W
27	792035	Retaining Ring	77	788078A	Inverted Retaining Ring
28	788040	Retaining Ring	79	792144	Spring .430 OD x .5000 L
29	780072	Thrust Washer .627 ID x .031W	82	778333	Bevel & Spur Gear (30 & 13 teeth)
29A	780160	Thrust Washer .563 ID x .031W	83	778338	Spur Gear (27 teeth)
29B	780051	Thrust Washer .762 ID x .031W	85	792154	Oil Fill Plug
29C	780199	Anti-Rotation Washer .632	87	788089A	Oil Seal 9/16"
30	780108	Cup Washer 1.127 ID x .032W	150	788093A	Liquid Gasket RTV Silicone
31	780001	Flat Washer .750 ID x .056W (Use As Needed)	157	788088A	Oil Seal 3/4"
31A	780195	Flat Washer .750 ID x .062W	180	730229A	Gear Oil 80W90
32	788083	Oil Seal 5/8"	900	794691	Replacement MST-206-545C Transaxle
34	780194	Bushing .563	900	--	Remove: 790079 Brake Lever
35	780193	Flanged Bushing 5/8" ID	900	---	Add: 790058 Brake Lever
35A	780197	Flanged Bushing .751			
36	790075	Brake Disk			
37	790007	Brake Pad Plate			
38	799021	Brake Pad (pkg of 2)			
39	786026	Dowel Pin			
40	792076A	Flat Washer .312 ID x .059W			
41A	790058	Brake Lever			

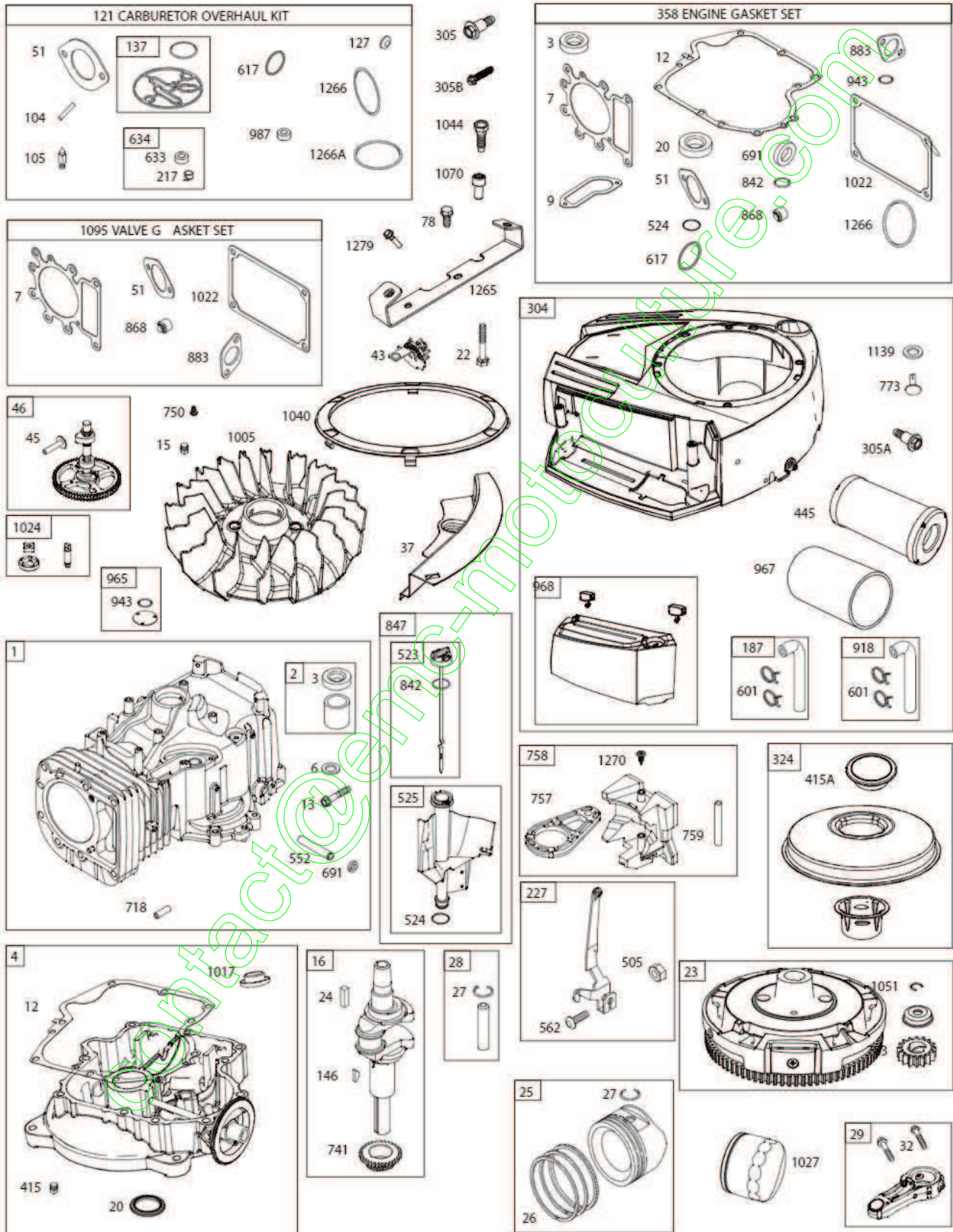
NOTE: All component dimensions given in U.S. inches
1 inch = 25.4 mm

REPAIR PARTS

TRACTOR- -MODEL NO. 917.992120

BRIGGS & STRATTON ENGINE - - MODEL NUMBER 31L777, TYPE NUMBER 0020-B1

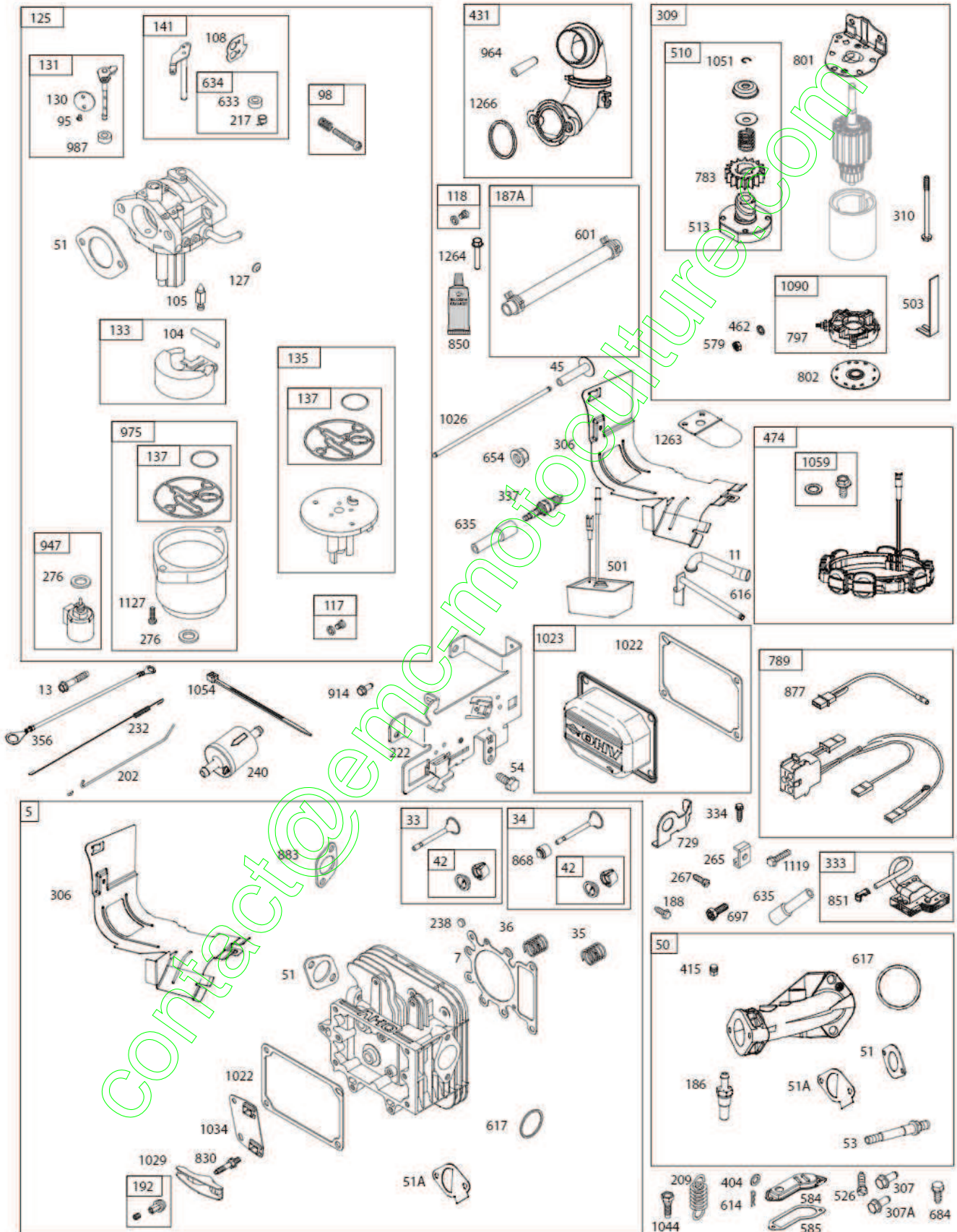
48 SHORT BLOCK | 1058 OPERATOR'S MANUAL | 1329 REPLACEMENT ENGINE | 1330 REPAIR MANUAL | 1036 EMISSIONS LABEL



REPAIR PARTS

TRACTOR- -MODEL NO. 917.992120

BRIGGS & STRATTON ENGINE - - MODEL NUMBER 31L777, TYPE NUMBER 0020-B1



REPAIR PARTS

TRACTOR- -MODEL NO. 917.992120

BRIGGS & STRATTON ENGINE - - MODEL NUMBER 31L777, TYPE NUMBER 0020-B1

KEY NO.	PART NO.	DESCRIPTION	KEY NO.	PART NO.	DESCRIPTION
1	796010	Cylinder Assembly	186	794873	Connector-Hose (Intake Manifold)
2	797673	Bushing/Seal Kit (MagnetoSide)	187	791805	Line-Fuel (Formed) (Cut to Re-
3	391086s	Seal-Oil (Magneto Side)			quired Length)
4	697188	Sump-Engine	187A	791766	Line-Fuel (Cut to Required
5	796026	Head-Cylinder			Length)
6	690310	Washer (Cylinder Head)	188	691693	Screw (Control Bracket)
7	796584	Gasket-Cylinder Head	192	691986	Adjuster-Rocker Arm
11	794683	Tube-Breather	202	691841	Link-Mechanical Governor
12	697110	Gasket-Crankcase	209	796260	Spring-Governor (Green)
13	592244	Screw (Cylinder Head)	217	695409	Spring-Choke Return
15	690946	Plug-Oil Drain	222	694042	Bracket-Control
16	591763	Crankshaft	227	691374	Lever-Governor Control
20	795387	Seal-Oil (PTO Side)	232	691842	Spring-Governor Link
22	692125	Screw (Crankcase Cover/Sump)	238	691843	Cap-Valve
23	591758	Flywheel	240	691035	Filter-Fuel
24	591757	Key-Flywheel (Steel)	265	691024	Clamp-Casing
25	796172	Piston Assembly (Standard)	267	794904	Screw (Casing Clamp)
	796173	Piston Assembly (.020" Oversize)	276	695410	Washer-Sealing
26	791936	Ring Set (Standard)	304	591644	Blower Housing
	792649	Ring Set (.020" Oversize)	305	697102	Screw (Blower Housing) (1/4-
27	698469	Lock-Piston Pin			20x1.21)
28	796007	Pin-Piston	305A	799370	Screw (Blower Housing) (1/4-
29	794571	Rod-Connecting			20x.91)
32	791118	Screw (Connecting Rod)	305B	793376	Screw (Blower Housing) (#10-
33	792868	Valve-Exhaust			16x.438)
34	791935	Valve-Intake	306	794953	Shield-Cylinder
35	691279	Spring-Valve (Intake)	307	691108	Screw (Cylinder Shield) (1/4-
36	691279	Spring-Valve (Exhaust)			20x.62)
37	699882	Guard-Flywheel	307A	691693	Screw (Cylinder Shield) (#10-
42	499586	Keeper-Valve			32x.37)
43	691968	Slinger-Governor/Oil	309	693551	Motor-Starter
45	690564	Tappet-Valve	310	690323	Screw (Starter Motor)
46	793880	Gear-Cam	324	796309	Screen/Cup Assembly
48	N/A	Short Block (Not Available at this	333	799650	Armature-Magneto
		Printing)	334	691061	Screw (Magneto Armature)
50	591248	Manifold-Intake	337	691043	Plug-Spark
51	692137	Gasket-Intake	356	697089	Wire-Stop
51A	796081	Gasket-Intake	358	796187	Gasket Set-Engine
53	591260	Stud (Carburetor)	404	691691	Washer (Governor Crank)
54	691148	Screw (Intake Manifold)	415	794903	Plug
78	691693	Screw (Flywheel Guard)	415A	794129	Plug (Cover/Retainer)
95	690718	Screw (Throttle Valve)	431	799043	Elbow-Intake
98	695408	Kit-Idle Speed	445	793569	Filter-Air Cleaner Cartridge
104	694918	Pin-Float Hinge	462	691261	Washer (Starter Cable)
105	696136	Valve-Float Needle	474	696457	Alternator
108	695419	Valve-Choke	501	794360	Regulator
117	699457	Jet-Main (Standard)	503	691532	Strap-Starter
118	695415	Jet-Main (High Altitude)	505	691251	Nut (Governor Control Lever)
121	796184	Kit-Carburetor Overhaul	510	693699	Drive-Starter
125	591731	Carburetor	513	692024	Clutch-Drive
127	690727	Plug-Welch	523	699908	Dipstick
130	699500	Valve-Throttle	524	691032	Seal-Dipstick Tube
131	699501	Kit-Throttle Shaft	525	697184	Tube-Dipstick
133	694914	Float-Carburetor	526	697088	Screw (Regulator)
135	698780	Tube-Fuel Transfer	552	697144	Bushing-Governor Crank
137	698781	Gasket-Float Bowl	559	697561	Screw (Remote Choke) (#8-
141	792777	Kit-Choke Shaft			32x.37)
146	691639	Key-Timing	559A	693675	Screw (Remote Choke)

REPAIR PARTS

TRACTOR- -MODEL NO. 917.992120

BRIGGS & STRATTON ENGINE - - MODEL NUMBER 31L777, TYPE NUMBER 0020-B1

KEY NO.	PART NO.	DESCRIPTION	KEY NO.	PART NO.	DESCRIPTION
559B	699891	Screw (Remote Choke) (#8-32x.50)		692011	Rod-Push (Exhaust) (Steel)
562	691119	Screw (Governor Control Lever)	1027	795890	Filter-Oil
579	691029	Nut (Starter Cable)	1029	691751	Arm-Rocker
584	794682	Cover-Breather Passage	1034	690822	Guide-Push Rod
585	697109	Gasket-Breather Passage	1036		Label-Emissions (Available from a Briggs & Stratton Authorized Dealer)
601	791850	Hose-Clamp (Green)			
614	691620	Pin-Cotter (Governor Crank)	1040	698368	Plate-Trim
616	692012	Crank-Governor	1044	698139	Screw (Flywheel)
617	692138	Seal-O Ring (Intake Manifold) (Red)	1051	691265	Ring-Retaining
			1054	280275	Tie-Cable
633	699813	Seal-Choke/Throttle Shaft (Choke Shaft)	1058	277675	Operator's Manual
634	698779	Spring/Seal Assembly (Choke Shaft)	1059	698516	Kit-Screw/Washer (Alternator)
			1070	791680	Screw (Flywheel Fan)
635	691909	Boot-Spark Plug	1090	691293	Retainer-Brush
654	690958	Nut (Carburetor) (Serrated)	1095	794152	Gasket Set-Valve
684	697157	Screw (Breather Assembly)	1119	691183	Screw (Alternator)
691	692407	Seal-Governor Shaft	1127	695407	Screw (Float Bowl)
697	791680	Screw (Drive Cap)	1139	796449	Washer (Fuel Pump Bracket)
718	690959	Pin-Locating	1263	697124	Reed-Breather
729	691224	Clip-Wire	1264	697104	Screw (Breather Reed)
741	697128	Gear-Timing	1265	794151	Support-Blower Housing
750	790832	Screw (Oil Pump Cover)	1266	691917	Seal-O Ring (Intake Elbow) (Red)
757	793242	Link-Counterweight	1270	793243	Plug-AVS Counterweight
758	793763	Counterweight	1279	691108	Screw (Blower Housing Support)
759	697392	Pin-Counterweight	1329	N/A	Replacement Engine (Not Available at this Printing)
773	796448	Retainer (Blower Housing)	1330	276781	Repair Manual
783	693713	Gear-Pinion			
789	698329	Harness-Wiring			
797	693167	Nut (Brush Retainer)			
801	691283	Cap-Drive			
802	691286	Cap-End			
830	691095	Stud-Rocker Arm			
842	691031	Seal-O Ring (Dipstick Tube)			
847	790442	Dipstick/Tube Assembly			
850	100106	Sealant-Liquid			
851	692424	Terminal-Spark Plug			
868	690968	Seal-Valve			
877	790544	Wire/Connector-Alternator			
883	692236	Gasket-Exhaust			
914	691108	Screw (Rocker Cover)			
918	791744	Hose-Vacuum (Formed) (Cut to Required Length)			
943	690589	Seal-O Ring (Oil Pump Cover)			
947	699915	Solenoid-Fuel			
964	799159	Cap-Connector (EVAP System)			
965	499613	Cover-Oil Pump			
967	793685	Filter-Pre Cleaner			
968	591648	Cover-Air Cleaner			
975	699502	Bowl-Fuel			
987	698777	Seal-Throttle Shaft			
1005	796084	Fan-Flywheel			
1017	796981	Screen-Oil Pump			
1022	272475s	Gasket-Rocker Cover			
1023	797421	Cover-Rocker			
1024	794644	Pump-Oil			
1026	692003	Rod-Push (Intake) (Aluminum)			

Carburetor Overhaul Kit Key No. 121
 Engine Gasket Set Key No. 358
 Valve Gasket Set Key No. 1095

NOTE: All component dimensions given in U.S. inches
 1 inch = 25.4 mm

LIMITED WARRANTY ON CRAFTSMAN RIDING EQUIPMENT

For two (2) years from the date of purchase, if this Craftsman Riding Equipment is maintained, lubricated and tuned up according to the instructions in the owner's manual, Sears will repair or replace free of charge any parts that are found to be defective in material or workmanship according to the guidelines of coverage listed below. Sears will also provide free labor for these applicable warranted parts for the two full years. During the first 30 days of purchase, there will be no charges to service the product at your home for issues covered by this warranty. (See exclusions below). For your convenience, IN HOME warranty service will still be available after the first 30 days of purchase, but a trip charge will apply. This charge will be waived if the Craftsman product is dropped off at an authorized Sears location. For the nearest authorized Sears location, please call 1-800-4-MY-HOME®. This warranty applies only while this product is within the United States.

This Warranty does not cover:

- Expendable items which become worn during normal use, including but not limited to blades, spark plugs, air cleaners, belts, and oil filters.
- Standard Maintenance Servicing, oil changes, or tune-ups
- Tire replacement or repair caused by punctures from outside objects, such as nails, thorns, stumps, or glass.
- Repairs necessary because of operator abuse, including but not limited to, damage caused by towing objects beyond the capability of the riding equipment, impacting objects that bend the frame or crankshaft, or over-speeding the engine.
- Repairs necessary because of operator negligence, including but not limited to, electrical and mechanical damage caused by improper storage, failure to use the proper grade and amount of engine oil, failure to keep the deck clear of flammable debris, or failure to maintain the equipment according to the instructions contained in the owner's manual.
- Engine (fuel system) cleaning or repairs caused by fuel determined to be contaminated or oxidized (stale). In general, fuel should be used within 30 days of its purchase date.
- Normal deterioration and wear of the exterior finishes, or product label replacement.
- Riding equipment used for commercial or rental purposes.

LIMITED WARRANTY ON BATTERY

For ninety (90) days from date of purchase, if any battery included with this riding equipment proves defective in material or workmanship and our testing determines the battery will not hold a charge, Sears will replace the battery at no charge. During the first 30 days of purchase, there will be no charges to replace the battery at your HOME. After the first 30 days, for your convenience, IN-HOME warranty service will still be available but a trip charge will apply. This charge will be waived if the Craftsman product is dropped off at an authorized Sears location. For the nearest authorized Sears location, please call 1-800-4-MY-HOME®.

This battery warranty applies only while this product is within the United States.

This warranty gives you specific legal rights, and you may also have other rights, which vary, from state to state.

Sears, Roebuck and Co., Dept. 817WA, Hoffman Estates, IL 60179

SERVICE NOTES

contact@enc-motoculture.com

contact@enc-motoculture.com

