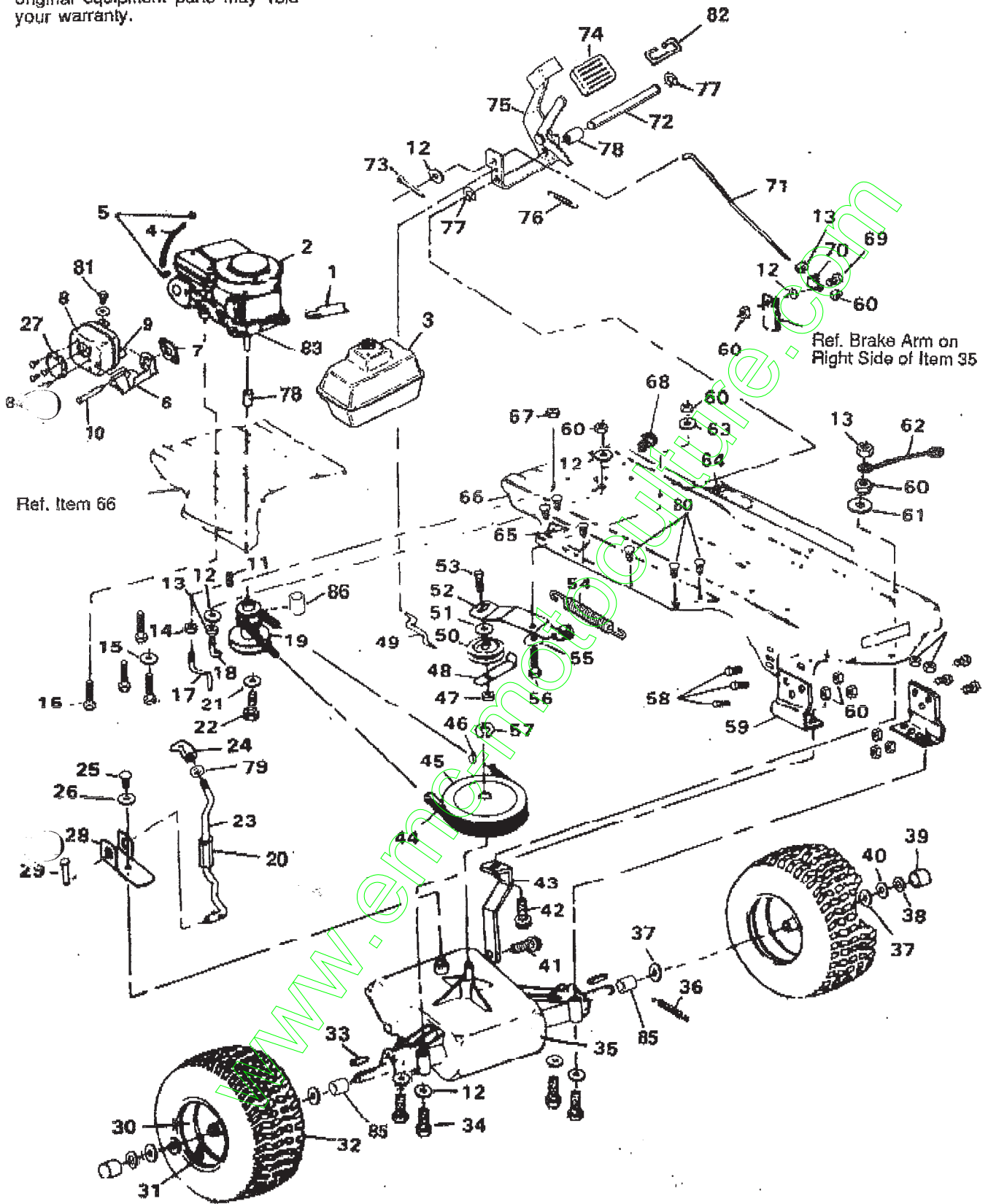


NOTE: ALWAYS USE ORIGINAL EQUIPMENT PARTS. Use of service/replacement parts other than original equipment parts may void your warranty.

ALL UNNUMBERED ITEMS ARE INTERCHANGABLE WITH OPPOSITE SIDE



36" RIDING MOWER MODEL A3560-010

ALWAYS GIVE THE FOLLOWING INFORMATION WHEN ORDERING REPAIR PARTS:

1. The PART NUMBER; 2. The PART NAME; 3. QUANTITY DESIRED; 4. The MODEL NUMBER (As shown on Model Plate).

SEND PART ORDERS AS PER INSTRUCTIONS ON THE FRONT PAGE.

DO NOT USE KEY NUMBERS WHEN ORDERING REPAIR PARTS, ALWAYS USE PART NUMBERS.

All replacement parts will be supplied in current production colors or in a neutral color.

A handling fee is applicable to small parts orders.

YOUR UNIT IS RIGHT HAND (RH) OR LEFT HAND(LH) AS YOUR STAND BEHIND IT.

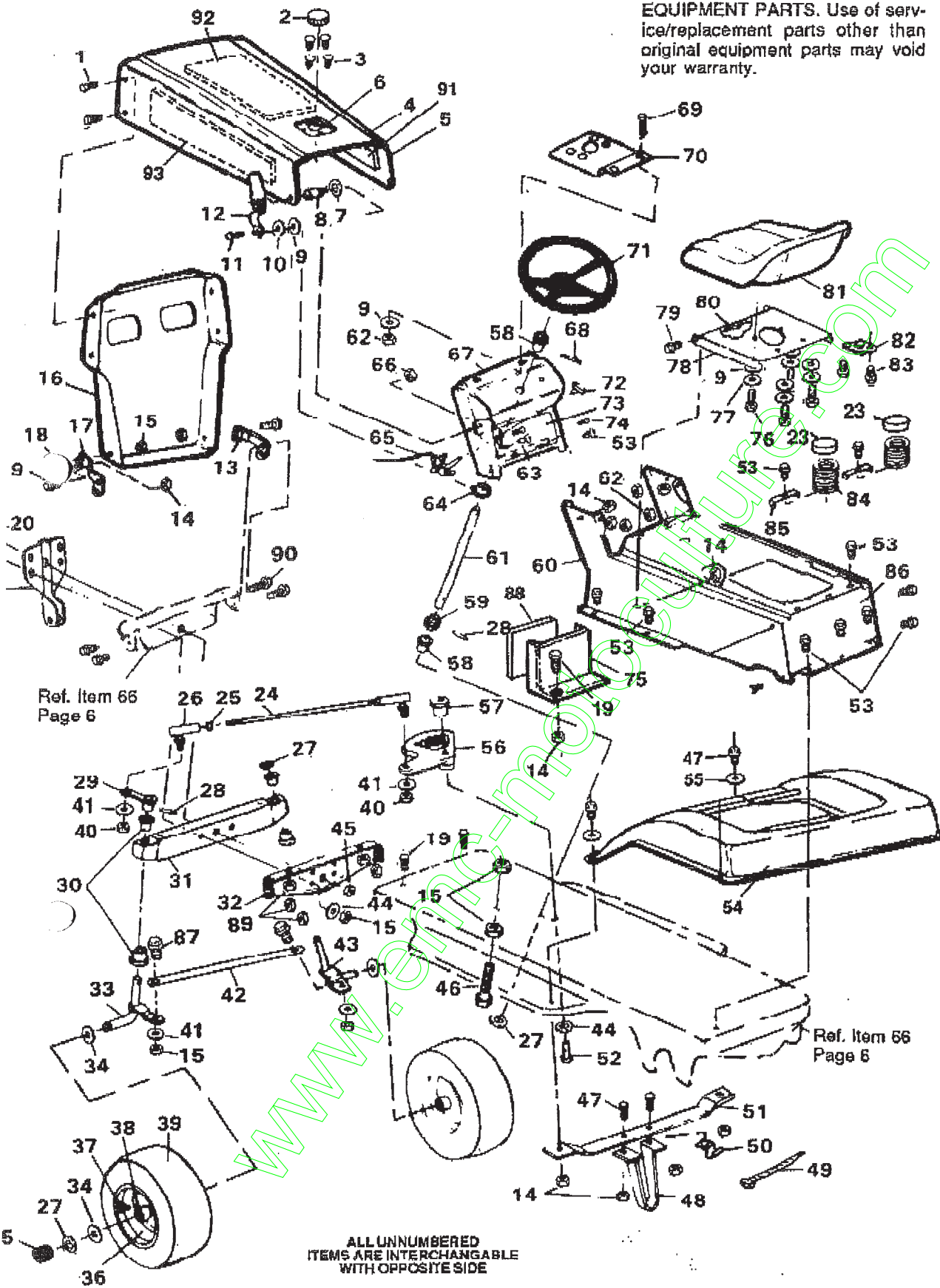
Key No.	Part No.	Description	Key No.	Part No.	Description
1	54873	Trough, Oil Drain	47	1499	Locknut, Hex, 3/8-16 Thd.
2	Engine	* See Footnote Below	48	39659	Belt Retainer
3	302579	Gas Tank	49	43980	Rod, Clutch
4	47452	Gas Line	50	303031	Pulley, Idler
5	41008	Clamp, Gas Line	51	274517	* Flatwasher, 13/32 In.
6	305409	Heat Shield, Muffler	52	1306	Idler Arm
7	46708	Gasket, Muffler	53	45892	Carriage Bolt, 3/8-16 x 1-1/2 In.
8	305406	Muffler	54	49276	Spring, Main Drive
9		Engine Part	55	4107	Washer, 5/8 In.
10	305407	* Screw, Hex Hd, 5/16-18 Thd.	56	41890	Shoulder Bolt
11	303151	Key, Engine Pulley	57	22053	Retaining Ring
12	120393	* Flatwasher, 11/32 In.	58	120228	* Screw, Hex Hd, 5/16-18 x 5/8 In.
13	271184	Nut, Keps, 5/16-18 Thd.	59	7707	Bracket, Axle
14	271190	Nut, Keps, 3/8-16 Thd.	60	1498	Locknut, Hex 5/16-18 Thd.
15	138489	Washer, Pilot	61	138485	Washer, Ext. Lock, 5/16 In.
16	50947	Screw, Hex Wa Tap, 3/8-16 x 1-1/4 In.	62	55511	Ground Wire
17	50653	Belt Guide, Blade Drive	63	45602	Flatwasher, 21/64 In.
18	49896	Belt Guide, Transm. Drive Belt	64	310004	Foot Pad, R.H.
19	304330	Pulley Engine	65	310003	Foot Pad, L.H.
20	302445	Tube Shift	66	310300	Main Frame
21	120383	* Lockwasher, Split, 7/16 In.	67	41529	Locknut, 3/8-16 Thd.
22	433146	Screw, Hex Hd, 7/16-20 x 4-1/4 In.	68	54888	Retainer, Wire
23	302283	Shift Lever	69	20507	Shoulder Bolt
24	304438	Knob, Gear Shift	70	54723	Bracket, Brake Rod
25	56255	Screw, Nylock, 1/4-28 x 3/4 In.	71	310189	Rod, Brake
26	57157	Washer	72	302600	Shaft, Brake-Clutch Pedal
27	56472	Deflector	73	121222	* Pin, Cotter, 3/32 x 3/4 In.
28	57480	Shift Bracket	74	53979	Rubber Pad, Brake Pedal
29	137185	* Cotter Pin, 1/8 x 1 In.	75	302603	Brake Pedal Assembly
30	41105	Wheel	76	50562	Spring, Clutch Pedal
31	24167	Valve Stem	77	20864	Retaining Ring
32	41106	Tire	78	302601	Spacer
33	39628	Key, 3/16 x 3/16 x 2-1/2 In.	79	120238	Jam Nut, Hex, 1/2-13 Thd.
34	180112	* Screw, Hex Hd, 5/16-18 x 2-3/4 In.	80	309235	Fastener, Ratchet
35	Transaxle	* Foote 4360-5 Speed	81	305410	Screw, Hex Hd, 1/4-20
36	35410	Spring, Brake Return.	82	55024	Wire Retainer
37	642	Flatwasher, 3/4 In.	83	302967	Speed Reducer
38	36625	E-Ring	84	35287	Screw, #8-32 x 3/8 In.
39	40394	Hub Cap	85	57479	Spacer
40	42815	Flatwasher, 3/4 In.	86	304246	Engine Pulley Spacer
41	35498	Screw, Hex Wa Tap, 5/16-18 x 3/4 In.	87	12563	Operator's Manual (Not Illustrated)
42	122017	* Screw, Hex Hd, 5/16-18 x 1 In.	88	310473	Parts Manual, English (Not Illustrated)
43	309770	Bracket, Stabilizer			
44	54758	V-Belt			
45	302745	Pulley, Transaxle			
46	3021	Key, Woodruff, #606			

(* Standard Hardware Items - May Be Purchased Locally

(-) Contact Engine Manufacturer's authorized service dealer (See Engine Manual) for parts and warranty.

(^) Contact Tecumseh/Peerless authorized service dealer for parts and warranty

NOTE: ALWAYS USE ORIGINAL EQUIPMENT PARTS. Use of service/replacement parts other than original equipment parts may void your warranty.



Ref. Item 66
Page 6

Ref. Item 66
Page 6

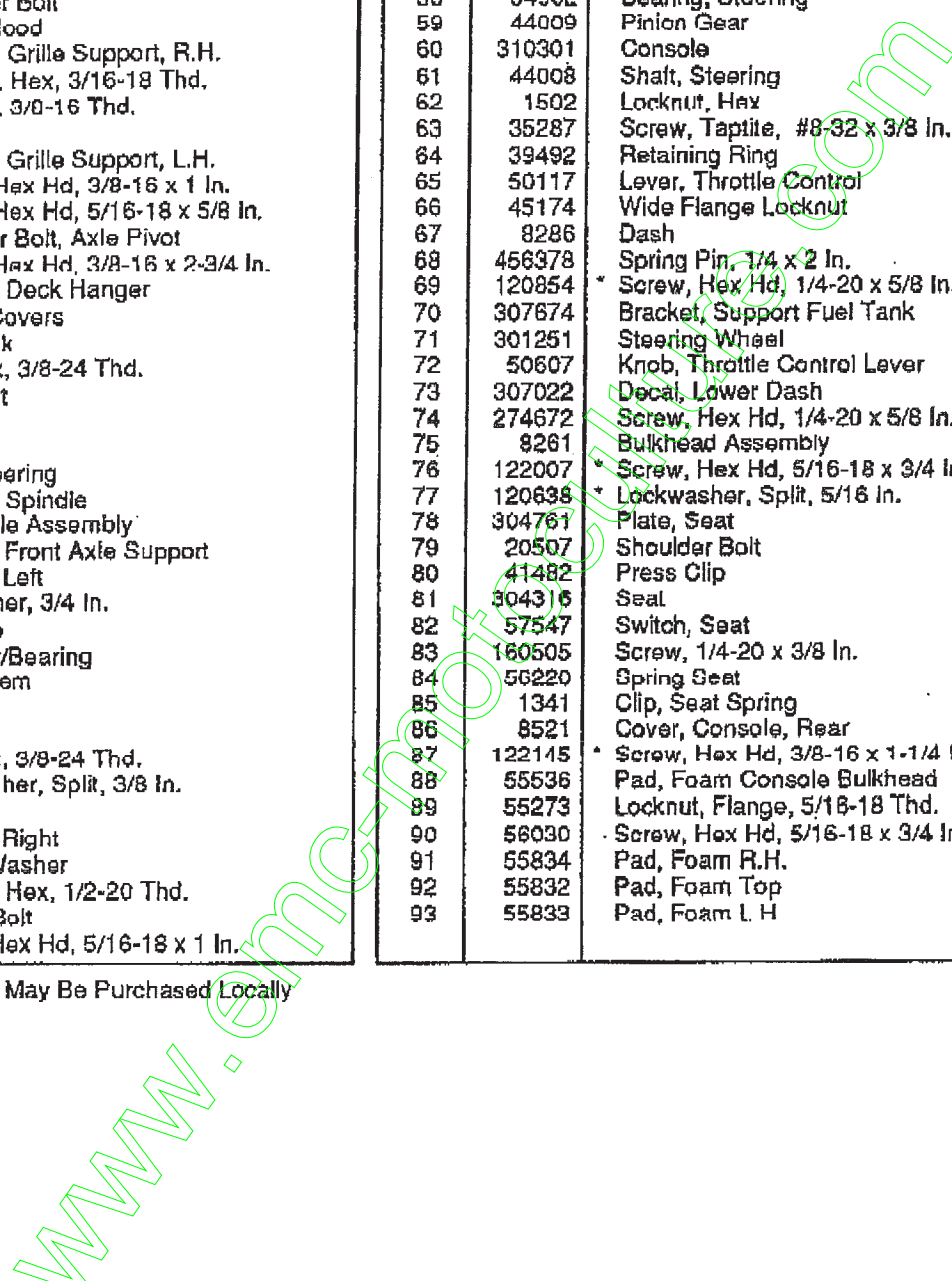
ALL UNNUMBERED
ITEMS ARE INTERCHANGABLE
WITH OPPOSITE SIDE

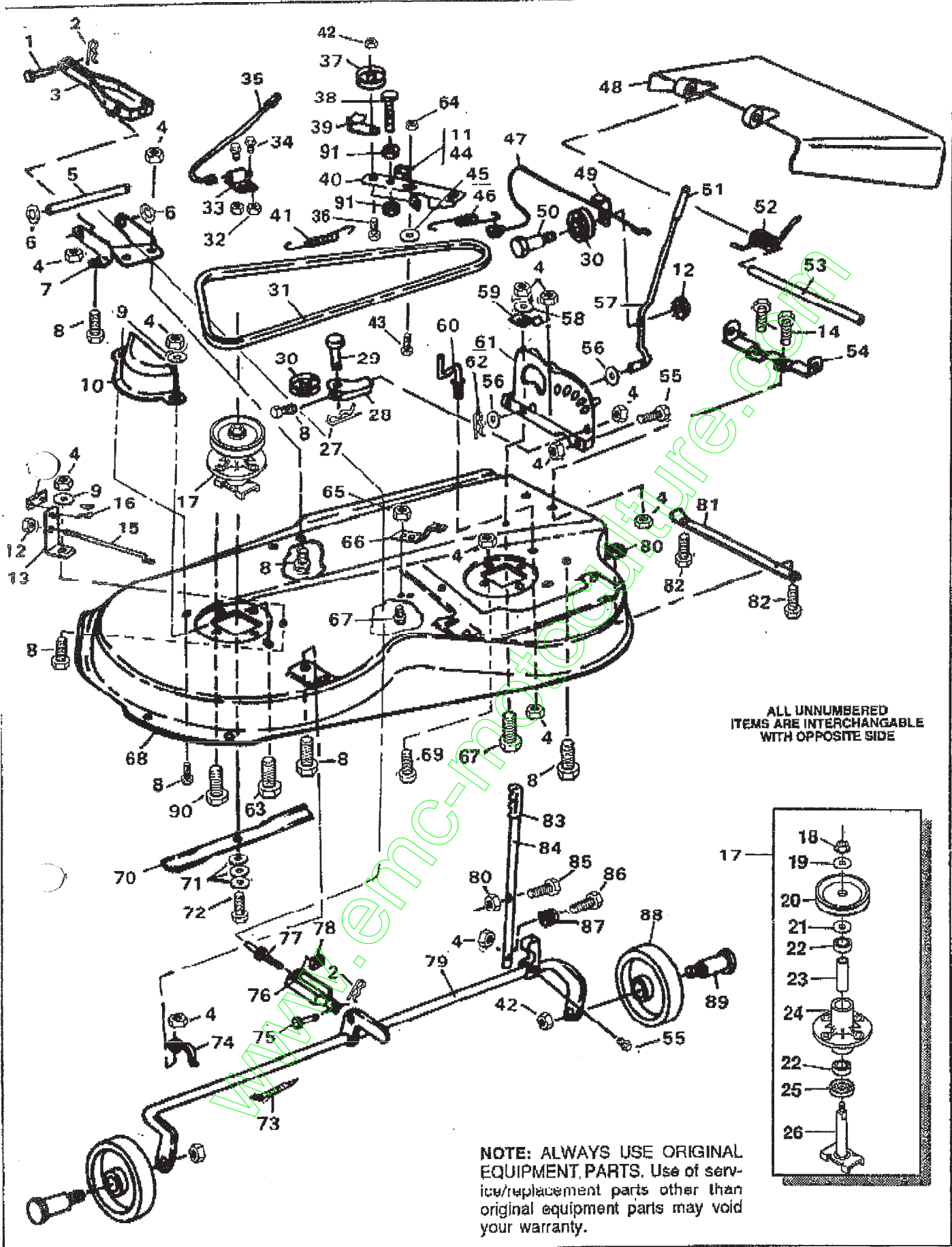
Part No. 310473

RIDING MOWER MODEL A3560-010

Qty.	Part No.	Description	Key No.	Part No.	Description
1	57215	Screw, Plastite, 5/16-9 x 3/4 In.	48	301258	Bracket, Deck Guide
2	46704	Gas Cap	49	57444	Tie Wire
3	49050	Screw, Plastite, 1/4-10 x 3/4 In.	50	57569	Retainer, Wire
4	7822	Hood	51	43964	Bracket, Deck Guide Support
5	55021	Edging, Hood	52	39573	Screw, Hex Hd, Lock, 3/8-24 x 1 In.
6	54885	Pad, Vibration	53	995346	* Screw, Taptite, 1/4-20 x 1/2 In.
7	138538	Washer, Int. Lock	54	7219	Fender
8	53446	Pin, Hood Latch	55	446363	* Flatwasher, 5/16 In.
9	120393	Flatwasher, 1 1/32 In.	56	304245	Sector Gear
0	120394	* Flatwasher, 13/32-16 x 1 In.	57	44011	Shoulder Bolt, Sector Gear
1	8482	Shoulder Bolt	58	54902	Bearing, Steering
2	57159	Latch, Hood	59	44009	Pinion Gear
3	8535	Bracket, Grille Support, R.H.	60	310301	Console
4	1498	Locknut, Hex, 3/16-18 Thd.	61	44008	Shaft, Steering
5	1499	Locknut, 3/8-16 Thd.	62	1502	Locknut, Hex
6	56227	Grille	63	35287	Screw, Taptite, #8-32 x 3/8 In.
7	8533	Bracket, Grille Support, L.H.	64	39492	Retaining Ring
8	120293	* Screw, Hex Hd, 3/8-16 x 1 In.	65	50117	Lever, Throttle Control
9	120228	* Screw, Hex Hd, 5/16-18 x 5/8 In.	66	45174	Wide Flange Locknut
0	50720	Shoulder Bolt, Axle Pivot	67	8286	Dash
1	122201	* Screw, Hex Hd, 3/8-16 x 2-3/4 In.	68	456378	Spring Pin, 1/4 x 2 In.
2	9140	Bracket, Deck Hanger	69	120854	* Screw, Hex Hd, 1/4-20 x 5/8 In.
3	302099	Spring Covers	70	307674	Bracket, Support Fuel Tank
4	56190	Drag Link	71	301251	Steering Wheel
5	124925	Nut, Hex, 3/8-24 Thd.	72	50607	Knob, Throttle Control Lever
6	21275	Ball Joint	73	307022	Decal, Lower Dash
7	36625	E-Ring	74	274672	Screw, Hex Hd, 1/4-20 x 5/8 In.
8	454565	Roll Pin	75	8261	Bulkhead Assembly
9	49447	Arm, Steering	76	122007	* Screw, Hex Hd, 5/16-18 x 3/4 In.
0	50546	Bearing, Spindle	77	120638	* Lockwasher, Split, 5/16 In.
1	56400	Front Axle Assembly	78	304761	Plate, Seat
2	56362	Bracket, Front Axle Support	79	20507	Shoulder Bolt
3	302667	Spindle, Left	80	41482	Press Clip
4	642	Flatwasher, 3/4 In.	81	304316	Seal
5	40394	Hub Cap	82	57547	Switch, Seat
6	39829	Wheel w/Bearing	83	160505	Screw, 1/4-20 x 3/8 In.
7	24167	Valve Stem	84	56220	Spring Seat
8	39979	Bearing	85	1341	Clip, Seat Spring
9	301140	Tire	86	8521	Cover, Console, Rear
0	120369	* Nut, Hex, 3/8-24 Thd.	87	122145	* Screw, Hex Hd, 3/8-16 x 1-1/4 In.
1	120382	* Lockwasher, Split, 3/8 In.	88	55536	Pad, Foam Console Bulkhead
2	302691	Tie Rod	89	55273	Locknut, Flange, 5/16-18 Thd.
3	302668	Spindle, Right	90	56030	Screw, Hex Hd, 5/16-18 x 3/4 In.
4	2483	Spring Washer	91	55834	Pad, Foam R.H.
5	274654	Locknut, Hex, 1/2-20 Thd.	92	55832	Pad, Foam Top
6	49930	Upstop Bolt	93	55833	Pad, Foam L.H.
7	22017	* Screw, Hex Hd, 5/16-18 x 1 In.			

Standard Hardware Items - May Be Purchased Locally





ALL UNNUMBERED ITEMS ARE INTERCHANGABLE WITH OPPOSITE SIDE

NOTE: ALWAYS USE ORIGINAL EQUIPMENT PARTS. Use of service/replacement parts other than original equipment parts may void your warranty.

Part No. 310473

36" RIDING MOWER MODEL A3560-010

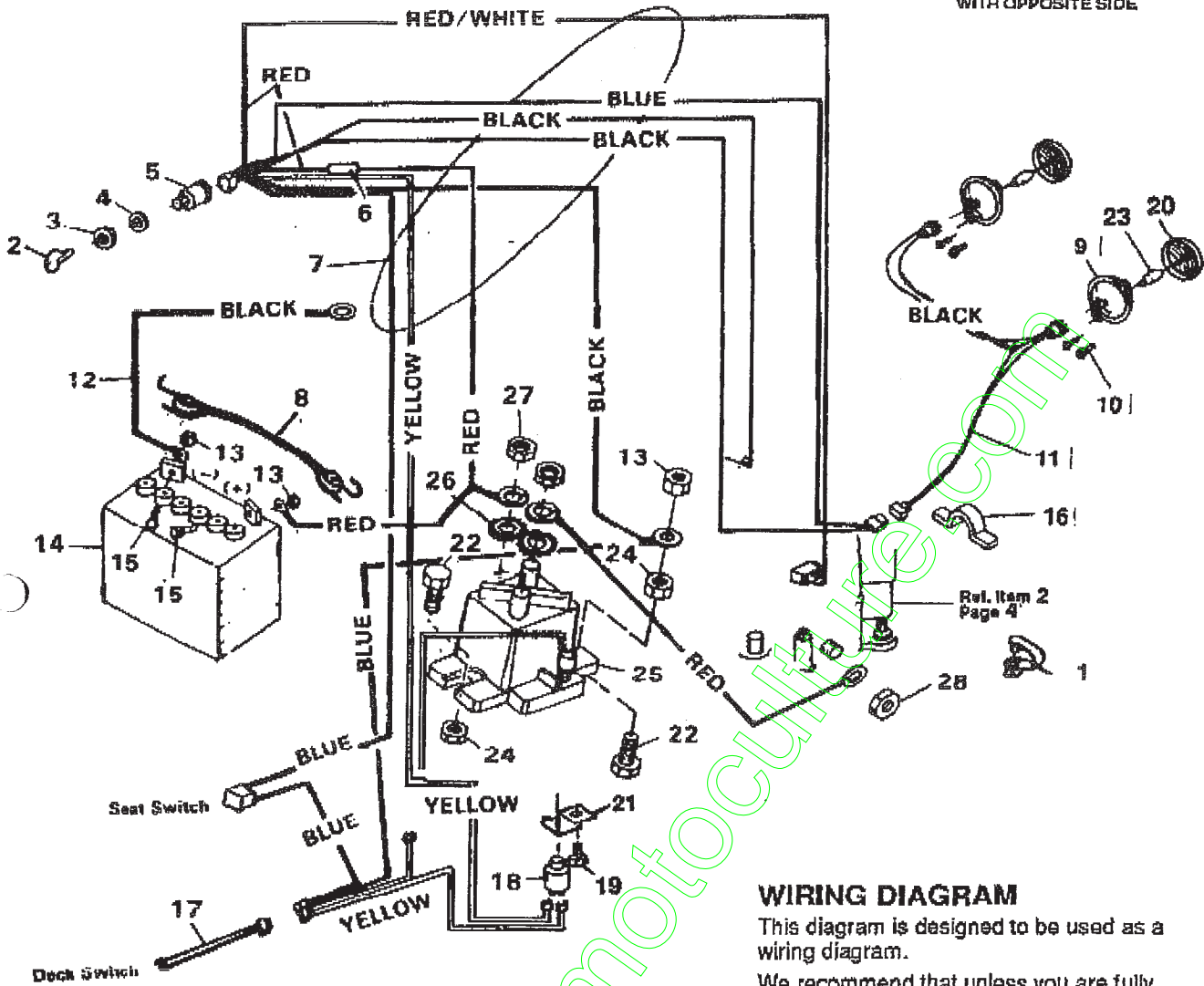
Key No.	Part No.	Description
1	47816	Pin, Clevis
2	56180	Pin, Hair
3	57340	Pivot Bracket
4	1498	Locknut, 5/16-18 Thd.
5	57196	Pin, Pivot
6	20864	"E" Ring
7	57327	Lift Support Plate
8	120228	* Screw, Hex 5/16-18 x 5/8 In.
9	120393	Flatwasher, 11/32 In.
10	302833	Belt Guard, L.H. Pulley
11	306973	Brake Pad
12	1502	Locknut, 1/4-20 Thd.
13	303247	Blade Brake Assy, (Incl. Nos. 11 & 16)
14	120834	* Screw, Hex 5/16-18 x 1/2 In.
15	300315	Rod, Brake Release
16	135624	Rivet, Brake Pad
17	56424	Quill Assy, (Incl. Nos. 18-26)
18	1282	Locknut, Flange 7/16-20 Thd.
19	56365	Special Washer
20	56390	Pulley
21	51449	Spacer, Quill
22	49562	Bearing
23	50818	Spacer, Tube
24	55647	Quill
25	50616	Dust Shield
26	56425	Saddle & Shaft Assy.
27	121222	* Cotter Pin, 3/32 x 3/4 In.
28	49320	Support, Cable Pulley
29	49332	Pin, Clevis 3/8 x 1 In.
30	39298	Pulley, Nylon
31	302289	V-Belt
32	271166	Nut, Keps #10-24 Thd.
33	57476	Switch
34	159943	Screw, Pan #10-24 x 5/8 In.
35	57588	Wire Assembly
36	57325	Carriage Bolt, 3/8-16 x 2 In.
37	303030	Pulley, Idler
38	121954	* Screw, Hex 1/4-20 x 2 In.
39	1346	Retainer, Belt
40	300491	Idler Arm Assy, (Incl. Nos. 11 & 44)
41	35410	Spring
42	1499	Locknut, 3/8-16 Thd
43	300180	Shoulder Bolt
44	41601	Rivet, Brake Pad
45	996416	* Flatwasher, 3/8 In.
46	300683	Spring, Clutch

Key No.	Part No.	Description
47	57326	Clutch Cable
48	57818	Chute Guard
49	1288	Retainer, Cable
50	57322	Shoulder Bolt
51	46478	Grip, Clutch Lever
52	55767	Spring, Discharge Chute
53	57317	Rod, Pivot
54	57360	Bracket, Pivot
55	122040	* Screw, Hex 5/16-18 x 1-1/2 In.
56	120396	Washer, Flat
57	57329	Clutch Lever
58	120386	* Washer, Flat 5/16 In. I.D.
59	57321	Spring
60	57318	Retainer, Belt
61	57337	Quadrant
62	8260	Pin, Hair
63	122017	Screw, Hex Hd 5/16-18 x 1 In.
64	45171	* Locknut, Wide Flange 3/8-16 Thd.
65	44108	Nut, Hex Wide Flange 5/16-18 Thd.
66	300179	Bracket, Idler
67	180077	* Screw, Hex Wide Flange 5/16-18 Thd.
68	305467	Mower Deck
69	300345	* Screw, Hex 5/16-18 x 1-3/8 In.
70	56821	Blade
71	2483	Formed Washer
72	39573	Screw, Hex 3/8-24 x 1 In.
73	57444	Wire Tie
74	51985	Support, Pivot Tube
75	39522	Pin, Clevis
76	9405	Clevis, Lift Cable
77	300341	Lift, Cable
78	120372	* Nut, Square 1/4-20 Thd.
79	306881	Pivot Tube Assembly
80	271184	* Nut, Keps 5/16-18 Thd.
81	57314	Skid Bar
82	126216	* Carriage Bolt, 5/16-18 x 3/4 In.
83	56924	Grip, Height Adjust Lever
84	300188	Height Adjust Lever
85	57324	Screw, Latch
86	995338	Screw, Taprite 1/4-20 x 5/8 In.
87	57319	Spring
88	52584	Wheel, Deck
89	23763	Wheel Axle
90	50634	Screw, Hex Wa Tap 5/16-18 x 7/8 In.
91	271172	Nut, Keps 1/4-20 Thd.

(* Standard Hardware Items - May Be Purchased Locally

www.emc-motors.com

ALL UNNUMBERED ITEMS ARE INTERCHANGABLE WITH OPPOSITE SIDE



WIRING DIAGRAM

This diagram is designed to be used as a wiring diagram.

We recommend that unless you are fully qualified to make repairs on the electrical system on this unit, you take it to a competent repairman for such work or adjustments. If wiring is incorrectly hooked up, engine electrical system can be damaged.

NOTE: ALWAYS USE ORIGINAL EQUIPMENT PARTS. Use of service/replacement parts other than original equipment parts may void your warranty.

Key No.	Part No.	Description
1	54888	Wire Retainer
2	300626	Key, Ignition
3	48140	Locknut (Switch Part)
4	138557	Lockwasher (Switch Part)
5	300687	Switch, Ignition
6	302031	Fuse
7	57642	Wire Harness Assembly
8	309862	Strap, Rubber Battery Hold Down
9	52571	Bezel, Headlight
10	50568	Screw, Hex Wa Hd, #10-14 x 1/2 In.
11	56109	Lead Wire, Headlight
12	55511	Ground Wire
13	271172	Nut, Keps, 1/4-20 Thd.
14	302257	Battery
15	120854	* Screw, Hex Hd, 1/4-20 x 5/8 In.

Key No.	Part No.	Description
16	41482	Wire Clip, Press
17	57588	Wire Assembly, Deck Switch
18	300220	Switch, Lockout
19	995346	Screw, Taptite, 1/4-20 x 1/2 In.
20	52570	Lens, Headlight
21	302610	Bracket, Switch Mounting
22	187745	* Screw, Hex Hd, 1/4-20 x 3/4 In.
23	52572	Bulb, Headlight
24	1502	Locknut, Hex, 1/4-20 Thd.
25	53716	Solenoid
26	138485	* Washer, Shakeproof, 5/16 In.
27	120368	Locknut, Hex, 5/16-24 Thd.
28		Engine Part

(*) Standard Hardware Items - May Be Purchased Locally

Part No. 310473