

ILLUSTRATED PARTS BREAKDOWN

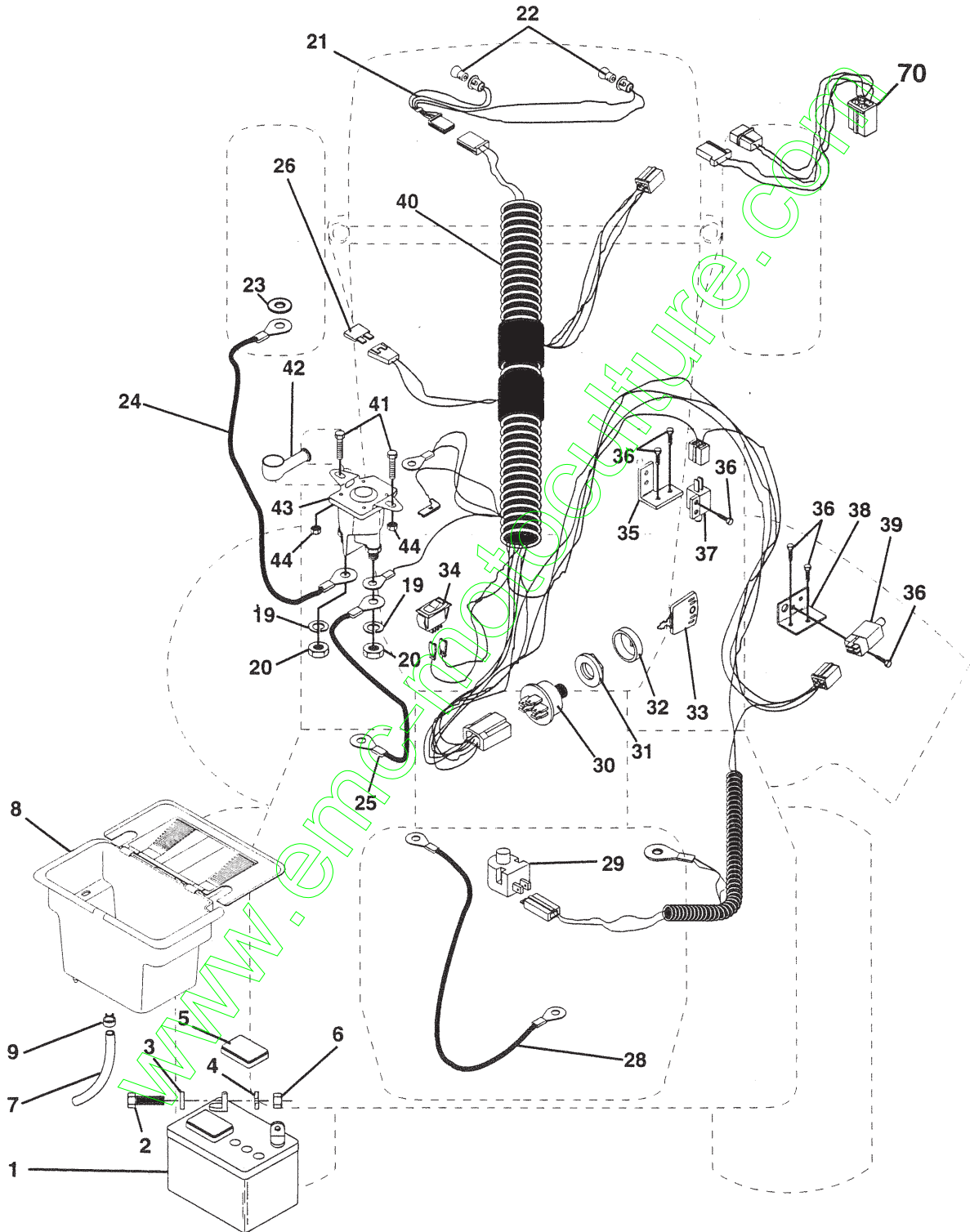
**BERNARD LOISIRS
15 HP, 42" MOWER DECK
LAWN TRACTOR
MODEL NUMBER BL1542LTB
954 00 23-91**

FILE COPY

www.emc-motoculture.com

REPAIR PARTS

15 HP 42" TRACTOR - - MODEL NO. BL1542LTB, PRODUCT NO. 954 00 23-91
ELECTRICAL



REPAIR PARTS

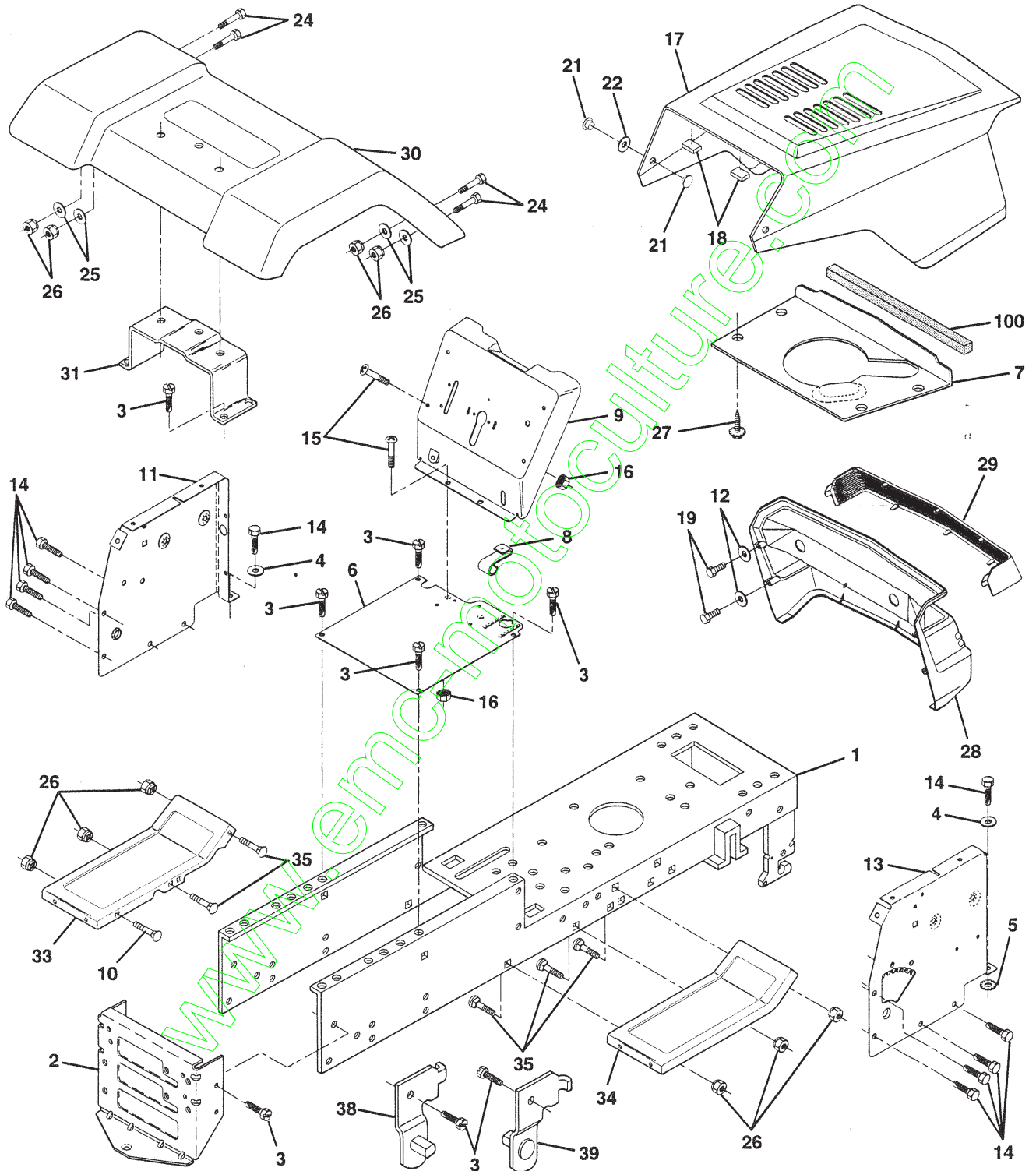
15 HP 42" TRACTOR -- MODEL NO. BL1542LTB, PRODUCT NO. 954 00 23-91
ELECTRICAL

KEY NO.	PART NO.	DESCRIPTION
1	532121265	Battery 12 VOLT 25 AMP
2	874760412	Bolt Hex Hd 1/4-20unc X 3/4
3	819091016	Washer 9/32 X 5/8 X 16 Ga
4	810040400	Washer Lock Hvy Helical 1/4
5	532121264	Caps Battery 20/25/30 AMP
6	873220400	Nut Fin Hex 1/4-20 Unc
7	532109238	Tube Plastic 12"
8	532129965	Case Battery Hng Mech W/lid
9	532109596	Clamp Hose Olive
19	810090400	Washer Lock 1/4
20	873350400	Nut Jam Hex 1/4-20 Unc
21	532136850	Harness Asm Light W/4152J
22	532004152	Bulb Light #1156
23	811150400	Washer Lock Internal Tooth 1/4
24	532124780	Cable Battery 6 Ga 11"red
25	532132202	Cable Battery 6 Ga 43"red
26	532108824	Fuse 30 AMP Auto Green
28	532124773	Cable Ground 6 Ga 12"black
29	532121305	Switch Plunger Nc Gray
30	532140399	Switch Ignition 3 pos
31	532140400	Nut Ignition
32	532141226	Cover Sw Key Blk 1 25 Text SLT
33	532140401	Key Ign Molded Generic Delta
34	532110712	Switch Light Blk Blk Red
35	532108236	Bracket Switch Clutch
36	817021008	Screw Tap Hex #10-24unc X 1/2
37	532104445	Switch Intlk Clutch Gry 2 Term
38	532140336	Bracket Switch Interlock
39	532109553	Switch Intlk Clutch Gry 4 Term
40	532140414	Harness Ign Dash Lt Mech
41	871110408	Bolt Hex Hd. Fin 1/4-20 x 1/2
42	532131563	Cover Terminal Red
43	532138406	Solenoid
44	873640400	Nut Keps Hex 1/4-20 Unc
70	532140422	Harness Engine B&S 14 OHV Dual

NOTE: All component dimensions given in U.S. inches.
1 inch = 25.4 mm.

REPAIR PARTS

15 HP 42" TRACTOR - - MODEL NO. BL1542LTB, PRODUCT NO. 954 00 23-91
CHASSIS AND ENCLOSURES



REPAIR PARTS

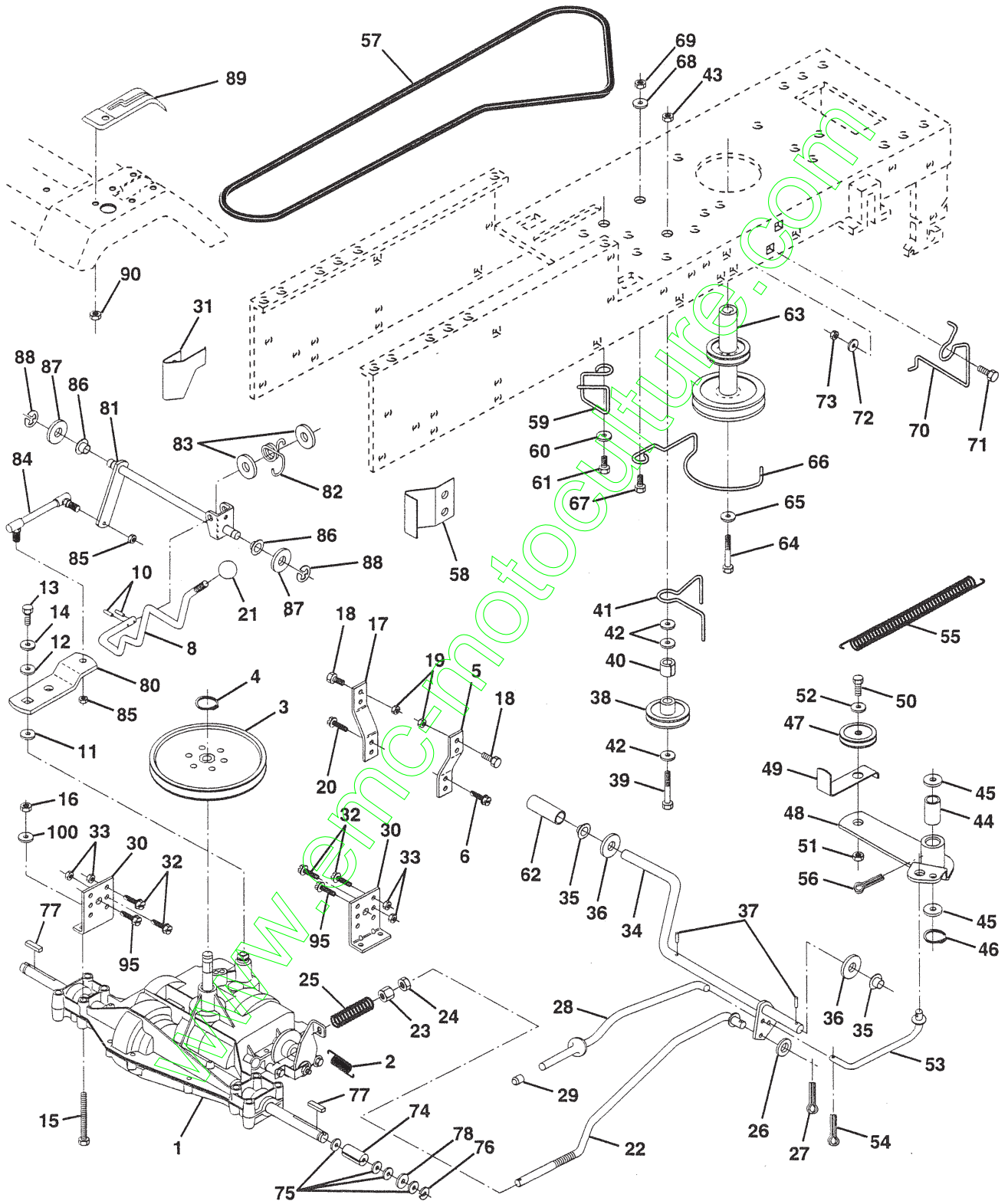
15 HP 42" TRACTOR - - MODEL NO. BL1542LTB, PRODUCT NO. 954 00 23-91
CHASSIS AND ENCLOSURES

KEY NO.	PART NO.	DESCRIPTION
1	532140341	Chassis Wldmt 11ga 38/42 W/pvt
2	532140356	Drawbar Stretch
3	817490612	Screw Thdrol 3/8-16x3/4 Ty-tt
4	819131216	Washer 13/32 X 3/4 X 16 Ga
5	811050600	Washer Lock ext Tooth 3/8
6	532140169	Saddle
7	532126842	Shield Heat Hood Lt
8	532126471	Clip Fuel Line
9	532141323	Dash Sikschr 1-pc M W/i N/c Sym
10	872140608	Bolt Rdhd Sqnk 3/8-16unc X 1
11	532135464	Panel Dash LH
13	532126276	Panel Dash RH Weldment
14	817490608	Screw Thdrol 3/8-16x1/2 Ty-tt
15	874180512	Screw Mach TRHD 5/16-18uncx3/4
16	873510500	Nut Keps 5/16-18 Unc
17	532125153	Hood Asm Pnt Weld Yel Slope
18	532126938	Bumper Hood
19	817521312	Screw Sltd Hex Hd. W/PI Washer
20	811030400	Washer Lock 1/4 Int.
21	532122933	Rivet Ratchet Nylon
22	532124479	Washer Nylon Blk 28x 75x 19
24	874780616	Bolt Fin Hex 3/8-16unc Gr. 1
25	819131312	Washer 13/32 X 13/16 X 12 Ga
26	873800600	Locknut 3/8-16 Unc
27	817030808	Screw Spiderloc Hex Hd #8 x 1/2 Ab
28	532140135	Grille Grey
29	532124029	Lens Headlight Bar Clear
30	532141324	Fender Pnt LT W/shf
31	532136619	Bracket Fender Repl 109873x
33	532124899	Footrest Pnt LH (Husq Gray)
34	532124914	Footrest Pnt RH (Husq Gray)
35	872110606	Bolt Rdhd Sht Sqnk 3/8-16 X3/4
38	532139886	Bracket Asm Pvt42 LH MWR Rear
39	532139887	Bracket Asm Pvt42 RH MWR Rear
100	532105037	Strip Foam 18"
-	532108256	Pad Footrest Rbr Sq Generic
-	532005479	Plug Button Blk 359 Dia Choke

NOTE: All component dimensions given in U.S. inches.
1 inch = 25.4 mm.

REPAIR PARTS

15 HP 42" TRACTOR -- MODEL NO. BL1542LTB, PRODUCT NO. 954 00 23-91
DRIVE



REPAIR PARTS

15 HP 42" TRACTOR - - MODEL NO. BL1542LTB, PRODUCT NO. 954 00 23-91

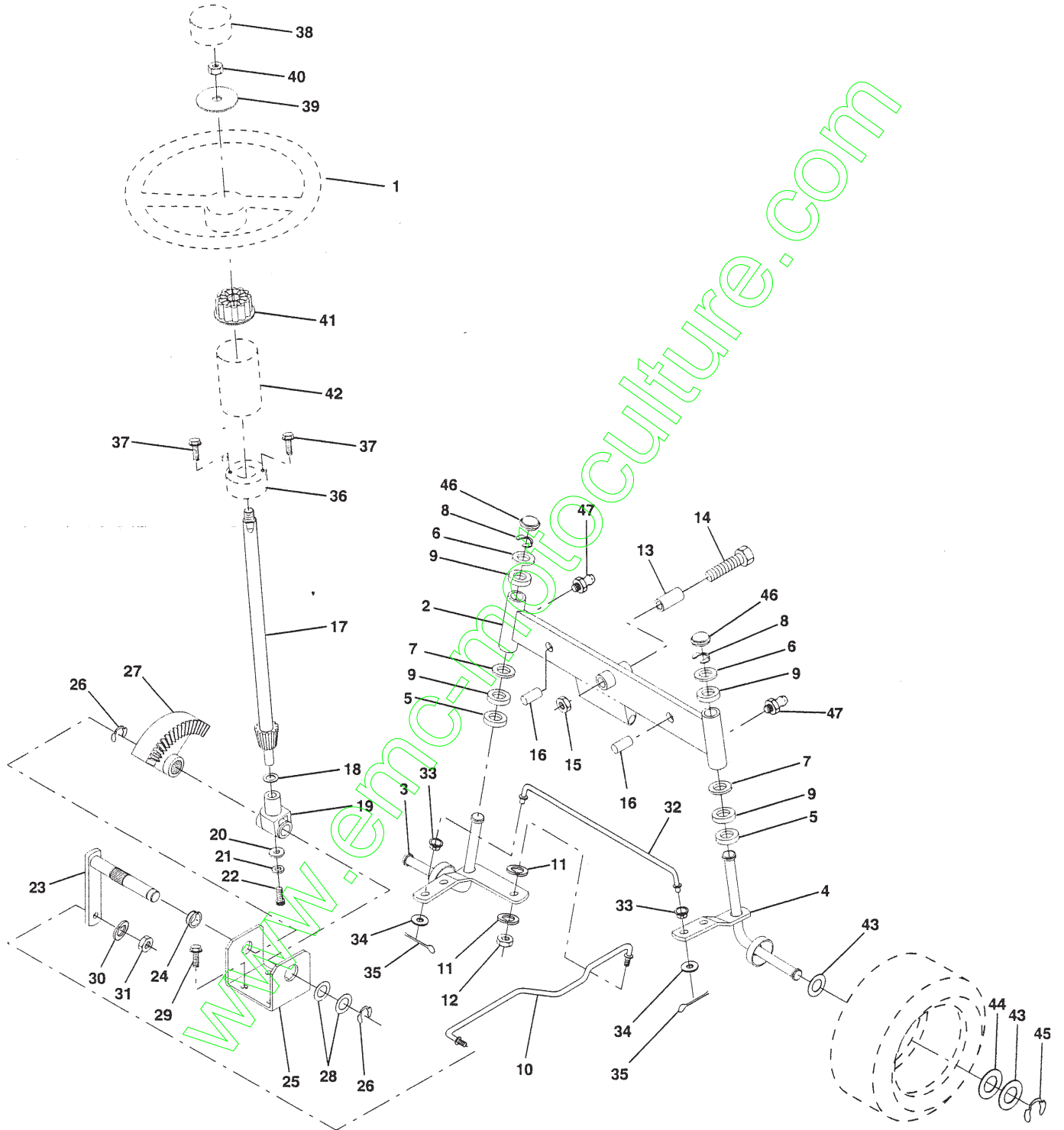
DRIVE

KEY NO.	PART NO.	DESCRIPTION	KEY NO.	PART NO.	DESCRIPTION
1	532142603	Transaxle 6sp Dana 4360-79	49	532123205	Retainer Belt Style Spring
2	532110422	Spring Return Brake T/a Zinc	50	874760624	Bolt Hex Hd 3/8-16unc X 1-1/2
3	532123666	Pulley Transaxle 18" tires	51	873800600	Locknut 3/8-16 Unc
4	812000028	Ring Retainer # 5100-62	52	819131316	Washer 13/32 X 13/16 X 16 Ga
5	532121520	Strap Torque 30 Degrees	53	532105710	Link Clutch 7 66
6	817490512	Screw Thdrol 5/16-18 X 3/4 TYT	54	876020412	Pin Cotter 1/8 X 3/4 Cad
8	532141003	Rod Shifter	55	532105709	Spring Return Clutch 6 75
10	876020416	Pin Cotter 1/8 X 1 Cad	56	876020412	Pin Cotter 1/8 X 3/4 Cad
11	532105701	Washer Plate Shf 388 Sq Hole	57	532130801	V-Belt Ground Drive 95 25 42"
12	819151216	Washer 15/32 X 3/4 X 16 Ga	58	532127274	Keeper Belt RH LT Pnt/zinc 16g
13	871040412	Bolt Fin Hex 1/4-28unfx3/4 Gr8	59	532140312	Keeper Belt Span Ctr
14	810040400	Washer Lock Hvy Helical 1/4	60	819131312	Washer 13/32 X 13/16 X 12 Ga
15	874780544	Bolt Fin Hex 5/16-18uncx 2 3/4	61	817490612	Screw Thdrol 3/8-16x3/4 Ty-tt
16	873800500	Locknut 5/16-18	62	532124872	Cover Pedal Blk Round
17	532121520	Strap Torque LT	63	532140186	Engine Pulley LT/YT
18	874780616	Bolt Fin Hex 3/8-16unc X 1 Gr.	64	871170764	Bolt Hex 7/16-20x4 Gr 5
19	873800600	Locknut 3/8-16 Unc	65	310040700	Washer Lock Hvy Hlcl Spr 7/16
20	817490512	Screw Thdrol 5/16-18 X 3/4 TYT	66	532129921	Keeper Belt Engine LH LT
21	532106933	Knob Rd 1/2-13 Plstc Thds Blk	67	874760616	Bolt Fin Hex 3/8-16unc X 1
22	532130804	Rod Brake Blk Zinc 26 840	68	819131312	Washer 13/32 X 13/16 X 12 Ga
23	873800600	Nut Lock Hex W/wsh 3/8-16unc	69	873800600	Locknut 3/8-16 Unc
24	873350600	Nut Hex Jam 3/8-16 Unc	70	532134683	Guide Belt Mower Drive RH
25	532106888	Spring Rod Brake 2 00 Zinc	71	874760616	Bolt Fin Hex 3/8-16unc X 1
26	819131316	Washer 13/32 X 13/16 X 16 Ga	72	819132012	Washer 13/32 X 1-1/4 X 12 Ga
27	876020412	Pin Cotter 1/8 X 3/4 Cad	73	873800600	Locknut 3/8-16 Unc
28	532140448	Rod Brake Parking LT	74	532109502	Spacer Split
29	532071673	Cap Brake Parking Black	75	532121749	Washer 25/32 X 1 1/4 X 16 Ga
30	532130807	Bracket Mtg Transaxle	76	812000001	E-ring #5133-75
31	532127275	Keeper Belt LH LT 14 Ga	77	532123583	Key Square 2 0 X 1845/ 1865
32	874760512	Bolt Hex Hd 5/16-18unc X 3/4	78	532121748	Washer 25/32 X 1-5/8 X 16 Ga
33	873800500	Locknut 5/16-18	80	532131488	Arm Shift Transaxle
34	532122424	Shaft Asm Pedal Foot 1 930	81	532136932	Shaft Asm Cross 18"t 42"deck
35	532120183	Bearing Nylon Blk 629 Id	82	532123782	Spring Torsion T/a
36	819211616	Washer 21/32 X 1 X 16 Ga	83	819171216	Washer 17/32 X 3/4 X 16 Ga
37	532124963	Pin Roll 3/16 X 1"	84	532132182	Rod Shift Adj Tie
38	532123674	Pulley Idler Flat	85	873530400	Nut Nylock 1/4 - 28
39	874760644	Bolt Fin Hex 3/8-16unc X 2-3/4	86	532071208	Bushing Rod Strg 629/632 Id
40	532124965	Spacer Split 395 X 59 Bzp	87	819212016	Washer 21/32 X 1-1/4 X 16 Ga
41	532109070	Keeper Belt Retainer	88	812000008	Ring Klip #5304-62
42	819131312	Washer 13/32 X 13/16 X 12 Ga	89	532139964	Console Shift 6sp LT
43	873800600	Locknut 3/8-16 Unc	90	532124346	Nut Self-thd Wsh-hd 1/4 Zinc
44	532105706	Bearing Nyl 503 X 628 X 1 25	95	817490612	Screw Thdrol 3/8-16x3/4 Ty-tt
45	532110812	Washer Hardened	100	819111216	Washer 11/32 X 3/4 X 16 Ga.
46	812000039	Ring Klip #5304-50			
47	532127783	Pulley Idler V Groove Plastic			
48	532123789	Bellcrank Asm Clutch			

NOTE: All component dimensions given in U.S. inches.
1 inch = 25.4 mm.

REPAIR PARTS

15 HP 42" TRACTOR - - MODEL NO. BL1542LTB, PRODUCT NO. 954 00 23-91
STEERING ASSEMBLY



REPAIR PARTS

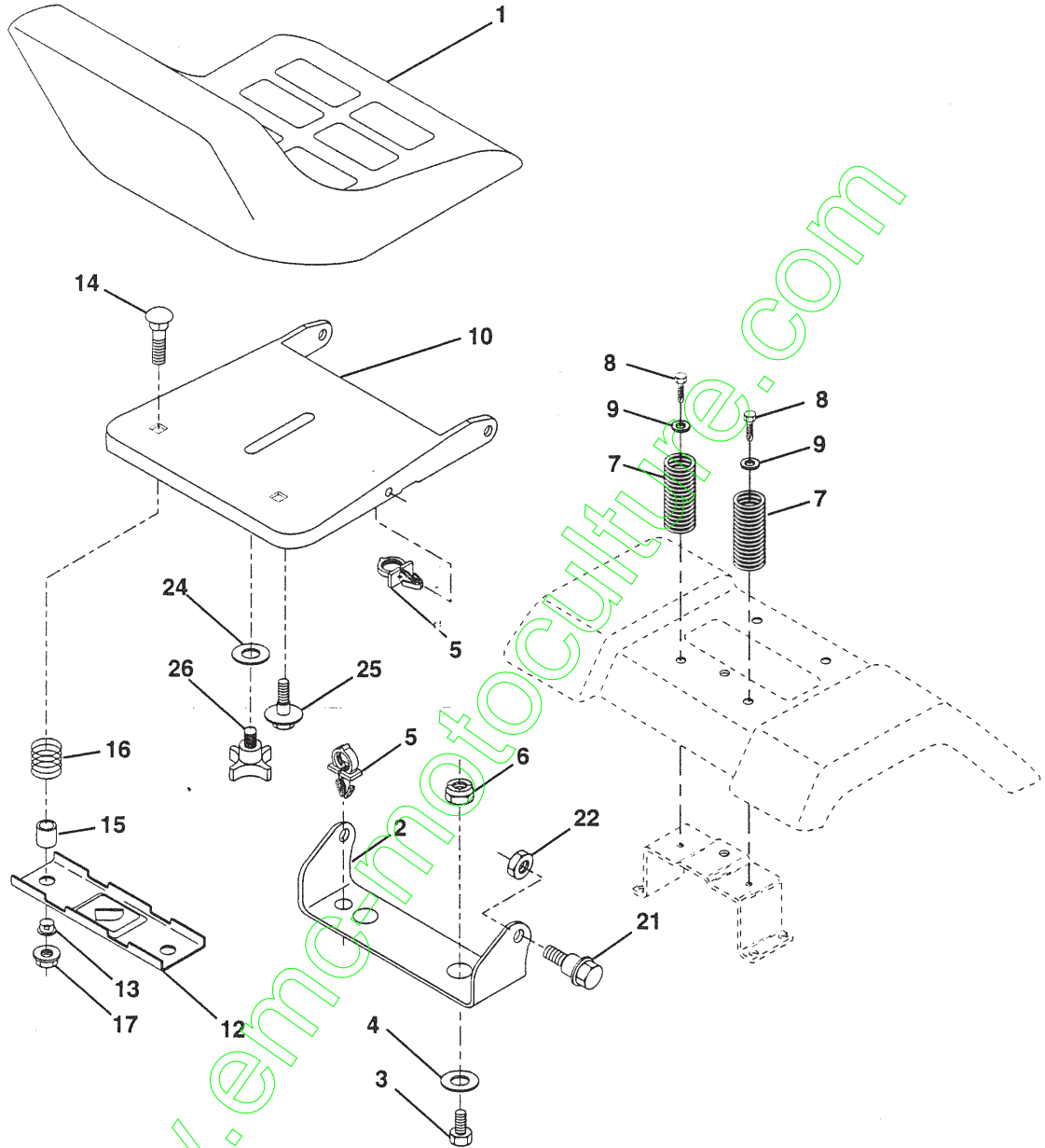
15 HP 42" TRACTOR - - MODEL NO. BL1542LTB, PRODUCT NO. 954 00 23-91
STEERING ASSEMBLY

KEY NO.	PART NO.	DESCRIPTION
1	532133741	Wheel Steering Ayp/kelch Blk
2	532142033	Axle Asm Fr LT W/gzks 38/42
3	532135227	Spindle Asm LH
4	532135228	Spindle Asm RH
5	532124931	Bearing Race Thrust Harden
6	532121748	Washer 25/32 X 1-5/8 X 16 Ga
7	819272016	Washer 27/32 X 1-1/4 X 16 Ga
8	812000029	Ring Klip #t5304-75
9	532124937	Bearing Col Strg Blk
10	532130468	Link Drag Sol Ball Jt 20 064
11	810040600	Washer Lock Hvy Hlcl Spr 3/8
12	873610600	Nut Fin Hex 3/8-24 Unf
13	532110438	Spacer Bearing Axle Front
14	874011056	Bolt Hex 5/8-11 Unc X 3-1/2
15	873901000	Nut Lock Flange 5/8-11 Unc
16	532132624	Pin Axle 5/8 X 1 55/1 54 Lg
17	532132614	Shaft Asm Strg 5/8 X 15 19 LT
18	532057079	Washer Thrust 515x 750x 033
19	532124035	Support Shaft
20	532126684	Washer Shim 1/4 X 5/8 X 062
21	810040400	Washer Lock Hvy Helical 1/4
22	871070410	Screw Hex Socket 1/4-20 X 5/8
23	532127501	Shaft Asm Pittman
24	532109816	Nyliner Snap In
25	532124036	Bracket Steering
26	812000029	Ring Klip #t5304-75
27	532136874	Gear Sector 22 Teeth
28	532124931	Bearing Race Thrust Harden
29	817490612	Screw Thdrol 3/8-16x3/4 Ty-tt
30	810040600	Washer Lock Hvy Hlcl Spr 3/8
31	873610600	Nut Fin Hex 3/8-24 Unf
32	532130465	Rod Tie Wire Form 19 75 Mech
33	532126847	Bushing Link Drag Blk LR
34	819131416	Washer 13/32 X 7/8 X 16 Ga
35	876020412	Pin Cotter 1/8 X 3/4 Cad
36	532132196	Bushing Strg 5/8 Id Dash
37	817431008	Screw Slftp #10-16 X 1/2 Ty-b
38	532133742	Cap Wheel Steer Ayp/kelch Blk
39	819133808	Washer 13/32 X 2-3/8 X 8 Ga
40	532124701	Nut Lock Center 3/8-24unf
41	532104820	Adaptor Wheel Strg 640/ 635id
42	532124418	Boot Shaft Steering Blk
43	532121749	Washer 25/32 X 1 1/4 X 16 Ga
44	532121748	Washer 25/32 X 1-5/8 X 16 Ga
45	812000029	Ring Klip #t5304-75
46	532121232	Cap Spindle Fr Top Blk
47	532124836	Fitting Grease

NOTE: All component dimensions given in U.S. inches.
1 inch = 25.4 mm.

REPAIR PARTS

15 HP 42" TRACTOR - - MODEL NO. BL1542LTB, PRODUCT NO. 954 00 23-91
SEAT ASSEMBLY



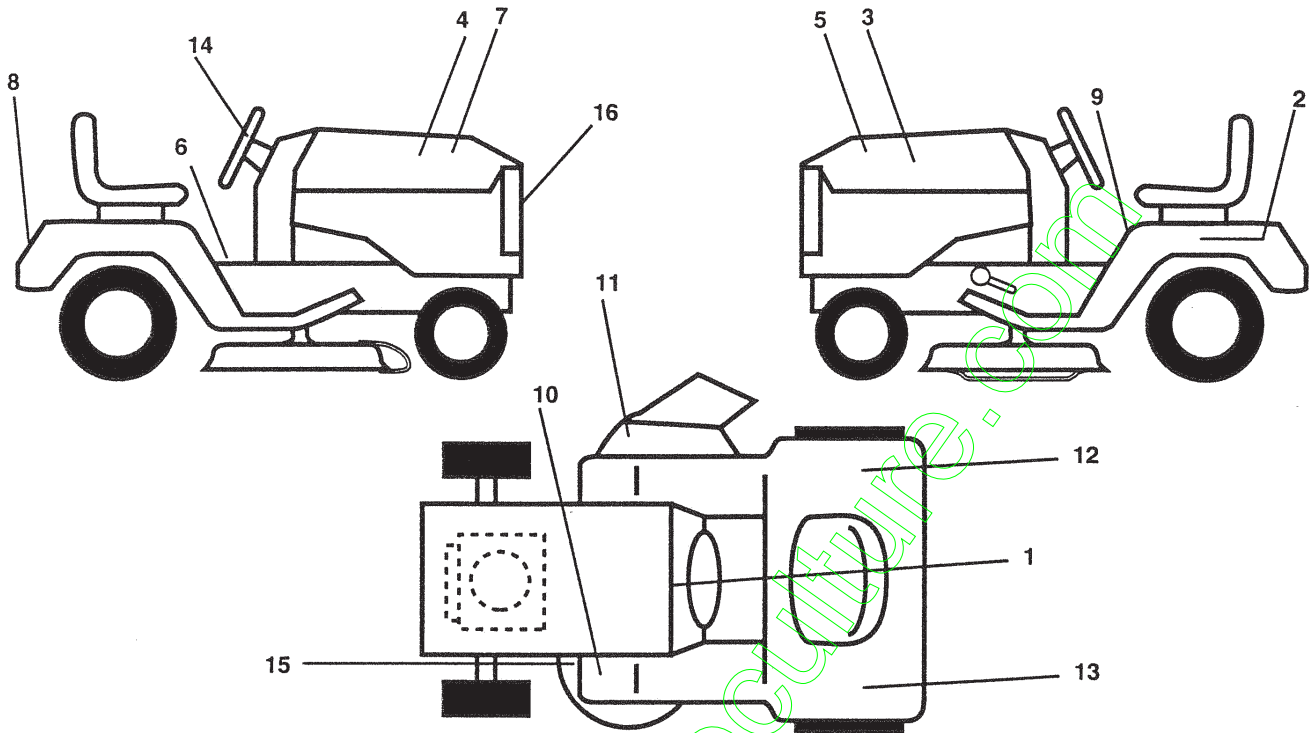
KEY NO.	PART NO.	DESCRIPTION	KEY NO.	PART NO.	DESCRIPTION
1	532127427	Seat V350 Blk/blk Std	14	872050411	Bolt Rdhd Sht Nk 1/4-20x1-3/8
2	532140551	Bracket Pivot Seat	15	532134300	Spacer Split 28x 96 Yel Zinc
3	874760616	Bolt Fin Hex 3/8-16unc X 1	16	532121250	Spring Cprsn 1 27 Blk Pnt
4	819131610	Washer 13/32 X 1 X 10 Ga	17	532123976	Nut Lock 1/4 Lge Flg Gr 5 Zinc
5	532140407	Clip Push-In .375 x .250	21	532139888	Bolt Shoulder 5/16-18
6	873800600	Nut Lock Hex W/Wsh 3/8-16	22	873800500	Locknut 5/16-18
7	532124181	Spring Seat Cprsn 2 250 Blk Zi	24	819171912	Washer 17/32 X 1-3/16 X 12 Ga
8	817490616	Screw Thdrol 3/8-16 X 1 Ty-tt	25	532127018	Bolt Shoulder 5/16-18 X 62
9	819131614	Washer 13/32 X 1 X 14 Ga	26	532120068	Knob Seat 1/2-13unc Blk
10	532140552	Pan Seat			
12	532121246	Bracket Mounting Switch			
13	532121248	Bushing Snap Blk Nyl 50 Id			

NOTE: All component dimensions given in U.S. inches.
1 inch = 25.4 mm.

REPAIR PARTS

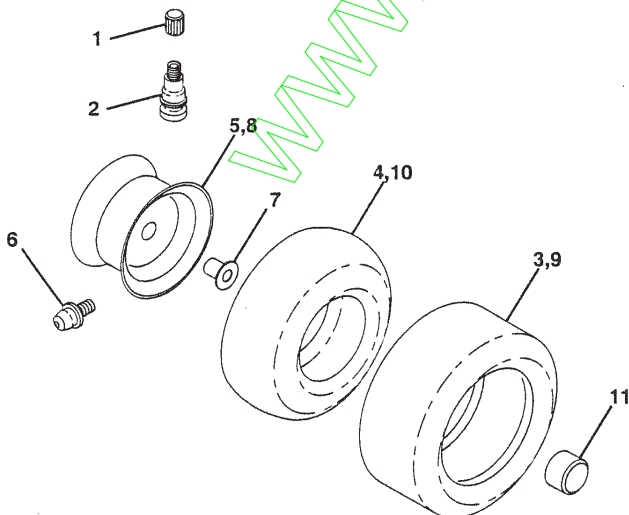
15 HP 42" TRACTOR - - MODEL NO. BL1542LTB, PRODUCT NO. 954 00 23-91

DECALS



KEY NO.	PART NO.	DESCRIPTION	KEY NO.	PART NO.	DESCRIPTION
1	532138956	Decal Instruction Dash Eng/fr	13	532142443	Decal Conformance
2	532121549	Decal Caution Battery Fr/ger	14	532125835	Decal Strg Wheel Cap Berd/lois
3	532125934	Decal Hood LH Bernard	15	532136830	Decal V-Belt Schematic
4	532125935	Decal Hood RH Bernard		532131265	Decal Lightbox Grille Sloped
5	532141086	Decal Side Panel LH	--	532142512	Manual Instr Asm BL1542LTB
6	532140837	Decal Brake Parking Saddle	--	532138311	Decal Handle Lft Height Adjust
7	532141085	Decal Side Panel RH	--	532140718	Manual Operators
8	532125819	Decal Fender Bernard	Available accessories not included with tractor:		
9	532133795	Decal Caution Fender Eng/fr	--	CE42	42" Bagger
10	532101892	Decal Clutch/brake Eng/fr	--	BD20LB048	42" Snow Blade
11	532137259	Decal Warning MULT-LANGUAGE	--	SB20LSB42	40" Snow Thrower
12	532125690	Decal 100 DbA	--	LC05	33lb. Wheel Wts. (Pair)
			--	LA018	Tire Chains (18 x 9.5 x 8)
			--	MP42	Mulcher Plate Kit 42"

WHEELS & TIRES

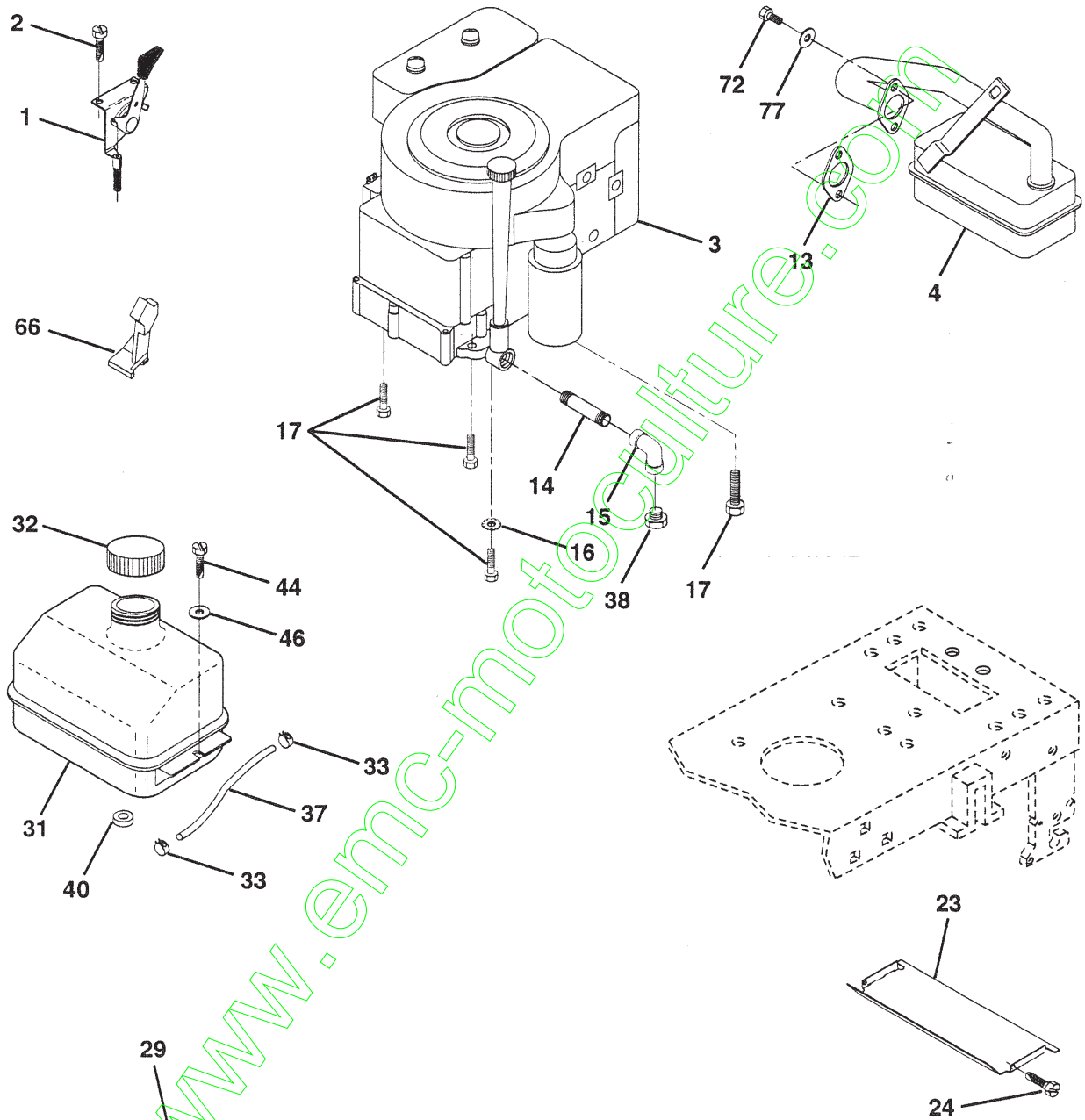


KEY NO.	PART NO.	DESCRIPTION
1	532059192	Cap Valve Tire
2	532065139	Stem Valve
3	532106222	Tire F Ts 15 X 6 0 - 6 Service
4	532059904	Tube Front (Service Item Only)
5	532125121	Rim Asm 6" front Yellow Service
6	532124957	Fitting Grease (Front Wheel Only)
7	532124959	Bearing Flange (Front Wheel Only)
8	532125122	Rim Asm 8" rear Yellow Service
9	532106268	Tire R Ts 18x9 5-8 C Service
10	532124926	Tube Rear (Service Item Only)
11	532104757	Cap Axle Blk 1 50 X 1 00

NOTE: All component dimensions given in U.S. inches
1 inch = 25.4 mm

REPAIR PARTS

15 HP 42" TRACTOR - - MODEL NO. BL1542LTB PRODUCT NO. 954 00 23-91
ENGINE



OPTIONAL EQUIPMENT
Spark Arrester

REPAIR PARTS

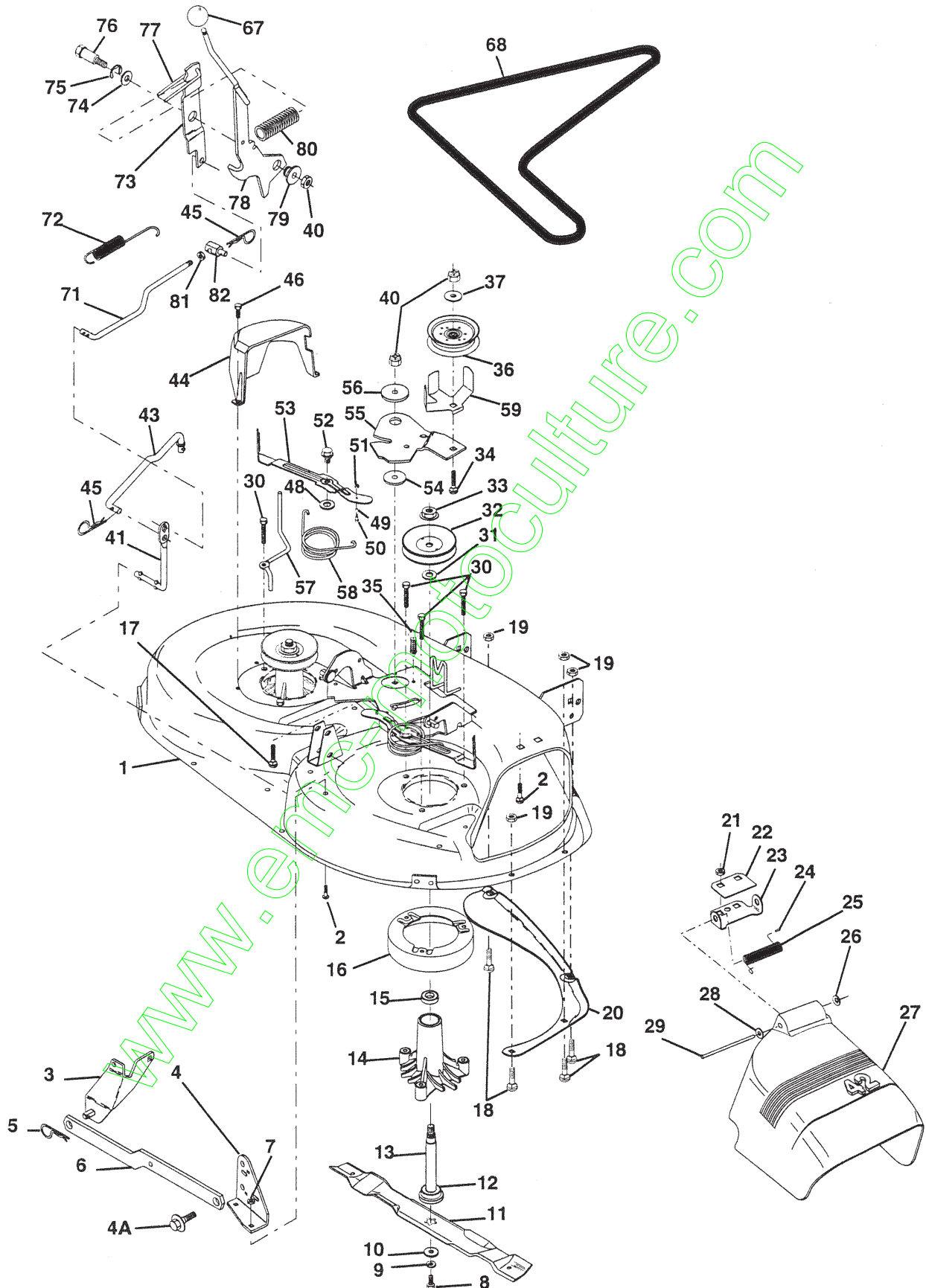
15 HP 42" TRACTOR - - MODEL NO. BL1542LTB PRODUCT NO. 954 00 23-91
ENGINE

KEY NO.	PART NO.	DESCRIPTION
1	532132623	Control Th/ch RH Blk Tee Eec
2	817720410	Screw Hex Thd Cut 1/4-20x5/8 T
3	-----	Engine B&S 15HP Vanguard Dual Model No. 28Q777
4	532137352	Muffler LT B&S 14HP lc/ohv
10	817490616	Screw Thdrol 3/8-16 x 1 Ty-TT
13	532125593	Gasket Eng 1 313 Id Tin Plated
14	813280324	Nipple Pipe 3/8 Npt X 3"
15	813200300	Elbow Std 90 Degree 3/8-18 Npt
16	811050600	Washer Lock Ext Tooth 3/8
17	817490620	Screw Thdrol 3/8-16x1-1/4 TYTT
23	532128953	Shield Heat Browning LT/YT
24	817021008	Screw Tap Hex #10-24unc X 1/2
29	532137180	Kit Spark Arrestor (Flat Scrn)
31	532109202	Tank Fuel Front 1 25
32	532140527	Cap Asm Fuel W/sym Vented
33	532123487	Clamp Hose Black
37	532137040	Line Fuel 9.50"
38	-----	Plug Oil Drain (Order From Engine Manufacturer)
40	532124028	Bushing Snap Nyl Blk Fuel Line
44	817490412	Screw Hexwsh Thdrol 1/4-20x3/4
46	819091416	Washer 9/32 X 7/8 X 16 Ga
66	532127951	Stop, Throttle
72	871070512	Screw Hexhd Cap 5/16-18x 3/4
77	810040500	Washer Lock Hvy Hlcl Spr 5/16

NOTE: All component dimensions given in U.S. inches
1 inch = 25.4 mm

REPAIR PARTS

15 HP 42" TRACTOR -- MODEL NO. BL1542LTB, PRODUCT NO. 954 00 23-91
42" MOWER DECK



REPAIR PARTS

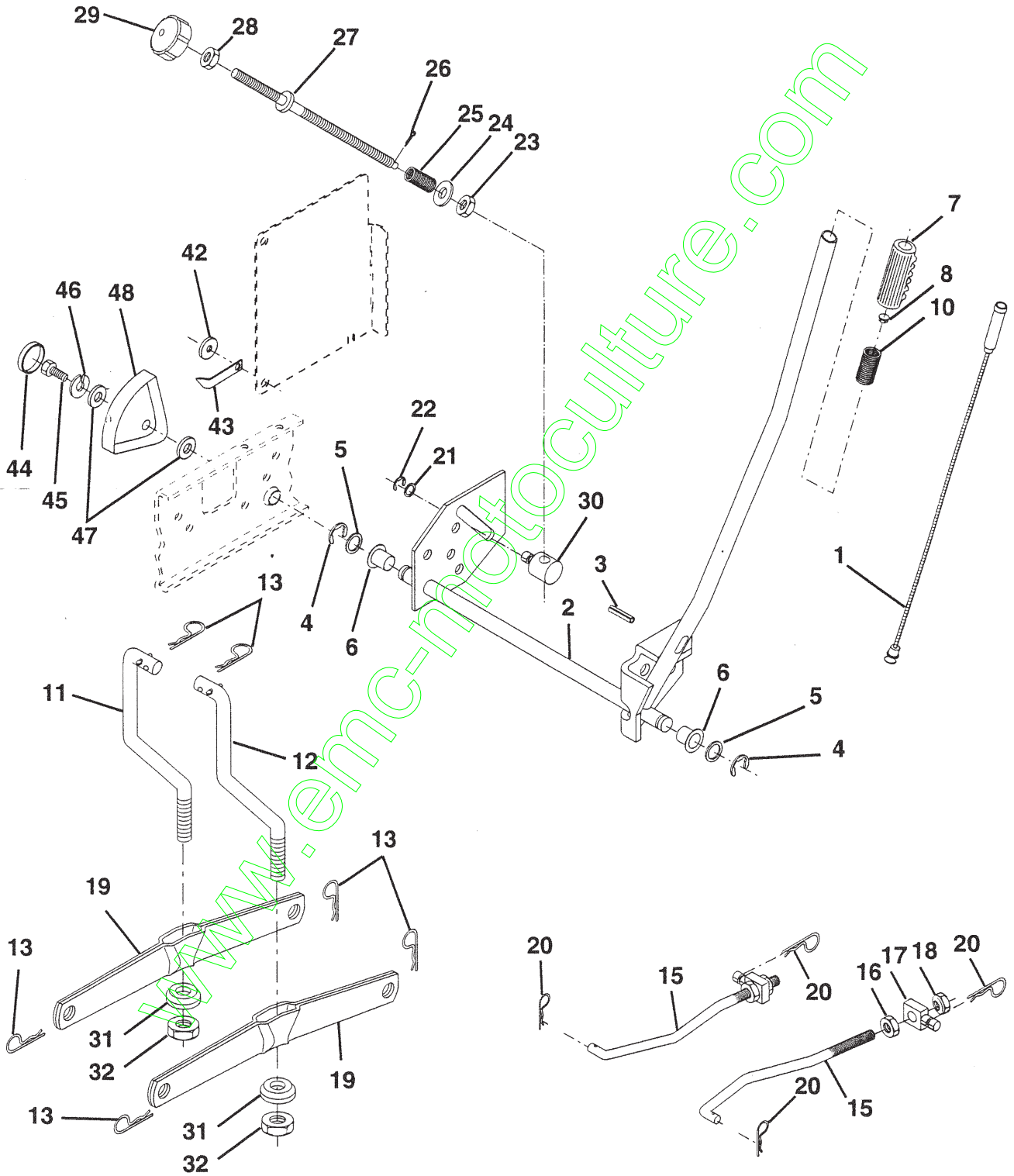
15 HP 42" TRACTOR - - MODEL NO. BL1542LTB, PRODUCT NO. 954 00 23-91
42" MOWER DECK

KEY NO.	PART NO.	DESCRIPTION	KEY NO.	PART NO.	DESCRIPTION
1	532140081	Deck Asm MWR 42"weldment	40	873800600	Locknut 3/8-16 Unc
2	872140506	Bolt Rdhd Sqnk 5/16-18unc X3/4	41	532133551	Rod Pivot W/nibs
3	532138017	Bracket Asm Fr Sway Bar 38/42	43	532140083	Rod Clutch Secondary W/nibs
4	532138440	Bracket Asm Deck 42"sway Bar	44	532140088	Guard Mandrel LH Black
4a	532132827	Bolt Shoulder	45	532124788	Spring Retainer 1" Zinc/cad
5	532124670	Retainer Spring	46	532137729	Screw Hex Thd Cut 1/4-20x5/8 T
6	532130832	Arm Suspension Rear	48	532133944	Washer Hardened Smaller
7	873800500	Locknut-hex W/ins 5/16-18unc P	49	532133940	Roller Asm Cam Follower 42"dec
8	532850857	Bolt 3/8 - 24 X 1.25 Gr 8	50	532131340	Bolt Shldr 10-24 Zinc Gr 5 42"
9	810030600	Washer Lock Hvy 3/8	51	532069180	Nut Lock #10-24 Unc
10	532140296	Washer Hard Blade Mower Vented	52	532139888	Bolt Shoulder 5/16-18 Unc Blkz
11	532134149	Blade Mower Mulching 42"	53	532131845	Arm Asm Pad Brake
12	532129895	Bearing Ball #6024 (Mandrel)	54	532133943	Washer Hardened
13	532137645	Shaft Asm W/lower Bearing	55	532140084	Arm Idler 42"mower LT/YT
14	532128774	Housing Mandrel Vented	56	532122052	Spacer Retainer Pm Mower
15	532110485	Bearing Ball Mandrel	57	532140090	Keeper Belt LH Front 42" 94
16	532140329	Stripper Mower Vented	58	532140086	Spring Torsion Brakes 42"
17	872110610	Bolt Rdhd Sqnk 3/8-16 X 2-1/4	59	532141043	Guard TUV Idler (94)
18	872140505	Bolt Rdhd Sqnk 5/16-18 X 5/8	67	532106932	Knob Rd 3/8-16 Plstc Thds Blk
19	873800500	Locknut-hex W/ins 5/16-18unc P	68	532140067	V-Belt Mower 42" 92 40
20	532136888	Baffle Vortex 42	71	532142427	Rod Clutch Primary 38/42
21	873800500	Locknut 5/16-18	72	532131870	Spring Return
22	532134753	Stiffener Bracket 42"deck	73	532127847	Arm Clutch Secondary
23	532131267	Bracket Deflector Mower 42"	74	532121748	Washer 25/32 X 1-5/8 X 16 Ga
24	532105304	Cap Sleeve 80x 112 Blk Mower	75	812000029	Ring Klip #t5304-75
25	532123713	Spring Torsion Deflector 2 52	76	532128903	Bolt Shoulder 3/8-16 Unc 1 44
26	532110452	Nut Push Phos & Oil	77	532127845	Keeper Spring 4 000
27	532130968	Shield Deflector Mower 42" Blk	78	532140334	Arm Asm Clutch Primary
28	819111016	Washer 11/32 X 5/8 X 16 Ga	79	532127498	Bushing 747 Od X 794 Lg Brass
29	532131491	Rod Hinge 42"6 75 Wlg	80	532128759	Spring Clutch Mower 2 750 Zinc
30	532138776	Screw Thdrol Hex Head Zinc Mwr	81	873350600	Nut Hex Jam 3/8-16 UNC
31	532129963	Washer Spacer Mower Vented	82	532142028	Trunnion Adj 94
32	532129861	Pulley Mandrel 42"	--	532140475	Deck Serv 42"mch S Bar Mult-Lang
33	532137266	Nut 9/16 Toplock Fing Oil Dip	--	532130794	Mandrel Asm Service (Includes Key Nos. 8-10, 12-15, 31 and 33)
34	872110614	Bolt Rdhd 3/8-16uncx1-3/4 Gr5			
35	532133835	Fastner Christmas Tree			
36	532131494	Pulley Idler Flat 3 060			
37	819131316	Washer 13/32 x 13/16 x 16 Ga.			

NOTE: All component dimensions given in U.S. inches
1 inch = 25.4 mm

REPAIR PARTS

15 HP 42" TRACTOR - - MODEL NO. BL1542LTB, PRODUCT NO. 954 00 23-91
MOWER LIFT



REPAIR PARTS

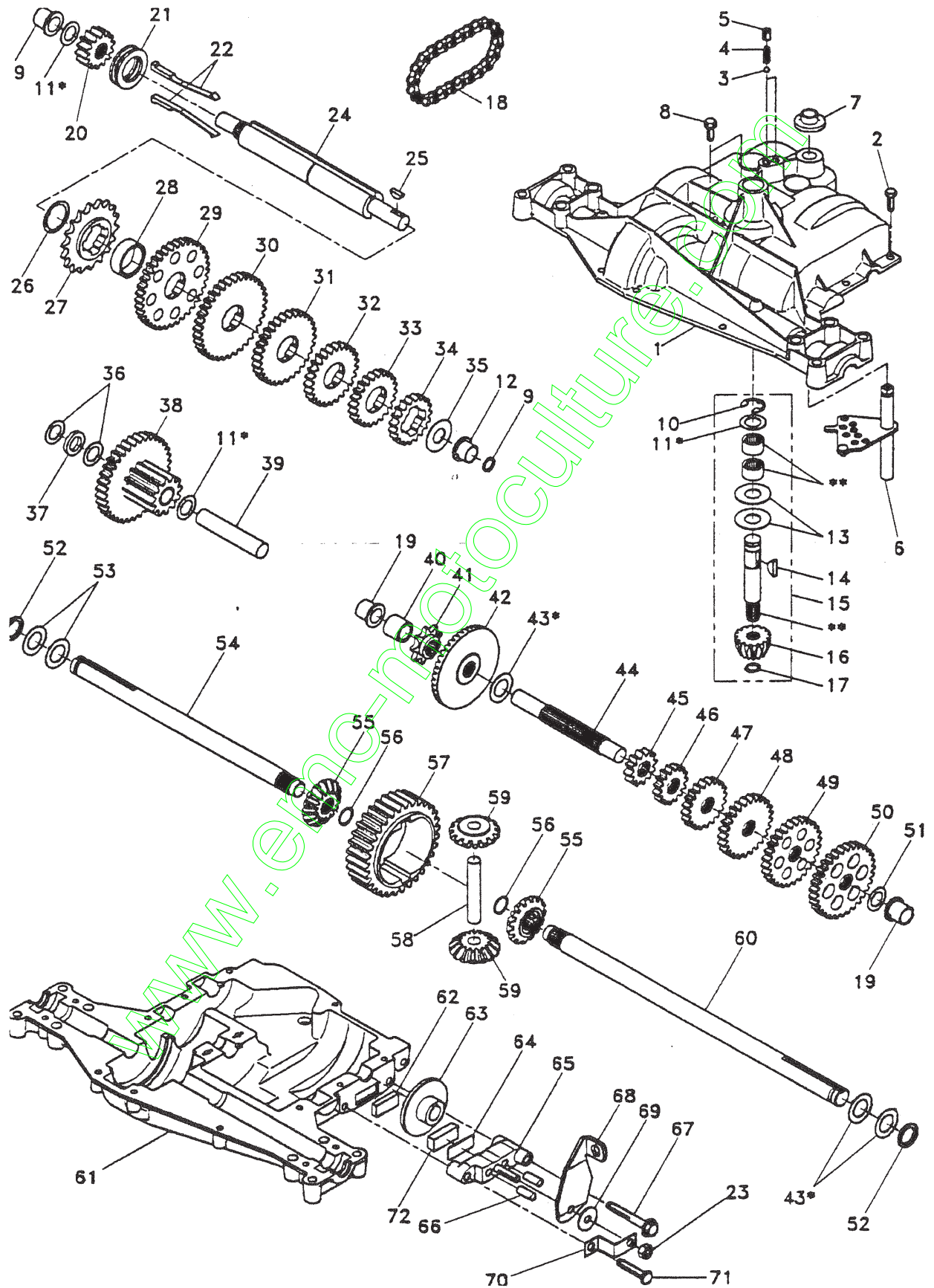
15 HP 42" TRACTOR - - MODEL NO. BL1542LTB, PRODUCT NO. 954 00 23-91
MOWER LIFT

KEY NO.	PART NO.	DESCRIPTION
1	532136973	Wire Asm Inner W/plunger 17 32
2	532122507	Shaft Asm Lift 9 680
3	532105767	Pin Groove 1 500 Zinc
4	812000002	E Ring #5133-62
5	819211621	Washer PLTD 21/32 X 1 X 21ga
6	532120183	Bearing Nylon Blk 629 Id
7	532109413	Grip Handle Bicycle Matte Blk
8	532124526	Button Plunger Black
10	532122512	Spring Cprsn 3 750 Oiled
11	532139865	Link Lift LH Fixed Length
12	532136866	Link Lift RH Fixed Length
13	532124670	Retainer Spring
15	532127218	Link Front
16	873350800	Nut Jam Hex 1/2-13 Unc
17	532130171	Trunnion Blk Zinc
18	873800800	Nut Lock W/wsh 1/2-13unc
19	532139868	Arm Suspension Rear
20	532124660	Spring Retainer
21	819151216	Washer 15/32 X 3/4 X 16 Ga
22	812000037	Ring Klip #t5304-37
23	532110807	Nut Special
24	819131016	Washer 13/32 X 5/8 X 16 Ga
25	532124874	Spring 2-1/8"
26	876020308	Pin Cotter 3/32 X 1/2
27	532126971	Rod Adj Lift Zinc 7 49 Wrk Lg
28	873350600	Nut Hex Jam 3/8-16 Unc
29	532138057	Knob Inf 3/8-16 Unc Blk W/sym
30	532110810	Trunnion Dp Stop Dbl Thds PLT
31	532140302	Bearing Pvt. Lift Spherical
32	873810600	Nut Nylock 3/8-24
42	532120529	Washer Nylon .44 X .75 X .032
43	532123933	Pointer Pnt Height Ind 505
44	532123935	Plug Hole Blk 1.485/1.515 Dia
45	817490512	Screw Thdrol 5/16-18 x 3/4 TyT
46	810040500	Washer Lock Hvy Hlcl Spr 5/16
47	819112410	Washer 11/32 X 1-1/2 X 10 Ga
48	532123934	Scale Ind Height Blk

NOTE: All component dimensions given in U.S. inches
1 inch = 25.4 mm

REPAIR PARTS

15 HP 42" TRACTOR - - MODEL NO. BL1542LTB, PRODUCT NO. 954 00 23-91
DANA TRANSAXLE - MODEL NUMBER 4360-79



REPAIR PARTS

15 HP 42" TRACTOR - - MODEL NO. BL1542LTB, PRODUCT NO. 954 00 23-91
 DANA TRANSAXLE - MODEL NUMBER 4360-79

KEY PART NO. NO.	DESCRIPTION	KEY PART NO. NO.	DESCRIPTION
1 142671	Housing, Upper	41 105928X	Sprocket, 9 Teeth
2 2274J	Screw, Self-Tapping, Large 1/4-20 x .734	42 110084X	Gear, Bevel, 42 Teeth
3 134400	Ball, Detent	43 134394	* Assembly, Kit, Shim .750 Shaft
4 105904X	Spring, Detent	44 120473X	Shaft, Drive
5 105905X	Screw, Set	45 142678	Gear, Spur, 12 Teeth
6 138235	Kit, Shifter Assembly	46 142679	Gear, Spur, 15 Teeth
7 134399	Boot, Shifter	47 120407X	Gear, Spur, 20 Teeth
8 134791	Screw, Tapping w/Sealer	48 106589X	Gear, Spur, 25 Teeth
9 138241	Square Ring	49 120408X	Gear, Spur, 28 Teeth
10 142672	Ring, Retaining	50 105937X	Gear, Spur, 31 Teeth
11 134793	* Assembly, Kit, Shim .625 Shaft	51 2226J	Washer, Plain .632 x 1.00 x .060
12 142673	Bearing, Flange	52 134401	Washer, Neoprene
13 120415X	Washer, Plain .632 x 1.38 x .046	53 2264J	Washer, Plain .758 x 1.25 x .031
14 142674	Key, Woodruff, #9	54 120474X	Axle, L.H.
15 138234	Assembly, Kit, Input Shaft	55 110081X	Gear, Miter, 15 Teeth
16 110078X	Pinion, Bevel, 14 Teeth	56 105941X	Ring, Retaining
17 105909X	Ring, Retaining	57 110071X	Gear, Spur, 32 Teeth
18 105910X	Chain, 24 Pitches	58 120952X	Shaft, Cross
19 105911X	Bearing, Flange	59 110082X	Gear, Miter, 15 Teeth
20 142675	Gear, Spur, 14 Teeth	60 120475X	Axle, R.H.
21 138246	Collar, Clutch	61 142680	Housing, Lower
22 138236	Assembly, Kit, Clutch Keys	62 120961X	Puck, Friction
23 73810500	Locknut 5/16-24	63 7294J	Disc, Brake
24 142676	Shaft, Intermediate	64 108989X	Spacer
25 2244J	Key, Woodruff, #61	65 120953X	Jaw, Brake
26 105916X	Ring, Retaining	66 120954X	Pin, Dowel
27 120470X	Sprocket, 18 Teeth	67 134799	Screw, Self-Tapping, Large 5/16-18 x 2.25
28 110070X	Spacer	68 138244	Lever, Actuating
29 142677	Gear, Spur, 37 Teeth	69 108996X	Washer, Plain .321 x 1.00 x .055
30 142681	Gear, Spur, 35 Teeth	70 120956X	Bracket, Anti-Rotation
31 120405X	Gear, Spur, 30 Teeth	71 106596X	Screw, Self-Tapping, Large 5/16-18 x 1.44
32 108980X	Gear, Spur, 25 Teeth	72 120951X	Puck, Friction
33 120406X	Gear, Spur, 22 Teeth	73 120416X	Grease
34 134796	Gear, Spur, 19 Teeth		
35 105925X	Washer, Plain .640 x 1.37 x .061		
36 2232J	Washer, Plain .632 x 1.00 x .026		
37 108978X	Spacer .630 x 1.00 x .169		
38 110079X	Assembly, Gear, Combination of 12 Teeth and 35 Teeth		
39 124639X	Shaft, Idler		
40 120472X	Spacer .635 x .875 x .755		

* Use in combinations to maintain proper clearances

** Order Key No. 15

NOTE: All component dimensions given in U.S. inches
 1 inch = 25.4 mm