

ILLUSTRATED PARTS BREAKDOWN

BERNARD

14.5 HP LAWN TRACTOR

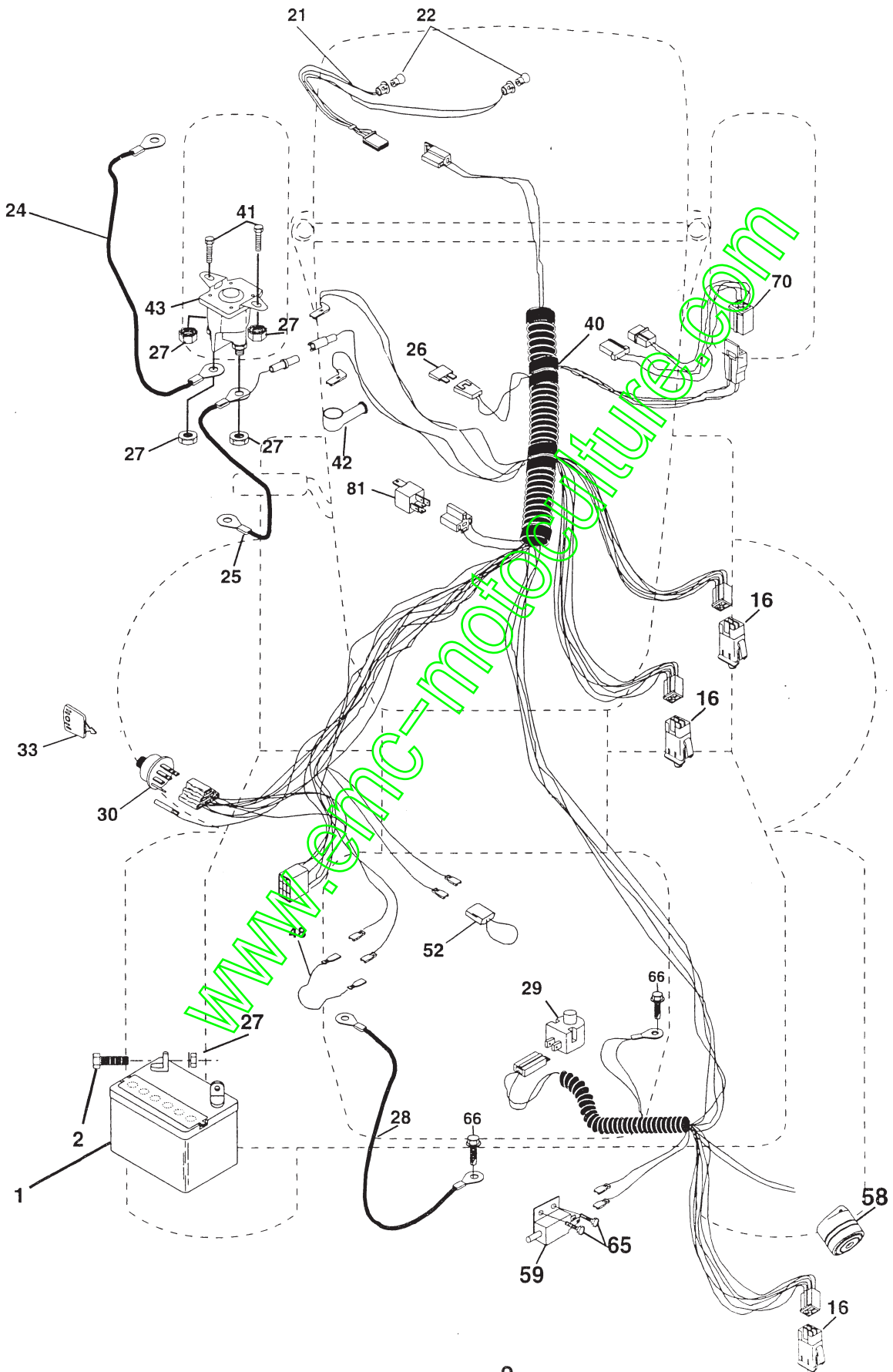
MODEL NO. BL1542RB (BL1542RBA)

954 21 00-30

www.emc-motoculture.com

REPAIR PARTS

TRACTOR--MODEL NUMBER BL1542RB (BL1542RBA) PRODUCT NO. 954 2100-30
ELECTRICAL



REPAIR PARTS

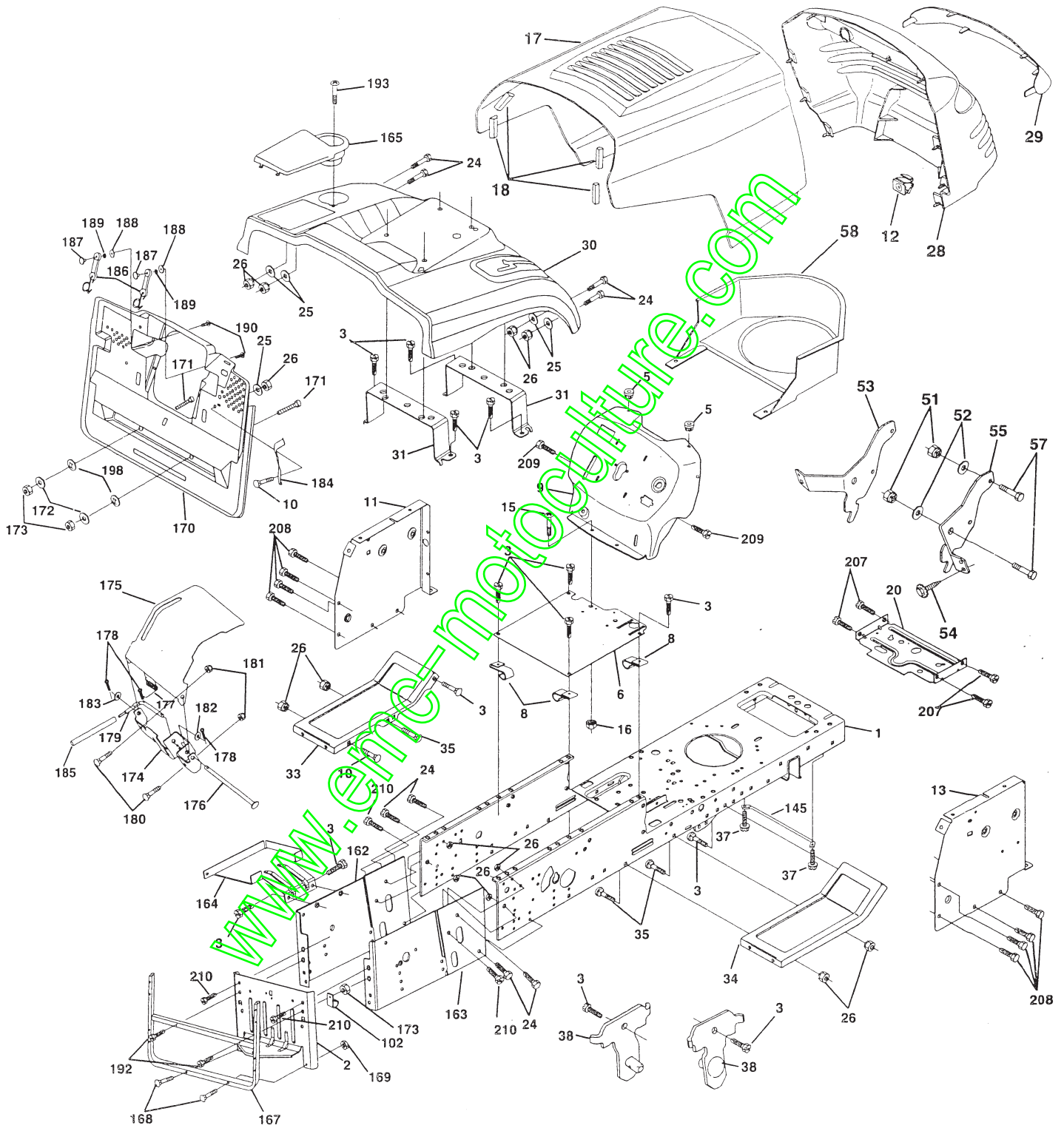
TRACTOR -- MODEL NUMBER BL1542RB (BL1542RBA) PRODUCT NO. 954 2100-30
ELECTRICAL

KEY NO.	PART NO.	DESCRIPTION
1	144925	Battery 12 Volt 25 AMP Wet
2	74760412	Bolt Hex Hd 1/4-20 Unc X 3/4
16	153664	Switch Interlock Push-In
21	166181	Harness Asm Light W/4152J
22	4152J	Bulb Light #1156
24	4799J	Cable Starter 6Ga 11" Red
25	165987	Cable Battery Crd 56" Red
26	166180	Fuse 15 Amp
27	73510400	Nut Keps Hex 1/4-20 Unc
28	127725X	Cable Ground 6Ga 18" Black
29	160784	Switch Plunger Normal Op Olive
30	163968	Switch Ignition
33	140401	Key Ign
40	170164	Harness Ign Crd Elect
41	71110408	Bolt Flk Fin Hex 1/4-20 Unc X 1/2
42	131563	Cover Terminal Red
43	145673	Solenoid
48	140844	Adaptor Ammeter Rectangular
52	141940	Protection Wire Loop
58	169419	Buzzer Crd
59	166299	Switch FBI CRD
65	17211008	Screw Sftp #10-16 x 1/2 Ty-Ab
66	17490608	Screw Thdrol 3/8-16 x 1/2 Ty-Tt
70	170243	Harness Engine
81	109748X	Relay Asm

NOTE: All component dimensions given in U.S. inches.
1 inch = 25.4 mm.

REPAIR PARTS

TRACTOR -- MODEL NUMBER BL1542RB (BL1542RBA) PRODUCT NO. 9542100-30
CHASSIS AND ENCLOSURES



REPAIR PARTS

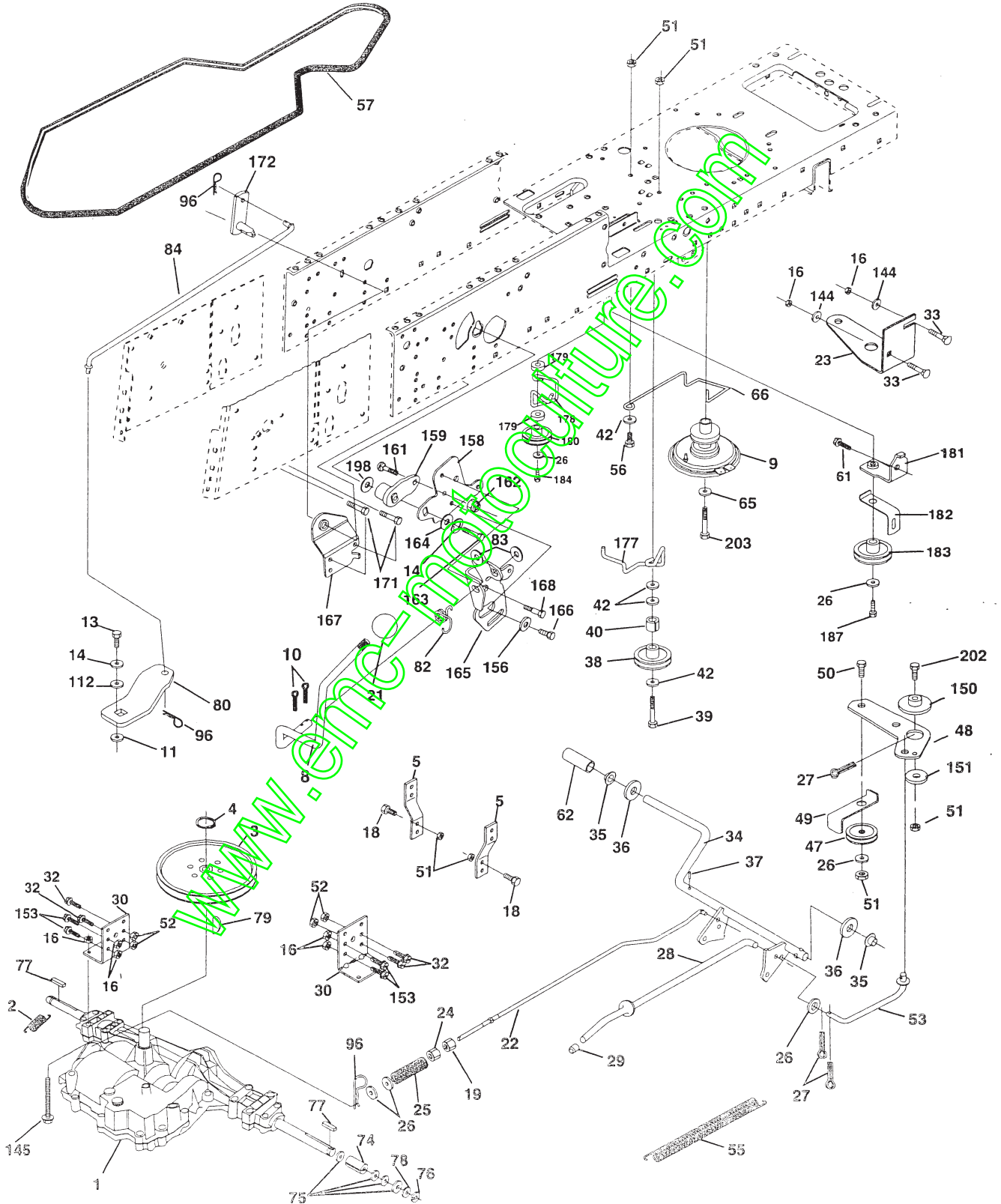
TRACTOR--MODEL NUMBER BL1542RB (BL1542RBA) PRODUCT NO. 9542100-30 CHASSIS AND ENCLOSURES

KEY NO.	PART NO.	DESCRIPTION	KEY NO.	PART NO.	DESCRIPTION
1	169831	Chassis Assembly	71	73680400	Nut Crownlock 1/4-20 UNC
2	165606	Drawbar	145	156524	Rod Pivot Chassis/Hood
3	17060612	Screw, 3/8-16 x 3/4	162	165672	Bracket Exten Chassis Lh CRD
5	155272	BumperHood/Dash	163	165673	Bracket Exten Chassis Rh CRD
6	155923	Saddle	164	165605	Support Battery CRD
8	126471X	Clip Insulator 13/32 Mtg. Hole	165	165742X428	Cover Battery CRD Lt
9	168347X011	Dash	167	165779	Support Asm. Backplate WLDMNT
10	72140608	Bolt, Carriage 3/8-16 x 3/4	168	72050412	Bolt RDHD SHT NK 1/4-20 x 1-1/2
11	155927	Panel, Dash, L.H.	169	123976X	Nut, Lock 1/4 LGE FLG Gr. 5 Zinc
12	145660	Clip, Tinnerman Grille P/L	170	165607	Cover, Backplate Plastic Black
13	169117X010	Panel, Asm. Dash R.H.	172	19132016	Washer 13/32 x 1-1/4 x 16 Ga.
14	17490608	Screw Thdrol 3/8-16 x 1/2	173	73510600	Nut, Keps Hex 3/8-16 UNC
15	74180512	Screw, Machine, Truss Head 5/16-18 UNC x 3/4	174	165939	Bracket Switch FBI CRD
16	73510500	Nut	175	166212	Guard Door Rear CRD
17	159639X421	Hood Assembly	176	128600	Pin Hinge Pivot
18	126938X	BumperHood	177	132796	Spring Bagger Top LH Black
20	156437	Plate Mtg. Battery/Fuel Tank	178	76020312	Pin Cotter 3/32 x 3/4 Cad Zinc
24	74780616	Bolt	179	165942	Rod Pivot FBI CRD
25	19131312	Washer 13/32 x 13/16 x 12 Gauge	180	74760516	Bolt Hex HD 5/16-18 UNC x 1
26	73800600	Nut	181	73680500	Nut Crownlock 5/16-18
28	157428	Grille PL	182	138200	Washer .385 x .625 x 11 Ga.
29	146654X599	Lens, Grille	183	19131316	Washer 13/32 x 13/16 x 16 Ga.
30	165714X421	Fender	184	166139	Bracket Actuator Bagger CRD
31	165156	Bracket, Fender Support	185	165940	Tube Lever Switch FBI CRD
33	145244X418	Footrest, L.H.	186	160793	Latch Asm Mulch/Bagger
34	145243X418	Footrest, R.H.	187	2029J	Nut Weld .327/.304 #10-24
35	72110606	Bolt	188	19061216	Washer #10
37	17490508	Screw Thdrol 5/16-18 x 1/2 TYT	189	10071000	Washer Lock #10
38	169834	Pivot Bracket Assembly	190	71161010	Screw Truss Head Phil 10-24 x 5/8
51	73800400	Nut Lock w/Insert 1/4-20 UNC	193	17070412	Screw Truss 1/4-20 x 3/4
52	19091416	Washer 9/32 x 7/8 x 16 Ga.	194	17060612	Screw Thdrol 3/8-16 x 1-1/2
53	144697	Bracket, Grille LH	198	168937	Nut Push
54	161464	Screw Hex WSHD 8-18 x 7/8	207	17670508	Screw Thdrol 5/16-18 x 1/2
55	144696	Bracket, Grille RH	208	17670608	Screw Thdrol 3/8-16 x 1/2
57	74780412	Bolt, Fin Hex 1/4-20 UNC x .75	209	17000612	Screw Hex Wsh Thdrol 3/8-16
58	150127	Duct Air Engine P/Lt			

NOTE: All component dimensions given in U.S. inches.
1 inch = 25.4 mm.

REPAIR PARTS

TRACTOR -- MODEL NUMBER BL1542RB (BL1542RBA) PRODUCT NO. 9542100-30
DRIVE



REPAIR PARTS

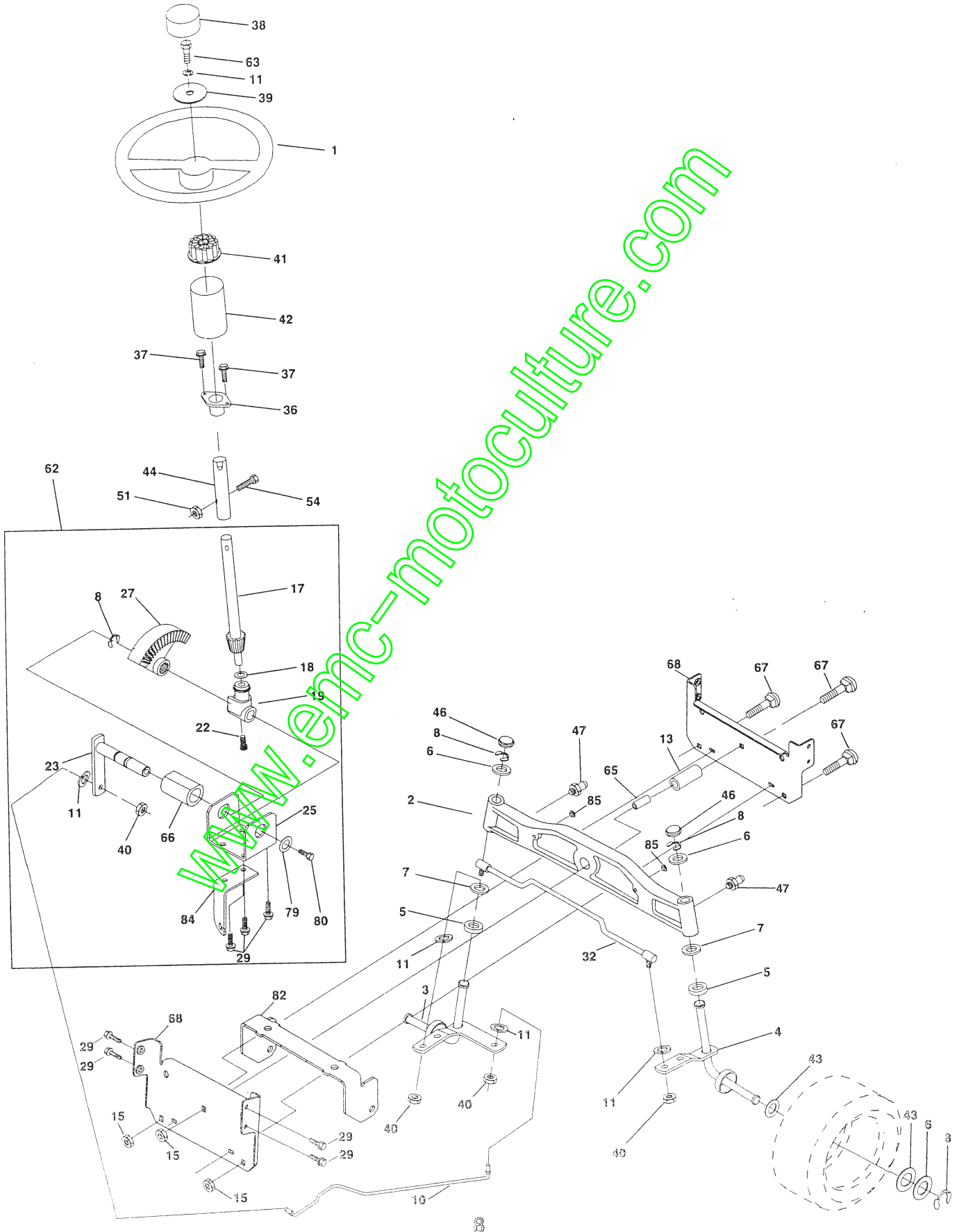
TRACTOR--MODEL NUMBER BL1542RB (BL1542RBA) PRODUCT NO. 954 2100-30
DRIVE

KEY NO.	PART NO.	DESCRIPTION	KEY NO.	PART NO.	DESCRIPTION
1	-----	Transaxle Peerless 206-546 (Order parts from transaxle manufacturer)	62	8883R	Cover, Pedal
2	146682	Spring Brake Return	65	10040700	Washer
3	165999	Pulley Transaxle	66	154778	Keeper, Belt Engine F-Proof
4	12000028	Ring Retainer #5100-62	74	137057	Spacer Axle
5	121520X	Strap torque 30 degrees	75	121749X	Washer 25/32 x 1-1/4 x 16 Ga.
8	165619	Rod Shift Fender Adjust Lt	76	12000001	Ring, E
9	170163	Clutch Asm Noram	77	123583	Key, Square
10	76020416	Pin, Cotter 1/8 x 1	78	121748X	Washer 25/32 x 1-5/8 x 16 Ga.
11	105701X	Washer Plate Shf .3888 sq hole	79	125096X	Key Woodruff
13	74550412	Bolt 1/4-28 Unf Gr 8 w/patch	80	145090	Arm Shift PMST 20" Tires
14	10040400	Washer, Lock Hvy Helical	82	123782	Spring, Torsion
16	73800500	Nut, Lock Hex w/Ins 5/16-18 UNC	83	19171216	Washer 17/32 x 3/4 x 16 Ga.
18	74780616	Bolt Hex 3/8-16 UNC x 1 Gr.5	84	165321	Link Shift CRD Pmst 18" Tires
19	73800600	Nut, Lock Hex w/Wsh 3/8-16 UNC	96	4497H	Spring, Retainer 1"
20	150280	Bolt, Hex 7/16-20 x 4-1/4 5 Ga. 1.38	112	19091210	Washer 9/32 x 3/4 x 10 Ga.
21	106933X	Knob	144	819111016	Washer 11/32 x 5/8 x 16 Ga.
22	165811	Rod, Brake CRD 0650	145	74490540	Bolt Hex FGHD 5/16-18 x Gr 5
23	171826	Bracket Asm Clutch Noram	150	165850	Bushing, Bellcrank Grnd Dr
24	73350600	Nut	151	19133210	Washer 13/32 x 2 x 10 Ga.
25	106888X	Spring, Rod, Brake	153	74760516	Bolt Hex Hd 5/16-18 Unc x 1
26	19131316	Washer 13/32 x 13/16 x 16 Ga.	156	166002	Washer Srrd 5/16 ID x 1.125
27	76020412	Pin, Cotter 1/8 x 3/4	158	165589	Bracket Shift Mount
28	145204	Rod, Parking Brake	159	165494	Hub Tapered Flange Shift Lt
29	071673	Cap, Parking Brake	161	72140406	Bolt Rdhd Sqnk 1/4-20 x 3/4 Gr 5
30	130807	Bracket, Mfg. Transaxle	162	73680400	Nut Crownlock 1/4-20 Unc
32	74760512	Bolt Hex 5/16-18 UNC x 3/4	163	74780416	Bolt Hex Fin 1/4-20 Unc x 1 Gr 5
33	72140516	Bolt Rdhd Sqnk 5/16-18 Unc x 3/4	164	19091010	Washer 5/8 x .281 x 10 Ga.
34	165496	Shaft, Asm Pedal Foot CRD	165	165623	Bracket Pivot Lever
35	120183X	Bearing, Nylon	166	166880	Screw 5/16-18 x 5/8
36	19211616	Washer 21/32 x 1 x 16 Ga.	167	165588	Bracket Support Shift CRD
37	1572H	Pin, Roll 3/16 x 1"	168	165492	Bolt Shoulder 5/16-18 x .561
38	165936	Pulley, Flat	171	17490608	Screw Thdrol 3/8-16 x 1/2 Ty-Tt
39	72110622	Bolt Rdhd 3/8-16 Unc x 2-3/4 Gr. 5	172	165635	Shaft Asm Shift Front CRD PMST
40	4470J	Spacer, Split 395 x 59 Bzp	177	165932	Keeper Flat Idler 3.06" CRD
42	19131312	Washer 13/32 x 13/16 x 12 Ga.	178	165933	Keeper Belt Idler 1.88" CRD
47	127783	Pulley, Idler, V Groove Plasic	179	120958X	Washer Sintered
48	154407	Bellcrank Clutch Grnd Drv	180	165630	Pulley Flat Composite 3.06"
49	123205X	Retainer, Belt Style Spring	181	165797	Bracket Idler Ground Drive CRD
50	74760624	Bolt Hex Hd 3/8-16 UNC x 1-1/2	182	165634	Keeper Belt 2.5" Od V-Idler CRD
51	73680600	Nut, Crownlock 3/8-16 UNC	183	165626	Pulley V-Idler 2.50" Od CRD
52	73680500	Nut Crownlock 5/16-18	184	17490644	Screw Hexwsh Thdrol 3/8-16 x 2-3/4
53	105710X	Link, Clutch 7.66	187	17490620	Screw Thdrol 3/8-16 x 1-1/4
55	105709X	Spring, Return, Clutch	198	169593	Washer Nyl 7/8 ID x .105"
56	74760620	Bolt, Hex 3/8-16 UNC x 1-1/4	202	72110612	Bolt Carr Sh 3/8-16 x 1-1/2 Gr. 5
57	165631	V-Belt Kev PMST CRD	203	71170780	Bolt Hex 7/16-20 x 5
61	17060612	Screw 3/8-16 x 3/4			

NOTE: All component dimensions given in U.S. inches
1 inch = 25.4 mm

REPAIR PARTS

TRACTOR--MODEL NUMBER BL1542RB (BL1542RBA) PRODUCT NO. 9542100-30
STEERING



REPAIR PARTS

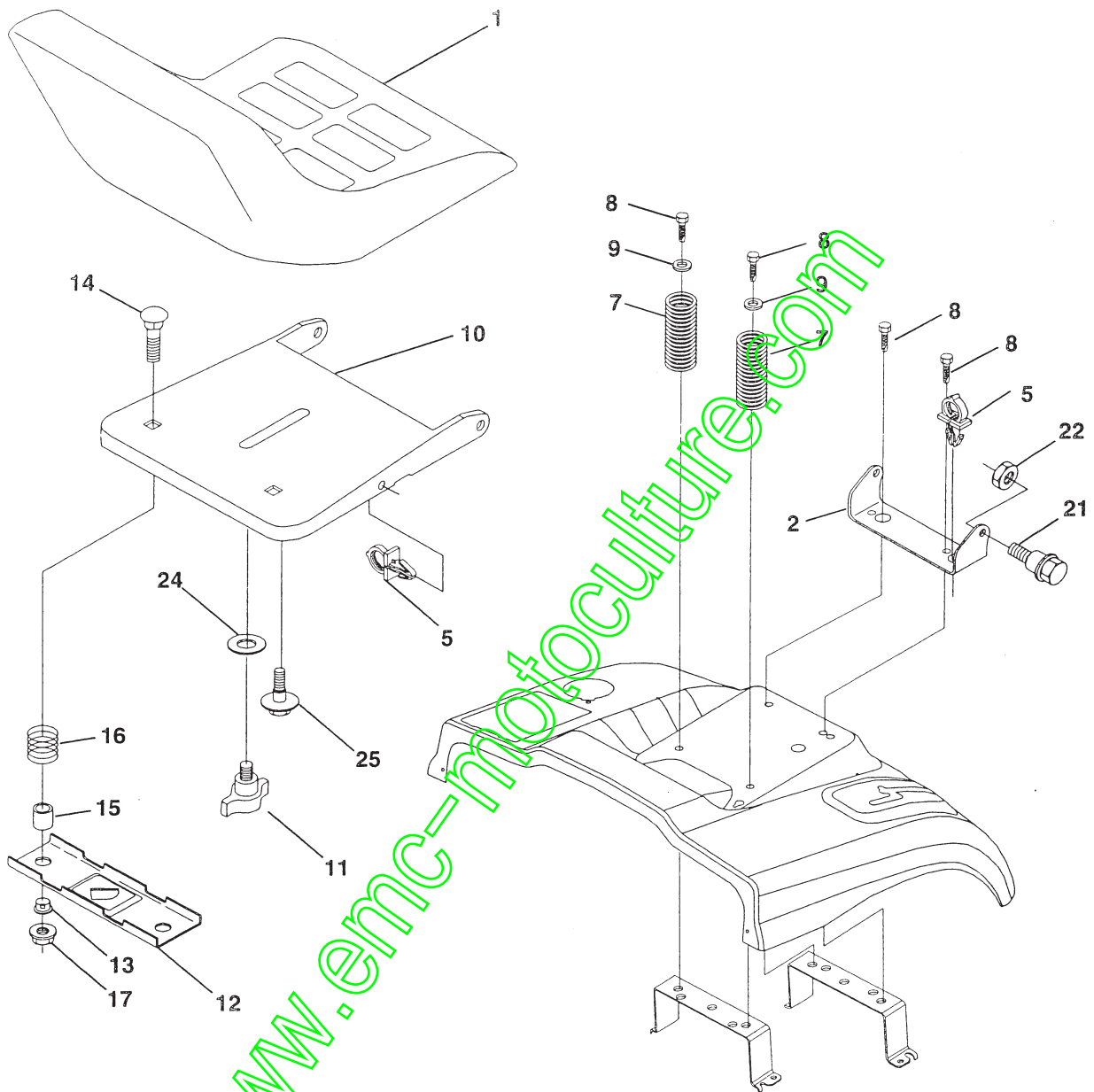
TRACTOR--MODEL NUMBER BL1542RB (BL1542RBA) PRODUCT NO. 9542100-30
STEERING

KEY NO.	PART NO.	DESCRIPTION
1	139768	Steering Wheel
2	165854	Front Axle Assembly
3	169840	Spindle Assembly, L.H.
4	169839	Spindle Assembly, R.H.
5	6266H	Bearing, Race, Thrust, Hardened
6	121748X	Washer 25/32 x 1-5/8 x 16 Gauge
7	19272016	Washer 27/32 x 1-1/4 x 16 Gauge
8	12000029	Ring, Klip
10	169832	Link, Drag
11	10040600	Washer, Lock
13	136518	Spacer Bearing Axle Front
15	145212	Nut, Lock, Hex Flange
17	156546	Shaft Assembly, Steering
18	57079	Washer, Thrust .515 x .750 x .033
19	160395	Support, Shaft
22	165857	Screw Hex Wshhd Torx
23	165851	Pittman Shaft Assembly
25	154406	Bracket, Steering
27	136874	Gear, Sector
29	17060612	Screw, 3/8-16 x 3/4
32	170162	Rod, Tie
36	155099	Bushing, Steering
37	152927	Screw 17 #10-32 x 5 x 3/8 Flange
38	140175	Cap Wheel Steering
39	19133812	Washer 13/32 x 2-3/8 x 12 Gauge
40	7810H	Nut Lock Center 3/8-24 Unf
41	100711L	Adaptor, Steering Wheel
42	145054X428	Boot, Steering Dash P/L Mtl
43	121749X	Washer 25/32 x 1-1/4 x 16 Gauge
44	153720	Extension Steering Non-Adjust
46	121232X	Cap, Spindle
47	6855M	Fitting, Grease
51	73800500	Nut Lock Hx W/Ins 5/16-18 UNC
54	74780520	Bolt Fin Hex 5/16-18 UNC x 1-1/4
62	167902	Kit, Steering Assembly, Service
63	74780616	Bolt Fin Hex 3/8-16 unc. x 1 Gr. 5
65	160367	Spacer Brace Axle
66	154404	Bearing Arm Pittman
67	72110618	Bolt RdHd Sqnk 3/8-16 x 2-1/4
68	169827	Brace Axle
79	19132012	Washer 13/32 x 1-1/4 x 12 Ga
80	74950612	Bolt Hex Nylon 3/8-16 x 3/4
82	169835	Bracket Susp Chassis Front
84	170016	Bracket Cable Clutch Chassis

NOTE: All component dimensions given in U.S. inches.
1 inch = 25.4 mm.

REPAIR PARTS

TRACTOR--MODEL NUMBER BL1542RB (BL1542RBA) PRODUCT NO. 9542100-30
SEAT



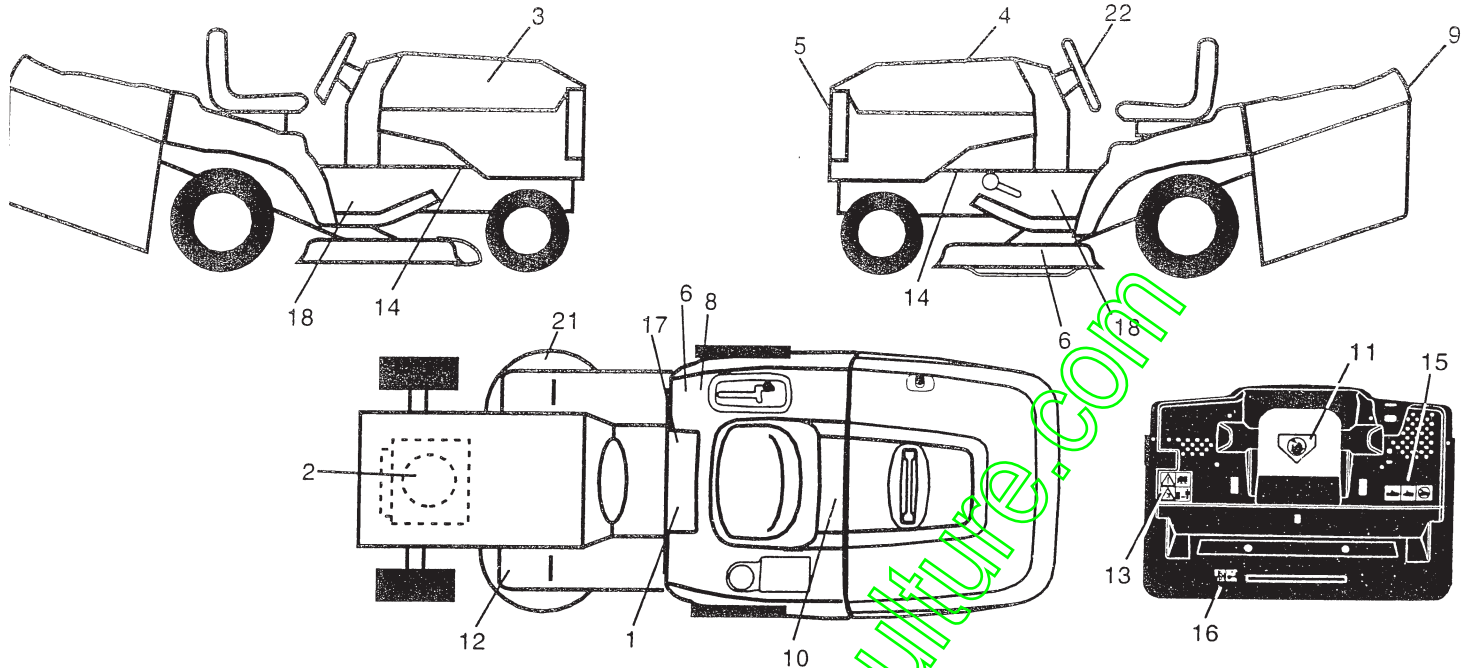
KEY NO.	PART NO.	DESCRIPTION
1	140117	Seat
2	140551	Bracket Pnt Pivot Seat (blk)
5	145006	Clip Push In Hinged
7	124181X	Spring Seat Cprsn 2 250 Blk Zi
8	17000616	Screw 3/8-16 x 1.5
9	19131614	Washer 13/32 X 1 X 14 Ga
10	155925	Pan Pnt Seat (blk)
11	166369	Knob Seat Adj Wingnut
12	121246X	Bracket Pnt Mounting Switch
13	121248X	Bushing Snap Blk Nyl 50 Id

KEY NO.	PART NO.	DESCRIPTION
14	72050412	Bolt Rdhd Sht Nk 1/4-20x1-1/2
15	134300	Spacer Split .28 X .96 Zinc
16	121250X	Spring Cprsn
17	123976X	Nut Lock 1/4 Lge Flg Gr 5 Zinc
21	171852	Bolt Shoulder 5/16-18 Unc-2A
22	73800500	Nut Hex Lock w/Ins 5/16-18
24	19171912	Washer 17/32 X 1-3/16 X 12 Ga.
25	127018X	Bolt Shoulder 5/16-18 X 62

NOTE: All component dimensions given in U.S. inches.
1 inch = 25.4 mm

REPAIR PARTS

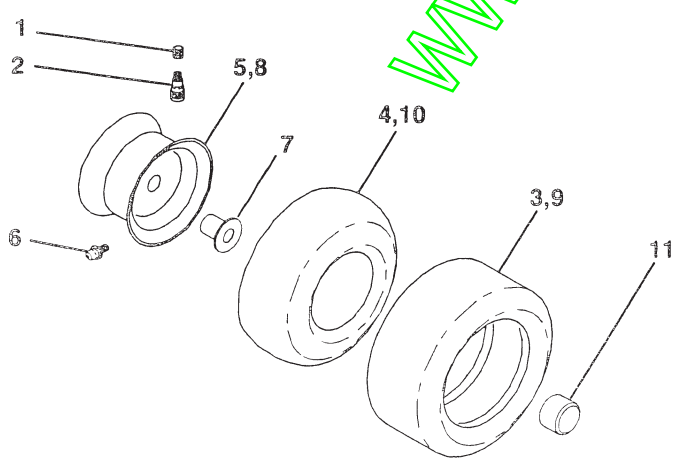
TRACTOR--MODEL NUMBER BL1542RB (BL1542RBA) PRODUCT NO. 9542100-30
DECAL



KEY NO.	PART NO.	DESCRIPTION
1	145498	Decal Read Owner's Manual Sym
2	170846	Decal Hp Engine
3	170520	Decal Hood Rh
4	170521	Decal Hood Lh
5	166287	Decal Lens
6	135013	Decal Deck Enviro
7	167584	Decal Sd Pnl Hp/Deck Size
8	145437	Decal Europe Stand Ce
9	166708	Decal Fender Logo
10	145005	Decal Bat Dan/Poi P/L Sym Wpn
11	145494	Decal Mower Cut Finger Symbol
12	159737	Decal Brake/Clutch Symbol L

KEY NO.	PART NO.	DESCRIPTION
13	166959	Decal Warn Back Plate CRD
14	159736	Decal Chassis Hot Muffler
15	166961	Decal Oper Bag Presence CRD
16	162598	Decal Drawbar Load Limit
17	140837	Decal Saddle Brake Parking
18	157624	Decal Chassis
21	166286	Decal Deck Sch 92 CRD
22	166285	Decal, Strg Whl
—	138311	Decal Lift Handle
—	133671	Pad Footrest
—	171500	Manual Operators (Euro)

WHEELS & TIRES

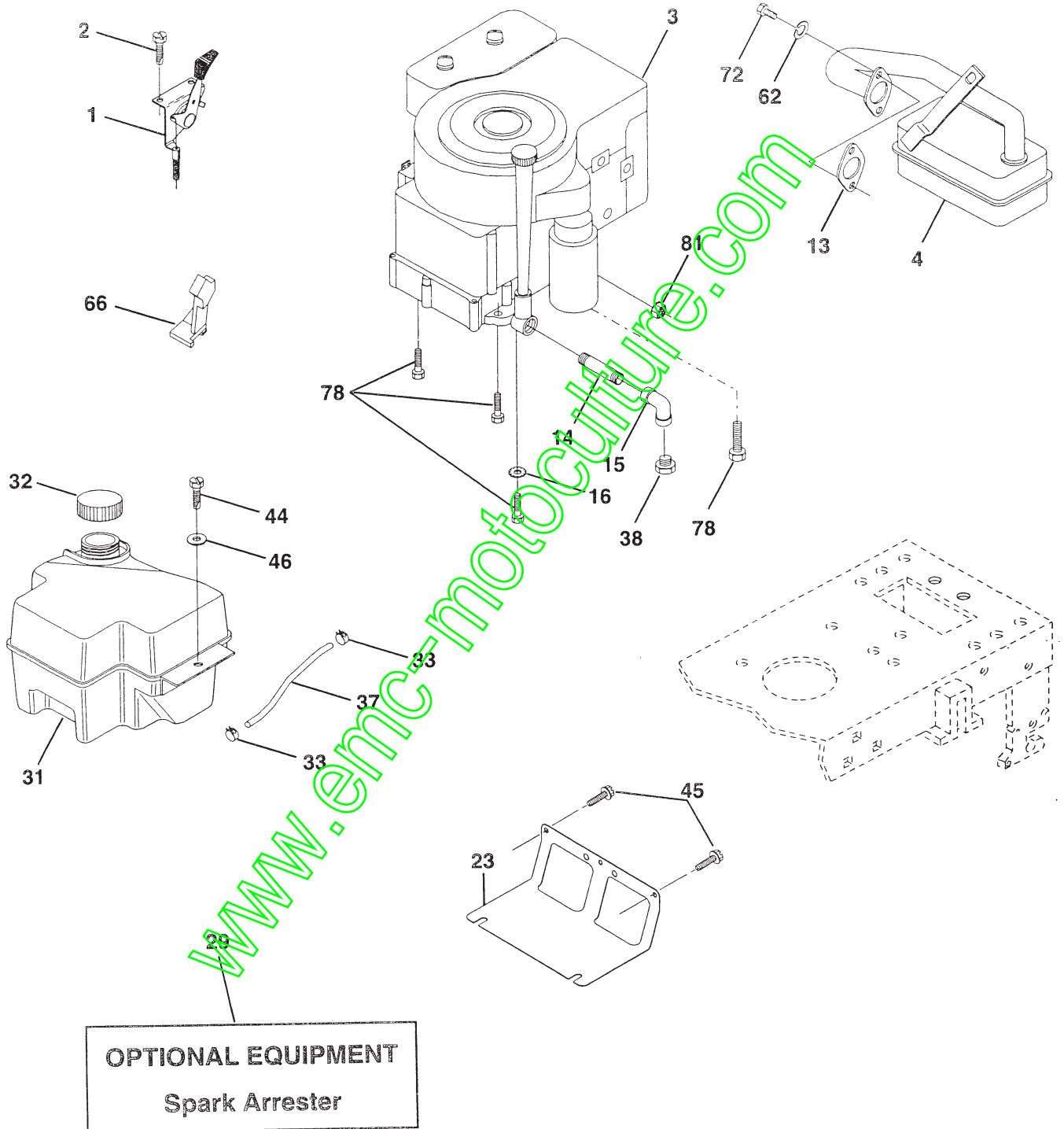


KEY NO.	PART NO.	DESCRIPTION
1	59192	Cap Value Tire
2	65139	Stem Value
3	106222X	Tire F Ts 15 X 6 0 - 6 Service
4	59904	Tube Inner Front #35060
5	106732X421	Rim Asm 6"front Yellow Service
6	278H	Fitting Grease
7	9040H	Bearing Flange
8	106108X421	Rim Asm 8"rear Yellow Service
9	138468	Tire R Ts 20 x 8-8 Service
10	7152J	Tube Rear 9 5 X 8 Service
11	104757X	Cap Axle Blk 1 50 X 1 00
--	144334	Sealant, Tire (10 oz. tube)

NOTE: All component dimensions given in U.S. inches
1 inch = 25.4 mm

REPAIR PARTS

TRACTOR -- MODEL NUMBER BL1542RB (BL1542RBA) PRODUCT NO. 9542100-30
ENGINE



REPAIR PARTS

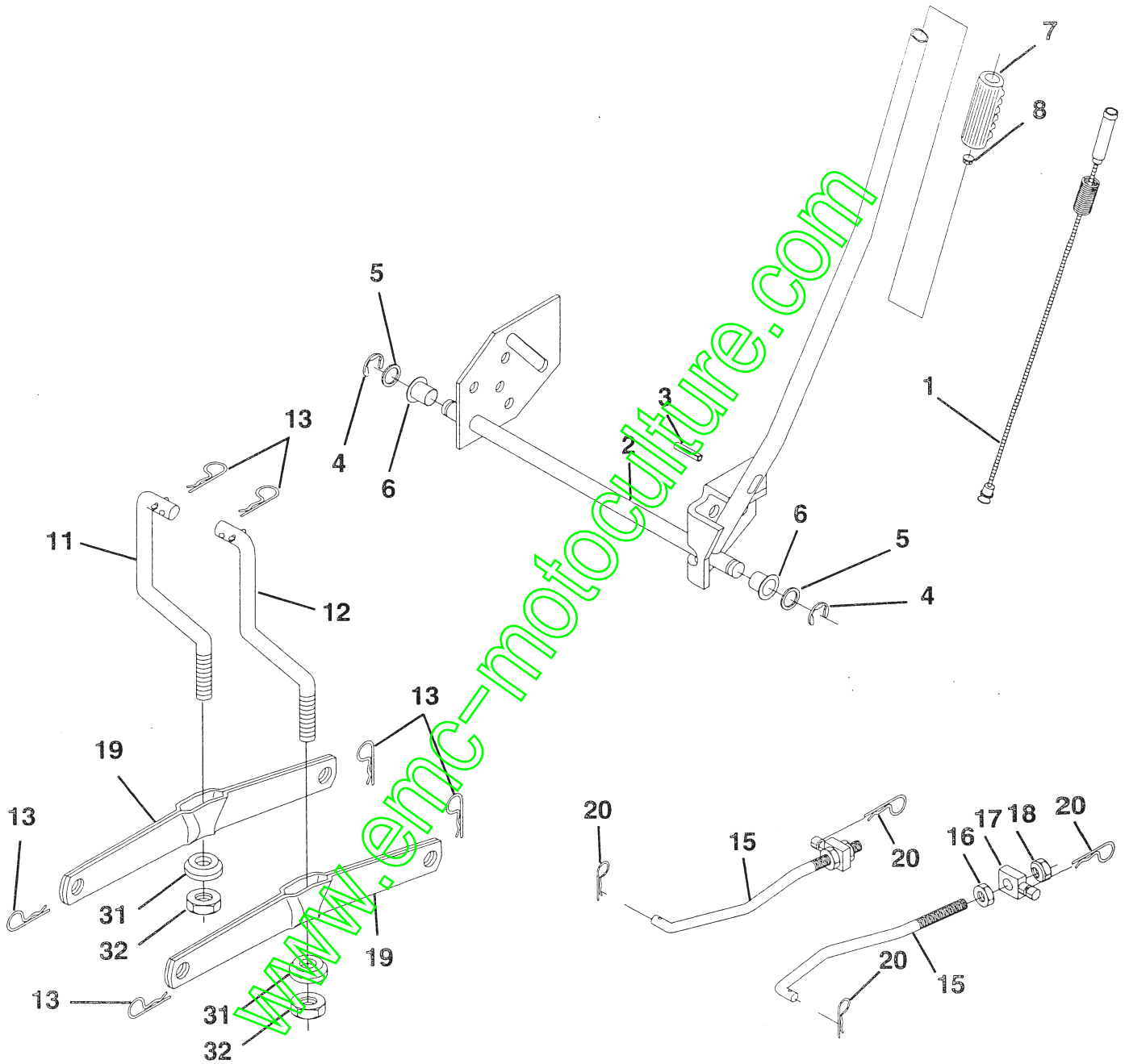
TRACTOR -- MODEL NUMBER BL1542RB (BL1542RBA) PRODUCT NO. 9542100-30
ENGINE

KEY NO.	PART NO.	DESCRIPTION
1	140310	Control Throt /Ch Lh
2	17720410	Screw Hex Thd Cut 1/4-20x5/8 T
3	-----	Engine Briggs Model 28U707 (Order Parts from Engine Manufacturer)
4	137352	Muffler Exhaust B&S Lt
13	165291	Gasket 1 313 Id Tin Plated
14	13280324	Nipple Pipe 3/8 Npt X 3"
15	13200300	Elbow Std 90 Degree 3/8-18 Npt
16	11050600	Washer Lock Ext T-coth 3/8"
23	169837	Shield Browning/Debris Guard
29	137180	Arrestor Spark
31	161911	Tank Fuel 2.00 Fr
32	140527	Cap Asm Fule Top Vent N/Lany
33	123487X	Clamp Hose Blk
37	137040	Line Fuel 20"
38	-----	Plug Oil Drain (Order From Engine Manufacturer)
44	17490412	Screw Hexwsh Thdrol 1/4-20x3/4
45	17060612	Screw 3/8-16 x 3/4
46	19091416	Washer 9/32 X 7/8 X 16ga
62	10040500	Washer Lock Hvy Hlcl Spr 5/16
66	127951	Stop Throttle 3000 Rpm
72	71070512	Screw Hexhd Cap 5/16-18x3/4
78	17060620	Screw 3/8-16x1-1/4
81	128861	Nut Flange 1/4-20 Starter Nut

NOTE: All component dimensions given in U.S. inches
1 inch = 25.4 mm

REPAIR PARTS

TRACTOR--MODEL NUMBER BL1542RB (BL1542RBA) PRODUCT NO. 954 2100-30
MOWER LIFT



REPAIR PARTS

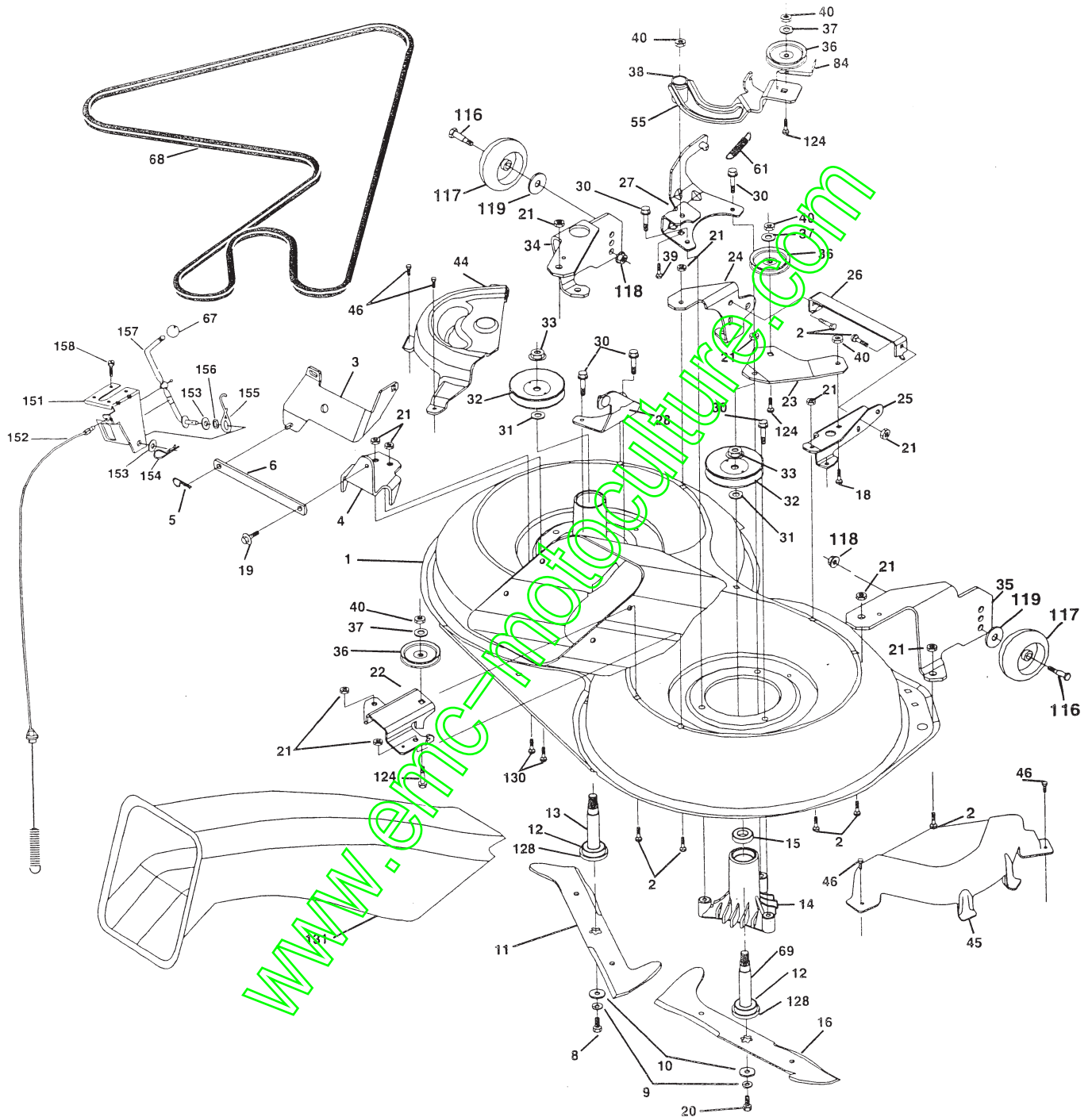
TRACTOR--MODEL NUMBER BL1542RB (BL1542RBA) PRODUCT NO. 9542100-30
MOWER LIFT

KEY NO.	PART NO.	DESCRIPTION
1	159460	Washer Asm Inner Spring W/Plunger
2	159471	Shaft Asm. Lift
3	105767X	Pin Groove
4	12000002	E Ring #5133-62
5	19211621	Washer 21/32 x 1 x 21 Ga.
6	120183X	Bearing Nylon
7	109413X	Grip Handle
8	124526X	Button Plunger
11	165829	Link Asm Lift L.H.
12	165831	Link Asm Lift R.H.
13	4939M	Retainer Spring
15	167253	Link Front
16	73350800	Nut Jam Hex 1/2-13 Unc
17	130171	Trunnion Blk Zinc
19	139868	Arm Suspension Mower
20	163552	Retainer Spring
31	140302	Bearing, Pvt. Lift. Spherical
32	73540600	Nut Crownlock 3/8-24

NOTE: All component dimensions given in U.S. inches
1 inch = 25.4 mm

REPAIR PARTS

TRACTOR--MODEL NUMBER BL1542RB (BL1542RBA) PRODUCT NO. 9542100-30
MOWER



REPAIR PARTS

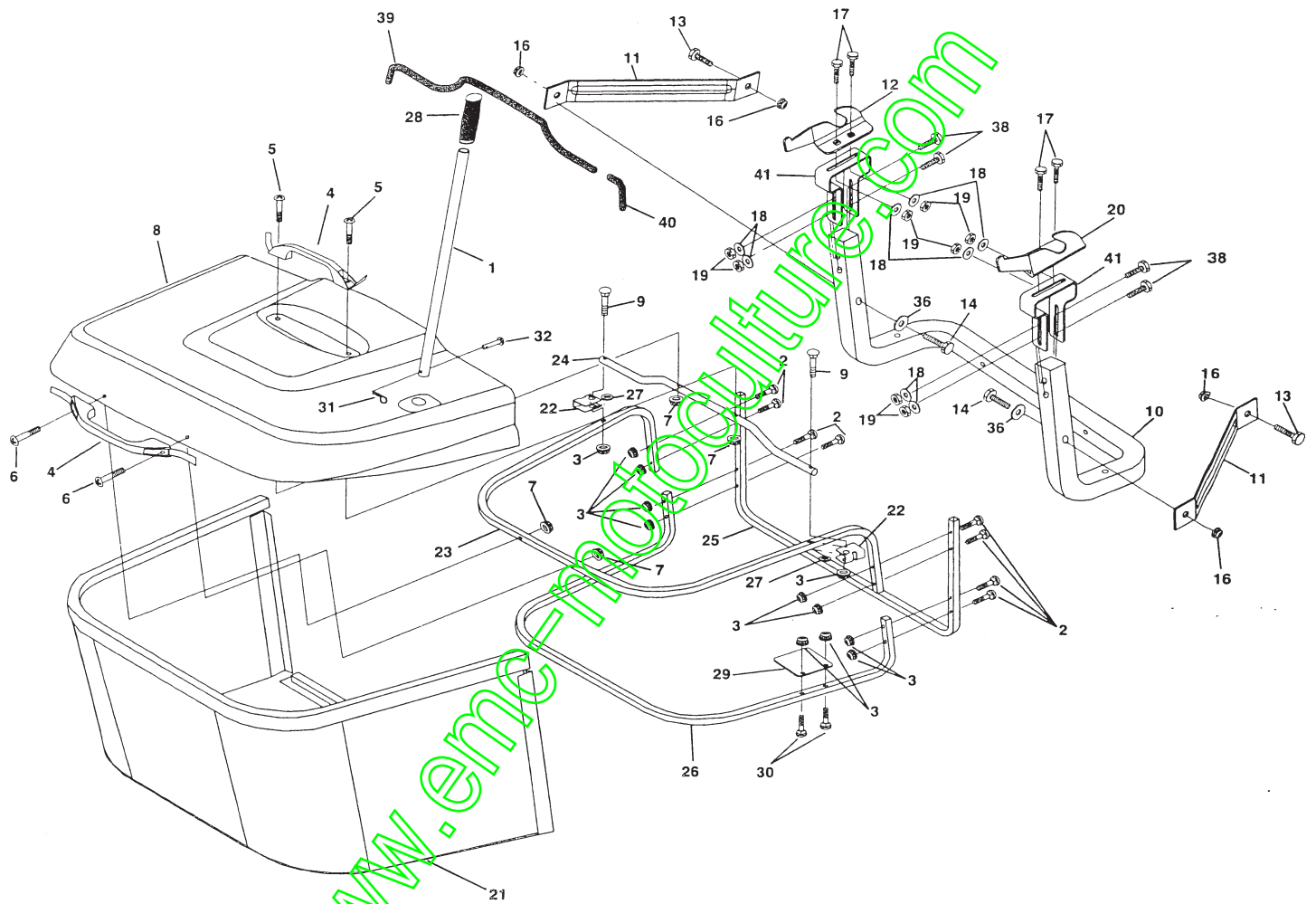
TRACTOR--MODEL NUMBER BL1542RB (BL1542RBA) PRODUCT NO. 9542100-30
MOWER

KEY NO.	PART NO.	DESCRIPTION	KEY NO.	PART NO.	DESCRIPTION
1	169160	Housing Asm. Mower	38	169851	Spacer Hub Arm Idler
2	72140506	Bolt Rdhd Sqnk 5/16-18 Unc x 3/4	39	72110622	Bolt Rdhd 3/8-16 Unc x 2-3/4 Gr.5
3	165569	Bracket Asm. S-Bar Chass	40	73680600	Nut Crownlock 3/8-16 Unc
4	169167	Bracket Bar Sway Deck	44	169180	Cover Mandrel Lh
5	4939M	Retainer Spring	45	169179	Cover Mandrel Rh
6	165557	Bar Sway	46	137729	Screw Thd Roll 1/4-20 x 5/8
8	850857	Bolt 3/8-24 x 1.25 Gr8 Patched	55	169849	Arm Idler
9	10030600	Washer Lock Hvy 3/8 Unplated	61	165945	Spring Tension Belt
10	140296	Washer Hard Blade Mower vented	67	106932	Knob Rd 3/8-16 Plstc Thds Blk
11	168720	Blade 3-1 Lh	68	169178	Hex-Belt Mower
12	129895	Bearing Ball #6204 (Mandrel)	69	165482	Shaft Asm W/Lwr Brg Rh Thd CRD
13	137645	Shaft Asm. W/Lower Bearing	84	156085	Keeper Belt Idler
14	128774	Housing Mandrel Vented (Machd)	116	137644	Bolt Shoulder
15	110485X	Bearing Ball Mandrel	117	133957	Wheel Gage Donut Wide
16	168721	Blade 3-1 Rh	118	73930600	Nut Centerlock 3/8-16 Unc
18	72110608	Bolt Rdhd Sqnk 3/8-16 x 1 Gr5	119	19121414	Washer 3/8 x 7/8 x 14 Ga.
19	132827	Bolt Shoulder 5/16-18 Thd Form	124	72110612	Bolt Carr Sh 3/8-16 x 1-1/2 Gr5
20	165484	Bolt 3/8-24 x 1.25 Gr8 Ptch Lhthd	128	153390	Washer Felt
21	73680500	Nut Crown Lock 5/16-18	130	72110506	Bolt Rdhdsqnk 5/16-18 Unc x 3/4
22	169165	Bracket Idler Sprt RR	131	165661	Chute Bagger CRD 92cm
23	169166	Bracket Idler Sprt RF	151	169670	Bracket Clutch Cable
24	169170	Bracket Suspension LF	152	170300	Clutch Cable 42"
25	169171	Bracket Suspension RF	153	169674	Washer Flat 3/8" Type B
26	165237	Brace Support Susp Frt CRD	154	169675	Spring Retainer
27	169172	Bracket Asm. Susp RR	155	169671	Spring Retention Lvr Cltch Cap
28	169168	Bracket Asm. Susp LR	156	169672	Spacer Clutch Cable
30	157722	Screw Thd Rolling Washer Head	157	169669	Rod Clutch Cable 3/8"
31	129963	Washer Spacer Mower Vented	158	17720410	Screw Hex Thd Cut 1/4-20 x 5/8
32	153535	Mandrel Pulleys	-	130794	Mandrel Asm Service
33	137266	Nut Flg Top Lock Cntr B 9/16	-	165579	Mandrel Asm CRD Lh Threads SVC
34	169174	Bracket Gauge Wheel L	-	170273	Deck Mower Complete
35	169175	Bracket Gauge Wheel R			
36	146763	Pulley Idler V-Groove Dim 4.25			
37	19131316	Washer 11/32 x 13/16 x 16 Ga			

NOTE: All component dimensions given in U.S. inches
1 inch = 25.4 mm

REPAIR PARTS

TRACTOR -- MODEL NUMBER BL1542RB (BL1542RBA) PRODUCT NO. 9542100-30
BAGGER



REPAIR PARTS

TRACTOR--MODEL NUMBER BL1542RB (BL1542RBA) PRODUCT NO. 9542100-30
BAGGER

KEY NO.	PART NO.	DESCRIPTION
1	165249	Tube Handle Bagger CRD
2	72140416	Bolt Carriage 1/4-20 x 2.0 Gr.5
3	123976X	Nut Lock 1/4 Lge Flg Gr. 5 Zinc
4	169916	Handle Bagger W/Lvrs
5	74981024	Screw Pan Head #10-24 x 1.50 Blk
6	74981032	Screw Pan Hd
7	73401000	Nut Wiz Lock Hex Serr/Hd 10-24
8	165715X421	Cover Bagger Plastic CRD
9	72140418	Bolt Carriage 1/4-20 x 2.25d x Gr.5
10	169688	Tube Support Bagger
11	165719	Bracket Support Upper Bag CRD
12	169685	Bracket Horiz Adj Bagger Lh
13	72110606	Bolt Rdhd Sht Sqnk 3/8-16 x 3/4
14	74520640	Bolt Hex 3/8-16 x 2-1/2 Gr.5
16	73900600	Nut Lock Flg 3/8-16 Unc
17	72140506	Bolt Rdhd Sht Sqnk 5/16 -18 Unc x 3/4
18	19111216	Washer 11/32 x 3/4 x 16 Ga.
19	73800500	Nut Lock Hex W/Ins 5/16-18 Unc Pl
20	169684	Bracket Horiz Adj Bagger RH
21	165780	Bag Asm CRD
22	165781	Bracket Side Bagger CRD
23	165782	Tube Upper Bagger CRD
24	165783	Tube Pivot Bagger CRD
25	165784	Tube Front Bagger CRD
26	165785	Tube Lower Bagger CRD
27	169692	Bushing Snap Bagger
28	165787	Grip Handle Black
29	165839	Plate Stop Bagger handle CRD
30	72140410	Bolt Carriage 1/4-20 x 1 Gr.5
31	4497H	Retainer Spring 1" Zinc/Cad
32	126875X	Rivet Rd Hd Drilled 3/8 Dia
36	1913216	Washer 13/32 x 1-1/4 x 16 Ga.
38	72010520	Bolt 5/16-18 x 2-1/2
39	169999	Seal 26" (Long)
40	170000	Seal 7" (Short)
41	169683	Bracket Vert Adj Bagger

NOTE: All component dimensions given in U.S. inches
1 inch = 25.4 mm

www.emc-motoculture.com