

**ILLUSTRATED PARTS BREAKDOWN**

**BERNARD**

**15.5 HP LAWN TRACTOR**

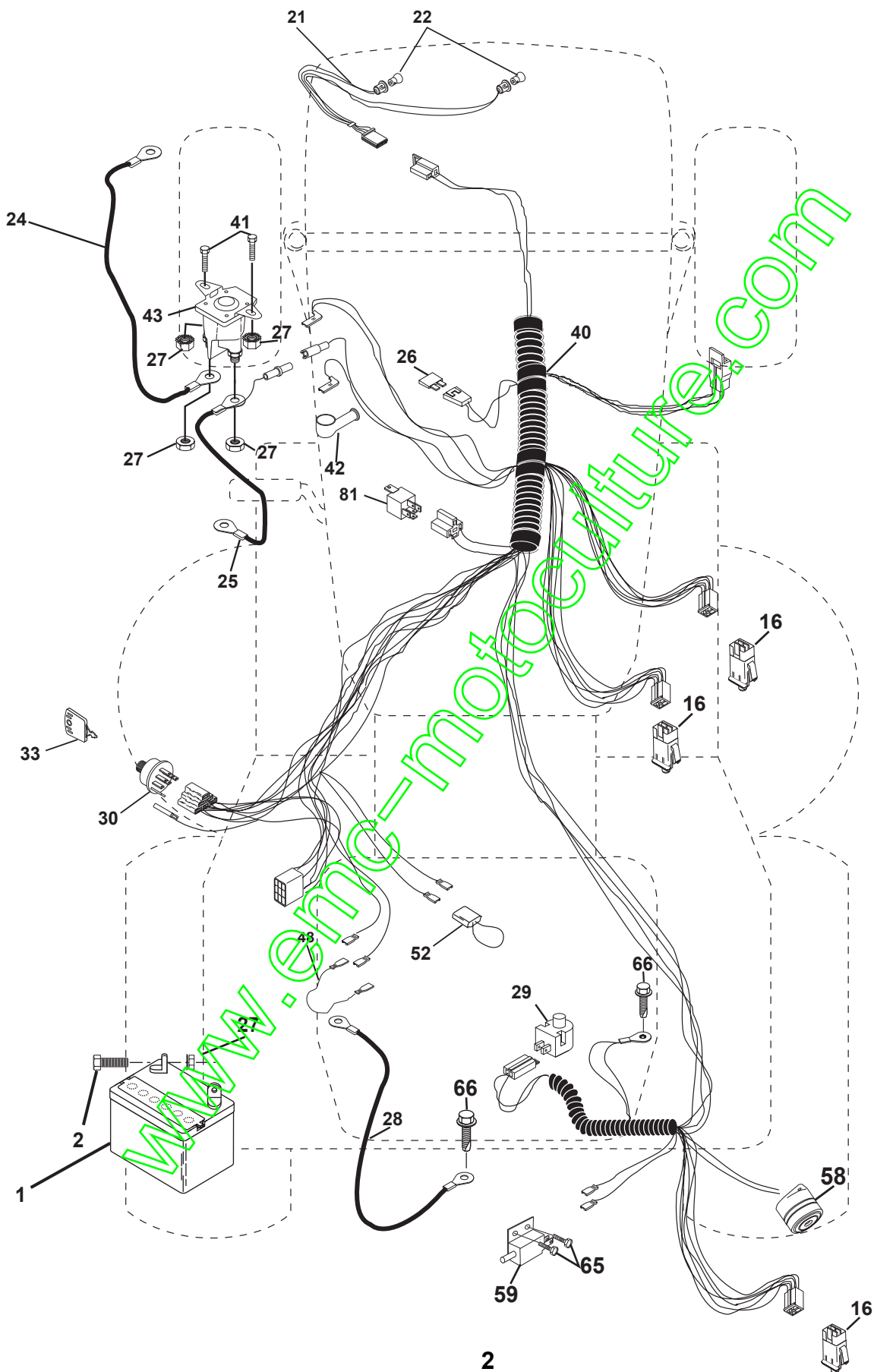
**MODEL NO. BL15536RBH (BL15536RBHB)**

**954 56 68-74**

[www.emc-motoculture.com](http://www.emc-motoculture.com)

# REPAIR PARTS

TRACTOR- MODEL NO. BL15536RBH (BL15536RBHB), PRODUCT NO. 954 56 68-74  
ELECTRICAL



# REPAIR PARTS

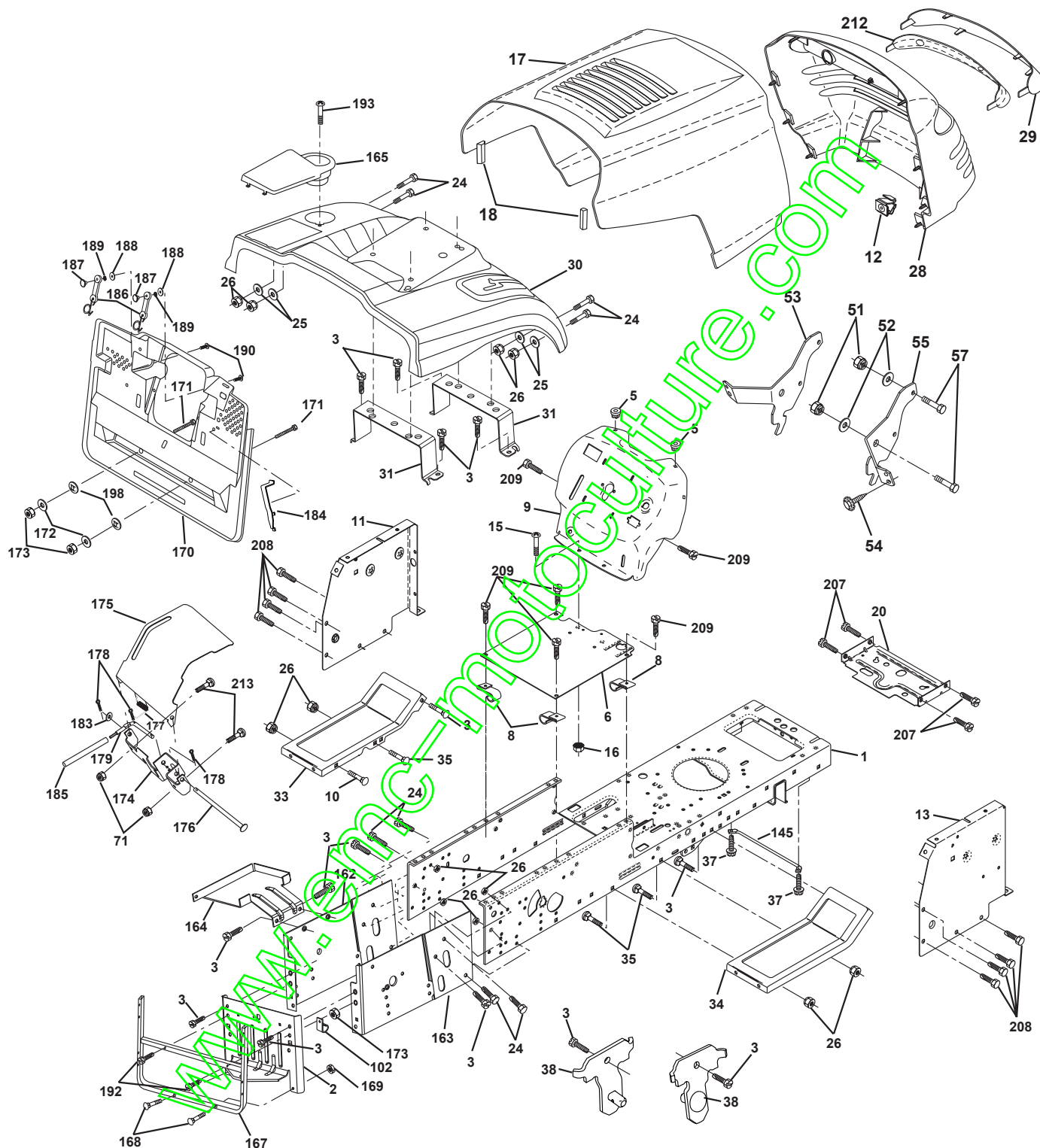
TRACTOR- MODEL NO. BL15536RBH (BL15536RBHB), PRODUCT NO. 954 56 68-74  
ELECTRICAL

| KEY NO. | PART NO.      | DESCRIPTION                       |
|---------|---------------|-----------------------------------|
| 1       | 144925        | Battery 12 Volt 25 AMP Wet        |
| 2       | 74760412      | Bolt Hex Hd 1/4-20 Unc X 3/4      |
| 16      | 153664        | Switch Interlock Push-In          |
| 21      | 166181        | Harness Asm Light W/4152J         |
| 22      | 4152J         | Bulb Light #1156                  |
| 24      | 108423X       | Cable Battery 6 Ga 16" Red        |
| 25      | 165987        | Cable Battery Crd 56" Red         |
| 26      | <b>175158</b> | Fuse                              |
| 27      | 73510400      | Nut Keps Hex 1/4-20 Unc           |
| 28      | 127725X       | Cable Ground 6Ga 18" Black        |
| 29      | 160784        | Switch Plunger Normal Op Olive    |
| 30      | 175566        | Switch Ignition                   |
| 33      | 140401        | Key Ign Molded                    |
| 40      | 170164        | Harness Ign Crd                   |
| 41      | 71110408      | Bolt Flk Fin Hex 1/4-20 Unc X 1/2 |
| 42      | 131563        | Cover Terminal Red                |
| 43      | 175141        | Solenoid                          |
| 48      | 140844        | Adaptor Ammeter Rectangular       |
| 52      | 141940        | Protection Wire Loop              |
| 58      | 169419        | Buzzer Crd                        |
| 59      | 166299        | Switch FB) CRD                    |
| 65      | 17211008      | Screw Sltp #10-16 x 1/2 Ty-Ab     |
| 66      | 17490608      | Screw Thdrol 3/8-16 x 1/2 Ty-Tt   |
| 81      | 109748X       | Relay Asm                         |

**NOTE:** All component dimensions given in U.S. inches.  
1 inch = 25.4 mm.

# REPAIR PARTS

TRACTOR- MODEL NO. BL15536RBH (BL15536RBHB), PRODUCT NO. 954 56 68-74  
CHASSIS AND ENCLOSURES



# REPAIR PARTS

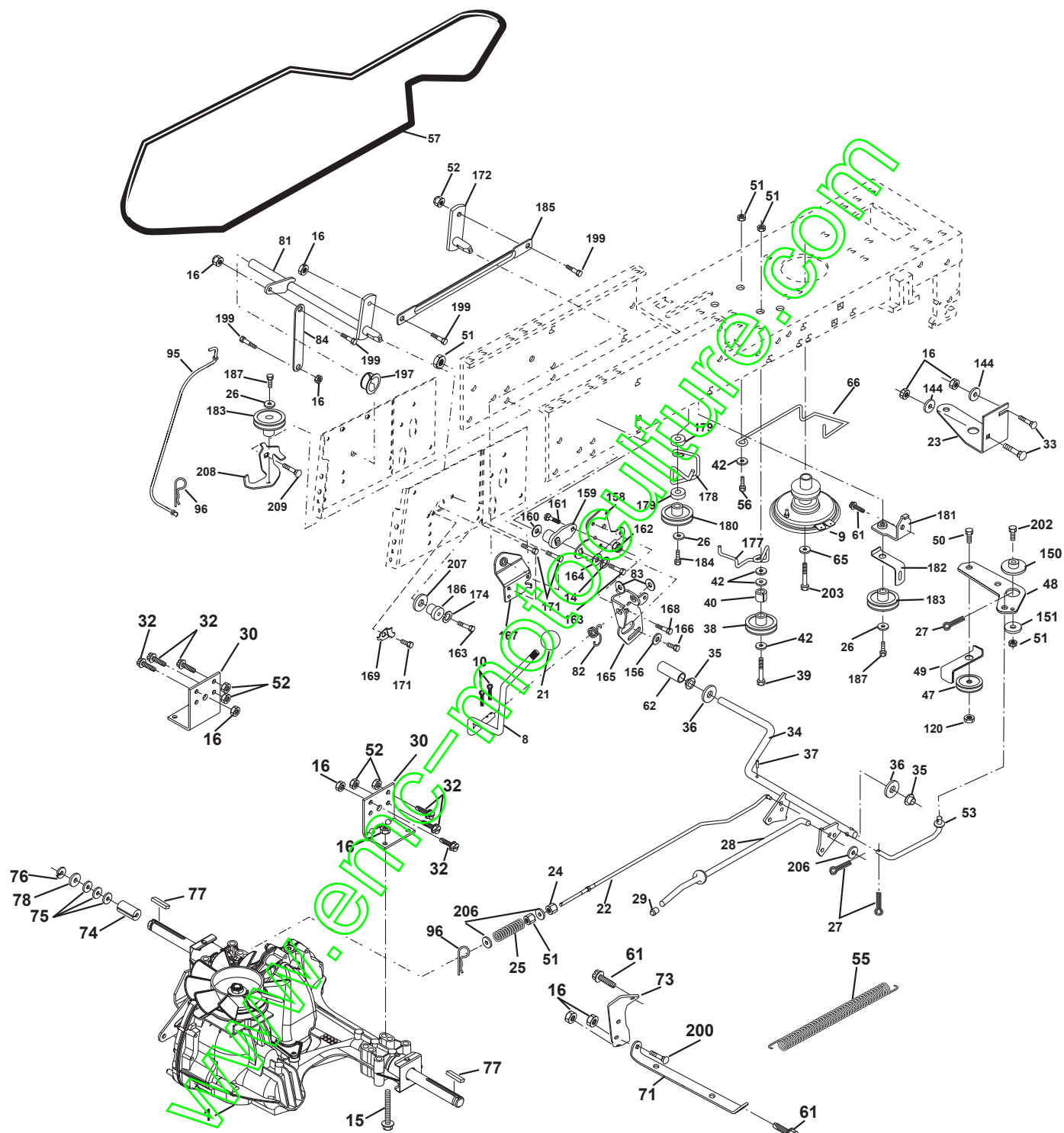
TRACTOR- MODEL NO. BL15536RBH (BL15536RBHB), PRODUCT NO. 954 56 68-74  
CHASSIS AND ENCLOSURES

| KEY NO. | PART NO.          | DESCRIPTION                                  | KEY NO. | PART NO.        | DESCRIPTION                      |
|---------|-------------------|--|---------|-----------------|----------------------------------|
| 1       | 169831            | Chassis Assembly                             | 145     | 156524          | Rod Pivot Chassis/Hood           |
| 2       | 165606            | Drawbar                                      | 162     | 170256          | Bracket Exten Chassis Lh CRD     |
| 3       | 17060612          | Screw Thdrol 3/8-16 x 1-1/2                  | 163     | 175770          | Bracket Exten Chassis Rh CRD     |
| 5       | 155272            | Bumper Hood/Dash                             | 164     | 165605          | Support Battery CRD              |
| 6       | 155923            | Saddle                                       | 165     | 165742X428      | Cover Battery CRD Lt             |
| 8       | 126471X           | Clip Insulator 13/32 Mtg. Hole               | 167     | 165779          | Support Asm. Backplate WLDMNT    |
| 9       | 168347X011        | Dash   | 168     | 72050412        | Bolt, RDHD SHT NK 1/4-20 x 1-1/2 |
| 10      | 72140608          | Bolt, Carriage 3/8-16 x 1                    | 169     | 123976X         | Nut, Lock 1/4 LGE FLG Gr. 5 Zinc |
| 11      | 155927            | Panel, Dash, L.H.                            | 170     | 175264          | Backplate Asm CRD                |
| 12      | 145660            | Clip, Tinnerman Grille P/L                   | 171     | <b>72140620</b> | Bolt RDHD SQNK 3/8-16 x 2-1/2    |
| 13      | 172107X010        | Panel, Asm. Dash R.H.                        | 172     | 19132016        | Washer 13/32 x 1-1/4 x 16 Ga.    |
| 15      | 74180512          | Screw, Machine, Truss Head 5/16-18 UNC x 3/4 | 173     | 73510600        | Nut, Keps Hex 3/8-16 UNC         |
| 16      | 73510500          | Nut  | 174     | 165939          | Bracket Switch FBI CRD           |
| 17      | 159639X421        | Hood Assembly                                | 175     | 166212          | Guard Door Rear CRD              |
| 18      | 126938X           | Bumper Hood                                  | 176     | 128600          | Pin Hinge Pivot                  |
| 20      | 156437            | Plate Mtg. Battery/Fuel Tank                 | 177     | 132793          | Spring Bagger Top LH Black       |
| 24      | 74780616          | Bolt   | 178     | 76020312        | Pin Cotter 3/32 x 3/4 Cad Zinc   |
| 25      | 19131312          | Washer 13/32 x 13/16 x 12 Gauge              | 179     | 165942          | Rod Pivot FBI CRD                |
| 26      | 73800600          | Nut  | 183     | 19131316        | Washer 13/32 x 13/16 x 16 Ga.    |
| 28      | <b>170474</b>     | Grille/Lens Asm                              | 184     | 174662          | Bracket Actuator Bagger CRD      |
| 29      | <b>170472X599</b> | Lens, Grille                                 | 185     | 165940          | Tube Lever Switch FBI CRD        |
| 30      | 170139X421        | Fender                                       | 186     | 160793          | Latch Asm Mulch/Bagger           |
| 31      | 165156            | Bracket, Fender Support                      | 187     | 2029J           | Nut Weld .327/.304 #10-24        |
| 33      | 145244X418        | Footrest, L.H.                               | 188     | 19061216        | Washer #10                       |
| 34      | 145243X418        | Footrest, R.H.                               | 189     | 10071000        | Washer Lock #10                  |
| 35      | 72110606          | Bolt   | 190     | 71081010        | Screw Pan Hd Phillip 10-24 x 5/8 |
| 37      | 17490508          | Screw Thdrol 5/16-18 x 1/2 TYT               | 192     | 17060624        | Screw 3/8-16 x 1-1/2             |
| 38      | 169834            | Bracket Asm pivot Mower Rear                 | 193     | 17070412        | Screw Truss 1/4-20 x 3/4         |
| 51      | 73800400          | Nut Lock w/Insert 1/4-20 UNC                 | 198     | 168937          | Nut Push                         |
| 52      | 19091416          | Washer 9/32 x 7/8 x 16 Ga                    | 207     | 17670508        | Screw Thdrol 5/16-18 x 1/2       |
| 53      | 144697            | Bracket, Grille LH                           | 208     | 17670608        | Screw Thdrol 3/8-16 x 1/2        |
| 54      | 161464            | Screw Hex WSHD 8-18 x 7/8                    | 209     | 17000612        | Screw Hex Wsh Thdrol 3/8-16      |
| 55      | 144696            | Bracket, Grille RH                           | 212     | <b>174503</b>   | Insert Lens Reflective           |
| 57      | 74780412          | Bolt, Fin Hex 1/4-20 UNC x .75               | 213     | <b>72110406</b> | Bolt Carr                        |
| 71      | <b>73680400</b>   | Nut Crownlock 1/4-20                         | --      | 5479J           | Plug, Button                     |
| 102     | 2751R             | Clip Fuel Line 13/32 Mtg Hole                |         |                 |                                  |

**NOTE:** All component dimensions given in U.S. inches.  
1 inch = 25.4 mm.

# REPAIR PARTS

TRACTOR- MODEL NO. BL15536RBH (BL15536RBHB), PRODUCT NO. 954 56 68-74  
DRIVE



# REPAIR PARTS

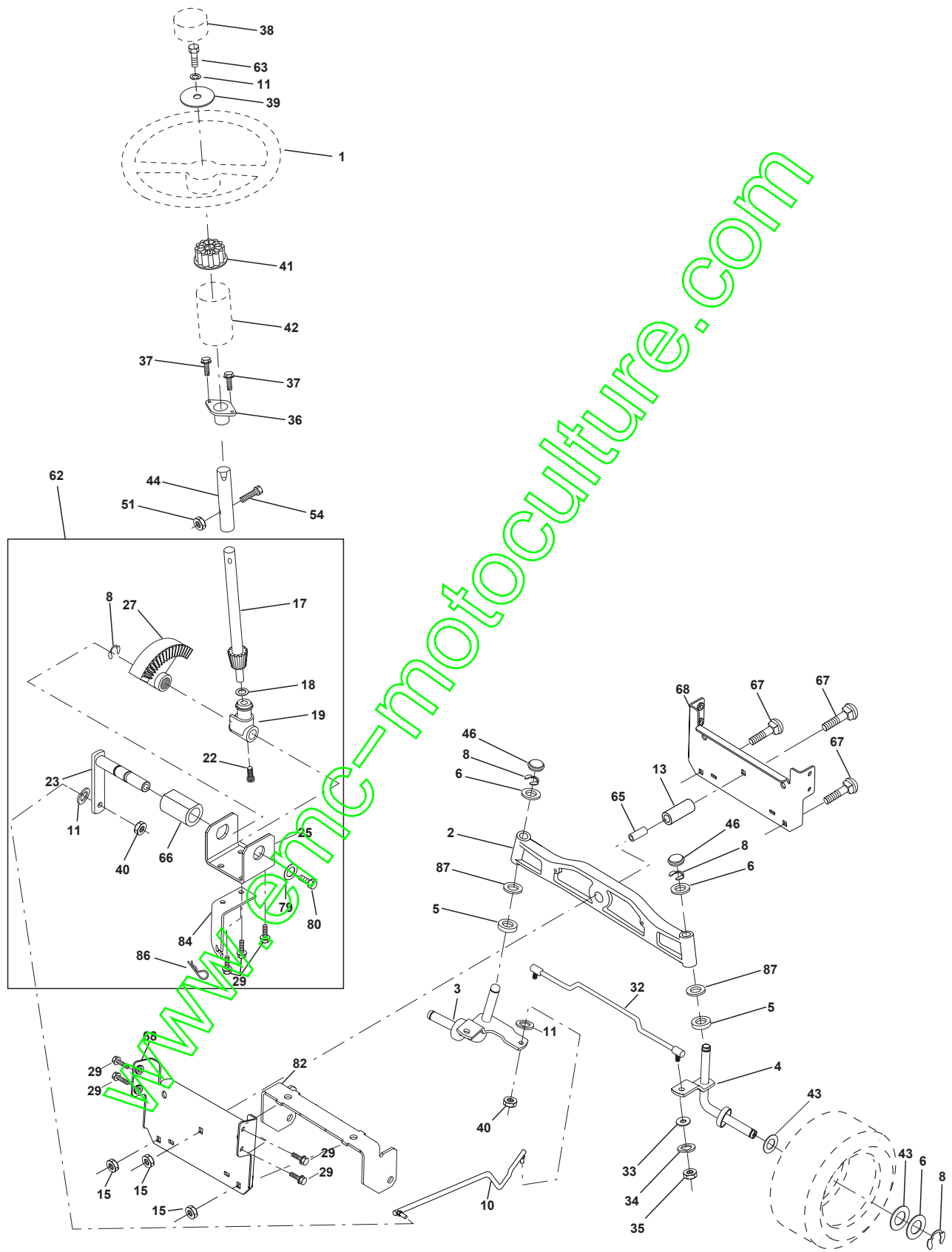
TRACTOR- MODEL NO. BL15536RBH (BL15536RBHB), PRODUCT NO. 954 56 68-74  
DRIVE

| KEY NO. | PART NO. | DESCRIPTION   | KEY NO. | PART NO. | DESCRIPTION                         |
|---------|----------|---|---------|----------|-------------------------------------|
| 1       | -----    | Transaxle ( Order part from transaxle manufacturer) | 78      | 121748X  | Washer 25/32 x 1-5/8 x 16 Gauge     |
|         |          | Hydro Gear Model 321-0510                           | 81      | 170006   | Shaft Asm. Cross                    |
| 8       | 165619   | Rod Shift Fender Adjust                             | 82      | 123782X  | Spring Torsion                      |
| 9       | 170163   | Clutch Asm Noram                                    | 83      | 19171216 | Washer 17/32 x 3/4 x 16 Ga.         |
| 10      | 76020416 | Pin Cotter 1/8 x 1 CAD                              | 84      | 170007   | Link Transaxle                      |
| 14      | 10040400 | Washer Lock Hvy Helical                             | 95      | 170015   | Rod Bypass CRD                      |
| 15      | 74490544 | Bolt Hex 5/16-18 Gr. 5                              | 96      | 4497H    | Retainer Spring 1" Zinc/Cad         |
| 16      | 73800500 | Nut Lock Hex W/Ins 5/16-18 Unc P                    | 120     | 73900600 | Nut Lock Flg 3/8-16unc              |
| 21      | 106933X  | Knob, Round 1/2-13                                  | 144     | 19111016 | Washer 11/32 x 5/8 x 16 Ga.         |
| 22      | 170137   | Rod, Brake Hydro                                    | 150     | 165850   | Bushing Bellcrank                   |
| 23      | 170017   | Bracket Clutch Noram                                | 151     | 19133210 | Washer 13/32 x 2 x 10 Ga.           |
| 24      | 73350600 | Nut Hex Jam 3/8-16                                  | 156     | 166002   | Washer Srrted 5/16ID x 1.125        |
| 25      | 106888X  | Spring, Brake Rod                                   | 158     | 165589   | Bracket Shift Mount                 |
| 26      | 19131316 | Washer 13/32 x 13/16 x 16 Ga.                       | 159     | 165494   | Hub Tapered Flange Shift Lt         |
| 27      | 76020412 | Pin Cotter 1/8 x 3/4 CAD.                           | 160     | 19292016 | Washer 29/32 x 1-1/4 x 16 Ga        |
| 28      | 145204   | Rod, Parking Brake                                  | 161     | 72140406 | Bolt Rdhd Sqnk 1/4-20 x 3/4 Gr. 5   |
| 29      | 71673    | Cap, Parking Brake                                  | 162     | 73680400 | Nut Crownlock 1/4-20 Unc            |
| 30      | 169592   | Bracket, Transaxle                                  | 163     | 74780416 | Bolt Hex Fin 1/4-20 Unc x 1 Gr 5    |
| 32      | 74760512 | Bolt Hex Hd 5/16-18 Unc x 3/4                       | 164     | 19091010 | Washer 5/8 x .281 x 10 Ga           |
| 33      | 72140506 | Bolt Rdhd Sqnk 5/16-18 unc x 3/4                    | 165     | 165623   | Bracket Pivot Lever                 |
| 34      | 165496   | Shaft, Foot Pedal                                   | 166     | 166880   | Screw 5/16-18 x 5/8                 |
| 35      | 120183X  | Bearing, Nylon                                      | 167     | 165588   | Bracket Support Shift CRD           |
| 36      | 19211616 | Washer 21/32 x 1 x 16 Ga                            | 168     | 165492   | Bolt Shoulder 5/16-18 x .561        |
| 37      | 1572H    | Pin, Roll   | 169     | 165580   | Plate Fastening Cross Shf. Stlt/CRD |
| 38      | 165936   | Pulley, Flat  | 171     | 17490608 | Screw Thdrol 3/8-16 x 1/2           |
| 39      | 74760644 | Bolt Fin Hex 3/8-16 x 2 3/4                         | 172     | 170271   | Shaft Asm Shifter Frt CRD           |
| 40      | 4470J    | Spacer, Split                                       | 174     | 10090400 | Washer Lock 1/4                     |
| 42      | 19131312 | Washer 13/32 x 13/16 x 12 Gauge                     | 177     | 165932   | Keeper Flat Idler                   |
| 47      | 127783   | Pulley, Idler, V-Groove                             | 178     | 165933   | Keeper Belt Idler                   |
| 48      | 154407   | Bellcrank Assembly                                  | 179     | 120958X  | Washer Sintered                     |
| 49      | 123205X  | Retainer, Belt                                      | 180     | 165630   | Pulley Flat Idler                   |
| 50      | 74760624 | Bolt Hex Hd 3/8-16 x 1 1/2                          | 181     | 165797   | Bracket Idler Ground Drive CRD      |
| 51      | 73680600 | Nut Crownlock 3/8-16 UNC                            | 182     | 165634   | Keeper Belt 2.5"OD V-Idler CRD      |
| 52      | 73680500 | Nut Crownlock 5/16-18 UNC                           | 183     | 165626   | Pulley V-Idler 2.50"OD CRD          |
| 53      | 105710X  | Link, Clutch  | 184     | 17490644 | Scr Hexwsh Thdrol 3/8-16 x 2-3/4    |
| 55      | 105709X  | Spring, Return, Clutch                              | 185     | 170008   | Link shift CRD Hydro                |
| 56      | 74760620 | Bolt Fin Hex 3/8-16 UNC x 1-1/4                     | 186     | 165614   | Hub Tapered Round CRD               |
| 57      | 170140   | V-Belt, Ground Drive                                | 187     | 17060620 | Screw 3/8-16 x 1-1/4                |
| 61      | 17060612 | Screw 3/8-16 x 3/4                                  | 197     | 169613   | Nyliner Snap-In 5/8" ID             |
| 62      | 8883R    | Cover, Pedal  | 199     | 169612   | Bolt Shoulder 5/16-18unc            |
| 65      | 10040700 | Washer  | 200     | 72140508 | Bolt RDHD SQNK 5/16-18unc x 1       |
| 66      | 154778   | Keeper Belt Engine                                  | 202     | 72110612 | Bolt Carr Sh 3/8-16 x 1-1/2 Gr. 5   |
| 71      | 169183   | Strap Torque Lh Hydro                               | 203     | 71170780 | Bolt, Hex 7/16-20 x 5               |
| 73      | 169182   | Strap Torque Rh Hydro                               | 206     | 19131416 | Washer 13/32 x 7/8 x 16             |
| 74      | 137057   | Spacer, Split                                       | 207     | 169845   | Washer Nylon Rear                   |
| 75      | 121749X  | Washer 25/32 x 1-1/4 x 16 Gauge                     | 208     | 169844   | Bracket Idler Rear LH CRD           |
| 76      | 12000001 | E-Ring  | 209     | 72110606 | Bolt RDHD SHT SQNK 3/8-16 x 3/4     |
| 77      | 123583X  | Key, Square   |         |          |                                     |

**NOTE:** All component dimensions given in U.S. inches  
1 inch = 25.4 mm

# REPAIR PARTS

TRACTOR- MODEL NO. BL15536RBH (BL15536RBHB), PRODUCT NO. 954 56 68-74  
STEERING





# REPAIR PARTS

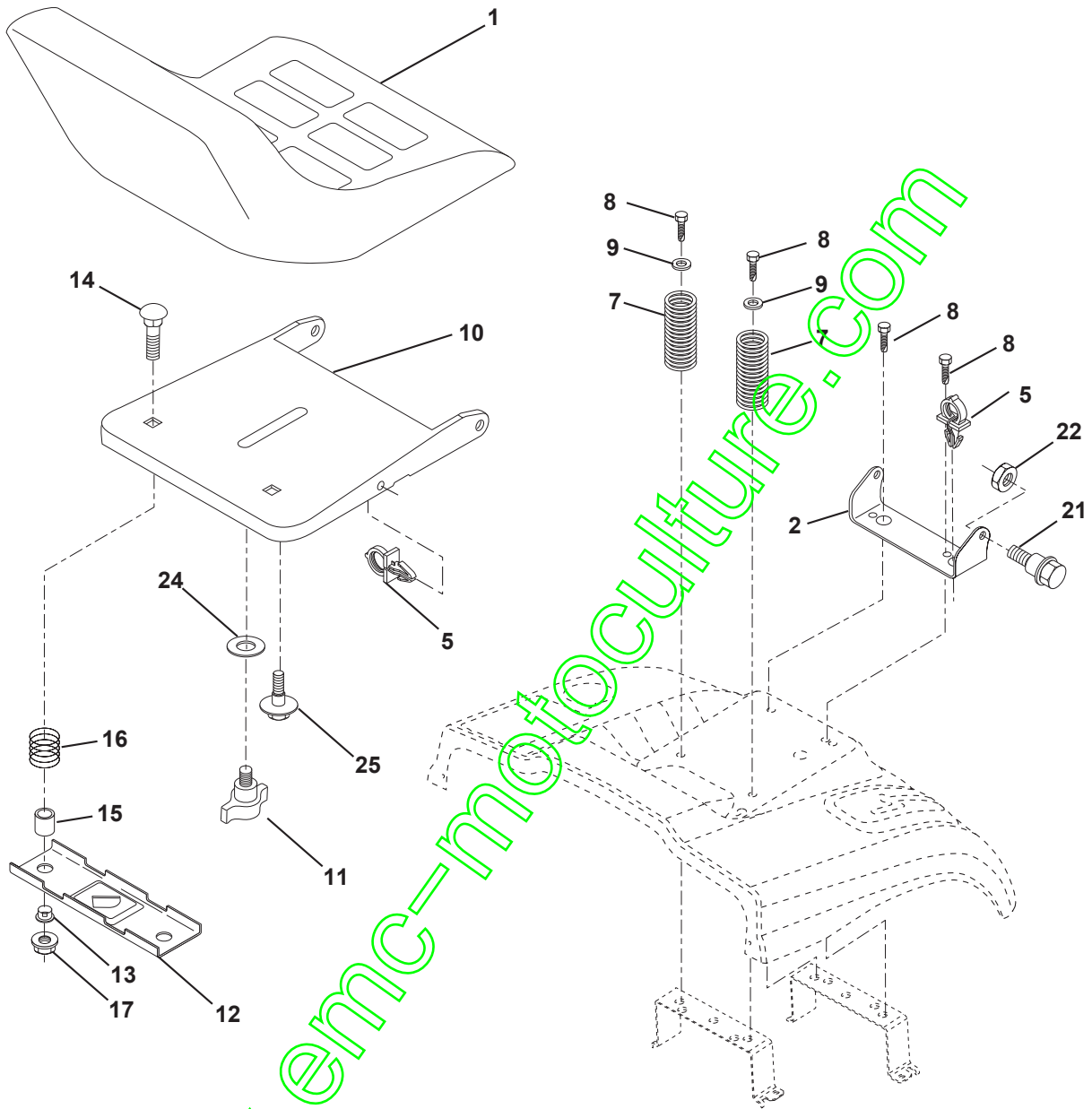
TRACTOR- MODEL NO. BL15536RBH (BL15536RBHB), PRODUCT NO. 954 56 68-74  
STEERING

| KEY NO. | PART NO.      | DESCRIPTION                        |
|---------|---------------|------------------------------------|
| 1       | 139768        | Steering Wheel                     |
| 2       | 172393        | Axle Cast                          |
| 3       | 169840        | Spindle Assembly, L.H.             |
| 4       | 169839        | Spindle Assembly, R.H.             |
| 5       | 6266H         | Bearing, Race, Thrust, Hardened    |
| 6       | 121748X       | Washer 25/32 x 1-5/8 x 16 Gauge    |
| 8       | 12000029      | Ring, Klip                         |
| 10      | 169832        | Link, Drag                         |
| 11      | 10040600      | Washer, Lock                       |
| 13      | 136518        | Spacer Brg. Front Axle             |
| 15      | 145212        | Nut, Hex Flange Lock               |
| 17      | 156546        | Shaft Assembly, Steering           |
| 18      | 57079         | Washer, Thrust .515 x .750 x .033  |
| 19      | 160395        | Support, Shaft                     |
| 22      | 165857        | Screw Hex Wshhd Torx               |
| 23      | 165851        | Pittman Shaft Assembly             |
| 25      | 154406        | Bracket, Steering                  |
| 27      | 136874        | Gear, Sector                       |
| 29      | 17060612      | Screw, 3/8-16 x 3/4                |
| 32      | 170162        | Rod, Tie                           |
| 33      | 19111216      | Washer 11/32 x 3/4 x 16 Ga         |
| 34      | 10040500      | Washer Lock Hvy Hlcl Spr           |
| 35      | 73540500      | Crownlock Nut 5/16-24 Unf          |
| 36      | 155099        | Bushing, Steering                  |
| 37      | 152927        | Screw TT #10-32 x 5 x 3/8 Flange   |
| 38      | 140175        | Cap Wheel Steering                 |
| 39      | 19133812      | Washer 13/32 x 2-3/8 x 12 Gauge    |
| 40      | 7810H         | Nut Lock Center 3/8-24 Unf         |
| 41      | 100711L       | Adaptor, Steering Wheel            |
| 42      | 145054X428    | Boot, Steering Dash P/L Mtl        |
| 43      | 121749X       | Washer 25/32 x 1-1/4 x 16 Gauge    |
| 44      | 153720        | Extension Steering Non-Adjust      |
| 46      | 121232X       | Cap, Spindle                       |
| 51      | 73800500      | Nut Lock Hx W/Ins 5/16-18 UNC      |
| 54      | 74780520      | Bolt Fin Hex 5/16-18 UNC x 1-1/4   |
| 62      | <b>167902</b> | Kit, Steering Assembly, Service    |
| 63      | 74780616      | Bolt Fin Hex 3/8-16 unc. x 1 Gr. 5 |
| 65      | 160367        | Spacer Brace Axle                  |
| 66      | 154404        | Bearing Arm Pittman                |
| 67      | 72140618      | Bolt Rdhd 3/8-16 x 2-1/4           |
| 68      | 169827        | Brace Axle                         |
| 79      | 19132012      | Washer 13/32 x 1-1/4 x 12 Ga       |
| 80      | 74950612      | Bolt Hex Nylon 3/8-16 x 3/4        |
| 82      | 169835        | Bracket Susp Chassis Front         |
| 84      | 170016        | Bracket Cable Clutch Chassis       |
| 86      | 165898        | Retainer Spring Yellow             |
| 87      | 173966        | Washer Flat .781 x 1-1/2 x .14     |

**NOTE:** All component dimensions given in U.S. inches.  
1 inch = 25.4 mm.

# REPAIR PARTS

TRACTOR- MODEL NO. BL15536RBH (BL15536RBHB), PRODUCT NO. 954 56 68-74  
SEAT



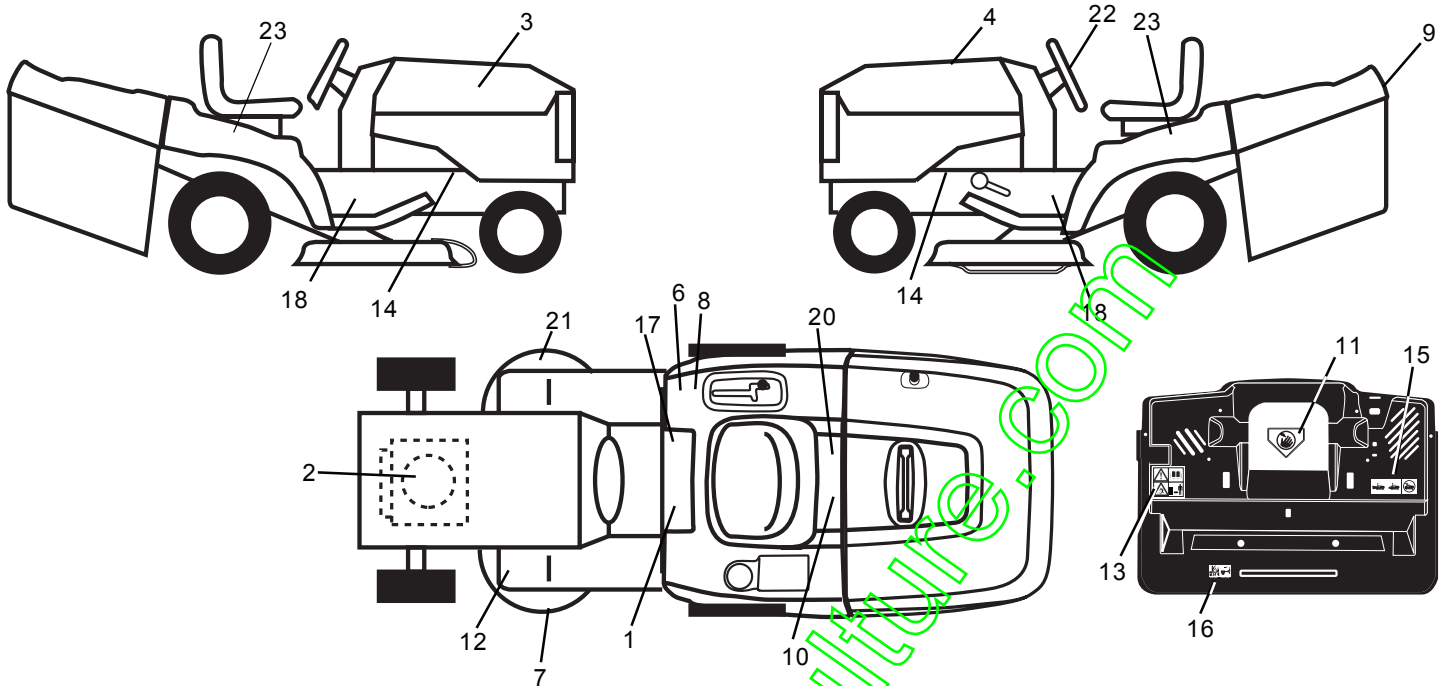
| KEY NO. | PART NO. | DESCRIPTION                    |
|---------|----------|--------------------------------|
| 1       | 175390   | Seat                           |
| 2       | 140551   | Bracket Pnt Pivot Seat (blk )  |
| 5       | 145006   | Clip Push In Hinged            |
| 7       | 124181X  | Spring Seat Cprsn 2 250 Blk Zi |
| 8       | 17000616 | Screw 3/8-16 X 1-1/2           |
| 9       | 19131614 | Washer 13/32 X 1 X 14 Ga       |
| 10      | 174894   | Pan Assembly Seat Tool Tree    |
| 11      | 166369   | Knob Seat Adj Wingnut          |
| 12      | 121246X  | Bracket Pnt Mounting Switch    |
| 13      | 121248X  | Bushing Snap Blk Nyl 50 Id     |

| KEY NO. | PART NO. | DESCRIPTION                    |
|---------|----------|--------------------------------|
| 14      | 72050412 | Bolt Rdhd Sht Nk 1/4-20x1-1/2  |
| 15      | 121249X  | Spacer Split .28 X .88 Zinc    |
| 16      | 123740X  | Spring Cprsn                   |
| 17      | 123976X  | Nut Lock 1/4 Lge Flg Gr 5 Zinc |
| 21      | 171852   | Bolt Shoulder 5/16-18 Unc-2A   |
| 22      | 73800500 | Nut Hex Lock w/lns 5/16-18     |
| 24      | 19171912 | Washer 17/32 X 1-3/16 X 12 Ga. |
| 25      | 127018X  | Bolt Shoulder 5/16-18 X 62     |

**NOTE:** All component dimensions given in U.S. inches.  
1 inch = 25.4 mm

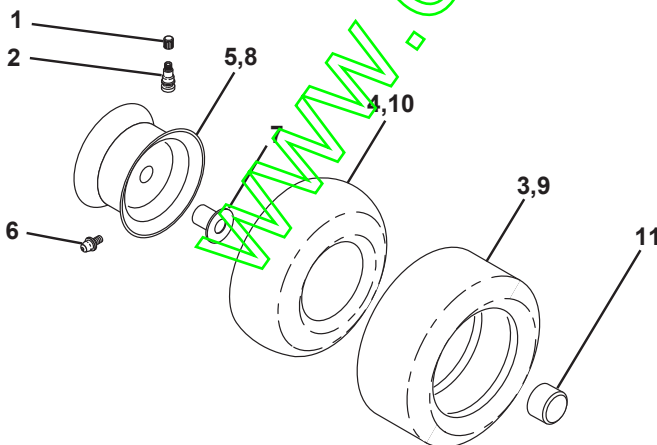
# REPAIR PARTS

TRACTOR- MODEL NO. BL15536RBH (BL15536RBHB), PRODUCT NO. 954 56 68-74  
DECAL



| KEY NO. | PART NO.   | DESCRIPTION                   | KEY NO. | PART NO.   | DESCRIPTION                     |
|---------|------------|-------------------------------|---------|------------|---------------------------------|
| 1       | 145498     | Decal Read Owner's Manual Sym | 14      | 159736     | Decal Chassis Hot Muffler       |
| 2       | 64-1731-29 | Decal Hp Engine               | 15      | 166961     | Decal Oper Bag Presence CRD     |
| 3       | 175780     | Decal Hood Rh                 | 16      | 162598     | Decal Drawbar Load Limit        |
| 4       | 175781     | Decal Hood Lh                 | 17      | 140837     | Decal Saddle Brake Parking      |
| 6       | 126187X    | Decal 100 DBA                 | 18      | 167105     | Decal Chassis Hydro 36" Bernard |
| 7       | 134999     | Decal Enviro Deck             | 20      | 166960     | Decal Bypass Fender CRD         |
| 8       | 145437     | Decal Europe Stand Ce         | 21      | 166286     | Decal Deck Sch 92 CRD           |
| 9       | 166708     | Decal Fender Logo             | 22      | 166285     | Decal, Strg Whl                 |
| 10      | 145005     | Decal Bat Dan/Poi P/L Sym Wpn | 23      | 151106     | Decal Fender Auto               |
| 11      | 145494     | Decal Mower Cut Finger Symbol | —       | 138311     | Decal Lift Handle               |
| 12      | 159737     | Decal Brake/Clutch Symbol Lt  | —       | 157199X428 | Pad Footrest                    |
| 13      | 166959     | Decal Warn Back Plate CRD     | —       | 175740     | Manual Operators (Euro)         |

## WHEELS & TIRES

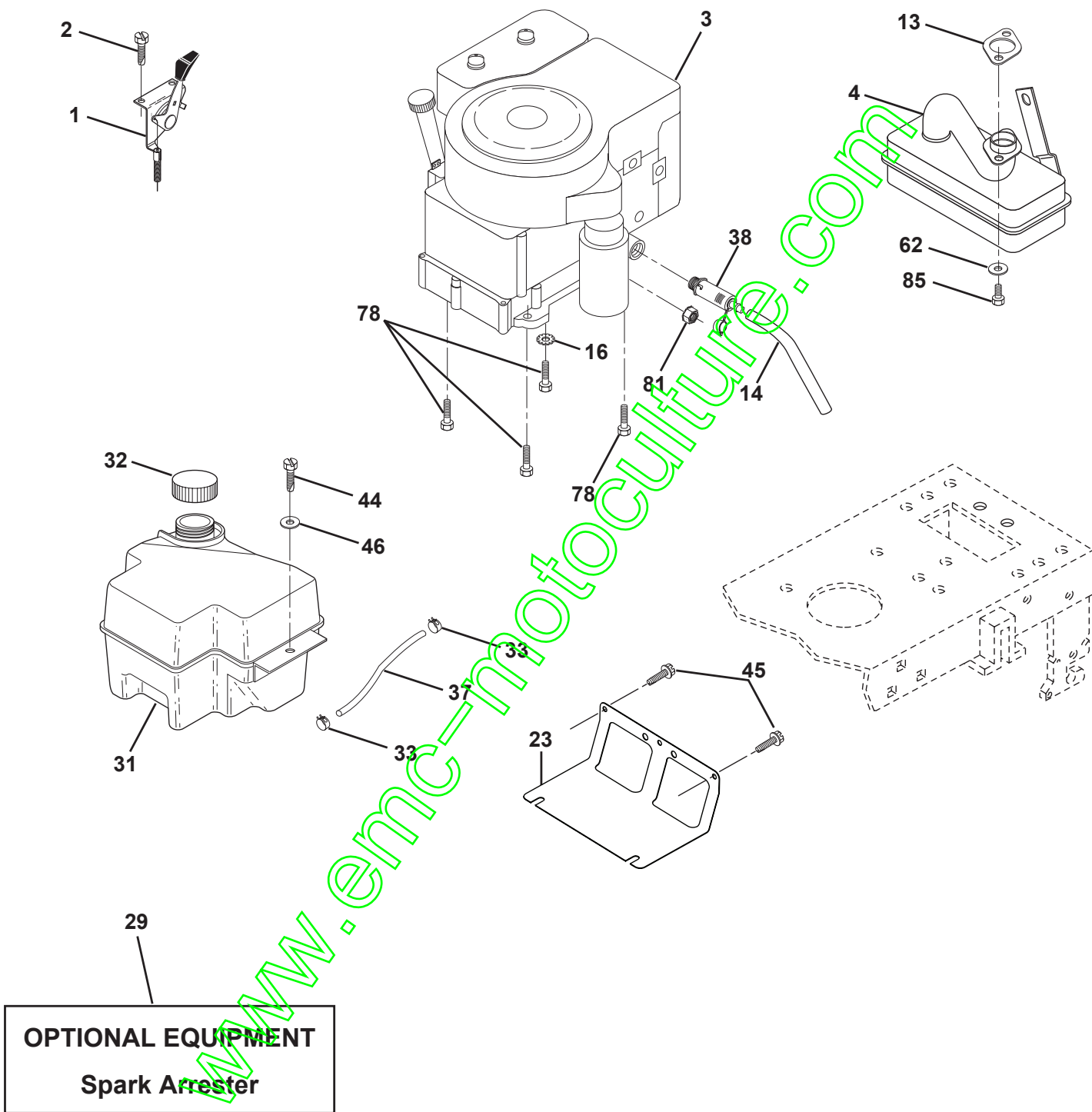


| KEY NO. | PART NO.   | DESCRIPTION                    |
|---------|------------|--------------------------------|
| 1       | 59192      | Cap Value Tire                 |
| 2       | 65139      | Stem Value                     |
| 3       | 106222X    | Tire F Ts 15 X 6 0 - 6 Service |
| 4       | 59904      | Tube Inner Front #35060        |
| 5       | 106732X421 | Rim Asm 6"front Service        |
| 6       | 278H       | Fitting Grease                 |
| 7       | 9040H      | Bearing Flange                 |
| 8       | 106108X421 | Rim Asm 8"rear Service         |
| 9       | 138468     | Tire R Ts 20 x 8-8 Service     |
| 10      | 7152J      | Tube Rear 9 5 X 8 Service      |
| 11      | 104757X428 | Cap Axle Blk 1 50 X 1 00       |
| --      | 144334     | Sealant, Tire (10 oz. tube)    |

**NOTE:** All component dimensions given in U.S. inches  
1 inch = 25.4 mm

# REPAIR PARTS

TRACTOR- MODEL NO. BL15536RBH (BL15536RBHB), PRODUCT NO. 954 56 68-74  
ENGINE



# REPAIR PARTS

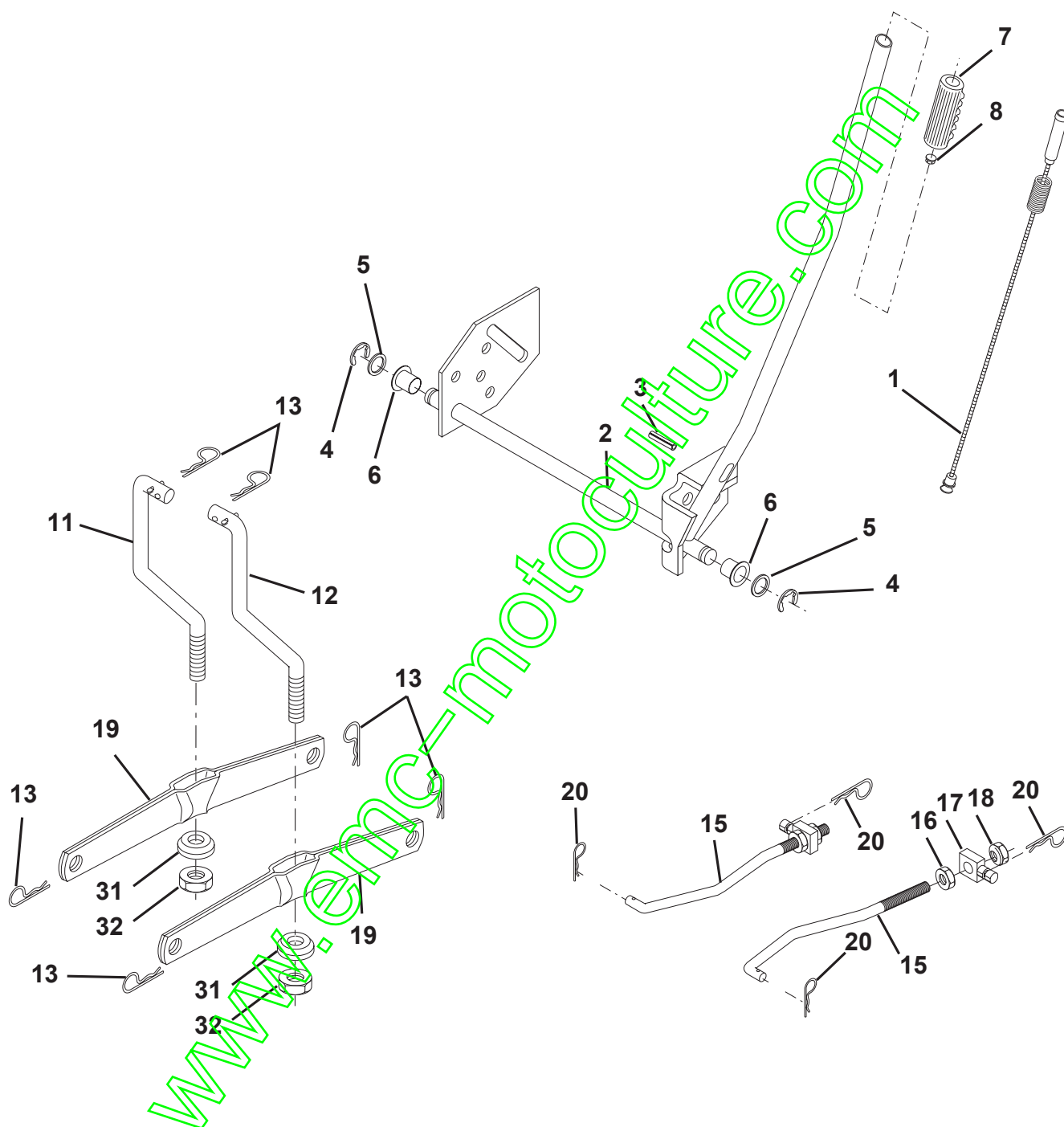
TRACTOR- MODEL NO. BL15536RBH (BL15536RBHB), PRODUCT NO. 954 56 68-74  
ENGINE

| KEY NO. | PART NO. | DESCRIPTION   |
|---------|----------|---|
| 1       | 170551   | Control Throt /Ch   |
| 2       | 17720410 | Screw Hex Thd Cut 1/4-20x5/8 T                                    |
| 3       | -----    | Engine Tec Model OHV165<br>(Order Parts from Engine Manufacturer) |
| 4       | 137351   | Muffler Tec   |
| 13      | 149272   | Gasket  |
| 14      | 148456   | Tube Drain Oil Easy   |
| 16      | 11050600 | Washer Lock Ext Tooth 3/8   |
| 23      | 169837   | Shield Browning/Debris Guard                                      |
| 29      | 137180   | Arrestor Spark  |
| 31      | 174642   | Tank Fuel 2.00 Fr   |
| 32      | 140527   | Cap Asm Fule Top Vent N/Lany                                      |
| 33      | 123487X  | Clamp Hose Blk  |
| 37      | 137040   | Line Fuel 20"   |
| 38      | 148315   | Plug Drain Oil Easy   |
| 44      | 17670412 | Screw Hexwsh Thdrol 1/4-20x3/4                                    |
| 45      | 17000612 | Screw Hexwsh Thd 3/8-16 x 3/4                                     |
| 46      | 19091416 | Washer 9/32 X 7/8 X 16ga  |
| 62      | 10040500 | Washer Lock Hvy Hlcl Spr 5/16                                     |
| 78      | 17060620 | Screw 3/8-16x1-1/4  |
| 81      | 73510400 | Nut Keps Hex 1/4-20 Unc   |
| 85      | 123528X  | Bolt Hex Hd Phillips  |

**NOTE:** All component dimensions given in U.S. inches  
1 inch = 25.4 mm

# REPAIR PARTS

TRACTOR- MODEL NO. BL15536RBH (BL15536RBHB), PRODUCT NO. 954 56 68-74  
MOWER LIFT



# REPAIR PARTS

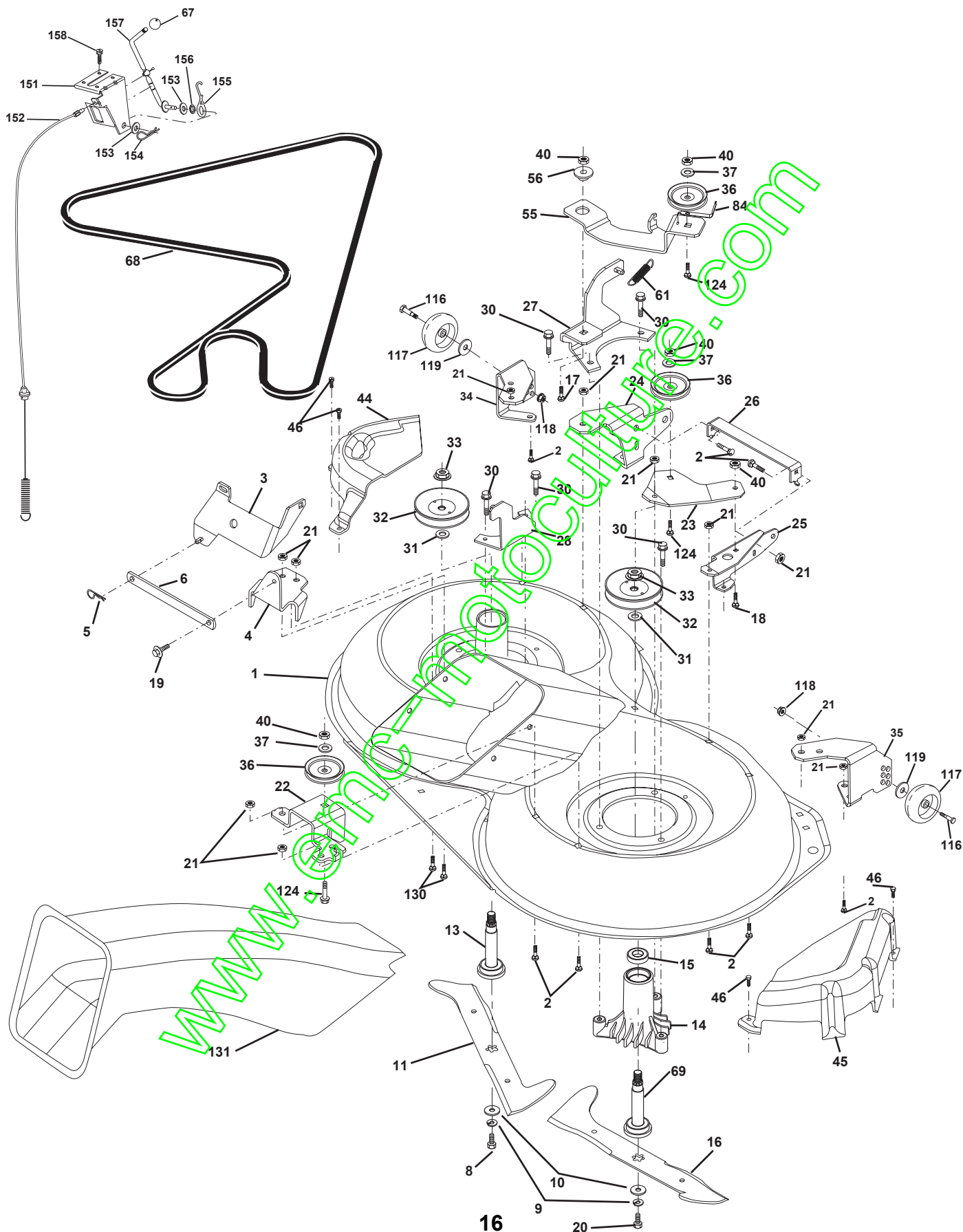
TRACTOR- MODEL NO. BL15536RBH (BL15536RBHB), PRODUCT NO. 954 56 68-74  
MOWER LIFT

| KEY NO. | PART NO. | DESCRIPTION                       |
|---------|----------|-----------------------------------|
| 1       | 159460   | Washer Asm Inner Spring W/Plunger |
| 2       | 159471   | Shaft Asm. Lift                   |
| 3       | 105767X  | Pin Groove                        |
| 4       | 12000002 | E Ring #5133-62                   |
| 5       | 19211621 | Washer 21/32 x 1 x 21 Ga.         |
| 6       | 120183X  | Bearing Nylon                     |
| 7       | 109413X  | Grip Handle                       |
| 8       | 124526X  | Button Plunger Black              |
| 11      | 165829   | Link Asm Lift L.H.                |
| 12      | 165831   | Link Asm Lift R.H.                |
| 13      | 4939M    | Retainer Spring                   |
| 15      | 173288   | Link Front                        |
| 16      | 73350800 | Nut Jam Hex 1/2-13 Unc            |
| 17      | 130171   | Trunnion Blk Zinc                 |
| 18      | 73800800 | Nut Lock w/wash 1/2-13 Unc        |
| 19      | 139868   | Arm Suspension Mower              |
| 20      | 163552   | Retainer Spring                   |
| 31      | 169865   | Bearing, Pvt. Lift.               |
| 32      | 73540600 | Nut Crownlock 3/8-24              |

**NOTE:** All component dimensions given in U.S. inches  
1 inch = 25.4 mm

# REPAIR PARTS

TRACTOR- MODEL NO. BL15536RBH (BL15536RBHB), PRODUCT NO. 954 56 68-74  
MOWER DECK





# REPAIR PARTS

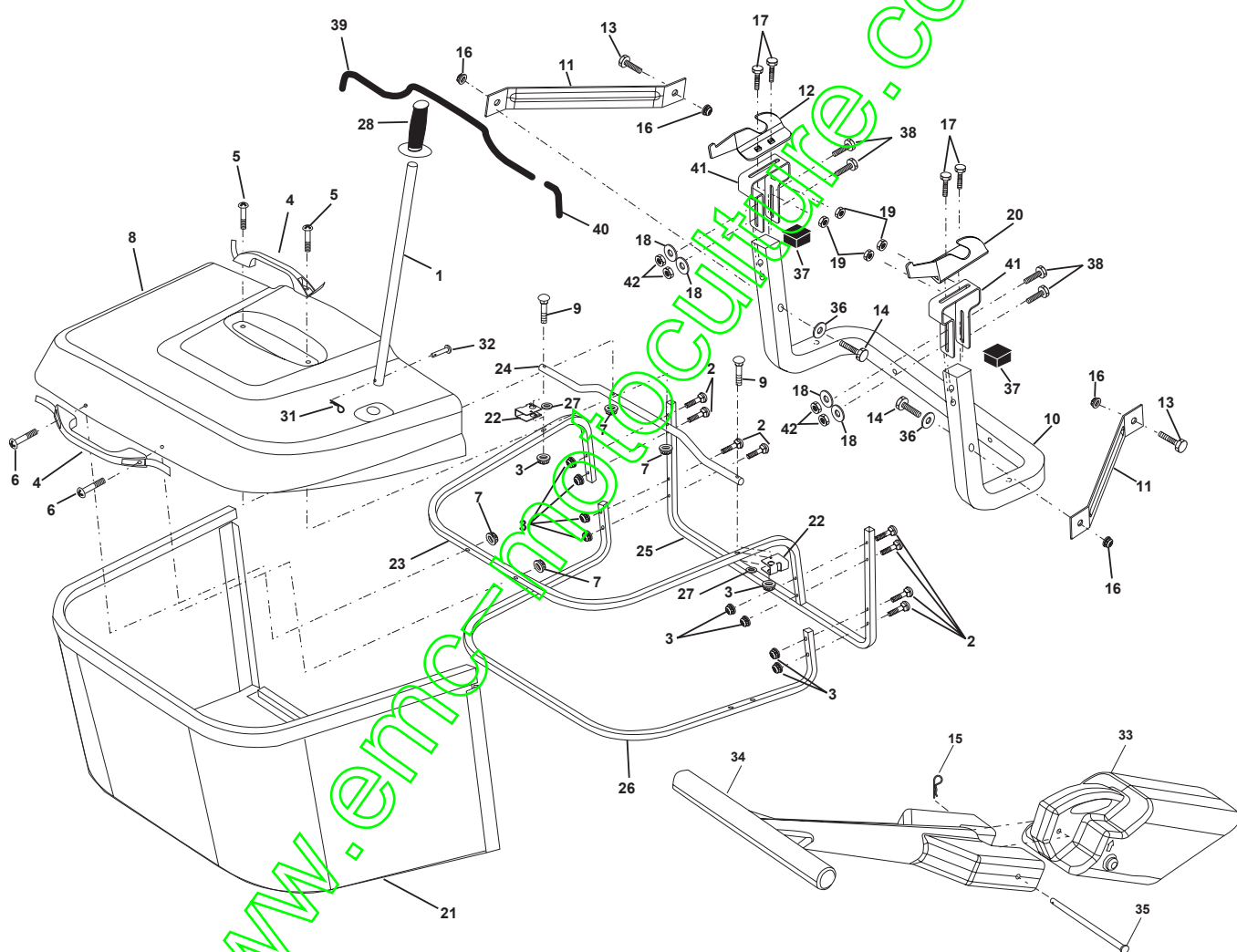
TRACTOR- MODEL NO. BL15536RBH (BL15536RBHB), PRODUCT NO. 954 56 68-74  
MOWER DECK

| KEY NO. | PART NO. | DESCRIPTION                       | KEY NO. | PART NO. | DESCRIPTION                       |
|---------|----------|-----------------------------------|---------|----------|-----------------------------------|
| 1       | 165552   | Housing Asm. Mower 92 CRD         | 37      | 19131316 | Washer 11/32 x 13/16 x 16 Ga      |
| 2       | 72140506 | Bolt Rdhd Sqnk 5/16-18 Unc x 3/4  | 40      | 73680600 | Nut Crownlock 3/8-16 Unc          |
| 3       | 165569   | Bracket Asm. S-Bar Chass 92 CRD   | 44      | 165724   | Cover Mandrel Lh 92 CRD           |
| 4       | 165558   | Bracket Bar Sway Deck 92 CRD      | 45      | 165556   | Cover Mandrel Rh 92 CRD           |
| 5       | 4939M    | Retainer Spring                   | 46      | 137729   | Screw Thd Roll 1/4-20 x 5/8       |
| 6       | 165557   | Bar Sway 92 CRD                   | 55      | 165445   | Arm Idler 92 CRD                  |
| 8       | 850857   | Bolt 3/8-24 x 1.25 Gr8 Patched    | 56      | 165723   | Spacer Retainer Mower             |
| 9       | 10030600 | Washer Lock Hvy 3/8 Unplated      | 61      | 165945   | Spring Tension Belt               |
| 10      | 140296   | Washer Hard Blade Mower vented    | 67      | 160932   | Knob Rd 3/8-16 Plstc Thds Blk     |
| 11      | 170037   | Blade 3-1 Lh 92 CRD               | 68      | 165555   | Hex-Belt 92 Mower 105AA           |
| 13      | 137645   | Shaft Asm. W/Lower Bearing        | 69      | 165482   | Shaft Asm W/Lwr Brg Rh Thd CRD    |
| 14      | 128774   | Housing Mandrel Vented (Machd)    | 84      | 156085   | Keeper Belt Idler                 |
| 15      | 110485X  | Bearing Ball Mandrel              | 116     | 137644   | Bolt Shoulder                     |
| 16      | 170038   | Blade 3-1 Rh 92 CRD               | 117     | 133957   | Wheel Gage Donut Wide             |
| 17      | 72140610 | Bolt Carriage 3/8-16 x 1-1/4      | 118     | 73930600 | Nut Centerlock 3/8-16 Unc         |
| 18      | 72110608 | Bolt Rdhd Sqnk 3/8-16 x 1 Gr5     | 119     | 19121414 | Washer 3/8 x 7/8 x 14 Ga.         |
| 19      | 132827   | Bolt Shoulder 5/16-18 Thd Form    | 124     | 72110612 | Bolt Carr Sh 3/8-16 x 1-1/2 Gr5   |
| 20      | 165484   | Bolt 3/8-24 x 1.25 Gr8 Ptch Lhthd | 130     | 72110506 | Bolt Rdhdsqnk 5/16-18 Unc x 3/4   |
| 21      | 73680500 | Nut Crown Lock 5/16-18            | 131     | 165661   | Chute Bagger CRD 92cm             |
| 22      | 165243   | Bracket Idler Sprt RR 92 CRD      | 151     | 169670   | Bracket Clutch Cable              |
| 23      | 165446   | Bracket Idler Sprt RF 92 CRD      | 152     | 176074   | Cable Clutch CRD Service          |
| 24      | 165242   | Bracket Suspension LF 92 CRD      | 153     | 169674   | Washer Flat 3/8" Type B           |
| 25      | 165244   | Bracket Suspension RF 92 CRD      | 154     | 169675   | Spring Retainer                   |
| 26      | 165237   | Brace Support Susp Frt CRD        | 155     | 169671   | Spring Retention Lvr Clutch Cable |
| 27      | 165568   | Bracket Asm. Susp RR 92 CRD       | 156     | 169672   | Spacer Clutch Cable               |
| 28      | 165567   | Bracket Asm. Susp LR 92 CRD       | 157     | 169669   | Rod Clutch Cable 3/8"             |
| 30      | 157722   | Screw Thd Rolling Washer Head     | 158     | 17720410 | Screw Hex Thd Cut 1/4-20 x 5/8    |
| 31      | 129963   | Washer Spacer Mower Vented        | -       | 130794   | Mandrel Asm Service               |
| 32      | 153531   | Mandrel Pulleys 36 & 46           | -       | 165579   | Mandrel Asm CRD Lh Threads SVC    |
| 33      | 137266   | Nut Flg Top Lock Cntr B 9/16      | -       | 173549   | Deck Mower Complete               |
| 34      | 165239   | Bracket Gauge Wheel Lt 92 CRD     |         |          |                                   |
| 35      | 165238   | Bracket Gauge Wheel Rf 92 CRD     |         |          |                                   |
| 36      | 146763   | Pulley Idler V-Groove Dim 4.25    |         |          |                                   |

**NOTE:** All component dimensions given in U.S. inches  
1 inch = 25.4 mm

# REPAIR PARTS

TRACTOR- MODEL NO. BL15536RBH (BL15536RBHB), PRODUCT NO. 954 56 68-74  
BAGGER



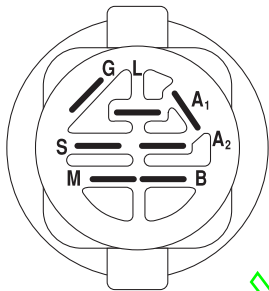
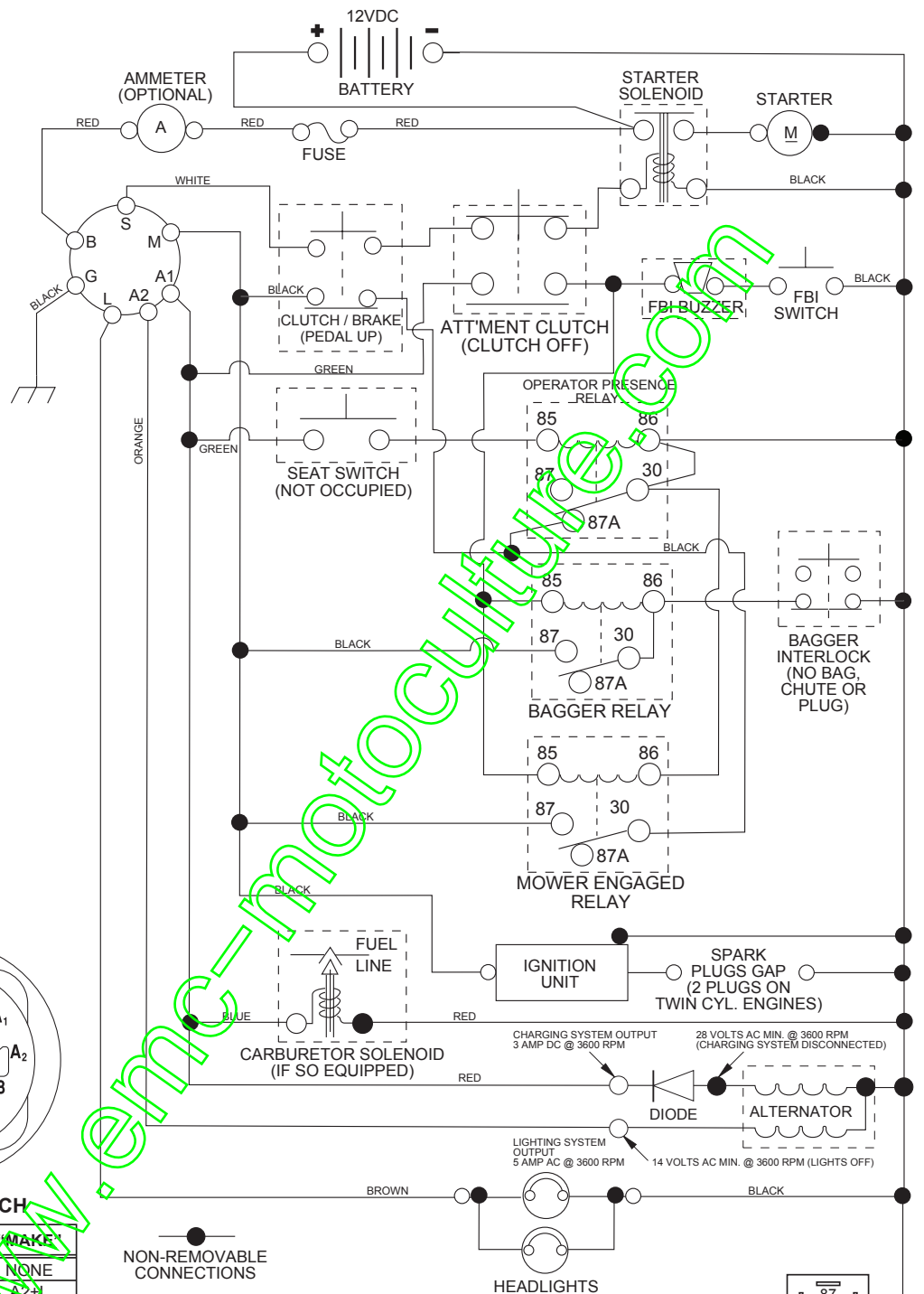
# REPAIR PARTS

TRACTOR- MODEL NO. BL15536RBH (BL15536RBHB), PRODUCT NO. 954 56 68-74  
BAGGER

| KEY NO. | PART NO.   | DESCRIPTION                           |
|---------|------------|---------------------------------------|
| 1       | 170690     | Tube Handle Bagger CRD                |
| 2       | 72140416   | Bolt Carriage 1/4-20 x 2.0 Gr.5       |
| 3       | 123976X    | Nut Lock 1/4 Lge Flg Gr. 5 Zinc       |
| 4       | 169916     | Handle Bagger w/lvrs Blk CRD          |
| 5       | 74981024   | Screw Pan Head #10-24 x 1.50 Blk      |
| 6       | 74981032   | Screw Pan Hd                          |
| 7       | 73401000   | Nut Wiz Lock Hex Serr Hd 10-24        |
| 8       | 165715X421 | Cover Bagger Plastic CRD              |
| 9       | 72140418   | Bolt Carriage 1/4-20 x 2.25d x Gr.5   |
| 10      | 169688     | Tube Support Bagger CRD               |
| 11      | 165719     | Bracket Support Upper Bag CRD         |
| 12      | 169685     | Bracket Horiz Adj Bagger Lh CRD       |
| 13      | 72110606   | Bolt Rdhd Sht Sqnk 3/8-16 x 3/4       |
| 14      | 74520640   | Bolt Hex 3/8-16 x 2-1/2 Gr.5          |
| 15      | 4939M      | Retainer Spring                       |
| 16      | 73900600   | Nut Lock Fig 3/8-16 Unc               |
| 17      | 72140506   | Bolt Rdhd Sht Sqnk 5/16 -18 Unc x 3/4 |
| 18      | 19111216   | Washer 11/32 x 3/4 x 16 Ga.           |
| 19      | 73900500   | Nut Lock Hex Flange 5/16-18           |
| 20      | 169684     | Bracket Horiz Adj Bagger RH CRD       |
| 21      | 165780     | Bag Asm CRD                           |
| 22      | 165781     | Bracket Side Bagger CRD               |
| 23      | 165782     | Tube Upper Bagger CRD                 |
| 24      | 165783     | Tube Pivot Bagger CRD                 |
| 25      | 165784     | Tube Front Bagger CRD                 |
| 26      | 165785     | Tube Lower Bagger CRD                 |
| 27      | 169692     | Bushing Snap Bagger CRD               |
| 28      | 170696     | Grip Handle Black                     |
| 31      | 4497H      | Retainer Spring 1" Zinc/Cad           |
| 32      | 126875X    | Rivet Rd Hd Drilled 3/8 Dia           |
| 33      | 165571     | Plug Mulcher                          |
| 34      | 165570     | Handle Mulcher                        |
| 35      | 165572     | Pin Mulcher 92/107 CRD                |
| 36      | 19132016   | Washer 13/32 x 1-1/4 x 16Ga           |
| 37      | 175401     | Plug Support Bagger CRD               |
| 38      | 72010520   | Bolt 5/16-18 x 2.50                   |
| 39      | 169999     | Seal 26" (Long)                       |
| 40      | 170000     | Seal 7" (Short)                       |
| 41      | 169683     | Bracket Vert Adj Bggr CRD             |
| 42      | 73800500   | Nut Lock Hex W/Ins 5/16-18 Unc PI     |

**NOTE:** All component dimensions given in U.S. inches  
1 inch = 25.4 mm

# TRACTOR- MODEL NO. BL15536RBH (BL15536RBHB), PRODUCT NO. 954 56 68-74 SCHEMATIC



**IGNITION SWITCH**

| POSITION  | CIRCUIT | "MAKE" |
|-----------|---------|--------|
| OFF       | M+G+A1  | NONE   |
| RUN/LIGHT | B+A1    | A2-L   |
| RUN       | B+A1    | NONE   |
| START     | B+S+A1  | NONE   |

**WIRING INSULATED CLIPS**  
NOTE: IF WIRING INSULATED CLIPS WERE REMOVED FOR SERVICING OF UNIT, THEY SHOULD BE REPLACED TO PROPERLY SECURE YOUR WIRING.

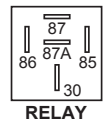
●  
NON-REMOVABLE CONNECTIONS

○  
REMOVABLE CONNECTIONS

**PTO SWITCH**

| POSITION | CIRCUIT             |
|----------|---------------------|
| OFF      | C + G, B + H        |
| ON       | C + F, B + E, A + D |

**NOTE**  
YOUR TRACTOR IS EQUIPPED WITH A SPECIAL ALTERNATOR SYSTEM. THE LIGHTS ARE NOT CONNECTED TO THE BATTERY, BUT HAVE THEIR OWN ELECTRICAL SOURCE. BECAUSE OF THIS, THE BRIGHTNESS OF THE LIGHTS WILL CHANGE WITH ENGINE SPEED. AT IDLE THE LIGHTS WILL DIM. AS THE ENGINE IS SPEEDED UP, THE LIGHTS WILL BECOME THEIR BRIGHTEST.



**RELAY**

