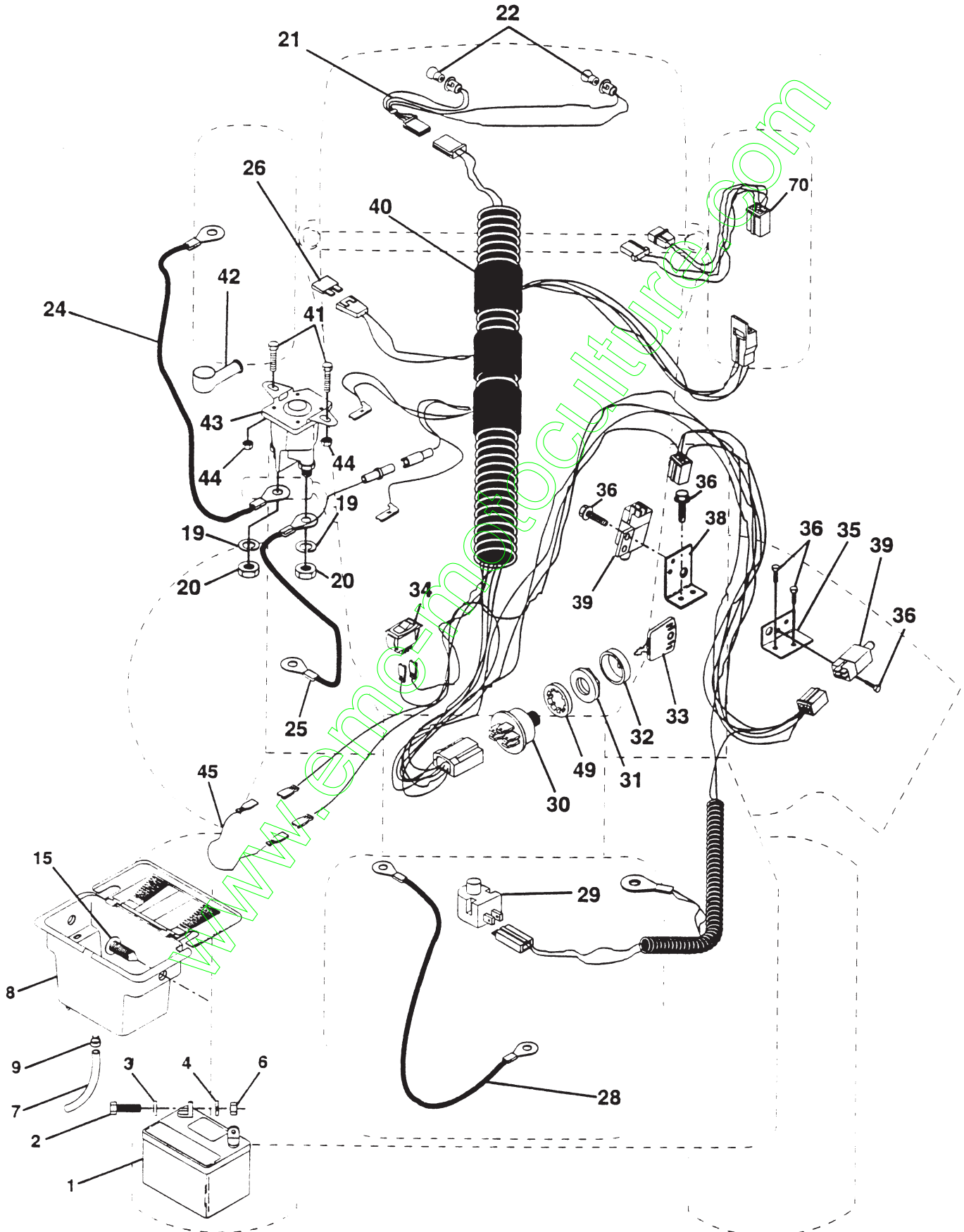


# REPAIR PARTS

TRACTOR -- MODEL NO. BL15542LTB, PRODUCT NO. 954 00 25-71

## ELECTRICAL



# REPAIR PARTS

TRACTOR - - MODEL NO. BL15542LTB, PRODUCT NO. 954 00 25-71

## ELECTRICAL

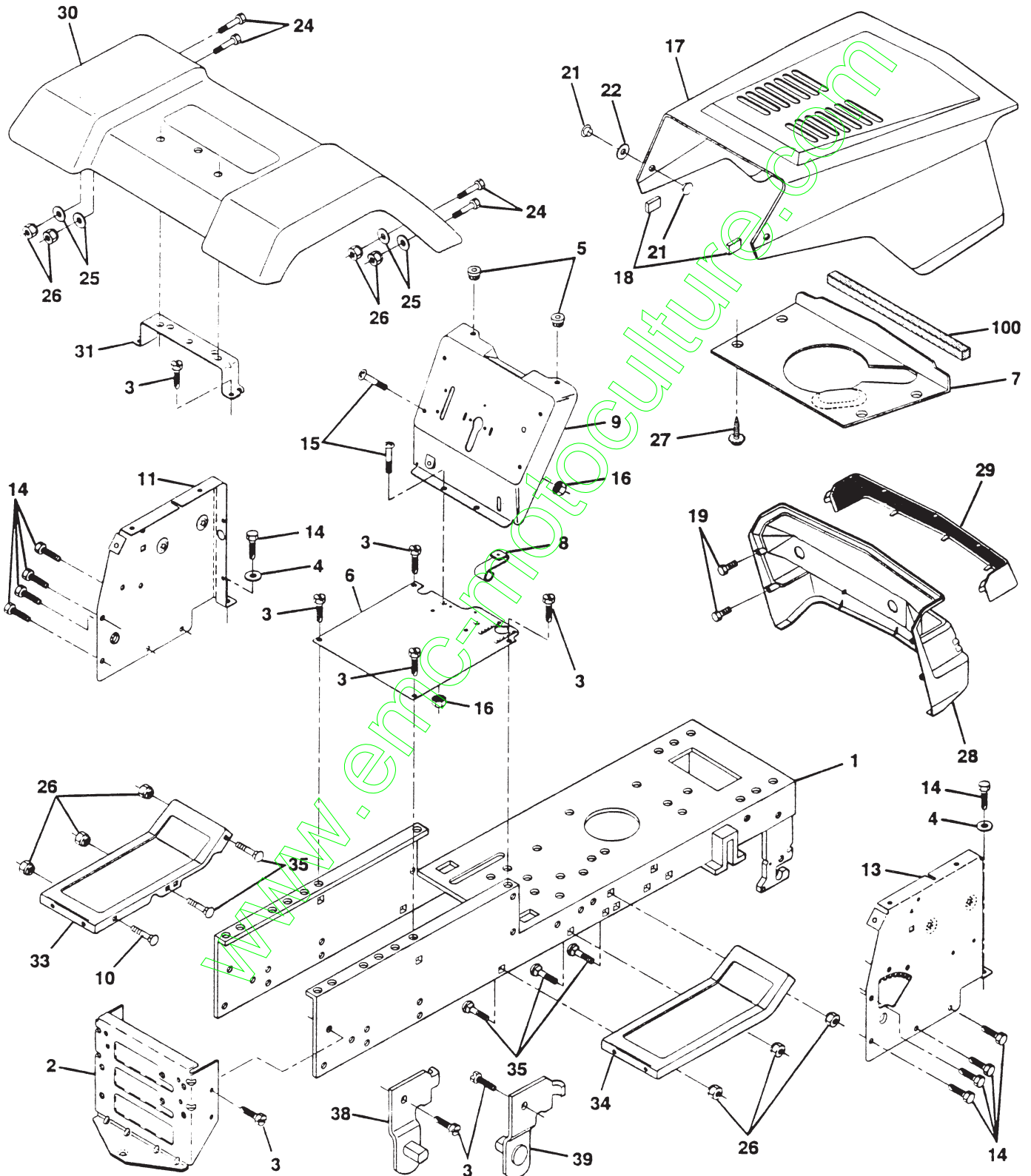
KEY NO.	PART NO.	DESCRIPTION
- 1	532144925	Battery 12 volt 25 AMP
2	874760412	Bolt Hex Hd 1/4-20unc X 3/4
3	819091016	Washer 9/32 X 5/8 X 16 Ga
4	810040400	Washer Lock Hvy Helical 1/4
6	873220400	Nut Fin Hex 1/4-20 Unc
7	532109238	Tube Plastic 12"
- 8	532144940	Case Battery W/2 Holes
9	532109596	Clamp Hose Olive
- 15	532147688	Fastener Snap-In
19	810090400	Washer Lock 1/4
20	873350400	Nut Jam Hex 1/4-20 Unc
21	532136850	Harness Asm Light W/4152J
22	532004152	Bulb Light #1156
24	532124780	Cable Battery 6 Ga 11*red
- 25	532146147	Cable Battery 6 Ga 44*red W/16 Wire
26	532108824	Fuse 30 AMP Auto Green
28	532124773	Cable Ground 6 Ga 12*black
29	532121305	Switch Plunger Nc Gray
30	532144921	Switch Ignition 3 pos
31	532140400	Nut Ignition
32	532141226	Cover Sw Key Blk 1 25 Text SLT
33	532140401	Key Ign Molded Generic Delta
34	532110712	Switch Light Blk Blk Red
35	532108236	Bracket Switch Clutch
36	817021008	Screw Tap Hex #10-24unc X 1/2
38	532140336	Bracket Switch Interlock
39	532109553	Switch Intlk Clutch Gry 4 Term
- 40	532146057	Harness Ign Dash 1 Pc Mch 95
41	871110408	Bolt Hex Hd. Fin 1/4-20 x 1/2
42	532131563	Cover Terminal Red
- 43	532145673	Solenoid
44	873640400	Nut Keps Hex 1/4-20 Unc
- 45	532140844	Adapter Ammeter
49	811151000	Washer Lock Internal Tooth 5/8
70	532140422	Harness Engine B&S,14 OHV Dual

**NOTE:** All component dimensions given in U.S. inches  
1 inch = 25.4 mm.

# REPAIR PARTS

TRACTOR - - MODEL NO. BL15542LTB, PRODUCT NO. 954 00 25-71

## CHASSIS AND ENCLOSURES



# REPAIR PARTS

TRACTOR - - MODEL NO. BL15542LTB, PRODUCT NO. 954 00 25-71

## CHASSIS AND ENCLOSURES

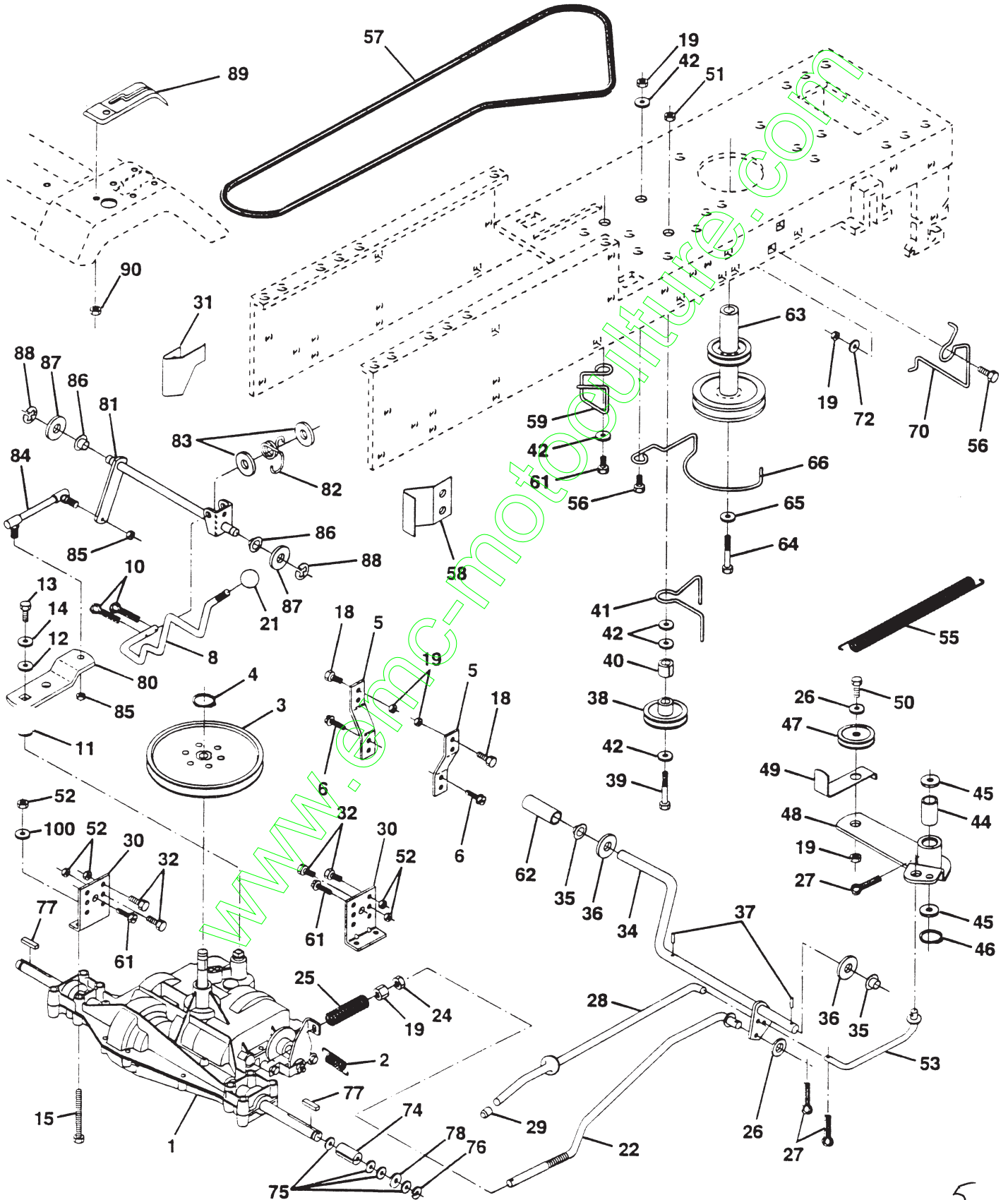
KEY NO.	PART NO.	DESCRIPTION
-1	532145501	Chassis Wldmt 11ga
2	532140356	Drawbar Stretch
3	817490612	Screw Thdrol 3/8-16x3/4 Ty-tt
4	819131216	Washer 13/32 X 3/4 X 16 Ga
-5	532146077	Bumper Snap-In
6	532145206	Saddle
7	532126842	Shield Heat Hood Lt
8	532126471	Clip Fuel Line
-9	532149239	Dash Slkscr 1-pc M NA N/c Sym
10	872140608	Bolt Rdhd Sqnk 3/8-16unc X 1
11	532135464	Panel Dash LH
-13	532126276	Panel Dash RH Weldment
14	817490608	Screw Thdrol 3/8-16x1/2 Ty-tt
15	874180512	Screw Mach TRHD 5/16-18uncx3/4
16	873510500	Nut Keps 5/16-18 Unc
17	532125153	Hood Asm Pnt Weld Yel Slope
18	532126938	Bumper Hood
19	817521312	Screw Sltd. Hex Hd. W/PI Washer
21	532122933	Rivet Ratchet Nylon
22	532124479	Washer Nylon Blk 28x 75x 19
24	874780616	Bolt Fin Hex 3/8-16unc Gr. 1
25	819131312	Washer 13/32 X 13/16 X 12 Ga
26	873800600	Locknut 3/8-16 Unc
27	817030814	Screw Spiderloc Hex Hd #8 x 7/8
28	532140135	Grille Grey
29	532124029	Lens Headlight Bar Clear
30	532141324	Fender Pnt LT W/shf
31	532136619	Bracket Fender Repl 109873x
-33	532147203	Footrest Pnt LH (Husq Gray)
-34	532147202	Footrest Pnt RH (Husq Gray)
35	872110606	Bolt Rdhd Sht Sqnk 3/8-16 X3/4
38	532139886	Bracket Asm Pvt42 LH MWR Rear
39	532139887	Bracket Asm Pvt42 RH MWR Rear
100	532105037	Strip Foam 18"
- -	532005479	Plug Button Blk 359 Dia Choke

**NOTE:** All component dimensions given in U.S. inches  
1 inch = 25.4 mm.

# REPAIR PARTS

TRACTOR -- MODEL NO. BL15542LTB, PRODUCT NO. 954 00 25-71

DRIVE



# REPAIR PARTS

TRACTOR - - MODEL NO. BL15542LTB, PRODUCT NO. 954 00 25-71

## DRIVE

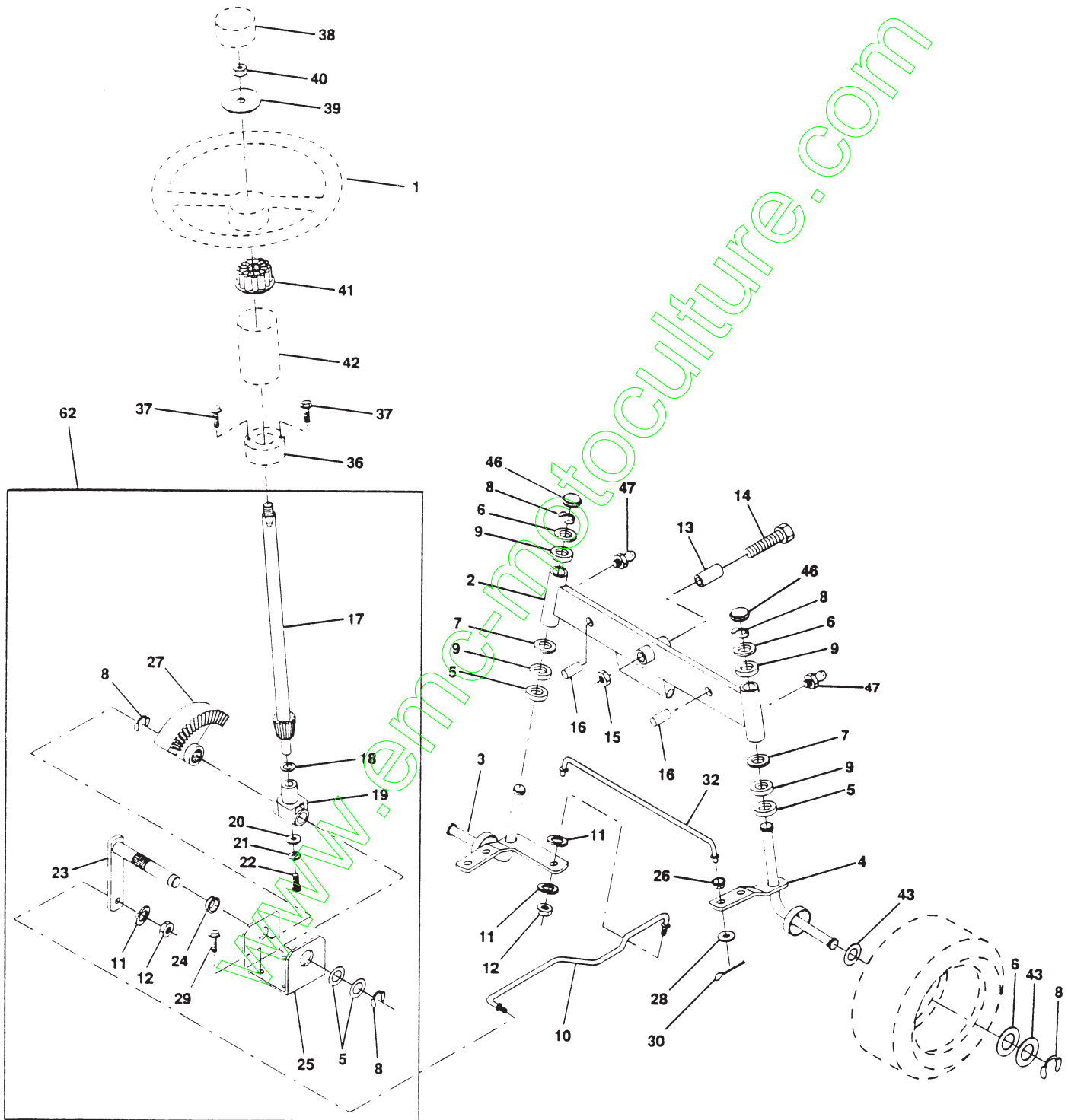
KEY NO.	PART NO.	DESCRIPTION	KEY NO.	PART NO.	DESCRIPTION
1	532142603	Transaxle 6sp Dana 4360-79	47	532127783	Pulley Idler V Groove Plastic
-2	532146682	Spring Return Brake	48	532123789	Bellcrank Asm Clutch
3	532123666	Pulley Transaxle 18"tires	49	532123205	Retainer Belt Style Spring
4	812000028	Ring Retainer # 5100-62	50	874760624	Bolt Hex Hd 3/8-16unc X 1-1/2
5	532121520	Strap Torque 30 Degrees	51	873680600	Nut Crownlock 3/8-16 Unc
6	817490512	Screw Thdrol 5/16-18 X 3/4 TYT	52	873680500	Nut Crownlock 5/16-18 UNC
8	532141003	Rod Shifter	53	532105710	Link Clutch 7 66
10	876020416	Pin Cotter 1/8 X 1 Cad	55	532105709	Spring Return Clutch 6 75
	532105701	Washer Plate Shf 388 Sq Hole	56	874760620	Bolt Hex 3/8-16 UNC x 1-1/4
12	819151216	Washer 15/32 X 3/4 X 16 Ga	57	532130801	V-Belt Ground Drive 95 25 42"
13	874550412	Bolt 1/4-28unf Gr8 w/Patch	58	532127274	Keeper Belt RH LT Pnt/zinc 16g
14	810040400	Washer Lock Hvy Helical 1/4	59	532140312	Keeper Belt Span Ctr
15	874780544	Bolt Fin Hex 5/16-18uncx 2 3/4	61	817490612	Screw Thdrol 3/8-16x3/4 Ty-tt
18	874780616	Bolt Fin Hex 3/8-16unc X 1 Gr.	62	532124872	Cover Pedal Blk Round
19	873800600	Locknut 3/8-16 Unc	63	532140186	Engine Pulley LT/YT
21	532140845	Knob Deluxe 1/2-13 UNC Blk/Blk	64	871170764	Bolt Hex 7/16-20x4 Gr 5
22	532130804	Rod Brake Blk Zinc 26 840	65	810040700	Washer Lock Hvy Hlcl Spr 7/16
24	873350600	Nut Hex Jam 3/8-16 Unc	66	532129921	Keeper Belt Engine LH LT
25	532106888	Spring Rod Brake 2 00 Zinc	70	532134683	Guide Belt Mower Drive RH
26	819131316	Washer 13/32 X 13/16 X 16 Ga	72	819132012	Washer 13/32 X 1-1/4 X 12 Ga
27	876020412	Pin Cotter 1/8 X 3/4 Cad	74	532109502	Spacer Split
28	532145204	Rod Brake Parking LT/YT	75	532121749	Washer 25/32 X 1 1/4 X 16 Ga
29	532071673	Cap Brake Parking Black	76	812000001	E-ring #5133-75
30	532130807	Bracket Mtg Transaxle	77	532123583	Key Square 2 0 X 1845/ 1865
31	532127275	Keeper Belt LH LT 14 Ga	78	532121748	Washer 25/32 X 1-5/8 X 16 Ga
32	874760512	Bolt Hex Hd 5/16-18unc X 3/4	80	532131488	Arm Shift Transaxle
34	532149001	Shaft Asm Pedal Foot	81	532136932	Shaft Asm Cross 18"t 42"deck
35	532120183	Bearing Nylon Blk 629 Id	82	532123782	Spring Torsion T/a
36	819211616	Washer 21/32 X 1 X 16 Ga	83	819171216	Washer 17/32 X 3/4 X 16 Ga
37	532124963	Pin Roll 3/16 X 1"	84	532132182	Rod Shift Adj Tie
38	532123674	Pulley Idler Flat	85	873530400	Nut Nylock 1/4 - 28
39	874760644	Bolt Fin Hex 3/8-16unc X 2-3/4	86	532071208	Bushing Rod Strg 629/632 Id
40	532124965	Spacer Split 395 X 59 Bzp	87	819212016	Washer 21/32 X 1-1/4 X 16 Ga
41	532109070	Keeper Belt Retainer	88	812000008	Ring Klip #5304-62
42	819131312	Washer 13/32 X 13/16 X 12 Ga	89	532139964	Console Shift 6sp LT
44	532105706	Bearing Nyl 503 X 628 X 1 25	90	532124346	Nut Self-thd Wsh-hd 1/4 Zinc
45	532110812	Washer Hardened	100	819111216	Washer 11/32 X 3/4 X 16 Ga.
46	812000039	Ring Klip #15304-50			

**NOTE:** All component dimensions given in U.S. inches  
1 inch = 25.4 mm

# REPAIR PARTS

TRACTOR - MODEL NO. BL15542LTB, PRODUCT NO. 954 00 25-71

## STEERING ASSEMBLY



# REPAIR PARTS

TRACTOR - MODEL NO. BL15542LTB, PRODUCT NO. 954 00 25-71

## STEERING ASSEMBLY

KEY NO.	PART NO.	DESCRIPTION
1	532140044	Wheel Steering Ayp/P/L Black
2	532142033	Axle Asm Fr LT W/gzks 38/42
3	532135227	Spindle Asm LH
4	532135228	Spindle Asm RH
5	532124931	Bearing Race Thrust Harden
6	532121748	Washer 25/32 X 1-5/8 X 16 Ga
7	819272016	Washer 27/32 X 1-1/4 X 16 Ga
8	812000029	Ring Klip #t5304-75
9	532124937	Bearing Col Strg Blk
10	532130468	Link Drag Sol Ball Jt 20 064
11	810040600	Washer Lock Hvy Hlcl Spr 3/8
12	873610600	Nut Fin Hex 3/8-24 Unf
13	532110438	Spacer Bearing Axle Front
14	874011056	Bolt Hex 5/8-11 Unc X 3-1/2
15	873901000	Nut Lock Flange 5/8-11 Unc
16	532132624	Pin Axle 5/8 X 1 55/1 54 Lg
17	532132614	Shaft Asm Strg 5/8 X 15 19 LT
18	532057079	Washer Thrust 515x 750x 033
19	532124035	Support Shaft
20	532126684	Washer Shim 1/4 X 5/8 X 062
21	810040400	Washer Lock Hvy Helical 1/4
22	871070410	Screw Hex Socket 1/4-20 X 5/8
23	532127501	Shaft Asm Pittman
24	532109816	Nyliner Snap In
25	532124036	Bracket Steering
26	532126847	Bushing Link Drag Blk LR
27	532136874	Gear Sector 22 Teeth
28	819131416	Washer 13/32 X 7/8 X 16 Ga
29	817490612	Screw Thdrol 3/8-16x3/4 Ty-tt
30	876020412	Pin Cotter 1/8 X 3/4 Cad
32	532130465	Rod Tie Wire Form 19 75 Mech
36	532132196	Bushing Strg 5/8 Id Dash
37	817431008	Screw Slftp #10-16 X 1/2 Ty-b
38	532140045	Cap Wheel Steer Ayp/P/L
39	819133808	Washer 13/32 X 2-3/8 X 8 Ga
40	532124701	Nut Lock Center 3/8-24unf
41	532104820	Adaptor Wheel Strg 640/ 635id
42	532124418	Boot Shaft Steering Blk
43	532121749	Washer 25/32 X 1 1/4 X 16 Ga
46	532121232	Cap Spindle Fr Top Blk
47	532124836	Fitting Grease
62	532149684	Steering Asm

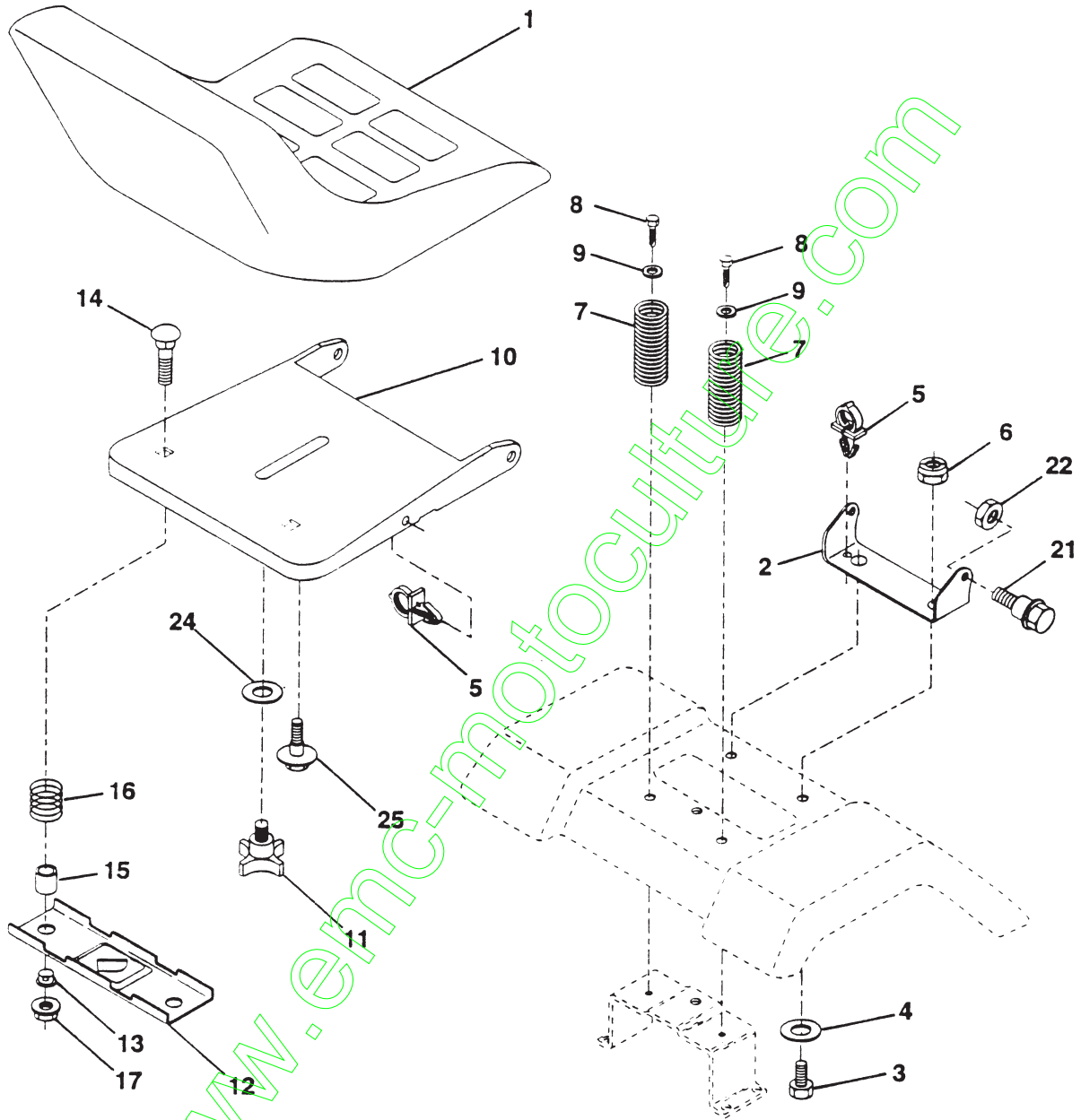
**NOTE:** All component dimensions given in U.S. inches  
1 inch = 25.4 mm



# REPAIR PARTS

TRACTOR - - MODEL NO. BL15542LTB, PRODUCT NO. 954 00 25-71

## SEAT ASSEMBLY



KEY NO.	PART NO.	DESCRIPTION
1	532127429	Seat V550 Blk/blk Std
2	532140551	Bracket Pivot Seat
3	874760616	Bolt Fin Hex 3/8-16unc X 1
4	819131610	Washer 13/32 X 1 X 10 Ga
5	532145006	Clip Push-In Hinged
6	873800600	Nut Lock Hex W/Wsh 3/8-16
7	532124181	Spring Seat Cprsn 2 250 Blk Zi
8	817490616	Screw Thdrol 3/8-16 X 1 Ty-tt
9	819131614	Washer 13/32 X 1 X 14 Ga
10	532140552	Pan Seat
11	532120068	Knob Seat 1/2-13unc Blk
12	532121246	Bracket Mounting Switch

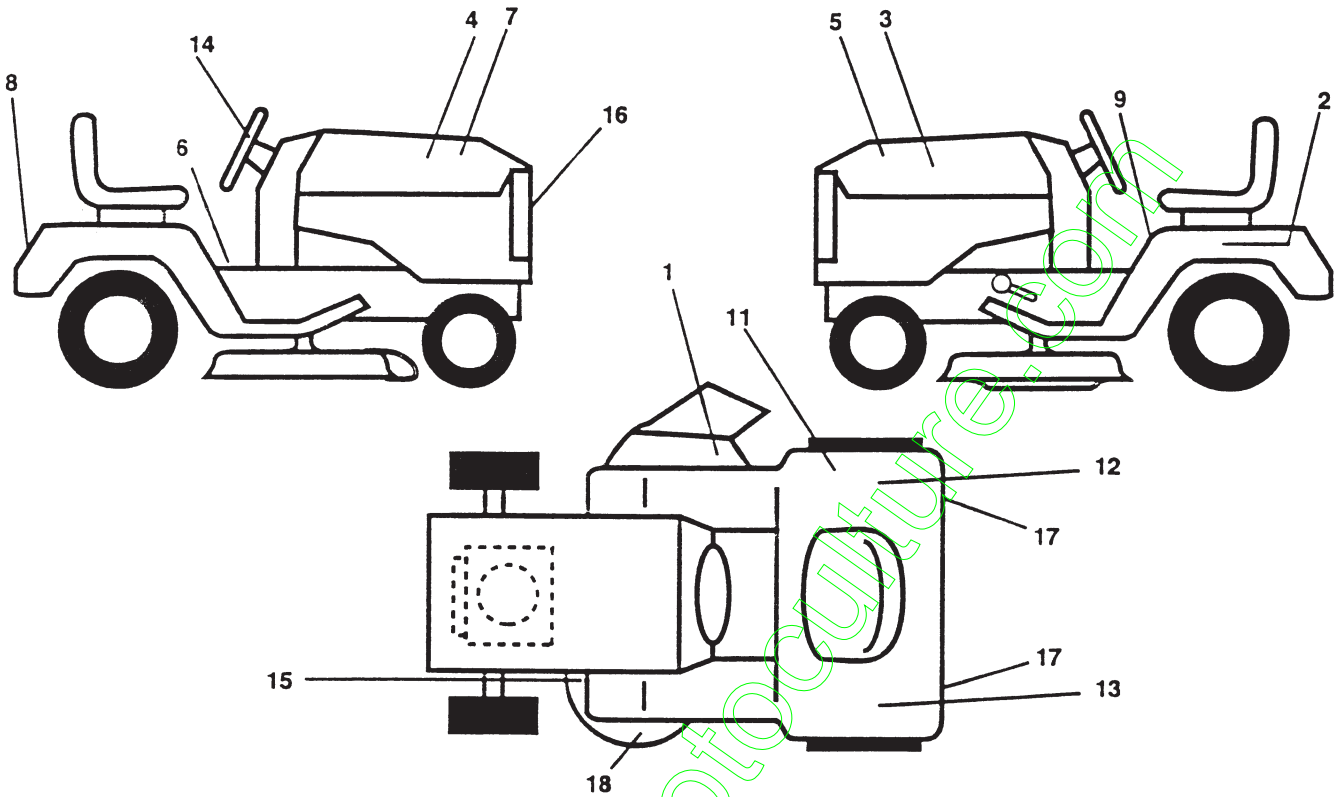
KEY NO.	PART NO.	DESCRIPTION
13	532121248	Bushing Snap Blk Nyl 50 Id
14	872050411	Bolt Rdhd Sht Nk 1/4-20x1-3/8
15	532121249	Spacer Split 28x 88 Zinc
16	532123740	Spring Cprsn Plate Sw 1.310 Ga.
17	532123976	Nut Lock 1/4 Lge Fig Gr 5 Zinc
21	532139888	Bolt Shoulder 5/16-18
22	873680500	Nut Crownlock 5/16-18 UNC
24	819171912	Washer 17/32 X 1-3/16 X 12 Ga
25	532127018	Bolt Shoulder 5/16-18 X 62

**NOTE:** All component dimensions given in U.S. inches  
1 inch = 25.4 mm

# REPAIR PARTS

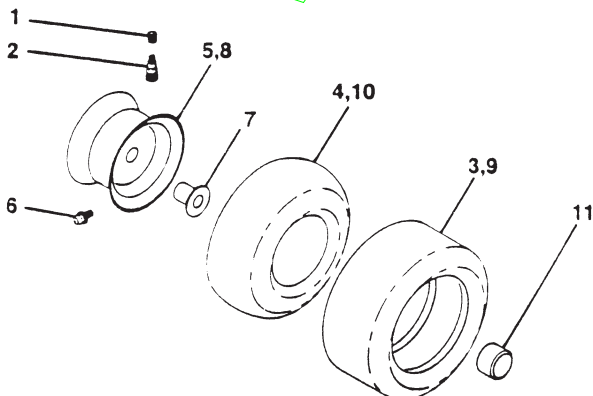
TRACTOR -- MODEL NO. BL15542LTB, PRODUCT NO. 954 00 25-71

## DECALS



KEY NO.	PART NO.	DESCRIPTION	KEY NO.	PART NO.	DESCRIPTION
1	532145494	Decal Mower Cutfinger Symbol	17	532106202	Decal Reflector Taillight Red/Amber
2	532145005	Decal Battery Dan/Poi P/L Symbols	18	532135013	Decal Enviro Deck Yellow
3	532125934	Decal Hood LH Bernard	--	532138311	Decal Handle Lft Height Adjust
4	532125935	Decal Hood RH Bernard	--	532145246	Pad Footrest Rbr Sq. Generic
5	532146385	Decal Side Panel LH	--	532145247	Fastener Pop-In Footrest (8 per)
6	532140837	Decal Brake Parking Saddle	--	532147659	Manual Instr Asm BL15542LTB
7	532146384	Decal Side Panel RH	--	532146157	Manual Operators
	532125819	Decal Fender Bernard	Available accessories not included with tractor:		
9	532145498	Decal Read Owners Manual Syms	--	LBD48	48" Snow Blade
11	532145437	Decal Europe Stand CE	--	LSB 42	42" Snow Blower
12	532125690	Decal 100 Db	--	LC05	33lb. Wheel Wts. (Pair)
13	532147809	Decal Conformance	--	LA018	Tire Chains (18 x 9.5 x 8)
14	532141294	Decal Ins. Strg Whl Ayp/P/L Blk	--	MK420	Mulching Kit w/Blades
15	532136832	Decal V-Belt Schematic			
16	532131265	Decal Lightbox Grille Sloped			

## WHEELS & TIRES



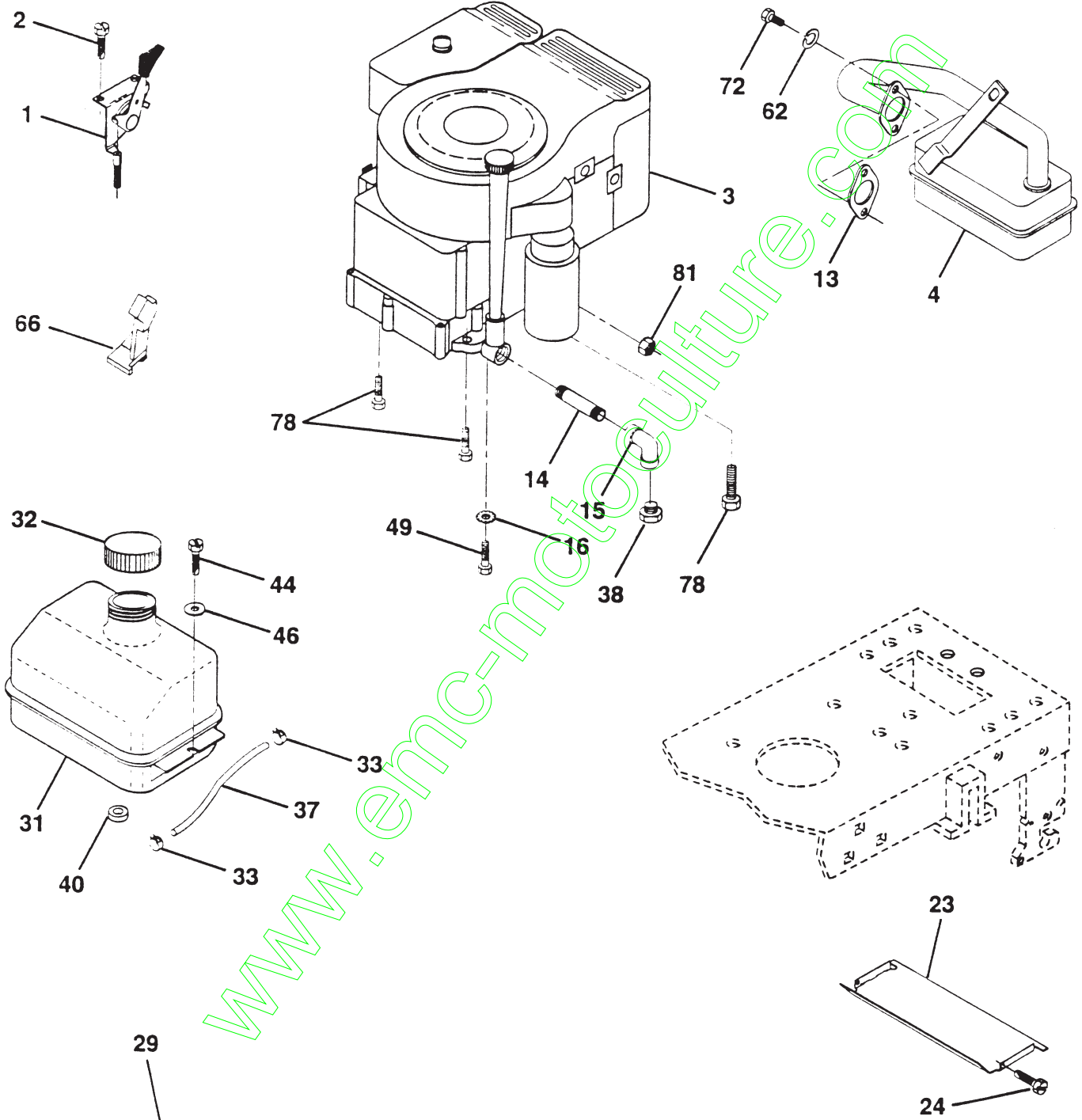
KEY NO.	PART NO.	DESCRIPTION
1	532059192	Cap Valve Tire
2	532065139	Stem Valve
3	532106222	Tire F Ts 15 X 6 0 - 6 Service
4	532059904	Tube Front (Service Item Only)
5	532125121	Rim Asm 6" front Yellow Service
6	532124957	Fitting Grease (Front Wheel Only)
7	532124959	Bearing Flange (Front Wheel Only)
8	532125122	Rim Asm 8" rear Yellow Service
9	532106268	Tire R Ts 18x9 5-8 C Service
10	532124926	Tube Rear (Service Item Only)
11	532104757	Cap Axle Blk 1 50 X 1 00
--	532144334	Sealant, Tire (10 oz. Tube)

**NOTE:** All component dimensions given in U.S. inches  
1 inch = 25.4 mm

# REPAIR PARTS

TRACTOR - - MODEL NO. BL15542LTB, PRODUCT NO. 954 00 25-71

ENGINE



**OPTIONAL EQUIPMENT**  
**Spark Arrester**

# REPAIR PARTS

TRACTOR - - MODEL NO. BL15542LTB, PRODUCT NO. 954 00 25-71

## ENGINE

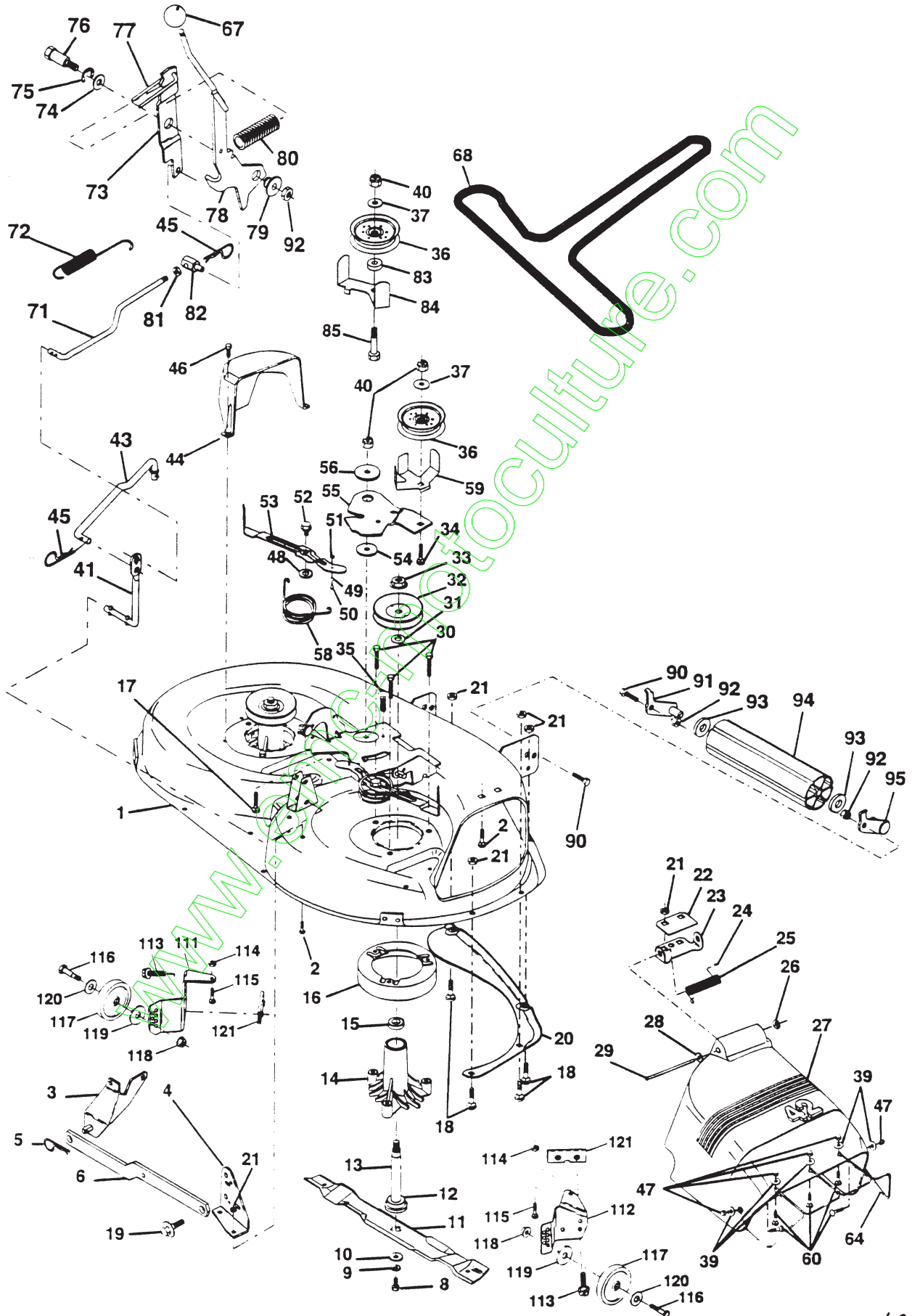
KEY NO.	PART NO.	DESCRIPTION
1	532132623	Control Th/ch RH Blk Tee Eec
2	817720410	Screw Hex Thd Cut 1/4-20x5/8 T
3	-----	Engine B&S 14/15.5 Vang 1 D Model No. 28Q777
4	532137352	Muffler Ext LT B&S 14 HP
13	532272293	Gasket Eng 1 313 Id Tin Plated
14	813280324	Nipple Pipe 3/8 Npt X 3"
15	813200300	Elbow Std 90 Degree 3/8-18 Npt
16	811050600	Washer Lock Ext Tooth 3/8
23	532128953	Shield Heat Browning LT/YT
24	817021008	Screw Tap Hex #10-24unc X 1/2
29	532137180	Kit Spark Arrestor (Flat Scm)
31	532109202	Tank Fuel Front 1 25
32	532140527	Cap Asm Fuel W/sym Vented
33	532123487	Clamp Hose Black
37	532137040	Line Fuel 9.50"
38	-----	Plug Oil Drain (Order From Engine Manufacturer)
40	532124028	Bushing Snap Nyl Blk Fuel Line
44	817490412	Screw Hexwsh Thdrol 1/4-20x3/4
46	819091416	Washer 9/32 X 7/8 X 16 Ga
49	817490616	Screw Thdrol 3/8-16 x 1 Ty-tt
62	810040500	Washer Lock Hvy Hlcl Spr 5/16
66	532127951	Stop, Throttle
72	871070512	Screw Hexhd Cap 5/16-18x 3/4
78	817490620	Screw Thdrol 3/8-16x1-1/4 TYTT
81	873510400	Nut Keps Hex 1/4-20 UNC

**NOTE:** All component dimensions given in U.S. inches  
1 inch = 25.4 mm

# REPAIR PARTS

TRACTOR -- MODEL NO. BL15542LTB, PRODUCT NO. 954 00 25-71

## MOWER DECK



# REPAIR PARTS

TRACTOR - - MODEL NO. BL15542LTB, PRODUCT NO. 954 00 25-71

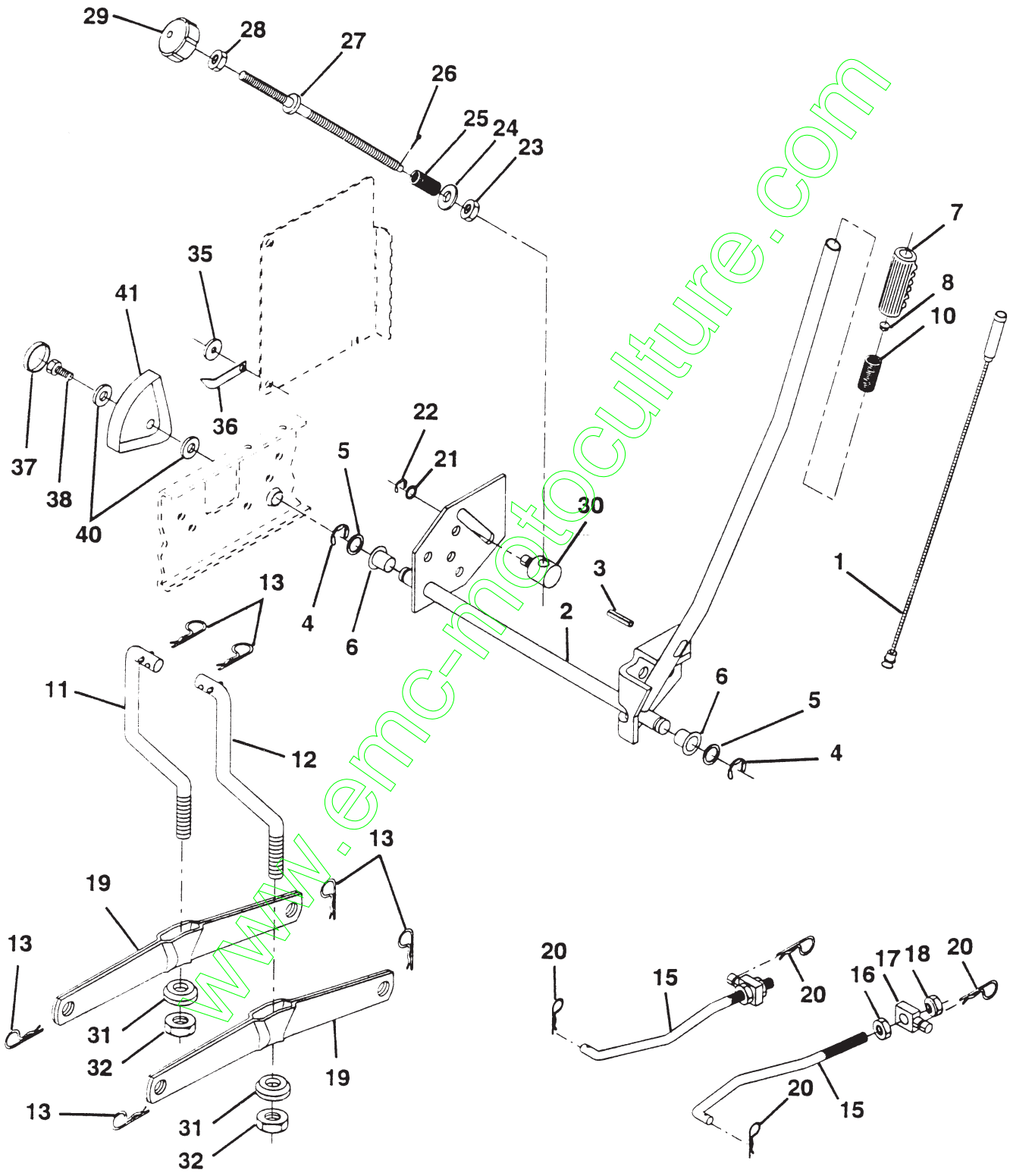
## MOWER DECK

KEY NO.	PART NO.	DESCRIPTION	KEY NO.	PART NO.	DESCRIPTION
1	532144393	Deck Asm MWR 42"weldment	54	532133943	Washer Hardened
2	872140506	Bolt Rdhd Sqnk 5/16-18unc X3/4	55	532140084	Arm Idler 42"mower LT/YT
3	532138017	Bracket Asm Fr Sway Bar 38/42	56	532122052	Spacer Retainer Pm Mower
4	532138440	Bracket Asm Deck 42"sway Bar	58	532140086	Spring Torsion Brakes
5	532124670	Retainer Spring	59	532141043	Guard TUV Idler
6	532130832	Arm Suspension Rear	60	871161010	Screw Truss Hd Phil 10-24 x 5/8
8	532850857	Bolt 3/8 - 24 X 1.25 Gr 8	64	532139328	Guard Deflector Mower 42" TUV
9	810030600	Washer Lock Hvy 3/8	67	532106932	Knob Rd 3/8-16 Plstc Thds Blk
10	532140296	Washer Hard Blade Mower Vented	68	532144200	V-Belt Mower 42"
	532138498	Blade Mower Hi-Lift 42"	71	532142427	Rod Clutch Primary 38/42
12	532129895	Bearing Ball #6024 (Mandrel)	72	532131870	Spring Return
13	532137645	Shaft Asm W/lower Bearing	73	532127847	Arm Clutch Secondary
14	532128774	Housing Mandrel Vented	74	532121748	Washer 25/32 X 1-5/8 X 16 Ga
15	532110485	Bearing Ball Mandrel	75	812000029	Ring Klip #5304-75
16	532140329	Stripper Mower Vented	76	532128903	Bolt Shoulder 3/8-16 Unc 1 44
17	872110610	Bolt Rdhd Sqnk 3/8-16 X 1-1/4	77	532127845	Keeper Spring 4 000
18	872140505	Bolt Rdhd Sqnk 5/16-18 X 5/8	78	532140334	Arm Asm Clutch Primary
19	532132827	Bolt Shoulder	79	532127498	Bushing 747 Od X 794 Lg Brass
20	532136888	Baffle Vortex 42	80	532128759	Spring Clutch Mower 2 750 Zinc
21	873680500	Nut Crownlock 5/16-18 UNC	81	873350600	Nut Hex Jam 3/8-16
22	532134753	Stiffener Bracket 42"deck	82	532142028	Trunnion Adj 94
23	532131267	Bracket Deflector Mower 42"	83	532120958	Washer Sintered
24	532105304	Cap Sleeve 80x 112 Blk Mower	84	532144394	Keeper Belt Idler Fixed
25	532123713	Spring Torsion Deflector 2 52	85	872140618	Bolt Carriage 3/8-16 x 2-1/2 Gr. 5
26	532110452	Nut Push Phos & Oil	90	874760616	Bolt Fin Hex 3/8-16 UNC x 1
27	532139450	Shield Deflector Mower 42" Blk	91	532132274	Bracket Asm Noseroller LH
28	819111016	Washer 11/32 X 5/8 X 16 Ga	92	873800600	Nut Lock Hex W/Ins 3/8-16 Unc
29	532131491	Rod Hinge 42"6 75 Wlg	93	819171416	Washer 17/32 x 7/8 x 16 Ga.
30	532138776	Screw Thdrol Hex Head Zinc Mwr	94	532132264	Roller Nose 38 & 42
31	532129963	Washer Spacer Mower Vented	95	532132273	Bracket Asm Noseroller RH
32	532129861	Pulley Mandrel 42"	111	532140353	Bracket Wheel Gauge LH 42" Deck
33	532137266	Nut 9/16 Toplock Fling Oil Dip	112	532132262	Bracket Gauge Wheel RH 42" Deck
34	872110614	Bolt Rdhd 3/8-16uncx1-3/4 Gr5	113	817490512	Screw Thdrol 5/16-18 x 3/4
35	532133835	Fastner Christmas Tree	114	873510500	Nut Keps 5/16-18 UNC
36	532131494	Pulley Idler Flat 3 060	115	872110504	Bolt Carriage 5/16-UNC x 1/2
37	819131316	Washer 13/32 X 13/16 X 16	116	532124842	Bolt Shoulder "A" 2.41 "B" 1.66
39	819070718	Washer 7/32 x 7/16 x 18 Ga.	117	532105455	Wheel Gauge Blk 4.93
40	873680600	Nut Crownlock 3/8-16 UNC	118	873930600	Nut Centerlock 3/8-16 UNC
41	532133551	Rod Pivot W/nibs	119	819121414	Washer 3/8 x 7/8 x 14 Ga.
43	532140083	Rod Clutch Secondary W/nibs	120	819171512	Washer 17/32 x 15/16 x 12 Ga.
44	532140088	Guard Mandrel LH Black	121	532143723	Bracket Extruded Gauge Wheel
45	532124788	Spring Retainer 1" Zinc/cad	--	532144783	Deck Serv 42" HL Mech
46	532137729	Screw Hex Thd Cut 1/4-20x5/8 T			(Standard Deck - Order separately
47	532060807	Nut Acorn Hex #10-24			gauge wheel and noseroller
48	532133944	Washer Hardened Smaller			components - Key Nos. 111-121,
49	532133940	Roller Asm Cam Follower 42"dec			90-95 and CE certification
50	532131340	Bolt Shldr 10-24 Zinc Gr 5 42"			components Kit No. EC42)
51	532069180	Nut Lock #10-24 Unc	--	532130794	Mandrel Asm Service (Includes Key
52	532139888	Bolt Shoulder 5/16-18 Unc Blkz			Nos. 8-10, 12-15, 31 and 33)
53	532131845	Arm Asm Pad Brake			

**NOTE:** All component dimensions given in U.S. inches  
1 inch = 25.4 mm

# REPAIR PARTS

TRACTOR -- MODEL NO. BL15542LTB, PRODUCT NO. 954 00 25-71  
MOWER LIFT



# REPAIR PARTS

TRACTOR - - MODEL NO. BL15542LTB, PRODUCT NO. 954 00 25-71

## MOWER LIFT

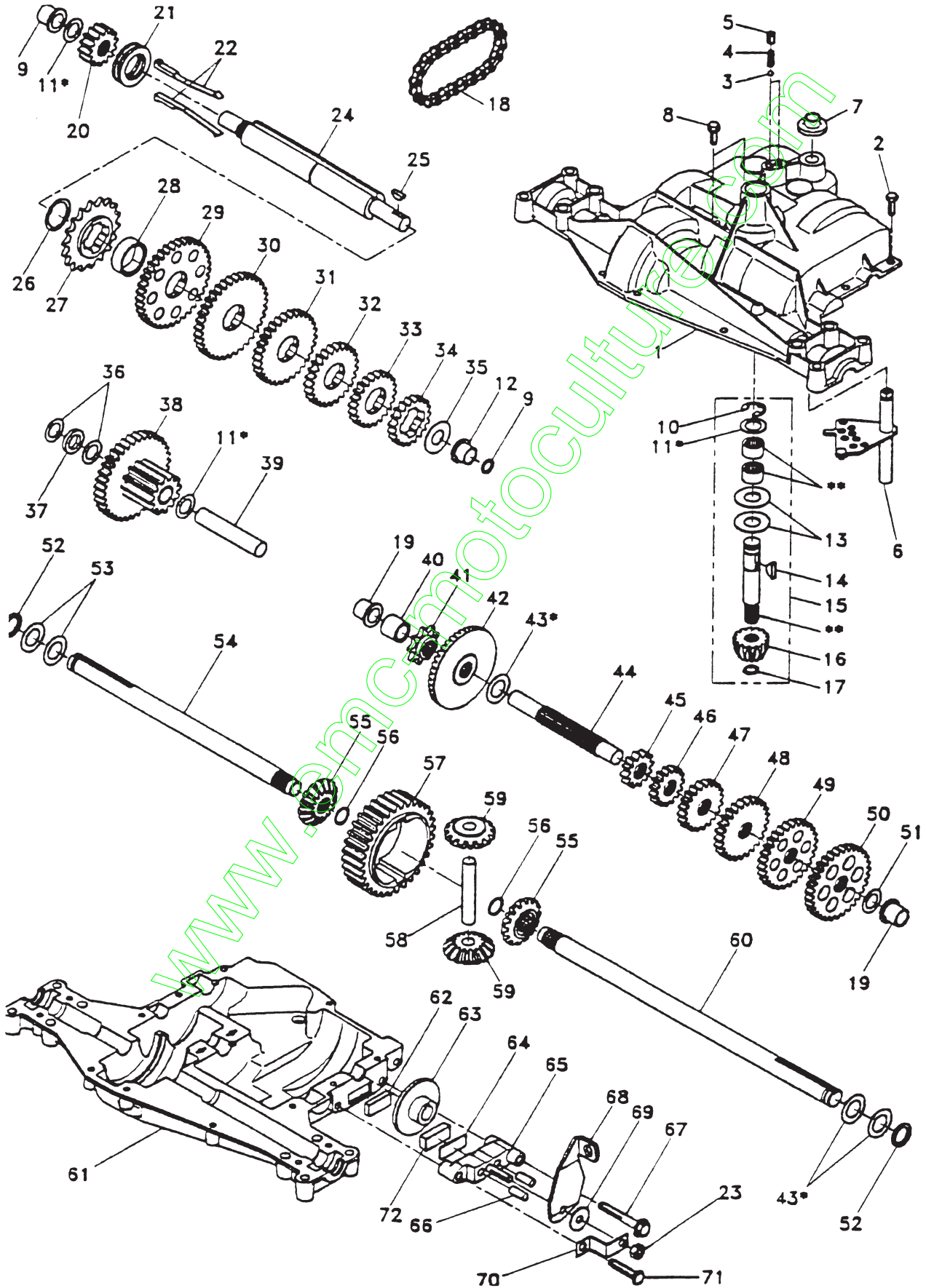
KEY NO.	PART NO.	DESCRIPTION
1	532136973	Wire Asm Inner W/plunger 17 32
2	532122507	Shaft Asm Lift LH Inf Hgt P/L
3	532105767	Pin Groove 1 500 Zinc
4	812000002	E Ring #5133-62
5	819211621	Washer 21/32 X 1 X 21 Ga
6	532120183	Bearing Nylon Blk 629 Id
7	532109413	Grip Handle Bicycle Matte Blk
8	532124526	Button Plunger Black
10	532122512	Spring Cprsn 3 750 Oiled
11	532139865	Link Lift LH
12	532139866	Link Lift RH
13	532124670	Retainer Spring
15	532127218	Link Front
16	873350800	Nut Jam Hex 1/2-13 Unc
17	532130171	Trunnion Blk Zinc
18	873800800	Nut Lock W/wsh 1/2-13unc
19	532139868	Arm Suspension Rear
20	532124660	Retainer Spring
21	819151216	Washer 15/32 X 3/4 X 16 Ga
22	812000037	Ring Klip #t5304-37
23	532110807	Nut Special
24	819131016	Washer 13/32 X 5/8 X 16 Ga
25	532124874	Spring 2-1/8"
26	876020308	Pin Cotter 3/32 X 1/2
27	532126971	Rod Adj Lift Zinc 7 49 Wrk Lg
28	873350600	Nut Hex Jam 3/8-16 Unc
29	532138057	Knob Inf 3/8-16 Unc Blk W/sym
30	532110810	Trunnion Dp Stop Dbl Thds PLT
31	532140302	Bearing pvt. Lift Sphencal
32	873540600	Nut Crownlock 3/8-24
35	532120529	Washer Nylon .44 x .75 x 032
36	532138346	Pointer pnt height ind.
37	532123935	Plug hole Blk 1.485/1.515 Dia
38	817490512	Screw Thdrol 5/16-18 x 3/4
40	819112410	Washer 11/32 x 1-1/2 10 Ga
41	532123934	Scale Ind. Height Black

**NOTE:** All component dimensions given in U.S. inches  
1 inch = 25.4 mm



# REPAIR PARTS

TRACTOR - - MODEL NO. BL15542LTB, PRODUCT NO. 954 00 25-71  
DANA TRANSAXLE - MODEL NUMBER 4360-79



# REPAIR PARTS

TRACTOR -- MODEL NO. BL15542LTB, PRODUCT NO. 954 00 25-71

DANA TRANSAXLE - MODEL NUMBER 4360-79

KEY PART NO.	NO.	DESCRIPTION	KEY PART NO.	NO.	DESCRIPTION
1	532142671	Housing, Upper	41	532105928	Sprocket, 9 Teeth (Reverse)
2	532002274	Screw, Self-Tapping, Large 1/4-20 x .734	42	532110084	Gear, Bevel, 42 Teeth
3	532134400	Ball, Detent	43	532134394	* Assembly, Kit, Shim .750 Shaft
4	532105904	Spring, Detent	44	532120473	Shaft, Drive
5	532105905	Screw, Set	45	532142678	Gear, Spur, 12 Teeth (1-)
6	532138235	Kit, Shifter Assembly	46	532142679	Gear, Spur, 15 Teeth (2-)
7	532134399	Boot, Shifter	47	532120407	Gear, Spur, 20 Teeth (3-)
8	532134791	Screw, Self-Tapping, with Sealer	48	532106589	Gear, Spur, 25 Teeth (4-)
9	532138241	Square Ring	49	532120408	Gear, Spur, 28 Teeth (5-)
10	532142672	Ring, Retaining	50	532105937	Gear, Spur, 31 Teeth (6-)
11	532134793	* Assembly, Kit, Shim .625 Shaft	51	532002226	Washer, Plain .632 x 1.00 x .060
12	532142673	Bearing, Flange	52	532134401	Washer, Neoprene
13	532120415	Washer, Plain .632 x 1.38 x .046	53	532002264	Washer, Plain .758 x 1.25 x .031
14	532142674	Key, Woodruff, #9	54	532120474	Axle, L.H.
15	532138234	Assembly, Kit, Input Shaft	55	532110081	Gear, Miter, 15 Teeth
16	532110078	Pinion, Bevel, 14 Teeth	56	532105941	Ring, Retaining
17	532105909	Ring, Retaining	57	532110071	Gear, Spur, 32 Teeth
18	532105910	Chain, 24 Pitches	58	532120952	Shaft, Cross
19	532105911	Bearing, Flange	59	532110082	Gear, Miter, 15 Teeth
20	532142675	Gear, Spur, 14 Teeth	60	532123908	Axle, R.H.
21	532138246	Collar, Clutch	61	532142680	Housing, Lower
22	532138236	Assembly, Kit, Clutch Keys	62	532120961	Puck, Friction
23	873810500	Locknut 5/16-24	63	532007294	Disc, Brake
24	532142676	Shaft, Intermediate	64	532108989	Spacer
25	532002244	Key, Woodruff, #61	65	532120953	Jaw, Brake
26	532105916	Ring, Retaining	66	532120954	Pin, Dowel
27	532120470	Sprocket, 18 Teeth (Reverse)	67	532134799	Screw, Self-Tapping, Large 5/16-18 x 2.25
28	532110070	Spacer	68	532138244	Lever, Actuating
29	532142677	Gear, Spur, 37 Teeth (1-)	69	532108996	Washer, Plain .321 x 1.00 x .055
30	532142681	Gear, Spur, 35 Teeth (2-)	70	532120956	Bracket, Anti-Rotation
31	532120405	Gear, Spur, 30 Teeth (3-)	71	532106596	Screw, Self-Tapping, Large 5/16-18 x 1.44
32	532108980	Gear, Spur, 25 Teeth (4-)	72	532120951	Puck, Friction
33	532120406	Gear, Spur, 22 Teeth (5-)	73	532120416	Grease
34	532134796	Gear, Spur, 19 Teeth (6-)			
35	532105925	Washer, Plain .640 x 1.37 x .061			
36	532002232	Washer, Plain .632 x 1.00 x .026			
37	532108978	Spacer .630 x 1.00 x .169			
38	532110079	Assembly, Gear, Combination of 12 Teeth and 35 Teeth			
39	532124639	Shaft, Idler			
40	532120472	Spacer .635 x .875 x .755			
			41	532105928	Sprocket, 9 Teeth (Reverse)
			42	532110084	Gear, Bevel, 42 Teeth
			43	532134394	* Assembly, Kit, Shim .750 Shaft
			44	532120473	Shaft, Drive
			45	532142678	Gear, Spur, 12 Teeth (1-)
			46	532142679	Gear, Spur, 15 Teeth (2-)
			47	532120407	Gear, Spur, 20 Teeth (3-)
			48	532106589	Gear, Spur, 25 Teeth (4-)
			49	532120408	Gear, Spur, 28 Teeth (5-)
			50	532105937	Gear, Spur, 31 Teeth (6-)
			51	532002226	Washer, Plain .632 x 1.00 x .060
			52	532134401	Washer, Neoprene
			53	532002264	Washer, Plain .758 x 1.25 x .031
			54	532120474	Axle, L.H.
			55	532110081	Gear, Miter, 15 Teeth
			56	532105941	Ring, Retaining
			57	532110071	Gear, Spur, 32 Teeth
			58	532120952	Shaft, Cross
			59	532110082	Gear, Miter, 15 Teeth
			60	532123908	Axle, R.H.
			61	532142680	Housing, Lower
			62	532120961	Puck, Friction
			63	532007294	Disc, Brake
			64	532108989	Spacer
			65	532120953	Jaw, Brake
			66	532120954	Pin, Dowel
			67	532134799	Screw, Self-Tapping, Large 5/16-18 x 2.25
			68	532138244	Lever, Actuating
			69	532108996	Washer, Plain .321 x 1.00 x .055
			70	532120956	Bracket, Anti-Rotation
			71	532106596	Screw, Self-Tapping, Large 5/16-18 x 1.44
			72	532120951	Puck, Friction
			73	532120416	Grease

\* Use in combinations to maintain proper clearances

\*\* Order Key No. 15

NOTE: All component dimensions given in U.S. inches  
1 inch = 25.4 mm