

BP253

ME/MAKINO

パーツリスト

SM
EG

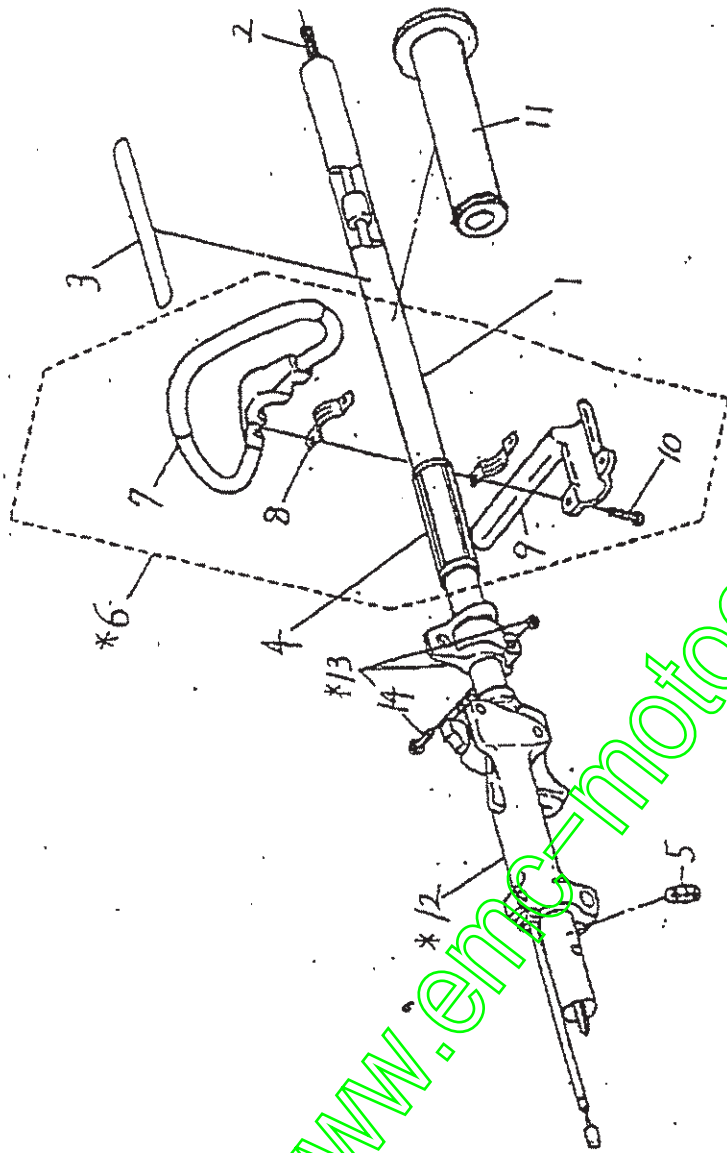
BP253 (BP253**0101)

(※印は新設部品です)

BP253 RECOMMENDED PARTS LIST			Per 10,000 units
A	Consumable and parts regularly replaced	2-3%	200-300 pcs
B	Parts which could be worn, teared and damaged	0.5-1.0%	50-100 pcs
C	Slow moving or less	0.1-0.2%	10-20 pcs

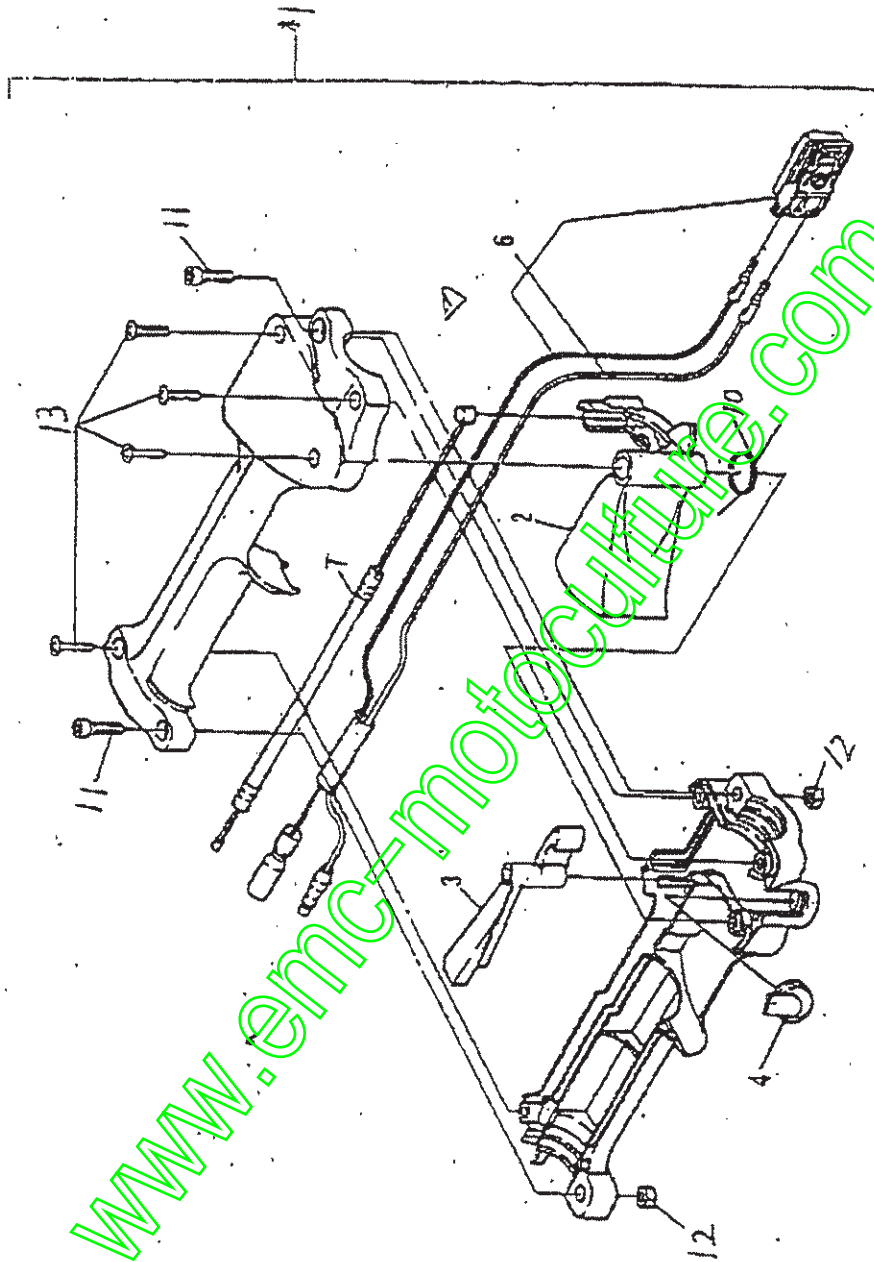
主 査	点 検	作 成
	倉 倉 00.10.16	

www.emc-motoculture.com



www.enc-motoculture.com

BP253

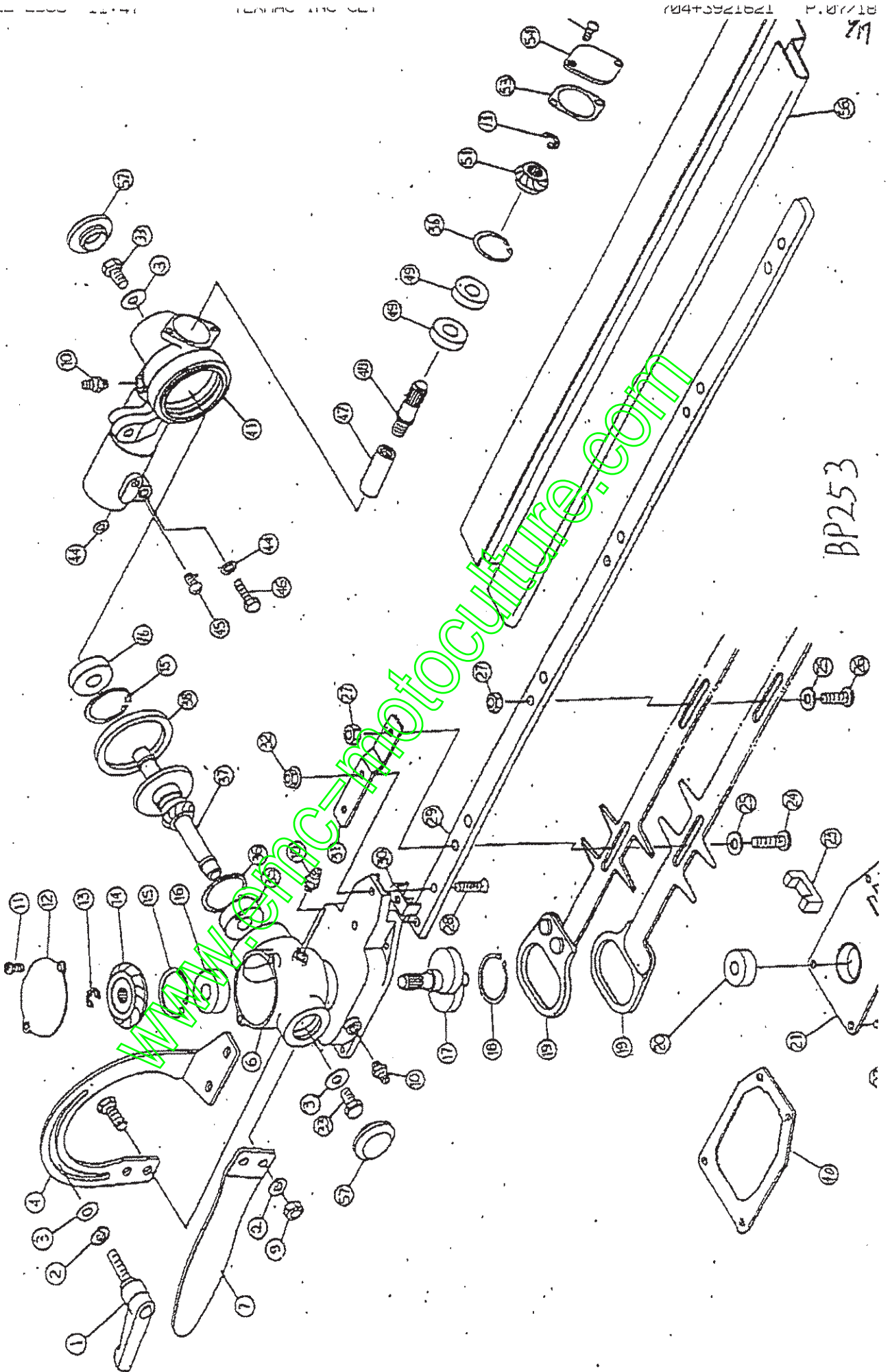


BP253

図番	部品番号	部品名称	標準価格 (1個 当たり)	個数			摘要
				BP253			
※	1	6015001000- C CONTROL LEVER ASSY		1			Incl. 2~4, 6, 10~13
	2	6195006030- C LEVER		1			9802
	3	6215023060- C LEVER		1			9803
	4	6195006150- C TOP		1			10018
△※	6	6015001000- C WIRE SET SWITCH ASSY		1			10019
△※	7	6015001000- B WIRE COMPL		1			10020
	10	6195006050- C SPRING		1			9809
	11	0119059720- C SOCKET HEAD BOLT		2			9817
	12	6415011160- C NUT		3			9818
	13	6195006060- C TAPPING SCREW		4			9819

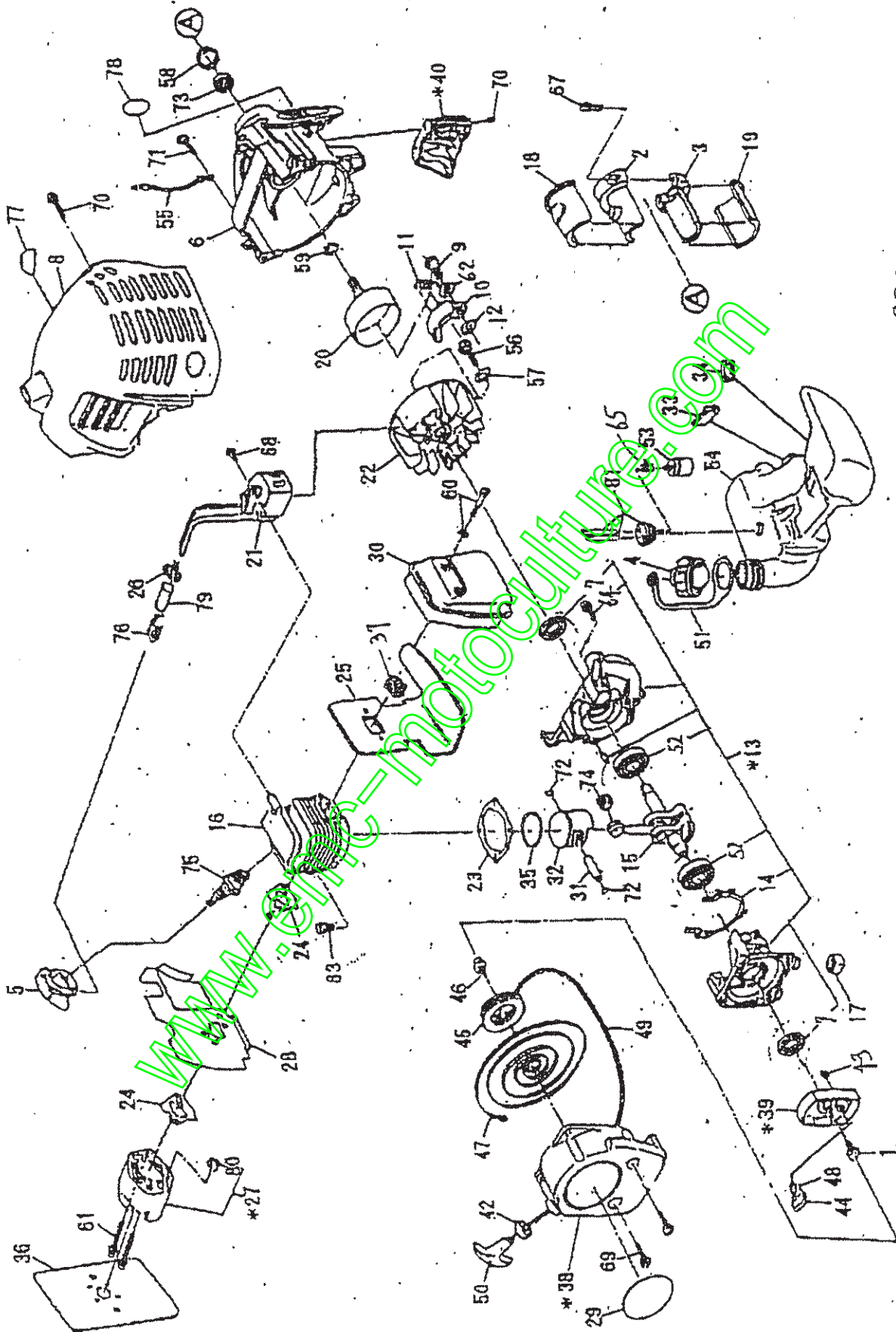
10057

www.emc-motoculture.com



図番	部品番号	部品名称	標準単位 (1個 当たり)	個数			備考
				BP253			
1	6013085010-	C LEVER, CLAMP		1			10021
2	0032105001-	C SPRING WASHER		3			10022
3	6013085020-	C WASHER		3			10023
4	6013085030-	C PLATE		1			10024
5	6013085040-	C BOLT		2			10025
6	6013085050-	C CASE A		1			10026
7	6013085060-	C HANDLE		1			10027
8							10028
9	0021706000-	C NUT		2			7505
10	6013085440-	C NIPPLE		1			10029
11	6013085450-	C SCREW PAN HEAD		1			10030
12	6013085460-	C PLATE		1			10031
13	0031306000-	G CLIP		2			10032
14	6013085510-	C GEAR		1			10033
15	0031426000-	C SNAPRING, INNER		2			6129
16	6013085110-	C BALL BEADING		2			10034
17	6013085120-	C CRANKSHAFT		1			10035
18	0031528000-	C SNAPRING, OUTER		1			10036
19	6013085130-	A BLADE		2			10037
20	6013085140-	C BALL BEARING		1			10038
21	6013085150-	C CASE LOWER		1			10039
22	6013085160-	C BOLT		4			10040
23	6013085520-	B FELT		1			10041
24	6013085530-	C SCREW		1			10042
25	6013085540-	C WASHER		5			10043
26	6013085550-	C SCREW		4			10044
27	0170069960-	C U-NUT		5			4209
28	6013085220-	C SCREW		2			10045
29	6013085230-	C GUIDE PLATE		1			10046

図番	部品番号	部品名称	標準価格 (1個・ 当たり)	個 数				備 考
				BP253				
* 30	6013085240-	C GUIDE		1				10047
* 31	6013085250-	C PLATE		1				10048
* 32	6013085250-	C FRANGE NUT		2				10049
* 33	6013085560-	C BOLT		2				10050
	34							
* 35	6013085610-	C BALL BEARING		1				10052
	36	0031422000-	C SNAPRING, INNER	2				5312
* 37	6013085620-	C GEAR COMPL		1				10053
* 38	6013085630-	C RING-O		1				10054
	39							
* 40	6013085430-	A PACKIN						10051
* 41	6013085310-	C CASE B						10055
	42							
	43							
* 44	6013085320-	C WASHER		2				10028
* 45	6013085330-	C SCREW PAN HEAD		1				10058
* 46	6013085340-	C BOLT		1				10059
* 47	6013085350-	C JOINT R		1				10056
* 48	6013085360-	C SHAFT, GEAR D		1				10060
* 49	6013085640-	C BALL BEARING		2				10061
	50							
* 51	6013085650-	C GEAR		1				10062
	52							
* 53	6013085660-	A PACKIN		1				10063
* 54	6013085700-	C PLATE		1				10064
	55							
* 56	6013085410-	C BLADE COVER		1				10065
* 57	6013085420-	C CAP		2				10066



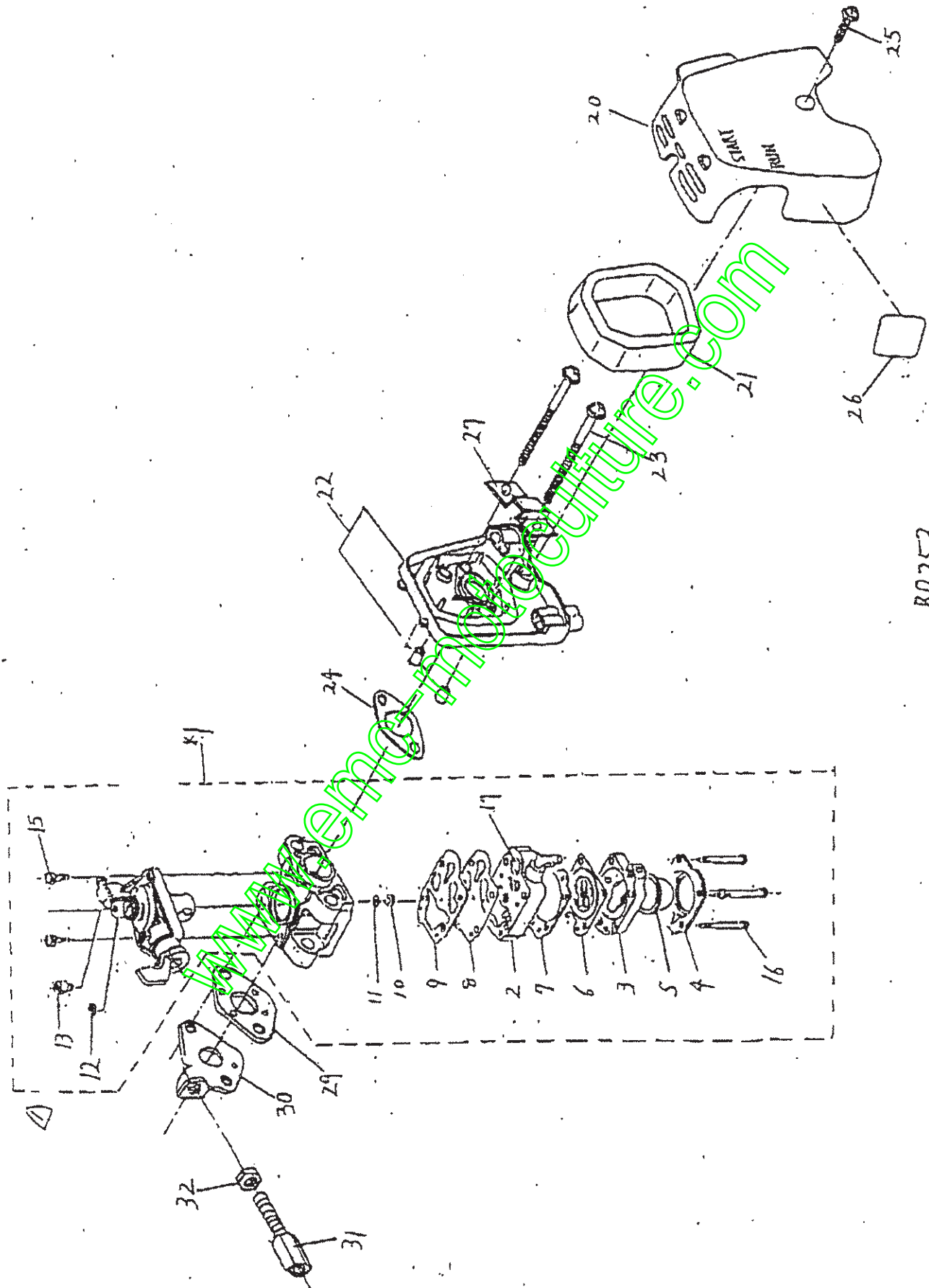
BP253

エンジン本体

図番	部品番号	部品名称	標準価格 (1個 当たり)	個 数				備 考
				BP253				
1	5235504700-	C BOLT ASSY		1				M6=14 W 5363
2	6251509500-	C BRACKET, PIPE 1		1				5377
3	6251509600-	C BRACKET, PIPE 2		1				5378
4	5316014000-1	B CAP, FUEL TANK		1				5468
5	5237503301-1	A CAP, PLUG		1				5354
6	6211504204-	C CASE, CLUTCH		1				10067
7	0440129970-	B OIL SEAL		2				5447
8	5255015000-	C COVER, CYLINDER COMPL.		1				5481
9	5928500400-	C BOLT, CLUTCH		2				10068
10	5928500000-	B SHOE, CLUTCH		2				9967
11	5928500100-	C SPRING		1				9968
12	6252500900-1	C WASHER		2				2308
*13	5231011001-1	C CRANKCASE ASSY		1				Incl. 7, 14, 62, 64 10069
14	5231502202-	A GASKET, CRANKCASE		1				5325
15	5232017000-	C CRANKSHAFT COMPL.		1				5448
16	5231501804-	C CYLINDER		1				10070
17	5216500200-	A DAMPER		2				6160
18	5261506604-	A DAMPER, PIPE 1		1				10071
19	6251506703-	A DAMPER, PIPE 2		1				10072
△*	6213014000- 6243003000-	C DRUM, CLUTCH COMPL.		1				10073
21	5237031024-1	B COIL		1				10074
22	5257002010-	C FLYWHEEL		1				5449
23	5231502304-	A GASKET, CYLINDER		1				5405
24	5233503902-	A GASKET, INSULATOR		2				5335
25	5253500602-	A GASKET, MUFFLER		1				10075
26	5237503202-	C GROMMET		1				5352
*27	5233014000-2	C INSULATOR COMPL.		1				Incl. 30 5484

図番	部品番号	部品名称	標準価格 (1個 当たり)	個 数		備 考
				BP253		
28	5253501001-	C INSULATOR CARBURETOR		1		5485
29	6019501700-	C LABEL, MODEL		1		10076
30	5233037003-2	C MUFFLER, EXHAUST		1		Incl. 37 5347
31	5232502600-	C PIN, PISTON		1		5329
32	5232501902-	C PISTON		1		5327
33	5036500200-1	A PLATE		1		6161
34	5036500300-1	A PLATE		1		6162
35	5242500701-	C RING, PISTON		1		5328
36	5253500300-	A SPACER, GASKET		1		5487
37	5233506800-	B SPARK ARRESTOR		1		10077
*38	5255006002-	C STARTER, REWIND		1		Incl. 39, 42~50 5488
*39	5235025001-	C PULLEY		1		Incl. 43, 44, 48 5361
*40	5219002000-	C STAND SET		1		Incl. 70 9841
				1		
42	5255001040-	C DAMPER		1		5490
43	5215003040-	C E-CLIP		1		6151
44	5415011010-	C RATCHET		1		3607
45	5235024012-	C REEL		1		5373
46	5425003010-	C SET SCREW		1		5376
47	5235024032-	C SPIRAL SPRING		1		10078
48	5245007020-	C RETURN SPRING		1		5492
49	5235024022-	C STARTER, ROPE		1		5375
50	5225004020-	C STARTER, KNOB		1		7614
51	6255021002-	B STRAP UNIT		1		5444
52	0600129850-	C BALL BEARING		2		#6001C3 10079
53	5236503900-	A FILTER		1		3112
54	5256501304-	C TANX, FUEL		1		10080

図番	部品番号	部品名称	標準価格 (1個 当たり)	個 数				価 値
				BP253				
55	6165501200-1	C WIRE		1				10081
56	0011306160-	C BOLT ASSY		1				6190
57	0031208000-	C WASHER		1				1395
58	0031432000-	C SNAPPING, INNER		1				6272-1
59	0031512000-	C SNAPPING, OUTER		1				1398
60	0119059600-	C SOCKET HEAD BOLT		2				M5=45 W 10082
61	0119059640-	C SOCKET HEAD BOLT		2				M5=25 W, SW 5495
62	0200089911-	C WASHER		2				6486
63	0119059730-	C SOCKET HEAD BOLT		2				M5=20 W, SW 5333
64	0140059520-	C SCREW		1				M5=25 W, SW 5341
65	0561059990-	C HOSE CLAMP		1				3114
67	0119059950-	C SOCKET HEAD BOLT		2				M5=18 SW 1223
68	0140049920-	C SCREW		2				M4=20 W, SW 5351
69	0140059450-	C SCREW		4				M5=18 W, SW 5497
70	0140059480-	C SCREW ASSY		3				M5=14 W, SW 10083
71	0140059700-	C SCREW		3				M5=20 W, SW 5334
72	0565089970-	C CLIP		2				5330
73	0600129950-	C BALL BEARING		1				#6201DD 8603
74	0610089990-	C NEEDLE ROLLER BEARING		1				1012
75	0660149721-	A PLUG, SPARK		1				(BMR7A) BMR7A
76	0654009931-	B SPRING, PLUG CAP		1				6169
77	0734509931-	C LABEL		1				10084
78	0739209980-	C LABEL		1				5500
79	0851069920-	B TUBE		1				5501
80	0021705000-	C NUT		2				6470
81	0851199971-	A TUBE		1				5502



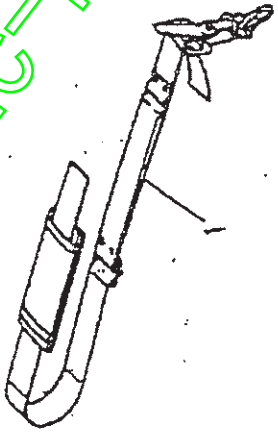
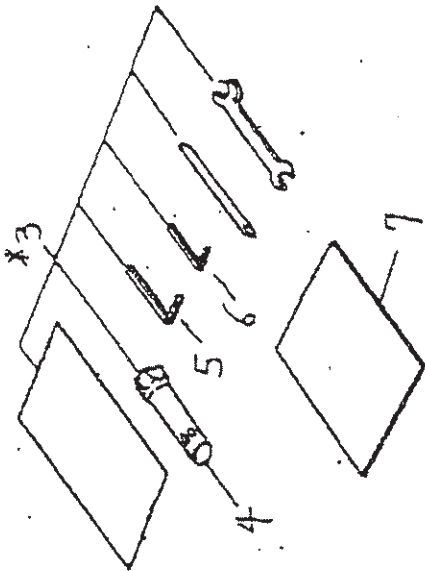
BP253

*

*

図号	部品番号	部品名称	標準価格 (1個 当たり)	個数				備 考	
				BP253					
								10085	
								Incl.2-17 WYL-144	
	* 1	5256065000- B	CARBURETOR		1				3861
	2	5236046130- C	BODY ASSEMBLY-PUMP		1				3863
	3	5236046060- C	BODY ASSEMBLY-AIR PURGE		1				6790
	4	5236046050- C	COVER-PRIMER PUMP		1				1504
	5	5246001150- C	PUMP-PRIMER		1				3171
	6	5316005250- A	DIAPHRAGM ASSEMBLY-MET'G		1				9882
	7	5236046040- A	GASKET-MET'G DIAPHRAGM		1				6499
	8	5246001040- A	DIAPHRAGM-PUMP		1				6498
	9	5246001030- A	GASKET-PUMP		1				10086
	* 10	5256065010- C	JET		1				6510
	11	5246001010- A	RING-O		1				6511
	12	5316005120- C	RING-SPRING RETAINING		1				5418
	13	5236018040- C	SWIVEL		1				
	14								
	15	5206008030- C	SCREW		2				5419
	16	5236046010- C	SCREW		4				5102
	17	5016004010- C	SCREEN-INLET		1				6508
	18								
	19								
	20	5253502600-1	CASE, AIR CLEANER		1				10087
	21	5233504700- A	ELEMENT, AIR CLEANER		1				5409
	22	5253021000-1	PLATE, CLEANER COMPL		1				10088
	23	0140059470- C	SCREW		2				10089
	24	5233504200- A	GASKET, CARBURSTOR		1				5412
	25	0043605140- C	SCREW ASSEMBLY		1				M5=14 W, SW 5416
	* 26	0736309980- C	LABEL		1				10090
	27	5013502400- C	PLATE, AIR CLEANER		1				5506
	28								

www.emc-motoculture.com



BP253

www.emc-motoculture.com