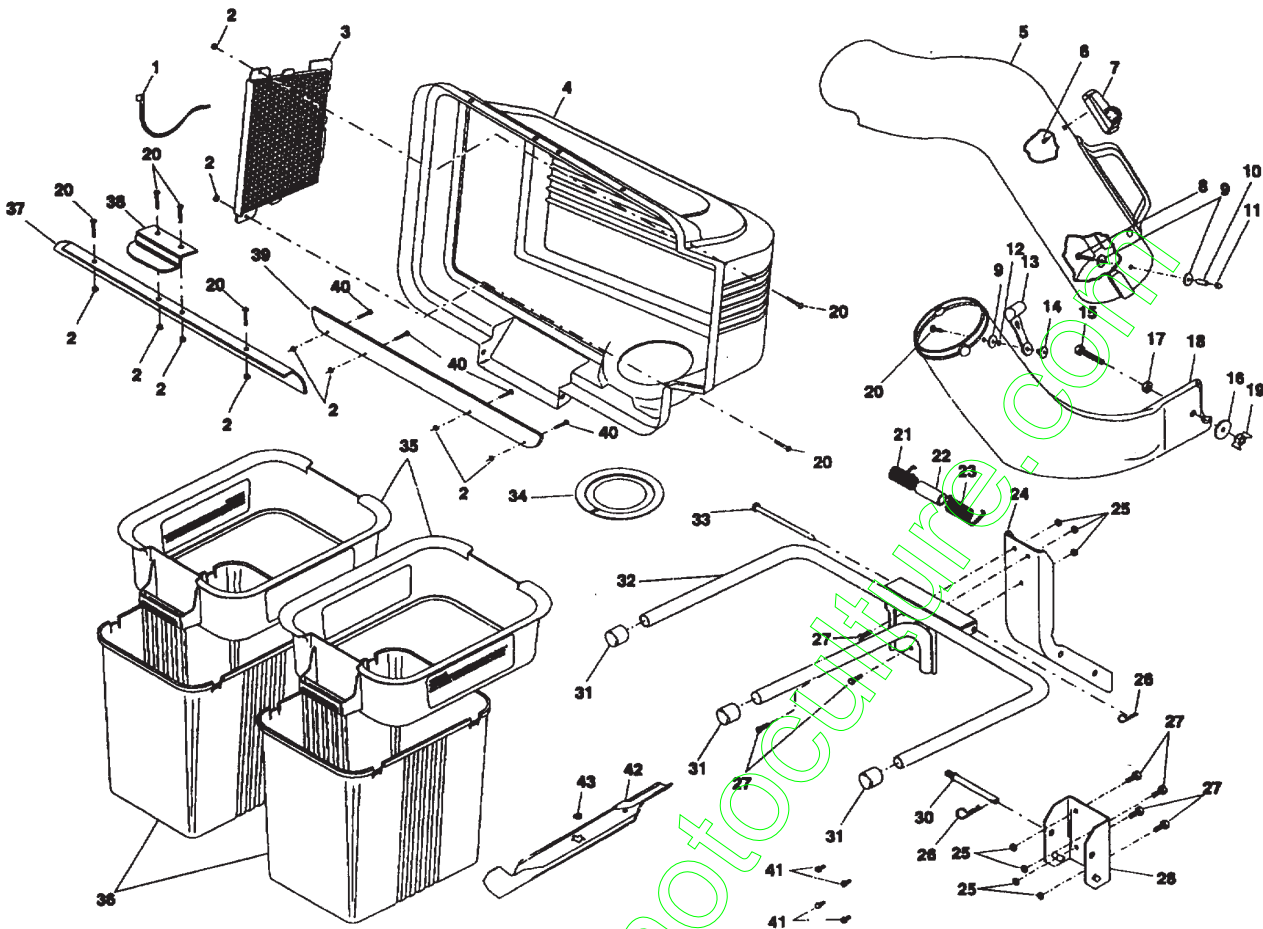


REPAIR PARTS

GRASS CATCHER – MODEL NUMBER CE38C



KEY PART NO. NO.

DESCRIPTION

| | | |
|----|--------------|-----------------------------|
| 1 | 532 12 47-56 | Tie Cable |
| 2 | 532 06 91-80 | Locknut#10-24 |
| 3 | 532 12 75-33 | Screen, Cover |
| 4 | 532 12 68-16 | Cover |
| 5 | 532 13 24-79 | Chute, Upper |
| 6 | 818 02 10-08 | Screw, Special #10-14 x 1/2 |
| 7 | 532 13 09-33 | Full Bagger Indicator |
| 8 | 874 98 10-20 | Screw, #10-24 x 1-1/8 |
| 9 | 819 06 12-16 | Washer 3/16x3/4x 16Ga. |
| 10 | 532 00 72-06 | Spacer, Split |
| 11 | 532 06 08-67 | Nut, Acron #10-24 |
| 12 | 810 07 10-00 | Washer, Lock |
| 13 | 532 10 98-08 | Latch, Chute |
| 14 | 532 00 20-29 | Nut, Weld |
| 15 | 874 93 06-20 | Bolt, Hex 3/8-16 x 1-1/4 |
| 16 | 819 13 16-16 | Washer 1332 x 1 x 16 Ga. |
| 17 | 873 68 06-00 | Locknut 3/8-16 |
| 18 | 532 13 29-72 | Chute, Lower |
| 19 | 532 13 11-30 | Wingnut 3/8-16 |
| 20 | 532 04 19-45 | Screw #10-24 x 1/2 |

KEY PART NO. NO.

DESCRIPTION

| | | |
|----|--------------|--|
| 21 | 532 13 27-96 | Spring, Cover L.H. (black) |
| 22 | 532 13 32-35 | Spacer, frver |
| 23 | 532 13 29-83 | Spring, Cover, R.H (gray) |
| 24 | 532 12 68-13 | Post, Support |
| 25 | 873 68 05-00 | Locknut 5/16 x 18 |
| 26 | 532 08 59-02 | Spring, Retainer |
| 27 | 874 78 05-12 | Bolt, Hex 5/16x18 |
| 28 | 532 13 08-89 | Bracket, Mounting |
| 30 | 532 13 11-37 | Pin, Support Post |
| 31 | 532 13 44-96 | Cap, Tubing End |
| 32 | 532 12 69-19 | Bagger, Frame |
| 33 | 532 12 86-00 | Pin, Hinge |
| 34 | 532 12 75-34 | Gasket, Cover |
| 35 | 532 12 95-85 | Container, Top |
| 36 | 532 12 95-86 | Container, Bottom |
| 37 | 532 13 22-56 | Seal, Cover |
| 38 | 532 13 08-95 | Latch Handle, Cover |
| -- | 532 10 50-70 | Bag, 3.0 mil. 30 Gallon Trash (not included with bagger) |
| 39 | 532 13 54-95 | Strip Seal |
| 40 | 532 04 19-45 | Screw 10-24 x 1/2 |
| 41 | 817 49 05-08 | Screw 5/16-18 x 1/2 |
| 42 | 532 13 84-97 | Blade, High Lift |
| 43 | 532 13 82-00 | Washer |