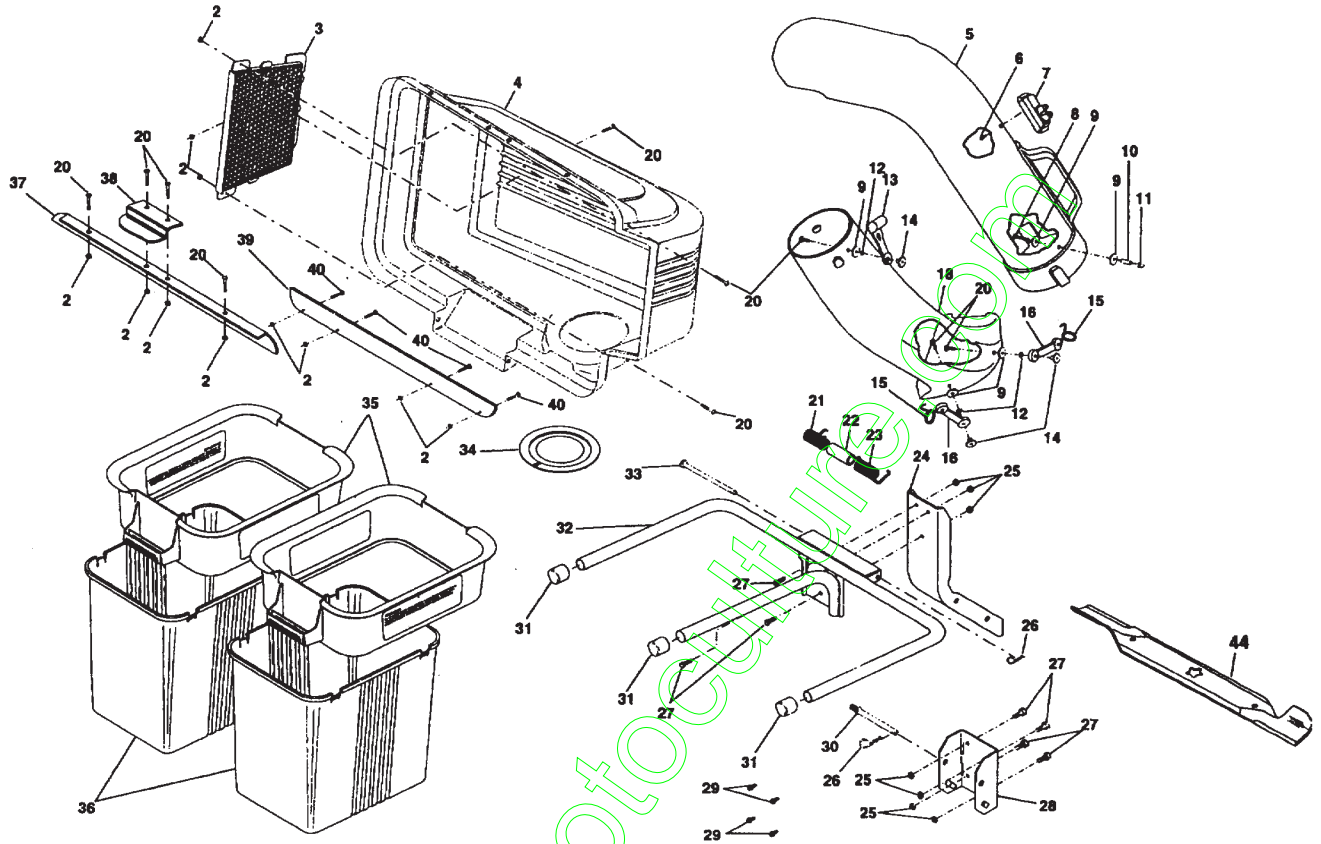


REPAIR PARTS

GRASS CATCHER – MODEL NUMBER CE42C



KEY PART NO. NO.

DESCRIPTION

2	532 06 91-80	Locknut#10-24
3	532 12 75-33	Screen, Cover
4	532 14 06-54	Cover
5	532 12 68-40	Chute, Upper
6	818 02 10-08	Screw, Special #10-14 x 1/2
7	532 14 05-72	Full Bagger Indicator
8	874 98 10-20	Screw, #10-24 x 1-1/8
9	819 06 12-16	Washer 3/16 x 3/4 x 16 Ga.
10	532 00 72-06	Spacer, Split
11	532 06 08-67	Nut, Acorn#10-24
12	810 07 10-00	Washer, Lock
13	532 10 98-08	Latch, Chute
14	532 00 20-29	Nut, Weld
15	532 13 07-60	Latch, Hook
16	532 13 07-59	Rubber, Latch
18	532 12 68-39	Chute, Lower
20	532 04 19-45	Screw #10-24 x 5/8
21	532 13 27-96	Spring, Cover L.H. (black)

KEY PART NO. NO.

DESCRIPTION

22	532 13 32-35	Spacer, Cover
23	532 13 29-83	Spring, Cover R.H. (gray)
24	532 12 68-13	Post, Support
25	532 06 31-24	Locknut 5/16 x 18
26	532 08 59-02	Spring, Retainer
27	874 78 05-12	Bolt, Hex 5/16-18 x 3/4
28	532 13 08-89	Bracket, Mounding
29	817 49 05-08	Screw 5/16-18 x 1/2
30	532 13 11-37	Pin, Support Post
31	532 13 44-96	Cap, Tubing End
32	532 12 69-19	Bagger, Frame
33	532 12 86-00	Pin, Hinge
34	532 12 75-34	Gasket, Cover
35	532 12 95-85	Container, Top
36	532 12 95-86	Container, Bottom
37	532 13 22-56	Seal, Cover
38	532 13 08-95	Latch Handle, Cover
39	532 13 54-95	Strip, Seal
40	532 04 19-45	Screw#10-24x 1/2
--	532 10 50-70	Bag, 3.0 mil. 30 Gallon Trash (not included with bagger)
44	532 13 84-96	Blade, High Lift