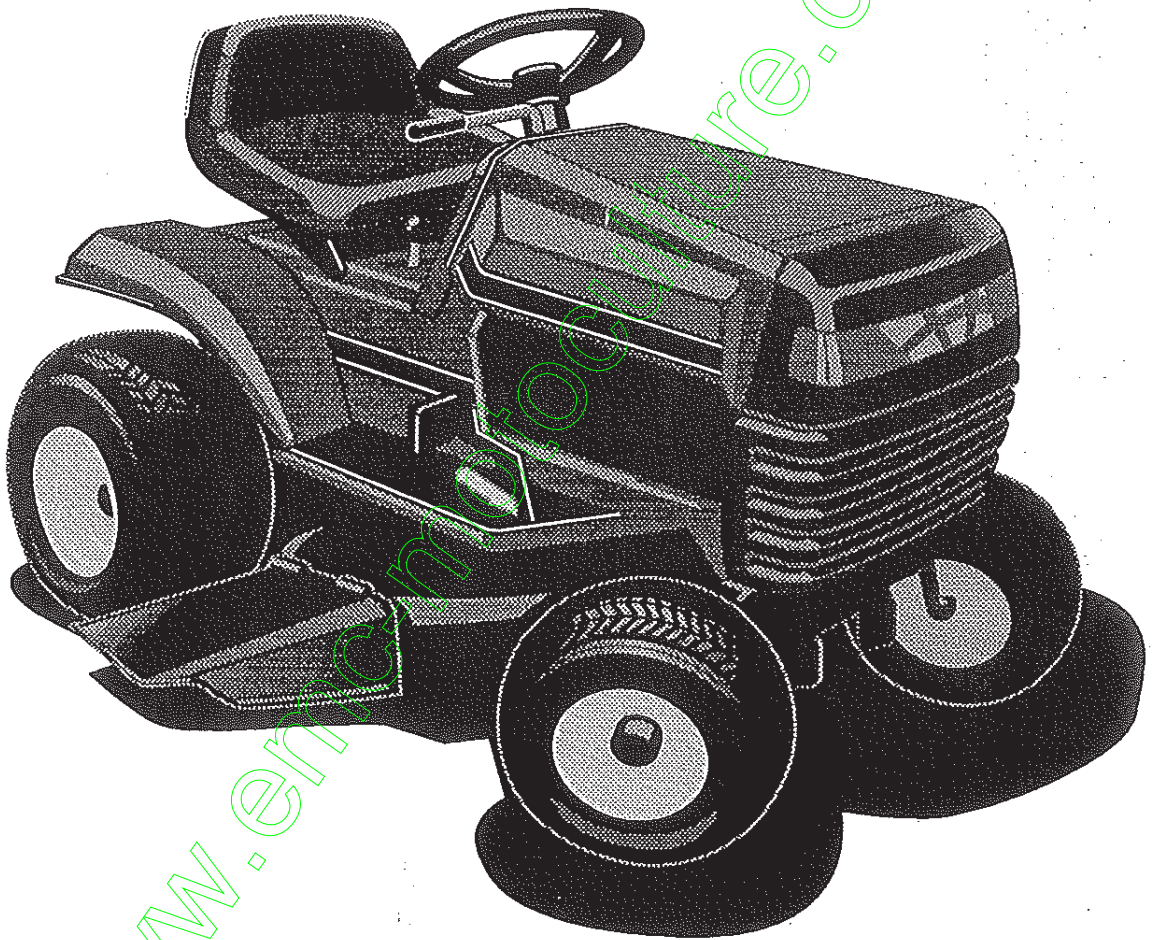


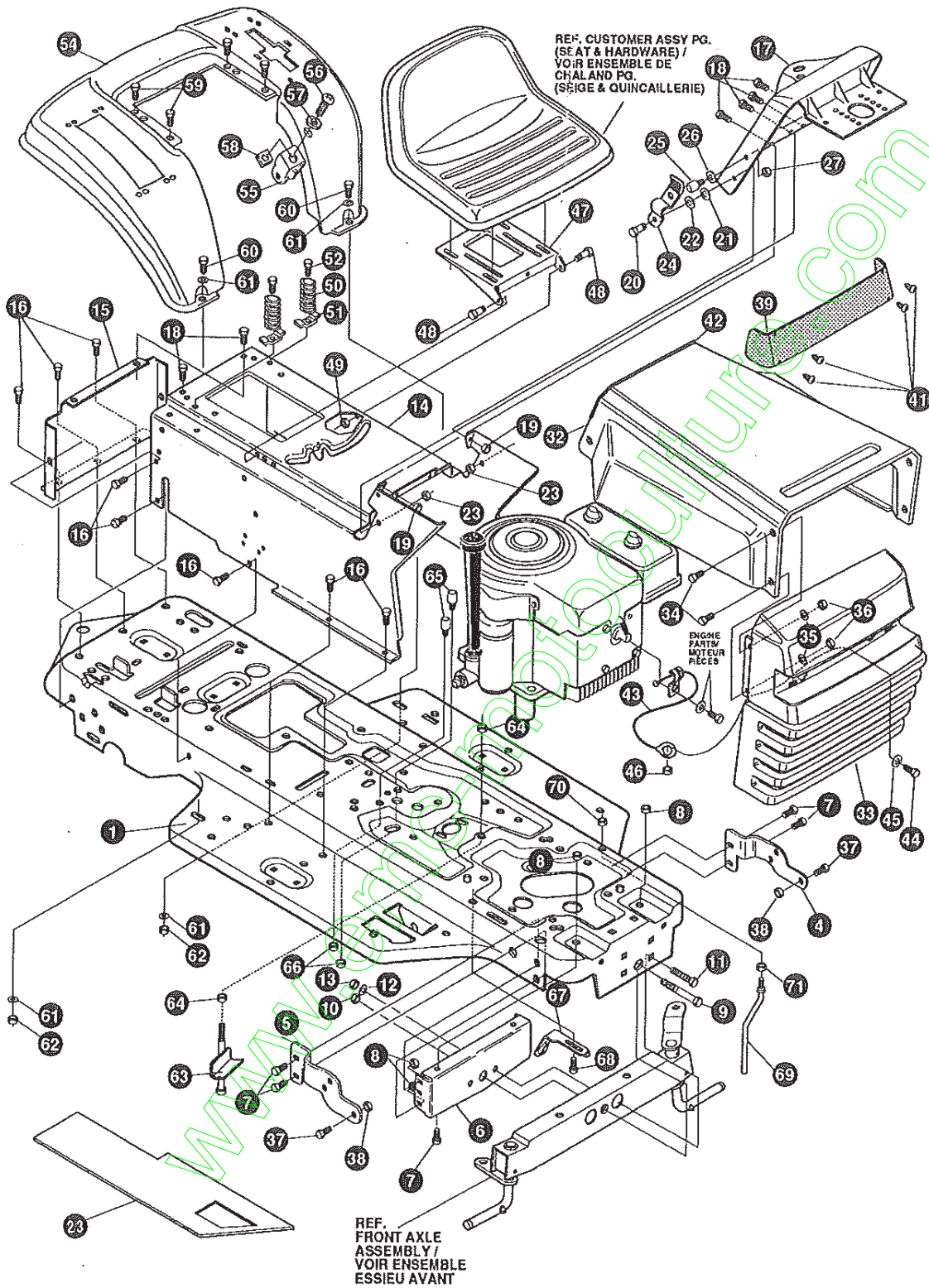
# **TRACTEUR - TONDEUSE MANUEL PIÈCES DE RECHANGE**



**D3554-330**

# TRACTEUR DE PELOUSE MODÈLE D3554-330 (39 po)

## CHASSIS & HOOD (FRONT) / CHÂSSIS & CAPOT (AVANT)



REMARQUE: UTILISEZ DES PIÈCES D'ORIGINE  
POUR CONSERVER L'APPLICATION DE LA  
GARANTIE.

TOUTES LES PIÈCES NON  
REFERÉES SONT  
INTERCHANGES AVEC  
LEURS OPPOSEES.

325649B

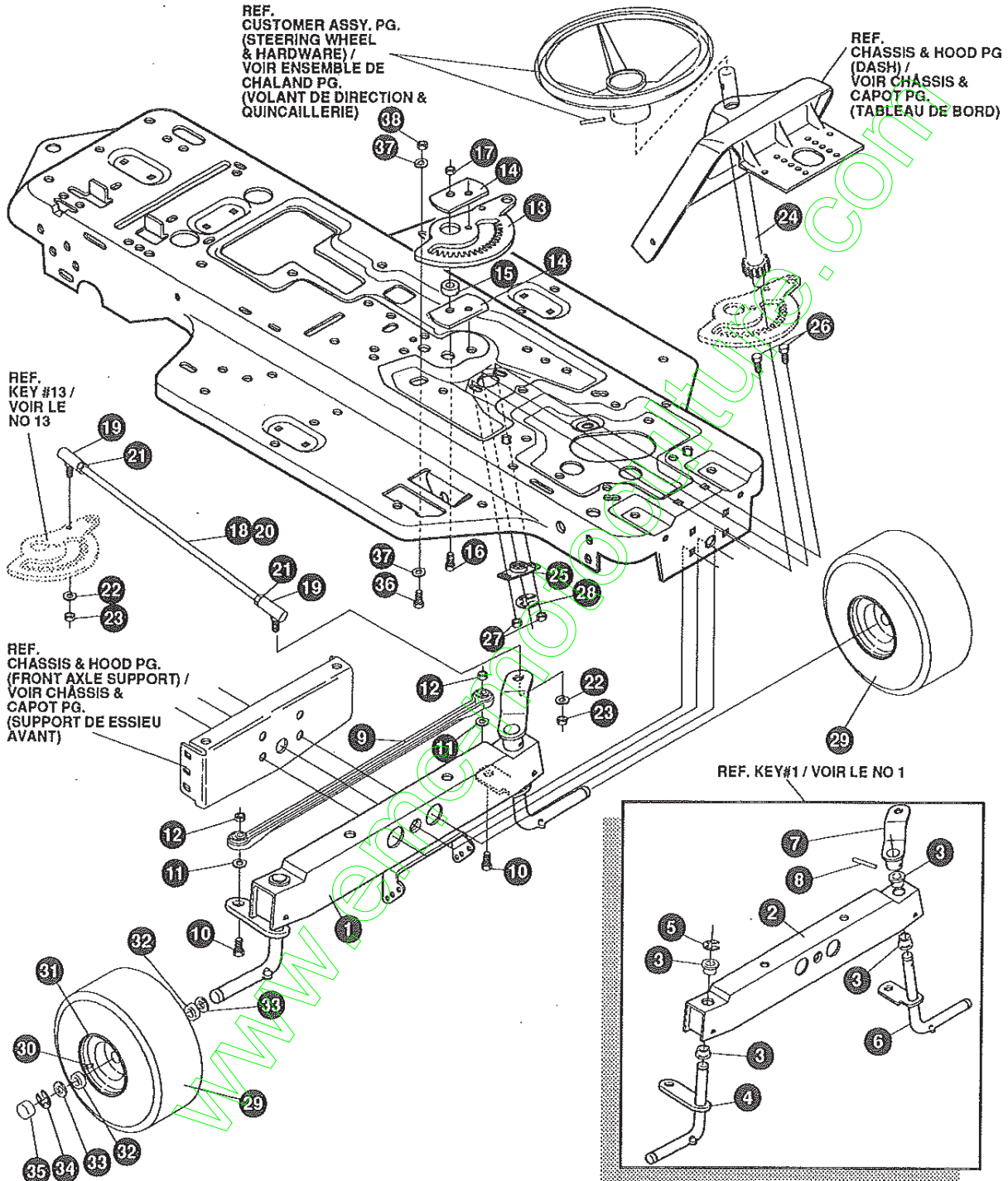
# TRACTEUR DE PELOUSE MODÈLE D3554-330 (39 po)

KEY#	PART#	DESCRIPTION	QTY.
1	321997-860	FRAME,MAIN SF RIDER	1
2	302917	FOOTPAD,LH SF WIDE	1
3	302916	FOOTPAD,RH SF WIDE	1
4	314579-853	BRACKET,GRILLE L.H.	1
5	314578-853	BRACKET,GRILLE R.H.	1
6	56362-853	BRKT,SUPT FRT AXLE-	1
7	328154	SCREW, 5/16-18X.75WDFLLK	6
8	55273	NUT, 5/16-18 HXWDFLLK	6
9	29616	BOLT, .625X2.875 SPSH 1/2-20	1
10	274654	NUT, 1/2-20 REGHXCTRLK	1
11	122201	SCREW, 3/8-16X2.75 HHC	2
12	2483	WASHER, 3/8IDX1.25DX.07 BELLVIL	2
13	1499	NUT, 3/8-16 REGHXCTRLK	2
14	314491-860	CONSOLE,SF DYNA STYLE TOPSH	1
15	56235-860	CONSOLE, REAR COVER	1
16	995346	SCREW, 1/4-20X .50 WAHHTAP	15
17	320466-860	DASH,SF NOMA DYNA STYLING	1
18	995338	SCREW, 1/4-20X .63 HHWATAP	4
19	50352	NUT 1/4-20 WDFLLK TOP LOCK	2
20	8482	BOLT, .375X .156 HSSH 5/16-18	2
21	120394	WASHER, FLAT .406X .81X.065	2
22	120393	WASHER, FLAT .344X .69X.065	2
23	1498	NUT, 5/16-18 REGHEXCTRLK	2
24	57159	LATCH, .94WDX.047 ASSY HOOD	2
25	53446	PIN, 5/16-18 HOOD LATCH	2
26	138538	WASHER, REGINTLK.320X.61X.03	2
27	45174	NUT, 5/16-18 HEXWDFLLK WHIZ	2
32	314538-860	HOOD	1
33	325401	GRILLE DYNA-PRO	1
34	274672	SCREW, 1/4-20X .63 WAHHC	4
35	120392	WASHER, FLAT .281X .63X.065	4
36	1502	NUT, 1/4-20 REGHEXCTRLK	4
37	36149	BOLT, .375X .500 HSSH 5/16-18	2
38	1498	NUT, 5/16-18 REGHEXCTRLK	2
39	302333	LENS HEADLAMP	1
41	57796	SCREW, #6 X .50 PLASTITE	4
42	56304	EDGING,WIDE BLK	25"
43	311094	LANYARD,HOOD	1
44	121887	SCREW 1/4-20 X .75 HHC	1
45	120392	FLATWASHER .281 X .63 X .065	1
46	1502	LOCKNUT 1/4-20	1
47	58367-853	PLATE, SEAT F-5 SF & LF	1
48	20507	BOLT, .437X .156 HSSH 5/16-18	1
49	1498	NUT, 5/16-18 REGHEXCTRLK	2
50	56220	SPRING,1.43X2.38X.162 COM SEAT	2
51	1341	CLAMP,SPRING 1.17"ID	2
52	995346	SCREW, 1/4-20X .50 WAHHTAP	2
53	^	FENDER F-5, SOC/LOF	2
54.	321157-860	FENDER, F-5/SOC/LOF	1
55.	9239	CLEVIS	1
56.	439455	SCREW, 5/16-18X.56 PHPNMA	1
57.	301551	WASHER, 3.44 IDX1.50X.09	1
58.	120373	NUT, 5/16-18 SQ.	1
59	995346	SCREW, 1/4-20X .50 WAHHTAP	4
60	122007	SCREW, 5/16-18X.75 HHC	2
61	446363	WASHER, FLAT .375X .88X.082	4
62	1498	NUT, 5/16-18 REGHEXCTRLK	2
63	328630	ASSY UPSTOP	1
64	1499	NUT, 5/16-18 REGHEXCTRLK	2
65	53446	PIN 5/16-18	2
66	271184	NUT, 5/16-18 HEX KEPS	2
67	302610-853	BRACKET,SWITCH MOUNT	1
68	995346	SCREW, 1/4-20X .50 WAHHTAP	1
69	50653	GUIDE, BELT	1
70	41529	NUT, 3/8-16 HXCTRLKJAM	1
71	271190	NUT, 3/8-16 HEXKEPS	1
72	329940	PARTS MANUAL	1
73	329939	OPERATOR'S MANUAL (FRENCH)	1
74	328195	AIR ASSIST MANUAL	1
75	327717	GRASS CATCHER MANUAL	1

^ ORDER INDIVIDUAL PARTS.

# TRACTEUR DE PELOUSE MODÈLE D3554-330 (39 po)

## STEERING ASSEMBLY / ENSEMBLE DE DIRECTION



REMARQUE: UTILISEZ DES PIÈCES D'ORIGINE POUR CONSERVER L'APPLICATION DE LA GARANTIE.

TOUTES LES PIÈCES NON REFERÉES SONT INTERCHANGES AVEC LEURS OPPOSEES.

324972D

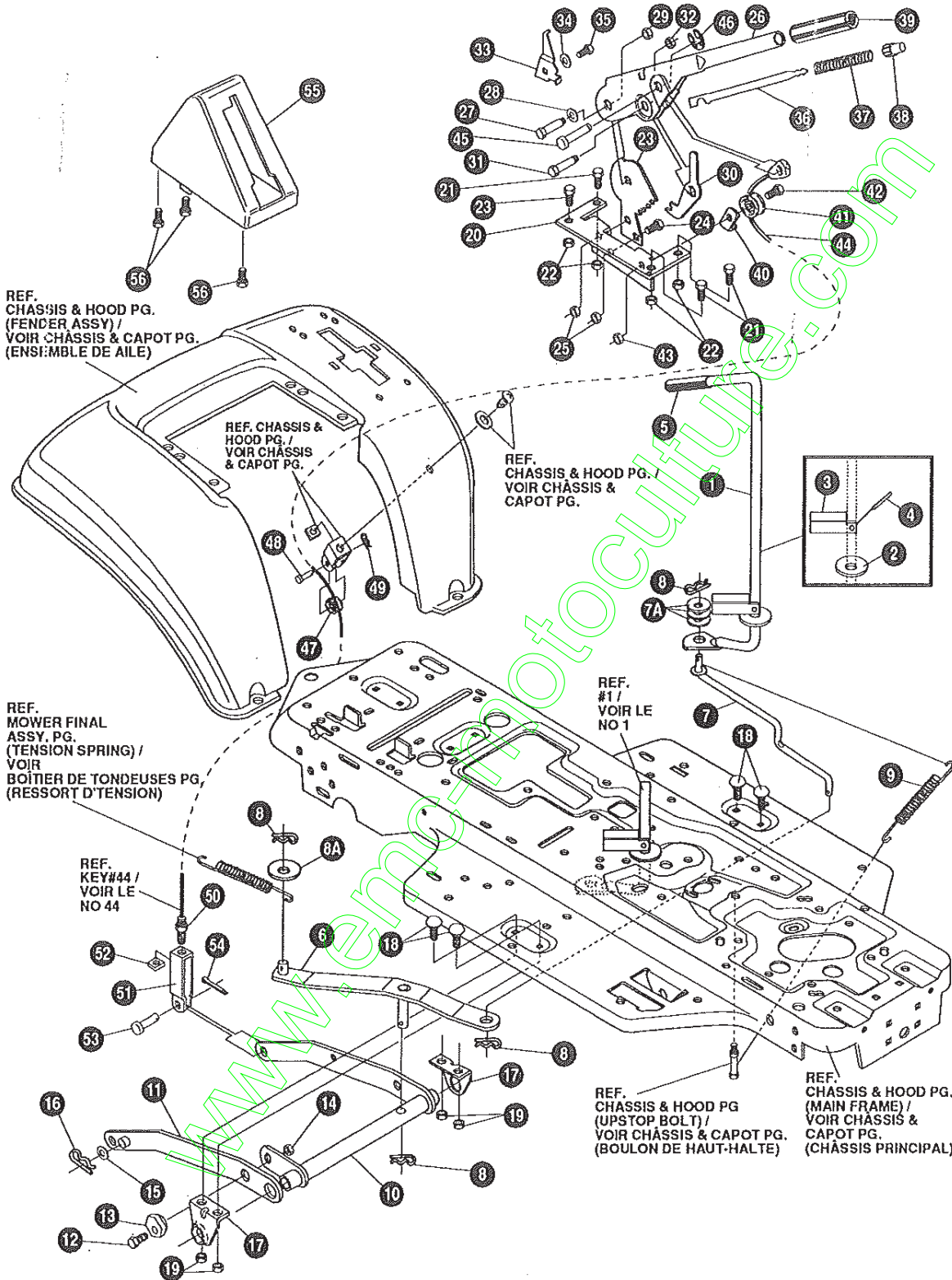
# TRACTEUR DE PELOUSE MODÈLE D3554-330 (39 po)

KEY#	PART#	DESCRIPTION	QTY.
1	^	FRONT AXLE ASSEMBLY SF	1
2	324915-853	AXLE, FRONT	1
3	50546	BEARING, FLANGE	4
4	310368	SPINDLE, RH	1
5	36625	RING, RETEX	1
6	310367	SPINDLE, LH	1
7	327619	ARM, STEERING LH	1
8	454565	PIN, SPRING	1
9	302688	TIE ROD	1
10	122145	SCREW, 3/8-16X1.25 HHC	2
11	120382	WASHER, .393X.68X.10 REGSPTLK	2
12	1499	NUT, 3/8-16 REGHCTRLK	2
13	324752	SECTOR, GEAR	1
14.	327833	PLATE SECTOR SF 4WS	2
15.	324753	BUSHING SECTOR GEAR SF 4WS	1
16.	180124	SCREW, 3/8-16X1.25	1
17.	1499	NUT, 3/8-16 REGHXCTRLK	1
18	328808	DRAGLINK ASSEMBLY	1
19	57158	BALL JOINT	2
20	56190	DRAGLINK	1
21	124925	NUT, 3/8-24 REGHEXJAM	2
22	120382	WASHER, REGSPTLK	2
23.	120369	NUT, 3/8-24 REGHEX	2
24.	327834	SHAFT PINION STEERING	1
25	325692	BRG. FL	1
26	326505	SCREW, 1/4-20X.75 GRD 5	2
27	46931	NUT, 1/4-20 FLLK NUT SIDE LOCK	2
28	20864	RING RET E	1
29	316702	ASSEMBLY TIRE	2
30	24167	VALVE STEM	1
31	39829	WHEEL W/BEARING	1
32	314416	BEARING, 1.38ODX.753ID FLANGE	2
33	642	WASHER, FLAT .755X1.31X.075	4
34	36625	RING, RETEX .57X.05	2
35	40394	HUB CAP	2
36	122145	SCREW, 3/8-16X1.25 GRD2	1
37	120394	WASHER, FLAT	2
38	44374	NUT, 3/8-16 HXWDFLLK	1

^ ORDER INDIVIDUAL PARTS.

# TRACTEUR DE PELOUSE MODÈLE D3554-330 (39 po)

## MOWER SUSPENSION ASSEMBLY / ENSEMBLE DE SUSPENSION DE LA TONDEUSES



REMARQUE: UTILISEZ DES PIÈCES D'ORIGINE POUR CONSERVER L'APPLICATION DE LA GARANTIE.

TOUTES LES PIÈCES NON REFERÉES SONT INTERCHANGES AVEC LEURS OPPOSEES.

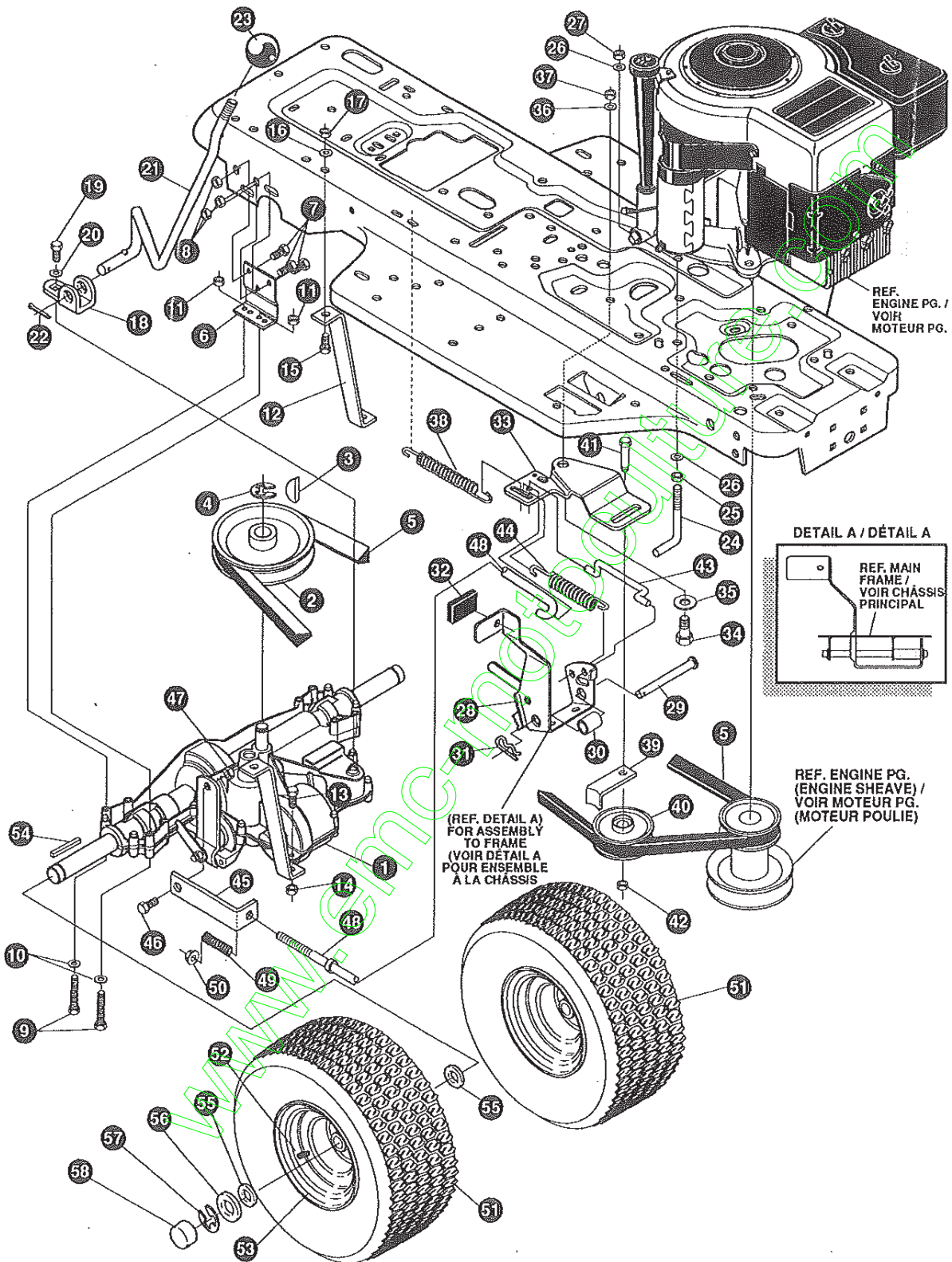
324784B

# TRACTEUR DE PELOUSE MODÈLE D3554-330 (39 po)

KEY#	PART#	DESCRIPTION	QTY.
1	3255911	HANDLE, RH PTO NOMA DASH SF	1
2	22265	WASHER, FLAT .515X1.38X.119PL	1
3	305225	ML STOP, PTO ENGAGEMENT	1
4	326386	PIN, SPRING. 187DIAX1.00LG HVPL	1
5	46478	GRIP, HAND .50ID 3.37 LG BLK	1
6	325587-853	WS STRAP ASSY, PTO BELCRANK	1
7	325590	ROD, BELCRANK LINK	1
7A	274517	FLAT WASHER .406X.73X.063	3
8	8260	HAIR PIN	4
8A	25210	FLAT WASHER, .392X1.25X.09	1
9	325802	SPRING, .63X7.75X.0897 TENSION	1
10	326114-853	WP LIFT ASSY, LH	1
11	325130-853	WP LIFT ASSY, RH	1
12	180079	SCREW, 5/16 18X1.00 HHC GR5Z	1
13	58247	NUT, ADJUST	1
14	1498	NUT, 5/16-18 REGHEXCTRLK	1
15	417098	WASHER, FLAT .5331X1.06X.063Z	2
16	8260	PIN, HAIR .091 DIA X 1.66LG	2
17	325495-853	MP BRACKET, REAR HANG SUSP	2
18	126211	BOLT, 5/16-18X.63 CARR GR2Z	4
19	1498	NUT, 5/16-18 REGHEXCTRLK	4
20	58333	MF BRACKET, HEIGHT ADJUST	1
21	180077	SCREW, 5/16-18X .75 HHC GR5Z	4
22	1498	NUT, 5/16-18 REGHEXCTRLK	4
23	301238	QUADRANT, HEIGHT ADJUST	1
24	180077	SCREW, 5/16-18X .75 HHC GR5Z	2
25	1498	NUT, 5/16-18 REGHEXCTRLK	2
26	322292-853	MP HANDLE, LIFT SHORT(30" S.F.)	1
27	300171	BOLT, .500X .270 HHSH 5/16-18Z	1
28	996418	WASHER, FLAT .506X .75X.024Z	1
29	44108	NUT, 5/16-18 HWDFLCTRLK	1
30	301239	HF PAWL, SQUARE HTTR955	1
31	300171	BOLT, .500X .270 HHSH 5/16-18Z	1
32	44108	NUT, 5/16-18 HWDFLCTRLK	1
33	9435	ML POINTER	1
34	138479	WASHER, EXLK .195X.41X.03Z	1
35	35287	SCREW, #8-32X .38 HHWATAPGR2	1
36	303027	ROD, ACTUATOR-SHORT	1
37	58326	SPRING, HEIGHT ADJUST	1
38	58325	KNOB, HEIGHT ADJ PUSH BUTTON	1
39	58329	GRIP, .750 OD W/ HOLE BLACK	1
40	9149	ML CABLE RETAINING BRACKET	1
41	48306	PULLEY, POWDER METAL	1
42	58336	BOLT, .375X .375 HHSH 1/4-20	1
43	1502	NUT, 1/4-20 REGHEXCTRLK	1
44	321430	CABLE, LIFT 21.50- 30 " S.F.	1
45	300310	PIN, CLEVIS .310 DIA + .475 LG ZPL	1
46	300311	RING, RET E .31X .25TRUX5133-31	1
47	48306	PULLEY, POWDER METAL	1
48	300317	PIN, CLEVIS .375 DIA. X .81 LG	1
49	8260	PIN, HAIR .091 DIA. X 1.66 LG	1
50	120375	NUT, 1/4-20 REGHEX	1
51	9405	ML CLEVIS, LIFT CABLE	1
52	120372	NUT, 1/4-20 REGSQ	1
53	39522	PIN, CLEVIS .312 X .812	1
54	121222	PIN, COTTER .090/.086X.75LG	1
55	300335	LIFT COVER-39" F5	1
56	300340	SCREW, #10 X .75 HHPLAST BLK	3

# TRACTEUR DE PELOUSE MODÈLE D3554-330 (39 po)

## MOTION DRIVE / COMMANDE DE PROPULSION



REF. ENGINE PG. /  
VOIR MOTEUR PG.

DETAIL A / DÉTAIL A

REF. MAIN  
FRAME /  
VOIR CHÂSSIS  
PRINCIPAL

(REF. DETAIL A)  
FOR ASSEMBLY  
TO FRAME  
(VOIR DETAIL A  
POUR ENSEMBLE  
À LA CHÂSSIS)

REF. ENGINE PG.  
(ENGINE SHEAVE) /  
VOIR MOTEUR PG.  
(MOTEUR POULIE)

REMARQUE: UTILISEZ DES PIÈCES D'ORIGINE  
POUR CONSERVER L'APPLICATION DE LA  
GARANTIE.

TOUTES LES PIÈCES NON  
REFERÉES SONT  
INTERCHANGES AVEC  
LEURS OPPOSEES.

327141C



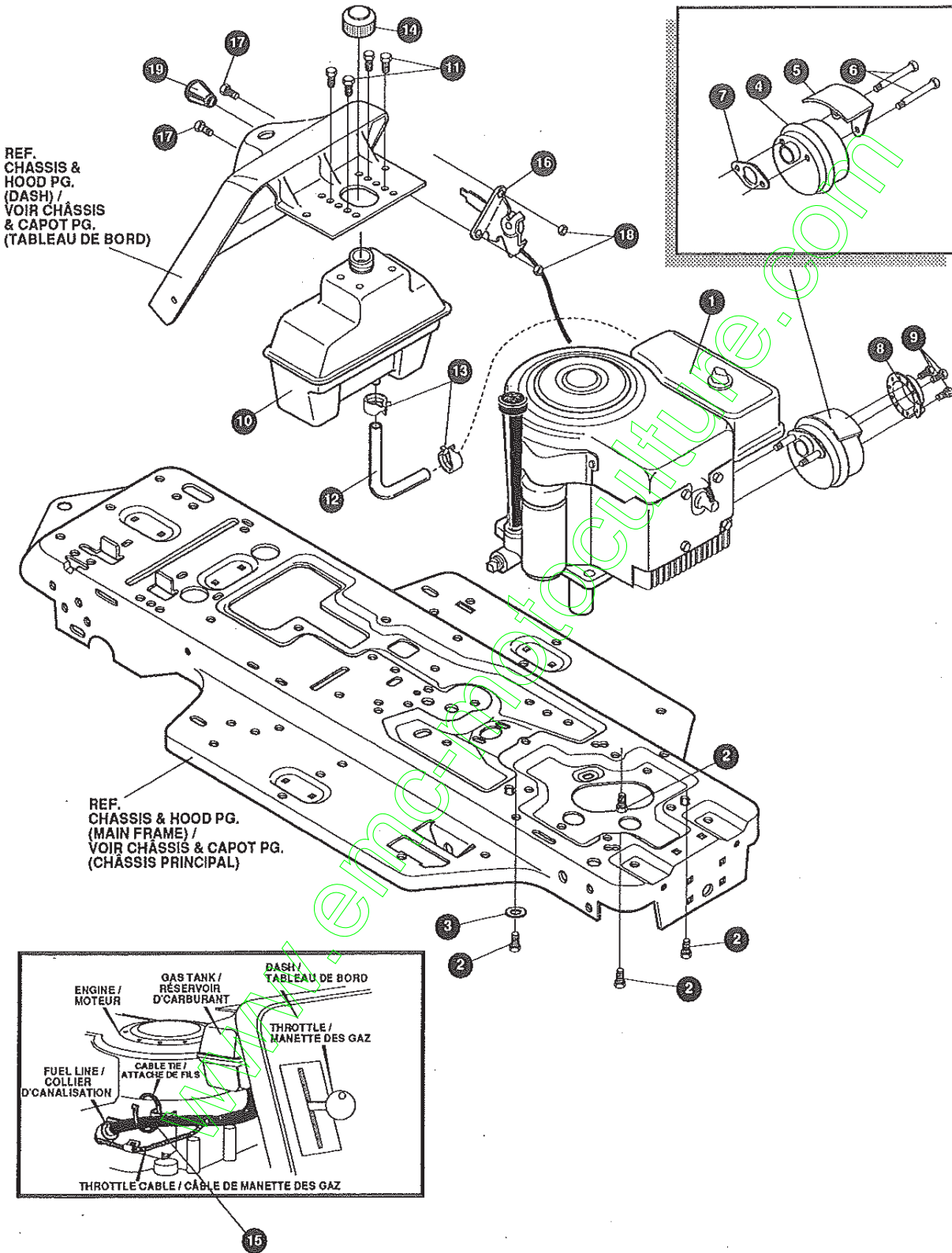
# TRACTEUR DE PELOUSE MODÈLE D3554-330 (39 po)

KEY#	PART#	DESCRIPTION	QTY.
1.	^	TRANSAXLE P940-5SP SF FER	1
2.	302745	PULLEY, IDLER V4L 6.60	1
3.	3021	KEY, WDRF 606 .750X.187X.312	1
4.	22053	RING, RETEX .58X.035TRU5100-62	1
5.	54758	BELT, V 4L 82.00 SF DRIVE	1
6.	53768-853	MP BRACKET, TRANSAXLE	2
7.	180075	SCREW, 5/16-18X .63 HHC	6
8.	1498	NUT, 5/16-18 REGHEXCTRLK	6
9.	180089	SCREW, 5/16-18X2.25 HHC	4
10.	120393	WASHER, FLAT .344X .69X.065	4
11.	1498	NUT, 5/16-18 REGHEXCTRLK	4
12.	323213	MF BRACKET, T/A TORQ. 915 S/F	1
13.	180087	SCREW, 5/16-18X2.00 HHC	1
14.	1498	NUT, 5/16-18 REGHEXCTRLK	1
15.	122017	SCREW, 5/16-18X1.00 HHC	1
16.	138485	WASHER, EXLK .320X.61X.03	1
17.	1498	NUT, 5/16-18 REGHEXCTRLK	1
18.	12616	MH BRACKET, SHIFT P920-3SP	1
19.	56255	SCREW, 1/4-28X .75 NYLHHC	1
20.	57157	WASHER, .750X.250 SP-TRANSAXLE	1
21.	313934	LEVER, SHIFT 915 T/A S/F	1
22.	137185	PIN, COTTER .125 DIA X 1.00LG	1
23.	55514	KNOB, ROUND 1.50 DIA BLACK	1
24.	49896	MF BELT GUIDE	1
25.	271184	NUT, 5/16-18 HEXKEPS	1
26.	120393	WASHER, FLAT .344X .69X.065	2
27.	1498	NUT, 5/16-18 REGHEXCTRLK	1
28.	302603-853	SF ASSY, BRAKE PEDAL S.F.	1
29.	319676	PIN, CLEVIS .5 DIA, 4.87LG, ZN PL	1
30.	302601	SPACER, SLEV .53 X .62X1.406	1
31.	56180	PIN, HAIR .091 DIA X 1.62LG	1
32.	48761	PAD, CLUTCH/BRAKE PEDAL	1
33.	321969	MF IDLER ARM BRKT TRACTION SF	1
34.	41890	BOLT, .625X .218 HHSH 5/16-18Z	1
35.	4107	WASHER, FLAT .635X1.31X.07	1
36.	45602	WASHER, FLAT .333X .87X.119	1
37.	1498	NUT, 5/16-18 REGHEXCTRLK	1
38.	327867	SPRING, 3/4 ODX 7.75X.091 TENSIO	1
39.	39659	MF RETAINER, BELT	1
40.	35374	PULLEY, IDLER V4L 3.06X .62	1
41.	45892	BOLT, 3/8-16X1.50 CARR	1
42.	1499	NUT, 3/8-16 REGHXCTRLK	1
43.	43980	ROD, .268 DIA CLUTCH	1
44.	50562	SPRING, 3/8 ODX 1.625X.055 TENSIO	1
45.	323210	BRACKET, TRACTION BRAKE S/F	1
46.	46824	BOLT, .500X .188 HHSH 5/16-18Z	1
47.	1498	NUT, 5/16-18 REGHEXCTRLK	1
48.	323211	ROD, BRAKE 915 T/A SF	1
49.	313881	SPRING, CLUTCH .625 OD	1
50.	50352	NUT, 1/4-20 WDFLLK TOPLOCK	1
51.	319684	TIRE & RIM, PU 20X8.0-8 TURWHI	2
52.	24167	VALVE STEM	1
53.	326362	WHEEL & HUB ASSY 20X8 WHITE	1
54.	52928	KEY, SQUARE .187SQ X 2.25LG	2
55.	642	WASHER, FLAT .755X1.31X.075	4
56.	42815	WASHER, FLAT .755X1.53X.07	2
57.	36625	RING, RETEX .57X.05TRU5133-75	2
58.	40394	HUB CAP, 1.500ID X 7/8LG	2

^ CONTACT YOUR NEAREST TRANSAXLE DEALER FOR PARTS AND SERVICE.

# TRACTEUR DE PELOUSE MODÈLE D3554-330 (39 po)

## ENGINE & CONTROL / MOTEUR ET COMMANDE



REMARQUE: UTILISEZ DES PIÈCES D'ORIGINE POUR CONSERVER L'APPLICATION DE LA GARANTIE.

TOUTES LES PIÈCES NON REFERÉES SONT INTERCHANGES AVEC LEURS OPPOSEES.

325601B

# TRACTEUR DE PELOUSE MODÈLE D3554-330 (39 po)

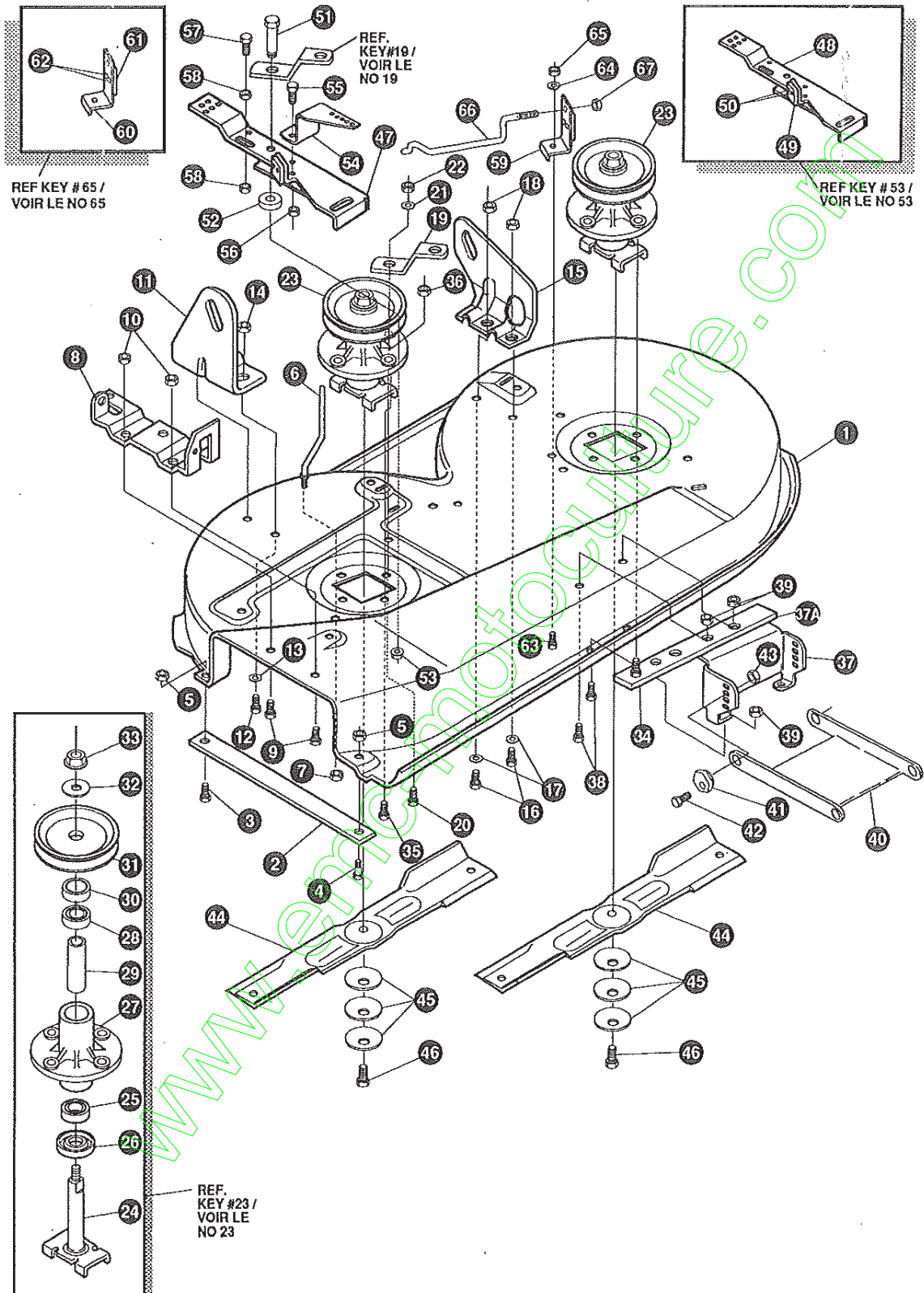
KEY#	PART#	DESCRIPTION	QTY.
1	^	12 HP B&S I/C DUAL CIRCUIT	1
2	50947	SCREW, 3/8-16X1.25 WAHHTAP BLKP	4
3	138489	WASHER, EXLK .384X.69X.04 Z	1
4	57908	MUFFLER NELSON LOOTONE	1
5	54767	SHIELD, HEAT, FOR ROUND MUFFLER	1
6	173063	SCREW, 5/16-18X3.50 HHC GR 2 Z	2
7	46708	GASKET, MUFFLER	1
8	323423	DEFLECTOR, MUFFLER PARTIAL	1
9	35287	SCREW, #8-32X.38 HHWATAP GR2 Z	3
10	314989	TANK, FUEL 1 GAL CLEAR	1
11	300303	SCREW, .25X.75X.51 HHWAPLASTITE	4
12	42258	TUBING .25Z.50X BULK GAS LINE	12"
13	47345	CLAMP, FUEL LINE RED	2
14	46704	GAS CAP 1-1/2-7 THD BLK	1
15	57444	TIE, CABLE BLACK NYLON 5.62 L	1
16	320031	THROTTLE CONTROL	1
17	274707	SCREW, 10-24X .50 WAHMA Z	2
18	308459	NUT, #10-24 HXHDNYLK	2
19	50607	KNOB, ROUND THROTTLE BLACK	1

^ SEE ENGINE MANUAL.

www.emc-motoculture.com

# TRACTEUR DE PELOUSE MODÈLE D3554-330 (39 po)

## PRE-PAINTED DECK ASSEMBLY / BOÎTIER DE TONDEUSES PEINT



REMARQUE: UTILISEZ DES PIÈCES D'ORIGINE  
POUR CONSERVER L'APPLICATION DE LA  
GARANTIE.

TOUTES LES PIÈCES NON  
REFERÉES SONT  
INTERCHANGES AVEC  
LEURS OPPOSEES.

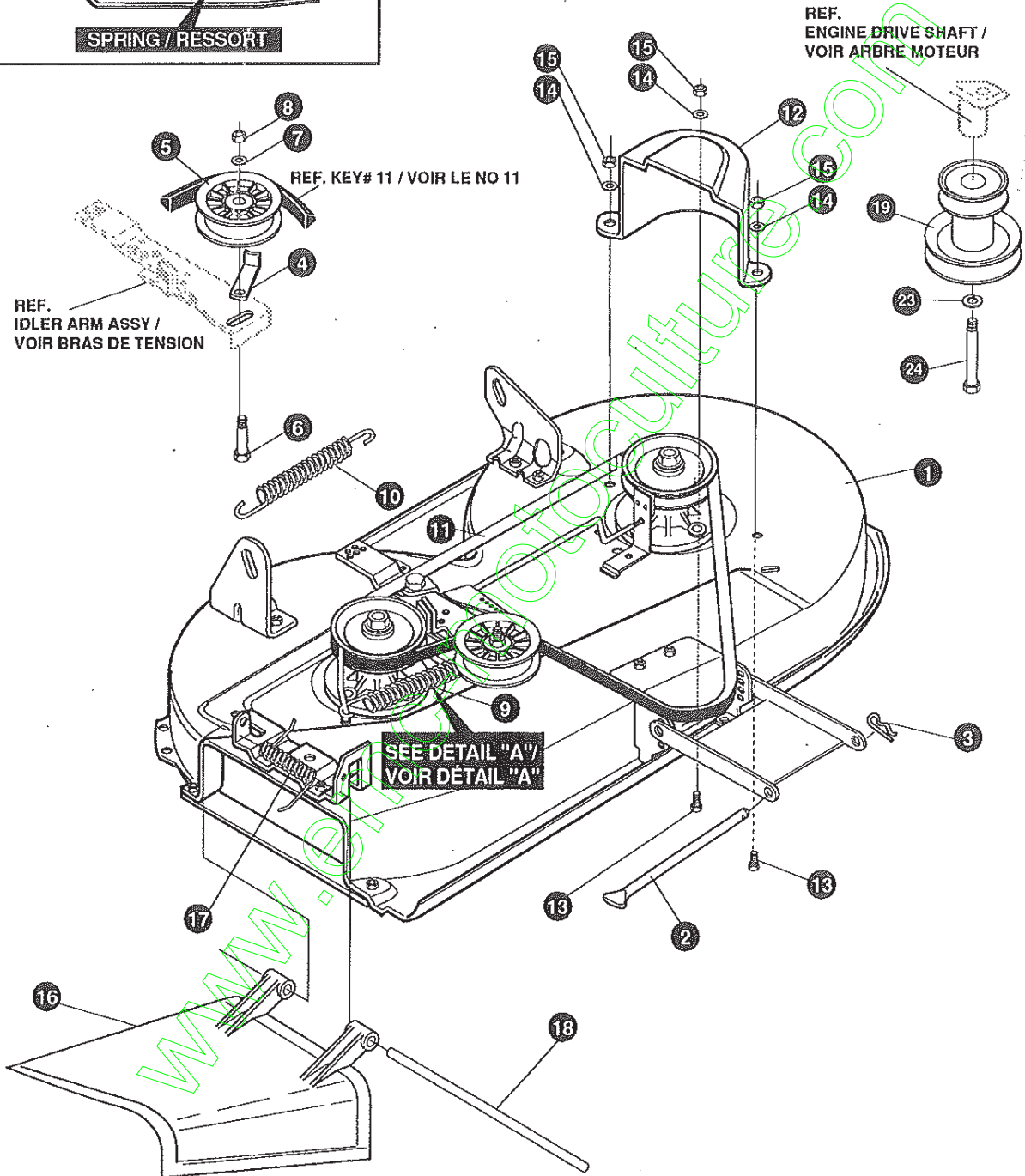
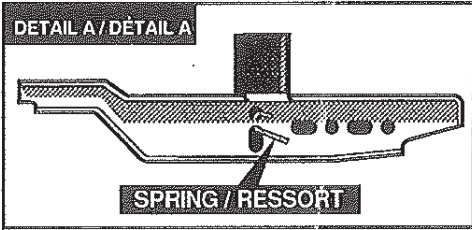
328680D

# TRACTEUR DE PELOUSE MODÈLE D3554-330 (39 po)

KEY#	PART#	DESCRIPTION	QTY.
1	325106-853	DECK,39"SD MOWER	1
2	326295-853	BAR, SKID	1
3	126216	BOLT, 5/16-18X .75 CARR	1
4	120230	BOLT, 5/16-18X1.25 CARR	1
5	271184	NUT, 5/16-18 HEXKEPS	2
6	57318	GUIDE, BELT 5/16-18 THD	1
7	1498	NUT, 5/16-18 REGHEXCTRLK	1
8	313928	BRACKET, CHUTE	1
9	180073	SCREW, 5/16-18X .50 HHC	2
10	1498	NUT, 5/16-18 REGHEXCTRLK	2
11	313929	LIFT BRACKET, REAR,RH	1
12	180077	SCREW, 5/16-18X .75 HHC	2
13	120393	WASHER, FLAT .344X .69X.065	2
14	1498	NUT, 5/16-18 REGHEXCTRLK	2
15	310667	BRACKET,DECK LIFTREAR LH	1
16	180077	SCREW, 5/16-18X .75 HHC	2
17	120393	WASHER, FLAT .344X .69X.065	2
18	1498	NUT, 5/16-18 REGHEXCTRLK	2
19	315302-853	BRACKET, IDLER SUPPORT	1
20	300345	SCREW, 5/16-18X1.38 WATAP	1
21	120393	WASHER, FLAT .344X .69X.065	1
22	1498	NUT, 5/16-18 REGHEXCTRLK	1
23	56424-853	QUILL ASSY, 36/39/40/43	2
24	56425	SHAFT/SADDLE 36"	1
25	49562	BRNG, BALL	1
26	50616	DUST SHIELD	1
27	55547	QUILL CASTING	1
28	49562	BRNG, BALL	1
29	50818	SPACER, 3.797LGX.669IDX.88OD	1
30	51449	SPACER, 4.381LGX.932ODX.672ID-PM	1
31	313898	PULLEY, 26/36" QUILL	1
32	56365	SPECIAL WASHER	1
33	1282	NUT, 7/16-20 WDFLLK	1
34	50634	SCREW, 5/16-18X .88 WAHTAP	6
35	300345	SCREW, 5/16-18X1.38 WATAP	1
36	1498	NUT, 5/16-18 REGHEXCTRLK	1
37	312526	LIFT SUPPORT FRONT DECK	1
37A	328155-853	MOUNTING PLATE	1
38	180075	SCREW, 5/16-18X .63 HHC	4
39	1498	NUT, 5/16-18 REGHEXCTRLK	4
40	58305-853	LINK BRACKET, DECK FR	1
41	58247	ADJUSTING NUT	2
42	122017	SCREW, 5/16-18X1.00 HHC	2
43	1498	NUT, 5/16-18 REGHEXCTRLK	2
44	306932	BLADE, 19.69 HI-LIFT	2
45	2493	WASHER, .39IDX1.25DX.07 BELLVIL	6
46	39573	SCREW, 3/8-24X1.00 NYLHHC	2
47	320565-853	IDLER ARM ASSY.	1
48	300490-853	IDLER ARM	1
49	306973	BRAKE PAD	1
50	41601	RIVET, TRSET .187 DIA X .50 LG	2
51	300180	BOLT, .50 X .188 HSSH3/8-16	1
52	996416	WASHER, FLAT .391 X 1. — X .125	1
53	45171	NUT, 5/16-18 X .75 HHC WHIZ-LOCK	1
54	326249-853	BRACKET EXTENSION IDLER	1
55	180077	SCREW, 5/16-18 X .75 HHC	1
56	1498	NUT, 5/16-18 REGHEXCTRLK	1
57	121954	SCREW, 1/4-20X2.00 HHC	1
58	271172	NUT, 1/4-20 REGHEXKEPS	2
59	303247-853	ASSY BLADE BRAKE	1
60	303246-853	BRAKE ARM	1
61	306973	BRAKE PAD	1
62	135624	RIVET, TRSET .185 DIA X .41	2
63	180075	SCREW, 5/16-18X.63 HHC	1
64	120393	WASHER, FLAT .344 X .69 X .65	1
65	1498	NUT, 5/16-18 REGHEXCTRLK	1
66	315306	ROD, BRAKE	1
67	1502	NUT, 1/4-20 REGHEXCTRLK	1

# TRACTEUR DE PELOUSE MODÈLE D3554-330 (39 po)

## FINAL DECK ASSEMBLY / BOÎTIER DE TONDEUSES



REMARQUE: UTILISEZ DES PIÈCES D'ORIGINE POUR CONSERVER L'APPLICATION DE LA GARANTIE.

TOUTES LES PIÈCES NON REFERÉES SONT INTERCHANGES AVEC LEURS OPPOSEES.

328679C

# TRACTEUR DE PELOUSE MODÈLE D3554-330 (39 po)

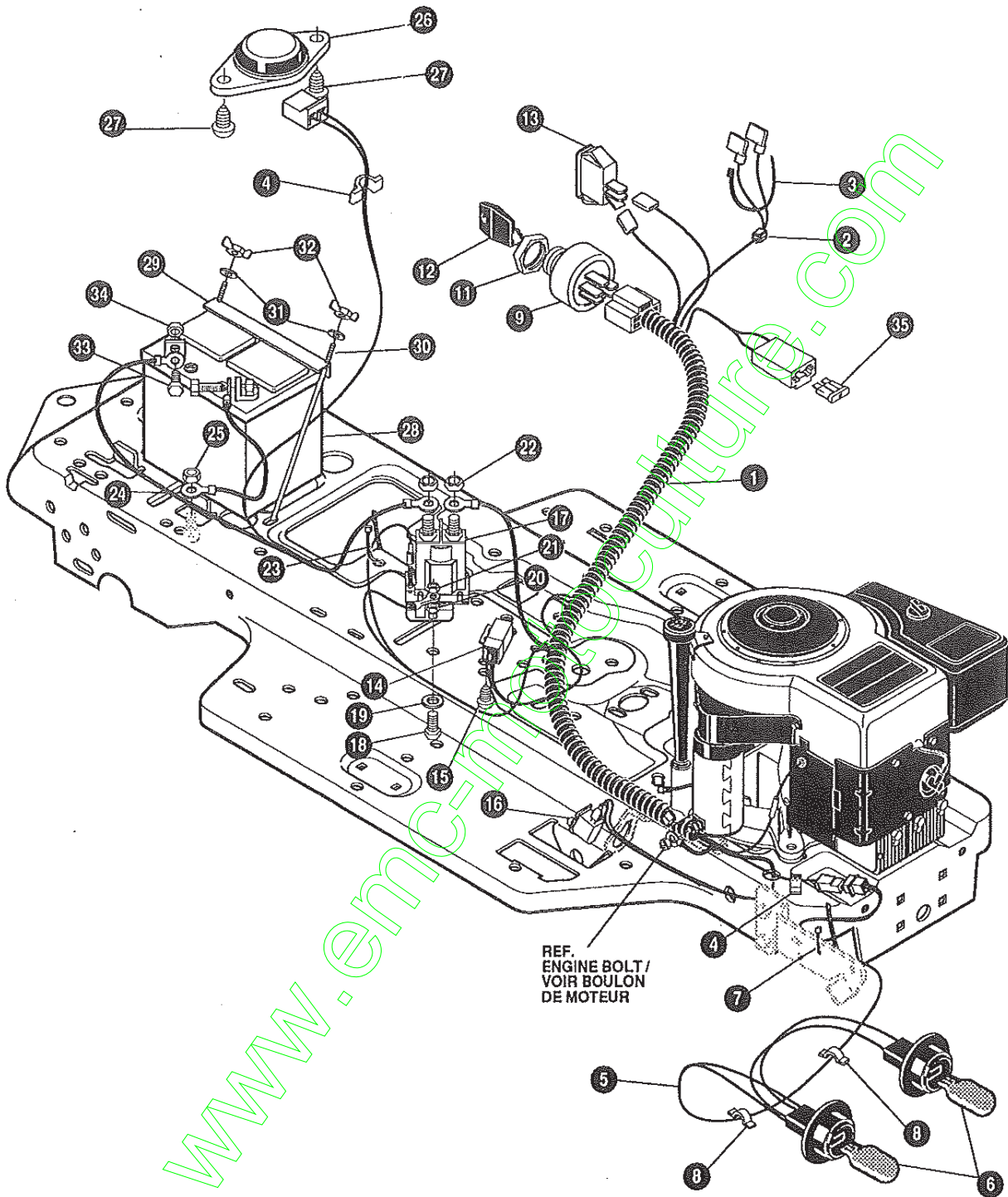
KEY#	PART#	DESCRIPTION	QTY.
1	^	ASSY DECK 39" SUS FOR AIR	1
2	58306	ROD, DECK HITCH	1
3	8260	PIN, HAIR .091 DIA X 1.66	1
4	1346	BELT RETAINER 2.55 OD	1
5	310326	PULLEY, IDLER BFF 4.00	1
6	57325	BOLT, 3/8-16 X 2.00 CARR	1
7	120382	WASHER, REGSPTLK.393X.68X.10	1
8	120377	NUT, 3/8-16 REGHX	1
9	322064	SPRING .071 X .62 X 4.37	1
10	326256	SPRING, TENSION	1
11	300680	BELT, V 5L 77.75	1
12	328257	GUARD, BELT LH	1
13	180075	SCREW, 5/16-18 X .63 HHC	3
14	120393	WASHER, FLAT .344 X .69 X .065	3
15	1498	NUT, 5/16-18 REGHEXCTRLK	3
16	57818	CHUTE-36SD,39SD	1
17	314975	SPRING, TORSION	1
18	57317	PIVOT ROD, CHUTE	1
19	328034	PULLEY ENG.	1
23	120383	WASHER, REGSPTLK	1
24	433146	SCREW, 7/16-20 X 4.25	1

^ ORDER DECK KIT# 329456 FOR COMPLETE DECK.

www.emc-motoculture.com

# TRACTEUR DE PELOUSE MODÈLE D3554-330 (39 po)

## ELECTRICAL / EQUIPMENT ÉLECTRIQUE



REMARQUE: UTILISEZ DES PIÈCES D'ORIGINE  
POUR CONSERVER L'APPLICATION DE LA  
GARANTIE.

TOUTES LES PIÈCES NON  
REFERÉES SONT  
INTERCHANGES AVEC  
LEURS OPPOSEES.

326872A

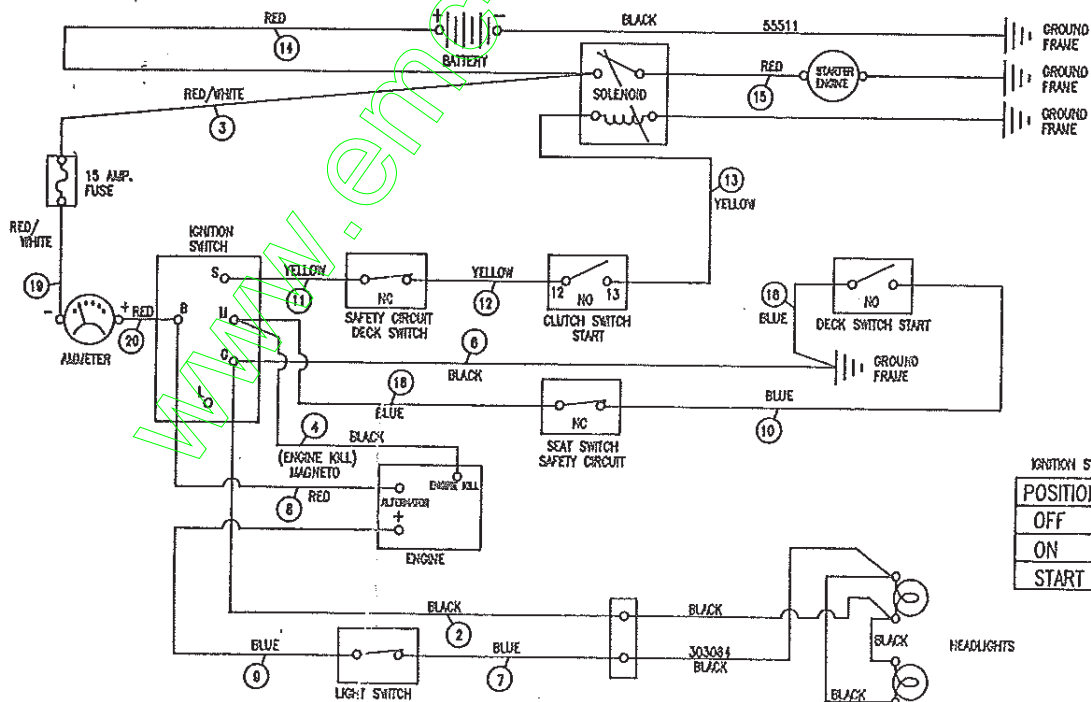


# TRACTEUR DE PELOUSE MODÈLE D3554-330 (39 po)

KEY#	PART#	DESCRIPTION	QTY.
1.	325084	WIRE HARNESS SF 12B&S IC W/AMM	1
2.	322298	SPLICER	1
3.	57444	TIE,CABLE	1
4.	41482	PRESS CLIP,1.380LG .255ID	2
5.	303064	ASSY,LIGHT WIRE-1/4 TURN	1
6.	316823	BULB, HEADLAMP	2
7.	57444	TIE, CABLE BLACK NYLON 5.62L	1
8.	41482	PRESS CLIP,1.380LG .255ID	2
9.	327355	SWITCH-IGN.(AFTER FIRE) 3 POSN	1
11.	327352	NUT, 5/8-8 ACME DELTA	1
12.	327350	KEY, IGNITION SWITCH,STEEL	1
13.	300334	LIGHT SWITCH ON/OFF PANEL MNT	1
14.	57476	SWITCH,SCR MNT DP NC NO BLK	1
15.	57220	SCREW, #12 X .50 PHPNHTAP BLK	2
16.	326653	SWITCH,SNAPMNT NO .055/.116BLK	1
17.	53716	SOLENOID	1
18.	187745	SCREW, 1/4-20X .75 HXSEMMA	2
19.	1084	WASHER, FLAT .281X1.00X.063PL	1
20.	1502	NUT, 1/4-20 REGHEXCTRLK	2
21.	271172	NUT, 1/4-20 REGHEXKEPS	1
22.	271187	NUT, 5/16-24 HKEPS	2
23.	57444	TIE, CABLE BLACK NYLON 5.62L	1
24.	55511	WIRE, GROUND, 12.5'	1
25.	271184	NUT, 5/16-18 HEXKEPS	1
26.	57547	SWITCH, SEAT	1
27.	160505	SCREW, 1/4-20X .38PHPNHMA	2
28.	302257	BATTERY, YUASA 12V 5-PLATE	1
29.	324719	BATTERY BRACKET	1
30.	40234	BATTERY ROD	2
31.	120392	WASHER, FLAT .281X .63X.065	2
32.	325232	WINGNUT, 1/4-20 NYLON	2
33.	120854	SCREW, 1/4-20X .63 HHC	2
34.	271172	NUT, 1/4-20 REGHEXKEPS	2
35.	** 302031	FUSE, 15 AMP SPADE TYPE	1

\*\* Spade type fuse included with the wire harness.

## SCHEMATIC DRAWING / SCHÉMA DE CÂBLAGE

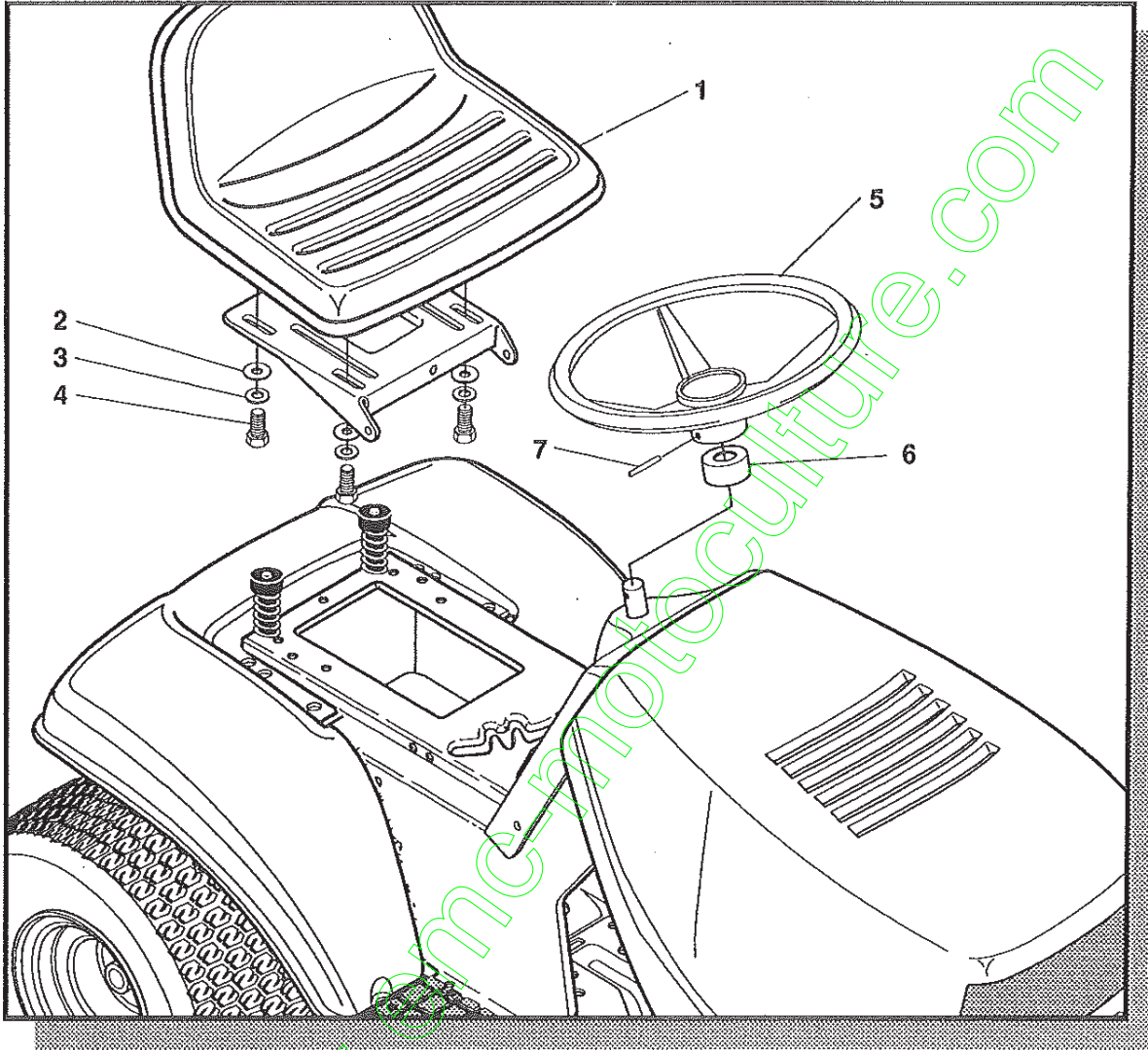


POSITION	G	M	L	B	S
OFF	●	●			
ON			●	●	
START			●	●	●

325084

# TRACTEUR DE PELOUSE MODELE D3554-330 (39 po)

## CUSTOMER ASSEMBLY



### CUSTOMER ASSEMBLY VIEW

315134 PARTS BAG ASSY QTY1

KEY#	PART#	DESCRIPTION	QTY
1	304314	SEAT MV340	1
2	120393	WASHER, FLAT .344X.69X.065	4
3	120638	WASHER, HV SPLTK .328X.60X.109	4
4	122007	SCREW, 5/16-18X.75 HHC	4
5	301251	STEERING WHEEL	1
6	323758	STEERING, SLEEVE	1
7	456378	ROLL PIN .250DIA X 2.0LG	1

315133C

## NOTES

[www.emc-motoculture.com](http://www.emc-motoculture.com)

## ACCESSORIES

Contact the dealer where your tractor was purchased for the available accessories. If you are unable to contact the dealer, write to the address on the front cover of this manual.

### Rear Engine Rider

Model	Description
5708-16	Bagger - Fits 32" Side Discharge
5708-17	Bagger - Fits 36" Side Discharge & 30" Top Discharge
5709-02	Front Weight Box - holds 35 lbs.
5648-16	Lawn Sweeper w/dump Release
5714-00	Mulching Kit - 30" Top Discharge

### Lawn Tractor

Model	Description
5708-22	Bagger - Fits 30" Side Discharge
5708-13	Bagger - Fits 36", 38", 39" & 45" Side Discharge
5705-04	36" Two-Stage Snowblower - Fits 36", 38", 39", & 45" Side Discharge
5661-06	42" Snowblade - Fits 36", 38", 39", & 45"
5592-00	Tire Chains - 18" x 6.50"
5585-00	Tire Chains - 18" x 9.50" & 20" x 8"
5672-01	Wheel Weights - Front - 1 pr. w/mtg. hdw. - Fits 15" tires
5673-02	Wheel Weights - Rear - 1 pr. w/mtg. hdw. - Fits 18" & 20" tires
5709-03	Front Weights - Fits 30" & 32" Side Discharge
5648-16	Lawn Sweeper w/dump Release
5714-00	Mulching Kit - 30" Top Discharge

### Garden Tractor - Light Ground Engaging

Model	Description
5708-13	Bagger - Fits 36", 38", 39", & 45" Side Discharge
5705-04	36" Two - Stage Snowblower - Fits 36", 38", 39", & 45"
5661-06	42" Snowblade - Fits 36", 38", 39", & 45"
5672-01	Wheel Weights - Front 1 pr. w/mtg. hdw. - Fits 15" tires
5673-02	Wheel Weights - Rear - 1 pr. w/mtg. hdw. - Fits 18" & 20" tires
5648-16	Lawn Sweeper w/dump Release
5667-02	Sleeve Hitch - w/lift bar - Fits 45"
5668-01	Adaptor (sleeve hitch) for use w/23" tires
5706-00	Tire Chains - 20" x 10"
5671-00	Tire Chains - 23" x 9.50"
5672-02	Wheel Weights - Front - 1 pr. w/mtg. hdw. Fits 16" tires
5673-00	Wheel Weights - Rear - 1 pr. w/mtg. hdw. Fits 23" tires
5674-01*	10" One Bottom Moldboard Plow
5675-01*	Cultivator - 7 row - Adj. 6" - 42" width
5676-01*	Disc Harrow - 8" & 11" disc - Adj. width & disc angle
5677-02*	Tiller - 5 H.P. Self-Powered - 28" width

### Four Wheel Steer

Model	Description
5708-14	Bagger - Fits 40" & 46" Side Discharge
5705-05	42" One-Stage Snowblower - Fits 40" & 46"
5661-07	48" Snowblade - Fits 40" & 46"
5709-04	Rear Weight Box for 40" & 46"
5648-16	Lawn Sweeper w/dump Release
5706-00	Tire Chains 20" x 10"
5671-00	Tire Chains 23" x 9.50"
5672-02	Wheel Weights - Front - 1 pr. w/mtg. hdw. Fits 16" tires
5673-00	Wheel Weights - Rear - 1 pr. w/mtg. hdw. Fits 23" tires
5672-01	Wheel Weights - Front - 1 pr. w/mtg. hdw. Fits 15" tires
5673-02	Wheel Weights - Rear - 1 pr. w/mtg. hdw. Fits 18" & 20" tires

### Two Wheel Steer Garden Tractor

Model	Description
5667-04	Sleeve Hitch - w/lift bar Fits 46"
5674-01*	10" One Bottom Moldboard Plow
5675-01*	Cultivator - 7 row - Adj. 6" - 42" width
5676-01*	Disc Harrow 8" & 11" Disc. Adj. width & disc angle
5677-02*	Tiller 5 H.P. Self-Powered - 28" width
5648-16	Lawn Sweeper w/dump Release

\*Requires a sleeve hitch