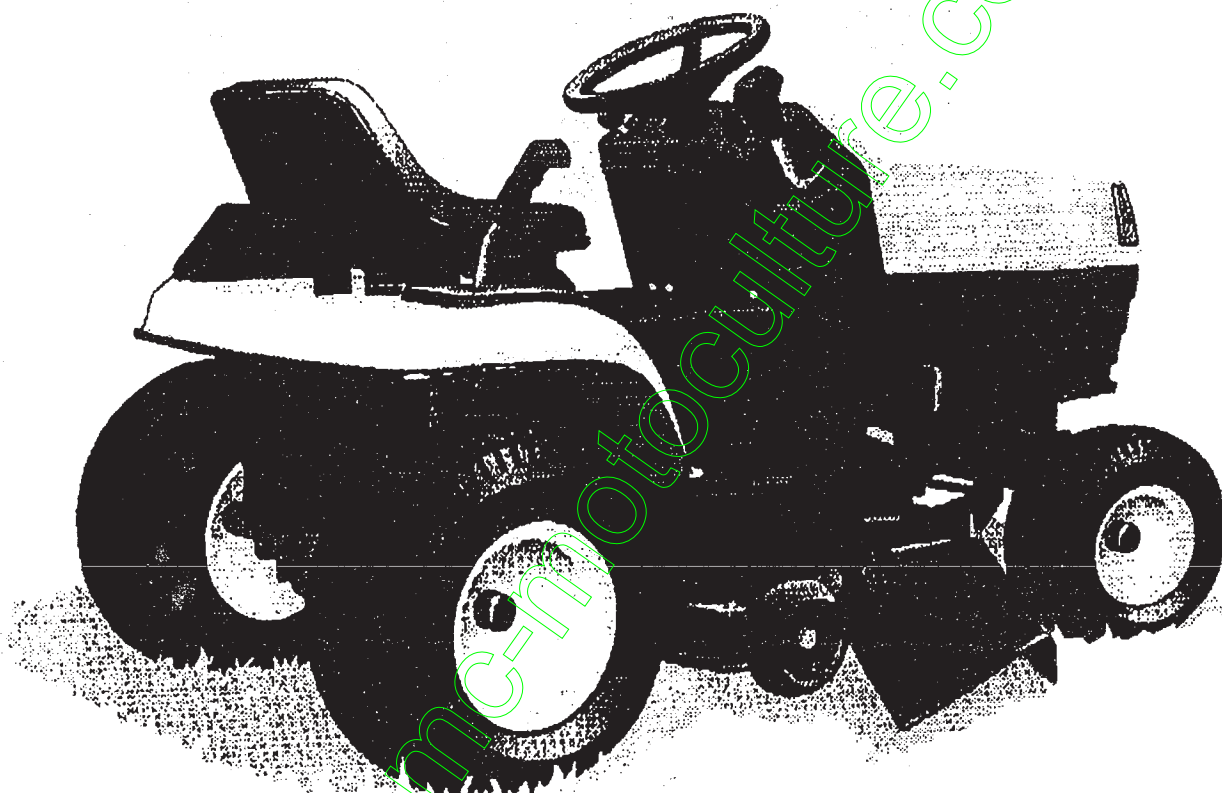


TONDEUSE AUTOPORTEE
CAST 13
MANUEL PIECES DE RECHANGE

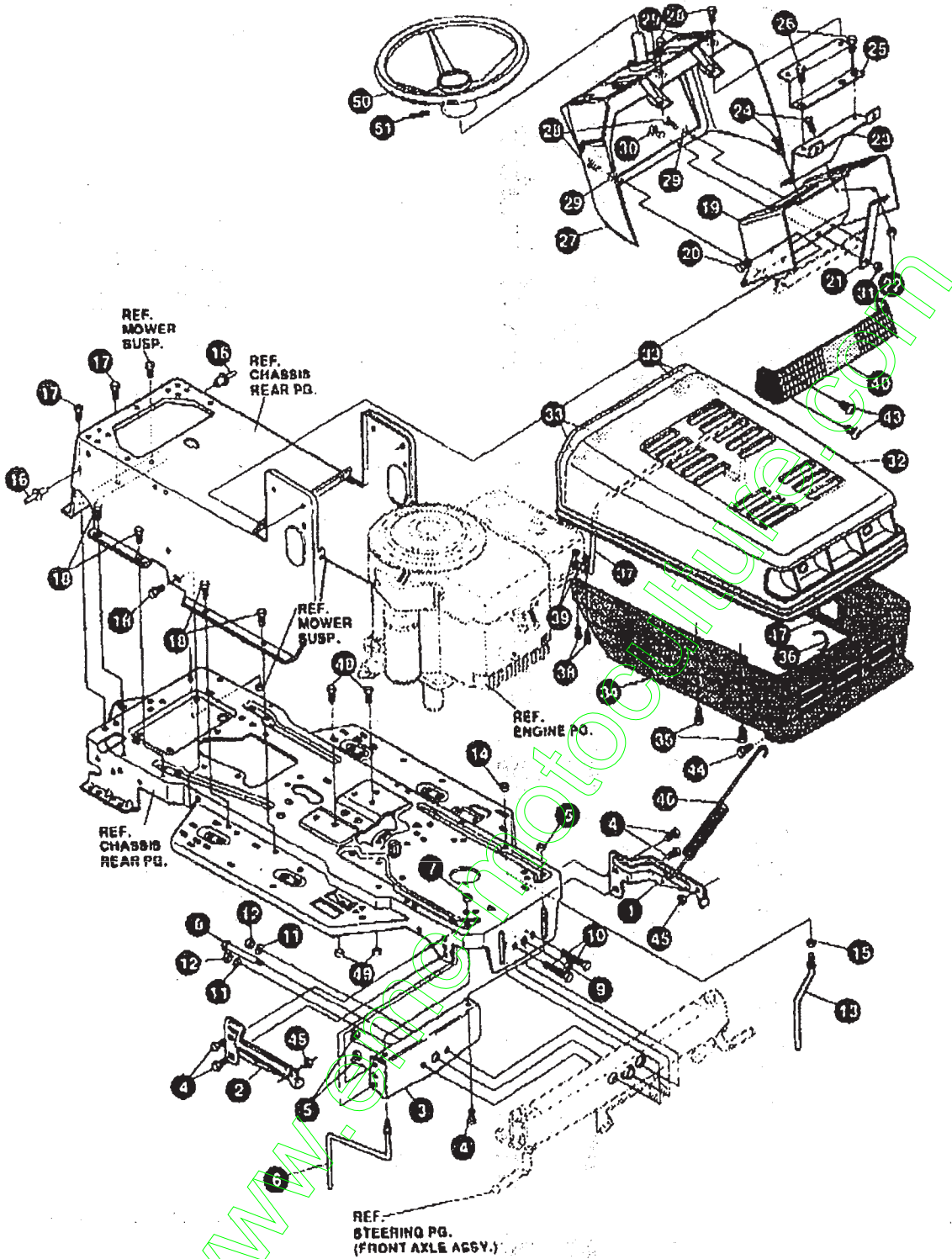


Modèle E3560-260

Pièce No. 332380 '94

TRACTEUR TONDEUSE 40" MODELE E3560-260

ENSEMBLE CHASSIS & CAPOT (AVANT)



UTILISEZ DES PIÈCES D'ORIGINE POUR CONSERVER L'APPLICATION DE LA GARANTIE.

TOUTES LES PIÈCES NON REFERÉES SONT INTERCHANGEABLES AVEC LEURS OPPOSÉS.

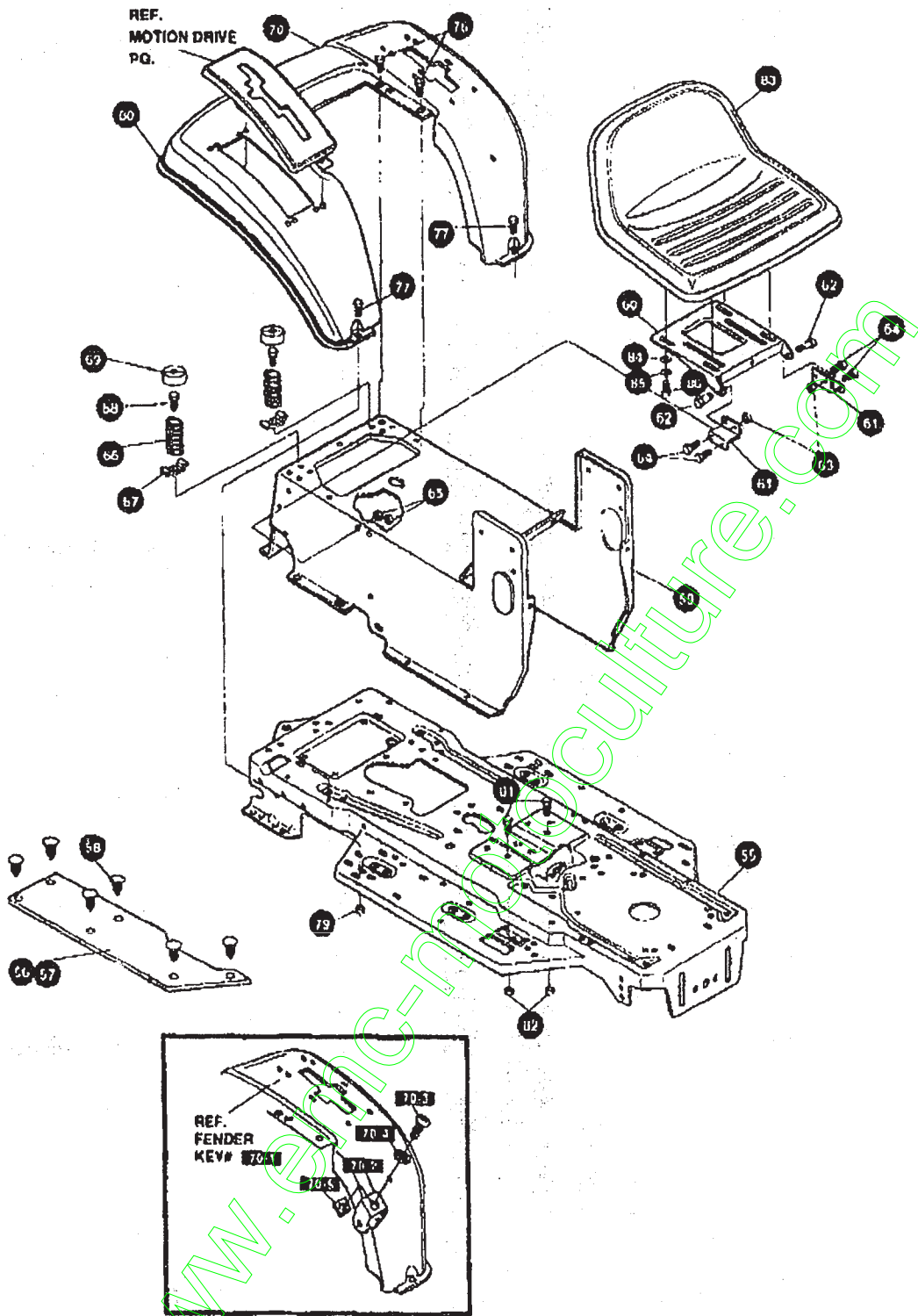
325976 C

TRACTEUR TONDEUSE 40" MODELE E3560-260

KEY#	PART#	DESCRIPTION	QTY
1	326569-853	BRACKET GRILLE LH	1
2	326568-853	BRACKET GRILLE RH	1
3	313541-853	BRACKET FRONT AXLE	1
4	56030	SCREW 5/16-18X.75WDFLLK	5
5	55273	NUT 5/16-18 HXWDFLLK	5
6	300440	GUIDE BELT RIDER	1
7	1498	NUT 5/16-18 REGHEXCTRLK	1
8	308207	BOLT .625X2.18 HSH 1/2-13	1
9	309008	NUT 1/2-13 HEXJAM CTRLK	1
10	180138	SCREW 3/8-18X3.00 HHC	2
11	2483	WASHER .39IDX1.25DX.07 BELLVIL	2
12	1499	NUT 3/8-16 REGHXCTRLK	1
13	300535	GUIDE BELT SHORT 15" WHEEL	1
14	124824	NUT 5/16-18 HEXJAM	1
15	271190	NUT 3/8-16 HEXKEPS	1
16	46763	RIVET POP .187DIA X .450LG ST	3
17	35407	SCREW 5/16-18X .50 WAHTAP	2
18	995346	SCREW 1/4-20X .50 WAHTAP	10
19	58312-853	SUPPORT DASH STEEL	1
20	300303	SCREW .25X.75X 51HHWAPLASTITE	2
21	300201-853	BRACE DASH SUPPORT LOWER	1
22	1502	NUT 1/4-20 REGHEXCTRLK	1
23	302530-863	BRKT GAS TANK	1
24	995346	SCREW 1/4-20X .50 WAHTAP	2
25	300264-853	BRACE DASH SUPPORT UPPER	1
26	995346	SCREW 1/4-20X .50 WAHTAP	2
27	305428	DASH GP W/O GRAPHIC SUS BLK173	1
28	995346	SCREW 1/4-20X .50 WAHTAP	4
29	316868	WASHER SHOULDER NYLON .255X.46	4
30	44811	SCREW 1/4-20X .75 WAHTAP	1
31	1502	NUT 1/4-20 REGHEXCTRLK	1
32	332568	HOOD H-11 PLASTIC GREY	1
33	318197	PAO ADHESIVE 1.00X1.60X.12	4
34	303037	GRILL LWR GPWR LG G-14 GREY630	1
35	300302	SCREW #10 X .50 HHTAPPST BLK	4
36	310203	CLIP HOG RING C-SHAPED	1
37	301425	BRACE HOOD SUPPORT H-11 GP	1
38	301542	SCREW 10-24X1.00HWATAPBLKPHOS	4
39	271166	NUT #10-24 HEXKEPS	4
40	302333	LENS SMOKED W/TAB NO LOGO	1
43	57798	SCREW #6 X .50 PLASTITE/HILO	4
44	56676	BOLT .375X .580 HSH 5/16-18	2
45	1498	NUT 5/16-18 REGHEXCTRLK	2
46	57478	SPRING HOOD LATCH	2
47	301452	FOIL HEAT REFLECTOR	1
48	180079	SCREW 5/16-18X1.00 HHC	2
49	1498	NUT 5/16-18 REGHEXCTRLK	2
50	330510	STEERING WHEEL	1
51	455378	PIN SPRING 250DIA X 2.00LG HVPL	1
52	332380	PARTS MANUAL	1
53	332367	OPERATOR'S MANUAL	1
54	327627	GRASS CATCHER MANUAL	1
55	328195	AIR ASSIST MANUAL	1

www.emc.com

ENSEMBLE CHASSIS & CAPOT (ARRIERE)



UTILISEZ DES PIÈCES D'ORIGINE POUR CONSERVER L'APPLICATION DE LA GARANTIE.

TOUTES LES PIÈCES NON REFÉRÉES SONT INTERCHANGEABLES AVEC LEURS OPPOSÉS.

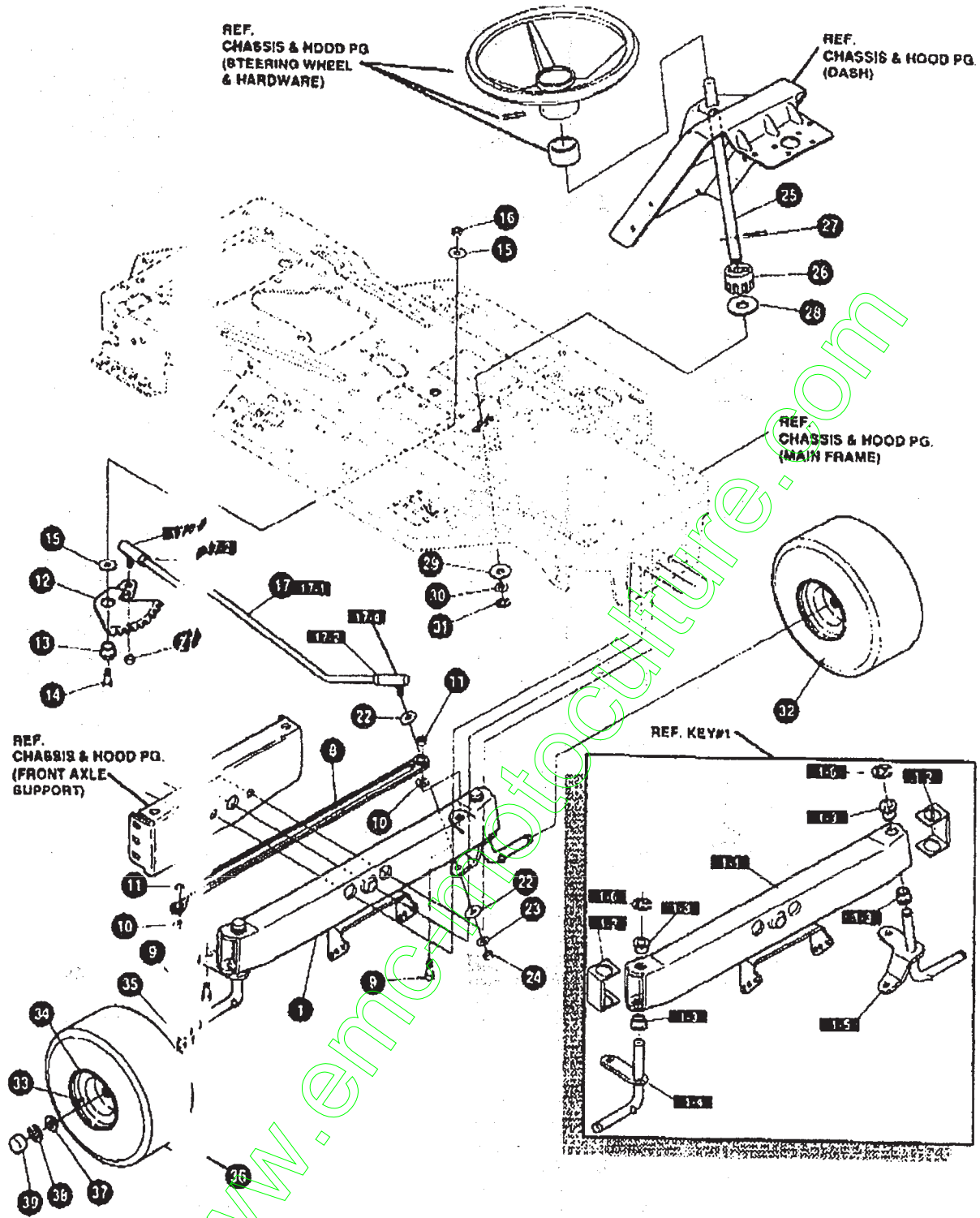
325904 B

TRACTEUR TONDEUSE 40" MODELE E3560-260

KEY#	PART#	DESCRIPTION	QTY
55	326577-854	FRAME,LF MAIN P820/F4380	1
56	310005	FOOT PAD, LH 22.12LG DYNA F-5	1
57	310006	FOOT PAD, RH 22.12LG DYNA F-5	1
58	309235	FASTENER, RATCHET BLACK	12
59	327575-854	CONSOLE, NON-WALK THRU, LFSOF	1
60	58367-854	PLATE, SEAT F5 SF, LF	1
61	310660-854	BRACKET, F-5 SEAT SUPPORT	2
62	20507	BOLT, .437X .156 HSH 5/16-18	2
63	1498	NUT, 5/16-18 REGHEXCTRLK	2
64	48901	SCREW, 5/16-18X .63WAHHC	4
65	1498	NUT, 5/16-18 REGHEXCTRLK	4
66	57153	SPRING, SEAT 2.63LG, 1.490D BLK	2
67	1341	LF CLAMP, SPRG 1.17"ID	2
68	44811	SCREW, 1/4-20X .75 WAHHTAP	2
69	58907	COVER, SEAT SPRING 1 5IDX1.0LG	2
70	327471	ASM, FENDER F5 LF, SFP, SUSP	1
70-1	332185-896	FENDER, F5, SUS, LF, SFP	1
70-2	8239	LF CLEVIS	1
70-3	439465	SCREW, 5/16-18X .66PHPNMA BKPH	1
70-4	301551	WASHER, .344IDX1.50DX .09 CU ZN	1
70-5	120373	NUT, 5/16-18 SQ	1
76	885346	SCREW, 1/4-20X .50 WAHHTAP	4
77	126358	BOLT, 5/16-18X1.00 CARRLN	2
79	55279	NUT, 5/16-18 HXWDFLLK	2
80	65023	TRIM, 77.6" BLACK NARROW	77.5
81	180079	SCREW, 5/16-18X1.00 HHC	2
82	1498	NUT, 5/16-18 REGHEXCTRLK	2
83	332667	SEAT, MICHIGAN GEN, W/SW HOLE	1
84	120393	WASHER, FLAT .344X .69X .065	4
85	120638	WASHER, HVSPTLK .328X .60X .09	4
86	180077	SCREW, 5/16-18X .75 HHC	4

www.emc-motocultivator.com

ENSEMBLE DIRECTION



UTILISEZ DES PIÈCES D'ORIGINE POUR CONSERVER L'APPLICATION DE LA GARANTIE.

TOUTES LES PIÈCES NON REFERÉES SONT INTERCHANGEABLES AVEC LEURS OPPOSEES.

315136 H

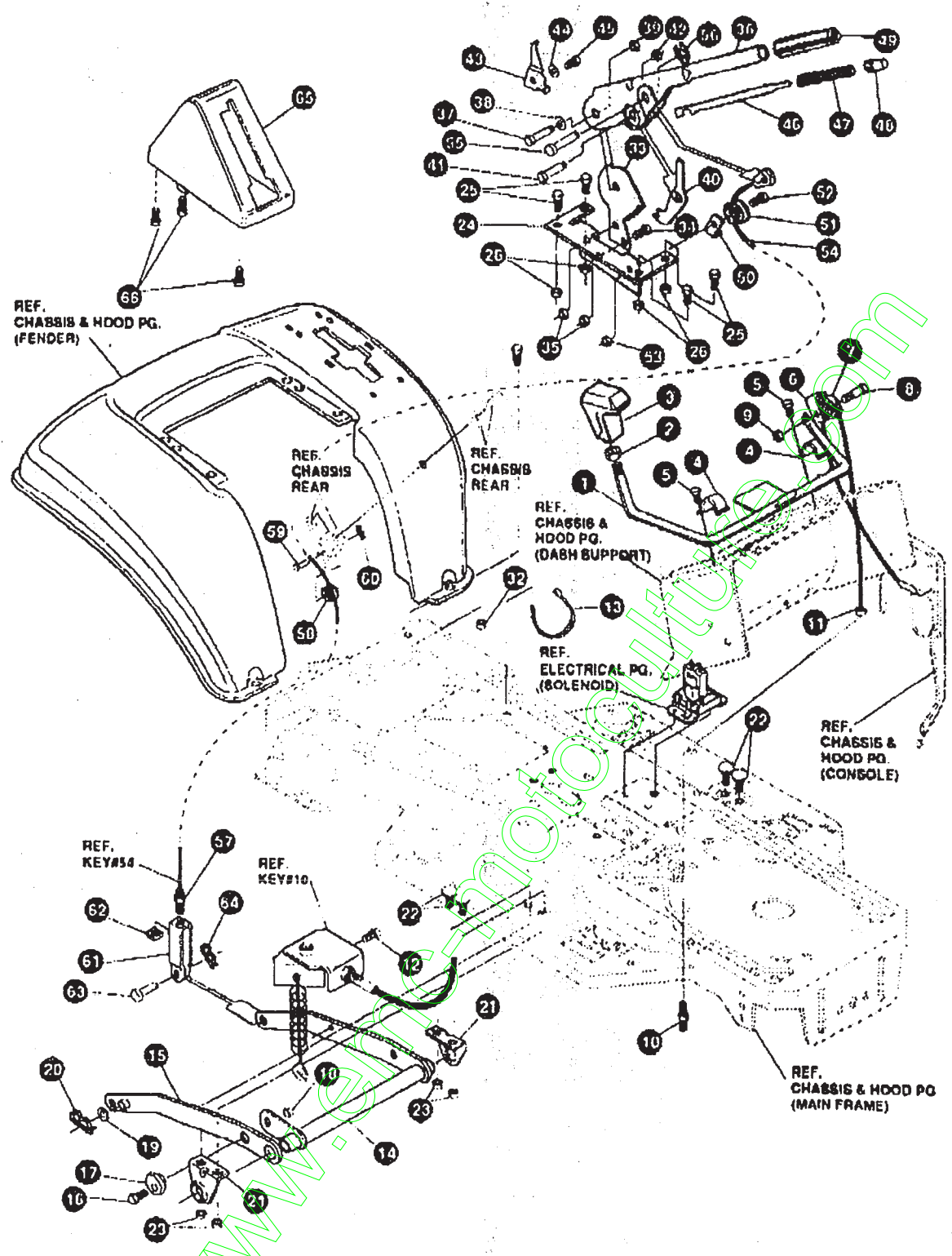
TRACTEUR TONDEUSE 40" MODELE E3560-260

KEY#	PART#	DESCRIPTION	QTY
1	^	ASSY, AXLE FRONT 4WS SUSP	1
1-1	310170	AXLE, FRONT	1
1-2	53373-854	AXLE COVER	2
1-3	52407	SPINDLE BEARING	4
1-4	302926	ASSY, SPINDLE RH	1
1-5	315886	ASSY, SPINDLE LH	1
1-6	36825	RING, RETEX .57X.05TRU6133-75	2
8	304590	TIE ROD ASSY 19.81LG W-SECTION	1
9	180128	SCREW, 3/8-16X1.75 HHC	2
10	120382	WASHER, REGSPTLK.393X.68X.10	2
11	120377	NUT, 3/8-16 REGHX	2
12	58289	SECTOR, STEERING LF	1
13	52406	BRNG, FL ECC.510IDX .998ODX .66	1
14	180177	SCREW, 1/2-13X1.50 HHC	1
15	22265	WASHER, FLAT .515X1.38X.119PL	2
16	1500	NUT, 1/2-13 REGHCTRLK	1
17	311100	KIT 300148 DRAGLINK	1
17-1	58291	STEERING LINK	1
17-2	124925	NUT, 3/8-24 REGHEXJAM	2
17-3	57158	BALL JOINT 3/8 THD SHORT STUD	1
17-4	21276	BALL JOINT 3/8 TH'D LONG STUD	1
21	46692	NUT, 3/8-24 WDFLHLK WHIZ	1
22	998416	WASHER, FLAT .391X1.00X.125	2
23	120382	WASHER, REGSPTLK.393X.68X.10	1
24	120369	NUT, 3/8-24 REGHEX	1
25	332628	SHAFT, STEERING LF, 2WS	1
26	58244	PINION, STEERING LF	1
27	58274	PIN, DOWEL .2600 OD+1.75LG PL	1
28	301410	BRNG, FL .752IDX1.081ODX .24	1
29	301308	WASHER, FORMED1.135X1.53X.12	1
30	21682	WASHER, FLAT .765X1.25X.042PL	1
31	36625	RING, RETEX .57X.05TRU5133-75	1
32	302828	TIRE & RIM, PU 15X6.0X6 TURWHI	2
33	24167	VALVE STEM	1
34	39829	WHEEL W/BEARINGS	1
35	39979	BRNG, FL .753IDX1.38 ODX	1
36	316702	TIRE, 15 X 6 X 6	1
37	642	WASHER, FLAT .755X1.31X.076	4
38	36625	RING, RETEX .57X.05TRU5133-75	2
39	40394	HUB CAP, 1.600ID X 7/8LG	2

^ ORDER INDIVIDUAL PARTS

www.emc-motors.com

ENSEMBLE DE SUSPENSION DE LA TONDEUSES



UTILISEZ DES PIÈCES D'ORIGINE POUR CONSERVER L'APPLICATION DE LA GARANTIE.

TOUTES LES PIÈCES NON REFEREES SONT INTERCHANGEABLES AVEC LEURS OPPOSEES.

315597 G

TRACTEUR TONDEUSE 40" MODELE E3560-260

KEY#	PART#	DESCRIPTION	QTY
1	303044-853	ASSY.WELD.CLUTCH HDLE	1
2	120238	NUT, 1/2-13 HEXJAM	1
3	304438	KNOB, SHIFT NOMA 1/2-13 BLK	1
4	9129	LF CLIP, RETAIN BRKT	2
5	44811	SCREW, 1/4-20X .75 WAHHTAP	2
6	1288	LF BRKT, CABLE RETAIN	1
7	48306	PULLEY, POWDER METAL	1
8	57322	BOLT, .375X .375 HSSH 1/4-20	1
9	1502	NUT, 1/4-20 REGHEXCTRLK	1
10	301491	ASSY.CL. CABLE GEN PWR 39SDSUS	1
11	120613	NUT, 1/4-28 HJAM	1
12	35498	SCREW, 6/16-18X .75 WAHHTAP	1
13	57444	TIE, CABLE BLACK NYLON 5.62L	1
14	300158-853	LIFT ASSY, LH	1
15	300189-853	LIFT ASSY, RH	1
16	180079	SCREW, 5/16-18X1.00 HHC	1
17	58247	NUT, ADJUST	1
18	1498	NUT, 5/16-18 REGHEXCTRLK	1
19	417098	WASHER, FLAT .631X1.08X.083	2
20	8260	PIN, HAIR .091 DIA X 1.68LG	2
21	58248-853	BRACKET, REAR HANG SUSP	1
22	57072	BOLT, 5/16-18X .83 CARPLN	4
23	1498	NUT, 5/16-18 REGHEXCTRLK	1
24	313026	BRACKET, HGT/ADJUST SUPPORT	1
25	180077	SCREW, 5/16-18X .75 HHC	4
26	1498	NUT, 5/16-18 REGHEXCTRLK	4
31	180077	SCREW, 5/16-18X .75 HHC	1
32	1498	NUT, 5/16-18 REGHEXCTRLK	1
33	301238	QUADRANT, HEIGHT ADJUST	1
34	180077	SCREW, 5/16-18X .75 HHC	2
35	1498	NUT, 5/16-18 REGHEXCTRLK	2
36	322292-853	HANDLE, LIFT SHORT (30" S.F.)	1
37	300171	BOLT, .500X .270 HSSH 5/16-18	1
38	998418	WASHER, FLAT .606X .76X.024	1
39	44108	NUT, 5/16-18 HWDFLCTRLK	1
40	301239	PAWL, SQUARE	1
41	300171	BOLT, .500X .270 HSSH 5/16-18	1
42	44108	NUT, 5/16-18 HWDFLCTRLK	1
43	9435	LF POINTER, HEIGHT ADJ	1
44	138479	WASHER, EXLK .195X.41X.03	1
45	35287	SCREW, #8-32X .38 HHWATAP	1
46	303027	ROD, ACTUATOR SHORT	1
47	58326	SPRING, HEIGHT ADJUST	1
48	58325	KNOB, HEIGHT ADJ PUSH BUTTON	1
49	58329	GRIP, .750 OD W/ HOLE BLACK	1
50	9149	LF BRKT, CABLE RETAIN	1
51	48306	PULLEY, POWDER METAL	1
52	58336	BOLT, .375X .375 HSSH 1/4-20	1
53	1502	NUT, 1/4-20 REGHEXCTRLK	1
54	314177	CABLE, LIFT 22.92 F-5 20X8-8	1
55	300310	PIN, CLEVIS .310DIA+.476LG ZPL	1
56	300311	RING, RET E .31X.25TRUX6133-31	1
57	120375	NUT, 1/4-20 REGHEX	1
58	48306	PULLEY, POWDER METAL	1
59	300317	PIN, CLEVIS .375DIA.X .81 LG	1
60	8260	PIN, HAIR .091 DIA X 1.68LG	1
61	9405	LF CLEVIS, LIFT CABLE	1
62	120372	NUT, 1/4-20 REGSO	1
63	39522	PIN, CLEVIS .312 X .812	1
64	121222	PIN, COTTER .090 DIA X .75LG	1
65	300335	LIFT COVER-39" F5	1
66	300340	SCREW, #10 X .75 HHPLAST BLK	3

www.gmc.com

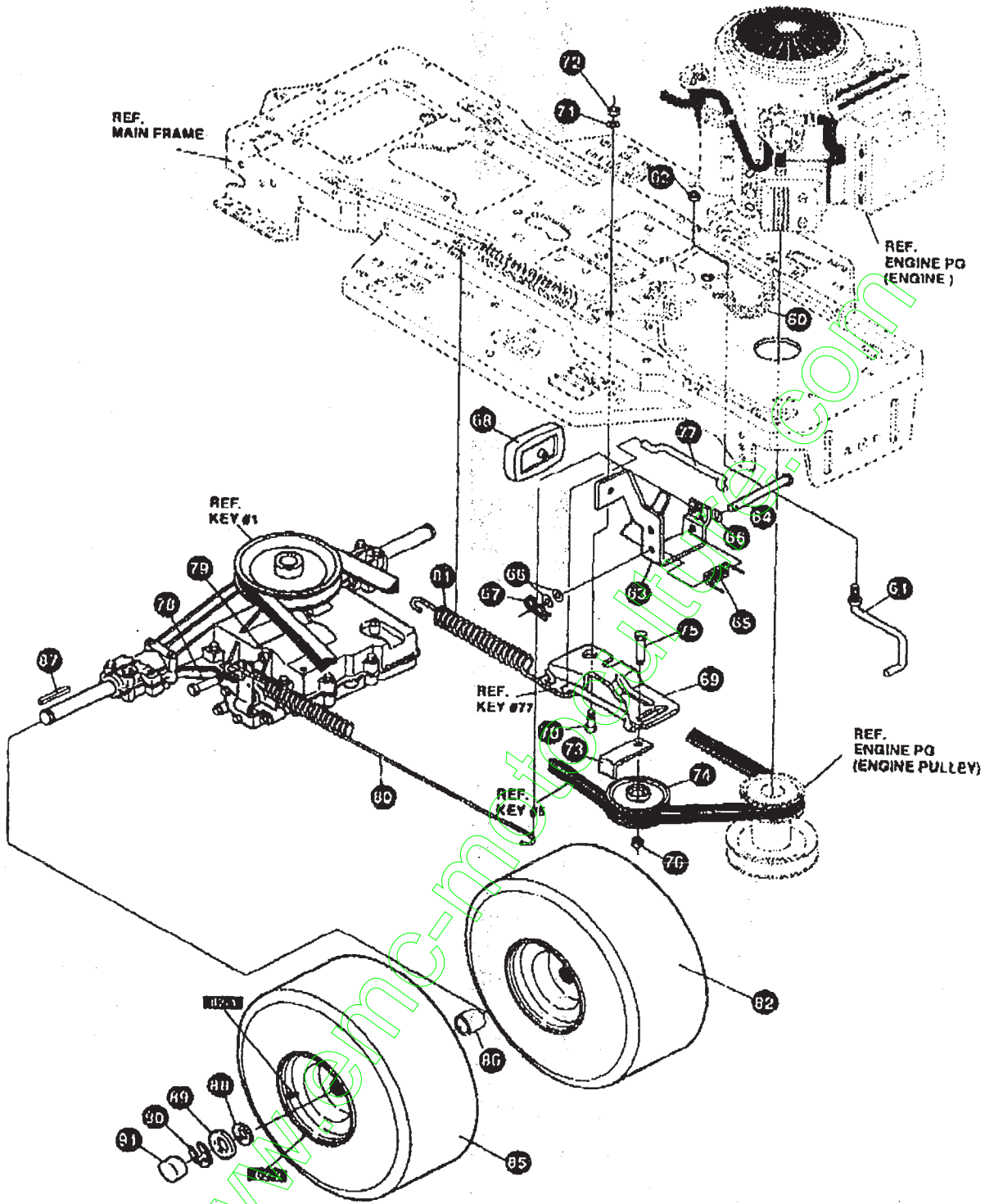
TRACTEUR TONDEUSE 40" MODELE E3560-260

KEY#	PART#	DESCRIPTION	QTY
1	A	TRANSAXLE P940-6 2WS.LF.SF	1
2	302745	PULLEY, 6.6 OD V4L T/A	1
3	50795	KEY, HI-PRO 806 .75DIA X .187WD	1
4	22053	RING, RETEX .58X.035TRUS100-62	1
5	314120	BELT, V 4L 87.25 4WS LF	1
6	180091	SCREW, 5/16-18X2.60 HHC	4
7	120393	WASHER, FLAT .344X.89X.065	8
8	1498	NUT, 5/16-18 REGHEXCTRLK	4
9	325202-863	BRACKET, STABILIZER	1
10	50947	SCREW, 3/8-16X1.25 WAHNTAPBLKP	1
11	180087	SCREW, 5/16-18X2.00 HHC	2
12	180079	SCREW, 5/16-18X1.00 HHC	1
13	120393	WASHER, FLAT .344X.89X.065	2
14	1498	NUT, 5/16-18 REGHEXCTRLK	2
15	180077	SCREW, 5/16-18X.75 HHC	1
16	138538	WASHER, REGINTLK.320X.61X.03	1
17	1498	NUT, 5/16-18 REGHEXCTRLK	1
18	330462	LEVER, SHIFT-LWR P940 LF	1
19	310347-853	CLIP, SHIFT LEVER .825 ROD	1
20	180077	SCREW, 5/16-18X.75 HHC	1
21	998416	WASHER, FLAT .391X1.00X.125	1
22	1498	NUT, 5/16-18 REGHEXCTRLK	1
23	310347-853	CLIP, SHIFT LEVER .825 ROD	1
24	57269	GUIDE, BELT 5/16-18THD	1
25	998416	WASHER, FLAT .391X1.00X.125	1
26	1498	NUT, 5/16-18 REGHEXCTRLK	1
27	310366	LF BRKT, PIVOT SH LEV	1
28	180020	SCREW, 1/4-20X.75 HHC	1
29	1502	NUT, 1/4-20 REGHEXCTRLK	2
30	309635	LEVER, SHIFT UPPER SDF 1/2-13	1
31	310285	SPRING, TORS. .56X.95X.095	1
32	137185	PIN, COTTER. 125 DIA X 1.00LG	1
33	120238	NUT, 1/2-13 HEXJAM	1
34	308890	HANDLE 1/2-13 MOLDED BLACK	1
35	325182	LINK TIEROD SHIFT P940-5 & 6 SPO	1
36	180124	SCREW, 3/8-16X1.25 HHC	1
37	1498	NUT, 3/8-16 REGHXCTRLK	1
38	327460	BRKT, SHIFT&SP LF FEND	1
39	180124	SCREW, 3/8-16X1.25 HHC	1
40	120394	WASHER, FLAT .406X.81X.065	2
41	1498	NUT, 3/8-18 REGHXCTRLK	1
42	57167	WASHER, 750X.260 8P-TRANSAXLE	1
43	58255	SCREW, 1/4-28X.75 NYLHHC	1
44	311257-853	BRACKET COVER F-5 FNDR 6SHIFT	1
45	311209	COVER PLASTIC LF P930/F4380-6	1
46	311331	SCREW, 1/4-15X.44/.63 HILOHWA	2
47	1341	LF CLAMP, SPRG 1.17"ID	2
48	311331	SCREW, 1/4-15X.44/.63 HILOHWA	2

^ CONTACT YOUR NEAREST TRANSAXLE DEALER FOR PARTS & SERVICE

www.emerco.com

TRANSMISSION



UTILISEZ DES PIÈCES D'ORIGINE POUR CONSERVER L'APPLICATION DE LA GARANTIE.

TOUTES LES PIÈCES NON REFEREES SONT INTERCHANGEABLES AVEC LEURS OPPOSEES.

327597 D

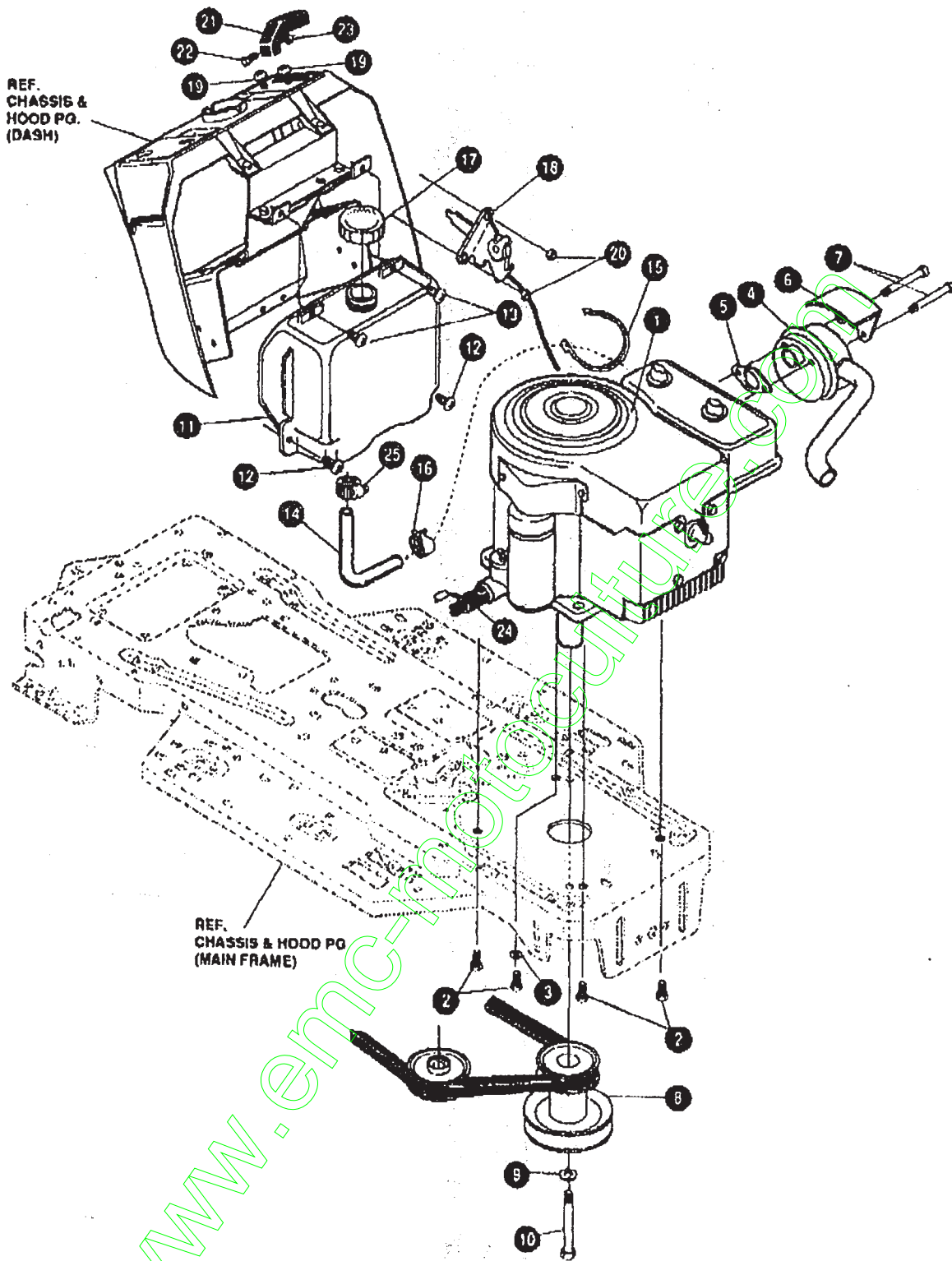
TRACTEUR TONDEUSE 40" MODELE E3560-260

KEY#	PART#	DESCRIPTION	QTY
80	321514	SPRING, DRAG LINK BIAS	1
61	304016	GUIDE, BELT R.H.	1
62	1498	NUT, 5/16-18 REGHEXCTRLK	1
63	325942	SF PEDAL ASSY, BRAKE/CLUTCH LF	1
64	319675	PIN, CLEVIS .500DX4.63LG	1
65	67847	SPRING, BRAKE PEDAL	1
66	2968	WASHER, FLAT .504X .75X.059	3
67	56180	PIN, HAIR .091 DIA X1.82LG	1
68	48160	PAD, CLUTCH BRAKE W/PRINTING	1
69	320381-853	ARM, IDLER TRACTION, SOG LF	1
70	329989	BOLT, .625X .135 HHS 5/16-18	1
71	45602	WASHER, FLAT .333X .87X.119	1
72	1498	NUT, 5/16-18 REGHEXCTRLK	1
73	39659	RETAINER, BELT	1
74	35374	PULLEY, IDLER V4L 3.06X .82	1
75	45892	BOLT, 3/8-16X1.50 CARRSN	1
76	1498	NUT, 3/8-16 REGHEXCTRLK	1
77	57204	ROD, CLUTCH 3.92"	1
78	326131	BOLT, .495X .31 HHS 5/16-18	1
79	1498	NUT, 5/16-18 REGHEXCTRLK	1
80	325910	SPRING, BRAKE 31.12 P940 LF	1
81	330505	SPRING, CLUTCH .113X.750X8.75	1
82	57166	TIRE & RIM, 20X8 00-8 WHITE 688	2
82-1	24187	VALVE STEM	1
82-1	57165	RIM, WHEEL	1
85	319884	TIRE, 20 X 8 X 8	1
86	301565	SPACER, SLEV .750X1.25X .50 PL	2
87	52928	KEY, SQUARE .187SQX2.28LG	2
88	642	WASHER, FLAT .755X1.31X.076	4
89	42815	WASHER, FLAT .755X1.53X.07	2
90	38825	RING, RETEX .67X.05TRU5133-75	2
91	40394	HUB CAP, 1.600ID X 7/8LG	2

www.emc-motocultures.com

TRACTEUR TONDEUSE 40" MODELE E3560-260

MOTEUR ENSEMBLE



UTILISEZ DES PIÈCES D'ORIGINE POUR CONSERVER L'APPLICATION DE LA GARANTIE.

TOUTES LES PIÈCES NON REFÉREES SONT INTERCHANGEABLES AVEC LEURS OPPOSÉS.

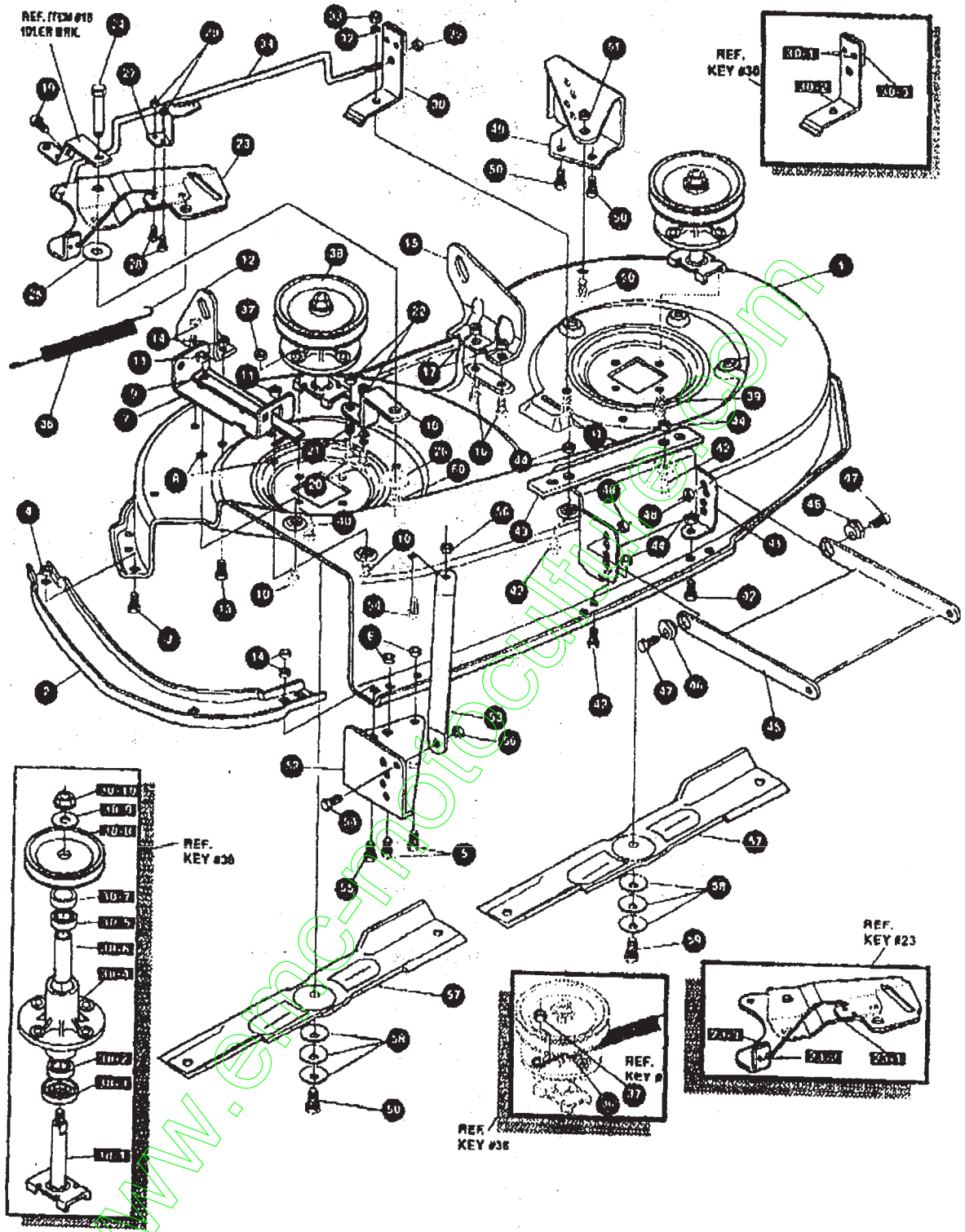
326200 G

KEY#	PART#	DESCRIPTION	QTY
1	ENGINE	12-12.5HP BS IC DUAL(SEE ENGINE MANUAL)	1
2	60847	SCREW, 3/8-16X1.25 WAHHTAPBLKP	4
3	138480	WASHER, EXLK 304X.60X.04	1
4	305367	MUFFLER-LO TONE NELSON EXPORT	1
5	46708	GASKET, MUFFLER	1
6	54767	SHIELD, HEAT, FOR ROUND MUFFLER	1
7	173083	SCREW, 5/16-18X3.50 HHC	2
8	328028	PULLEY, ENG 3.0D X 4.0LG X 5.0D	1
9	120383	WASHER, REGSP TLK. 450X.78X.12	1
10	433146	SCREW, 7/16-20X4.25 HHC BLK PH	1
11	314991	TANK, FUEL 2-GAL GPWR CLEAR	1
12	300303	SCREW, .25X.75X 51HHWAPLASTITE	2
13	995346	SCREW, 1/4-20X .50 WAHHTAP	2
14	50118	TUBING, .25X.50X BULK GAS LINE	14.0
15	67444	TIE, CABLE BLACK NYLON 5.62L	1
16	47345	CLAMP, HOSE SCREW TYPE	1
17	300304	CAP. GAS - 2.0 THROAT	1
18	303159	THROTTLE, CONTROL 11HP BS GP	1
19	320553	SCREW, 10-24X.63PHPNMA CRSS	2
20	271166	NUT, #10-24 HEXKEPS	2
21	900508	KNOB, THROTTLE CONTROL GP STYLE	1
22	169585	SCREW, #8-32X .36 PHPNMA	1
23	120622	NUT, #8-32 REGHX	1
24	325547	OIL DRAIN VALVE ASSEMBLY	1
25	47346	CLAMP, HOSE SCREW TYPE	1

www.emc-motoculture.com

TRACTEUR TONDEUSE 40" MODELE E3560-260

CARTER DE TONDEUSE

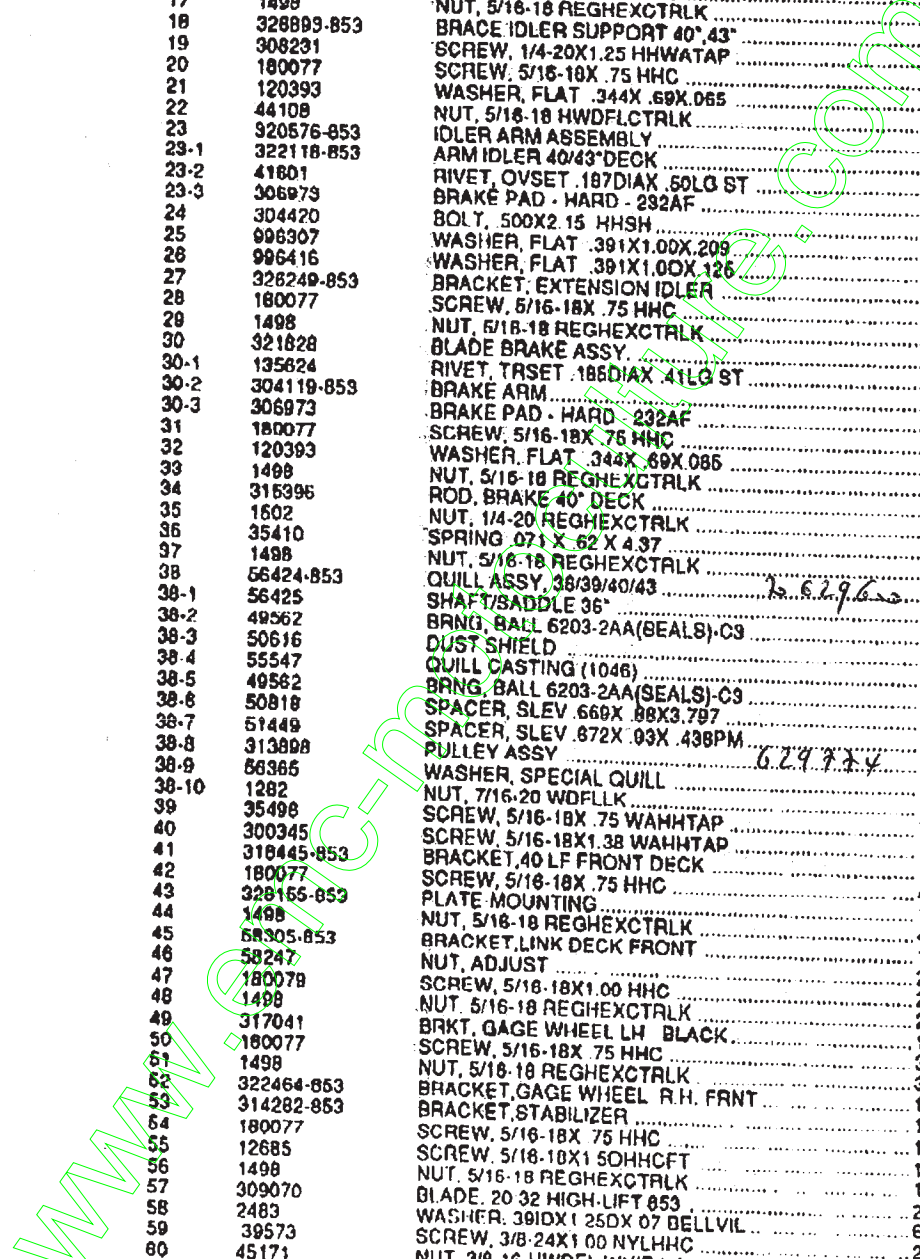


UTILISEZ DES PIÈCES D'ORIGINE POUR CONSERVER L'APPLICATION DE LA GARANTIE.

TOUTES LES PIÈCES NON REFERENCEES SONT INTERCHANGEABLES AVEC LEURS OPPOSEES.

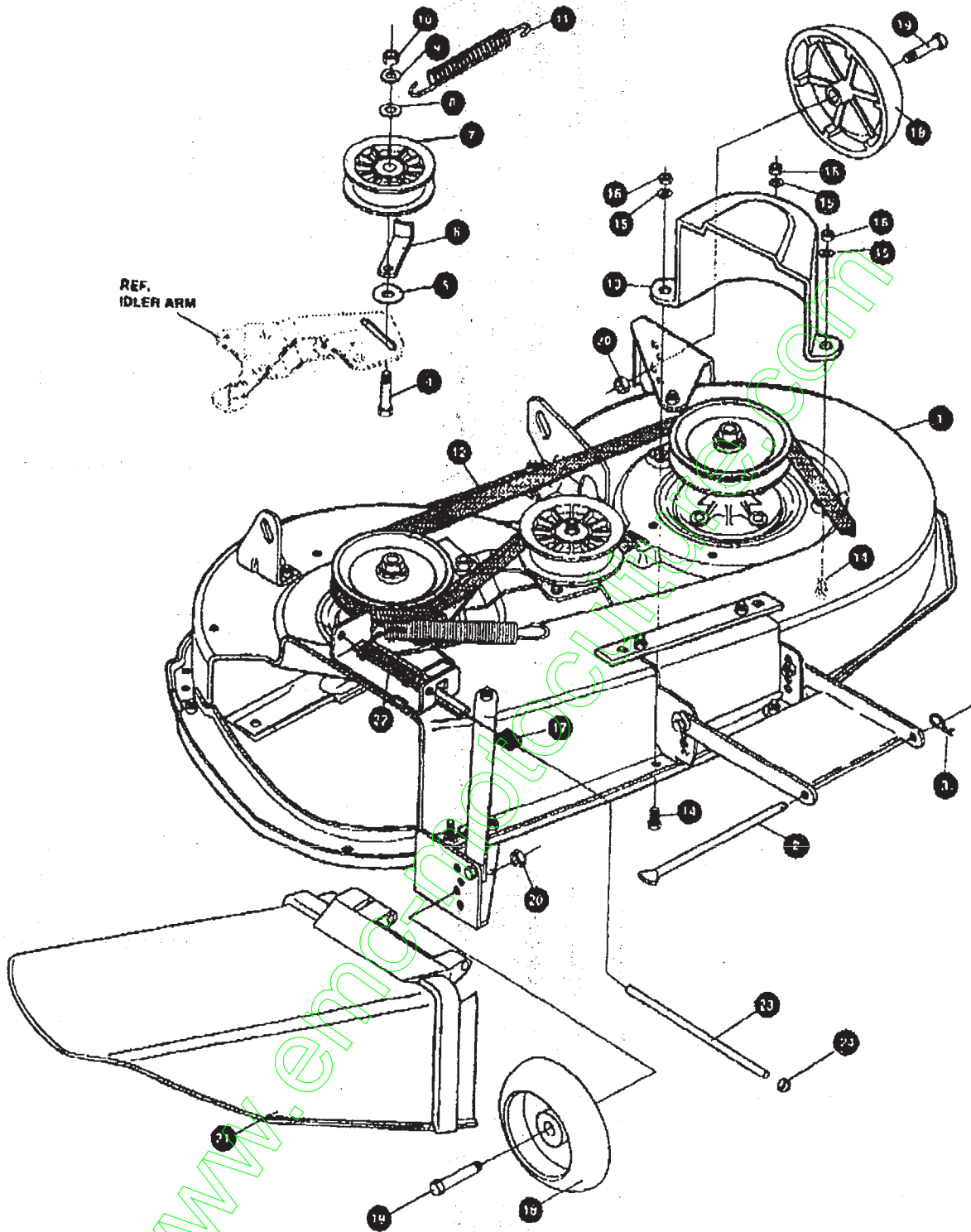
331147 B

KEY#	PART#	DESCRIPTION	QTY
1	325103	40° DECK KIT	1
2	326480-853	TOE GUARD - MULCHER	1
3	180077	SCREW, 5/16-18X .75 HHC	1
4	1498	NUT, 5/16-18 REGHEXCTRLK	1
5	180077	SCREW, 5/16-18X .75 HHC	1
6	1498	NUT, 5/16-18 REGHEXCTRLK	1
7	317017	BRACKET CHUTE MOUNT BLACK	2
8	120393	WASHER, FLAT .344X .69X.065	1
9	322320-853	LEVER ASSY (SHORT)	2
10	180077	SCREW, 5/16-18X .75 HHC	1
11	1498	NUT, 5/16-18 REGHEXCTRLK	2
12	313929	LIFT BRKT, REAR RH BLK 853	2
13	180077	SCREW, 5/16-18X .75 HHC	1
14	1498	NUT, 5/16-18 REGHEXCTRLK	2
15	310867	BRACKET, DECK LIFT REAR LHBLK	2
16	180077	SCREW, 5/16-18X .75 HHC	1
17	1498	NUT, 5/16-18 REGHEXCTRLK	2
18	326889-853	BRACE IDLER SUPPORT 40°, 43°	2
19	308231	SCREW, 1/4-20X1.25 HHWATAP	1
20	180077	SCREW, 5/16-18X .75 HHC	1
21	120393	WASHER, FLAT .344X .69X.065	2
22	44108	NUT, 5/16-18 HWDFLCTRLK	2
23	920576-853	IDLER ARM ASSEMBLY	2
23-1	322118-853	ARM IDLER 40/43° DECK	1
23-2	41801	RIVET, OVSET .187DIA X .50LG ST	1
23-3	306973	BRAKE PAD - HARD - 292AF	2
24	304420	BOLT, 500X2.15 HSHS	1
25	906307	WASHER, FLAT .391X1.00X.209	1
26	906416	WASHER, FLAT .391X1.00X.126	2
27	326249-853	BRACKET, EXTENSION IDLER	1
28	180077	SCREW, 5/16-18X .75 HHC	2
29	1498	NUT, 5/16-18 REGHEXCTRLK	1
30	321828	BLADE BRAKE ASSY	2
30-1	135824	RIVET, TRSET .186DIA X .41LG ST	1
30-2	304119-853	BRAKE ARM	2
30-3	306973	BRAKE PAD - HARD - 232AF	1
31	180077	SCREW, 5/16-18X .75 HHC	1
32	120393	WASHER, FLAT .344X .69X.065	1
33	1498	NUT, 5/16-18 REGHEXCTRLK	1
34	315996	ROD, BRAKE 40° DECK	1
35	1602	NUT, 1/4-20 REGHEXCTRLK	1
36	35410	SPRING .071 X .62 X 4.37	1
37	1498	NUT, 5/16-18 REGHEXCTRLK	1
38	56424-853	QUILL ASSY, 36/39/40/43	2
38-1	56425	SHAFT/SADDLE 36°	1
38-2	49562	BRNG, BALL 6203-2AA(SEALS)-C3	1
38-3	50616	DUST SHIELD	1
38-4	55547	QUILL CASTING (1046)	1
38-5	49562	BRNG, BALL 6203-2AA(SEALS)-C3	1
38-6	50818	SPACER, SLEV .660X .88X3.797	1
38-7	51449	SPACER, SLEV .872X .03X .438PM	1
38-8	313898	PULLEY ASSY	1
38-9	86365	WASHER, SPECIAL QUILL	1
38-10	1282	NUT, 7/16-20 WDFLLK	1
39	35498	SCREW, 5/16-18X .75 WAHHTAP	7
40	300345	SCREW, 5/16-18X1.38 WAHHTAP	1
41	318445-853	BRACKET, 40 LF FRONT DECK	1
42	180077	SCREW, 5/16-18X .75 HHC	1
43	320155-853	PLATE MOUNTING	4
44	1498	NUT, 5/16-18 REGHEXCTRLK	1
45	58305-853	BRACKET, LINK DECK FRONT	4
46	58247	NUT, ADJUST	1
47	180079	SCREW, 5/16-18X1.00 HHC	2
48	1498	NUT, 5/16-18 REGHEXCTRLK	2
49	317041	BRKT, GAGE WHEEL LH BLACK	2
50	180077	SCREW, 5/16-18X .75 HHC	1
51	1498	NUT, 5/16-18 REGHEXCTRLK	3
52	322464-853	BRACKET, GAGE WHEEL R.H. FRNT	3
53	314282-853	BRACKET, STABILIZER	1
54	180077	SCREW, 5/16-18X .75 HHC	1
55	12685	SCREW, 5/16-18X1.50HHCFT	1
56	1498	NUT, 5/16-18 REGHEXCTRLK	1
57	309070	BLADE, 20 32 HIGH-LIFT 853	1
58	2483	WASHER, 38IDX1.25DX.07 BELLVIL	2
59	39573	SCREW, 3/8-24X1.00 NYLHHC	6
60	45171	NUT, 3/8-16 HWDFL WHIZ-LOCK ZN	2



TRACTEUR TONDEUSE 40" MODELE E3560-260

CARTER DE TONDEUSE



UTILISEZ DES PIÈCES D'ORIGINE POUR CONSERVER L'APPLICATION DE LA GARANTIE.

TOUTES LES PIÈCES NON REFEREES SONT INTERCHANGEABLES AVEC LEURS OPPOSEES.

331145 B

TRACTEUR TONDEUSE 40" MODELE E3560-260

KEY#	PART#	DESCRIPTION	QTY
1	329035	ASM.40"DECK FOR AIR ASSIST	1
2	59306	ROD. DECK HITCH Z-PL	1
3	8260	PIN. HAIR .091 DIA X 1.66LG	1
4	57325	BOLT, 3/8-16 X 2.00 CARRSN	1
5	25210	WASHER, FLAT .386 X 1.25 X .09HT	1
6	1348	RETAINER BELT	1
7	310326	PULLEY, IDLER BFF 4.00 WIDE FL	1
8	996307	WASHER, FLAT .391 X 1.00 X .209	1
9	120392	WASHER, REGSPTLK.393X.68X.10	1
10	120377	NUT, 3/8-16 REGHX	1
11	300473	SPRING, TENSION 7.52LG. 17LB/IN	1
12	319005	BELT, V 6L 81.00 DECK 40 LF	1
13	328257	GUARD, BELT LH PLASTIC	1
14	180076	SCREW, 5/16-18 X .63 HMC	3
15	120393	WASHER, FLAT .344 X .68 X .065	3
16	1499	NUT, 5/16-18 REGHEXCTRLK	3
17	42348	GRIP-LEVER GRASS COLLECTOR	1
18	302611	GAUGE WHEEL EURO 6.00OD X 1.38WD	2
19	23763	BOLT, 500 X 1.390 HSSH 3/8-16	2
20	1499	NUT, 3/8-16 REGHXCTRLK	2
21	304422	CHUTE DEFLECTOR 40" 42" X 43"	1
22	314975	SPRING, TORSION CHUTE DEFLECTOR	1
23	304424	ROD, PIVOT DECK .312DX7.25	1
24	3535	NUT, PUSH ON CAP .312 OD	1

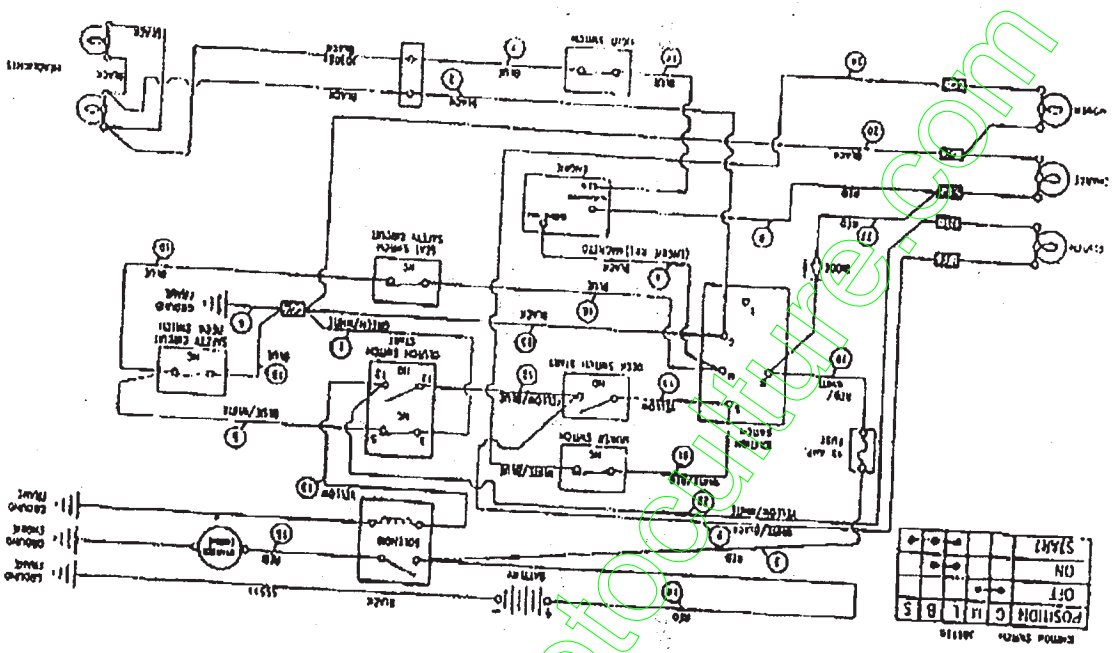
www.emc-motoculture.com

TRACTEUR TONDEUSE 40" MODELE E3560-260

KEY# PART# DESCRIPTION QTY

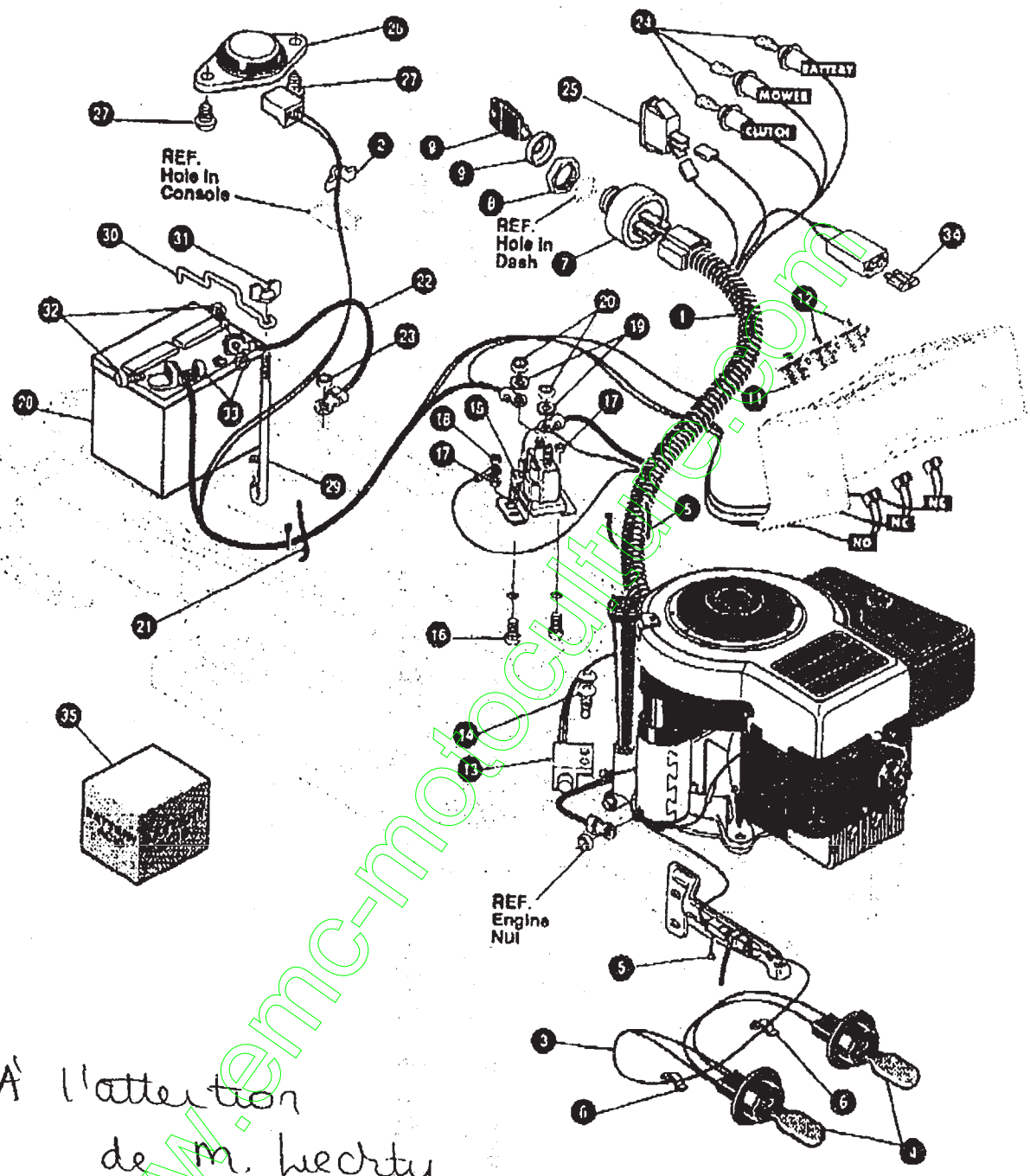
KEY#	PART#	DESCRIPTION	QTY
1	320067	HARNASS 12-12.5.H11G14.WRAP.LF	1
2	41482	PRESS CLIP 1.380LG 265ID	2
3	303084	ASSY.LIGHT WIRE-1/4 TURN	1
4	52572	BULB, HEADLAMP	1
5	57444	TIE, CABLE BLACK NYLON 6.82L	2
6	41482	PRESS CLIP 1.380LG 265ID	2
7	927355	SWITCH-IGN (AFTER FIRE) 3 POSN	1
8	327352	NUT, 5/8-BACME DELTA FOR BOOT	1
9	300184	BOOT, IGN SWITCH	1
10	327350	KEY,IGNITION GENERIC DELTA	1
11	326653	SWITCH,SNAPMNT NO 055/118GRY	2
12	326654	SWITCH,SNAP MNT NC, 140 BLUE	1
13	57476	SWITCH SCR MNT DP NC NO BLK	2
14	57220	SOLENOID	1
15	53716	SCREW, #12 X .50 PHPNHTAP BLK	2
16	187745	SCREW, 1/4-20X .75 HX6EMMA	1
17	1502	NUT, 1/4-20 REGHEXCTRLK	2
18	271172	NUT, 1/4-20 REGHEXKPKPS	2
19	138485	WASHER, EXLK 320X.81X.03	2
20	120368	NUT, 5/16-24 REGHEX	2
21	57444	TIE, CABLE BLACK NYLON 5.62L	2
22	55511	WIRE, GROUND, 12.5	1
23	271184	NUT, 5/16-18 HEXKPKPS	1
24	57769	BULB, INDICATOR	1
25	300334	LIGHT SWITCH ON/OFF PANEL MNT	3
26	67547	SWITCH, SEAT	1
27	160505	SCREW, 1/4-20X .38PPHNMMA	2
28	302257	BATTERY, 12V	1
29	57551	ROD, BATTERY	1
30	57552	ROD, BATTERY, TOP	1
31	325232	NUT, WING 1/4-20 NYLON	1
32	180020	SCREW, 1/4-20X .75 HHC	2
33	271172	NUT, 1/4-20 REGHEXKPKPS	2
35	271172	BATTERY ACID PAK, 80 OZ	1

^ CAN BE PURCHASED LOCALLY



TRACTEUR TONDEUSE 40" MODELE E3560-260

FAISCEAU ELECTRIQUE



A l'attention de M. Heerty

UTILISEZ DES PIÈCES D'ORIGINE POUR CONSERVER L'APPLICATION DE LA GARANTIE.

TOUTES LES PIÈCES NON RÉFÉRÉES SONT INTERCHANGEABLES AVEC LEURS OPPOSÉES.

325530 C