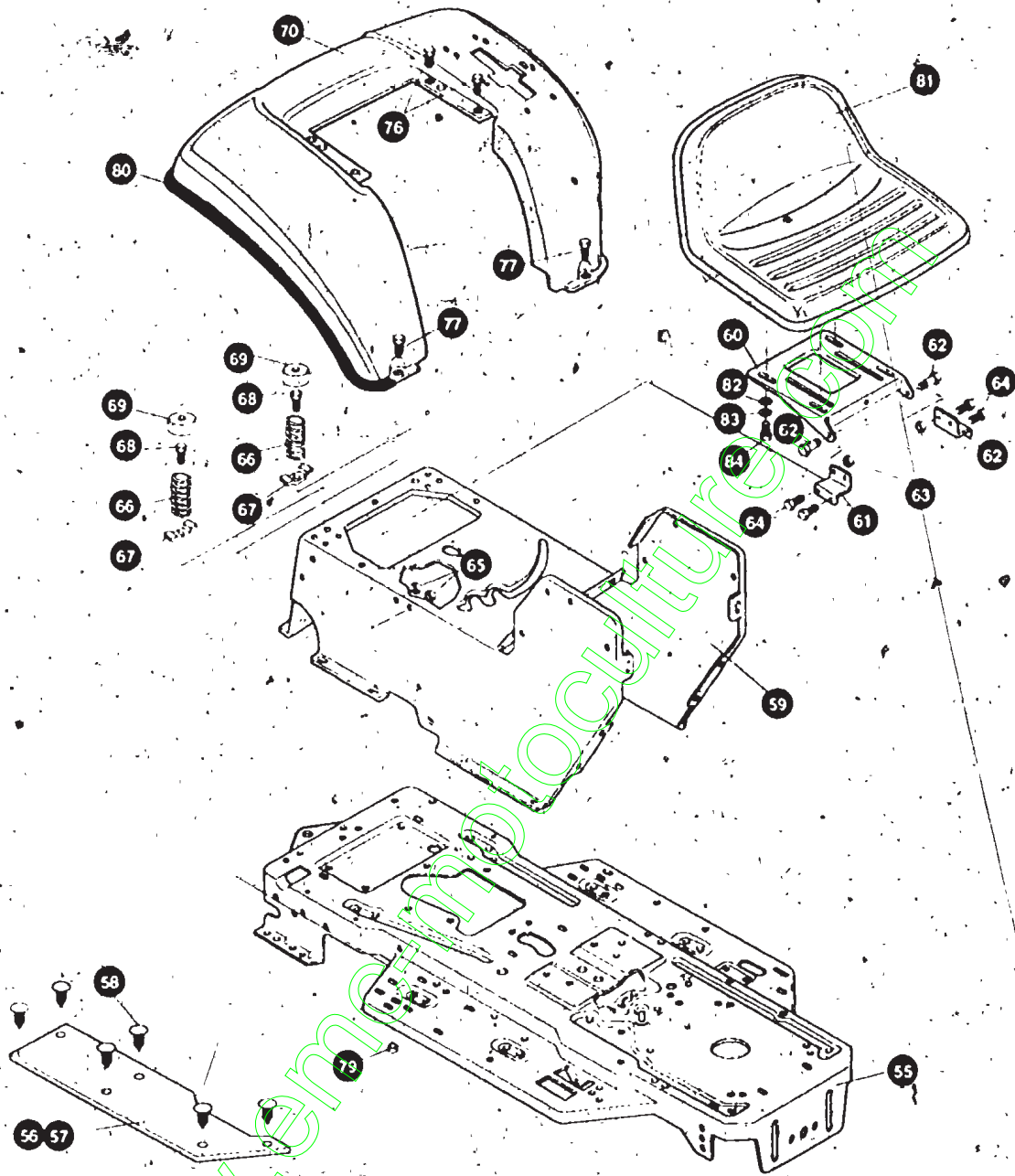


NOTE: ALWAYS USE ORIGINAL EQUIPMENT PARTS. Use of service/replacement parts other than original equipment parts may void your warranty.

ALL UNNUMBERED ITEMS ARE INTERCHANGEABLE WITH OPPOSITE SIDE

325873D

KEY#	PART#	DESCRIPTION	QTY
1	313001-853	BRACKET, GRILLE SUPPORT LH	1
2	313002-853	BRACKET, GRILLE RH	1
3	313541-853	BRACKET, FRONT AXLE	1
4	56030	SCREW, 5/16-18X 75WDFLLK GR5 Z	5
5	55273	NUT, 5/16-18 HXWDFLLK Z	5
6	300440	GUIDE, BELT, RIDER	1
7	1498	NUT, 5/16-18 REGHEXCTRLK Z	1
8	308207	BOLT, 625X2 18 HSH 1/2-13 Z	1
9	309008	NUT, 1/2-13 HEXJAM CTRLK Z	1
10	180138	SCREW, 3/8-16X3 00HHC GR5 Z	2
11	2483	WASHER, 39IDX1 25DX 07 BELLVIL	2
12	1499	NUT, 3/8-16 REGHXCTRLK Z	2
13	180079	SCREW, 5/16-18X1 00 HHC GR5 Z	2
14	1498	NUT, 5/16-18 REGHEXCTRLK Z	2
15	300635	GUIDE, BELT SHORT 15" WHEEL	1
16	124824	NUT, 5/16-18 HEXJAM Z	1
17	271190	NUT, 3/8-16 HEXKEPS Z	1
18	46763	RIVET, POP 187DIA X 450LG ST	3
19	35497	SCREW, 5/16-18X 50 WAHTAP Z	2
20	995346	SCREW, 1/4-20X 50 WAHTAP Z	10
21	309447-860	DASH STEEL, LF SUSP DYN	1
22	995346	SCREW, 1/4-20X 50 WAHTAP Z	2
23	57159	LATCH, 94WDX 047 ASSY HOOD	2
24	8482	BOLT, 375X 156 HSH 5/16 18Z	2
25	120394	WASHER FLAT 406X 81X 065 Z	2
26	120393	WASHER FLAT 344X 69X 065 Z	2
27	1498	NUT, 5/16-18 REGHEXCTRLK Z	2
28	53446	PIN, 5/16 18 HOOD LATCH GR2 Z	2
29	138538	WASHER REGINTLK 320X 61X 03 Z	2
30	45174	NUT, 5/16-18 HEXWDFLLK WHIZ Z	2
31	312306	BAFFLE CONSOLE SOUND EXPORT LF	1
32	300314	SCREW 1/4-20X 88WAHTAPGR2 Z	2
33	120392	WASHER, FLAT 281X 63X 065 Z	2
34	1502	NUT, 1/4-20 REGHEXCTRLK Z	2
35	314537-860	HOOD, LF H-20 DYNA-PRO	1
36	52151	EDGING (78" 47453) WIDE BLK	1
37	325401	GRILLE G17	1
38	274672	SCREW, 1/4-20X 63 WAHHC GR2 Z	4
39	120393	WASHER, FLAT 344X 69X 065 Z	4
40	1502	NUT, 1/4-20 REGHEXCTRLK Z	4
41	302333	LENS, SMOKED W/TAB NO LOGO	1
43	57796	SCREW, #6 X 50 PLASTITE/HI-LO	4
44	36149	BOLT, 375X 500 HSH 5/16-18Z	2
45	1498	NUT, 5/16-18 REGHEXCTRLK Z	2
46	311094	LANYARD HOOD, 11 75LG H15 VANG	1
47	48900	SCREW, 1/4-20 00 WAHHC GR2 Z	1
48	120392	WASHER, FLAT 281X 63X 065 Z	1
49	1502	NUT, 1/4-20 REGHEXCTRLK Z	2
50	314948	FOIL LENS DYNA-PRO REFLECTOR	1
50	311465	COVER, STEERING SHAFT GENERIC	1
51	330510	STEERING WHEEL, GENERIC	1
52	301412	SPACER, STEERING SHAFT	1
53	456378	PIN, SPRING 250DIA X 2 00LG HVPL	1
54	332212	OPERATOR'S MANUAL, ENGLISH (NOT SHOWN)	1
55	332213	OPERATOR'S MANUAL, FRENCH (NOT SHOWN)	1
56	332214	OPERATOR'S MANUAL, GERMAN (NOT SHOWN)	1
57	333329	PARTS MANUAL, ENGLISH (NOT SHOWN)	1



www.enhancedtechnology.com

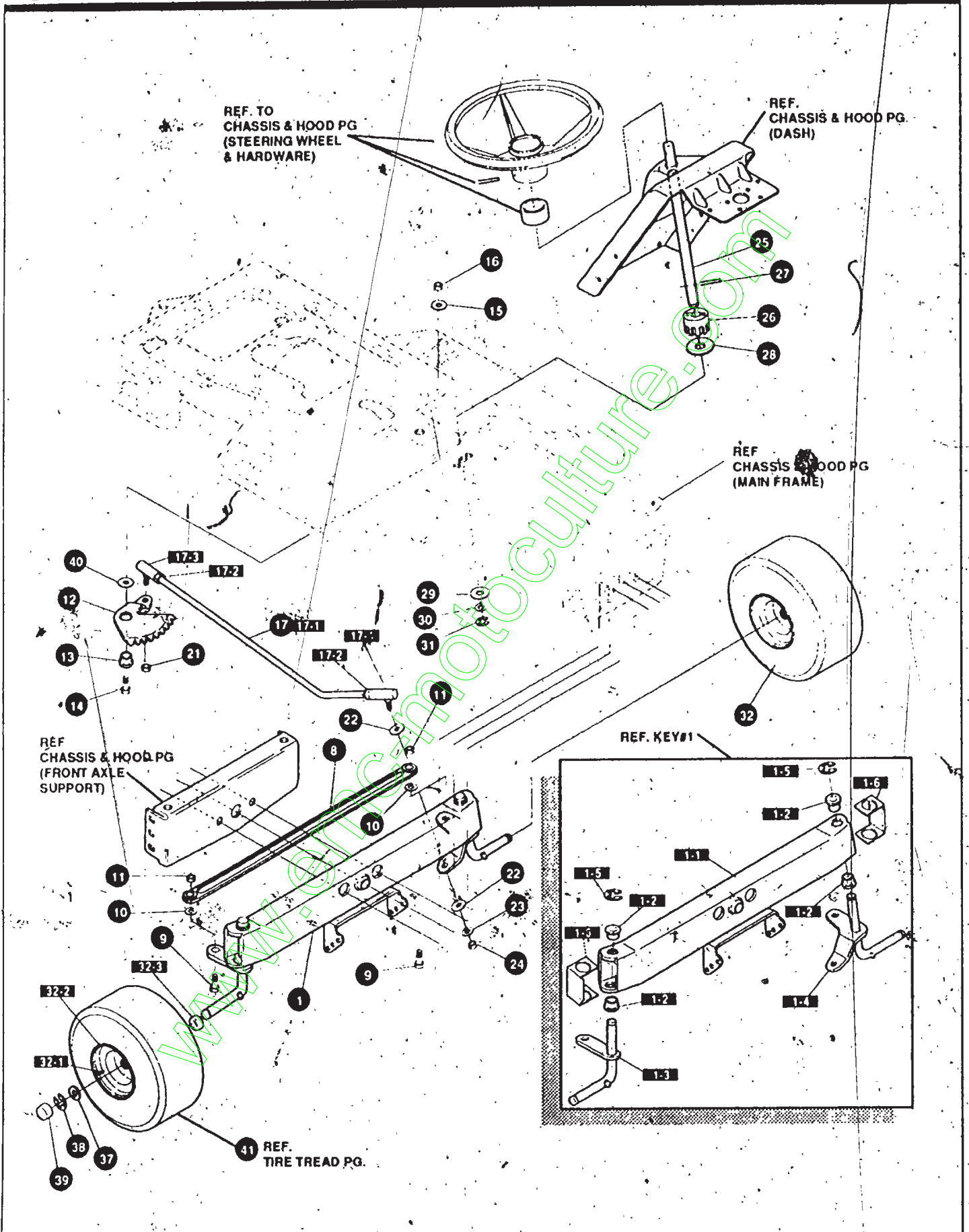
NOTE: ALWAYS USE ORIGINAL EQUIPMENT PARTS. Use of service/replacement parts other than original equipment parts may void your warranty.

ALL UNNUMBERED ITEMS ARE INTERCHANGEABLE WITH OPPOSITE SIDE

325850B

KEY#	PART#	DESCRIPTION	QTY
55	326577-860	FRAME,LF MAIN P920/F4360	1
56	310005	FOOT PAD, LH 22 12LG DYNA F 5	1
57	310006	FOOT PAD, RH 22 12LG DYNA F 5	1
58	309235	FASTENER, RATCHET BLACK	2
59	309657-860	CONSOLE GENERIC LF TOPSHIFT	1
60	58367-853	PLATE,SEAT F5 SF,LF	1
61	310660-853	BRACKET, F-5 SEAT SUPPORT	2
62	20507	BOLT, 437X 156 HSH 5/16-18Z	2
63	1498	NUT, 5/16-18 REGHEXCTRLK Z	2
64	48901	SCREW, 5/16-18X 63WAHHC GR2 Z	4
65	1498	NUT, 5/16-18 REGHEXCTRLK Z	4
66	57153	SPRING,SEAT 2 63LG,1 49OD BLK	2
67	1341	CLAMP, SPRG 1 17"ID BRZN953	2
68	44811	SCREW, 1/4-20X 75 WAHTAP Z	2
69	56907	COVER,SEAT SPRING 1 5IDX1 0LG	2
70	A	FENDER F5 LF SUSPENDED	1
70-1	332187-860	FENDER,F5,SUS,LF,STD,SHIFT	1
70-2	9239	CLEVIS BRZN953	1
70-3	439455	SCREW, 5/16-18X 56PHPNMA BKPH	1
70-4	301551	WASHER, 344IDX1 50DX 09 CU, ZN	1
70-5	120373	NUT, 5/16-18 SQ Z	1
76	995346	SCREW, 1/4-20X 50 WAHTAP Z	4
77	126358	BOLT, 5/16-18X1 00 CARRLNGR2 Z	2
79	55273	NUT, 5/16-18 HXWDFLLK Z	2
80	55023	TRIM, 77 5" BLACK NARROW	77 5"
81	304316	SEAT MICHIGAN GEN, W/SW HOLE	1
82	120393	WASHER FLAT 344X 69X 065 Z	4
83	120638	WASHER, HVSPTLK, 328X 60X 09 Z	4
84	180077	SCREW, 5/16-18X 75 HHC GR5 Z	4

^ ORDER INDIVIDUAL PARTS



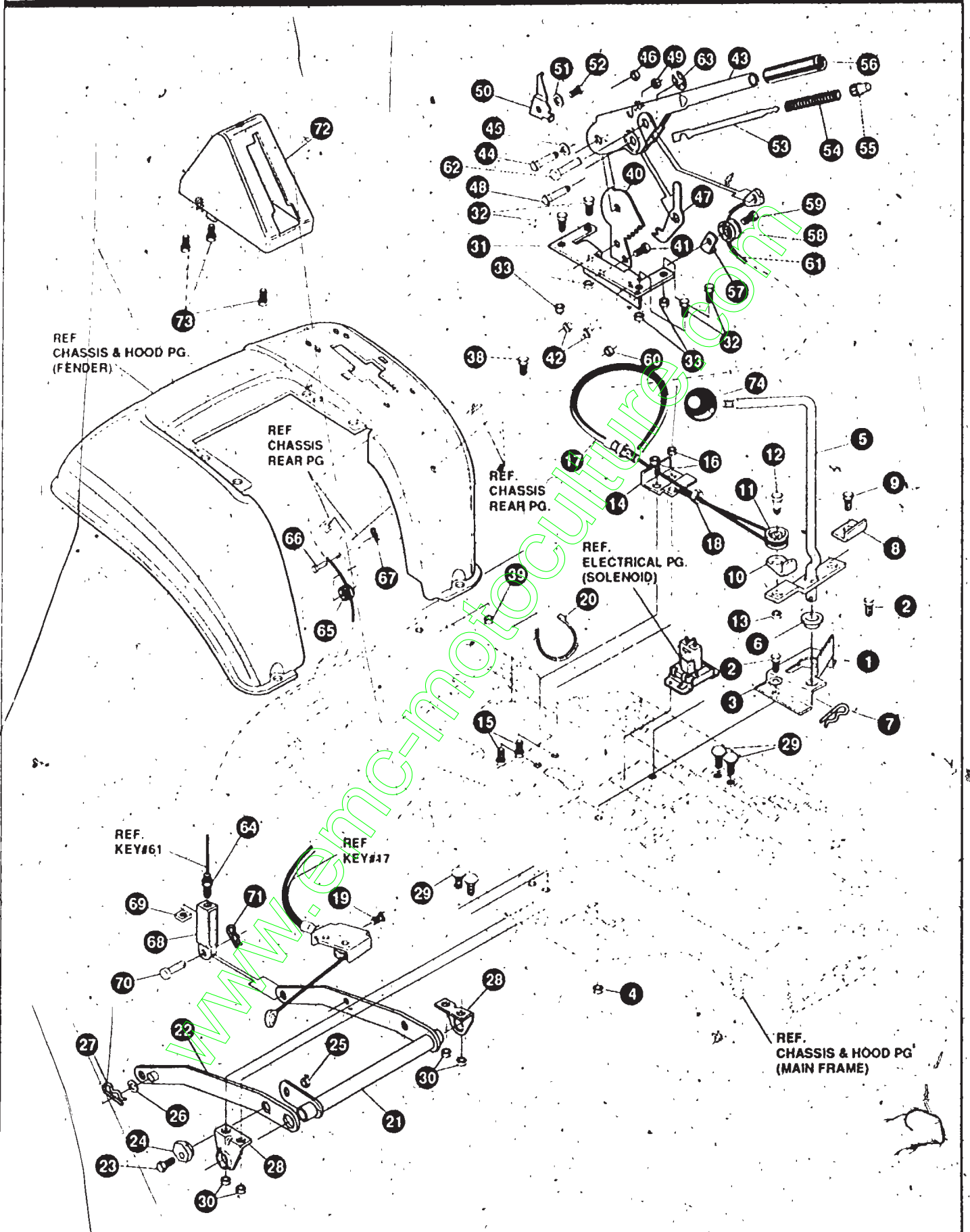
NOTE: ALWAYS USE ORIGINAL EQUIPMENT PARTS. Use of service/replacement parts other than original equipment parts may void your warranty.

ALL UNNUMBERED ITEMS ARE INTERCHANGEABLE WITH OPPOSITE SIDE

3171241

KEY#	PART#	DESCRIPTION	QTY
1	A	AXLE,FRONT ASSY LONGSUS4WSLF	1
1-1	310170	AXLE, FRONT	1
1-2	52407	SPINDLE BEARING	4
1-3	9180	ASSY,SPINDLE RH LG HTR955	1
1-4	314088	ASSY,SPINDLE,LH LG HTR955	1
1-5	36625	RING, RETEX .57X.05TRU5133-75	2
1-6	53373-860	AXLE COVER	2
8	304590	TIE ROD ASSY 19.81LG W-SECTION	1
9	180128	SCREW, 3/8-16X1.75 HHC GR5 Z	2
10	120382	WASHER, REGSPTLK.393X.68X 10 Z	2
11	1499	NUT, 3/8-16 REGHCTRLK Z	2
12	58289	SECTOR, STEERING LF	1
13	52406	BRNG,FL ECC 510IDX 998ODX 56	1
14	180177	SCREW, 1/2-13X1.50 HHC GR5 Z	1
15	22265	WASHER, FLAT .515X1.38X 119PL	1
16	1500	NUT, 1/2-13 REGHCTRLK Z	1
17	311100	KIT 300146 DRAGLINK FOR SERVICE	1
17-1	58291	STEERING LINK	1
17-2	124925	NUT, 3/8-24 REGHEXJAM Z	2
17-3	57158	BALL JOINT 3/8 THD SHORT STUD	1
17-4	21275	BALL JOINT 3/8 TH'D LONG STUD	1
21	46692	NUT, 3/8,24 WDFLHLK WHIZ Z	1
22	996416	WASHER, FLAT .391X1.00X 125 Z	2
23	120382	WASHER, REGSPTLK.393X.68X 10 Z	1
24	120369	NUT, 3/8-24 REGHEX Z	1
25	58243	SHAFT,STEERING LF 2WS GENERIC	1
26	58244	PINION, STEERING LF	1
27	58274	PIN,DOWEL .2500 OD+1.75LG PL	1
28	301410	BRNG, FL .752IDX1.061ODX .24	1
29	301398	WASHER, FORMED1.135X1.53X 12 Z	1
30	21682	WASHER, FLAT .765X1.25X 042PL	1
31	36625	RING, RETEX .57X.05TRU5133-75	1
32	302828	TIRE & RIM, PU 15X6.0X6 TURWHI	2
32-1	24167	VALVE STEM	
32-2	39829	RIM,WHEEL	
32-3	314416	BEARING, FLANGE	
37	642	WASHER, FLAT .755X1.31X 075 Z	4
38	36625	RING, RETEX .57X.05TRU5133-75	2
39	40394	HUB CAP, 1.500ID X 7/8LG	2
40	49998	WASHER, FLAT .520X1.25X 209 Z	1
41		SEE TIRE TREAD PAGE	

*ORDER INDIVIDUAL PARTS

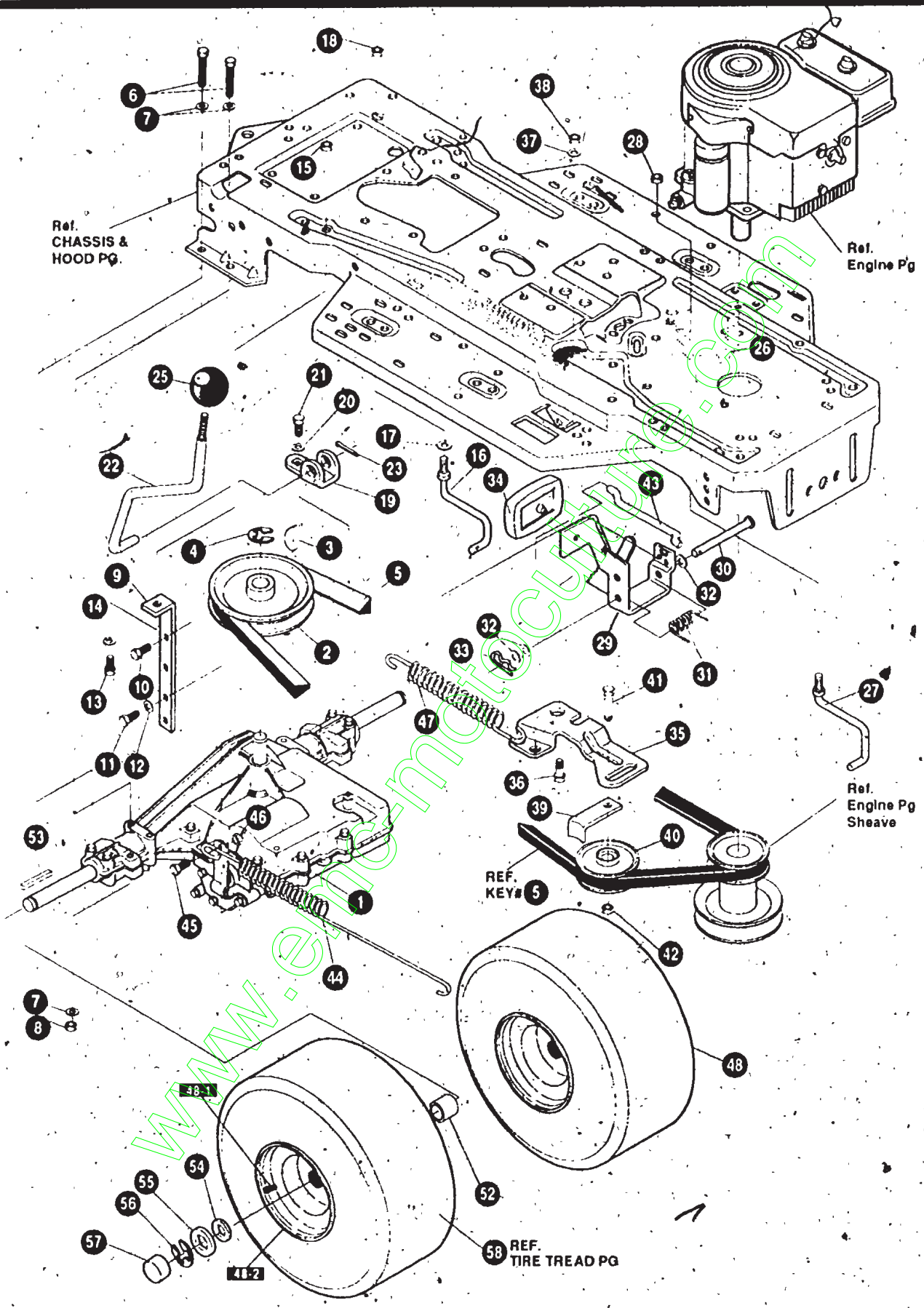


NOTE: ALWAYS USE ORIGINAL EQUIPMENT PARTS. Use of service/replacement parts other than original equipment parts may void your warranty.

ALL UNNUMBERED ITEMS ARE INTERCHANGEABLE WITH OPPOSITE SIDE

325815D

KEY#	PART#	DESCRIPTION	QTY
1	320075-853	BRACKET, CLUTCH ENGAGE LEVER	1
2	180079	SCREW, 5/16-18X1 00 HHC GR5 Z	2
3	120393	WASHER, FLAT 344X .69X .065 Z	2
4	1498	NUT, 5/16-18 REGHEXCTRLK Z	2
5	304791	ASSY, CLUTCH LEVER BRZN953	1
6	50148	BRNG, FL 503IDX .63ODX 50	1
7	8260	PIN, HAIR .091 DIA X 1.66LG Z	1
8	318341	BRKT, SWITCH ENGAGE BRZN953	1
9	35498	SCREW, 5/16-18X 75 WAHTAP Z	1
10	1288	BRKT, CABLE RETAIN BRZN953	1
11	48306	PULLEY, POWDER METAL	1
12	58336	BOLT, 375X .375 HSSH 1/4-20 Z	1
13	1502	NUT, 1/4-20 REGHEXCTRLK Z	1
14	300698-853	BRACKET FRAME CABLE	1
15	180020	SCREW, 1/4-20X .75 HHC GR5 Z	2
16	1502	NUT, 1/4-20 REGHEXCTRLK Z	2
17	301503	ASSY, CABLE, BLADE ENGAGE 39SUS	1
18	120813	NUT, 1/4-28 HJAM Z	1
19	35498	SCREW, 5/16-18X 75 WAHTAP Z	1
20	57444	TIE, CABLE BLACK NYLON 5 62L	1
21	300158-853	LIFT ASSY, LH	1
22	300169-853	LIFT ASSY, RH	1
23	180079	SCREW, 5/16-18X1 00 HHC GR5 Z	1
24	58247	NUT, ADJUST	1
25	1498	NUT, 5/16-18 REGHEXCTRLK Z	1
26	417098	WASHER, FLAT 531X1 06X .063Z	2
27	8260	PIN, HAIR .091 DIA X 1.66LG Z	2
28	58248-853	BRACKET, REAR HANG SUSP	2
29	57072	BOLT, 5/16-18X .63 CARRLNGR5 Z	4
30	1498	NUT, 5/16-18 REGHEXCTRLK Z	4
31	313926	BRACKET, HGT/ADJUST SUPPORT	1
32	180077	SCREW, 5/16-18X 75 HHC GR5 Z	4
33	1498	NUT, 5/16-18 REGHEXCTRLK Z	4
38	180077	SCREW, 5/16-18X 75 HHC GR5 Z	1
39	1498	NUT, 5/16-18 REGHEXCTRLK Z	1
40	301238	QUADRANT, HEIGHT ADJUST	1
41	180077	SCREW, 5/16-18X 75 HHC GR5 Z	2
42	1498	NUT, 5/16-18 REGHEXCTRLK Z	2
43	322292-853	HANDLE, LIFT SHORT (30" S.F.)	1
44	300171	BOLT, 500X 270 HSSH 5/16-18Z	1
45	996418	WASHER, FLAT 506X 75X .024 Z	1
46	44108	NUT, 5/16-18 HWDFLCTRLK Z	1
47	301239	PAWL, SQUARE HTR955	1
48	300171	BOLT, 500X 270 HSSH 5/16-18Z	1
49	44108	NUT, 5/16-18 HWDFLCTRLK Z	1
50	9435	POINTER, HEIGHT ADJ BRZN953	1
51	138479	WASHER, EXLK .195X .41X .03 Z	1
52	35287	SCREW, #8-32X 38 HHWATAPGR2 Z	1
53	303027	ROD, ACTUATOR SHORT	1
54	58326	SPRING, HEIGHT ADJUST	1
55	58325	KNOB, HEIGHT ADJ PUSH BUTTON	1
56	58329	GRIP, 750 OD W/ HOLE BLACK	1
57	9149	LF BRKT, CABLE RETAIN BRZN953	1
58	48306	PULLEY, POWDER METAL	1
59	58336	BOLT, 375X .375 HSSH 1/4-20 Z	1
60	1502	NUT, 1/4-20 REGHEXCTRLK Z	1
61	314177	CABLE, LIFT 22 92 F-5 20X8-8	1
62	300310	PIN, CLEVIS .310DIA X .475LG ZPL	1
63	300311	RING, RET E .31X .25TRUX5133-31	1
64	120375	NUT, 1/4-20 REGHEX Z	1
65	48306	PULLEY, POWDER METAL	1
66	300317	PIN, CLEVIS .375DIA X .81 LG Z	1
67	8260	PIN, HAIR .091 DIA X 1.66LG Z	1
68	9405	CLEVIS, LIFT CABLE BRZN953	1
69	120372	NUT, 1/4-20 REGSQ Z	1
70	39522	PIN, CLEVIS .312 X .812	1
71	121222	PIN, COTTER .090 DIA X .75LG Z	1
72	300335	LIFT COVER-39" F5	1
73	300340	SCREW, #10 X .75 HHPLAST BLK	3
74	55514	KNOB, ROUND 1 50 DIA BLACK	1



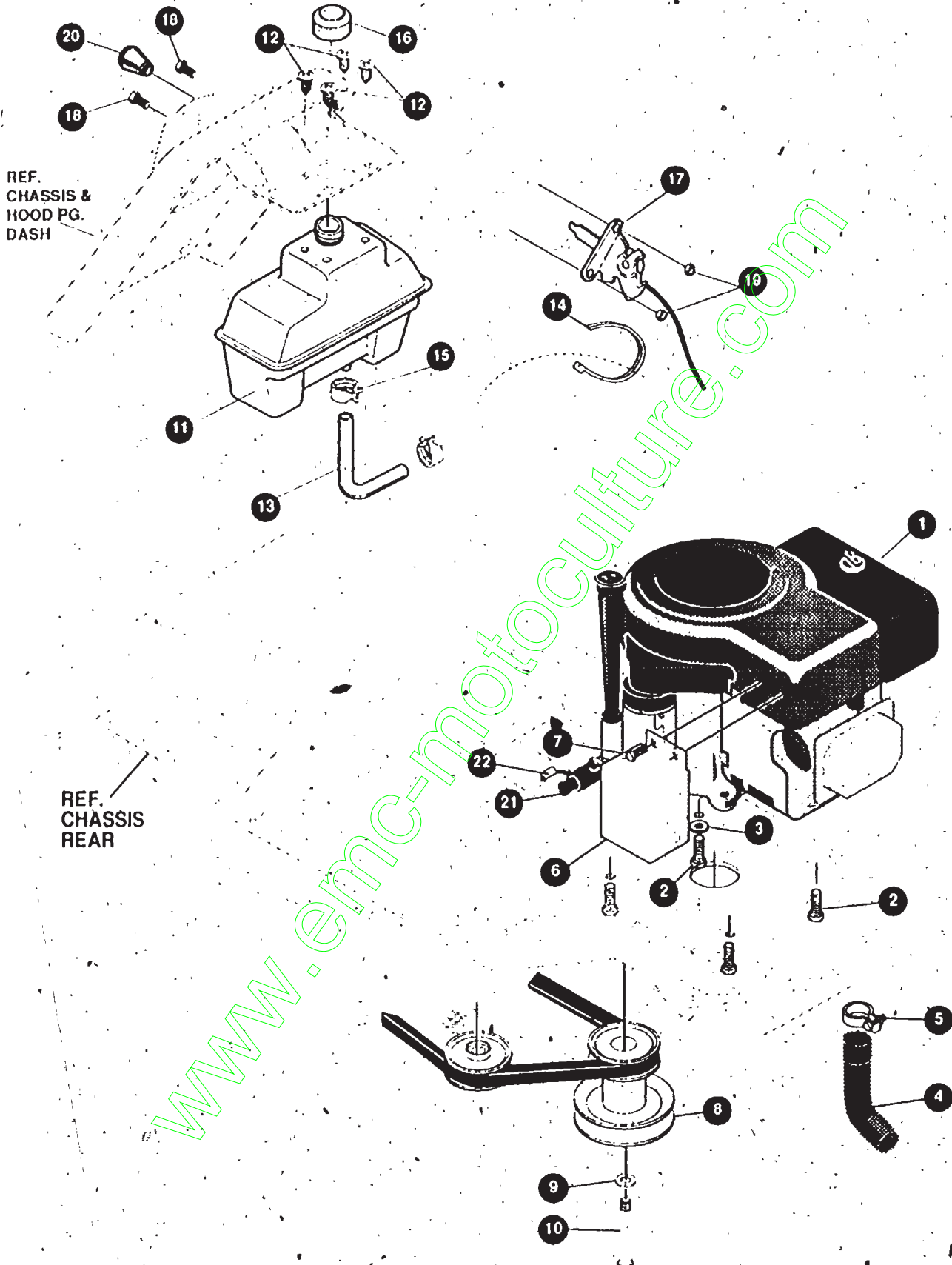
NOTE: ALWAYS USE ORIGINAL EQUIPMENT PARTS. Use of service/replacement parts other than original equipment parts may void your warranty.

ALL UNNUMBERED ITEMS ARE INTERCHANGEABLE WITH OPPOSITE SIDE

328261D

KEY#	PART#	DESCRIPTION	QTY
1	0	TRANSAXLE FOOTE 4360-5	1
2	302745	PULLEY, 6 6 OD V4L T/A	1
3	50795	KEY, HI-PRO 606 .75DIA X 187WD	1
4	22053	RING, RETEX .58X 035TRU5100 62	1
5	314120	BELT, V 4L 87 25 4WS LF	1
6	180113	SCREW, 5/16-18X3 00 HHC GR5 Z	4
7	120393	WASHER, FLAT 344X 69X.065 Z	8
8	1498	NUT, 5/16-18 REGHEXCTRLK Z	4
9	323739	BRKT, STABILIZER BLKPHOS954	1
10	50947	SCREW, 3/8-16X1.25 WAHTAPBLKP	1
11	35498	SCREW, 5/16-18X 75 WAHTAP Z	1
12	120638	WASHER, HVSP TLK 328X 60X 09 Z	1
13	180079	SCREW, 5/16-18X1 00 HHC GR5 Z	1
14	120393	WASHER, FLAT 344X 69X.065 Z	1
15	1498	NUT, 5/16-18 REGHEXCTRLK Z	1
16	57259	GUIDE, BELT 5/16-18THD	1
17	138538	WASHER, REGINTLK 320X 61X 03 Z	1
18	1498	NUT, 5/16,18 REGHEXCTRLK Z	1
19	57480	BRKT SHIFT P920-5/ HTR955	1
20	57157	WASHER, 750X 250 SP-TRANSAXLE	1
21	56255	SCREW, 1/4-28X 75 NYLHHCGR8 Z	1
22	302743	LEVER,SHIFT FOOT 4360-586 LF Z	1
23	137185	PIN, COTTER 125 DIA X 1 00LG Z	1
25	55514	KNOB, ROUND 1 50 DIA BLACK	1
26	321514	SPRING, DRAG LINK BIAS	1
27	304016	GUIDE, BELT R H	1
28	1498	NUT, 5/16-18 REGHEXCTRLK Z	1
29	325942	PEDAL ASSY, BRAKE/CLUTCH LF	1
30	319675	PIN, CLEVIS 500DX4 53LG Z	1
31	57847	SPRING, BRAKE PEDAL	1
32	2968	WASHER FLAT 504X 75X.059 Z	3
33	56180	PIN, HAIR .091 DIA X 1 62LG Z	1
34	48160	PAD, CLUTCH BRAKE W/PRINTING	1
35	320381-853	ARM, IDLER TRACTION, SOG LF	1
36	329989	BOLT, 625X 135 HSSH 5/16-18Z	1
37	45602	WASHER, FLAT 333X 87X 119 Z	1
38	1498	NUT, 5/16-18 REGHEXCTRLK Z	1
39	39659	RETAINER, BELT	1
40	35374	PULLEY, IDLER V4L 3 06X 62	1
41	45892	BOLT, 3/8-16X1 50 CARRSN GR2 Z	1
42	1499	NUT, 3/8-16 REGHXCTRLK Z	1
43	57204	ROD, CLUTCH 3 92"	1
44	325937	SPRING, BRAKE 28 80 930, 4360	1
45	326131	BOLT, 495X 31 HSSH 5/16-18	1
46	1498	NUT, 5/16-18 REGHEXCTRLK Z	1
47	330505	SPRING, CLUTCH 113X 750X8 75	1
48	57166	TIRE & RIM, 20X8 00-8 WHITE	2
48-1	24167	VALVE STEM	
48-2	57165	RIM, WHEEL	
52	57479	SPACER, SLEV 75 X1 25X1 32	2
53	52928	KEY, SQUARE 187SQX2 25LG	2
54	642	WASHER, FLAT 755X1.31X 075 Z	4
55	42815	WASHER, FLAT .755X1.53X 07 Z	2
56	36625	RING, RETEX .57X.05TRU5133-75	2
57	40394	HUB CAP, 1 500ID X 7/8LG	2
58		SEE TIRE TREAD PAGE	

◇ CONTACT YOUR NEAREST TRANSAXLE DEALER FOR PARTS AND SERVICE



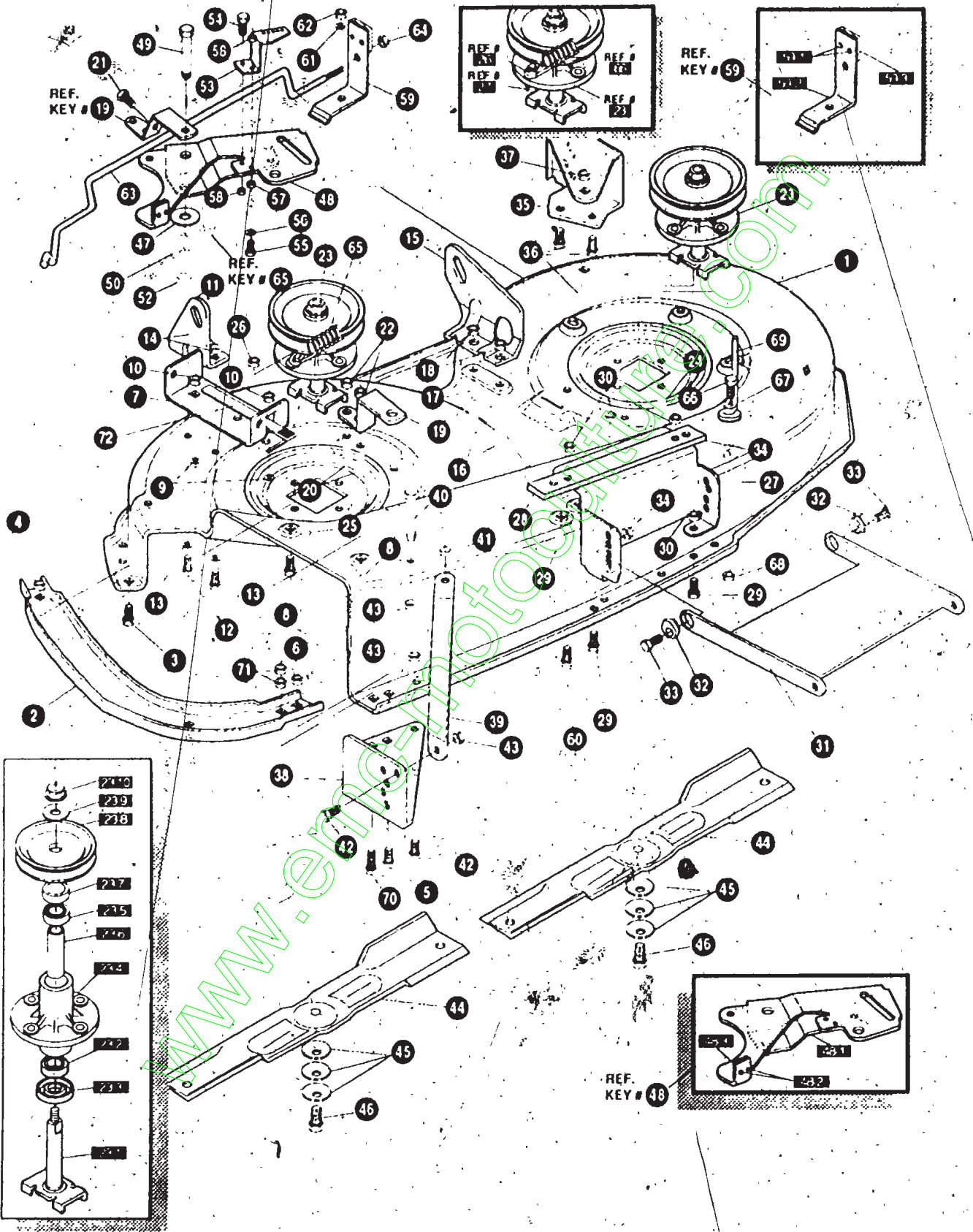
NOTE: ALWAYS USE ORIGINAL EQUIPMENT PARTS. Use of service/replacement parts other than original equipment parts may void your warranty

ALL UNNUMBERED ITEMS ARE INTERCHANGEABLE WITH OPPOSITE SIDE

329129C

KEY#	PART#	DESCRIPTION	QTY
1	A	ENG, 14.0 BS IC OHV DUAL CIR	1
2	50947	SCREW, 3/8-16X1.25 WAHTAPBLKP	4
3	138489	WASHER, EXLK .384X.69X.04 Z	1
4	327868	EXHAUST TUBE 14OHV B&S LF H15	1
5	328024	CLAMP EXHAUST 1.37 DIA	1
6	327785-853	HEAT SHIELD 14OHV B/S	1
7	995346	SCREW, 1/4-20X .50 WAHTAP Z	3
8	328029	PULLEY, ENG 4.40OFF/5.00D/3.00D	1
9	120383	WASHER, REGSPTLK 459X.78X.12 Z	1
10	428644	SCREW, 7/16-20X5.00 HHC GR5 P	1
11	314989	TANK, FUEL 1 GAL CLEAR	1
12	49050	SCREW, 1/4-10X .75PHPNTAPGR2BK	4
13	41007	TUBING, 25X 50X BULK GAS LINE	.16
14	57444	TIE, CABLE BLACK NYLON 5.62L	1
15	47345	CLAMP HOSE SCREW TYPE	2
16	46704	CAP, GAS 1-1/2-7 THD BLK	1
17	321273	CONTROL THROTTLE 12-12 5HP LF	1
18	320553	SCREW, 10-24X .63PHPNMA CRSS	2
19	271166	NUT, #10-24 HEXKEPS Z	2
20	50607	KNOB, ROUND THROTTLE BLACK	1
21	325547	OIL DRAIN VALVE ASSEMBLY	.1
22	327422	CAP OIL DRAIN VALVE ASM YELLOW	1

^ SEE ENGINE MANUAL

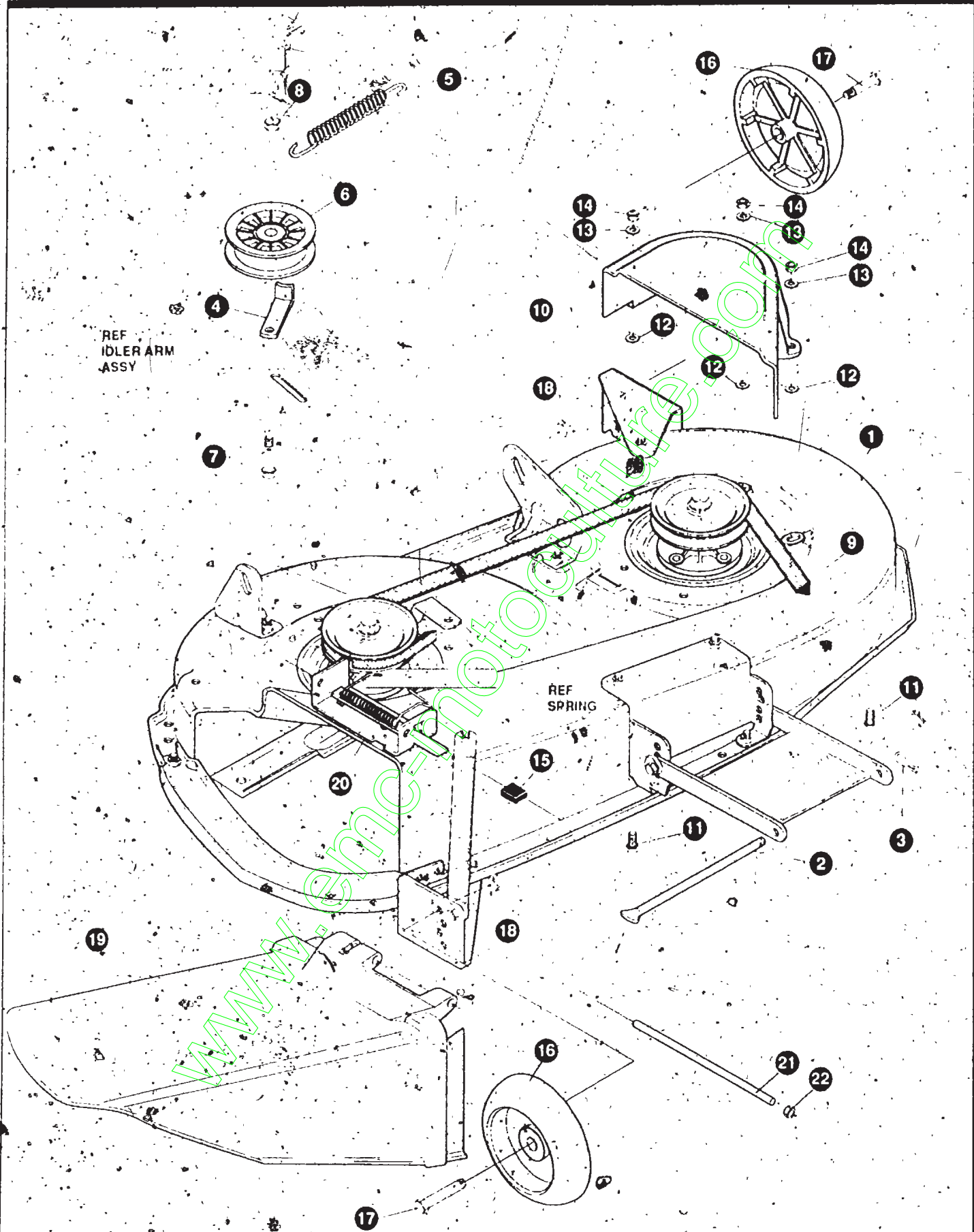


NOTE: ALWAYS USE ORIGINAL EQUIPMENT PARTS. Use of service/replacement parts other than original equipment parts may void your warranty.

ALL UNNUMBERED ITEMS ARE INTERCHANGEABLE WITH OPPOSITE SIDE

331508A

KEY#	PART#	DESCRIPTION	QTY
1	325116	43" DECK KIT	1
2	326480	TOE GUARD - MULCHER	1
3	180077	SCREW, 5/16-18X 75 HHC GR5 Z	1
4	1498	NUT, 5/16-18 REGHEXCTRLK Z	1
5	180077	SCREW, 5/16 18X 75 HHC GR5 Z	1
6	1498	NUT, 5/16-18 REGHEXCTRLK Z	1
7	317017	BRACKET CHUTE MOUNT BLACK	1
8	180077	SCREW, 5/16 18X 75 HHC GR5 Z	2
9	120393	WASHER FLAT 344X 69X 065 Z	2
10	1498	NUT, 5/16 18 REGHEXCTRLK Z	2
11	313929	LIFT BRKT. REAR RH BLK 853	1
12	180077	SCREW, 5/16-18X 75 HHC GR5 Z	2
13	120393	WASHER, FLAT 344X 69X 065 Z	2
14	1498	NUT, 5/16-18 REGHEXCTRLK Z	2
15	310667	BRACKET, DECK LIFT REAR LH BLK	1
16	180077	SCREW, 5/16-18X 75 HHC GR5 Z	2
17	120393	WASHER, FLAT 344X 69X 065 Z	2
18	1498	NUT, 5/16-18 REGHEXCTRLK Z	2
19	326893 853	BRACE IDLER SUPPORT 40" 43"	1
20	180077	SCREW, 5/16-18X 75 HHC GR5 Z	1
21	308231	SCREW, 1/4-20X1 25 HHWATAP G5Z	1
22	44108	NUT, 5/16-18 HWDFLCTRLK Z	2
23	56424-853	QUILL ASSY, 36" 39" 40" 43"	2
23-1	56425	SHAFT/SADDLE 36"	2
23-2	49562	BRNG, BALL 6203-2AA(SEALS) C3	1
23-3	50616	DUST SHIELD	1
23-4	55547	QUILL CASTING (1046)	1
23-5	49562	BRNG, BALL 6203-2AA(SEALS) C3	1
23-6	50818	SPACER, SLEV 669X 88X3 797	1
23-7	51449	SPACER SLEV 672X 93X 438PM	1
23-8	313898	PULLEY ASSY	1
23-9	56365	WASHER, SPECIAL QUILL	1
23-10	1282	NUT, 7/16 20 WDFLLK Z	1
24	35498	SCREW, 5/16-18X 75 WAHHTAP Z	7
25	300345	SCREW, 5/16 18X1 38 WAHHTAP Z	1
26	1498	NUT, 5/16-18 REGHEXCTRLK Z	1
27	317040	BRACKET FRT BLACK	1
28	328155	PLATE MOUNTING	1
29	180077	SCREW, 5/16 18X 75 HHC GR5 Z	4
30	1498	NUT, 5/16-18 REGHEXCTRLK Z	4
31	58305-853	BRACKET LINK DECK FRONT	1
32	58247	NUT, ADJUST	2
33	180079	SCREW, 5/16-18X1 00 HHC GR5 Z	2
34	1498	NUT, 5/16-18 REGHEXCTRLK Z	2
35	317041	BRKT GAGE WHEEL LH BLACK	1
36	180077	SCREW, 5/16 18X 75 HHC GR5 Z	3
37	1498	NUT, 5/16-18 REGHEXCTRLK Z	3
38	322464 853	BRACKET GAGE WHEEL RH FRNT	1
39	314282 853	BRACKET STABILIZER	1
40	311104	SCREW, 5/16-18X5 00 HHC GR 5 Z	1
41	271184	NUT, 5/16 18 HEXKEPS Z	1
42	180077	SCREW, 5/16 18X 75 HHC GR5 Z	2
43	1498	NUT, 5/16-18 REGHEXCTRLK Z	3
44	316608	BLADE, 21 70 HIGH LIFT BLK	2
45	2483	WASHER, 39IDX1 25DX 07 BELLVIL	6
46	39573	SCREW, 3/8 24X1.00 NYLHHHCGR5 Z	2
47	996307	WASHER, FLAT 391X1 00X 209 Z	1
48	320576 853	IDLER ARM ASSEMBLY	1
48-1	322116 853	ARM IDLER 40" 43" DECK	1
48-2	41601	RIVET, OVSSET 187DIA X 50LG ST	2
48-3	306973	BRAKE PAD - HARD - 232AF	1
49	304420	BOLT, 500X2 15 HHSH Z	1
50	996416	WASHER, FLAT 391X1 00X 125 Z	1
52	45171	NUT, 3/8-16 HWDFL WHIZ-LOCK ZN	1
53	326249 853	BRACKET, EXTENSION IDLER	1
54	180077	SCREW, 5/16-18X 75 HHC GR5 Z	1
55	180083	SCREW, 5/16-18X1 50 HHC GR5 Z	1
56	446363	WASHER, FLAT 375X 88X 082 Z	1
57	271184	NUT, 5/16-18 HEXKEPS Z	1
58	1498	NUT, 5/16-18 REGHEXCTRLK Z	2
59	321828	BLADE BRAKE ASSY	1
59-1	135624	RIVET, TRSET 185DIA X 41LG ST	2
59-2	304119 853	BRAKE ARM HT 955	1
59-3	306973	BRAKE PAD - HARD - 232AF	1
60	180075	SCREW, 5/16-18X 63 HHC GR5 Z	1
61	120393	WASHER, FLAT 344X 69X 065 Z	1
62	1498	NUT, 5/16-18 REGHEXCTRLK Z	1
63	315304	ROD, BRAKE	1
64	1502	NUT, 1/4-20 REGHEXCTRLK Z	1
65	35410	SPRING 071 X 62 X 4 37	1
66	180079	SCREW, 5/16-18X1.00 HHC GR5 Z	1
67	120393	WASHER, FLAT 344X 69X 065 Z	1
68	1498	NUT, 5/16-18 REGHEXCTRLK Z	1
69	325965	BELT GUIDE, 43" DECK UPSTOP	1
70	12685	SCREW, 5/16-18X1 50 HHC FT-GR2Y/	1
71	1498	NUT, 5/16-18 REGHEXCTRLK Z	2
72	322320 853	LEVER ASSY (SHORT)	1

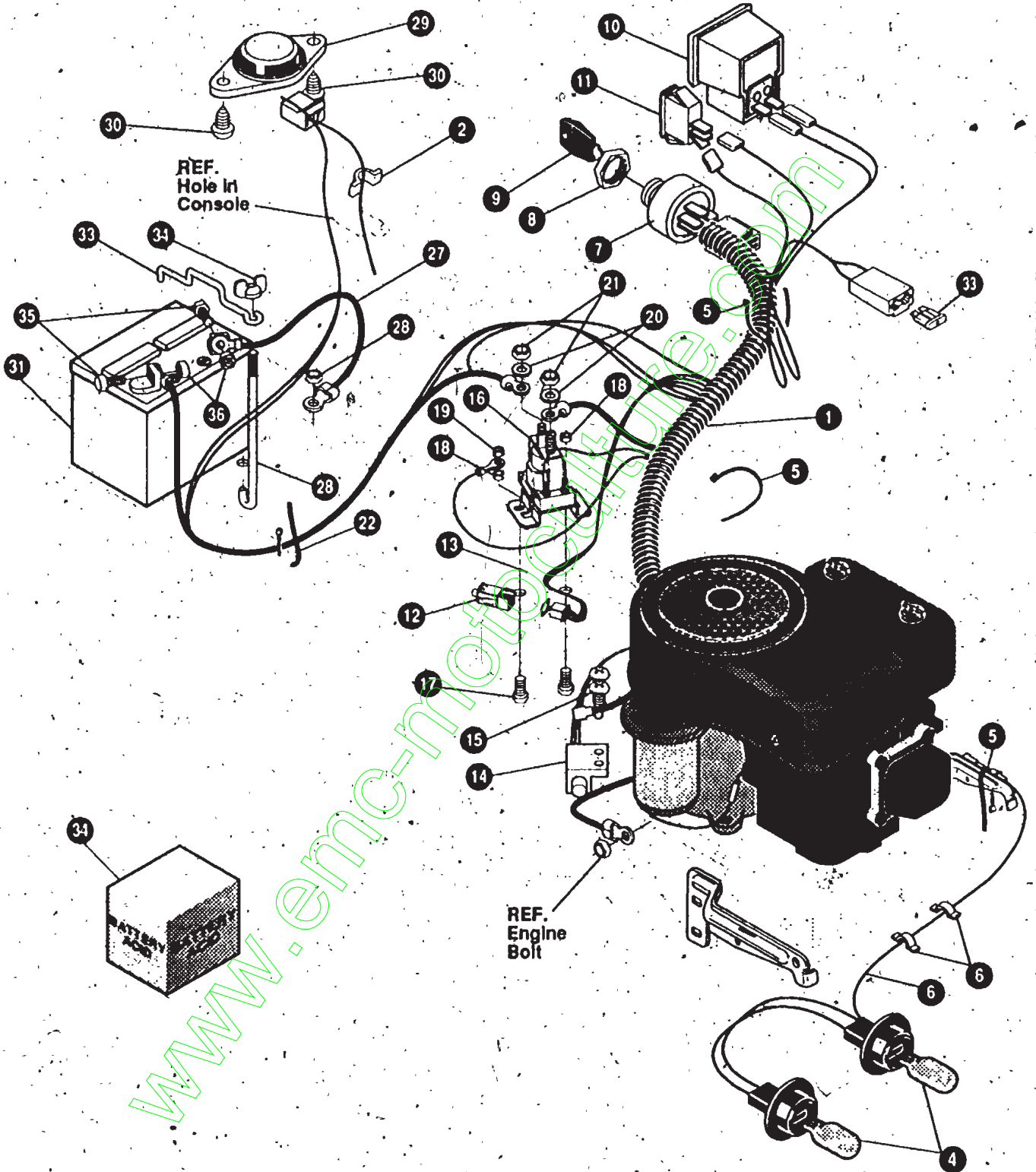


NOTE: ALWAYS USE ORIGINAL EQUIPMENT PARTS Use of service/replacement parts other than original equipment parts may void your warranty.

ALL UNNUMBERED ITEMS ARE INTERCHANGEABLE WITH OPPOSITE SIDE

331509A

KEY#	PART#	DESCRIPTION	QTY
1	329036	DECK, 43" MOWER 2-WH DOM AIR	1
2	58306	ROD, DECK HITCH Z-PL 953	1
3	8260	PIN, HAIR 091 DIA X 1.66LG Z	1
4	1346	RETAINER, BELT BRZN953	1
5	314107	SPRING, TENSION 5 00LG + 17LB/IN	1
6	310326	PULLEY, IDLER BFF 4.00 WIDE FL	1
7	126416	BOLT, 3/8-16 X 1 75 CARRLN GR2 Z	1
8	45171	NUT, 3/8-16 HWDFL WHIZ-LOCK ZN	1
9	314108	BELT, V 5L 86 00 KEVLAR	1
10	330520	GUARD, BELT LH PLASTIC	1
11	57101	BOLT, 5/16-18 X 75 CARRSNGR5 Z	3
12	309436	PUSHNUT, 5/16 BOLT RETAINER	3
13	120393	WASHER, FLAT 344X 69X 065 Z	3
14	1498	NUT, 5/16-18 REGHEXCTRK Z	3
15	42348	GRIP-LEVER GRASS COLLECTOR	1
16	302611	GAUGE WHEEL EURO 6 00ODX1 38WD	2
17	23763	BOLT, 500X1 390 HSSH 3/8-16 Z	2
18	1499	NUT, 3/8-16 REGHXCTRK Z	2
19	304422	CHUTE DEFLECTOR 40" 42" & 43"	1
20	314975	SPRING, TORSION CHUTE DEFLECTOR	1
21	304424	ROD, PIVOT DECK 312DX7 25 Z	1



NOTE: ALWAYS USE ORIGINAL EQUIPMENT PARTS. Use of service/replacement parts other than original equipment parts may void your warranty.

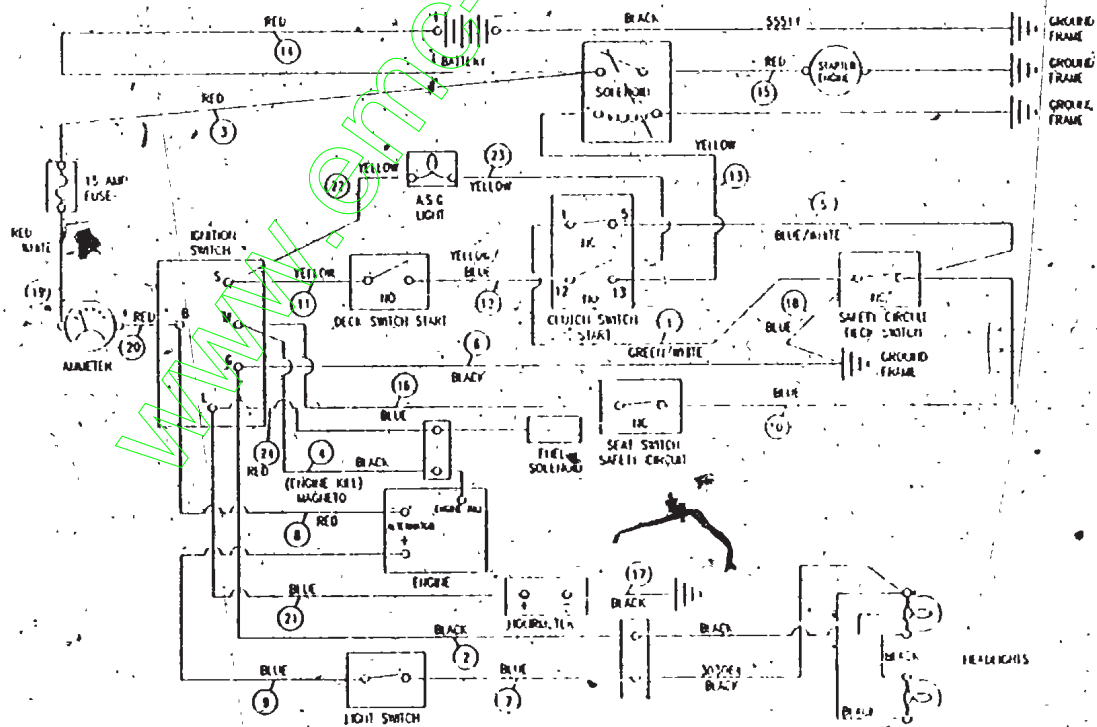
ALL UNNUMBERED ITEMS ARE INTERCHANGEABLE WITH OPPOSITE SIDE

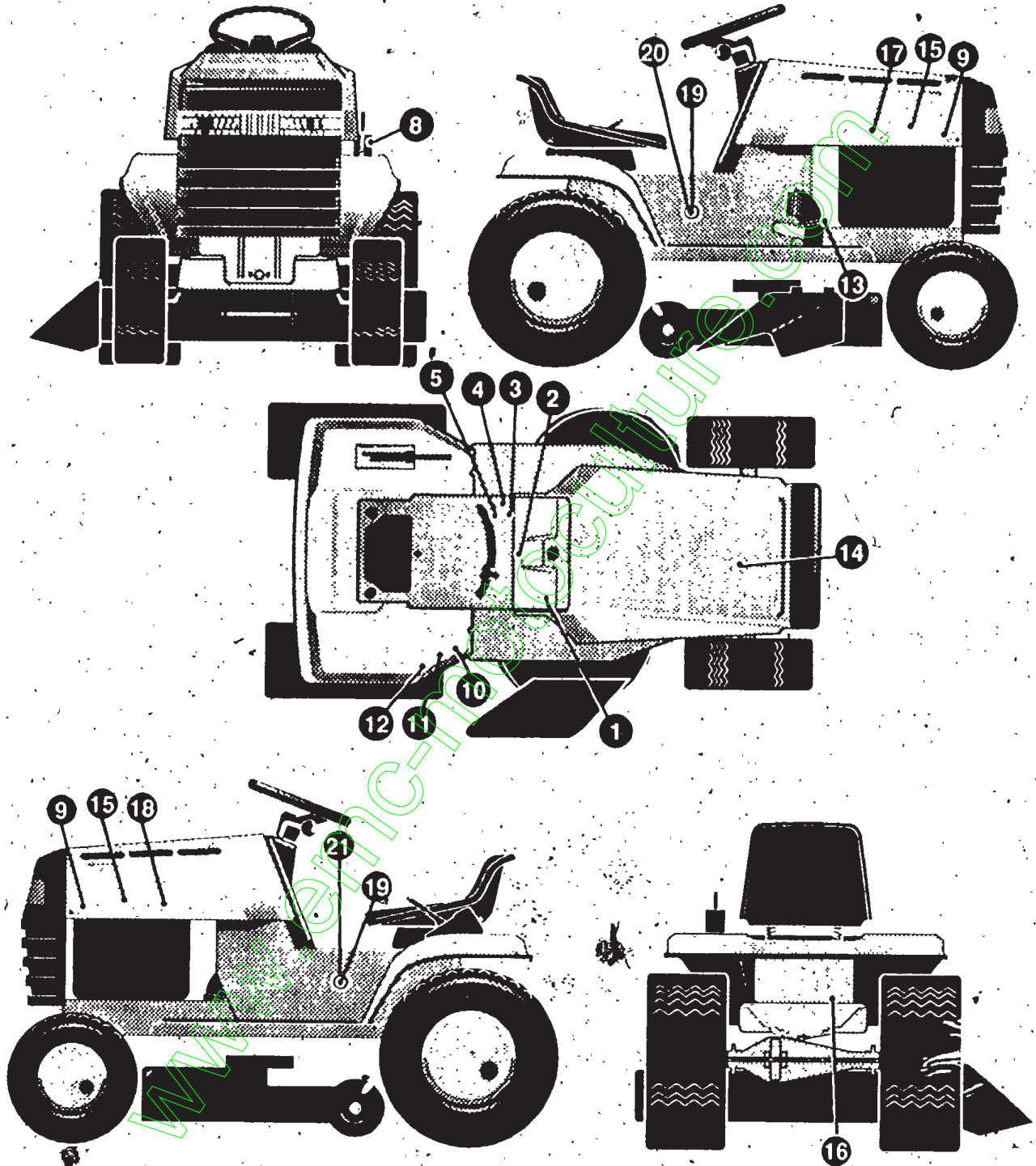
328541A

KEY#	PART#	DESCRIPTION	QTY
1	328253	HARNNESS, 14HPOHV, WRAPPED, DYN, LF	1
2	41482	PRESS CLIP, 1 380LG, 255ID	1
3	303064	ASSY, LIGHT WIRE-1/4 TURN	1
4	52572	BULB, HEADLAMP	2
5	57444	TIE, CABLE BLACK NYLON 5 62L	3
6	41482	PRESS CLIP, 1 380LG, 255ID	2
7	327355	SWITCH-IGN, (AFTER FIRE) 3 POSN	1
8	327352	NUT, 5/8-8ACME DELTA FOR BOOT	1
9	325350	KEY, IGNITION GENERIC DELTA	2
10	300133	AMMETER	1
11	300334	LIGHT SWITCH ON/OFF PANEL MNT	1
12	320082	SWITCH, DOUBLE POLE NO/NC GRAY	1
13	57444	TIE, CABLE BLACK NYLON 5 62L	1
14	57476	SWITCH, SCR MNT DP NC NO BLK	1
15	57220	SCREW, #12 X 50 PHPNHTAP BLK	2
16	53716	SOLENOID	1
17	187745	SCREW, 1/4-20X .75 HXSEMMA Z	2
18	1502	NUT, 1/4-20 REGHEXCTRLK Z	2
19	271172	NUT, 1/4-20 REGHEXKEPS Z	1
20	138485	WASHER, EXLK 320X.61X.03 Z	2
21	120368	NUT, 5/16-24 REGHEX Z	2
22	57444	TIE, CABLE BLACK NYLON 5 62L	1
23	55511	WIRE, GROUND, 12 5"	1
24	271184	NUT, 5/16-18 HEXKEPS Z	1
25	57547	SWITCH, SEAT	1
26	160505	SCREW, 1/4-20X .38PHPNHMAGR2 Z	2
27	302257	BATTERY, 12V	1
28	57551	ROD, BATTERY Z	1
29	57552	ROD, BATTERY, TOP	1
30	325232	NUT, WING 1/4-20 NYLON	1
31	160020	SCREW, 1/4-20X .75 HHC GR5 Z	2
32	271172	NUT, 1/4-20 REGHEXKEPS Z	2
34		BATTERY ACID PACK, 80 OZ	

^ CAN BE PURCHASED LOCALLY

WIRING SCHEMATIC





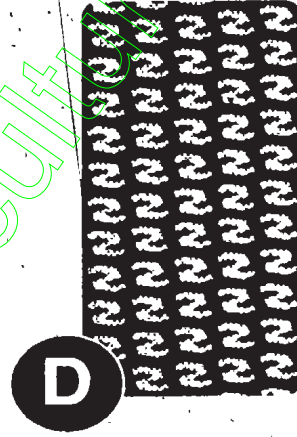
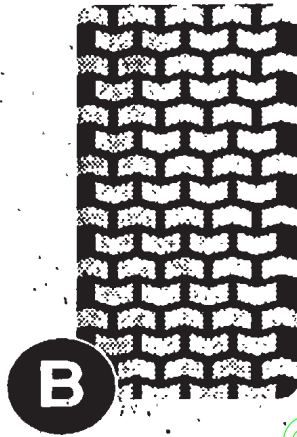
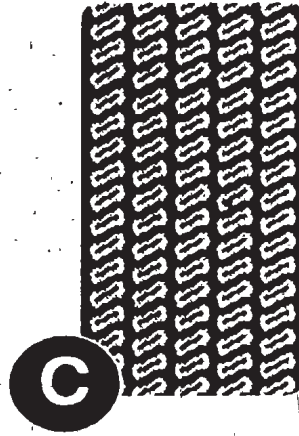
NOTE: ALWAYS USE ORIGINAL EQUIPMENT PARTS. Use of service/replacement parts other than original equipment parts may void your warranty.

ALL UNNUMBERED ITEMS ARE INTERCHANGEABLE WITH OPPOSITE SIDE

332583A

KEY#	PART#	DESCRIPTION	QTY
1	321765	DECAL, LF DASH, PTO/LIGHT SW EXP	1
2	307383	DECAL, INSTR CONSOLE TOP ENGL	1
3	69524	DECAL, INSTRUCT CONSOLE TOP GER	1
4	69525	DECAL, INSTRUCT CONSOLE TOP FR	1
5	301104	DECAL, CONSOLE TOP SHIFT 5, SP	1
8	402214	DECAL, HEIGHT ADJUST	1
9	402142	NAMEPLATE, TURFMASTER WHT/BLK	2
10	305770	DECAL, CAUTION TRIANGLE EUROPE	1
11	68902	DECAL, WARNING, FRENCH/GERMAN	1
12	310553	DECAL, DANGER ENGLISH	1
13	30003	DECAL, BRAKE/CLUTCH ISO	1
14	30035	PAD, FOAM HOOD TOP H-6/7	1
15	30036	PAD, FOAM HOOD SIDE H-6/7	2
16	300638	DECAL, EXPORT LWA100DB	1
17	320714	DECAL, HOODSIDE RH H-21	1
18	320713	DECAL, HOODSIDE LH H-21	1
19	321759	NAMEPLATE, 14/42 WHITE/BLK	2
20	314462	DECAL, CONSOLE RH LARGE FRAME	1
21	314463	DECAL, CONSOLE LH LARGE FRAME	1

TREAD PATTERNS

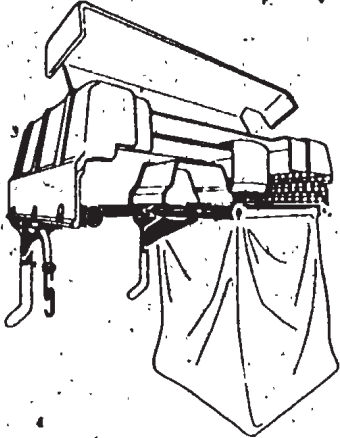


TIRE SIZE	"A"	"B"	"C"	"D"	"E"
11 X 4.00 - 5	42295	319679			
13 X 5.00 - 6	41060	319680			
15 X 6.00 - 6	39830	316702	301140	313952	
16 X 4.80 - 8		305035			
16 X 6.50 - 8	41081	319682		314539	
18 X 6.50 - 8		42091			
18 X 8.50 - 8	319683	317400			
18 X 9.50 - 8	41106	316701		313950	
20 X 8.00 - 8	319685	319684	57164	314584	331606
20 X 10.00 - 8	58276	319686		313654	
20 X 10.00 - 10	55893	319687			
23 X 9.50 - 12	53655	319690	319689	314370	

ACCESSORIES

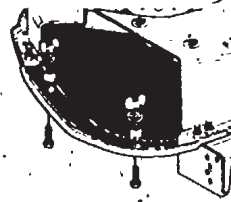
Contact the dealer where your tractor was purchased for the available accessories. If you are unable to contact the dealer, write to the address on the front cover of this manual.

Large Lawn Tractor

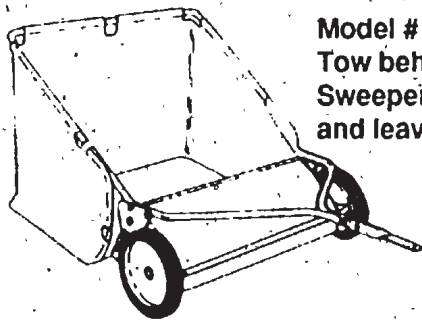


Model # 5708-34
Grass Collector for
40, 42, 43" decks

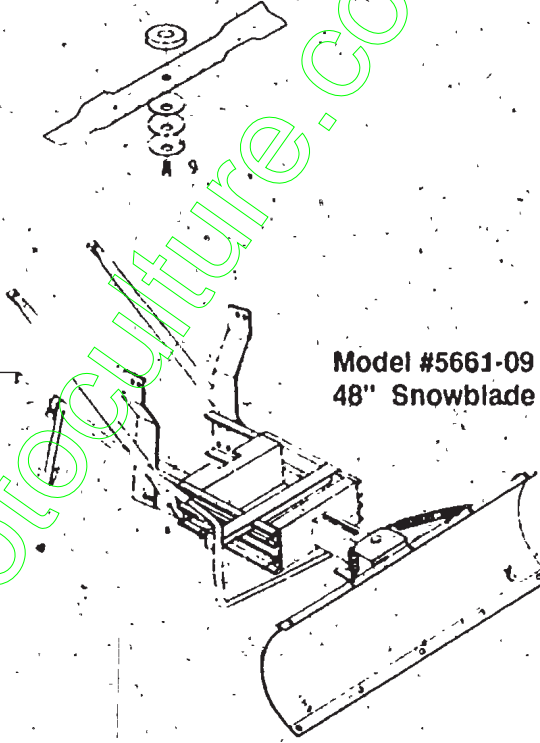
For heavy duty grass
collection order Model
#5709-10 Air Assist



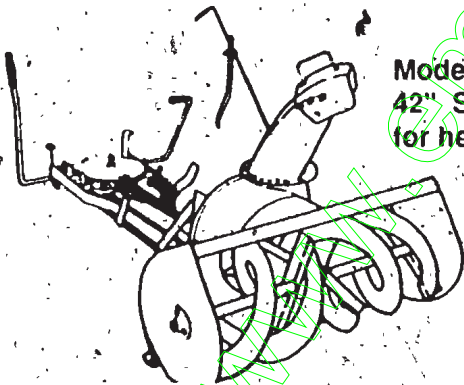
5717-00
Mulching Kit (42/43" Deck)
5716-00
Mulching Kit (40" Deck)



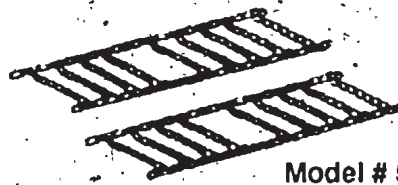
Model # 5648-16
Tow behind Lawn
Sweeper for grass
and leaves



Model #5661-09
48" Snowblade



Model #5705-06
42" Snowthrower
for heavy snowfall



Model # 5585-00
Tire Chains - 20" x 8.0" tires
Model # 5706-00
Tire Chains - 20" x 10.0" tires

OTHER ACCESSORIES

Model	Description
5672-01	Wheel Weights - Front - 1 pr. w/mtg. hdw. - Fits 15" tires
5673-02	Wheel Weights - Rear - 1 pr w/mtg. hdw. - Fits 18" & 20" tires
316608	43" High Lift Blade for Bagging or Side Discharge (Requires 2)
325762	43" Mulching Blade (Requires 2)