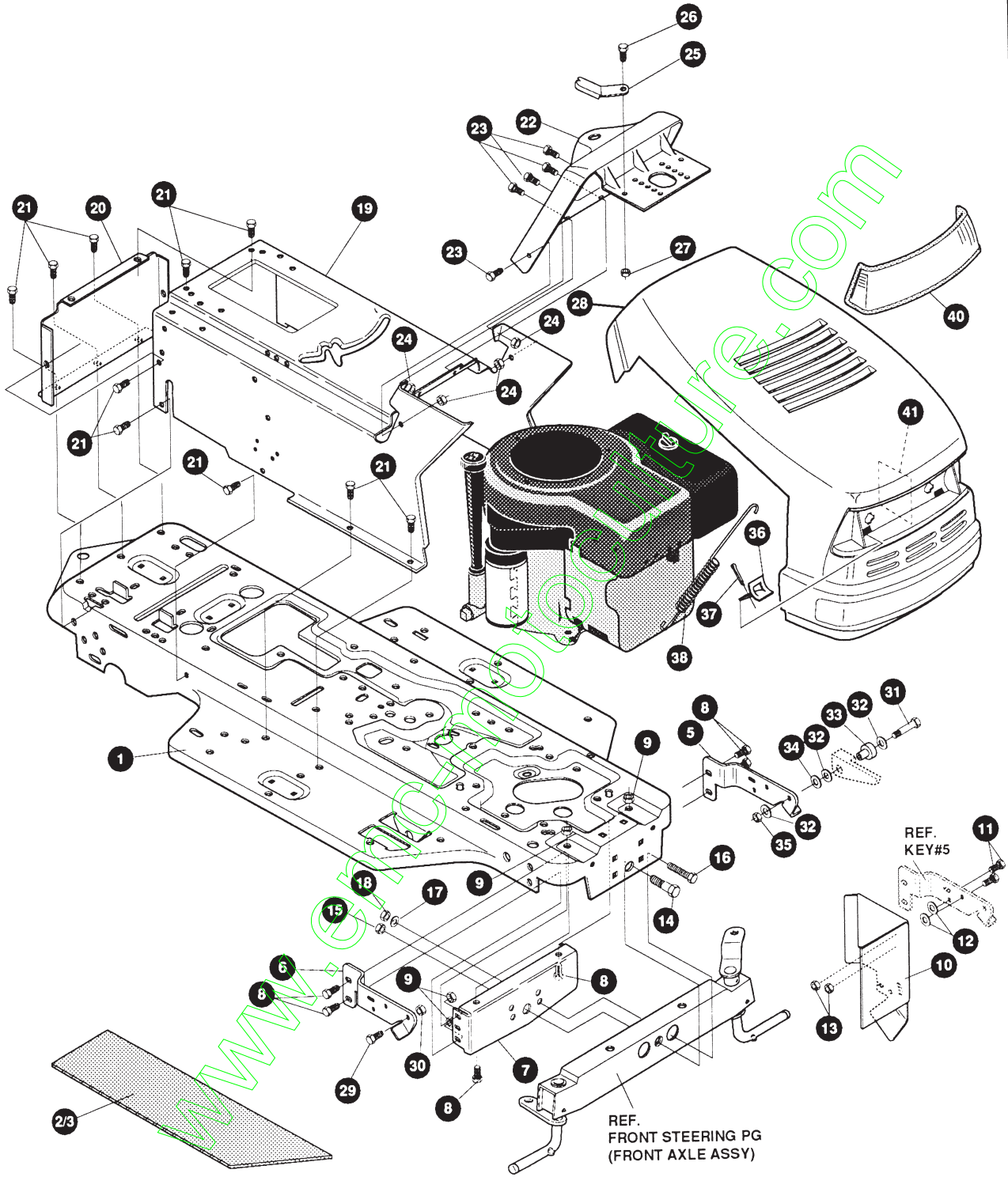




F3554-050
12HP/39"

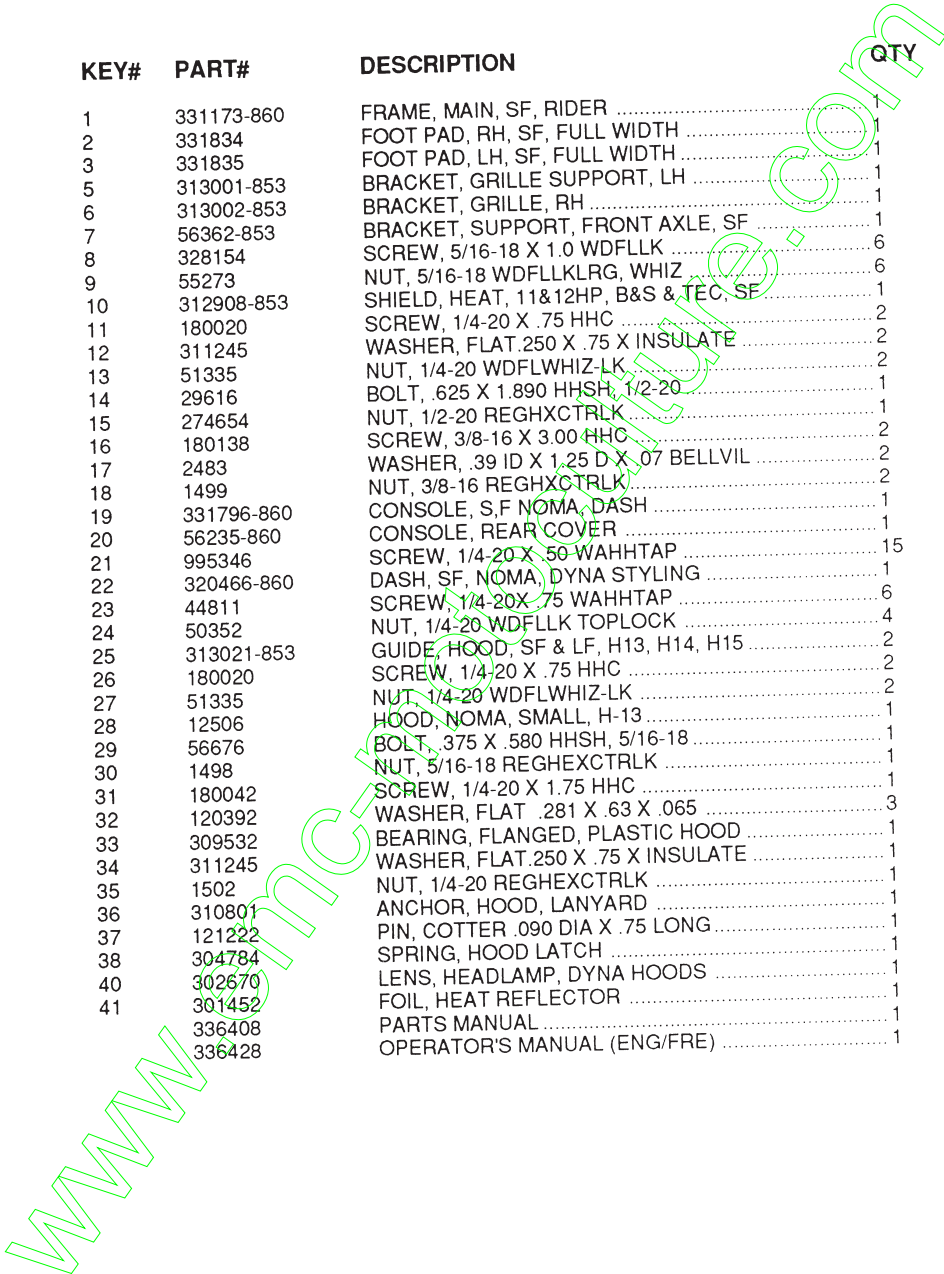


NOTE: ALWAYS USE ORIGINAL EQUIPMENT PARTS.
Use of service/replacement parts other than original equipment parts may void your warranty.

**ALL UNNUMBERED
ITEMS ARE INTERCHANGEABLE
WITH OPPOSITE SIDE**

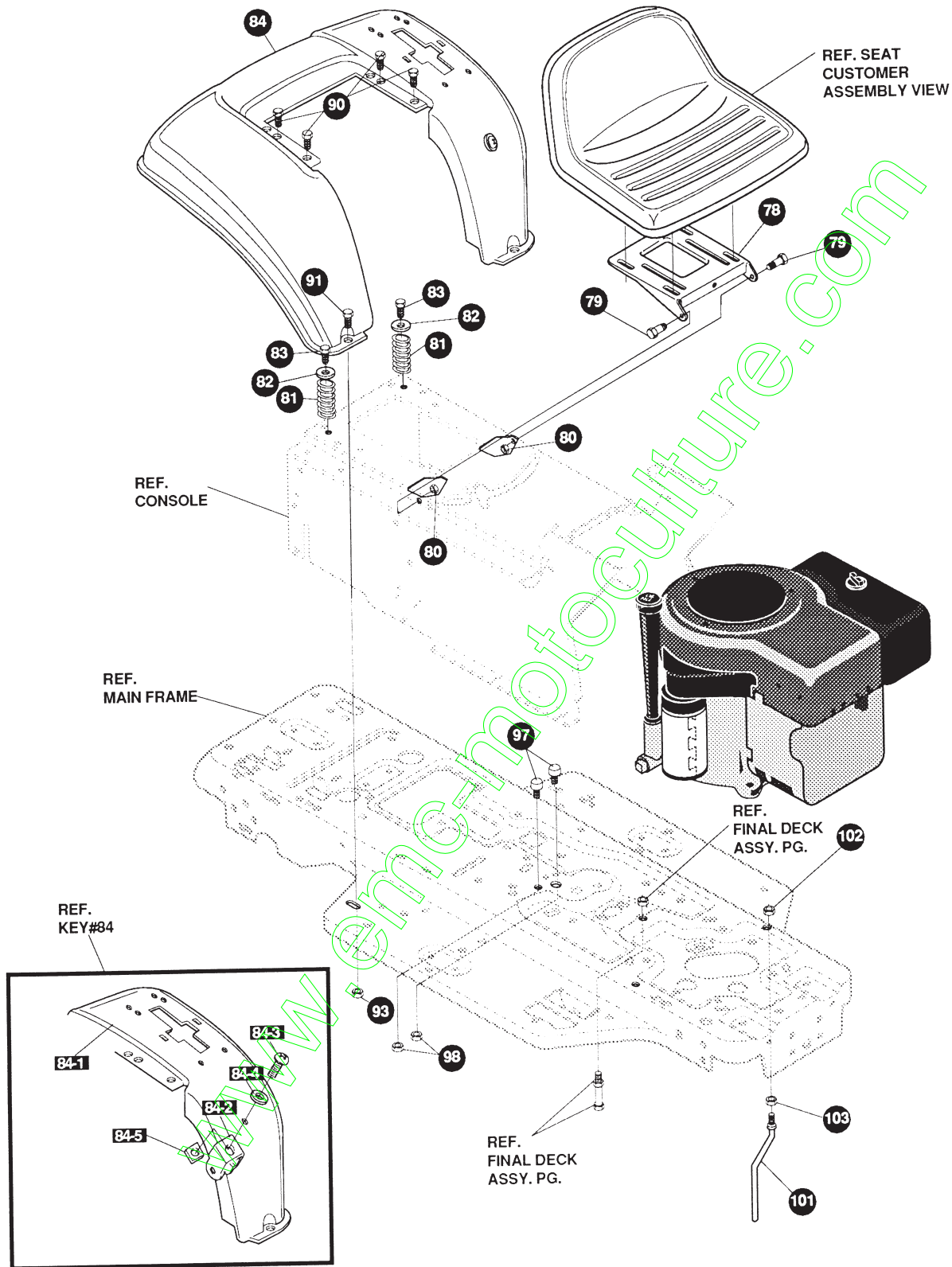
333517 B

| KEY# | PART# | DESCRIPTION | QTY |
|------|------------|---|-----|
| 1 | 331173-860 | FRAME, MAIN, SF, RIDER | 1 |
| 2 | 331834 | FOOT PAD, RH, SF, FULL WIDTH | 1 |
| 3 | 331835 | FOOT PAD, LH, SF, FULL WIDTH | 1 |
| 5 | 313001-853 | BRACKET, GRILLE SUPPORT, LH | 1 |
| 6 | 313002-853 | BRACKET, GRILLE, RH | 1 |
| 7 | 56362-853 | BRACKET, SUPPORT, FRONT AXLE, SF | 1 |
| 8 | 328154 | SCREW, 5/16-18 X 1.0 WDFLLK | 6 |
| 9 | 55273 | NUT, 5/16-18 WDFLLKLRG, WHIZ | 6 |
| 10 | 312908-853 | SHIELD, HEAT, 11&12HP, B&S & TEC, SF | 1 |
| 11 | 180020 | SCREW, 1/4-20 X .75 HHC | 2 |
| 12 | 311245 | WASHER, FLAT .250 X .75 X INSULATE | 2 |
| 13 | 51335 | NUT, 1/4-20 WDFLWHIZ-LK | 2 |
| 14 | 29616 | BOLT, .625 X 1.890 HHSH, 1/2-20 | 1 |
| 15 | 274654 | NUT, 1/2-20 REGHXCTRLK | 1 |
| 16 | 180138 | SCREW, 3/8-16 X 3.00 HHC | 2 |
| 17 | 2483 | WASHER, .39 ID X 1.25 D X .07 BELLVIL | 2 |
| 18 | 1499 | NUT, 3/8-16 REGHXCTRLK | 2 |
| 19 | 331796-860 | CONSOLE, S,F NOMA, DASH | 1 |
| 20 | 56235-860 | CONSOLE, REAR COVER | 1 |
| 21 | 995346 | SCREW, 1/4-20 X .50 WAHHTAP | 15 |
| 22 | 320466-860 | DASH, SF, NOMA, DYNA STYLING | 1 |
| 23 | 44811 | SCREW, 1/4-20 X .75 WAHHTAP | 6 |
| 24 | 50352 | NUT, 1/4-20 WDFLLK TOPLOCK | 4 |
| 25 | 313021-853 | GUIDE, HOOD, SF & LF, H13, H14, H15 | 2 |
| 26 | 180020 | SCREW, 1/4-20 X .75 HHC | 2 |
| 27 | 51335 | NUT, 1/4-20 WDFLWHIZ-LK | 2 |
| 28 | 12506 | HOOD, NOMA, SMALL, H-13 | 1 |
| 29 | 56676 | BOLT, .375 X .580 HHSH, 5/16-18 | 1 |
| 30 | 1498 | NUT, 5/16-18 REGHEXCTRLK | 1 |
| 31 | 180042 | SCREW, 1/4-20 X 1.75 HHC | 1 |
| 32 | 120392 | WASHER, FLAT .281 X .63 X .065 | 3 |
| 33 | 309532 | BEARING, FLANGED, PLASTIC HOOD | 1 |
| 34 | 311245 | WASHER, FLAT .250 X .75 X INSULATE | 1 |
| 35 | 1502 | NUT, 1/4-20 REGHEXCTRLK | 1 |
| 36 | 310801 | ANCHOR, HOOD, LANYARD | 1 |
| 37 | 121222 | PIN, COTTER .090 DIA X .75 LONG | 1 |
| 38 | 304784 | SPRING, HOOD LATCH | 1 |
| 40 | 302670 | LENS, HEADLAMP, DYNA HOODS | 1 |
| 41 | 301452 | FOIL, HEAT REFLECTOR | 1 |
| | 336408 | PARTS MANUAL | 1 |
| | 336428 | OPERATOR'S MANUAL (ENG/FRE) | 1 |



F3554-050

REPAIR PARTS



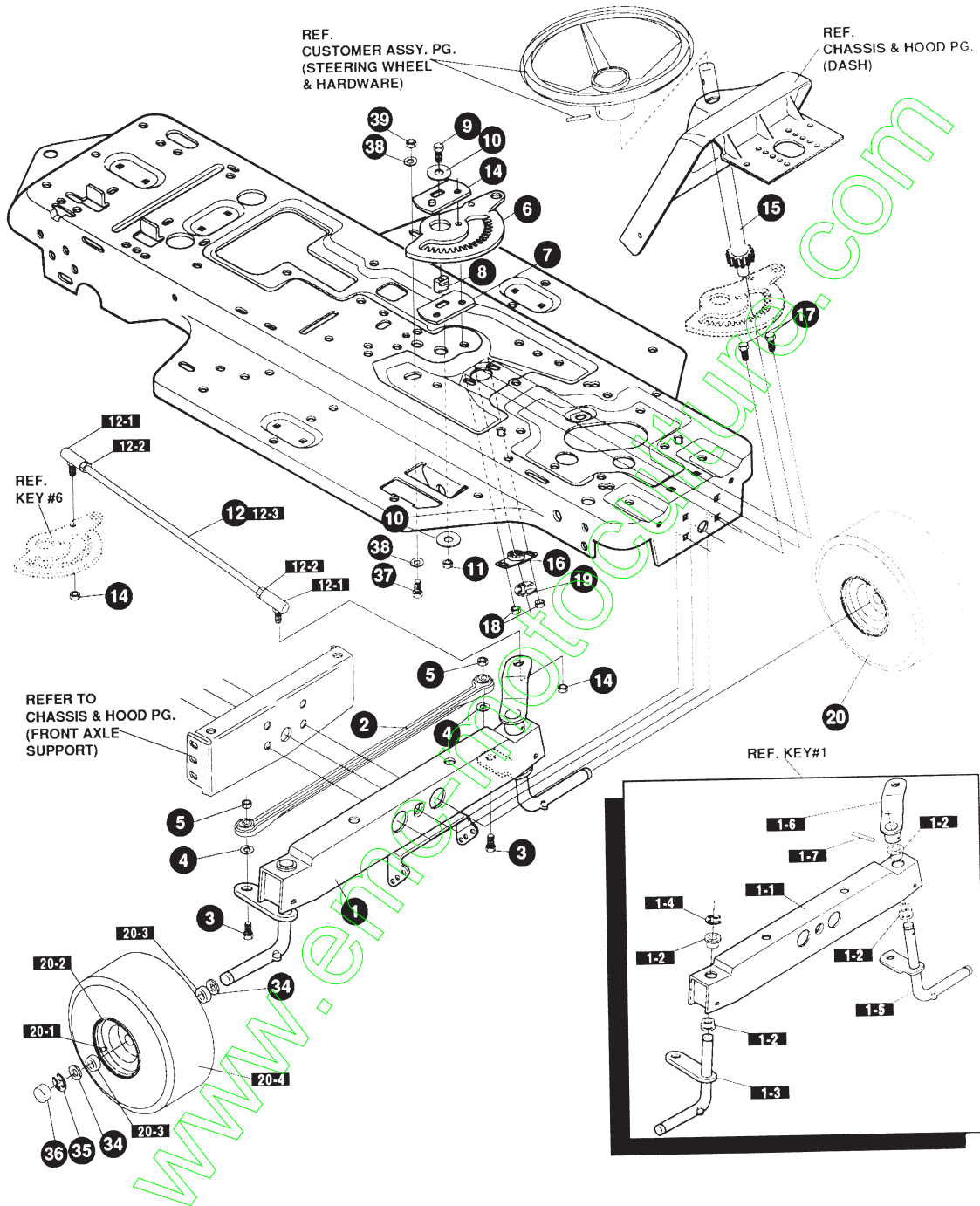
NOTE: ALWAYS USE ORIGINAL EQUIPMENT PARTS.
 Use of service/replacement parts other than original equipment parts may void your warranty.

ALL UNNUMBERED ITEMS ARE INTERCHANGEABLE WITH OPPOSITE SIDE

333517 B

| KEY# | PART# | DESCRIPTION | QTY |
|------|------------|--|-----|
| 78 | 58367-853 | PLATE, SEAT | 1 |
| 79 | 20507 | BOLT, .437 X .156 HSSH, 5/16-18 | 2 |
| 80 | 1498 | NUT, 5/16-18 REGHEXCTRLK | 2 |
| 81 | 330463 | SPRING, SEAT 1.50 OD X 2.25 LONG | 2 |
| 82 | 120392 | WASHER, FLAT .281 X .63 X .065 | 2 |
| 83 | 995346 | SCREW, 1/4-20 X .50 WAHTAP | 2 |
| 84 | 327335-860 | ASSEMBLY, FENDER | 1 |
| 84-1 | REF. ONLY | FENDER | 1 |
| 84-2 | 9239 | CLEVIS | 1 |
| 84-3 | 439455 | SCREW, 5/16-18 X .56 PHPNMA | 1 |
| 84-4 | 301551 | WASHER, .344 ID X 1.50 D X .09 | 1 |
| 84-5 | 120373 | NUT, 5/16-18 SQUARE | 1 |
| 90 | 995346 | SCREW, 1/4-20 X .50 WAHTAP | 4 |
| 91 | 126358 | BOLT, 5/16-18X1.00 CARRLN | 2 |
| 93 | 55273 | NUT, 5/16-18 WDFLLKLRG WHIZ | 2 |
| 97 | 53446 | PIN, 5/16-18, HOOD LATCH | 2 |
| 98 | 271184 | NUT, 5/16-18 HEXKEPS | 2 |
| 101 | 50653 | GUIDE, (BELT) | 1 |
| 102 | 41529 | NUT, 3/8-16 HXCTRLKJAM | 1 |
| 103 | 271190 | NUT, 3/8-16 HEXKEPS | 1 |

* ORDER INDIVIDUAL PARTS - ASSEMBLY NOT AVAILABLE



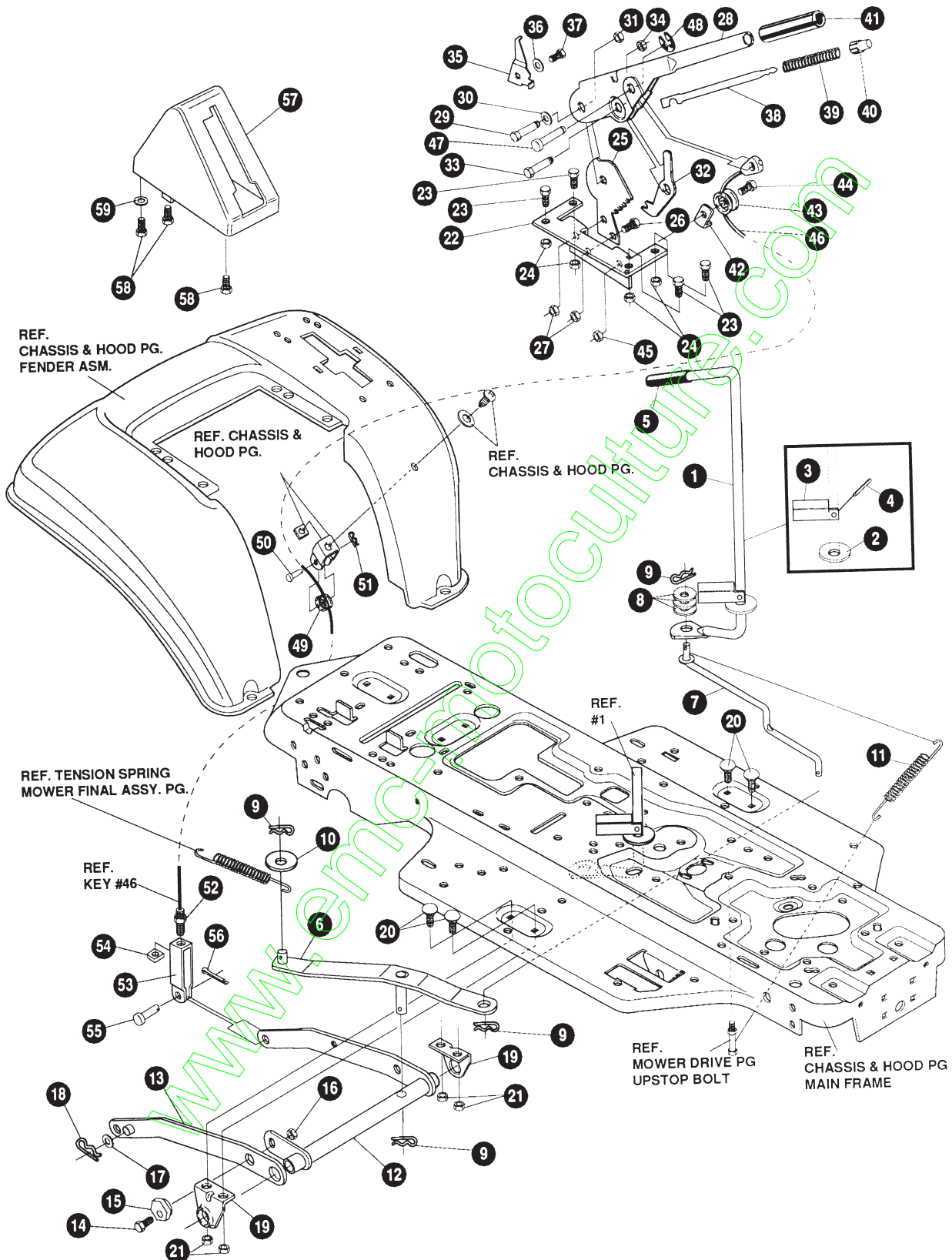
NOTE: ALWAYS USE ORIGINAL EQUIPMENT PARTS.
 Use of service/replacement parts other than original equipment parts may void your warranty.

ALL UNNUMBERED ITEMS ARE INTERCHANGEABLE WITH OPPOSITE SIDE

324972 J

| KEY# | PART# | DESCRIPTION | QTY |
|------|------------|---------------------------------------|-----|
| 1 | * | AXLE, FRONT ASSEMBLY, SF, LONG | 1 |
| 1-1 | 324915-853 | ASSEMBLY, FRONT AXLE, SF, GS | 1 |
| 1-2 | 50546 | BEARING, FL .759 ID X 1.002 OD X .75 | 4 |
| 1-3 | 310368 | SPINDLE ASSEMBLY, RH, LONG, SF | 1 |
| 1-4 | 36625 | RING, RETEX .57 X .05 TRU 5133-75 | 1 |
| 1-5 | 310367 | SPINDLE ASSEMBLY, LH, LONG, SF | 1 |
| 1-6 | 327619 | ARM ASSEMBLY, SF, 4WS, FRONT STEERING | 1 |
| 1-7 | 454565 | PIN, SPRING .250 DIA X 1.25 LONG | 1 |
| 2 | 302688 | ASSEMBLY, TIE ROD, 19.31 LONG | 1 |
| 3 | 180124 | SCREW, 3/8-16 X 1.25 HHC | 2 |
| 4 | 120382 | WASHER, REGSPTLK, 393 X .68 X .10 | 2 |
| 5 | 1499 | NUT, 3/8-16 REGHXCTRLK | 2 |
| 6 | 327399 | GEAR, SECTOR, SF, 2WS | 1 |
| 7 | 333289 | PLATE, SECTOR, SF, 4WS | 2 |
| 8 | 330021 | BUSHING, SECTOR GEAR, SF, 4WS | 1 |
| 9 | 181643 | SCREW, 3/8-24 X 1.50 HHC | 1 |
| 10 | 845 | WASHER, FLAT .390 X 1.25 X .119 | 2 |
| 11 | 412349 | NUT, 3/8-24 HXCTRLK | 1 |
| 12 | 328808 | DRAG LINK ASSEMBLY 17.69 LONG | 1 |
| 12-1 | 57158 | BALL JOINT, 3/8 THD, SHORT STUD | 2 |
| 12-2 | 124925 | NUT, 3/8-24 REGHEXJAM | 2 |
| 12-3 | 56190 | DRAG LINK | 1 |
| 14 | 412349 | NUT, 3/8-24 HXCTRLK | 2 |
| 15 | 327834 | SHAFT, PIN-STEER | 1 |
| 16 | 325692 | BEARING, FL .50 ID X 1.370 OD X | 1 |
| 17 | 326505 | SCREW, 1/4-20 X .75 | 2 |
| 18 | 46931 | NUT, 1/4-20 WDFL MAC-LOCK | 2 |
| 19 | 20864 | RING, RET E .39 X .04 TRU 5133-50 | 1 |
| 20 | 302828 | TIRE & RIM ASSEMBLY, PU 15 X 6.0 X 6 | 2 |
| 20-1 | 24167 | VALVE STEM | |
| 20-2 | 39829 | RIM, WHEEL | |
| 20-3 | 314416 | BEARING, FLANGE | |
| 20-4 | 316702 | TIRE, PU 15 X 6.0 X 6 | |
| 34 | 642 | WASHER, FLAT .755 X 1.31 X .075 | 4 |
| 35 | 36625 | RING, RETEX .57 X .05 TRU 5133-75 | 2 |
| 36 | 40394 | HUB CAP, 1.500 ID X 7/8 LONG | 2 |
| 37 | 180124 | SCREW, 3/8-16 X 1.25 HHC | 1 |
| 38 | 120394 | WASHER, FLAT .406 X .81 X .065 | 2 |
| 39 | 45171 | NUT, 3/8-16 HWDFL WHIZ-LOCK | 1 |

* ORDER INDIVIDUAL PARTS - ASSEMBLY NOT AVAILABLE



NOTE: ALWAYS USE ORIGINAL EQUIPMENT PARTS.
 Use of service/replacement parts other than original equipment parts may void your warranty.

ALL UNNUMBERED ITEMS ARE INTERCHANGEABLE WITH OPPOSITE SIDE

331232 D

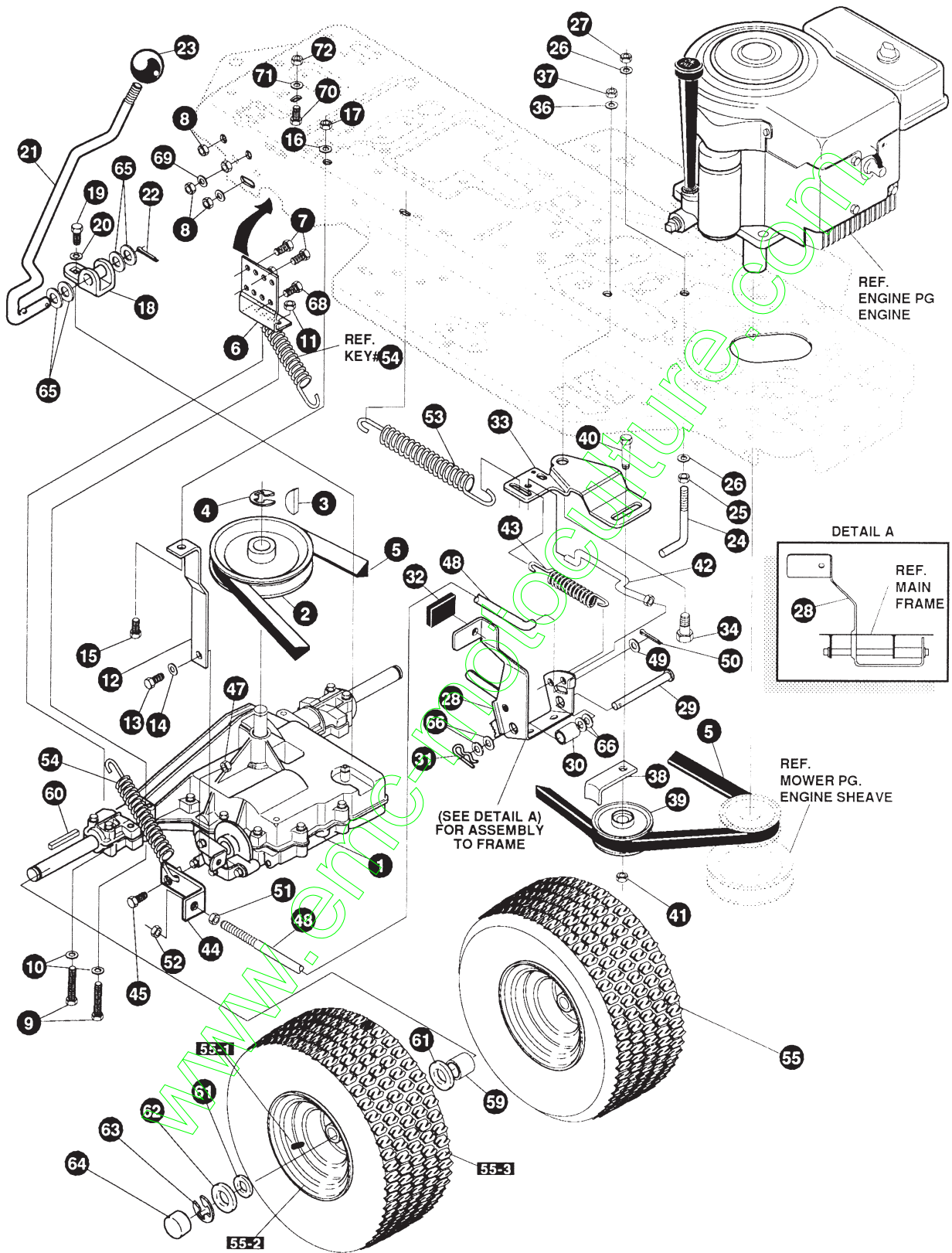
F3554-050

MOWER SUSPENSION ASSEMBLY

| KEY# | PART# | DESCRIPTION | QTY |
|------|------------|--|-----|
| 1 | 325591 | LEVER, CLUTCH, RH, PTO | 1 |
| 2 | 22265 | WASHER, FLAT .515 X 1.38 X .119 | 1 |
| 3 | 305225 | STOP, PTO ENGAGE | 1 |
| 4 | 326386 | PIN, SPRING .187 DIA X 1.13 LONG | 1 |
| 5 | 321837 | KNOB, ROUND 1.50 DIA OR GRIP, SF | 1 |
| 6 | 325587 | STRAP ASSEMBLY, PTO BELCRANK, SF | 1 |
| 7 | 325590 | ROD, BELLCRANK LINK, SF | 1 |
| 8 | 274517 | WASHER, FLAT .406 X .73 X .063 | 3 |
| 9 | 8260 | PIN, HAIR .091 DIA X 1.66 LONG | 4 |
| 10 | 25210 | WASHER, FLAT .386 X 1.25 X .09 | 1 |
| 11 | 325802 | SPRING, .69 X 7.75 X .0897 TENSION | 1 |
| 12 | 326114-853 | LIFT ASSEMBLY, LH | 1 |
| 13 | 325130-853 | LIFT ASSY, RH SF | 1 |
| 14 | 180079 | SCREW, 5/16-18 X 1.00 HHC | 1 |
| 15 | 58247 | NUT, ADJUST | 1 |
| 16 | 1498 | NUT, 5/16-18 REGHEXCTRLK | 1 |
| 17 | 417098 | WASHER, FLAT .531 X 1.06 X .063 | 2 |
| 18 | 8260 | PIN, HAIR .091 DIA X 1.66 LONG | 2 |
| 19 | 325495-853 | BRACKET, REAR, HANG, SUSP | 2 |
| 20 | 330967 | BOLT, 5/16-18 X 1.00 CARR | 4 |
| 21 | 1498 | NUT, 5/16-18 REGHEXCTRLK | 4 |
| 22 | 313926 | BRACKET, HEIGHT/ADJUST SUPPORT | 1 |
| 23 | 180077 | SCREW, 5/16-18 X .75 HHC | 4 |
| 24 | 1498 | NUT, 5/16-18 REGHEXCTRLK | 4 |
| 25 | 301238 | QUADRANT, HEIGHT ADJUST | 1 |
| 26 | 180077 | SCREW, 5/16-18 X .75 HHC | 2 |
| 27 | 1498 | NUT, 5/16-18 REGHEXCTRLK | 2 |
| 28 | 322292-853 | HANDLE, LIFT SHORT (30" S.F.) | 1 |
| 29 | 300171 | BOLT, 500 X .270 HSSH, 5/16-18 | 1 |
| 30 | 996418 | WASHER, FLAT .506 X .75 X .024 | 1 |
| 31 | 44108 | NUT, 5/16-18 HWDFLCTRLK | 1 |
| 32 | 301239 | PAWL, SQUARE | 1 |
| 33 | 300171 | BOLT, 500 X .270 HSSH, 5/16-18 | 1 |
| 34 | 44108 | NUT, 5/16-18 HWDFLCTRLK | 1 |
| 35 | 9435 | POINTER, HEIGHT ADJUST | 1 |
| 36 | 138479 | WASHER, EXLK .195 X .41 X .03 | 1 |
| 37 | 35287 | SCREW, #8-32 X .38 HHWATAP | 1 |
| 38 | 303027 | ROD, ACTUATOR-SHORT | 1 |
| 39 | 58326 | SPRING, HEIGHT ADJUST | 1 |
| 40 | 58325 | KNOB, HEIGHT ADJUST, PUSH BUTTON | 1 |
| 41 | 58329 | GRIP, .750 OD W/ HOLE, BLACK | 1 |
| 42 | 9149 | BRACKET, CABLE RETAINER | 1 |
| 43 | 48306 | PULLEY, POWDER METAL | 1 |
| 44 | 58336 | BOLT, .375 X .375 HSSH, 1/4-20 | 1 |
| 45 | 1502 | NUT, 1/4-20 REGHEXCTRLK | 1 |
| 46 | 57511 | LIFT CABLE, 20.75 LONG | 1 |
| 47 | 300310 | PIN, CLEVIS .310 DIA+ .475 LONG | 1 |
| 48 | 300311 | RING, RET E .31 X .25 TRU 5133-31 | 1 |
| 49 | 48306 | PULLEY, POWDER METAL | 1 |
| 50 | 300317 | PIN, CLEVIS .375 DIA X .81 LONG | 1 |
| 51 | 8260 | PIN, HAIR .091 DIA X 1.66 LONG | 1 |
| 52 | 120375 | NUT, 1/4-20 REGHEX | 1 |
| 53 | 9405 | CLEVIS, LIFT CABLE | 1 |
| 54 | 120372 | NUT, 1/4-20 REGSQ | 1 |
| 55 | 39522 | PIN, CLEVIS .312 X .812 | 1 |
| 56 | 121222 | PIN, COTTER .090 DIA X .75 LONG | 1 |
| 57 | 333903 | LIFT COVER, F5, LF, SF, BLACK | 1 |
| 58 | 300340 | SCREW, #10 X .75 HHPLAST, BLACK | 3 |
| 59 | 120392 | WASHER, FLAT .281 X .63 X .065 | 1 |

F3554-050

REPAIR PARTS



NOTE: ALWAYS USE ORIGINAL EQUIPMENT PARTS.
Use of service/replacement parts other than original equipment parts may void your warranty.

ALL UNNUMBERED ITEMS ARE INTERCHANGEABLE WITH OPPOSITE SIDE

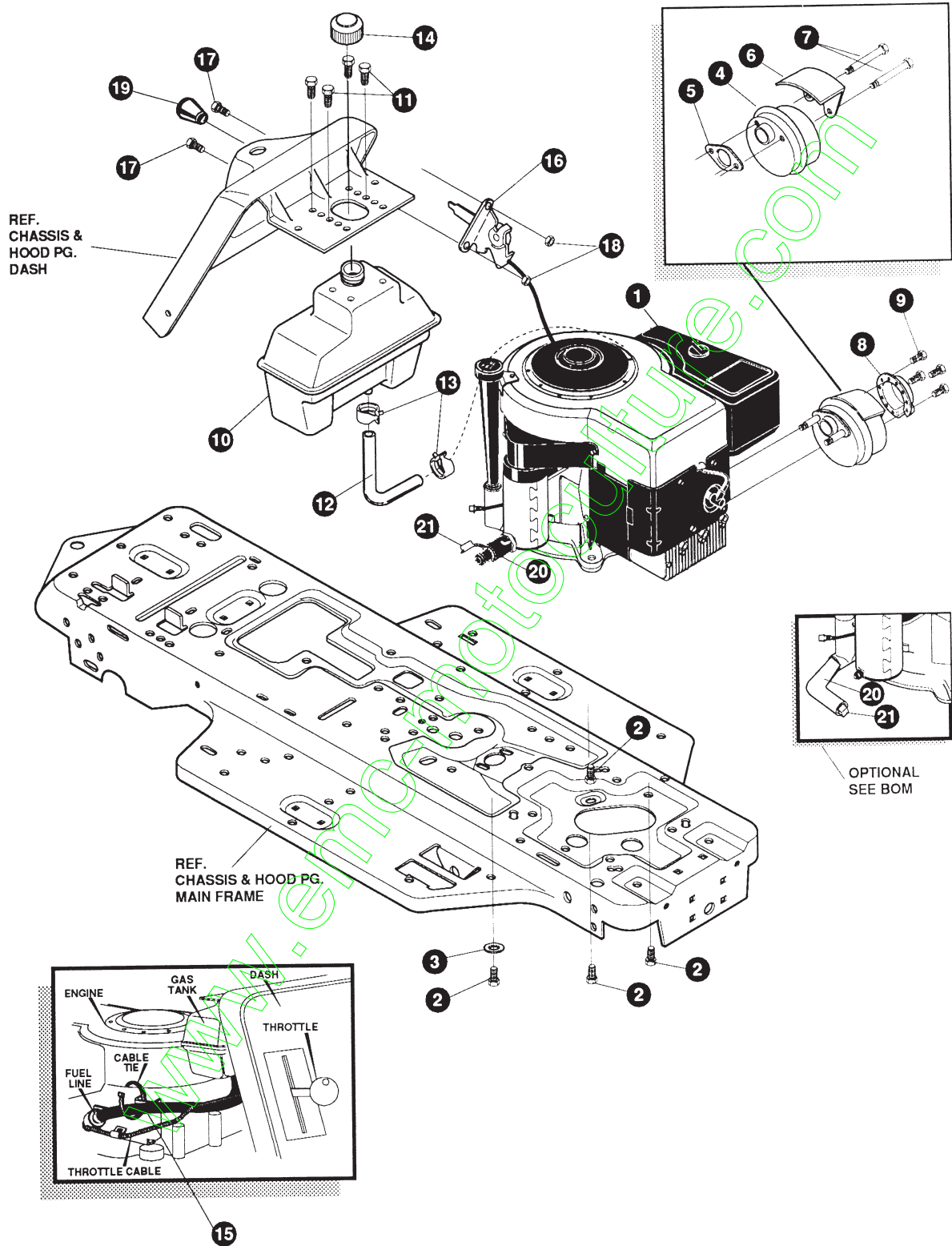
331791 E

F3554-050

MOTION DRIVE ASSEMBLY

| KEY# | PART# | DESCRIPTION | QTY |
|------|------------|--------------------------------------|-----|
| 1 | * | TRANSAXLE, FOOTE, 4360-5 | 1 |
| 2 | 303109 | PULLEY, 6.6 OD, V4L, T/A | 1 |
| 3 | 50795 | KEY, HI-PRO, 606 .75 DIA X .187 WD | 1 |
| 4 | 22053 | RING, RETEX .58 X .035 TRU 5100-62 | 1 |
| 5 | 54758 | BELT, V 4L, 82.00, DRIVE | 1 |
| 6 | 326615-853 | BRACKET, TRANSAXLE | 2 |
| 7 | 180077 | SCREW, 5/16-18 X .75 HHC | 4 |
| 8 | 1498 | NUT, 5/16-18 REGHEXCTRLK | 8 |
| 9 | 180091 | SCREW, 5/16-18 X 2.50 HHC | 4 |
| 10 | 120393 | WASHER, FLAT .344 X .69 X .065 | 4 |
| 11 | 1498 | NUT, 5/16-18 REGHEXCTRLK | 4 |
| 12 | 323126 | BRACKET, STABILIZER, BLACK | 1 |
| 13 | 35498 | SCREW, 5/16-18 X .75 WAHTAP | 1 |
| 14 | 120638 | WASHER, HVSPTLK .328 X .60 X .09 | 1 |
| 15 | 180079 | SCREW, 5/16-18 X 1.00 HHC | 1 |
| 16 | 138485 | WASHER, EXLK .320 X .61 X .03 | 1 |
| 17 | 1498 | NUT, 5/16-18 REGHEXCTRLK | 1 |
| 18 | 335218 | SHIFT BRACKET, P930/4360 | 1 |
| 19 | 56255 | SCREW, 1/4-28 X .75 NYLHHC | 1 |
| 20 | 57157 | WASHER, .750 X .250 SP-TRANSAXLE | 1 |
| 21 | 331800 | SHIFT LEVER (DANA) | 1 |
| 22 | 137185 | PIN, COTTER .125 DIA X 1.00 LONG | 1 |
| 23 | 55514 | KNOB, ROUND 1.50 DIA, BLACK | 1 |
| 24 | 49896 | BELT GUIDE | 1 |
| 25 | 271184 | NUT, 5/16-18 HEXKEPS | 1 |
| 26 | 120393 | WASHER, FLAT .344 X .69 X .065 | 2 |
| 27 | 1498 | NUT, 5/16-18 REGHEXCTRLK | 1 |
| 28 | 331836 | ASSEMBLY, PEDAL, BRAKE, CLUTCH, SF | 1 |
| 29 | 319676 | PIN, CLEVIS .500 D X 4.87 LONG | 1 |
| 30 | 331972 | SPACER, SLEEVE .53 X .62 X 1.240 | 1 |
| 31 | 56180 | PIN, HAIR .091 DIA X 1.62 LONG | 1 |
| 32 | 48761 | PAD, CLUTCH/BRAKE PEDAL | 1 |
| 33 | 321969 | IDLER ARM BRACKET, TRACTION | 1 |
| 34 | 329989 | BOLT, .625 X .135 HSSH, 5/16-18 | 1 |
| 36 | 45602 | WASHER, FLAT .333 X .87 X .119 | 1 |
| 37 | 1498 | NUT, 5/16-18 REGHEXCTRLK | 1 |
| 38 | 39659 | RETAINER, BELT | 1 |
| 39 | 35374 | PULLEY, IDLER, V4L, 3.06 X .62 | 1 |
| 40 | 45892 | BOLT, 3/8-16 X 1.50 CARRSN | 1 |
| 41 | 1499 | NUT, 3/8-16 REGHXCTRLK | 1 |
| 42 | 333175 | CLUTCH ROD ASSEMBLY, .268 DIA 3.92 | 1 |
| 43 | 326780 | SPRING, 3/8 OD X 2.18 X .055 TENSION | 1 |
| 44 | 323127 | BRACKET, BRAKE ROD, BLACK | 1 |
| 45 | 20507 | BOLT, .437 X .156 HSSH, 5/16-18 | 1 |
| 47 | 1498 | NUT, 5/16-18 REGHEXCTRLK | 1 |
| 48 | 323222 | BRAKE ROD, RIDER, BLACK | 1 |
| 49 | 120393 | WASHER, FLAT .344 X .69 X .065 | 1 |
| 50 | 121222 | PIN, COTTER .090 DIA X .75 LONG | 1 |
| 51 | 271184 | NUT, 5/16-18 HEXKEPS | 1 |
| 52 | 44108 | NUT, 5/16-18 HWDFLCTRLK | 1 |
| 53 | 327867 | SPRING, 3/4 OD X 7.75 X .091 TENSION | 1 |
| 54 | 35410 | SPRING, .071 X .62 X 4.37 | 1 |
| 55 | 331789 | TIRE & RIM, PU 18 X 8.5 X 8 | 2 |
| 55-1 | 24167 | VALVE STEM | |
| 55-2 | 326362 | RIM, WHEEL | |
| 55-2 | 317400 | TIRE 18 X 8.5 X 8 | |
| 59 | 57479 | SPACER, SLEEVE .75 X 1.25 X 1.32 | 2 |
| 60 | 52928 | KEY, SQUARE .187 SQUARE X 2.25 LONG | 2 |
| 61 | 642 | WASHER, FLAT .755 X 1.31 X .075 | 4 |
| 62 | 42815 | WASHER, FLAT .755 X 1.53 X .07 | 2 |
| 63 | 36625 | RING, RETEX .57 X .05 TRU 5133-75 | 2 |
| 64 | 40394 | HUB CAP, 1.500 ID X 7/8 LONG | 2 |
| 65 | 5950 | WASHER, FLAT .505 X .88 X .13 | 4 |
| 66 | 2968 | WASHER, FLAT .504 X .75 X .059 | 4 |
| 68 | 327917 | SCREW, 5/16-18 X 1.50 HHCFT | 4 |
| 69 | 73787 | WASHER, FLAT .330 X .75 X .1793 | 4 |
| 70 | 180022 | SCREW, 1/4-20 X 1.00 HHC | 1 |
| 71 | 120380 | WASHER, REGSPTL K.263 X .49 X .07 | 1 |
| 72 | 120375 | NUT, 1/4-20 REGHEX | 1 |

* CONTACT YOUR NEAREST TRANSAXLE DEALER FOR PARTS & SERVICE



NOTE: ALWAYS USE ORIGINAL EQUIPMENT PARTS.
Use of service/replacement parts other than original equipment parts may void your warranty.

ALL UNNUMBERED ITEMS ARE INTERCHANGEABLE WITH OPPOSITE SIDE

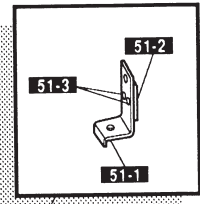
326553 D

| KEY# | PART# | DESCRIPTION | QTY |
|------|--------|-------------------------------------|-------|
| 1 | * | ENGINE, 12-12.5HP, B&S, IC DUAL | 1 |
| 2 | 50947 | SCREW, 3/8-16 X 1.25 WAHHTAP | 4 |
| 3 | 138489 | WASHER, EXLK .384 X .69 X .04 | 1 |
| 4 | 57908 | MUFFLER-DOMESTIC/EXPORT ROUND | 1 |
| 5 | 46708 | GASKET, MUFFLER | 1 |
| 6 | 54767 | SHIELD, HEAT, FOR ROUND MUFFLER | 1 |
| 7 | 54980 | SCREW, 5/16-18 X 3.50 HHC | 2 |
| 8 | 56472 | DEFLECTOR SIDE OUT (BS222573) | 1 |
| 9 | 35287 | SCREW, #8-32 X .38 HHWATAP | 4 |
| 10 | 314989 | TANK, FUEL 1 GALLON, CLEAR | 1 |
| 11 | 300303 | SCREW, .25 X .75 X .51 HHWAPLASTITE | 4 |
| 12 | 42258 | TUBING, .25 X .50 X BULK GAS LINE | 12.0" |
| 13 | 336890 | CLAMP, HOSE SCREW TYPE | 2 |
| 14 | 46704 | CAP, GAS 1-1/2-7 THD, BLACK | 1 |
| 15 | 57444 | TIE, CABLE BLACK NYLON, 5.62 LONG | 1 |
| 16 | 320031 | THROTTLE CONTROL | 1 |
| 17 | 274707 | SCREW, #10-24 X .50 WAHMA | 2 |
| 18 | 308459 | NUT, #10-24 HXHDNYLK | 2 |
| 19 | 50607 | KNOB, ROUND THROTTLE, BLACK | 1 |
| 20 | 43989 | OIL DRAIN VALVE OR TUBE | 1 |
| 21 | 23700 | CAP OR PLUG FOR OIL DRAIN | 1 |

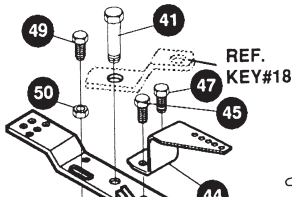
* SEE ENGINE MANUAL

F3554-050

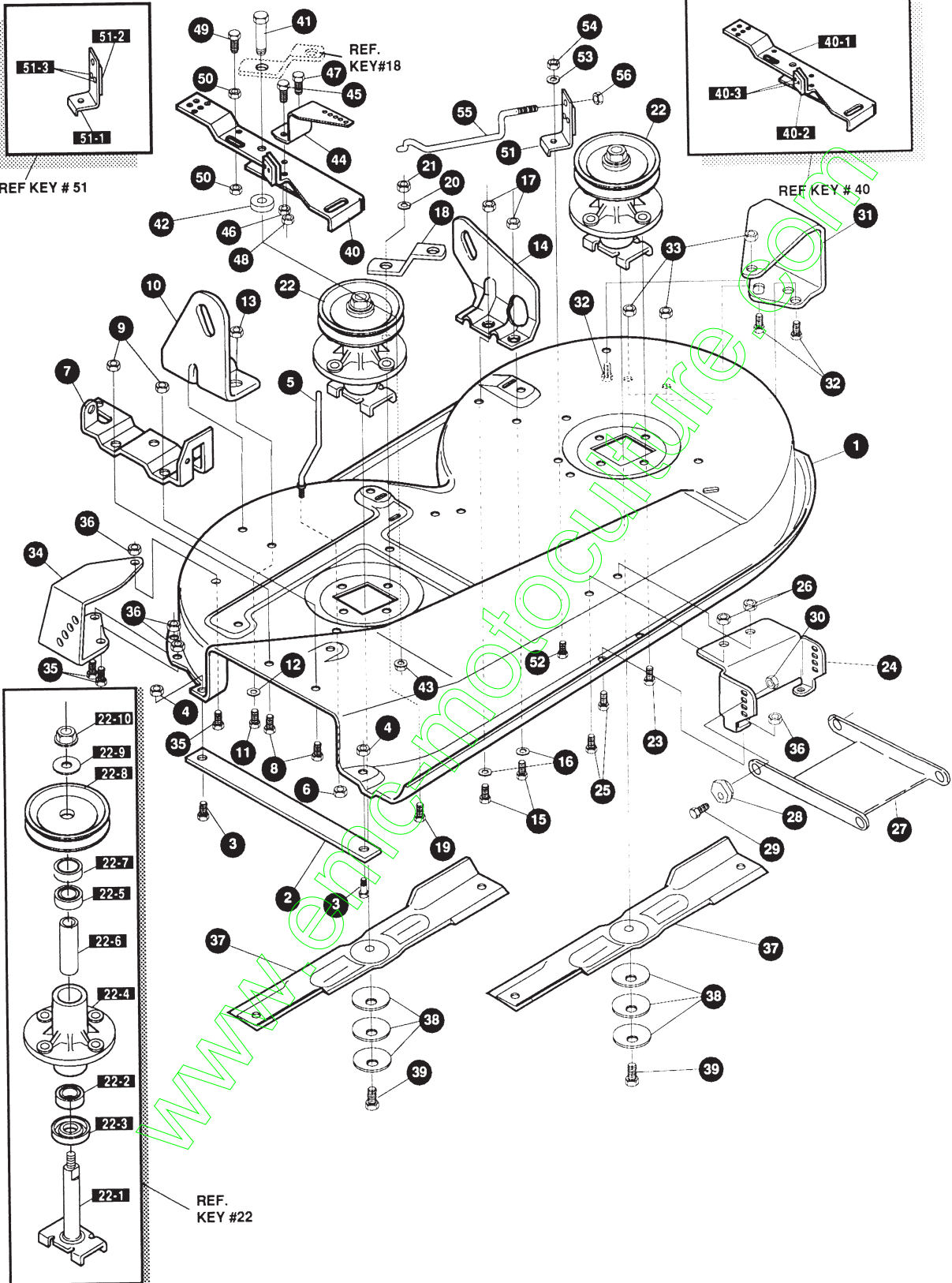
REPAIR PARTS



REF KEY # 51



REF KEY # 40



NOTE: ALWAYS USE ORIGINAL EQUIPMENT PARTS.
Use of service/replacement parts other than original equipment parts may void your warranty.

ALL UNNUMBERED ITEMS ARE INTERCHANGEABLE WITH OPPOSITE SIDE

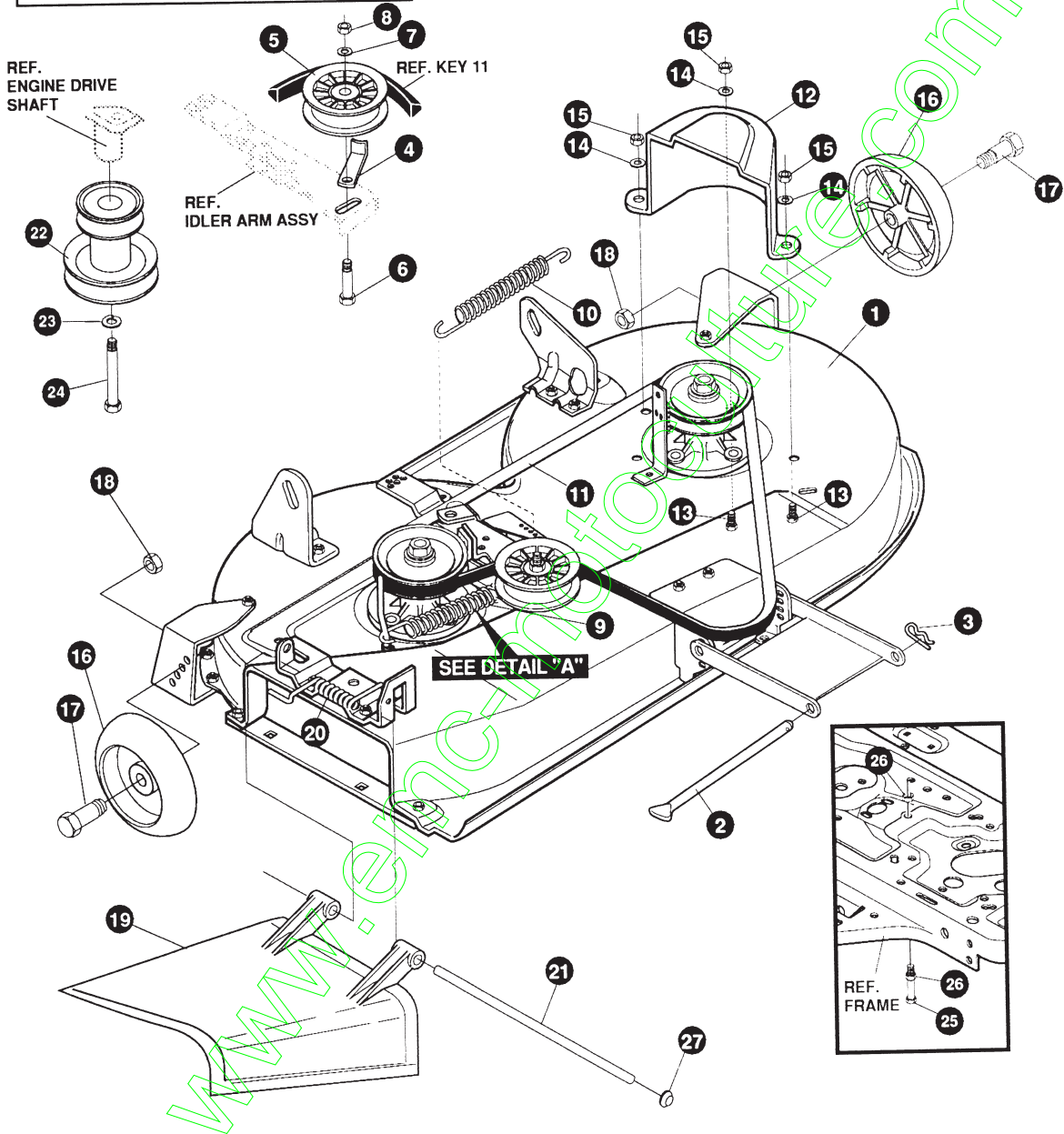
332345 B

F3554-050

PRE-PAINTED DECK ASSEMBLY

| KEY# | PART# | DESCRIPTION | QTY |
|-------|--------|--|-----|
| 1 | 325106 | 38" DECK KIT | 1 |
| 2 | 326295 | BAR, SKID | 1 |
| 3 | 126216 | BOLT, 5/16-18 X .75 CARRLN | 2 |
| 4 | 271184 | NUT, 5/16-18 HEXKEPS | 2 |
| 5 | 57318 | GUIDE, BELT 5/16-18 THD | 1 |
| 6 | 1498 | NUT, 5/16-18 REGHEXCTRLK | 1 |
| 7 | 313928 | BRACKET, CHUTE | 1 |
| 8 | 180073 | SCREW, 5/16-18 X .50 HHC | 2 |
| 9 | 1498 | NUT, 5/16-18 REGHEXCTRLK | 2 |
| 10 | 313929 | BRACKET, RH, LIFT REAR | 1 |
| 11 | 180077 | SCREW, 5/16-18 X .75 HHC | 2 |
| 12 | 120393 | WASHER, FLAT .344 X .69 X .065 | 2 |
| 13 | 1498 | NUT, 5/16-18 REGHEXCTRLK | 2 |
| 14 | 310667 | BRACKET, LH, LIFT REAR | 1 |
| 15 | 180077 | SCREW, 5/16-18 X .75 HHC | 2 |
| 16 | 120393 | WASHER, FLAT .344 X .69 X .065 | 2 |
| 17 | 1498 | NUT, 5/16-18 REGHEXCTRLK | 2 |
| 18 | 315302 | BRACKET, IDLER SUPPORT | 1 |
| 19 | 300345 | SCREW, 5/16-18 X 1.38 WAHTAP | 1 |
| 20 | 120393 | WASHER, FLAT .344 X .69 X .065 | 1 |
| 21 | 1498 | NUT, 5/16-18 REGHEXCTRLK | 1 |
| 22 | 56424 | QUILL ASSEMBLY, 36/39/40/43 | 2 |
| 22-1 | 56425 | SHAFT/SADDLE 36" | 1 |
| 22-2 | 49562 | BEARING, BALL 6203-2AA-C3 ARMORED | 1 |
| 22-3 | 50616 | DUST SHIELD | 1 |
| 22-4 | 55547 | QUILL CASTING (1046) | 1 |
| 22-5 | 49562 | BEARING, BALL 6203-2AA-C3 ARMORED | 1 |
| 22-6 | 50818 | SPACER, SLEEVE .669 X .88 X 3.797 | 1 |
| 22-7 | 51449 | SPACER, SLEEVE .672 X .93 X .438 | 1 |
| 22-8 | 313898 | PULLEY, 26/36" QUILL, V5L | 1 |
| 22-9 | 56365 | WASHER, SPECIAL QUILL | 1 |
| 22-10 | 1282 | NUT, 7/16-20 WDFLLK | 1 |
| 23 | 35498 | SCREW, 5/16-18 X .75 WAHTAP | 7 |
| 24 | 312526 | SUPPORT, LIFT DECK FRONT | 1 |
| 25 | 180077 | SCREW, 5/16-18 X .75 HHC | 4 |
| 26 | 1498 | NUT, 5/16-18 REGHEXCTRLK | 4 |
| 27 | 58305 | BRACKET, LINK DECK FRONT | 1 |
| 28 | 58247 | NUT, ADJUST | 2 |
| 29 | 180079 | SCREW, 5/16-18 X 1.00 HHC | 2 |
| 30 | 1498 | NUT, 5/16-18 REGHEXCTRLK | 2 |
| 31 | 312477 | BRACKET, LH WHEEL | 1 |
| 32 | 180077 | SCREW, 5/16-18 X .75 HHC | 3 |
| 33 | 1498 | NUT, 5/16-18 REGHEXCTRLK | 3 |
| 34 | 300102 | WHEEL BRACKET, RH | 1 |
| 35 | 180077 | SCREW, 5/16-18 X .75 HHC | 3 |
| 36 | 1498 | NUT, 5/16-18 REGHEXCTRLK | 3 |
| 37 | 309069 | BLADE, 19.69, LOW-LIFT | 2 |
| 38 | 2483 | WASHER, 39 ID X 1.25 D X .07 BELLVIL | 6 |
| 39 | 39573 | SCREW, 3/8-24 X 1.00 NYLHHC | 2 |
| 40 | 300491 | IDLER ARM ASSEMBLY | 1 |
| 40-1 | 300490 | IDLER ARM 36, 38, 39, & 45 SD | 1 |
| 40-2 | 306973 | BRAKE PAD - HARD-NF343 (X-31) | 1 |
| 40-3 | 41601 | RIVET, OVSET .187 DIA X .50 LONG | 2 |
| 41 | 300180 | BOLT, .50 X 1.88 HSSH, 3/8-16 | 1 |
| 42 | 996416 | WASHER, FLAT .391 X 1.00 X .125 | 1 |
| 43 | 45171 | NUT, 3/8-16 HWDFL, WHIZ-LOCK | 1 |
| 44 | 326249 | BRACKET, EXTENSION IDLER | 1 |
| 45 | 180077 | SCREW, 5/16-18 X .75 HHC | 1 |
| 46 | 1498 | NUT, 5/16-18 REGHEXCTRLK | 1 |
| 47 | 180020 | SCREW, 1/4-20 X .75 HHC | 1 |
| 48 | 1502 | NUT, 1/4-20 REGHEXCTRLK | 1 |
| 49 | 121954 | SCREW, 1/4-20 X 2.00 HHC | 1 |
| 50 | 271172 | NUT, 1/4-20 REGHEXKEPS | 2 |
| 51 | 303247 | ASSEMBLY, BLADE BRAKE 36, 39, 45 | 1 |
| 51-1 | 303246 | BRAKE ARM | 1 |
| 51-2 | 306973 | BRAKE PAD - HARD-NF343 (X-31) | 1 |
| 51-3 | 135624 | RIVET, TRSET .185 DIA X .41 LONG | 2 |
| 52 | 180077 | SCREW, 5/16-18 X .75 HHC | 1 |
| 53 | 120393 | WASHER, FLAT .344 X .69 X .065 | 1 |
| 54 | 1498 | NUT, 5/16-18 REGHEXCTRLK | 1 |
| 55 | 300316 | ROD, BRAKE RELEASE 14.7 39 DECK | 1 |
| 56 | 1502 | NUT, 1/4-20 REGHEXCTRLK | 1 |

DETAIL A



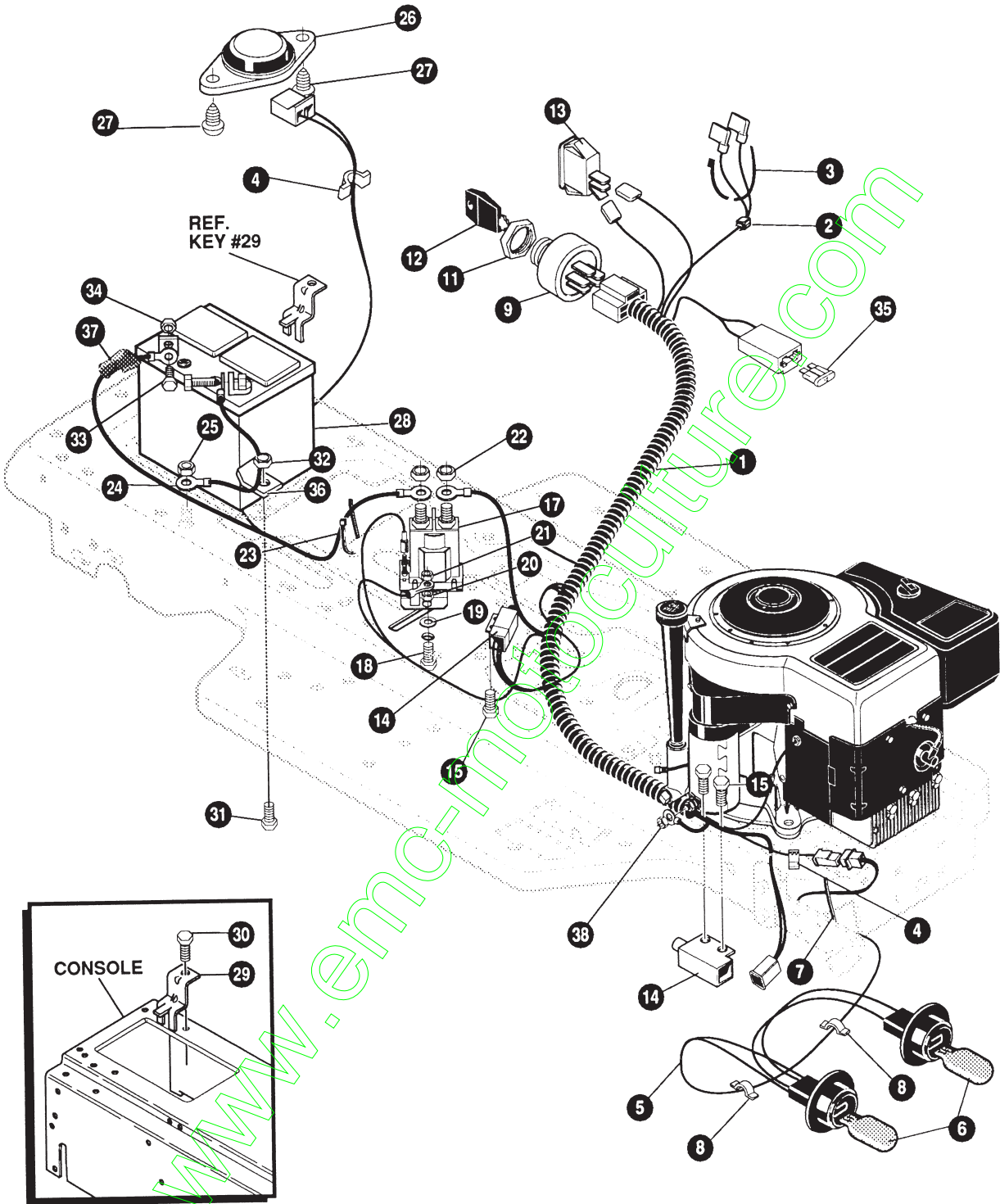
NOTE: ALWAYS USE ORIGINAL EQUIPMENT PARTS.
 Use of service/replacement parts other than original equipment parts may void your warranty.

ALL UNNUMBERED ITEMS ARE INTERCHANGEABLE WITH OPPOSITE SIDE

332346 B

| KEY# | PART# | DESCRIPTION | QTY |
|------|--------|-------------------------------------|-----|
| 1 | 329456 | SUB ASSEMBLY DECK, SF, 38" SD | 1 |
| 2 | 58306 | ROD, DECK HITCH | 1 |
| 3 | 8260 | PIN, HAIR .091 DIA X 1.66 LONG | 1 |
| 4 | 1346 | RETAINER, BELT | 1 |
| 5 | 310326 | PULLEY, IDLER BFF, 4.00 WIDE FL | 1 |
| 6 | 57325 | BOLT, 3/8-16 X 2.00 CARRSN | 1 |
| 7 | 120382 | WASHER, REGSPTLK .393 X .68 X .10 | 1 |
| 8 | 120377 | NUT, 3/8-16 REGHX | 1 |
| 9 | 322064 | SPRING, .75 X 8.4 X .105 TENSION | 1 |
| 10 | 326256 | SPRING, .75 X 10.0 X .105 TENSION | 1 |
| 11 | 300680 | BELT, V 5L, 77.75 KEVLAR | 1 |
| 12 | 328257 | GUARD, BELT, LH, PLASTIC | 1 |
| 13 | 180077 | SCREW, 5/16-18 X .75 HHC | 3 |
| 14 | 120393 | WASHER, FLAT .344 X .69 X .065 | 3 |
| 15 | 1498 | NUT, 5/16-18 REGHEXCTRLK | 3 |
| 16 | 302611 | GAUGE WHEEL, EURO 6.00 OD X 1.38 WD | 2 |
| 17 | 23763 | BOLT, 5/00 X 1.390 HSSH, 3/8-16 | 2 |
| 18 | 1499 | NUT, 3/8-16 REGHXCTRLK | 2 |
| 19 | 57818 | CHUTE DEFLECTOR, 36", 39", 45" | 1 |
| 20 | 314975 | SPRING, TORSION, CHUTE DEFLECTOR | 1 |
| 21 | 334908 | KIT FOR 57317 PIVOT ROD | 1 |
| 22 | 328034 | PULLEY, ENGINE, V3L, 4.00 OFFSET | 1 |
| 23 | 120383 | WASHER, REGSPTLK .459 X .78 X .12 | 1 |
| 24 | 433146 | SCREW, 7/16-20 X 4.25 HHC, BLACK | 1 |
| 25 | 180128 | SCREW, 3/8-16 X 1.75 HHC | 1 |
| 26 | 1499 | NUT, 3/8-16 REGHXCTRLK | 2 |
| 27 | 332179 | CAP, PUSH ON, FOR DIA .250 ROD | 1 |

www.emc.com



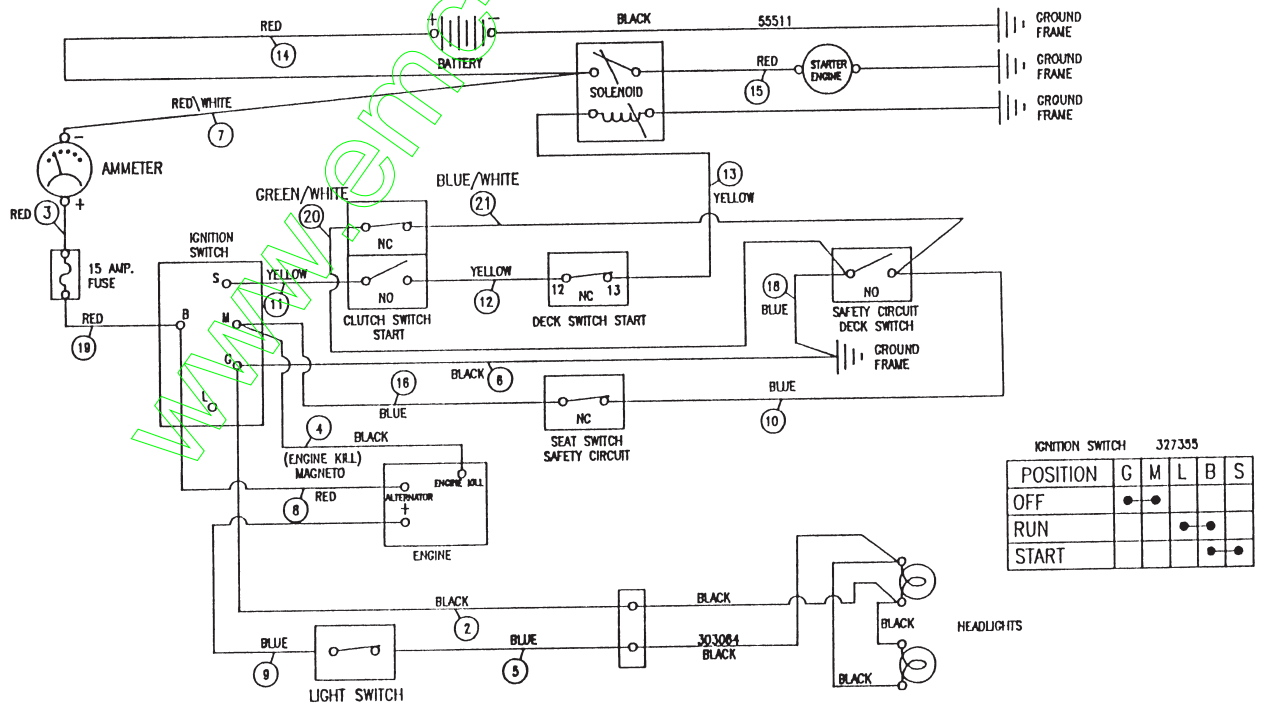
NOTE: ALWAYS USE ORIGINAL EQUIPMENT PARTS.
 Use of service/replacement parts other than original equipment parts may void your warranty.

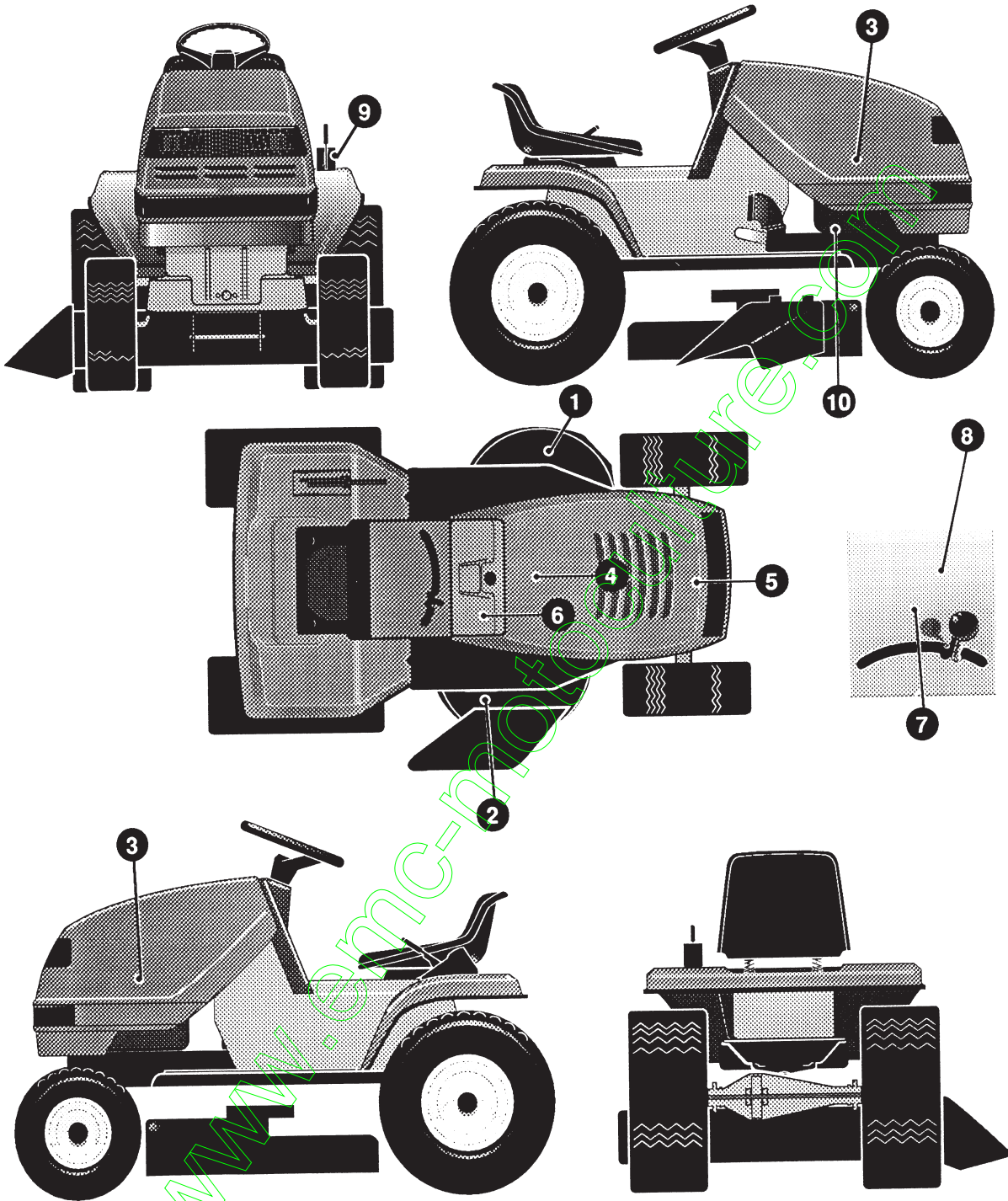
ALL UNNUMBERED ITEMS ARE INTERCHANGEABLE WITH OPPOSITE SIDE

33209 B

| KEY# | PART# | DESCRIPTION | QTY |
|------|--------|--|-----|
| 1 | 331450 | WIRE HARNESS, SF, W/AMP | 1 |
| 2 | 322298 | SPLICER | 1 |
| 3 | 57444 | TIE, CABLE BLACK NYLON, 5.62 LONG | 1 |
| 4 | 41482 | PRESS CLIP, 1.380 LONG, .255 ID | 2 |
| 5 | 303064 | ASSEMBLY, LIGHT WIRE-1/4 TURN | 1 |
| 6 | 52572 | BULB, HEADLAMP | 2 |
| 7 | 57444 | TIE, CABLE BLACK NYLON, 5.62 LONG | 1 |
| 8 | 41482 | PRESS CLIP, 1.380 LONG .255 ID | 1 |
| 9 | 327355 | SWITCH-IGN.(AFTER FIRE) 3 POSN. | 1 |
| 11 | 327352 | NUT, 5/8-8ACME DELTA FOR BOOT | 1 |
| 12 | 327350 | KEY, IGNITION | 1 |
| 13 | 300334 | LIGHT SWITCH, ON/OFF PANEL MOUNT | 1 |
| 14 | 57476 | SWITCH, SCREW MOUNT, DP, NC, NO, BLK | 2 |
| 15 | 300302 | SCREW, #10 X .50 HHTAPPST, BLACK | 4 |
| 17 | 53716 | SOLENOID | 1 |
| 18 | 187745 | SCREW, 1/4-20 X .75 HXSEMMA | 2 |
| 19 | 1084 | WASHER, FLAT .281 X 1.00 X .063 | 1 |
| 20 | 1502 | NUT, 1/4-20 REGHEXC TRLK | 2 |
| 21 | 271172 | NUT, 2 1/4-20 REGHEXKEPS | 1 |
| 22 | 271187 | NUT, 5/16-24 HKEPS | 2 |
| 23 | 57444 | TIE, CABLE BLACK NYLON, 5.62 LONG | 1 |
| 24 | 55511 | WIRE, GROUND, 12.5" | 1 |
| 25 | 271184 | NUT, 5/16-18 HEXKEPS | 1 |
| 26 | 57547 | SWITCH, SEAT | 1 |
| 27 | 160505 | SCREW, 1/4-20 X .38 PHRNHMA | 2 |
| 28 | 302257 | BATTERY, 12V | 1 |
| 29 | 329175 | BATTERY BRACKET | 1 |
| 30 | 995346 | SCREW, 1/4-20 X .50 WAHHTAP | 1 |
| 31 | 187745 | SCREW, 1/4-20 X .75 HXSEMMA | 1 |
| 32 | 1502 | NUT, 1/4-20 REGHEXC TRLK | 1 |
| 33 | 180020 | SCREW, 1/4-20 X .75 HHC | 2 |
| 34 | 271172 | NUT, 1/4-20 REGHEXKEPS | 2 |
| 35 | 302031 | FUSE SPADE TYPE 32V 15A | 1 |
| 36 | 9149 | BRACKET, CABLE RETAINER | 1 |
| 37 | 308201 | INSULATOR, BATTERY BOOT EURO | 1 |
| 38 | 124818 | NUT, 1/4-20 REGHXJAM | 1 |

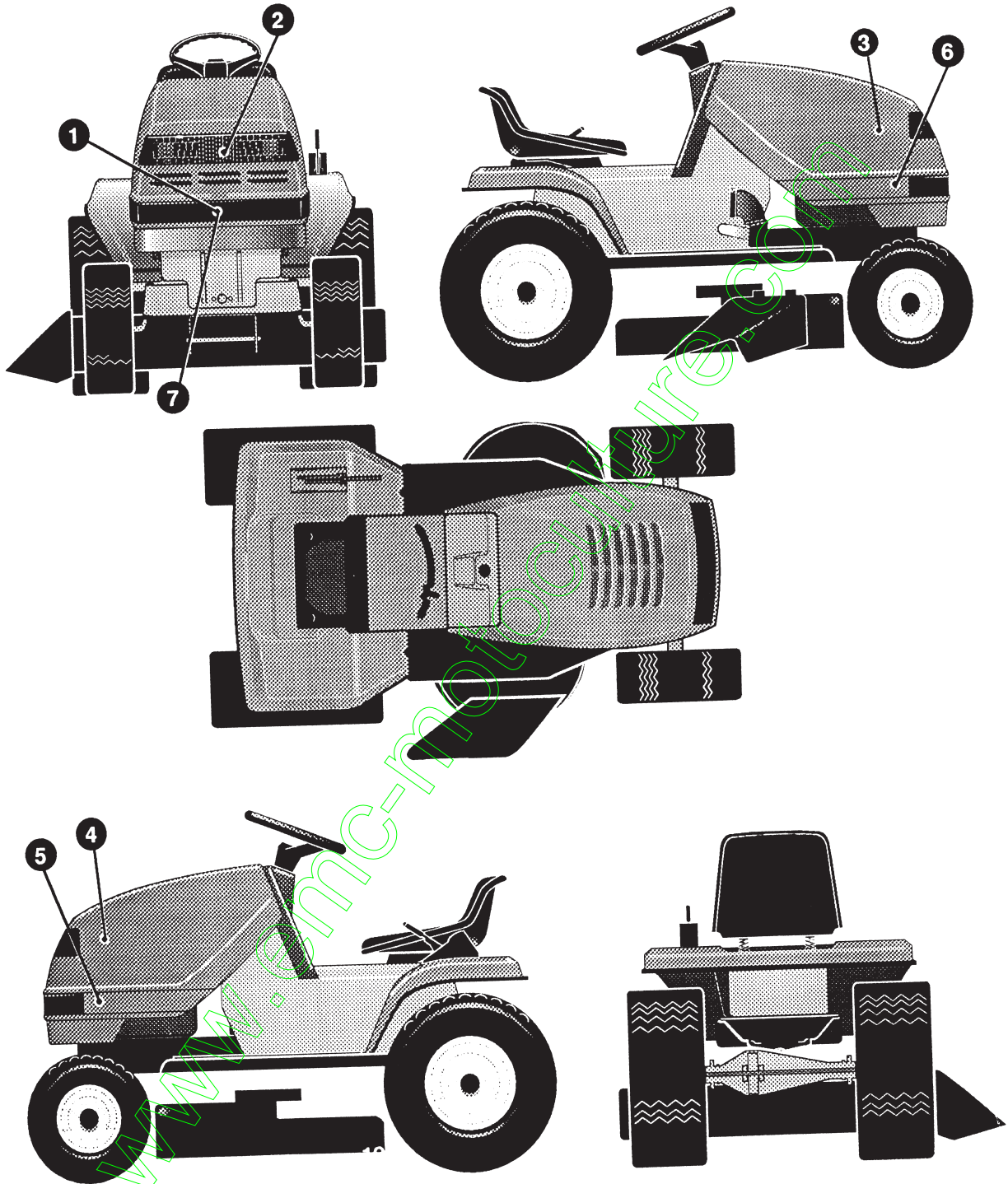
SCHEMATIC DRAWING





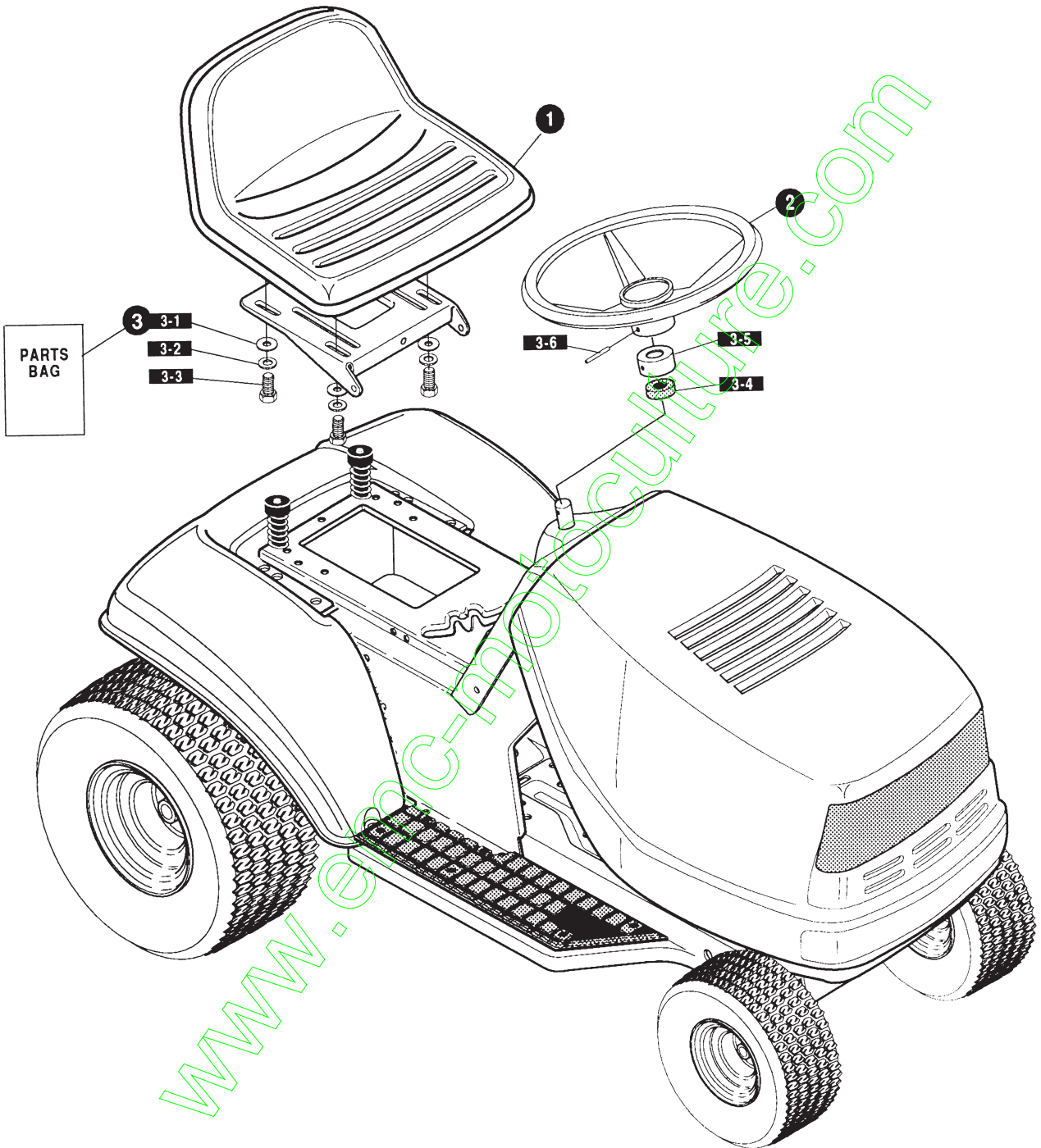
| KEY# | PART# | DESCRIPTION | QTY |
|------|--------|---------------------------------------|-----|
| 1 | 402700 | DECAL, CAUTION, DECK, LH | 1 |
| 2 | 402701 | DECAL, CAUTION, DECK, RH | 1 |
| 3 | 305603 | PAD, 18 X 6 FOAM HOOD | 2 |
| 4 | 307276 | PAD, 15 X 7 FOAM HOOD | 1 |
| 5 | 307277 | PAD, 12 X 4 FOAM HOOD | 1 |
| 6 | 324989 | DECAL, DASH, DYNAMARK, EXPORT | 1 |
| 7 | 301104 | DECAL, CONSOLE, TOP, SHIFT 5-SP | 1 |
| 8 | 402747 | DECAL, CONSOLE, SYMBOLIC, SF | 1 |
| 9 | 402214 | DECAL, HEIGHT ADJUST | 1 |
| 10 | 402702 | DECAL, BRAKE/CLUTCH | 1 |

335224 A



| KEY# | PART# | DESCRIPTION | QTY |
|------|--------|---------------------------------------|-----|
| 1 | 322699 | DECAL, TAPE H13 8MIL VINYL | 1 |
| 2 | 308492 | FOIL, LENS, DYNA HOOD REFLECTOR | 1 |
| 3 | 336597 | DECAL, HOOD, RH, WESTWOOD | 1 |
| 4 | 336598 | DECAL, HOOD, LH, WESTWOOD | 1 |
| 5 | 336599 | DECAL, HOOD LOWER, LH | 1 |
| 6 | 336600 | DECAL, HOOD LOWER, RH | 1 |
| 7 | 336601 | DECAL, HOOD BADGE (BUMPER) | 1 |

335225 A



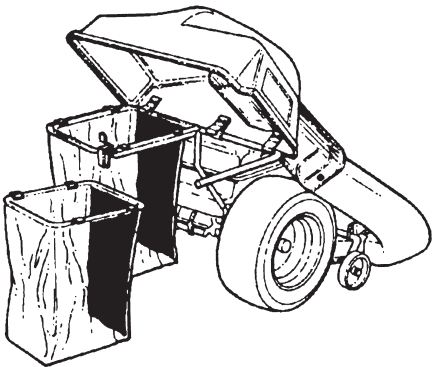
| KEY# | PART# | DESCRIPTION | QTY |
|------|--------|---|-----|
| 1 | 304316 | SEAT, MICHIGAN GEN, W/SWITCH HOLE | 1 |
| 2 | 330510 | STEERING WHEEL | 1 |
| 3 | 331424 | PARTS BAG, ASSEMBLY SEAT/STEER | 1 |
| 3-1 | 120393 | WASHER, FLAT (344 X) .69 X .065 | 4 |
| 3-2 | 120638 | WASHER, HVSP TLK 328 X .60 X .09 | 4 |
| 3-3 | 180077 | SCREW, 5/16-18 X .75 HHC | 4 |
| 3-4 | 331322 | COVER, STEERING SHAFT | 1 |
| 3-5 | 301413 | SPACER, STEERING SHAFT | 1 |
| 3-6 | 456378 | PIN, SPRING .250 DIA X 2.00 LONG | 1 |

www.emc-motorsculture.com

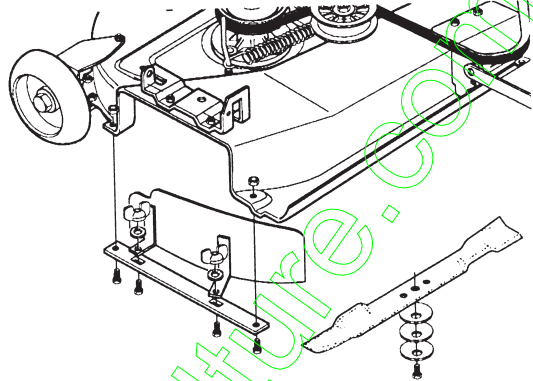
ACCESSORIES

Contact the dealer where your tractor was purchased for the available accessories. If you are unable to contact the dealer, write to the address on the warranty page of this manual.

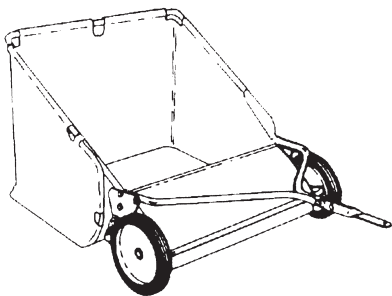
Standard Lawn Tractor



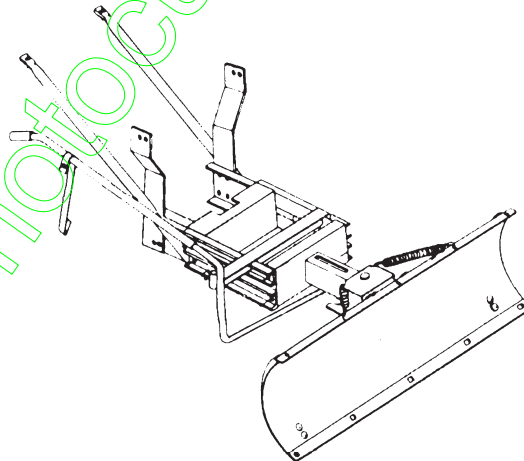
Model # 5708-13
Grass Collector for 39" decks
 For heavy duty grass collection
 order Model # 5709-10 Air Assist



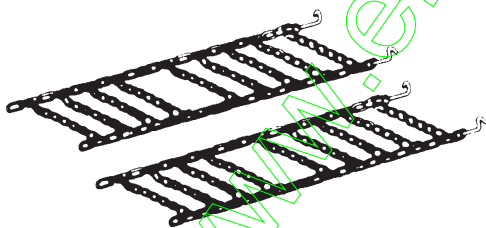
Model #5715-00
Mulching Kit (39" Deck)



Model # 5648-16
Tow behind Lawn Sweeper for
Grass and leaves



Model #5661-09
42" Snowblade - Fits 36", 38", 39", & 45"



Model # 5579-00
Tire Chains - 18" x 8.50" tires

OTHER ACCESSORIES

| Model | Description |
|---------|---|
| 5672-01 | Wheel Weights - Front - 1 pr. w/mtg. hdw. - Fits 15" tires |
| 5673-02 | Wheel Weights - Rear - 1 pr. w/mtg. hdw. - Fits 18" & 20" tires |
| 306932 | 39" High lift blade for bagging or side discharge (requires 2) |
| 326160 | 39" Mulching blade (requires 2) |