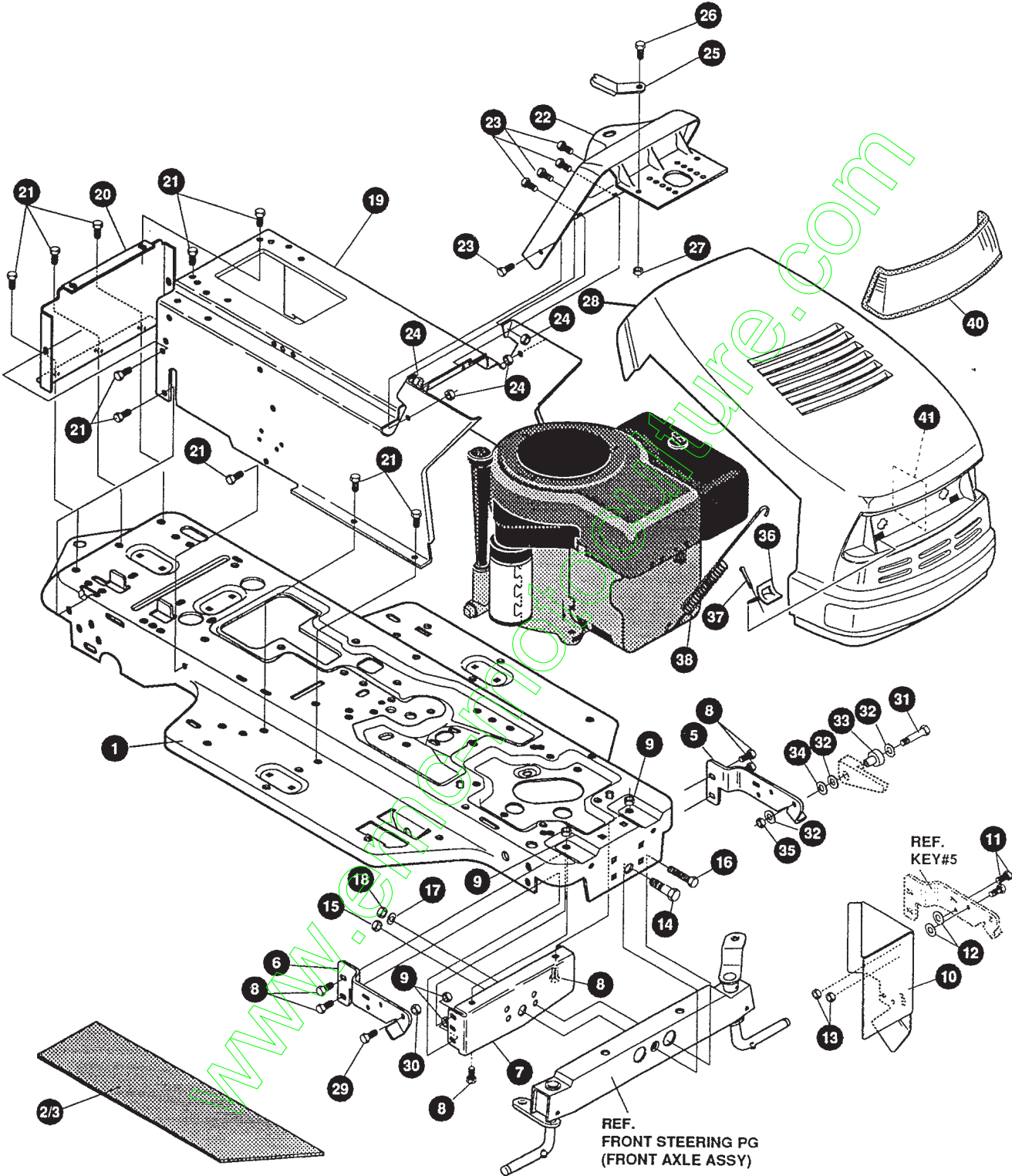


F3554-231 (0)
12HP/39"

Texas 120-39 1995

F3554-231

REPAIR PARTS



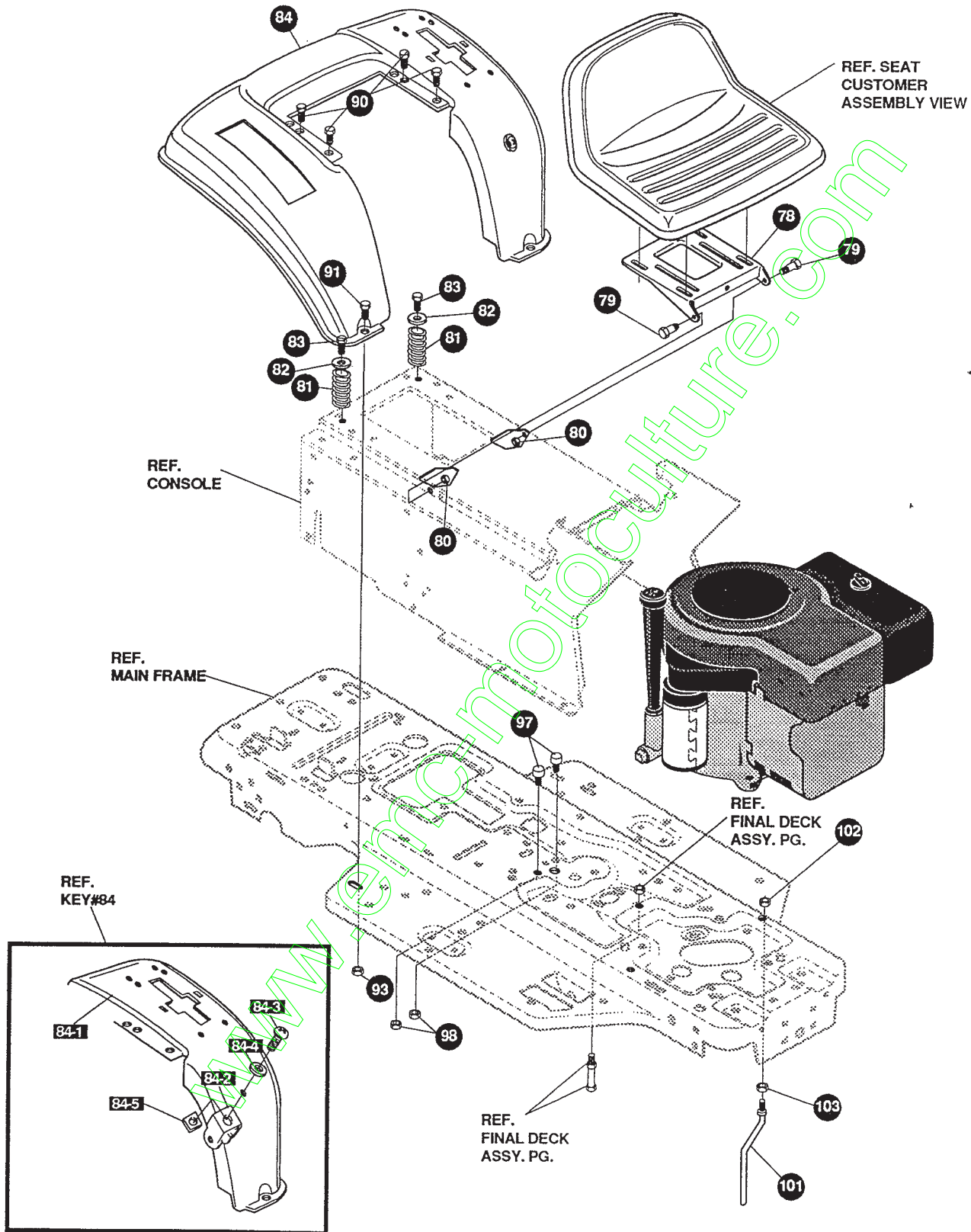
NOTE: ALWAYS USE ORIGINAL EQUIPMENT PARTS.
Use of service/replacement parts other than original equipment parts may void your warranty.

**ALL UNNUMBERED
ITEMS ARE INTERCHANGEABLE
WITH OPPOSITE SIDE**

335395 B

| KEY# | PART# | DESCRIPTION | QTY |
|------|---------------|---|-----|
| 1 | 331173-889 | FRAME, MAIN, SF, RIDER | 1 |
| 2 | 331834 | FOOT PAD, RH, SF, FULL WIDTH | 1 |
| 3 | 331835 | FOOT PAD, LH, SF, FULL WIDTH | 1 |
| 5 | 313001-853 | BRACKET, GRILLE, SUPPORT, LH | 1 |
| 6 | 313002-853 | BRACKET, GRILLE, RH | 1 |
| 7 | 56362-853 | BRACKET, SUPPORT, FRONT, AXLE-SF | 1 |
| 8 | 328154 | SCREW, 5/16-18 X 1.0WDFLLK | 6 |
| 9 | 55273 | NUT, 5/16-18 WDFLLKLRG WHIZ | 6 |
| 10 | 312908-853 | SHIELD, HEAT 11&12HP, B&S & TEC, SF | 1 |
| 11 | 180020 | SCREW, 1/4-20 X .75 HHC | 2 |
| 12 | 311245 | WASHER, FLAT .250 X .75 X INSULATE | 2 |
| 13 | 51335 | NUT, 1/4-20 WDFLWHIZ-LK | 2 |
| 14 | 29616 | BOLT, .625 X 1.890 HSSH, 1/2-20 | 1 |
| 15 | 274654 | NUT, 1/2-20 REGHXCTRLK | 1 |
| 16 | 180138 | SCREW, 3/8-16 X 3.00 HHC | 2 |
| 17 | 2483 | WASHER, .39 ID X 1.25 D X .07 BELLVIL | 2 |
| 18 | 1499 | NUT, 3/8-16 REGHXCTRLK | 2 |
| 19 | 324748-889 | CONSOLE, SF, DYNA, FENDER SHIFT | 1 |
| 20 | 56235-889 | CONSOLE, REAR COVER | 1 |
| 21 | 995346 | SCREW, 1/4-20 X .50 WAHTAP | 15 |
| 22 | 320466-830 | DASH, SF | 1 |
| 23 | 44811 | SCREW, 1/4-20 X .75 WAHTAP | 6 |
| 24 | 50352 | NUT, 1/4-20 WDFLLK TOPLOCK | 4 |
| 25 | 313021-853 | GUIDE, HOOD, SF & LF, H13, H14, H15 | 2 |
| 26 | 180020 | SCREW, 1/4-20 X .75 HHC | 2 |
| 27 | 51335 | NUT, 1/4-20 WDFLWHIZ-LK | 2 |
| 28 | 335409 | HOOD, SMALL, H-13 | 1 |
| 29 | 56676 | BOLT, .375 X .580 HSSH, 5/16-18 | 1 |
| 30 | 1498 | NUT, 5/16-18 REGHEXCTRLK | 1 |
| 31 | 180042 | SCREW, 1/4-20 X 1.75 HHC | 1 |
| 32 | 120392 | WASHER, FLAT .281 X .63 X .065 | 3 |
| 33 | 309532 | BEARING, FLANGED, PLASTIC, HOOD | 1 |
| 34 | 311245 | WASHER, FLAT .250 X .75 X INSULATE | 1 |
| 35 | 1502 | NUT, 1/4-20 REGHEXCTRLK | 1 |
| 36 | 310801 | ANCHOR, HOOD LANYARD | 1 |
| 37 | 121222 | PIN, COTTER .090 DIA X .75 LONG | 1 |
| 38 | 304784 | SPRING, HOOD LATCH | 1 |
| 40 | 302670 | LENS, HEADLAMP | 1 |
| 41 | 301452 308492 | FOIL, HEAT REFLECTOR | 1 |
| | 336713 | PARTS MANUAL | 1 |
| | 336047 | OPERATOR'S MANUAL (DANISH) | 1 |





NOTE: ALWAYS USE ORIGINAL EQUIPMENT PARTS.
 Use of service/replacement parts other than original equipment parts may void your warranty.

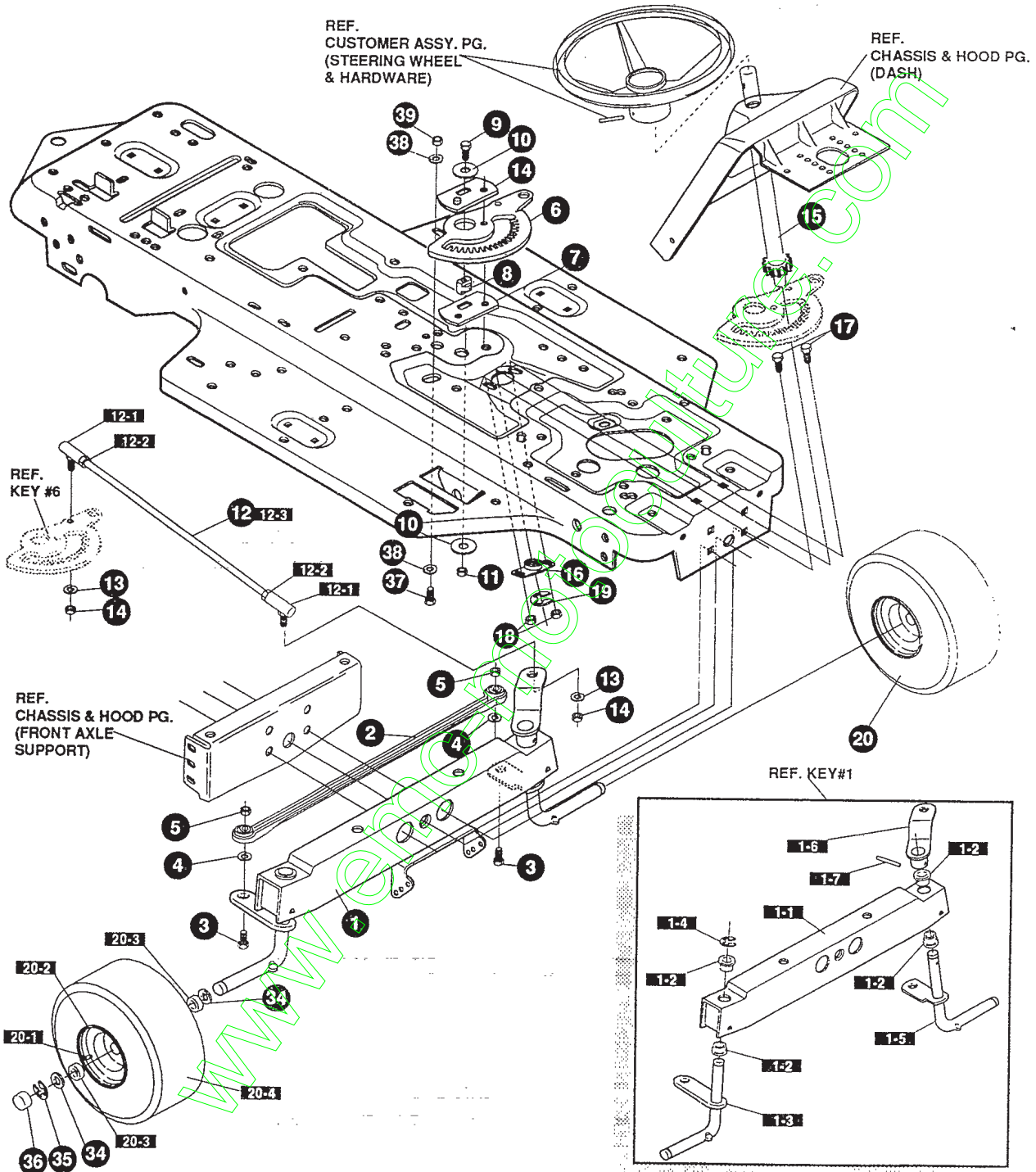
ALL UNNUMBERED ITEMS ARE INTERCHANGEABLE WITH OPPOSITE SIDE

| KEY# | PART# | DESCRIPTION | QTY |
|------|------------|--|-----|
| 78 | 58367-889 | PLATE, SEAT, F5, SF, LF | 1 |
| 79 | 20507 | BOLT, .437 X .156 HSH, 5/16-18 | 2 |
| 80 | 1498 | NUT, 5/16-18 REGHEXCTRLK | 2 |
| 81 | 330463 | SPRING, SEAT 1.50 OD X 2.25 LONG | 2 |
| 82 | 120392 | WASHER, FLAT .281 X .63 X .065 | 2 |
| 83 | 995346 | SCREW, 1/4-20 X .50 WAHTAP | 2 |
| 84 | * | ASSEMBLY, FENDER, F-5, SF, SOF/LOF | 1 |
| 84-1 | 327334-889 | FENDER, F-5, SF, SOF/LOF | 1 |
| 84-2 | 9239 | CLEVIS | 1 |
| 84-3 | 439455 | SCREW, 5/16-18 X .56 PHPNMA | 1 |
| 84-4 | 301551 | WASHER, .344 ID X 1.50 D X .09 | 1 |
| 84-5 | 120373 | NUT, 5/16-18 SQUARE | 1 |
| 90 | 995346 | SCREW, 1/4-20 X .50 WAHTAP | 4 |
| 91 | 126358 | BOLT, 5/16-18 X 1.00 CARRLN | 2 |
| 93 | 55273 | NUT, 5/16-18 WDFLLKLRG, WHIZ | 2 |
| 97 | 53446 | PIN, 5/16-18 HOOD LATCH | 2 |
| 98 | 271184 | NUT, 5/16-18 HEXKEPS | 2 |
| 101 | 50653 | GUIDE, BELT | 1 |
| 102 | 41529 | NUT, 3/8-16 HXCTRLKJAM | 1 |
| 103 | 271190 | NUT, 3/8-16 HEXKEPS | 1 |

www.emc-direct.com

F3554-231

REPAIR PARTS



NOTE: ALWAYS USE ORIGINAL EQUIPMENT PARTS.
Use of service/replacement parts other than original equipment parts may void your warranty.

ALL UNNUMBERED ITEMS ARE INTERCHANGEABLE WITH OPPOSITE SIDE

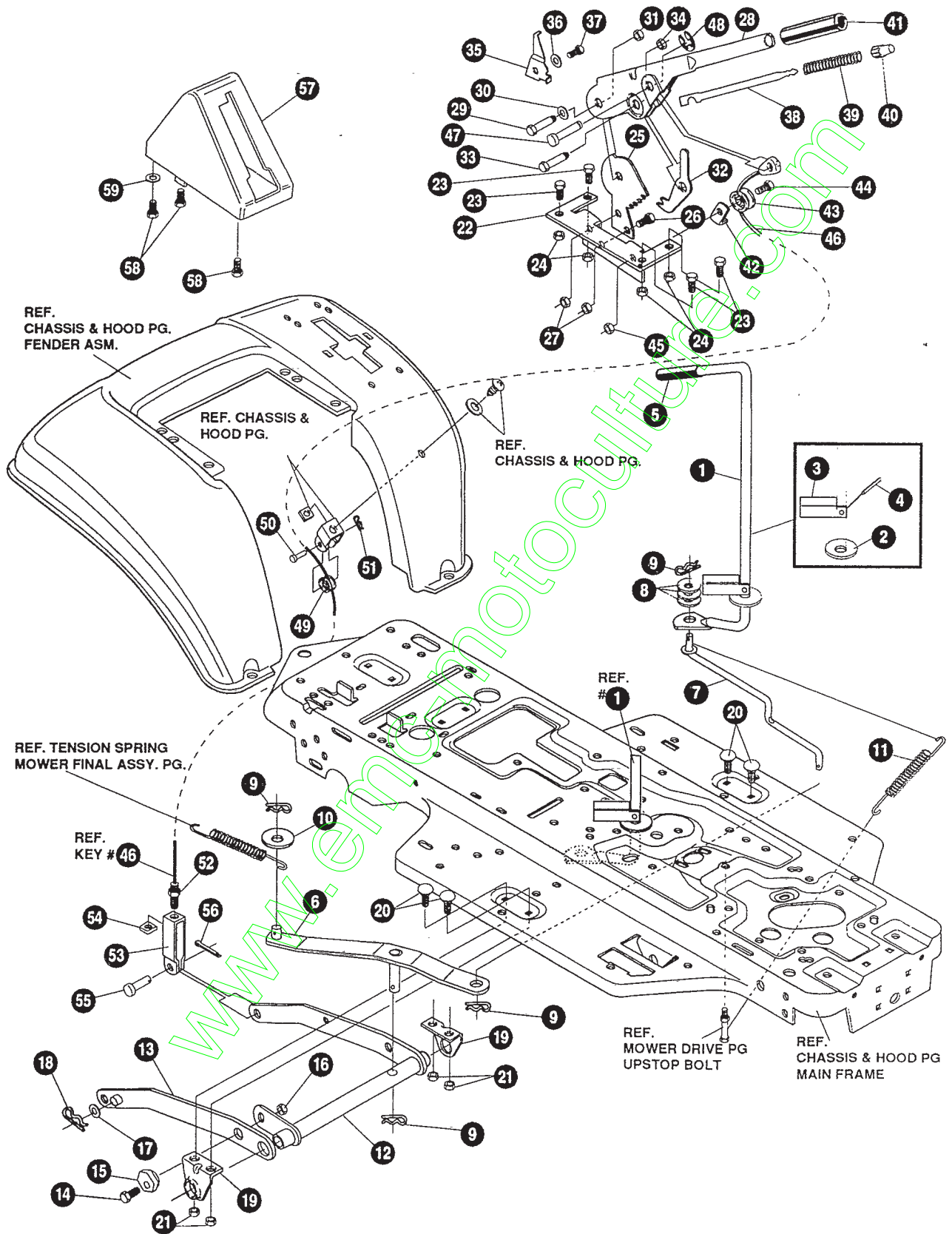
324972 H

F3554-231

STEERING ASSEMBLY

| KEY# | PART# | DESCRIPTION | QTY |
|------|------------|--|-----|
| 1 | * | AXLE, FRONT ASSEMBLY, SF, LONG | 1 |
| 1-1 | 324915-889 | ASSEMBLY, FRONT AXLE, SF, GS | 1 |
| 1-2 | 50546 | BEARING, FLANGE .759 ID X 1.002 OD X .75 | 4 |
| 1-3 | 310368 | SPINDLE, ASSEMBLY, RH, LONG, SF | 1 |
| 1-4 | 36625 | RING, RETEX .57 X .05 TRU 5133-75 | 1 |
| 1-5 | 310367 | SPINDLE, ASSEMBLY, LH, LONG, SF | 1 |
| 1-6 | 327619-853 | ARM ASSEMBLY, SF, 4WS, FRONT STEERING | 1 |
| 1-7 | 454565 | PIN, SPRING .250 DIA X 1.25 LONG | 1 |
| 2 | 302688 | ASSEMBLY, TIE ROD, 19.31 LONG | 1 |
| 3 | 180124 | SCREW, 3/8-16 X 1.25 HHC | 2 |
| 4 | 120382 | WASHER, REGSPTLK .393 X .68 X .10 | 2 |
| 5 | 1499 | NUT, 3/8-16 REGHXCTRLK | 2 |
| 6 | 327399 | GEAR, SECTOR, SF, 2WS | 1 |
| 7 | 333289 | PLATE SECTOR, SF, 4WS, BLACK | 2 |
| 8 | 330021 | BUSHING, SECTOR, GEAR, SF, 4WS | 1 |
| 9 | 181643 | SCREW, 3/8-24 X 1.50 HHC | 1 |
| 10 | 845 | WASHER, FLAT .390 X 1.25 X .119 | 2 |
| 11 | 412349 | NUT, 3/8-24 HXC TRLK | 1 |
| 12 | 328808 | DRAG LINK ASSEMBLY, 17.69 LONG | 1 |
| 12-1 | 57158 | BALL JOINT, 3/8 THD, SHORT STUD | 2 |
| 12-2 | 124925 | NUT, 3/8-24 REGHEXJAM | 2 |
| 12-3 | 56190 | DRAG LINK | 1 |
| 13 | 120382 | WASHER, REGSPTLK .393 X .68 X .10 | 2 |
| 14 | 120369 | NUT, 3/8-24 REGHEX | 2 |
| 15 | 327834 | SHAFT, PIN-STEER, BLACK | 1 |
| 16 | 325692 | BEARING, FLANGE .50 ID X 1.370 OD | 1 |
| 17 | 326505 | SCREW, 1/4-20 X .75 (TQ 30-35 FT#) | 2 |
| 18 | 46931 | NUT, 1/4-20 WDFL MAC-LOCK | 2 |
| 19 | 20864 | RING, RET E .39 X .04 TRU 5133-50 | 1 |
| 20 | 302828 | TIRE & RIM ASSEMBLY, PU 15 X 6.0 X 6 | 2 |
| 20-1 | 24167 | VALVE STEM | |
| 20-2 | 39829 | RIM, WHEEL | |
| 20-3 | 314416 | BEARING, FLANGE | |
| 20-4 | 316702 | TIRE, 15 X 6 X 6 | |
| 34 | 642 | WASHER, FLAT .755 X 1.31 X .075 | 4 |
| 35 | 36625 | RING, RETEX .57 X .05 TRU 5133-75 | 2 |
| 36 | 40394 | HUB CAP, 1.500 ID X 7/8 LONG | 2 |
| 37 | 180124 | SCREW, 3/8-16 X 1.25 HHC | 1 |
| 38 | 120394 | WASHER, FLAT .406 X .81 X .065 | 2 |
| 39 | 45171 | NUT, 3/8-16 HWDFL WHIZ-LOCK | 1 |

* ORDER INDIVIDUAL PARTS - ASSEMBLY NOT AVAILABLE



NOTE: ALWAYS USE ORIGINAL EQUIPMENT PARTS.
 Use of service/replacement parts other than original equipment parts may void your warranty.

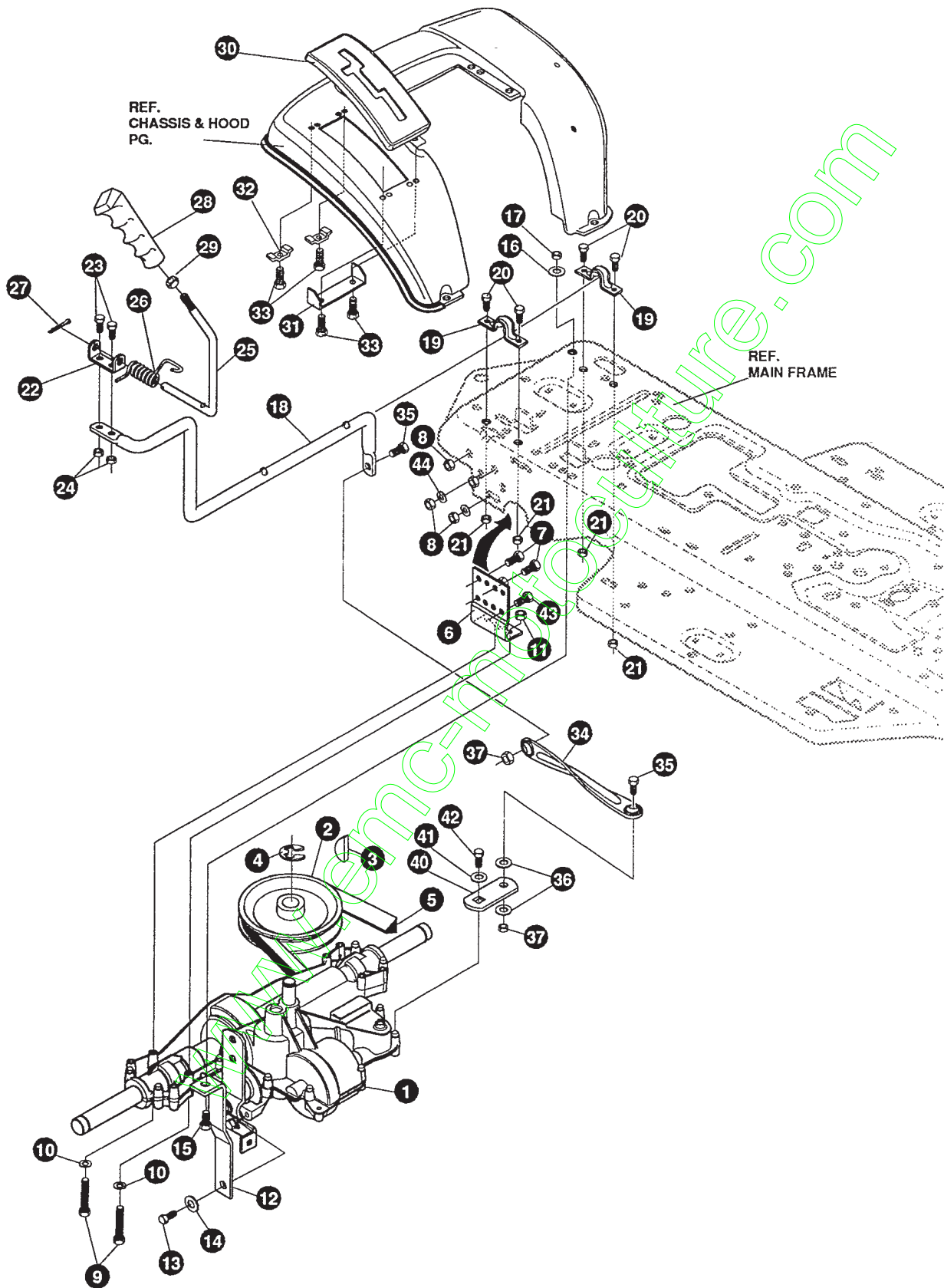
ALL UNNUMBERED
 ITEMS ARE INTERCHANGEABLE
 WITH OPPOSITE SIDE

333061 B

F3554-231

MOWER SUSPENSION ASSEMBLY

| KEY# | PART# | DESCRIPTION | QTY |
|------|------------|------------------------------------|-----|
| 1 | 325591 | LEVER, CLUTCH, RH, PTO | 1 |
| 2 | 22265 | WASHER, FLAT .515 X 1.38 X .119 | 1 |
| 3 | 305225 | STOP, PTO ENGAGE | 1 |
| 4 | 326386 | PIN, SPRING, .187 DIA X 1.13 LONG | 1 |
| 5 | 331624 | KNOB, ROUND 1.50 DIA OR GRIP, SF | 1 |
| 6 | 325587-853 | STRAP ASSEMBLY, PTO, BELCRANK, SF | 1 |
| 7 | 325590 | ROD, BELCRANK, LINK, SF | 1 |
| 8 | 274517 | WASHER, FLAT .406 X .73 X .063 | 3 |
| 9 | 8260 | PIN, HAIR .091 DIA X 1.66 LONG | 4 |
| 10 | 25210 | WASHER, FLAT .386 X 1.25 X .09 | 1 |
| 11 | 325802 | SPRING, .69 X 7.75 X .0897 TENSION | 1 |
| 12 | 326114-853 | LIFT ASSEMBLY, LH | 1 |
| 13 | 325130-853 | LIFT ASSEMBLY, RH, SF | 1 |
| 14 | 180079 | SCREW, 5/16-18 X 1.00 HHC | 1 |
| 15 | 58247 | NUT, ADJUST | 1 |
| 16 | 1498 | NUT, 5/16-18 REGHEXCTRLK | 1 |
| 17 | 417098 | WASHER, FLAT .531 X 1.06 X .063 | 2 |
| 18 | 8260 | PIN, HAIR .091 DIA X 1.66 LONG | 2 |
| 19 | 325495-853 | BRACKET, REAR HANG, SUSP | 2 |
| 20 | 330967 | BOLT, 5/16-18 X 1.00 CARR | 4 |
| 21 | 1498 | NUT, 5/16-18 REGHEXCTRLK | 4 |
| 22 | 313926 | BRACKET, HEIGHT ADJUST | 1 |
| 23 | 180077 | SCREW, 5/16-18 X .75 HHC | 4 |
| 24 | 1498 | NUT, 5/16-18 REGHEXCTRLK | 4 |
| 25 | 301238 | QUADRANT, HEIGHT ADJUST | 1 |
| 26 | 180077 | SCREW, 5/16-18 X .75 HHC | 2 |
| 27 | 1498 | NUT, 5/16-18 REGHEXCTRLK | 2 |
| 28 | 322292-853 | HANDLE, LIFT SHORT (30" S.F.) | 1 |
| 29 | 300171 | BOLT, .500 X .270 HHSH, 5/16-18 | 1 |
| 30 | 996418 | WASHER, FLAT .506 X .75 X .024 | 1 |
| 31 | 44108 | NUT, 5/16-18 HWDFLCTRLK | 1 |
| 32 | 301239 | PAWL, SQUARE | 1 |
| 33 | 300171 | BOLT, .500 X .270 HHSH, 5/16-18 | 1 |
| 34 | 44108 | NUT, 5/16-18 HWDFLCTRLK | 1 |
| 35 | 9435 | POINTER, HEIGHT ADJUST | 1 |
| 36 | 138479 | WASHER, EXLK .195 X .41 X .03 | 1 |
| 37 | 35287 | SCREW, #8-32 X .38 HHWATAP | 1 |
| 38 | 303027 | ROD, ACTUATOR-SHORT | 1 |
| 39 | 58326 | SPRING, HEIGHT ADJUST | 1 |
| 40 | 58325 | KNOB, HEIGHT ADJUST, PUSH BUTTON | 1 |
| 41 | 58329 | GRIP, .750 OD W/ HOLE, BLACK | 1 |
| 42 | 9149 | BRACKET, CABLE RETAINER | 1 |
| 43 | 48306 | PULLEY, METAL | 1 |
| 44 | 58336 | BOLT, .375 X .375 HHSH, 1/4-20 | 1 |
| 45 | 1502 | NUT, 1/4-20 REGHEXCTRLK | 1 |
| 46 | 321430 | CABLE, LIFT 21.50 - 30" S.F. | 1 |
| 47 | 300310 | PIN, CLEVIS .310 DIA X .475 LONG | 1 |
| 48 | 300311 | RING, RET E .31 X .25 TRU 5133-31 | 1 |
| 49 | 48306 | PULLEY, METAL | 1 |
| 50 | 300317 | PIN, CLEVIS .375 DIA X .81 LONG | 1 |
| 51 | 8260 | PIN, HAIR .091 DIA X 1.66 LONG | 1 |
| 52 | 120375 | NUT, 1/4-20 REGHEX | 1 |
| 53 | 9405 | CLEVIS, LIFT CABLE | 1 |
| 54 | 120372 | NUT, 1/4-20 REGSQ | 1 |
| 55 | 39522 | PIN, CLEVIS .312 X .812 | 1 |
| 56 | 121222 | PIN, COTTER .090 DIA X .75 LONG | 1 |
| 57 | 333903 | LIFT COVER, F5, LF, SF, BLACK | 1 |
| 58 | 300340 | SCREW, #10 X .75 HHPLAST, BLACK | 3 |
| 59 | 120392 | WASHER, FLAT .281 X .63 X .065 | 1 |



NOTE: ALWAYS USE ORIGINAL EQUIPMENT PARTS.
Use of service/replacement parts other than original equipment parts may void your warranty.

**ALL UNNUMBERED
ITEMS ARE INTERCHANGEABLE
WITH OPPOSITE SIDE**

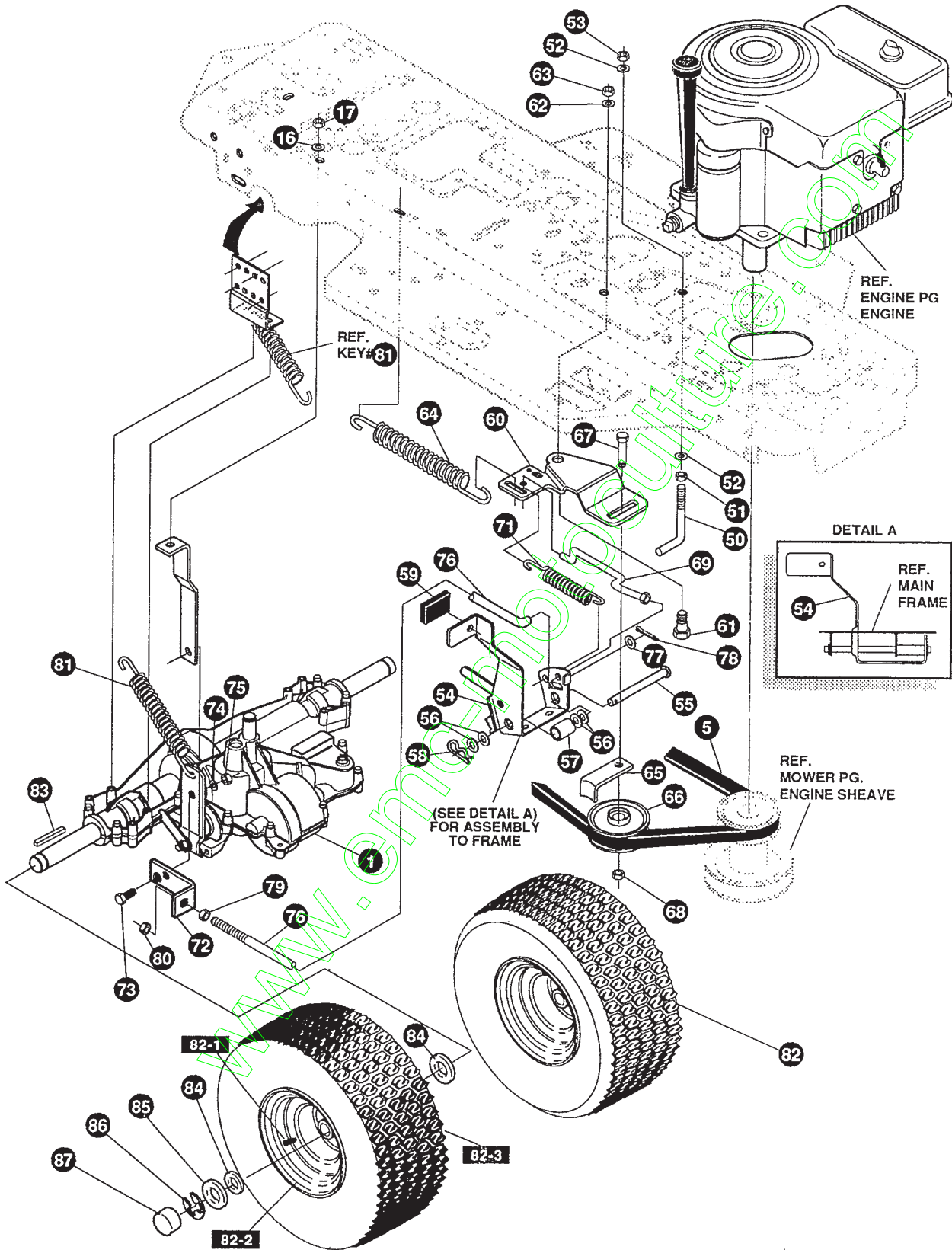
336288 A

F3554-231

MOTION DRIVE ASSEMBLY

| KEY# | PART# | DESCRIPTION | QTY |
|------|------------|--------------------------------------|-----|
| 1 | * | TRANSAXLE, PEERLESS, 930-5, LF/SF | 1 |
| 2 | 303109 | PULLEY, 6.6 OD, V4L, T/A | 1 |
| 3 | 50795 | KEY, HI-PRO 606, .75 DIA X .187 WD | 1 |
| 4 | 22053 | RING, RETEX .58 X .035 TRU 5100-62 | 1 |
| 5 | 54758 | BELT, V 4L, 82.00, SF, DRIVE | 1 |
| 6 | 326615-853 | BRACKET, TRANSAXLE | 2 |
| 7 | 180077 | SCREW, 5/16-18 X .75 HHC | 4 |
| 8 | 1498 | NUT, 5/16-18 REGHEXCTRLK | 8 |
| 9 | 180091 | SCREW, 5/16-18 X 2.50 HHC | 4 |
| 10 | 120393 | WASHER, FLAT .344 X .69 X .065 | 4 |
| 11 | 1498 | NUT, 5/16-18 REGHEXCTRLK | 4 |
| 12 | 323126 | BRACKET, STABILIZER, BLACK | 1 |
| 13 | 35498 | SCREW, 5/16-18 X .75 WAHTAP | 1 |
| 14 | 120638 | WASHER, HVSPTLK .328 X .60 X .09 | 1 |
| 15 | 180079 | SCREW, 5/16-18 X 1.00 HHC | 1 |
| 16 | 138485 | WASHER, EXLK .320 X .61 X .03 | 1 |
| 17 | 1498 | NUT, 5/16-18 REGHEXCTRLK | 1 |
| 18 | 319113 | LEVER, SHIFT LOWER, SF, FENDER SHIFT | 1 |
| 19 | 302760 | CLAMP, .625 DIA | 2 |
| 20 | 180077 | SCREW, 5/16-18 X .75 HHC | 4 |
| 21 | 1498 | NUT, 5/16-18 REGHEXCTRLK | 4 |
| 22 | 310356 | BRACKET, PIVOT, SHIFT LEVER | 1 |
| 23 | 180020 | SCREW, 1/4-20 X .75 HHC | 2 |
| 24 | 1502 | NUT, 1/4-20 REGHEXCTRLK | 2 |
| 25 | 324798 | LEVER, SHIFT UPPER, SOF, 1/2-13 | 1 |
| 26 | 310265 | SPRING, TORSION .56 X .95 X .095 | 1 |
| 27 | 137185 | PIN, COTTER .125 DIA X 1.00 LONG | 1 |
| 28 | 306690 | KNOB, ROUND 1.50 DIA OR GRIP, SF | 1 |
| 29 | 120238 | NUT, 1/2-13 HEXJAM | 1 |
| 30 | 311209 | COVER, PLASTIC, LF, P930/F4360-6 | 1 |
| 31 | 311257-853 | BRACKET COVER, F-5, FENDER SHIFT | 1 |
| 32 | 1341 | CLAMP, SPRING 1.17"ID | 2 |
| 33 | 311331 | SCREW, 1/4-15 X .44/.53 HILOHWA | 4 |
| 34 | 309546 | LINK, TIE ROD SHIFT, 7.812C/L | 1 |
| 35 | 180124 | SCREW, 3/8-16 X 1.25 HHC | 2 |
| 36 | 120394 | WASHER, FLAT .406 X .81 X .065 | 2 |
| 37 | 1499 | NUT, 3/8-16 REGHXCTRLK | 2 |
| 40 | 309637 | BRACKET, SHIFT, 5SP, SF | 1 |
| 41 | 57157 | WASHER, .750 X .250 SP-TRANSAXLE | 1 |
| 42 | 56255 | SCREW, 1/4-28 X .75 NYLHHC | 1 |
| 43 | 327917 | SCREW, 5/16-18 X 1.50 HHCFT | 4 |
| 44 | 73787 | WASHER, FLAT .330 X .75 X .1793 | 4 |

* CONTACT YOUR NEAREST TRANSAXLE DEALER FOR PARTS & SERVICE



NOTE: ALWAYS USE ORIGINAL EQUIPMENT PARTS.
Use of service/replacement parts other than original equipment parts may void your warranty.

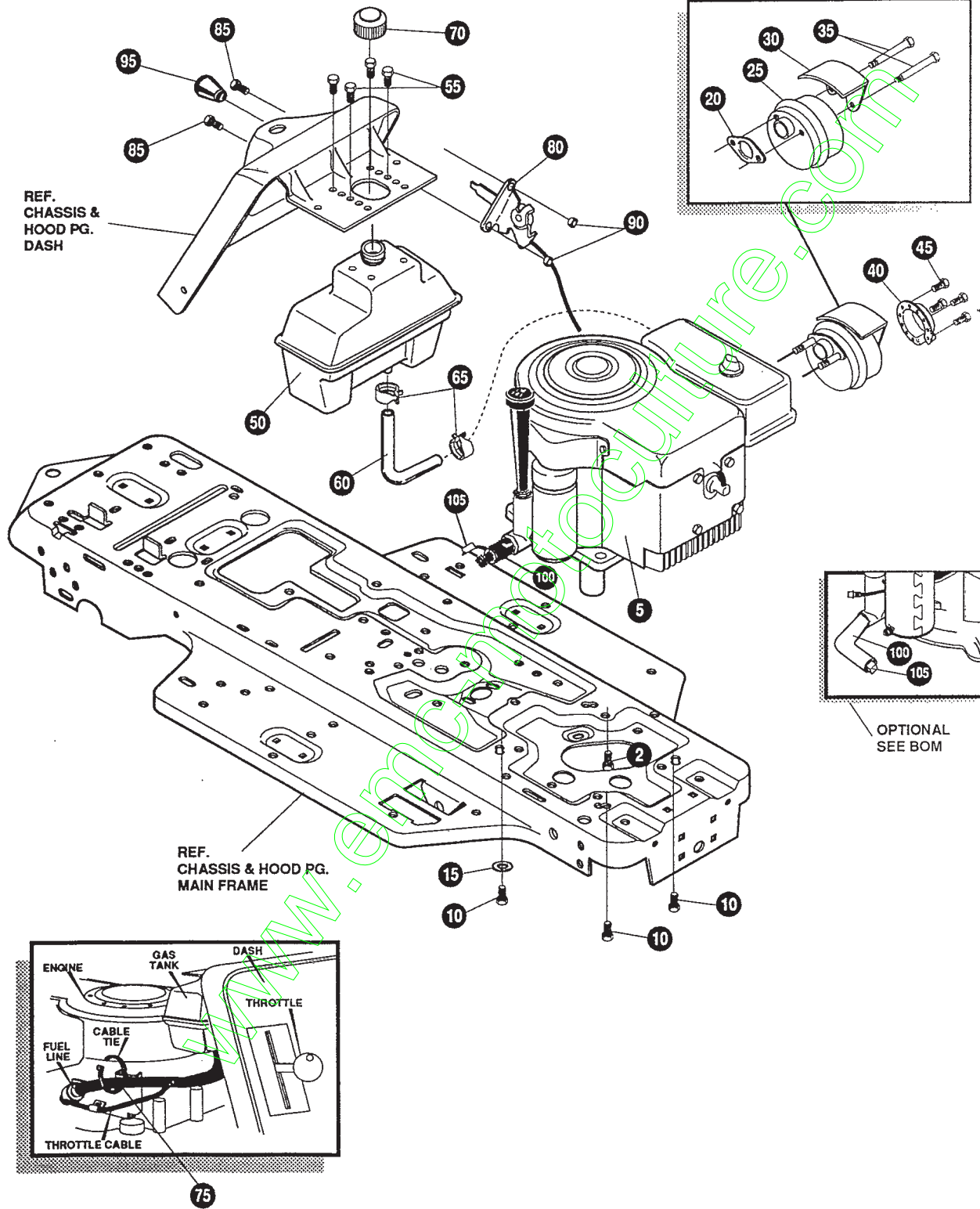
ALL UNNUMBERED ITEMS ARE INTERCHANGEABLE WITH OPPOSITE SIDE

336288 A

F3554-231

MOTION DRIVE ASSEMBLY

| KEY# | PART# | DESCRIPTION | QTY |
|------|------------|--|-----|
| 50 | 49896 | BELT GUIDE | 1 |
| 51 | 271184 | NUT, 5/16-18 HEXKEPS | 1 |
| 52 | 120393 | WASHER, FLAT .344 X .69 X .065 | 2 |
| 53 | 1498 | NUT, 5/16-18 REGHEXCTRLK | 1 |
| 54 | 331836 | ASSEMBLY, PEDAL, BRAKE, CLUTCH, SF | 1 |
| 55 | 319676 | PIN, CLEVIS .500 D X 4.87 LONG | 1 |
| 56 | 2968 | WASHER, FLAT .504 X .75 X .059 | 4 |
| 57 | 331972 | SPACER, SLEEVE .53 X .62 X 1.240 | 1 |
| 58 | 56180 | PIN, HAIR .091 DIA X 1.62 LONG | 1 |
| 59 | 48761 | PAD, CLUTCH/BRAKE PEDAL | 1 |
| 60 | 321969-853 | IDLER ARM BRACKET, TRACTION, SF | 1 |
| 61 | 329989 | BOLT, .625 X .135 HSH, 5/16-18 | 1 |
| 62 | 45602 | WASHER, FLAT .333 X .87 X .119 | 1 |
| 63 | 1498 | NUT, 5/16-18 REGHEXCTRLK | 1 |
| 64 | 327867 | SPRING, 3/4 OD X 7.75 X .091 TENSION | 1 |
| 65 | 39659 | RETAINER, BELT | 1 |
| 66 | 35374 | PULLEY, IDLER V4L, 3.06 X .62 | 1 |
| 67 | 45892 | BOLT, 3/8-16X1.50 CARRSN | 1 |
| 68 | 1499 | NUT, 3/8-16 REGHXCTRLK | 1 |
| 69 | 333175 | CLUTCH ROD ASSEMBLY, .268 DIA 3.92 | 1 |
| 71 | 326780 | SPRING, 3/8 OD X 2.18 X .055 TENSION | 1 |
| 72 | 323127 | BRACKET, BRAKE ROD, BLACK | 1 |
| 73 | 20507 | BOLT, .437 X .156 HSH, 5/16-18 | 1 |
| 74 | 4230 | WASHER, FLAT .328 X .68 X .104 | 1 |
| 75 | 1498 | NUT, 5/16-18 REGHEXCTRLK | 1 |
| 76 | 323222 | BRAKE ROD, RIDER, BLACK | 1 |
| 77 | 120393 | WASHER, FLAT .344 X .69 X .065 | 1 |
| 78 | 121222 | PIN, COTTER .090 DIA X .75 LONG | 1 |
| 79 | 271184 | NUT, 5/16-18 HEXKEPS | 1 |
| 80 | 44108 | NUT, 5/16-18 HWDFLCTRLK | 1 |
| 81 | 35410 | SPRING, .071 X .62 X 4.37 | 1 |
| 82 | 326363 | TIRE & RIM ASSEMBLY, 20 X 8.00-8 | 2 |
| 82-1 | 24167 | VALVE STEM | |
| 82-2 | 326362 | RIM, WHEEL | |
| 82-3 | 319684 | TIRE, 20 X 8 X 8 | |
| 83 | 52928 | KEY, SQUARE .187 SQUARE X 2.25 LONG | 2 |
| 84 | 642 | WASHER, FLAT .755 X 1.31 X .075 | 4 |
| 85 | 42815 | WASHER, FLAT .755 X 1.53 X .07 | 2 |
| 86 | 36625 | RING, RETEX .57 X .05 TRU 5133-75 | 2 |
| 87 | 40394 | HUB CAP, 1.50 OID X 7/8 LONG | 2 |



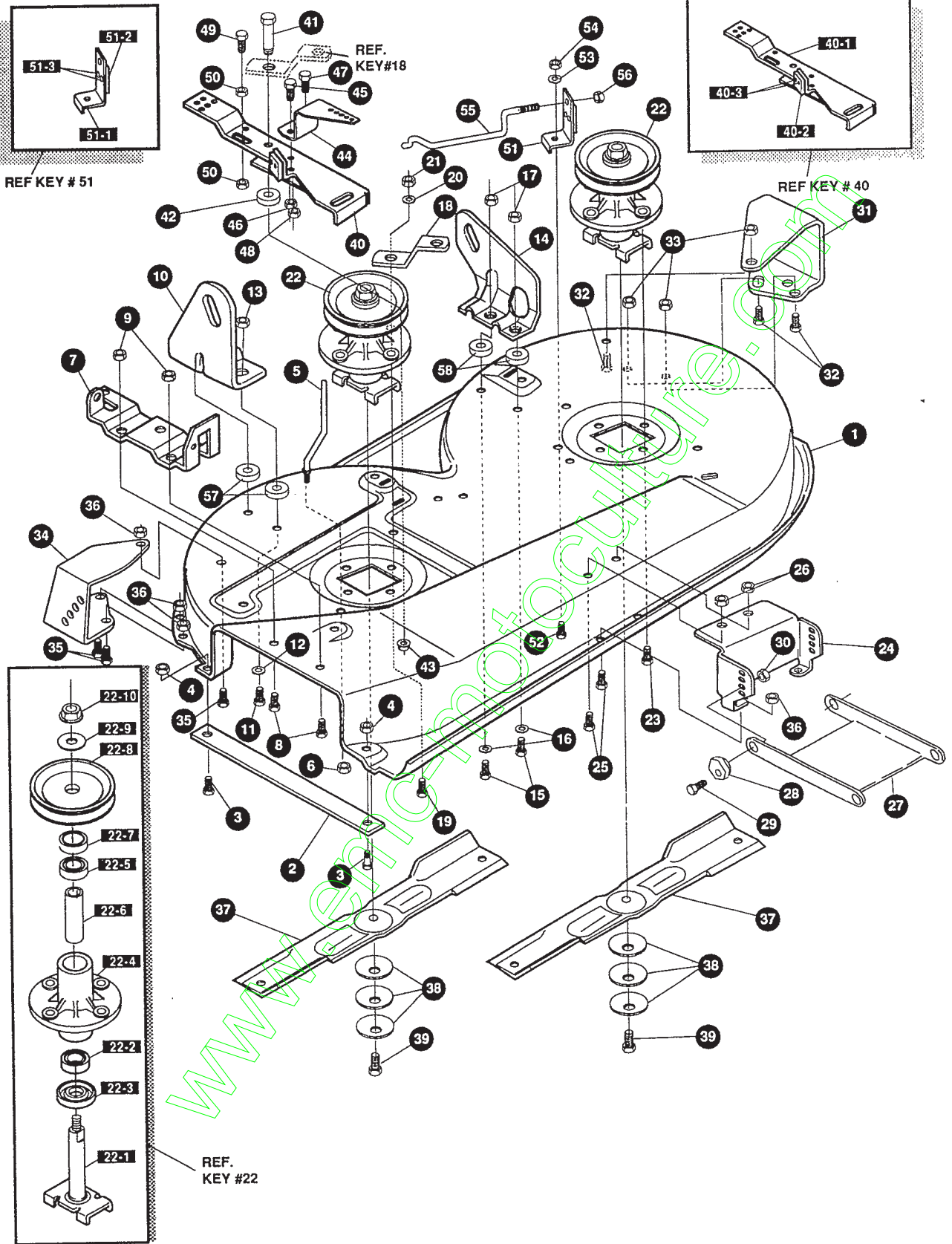
NOTE: ALWAYS USE ORIGINAL EQUIPMENT PARTS.
 Use of service/replacement parts other than original equipment parts may void your warranty.

ALL UNNUMBERED ITEMS ARE INTERCHANGEABLE WITH OPPOSITE SIDE

331639 B

| KEY# | PART# | DESCRIPTION | QTY |
|------|--------|---|-------|
| 5 | * | ENGINE, 10-12HP, B&S, 3A | 1 |
| 10 | 50947 | SCREW, 3/8-16 X 1.25 WAHTAP, BLACK | 4 |
| 15 | 138489 | WASHER, EXLK .384 X .69 X .04 | 1 |
| 20 | 46708 | GASKET, MUFFLER | 1 |
| 25 | 57908 | MUFFLER-DOMESTIC/EXPORT ROUND | 1 |
| 30 | 54767 | SHIELD, HEAT, FOR ROUND MUFFLER | 1 |
| 35 | 54980 | SCREW, 5/16-18 X 3.50 HHC | 2 |
| 40 | 56472 | DEFLECTOR SIDE OUT (BS222573) | 1 |
| 45 | 35287 | SCREW, #8-32 X .38 HHWATAP | 4 |
| 50 | 314989 | TANK, FUEL, 1 GALLON, CLEAR | 1 |
| 55 | 300303 | SCREW, .25 X .75 X .51 HHWA, PLASTITE | 4 |
| 60 | 42258 | TUBING, .25 X .50 X BULK GAS LINE | 12.0" |
| 65 | 47345 | CLAMP, HOSE, SCREW TYPE | 2 |
| 70 | 46704 | CAP, GAS 1-1/2-7 THD, BLACK | 1 |
| 75 | 57444 | TIE, CABLE, BLACK NYLON, 5.62 LONG | 1 |
| 80 | 320031 | THROTTLE CONTROL | 1 |
| 85 | 274707 | SCREW, 10-24 X .50 WAHHMA | 2 |
| 90 | 308459 | NUT, #10-24 HXHDNYLK | 2 |
| 95 | 50607 | KNOB, ROUND THROTTLE, BLACK | 1 |
| 100 | 325547 | OIL DRAIN VALVE OR TUBE | 1 |
| 105 | 327422 | CAP OR PLUG FOR OIL DRAIN | 1 |

* SEE ENGINE MANUAL



NOTE: ALWAYS USE ORIGINAL EQUIPMENT PARTS.
Use of service/replacement parts other than original equipment parts may void your warranty.

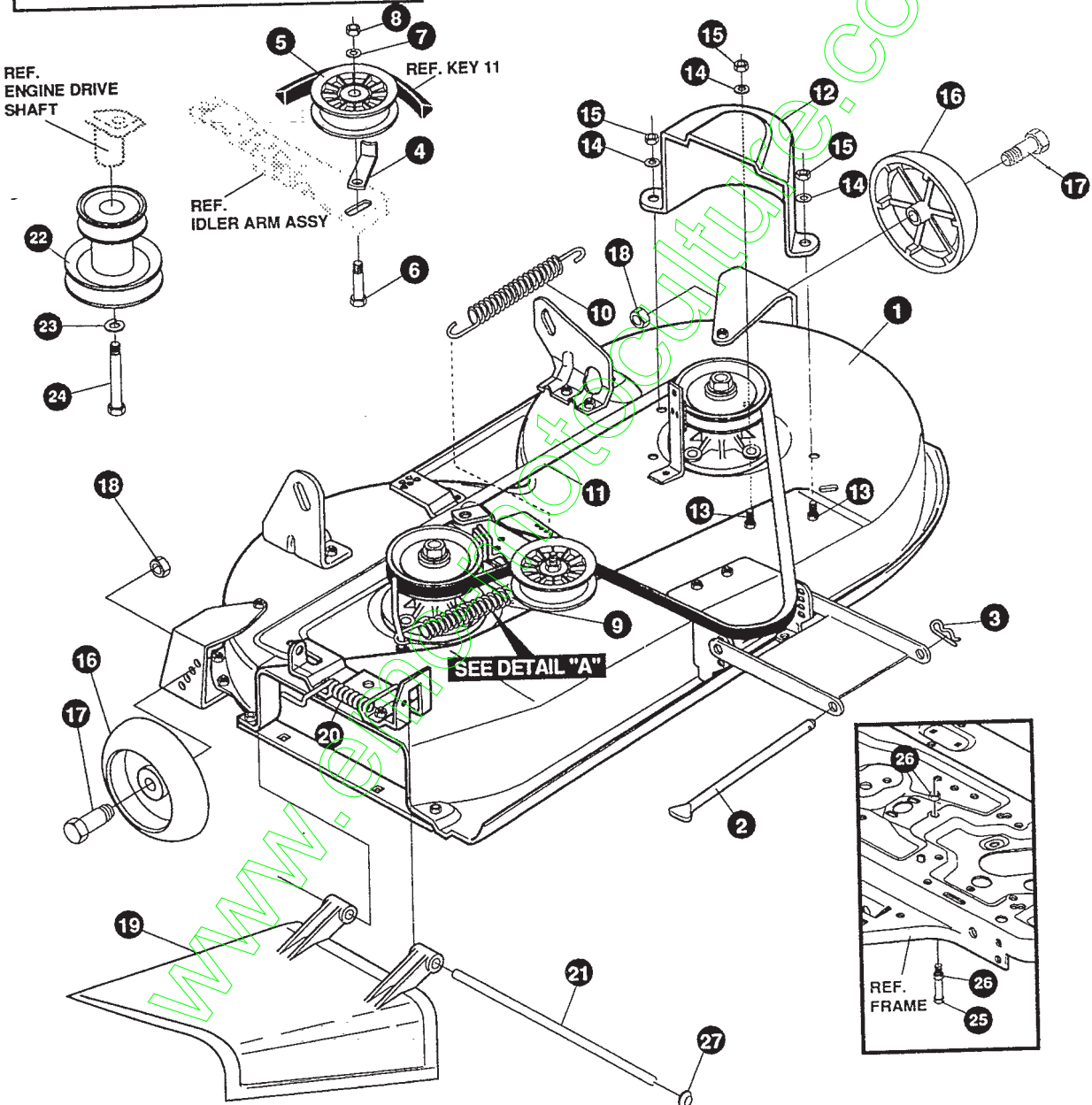
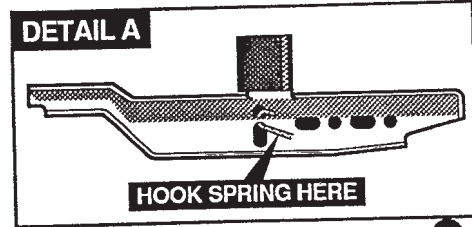
**ALL UNNUMBERED
ITEMS ARE INTERCHANGEABLE
WITH OPPOSITE SIDE**

333272 C

F3554-231

PRE-PAINTED DECK ASSEMBLY

| KEY# | PART# | DESCRIPTION | QTY |
|-------|------------|---|-----|
| 1 | 325106 | 39" DECK KIT | 1 |
| 2 | 326295-853 | BAR, SKID | 1 |
| 3 | 126216 | BOLT, 5/16-18 X .75 CARRLN | 2 |
| 4 | 271184 | NUT, 5/16-18 HEXKEPS | 2 |
| 5 | 57318 | GUIDE, BELT 5/16-18 THD | 1 |
| 6 | 1498 | NUT, 5/16-18 REGHEXCTRLK | 1 |
| 7 | 313928 | BRACKET, CHUTE | 1 |
| 8 | 180073 | SCREW, 5/16-18 X .50 HHC | 2 |
| 9 | 1498 | NUT, 5/16-18 REGHEXCTRLK | 2 |
| 10 | 313929 | BRACKET, RH, LIFT REAR | 1 |
| 11 | 180081 | SCREW, 5/16-18 X 1.25 HHC | 2 |
| 12 | 120393 | WASHER, FLAT .344 X .69 X .065 | 2 |
| 13 | 1498 | NUT, 5/16-18 REGHEXCTRLK | 2 |
| 14 | 310667 | BRACKET, LH, LIFT REAR | 1 |
| 15 | 180081 | SCREW, 5/16-18 X 1.25 HHC | 2 |
| 16 | 120393 | WASHER, FLAT .344 X .69 X .065 | 2 |
| 17 | 1498 | NUT, 5/16-18 REGHEXCTRLK | 2 |
| 18 | 315302-853 | BRACKET, IDLER SUPPORT | 1 |
| 19 | 300345 | SCREW, 5/16-18 X 1.38 WAHHTAP | 1 |
| 20 | 120393 | WASHER, FLAT .344 X .69 X .065 | 1 |
| 21 | 1498 | NUT, 5/16-18 REGHEXCTRLK | 1 |
| 22 | 56424-853 | QUILL ASSEMBLY, 36/39/40/43 | 2 |
| 22-1 | 56425 | SHAFT/SADDLE 36" | 1 |
| 22-2 | 49562 | BEARING, BALL 6203-2AA-C3 ARMORED | 1 |
| 22-3 | 50616 | DUST SHIELD | 1 |
| 22-4 | 55547 | QUILL CASTING (1046) | 1 |
| 22-5 | 49562 | BEARING, BALL 6203-2AA-C3 ARMORED | 1 |
| 22-6 | 50818 | SPACER, SLEEVE .669 X .88 X 3.797 | 1 |
| 22-7 | 51449 | SPACER, SLEEVE .672 X .93 X .438 | 1 |
| 22-8 | 313898 | PULLEY, 26/36" QUILL, V5L | 1 |
| 22-9 | 56365 | WASHER, SPECIAL QUILL | 1 |
| 22-10 | 1282 | NUT, 7/16-20 WDFLLK | 1 |
| 23 | 35498 | SCREW, 5/16-18 X .75 WAHHTAP | 7 |
| 24 | 312526 | SUPPORT, LIFT DECK FRONT | 1 |
| 25 | 180077 | SCREW, 5/16-18 X .75 HHC | 4 |
| 26 | 1498 | NUT, 5/16-18 REGHEXCTRLK | 4 |
| 27 | 58305-853 | BRACKET, LINK DECK FRONT | 1 |
| 28 | 58247 | NUT, ADJUST | 2 |
| 29 | 180079 | SCREW, 5/16-18 X 1.00 HHC | 2 |
| 30 | 1498 | NUT, 5/16-18 REGHEXCTRLK | 2 |
| 31 | 312477 | BRACKET, LH, WHEEL | 1 |
| 32 | 180077 | SCREW, 5/16-18 X .75 HHC | 3 |
| 33 | 1498 | NUT, 5/16-18 REGHEXCTRLK | 3 |
| 34 | 300102-853 | WHEEL BRACKET, RH | 1 |
| 35 | 180077 | SCREW, 5/16-18 X .75 HHC | 3 |
| 36 | 1498 | NUT, 5/16-18 REGHEXCTRLK | 3 |
| 37 | 309069 | BLADE, 19.69 LOW-LIFT | 2 |
| 38 | 2483 | WASHER, .39 ID X 1.25 D X .07 BELLVIL | 6 |
| 39 | 39573 | SCREW, 3/8-24 X 1.00 NYLHHC | 2 |
| 40 | 300491-853 | IDLER ARM ASSEMBLY | 1 |
| 40-1 | 300490-853 | IDLER ARM, 36, 38, 39, & 45 SD | 1 |
| 40-2 | 306973 | BRAKE PAD - HARD-NF343 (X-31) | 1 |
| 40-3 | 41601 | RIVET, OVSET .187 DIA X .50 LONG | 2 |
| 41 | 300180 | BOLT, .50 X 1.88 HSSH, 3/8-16 | 1 |
| 42 | 996416 | WASHER, FLAT .391 X 1.00 X .125 | 1 |
| 43 | 45171 | NUT, 3/8-16 HWDFL WHIZ-LOCK | 1 |
| 44 | 326249-853 | BRACKET, EXTENSION IDLER | 1 |
| 45 | 180077 | SCREW, 5/16-18 X .75 HHC | 1 |
| 46 | 1498 | NUT, 5/16-18 REGHEXCTRLK | 1 |
| 47 | 180020 | SCREW, 1/4-20 X .75 HHC | 1 |
| 48 | 1502 | NUT, 1/4-20 REGHEXCTRLK | 1 |
| 49 | 121954 | SCREW, 1/4-20 X 2.00 HHC | 1 |
| 50 | 271172 | NUT, 1/4-20 REGHEXKEPS | 2 |
| 51 | 303247 | ASSEMBLY, BLADE BRAKE 36, 39, 45 | 1 |
| 51-1 | 303246 | BRAKE ARM | 1 |
| 51-2 | 306973 | BRAKE PAD - HARD-NF343 (X-31) | 1 |
| 51-3 | 135624 | RIVET, TRSET .185 DIA X .41 LONG | 2 |
| 52 | 180077 | SCREW, 5/16-18 X .75 HHC | 1 |
| 53 | 120393 | WASHER, FLAT .344 X .69 X .065 | 1 |
| 54 | 1498 | NUT, 5/16-18 REGHEXCTRLK | 1 |
| 55 | 300316 | ROD, BRAKE RELEASE, 14.7 39" DECK | 1 |
| 56 | 1502 | NUT, 1/4-20 REGHEXCTRLK | 1 |
| 57 | 314702 | SPACER, SLEEVE .344 X 1.00 X .500 | 2 |
| 58 | 314702 | SPACER, SLEEVE .344 X 1.00 X .500 | 2 |



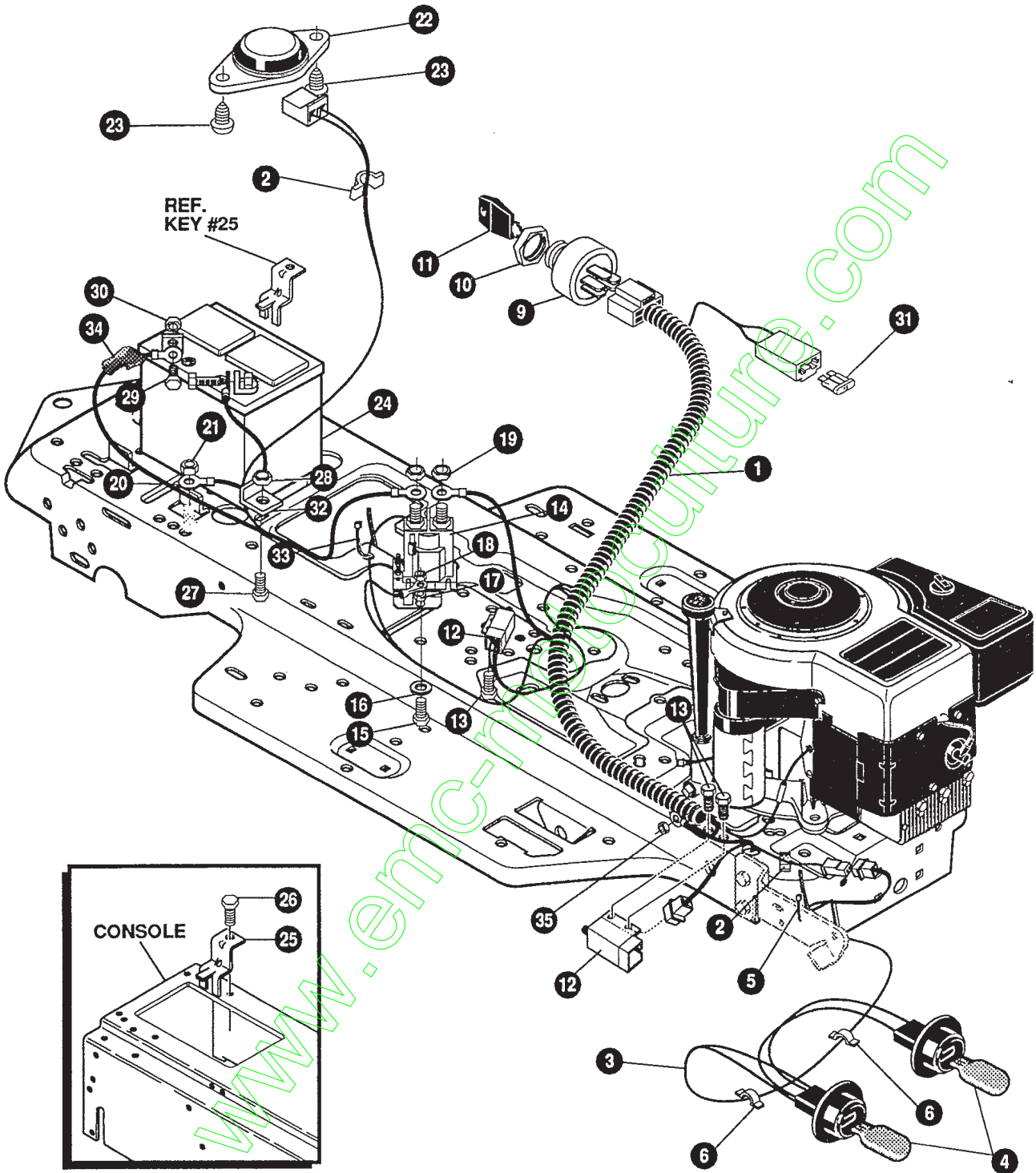
NOTE: ALWAYS USE ORIGINAL EQUIPMENT PARTS.
 Use of service/replacement parts other than original equipment parts may void your warranty.

ALL UNNUMBERED ITEMS ARE INTERCHANGEABLE WITH OPPOSITE SIDE

333274 B

| KEY# | PART# | DESCRIPTION | QTY |
|------|--------|---|-----|
| 1 | 329456 | ASSEMBLY, DECK, SF, 39" SD/20 X 8-8 | 1 |
| 2 | 58306 | ROD, DECK HITCH | 1 |
| 3 | 8260 | PIN, HAIR .091 DIA X 1.66 LONG | 1 |
| 4 | 1346 | RETAINER, BELT | 1 |
| 5 | 310326 | PULLEY, IDLER BFF 4.00 WIDE FL | 1 |
| 6 | 57325 | BOLT, 3/8-16 X 2.00 CARRSN | 1 |
| 7 | 120382 | WASHER, REGSPTLK .393 X .68 X .10 | 1 |
| 8 | 120377 | NUT, 3/8-16 REGHX | 1 |
| 9 | 322064 | SPRING, .75 X 8.4 X .105 TENSION | 1 |
| 10 | 326256 | SPRING, .75 X 10.0 X .105 TENSION | 1 |
| 11 | 300680 | BELT, V 5L, 77.75, KEVLAR | 1 |
| 12 | 328257 | GUARD, BELT LH, PLASTIC | 1 |
| 13 | 180077 | SCREW, 5/16-18 X .75 HHC | 3 |
| 14 | 120393 | WASHER, FLAT, .344 X .69 X .065 | 3 |
| 15 | 1498 | NUT, 5/16-18 REGHEXCTRLK | 3 |
| 16 | 302611 | GAUGE WHEEL, EURO 6.00 OD X 1.38 WD | 2 |
| 17 | 23763 | BOLT, 500 X 1.390 HSH, 3/8-16 | 2 |
| 18 | 1499 | NUT, 3/8-16 REGHXCTRLK | 2 |
| 19 | 57818 | CHUTE DEFLECTOR, 36", 39", 45" | 1 |
| 20 | 314975 | SPRING, TORSION, CHUTE DEFLECTOR | 1 |
| 21 | 334908 | KIT FOR 57317 PIVOT ROD | 1 |
| 22 | 328034 | PULLEY, ENGINE, V3L, 4.00 OFFSET | 1 |
| 23 | 120383 | WASHER, REGSPTLK .459 X .78 X .12 | 1 |
| 24 | 433146 | SCREW, 7/16-20 X 4.25 HHC, BLACK | 1 |
| 25 | 180128 | SCREW, 3/8-16 X 1.75 HHC | 1 |
| 26 | 1499 | NUT, 3/8-16 REGHXCTRLK | 2 |
| 27 | 332179 | CAP, PUSH ON, FOR DIA .250 ROD | 1 |

www.emcpress.com



NOTE: ALWAYS USE ORIGINAL EQUIPMENT PARTS.
 Use of service/replacement parts other than original equipment parts may void your warranty.

**ALL UNNUMBERED
 ITEMS ARE INTERCHANGEABLE
 WITH OPPOSITE SIDE**

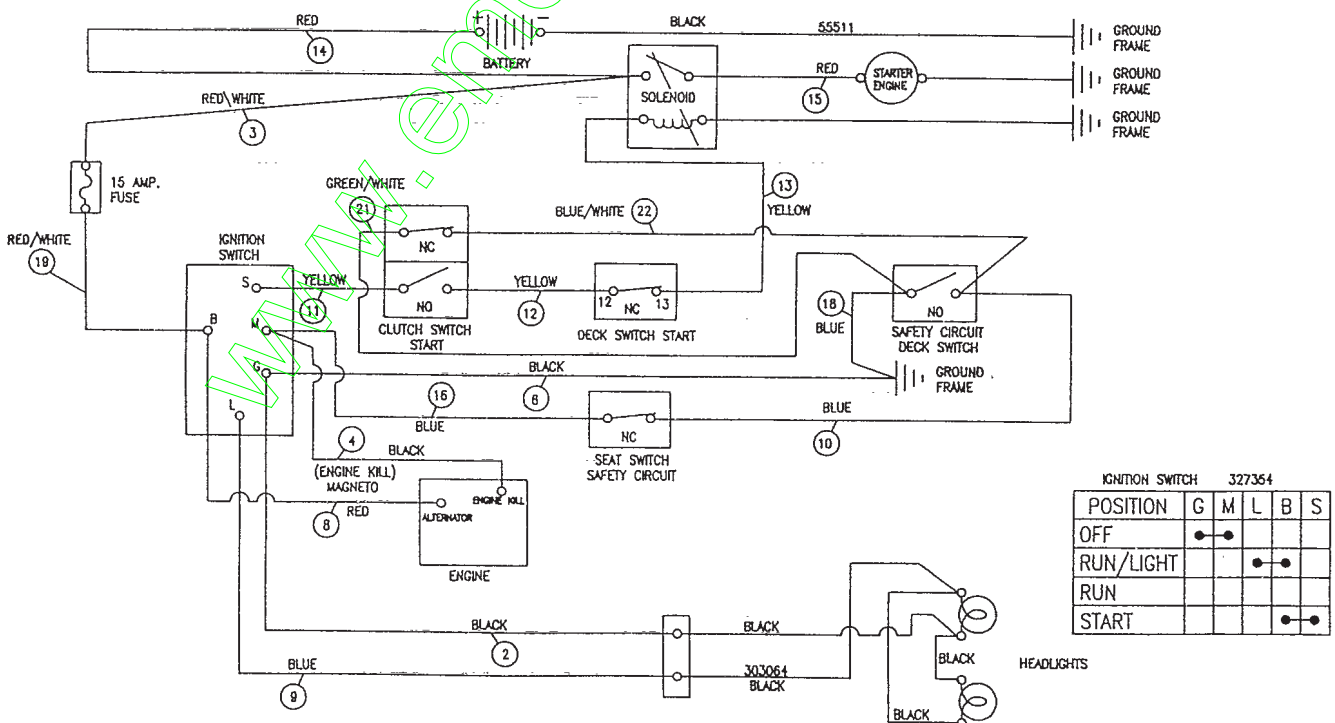
331669 C

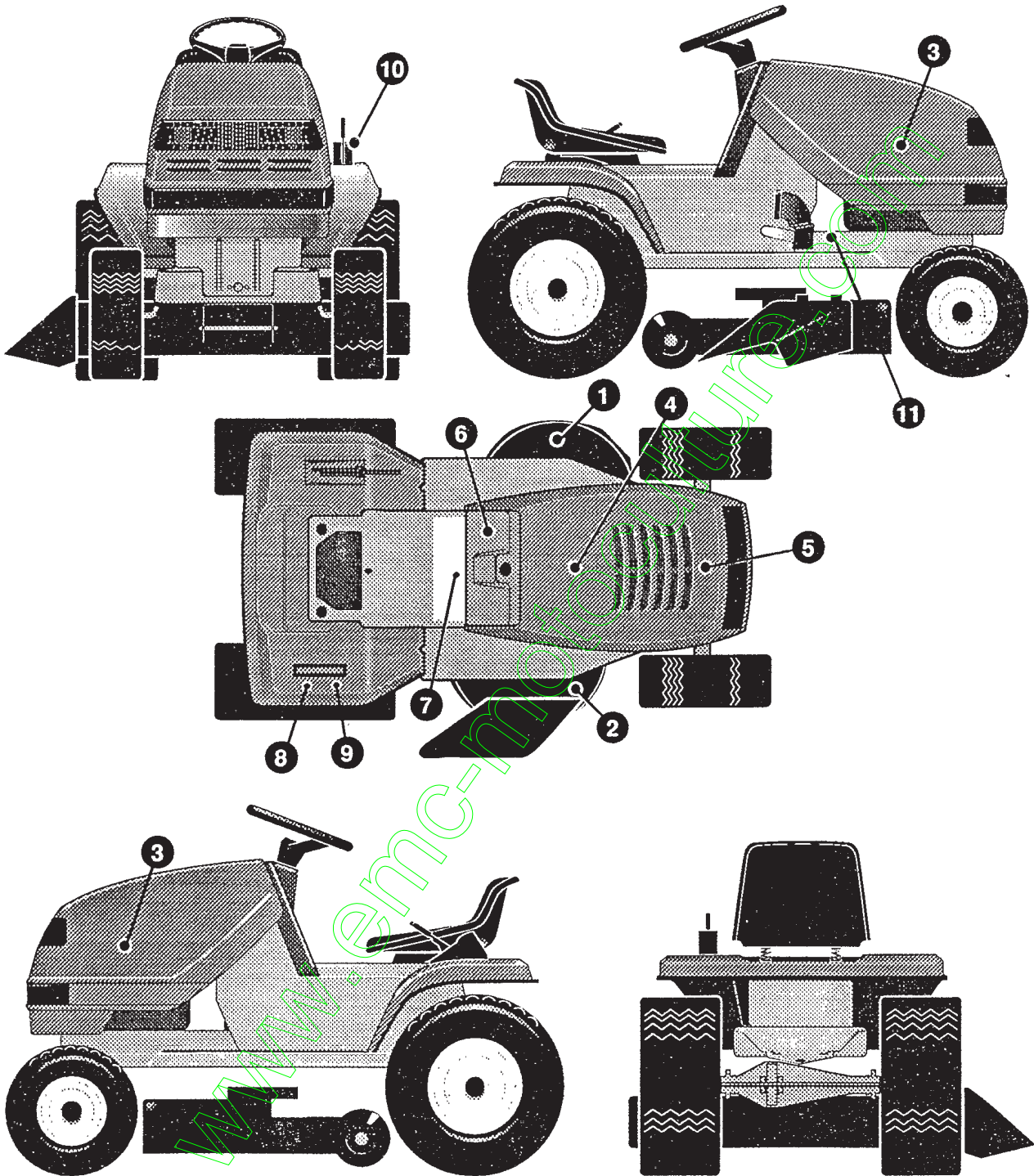
F3554-231

ELECTRICAL ASSEMBLY

| KEY# | PART# | DESCRIPTION | QTY |
|------|--------|---------------------------------------|-----|
| 1 | 331739 | WIRE HARNESS, SF, 8-12HP, B&S | 1 |
| 2 | 41482 | PRESS CLIP, 1.380 LONG .255 ID | 2 |
| 3 | 303064 | ASSEMBLY, LIGHT WIRE-1/4 TURN | 1 |
| 4 | 52572 | BULB, HEADLAMP | 2 |
| 5 | 57444 | TIE, CABLE BLACK NYLON, 5.62 LONG | 1 |
| 6 | 41482 | PRESS CLIP, 1.380 LONG .255 ID | 2 |
| 9 | 327354 | SWITCH,IGNITION & LIGHTS DELTA | 1 |
| 10 | 327352 | NUT, 5/8-8ACME DELTA FOR BOOT | 1 |
| 11 | 327350 | KEY, IGNITION | 1 |
| 12 | 57476 | SWITCH, SCREW MOUNT, DP, NC, NO BLACK | 2 |
| 13 | 300302 | SCREW, #10 X .50 HHTAPPST, BLACK | 4 |
| 14 | 53716 | SOLENOID | 1 |
| 15 | 187745 | SCREW, 1/4-20 X .75 HXSEMMA | 2 |
| 16 | 1084 | WASHER, FLAT .281 X 1.00 X .063 | 1 |
| 17 | 1502 | NUT, 1/4-20 REGHEXCTRLK | 2 |
| 18 | 271172 | NUT, 1/4-20 REGHEXKEPS | 1 |
| 19 | 271187 | NUT, 5/16-24 HKEPS | 2 |
| 20 | 55511 | WIRE, GROUND, 12.5" | 1 |
| 21 | 271184 | NUT, 5/16-18 HEXKEPS | 1 |
| 22 | 57547 | SWITCH, SEAT | 1 |
| 23 | 160505 | SCREW, 1/4-20 X .38 PHPNHMA | 2 |
| 24 | 92693 | BATTERY,12V, MAINTENANCE FREE | 1 |
| 25 | 329175 | BATTERY BRACKET | 1 |
| 26 | 995346 | SCREW, 1/4-20 X .50 WAHTTAP | 1 |
| 27 | 187745 | SCREW, 1/4-20 X .75 HXSEMMA | 1 |
| 28 | 1502 | NUT, 1/4-20 REGHEXCTRLK | 1 |
| 29 | 180020 | SCREW, 1/4-20 X .75 HHC | 2 |
| 30 | 271172 | NUT, 1/4-20 REGHEXKEPS | 2 |
| 31 | 302031 | FUSE, SPADE TYPE, 32V, 15A | 1 |
| 32 | 9149 | BRACKET, CABLE RETAINER | 1 |
| 33 | 57444 | TIE, CABLE BLACK NYLON, 5.62 LONG | 1 |
| 34 | 308201 | INSULATOR, BATTERY BOOT | 1 |
| 35 | 124818 | NUT, 1/4-20 REGHXJAM | 1 |

SCHEMATIC DRAWING

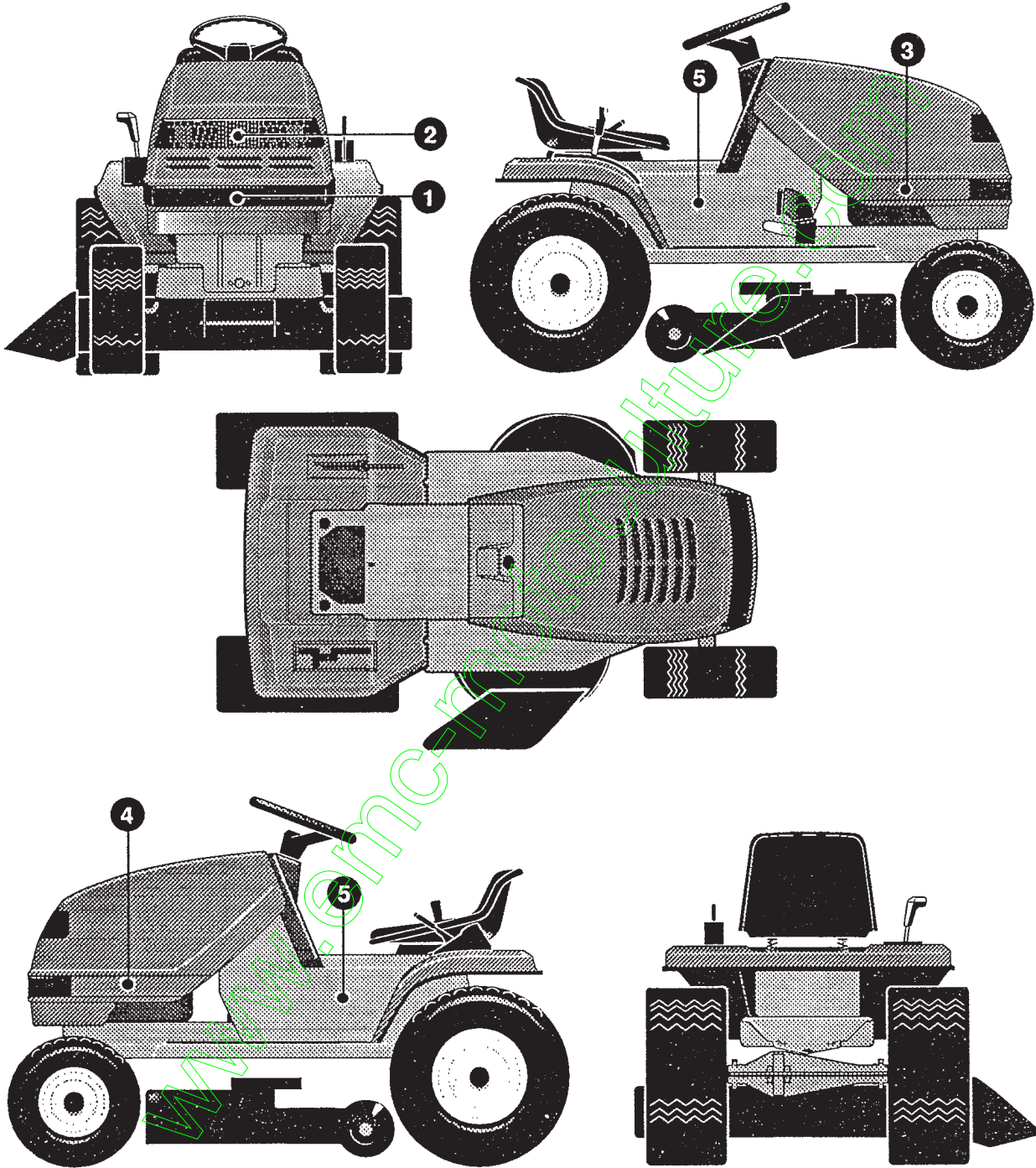




| KEY# | PART# | DESCRIPTION | QTY |
|------|--------|---|-----|
| 1 | 402700 | DECAL, CAUTION, DECK, LH | 1 |
| 2 | 402701 | DECAL, CAUTION, DECK, RH | 1 |
| 3 | 305603 | PAD, 18 X 6 FOAM HOOD | 2 |
| 4 | 307276 | PAD, 15 X 7 FOAM HOOD | 1 |
| 5 | 307277 | PAD, 12 X 4 FOAM HOOD | 1 |
| 6 | 326587 | DECAL, DASH, EXPORT | 1 |
| 7 | 402689 | DECAL, CONSOLE, SYMBOLIC, CAUTION | 1 |
| 8 | 311394 | DECAL, SHIFTER REVERSE/NEUTRAL | 1 |
| 9 | 331013 | DECAL, SHIFTER POSITION | 1 |
| 10 | 402214 | DECAL, HEIGHT ADJUST | 1 |
| 11 | 402702 | DECAL, BRAKE/CLUTCH | 1 |

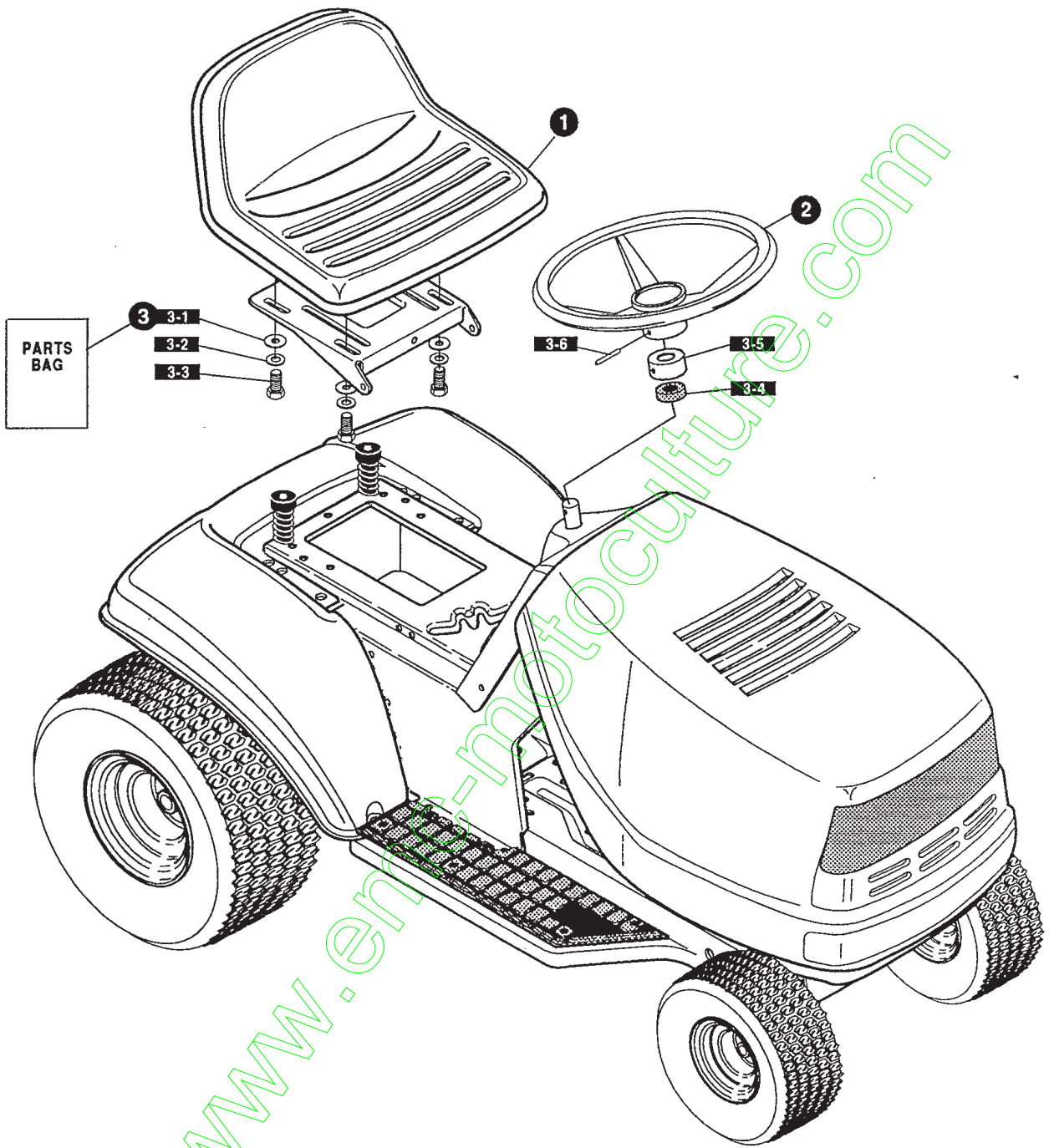
F3554-231

DECAL ASSEMBLY



| KEY# | PART# | DESCRIPTION | QTY |
|------|--------|-------------------------------------|-----|
| 1 | 322699 | DECAL, TAPE H13, 8MILL, VINYL | 1 |
| 2 | 308492 | FOIL, LENS, HOOD REFLECTOR | 1 |
| 3 | 402734 | DECAL, TEXAS, H-13, RH | 1 |
| 4 | 402733 | DECAL, TEXAS, H-13, L/H | 1 |
| 5 | 300442 | NAME PLATE, 12/39, WHITE | 2 |

335401 A



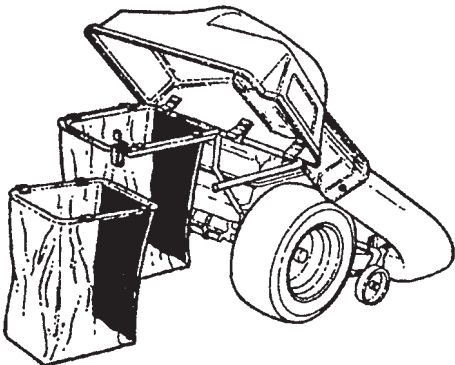
| KEY# | PART# | DESCRIPTION | QTY |
|------|--------|---|-----|
| 1 | 304316 | SEAT, MICHIGAN GEN, W/SWITCH HOLE | 1 |
| 2 | 330510 | STEERING WHEEL | 1 |
| 3 | 331424 | PARTS BAG, ASSEMBLY SEAT/STEER | 1 |
| 3-1 | 120393 | WASHER, FLAT .344 X .69 X .065 | 4 |
| 3-2 | 120638 | WASHER, HVSP TLK .328 X .60 X .09 | 4 |
| 3-3 | 180077 | SCREW, 5/16-18 X .75 HHC | 4 |
| 3-4 | 331322 | COVER, STEERING SHAFT | 1 |
| 3-5 | 301413 | SPACER, STEERING SHAFT | 1 |
| 3-6 | 456378 | PIN, SPRING .250 DIA X 2.00 LONG | 1 |

F3554-231

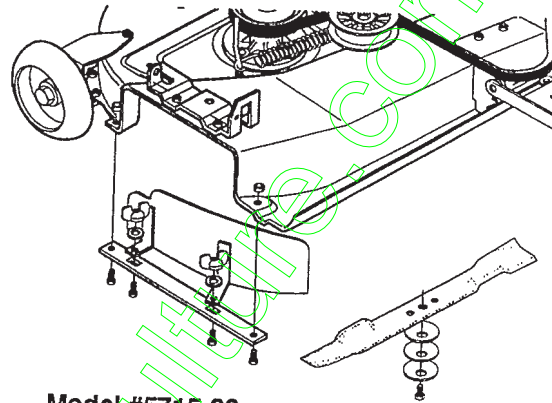
ACCESSORIES

Contact the dealer where your tractor was purchased for the available accessories. If you are unable to contact the dealer, write to the address on the warranty page of your Operator's Manual..

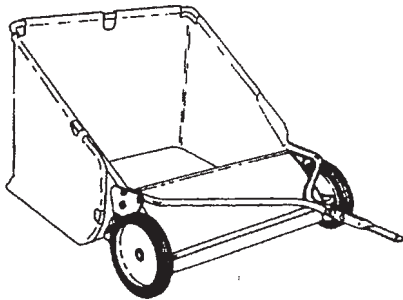
STANDARD LAWN TRACTOR



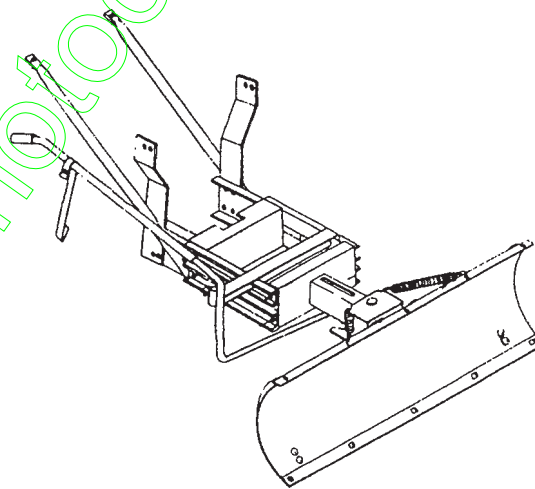
Model # 5708-13
Grass Collector for 39" decks
For heavy duty grass collection
order Model # 5709-10 Air Assist



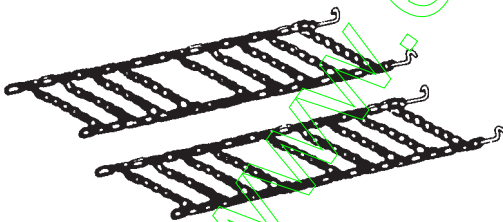
Model #5715-00
Mulching Kit (39" Deck)



Model # 5648-16
Tow behind Lawn Sweeper for
Grass and leaves



Model #5661-09
42" Snowblade - Fits 36", 38", 39", & 45"



Model # 5579-00
Tire Chains - 18" x 8.50" tires

OTHER ACCESSORIES

| Model | Description |
|---------|---|
| 5672-01 | Wheel Weights - Front - 1 pr. w/mtg. hdw. - Fits 15" tires |
| 5673-02 | Wheel Weights - Rear - 1 pr. w/mtg. hdw. - Fits 18" & 20" tires |
| 306932 | 39" High lift blade for bagging or side discharge (requires 2) |
| 326160 | 39" Mulching blade (requires 2) |