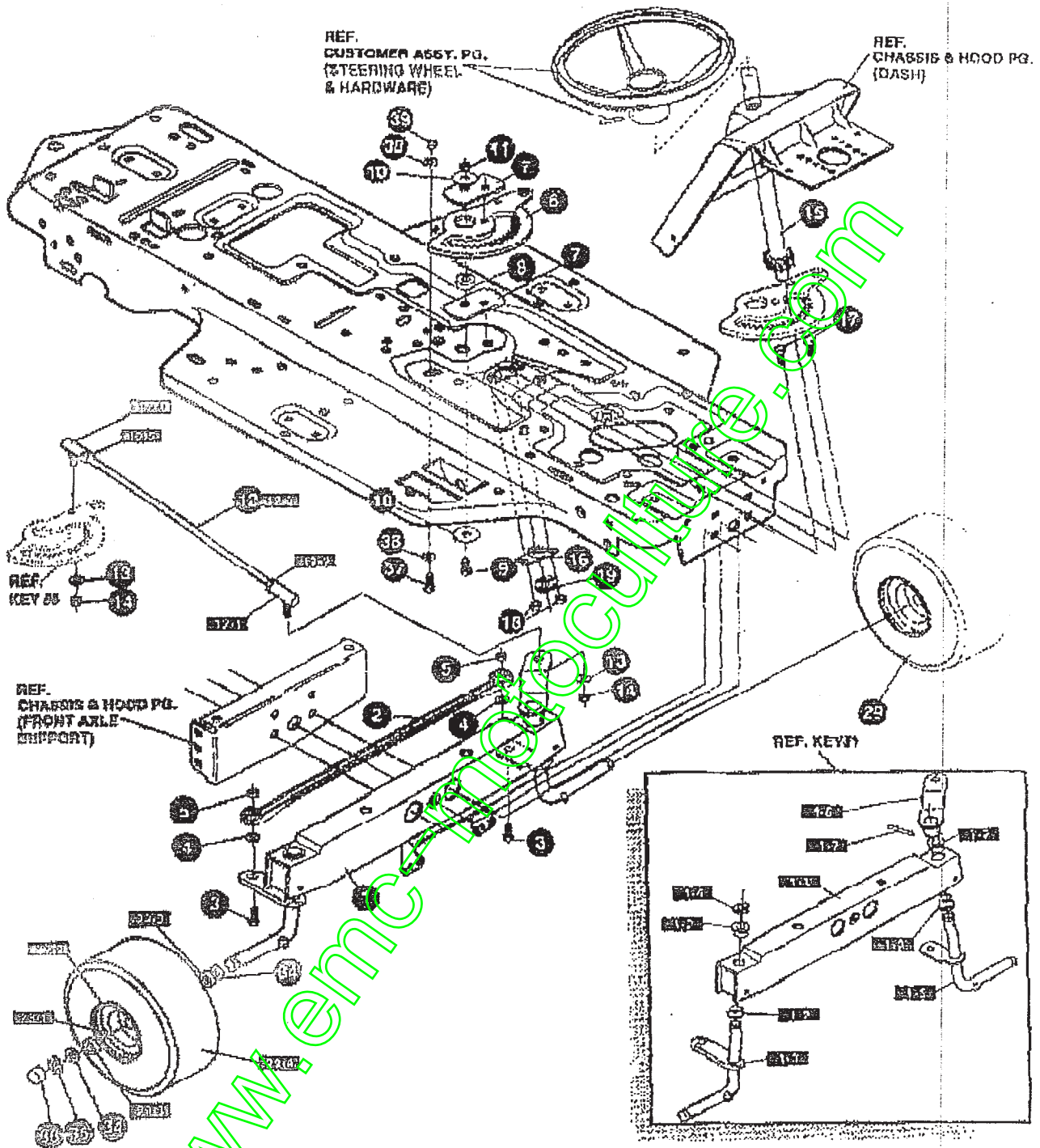


8554-330

REPAIR PARTS



NOTE: ALWAYS USE ORIGINAL EQUIPMENT PARTS.
 Use of service/replacement parts other than original equipment parts may void your warranty.

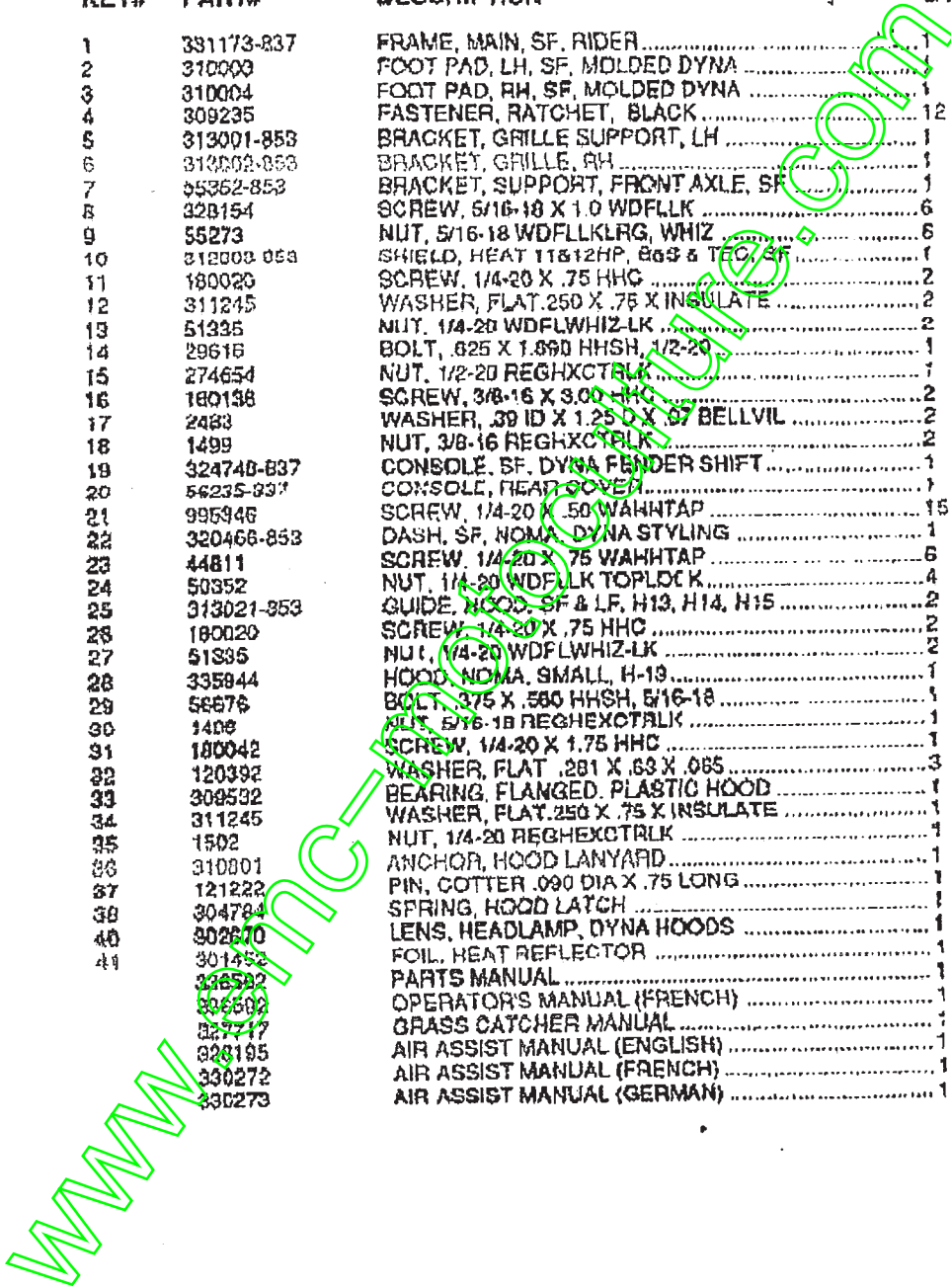
ALL UNNUMBERED ITEMS ARE INTERCHANGEABLE WITH OPPOSITE SIDE

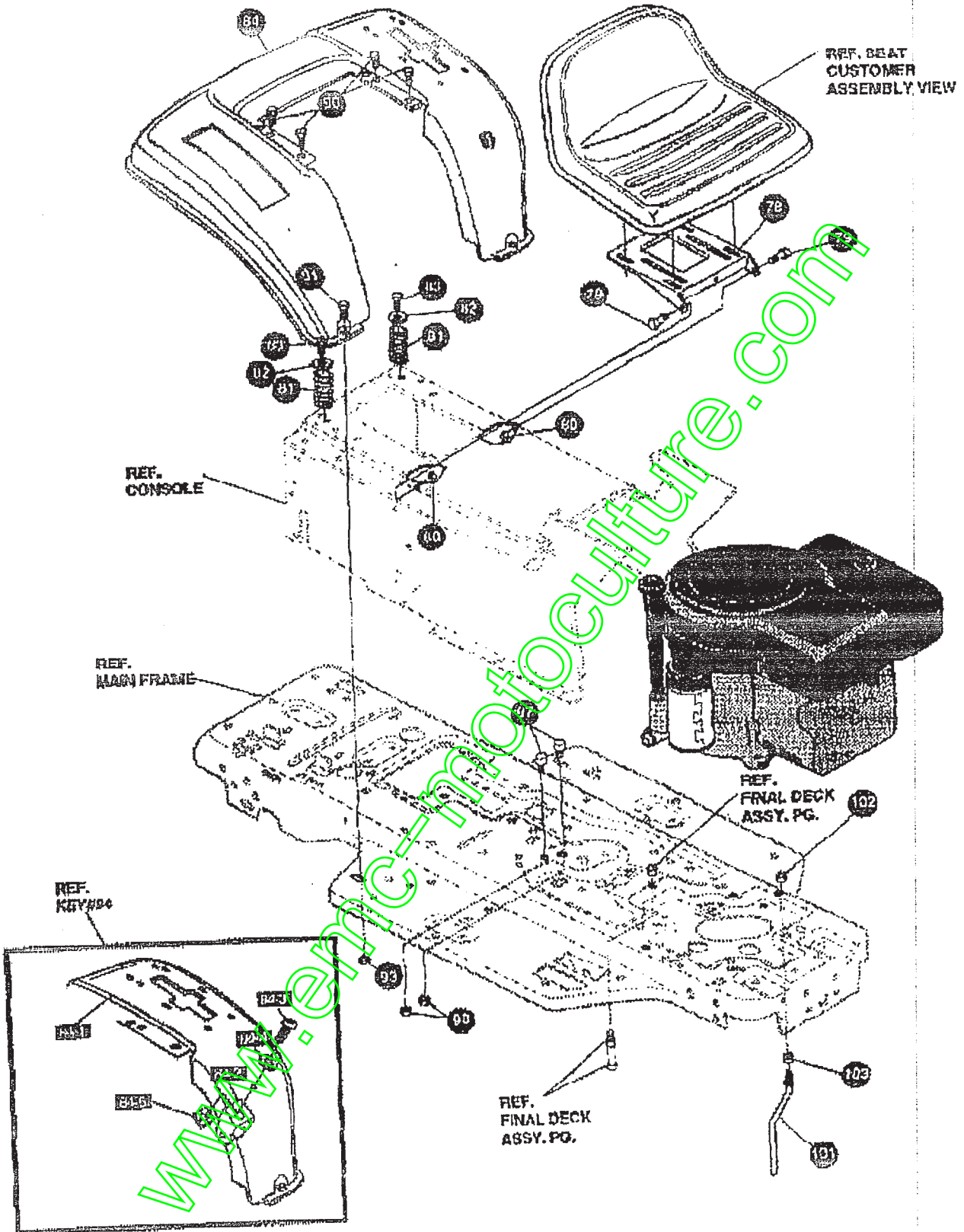
324972 H

KEY#	PART#	DESCRIPTION	QTY
1	*	AXLE FRONT ASSEMBLY, SF, LONG	1
1-1	312280	FRONT AXLE, ASSEMBLY, SF, BLACK	1
1-2	50548	BEARING, FLANGE .759 ID X 1.062 OD X .75	4
1-3	310388	SPINDLE, ASSEMBLY, RH, LONG, SF	1
1-4	36625	RING, RETEX .57 X .05 TRU 5133-75	1
1-5	310367	SPINDLE, ASSEMBLY, LH, LONG, SF	1
1-6	827619	ARM ASSEMBLY, SF, 4WS, FRONT STEERING	1
1-7	454565	PIN, SPRING .250 DIA X 1.25 LONG	1
2	302688	ASSEMBLY, TIE ROD, 19.31 LONG	1
3	180124	SCREW, 3/8-16 X 1.25 HHC	2
4	120382	WASHER, REGSPTLK .393 X .68 X .10	2
5	1499	NUT, 3/8-16 REGHXCTRK	2
6	327399	GEAR, SECTOR SF, 2WS	1
7	339288	PLATE, SECTOR, SF, 4WS, BLACK	2
8	330021	BUSHING, SECTOR, GEAR, SF, 4WS	1
9	181643	SCREW, 3/8-24 X 1.50 HHC	1
10	845	WASHER, FLAT .393 X 1.125 X .119	2
11	418348	NUT, 3/8-24 HXCTRK	1
12	328808	DRAG LINK ASSEMBLY, 17.69 LONG	1
12-1	57158	BALL JOINT, 3/8 THD, SHORT STUD	2
12-2	124925	NUT, 3/8-24 REGHEXJAM	2
12-3	56190	DRAG LINK	1
13	120382	WASHER, REGSPTLK .393 X .68 X .10	2
14	120369	NUT, 3/8-24 REGHEX	2
15	327834	SHAFT, PIN, STEER, BLACK	1
16	325682	BEARING, FLANGE .50 ID X 1.370 OD	1
17	328505	SCREW, 1/4-20 X .75 (TC 20-35 FT#)	2
18	46831	NUT, 1/4-20 WDFL MAC-LOCK	2
19	20864	RING, RET E .39 X .04 TRU 5133-60	1
29	*	TIRE & RIM, PU 13 X 5.0 X 6	2
29-1	24167	VALVE STEM	
29-2	38829	RIM, WHEEL	
29-3	314416	BEARING, FLANGE	
29-4	TIRE	REFER TO TIRE TREAD PAGE	
34	642	WASHER, FLAT .755 X 1.31 X .075	4
35	36625	RING, RETEX .57 X .05 TRU 5133-75	2
36	40398	HUB CAP, 1.500 ID X 7/8 LONG	2
37	180124	SCREW, 3/8-16 X 1.25 HHC	1
38	120384	WASHER, FLAT .406 X .81 X .085	2
39	45171	NUT, 3/8-16 HWDFL WHIZ-LOCK	1

* ORDER INDIVIDUAL PARTS - ASSEMBLY NOT AVAILABLE

KEY#	PART#	DESCRIPTION	QTY
1	391173-837	FRAME, MAIN, SF, RIDER	1
2	310003	FOOT PAD, LH, SF, MOLDED DYNA	1
3	310004	FOOT PAD, RH, SF, MOLDED DYNA	1
4	309235	FASTENER, RATCHET, BLACK	12
5	313001-853	BRACKET, GRILLE SUPPORT, LH	1
6	310002-853	BRACKET, GRILLE, RH	1
7	55352-853	BRACKET, SUPPORT, FRONT AXLE, SF	1
8	320154	SCREW, 5/16-18 X 1.0 WDFLLK	6
9	55273	NUT, 5/16-18 WDFLLKLRG, WHIZ	6
10	312003-853	SHIELD, HEAT 11&12HP, 863 & TEC/3F	1
11	180020	SCREW, 1/4-20 X .75 HHC	2
12	311245	WASHER, FLAT, 250 X .75 X INSULATE	2
13	51335	NUT, 1/4-20 WDFLWHIZ-LK	2
14	29616	BOLT, 3/8 X 1.890 HSSH, 1/2-20	1
15	274654	NUT, 1/2-20 REGHXCTRLK	1
16	180138	SCREW, 3/8-16 X 3.00 HHC	2
17	2483	WASHER, 39 ID X 1.25 O X .97 BELLVIL	2
18	1499	NUT, 3/8-16 REGHXCTRLK	2
19	324740-837	CONSOLE, SF, DYNA FENDER SHIFT	1
20	56235-837	CONSOLE, HEAD COVER	1
21	995946	SCREW, 1/4-20 X .50 WAHHTAP	15
22	320466-853	DASH, SF, NOMA, DYNA STYLING	1
23	44811	SCREW, 1/4-20 X .75 WAHHTAP	6
24	50352	NUT, 1/4-20 WDFLLK TOPLOC K	4
25	313021-853	GUIDE, HOOD, SF & LF, H13, H14, H15	2
26	180020	SCREW, 1/4-20 X .75 HHC	2
27	51335	NUT, 1/4-20 WDFLWHIZ-LK	2
28	335944	HOOD, NOMA, SMALL, H-19	1
29	58676	BOLT, 3/8 X .580 HSSH, 5/16-18	1
30	1409	NUT, 5/16-18 REGHEXOTRLK	1
31	100042	SCREW, 1/4-20 X 1.75 HHC	1
32	120392	WASHER, FLAT, 201 X .63 X .065	3
33	309532	BEARING, FLANGED, PLASTIC HOOD	1
34	311245	WASHER, FLAT, 250 X .75 X INSULATE	1
35	1502	NUT, 1/4-20 REGHEXOTRLK	1
36	310001	ANCHOR, HOOD LANYARD	1
37	121222	PIN, COTTER .090 DIA X .75 LONG	1
38	304784	SPRING, HOOD LATCH	1
40	302670	LENS, HEADLAMP, DYNA HOODS	1
41	301452	FOIL, HEAT REFLECTOR	1
	338532	PARTS MANUAL	1
	336502	OPERATOR'S MANUAL (FRENCH)	1
	337417	GRASS CATCHER MANUAL	1
	328195	AIR ASSIST MANUAL (ENGLISH)	1
	330272	AIR ASSIST MANUAL (FRENCH)	1
	330273	AIR ASSIST MANUAL (GERMAN)	1



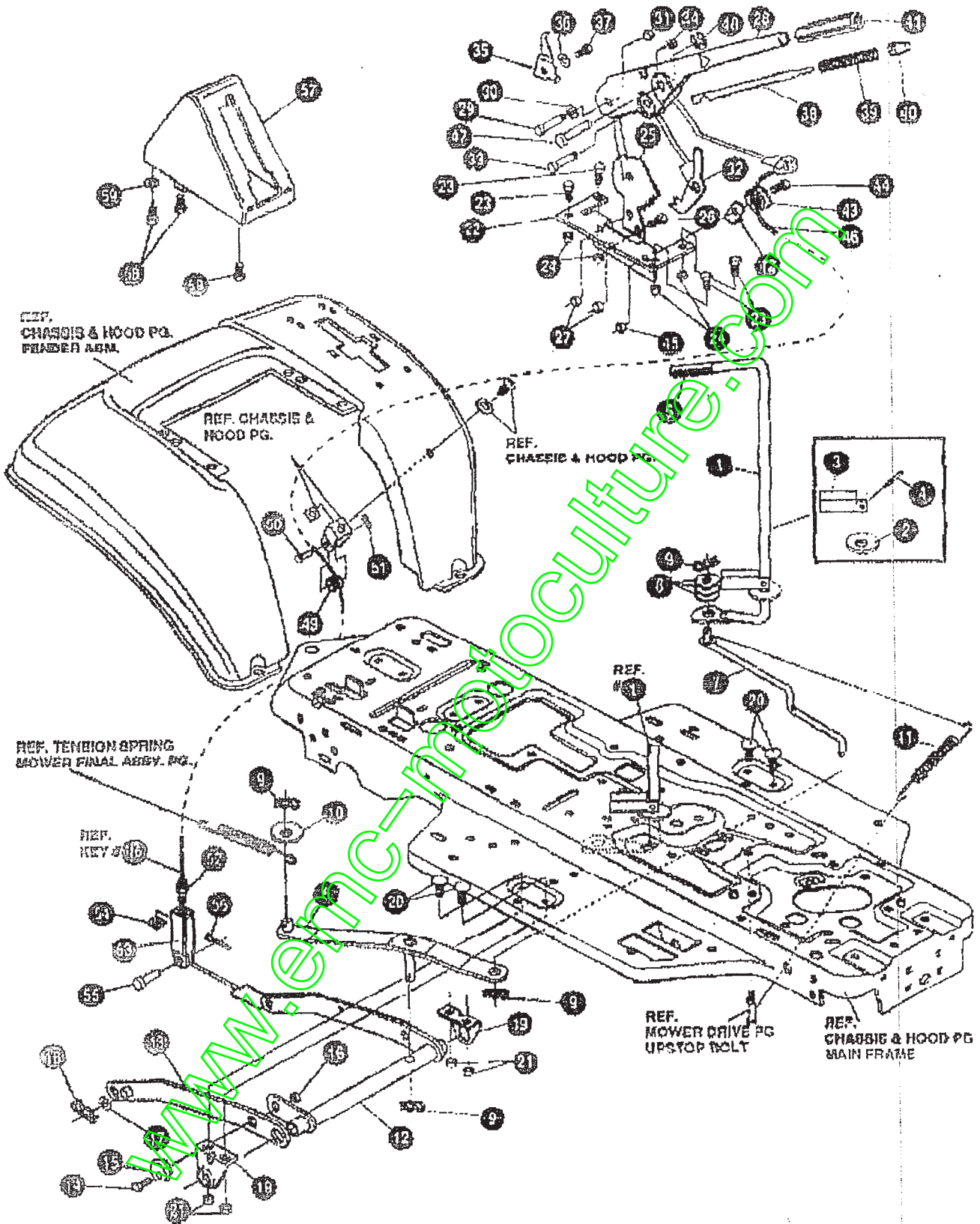


NOTE: ALWAYS USE ORIGINAL EQUIPMENT PARTS.
 Use of service/replacement parts other than original
 equipment parts may void your warranty.

ALL UNNUMBERED
 ITEMS ARE INTERCHANGEABLE
 WITH OPPOSITE SIDE

KEY#	PART#	DESCRIPTION	QTY
78	58387-837	PLATE, SEAT, F5, SF, LF	1
79	20507	BOLT, .437 X .156 HSSH, 5/16-18	2
80	1408	NUT, 5/16-18 REGHEXCTRJK	2
81	330463	SPRING, SEAT 1.50 OD X 2.25 LONG	2
82	120392	WASHER, FLAT .281 X .83 X .065	2
83	995345	SCREW, 1/4-20 X .50 WASHTAP	2
84		ASSEMBLY, FENDER, F-5, SF, SOFLOF	1
84-1	38242	3-837 FENDER, F-6 SF SOFLOF	1
84-2	9239	GLEVIS	1
84-3	499455	SCREW, 5/16-18 X .56 SHPNMA	1
84-4	301551	WASHER, .344 ID X 1.50 O.D X .09	1
84-5	120373	NUT, 5/16-18 SQUARE	1
90	995346	SCREW, 1/4-20 X .50 WASHTAP	4
91	126358	BOLT, 5/16-18 X 1.00 CARRLN	2
93	55273	NUT, 5/16-18 WDFLLG RG, WHIZ	2
97	53446	PIN, 5/16-18 HOOD LATCH	2
98	271184	NUT, 5/16-18 HEXKEPS	2
101	50853	GUIDE, BELT	1
102	41529	NUT, 3/8-16 HXCTRJKJAM	1
103	271190	NUT, 3/8-16 HEXKEPS	1

* ORDER INDIVIDUAL PARTS - ASSEMBLY NOT AVAILABLE

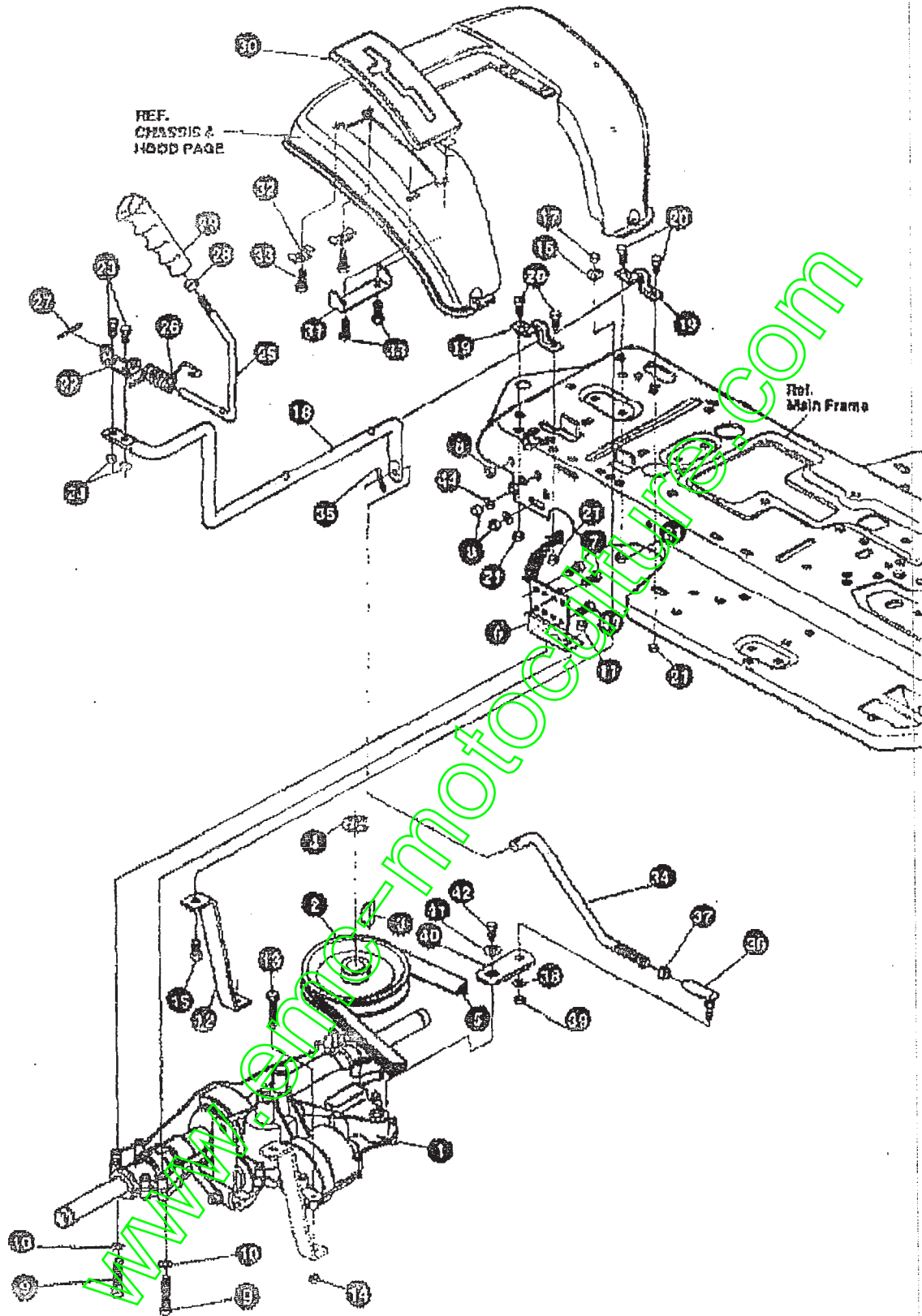


NOTE: ALWAYS USE ORIGINAL EQUIPMENT PARTS. Use of service/replacement parts other than original equipment parts may void your warranty.

ALL UNNUMBERED ITEMS ARE INTERCHANGEABLE WITH OPPOSITE SIDE

KEY#	PART#	DESCRIPTION	QTY
1	325691	LEVER, CLUTCH, RH, PTO	1
2	22285	WASHER, FLAT .515 X 1.38 X .119	1
3	305225	STOP, PTO ENGAGE	1
4	326308	PIN, SPRING .187 DIA X 1.13 LONG	1
5	321037	KNOB, ROUND 1.50 DIA OR GRIP, SF	1
6	325587	STRAP ASSEMBLY, PTO BELCRANK, SF	1
7	326590	ROD, BELCRANK LINK, SF	1
8	274517	WASHER, FLAT .408 X .79 X .063	3
9	8260	PIN, HAIR .091 DIA X 1.64 LONG	4
10	25210	WASHER, FLAT .386 X 1.25 X .09	1
11	325802	SPRING, 69 X 7.75 X .0897 TENSION	1
12	325114-853	LIFT ASSEMBLY, LH	1
13	325130-853	LIFT ASSEMBLY, RH, SF	1
14	180079	SCREW, 5/16-18 X 1.00 HHC	1
15	58247	NUT, ADJUST	1
16	1498	NUT, 5/16-18 REGHEXCTRLK	1
17	4170BB	WASHER, FLAT .531 X 1.06 X .063	2
18	8260	PIN, HAIR .091 DIA X 1.66 LONG	2
19	325485-853	BRACKET, REAR HANG, SUSP	2
20	930967	BOLT, 5/16-18 X 1.00 CARB	4
21	1498	NUT, 5/16-18 REGHEXCTRLK	4
22	313926	BRACKET, HEIGHT ADJUST	1
23	180077	SCREW, 5/16-18 X .75 HHC	4
24	1498	NUT, 5/16-18 REGHEXCTRLK	4
25	001238	QUADRANT, HEIGHT ADJUST	1
26	180077	SCREW, 5/16-18 X .75 HHC	2
27	1498	NUT, 5/16-18 REGHEXCTRLK	2
28	32282-853	HANDLE, LIFT SHORT (30" S.F.)	1
29	300171	BOLT, .500 X .270 HSSH, 5/16-18	1
30	992410	WASHER, FLAT .506 X .76 X .024	1
31	44108	NUT, 5/16-18 HWDFLCTRLK	1
32	301230	PAWL, SQUARE	1
33	300171	BOLT, .500 X .270 HSSH, 5/16-18	1
34	44108	NUT, 5/16-18 HWDFLCTRLK	1
35	0135	BRACKET, HEIGHT ADJUST	1
36	138470	WASHER, EXLK .195 X .41 X .03	1
37	35287	SCREW, #8-32 X .38 HHWATAP	1
38	303027	ROD, ACTUATOR-SHORT	1
39	58325	SPRING, HEIGHT ADJUST	1
40	58325	KNOB, HEIGHT ADJUST, PUSH BUTTON	1
41	58329	GRIP, 750 OD, W/HOLE BLACK	1
42	9149	BRACKET, CABLE RETAINER	1
43	48306	PULLEY, METAL	1
44	58338	BOLT, .375 X .375 HSSH, 1/4-20	1
45	1502	NUT, 1/4-20 REGHEXCTRLK	1
46	321430	CABLE, LIFT 21.60 - 30" S.F.	1
47	300310	PIN, CLEVIS .310 DIA X .475 LONG	1
48	300311	RING, RET E .31 X .25 TRU 5133-31	1
49	48306	PULLEY, METAL	1
50	300317	PIN, CLEVIS .375 DIA X .81 LONG	1
51	8260	PIN, HAIR .091 DIA X 1.66 LONG	1
52	120375	NUT, 1/4-20 REGHEX	1
53	9405	CLEVIS, LIFT CABLE	1
54	120372	NUT, 1/4-20 REGSQ	1
55	30622	PIN, CLEVIS .312 X .812	1
56	121222	PIN, COTTER .090 DIA X .75 LONG	1
57	333003	LIFT COVER, F5, LF, SF, BLACK	1
58	300340	SCREW, #10 X .75 HHPLAST, BLACK	3
59	120392	WASHER, FLAT .261 X .63 X .055	1

www.mcm.com



NOTE: ALWAYS USE ORIGINAL EQUIPMENT PARTS.
 Use of service/replacement parts other than original
 equipment parts may void your warranty.

ALL UNNUMBERED
 ITEMS ARE INTERCHANGEABLE
 WITH OPPOSITE SIDE

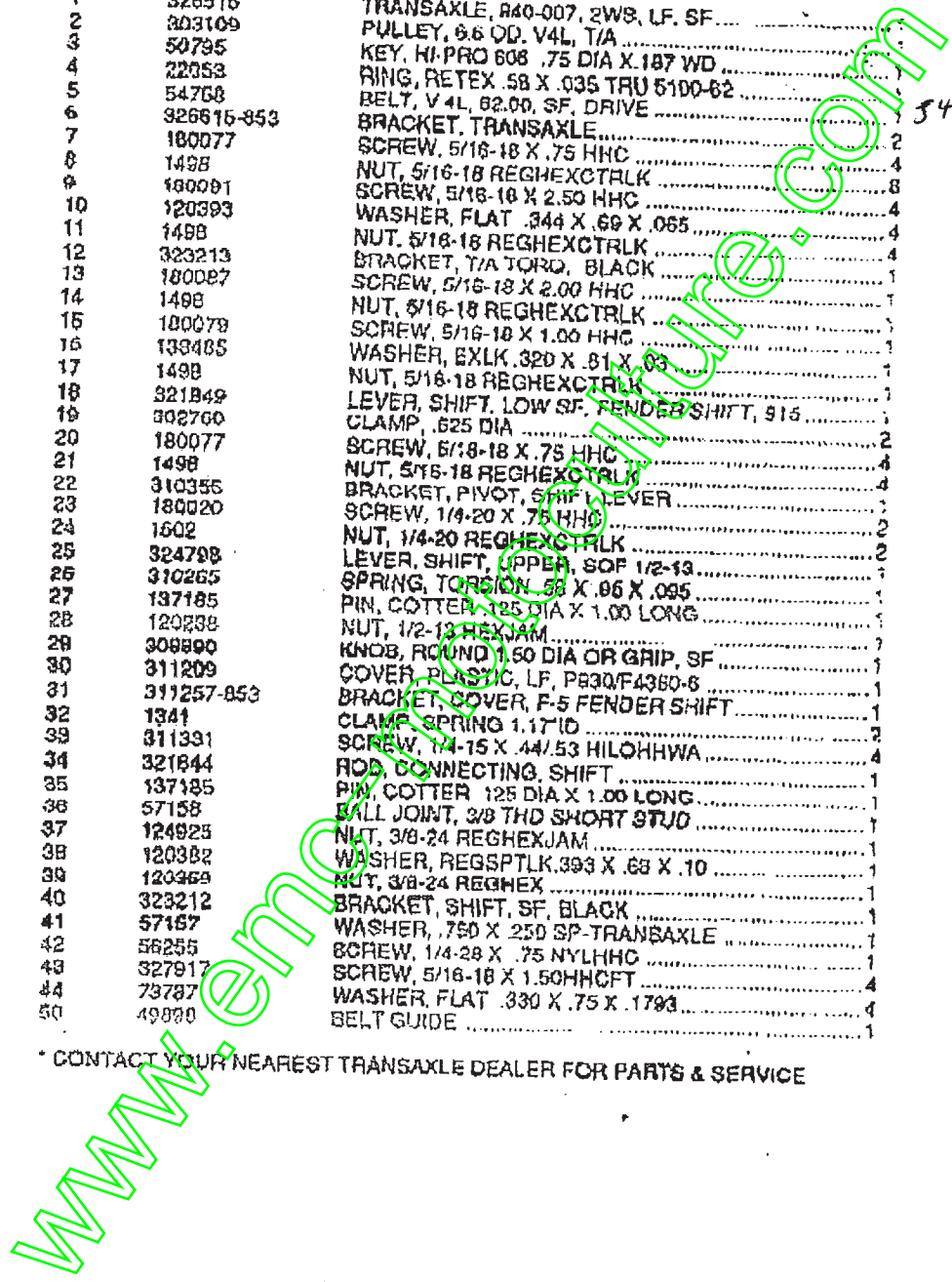
333377 B

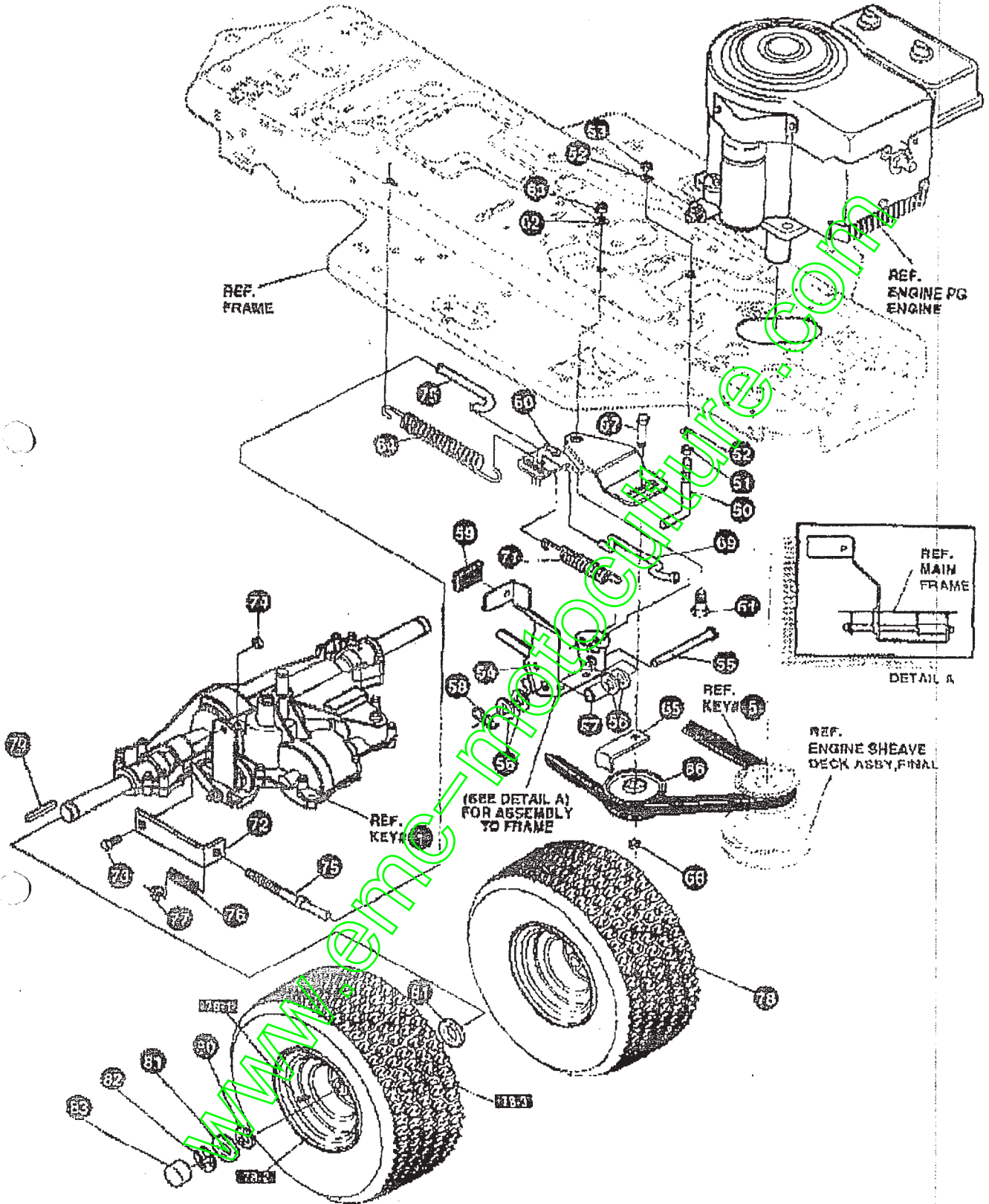
MOTION DRIVE ASSEMBLY

KEY#	PART#	DESCRIPTION	QTY
1	329516	TRANSAXLE, R40-007, 2WS, LF, SF	1
2	303109	PULLEY, 6.6 OD, V4L, T/A	1
3	50795	KEY, HI-PRO 608 .75 DIA X .187 WD	1
4	22053	RING, RETEX .58 X .035 TRU 5100-62	1
5	54768	BELT, V 4L, 82.00, SF, DRIVE	1
6	326616-853	BRACKET, TRANSAXLE	1
7	180077	SCREW, 5/16-18 X .75 HHC	2
8	1498	NUT, 5/16-18 REGHEXCTRLK	4
9	180091	SCREW, 5/16-18 X 2.50 HHC	8
10	120393	WASHER, FLAT .344 X .69 X .065	4
11	1498	NUT, 5/16-18 REGHEXCTRLK	4
12	323213	BRACKET, T/A TORQ, BLACK	4
13	180087	SCREW, 5/16-18 X 2.00 HHC	1
14	1498	NUT, 5/16-18 REGHEXCTRLK	1
15	180079	SCREW, 5/16-18 X 1.00 HHC	1
16	139485	WASHER, EXLK .320 X .81 X .03	1
17	1498	NUT, 5/16-18 REGHEXCTRLK	1
18	321849	LEVER, SHIFT, LOW SF, FENDER SHIFT, 915	1
19	302760	CLAMP, .625 DIA	1
20	180077	SCREW, 5/16-18 X .75 HHC	2
21	1498	NUT, 5/16-18 REGHEXCTRLK	4
22	310355	BRACKET, PIVOT, SHIFT LEVER	4
23	180020	SCREW, 1/4-20 X .75 HHC	1
24	1502	NUT, 1/4-20 REGHEXCTRLK	2
25	324798	LEVER, SHIFT, UPPER, SF 1/2-13	2
26	310265	SPRING, TORSION .58 X .06 X .095	1
27	137185	PIN, COTTER .125 DIA X 1.00 LONG	1
28	120238	NUT, 1/2-13 HEXJAM	1
29	308890	KNOB, ROUND 1.50 DIA OR GRIP, SF	1
30	311209	COVER, PLASTIC, LF, P830/F4360-8	1
31	311257-853	BRACKET, COVER, F-5 FENDER SHIFT	1
32	1341	CLAMP, SPRING 1.17 ID	1
33	311391	SCREW, 1/4-15 X .44/.53 HILOHHWA	2
34	321844	ROD, CONNECTING, SHIFT	4
35	137185	PIN, COTTER .125 DIA X 1.00 LONG	1
36	57158	BALL JOINT, 3/8 THD SHORT STUD	1
37	124925	NUT, 3/8-24 REGHEXJAM	1
38	120382	WASHER, REGSPTLK .393 X .68 X .10	1
39	120369	NUT, 3/8-24 REGHEX	1
40	323212	BRACKET, SHIFT, SF, BLACK	1
41	57157	WASHER, .750 X .250 SP-TRANSAXLE	1
42	56255	SCREW, 1/4-28 X .75 NYLHHC	1
43	327917	SCREW, 5/16-18 X 1.50HHCFT	4
44	73787	WASHER, FLAT .330 X .75 X .1793	4
50	49970	BELT GUIDE	1

54751

* CONTACT YOUR NEAREST TRANSAXLE DEALER FOR PARTS & SERVICE





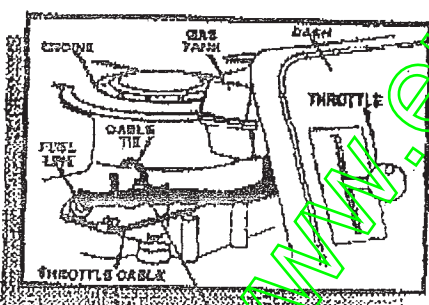
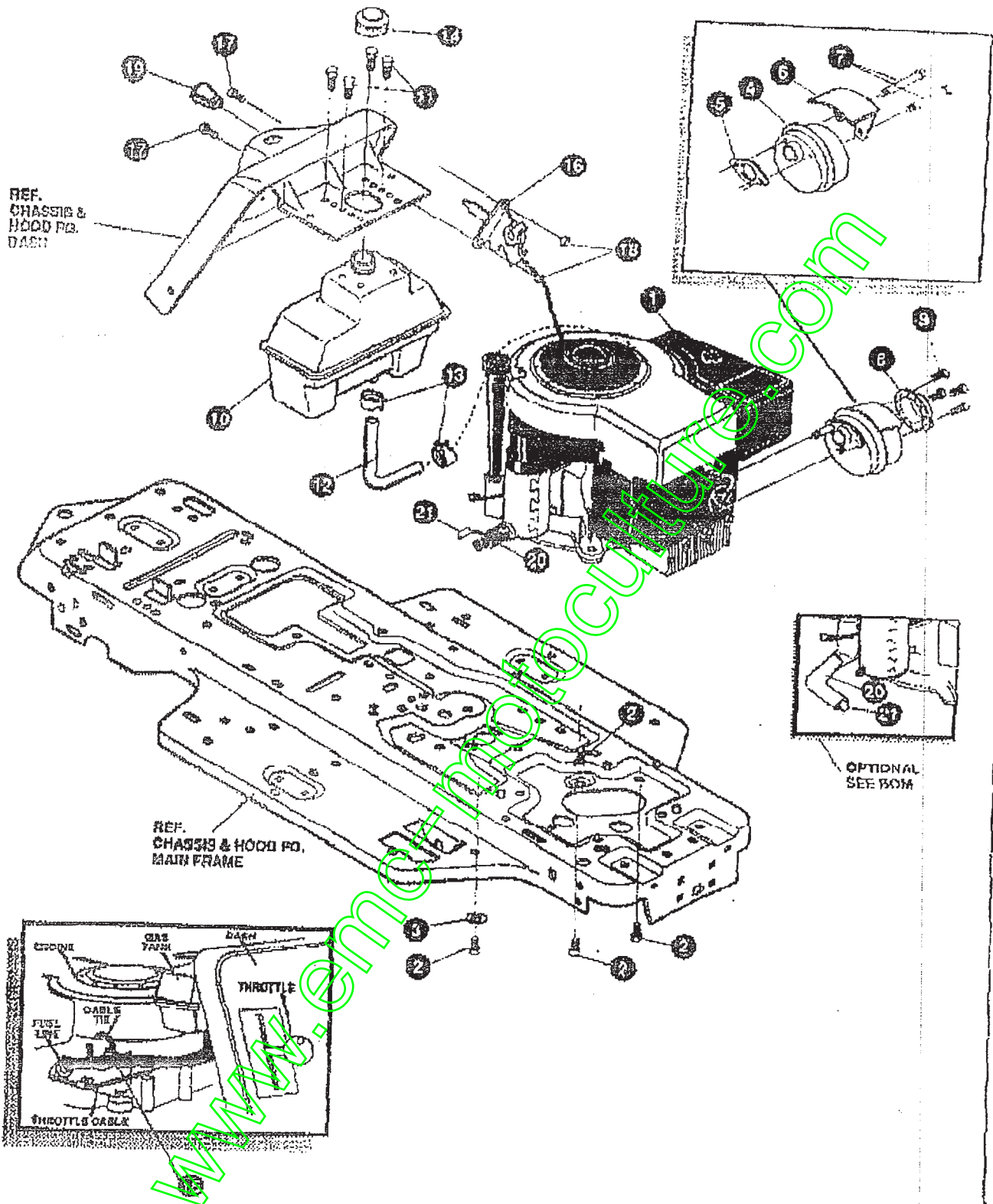
NOTE: ALWAYS USE ORIGINAL EQUIPMENT PARTS.
 Use of service/replacement parts other than original equipment parts may void your warranty.

ALL UNNUMBERED ITEMS ARE INTERCHANGEABLE WITH OPPOSITE SIDE

KEY#	PART#	DESCRIPTION	QTY
51	271184	NUT, 5/16-18 HEXKEPS	1
52	120393	WASHER, FLAT .341 X .08 X .065	1
53	1498	NUT, 5/16-18 REGHEXCTRK	2
54	331636	ASSEMBLY, PEDAL, BRAKE, CLUTCH, SF	1
55	318676	PIN, CLEVIS .500 D X 4.87 LONG	1
56	2968	WASHER, FLAT .504 X .76 X .069	1
57	331972	SPACER SLEEVE .59 X .82 X 1.249	1
58	68180	PIN, HAIR .091 DIA X 1.62 LONG	1
59	48761	PAD, CLUTCH/BRAKE PEDAL	1
60	321809	IDLER ARM BRACKET, TRACTION, SF	1
61	329989	BOLT, .825 X .135 HSSH, 5/16-18	1
62	45602	WASHER, FLAT .393 X .87 X .118	1
63	1498	NUT, 5/16-18 REGHEXCTRK	1
64	327867	SPRING, 3/4 OD X 7.75 X .09 TENSION	1
65	39668	RETAINER BELT	1
66	35374	PULLEY, IDLER V4L 3.06X .62	1
67	45892	BOLT, 3/8-16X1.50 CARSSH	1
68	1498	NUT, 3/8-16 REGHXCTRK	1
69	333175	CLUTCH ROD ASSEMBLY, .258 DIA 3.92	1
71	328780	SPRING, 3/8 OD X 2.16 X .055 TENSION	1
72	323210	BRACKET, TRACTION, SF, BLACK	1
73	46824	BOLT, .500 X .189 HSSH, 6/16-10	1
74	1498	NUT, 5/16-18 REGHEXCTRK	1
75	333263	ROD, BRAKE 240, BLACK	1
76	313881	SPRING, CLUTCH .825 OD	1
77	50352	NUT, 1/4-20 WDFLK TOPLOCK	1
78	*	TIRE & RIM, 20 X 8.00-8	2
78-1	24167	VALVE STEM	1
78-2	328362	RIM, WHEEL	1
78-3	TIRE	REFER TO TIRE TREAD PAGE	1
79	52928	KEY, SQUARE .187 SQUARE X 2.25 LONG	2
80	642	WASHER, FLAT .765 X 1.31 X .075	4
81	42815	WASHER, FLAT .765 X 1.53 X .07	2
82	36625	RING, RETEX, .57 X .05 TRU 3133-75	2
83	40394	HUB CAP, 1.500 ID X 7/8 LONG	2

* ORDER INDIVIDUAL PARTS. - ASSEMBLY NOT AVAILABLE

REPAIR PARTS



NOTE: ALWAYS USE ORIGINAL EQUIPMENT PARTS. Use of service/replacement parts other than original equipment parts may void your warranty.

ALL UNNUMBERED ITEMS ARE INTERCHANGEABLE WITH OPPOSITE SIDE

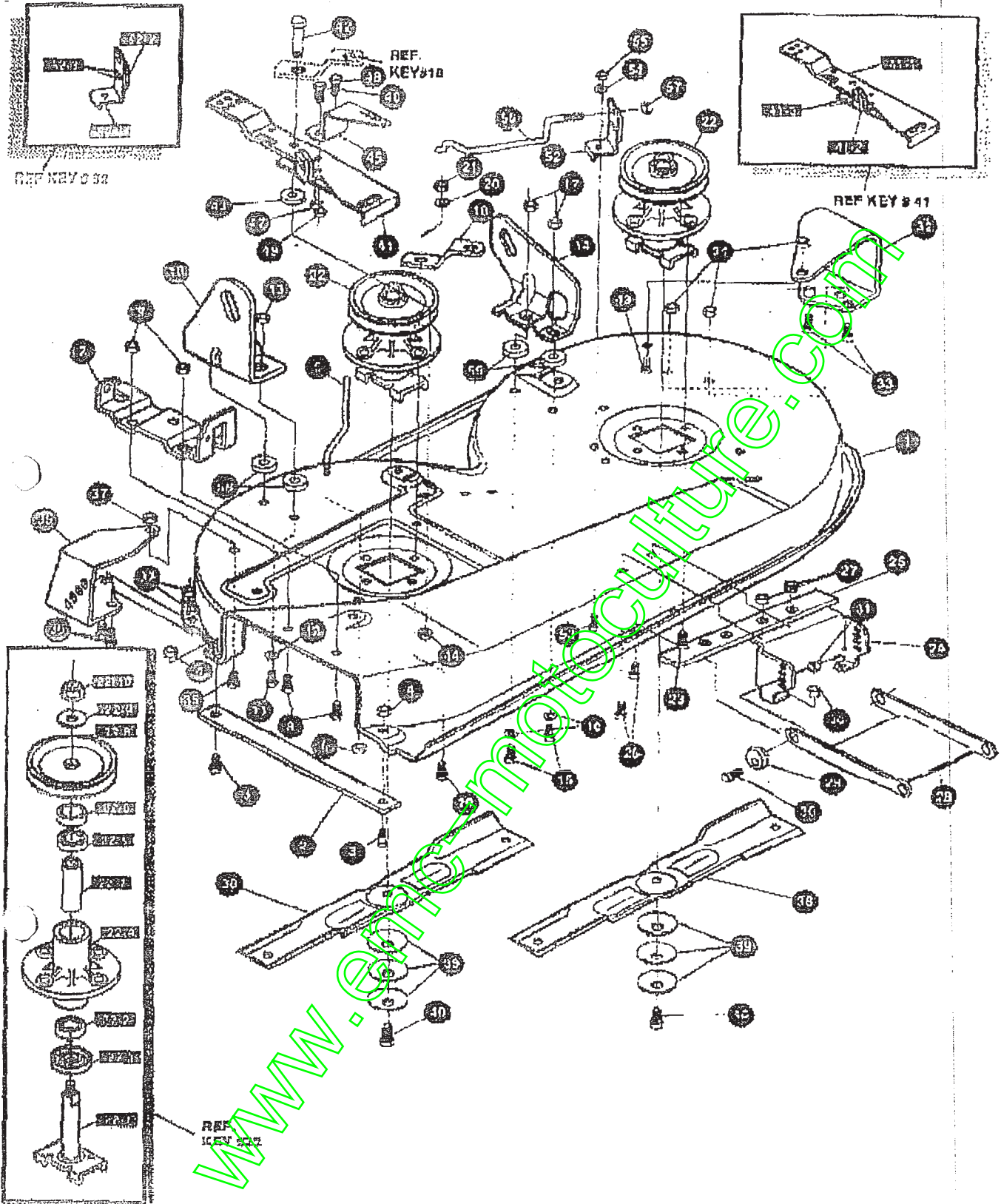
326553 D

ENGINE & CONTROL ASSEMBLY

KEY#	PART#	DESCRIPTION	QTY
1	.	ENGINE, 12-12.5HP, B&S, IC DUAL	1
2	50947	SCREW, 3/8-16 X 1.25 WASH TAP	4
3	180408	WASHER, EXLK .384 X .69 X .04	1
4	57908	MUFFLER-DOMESTIC/EXPORT ROUND	1
5	46708	GASKET, MUFFLER	1
6	54787	SHIELD, HEAT, FOR ROUND MUFFLER	1
7	54080	SCREW, 5/16-18 X 3.50 HHC	2
8	58472	DEFLECTOR SIDE OUT (BR22257S)	1
9	35287	SCREW, #8-32 X .38 III WATAP	4
10	314889	TANK, FUEL 1 GALLON, CLEAR	1
11	300303	SCREW, .25 X .75 X .61 HHW PLASTITE	4
12	42258	TUBING, .25 X .50 X BULK GAS LINE	12.0'
13	47845	CLAMP, HOSE SCREW TYPE	2
14	46704	CAP, GAS 1-1/2-7 THD, BLACK	1
15	57444	TIE, CABLE BLACK NYLON, 5.62 LONG	1
16	320031	THROTTLE CONTROL	1
17	274707	SCREW, 10-24 X .50 WAH/MA	2
18	300459	NUT, #10-24 HXHD RYLK	2
19	50607	KNOB, ROUND THROTTLE, BLACK	1
20	325547	OIL DRAIN VALVE OR TUBE	1
21	327422	CAP OR PLUG FOR OIL DRAIN	1

* SEE ENGINE MANUAL

REPAIR PARTS

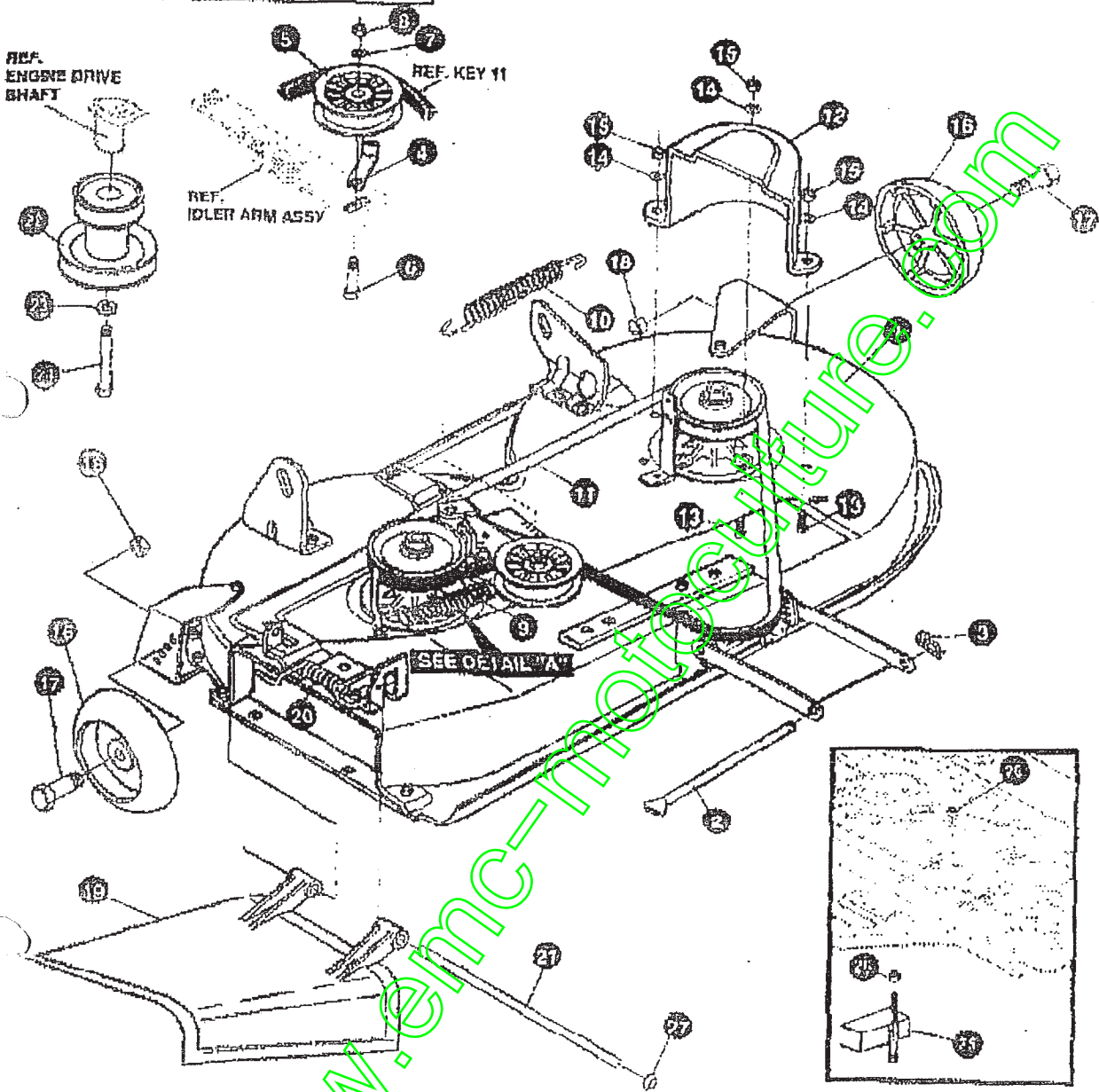
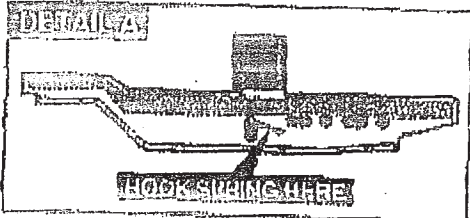


NOTE: ALWAYS USE ORIGINAL EQUIPMENT PARTS.
 Use of service/replacement parts other than original equipment parts may void your warranty.

**ALL UNNUMBERED
 ITEMS ARE INTERCHANGEABLE
 WITH OPPOSITE SIDE**

333277 F

KEY#	PART#	DESCRIPTION	QTY
1	325106	38" DECK KIT	1
2	326295	BAR, SKID	1
3	120230	BOLT, 5/16-18 X 1.25 CARB LN	2
4	271184	NUT, 5/16-18 HEXKEPS	2
5	57318	GUIDE, BELT 5/16-18 THD	1
6	1498	NUT, 5/16-18 REGHEXCTRLK	1
7	313928	BRACKET, CHUTE	1
8	180073	SCREW, 5/16-18 X .50 HHC	2
9	1498	NUT, 5/16-18 REGHEXCTRLK	2
10	313929	BRACKET, RH, LIFT REAR	1
11	180081	SCREW, 5/16-18 X 1.25 HHC	2
12	120393	WASHER, FLAT .344 X .69 X .065	2
13	1498	NUT, 5/16-18 REGHEXCTRLK	2
14	310687	BRACKET, LH, LIFT REAR	1
15	180081	SCREW, 5/16-18 X 1.25 HHC	2
16	120393	WASHER, FLAT .344 X .69 X .065	2
17	1498	NUT, 5/16-18 REGHEXCTRLK	2
19	315302	BRACKET, IDLER SUPPORT	1
18	300345	SCREW, 5/16-18 X 1.38 WASH TAP	1
20	120393	WASHER, FLAT .344 X .69 X .065	1
21	1498	NUT, 5/16-18 REGHEXCTRLK	1
22	56424	QUILL ASSEMBLY, 38/39/40/43	2
22-1	50423	SHAFT/SADDLE 36"	1
22-2	49552	BEARING, BALL 6203-2AA-C3, ARMORED	1
22-3	50816	DUST SHIELD	1
22-4	55547	QUILL CABTING (1040)	1
22-5	49582	BEARING, BALL 6203-2AA-C3 ARMORED	1
22-6	50818	SPACER, SLEEVE .669 X .90 X 3.787	1
22-7	51449	SPACER, SLEEVE .672 X .93 X 4.38	1
22-8	313898	PULLEY, 26/36" QUILL, V6L	1
22-9	56365	WASHER, SPECIAL QUILL	1
22-10	1282	NUT, 7/16-20 WDFLLK	1
23	35430	SCREW, 5/16-18 X .75 WASH TAP	7
24	312526	SUPPORT, LIFT, DECK FRONT	1
25	328155	PLATE-MOUNTING	1
26	180077	SCREW, 5/16-18 X .75 HHC	4
27	1498	NUT, 5/16-18 REGHEXCTRLK	4
28	58305	BRACKET, LINK DECK FRONT	1
29	58247	NUT, ADJUST	2
30	180079	SCREW, 5/16-18 X 1.00 HHC	2
31	1498	NUT, 5/16-18 REGHEXCTRLK	2
32	312477	BRACKET, LH WHEEL	1
33	180077	SCREW, 5/16-18 X .75 HHC	3
34	1498	NUT, 5/16-18 REGHEXCTRLK	3
35	300102	WHEEL BRACKET, RH	1
36	180077	SCREW, 5/16-18 X .75 HHC	6
37	1498	NUT, 5/16-18 REGHEXCTRLK	3
38	309069	BLADE, 10.69, LOW-LIFT	2
39	2493	WASHER, .39 ID X 1.25 D X .07 BELLVIL	6
40	39573	SCREW, 3/8-24 X 1.00 NYLHHC	2
41	300491	IDLER ARM ASSEMBLY	1
41-1	300490	IDLER ARM, 36, 38, 39, & 45, SD	1
41-2	308973	BRAKE PAD - HARD-NF343 (X-31)	1
41-3	41601	RIVET, OVSET, 187 DIA X .50 LONG	2
42	300100	BOLT, .50 X 1.88 HSSH 3/8-16	1
43	998416	WASHER, FLAT .391 X 1.00 X .125	1
44	45171	NUT, 3/8-16 HWDFL, WHIZ-LOCK	1
45	306249	BRACKET, EXTENSION IDLER	1
46	180077	SCREW, 5/16-18 X .75 HHC	1
47	1100	NUT, 5/16-18 REGHEXCTRLK	1
48	180020	SCREW, 1/4-20 X .75 HHC	1
49	1502	NUT, 1/4-20 REGHEXCTRLK	1
50	303247	ASSM Y. BLADE BRAKE 36, 39, 46	1
50-1	303246	BRAKE ARM	1
50-2	306973	BRAKE PAD - HARD-NF343 (X-31)	1
50-3	135624	RIVET, TRSET, 185 DIA X .41 LONG	2
51	180077	SCREW, 5/16-18 X .75 HHC	1
54	120393	WASHER, FLAT .344 X .69 X .085	1
55	1498	NUT, 5/16-18 REGHEXCTRLK	1
56	315305	ROD, BRAKE, 14.7 99" DECK	1
57	1502	NUT, 1/4-20 REGHEXCTRLK	1
58	314702	SPACER, SLEEVE .344 X 1.00 X .500	2
59	314702	SPACER, SLEEVE .344 X 1.00 X .500	2



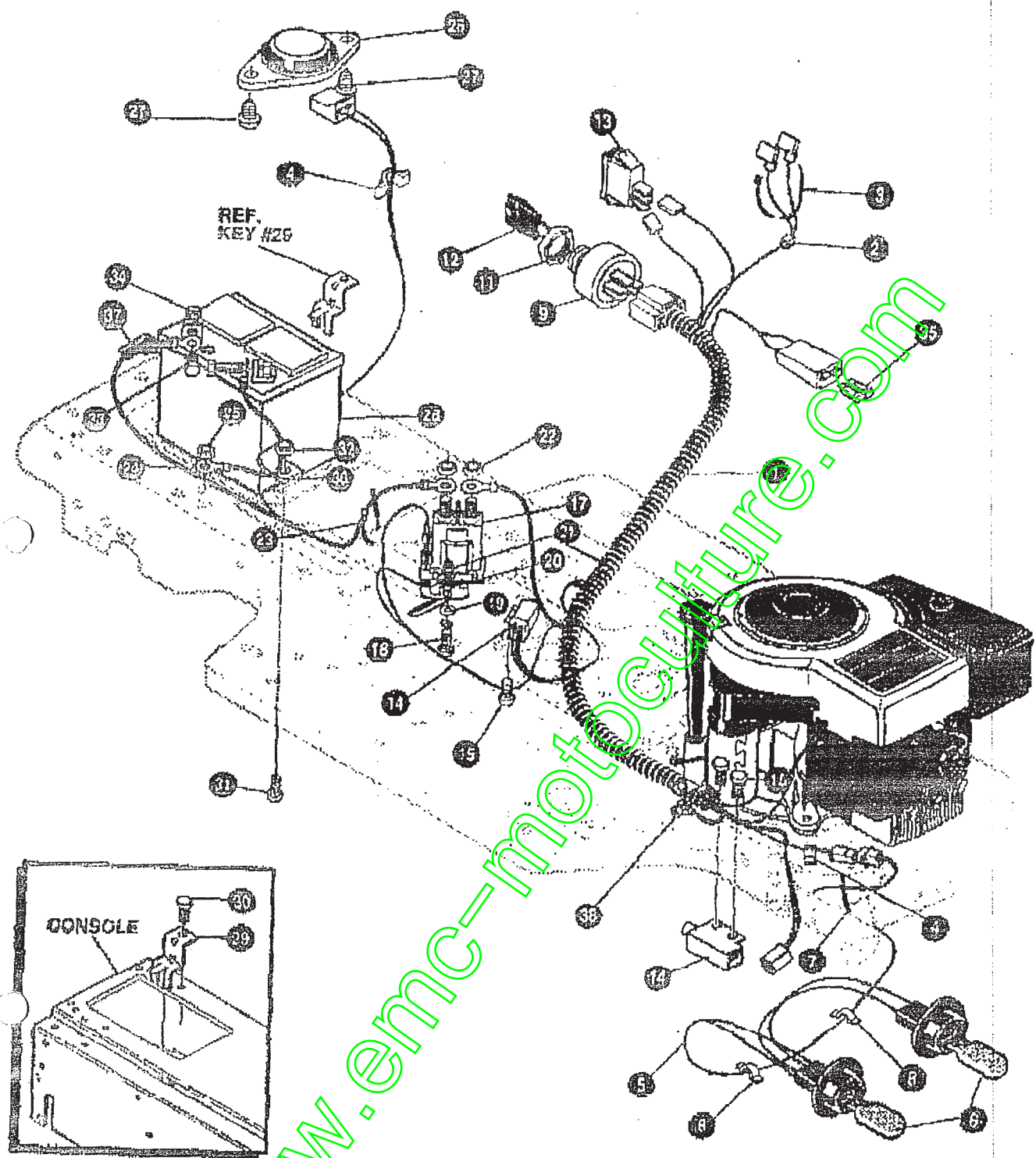
www.enc-motors.com

NOTE: ALWAYS USE ORIGINAL EQUIPMENT PARTS.
Use of service/replacement parts other than original equipment parts may void your warranty.

ALL UNNUMBERED
ITEMS ARE INTERCHANGEABLE
WITH OPPOSITE SIDE

333278 D

KEY#	PART#	DESCRIPTION	QTY
1	329456	ASSEMBLY, DECK, 36", SUS, SF/AIR ASSIST	1
2	58306	ROD, DECK HITCH	1
3	8260	PIN, HAIR, .091 DIA X 1.66 LONG	1
4	1348	RETAINER, BELT	1
5	310326	PULLEY, IDLER BFF, 4.00 WIDE FL	1
6	67325	BOLT, 3/8-16 X 2.00 CARBON	1
7	120382	WASHER, REGSPTLK .303 X .88 X .10	1
8	120377	NUT, 3/8-16 REGHX	1
9	322064	SPRING, .75 X 8.4 X .105 TENSION	1
10	326266	SPRING, .75 X 10.0 X .105 TENSION	1
11	300880	BELT, V 3L, 77.75, KEVLAR	1
12	328257	GUARD, BELT, LH, PLASTIC	1
13	180077	SCREW, 5/16-18 X .75 RHC	3
14	120393	WASHER, FLAT .344 X .80 X .065	3
15	1498	NUT, 5/16-18 REGHXCTRLK	3
16	302811	GAUGE WHEEL, EURD, 6.00 OD X 1.38 WD	2
17	23753	BOLT, 5/16 X 1.500 FNHSH, 3/8-16	2
18	1499	NUT, 3/8-16 REGHXCTRLK	2
19	57810	CHUTE DEFLECTOR, 36", 39", 45"	1
20	314975	SPRING, TENSION, CHUTE DEFLECTOR	1
21	304000	KIT FOR 31017 PIVOT ROD	1
22	328034	PULLEY, ENCHIE, V3L, 4.00 OFFSET	1
23	120383	WASHER, REGSPTLK .458 X .78 X .12	1
24	433146	SCREW, 7/16-20 X 4.25 RHC, BLACK	1
25	354252	ASSEMBLY, UPSTOP, WHOSE PLATE	1
26	1499	NUT, 3/8-16 REGHXCTRLK	2
27	332179	CAP, PUSH ON, FOR DIA .250 ROD	1



REF. KEY #26

CONSOLE

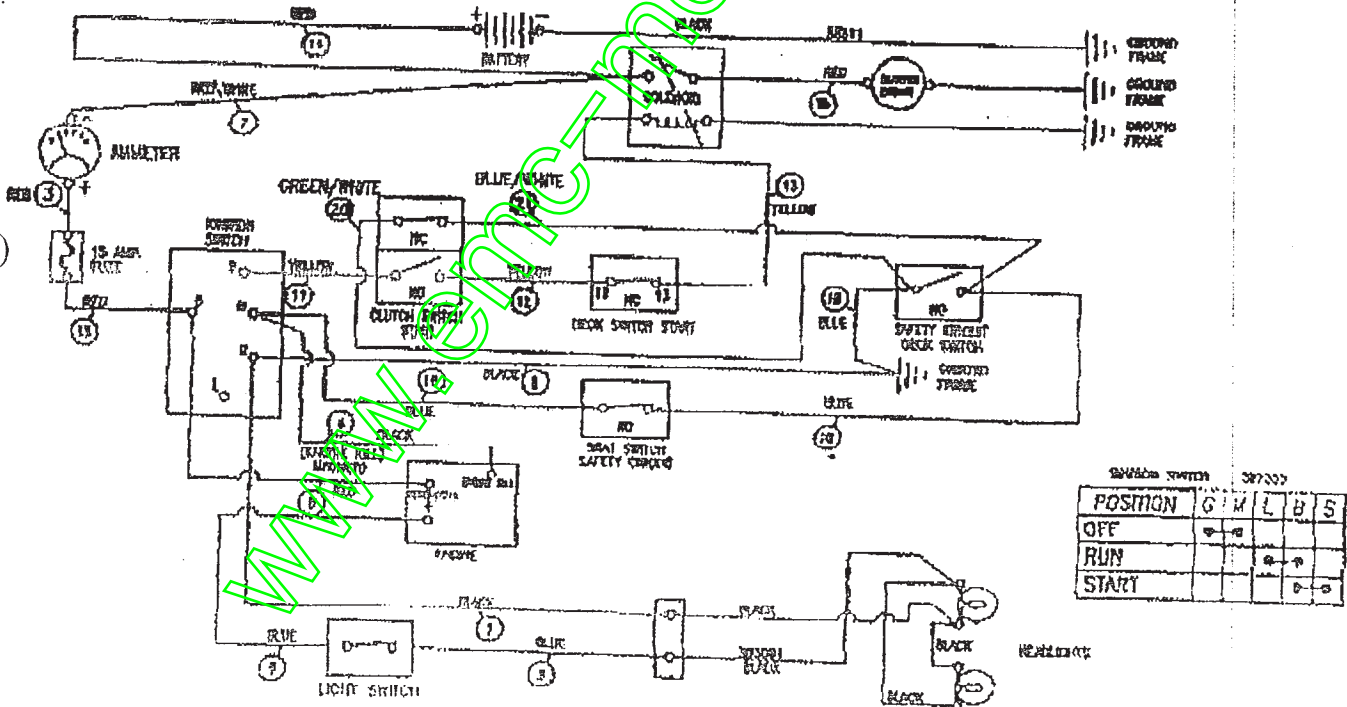
NOTE: ALWAYS USE ORIGINAL EQUIPMENT PARTS.
Use of service/replacement parts other than original equipment parts may void your warranty.

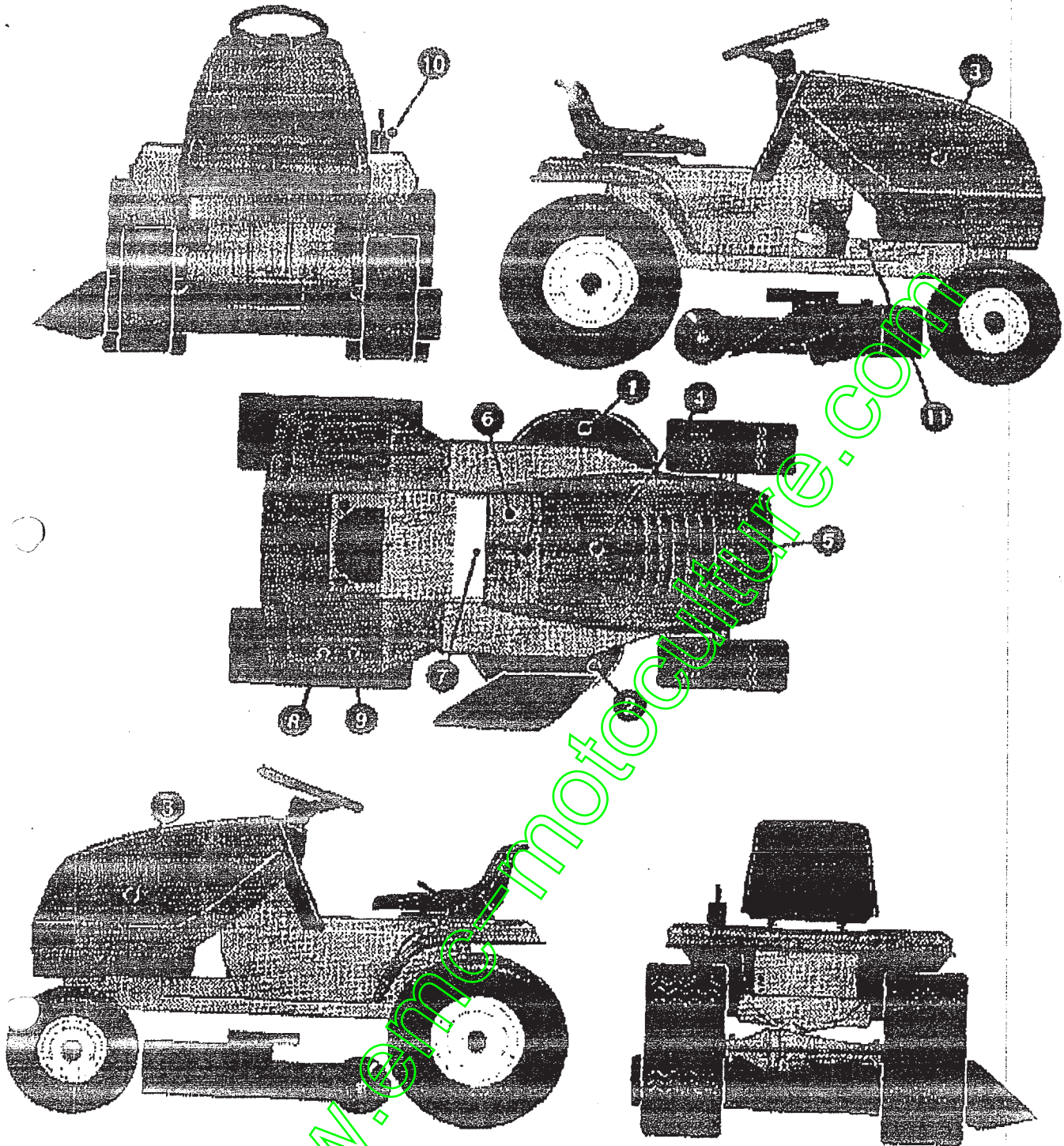
ALL UNNUMBERED
ITEMS ARE INTERCHANGEABLE
WITH OPPOSITE SIDE

326553 D

KEY#	PART#	DESCRIPTION	QTY
1	381450	WIRE HARNESS, SF, WAMP	1
2	322298	SPLICER	1
3	57444	TIE, CABLE BLACK NYLON, 5.62 LONG	1
4	41482	PRESS CLIP, 1.380 LONG, .255 ID	1
5	303054	ASSEMBLY, LIGHT WIRE-1/4 TURN	2
6	62572	BULB, HEADLAMP	1
7	57444	TIE, CABLE BLACK NYLON, 5.62 LONG	2
8	41482	PRESS CLIP, 1.380 LONG, .255 ID	1
9	327355	SWITCH-IGN.(AFTER FIRE) 3 POSN	1
11	327352	NUT, 5/8-8ACME DELTA FOR BOOT	1
12	327350	KEY, IGNITION	1
13	300334	LIGHT SWITCH, ON/OFF PANEL MOUNT	1
14	57476	SWITCH, SCREW MOUNT, DP, NC, NO, BLK	1
15	300302	SCREW, #10 X .50 HHTAPPST, BLACK	2
17	53716	SOLENOID	1
18	187745	SCREW, 1/4-20 X .75 HXSEMMA	2
19	1084	WASHER, FLAT .281 X 1.00 X .063	2
20	1502	NUT, 1/4-20 REGHEXCTRLK	1
21	271172	NUT, 1/4-20 REGHEXKEPS	1
22	271187	NUT, 5/16-24 HKEPS	1
23	57444	TIE, CABLE BLACK NYLON, 5.62 LONG	2
24	65511	WIRE, GROUND, 12.5"	1
25	271184	NUT, 5/16-18 HEXKEPS	1
26	57547	SWITCH, SEAT	1
27	180505	SCREW, 1/4-20 X .38 PHPNMA	1
28	92693	BATTERY, 12V	2
29	329175	BATTERY BRACKET	1
30	085348	SCREW, 1/4-20 X .50 WAHTAP	1
31	187745	SCREW, 1/4-20 X .75 HXSEMMA	1
32	1502	NUT, 1/4-20 REGHEXCTRLK	1
33	180020	SCREW, 1/4-20 X .75 HHC	1
34	271172	NUT, 1/4-20 REGHEXKEPS	2
35	302031	FUSE SPADE TYPE 32V 10A	1
36	0149	BRACKET, CABLE RETAINER	1
37	300201	INSULATOR, BATTERY BOOT EURO	1
38	124818	NUT, 1/4-20 REGHEXCTRLK	1

SCHEMATIC DRAWING

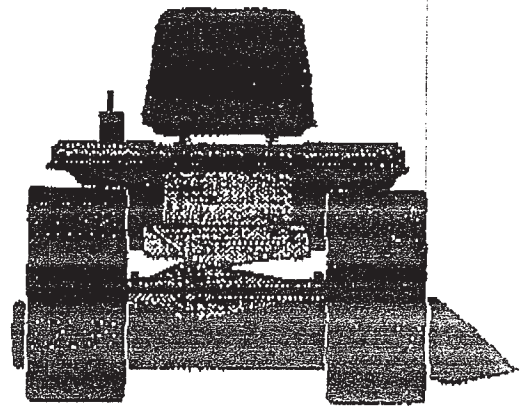
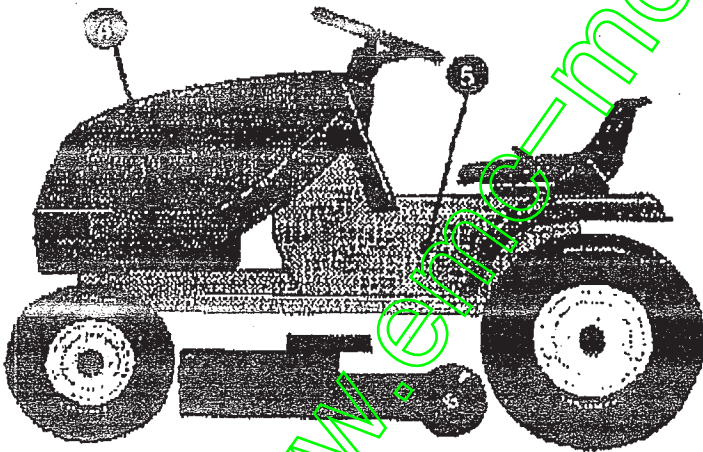
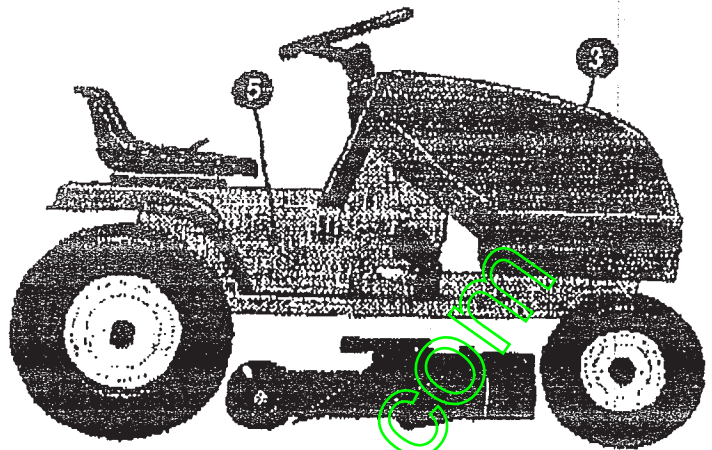
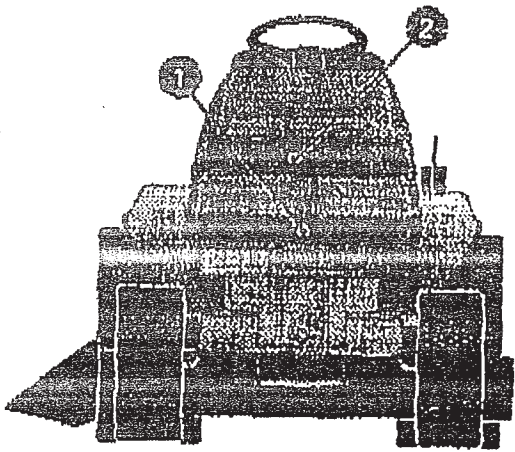




KEY#	PART#	DESCRIPTION	QTY
1	402700	DECAL, CAUTION, DECK, LH	1
2	402701	DECAL, CAUTION, DECK, RM	1
3	305603	PAD, 18 X 6 FOAM HOOD	1
4	307276	PAD, 15 X 7 FOAM HOOD	2
5	307277	PAD, 12 X 4 FOAM HOOD	1
6	324989	DECAL, DASH, DYNAMARIK, EXP	1
7	402747	DECAL, CONSOLE, SYMBOLIC, SF	1
8	311394	DECAL, SHIFT REVERSE/NEUTRAL	1
9	331013	DECAL, SHIFTER POSITION	1
10	402214	DECAL, HEIGHT ADJUST	1
11	402702	DECAL, BRAKE/CLUTCH	1

336103 A

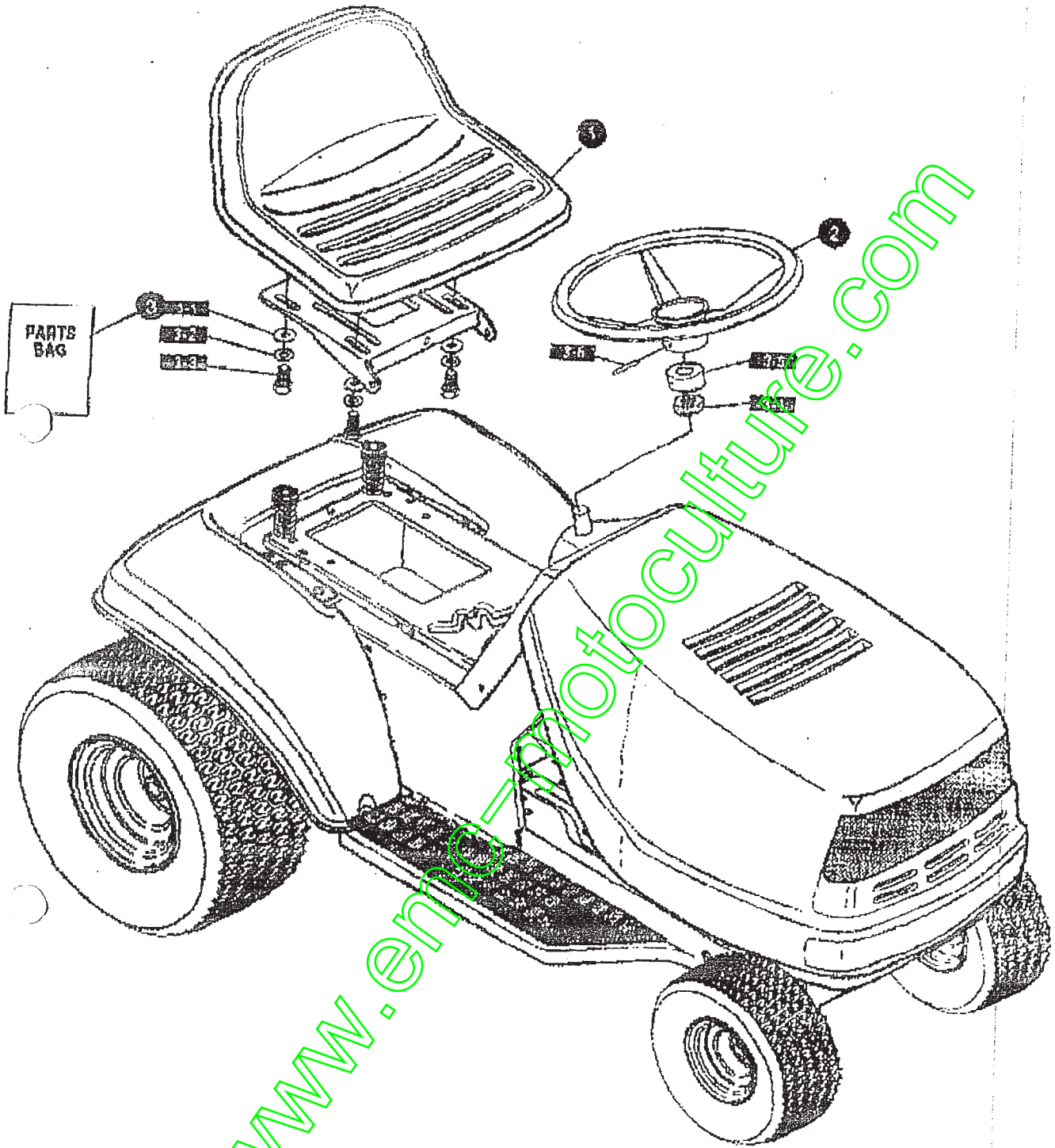
DECAL ASSEMBLY



KEY#	PART#	DESCRIPTION	QTY
1	322698	DECAL TAPE H13 8MIL VINYL.....	1
2	308492	FOIL, LENS, DYNA HOOD REFLECTOR.....	1
3	402884	DECAL, HOOD, GREENCUT, H-13, RH.....	1
4	402883	DECAL, HOOD, GREENCUT, H-13, LH.....	1
5	402881	DECAL, CONSOLE, GREENCUT, GC13.....	2

335939 A

REPAIR PARTS



327405 D

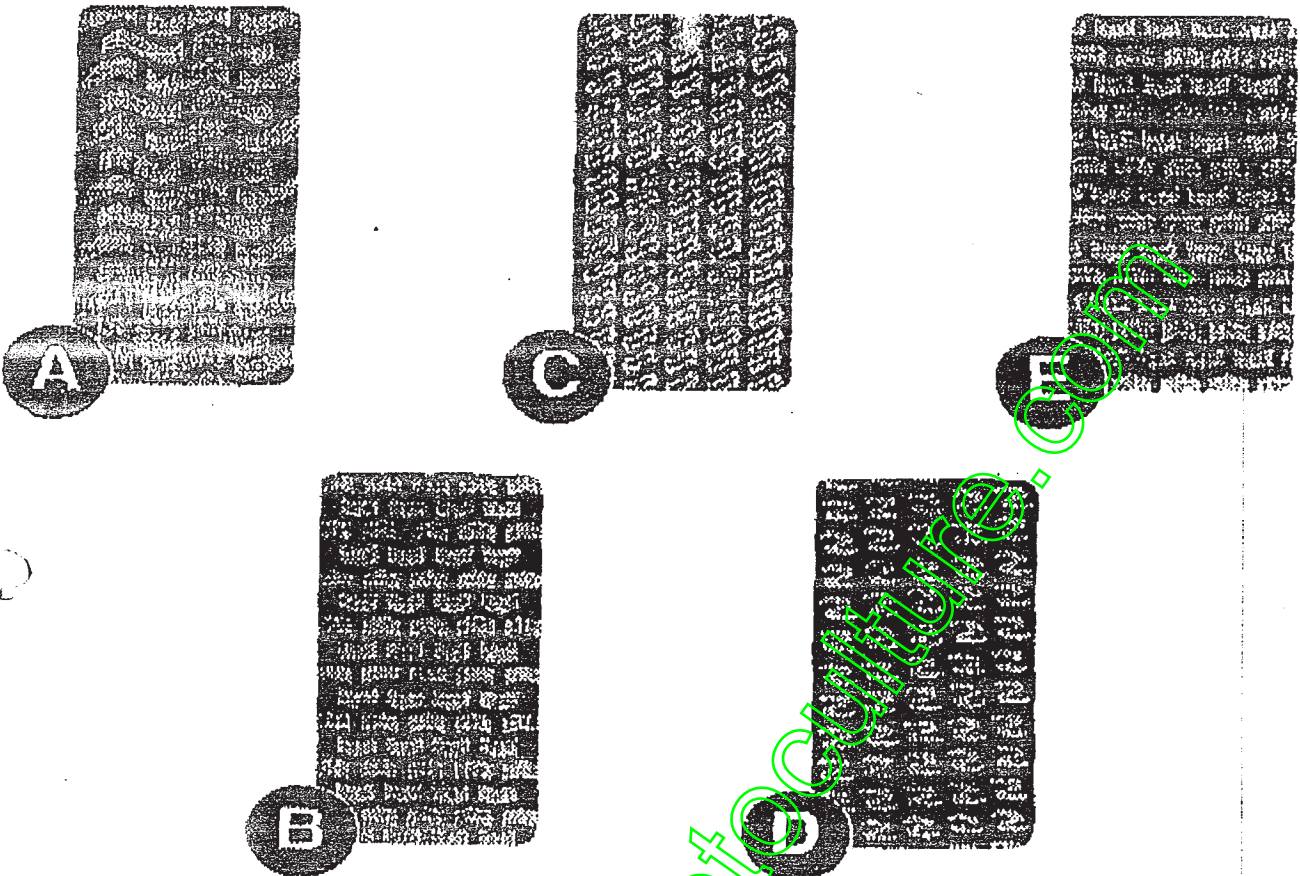
F3554-330

CUSTOMER ASSEMBLY

KEY#	PART#	DESCRIPTION	QTY
1	304316	SEAT, MICHIGAN GEN, W/SWITCH HOLE	1
2	330510	STEERING WHEEL	1
3	391424	PARTS BAG, ASSEMBLY SEAT/STEER	1
3-1	120393	WASHER, FLAT .344 X .69 X .065	4
3-2	120638	WASHER, HVSP TLK .528 X .80 X .09	4
3-3	180077	SCREW, 5/16-18 X .75 HNC	4
3-4	321322	COVER, STEERING SHAFT	1
3-5	301413	SPACER, STEERING SHAFT	1
3-6	450378	PIN, SPRING .250 DIA X 2.00 LONG	1

www.emc-motoculture.com

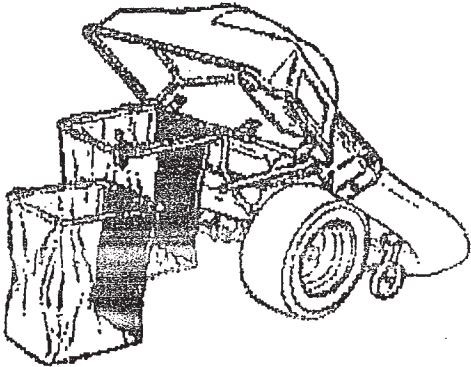
TREAD PATTERNS



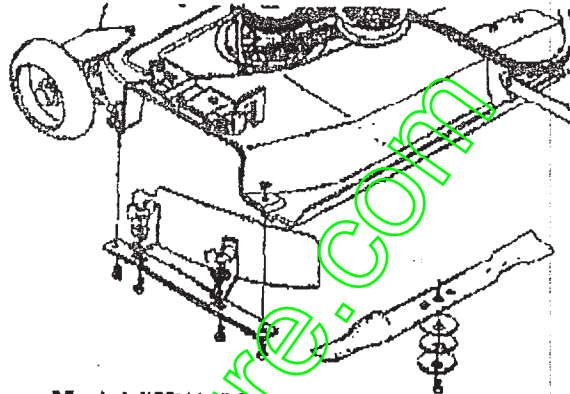
TIRE SIZE	"A"	"B"	"C"	"D"	"E"
11 X 4.00 - 5	42295	319679			
13 X 5.00 - 6	41060	319680			
15 X 6.00 - 6	39830	316792	301140	313952	
16 X 4.80 - 8		305035			
16 X 6.50 - 8	41081	319682		314539	
18 X 6.50 - 8		42091			
18 X 8.50 - 8	319683	317400			
18 X 9.50 - 8	41106	316701		313950	
20 X 8.00 - 8	319685	319684	57164	314584	331606
20 X 10.00 - 8	58276	319686		313654	
20 X 10.00 - 10	55893	319687			
23 X 9.50 - 12	53655	319690	319689	314370	

Contact the dealer where your tractor was purchased for the available accessories. If you are unable to contact the dealer, write to the address on the warranty page of your Operator's Manual.

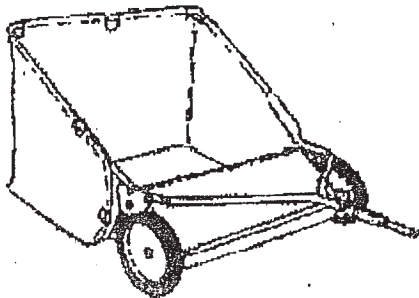
STANDARD LAWN TRACTOR



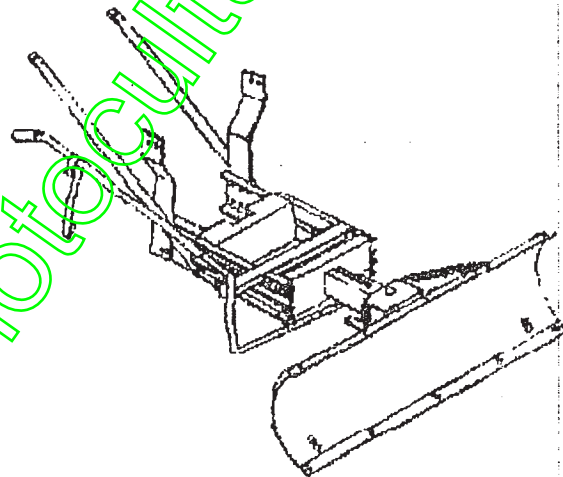
Model # 5708-13
Grass Collector for 39" decks
For heavy duty grass collection
order Model # 5709-10 Air Assist



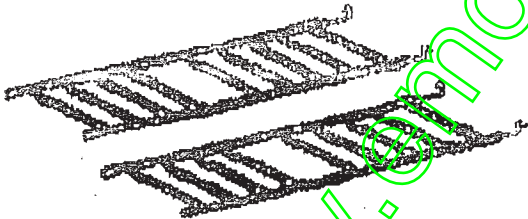
Model #5715-00
Mulching Kit (39" Deck)



Model # 5648-10
Tow behind Lawn Sweeper for
Grass and leaves



Model #5661-09
42" Snowblade - Fits 36", 38", 39", & 45"



Model # 5579-00
Tire Chains - 18" x 0.50" tires

OTHER ACCESSORIES

Model	Description
5672-01	Wheel Weights - Front - 1 pr. w/mtg. hdw. - Fits 15" tires
5673-02	Wheel Weights - Rear - 1 pr. w/mtg. hdw. - Fits 18" & 20" tires
306932	39" High lift blade for bagging or side discharge (requires 2)
326160	39" Mulching blade (requires 2)