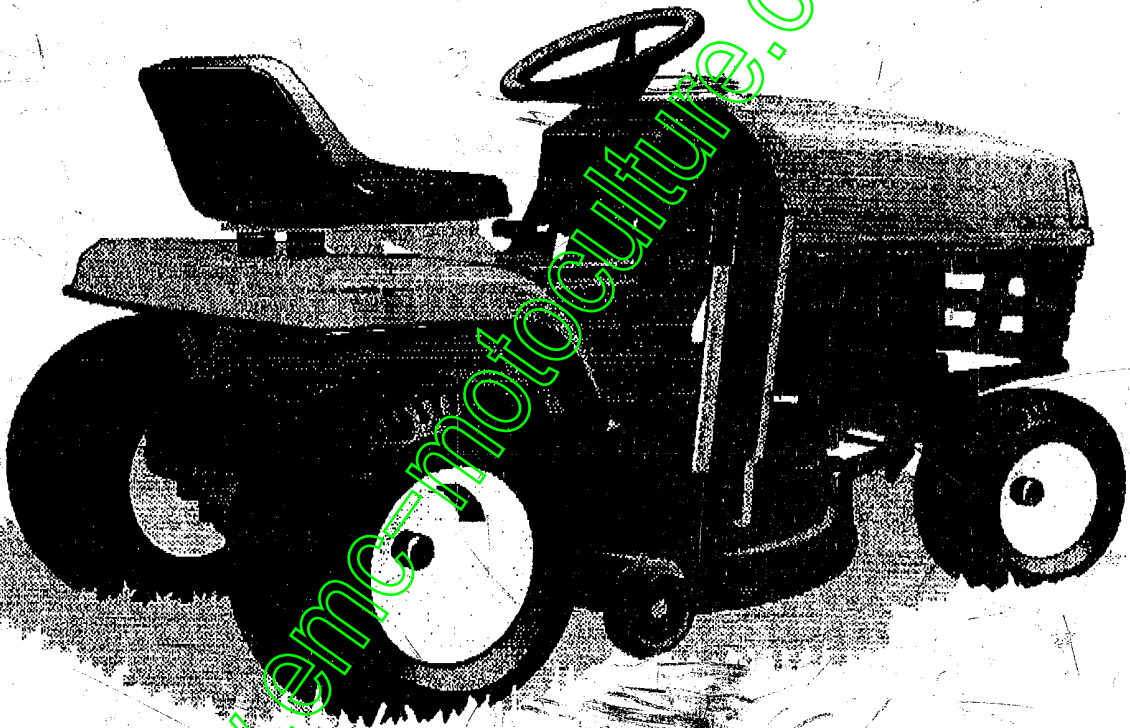


**MANUEL**

**PIÈCES DE RECHANGE**

**Tracteurs**

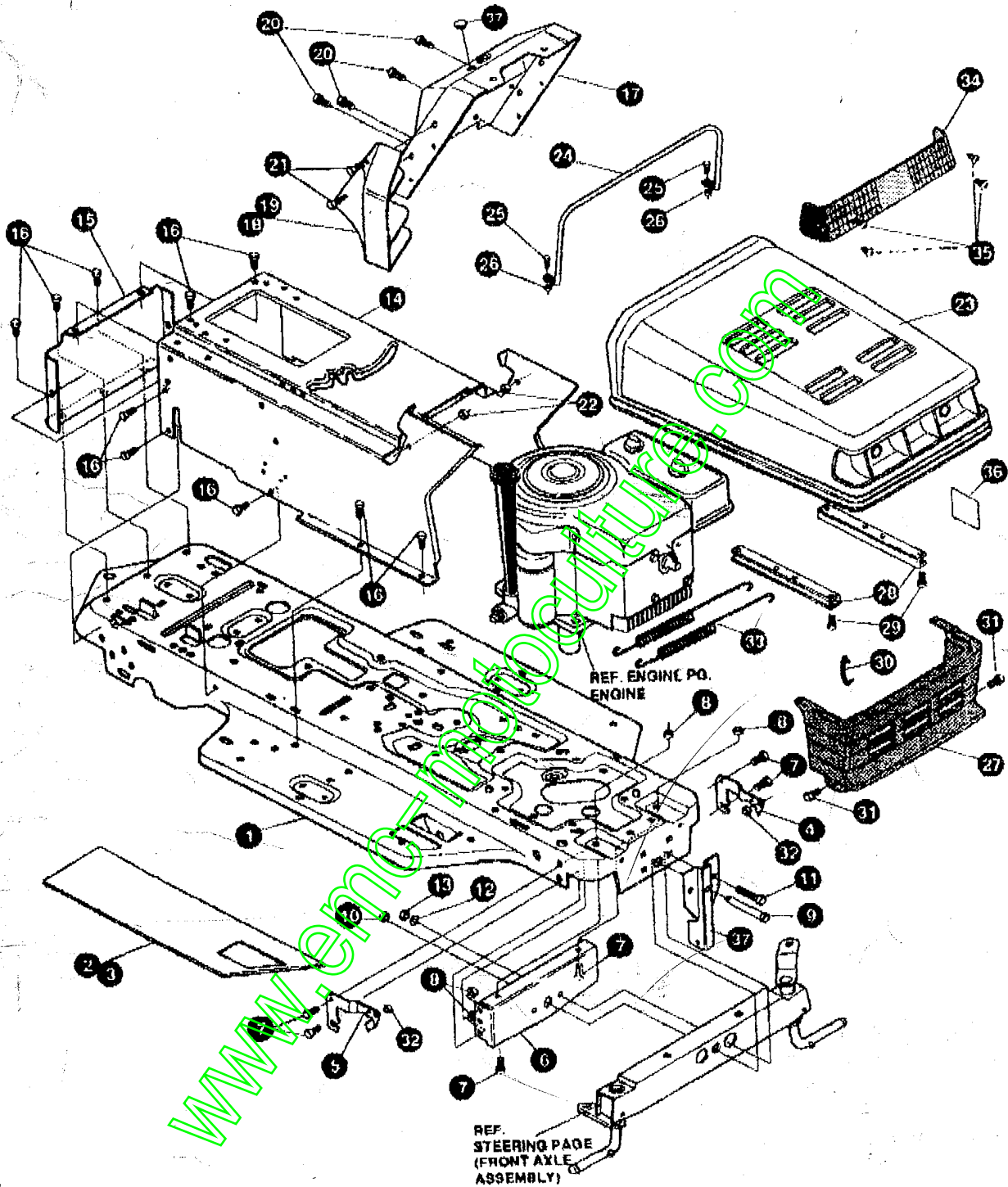


**TONDEUSE AUTOPORTEE**

**Modèle B3554-350**

# F3554-350

# REPAIR PARTS



**NOTE: ALWAYS USE ORIGINAL EQUIPMENT PARTS.**  
 Use of service/replacement parts other than original equipment parts may void your warranty.

**ALL UNNUMBERED ITEMS ARE INTERCHANGEABLE WITH OPPOSITE SIDE**

335695 A

**F3554-350**

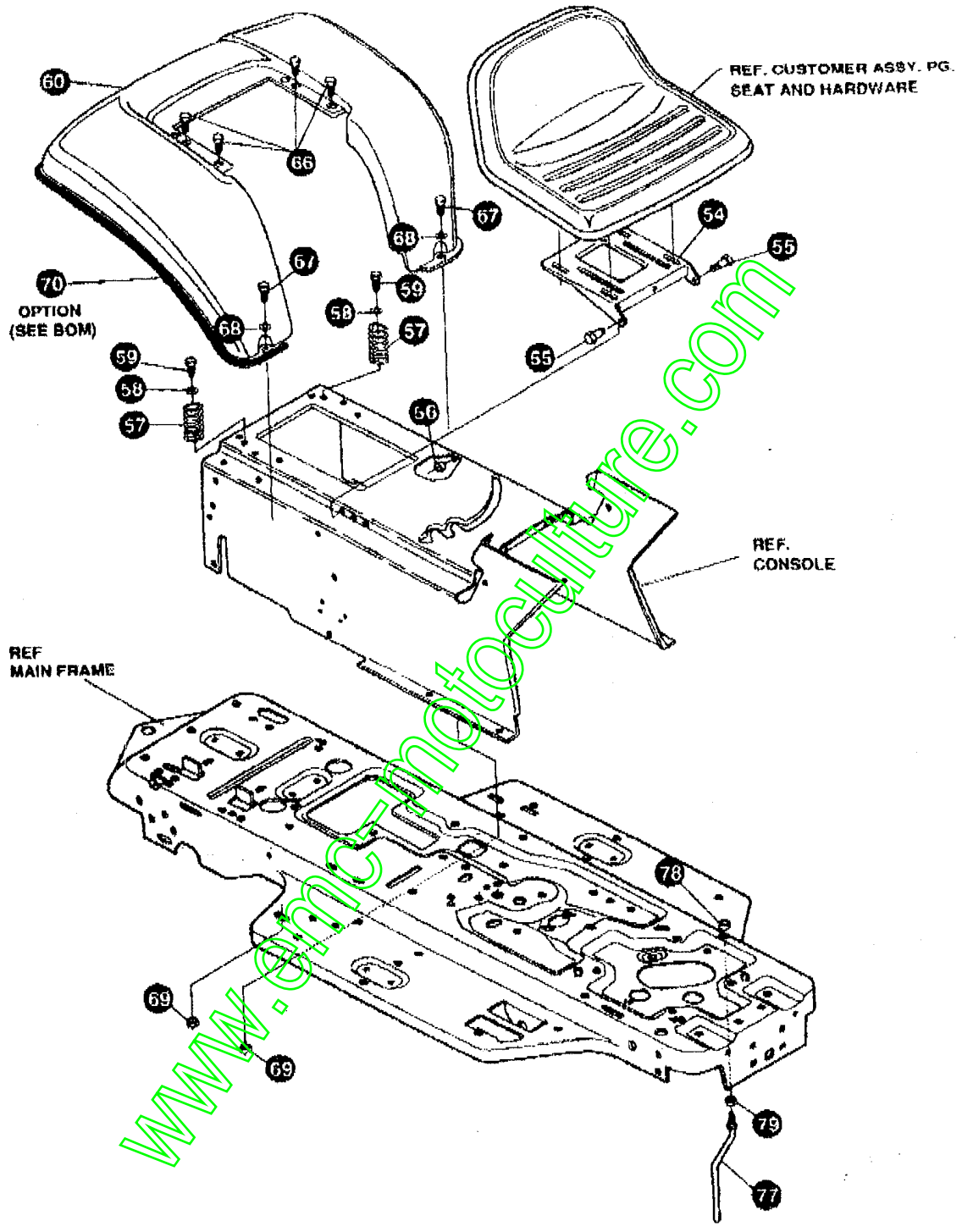
**CHASSIS & HOOD ASSEMBLY**

KEY#	PART#	DESCRIPTION	QTY
1	391173-860	FRAME, MAIN, SF, RIDER	1
2	391834	FOOT PAD, RH, SF, FULL WIDTH	1
3	391835	FOOT PAD, LH, SF, FULL WIDTH	1
4	313003-853	BRACKET, GRILLE SUPPORT, LH	1
5	313004-853	BRACKET, GRILLE SUPPORT, RH	1
6	56362-853	BRACKET, SUPPORT, FRONT AXLE-SF	1
7	328154	SCREW, 5/16-18 X 1.0 WDFLLK	1
8	55273	NUT, 5/16-18 WDFLLKLRG WHIZ	6
9	50720	BOLT, 625X2.875 SPSH 1/2-20	1
10	274854	NUT, 1/2-20 REGHXCTRLK	1
11	180138	SCREW, 3/8-16X3.00 HHC	1
12	2483	WASHER, 39IDX1.25DX 07 BELLVIL	1
13	1499	NUT, 3/8-16 REGHXCTRLK	1
14	332178-860	CONSOLE, SF, GP, DASH	1
15	56235-860	CONSOLE, REAR COVER	1
16	995346	SCREW, 1/4-20X .50 WAHHTAP	15
17	321980-853	DASH, SF, W/O AMMET, GPWR	1
18	302723	INSERT, DASH, LH, 11HP	1
19	302724	INSERT, DASH, RH, 11HP	1
20	44811	SCREW, 1/4-20 X .76 WAHHTAP	4
21	274672	SCREW, 1/4-20 X .63 WAHHC	4
22	51335	NUT, 1/4-20 WDFLWHIZ-LK	4
23	335725	HOOD, H-12, PLASTIC	1
24	307278	SUPPORT, HOOD, H-12, GP, 11HP	1
25	301542	SCREW, 10-24 X 1.00 HWATAP, BLACK	4
26	308459	NUT, 10-24 HXHDNYLK	4
27	302722	GRILL, G-15, GPWR, SMLOWER, GREY	1
28	9783	BRACKET, TIE HOOD	2
29	35055	SCREW, 10-24 X .50 SLMWATAP	8
30	310203	CLIP, HOG RING, C-SHAPED	1
31	56876	BOLT, .375 X .580 HHSB, 5/16-18	2
32	1498	NUT, 5/16-18 REGHEXCTRLK	2
33	57478	SPRING, HOOD LATCH	2
34	305716	LENS, 11HP, SMOKED, H-12	1
35	57798	SCREW, #8 X .50 PLASTITE/HI-LO	4
36	301452	FOIL, HEAT REFLECTOR	1
37	33261-860	BRACKET, FRONT HANGER	1
	315202	PLUG, DOME, .56 DIA, HEYCO #2653, BLACK	1
	336312	PARTS MANUAL	1
	336913	OPERATOR'S MANUAL (FRENCH)	1

WWW.CAT-INFO.COM

# F3554-350

# REPAIR PARTS



**NOTE: ALWAYS USE ORIGINAL EQUIPMENT PARTS.**  
 Use of service/replacement parts other than original  
 equipment parts may void your warranty.

**ALL UNNUMBERED  
 ITEMS ARE INTERCHANGEABLE  
 WITH OPPOSITE SIDE**

335695 A

# F3554-350

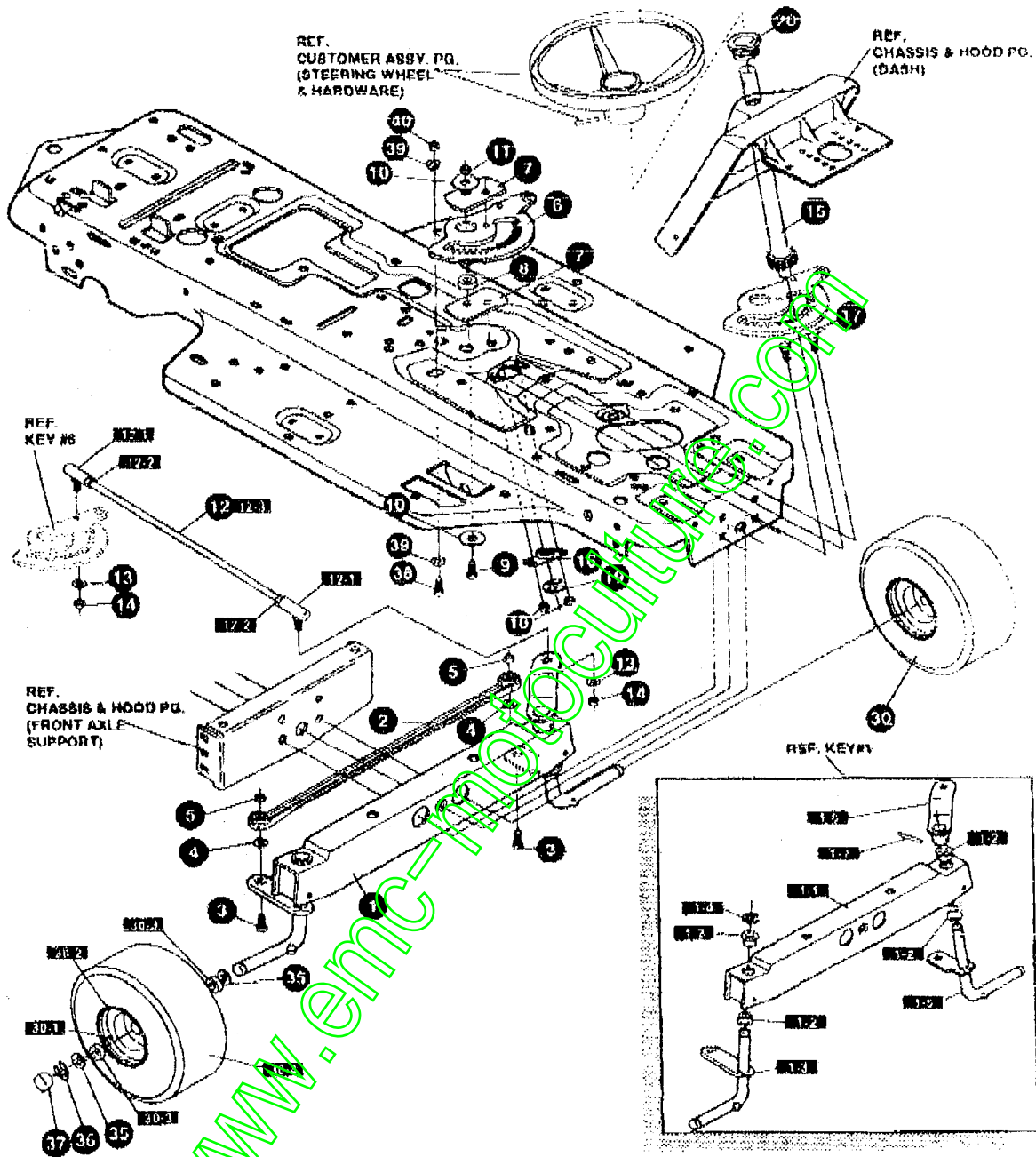
# CHASSIS & HOOD ASSEMBLY

KEY#	PART#	DESCRIPTION	QTY
54	68967-859	PLATE, SEAT, F6, SF, LF	1
55	20507	BOLT, .437 X .156 HSSH, 5/16-18	2
56	1498	NUT, 5/16-18 REGHEXCTRLK	2
57	330463	SPRING, SEAT 1.60 OD X 2.25 LONG	2
58	120392	WASHER, FLAT .281 X .63 X .065	2
59	995346	SCREW, 1/4-20 X .50 WASHTAP	2
60	332420-860	FENDER, F-5, SF ONLY	1
66	995346	SCREW, 1/4-20 X .50 WASHTAP	4
67	126358	BOLT, 5/16-18 X 1.00 CARHLN	2
68	446363	WASHER, FLAT .376 X .88 X .082	2
69	55273	NUT, 5/16-18 WDFLLKLRG, WHIZ	2
70	85023	TRIM, STRIP, BLACK	77.5
77	50653	GUIDE, BELT	1
78	41529	NUT, 3/8-18 HXCTRLKJAM	1
79	271190	NUT, 3/8-18 HEXKEPS	1

www.emc-moldings.com

# F3554-350

# REPAIR PARTS



**NOTE: ALWAYS USE ORIGINAL EQUIPMENT PARTS.**  
 Use of service/replacement parts other than original equipment parts may void your warranty.

**ALL UNNUMBERED ITEMS ARE INTERCHANGEABLE WITH OPPOSITE SIDE**

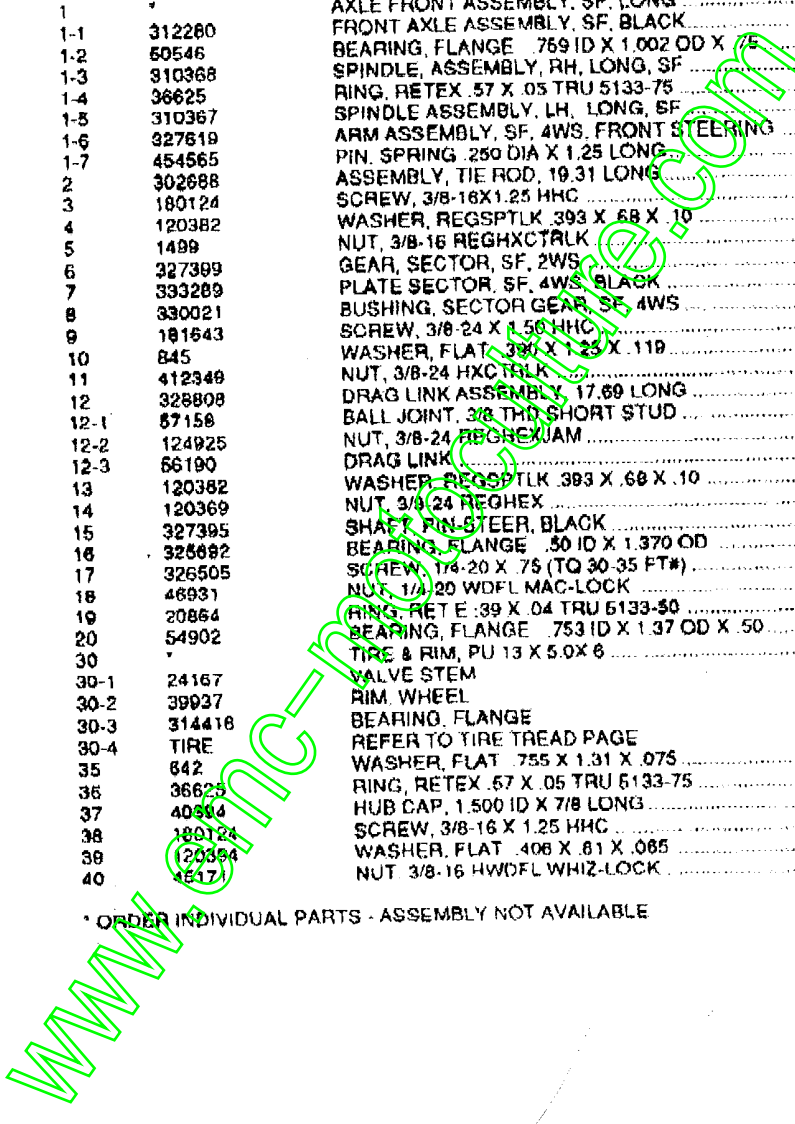
332321 C

# F3554-350

# STEERING ASSEMBLY

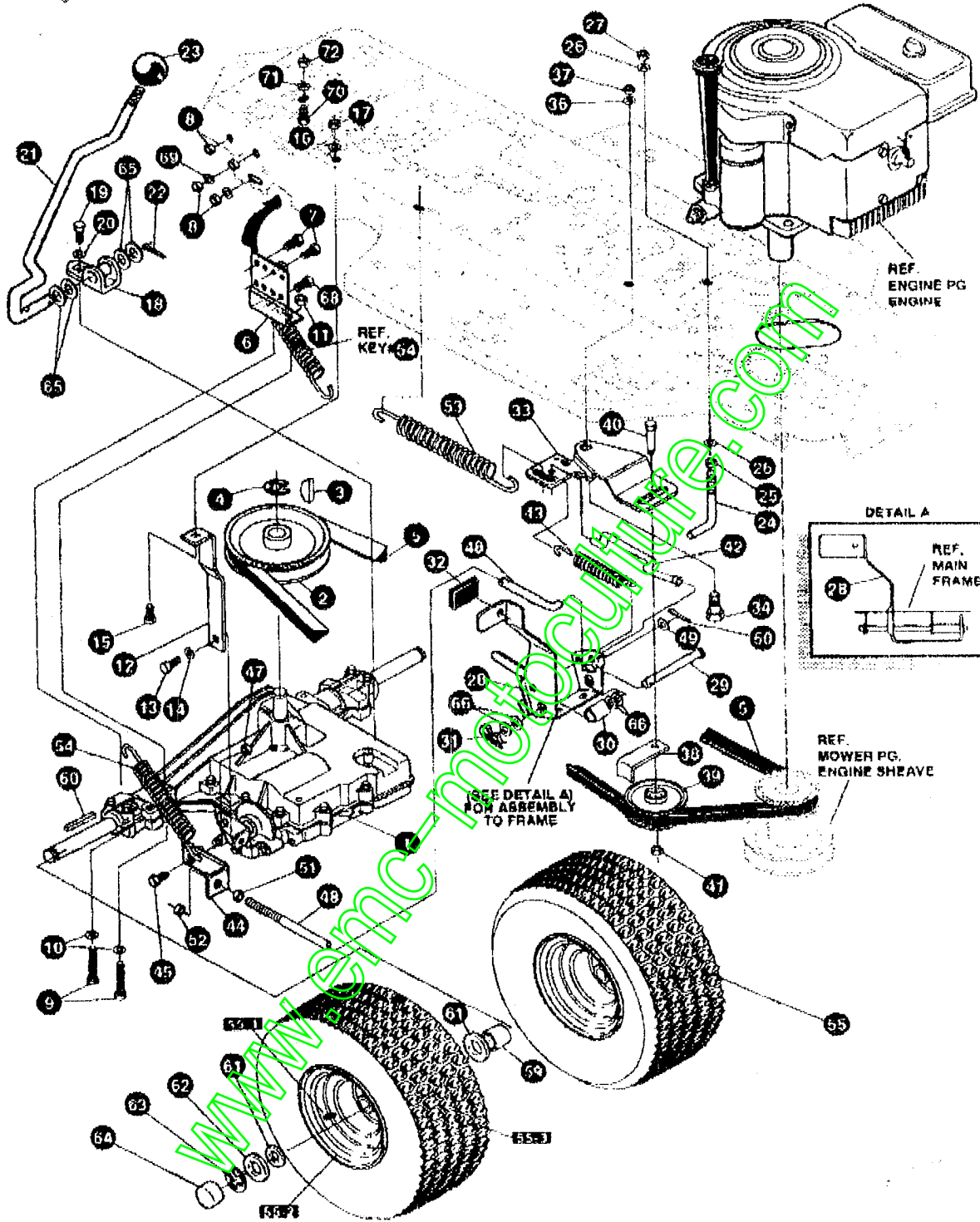
KEY#	PART#	DESCRIPTION	QTY
1	*	AXLE FRONT ASSEMBLY, SF, LONG	1
1-1	312280	FRONT AXLE ASSEMBLY, SF, BLACK	1
1-2	60546	BEARING, FLANGE .769 ID X 1.002 OD X .75	4
1-3	310368	SPINDLE, ASSEMBLY, RH, LONG, SF	1
1-4	36625	RING, RETEX .57 X .05 TRU 5133-75	1
1-5	310367	SPINDLE ASSEMBLY, LH, LONG, SF	1
1-6	327619	ARM ASSEMBLY, SF, 4WS, FRONT STEERING	1
1-7	454565	PIN, SPRING .250 DIA X 1.25 LONG	1
2	302688	ASSEMBLY, TIE ROD, 19.31 LONG	1
3	180124	SCREW, 3/8-16X1.25 HHC	2
4	120382	WASHER, REGSPTLK .393 X .68 X .10	2
5	1499	NUT, 3/8-16 REGHXCTLK	2
6	327399	GEAR, SECTOR, SF, 2WS	1
7	333289	PLATE SECTOR, SF, 4WS, BLACK	2
8	330021	BUSHING, SECTOR GEAR, SF, 4WS	1
9	181643	SCREW, 3/8-24 X 1.50 HHC	1
10	845	WASHER, FLAT .393 X 1.25 X .119	2
11	412349	NUT, 3/8-24 HXC TRLK	1
12	328809	DRAG LINK ASSEMBLY, 17.69 LONG	1
12-1	87158	BALL JOINT, 3/8 THD SHORT STUD	2
12-2	124925	NUT, 3/8-24 REGHEXJAM	2
12-3	66190	DRAG LINK	1
13	120382	WASHER, REGSPTLK .393 X .68 X .10	2
14	120369	NUT, 3/8-24 REGHEX	2
15	327395	SHAFT PIN, STEER, BLACK	1
16	325692	BEARING, FLANGE .50 ID X 1.370 OD	1
17	326505	SCREW, 1/4-20 X .75 (TO 30-35 FT#)	2
18	46931	NUT, 1/4-20 WDFL MAC-LOCK	2
19	20864	RING, RETEX .39 X .04 TRU 5133-50	1
20	54902	BEARING, FLANGE .753 ID X 1.37 OD X .50	1
30	*	TIRE & RIM, PU 13 X 5.0X 6	2
30-1	24167	VALVE STEM	
30-2	39937	RIM, WHEEL	
30-3	314418	BEARING, FLANGE	
30-4	TIRE	REFER TO TIRE TREAD PAGE	
35	842	WASHER, FLAT .755 X 1.31 X .075	4
36	36625	RING, RETEX .57 X .05 TRU 5133-75	2
37	40364	HUB CAP, 1.500 ID X 7/8 LONG	2
38	180124	SCREW, 3/8-16 X 1.25 HHC	1
39	(20354)	WASHER, FLAT .406 X .81 X .065	2
40	(517)	NUT 3/8-16 HWDFL WHIZ-LOCK	1

\* ORDER INDIVIDUAL PARTS - ASSEMBLY NOT AVAILABLE



# F3554-350

# REPAIR PARTS



**NOTE: ALWAYS USE ORIGINAL EQUIPMENT PARTS.**  
 Use of service/replacement parts other than original equipment parts may void your warranty.

**ALL UNNUMBERED ITEMS ARE INTERCHANGEABLE WITH OPPOSITE SIDE**

331791 E



# F3554-350

# MOTION DRIVE ASSEMBLY

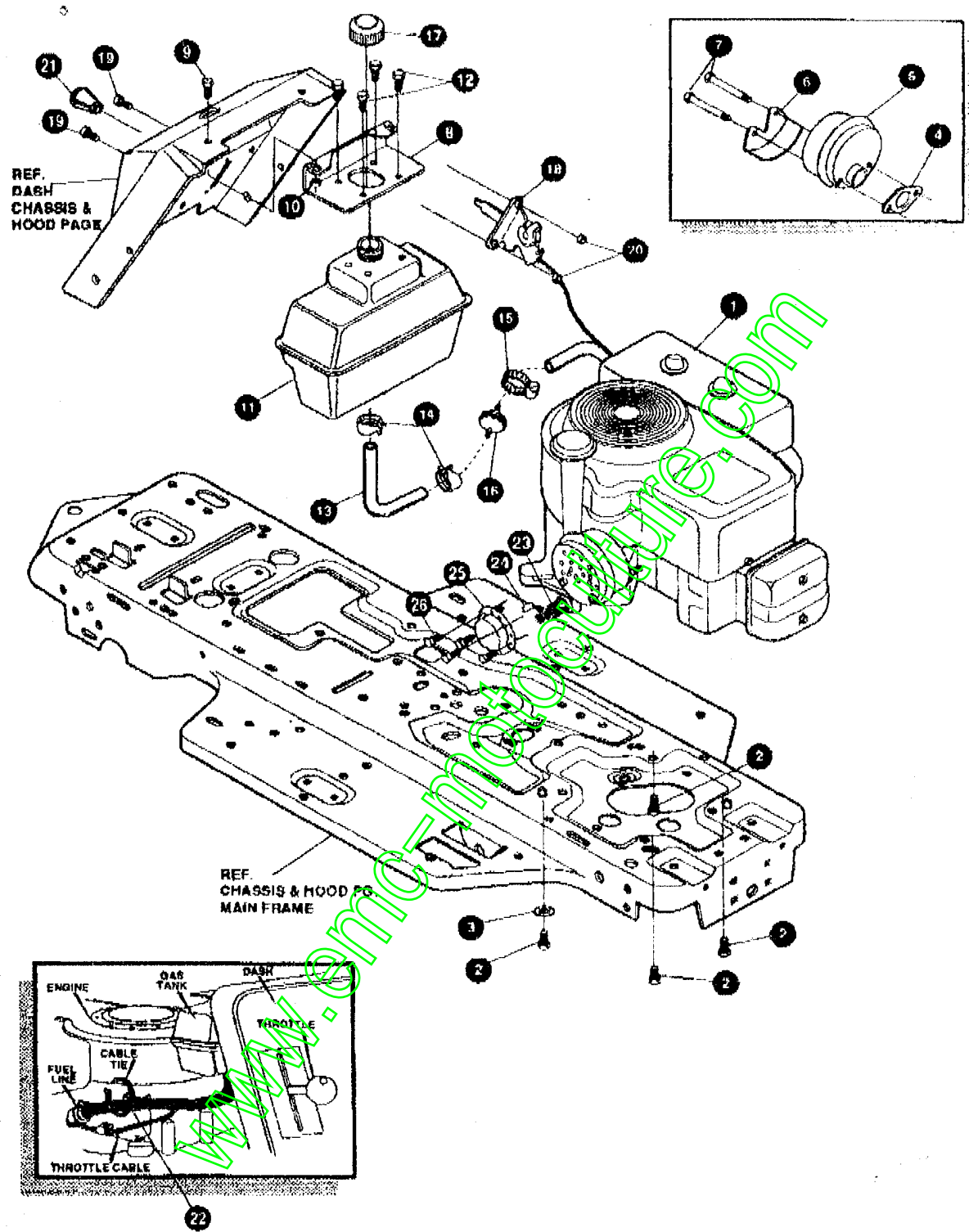
KEY#	PART#	DESCRIPTION	QTY
1		TRANSAXLE, FOOT, 4360-5	1
2	303109	PULLEY, 6.6 OD, V4L, T/A	1
3	50795	KEY, HI-PRO, 606 .75 DIA X .187 WD	1
4	22053	RING, RETEX, 58 X .035 TRU 5100-62	1
5	54758	BELT, V 4L, 82.00, SF, DRIVE	1
6	326515-853	BRACKET, TRANSAXLE	2
7	180077	SCREW, 5/16-18 X .75 HHC	4
8	1498	NUT, 5/16-18 REGHEXCTRLK	8
9	180091	SCREW, 5/16-18 X 2.50 HHC	4
10	120399	WASHER, FLAT, 344 X .69 X .065	4
11	1498	NUT, 5/16-18 REGHEXCTRLK	4
12	323126	BRACKET, STABILIZER, BLACK	1
13	35498	SCREW, 5/16-18 X .75 WAHTAP	1
14	120638	WASHER, HV8PTLK, 328 X .80 X .09	1
15	180078	SCREW, 5/16-18 X 1.00 HHC	1
16	138485	WASHER, EXLK, 320 X .81 X .03	1
17	1498	NUT, 5/16-18 REGHEXCTRLK	1
18	335218	SHIFT BRACKET, P930/4360	1
19	56255	SCREW, 1/4-28 X .75 NYLHHC	1
20	57157	WASHER, .750 X .250 SP-TRANSAXLE	1
21	331800	SHIFT LEVER (DANA)	1
22	197185	PIN, COTTER, .125 DIA X 1.00 LONG	1
23	55514	KNOB, ROUND, 1.50 DIA, BLACK	1
24	49888	BELT GUIDE	1
25	271184	NUT, 5/16-18 HEXKEPS	1
26	120393	WASHER, FLAT, 344 X .69 X .065	2
27	1498	NUT, 5/16-18 REGHEXCTRLK	1
28	331836	ASSEMBLY, PEDAL, BRAKE, CLUTCH, SF	1
29	319676	PIN, CLEVIS, .800 O X 2.87 LONG	1
30	381972	SPACER, SLEEVE, 53 X .62 X 1.240	1
31	56180	PIN, HAIR, .091 DIA X 1.62 LONG	1
32	48761	PAD, CLUTCH/BRAKE, PEDAL	1
33	321989	IDLER ARM BRACKET, TRACTION, SF	1
34	320989	BOLT, .625 X 1.185 HSH, 5/16-18	1
36		WASHER, FLAT, 333 X .87 X .119	1
37		NUT, 5/16-18 REGHEXCTRLK	1
38	30689	RETAINER, BELT	1
39	35374	PULLEY, IDLER, V4L, 3.06 X .62	1
40	45892	BOLT, 3/8-16 X 1.50 CARRSN	1
41	1498	NUT, 3/8-16 REGHXCTRLK	1
42	333175	CLUTCH ROD ASSEMBLY, 268 DIA 3.92	1
43	326780	SPRING, 3/8 OD X 2.18 X .055 TENSION	1
44	323127	BRACKET, BRAKE ROD, BLACK	1
45	20507	BOLT, .437 X .156 HSH, 5/16-18	1
47	1498	NUT, 5/16-18 REGHEXCTRLK	1
48	323222	BRAKE ROD, RIDER, BLACK	1
49	120393	WASHER, FLAT, 344 X .69 X .065	1
50	121222	PIN, COTTER, .090 DIA X .75 LONG	1
51	271184	NUT, 5/16-18 HEXKEPS	1
52	44105	NUT, 5/16-18 HWDFLCTRLK	1
53	327867	SPRING, 3/4 OD X 7.75 X .091, TENSION	1
54	35419	SPRING, .071 X .62 X 4.37	1
55		TIRE & RIM, PU 18 X 8.6 X 8	2
55-1	24167	VALVE STEM	
55-2	326162	RIM, WHEEL	
55-3		REFER TO TIRE TREAD PAGE	
56	57479	SPACER, SLEEVE, .75 X 1.25 X 1.32	2
58	52928	KEY, SQUARE, .187 SQUARE X 2.25 LONG	2
59	642	WASHER, FLAT, .755 X 1.31 X .075	4
62	42815	WASHER, FLAT, .755 X 1.53 X .07	2
63	36625	RING, RETEX, .57 X .05 TRU 5133-75	2
64	40394	HUB CAP, 1.500 ID X 7/8 LONG	2
65	5950	WASHER, FLAT, .505 X .88 X .13	4
66	2968	WASHER, FLAT, .504 X .75 X .059	4
68	327917	SCREW, 5/16-18 X 1.50HHCFT	4
69	73787	WASHER, FLAT, 330 X .76 X .1793	4
70	180022	SCREW, 1/4-20 X 1.00 HHC	1
71	120380	WASHER, REGSPTLK, 268 X .49 X .07	1
72	120375	NUT, 1/4-20 REGHEX	1

\* CONTACT YOUR NEAREST TRANSAXLE DEALER FOR PARTS & SERVICE

\* ORDER INDIVIDUAL PARTS - ASSEMBLY NOT AVAILABLE

# F3554-350

# REPAIR PARTS



REF. DASH CHASSIS & HOOD PAGE

REF. CHASSIS & HOOD PG. MAIN FRAME

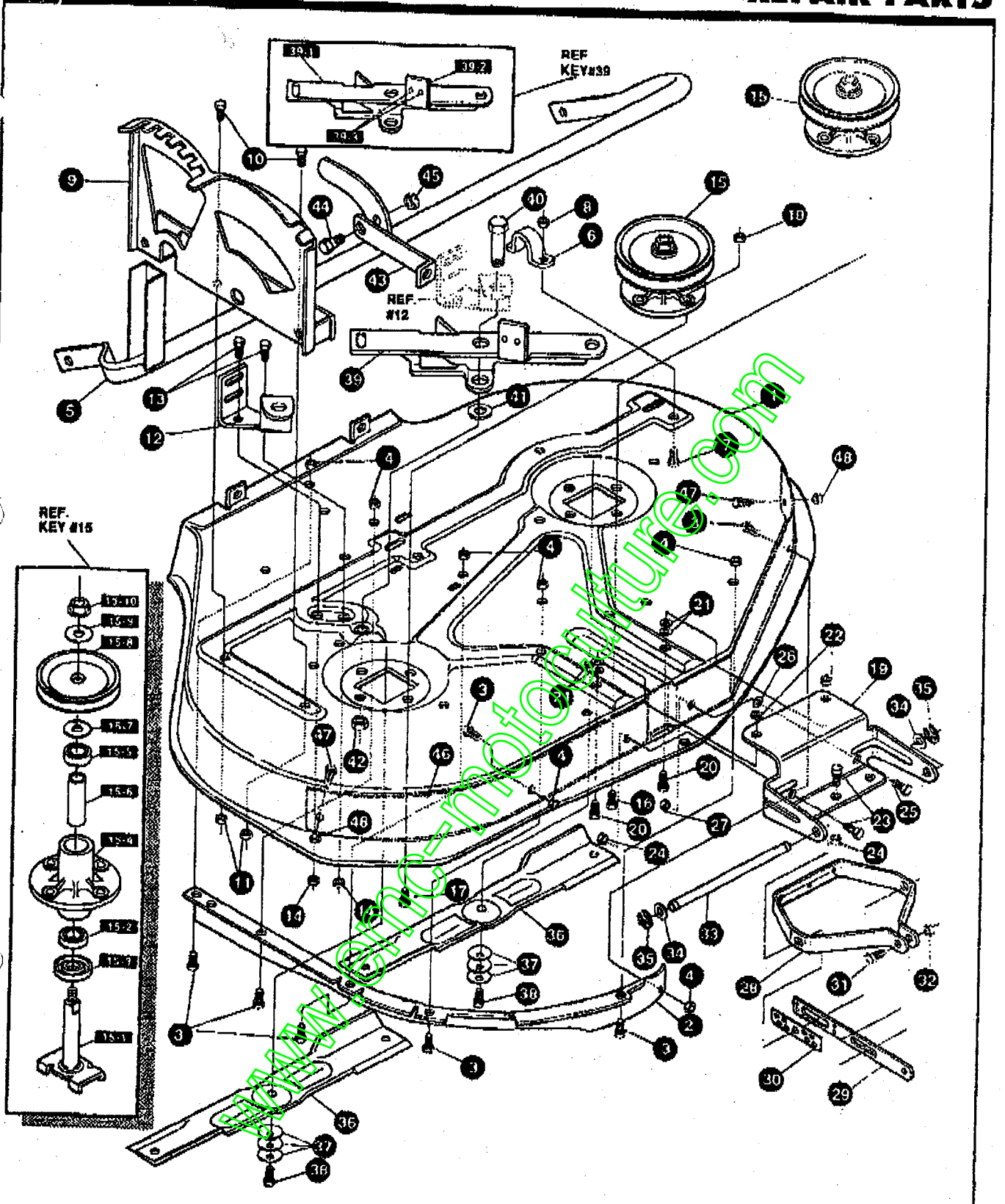
**NOTE: ALWAYS USE ORIGINAL EQUIPMENT PARTS.**  
Use of service/replacement parts other than original equipment parts may void your warranty.

**ALL UNNUMBERED ITEMS ARE INTERCHANGEABLE WITH OPPOSITE SIDE**

335692 A



REPAIR PARTS



**NOTE: ALWAYS USE ORIGINAL EQUIPMENT PARTS.**  
 Use of service/replacement parts other than original  
 equipment parts may void your warranty.

**ALL UNNUMBERED  
 ITEMS ARE INTERCHANGEABLE  
 WITH OPPOSITE SIDE**

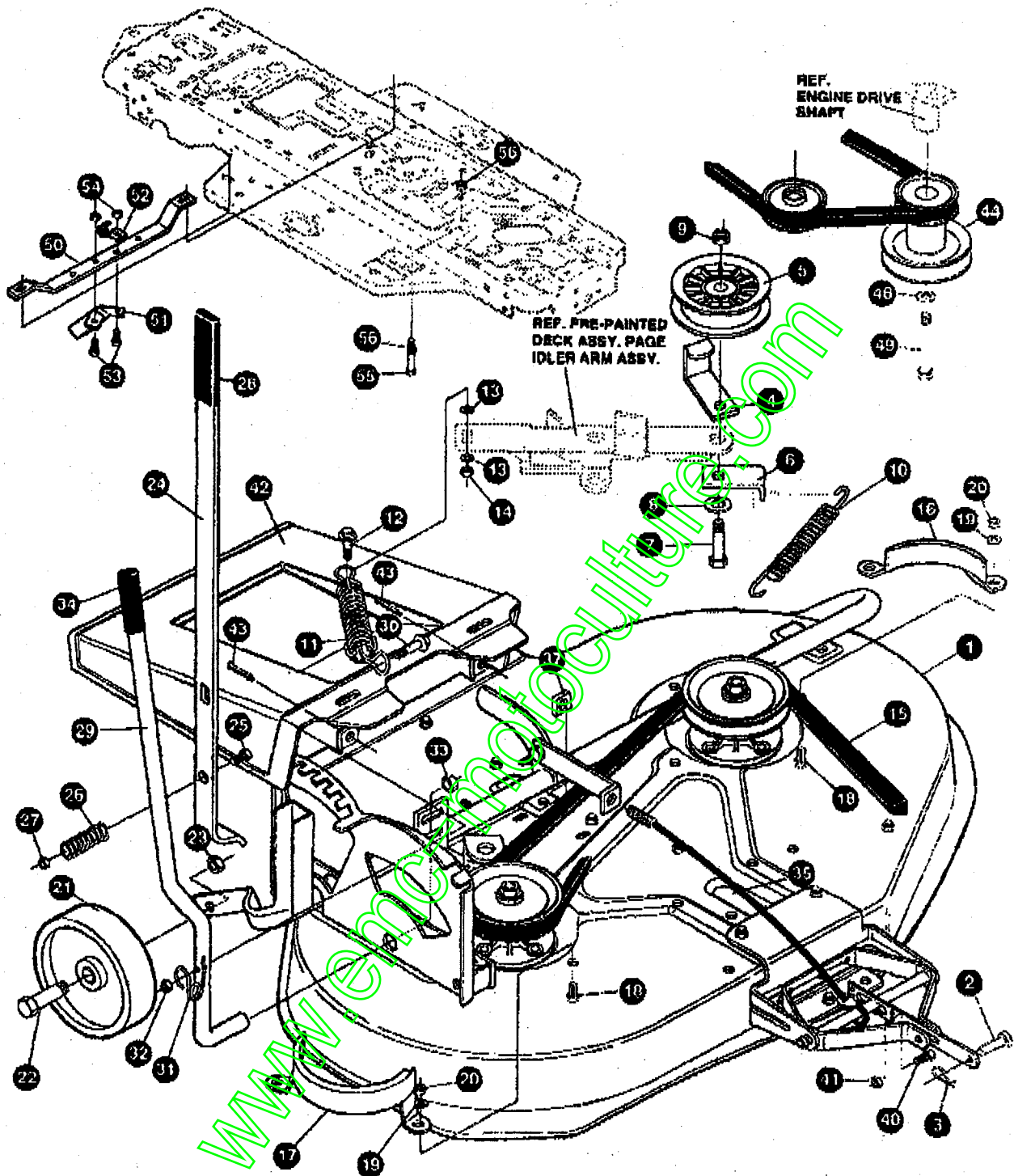
335960 A

**PRE-PAINTED DECK ASSEMBLY**

KEY#	PART#	DESCRIPTION	QTY
1	325094	36" DECK KIT	1
2	310242	BAFFLE, 36 RD, LH, DECK, BLACK	1
3	180077	SCREW, 5/16-18 X .75 HHC	7
4	1498	NUT, 5/16-18 REGHEXCTRLK	7
5	304015	ASSEMBLY, TORQUE TUBE, 36"	1
6	310672	SUPPORT, PIVOT TUBE, BLACK	1
7	180073	SCREW, 5/16-18 X .50 HHC	1
8	1498	NUT, 5/16-18 REGHEXCTRLK	1
9	313690	32 & 36 QUADRANT, BLACK	1
10	180073	SCREW, 5/16-18 X .50 HHC	2
11	1498	NUT, 5/16-18 REGHEXCTRLK	2
12	313631	BRACKET, IDLER, BLACK	1
13	180077	SCREW, 5/16-18 X .75 HHC	2
14	1498	NUT, 5/16-18 REGHEXCTRLK	2
15	56424	QUILL ASSEMBLY, 36/39/40/43	2
15-1	56425	SHAFT/SADDLE, 36"	1
15-2	49562	BEARING, BALL 6203-2AA-C3 ARMORED	1
15-3	50616	DUST SHIELD	1
15-4	55547	QUILL CASTING (1046)	1
15-5	49562	BEARING, BALL 6203-2AA-C3 ARMORED	1
15-6	50818	SPACER, SLEEVE .669 X .80 X 3.125	1
15-7	51449	SPACER, SLEEVE .672 X .83 X .438	1
15-8	313898	PULLEY ASSEMBLY	1
15-9	58385	WASHER, SPECIAL QUILL	1
15-10	1282	NUT, 7/16-20 WDFLK	1
16	35498	SCREW, 5/16-18 X .75 WASH TAP	7
17	300345	SCREW, 5/16-18 X 1.38 WASH TAP	1
18	1498	NUT, 5/16-18 REGHEXCTRLK	1
19	310762	LIFT PLATE, BLACK	1
20	180077	SCREW, 5/16-18 X .75 HHC	2
21	996416	WASHER, FLAT .391 X 1.00 X .125	4
22	1498	NUT, 5/16-18 REGHEXCTRLK	2
23	180077	SCREW, 5/16-18 X .75 HHC	2
24	1498	NUT, 5/16-18 REGHEXCTRLK	2
25	180079	SCREW, 5/16-18 X 1.00 HHC	1
26	996416	WASHER, FLAT .391 X 1.00 X .125	1
27	1498	NUT, 5/16-18 REGHEXCTRLK	1
28	310673	BRACKET, PIVOT, BLACK	1
29	310230	BAR, HITCH	1
30	310229	BRACKET, LOCK	1
31	180126	SCREW, 3/8-16 X 1.50 HHC	1
32	1498	NUT, 3/8-16 REGHXCTRLK	1
33	55724	PIN, PIVOT ROD .60 D X 7.65	1
34	996425	WASHER, FLAT .515 X .88 X .064	2
35	20864	RING, RET E .39 X .04 TRU 5133-50	2
36	8685	BLADE, 36" STO-LIFT 18, BLACK	2
37	2483	WASHER, .39 ID X 1.26 D X .07 BELLVIL	6
38	39573	SCREW, 3/8-24 X 1.00 NYLHHC	2
39	311427	IDLER, ASSEMBLY, PIVOT ARM	1
39-1	311425	PIVOT ARM, IDLER, 32/36" RD	1
39-2	305973	BRAKE PAD - HARD-NF343 (X-31)	1
39-3	41601	RIVET, OVSET, 187 DIA X .50 LONG	2
40	47516	BOLT, .500X1.950 HSSH 3/8-16	1
41	996416	WASHER, FLAT .391X1.00X.125	1
42	1498	NUT, 3/8-18 REGHXCTRLK	1
43	55597	CLEVIS 30"SD LIFT CABLE	1
44	8482	BOLT, .375X .155 HSSH, 5/16-18	1
45	309936	NUT, 5/16-18 HXCTRLKJAM	1
46	312222	BAFFLE, 36RD DECK, BLACK	1
47	180020	SCREW, 1/4-20X .75 HHC	2
48	1502	NUT, 1/4-20 REGHEXCTRLK	2

# F3554-350

# REPAIR PARTS



**NOTE: ALWAYS USE ORIGINAL EQUIPMENT PARTS.**  
 Use of service/replacement parts other than original equipment parts may void your warranty.

**ALL UNNUMBERED  
 ITEMS ARE INTERCHANGEABLE  
 WITH OPPOSITE SIDE**

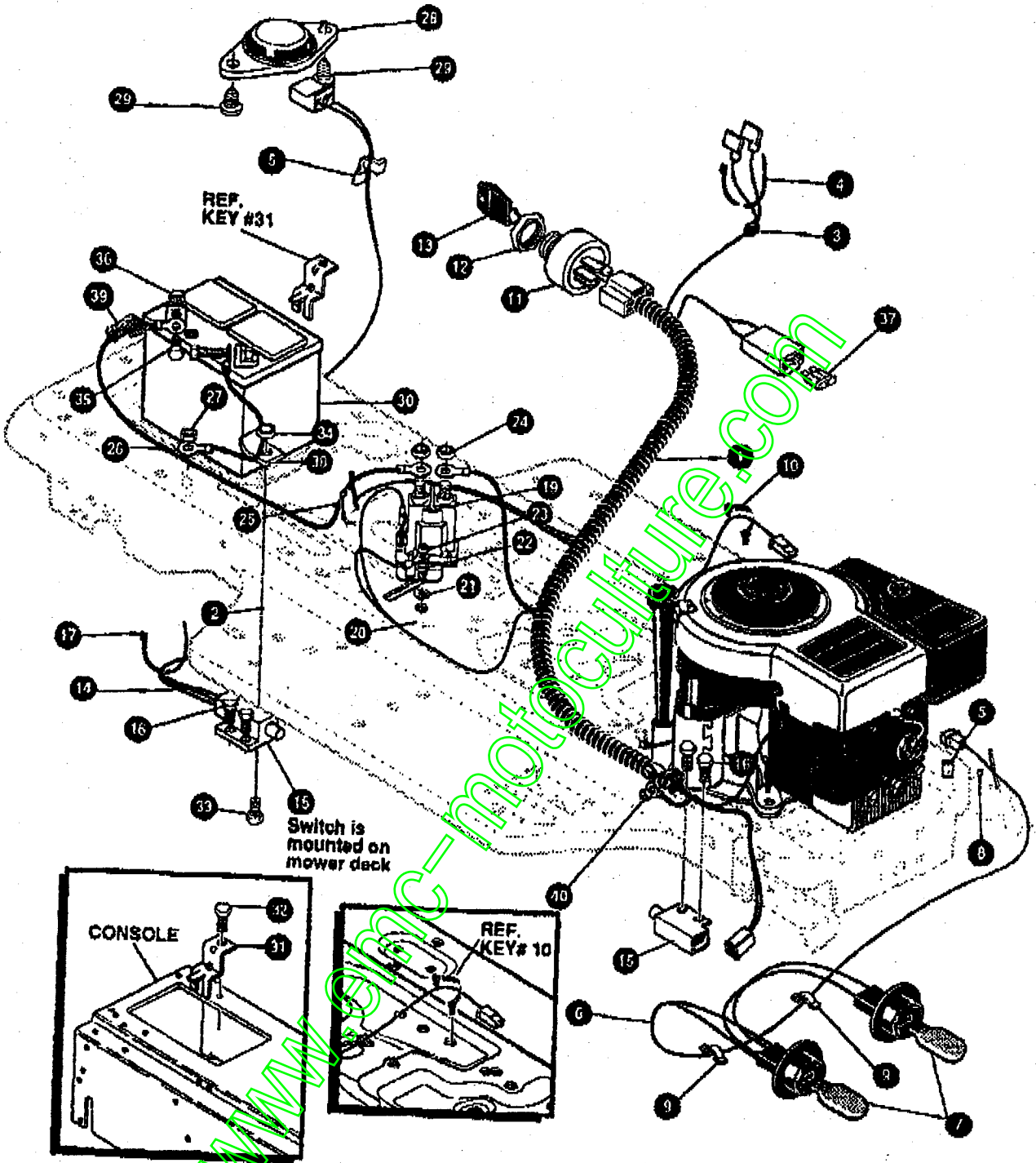
335964 A

**F3554-350**

**FINAL DECK ASSEMBLY**

KEY#	PART#	DESCRIPTION	QTY
1	13534	ASSEMBLY, MOWER, 36" RD, DECK	1
2	47817	PIN, CLEVIS LONG	1
3	56180	PIN, HAIR .091 DIA X 1.62 LONG	1
4	7354	RETAINER, BELT	1
5	303028	PULLEY, IDLER BFF, 3.13 DIA	1
6	57217-853	BRACKET, BRAKE ROD	1
7	180128	SCREW, 3/8-16 X 1.75 HHC	1
8	446363	WASHER, FLAT .375 X .88 X .082	1
9	1499	NUT, 3/8-16 REGHXCTRLK	1
10	35410	SPRING .071 X .62 X 4.37	1
11	52636	SPRING	1
12	48563	BOLT, .375 X .250 SHWA, 1/4-20	1
13	120382	WASHER, FLAT .261 X .63 X .065	2
14	1502	NUT, 1/4-20 REGHEXCTRLK	1
15	308701	BELT, V BL, 80.00, DECK, 36 RD, EXP	1
16	48365-853	COVER, QUILL, LH	1
17	46364-853	COVER, QUILL, RH	1
18	180077	SCREW, 5/16-18 X .75 HHC	4
19	120393	WASHER, FLAT .344 X .69 X .065	4
20	1498	NUT, 5/16-18 REGHEXCTRLK	4
21	302611	GAUGE WHEEL, EURO, 5.00 OD X 1.38 WD	2
22	23763	BOLT, .500 X 1.390 H/SH, 3/8-16	2
23	1499	NUT, 3/8-16 REGHEXCTRLK	2
24	307050	LEVER, HEIGHT ADJUST	1
25	180081	SCREW, 5/16-18 X 2.50 HHC	1
26	53246	SPRING	1
27	1498	NUT, 5/16-18 REGHEXCTRLK	1
28	53995	GRIP, HAND	1
29	313832	LEVER, BLADE ENGAGE, BLACK	1
30	46563	BOLT, .375 X .250 SHWA, 1/4-20	1
31	48581	SPRING, TORSION 36 RD, 32 RD	1
32	1502	NUT, 1/4-20 REGHEXCTRLK	1
33	59697	NUT, 1/2 PUSHON	1
34	46478	GRIP, HAND .50 ID 3.37 LONG, BLACK	1
35	301718	CABLE, LIFT, 22.7 LONG, F-5, 20 X 10-8	1
37	120372	NUT, 1/4-20 REG SQ	1
40	180077	SCREW, 5/16-18 X .75 HHC	1
41	1498	NUT, 5/16-18 REGHEXCTRLK	1
42	50993	CHUTE, EXTENSION, PLASTIC, 36 RD, BLACK	1
43	120128	PIN, COTTER .125 DIA X 1.25 LONG	2
44	328028	PULLEY, ENGINE 3.0D X 4.0 LONG X 5.0D	1
48	120383	WASHER, REGSPTLK .459 X .78 X .12	1
49	433146	SCREW, 7/16-20 X 4.25 HHC, BLACK	1
50	523102	SUPPORT, GUIDE BLACK	1
51	323105	GUIDE, MOWER DECK, BLACK	1
52	57359	RETAINER, .31 ID X .62 X .03 WIRE	1
53	180079	SCREW, 5/16-18 X 1.00 HHC	2
54	1498	NUT, 5/16-18 REGHEXCTRLK	2
55	49830	SCREW, 3/8-16 X 7.50 HHC	1
56	1499	NUT, 3/8-16 REGHXCTRLK	2

REPAIR PARTS



www.motoculture.com

**NOTE: ALWAYS USE ORIGINAL EQUIPMENT PARTS.**  
 Use of service/replacement parts other than original equipment parts may void your warranty.

**ALL UNNUMBERED ITEMS ARE INTERCHANGEABLE WITH OPPOSITE SIDE**

335737 A

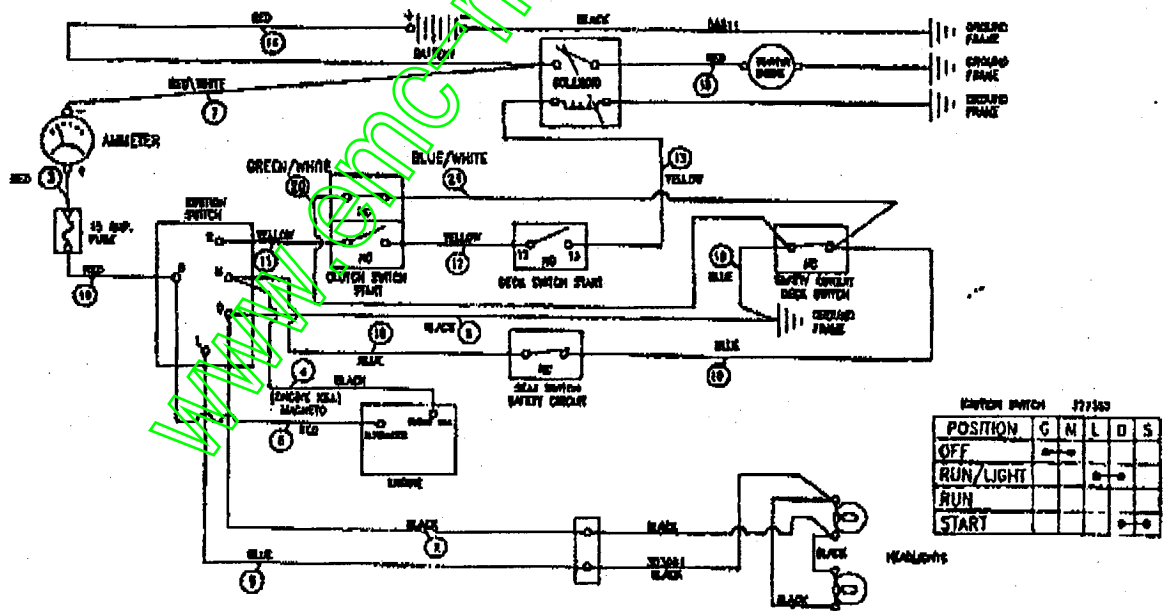


# F3554-350

# ELECTRICAL ASSEMBLY

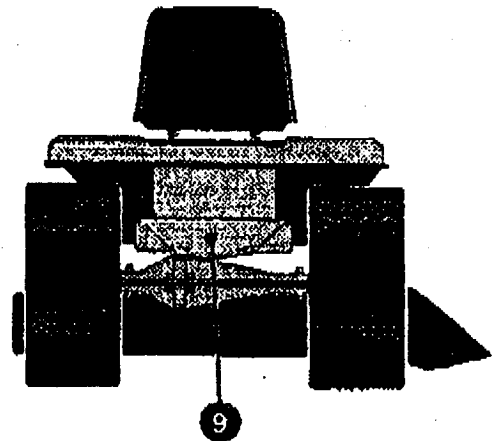
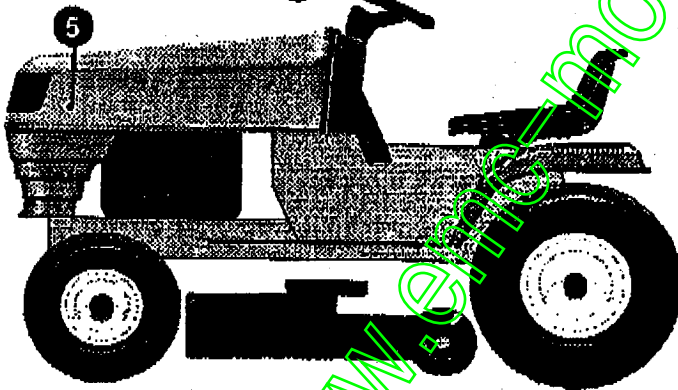
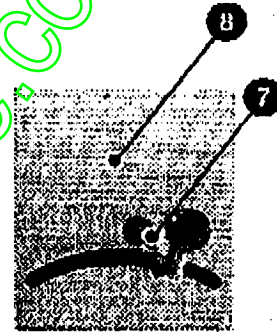
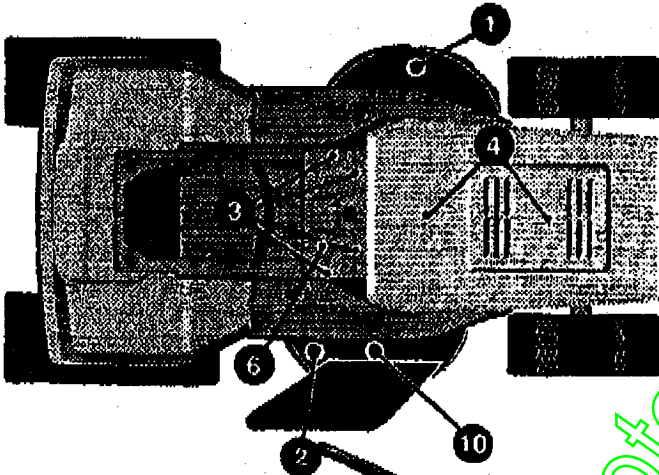
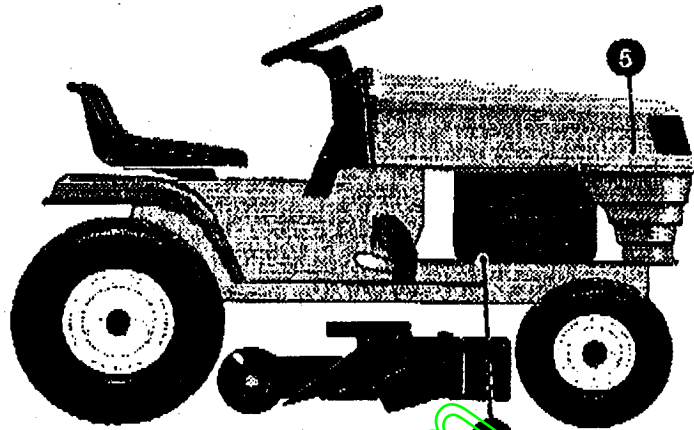
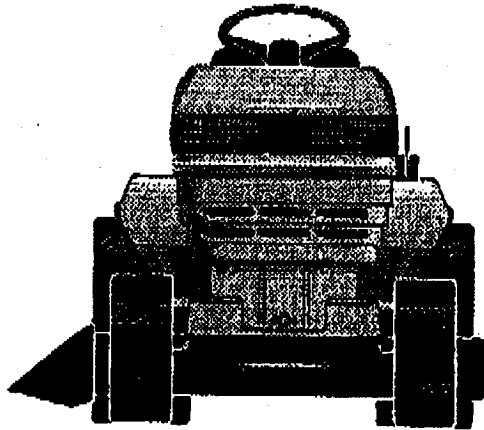
KEY#	PART#	DESCRIPTION	QTY
1	331453	WIRE HARNESS SF. 8-12HP. B&S. WI/AMM	1
2	322296	BY-PASS FOR GROUND SUPPORT	1
3	322298	SPLICER	1
4	57444	TIE, CABLE BLACK NYLON, 5.62 LONG	1
5	41482	PRESS CLIP, 1.380 LONG 255 ID	2
6	303064	ASSEMBLY, LIGHT WIRE-1/4 TURN	1
7	52572	BULB, HEADLAMP	2
8	57444	TIE, CABLE BLACK NYLON, 5.62 LONG	1
9	41482	PRESS CLIP, 1.380 LONG 255 ID	2
10	54888	RETAINER, 260 DIA X 1.665 WIRE	1
11	327364	SWITCH, IGNITION & LIGHTS	1
12	327352	NUT, 5/8-9 ACME DELTA FOR BOOT	1
13	327350	KEY, IGNITION	1
14	57588	HARNESS, DECK WIRE SHORT, 4 WIRE	1
15	57476	SWITCH, SCREW MOUNT, DP, NC, NO, BLACK	2
16	300302	SCREW, #10 X .50 HHTAPPST, BLACK	4
17	57444	TIE, CABLE BLACK NYLON, 5.62 LONG	1
19	63716	SOLENOID	1
20	187745	SCREW, 1/4-20 X .75 HXSEMMA	2
21	1084	WASHER, FLAT .291 X 1.00 X .063	1
22	1502	NUT, 1/4-20 REGHEXCTRLK	2
23	271172	NUT, 1/4-20 REGHEXKEPS	1
24	271187	NUT, 5/16-24 HKEPS	2
25	57444	TIE, CABLE BLACK NYLON, 5.62 LONG	1
26	55511	WIRE, GROUND, 12.5"	1
27	271184	NUT, 5/16-18 HEXKEPS	1
28	67647	SWITCH, SEAT	1
29	160505	SCREW, 1/4-20X .38PHPNHMA	2
30	92693	BATTERY, 12V (MAINTENANCE FREE)	1
31	329175	BATTERY BRACKET	1
32	995346	SCREW, 1/4-20 X .50 W/HTAP	1
33	187745	SCREW, 1/4-20 X .75 HXSEMMA	1
34	1502	NUT, 1/4-20 REGHEXCTRLK	1
35	180020	SCREW, 1/4-20X .75 MHC	2
36	271172	NUT, 1/4-20 REGHEXKEPS	2
37	302031	FUSE SPADE TYPE 32V 15A	1
38	9149	CABLE RETAINING BRACKET	1
39	309201	INSULATOR, BATTERY BOOT EURO	1
40	124818	NUT, 1/4-20 REGHXJAM	1

## SCHEMATIC DRAWING



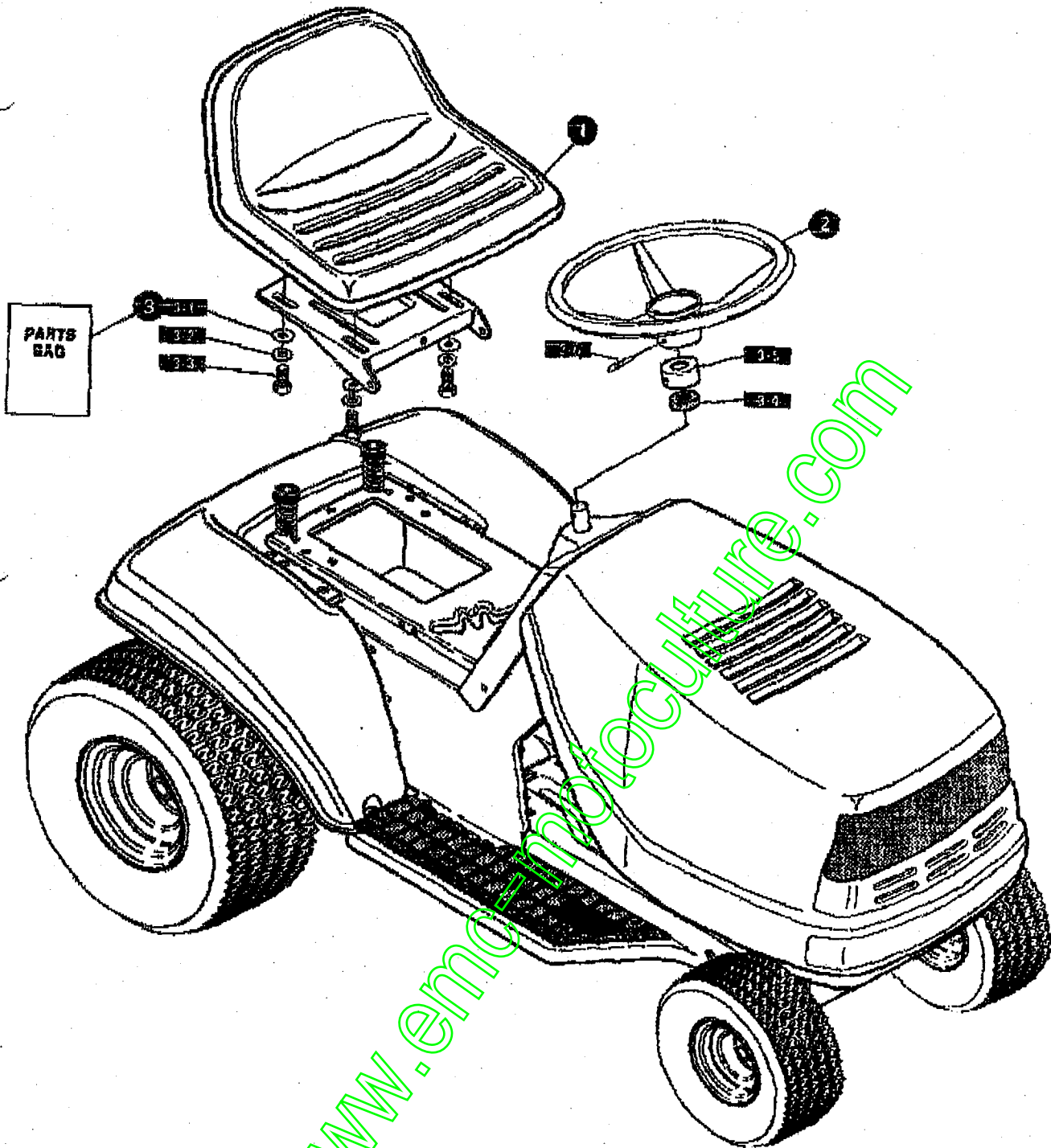
**F3554-350**

**REPAIR PARTS**



KEY#	PART#	DESCRIPTION	QTY
1	402700	DECAL, CAUTION, DECK, LH .....	1
2	402701	DECAL, CAUTION, DECK, RH .....	1
3	318187	PAO, ADHESIVE 1.00 X 1.50 X .12 .....	4
4	305602	FOAM, HOOD 4 X 15 .....	2
5	305803	PAD, 18 X 6 FOAM HOOD .....	2
6	320721	DECAL, DASH, PLAIN, EXPORT, G.P. ....	1
7	301104	DECAL, CONSOLE, TOP, SHIFT 5-SP .....	1
8	402889	DECAL, CONSOLE SYMBOLIC CAUTION .....	1
9	402701	DECAL, CAUTION, DECK, RH .....	1
10	402708	DECAL, BLADE, CUT HEIGHT/ENGAGE .....	1
11	402702	DECAL, BRAKE/CLUTCH .....	1

335710 A



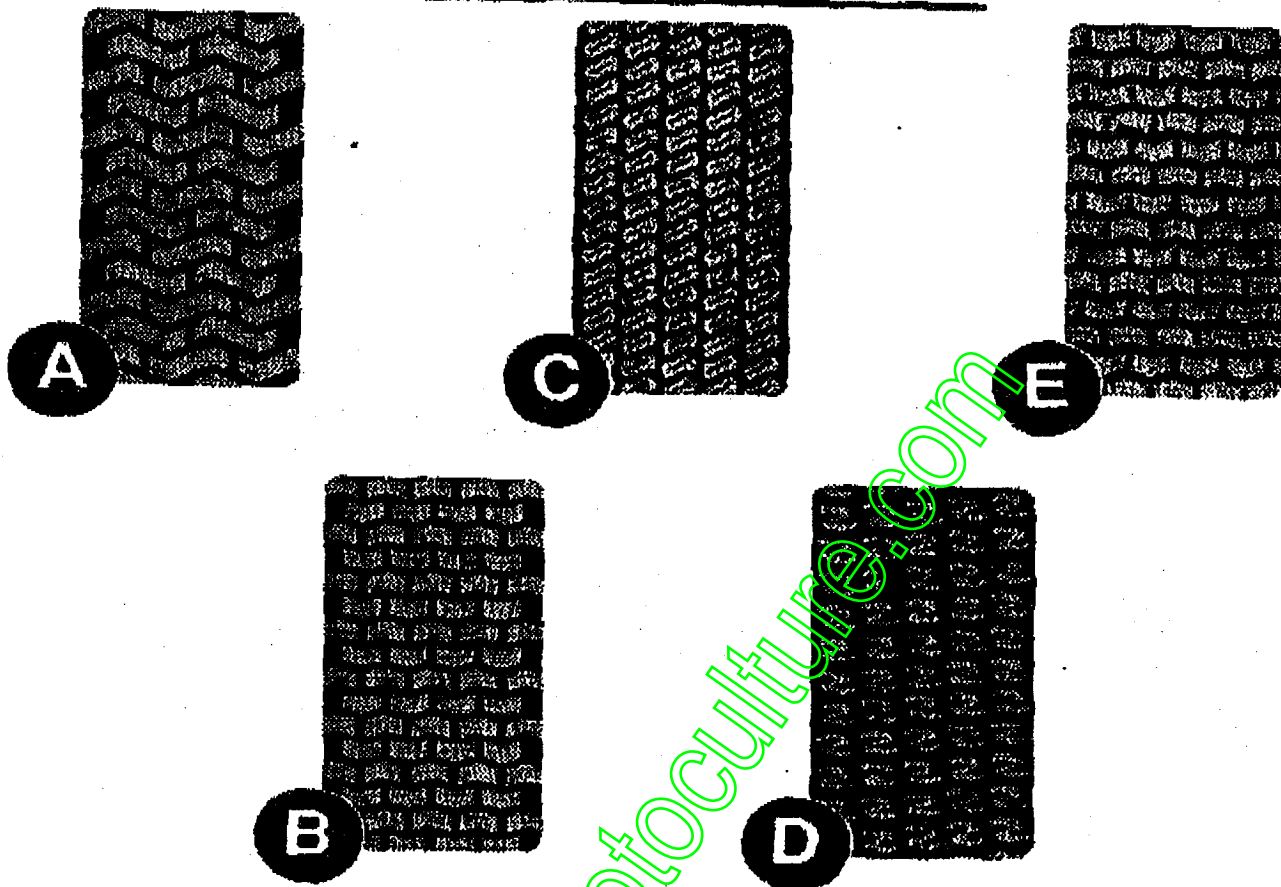
KEY#	PART#	DESCRIPTION	QTY
1	304214	SEAT, MICHIGAN GEN. W/SWITCH HOLE .....	1
2	330510	STEERING WHEEL .....	1
3	331424	PARTS BAG, ASSEMBLY SEAT/STEER .....	1
3-1	120393	WASHER, FLAT .344 X .60 X .065 .....	4
3-2	120639	WASHER, HVSP TLK .328 X .60 X .09 .....	4
3-3	180077	SCREW, 5/16-18 X .75 HHC .....	4
3-4	331322	COVER, STEERING SHAFT .....	1
3-5	301413	SPACER, STEERING SHAFT .....	1
3-6	456378	PIN, SPRING, .250 DIA X 2.00 LONG .....	1

327405 D

**F3554-350**

MAR 26 '99 12:05 No.009 P.02  
**TIRE TREAD PATTERN**

# TREAD PATTERNS



TIRE SIZE	"A"	"B"	"C"	"D"	"E"
11 X 4.00 - 5	42295	319679			
13 X 5.00 - 6	41060	319680			
15 X 6.00 - 6	39830	316702	301140	313952	
16 X 4.80 - 8		305035			
16 X 6.50 - 8	41081	319682		314539	
18 X 6.50 - 8		42091			
18 X 8.50 - 8	319683	317400			
18 X 9.50 - 8	41106	316701		313950	
20 X 8.00 - 8	319685	319684	57164	314584	331606
20 X 10.00 - 8	58276	319686		313654	
20 X 10.00 - 10	55893	319687			
23 X 9.50 - 12	53655	319690	319689	314370	

[www.emc-motoculture.com](http://www.emc-motoculture.com)