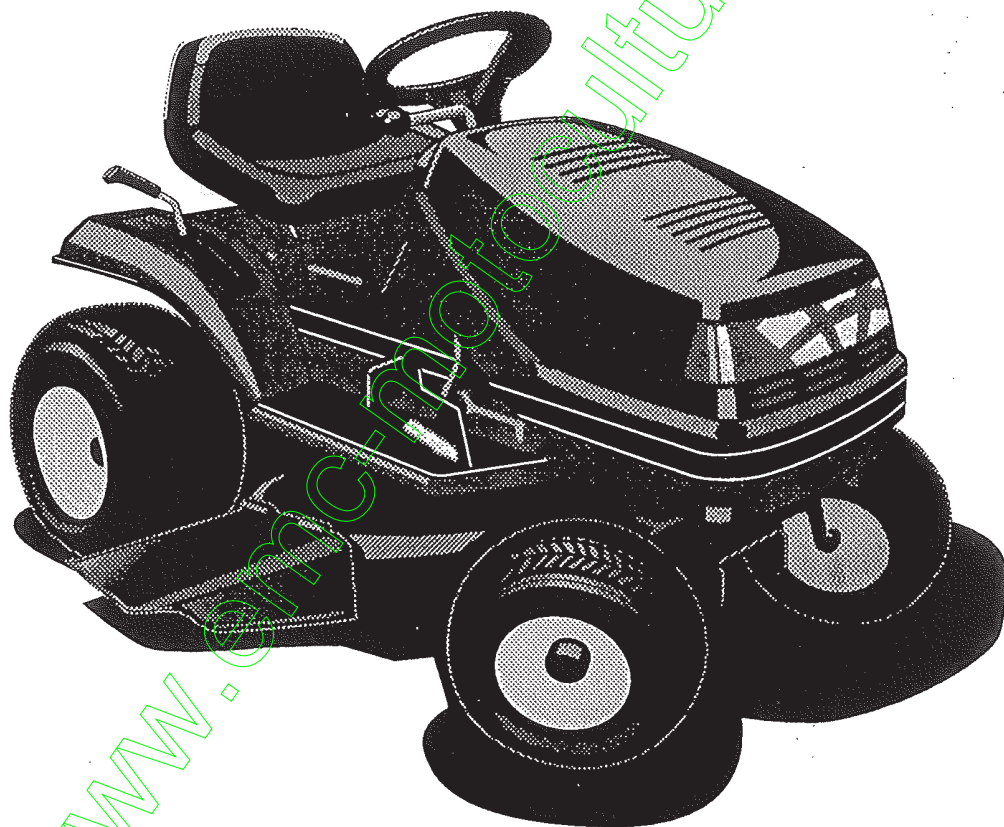


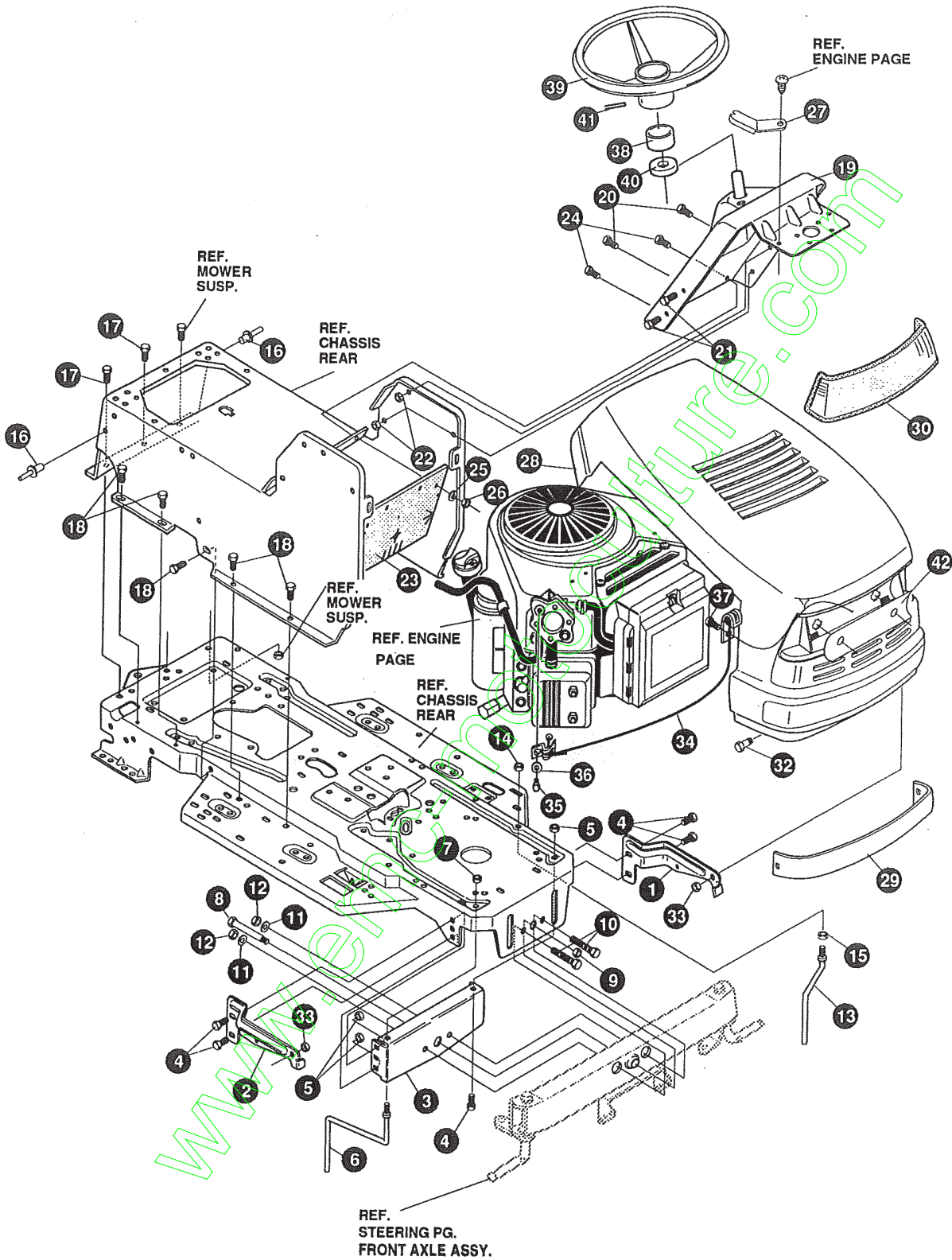
GREENCUT

MANUEL PIÈCES DE RECHANGE



TRACTEUR TONDEUSE 18HP/43"

F3560-180

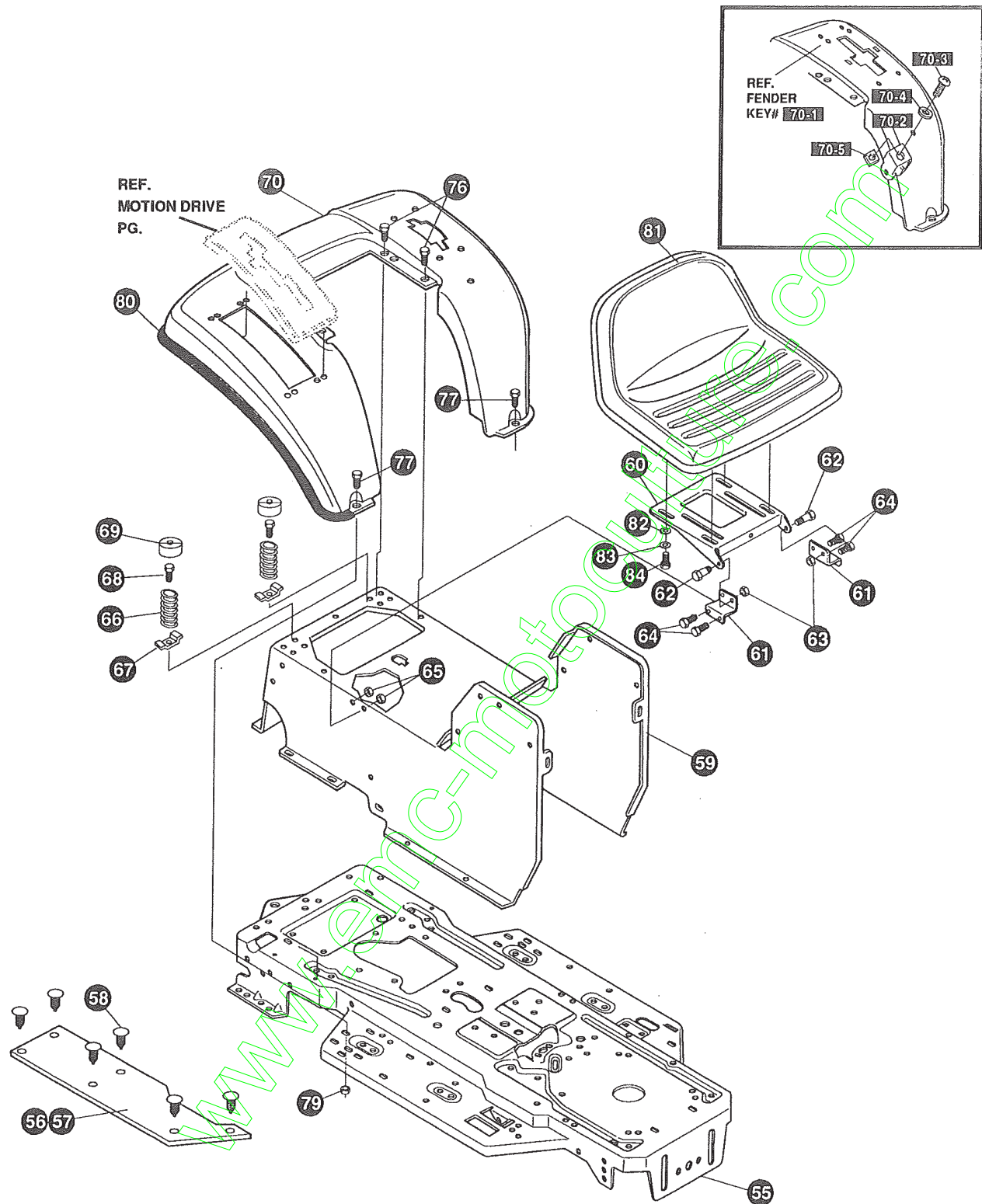


NOTE: ALWAYS USE ORIGINAL EQUIPMENT PARTS.
 Use of service/replacement parts other than original equipment parts may void your warranty.

ALL UNNUMBERED ITEMS ARE INTERCHANGEABLE WITH OPPOSITE SIDE

325867 C

KEY#	PART#	DESCRIPTION	QTY
1	326569-853	BRACKET, GRILLE, LH	1
2	326568-853	BRACKET, GRILLE, RH	1
3	313541-853	BRACKET, FRONT AXLE	1
4	56030	SCREW, 5/16-18 X .75 WDFLLK	5
5	55273	NUT, 5/16-18 WDFLLKLRG WHIZ	5
6	300440	GUIDE, BELT, RIDER	1
7	1498	NUT, 5/16-18 REGHEXCTRLK	1
8	308207	BOLT, .625X2.18 HSH,1/2-13	1
9	309008	NUT, 1/2-13 HEXJAM CTRLK	1
10	180138	SCREW, 3/8-16 X 3.00 HHC	2
11	2483	WASHER, .39 ID X 1.25 D X .07 BELLVIL	2
12	1499	NUT, 3/8-16 REGHXCTRLK	2
13	300635	GUIDE, BELT SHORT, 15" WHEEL	1
14	124824	NUT, 5/16-18 HEXJAM	1
15	271190	NUT, 3/8-16 HEXKEEPS	1
16	46763	RIVET, POP .187 DIA X .450 LONG	3
17	35497	SCREW, 5/16-18 X .50 WAHHTAP	2
18	995346	SCREW, 1/4-20 X .50 WAHHTAP	10
19	309447-853	DASH, STEEL, LF, SUSP	1
20	995346	SCREW, 1/4-20 X .50 WAHHTAP	2
21	44811	SCREW, 1/4-20 X .75 WAHHTAP	4
22	50352	NUT, 1/4-20 WDFLLK TOPLOCK	4
23	312306	BAFFLE, CONSOLE, SOUND EXPORT, LF	1
24	300314	SCREW, 1/4-20 X .88 WAHHTAP	2
25	120392	WASHER, FLAT, 281 X .63 X .065	2
26	1502	NUT, 1/4-20 REGHEXCTRLK	2
27	313021-853	GUIDE, HOOD, SF & LF, H13, H14, H15	2
28	335885	HOOD, LARGE, H-15	1
29	319986	DECAL TAPE, H15, 8MIL, VINYL	1
30	302670	LENS, HEADLAMP	1
32	56676	BOLT, .375 X .580 HSH, 5/16-18	2
33	1498	NUT, 5/16-18 REGHEXCTRLK	2
34	311094	LANYARD, HOOD, 11.75 LONG, H15, VANG.	1
35	180020	SCREW, 1/4-20 X .75 HHC	1
36	120380	WASHER, REGSPTLK .263 X .49 X .07	1
37	49050	SCREW, 1/4-10 X .75 PHPNTAP	1
38	311465	COVER, STEERING SHAFT	1
39	330848	STEERING WHEEL	1
40	301413	SPACER, STEERING SHAFT	1
41	456378	PIN, SPRING .250 DIA X 2.00 LONG	1
42	308492	FOIL, LENS, DYNA HOOD REFLECTOR	1
	336762	PARTS MANUAL	1
	336784	OPERATOR'S MANUAL (FRENCH)	1
	327627	GRASS CATCHER MANUAL	1
	328195	AIR ASSIST MANUAL (ENGLISH)	1
	330272	AIR ASSIST MANUAL (FRENCH)	1
	330273	AIR ASSIST MANUAL (GERMAN)	1



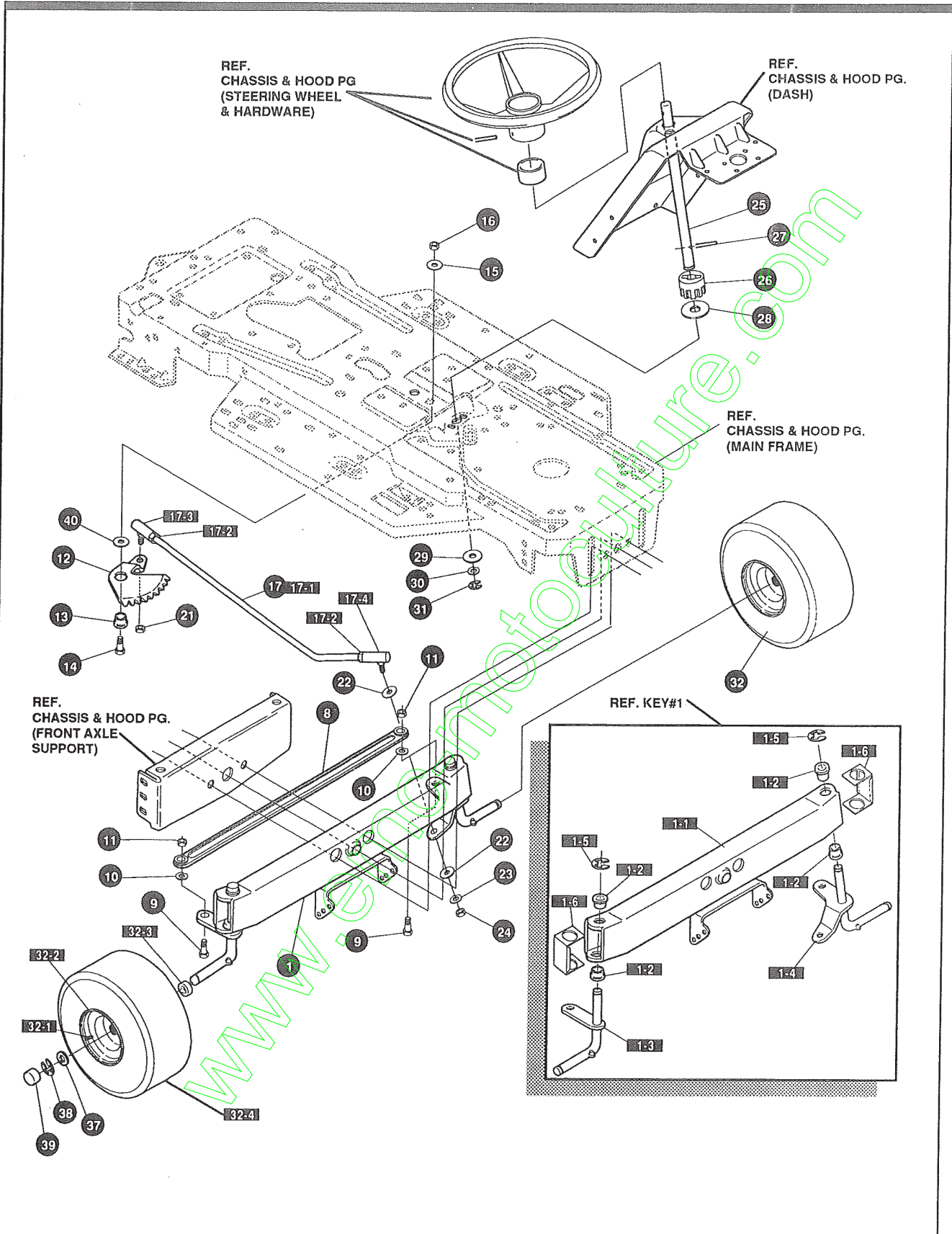
NOTE: ALWAYS USE ORIGINAL EQUIPMENT PARTS.
Use of service/replacement parts other than original equipment parts may void your warranty.

**ALL UNNUMBERED
ITEMS ARE INTERCHANGEABLE
WITH OPPOSITE SIDE**

325855 C

KEY#	PART#	DESCRIPTION	QTY
55	335697-837	FRAME, LF, MAIN, P920/F4360.....	1
56	310005	FOOT PAD, LH, 22.12 LONG, F-5	1
57	310006	FOOT PAD, RH, 22.12 LONG, F-5	1
58	309235	FASTENER, RATCHET, BLACK	12
59	308665-837	CONSOLE, H14-15, SOF	1
60	58367-837	PLATE, SEAT, F5, SF, LF	1
61	310660-837	BRACKET, F-5, SEAT SUPPORT	2
62	20507	BOLT, .437 X .156 HSH, 5/16-18	2
63	1498	NUT, 5/16-18 REGHEXCTRLK	2
64	48901	SCREW, 5/16-18 X .63 WAHHC	4
65	1498	NUT, 5/16-18 REGHEXCTRLK	4
66	57153	SPRING, SEAT 2.63 LONG, 1.49OD, BLACK	2
67	1341	CLAMP, SPRING 1.17" ID	2
68	44811	SCREW, 1/4-20 X .75 WAHTAP	2
69	56907	COVER, SEAT SPRING, 1.5 ID X 1.0 LONG	2
70	*	ASSEMBLY, FENDER, F5, LF, SOF, SUSP.	1
70-1	327471-837	FENDER, F5, SUS, LF, SOF	1
70-2	9239	CLEVIS	1
70-3	439455	SCREW, 5/16-18 X .56 PHPNMA	1
70-4	301551	WASHER, .344 ID X 1.50 D X .09	1
70-5	120373	NUT, 5/16-18 SQUARE	1
76	995346	SCREW, 1/4-20 X .50 WAHTAP	4
77	126358	BOLT, 5/16-18 X 1.00 CARRLN	2
79	55273	NUT, 5/16-18 WDFLLKLRG, WHIZ	2
80	55023	TRIM, STRIP, BLACK—SMALL, W/ ADH	77.5
81	57455	SEAT, MICHIGAN GEN, W/SWITCH HOLE	1
82	120393	WASHER, FLAT .344 X .69 X .065	4
83	120638	WASHER, HVSPTLK .328 X .60 X .09	4
84	180077	SCREW, 5/16-18 X .75 HHC	4

* REFERENCE ONLY - ORDER INDIVIDUAL PARTS



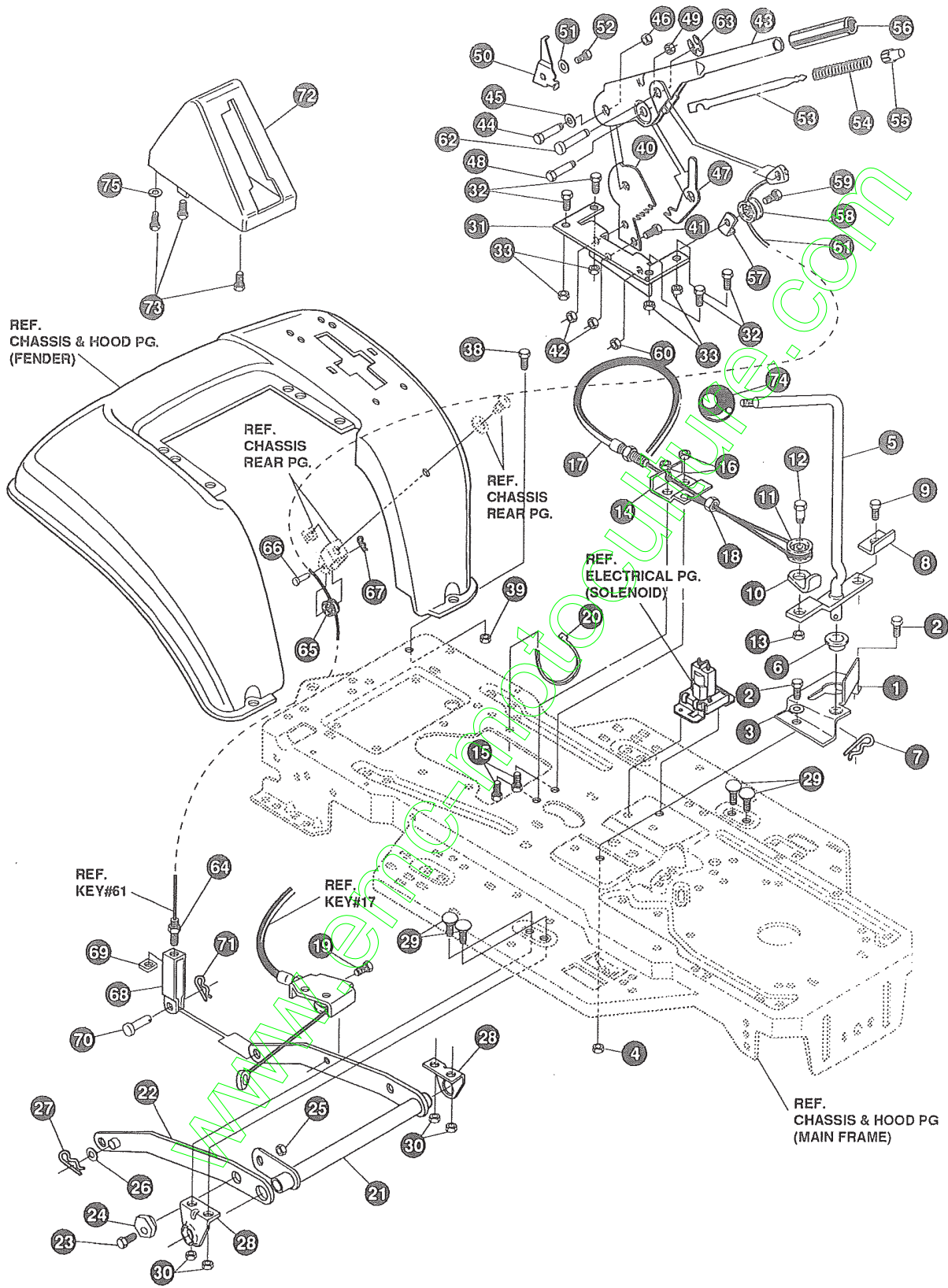
NOTE: ALWAYS USE ORIGINAL EQUIPMENT PARTS.
 Use of service/replacement parts other than original equipment parts may void your warranty.

ALL UNNUMBERED ITEMS ARE INTERCHANGEABLE WITH OPPOSITE SIDE

317124 I

KEY#	PART#	DESCRIPTION	QTY
1	*	AXLE, FRONTASSEMBLY, LONG, SUS, 4WS, LF	1
1-1	310170	AXLE, FRONT	1
1-2	52407	SPINDLE BEARING	4
1-3	9180	ASSEMBLY, SPINDLE, RH, LONG	1
1-4	314088	ASSEMBLY, SPINDLE, LH, LONG	1
1-5	36625	RING, RETEX .57 X .05 TRU 5133-75	2
1-6	53373-853	AXLE COVER	2
8	304590	TIE ROD ASSEMBLY, 19.81 LONG W-SECTION	1
9	180128	SCREW, 3/8-16 X 1.75 HHC	2
10	120382	WASHER, REGSPTLK .393 X .68 X .10	2
11	1499	NUT, 3/8-16 REGHXCTRLK	2
12	58289	SECTOR, STEERING, LF	1
13	52406	BEARING, FLANGE ECC .510 ID X .998 OD X .56	1
14	180177	SCREW, 1/2-13 X 1.50 HHC	1
15	22265	WASHER, FLAT .515 X 1.38 X .119	1
16	1500	NUT, 1/2-13 REGHXTRLK	1
17	311100	KIT 300146 DRAGLINK	1
17-1	58291	STEERING LINK	1
17-2	124925	NUT, 3/8-24 REGHEXJAM	2
17-3	57158	BALL JOINT, 3/8 THD SHORT STUD	1
17-4	21275	BALL JOINT, 3/8 THD LONG STUD	1
21	46692	NUT, 3/8-24 WDFLHLK WHIZ	1
22	996416	WASHER, FLAT .391 X 1.00 X .125	2
23	120382	WASHER, REGSPTLK .393 X .68 X .10	1
24	120369	NUT, 3/8-24 REGHEX	1
25	58243	SHAFT, STEERING, LF, 2WS	1
26	58244	PINION, STEERING, LF	1
27	58274	PIN, DOWEL .2500 OD+1.75 LONG	1
28	301410	BEARING, FLANGE .752 ID X 1.061 OD X .24	1
29	301398	WASHER, FORMED 1.135 X 1.53 X .12	1
30	21682	WASHER, FLAT .765 X 1.25 X .042	1
31	36625	RING, RETEX .57 X .05 TRU 5133-75	1
32	302828	TIRE & RIM ASSEMBLY, PU 15 X 6.0 X 6	2
32-1	24167	VALVE STEM	
32-2	39829	RIM, WHEEL	
32-3	314416	BEARING, FLANGE	
32-4	316702	TIRE, 15 X 6 X 6	
37	642	WASHER, FLAT .755 X 1.31 X .075	4
38	36625	RING, RETEX .57 X .05 TRU 5133-75	2
39	40394	HUB CAP, 1.500 ID X 7/8 LONG	2
40	49998	WASHER, FLAT .520 X 1.25 X .209	1

* ORDER INDIVIDUAL PARTS - ASSEMBLY NOT AVAILABLE

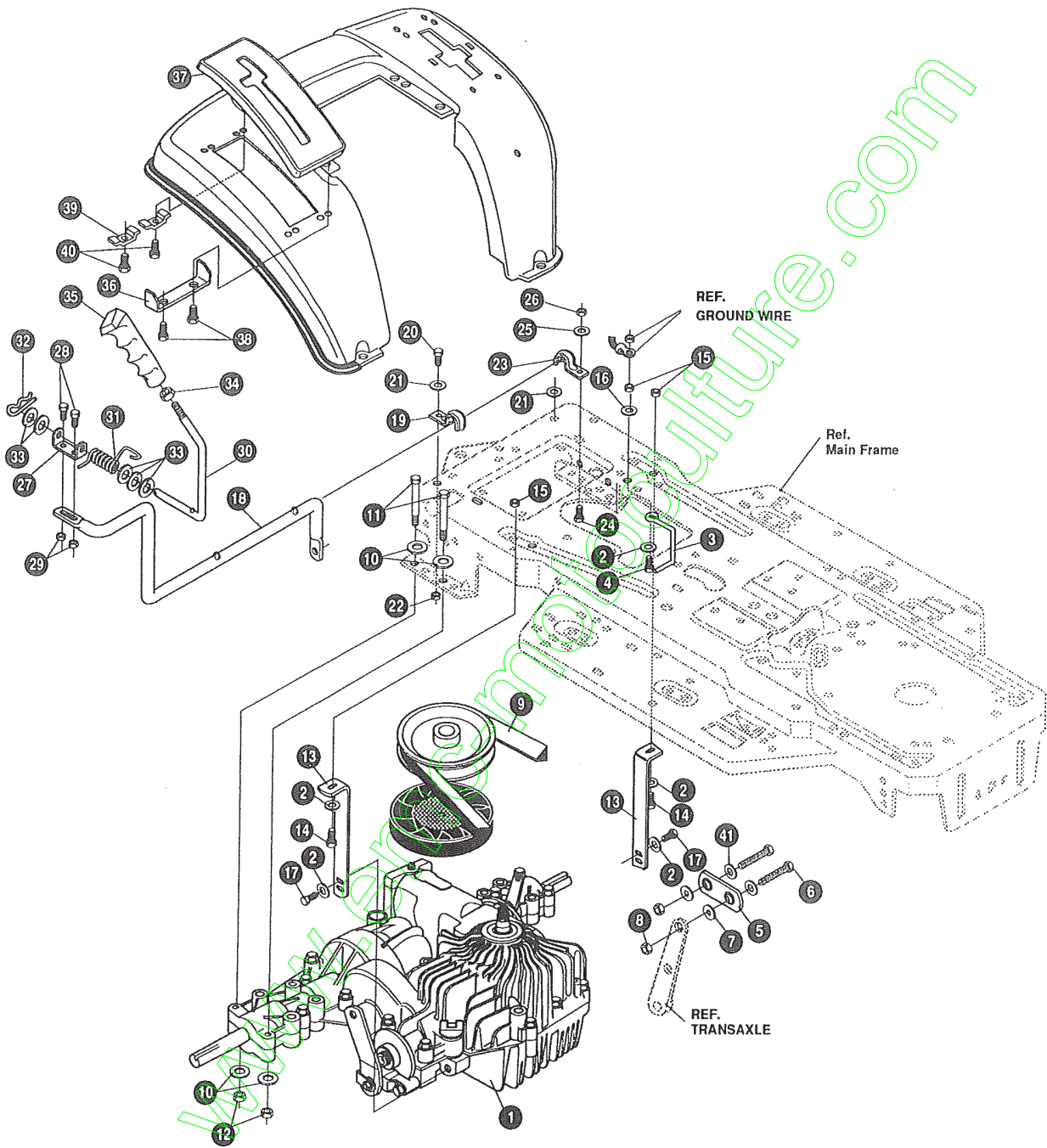


NOTE: ALWAYS USE ORIGINAL EQUIPMENT PARTS.
Use of service/replacement parts other than original equipment parts may void your warranty.

**ALL UNNUMBERED
ITEMS ARE INTERCHANGEABLE
WITH OPPOSITE SIDE**

325815 F

KEY#	PART#	DESCRIPTION	QTY
1	320075-853	BRACKET, CLUTCH ENGAGE LEVER	1
2	180079	SCREW, 5/16-18 X 1.00 HHC	2
3	120393	WASHER, FLAT .344 X .69 X .065	2
4	1498	NUT, 5/16-18 REGHEXCTRLK	2
5	304791	ASSEMBLY, CLUTCH LEVER	1
6	50148	BEARING, FLANGE .503 ID X .63 OD X .50	1
7	8260	PIN, HAIR .091 DIA X 1.66 LONG	1
8	318341	BRACKET, SWITCH ENGAGE	1
9	35498	SCREW, 5/16-18 X .75 WAHTAP	1
10	1288	BRACKET, CABLE RETAINER	1
11	48306	PULLEY, METAL	1
12	58336	BOLT, .375 X .375 HSSH, 1/4-20	1
13	1502	NUT, 1/4-20 REGHEXCTRLK	1
14	300698-853	BRACKET, FRAME CABLE	1
15	180020	SCREW, 1/4-20 X .75 HHC	2
16	1502	NUT, 1/4-20 REGHEXCTRLK	2
17	301503	ASSEMBLY, CABLE, BLADE ENGAGE	1
18	120613	NUT, 1/4-28 HJAM	1
19	35498	SCREW, 5/16-18 X .75 WAHTAP	1
20	57444	TIE, CABLE BLACK NYLON, 5.62 LONG	1
21	300158-853	LIFT ASSEMBLY, LH	1
22	300169-853	LIFT ASSEMBLY, RH	1
23	180079	SCREW, 5/16-18 X 1.00 HHC	1
24	58247	NUT, ADJUST	1
25	1498	NUT, 5/16-18 REGHEXCTRLK	1
26	417098	WASHER, FLAT .531 X 1.06 X .063	2
27	8260	PIN, HAIR .091 DIA X 1.66 LONG	2
28	58248-853	BRACKET, REAR HANG SUSPENSION	2
29	57072	BOLT, 5/16-18 X .63 CARRLN	4
30	1498	NUT, 5/16-18 REGHEXCTRLK	4
31	313926	BRACKET, HEIGHT/ADJUST SUPPORT	1
32	180077	SCREW, 5/16-18 X .75 HHC	4
33	1498	NUT, 5/16-18 REGHEXCTRLK	4
38	180077	SCREW, 5/16-18 X .75 HHC	1
39	1498	NUT, 5/16-18 REGHEXCTRLK	1
40	301238	QUADRANT, HEIGHT ADJUST	1
41	180077	SCREW, 5/16-18 X .75 HHC	2
42	1498	NUT, 5/16-18 REGHEXCTRLK	2
43	322292-853	HANDLE LIFT SHORT(30" S.F.)	1
44	300171	BOLT, .500 X .270 HSSH, 5/16-18	1
45	996418	WASHER, FLAT .506 X .75 X .024	1
46	44108	NUT, 5/16-18 HWDFLCTRLK	1
47	301239	PAWL, SQUARE	1
48	300171	BOLT, .500X .270 HSSH, 5/16-18	1
49	44108	NUT, 5/16-18 HWDFLCTRLK	1
50	9435	POINTER, HEIGHT ADJUST	1
51	138479	WASHER, EXLK .195 X .41 X .03	1
52	35287	SCREW, #8-32 X .38 HHWATAP	1
53	303027	ROD, ACTUATOR-SHORT	1
54	58326	SPRING, HEIGHT ADJUST	1
55	58325	KNOB, HEIGHT ADJUST, PUSH BUTTON	1
56	58329	GRIP, .750 OD, W/ HOLE BLACK	1
57	9149	BRACKET, CABLE RETAINER	1
58	48306	PULLEY, METAL	1
59	58336	BOLT, .375X .375 HSSH, 1/4-20	1
60	1502	NUT, 1/4-20 REGHEXCTRLK	1
61	314177	CABLE, LIFT, 22.92, F-5, 20 X 8-8	1
62	300310	PIN, CLEVIS .310 DIA+.475 LONG	1
63	300311	RING, RET E .31 X .25 TRU 5133-31	1
64	120375	NUT, 1/4-20 REGHEX	1
65	48306	PULLEY, METAL	1
66	300317	PIN, CLEVIS .375 DIA X .81 LONG	1
67	8260	PIN, HAIR .091 DIA X 1.66 LONG	1
68	9405	CLEVIS, LIFT CABLE	1
69	120372	NUT, 1/4-20 REGSQ	1
70	39522	PIN, CLEVIS .312 X .812	1
71	121222	PIN, COTTER .090 DIA X .75 LONG	1
72	333903	LIFT COVER, F5, LF, SF, BLACK	1
73	300340	SCREW, #10 X .75 HHPLAST, BLACK	3
74	55514	KNOB, ROUND 1.50 DIA, BLACK	1
75	120392	WASHER, FLAT .281 X .63 X .065	1



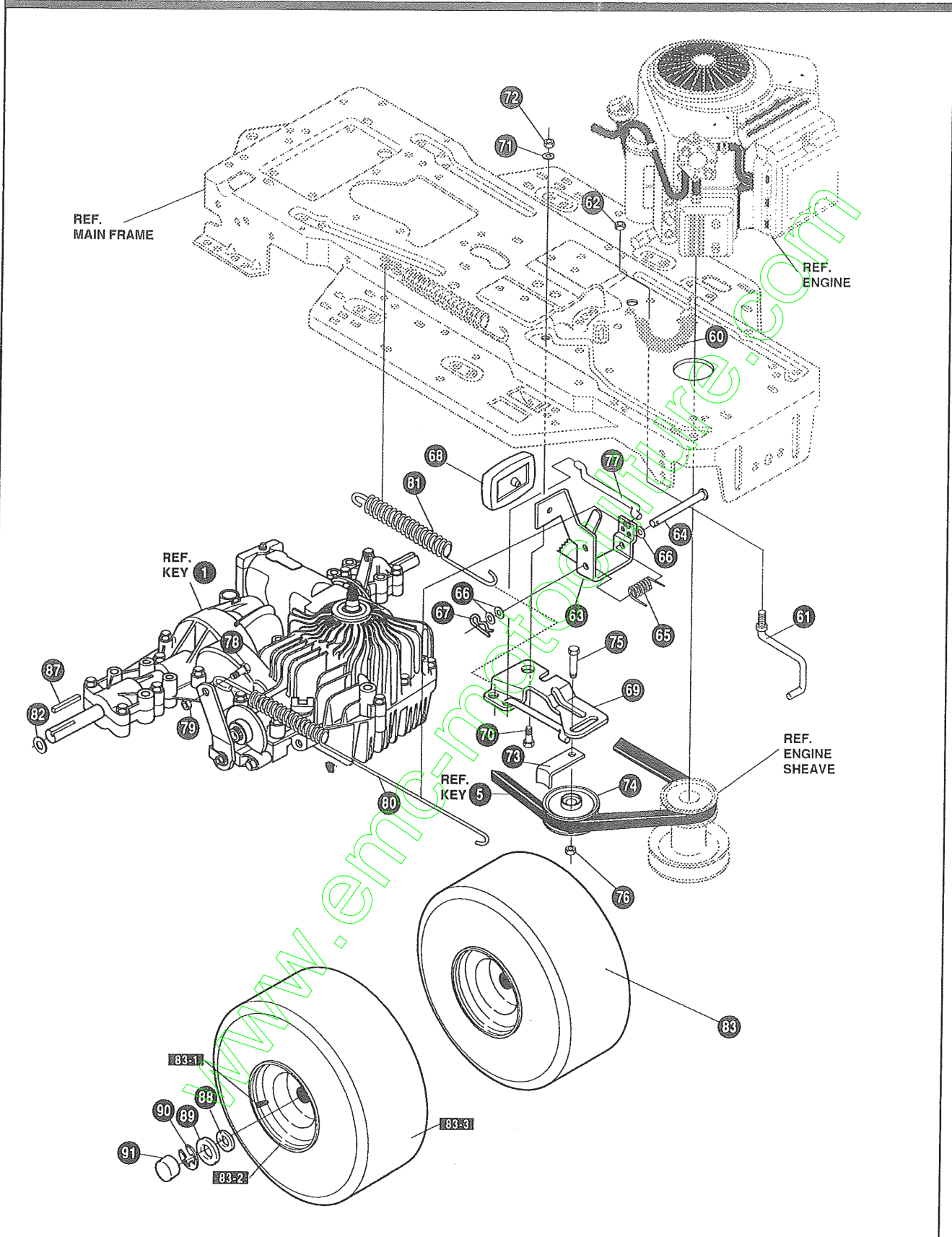
NOTE: ALWAYS USE ORIGINAL EQUIPMENT PARTS.
Use of service/replacement parts other than original equipment parts may void your warranty.

**ALL UNNUMBERED
ITEMS ARE INTERCHANGEABLE
WITH OPPOSITE SIDE**

335520 A

KEY#	PART#	DESCRIPTION	QTY
1	*	TRANSAXLE, PEERLESS, VST, 205, 2WS	1
2	120393	WASHER, FLAT .344 X .69 X .065	6
3	326633	BELT GUIDE	1
4	180079	SCREW, 5/16-18 X 1.00 HHC	1
5	326678	LINK, TIE ROD, SHIFT, PEERLESS	1
6	180124	SCREW, 3/8-16 X 1.25 HHC	2
7	120394	WASHER, FLAT .406 X .81 X .065	2
8	1499	NUT, 3/8-16 REGHXCTRLK	2
9	332547	BELT, V 4L, 78.75, HYDRO, LF	1
10	120393	WASHER, FLAT .344 X .69 X .065	8
11	180091	SCREW, 5/16-18 X 2.50 HHC	4
12	1498	NUT, 5/16-18 REGHEXCTRLK	4
13	326684	BRACKET, STABILIZER	2
14	180077	SCREW, 5/16-18 X .75 HHC	1
15	1498	NUT, 5/16-18 REGHEXCTRLK	3
16	138538	WASHER, REGINTLK .320 X .61 X .03	1
17	35498	SCREW, 5/16-18 X .75 WAHHTAP	1
18	325392	LEVER, SHIFT-LOWER, LF, BLACK	1
19	310347-853	CLIP- SHIFT LEVER .625 ROD	1
20	180077	SCREW, 5/16-18 X .75 HHC	1
21	996416	WASHER, FLAT .391 X 1.00 X .125	1
22	1498	NUT, 5/16-18 REGHEXCTRLK	1
23	310347-853	CLIP- SHIFT LEVER .625 ROD	1
24	180077	SCREW, 5/16-18 X .75 HHC	1
25	996416	WASHER, FLAT .391 X 1.00 X .12	1
26	1498	NUT, 5/16-18 REGHEXCTRLK	1
27	310356	BRACKET, PIVOT SHIFT LEVER	1
28	180020	SCREW, 1/4-20 X .75 HHC	2
29	1502	NUT, 1/4-20 REGHEXCTRLK	2
30	318452	LEVER, SHIFT, UPPER, SOF, 1/2-13	1
31	318451	SPRING, TORSION, .56 X .95 X .095	1
32	8260	PIN, HAIR .091 DIA X 1.66 LONG	1
33	2968	WASHER, FLAT .504 X .75 X .059	5
34	120238	NUT, 1/2-13 HEXJAM	1
35	306690	HANDLE, 1/2-13 MOLDED, BLACK	1
36	311257-853	BRACKET, COVER, F-5 FENDER, SHIFT	1
37	314244	COVER, PLASTIC, LF, HYDRO, F-5	1
38	311331	SCREW, 1/4-15 X .44/.53 HILOHHWA	2
39	1341	CLAMP, SPRING 1.17"ID	2
40	311331	SCREW, 1/4-15 X .44/.53 HILOHHWA	2

* CONTACT YOUR NEAREST TRANSAXLE DEALER FOR PARTS & SERVICE

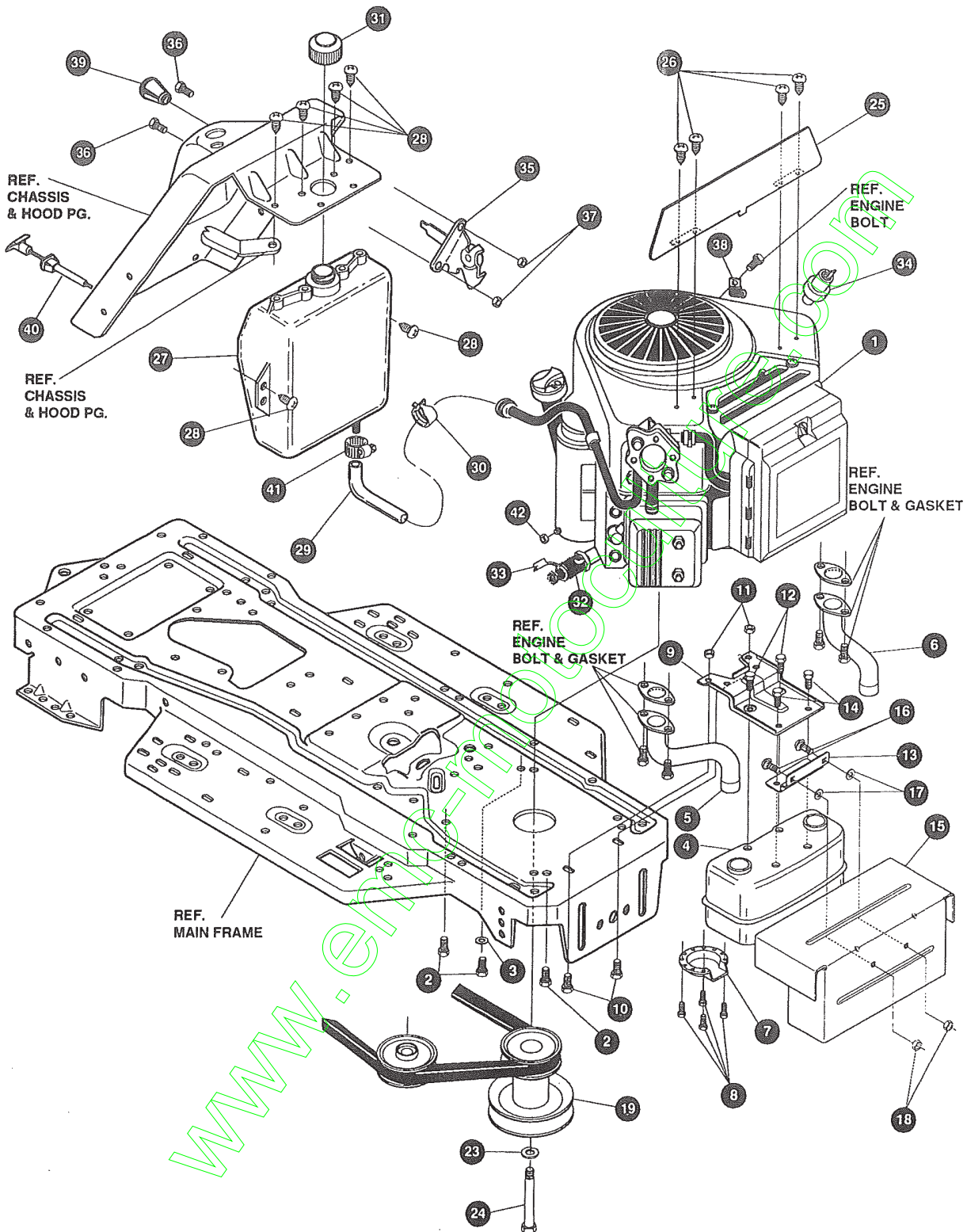


NOTE: ALWAYS USE ORIGINAL EQUIPMENT PARTS.
 Use of service/replacement parts other than original equipment parts may void your warranty.

ALL UNNUMBERED ITEMS ARE INTERCHANGEABLE WITH OPPOSITE SIDE

335520 A

KEY#	PART#	DESCRIPTION	QTY
60	321514	SPRING, DRAG LINK BIAS	1
61	304016	GUIDE, BELT, RH	1
62	1498	NUT, 5/16-18 REGHEXCTRLK	1
63	325942	PEDAL ASSEMBLY, BRAKE/CLUTCH, LF	1
64	319675	PIN, CLEVIS .500 D X 4.53 LONG	1
65	57847	SPRING, BRAKE PEDAL	1
66	2968	WASHER, FLAT .504 X .75 X .059	3
67	56180	PIN, HAIR .091 DIA X 1.62 LONG	1
68	48160	PAD, CLUTCH BRAKE W/PRINTING	1
69	320381	ARM, IDLER TRACTION, SOG, LF	1
70	329989	BOLT, .625 X .135 HHSH, 5/16-18	1
71	45602	WASHER, FLAT .333 X .87 X .119	1
72	1498	NUT, 5/16-18 REGHEXCTRLK	1
73	39659	RETAINER, BELT	1
74	35374	PULLEY, IDLER, V4L 3.06 X .62	1
75	45892	BOLT, 3/8-16 X 1.50 CARBON	1
76	1499	NUT, 3/8-16 REGHEXCTRLK	1
77	57204	ROD, CLUTCH 3.92"	1
78	326131	BOLT, .495 X .31 HHSH, 5/16-18	1
79	1498	NUT, 5/16-18 REGHEXCTRLK	1
80	327947	SPRING, BRAKE 29.25, LF, PEERLESS, HYDRO	1
81	330505	SPRING, CLUTCH .113 X .750 X 8.75	1
82	42815	WASHER, FLAT .755 X 1.53 X .07	4
83	301318	TIRE & RIM, 20 X 10.00-8	2
83-1	24167	VALVE STEM	
83-2	301366	RIM, WHEEL	
83-3	319686	TIRE, 20 X 10 X 8	
87	52928	KEY, SQUARE .187 SQUARE X 2.25 LONG	2
88	642	WASHER, FLAT .755 X 1.31 X .075	4
89	42815	WASHER, FLAT .755 X 1.53 X .07	2
90	36625	RING, RETEX .57 X .05 TRU 5133-75	2
91	40394	HUB CAP, 1.500 ID X 7/8 LONG	2



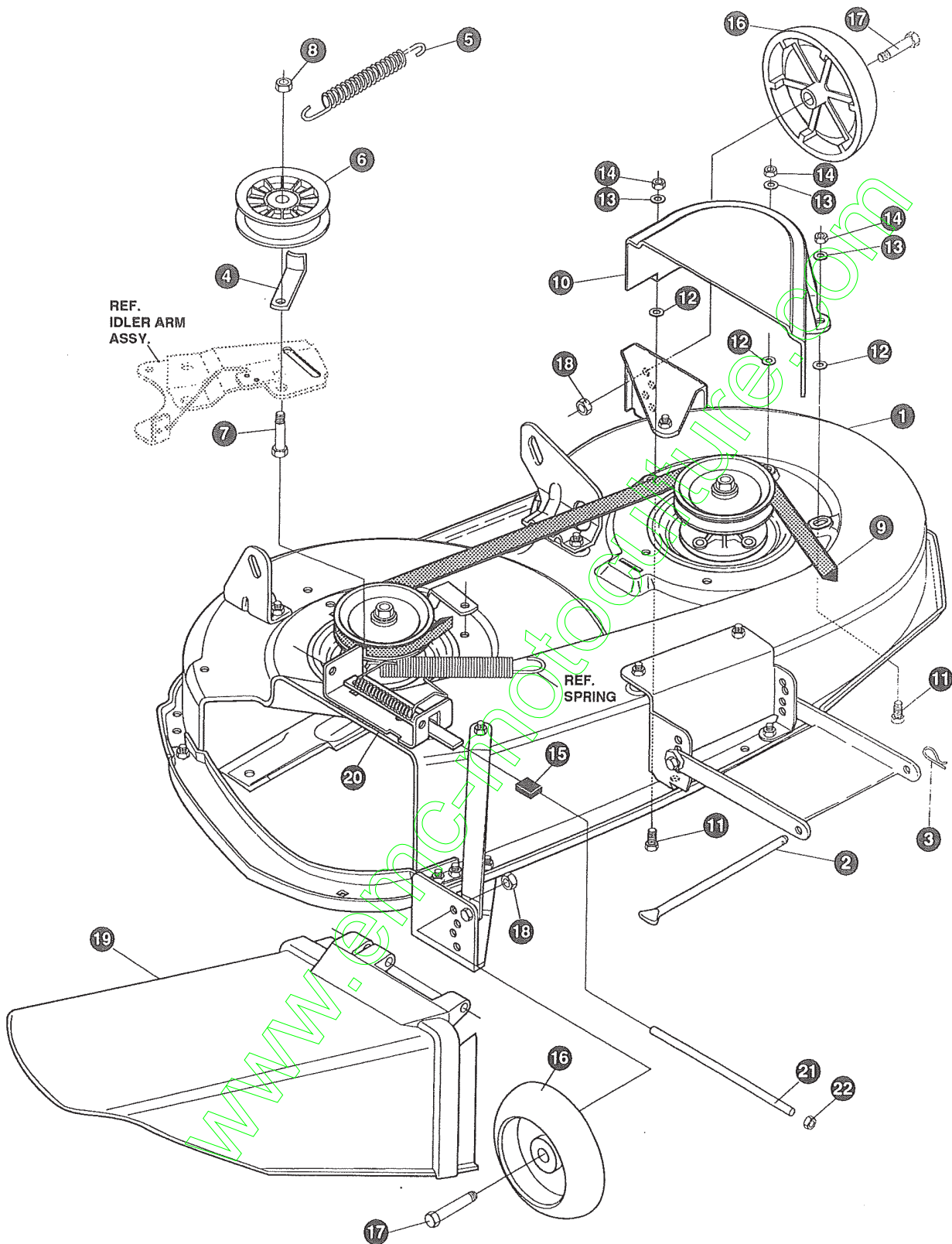
NOTE: ALWAYS USE ORIGINAL EQUIPMENT PARTS.
 Use of service/replacement parts other than original equipment parts may void your warranty.

ALL UNNUMBERED ITEMS ARE INTERCHANGEABLE WITH OPPOSITE SIDE

327731 E

KEY#	PART#	DESCRIPTION	QTY
1	*	ENGINE, 14-16HP, VANGUARD	1
2	50947	SCREW, 3/8-16 X 1.25 WAHTAP	4
3	138489	WASHER, EXLK .384 X .69 X .04	1
4	305553	MUFFLER, 14/18 TWIN NELSON, 22785 N	1
5	305554	EXHAUST TUBE, 15HP, RH, B&S, VANG	1
6	305555	EXHAUST TUBE, 15HP, LH, B&S, VANG	1
7	56472	DEFLECTOR SIDE OUT (BS222573)	1
8	35287	SCREW, #8-32 X .38 HHWATAP	4
9	304709-853	BRACKET, MUFFLER	1
10	56030	SCREW, 5/16-18 X .75 WDFLLK	2
11	55273	NUT, 5/16-18 WDFLLKLRG WHIZ	2
12	995346	SCREW, 1/4-20 X .50 WAHTAP	2
13	9796	BRACKET, TRANSAXLE	1
14	44811	SCREW, 1/4-20 X .75 WAHTAP	2
15	320922-853	SHIELD, MUFFLER HEAT TWIN	1
16	57072	BOLT, 5/16-18 X .63 CARRLN	2
17	309436	PUSHNUT, 5/16 BOLT RETAINER	2
18	55273	NUT, 5/16-18 WDFLLKLRG, WHIZ	2
19	326565	PULLEY, ENGINE 4.0 OD X 4.4 LONG X 5.0 OD	1
23	120383	WASHER, REGSPTLK /459 X .78 X .12	1
24	428644	SCREW, 7/16-20 X 5.00 HHC	1
25	312728-853	HEAT SHIELD, VANG (MF. HOOD)	1
26	57366	SCREW, 10-16 X .50 DRILLTITE	4
27	314992	TANK, FUEL 2 GALLON, CLEAR	1
28	49050	SCREW, 1/4-10 X .75 PHPNTAP	6
29	48049	TUBING, .25 X .50 X BULK GAS LINE	10.0"
30	47345	CLAMP, HOSE SCREW TYPE	1
31	46704	CAP, GAS 1-1/2-7 THD, BLACK	1
32	325547	OIL DRAIN VALVE ASSEMBLY	1
33	327422	CAP, OIL DRAIN VALVE ASSEMBLY, YELLOW	1
34	314797	OIL SENSOR, B&S, TWIN CYLINDER	1
35	310280	CONTROL, THROTTLE, 33.5 LONG, B&S, VAN	1
36	320553	SCREW, 10-24 X .63 PHPNMA CRSS	2
37	308459	NUT, #10-24 HXHDNYLK	2
38	57569	RETAINER, .31 ID X .62 X .03 WIRE	1
39	50607	KNOB, ROUND THROTTLE, BLACK	1
40	310279	CONTROL, CHOKE, 35.25 LONG PANTK.05	1
41	47345	CLAMP, HOSE SCREW TYPE	1
42	124818	NUT, 1/4-20 REGHXJAM	1

KEY#	PART#	DESCRIPTION	QTY
1	325116	43" DECK KIT	1
2	326480-853	TOE GUARD - MULCHER	1
3	180077	SCREW, 5/16-18 X .75 HHC	1
4	1498	NUT, 5/16-18 REGHEXCTRLK	1
5	180077	SCREW, 5/16-18 X .75 HHC	1
6	1498	NUT, 5/16-18 REGHEXCTRLK	1
7	317017	BRACKET, CHUTE MOUNT, BLACK	1
8	180077	SCREW, 5/16-18 X .75 HHC	2
9	120393	WASHER, FLAT .344 X .69 X .065	2
10	1498	NUT, 5/16-18 REGHEXCTRLK	2
11	313929	LIFT BRACKET, REAR, RH, BLACK	1
12	180077	SCREW, 5/16-18 X .75 HHC	2
13	120393	WASHER, FLAT .344 X .69 X .065	2
14	1498	NUT, 5/16-18 REGHEXCTRLK	2
15	310667	BRACKET, DECK, LIFT, REAR, LH, BLACK	1
16	180077	SCREW, 5/16-18 X .75 HHC	2
17	120393	WASHER, FLAT .344 X .69 X .065	2
18	1498	NUT, 5/16-18 REGHEXCTRLK	2
19	326893-853	BRACE, IDLER SUPPORT, 40", 43"	1
20	180077	SCREW, 5/16-18 X .75 HHC	2
21	308231	SCREW, 1/4-20 X 1.25 HHWATAP	1
22	44108	NUT, 5/16-18 HWDFLCTRLK	2
23	56424-853	QUILL ASSEMBLY, 36/39/40/43	2
23-1	56425	SHAFT/SADDLE 36"	1
23-2	49562	BEARING, BALL 6203-2AA-C3 ARMORED	1
23-3	50616	DUST SHIELD	1
23-4	55547	QUILL CASTING (1046)	1
23-5	49562	BEARING, BALL 6203-2AA-C3 ARMORED	1
23-6	50818	SPACER, SLEEVE .669 X .88 X 3.797	1
23-7	51449	SPACER, SLEEVE .672 X .93 X 4.38	1
23-8	313898	PULLEY ASSEMBLY	1
23-9	56365	WASHER, SPECIAL QUILL	1
23-10	1282	NUT, 7/16-20 WDFLLK	1
24	35498	SCREW, 5/16-18 X .75 WAHHTAP	7
25	300345	SCREW, 5/16-18 X 1.38 WAHHTAP	1
26	1498	NUT, 5/16-18 REGHEXCTRLK	1
27	317040	BRACKET FRONT, BLACK	1
28	328155-853	PLATE-MOUNTING	1
29	180077	SCREW, 5/16-18 X .75 HHC	4
30	1498	NUT, 5/16-18 REGHEXCTRLK	4
31	58305-853	BRACKET, LINK DECK, FRONT	1
32	58247	NUT, ADJUST	2
33	180079	SCREW, 5/16-18 X 1.00 HHC	2
34	1498	NUT, 5/16-18 REGHEXCTRLK	2
35	317041	BRACKET, GAGE WHEEL, LH, BLACK	1
36	180077	SCREW, 5/16-18 X .75 HHC	3
37	1498	NUT, 5/16-18 REGHEXCTRLK	3
38	322464-853	BRACKET, GAGE WHEEL, RH, FRONT	1
39	314282-853	BRACKET, STABILIZER	1
40	311104	SCREW, 5/16-18 X 5.00 HHC	1
41	271184	NUT, 5/16-18 HEXKEPS	1
42	180077	SCREW, 5/16-18 X .75 HHC	2
43	1498	NUT, 5/16-18 REGHEXCTRLK	3
44	326961	BLADE, 43", BLACK	2
45	2483	WASHER, .39 ID X 1.25 D X .07 BELLVIL	6
46	39573	SCREW, 3/8-24 X 1.00 NYLHHC	2
47	996307	WASHER, FLAT .391 X 1.00 X .209	1
48	320576-853	IDLER ARM ASSEMBLY	1
48-1	322116-853	ARM, IDLER, 40/43" DECK	1
48-2	41601	RIVET, OVSET .187 DIA X .50 LONG	2
48-3	306973	BRAKE PAD - HARD-NF343 (X-31)	1
49	304420	BOLT, .500 X 2.15 HHSH	1
50	996416	WASHER, FLAT .391 X 1.00 X .125	1
52	45171	NUT, 3/8-16 HWDFL WHIZ-LOCK	1
53	326249-853	BRACKET, EXTENSION IDLER	1
54	180077	SCREW, 5/16-18 X .75 HHC	1
55	180083	SCREW, 5/16-18 X 1.50 HHC	1
56	446363	WASHER, FLAT .375 X .88 X .082	1
57	271184	NUT, 5/16-18 HEXKEPS	1
58	1498	NUT, 5/16-18 REGHEXCTRLK	2
59	321828	BLADE BRAKE ASSEMBLY	1
59-1	135624	RIVET, TRSET .185 DIA X .41 LONG	2
59-2	304119-853	BRAKE ARM	1
59-3	306973	BRAKE PAD - HARD-NF343 (X-31)	1
60	180077	SCREW, 5/16-18 X .75 HHC	1
61	120393	WASHER, FLAT .344 X .69 X .065	1
62	1498	NUT, 5/16-18 REGHEXCTRLK	1
63	315304	ROD, BRAKE	1
64	1502	NUT, 1/4-20 REGHEXCTRLK	1
65	35410	SPRING .071 X .62 X 4.37	1
66	180079	SCREW, 5/16-18 X 1.00 HHC	1
67	120393	WASHER, FLAT .344 X .69 X .065	1
68	1498	NUT, 5/16-18 REGHEXCTRLK	1
69	325965	BELT GUIDE, 43" DECK, UPSTOP	1
70	12685	SCREW, 5/16-18 X 1.50 HHCFT	1
71	1498	NUT, 5/16-18 REGHEXCTRLK	2
72	322320	LEVER ASSEMBLY (SHORT)	1



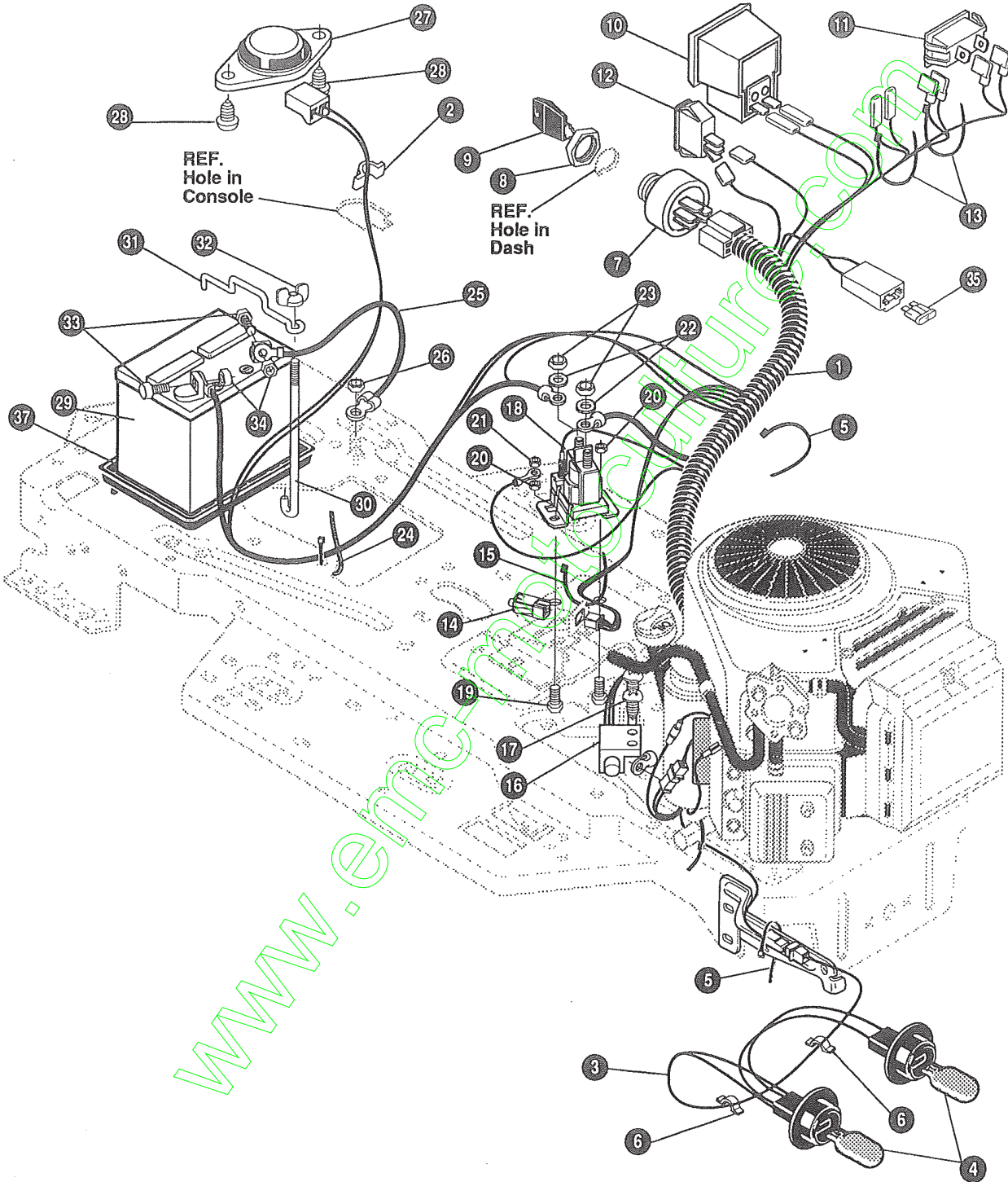
NOTE: ALWAYS USE ORIGINAL EQUIPMENT PARTS.
Use of service/replacement parts other than original equipment parts may void your warranty.

**ALL UNNUMBERED
ITEMS ARE INTERCHANGEABLE
WITH OPPOSITE SIDE**

331509 A

KEY#	PART#	DESCRIPTION	QTY
1	329036	DECK, 43", MOWER, 2-WHEEL, DOM AIR	1
2	58306	ROD, DECK HITCH	1
3	8260	PIN, HAIR .091 DIA X 1.66 LONG	1
4	1346	RETAINER, BELT	1
5	314107	SPRING, TENSION 5.00 LONG+17LB/IN	1
6	310326	PULLEY, IDLER BFF, 4.00 WIDE FL	1
7	126416	BOLT, 3/8-16 X 1.75 CARRLN	1
8	45171	NUT, 3/8-16 HWDFL WHIZ-LOCK	1
9	314108	BELT, V 5L, 86.00, KEVLAR	1
10	333073	GUARD, BELT, LH, PLASTIC	1
11	57101	BOLT, 5/16-18 X .75 CARRSN	3
12	309436	PUSHNUT, 5/16 BOLT RETAINER	3
13	120393	WASHER, FLAT .344 X .69 X .065	3
14	1498	NUT, 5/16-18 REGHEXCTRLK	3
15	42348	GRIP-LEVER GRASS COLLECTOR	1
16	302611	GAUGE WHEEL, EURO 6.00 OD X 1.38 WD	2
17	23763	BOLT, .500 X 1.390 HHSH, 3/8-16	2
18	1499	NUT, 3/8-16 REGHXCTRLK	2
19	304422	CHUTE DEFLECTOR, 40", 42" & 43"	1
20	314975	SPRING, TORSION, CHUTE DEFLECTOR	1
21	304424	ROD, PIVOT DECK .312 D X 7.25	1
22	3535	NUT, PUSH ON CAP .312 OD	1

www.emc-parts.com



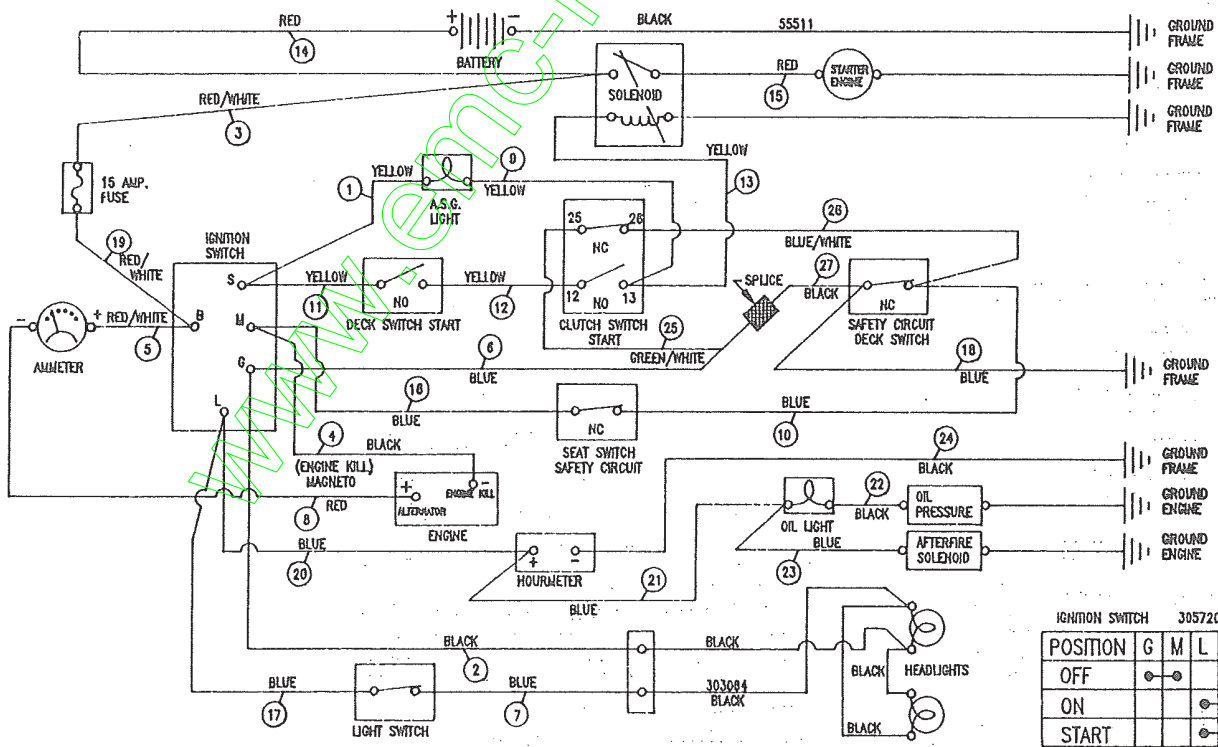
NOTE: ALWAYS USE ORIGINAL EQUIPMENT PARTS.
 Use of service/replacement parts other than original equipment parts may void your warranty.

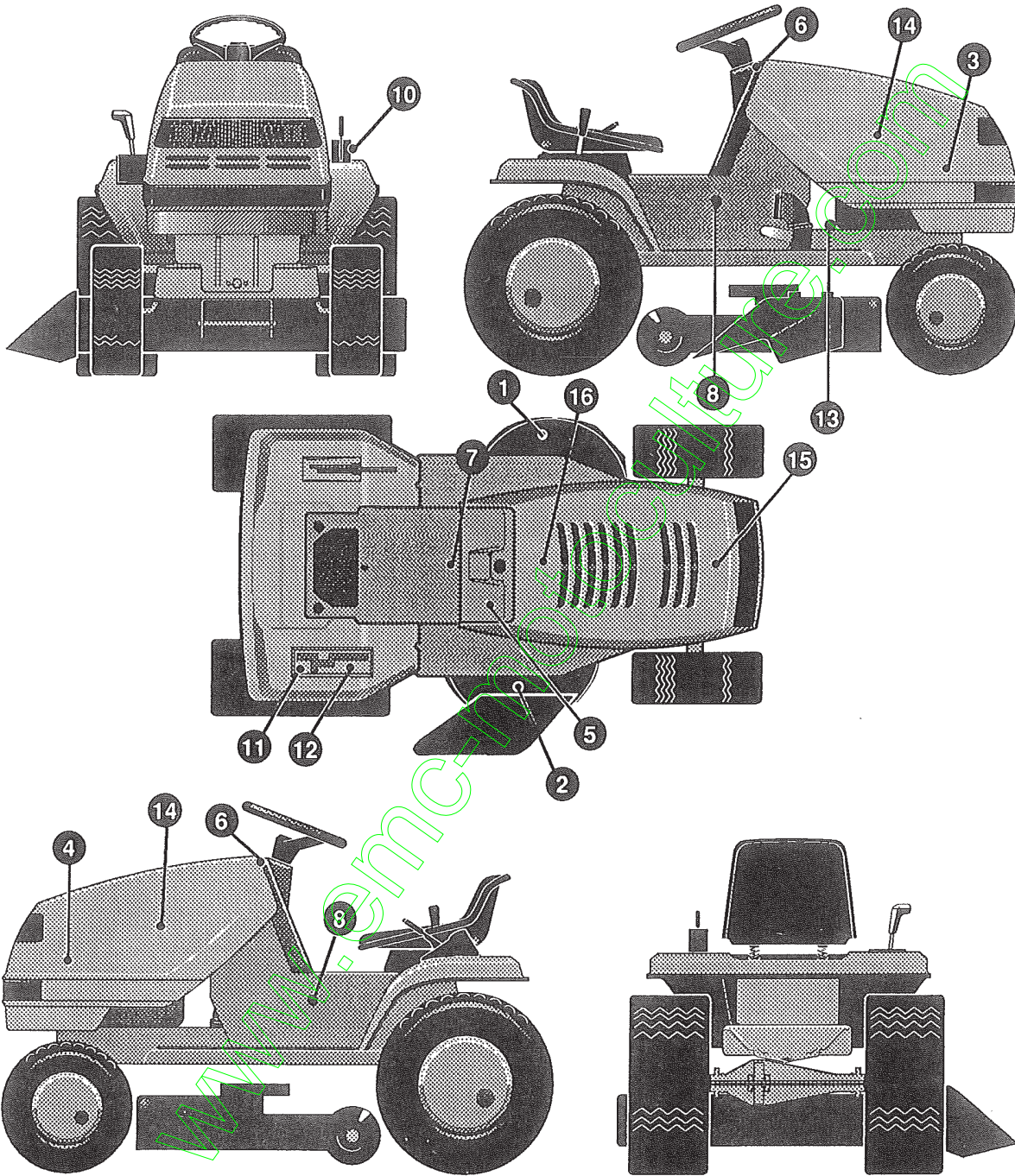
ALL UNNUMBERED ITEMS ARE INTERCHANGEABLE WITH OPPOSITE SIDE

325509 D

KEY#	PART#	DESCRIPTION	QTY
1	320393	WIRE, HARNESS, 14-16HP, B&S, VAN WRAPPED	1
2	41482	PRESS CLIP, 1.380 LONG .255 ID	1
3	303064	ASSEMBLY, LIGHT WIRE-1/4 TURN	1
4	52572	BULB, HEADLAMP	2
5	57444	TIE, CABLE BLACK NYLON, 5.62 LONG	2
6	41482	PRESS CLIP, 1.380 LONG .255 ID	2
7	327355	SWITCH-IGNITION (AFTER FIRE) 3 POSITION	1
8	327352	NUT, 5/8-8 ACME DELTA FOR BOOT	1
9	327350	KEY, IGNITION	2
10	300133	AMMETER	1
11	300255	LIGHT, INDICATOR PANEL MOUNT	1
12	300334	LIGHT SWITCH, ON/OFF, PANEL MOUNT	1
13	57444	TIE, CABLE BLACK NYLON, 5.62 LONG	2
14	320082	SWITCH, DOUBLE POLE, NO/NC GRAY	1
15	57444	TIE, CABLE BLACK NYLON, 5.62 LONG	1
16	57476	SWITCH, SCREW MOUNT, DP, NC, NO BLACK	1
17	57220	SCREW, #12 X .50 PHPNHTAP, BLACK	2
18	53716	SOLENOID	1
19	187745	SCREW, 1/4-20 X .75 HXSEMMA	2
20	1502	NUT, 1/4-20 REGHEXCTRLK	2
21	271172	NUT, 1/4-20 REGHEXKEPS	1
22	138485	WASHER, EXLK .320 X .61 X .03	2
23	120368	NUT, 5/16-24 REGHEX	2
24	57444	TIE, CABLE BLACK NYLON, 5.62 LONG	1
25	55511	WIRE, GROUND, 12.5"	1
26	271184	NUT, 5/16-18 HEXKEPS	1
27	57547	SWITCH, SEAT	1
28	160505	SCREW, 1/4-20 X .38 PHPNHMA	2
29	92693	BATTERY, 12V (MAINTENANCE FREE)	1
30	57551	ROD, BATTERY	1
31	57552	ROD, BATTERY, TOP	1
32	325232	NUT, WING 1/4-20 NYLON	1
33	180020	SCREW, 1/4-20 X .75 HHC	2
34	271172	NUT, 1/4-20 REGHEXKEPS	2
37	91895	TRAY - BATTERY	1

SCHEMATIC DRAWING



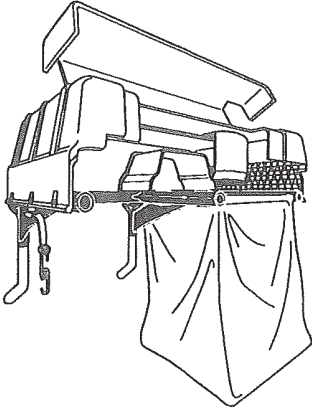


KEY#	PART#	DESCRIPTION	QTY
1	402700	DECAL, CAUTION, DECK, LH	1
2	402701	DECAL, CAUTION DECK, RH, CUT HAND	1
3	402686	DECAL, HOOD GREENCUT, H-15 (RH)	1
4	402685	DECAL, HOOD GREENCUT, H-15	1
5	323445	DECAL, LF, DASH, OIL/LSW/CH EX	1
6	313210	DECAL, DASH, WEAR STRIP, BLACK	2
7	402689	DECAL, CONSOLE SYMBOLIC, CAUTION	1
8	402682	DECAL, CONSOLE GREENCUT, GC18	2
10	402214	DECAL, HEIGHT ADJUST	1
11	314925	DECAL, SHIFT, LF, HYDRO, REVERSE	1
12	314923	DECAL, SHIFTER, LF, HYDRO, FORWARD	1
13	402702	DECAL, BRAKE/CLUTCH	1
14	305603	PAD, 18 X 6 FOAM HOOD	2
15	307277	PAD, 12 X 4 FOAM HOOD	1
16	305602	FOAM HOOD 4 X 15	1

www.emc-motors.com

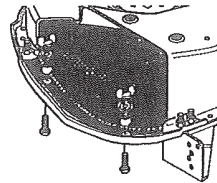
Contact the dealer where your tractor was purchased for the available accessories. If you are unable to contact the dealer, write to the address on the warranty page of your Operator's manual.

LARGE LAWN TRACTOR

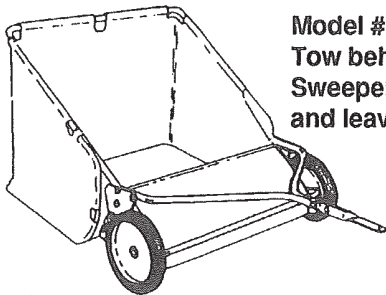
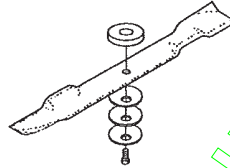


Model # 5708-34
Grass Collector for
40, 42, 43" decks

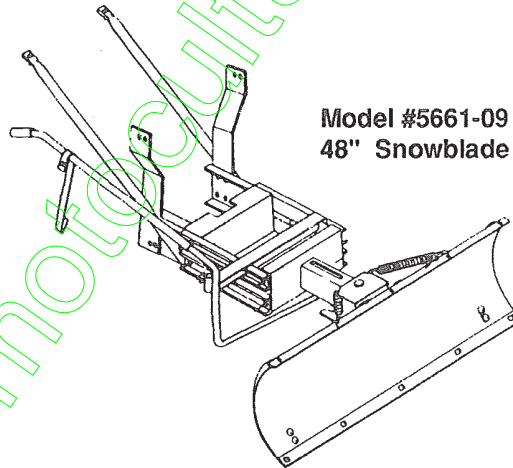
For heavy duty grass
collection order Model
#5709-10 Air Assist



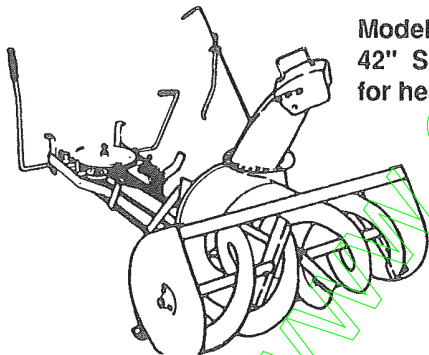
5717-00
Mulching Kit (42/43" Deck)
5716-00
Mulching Kit (40" Deck)



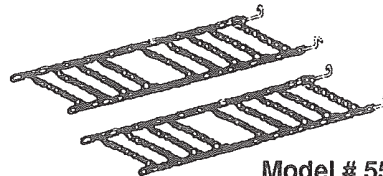
Model # 5648-16
Tow behind Lawn
Sweeper for grass
and leaves



Model #5661-09
48" Snowblade



Model #5705-06
42" Snowthrower
for heavy snowfall



Model # 5585-00
Tire Chains - 20" x 8.0" tires
Model # 5706-00
Tire Chains - 20" x 10.0" tires

OTHER ACCESSORIES

Model	Description
5672-01	Wheel Weights - Front - 1 pr. w/mtg. hdw. - Fits 15" tires
5673-02	Wheel Weights - Rear - 1 pr. w/mtg. hdw. - Fits 18" & 20" tires
309070	40" High Lift Blade for Bagging or Side Discharge (Requires 2)
330277	40" Mulching Blade (Requires 2)
316608	43" High Lift Blade for Bagging or Side Discharge (Requires 2)
325762	43" Mulching Blade (Requires 2)

www.emc-motoculture.com

www.emc-motoculture.com

www.emc-motoculture.com

www.emc-motoculture.com